

WEATHER

	Moisture	High	Low
Sunday	.00	23	5
Monday	.25	25	7
Tuesday	.00	30	13
Moisture this Month: .18			
Moisture this Year: 25.17			
Moisture last Year: 18.12			

The Hereford Brand

12 pages

SINCE 1901

Our Slogan: "More People — More Farms"

Sixty-one Years Of Service

62ND YEAR — NO. 32

HEREFORD, TEXAS, THURSDAY, DECEMBER 26, 1963

PRICE 10c PER COPY

Hereford Almost Has White Christmas But Snow Thaws

Hereford and Deaf Smith County almost had a white Christmas — and it was white in spots — but temperatures warmed rapidly with a high of 50 degrees recorded here Monday.

While moisture was welcomed in some areas of the county due to dry conditions in pastures and dryland wheat fields, cotton producers with some fields still unharvested viewed the moisture apprehensively.

Approximately one-third to one-fourth of the crop is still to be stripped. However, most of the fiber in fields is a storm proof variety.

As the month draws to a close, total moisture recorded in the city officially has reached .18 of an inch. The last winter storm dumped .08 of an inch over the area in the form of freezing drizzle and snow.

The freezing moisture began falling Friday as the second arctic storm of the week hit the area. Temperatures had climbed to a mild 57-degree reading Thursday, but tumbled rapidly. High temperature Friday was a chilling 31 degrees.

As weather conditions worsened Saturday, a hard, slick coating of ice covered city streets and area highways as the temperature warmed only to a 23 degree reading during the day after a five degree low.

During the day, streets and highways were iced over and law enforcement officials considered driving conditions as extremely hazardous. However, no serious accidents were reported in the area or the city during the period.

Hereford Police Department did, however, investigate four accidents which it classed as "fender-benders." All four occurred between 10 a.m. and 12:15 p.m. Saturday and damage in all were reported as "light."

One of the collisions occurred on West Second Street with the three remaining wrecks happening on Park Avenue at Avenue F, at Star, and in the 600 block. No accidents were reported during the remainder of the day or Sunday as snow and ice covered streets and roads.

In spite of predictions of from three to five inches of snow Saturday.

(Continued on Page 3)

Around Town

First candidate for a school board position here has filed with the School Tax office. He is Denzil Pulliam, a farmer. Terms for two members of the board, Tom Robinson and Labry Ballard, are to be filled in the 1964 elections. Neither of the incumbents has filed for re-election as yet.

Bruce Choppin, Rotary Foundation Fellow from England who is attending the University of Chicago on a Rotary scholarship, is to speak to the Hereford Rotary Club Monday.

Three Hereford students are among 354 North Texas State University students who are serving as student teachers in the Dallas-Fort Worth-Denton area this semester. They are Carl W. Covington, student teaching physical education in Denton Junior High; Milner G. Duvall, teaching physical education in Pilot Point; and Mrs. Lynda Higgins, teaching mathematics in Hillcrest High in Dallas.

Wain Miller, a Hereford High School graduate who got his newspaper start on The Brand, is now news editor of the Hobbs (N.M.) News-Sun, a daily. His mother, Mrs. Jewell Miller, lives in Hereford.

Hereford's newest civic club, American Business Club, wound up its charter membership rolls this week with 68 members, believed to be the largest charter membership ever for ABC. Darrell Rose, secretary said. The club was chartered at a banquet Dec. 13. Bob Huddleston is the president.



TREES AND SHRUBBERY IN THE Hereford area put on new "follage" over the week and as ice and snow coated their branches. The white covering, however, did not last long as temperatures warmed rapidly Monday to a high reading of 50 degrees. While the area missed having a white Christmas by a matter of days, it was still white in spots. (Staff Photo)

\$4.5 Million in Building Permits Seen for Hereford

Hereford will see a \$4.5 million building boom during 1964, or approximately \$1 million

more than the current year's total, says the Deaf Smith County Chamber of Commerce.

The figure was included in building prospects for next year, compiled by the West Texas Chamber of Commerce, with the aid of local chambers.

The \$4.5 million mark is considerably greater than a number of towns in West Texas of comparable size, the report shows.

In summarizing the Hereford building prospects, the WTCC said: "A substantial total increase for 1963, with \$3,101,250 in residential this year as compared with \$1,324,590 a year ago (is shown)."

The summary continued: "This year's total: \$3,596,950 as compared with \$2,721,764 in 1962."

The WTCC figures are based on the 12-month period from Nov. 1, 1962 to Nov. 1, 1963. Breaking down the November to November summary, WTCC's figures show residential construction for the period amounted to \$3,101,250 and commercial construction to \$239,525. School construction totaled \$268,700 during the same period.

The figures, of course, do not include outlying construction, such as the \$21-million Holly Sugar Plant, and the proposed \$1 million beef packing plant, both due for completion next year.

The \$4.5 million in new construction for 1964 will exceed Dumas' prospective construction by \$1.5 million. The two towns are of comparable size. The 1963 total also is considerably greater here than at Dumas. That city showed total construction of \$2,451,191 this past year with residential construction of \$1,348,129 accounting for almost half of the November-to-November building.

A large commercial plant nearing completion at Dimmitt boosted that city's 1963 figure to \$5,046,435, but 1964 estimate is for only \$1 million worth of new construction.

In the year ended Nov. 1, Dimmitt has issued permits for \$577,480 worth of residences; \$3,825,500 for commercial buildings; \$458,000 in public build-

ings and \$199,663 in utility construction.

Among Dimmitt's major projects were the Castro County Hospital, an anhydrous ammonia fertilizer plant, a new radio station and other business buildings, the report said.

Earth will see between \$200,000 and \$300,000 in new construction next year. A \$306,350-residential program this past year boosted that town's total to \$617,050.

New construction in Farwell will amount to \$300,000 this year, \$18,000 less than in 1963. Floydada will have \$2.5 million in new construction next year as compared with the present year's \$1,196,000, the report says. Public buildings accounted for \$483,600 worth of the 1963 figure in Floydada.

(Continued on Page 3)

Moisture Aids Wheat Outlook

Thermometer readings in the teens and below, plus two inches of snow, failed to do serious damage to Deaf Smith county crops, and bright sunshine Tuesday cheered cotton farmers.

So far the cotton, two-thirds to

three-fourths harvested, has not suffered seriously, Lefty Thomas, County Agent, said Tuesday, but wet weather always is viewed with alarm by cotton producers who remember seasons when winter rains, snow and freezing weather extended well into January.

Thomas pointed out that continued wet weather would cause cotton grades to decline a point of two, but modern storm-proof varieties are bred to withstand such weather far better than the older varieties.

"Was a time," the county agent recalled, "when cotton left in the fields until January was virtually beaten to the ground."

"I don't think we have had severe enough weather so far," the county agent summed up, "to effect our cotton production seriously. At least up until Christmas nothing too bad has come our way."

On the other hand, moisture received in the form of snow, sleet and frozen mist recently

(Continued on Page 3)

All Mail Worked; Post Office Has Record Season

Hereford Post Office employees were pushing to complete the delivery of Christmas mail Tuesday with the last delivery of Christmas parcel post packages scheduled for early Wednesday, according to Nolan Grady, postmaster.

"All incoming and outgoing mail will be worked by Christmas Day," said the postmaster. "Incoming mail volume has been greater this year since we are serving more people. Outgoing mail has remained about the same," he added.

Grady noted that area residents have apparently bought less stamps than a year ago. "Employees at the windows report that instead of buying stamps in 50's and 100's, patrons are buying stamps in lots of 20's and 40's."

However, for the month of December, he quickly added, receipts are up approximately \$2300 over a year ago.

The biggest day for the Hereford Post Office came Monday, Dec. 16, according to Grady, when the office made more than 19,000 cancellations and handled from 350 to 400 outgoing packages.

A week later the biggest volume of incoming parcels was handled as the office was swamped with 1200 incoming packages for city delivery and rural distribution.

All Christmas mail this year has been handled with one delivery each day with city and rural carriers carrying a greater volume of mail. In order to get the mail worked and distributed to post office patrons, crews have reported

(Continued on Page 3)

Three Men Held On Indictments; \$1000 Bonds Set

Three men recently indicted on felony charges by the final session of Deaf Smith County Grand Jury for the July term are now in the county jail. All are being held on \$1000 bonds set when indictments were returned.

Being held on an indictment alleging forgery is Alfred Glenn Williamson, 17, who gave his address at the rear of 325 Ave. B. He was arrested on Friday, Dec. 13.

Williamson is also wanted by U. S. Army officials on a charge alleging desertion.

Also being held on a felony forgery indictment is Frank Balderas, 29, Lovelland. The Latin-American was arrested by law enforcement officials in Littlefield on Friday, Dec. 20, and returned to Hereford.

Being held on an indictment alleging felony swindling with a worthless check is Willie Owens Carnes, 36, Plainview. Carnes was arrested by law enforcement officers in Guymon, Okla., He waived extradition procedures and was returned to Hereford on Sunday by Deaf Smith County Sheriff's Office.

Fine, Sentence Latin-American On DWI Charge

A 33-year-old Latin-American pleading guilty Monday to charges of driving while intoxicated, first offense, in Deaf Smith County Court, Judge H. C. Williams presiding, was sentenced to three days in jail and fined \$50 plus court costs.

Entering the plea to charges was Hilberto Lucero, Vega. Lucero was arrested Sunday by a unit of the Texas Highway Patrol just north of Hereford city limits.



TYING UP A BUNDLE of Christmas toys for a needy family is Dick Oakes, a member of the Veterans of Foreign War post here. The project, repairing and distributing toys to needy families, is an annual project of the post. Toys were distributed to the families by members of the post Christmas Eve. (Staff Photo)

Burglary Mars Christmas Eve Day For Police

A burglary marred Christmas Eve Day for Hereford Police Department as a break-in was investigated at Warren-Brothers Motor Co., 1219 East First. The break-in was reported about 8 p.m. Tuesday.

According to the investigation report, entry into the firm's office was made by prying open the south door of the building with a tire tool.

One inside "person or persons unknown" broke into a coin-operated soft drink vending machine, and "did considerable damage" for 10-cents.

All desks in the office were ransacked with approximately \$10 in dimes missing from one. Also reported taken from the office was a radio and a portable sewing machine.

It was reported that persons breaking into the office attempted to pry open the trunk of a 1960 model automobile on the lot but were unsuccessful. Trunk of the vehicle was, however, bent.

A tire and wheel were taken from another vehicle.

Men's Tournament Winners Are Told

Winners in the fifth annual Men's City Bowling Tournament were announced recently as finals were completed in each of the tournament's four divisions.

The city bowling championships were held at Sunset Lanes on two successive weekends, Dec. 7-8 and Dec. 14-15. Bowlers competed in four classes with divisions for teams, doubles, singles, and all events competition.

In class A, the team division was won by Guys and Dolls, No. 1, bowling a 2184 series. Team members were Bill Lookingbill, Steve Chaiky, Roy Lueb, and Fred Lookingbill.

Charlie Owens and Jim Fox bowling an 1125 series won double competition for the class

with Fox taking both the singles event with a 599 and all events with a 1746 total for nine games.

In class B, the Consumers' Fuel Co-Op team won the team championship with a 2019 series. Team members were Wayne Caster, Jim Collier, Dean Rubbs and Bud Sparks.

Winning the doubles event in the class were Al Bagwell and Roy Bolinger with an 1137. Carl Kleuskens won the singles bowling with a 582 with Jack Kirksey winning the all events trophy with a 1612 total for nine games.

Winning the team trophy in the class C was the Big T Pump Co. team. Doc Carter, Woodrow Welty, Arnold Wall and Bud Ames were team members.

Winners in the doubles divi-

sion were Vincent and Leonard Waltersheid with a 1656 with Vincent winning the singles event with a 623. Leonard took the all events trophy with a 1634 for nine games.

Kinsey-Osborn Buick team swept the Class D. team division with an 1832. Members of the team were Roy Crofford, Derrill Carroll, Frank Randeau, and Ben Lueb.

Wesley Poarch and Bill Curry won the doubles event of the class with a 521 while Roger Dhipley won the all events with a 1526 total. Curry also won singles with a 521.

In the tournament which was held on the two weekends, 37 teams were entered in the team divisions. In doubles, singles and all events divisions of the men's bowling tournament entries totaled 140.

Trophies and prize money for the Herford Bowling Association meet will be awarded at a later date, according to the Rev. Fred Beversdorf, league president, and L. J. Clark, secretary.



COLD TURKEY SALE

- Round Steak lb. 89¢
- Chuck Roast lb. 49¢
- Arm Roast lb. 59¢
- Bacon WRIGHT'S 2 lbs. 98¢
- Loin Steak lb. 79¢



Hoof Prints

By David Stevens
Whiteface Sports Editor

Some weeks are bad from the first and then they get worse. That's what happened to the Whitefaces last week. The Herd started the week with a weak 45-42 victory over Dimmitt Bobcats. Earlier in the season the Bobcats had been 79-46 losers to the Herd.

In the Clovis tournament the Whitefaces suffered two consecutive setbacks. Thursday night the Herd fell to Amarillo Carver by a score of 83-60. Then, Friday night, the Canyon Eagles beat Herford for the first time in at least eight years. The Eagles eliminated the Herd from the tourney by a margin of 67-58.

Tonight the Whitefaces travel to Roswell for the Roswell Tournament. The Herd will play at least two games in the tourney, meeting Santa Fe tonight.

Before the Whitefaces play at home again they will have played at least twice as many games in Roswell, which is 170 miles from Herford, as they have played in Whiteface gym. The next home game for the Herd is Jan. 3.

Dimmitt nearly pulled a big upset over the piddling Herd. The Whiteface manager in a 25-17 halftime lead but the Cats tied it up after three periods at 35-35. Both teams went completely cold in the last quarter before Mike Ferguson iced the game with two free throws to give the Herd a three point lead with two seconds to play. Bill Hill led the Whiteface scorers with nine points.

Again in the Carver game the Herd held the lead at halftime. However, the margin after two periods in this game was only two points, 37-35. The Dragons came out shooting in the second half and they did a great job of it, hitting 58% of their shots.

They also switched from a man-to-man defense to a zone and the usually hot-shooting Herd couldn't do anything. Jim Haney was high points man in this game with 16 points. Earl Jackson had 14, Mike Ferguson, 10; and Danny Cates, 10.

It took two more quarters before the Whitefaces began to hit, but by then it was too late. After trailing 39-24 at halftime of the Canyon game the Herd hit 55% in the second half but it wasn't good enough to catch up.

The difference was the fact that the Herd hit 12 of 15 free throws in the first half and only 4 of 11 in the second half. The last six misses came on one-and-one situations in the last period.

Westway 4-H's Exchange Gifts

Westway 4-H club met Dec. 20 at the community house for its annual Christmas party. Harold Rudd led the club in games, and Mrs. Rudd provided a pinata. Gifts were exchanged by the members, and Mrs. Jesko and Mrs. Head made aprons from towels for the girls. The boys received ball point pens.

Each member brought an item for a needy family. Hosts for the meeting were the George Turrentine and Leon Denton families.

A. O. THOMPSON ABSTRACT CO.

Mr. & Mrs. A. J. Schroeter,
Mgn. Courthouse
P. O. Box 73
Phone EM 4-1504
Free City Maps
Showing Blocks

***WINTER**
***SUMMER**
***SPRING** or
***FALL**

EVERY SEASON

is more comfortable when your home is equipped with Storm Doors & Windows

CHECK WITH THE FOLKS AT

Carl McCaslin Lumber Company

TODAY ABOUT THE ADVANTAGES OF
ALUMINUM
STORM DOORS & WINDOWS



- Cut Fuel Bills
- Keeps Home Comfortable
- Adds Beauty And Value

DON'T DELAY... SEE US TODAY!

Carl McCaslin Lumber Co.

A COMPLETE BUILDING SERVICE
1/2 BLOCK EAST OF THE COURTHOUSE
PHONE THE LUMBER NUMBER EM-3434

Dr. Pepper

REG. SIZE PLUS DEP. 39¢

DEL MONTE - CHUNK STYLE TUNA 29¢	FOLGER'S - 6 oz. INSTANT COFFEE 79¢
SKINNERS - 10 oz. MACARONI or SPAGHETTI 2 for 35¢	TENDERCRUST - LG. CELLO COOKIES 49¢
MIRACLE WHIP qt. 49¢	KRAFT DELUXE - 8 oz. CHEESE SLICES 33¢
1/2 GALLON - SWIFT HONEYCUP MELLORINE 39¢	SHURFRESH 10 CANS BISCUITS 79¢

SOUP CRACKERS

CAMPBELLS NO. 1 CAN 6: \$1

SHURFRESH 21¢

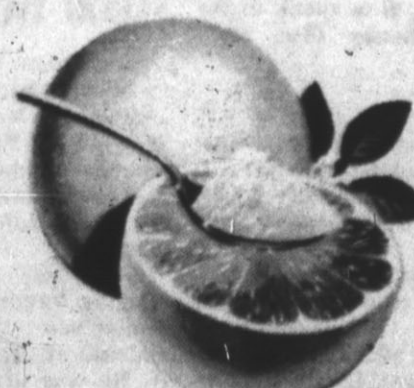
FOOD KING OLEO lb. 2 for 25¢	12's KOTEX 2 for 69¢
TENDERCRUST - 1 1/2 LB. CELLO BREAD 27¢	FOLGER'S COFFEE lb. 65¢
25's ALKA SELTZER 39¢	LIBBY VIENNA SAUSAGE 2 for 39¢
LYDIA GREY - 10 ROLL PACK TOILET TISSUE 89¢	BLUE PLATE - BREADED - 10 oz. FROZEN SHRIMP 49¢

Blackeyed Peas 25¢

ARROW 2 LBS.

GRAPEFRUIT

lb. 10¢
Potatoes WHITE 10 lbs. 39¢
Cabbage lb. 5¢
Apples DELICIOUS 2 lbs. 25¢



TAYLOR & SONS FOODS

★ YOUR HOME TOWN BOYS ★

LOW LOW EVERYDAY SHELF PRICES PLUS S & H GREEN STAMPS

CASH AND SAVE

'Do-It-Yourself' Fad Still Popular

At least once a year, somewhere, somebody makes a speech or writes a magazine article about a diminishing interest in what he calls the do-it-yourself fad.

Don't you believe it! More persons are making or fixing things these days than at any time in the past. And since a fad is something which excited only passing attention, you can hardly call something a fad which began in the 1930s, moved into high gear in the '40s and has been going strong ever since.

Do-it-yourself, indulged in by a small percentage of the population as far back as you care to go, really came into its own during the depression. Everybody was searching for a way to economize. And even though help could be obtained in those days for small fees, householders did it themselves solely for the purpose of saving money.

When things began to get prosperous in the '40s, the necessity to cut financial corners was no longer urgent, but another obstacle arose. Most skilled workers were engaged in wartime activities of one sort or another, and it became difficult to get help at any price.

These days, a combination of factors has kept the average home owner doing-it-himself. He has learned the personal satisfaction of creating and fixing things. And he has discovered,

from sad experience, that he can't always get professional help when he needs it. Longer weekends and holidays, plus shorter workdays, have combined to make the professional inaccessible at odd hours except in major emergencies.

Also to be considered in this area is the fact that it isn't easy to get a plumber or electrician or carpenter for a small job. The professionals may deny it, but you simply can not get service on a job that will cost \$75. The skilled worker is usually a busy individual these days and he can not spare the time to make a small repair at a small cost. He has to charge for his traveling time, usually referred to as a service charge, and he may feel that you will not be paying for more than just the labor and materials. It isn't his fault; it's merely, as Jimmy Durante puts it, that "those are the conditions that prevail."

It's not difficult to figure out therefore, why so many persons are doing so many repair tasks around the house. Those who think do-it-yourself is slipping haven't talked to the manufacturer of materials and products used by the householder. They will all tell you — and show you figures to prove it — that the curve on the do-it-yourself chart is still going up.

\$4.5 Million

(Continued from Page 1)
State Center will get \$230,000 worth of new buildings in 1964. WTCC estimates, as compared with \$219,504 in 1963. Listed in the 1963 report was \$97,000 worth of commercial building.
New construction in Tulla next year will amount to \$1.5 million as compared with \$1,407,652 during the November-to-November period this year. New residences topped Tulla's 1963 permits with \$730,905.
Plainview construction will to-

tal \$9 million as compared with \$13,844,400 this past year. The report says: "The 1963 boom (at Plainview) was sparked by \$14,500,000 in industrial construction. Best Fertilizers Co. began a large anhydrous ammonia and dry fertilizer plant last spring which is due for completion Jan. 1. Plainview had \$2,280,000 in residential construction... and schools and public buildings added nearly \$1 million more."
The WTCC estimate predicts a \$400,000 building total for Olton, which is \$56,837 less than last year. Residential permits accounted for \$327,225 of Olton's 1963 total and commercial construction amounted to \$13,150.
Morton will have a \$1.5 total in 1964 as compared with \$810,962 for the past year. Pampa should have a \$4 million total next year as compared with \$6,812,130 for the present period.
Leveland's 1964 total will be \$2,626,250 as compared with \$2,528,988 for the past year. Residential permits led total construction outlay in 1963. Daltart permits will total \$1 million plus or about the same as this past year's \$1,067,191.
Among the larger cities, Amarillo is expected to see \$50 million in building permits as compared with this past year's \$45,563,083. Abilene is due to spend \$17 million on new construction; last year's total was \$15,611,827. Lubbock's estimate for '64 is \$40 million, WTCC says, as compared with \$38,346,793 in 1963. Residential construction accounted for \$17 million plus of Lubbock's 1963 aggregate.
WTCC's survey says Canyon's '64 construction will total \$2 million as compared with \$1,721,676 this past year. Denver City's '64 permits will total \$600,000 as compared with \$572,850 for the past year.

All Mail...

(Continued from Page 1)
to work as early as 5:30 a.m.
"The entire crew has moved more mail than usual as quickly and in a better fashion," commented the Hereford postmaster. "Carriers have been able to handle the increased load and stick close to schedules."
Final delivery of Christmas packages was made early Wednesday morning as the post office completed a record year and a record month for postal receipts.

Farm and Ranch Club Has Party

Gifts were exchanged and secret pals were revealed during the Christmas party of Farm and Ranch Club Dec. 19. Names were then drawn for 1964 secret pals, and it was reported that a love gift had been presented to a small patient in the hospital.

Mrs. John Hill gave each club member a handpainted picture. "They were beautiful and will be cherished by each member for years to come," said Mrs. Joe Wagoner, club reporter.

Presiding officer was Mrs. Glenn Burrus. Hostess for the covered dish luncheon party was Mrs. Cliff Johnson. Visitors present were Mrs. Bill Johnson and daughter, Mrs. Wayne Johnson and son, Mrs. Charley Burk, and Ronda Lynn Combs.

Members present were Mrs. Glenn Burrus, Mrs. Hershel Burrus, Mrs. G. V. Hall, Mrs. John Hill, Mrs. Phillip Miller, Mrs. Paul Rudd, Mrs. W. W. Thomas, Mrs. N. E. Tyler, Mrs. Joe Wagoner, Mrs. Jack Weaver, and the hostess.

Hereford...

(Continued from Page 1)
tuesday and early Sunday, skies cleared as snow cover amounted to only one to two inches.
During the day Sunday, snow and ice began melting even though temperatures remained below freezing. A rapid thaw set in Monday as the city recorded a 36-degree high reading.

Moisture...

(Continued from Page 1)
has been beneficial to wheat which had been suffering for want of moisture. In fact in some areas of the county, wheat had been so severely hit by the autumn drought that farmers were considering abandoning the crop entirely. The moisture of the past 10 days, however, has brightened wheat prospects considerably.

Lightness of the frost in arriving this year materially aided harvesting, and was of untold value to cotton which had got off last spring to a wobbly start.

Thomas said: "We got off to a poor start last spring, crop-wise, but we are winding up the season with a good finish." He also pointed to last year's prospects at this same time of the year when wheat was practically drying up in the fields, due to lack of moisture.
"This year's wheat outlook, as a result of recent snow, has brightened considerably."

GET MORE FOR YOUR MONEY... shop SAFEWAY!



Start The Day With a Hearty Breakfast!

Breakfast Gem
Grade "A" Eggs
Medium Size Doz. **39c**

Mexican Dinners
Frozen Pot Pies
Party Mixers

EL CHICO FROZEN DINNERS SAVE 20c 16 oz. Pkg. **39c**
SPARETIME POT PIES... SAVE 14c 6 oz. Pies **2 25c**
CRAGMONT ASSD. FLAVORS REG. PRICE 2 for 25c QT. BTL. **10c**

Campbell's SOUPS

Chili

Wilson's Chili Without Beans 24 oz. Can **49c**
Save 4c

Lucerne Pasteurized EGG NOG
QT. **49c**
CTN. **98c**

MEAT VARIETY 6 Tall Cans **\$1.00**

Tuna

Sea Trader Chunk Tuna 6 oz. Cans **\$1.00**
Save 24c

Ellis Hot TAMALES

Peas

Highway Blackeye Peas 3 No. 300 Cans **25c**
Save 8c

HEAT & SERVE 3 No. 2 1/2 Cans **\$1.00**

Peas

Big Chief Blackeye Peas 2 LB. Bag **35c**
Save 6c

Jolly Time Popcorn 20 oz. Pk. **35c**
Snack Crackers Busy Baker 1 lb. Pkg. **35c**
Breeze Detergent GT. BOX **79c**

Melrose CRACKERS

Special Prices on Produce

POTATOES

BUSY BAKER FAMILY ASSORTMENT COOKIES
24 oz. PKG. **45c**

MELROSE SODA CRACKERS 1 lb. Pkg. **19c**

Colorado Red McClure Potatoes 20-lb. Bag **49c**

PORK CHOPS
CENTER CUT RIB LB. **69c**

Sunshine Hi-Ho Crackers 10 oz. Pkg. **29c**
Sunshine Cheez-Its 10 oz. Pkg. **31c**
Skinner's Macaroni 2 7 oz. Pkg. **27c**

Perfect Eating Guaranteed

STEAKS
USDA Choice Aged Mature Beef, Sirloin or T-Bone Steak, This Low Price Now at Safeway Only LB. **89c**

Sliced Bacon
ARMOUR'S CAMPFIRE 1 lb. PKG. **39c**

Pork Sausage
HORMEL PURE PORK LB. **29c**



PARD DOG FOOD 2 Tall Cans **33c**
DUZ DETERGENT 1 lb. 7 oz. Pkg. **59c**

Corned Beef TOWN HOUSE 12 oz. Can **49c**
Potato Chips LAY'S FAMILY SIZE PKG. **49c**

LUCERNE Party Dips
ASSTD. VARIETIES 3 8 oz. CTN. **\$1.00**

JOY LIQUID Safeway Price 32 oz. Btl. **98c**
CHUNK TUNA Star Kist White Label No. 1/2 Can **47c**

Potato Chips MORTON'S FAMILY SIZE PKG. **59c**
Oysters SEA TRADER SMOKED OYSTERS 3 3-2/3 oz. Cans **\$1.00**

WILSON'S MOR Canned Pork 12 oz. **47c**
WILSON'S BIF Canned Beef 12 oz. Can **47c**
LISTERINE 7 oz. Btl. **69c**

MARGARINE Creamo 1 lb. Pkg. **27c**
STAR-KIST TUNA Chunk 6 1/2 oz. Can **37c**

Nabisco
9 oz. Tang-O-Chips, 9 oz. Sociables, 10 oz. Swiss-N-Ham Crackers, 10 oz. Triangle Thins, 9 1/2 oz. Vegetable Thins, 10 1/2 oz. Wheat Thins, 8 1/2 oz. Bacon Thins, 1 lb. Ritz Crackers & 8 oz. French Onion Thins.
2 PKGS. ONLY **79c**

"POOL YOUR NEEDS"
• Home • Auto • Fire
• Casualty • Bonds
• Long Haul Trucks
We Represent Business Men's Assurance Life Health - Accident - Hospital Insurance Pool Insurance Agency
Lloyd Pool 618 W. Hwy. 61 EM 4-0758

SAFEWAY
We Reserve the Right to Limit Quantities

SUGARINE 4 oz. BTL. **69c**

Phone EM 4-2030 W A N T A D S Phone EM 4-2030

EAGLE NEST HOMES
Builders & Developers
Eagle Nest Construction
HEREFORD
230 N. 25 Mile Ave. EM 4-3722

- Homes Custom Built on Your Lot or Ours
- Maximum Conventional Loans Arranged
- Commercial Buildings • Turn Key Remodeling
- Also will build to suit tenant on long term lease.

GOOD STOCK FARM FOR SALE

1 1/2 sections, cotton, maize & wheat allotments, part in grass.
5 small irrigation wells with electric submerical pumps. Irrigation pipe to go with place.
Good 2 bedroom house recently remodeled. This farm is well financed and priced to sell at \$170.00 per acre.
Also have other irrigated farms listed. See me for details.

G. W. NEWSOM, Agency
415 N. Main - Hereford, Texas
Phones: Office EM 4-1733
Res. EM 4-3338

The Hereford Brand

TEXAS PRESS ASSOCIATION
Member 1963

Our Slogan: "More People—More Farms"
Member National Editorial Assn.
Member Associated Press
Hereford, Deaf Smith County, Texas—Phone EM 4-2030

Published Every Thursday at 336 Main St.

Entered as second-class matter at the Post Office in Hereford, Texas under the act of March 30, 1879 Second - Class postage paid at Hereford, Texas. Any erroneous reflection upon the character, standing or reputation of any person, firm or corporation, which may appear in the columns of this paper, will be gladly corrected upon due notice of same being given to the editor personally at the office. Subscription Rates: Zone 1, \$2.50 per year; Zone 2 and above, \$3.50 per year. With the Sunday Brand, both papers, Zone 1, \$4.95 per year; Zone 2, \$6.15 per year. Carrier delivery, 60c per month. Single copies, 10c each.

Classified advertising rates: 6c per word first insertion (60c minimum); 4c per word additional insertion.

JAMES M. GILLENTE Publisher
MELVIN YOUNG Managing Editor
BILL PENN Advertising Manager

Hallmark of Service

MARK REALTORS

618 W. Hwy. 60 EM 4-2220

3 bedrooms, 2 baths, large den, large kitchen, beautiful fireplace, 2350 sq. ft. of living area. 213 Ranger.

Call Today for your own Personal Showing.

HOMES

Two bedroom brick, large living room and kitchen, freshly painted. Why wait any longer to own instead of renting? H26

2100 sq. ft. in NW Hereford with 4 bedrooms, 2 baths, large den and complete kitchen. This is a new home that will trade for your old house. H319

Three bedrooms, 1 1/2 baths, double garage, close to high school, large lot. Low down payment. H321

Have you ever thought about trading your old house in on one of the many fine 3 bedroom homes that are available? Call us for details. H32-34-36-310-316-318-32-321. That's right, we have nine houses that will trade for older, smaller houses.

RANCHES

Seven sections, Texas ranch, plenty of water, good grass, some wheat and cotton. \$60 an acre. \$30 an acre loan commitment. R27

Five and three quarter section ranch. Plenty of water, 150 to 175 cows. 29% down. \$32.50 an acre. R17

FARMS

One section northwest of town in good water. Half in cultivation. 46 acres wheat, 238 milo. Fair frame house. One 8" well on natural gas. Good native grass. On pavement. \$325 an acre. F49

330 acres near Muleshoe. 160-lays perfect. 95 acres cotton, 189 milo, 45 alfalfa, 170 acres in soil bank paying \$1600 a year. Good improvements. Close to town. F22

EVENINGS & SUNDAYS

Lloyd Pool - EM 4-1207 Oliver Streu - EM 4-2857
J. L. Marcum EM 4-2691 Francis Hardwick EM 4-2241

You've Never Seen Such Thorough Service
STOP IN SOON
Phillip "66" Products
EAST SIDE "66"
Rocky Stewart
1303 E. 1st. EM 4-2644

RENT A CAR

BY DAY, WEEK or MONTH

Campbell Pontiac
815 E. 1st EM 4-2283

Hereford Rotary Club
meets every Monday at 12:05
RANEY'S RESTAURANT

Kwanis Club
Thurs. Noon
IOOF Hall
207 E. Sixth

STATED MEETINGS
Second Monday

Thursday Night
EA
7:30 P.M.
Hereford A. F. & A. M.
No. 849
Troy Stambaugh, Sec.
Bill Hutson W. M.

OPTIMIST CLUB
Meets Monday Eve 6:30 p.m.
Raney's Restaurant

Lions Club meets each
Wednesday, 12 Noon
Hotel Jim Hill

Hereford Radiator
DEPENDABLE SERVICE
120 Schley EM 4-3355

GLASS IS OUR BUSINESS
Call Us For All Your Glass Needs
HEREFORD GLASS CO.
1302 Park Ave. INC. EM 4-2652

Merry Christmas and Happy New Year

from J. C. & Joyce Pool and Family
Kirby Vacuum Cleaner Co.
431 W. FIRST EM 4-0422

CUSTOM FEEDING
Growing - Finishing Rations
CHARLIE STONE
EM 4-2224

HEREFORD BAKERY
519 Park Ave. EM4-0177
HOME OF Deaf Smith County Bread and Pastries

GO GO GO

AUCTION SERVICE
Sales of All Kinds
BILL FLIPPIN
Friena Phone 5362
or **George Zetzsch**
Clerk Phone AV9-4404

Colorado Rod-Weeders
PTO or hydraulic drive.
Cisco Rod - Weeders with hydraulic drive.
Dempster Planters, Cultivators and Rotary Mags.
Liljinton Shredders & Blades.
See the new M-F Diesel tractors. We have several GOOD used Combines.

SEE:
LESLEY MOTOR CO.
For the finest in farm machinery.
West Hi-way 60
Phone EM 4-1600

MATTRESSES

- New • Renovated
- Remanufactured

FREE PICKUP & DELIVERY

Prices are the same in Hereford as Amarillo

Call or Write
ANDERSON
Mattress & Upholstering Co.
Box 802 - 205 N. Tyler
Amarillo DR3 - 8313

1. FOR SALE Miscellaneous
BY OWNER, to be moved, small two bedroom modern house. \$2,000.00 Call EM4-2488.
B-1-13-25-TFC

HOUSES FOR SALE
IN ANY PRICE BRACKET
CALL EM 4-0615
Lone Star Agency

SERVICE ON ALL Washers & Dryers
SUNSET APPLIANCE
906 Lee EM4-3472

CHARLIE BELL SELLS
Southwestern Life

HILL'S TEXACO
FIRST & MILES
EM 4-1823
CONVENIENT TO DOWNTOWN

ALL TYPES ELECTRICAL WIRING
PHONE EM 4-0910
BILL DRUMMOND
BILL'S ELECTRIC

SERVICE ON Black & White & Color TELEVISION
Any Make or Model
SUNSET APPLIANCE
906 Lee EM4-3472

Reliance HOMES
NO DOWN PAYMENT
NO CLOSING COSTS

B & B
Recreation Club
128 Lawton
Pool - Snooker

FOR Gas • Wash • Grease • Wheel Balancing • Minor Repairs
BOYD'S HUMBLE SERVICE
EM 4-1110
Hwy 60 & 385

MEAT
Processed For Freezer - Also RETAIL SALES

HACKER & JESKO
1315B Park Ave. EM4-3224

POWELL TV & RADIO SERVICE
Years of Experience
On All Makes
EMMETT POWELL
105 Grand Ave
EM 4-1659

GENERATORS and starters for cars and trucks. Hereford Wrecking Co. Phone EM 4-0580.
T-1-12-28-tfc

ANGUS BULLS Andrews and Andrews, Aberdeen Angus. BR6-4404 or BR6-4133
B-1-10-25-TFC

BIG RED BARN
We Buy - Sell - Trade for anything of value. Used Furniture, Appliances and Junk.
EM 4-3552
West Edge Of Hereford Highway 60
B-1-1-TFC

FOR SALE two small horses; set Samsonite Luggage. New ice skates, planter boxes. 803 Knight. Phone EM4-3315.
B-1-17-23-tfc

IMPORTED FIESTA Skirts. Wholesale and retail. 808 Knight. Phone EM4-3315.
B-1-10-22-tfc

Chrysler - Plymouth AUTOMOBILES
CHRYSLER IRRIGATION ENGINES
New & Used
MCCULLOUGH MOTOR CO.
Sales & Service
345 East Highway 60
Phone EM 4-3150
B-1-43-TFC

ALFALFA HAY See Charlie Holt 4 1/2 Miles West on Clovis Highway. EM 4-0402 or EM 4-3706.
B-1-14-4-12tp

Johnson Outboard Motor or Arkansas Traveler Boat, or for a used boat or motor, see **KINSEY - OSBORN MOTORS**
142 MILES AVENUE
B-1-26-TFC

FOR SALE to be moved. 16 x 28 building in Dimmitt. Mrs. R. V. McMahon Rt. 647-3778.
B-1-15-50-6C

HAVE YOU TRIED??
The prompt, courteous and guaranteed service at **POOR BOY'S GARAGE**
Bring us all your automotive troubles. Lawn mowers to tractors.
Bill McIver - EM 4-3509
Johnny McIver - EM 4-2130
EM 4-2799
B-1-11-Tfc

USED BARGAINS
Magic Chef Range - Hotpoint electric range, Norge 30" electric range, Frigidaire electric range, \$40. Late Model GE combination washer and dryer. GE automatic washer. Frigidaire dryer. Corner China Closet in mahogany.
BUY-RITE FURNITURE
North End of Main Street
B-1-21-tfc

2. FOR SALE Farm Equipment

WE ARE DEALERS for Peerless Grain Rollers and Feeding Equipment
DAVIS IMPLEMENT
144 W 2nd EM 4-2811
B-2-18-tfc

TOP QUALITY Irrigation Dams as low as \$3.25
DAVIS IMPLEMENT
144 W 2nd EM 4-2811
B-2-18-tfc

3. FOR SALE Automobiles
FOR SALE '57 Chevy. Good Condition. Clean. New tires. Reasonable. EM4-2603 or see at 232 Avenue J.
B-3-17-24-tfc

1951 FORD HALF ton pickup. Runs and handles well. Good general shape. Call EM4-0872 or EM 4-0789.
B-3-16-tfc

MILBURN MOTOR COMPANY
We Pay Cash For Used Cars
225 N. Sempson
Phone EM 4-0077
B-3-33-TFC

1958 Chevy Impala. Really good shape. Automatic, rolled and plated. Real sharp. Call EM 4-0854.
B-3-14-17-tfc

4. REAL ESTATE For Sale Or Trade

DEAN BINGHAM LAND COMPANY
Farms - Ranches
Loan Service
116 S. 25 Mile Ave.
Phone EM 4-0410
B-4-15-TFC

WESTERN HOMES
A custom builder. FHA, GI, Conventional. Build on your location. All brick, built-in oven and range. All carpet 501 DuPont Nylon. Your selection of cabinets. Ceramic tile all baths. Slob, or hardwood floors. Fully insulated. Finished garage. Your selection of colors. \$8.00 per sq. foot.
CARTHOL REAL ESTATE
206 N. 25 Mile Ave.
EM 4-0944
B-4-25-3c

NICE SMOOTH, well improved 1/2 section. 2 good 8" wells on gas, 160A milo. \$495A, 1/2 cash. Immediate possession. 200A farm for cash lease. 165A cultivated. 35A grass. One 8" well. 21A wheat, 90 A milo, 11.5A cotton. Immediate possession. \$2500 year. One of the nicest cattle feeding operations in SE Colorado. Well improved. 165A in cultivation. 200A permanent pasture. One 12", two 10", one 6" well, on gas; set at 75'. A good buy at 29% down.
CARTHOL REAL ESTATE
206 N. 25 Mile Ave.
Phone EM 4-0944
B-4-25-3c

WESSON'S SPECIALS
MOVED: We have moved to our new office, located south of Hereford, on Dimmitt Highway. EVERONE, is invited to visit us at our new location, see our new office which is especially arranged and designed for rendering the very highest efficiency in Real Estate service. Plenty parking space. BUY, SELL OR TRADE: To buy, sell, or trade real estate, you can rely on our service, we know how, when, and where to do a job. If you want to sell, list with us.
HANCOCK FARM LOANS: We make farm and ranch loans, anywhere for any purpose. Free, prompt, and liberal appraisals. Long time term, low int. rates.
YOU CAN DEPEND ON OUR SERVICE
WESSON REAL ESTATE
Ph. EM 4-2528 Ph. EM 4-2860
Hereford, Texas
South on Dimmitt Highway
B-4-24-tfc

FOR SALE by owner. Four bedroom, two baths. Convenient to schools. Phone EM4-2647.
B-4-13-25-6P

FOR SALE: Two bedroom house. Excellent location. Immediate occupancy. Call AV9-4514.
B-4-11-25-7C

LOANS FARM & RANCH FAST SERVICE
DUWARD HAMBY
EM 4-3366
NIGHT - EM 4-3466
B-4-35-TFC

CERTIFIED SEED FARM
DEAF SMITH COUNTY
955 Acres: Nice 3 bedroom brick home; 2 bedroom helper house. Grain elevator, other out buildings. 5-6" irrigation wells. 2 1/2 miles tile. Wheat and Milo allotments. All clean land, on pavement. Will sell or take 1/2 section as trade in, in Hereford School District. For further information contact:
DOUGLAS LAND CO.
Friena, Texas
Phone 5541
Joe B. Douglas Ed Hicks
Phone 5531 Phone 3231
B-4-22-tfc

\$\$\$
ONE MILLION DOLLARS To land on irrigated land in Deaf Smith, Castro and Parker counties. For PRUDENTIAL America's Largest Farm Lender!
SAM NUNNALLY
EM 4-0555 EM 4-2814
LONE STAR AGENCY
B-4-1-277

Buy With Confidence

JUSTICE

WE WISH YOU NOTHING BUT THE BEST IN '64

We will be open Dec. 26

Justice Realtors
Corner Main and Hwy. 60
EM 4-1757 EM 4-2266 Box 711
Gene Speed Mike Justice
EM 4-1420 Res. EM 4-0544
Virgil Justice

PRESENT CHRISTMAS PROGRAM — Children from Thompson Memorial Baptist Mission presented a program "Feliz Navidad" (Merry Christmas) to approximately 200 persons at the First Baptist Church. Twenty-five children participated in the program. Some are shown here spelling out "Feliz Navidad" (Merry Christmas). (Staff Photo)

Gastonia POPULAR STORE

Doors Open At 9 A.M.
Thursday
All Sales Cash
And Final

PRE - INVENTORY Sale

MENS & BOYS DEPT.

WE MUST CLEAR OUR SHELVES SPORT COATS

REG.	NOW
39.95	29.95
35.00	27.50
29.95	25.00
27.50	22.50
25.00	20.00

LOOK!



MENS & BOYS SWEATERS

ALL STYLES & COLORS **1/2 PRICE**

BOYS - LONG SLEEVE SPORT SHIRTS AND KNIT SHIRTS

1/2 PRICE

MEN'S SUITS

ALL SUITS REDUCED

Reg.	Now
75.00	60.00
69.50	57.50
65.00	52.50
59.50	47.50
55.00	45.00
49.95	39.95
45.00	39.95
39.95	32.50

LOOK!



Boys Knit
SPORT SHIRTS **1/2 Price**

ONE GROUP MENS SPORT SHIRTS

2.99

MEN'S
JACKETS
ALL MARKED
DOWN

TOP COATS

ALL MUST GO

Reg.	Now
44.75	35.00
39.95	29.95
38.75	29.95
35.95	29.95
20.95	15.49
18.95	14.75

LOOK!



ALL MENS & BOYS WESTERN SHIRTS

1/2 PRICE

BOYS JACKETS

Sizes 3 to 20

REG.	NOW
5.50	3.99
9.95	5.95
11.95	6.95
12.95	7.95
13.95	8.95
14.95	9.95
15.95	10.95
17.95	11.95
19.95	12.95

LOOK!

MANY MORE
ITEMS THROUGHOUT
THE STORE

S-H-O-E-S

Johansen and
Mr. Easton
HEELS

Val. To **11.99**

ONE GROUP
SHOES

Hi - Mid - & Low
Also Childrens
Sparkle Toes **5.99**

Displayed on Tables & Racks

Domani - Nina - Debs

Better Flats

Val. To **7.99**

GROUP
FLATS and
CHILDRENS SHOES

Val. To **4.99**

Classifieds...

NORTH PLAINS, 2 sections, good level land, 3 wells. **PABNER CO.**, 640 Acres. 100 acres cotton. 300 acres, good water. **URSCHEL PERKINS REAL ESTATE**
818 Blevins EM 4-0020 B-4-52-2c

WESSON'S SPECIALS
125 ACRES: Located on hwy. right near the new location of the Meat Packing Plant. Priced reasonable on terms.
CASTRO COUNTY: 1/4 sect. all good level land in cult. good allotments. Good irrigation well. Poss. Terms. \$375 Ac.
DRY LAND: 480 Acres. Deaf Smith county. All good level land in cult. Good wheat & maize allotments. A real good investment for \$110 per acre. Terms.

1000 ACRES: Apprx. 1/2 good tillable and irrigatable, balance good grass land. Plenty irrigation water available. Exceptional good buy for \$112.50 per acre.

MANY OTHER GOOD LISTINGS

See us for your needs. **TO BUY, SELL, or TRADE** You can depend on our service. We know how, when, and where.

HANCOCK FARM, AND RANCH LOANS

Free, prompt, and liberal appraisal. Fast service. Long time terms. Low int. rate.

WESSON REAL ESTATE

South of Hereford on Dimmit Highway B-4-51-1c

"FREE OF DEBT"

Choice income property. Trade for ranch. EM 4-0484, Box 27, Hereford, Texas. B-4-50-6c

BUILDINGS BUILDINGS!

Will build to suit tenant..... will build, sell land, turnkey job. Will finance long term.

All Steel Colored Metal Buildings

There are 7 lots left in South Park (B & B Oliver & Patterson Chemical)..... there is one lot... 200 foot front X 196 feet on North 25 Mile Ave. (Mona Lisa Trailer Court) Several locations on Canyon Highway.

SAM MUNNALLY LONE STAR AGENCY

Sixth & Main EM 4-0555 Nite EM 4-2814

FOR SALE

Large 3 bedroom on Elm Street. 2050 feet, 100 foot lot, two full baths, fire place, nice yard and fence. Call owner at EM 4-2849 for appointment. B-4-5-TFC

FOR RENT

APARTMENTS FOR RENT, 2 bedroom, 2 bath, cook top, oven, dishwasher, refrigerator, carpeted, drapes, plumbed for washer, dryer. **HARRISON HWY & CENTRE** Open 2:00 to 6:00 B-5-22-1c

FOR RENT Furnished 3 room house. Adults only. Available Jan. 1st. EM4-2621. B-5-12-51-2c

FURNISHED ONE bedroom duplex to white couple. Central heat. Utilities paid. 711 East Third. B-5-14-49-1c

FOR RENT: Dulux 2 bedroom apartments, northwest. Carpets, central heat and air. Call EM4-2220, Mark IV Realtors. B-5-17-51-4c

TWO BEDROOM furnished house. Newly decorated. Furnace, Carpets, Adults only. No pets. Call, nights and week ends. EM4-1226. Week days EM4-2733. B-5-21-23-1c

FOR RENT Office on Hwy 60. Call EM4-3586. B-5-10-45-1c



CHARLIE MORRIS, member of the local VFW post, packs boxes with toys for children in needy families. The boxes were distributed by the VFW and the auxiliary Christmas day. This is one of the post's annual projects. (Staff Photo)

6. WANTED

YOUNG, EXPERIENCED beet grower from North Platte Valley of Western Nebraska wants job on crop rent basis in Hereford area. Inquire to Box 10 Gering, Nebraska. B-6-26-5P

WANTED USED land plane about 80 feet long with a 12 foot blade. Call 883-2561 after 7:00 p.m. or Write Lem Green, Box 24, White Deer, Texas. B-6-27-25-2C

NEEDED LISTINGS on farms, homes, businesses and commercial property. Justice Realtors. B-6-11-4-TFC

PORTABLE DISC ROLLING Scalloped or plain. Jacobsen Brothers. Phone EM 4-1543. B-11-10-23-1c

LET US handle all your real estate problems including free rental service. Justice Realtors. B-11-14-4-TFC

OPPORTUNITY available for Dental Assistant. Experience unnecessary. Preferably age 35-40. Applications being taken at 907 Park Avenue, Hereford, Texas. EM4-2820. B-9-20-51-2C

WAITRESSES Wanted: Apply in person at Ramey's Restaurant. B-8-10-1-1c

10. NOTICE

MR. FARMER We have hundreds of 14, inch Trailer Tires. New and used tires. **James A. Brown Tire Service** Highway 60, West B-10-23-1c

DITCHING SERVICE AND SPRINKLER SYSTEMS EM 4-0343 EM 4-1567 B-10-19-TFC

11. Business Service

FOWLER AND KELLEY Electrical Contractors Residential and Commercial All bids and wiring competitive. Phone EM 4-2012 Nights phones EM 4-2012 or EM 4-1828 B-11-21-1c

Religious Plaques Styrofoam Forms Wicker Christmas Decorations Race Car Accessories HOBBY HOUSE 127 West Third B-11-22-1c

OWENS & HOLLINGSWORTH EM 4-3572 Commercial - Industrial Residential Wiring 809 EAST SECOND Magneto - Starter Generator & Electric Motors Rewind Sales & Service B-11-13-TFC

DILLARD EARTH MOVING SERVICE Bulldozer Work **TROY NEWMAN** Phone EM 4-2072 B-11-42-TFC

13. LOST AND FOUND

LOST DECEMBER 7th, Vicinity Jim Hill Hotel, bracelet, white pearl with rhinestone clasp. Reward offered. Call Grace Potter. DR3-8606 or FL6-1921 B-13-21-25-2C

LOST 10 MILES North of Hereford, White Samoyede (Husky type) dog. Answers to Nauré Blitz. Reward: Contact Bob Veigel. CL8-4393. B-13-20-25-9C

Irish peasants depended almost entirely on the potato for food in the first half of the 19th century.

INSURE!

Before You Leave!!

Plains Insurance Agency

Since 1926

Jno. H. Patton W. H. Patton Robert Lemons

AUSTIN HIGHLIGHTS

Christmas Vacation Turns Capital Into News Center

By Vera Sanford
When President Lyndon B. Johnson said "I'll be home for Christmas," he made "AUSTIN" a world dateline—and he changed the plans of a lot of newspapermen.

Reporters from all over the nation preceded, accompanied and followed the President to Central Texas.

European newsmen will arrive soon after Christmas. They will be here for German Chancellor Ludwig Erhard's December 23-29 visit to the President's famous LBJ Ranch near Johnson City.

Johnson's plans to confer with Erhard in Texas had been known for some time. But, his announcement that he planned to spend Christmas with his family at the ranch was a surprise.

Johnson said he wanted to re-

lax on Christmas Day, maybe go hunting or just take to the hills "communing with myself". He also wanted to see "my sisters and my brother and my uncles and cousins and aunts."

The family scheduled the hanging of four traditional red velvet stockings from the mantel and opening of surprise presents just like any other family.

Turkey and trimmings, cooked by the ranch cook, was the Christmas day menu.

Meanwhile, 65 miles away, hundreds of the nation's top newspapermen set up headquarters and communications facilities in Austin hotels to cover the story of the President's return to Texas and the visit of German dignitaries.

Many would make the trip to the LBJ Ranch over newly-designated Ranch Road 1. Last week the Texas Highway Commission budgeted funds for reconditioning and resurfacing the 4.5 mile loop paralleling the Pedernales River in the ranch area.

about industrial development. In many cases, water and industrial development were mentioned in the same answer.

The lieutenant governor found more concern over taxes at the local level "where increased demands for new schools and other municipal services are continuing to mount." But state taxes, too, are worrying citizens as they assess the overall load.

Education, transportation, municipal improvements, slum clearance and care of the aged were other problems listed by Texans answering Smith's questionnaires. The lieutenant governor is compiling answers to his other questions dealing with the state vs. federal control.

A number of newspapers are printing samples of the questionnaire.

FINANCES AT A GLANCE

In a new summary of the State budget, Governor John Connally offers these facts on tax outgo and sources of state income:

To public education 35 cents, highways and roads 28 cents; public welfare 15 cents; higher education 11 cents; health and hospitals four cents; law enforcement and corrections two cents; other governmental functions five cents.

From all types of sales taxes 37 cents; federal aid 24 cents; severance and production taxes 12 cents; franchise, gross receipts and occupational taxes eight cents; licenses, permits and registrations 10 cents; and other sources nine cents.

HIGHWAY SAFETY URGED

"Drastic action" by the Legislature and law enforcement agencies will be necessary if Texas drivers don't start showing more care about their own safety, Governor Connally warned in a holiday message.

Connally, "appalled" at predictions that 96 would die in holiday traffic accidents, issued a direct appeal to all drivers to make safety their personal business.

COUNTY ROAD INDEBTEDNESS

Eighty-two of Texas' 254 counties still have indebtedness on bonds for payment on pre-1939 road construction programs, according to the annual report by the Board of County and District Road Indebtedness.

The State participates in the retirement of these bonds through contributions of state gasoline sales tax money, to help finance roads that came into the state system before 1939 and in the construction of new rural roads. This participation amounted to \$7,300,000 for the year ending Aug. 31, 1963.

DOGS ON RESEARCH TEAM

Texas Prison System is raising dogs for Baylor College of Medicine for experimental purposes. An inter-institution agreement between Baylor and the Board of Corrections, dated July, 1962, established the dog-raising program at Wynne State Prison Farm in Huntsville.

Initial plans call for expanding the program to include other animals for experimental purposes as needed. These include hamsters, rats, rabbits and guinea pigs. Baylor has the first option on purchase of animals raised at Wynne. But ex-

cess animals may be sold to any other institution in the state.

WHOOPIING COUGH ON INCREASE

Whooping cough—known in medical jargon as pertussis—is not the killer it used to be. But it still is causing a significant scattering of infant deaths and a spread of sickness each year.

Its incidence seems to be on the increase in Texas. During the first week of December, city and county health officers across the state reported 19 new cases of whooping cough, bringing the 1963 total to 3,312—an increase of 330 cases over the same period in 1962. Only five deaths due to whoop-

ing cough were reported last year, but the State Department of Public Health already has received reports of 15 infant deaths from the disease this year.

State health officials say whooping cough is a large problem in the first six months of childhood. They emphasize two words—"family cooperation"—as the key to protecting infants against this and other disease.

Doctors advise expectant mothers to have their own children receive whooping cough shots, or boosters, at least three months before the new baby's arrival.

SHORT SHORTS

Atty. Gen. Waggoner Carr named Dallas attorney Robert G. Storey as a special counsel to participate in a presidential commission inquiry into the Black Friday events of November 22 in Dallas. Reports from 18 agencies concerned with water recreation have been received by the Water Recreation Study Committee. Its consolidated report and proposals to Governor Connally will be ready in March.

Garland City Manager Terrell Blodgett is the new chairman of the Texas Municipal Retirement System. He succeeds L. L. Walter, Wilkins, Corpus Christi police officer. Applications for new First Bank and Trust Company in Austin and Guaranty

Letters To Santa

Dear Santa Claus: I want a Barbie doll. Patricia wants a

Barbie doll. Sheila wants a rag-gam doll. Ronald wants a rag-gam doll. Minda wants a Chatty baby doll. Reg wants a tonny gun. Randy wants a sweater, size 14.—Menda

Dear Santa: Would you please get me a set of rice ears and a B gun. Your friend.—Joe Galah.

Dear Santa Claus: I want a Ford tractor, a boxing bear and a wood carrier. Please. Love—Tom Conewey

The Bobwhite quail can live all summer without drinking water because the insects it eats are mostly water.

Newest 5-Cent Stamp To Honor IMCO Agency

The First Commemorative stamp to be issued by the United Nations in 1964 will honor the Inter-Governmental Maritime Consultative Organization (IMCO).

IMCO is specialized agency of the United Nations with headquarters in London. Its primary objective is the cooperation a-



mong governments in technical matters regarding shipping. It also concerns itself with standards of maritime safety and efficient navigation. At present there are 56 member countries.

The new stamp will depict two ships at sea under the protection of the IMCO emblem. The design will be the same for the 5 cent and 11 cent stamps. Collectors desirous of obtaining first-day covers may send their remittances to cover the cost of the stamps to be affixed, in either money order or certified check, to the United National Postal Administration, the United Nations, N. Y. The outside envelope should be clearly marked "FDC-IMCO." Requests should arrive prior to Jan. 13.

U. S. Postmaster General John A. Gronouski announced that the Sam Houston commemorative stamp scheduled for first day sale at Houston, Tex., on Dec. 13 was postponed until some time in January. Requests for first-day covers which have been received at the Houston PostOffice will be serviced when the new date has been selected.

Israel has issued two new sets of stamps reports the Israel Philatelic Agency in America. The first set consisting of four stamps is a continuation of the Red Sea Fish Series begun in December, 1962. Depicted are four species found off the coast of Eilat. The second stamp set features the SS Shalom, a new luxury liner and the flagship of the Israel Navigation Company. This set shows the new ship in the foreground with an ancient map and the Israeli coast in the background.

Italy has issued a 30 lire commemorative stamp honoring the 150th birthday of composer Giuseppe Verdi. Also issued by Italy was a 30 lire stamp honoring the centenary of the death of sonnet writer Giuseppe Belli.

Iran has issued two stamps to commemorate the visit to that country of the King and Queen of Denmark. The 5 Rials and 14 R stamps feature portraits of the Shah of Iran and the King of Denmark. The crowns of each country appear next to their respective monarchs.

TOP PROBLEMS

Taxes, water, and industrial development are the problems of most concern to Texans in their home areas, L. G. Preston Smith found after a state-wide survey.

Smith received 2500 responses to 7500 questionnaires mailed to Texans. Queries asked for opinions as to the biggest problems facing their cities and the immediate areas in which they live and work. He found 85 per cent of answers centered on three subjects.

"Taxes and or fiscal responsibility, water and industrial development were the three fields showing greatest concern," Smith said. "Many of the water-problem answers came from municipal areas while the small towns in rural areas were more concerned a-

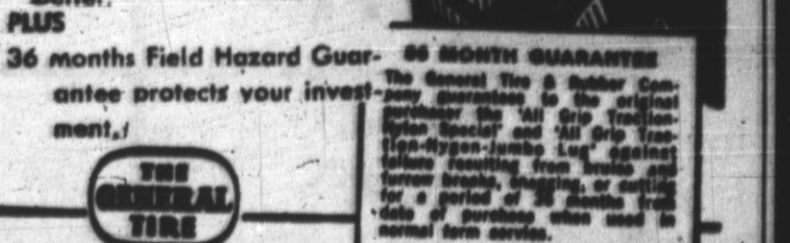
NEW, LOW PRICES PREMIUM FEATURES

GENERAL NYLON SPECIAL TRACTOR TIRE

- Nylon Cord—for strength and moisture proofing.
- More Rubber—where it counts to cushion shock.
- Double Cured Cleat—keep clean—dig deeper—pull better.

PLUS

- 36 months Field Hazard Guarantee protects your investment.
- 36 MONTH GUARANTEE



Hereford Butane
INCORPORATED
Veterans Park Road EM4-3367

MR. FARMER...

Are you among the many who will receive sugar beet allotments for the first time in '64

If so, chances are, this will be your first experience at growing sugar beets, and there will be many questions that need to be answered.

Check with the Holly Sugar Company farm representative. Their wide experience down through the years may help you avoid costly mistakes, and.....

May we suggest that:

1. You then check with your farm equipment dealer for the right equipment to get the job done. Proper equipment can mean greater profits in the end.
2. Rely on the FIRST NATIONAL BANK of Hereford for all your financial problems, including the financing of your new equipment.

Call us at your convenience



OPTOMETRISTS
Dr. Milton C. Adams
Dr. Dale H. Wynn
335 Miles EM 4-2255

Office Hours
Mon. - Fri. 9:30-5:00
Saturdays 9:30-1:00
DRS. ADAMS & WYNN

Courthouse Records

Vehicle Registrations
 Henry Brorman, 1960 Chevrolet pickup; Jose Arnoldo Sanchez, 1959 Ford; D. W. Hurst, 1962 Pontiac; L. N. Raney, 1964 Buick; Homer Brumley, 1963 Buick; Patterson Chemical Co., 1958 Chevrolet truck; Fred G. Sims, 1964 Ford; T. F. Taylor, 1952 Chevrolet pickup, 12-20.
 Eldon Owens, 1964 Chevrolet pickup; R. L. Curtis, 1964 Pontiac; George H. Jones, 1956 Ford; Fly Driver, 1964 Dodge; Halo Center Funeral Home, 1957 Chevrolet pickup; Fernando Fuentes, 1955 Chevrolet; Gary D. Reagan, 1964 Dodge; Henry M. Balmhorst, 1964 Chevrolet pickup, 12-23.

Deeds of Trust
 Great Plains Farms to Claire Bohannon, et vir: First tract being the North 1/2 of Section 81, Block K-7; Second tract being the North 1/2 of the Northeast 1/4 of Section 100, Block K-7.

Diamond Valley Grain Inc. to Amarillo Savings Association: All of Lot 103; All of Lot 104; The South 20 feet of Lot 23, all of Lot 24; The South 42 feet of Lot 22 and the North 30 feet of Lot 23; The South 14 feet of Lot 20 and all of Lot 21, and the North 8 feet of Lot 17, and all of Lot 18, and the North 14 feet of Lot 19; The East 29 feet of Lot 27 and the West 43 feet of Lot 26; All of the East 1 foot of Lot 29 and all of Lot 28 and the West 21 feet of Lot 27; The East 23 feet of Lot 30 and the West 49 feet of Lot 29; Lot 31 and the West 27 feet of Lot 30, all in Colonia de Buena Vista, a subdivision of a part of Womble Addition.

Lindy Daniels to H. C. Barton: A part of Section 111, Block M-7.

J. T. Parker and Clyde Douglas to T. J. Bettes: Tract 1 being all of Lot 1, Block 3, W. L. Braty First Subdivision of Blocks 3 and 12 and the South 10.65 feet of Blocks 6 and 11, Mabry Addition; Tract 2 being all of Lot 3, Hare Addition.

James M. Gillette to Hi-Plains Savings and Loan Association: The East 40 feet of Lots 7 and 8, Block 27, original Town of Hereford.

Ernesto Tjerina to Eusebio H. Prieto: All of Lot 14, Block 7, Womble Addition.
 Marvin Diller, et ux, to Federal Land Bank of Houston: The North 440 acres of Section 3, Block K-3.

Accent Homes to Alltex Mortgage Company: All of Lots 53 and 54, Block W, Northside Addition.

Heriberto Delgado to J. F. Messer: The South 50 feet of the North 450 feet of the West 105 feet of the East 290.42 feet of Block 12, DeAtley Addition, a subdivision of Blocks 10 and 11, Womble Addition.

Warranty Deeds
 Eva Brown to Charles M. Brown: All of the North 1/2 of Section 35 and the Northeast 1/4 of Section 34, Township 3 North, Range 2 East.

Ellen E. Neal, et al, to A. G. Crissham, et ux: The North 30 feet of the East 415 feet of Block 27, Ricketts Addition.

J. F. Messer to Heriberto Delgado: The South 50 feet of the North 450 feet of the West 105 feet of the East 290.42 feet of Block 12, DeAtley Addition, a subdivision of Blocks 10 and 11, Womble Addition.
 J. D. Porech, et ux, to Walter

London Jr.: A part of Lot 6, Russell Addition.
 Cranbrook Corporation to Pat Robinson: All of the North 20 feet of Lot 1 and the South 100 feet of Lot 2, Russell Addition.

Marriage Licenses
 Edward Salinas and Andrea Olivia Pesina, Dec. 20.
 Capt. Allen John Monroe and Mary Jo Peters, Dec. 23.
 Frederico Gamboa and Efraina Maria Gonzales, Dec. 23.
 Larry Norman Morrow and Billie Sue Proffitt, Dec. 23.

Letters To Santa

Dear Santa: I am 9-years-old. Will you please bring me a BB gun and a race car set and some househoes. Bring the other good girls and boys something nice. Love.—Ronnie Hall.

Hospital Notes:

Patients in Hospital
 Charles L. Watson, Box 201, Ralls; Maria Aguinago, Box 362; Connie G. Pace, 1505 Park; Mrs. Augustine Rodriguez, 209 Lake; Susan Elaine Sanders, 303 West Ninth; Kenneth C. Christie, Mrs. Kenneth C. Christie, Jimmie Christie, and Valerie Ann Christie, Box 73, Summerfield; Mrs. Corinne Moore, 115 Beach; Mrs. Ola Davis, King's Manor; Exie Lee Mays, Box 796; Earl H. Hare, 121 Emma; Mrs. Ida Madden, 420 Avenue J; Joe Scott, Box 146, Vega; Mrs. Virgil Morton, Box 304; Mary Elizabeth Foshee, Route 4; Fred H. Oberthier, 511 North Miles; Frank A. Zachary, 417 Avenue J; Edwin W. Thomas, 327 Avenue J; Norman G. Kelley, 960 South Walnut, Idalou; E. F. Sevier, Route 3; C. L. Ueckert, Box 324.

Dismissals
 Mrs. Raul Cruz, 12-14.
 Mrs. J. B. Snead, Mrs. Georgia Benefield, Mrs. Donald R. Stephens, Mrs. Anthony J. Urbanczyk, Mrs. Fred F. Collett, Mrs. James H. Sprouse, Roger Dale Barnett, Victor Hill, Charles Edgar Cupell, 12-21.
 Mrs. Clifton C. Combs, Mrs. Wilton W. McBe, 12-22.
 Mrs. Vera R. Panther, Raymond P. Conaway Sr., Mrs. Chancie L. Mercer, Pamela Jo Smith, 12-23.

Wilbur A. Nelson Buried Tuesday

Wilbur Arthur Nelson, 25, died Dec. 20 in the Savoy Hotel fire. Funeral services were conducted Tuesday, Dec. 24, at 11 a.m. in the Rose Chapel, Gilliland Funeral Home, by the Rev. Eugene Brink, pastor of First Christian Church.
 Mr. Nelson was born Sept. 4, 1938, in Montana. He moved to Hereford in September, 1956, from Cutbank, Mont., and was married to Stella Hunter March 29, 1959. He was a member of First Christian Church.
 Survivors include his wife, two children, Elizabeth and Ricky, his mother, Mrs. Mabel Fowler, Bozeman, Mont., five sisters, and two brothers.
 Burial was in West Park Cemetery under the direction of Gilliland Funeral Home.

PRE - INVENTORY

Sale

The family at Gaston's Popular Store takes this means of wishing you a Happy and Peaceful New Year. Our Blessings to you... our customers... and to show our gratitude for a wonderful year we present this Gigantic Annual Pre-Inventory SALE!

DOORS OPEN
 At 9:00 A.M.
 All Sales
 • CASH
 • FINAL

If Your Christmas Gift Does Not Fit — We Will Cheerfully Exchange It.
 Please—Within The Next 10 Days

if you're the SHE in a HE-MAN'S life and have more taste than money, this great savings event is for **YOU!**

SALE BEGINS THURSDAY MORNING

OUR COMPLETE STOCK OF FALL AND WINTER DRESSES

REGULAR	NOW
\$17.95	\$12.00
\$25.95	\$15.00
\$39.95	\$25.00
\$49.95	\$29.00

Large Selection
Sebastian and Dalton
 Italian Knits Cashmeres
Skirt and Sweater

44⁰⁰
 COMPLETE SET

Janizzen
SKIRTS

Reg. 9.98 to 22.98
5⁰⁰

and
SWEATERS
 Sizes 8-18

to
12⁰⁰

All Fall And Winter
SLIM JIMS - SKIRTS
 Reg. \$8.98 to \$29.95
 Wools — Corduroys — Cottons
 Size 6 to 18
6⁰⁰ TO 12⁰⁰

DALTON & KENROB
KNIT SUITS & DRESSES
 SIZE 8 TO 18

\$15 TO \$45

One Group
HATS 1/2 PRICE

CHILDREN'S DRESSES
 SIZES 1 - 14

REDUCED **25%**

CHILDRENS
COATS & CAR COATS
 REDUCED **25%**

ALL GIRLS	Were	Now
• Slim Jims	3.98	2.99
• Skirts	4.98	3.99
• Sweaters	5.98	4.50
• BLOUSES	7.98	5.00
• Wool	10.98	7.00
• CORDUROY	11.98	8.00

Size 3 Yrs. to 14 Yrs.

Large Selection
 Fine
COSTUME JEWELRY
 1/2 PRICE

250 KENROB
 KNIT SEPARATES
 • Blouses
 • Skirts
 • Jackets
 • Pants
 All New Fall Colors
 Reg. 12.95 to 19.95
Now 7.00 to 9.00

PARTY DRESSES
 1/2 OFF

Group Of
BAGS
 • Leather
 • Tapestry
 1/2 OFF Reg. 8.98 to 29.98

Large Selection
Blouses
5⁰⁰
 Reg. 17.95

GROUP OF LADIES
 ALL WEATHER

COATS
 Reg. 29.95 TO 69.95 **40% OFF**

Our Entire Fall Collection
 Designers
 Coats Suits Dresses
1/2 OFF
 \$89.95 to \$250.00

AFTER XMAS SALE

Sensational Savings Throughout the Store
All Xmas Items 1/2 Price
 Save now! Takes only a small closet space to store these items!

Wrapping Paper	Reg. 25c	2 Bolls 25c
Light Sets	Reg. \$1.19	60c
Ornaments	Box of 12 Reg. \$1.20	60c
Ornaments	Smaller - 12 Reg. 60c	30c
Xmas Cards	Boxed Reg. \$1.00	50c

Lots of other Xmas items at only one half price. Big price cut on items throughout the store... Dolls, children's luggage, etc.

Prices Good Thurs. - Fri. - Sat.

CAVE'S

Gaston's
 POPULAR STORE

Now You'll Need Records For That New Phonograph

By Mary Campbell
When The Children — who learn early how to be good con-

sumers—receive a record player of their very own for Christmas, they're naturally going to want some records of their own to play on it.

Wonderland Records has an excellent musical series, "A Young People's Introduction to Composers." New releases in the series are Bach, Debussy, Schumann and Haydn. In "A

Young People's Introduction to Bach," compositions by Bach are played and at intervals Norman Rose tells about Bach's life. Adults won't tire of this if children play it over and over, because there is more music than speaking.

The back of the jacket lists definitions of musical terms applicable to Bach's work. Some terms, like passacaglia, polyphonic, counterpoint and fugue, are explained by the narrator.

The "Great Composers" series by Disneyland Records is less advanced. However, most children, even young ones, won't find the Wonderland series over their heads.

Instruction through music and story telling is a favorite gambit of children's records and one of the happiest examples of this is "Ballads for the Age of Science" by Motivation Records. There are six LPs here—space, experiments, two about nature, energy and motion, and weather.

These are songs, with interesting tunes and good rhyming lyrics, which teach about science, sung by Tom Glazer and Dottie Evans, Dorothy Collins, and Marais and Miranda. They are for elementary school children.

"What is an Insect?" amusingly explains what an insect is.

"The Conservation Song" is so catchy adults may hum some of it and "Grand Coulee Dam" has perfect rhythm for the Twist. It may not explain to every junior scientist's satisfaction how water power is changed to mechanical energy to electrical energy, but it may drive him—or you—to the encyclopedia.

"A Child's Introduction to Great Inventors—Henry Ford" on Wonderland has Eve Corey telling about the early life of Ford on side 1. On side 2 she explains experiments ala Ford that a child can do at home. Equipment isn't too complicated—with a tea kettle, pin, hollow bead, eraser and aluminum foil a child can make a pinwheel and see it turned by steam power.

A child may find it difficult to catch all the steps in an experiment from a voice which goes on talking faster than he can act. But if he's interested in doing experiments, he'll play the record over until he gets it.

Christobel Weerasinghe, from Ceylon, narrates the interesting "A Child's Introduction to Life in Japan and Burma." (Wonderland.) She begins with a geographic description of Japan (Side 2 is about Burma), continues, "If you were a child in Japan, you would wear—and



MEMBERS OF THE LOCAL VFW Post are shown as they pack boxes of toys for needy children in the area. The post and its auxiliary met Sunday afternoon for the session of packing. They distributed the boxes to children on Christmas Day. Shown packing the boxes are (from left to right) Earl Wood, David Ruland, Mrs. Wayne Lawrence, Charlie Morris, and Mrs. Jewel Smith. (Staff Photo)

Squier Serving At Pearl Harbor

David W. Squier, yeoman third class, USN, son of Mr. and Mrs. Louise Squier of 128 Emma St., Hereford, is serving with the staff of Commander Submarine Force, U. S. Pacific Fleet, at Pearl Harbor, Hawaii. Before entering the service in May 1962, he attended Midwestern University at Wichita Falls.

STAR THEATRE STARTS NEW YEARS DAY



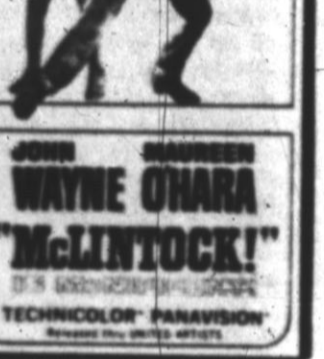
HE'S A TENDER LOVING GUY!



HE'S A DEVOTED FAMILY MAN!



HE'S A PEACE LOVING CITIZEN!



JOHN HANCOCK WAYNE OWARA "McINTOCK!"

HEREFORD MEAT MARKET
740 West First EM 4-3520
Open 7 Days a Week — 8 a.m. - 8 p.m.

T-Bone STEAK	lb. 59¢
SIRLOIN STEAK	lb. 59¢
ROUND STEAK	lb. 79¢
Tortillas Taco Village	3 Pkgs. 25¢
CHUCK STEAK	2 lbs. \$1.00
ARM STEAK	2 lbs. \$1.00
BEEF RIBS	3 lbs. \$1.00
CLUB STEAK	2 lbs. \$1.00
Hot Link Sausage	lb. 59¢
FRYERS	lb. 29¢

Chorizo Mexicano	3 lbs.	\$ 1
Dry Salt	5 lbs.	
Menudo	5 lbs.	
Tripas	4 lbs.	
Pure Pork Sausage	3 lbs.	
Fresh Ground Beef	3 lbs.	
Sliced Bologna	3 lbs.	
Wieners	3 lbs.	
Baby Beef Liver	3 lbs.	
Fresh Pig Feet	6 lbs.	
Neck Bones	4 lbs.	
Hog Maws	5 lbs.	
Pork Chops	2 lbs.	
Pork Ribs	3 lbs.	

We also have a nice selection of Fruit and Vegetables

eat. — Japanese children sing and there also is description of festivals and a fairy tale.

Younger children can act out "Here We Go 'Round the Mulberry Bush" and count 1 to 10 with "This Old Man" on "Let's Sing While We Work and Play." Jean Cook narrates for Vocalion.

"All About Wheels and Wings," Vocalion, keeps nicely changing pace between true stories about transportation, legends like that of Daedalus and Icarus, song and humor. It is narrated by James Mahony as "Waldo Wheeler" and Robert Douglas as "Wally Wing."

Two other albums on Vocalion are less effective. "All About the Seasons" has too much talk to hold interest plus a soprano whose words are hard to understand. "Let's Sing About the Alphabet" chooses monotonous tunes and unusual words—counting for c, illustrated with a song about some birds in love, and east for e, and its song "There was a ship that sailed on the eastern sea."

We preferred "Zoo's Who" on Harmony to "Let's Go to the Zoo" on Vocalion, for an animal album. "Zoo's Who" is songs about the animals, "Otto the Otter," "The Little White Duck," etc. The other is a guided tour of the zoo, with animals noises in the background. It's more educational but less attention-hold-

ing. Strictly For Fun, and children don't have to be studying all the time, is "The Best of Burl's for Boys and Girls" (Decca) Burl Ives sings songs children really like—"Big Rock Candy Mountain," "Blue Tail Fly," "Davy Crockett."

Fiona Jamieson tells four stories in "Let's Visit Fairy Tale Lands," (Vocalion) and occasionally interrupts herself to sing an appropriate folk song. She is a folk singer, who has a pleasant speaking voice.

"Songs Children Sing in Latin America," by Tom Glazer (Wonderland) includes songs sung first in their original language, then in English.

Funeral Services For Mrs. Wainscott Conducted Tuesday

Mrs. Opal Wainscott, Route 1, died Dec. 21 in Deaf Smith County Hospital. Funeral services were conducted at 1 p.m. Dec. 24 in Newark Chapel, Newark Cemetery. Born Oct. 20, 1905, in Oklahoma, she was married in 1925 in Wheeler to D. Wainscott. They moved to Hereford from Alvord in 1963. Surviving Mrs. Wainscott are her husband, one daughter, Mrs. Leona Pittman, Alvord, three brothers, and two sisters.

Look Who's New!

Mr. and Mrs. Augustine Rodriguez are the parents of a daughter, Diana, born Dec. 22 at 8:27 a.m. She weighed 6 pounds and 15 1/2 ounces. First elevated railroad in the world was built in New York in 1866-67. A Georgia school teacher, Eli Whitney, invented the cotton gin in 1793. The printer's union, organized in 1853, is the oldest labor union in the U. S.

STAR
11:30 P.M.
FUNKY GALORE For ALL
NEW YEAR'S EVE MIDNITE PREMIERE
FIRST SHOWING of this FUN HIT!
A DELIGHTFULLY ROMANTIC CAMP-OUT BEDTIME STORY!

BLUSH a little! LAUGH a lot!
FUNNY-like WOW!
Two in a sleeping-bag
TECHNICOLOR
A MOLT INTERNATIONAL RELEASE
All Seats 90c

Continuous Daily From 1:45 p.m.
NOW... THRU SATURDAY
These Three Unlikely Companions
face an unknown world of adventure with instinct their only guide to home.
WALT DISNEY presents
The Incredible Journey
TECHNICOLOR®
BODGER the Bull Terrier ADULTS 85c
TAO the Siamese Cat STUDENTS 75c
LUATH the Labrador Retriever CHILDREN 50c
STARTS SUNDAY FOR 3 DAYS!

Stars Shine In 'Palm Springs'
Palm Springs Weekend
TROY DONAHUE CONNIE STEVENS TY HARDIN STEFANIE POWERS ROBERT CONRAD JACK WESTON JERRY VAN DYKE
Written by EARL HAMNER, JR. Produced by MICHAEL A. HOEY Directed by NORMAN TAUBOG
Get the new Warner Bros. sound track album featuring Troy singing for the very first time
TECHNICOLOR® From WARNER BROS.

NOW
AGRI-BUSINESS RADIO
"Where The Money Is"
from
KDHN
Dimmitt, Texas
1470 kc
With Proven Salesman
Uncle Jay

SEE **HI-PLAINS** SAVINGS and LOAN ASSOCIATION 128 E. 3rd FOR **HOME LOANS** TO BUY OR BUILD REMODEL REFINANCE



FOUR GENERATIONS — Baby Mike Wallace when the family gathered recently in the Duwayne Wallace home, 1103 Coombes Creek Drive, Dallas. (Personal Photo)

LET'S COOK SOMETHING

'Preview Party' Fun For New Year's Eve

By Dale Stevens
Brand Foods Editor
A Preview Party can be lots of fun on New Year's Eve. For this type of party, decorations, games, and refreshments "preview" the coming year.

Games which represent each month of the year should be selected carefully to provide a variety of "ice-breaker," quiet, active, participant, and spectator entertainment.

For January "Resolve" makes a good opening game. Each person is given a piece of paper and a pencil and asked to write a few new year resolutions, either serious or humorous. The papers are then placed in a container, mixed around, and each person then draws one out and writes his name on the folded paper. The names and resolutions are then read aloud.

A second game for January is a snowball race. Each contestant is given a cotton ball on a spoon and teams are chosen for a relay race. The object is to carry the snowball a certain distance without dropping it. If it falls off the spoon, the contestant must return to the starting point and begin again. The team which completes the race first is the winner.

For February, hearts can be cut out of light cardboard. Keys of different shapes are then cut from each heart center. The men or boys are then given the keys and the women or girls the hearts. The object is to see which couple can match key and heart first.

For each month there are appropriate games, such as guessing games for events or people associated with that month. A woman's wedding can be staged for June with just a few easily-assembled props. Each participant, without any advance notice, is called into a separate room and costumed quickly for his part. A curtain ring may be used for the wedding band, and mosquito netting can be tied with a rope for the bride's veil.

Some game books contain a prepared script for the preacher, but usually he and the audience begin to ad-lib. The "bride and groom" often make spontaneous and very funny responses also.

The host and hostess can be, if they desire, costumed as Father Time and Lady New Year without very much trouble. Decorations may be confined to suitable winter scenes, such as a centerpiece made of a mirror, sparkled snow, little evergreens, and skating figures, or they may represent each month of the year.

Antonian Circle Holds Annual Christmas Party

Members of Antonian Circle and their husbands met at the Community Center for their Christmas party Dec. 15. Mrs. Thomas Albracht, president, presented Father Angelus Delshant, S. A., with a check for \$50, and club members brought baby clothing to give Dr. Edward for the Labor Camp Hospital.

Mrs. Don Dolle, Mrs. Bill Reinauer, and Mrs. Duane Albracht led the group in games and helped with the exchange of gifts. After the refreshments were served, games of cards and dominoes were played.

Those present were Father Angelus Delshant, S. A., Mr. and Mrs. Darrell Hershey, Mr. and Mrs. Thomas Albracht, Mr. and Mrs. Arnold Fangman, Mr. and Mrs. James Hund, Mr. and Mrs. Werner Koelzer, Mr. and Mrs. Donald Paetzold, Mr. and Mrs. Bill Reinauer, Mr. and Mrs. Don Dolle, Mr. and Mrs. Edward Schilling, Mr. and Mrs. Raymond Schiaba, Mr. and Mrs. Charles Shetz, Mr. and Mrs. Oskar Schwertner, Mr. and Mrs. Tony Urbanczyk, Mr. and Mrs. Leonard Walterschied, Mr. and Mrs. Morris Hacker, Mr. and Mrs. Kenneth Walterschied, Mr. and Mrs. Duane Albracht, Mr. and Mrs. Vincent Walterschied, and Mr. and Mrs. Leavler Reinart.

Hostesses were Mrs. Oskar Schwertner, Mrs. Morris Hacker, Mrs. Charles Shetz, Mrs. Vincent Walterschied, and Mrs. Erwin Bertels.

Refreshments also may be appropriate for a wintertime party, or the hostess may prepare a smorgasbord of year-round foods, such as a ham decorated with Easter eggs, a Lincoln log cake, a gelatin salad molded as a Christmas tree, a May Pole with baskets of candied nuts at the end of each streamer, and many other dishes representing months, holidays, or seasons.

Some of the ideas for such a party and the following recipes are from "Year Round Party Book," by William P. Young and Horace J. Gardner, and available from Deaf Smith County Library.

Old Year Fruit Punch
To one gallon lemonade, add 2 oranges, 2 ripe bananas cut in small slices, 1/2 box strawberries, a can of pineapple chunks, 1/2 can peaches, and a strong cup of tea.

Chocolate Log
1 cup sugar
1 egg, well-beaten
1 t. sat
1 cup crushed cornflakes
1 T. milk
1/2 t. vanilla
2 squares unsweetened chocolate
2 T. butter

Add sugar slowly to the beaten egg; then add salt, 1/2 cup corn flakes, milk, and vanilla. Melt chocolate and butter in bowl over hot water. Cool, add egg mixture, and stir. Sprinkle greased pan (8x8x2 inch) with 1/2 cup corn flakes, pour in mixture, and sprinkle rest of corn flakes on top. Bake in slow oven (325 degrees) for 40 minutes or until well done. Cut in strips 4x1 inches before removing from pan. Makes 16 logs.

May Day Fruit Cap
Peel bananas and slice lengthwise. Cut each slice in half. Line sherbet glasses with the slices and fill the center with a combination of any desired: yellow fruit, such as chopped oranges, pineapples, and apricots. Top with sweetened whipped cream, colored lightly with yellow vegetable coloring. Place a sprig of mint between each banana slice before serving.

CARD OF THANKS
We wish to take this means to thank the doctors and nurses for their kindness to our sister during her stay in the hospital and also to those who visited her and brought flowers for her to enjoy. The kindness and thoughtfulness of personnel at Gilliland Funeral Home has also been greatly appreciated by the whole family. We also wish to thank those who prepared the food for us and sent the many flowers and cards; those who stayed to serve our meals, and the Win-One Class—her class—who served us in the new dining room of the church. We have found how many friends we have. We can never make the rounds to all who made house and telephone calls. Thanks to all.
The Bolstford Brothers

CHEAP WATER
The additional water you get when you add acid to your water with **DRY ACID**
See your LOCAL WELL MAN and let him get you some cheap water with a DRY ACID treatment.
Coley Chemical Co.
Cibola, Texas

LOW PRICE after LOW PRICE
Make Savings Mighty Nice

Get more MEALs out of your budget! Do ALL your food buying at COOPER'S where STOREWIDE LOW PRICES show up as LOW PRICE after LOW PRICE on the register tape. They add up to a lower total cost—to higher cash savings for you! And the savings are mighty nice to come by because they're on the foods you like the best and the brands you prefer the most. So shop COOPER'S today and get the most THRIFT-FYING prices right down your entire order.

Capr. G. Doppel 1963



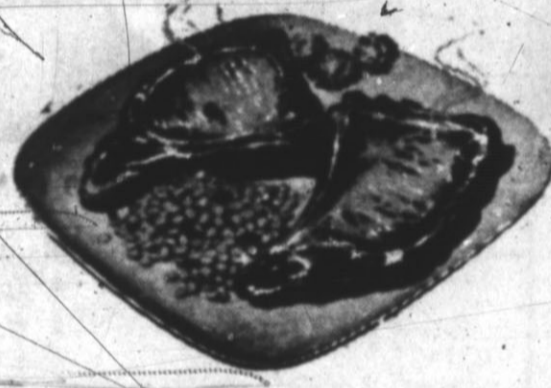
Shurfine **TUNA**
Chunk Style - Flat Can
4 for \$1

Campbell's **SOUP**
Mix or Match
6 for \$1

Supreme **CRACKERS**
lb. Box **29¢**

GLEEN
TOOTHPASTE
Family Size
Reg. 79¢ **69¢**

- VAN CAMPS VIENNA SAUSAGE** 5 for \$1
- HUNTS - NO. 300 CAN SPINACH** 8 for \$1
- VAN CAMP - NO. 300 CAN PORK & BEANS** 8 for \$1
- NO. 2 CAN - NO BEANS WOLF CHILI** 55c



PORK CHOPS FIRST CUTS LB. **39¢**

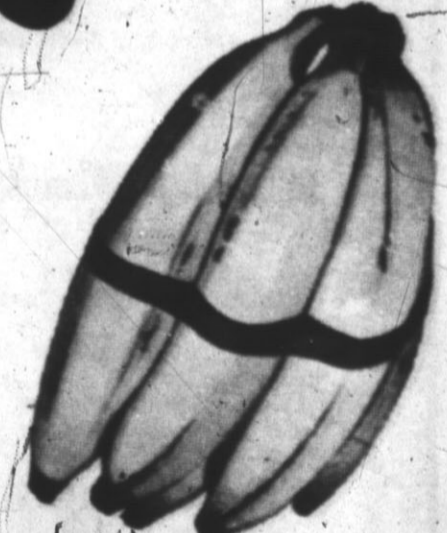
CENTER CUT PORK CHOPS lb. 59¢ **Ground Beef** FRESH LEAN lb. 39¢

USDA Graded CLUB STEAK lb. 79¢

BIG-DO BANANAS

(DOUGH)
FREE! FREE!
HUNDREDS OF DOLLARS WILL BE GIVEN AWAY

2 for 25¢



* Game Number Five-Green Card
* Each Game Lasts Approximately One Week
* Winner of each game receives \$100 CASH
GET YOUR FREE "BIG-DO" CARD Today
NO DELAY—NO PURCHASE NECESSARY
GET COMPLETE DETAILS AT **COOPER'S**

CABBAGE lb. 5c
TURNIPS lb. 10c

WAFFLE SYRUP SHURFINE QT. BTL 39c	Beef ENCHILADAS PATIO - FROZEN 24 oz. 59c
HUNT'S CATSUP 14 oz. BTL 5 for \$1	PANCAKE MIX AUNT JEMIMA 2 lb. BOX 35c
HEP Oven Cleaner AEROSOL SPRAY CAN 69c	Nestle Wave Set REG. 39c 29c
FOR AUTOMATIC DISHWASHERS CASCADE Box 39c	FABRIC SOFTENER DOWNY 32 oz. 79c

ANOTHER BIG-DO (DOUGH) WINNER

Mrs. Guy Lawrence

\$100. WINNER!

CLOSED SUNDAY
Open Till 9 p. m. Mon. thru Sat.

COOPER'S

For COLDS take 666

Holiday driving can be dangerous!

See us today for **Trip Accident Insurance**

Lone Star Agency

INSURANCE **Lloyd Sharp** 601 MAIN
REAL ESTATE **Sam Nunolly** PH. EMERSON 4-0555

FOR GOD SO LOVED THE WORLD

First Methodist Church

501 North Main
 Rev. Herschel L. Thurston
 Pastor
 Sunday, Dec. 29: Sunday School, 9:30 a.m.; Morning Worship, 10:55 a.m.; Junior and Senior High Fellowship Dinner, 6:45 p.m.; Evening Worship, 7 p.m.
 Tuesday, Dec. 31: Woman's Society of Christian Service Prayer Group, 9:30 a.m.; Holy Communion, 6:30 p.m.; Prayer Vigil, 6 p.m. to 12 midnight; Homebuilder's Prayer Group, 8 p.m.

Grace Gospel Church

Rev. H. V. Fields, Pastor
 Thirteenth and Avenue K
 Sunday School is at 9:45 a.m. and worship services convene at 11 a.m.
 Bible Study is held each Sunday at 7 p.m. and preaching service at 8 p.m.
 Wednesday prayer meeting held at 8 p.m.

Thompson Memorial Mexican Baptist Mission

Rev. Guillermo Benitez
 Minister
 215 Norton
 Orden De Cultos
 Domingo For La Manana, 10 a.m.; Escuela Dominical, 11 a.m.; Culto De Adoracion.
 Domingo Por La Noche, 7 p.m.; Union/De Preparacion, 8 p.m.; Culto/Evangelistico, Miercoles Por La Noche. Culto De Oracon Y Estudio Biblico.
 Union, Fimencil Y Union Varonil Un Lunes Si Y Otro No.

Mission De San Jose

LABOR CAMP
 El Domingo es el dia del Senor. Tenemos que adorarlo. No hay mejor modo que la Santa Misa: El sacrificio de Calvario.
 Horas de Misas los Domingos: 8 a.m.; 10 a.m.; 8 p.m.
 Bautismos despues de la misa de las 10 a.m.

Immanuel Lutheran Church

Rev. Fred Beversdorf
 Pastor
 Sunday, Dec. 1: Worship Services, Friona, 8:30 a.m.; Sunday School and Bible Classes, Friona, 9:45 a.m.; "Call to Worship", KPAN, 9:15 a.m.; Sunday School and Bible Classes, 9:45 a.m.; Worship Services, 11 a.m.; Adult Class, 6 p.m.; Young Peoples Business Meeting, 7 p.m.; Elders Meeting, 8 p.m.
 Monday, Dec. 2: Ladies Bible Class, 4:15 p.m.
 Wednesday, Dec. 4: Cub Scouts, 4:15 p.m.; Visitation, 7 p.m.
 Saturday, Dec. 7: Visitation, 2:30 p.m.

Jehovah's Witnesses Church

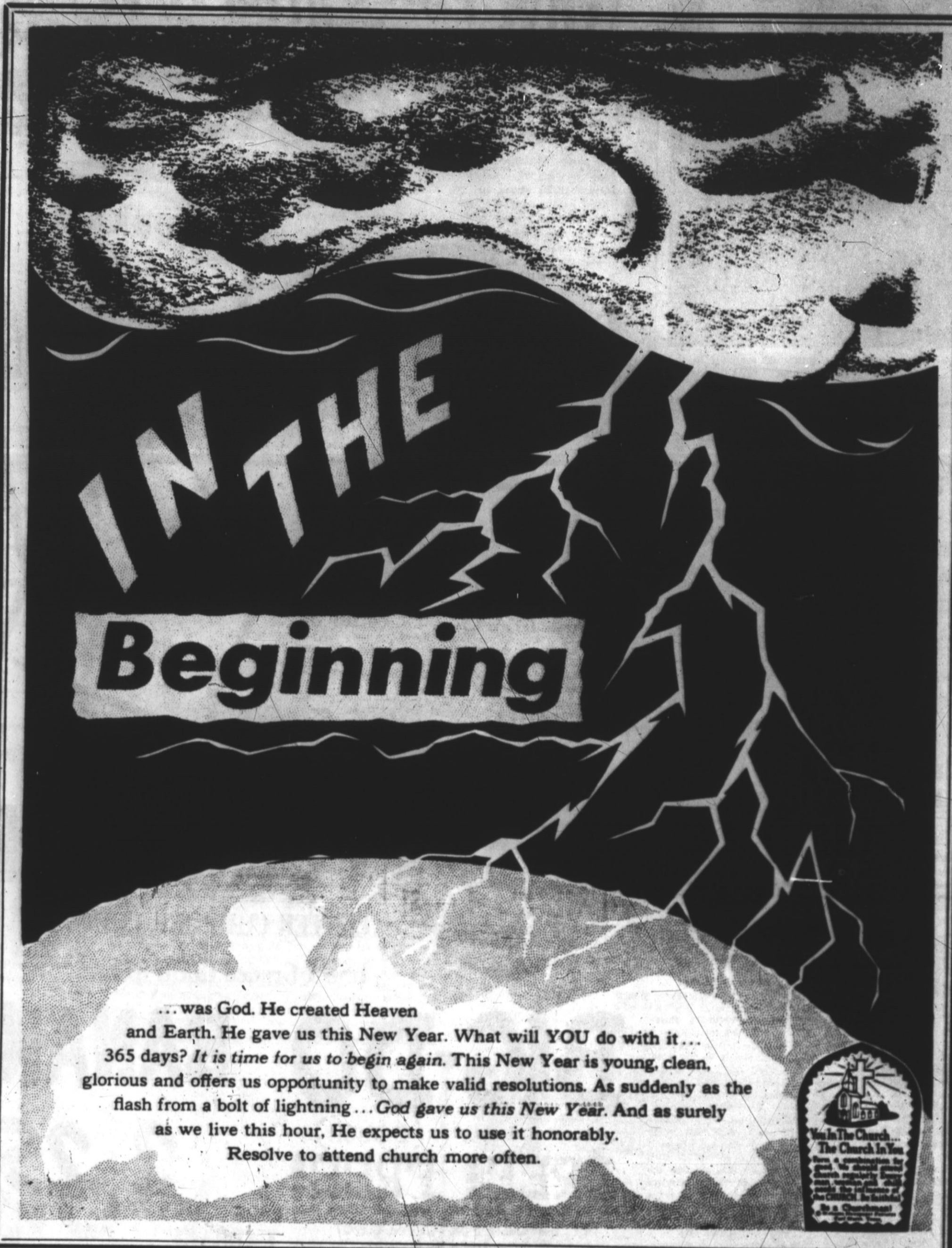
317 Ave. 1
 Sunday: Public Bible Lecture, Study, 4:15 p.m.
 Tuesday: Congregation Bible Study, 8 p.m.
 Friday: Service Meeting, 7:30 p.m.; Theocratic Ministry.

Avenue Baptist Church

Rev. Clarence F. Powell,
 Pastor
 Sunday School is held at 9:45 a.m.; Worship Service at 11 a.m.; Training Union, 7 p.m.; Evening Worship Service, 8 p.m. Wednesday Evening Prayer Service, 7:30 p.m.

Wesley Methodist Church

Rev. Cleasby Patterson, Pastor
 Sunday, Dec. 29, Sunday School 9:45 a.m. Student Recognition Day at 10:55 a.m., "Gary Kendrick Day". The Young People will bring the morning worship. Gary Kendrick, one of Wesley's own preacher boys, will preach at both the morning and evening worship. Other youth assisting in the worship will be: Randy Tooley, Manuel Valdez, Jerry McCatherin, Lyndon Rieger, Miss Linda Tooley, Miss Ann Friddy, Mike Solomon, Gary Duggan, and Sheryl Solomon.
 Evening Worship, 5:30 p.m. MYF 5:30 p.m.
 Primary Fellowship 6:30 p.m.
MONDAY, DEC. 30
 Commission on Membership and Evangelism 7:30 p.m.
TUESDAY, DEC. 31
 Watch Night Party 10 p.m. Wesley's Covenant Service 11 p.m.
 Holy Communion 12:00 p.m.
WEDNESDAY, JANUARY 1
 Bible Study 7:30 p.m.



... was God. He created Heaven and Earth. He gave us this New Year. What will YOU do with it... 365 days? It is time for us to begin again. This New Year is young, clean, glorious and offers us opportunity to make valid resolutions. As suddenly as the flash from a bolt of lightning... God gave us this New Year. And as surely as we live this hour, He expects us to use it honorably.
 Resolve to attend church more often.

These Hereford Business Firms Make This Page Possible in the Interest of a Christian Community. Go to Church Sunday.

- | | | |
|--|--|---|
| ELIZABETH WITHERSPOON INSURANCE
● 148 N. Main St. | HEREFORD FERTILIZER & INSECTICIDE CO.
● Norman Moore | HEREFORD TEXAS FEDERAL CREDIT UNION
● Mrs. Dyalthis Benson |
| E. B. BLACK CO.
● Dick Barnard - Jesse Stanford | PIGGLY WIGGLY
● Mr. and Mrs. Gaylord Newell | ED SKYPALA
● Your Borden's Distributor |
| McRIGHT GARAGE & SUPPLY
● Mr. and Mrs. A. N. McRight | DAVIS IMPLEMENT CO.
● W. L. Davis, Jr. | GILLILLAND FUNERAL HOME
● Marlin Gilliland |
| FIRST NATIONAL BANK
● Virgil Hennen | CITY DRUG STORE
● Mr. and Mrs. Kenneth Coker | MASTER CLEANERS
● Mr. and Mrs. C. D. Fitzgerald |
| ROCKWELL BROS. & CO.
● D. R. Vandever | JONES TEXACO SERVICE
● Mr. and Mrs. J. P. Jones | ROGERS DRUG
● Mr. and Mrs. Grady Rogers |
| BUY-RITE FURNITURE
● J. H. Fish | WESTERN WHEEL INN
● Mr. and Mrs. G. D. Celson | LOERWALD BROS.
● Ed, George, Gene & Harold Loerwald |
| BIG T PUMP CO., INC.
● Hilroy and Leroy Aven | HEREFORD GRAIN CORP.
● Curtis O. Roach, Mgr. | FARMER'S DRIVE IN
● Troy Moore |
| Lyle Blanton of Hereford, Inc. | PITMAN GRAIN CO. | PLAINS FERTILIZER CO. |
| HEREFORD LAUNDRY & DRY CLEANERS
● Ernest Kendall | HEREFORD STATE BANK
● Russell F. Carver, Pres. | ORSBORN - CHEVROLET OLDSMOBILE
● Your Chevrolet-Oldsmobile Dealer |
| SUIT'S AUTO SUPPLY | Western Weeking
● Anson A. and June Dearing | CONSUMER'S FUEL ASS'N |

Seventh Day Adventist Church

West Park Addition
 ELDER JAMES MEADE,
 PASTOR
 "The Judgement" is the subject for daily lesson study and class discussion Sabbath December 28. Memory text: Isaiah 28:17.
 Study Helps: "The Great Controversy," chapters 28 and 42.
 Lesson Aim: To make clear the nature and purpose of the great final Judgement.
 Lesson outline: The Coming Judgement, Romans 14:10-12, Eccl. 12:14, James 2:10-12; The Judgement and Judgement Bound, Matthew 24:36-39; God's Strange Act, Rev. 20:3-15, Matt. 4:1.
 Services: Sabbath School, 2:45 p.m. Saturday; Worship service, 4:00 p.m. Saturday.

First Baptist Church

Rev. E. L. Davis, Pastor
 Fifth and Main Streets
 Sunday: Sunday School, 9:45 a.m.; Morning Worship, 10:30 a.m.; Training Union, 6:30 p.m.; Evening Worship, 6:30 p.m.
 Wednesday: Sunday School teachers and officers meeting, 7 p.m.; Mid-Week Prayer Service, 7:45 p.m.; Church Choir rehearsal, 8:30 p.m. Junior GA's, Intermediate GA's, Young Women's Auxiliary Crusader RA's and Pioneer RA's meet at 7 p.m. WMS visitation, first Wednesday, 9:30 a.m.; WMS luncheon and business meeting, second Wednesday, 12 noon; WMU circle meetings, fourth Wednesday, 9:30 a.m. or 3 p.m. WMU night circle meeting, second Thursday, 4 p.m.
 Nursery is provided for all church-wide activities.
 Sunday morning worship services broadcast over KPAN. Listen to the "Baptist Hour" at 8 a.m. Sunday over KPAN.

St. Anthony's Church

Harrison Highway at 25 Mile Ave.
 Father Angelus, Pastor
 Sunday Masses at 6:30 a.m., 8 a.m., and 10 a.m.; Sunday evening mass at 8 p.m.; Daily mass at 6:30 a.m. and 11 a.m. during school year. Tuesday evening mass at 8 p.m.
 First Friday Masses at 8 a.m., 11 a.m. during school year, and 8 p.m.
 First Saturday Masses at 8 a.m.; 8 a.m.
 Holy Day Obligation Masses at 6 a.m., 8 a.m., and 8 p.m.
 Confessions are Tuesday at 12 noon - 1 p.m. during school year and 8 p.m.; Thursday, 12 - 1 p.m. before school and 8 - 9 p.m. before First Friday; Saturday, 4:45 p.m., 8 - 9 p.m.; Sunday, 7:30 a.m.
 Baptisms at 4 p.m. Sunday. Any other time by calling Rectory.

Temple Baptist Church

Rev. Bill Ware, Pastor
 Forrest Ave. and Ave. K
 Sunday: Sunday School, 9:45 a.m.; Morning Worship, 11 a.m.; Training Union, 6:30 p.m.; Evening Worship, 7:30 p.m.
 Tuesday: Beginner Sunbeams, 9:30 a.m.; Primary Sunbeams, Junior Girls Auxiliary, and Intermediate Girls Auxiliary, 4 p.m.
 Wednesday: Prayer Meeting, 7:30 a.m.; Choir Rehearsal, 8:15 p.m.

Central Church Of Christ

L. E. Fooks, Minister
 Marvin Croswon
 Minister
 Sunday Services: Bible Study, 9:30 a.m.; Morning Worship, 10:25 a.m.; Evening Worship, 6 p.m.
 Mid-Week Services: Ladies Bible Study, 10 a.m. Wednesday; Mid-Week Classes for all.

Bippus Community Church

Eugene L. Naugle each first and third Sunday and R. D. Evans each second and fourth Sunday.
 Sunday School is at 10 a.m. every Sunday and Preaching is at 11 a.m. and 7 p.m. All Day Singing each Fifth Sunday.

Park Ave. Church Of Christ

On Harrison Highway
 Worship Services 10:30 a.m. Sunday. Prayer meeting 7 p.m. Wednesday.

(Continued on Page 11)



GUY BOGLE, owner of B&B Oliver Co. here, (second from left) receiving the award from received an "Ollie" award for outstanding sales achievement in 1963 at a recent dealers' meeting in Dallas. Here he is shown with S. W. White Jr., president, at Mrs. Bogle and R. D. Merrill Jr., Dallas branch manager, watch.

CHURCH...
(Continued from Page 10)
Church Of Jesus Christ of Latter Day Saints
(Mormon)
EM 4-1805

The Mormon Church meets in Gilliland Funeral Home. Sunday School, 10 a. m. Sunday, Sacrament Meeting, 11 a. m. Sunday.

Iglesia De Cristo

Bien venidos a los servicios de la Iglesia de Cristo, Sunset y Plains. Estan servicios en el español: Domingo, 11 a. m. y 7 p. m.; miercoles, 7:30 p. m. Tambien, estan clases en ingles, para los espanoles, Viernes, 7:30 p. m. Por favor, entre ud. por la puerta oeste en la sur.

The Church of God in Christ

Rev. Calvin Hodge, Pastor
115 West Norcia
Sunday School 9:45 a. m.; Morning Worship 11 a. m.; Evening Worship 8 p. m.
Monday, Bible Band meets, 7 p. m.
Wednesday, Prayer Meeting 8 p. m.

Church Of The Nazarene

Fourth and Jackson
Rev. Earl M. DeBord, Pastor
EM 4-1375
Sunday School is held at 10 a. m.; Worship Service at 11 a. m.; Evening Service at 7:30 p. m.
Prayer meeting, Wednesday will begin at 7:30 p. m.

Assembly Of God Church

Union and Ave. G
Rev. V. W. Marcell, Pastor
Sunday School is held at 9:45 a. m. Morning worship service convenes at 11 a. m.
C. A. service begins at 7 p. m. Junior C. A.'s meet at 6 p. m. and worship service begins at 8 p. m. each Sunday evening.
Prayer meeting and Bible Study will be held Wednesday at 8 p. m.

Frio Baptist Church

Rev. G. W. Fine, Pastor
Sunday School is held at 10 a. m. each Sunday followed by Worship Services at 11 a. m. Training Union is held at 6:30 p. m. Sunday and Evening Worship Services begin at 7:30 p. m. On Wednesday, a Prayer Service is held at 8 p. m.

First Christian Church

Rev. Eugene Brink, Pastor
West Park Avenue
Sunday School is held at 9:30 a. m. Worship service will begin at 10:30 a. m.
Chi-Rho and CYF meets at 6 p. m. Sundays and vesper services are at 7 p. m.
Functional Departments first Wednesday at 8 p. m. General Church Board, second Wednesday at 8 p. m.

Church Of God

11 and 18th Street
Rev. W. A. Gray
Sunday School will begin at 10 a. m. Worship service is at 11 a. m. Sunday evening worship begins at 7:30 p. m.
Wednesday - Prayer Service, 7:30 p. m.
Friday - Young People's Endeavor, 7:30 p. m.
"Bring your burden and carry away a smile."
"The Church that is large enough to serve you and small enough to know you."
For transportation call EM 4-2809.

Funeral Services For Roy Golden Held Monday

Funeral services for Roy F. Golden, 67, were conducted Monday at 3 p. m. in the Wood-Dunning Colonial Chapel, Plainview, by Bertram Jack, Hereford Church of Christ. Burial was in Lockney Cemetery.
Mr. Golden died Saturday at 10 a. m. in Veterans' Hospital,

San Antonio A La Iglesia

North 25 Mile Avenue and Highway
Vd. Es Catolico? Pues, Tiene La Obligacion De Asistir A La Santa Misa Todos Los Domingos!
Horas De Misas En Los Domingos: 6:30 a. m.; 8 a. m.; 10 a. m. y 8 p. m.
Durante La Semana: 6:30 a. m. y devocional services at 7:30 p. m. Wednesday.

Templo el Calvari Asemblea de Dios

Pastor, Fidel Alcalá
Bien-venidos. Cuidada en la Calle 128 E. 5th.
Las servicios durante la semana y el Domingo.
Como siguen: 9:30 a. m. los Martes, Jueves, Sabado y Domingo.
Domingo, 10 de la mañana, escuela dominical, a las 11:30 predicacion.

Iglesia Metodista San Pablo

222 Kibbe Street
Rev. Gilbert Dias, Pastor
Los Servicios de nuestra nueva Iglesia, Seran de la Sigiente manera: los Domingos y los dias de la semana, Escuela Dominical, a las 10 a. m.; Servicio de Adoracion, a las 11 a. m.; Domingo en la noche Predicacion 7 p. m.; Los Jueves servicia de oracion 7 p. m.

St. Thomas Episcopal Church

Rev. Joel C. Fendrell, Vicar
Harrison Highway
Vicariate, 115 Elm Street
Sunday: Holy Communion, 8 a. m.; Sunday School, 10 a. m.; Morning Prayer and Sermon, 11 a. m.; Youth Fellowship, 7 p. m. Wednesday: Holy Communion, 10 a. m.
The Bishop's Committee meets the first Sunday of each month - immediately following morning worship.
Women's Day Guild meets the second Tuesday of each month at 2 p. m. at the church.
Women's Night Guild meets the second Thursday of each month at 7:30 p. m. at the church.

Westway Baptist Church

Rev. Kenneth Lowry, Pastor
Sunday School is held at 10 a. m. with Church Services following at 11 a. m. Training Union is held at 7:00 p. m. and Evening Services on Sunday begin at 8:00 p. m.
The Wednesday night Prayer Meeting in the Church is held at 7:30 p. m.

First Presbyterian Church

619 Leo Street
Rev. Russell Wingert, Pastor
Sunday School is held each Sunday at 9:45 a. m. followed by worship service at 11 a. m. Morning Devotional at 9 a. m. Tuesday.
Choir Rehearsal, 8 p. m. Wednesday. Prayer meeting Friday at 7:30 p. m.

Amarillo. Born Nov. 22, 1896, in Whitney, he moved to Hereford in 1957. He was a member of the Church of Christ.

Survivors include his wife, Leone; two daughters; Mrs. Phil Meison, Marshville, Mo., and Mrs. Wesley Vasek, Plainview; two sons, Richard, Hereford, and Don, Stratford, Mo.; four sisters, and three brothers.

Vega Soldier Gets Assignment

Army Pvt. Jerry L. Biddle, son of Mr. and Mrs. Lemuel L. Biddle, Vega, was assigned Dec. 13 to the 517th Artillery, a Nike-Hercules missile unit at Dyess Air Force Base.
Biddle, a sentry dog handler in Battery A of the 517th Artillery's 5th Missile Battalion, entered the Army in May 1963 and completed basic training at Fort Polk, La.
The 23-year-old soldier is a 1959 graduate of Vega High School.

Adam H. Swigart Dies In Amarillo, Burial Sunday

Funeral services for Adam H. Swigart were conducted Sunday, Dec. 22, at 3 p. m. by the Rev. H. V. Fields, pastor of Grace Gospel Church, in Rose Chapel, Gilliland Funeral Home.
Mr. Swigart, 69, died Dec. 21 in Veterans' Hospital, Amarillo. Born Nov. 13, 1894, in Oklahoma, he came to Hereford from Oklahoma in 1932. He and Mrs. Alice Cox were married Nov. 17, 1961, in Midland. He was a veteran of World War I and a member of Avenue Baptist Church.
He is survived by his wife, 118 North Jackson; one son, Adam H. Swigart Jr., Fort Worth; two sisters, Mrs. Nellie McCoy, Carnegie, Okla., and Mrs. Grace Howard, Anadarko, Okla., and two children.
Interment was in West Park Cemetery under the direction of Gilliland Funeral Home.

Mt. Sinai Baptist Church

302 Knight St.
Sunday Services are Sunday School, 10 a. m.; Morning Worship Services, 11 a. m.; Evening Worship Services, 7:30 p. m.
Mid-week Prayer Service is held at 7:45 p. m.; Wednesday, Choir Rehearsal is held at 8 p. m. on Thursday. A teachers Meeting is held at 7 p. m. on Friday.

First Presbyterian Church

619 Leo Street
Rev. Russell Wingert, Pastor
Sunday School is held each Sunday at 9:45 a. m. followed by worship service at 11 a. m. Morning Devotional at 9 a. m. Tuesday.
Choir Rehearsal, 8 p. m. Wednesday. Prayer meeting Friday at 7:30 p. m.

PIGGLY WIGGLY'S PRE-INVENTORY SALE



ALL THE FOLKS AT PIGGLY WIGGLY EXPRESS THEIR APPRECIATION FOR YOUR PATRONAGE THIS PAST YEAR. THEY WISH YOU A JOYOUS HOLIDAY SEASON!

PINTO BEANS/PORK & BEANS

ARROW No. 1 RECLEANED 4 lb. BAG **43¢**
WRIGHT'S CURED HAM HOCKS LB. **19¢**
VAN CAMPS 300 CAN **8 FOR \$1**

ALKA SELTZER 59¢ Val. **45¢** FLOUR Shurfine 5 lb. Bag **39¢**
SOUP Campbell's Meat Base Varieties **6 FOR \$1** OLIVES Haase's Sandwich Jar **39¢**

AUSTEX **CHILI TIME**
300 Can With Beans **4 for \$1**
300 Can No Beans **3 for \$1**
15 oz. Beef TAMALES **4 for \$1**

MACARONI or SPAGHETTI
Shurfine 12 oz. Bag **2 for 25¢**

Shurfine Pure **VEGETABLE OIL**
1 1/2 Pint Jar **29¢**

Shurfine **Chili Con Carne With Beans**
15 oz. Can **4 FOR \$1**

MELROSE Hand Lotion
1.50 Size **1/2 PRICE**

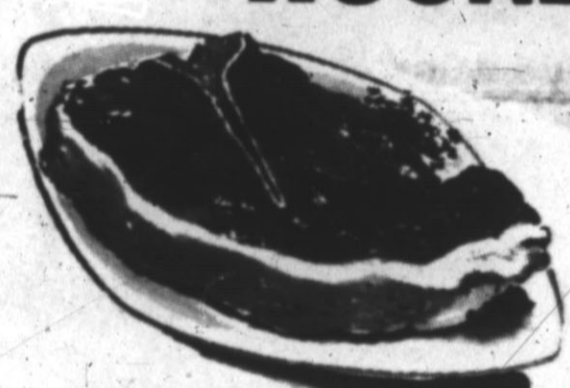
PRESTONE **ANTI-FREEZE**
9.54 Case **\$1.59 GAL.**

Pyro Permanent-Type **ANTI-FREEZE**
Ethylene Glycol Base
\$5.94 Case **99¢ GAL.**

OTHER ITEMS ON SALE **CLOSED THURS. DECEMBER 26**

Piggly Wiggly Sells Only U.S.D.A Government Inspected Beef

ROUND & T-BONE
USDA GOOD CHOICE **89¢ LB.**



SIRLOIN & CLUB BACON
HORMEL FIRST GRADE **79¢ LB.**
53¢ LB.



POTATOES
COLORADO U.S. No. 1 WHITE 10 lb. bag **49¢**

CUCUMBERS Green Fancy Slicers **lb. 15¢**
ORANGES TEXAS HAMLIN 5 lb. bag **59¢**

STOCK UP FOR NEXT YEAR Christmas Decorations WRAPPING PAPER - RIBBON ETC. 1/2 PRICE	WEST BEND ELEC. BEAN POT WHILE THEY LAST \$3.99	NATTY SPUN NYLON HOSE 51-15 WITH SEAMS 1st. QUALITY 39¢
--	---	---



Hereford Redi-Mix Concrete
Complete Pouring & Finish Work
Free Estimates
No job too large or too small
Phone EM 4-0228



For the first two years after we moved to Hereford, cakes were the biggest joke in our household. With recipes I had used for years, we could stand at the oven window and watch the cakes fall. It took an awful lot of icing to fill those center craters, but we ate them anyway.

It seems there's a difference in altitude here and in the Houston area that affects cakes. (Pinto beans, must be cooked a different way too, but that's another story.) People said add more flour and less liquid, or was it less flour and less liquid, or maybe they said... well, I

never could quite figure it all out. The recipe books also gave variations for different altitudes, but we're on a borderline here, and no matter what I did, the cakes just fell anyway.

Sometime last year I read the solution to the whole problem, and since then I have had no more trouble at all. My cakes have turned out beautifully with no problems, no center depressions of any sizes. Probably solutions offered by residents here and the cookbooks would have worked too. I could ever have figured them out. But this was simple enough for my "kitchen" brain (which seems to have a

very different IQ from the rest of it, more in the moron range). All that is necessary is to raise the baking temperature 10 degrees. It has worked like a charm for me.

But then there is the story of the Lemon Pecan Fruit Cake, or Texas Fruit Cake. My recipe, used several times in Galena Park, said cook it at 300 degrees for 1 1/2 hours. Last year I tried it for the first time since we moved here. It was the Saturday before the "Messiah" on Sunday. I got down to where it said "refrigerate overnight"—the oven was already hot, which shows you what I mean about my kitchen brain.

Sunday after church, as soon as we finished with the oven, I set it at 300 degrees and noted the time. There was plenty of time to cook it, before we had to leave for the program—I thought. At the end of an hour and a half, I removed it from the oven and tested it—raw dough. I set the timer for 30 minutes, tested it again—again raw dough, set the timer for 15 minutes more—still not done. But it had been cooking two hours and 15 minutes, and we had to leave in 15 minutes more.

This was ridiculous—I would cook it until the last minute and that was all.

As we started out the door, I removed it from the oven. As I started working the title section from the pan, I asked Steve to hand me the cake rack. By the time he understood where I keep it, I said, "Never mind." That cake was spread out all over the kitchen cabinet in moist, oozy, glistening chunks of all sizes and shapes.

After the program I was telling Virginia Russell that I had to go home, pile it back in the pan, and cook it some more (it turned out quite good even though it was already bite-sized). In the course of the conversation, she said, she cooked hers three hours or more at 250 degrees. Otherwise the recipes were the same. A little matter of 3500 feet difference in altitude! Well, last night I baked another (at 260 degrees) for 3 1/2 hours and it came out just perfect.

The San Francisco earthquake and ensuing fire in 1906 destroyed over \$3,000,000 worth of property.

Letters To Santa...

(Editor's Note: The Brand and Sunday Brand this year have printed more than 200 letters to Santa Claus. A few, however, were received too late to appear in pre-Christmas issues. Late letters are printed below anyway, with the hope that Santa has clairvoyant powers and knew what these children wanted.)

Dear Santa Claus: My brother and I have tried to be good most of the time. Please send me a doll, baby buggy and a high chair. Cory wants a hoop-a-bear, an airplane and football. We'll leave you some cake and a glass of milk. Merry Christmas to you.—Krestl and Cory Springer.

Dear Santa: I am a boy 4-years-old. I think I have been a nice boy. Would you bring me a transistor radio and a Vacuum. Very sincerely yours.—Terry Tuck.

Dear Santa Claus: For Christmas I want a Big Bruiser, 100

instant camera and a surprise and lots of nuts and candy. Don't forget my sisters and brother-in-law. I will be expecting you because I've tried to be good. Love—Joe Don Weaver

Dear Santa Claus: I am 8-years-old. I have been good. I want a telescope and a watch and a basketball. Yours truly—Tommy Lee Tuck.

Dear Santa: For Christmas I want a Tom Thumb typewriter (red) a Miss Popularity Golf-rino. Please fill my stocking with lots of nuts and oranges. Don't forget the other boys and girls. Love—Charlene Weaver.

The Battle of New Orleans during the Civil War was the last battle in which all-wooden vessels were used.

Honey bees are not native to America but were brought to Florida by the Spaniards in 1763.

California has a difference in elevation of 2.8 miles between the lowest and highest point.

Final Rites Held For Daughter Of W. C. Gearn

Mrs. Edd (Elizabeth Jean) Wilson, daughter of Mr. and Mrs. W. C. Gearn, Hereford, died at 5 p.m. Sunday in Plains Memorial Hospital, Dimmitt, after a lengthy illness. Funeral services were held Monday at 3 p.m. in First Methodist Church, Dimmitt, with the Rev. Hugh Blaylock officiating. Interment was in Castro Memorial Gardens under the direction

of Dennis Funeral Home. Mrs. Wilson, 34, was born in Rogers, Ark. Survivors include her husband and a daughter, Debbie, her parents, two brothers, Kenny Gearn, Hereford, and George Gearn, Fresno, Calif., and a sister, Mrs. Jack Smith, Oklahoma City, Okla.

CARD OF THANKS
We wish to thank all the very kind and generous people who have helped us so much in our time of need. There is no way we know to express the appreciation both my wife and I and the kiddies feel. All we can say is thank you.
The W. D. Collier Family

Hereford State Bank
FOR YOUR
Auto Financing

Mc Gee

INVENTORY SALE

ONE OF A KIND ITEMS!
THESE ARE FLOOR SAMPLES!
NOT A STOREWIDE SALE!
MANY ITEMS NOT LISTED!

Closing Out Linoleum

3 Rolls
Armstrong
Vinyl Accolon
95¢ Sq. Yd.

This is an excellent opportunity to buy a lasting gift with that CHRISTMAS MONEY.

**CLOSED THURSDAY
SALE STARTS FRIDAY
8:30 A.M.**

SPECIAL!

2 Only
Early American
SWIVEL ROCKERS
Brown & Tangerine Tweed
Reg. 79.95
Each **\$49⁹⁵** Each



DISCONTINUED STOCK
Thomasville



BEDROOM and DINING ROOM

Country Manor
Distressed Pecan Bedroom Suites
DRESSER MIRROR BED & CHEST Reg. 483.00 **\$359**
DRESSER CHEST MIRROR KING SIZE BED NITE TABLE Reg. \$757.00 **\$570**

8 PIECE SUITE
Round Dining Table
4 Side Chairs
2 Arm Chairs and China
Reg. 665.00 **\$475**

5 PIECE SUITE
Tripple Dresser Mirror - Chest
Nite Table - Bed
Reg. 611.00 **\$450**

6 PIECE SUITE
Tripple Dresser Mirror - Chest
2 Nite Tables
King Size Bed
Reg. 732.00 **\$600**

SPECIAL!

SEWMOR - Early Amer. Maple -
SEWING MACHINE CABINET & CHAIR
25 Yr. Guar. Reg. 129.95 **\$79⁹⁵**
ONLY ONE

SPECIAL!

Toast - Nylon - Large
CHAIR and OTTOMAN
Reg. 169.95 **\$89⁹⁵**

7 Pc. Mahogany Dining Room Gp.

REG. \$271.00
DROP LEAF DINING TABLE 6 CHAIRS **\$160⁰⁰**

3-Pc. CHAIR SET

REG. 269.90
LADIES' CHAIR MAN'S CHAIR and OTTOMAN **\$140⁰⁰**

SPECIAL!

Modern Walnut
BEDROOM SUITE
4 Piece - Bed - Chest
Nite Table - Tripple Dresser
Reg. 239.95 **\$169⁹⁵**

SPECIAL!

2 Pair - Elaborate
VICTORIAN LAMPS
Reg. 59.95
Each **\$59⁹⁵** Pair



SOFAS and HIDABEDS

SOFAS
95" Early American Copper & Brown Brocade - Reg. 349.95 **\$235⁰⁰** WT
82" Early American Turq. - Beige & Brown Reg. 329.95 **\$249⁹⁵** WT
Ethan Allen Tuxedo Gold 100% Nylon - 84" - Reg. 509.00 **\$375⁰⁰** WT
83" Tang. - Gold & Toast Heavy Brocade - Reg. 279.95 **\$199⁹⁵** WT
90" Italian Provincial Toast & Gold Reg. 299.95 **\$199⁹⁵** WT

HIDABEDS
94" Traditional Simmons Brocade Beige Beautyrest Mattress - Reg. 389.95 **WT \$275⁰⁰**
Beige Brocaded - Beautyrest Mattress Simmons - Reg. 409.95 **WT \$285⁰⁰**
80" Simmons Trad Turq. Brocaded Beautyrest Mattress - Reg. 429.50 **WT \$329⁵⁰**



DINETTES

5 Pc. Early American Maple - Drop Leaf Table
4 Upholstered Chairs
Reg. 139.95 **\$89.95**
One Ultra Modern 5 Piece 48" Round Table - Reg. 159.95 **\$99.95**
Multi-Colored Chairs

SPECIAL!

Victorian Mahogany
LIVINGROOM SUITE
4 Pieces - Sofa
Chair - Cocktail Table
Console - Marble Tops
Reg. 809.80 **\$425**

WE TRADE
Up To 36 Months To Pay

Buy Quality Furniture With Confidence At

Mc Gee Furniture

511 N. Main

"Home Owned and Operated"

EM 4-2586

82" Gold Tweed Simmons
HIDABED
Large Wings **\$299⁹⁵**
60" Matt. Reg. 379.50 **WT**