

WEATHER

Moisture High Low
Sunday 65 39
Monday 55 32
Tuesday 68 33
Wednesday 70 30
Moisture this Month: .00
Moisture this year: .00
Moisture last Year: .30

The Hereford Brand

16 pages

SINCE 1901

Published Every Thursday

Our Slogan: "More People — More Farms"

Sixty-two Years Of Service

63RD YEAR — NO. 4

HEREFORD, TEXAS, 79045, THURSDAY, JANUARY 23, 1964

PRICE 10c PER COPY

Wheat Is Dry, But Not Suffering

Officials Sample Farmers' Views

Two Texas A&M University Agricultural Extension Service officials were in Hereford Tuesday for a quick study of area agricultural views preliminary

to a state-wide meeting planned for early spring.

Here for the one-day meeting were John Hutchinson, State Director of Extension, and J. E. Kirby, economist with Extension Service. Kirby is the son of Mrs. J. W. Kirby, Hereford.

They contacted a number of area farmers and ranchers to get their thinking on the overall farm program. Lefty Thomas, County Agent, said, "They are interested in finding out what the farmers themselves want in the way of farm programs, not only for present crops, but for future plans as well."

They also are interested in the export-import programs, as affecting farm prices, Thomas added.

Kirby took an optimistic view of the export prospects for at least one West Texas crop—cotton.

He said that cotton exports for the first quarter of the current cotton year more than doubled those of a year ago.

He explained that exports of all types of cotton amounted to \$109,000 running bales for the August-October period. This volume was 34 percent greater than the average for the same period in the preceding five years. This, he explained, is good news for Texas producers since a good percent of their crop is exported.

Japan was the top buyer during that period, Kirby said. This country took 22 percent of the total, or 221,000 bales. Total shipments to Europe amounted to 481,000 bales, an increase of 290,000 bales over the same period a year ago.

Around Town

Grand Champion calf at last week's Golden Spread Western Junior Livestock show here, shown by Junior Whaley of Oldham County 4-H, wound up second in middleweight division at the Amarillo Fat Stock Show this week. Bill Cole's calf, which was reserve grand champion here, finished fifth in the same division in Amarillo.

It's banquet-attending time for Chamber of Commerce officials as area chambers hold their annual banquets. This past week, representatives of the Deaf Smith County Chamber attended the annual banquet at Dumas Thursday and at Muleshoe last night. Next Thursday, the chamber will be represented at the Tulla banquet, and Feb. 11 at the Brownfield annual dinner.

A Christmas advertisement in The Brand by Deaf Smith County Electric Co-Op won second place in the Texas Press Association competition for December. "Effective use of white space, plain and trade mark" were praised.

Bill Thompson, manager of the Deaf Smith County Chamber of Commerce, will attend the WTCC board meeting in El Paso Jan. 29-30. As president of the WTC Executives Association, he is an ex-official member of the West Texas board.

Don Moore, choral director of Hereford High, will be one of four public school music teachers appearing on a music conference program to be held at Eastern New Mexico University, Portales Jan. 25. Dr. Robert (Continued on Page 2)

Hale Announces For City Post

Gerald Hale authorized The Brand Wednesday to announce his name as a candidate for city commissioner, Place 4, in the forthcoming spring primary.

Hale, who is married and the father of an 11 and 14-year-old daughters, has lived in Hereford for 10 years.

He is a member of the Hereford Jaycees and the Volunteer Fire Department. Hale is also a deacon in the First Presbyterian Church.

In his statement, Hale said: "If elected, I will, to the best of my ability, serve the entire population of Hereford on all matters. I know Hereford will continue to grow, and I would like very much to do my part in making this the finest place to live that I know of."



Gerald Hale

City Makes New Annexation Move

City commissioners, at a regular session Monday launched still another annexation proceeding as an ordinance bringing the remainder of Womble subdivision and DeAtley addition passed on first reading.

The proceeding has been under consideration by the Commission for some time and the decision to bring the area within the city limits was made at a previous meeting. With the ordinance passed on first reading, a public hearing has been called for Monday, Feb. 3, at the next regular meeting. The meeting begins at 7:30 p.m. and is held in the city manager's office at City Hall.

In other action, commissioners also purchased a new packer unit for trash collection and a backhoe and trencher for the water and sewer departments.

Submitting a low bid of \$11,643.73 for the complete unit was Pak-Mor Manufacturing Co. It was decided to add a \$250 optional quick packer to the unit. Even with the addition the firm's bid was still low.

Also submitting bids on the new piece of city equipment were Tradewind Industries on a Baughman Ram-Pak unit, \$12,



Albert Maxwell



BECAUSE HEREFORD is a diversified farming area, Texas Agricultural Extension experts Tuesday sampled farmers for views on the over-all farm program. Left to right are J. E. Kirby, Extension Economist; Lefty Thomas, County Agent here; John Hutchinson, State Director of Extension, and an A&M pilot, Col. Bob Mills. They flew here from College Station Tuesday, returning late in the afternoon for a meeting there Tuesday night. (Staff Photo.)

Chamber Crosses Fingers

Deaf Smith County Chamber of Commerce officials are going ahead with ticket sales for the Chamber's annual banquet Feb. 8, but remembering weather ex-

periences of past years, they are keeping their fingers crossed.

All plans for the banquet, to be held in Whiteface gymnasium, have been completed. Speaker will be Jeff Williams, noted after-dinner speaker from Chickasha, Okla., who has appeared at many West Texas functions as a speaker. Tickets

are being sold at the Chamber headquarters at \$4.50 each, and will be limited to 850 persons. A capacity crowd is expected for the dinner.

Bad weather, more than once, has resulted in speakers arriving only a matter of minutes before the dinner's starting time, Bill Thompson, chamber manager, recalled. "This year

we are definitely keeping our fingers crossed, remembering the curves the weather has thrown us in the past."

It started in 1959 when the speaker for that banquet was Roe Barite, mayor of Kansas City. His plane was forced to land at Wichita Falls after a severe snow storm hit the area.

A Braniff mechanic took him in his car as far as Childress, where he was met by Hereford folk and brought here only 15 minutes before the banquet was to start. The temperature outside the gymnasium was 4 degrees and it was snowing.

The next year the weatherman smiled on Hereford. Dr. J. D. Gray, pastor of the First Baptist Church in New Orleans, arrived without difficulty. Weather was cold, but skies were clear.

In 1961, Paul Harvey, the well-known newscaster arrived (Continued on Page 2)

Whitefaces Upset Levelland 59-54

Hereford Whitefaces took the lead in District 1-AAA basketball as they handed the Levelland Lobos a 59-54 upset defeat here Tuesday at Hereford High gym. While both teams were evenly matched in field goals, the Herd won the decision at the free throw line.

During the game, the Hereford quintet netted 18 field goals while the Lobos hit for 19. In charity toss statistics it was a different story as the Herd hit 23 of 28 attempted while Levelland made good on 16 of 28 attempted.

Assault Charge Results In Six Months' Sentence

A Hereford man entering a plea of guilty Wednesday to charges of aggravated assault on a female was sentenced to six months in the county jail. The plea was entered Wednesday afternoon in Deaf Smith County Court, Judge H. C. Williams presiding.

Charged with the offense was Clarence G. Thurman, 45, 812 Texas.

The incident resulting in the charge filed by the Sheriff's Office, is reported to have occurred about 5:30 p.m. Tuesday north of the Westway Community.

According to a spokesman for the Sheriff's Office, the wife of an area farmer-rancher was driving down one of the county roads when she saw a man who had apparently been hurt as his pick up nosed into a ditch.

Thinking the man was hurt and in need of medical attention she stopped her automobile. Thurman went to the vehicle and "forced his way into a (Continued on Page 2)

Earl Jackson, who hit 21 points for Hereford, more than added the margin of victory as he pumped in ten straight one-pointers during the third and fourth quarters.

With Jackson high point man, Jim Haney hit for 11 points with four goals and three free shots. Danny Cates also hit the double figure column with ten points as he hit five goals.

In the B game, Hereford won by a 31-point margin 69-31 as Roger Owen netted 23 points. Three other players also shot in the double figure column with Steve Hodges hitting for 13, and Robert Lemons and Mike Moore scoring 10 points each.

With only a five-point lead in the first stanza, the Herd B team began hitting with the scoreboard showing a 31-13 half-time score. At the three quarter mark of the game, the Herd was out in front 48-24.

In the varsity game, the Herd hit the floor cold and the Lobos held a six-point edge before the Whitefaces ever got on the scoreboard. But, as the buzzer sounded ending the period, the Herd had edged to within four points of Levelland. The score was 9-13.

In the second period, the Hereford quintet stiffened their defenses and began getting some of the rebounds at both ends of the court. Jackson hit the net for nine points with Cates hitting for three goals, Haney dropped a bucket and Billy Hill and David Stevens netted in two one-pointers.

At the half, the Whitefaces were out in front 20-25 after overcoming the opening quarter's deficit.

In the third and fourth quarters of the game, the lead changed hands again, but the Herd was still out in front when the final buzzer sounded.

During the two periods, the lead by either team (Continued on page 2)

Deaf Smith County's wheat crop is in good condition despite the lack of moisture, says County Agent Lefty Thomas. "The crop could use rain or snow," the county agent admits, "but it's not suffering. The cold weather late in December and early in January put the crop into the dormant stage, and moisture is of little value at such a time, although the ground could store it up for use by wheat when weather warms up."

"He said the near-zero weather early this year had not harmed the crop. "It stopped the growth of wheat completely," he said, "but that is to be expected at this time of the year." He said growing is not expected to start again before late March, depending on the arrival of warmer weather.

The county has an estimated 150,000 acres of wheat planted this year.

Drouth last year cut production, not only here but throughout the entire wheat-producing area. A report issued this week by the Texas Department of Agriculture said, "Texas' 1963 grain production, hampered somewhat by the drouth, fell short of the five-year average on

most kinds of grain, except rice.

The department said: Ample storage capacity was available to handle the 1963 crop, after the usual harvest overload. Total capacity of warehouses registered with Commissioner White's office is 691,369,682 bushels and about one-third of this space was ready to receive the 1963 grains at the season's start.

Despite much discussion of surplus grains, Texas' warehouses have an average of only about a year's supply of most commodities on hand. This is regarded as adequate for emergencies but not excessive by food distribution officials.

Commissioner John White also pointed out that Texas grain warehouse laws, offering about the best protection in the nation, have prevented any losses by grain growers. "No Texas grain farmer has lost even one bushel's worth of grain through theft or mismanagement in nearly 10 years because of our strict bonding and licensing provisions," White said. "The Estes scandals centered primarily on financial manipulations and not grain shortages, and no farmer lost his grain."

Production figures and grain storage amounts were as follows (first figure is 1963 production, second figure is amount of storage at midsummer): Barley 3,780,000 bushels, 785,006 bushels; Corn 24,064,000 bu., 1,061,133 bu.; Milo 245,310,000 bu.; 380,232,412 bu.; Oats 13,674,000 bu., 270,649 bu.; Wheat 40,618,000 bu., 67,779,640 bu.

"Texas remains the leader in almost all forms of grain production and in laws protecting our stored crops," White added.

Brand Moves

The 63-year-old Brand has moved to brand-new quarters at 130 W. Fourth, its fifth location since those days back in December of 1900 when Frank L. Vanderburgh came to Hereford from Roswell, N. M. and set up shop for the town's first newspaper.

He called it "The Reporter," but in the spring of 1901, Vanderburgh visited the sprawling XIT ranch and promptly changed the name of his newspaper to The Brand.

For a number of years, the newspaper's plant was located on E. Third just back of where the First National Bank now stands.

Then eventually it was moved to 407 N. Main to the building now occupied by the Federal Land Bank Association of Hereford, and shortly after Pearl Harbor, December of 1941, the paper moved to 336 N. Main.

That has been the newspaper's headquarters until its latest move, completed during the weekend.

Basic telephone number, EM4-2030, remains unchanged, although an additional outside line has been added to facilitate calls.

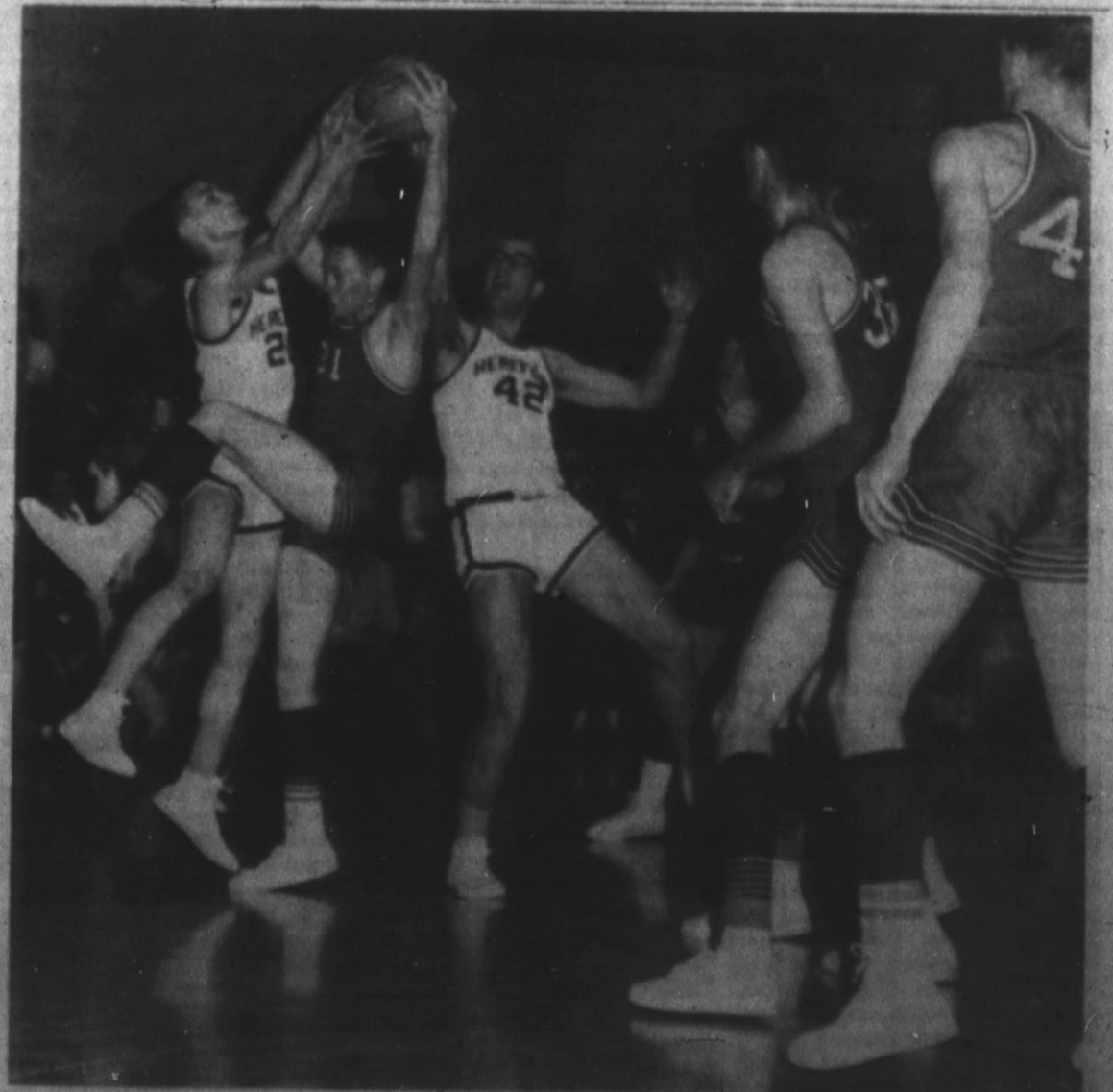
Two Men Enter Pleas Of Guilty

Two men entering pleas of guilty Monday to charges of misdemeanor swindling with worthless checks in Deaf Smith County Court, Judge H. C. Williams presiding, were sentenced to serve six days in jail plus court costs.

Pleading guilty to the charge was Kenneth Lee Raines, 21, Pampa. He was sentenced on two counts of the misdemeanor offense.

Raines was arrested in Pampa on Friday, Jan. 7, and returned to Hereford to face charges by a sheriff's deputy.

Also being sentenced after pleading guilty to a similar charge was Marion Andrews, 31, who was arrested in Lubbock by the sheriff's office there. He was returned to Hereford on Tuesday, Jan. 14.



IN A TANGLE during action in the Whiteface-Levelland game here Tuesday are Billy Hill (20) and Neal Leeb (42) for the Herd and Vic Hines (31) for the Lobos. The Hereford High quintet surprised the Lobos with an upset 59-54 win and took over the lead in the District 1-AAA basketball race. The Whitefaces have a 3-0 district record while the loss gives Levelland a 3-1 record. Hereford meets the Dumas Demons next at Dumas on Friday. (Staff Photo)

Assault

(Continued from page 1)
 rear seat," according to the deputy sheriff.
 The woman then drove toward Westway, but the man is alleged to have grasped her around the throat. The woman's four children then began scuffling with the man to get him to "stop hurting mother."
 In the scuffle, one of the children fell out of the vehicle and the woman stopped. The child was not injured since the automobile was traveling at a slow speed. Also in the scuffle, the man got out of the car.
 The woman and her children then rolled up the window and locked all of the doors, but Thurman is alleged to have attempted to break into the vehicle when the automobile failed to start.
 The man went around to the front of the vehicle and reportedly made motions for the woman to raise the hood. The car started and Thurman was hit by the vehicle.
 A deputy sheriff called to investigate the incident, found the man still lying in the road, but he was not injured except for scratches and bruises.

Whitefaces

was never more than three or four points until the end of the game.
 During the third stanza, Haney hit for five on a field goal and three free tosses as Jackson after missing one, began his string of consecutive free throws.
 Cates and Hill each contributed one bucket each to the Herd's effort with Steven and Neal Leub each getting a free shot.
 As the fourth quarter began, the Herd was in possession of a two point lead. Haney hit another field goal as Jackson sank four more charity tosses. Stevens netted two goals and two free shots.
 The next foe to be faced by the Herd in the district race will be the Dumas Demons. The game will be played Friday in Dumas beginning at 6:15 p.m. for the B squads and 8 p.m. for the varsity.

Around...

(Continued from page 1)
 Pace, head piano instructor at Teachers College, Columbia University, will be guest consultant.
 Hereford Lions Club has announced dates for two of its winter events. The club's annual variety show, with Ben Gollehon in charge will be held Feb. 21-22, and the club's public pancake supper March 6.
 Virginia Gollehon and Thelma Lamm, secretaries of the Chamber of Commerce here, will attend an area workshop for secretaries in Canyon, Jan. 31.
 Hardy Benson was this week's speech winner in the Hereford Toastmasters Club, and will compete with four other speakers in the finals Feb. 20. The winner of that contest will represent the Hereford club at Area 1 finals in Amarillo.
 VFW and American Legion are holding a called meeting tonight at 7:30 to consider disposition of commercial property in Veterans Park, according to Cecil Parker, chairman of the park committee.

Chamber

(Continued from page 1)
 in his own plane but somebody had given the Chamber here the wrong arrival time for Harvey's plane. As a result, he landed at the airport, sans a welcoming committee. In fact, the place was closed up tightly. Harvey walked to Highway 60, which was then under construction, and managed to catch a ride to town in a pickup, arriving barely in time for his speech.
 In 1962, weather again threw the speaker a curve. That year, Cajun Humorist, Justin Wilson, was scheduled to arrive by plane in Lubbock, but a dust storm was brewing, and the plane was unable to land. He wound up in Albuquerque and finally was able to catch a flight to Amarillo, arriving there at 6:30. Local fliers picked him up and brought him to Hereford. Just 15 minutes before the banquet was due to start.
 A West Coast smog, of all things, almost prevented last year's banquet speaker from arriving on time. Bill Bird, San Francisco speaker, was in Las Vegas, Nev., but all flights from Los Angeles were cancelled on account of smog making it impossible for aircraft to get off the ground. He finally caught a semi-local sort of flight to Albuquerque, and local fliers again filled in to bring the speaker to Hereford.
 This year, Thompson has al-

LET'S COOK SOMETHING!

Mrs. Earl Cole Enjoys Cooking For Grandchildren, Farm Crews

By Dale Stevens
 Brand Foods Editor
 Mr. and Mrs. Earl Cole, 107 Avenue I, have farming interests in several parts of the Panhandle. During the summer months Mrs. Cole spends much of her time on their farm near Gruver, where she cooks for the crews. She has many recipes which she has treasured for many years.
 The Coles moved to Deaf Smith County about 18 years ago. Their children live in Illinois, Arizona, Oklahoma, and one son and his family, the Floyd Coles, farm near Hereford. They have 19 grandchildren and three great-grandchildren.



"THAT'S THE RECIPE for that pie you like Grandmother to make at Christmastime," Mrs. Earl Cole, 107 Avenue I, tells her granddaughter, Beverly, who is the six-year-old daughter of Mr. and Mrs. Floyd Cole and a first grader at Central Elementary School. Mr. and Mrs. Cole have 19 grandchildren and three great-grandchildren. (Staff Photo)

Chess Pie
 2 eggs
 1 cup sugar
 1/2 cup butter
 1/2 cup sweet cream
 1 T. corn meal
 Pinch of salt
 1 t. vanilla
 1/8 t. nutmeg.
 Mix ingredients, pour in pie shell, and bake in a slow oven.

Pecan Pie
 1 cup sugar
 1/2 cup corn syrup
 2 eggs
 1 T. melted butter
 1 cup pecans
 Mix ingredients, pour in pie shell, and bake in a slow oven about 40 minutes.

Hush Puppies
 2 cups corn meal
 1 T. flour
 1 t. soda
 1 T. salt
 1 whole egg
 6 T. chopped onion
 2 cups milk
 Sift dry ingredients together, add chopped onion, milk, and egg, and drop by spoonful into deep, hot grease where fish is cooking. When done hush puppies will float. Drain on paper.

Walcott 4-H Club Girls See Film, 'Pulse Of Life'

"The Pulse of Life," a film demonstrating mouth-to-mouth artificial respiration and closed chest heart massage, was shown to members of Walcott 4-H Girls Club Jan. 8 at the Walcott School Auditorium.
 Albert Farris and Ray Simpson presented the film and assisted club members and visitors with practice in the correct procedures, using a mannequin as the victim.
 Each member brought for display the project she had made during the Christmas holidays. Refreshments were served by Mrs. Norman Minks to Mr. and Mrs. T. L. Collins, Mrs. Jack Weaver, Mary Ruth, Charlene, and Joe Don Weaver, Nancy and Margaret Minks, Miss Shirley Bourquin, Miss Paula Green, Mary Alice Burrus, Mrs. Glenn Burrus, and Elizabeth Burrus.

City Makes

(Continued from page 1)
 Power and Equipment, \$5620 and H&W Implement Co. on a John Deere, \$6311.09.
 Discussing the airport lease contract with commissioners were Olin Paris and Bob Doughman, operators of Whiteface Aviation. Discussion centered around an escrow clause in the contract, but action was withheld. The matter will be taken up at the next Commission meeting.
 Dudley Bayne, city manager, asked authorization to advertise for bids on sewer plant expansion and well line piping for three new city wells. Bids will be tabulated on Feb. 17.
 In other action the city waived the \$25 fee which was required for zone changes on newly annexed property along East Highway 60.
 Annexation began before an amendment changed the zoning ordinance requiring property owners to pay the fee.
 A contract with Santa Fe was also signed granting the city permission to bore under tracks in constructing a new sewer line.
 At the close of the meeting, a tentative budget for 1964-65 was presented to the Commission by Bayne. The budget for the next fiscal year calls for an increase of \$100,000 approximately.
 Total expenditures including an operating reserve to total an estimated \$782,577. Budget for this fiscal year is \$671,433.
 Bayne started worrying about the weather, even though the speaker lives less than 400 miles from Hereford.

Women Find New Place: In Stocks

By Joy Miller
 AP Women's Editor
 NEW YORK (AP) — "Stocks should be watched like a baby—never let out of your sight," says the investment expert with a knowledgeable chuckle. "They can change overnight."
 That motherly little analogy sums up, as succinctly as anything, the quiet revolution that has been going on in Wall Street. It's something a woman would say—and did; specifically, Lotte Kahn, account executive of a New York Exchange member company and author of the recent book "Women and Wall Street."
 But it wasn't so long ago, in the days when a "customer's man" meant just that, that a woman was as welcome in the board rooms of brokerage houses as watered stock in a Siberian coal mine during the Russian Revolution. If one did show up, and without a notebook—necessary to indicate legitimate business—her reputation was shattered.
 Smoke Thins Out
 Nowadays, says Mrs. Kahn, the cigar smoke has thinned out and these erstwhile mens clubs are no longer exclusively male. More than 2,000 women today buy and sell stocks and bonds on Wall Street, she says; more than half of all American stockholders are women.
 This doesn't mean capitulation to the sex often considered capable only of coping with the household budget book. But there's no doubt another bastion of male supremacy is crumbling.
 Mrs. Kahn's film is a particularly cheerful example. In the main office in New York, where she's worked the last three years, there are about 40 registered representatives; formerly called customer's men; of which 8 are women.
 "This is a tremendous percentage," agrees the pleasantly-rounded, brunette mother of two college youngsters.
 "But in my first office I was the only woman. The men were jealous and it became unbearable. I had to quit."
 Only Woman Present
 When she joined the Brokers Association in the spring of 1959 she was often the only woman present at meetings. "They'd have to say 'Lady and gentlemen'." Now things are changing rapidly. The field is getting bigger and bigger for women. Although there are still plenty of companies that won't take women, we're in it for good, that's sure.
 "I have two bits of advice to women who are interested in entering the field:
 "1. Be sure you can take the strain of the market fluctuations. If you're very emotional, or have weak nerves, it's no business for you.
 "2. You have to be good at figures—and fast."
 Mrs. Kahn says she's had a lifelong interest in the stock market. Her father was a well-to-do textile manufacturer in Germany, "but he never bought stock or real estate in his life. It bothered me that he kept so much in savings accounts for only a few cents interest."
 After Mrs. Kahn and her husband, Alfred, now an interna-

Legal Notice

NOTICE OF PUBLIC HEARING TO ALL PERSONS INTERESTED IN THE HEREINAFTER DESCRIBED PROPERTY:
 Please take notice that the City Commission of the City of Hereford, Texas, proposes to institute annexation proceedings, to annex the following described properties and tracts of land to the said City of Hereford:
 All persons interested in said annexation proceedings or said property, will be heard at a public hearing before the said City Commission on said proposed annexation, to be held at the City Hall in the City of Hereford, Texas, at 7:30 o'clock p.m. on February 3, 1964.
 The properties and areas proposed to be annexed are, as follows:
 BEGINNING at a point in the existing City Limits line, along the South line of Section 80, Block K-3, at the Southwest corner of Block 3 of John W. DeAtley Addition to the City of Hereford;
 THENCE continuing West with said South line of Section 80, to a point where said Section line intersects the South right of way line of U. S. Highway 60; THENCE in a Northwesterly direction across the right of way of U. S. Highway 60 to a point where the North right of way line of said U. S. Highway 60 intersects the South line of Block 10 of said John W. DeAtley Addition to the City of Hereford;
 THENCE along the North right of way line of the public road and along the South line of said Block 10 and Blocks 11, 14, and 15 of the said John W. DeAtley Addition to the Northwest corner of said Block 16;
 THENCE North with the West line of Block 15 and the West Line of Block 16 of said John W. DeAtley Addition to the Northwest corner of said Block 16;
 THENCE East with the North line of Blocks No. 16, 13, 12, and 9 of the said John W. DeAtley Addition to the point of intersection of a public road

Property Losses Are High In Two Collisions Here

Property damages were heavy as a truck crashed through a chain link fence at Southwestern Public Service Co. warehouse, 308 New York, and two vehicles collided at the intersection of West Third and Miles early Wednesday. In the two accidents there were no injuries.
 The first accident occurred shortly after noon Tuesday as a 1959 model truck, driven by Jasper Leslie Thompson, 53, 225 Avenue I, went out of control.
 According to a Hereford Police Department accident investigation report a tie pin on a spring came loose and the wheels locked. The truck, headed east at the time of the accident, narrowly missed guy-wires supporting power transmission poles and crashed into the fence.
 Damages to the vehicle were placed at \$250 while the estimated loss to the fence and two transformers stored on the yard was placed at \$700.
 In the accident Wednesday, a 1957 four-door sedan driven by Ensenio Gonzales Hill, 28, 521 Irving, collided broadside with a 1963 model pick-up driven by Joseph N. Harding, 67, 106 Centre.
 Hill was headed west on Third Street while Harding was traveling south.
 According to the report, Harding's car was damaged to the extent of a rear fender and bumper. Hill's car was damaged to the extent of a front fender and bumper. Hill's car was damaged to the extent of a front fender and bumper.
 Ancient Europeans displayed mistletoe as a cure for ulcers.

ing stopped at the intersection but apparently failed to see the oncoming automobile. He pulled into the intersection in front of Hill's vehicle.
 The sedan was listed as a total loss at \$800 with damages to the truck placed at \$250.
 Europe still supports more people to the square mile than any other continent. Europe, including Soviet Russia, has an average of 225 people a mile, compared with Asia's 102, North America's 29, Africa's 23, South America's 21 and Oceania's 5.

HEREFORD MEAT MARKET

740 West First EM 4-3520
 Open 7 Days a Week — 8 a.m. - 8 p.m.

Ground Beef	Lb. 35c
Beef Liver	Lb. 35c
Sirloin Steak	Lb. 59c
T-Bone Steak	Lb. 69c
Arm Steak	Lb. 59c
Chuck Steak	Lb. 49c
Club Steak	Lb. 59c
Beef Short Ribs	Lb. 35c
Roast	Rump or Pikes Peak Lb. 59c
Stew Meat	Lb. 59c
Pork Chops	Lb. 49c
Pork Sausage	2 Lbs. \$1
Fryers	Lb. 29c
Smoked Bacon Sliced	2 Lbs. \$1
Smoked Jowl Sliced	2 Lbs. \$1
Bologna	3 lbs. \$1
Wieners	3 lbs. \$1
Salt Pork	3 Lbs. \$1

We also have a nice selection of Fruit and Vegetables

We Are Remodeling
 our building . . . Enlarging to serve you better. Even though we are all torn up, we still offer you the same courteous service.

IMPORTANT NOTICE

THE ANNUAL MEETING OF THE Hereford Texas Federal Credit Union WILL BE MARCH 10, 1964 7:30 P.M. Hereford High School Auditorium

CHANGE OF DATE NECESSARY AFTER AMENDMENT TO THE FEDERAL CREDIT UNION ACT

We almost promise good weather and We DO promise an interesting program, and many, many valuable door prizes including 1964 PACKARD BELL TV

GROWTH OF RESOURCES AND RETURNS SINCE DECEMBER, 1936

Resources	Returns To Members
\$125.44	1936 . . . 0-
\$3,720.64	1940 . . . \$94.12
\$21,117.52	1945 . . . \$507.53
\$87,900.57	1950 . . . \$2,158.18
\$733,566.39	1955 . . . \$31,706.86
\$2,347,955.57	1960 . . . \$107,034.20
\$2,894,166.39	1963 . . . \$137,422.10

YOU ARE INVITED TO PARTICIPATE IN SERVICES AND RETURNS

Hereford Texas Federal Credit Union

Across the Street East of Courthouse

This Could Happen To YOU!

Do You Have ADEQUATE INSURANCE? Plains Insurance Agency Since 1926 Ino. H. Patton W. H. Patton Robert Lemons

Legal Notice

NO. 4754

BRADLEY INVESTMENT CORPORATION, Plaintiff VS. IDA B. DAVIDSON, ET AL., Defendants IN THE DISTRICT COURT OF DEAF SMITH COUNTY, TEXAS

CITATION BY PUBLICATION THE STATE OF TEXAS TO ANY SHERIFF OR CONSTABLE WITHIN THE STATE OF TEXAS - GREETING:

Your are hereby commanded to cause to be published once each week for four consecutive weeks, the first publication to be at least 28 days before the return day thereof, in a newspaper printed in Deaf Smith County, Texas, the accompanying citation, of which the herebelow following is a true copy.

CITATION BY PUBLICATION THE STATE OF TEXAS:

To: IDA B. DAVIDSON; IDA DAVIDSON; RALPH DAVIDSON; R. DAVIDSON; SYDNEY DAVIDSON; F. DAVIDSON; A. P. MURCHISON; J. D. THOMPSON; J. S. JONES; W. O'BRIEN; MURCHISON THOMPSON & CO., a partnership composed of A. P. MURCHISON, J. D. THOMPSON, J. S. JONES, and W. O'BRIEN; GEORGE S. WILLIFORD; D. M. WILLIFORD; E. M. VANDERBURGH; C. W. DODSON; W. R. RUSH; The unknown children of W. R. Bush, deceased; J. W. CORLEY; W. F. THRAILKILL; MRS. M. L. THRAILKILL; J. W. CHILDRESS; J. W. CHILDERS; MRS. M. A. CHILDERS; T. G. CHILDERS; W. H. CHILDERS; J. W. CHILDERS Jr.; R. A. CHILDERS; MRS. DORA REAGAN; MRS. NORA SAVAGE; ROSA CHILDERS; KEWEN CHILDERS; ROBERT A. CHILDERS, Jr.; HONERA CHILDERS; J. H. REAGAN; J. C. CAPERTON; MRS. C. M. CAPERTON; O. L. RUTHERFORD; MRS. HATTIE RUTHERFORD;

If living; and the unknown spouses of each of said named persons, if living; and if dead, the legal representatives of each of said named persons and their unknown spouses, and the unknown heirs of each of said named persons and their unknown spouses; the legal representatives and unknown heirs of the unknown heirs of each of said named persons and their unknown spouses, if the unknown heirs of said named persons are dead; all of whose places of residence are unknown to Plaintiff; all hereinafter called Defendants.

You are hereby commanded to appear before the Honorable District Court, 69th Judicial District of Deaf Smith County, Texas, at the Courthouse thereof, in Hereford, Texas, by filing a written answer at or before 10:00 a.m. of the first Monday next after the expiration of forty-two (42) days from the date of the issuance of this citation, the same being the 24th day of February A. D., 1964, to Plaintiff's petition filed in said Court, on the 6th day of January, A. D. 1964, in this cause, numbered 4754 on the Docket of said Court, and styled BRADLEY INVESTMENT CORPORATION, Plaintiff, VS. IDA B. DAVIDSON, ET AL., Defendants.

A brief statement of the nature of this suit is as follows, to-wit: A trespass to try title suit in which Plaintiff, for cause of action, alleges to the Court that on or about the 10th day of December, 1963, it was lawfully seized and possessed of the following described lands and premises situated in Deaf Smith County, Texas, holding a deed claiming the same in fee simple, to-wit:

TRACT NO. 1; The South 834.84 feet of Block No. 34; and the South 834.84 feet of the West one-half of Block No. 35; both of Evants Addition to the Town of Hereford, Deaf Smith County, Texas; together with the South 834.84 feet of closed

Avenue A which lies between said Blocks Nos. 34 and 35; SAVE AND EXCEPT, the South 280 feet of the East 198.71 feet of said Block No. 34. TRACT NO. 2: Lot No. 28 of J. B. Phillips Subdivision of Block No. 39, Evants Addition to the Town of Hereford, Deaf Smith County, Texas; being now a part of Southlake Addition to the City of Hereford, TRACT NO. 3: Lots Nos. 16 and 19; the South 20 feet of Lot No. 20; all in Northridge Addition to the City of Hereford, Deaf Smith County, Texas.

TRACT NO. 4: Lots Nos. 35, 36, 37 and 38, Gamez Subdivision of Block No. 37, Evants Addition to the Town of Hereford, Deaf Smith County, Texas.

TRACT NO. 5: Lots Nos. 1 through 5, inclusive, and Lots Nos. 27 through 31, inclusive, of a Subdivision of Block No. 43, Evants Addition to the Town of Hereford, Deaf Smith County, Texas.

That Defendants unlawfully entered upon said premises and ejected Plaintiff therefrom and unlawfully withhold from it the possession thereof, to Plaintiff's damage. Plaintiff further alleges in its petition that it has and holds title to the same by limitation under the three year statute of limitations of the State of Texas, the five year statute of limitations of the State of Texas, and the ten year statute of limitations of the State of Texas.

Plaintiff prays for judgment for title and possession of said land and other and further relief to which it is entitled, as is more fully shown by Plaintiff's petition on file in this suit.

If this citation is not served within 90 days after the date of its issuance, it shall be returned unserved.

The officer executing this writ shall promptly serve the same according to requirements of law, and the mandates hereof, and make due return as the law directs.

ISSUED AND GIVEN UNDER MY HAND AND THE SEAL OF SAID COURT, at office in the City of Hereford, this 6th day of January, A. D. 1964. Lucille Posey, Clerk of the District Court, 69th Judicial District, Deaf Smith County, Texas

T-24C

Church Of Christ Rites Held For Mrs. Morin, 68

Funeral services for Mrs. Isabel Reyes Morin, 207 Roosevelt, were held at 3 p.m. Wednesday in the South Side Church of Christ, Amarillo. Max Zamorano, pastor of the Amarillo Mexican Church of Christ, officiated. He was assisted by Elmer Patterson, elder of the Central Church of Christ, Hereford.

Mrs. Morin and her husband, V. E. Morin, moved to Amarillo in 1922 from San Antonio and to Hereford from Amarillo in February, 1962. He worked with the Mexican Church of Christ in Amarillo for about 30 years and is presently serving as minister for the Spanish Church of Christ, Hereford.

Survivors include her husband, three daughters, Mrs. A. F. Giannatti, Reno, Nev., Mrs. O. E. Ames, Amarillo, and Mrs. J. C. Temple, Cincinnati, Ohio; three sons, Paul Morin, San Francisco, Calif., Moises Morin, Amarillo, and Sam Morin, stationed in New York with the U. S. Navy, and 21 grandchildren. Interment was in Liano Cemetery under the direction of Boxwell Brothers Funeral Directors.

Lowest towns in the world are villages along the Dead Sea; 1,286 feet below sea level.

IT'S EASY TO TURN OUR BARGAIN BUYS INTO BANQUET FARE....



FOLGERS COFFEE 3 POUND CAN **2.07**

Campbells — Tall Can Tomato Soup 10c	With Free Comb Vaseline Tonic 79c Val. 69c	Del Cerro Shelled Pecans 12 Oz. Pkg. 89c	Sunshine Choc. Chip Cookies 7 1/2 Oz. Box 4 for \$1
---	--	--	---

NORTHERN TOILET TISSUE 4 ROLL PACK **29c**

Tender Cake ANGEL FOOD CAKE .49c Val. 39c	Tender Crust BROWN & SERVE ROLLS 2 for 49c	Shurfresh CRACKERS Lb. Box 2 for 45c	Shurfine COFFEE Lb. Can 59c	Three Minute POP CORN 2 lb. bag 29c
---	--	--	---	---

MRS. TUCKERS SHORTENING 3 POUND CAN **59c**

BANANAS
CENTRAL AMERICAN Lb.

CARROTS
TEXAS Lb. Pkg. Each

CELERY
LARGE CRISP STALK Lb.

10c

FRESH - LEAN

PORK ROAST POUND **29c**

WESTINGHOUSE Steam and Dry Iron 10.95 Val. **\$8-95**

RENT A FLOOR POLISHER ONLY 50c PER DAY

Normany — 7 Piece **KITCHEN TOOL SET** 4.95 Val. **\$3-49**

Floating Head **NORELCO RAZOR** 19.95 Val. **\$16-95**

Westinghouse Immersible — 8 Cup Spoutless **COFFEE MAKER** 12.95 Val. **\$9-95**

Westinghouse 8 Cup Spoutless **COFFEE MAKER** 9.95 Val. **\$7-95**

CHEESE SPREAD Shurfresh 2 lbs. **69c**

BISCUITS Shurfresh 2 for **15c**

BACON ARMOUR CAMPFIRE **2 LBS 89c**

PIGGLY WIGGLY
The Original SELF SERVICE



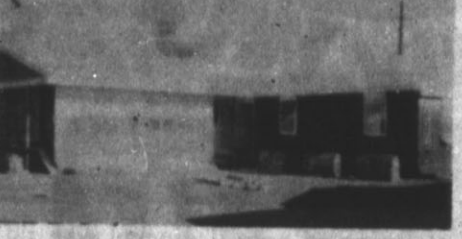
Lone Star Agency
Moyd Sharp Sam Nunnelly
601 MAIN PH. EMERSON 4-0555

Phone EM 4-2030 WANT ADS Phone EM 4-2030

Hereford Radiator

DEPENDABLE SERVICE
120 Schley EM 4-3355

SWEETING DRIVE...



This new home will soon be complete at 224 Beach. See this three bedroom beauty. Two baths, carpet, range and oven. Move in for \$450 down and \$425 closing costs.

We'll be happy to show you. Call

Hereford Real Estate

Jim Cramer EM 4-2424
345 West First EM 4-1226

You've Never Seen Such Thorough Service
STOP IN SOON
Phillip "66" Products
EAST SIDE "66"
Rocky Stewart
1303 E. 1st. EM 4-2644

Lions Club meets each
Wednesday, 12 Noon
Hotel Jim Hill

STATED MEETINGS
Second Monday

Thursday Night FC
7:30 P.M.
Hereford A. F. & A. M. No. 849
Troy Stambaugh, Sec.
Bill Hulson W. M.

Kiwanis Club
Thurs. Noon
100F Hall
207 E. Sixth

Hereford Rotary Club
meets every
Monday at 12:05
RANEY'S RESTAURANT

OPTIMIST CLUB
Meets
Monday Eve
6:30 p.m.
Raney's Restaurant

MATTRESSES

• New • Renovated
• Remanufactured
FREE PICKUP & DELIVERY
Your Mattress Remade \$14.90
New Springs \$24.90
Call or Write
ANDERSON
Mattress & Upholstering Co.
Box 802 — 205 N. Tyler
Amarillo DR3 -8313

RENT A CAR

BY DAY, WEEK or MONTH

Campbell Pontiac
815 E. 1st EM 4-2283

Colorado Rod Weeder
PTO or hydraulic drive.
Cisco Rod - Weeder
with hydraulic drive.
Dempster Planters, Cultivators
and Rotary Mows.
Lillian Shredders & Blades.
See the new M-F Diesel
tractors. We have several
GOOD used Combines.
SEE:
LESLEY MOTOR CO.
For the finest in farm machinery.
West Hi-way 60
Phone EM 4-1600

Reliance HOMES

FOXWORTH DALBRAITH
NO DOWN PAYMENT
NO CLOSING COSTS

For Real Hickory Smoked
BEEF & HAM SANDWICHES
Black Coffee, Red Beans,
Hamburgers, too try the
HICKORY HUT
Just west of Intersection
Highways 60 & 385
Ted Young

AUCTION SERVICE
Sales of All Kinds
BILL FLIPPIN
Frona
Phone 5362
or
George Zetzsche
Clerk
Phone AV9-4404

Loaded
1961 T-BIRD .. \$???
2 Dr. Loaded
1963 FORD ???
SEE BILL COMBS
4 Dr. Loaded
1962 FORD .. \$???
Loaded
1960 FORD ???
SEE BILL PRICE
2 Dr. Hardtop Loaded
1959 FORD .. \$???
2 Dr. Auto. Trans., Rad.,
& Htr.
1958 FORD ???
SEE CLAY LINDSEY

2 Dr. V-8 Standard
1957 FORD \$???
1/2 Ton Ford
1962 PICKUP .. ???
SEE GLEN NELSON
1/2 Ton Ford
1961 PICKUP .. \$???
1/2 Ton Ford
1960 PICKUP .. ???
SEE WAYNE HOUGHTON
1/2 Ton Ford
1959 PICKUP .. \$???

—SPECIAL—
FORD SCHOOL BUS
33 Passenger \$495.00
SEE BENTON BOLIN
1949 FORD TRUCK
1/2 Ton \$295.00
SEE
STEPHENS-HUDSON
MOTOR CO.
1st & Miles EM 4-2727
HereFORD, Tex.

CUSTOM FEEDING
Grain - Finishing Rations
CHARLIE STONE
EM 4-2224

HOUSES FOR SALE
IN ANY PRICE BRACKET
CALL EM 4-0535
Lone Star Agency

SERVICE ON
Black & White & Color
TELEVISION
Any Make or Model
SUNSET APPLIANCE
906 Lee EM 4-3472

HILL'S TEXACO
FIRST & MILES
EM 4-1823
CONVENIENT TO
DOWNTOWN

GO GO GO

FOR
• Gas • Wash • Grease
• Wheel Balancing
• Minor Repairs
BOYD'S HUMBLE
SERVICE
EM 4-1110
Hiway 60 & 385

POWELL
TV & RADIO
SERVICE
Years of Experience
On All Makes
EMMETT POWELL
105 Grand Ave
EM 4-1659

MEAT
Processed For
Freezer - Also
RETAIL SALES
HACKER & JESKO
1315B Park Ave. EM 4-3224

HEREFORD
BAKERY
519 Park Ave. EM 4-0177
HOME OF
Deaf Smith County
Bread and Pastries

POLITICAL CALENDAR
Commissioner, Precinct 1
Charley Sowell
Earl Holt
J. F. Martin
Commissioner, Precinct 2
J. T. Gulun
Jim Monroe
Bruce Coleman
Sheriff
Lowell R. Sharp
Charles Skinner
Tax Assessor-Collector
Neil Miller
District Attorney
William (Bill) Huner

FOR SALE
Miscellaneous
ADMIRAL PORTABLE dish-
washer. White. Real clean.
Hickman. Call EM 4-3852
B-1-10-28-4C

HUNDREDS
Of good used tires. 14" sizes
Also re-treads. New tires too.
JAMES A. BROWN
TIRE SERVICE
Highway 60 West
B-1-2-Hfc

GOLF CLUBS for sale. Pro certified
irons. 2 through wedge,
2 woods, P and bag. 313 Ave.
K.
B-1-18-3-2P

FOR SALE: 34 weaner pigs. 4
brood sows, one boar. Call
EM 4-2352 or EM 4-3261.
B-1-14-3-TFC

BY OWNER, to be moved, small
two bedroom modern house.
\$2,000.00 Call EM 4-2488.
B-1-13-25-TFC

Johnson Outboard Motor or
Aransas Traveler Boat, or
for a used boat or motor, see
KINSEY - OSBORN
MOTORS
142 MILES AVENUE
B-1-26-TFC

USED BARGAINS
Maytag, Hamilton, Frigidaire
and Kenmore Dryers in good
condition; Maytag automatic
washer, Norge 30" electric
range and Frigidaire electric
range.
BUY-RITE FURNITURE
North End of Main Street
B-1-26-Hfc

ANGUS BULLS Andrews and
Andrews, Aberdeen Angus.
BR6-4404 or BR6-4133
B-1-10-25-TFC

BIG RED BARN
We Buy - Sell - Trade
for anything of value.
Used Furniture, Appli-
ances and Junk.
EM 4-3552
West Edge Of
Hereford
Highway 60
B-1-1-TFC

Chrysler - Plymouth
AUTOMOBILES
CHRYSLER
IRRIGATION
ENGINES
New & Used
McCULLOUGH MOTOR CO.
Sales & Service
345 East Highway 60
Phone EM 4-3150
B-1-43-TFC

HAVE YOU TRIED???
The prompt, courteous and
guaranteed service at
POOR BOY'S GARAGE
Bring us all your automotive
troubles. Lawn mowers to
tractors.
Bill McIver — EM 4-3509
Johnny McIver — EM 4-2130
EM 4-2799
B-1-11-Tfc

SERVICE ON ALL
Washers & Dryers
SUNSET APPLIANCE
906 Lee EM 4-3472

CHARLIE BELL
SELLS
Southwestern Life

GENERATORS and starters for
cars and trucks. Hereford
Wrecking Co. Phone EM 4-
0580.
T-1-12-18-4fc

VACUUM CLEANER SALE
Saturday only, hose to fit
Electrolux, \$4.00
Compact cleaner—like new,
\$69.95
Electrolux automatic, \$34.95.
Repair \$37.50
Kirby's rebuilt, \$45.00, up.
KIRBY VACUUM CLEANER CO.
434 West 1st EM 4-0422
B-1-4-1-C

FOR SALE: 1953 Traveler trailer
house 35' x 8'. Good Condition.
Vega, Texas. 267-3626.
B-1-12-4-2C

FOR SALE: Set of china, serv-
ice for 8. Never been used.
Phone EM 4-0533. Mrs. Pat
Parker, 514 Ave. K.
B-1-19-4-2C

ALFALFA HAY See Charlie
Holt 4 1/2 Miles West on Clovis
Highway. EM 4-0402 or EM 4-
3706.
B-1-14-8-110p

FOR SALE: Completely rebuilt
4 inch electric irrigation pump
6 inch bowls, 110 foot setting,
\$600.00 Jerry Carter. EM 4-2761
B-1-19-2-TFC

FOR SALE: Set of drums. Good
Condition. EM 4-2871.
B-1-10-2-TFC

2. FOR SALE
Farm Equipment
FOR SALE: '52 IHC (M) on
Butane. Good shape. See at
Bill's Garage and Welding,
North 385. Call EM 4-2352 or
EM 4-3261.
B-2-21-3-TFC

TOP QUALITY
Irrigation Dams as low
as \$3.25
DAVIS IMPLEMENT
144 W 2nd EM 4-2811
B-2-18-1fc

WE ARE DEALERS
for Peerless Grain Rollers
and Feeding Equipment
DAVIS IMPLEMENT
144 W 2nd EM 4-2811
B-2-18-1fc

FOR SALE: four self feeders,
Mig. by Norton at Saginaw,
Texas. 20' lengths. Sell each
at \$90.00 off, new delivered
price. Broadcast Reader for
IH ensilage cutter. Used one
season. \$450.00. Call EM 4-2849
or AV9-4468.
B-2-35-4-8C

FOR SALE: 1963, 504, IHC Die-
sel tractor with only 320 hours.
Phone OL 5-4684, Canyon.
B-2-14-29-TFC

3. FOR SALE
Automobiles
FOR SALE: '59 Volkswagen.
Good condition, good tires.
Bargain at 685.00. Call EM 4-
2849.
B-3-13-4-8C

FOR SALE: Two ton Chevrolet
truck. 1954 Motor. Phone EM 4-
2100
B-3-10-4-TFC

MILBURN MOTOR
COMPANY
We Pay Cash For Used Cars
225 N. Sampson
Phone EM 4-0077
B-3-33-TFC

FOR SALE: 1962 Chevy two door
hardtop. Air Condition. EM 4-
2847.
B-3-10-2-9C

FOR SALE: 1960 Buick Le Sabre
in good condition. Call EM
4-3570, after 5:30
B-3-12-2-TFC

FOR SALE: 1955 Chev four
door sedan, Good shape. Best
offer. Call evenings. EM 4-2638
B-3-14-28-TFC

The Hereford Brand

TEXAS PRESS ASSOCIATION
Member 1964

Our Slogan: "More People—More Farms"
Member National Editorial Assn.
Member Associated Press
Hereford, Deaf Smith County, Texas—Phone EM 4-2030
Published Every Thursday at 336 Main St.

Entered as second-class matter at the Post Office in
Hereford, Texas under the act of March 30, 1879
Second - Class postage paid at Hereford, Texas. Any
erroneous reflection upon the character, standing or
reputation of any person, firm or corporation, which
may appear in the columns of this paper, will be gladly
corrected upon due notice of same being given to the
editor personally at the office. Subscription Rates: Zone
1, \$2.50 per year; Zone 2 and above, \$3.50 per year.
With the Sunday Brand, both papers, Zone 1, \$4.95
per year; Zone 2, \$6.15 per year. Carrier delivery, 60c
per month. Single copies, 10c each.
Classified advertising rates: 6c per word first insertion (60c
minimum); 4c per word additional insertion.

JAMES M. GILLENLINE Publisher
MELVIN YOUNG Managing Editor
BILL PENN Advertising Manager

MARK IV REALTORS

Hallmark of Service
618 W. Hwy. 60 Em 4-2220

Luxurious Living . . .
for ordinary price!
3 large bedrooms
Full tile baths
Den with fireplace
Beautiful interior
Covered patio

213 Ranger

You get more for your money . . .
when you buy an Award Home

— HOMES —

Why don't you trade for one of the beautiful brick
homes now available? These houses have fireplaces,
dens, built-ins and all the trimmings. Call today for an
appointment. H-32,34,36,318,320,323.

Three bedrooms, 1 1/2 baths, double garage, carpets,
central heat, large lot. \$15,500, low down payment.
215 Ave. E. H-321.

Four bedroom split level with large den. Will trade.
105 Fir. H-319.

— TRAILER HOUSE —

45x10 Mobile Home complete in every detail. Never
been on the road. Why not look at it and make us an
offer?

— FARMS —

Half section in Parmer County. Two 8" wells, 90%
mile base. Terms. \$525 an acre. F-312.

There are some outstanding buys in Colorado farms
now available. Good wheat allotments, good grass,
good water. Call for details.

— COMMERCIAL —

OK Rubber Welders on East Highway 60 is for sale
with all equipment and stock including at least 250
new tires. Only \$9,000. C-29.

There are many other excellent business properties.
Why don't you invest now in Hereford's booming
economy?

— EVENINGS & SUNDAYS —

Lloyd Pool - EM 4-1207 Oliver Stru - EM 4-2857
J. L. Marcom EM 4-2691 Francis Hardwick EM 4-2241
Don Metcalf EM 4-1740 — Award Homes EM 4-1605

GLASS IS OUR BUSINESS —
Call Us For All Your Glass Needs
HEREFORD GLASS CO.
1302 Park Ave. INC. EM 4-2652

EAGLE NEST HOMES

Builders & Developers
Eagle Nest Construction
HEREFORD
230 N. 25 Mile Ave. EM 4-3722

- Homes Custom Built on Your Lot or Ours
- Maximum Conventional Loans Arranged
- Commercial Buildings • Turn Key Remodeling
- Also will build to suit tenant on long term lease.

FARMS FOR SALE

575 A. near Hereford on pavement improved.
Land lays good and has good deep soil.

480 A. North West of Hereford 1 mile from pave-
ment. In extra good water area.

1 1/2 section stock farm, some irrigation, well
located and priced to sell at \$170.00 per A.

Also other good buys in this area.

See
G. W. NEWSOM, Agency
415 N. Main St.
Phone EM 4-1733 Res. EM 4-3338

Large Company Seeking
Salaried Representative
in Hereford area. No travel required. Start-
ing salary open. Married man, age 25 to
45. No experience necessary. Complete
training provided. For appointment write
complete resume to . . .
P. O. Box 1720, Amarillo

Buy With Confidence

JUSTICE HOUSES

DEMAND . . .

Three bedrooms, 2 baths, brick home with furnished
rental apartment on same property for only \$125 per
month. Located in nice neighborhood close to down-
town.

Two bedroom brick with covered patio, built-in kitchen,
attached garage and fenced yard. Located in north-
west Hereford. \$1,000 cash down payment.

Three bedrooms, 1 1/2 baths, 1700 sq. ft. loaded with
extras. \$17,500.

We still have one new three bedroom house on Long
Street. \$270 move in cost.

FARMS

Two sections located near Textline. 12 irrigation wells,
two sets improvements, 125 acres alfalfa. On highway.
\$285 per acre, 29% down.

320 acres. One half in cultivation. Nice improvements,
located north of Hereford. \$390 an acre.

Perfect section with very nice improvements. Three miles
of underground tile, good allotments. \$300 an acre.

Justice Realtors

Corner Main and Hiway 60
EM 4-1757 EM 4-2266 Box 711
Gene Sneed Mike Justice
EM 4-1420 Res. EM 4-0544
Virgil Justice



RECEIVES SOLO TROPHY—Mrs. Chester Wiggins, who soloed Jan. 16, receives her trophy from her instructor, Olin Parris, at the Hereford Airport. Mrs. Wiggins is the sixth Hereford woman to receive the trophy from her instructor, Olin Parris, at the airport.

(Personal Photo)



ALL EVENTS WINNERS in the annual men's bowling tournament were Roger Shipley (left) in the class D event with the class B trophy going to Jack Kirksey. Trophies were presented to winners in the December tournament Monday. (Staff Photo)



SWEEPING ALL Class C events in the annual men's bowling tournament were Vincent (left) and Leonard Walterscheid. Vincent won singles while Leonard won all events trophies. They teamed together to win a second trophy in the doubles competition. Trophies were presented to winners by the bowling association at ceremonies held Monday. (Staff Photo)

AUSTIN HIGHLIGHTS

Enrollment In 'Medical Self-Help' Leads Nation

By Vern Sanford
For the past three months, Texas has led the nation in the number of people taking a newly-developed, 11-lesson course in "Medical Self-Help."
Prepared by the U. S. Public Health Service, the plan is to train at least one member of each family in emergency do-it-yourself doctoring.

existing programs and has been endorsed by the Texas Medical Association.
Information or assistance in setting up a local program may be obtained from the State Health Department in Austin.
HIRING POLICY STRENGTHENED
State Hospital Board has announced tough new hiring rules. Board has drawn fire due to hiring of a former mental patient as a doctor in its Wichita Falls Hospital and a one-time convict as a medical assistant at San Antonio Hospital.

Rusk Hospital.
PATIENT PAYMENTS UP
Patients in seven state schools for the mentally retarded, four state tuberculosis hospitals for the mentally ill (including senile persons) and the Houston State Psychiatric Institute paid a bigger share for their care and treatment in December than ever before.
A report by the state hospitals system shows that patient collections for that month totaled \$424,951, bringing the total paid under the patient past-pay program during the past five and a fourth years to more than \$20,000,000.

Classifieds

Get

Results

APPOINTMENTS ANNOUNCED
J. E. (Dutch) Winters, former Tarrant County first assistant district attorney, is the new judge of Criminal District Court No. 2 in Fort Worth. Gov. John Connally named him to succeed the late Judge Dave McGee.

CIGARETTE TAX REVENUES HOLDING
A federal study committee's report linking cigarette smoking to lung cancer and other serious ailments is slowing state tobacco tax revenues little so far, according to Comptroller Robert S. Calvert.

COURTS SPEAK
In upholding the conviction and eight-year prison sentence assessed Billie Sol Estes, the Court of Criminal Appeals announced conclusions of importance to news media, as well as to attorneys and those facing felony trial.

INSURANCE POLICIES DEBATED
Texas Insurance Commission has under advisement divergent testimony on whether general home owner package policy rates should be trimmed and cons-

tal area rates should be raised. Mutual insurance company spokesmen opposed both proposals.

COLEGE PROGRAMS STUDIED
A plan for coordinated development of graduate facilities at both public and private colleges in the Dallas-Fort Worth area is being studied by the Commission on Higher Education.

OIL ALLOWABLE RAISED
Railroad Commission set the highest oil production allowable in 12 months when it put the February allowable at 29 percent of capacity. It's an estimated increase of 25,249 barrels a day over January.

WATER HEARINGS SET
Texas Water Commission has scheduled two important hearings for February.

SHORT SNORTS
Texas' draft boards will begin classifying 18-year-olds immediately after they register for the draft, but they won't be called right away.

DEAN BINGHAM LAND COMPANY
Farms - Ranches
Loon Service
116 S. 25 Mile Ave.
Phone EM 4-0410
B-4-13-TFC

COMMERCIAL RANCH, AND FARM LOANS
We specialize in hard to place loans. Money is our business. P.O. Box 3314, Lubbock, Texas B-4-29-9c

CLASSIFIEDS...
1958 Chevy Impala. Really good shape. Automatic, rolled and pleated. Real sharp. Call EM-4-0454.
B-3-14-17-tfx

REAL ESTATE For Sale Or Trade
FOUR BEDROOM Brick, country kitchen and family room, wood burner, 2 baths, carpeted. No city taxes. Call for appointment. EM4-2079.
B-4-20-29-4C

BY OWNER, TRANSFERRED
\$950.00 equity in 3 bedroom brick. Two baths, built-in, double garage. Assume 5 1/4 FHA Loan. \$1,120.00 total monthly payment. Immediate possession. 238 Beach. Phone EM 4-1239.
B-4-4-TFC

LOANS FARM & RANCH FAST SERVICE
DUWARD HAMBY
EM 4-3566
NIGHT - EM 4-3466
B-4-35-TFC

COMMERCIAL RANCH, AND FARM LOANS
We specialize in hard to place loans. Money is our business. P.O. Box 3314, Lubbock, Texas B-4-29-9c

CLASSIFIEDS...
1958 Chevy Impala. Really good shape. Automatic, rolled and pleated. Real sharp. Call EM-4-0454.
B-3-14-17-tfx

REAL ESTATE For Sale Or Trade
FOUR BEDROOM Brick, country kitchen and family room, wood burner, 2 baths, carpeted. No city taxes. Call for appointment. EM4-2079.
B-4-20-29-4C

EQUITY IN house for sale by owner only. Low down payment. 134 Ranger Drive.
B-4-14-4-3P

FOR SALE
Large home in NW Hereford. Large lot with yard in. Almost 2100 square feet, plus two car garage. Built by owner. Not a development house. If you are interested in a fine home, call EM 4-2849.
B-4-4-TFC

BY OWNER, TRANSFERRED
\$950.00 equity in 3 bedroom brick. Two baths, built-in, double garage. Assume 5 1/4 FHA Loan. \$1,120.00 total monthly payment. Immediate possession. 238 Beach. Phone EM 4-1239.
B-4-4-TFC

WANTED
500-1000 brood cows and ranch. "Trade debt - free" choice income property. EM 4-0484 Box 31 Hereford, Texas
B-4-4-6C

FARMS FOR SALE
Large farms, small farms, irrigated farms, dry land farms, stock farms. Just about any kind of farm just about anywhere. Also city and business property.
BUY, SELL, OR TRADE
To buy, sell, or trade real properties, you can depend on our services. We know how, when and where to do a good job. Free appraisals.
HANCOCK FARM LOANS
Farm loans, anywhere for any purpose, free, prompt and liberal appraisals. No stocks to buy, no commissions to pay, long time terms, low int. rates?
WESSON REAL ESTATE
So. on 385 Hwy.
Ph. EM 4-2528 or EM 4-2860
B-4-4-TFC

FOR SALE BY OWNER
Beautiful 3 bedroom house on Texas Street. 2700 square ft., 3 baths, fireplace. Carpeting throughout. Extraordinary closet space. Built-in dishwasher, blender, etc. Sprinkler system, large fenced back yard, central heat and refrigerated cooling. \$39,000.00
Phone EM 4-1655 or EM 4-2788
B-4-29-tfc

ALMOST TABLE TOP, 1/2 section. Well improved, 2 strong 8" wells on natural gas. 145 acres milo. Immediate possession. \$500 per A, 1/2 cash, SMOOTH 1/2 section, 1 well on natural gas, in good 8" water. 130 wheat, 130 milo. Possession. \$325 A. \$30,000 will handle.
CARTHEL REAL ESTATE
206 N. 25 Mile Ave.
Phone EM 4-0944 day or night
B-4-29-3c

ONE MILLION DOLLARS
To lend on irrigated land in Deaf Smith, Castro and Parmer counties. For - - -
PRUDENTIAL
America's Largest Farm Lender!
SAM NUNNALLY
EM 4-0555 EM 4-2814
LONE STAR AGENCY
B-4-1-27P

FOR RENT
ATTRACTIVE ONE BEDROOM FURNISHED DUPLEX TO white adults. Central heat, paid. Also large desirable basement bedroom. Private bath, private entrance. No drinking white man. 711 East Third.
B-5-28-4-TFC

FOR RENT: Two bedroom furnished apartment. Apply 232 West Third.
B-5-10-4-TFC

FOR RENT: Two bedroom unfurnished apartment. Call EM 4-2581.
B-5-10-29-2C

FOR RENT unfurnished four room and garage duplex apartment. Carpeted. White Adults only. Call EM4-1617.
B-5-15-27-TFC

FOR RENT: Office or store building. 25 x 50 brick. Will redecorate. 116 West 2nd. Clyde Cave.
B-5-15-3-4P

FOR RENT: Two bedroom unfurnished apartment. Call EM 4-2581.
B-5-10-29-2C

FOR RENT unfurnished four room and garage duplex apartment. Carpeted. White Adults only. Call EM4-1617.
B-5-15-27-TFC

FOR RENT: Office on Hiway 60. Call EM4-3566.
B-5-10-45-tfc

WANTED
WANTED TO BUY: Baby bed in good condition: Call EM4-2205.
B-6-10-29-2C

WANTED: Pasture for 30 head of cows. Phone EM4-1724.
B-6-10-29-2P

NEEDED LISTINGS on farms, homes, businesses and commercial property. Justice Realtors.
B-6-11-4-TFC

WOULD LIKE to rent from 160 to 640 acres irrigated land. P. O. Box 26 Plainview.
B-6-14-1-9p

DRESSMAKING-IRONING
WANTED: Ironing in my home. 336 Avenue C. Call EM4-0187.
B-7-10-29-4C

HELP WANTED
OPPORTUNITY FOR HIGH SCHOOL BOY - LUBBOCK AVALANCHE-JOURNAL distributorship. Must have use of a car, and time to devote. Attractive income. Call Larry Fuhrmann after 7 p.m. at EM 4-0799.
B-8-4-2C

NOTICE
DITCHING SERVICE AND SPRINKLER SYSTEMS
EM 4-0343 EM 4-1567
B-10-19-TFC

WHEN IN HEREFORD
Shop for home-made cakes, pies and bread at the H. D. Market located at Taylor & Sons each Friday afternoon and all day Saturday.
T-10-4-TFC

BUSINESS SERVICE
DILLARD EARTH MOVING SERVICE
Bulldozer Work
TROY NEWMAN
Phone EM 4-2072
B-11-42-TFC

HAVING TROUBLE WITH YOUR VACUUM CLEANER ???
Service on all makes
Call EM 4-0022
KIRBY VACUUM CLEANER CO.
434 West First St.
B-11-4-8C

FOWLER AND KELLEY
Electrical Contractors
Residential and Commercial
All bids and wiring competitive.
Phone EM 4-2012
Nights phones EM 4-2012 or EM 4-1828
B-11-21-tfc

FOR SALE (\$13,000)
OR LEASE (\$125.00 Mo.)
807 Blevins - New 3 bdrm. house, central heat, single garage, fenced yard. Key at 806 Ave. "K". Write Box 146, Hardesty, Okla.
B-5-29-4p

FOR RENT: Office or store building. 25 x 50 brick. Will redecorate. 116 West 2nd. Clyde Cave.
B-5-15-3-4P

FOR RENT: Two bedroom unfurnished apartment. Call EM 4-2581.
B-5-10-29-2C

FOR RENT unfurnished four room and garage duplex apartment. Carpeted. White Adults only. Call EM4-1617.
B-5-15-27-TFC

FOR RENT: Office on Hiway 60. Call EM4-3566.
B-5-10-45-tfc

WANTED
WANTED TO BUY: Baby bed in good condition: Call EM4-2205.
B-6-10-29-2C

WANTED: Pasture for 30 head of cows. Phone EM4-1724.
B-6-10-29-2P

NEEDED LISTINGS on farms, homes, businesses and commercial property. Justice Realtors.
B-6-11-4-TFC

WOULD LIKE to rent from 160 to 640 acres irrigated land. P. O. Box 26 Plainview.
B-6-14-1-9p

HELP WANTED
OPPORTUNITY FOR HIGH SCHOOL BOY - LUBBOCK AVALANCHE-JOURNAL distributorship. Must have use of a car, and time to devote. Attractive income. Call Larry Fuhrmann after 7 p.m. at EM 4-0799.
B-8-4-2C

NOTICE
DITCHING SERVICE AND SPRINKLER SYSTEMS
EM 4-0343 EM 4-1567
B-10-19-TFC

WHEN IN HEREFORD
Shop for home-made cakes, pies and bread at the H. D. Market located at Taylor & Sons each Friday afternoon and all day Saturday.
T-10-4-TFC

BUSINESS SERVICE
DILLARD EARTH MOVING SERVICE
Bulldozer Work
TROY NEWMAN
Phone EM 4-2072
B-11-42-TFC

HAVING TROUBLE WITH YOUR VACUUM CLEANER ???
Service on all makes
Call EM 4-0022
KIRBY VACUUM CLEANER CO.
434 West First St.
B-11-4-8C

FOWLER AND KELLEY
Electrical Contractors
Residential and Commercial
All bids and wiring competitive.
Phone EM 4-2012
Nights phones EM 4-2012 or EM 4-1828
B-11-21-tfc

OWENS & HOLLINGSWORTH
EM 4-3572
Commercial - Industrial Residential Wiring
809 EAST SECOND
Magneto - Starter Generator & Electric Motors Rewind Sales & Service
B-11-13-TFC

PORTABLE DISC ROLLING
Scalloped or plain. Jacobson Brothers. Phone EM 4-3563.
B-11-30-23-tfc

LET US handle all your real estate problems including free rental service. Justice Realtors.
B-11-34-4-TFC

LIVESTOCK
Strayed - Found
STRAYED FOUR MIXED yearling calves branded running M left thigh. Phone CL4-6000.
B-12-12-3-8P



By Melvin Young
130 W. 4th Street. That's home base for the Hereford Brand these days.

Johnny Haney, right hand man for Poarch Bros., and the company's fork-lift truck, turned out to be a lifesaving combination when the heavy moving started.

And in spite of the big mess, a number of people have dropped in to visit.

Nolan Grady, taking a "busman's holiday" strolled through and finally found the mail room.

Mrs. Maggie Hopper of Canyon, pioneer and former resident of Deaf Smith County, visited with us Monday.

Another pioneer resident, Will Harris, (better known as the Mayor of Coahthead Prairie) was in to make his annual visit.

Will was quite enthused about the number of sheep recently donated to Boys Ranch by buyers at the annual Golden Spread Western Junior Livestock Show.

We understand also that Will has an education fund started over at West Texas University, administered through Buff Morris' Opportunity Plan, Inc.

Claude McClure, 431 Star Street, retired from farming a number of years ago, but having been so active during his farming years, he just couldn't sit back and watch the world go by.

Antonian Circle Has Meeting
Mrs. Thomas Albrecht, president, conducted the business meeting of the Antonian Circle Jan. 16 at Saint Anthony's School.

top type building designed for vans, etc.

Sounds like a good deal to us.

Bruce Miller, local attorney has announced for the county attorney spot.

And on the city side of the slate, Gerald Hale has announced for Place 4 of the city commission with Albert Maxwell making a bid for the other spot.

Saturday, Jan. 25th will be the date for Patterson Chemical Company's formal opening.

The firm is located 1 mile south of Hereford on 385, just north of the B & B Oliver location.

Teen-agers, we've found, are almost like people. In passing through our daughter's room a couple of days ago, we noticed that she had written her beauty appointment on the calendar in large, bold letters, with the dental appointment almost illegible.

We've heard it said that "brooding over your troubles insures a perfect hatch."

Look Who's New!

Mr. and Mrs. Otis Dorven King are the parents of a son, Joe Don, born Jan. 17 at 6:11 p.m. He weighed 7 pounds.

Mr. and Mrs. Angel Santana Moya are the parents of a daughter, Debbie, born Jan. 18 at 4 p.m. She weighed 7 pounds and 8 1/2 ounces.

Mr. and Mrs. George Raymond Wilhelm are the parents of a son, Nathaniel Damian, born Jan. 19 at 7:10 p.m. He weighed 6 pounds.

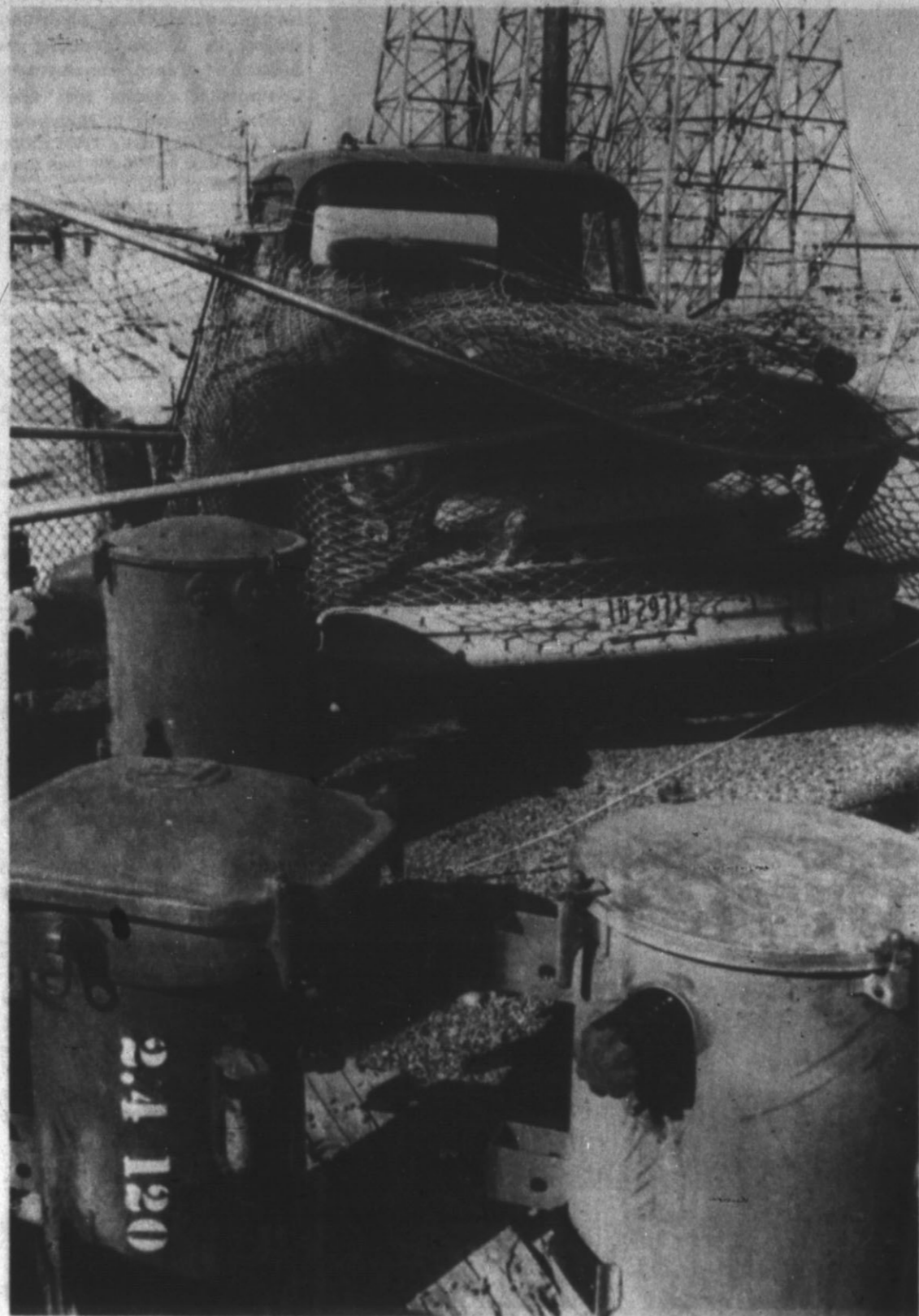
Mr. and Mrs. Jesus Cuellar are the parents of twins born Jan. 20, a boy at 2:46 p.m. weighing 5 pounds and 13 1/2 ounces and a girl at 2:52 p.m. weighing 4 pounds and 13 1/2 ounces.

Mr. and Mrs. Alfredo Barrera are the parents of a daughter born Jan. 21 at 8:29 a.m. She weighed 5 pounds and 1/2 ounce.

Hospital Notes:

Patients in Hospital
Mrs. Robert C. Lay, Box 6, Dimmitt; E. F. Seymour, Route 5; Bert M. Boomer, 138 Star; Anton Huckert, King's Manor; Mrs. Don Newman, 414 Sunset; Mrs. Corinne Moore, 115 Beach; Mrs. Grace Winters, 1017 West Stinson, Dimmitt; Edwin B. Harris, 113 Avenue D; Mrs. Alvin E. Hewitt, 148 North Emma; Mrs. Alfredo Barrera, 207 Lake; Lori Lynn Albrecht, 480 Avenue J; Gwana Gayle Word, 209 Avenue H; Mrs. Chancie L. Mercer, Box 786; Tony Barros, 507 East Third; Mrs. George R. Wilhelm, Route 3; Kenneth R. Brightman, 125 North Main; Mrs. Oscar O. Lanier, Boys Ranch; Lynda Levy, 1825 Plateau Lane, Amarillo; Mrs. Jesus Cuellar, 207 Kibbe; Tony Moreno, General Delivery; F. J. Reinhardt Sr., 101A South Palo Duro, Amarillo; Mrs. Ira Ricketts, 296 Avenue J; Marvin E. Morrison, 610 Jackson; Charles M. Leffel, 216 Whiteface; Mrs. Bob Hudson, Route 3, Muleshoe; Mrs. Ludwig Kovacs, 709 Knight; Mrs. James E. Bradley, Box 65, Amherst; Joe Lyons, 119 Douglas; Mrs. Pat Farmer Jr., 507 Park; Michael Frost, 831 Blevins; Mrs. Susan Rose, Route 5; Mrs. Daisy Miller, Box 144, Friona; C. L. Uecker, Box 325; Alvin E. Roper, Box 69, Quinton, Okla.; Jeff T. Gilbreath, 441 Lee; Hubert V. Harp, 2324 Wood, Vernon; Mrs. Julian Johnson, Star Route; John T. Sims Sr., 302 Western; Mrs. Lucile Bookout, 551 Schley; Price Prather, 1006 East Third.

Dismissals
Mrs. Chesley C. Johnson, Mrs. Scott L. Gardner, 1-17. Mrs. Clara Shore, Mrs. Sheddrick Jones, Mrs. Glen D. Neill, E. F. Sevier, Jack Harris, Bartley B. Coffey, Elmer L. Kimball, H. W. Cameron, Robert N. Shields, 1-18. Mrs. C. C. Ellis, Mrs. W. W.



A TRUCK CRASHED THROUGH the chain link fence at Southwestern Public Service Co. warehouse about noon Tuesday and did heavy damage to the fence and equipment stored on the yard.

Courthouse Records

Vehicle Registrations
Fell Ward, 1962 Chevrolet; Jose Dolares Gallegas, 1958 Mercury Jose Angel Lucio, 1957 Chevrolet pickup; L. W. Walterscheid, 1960 Plymouth; Ronnie Osborn, 1957 Chevrolet; W. L. Haigood, 1955 Oldsmobile; Larry C. Kaul, 1960 Chevrolet pickup; Pat Parker, 1962 Buick; Armando B. Perez, 1955 Chevrolet pickup; Pedro S. Rice and Christina V. Rice, 1957 GMC pickup; Albert Flowers, 1956 Buick; Jesus Garcia, 1956 Buick; Shell Sheffy Implement Co., 1961 Ford truck tractor; Samuel L. Bolin, 1960 Pontiac; Troy Gandy, 1957 Chevrolet pickup; Sam Nunnally, 1964 Oldsmobile; Harry E. Cayler, 1954 Plymouth; Jimmy Cherry, 1964 Ford; Oscar Munoz, 1961 Chrysler; Paschal H. Roberts, 1955 Ford, 1-14.

Chris Clark, 1957 Chevrolet; Silverto Rodriguez, 1953 Ford; E. R. Frye, 1964 Chevrolet; Crowe-Gulde Cement Co. of Hereford, 1964 Chevrolet pickup; D. R. Vandever, 1963 Chevrolet; Hereford Feed Yards, 1964 Chevrolet feed mixer; Melvin R. Lomenick, 1964 Buick; R. E. McDaniel, 1961 Pontiac; Lewis B. Barnett, 1959 Buick; Billy W. Parvin, 1959 Rambler; O. W. Parris, 1963 Buick; Raymond Russell, 1957 Chevrolet; Isaisa Briones, 1959 Chevrolet; Bob Huddleston, 1957 Chevrolet; J. F. Messer, 1964 International Scout; R. D. Wilson, 1961 Chevrolet, 1-15.

John Chevarria, 1956 Chevrolet pickup; Jose I. Garcia, 1955 Buick; Robert Woolsey, 1963 Ford; Buddie Evans, 1960 International van, 1-16.
Norma Jean Killion, 1964 Chrysler; W. J. Williams, 1962 Chevrolet pickup; Victor Hill, 1958 Ford truck; David Lee Kendall, 1961 Ford, 1-17.

Wells, Mrs. Andrew G. Mauldin, 1-19.
Mrs. Alex Catano, Mrs. Tommy D. Sparleman; Mrs. Don Sanders, Mrs. Robert Thuet, Mrs. Angel Moya, Mrs. William H. Johnson, 1-20.
Bill Watts, A. C. Hays, Mrs. B. B. Kahenzind, Mrs. Dorven King; Mrs. Charles R. Kropff, Jack Grady, 1-21.

dedicate Subdivision out of Capitol League No. 387.
Ewald Berend, et ux, to A. D. Cowley: All the East Half of Section No. 28, in Block K-8, Certificate No. 5/904.
D. W. Finlan to Jim Walter Corporation: All of Lot No. 16, Block No. 11, Finlan Subdivision out of a part of Section No. 111, Block M-7.

Diamond Valley Grain, Inc., to Virgil Justice: The East 31.36 feet of Lot No. 5 and the West 40.64 feet of Lot No. 4; The East 9.36 feet of Lot No. 4, all of Lot No. 3 and the West 12.64 feet of Lot No. 2; The East 37.36 feet of Lot No. 2, Colonia De Buena Vista, a subdivision of a part of Blocks 3 and 4, Womble Addition.

Fedencio Albiar, et ux, to Jesse R. Barrett: All of the East 1/2 of Lot No. 7, the West 1/2 of Lot No. 8, and the East 50 feet of the West 121 feet of Lot No. 1 in Womble's Subdivision of Block No. 5 of the Womble Addition.

John Chevarria, 1956 Chevrolet pickup; Jose I. Garcia, 1955 Buick; Robert Woolsey, 1963 Ford; Buddie Evans, 1960 International van, 1-16.
Norma Jean Killion, 1964 Chrysler; W. J. Williams, 1962 Chevrolet pickup; Victor Hill, 1958 Ford truck; David Lee Kendall, 1961 Ford, 1-17.

Everything Else Going Up— BOB'S COMING DOWN!
BEEF SANDWICHES 25c
BEEF DINNERS \$1.25
CHICKEN DINNERS \$1.00
SAUSAGE DINNERS 75c
Nickel Coffee
BOB'S PIT BAR-B-Q
1001 Park Ave. EM 4-0126

ADRIAN NEWS

Adrian P-TA Hears Banker; Attendance Drive Launched

By Ann Beavers
Adrian Parent-Teachers Association met last Monday night when Raymond Thompson, president of the First State Bank at Vega was the speaker.

The Adrian P-TA is attempting to interest more parents in attending their meetings. As a result, they are giving gifts to the class from first through sixth grade who have the greatest number of parents attending.

Mr. and Mrs. Earl Brown, Mr. and Mrs. Ted Hale and the Billy Browns enjoyed a Mexican supper at the Donald Pinnell home Saturday at Glenrio.

Mrs. Cynthia Pinnell will be teaching in Amarillo, starting Jan. 21 for the remainder of the school year.

Mrs. Elbert Whitten and Mrs. W. C. Briggs attended the Home Demonstration Club Council Meeting in Vega Friday afternoon.

Mrs. Horace Boyd and children from Dumas visited the Tom Tyler family Saturday.

Mr. and Mrs. Keith Kromer and son are here from Morton. They live at Morton during the cotton ginning season.

Mr. and Mrs. Albert Clark and children visited with relatives in Queen City last week.

Adrian school had two holidays when the heating system failed. School was resumed Friday.

Mr. and Mrs. Chubby Sasser and son from Hereford visited the Manuel Loveless family over the weekend.

Clayton Thompson enrolled in the Adrian school the second semester and will finish out the school term here.

M/Sgt. and Mrs. Bob Larson and children from Fort Hood, Wash., were sent overseas from New York to Stuttgart, Germany. They were weekend guests here of the Manuel Loveless family.

less family.
Mr. and Mrs. E. E. Allen honored Mr. and Mrs. E. B. Pounds with dinner in Amarillo Sunday. The occasion was the Pounds' 30th anniversary.

Matador girls defeated Channing girls 62-17 last Friday with Coralie Fortenberry scoring 22 points for Adrian.

Mrs. Glenda Sifford and Mrs. Ann Fortenberry were honored at a pink and blue shower in the home of Mrs. Jack Fortenberry.

Mrs. Cynthia Pinnell will be teaching in Amarillo, starting Jan. 21 for the remainder of the school year.

Mrs. Elbert Whitten and Mrs. W. C. Briggs attended the Home Demonstration Club Council Meeting in Vega Friday afternoon.

Mrs. Horace Boyd and children from Dumas visited the Tom Tyler family Saturday.

Mr. and Mrs. Keith Kromer and son are here from Morton. They live at Morton during the cotton ginning season.

Mr. and Mrs. Albert Clark and children visited with relatives in Queen City last week.

Adrian school had two holidays when the heating system failed. School was resumed Friday.

Mr. and Mrs. Chubby Sasser and son from Hereford visited the Manuel Loveless family over the weekend.

Clayton Thompson enrolled in the Adrian school the second semester and will finish out the school term here.

M/Sgt. and Mrs. Bob Larson and children from Fort Hood, Wash., were sent overseas from New York to Stuttgart, Germany. They were weekend guests here of the Manuel Loveless family.

Mrs. Terry Ashford was in an Amarillo hospital last week.

Mr. and Mrs. Guy Killian are the parents of a boy born Jan. 13. The Killians are former residents of Adrian.

Jesse Fincher was in the Osteopathic Hospital in Amarillo last week, recuperating from an operation.

The Johnny Cavitt family moved to Colorado Thursday.

The Adrian Home Demonstration club met last week in the parlor of the Methodist Church when the Rev. Dave Sellers, Baptist minister of Adrian, gave a talk on "Danger of Immoral Influence on Youth."

Next meeting will be Jan. 28 at 1:30 p.m. in the home of Mrs. Bill Leslie when the program theme will be "Highway Safety Is No Accident."

We're PROUD!
Of our electrical work for the Paterson Chemical new building on the Dimmitt Highway. Congratulations on your opening!
Owens & Hollingsworth
ELECTRICAL CONTRACTORS
809 E. Second EM 4-3572

YIELD!!
THAT'S WHAT YOU WANT!
MINNESOTA'S RED RIVER VALLEY CERTIFIED SEED POTATOES
CONTACT YOUR GROWER-SHIPPER NOW FOR YOUR 1964 PLANTING NEEDS
1001 Park Ave. EM 4-0126

Courthouse

(Continued from Page 6)

Inc.: 160 acres out of Capitol League 409½ patented to Abner Taylor by Patent No. 442; 180 acres out of Capitol League 409½ patented to Abner Taylor by patent No. 442, volume 1.

Vehicle Registrations

Maxey Dowd, 1964 Dodge; L. B. Baxter, 1964 Dodge pickup; Jimmy Brown Trucking, 1964 Chevrolet truck; W. A. DeBusk, 1964 Chevrolet; Abel Guerra, 1956 Buick; Henry Johnson Jr., 1954 Oldsmobile; George C. Warner, 1959 Chevrolet truck; J. M. Payne Jr., 1958 Plymouth, and 1963 Buick; Gerald Carter, 1960 Chevrolet pickup; Jesus Albiar, 1964 Chevrolet; Daniel M. Aquire, 1959 Oldsmobile; Trinidad Gomez, 1953 Pontiac; David Sims, 1962 Chevrolet pickup; J. Gary Barnett, 1964 Chevrolet, 1-17.

James R. Bounds, 1963 Chickasha house trailer; Mrs. W. D. Collier, 1955 Buick; John Snow, 1956 Rambler station wagon; Lawrence Larry Wendall, 1964 Plymouth; Howard Gore, 1957 Chevrolet; Orsborne Chevrolet-Olds, 1964 Chevrolet; Mrs. H. F. Paetzold, 1964 Oldsmobile; H. N. Bishop, 1964 Chevrolet pickup; Fred Turner, 1964 Dodge; John Snow, 1954 Buick; Royce Ellis, 1955 Ford; George Jones, 1960 Chevrolet; Ignacio Pena, 1958 Ford; G. E. Carney, 1962 Dodge; Bill Lookingbill, 1964 Dodge pickup; Roy J. Grubbs, M.D., 1964 Dodge; John McClesky, 1964 Oldsmobile; F. A. Philfer, 1958 Oldsmobile; Don L. Gaston, 1964 Mercury, 1-20.

Richard Smith, 1960 Chevrolet pickup; J. S. Gonzalez, 1956 Ford; Tony Schoenberg, 1958 Ford; D. Gambo, 1956 Chevrolet; Elise Evelyn Shaw, 1955 Plymouth; Armulio Castillo, 1959 Chevrolet; Walter Williams, 1958 Chevrolet truck; Eleanor B. Cramer, 1962 Ford; Bobby G. Wilson, 1958 Ford station wagon; W. L. Rogers, 1958 Dodge, 1-21.

Deeds of Trust

Raymond Pete Gerk, et ux, to Security Federal Savings and Loan Association: All of Lot 36, Hare Addition, a subdivision of Block 14, Welsh Addition.

Arthur Leland Shelton, et ux, to First Federal Savings and Loan Association: The South 58 feet of the North 78 feet of Lot

3, Block 4, Sunset Terrace Addition.

L. C. Oliver to Hereford Texas Federal Credit Union: The North 120 feet of the South 240 feet of the West 130 feet of Block 8, Mabry Addition.

Vernon E. Lewis, et ux, to Amarillo Savings Association: All of Lot 13 and the North 30 feet of Lot 14, Brownlow Addition, a subdivision of the West 550 feet of Block 16, Welsh Addition.

First Methodist Church of Hereford to Division of National Mission of the Board of Missions of the Methodist Church: The West 158.71 feet of Lot 15, Block 6, Womble Addition.

Fred D. Rutland, et ux, to First Federal Savings and Loan Association: Part of Section 110, Block M-7.

Joseph R. Hill, et ux, to Floyd H. Lindsey: All of Lot 5, J. A. Fox Subdivision of Block 12, Evans Addition.

Warranty Deeds

Golden Spread Homes Inc. to Raymond Pete Gerk, et ux: All of Lot 36, Hare Addition, a subdivision of Block 14, Welsh Addition.

Floyd McGee to Arthur Leland Shelton, et ux: The South 58 feet of the North 78 feet of Lot 3, Block 4, Sunset Terrace Addition.

Susie Conklin to L. C. Oliver: The North 120 feet of the South 240 feet of the West 130 feet of Block 3, Mabry Addition.

W. C. Meharg, et ux, to Edward E. Sneed, et ux: The East 75 feet of Lot 9, Block 4, Womble Addition.

Susie Conklin to Arch and Margaret Conklin: The North 20 feet of the South 120 feet of the West 130 feet of Block 3, Mabry Addition.

W. B. Dowell, et ux, to Joseph R. Hill, et ux: All of Lot 5, F. A. Fox Subdivision of Block 12, Evans Addition.

Richard Smith, 1960 Chevrolet pickup; J. S. Gonzalez, 1956 Ford; Tony Schoenberg, 1958 Ford; D. Gambo, 1956 Chevrolet; Elise Evelyn Shaw, 1955 Plymouth; Armulio Castillo, 1959 Chevrolet; Walter Williams, 1958 Chevrolet truck; Eleanor B. Cramer, 1962 Ford; Bobby G. Wilson, 1958 Ford station wagon; W. L. Rogers, 1958 Dodge, 1-21.

Raymond Pete Gerk, et ux, to Security Federal Savings and Loan Association: All of Lot 36, Hare Addition, a subdivision of Block 14, Welsh Addition.

Arthur Leland Shelton, et ux, to First Federal Savings and Loan Association: The South 58 feet of the North 78 feet of Lot



Frank Farmer

Farmer Returns To Hereford As Wire Chief

Frank Farmer, who served here as Wire Chief for the Southwestern Bell Telephone Co. for six years and was then named head repeaterman for the company in Midland will return to Hereford as wire chief.

Farmer will succeed Dink Hunnicut who has been named wire chief for the company in Pecos. Hunnicut has been wire chief for the company in Pecos since last May when Farmer was transferred to Midland.

A 22-year veteran with the telephone company, Farmer began his career as a switchman in Amarillo in 1942. He later served as a PBX repairman there and came to Hereford the first time in 1956.

Hunnicut has been with the telephone company since 1948 when he started his career as a frameman in Lubbock. He served in various capacities there until his appointment here as Wire Chief.



JET HELICOPTERS LAND AT AIRPORT—Two United States Army jet helicopters landed at Hereford Municipal Airport Jan. 16 while their crews ate lunch in Hereford. They were returning to Fort Hood. The commanding officer, Pat Griffin, expressed some surprise that the weather was so fine here while he might have difficulty landing at Fort Hood because of the snow in that area.

(Personal Photo)

REP. ROGERS WRITES

Agency Report Points Out Soviet Economic Failures

The super-secret Central Intelligence Agency has issued one of its rare reports—this one on problems in the world's leading underdeveloped nation, the Soviet Union. The CIA took careful aim in a short paper entitled "Soviet Economic Problems Multiply" and gored the Red ox where it hurts.

Soviet propagandists growled that the unflattering array of facts and figures was "preposterous and unconvincing," hoping, as you would expect, that the world's other underdeveloped nation would pay no heed to the CIA study.

To hear the Communists tell it, they have all the answers for maintaining a thriving economy. Of course, we know better. Convincing some people in the world that the Reds are economic illiterates is a major task of the United States Government, and the new CIA report—the first public report issued by the agency in four years—should help.

The Soviets have boasted that by 1970 the Soviet Union will overtake and surpass U. S. production. The CIA study, by contrast, shows that the Soviets are not only lagging in the race but that they keep falling farther behind. The substance of the report is that for several years the Kremlin leadership has been trying to do too much with too few resources. This living on borrowed capital, improvising cheap but temporary solutions to basic problems such as agriculture, and chronically neglecting balanced development to push ahead spectacularly on a narrow range of goals has finally caught up with the Soviet Union.

A nearly disastrous crop failure in 1963 was not the root cause of Moscow's current economic difficulties, what it did was to bring to a head the many underlying problems of the Soviet economy and force a re-consideration of the pattern of resource allocation. To a great extent Soviet economic difficulties stem from a series of programs too ambitious for available resources. With a gross national product less than half that of the United States, the Soviet leadership has invested in new plant and equipment amounts nearly as large as investment in the U. S. and has maintained a military-space program ap-

proaching in real cost that of the U. S.

Khrushchev scored early successes. Economic growth, maintained at better than 6% in the 1950-59 period, was accelerated after he took over. Housing was tight, but improvements came in living standards, particularly in foodstuffs but also in consumer goods. Then the slow down came, due in part to an increased allocation of manpower and materials to the defense program (thus slowing down industrial output in other categories), but due primarily in the last two years to failures in agriculture. Current growth rate: 2.3%.

In total calories consumed, the Russian citizen is not far behind an American. But 70% of the Russian diet consists of grain and potatoes, compared to 28 per cent of the American diet. Only one-fourth of the Soviet diet consists of qual-

ity foods—livestock products, vegetables, and fruits.

The New Lands development program kicked off by Khrushchev did temporarily put more grain in Soviet stomachs and help the Soviet Union bolster its Eastern European satellites by making up deficits in their own farm output. But the original soil moisture and fertility in the new acreage put under the plow were quickly used up and output fell off. Soviet farm production on a per capita basis in 1963 was about 10 per cent below that of 1958.

The impact of a short grain crop on the Russian pattern of diet is obvious. Bread for human consumption must be curtailed. Livestock herds must be reduced. Consumers pay more for food.

Soviet leaders are calling for a solution to the agricultural problem. A new program calls for production increases in fertilizers from 28 million tons

'Know Business Of Your Family,' Speaker Urges

"Every homemaker should know as much about family business matters as she does about cooking and sewing," Jean Beene, assistant home demonstration agent, told members of North Hereford Home Demonstration Club during their meeting Jan. 16.

Mrs. Beene, continuing her

discussion of filing papers, advised the women to organize important and valuable papers and keep them in their proper places. She noted that women's interests in all phases of homemaking is one reason for the change in family living patterns. Mrs. Clyde Smithers presided at the business meeting. The secretary reported that she had given a check to the March of Dimes for the club. The next meeting was changed from Feb. 6 to Feb. 13 in the home of Mrs. H. A. LaFavers, 401 East Fourth.

Mrs. LeRoy Smithers was hostess for the meeting. Other members present were Mrs. Clyde Smithers, Mrs. Melvin Sween, Mrs. H. L. LaFavers, Mrs. O. C. Williams, Mrs. Otto Olson, Mrs. O. L. Williams, Mrs. Tony Hoffman, Mrs. J. M. Gooch, Miss Roberta Campbell, and Mrs. Charles Russell.

Just too lucky Louisville, Ky. (AP)—William Patrick Mulloy's lucky touch proved embarrassing to his family. The 9-year-old boy and his brother, 7, accompanied their father to an Optimist Club meeting where the elder Mulloy helped judge an oratorical contest. There were four door prizes and young Patrick was invited to pull names out of a hat. He drew his own name, then his dad's.

On the third try, he came up with the name of a club member. But on the final draw, out came his younger brother's name.

Underwater job SAN FRANCISCO (AP)—Four Coast Guard skindivers save money for taxpayers. John Ginsburg, Paul Houk, Ed Hanson and Richard Boron specialize in changing propellers on cutters which patrol the bay. The job ordinarily takes 12 hours but the skindiving crew has switched a prop in 5 minutes.

In 1962 the men changed 115 propellers, saving \$6,000.

ABUSED
Used or New
Pickups — Cars — Trucks
GLEN NELSON
STEPHENS - HUDSON
MOTOR CO.

STAD
Open Sat. & Sun. . . 1:45 p.m.
Open Week Days . . . 6:45 p.m.
Now . . . Ends Friday
A THOUSAND THRILLS
STAMPEDE THE SCREEN!
SWORD OF LANCELOT
CORNEL WILDE / JEAN WALLACE / BRIAN AHERNE
TECHNICOLOR PARAVISION

SATURDAY ONLY!
IT'S NEW...
IT'S SENSATIONAL...
HOOTENANNY!
The Young Swingers
HEAR-9 GREAT BIG HITS!

ROD LAUREN - MOLLY BEE - GENE W. DANIELS
JACK LARSON - THE SHERWOOD SINGERS
Plus Big Co-Hit!

A STORY OF THE NORTHERN WOODS!
Lassie's GREAT ADVENTURE
JUNE LOCKHART / HUGH REELLY
Released by JON PROVOST 20th Century-Fox

Starts SUNDAY
HER HUSBAND...
HER ROOM...
ANOTHER WOMAN...!
COLUMBIA PICTURES
presents
STRAIT-JACKET
Starring JOAN CRAWFORD
A WILLIAM CASTLE PRODUCTION
WARNING!
STRAIT-JACKET
VIVIDLY DEPICTS
AK MURDERS!
WHEN THE AX DRINGS
THE EXCITEMENT BEGINS!
WE URGE YOU TO SEE "STRAIT-JACKET" FROM THE BEGGINING
IN ORDER TO BRACE YOURSELF
FOR THE SHOCKING ENDING!

For **COLDS** take **666**

QUALITY NURSERY STOCK
Armstrong
305 W. Park EM 4-1868

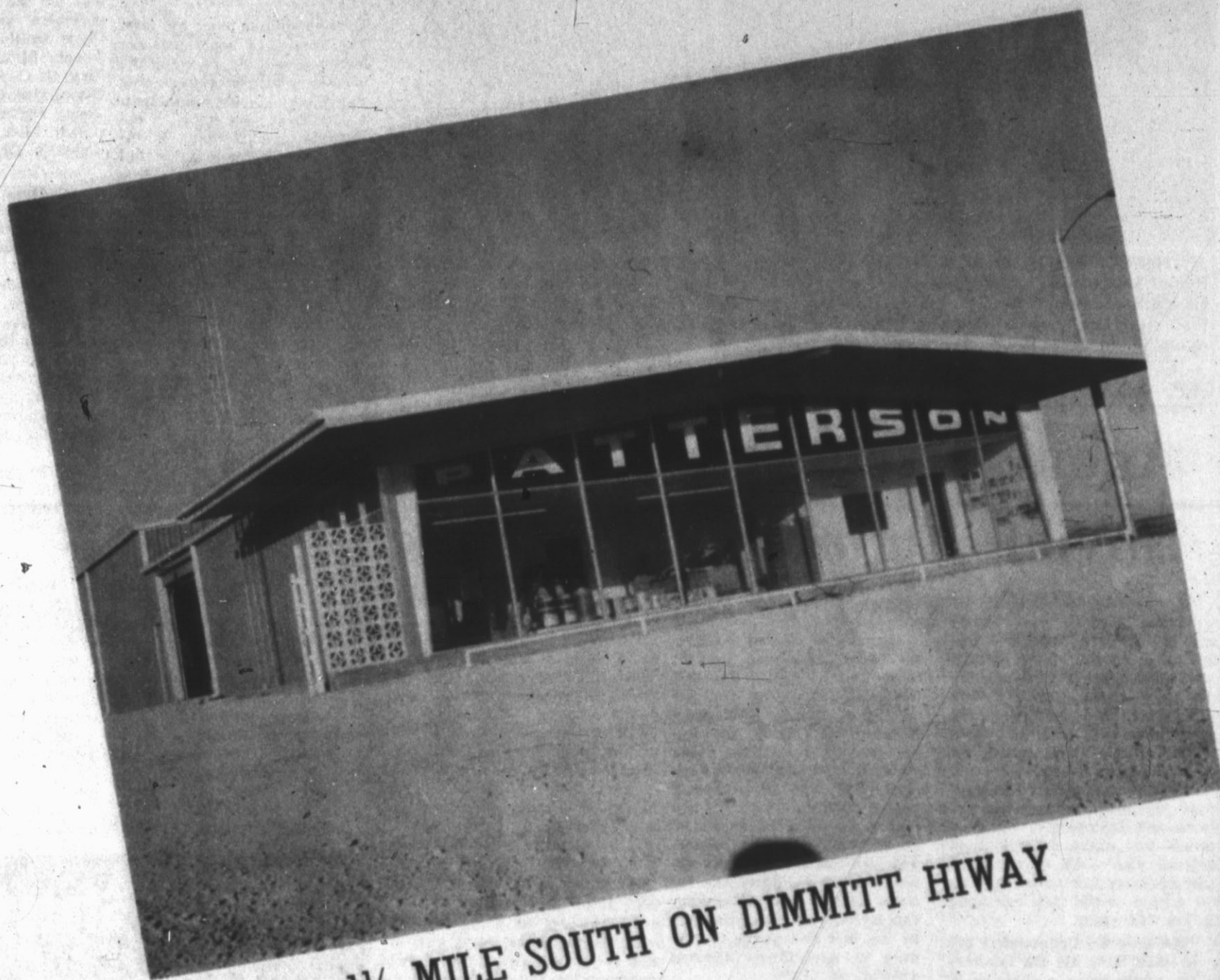
OPTOMETRISTS
Dr. Milton C. Adams
Dr. Dale H. Wynn
335 Miles EM 4-2255
Office Hours
Mon. - Fri. 8:30-5:00
Saturdays 8:30 - 1:00
DRS. ADAMS & WYNN

A. O. THOMPSON
ABSTRACT CO.
Mr. & Mrs. A. J. Schroeter,
Mgrs.
Courthouse
P. O. Box 73
Phone EM 4-1504
Free City Maps
Showing Blocks

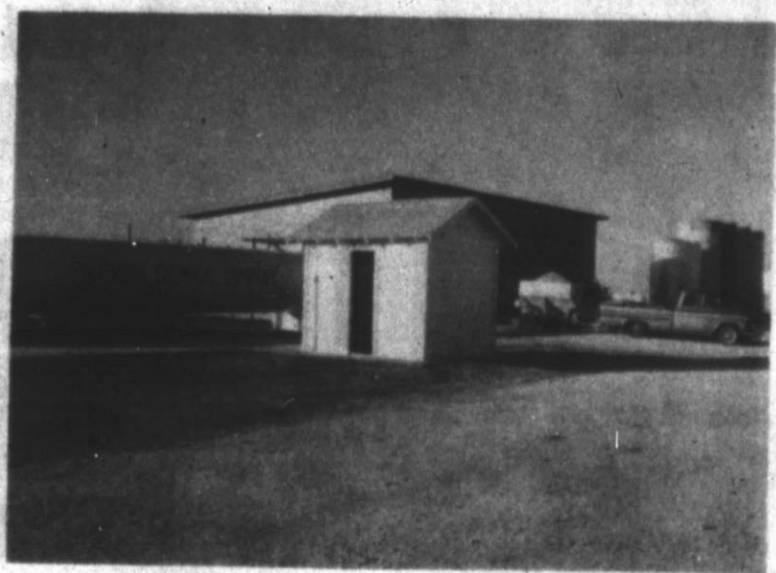
Under New Management...
WADE'S STEAK HOUSE
Bud's Steak House is now under the management of Mr. and Mrs. V. A. Wade, formerly of Monahans, who have had 10 years experience in the cafe business. Personnel will remain the same and the Wade's will continue to serve the very best in steaks, Mexican food and sea food. Drop by to visit these friendly people... you'll receive a most cordial welcome!
OPEN HOUSE SATURDAY, JAN. 25
Free Coffee & Donuts — 9 to 11 a.m. — 2 to 5 p.m.
WADE'S STEAK HOUSE
1309 East First EM 4-3565

Good News FOR YOU...
Open House
AT
PATTERSON CHEMICAL
COMPANY
Saturday, Jan. 25
In their brand new building on the Dimmitt Hwy.
We are happy to furnish this company with our unbeatable dry fertilizer products.
CAPROCK FERTILIZER CO.
LITTLEFIELD, TEXAS

GRAND OPENING



SATURDAY JAN. 25 — ALL DAY



**WE ARE NOW BETTER EQUIPPED TO
HANDLE YOUR FARMING NEEDS!**

- ★ LIQUID & DRY FERTILIZER STORAGE FACILITIES
- ★ ANHYDROUS AMMONIA
- ★ PLENTY OF FREE PARKING

FREE COFFEE & DOUGHNUTS — REGISTER FOR FREE DOOR PRIZES

PATTERSON CHEMICAL CO.

EM 4-0566

1 1/2 MILE SOUTH ON DIMMITT HIWAY

The Whiteface

Official Publication
Of
Hereford High School
Hereford, Texas

The Hereford Brand, Hereford, Texas, Thursday, Jan. 23, 1964

Training In Several Fields Is Available In Red Cross



RESERVE GRAND Champion steer of the Golden Spread Western show here was exhibited by Bill Cole, Hereford, shown here with his steer, a Hereford. The steer was bought by Community Grain Co., Easter, for \$1.60 a pound. (Staff Photo)

Plans of the Red Cross in HHS cover several fields. In the coming months, Red Cross members will have projects and programs covering such fields as gun safety, first aid, water safety, volunteer service, and disaster committee programs. These projects and programs are devised to help students fully understand safety techniques and precautions, and to give valuable training in field of disaster.

In the Red Cross, students receive training. For instance, the members of the disaster committee receive training so that they will be able to help those in need in cases of floods, tornadoes, car or train wrecks, and other similar disasters.

Later, in the months of May, June, and July, members will work with the Air Force base trainee groups in Amarillo and at Kings Manor with a group of Red Cross members known as the Gray Ladies.

A goal of \$100 was set by the high school Red Cross organization this year. The goal was to be solicited from high school students in the form of membership fees. Students were asked to give a dime or fifteen cents in return for a Red Cross membership card.

So far this year, the Red Cross has collected only \$62.50 of its \$100 goal.

The money donated to the Red Cross is used to finance several different programs and projects. Work at Amarillo Air Force Base and Hereford's Kings Manor is included in the list of projects. The money also finances the basket of food given to a needy family at Christmas.

In 1963, the high school took honors for the money it raised. The competition each year is between the high school, junior high, and elementary schools.

To help supplement the amount contributed this year, the Red Cross plans to have a talent show. No definite date has been set, but it will be held sometime in April.

Like many other clubs in HHS, organization is just now beginning. Officers for this year are Kathleen Kuper, chairman, and Dieder Thomas, co-chairman. The remainder of the officers will be elected sometime in the near future.

Sponsors this year are Mrs. Billye Buck and Mrs. Sue Painter.

Editors' Notes: HHS Students Have Ideas Of Happiness

By Linda Higgins
And Lou Ann Witkowski

Last week, semester test week, was one of last minute reviewing and studying.

One fellow half-runner said to me, "I studied last night for the first time; I mean really studied, and ya' know—it kind of felt good."

I suppose this is true of a few of us, but I believe a majority would vote for the good feeling that finally came when semester tests were over.

From looking at the mobs of people surrounding the office, I believe more than one student decided that he just couldn't make it through that second semester of one of those classes.

Seems a few didn't have a class to go to, even if they did sign up for one second semester.

I don't know about you, but I really did miss NOT having a library book. The library was closed for inventory all last week.

A few missed the pleasure of just good reading, still a few more missed using the excuse of "May I go to the library to get a book?", but me, I missed owing a library fine. At least when I do, I know someone up there wants me.

Choir Students Order Sweaters

"Make mine a size 30, please" was one of the statements heard in the study hall of HHS as members of the mixed choir ordered their sweaters.

This is the second year that HHS has been able to obtain choir sweaters for all mixed choir members. The members who received a sweater in '63 ordered an additional letter for (Continued on Page 2)

Charles M. Shultz, creator of the "Peanuts" comic strip, recently wrote a book called *Happiness is a Warm Puppy*. Many people began forming their own opinions of happiness. Here are a few from HHS students and faculty:

"Getting a passing grade in geometry and having my car start on a cold morning—Nancy Boyer, junior

"When everybody has accomplished something in my class.—Mr. Earl Keese, math teacher.

"A letter from...—Carolyn Aven, senior

"A senior trip!"—Janice Har-

zans, senior

"A decent all-school play! (hint)—La Reece Askew, senior

"Going to France this summer.—Monsieur Gerald Dingus, French teacher

"The right boy."—Sue Rife, sophomore

"A trip to Amarillo."—Wayne Edwards, senior

"A good senior class."—Larry Hill, senior

"The last button on Barbara's dress being buttoned!"—Sharon Tinnin, junior

"The assignment basket on Mr. Patterson's desk being turned over."—Barbara Langley, junior

"A warm puppy on a cold day."—John Fowlkes, senior.

The returns of the class elections were announced Tuesday afternoon, January 14. Serving the senior class as vice-president will be Steve Conaway; Shirley Anderson will serve as secretary-treasurer. They will assist Larry Hill, president of the senior class, who was elected last spring.

The juniors have elected George Muse for vice-president and Nancy Tyler for secretary-treasurer. Larry Minks has been serving as president since last spring.

John Perrin was elected president of the sophomore class with Jerry McCathern as vice-president and Barbara Zinser serving as secretary-treasurer.

The freshmen class have chosen Gary Story as their president, Ken Stark as their vice-president, and Paula Waldrop as secretary-treasurer.

Mr. Dingus said many of his students are learning to sing "Dominic," which helps their French vocabulary and pronunciation. He said that it will be easier to learn songs than it will be to learn dialogue.

"Many of my students," stat-

ed Mr. Dingus, "are musicians. They plan to learn French for use in reading musical terms."

Mr. Dingus emphasizes spelling and understanding French rather than reading and grammar.

A few of the filmstrips will be (Continued on Page 2)

Records, magazines, film strips and cartoons are a few of the aids Mr. Gerald Dingus is using to teach French this year.

One of the record albums being used is "The Singing Nun." This album is sung by a French nun, Sister Luc Gabrielle, who is a novice in the convent of the Dominican Order.

Sister Luc Gabrielle bought her guitar, "Adele," before entering the convent.

After finishing her studies, she plans to go to South America as a missionary. She is 30 years old.

Mr. Dingus said many of his students are learning to sing "Dominic," which helps their French vocabulary and pronunciation. He said that it will be easier to learn songs than it will be to learn dialogue.

Only Seven More Games in Season

The Herd has seven more games in this season. All "B" team games begin at 6:15 with the "A" team following at 8 p.m. The schedule for the remainder of this season is: Jan. 24, Dumas, There Jan. 28, Phillips, There Jan. 31, Perryton, Here Feb. 4, Littlefield, There Feb. 7, Dumas, Here Feb. 11, Levelland, There Feb. 14, Phillips, Here

Key Club Panel Discusses Steps Of Stock Show

Key club met Jan. 13 at the Community Center. The program dealt with a livestock show. Chairman was Arvell Williams with Gary Royal and Jackie Andrews on the panel. The discussion was the steps involved in participating or entering the livestock show.

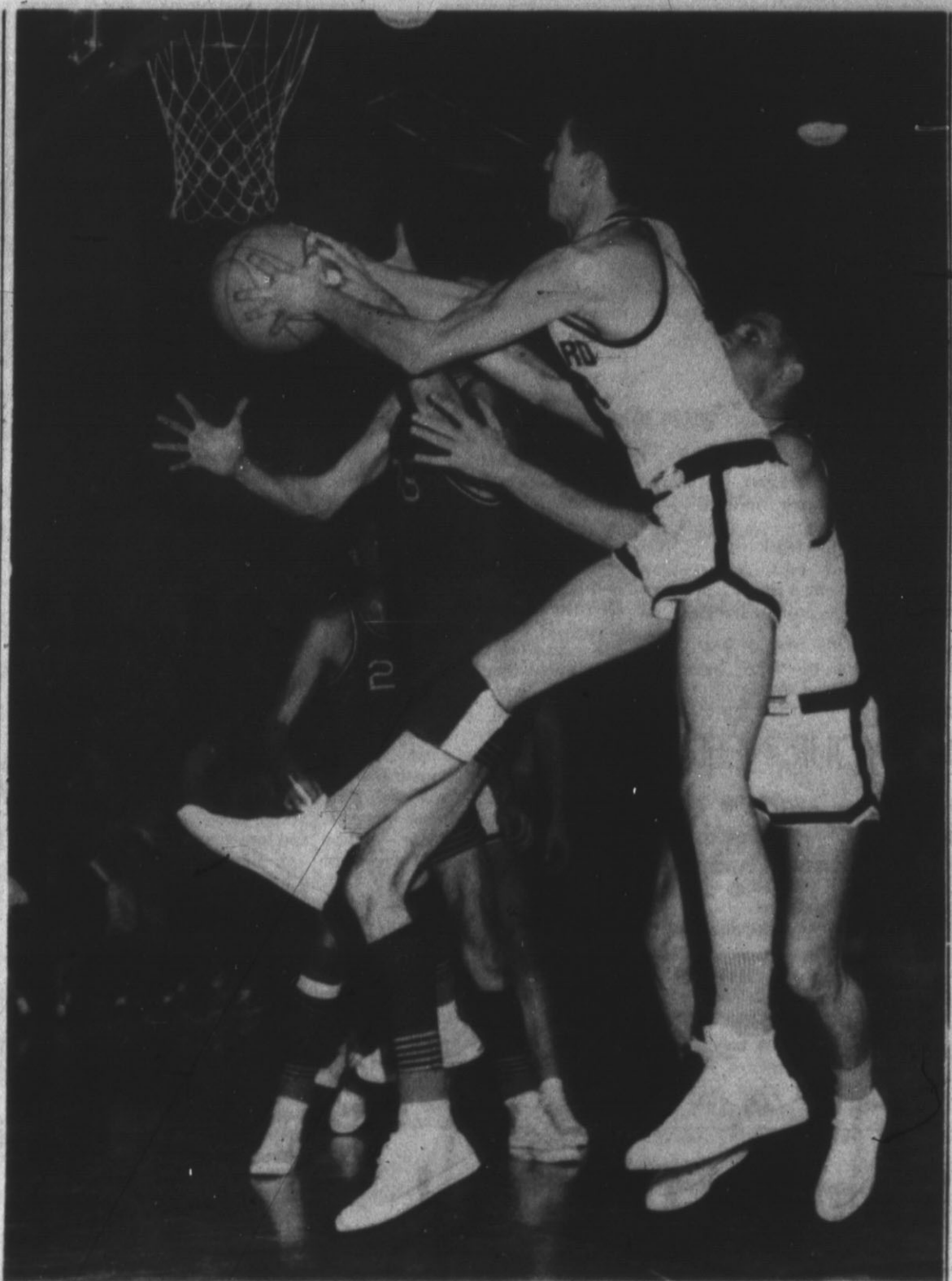
Plans were made for the H-Y and Key club basketball game which is to be played Jan. 23.

David Block, president, presided at the meeting.

Mr. Dingus, "are musicians. They plan to learn French for use in reading musical terms."

Mr. Dingus emphasizes spelling and understanding French rather than reading and grammar.

A few of the filmstrips will be (Continued on Page 2)



TOO MANY HANDS resulted in a foul called on Butch Harrell (35) for Levelland as both Billy Hill and Danny Cates brought down a rebound for the Herd in Tuesday's game. The Whitefaces took their third district

1-AAA outing downing the Lobos 59-54 in a tight game decided at the free throw line. The Herd is now undefeated in district play but must face Dumas Demons at Dumas on Friday. (Brand Staff Photo)

DE Students Will Go To Area Contests February 7

The area Distributive Education Contest will be held in San Angelo February 7 and 8. Distributive Education students may enter any contest they choose.

If there are several entries for one contest, a local contest will determine the best one of the group. After the local contest the winners may enter their chosen contests at the area meeting, and then the winners from the area go to the state contest.

Some of the contests that will be entered are as follows: Sales demonstration will be entered by Johnny Brownlow. The contestant chooses the item or items he desires to sell. This item should be taken from his training station.

He then attempts to sell the item to a customer and is judged on his abilities to sell, knowledge of his product, and his approach to the customer.

The job interview contest will be entered by Judy Crume. In this contest the contestant makes formal application for a position. This contest includes a preliminary interview by a secretary, filling out an application blank and then the interview itself.

Judging is based on appearance, approach, and how the contestant conducts himself during the interview.

The local contestant who will enter the ad layout contest will be determined next week. This contest is a timed event in which each student lays out an ad. He is judged on his ability and originality.

The parliamentary procedure team has been chosen. After the officers have been selected the practice sessions will be held by the students until the date of the contest.

FHA To Sponsor Chili Supper For AFS January 25

The Future Homemakers of America are sponsoring a chili supper Jan. 25 from 5:30 to 8 p.m. The supper will be held in the high school cafeteria for the benefit of the American Field Service exchange student program.

Members of FHA will be selling tickets to the supper. Charge will be \$1 for adults and 50 cents for children.

"This supper is a big factor in the exchange student program and we hope to see each of you Jan. 25, commented Mrs. Dorothy Frowell.

Hoof Prints

By David Stevens

Playing at home twice in two nights seemed to agree with the Whitefaces as they smashed Littlefield Friday night by a score of 88-69 and followed up Saturday night with a 77-27 victory over White Deer.

Next in line for the Whitefaces are the Dumas Demons. The game will be in Dumas. The Herd should be favored over the Demons as Dumas is 1-2 in district play, with only a 57-54 double-overtime win over Littlefield. However, this is one of those games where you can never tell. But face facts, friends, it's our turn after the events of the past two years.

In gaining their second conference victory against no losses the Whitefaces hit a tremendous 58% of their field goal attempts. The Herd took a 50-29 halftime lead, hitting 48% on field goals. In the second half the Whitefaces canned a fantastic 68% from the floor. Jim Haney led the scorers with 24 points, Earl Jackson racked up 22 and Neal Laeb put in 15.

Friday night's game had several strange aspects. The referees were threatening to give technical fouls to practically everyone in the gym. The Wildcats finally did get in the last (Continued on Page 2)

Whiteface Stage Band Specializes In Popular Music

The stage band, a separate unit from the regular band, specializes in playing popular music and is composed of members from the Whiteface band.

"Members of the stage band are taken just from the band, but sometimes we get someone outside of the band to play the piano," explained Mr. Ben Gollehon, band director and sponsor of the stage band.

Among some of the places the stage band has played are at programs, banquets, parties, Lion's Club meetings, and at basketball pep rallies, Mr. Gollehon commented.

Practice sessions are held once a week at the school. The girls in the stage band wear red dresses, while the boys wear black suits.

The future plans of the stage band, according to Mr. Gollehon, are to "play as much as possible." "We will also be playing at the Lion's Club minstrel," said Mr. Gollehon.

"Sometimes the stage band competes in area contests, but we won't be doing it this year," he noted.

Members of the stage band are Carolyn Boynton, Patti Roach, Ernest Rodriguez, Jimmy Cooper, Jerry Ross, Steve Knox, Jack Aikin, Charles Dames, John Brownlow, Jerry McCathern, Lonny Cooker, Olen Nelson, Steve Thornton, James Combs, Ricky Osborn, Tyler Thompson, and Donny Huckert.



MODELING SUITS THEY MADE as part of their semester work in Homemaking III class are, from the left, Cheryl Edmondson, Mary Brorman, Linda Tooley, and Judy Huseman. All girls taking the class are required as a semester project to make suits. The girls held a tea for their mothers on Wednesday, Jan. 15, and modeled suits they made during the first semester. (Brand Staff Photo)

MODELING SUITS THEY MADE as part of their semester work in Homemaking III class are, from the left, Cheryl Edmondson, Mary Brorman, Linda Tooley, and Judy Huseman. All girls taking the class are required as a semester project to make suits. The girls held a tea for their mothers on Wednesday, Jan. 15, and modeled suits they made during the first semester. (Brand Staff Photo)

(Brand Staff Photo)

Hoof Prints.. Choir...

(Continued from Page 1)
 quarter.
 Then, as the Whitefaces completed a three point play with the game apparently over, the Littlefield coach insisted that the remaining one second (give or take 1/2 a second) be played. The floor had to be cleared and the Wildcat coach had to go to the dressing room to get five players to finish the game.
 The buzzer sounded as one of the Littlefield players attempted to hit the scoreboard with the ball. Fortunately, he missed.

White Deer tried to force the Whitefaces to play a slowed-up game. They got as close as 6-4 before the Herd started their own running game. And they ran to an 18-5 lead at the end of the first period. It was no contest as Hancy drilled the baskets for 21 points while Jackson netted 20.

(Continued from Page 1)
 their sweaters.
 The sweaters come in three different weights—light, medium, and heavy. They are white with a maroon letter 'H' with a musical note on the pocket.
 The sweaters were ordered Tuesday and Wednesday during the choir's class period. They will arrive in about six weeks.

Records...

(Continued from Page 1)
 "The Little Matchgirl," "A Walk in Paris," "Paris Modern," and "Victor Hugo."
 Mr. Dingsy feels that if the students can pick out a few words in the filmstrips, the films will be worthwhile.

Toward the end of the year, Mr. Dingsy plans to have his classes study Faust.

H.D. CHATTER

Clubs Studying Filing Systems

By Argen Draper
 The home demonstration club members have appreciated the programs on filing important papers. Some of the club members have reported that already they have improved their filing system by organizing papers in large envelopes in folders. Some of the women have in the past few years added steel files—regular office type and some safes.

It is brought out in the program that important papers (with the exception of those of sentimental value) can be replaced. It will take time, money, effort and temper to replace papers but it can be done. Here is a release from the United States Savings Bond Division: You may have heard the story of the farmer who lost three Savings Bonds in a most unusual way: They were eaten by a cow. This not only is an amusing story, it just happens to be true—taken from the Treasury Department files.

My purpose in mentioning this is to remind you that people are losing their bonds every day, in a variety of ways. And they are getting them replaced, free of charge.

So if you have lost Savings Bonds, or know someone who has, remember this: Just let the Treasury know about it. You'll

get a form to fill out, then you're on your way to recovered riches. If you have a record of bond numbers and so forth, that will speed up things. But this is not absolutely essential.

Women are interested in the study of managing time and energy as well as managing money. In beginning the study the first step is to analyze the activities requiring your time. Normally homemakers time is divided into these eight parts:

1. Vocation-Profession-Business
2. Avocation-Hobbies
3. Family and Friends
4. Recreation
5. Education
6. Civic Activities
7. Religion
8. Health-Rest, etc.

How do you allocate your time between the above?

For a balanced happy life, the above activities are a must. Based on your own beliefs, values and needs, your time must be allocated between these activities. It is impossible to place priorities or importance on these activities that require your time and effort, but we do know that in varying degrees, they are all important. If we go over-board on any of the areas, we tend to neglect other areas. It is well worth our consideration to make every effort to keep these in balance to fulfill our needs, beliefs and values. Continuously through life, we tend to grow stronger or become weaker in these activities. We change our values, beliefs, and needs, there-



THE WINNING Class D doubles event trophies for the men's city bowling tournament went to Bill Curry (left) and his partner, Wes Poarch. Curry also won first in the class singles competition. Presentation of trophies and awards for the tournament was held Monday. (Staff Photo)

fore place different emphasis on each of these at different stages of life.
 There are plenty of copies of the Extension bulletin 987 Wild-

think. Ahead of us in per capita meat consumption is New Zealand, where each person averages 235 pounds a year. And Australians eat 221 pounds; Uruguayans, 213 pounds; and Argentinians, 202 pounds.

Americans come next, the U. S. Department of Agriculture says, with an annual per capita consumption of 164 pounds a year.

Call the office for an order blank for ordering windbreak planting stock.

It is time to nominate, Con-

servation Homemaker of the Year. If you know someone who has done a good job in conservation in the home and on the farm or ranch you should nominate her. Details can be received from our office.

CLASSIFIEDS
 GET
 RESULTS

Hereford Redi-Mix Concrete

Complete Pouring & Finish Work
 Free Estimates
 No job too large or too small
 Phone EM 4-0228

Annual Statement Of Perpetual Care Fund For Year Ending Dec. 31, 1963

Of Rest Lawn Memorial Park of Hereford, Inc.
 Address 411 East 6th Street, Hereford, Texas

1. Name of Trust Company or Bank with trust powers holding Perpetual Care Fund, or if no Trust Company or Bank, names of Trustees holding Perpetual Care Fund.
 The First National Bank of Amarillo, Trustee.
2. Filing Fee (Fee must accompany this report.)
 For cemetery serving city with population of 25,000 or less — \$25.00
 For cemetery serving city with population of 24,000 or more — \$50.00
3. (a) Detailed sworn statement of Perpetual Care Funds held in Bank or Trust Company or Trustees is attached to and made a part hereof, total of which is:
 Principal amount \$9,5630.8
 (b) Total amount of Perpetual Care Fund not yet collected on term sale contracts but allocated for Perpetual Care, now in process of collection and to be paid to Trustee as collected according to trust agreements.
 \$2,113.25
 Does trust agreement provide for — % of sale price or minimum per square foot grave space, crypt or niche as provided by law?
 Percentage minimum X
 Does trust agreement provide for:
 Perpetual Care Reserve to be collected from percent of installment collections—or last money collected on each contract X?
 Has all money collected on term contracts and allocated to Perpetual Care Trust Fund been paid to Trustee? (Yes) _____ (No) _____
 (c) Total Principal of Perpetual Care Funds (Add "a" and "b") Sq. Ft. \$11,676.33
4. (a) *Number sq. ft. grave space disposed of under Perpetual Care prior to 3-15-34 — 0 — sq. ft. \$ — 0 — Subsequent to 3-15-34 to 8-23-63 at 20c per sq. ft. 29,492.0 Sq. Ft. 5,898.40 Subsequent to 8-23-63 to date of this report of 50c per sq. ft. 134.0 — \$67.00
 (d) Total Requirement for all sales made under Perpetual Care 5,965.40
 Amount placed in Perpetual Care Fund is Excessive of (Excess) 3,599.68 amount required by law
 6. Have the requirements of Section 16 of the Cemetery Code pertaining to sign, and statement on certificate of ownership and contract been complied with? Yes.

Rest Lawn Cemetery Inc.

By Marlin Gilliland

THE STATE OF TEXAS, COUNTY OF DEAF SMITH

BEFORE ME, the undersigned authority, on this day personally appeared Ralph Owens and Marlin Gilliland, known to me to be the President and Secretary, respectively, (or two of the responsible officers) of Rest Lawn Memorial Park and being by me duly sworn, on oath did depose and say, each for himself (or herself) that each of the affiants has read the above and foregoing report of status of Perpetual Care Funds of said Cemetery, that each knows the contents thereof, and that the facts set forth therein are known by each of said affiants to be in all things true and correct.

(Affiant) Ralph Owens, President
 (Affiant) Marlin Gilliland, Secretary

SUBSCRIBED AND SWORN TO before me this 17th day of February, 1964 to certify which witness my hand and seal of office.

John Gilliland, Notary Public in and for Deaf Smith County, Texas.

(SEAL)
 Annual Statement Perpetual Care Fund — Trustee Statement Name and address of Bank, Trust Co., or Board of Trustees
 The First National Bank of Amarillo — Trustee Trust Department, P. O. Box 1331, Amarillo, Texas

Name and address of Cemetery Association
 Rest Lawn Memorial Park of Hereford, Inc. 411 E. 6th St., Hereford, Texas

STATEMENT OF CONDITION OF

PERPETUAL AND IRREVOCABLE FUNDS IN TRUST AS OF DECEMBER 31, 1962

ASSETS	
Cash	\$687.11
*Bonds (Corporate)	\$3,980.80
*Corporate Stocks	\$4,538.55
*Real Estate Mortgages	\$485.78
Total	\$9,692.24
LIABILITIES	
Principal in Trust	\$9,563.08
Undisbursed Income	129.16
Total	\$9,692.24

I hereby certify that the foregoing statement is true and correct to the best of my knowledge and belief.
 Signed, Vice President and Trust Officer, The First National Bank of Amarillo, Texas, Trustee for Rest Lawn Memorial Park of Hereford, Inc. Perpetual Care Trust.

It's The Buy of a Lifetime! Genuine Pre-Finished BIRCH PANEL BOARD



Now
 Only
6⁹⁵ PER SHEET

Now is the ideal time to refinish that den or playroom with genuine BIRCH Panel Board and Armstrong Ceiling Tile. Don't wait.... this is the buy of a lifetime.

ARMSTRONG CEILING TILE

Cost Per Average

Size Room
 AS LOW AS
 (12' x 12')

28⁸⁰

FOR DETAILS

SEE

CEILING TILE

the
 Secret
 of
 Beautiful
 Ceilings



EASY TO APPLY
 ECONOMICAL

The beautiful patterns and textures to be found in ceiling tile make it an ideal ceiling material. See our large display.

Carl McGaslin Lumber Co.

A COMPLETE BUILDING SERVICE

1 Block East of the Courthouse

Phone the Lumber Number EM 4-1708

SEBRING:



PLYMOUTH BEATS FORD & CHEVROLET 10 OUT OF 10

Showroom Plymouth wins tests of Acceleration, Handling, Braking, Gas Economy— "things you buy a car for." Plymouth also costs less†—and carries the only 5-year/50,000-mile warranty.*

OFFICIAL RESULTS	CITY PASSING	GO-STOP-PARK
PLYMOUTH..... 166 ft.	PLYMOUTH..... 166 ft.	PLYMOUTH..... 1:58.86 min.
CHEVROLET..... 183 ft.	FORD..... 183 ft.	FORD..... 2:02.50 min.
FORD..... 197 ft.	CHEVROLET..... 197 ft.	CHEVROLET..... 2:06.43 min.
HIGHWAY PASSING	EMERGENCY STOP	ZERO-TO-SIXTY
PLYMOUTH..... 297 ft.	PLYMOUTH..... 112 ft.	PLYMOUTH..... 11.73 sec.
CHEVROLET..... 325 ft.	FORD..... 140 ft.	CHEVROLET..... 11.94 sec.
FORD..... 373 ft.	CHEVROLET..... 143 ft.	FORD..... 13.70 sec.
5.3-MILE SEBRING CLASSIC	PRICE	
PLYMOUTH..... 4:23.39 min.	PLYMOUTH..... \$2706	
FORD..... 4:33.22 min.	CHEVROLET..... \$2786	
CHEVROLET..... 4:34.33 min.	FORD..... \$2794	
QUARTER-MILE	HILL CLIMB	
PLYMOUTH..... 17.29 sec.	PLYMOUTH..... 19.70 sec.	
CHEVROLET..... 17.76 sec.	CHEVROLET..... 21.03 sec.	
FORD..... 17.76 sec.	FORD..... 21.38 sec.	

†Based on Manufacturers' Suggested Retail Prices for 2-door hardtop Plymouth Fury, Chevrolet Impala, and Ford Galaxie "500" V-8, excluding state and local taxes, if any, destination charges, and optional equipment. Prices for Chevrolet and Ford, but not Plymouth, include heater which may be deleted by special order with appropriate price adjustment.

At Plymouth's request, Nationwide Consumer Testing Institute bought and compared comparably equipped V-8 models of Plymouth Fury, Chevrolet Impala, and Ford Galaxie "500". They set up a program of ten tests, hired professional drivers, made the rules, and supervised the entire competition. The results are in the chart.

*HERE'S HOW PLYMOUTH'S ENGINE AND DRIVE TRAIN WARRANTY PROTECTS YOU: Chrysler Corporation warrants for 5 years or 50,000 miles, whichever comes first, against defects in materials and workmanship and will replace or repair at a Chrysler Motors Corporation Authorized Dealer's place of business, the engine block, head and internal parts, intake manifold, water pump, transmission case and internal parts (excluding manual clutch), torque converter, drive shaft, universal joints, rear axle and differential, and rear wheel bearings of its 1964 automobiles, provided the owner has the engine oil changed every 3 months or 4,000 miles, whichever comes first, and every 2 years, and every 6 months oil change and the carburetor air filter cleaned every 6 months and replaced every 2 years, and requests the dealer to furnish to such a dealer evidence of performance of the required service, and requests the dealer to certify (1) receipt of such evidence and (2) the car's then current mileage.

PLYMOUTH DIVISION CHRYSLER MOTORS CORPORATION

SEE YOUR PLYMOUTH DEALER AND DRIVE THE CHAMP—Plymouth
McCULLOUGH MOTOR COMPANY
 345 East First Street Hereford, Texas

Sandi Says...

By Sandi Thomas

Hi! to all of you who survived semester exams. By the size of the dance crowd Friday night, I'm beginning to wonder. Well, now to get down to business.

Tuesday, Jan. 14, students around H. H. 8, were busy marking and counting ballots for the election of class officers. Congratulations are on hand for Steve Oneway, Shirley Anderson, George Muse, Nancy Tyler, John Perrin, Jerry McCathern, Barbara Zinser, Gary Story, Ken Stark, and Paula Waldrep.

Also in the run-offs were Earl Jackson, Kay Coffman, Stan Sigman, Merle Carmichael, Sammy Curtsinger, Sid Bayne, Linda Rickman, Larry Noland, Bob Gentry, and Lee Robinson. Let's give them all our strong support.

Peggy Lemons was the hostess of a surprise slumber party Friday, Jan. 17, in the honor of Rahlene Chick who is moving to Amarillo. Among those having a sleepless time could be found Sue Rife, Beverly Betzen, Barbara Zinser, Janice Hill, and Barbara Rhodes. Best Wishes in your new home, Rahlene; we'll all miss you.

Those of you who attended the calf show Friday will agree with me that there was a lot of tough competition. Nevertheless, Hereford pulled through when Bill Cole showed the Reserve Champion steer.

Others in the steer show were James Short who placed sixth in the lightweight division; Becky Higgins placed fourth in the middleweight division; Greg Richards sixth; Gerald Witkowski, seventh; Jim Higgins, ninth; Debbie Thomas, tenth. In heavyweight steers, Larry Minks placed first; Becky Higgins, third; Jim Higgins, fourth. Others showing steers were Donna Olson, Dan Thomas, Jackie Andrews, and Ronald Paetzold.

The barrow division of the show is not to be forgotten. David Black placed second in the heavyweights with his Chester. Gary Royal stood sixth in the lightweights with a Poland China barrow. Jimmy Campbell showed the champion which was a Berkshire Breed. Placing ninth with a lightweight Hampshire was Carl Myers, who also placed third with his heavyweight Crossbreed. Alice Myers stood second with her heavy Crossbreed. Also in the barrow show were Larry Brown, David Natfger, and Ronny Houston.

Congratulations to all you fine showmen!

Saturday night, Amarillo was invaded by kids from Hereford who went to watch or to enter the rodeo. Those attending were Stan Sigman, Dick Lookingbill, George Muse, David Hill, Karen Blackwell, Edward Allison, Dan Thomas, Jim Higgins, Carl Myers, David Block, Gary Royal, Deborah Thomas, Jo Poarch, David Sorrels, Lynn Poarch, Wes Poarch, Pat Smith, and Yours Truly. Have I forgotten anyone?

Friday, 24, the junior highers will have a dance lasting from 8 p.m. to 11 p.m. Admission will be 25 cents per person.

Saturday night there will be a high school record dance. The admission is set at 25 cents for dancing from 8:30 to 11:30 p.m. See you there!

Please don't fail to get in touch with me if you have any news. I would sure appreciate it.

Federal Land Bank Dividend Is Declared

Dividend payments totaling \$13,070.25 will be paid to members of the Federal Land Bank Association of Hereford, Manager Woodrow Wilson announced Wednesday.

Wilson said the dividend checks will be mailed immediately to the association's 240 farmer-rancher stockholders.

The Hereford association is one of the 73 farmer-rancher owned associations in Texas served by The Federal Land Bank of Houston.

The local association makes land bank loans in Deaf Smith County and the northeast quadrant of Farmer County. The directors are: Ira Scott, president; Frank Bezler, vice-president; George Turrentine; J. M. White; and Charlie Burk, all of Hereford.

San Jose, Costa Rica, with more than 102,000 population, stands in the central highland of Costa Rica 40 miles inland from the Pacific and 50 miles from the Caribbean.

Sword in the Stone

\$100 Winners

MORE \$100 CASH WINNERS IN SAFEWAY'S "Sword In The Stone"

\$100.00 Winners

Mrs. John Byers
Jimmy Turnbow
James Wansley

Other Winners

Geraldine Tyler
Mrs. Allen Klein
Mrs. Dean Butler
Annie Brown
Aleane Booker
John Trotter
J. D. Tyler
Danny Rodriguez
Clint Harris
Antonio Garcia
Alice Romero

YOU CAN WIN FREE TRIPS TO DISNEYLAND!

Deposit The Yellow Portion of Your Card in The Box In The Lobby at Safeway— A Drawing Will Be Held at End of Contest!

SAFEWAY



300 COUNT NOTEBOOK PAPER

300 Ct. Pkg. **49¢**

PLAY "SWORD IN THE STONE" AT SAFEWAY! YOU COULD BE THE NEXT \$100 WINNER!

Get You "FREE" "Sword in the Stone" Card Now - There's Nothing To Buy, & No Obligations. It's Fun & Easy To Play!

Safeway Guaranteed Meat!

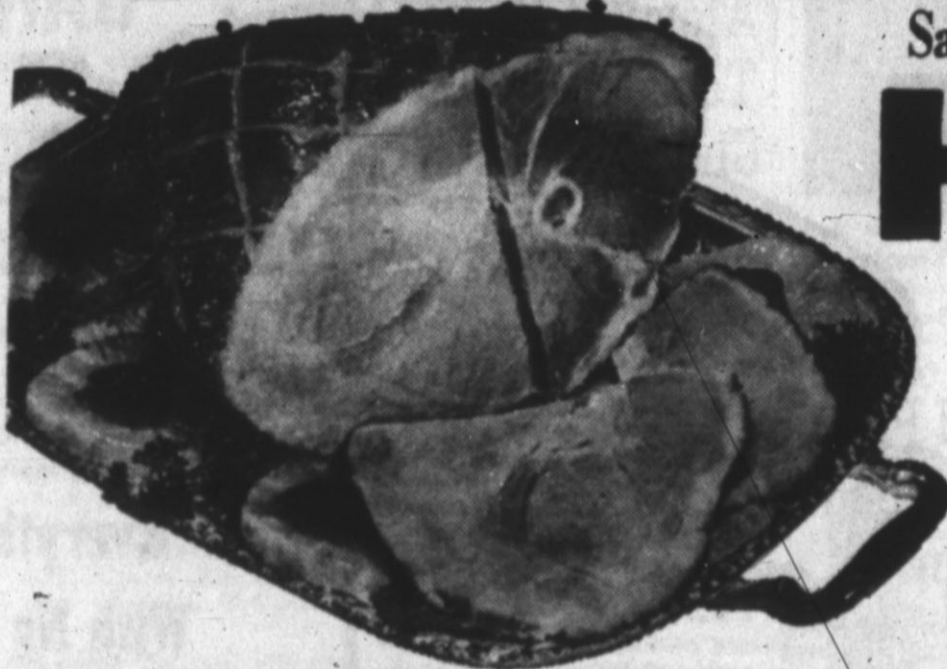
HAM

Shank End **43¢** Lb.

HAMS Pinkney Sun Ray Whole or Butt End Lb. 45c

U.S. Choice Aged Mature Beef Lb. **49¢**

Ground Beef Safeway Quality Extra Lean Lb. **49¢**



Chuck Roast

Turkeys

Young and Tender 10 lb. & up Lb. **39¢**

These Prices Good Thru Sat. Jan. 25, 1964 in Hereford

Rules For Playing "SWORD IN THE STONE"

1. Only "Sword In The Stone" Cards Distributed by Safeway may be used.
2. Four Cards are required to spell "Sword In The Stone."
3. Cards showing evidence of Alteration cannot be accepted.
4. Safeway Reserves the Right to Determine and Verify Winners
5. Only Adults (over 16 yrs.) are eligible to play.



Marshmallow TREATS

Melrose Save 4c 14 Oz. Pkg. **39¢**

Shop Safeway For Low Prices Everyday

- Sunshine Crackers Lb. Pkg. 31c
- Parkay Margarine 2c Off Label Lb. 25c
- Kraft Mayonnaise 16-Oz. Jar 45c
- Kraft Carmels 14-Oz. Pkg. 41c
- Miracle Margarine 2c Off Label Lb. 31c

Nabisco Cookies

- 16-Oz. Oatmeal Raisin Cookies Pkg. 45c
- 16-Oz. Choc. Chip Cookies
- 16-Oz. Oreo Cookies

- Lux Liquid Detergent 22-Oz. Bott. 69c
- Wisk Liquid Detergent 1/2 Gal. Bott. 1.49
- Breeze Detergent Powder Gt. Pkg. 81c
- Rinso Blue Powdered Detergent Gt. Pkg. 79c
- Dry All Detergent Powder 3-Lb. Pkg. 79c
- Handy Andy Cleaner Liquid 28-Oz. Bott. 69c
- Handy-Andy with AMMONIA 28-Oz. Bott. 69c
- Fab Detergent Powder Gt. Pkg. 79c
- Ajax Powder Cleaner 21-Oz. Can 25c

Ajax Liquid Cleaner 44-Oz. Bott. **99c**

BAGGIES Food Wrap 25-Ct. Pkg. **43c**

Grade "A" Eggs Breakfast Gem Grade 'A' Medium Size Doz. **49¢**

White Flour Kitchen Craft Enriched Flour 25-Lb. Bag **\$1.79** Save 20c

Canned Milk Lucerne Canned Milk 2 Tall Cans **25¢**

Sweet Corn Kounty Kist Whole Kernel Save 4c 2 No. 300 Cans **25¢**

WE GIVE GUNN BROS STAMPS

GARDEN FRESH PRODUCE

WINESAP APPLES

or Red Romes Washington Extra Fancy

8 LBS \$1.00

Potatoes

Maryland Sweets **3 : 29¢**

U. S. No. 1 Colorado Russet POTATOES

10-Lb. Bag **49¢**

Colorado Yellow Spanish ONIONS

2 : 25¢

California Firm Green CABBAGE

Lb. **8¢**



SAFEWAY

We Reserve The Right To Limit Quantities

NEW. LOW PRICES PREMIUM FEATURES

GENERAL NYLON SPECIAL

TRACTOR TIRE

- Nylon Cord—for strength and moisture proofing.
- More Rubber—where it counts to cushion shock.
- Double Cured Cleat—keep clean—dig deeper—pull better.

PLUS
36 months Field Hazard Guarantee protects your investment.



60 MONTH GUARANTEE
The General Tire & Rubber Company guarantees to the original purchaser the "All Grip Traction-Nylon Special" and "All Grip Traction-Nylon-Jumbo Load" against failure resulting from bruises and tire breaks, snagging, or cutting for a period of 60 months from date of purchase when used in normal farm service.

Hereford Butane

INCORPORATED
Veterans Park Road EM4-3367



SIXTH IN HEAVY WEIGHTS—Kathy Garrison of the Oldham County 4-H club took sixth place in the heavy weight cattle division at the Golden Spread Western Junior Livestock Show. Kathy sold both her entries at the auction Saturday afternoon in the Bull Barn. Businesses in the area bought the animals, and many of those bought were donated to Boys' Ranch. (Staff Photo)

Methods Of Filing Papers Discussed

After citing a survey showing misplaced papers to be the most frequent source of family disagreements, Argen Draper, county home demonstration agent, discussed methods of filing papers for members of Ford Home Demonstration Club Jan. 15.

Among the helpful suggestions for organizing and keeping the family's records in order, Mrs. Draper said, "Every family should have a fireproof storage place for valuable papers. It can be either a safety deposit box at the bank or a safe at home."

Mrs. Draper then urged that family records, such as bank statements, income tax records, receipts, and even newspaper clippings be kept in an orderly manner. "I hope all home demonstration women will make a special effort to get organized in 1964," she concluded.

After the program, Mrs. A. L. Hollingsworth made a report on the tour Jan. 8 of the Atomitat underground home in Plainview made by club members Mrs. Hollingsworth, Mrs. LeRoy Edwards, Mrs. J. C. Gossett, Mr. and Mrs. Hardy Benson, and

Mr. and Mrs. J. Raymond Flores. The tour was part of a program on civil defense, Mrs. Hollingsworth noted.

Mrs. Raymond Smith was presiding officer for the meeting, and Mrs. F. L. Eicke was hostess. Others present were Mrs. Hardy Benson, Mrs. LeRoy Edwards, Mrs. George Epting, Mrs. J. Raymond Flores, Mrs. C. G. Heard, Mrs. A. L. Hollingsworth, Mrs. A. J. Jamerson, Mrs. Luther Norvell, Mrs. L. J. Strafass, and Mrs. J. O. Walker, and a visitor, Mrs. James A. Jamerson.

PUBLIC AUCTION

FARM SUPPLY

HEREFORD FARM SUPPLY

600 East 1st

HEREFORD, TEXAS

10:00 a.m. Sat.

JAN. 25

- 1961 A.C. D-17 fcl butane - pwr str - wide ft end
- 1961 A.C. D-14 fcl LP - pwr str-wide ft end
- 1961 A.C. D-15 diesel-pwr str -wide-ft end-3 pt hch
- 55 GB combine-62 Oliver & 66NH bailers
- '59 1/2 ton - '55 3/4 ton - '50 2 ton Ford truck
- Trailers-Rakes-Mowers-Sprayers-Diggers
- Shredders-Plows-Tool bar frames-Misc.
- Complete stock of parts-25 parts bins.
- 12' House Trailer-Tire change equip.
- Batteries-Tires-Tubes-Air Tools
- Sioux Valve mach.-Dynamometer
- Welders-Floorjacks-Air Comp.-Chargers
- Typewriter Adding Mach.-Cash Reg. - etc.

Everything Sells

With No Minimum!

for brochure write:

NELSON

AUCTION SERVICE

Executive Offices - 4484 Canyon Dr. - Amarillo, Texas

AMARILLO - BATON ROUGE - DALLAS - HOUSTON

We're the best of the big car men

YOUR NEIGHBORHOOD CHRYSLER DEALERS:

McCULLOUGH MOTOR COMPANY

345 East First Street
Hereford, Texas



A big league of big car men right in your neighborhood. Men who sell and service big cars only. Cars that look big. Crisp. Clean. No gingerbread. Cars that act big. Powered by husky V-8 engines that sip gas like misers. Cars that are engineered better... backed better than any car in their class. Backed by 40 years of engineering leadership. We don't sell jr. edition Chryslers, because they downgrade your pride. And your investment. We're men who stand up tall behind our cars—with courteous, dependable service after the sale. With fair, square trade-in allowances. Nothing small about our deals. Stop in. And meet us. CIDAA

Move up to Chrysler

AUTHORIZED DEALERS CHRYSLER

Messenger Club Hears Program On Filing Papers

"Next week may be too late to organize your valuable papers," warned Argen Draper, county home demonstration agent, as she discussed methods of filing papers for members of Messenger Home Demonstration Club at their meeting Jan. 17.

Mrs. Draper then advised her audience to keep their papers in a safe place, such as a safety deposit box in a bank or in a metal case at home.

During the business meeting, yearbooks were completed through June, and members discussed the possibility of touring the underground home in Plainview. The tour will be discussed again during the next meeting, which will be Jan. 24 in the home of Mr. Bertram Jack. Mrs. Elmer Northcutt was the presiding officer.

Hostess for the meeting was Mrs. E. M. Jack. Other members present were Mrs. S. N. Thweatt, Mrs. N. A. Brown, Mrs. H. D. Buse, Mrs. Elton Sorrells, Mrs. Jerry Northcutt, Mrs. G. E. Pinkerton, Mrs. El-

Mrs. Fuller, 75, Buried Tuesday

Mrs. Berdie Fuller, a resident of Hereford since 1920, died at 1:30 p.m. Sunday in Deaf Smith County Hospital. Funeral services were held Tuesday at 2 p.m. in Gilliland Funeral Home Rose Chapel, with the Rev. Herschel Thurston, pastor of First Methodist Church, officiating.

Born Dec. 7, 1888, in Tennessee, Mrs. Fuller came to Texas as a small child. She and Ross Fuller were married Dec. 28, 1916, in Arlington. He preceded her in death May 11, 1961. Mrs. Fuller, who lived at 801 South 25 Mile Avenue, was a member of the Methodist Church.

She is survived by two sons, Ross Green, Grants, N. M., and Emmitt Green, Amarillo; two brothers, Neal Reeves, Eules, and Anner Reeves, Fort Worth; a sister, Ina Calvert, Washington, Okla.; three grandchildren, and two great-grandchildren.

Burial was in West Park Cemetery. Burial was in West Park Cemetery. Burial was in West Park Cemetery. Burial was in West Park Cemetery. Burial was in West Park Cemetery.

Farm and Ranch Club Has Salad Lunch Jan. 16

Members of Farm and Ranch Club met Jan. 16 for a covered dish luncheon in the home of Mrs. Hershel Burrus. They planned a Valentine party with refreshments of coffee and pie. Mrs. Glenn Burrus was presiding officer.

The program was postponed due to the illness of the speaker, Mrs. John E. Hill. Those present were Mrs. Hershel Burrus, Mrs. Glenn Burrus, Mrs. Jack Weaver, Mrs. N. E. Tyler, Mrs. W. W. Thomas, and a visitor, Cecilia Burrus.

CARD-OF THANKS

We wish to express our deepest appreciation for the many deeds of kindness and prayers, food and words of comfort during the illness and death of our loved one. These acts of love shall always be remembered. God bless each of you!

Mrs. L. H. (Petie) Hoffman
Lucille Hoffman
Mr. and Mrs. Carl J. Hoffman
and family.

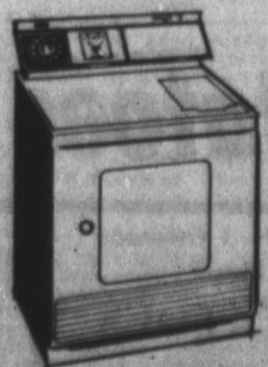
You save enough to buy



2 MONTHS SUPPLY OF MILK

when you
DRY WITH GAS

You can save \$24.00 a year on your utility bill when you dry with GAS. That's enough to buy a two-months supply of milk for an average family of four. And GAS dries your clothes faster... yet so gently.



SAVE ON INSTALLATION AND MAINTENANCE, TOO. A GAS clothes dryer costs less to install and maintenance costs are the lowest of any dryer. A GAS burner, the heart of your dryer, carries a lifetime guarantee.

Pioneer Natural Gas Company

Announcing

THE NEW DISTRIBUTOR FOR

CHAMPLIN

MOTOR OILS & GREASES

★ Wholesale

★ Retail

★ Delivery

Come Visit Us!

Swede & Duane Janssen

SWEDE'S

CHAMPLIN MOTOR OIL

310 MYRTLE

EM 4-0439



CHAMPION SOUTHDOWN AND Southdown crosses—Jerry Smith of Hart FFA took the championship for the Southdowns with his 96 pound entry in the annual livestock show. Many of the lambs sold in the Saturday afternoon auction were donated to Boys' Ranch by the buyers. (Staff Photo)

EASTER NEWS

Party Honors Shelly Barton On Birthday

By Ruby Stone

Shelly Barton was honored with a party Thursday on her 4th birthday.

Those attending were Sherry Barton, Binnie and Julia Halows, Christy and Beverly Heens, Steven Anderson, Sonia Markley, Coleen, Rebecca and Elizabeth Rudd and Mark Smuhers.

Mr. and Mrs. J. H. Flood were in Amarillo Thursday on business.

Mr. and Mrs. Leo Hall, Reba and Ronnie visited in Wellington over the weekend.

Mrs. Raleigh Rule visited Mrs. W. O. Markley and children Thursday.

Mr. and Mrs. Raleigh Rule recently returned from a 10-day trip to San Perito in South Texas where they visited relatives.

Mr. and Mrs. Melvin Barton and children recently visited Mrs. Barton's aunt, Mrs. Elton Eady, near Dallas.

Mr. and Mrs. H. O. Markley left Sunday for Truth or Consequences, N. M. They expect to be away two weeks.

Mrs. Burr Morris of Dimmitt was a visitor in the W. O. Mark-

Dorothy Prowell 4-H Program Was On Resuscitation

Dorothy Prowell 4-H club met at the Community Center Jan. 17 at 4:30 p.m. The program was presented by Ray Simpson and Albert Farris from the Deaf Smith County Electric Co.-Op. They showed a film and gave

a demonstration on mouth-to-mouth resuscitation. Each member practiced on a manikin. In the business meeting, plans for the "Share the Fun" contest were discussed.

Refreshments were served to Wileta Wyle, Cynthia Hanna, Terry Townsend, Margaret Anderson, Paul Wyle, Mrs. Smith, Mrs. Wyle, Ray Simpson and Albert Farris.

CARD OF THANKS

We wish to thank everyone who was so kind to us when we lost our beloved wife and mother. Our special prayers are with the Rev. Powell, Dr. A. T. Mims, the pallbearers, the ladies of the Avenue Baptist Church who served lunch and brought in food and Gilliland Funeral Home. Your deeds and prayers will make our burden much easier to bear. May God bless each one.

J. M. Lee
Mr. and Mrs. William Lee
Mr. and Mrs. Kenion Whittington
Mrs. Carroll Woods
Mr. and Mrs. Paul Lee
Mr. and Mrs. J. A. Allen
Mr. and Mrs. Perry A. Lee
Mr. and Mrs. J. O. Lee
Mr. and Mrs. John Nix

All the people on Tristan da Cunha Island is the South Atlantic bear one of seven family names: Glass, Green, Hagan, Rogers, Swain, Lavarello and Repetto.



Why settle for a fraction of the action!

Drive an Olds Jetstar 88—priced lower than 30 models with low-price names!

Thinking of buying a full-size car with a low price tag? Then think Olds, for this brilliant Jetstar 88 is actually lower priced than 30 models with low-price names! Add a big 123-inch wheelbase! A 330-cubic-inch Jetfire Rocket V-8! Plus smooth new variable-vane Jetaway Drive! Better look into a Jetstar 88 today at your Olds Dealer's... where the action is!



64 OLDS WHERE THE ACTION IS!

ORSBORN CHEVROLET-OLDS Hereford, Texas

SPECIALS GOOD THURS., FRI. and SAT., JAN. 23, 24, 25

HAM Sunray Half or Whole Lb. 45¢		
HAM Shank Portion Lb. 39¢		
BACON Wright's 2 Lbs. 98¢		
RIB STEAK Lb. 79¢	BEEF LIVER Lb. 39¢	
FLOUR Gold Medal	10 : 98¢	
Swifts Honeycup — 1/2 Gal. MELLORINE 39¢	Roxey — Tall Can DOG FOOD 10 for 69¢	Food King — Solids OLEO 2 for 25¢
Lydna Grey — 10 Roll Pack TOILET TISSUE 89¢	Hunts — 300 Can TOMATOES 6 for \$1	Shurfine — 18 Oz. PEANUT BUTTER 45¢
Parkay — 1 Lb. OLEO 25¢	Betty Crocker CAKE MIXES 35¢	Schilling — 4 oz. BLACK PEPPER 33¢
COFFEE	Folger's 3 Lb. Can	\$2.09
COCA COLA	Reg. or King Size Plus Dep.	39¢
CRISCO	3 Lb.-Can	69¢
Kraft — 16 Oz. Mayonaise 39¢	Ranch Style — 300 Can Beans 2 for 29¢	
Nestles — 12 Oz. Chocolate Chips 39¢	Woodbury — Reg. \$1 Size Hand Lotion 39¢	
Frozen — 10 Oz. Food King Strawberries 23¢	Libby — Can Vienna Sausage 2 for 39¢	
VELVEETA CHEESE SPREAD 2-Lb. Box	79¢	
	BANANAS 2 : 25¢	
	GRAPEFRUIT LB. 10¢	
RUSSET — NO. 1 POTATOES 10 Lbs. 39¢	TANGARINES Lb. 19¢	

TAYLOR & SONS FOODS

LOW LOW EVERYDAY SHELF PRICES PLUS S & H GREEN STAMPS

YOUR HOME TOWN BOYS CASH AND SAVE

FOR GOD SO LOVED THE WORLD

Park Ave. Church Of Christ

On Harrison Highway
Worship Services 10:30 a. m.
Sunday. Prayer meeting 7 p. m.
Wednesday.

Iglesia De Cristo

BIENVENIDOS a los
Servicios en la IGLESIA
DE CRISTO, en ESPANOL.
Ubicado en SUNSET & PLAINS.
Hora de servicios en Espanol
Domingo, 11 A. M. Miercoles,
7:30 P. M.;
Viernes, 7:30 P. M.; en Ingles.
La entrada es por el lado SU-
RESTE
Del Edificio

First Methodist Church

501 North Main
Rev. Herschel L. Thurston
Pastor
Sunday, Jan. 5: Sunday Sch-
ool, 9:45 a. m.; Morning Wor-
ship, 10:55 a. m.; Junior High
and Senior High Fellowship Din-
ner, 5:45 p. m.; Junior High and
Senior High MYF, 6:15 p. m.;
Worship Service, 7 p. m.
Tuesday, Jan. 7: Woman's So-
ciety of Christian Service Pray-
er Group, 9:30 a. m.; Homebuil-
der's Prayer Group, 8 p. m.
Wednesday, Jan. 8: Official
Board Regular Meeting, 8 p. m.;
Choir Rehearsal, 8 p. m.

Immanuel Lutheran Church

Rev. Fred Beversdorf
Pastor
Sunday, Jan. 5: Worship Ser-
vices, Friona, 8:30 a. m.; Sun-
day School and Bible Classes,
Friona, 9:45 a. m.; "Call To
Worship", KPAN, 9:15 a. m.
Worship Services, 11 a. m.; Adult
Classes, 6 p. m.; Walther Lea-
gue Business-Meeting, 7 p. m.;
Elders Meeting, 8 p. m.
Monday, Jan. 6: Ladies Bible
Class, 4:15 p. m.
Wednesday, Jan. 8: Cub
Scouts, 4:15 p. m.; Visitation, 7
p. m.
Saturday, Jan. 11: Visitation,
2:30 p. m.

San Antonio A La Iglesia

North 25 Mile Avenue and
Highway
Vd. Es Catolico? Pues, Tie-
ne La Obligacion De Asistir A
La Santa Misa Todos Los Dom-
ingos!
Horas De Misas En Los Dom-
ingos: 6:30 a. m.; 8 a. m.; 10 a.
m. y 8 p. m.
Durante La Semana: 6:30 a.
ages and devotional services at
7:30 p. m. Wednesday.

St. Anthony's Church

Harrison Highway at 25 Mile
Ave.
Father Angelus, Pastor
Sunday Masses at 6:30 a. m.,
8 a. m., and 10 a. m.
Sunday evening mass at 8 p.
m., Daily mass at 6:30 a. m.
and 11 a. m. during school year.
Tuesday evening mass at 8
p. m.
First Friday Masses at 6 a.
m., 11 a. m. during school year,
and 8 p. m.
First Saturday Masses at 6
a. m., 8 a. m.
Holy Day Obligation Mas-
ses at 6 a. m., 8 a. m., and
8 p. m.
Confessions are Tuesday at
12 noon - 1 p. m. during school
year and 5 p. m.; Thursday,
12 - 1 p. m. during school and
8 - 9 p. m. before First Friday;
Saturday, 4-5 p. m., 8 - 9 p.
m.; Sunday, 7:30 a. m.
Baptisms at 4 p. m. Sunday.
Any other time by calling Rec-
tory.

Thompson Memorial Mexican Baptist Mission

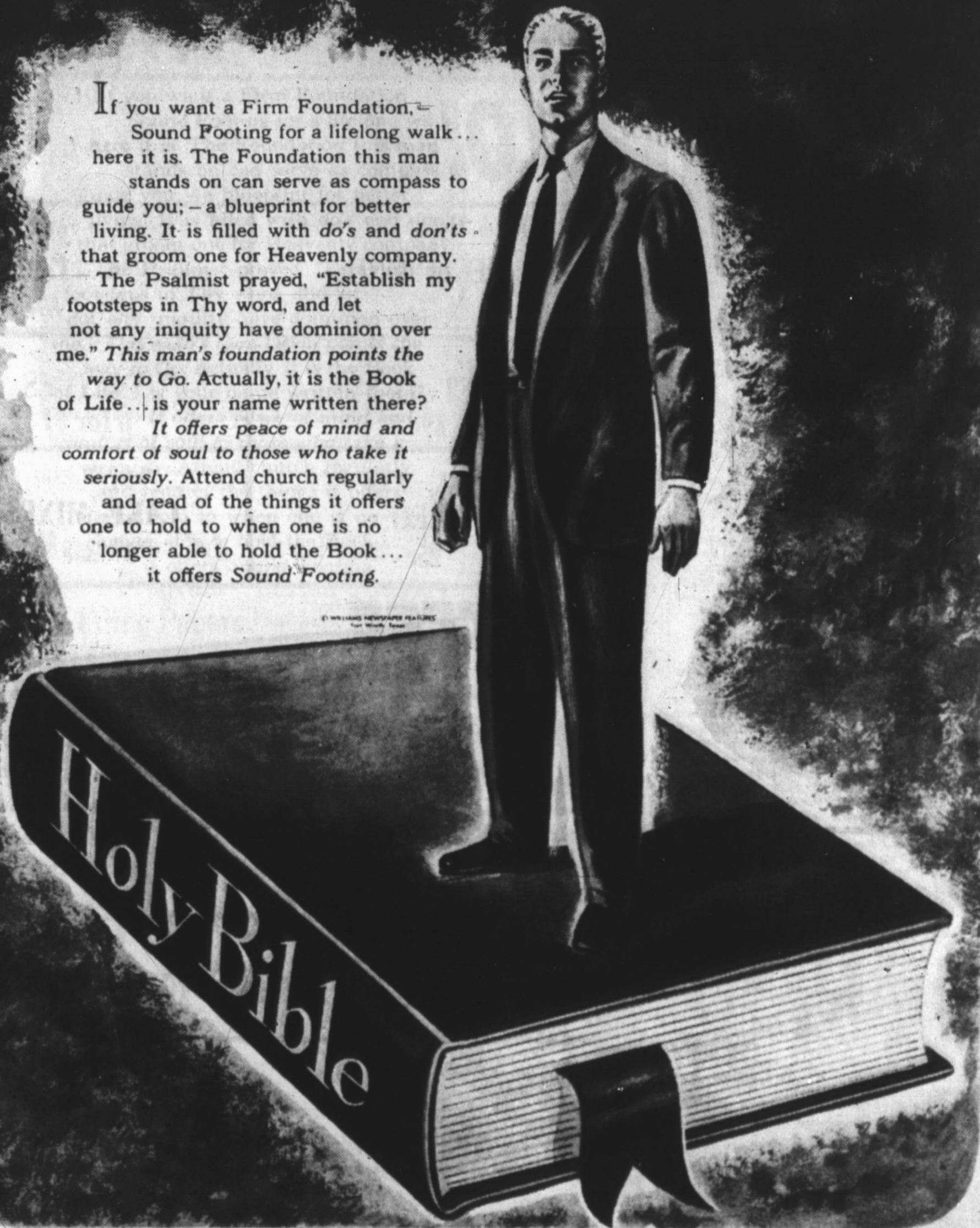
Rev. Guillermo Bentler
Minister
215 Norton
Orden De Cultos
Domingo Por La Manana, 10
a. m.; Escuela Dominical, 11
a. m.; Culto De Adoracion.
Domingo Por La Noche, 7
p. m.; Union De Preparacion, 8
p. m.; Culto Evangelistico, Mier-
coles Por La Noche, Culto De
Oracion Y Estudio Biblico.
Union Femenil Y Union Va-
ronil Un Lunes Si Y Otro No.

Central Church Of Christ

L. E. Fooks, Minister
Marvin Crowson
Minister
Sunday Services: Bible Study,
9:30 a. m.; Morning Worship,
10:25 a. m.; Evening Worship,
6 p. m.
Mid-Week Services: Ladies
Bible Study, 10 a. m. Wednes-
day; Mid-Week Classes for all.

SOUND FOOTING

If you want a Firm Foundation,
Sound Footing for a lifelong walk...
here it is. The Foundation this man
stands on can serve as compass to
guide you; - a blueprint for better
living. It is filled with *do's* and *don't's*
that groom one for Heavenly company.
The Psalmist prayed, "Establish my
footsteps in Thy word, and let
not any iniquity have dominion over
me." *This man's foundation points the
way to Go.* Actually, it is the Book
of Life... is your name written there?
*It offers peace of mind and
comfort of soul to those who take it
seriously.* Attend church regularly
and read of the things it offers
one to hold to when one is no
longer able to hold the Book...
it offers *Sound Footing.*



These Hereford Business Firms Make This Page Possible in the Interest of a Christian Community. Go to Church Sunday.

ELIZABETH WITHERSPOON INSURANCE
● 148 N. Main St.

E. B. BLACK CO.
● Dick Barnard - Jesse Stanford

McRIGHT GARAGE & SUPPLY
● Mr. and Mrs. A. N. McRight

FIRST NATIONAL BANK
● Virgil Hennen

ROCKWELL BROS. & CO.
● D. R. Vandever

BUY-RITE FURNITURE
● J. H. Fish

BIG T PUMP CO., INC.
● Hilrey and Leroy Aven

HEREFORD LAUNDRY & DRY CLEANERS
● Ernest Kendall

SUIT'S AUTO SUPPLY

HEREFORD FERTILIZER & INSECTICIDE CO.
● Norman Moore

PIGGLY WIGGLY
● Mr. and Mrs. Gaylord Newell

DAVIS IMPLEMENT CO.
● W. L. Davis, Jr.

CITY DRUG STORE
● Mr. and Mrs. Kenneth Coker

JONES TEXACO SERVICE
● Mr. and Mrs. J. P. Jones

WESTERN WHEEL INN
● Mr. and Mrs. G. D. Colson

HEREFORD GRAIN CORP.
● Curtis O. Roach, Mgr.

PITMAN GRAIN CO.

HEREFORD STATE BANK
● Russell E. Carver, Pres.

Western Wrecking
● Anson A. and June Dearing

HEREFORD TEXAS FEDERAL CREDIT UNION
● Mrs. Dyalthia Benson

ED SKYPALA
● Your Borden's Distributor

GILLILLAND FUNERAL HOME
● Marlin Gilliland

MASTER CLEANERS
● Mr. and Mrs. C. D. Fitzgerald

ROGERS DRUG
● Mr. and Mrs. Grady Rogers

LOERWALD BROS.
● Ed, George, Gene & Harold Loerwald

FARMER'S DRIVE IN
● Troy Moore

PLAINS FERTILIZER CO.

ORSBORN - CHEVROLET OLDSMOBILE
● Your Chevrolet-Oldsmobile Dealer

CONSUMER'S FUEL ASS'N

Grace Gospel Church

Rev. H. V. Fields, Pastor
Thirteenth and Avenue K
Sunday School is at 9:45 a. m.
and worship services convene
at 11 a. m.
Bible Study is held each Sun-
day at 7 p. m. and preaching
service at 8 p. m.
Wednesday prayer meeting
held at 8 p. m.

Bippus Community Church

Eugene L. Naugle each first
and third Sunday and R. D.
Evans each second and fourth
Sunday.
Sunday School is at 10 a. m.
every Sunday and Preaching
is at 11 a. m. and 7 p. m. All
Day Singing each Fifth Sunday.

Mission De San Jose LABOR CAMP

El Domingo es el dia del
Senor. Tenemos que adorarlo.
No hay mejor modo que la San-
ta Misa: El sacrificio de Cal-
vario.
Horas de Misas los Domingos:
8 a. m.; 10 a. m.; 8 p. m.
Bautismos despues de la misa
de las 10 a. m.

Jehovah's Witnesses Church

317 Ave. I
Sunday: Public Bible Lecture,
Study, 4:15 p. m.
Tuesday: Congregation Bible
Study, 8 p. m.
Friday: Service Meeting, 7:30
p. m.; Theocratic Ministry.

Avenue Baptist Church

Rev. Clarence F. Powell,
Pastor
Sunday School is held at 9:45
a. m.; Worship Service at 11
a. m.; Training Union, 7 p. m.;
Evening Worship Service, 8 p.
m. Wednesday Evening Prayer
Service, 7:30 p. m.

Temple Baptist Church

Rev. Bill Ware, Pastor
Furthest Ave. and Ave. K
Sunday: Sunday School, 9:45
a. m.; Morning Worship, 11 a.
m.; Training Union, 6:30 p.
m.; Evening Worship, 7:30 p. m.
Tuesday: Beginner Sun-
beams, 9:30 a. m.; Primary
Sunbeams, Junior Girls Auxil-
iary, and Intermediate, Girls
Auxiliary, 4 p. m.
Wednesday: Prayer Meeting,
7:30 a. m.; Choir Rehearsal,
8:15 p. m.

Templo el Calvario Asamblea de Dios

Pastor, Martin Mosquiz
Bien venidos.
Calle Ave. H & 13th.
Los servicios durante la ser-
mana y el Domingo.
Como siguen: 7:30 de la noche
Martes, Jueves.
Domingo, 10 de la manana,
escuela dominical, a las 11:30
predicacion.

St. Thomas Episcopal Church

Rev. Joel C. Treadwell, Vicar
Harrison Highway
Vicarage, 115 Elm Street.
Sunday: Holy Communion, 8
a. m.; Sunday School, 10 a. m.;
Morning Prayer and Sermon, 11
a. m.; Youth Fellowship, 7 p. m.
Wednesday: Holy Communion,
10 a. m.
The Bishop's Committee
meets the first Sunday of each
month immediately following
morning worship.
Women's Day Guild meets the
second Tuesday of each month
at 2 p. m. at the church.
Women's Night Guild meets
the second Thursday of each
month at 7:30 p. m. at the
church.

Iglesia Metodista San Pablo

225 Kibbe Street
Rev. Gilbert Diaz
Pastor
Los Servicios de nuestra nue-
va Iglesia. Seran de la Sigu-
iente manera los Domingos y los
dias de la semana, Escuela Do-
minical, a las 10 a. m.; Ser-
vicio de Adoracion, a las 11 a.
m.; Domingo en la noche Pre-
dicacion 7 p. m.; Los jueves
servicio de oracion 7 p. m.

The Church Of God In Christ

Rev. Calvin Hodge, Pastor
115 West Norton
Sunday School 9:45 a. m.;
Morning Worship 11 a. m.; Even-
ing Worship 8 p. m.
Monday, Bible Band meets 7
p. m.
Wednesday, Prayer Meeting
8 p. m.

(Continued on Page 7)

CHURCH...

(Continued from page 6)

Westway Baptist Church

Rev. Kenneth Lowry, Pastor
Sunday School is held at 10 a. m. with Church Services following at 11 a. m. Training Union is held at 7:00 p. m. and Evening Services on Sunday begin at 8:00 p. m.
The Wednesday night Prayer Meeting in the Church is held at 7:30 p. m.

Mt. Sinai Baptist Church

302 Knight St.
Sunday Services are Sunday School, 10 a. m.; Morning Worship Services, 11 a. m.; Evening Worship Services, 7:30 p. m.
Mid-week Prayer Service is held at 7:45 p. m. Wednesday, Choir Rehearsal is held at 8 p. m. on Thursday. A teachers Meeting is held at 7 p. m. on Friday.

First Presbyterian Church

616 Lee Street
Rev. Russell Wingert, Pastor
Sunday School is held each Sunday at 9:45 a. m. followed by worship service at 11 a. m. Morning Devotional at 9 a. m. Tuesday.
Choir Rehearsal, 8 p. m. Wednesday. Prayer meeting Friday at 7:30 p. m.

Church Of Jesus Christ of Latter Day Saints

(Mormon)
EM 4-1905
The Hereford Church meets in Gilliland Funeral Home, Sunday School, 10 a. m. Sunday, Sacrament Meeting, 11 a. m. Sunday.

Church Of God

8 and 13th Street
Rev. W. A. Gray
Sunday School will begin at 10 a. m. Worship service is at 11 a. m. Sunday evening worship begins at 7:30 p. m.
Wednesday - Prayer Service, 7:30 p. m.
Friday - Young People's Endeavor, 7:30 p. m.
"Bring your burden and carry away a smile."
"The Church that is large enough to serve you and small enough to know you."
For transportation call EM 4-3809.

Assembly Of God Church

Union and Ave. G
Rev. V. W. Marcocci, Pastor
Sunday School is held at 9:45 a. m. Morning worship service convenes at 11 a. m.
C. A. service begins at 7 p. m. Junior C. A.'s meet at 6 p. m. and worship service begins at 8 p. m. each Sunday evening.
Prayer meeting and Bible Study will be held Wednesday at 8 p. m.

First Baptist Church

Rev. B. L. Davis, Pastor
5th and Main Streets
Sunday: Sunday School, 9:45 a. m.; Training Union, 10:55 a. m.; Morning Worship, 10:55 a. m.; Evening Worship, 6:55 p. m.
Wednesday: Sunday School teachers and officers meeting, 7 p. m.; Mid-Week Prayer Service, 7:45 p. m.; Church Choir rehearsal, 8:30 p. m.
Young GA's, Intermediate GA's, Young Women's Auxiliary Crusader RA's and Pioneer RA's meet at 7 p. m. WMS visitation, first Wednesday, 9:30 a. m.; WMS luncheon and business meeting, second Wednesday, 12 noon; WMU circle meetings, fourth Wednesday, 9:30 a. m. or 3 p. m. WMU night circle meeting, second Thursday, 4 p. m.
Nursery is provided for all church-wide activities.
Sunday morning worship services broadcast over KPAN.
Listen to the "Baptist Hour" at 8 a. m. Sunday over KPAN.

First Christian Church

Rev. Eugene Briak, Pastor
West Park Avenue
Sunday School is held at 9:30 a. m. Worship service will begin at 10:50 a. m.
Chi - Rho and CYF meets at 6 p. m. Sundays and vesper services are at 7 p. m.
Functional Departments first Wednesday at 8 p. m.
General Church Board, second Wednesday at 8 p. m.

Wesley Methodist Church

410 Irving
Rev. Cleby Patterson, Pastor
Sunday School, 9:45 a. m.; Sunday Morning Worship, 10:55 a. m.; Sunday Evening Worship, 5:30 p. m.; MYF, 6:30 p. m.; Primary Fellowship, 6:30 p. m. Choir Rehearsal, 6:30 p. m.
Bible Study: Wednesdays, 7:30 p. m.; W S C S 2nd and 4th Mondays, 3:00 p. m.; Methodist Men, 1st Saturdays, 6:30 a. m.
Commission on Membership and Evangelism: 4th Mondays, 7:30 p. m.
Commission on Education, last Thursday each month, 7:30 p. m.
Official Board, 1st Monday, 7:30 p. m.
Sunday, January 26: The Rev. Alvin, a former pastor, will be at Wesley to preach both morning and evening.
Saturday, February 1: The choir will have a party at the home of Mrs. Merlin Kaul for sandwiches, pie and singing.

Seventh Day Adventist Church

West Park Addition
ELDER JAMES MEADE, PASTOR
Sunday School is held at 10 a. m. each Sunday followed by Worship Services at 11 a. m. Training Union is held at 6:30 p. m. Sunday and Evening Worship Services begin at 7:30 p. m. On Wednesday, a Prayer Service is held at 8 p. m.
Lesson Aim: To show that in the deliverance of Israel from Egypt, and in the form of worship established for the chosen people, God was setting forth in type and symbol the great fact of final redemption through the Messiah.
1. The Great I Am. Ex. 3: 1-15 John 8:58.
2. The Passover Lamb. Ex. 12 3-13; John 1:29
3. The Tabernacle. Ex. 25: 8-9; Heb. 9:24.
4. The Ark of the Mercy Seat. Ex. 25: 10-22; Rev. 11:19; John 8:12
Services: Sabbath School, 2:45 p. m. Saturday; Worship Services, 4 p. m., Saturday.

Frio Baptist Church

Rev. G. W. Fine, Pastor
Sunday School is held at 10 a. m. each Sunday followed by Worship Services at 11 a. m. Training Union is held at 6:30 p. m. Sunday and Evening Worship Services begin at 7:30 p. m. On Wednesday, a Prayer Service is held at 8 p. m.

Church Of The Nazarene

Fourth and Jackson
Rev. Burl M. DeBord, Pastor
EM 4-1375
Sunday School is held at 10 a. m.; Worship Service at 11 a. m.; Junior and Youth Services at 6:15 p. m. Evening Service at 7 p. m.
Prayer meeting Wednesday will begin at 7 p. m.
The first Wednesday of each month a Missionary meeting is held at 7 p. m.

Past Matrons, Patrons Honored By Eastern Star

Past matrons and past patrons night was observed by members of the Order of Eastern Star Jan. 14 at the Masonic Temple. Past matrons present were Nell Culpepper, Belle Hromas, Myrtle Witherspoon, Vivian Major, Bessie Hill, Gladys Manjeot, Florence Fluit, Argen Draper, Catherine Moore, and Juanita Hershey. Past patrons present were W. C. Hromas, H. L. Hershey, and Norman Moore.
During the business meeting, conducted by Dorothy Noland, worthy matron, plans were made for Masonic Night Feb. 22. Two girls from Masonic Home, Dallas, will be guests for the evening.
Refreshments were served in the dining room by Rose Marie Robinson, Virginia Yandell, Lee Parris, and Wanda Jones to 32 members and one guest, Velma M. Sanders, Coyle Chapter 488, Coyle, Okla. Her home is in Edmond, Okla.

Final Rites For Hugh Bookout Held Monday

Funeral services for Hugh Bookout, 58, were conducted Monday at 2 p. m. in First Methodist Church by the Rev. Herschel Thurston, pastor. Mr. Bookout died Sunday morning in Deaf Smith County Hospital after a long illness.
A resident of Hereford since 1939, he was in the insurance business and a member of the Methodist Church. He was born, Dec. 22, 1905, in Sherman and married Lucille Williams Feb. 4, 1928, in Dalhart.
Survivors include: his wife, 511 Schley; two sons, Don Bookout, Tulla, and Norman Bookout, stationed at Fort Hood with the United States Army; two brothers, John Bookout and Barrett Bookout, both of Hartley; a sister, Minerva Gay, Portersville, Calif., and four grandchildren.
Burial was in Rest Lawn Cemetery under the direction of Gilliland Funeral Home.

SUNSET FOOD CENTER

We Give Frontier Stamps
Double Frontier Stamps on Wed.

ABSOLUTELY THE BEST AND FRESHEST PRODUCE YOU'LL FIND ANYWHERE!!!!

RADISHES	OR GREEN ONIONS	2 BUN.	5c
AVOCADOS	EACH		10c
BELL PEPPERS	OR Cucumbers	1/2	12c
POTATOES	RUSSETS	20 LBS.	69c

FARM FRESH PRODUCE

EGGS	Grade A Large	Doz.	49c
ICE CREAM	Sealtest	1/2 Gal.	59c
SODA POP	King Size Reg. Size	6 Btl. Ctn.	39c
BISCUITS	Borden's		13c

ROUND STEAK	U.S. GOOD	LB.	89c
CLUB STEAK	U.S. GOOD	LB.	69c
SIRLOIN STEAK	U.S. GOOD	LB.	69c
PORK SAUSAGE	WE MAKE 'EM	2	89c
HAMS	WHOLE OR SHANK HALF	LB.	45c
HAMS	BUTT HALF	LB.	49c

300 to 225 Pound Ave

1/2 Beef	45c
U.S. GOOD	
400 to 115 Pound Ave	
Hindquarters	55c

FREEZER PACK

7 lbs. STEAK	
7 lbs. ROAST	
7 lbs. HAMBURGER	
4 lbs. SHORT RIBS	
	\$12.95

ATTENTION BEET FARMERS!

See A Field Demonstration

MONDAY, JANUARY 27th

1:30 P. M.


of the outstanding

K-C BED SHAPER & SLED

Pictured at right is the 2-row K-C combination sled shaper & cultivator combined with a precision type planter attachment. With this equipment you form the seed bed, and plan all in one operation. One may with one tractor does the work of three men & two tractors.

Such an application is unsurpassed in planting lettuce, carrots, broccoli, onions, beets and all similar small seed crops.

The 4-row and 6-row K-C Bed Shaper will be demonstrated during this field day.



Where? Austin Rose Jr. Farm on Harrison Highway!

Due West of South Side of Cemetery

For Further Information Contact Austin Rose, Jr. or Bill Davis or See on Display at

DAVIS IMPLEMENT CO.

144 W. Second Phone EM 4-2811

Play
OUR NEW
GAME



BIG-DO

(DOUGH)

FREE! FREE!

HUNDREDS OF DOLLARS WILL BE GIVEN AWAY

- ★ Game Number Eight - Gray Border
- ★ Each Game Lasts Approximately One Week
- ★ Winner of each game receives \$100 CASH
- ★ Only One Grand Prize Per Family

GET YOUR FREE "BIG-DO" CARD *Today*
NO OBLIGATION-NO PURCHASE REQUIRED
GET COMPLETE DETAILS AT **COOPER'S**

Kraft Salad Dressing

KLEENEX

600 Ct. Box
FACIAL
TISSUE

3 FOR \$1

MIRACLE WHIP

49¢

SOUPS

Campbells
Meat Base
Mix or Match

6 FOR \$1

PIES

36 Oz.
Johnson
Frozen
Apple
Peach
Cherry

59¢ **FLOUR**

Gladiola
10 Lb. Bag

89¢

AF Tender Aged Beef

CHUCK ROAST

USDA
GRADED

Lb. **49¢**



Mrs. G. T. Moody



Mrs. B. D. Hutson



Mrs. Cecilia Vasek Jr.



Mrs. Guy Lawrence



Mrs. Don Heddens



Mrs. George Tiefel



Kenneth Kelly

These 7 People
Have Won \$100
Each Playing
Cooper's Big-Do.
It's Easy — Its Fun
There's an Empty
Spot Waiting for You.

BANANAS

Golden
Ripe

2 FOR 25¢

Pears

Washington D'Anjou

Lb. 15¢

Romaine Lettuce

Bunch 19¢

- Arm Roast USDA Graded Lb. 65¢
- Longhorn Cheese Lb. 49¢
- Ground Beef Fresh Lean Lb. 39¢
- Cubed Steak No Bone — No Waste Lb. 98¢

Rosedale Cut — 303 Green Beans 3 for 49¢	300 Can with Beans Austex Chili 3 for \$1
Patlo Frozen — 24 Oz. Beef Enchiladas 59¢	Color Fast — Ovenware Chili Bowls Reg. 39¢ 3 for \$1
Anacin Tablet 100's Reg. \$1.25 98¢	28 Oz. Liquid Mr. Clean 59¢
New Blue Cheer Gt. Box 75¢	Ivory Soap Personal Size 4 for 25¢

Recipe — Tall Can Salmon 59¢	Alcoa Aluminum Foil 25' Roll 29¢	Maryland Club Coffee Lb. Can 69¢
Duncan Hines Brownie Mix Box 39¢	Cherry — Raspberry — Orange — Lemon — Lime — Strawberry Jello 4 for 29¢	Comstock Pie Apples No. 2 Can 2 for 49¢
HAWAIIAN Punch 46 Oz. Can 3 for \$1	Hunts — No. 300 Can Tomato Juice 3 for 29¢	Van Camp — 300 Can Pork and Beans 8 for \$1

JEWELRY

Priced as Marked
All Sales Final

1/2 PRICE

**CLOSED
SUNDAYS**

**OPEN
MON. - SAT.
Til' 9 pm.**

COOPER'S