

WEATHER		
	Moisture	High
Sunday	61	25
Monday	64	30
Tuesday	62	32
Wednesday	T	25
Moisture this month: .01		
Moisture this year: 1.66		
Moisture last year: 1.24		

# The Hereford Brand

16 pages

SINCE 1901

Sixty-two Years Of Service

Published Every Thursday

Our Slogan: "More People — More Farms"

63RD YEAR — NO. 10

HEREFORD, TEXAS, 79045, THURSDAY, MARCH 5, 1964

PRICE 10c PER COPY

## City Approves Record Budget

### Around Town

Hereford High School choir will present a "free" program in Senior High School auditorium Friday night under direction of Don Moore. It was announced today. All four of the school choirs are to appear, and the Madrigal singers. Also appearing will be several soloists, the director said.

Church of Christ on Park Avenue will conduct a series of discourses on Revelations beginning Saturday night and running through Sunday, March 15. The sessions will be led by P. C. Key, will start at 7:30 p. m. and will be open to the public. Key is a former associate professor at Texas A&M.

Hereford Band Aides will meet at 7:30 tonight in the choir room at senior high school. It was announced Thursday. All band parents are urged to attend when the trip to the Fair, Okla. band festival will be discussed.

Hereford Lions club has scheduled its annual pancake supper for Friday, March 20. It was announced Wednesday by Charles Hoover, chairman. The supper, with Aunt Jemima pancakes and sausage, will be served for 75 cents per person, and children under school age will be fed free. Serving hours are from 5 until 8 p. m.

Aikman P. T. O. will meet tonight in the school auditorium to elect officers for next year. Helen Langley, P. T. O. president and D. C. Martin, principal, announced Thursday. After the meeting, the school plans open house as part of Texas Education week. Central School also is holding open house tonight.

Hale Center Chapter of the Myasthenia Gravis Foundation is seeking to locate persons suffering from this disease. W. E. Swenson, president of the Northwest Texas chapter, said Wednesday. They are asked to attend a clinic for MG supporters at St. Anthony's Hospital in Amarillo, March 10 from 9:30 a. m. until 4:30 p. m.

Elmer Combs of Stephens-Hudson Motor Co., Hereford, will be presented Ford Motor Company's 300-500 club award at a banquet in the Skirvin Tower. (Continued on page 2)



REGISTRATION — Mr. and Mrs. Le Grand Morton and Gary are signing up for the parents' visitation night at Northwest Elementary Monday night as one of the school's teachers looks on. Approximately 500 persons visited the school during the open house Monday evening. (Brand Staff Photo)

### City Spreads; 85 Additional Acres Annexed To Hereford

Although the most important portion of the meeting of the city commissioners Monday evening was the acceptance of the proposed budget for 1964-1965, several items of business were transacted which were very important and can have a large outcome on the accepted budget.

More than 85 acres were annexed into the city at the monthly meeting which puts a strain on the already overburdened water and sewer department.

The portions annexed were the portion Addition in the Northeast portion of the city and Block 6 of the Westhaven Addition, which is in the west portion of the city. These areas of annexation will have to be supplied with water and sewer lines in areas that they are not already installed or are not adequate.

The Whiteface Aviation contract was tabled until the next meeting following a request by Commissioner Bill Howard. During the previous year the city has been operating under a proposed contract with Olin

Paris to operate the airport and the city shall receive 10 percent of the gross business conducted by the airport.

### Deadline Near, No Additional Candidates File

From all indications, four men will be seeking two school board positions in April 4 elections, a check of the tax assessors' office at noon Wednesday revealed. Candidates had only until 5 p. m. Wednesday in which to file with the school tax office.

No additional city councilmen candidates had filed Wednesday with the deadline only three days away. Candidates for city posts must file by 5 p. m. Saturday, March 7, for the city election, slated for Tuesday, April 6.

Only one of two board incumbents had filed for re-election; Labry Ballard has filed again. (Continued on page 2)

Paris told the commission that he felt he could continue the operation of the airport under a proposed contract for another year, but that it would. (Continued on page 2)

### 'Dry' Snow Adds Moisture Trace

Hereford got a smattering of "dry" snow Tuesday night which added .01 inches of moisture to the season's total of 1.66 as compared with 1.24 at this same time last year. It was the fifth snow of the winter for Hereford, if the Tuesday night all could be considered a snow.

The flakes were small and were only a remnant of New Mexico snows. A predicted "two to three inches" of snow failed to materialize throughout the Panhandle, and temperatures which had been expected to skid into the teens dropped no lower than 25 here. Fair skies Wednesday chased away the snow.

### Board Completes Plans For 'Citizens' Meeting

Hereford school board, in a called session Tuesday morning, made final plans for its "citizens committee" meeting at 7:30 p. m. March 12 to discuss housing problems which Hereford schools face, a problem which may become acute by next autumn.

The meeting is to be held in the junior-senior cafeteria when Ivan Block, vice-president of the board, will serve as master of ceremonies for the initial meeting.

Superintendent Paul Stevens said every civic club and other organizations in Hereford have been asked to send representatives to the meeting to make up the "citizens committee" to study the school housing problem. Stevens said the board expects

the committee to be made up of some 100 persons from all walks of life, and will function in the capacity of an advisory committee after the problem has been laid before them.

The superintendent said the board will go into detail to explain the critical housing situation, and will outline the school's needs. The committee will study the report which the board will make and a "month or so later will meet with the board again to lay their recommendations before the group."

From these citizens' representatives, the board will make its final report with recommendations for a bond issue or whatever other means is necessary to relieve the school housing situation.

### Hereford Play Programs Open To All Groups

Hereford has no race problems in recreation programs, it was announced Wednesday following a meeting Tuesday night of the Human Relations Committee of the Deaf Smith County Chamber of Commerce.

The committee, which is made up of men and women from all races, reviewed the recreation program in Hereford, especially for youth, and came up with the conclusion that all facilities are available to all boys and girls regardless of race or color, Dodson said.

"The main problem rests not in restrictions or discrimination against races or colors," Dodson said, "but rather in the lack of participation by minority groups in the recreation program."

He said the committee discovered that such programs as Scouting and boys' baseball programs are open to all youth in the city, but that some groups fail to participate for one reason or another.

Dodson said the committee was told that some groups are prejudiced against such programs as Scouting, holding the erroneous belief that Scouting is of a military nature and leads simply to army service.

The committee will make efforts this summer especially to interest all youth, regardless of color or race, in the various recreational projects.

for 3500 to 3600 pupils before we would need further expansion."

However, the superintendent explained, "we are already at that point, a good two to three years ahead of schedule, and with many new families due to move into the district this autumn, our situation will become acute. We hope we don't have to go back to teaching in churches in order to accommodate our increased load."

He said the high school facilities were engineered in the 1962 expansion program to take care of 1000 pupils, but enrollment has already reached the 820 mark, and by September 1965, the mark will reach 1100 pupils if the rate of increase continues.

He pointed to the opening next autumn of the Holly Sugar plant and other industries planned as certain to boost enrollment to an all-time figure. "I believe the additional farm workers who will come here to handle the sugar beet crops will bring about our greatest school enrollment increase," the superintendent concluded.

The program is being run in much the same manner as in 1962 which resulted in a \$775,000 building project for new classrooms and shops. At that time, the board had expected the expanded facilities to be sufficient for three to five years, but already every available inch of space has been pressed into use after school enrollment reached an all-time high this year.

The expansion program of 1962 provided for 17 new elementary classrooms at Northwest elementary and for 12 classrooms in senior high school. The bond issue also provided for a language laboratory and girls' physical education facilities, along with a greatly expanded shop buildings.

Old temporary wooden shop buildings were replaced with permanent buildings which more than doubled the housing for shops. Power mechanics, electricity, metal work and an enlarged agriculture laboratory were also added.

At that time, Stevens explained, enrollment was only 2600, we figured we would have room

### Walcott School Open House Set

Walcott Schools northwest of Hereford, will conclude Texas Public School Week with a grand opening Sunday afternoon of its brand-new combination gymnasium-auditorium, it was announced Thursday.

The public is invited to attend and to view the new structure, one of the finest buildings of its sort in this area.

Special programs are being planned for the open house.

### New Additions Increase Cost Of Operation

The Hereford City Commission met for over an hour Monday evening and voted unanimously to approve the largest budget for a year ever submitted in the city of Hereford.

The budget totaled \$831,917 and was approximately \$230,000 over the previous year's budget.

Mayor Roy Cowsett presided over the commission meeting which was attended by the local B&PW Club and several interested persons. City Commissioners attending the meeting were W. L. Davis, Jr., Gid Brown, W. J. Howard and Dale Tinnin. City Attorney Earnest Langley and City Manager Dudley Bayne also attended.

The accepted budget will be in effect from May 1, 1964 to May 1, 1965. "At the rate the city is growing, even with the largest budget ever submitted being accepted, it will very possibly stretch this budget very thin and may exceed the budget," Bayne said.

Bayne pointed out at the meeting that during the year of 1963 approximately 163 acres were annexed into the city, which seemed like a very large portion for one single year, but during the first two months of 1964, more than 336 acres were annexed into the city.

At this rate of annexation, and many portions of the outlying areas awaiting annexation, it could be a definite strain on the budget by supplying water and sewer lines for these annexed areas.

Bayne gave a thorough breakdown of the budget to the commissioners telling what the proposed budget for each department was in 1963-1964 and what was actually spent for that year. He then told the estimated budget for each department for 1964-1965.

The largest increase in the budget over the previous year was listed under the water and sewer portion. In the previous budget \$166,490 was approved, while \$168,524 was the estimated amount spent in that budget. The new budget will allow for \$204,971 for this department, an increase of over \$38,000.

Another large increase came in the health department where \$50,963 was proposed in the previous budget and \$80,859 was spent. The 1964-1965 budget calls for \$70,406 in this budget.

The police department was up over \$16,600 due to the addition. (Continued on page 2)

## People-Loving Dr. Edwards Plans Again For Her Hospital

By Phil Duncan  
Just three short years ago on Jan. 4, 1961, Dr. Lena Edwards arrived in Hereford from Washington D. C. with a determined goal of building a clinic in the labor camp that would provide first-rate care for maternity patients who didn't have enough money for other medical facilities.

Today the 10-bed maternity ward is in operation with more than 134 children born there since its construction in August, 1961.

Now that Dr. Edwards has the fully-equipped maternity hospital and clinic in operation she recognizes the need for the remodeling and equipping of the outdated structure known as the Catholic Mission Clinic.

The plans for the remodeling of the clinic and hospital were sent to Austin last week and construction costs and equipment are expected to exceed more than \$12,000.

"All of the amount needed will have to come from contribution in the Hereford area as we have no funds from the maternity hospital to put into the new hospital. We have faith that the people of Hereford will get behind this project and show their concern for the underprivileged people as they have in the past," Dr. Edwards said.

hospital payment plan for low-income families such as the Latin-American migrant workers is a very urgent necessity for this community where the low-income families exist in large numbers," Dr. Edwards continued.

Dr. Edwards began her drive to collect money for the 10-bed hospital shortly after she arrived in Hereford. She began work by sending out 2,200 letters soliciting funds from which \$5,000 of the needed \$60,000 trickled in from Hereford and surrounding communities.

"At first things got off to a slow start and I began to wonder if my dream would ever be a reality, but the promise had been made to build the hospital and I knew it had to be completed."

"I went back East during the summer of '61 where an article appeared of the work I was doing and my friends in the East began to take up money to help build my hospital. Between the money I collected there and the money my children and myself donated I came back to Hereford with \$45,000 and a new inspiration to complete the hospital."

"The total of the \$60,000 was nearly reached as total contributions from Hereford and over the Panhandle climbed to \$17,000. Part of the local contributions came from fund-

raising programs among the Latin-Americans."

"Construction was then started on our two-story structure and in August of 1962 it was completed and dedicated as 'Our Lady of the Guadalupe Maternity Clinic.'"

There have been more than 275 admissions since the hospital was opened and 97 children were born in the hospital in 1963.

The hospital not only serves the Latin-American workers in the Labor Camp, but those who live in the surrounding areas. During the summer and harvest seasons it is estimated that more than 8,000 migrant workers are here in Hereford, while some 3,000 to 4,000 are permanent residents and more are expected during the coming harvest.

The need for funds to complete the hospital are desperately needed. Four graduate volunteer nurses are expected to come to the new clinic and medical ward this summer.

At present Dr. Edwards is assisted by Marie O'Conner, R. N., who is a retired Major in the Army Nurse Corp. Stella Gonzales also is a registered nurse who works at the hospital. Nurses aides are Consulla Costello and Matilda Coronado.

Miss O'Conner and Alma Paetold will reorganize the in and out patient clinics in the hospital.

At present both hospitals are licensed by the state for a 25-bed hospital, which includes 15 in the medical division and 10 in the maternity. "The people don't want anything free and it is not a charity hospital as believed by so many people. They pay for all services, but on a pro-rated basis that coincides with their income and size of their family. We have a set maternity fee of \$100 which includes: pre-natal care, delivery, five days in the hospital, post partum check-up and supervision of baby in a newly organized well-baby clinic for one year. This includes inoculations, immunization and monthly check-ups," Dr. Edwards continued.

"We feel we are doing a service for the people of Hereford as well as the definite service that is being contributed to the migrant workers. We hope that the local citizens will get behind this project and help us remodel this desperately needed hospital," she concluded.

The honors Dr. Edwards has been awarded are far too numerous to mention, some of which are national honors for which she received national recognition. Before coming to Hereford she was assistant professor of obstetrics and gynecology at Howard University in Washington. (Continued on Page 2)



PREPARING DELIVERY ROOM — Dr. Lena Edwards, right, is shown with her two registered Nurses, Marie O'Conner, left and Stella Gonzales preparing the delivery room in the Our Lady of Guadalupe Maternity clinic of the Labor Camp. Dr. Edwards solicited funds and donated her entire life savings for the construction of the hospital. At present more than \$12,000 are needed to remodel and furnish the 15-bed medical hospital adjoining the maternity hospital. (Brand Staff Photo)

### Budget...

(Continued from Page 1) of two more patrolmen and another police car. The accepted previous budget allowed for \$80,448 and \$82,804 was the estimated amount spent. The new budget accepted by the commissioners will allow for \$97,065 to be allotted to this department.

The largest cut in the new budget over the previous budget came in the street department. The allotment for this department in the new budget calls for \$83,990 while the budget for the previous year was \$109,995. However the estimated actual spent was \$95,654.

Bayne said the reason for the decrease was that there was one fewer employees in the department and much equipment was purchased in the previous year that will not have to be bought in the new year.

The fire department and the park department had minor cuts totaling more than \$7,000. Most of this decrease was accounted for the purchase of equipment in the previous year.

The airport and administrative portions were increased by less than \$9,000, most of which was accounted for by increases in salaries and equipment.

A copy of the budget was available to each commissioner and every expense in each department was itemized on the copy. This enabled the commissioners and visitors to see what departments the increase was in and where in that department the increase was.

In other business, the Denton Addition and Block 6 of the Westhaven were annexed into the city and several districts were rezoned, following the recommendation of the zoning commission.

All voting at the short meeting was unanimous and there was little discussion.

### Deadline...

(Continued from Page 1) but Tom Robinson had not tossed his hat into the ring up to noon Friday.

Three other candidates for board posts are Dr. H. A. Cavness, Denzil Pulliam and Raymond White.

In the city campaign, places to be filled are now held by Dale Tinnin and W. J. Howard, but up to noon Friday, Tinnin had not filed for re-election. Other candidates are Mike Justice, Gerald Hale and Lloyd D. Sharp for the position now held by Tinnin.

Howard has filed for re-election and will face two opponents — William R. (Bill) Dickson and Albert Maxwell.

Voting is expected to be heavy in both the school board and city council elections as indicated by a record number of poll tax receipts issued prior to the Feb. 1 deadline. A total of 3726 persons paid the \$1.75 poll tax fee entitling them to vote in all elections this year.

### City...

(Continued from Page 1) be impossible for him to continue management of the airport under the stipulation which provides the 10 per-cent profit for the city.

"This is a small but promising airport and I feel that in a few years it will be able to be on a profit-making basis, however at this time I feel that it would be impossible to operate under the proposed contract," Paris said.

City Manager Dudley Bayne emphasized that the airport is not costing the city anything and is a distinct advantage to the entire community.

Several requests for rezoning were voted on at the meeting with the commission unanimously accepting the decision of the zoning commission in each case.

The first petition for rezoning was from Lee Nora Simpson, 823 S. Texas. The commission voted unanimously to accept the decision of the zoning commission which voted unanimously to reject the proposed rezoning.

The commission voted to accept the decision of the zoning commission which concerned a petition by Durward Hamby, 213 W. Park, to re-zone to a commercial district two lots on Harrison Highway.

In a more disputed petition, the commission voted to accept the decision of the zoning commission to allow a lot at the corner of Avenue F and Grand to be rezoned for a trailer park. The zoning commission did not vote unanimously on this decision, but there was some reported dissent from a person living near the proposed trailer park.

The commission accepted a bid from Hereford Glass Co. for \$3,500 for windows on the second floor of the city hall. The windows are similar to those on the first floor and the bid was \$900 under the cost of the previously installed windows.

Also accepted by a unanimous decision was the equipment for sewer plant expansion. The low bid of the four bidding firms was \$58,400.

The commission also authorized the city manager to study a new plumbing code which would replace the outdated code with a modern one if adopted.

The city manager reported that the golf course has been on a paying basis ever since it was taken over by the city. Bayne said more than \$18,400 were collected in 1963 in green fees.

Following the transaction of the business, the council accepted the largest budget ever proposed in a unanimous decision following the reading.

Mayor Ray Cowser adjourned the meeting following the approval of the budget.

Read The Classifieds

### Around...

(Continued from page 1) er Hotel in Oklahoma City Saturday. He sold nearly \$400,000 worth of merchandise to qualify for the national honor.

Joe C. Land, airman apprentice, USN, and the son of Mr. and Mrs. C. W. Land, Star Route, Hereford, is participating in a United States-Nationalist Chinese amphibious exercise being conducted off the coast of Taiwan.

Harry Schultz, district judge here, is among 1500 who attended a three-day southwestern area meeting of the National Council of United Presbyterian Men in Wichita, Kan. recently. He served as chairman of one of the panels conducting "Talk-It-Over" sessions.

Jaycees are holding pre-election rallies at the Jaycee Hut on South Main Saturday night with all members and their wives invited.

Colby Conkright, Hereford, was re-elected as a vice-president of the Texas Hereford Association at their annual meeting in Fort Worth recently.

### Heated Contests Are Developing In Election

Heated races are developing in the annual Junior Chamber of Commerce officer elections.

An election rally will be held Saturday evening at the Jaycee Hut on S. Main at which time all of those nominated will make their campaign speeches and explain their platform to the voters.

Perhaps the most heated contest will be in the race for the presidency of the organization. Three members of the club are running for the office.

Bill Dufur, Bob Rott and Pat Ferguson are all seeking the presidency and have varied platforms to offer the organization.

Ralph Owens and Ray Fitzgerald are the nominees for the office of vice-president. Randall Edwards and Dale Wynn are seeking the office of treasurer, while Mike Wilson is unopposed for the office of secretary.

"The directors will also be unopposed as there are enough running to fill the positions," Wayne Fuller, president, said.

### PLEDGES SORORITY

Miss Audri Miller, freshman student at Texas Lutheran College, has been elected to Kappa Pi Gamma sorority. She was appointed chairman of pledge activities.



CAP IN AMARILLO — Hereford Composite Squadron of Civil Air Patrol went to Amarillo Sunday to visit the FAA White Service Station and control tower at the airport. They also visited the weather bureau. Here are part of the Hereford visitors in the control tower (top) and in the service station itself, watching aircraft being guided to a landing via radar. Wes Owen and Bill Thompson accompanied the youths to Amarillo. (Personal Photos)

### FOUND MASTALKA, TOO

RENO (AP) — Residents of a residential area awoke early one morning to the blaring of a police loudspeaker: "All residents get out of bed. Check your backyards. There is a burglary suspect in the area."

The sleepy homeowners grabbed flashlights, turned on porch lights and called out their dogs. Patrolman Floyd Mastaka said he was chased by two boxer dogs, climbed a fence and was confronted by a homeowner armed with a shotgun.

The suspect was found hiding in a car.

### Housewarming Honors Whites

Dinner guests Sunday, March 1, in the home of Mr. and Mrs. Hubert White, 331 McKinley, honored their host and hostess with a surprise housewarming party. Mr. and Mrs. White were married Nov. 1, 1963.

Relatives and friends present were Mr. and Mrs. Otis White, Bovina; Mr. and Mrs. Troy Schuder, Dimmitt; Mr. and Mrs. R. A. McKenzie and Bill, Bron-

## More Specific Soil Test Desirable For Local Needs

By W. F. "Bill" Bennett, Agronomist

Because of the large economic importance of nitrogen in this area, it would be highly desirable to have a more specific soil test to determine nitrogen needs. A large amount of research work has been done on soil test to determine nitrogen test.

Several types of nitrogen tests have been used to determine nitrogen needs of soils. The test that has been used for the longest period of time is the determination of organic matter. It measures the easily decomposable portion of the organic matter. This gives an indication of the nitrogen supplying power of the soil. To properly predict nitrogen needs this test has to be related to past cropping history, past fertilizer use, soil type and yield potential. Such a test will not measure recent applications of ammonium or nitrate nitrogen.

Tests have been developed which determine the nitrification rate of soils under ideal conditions. Such tests appear to work very well under some conditions, but are of less value in areas where decomposition takes place rapidly. Our state university laboratories have found that nitrification rate does not predict nitrogen needs in our soils any better than the organic matter test.

The determination of nitrate nitrogen at monthly intervals at different depths would be one way to determine nitrogen needs. You can quickly see, however, that labor in sampling and in laboratory work means that this method is not feasible. A single test on nitrates on a sur-

face sample can be misleading since nitrates fluctuate in the soil. During a dry period, nitrates may accumulate to 20 to 30 pounds in the surface. Following a rain or snow, nitrates will move downward, leaving only 2 to 3 pounds or less in the surface.

Since there is no "perfect" nitrogen test, how is the best way to determine nitrogen needs? My suggestion is to rely on a laboratory with a good reputation and good background. Nitrogen recommendations based on research in the area, organic matter level, previous cropping history, etc., and made by a competent agronomist should give you best results. Give the laboratory and the agronomist all of the information you can and he can give you sounder nitrogen recommendations.

### Look Who's New!

Mr. and Mrs. Charles Byrd Spradley are the parents of a daughter, Dana Dawn, born Feb. 28 at 10:29 p. m. She weighed 5 pounds and 10 ounces.

Mr. and Mrs. Jerald Everett Dickey are the parents of a daughter, Debbie Renee, born March 3, at 1:25 a. m. She weighed 6 pounds.

### Police Check Two Accidents

Accidents once again settled down to a slow pace as only two collisions were reported to city police this week.

The first accident occurred shortly after 9:41 a. m. Wednesday with vehicles driven by Thomas Littleton, Rt. 3 and Herbert Posey of Hereford.

Total damage to both vehicles was estimated at \$200 by Don Brush, investigating patrolman, who issued Littleton a ticket for failure to yield right of way. In a collision shortly after 11 a. m. Wednesday, two cars driven by Helen Line, 235 Ave. C and Earl R. Drager, Rt. 3 were in collision in an alley between Avenues E and F.

Watch For The OPENING OF S & R APPLIANCE 209 Miles

SAMMY LANE CUSTOM HOMES

**Mike Justice**  
Your Candidate for  
**CITY COMMISSION PLACE 4**  
Your Support Will Be Greatly Appreciated  
Pd. Pol. Adv.

**Podner, don't forget Tuesday MARCH 10th 27th Annual Meeting of Hereford Texas Federal Credit Union 7:30 — 9:00 High School Auditorium Mr. Paul Mullins, Dallas, to be Guest Speaker VALUABLE PRIZES 1964 Packard Bell TV and stand... and many others VISITORS WELCOME Hereford Texas Federal Credit Union Across the Street East of Courthouse — EM 4-1888**

**If your business is farming...**

**take a close look!**

The sample below is a new discovery in modern soil fertilization. We simply call it Prilled Sulphur.

Why is it round? Shape is the most important thing about this new product. Its size and shape is carefully controlled for proper application without dust.

Farmers throughout the country are realizing the amazing effect that applied elemental sulphur has on their soil.

The modern farmer knows that highly alkaline soils keep needed plant nutrients from his crops. Prilled Sulphur, containing 99.5% elemental sulphur, neutralizes alkaline soils and increases availability of those nutrients.

The prilled form will allow exact mixing with even and controlled distribution. Last but not least... its gradual breakdown has continuous and long lasting effects on your soil.

See your local dealer for complete information.

**NATIONAL SULPHUR**

Prilled Sulphur Developed and produced by National Sulphur

For Complete Information contact National Sulphur Company, Midland, Texas



By Melvin Young

The big federal income tax cut will take effect this week, with most wage earners going home with a little more money than before; but after looking over our bank balance, we have decided that it will take more than a tax cut to help.

Our problem, it seems, is spending more than we earn. That's before taxes, not after.

The idea behind the new tax law of course, is that the additional spending money allowed by the tax cut will spur the economy to greater heights; therefore creating an increase in the federal government. Something along the lines of "sell for less, but sell more" with the increased volume bringing in more profits. Which, on the surface, sounds pretty good, since many businesses operate on a "volume" basis and do quite well. On the other hand, few of them could operate under the "deficit" pattern set by our federal government.

Anyhow, we hope the deal works. If so, we might just slice off another ten percent and have prosperity running rampant.

Mrs. Herbert A. Duncan, 107 West 8th, called this week, wanting us to convey her thanks to the fire department for the fine job they did in saving her home. Mrs. Duncan thinks, and we'll agree, that Hereford has the finest volunteer fire department in the country. The boys extinguished the blaze in minutes, with a minimum of damage to the house.

And Ruby Lee Hickman, long time employee of the Texas Employment Commission office is now on the list of the unemployed. "It's international" says Mrs. Hickman. "I just want to rest for awhile."

And a well deserved rest it is too, for Mrs. Hickman has done an outstanding job of securing jobs for the unemployed, as well as filling positions needed by farmers and businessmen alike.

Hereford has at least two new businesses this week, with the Custom Floor Covering Company opening their doors for business on March 2, and S&R Appliances announcing an opening soon. The Custom Floor Covering Co. is owned by John and G. T. Moody and is located on Second St. behind Cave's 5 & 10c, while S&R Appliances will be located at 209 Miles Avenue. The appliance business will be owned by "Dub" Self and Ted Royal, with Self acting as manager.

Reuben Aasland, an uncle of Keith Jorde's, was in to report on the progress of their proposed addition in Northwest Hereford. Aasland is developing the section of land owned by Jorde, and adjoining the property of N. D. Bartlett north of the cemetery. They plan to get started sometime next week with the first houses, and will build according to the demand.

Present plans call for at least one street of higher-priced homes, with a minimum floor space of 2300 ft., while other streets will be in the medium price range.

The building boom continues, and apparently sale of the property is continuing right along with the construction. At least, most builders report sales at an all time high.

Watch For The  
OPENING OF  
S & R APPLIANCE  
209 Miles

SAMMY LANE  
CUSTOM HOMES

**"POOL YOUR NEEDS"**

- Home • Auto • Fire
- Casualty • Bonds
- Long Haul Trucks

We Represent  
Business Men's Assurance  
Life  
Health - Accident - Hospital  
Insurance

Pool Insurance Agency

Lloyd Pool  
618 W. Hwy. 60 EM 4-0758

We had thought perhaps the growth might level out for a while, but it seems to continue ever upward. And in spite of the number of new houses being constructed, rent property is still as scarce as hen's teeth. Of course, large 3 bedroom rent houses have always been hard to find, but now even apartments are at a premium.

However, with the number of houses now under construction, the situation should ease soon.

Don't forget the big open house this Sunday at Walcott School. The folks out Walcott way have gone to a great deal of trouble and expense to have the open house, and every one is invited to attend. Let's all go and make it a "big day" for the community.

Many a wife has helped her husband to the top of the ladder — then decided that the picture would look better on another wall.

### Season's First Relays Draw 13 HHS Youths

By Loretta Higgins  
Thirteen Hereford High School boys on the track team participated in the Comanche Relays at Ft. Stockton Saturday.

Although the boys did not place in the meet, Jesse Geron, track coach, said the boys did a very good job. He also said that it was a hard and rough meet.

The tasks the boys entered in were: high hurdles, low hurdles, sprint relay, mile relay, discus, high jump. They ran the 800-yd., 230-yd., 440-yd., 100-yd and the mile.

The boys that participated were: Donny Eiland, high hurdles and 440; Larry Duncan, low hurdles and 440; Kenny Justice, low hurdles and 100; Wynn Buck, 100 and 220; Elias Briones, 440; Steve Perrin, 880; Joe Don Edolmon, 880; J. Carter, 220; Manuel Pacheco, mile; Neal Leub, Discus; Robert Strange, high jump; and John Pool, high jump. Wynn Buck, J. Carter, Larry Duncan, Kenny Justice also entered in the sprint relay. Elias Briones, J. Carter, Larry Duncan, Steve Perrin also entered in the mile relay. One of the managers, George Connally, also attended the meet.

Denver City, Division II B & 2A, won with 64 points. Kermit, Division I 3 & 4A, won with 72 points.

Jesse Geron, who teaches at Stanton Junior High, is the High School track coach. James Williams is the assistant track coach.

### People...

(Continued from Page 1)

ton D. C. She is a diplomat of the American Board of Obstetrics and Gynecology, a Fellow of the International College of Surgeons and in 1955, was named Medical Woman of the Year by the New Jersey District of American Medical Women's Association.

Of her six children, one son and one daughter are physicians. Another daughter is a psychiatric social worker; another son is a project engineer and a third son is a business administration graduate. The fourth son is a Roman Catholic priest.

In February of 1963 Dr. Edwards was named Citizen of the Year for 1962 in Hereford. In accepting the award, Dr. Edwards pledged that she would do all she could to help make better citizens out of the migrant workers.

"My work here has just begun," she said quietly, but with determination. "I will work even harder to be worthy of this award. It is my belief that these people must be educated, in order to become good citizens of this community."

# ...whether March roars in... LIKE A LION ...and out like a LAMB (OR VICE VERSA!)

you save every month at...  
**PIGGLY WIGGLY!**

Only 3 More Days to Take Advantage  
of Shurfine \$ Values.

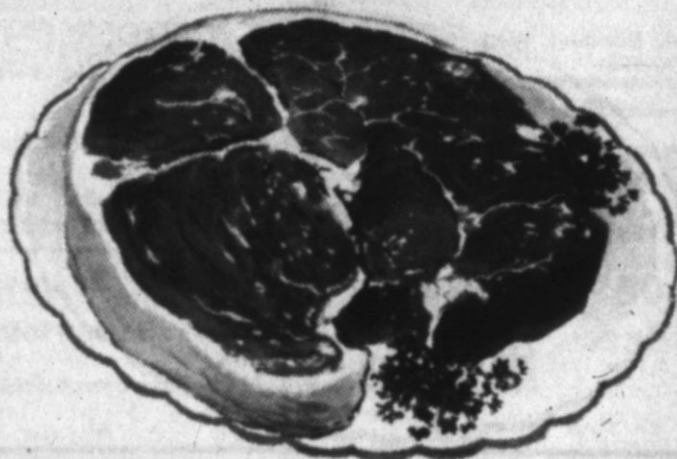
Margarine Shurfresh 1 Lb. **6 FOR \$1**

Catsup 14 Oz. Shurfine **6 FOR \$1**

## ROUND STEAK

U.S.D.A.  
Choice  
Lb.

**89¢**



T-Bone Steak U.S.D.A. Choice Lb. **89¢**

Sirloin Steak Club Steak U.S.D.A. Choice Lb. **79¢**

Wright's All Meat BOLOGNA Chunk Lb. **29¢**  
Sliced Lb. **39¢**

Ground Beef Fresh, Lean **3 1/2 \$1**

COFFEE Shurfine Reg. or Drip Lb. **63¢**

## SHORTENING

T. V. Dinners Swanson Frozen ea. **49¢**

Cottage Cheese Cloverlake 12 Oz. Ctn. **2 For 39¢**

Mellorine Cloverlake All Flavors 1/2 Gal. **39¢**

EGGS B. F. Cain Grade 'A' Large Doz. **45¢**

PIES Johnston's Big 34 Oz. Apple Peach Cherry **59¢**

Pork & Beans Can Camp's 300 Can **8 For \$1**

## GLASSWARE

7 1/2 oz. Old Fashion GLASS

Autumn Harvest Pattern

THIS WEEK  
Each Piece  
Only

**9¢**

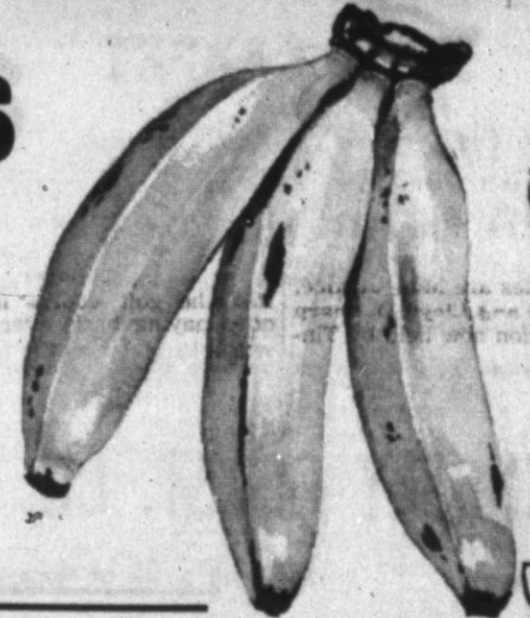
with each \$5.00 Purchase

Milk Shurfine Tall Cans **8 FOR \$1**

## Bananas

Lb.

**10¢**



Texas, 1-Lb. Pkgs. Carrots **2 FOR 19¢**

Pineapple Mexico Lb. **15¢**

Apples Golden Delicious Lb. **19¢**

Shurfine 3 Lb. Can **59¢**

### Shurfine \$ Values

- Shurfine Asparagus Sprs. All Gr. Cut-300... 4/\$1.00
- Shurfine Biscuits Sweet-Buttermilk 8 oz. 4/\$.29
- Shurfine Frozen Broccoli Spears 10 oz. 5/\$1.00
- Shurfine Cheese Spread 2 lbs. .69
- Shurfine Low Cal Pop Ass'd. Flav.-12oz... 6/\$.49
- Shurfine VP Corn Golden 12 oz. 7/\$1.00
- Energy Powdered Detergent 47 oz. .49
- Shurfine Flour 10 lb. Paper Bag. .69
- Shurfine Fruit Cocktail 303 4/\$1.00
- Shurfine Grape Juice 24 oz. 2/\$.79
- Shurfine Gr. Beans Cl. Bl. Lake 4-Sv. 303. 5/\$1.00
- Shurfine Frozen Limas Grn. Baby 10 oz. 5/\$1.00
- Shurfine Luncheon Meat 12 oz. 2/\$.79
- Shurfine Macaroni or Spaghetti Elbo 2 lbs. 2/\$.79
- Shurfine Noodles Med. Wide-Ex. Wide 12oz. 3/3 .69
- Shurfine Frozen Okra Whole Baby 10 oz. 5/\$1.00
- Shurfine Peaches YC Sli. or Hlvs. No. 2 1/2 4/\$1.00
- Shurfine Peanut Butter 18 oz. .49
- Shurfine Early Harvest Peas 303 5/\$1.00
- Shurfine Pickles Fr. Kosh. or Pl. Dill 48 oz. .49
- Shurfine Pork & Beans 300 9/\$1.00
- Shurfine Preserves Strawberry 18 oz. 2/\$.89
- Shurfine Salad Dressing Qt. .39
- Shurfine Spinach 303 7/\$1.00
- Soffin Toilet Tissue 4 Roll Pak 12 Rolls \$1.00
- Shurfine Tomato Juice 46 oz. 4/\$1.00
- Shurfine Chunk Style Tuna Flat Can 4/\$1.00
- Shurfine Frozen Mixed Vegetables 10 oz. 5/\$1.00
- Shurfine Vienna Sausage 4 oz. 5/\$1.00
- Shurfine Waffle Syrup 32 oz. 2/\$.79

# PIGGLY WIGGLY

VALUABLE S & H GREEN STAMPS WITH EVERY PURCHASE

# Phone EM 4-2030 WANT ADS Phone EM 4-2030

**GO GO GO**

For What ????

**Hereford Rotary Club**

meets every Monday at 12:05  
**RANEY'S RESTAURANT**

**Lions Club** meets each Wednesday, 12 Noon  
**Hotel Jim Hill**

**Hereford Radiator**

DEPENDABLE SERVICE  
120 Schley EM4 - 3355

**GLASS IS OUR BUSINESS**  
Call Us For All Your Glass Needs  
**HEREFORD GLASS CO.**  
1302 Park Ave. INC. EM 4-2652

**CALVES** ANGUS-HOLSTEIN CROSSBREDS  
Thrifty fast-growing Holstein bull calves for feeding. The good steer kind. Holstein and Guernsey heifer calves from Wisconsin's better farms. All calves 2 to 12 weeks old delivered on your approval. We guarantee these calves to be healthy upon arrival. Call or write for prices. Buy with confidence from:  
**Nolan Livestock Co., Bonduel, Wis.**  
Phone 758-4741

**EAGLE NEST HOMES**  
Builders & Developers  
**Eagle Nest Construction**  
HEREFORD  
230 N. 25 Mile Ave. EM 4-3722

- Homes Custom Built on Your Lot or Ours
- Maximum Conventional Loans Arranged
- Commercial Buildings
- Turn Key Remodeling
- Also will build to suit tenant on long term lease.

home planning development company IS NOW IN HEREFORD

Model-246 elm

call: ed humphreys em 4-2667

**WE OFFER:**  
Complete Financing Services  
Complete Architects Service  
True Quality for Your Dollar Value  
Guaranteed Construction

Please Call Today: We Will Enjoy Being of Service to You. There is no Charge For Our Customer Planning Service.

**The Hereford Brand TEXAS PRESS ASSOCIATION**

Member 1964

Our Slogan: "More People—More Farms"  
Member National Editorial Assn.  
Member Associated Press  
Hereford, Deaf Smith County, Texas—Phone EM 4-2030  
Published Every Thursday at 130 W. Fourth

Entered as second-class matter at the Post Office in Hereford, Texas under the act of March 30, 1879 Second - Class postage paid at Hereford, Texas. Any erroneous reflection upon the character, standing or reputation of any person, firm or corporation, which may appear in the columns of this paper, will be gladly corrected upon due notice of same being given to the editor personally at the office. Subscription Rates: Zone 1, \$2.50 per year; Zone 2 and above, \$3.50 per year. With the Sunday Brand, both papers, Zone 1, \$4.95 per year; Zone 2, \$6.15 per year. Carrier delivery, 60c per month. Single copies, 10c each.

Classified advertising rates: 6c per word first insertion (60c minimum); 4c per word additional insertion.

**JAMES M. GILLENTE** Publisher  
**MELVIN YOUNG** Managing Editor  
**RAY MARTIN** News Editor  
**BILL PENN** Advertising Manager  
**LEE BROWN** Mech. Supt.

**SERVICE ON ALL Washers & Dryers**  
**SUNSET APPLIANCE**  
906 Lee EM4-3472

Watch For The OPENING OF **S & R APPLIANCE**  
209 Miles

**HEREFORD BAKERY**  
519 Park Ave. EM4-0177  
HOME OF Deaf Smith County Bread and Pastries

**MATTRESSES**

- New
- Renovated
- Remanufactured

FREE PICKUP & DELIVERY  
Your Mattress Remade \$14.90  
New Springs \$24.90  
Call or Write **ANDERSON**  
Mattress & Upholstering Co.  
Box 802 — 205 N. Tyler Amarillo DR3 -8313

**Three Bedroom 1 1/2 Bath House**  
under construction at **423 Ave. C**  
**Excel Homes**  
of Hereford EM 4-0090  
or Canyon OL 5-4209

Colorado Rod-Weeders PTO or hydraulic drive. Cisco Rod - Weeders with hydraulic drive. Dempster Planters, Cultivators and Rotary Mows. Lilliston Shredders & Blades. See the new M-F Diesel tractors. We have several GOOD used Combines. SEE: **LESLEY MOTOR CO.**  
For the finest in farm machinery.  
West Hi-way 60 Phone EM 4-1600

**RENT A CAR**

BY DAY, WEEK or MONTH

**Campbell Pontiac**  
815 E. 1st EM 4-2283

**K** Kwanis Club Thurs. Noon IOOF Hall 207 E. Sixth

**STATED MEETINGS**  
Second Monday

**G** Thursday Night Floor Practice 7:30 P.M.  
Hereford A. F. & A. M. No. 849  
Troy Stambaugh, Sec. Bill Hutson W. M.

**CHARLIE BELL SELLS**  
Southwestern Life

**CUSTOM FEEDING**  
Growing - Finishing Rations  
**CHARLIE STONE**  
EM 4-2224

**SAMMY LANE**  
CUSTOM HOMES

**HILL'S TEXACO**  
FIRST & MILES EM 4-1823  
CONVENIENT TO DOWNTOWN

**Reliance HOMES**  
FOXWORTH GALBRAITH  
NO DOWN PAYMENT NO CLOSING COSTS

**SERVICE ON**  
Black & White & Color TELEVISION  
Any Make or Model  
**SUNSET APPLIANCE**  
906 Lee EM4-3472

FOR Gas Wash Grease Wheel Balancing Minor Repairs  
**BOYD'S HUBBLE SERVICE**  
EM 4-1110  
Hiway 60 & 385

**MEAT**  
Processed For Freezer - Also RETAIL SALES

**HACKER & JESKO**  
13158 Park Ave. EM4-3224

You've Never Seen Such Thorough Service  
**STOP IN SOON**  
Phillip "66" Products  
**EAST SIDE "66"**  
Rocky Stewart  
1303 E. 1st. EM 4-2644

**POLITICAL CALENDAR**  
Commissioner, Precinct 1  
Charley Sowell  
Earl Holt  
J. F. Martin  
Commissioner, Precinct 2  
J. T. Gulin  
Jim Monroe  
Bruce Coleman  
Sheriff  
Lawell R. Sharp  
Charles Skinner  
Tax Assessor-Collector  
Nell Miller  
District Attorney  
William (Bill) Hunter

**1. FOR SALE Miscellaneous**

FOR SALE: Antique Organ. Good shape. 801 Park Avenue. EM4-3723. B-1-10-10-2p

USED FURNITURE, household items, 801 Park Avenue. All day Saturday. B-1-10-10-1p

FOR SALE: Two, 8' overhead garage doors. Chrysler Industrial Well Motor. 12 gauge pump shotgun and 32 rifle. Phone EM4-3454. B-1-20-10-2c

**GENERATORS** and starters for cars and trucks. Hereford Wrecking Co. Phone EM 4-0580. T-1-12-18-tfc

**FEED OATS**  
Extra heavy Northern Oats. Will sell in bulk, pickup or semi-truck load.  
**CONTINENTAL GRAIN COMPANY**  
EM 4-2366 B-1-35-3c

MILLENNY supplies, knitting yarns, fabrics, quilt-tops, quilting supplies, art linens, needlepoint rugs, hooked rugs, supplies. Dan's of Canyon. B-1-18-35-8c

**FOR SALE**  
220' setting, 6" used pump. Excellent condition.  
150', 8" used Johnston pump. Excellent condition.  
260' setting used Layne pump. Very good condition.  
**BIG-T-PUMP COMPANY**  
B-1-35-tfc

**WASHERS . . . DRYERS**  
Remanufactured by factory trained mechanics. Automatics. Guaranteed A-1 condition.  
**BUY-RITE FURNITURE**  
North End of Main Street B-1-35-tfc

FOR SALE: 25 acres of carrots for livestock feed. Fenced, water, Man to care for stock. See Walter Leal, Nine miles north, four west, 1/2 north of Hereford. B-1-28-8tfc

**Johnson Outboard Motor or Arkansas Traveler Boat, or for a used boat or motor, see KINSEY - OSBORN MOTORS**  
142 MILES AVENUE B-1-26-TFC

**Chrysler - Plymouth AUTOMOBILES CHRYSLER IRRIGATION ENGINES**  
New & Used  
**MCCULLOUGH MOTOR CO.**  
Sales & Service  
345 East Highway 60 Phone EM 4-3150 B-1-43-TFC

**BIG RED BARN**  
We Buy - Sell - Trade for anything of value. Used Furniture, Appliances and Junk.  
EM 4-3552  
West Edge Of Hereford Highway 60 B-1-T-TFC

ALL TYPES ELECTRICAL WIRING PHONE EM 4-0910  
**BILL DRUMMOND**  
**BILL'S ELECTRIC**

FOR SALE: Dry land cane Bundles, Phone EM4-1724. B-1-10-34-tfc

**HAVE YOU TRIED???**  
The prompt, courteous and guaranteed service at **POOR BOY'S GARAGE**  
Bring us all your automotive troubles. Lawn mowers to tractors.  
Bill McIver — EM 4-3509  
Johnny McIver — EM 4-2130 EM 4-2799 B-1-11-Tfc

**ALFALFA HAY** See Charlie Holt 4 1/2 Miles West on Clovis Highway. EM 4-0402 or AV 9-4599. B-1-14-8-110p

**2. FOR SALE Farm Equipment**

**TOP QUALITY**  
Irrigation Dams as low as \$3.25  
**DAVIS IMPLEMENT**  
144 W 2nd EM 4-2811 B-2-18-tfc

**WE ARE DEALERS**  
for Peerless Grain Rollers and Feeding Equipment  
**DAVIS IMPLEMENT**  
144 W 2nd EM 4-2811 B-2-18-tfc

**3. FOR SALE Automobiles**

1958 Chevy Impala. Really good shape. Automatic, rolled and pleated. Real sharp. Call EM 4-0654. B-3-14-17-tfx

FOR SALE 1959 Ford Galaxie. air, power steering, etc. Priced for immediate sale. Call for see at Kerr Mobil Service on East Highway 60. B-3-24-10-3c

**MILBURN MOTOR COMPANY**  
We Pay Cash For Used Cars  
225 N. Sampson Phone EM 4-0077 B-3-33-TFC

FOR SALE: 1964 Chevy Impala. S.S. 425 HP, 4 speed, positraction. P.B. P.W. Call EM 4-1788. M. 28C yowdskn no

FOR SALE: 54 Chevy; Belair; Powerglide; \$225; EM 4-0799 after 7:00 p.m. B-3-10-31-tfx

**4. REAL ESTATE For Sale Or Trade**

**FOR SALE**  
239 Beach, immediate possession. 3 bedroom brick, carpeted, built-in range and oven. 1 1/2 tile baths, double garage, large kitchen with dining bar. \$950.00 down, no closing costs.  
**UNDER CONSTRUCTION, 504 Plains, 3 bedroom brick, living den, carpeted, fireplace, dishwasher, built-in range and oven. 1 1/2 baths, double garage, covered patio, fenced back yard, refrigerated air, corner lot. \$20,000.00. Only \$2,000 down. Move in about April 1. PAUL SCHRÖETER EM 4-1504 or EM 4-0035 B-4-10-tfc**

**BY OWNER**  
Three bedroom and study. Combination country kitchen, family room. 1 1/2 bath. Carpeted, drapes, wood burning fireplaces. Call EM 4-2079. B-4-10-tfc

**Homes For Sale**

We Trade for Equities  
**LINDSEY HOMES**  
Are MORE For The Money  
Builders of 24 homes this past year!  
**5 NEW HOMES**  
ON ELM ST.  
Move in in March for 10% down  
207 - 213 - 217 Elm  
**FREE CARPET**  
In FHA homes — 501 Nylon with 10 Year Warranty.  
211 Elm - 219 Elm - 136 Gum

We have several small homes we received on trade-ins. Low payments and no closing costs.

**LINDSEY CONST. CO.**  
124 Gough St. 1 Block South of Hospital  
Phones EM4-3841 or EM4-0912

Hallmark of Service

**MARK IV REALTORS**  
618 W. Hwy. 60 Em 4-2220

Don't Buy A New Home  
Until you compare the quality and outstanding feature available to you in an Award Home. Prices begin at \$12,500. FHA, GI or Conventional.

**TRADE**  
Your present house for a new AWARD HOME

**HOMES**

Large 2 bedroom brick. 829 Brevard. Low, low, down payment and terms to fit your budget. Call for details. H-26.

If you have always wanted a 2-story house, now is the time. Trade your present house for this 3 bedroom brick with 1 1/2 baths, carpets, built-ins, double garage. 602 Star. H-323

1600 sq. ft. for \$8000. Huge living room, 2 large rooms in basement. Good location. Payments \$76 a month. H-330.

More space for less money. Three bedrooms, 1 1/2 baths, carpets, central heat, double closets in every bedroom. Will trade. H-321.

**FARMS**

Quarter section, new brick house, 46 acres wheat, 96 acres milo, good 8" well. \$500 an acre, easy terms. F-27

970 acres near Burlington, Colorado with good water possibility. Better than 600 acres good level land. If you haven't heard the story of the possibilities in Burlington, come in and check this out. Price \$77,600. F-516

320 acres north of Black in Deaf Smith County. Two wells, good allotments. Call for details. F-35.

We have several small tracts close to town for suburban living. \$600 to \$1,000 an acre.

**EVENINGS & SUNDAYS**

Don Metcalf EM 4-1740 Oliver Strou - EM 4-2857  
Award Homes EM 4-1605 Francis Hardwick EM 4-2241

Buy With Confidence

**JUSTICE HOUSES**

Small tract of land located south of Hereford suitable for sub-dividing or just a large building site out of the city limits. \$750 down, balance monthly.

Nice three bedroom stucco located near downtown. Attached garage, backyard fence, \$600 down, \$85 monthly. Total price \$6500.

Very nice two bedroom brick with covered patio, built-in range, garage, carpet and fenced yard. Located in northwest Hereford. \$1500 down, \$79 per month.

Three bedrooms, one bath, large garage and finished storm cellar. Oversized lot. Clean as a pin. FHA financing available.

Panorama Homes, Inc., invites you to watch the construction of a three bedroom, 1 1/2 baths, den and double garage being built at 204 Aspen and also a three bedroom, bath and a half and single garage being built at 428 Western.

Bring us your listings.

**Justice Realtors**  
Corner Main and Hiway 60  
EM 4-1757 EM 4-2266 Box 711  
Gene Sngad Mike Justice  
EM 4-1420 Res. EM 4-0544  
Virgil Justice

Classifieds...

DEAN BINGHAM LAND COMPANY Farms - Ranches Loan Service 116 S. 25 Mile Ave. Phone EM 4-0410

FOUR BEDROOM, two bath house for sale by owner. Close to schools. EM4-2547. B-4-13-34-4p

FOR SALE 1520 acres, 3 farms, 8 wells. Good terms. B-4-15-TFC

FOR SALE OR TRADE 14 unit Motel, Hiways 287, 385 and 160. New 4 bedroom, 2 bath living quarters. Doing excellent business. Owner retiring. B-4-13-34-4p

R. F. WRIGHT Springfield, Colo., Baca Co. Phone 523-6991 B-4-34-4p

BY OWNER: Four bedroom brick. Best location. Phone EM 4-2079. B-4-10-33-TFC

FARMS 162 A., 150 cul., 1-8" well, good allot., irr. 1/2 sec. lease to go with sale. ONE GOOD SECTION, 3-8" wells, well located. Good allotments. \$415.00 per acre. Good terms. B-4-9-tfc

785 acres Sherman County. 725 cultivated, 632A allotments. 290 wheat, balance milo. In irrigation district. Test well privileges. Price \$160.00 acre. 29% down, balance 20 years 5%. Extra nice 640, 3-8" wells. Allotments, Deaf Smith Co. \$415.00, acre; 29% down. Have some 5, 10, 20 and 80 acre tracts near Hereford, some imp. B-4-9-tfc

HOMES 2-bedroom, frame, single garage, fenced yard and storage building, \$375.00 down. 3-bedroom frame, double garage, \$9,000.00 only \$500.00 down, buyer get loan. 3-bedroom brick with den, double garage, stove and oven, fenced yard, \$17,900.00, loan \$15,000.00. 3-bedroom brick, double garage, fenced yard, built in dishwasher, disposal unit, stove & oven, air condition, Price \$23,625.00, loan \$17,500.00. J. M. Hamby Real Estate 1/2 Mile South of Underpass on Highway 385 EM 4-3566 J. M. Hamby EM 4-2553 Durward Hamby EM 4-3466 Gerald Hamby EM 4-1534 Harold Hamby EM 4-3454 B-4-8-tfc

FARMS & RANCHES FOR SALE FINE 1/4 SECTION: Near Summerfield. All perfect clean level land in cult. Fully allotted. Fair improvements. Good 8" well on natural gas. 1/2 Min. Poss. Price and terms on request. 1/2 SECTION: NW Hereford. Nice 2 bed room home, 2 8" wells on Natl. gas. All good land in cult. Good allotments. Possession. Terms. Per acre \$395. GOOD SECTION: NW Hereford, all good land in cult. Good wheat and maize allotments. 3 8" wells on natl. gas. Rent goes this year. Possession next year. 29% down. Long time terms on Bal. Per A \$395. MANY OTHER LISTINGS: On farms and ranches, located throughout the Country. See us for your farm and ranch needs. Your listings wanted. WESSON REAL ESTATE South on 385 Hwy Phone EM 4-2428 Hereford, Texas B-4-9-tfc

Nice 1/4 close in, 21C, 97M, 28W, 1 well. Rented for 64. 29% down. Table top 1/4 west of Friona. 2-6" wells on nat. gas, 1 mile underground tile, 80 wheat, 50 milo, 12 cotton. \$425.00, 29% down. Almost choice 1/2 sec., 1/2 mile from pavement. Excellent water. 2-8" wells on nat. gas. 226A milo, 68A wheat, 35A cotton. All plowed and ready to go with full possession if sold soon. 29% down. Well imp. sec. stock farm with new 3 bedroom brick home, 1-6" well, nat. gas. 295 A. cult. 136A milo, 94A wheat. Full poss. \$265 A. 29% dn. Carthel Real Estate 206 N. 25 Mile Ave. Ph. EM 4-0944 Hereford, Texas B-4-35-3c

NICE 3 bedroom home located at 115 Ave. C. Completely redecorated. Large double garage, finished storm cellar, room for rental property in back. Full FHA financing. Contact Mike Justice, EM4-2266. B-4-30-35-3c

ACREAGE OR lot for sale: Will give terms Call EM4-1558 B-4-10-35-tfc

FOR SALE: To be moved. Small, ultra modern house. Beautifully designed, well built. Ideal for efficiency living or as rental property. Call EM4-0090. B-4-8-tfc.

ONE MILLION DOLLARS To lend on irrigated land in Deaf Smith, Castro and Parmer counties. For PRUDENTIAL America's Largest Farm Lender! SAM NUNNALLY EM 4-0555 EM 4-2814 LONE STAR AGENCY B-4-1-27P

JOHN HANCOCK FARM & RANCH LOANS JOHN HANCOCK is one of the oldest and largest farm & ranch lending agency in America. They have lots of money, and want to loan it. JOHN HANCOCK makes farm & ranch loans, anywhere, for any purpose. For buying land, for making improvements, and refinancing a burdened loan condition to a more liberal basis. JOHN HANCOCK makes free, prompt and liberal appraisals. No stocks to buy, no commission to pay. You get all your money. Terms to meet your requirements. Low int. rates. For the best farm and ranch loan available, see or call WESSON REAL ESTATE So. on 385 Hwy. Hereford, Texas Phone EM 4-2528 B-4-9-tfc

LONE STAR AGENCY 601 Main Street Two bedroom stucco, 2 baths, living room, kitchen, two car garage, fenced back yard. Close to downtown. \$16,275. \$14,000 GI 4 1/2 % loan. Three bedrooms, 3 full baths with ceramic tile, refrigerated air conditioning, wood burning fireplace, large and plentiful built-ins. 2380 sq. ft. on living area plus 380 sq. ft. back porch. Two car garage. This is a dream house. Two story brick veneer. Three bedrooms, 2 baths, two car garage. 1700 sq. ft. in living area. Refrigerated air conditioning. We have many other listings on good buys in dwellings. Call for a showing of these houses. LLOYD SHARP Lone Star Agency EM 4-0555 B-4-35-tfc

HOUSES TO BE MOVED HOUSES, sheds, barns, storage houses, rent houses, can be built by us and moved to your location. See us for prices. LINDSEY CONSTRUCTION CO. 124 Gough Street Tele EM 4-3841, Hereford B-4-34-35-tfc

NEW MEXICO RANCH 2190 deeded acres, 120 acres private lease. All grass land. 3 windmills, 5 earth ponds. 7 room modern home, basement. Barns and sheds, with large hayloft and stalls. Bus route to door, REA and butane heating. Located 24 miles SW of Clayton. 12 miles South on Highway 18, 12 miles west. New Farm to Market road now being constructed to within 4 miles of improvements. \$75.00 per deeded acre, \$1.00 per acre on private lease. Contact owner, Tammy W. Bates, Buyer's Route, Clayton, New Mexico. B-4-10-2p

FOR SALE OR TRADE BY OWNER 3 bedroom brick, single garage, cellar, fenced yard, close to downtown. Will trade on large late model trailer house, or 2 bedroom house. Phone EM 4-3454. B-4-10-tfc

FOR SALE BY OWNER Beautiful 3 bedroom house on Texas Street. 2700 square ft., 3 baths, fireplace. Carpeting throughout. Extraordinary closet space. Built-in dishwasher, blender, etc. Sprinkler system, large fenced back yard, central heat and refrigerated cooling. \$39,000.00 Phone EM 4-1655 or EM 4-2788 B-4-10-tfc

FOR SALE: 960 Acres. Irrigation 840 acres, irrigation. Good improvements. Phone 365-3611, Texline. B-4-13-10-4p

FOR SALE Large home in NW Hereford large lot with yard in. Almost 2100 square feet, plus two car garage. Built by owner. Not a development house if you are interested in a fine home, call EM 4-2849. B-4-4-TFC

FOR SALE ONE bedroom trailer and lot on Texas Street, between Norton and Higgins. See owner 9 miles east on highway 60 or write R. E. Curtinger Route 1. B-4-28-35-3c

MODERN 4 room house to be moved, Ted Irlbeck, Umbarger. GY9-2646. B-4-11-10-2p

FOR SALE BY OWNER: Three bedroom brick home. Extra good condition. Single garage. EM4-2033. B-4-14-10-2p

LOANS FARM & RANCH FAST SERVICE DUWARD HAMBY EM 4-3566 N.GHT - EM 4-3466 B-4-35-TFC

FOR RENT In Canyon: Nice large three room furnished apartments, water paid. \$45.00 to \$65.00 per month. Children and pets allowed. Call OL-5-3364 or inquire 2507 9th Ave., Canyon, Texas. B-5-28-9-6c

FOR RENT: two bedroom house with big basement. Call Bill Bradley. EM4-2610 or EM4-3330. B-5-14-8-tfc

FOR RENT: House in Summerfield. Call BR 6-4188 or AV 9-4123. B-5-10-9-TFC

ONE BEDROOM unfurnished apartment for rent. Nice. Carpeted. Available March 1st. Call EM 4-2488. B-5-13-9-TFC

3 ROOM FURNISHED apart-Bills paid. Call EM4-0508 after 5:00. B-5-10-10-tfc

APARTMENT: 510-C Roosevelt. Two bedrooms, furnished, refrigerated air, New. Sam Nunnally. EM4-0555, EM4-2814 or EM4-2580. B-5-14-10-tfc

TWO BEDROOM living room, kitchen combination. Carpeted drapes, refrigerator, electric stove. Water bill paid. Call EM4-3719 after 4:00 p.m. B-5-19-10-2p

THREE BEDROOM furnished house. 126 Emma Phone EM-4-3311. B-5-10-10-2c

THREE BEDROOM unfurnished house. Two miles out, near pavement. EM4-3033 B-5-10-10-2p

FOUR ROOM unfurnished house for rent to whites only. EM-4-2815. B-5-10-10-tfc

FURNISHED Apartment for rent. Palo Duro Apartments. 608 East Third. B-5-10-34-tfc

FOR RENT: Two bedroom furnished apartment for Latin Americans. Bills paid. Call EM4-0972 or EM4-0789. B-5-15-34-tfc

FOR RENT: Building at 621 East First Formerly Allie-Chalmers Dealer location. Phone EM 4-1111. B-5-13-6-tfc

CAR LOT for rent. Phone EM 4-3566. B-5-10-31-tfc

FURNISHED & UNFURNISHED APARTMENTS FOR RENT Looking for 2 large bedrooms with double bath, complete with all the trimmings? Before you move you owe it to yourself to see these outstanding features: Luxurious Carpets Private Patio Paneled Living Room Drapes Refrigerator - Stove Dishwasher Plumbed for Washer & Dryer Ample Storage THUNDERBIRD APARTMENTS So. Centre & Park Ave. Open from 2 to 6 Or call for an appointment MARK IV REALTORS EM 4-2220 B-5-28-tfc

FOR LEASE: my home. White. Adults. Phone EM4-0028. B-5-10-6-tfc

FOR LEASE New two bedroom split level duplex apartment, unfurnished, Central heating, refrigerated air, tile bath, carpet, 13th and B. Shown by appointment. EM-4-1111. B-5-24-30-tfc

WANTED WANT TO BUY: Springer Holstein cows or Springer Holstein Heifers Cecil Malone EM 4-3489. B-4-13-35-3c

WANTED: 50 or 60 H.P. Electric Motor. Call EM4-0916. B-4-10-7tfc

NEEDED LISTINGS on farms, homes, businesses and commercial property. Justice Restors. B-4-11-4-TFC

7. Dressmaking-Ironing

WANTED IRONING: 305 Avenue F. Second Trailer. B-7-10-10-1p

SEWING WANTED 515 Avenue K. Phone EM4-0210. Mrs. T.L. Kimbell. B-7-11-10-2p

8. HELP WANTED

STANLEY HOME Products is pleased to announce their new Lady Catherine Beauty Aid Line. Demonstrators needed. For information write: Frances Layman, Box 284, Dimmitt, Texas. B-8-25-9-6c

WANTED - Experienced motel maid. Prefer mature Spanish woman. Would consider training. See Frank at Lucky-u-Mote. B-8-17-35-tfc

MAKE \$70.00 WEEK PART TIME

We have opening for several men in Hereford and surrounding towns, who wish to supplement their present earnings. Requirements are, you must be between 21 and 50 years of age, must be able to work from 4:00 P.M. to 7:00 P.M. or from 7:00 P.M. to 10:00 P.M., 5 days a week, or equivalent of 20 hours a week. IMPORTANT, your wife must be present when we talk with you. For interview, come to Jim Hill Hotel, Monday March 2, 7:30 P.M. sharp, ask for Mr. Byrd. B-8-35-1c

DOES AN AVON REPRESENTATIVE CALL ON YOU?

We may have an opening in your neighborhood. If interested, write Dist. Sales Mgr. Box 2017, Plainview, Texas B-8-10-4c

\$65 WEEKLY AND MORE For reliable man or woman to service customers in section of Hereford. Full or part time. No investment. Write C. R. Ruble, Watkins Products, Inc., Dept. M-1, P. O. Box 2447, Memphis, Tenn. B-8-10-1p

WANTED SINGLE MAN for general ranch work. Wines need not apply. Roger Brumley. EM4-0924. B-8-14-10-tfc

WANTED SERVICE Station attendant. Experience preferred, but not absolutely necessary. Good job for the right man. See J. P. Jones at Jones Texaco Service. Highway 385 and 60. B-8-28-10-2c

WAITRESSES Wanted: Apply in person at Roney's Restaurant. B-8-10-1-tfc

10. NOTICE

WHEN IN HEREFORD Shop for home-made cakes, pies and bread at the H. D. Market located at Taylor & Sons each Friday afternoon and all day Saturday. T-10-4-TFC

FOR SOFT WATER SERVICE Or home owned water softeners, see Soft Water Service. 216 N. 25 Mile Avenue Phone EM 4-3280 B-10-7-tfc

DITCHING SERVICE AND SPRINKLER SYSTEMS EM 4-0343 EM 4-1567 B-10-19-TFC

11. Business Service

LET US handle all your real estate problems including free rental service. Justice Realtors. B-11-14-4-TFC

OWENS & HOLLINGSWORTH, EM 4-3572 Commercial - Industrial Residential Wiring 809 EAST SECOND Magneto - Starter Generator & Electric Motors Rewind Sales & Service B-11-13-TFC

Melvin, Doug and Virgil FOWLER AND KELLEY Electrical Contractors Residential and Commercial All bids and wiring competitive. Phone EM 4-1345 Nights phones EM 4-2012 or EM 4-1828; EM 4-1345 B-11-21-tfc

PORTABLE DISC ROLLING Scalloped or plain. Jacobs Brothers. Phone EM 4-1943 B-11-10-23-tfc

NEED FILL SANDS? Call L. J. Jones, BR6-5140 or night BR6-4473. Will haul. B-11-13-32-tfc

AUSTIN HIGHLIGHTS

Legislative Puzzler: Can Office Holders Also Run?

By Vera Sanford Texas Press Association AUSTIN—Courts are making the news these days.

Texas Supreme Court will hear arguments in an important test case which will determine whether holders of paid political offices can run for the Legislature during their present elective or appointive terms. Truman P. Kirk, Abilene lawyer and legislative candidate, is trying to keep 104th Dist. Atty. Tom Todd off the Democratic ballot. Todd's term as D. A. runs through December 31, although he has resigned effective November 1. Present office holder is Rep. Allen Glenn of Abilene.

Court's decision will affect many local officeholders over the state similarly seeking legislative places this year. In earlier action the State Supreme Court lost little time in polishing off an attempt to ban, from jury service, all who saw telecasts of the shooting of Lee Harvey Oswald. High court refused a request, by Jack Ruby's attorneys, for permission to file a petition for mandamus to force Dallas Trial Judge Joe B. Brown to accept two televisioners as defense witnesses.

A day later the Court turned down another motion for leave to file a mandamus pleading. This was from Leroy Roach of Brownwood. Roach has tried unsuccessfully to get his name on the 64th District ballot as a legislative candidate. Area includes Brown, Coleman, Comanche and Runnels Counties. Roach's application arrived after the filing deadline, and was not sent by registered or certified mail. So the Democratic county chairman rejected it. James M. Bushnell, convicted of robbery in Orange County nearly 20 years ago, finally won a new trial. Court of Criminal Appeals said he was entitled to one under the recent U. S. Supreme Court ruling that every indigent person charged with a felony must have a court appointed attorney. Bushnell had no lawyer at the original trial. PARTY LEADERS TO MEET Both Democratic and Republican state executive committees will hold meetings here on Mar. 9.

Required business is certifying candidates for statewide primary ballots, selection of party convention sites and the place of May 12 meetings to canvass the May 2 vote. Scene-stealer at the Republican meeting, however, is the decision on whether (and how) to hold a presidential straw vote in connection with the first primary. The GOP will also get a look at its statewide candidates and hear an address by its only gubernatorial contender, Dallas oilman Jack Crichton. Both party committees may see a little action, too, on a proposed liquor-by-the-drink referendum, which reportedly is getting some backing from unexpected places. FIRE INSURANCE—Texas cities with low insured fire losses are to be rewarded by lower rates. State Board of Insurance has set new fire insurance rates to take effect April 1. Property owners in cities with high insurance losses, however, will have to pay more for insurance in the year ahead. System allows discounts as high as 25 per cent from regular rates for property in cities which have been successful in holding down fire losses. Cities in which high losses have been suffered are charged as much as 15 per cent above regular rates.

Board also revised extended coverage rates in the Galveston and Pelican Island areas, and promulgated an optional \$250 windstorm, hurricane and hail deductible applicable to home-

owners' policies and standard fire policies. APPOINTMENTS — Appointments by the dozens have been announced by Gov. John Connally. San Antonio lawyer John Peace, a native of Wharton County, was named to the Texas Public Safety Commission, succeeding C. T. McLaughlin of Snyder.

Connally selected three committees—one of 73 members, another of 21, and a third of five. The five-member group will study development and use of Texas bays. Members are Dr. Carl J. Lind Jr. of Houston, Barry Richburg of Pasadena, Stone Wells of Houston, Charles Sowell of Houston; and Joh Clegg of Port Lavaca. Judge Herman Jones of Austin was appointed chairman of the 21-member Citizens Advisory Council on Mental Retardation to help with a new state-federal planning program which will bring a \$30,000 grant to Texas. State Sen. Walter Richter of Gonzales is chairman of the steering committee of the Governor's 73-member Committee on Aging. DROPOUT STUDY — Texas Education Agency will begin the first of a projected series of five pilot programs for school dropouts in the Corpus Christi School District. District will work with Earl Martin of TEA in (1) direction and planning of special courses or dropouts; (2) assisting in developing part-time employment possibilities for pupils who need work to stay in school; and (3) organizing a program of consul-

tation to meet the dropouts' needs. TOURING TEXANS — Two Texas tourists got home from Germany with high hopes they have been successful in interesting Germans in touring Texas. Sen. Walter Richter of Gonzales and Walter Meyer of San Antonio made the trip as official goodwill envoys. They got to ride in a carnival parade in full cowboy attire. Richter said many German children wear cowboy suits, and they hope to capitalize on their interest in cowboys to perk up Texas tourist business. TAX PICTURE BRIGHTENS — If U. S. Treasury Department slide rule forecasters are right, the federal income tax cut will ease the revenue raising pressure on the next Legislature. Treasury department officials say the income tax cut will put more money in circulation which will mean more spending — and thus more sales taxes. Furthermore, the federal tax cut is seen by state economists as encouraging industrial construction and having "an invigorating effect" on the Texas economy in general. Overall effect could be to drastically alter the state and local tax picture in 1965. NEW SCENIC ATTRACTION—State Highway Commission, which has authorized more than \$128,500,000 worth of road construction in the burgeoning Houston area, discovered a new tourist attraction when a Camal County delegation asked for a 13.9-mile farm-to-market road to

connect Interstate Highway 35 with Natural Bridge Caverns and Canyon Dam. There is no road to Natural Bridge Caverns now. But the delegation elicited excitement from highway commissioners Herb Petry Jr. of Carrizo Springs, Hal Woodward of Coleman and Jack Kultgen of Waco when they saw natural color photographs of the "live" formations in the caverns, including some "fried-egg" formations. Commission approved a proposal to build a 9.6-mile farm-to-market road to serve the new Natural Dam and Lake area in Hutchinson County. SHORT SNORTS — U.S. Sen. Ralph Yarborough has opened Austin campaign headquarters with Emerson Stone Jr., of Jacksonville as his state wide campaign manager. Don Yarborough, Democratic candidate for governor, also opened a campaign base here, naming Bill McIntyre of Navasota as his state operations manager. Governor Connally answered State capitol reporters' protest on closed door sessions of his Committee on Education Beyond the High School by saying he doesn't believe in government secrecy, but he defended the right of the committee to hold private meetings. State Comptroller Robert S. Calvert reported the state spent \$2,300,000 in fiscal 1963, and wound up with a net balance of \$219,300,000. Atty. Gen. Waggoner Carr said judgments totaling \$493,400 now have been entered against operators of alleged slant-hole oil wells. Securities Commissioner William M. King reported securities permits valued at \$28,179,411 were issued in January. Attorney General Carr ruled that a state law (Article 3930) prescribing fees of county clerks is constitutional; but Article 3830-A — covering clerks in counties of 1,200,000 population — is not.

SHOWING WORK — Jane Parsley, daughter of Mr. and Mrs. Gene Parsley, proudly exhibits her work to her parents and little brother at the parent's visitation night at Northwest Elementary. The parents toured the school; looked at their children's work during the open house. More than 500 persons attended the open house at Monday evening. (Brand Staff Photo)

Legal Notice INVITATION TO BID The Board Of Managers of the Deaf Smith County Hospital, Hereford, Texas, will accept bids on the following items of Television equipment, said bids to be in the office of the Administrator, Deaf Smith County Hospital, P.O. Box 552, Hereford, Texas, not later than 5:00 P.M. March 11, 1964. Items: 20-19" remote control television sets designed to be wired into hospital audio communication system, more specifically the Hill-Rom Executive Electronic Beside Unit as manufactured by Executive. 8-19" Portable television sets with standard controls and tuning. 8-Wall brackets for above standard sets. Prices quoted should include freight and transportation to the hospital job site at Hereford, Texas. Delivery on the above sets to be approximately June 1, 1964. The Board of Managers reserves the right to reject any or all bids. DEAF SMITH COUNTY HOSPITAL, T. E. Seigler, Administrator. T-9-3c

Legal Notice INVITATION TO BID The Board Of Managers of the Deaf Smith County Hospital, Hereford, Texas, will accept bids on the following items of Television equipment, said bids to be in the office of the Administrator, Deaf Smith County Hospital, P.O. Box 552, Hereford, Texas, not later than 5:00 P.M. March 11, 1964. Items: 20-19" remote control television sets designed to be wired into hospital audio communication system, more specifically the Hill-Rom Executive Electronic Beside Unit as manufactured by Executive. 8-19" Portable television sets with standard controls and tuning. 8-Wall brackets for above standard sets. Prices quoted should include freight and transportation to the hospital job site at Hereford, Texas. Delivery on the above sets to be approximately June 1, 1964. The Board of Managers reserves the right to reject any or all bids. DEAF SMITH COUNTY HOSPITAL, T. E. Seigler, Administrator. T-9-3c

Legal Notice INVITATION TO BID The Board Of Managers of the Deaf Smith County Hospital, Hereford, Texas, will accept bids on the following items of Television equipment, said bids to be in the office of the Administrator, Deaf Smith County Hospital, P.O. Box 552, Hereford, Texas, not later than 5:00 P.M. March 11, 1964. Items: 20-19" remote control television sets designed to be wired into hospital audio communication system, more specifically the Hill-Rom Executive Electronic Beside Unit as manufactured by Executive. 8-19" Portable television sets with standard controls and tuning. 8-Wall brackets for above standard sets. Prices quoted should include freight and transportation to the hospital job site at Hereford, Texas. Delivery on the above sets to be approximately June 1, 1964. The Board of Managers reserves the right to reject any or all bids. DEAF SMITH COUNTY HOSPITAL, T. E. Seigler, Administrator. T-9-3c

Legal Notice INVITATION TO BID The Board Of Managers of the Deaf Smith County Hospital, Hereford, Texas, will accept bids on the following items of Television equipment, said bids to be in the office of the Administrator, Deaf Smith County Hospital, P.O. Box 552, Hereford, Texas, not later than 5:00 P.M. March 11, 1964. Items: 20-19" remote control television sets designed to be wired into hospital audio communication system, more specifically the Hill-Rom Executive Electronic Beside Unit as manufactured by Executive. 8-19" Portable television sets with standard controls and tuning. 8-Wall brackets for above standard sets. Prices quoted should include freight and transportation to the hospital job site at Hereford, Texas. Delivery on the above sets to be approximately June 1, 1964. The Board of Managers reserves the right to reject any or all bids. DEAF SMITH COUNTY HOSPITAL, T. E. Seigler, Administrator. T-9-3c

Legal Notice INVITATION TO BID The Board Of Managers of the Deaf Smith County Hospital, Hereford, Texas, will accept bids on the following items of Television equipment, said bids to be in the office of the Administrator, Deaf Smith County Hospital, P.O. Box 552, Hereford, Texas, not later than 5:00 P.M. March 11, 1964. Items: 20-19" remote control television sets designed to be wired into hospital audio communication system, more specifically the Hill-Rom Executive Electronic Beside Unit as manufactured by Executive. 8-19" Portable television sets with standard controls and tuning. 8-Wall brackets for above standard sets. Prices quoted should include freight and transportation to the hospital job site at Hereford, Texas. Delivery on the above sets to be approximately June 1, 1964. The Board of Managers reserves the right to reject any or all bids. DEAF SMITH COUNTY HOSPITAL, T. E. Seigler, Administrator. T-9-3c

Legal Notice INVITATION TO BID The Board Of Managers of the Deaf Smith County Hospital, Hereford, Texas, will accept bids on the following items of Television equipment, said bids to be in the office of the Administrator, Deaf Smith County Hospital, P.O. Box 552, Hereford, Texas, not later than 5:00 P.M. March 11, 1964. Items: 20-19" remote control television sets designed to be wired into hospital audio communication system, more specifically the Hill-Rom Executive Electronic Beside Unit as manufactured by Executive. 8-19" Portable television sets with standard controls and tuning. 8-Wall brackets for above standard sets. Prices quoted should include freight and transportation to the hospital job site at Hereford, Texas. Delivery on the above sets to be approximately June 1, 1964. The Board of Managers reserves the right to reject any or all bids. DEAF SMITH COUNTY HOSPITAL, T. E. Seigler, Administrator. T-9-3c

Legal Notice INVITATION TO BID The Board Of Managers of the Deaf Smith County Hospital, Hereford, Texas, will accept bids on the following items of Television equipment, said bids to be in the office of the Administrator, Deaf Smith County Hospital, P.O. Box 552, Hereford, Texas, not later than 5:00 P.M. March 11, 1964. Items: 20-19" remote control television sets designed to be wired into hospital audio communication system, more specifically the Hill-Rom Executive Electronic Beside Unit as manufactured by Executive. 8-19" Portable television sets with standard controls and tuning. 8-Wall brackets for above standard sets. Prices quoted should include freight and transportation to the hospital job site at Hereford, Texas. Delivery on the above sets to be approximately June 1, 1964. The Board of Managers reserves the right to reject any or all bids. DEAF SMITH COUNTY HOSPITAL, T. E. Seigler, Administrator. T-9-3c

Legal Notice INVITATION TO BID The Board Of Managers of the Deaf Smith County Hospital, Hereford, Texas, will accept bids on the following items of Television equipment, said bids to be in the office of the Administrator, Deaf Smith County Hospital, P.O. Box 552, Hereford, Texas, not later than 5:00 P.M. March 11, 1964. Items: 20-19" remote control television sets designed to be wired into hospital audio communication system, more specifically the Hill-Rom Executive Electronic Beside Unit as manufactured by Executive. 8-19" Portable television sets with standard controls and tuning. 8-Wall brackets for above standard sets. Prices quoted should include freight and transportation to the hospital job site at Hereford, Texas. Delivery on the above sets to be approximately June 1, 1964. The Board of Managers reserves the right to reject any or all bids. DEAF SMITH COUNTY HOSPITAL, T. E. Seigler, Administrator. T-9-3c

Legal Notice INVITATION TO BID The Board Of Managers of the Deaf Smith County Hospital, Hereford, Texas, will accept bids on the following items of Television equipment, said bids to be in the office of the Administrator, Deaf Smith County Hospital, P.O. Box 552, Hereford, Texas, not later than 5:00 P.M. March 11, 1964. Items: 20-19" remote control television sets designed to be wired into hospital audio communication system, more specifically the Hill-Rom Executive Electronic Beside Unit as manufactured by Executive. 8-19" Portable television sets with standard controls and tuning. 8-Wall brackets for above standard sets. Prices quoted should include freight and transportation to the hospital job site at Hereford, Texas. Delivery on the above sets to be approximately June 1, 1964. The Board of Managers reserves the right to reject any or all bids. DEAF SMITH COUNTY HOSPITAL, T. E. Seigler, Administrator. T-9-3c

Legal Notice INVITATION TO BID The Board Of Managers of the Deaf Smith County Hospital, Hereford, Texas, will accept bids on the following items of Television equipment, said bids to be in the office of the Administrator, Deaf Smith County Hospital, P.O. Box 552, Hereford, Texas, not later than 5:00 P.M. March 11, 1964. Items: 20-19" remote control television sets designed to be wired into hospital audio communication system, more specifically the Hill-Rom Executive Electronic Beside Unit as manufactured by Executive. 8-19" Portable television sets with standard controls and tuning. 8-Wall brackets for above standard sets. Prices quoted should include freight and transportation to the hospital job site at Hereford, Texas. Delivery on the above sets to be approximately June 1, 1964. The Board of Managers reserves the right to reject any or all bids. DEAF SMITH COUNTY HOSPITAL, T. E. Seigler, Administrator. T-9-3c

Legal Notice INVITATION TO BID The Board Of Managers of the Deaf Smith County Hospital, Hereford, Texas, will accept bids on the following items of Television equipment, said bids to be in the office of the Administrator, Deaf Smith County Hospital, P.O. Box 552, Hereford, Texas, not later than 5:00 P.M. March 11, 1964. Items: 20-19" remote control television sets designed to be wired into hospital audio communication system, more specifically the Hill-Rom Executive Electronic Beside Unit as manufactured by Executive. 8-19" Portable television sets with standard controls and tuning. 8-Wall brackets for above standard sets. Prices quoted should include freight and transportation to the hospital job site at Hereford, Texas. Delivery on the above sets to be approximately June 1, 1964. The Board of Managers reserves the right to reject any or all bids. DEAF SMITH COUNTY HOSPITAL, T. E. Seigler, Administrator. T-9-3c

Legal Notice INVITATION TO BID The Board Of Managers of the Deaf Smith County Hospital, Hereford, Texas, will accept bids on the following items of Television equipment, said bids to be in the office of the Administrator, Deaf Smith County Hospital, P.O. Box 552, Hereford, Texas, not later than 5:00 P.M. March 11, 1964. Items: 20-19" remote control television sets designed to be wired into hospital audio communication system, more specifically the Hill-Rom Executive Electronic Beside Unit as manufactured by Executive. 8-19" Portable television sets with standard controls and tuning. 8-Wall brackets for above standard sets. Prices quoted should include freight and transportation to the hospital job site at Hereford, Texas. Delivery on the above sets to be approximately June 1, 1964. The Board of Managers reserves the right to reject any or all bids. DEAF SMITH COUNTY HOSPITAL, T. E. Seigler, Administrator. T-9-3c

Legal Notice INVITATION TO BID The Board Of Managers of the Deaf Smith County Hospital, Hereford, Texas, will accept bids on the following items of Television equipment, said bids to be in the office of the Administrator, Deaf Smith County Hospital, P.O. Box 552, Hereford, Texas, not later than 5:00 P.M. March 11, 1964. Items: 20-19" remote control television sets designed to be wired into hospital audio communication system, more specifically the Hill-Rom Executive Electronic Beside Unit as manufactured by Executive. 8-19" Portable television sets with standard controls and tuning. 8-Wall brackets for above standard sets. Prices quoted should include freight and transportation to the hospital job site at Hereford, Texas. Delivery on the above sets to be approximately June 1, 1964. The Board of Managers reserves the right to reject any or all bids. DEAF SMITH COUNTY HOSPITAL, T. E. Seigler, Administrator. T-9-3c

Legal Notice INVITATION TO BID The

# Latter Day Saints Start New Church

Hereford's Latter Day Saints launched a building program Sunday when ground-breaking ceremonies were held for the first phase of a long-range building project which may eventually reach the half-million mark.

The first phase will include a chapel and a junior Sunday School with 10 teaching areas, according to Dale Hallows, branch president. The first unit will cost \$85,000, and construction is expected to be completed

within six months. It will have a seating capacity of 136 and construction will be of brick, block and glass. The first structure will have 32,000 square feet of floor space. Much of the labor will be donated, and the work will be handled on a sub-contract basis, Hallows explained.

Future projects include five phases of enlargement as growing merits expansion. Hallows said the church has been in existence here for 12 years, but services have been held in various places throughout town, including a Funeral home, veterans' clubhouse and the Seventh Day Adventist church building.

Several officials of the church were here for the ground-breaking ceremonies, including Daniel J. Larson, counselor who turned the first shovel of dirt. Representing Hereford at the ceremonies were Mayor Ray Cowsett and C-C President Austin Rose Jr.

The ground-breaking ceremonies were followed by a luncheon at Community Center.

## Guild Members See Slides, Hear Citizenship Talk

During the Feb. 27 meeting of St. Anthony's Guild, Mrs. Ozetta Wilhelm showed colored slides of the Holy Land, Greece, and Hawaii, and Gerald Witkowski, member of Dawn Boys 4-H club, delivered the speech on citizenship which has been entered in the county elimination contest.

Mrs. Leon Vinton was presiding officer. Members voted to have a card party as a means to raise funds to buy new cafeteria benches.

Hostesses for meeting were Mrs. Ray Wilhelm, Miss Agnes Hellman, Mrs. Gene Loerwald, and Mrs. H. Hostenstein. Guests were Gerald Witkowski and Mrs. Kenneth Diller.

Other members present were Mrs. J. M. Paetzold, Mrs. Norbert Skpala, Mrs. Josephine Schneider, Mrs. Steve Meiwes, Mrs. Mable Wagner, Mrs. Elbert Vance, Mrs. Frank Annen, Mrs. Edward Patzold, Mrs. Leslie Wagner, Mrs. Alfred Reinart, Mrs. A. H. Huseman, Mrs. John Gallagher, Mrs. J. E. Pavlicek, Mrs. Walt Warren, Mrs. W. J. Albracht, Mrs. Andrew Kershen, Mrs. Harold Hersley, Mrs. Leo Witkowski, Mrs. Ed Loewwald, Mrs. Leon Vinton, Mrs. A. J. Bezner, and Mrs. Ozetta Wilhelm.

## Rabbi Solomon Is Speaker For L'Allegra Club

Rabbi Solomon, Amarillo, explained basic Judaism as it exists in the world today and gave a brief history of the religion as he presented the program Feb. 20 for L'Allegra Study Club.

The business meeting was conducted by Mrs. Ames Higgins. The next meeting will be March 5 at the First National Bank, with Margaret Carnahan as hostess.

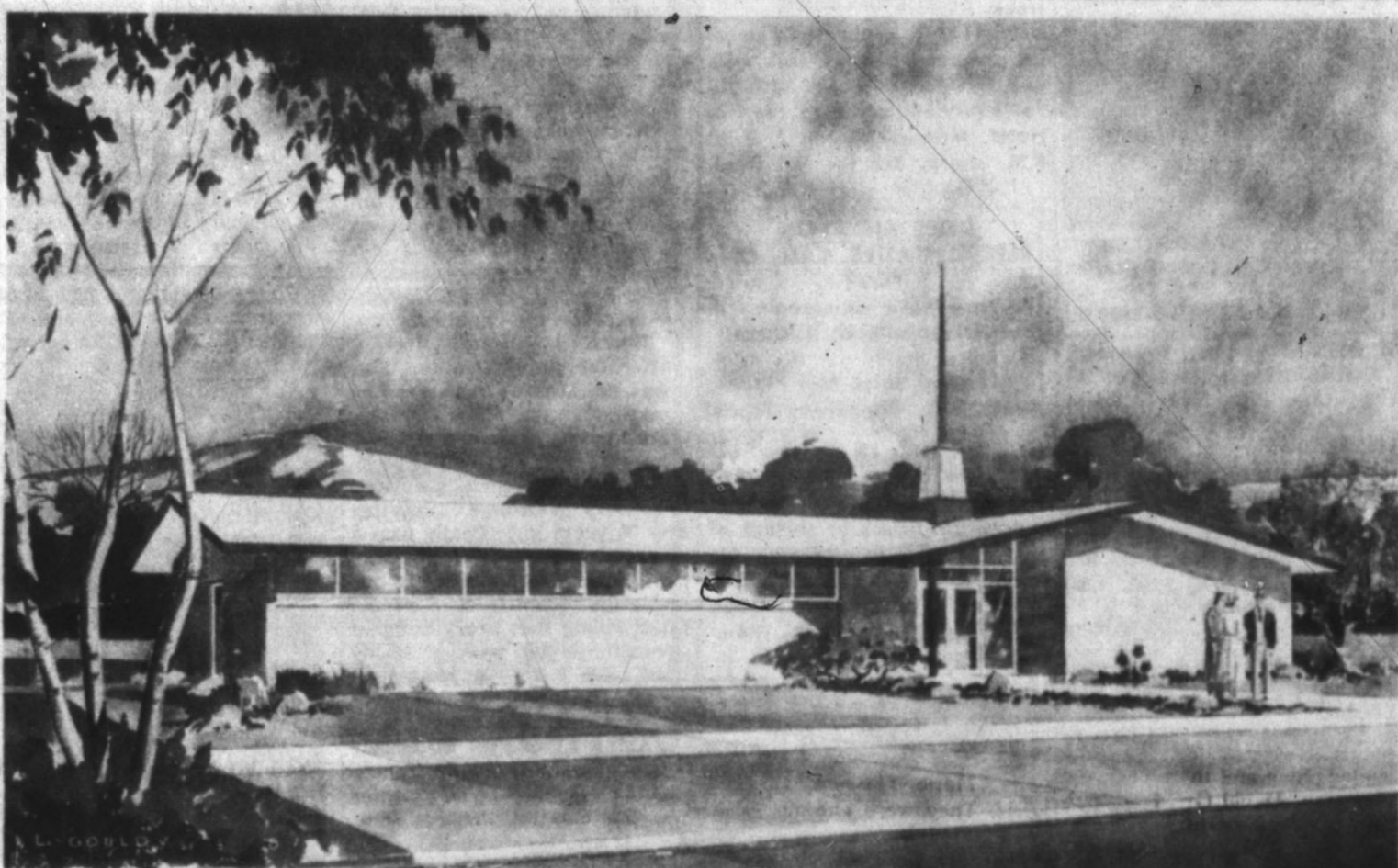
Hostess for the meeting was Mrs. Richard Pickens. Other members present were Mrs. Alice Schroter, Mrs. James E. Higgins, Mrs. Hilton Higgins, Mrs. Joe Easley, Mrs. Robert Miller, Mrs. Walter London, Mrs. Dameron, Mrs. John Beasley, and Mrs. Bob Veigel.

### DRIVE-IN FIRE FIGHTING

RENO (AP) — Engine units of a westbound Southern Pacific freight caught fire four miles out of Reno.

Crew members tried to douse the flames themselves, but failed. So they unhooked the engines and drove them back to Reno, pulling up to a fire station alongside the tracks.

The firemen stepped out the door to battle the flames.



GROUND-BREAKING — Latter Day Saints, with 85 members, Sunday launched the first phase of a building program on Austin Street near the Country Club. Upper picture shows Daniel T. Larsen, counselor, turning the first shovel of dirt. Watching are William R. Head, building supervisor; Dale Hallows, Branch president; O. A. Rudd, project clerk; H. B. Pinchard, district president; Mayor Ray Cowsett, and Chamber of Commerce President Austin Rose Jr. Below shows the architect's drawing of the first unit of the new building. (Brand Staff Photo)

# FFA's Purposes, Aims Are Listed

**By Jesse Janke**  
The primary aim of the Future Farmers of America is the development of agricultural leadership, cooperation and citizenship.

The development of agricultural leadership is the farming of your own and being a leader yourself. Knowing what you are doing is essential.

Cooperation in agriculture is the act of working together trying to achieve a common good in your community.

Citizenship in agriculture is the condition of being a citizen through duties, rights and privileges of one's self.

The specific purposes for which this organization was formed are as follows:

To develop competent, aggressive, rural and agricultural leadership. This means to be properly qualified and able to stand up to what is thought to be right in agriculture.

To create and nurture a love of country life. This means to make by giving a new character, function or status to and to rear are to care for country life.

To strengthen the confidence of farm boys and young men in themselves and their works. This means that you have to have confidence in yourself and your work before it can be done correctly.

To create more interests in the intelligent choice of farming occupations. This means to be able to do something interesting but still able to learn a little more of what you are doing in the act of agricultural.

To encourage members in development of individual farming programs and establishment in farming. This means to help out other members to learn individually the farming programs in

which they are starting and help to establish more knowledge in farming.

To encourage members to improve the farm home and its surroundings. This means to do something that is worth it and is for the improvement in agricultural.

To develop character, train for useful citizenship and foster patriotism. This means to possess certain features for the training of citizenship and also to encourage love and loyal support of one's country.

To participate in cooperative effort. This means having a job that has to do with the work of others.

To encourage and practice thrift. This means the saving of money through better agricultural efforts.

To encourage improvement in scholarship. This means to increase the hopes by improvement of the possession of knowledge which is gained through study.

To provide and encourage the development of organized rural recreational activities. This means to increase the confidence of developing an organized rural recreational activities of agriculture.

Without these purposes there might not be an organization like the Future Farmers of America which is an organization in every state.

Classifieds Get Results

For **COLDS** take **666**

Watch For The  
OPENING OF  
**S & R APPLIANCE**  
209 Miles

**SAMMY LANE**  
CUSTOM HOMES

Have You Tried  
**FLAVOR CRISP CHICKEN?**  
"It's Delicious"  
Reg. Order \$1.00  
**Rainbow Drive Inn**  
West Highway 60 EM 4-2306  
SPECIAL THIS WEEK ONLY  
**Steak Fingers 69¢**

**Hereford Redi-Mix Concrete**  
Complete Pouring & Finish Work  
Free Estimates  
No job too large or too small  
Phone EM 4-0228

**Hereford State Bank**  
FOR YOUR  
**Auto Financing**

**Top of the Morning**  
with Lively Toe-Topping  
SONGS OF THE WEST  
Hear The...  
**HILLYBILLY HOOTENANY**  
7-7:15 each Morning  
**MONDAY thru SATURDAY**  
**KPAN**  
860 Kc  
Presented By  
**LEE TIRE & FARM SUPPLY**  
128 West First

1. ONCE UPON A TIME, THERE WAS A BUSINESSMAN WHO WANTED TO BUILD HIS SALES...

2. AN ADVERTISING-MINDED BUSINESSMAN...

3. ONE DAY, THREE ADVERTISING REPRESENTATIVES CALLED ON THIS BUSINESSMAN.

4. "PICK A CIRCULATION... AN OSCILLATION... I'VE GOT ONE FOR YOU!"

5. "YOU WANT TO REACH THAT AREA? WE'LL COVER THAT AREA!"

6. BUT THE THIRD NICELY REACHED INTO HIS BRIECASE!

7. THE FIRST PLAYED 'THE NUMBERS GAME'...

8. AND HANDED THE BUSINESSMAN AN A.B.C. REPORT OF HIS NEWSPAPER...

9. AS A MEMBER OF THE AUDIT BUREAU OF CIRCULATIONS, THE DESTINATION OF EVERY COPY OF HIS PAPER WAS VERIFIED BY INDEPENDENT AUDIT...

10. THE ACCURATE CIRCULATION FIGURES IN THE A.B.C. REPORT GAVE THE BUSINESSMAN AN UNPRECEDED PICTURE OF WHERE HIS ADS WOULD BE RECEIVED...

11. THIS A.B.C. SEAL IS GUARANTEE ENOUGH FOR ME," SAID THE DISCRIMINATING BUSINESSMAN.

12. DISCRIMINATING, SALES-MINDED BUSINESSMEN KNOW THAT Hereford Brand... IS A MEMBER OF THE AUDIT BUREAU OF CIRCULATIONS.



PARENTS GO TO SCHOOL — Hereford schools held open house this week at two schools and two other elementary schools, Central and Aikman, are holding open house tonight. Here is the J. B. Caraway family looking over displays at Northwest Elementary school with Alice, Ann, Bill and Bob. (Brand Staff Photo)

ADRIAN NEWS

# Adrian Couple's Son Wins 'Citizen' Award In Elko, Nev.

Mark Chilton, son of Mrs. Hazel Chilton, has been named "Young Man of the Year in Elko, Nev." The award, given by the Elko Jaycees, was presented at the Ranch Inn Motor Lodge, and was attended by 100 Elkoians.

Among the many services given to the community by Chilton was his work with the youth of the Presbyterian Church, of which he is an elder, and with other community functions. He also had been active in the "Silver Stage Players," and had worked toward gaining for Elko an institution of higher learning. He donated the land for a college or junior college, and had been active in working for a freeway through Elko.

The Caprock 4-H cooking group met Wednesday afternoon in the home economics room when beginners made hot choc-

olate with the supervision of Mrs. Russell Patterson. The junior group made nut bread which they later enjoyed with soft drinks. Mrs. Bea Fortenberry is the teacher of the junior group. Mrs. G. D. Webb was a guest.

Mrs. O. C. Johnson had a products part in her home Thursday morning when guests enjoyed games and refreshments. Present were Mrs. Lester Gilliam, Mrs. Alford Jobe, Mrs. Marion Ferguson, Mrs. A. D. Lewis, Mrs. Brub Beavers, Mrs. Claude Hicks, Mrs. Harvey Brothers and Mrs. Emma Bales.

Vega high school band honored the Adrian school Wednesday morning at the Adrian school assembly by playing several selections.

Public school week is being observed this week, opening Monday with an open house.

Alton Dale Whitten was presented the Eagle Scout award before a special assembly of the Adrian student body Feb. 28.

Whitten became the second Boy Scout in the history of the Adrian Troop No. 52 to reach the rank of Eagle Scout. He is the son of Mr. and Mrs. Elbert Whitten, Adrian. Six months ago, Alton's brother, David, became the first Eagle Scout for Troop 32. Alton achieved the rank of an Eagle, highest rank in Boy Scouts of America, by attaining skill in camping, crafts, first aid, citizenship leadership,

conservation and aquatic skills. He has been a member of the Boy Scouts and Troop 32 for three years, and during that time has attended summer camps at Camp Don Harrington near Amarillo, and Camp Ki-O-Wah near Canadian.

Other Scouts receiving awards were David Whitten, silver Eagle palm, one-year perfect attendance award, senior patrol leader patch and three-year service star; David Grublikey, public speaking, painting, Indian lore and camping merit badges, and was presented the rank of life Scout; Bobby Brown, promote to first class; Bruce Kramer, Dan Foster and Bobby Harwood received tenderfoot awards.

The following Scouts received stars: Jim Cavin, Dwayne Grunley, Billy James, and Bobby Brown.

Last Saturday the Scout troop and their scoutmasters, Grady Saggis and Robert Jacobson, enjoyed a cook-out and hike near Dripping Springs. Boys making the outing were Bruce Kromer, B. Loy Harwood, Charles Harwood, Jim Cavin, Billy James, Alton Whitten, David Whitten, David Grunley and Dwayne Grublikey.

Mrs. Hazel Chilton and her fifth and sixth grade children gave an interesting patriotic program at assembly.

Billy Lee Johnson from Amarillo visited in Adrian Sunday with relatives and friends.

Carroll Grublikey and Jack Fisher were in El Paso over the weekend.

Bob Caldwell and Allen Ehresman attended a Grain school meeting in Lubbock last week.

Mrs. Midge Stroup and Alessa, Amarillo, visited the L. A. Worsham family over the weekend.

Mrs. Arthur Kemp, Amarillo, is visiting the Cal Jackson family for a week and then will be moving to Portales, N. M. to make her home.

Mrs. Tom King was taken to the Deaf Smith County Hospital Sunday by the Vega Ambulance after suffering an ulcer attack.

Pat Maupin Jr., Amarillo, visited the Pat Maupin Sr. family over the weekend.

Adrian Lions club had as guests at its Thursday night meeting various persons who had helped serve at the Lions Club's pancake supper recently.

In spite of severe weather, the club made \$130 from the supper, and the money will be used to improve and expand the Adrian city park.

In addition to guests from Adrian, three from the hereford Lions club were present. They

included Labry Ballard, Elmo Kimbell and Sergio Bravo, an exchange student from Chile. Sergio is sponsored by the Hereford Lions club and makes his home with Mr. and Mrs. Kimbell. He gave a talk about his country and showed a series of slides. The Adrian club expressed thanks to the Hereford club for presenting this program.

Mr. and Mrs. Danny Wagner spent the weekend with the Jackson family at San Jon, N. M. and the Luther Wagoner family visited there Sunday afternoon.

Mrs. Cal Jackson and Mrs. Arthur Kemp visited Monday in Portales with Mrs. Claude Ralnes.

Visiting in the Anna Witt home last week were Mr. and Mrs. Abel Moffitt and Mr. and Mrs. Merle Tjassem, Phoenix, Ariz. They were enroute to Iowa.

Mr. and Mrs. Robert Jacobson and children visited in Wellington with Mrs. Joe Baumgardner over the weekend.

Mrs. Charles Howard, Cement, Okla., and Mrs. Emmitt Cole, Wichita, Kan., who have been to Honolulu, Hawaii visiting the Glen Howards, stopped off here and visited Mrs. Gene Vandervork last week.

A fire in a soil bank field east of Adrian Sunday afternoon destroyed a pickup truck belonging to some hunters. The Adrian volunteer fire department was called to extinguish the blaze.

Brub Beavers visited in Silvertown Sunday with the Floyd Wood family.

Mrs. Gene Vandervork is visiting in Arizona and New Mexico this week.

Phillip Pinnell, son of Mr. and

H.D. CHATTER

## Emergency Food Program Here Gets Good Response

By Argen Draper

The merchants are giving the Foods Committee good reports on the Food for Preparedness. One merchant told me some of the customers are asking for bulletins. We still have bulletins in case anyone or any groups want them.

A release from the Civil Defense Office:

The emergency food supply should be in cans or jars, require no refrigeration and little preparation. They should be foods familiar to the family and be completely edible either cold or hot. The food should be stored in a dry place with a temperature of not more than 70 degrees F. and not below freezing. They can be left in ordinary paper cartons, enclosed in metal containers or sealed in plastic.

Emergency foods should include special foods for babies, foods for special diets and canned foods in sizes that will serve the family one meal. Stored items, which are marked with the date of purchase should be rotated in the regular family meals at least every three months. They can be stored in the regular family fallout shelter or on a convenient shelf or in a basket.

Food doesn't become dangerous unless radioactive particles are mixed with it or get into it. Internal injury may occur if such food is eaten.

en. Radiation passing through food doesn't make it radioactive or unfit for consumption.

Protecting food from fallout is relatively simple and in similar to methods used in keeping out ordinary dust. Any tight cover will protect food from fallout. Processed foods in cabinets, refrigerators and freezers will not be harmed by fallout.

Food kits designed for shelter storage are currently being marketed by a number of food concerns. These can be used to supplement the regular emergency food supply.

CARD OF THANKS

To all friends and loved ones who helped us during our time of sorrow, we would like to ex-

press our sincere appreciation. The William Rice Jr. Family The Don A. Rice Family Betty Rice

Read The Classifieds

QUALITY NURSERY STOCK

Armstrong  
505 W. Park EM 4-1868

SAMMY LANE

CUSTOM HOMES

# SUNSET FOOD CENTER Another Big Beef Sale

THURSDAY FRIDAY SATURDAY

ALL MEATS UNCONDITIONALLY GUARANTEED,  
GRAIN FED, GOV'T. GRADED, U.S. GOOD & CHOICE

1/2 Beef	200 to 250 Pound Avg.	39¢
Hindquarters	100 to 125 Pound Avg.	49¢
Forequarters	100 to 125 Pound Avg.	33¢

CUT - WRAPPED - MARKED - QUICK FROZEN  
FOR YOUR FREEZER AT NO EXTRA COST.

Round Steak	U. S. GOOD	LB. 69¢
Sirloin Steak	U. S. GOOD	LB. 59¢
T-Bone Steak	U. S. GOOD	LB. 89¢
Club Steak	U. S. GOOD	LB. 59¢
Arm Roast	U. S. GOOD	LB. 49¢
Chuck Roast	U. S. GOOD	LB. 39¢
Beef Short Ribs	U. S. GOOD	LB. 29¢
Ground Beef	GROUND FRESH HOURLY	3:51

FREEZER PACK

7 lbs. STEAK	
7 lbs. ROAST	
7 lbs. HAMBURGER	
4 lbs. SHORT RIBS	
	\$11.95

Fruits & Vegetables

25 lb. Package	\$2.99
This includes:	
Potatoes, Bananas, Lettuce, Tomatoes	
Plus A Variety of Fresh Quality Produce	

COTTAGE CHEESE	Cloverlake	2 12 Oz. Containers	39¢
SUGAR		10 lb. Bag	\$1.25
ICE CREAM	Borden's	1/2 Gal.	59¢
FAB		Giant Box	69¢
MILK		1/2 Gal.	49¢
Green Onions		3 For	10¢
Bananas	Central America	2 lbs.	25¢
Apples	Delicious	lb.	15¢
Potatoes	Russet	10 lb. Bag	55¢
Cabbage	Texas	lb.	5¢
Avocados		3 For	25¢

Watch For The  
OPENING OF  
S & R APPLIANCE  
209 Miles

SAMMY LANE  
CUSTOM HOMES

### NEW. LOW PRICES PREMIUM FEATURES

GENERAL  
NYLON  
SPECIAL

TRACTOR TIRE

- Nylon Cord—for strength and moisture proofing.
- More Rubber—where it counts to cushion shock.
- Double Cured Cleat—keep clean—dig deeper—gull better.

PLUS  
36 months Field Hazard Guarantee protects your investment.

30 MONTH GUARANTEE  
The General Tire & Rubber Company guarantees its Nylon Cord Tractor Tires for 30 months or 30,000 miles, whichever comes first. This guarantee covers the tread and sidewall. It does not cover normal wear, tear, or damage caused by misuse or neglect.

HEREFORD BUTANE  
INCORPORATED  
Veterans Park Road EM4-3367

USED CARS  
NO. 2  
136 Sampson

USED CARS  
NO. 2  
136 Sampson

USED CARS  
NO. 2  
136 Sampson

USED CARS  
NO. 2  
136 Sampson

62 DODGE TRADE-INS  
To Choose From  
So Many We Had to Open a New Lot

1955 Chevrolet	\$495
4 dr.-Rad.-Htr. Std. Shift	
1961 Chevrolet	\$1295
4 dr.-Rad.-Htr. Std. Shift	
1956 Chevrolet	\$595
2 dr.-Rad.-Htr.-Std. Shift	
1959 Oldsmobile	\$1295
4 door—Loaded	
1958 Oldsmobile	\$995
4 door—Loaded	
1960 DeSota	\$1295
4 dr.—Cleanest in town	

"WE TRADE FOR ANYTHING"

HI-WAY AUTO SALES

No. 1 600 W. 1st EM 4-0501 No. 2 136 Sampson. EM 4-0976

HERE'S MORE TEA DRINKING PLEASURE  
FOR YOU, YOUR FAMILY, AND FRIENDS

BELOW

Constant Comment

PIGGLY WIGGLY  
426 North Main  
Hereford



Pay the Baby Sitter  
out of what you  
**SAVE HERE**



Copr. G. Doppel 1964

**HOLLY BEET SUGAR** 10 Lb. Bag **\$1.23**

**MIXED NUTS** Fisher's 14 Oz. Can **69¢**

**TOMATO SAUCE** Hunt's 8 Oz. Can 10 FOR **\$1**

**TUNA** SHURFINE FLAT CAN 4 FOR **\$1**

**HAND LOTION** Jergen's With Free Dispenser Reg. 65c **49¢**

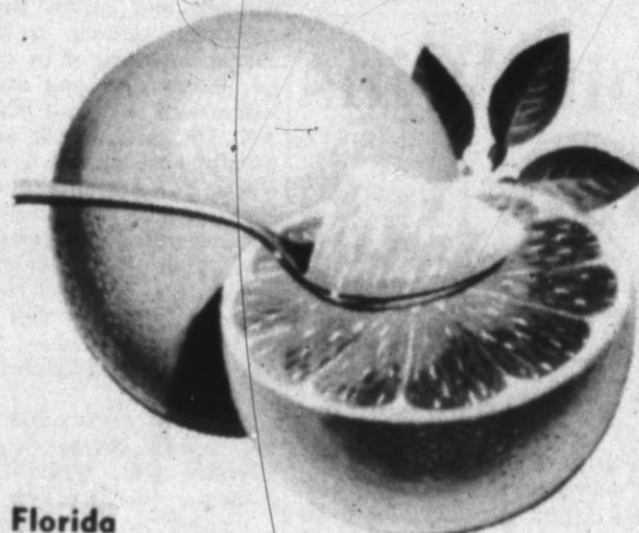
**TIDE** DETEREGNT Giant Size **58¢**

 **CHUCK ROAST** U.S.D.A. Lb. **45¢**

**CLUB STEAK** U.S.D.A. Lb. **79¢**

**ROUND STEAK** U.S.D.A. Lb. **89¢**  
**ARM ROAST** U.S.D.A. Lb. **69¢**  
**LEAN MEATY SHORT RIBS** Lb. **25¢**

Enjoy a "night out" more often—without budging on your budget! Here's one sure way to do it! Buy ALL your food needs and household supplies at COOPER'S where STOREWIDE LOW PRICES add up fast to BIGGER SAVINGS—CASH-IN-HAND SAVINGS to spend for fun and pay the baby sitter, too. That's one good reason why COOPER'S is the favorite market of the lively, happy young marrieds of Hereford.



Florida Ruby Red

**GRAPEFRUIT** 2 For **19¢**

**RUTABAGAS** Lb. **7¢**

**YELLOW ONIONS** Lb. **7¢**

**Tea Bags** Lipton's 48 Ct. **59¢**

**Applesauce** Shurfine 303 Can 2 For **29¢**

**Cherries** Shurfine R. S. P. 303 Can 2 For **45¢**

**Juice** Texsun Grapefruit 46 Oz. Can **39¢**

**Beanie Weenies** Van Camp 8 Oz. Can **19¢**

**Hominy** Shurfine 303 Can 3 For **25¢**

**Tomatoes** Hunt's Solid Pack—300 Ca 2 For **35¢**

**Oysters** Blue Plate Cove—8 Oz. Can **39¢**

PLUS MANY SHURFINE ITEMS STILL ON SALE NOT LISTED IN THIS AD

Kraft's—With Cheese **PIZZA** Box **39¢**

Shurfine **Potted Meat** 3 1/2 Oz. Can 3 For **29¢**

Kraft—24 Oz. Jnr **Sandwich Spread** **49¢**

Lawrys—Mix **Spaghetti Sauce** Pkg. **25¢**

Pillsbury's **Danish Rolls** Can **29¢**

Hair Dressing **Brylcreem** Large Tube Reg. 87c **69¢**

Oven Cleaner **Hep** Aerosol Can **69¢**

Cleanser **Ajax** Large 21 Oz. Can **19¢**

PLAY "BIG DO"  
12 WINNERS SO FAR  
GAME CONTINUES

Another **BIG-DO (DOUGH)** WINNER



Alva L. Crissy  
710 N. Lee

**BIG-DO (DOUGH)** \$100 WINNER!



**COOPER'S**



Consider the postage stamp, my son: Its usefulness consists in its ability to stick to one thing until it gets there  
Josh Billings.

# The Whiteface

Official Publication  
Of  
Hereford High School  
Hereford, Texas

The Hereford Brand, Hereford, Texas, Thurs., March 5, 1964



IN SAN ANTONIO — These DE students and their sponsors are shown while at the Alamo Memorial in San Antonio. Students left Thursday and returned late Sunday. From left to right, persons shown are Mr. and Mrs. Don Paris, sponsors, Johnny Brown, Linda Loerwald, Judy Crume, Ronda Neff, Debbie Lee, Peggy Neff, and Glen Fuller. Not shown is Larry Fuhrmann, mainly because he was across the street taking the picture.

## Hereford Choirs Walk Off With 15 Firsts In Contest

### Region XI Trials Held At Canyon

By Rosemary Hershey  
The HHS choir brought home 15 first-rating solo numbers Saturday, Feb. 29. The vocal solo and ensemble contest of Region XI, of the Texas Music Educators Association was held at West Texas State College in the Fine Arts Building.

From the music class III, the following students made these ratings: Carol Brashear, 3; Nancy Smith, 2; Sue Cox, 2; Judy Hill, 2; Ellen McGowan, 2; Becky Higgins, 2; Berta Lindsey, 2; Dorothy Marnell, 2; Carole Clearman, 2; Jane Wilhelm, 2; Jimmy Gutierrez, 2; Beverly Lemons, 1; Jenny Hagar, 1; Ken Stark, 1; Nate Stark, 1; Jody Rogers, 1; James Schultz, 1.

From the music class II, the following students made these ratings: Hedy Bailey, 3; Carolyn Anderson, 2; Barbara Zinzer, 2; Garry Clements, 2; Kathy Pool, 1; Sylvia Phipps, 1; Suzanne Siegler, 1; Karen DeBord, 1; Jimmy Brink, 1.

In the music class I, the following students made these ratings: Ruth Ann Allison, 3; Dean Wilson, 3; Kay McKee, 3; Darrell Sparks, 3; and Ronnie Roberts, 3; Wayne Edwards, 2; Jella Hamilton, 2; Mary Lyn Gibson, 2; Bob Reinauer, 2; Mary Ann Scott, 2; Sharon Tinnin, 2; Pat Price, 1; Jo Ella McGee, 1; and Mamie Silvertooth, 1.

Also making a 1 in a first-class piece was the HHS Madrigal Singers. The students who composed the Madrigal Singers are the following: Wayne Edwards and Gary Don Robertson, Tennon; Steve Conway and James Short, Base; Linda Lemons and Dian Wilson, Soprano II; Pegene Cox and Linda London, alto; and Mamie Silvertooth and Jo Ella McGee, Soprano I.

Students who made a 1, the highest rating, and sang a first class, also the hardest, piece of music, will be given the opportunity to try for the all state choir the following year.

Joe Carroll, Roswell; Mrs. Auhugh Elison, Midland; Tom Adams, Snyder; and Jack Glover, Abilene, participated as judges.

## Junior-Senior Banquet Committees Start Work

By Vickie Inman

Tentative plans for the Junior-Senior Banquet, which has been scheduled later this semester, are being set up.

"Each junior homeroom will be responsible for raising \$1.50 per person," said Mrs. Jane Westberry, a sponsor of the junior class. "This may be by dues. There are 211 juniors, so that

will be about \$320." The juniors in Mrs. Irene Young's homeroom have decid-

ed to sell candy bars instead of having each person pay \$1.50. "If everyone sells their four bars apiece, we will come out with more money than we would by donating the money," said Mrs. Young. The five-ounce chocolate and almond bars will sell for 50 cents each. This will be an extra ounce of candy for the same price as most fundraising candy.

"The juniors now have \$270 for the banquet which was raised by selling mums and by managing the concession stand at the football games," said Mrs. Dorothy Prowell, a sponsor of the junior class. "The banquet usually takes around \$500 to present."

Committee for the various phases of the Junior-Senior banquet have been set up. Beth Ballard is the general chairman of the committees. Debbie Beene is head of the foods committee; Stan Sigman is head of entertainment; George Muse is head of the invitation committee; Peggy Neff is head of the decorations; Marilyn Tice is head of the seating arrangements; and Larry Minks is head of choosing the sophomore helpers for the banquet.

The banquet will be formal dress. The seniors and the teachers will be sent an invitation. Peggy Neff, head of the decoration committee, made no comments about the type of decorations but did venture to say that "the decorations will be unusual and very beautiful." Last year the decoration theme for the banquet was "Side-Walk Cafe" set in Paris with an Eiffel Tower.

## March-April Calendar Of Events

- Friday March 6 — End of 4th six-weeks
- 8:40 Armed Services Assembly, Juniors and Seniors only. Boys to the gym, girls to the auditorium. State Basketball Tournament — Austin.
- Saturday March 7 — F.N.A. Tour of Northwest Texas Hospital. Track meet — Brownfield
- Monday March 9 — Basketball Banquet. Drivers Education — All Day. Measure for Senior Rings.
- Tuesday March 10 — Credit Union Assembly — Auditorium.
- Saturday March 14 — Track meet. Denver City.
- Monday and Tuesday March 16-17 — All-School Play — 8 p.m. Auditorium.
- Thursday March 19 — Band Concert — Jr. and Sr. High 8 p.m. Auditorium.
- Friday and Saturday March 20-21 — Exchange Students trip to Stratford.
- Friday March 20 — Highway Patrol Film Assembly 9:20 a.m. Auditorium.
- Saturday March 21 — Track meet — Levelland
- Thursday March 26 — Easter Assembly — 10 a.m. Tri-Hi-Y Model Assembly
- Friday March 27-30 — Easter Holidays
- April 1 — Western Day
- April 2 — Southern Assembly
- April 3-4 — Track Meet — Amarillo.
- April 4 — Track Meet-Hereford (Jr. High Invitational)

## Editors' Notes:

By Lou Ann Witkowski and Linda Higgins

Last week seemed to be especially busy here in the Journalism room.

There seemed to be a little more running around as we sent out a questionnaire to other schools in the Panhandle High School Press Association.

The questionnaire is our part in the PHSPA meet the Whiteface staff will attend March 21.

I suppose now that all the annual has been set to the publisher and that everytime there is an assembly or someone asks, "What's new," you can depend on an annual staff member whispering "The annuals are in."

Every student was probably envying all the people who were lucky enough to take a trip during school. Relax, we will not need to worry about school next Friday, March 13, for there is no school.

Teachers, you should be glad, for you can be sure that every student will take this extra day in catching up on lessons. This will be a great change!

Congratulations are due to the new yearbook officers. Best of luck on your new venture.

The band concert which was scheduled for February has been canceled to March 19.

Glen Toren, of Anaheim, Calif. presented to the student body of HHS a program on gyroscopes Friday, in the school auditorium.

By defining simple inertia, gyroscopic inertia, Newton's first law of relativity and the laws of motion, he demonstrated the purpose and use of the gyroscope.

By disrupting a scientific principles to ask in Dick Smuthers' manner, "Will the big bad wolf catch the three little pigs?" he gave his audience a laugh.

Thoren said he wished he could advise the students to take advantage of the "Power" of learning that only their teachers can give.

## Posers

1. A man who wears either blue or brown socks keeps them all in the same drawer in a state of complete disorder. In total there are 20 blue and 20 brown socks in the drawer.

Assuming that there is insufficient light for the man to see the color of the socks, how many must he take out of the drawer to be sure that he has a matching pair?

In a certain town, there are two groups of men — one group always tells the truth; the other group always lies.

A stranger arrived in this town and asked one of the natives whether he was a Truth Teller or a Liar. The native answered but the stranger didn't hear the answer. Two other natives A and B, who overheard the conversation were questioned by the stranger as to what the first man had said. A replied, "He said he was a Truth Teller." Native B replied, "He said he was a Liar."

Can you tell which of the two men, A or B, is a Truth Teller and which is a Liar.

Time Limit — 7 minutes

3. A sweater worn in the normal way has a label on the inside of the collar. Assuming that the sleeve which accommodates the left arm when the sweater is worn normally is referred to as the left sleeve, where will the label be if the sweater is turned inside out and right arm is put into the left sleeve and the left arm is put into the right sleeve?

Will the label be on the front outside, front inside, back outside or back inside? (you are not allowed to use an actual sweater, shirt, etc.)

Time Limit — 45 minutes

There are three men, Arthur, Ben and Charles — each of whom has two occupations from among the following — doctor, engineer, teacher, painter, writer and lawyer. No two men have the same occupation.

1. The doctor had lunch with the teacher.

2. The teacher and writer went fishing with Arthur.

3. The painter is related to the engineer.

4. The doctor hired the painter to do a job.

5. Ben lives next door to the writer.

6. Charles beat Ben and the painter at tennis.

Which two occupations is each man engaged in?

Time Limit — 30 minutes

ANSWERS

Three socks must be taken from the drawer. If only two were taken, one might be blue and the other brown. The third selection must result in a pair

(Continued on page 3)

## Teacher Chapter Attends State Meet in Austin

By Betty Hucker

Eight members of the Future Teachers of America Chapter at Hereford High School were participants this week end in the Fifteenth Annual State Convention of the Texas Future Teachers of America, which was held in Austin.

Local participants in the Fifteenth Annual Convention were: Linda Higgins, Patsy Hucker, Laura Higgins, Joyce Warren, Dorothy Frerich, Cynthia Loerwald, Bob Caraway and Billy Johnson.

Headline speakers for the occasion were:

(Continued on page 3)

## Scott Offers New Metalwork Course

By Mary Brorman and Lorett Higgins

Mr. Jack Scott teaches Metals Working I which was offered for the first time this year. HHS also is expected to offer Metals Working II next year. (Mr. Scott also teaches Mechanical Drawing.)

During the first semester of Metals Working the boys learned how to lay patterns on metal with tools and bend the metal into shapes and forms. The boys made such things as: funnels, and toolboxes. For home projects most of the boys made another toolbox. In art metal the boys learned how to work copper and aluminum into bowls and plates, etc. by using raising hammers with steel headings.

Students taking the course are: Wyndell Wall, Neal Lueb, George Schulte, and Joel Lytle. Mr. Scott said that the purpose of the course is, "It will give or teach a better understanding of metal and their properties and help them, if they decide to take up one of these phases as a trade, to know the fundamentals."

The trades it will introduce them to are: sheetmetal workers, welders, steel fabricators, machinist, machine workers and foundry workers. All of these skilled labors are needed in industry. When the boys study this, first they have to study apprenticeship, then journeyman. This takes about three to five years.

Mr. Scott's wife is a teacher at Northwest Elementary. He is from Uvalde, Tex. where he enjoys hunting deer.

The second semester they will learn both Oxyacetylene and electric welding, working with heavy 1/2 and 3/4 inch steel. They are getting set to build two welding tables for shop and a rack for metal storage. Then they will start on their projects, like making rotisseries, barbecues, and hayracks.

Mr. Scott said "The students design their plans after I go over the problem with them. They do the layout and development themselves because if they do it later in life, they will have to do it all."

standing of metal and their properties and help them, if they decide to take up one of these phases as a trade, to know the fundamentals."

The trades it will introduce them to are: sheetmetal workers, welders, steel fabricators, machinist, machine workers and foundry workers. All of these skilled labors are needed in industry. When the boys study this, first they have to study apprenticeship, then journeyman. This takes about three to five years.

Mr. Scott's wife is a teacher at Northwest Elementary. He is from Uvalde, Tex. where he enjoys hunting deer.

## DE Pupils Back From State Meet

By Beverly Barrett

Students and delegates from Hereford High School who attended the 18th Annual State Youth Leadership Conference of the Distributive Education Clubs of America, Texas Association held in San Antonio last week found their program to be both enjoyable and educational.

The welcome mat was out for the 1200 delegates, sponsors and friends who converged on San Antonio. From El Paso to the West, Borger to the North, Texarkana to the East, Brownsville to the South, and all points between, they came by train, plane, bus and car to spend a busy week-end in San Antonio.

Friday, at 1 p.m., the business meeting marked the official beginning of the conference — Where student officers for the 1964-65 year were elected. Friday the Business Speaking, Job Interview, Ad Layout and Copy-Writing Contests were held. Late to bed and early to rise found the students in the midst of the Sales Demonstration Contest Saturday morning. Saturday night the high school officials concerned themselves with the role of education in distribution.

Festivities after the banquet included the crowning of the State Distributive Education Sweetheart.

## Christa Given Party by FHA

By Lou Ann Witkowski

Christa Holtz, was honored with a surprise birthday party Monday following the regular meeting of the Future Homemakers of America.

The FHA girls presented Christa with gifts and prepared an attractive table for the occasion. The table was covered with a lace cloth with a pink carnation arrangement in the center. Carrying out their

## Round-Up's New Officers Named

By Mike O'Conner

"The funniest thing just happened. A petite, green-eyed blonde just came up to me in the hall and whispered, 'The yearbooks are here'."

Oh, don't worry, it's only Barbara Langley. The yearbook staff sent off the last section of the yearbook last Tuesday and after that deadline Barbara begins her little chan.

No sooner than co-editors Judy Wyman and Ronny Duncan sent off the last page the staff elected their next year's officers.

Barbara "the yearbooks are here" Langley, daughter of Mr. and Mrs. Earnest Langley, 502 Star, has been elected as the Round-up's 1964-65 editor.

Sophomore Cynthia Leasure, daughter of Mr. and Mrs. C.E. Leasure, 511 Star, was elected as assistant editor. Linda Loerwald will be the Round-up's business manager. She is the daughter of Mr. and Mrs. S. T. Loerwald, 212 Centre.

When will the yearbooks be in? "Students have approximately ten weeks from Feb. 27 to wait before the Yearbooks do arrive," said Mrs. Viola Chisholm, yearbook sponsor.

Seven hundred and fifty yearbooks were ordered this year. The staff made reservation for 743 yearbooks and then ordered 17 extra yearbooks for a "cushion."

This "cushion" will provide a yearbook for any student who entered school after the first reservation date in December.

The deadline for the last payment of the balance, \$2.00, was set for Friday, Feb. 28. After

theme, the girls used pink party punch and decorated the cake with pink flowers. The crystal punch bowl and serving cups and dishes added the final touch to the inviting table.

Having made her wish, Christa cut the cake and served it of the sponsors, guests and FHA.

Her last comment was, "I did not know all of you could be so sneaky."



AFRICAN STUDY — Pupils in Marie Gordon's classroom at Northwest are studying Africa, Mrs. George Ritter and Mrs. Zinser Jr., holding two of the masks at Monday night's open house, part of Texas Public School depicting different African tribes. Here are week. (Brand Staff Photo)

### New Book Based On Freak Cases In Medicine

By Keith Blanton

In the science section of our library there is a new book called *Eleven Blue Men and Other Narratives of Medical Detection* by Berton Roueche.

This is a collection of histories of freak cases in the medical profession.

The title story, "Eleven Blue Men" takes place on September 25, 1944.

An 82-year old man collapsed near the Hudson Terminal. Ten more in the same city, all of them aged, dilapidated — and blue all over. Two doctors began the search and found a very common occurrence caused these men to be stricken with this weird malady.

"A Pinch of Dust" tells the story of six victims of tetanus who were all drug addicts. The New York Bureau of Preventable Disease traces the path to the answer, at the end of the trail.

Thanksgiving dinner turns out to be deadly in "Family Reunion."

A man admitted to Albany Hospital showed most of the symptoms of polio, but he actually had an attack of botulism, a deadly food poisoning.

"The Fog" is the nightmarish story of Donora, Pennsylvania's smog of October, 1948, which struck down 6,000 men, women, and children — half the town's population — and killed twenty.

Other interesting cases in the book included "A Pig from Jersey" about trichinosis, "A Game of Wild Indians," about typhoid fever, and "A Lonely

### Mrs. Robinson Is Hostess For Cultural HD Club

Mrs. M. W. Sumner gave the reading, "Count Your Blessings," as the opening exercise for the meeting Feb. 25 of Cultural Home Demonstration Club. Hostess was Mrs. Pat Robinson.

A program on mental health was presented by Mrs. Louie Olson. After giving a short reading titled "The Power of Positive Thinking," she said, "Patience, kindness, and loving care can do more for the mental patient than pushing him off to himself, and sometimes will do more than institutional care."

Mrs. Grady Parsons conducted the business meeting. The council report was given by Mrs. J. G. Gandy. The need for crystal plates at the Community Center was discussed. Members voted to bring the by-laws and constitution up-to-date.

The hostess served refreshments to Mrs. Ted Royal, Mrs. Art Lewis, Mrs. Earl DeHart, Mrs. Parsons, Mrs. George Parker, Mrs. P. M. Houser, Mrs. Gandy, Mrs. Olson, Mrs. Marvis Southward, Mrs. Sumner, Mrs. Viola Williams, Mrs. J. D. Love, and the visitors, Mrs. Kenneth De Hart and Mrs. H.E. Houck, Delja, Kans.

Road" about leprosy. This is a unique nonfiction book in that it tells of the relatively unknown science detective—health officials who must find the cause of diseases to prevent the spread of disease to helpless citizens of the area, and to effect the cure of the stricken patient.

### Posers...

(Continued from Page 1) of blue or brown socks.

In this town, everyone who is asked the question "Are you a Truth Teller or a Liar?" must answer, "I am a Truth Teller," because if he actually is he must tell the truth, and if he isn't he must lie and say that he is. A is a Truth Teller and B is a Liar.

The label will be on the back outside. Now you can turn a sweater inside out and prove it.

From statement 6, Arthur is established as the painter. From statements two, three and four, Arthur cannot be teacher, writer, engineer or doctor and is therefore the lawyer. Arthur is then a painter and a lawyer. Now Ben is not a writer from statement 5, so his occupation must be chosen from doctor, teacher and engineer. From statement one, the doctor and the teacher are two different people so Ben must be an engineer. He cannot also be a doctor because that would leave teacher and writer for Charles, which statement two forbids. Ben must be a teacher and Charles is a doctor and a writer.

### CARD OF THANKS

I would like to express my appreciation for all the food, flowers, care, cards, and prayers received during my recent illness and hospital stay. Thank you for all your kind deeds.

Sincerely,  
Mrs. Oma Lee Kropff



REPRESENT CHAPTER I — Here are the sweetheart and beau from Chapter I of the FHA at Hereford High, Arvell Williams and Cindy Loerwald. The FFA-FHA had its joint valentine's party Saturday, Feb. 15, in the Bull Barn. The group used the "Sadie Hawkins" day theme for the get-together. (Brand Staff Photo)

### Three HHS Cagers Are Elected to All-District

Three Hereford High School basketball players were elected by basketball coaches of District 1-AAA to the All-District basketball team, according to W. H. Kitchens, basketball coach.

Jim Haney, Earl Jackson, and Danny Cates were all elected to the District 1-AAA All-District, second team.

Hereford, who finished third in the district race, landed as many men on the all-district roster as any team in the district. Jackson paced the Whitefaces this season with a 10.8 point per game average, while scoring a total of 281 points.

Haney averaged 9.8 points per game while scoring 224.

Cates averaged 9 points per game while scoring 224.

Members of the District 1-AAA first team are: Drake of Perryton, Larry Woods of Littlefield, Larry Lewis of Phillips, Butch Harrell of Levelland and Vick Hines of Levelland.

The second team was made up of Butler of Perryton, Haney of Hereford, Earl Jackson of Hereford, Danny Cates of Hereford, Moffett of Dumas and Danny Dawson of Dumas. The two latter boys tied for the berth on the second team.

The honorable mention roster listed Bonner of Dumas, Cathern of Dumas, Roberts of Littlefield, Anderson of Perryton and

Crump of Levelland.

The Whitefaces ended the season with a district record of 6-4 while Levelland had a 7-3 record and Perryton ended the season with an 8-2. The Whitefaces had a season record of 15-11.

Kitchens said he was very proud of the performance the boys had given during the season and felt that they worked and played hard all season.

All five starters for the Whiteface cager: will graduate this Spring.



### FORD HARDTOP SIZZLER

(NO WONDER HARDTOP SALES ARE SIZZLING AT TEXAS FORD DEALERS. COME LET A TEST DRIVE DO THE TALKING!)

This Fairlane Sports Coupe—bred in fiery open competition—is powered with an optional 271-hp V-8! The same basic powerplant used in the record-breaking Cobra sports car!

Trim on the outside—spacious on the inside—it's the most proved and experi-

enced middle-size car in Texas.

Over 40,000 Texas owners can tell you Fairlane has the total performance needed for our long, sizzling Texas trips.

Try total performance—and you'll buy it! Test-drive a Fairlane Hardtop sizzler at your Texas Ford Dealer's.

**STEPHENS-HUDSON MOTOR CO.**  
HEREFORD, TEXAS

### Good Practice In Farming Pays For Pupils, Too

By Roy Carlson

A balanced supervised farming program consists of production project and supplementary farm practice jobs. The following are reasons why it is important to have a good supervised farming program:

It can make the student some money. Agriculture students often make \$50 to \$200 on their first year projects. Many boys have made over \$1000 with their supervised farming program during their three or four years of vocational agriculture work.

It teaches the boy to do many farm jobs in the correct way. It provides an excellent avenue to establishment in farming. It provides excellent college preparatory training if one elects to go to college to prepare for a career in agriculture or in a business or industry related to agriculture.

It provides an opportunity to learn how to earn, save, spend and invest money.

It can make school work more interesting.

It gives the boy the opportunity to compete for school, com-

munity and state honors.

The cooperation of parents is an important factor in the success of supervised farming programs.

In the supervised program the student can have production projects, improvement projects and supplementary jobs.

There are many kinds of production projects. Some of these projects are: beef production, swine, dairy, poultry, sheep, cotton, corn, grain sorghum, small grain and legumes.

An improvement project is a large undertaking involving a series of jobs which are done to improve the appearance and sale value of the farm and make it easier and more profitable to operate.

A supplementary job is one that a student performs in order to learn how to do that particular job or how to improve his skill and efficiency in doing the work.

All jobs lying outside of the production and improvement project programs are considered supplementary jobs. The main purpose of supplementary practices is to provide the student with an opportunity to gain experience, skill and efficiency in performing jobs by approved methods.

Good planning is important. The future Farmer should select his project, set up certain goals, list practices, study and carry out his project to completion.

A wise motto for the Future Farmer to follow is "Plan your work — then work your plan."

### Teacher...

(Continued from page 1) cation were Wagoner Carr, Attorney General of Texas; Dr. Wolda Faust of the National Education Association in Washington, D.C.; Mrs. Amy Freeman Lee of San Antonio, famed artist and lecturer; and Pat Culpepper, 1962 Heisman Trophy Winner and former All-American football player for the University of Texas, whose topic was "Coaching Is Teaching, Too."

Scholarships and awards were presented at an Awards Night Banquet Saturday in Austin's Municipal Auditorium.

**OPTOMETRISTS**  
Dr. Milton C. Adams  
Dr. Dale H. Wynn  
335 Miles EM 4-2255

**Office Hours**  
Mon. - Fri. 8:30-5:00  
Saturdays 8:30 - 1:00  
DRS. ADAMS & WYNN



If you missed...

### "Hap" Wiseman's

Sourdough Biscuits  
during Robert's Appliance Big  
LEAP YEAR SALE,

You really missed some "Mighty Good Eatin'."

Cook Better—Electrically  
With TAPPAN

### ROBERTS APPLIANCE

136 W. 3rd St.

EM 4-1588

**BRASS BOTTLE** Continuous Daily  
Week Days Open 6:45 p.m.  
Sat. & Sun. Open 1:45 p.m.

Now... Thru **SATURDAY**

IT'S A MODERN ARABIAN NIGHTS-MARE OF OUTRAGEOUS FUN!

**TONY RANDALL BURLIVES BARBARA EDEN**

**The Brass Bottle**  
in EASTMAN COLOR  
and Luscious LULU PORTER  
International Dancing Star!

A Universal Screen, Inc. Production  
A UNIVERSAL PICTURE

**STARTS SUNDAY for 3** Hilarious Days!

He really wasn't out to make \$1,000,000 — He'd already made that!

**REMICK GARNER**

**WHEELER DEALERS**

**TOWER DRIVE-IN**  
Now Open Every Fri. - Sat. - Sun.  
Show Starts at Dusk!

**STARTS FRIDAY for 3 DAYS**

**ALFRED HITCHCOCK'S The Birds**

TECHNICOLOR

STARRING ROD TAYLOR · JESSICA TANDY  
SUZANNE PLESHETTE and TIPPY HEDREN

Plus: Big Co-Feature

**SHOWDOWN**  
A UNIVERSAL PICTURE  
STARRING AUDIE MURPHY · KATHLEEN CROWLEY  
CHARLES DRAKE · HAROLD J. STONE



The newest resident of King's Manor is Bessie F. Brown, a former missionary to China and cent speaker during the morning service of the Lazbuddie church.

Construction of the new nursing unit is now underway. The Joe Hamilton family and Mrs. John Jacobsen presented a musical program for residents Feb. 21. The Y. L. Methodist women brought figs and visited the home. They were served refreshments by Mrs. Blake and Mrs. Fisher.

A group from Oklahoma Lane Church visited the home, and Mrs. Snodgrass presented a short program. They gave dessert bowls to the home. Mrs. G. Wilcoxson spent several days in Littlefield with her daughter. The Tuesday evening prayer meeting was led by the Rev. Mr. Thurston.

The grounds committee met recently at the home. Mrs. Shelly, Dimmitt, Mrs. Graham, Amarillo, and Mrs. S. S. Williams, Hereford serve on the committee. Miss Lilly Hofstetter, Amarillo, had dinner in the home Feb. 20. She was librarian here from 1930-1938.

Mrs. Rucker was welcomed home after her week's visit with her son in New Mexico. Mrs. C. R. Smith is in the Friona Hospital. Mr. McMinn, Amarillo, visited his aunt, Mrs. J. F. Ward Wednesday. Mrs. Earl Plank and Mrs. Lefty Thomas continue to teach a crafts class each Wednesday.

Mrs. L. C. Thomas and Mrs. J. D. Culver attended a hair style show in Friona Tuesday. Mrs. J. W. Houston is attending the Frank Laubach school of missions in Amarillo with Mrs. Lee Benefield. Another recent visitor was Carlton Thomson, Abernathy.

Bro. Patterson, Wesley Methodist Church, showed pictures to the residents Friday evening. Mr. Doffern's children from Plainview visited last week. Mrs. A. V. Tipps' nephew, who is on his way to Formosa, stopped by for a visit. Mrs. Ola Davis had visitors from Dimmitt last week.

### El Llano Study Club Has Party For Husbands

Members of El Llano study Club honored their husbands with a dinner party Feb. 24 in the home of Mr. and Mrs. Ben Childers. Bridge and "42" were played after dinner.

Those attending were Mr. and Mrs. Jack Meredith, Mr. and Mrs. R. A. Daniel, Mr. and Mrs. Jesse Geron, Mr. and Mrs. Pete Caviness, Mr. and Mrs. Ivan Block, Mr. and Mrs. Kendall Williams, Mr. and Mrs. John N. Jacobsen Jr., Mr. and Mrs. G.D. Caison Jr., Mrs. Jim Bookout, Mrs. Ray Todd, and Mr. and Mrs. Childers.

### Westway Club Has Luncheon Meeting Feb. 27

Mrs. W. W. Thomas was hostess for the luncheon meeting Feb. 27 of Westway Home Demonstration Club. The program, "Fruits and Vegetables for Health," was presented by Mrs. Kenneth Rudd, foods demonstrator. She emphasized the need for essential vitamins and minerals in the daily diet.

Mrs. Joe Wagoner was presiding officer. The next meeting will be at 7:30 p.m. March 12 in the Westway Community Center. The boys and girls of the Westway 4-H Club will present the program.

Members present for the luncheon were Mrs. Benton Bolln, Mrs. Bess Werner, Mrs. Paul Rudd, Mrs. R. W. Mitchell, Mrs. David Seal, Mrs. Gail Borland, Mrs. George Turrentine, Mrs. Joe Wagoner, Mrs. Joe Landers, Mrs. Preach Merritt, Mrs. Kenneth Rudd, and Argen Draper. Mrs. Jimmy Jesko and Mrs. Albert Lamb joined the group for the business meeting.

**SAMMY LANE**  
CUSTOM HOMES

# FAMOUS BRANDS SALE!

Safeway Is Having A Big Sale On Famous Brands--So Stock-Up Today!

**SAFEWAY**



**CORN**

Highway Whole Kernel  
**SAVE 16c**

**8** 12 Oz. Cans **\$1**

Del Monte **KRAUT**  
6 303 Cans **\$1**

**PEAS**

Town House Garden Fresh  
**SAVE 15c**

**6** No. 303 Cans **\$1**

**BEANS**

Del Monte Fancy Cut  
**SAVE 8c**

**4** **\$1**

Breakfast Gems  
**EGGS**  
Grade "A" Medium Size Doz. **45c**

Del Monte Prune **JUICE**  
2 Qt. Btl. **89c**

All Grinds **FOLGER'S**  
1-Lb. Can **69c**

**Flour**  
**Salmon Bleach Juice**

Kitchen Craft Enriched Flour 25-Lb. Bag **\$1.69**  
**SAVE 30c**

Del Monte Fancy Quality Red Salmon No. 1/2 Can **69c**

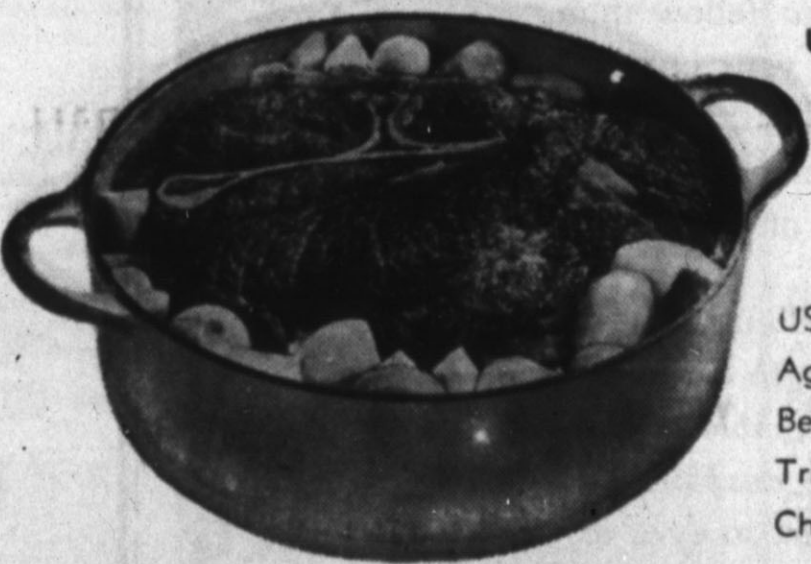
White Magic You Save 6c 1/2 Gal. Btl. **29c**

Del Monte Pineapple-Grapefruit Juice 3 46 Oz. Cans **\$1**

Snow Star **ICE CREAM**  
Assttd. Flavors 1/2 Gal. Ctn. **59c**  
**SAVE 10c**

Scotch Treat Frozen **ORANGE JUICE**  
6 Oz. Cans 4 **\$1**  
**SAVE 18c**

C&H **CANE SUGAR**  
10-Lb. Bag **\$1.23**  
**SAVE 14c**



USDA Choice Aged Mature Beef

**ROAST**

USDA Choice Aged Mature Beef, Safeway Trimmed Chuck Roast

Lb. **45c**

**T-Bone Steak** US Choice Aged Mature Beef Lb. **98c**

**Sirloin Steak** US Choice Aged Mature Beef Lb. **89c**

**Ground Beef** 100% Pure Meat Lb. **49c**

**Franks** Sterling Brand Lb. **49c**

**Kraut** Meeter's Qt. Jar **33c**

**Bacon** Safeway Sliced Tray Pack Lb. **55c**

**Cheese** Safeway Cheddar Mild Bar or Chunk Lb. **69c**

**Fillets** Captain's Choice Perch or Cod Lb. **49c**

**Minute Rice** 14-Oz. Pkg. **49c**

**PINEAPPLE BUTTERMILK** Del Monte Fancy Sliced 2 No. 2 Cans **79c**

Lucerne Bonus Quality 1/2 Gal. Ctn. **39c**

**Bakerite** Shortening 3-Lb. Can **79c**

**Mr. Clean Cleaner** 28-Oz. Btl. **69c**

**Salvo Tablets** 2 Lb. 14 Oz. Box **81c**

**Liquid Thrill** 22 Oz. Btl. **69c**

**Crisco Shortening** 4c 3-Lb. Can **83c**

**Dry Trend** 4c 3-Lb. Can **49c**

**Dutch Cleanser** 21 Oz. Can **25c**

**V. O. 5** Creme Rinse Reg. or for Dry Hair Btl. **\$1** + tax

Garden Fresh Produce  
**POTATOES** Colorado Red 20-Lb. Bag **69c**  
**PEAT** Michigan 100-Lb. Bag **\$1.79**  
**ORANGES** California Navel 5-Lb. Bag **69c**  
**CABBAGE** Garden Fresh Washington Rome or 2-Lb. **35c**

Bel Air Frozen Foods  
**MIX or MATCH**  
12 Oz. Leaf or Chopped Spinach, 9 oz. Crinkle Cut or French Fried Potatoes, 10 Oz. Turnip Greens, 10 Oz. Green Peas  
**6** Pkgs. **\$1.00**

**Pard Dog Food** 2 1-Lb. Cans **33c**

**Certified Chili** Wilson's 24 Oz. Can **53c**

**Colgate Toothpaste** 4 Oz. Tube **53c**

**Imperial Margarine** 1-Lb. Pkg. **37c**

One FREE Card Per Store Visit. No Purchase Required. Purchasers Not Favored. No need to pass through Checkstand. Secure Your Free Card at either end of the Checkstand, or from any store employee other than in the Meat Department.

**YOU CAN STILL PLAY**  
**Sword in the Stone**  
**AT SAFEWAY**  
Hurry! Get Your FREE Card Today. You Could Win \$100.

**SAFEWAY**  
We Reserve the Right to Limit Quantities

# FOR GOD SO LOVED THE WORLD

## Church Of Jesus Christ of Latter Day Saints

(Mormon)  
EM 4-1905  
The Mormon Church meets in Gilliland Funeral Home, Sunday School, 10 a. m. Sunday, Sacrament Meeting, 11 a. m. Sunday.

## Avenue Baptist Church

Rev. Clarence F. Powell, Pastor  
Sunday School is held at 9:45 a.m.; Worship Service at 11 a. m.; Training Union, 7 p.m.; Evening Worship Service, 8 p. m. Wednesday Evening Prayer Service, 7:30 p. m.

## Grace Gospel Church

Rev. H. V. Fields, Pastor  
Thirteenth and Avenue K  
Sunday School is at 9:45 a.m. and worship services convene at 11 a. m.  
Bible Study is held each Sunday at 7 p. m. and preaching service at 8 p. m.  
Wednesday prayer meeting held at 8 p. m.

## Temple Baptist Church

Rev. Bill Ware, Pastor  
Forrest Ave. and Ave. K  
Sunday: Sunday School, 9:45 a. m.; Morning Worship, 11 a. m.; Training Union, 6:30 p. m.; Evening Worship, 7:30 p. m.  
Tuesday: Beginner Sunbeams, 9:30 a. m.; Primary Sunbeams, Junior Girls Auxiliary, and Intermediate Girls Auxiliary, 4 p. m.  
Wednesday: Prayer Meeting, 7:30 a. m.; Choir Rehearsal, 8:15 p. m.

## Park Ave. Church of Christ

On Harrison Highway  
Worship Services 10:30 a. m. Sunday. Prayer meeting 7 p. m. Wednesday.

## Jehovah's Witnesses Church

317 Ave. I  
Sunday: Public Bible Lecture, Study, 4:15 p. m.  
Tuesday: Congregation Bible Study, 8 p. m.  
Friday: Service Meeting, 7:30 p. m.; Theocratic Ministry.

## St. Anthony's Church

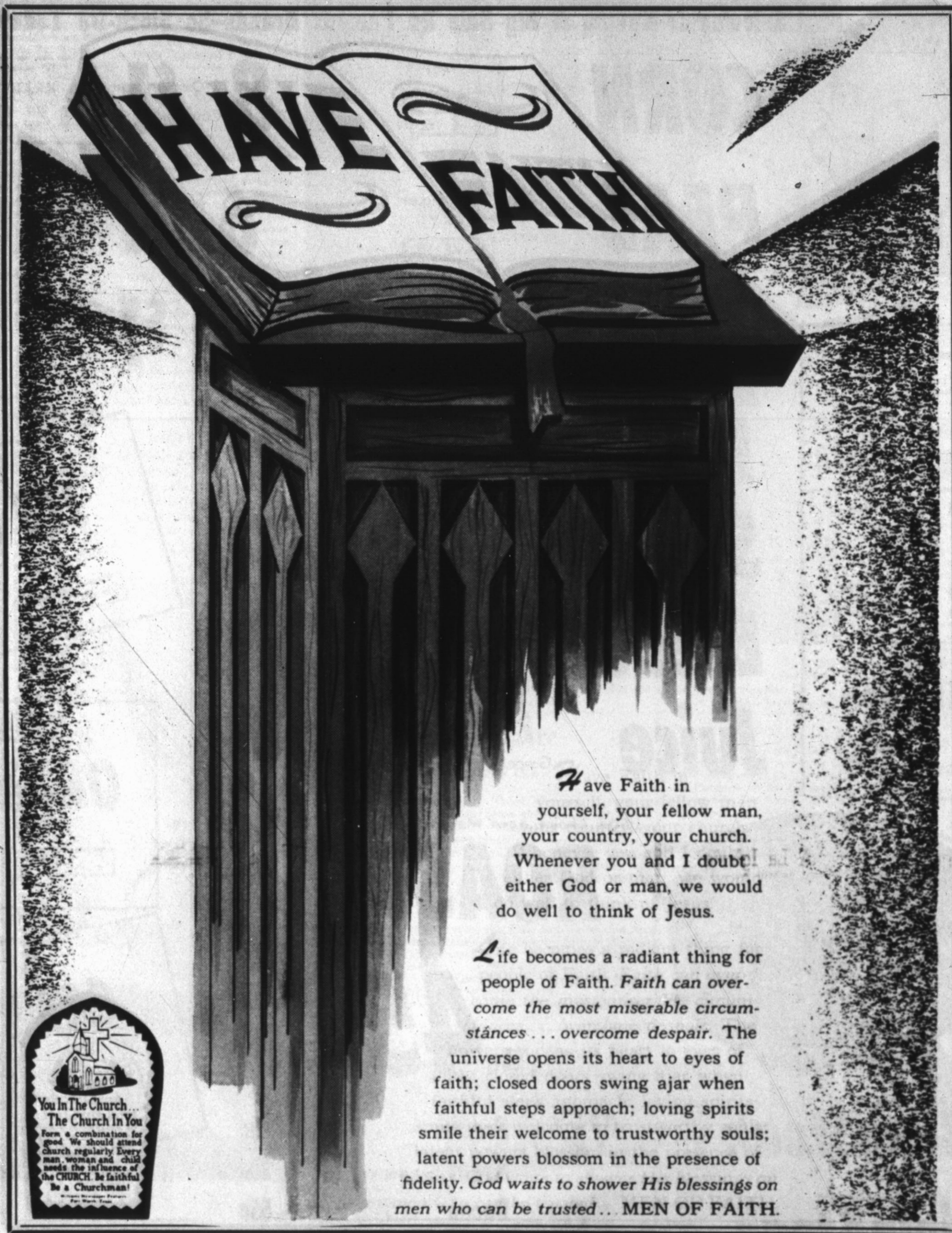
Harrison Highway at 25 Mile Ave.  
Father Angelus, Pastor  
Sunday Masses at 6:30 a. m., 8 a. m., and 10 a. m.  
Sunday evening mass at 8 p. m., Daily mass at 6:30 a. m. and 11 a. m. during school year.  
Tuesday evening mass at 8 p. m.  
First Friday Masses at 6 a. m., 11 a. m. during school year, and 8 p. m.  
First Saturday Masses at 6 a. m., 8 a. m.  
Holy Day Obligation Masses at 6 a. m., 8 a. m., and 8 p. m.  
Confessions are Tuesday at 12 noon - 1 p. m. during school year and 8 p. m.; Thursday, 12 - 1 p. m. during school and 8 - 9 p. m. before First Friday; Saturday, 4-5 p. m., 8 - 9 p. m.; Sunday, 7:30 a. m.  
Baptisms at 4 p. m. Sunday. Any other time by calling Rectory.

## St. Thomas Episcopal Church

Rev. Joel C. Treadwell, Vicar  
Harrison Highway  
Vicarsage, 113 Elm Street  
Sunday: Holy Communion, 8 a. m.; Sunday School, 10 a. m.; Morning Prayer and Sermon, 11 a. m.; Youth Fellowship, 7 p. m.  
Wednesday: Holy Communion, 10 a. m.  
The Bishop's Committee meets the first Sunday of each month immediately following morning worship.  
Women's Day Guild meets the second Tuesday of each month at 2 p. m. at the church.  
Women's Night Guild meets the second Thursday of each month at 7:30 p. m. at the church.

## Mt. Sinai Baptist Church

302 Knight St.  
Sunday Services are Sunday School, 10 a. m.; Morning Worship Services, 11 a. m.; Evening Worship Services, 7:30 p. m.  
Mid-week Prayer Service is held at 7:45 p. m. Wednesday. Choir Rehearsal is held at 8 p. m. on Thursday. A teachers Meeting is held at 7 p. m. on Friday.



Have Faith in yourself, your fellow man, your country, your church. Whenever you and I doubt either God or man, we would do well to think of Jesus.

Life becomes a radiant thing for people of Faith. Faith can overcome the most miserable circumstances... overcome despair. The universe opens its heart to eyes of faith; closed doors swing ajar when faithful steps approach; loving spirits smile their welcome to trustworthy souls; latent powers blossom in the presence of fidelity. God waits to shower His blessings on men who can be trusted... MEN OF FAITH.

These Hereford Business Firms Make This Page Possible in the Interest of a Christian Community. Go to Church Sunday.

**ELIZABETH WITHERSPOON INSURANCE**  
• 148 N. Main St.

**E. B. BLACK CO.**  
• Dick Barnard & Jesse Stanford

**McRIGHT GARAGE & SUPPLY**  
• Mr. and Mrs. A. N. McRight

**FIRST NATIONAL BANK**  
• Virgil Hennen

**ROCKWELL BROS. & CO.**  
• D. R. Vandever

**BUY-RITE FURNITURE**  
• J. H. Fish

**BIG T PUMP CO., INC.**  
• Hilroy and Leroy Aven

**HEREFORD LAUNDRY & DRY CLEANERS**  
• Ernest Kendall

**SUIT'S AUTO SUPPLY**

**HEREFORD FERTILIZER & INSECTICIDE CO.**  
• Norman Moore

**PIGGLY WIGGLY**  
• Mr. and Mrs. Gaylord Newell

**DAVIS IMPLEMENT CO.**  
• W. L. Davis, Jr.

**CITY DRUG STORE**  
• Mr. and Mrs. Kenneth Coker

**JONES TEXACO SERVICE**  
• Mr. and Mrs. J. P. Jones

**WESTERN WHEEL INN**  
• Mr. and Mrs. G. D. Calson

**HEREFORD GRAIN CORP.**  
• Curtis O. Roach, Mgr.

**PITMAN GRAIN CO.**

**HEREFORD STATE BANK**  
• Russell E. Carver, Pres.

**Western Wrecking**  
• Anson A. and June Dearing

**HEREFORD TEXAS FEDERAL CREDIT UNION**  
• Mrs. Dyalhia Benson

**ED SKYPALA**  
• Your Borden's Distributor

**GILLILLAND FUNERAL HOME**  
• Marlin Gilliland

**MASTER CLEANERS**  
• Mr. and Mrs. C. D. Fitzgerald

**ROGERS DRUG**  
• Mr. and Mrs. Grady Rogers

**LOERWALD BROS.**  
• Ed, George, Gene & Harold Loerwald

**FARMER'S DRIVE IN**  
• Troy Moore

**PLAINS FERTILIZER CO.**

**ORSBORN - CHEVROLET OLDSMOBILE**  
• Your Chevrolet-Oldsmobile Dealer

**CONSUMER'S FUEL ASS'N**

## Templo el Calvario Asamblea de Dios

Pastor, Martin Musquis  
Bien venidos.  
Calle Ave. H & 13th.  
Las servicios durante la semana y el Domingo.  
Como siguen: 7:30 de la noche Martes, Jueves.  
Domingo, 10 de la mañana, escuela dominical, a las 11:30 predicacion.

## First Baptist Church

Rev. B. L. Davis, Pastor  
Fifth and Main Streets  
Sunday: Sunday School, 9:45 a. m.; Morning Worship, 10:55 a. m.; Training Union, 6:30 p. m.; Evening Worship, 6:55 p. m.  
Wednesday: Sunday School teachers and officers meeting, 7 p. m.; Mid - Week Prayer Service, 7:45 p. m.; Church Choir rehearsal, 8:30 p. m. Junior GA's, Intermediate GA's, Young Women's Auxiliary Crusader RA's and Pioneer RA's meet at 7 p. m. WMS visitation, first Wednesday, 9:30 a. m.; WMS luncheon and business meeting, second Wednesday, 12 noon; WMU circle meetings, fourth Wednesday, 9:30 a. m. or 3 p. m. WMU night circle meeting, second Thursday, 4 p. m.  
Nursery is provided for all church - wide activities.  
Sunday morning worship services broadcast over KPAN.  
Listen to the "Baptist Hour" at 8 a. m. Sunday over KPAN.

## Iglesia Metodista San Pablo

223 Kibbe Street  
Rev. Gilbert Diaz  
Pastor  
Los Servicios de nuestra nueva Iglesia. Seran de la siguiente manera los Domingos y los dias de la semana, Escuela Dominical, a las 10 a. m.; Servicio de Adoracion, a las 11 a. m.; Domingo en la noche Predicacion 7 p. m.; Los jueves servicios de oracion 7 p. m.

## Church Of The Nazarene

Fourth and Jackson  
Rev. Burl M. DeBord, Pastor  
EM 4-1375  
Sunday School is held at 10 a. m.; Worship Service at 11 a. m.; Junior and Youth Services at 6:15 p. m. Evening Service at 7 p. m.  
Prayer meeting Wednesday will begin at 7 p. m.  
The first Wednesday of each month a Missionary meeting is held at 7 p. m.

## Assembly Of God Church

Union and Ave. G  
Rev. V. W. Marcellini, Pastor  
Sunday School is held at 9:45 a. m. Morning worship service convenes at 11 a. m.  
C. A. service begins at 7 p. m. Junior C. A.'s meet at 6 p. m. and worship service begins at 8 p. m. each Sunday evening.  
Prayer meeting and Bible Study will be held Wednesday at 8 p. m.

## Fellowship Baptist Church

Independent Fundamental  
Odd Fellow Hall  
305 E. 6th  
Rev. Kenneth Irwin, Pastor  
Sunday School is held at 9:45 a. m. each Sunday, followed by Worship Services at 11:00 a. m. Evening Service at 7:45 p. m. Mid-week prayer Service, Wed. 7:30 p. m.  
For transportation, call EM4-3101.

## First Christian Church

Rev. Eugene Brink  
Pastor  
West Park Avenue  
Sunday School is held at 9:30 a. m. Worship service will begin at 10:50 a. m.  
Chi - Rho and CYF meets at 6 p. m. Sundays and vesper services are at 7 p. m.  
Functional Departments first Wednesday at 8 p. m.  
General Church Board, second Wednesday at 8 p. m.

## Westway Baptist Church

Rev. Kenneth Lowry, Pastor  
Sunday School is held at 10 a. m. with Church Services following at 11 a. m. Training Union is held at 7:00 p. m. and Evening Services on Sunday begin at 8:00 p. m.  
The Wednesday night Prayer Meeting in the Church is held at 7:30 p. m.

(Continued on page 5)

# CHURCH...

(Continued from Page 4)

## Mission De San Jose

**LABOR CAMP**  
El Domingo es el dia del Señor. Tenemos que adorarlo. No hay mejor modo que la Santa Misa? El sacrificio de Calvario.  
Horas de Misas los Domingos: 8 a. m.; 10 a. m.; 8 p. m.  
Bautismos después de la misa de las 10 a. m.

## Bippus Community Church

Eugene L. Nangle each first and third Sunday and R. Evans each second and fourth Sunday.  
Sunday School is at 10 a. m. every Sunday and Preaching is at 11 a. m. and 7 p. m. All Day Singing each Fifth Sunday.

## Central Church Of Christ

**L. E. Fooks, Minister**  
**Marvin Crowson, Minister**  
Sunday Services: Bible Study, 9:30 a. m.; Morning Worship, 10:25 a. m.; Evening Worship, 6 p. m.  
Mid-Week Services: Ladies Bible Study, 10 a. m. Wednesday; Mid-Week Classes for all.

## Immanuel Lutheran Church

Park Ave. & B Street Hereford, Texas  
**Fred Beversdorf, Pastor**  
Feb. 23, Sunday 8:30 a. m. Friona Worship 9:15 a. m. Call to Worship KPAN 9:45 a. m. Sunday School & Bible Class 11:00 a. m. Worship 1:15 p. m. The Lutheran Hour KPAN 2:30 p. m. Missions & Evangelism Committees  
Feb. 24, Monday 4:15 p. m. Ladies Bible Class  
Feb. 25, Tuesday 10:00 a. m. Circuit Conference in  
Feb. 26, Wednesday 4:15 p. m. Cub & Boy Scout 7:30 p. m. Lenten Service  
Feb. 27, Thursday 7:30 p. m. Lenten Service in Fri.  
Feb. 29, Saturday 2:30 p. m. Visitation

## Frio Baptist Church

**Rev. G. W. Fine, Pastor**  
Sunday School is held at 10 a. m. each Sunday followed by Worship Services at 11 a. m. Training Union is held at 6:30 p. m. Sunday and Evening Worship Services begin at 7:30 p. m. On Wednesday, a Prayer Service is held at 8 p. m.

## Thompson Memorial Mexican Baptist Mission

**TEMPLO BAUTISTA MEMORIAL**

Alex O. Thompson Memorial 215 Mission Street Guillermo Enrique Benitez, Ministro

**LA SEMANA QUE VIENE**

Domingo 1: Escuela Biblica 9:45 a. m. Leccion: Jesus en el Hogar Culto de Adoracion 11:00 a. m. Sermon: "Para el Bien de los Que Aman a Dios" Texto: 1 Juan 5:2  
Union de Preparacion 7:00 p. m.  
Topico: Lo Que Creemos Acerca de la Expiacion. Culto de Predicacion 8:00 p. m. Sermon: "Por Que Nos Ha Venido Este Mal?" (Tercer Sermón sobre el Profeta Jonas)  
Lunes 2: Programa de Radio en KPAN, 860 kc. a las 6:15 p. m. Mensaje: Bienaventuranzas de los Hijos de Dios Culto de Oracion 7:30 p. m.  
Miércoles 4: Culto de Oracion 8:00 p. m. Rayitos de Sol 8:00 p. m.  
Jueves 5: Culto de Oracion 7:30 p. m.  
Viernes 6: Cultos de Oracion 7:30 p. m.  
Sabado 7: Reunion de la Juventud (Festival de Coros). El Bus sale a las 6:15 p. m.

## Wesley Methodist Church

410 Irving  
**Rev. Clesby Patterson, Pastor**  
Sunday School, 9:45 a. m.; Sunday Morning Worship, 10:55 a. m.; Sunday Evening Worship, 5:30 p. m.; MYF, 6:30 p. m.; Primary Fellowship, 6:30 p. m. Choir Rehearsal, 6:30 p. m.  
Bible Study: Wednesdays, 7:30 p. m.; W S C S 2nd and 4th Mondays, 3:00 p. m.; Methodist Men, 1st Saturdays, 6:30 a. m. Commission on Membership and Evangelism: 4th Mondays, 7:30 p. m. Commission on Education, last Thursday each month, 7:30 p. m. Official Board, 1st Monday, 7:30 p. m.

## The Church Of God In Christ

**Rev. Calvin Hodge, Pastor**  
115 West Norton  
Sunday School: 9:45 a. m.; Morning Worship 11 a. m.; Evening Worship 8 p. m.  
Monday, Bible Band meets 7 p. m.  
Wednesday, Prayer Meeting 8 p. m.

## Iglesia De Cristo

BIENVENIDOS a los Servicios en la IGLESIA DE CRISTO, en ESPAÑOL. Ubicado en SUNSET & PLAINS. Hora de servicios en Español Domingo, 11 A. M. Miércoles, 7:30 P. M.; en Inglés. La entrada es por el lado SURESTE Del Edificio  
Viernes, 7:30 P. M.; en Inglés. La entrada es por el lado SURESTE Del Edificio

## First Presbyterian Church

410 Lee Street  
**Rev. Russell Wingert, Pastor**  
Sunday School is held each Sunday at 9:45 a. m. followed by worship service at 11 a. m. Morning Devotional at 9 a. m. Tuesday.  
Choir Rehearsal, 8 p. m. Wednesday, Prayer meeting Friday 7:30 p. m.

## Seventh Day Adventist Church

West Park Addition  
**ELDER JAMES MEADE, PASTOR**  
"The Messiah in the prophecies of Isaiah" is the subject for daily lesson study and class discussion Sabbath Saturday.  
Memory text: Isaiah 61:1  
Study Helps: "Prophets and Kings" Pages 689-697; 729-733  
Lesson Aim:  
To present the salient points of Messianic Prophecy in the writings of the "Gospel Prophet" and to observe their specific fulfillment in Jesus of Nazareth.

Lesson:  
1. The Immanuel Passage Isa. 7:13-17 Isa. 9:1-7  
2. The Messianic Age Isa. 42:1; Matt. 12:18 Isa. 35:1-8  
3. The Servant of God Isa. 49:5-7  
4. The Suffering Saviour Acts 8:26-35 Isa. 53  
5. The Gracious Work of the Saviour Isa. 61:1-2; Luke 4:18-21.  
Services:  
Sabbath School—9:45 a. m. Saturday  
Worship Service 11 a. m. Saturday.

## San Antonio A La Iglesia

North 25 Mile Avenue and Highway  
Vd. Es Catolic? Pues, Tiene La Obligacion De Asistir A La Santa Misa Todos Los Domingos!  
Horas De Misas En Los Domingos: 6:30 a. m.; 8 a. m.; 10 a. m. y 8 p. m.  
Durante La Semana: 6:30 a. m. ages and devotional services at 7:30 p. m. Wednesday.

## Reading For Mental Health Is Club Topic

A program on reading for mental health was presented by Mrs. Mary King during the meeting Feb. 25 of West Hereford Home Demonstration Club. Mrs. King spoke of the everyday tensions in a woman's life, which she termed the "Worry-Go-Round."

Using a booklet with sketches of common situations, Mrs. King read the problems and explained them. "Reading can help us overcome these problems," she concluded.

Mrs. E. B. Mosley, president, opened the meeting with a poem,

## First Methodist Church

501 North Main  
**Rev. Herschel L. Thurston, Pastor**  
Sunday: Sunday School, 9:45 a. m.; Worship, 10:55 a. m.; Junior High and Senior High Fellowship Dinner, 5:45 p. m.; Junior High and Senior High MFY, 6:15 p. m.  
Tuesday, W.S.D.S. Prayer group, 9:30 a. m.; Homebuilder's Prayer Group, 8 p. m.  
Wed. Junior High Prayer Group, 6:15 p. m.; Thurs. Senior High Prayer group, 6:15 p. m.  
Wed. All Commissions meeting.

"The untaxable Riches." Mrs. Vida Jacobs recited from memory the 13th chapter of I Corinthians. The topic for roll call response was "Reading for Recreation."

Mrs. W. J. Frost gave the council report, and a report was given on the appreciation luncheon. The next meeting, March 10, will be in the home of Mrs. Alice Swigart. Following a salad luncheon at 12 o'clock, Mrs. M.

J. Koelzer will present a program on 4-H work.  
Miss Evelyn Bell led the group in a game of recognizing states by their outlines. The hostess gift was won by Mrs. Blanche Hardin.

The meeting was held in the Flame Room, Pioneer Gas Company. Miss Bell, the hostess, served refreshments to Mrs. Swigart, Mrs. Vern Witherspoon, Mrs. W. J. Frost, Mrs. King,

Mrs. Hardin, Mrs. Mosley, and Mrs. Pearl Gass.

Read The Classifieds Classifieds Get Results

**SAMMY LANE CUSTOM HOMES**

## CONFIDENTIAL SURVEY

Without obligation on my part I am interested in being considered for this type of work if the company decides to locate in Hereford.

Please print or write legibly:

NAME .....

ADDRESS .....

CITY .....

Experience in operating sewing machines (If you have no experience, but are willing to learn, write "None") .....

Return by March 14th, 1964 to  
Deaf Smith County Chamber of Commerce.

Box 192  
Hereford, Texas  
(Pay Schedule \$1.25 per hour)

# You'll Be... RIDING HIGH



## When You Plant SCOTT'S HYBRID SORGHUM and SCOTT'S GRAZER

(Sudan X Sorghum Hybrid)

"Good Seed Doesn't Cost --- It Pays"

# SCOTT SEED CO.

EM 4-3484



## The Dodge Boys are straight-shooters

(they hit the highest sales gains in the industry)

No fudging. No chippy trading. The Dodge Boys are champs — with top dollar on your old car, low, long-term financing, service promises that stick. That's why Dodge sales are up 22% so far this year in the Southwest — higher than any other car sales increase! So drive a new Dodge bargain... it's the cat's eye of the '64s! See the Dodge Boys and drive home with all the marbles!



LET'S COOK SOMETHING!

# Mrs. Werner Koelzer Gives Recipes For Lent

By Dale Stevens  
Brand Foods Editor

During Lent, members of the Catholic faith must observe the laws of fast, which require that only one full meal may be eaten each day. Meat may be eaten as part of this meal except on certain days.

Daily menus for the Lenten season must include two light, meatless meals. For these Mrs. Werner Koelzer, 424 Star, shares her recipes for several light dishes. She suggests the heartier Salmon Vegetable Bake for days when meat is prohibited.

Mrs. Koelzer is very active in church work and is a member of both St. Anthony's Parish Council and the Antonian Circle. Her hobbies are reading and sewing for her children. Tommy, 9, Jeanie, 8, Cathy, 7, and Barbie, 16 months. Mr. Koelzer is with Suit's Auto Supply.

Cooking is sometimes a discouraging experience for Mrs. Koelzer. No matter how hard she has worked and how elaborate the meal she has prepared, she often hears from one or more of her children, "Can't I have cold cereal?"

**Salmon Vegetable Bake**  
1 cup boiling water.  
3 medium sized potatoes, peeled and thinly sliced.  
1 can (No. 1 tall) salmon  
1 1/2 cups peas, shelled fresh or frozen  
1 cup carrots, coarsely grated  
1/2 medium onion, grated

1 egg  
1 cup milk  
1 t. salt  
1/2 t. pepper  
1 T. butter or margarine  
1/4 cup corn flakes, crushed

Pour boiling water over potatoes and let stand 5 minutes. Drain salmon, saving liquid, and remove bones and skin. Flake. Drain potatoes and arrange half of them in bottom of a greased 2 1/4 quart casserole; cover with half of the salmon and half of the uncooked peas. Build a second layer with remaining potatoes, salmon, and peas. Mix together carrots and onion and arrange over peas. Beat egg together with milk, salmon liquid, salt, and pepper and pour into casserole. Dot with butter and top with corn flakes. Bake at 350 degrees for one hour or until potatoes are tender.

**Tuna Loaf**  
1 small package potato chips  
1 small can tuna  
1 egg, hard-boiled  
1 can cream of mushroom soup mixed with 1/2 soup can milk  
grated cheese  
Place potato chips in casserole; crumble tuna over chips. Slice egg over tuna and pour soup mixture over all. Top with grated cheese. Bake at 350 degrees for 45 minutes to one hour.

**Creamed Eggs**  
6 eggs, hard cooked  
1 1/2 cups medium white sauce

6 slices toast  
Cut eggs into fourth and add to white sauce; stir carefully. Serve on toast. Sprinkle with paprika or chopped parsley. Serves 4.

**White Sauce**  
2 T. butter  
2 T. flour  
1 cup milk  
Melt butter; add flour and blend. Add milk and cook over low heat until thick, stirring constantly. Add 1/4 t. salt.

**Corn Chowder**  
1 T. melted shortening  
1 small onion, sliced  
1 No. 2 can (2 1/2 cups) corn  
2 cups diced potatoes  
1 1/2 cups fresh or canned tomatoes.

1 T. sugar  
1 T. sugar  
1 t. salt  
Dash pepper  
2 cups boiling water  
2 cups hot milk

Cook onion in hot fat, without browning, five minutes. Add vegetables in layers; sprinkle with sugar and seasonings. Add water and cook slowly until potatoes are tender. Remove from heat and slowly stir in milk. Serve piping hot.

## Guest Speaker For Art Guild Is Bill Bradly

During the Feb. 25 meeting of Hereford Art Guild, Bill Bradly presented a program on picture framing. Using slides of framed pictures, he discussed the effect achieved with the frames. He also used samples to demonstrate proper framing.

Mrs. Ray Cowert conducted the business meeting. Mrs. Nell Culpepper, Mrs. Bess Werner, and Mrs. Eunice Petersen were appointed members of the nominating committee.

The meeting was held in the art room at the Community Center. Those present were Mrs. Jim Higgins, Mrs. E. W. Young, Mrs. Earl Poarch, Mrs. Cowert, Mrs. Werner, Mrs. Ellen Carter, Mrs. W. S. Kerr, Mrs. Carrie Mae Doak, Mrs. Vivian Major, and a visitor, Mrs. Mary Poarch.



PREPARING LENTEN MEALS — Mrs. Werner Koelzer, 424 Avenue J, prepares Creamed Eggs for her family in observance of Lent. According to official regulations, a Catholic person may eat one full meal each day during this season. (Brand Staff Photo)

## Courthouse Records

### Vehicle Registrations

Hoyt R. Renfro, 1964 Chevrolet; Hoyt R. Renfro, 1961 Ford; Lee Roy Boyer, 1961 Buick; Eugene Collins, 1961 Chevrolet; Henry Easton, 1959 Metropolitan Louise Tomlinson, 1955 Chevrolet; H. J. Kuper, 1963 Dodge pickup; V. J. Duncan, Jr., 1962 Ford; Mae Smith, 1964 Ford G. J. Whisenant, 1954 Oldsmobile; Pancira Tire and Supply Co., 1959 GMC Pete L. Carmichael, 1963 Buick; Hereford Grain Corporation, 1964 Chevrolet pickup; Clinton C. Ward, 1964 Oldsmobile; Deaf Smith County, Predinet 3, 1962 Dodge pickup; Don B. Smith, 1960 Rambler; Lou Ann Rule, 1957 Chrysler; Willis Edmon, 1958 Chevrolet, 2-25

Randy Reed, 1958 Chevrolet; Florencio Lucero, 1956 Chevrolet; Edward Garcia, 1953 Chevrolet; Leon Martin, 1956 Ford; Jack Haney, 198 Chevrolet; Desiderio Tijerina, 1957 Chevrolet; Paul E. Humbert, 1954 Plymouth; Robert Veigl, 1964 Buick; Homer Hulsey, 1952 Chevrolet pickup; James H. Bounds, 1964 Chrysler; D. R. Wilson, 1958 Oldsmobile; Charles J. Self, 1962 Pontiac; Mrs. Jackie Hamilton, 1959 Pontiac; Ronald Paetzold, 1964 Ford; Bill Combs, 1955 Ford; V. C. Willard, 1963 Ford pickup; Fowler and Kelly Electric, 1959 Ford pickup, 2-26.

Desiderio Tijerina, 1956 Chevrolet; Dewey F. Foster, 1964 Chevrolet pickup; Glenn O. Edwards, 1964 Oldsmobile; Ramon Zamora, 1951 Chevrolet; LaPreal Stafford, 1962 Chevrolet; Charles Robert Lee, 1951 Ford; Rosendo M. Dominguez, 1964 Pontiac; Laverne Thursday, 1958 Dodge pickup; Cowan Jewelry, 1964 Dodge; Roger Brumly, 1964 Buick; O. W. Parris, 1950 GMC pickup; William S. Rice Jr., 1956 Buick; Don A. Rice, 1959 Liberty house trailer; Tom Schumacker, 1953 Ford pickup; Monroe Parker, 1958 Chrysler; C. W. George

Jr., 1962 Chevrolet pickup; C. W. George Jr., 1962 Ford pickup; J. C. Crume, 1953 Dodge pickup; S & R Appliance, 1964 Dodge pickup, 2-27.

Pierceson Adams, 1959 Ford; Virginia M. Stevens, 1953 Dodge; Stanley Vinson, 1961 Rambler; J. E. McCathern Jr., 1964 Chevrolet pickup; James O. Lee, 1951 DeSoto; Don Howard, 1960 Oldsmobile; Edwin M. Schroeter, 1960 Chevrolet; Jerry Cluck, 1964 Dodge pickup; Roland Barton, 1952 Ford; George T. Guetschoff, 1961 Chevrolet; Lloyd Homes, 1961 Ford, 2-28.

**Deeds of Trust**  
Lindsey Construction Co. to Strong Trailer and Supply Co.; The South 30 feet of Lot 9 and the North 30 feet of Lot 10, Block 2, Crestlawn Addition.

Filemon L. Valdea to Hereford Texas Federal Credit Union; All of Lot 11, Alvarado Subdivision. Davis Bumper to Bumper Inc. to Pennsylvania Tire Acceptance Corp.; Apart of Block 10, DeAt-

ly Addition. Troy W. Benefield, et ux, to T. J. Betts; All of Lot 28, Hare Addition.

Michael Justice to L. B. Russell; Al of Lots 20, 21, and 22, Russell Addition. L. C. Thomas, et ux, to Hi-Plains Savings and Loan Association; All of Lot 7 and the West 15 feet of Lot 6, Barcus and Bullock Subdivision.

Charles R. Balden, et ux, to Medlock Investment Co.; All of Lot 53 and the South 10 feet of Lot 54, Hare Addition.

Tex A. Rhodes, et ux, to Mountain States Investment Corp.; All of Lot 4, Ford Subdivision. J. B. Snead, Jr., et ux, to Amarillo Savings Association; The East 75 feet of Lot 9, Block 4, Womble Addition. John E. McCleskey, et ux, to H-Plains Savings and Loan Association; All of Lot 1 and the North 13 feet of Lot 2, Wayne Wallace Subdivision. Wesley S. Fisher, et ux, to Fir-

st Federal Savings and Loan Association; The North 80 feet of Lot 54 and the South 10 feet of Lot 55, Hare Addition.

**Warranty Deeds**  
Richard P. Parker, et ux, to Monroe Parker; All of the South 88.71 feet of the East 121.42 feet of Lots 2 and 3, except the East 11.42 feet thereof in Lambert Subdivision.

William S. Rice to Floyd Fowler, Lots 21 and 22, Davidson's Subdivision. Darrell Blanton, et ux, to Nadene Blanton, trustee; All of Lot 6 and the North 1/2 of Lot 7 of Block 2, North Park Addition. E. M. Rice, et ux, to Leslie Loyd Bridges, et ux; All of Lot 22, Wils and Holland Subdivision.

Julia Salcedo, et ux, to Domingo Guardiola; All of Lot 2, Block 9, Finlan Subdivision. Parker and Douglas to Troy

Benefield, et ux; All of Lot 28, Hare Addition. John Allen Hoover, et ux, to G. K. Horton; All of the South 1/2 of Section 6 and the North 1/2 of Section 7, Township 4 North, Range 3 East.

L. B. Russell, et ux, to Michael Justice; All of Lots 20, 21, and 22, Russell Addition. L. B. Russell, et ux, to Panorama Homes, Inc.; The South 80 feet of Lot 50, Russell Addition.

Jessie E. Ford, et ux, to Tex A. Rhodes, et ux; All of Lot 4, Ford Subdivision. Edward E. Snead, et ux, to J. B. Snead, et ux; The East 75 feet of Lot 9, Block 4, Womble Addition.

Floyd McGee to Wesley Fisher, et ux; The North 80 feet of Lot 55, Hare Addition.

Read The Classifieds Classifieds Get Results

## FIRE?

**IS YOUR PROTECTION UP TO DATE?**

### Plains Insurance Agency

Since 1926

Jno. H. Patton      W. H. Patton  
Robert Lemons

**GIVE YOUR EMPLOYEES AROUND THE CLOCK — AROUND THE WORLD PROTECTION**

**\$10,000 COVERAGE**

*for less than \$1.00 a month!*

This special low-cost group insurance plan was developed by Great American of Dallas for both large and small business firms. Now you can eliminate expensive "unusual event" or limited coverage policies with one plan which provides accidental death benefits up to \$100,000 for business owners, top executives and employees. For complete information, call your Great American man today!

**GREAT AMERICAN INSURANCE COMPANIES**  
**WILBUR GIBSON**  
209 Western      EM 4-2225

# PAINT-UP WITH PITTSBURGH



Pittsburgh is famous for quality paints the nation-over. Always plan on the best... and you always get the best. Come in and let us show you the wonderful world of color by Pittsburgh.



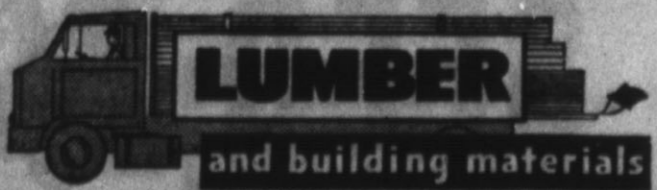
Whatever your decorating problems... you can count on us for the help and planning you need.

Call EM 4-3434

## CARL McCASLIN

Phone The Lumber Number EM 4-3434

One Block East Of Courthouse



### FAMOUS PAINTS!

### HUNDREDS

of today's most wanted colors including:

**WALLHIDE** rubberized wall paint

**WALLHIDE** alkyl type flat wallpaint

**SATINHIDE** Enamel

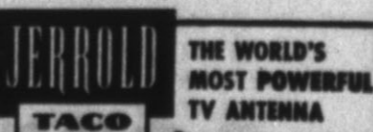
**WALLHIDE** Gloss Enamel

**PITTSBURGH** maestro colors

**NOW!** receive all distant TV channels in

sharp and clear with new

### PARALOG



THE WORLD'S MOST POWERFUL TV ANTENNA

**FINEST FOR COLOR, BLACK & WHITE**

Here's the last word in clear, crisp television and FM reception, even from stations a hundred miles or more away. The new PARALOG antenna clears your TV screen of the "snow" and lines that once made TV watching unbearable. Fourteen models available including four electronic PARALOGs. Call now for a demonstration.

136 W. 3rd  
EM 4-1588

ROBERTS APPLIANCE

## WHAT DOES VALIANT'S 5-YEAR/50,000-MILE WARRANTY\* COVER?

Read about it here.

### \*HERE'S HOW THE STRONG 5/50 WARRANTY PROTECTS YOU:

Chrysler Corporation warrants for 5 years or 50,000 miles, whichever comes first, against defects in materials and workmanship and will replace or repair at a Chrysler Motors Corporation Authorized Dealer's place of business, the engine block, head and internal parts, intake manifold, water pump, transmission case and internal parts (excluding manual clutch), torque converter, drive shaft, universal joints, rear axle and differential, and rear wheel bearings

of its 1964 automobiles, provided the owner has the engine oil changed every 3 months or 4,000 miles, whichever comes first, the oil filter replaced every second oil change and the carburetor air filter cleaned every 6 months and replaced every 2 years, and every 6 months furnishes to such a dealer evidence of performance of the required service, and requests the dealer to certify (1) receipt of such evidence and (2) the car's then current mileage.

Then see it here!

## McCULLOUGH MOTOR COMPANY

345 East First St.  
Hereford, Texas



If you like quality along with beauty and performance, you'll find it in Valiant/64 style. We're so confident of Valiant's performance that it's backed with one of the longest and

best warranties\* in the industry—5 years or 50,000 miles. Come in and let us show you what we mean. Right now would be a good time... how about it?

Valiant/64 style... best all-around compact!



The Stewart Brothers

Reece and Ray

## Stewart Brothers Overcame Big Odds To Irrigate Farm

By Argen Draper  
 "If we could get just one more shower," is an often-repeated comment heard in the Stewart families' conversation. The Stewart brothers, Ray and Reece, are enterprising young men and were determined to get some water to their farm land. They had often seen promising crops perish due to the "one more shower" that didn't fall.  
 In 1955 the Stewart Brothers bought 130 acres of land three and one half miles north of their farm. This tract of land had underground water. It was not only three and a half miles from the land they wanted to irrigate but it was across U.S. Highway 60 and the Santa Fe Railroad. This, however, didn't daunt the Stewarts.

This conservation practice was not one of the cost-sharing practices approved by the farm agencies of the Department of Agriculture. For several months the dream continued and the Stewarts completed this outstanding conservation job in the summer of 1956, with their own labor and capital. It is undoubtedly one of the most outstanding conservation jobs in the area.

It has turned the dry land farmland of 900 acres into an irrigated farm which produces abundant crops and pasture

land for the cattle. Ray and Reece Stewart married sisters, Arliss and Hazel, the families own the land together and farm together. It is one of the most satisfying sights to see the harmony that exists between the two families and the happy times they have in farming together, working and playing together.  
 The farm consists of 1574 acres; 990 acres in cultivation where grain sorghum, wheat, and forage is raised. Cattle has proved to be a profitable investment.

Good breeding stock is kept and young bulls are sold to add to the family income. The cattle are provided water in the pastures by windmills and supplementary pasture on wheat in season.

Certified seed, dry and liquid fertilizer make for better yields and earlier harvests. Water conservation is most important as it is very difficult to get good irrigation water in this area. Thus, the idea was conceived to pipe water from another farm. After the water has traveled three and a half miles in pipes it then runs as much as two miles further. There are plans to pipe this water underground.

There is a detailed plan of soil conservation on the Stewart farm. This year the Stew-

arts have completed the cropping system crop residue use, and the crop range use, 1,350 feet of the 2800 feet underground tile.

Mrs. Ray Stewart was nominated by the Dawn Home Demonstration Club as Conservation Homemaker of the Year. She was selected as the county winner and her recommendation was judged in district. The result of that contest has not been announced.

When visiting these families and talking to any member of the family, persons get the feeling that soil conservation is a family affair. The families honestly and frankly believe that they should "Save the Soil and Save Texas."

On February 11, 1854, the Texas Legislature appropriated \$17,500 for the erection of a suitable residence and out-buildings for the governor. The present Governor's Mansion was completed in 1855.

**SAMMY LANE  
CUSTOM HOMES**

## Specials Good Thurs., Fri. and Sat. March 5, 6, and 7 COMPLETE SELECTION OF GARDEN SEEDS FOR SPRING GARDENS!



**Pork Roast**  
Lb. **29¢**

**PORK STEAK** Lb. **39¢**  
**PORK CHOPS** Center Cuts Lb. **69¢**  
**PORK CHOPS** End Cuts Lb. **49¢**  
**BACK BONE** Country Style Lb. **49¢**  
**BRICK CHILI** Wright's Lb. **49¢**

**COOKIES** Tender Crust Large Cello Package **49¢**

The most EXCITING-THRILLING shopping game of all!

# Bonus BOWLING

**WIN UP TO \$100.00**  
4 EASY WAYS TO WIN!

**WIN \$100.00** When you have collected one red pin—one green pin—one yellow pin—a total of only three pins, each a different color (regardless of what you have on printed on the pin) YOU WIN \$100.00.

**WIN \$25.00** When you have collected all ten pins by numbers (1 through 10) regardless of the colors of the pins, YOU WIN \$25.00.

**WIN \$5.00** When your Bonus Bowling Card reads "BROKE" YOU WIN IMMEDIATELY \$5.00.

**WIN \$1.00** When your Bonus Bowling Card reads "STRIKE" YOU WIN IMMEDIATELY \$1.00.

**Rules of Game**  
 "Bonus Bowling" cards are issued free—one per store visits to adults only. Purchases are not limited, and you need not pass through our check stand to play "Bonus Bowling."  
 Remove cover from Bonus Bowling Card in food window. Write winning cards to store for your cash prize.

PICK UP YOUR FREE BONUS BOWLING CARD TODAY!

We Reserve the Right to Certify Winners

- Shurfine Fruit Cocktail 303 ..... 4/\$1.00
- Shurfine Grape Juice 24 oz. .... 2/\$ .79
- Shurfine Gr. Beans Ct. Bl. Lake 4-Sv. 303. 5/\$1.00
- Shurfine Frozen Limas Gr.-Baby 10 oz. .... 5/\$1.00
- Shurfine Luncheon Meat 12 oz. .... 2/\$ .79
- Shurfine Macaroni or Spaghetti Elbo 2 lbs. 2/\$ .79
- Shurfine Frozen Mixed Vegetables 10 oz. .... 5/\$1.00
- Shurfine Vienna Sausage 4 oz. .... 5/\$1.00
- Shurfine Waffle Syrup 32 oz. .... 2/\$ .79
- Shurfine Coffee Reg. or Drip 1 lb. .... \$ .63
- Shurfine Low Cal Pop Asst'd. Flav.-12oz... 6/\$ .49
- Shurfine VP Corn Golden 12 oz. .... 7/\$1.00
- Energy Powdered Detergent 47 oz. .... \$ .49
- Shurfine Noodles Med.-Wide-Ex-Wide 12 oz. 3/\$ .69
- Shurfine Frozen Okra Whole Baby 10 oz. .... 5/\$1.00
- Shurfine Peaches YC Sli. or Hlvs. No. 2 1/2 4/\$1.00
- Shurfine Peanut Butter 18 oz. .... \$ .49
- Shurfine Early Harvest Peas 303 ..... 5/\$1.00
- Shurfine Pickles Fr. Kosh. or Pl. Dill 48 oz. .... \$ .49
- Shurfine Pork & Beans 300 ..... 9/\$1.00
- Shurfine Preserves Strawberry 18 oz. .... 2/\$ .89
- Shurfine Salad Dressing Qt. .... \$ .39
- Shurfine Shortening 3 lb. Can ..... \$ .59
- Shurfine Spinach 303 ..... 7/\$1.00
- Soffin Toilet Tissue 4 Roll Pak .... 12 Rolls/\$1.00

16 Oz. 6 Btl. Ctn. Plus Dep. <b>COCA COLA</b> 49¢	Swift's Honeycup—1/2 Gal. <b>MELLORINE</b> 39¢	Shurfine—1 Lb. <b>CRACKERS</b> 21¢
One-A-Day—60's \$1.96 <b>VITAMINS</b> \$1.39	Sunshine—1 Lb. <b>FIG BARS</b> 37¢	Roxey—Tall Can <b>DOG FOOD</b> 13 For \$1
Campbell's—Meat Varieties <b>SOUP</b> 6 For \$1	Nabisco—Ritz—1 Lb. <b>CRACKERS</b> 39¢	Folger's—3 Lb. Can <b>COFFEE</b> \$2.07

**SHAMPOO** Liquid Prell \$1.00 Size **69¢**

Texas **ORANGES** 5 Lb. Bag **59¢**

**GRAPEFRUIT** Lb. **10¢** **POTATOES** Red 20 Lbs. **59¢** **CARROTS** Lb. Cello Bag **2 For 15¢**

**TAYLOR & SONS FOODS**

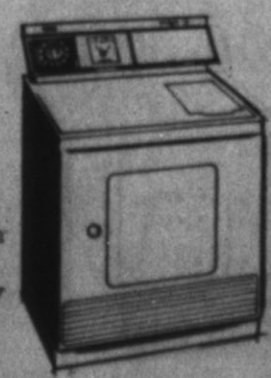
★ YOUR HOME TOWN BOYS ★ CASH AND SAVE ★

LOW LOW EVERYDAY SHELF PRICES PLUS S & H GREEN STAMPS

### You save enough to buy



**2 MONTHS SUPPLY OF MILK**  
when you **DRY WITH GAS**



You can save \$24.00 a year on your utility bill when you dry with GAS. That's enough to buy a two months supply of milk for an average family of four. And GAS dries your clothes faster, yet so gently.

SAVE ON INSTALLATION AND MAINTENANCE, TOO. A GAS clothes dryer costs less to install and maintenance costs are the lowest of any dryer. A GAS burner, the heart of your dryer, carries a lifetime guarantee.

**Pioneer Natural Gas Company**

# Sandi Says...

By Sandi Thomas

Hi! Boy, if this hasn't been a hectic week! Did everyone enjoy his six weeks' tests?

Catching up on late news, I must mention Carole Coffey's slumber party Friday, Feb. 21. The girls missing out on a little sleep were Penny Jones, Patti Roach, Judy Summers, Linda Price, and Randy Hopson.

Last Saturday afternoon many soloists from junior high and high school went to Canyon for voice contests. There were about 20 girls and 10 boys, accompanists included, who enjoyed the day.

Last Friday afternoon, Camille Pavlicek had a coke party which ran into a slumber party Friday night. The event was to celebrate Camille's birthday. Afternoon guests were Joyce Joyce Bezner, Debbie Thomas, Patsy Smith, and Jan Miller. Among the "Anti-Sleeping Beauties" were Jan Scott, Suzanne Hart, Susan Ballard, Sharon Hagans, and Paula Loudder from Dimmit.

Monday night, Feb. 24, Mike Paschel entered the hospital with a serious back injury. He was released last Thursday. Nice to see you back, Mike.

Last Saturday afternoon, Suzanne Hart celebrated her birthday with a coke party. The girls there were Lynn Hale, Sharon Hagans, Debbie Thomas, Carol Todd, Jan Scott, Jan Miller, Patsy Smith, Teresa Robinson, Camille Pavlicek, and Paula Loudder.

There are new, new cars. The "Old Red Beast" you've seen around belongs to Neal Lueb. Don't laugh—he's proud of it! Speaking of cars, Jim Haney now shoots the breeze in a black and white '55 Mercury. The interior is red and white.

In the midst of all these new cars, some people prefer horse trailers. One such is Edward Allison who recently attached his car to a beautiful blue trailer with a white top.

Last Friday afternoon Gene Duval and Danny Cates left for the big city of Dallas to visit Gene's brother and sister, Miller and Dian. The "adventurers" returned Sunday afternoon. Enjoy yourselves, Boys?

Early Saturday morning Carol Coffey had a come-as-you-are breakfast. The early risers there were Randy Hopson, Janet Fryar, Judy Wiltshire, Benny Jones, Linda Price, and Judy Summers.

Pam Winget and Sharon Garrison were the hostesses of a party last Saturday night. Those who gathered at Sharon's home to play cards and dance were Carol Clearman, Beverly Packard, Nancy Smith, Charlotte Hill, Sue La Fever, Kathy Pool, Carol Sue Robbins, Terri Wiloughby (Pam's cousin from Oklahoma City), Nelson Kendall, Gary Tucker, Mark Hicks, Keith Blanton, Dennis Lathem, and Ricky Garret.

Last Saturday night seemed to be a swinging night as far as parties are concerned. Linda Hart and Cynthia Seed were hostesses of a pizza party at Cynthia's home. The kids who ate, played games, and danced were Mike Ferguson, Gary Don Roberson, Gayle Newell, Billy Hill, Cynthia Leasure, Jim Higgins, Hedy Bailey, Gayla and Ward, Behy Duncan, Jim Haney, Jan Keeth, Ronnie Duncan, Janice Gagens, Earl Jackson, Barbara Langley, John Kriegshauser, Ann Braddy, George Muse, Carolyn Aven, Larry Hill, Pegene Cox, and Steve Coney.

Also on last Saturday night's agenda was Penny Jones' indoor weenie roast. The girls there were Judy Wiltshire, Judy Summers, Carole Coffey, and Randy Hopson.

Steve Thornton celebrated his fourth birthday last Saturday night with supper at his house. It seems he was born on leap year. The "little neighbor kids" who went were Patti Roach, Jerry McCathern, Carolyn Boynton, Lonnie Coker, Sharon Seiver, and Charles Doanes.

For you who keep up with this column, I mentioned last week that several kids had left for the Houston stock show. Well, they returned last Sunday. Larry Noland was rated choice on five of his commercial cattle. Donna Olson placed ninth with her light weight shorthorn; Ronnie Sandreus placed twenty-fourth with his lightweight angus. Jackie Andrews and Jim Higgins were also down there with steers. Congratulations, Jim, on being elected vice-president of the Texas Junior Hereford Association.

tion. Last Sunday, during the warm weather, roping enthusiasts gathered to do a little practicing. Pat Smith, Edward Allison, Don Sigman, David Hill, Mike Moore, Dick Lookingbill, George

Muse, Karen Blackwell, and Donna Hill flocked to David's arena to tie-down and team rope and observe.

The Christian Youth Fellowship of the First Christian Church went to Amarillo last

Friday afternoon for a fellowship meet. The group returned Saturday night. Those attending were Patti Roach, Fanelia Williams, Clarke Adams, Rozel Rush, David Stevens, David Block, Jack Aikin, Monte Gripp,

Jimmy Brink, and Frank Cain. Eight high school students left last Thursday morning for a Distributive Education state convention in San Antonio. While there, Judy Crume placed second in a contest in which

she was interviewed for a job. Others who went were Debbie Lee, Glen Fuller, Johnny Brownlow, Larry Fuhrmann, Peggy and Ronda Neff, and Linda Loewald. Sure do wish I would have

known about the Hootenany they had in Amarillo last Saturday night. However, some of the kids didn't miss it. Those who went to the affair were Merle Carmichael, Joe Parker, Ann Mercer, Gilbert Sims, Cheryl

Edmonson, and Clifton Corley. I've been informed that the Youth Club of the Catholic Church is having a chile supper next Sunday night. It will last from 5:00 p.m. to 7:00 p.m.

Hippety-Hop to  
**Anthony's**  
C. R. ANTHONY CO.

# WHY WAIT? Get Ready NOW Easter

**Textured Rayon COAT DRESS**

...with lots of flair and versatility. Fully lined full-length coat tailored with an open cardigan neckline, ¾ sleeves and 2 flap pockets. The sheath dress has cap sleeves, self-tie sash. Apple Red, Lily Blue, Seafrost Green, Turquoise. Sizes: 12 to 20.

**25.95**

**Textured Rayon Costume**

**22.95**

Short waist-length jacket with cardigan neckline. Fashioned with long sleeves, fully lined. Pretty crocheted buttons. The sheath dress has a scoop neckline, short sleeves. Navy, Aqua, Red, Hot Pink, Beige. Sizes: 10 to 20.

**Anthony's**

**Lustrous Patentite Vinyl OPERA PUMPS**

Imagine—such high fashion at such tiny price, but that is Anthony's for you. Lustrous finish patentite vinyl opera pumps in medium and high heel. Styled and detailed to look so much more expensive. Colors: White, Red, Yellow, Black, Blue, Pink, Nude, Bone. Sizes 4 1/2 to 9. Select a bag to match from several different shapes.

**7.95**

**BAG TO MATCH 2.98**

**Girls' 2-Piece DRESSES**

A. Dainty and feminine for the Easter parade—in a Wamsutta woven cotton dress. Beautifully tailored and detailed. The crop-top is embroidered trimmed. Colors: Moize, Blue, Green. Sizes: 7 to 14.

**3.98**

B. For the "young fashionable"—neatly tailored "A" line jumper with pleated skirt and pretty under-blower with ¾ sleeves and round collar. Colors: Moize, Blue. Sizes: 7 to 14.

**3.98**

**Anthony's**

**COAT DRESSES**

Attractive, sling-shot textured rayon, sleeveless full-length coat with a front button closure and slash pockets, covering pretty Dacron-Avril step-in shift. Wear it with a self-belt or without, as you wish. Colors: Blue, Gold. Sizes 10 to 18.

**16.95**

Beautiful costume dress: lined shiffl embroidered spun rayon ¾ sleeveless coat with two large pockets goes over a solid color jewel neck sheath dress, fashioned also in spun rayon. Sizes 10 to 18. Beige only.

**Boys' Wash-N-Wear CONTINENTAL SUITS**

Cleanly tailored suit of hardy Dacron and Rayon blend. Crease resistant finish, continental 3-button front, two flap pockets, inside pocket and breast pocket, fully lined, handsome and wash-wearable.

**17.95**

**SIZES 13 -**

**Little Gents 2-PC. SET**

White short sleeve with bow tie and red vesties attached to shirt. Elastic covered bow ties with one hip pocket. Vest has metal buttons. In sizes 3-8. Longies in black only.

**PER SUIT 2.98**

**Smart Continental Styling BOYS' SUITS**

Fine tailored continental suit fashioned in 50% Rayon and 20% Acetate. The style is a 3-button classic with slanted flap-pockets. Crease resistant finish, inside pocket and breast pocket, fully lined. This suit will make him look like a younger edition of Dad. Black, Teal, Brown, Navy.

**SIZES 4-12 10.95**

**Artfully Shaped Straw Hats For Spring...**

**\$4.00 and up**

The new direction of flattery when Spring wings in. Straw... rough straw deep pillbox above and below striking rough straw sailor. Perfect companions for your Easter finery. Where else but at Anthony's could you buy so much fashion at such tiny prices?

**100% Dacron Polyester DRESSES**

100% Dacron print dress styled with a permanently pleated skirt, self belt, short set-in sleeves. Adaptable modified scoop neck. Green, Beige, Blue. Sizes: 10 to 16.

Dainty 100% Dacron print dress with pretty cowl neck, short set-in sleeves, unpressed pleated full skirt, back zipper closure. Gold, Blue, Coral. Sizes 10 to 18.

**10.95**

**Full Skirts**

**Anthony's**

**A. O. THOMPSON ABSTRACT CO.**

Mr. & Mrs. A. J. Schroeter, Mgrs. Courthouse P. O. Box 73 Phone EM 4-1504 Free City Maps Showing Blocks

**NEW SPRING BAGS**

Choose from rough textured vinylite or shiny patentite. Assorted shapes and sizes, covered frames, inside pockets, self lined. In spring and summer colors of black, bone, off white, red, pink and blue.

**4.98**

**Little Boy's SPORT COATS**

Just like the big boys wear. 3 button model in fine Moorsville plaid with acetate lining. Two flapped continental pockets. Truly a sport coat that will thrill the heart of any little gent.

**4.98**

**Sizes 4-8**

**Costume Jewelry \$1.00 and \$1.99**