







# SAFEWAY BRANDS SALE

Lower Your Food Bill By Shopping For These Safeway Brands On Sale This Week!

<p>Mrs. Wright's Liquid <b>DRESSING</b></p> <p>• Italian • Zesty or Savory French</p> <p>8 Oz. Btl. <b>19¢</b></p>	<p>White Magic Cleaning Aids <b>DETERGENTS</b></p> <p>Mix or Match</p> <p>Gt. Regular Gt. Low Suds (10¢ Off) Gal. Bleach</p> <p>2 PKGS. FOR <b>\$1</b></p>
<p>Royal Satin Quality <b>SHORTENING</b></p> <p>10¢ Off Label <b>59¢</b></p>	<p>Safeway Brand <b>COFFEE</b></p> <p>1 Lb. Can All Grinds <b>Edwards 67¢</b></p> <p>1 Lb. Bag Pre-Ground <b>Nob Hill 62¢</b></p> <p>1 Lb. Bag Pre-Ground <b>Airway 60¢</b></p>

## CORN PEAS BEANS SAUCE

Town House Cream Style or Whole Kernel Golden Save 11c	<b>6</b>	No. 303 Cans	<b>\$1</b>
Town House Quality Garden Sweet Save 15c	<b>4</b>	No. 303 Cans	<b>69¢</b>
Town House Quality Fancy Cut Green Save 25c	<b>6</b>	No. 303 Cans	<b>\$1</b>
Town House Quality Tomato Sauce Save 24c	<b>12</b>	8 Oz. Cans	<b>\$1</b>

Prices Are Good Thru Wed., Feb. 2  
At Your Safeway Store

### FROZEN FOOD BUYS

ORANGE JUICE	Scotch Treat	2 6 Oz. Cans	<b>25¢</b>
MEAT PIES	Manor House Tuna Chicken, Turkey, Beef	5 8 Oz. Pies	<b>\$1</b>
ICE CREAM	Snow Star Asst. Flavors	1/2 Gal. Ctn.	<b>49¢</b>
CREAM PIES	Bel Air Lemon Chocolate - Coconut	3 14 Oz. Pies	<b>\$1</b>

### Bel Air Frozen Vegetable Buys!

- Green Peas
- Yellow Squash
- Collards
- Chopped Broccoli
- Leaf Spinach
- Chopped Spinach
- Crinkle Cuts

MIX or MATCH  
**5 10-Oz. Pkgs. \$1**

SAVE ON THESE REDUCED SPECIALS!

CHERRIES	Town House Pitted	5 No. 303 Cans	<b>89¢</b>
PORK & BEANS	Van Camp's Easy Fixin	8 No. 303 Cans	<b>\$1</b>
LUCERNE DIPS	Choice Of 7 Flavors	3 8 Oz. Ctns.	<b>\$1</b>
COFFEE	Maryland Club 5c Off Label	2 Lb. Can	<b>69¢</b>
COFFEE	Maryland Club 10c Off Label	1 Lb. Can	<b>\$1.37</b>
CAKE MIXES	Betty Crocker	3 19 Oz. Pkgs.	<b>\$1</b>
MARGARINE	Coldbrook Solid Pack	2 1 Lb. Ctns.	<b>29¢</b>

Everybody's Playing Safeway's

## BONUS BINGO

Clip These Slips To Help You Win!

<p>BONUS BINGO PRIZE SLIP PROGRAM #44</p> <p>\$50 GAME</p> <p><b>B-1</b></p> <p>SAFEWAY</p>	<p>BONUS BINGO PRIZE SLIP PROGRAM #44</p> <p>\$20 GAME</p> <p><b>U-2</b></p> <p>SAFEWAY</p>
---	---

## FREEZER BEEF SALE!



Stock Your Freezer Now!

	US Choice Beef	US Good Baby Beef
<b>Full Sides</b>	250-300 Lbs. Lb. <b>49¢</b>	150-200 Lbs. Lb. <b>47¢</b>
<b>Hindquarters</b>	125-150 Lbs. Lb. <b>59¢</b>	75-100 Lbs. Lb. <b>57¢</b>
<b>Forequarters</b>	125-150 Lbs. Lb. <b>45¢</b>	75-100 Lbs. Lb. <b>39¢</b>

It pays to stock your freezer with the finest—Safeway Guaranteed Meats. Especially at this week's extra-value prices. And we're happy to prepare your purchases just right for the freezer.

### SHOP SAFEWAY FOR THESE MEAT SPECIALS!

<b>ROUND STEAK</b>	US Choice Beef	<b>89¢</b>	US Good Baby Beef — Full Cuts Lb.	<b>79¢</b>
<b>SIRLOIN STEAK</b>	US Choice Beef	<b>79¢</b>	US Good Baby Beef Steaks Lb.	<b>79¢</b>
<b>T-BONE STEAK</b>	US Choice Beef	<b>89¢</b>	US Good Baby Beef Lb.	<b>89¢</b>
<b>CHUCK ROAST</b>	US Choice Beef Blade Cut	<b>49¢</b>	US Good Baby Beef Lb.	<b>45¢</b>
<b>SHOULDER ROAST</b>	US Choice Beef No. 7 Cut	<b>59¢</b>	US Good Baby Beef Lb.	<b>55¢</b>
<b>SLICED BACON</b>	Swift's Worthmore	1 Lb. Pkg.	Lb.	<b>79¢</b>
<b>GROUND BEEF</b>	Safeway's Dependable	Lb.	Lb.	<b>39¢</b>

**Hereford Heaven STEAKS**

Quick Cooking 6 Large 20 Oz. Steaks Pkg. **69¢**

### OTHER MEAT BUYS!

Fish Sticks	Sea Star	5 8 Oz. Pkgs.	<b>\$1</b>
Fish Cakes	Captains Choice	12 Oz. 3 Pkgs.	<b>\$1</b>
Chickens	Mountaire Roasting	Lb.	<b>43¢</b>
Franks	Safeway or Wilson	Lb.	<b>59¢</b>

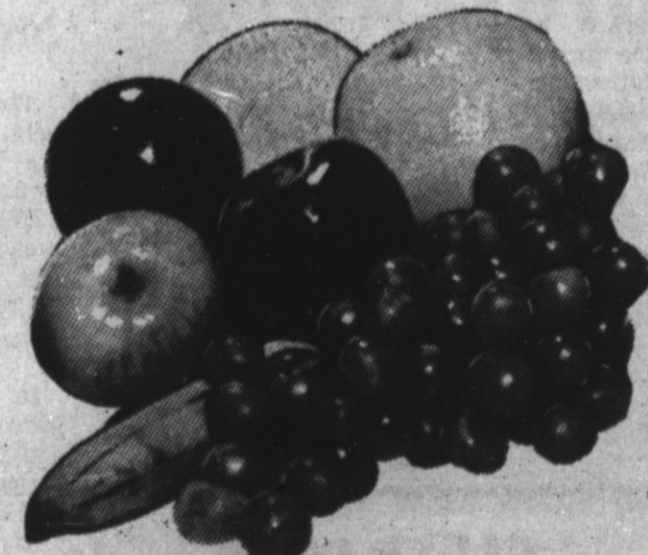
SAFEWAY **FREE COUPON**

REDEEM THIS COUPON AT YOUR SAFEWAY STORE IN HEREFORD FOR 100 GUNN BROS. STAMPS WITH THE PURCHASE OF \$2.50 OR MORE

NAME \_\_\_\_\_ ADDRESS \_\_\_\_\_

Limit One Coupon Per Family! Coupon Expires Sat., Feb. 5th, 1966

Sugar	Imperial Holly	5 Lb. Bag	<b>49¢</b>	Armours Tree	For Sandwiches 12 Oz. Can	<b>57¢</b>
Fresh Eggs	Breakfast Gem Medium	Doz	<b>47¢</b>	Salad Dressing	Nu Made Quality 32 Oz. Jar	<b>45¢</b>
Lucerne Milk	Homogenized Sweet	Gal. Ctn.	<b>91¢</b>	Pillsbury Flour	For Baking 5 Lb. Bag	<b>61¢</b>
Chocolate Milk	Lucerne Quality	1/2 Gal. Ctn.	<b>55¢</b>	Krispy Crackers	Sunshine 1 Lb. Saltines Box	<b>35¢</b>



**APPLES** Washington State Winesaps Extra Fancy

**ORANGES** Florida Indign Ribber

**GRAPEFRUIT** Calif. Sunkist Navels

**BANANAS** Central American Golden Ripe

Rubber Plants each **1.89**

Onions Colorado Yellow 2 Lbs. **15¢**

Portales Maryland Sweets

Sweet Potatoes 2 Lbs. **29¢**

Garlic Fresh Pod Box **10¢**

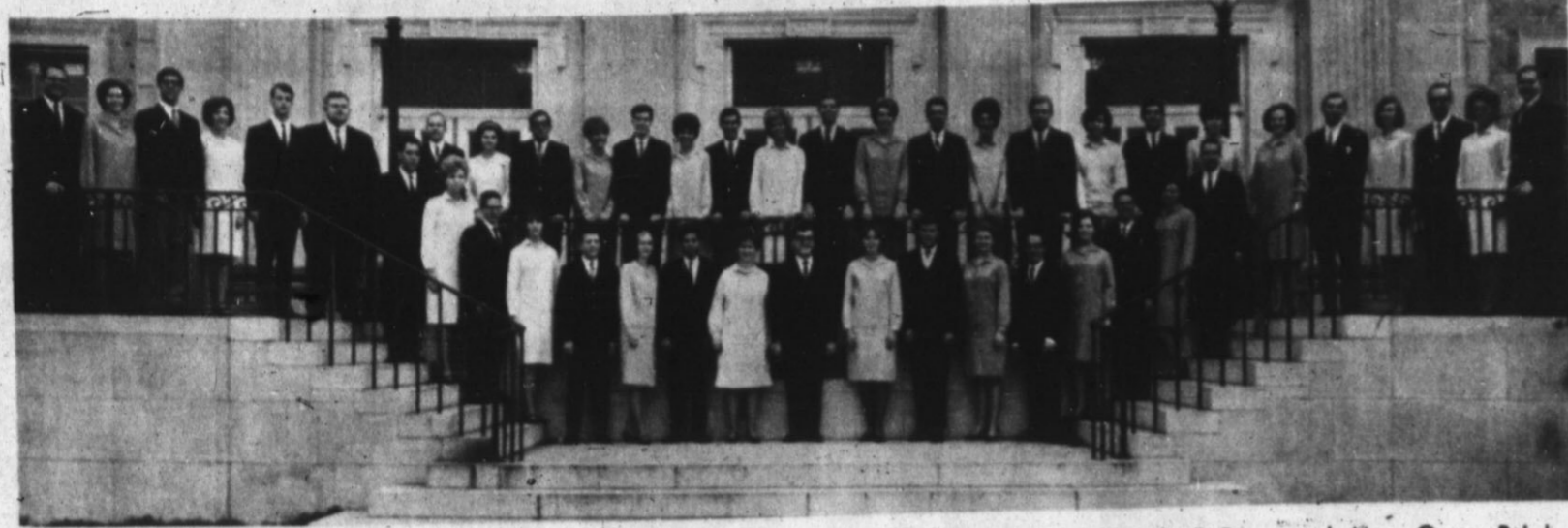
U.S. No. 1 Russet **POTATOES**

Bake - Pan Fry Or Broil 10 Lb. Bag **49¢**

**7 Lbs. \$1**

Liquid For Hair Rinse Away	Hair Dressing VO-5	Bar Soap Camay	Bar Soap Zest	Liquid Ivory
98¢	Regular Blue Fine \$1.09	3 Reg. Bars 35¢	2 Bath Bars 35¢	22 Oz. Btl. 69¢

# SAFEWAY



**TO PERFORM HERE** — Members of the Texas Christian University choir will perform here Monday evening at 7:30 in the Hereford High School Auditorium. Among the members will be Jim Brink, son of Rev. and Mrs. Gene Brink of Hereford. The choir has received nationwide recognition during the past five years. (TCU Photo)

### TCU Choir Sets Monday Night Concert Here

Members of the Texas Christian University A Cappella Choir will perform here Monday in the Hereford High School auditorium at 7:30 p.m. After being organized for five years the choir has received national recognition on two major radio networks in various events in New York and Washington D. C.

Singers include 50 students selected from the University at large. The current tour includes 11 cities in Texas and began Jan. 11 and will conclude Feb. 1.

Director of the choir is B. R. Henson who was previously director of the Trinity University choir the San Antonio Symphony and at McAllen High School.

The program will include music by Bach, Mozart and Berlioz.

Hereford Country Club. V. E. Dodson introduced his guest, Willie Weaver.

**Olivetti-Underwood Adding Machine & Typewriters THE INK SPOT**

### Federal Land Bank Dividends Total \$17,653

Dividend payments totaling \$17,653.75 will be paid to members of the Hereford Federal Land Bank Association, Manager Woodrow B. Wilson announced Saturday.

Wilson said the dividend

checks would be mailed Feb. 1 to the association's 243 farmer-rancher stockholders. The Hereford Association is one of the 73 farmer-rancher owned associations in Texas served by the Federal Land Bank of Houston.

The local association makes Land Bank loans in Deaf Smith and the northeast quadrant of Farmer counties. The directors are Ira Scott, President, Hereford; Frank J. Bezner, Vice President, Hereford; Charlie

Burk, Hereford; George E. Turrentine, Hereford and J. R. Hickman, Hereford.

### MANY DEAD DRIVERS WERE YOUNG

CANBERRA, Australia — Of 293 automobile drivers killed on Australian roads in the three months ended Sept. 30, 116 were aged 17-29, according to a government analysis. Most fatal accidents occurred on straight roads.



By MELVIN YOUNG

Winter has arrived. Just a few days before the peach trees would have started blooming.

Actually, the winter weather has been somewhat invigorating, and we have enjoyed most of it. All that is, except the ice on the streets. This we all could do without.

To begin with, it has made driving extremely hazardous; has spoiled a couple of trips that we were planning; and to top it off, has upended a few people who unsuspectingly stepped on a slick spot. When this happens, arms and legs fly in all directions. And it isn't a bit funny — at least the person most concerned.

The snow has been nice though. Beneficial in that it has added much needed moisture to the thirsty fields — or will when it finally melts; and the snow and ice has created a few story-book picture scenes such as the ones on the front page of the Thursday Brand.

And the cold came just in time. Much more of the type weather we have been experiencing and the peach trees would bloom — only to be nipped in the bud at a latter date. Of course, this may happen yet, but at least the process has been delayed.

**Irish Digest.** —HB— And the North Kingstown (R. I.) Standard says: "You cannot finance a divorce with a Home Improvement Loan."

### RETURN FROM VISIT

Mr. and Mrs. D. H. Alexander have returned to their home on Harrison Highway after spending a few weeks in Alamogordo, N. M. They visited there with their granddaughter, Mrs. David Townsend, and her family.

Rev. Eugene Naugle dropped by the office Friday afternoon and caught us loafing — with our feet on the desk no less. "You're the hardest working guy I've seen since I looked into the mirror this morning," he said, and then proceeded to tell us one of his favorite stories about the time he tried to say the above to a friend of long standing and got into trouble.

"You're the hardest looking woman I've seen..." he told that's as far as he got. It took a little explaining to get out of that one — and if the lady had not been a friend of many years, it could have been even more embarrassing. He says he's more cautious these days.

And speaking of preachers, Rev. B. L. Davis was telling us recently about the preacher who was trying to drive a hard bargain on the used car lot. "I'm just a poor preacher," he told the salesman after hearing the price of the automobile. "I know," the salesman replied. "I heard your sermon last night."

Hereford should be proud of its young people.

Not only do they travel to the big city and show the people there "how the cow ate the cabbage," winning three top spots in the annual Livestock Show, but they're making some pretty good records on the scholastic scene too.

David Nafzger, son of Mr. and Mrs. W. D. Nafzger of Hereford, has just completed his first semester at West Texas University, and came home with a straight A record. That a 3. grade average, and pretty hard to maintain.

David, incidentally, is a former FFA student in Hereford High School and was a frequent entrant in the local Junior Livestock Show.

Like the calf show spectator said: "It's hard to beat those Hereford kids."

Congratulations to Wayne Thomas — new head of the West Texas State University ex-students association. Thomas has just completed a year as president of the Deaf Smith County Chamber of Commerce, chalking up an outstanding record with that organization. He tackles each new task with enthusiasm and always fulfills the duties of the office with admirable efficiency. He is blessed with leadership qualities that few of us could ever hope to attain, and we've never known him to "fall short" on any job.

Consequently, the WT exes are no doubt headed for an outstanding year. —HB— Warning from an income tax inspector: "When submitting returns keep in mind that it's better to give than to deceive."

### Toastmasters Hold Meeting

The Hereford Toastmasters Club met Thursday night, with Dr. Milton Adams, president, presiding.

Toastmaster for this week's meeting was V. E. Dodson, Rex Lee filled the slot of table topic chairman.

Earnest Neff was introduced as a new member of the club. Bill Lamm and Stan Knox were presented with awards at the regular meeting held at the

**END OF MONTH SALE**  
ON  
**LADIES DRESSES**  
Reg. or Half Sizes  
Cottons, Cotton Blends, Bonded Crepes, Rayon, Silk  
Values \$19.95  
**SALE PRICE \$5**

**Ladies Winter Dresses**  
Acetate and Orlon Knits  
Wool Knits — Half Size  
Reg. \$12.75 — \$8.75  
**16.75 - \$10**

**Cotton Knits**  
Reg. \$8.75 Now  
**\$5.75**

**Ladies Nylon Hose**  
WHILE THEY LAST  
2 pr. 65c

**Little Girls SWEATERS**

Reg.	NOW
2.29	1.39
3.29	1.98
3.95	2.49
4.95	2.89

**Little Girls KNIT BLOUSES**  
Reg. \$2.29 **\$1.49**

SAVE  
**\$1 to \$5**  
on Little Girls BETTER DRESSES  
WHERE YOUR DOLLAR BUYS MORE  
See our Sportswear by Stylecraft

**Turner Fashions**

**Watch Repairing**  
Local

**Santa Fe**

The Inspector  
**KESTER'S**  
Jewelry & Gift Shop

Across from Post Office  
Phone EM 4-1811

## WHAT A WORLD OF DIFFERENCE THIS CARPET MAKES IN YOUR HOME!

*It's luxurious Sculptured Carpet*  
• ORIGINALE BY BIGELOW

Step down into elegance! This carpet transforms an ordinary room into a decorator's dream! Bigelow's sculptures are kitten-soft, deep-piled — with airy plush clouds floating over a firm, looped base. The colors are marvelous — from pale, restful shades and dramatic fashion hues to deep background tones. The result — a bold and beautiful carpet that satisfies a woman's instinctive love of luxury... and luxury at such a reasonable price, too!

**\$12.95 sq. yd. COMPLETELY INSTALLED**

Bigelow Sculptured Carpets available in wool, nylon or acrylic pile in 12' and 15' broadloom

People who know buy Bigelow

Other carpets in stock as low as \$4.95 sq. yd. Completely installed. All Installation personally supervised by Mr. McGee.

Buy Quality Furniture With Confidence At

# McGee Furniture

6th & Main Home Owned Home Operated Phone EM 4-2586



OUR ONLY TRUE DISCOUNT STORE

YOUR ONLY TRUE DISCOUNT STORE

YOUR ONLY TRUE DISCOUNT STORE

# STOREWIDE CLEARANCE TO MAKE ROOM FOR NEW MERCHANDISE!!!

## LAY-A-WAYS, PLEASE

### SPECIALS GOOD MON. - TUES. - WED., JAN. 31 - FEB 1 & 2

**Maryland Club COFFEE**



REGULAR GRIND  
RE-USABLE PLASTIC LID  
1 Lb. Can  
**69¢**  
Limit 4- 1 Lb. Cans Per Customer Please

**SMALL APPLIANCE CLEARANCE**

Westinghouse Toast Master  
Sunbeam Dormeyer  
Udico Dominion  
Presto Oster

**1/3** OF GIBSON'S REG. PRICE

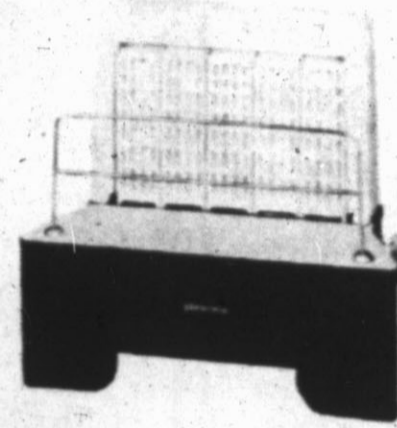
**SWAN BUTANE TABLE LIGHTER**

Reg. \$10.00

Black Gold Red Green

**\$4.97**

**COMPLETE STOCK OF GAS HEATERS**



**1/3** GIBSON'S REGULAR PRICE

**Nescafe INSTANT COFFEE**

Giant 10 Oz. Size

**\$1.17**

**DECCA RECORD PLAYER**

Palm Beach X DPS 22 Mono. Reg. Ret. \$24.95 GIBSON'S PRICE

Colors: Gold & Blue

**\$15.99**

**ALL CERAMIC NOVELITIES**

MANY ITEMS TO CHOOSE FROM **50%** OFF GIBSON'S REGULAR PRICE

**TRANSISTOR RADIOS**

7 Transistor by Master-Craft — Model 7RT82

Reg. \$12.95 **\$6.33**

MICRO 7 Transistor — Model TR 714

**TOY CLEARANCE**

Does Not Include Wheel Toys

Making Room For New Stock

**1/2** Savings Up To 75%

Gibson's Regular Price

**STAINLESS TABLEWARE SET**

Service For 8 — 50 Pieces by Walco — Nike Pattern

Reg. \$9.95 **\$5.77**

**Insulated Underwear**

While It Lasts

Reg. Ret. \$9.95

**\$3.88**

**Ironing Board Cover**

Reg. \$1.25 Teflon

54" Full Size Heavyweight Teflon by American

**37¢**

**CHECK OUR RED TAG SALE ON WINTER CLOTHING CLEARANCE**

All Winter Clothing Prices Slashed **30 to 50%** OF GIBSON'S REG. PRICE



REG. \$12.95 **LADY SUNBEAM SHAVER** MODEL LS-4

GIBSON'S PRICE **\$6.97**

**Insulated Underwear**

While It Lasts

Reg. Ret. \$9.95

**\$3.88**

**Lunch Kit**

LIFETIME

With Thermos Btl. By Thermo

Indestructible Polypropylene Reg. Ret. \$3.95

GIBSON'S SPECIAL PRICE **\$2.22**

**Rubber Gloves**

HOUSE HOLD

Fragrant Touch by Seiberling Floc Lined — Latex Rubber Firm Grip

Reg. 98c Value

PAIR **47¢**

**KITCHEN KADDY**

by Loma Regular \$1.50 Value

Stores All Cleaning Materials — Easy Grip Handle

**67¢**

**Door Mats**

Coca

Reg. Ret. \$1.59 GIBSON'S PRICE

**\$1.23**

**CLOTHES PINS**

SPRING CLOTHESPINS

Grip-Rite Spring Clothespin BAG OF 50 ONLY

**27¢**

**KITCHEN CLOCKS**

Sessions — Red or Yellow **\$2.97**

Sunbeam — White or Yellow **\$1.97**

**Cordless Toothbrush**

PRESTO No. TB3 GIBSON'S PRICE

**\$8.87**

**GIBSON'S**

YOU ALWAYS BUY THE BEST FOR LESS

PHARMACY ECONOMY

**Battery Booster CABLES**

Heavy Duty — 8 Ft.

Reg. Ret. \$2.69 **\$1.33**

**GAS GUARD**

Du Pont 12 Oz. Size

Prevents Carburetor jets and stalling

**38¢**

**DE-ICER**

DuPont Windshield

Reg. Ret. 98c

12 Oz. Size SPECIAL PRICE **57¢**

**Radiator Thermostats**

For Most Makes

Reg. Ret. \$1.95 GIBSON'S SPECIAL PRICE **88¢**

YOUR ONLY TRUE DISCOUNT STORE YOUR ONLY TRUE DISCOUNT STORE YOUR ONLY TRUE DISCOUNT STORE

YOUR ONLY TRUE DISCOUNT STORE YOUR ONLY TRUE DISCOUNT STORE YOUR ONLY TRUE DISCOUNT STORE YOUR ONLY TRUE DISCOUNT STORE YOUR ONLY TRUE DISCOUNT STORE











**\$100 Gift Certificate Winner**  
 Mrs. Lester Wagner  
**65 Piece Stainless Tableware**  
 Mike Clark  
 Mrs. George Tiefel  
 Sam Everitt  
**48 Piece Melmac Set**  
 Ora McCoy  
**Patio Metal Coffee Set**  
 Mrs. Ramon Zamora  
**24 Piece Plastic Tumbler Set**  
 Mrs. George C. Green  
**Electric Ronson Toothbrush**  
 Mrs. C. W. Halcomb

**TEC Electric Shaver**  
 Mrs. J. B. Culp  
**USDA Choice Hindquarter Beef**  
 Nita Lea  
**Free Bag Groceries**  
 Mrs. Don Phillips  
 Mrs. G. L. Bumpass  
 Mrs. Reavis Kerr  
 Lowell Hill  
**Joe Oscar Hernandez**  
 Mrs. Don Baugous  
 Tom Hart  
 Mrs. R. L. Dowell  
 Mrs. Arnold Fangman  
 Lola Menasco

**Kay Boomer**  
 Mrs. Melvin Fowler  
 Fred Turner  
 Mrs. Lee Lambert  
 Mrs. Andrew Batterman  
 Mrs. Dudley Green  
 Mrs. J. H. Dobbs  
 Mrs. Bill Paetzold  
 M. L. Simpson Sr.  
 Henry Benson  
 R. D. Lance Jr.  
 Mrs. James Cash  
 Mrs. Gerald McCathern  
 Mrs. Tommy Martinez  
 Mrs. Belton Bryant

**\$100.00 BIG-DO WINNERS**



Mrs. Ethel Hunter



Diane Roberson



*...But You* **SAVE MORE**  
*of it* **HERE!**

Copr. G. Doppel 1966

Your CASH SAVINGS GROW because ALL prices are LOW — at Cooper's. Sure we have more than our share of SPECIALS and SUPER VALUES, but what makes the big difference is the hundreds of everyday LOW PRICES on the foods you buy the most of most often. It may be only money you SAVE — but you SAVE MORE of it... LOTS MORE... at Cooper's

Duncan Hines  
**FUDGE BROWNIE MIX**  
 Box **39¢**

**Vienna Sausage**  
 Van Camp 5 4 Oz. Cans **\$1**

**Marshmallows**  
 Kraft 10 Oz. **19¢**  
 Jet Puffed Pkg.

**Broccoli Spears**  
 Shurfine Frozen 2 10 Oz. Pkgs. **39¢**

**CARNATION INSTANT BREAKFAST** 69¢  
**LIPTON TEA BAGS** 48 Count 59¢  
**SHURFINE EARLY HARVEST PEAS** 6 303 Cans \$1

All Popular Brands — King Size or Filter  
**CIGARETTES** Carton **\$2.99**

**DRUG DEPARTMENT**

Jergens **Hand Lotion** Reg. \$1.00 Value **69¢**  
 Micrin — 98c Value **69¢**  
 Hidden Magic — 15 Oz. Size **Hair Spray** \$2.35 Value **\$1.49**  
 Bubble Club **Bubble Bath** New Characters **59¢**  
 Triumph **Rubbing Alcohol** 2 Pint Btl. **25¢**

Lucky Leaf  
**Cherry Pie Mix**  
 3 No. 2 Cans **\$1**

Welch's Frozen  
**GRAPE JUICE**  
 12 Oz. Cans  
**3 FOR \$1**

Cleanser **AJAX** 2 14 Oz. Cans **29¢**  
 Liquid Cleaner **LUX** 22 Oz. Size **45¢**

Fisher's **MIX NUTS** 13 Oz. Can **69¢**  
 Duncan Hines **PANCAKE MIX** 2 Lb. Box **29¢**  
 Lysol — 7 Oz. Can **SPRAY DISINFECTANT** **69¢**

**Rawhide KITCHEN DELICATESSEN**

Baked Beans lb. 49¢  
 Gr. Beans & New Potatoes lb. 49¢  
 Dutch Pot Salad pr. 49¢  
 Chicken Fried Steak lb. \$1.49  
 Fried Chicken Light Meat lb. 98¢ Dark Meat lb. 89¢  
 Banana Pudding pr. 45¢

Circus  
**Orange Drinks**  
 4 46 Oz. Cans **\$1.00**

**SHURFRESH MILK FOR GOODNESS SAKE**

**ORANGES**  
 SUNKIST 2 Lbs. **25¢**

Yellow Onions lb. 5¢  
 White Potatoes 8 Lb. Bag **35¢**

Kraft **LIQUID DRESSING**  
 8 Oz. Btl. **3 FOR \$1**

YOU ALWAYS RECEIVE THE...  
**RED CARPET**

Save 3 out of 4 washing dollars...  
 BUY ARM & HAMMER WASHING SODA

**BIG-DO**

11 29 43 50 67  
 2 30 33 57  
 5 24  
 8 20  
 14

FREE SAMPLE CARD

★ BEGIN PLAYING ANYTIME  
 ★ GET FREE "BIG-DO" CARDS  
 ★ NO PURCHASE NECESSARY  
 ★ SEE OUR MASTER BOARD AND BRING YOUR CARD UP TO DATE  
 ★ NUMBERS CALLED ON KPAN



TREATMENT at...  
**COOPER'S**

# Club Jewels



Mrs. J. M. Gililand  
Pioneer Study Club



Mrs. D. H. Alexander  
Bay View Club



Mrs. A. M. Jones  
Bay View Club



Mrs. Lee Curry  
Summerfield Study Club

## The Sunday Brand

HEREFORD, TEXAS 79045, SUNDAY, JANUARY 30, 1966  
SECTION TWO



Mrs. Ray L. Johnson  
Pioneer Study Club

CHOSEN BY CLUBS in which they have long been leaders, five women were honored as "Federation Jewels" at the Saturday luncheon of Deaf Smith Federation of Women's Clubs. Since the General Federation of Women's Clubs is celebrating its 75th, or diamond, anniversary this year, its affiliated clubs over the nation have each been asked to name the member with the longest record of membership and also the one who has an outstanding record of leadership over the years.

FEDERATED CLUBS of Hereford paid tribute to their selections at the luncheon. These women will be introduced at the Top of Texas District Federated Club convention here March 24 and 25, with those named from other Panhandle clubs. From them

all, the district will choose women to be considered in the Texas Federation of Women's Clubs, when Texas Jewels are picked.

ONLY CHARTER MEMBER still active in the Pioneer Study Club is Mrs. J. M. Gililand, and in Bay View Study Club, Mrs. A. M. Jones. Mrs. Lee Curry is a charter member, one of the founders, of Summerfield Study Club. Her fellow members decided that she also merited the citation for long-time leadership, and so designated her their only representative. Mrs. D. H. Alexander is Bay View Club's selection for long leadership in many activities, and Mrs. Ray L. Johnson received that preference in Pioneer Club.

(See Stories On Inside Pages This Section)

## Plans Take Form

LOOKING TOWARD the annual convention of Federated Women's Clubs from over the Top of Texas District, to be held here March 24 and 25, a planning session was conducted in the Caison House Thursday by members of the Hereford and Canyon clubs which will be hostesses. Previous meetings of smaller groups have resulted in arrangements which were correlated at this session.

COMPILING NOTES on the plans are, standing from left, Mrs. O. G. Hill Sr., general chairman of arrangements; Mrs. R. T. Lindsey of Canyon, district president; Mrs. Dick Godwin, music chairman; Mrs. A. W. Lair of Canyon, program chairman; and seated from left, Mrs. Ralph McCullough, in charge of reservations; Mrs. A. L. Manjoet, decorations chairman; and Mrs. Dexter Lillie, chairman of packets and favors.

DIAMOND JUBILEE year of the General Federation of Women's Clubs will supply the program theme, to be carried out in addresses, music, reports of club accomplishments and awards to outstanding clubs and members.





Now at FURR'S

**EXCLUSIVE EXTRA CARE Service**

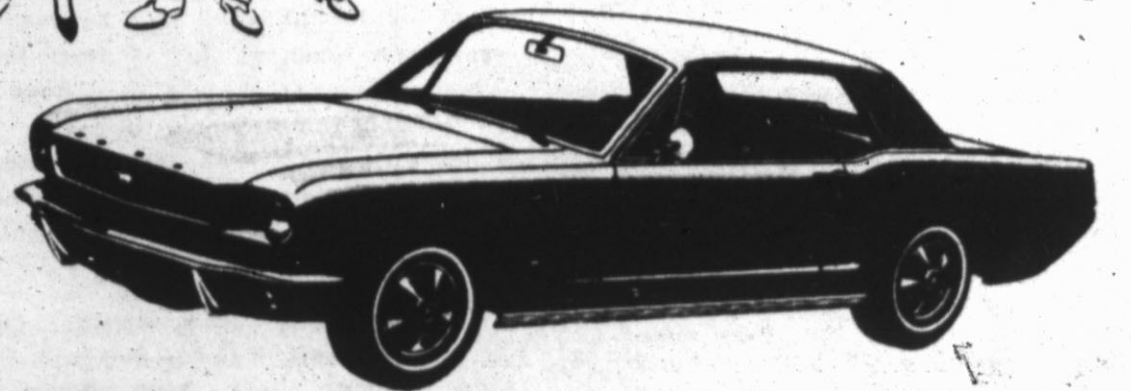


**New Store Hours**  
 Mon.-Tues.-Thurs.-Fri.  
 8 a.m. to 7 p.m.  
 Wed. - Sat.  
 8 a.m. to 8 p.m.  
 Sundays  
 9 a.m. to 6 p.m.

Furr's is the home of EXTRA CARE everywhere. In every department, including fresh fruits & vegetables, you find evidence of our exclusive treatment of merchandise to bring you the best. First of all, all fresh fruits and vegetables are RUSHED to you so that when you buy it you get FRESHNESS. Second, we treat all perishable items with loving care so that they come to you undamaged... better tasting... more attractive. Third... we PRICE EVERYTHING LOW! This is just one more way in which Furr's workers go out of the way to make shopping with us more pleasant. We love you so please excuse us if we show it.



**WIN!**  
 1966  
 FORD  
**MUSTANG**



**DRAWING MARCH 2**

Nothing to do but register free when ever you are at Furr's Super Market in Hereford. You'll love the Mustang... It's the car that everyone wants. This beautiful automobile has all the trimmings! Radio, heater, directional signals, bucket seats, padded dash, carpet, seat belts and other features.

**MELLORINE SHORTENING**  
**Tomato Juice**  
**SUGAR**

Dartmouth Assorted Flavors 1/2 Gal. **29¢**

Jewel 3 Lb. Can **59¢**

Hunt's 46 Oz. Can **25¢**



Bleach Purex 2c Off 1/2 Gal. **29¢**

Chili Irelands Plain No. 2 Can **55¢**

Maryland Club Special Label Instant Coffee 10 Oz. Jar **99¢**

Flour 25 Lb. Cotton Bag **\$2.09**

Grape Jelly Kraft 18 Oz. Jar 3 For **\$1**

Milk Food Club Tall Can 8 For **\$1**

Wesson Oil 24 Oz. Bottle **43¢**

Detergent Reynolds 13c Off Label Bottle 22 Oz. **49¢**

Aluminum Foil Regular Pkg. 25 Ft. **29¢**

**Furr's Family Kitchen DELICATESSEN SPECIALS**

- 1 Whole Fried Chicken 1 1/2 Lb. After Cooking
- 1 Pint Cole Slaw
- 1 Lb. Potato Salad

**\$1.79**

- Scalloped Potatoes . pt. 39¢
- Pim. Cheese Spread lb. 79¢
- Boston Baked Beans pt. 39¢



Crackers Premium 1 Lb. **35¢**  
 Tuna Food Club No. 1/4 Can 4 For **\$1**  
 Campfire Chunk Style  
 Pork & Beans No. 2 1/2 5 For **\$1**  
 Swansdown  
 Cake Mix Assorted Flavors 3 Pkg. **\$1**  
 Flour Gold Medal 25 Lb. Bag **2.19**

**POT PIES**

Morton, Fresh Frozen Chicken, Beef, Turkey Macaroni & Cheese 2 For **35¢**  
 Oleo Food Club Corn Oil 1 Lb. **29¢**  
 Cream Pies Morton's Fresh Frozen Assorted Flavors **29¢**  
 Pizza Gonzalli All Flavors Fresh Frozen **79¢**  
 Potatoes Top Frost French Fried Fresh Frozen 16 Oz. Pkg. 4 For **\$1**

**GENERAL MERCHANDISE**

**Kleenex** Facial Tissue 2 Ply 300 Ct. 3 For **\$1**

**Hair Spray** Airmaid 10 Oz. Size 3 For **\$1**

Toothbrush Valiant Hard, Med. & Soft 3 For **\$1**  
 Vitamins Fulvita Multiples, reg. 1.29 **1.00**  
 Creme Rinse Tame 8 Oz. **79¢**

**Grapefruit**

Texas Ruby Red

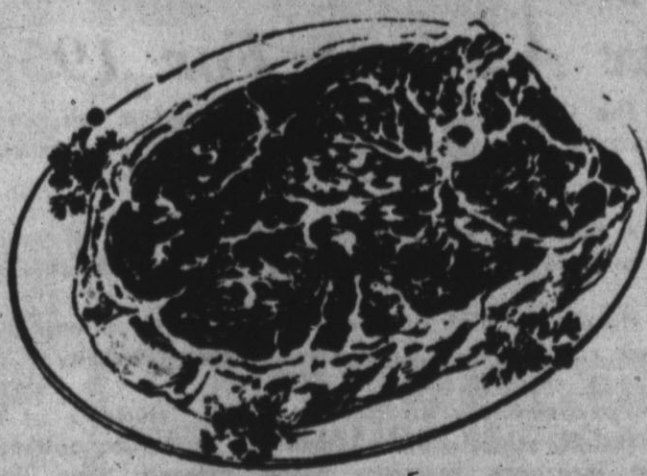
**2 LBS 25¢**



**Orange Juice** Pure Florida Qt. **29¢**

**ENJOY FURR'S QUALITY "EXTRA CARE" MEATS**

**ROUND STEAK** U.S.D.A. Graded Choice Mature Beef Lb. **89¢**  
**Cutlets** Extra Lean No Waste Lb. **98¢**  
 Beef Roast Boneless USDA Choice Heavy Mature Beef Lb. **79¢**  
 Liver Tender Baby Beef Lb. **49¢**  
 Sausage Fresh All Pork Market Made 2 Lb. Pkg. **98¢**  
 Franks Farm Pac All Meat **59¢**



**GROUND BEEF PATTIES**

10 Generous Servings 2 Lbs. For **\$1**

**BREADED FISH STICKS**

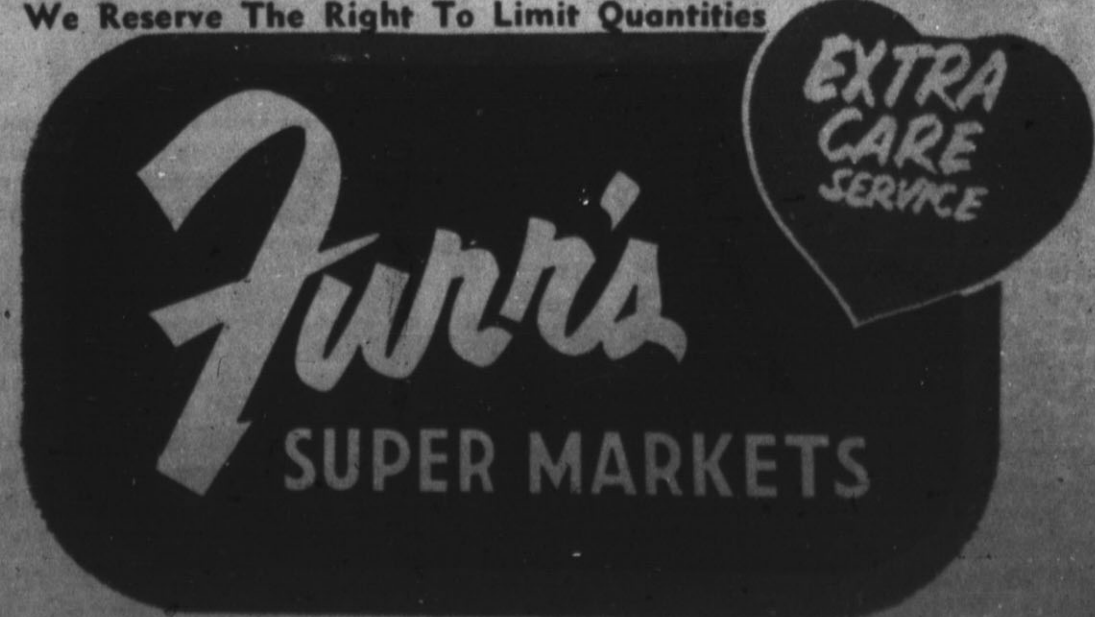
12 - 3 Oz. Portions Halibut Steak Ocean Perch Fillet of Cod your choice 2 Lb. Pkg. **98¢**

We Reserve The Right To Limit Quantities

PECANS Paper Shell 3 lbs. **\$1**

ONIONS Idaho Yellow 5 Lb. Bag **29¢**

AVOCADOS Calif. Large Size 6 For **49¢**













**LONG-TIME CHURCH MEMBERS** — Many years of membership in First Christian Church are represented by the guests at a party in the parsonage Wednesday afternoon, when the Women's Fellowship was hostess. Seated around the table, to the left from center front, are Mrs. Ida Vaughn, Miss Lillie Hostetter, F. H. Oberthier, Mrs. L. Z. Oldham, Will Harris, Mrs. J. D. Pense, Mrs. Berry Orr, Mrs. J. B. Elliston, Mrs. Allan Bell and Mrs. Ira Ricketts. Standing from left are the Rev. Gene Brink, minister, Mrs. W.

E. Dameron, Miss Frances Dameron, Mrs. Pete Carmichael, Mrs. Walter London Jr., Mrs. Robert Viegel, L. Z. Oldham, Mrs. Fred Moreman, Mrs. A. M. Jones, J. B. Elliston, Ira Ricketts and Mrs. Corinne Neely. Supper was served to the guests after an informal afternoon of conversation and music. Glen Nelson played the guitar and sang; guests sang with him in familiar selections.

### Medicare Ruling On Doctors Is Explained

"May I keep my own family doctor if I sign up for the new Medicare plan," is one of the questions most frequently raised by older people, according to Hal Geldon, district manager, Social Security Administration at Amarillo.

"The answer is 'yes,'" Geldon stated today. "The Medicare program will help pay the hospital and doctor bills, but it won't tell an individual what doctor or hospital to go to. He will be free to choose his own doctor just as he always has done. It will be up to the doctor to decide if the patient should go to the hospital, what tests are to be made, which drugs and treatments may be needed, and the length of the hospital stay. No 'government doctors' are involved."

The doctor and patient will also have a choice as to how the bill is to be paid. The doctor can bill the patient, the patient pay the doctor, and then the patient submit his bill to the medicare plan.

All persons who were 65 and over in 1965, who have not already signed up in this new plan, need to get in touch with their social security office before enrollment period ends March 31. This means persons who are still regularly employed or self-employed. Also persons who have never worked under the social security program are eligible for this protection.

### New Members Welcomed By Madre Mia Club

Bad weather changed program plans for Madre Mia Club members this week, but an informal meeting was held in the City Commission room at City Hall Thursday evening and two new members were welcomed.

Mrs. Ron Zimmerman and Mrs. Don Taylor are the new additions to club membership. Mrs. Charles Frye was hostess at the meeting and served refreshments after a business session and an hour of conversation.

Committee reports were made in the business period, with Mrs. Joe Hacker, vice president, presiding in the absence of Mrs. Gerald Martin. Plans were made for a party in Washington's Birthday theme, at which husbands of members will be entertained Feb. 19.

### Circle Members Meet At Dinner

Dinner was served to members of Anderson Circle, First Baptist Missionary Society, meeting in the home of Mrs. L. H. Lookingbill Sr. Thursday evening. Mrs. Tandy Legg presented a program from Royal Service magazine.

She was introduced by Mrs. Bill Hutson, who presided for business. Mrs. Alex Thompson read the prayer calendar. Others present were Miss Della Stagner, Mmes. Art Foster, Ed Fralin, J. E. McCathern, Lynn Kester, and N. Terrell.

Social committee members, Mmes. Jesse Click, Herschel Black and Dean Herring, will be hostesses.

Present Thursday were Mmes. Bill Nelson, Bobby Owen, John Smith, Eugene Sparks, Ray Don King, Bill Lankford, Harvey Penner, Herring, Hacker, Black and the new members.

### Short-Season Soybean Seed Made Available

The new Patterson short-season variety of soybeans developed at the High Plains Research Foundation has aroused considerable interest throughout the North and South Plains as well as Oklahoma and New Mexico.

The Patterson variety has performed well in extensive tests throughout the High Plains during the past four years. Foundation seed of this new variety will be distributed from the High Plains Research Foundation headquarters at Halfway, and from the B & B Grain Company at Spearman.

THE PATTERSON soybean variety was developed by Dr. Earl H. Collister, Chief Agronomist and Director of the Foundation, Paul Belcher, Technician and Berry Love, Agronomist, assisted in perfecting the Patterson variety.

The Patterson variety has the following desirable features for the High Plains area: (1) an additional cash crop; (2) a catch crop in case of hail or blow-out too late in the season for replanting cotton or grain sorghum; and (3) as a means of double cropping the land by planting this variety after wheat, then going back to wheat in the fall after harvest.

The Patterson bean matures in 105 days if planted after June 15. It can be planted as late as early July and still mature. The variety shows good seed quality and light hull.

IT FRUITS around 4 inches above the ground, and has considerable shattering resistance. Its early maturing characteristics promises a saving in water for the farmers, usually with one less irrigation. Another feature of the Patterson is its bland taste, which makes it most desirable for human consumption and should have an appeal to the Foreign Trade which desires this type bean.

The national average yield of soybeans is 24.9 bushels per acre. The Patterson soybean, with a growing season of approximately 30 days shorter than other varieties, is expected to

range between 25 and 35 bushels per acre.

The Foundation seed for the Patterson was raised in Hale, Hansford, Moore and Sherman Counties.

The Foundation seed will be available at the High Plains Research Foundation headquarters at Halfway. Farmers and others interested in obtaining seed may contact the Foundation by writing the Foundation at P. O. Box 1870, Plainview, Texas.

The government has budgeted 1.7 billion for the 1966 Food for Peace program to make surplus agricultural products available to hungry persons throughout the world.

### WHY VETERANS ARE DROPPED

**FORT LAUDERDALE, Fla.** — The Pittsburgh Pirates tried to "sell" catcher Del Crandall, 35, on a conditional 30-day basis during the baseball meetings here but found no takers and had to give the veteran his outright release.

The asking price was \$5,000 plus \$20,000 if Crandall stuck with another major league team. Crandall was dropped so that the Pirates would have room to draft two players. They drafted Dave Roberts, first baseman-outfielder 32, who hit 38 homers for Oklahoma City, and catcher Jesse Gonder from the Richmond, Va. (nee Atlanta) roster. Gonder is 29.

### CITY NEEDS WISE MEN

**ROSSFORD, Ohio** — Rossford's City Council agreed to buy three wise men.

"We can always use wise men," said Street Commissioner Joseph Duly in reporting plans to buy the wise men — and an ox and a donkey — to complete the city's Christmas Nativity scene.

### Spanish Art Influence Is Club Talk Subject

Mrs. Wesley Owen, speaking of Spanish Influence on the Southwest, interested members and a guest of Calliopean Club Thursday evening as she emphasized the contributions of early Spaniards to the art of furniture design.

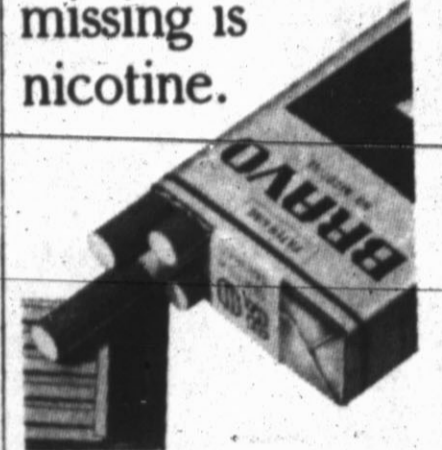
Mrs. George Warner was hostess in her home. Mrs. Owen spoke of the current revival of Spanish-style furniture as a high style trend, and described some of the antique pieces of hand-made and carved furniture which she studied in the historical museum at Santa Fe.

The speaker touched on Spanish influence on other arts, on architecture and on daily living in the Southwest, but most of her time was devoted to a discussion of the furniture which the colonial Spanish settlers made of sturdy wood for functional use, but decorated with elaborate carving, even on ordinary household pieces.

Refreshments were served to a guest, Mrs. Barbara Woods, and Mmes. J. T. Gilbreath Jr., E. W. Dettman, C. J. Crump, B. F. Cain, Sue James, Ansel McDowell, Emmett Milburn and Owen.

### BRAVO!

The only thing missing is nicotine.



Who ever thought a no tobacco smoke could taste so great?

# END-OF-MONTH CLOSE-OUTS

MONDAY JAN. 31st

ONLY 55

## LADIES DRESSES

Reg. \$24.95	NOW	\$10.00
Reg. \$22.95	NOW	\$9.00
Reg. \$19.95	NOW	\$8.00
Reg. \$17.95	NOW	\$7.00
Reg. \$15.00	NOW	\$6.00
Reg. \$13.00	NOW	\$5.00

## ALL WEATHER COATS

1/2 PRICE

---

6 ONLY

## BOY'S CAR COATS

Reg. \$14.98	NOW	\$9.50
Reg. \$12.98	NOW	\$8.50

35 PAIR

## LADIES LOW HEEL SHOES

Values to \$12.95

\$2.99

Now Only Pair

9 Pair Only

## GIRL'S LOAFERS

Size 8 - 8 1/2 - 9

Values To \$6.98

\$1.49

FOR Pair

## LITTLE GIRLS CAR COATS

Reg. \$12.98	NOW	\$6.75
Reg. \$10.98	NOW	\$5.75
Reg. \$8.98	NOW	\$4.75
Reg. \$6.98	NOW	\$3.75
Reg. \$5.98	NOW	\$3.00

10 ONLY

## MEN'S JACKETS

Values To \$19.95

\$5.00

FOR

Monday, January 31st is the Last Day To Take Advantage Of PLAY-TEX SALE!

ALL SALES FINAL

# Rutherford & Co.

BE IRRESISTIBLE TO HIM

## FASHION WIG OR WIGLET

Complete line of Fashion Tress and Villa Capri MANY COLORS TO SELECT FROM — Come in today — Buy a wig or let us style your present one. Complete staff to serve you.

Davis — Clea — Billie — Rickie Zinn — Shampoos

### Continental Coiffeurs

1509 E. Hwy. 60 EM 4-4520

## HEREFORD JANITOR SUPPLY

Hereford Janitor Supply & Sanitary Supply Combined

★ Offers You A Better Service ★ A More Complete Line Of Cleaning Supplies and Chemicals

ALSO Headquarters For American Window Cleaning Co.

FOR FAST — PROMPT — EFFICIENT SERVICE  
Call EM 4-0517 — or come by 130 E. 5th  
Sam Everitt Leroy McDonald

## HEREFORD JANITOR SUPPLY

PIGGY WIGGLY PIGGY WIGGLY PIGGY WIGGLY PIGGY WIGGLY PIGGY WIGGLY

IT'S SIMPE AS

SHOP

and

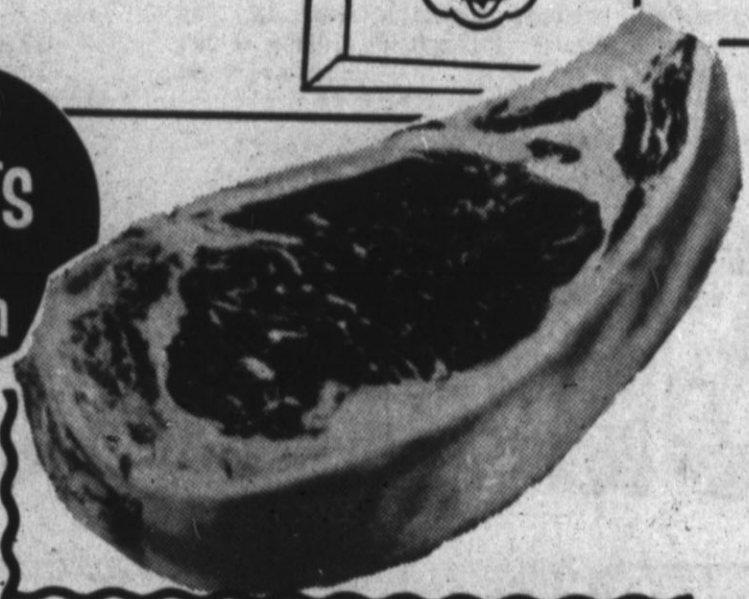
SAVE

at

PIGGY WIGGLY



Best MEATS in Town



FRESH LEAN GROUND BEEF

3 Lbs. \$1

Armour Star Assorted LUNCH MEAT 3 Pkgs. 89¢

USDA CHOICE STEAK ROUND T-BONE LOIN TIP LB. 89¢

SIRLOIN CLUB LB. 79¢

Magic Hostess Electric \$10.00 Value

CAN OPENER

with \$10.00 Purchase \$6.88

Piggly Wiggly Measuring Glass To The First 500 Customers Shopping Piggly Wiggly This Week!

Wizard Household All Fragrances. 49c Value Deodorant 3 For \$1

Bread 1 1/2 Lb. Loaf 29¢

6 TRANSISTOR RADIO

RADIO

\$8.88 Value With \$10.00 Purchase

\$4.49

All Popular Brands CIGARETTES

King Size Filters Regular Ctn. \$2.99

Food King Solid Block OLEO

2 Lbs. 29¢

Buy 1 Box — Get Another For Only 1c — Dishwasher Soap

FINISH 55¢

2 Free Flashlight Batteries With Each Purchase GLEEM Family Size Toothpaste 69¢

Borden's Glacier Club Ice Cream All Flavors 1/2 Gal. 49¢

Durkee's 14 Oz. Cello Bag Coconut 59c Value 39¢

Arrow No. 1 Re-cleaned Pinto Beans 2 Lb. Bag 29¢

Reg. or King Size — 6 Bl. Ctn. Cola-Cola Plus Deposit 39¢

Morton's Frozen Pies Pumpkin 4 Family Size \$1

Your Choice — Cane or Beet Sugar 5 Lb. Bag 49¢

King-Size or Reg. — Plus Deposit 6 Bl. Ctn. Dr. Pepper 39¢

Grade 'A' Large Guaranteed Eggs Doz. 49¢

Ellis New Crop Shelled Pecans 10 Oz. Pkg. 59¢

Campbell's All Meat Base Soup Varieties Mix or Match 6 For \$1

Gold Medal — All Purpose Flour 10 Lb. Bag 98¢

Hard to Hold & Regular Aqua Net 15 Oz. Can 59¢

Folger's — All Grinds Coffee Lb. Can 69¢

Delsey — All Colors Toilet Tissue 4 Roll Pkg. 43¢

10c Off Label Pack Tide "The Washday Miracle" Giant Box 59¢

Shurfine 6 Oz. Cans Shurfine Frozen Orange Juice 2 FOR 25¢

KRAFT MIRACLE WHIP

SALAD DRESSING Qt. Jar 49¢



Kraft — Apricot, Peach, Grape, Red Plum PRESERVES

3 18 Oz. Tumblers \$1

New Product From The Shurfresh People COTTAGE CHEESE 2 Lb. Ctn. 49¢



Shurfresh MILK 1/2 Gal. 47¢ Gal. 91¢

All Purpose . . . Red U.S. No. 1 Quality POTATOES 10 Lb. Bag 39¢

Washington APPLES 7 LBS \$1

Orange HI-C DRINK 46 Oz. Cans 4 FOR \$1

Double 5¢ Green Stamps each Wcd. with \$2.50 Purchase or

Magic — Assorted Flavors Cake Mix 2 For 29¢ Melrose — \$1.75 Value Hand Cream 49¢

LOOSE LEAF FILLER NOTEBOOK PAPER 300 Sheet Pkg. 69c Value 39¢

Mon. - Tues. - Thurs. - Fri. Open 7 a.m. 'til 8 p.m. Wednesday & Saturday Open 7 a.m. 'til 9 p.m. —Closed Sunday—



Save More At Your Piggly Wiggly Store!

PIGGY WIGGLY DELICATESSEN

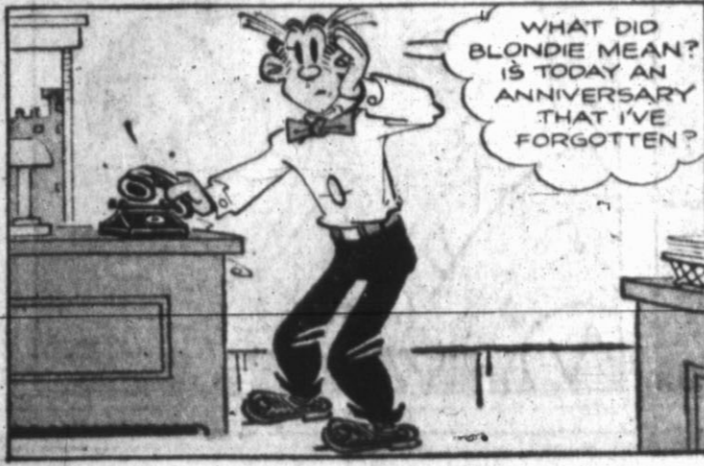
Chili Made Daily lb. 79¢ Macaroni & Cheese lb. 49¢ Bar-B-Q Beef lb. 98¢ Green Beans & Potatoes lb. 49¢ Grandma's Meat Loaf lb. 89¢ Fruit Cobblers lb. 49¢ BANANA PUDDING lb. 45¢ Pinto Beans pt. 19¢ Cole Slaw pt. 19¢ Grandma Cooks Pies Every Day . . .

WIGGLY PIGGY WIGGLY PIGGY WIGGLY PIGGY WIGGLY PIGGY WIGGLY

BLONDIE by CHIC YOUNG



BE SURE TO COME HOME EARLY, DAGWOOD-- REMEMBER WHAT DAY THIS IS



WHAT DID BLONDIE MEAN? IS TODAY AN ANNIVERSARY THAT I'VE FORGOTTEN?



TODAY IS SOME SPECIAL DAY, BOSS, AND I CAN'T REMEMBER WHAT IT IS

OH, BOY-- YOU'RE IN BIG TROUBLE



BUY HER AN ALLIGATOR PURSE-- IT'LL BE APPROPRIATE NO MATTER WHAT YOU'RE CELEBRATING



WOMEN LOVE ROSES FOR ALL OCCASIONS

YES, DAGWOOD-- BUY HER A DOZEN ROSES



AND NOW TOP IT ALL OFF WITH A BIG BOX OF FINE CHOCOLATES



YOU'RE SAFE NOW, DAGWOOD-- GOOD LUCK

IT COST A LOT, BUT I FEEL SECURE



HOW SWEET OF YOU TO BRING ME ALL THESE GIFTS WHEN THERE ISN'T EVEN AN OCCASION FOR IT!



AND YOU EVEN CAME HOME EARLY SO YOU COULD TAKE DAISSY TO THE VET'S FOR HER DISTEMPER SHOTS



IS THAT THE SOMETHING SPECIAL YOU PHONED ME ABOUT?

YES, DEAR-- THAT'S ALL IT WAS



DON'T WORRY, DAISSY-- THIS WON'T HURT



I'M THE ONE WHO NEEDS THE DISTEMPER SHOTS

MANDRAKE THE MAGICIAN



BY LEE FALK



AMAZING-- LOTHAR-- THIS MINIATURIZED TV TRANSMITTER-- IN THE HELMET--

--SOMEWHERE-- THE COBRA IS WATCHING AND HEARING US!



--WATCHING AND HEARING US--!

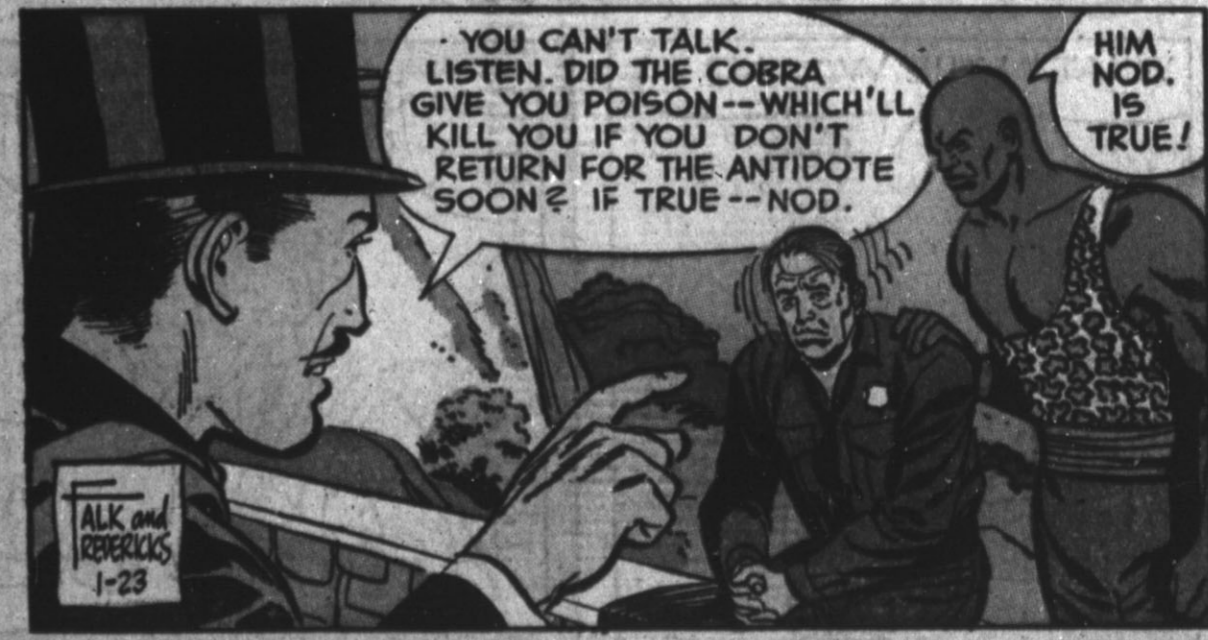


YOU'VE HEARD AND SEEN US THIS FAR-- COBRA-- NOW YOU'VE HEARD AND SEEN ENOUGH--!



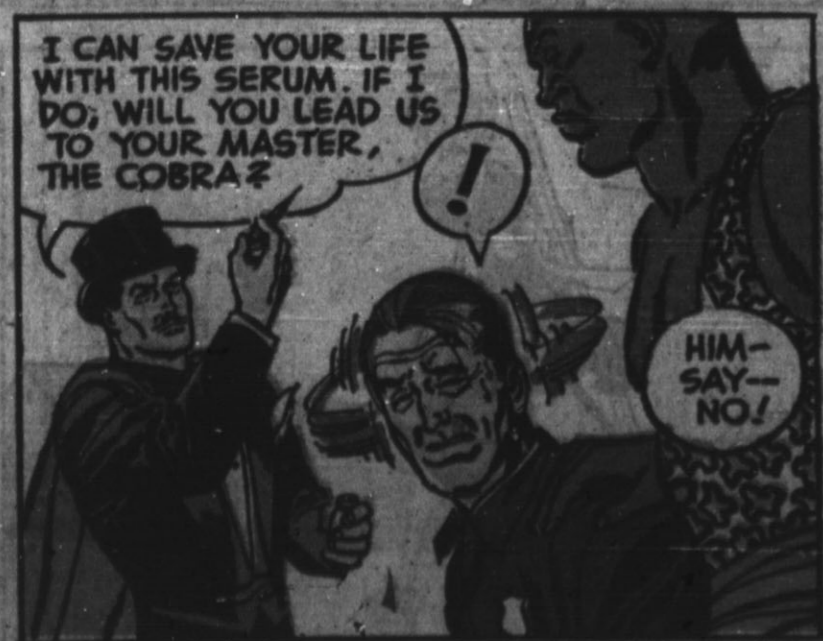
MANDRAKE TURNED OFF THE TRANSMITTER! --SIRE-- OUR MAN--

OUR MAN WILL NOT LEAD THEM TO US-- BECAUSE HE'LL BE DEAD IN FIVE MINUTES!



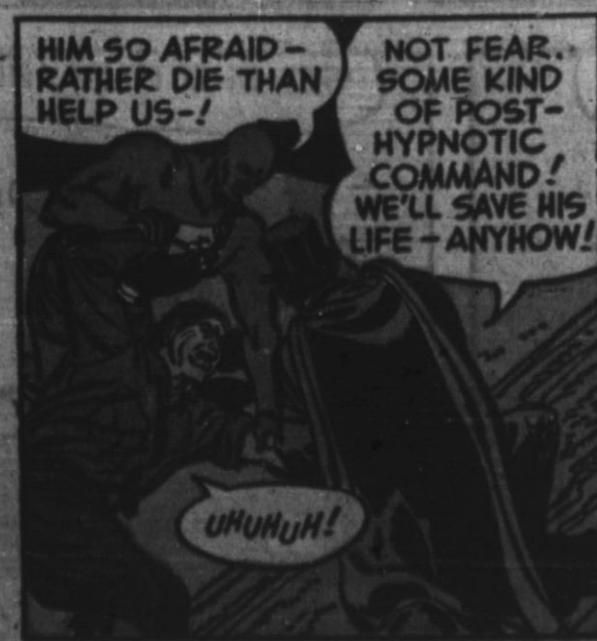
YOU CAN'T TALK-- LISTEN. DID THE COBRA GIVE YOU POISON-- WHICH'LL KILL YOU IF YOU DON'T RETURN FOR THE ANTIDOTE SOON? IF TRUE-- NOD.

HIM NOD. IS TRUE!



I CAN SAVE YOUR LIFE WITH THIS SERUM. IF I DO, WILL YOU LEAD US TO YOUR MASTER, THE COBRA?

HIM-- SAY-- NO!



HIM SO AFRAID-- RATHER DIE THAN HELP US--!

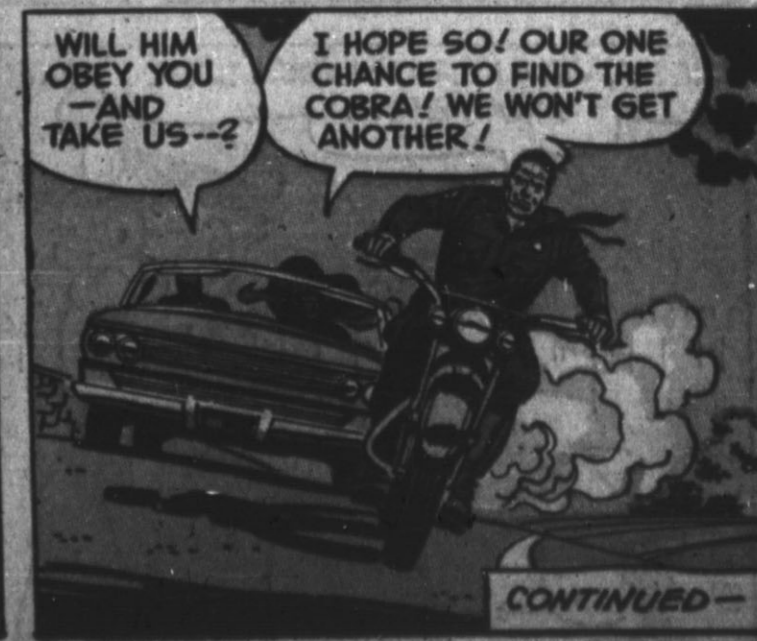
NOT FEAR. SOME KIND OF POST-HYPNOTIC COMMAND! WE'LL SAVE HIS LIFE-- ANYHOW!



MANDRAKE'S EYES BURN HYPNOTICALLY INTO THE AGENT'S

NOW-- YOU WILL LIVE. HAVE NO MORE FEAR OF THE COBRA. CLEAR YOUR MIND OF HIS COMMANDS--! OBEY ME!

TAKE US TO HIM!



WILL HIM OBEY YOU-- AND TAKE US--?

I HOPE SO! OUR ONE CHANCE TO FIND THE COBRA! WE WON'T GET ANOTHER!

CONTINUED

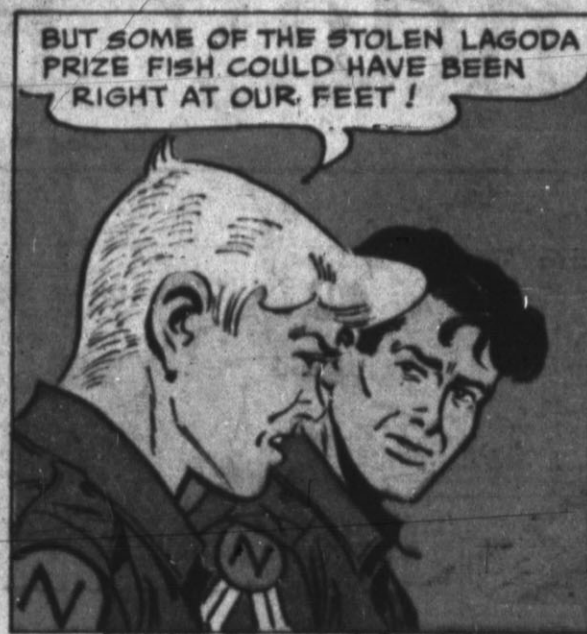
# TIM TYLER'S LUCK

by Lyman Young and Tom Massey



BEADY LANE SHOWED US THE POOL TANKS BUT NOT THE FISH... WHY?

NOT WANTING TO DISTURB THE FISH WAS A GOOD REASON... I SUPPOSE —



BUT SOME OF THE STOLEN LAGODA PRIZE FISH COULD HAVE BEEN RIGHT AT OUR FEET!



YOU WOULDN'T EXPECT A SUCCESSFUL HUNTING GUIDE TO RESORT TO SWIPING LITTLE FISH —

HOW SUCCESSFUL IS HE? THERE ARE NO HUNTERS HERE NOW!



AND SWIPING MINIATURE FISH WORTH 500 BUCKS A PAIR IS HARDLY SMALL POTATOES!



WHAT ARE THE CRATES FOR, MISTER LANE?

TROPHIES... I SHIP OUT HIDES, HEADS, TUSKS, GIRAFFE TAILS... WHATEVER MY CLIENT WANTS TO KEEP —



Y'KNOW, TIM, BEADY LANE HAS A BETTER SETUP FOR SHIPPING OUT TROPICAL FISH THAN PROSPECTOR ERIC HAS —

TRUE — BUT KLEE LISTED A THIRD SUSPECT... THE TRADER JADER



AND I'D GUESS A TRADER MIGHT BE IN THE BEST POSITION OF ALL TO DISPOSE OF SUCH UNUSUAL STOLEN PROPERTY —

TO BE CONTINUED!

# TIGER

by BUD BLAKE



YOU'RE KIDDING, FUNKINHEAD

YOUR PET WIN FIRST PRIZE???

HE'S ONLY A CLAM!

A STUPID CLAM



WHAT'S SO GREAT ABOUT A PET CLAM?



WELL, MY PET CLAM DOESN'T BARK OR KEEP SCRATCHING HIMSELF



— AN' YOU DON'T HAVE TO HIDE HIM IN A BOX



AND MY PET CLAM IS QUIET AND NEVER RUNS AWAY...

CROAK CROAK



EEEPS!

— OR GET MAD AND CHOMP ON PEOPLE!

— AND BESIDES...



YOU CAN EAT HIM!

# GRANDMA

by Chas. Kuhn



WHAT IN THE WORLD?



GRANDMA IS TRYING SOMETHING NEW, MR. OTIS!



SHE'S A REAL DAREDEVIL!



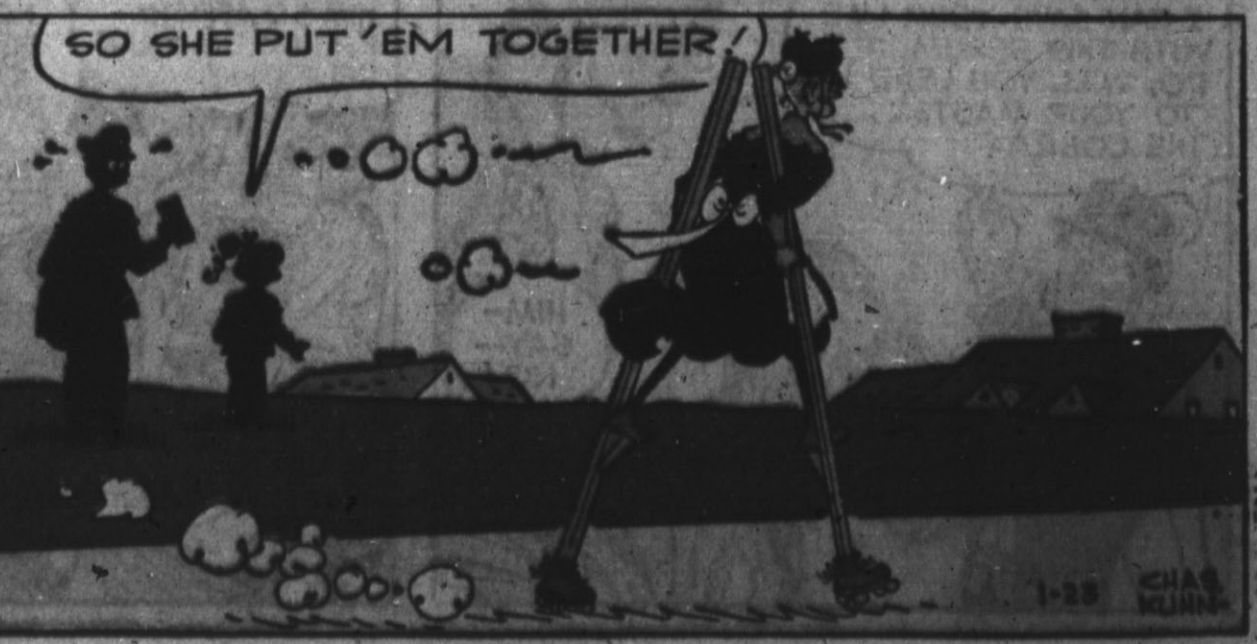
I'LL SAY!



SHE'S A CHAMPION ROLLER SKATER...



...AND AN EXPERT STILT WALKER...!



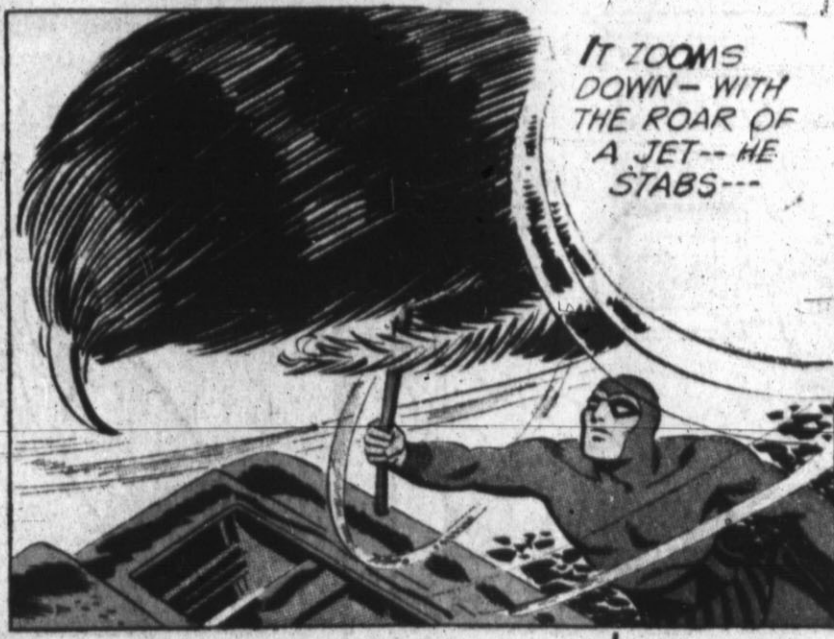
SO SHE PUT 'EM TOGETHER!

# The PHANTOM

By Lee Falk



**ZZZRRR!**  
THAT'S WHAT DR. LOVE SAW--A GIGANTIC BEE! SHE MUST HAVE CRASHED INTO ONE--  
IT'S COMING AT ME!



IT ZOOMS DOWN-- WITH THE ROAR OF A JET-- HE STABS---



THE FLYING MONSTER FALLS WITH A CRASH!  
GURAN'S PYGMY-POISON SPEAR DID IT!



NO SIGN OF DR. LOVE OR HER ASSISTANT-- NO WEAPONS-- THEY MUST HAVE GOTTEN OUT ALIVE-- THE QUESTION IS-- ARE THEY STILL ALIVE-- IN THIS NIGHTMARISH PLACE?



BLAST-- WHAT'S THAT? FLIES-- AS BIG AS SWALLOWS!



THE MISSING PAIR-- DR. LOVE AND KARL!

THAT'S-- A TOAD?! SHH-- IT HASN'T SEEN US--

BY BARRY 1/23

CONT'D

# BRINGING UP FATHER

by BILL KAVANAGH & FRANK FLETCHER



OH, YOU BOUGHT AN ANTIQUE CHAIR! IT'S LOVELY!  
IT SHOULD BE-- IT COST ENOUGH!



SO DELICATE AND GRACEFUL!  
IT'S ALMOST 200 YEARS OLD-- I MUST WARN EVERYBODY NOT TO SIT ON IT!



OH, JIGGS-- WHERE ARE YOU? I WANT TO TELL YOU SOMETHING--



INSECT! KEEP OFF THAT ANTIQUE CHAIR!!



THERE-- THAT'S THE KIND OF CHAIR A CLUMSY OAF LIKE YOU SHOULD USE!



ANYBODY WHO WOULD SIT ON THAT PRICELESS MUSEUM PIECE IS AN IGNORANT LOU!



GO-- NESS GRACIOUS!!  
**CRASH!**



BROTHER DARLING, ARE YOU HURT?  
HE WILL BE WHEN I TELL HIM WHAT YOU CALLED HIM!

# THIMBLE THEATRE starring POPIEYIE

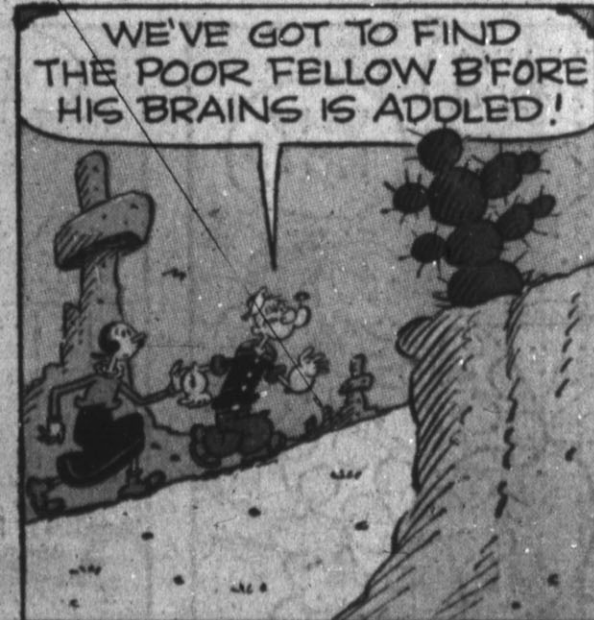
by BUD SAGENDORF



AREN'T YOU WORRIED ABOUT HAPPY?  
I'LL SAY I IS!! THAT CRAZY HAS-BEEN COMEDIAN SHOULDN'T BE WANDERIN' AROUN' IN A HOT SUN!



THE SUN IS BAD ON THE HEAD.... HE MIGHT GIT DESERT MADNESS AND START TELLING HIS JOKES TO THE ROCKS AND CACTUS!



WE'VE GOT TO FIND THE POOR FELLOW B'FORE HIS BRAINS IS ADDED!



WE'VE BEEN SEARCHING FOR HOURS!  
WE HAS TO KEEP LOOKING!



SH-H-H! WHAT'S THAT?  
OH, MY GORSH!



HE'S GOT IT! HE'S GOT DESERT MADNESS!  
BLA-BLA-BLA...



JOKER... MY DOCTOR SAYS I CAN'T PLAY GOLF... WELL, HE CAN'T PLAY EITHER!  
JOKER... AN ICEBERG IS A PERMANENT WAVE!  
JOKER... AN ONION A DAY WILL KEEP EVERYONE AWAY!  
UGH?

BUD SAGENDORF

1-23

© King Features Syndicate, Inc., 1966. World rights reserved.

# BUZ SAWYER

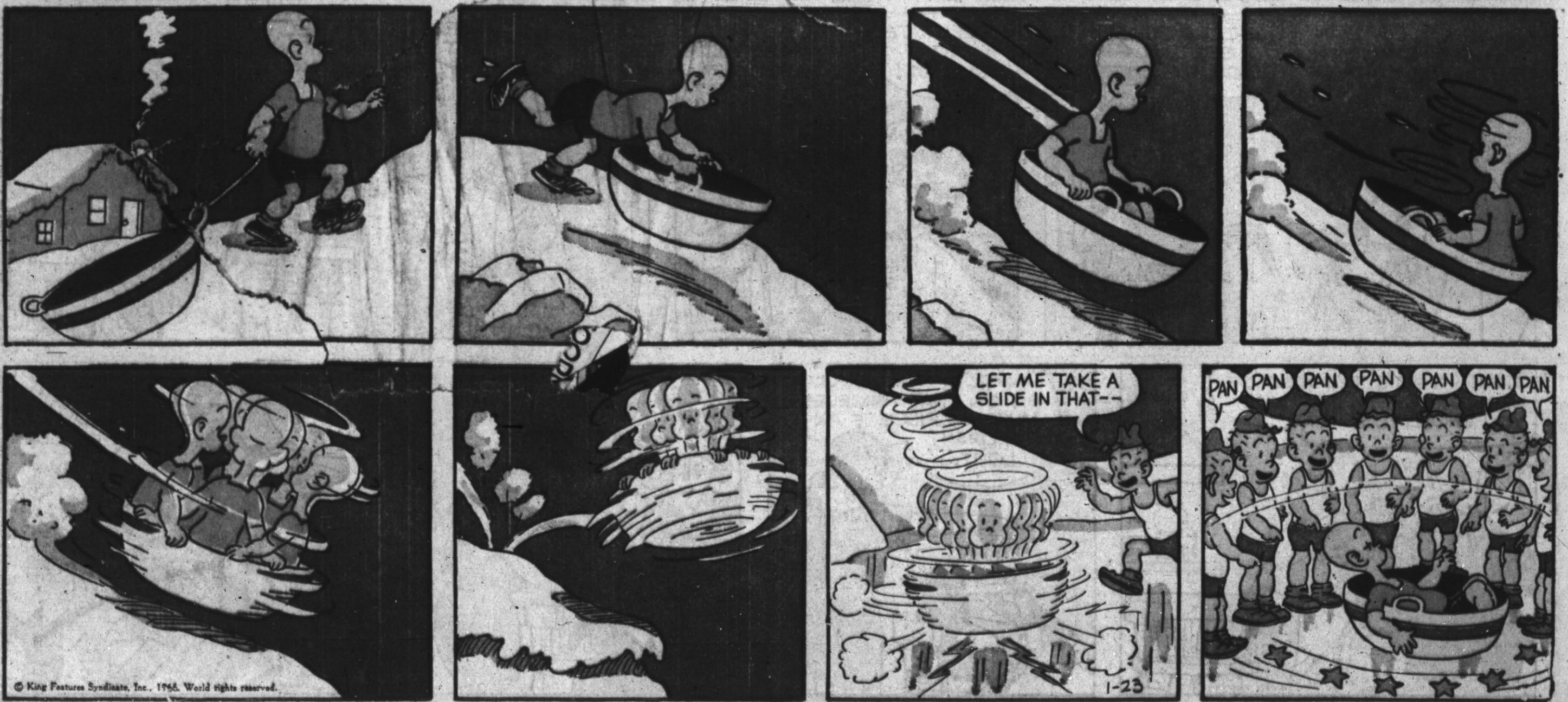
Featuring His Pal Rosco Sweeney

by ROY CRANE



# HENRY

by CARL ANDERSON



# The KATZENJAMMER KIDS

by JOE MUSIAL

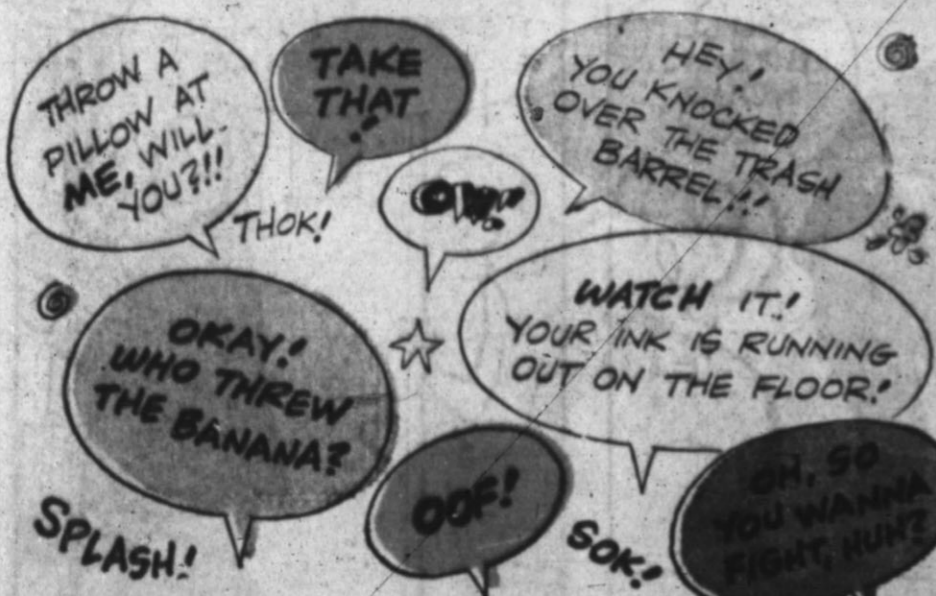
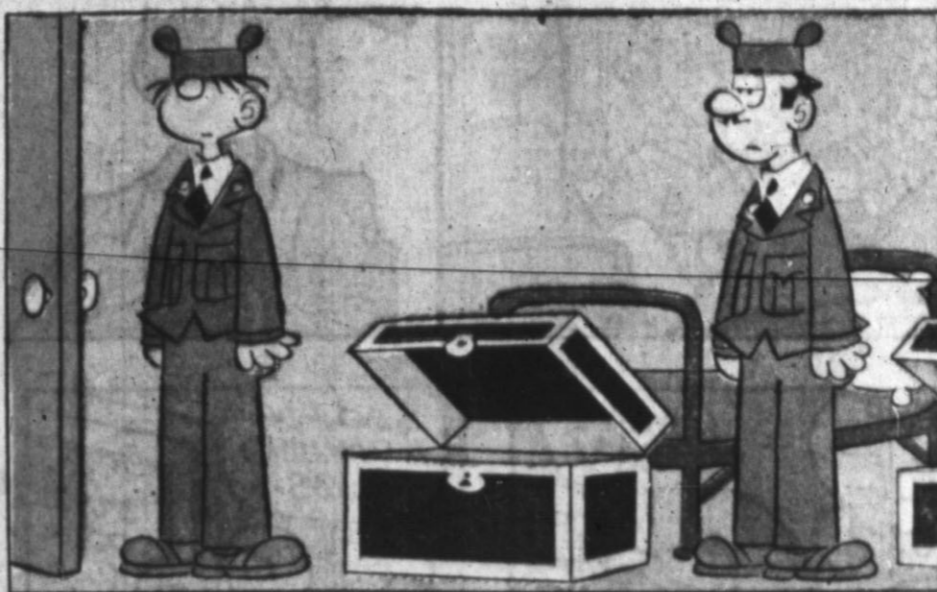
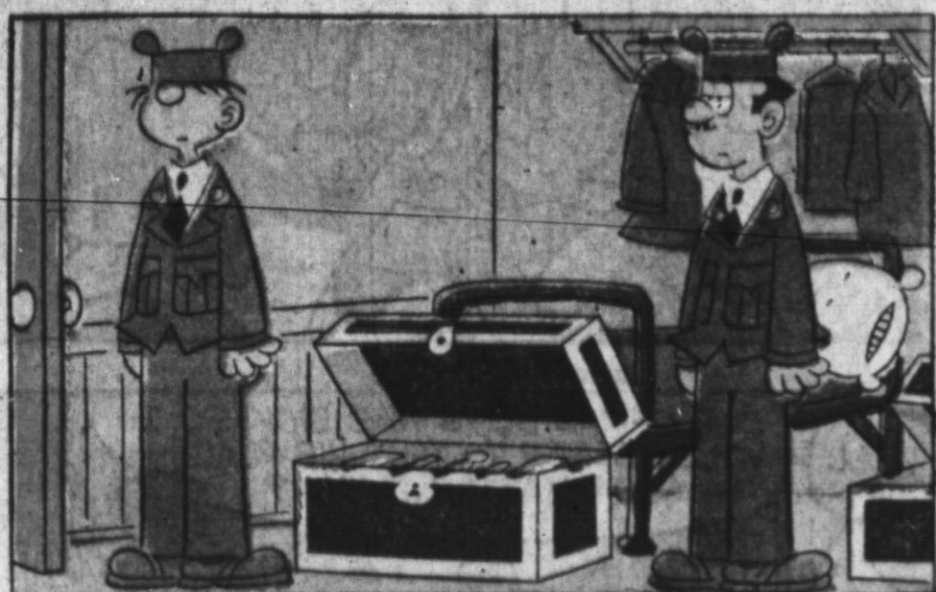






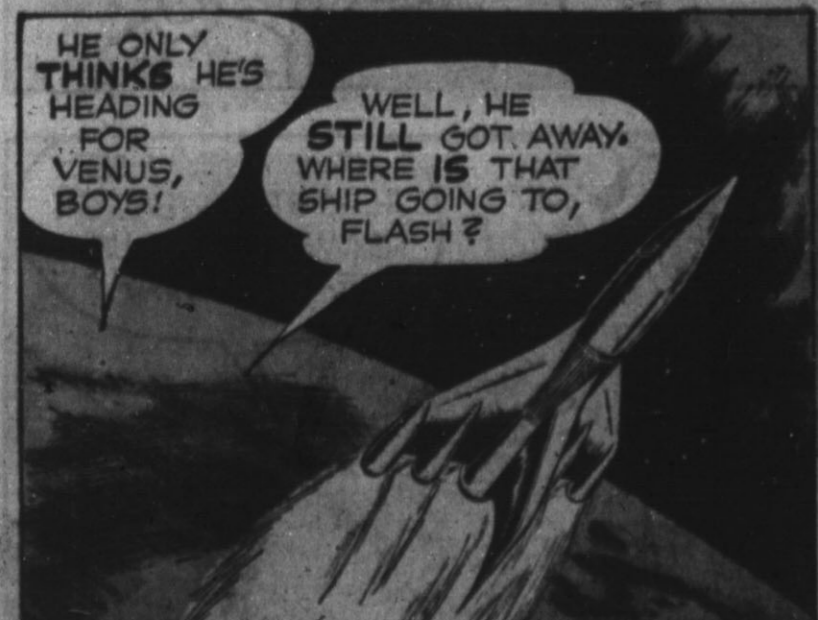
# beetle bailey

by mort walker



# FLASH GORDON

by MAC RABOY



NEXT WEEK - OUT OF HARM'S WAY! 1-23

# LITTLE IODINE by JIMMY HATLO



# The Little Woman

by DON TORBIN



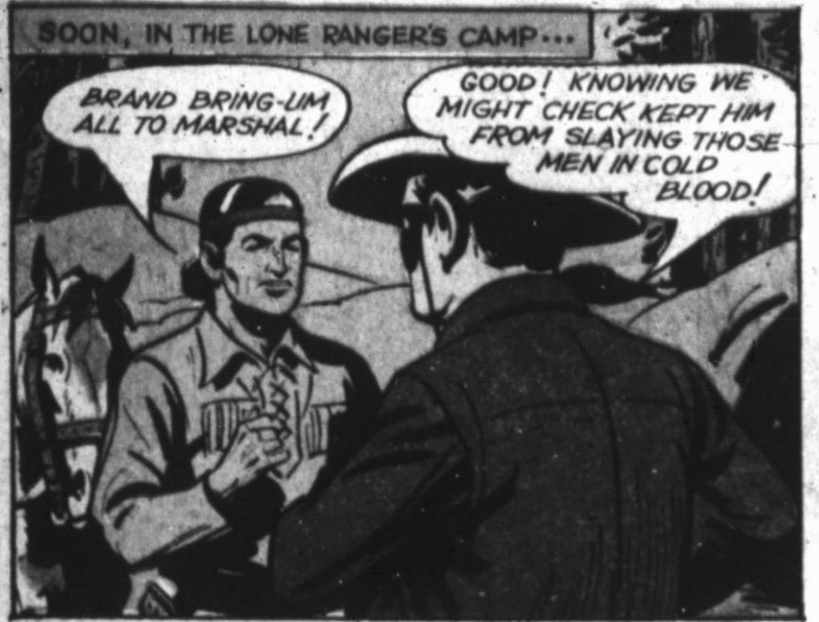
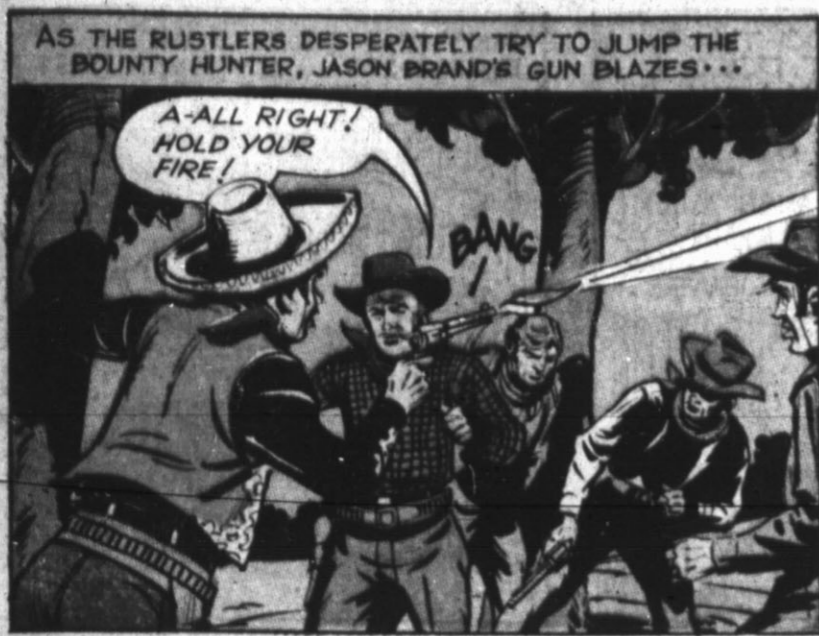
# Hi and Lois

by MORT WALKER and DIK BROWNE



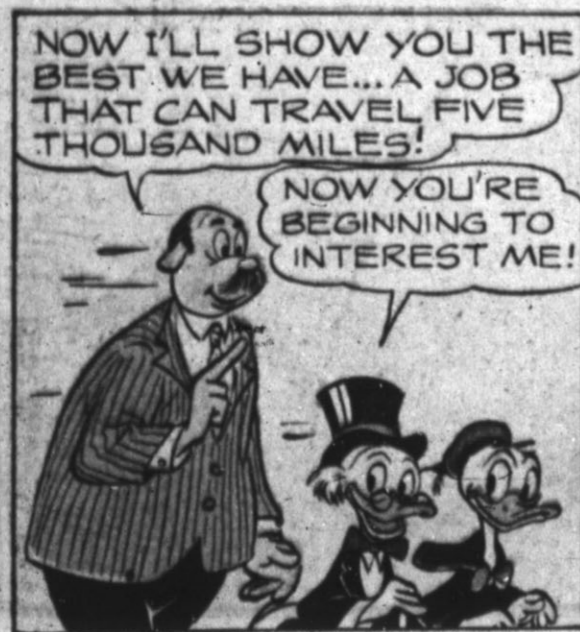
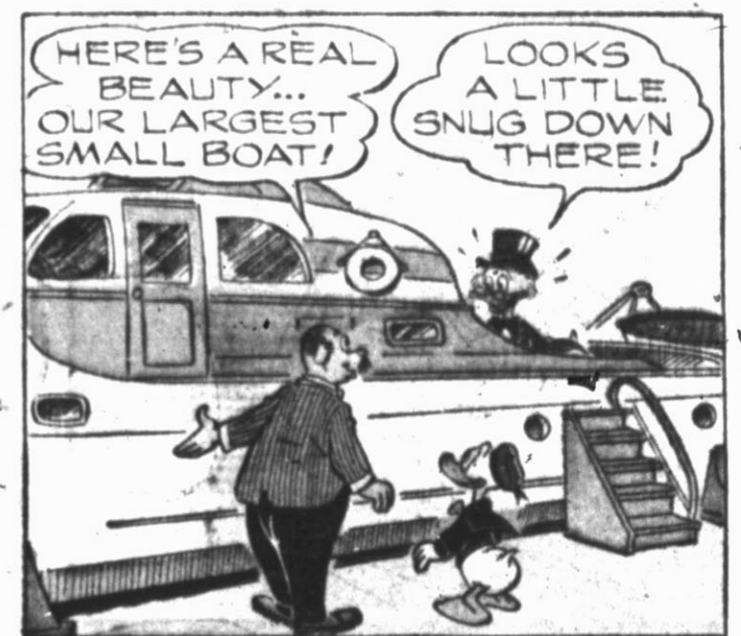
# The LONE RANGER

by Charles Flanders and Paul S. Newman



# DONALD DUCK

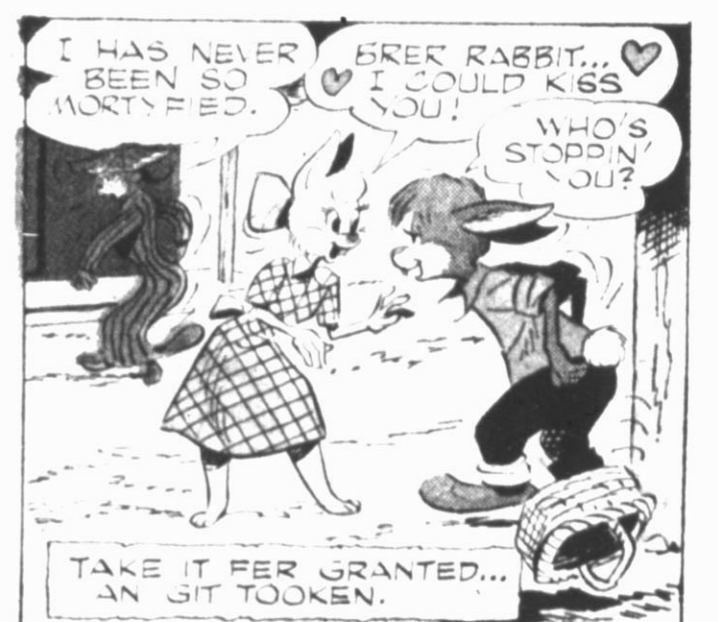
by WALT DISNEY



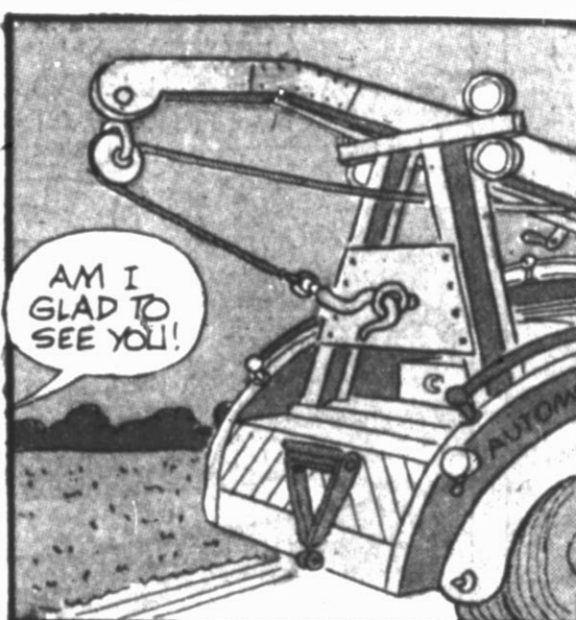
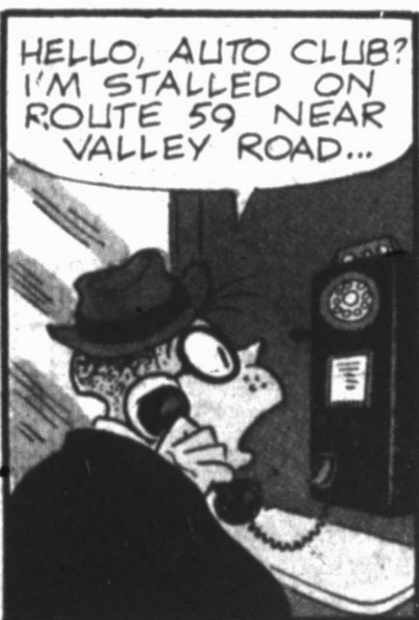
# MICKEY MOUSE

by WALT DISNEY





**MISTER BREGER** by Dave Breger



**BARNEY GOOGLE and SNUFFY SMITH** by FRED LASSWELL

