

The Hereford Brand

Vol. 9

HEREFORD, TEXAS, FEBRUARY 19, 1909

No. 2

**MAKE
READY!**

AIM!

FIRE!

**KEEP YOUR EYE
ON THE GUN!**

**THINGS ARE HAPPENING!
SOMETHING DOING AT OUR PLACE!**

We must get more space. Make room for three big cars en route. We make a specialty of furnishing homes--the best homes too--as well as the more humble. Increase volume of business for 1909, is our motto--we are determined to do it and expect to achieve the desired end by your co-operation. We expect to have your support by giving you the best and most courteous treatment, prompt service, the best goods for less money and the greatest line to select from. We have choice of the best factory lines to select our stock from. We know the best when we see it and buy for less--hence can save you money on your Furniture, Carpets, Rugs, Matting, Linoleum, Wall Paper and everything. Its no experiment with us. We are prepared to do it. Why? Answer--We don't keep furniture, we sell it. We don't use a mirage or a decoy duck. We deliver the goods.

The Furniture Store
Ahead

E. B. BLACK CO.
FURNITURE AND UNDERTAKING

O. E. THOMAS
EMBALMER and FUNERAL
DIRECTOR

COME TO TEXAS TO MAKE START

Newlyweds Are Numerous in Home-seekers' Parties--Twelve Trains Bring in About 4,200.

Bridal couples galore were scattered through the army of homeseekers who reached Fort Worth Thursday on twelve special trains from Chicago, St. Louis and Kansas City. These newlyweds had taken advantage of the low rates to spend their honeymoon in the Southwest, and many of them to look over Texas with a view of locating here.

The Katy seemed the favorite line for the bridal couples Thursday, three being on one.

A conservative estimate on the twelve trainloads passing through Fort Worth is 4,200 people. That exceeds the record-breaking travel of two weeks ago by 1,200. The homeseekers, who had ample opportunity for observation on the long trip to Texas, declared there were but few coaches without a bridal couple.

August Langston, general immigration agent of the Katy accompanied the homeseekers through the city for that road. In his opinion, Texas will see more newcomers enter the state this year than ever before in her history. He bases this opinion upon the number of inquiries he is daily receiving at his office in St. Louis.

A notable feature of the home-

seekers traffic Thursday was the fact that the tide of immigration seemed to have turned slightly from the Gulf coast country to West Texas. More went to the western counties this time than ever before. On all previous excursions, the vast majority have gone to Brownsville and to other points on the Gulf.

The special homeseeker trains were distributed as follows: Four on the Santa Fe, four on the Katy, two on the Rock Island, one each on the Texas & Pacific and Cotton Belt.

This does not include the Katy trains around by Dallas and the Rock Island trains that entered thru the Panhandle, nor the Texas & Pacific specials to East Texas.—Telegram.

Get you a Spring Suit of clothes at J. M. Boone's. 2-2t

Couple Marries.

At the residence of the pastor, last Sunday afternoon, at 5 o'clock, Mr. Raymond D. Orr and Miss Irene Beemer were united in marriage, Rev. O. W. Dean, officiating. The couple have many friends in the city who extend to them their happiest felicities.

A Quarter-Section Snap.

For a short time we can offer one of the choicest of 160-acre tracts at a snap all cash price.—This tract is all fenced, has about 40 acres sown in wheat, besides about 80 acres additional is now ready for planting in the spring. A school house will soon be built near this tract, which is 9 1/2 miles from Hereford and 5 miles from Summerfield. The first man with the "kale seed" gets it.

O. K. LAND COMPANY.

RAILROAD NEWS

What Is Doing in the Panhandle About New Railroads—Hereford Interest.

The following clippings from exchanges will serve as a symposium of railroad news in which Hereford is interested:

The Goose Hangs High.

Floydada, Texas, Feb. 12.—The charter for the Llano Estacado Ry. Co. was issued last Thursday. A. L. Love went to Austin last week upon business pertaining to this matter. He returned the latter part of the week. The road can now be graded from one end to the other wherever a right of way is needed. Work continues steadily. The contractors have been paid for one and one-eighth mile of finished grade. Everything is lovely and the goose hangs high. There is part of a railroad dump in Floyd county if there's never anything else.—Hesperian.

Surveyors in Stanton.

Stanton, Texas, Feb. 12.—Wednesday the surveyors running a preliminary line for the C. H. & G. railroad struck camp a few miles west of town, thus finishing their route to the T. & P. This is the second survey made within the past two weeks, the first one going to the east and intersecting the T. & P. at Moritta. Lamesa, we understand is left out in the cold.

It looks like it would have been so much more convenient to the

traveling public had this road come nearer the city limits and joined with our other line in a union depot, and so long as this line is only a preliminary it may be they will do so yet. At any rate it wont be many years until the suburbs of our town will have surrounded their depot, even though it is four or five miles out of the way at present.—Reporter.

Railroad Men Visit Crosbyton.

Crosbyton, Tex., Feb. 12.—Tuesday evening the following named gentlemen visited the city of Crosbyton: W. Cowen, chief engineer of the Colorado Southern; W. F. Sterling, general freight agent of the Ft. Worth & Denver; Mr. Johnson, general contractor for Stamford & Northwestern; Mr. Hudson and Rudolph Colbert, of Stamford and C. A. Jones, manager of the Spur Lands of Espuela. These were only half of the party, the other car going up canon to the east of Crosbyton. It is thought that these men are looking for the most favorable place for a road to come up on the cap rock. The party coming to Crosbyton had no proposition to make, or any very definite information to give out, more than the building of the Stamford & Northwestern, which is now being graded. It is believed that they are making these surveys of the country in search of the most direct route and the most desirable place to climb the cap rock. Crosbyton is in the market for a road and when any other railroad men get ready to talk, they will find Crosbyton "Johnny on the spot" and there with the goods.

(Continued on Page Twelve)

WILL BREAK LARGE TRACT

Nebraska Farmers Will Use Gasoline Plow in Putting Two Sections of Land in Cultivation.

People in this country do not do things by small means. When they do anything at all they want it to be on a large scale. Gus Lowburg, Henry Jenson and Henry Hemstreet of Emerson, Nebraska, are on their way to this country for the purpose of making their home among us.

They have ordered and now have on the way to this place a gasoline plow outfit for the purpose of breaking up and putting into cultivation two sections of land which they own about ten miles east from Happy. They are successful farmers and have made a study of the proper methods of farming in districts such as ours is and no doubt they will make a great success of their venture. They propose to raise feed crops during the first year.—Randall County News.

A nice line of Stationery and envelopes at J. M. Boone's. 2-2t

Farm for Trade.

A well improved 220 acre farm in Van Buren Co. Iowa, 3 miles of railroad town, will exchange for land near Hereford. This is one of the best stock and grain farms in the Southern Iowa. If interested see or write. C. O. LEE

50-tf

Hereford, Texas.

KEEN KUTTER



KEEN KUTTER

WE SELL



TOOLS CUTLERY



KEEN KUTTER



THEY DON'T MIND HE KNOWS IT WON'T HURT—IT'S A KEEN KUTTER

KEEN KUTTER



KEEN KUTTER

Make Our Store Your Headquarters

If you want to cut it out-off-or up, get a Keen Cutter from GARRISON BROS.

The Hardware and Implement Men

Club Directors Meet.
 Last night in the offices of Knight & Slaton, the Board of Directors of the Commercial Club met and organized, naming the following officers for the year: W. M. Knight, president; L. Gough, vice president; O.H. Vardeman, treasurer. No secretary was elected as the Board desired to make a thorough canvas of the situation and further consideration. According to instructions from the Club, the Directors appointed Geo. W. Barcus and A. C. Elliott as campaign leaders in the contest. They will "choose up" like a spelling match and pull-off one of the hottest campaigns ever had in the city.

Jersey Cows.
 Jersey cows fresh in milk. Prices reasonable. See Robt. Elliott at The Brand office.

Home Wedding.
 At the home last Tuesday evening, in the presence of the members of the families and friends of the contracting parties, Mr. J. S. Gillean and Miss Bessie Curtsinger were united in marriage, Rev. O. W. Dean officiating. After the ceremony and congratulations, light refreshments were served. Miss Bessie is the daughter of J. D. Curtsinger, one of Hereford's leading business men. The friends of these wish them added happiness in their new relation.

We are sole agents for Azie,
 For the lazy to live easy
 Is quick and easy; it's all in the bag,
 For ten cents you can take it Azie,
 And get your money back easy for Azie,
 If Azie don't prove a Daisy.
 2-4t
 E. T. WOODBURN & SON.

Mrs. Flood.
 After a long illness, Mrs. Flood, the wife of A. J. Flood, died at the residence in north Hereford, Wednesday, February 17. Funeral services were conducted from the Methodist church, the pastor, Rev. J. W. Story, officiating. The body was followed to its last resting place in the city cemetery by sympathizing friends and the sorrowful members of the family. Mrs. Flood had been here only a short time, having come to the Panhandle in hopes of benefiting her health.

Wanted.
 Everybody to read the Bill Board for the Gertrude Ewing performances.
 It.

Infant Dies.
 The infant child of Mr. and Mrs. Buckler died Wednesday after living but a day. Interment was in the city cemetery.

Every Body
 Reads the Bill Board when we tell about Gertrude Ewing's plays. It

Patriotic Vote Day.
 As previously announced the ladies of the Benevolent Club will hold an election at Gough's office on Washington's birth day and there receive ballots of all qualified voters. But unlike the usual election, the women and children may vote. Judges and clerks will keep the tally sheets and pass upon your qualifications. No paper or printed ballots will be used, but instead silver coins; the votes of the men will be \$1, the women 50 cents and the children 25 cents. A big ballot box will be provided and the sum total of the ballot will be divided equally between the Park and Drinking Fountain Fund. Vote early and late and on the right side.

For Sale.
 Two acres in Block 20, Evans addition.
 C. R. SMITH. 49-tf

LISTEN BOYS!

I want you to do some advertising for me and I am going to pay you well for it.

\$5.00 in Gold to the boy who gets the best results.
 \$2.50 pair of Shoes to the second best.
 \$1.50 Hat to the third best.

JUST AS EASY—LIKE FUN

Come in and let me start you

H. C. MYRICK

Get Your Hooks in the Panhandle

Where land is cheap in price but rich in quality, where the climate is healthful, and you can work out of doors nine-tenths of the year. We do not ask you to believe a word we say, but invite you to investigate for yourself.

Statement from W. M. Smith.

"I came from Mercer county, Missouri, nine years ago and settled on the place I now own. A man can cultivate more land on the Plains and with greater ease than he can in Missouri. One one 20-acre field, I have raised millet six years in succession, making a good crop each year. The fourth year, my neighbors said that the field would make 4 tons per acre, which sold at the barn for \$9.00 per ton; delivered at Hereford, it sold for \$12.00; thus this crop made from thirty-six to forty-eight dollars per acre. The farm I owned in Missouri recently sold for \$50.00 per acre, but I would not exchange my Panhandle farm, acre for acre, for it and be compelled to live on it. I have no land to sell. I have never failed to make a crop."

W. M. SMITH.

This Missouri farmer "On the Plains" owns 3,200 acres and has 300 acres in cultivation.



HEAD HIGH IN KAFFIR CORN AND SORGHUM.

Letter from D. L. Myers.

Traffic Department of the Eastern Railway of New Mexico System and Southern Kansas Railway Co. of Texas.

Amarillo, Texas,
 February 8th, 1909;
 Publisher, Hereford Brand,
 Hereford, Texas.

Dear Sir:

During the year 1908 we unloaded at stations on our line in the Panhandle of Texas 1184 carloads of immigrant outfits. This compares with 1033 cars during the year 1907 and 494 cars during 1906, shows a remarkable improvement and seems to clearly indicate that the reputation of the country from an agricultural standpoint is well and permanently established.

Yours truly,
 D. L. MEYERS, G. F. & P. A.

OUR HOMESEEKERS AND INVESTOR'S EXCURSION leaves Kansas City the 1st and 3rd Wednesday mornings of each month at eleven o'clock

J. P. Snyder Land Co

HEREFORD, TEXAS

ANNUAL MEETING OF CLUB

Business Men Elect New Directors for the Year Under New Charter—
Speeches Made on Subjects of Interest and a General Good
Feeling Created for the Work of the Year.

WILL GIVE GRAND CONTEST BANQUET

Matched Contest for Membership to Result in Complimentary Feast for
Winners—Will Divide Membership into Two Divisions for
Team Work—A Lively Time Anticipated.

At the call of the president, the Hereford Commercial Club met in annual session last Friday night in the district court room and there transacted some important business, President Baskin in the chair. A. C. Elliott, acting secretary, read his annual report. Hon. W. M. Knight upon invitation of the chair read the charter and the new by-laws, recommended by the Board of Directors. Mr. Knight explained that the Club as such had not been properly organized under the charter, until the charter members recently met and perfected the organization, and that a simpler and a better working body needed to be had. After the reading of the By-laws, a call was made for members to join under the new organization. About one half the number in the room asked that their names be placed on the roll and paid their first semi-annual dues of \$5.00 each.

A motion was made and carried that a committee of five be appointed to solicit new members. The committee named by the chair was: A. J. Lipscomb, Geo. W. Barcus, E. M. Vanderburg, Eli Dunlap and J. L. Fuqua.

After some suggestions, a motion was made to postpone the election of the seven directors until Tuesday night of this week. Motion carried and the Club adjourned.

Pursuant to the order of the adjourned meeting of the Club, a full house gather in the courtroom Tuesday night. L. Baskin, president in the chair. An abstract of the minutes of the Friday night meeting were read and adopted.

Membership committee made a report showing 35 members secured. Short program was then taken up. L. Gough spoke on the subject for the platform for 1909, laying stress on the necessity of public parks and playgrounds. He touched on the move made by the ladies to raise funds for the purpose of improving the drinking facilities at the public school.

Hon. John P. Slaton made a telling talk about the Stamford-Northwestern Railroad and showed how that Hereford was the strategic point of the Plains for all the roads coming from that direction. He explained about the charter for the Floyadada-Hereford road and made some surmises as to what it meant.

Geo. W. Barcus touched a responsive cord in the hearts of newspaper men and advertisers when he approached the subject of advertising Hereford and the best way to do it. Mr. Barcus told how other towns had been brought into public notice by a system of judicious advertising. His premises were based upon the remark, "That all men have long since conceded that it pays to advertise." If it pays a merchant why would it not pay a town. His arguments and happy illustrations were plaudibly received.

W. M. Knight was the next to take the floor and he spoke to the subject: "The Club and the business men—shall the Club survive." He laid particular force upon the advanced business methods in all lines of business and showed that even the business men of a town needed to be organized so that the greatest good might come from united effort, that few men had time nor was it good business policy to leave their own private affairs in order to attend to some public interest and that the method best for such a purpose was found in the Commercial Club. His remarks were received by full endorsement.

The last speaker for the evening, tho disclaiming any efforts at public speaking, was A. J. Lipscomb, cashier of the Western National Bank. Mr. Lipscomb's subject was of much interest just at this time, the C. H. & G. Ry., its advent into Hereford. He clearly and forcibly showed that already those who had subscribed toward the bonus and those who had not promised to give a dime, had received from five to ten times the amounts promised in the advance of property and business. That even, if the road was never finished, Hereford citizens and others had been more than repaid for their efforts in securing the contract to building the line. Mr.

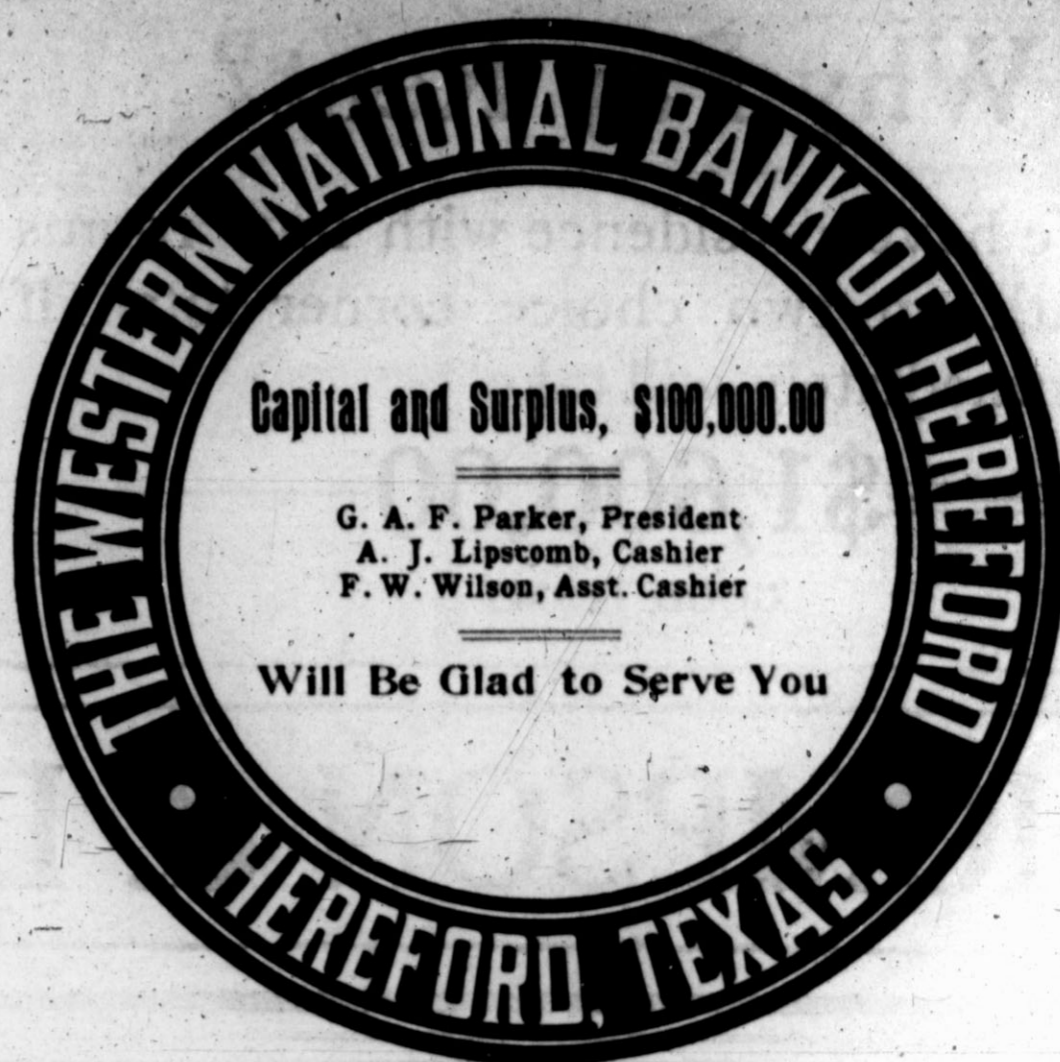
After this program was finished a short recess was taken to receive new members, a number of names were added. During the time, many who did not join left the house, but all who had a greater interest remained for the election of the directorate. It was agreed that a committee be appointed to nominate a list of twelve men. Messrs. Gough, Garrison and Knight were appointed and retired to make up the list. A motion was made to add their names to the list, which made fifteen names. Tickets were distributed and each member was requested to vote for seven names. The first ballot resulted in choosing four directors: W. M. Knight, J. E. Garrison, L. Gough and J. L. Fuqua, these having received the required number of votes and more. Fourteen was necessary to elect. A second ballot was cast and two more names added: F. H. Obertheir A. J. Lipscomb. A third ballot was being prepared when upon motion of Mr. Slaton, the name of Mr. Elliott was added to the list and the directorate completed.

Mr. Knight having received the highest number of votes cast, called the newly elected directors to meet at his office Thursday night.

A motion was made and carried that the Directors appoint two members who should make two lists of the members by choosing sides, like an old fashioned spelling match, and these two companies make a campaign for new members and that the side who secured the least number of members should banquet the winning side. No date was set for this.

Upon motion by Mr. Garrison and seconded by Mr. Gough, it was decided for the Club to meet next Tuesday night at the opera house, if that building could be secured and there to have a special program, outlining the policy of the Club and the work to be accomplished.

A motion to adjourn was carried.



J. F. JOSS SEE US BEFORE YOU BUILD LESLIE BASKIN

HEREFORD YARD IS LOCATED HALF BLOCK NORTH OF NEW SANTA FE PASSENGER STATION EAST SIDE OF STREET

LUMBER, SASH, DOORS, GLASS, PAINTS, OILS, VARNISH
FENCE POSTS, LIME, SAND, CEMENT, BRICK

We aim to carry nothing but the better grades in everything handled; to extend honest, fair and courteous treatment to all our patrons, and promise complete satisfaction in every transaction. Our yard at Scherer, which is 10 miles Northwest of Hereford, will soon be open and we expect to furnish building material to Kelso tract owners at Hereford prices. . . . Give us a trial.

Ready for Business

We are now located in the Opera House building where we will be pleased to serve you. Our new stock of Hardware has begun to arrive and we expect to have a complete stock in a short time. Call on us when you want anything in our line.

DON'T FORGET TUCKER Windmill

A NEW BUILDING, Larger and better than before will be ready for us IN A SHORT WHILE

Hereford Hardware Co.

Why Pay Rent?

We have a residence with four rooms and bath, on two choice corner lots. If sold immediately will take

\$1,600.00

GOOD TERMS

Choice Half Section.

We also have a choice half section, six miles from a real railroad and switch. 80 feet to water, seven miles from town and postoffice. This choice half section at a bargain. Good Terms.

NO COMMISSIONS

THOMPSON & DANIEL AT THE GARAGE

WILL GET RURAL ROUTE

Petitioners for Free Rural Route Receives Encouragement from Department.

J. A. Hasser, P. W. Smith, A. A. Goodwin and others are in receipt of a letter from the Fourth Assistant Postmaster General in answer to their petition for a rural route. As will be seen by the letter, eighty-nine signers were secured while the requirements are 100 names. Messrs Smith and Hasser were in the Brand office the other day and stated that they would soon have the required number for an every day delivery as they did not want a tri-weekly. Three new families have moved into the district since the petition was first circulated and they say others are coming and that in a few days the full 100 names will be on the list.

Washington, Feb., 3, 1909. — The petition of A. A. Goodwin and others requesting establishment of a rural route to extend from Hereford is herewith returned without action.

The proposed route is twenty-five miles long and should serve one hundred families if a daily delivery of mail is desired. The petition is signed by only eighty-nine people so does not meet the requirements.

However, if the people will be satisfied with a tri-weekly route, and will so advise the Department, the matter will be given consideration upon return of the petition.

Very respectfully,

P. V. DeGraw.

Fourth Assistant Postmaster General.

We have a few more Fall and Winter Suits, Overcoats and Pants Left and to dispose of them right quick will offer for the next few days the following prices:

Any Hart, Schaffner & Marx Suit in the house for **\$16.50**

Any Kantbebeat Youth's Suit in the house for **9.75**

Any Hart, Schaffner & Marx Rain-coat in the house for **15.00**

Any Overcoat in the house for **12.00**

Any Odd Pair of Pants in the house for **3.30**

Clothing Dept.—**MUBBARD & BARNETT**
DEPARTMENT STORE

NEW DISTRICT COURT

The Panhandle Has Another Court Established by Legislation.

A recent act of the present legislature created the 69th district, for court purposes in the Panhandle. D. B. Hill, a prominent attorney of Dalhart was made the first judge and Mr. O'Brien of Channing was made attorney. The first term will be held in Hartley county beginning February 22nd. The court will convene at Hereford, May 3rd.

Home-Talent Play.

Last Friday night at the Hereford opera house, the home talents put on the popular play, "A Mansion of Aching Hearts," to a full house. The coaching had been done by Mrs. Estelle Horne who was a "Dora Thorne" with a traveling company that played here some weeks ago. Under her able tutelage, the amateurs played like professionals but with that mechanical attitude entirely absent. Every one in the cast gave excellent support and while all could be complimented highly for their work, it must not pass without calling especial attention to one character, that played by little Miss Louise Oberthier. She easily won the plaudits of the house and carried off the honors of the amateurs. Of course, Mr. and Mrs. Thorne are not included in the amateur list and due credit must be given them for their splendid work. The play has received so much favorable comment that many ask for its early repetition and it may be put on again soon.

The Monkey and the Chesnuts.

The ingratitude of corporations is clearly demonstrated in the case of Amarillo and the Santa Fe railroad. Two years ago the citizens of our neighbor on the west spent thousands of dollars to have the legislature pass a bill authorizing the railroad to abandon its track between

here and Washburn. The hope was held out to the "Queen City of the Plains" that immense shops would be built there. The track running to Washburn has been removed and the shops are being built at Clovis, N. M. And now Amarillo is holding meetings and asking the railroad officials if their intentions are honorable. Is this

another case of the monkey and the chesnuts? There is no question but what Amarillo earned the shops and everything else her citizens might ask for.—Claude News.

Early Garden Plants.

I will have them, all kinds and an unlimited quantity. The price will be right.

WALTER NELSON.
South side town.

WE ARE HERE TO STAY!

We want your land business. We offer the very best bargains to our purchasers. More immigrants are coming to the Panhandle than any other section of the whole country. You'll have to hurry if you want a nome here while land is cheap.



A Panhandle Farm Scene

Join one of our special excursions for Hereford, Texas, that leaves St. Louis on Tuesday and Kansas City on Wednesday of the 1st and 3d weeks in each month. Our autos will be at your service to view the country and see for yourself its wonderful possibilities. Write us.

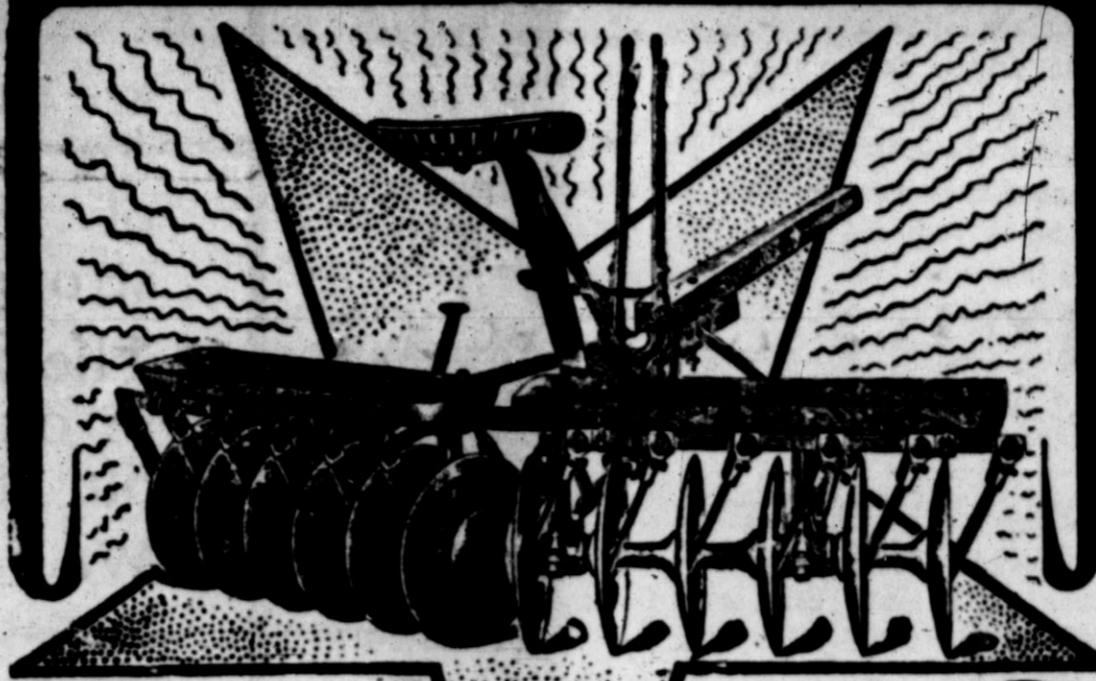
EDWARDS-O'BRIEN LAND CO.
HEREFORD, TEXAS

THE GREAT MAJESTIC RANGES

Our stock of Baker Perfect Barb Wire both painted and galvanized, American and Ellwood Field Fence, Eclipse and Woodmanse Windmills, Heavy Team Harness and Single Drawing Harness, all heights of Poultry Netting, and One Minute Washing Machines, is always complete and is ready for inspection. Let us figure with you on that that Plumbing job. We have a nice line of Bath Tubs, Corner and Wall Lavatories, Kitchen Sinks, Drain Board and Sink, Back Low Down Closets and the best Plumbers in town. Our Intentions is to give you the Best Quality of goods at the Lowest Possible Prices.

BUCK'S STOVES

CANTON STAR HARROW



The P. & O. Canton Star Disc Harrow

Can be equipped with a first-class **Reeder Attachment**, which can be used either as a drill or a broadcaster. It has all the features for doing the best work.

The wood bushings cost but a trifle and are easily renewed, though it is seldom necessary to do so. Owing to the facilities for oiling the bearings they won't run dry. You take out the oil plugs which are in the bottom of the weight boxes, the most accessible place to put them, and fill the oil ducts—they hold a lot of oil, too—then forget about them. The lead is just right and the harrow will run easily without more attention for a long time. These oil ducts are simply holes cast in the standards, the lower ends of which form the top sections of the bearings. It is a simple and effective arrangement.

Don't overlook the scrapers—they are one of the fine points on this harrow. A harrow defective in this respect, though perfect in every other, is often useless. Remember this and examine those on the **Canton Star**. They are made to sweep across the faces of the discs from center to the outer edges.

The hitch is low and the tongue is directly in the line of draft, avoiding neck draft and relieving the frame from all strain. The weight boxes are large and have ample capacity. The bearings are **dust-proof** and are provided with **wood bushings**. As a result all wear is concentrated upon these wood parts.

Come in and Let Us Show You

WHITE SEWING MACHINES

A car of Enterprise Buggies has just been unloaded at our store, and we will take pleasure in showing our customers and friends the Best Quality and Nobbyest Vehicles. Our Emerson Standard Double and Triple Disc Plows are the best that money can buy. We have in stock at all times the Celebrated Success Sulky, the New Tongue Trick Disc Harrows in all sizes, the S. Drag Harrows, the Canton Clipper Breaking Plow, the Katydid Sod Plow and the Emerson Riding Attachment, the only Successful one made. And many other Implements that are essential in making a crop in the Panhandle.

BUILDER'S HARDWARE

WARREN HARDWARE COMPANY **HEREFORD TEXAS**

HEREFORD SOCIETY

Mrs. M. J. Biscoe left Tuesday for a visit to relatives in Central Texas.

Mrs. J. P. Slaton left Tuesday for an extended visit with relatives at Dallas.

Miss Bourn of Lauger Texas is the guest of her cousin, Mrs. Ernest Cardwell.

Mesdames Price and Asburry enjoyed a delightful trip to the country in an auto Monday afternoon.

Mrs. J. F. Barker expects to leave for Ft. Worth in a few days where she will join her husband who is there in the hospital.

Mr. J. S. Warner returned home Thursday from a northern trip and was accompanied by his mother who will visit in the Warner home for some time.

Mr. and Mrs. A. L. Gibson were at home to the ladies of the Modern

Pricilla club and their husbands with addition of a few other guests Monday evening. The occasion of the gathering was a Valentine party. The Gibson home was artistically decorated in hearts and other decorations appropriate for the occasion. The weather had moderated and the evening was ideal for this pleasant social function. A number of contests suggestive of St. Valentine were engaged in, the earlier part of the evening; among these was a test in geography. Large hearts on which were drawn outline maps of the different states in the Union were given the guests, with the request that the name of the state be written on the opposite side of the heart. A table in the parlor contained a number of objects varying greatly in size and kind. At this table only five minutes were given each guest to view the different articles. When the time expired they were asked to write a list from memory of what they had seen. These among other contests furnished amusement for some hours. The hostess next serv-

ed a dainty three coursed luncheon, consisting of sandwiches, salad, pickles, olives, cream potatoes, coffee, cake and home-made candy. After the luncheon had been served a progressive game of "42" was played. At a late hour the following guests pronounced the evening a most enjoyable one and departed: Mr. and Mrs. G. W. Barcus, Dr. and Mrs. Hicks, Mr. and Mrs. Luther Hough, Mr. and Mrs. W. C. Witherspoon, Mr. and Mrs. Hall Hawkins, Mr. and Mrs. Sullivan, Mr. and Mrs. Killough, Mr. and Mrs. Emmet Cardwell, Mr. and Mrs. J. T. Webb, Mr. and Mrs. S. B. Edwards, Messrs. J. H. Pitman, Douglas Fox, Marvin Cross; Misses Bourn, Anna Miller and Mrs. Estelle Tucker.

Miss Ina Gregg made it pleasant for a number of her young friends on Valentine eve. Tho the mercury had fallen several degrees and the north wind was blowing briskly the condition of the elements was entirely forgotten when the merry party reached their destination.

To those whom the hospitality of the Gregg home has ever been extended it is useless to say that never drags mid such congenial surroundings. After a few moments allowed the guests in which to exchange greetings the charming hostess brought forth many cunning little devices suggestive of St. Valentine's celebration. First were love letters the sentences of which were disarranged in a very confusing manner. It became the task of the guests to rearrange these words. Telegram blanks were next provided on which love messages were requested to be written. A prize was awarded the person who proved most skilled in covering a large red heart with things most apt to be found therein. Mr. Carl Shirley received the prize, a valentine, for knowing what should

be the most fitting contents of a girls heart. An improvised post office containing a valentine for each member furnished a deal of amusement after choosing pastimers for lunch in a unique manner. The happy love makers received charming little menu cards on which the following menu appeared:

First Course—Cold heart sandwiches, love sick pickles.
Second Course—Sweet hearts, Cupids-nectar.

The young people who were favored with an invitation from Miss Gregg on this occasion were: Misses Nannie Jowell, Vera Angel, Ruth and Ruby Wilson, Ruth Ricketts, Mate Hunt, Beulah Potter, Emma Gough and Nona Arthur; Messrs Otis Parks, Forrest Parks, Claud Ricketts, Arthur Thompson, Odell Elliott, Lester Guinn, Carl Shirley, Lester Fretz, Roy Long, Charleston and Floyd Elliston.

Another Couple.

At just 3 minutes past 12 o'clock Wednesday night, at the gate of the parsonage, Mr. Earl Tanner and Mrs. Zula McAlester were united in marriage by Rev. Dean, who had been called from his slumbers by phone a few minutes before that he might say the words.

Notice.

I have a good gentle buggy horse I will trade for a buggy. See me at the Hereford Market.

PHIL ARTHUR.

Contract Let.

Dunlap and Britain have let the contract for the erection of their 50 foot front business house on Dewey avenue to J. C. Berry. Work has already commenced on the foundation.

CARES FLIT AWAY

like the butterfly before the wind when you sense the feel of my cigars between your lips. There's a contentment in the smoking of them that will always bring you back. Their quality shows in the very way the smoke wreaths sway around your head. My cigars and a smile harmonize perfectly, and the former will always produce the latter. Drop around and test their fitness, a cool, sweet smoke is assured you. All the best brands.

DRUGS T. M. COULSON CIGARS



See J. L. Johnson for Waterproof Building Blocks. Phone 324. Factory, Hereford, Texas.

Hereford Brand

D. W. Hawkins, Business Manager
A. C. Elliott, Editor

Address all communications to
THE HEREFORD BRAND

Entered April 17, 1901, as second-class
mail matter, post office at Hereford, Texas,
act of Congress of March 3, 1879.

Subscription Price \$1.00 Per Year,
Strictly in Advance

Any erroneous statement affecting the
character or reputation of any individual or
firm which may appear in The Brand, will
be gladly corrected upon being brought to
the attention of the publishers.

ABOUT DRY FARMING.

**Prof. H. W. Campbell, Soil Culture
Expert, Tells of Success of
His Methods to News.**

"Ignorance on the part of the farmer or failure to properly handle the soil are the only things which may be expected to cause crop failures in the farming land of West Texas or any part of the West, according to Prof. H. W. Campbell, the soil culture expert of Lincoln, Neb., who stopped yesterday at the Metropolitan on his way from his model farm at Plainview to his farm at Midland.

"Dry farming according to what is known as my system," said Prof. Campbell yesterday, "simply means the observance of the best methods for using the moisture stored up in the ground from the regular rainfall, together with the elements in the soil and air which cause plant growth. We have proved time and again that land in the semi-arid West always yields rich returns when properly handled.

"Up on our farm near Plainview, which I have just visited, a party of prospectors the other day wanted to find out how deep the moisture extended under one of the fields which has been cultivated for a little over a year according to Campbell methods. They dug down four feet and the ground was still moist so they gave it up. There has been comparatively little rain in that section during the winter and fall but wheat on that field is up in good even stand and will make a yield without any more rain. Wheat in other fields in that vicinity shows need of rain and will not yield at all without rain. Of course the yield on our fields will be considerably increased by rain at the proper time.

"At our Midland farm where I go tomorrow, the work has been more thoroughly performed and I am expecting especially good results.

"People are slow to take proper methods of farming in the Panhandle because they have so long been ac-

customed to haphazard methods which may or may not make yields. But where they have begun farming right the results amply justify the trouble taken. Around Hereford, in Deaf Smith county, there are a number of farms which are following the Campbell system pretty carefully. On one of these Judge L. Gough of that city raised over thirty bushels of wheat per acre last summer when adjoining fields returned only one-third to two-thirds of that amount. Near Guymon, Oklahoma, last summer in a particularly dry season, a farmer who followed my system got 48 bushels per acre which sold for \$47.70 per acre, when a large per cent of his neighbors made total failures and none of them made good yields. I could quote many more instances like that, and I can prove that there has not been a single failure when the system has been carefully followed.

"I couldn't tell all about the system under varying conditions in 500 book pages but the essential thing is to give the plants a firm moist, root bed, covered with a loose surface of soil. We do that by plowing deep and by packing the surface down firm at once so that the subsoil will not dry out. Then with the surface loose, the ground is in condition to accumulate all the moisture that falls and it is also in condition to get the elements from the air that the soil needs to become fertile. We keep that surface loose by harrowing after every rain. Then when seed is finally planted on that firm seed bed with the soil over it, it can get the moisture from below and the elements in the air and the soil which made for plant growth. The surface of the ground must be cultivated after each rain so as to break up the crust which would form and hurt the crop both by wasting the moisture from below and by choking off the air from supplying the plant roots with the elements they need."

Prof. Campbell does not regard with entire satisfaction all the experimental work directed by the United States department of agriculture and he declares that experimental farms directed from Washington will never solve the problem of farming in the semi-arid West.

He also discountenances the unfavorable reports given out by parties connected with the country life commission on "dry farming." He received a message here yesterday from a leading railroad official of a big western road asking him if he could appear in Washington at some date soon to present the case of the dry land farmers fairly before the country life commission and it is possible that he will fill such an appointment.—Ex.

Stockmen Attention.

Dr. F. L. Watson, D. V. S. of West Liberty, Ia., a graduate of Kansas City Veterinary College (a first class and up-to-date institution.) Class of 1908. He can show you his diploma, also give you stockmen, banks and business firms at home as references.

We have decided to join our forces in your interest. The treatment you will receive at our hands will be as heretofore from mine, with which you are all familiar. We will equip a hospital and run our own motor as soon as possible.

Teeth floated for \$1.00. City calls \$1.00 mileage, 50 cents less for long distance. At present at Cullup's wagon yard each day. Day phone 1, night phone 142. 1-2tp F. E. Rowe, V. S.

Cotton Seed, Meal and Cake.

Ask us for prices delivered any railroad station. We are also in the market for KAFFIR CORN, CANE, and MILLET SEED. EARLY GRAIN & HAY CO., 40-1f Amarillo, Texas.

FROM NEW YORK

Brand Readers in Empire State
Throws a Boquet and Thanks
the Manager for the Re-
minder.

The Brand has had but few irate subscribers, in fact but one, who became offended because he was "dunned for a dollar." The manager has made it a rule to notify all subscribers when their time had expired and so many letters of appreciation have been received that it has been impossible to print all, but here is one from a subscriber in the Empire State of the Union, who sends a boquet a long distance for a Texas country newspaper. It has the right ring. If you have never witnessed a letter like this one, try it; it will make you happy for a week and extend your life a whole year. The writer sends a polite, but cold business letter, as he calls it, (but it had a warm M. O. in it), and then like a pretty woman adds a postscript that is worth a hundred dollars. Read his letter.

77 Chili Ave., Rochester, N. Y.
Jan. 25, 1909.

The Hereford Brand,
Hereford, Texas.

Your card received, thank you for the reminder. I surely don't want The Brand discontinued, and so I enclose P. O. Money Order for One Dollar. Please advance my subscription one year and oblige.

Yours with best wishes,
Dr. W. A. Whitfield.

P. S. The above is purely a business letter and they are always cold. I feel The Brand has a real friendly interest in the whole world in general and its sympathies are extended to all especially those who try to move forward. I should greatly miss your friendly not to say fraternal greeting each week.

W. A. W.

After this week I will be in Missouri until about March 1st. I still have 20 fine lots, each 50x200 feet, in Block 39 Evants addition. Will sell on easy terms. I also have two new houses, just being completed, will sell one or both on easy terms, might rent one of them. See L. Baskin, for particulars. J. B. Phillips. 49-1f



**DR. TERRILL'S
BOOK**

On the Special and Pelvic Diseases peculiar to the male sex is conceded by every man who has read it to be easily the best and most comprehensive work of its kind ever written. It describes in plain, simple language such diseases as Stricture, Varicocele, Contagious Blood Poison, Lost Manhood, Seminal Emissions, Unnatural Drains or Development, Hydrocele, Catarrh, Epilepsy, Rheumatism, and all Chronic Diseases of the Stomach, Kidneys, Bladder and Prostate Gland

FOR MEN

This book tells you HOW to get well HOW to regain your one-time Vim, Vigor and Vitality. Will be sent to your address in a plain, sealed envelope ABSOLUTELY FREE, and don't forget to MENTION THIS PAPER. All Correspondence Sincerely Confidential. Examination with our Mammoth X-Ray and consultation

IS FREE

Address
Dr. J. H. Terrill,
285 Main St. Dallas, Texas

Satisfied Customers

are the best advertisement for the business man. This kind of advertising is our chief stronghold.

The best value money can buy in our line is to be found at our store.

We make your watch keep the best time.

W. H. RAY, Jeweler and
Optician

Something That You Should Consider in the

Building of a Home

Good Grades—Right Prices
We refer you to our long
list of satisfied customers.
You should not fail to see us

Alfalfa Lumber Company
C. M. Miller - Local Manager

WHY NOT TRADE

at Cardwell Bros., the leading up-to-date Grocerymen. We are carrying a very heavy stock now and can handle our business promptly with our two delivery wagons. Try us one month. We can please you in every particular.

Cardwell Brothers

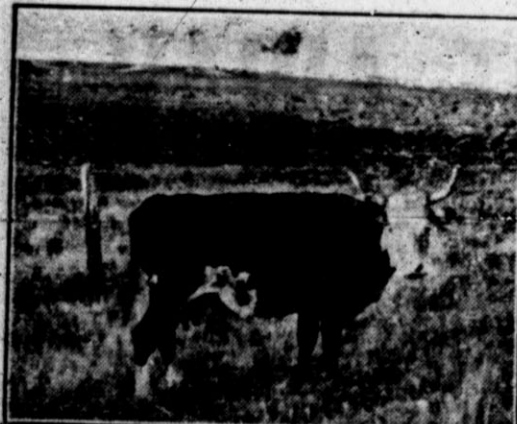
J. E. COLLUP

DEALER IN

**COAL, HAY AND GRAIN,
FIELD SEEDS AND STOCK SALT**

We solicit a share of your business, promising that we will endeavor to sell you goods at as close margin as possible. . . . Telephone No. 1.

WE HANDLE ALL KINDS OF POSTS.



LUMBER CO.

J. F. BARKER, Mgr.

Will sell you anything in the building line and make no effort to please you, as our grades will do that. We are born to do right and deserve no praise for it.

BRIGHTEN UP

With Sherwin-williams Paint

Superior Coal

"Niggerhead" Coal is acknowledged by all who burn it to be superior to any coal sold here. Our customers continue with us. We are steadily getting more. Do you burn "Niggerhead"? If so, you realize you get your money's worth. If not, get in line. Once burned, always burned. WE SCREEN IT. PHONE SEVEN-SIX.

Coal that burns—burns to ashes.
Produces Greater Heat than any other like amount. Coal once bought always bought.
That's:

RUGBY

"Niggerhead"

A full line of Feed Stuffs kept in stock. We sell Trico the great cow feed. \$1.00 per 100 lbs.

Fresh Meal and
Graham Flour
Grinding Done for the Public

HICKS & HARRISON

OUR MOTTO:
Quality first, last and
all the time.

Local and Personal

A car of new Linoleum at Black's.
Keep your left eye on Baskin Heights. 1-tf

E. Hardono was in Amarillo Monday on business.

One hundred new Art Rugs at Black's. 1t

All the late Magazines at J. M. Boone's. 2-2t

Keep your right eye on Baskin Heights. 1-tf

E. B. Black Co. sells good Straw Matting. 1t

Keep both eyes on Baskin Heights. 1-tf

Subscription for any publication at J. M. Boone's. 2-2t

Plant now, Potatoes, Onion Sets, Onion Seed. Roswell Seed Co. 52tf

See Wilson & Cloyd for all kinds of fresh meats and pure lard. 2-tf

For fresh Jersey milk, call on the Hereford Dairy. Phone No. 9. 24-tf

See the Actual Settlers' Association for cheap town lots. 48-tf

We sell Window Shades that give satisfaction. E. B. Black Co. 1t

Mr. and Mrs. G. A. F. Parker are spending the week in San Antonio.

Life time guaranteed Sewing Machine \$18.75, E. B. Black Co. 1t

Get your suit cleaned and pressed by a first class tailor. J. M. Boone. 2-2t

We are originators—not imitators. We lead, watch us. E. B. Black Co. 1t

Rufus Byrd of Waco is here for a few days, having come up with some fine cattle.

A fresh car of Red Rust Proof Seed Oats at J. F. Collup's. Now is the time to sow. 2-tf

Kansas bred milk cows from one of the best dairies in the state, for sale at Sherk and Stenek's livery barn. 48-tf

See those fine Percherons at Sherk & Stenek's Barn. For prices and terms see C. O. Lee. 51-tf

Mrs. J. F. Barker left Tuesday for Fort Worth to join Mr. Barker who has been in the sanitarium.

I will trade the balance of my lumber, about 200,000 feet for unimproved Hereford property. This lumber is stacked near my new residence adjoining college, where it can be seen. Rat Jowell. 52-tf

See the ad elsewhere in this paper advertising some good registered draft horses. See C. O. Lee for particulars. 51-tf

Big shipment Lace Curtains, Portiers, Curtains and Rugs at E. B. Black Co. 1t

Mr. Brockman who some months ago traded his land in the Panhandle for Colorado property is in the city on business.

Five, ten, twenty and forty acre improved places edge of town for sale at reasonable prices. Address L. Baskin, Hereford, Texas. 31-tf

Mrs. J. P. Slaton and daughter, Velma, are visiting Mrs. Slaton's sister at Dallas, leaving Tuesday for a month's visit.

I am at the helm again in the old stand, The Home Bakery, and you will get the same good bread and cakes, as of old. C. F. Hacker. 2-3

Robert Elliott of Waco came in Tuesday afternoon from Amarillo where he has just disposed of a carload of fine jersey cows.

We have a well improved 20 acre tract in Welsh addition which we are offering at two thirds its present value. The Actual Settlers Association. 48-tf

I will return in a few days from St. Louis with a full and complete line of millinery goods. Intend to have my opening about March 1st. Call and see the new styles. Mrs. T. N. Heifner, with Hubbard & Barnett. 1-2t

A Bargain.—Building located just south of Hereford Lumber Company, used as a carpenter shop, 16 x 30. \$50.00 will buy it. Parker Bros. at Hereford Lumber Co. 1-tp

Position on Farm Wanted.
Man with 20 years experience wants a position as foreman or helper on a wheat and stock farm. Understands breeding cattle, hogs and horses. Would like to open and improve a field and stock farm for non-resident owner. Call on Forest Parks at Ray's jewelry store. 1-2t

Will Make \$6,000 A Year.
If you want a livery business near Chicago which is paying an annual dividend of \$6,000 and have a little cash and a section of land near Hereford to exchange, there will be something doing, if you will write Advertiser, care of The Brand,

Hereford, Texas, and state what you have in the first letter. My proposition is only 17 miles from the Union depot in Chicago and it has been paying big for a number of years. Only those who mean business need write. 2-2t

For Sale at a Bargain.
A new 4-room house on Dewey Ave., lot 104x208 feet. See O. K. Land Co. 1-tf

Relics of the Past.
Last week while plowing was being done by L. Weaver he unearthed a peculiar shaped rock which looks very much like a battle ax of the Stone Age. It measures 14 inches long 4 inches in diameter at the largest part and tapers from this towards both ends to a point. The rock is sandstone and suggests a

young shark in shape, but not being of limestone formation would preclude the theory of petrification. It is possibly the upper stone of an old Mexican corn mill.

That this country was once the habitat of thousands of huge buffalo was brought in evidence again while the graders on the C. H. & G. were making a cut near the Paloduro draw 17 miles north west from Hereford. Some ten feet under the ground and in a heavy bed of sand, hundreds of bones were found. It is thought that the place where the bones were found was once the bed of the Paloduro creek and contained water on a sand bed; similar to the Canadian river and that the buffalo were driven into it by storm or stampeded into it and there hundreds of the animals

perished. Old buffalo hunters tell that they have seen right here in the creek near town, hundreds of these prairie roamers rush and jam was so great that they would drown each other and pile up in the drinking places. This is likely what occurred at the Paloduro draw. The bones were easily crushed after being exposed to the air.

See the Actual Settlers' Association for bargains in small homes 48tf

Tax Payers.
I have begun to assess taxes for 1909. All who own city property please be ready with a list of the block and lot numbers so that no time will be lost in obtaining proper data and description. 52-4t
J. W. FORD,
Tax Assessor of Deaf Smith Co.



ASK ME If you want to sell your
Business or Real Estate FOR CASH

No matter where located, if you want to Buy, Sell or Exchange any kind of Business or Real Estate.

Insurance placed in best companies and policies looked after.

Office Opposite **C. O. LEE** Phone 310
First National Bank Hereford, Texas

THE HAPPINESS OF HOUSE KEEPERS



depends largely on the character of the eating. Let us supply your groceries and they will go a long way toward insuring good eating at your house.

WE ARE RECEIVING DAILY

Shipments of new goods such as Jellies, Jams, Preserves, Sulad Dressing, Evaporated Fruits, Seeded Raisins, Currants, Citron and Lemon

Peel, Codfish, Plum Pudding, Cranberries, Oatmeal, Pickles, Sauer Kraut and many other good things too numerous to mention. Just call at our store or phone us and let us tell you about them.

Yours for Business

HUBBARD GROCERY CO.

Telephone No. 25

Professional and Business Cards

W. J. ROGERS, M. D.
PHYSICIAN AND SURGEON
Office at Coulson's Drug Store
Residence Phone 77 Office Phone 105

W. A. PRICE
PHYSICIAN AND SURGEON
Office at El Merito Pharmacy
Res. Phone 220 Office Phone 300
HEREFORD, - TEXAS

R. M. JOHNSON,
PHYSICIAN AND SURGEON
CITY HEALTH OFFICER
Res. Phone No. 109 Office Phone No. 105

J. W. HICKS
PHYSICIAN AND SURGEON
Office over Coulson's Drug Store.
Office Phone 298 Residence Phone 217

DRS. TAYLOR & HUDGINS
PHYSICIANS AND SURGEONS
Office at H. O. Park's Drug Store
Office Phone No. 16
Residence Phone: Dr. Taylor 138. Dr. Hudgins 44

DR. G. F. LeGRAND
PHYSICIAN AND SURGEON
Office at El Merito Pharmacy.
Residence Phone 244 Office Phone 300

A. B. COLLINS
PHYSICIAN AND SURGEON
Office over Coulson's Drug Store
Office Hours: 9 to 10 a. m. 1 to 3 and 7 to 8 p. m. PHONE NO. 234

E. F. CONNELL & COMPANY
Real Estate and Live Stock
Panhandle Farms, Ranches and Hereford City Property of all kinds. Also some good bargains in Central Texas black land farms.

B. D. WOODLEE
ABSTRACTOR OF CASTRO AND BAILEY COUNTY LANDS
Dimmitt, Texas

Wm. M. KNIGHT Jno. P. SLATON
KNIGHT & SLATON
ATTORNEYS
First National Bank Bldg
Hereford, Texas.

Geo. W. Barcus Jno. C. North
BARCUS & NORTH
Attorneys at Law
Hereford, Texas
Office in First State Bank building

L. GOUGH
GENERAL IMMIGRATION
NOTARY PUBLIC
Hereford, - - - Texas

G. M. SUGGS A. M. JONES
SUGGS & JONES
ABSTRACTERS
Complete Abstract of Title to Deaf Smith County Lands.
HEREFORD, - - - TEXAS

C. G. Witherspoon W. Claude Witherspoon
C. G. Witherspoon & Son
Dealers in Panhandle Lands
Abstracts prepared on short notice. All kinds of stenographic work done. Exclusive agents for Western Union Land Co.'s Lands

A. P. Murchison J. S. Jones
MURCHISON & JONES
Real Estate and Live Stock
Hereford, Texas

B. H. Smith D. F. Ashbrook
SMITH & ASHBROOK
ALL KINDS OF INSURANCE AND LOANS. Phone 273.
Office 1st door South of First National Bank

J. C. BERRY
ARCHITECT and BUILDING CONTRACTOR
Room 1 Upstairs Garrison Building
Phone 335.

E. S. Ireland R. A. Holland
DIMMITT ABSTRACT CO.
ABSTRACTS OF CASTRO AND BAILEY COUNTY LANDS
Dimmitt, Texas

Local and Personal

J. G. Callens has returned from the markets.

J. W. White of Dimmitt was in the city last Tuesday.

J. M. Hart of Dimmitt was in Hereford Tuesday on business.

The Furniture Store that is "pleasing" Irwin & Matthews. 1t

Myrick says he is selling more good shoes than any body. 1t

Born.—To Mr. and Mrs. Irwin Teal Friday, Feb. 13, a girl.

W. O. London visited in New Mexico Sunday, returning Tuesday.

Myrick says he is selling more good shoes than any body, 1t

Born.—To Mr. and Mrs. Chas. Hodges Friday, Feb. 13, a boy.

C. O. Humble of Portales, N. M., was in the city yesterday on business.

We have made and continue to make horseshoeing a study H. L. Rice. 1t

W. E. Zaner with the P. & O. Implement Co. made Hereford this week.

Let us demonstrate our ability to do a first class job of horseshoeing. H. L. Rice. 1t

A few high class Jersey cows for sale by Robt. Elliott. Call at The Brand office.

Irwin & Matthews, Furniture and Undertaking. Prices to harmonize with the times. 1t

F. M. Benton of Quitman is holding a position temporarily with The Western National.

Claud Boyd and M. L. Greathouse of Dimmitt were transacting business in Hereford Tuesday.

Edgar Betts was called to Clarendon Wednesday morning on account of the illness of his father.

N. M. Bartley is not at his post of duty this week being confined at home with a pet on his neck.

J. M. Gilliland, Embalming and Funeral director, with Irwin & Matthews, Furniture and Undertaking.

C. M. Meadows is at the prescription desk of the Park drug store this week on account of the illness of Mr. Parks.

Mrs. A. A. Davis of Summerfield, who came from Iowa, was in the city recently making inquiry at The Brand office about the building of the Catholic Church.

C. F. Hacker has bought back a half interest in the Home Bakery and is now the chief bread maker in his old shop. He and Mr. Tompson are now able to furnish all the bread needed.

We are sole agents for Azie, For the lazy to live easy Is quick and easy, it's all in the bag, For ten cent you can take it Azie, And get your money back easy for Azie, If Azie don't prove a Daisy. 2-4 E. T. WOODBURN & SON.

Irwin & Matthews, Furniture and Undertaking. We have with us J. M. Gilliland, Embalmer and Funeral Director. The best services rendered. Day phone 115; Night phone 251 or 232. 1t

FOR SALE.—A complete Ice Cream Parlor outfit, and a fine Soda Fountain and everything complete. Worth \$900.00, all for \$400. 1 2-t J. M. Boone.

FOR SALE.—Richards White Wyandottes. Winter layers, prize winners. Cockerills \$3.00 to \$5.00. 15 eggs \$1.50. Richards & Company, Weatherford, Texas. 2-2tp

LOST.—Saturday night a horse 15½ hands high, weight about 1000 lbs., 4 years old, color dirty gray, wire cut on right shoulder. Finder rewarded. Frank Williams. 1-tp

Grab These Quick.

No. 112—640 acres 8 miles from Hereford, fenced, about 50 per cent tillable, of which 160 acres is sub-irrigated alfalfa land, balance good pasture land. \$4,160.00 cash, balance 1 and 2 years at 8 per cent.

No. 115—640 acres 4 miles from Hereford, 12-room house, 200 feet sheds, 2 wells and mills, large earth tank, small orchard, 165 acres in farm, all tillable except about 40 acres in lake, all fenced, farm fenced; one-half cash, balance to suit at 8 per cent.

No. 116—640 acres 18 miles from Hereford, 8 miles from Dimmitt, 4 miles from new townsite on C. H. & G. R. R., all tillable, water at about 150 feet; one-half cash, balance to suit at 7 per cent.

No. 118—93 acres 11 miles from Hereford, all tillable, water at 75 feet.

No. 131—640 acres 10 miles from Happy, 10 miles from Nazareth, all tillable, water at about 75 feet; one-half cash, balance in 1 and 2 years at 8 per cent.

No. 132—Same description as No. 131.

No. 133—Same description as No. 131.

No. 139—667 3-5 acres 9 miles from Dimmitt, 60 acres in farm, all but about 10 acres tillable, fenced, 25 feet to water in valley. \$5,000 cash, balance 1 to 4 years at 8 per cent. Will sell 320 acres at same price.

No. 140—667 3-5 acres 9 miles from Dimmitt, 3-room house, sheds and corrals, well and mill, 120-acre farm, fenced, water at 50 feet; same terms as No. 139.

No. 141—506½ acres 9 miles from Dimmitt, two sides fenced. Can sell in 168 3-4 acre tracts at \$1,256.00 cash per tract, balance 1 to 4 years at 8 per cent.

No. 143—665 2-5 acres 9 miles from Hereford, 4-room house, sheds, well and mill, 160-acre farm, all fenced and cross-fenced, all tillable but about 10 acres, has about 80 acres alfalfa land. \$9,000.00 cash, balance 1 to 3 years at 8 per cent.

No. 145—640 acres 8 miles from Hereford, fenced, 20 acres in farm fenced, all tillable, shallow water. \$12.00 per acre cash; balance 1 and 2 years at 8 per cent. Will sell in 320-acre tracts at same price.

No. 148—640 acres 20 miles from Hereford, 9 miles from Roy (a new town on the C. H. & G. R. R.) 4-room house, sheds, etc., well and mill, 80 feet to water, 135-acre farm fenced. \$5,000.00 cash, balance 1 and 2 years at 8 per cent.

No. 149—640 acres about 10 miles from Hereford on 25-Mile Avenue, school house joins land, part of a lake on south-west corner, balance tillable. \$7,200.00 cash, balance 1 to 4 years at 8 per cent.

No. 101—Unimproved 160 acres located near Sherer, the new town on the C. H. & G. R. R., all tillable; deep loam soil; gradual slope to the north; a bargain and on easy terms. You'll have to hustle.

No. 135—10 acres in northeast part of Hereford; 4-room house; barn, coal house and outbuildings; well and mill; nice orchard; net wire fence on two sides. Price \$2750; 1-3 cash, balance 1 and 2 years at 8 per cent.

No. 152—640 acres about 10 miles from Happy, all tillable except lake, water from 50 to 100 feet. \$3,840 cash, balance 1 to 6 years at 8 per cent.

No. 110—160 acres 3 miles from Hereford, all tillable, about 75 feet to water. \$2880.00 cash, balance 1 to 3 years at 8 per cent.

No. 126—160 acres 2½ miles from Hereford, 4-room house, sheds and corrals, well and mill, 70 feet to water, 70 acres in farm fenced, all fenced, all tillable except 5 acres in lake.

No. 130—320 acres 10 miles from Dawn, 12 miles from Hereford, all tillable.

No. 134—200 acres 6 miles from Summerfield, 100 acres in farm, all fenced, 14x20 2-room house, 12x40-foot shed. \$2,600.00 cash, balance 1 to 3 years at 6 per cent.

No. 144—160 acres 8 miles from Hereford, 2-room house, well, small lake on tract, balance tillable. \$2680.00 cash, balance good terms.

No. 150—160 acres 9 miles from Hereford, fenced on two sides, all tillable. \$1680.00 cash, balance 1 to 3 years at 8 per cent.

No. 153—160 acres 4 1-2 miles from Hereford, new 4-room house, new 20x60 barn, well and mill, outbuildings, fenced, 30 acres sod broke.

No. 107—320 acres 2 1-2 miles from Dawn, 2-room house, sheds, etc., well and mill, 100-acre farm fenced, all fenced, all tillable, about 75 feet to water. \$3960.00 cash, balance 1 to 3 years at 8 per cent.

No. 119—320 acres 14 miles from Dimmitt, all tillable, water about 125 feet. \$8.00 per acre cash, balance 1 and 2 years at 6 per cent.

No. 123—320 acres 8 miles from Hereford, 250 acres tillable, balance good grazing, about 75 feet to water. \$8.00 per acre cash, balance 1 year at 8 per cent.

No. 124—320 acres 8 miles from Hereford, all tillable, fenced on 3 sides, fine alfalfa valley, about 50 feet to water on upland. \$10.00 per acre cash, balance 1 to 10 years at 8 per cent.

No. 151—320 acres 9 miles from Hereford, well and mill, all tillable. \$3,360.00 cash, balance 1 to 4 years at 8 per cent.

No. 103—More picking in a 1280-acre tract near Adrian; small house, well and mill, sheds, corrals, etc.; 200 acres in farm; has fine alfalfa valley; will give good terms.

No. 129—100 acres 2 1-2 miles east from Hereford on south side of railroad; 6-room house, sheds, well and mill; all in cultivation.

No. 157—628 acres, 1 mile of station, well improved, 270 acres in farm of which 215 is sown to wheat and purchaser has landlord's possible; deep loam soil; gradual slope to the north; a bargain and on easy terms. You'll have to hustle.

Refer to tract number when writing about above propositions.
THESE WILL GO IN A HURRY. SEE OR WRITE
O. K. Land Company
HEREFORD - - - TEXAS

The Home Bakery
For
Plain and Cream Bread, Buns, Rolls, Pies and all kinds of Cakes and Cookies
TOMPKINS & HACKER, - Proprietors

Want Ads on Page 11

Bank Statement

Official Statement of the Financial Condition of the First State Bank at Hereford, State of Texas, at the Close of Business on the 5th day of February 1909, published in the Hereford Brand, a newspaper printed and published at Hereford, State of Texas, on the 19th day of February, 1909.

RESOURCES.	
Loans and discounts, personal or collateral	\$91,208.15
Loans, real estate	23,544.46
Overdrafts	8,315.65
Real estate (banking house)	6,427.12
Other real estate	0.00
Furniture and fixtures	2,370.00
Due from approved reserve agents	\$10,936.02
Due from other banks and bankers subject to check	1,504.16
Cash items	\$1,509.04
Currency	8,212.00
Specie	2,276.61
Total	11,997.65
Total	\$156,303.21
LIABILITIES.	
Capital stock paid in	\$30,000.00
Surplus fund	3,000.00
Undivided profits, net	410.97
Due to banks and bankers subject to check	2,814.93
Individual deposits subject to check	99,391.07
Time certificates of deposits	12,211.24
Demand certificates of deposits	8,475.00
Cashier's checks	0.00
Bills payable and re-discounts	0.00
Other liabilities as follows:	0.00
Total	\$156,303.21

State of Texas,
County of Deaf Smith.
We, W. B. Beach as president, and Otho H. Vardeman as cashier of said bank, each of us, do solemnly swear that the above statement is true to the best of our knowledge and belief.
W. B. BEACH, President.
OTHO H. VARDEMAN, Cashier.
Sworn and subscribed to before me this 17th day of February A. D. nineteen hundred and nine.
WITNESS my hand and notarial seal on the date last aforesaid.
W. C. WITHERSPOON,
Notary Public.
CORRECT ATTEST:
C. G. WITHERSPOON,
W. S. HIGGINS, } Directors.

Bank Statement

Report of the Condition of The First National Bank at Hereford, in the State of Texas, at the close of business February 5th, 1909.

RESOURCES.	
Loans and discounts	\$349,282.34
Overdrafts, secured and unsecured	19,563.71
U. S. Bonds to secure circulation	50,000.00
Premiums on U. S. Bonds	1,816.41
Banking house, furniture and fixtures	13,038.30
Due from National Banks (not reserve agents)	19,407.30
Due from State and Private Banks and Bankers, Trust Companies and Savings Banks	2,985.44
Due from approved reserve agents	57,946.86
Checks and other cash items	223.63
Notes of other National Banks	6,100.00
Fractional paper currency, nickels and cents	310.25
LAWFUL MONEY RESERVE IN BANK, VIZ:	
Specie	\$7,375.30
Legal-tender notes	5,000.00
Redemption fund with U. S. Treasurer (5 per cent of circulation)	2,500.00
Total	\$535,549.78
LIABILITIES.	
Capital stock paid in	50,000.00
Surplus fund	48,000.00
Undivided profits, less expenses and taxes paid	3,970.20
National Bank notes outstanding	50,000.00
Due to State Banks and Bankers	3,658.58
Individual deposits subject to check	358,690.92
Time certificates of deposit	11,230.08
Bills payable, including certificates of deposit for money borrowed	10,000.00
Total	\$535,549.78

THE STATE OF TEXAS
COUNTY OF DEAF SMITH ss.
I, C. W. Dodson, Cashier of the above named bank, do solemnly swear that the above statement is true to the best of my knowledge and belief.
C. W. DODSON, Cashier.
Subscribed and sworn to before me this 3rd day of December, 1908.
[SEAL] CARL GILLILAND,
Notary Public.
Correct—Attest:
R. J. KIBBE,
J. T. JOWELL,
J. L. FOQUA, } Directors.

Hard to Please?

If you are we want to sell you Groceries. Our business is to serve your wants. We are never in too big a hurry to fill your order. Your order is never to small for our attention.

Phone 81

Jno. D. Jarrott

The Hereford Market

We are now in the first building North of the Brand Office. We are going to deserve the continued patronage of our old customers and any one else who wants first-class service in the market line.

Yours for business,

Phone 318 HAWKINS @ ARTHUR

THE RIGHT PLACE

For Lumber and all Classes of Building Material. 100 per cent Pure Paint. Largest Stock of Glass in Town. No trouble to Figure Bills. Prices Right.

Come and See Us.

T. M. PALMER LUMBER CO.

That Old Buggy

needs painting. Bring it around to my shop and let me make it look like a new one for you. No charges if it don't look like a new buggy. Come and examine my work.

Sign Painting and Piano Dressing a Specialty

Located at rear of Blacksmith Shops.

Willard Griffin

BUY YOUR

LUMBER

FROM

Kemp Lumber Co.

LEE CARTER, Local Manager

DRY FARMING CONGRESS

Third Trans-Missouri Session Will Be Held in Cheyenne, Wyoming—Hereford to be Represented.

Harvey G. Hays, president of the Farmers Institute will attend from Hereford. He has been in correspondence with the officers of the Congress and in a letter from Secretary Burns, says in part.

Dear Sir:—

We certainly desire to thank you for your kind words of the 23rd and we believe that as we stand now we are ahead on the proposition. However, we have just received a communication from Mr. Pinchot, showing that he does not believe in dry farming and as President of the Country Life Commission, (appointed by Mr. Roosevelt) indicates that there will be some expression from that quarter. The rates on all roads will be one fare plus \$2.00. A number of governors will be present and several countries will be represented. Australia, Chile, South Africa, Brazil, Argentine and Mexico will have official delegations.

Yours truly,

John T. Burns, Secy.

The official program of the Congress gives the objects as follows:

This Congress will be watched by thousands of Western farmers and especially those who are interested in the so-called dry farming process. The use of term so-called expresses no doubt as to the methods, but that such a name is misleading. It should be called scientific soil culture rather. The object of all farming is to get the most out of the soil with the least waste of labor and soil fertility. Any method which exhausts the soil is not good and should be abandoned. Modern methods of scientific soil culture looks toward two things: Greatest yields and the conservation of the rainfall and soil fertility.

To discuss and compare methods by which the great area of arid land can be profitably utilized under thro tillage by which the natural rainfall can be conserved.

To encourage the use of methods by which, in districts where rainfall is slight or irrigation water is limited, the actual productive acreage can be increased.

To create closer co-operation between the government and state experts in charge of Dry Farming Experimental work and the actual farmers of the arid districts.

To discuss plans for carrying on a great educational propaganda by which, eventually, the arid districts of the entire world can be populated by prosperous and contented agriculturists.

To encourage legislation looking to increased Federal and State appropriations for the establishment of more experimental stations, the employment of more field experts and the actual co-operation of all these stations in fixing and maintaining a certain recognized standard of methods for obtaining results from the operation of farms in the arid districts.

To study methods and results of Dry Farming operation in the various Western states and in various foreign countries which will be represented by official delegates.

A Beautiful Hereford Home.

For sale, equipped with modern furniture and fixtures—all new and up-to-date. Possession given in three days after sale. This is a rare bargain. If you want it you must come quick with the cash. See

O. K. Land Co. 50-11.

CAN YOU PLAY FORTY-TWO

IF SO, ALL RIGHT. IF NOT, THEN LEARN.

We have just made arrangements with the Forty-two Card Company for a limited supply of their NEW CARDS and will send you a pack of "42 Cards", regular price 50c, if you will send us the names of 15 young persons in your vicinity, who are interested in a BUSINESS EDUCATION and 25c in stamps or silver. This is good for only one week from the date of this paper. Mention paper. HURRY. Address:

THE AMARILLO BUSINESS COLLEGE
AMARILLO, TEXAS

DRAFT STALLIONS

Two Perchern and Two French Draft

These Horses were shipped from Southern Iowa, and may be seen at Sherk & Staneck's Livery Barn. They are fine bunch, and have Size, Bone, and Style that go to make a first-class draft horse.

These horses will be sold to either individuals or companies.

For Prices and Terms see C. O. LEE

MAITLAND COAL

We now have in transit several cars of Genuine Black Diamond Maitland Coal. See us before placing your Storage Orders.

W. L. FALLWELL & SONS

Tierra Blanco Herefords

L. R. BRADLEY, Owner W. T. WOMBLE, Manager
...BREEDERS OF...

Write owner or call at my ranch, situated five miles east of Hereford, on the Tierra Blanca river.

Registered Hereford Cattle
Herd Headed by Strike Six, No. 156847
Assisted by Texas Tom, No. 204446
Will sell a quantity of young stock either singly or in car load Lots

The HEREFORD NURSERY

LARGEST and best selection of Choice and Fancy Fruit Trees, etc., grown on the plains. We have ripe fruit every day from May to October, and you can too. Our 18 years' experience has taught us what varieties are hardy and prolific. We want your trade.

L. P. LANDRUM

P. R. Purcell & Sons Livery, Feed and Sale Stables

GOOD SADDLERS GENTLE DRIVERS

Special Conveniences for Drummers

HEREFORD TEXAS

The Patronage of the General Public is Cordially Solicited.

FOR 3 1/2 DOLLARS

You Can Make A MILLION DOLLARS BRIGHT

E. T. Woodburn & Son HAS IT

WHAT ONE DOLLAR HAS DONE

The Success of a Diversificationist in the Panhandle—Makes Good Crops and Something to Sell.

The head of this article would indicate that the subject treated is one of high finance but such is not the case. The dollar referred to in this interview is a real live dollar, walks, talks, and is a diversificationist of the sort that makes good. He walked into The Brand office this week. He owns a fine farm six miles south of Hereford just over the line in Castro county, the Panhandle country and the State of Texas.

J. F. Dollar, which is the name, is a plain sort of man but an indefatigable diversificationist, raising

successfully many things on his farm and something to sell at all times. Upon solicitation, he gives out the following statement:

Two hundred and thirty acres in cultivation for 1908 with the yield as follows:

40 acres wheat	400 bu.
50 acres oats threshed	1750 bu.
90 acres oats, bundle	90 tons
10 acres corn	500 bu.
40 acres maize	1800 bu.
Fodder from same	40 tons
1 acre kershaws	1 car load
1-4 acre turnips	100 bu.
Few rows peanuts	10 bu.
16 fattening hogs, meat	5600 lbs.

Chickens, turkeys and eggs of which no account was kept. Of the maize, 16 acres were on fresh sod land and threshed out 42 1-1 bushels to the acre; 10 acres were on old land and made 50 bushels average; the remaining 14 acres was left in the bundle but the crop was as good. The forage from the threshed maize is very fine stock feed and is being used to feed horses, mules and hogs.

The kershaws are being fed to the hogs and cows. The hogs were raised on maize and finished on corn, and will average 300 and 400 pounds.

A little more figuring and the result of the year's work of one dollar may be seen.

400 bushels wheat 90c	\$ 360.00
1750 " " oats 50c	875.00
500 " " corn 65c	325.00
1800 " " maize 50c	900.00
90 tons bundle oats	720.00
40 " " fodder \$3.00	120.00
100 bu turnips feed value	25.00
10 " " peanuts	20.00
15 " " potatoes	15.00
1 car load kershaws	100.00
5000 pounds meat 5c	250.00
Total	\$3,710.00

Three thousand seven hundred and ten dollars, and this does not take into account the eggs, chickens and turkeys which were sold during the year. Mr. Dollar says that though he has nine children to support and educate, only one boy is old enough to help him in the field. This boy goes to school while it is in session. The girls, five in number, do not work in the field—they have no cotton to pick. When it is known that no money was paid out for "hired help" of any kind and that what work was done by neighbors was "paid back" in similar work, it must be wonder to many and a hard-to-believe story. There was little expense in making or harvesting the crop. The toll for the threshing, the cost of twine and sacks and incidental expenses for repairs of machinery was about all the work. The farm supports 30 to 40 head of cattle besides the work stock. It has been the rule when coming to town to bring along something that could be turned into dollars and cents—a few chickens or eggs, turkeys or porkers. In this way, the incidental family expenses are not felt. Only recently, 1,000 bushels of maize was hauled in and stored. This is

equal to a deposit of \$500.00 in the bank.

No one must imagine that such a crop as Mr. Dollar raises can be done with your Sunday clothes on while swapping yarns on the streets in town. A one-man and one-boy crop like this is well worth the careful attention of those northern farmers who are hardly able to cultivate one third less in acreage and to the north Texas nester who belabors 13 months in the year with a cotton crop that keeps his boys and girls out of school and keeps him always behind at the store for supplies.

The Brand calls upon the Dallas News to note the results of this diversificationist, what he raises and how easy it is done, even in the far-off Windy West.

Feed and Mules.
50 tons millet and milo maize for sale 10 miles due south of Hereford. Also a few good young work mules worth the money. Come and see.
S. J. Sanders.

The Weather.
During the week ending yesterday, Hereford has enjoyed a variety of weather. Last Friday it was warm and no overcoats were needed. During Saturday night the thermometer went down to 4 above and Sunday night dropped down to one above. Monday afternoon Tuesday and Wednesday it was like spring, but Wednesday night a northwester came over from the Rockies and brought a light rain, followed by a half inch snow, which disappeared by the afternoon.

Notice Modern Woodmen.
A special meeting is called to be held Tuesday night, Feb. 23 for the consideration of applications for membership, initiation of candidates, installation of Banker and for action on bills and communications.
We have a very important communication to consider. District Deputy, H. Ragsdale of Amarillo will be present. It is absolutely necessary that you attend.
WALTER NELSON, CLERK.

Glenwood Sanatorium

A private home for the treatment of Chronic, Nervous and Mental Diseases, and selected cases of Alcohol and Drug Addictions.

Climate high and dry, invigorating air, plenty of ozone, strictly ethical, efficient service and modern methods.

Dr. R. L. McMeans, Dr. J. R. Wrather and Dr. A. J. Caldwell, Attending Physicians.

The Land of Sunshine and Cloudless Sky

...For Full Particulars Address...

Glenwood Sanatorium,

P. O. Drawer 459 Amarillo, Texas

"EAT AND BE MERRY"

SAID THE OLD GREEK PHILOSOPHER

You can do this without fear of any pain from the gout if you buy from our well selected stock of groceries. It is our aim to get the best and purest in the market and only give our customers that which satisfies.

GIVE US A CHANCE AT YOUR GROCERY TRADE

JNO. A. JOHNSON

DID you ever sit around outside your house on a Sunday afternoon, or of an evening, maybe, and watch the paint, and see it go, when it ought to be holding on tight?

Some paints are so poor that you can almost see them as they dry out, and crumble, and powder, and blow away.

Why do they do this? Why does this happen? Something the matter with the materials—too much lead, maybe, or poor oil, or not scientifically ground and mixed—might have been good materials but not balanced right for wear.

At this store we make it our business to KNOW what paint will wear—because it pays us to handle the kind that pays you. And that's why we handle MOUND CITY HORSE SHOE BRAND HOUSE PAINT—made of pure lead and zinc and aged linseed oil, the necessary drier and coloring matter—and nothing else. Every atom of every gallon of it is good paint. Paint that is balanced for longest wear, for finest looks and to spread over the largest surface to the gallon.

So much for the outside of the house, but don't forget there's a HORSE SHOE BRAND PAINT for every use—one for kitchen floors and steps—one for borders around rugs—one for screens—one for buggies, another for wagons, and one for practically every other purpose.

The best place in this town to buy paint is the place where they know most about paint and can help you and advise you what particular paint to use for the purpose, how to get the surface ready, how to put it on, and all that; things you naturally want to know to get the best results. So if you want the best paint and the best paint service (and you do, if you come here,) come here.

Hereford Lumber Company

HEREFORD GLOVE FACTORY
 MANUFACTURER OF
Fabric Gloves and Mittens
 We guarantee our Gloves to be equal or better than those purchased in Northern Markets. They are made of the best Fabric and will not rip. Send in your order.
C. F. HACKER, Proprietor

COAL = GRAIN = HAY
 We are in the market for Wheat, Corn, Oats, Maize and Kaffir Corn. We handle the best grade of Colorado coal. Come and examine our coal and get our prices before buying.
Hereford Grain Co.
 Phone No. 160 Free Delivery

UP-TO-DATE LIVERY and SALE BARN
 When you want a good drive or an up-to-date rig call at our Barn. We have spent a great deal of time and money lately improving and enlarging our premises. We have one of the best barns in West Texas and can give you the best accommodations in any line of livery service. We guarantee courteous and fair treatment to all. Yours to please,
SHERK & STANEK

Program of Faculty Recital.

As announced last week the Fine Arts Faculty of Hereford College will give a recital tonight in the College Chapel. The public is given a cordial invitation to attend. The program which will begin at 8:15 follows.

- (a) Bearerolle A' Oberon (Weberk) Fd. Herman Op. 180, No. 13.
- (b) Romance from Second Concerts Wieniawski, Op. 22. Miss Ratten.
- Cutting from Romeo and Juliet Act II Sc. V. Shakespeare. Miss Gregg.
- (a) Die list wie Eine Blume Chadwick.
- (b) Juni Tage Mrs. Beach. Miss Shirley.
- (a) Sonata E Maj. Largo, con gran espressione Beethoven, Op. 7.
- (b) Poliovaise C Minor Chopin Op. 26, No. 1. Miss Haile.
- "The Last Word" H. Van Dyke. Miss Gregg.
- (a) Melodrame de Piccolino (E. Gurand) A. Lefort.
- (b) Canzonetta A. d'Ambrosia Op. 6. Miss Ratten.
- (a) He Loves Me Chadwick.
- (b) The Donza Miss Shirley.

Chalk Talk Mr. Brown. Myrick says he is selling more good shoes than any body. It

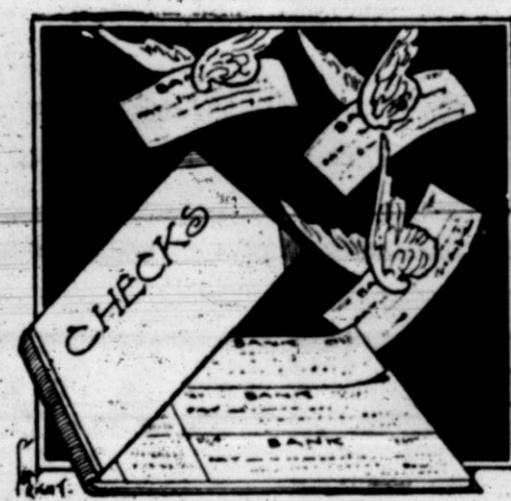
Miss Ruth Baylor of Henrietta has opened the Frio school for the winter and spring terms.

Henry S. Lange of Chicago, well known to several business men of Hereford, was in the city this week looking after some business matters.

S. J. Williams has been out of his office most of the week and at home making hams, sides, sausage and lard out of five big porkers. He says he has two that he don't need and they are still alive.

Homer Wilkinson and family arrived in Hereford last Tuesday to make their home. They are from Greenwood, Arkansas, in the Ozark district. Mr. Wilkinson is a son of our townsman J. T. Wilkinson.

J. L. Thompson, the cement block man, has bought another machine for making blocks, being unable to furnish sufficient numbers with his present equipment. He says he could have sold 25,000 blocks the first month if he had had them.



checks fly out

but you know where they are going and for what they stand if they are drawn on a bank account in our fine BANK. Business men all keep their accounts here often congratulate us on the

CONFIDENCE PLACED

in this institution. Look over the yearly report and study the directors names and THEN put your account with us.

FIRST STATE BANK OF HEREFORD
 W. B. BEACH, President
 H. B. WEBB, Vice-President
 OTHO H. VARDAMAN, Cashier
 J. THOS WEBB, Assistant Cashier

THE BRAND'S SPECIAL CLASSIFIED ADS

Matter for this column and local ads any where in the paper will be inserted at rate of one cent a word or five cents a line for each insertion. Pay in advance unless you can be easily found on the street or in your office the first of the month.

LOST AND FOUND

LOST—Somewhere on the road from Dimmitt to Hereford about one month ago, three Hereford calves branded small — on left jaw, unmarked. Reward for recovery. 44-tf F. H. Oberthier, Hereford.

ROOMS AND BOARD

ROOMERS—Some roomers and boarders. Mrs. P. L. Johnson. 52-tf

BOARD—Roomers and boarders at reasonable rates by the week or month at J. E. Humphreys' one block east of Presbyterian church. 45-tf

CITY PROPERTY FOR SALE

FOR SALE—The Iowa Hotel for sale or trade. See L. Gough. 34-tf

FOR SALE.—My ten room residence. Will make reasonable terms. 52-tf A. P. Murchison.

SIX PER CENT—320 acres in Castro county, very cheap; 1-3 cash, balance 1 and 2 years at 6 per cent. 70-tf O. K. Land Co.

LAND—C. O. Lee will sell you a lot, an acre or a block in the Evans Addition to Hereford. See him for prices and terms. Office opposite First National Bank. 45-tf

NINE ROOM HOUSE—South front, large lot containing one acre land, well and windmill, lots of fruits, conveniently located and will be sold at a bargain, and on easy terms. See or write C. O. Lee for particulars. 1tf

FOR SALE OR TRADE—665.4 acres of land nine miles South of Hereford, Texas; 160 acres in cultivation, four-room house, fenced and cross fenced. Will trade for unincumbered land in Kansas, Missouri, Illinois or Iowa. 2tf W. B. Park, Hereford, Tex.

SEVEN ROOM HOUSE—With two acres of ground fenced with woven wire, south front, well and mill with tank, 100 fruit trees, stable 14x16, also other out-buildings. This is one of the best bargains in town. For particulars see C. O. Lee. 1tf

FOUR-ACRE block in South Hereford, with 5-room house, well and wind-mill, barn, lots of fruit trees, grapes, berries, rose bushes and other flowering shrubs. If interested don't fail to see this property. For price and terms see C. O. Lee. 2-tf

FOR SALE—Good terms, one 7-room house, lot 75x150; close in, \$650 cash, balance in 1, 2 and 3 yearly payments at 8 per cent interest. 32 lots 53x200 feet, North of College, Evans addition, 3 lots 49x200 feet, South of College, Evans addition. 2 lots 56x140, Mabry addition. For further information apply to owner. 53-4t W. A. Price, M. D.

MISCELLANEOUS

AUCTIONER—Buck Roberts, licensed, sells any old thing for money. 1-3t

FOR SALE—5000 Apple and 5000 Locust trees for sale at a bargain. O. K. Land Co. 1-2t

FOR SALE—Two Cyphers Model, incubators, 150 egg size. Price \$20 each. L. A. Stroud. 1-tf

CHICKENS—Full-blooded Langshang hens and one Cockrell for sale, Mrs. I. A. Broden, on Irvin place, 1-2 mile West of town. 53-2t

LAND—Wanted a section of land near Hereford. Will trade good property near Chicago which is paying good revenue. Say what you have and address Advertiser, care of The Brand. 47-tf

WANTED—To sell or exchange 25-000 growing trees, mostly apples on a 120 acre tract of land located near the Santa Fe railroad and adjoining South Hereford. Fine location for a Canning Factory. Will sell cheap or exchange for unimproved land. 51-tf O. K. Land Co.

FOR RENT.

FOR RENT—320 acres 10 miles N. E. of Hereford, Texas. Inquire R. Long, Sr., Le Main, Iowa. 1-2-t

FOR RENT light housekeeping. Large nicely furnished bed room, small furnished kitchen. No one with children need apply. 2-2t Max Roberts.

LIVE STOCK FOR SALE

COW—Good jersey milch-cow. May be seen 2 miles West of town on Johnson farm. 1-2tp W. M. Mathis.

Three strains of milk cows, Durham, Holstein and Jersey, for sale at Sherk and Stanek's livery barn. Come and get your choice. 48tf

FOR SALE—At Sherk and Stanek's Livery Barn any kind of a milk cow you want, Jersey, Holstein or Durham. These cows have been carefully selected for their milking qualities. If you are in the market for a good milker let us show you herd. 48-tf

REAL ESTATE FOR SALE

FOR SALE—320 acres close in, will be sold at a bargain. See L. Gough. 34-tf

SMALL TRACT—5, 10, 20, 40 and 80 acre tracts on easy terms. O. K. Land Co. 50-tf

SECTION—Good section in Castro county, has 100 acres fine alfalfa land. The price is a bargain. 52-tf Gough & Russell.

QUARTER—160 acres well improved, 7 1-2 miles from Hereford, 2 miles from Jewell. \$1000 cash closes a deal. 52-tf Gough & Russell.

HALF SECTION—A 420 acres, 4 1-2 miles from Hereford, at Jewell. \$3,000 cash, balance on good terms at 8 per cent interest. 52-tf Gough & Russell.

FOR SALE—One-half section of land, 8 miles from Hereford. This is the best bargain in the country. Write me for prices and I'll prove it to you. Box. 67, Hereford, Texas. 52-4tp

SMALL TRACTS—A section of fine smooth land, with just enough fall for drainage, located one mile south from resident part of Hereford, between South Boulevard and S. 25 Mile Avenue, is offered in 80 and 160 acre tracts. All adjoining quarters are being put under cultivation and good improvements being made. This land can be bought on long time and at a low rate of interest to suit purchaser. It is near enough Hereford to receive the benefit of good schools and to attend church and a fine location for a suburban home. For terms and prices, write C. L. Davis Realty & Immigration Co. 52-4t

FOR SALE—640 acres of fine agricultural land, 10 miles north of Hereford. Very cheap if sold this week.

3 sections of good land, northeast of Hereford, 9 miles south of Wildorado and 9 miles north of Dawn, shallow water, one of these sections is well improved. This is a great bargain, can give terms.

640 acres well improved, 4 miles from town, this is another good bargain, can give terms.

300 acres 4 1/2 miles from town, unimproved, a very desirable location, fronts on main road. Good terms.

640 acres 3 miles south of Vega, good terms.

We have several large tracts in Deaf Smith county, that are very near the new Railroad, suitable for small colony, if interested, it will pay you to investigate this.

Also a number of 1/2 and 1/4 sections unimproved and improved near town, we are offering these at a bargain.

If you are wanting something worth the money, give us a call. Murchison & Jones. 50-tf

BIG YEAR at HEREFORD

MORE LAND SOLD THAN EVER BEFORE

The Cheap Land is going fast, and everytime it changes hands it goes up. It has advanced from 25 to 50 per cent every year for the last five. Buy now and get the advantage of this continued advance. We handle land in any sized tracts. Make a specialty of large bodies. Write us at

HEREFORD, TEXAS, or
KANSAS CITY, MO.

Star Land Company

RAILROAD NEWS

(Continued From Page One)

We are glad to have these people call on us and will say we hope to see them again soon. The entire party expressed great surprise at the growth of Crosbyton and development of the country tributary to her.—The Review.

Some Railroad Smoke.

Stanton, Texas, Feb. 12.—Messrs. J. Le Roy Lancaster of San Antonio, and J. C. Vernor of Dallas, the enterprising townsites men who are undertaking the sale of the town of Brownlee, are all astir. Their literature will soon be ready to publish to the world, and their proposition ready to be stated.

E. G. Salsler, owner of Brownlee, has just placed in the First National Bank a note for \$30,000 payable to T. J. O'Donnell, the promoter of the road from here to Lamesa. This note calls for a railroad within a specified time over the grade now almost completed from Stanton, thru Brownlee to Lamesa.

We also understand a move is on foot upon the part of some Stanton capitalists by which the sum of \$50,000 is to be placed in the bank at once calling for the same road.

There are Hereford, Colorado and Gulf surveyors west of town playing around on several surveys. These surveys may spell something for Stanton and it may not, but the Stanton-Brownlee-Lamesa proposition is now an assured fact and our people should not be disturbed over the H. C. & G. passing by on the other side as this line as yet is only a preliminary one and in due time we suppose Stanton will get a proposition. Stanton is not antagonistic and when the time comes she will show how she is capable of digging up on any reasonable bonus proposition she may be asked for.

Citizens of Stanton, every man to

your gun! Get busy Lamesa we're coming.—Reporter.

Plainview-Lubbock Road.

Lubbock, Texas, Feb. 9.—The contract for the road from Plainview to Lubbock, an extension of the Santa Fe, has been signed up between the citizens of Lubbock and the Southwestern Construction Company, the road to be completed by Jan. 1, 1910. The contract calls for a bonus of \$50,000, right of way and depot grounds, the right of way being from the county line on the north and through the town.

The bonus and right of way has been guaranteed and work is to commence by May 1st next.

Stamford and Northwestern.

Stamford, Texas, Feb. 13.—The contractor of the Stamford and Northwestern Railway is adding new outfits daily and every five miles on the road from Stamford to a point seventy-five miles west is a crew of men and teams. Chief Engineer Cowan of the Fort Worth and Denver Railway and Consulting Engineer Burns of the Stamford and Northwestern Railway were in conference yesterday and, while nothing has been given out for publication, it is believed that the conference is on the discussion of the further extension of the road toward Plainview. There is much speculation as to the connections that will be formed with this road and the Graham extension of the Rock Island Railway, but no official information is obtainable at this point.

1000 Trip in Auto.

Ft. Worth, Feb. 13.—Ira Word of Sonora, Texas, is in Fort Worth Saturday after completing a 1,000 mile tour of Texas and Mexico in an automobile. This extensive trip began in Fort Worth three weeks ago, carried him through San Angelo, Sonora, Del Rio, and through many Mexican towns. He was accompanied on the trip by the Mexican consul at Del Rio, by an official of the Mexican government and by Charles Hartling, sheriff of Val Verde county.

"What do we care for railroads when we have automobiles and good dirt roads?" asks Mr. Word.

The roads were found to be in splendid condition everywhere and a high rate of speed was possible. Many side trips were made in Val Verde county before the party crossed the Rio Grande into the neighboring republic. Because of the prominence of the Mexican official in the car no trouble was encountered at any point. Mr. Word has become as good an auto driver as he is a judge of cattle.

Want to sell 50 American Alarm Clocks at \$1. J. M. Boone. 2-2t

Tries the Auto Line.

Wm. O'Brien of the firm of Edwards & O'Brien, and a party went over 75 miles of the Hereford-Brownfield auto line the latter part of last week. Mr. O'Brien says that plows and drags have been used to make a wide smooth track for the wheels of the machines and except a few places where "cow trails" intersect the line, the road, for the distance

he traveled, was in fine shape. In the lower part of Lamb county, where a few miles of sand is encountered, the road has not been finished. Several hundred dollars have been spent by interested parties along the route and a number of long trips and runs have been made. As yet no regular schedule has been fixed and those who care to make the trip must notify the drivers some days before.

So far, two trips a week have been made.

I will be compelled to be in my office the greater part of my time for the next three months on account of city tax collections. So if my services are needed elsewhere please phone office, 222 or residence, 182. City office is with Suggs & Jones abstractors. C. L. Sullivan, City Marshal. 34-tf

J. L. FUQUA, President

C. W. DODSON, Cashier

The First National Bank

HEREFORD, TEXAS

CAPITAL	\$ 50,000.00
SURPLUS AND PROFITS	48,000.00
SHAREHOLDERS LIABILITY	50,000.00
TOTAL	\$148,000.00
TOTAL ASSETS	500,000.00

DIRECTORS: L. GOUGH, J. L. FUQUA, C. W. DODSON, R. J. KIBBE, W. H. FUQUA, W. S. HIGGINS, J. T. JOWELL.

Safety Deposit Boxes For Rent

This Bank is well equipped to handle all business entrusted to its care and respectfully solicits your account

SAY, LOOK HERE!

Do You Want to Buy an Improved Farm in the Best Part of the Panhandle of Texas? If so Write Us for Price.

We have a good section of land with 360 acres under plow, 240 acres of it new in wheat, good 4-room house, sheds and corrals, two wells, windmills and tanks, good young orchard, fenced and cross fenced.

Also a farm of 655 acres with over \$6,000 worth of improvements on it, 240 under plow, all nice smooth land and only six miles from Hereford.

320 acres 2 miles of town, 180 acres in cultivation, 80 acres in wheat, a well improved place.

Also 191 acres, all under plow but 25 acres, with a small house, stable, well, windmill, etc.

820 acres 3 1-2 miles southeast of Summerfield; will sell for 1-3 cash, balance in 1, 2 and 3 years; has 160 acres in cultivation; or will sell in half or quarter sections.

1-2 section 4 miles of Hereford; well improved. This is a bargain if taken at once.

For prices and terms on the above, write us, we have land in all size tracts from a town lot to a league. If you are interested address the

Scherer Town Lot & Immigration Company

J. C. Meacham,
Ed Witthauer,
W. S. Rance.

Hereford, Texas



We offer special inducements in quarter and half section tracts close in to actual settlers. We have some on easy payments. Hereford is in the shallow water belt. Write us for particulars. Address BASKIN LAND COMPANY HEREFORD, TEXAS