

WEATHER
Cast Your Votes,

BAILEY COUNTY JOURNAL



Tuesday, November 8

'The Community Of Opportunity-Where Water Makes The Difference

Vol. 26, No. 4.3

16 PAGES TODAY

Published Every Sunday At Muleshoe, Bailey County, Texas 79347

20¢

Sunday, November 6, 1988

Large Turnout Expected At Polls Nov. 8



GETTING IT ALL TOGETHER IN A PILE--Mule Fullback John Orozco, No. 30, looks on while his teammate at the bottom of the pile gets squished along with a host of other players in the Muleshoe-Littlefield game Friday night. Coming up from behind are Mule Jaime Olivarez No. 76 and Mule Chris Young No. 56, to assist their teammates in the tackle. Despite the best efforts of the Mules, the Littlefield Wildcats came away with the victory by a score of 55-0. The Mules ended their

Following months and months of reading and hearing campaign speeches and promises on TV, Radio and News Papers, it is time to go to the polls again and let your choices for National, State and Local leaders be known.

Polls will be open from 7 a.m. to 7 p.m. and you must have your voters registration card with you to be able to vote. Be sure to

check your registration card for your voting precinct number

Voters in precinct 1 will vote at the Courthouse; Precinct 2. Bailey County Coliseum; Precinct 3. Three Way School; Precinct 4. Methodist Church; Precinct 5. Bula Community Center; and Precinct 6. Needmore Community Center. Precinct 7. will vote at the City Hall.

As of Friday afternoon 280 persons had voted absentee and County Clerk, Barbara McCamish said that they had mailed out another 91 ballots. Bailey County has a total of 3,486 registered voters this year as compared to 3,679 in 1984, when 2,618 turned to vote.

According to reports Texas has more than 8.2 million registered voters this year, a record number.

On the local level, Bailey County has four candidates vying for the unexpired term of County Judge. A vacancy created by the resignation of Gordon Green. Candidates seeking this office include John Smith, Linda Huckaby, Jimmy Watson and James Warren. Smith is running on the Republican ticket and Watson is a democratic candidate while Warren and Mrs. Huckaby are write-ins.

Constable Precinct No. 3. Gerry Pierce.

Johnny Atkinson, Democrat, has no opponent for District Attorney.

In the presidential race, candidates George Bush and Dan Quayle, Republicans, and Michael Dukakis and Lloyd Benson, their campaign being very negative some party leaders are afraid some voters may not even cast a vote.

In the spotlight of the state balloting is the Texas Supreme Court, where six seats are to be filled. Since a media investigation by a TV network, the state's highest court has been under fire. The network revealed that many of the justices had accepted large contributions from companies and law firms that had cases pending before the court.

Cont. Page 6, Col. 5

Hepatitis Under Control In Local Schools

Thursday morning the Journal received a phone call from a concerned parent reporting that there was Hepatitis in our local schools. Upon talking to Superintendent Dr. Lawrence Ward, he stated that there have been a total of seven students from Dillman and DeShazo Elementary Schools who have contacted Hepatitis. "This is more than the usual number of cases, but it is not enough to create an epidemic," Ward stated. "Although it is enough for concern, this represents only about one percent of the students at these two schools. We are concerned as we would be with the flu or the common cold, because we care about the students."

"We talked to our local doctors, Dr. Algood, Dr. Purdy and Dr. McClannahan as well as the Health Department concerning this matter, and all precautions are being taken."

Dr. Ward also stated that letters had been sent home with students from these schools advising them of the situation.

Friday morning the Journal talked with Dr. Isaacson with

New Business

Opens Its Doors In Muleshoe

A new business opened in Muleshoe this week, a quarterly tractor and farm equipment market report called Auction Insight is being produced on video and marketed by Tom Flowers of Muleshoe, who has over 20 years of experience in buying, selling, and auctioning of tractors and farm equipment across the United States.

Mrs. Flowers told the Journal Wednesday morning that at the present time they are operating out of their home. "We believe this is a valuable service to the community, saving farmers hundreds of dollars."

"The video medium is a totally new concept for market reports", Flowers explains. "More accurate evaluations of farm equipment can be made using these detailed pictorial comparisons of equipment condition and appearance. Values of featured equipment were set at major High Plains farm sales. These are prices that were actually paid, not simply an opinion of the value, which might be unrealistic or inflated. We've seen too many failed bands and foreclosed farms in recent years resulting from guesswork in evaluations."

Auction Insight was developed in response to the need for realistic appraisals for equipment for the buyer, the seller, and the leader in today's tight financial climate, according to Flowers. "Farmers are buying used equipment at auction more than ever before, and lenders must have substantial evidence to support appraised cash values. After all, the average farmer's equipment investment totals 25 to 35 percent of the value of his

Public Service Files For Electric Rate Decrease

Southwestern Public Service Company (SPS) filed Wednesday, Nov. 2, with the Public Utility Commission of Texas (PUCT) to implement a previously announced 4.3% electric-rate decrease for SPS customers outside city limits, said Sam Hunter, SPS vice president of rates and economic research.

This step is part of a process that ultimately will result in all of SPS's residential, commercial, industrial and other retail customers in Texas receiving a decrease of 4.3%, or \$20.6

million, compared with rates in effect at the first of the year, Hunter said.

Getting the decrease approved and implemented is occurring in stages, he noted, because of the regulatory process in Texas. Cities have original jurisdiction over base rates within city limits. The PUCT regulates rates for customers outside city limits.

The electric-rate decrease primarily reflects the lower federal-income-tax rate for corporations, Hunter said.

"If you will recall, in March 1988 SPS implemented a 3.1% decrease for customers within the city limits, following approval of the 74 Texas cities it serves," Hunter said. "On July 8, SPS, the PUCT staff, a representative of the cities' steering committee and others worked out an agreement for a 4.3% decrease for customers outside city limits."

SPS announced at that time it would ask cities to approve an additional 1.2% decrease, thus making rates the same for customers inside and outside city limits."

Before these rates for customers outside city limits can be implemented, a PUCT hearing examiner must approve them, and finally the PUCT itself must rule on the agreement, Hunter said.

"That is the stage we are at now," he said. "The hearing examiner is expected to rule in about two weeks. If approved, the interim rates for customers outside city limits would be implemented a few days later."

"It is expected the PUCT will rule on this agreement and finalize rates about four weeks after the hearing examiner rules."

Cont. Page 6, Col. 1

Farmers-Ranchers Receive Corrections In Tax Laws

"On the last day of Congress, farmers and ranchers got two big corrections in tax laws," reports Gary Hooten of Muleshoe, president of the Bailey County Farm Bureau.

One dealt with the diesel fuel tax and the other, the so-called "heifer tax," pertained to an income tax provision regarding production expenses, he said.

One correction restores a tax exemption on farm-used fuel at the retail level. The so-called

President's Council Being Organized

The Muleshoe Chamber of Commerce and Agriculture hosted the first meeting of the proposed President's Council of Muleshoe. The group meet in the Council Chambers of City Hall Thursday, November 3, at 7:00 p.m. Ten interested group representatives meet to discuss community activities and a community calendar.

Those attending agreed that a community calendar is a good idea and every group is urged to call the Chamber office and place their meeting dates and activities on the calendar. When planning activities you can call the Chamber office and check the community calendar.

Cont. Page 6, Col. 1

"heifer tax" restores preproductive expensing of livestock.

"Both tax corrections are very important to the farmers and ranchers of this county," Hooten said.

The Budget Reconciliation Act, passed by Congress last December, changed the collection point for the diesel tax from the retail to the wholesale level, forcing users to pay the tax and then apply for a refund. The change became effective April 1. In most instances, producers would have to wait for an entire year to get a refund.

Both taxes have now been repealed by the Technical Corrections bills passed just before Congress adjourned, the local farm leader said.

The local county Farm Bureau received a letter from Texas Farm Bureau President S.M. True, congratulating local leaders for the two successes.

"Your hard work has paid off, and the Texas Farm Bureau's top legislative priorities have been accomplished for 1988," True wrote.

Gary said the American Farm Bureau Federation Credits Texas Producers with playing a key role in obtaining final passage of the bills. AFBF reported that hundreds of letters were received by Texas members of Congress, he said.



At press time services for Phillis Bevers Smith, 67, of Lubbock, formally of Muleshoe are pending with Ellis Funeral Home. Ms. Smith died at 4 a.m. Saturday in St. Marys Hospital.

Students at Watson Junior High who were selected to receive the Principal's award for the month of October included: Misty Richardson, 6th; Allie Riley, 7th; and Cindy Hime, 8th.

A memorial Scholarship Fund has been set up at the First Bank in Muleshoe in the name of Lisa Triana, a student and cheerleader at Muleshoe High School, who was killed in a traffic accident a few weeks ago. Plans are for a \$200 scholarship to be given to a senior each year.

Sgt. 1st Class Vicki D. Knight, daughter of James E. and Minnie A. Knight of 1301 W. Fifth St., Friona, Texas, has re-enlisted in the U.S. Army at Schofield Barracks, Hawaii, for six years.

Knight is a tactical transport helicopter repairer with the 25th Aviation Regiment.

In 1970, she graduated from Friona High School, and received an associate degree in 1972 from Amarillo Junior College, Texas.

The Bailey County Commissioners Court will meet in SPECIAL SESSION in the Bailey County Courthouse, Thursday, November 10, 1988.

The meeting will begin at 9:00 a.m., and will continue until all business is concluded, with the following items on the agenda.

Cont. Page 6, Col. 4

- Voting Places**
- PRECINCT 1
Courthouse
 - PRECINCT 2
Bailey Co. Coliseum
 - PRECINCT 3
Three Way School
 - PRECINCT 4
Methodist Church
 - PRECINCT 5
Bula Community Center
 - PRECINCT 6
Needmore Community Center
 - PRECINCT 7
City Hall



JIMMY WATSON



LINDA HUCKABY

Local Group

Attends Economic Development Class

Duane Castleberry, Duane Lloyd, Cliff Black, Bob Stovall and Troy Stegemoeller, directors of the Muleshoe Industrial Foundation and Toni Eagle, Chamber of Commerce manager attended the first class of the Rural Economic Development Initiatives Tuesday, Oct. 25 in the SPAG offices in Lubbock.

Those attending were schooled on ten tasks for the program by Cheryl Pink of Southwestern Public Service. Julia Moake of Texas Department of Commerce spoke on creating critical links and effective leadership.

Following a short break models of organizational structures were presented by several surrounding towns. Muleshoe's group then completed an assignment of individual community work.

The REDI program is a joint venture of Southwestern Public Service and South Plains Association of Governments. The program is designed to train volunteers on economic development in towns where there isn't full time Economic Developer on staff. The Muleshoe Area Industrial Foundation is enrolled in the program that will entail 20



JOHN SMITH



JAMES WARREN

Bivins Receives Farm Bureau Endorsement

State Senate candidate Tell Bivins, an Amarillo cattleman, has received a major endorsement from the Texas Farm Bureau. The endorsement marks the first time ever that the Farm Bureau has made a recommendation in the 31st Senatorial District, or anywhere in the state, through its "Friends of Agriculture Fund."

"We believe Teel Bivins will best represent this district in Austin during these critical economic times," said Aubrey Rasor, a Gruver farmer who is the District One Director of the

NRA Endorses Mel Phillips For State Senate

The National Rifle Association endorses Mel Phillips, candidate for the 31st District State Senate seat, today in Amarillo. "Mel is solidly pro gun, pro sportsman, opposed to additional controls on firearms or legislation restricting hunting and would vote for pro-gun reform legislation," says the NRA.

The endorsement was prepared by the NRA's Institute for Legislative Action and the Texas State Rifle Association. The NRA encourages voters to "use your vote to protect your rights in the general election on Nov. 8. Join in the effort to help elect pro-gun/pro-hunting candidates to public office."

"I am proud to receive the endorsement of the NRA. The work that this organization does to protect our constitutional right to bear arms is one of the things that makes this country great," Phillips said.

Mel Phillips is a former United States Navy pilot, living and working in Amarillo as a real estate developer. Mel is married and the father of three girls.

Texas Farm Bureau. "He is a conservative, he has an understanding of what it takes to earn a living from agriculture, he has a deep and abiding appreciation for the people and the land in this Panhandle region, and he is young and aggressive."

"He will be a sincere representative of the people, who will listen to our concerns, and will make decisions based upon the view of the people," Rasor said.

The decision to endorse Bivins came after Farm Bureau county meetings in each of the 22 counties that make up District One. There are at least 13,000 voting delegates in the district. Farm Bureau is the largest farm association in Texas.

Bivins said he was proud to receive the Farm Bureau endorsement. "When you consider the fact that some 35% of the agricultural revenues in the entire state come from North of Lubbock," Bivins said, "I believe it's important that we have a voice for agriculture in the Texas Senate."

"I make the better part of my living from agriculture. I know what it is to have a wheat crop hauled out, I know what it is to face drought, and have markets go all over the place," Bivins said.

If elected, Bivins would be one of the only two senators who makes his living from production agriculture.

He Knows?

No father objects to his children asking questions—provided he knows the answers.

GRAIN PRICES	
FEED CORN..4.88 cwt:	
WCY...5.70 cwt	
RCY...5.23 cwt	
WHITE FOOD CORN..6.85 cwt:	
MILO...4.38 cwt	
SOYBEANS..7.34 cwt	
NEW WHEAT..3.46 cwt:	
97%	
Prices-November 4, 1988	
MARKETS COURTESY OF	
FARMERS CO-OP	
ELEVATORS	
272-4335	Muleshoe, Texas

Sudan News

By: Evelyn Ritchie

Funeral services for Tom Henderson, 90, of Olton were at 10 a.m. Monday in the First Baptist Church of Olton with Rev. Glendell Smith, pastor, officiating.

Burial was at 2 p.m. in Sudan Cemetery under direction of Foskey-Fleming Funeral Home.

Henderson died at 2 p.m. Friday in Lubbock's University Manor Nursing Home after a lengthy illness.

He was born in Hamilton, moved to Sudan in 1940 and moved to Olton in 1980. He owned Henderson's Grocery in Sudan from 1940 until retiring in 1975.

It's easy to find an excuse for delaying hard work.

Veterans Gain Seat In President's Cabinet

Congress has approved, and the President has signed, a bill to make the Veteran's Administration part of the President's Cabinet, reports U.S. Sen. Phil Gramm, a supporter of the legislation.

"Providing veterans with direct access to the highest levels of government by giving them a seat at the President's table is a proposition that makes sense,"

Gramm said. "America's veterans are people who served and sacrificed for their country, and their voices should be heard clearly in the highest councils of government."

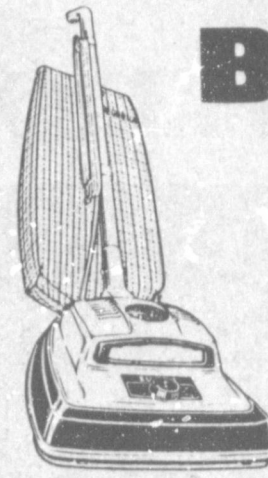
The new Department of Veterans Affairs was created originally in 1930 as the VA with a mandate to administer the growing number of programs created for the country's vet-

erans, their dependents and survivors.

"Just two years ago, the VA Hospital grew so much that it became the government's largest independent agency with a budget of \$28 billion and over 240,000 employees," the senator noted.

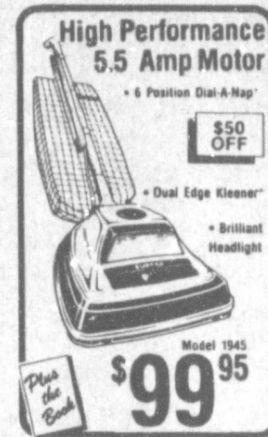
Gramm, a co-sponsor and strong supporter of the legislation, also pointed out that the new department will have an impact on more than 79 million Americans, including 28 million veterans, 49 million family members and two million survivors.

EUREKA PRICE BREAKS



A
\$149.95
Value
99⁹⁵

- EUREKA UPRIGHT With Bonus Tool Kit**
Model 1028
4.0 Amp Motor
• 4 Position Dial-A-Rag™
• Power Driven Beater Bar Brush Roll
• Dual Edge Kleaner™
• Brilliant Dirt Seeking Headlight
• Top Loading Large Capacity Disposable Dust Bag
• Adapts Easily to 8-Prong Bonus Cord Kit
• 25' Power Cord
• On/Off the Switch



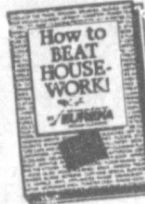
High Performance 5.5 Amp Motor
• 6 Position Dial-A-Rag™
• Dual Edge Kleaner™
• Brilliant Headlight
Model 1045
\$99⁹⁵



ESP UPRIGHT 6.5 Amp Motor
• 6 Position Dial-A-Rag™
• Dual Edge Kleaner™
• Brilliant Headlight
• Power Driven Beater Bar Brush Roll
Model 1061
\$129⁹⁵



POWERFUL ULTRA
• Front Mounted Dust Bag
• Automatic Carpet Height Adjustment
• Brilliant Headlight
Model 1040
\$99⁹⁵



Free From Eureka.. How to Beat Housework!
A \$19.95 value. Hardcover book. Yours at no additional cost when you purchase any Eureka cleaner for \$80.00 or more.



Lay-A-Way Before Nov. 20th

& Take A 10% Discount On All Vacuums



Higginbotham-Bartlett Co.

"Quality & Service"

215 Main At The Right Price 272-3351

A&M FARM & RANCH SUPPLY of Muleshoe

Is Proud To Introduce To You...

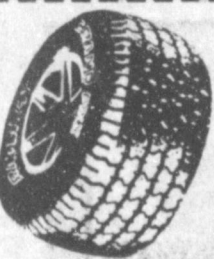
Johnny has been working in the tire business for over 20 years. He has a lot of experience in knowing what your tire and automotive needs might be and how to take care of them. He invites all of Muleshoe and the surrounding area to come in, have a cup of coffee and get acquainted with him. Johnny will be glad to talk with you about your tire or automotive needs. To introduce you to his fine service Johnny will be offering these specials, for the month of November.

Johnny Trujillo
Our New Tire Dept. Manager



GRAND PRIZE

Come On Get To Know Us.



Sundays 12:30 - 5:00 P.M.

All Stores Open Monday-Saturday 7:30 A.M. - 6:00 P.M.

1302 W. American Blvd., Muleshoe, Texas 1-806-272-5571



We would also like to inform you that we now have installation available at A&M in Muleshoe for our

Installation Of

- P/U Tool Boxes
- Batteries
- Tailgate Guards & More

At A&M on every New Tire Purchased we always give you

- Mounting
- Computer Balancing
- Rubber Valve Stem



Tire Repairs

(Lt Truck Or Passenger) Through November



"AT NO CHARGE"

Tire Trade-IN Special

Any tire you can drive in on regardless of condition we will give a minimum trade-in of... (excludes sale price)

- 13" \$5.00 per tire
- 14" \$6.00 per tire
- 15" \$7.00 per tire

Lots of Specials

only: **\$250** each

Come By!

For LT Truck or Passenger Car **Oil Change & Lube**

- Includes:
- 5 qts of oil (your choice)
 - 1 oil filter
 - Chassis lubrication



"Come In & Get Acquainted With Johnny"

For: **\$15.00**

4-Tire Rotation and Computer Balanced

Done the way you like it for a great ride everywhere.

Just: **\$13.95**

Hurry In!

"And For Your Information" All new tires mounted, on any LT Truck or Passenger vehicle, carries our full warranty. Warranted against: faulty workmanship*, material, ride defect* and road hazard* for the life of tread down to 3/32" of tread wear. (excludes run flat and rim cut) (*pro-rated)

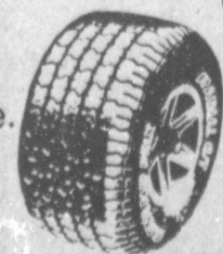
Come On IN!



automotive items that we sell such as....

Big Savings!

- Installation of**
- Running Boards
 - Bed Rails
 - Cool Shades & more



Sudan News

by Evelyn Ritchie

Fireman of the week is Rick Hill. Rick joined the fire department of Sudan, July 17, 1978 in order to serve the community and its people which he finds a rewarding experience. While on the department he has served in the offices of president, second assistant fire chief; is a certified fireman and EMT.

Rick has lived in Sudan all of his life and is a graduate of Sudan High School. He has worked for his father, Theron Hill, in his shop as a mechanic. He is a member of the First Baptist Church.

Rick married LaRhonda Franklin three years ago.

The 1988-89 FHA members met Wednesday, Nov. 26, to elect officers for the year. They are: Kay Lynn Gordon, president; Melanie McKillip, vice president of programs; Kendra Fisher, vice president of recreation; Olga Ruiz, secretary-treasurer; Hyla Ford, Historian-Reporter; Mitzi Glascock, parliamentarian. FHA boosts 32 members this year. Members earned their dues of \$6.00 this year by helping with the Mexican Food Supper October 14. They are: Amy Adams, Josie Alvarez, Israel Azua, Queena Bigbee, Julie Brotherton, Stephanie Damron, Rebecca Duran, Billy Espinoza, Sabrina Faz, Kendra Fisher, Hyla Ford, Mitzi Glascock, Ramona Gonzalez, Kay Lynn Gordon, Eva Griggs, Kristi Hargrove, Fred Hernandez, Tyrone Johnson, Kristi Lambert, Brandy Martin, Kyle Maxfield, Nicole Maxfield, David McDaniel, Melanie McKillip, Delma Montes, Olga Montes, Yolanda Montes, Jackie Murillo, Jean Murillo, Keena Sue Richards, Olga Ruiz and Star Tennyson.

The students and their sponsor, Mrs. Lanette Whitley, appreciate the community support for the fund raiser supper.

Others on the sick list are: Misty Bartley has her tonsils removed last week; Jack Kelley had surgery in Methodist Hospital and is reportedly doing well; John Kinnie underwent tests at Methodist.

Mr. and Mrs. Edwin Harper and Chris received word Tuesday that her brother-in-law, Kenneth Carey, had died. They have been in Bovina to be with Virgie and Ronnie and attend funeral services.

Mrs. Terry Graves and Timothy of Littlefield visited Sunday with her parents, Mr. and Mrs. Billy Chester. Billy and Sue recently attended Open House at Littlefield Schools and visited Timothy's room.

Mr. and Mrs. John Corley attended funeral services in Belen, N.M. last Saturday for his grandfather, Vernon Corley, 72.



ENGAGEMENT ANNOUNCED—Mr. and Mrs. Dwayne Powell of Sudan would like to announce the engagement and approaching marriage of their daughter, Kathy to Bill Gardner, son of Mrs. Douglas Gardner of Sudan. Marriage vows will be exchanged on Dec. 17 at 6 p.m. in the First Baptist Church of Sudan. The bride elect is a 1988 graduate of Sudan High School and is currently attending South Plains College in Levelland. Gardner is a 1987 graduate of Sudan High School and a graduate of Dallas Institute of Funeral Services. He is employed by Robert-Massie Funeral Home of San Angelo.

Students in the first grade classess have received their second reading awards. They received the "Cass, the Cat" award for reading seven short books. Each student has successfully read and kept records to receive the reading award. The books are high interest books. They are cleverly written and illustrated. The children enjoy reading them very much. It is neat to have the "joy of Reading" at an early age.

First grade teachers are Joyce Carr and Loretta Reid.

The following students received the award:

Mrs. Reid's room—Yadira Alcazar, Dusty Cannon, Erik Edwards, Beatrice Freeman, T.J. Ingle, Ysenia Jimenez, Amber Legg, Anthony Lopez, Sandra Manriquez, Cameron Nix, Jonathan Richey, Pime Salinas, Juana Flores, Agustin Ruiz.

Mrs. Carr's room—Sophia Castillo, Jonathan Edwards, Dekirton Golightly, Clay Horn, Kasey Humphreys, Ricky McAdams, Irene Mendoza, Isela Ortega, Shakara Richards, Mitchell Seymore, Carl Walker, Myron Williams, Jennifer Briscoe.

Bailey County Journal USPS 040-200
 Established March 31, 1963. Published by Mulhsoe Publishing Co., Inc. Every Sunday at 304 W. Second, Box 149, Mulhsoe, Texas 79347. Second Class Postage paid at Mulhsoe, Texas 79347.

Member
 NATIONAL NEWSPAPER ASSOCIATION
 WEST TEXAS PRESS ASSOCIATION
 PANHANDLE PRESS ASSOCIATION

L.B. Hall, President & Publisher
 Sammie Hall, Vice President & Controller
 Clea Williams-News
 Evelyn Harris-Society

SUBSCRIPTIONS
 Mulhsoe Journal and Bailey County Journal
 Bailey and Surrounding Areas
 Mulhsoe Journal and Bailey County Journal
 Elsewhere in Texas \$14.75
 Mulhsoe Journal and Bailey County Journal
 Outside of Texas \$16.50
 Yearly by Carrier \$12.50
 Advertising rate card on application

Gas Lights On Sale Now!

It's a special sale of West Texas' favorite new yard lights!



starting from
\$126.47

- Heavy cast aluminum construction.
- Heat-tempered glass for durability.
- Makes a wonderful soft-glow light.
- Perfect for both front and back yards.
- Provides attractive security for your home.
- Quality installation available.
- Many beautiful styles and colors to choose from.

Here's something important: It's been a long time since we've been able to offer these beautiful gas yard lights like you used to see years ago. Now you can get them for your yard, and at a great price. But hurry! This special sale won't last long.

And with your good credit, you can put it all on your gas bill!

Contact any Energas employee, or call your nearest Energas office.



Girl Scouts Take Visitors To Pumpkinland

Halloween night boys and girls who toured the Girl Scout Spook House got an extra treat as they took a tour through Pumpkinland. This is the story as told to the ones who went on the tour.

PUMPKINLAND
 On Halloween night, the little boys and girls get to visit the magical land of Pumpkinland. You usually enter Pumpkinland through a giant pumpkin. Black and orange streamers are hanging everywhere. And there are friendly ghosts there to greet you. You must crawl through Pumpkinland tunnel which is a lot of fun. Even the fuzzy brown bear who sleeps in the tunnel doesn't wake up when you crawl through. And the other little

animals don't mind either. Then you see cornstalks and lots and lots of pumpkins. Some are carved into jack-o-lanterns with candles glowing inside them.

Then you see HER. THE LITTLE PRINCESS OF PUMPKINLAND. She is beautiful in her glittering long dress. Her long pink cape is trimmed in gold and her crown and scepter sparkle with gold and jewels. She rules over Pumpkinland with love and kindness. I've been told that she sometimes grants wishes on Halloween. Actually Halloween is the birthday of the little Princess and all of her subjects light jack-o-lanterns in honor of her birthday. They dress up in all kinds of costumes and have a lot of fun on her birthday. They like for all of the little boys and girls to come out to help them celebrate. The good little witches stir up a delicious brew in their big black pot and

they give cups of the brew to everyone who comes by - as well as cookies and surprises, too.

Everyone gets to visit Pumpkinland Castle too. It is beautiful and the tall golden turrets sparkle and shine in the moonlight. Many animals live in the Castle with the Princess. When you walk up to the castle, the animals stick their heads out of the windows and talk to you. It might be a cat, or a dog or an alligator. Maybe a bird or something else. It is so much fun and sometimes the boys and girls pet them or give them a kiss.

Remember, you can only see the little Princess of Pumpkinland on Halloween. She only comes out in all of her splendor then. Sometimes she comes to town and then she locks just like everybody else. So, be nice to everyone because you may be talking to a real Princess, only YOU won't know it. She looks like a Princess only in Pumpkinland. She's looking forward to seeing everyone next Halloween.

Rebekah Lodge News

Mulhsoe Rebekah Lodge No. 114 met Tuesday night, Nov. 1 with 19 members answering roll call. Louise Allen, Noble Grand, was in charge of the meeting. Opening prayer was given by Fern Davis and minutes of the previous meeting were read by June Green and approved as read. The treasurer's report was given by Ina Wilemon.

Thelma Stearns was admitted to membership by deposit of card. She was a former member in Oklahoma and has now moved her membership here. "We welcome her as a new member" said Adelle Tompkins.

Ina Wilemon gave a talk on her visit to the Rebekah Childrens Home in Corsicana and to the Old Folks Home in Ennis.

Final plans were made for the Thanksgiving dinner on Thursday.

It was reported that several members and their families are still sick.

The Evening Prayer was sung and lodge was dismissed by Maud Young.

Refreshments were served by Ruby Garner.

The General Election in Sudan will be held at the Sudan Community Center for Precinct 11 from 7 a.m. to 7 p.m., Tuesday, November 8, according to Judge Nolan Parrish. He will be assisted by Margaret Smith, assistant judge; Clerks, LaFern Doty, Francis Potter, Frances Gardner, Elsie Cate and Louise Parrish.

Voters north and northeast of Sudan will cast their votes at the Farmers Co-Op Gin, North of Sudan.

Definition

Friends: People who dislike the me people.
 —Count, Los Angeles.

Don't Wait Until It's To Late!
 Call Today For Your Christmas Family Portrait
272-3487
So You Can Give The Gift Only You Can Give!

Adrian Photography
 218 W. 2nd. 272-3487
 Mulhsoe, Texas

Radio Shack DEALER

PRE-CHRISTMAS SHOPPERS

Shop Early for Big Savings on the Most-Wanted Electronic Gifts!

<p>VHS VCR With On-Screen Programming Model 21 By Realistic® Save \$61.95 28800 Reg. 349.95 Wireless Remote</p> <p>Remote on-screen programming makes setting the 14-day/6-event timer easy. HQ system enhances picture sharpness. #16-510 Remote batteries extra</p>	<p>Tandy® 1000 HX Computer Save \$200 Reg. 699.00 Monitor extra 49900 With CM-5 Color Monitor (#25-1043) Only \$798.95 (Reg. Separate Items 998.95)</p> <p>Easy to use because MS-DOS® is built in. Includes Personal DeskMate™ 2 software. #25-1053 MS-DOS/Reg. TM/Microsoft Corp.</p>
<p>Dual-Cassette AM/FM Stereo Phono Clarinette®-122 By Realistic 12995 Save \$70 Reg. 199.95</p> <p>Copies your personal tapes and plays two tapes in sequence. 2-speed turntable, matching 17"-High speakers. #13-1226</p>	<p>128K Color Computer 3™ By Tandy Save \$70 Reg. 199.95 Monitor extra</p> <p>The family gift for education, productivity, programming and fun. Built-in Extended BASIC. Attaches to any TV. #26-3334</p>
<p>6-Band Portable Radio Patrolman® SW-60 By Realistic Save \$40 5995 Reg. 99.95</p> <p>Tunes 6-18 MHz SW, VHF, UHF, police, air, FM, AM. #12-779 Batteries extra</p>	<p>Mobile CB With Priority TRC-474 By Realistic Save \$60 7995 Reg. 139.95</p> <p>Terrific travel gift! Emergency Ch. 9 priority switch. #21-1539</p>
<p>Pocket Weatheradio® By Realistic 32% Off 1495 Reg. 21.95</p> <p>Instant VHF weather reports for campers, boaters. #12-151 Battery extra</p>	<p>Electronic Melody Maker Concertmate®-350 By Realistic Cut 25% 2995 Reg. 39.95</p> <p>Four preset tones, 10 rhythm presets, 100-note memory. #42-4008 Batteries extra</p>
<p>CB Walkie Talkie TRC-218 By Realistic 40% Off 2995 Reg. 49.95 Batteries extra</p> <p>Super gift for fun and work. Three channels, 2 watts. With Ch. 14 crystals. #21-1638</p>	<p>Desktop Calculator EC-2010 By Radio Shack 37% Off 1888 Reg. 29.95 Batteries extra</p> <p>A great, practical gift! Fluorescent display. #65-960 Batteries extra</p>

Wilson APPLIANCE, INC.
 117 Main Street Phone 272-5531 MULHSHOE
Most Major Credit Cards Welcome
 A RADIO SHACK DEALER

Double Ring Ceremony Unites Miss Wilcox, Whatley



MRS. KASEY LEWIS WHATLEY
(nee Crista Wynelle Wilcox)

Miss Crista Wynelle Wilcox and Kasey Lewis Whatley were united in marriage in a candle-light ceremony at 6 p.m. Saturday, Oct. 15 in the First Assembly of God Church with the Rev. H.D. Hunter reading the double ring marriage vows.

Parents of the couple are Caryn Lechner of Amarillo, Philip Wilcox of Salisaw, Okla., and Mr. and Mrs. George Whatley of Muleshoe.

Marriage vows were exchanged before a fifteen candle brass arch shaped candelabra adorned with an array of mauve mist and mauve tempest lilies flowing with mauve mist freesia accented with baby's breath and miniature mauve tempest lilies connected by two fifteen candle spirals. Palms of emerald greenery complimented the entire setting. On each side were planters decorated with candlelight and wedding garland draped by love doves. The unity candle was dressed in matching flowers. Aisle decorations were of candle lit pew markers dressed with mauve mist and mauve tempest lilies.

Wayland and Jeanette Ethridge sang "My Only Love", "You Light Up My Life", and "You And I".

Given in marriage by her uncle, Ike Wilcox, the bride chose a formal length gown of Shergaza and re-embroidered Chantilly lace over bridal taffeta. The gown was designed with a short sheer fitted bodice jacket with a high neckline, natural waistline, full bishop sleeves coming to wide pointed cuffs at the wrist. The cuffs and bodice jacket both fastening with tiny bridal taffeta covered buttons.

The gown was with a natural waist, thin spaghetti straps, topped the formal bodice with a full hooped bouffant Southern Colonial style skirt. Inserts of lace enhanced with tiny seed pearls, with rainbow sequins complemented the neckline, bodice, sleeves, cuffs and skirt of the two piece wedding gown. Rows of re-embroidered Chantilly lace ruffles on the skirt of the gown fell in waterfall fashion in the back of the skirt, with the back of the gown ending in a sweeping chapel length train.

The bride wore a Southern style hat accented with tiny seed pearls. She carried a bridal bouquet consisting of a crescent shape of ecru and mauve mist roses with a cascade of mauve mist lilies accented with pearls and mauve tempest miniature lilies atop a Chantilly lace backing.

Tanya Wilcox, sister of the bride, of Amarillo served as maid of honor and Mrs. John Wayne Metcalf, cousin of the bride, of Cohoma served as bridesmaid.

The attendants wore identical tea length dresses of mauve taffeta moire. Their flowers were a smaller version of the bridal bouquet.

Monty Black, cousin of the groom, of Muleshoe was best man and Lanes Ivy, cousin of the groom, of Lazbuddie was groomsman. Blake Gartin of Muleshoe was ring bearer.

Candlelighters were Chanda Kemp and Keisha Kemp, both of Muleshoe. Blake Gartin of Muleshoe was ring bearer. Ushers were Brent Black of Lubbock, and Shane Burris of Muleshoe, both cousins of the groom.

The wedding was designed by Libby Black, owner of the "Yellow Rose Floral and Gift in Muleshoe."

Following the ceremony, a reception was held in the fellowship hall of the church. Members of the house party were Chanda Kemp, Keisha Kemp, Lisa Clayton and Diane Enos.

Atop an ecru silk and lace table cloth was a three tier ecru colored wedding cake with a waterfall and two eight inch cakes connected to the first tier by stairways perched

with love doves. On the first tier was a bride and groom statuette, the second tier was topped with roses, and the top tier a pair of love doves. Surrounding the waterfall and the side cakes was an array of fresh fern and baby's breath. Complimenting each side of the cake were crystal candelabras with mauve candles.

The groom's table was a western theme consisting of a cowboy boot surrounded by a cactus with mauve rosebuds and mauve tempest lilies on a bed of green fern and looped ribbon. Boot shaped mints, nuts and a chocolate horse shoe shaped cake

Harvest Day

Dinner Set

Wednesday

The Earth United Methodist Women will serve their Annual Harvest Day Dinner on Wednesday, November 9, in conjunction with the bazaar.

Serving time will be from 5 to 8 p.m. The event will be held in the fellowship hall of the church and will cost five dollars for adults and two dollars for children under 12. There will be baked goods and crafts at the bazaar and they will be open from 5 to 8 p.m.

Proceeds from this annual event will be used by the Methodist Women for necessary items and repair in the parsonage, and for needed programs in the church.

was served. Coffee was served from a silver coffee service. A round table completed the reception setting with a silver punch bowl and crystal appointments.

Following a wedding trip to Ruidoso, N.M., the couple will make their home in Muleshoe.

The bride is employed by Green Brothers, Inc. and Whatley is employed by Wes-Tex Feed-yards, Inc.

Out of town wedding guests and relatives were Mr. and Mrs. Elbert Kemp, Mr. and Mrs. Don Nolley, all of Midland; Mr. and Mrs. Danny Kemp of Lubbock; and Mrs. Buddy Peeler of Hereford.

A rehearsal party was held at the fellowship hall of the First Assembly of God Church on Friday, Oct. 14.

This Week's Definition

"A statesman knows everything; a politician knows everyone."
—Sentinel, Philippines.

Hot Air

Reputation is a large bubble which will burst when you blow it up yourself.
—Globe, Atchison, Kan.

Wisdom

When we discuss, we show our intelligence, when we argue, we display our ignorance.
—Grit.

Lisa Noble Named Girl of Month

Lisa Noble, daughter of Deborah and Sandy Noble has been selected as the September Girl of the Month by the Muleshoe Branch of the American Association of University Women.

Lisa, a senior at Muleshoe High School, is very active in her school, community, and church. She was a regional qualifier in Varsity Track her Freshman, Sophomore, and Junior years; and she was State Alternate in Cross Country her Freshman year. She is a Varsity Cheerleader, Chaplain of Student Council, has served as Chaplain of the Fellowship of Christian Athletes, is president of the National Honor Society, and has served as both Parliamentarian and Secretary of the Student Community Action Club. Lisa is Editor of the Muletrain Yearbook and was a class officer as a Freshman and Sophomore.

As a Junior, she was selected as Best Citizen and Class Favorite. She has received the World History and American History awards, the Physical Science, Biology, and Chemistry awards, and the Trigonometry award.

Lisa is an assistant Sunday School teacher and sings in the choir in her church.

Her hobbies include running, reading and writing short stories.

Her ambitions are many including being an author, teaching in a University, and studying law at a University, and studying law and politics.

"Congratulations to Lisa Noble, an outstanding student of Muleshoe High School, on being chosen the first Girl of the Month for the 1988-89 school year," said Lucy Faye Smith.



LISA NOBLE

Argumentative souls, short of facts, are very argumentative.

Most of the over-active civic workers know what they're doing.

Tops Club

Muleshoe TOPS club met at 6 p.m. Thursday, Nov. 3 in the Heritage Thrift Shop. Laverne James called the meeting to order with the TOPS pledge, fellowship song and prayer.

Minutes of the previous meeting were read and approved. Orville Burris called the roll with 13 members answering with the amount they had lost or gained. One visitor, Wendy Sain, a former member, who now lives in Korea, was welcomed to the meeting.

Ruth Clements gave the treasurer's report. Betty Jo Davis drew a gift from the white elephant box, for having been best loser last week and losing again this week.

Best loser for the week was Molly Davis. First runner-up was Jewel Peeler, and second runner-up was Lucille Harp.

Monthly best loser was also recognized. Lucille Harp was best loser for the month and runners-up were Alene Bryant, first; and second was a tie between Betty Jo Davis and Laverne James.

The thought for the day was "Think Sweet Thoughts, Not Thoughts of Sweets."

The meeting was adjourned with the singing of the goodnight song.

The Yellow Rose Floral, Gift & Interior Design
 218 Main
 Opening Nov. 15th
 Now Accepting Custom Gift Wrapping Orders
 For Your Packages
 Libby Black 272-3676 Lena Gartin 272-4967

FLORSHEIM
 SHOES FOR WOMEN

SPECIAL
39⁹⁹

REGULAR \$59.99. Tailored to please, with comfortable moc styling and sensible heel height. "Chambers" made of glove soft leather with a cushioned arch support and covered heel is available in Taupe and Navy at a special price that saves you over 33%. Ask for Florsheim® Ramblers®

We have your size 8-10 AAA 7-10 AA 5 1/2-9 B

Bentley's
 SMART FASHION

MULESHOE
 110 Main 272-4119
 9-6 Mon-Sat
 Closed Sunday

"ATTENTION"
 Educators are interested in the preservation of the permanent school fund and the teacher retirement fund. The Muleshoe members of the Texas State Teachers Association urge voters to vote
AGAINST
 Amendment 3 on the ballot.

Welcome To Muleshoe

EMBRANCE OF

A BIG WELCOME TO MULESHOE TO Rev. Mike and Eva Doyle and son Nathan Daniel, age 7. The Doyle family moved to Muleshoe about one week ago, after he accepted the pastorate of the Spanish Assembly of God Church. He and his wife came here from El Paso where they were living after two years in El Salvador as missionaries.

Mike attended Zion Bible Institute in Rhode Island.
 BA Degree: Southwestern Assemblies of God Bible College in Waxahachie, Texas. Eva attended Latin American Bible Institute in El Paso, Texas, BA Degree: Southwestern Assemblies of God Bible College. Mike's hobbies are reading and swimming, Eva enjoys reading, volleyball, Nathan likes riding his bike and playing with his toys.

James Crane Tire Co.
GOODYEAR
 322 N. 1st 272-4594

Henry Insurance Agency **Damron Rexall Drug**
 111 W. Ave. B. 272-4581 308 Main 272-4210

Miss Kennedy, Tarpley United In Marriage



MRS. BRET ALLEN TARPLEY
[nee Shannon Lynn Kennedy]

Miss Shannon Lynn Kennedy of Lubbock became the bride of Bret Allen Tarpley, also of Lubbock, in a candlelight ceremony, Saturday, Oct. 8 at 6:30 p.m. in Ford Memorial Chapel of the First Baptist Church in Lubbock.

Parents of the couple are Mr. and Mrs. Clinton Kennedy of Plainview, formerly of Muleshoe, and Mr. and Mrs. John Tarpley of Tyler.

Marriage vows were exchanged before an altar enhanced with brass candelabras, adorned with greenery and mint green bows. The unity candle was also adorned with mint green bows.

Laurie Evans of Lubbock, soloist, sang "Through The Eyes Of Love", "Sunrise, Sunset", "Wind Beneath My Wings", and "The Lord's Prayer."

Given in marriage by her father, the bride chose a gown designed by San Martin Bridals. The bodice was of satin and Venice lace, embellished with pearls, outlining a sweetheart neckline. Puffed sleeves featured rows of crystalline ruffles. The natural waistline came to a point in front and had a satin bow in back.

Her fully gathered skirt was of crystalline organza over satin, applied with Italian Milano lace. The hemline of the skirt featured rows of crystalline ruffles forming a cascading cathedral length train. She wore a beaded headband adorned with silk flowers and her veil was beaded and enhanced by crystalline ruffles. The headpiece was

designed by Diana Smith of Lubbock.

The bridal bouquet was of white orchids, surrounded by white stephanotis, baby's breath, mint green rose buds and white ribbon designed by Marsha Rasco of Lubbock.

Mrs. Kevin (Abbye) Satterwhite of Dumas served as her sister's matron of honor. Glenda Rascoe of Lubbock was bridesmaid, and Amanda Tarpley, sister of the groom, of Tyler was junior bridesmaid.

Bridal attendants wore mint green print polished cotton tea length dresses. The bodice featured a scoop neckline, a double ruffle over the shoulder and a deep basque waistline, designed by Alfred Angelo of Dallas. They carried bouquets of mint green rosebuds, white stephanotis and baby's breath accented with mint green and lilac ribbons.

Shani Rascoe of Muleshoe served as flower girl. She wore a teal green floor length dress with puffed sleeves and a bow in back.

Richard Tension of Lubbock served as best man and Terry Franklin, also of Lubbock was groomsman. King bearers were

Sean Fisher and Bryan Tarpley, both of Lubbock. Krista Tarpley, cousin of the groom, of Garland was candlelighter, and Kevin Satterwhite of Dumas and Joe Hesse of Lubbock served as ushers.

Following the ceremony, a reception was held in Ford Memorial Chapel parlor. Tammy Sunday, Vickie Peterson and Diana Smith, all of Lubbock served and Kim Harris of Lubbock registered the guests.

The bride's bouquet served as the centerpiece for the bride's table, which was accented with a large brass candelabra.

The groom's table was adorned with a brass candelabra and brass

coffee service.

Following a wedding trip to Puerto Vallarta, Mexico, the couple will make their home in Wolfforth.

The bride is a graduate of Muleshoe High School, attended Texas Tech University and American Commercial College. She is employed as National Advertising Co-ordinator at the Lubbock Avalanche Journal.

Tarpley is a graduate of Chapel Hill High School and Texas Tech University. He is employed as a Petroleum Engineer for Texaco, inc.

Out of town guests were registered from Bledsoe, Morton, Lovelland, Fredonia, Tyler, Garland, Muleshoe, Plainview, Dumas and Panhandle.

A rehearsal dinner was held at the Fifty Yard Line Restaurant in Lubbock on Friday, October 7.

Brownie Scout News

Brownie Troop No. 200 met Friday, Oct. 28 at the Girl Scout Hut. The meeting began with the girls making the Brownie Ring. All of the girls then said the Girl Scout Promise.

The girls learned two songs, "Brownie Smile", and "Make New Friends".

The girls then went over all the Brownie Signs.

Leesa Gable provided the refreshments.

Following refreshments, the girls made ghosts and had a lot of fun doing so.

It was reported that since it was such a pretty day, the girls all went outside and had a ecology hunt.

The meeting came to an end with the girls playing games. Those present were Lela Hancock, Kristy Hime, Leesa Gable, Kristal Hailey, Marissa Beverdorf, Chelyn Maddox and Chine Maddox, leader.

Hobby Club

Muleshoe Hobby Club met Thursday, Nov. 3 in the Senior Citizens Complex with 11 members present. Those present included: LaDema Wright, Linda Morris, Laura Mae Stancell, Mabel Caldwell, Jane Williams, Hazel Reeder, Blanche Aubrey, Mattie Benton, Edith Fox, Myrtle Chambless and Frances Bruns.

"It was good to have Blanche Aubrey back following her surgery" said Ms. Benton.

Ms. Reeder took a napkin and some kitchen towels she had made. Other items taken were Ms. Bruns a crochet purse made from a milk carton with a doll inside. Ms. Caldwell took a framed picture of her grandchildren.

Ms. Caldwell drew the hostess gift which was a breakfast set and two pot holders.

Hostess for the day was Ms. Benton.

Ms. Benton served sandwiches, cookies, punch and coffee. Sammie Ethridge will be the hostess at the Nov. 17 meeting.

Arts And Crafts

Festival Planned At Littlefield

The Littlefield Young Home makers are sponsoring their 6th annual Littlefield Arts and Crafts Festival. Many talented artists and craftsmen will be showing their wares on Saturday, November 12, from 9 a.m. to 6 p.m. at the Lamb County Agriculture and Community Center located on Highway 385 and 17th Street.

The 49 booths will be filled with an exciting array of items which will include country decorator items, ceramics, dolls, wooden toys, oil painting, jewelry and baskets. Decorated sweatshirts, wreaths, clocks and many other items will also be featured.

The admission charge of \$1.00 will entitle each person who attends to a chance at door prizes which will be awarded through out the day. This money will be used by the Little field Young Homemakers in their adult education programs and for community and charity work.

Homemade items will be available in the concession stand. Breakfast items will be served and charcoal hamburgers will be featured for lunch. Coffee, tea, soft drinks, brownies and other snacks will be available through out the day.

The Littlefield Young Home makers wish to extend a hearty welcome to everyone interested in attending. For further information please contact Loretta Benton, Route 1 Box 45, Littlefield, TX 79339 or phone (806)385-4805.

Solution

To whip the dandelion scourge—plant concrete in your back yard. —The Country Editor.



SCENE AT SCOUT CARNIVAL--This was one of the many scenes that could be found in the Scout Spook House Halloween night.

FREE HEARING TESTS FOR SENIOR CITIZENS

MEET AT WESTERN DRUG - MULESHOE
114 MAIN
WEDNESDAY, NOVEMBER 9, 1988
COME BY OR CALL 272-3106 9:30 a.m. - 10:30 a.m.
10 DAY FREE TRIAL 12 BRANDS TO CHOOSE FROM
SATISFACTION GUARANTEED

Sponsored by
LIVINGSTON HEARING AID CENTER
1903 19TH LUBBOCK, TX 79401 806 762 2951
606 B QUINCY PLAINVIEW, TX 79072 806 793 8874
RICHARD R. DAVILA CERTIFIED HEARING AID AUDIOLOGIST

I can't lose weight fast enough!

"Now you can with Weight Watchers on your side."

You keep trying to lose weight fast but keep running into all kinds of problems. You're always hungry. You're snacking at parties or ordering the wrong things at restaurants. It's all so confusing. But NOT anymore. Now, you can have Weight Watchers® on your side and lose weight fast without being hungry.

With our New Quick Success® Program, you can start losing weight 20% faster in the first few weeks. Don't miss this chance to lose weight faster than ever and save money too!

Join For Only... **\$10**

Registration Fee...\$17.00
First Meeting Fee...\$ 8.00
Regular Price...\$25.00
YOU SAVE \$15.00
Offer ends November 13, 1988.

Come to the Weight Watchers meeting nearest you.

MULESHOE Church of Christ
16th and Avenue D
Thur: 6:00 pm

NOTHING WORKS LIKE WEIGHT WATCHERS!
TEXAS TOLL FREE 1-800-692-4329

SOFT SUPPORTIVE LIGHTWEIGHT
CUSHION-WEDGE COMFORT FOR WORK OR PLAY
MADE IN U.S.A.

Fair Dept. Store
120 Main 272-3500

RED WING SHOES

Rip's BOOTS
1943-1988

WESTERN WEAR IN TEXICO
OPEN 8:00 a.m. - 6:30 p.m. c.d.t.

We've Got Em' - Most All Sizes In Stock - Infants to 14. AAA to EEE Widths.

BOOT SPECIALS

Elephant Boots 4 Colors To Choose From \$159⁹⁸	Bull Hide Boots Large Selection All Sizes and Colors Your Choice \$99⁹⁸	Shark Skin Boots One Special Group \$119⁹⁸
---	--	---

Men's Justin Ropers \$79⁹⁸
(Excluding Exotics)

Last Week's Winners:
Kristi Spies, Muleshoe
Larry Powell, Farwell
Paul Kinard, Clovis
Ruth Grinstead, Muleshoe
Mr. George Barton, Clovis
Patty Miller, Sudan
\$100.00 Winner Eunice Schilling

LAYAWAYS WELCOME

314 Wheeler WE ACCEPT: 482-3363

Thanks! For Making Our Anniversary Celebration A Huge Success. We Look Forward to Your Loyal Patronage In The Future.

Hepatitis...

Cont. from Page 1

The Texas Department of Health in Lubbock and he stated that there had been 22 cases of Hepatitis reported in Muleshoe since the 29 of September, but he felt that it was well under control due to the superb job that our local doctors and the county health nurse has done.

He stated that although we may see a few more cases, the physicians are doing a good job in helping to control this disease.

"Although the schools are doing a superb job in disinfecting the bathrooms in the local schools, parents can contribute to the controlling of this disease by helping to teach the children good hygiene. This disease is spread from person to person through poor hygiene, drinking from the same glass, improper washing of the hands following use of the bathroom and then handling toys, books and pencils that the infectious person has handled.

"Again I think the educators, physicians and the County Health Nurse as well as the school nurses are all doing a superb job in controlling this disease and I don't see any reason at the present time for alarm," Dr. Isaacson said.

Council...

Cont. from Page 1

Also discussed was the use of the council to pass information and organize activities. Mentioned to the group was the Christmas Parade which is scheduled for December 3 at 2:00 p.m.

The group will meet again December 8 at 7:00 p.m. in the City Hall council chambers. Notices will be sent to remind groups of the meeting.

Rate Decrease...

Cont. from Page 1

At that time, customers outside city limits will receive a credit on their bills reflecting savings accrued since July 8 when the agreement for lower rates was reached," Hunter said.

At the time of PUCT approval, it will be about 35 days after we file with the cities it serves to further reduce the amount of the cities' March 1988 rate reduction, Hunter said.

"If the cities approve, it will be about 35 days after we file with the cities when the additional rate reduction takes effect within city limits. Then SPS's customers within the city limits also will receive a credit on their bills reflecting savings accrued since July 8," he said.

"The process can be hard to follow at times," Hunter said. "But when it's all said and done, all of our retail customers will have the benefits of lower electric rates. Rates within city limits and outside city limits will be identical."



SUPER KIDS AT DILLMAN ELEMENTARY--Super Kids at Dillman Elementary for the month of November are: E.C., Justin Pickering; Pre Kindergarten, Olympica Hernandez; Kindergarten, Cami Kennemer and Moises Garcia; First Grade, Alex Barraz and Ernestina Bara; Second Grade, Jack Holloway and Susan Louven.



LOOKING THROUGH THE BARS--This little girl seems to want someone to turn her out of the cage, one of the scenes at the Scout Halloween Carnival.

Local Group

Cont. from Page 1

hours of training in the skills of attracting new business or expanding existing business in the Muleshoe area.

Town enrolled in the program,

along with Muleshoe include: Sundown, Olton, Earth, Brownfield, Floydada, Slaton, Post and Hale Center.

Thursday, November 17 will be the next meeting of the REDI class and this session will be on program of work, surveys, sites and site presentations and developing building presentations.

New Business...

Cont. from Page 1

farmland." Auction Insight provides bankers, dealers, lenders, farmers, and others who have a large capital investment in farm equipment the means to learn cash values quickly, to spot market trends as they develop, to take the guesswork out of appraisals, and to improve investment recovery. "This video market report far surpasses any other report available today in providing information to make accurate evaluations based on

age, condition, and all other pertinent data," says Flowers.

"Auction Insight consists of five highly detailed video reports: Tractors, Farm Equipment, Grain Trucks Combines and Headers, and Cotton and

Hay Harvest Equipment. For example, the 1988 Third Quarter Report features 83 Tractors, 165 pieces of Farm Equipment, 53 Grain Trucks, 59 Combines and Headers, and 44 pieces of Cotton and Hay Equipment. Each video includes a written descriptive sheet listing each item featured."

Election

Cont. from Page 1

Another decision facing the voters will be a new state senator for District 31. Democratic nominee Mel Phillips, and Teel Bivins, Republican, both of Amarillo are seeking the seat vacated by Senator Bill Sarpalus of Amarillo, who is a candidate for the 13th congressional district seat.

Candidates for U.S. Representative from District 19 are Larry Combest of Lubbock, Republican incumbent and Democratic challenger Gerald McCathern of Hereford.

Texas voters will also be asked to rule on three proposed amendments to the state constitution. Amendment No. 1 known as the "Good Roads Amendment" should clarify that "federal reimbursement of state highway dedicated funds are themselves dedicated for the purpose of acquiring rights-of-way and constructing, maintaining and policing public roadways" and is intended to keep federal highway funds from being diverted to general fund uses.

Amendment No. 2 calls for "establishing an economic stabilization fund in the state treasury to be used to offset unforeseen shortfalls in revenue."

Amendment No. 3 would create a "Texas growth fund" and provide "for the investment of the permanent university fund, the permanent school fund and public employee retirement systems in the Texas growth fund" to "directly create, retain and expand job opportunity and economic growth in Texas."

The Baptist Womens Day of Prayer will be observed Monday, November 7th.

A special community service will be held at the First Baptist Church, Muleshoe at 6:30 p.m.

The women who went to Australia from F.B.C., Muleshoe this summer will present slides of their trip.

There will be testimonies from around the world, special music by St. Luke Baptist Church Choir, and Bible Study.

Please attend this special service.

Muleshoe ...

Cont. from Page 1

1. Canvass the votes of the General Election, November 8, 1988.

2. Miscellaneous items.

Basketball season tickets for adults and students are now on sale in the Business Office of Muleshoe I.S.D., 514 West Avenue G, Muleshoe, TX. Tickets are \$7.50 for students and \$15.00 for adults. These tickets will enable the holder entrance to ALL home basketball games for Junior High and High School.

This is a tremendous savings for those planning to attend several games.

Keep Judge Chuck MILLER

COURT OF CRIMINAL APPEALS

If you vote independently in the JUDGESHIP RACES, you should know that after their senior editorial boards investigated the background, philosophy and ability of the candidates, **Judge CHUCK MILLER was publicly and enthusiastically ENDORSED FOR STATE WIDE RE-ELECTION** by the

AMARILLO News & Globe-Times	HOUSTON Chronicle
AUSTIN American-Statesman	HOUSTON Post
CORPUS CHRISTI Caller-Times	MIDLAND Reporter-Telegram
DALLAS Morning News	SAN-ANGELO Standard-Times
DALLAS Times Herald	VICTORIA Advocate
FORT WORTH Star-Telegram	WACO Tribune-Herald

AND MANY, MANY OTHER FINE TEXAS PAPERS

DEMOCRAT - Pol. Adv. by Judge Chuck Miller Campaign Comm. Kate Kelley-Miller, Tres., 1705 Wild basin Ledge, Austin, Texas 78746

Teel Bivins' Views and Values are What We Need in Our State Senator.

Teel Bivins makes his living in agriculture, like his great grandfather, grandfather and father before him. He'll bring strong new conservative leadership for more jobs, less spending, lower taxes and **NO STATE INCOME TAX.**

ENDORSED BY...

President Ronald Reagan
Vice President George Bush
U. S. Senator Phil Gramm
U. S. Representative Beau Boulter
Texas State Representative John Smithee

...On the Other Hand
Teel's opponent, Mel Phillips

- Was Gary Hart's campaign chairman for this part of Texas not just once, but in two campaigns.
- Was an active supporter of JIMMY CARTER, WALTER MONDALE
- Is an active supporter of MICHAEL DUKAKIS

TEEL BIVINS
FOR TEXAS SENATE

Political Advertisement paid for by Bivins for Senate, John Chandler, Treasurer, P.O. Box 7338, Amarillo TX 79114

We're Your PIPELINE TO LUBRICANT VALUES!

Your pipeline to savings on premium quality oils and lubricants is here right now. Make the connection today and get the best prices of the season.

Torq-Gard Supreme® Engine Oil
5-gal. Now **\$21²⁵**

Hy-Gard® Transmission & Hydraulic Oil
5-gal. Now **\$21⁷⁸**

Dent & Co.
W. Hwy. 81
272-4206

Nursing Home News
By: Joy Stancell

Edith Bruns recent visitors were her sister-in-law, Virginia Floan, Margaret Evans and Besty Bruns, all from Sacramento, Calif.

Ernest Kerr's brother, Orvil Kerr, from Ill. was here visiting last week.

Among those visiting Fluff Baldwin were Virmon Petty of Simonoie, his daughter, Floyce, granddaughter, Samantha and great granddaughter, Amber.

Guy Kendall's daughter, Darla, visited him last week.

Ora Roberts went out with her daughter, Ruby Clark, last weekend.

Ruth Williams spent the day visiting with relatives in Lubbock last week.

Lois Ethridge attended the J.O.Y. Choir meeting at the First Baptist Church with Clara L. Jones Monday.

Connor Burford is visited daily by his daughter and son-in-law, Mr. and Mrs. Joe Smallwood, his grandson, Ricky Smallwood and family had been here visiting. His wife visits several times a week.

The Progress Baptist Church came Sunday to sing gospel music and visit with the residents.

Friday afternoon Lona Embry served ice cream and cookies to the residents.

Three-Way News
by: Mrs. H.W. Garvin

Bobby Soleas, an employee of Three Way School was seriously injured in a freak accident at the school Friday. He underwent surgery at St. Mary's Hospital as soon as he was admitted and had part of his leg amputated.

Mr. and Mrs. Bill Dupler and Eugena spent the weekend visiting their daughter, the Bobby Sinclair family in Monahans.

The co-op gin at Maple and the grain elevator at Goodland have been busy the past week as harvest has started.

Mrs. Roger Hatcher and daughter from Clovis spent Wednesday night and Thursday with her parents, the Jack Lane's.

The Three Way School held their Halloween carnival Saturday night at the school.

Allie Barbour went out to visit with her son, Billy Dorr and his family, and Pinkie and Sybil over the week end.

Johnny Chappell remains in the hospital in Lubbock. Please remember to pray for him and his family.

Thank you for remembering us during the Christmas Card Project.

Laverne James, Olive Cox, Elaine Greenhouse, Jackie Johnson, Ruth Clements, Lula May Shanks and Beth Watson came to shampoo and set the ladies hair and give them a little extra T.L.C. Lula May Shanks entertained us afterward with her piano playing.

Lynn Bratcher shared his beautifully decorated birthday cake with the residents and employees at the monthly birthday party Thurs. Saturday, Mr. Bratcher's 3 children, his grandchildren and great grandchildren visited him at the Nursing Home. His family gathered together in the home of Mr. and Mrs. Tom Bratcher to honor him with a birthday party.

Lona Embry decked the yellow dining room with fall leaves, pumpkins and shocks to treat the employees with Effie Smith homemade Chili, on chili dogs with all the trimmings Friday noon.

The 55 and Alive group from the Muleshoe Church of Christ hosted a fantastic Halloween party for the residents Fri. Some of the fun things included our rendition of a cake walk and bobbing for apples. Ghost stories by Roland McCormick. Refreshments of home made cookies and slush punch were served.

Effie Smith was visited by Herbert Whalin over the weekend and her niece Dortha Joyner visited Tues.

Mary Sisemore was visited by her son Tommy Sisemore Tues.

Friday was a day of fun and activity as residents and employees dressed in Halloween array, "floating" in and out and through the halls.

The Gospel Notes Quartet sang to the residents in the Nursing Home Day Room, Sunday afternoon.

Our monthly birthday party hosted by the Needmore Community Club will be Thurs. Nov. 10th at 3:00 P.M.

We are so pleased to have Mr. Clifton Finley feeling well enough to be back shopping for us on Wednesday mornings.

Effie Smith's niece, Dortha Joyner of Lubbock visited her last week. Dortha has just recently undergone knee surgery but was able to walk (with the help of a walker) in to visit Effie.

Happy Nov. birthday to: Johnny Chappell, Nov. 27, 1915; Beryl Hallis, Nov. 7, 1897; Emma Schuster, Nov. 8, 1906; Mary Sisemore, Nov. 10, 1901; Allie Barbour, Nov. 19, 1894; Birdie Warren, Nov. 21, 1903; Mamie Askew, Nov. 30, 1900. Also employees Conrado Cumpion Nov. 11; Opal Jean Moton, Nov. 12.

Beryl Hallis was treated to a special dinner on her birthday Tuesday by Mr. and Mrs. Delmar McCarty in their home.

Our thanks to Ann Johnson for the nice gift of clothing.

Educating young America is essential to U.S. economic development

COLLEGE STATION — Economic development of the United States will be seriously damaged within two years if educators and the general public do not renew their commitment to the fundamental promise of American education — that everyone has a right to learn — says Dr. Dean Corrigan, Texas A&M University's dean of education.

"We are a society with a shortage of youth and rapidly increasing senior citizen population," said Corrigan. "We've got to educate all of our children because we simply cannot afford to waste them, economically or otherwise," he said. "A growing number of young people are out of school and out of work with no skills to make a living," said Corrigan.

While the Department of Education sets the current dropout rate at over 30 percent, a number of studies by other agencies suggest this figure is low.

Texas dropout rate is a travesty," said Corrigan. "Fifty percent of Hispanic students and 40 percent of black students in Texas never finish high school." Eighty-five percent of Texas prison inmates are dropouts, costing the state \$24,000 for each year of incarceration, he said.

"It would be less expensive to send them to Harvard," said Corrigan.

More important than the economic development argument, he said, is the humane argument. "The great vision of America is the belief that the whole country is improved when all of the children of all the people receive a quality education, not just the children of the rich and powerful," he said.

Martha Smaltz was visited by Gladys Hardage and Francis Bellingsley last Thurs. morning.

Our heartfelt sympathy to the friends and family of Edith

Goucher We miss her.

Among those visiting the nursing home last week were S.W. Inman and J.E. Embry.

Juanita Snow was visited by

her sister, Olive Cox, Sammie Ethridge, Clara L. Jones and Lois Ethridge.

Have A Safe And Happy Halloween!



THE KITCHEN BAND PERFORMING AT THE AARP LUNCHEON

Our heart felt thanks to the Truth Seekers S.S. Class of the First Baptist Church, The A.A.R.P. and Lula May Shanks for your love and donation to our Nursing Home.

Our thanks to James Warren for the nice turnips for our residents meals. We will have a feast.

Steve Claybrook came Tues. afternoon to sing and play gospel music for the residents and to bring a devotional.

Jeanine Gunstream and Willie Mae Graves attended the Oct. birthday party with her mother and friend Oneita Wagnon. Dorothy Beddingfield also visited her.

Jackie Johnson our beloved friend and volunteer is recovering remarkably well after surgery in Lubbock Tues.

FIXED RATE LOAN PLAN

9.750% ★
RURAL REAL ESTATE

10% ★
RURAL RESIDENTIAL

LIMITED FUNDS AVAILABLE AT THESE RATES

We are strongly committed to real estate lending in Texas.

- NEW PURCHASES ONLY
- 10-YEAR FIXED RATE converts to variable thereafter
- ONE POINT ORIGINATION FEE
- LONG-TERM LOANS
- ASSUMABLE

FEDERAL LAND BANK OF TEXAS

* Annual percentage rates range from 9.97% to 10.27% depending on length of contract; after fixed rate period, variable rates are subject to change.

Patients In West Plains Medical Center

NOVEMBER 1, 1988
Wanda Cockerham, Billie Powell, Cleta Williams and Pat Langfitt.

NOVEMBER 2, 1988
Ada Murrah, Billie Powell, Cleta Williams and Pat Langfitt.

NOVEMBER 3, 1988
Ada Murrah, Billie Powell, Cleta Williams, Pat Langfitt.

VOTE FOR MONTE HASIE
He will work for us.

- FOR more local control of our schools and a practical policy on taxation. All schools are not equal and cannot meet every non-funded demand of the state.
- FOR extra-curricular programs and good vocational-technical education. They produce good leaders and much-needed talents.
- FOR attracting and keeping good teachers and administrators.
- FOR practical progress toward excellence in education, with consideration for each individual school district.

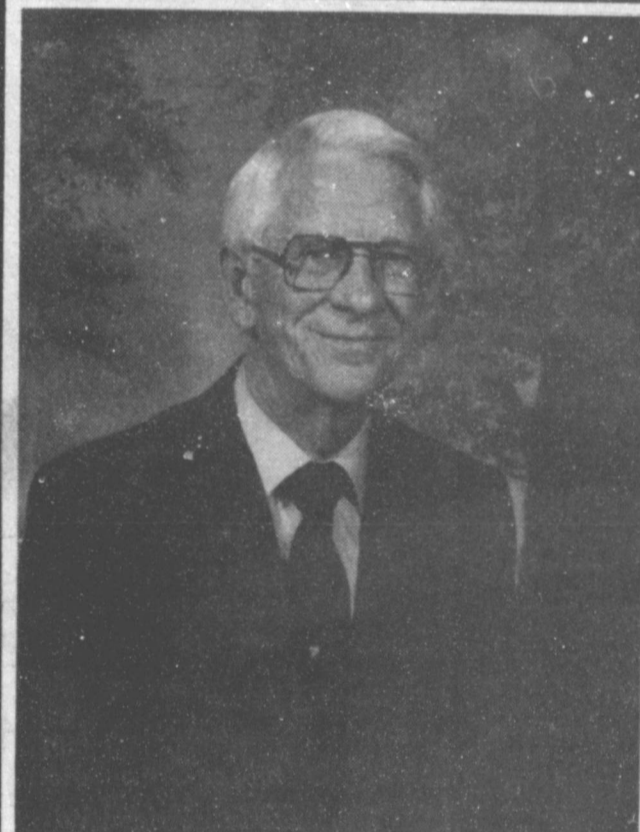
MONTE HASIE is a financial consultant and a native of West Texas. He served 12 years on the school board in Lubbock, 7 years as president. He knows schools. He and his wife, Mary Ann, raised three children who attended Lubbock Public Schools.

MONTE HASIE did not ask for or receive the endorsement of H. Ross Perot.



VOTE NOV. 8 FOR MONTE HASIE
State Board of Education, District 15

Paid for by the committee to elect Monte Hasie, Mike Abell, Texas, 5211 Brownfield Highway, #200, Lubbock, TX 79407, (806) 792-0015



- HONEST
- SINCERE
- LONGTIME MULESHOE BUSINESSMAN

As your County Judge I want you to know my door will always be open. If you have a problem come by and see me. I want to listen. Your vote and support will be greatly appreciated.
John W. Smith

John W. Smith Will Be A Dedicated Full Time County Judge

Muleshoe School Menu

NOVEMBER 7-11, 1988
BREAKFAST
MONDAY
 Milk, Cheese Toast, Fruit.
TUESDAY
 Milk, Blueberry Muffin, Juice.
WEDNESDAY
 Milk, Honey Buns, Juice.
THURSDAY
 Milk, Toast, Jelly, Fruit.
FRIDAY
 NO SCHOOL

LUNCH
MONDAY
 Milk, Burritos, Buttered Corn, Cheese Stick, Crackers, Fruit.
TUESDAY
 Milk, Juicy Burgers, Lettuce & Tomato, Pickles & Onions, Tater Tots, Cookies.
WEDNESDAY
 Milk, Taco's, Salad, Cheese, Beans, Jello.
THURSDAY
 Milk, Corn Dogs, Veg. Beef Soup, Crackers, Cinnamon Rolls, Fruit.
FRIDAY
 NO SCHOOL

COMBO LINE
MONDAY
 Milk, Pizza, Mixed Vegetables, Pickles, Fruit.
TUESDAY
 Milk, Hamburgers, Lettuce & Tomato, Pickles & Onions, Tater Tater Tots, Cookies.
WEDNESDAY
 Milk, Enchalladas, Salad, Beans, Corn Bread, Jello.
THURSDAY
 Milk, Corn Dogs, Veg. Beef Soup, Crackers, Cinnamon Rolls, Fruit.
FRIDAY
 NO SCHOOL

Lazbuddie Menu

NOVEMBER 7-11, 1988
BREAKFAST
MONDAY
 Toast, Bacon, Juice, Milk.
TUESDAY
 French Toast, Juice, Milk.
WEDNESDAY
 Toast, Oatmeal, Milk.
THURSDAY
 Cereal, Juice, Milk.
FRIDAY
 Cinnamon Rolls, Fruit, Milk.

LUNCH
MONDAY
 Chicken Strips, Potatoes, Gravy, Green Beans, Hot Rolls, Fruit, Milk.
TUESDAY
 Hamburgers, Tater Tots, Lettuce, Tomatoes, Onions, Cookies, Milk.
WEDNESDAY
 Nacho's, Pinto Beans, Green Salad, Pudding, Milk.
THURSDAY
 Baked Potatoes, Chopped Ham, Sour Cream, Bacon Bits, Butter, Green Salad, Hot Bread, Jello Milk.
FRIDAY
 Chili Dogs, French Fries, On-

ions, Pickles, Cake and Milk.
Salad Bar Served Mon-Thurs.

Cramped Quarters
 Boss: "You want a raise? Why don't you live within your means?"
 Employee: "I do sir; but you don't realize how I am crowded for space."

Sad Case
 "Now, what do you do in a case like that?"
 "Like what?"
 "They tell me to strike and my wife orders me to keep on working."

GENERAL ELECTION (ELECCION GENERAL)
 (CONDADO DE) BAILEY COUNTY, TEXAS
 NOVEMBER 8, 1988 (8 de noviembre de 1988)
SAMPLE BALLOT (Boleta De Muestra)

INSTRUCTION NOTE:

Vote for the candidate of your choice in each race by placing an "X" in the square beside the candidate's name. You may cast a straight-party vote (that is, cast a vote for all the nominees of one party) by placing an "X" in the square beside the name of the party of your choice. If you cast a straight-party vote for all nominees of one party and also cast a vote for an opponent of one of that party's nominees, your vote for the opponent will be counted as well as your vote for all the other nominees of the party for which the straight-party vote was cast. *Usted podra votar por todos los candidatos de un solo partido politico ("straight ticket") marcando una "X" en el espacio cuadrado a la izquierda del nombre de ese partido politico. Si usted vota por uno de los partidos politicos y tambien vota por el contricante de uno de los candidatos de dicho partido politico, se contara su voto por el contricante tanto como su voto por todos los demas candidatos del partido politico de su preferencia.*

Candidates: (Candidatos para:)	<input type="checkbox"/> REPUBLICAN PARTY (Partido Republicano)	<input type="checkbox"/> DEMOCRATIC PARTY (Partido Democratico)	<input type="checkbox"/> LIBERTARIAN PARTY (Partido Libertariano)	<input type="checkbox"/> NEW ALLIANCE PARTY (Partido Nueva Alianza)	<input type="checkbox"/> INDEPENDENT (Independiente)	WRITE-IN (Voto Escrito)
President and Vice President (Presidente y Vice Presidente)	<input type="checkbox"/> GEORGE BUSH/ DAN QUAYLE	<input type="checkbox"/> MICHAEL S. DUKAKIS/ LLOYD BENSON	<input type="checkbox"/> RON PAUL/ ANDRE MARROU	<input type="checkbox"/> LENORA B. FULANI/ RAFAEL MENDEZ		<input type="checkbox"/>
United States Senator (Senador de los Estados Unidos)	<input type="checkbox"/> BEAU BOULTER	<input type="checkbox"/> LLOYD BENSON	<input type="checkbox"/> JEFF DAIELL			<input type="checkbox"/>
United States Representative, District 19 (Representante de los Estados Unidos, Distrito Num. 19)	<input type="checkbox"/> LARRY COMBEST	<input type="checkbox"/> GERALD McCATHERN				<input type="checkbox"/>
Railroad Commissioner (Comisionado de Ferrocarriles)	<input type="checkbox"/> ED EMMETT	<input type="checkbox"/> JAMES E. (Jim) NUGENT	<input type="checkbox"/> RICHARD DRAHEIM	<input type="checkbox"/> REYNALDO LOZANO, JR.		<input type="checkbox"/>
Railroad Commissioner, Unexpired Term (Comisionado de Ferrocarriles, Termina no Completado)	<input type="checkbox"/> KENT R. HANCE	<input type="checkbox"/> CLINT HACKNEY				<input type="checkbox"/>
Chief Justice, Supreme Court, Unexpired Term (Juez Presidente, Corte Suprema, Termina no Completado)	<input type="checkbox"/> TOM PHILLIPS	<input type="checkbox"/> TED Z. ROBERTSON				<input type="checkbox"/>
Justice, Supreme Court, Place 1 (Juez, Corte Suprema, Lugar Num. 1)	<input type="checkbox"/> PAUL MURPHY	<input type="checkbox"/> LLOYD DOGGETT				<input type="checkbox"/>
Justice, Supreme Court, Place 2 (Juez, Corte Suprema, Lugar Num. 2)	<input type="checkbox"/> NATHAN HECHT	<input type="checkbox"/> BILL KILGARLIN				<input type="checkbox"/>
Justice, Supreme Court, Place 3 (Juez, Corte Suprema, Lugar Num. 3)	<input type="checkbox"/> CHARLES BEN HOWELL	<input type="checkbox"/> RAUL A. GONZALEZ	<input type="checkbox"/> CALVIN W. SCHOLZ			<input type="checkbox"/>
Justice, Supreme Court, Place 4, Unexpired Term (Juez, Corte Suprema, Lugar Num. 4, Termina no Completado)	<input type="checkbox"/> BARBARA G. CULVER	<input type="checkbox"/> JACK HIGHTOWER				<input type="checkbox"/>
Justice, Supreme Court, Place 5, Unexpired Term (Juez, Corte Suprema, Lugar Num. 5, Termina no Completado)	<input type="checkbox"/> EUGENE A. COOK	<input type="checkbox"/> KARL BAYER				<input type="checkbox"/>
Presiding Judge, Court of Criminal Appeals (Juez Presidente, Corte de Apelaciones Criminales)	<input type="checkbox"/> DAVID A. BERCHELMANN, JR.	<input type="checkbox"/> MIKE McCORMICK				<input type="checkbox"/>
Judge, Court of Criminal Appeals, Place 1 (Juez Corte de Apelaciones Criminales, Lugar Num. 1)		<input type="checkbox"/> CHARLES F. (Chuck) CAMPBELL	<input type="checkbox"/> EGON TAUSCH			<input type="checkbox"/>
Judge, Court of Criminal Appeals, Place 2 (Juez, Corte de Apelaciones Criminales, Lugar Num. 2)	<input type="checkbox"/> TOM RICKHOFF	<input type="checkbox"/> CHUCK MILLER	<input type="checkbox"/> CAROL CAUL			<input type="checkbox"/>
Member, State Board of Education, District 15 (Miembro de la Junta Estatal de Instruccion Publica, Distrito Num. 15)	<input type="checkbox"/> MONTE HASIE	<input type="checkbox"/> PAUL C. DUNN				<input type="checkbox"/>
State Senator, District 31 (Senador Estatal, Distrito Num. 31)	<input type="checkbox"/> TEEL BIVINS	<input type="checkbox"/> MEL PHILLIPS				<input type="checkbox"/>
State Representative, District 85 (Representante Estatal, Distrito Num. 85)		<input type="checkbox"/> JAMES E. "Pete" LANEY				<input type="checkbox"/>
Justice, 7th Court of Appeals District, Place 1 (Juez, Corte de Apelaciones, Distrito Num. 7th, Lugar Num. 1)		<input type="checkbox"/> H. BRYAN POFF, JR.				<input type="checkbox"/>
Justice, 7th Court of Appeals District, Place 2 (Juez, Corte de Apelaciones, Distrito Num. 7th, Lugar Num. 2)		<input type="checkbox"/> JOHN T. BOYD				<input type="checkbox"/>
District Attorney, 287th Judicial District (Procurador del Distrito, Distrito Judicial Num. 287th)		<input type="checkbox"/> JOHNNY W. ACTKINSON				<input type="checkbox"/>
County Judge, Unexpired Term (Juez del Condado, Termina no Completado)	<input type="checkbox"/> JOHN W. SMITH	<input type="checkbox"/> JIMMY WATSON			<input type="checkbox"/> LINDA HUCKABY	<input type="checkbox"/>
County Attorney (Procurador del Condado)		<input type="checkbox"/> LINDA ELDER				<input type="checkbox"/>
Sheriff (Sherife)		<input type="checkbox"/> JERRY HICKS				<input type="checkbox"/>
County Tax Assessor-Collector (Asesor-Collector de Impuestos del Condado)		<input type="checkbox"/> KATHLEEN HAYES				<input type="checkbox"/>
County Commissioner, Precinct No. 1 (Comisionado del Condado, Precinto Num. 1)		<input type="checkbox"/> R. L. SCOTT				<input type="checkbox"/>
County Commissioner, Precinct No. 3 (Comisionado del Condado, Precinto Num. 3)		<input type="checkbox"/> JOEY R. KINDLE				<input type="checkbox"/>
Constable, Precinct No. 1 (Condestable, Precinto Num. 1)		<input type="checkbox"/> RICH MAGBY				<input type="checkbox"/>
Constable, Precinct No. 3 (Condestable, Precinto Num. 3)		<input type="checkbox"/> GERRY PIERCE				<input type="checkbox"/>

FOR (POR)
 AGAINST (CONTRA)
 "The constitutional amendment and/or clarification providing that federal reimbursement of state highway dedicated funds are themselves dedicated for the purpose of acquiring rights-of-way and constructing, maintaining, and policing public roadways."
 ("La enmienda y/o clarificacion de la constitucion que dispone que tambien el reembolso por el gobierno federal de los fondos dedicados a carreteras estatales estan dedicados a la adquisicion de servidumbres de paso y a la construccion, mantenimiento, y vigilancia de las carreteras publicas.")

FOR (POR)
 AGAINST (CONTRA)
 "The constitutional amendment establishing an economic stabilization fund in the state treasury to be used to offset unforeseen shortfalls in revenue."
 ("La enmienda constitucional que establece un fondo de estabilizacion economica en la tesoreria del estado que se utilizara para compensar por cualquier escasez imprevista de ingresos.")

FOR (POR)
 AGAINST (CONTRA)
 "The constitutional amendment to provide for the investment of the permanent university fund, the permanent school fund, and public employee retirement systems in the Texas growth fund created by the amendment, which will directly create, retain, and expand job opportunity and economic growth in Texas."
 ("La enmienda constitucional que da disposiciones para la inversion del fondo permanente de la universidad, del fondo escolar permanente, y de fondos de los sistemas del retiro de empleados publicos en el fondo para el desarrollo de Texas establecido por la enmienda y que directamente establecera, conservara, y adelantara las oportunidades de empleo y el desarrollo economico en Texas.")

Sponsored In The Public Interest By:





U.S. SEN. PHIL GRAMM and other senators who drafted the Senate's anti-drug bill meet with reporters in Washington to detail the tough new law. Pictured are, from left, Sens. Daniel Patrick Moynihan, D-N.Y.; Warren Rudman, R-N.H.; Phil Gramm, R-Texas; Pete Domenici, R-N.M.; Bob Graham, D-Fla.; Pete Wilson, R-Calif.; Strom Thurmond, R-S.C.; Sam Nunn, D-Ga.

Justine Hanes New Kiwanis Sweetheart

Fourteen Kiwanians and four guests met Friday morning at the Old Corral. Vice President Hugh Young called the meeting to order, James Roy Jones led the club in the Pledge to the flag and R.A. Bradley gave the invocation.

James Roy Jones gave the friendship coin to Don Clapp for saving James Roy a chair at the head table.

Guest present were Tadd Young, Charles Martin, Dr. Lawrence Ward and Justine Hanes. Justine is the Muleshoe Kiwanis Club's new Sweetheart. Justine is the daughter of Frank and Dorothy Hanes. Justine is a senior in Muleshoe High School.

The Kiwanis Club has been without a Sweetheart for quite sometime and I believe it has been worth the wait to have someone like Justine to be our sweetheart, commented R.A. Bradley. "Justine we welcome you to the Kiwanis Club and hope you enjoy it as much as we will enjoy you. We are proud to call you our sweetheart."

Vice President Hugh Young presented the 1988-89 Kiwanis budget to the club and it was approved by the club.

Scott Churchman introduced Dr. Lawrence Ward, Superintendent to the MISD. Dr. Ward talked about education, which is very dear to him. Dr. Ward stated that his aim to educate the

whole person, the three R's, Reading, Writing, and Arithmetic are very important but just the beginning. Teachers and parents we should teach our youth to win and they should learn to lose, to make decisions, to think-how to get along with others, etc... Dr. Ward stated that one half of the first grade today, by the time they get into the work force will be in jobs that do not exist today. This is quite a challenge to the educators to help teach our youth to be ready for something that does not exist now. Dr. Ward read the article "I learned it all in Kindergarten". If you haven't read this article, please do so, Bradley stated. Dr. Ward stated that learning is exciting. School should be the place where one feels as safe as you should be at home. A person, teacher or student who makes a mistake now and this is one who is learning, trying new things, thinking, Don't depend on others to do your thinking for you. This writer does not believe that we ever leave the learning field. We may get out of school but our education is just beginning. Just like when you started in the first grade you still have so much to learn from then to the end of life. "We appreciate Dr. Ward and the whole staff at MISD" Bradley said. "Please continue to educate The Whole Person. Thanks Dr. Ward for a wonderful program."

Debris from Texas beaches affects endangered sea turtles

COLLEGE STATION — When you're messing with Texas beaches, you may also be messing with the lives of endangered sea turtles.

A high correlation has been found between trash or debris on beaches and debris found in the stomachs of stranded turtles, says a Texas A&M University at Galveston researcher.

Plastic was the worst, occurring in nearly 80 percent of the turtle stomachs that contained debris and on about 97 percent of the beaches surveyed.

Approximately 85 percent of the debris categories found in turtles were recorded during beach debris surveys, says Dr. Andre Landry, a marine biologist. These categories include plastic, rubber, fishing line, tar, cellophane, monofilament rope, wax, styrofoam, aluminum cans, string and cigarette filters.

Hospital Questions And Answers

More questions have been received by the Journal concerning West Plains Medical Center. If you have any questions address them to Cleta Williams at the Journal.

Question: What patients are being transferred to Lubbock and why?

Answer: The family physician is capable of providing treatment for most illnesses and serves as the first point of encounter when medical care is sought. Speciality consultation is sometimes required for example (massive heart attacks, severe trauma, renal failure etc...)

Every effort is made to endure our patients receive the best possible medical care and when needed, speciality referral is made to specialist most often to Lubbock.

Once financial stability is obtained a full time surgeon and anesthesiologist will be added and the care at WPMC will become more inclusive.

Question: What can someone on a limited budget do to help the hospital?

Answer: A hospital has an ongoing list of small items that are needed. Some examples are pillow cases, gowns, baby shirts and blankets. Almost anyone can afford a small item or go together with a few friends and make a hospital gown or baby blanket. One item is just appreciated as a dozen.

For specific items that are needed please contact Kay Swint DON, at 272-4524.

Question: How many nurses work at the hospital now, and how are they broken down? RN, LVN's, etc...

Answer: The hospital employs a full time Director of Nurses (DON) who is an RN and who works on the floor part-time. We have a full-time 7-3 RN, a full-time 3-11 RN and a part-time RN who works 11-7. We have 3 part-time RN's who have full time jobs elsewhere and work an average of four shifts a month at our hospital.

We employ 2 full time LVN's on the 7-3 shift, two full time LVN's on the 3-11 shift, 4 full time LVN's on the 11-7 shift. We have 5 part-time LVN's who work an average of one to 16 days a month depending on census.

We employ one full time Nurses Aide on the 3-11 shift. We have one full time ward clerk. We have one part-time sterile supply tech. and one part-time surgery scrub nurse who also works in other areas.

At present the nursing staff works a four on two off schedule, which means they work four days and are off two.

Question: Who are the members on the West Plains Medical Center Board of Trustees?

Answer: Jim Burgess, David Stovall, Dorothy Green, Derrell

Jennings, Roland McCormick, Bruce Purdy, MD., Lewis Scoggin and J.R. Carter.


Question: Will the laboratory and pharmacy re-open?

Answer: Currently lab work is carried out at Muleshoe Diagnostic Lab, however, in November the hospital lab will be reopened.

The pharmacy is currently opened for inpatient services only. However, should the hospital add new physicians to the current staff, strong consideration will be given to adding outpatient retail services.



EMPLOYEE OF THE MONTH--Toni Eagle, "left" manager of the Muleshoe Chamber of Commerce, presented the traveling trophy and a certificate to Starla Ellis Thursday morning. Starla was named Employee of the Month by the CoC.



WRITE-IN CANDIDATE
JAMES WARREN
BAILEY COUNTY JUDGE
DEDICATED — CONSERVATIVE — EFFICIENT
Thanks For Your Vote
Paid Political Advertising By James Warren

APPLICATIONS ON TUESDAY ONLY - 8:30 - 4:30

The following jobs are now available in this area:

- *Driller Helper
- *Refrigeration & Heating
- *Body Shop Repair
- *Car Hop
- *Maintenance Man

These jobs are offered by the Job Training Partnership Act participating employers. Certain eligibility documentation will be required. Applications may be submitted and inquiries directed to J.T.P.A. department, Bailey County Community Action Center, 800 West American Blvd., Muleshoe, Texas 79347.

APPLICATIONS ON TUESDAY ONLY - 8:30 - 4:30

ATTENTION MR. EMPLOYER

May We Suggest That You Consider Hiring Job Training Partnership Act (JTPA) Participants...

50¢ Can Buy You \$1.00 In Training Cost

Participating Employer Advantages:

- *Re-Imbursement of up to 50% of wages you pay to eligible workers for up to 6 months.
- *A new employee trained your way
- *Candidates screened to your specifications
- *All hiring decisions made by you
- *All services provided at no charge
- *Re-Imbursement made on monthly basis
- *Minimal time required for records

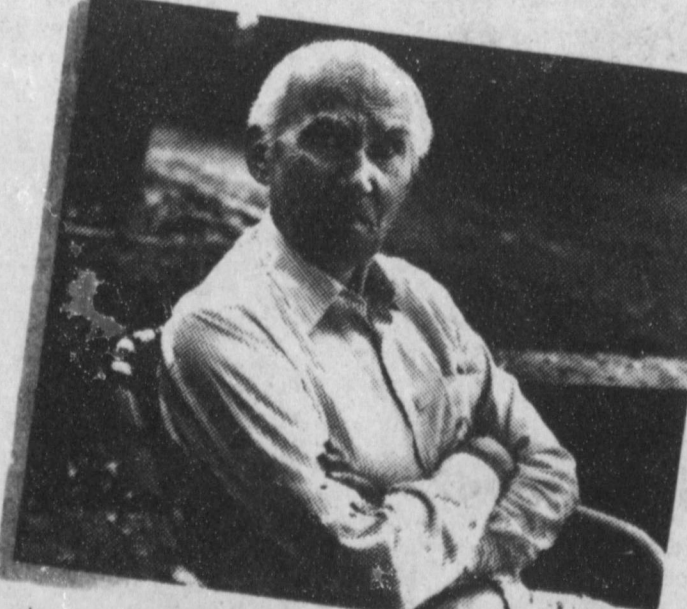
Employer Contract Obligations:

- *Must meet current minimum wage standard
- *Must have current federal tax ID
- *Must have workmen's compensation insurance in force

Contact:
South Plains Community Action
JTPA Staff

806-894-6104 Levelland, Texas
Joe Embry Charlie Bishop Brad Heffington

You said it was cold... He thought you called him old.



To someone with a hearing loss, a casual remark can often lead to misunderstandings and hurt feelings. Feelings you may never be able to set right. Because even though a friend or relative may hear what you say, he or she may have trouble understanding certain words. And one misunderstood word is all it takes.

Why take the chance? Be a good friend. Show someone how much you care. Call Beltone and make an appointment for a loved one now. Many hearing problems can be helped.

Friday, Nov. 11, 1988
10 A.M.-12 P.M.
Beltone®
Call Now For An Appointment To Avoid Waiting
Bailey County Coliseum
272-4114

HOUSE OF REPRESENTATIVES
WASHINGTON, D. C. 20515

LARRY COMBEST
19TH DISTRICT
TEXAS

DEAR FRIEND:

ON TUESDAY, NOVEMBER 8TH, WE FACE AN IMPORTANT ELECTION TO DECIDE THE FUTURE DIRECTION OF WEST TEXAS AND AMERICA.

FOR FOUR YEARS I'VE WORKED HARD TO BE YOUR VOICE IN CONGRESS FOR SOUND, CONSERVATIVE GOVERNMENT. WITH YOUR HELP, I'LL CONTINUE TO WORK FOR JOBS, A STRONG ECONOMY, AND PEACE THROUGH STRENGTH.

I URGE YOU TO VOTE, AND I ASK FOR YOUR SUPPORT ON ELECTION DAY.

Sincerely,
Larry

NOT PRINTED OR MAILED AT GOVERNMENT EXPENSE

Paid for by Combest Congressional Committee.

PTA Sponsors Annual Halloween Carnival

Ghost, goblins, witches and spooks roamed the streets of Muleshoe this week, beginning Saturday night, Oct. 29 when Muleshoe P.T.A. held their annual Halloween Carnival, at the Bailey County Civic Center.

In addition to the many booths, where the youngsters and some who were young at heart could throw balls and darts, go fishing in the fishing booth, enjoy a cake walk, play Bingo, just to name a few of the activities which could

be found at the carnival. In addition to many booths, the P.T.A. also held a costume contest and winners are as follows:

- Winners For Costume Contest**
0-2 YEARS
 1st - Cristin Bland.
 2nd - Brandi Whalin.
 3rd - Cameron Lunsford.
 h.m. - Erin DeHoyos.
3-4 YEARS
 1st - Paul Rodriguez.
 2nd - Jodi Hawkins.

- 3rd - Brittany Gore.
 H.M. - Erica Pollard.
Pre K & Early Childhood
 1st - Ricky Cogliandro.
 2nd - Brandon Mount.
KINDERGARTEN
 1st - David Morris.
 2nd - Kinsey Estep.
 3rd - Brandon Broyles.
 H.M. - Melody Cantu.

- 1st GRADE**
 1st - Lindsey Field.
 2nd - T.J. Hutto.
 3rd - Stephanie Marlow.
 H.M. - Blake Mount.
2nd GRADE
 1st - Kayna Puckett.
 2nd - Laura Freeman.
 3rd - Alma Gonzales.

- 3rd GRADE**
 1st - Lacy Tillman.
 2nd - Micaela Eagle.
 3rd - Amanda Puckett-New Zealand (home).
 H.M. - Amy Hooten; Courtnee Free.

- 4th GRADE**
 1st - Megan Harlan.
 2nd - Sara Watson.
 3rd - Jason Rasco.
 H.M. - Kyle Embry.
5th GRADE
 1st - Carissa Buie.
 2nd - Johnny Rodriguez.
 3rd - Cyle Marr.
 H.M. - Joshua Otwell.

- WINNERS FOR JACK-O-LANTERN CONTEST**
Pre-K through 2nd Grade
 Scariest - Joshua Pyle.
 Funniest - Stephani Marlow.
 Most Original - Landon Black.
3rd Grade through 5th Grade

- Scariest - Brandi Morgan.
 Funniest - Carissa Buie.
 Most Original - Koy Wilhite.

- WINNING BOOTHS**
1st - The Lost Forest, Spook House - Turner - Neal - Brown (fifth grade).
2nd - Grab Witch - Boyd (kindergarten).
3rd - Jewelry Wheel - Snitker (fifth grade).
 Honorable Mention - Dart Game - Sanchez (fifth Grade).

Swell Smell!

Glamor girl to clerk at perfume counter: "Do you have something that will bring out the mink in a man without disturbing the wolf?"



ATTENDING HALLOWEEN CARNIVAL---Misty Dixon, Lacy Tillman and Jenny Tillman all enjoyed the PTA Halloween Carnival last week.



HALLOWEEN COSTUME---Contestants in the Halloween Costume Contest were dressed in all kinds of attire when they visited the PTA Halloween Carnival.

Mary Hanna
 and
 Peggy Ray
 with
 H&R Block
 and
 High Plains Underground Water Conservation District No. 1
 will be having an
OPEN HOUSE
 Friday, November 11, 1988
 from 9:00 a.m. until 4:00 p.m.
 in their new offices at 224 W. Second
 Muleshoe, Texas
 Ribbon Cutting Ceremony
 will be at 10:30 a.m.
 Please come and help us celebrate



LITTLE BRIDE---Jessica Shelly Carpenter, daughter of Mr. and Mrs. Curtis Carpenter, dressed as a little bride at the PTA Halloween carnival last Saturday night.

Gerald McCathern for Congress

- ☆ in oil: Texas Tech Graduate-Petroleum Geology
- ☆ in Business: Publisher of National Newsletter
- ☆ in Agriculture: Successful Farmer

Gerald McCathern's roots go deep in the 19th Congressional District. He and his wife Bonnie, were married in 1947 in Lubbock and moved to Midland after earning his degree in Petroleum Geology at Texas Tech. He worked as a geologist on wildcat oilwells throughout the Permian basin before moving to Hereford, buying a farm and establishing a long and successful career as a farmer and stockman. Because of his long record of service in civic and industry organizations, in 1981, President Reagan honored him by

appointing him as a Special Assistant to the Secretary of Agriculture in Washington, D.C. Gerald is well experienced to represent the oil and gas industry as well as the agriculture industry of West Texas. "We are all dependent, one upon the other," Gerald says. "A prosperous oil and agriculture industry means prosperous service and supply businesses--which means productive jobs for our workers--which relates to a stronger tax base with which to support our important educational institutions as well as our county and city governments."



Gerald & Bonnie are proud of their family.
 ☆ Married for forty years. ☆ Three children, five grandchildren.
 ☆ Christians, members of the Church of the Nazarene. ☆ Committed to traditional Christian family values.

Who reflects family values?

Dallas Times Herald criticizes politicians who campaign on "traditional family values", but fail to practice those values.

DALLAS TIMES HERALD, Sunday, November 11, 1984

Molly Ivins/Family Tradition

Lots of curious aspects of the recent electoral festivities to chew over. Now here's a potential trend: An interesting number of those who won re-election this year by blathering constantly about their devotion to "traditional family values" have themselves sought traditional family divorces. The case of Ronald Reagan, who is once-divorced and apparently not close to any of his children, is often cited for its irony. Now we have several other examples as well. Our conser-

vative Republican Sen. John Tower, once divorced, is being replaced by a right-wing Republican, Phil Gramm, also once divorced.

Of the new Republican congressmen from Texas Dick Armye of Denton has been divorced once, Larry Combest of Lubbock three times. None of this would be remarkable or even interesting save for the political irony of these folks harping about how "pro-family" they are.

EXPERIENCED TO DO THE JOB

It's Time To Put America First!

Where McCathern Stands On The Issues

- | FOR | AGAINST |
|--|---|
| <ul style="list-style-type: none"> • Well funded educational programs • Balanced budgets • More productive jobs • Less taxes, more taxpayers • Strong defense • Strong Social security/Medicare • Cost of living adjustments for retirees • Oil import tariff • Protected veterans rights • Prayer in school • Higher agricultural prices • Constitutional government • Aid to the hungry and homeless • College student loans for education • Workforce instead of welfare | <ul style="list-style-type: none"> • Abortion • O.P.E.C. control of U.S. energy policies • Foreign aid except for humanitarian reasons • Imports which destroy U.S. industry & jobs • Cuts in medicare benefits for the elderly • Gun control • Unemployment • Drug pushers and users • Cuts in educational funds • Economic policies which cause bankruptcies • Graft and corruption by government officials • Tax dollars used to fund U.N. World Bank, IMF • Buyup of America by foreigners • Tax credits to off-shore industries • Uncontrolled spending by federal government |

But What About Your Other Choice?

Larry Combest has sold your Congressional Seat to the highest bidder--and that isn't the voter in the 19th Congressional District! Since 1984, he has accepted over \$400,000 in special interest political action (PAC) money. And while businesses, industries, oil companies, farms and banks have been failing by the thousands in the 19th District, many of these special interest corporations have been making the highest profits in their history. Here is just a partial list of those corporations which control the votes of your Congressman.

- | | |
|--|--|
| Rockwell International | Commodity Exchange PAC |
| Occidental Petroleum Company | Commodity Futures PAC |
| E.F. Hutton Group | CONAGRA Inc. |
| Louisiana Land and Exploration | Dow Chemical Company |
| Baltimore Gas and Electric | J.G. Boswell Company |
| Borg Warner | Monsanto |
| Broyhill Furniture | Nestle Enterprises, Inc. |
| Dr. Pepper Company | RJ Reynolds PAC |
| Exxon Corporation | Solomon Bros. Inc. PAC |
| Grumman PAC | Tenneco, Inc. |
| Houston Natural Gas Corporation | Tobacco Institute PAC |
| Hunt Oil Company | Union Pacific Corporation |
| King Ranch, Inc. | Westinghouse Electric |
| Lockheed PAC | American Telephone & Telegraph Company |
| Louisiana Energy | Archev Daniels Midland Company |
| NABISCO Brands, Inc. | Cabot Corporation |
| Pacific Lighting Corporation | Cameron Iron Works, Inc. |
| PepsiCo | Coca-Cola Company |
| Philip Morris PAC | Delaware Valley PAC |
| Sears PAC | Emerson Electric Company |
| Winn-Dixie Stores | Electrospace Space Systems |
| ThriftyMart, Inc. | Fairchild Industries, Inc. |
| American Airlines | K-Mart Corporation |
| American Medical Association | Safeway Stores, Inc. |
| Auto Dealers and Driver for Free Trade (Foreign) | FMC, Corp. |
| General Motors Corporation | Plus Many More |
| | TOTAL Since 1984 \$408,242 |

...And many more for a grand total of \$408,242 since 1984

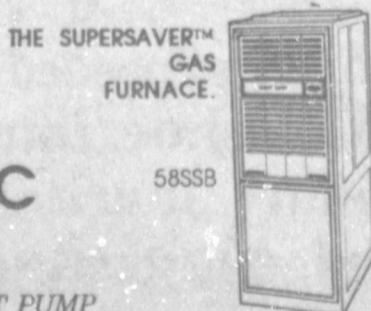
☆☆☆Gerald McCathern has refused to accept any PAC contributions in this election... he will represent you!!

Paid for by the McCathern for Congress Committee

CARRIER BAREFOOT COMFORT SALE!

4.9% A.P.R. Financing!

Get barefoot comfort and be cozy all winter long when you buy a Carrier deluxe heat pump or gas furnace now and you'll save with 4.9% financing for a full year. **Limited time offer, so don't delay.**



CALL US TODAY!
 Get Carrier comfort now with nothing down for qualified buyers. Ask for details on Carrier Retail Credit. Offer good on models 38ED, 38ES, 38QD, 58SX, 58SSB and 58H9 only. Offer expires Dec. 9, 1988. Available to homeowner-occupants only.

BOMER ELECTRIC
 Call 272-5175

ASK ABOUT THE DUAL FUEL HEAT PUMP

Letter To The Editor

Big Spring State Hospital is the "catchment area" for 56 counties in West and Northwest Texas: Brewster to Parmer County, El Paso to Callahan County. "Catchment" means: anyone, in these 56 counties, who needs to be hospitalized for any type of mental illness will come to BSSH for treatment.

Volunteers, working through the Volunteer Services Council, work very hard to make a client's stay at BSSH as pleasant as possible. They have birthday parties, picnics and ice cream in the summer, Halloween and Valentine festivities, Christmas parties, and a gift under the Christmas tree for each client on Christmas morning. The volunteers maintain a library for the clients; offer a sympathetic ear and helping hand to families of clients, and maintain a resale shop, The Chalet, in downtown Big Spring to help finance their projects. The list could go on and on. The volunteers are dedicated, hard-working people who gladly give of their time, money and energy to help others.

During this economic crunch, donations from Big Spring citizens have been less, and, with more people working two jobs, it is harder to get volunteers to help. We, the volunteers, could use financial and physical help from all the other counties served by Big Spring State Hospital.

The present volunteers will not quit doing all we can for the clients of BSSH, but we could use some help.

Sincerely
Doris Day
Volunteer
Editor,

In 1985 a farm bill was passed and designed to benefit the big commodity traders and merchants at the expense of farmers. This farm bill is also a Combest Farm Program. In 1985, on 8 different occasions, Larry Combest voted against higher market prices for farm commodities and he voted for the current program.

Since the passing of the 1985 bill, U.S.D.A. figures show that over 2500 farmers have gone out of business per week. Figures also show that for every 5 farmers gone that 1 Agri-Business has gone.

The 1985 farm bill is Government Control of the farming industry. When we sign up in the program, all information goes into the government computers. U.S.D.A. has reported that the 1985 program has the largest percentage of farmer participation of any previous program. Farmers are forced to participate to receive government payments.

On June 21, 1972 the U.S.D.A. gave a report before the 92nd congress. It was published in Vol. 118 No. 101 in the congressional record. The report was titled "New Directions for U.S. Agricultural Policy". It recommended that farm policy disregard the incomes of farmers and be concerned only with assuring production. It planned a \$6 billion decline in farm income and speculated on the number of farms dropping to 600,000 from 2.7 million of 1972. The report stated that non-recourse loans would be reduced to a "Disaster Price" level for feed grains and wheat and to zero for all other commodities. It also stated that eliminating the parity ratio would be a major improvement. The report further stated that given these conditions, agriculture cannot and should not be expected to provide employment opportunities sufficient to preserve the nations rural towns and communities. When this report was made in 1972, no one ever thought that the plans would ever be followed or implemented. The under secretary of agriculture served as chairman to the committee that made and recommended this report. His name was Richard Lyng. Today, as Richard Lyng serves as the secretary of agriculture in 1988, he must feel very successful in watching the 1985 farm bill reach the goals of the U.S.D.A. young executives committee of 1972.

Lets all vote for a change in direction and vote for Gerald McCathern for Congress.

Sincerely,
Garvin Thorn,
HCR 1 Box 144
Frona, TX
Hub Exchange 806-265-3437

Dear Editor:

In reference to an earlier press release published in your paper, the Bailey County Farm Bureau Board of Directors would like to make the following comment. The Texas Farm Bureau *Ag Fund* has released a list of candidates that it supports with voluntary contributions by Farm Bureau Members. Bailey County Farm Bureau is not a member of this fund and our membership does not participate. Bailey County Farm Bureau does not endorse any political candidate, and believes that their members should vote for the candidate of their individual choice. The board of directors urge that each resident of Bailey County vote in this very important election, and for their individual choice.

The Board of Directors
Bailey County Farm Bureau

Enochs News
By:
Mrs. J.D. Bayless

Mrs. Ellen Bayless and Mrs. Etta Layton visited Mrs. Juanita Snow in Muleshoe Wednesday afternoon. Mrs. Bayless also visited Mrs. Clara Coffman.

Mrs. Jerry Nichols of Muleshoe, formerly of Enochs, was admitted to Littlefield Medical Center for tests and X-rays. Mrs. Etta Layton and Mrs. Ellen Bayless visited her Monday.

Harold Layton of Dell City visited his mother, Mrs. Etta Layton, and spent Thursday night with her.

Mr. and Mrs. Dale Nichols visited his aunt, Mrs. Anna Mae Morris, at the Littlefield Medical Center Saturday. They also visited their daughter-in-law, Mrs. Jerry Nichols Sunday afternoon.

No excuse is as good as a satisfactory performance.

Texas Nurses Have Endorsed Mel Phillips

The Texas Nurse Association announced its endorsement today of Democratic Senate Candidate Mel Phillips. Citing Mel's dedication to maintaining a high level of health care in this community as well as the entire 31st district as the main reasons for their endorsement.

"Mel Phillips has been working for our community for a long time. During this campaign Mel has found solutions to some of these areas most pressing health care needs. The salt in our drinking water is one of these pressing issues. Our Sr. Citizens, people with high blood pressure, pregnant women, all are affected by the high sodium content of our water. Mel has found a way to reduce the salt levels," says Dr. Joyce Walsh, President, District Two Texas Nurses Association.

"Another problem that this area is experiencing is our

growing lack of rural health. Mel has been working closely with the state's Interim Committee on Rural Health Care, chaired by Sen. Richard Anderson, to see if we can find some relief for our rural hospitals," added Dr. Walsh.

"I have a special place in my heart for the people who provide our health care. My mother was a Licensed Vocational Nurse, so I understand the problems that affect both the people who provide our health care and our folks who receive it. There are two issues that are paramount in the upcoming session and both deal with health care. The first is reducing the salt in our drinking water, and the other is keeping the doors of our rural hospitals back open. These are the two issues that I will work on to see that our area of Texas gets its fair share," says Phillips.



R.L. Scott

I would like to take this opportunity to once again thank all the people who supported me in the primary and run-off election.

I encourage everyone to go vote in the General Election on November 8th. Its very important to our county as well as our country that you exercise your privilege to vote - your vote does count!

Pd. For By R.L. Scott



BUSINESS OF THE MONTH--B&B Medical Supply was named Business of the Month Thursday morning by the Muleshoe Chamber of Commerce. Delfina Martinez and Mark Benedict accepted the plaque from the CofC.



WITCHES BREW ANYONE?--Refreshments being served by Muleshoe Girl Scouts during their carnival Halloween night.

Who Knows?

1. Name the capital of Egypt.
2. Who created "Charlie Brown"?
3. Name the Pelican State.

4. What is another word for spasmodic?

- Answers to Who Knows**
1. Cairo.
 2. Charlie Schulz.
 3. Louisiana.
 4. Stuttering.

BAILEY COUNTY VOTERS:

As election time draws near, think of your tax dollars and vote for
JAMES WARREN
for
COUNTY JUDGE

Your only conservative candidate that is concerned.

THANKS FOR YOUR WRITE IN VOTE
JAMES WARREN



CLEAN UP AT Robert D. Green

1987 and earlier		
8" white painted rear bumpers	Was 84.50	Now 67.50
1 lot of used chrome rear bumpers	Was 165.00	Now 75.00
Tailgate protectors	Was 17.25	Now 12.75
Painted headache racks	Was 100.00	Now 75.00
Chrome headache rack	Was 145.00	Now 105.00
AM-FM PU radios	Was 187.50	Now 100.00
Sliding rear window	Was 99.00	Now 73.00
Stone guards	Was 17.75 pr	Now 14.55 pr
Front floor mats for vans	Was 23.00 pr	Now 18.85 pr
1988 and later		
1988 chrome grille guard	Was 200.00	Now 160.00
1988 Sliding rear window	Was 79.95	Now 53.50
8 ft. square load lockers	Was 76.75	Now 49.95
36" side mount tool boxes	Was 75.50	Now 53.50
Splash guards for cars	Was 5.50 pr	Now 3.30 pr

Prices Limited to parts in stock
Robert D. Green, Inc.
2400 W. Amer. Blvd. 272-4588



Mr. Goodwrench

Mel PHILLIPS
WILL WORK FOR US. . .

ENDORSED BY:



NATIONAL RIFLE ASSOCIATION (NRA)
"We appreciate the strong commitment you have made to the law abiding firearm owners of Texas."

YOUNG CONSERVATIVES OF TEXAS
"We believe that you will uphold the principles of Liberty, Limited Government, and Free Enterprise which are clearly in the best interest of Texas."

AMARILLO POLICE OFFICERS ASSOCIATION
"The Amarillo Police Officers Association believes that you are committed to seeing that the state government uses its resources to aid local police and district attorneys in their war on drugs."

- Texas State Teachers Association • Combined Law Enforcement Association of Texas
- Amarillo Fireman's Association • Texas Firemarshal's Association • Texas Sugar Beet Growers
- Texas Volunteer Fireman's Association • Texas Consumer Association
- Texas Medical Association • Texas Association of Nurses • Castro County News
- Amarillo Classroom Teachers Association • Rural Friends (Electric Co-op)
- American College of Emergency Physicians, Texas Chapter • Frona Star
- Texas Association of County Officials • Bovina Blade

NO STATE INCOME TAX

Pol. Adv. Paid for by Mel Phillips For Senate Committee, 514 South Polk, Amarillo, TX 79101, Dennis Clouch, Treasurer.

Enochs News

by: Mrs. J.D. Bayless

Mr. and Mrs. Bill Key visited his sisters, Mrs. Mildred Butler and the Hubert Garmons at Weatherford Friday night Oct. 22 and drove on to Mounty Vernon Saturday to be with the R.M. Walker family they met at the Ramada Inn. There were 51 there kin to the Walkers. On Sunday they attend church at the Mount Vernon Baptist Church.

The five walker children surprised their parents with a get together to help them celebrate their 50th wedding anniversary Oct. 23.

Weldon, a son, had compiled a book of pictures and letters from friends who had sent them.

The reception and fellowship was held in the Franklin National Bank parlor at Mount Vernon, there was over 130 registered.

The Bill Key's also celebrated their 51st Anniversary with them. Mr. and Mrs. J.F. McGennis of Lubbock and son Jerry and the Keys spent Sunday night with the Walkers.

Mrs. Etta Layton and Mrs. Ellen Bayless visited Mrs. Jerry Nichols in the Littlefield Hospital Monday, Mrs. Dale Nicholos also visited her. Mrs. Olive Cox, Mrs. David McDaniel and Jerry and children.

Visiting Mr. and Mrs. Dale Nicholos Thursday was her brother, Walt Sandefer of Midland, and their daughter, Paula and James Grand and Ashley of Odessa.

Sunday after church there was a fellowship and dinner. In the afternoon they had singing. Buford Peterson led the congregational singing and him and Mrs. J.C. Snitker sang two specials Elnita Key read a poem Bro. David Graves made a talk, Ted Belez, Mrs. Belez, Sid Key and Ruby Hinojos played their instruments and sang specials for us, Mrs. Jerry Nichols played the organ and Buford sang a special we enjoyed it all very much. Ellen Bayless led the closing prayer.

Mrs. Ima Roberts visited Mrs. Bill Key Monday morning.

Kristen and Landon Nicholos of Muleshoe spent Wednesday night with their grandparents, Mr. and Mrs. Dale Nicholos.

Mr. and Mrs. Jerry Nicholos and children of Muleshoe were visitors at the Baptist Church Sunday.

Mr. and Mrs. Buford Peterson are home from a two weeks trip, they visited their son, Mr. and Mrs. Morris Peterson and family at Hillsboro and visited her sister, Mr. and Mrs. Jack Houguton at Saratoga.

Visiting Mr. and Mrs. Goldman Stroud Sunday afternoon were Mr. and Mrs. Boyd Maxey

Claude Goodson

Graveside Services Held Here

Graveside services for Claude Goodson, 84, of Logan, N.M. were conducted at 2 p.m. Saturday, Nov. 5 in the Muleshoe Cemetery with the Rev. Bob Reid, minister of the First Baptist Church in Logan, officiating.

Burial was in Muleshoe Cemetery under the direction of Ellis Funeral Home of Muleshoe. Goodson died at 5:45 p.m. Wednesday in the Veterans Administration Hospital at Albuquerque, N.M.

Born Jan. 13, 1904, in Oxanna, Alabama, Goodson had been a resident of Logan for 13 years, moving there from Santa Fe, N.M. He was employed by the Game and Fish Department, a member of the Masonic Lodge, V.F.W. and Disabled American Veterans, and was a veteran of World War II, serving in the U.S. Navy. He married Virginia Edmondson on Jan. 20, 1975, in Farwell.

Survivors include his wife, Virginia; a step-daughter, Betty Ann Christopher of Las Vegas, Nevada; one step-granddaughter; one great step-grandchild; and several nieces and nephews.

from Littlefield.

Mrs. Myrna Turney and daughter, Mr. and Mrs. Terry Drinnan of Morton, did some fishing Saturday 22- Thursday 27 at Amstead.

Mrs. Ellen Bayless drove to Muleshoe Sunday afternoon to visit her nephew Jim Swanner at the Hospital and they had transferred him to Methodist Hospital in Lubbock. She visited Mrs. Juanita Snow.

Mr. and Mrs. Buford Peterson and her sister, F.A. Smith attended the funeral of a friend, George McKinney at Wichita Falls last Wednesday.

Mrs. Bill Key, Mrs. Bobby Adams and Mrs. Bonnie Long visited Mrs. Naimo Julian and her daughters, the Gary Freemans, and Mrs. Ruby Everett and son Kenyth in Muleshoe

Wednesday.

Thursday night, Kenyth Key and 3 other men from Edroy spent the night with the Bill Keys.

Mrs. Winnie Byars visited her granddaughter and family Mr. and Mrs. Randy Robinson Sunday evening, her daughter, Mr. and Mrs. Henry Hardaway were there.

Mr. and Mrs. Hardaway and son, Tommy Jo and daughter Bridget from Texarkana, and Larry Eckhoff of Louisiana are visiting Mrs. Byars.

Mr. and Mrs. Burley Roberts and son Tory visited their daughter Mr. and Mrs. Greg Bruton and children in Lubbock Saturday, they also visited her mother, Mr. and Mrs. J.W. McDaniel while in Lubbock.

Mr. and Mrs. Bobby Adams, Mrs. Winnie Byars and Mrs. Ellen Bayless had dinner at the Senior Citizens in Morton Thursday. We always enjoy the visiting and food was so good.

Mr. and Mrs. Dale Nicholos went to the West Texas Opry in Lubbock Saturday night.

Sid Key took his son to the plane in Lubbock Monday for home, in returning home he stopped in Littlefield and visited the Homer Howards and the Esteps.

Monday the 17, all of the former Fort daughters were together and had dinner at the home of a sister, Doris and Bud Huffs' home. They were Mr. and Mrs. Bill Key, Mr. and Mrs. Bobby Adams, Mrs. Bonnie Long, and Mr. and Mrs. J.P.

Meek, they enjoyed visiting, singing and playing chicken scratch. Mrs. Mamie Adams also visited with the group.

Brent George of Lubbock visited his grandparents, Mr. and Mrs. E.N. McCall Friday afternoon.

HIGH PLAINS ANTIQUE DEALERS ASSOCIATION
ANTIQUES AND COLLECTABLES SHOW AND SALE
DEPRESSION AND CARNIVAL GLASS
PRIMITIVES, FURNITURE AND GLASSWARE
 Saturday, Nov. 12 10 A.M. - 6 P.M.
 Sunday, Nov. 13 12:00 - 5 P.M.
ROY S. WALKER COMMUNITY CENTER
 316 Grand (where first street; HWY 60; merges into west grand avenue) Clovis, N.M.
ADMISSION \$1.50 DONATION
 For information contact Royel M. Odell (505) 763-6095

Immaculate Conception Catholic Church

Father Patrick Maher Northeast of City

First Baptist Church
 220 West Ave. E. Barry Bradley, Pastor

Emmanuel Baptist Church
 Iglesia Bautista Emmanuel 107 East Third Isaias Cardenas, Pastor

Trinity Baptist Church
 314 E. Ave. B. Rev. Dale Berry

Circle Back Baptist Church
 INTERSECTION FM 3397 & FM 298 946-3676

Calvary Baptist Church
 1733 W. Ave. C. Rev. Rick Michael

Muleshoe Baptist Church
 8th and Ave. G. Bob Dodd, Pastor

Progress Baptist Church
 Charles Fisk, Pastor Progress, Texas

Richland Hills Baptist Church
 17th and West Ave. D Allen Petersen, Pastor

St. Matthews Baptist Church
 Corner of West Boston & West Birch M.S. Brown, Pastor

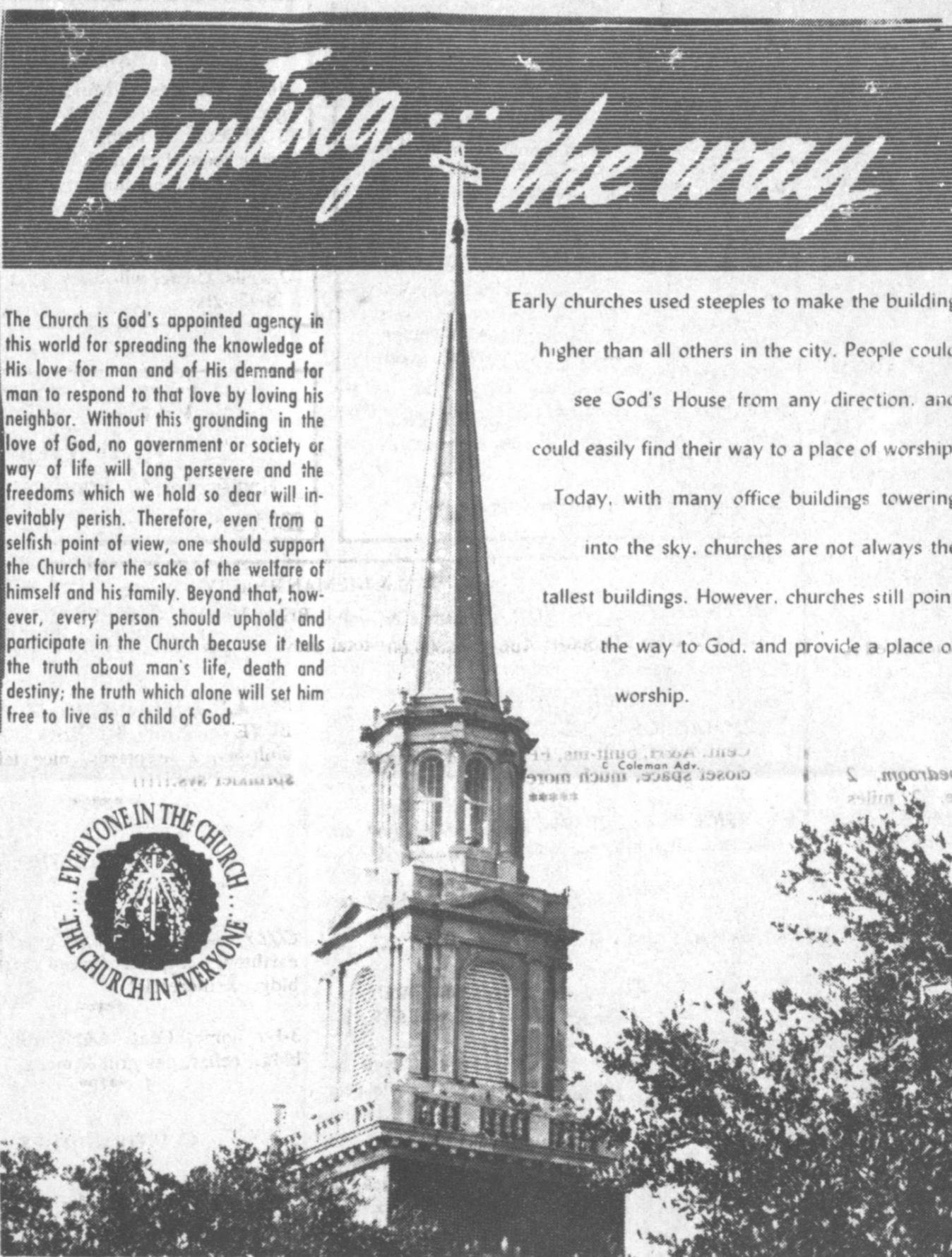
Progress Second Baptist Church
 1st and 3rd Sunday Clifford Slay, Pastor

The Community Church
 Morton Hwy. Jim Cope, Pastor 272-5992
1st Baptist Church
 Lazbuddie, Tx. 965-2126 Gary Wilcox, Pastor

Pointing the way

The Church is God's appointed agency in this world for spreading the knowledge of His love for man and of His demand for man to respond to that love by loving his neighbor. Without this grounding in the love of God, no government or society or way of life will long persevere and the freedoms which we hold so dear will inevitably perish. Therefore, even from a selfish point of view, one should support the Church for the sake of the welfare of himself and his family. Beyond that, however, every person should uphold and participate in the Church because it tells the truth about man's life, death and destiny; the truth which alone will set him free to live as a child of God.

Early churches used steeples to make the building higher than all others in the city. People could see God's House from any direction, and could easily find their way to a place of worship. Today, with many office buildings towering into the sky, churches are not always the tallest buildings. However, churches still point the way to God, and provide a place of worship.




Longview Baptist Church

965-3413 B.C. Stonechiper, Pastor
Primera Iglesia Bautista
 223 E. Ave. B. Roy Martinez, Pastor

Lariat Church Of Christ
 Sunday School 10:00 a.m. Worship 11:00 & 6:00 p.m. Wednesday Services 7:00 p.m. Sam Billingsley, Minister

Muleshoe Church Of Christ
 Clovis Hwy. Bret McCasland, Minister
 16th & Ave. D. Church Of Christ
 Sunday 10:30 a.m. Evening 6:00 p.m. Wednesday 8:00 p.m.

First Assembly Of God
 Rev. David C. McCune 9:45 Sunday School 11:00 Morning Worship 6:30 Evening Services 7:30 Mid-week Services 272-3984

Primitive Baptist Church
 621 South First Elder Cleveland Bass, Pastor
Spanish Assembly Of God

East 6th and Ave. F. Mike Doyle, Pastor
First United Methodist Church

507 W. 2nd Street Richard Edwards, Pastor
El Divino Salvador Methodist Church

5th and Ave. D. Jose M. Fernandez, Pastor
Lazbuddie Church of Christ

965-2932
United Pentacostal Lighthouse Church

207 East Ave. G. Rev. J.A. Torres

St. John Lutheran
 Sunday School and Bible Classes 9:30 a.m. Church Services 10:30 a.m. Rev. Mac Bearss, Pastor

Templo Calvario
 507 South Main Sunday 10:00 a.m. Sunday Evening 7:00 p.m. Evangelistic Services J.L. Soto, Pastor
Jehovah Witness
 Friona Hwy. Boyd Lowery, Pastor

New Covenant Church
 Plainview Hwy. Sunday 10:00 a.m. Wednesday 7:00 p.m. Jimmy Lowe, Pastor
Church Of The Nazarene
 9th and Ave. C. Dennis Hayes, Pastor

Lazbuddie Methodist Church
 965-2121 Larry Reid Farris, Pastor
Truth Tabernacle (Pentecostal Church)
 200 E. Ithaca & Fir Pastor: Les James 272-3391

Western Drug 114 Main 272-3106	Serv-All Thriftway 401 W. Amer. Blvd. 272-4739	American Valley, Inc. W. Hwy. 84 272-4266	Dairy Queen 1204 W. Amer. Blvd. 272-3412
Little Gulf 202 W. Amer. Blvd. 272-4918	KC Mufflers Inc. 201 North First 272-3620	Farmers Co-Op Elevators Muleshoe 272-3988	Muleshoe Publishing Co. 304 W. 2nd 272-4536
Bob Stovall Printing 221 E. Ave. B. 272-3373	Lenau Lumber 202 E. Ash 272-4222	Bratcher Motor Supply 107 E. Ave. D. 272-4283	Bobo Insurance 108 E. Ave. C. 272-4264
Main Street Beauty Salon 115 Main 272-3448	Wes-Tex Feed Yards 272-7555	Foster Fertilizer Lazbuddie 965-2921	Five Area Telephone Cooperative, Inc. 302 Uvalde 272-5533
Irrigation Pumps & Power West Hwy. 84 272-4483			Richland Hillis Texaco 1914 W. Amer. Blvd. 272-4875



Play It Smart... Get Into THE CLASSIFIEDS

272-4536

CLASSIFIED RATES
Minimum Charge \$2.30

Consecutive Insertions
Minimum Charge \$2.00

CLASSIFIED DISPLAY RATES
\$1.75
Per Column Inch

DEADLINES
12 noon Tuesday
For Thursday Paper
12 noon Friday
For Sunday Paper
We reserve the right to classify, revise, or reject any ad. Not responsible for any error after ad has run once.

1. Personals

FRANK'S
Refrigeration & Appliance Service Parts & Repairs.
817 Gum
Muleshoe, Texas 79347
PHONE
Home 272-3822
fl-6s-tfc

DO YOU NEED a place for a horse or horses close to town? Call 272-4488 after 7:30 p.m.
p1-44s-6tp

\$60.00 PER HUNDRED remaining letters from home! details, send self-addressed, stamped envelope. Associates, Box 309-T, Colonia, NJ 07067.
p1-44s-4tp

Babysitting in my home for 18 months or older, Monday-Friday, 8:00 a.m. to 6:00 p.m. Call 272-4184.
b1-43t-4tc

Call your local used cow dealer for 7 day a week dead stock removal. 965-2903 or 1-800-692-4043.
cl-37t-tfc

Wanted: Responsible party to assume small monthly payments on piano. See Locally. Call Credit Manager 1-800-447-4266
p15-43s-8tc

CONCERNED
About Someone's Drinking?
HELP IS AVAILABLE
through Al-Anon
Call 272-2350 or 965-2870 or come to visit Tuesday nights, 8:00 p.m. or Saturday mornings at 10:30 a.m. and through AA call 965-2870 or come visit Tuesday nights, 8:30 at 620 W. Second, Muleshoe.

2. LOST & FOUND

MISSING: New skateboard: White with maroon wheels, and Dr. Pepper design. Last seen Friday afternoon, 608 W. Ave. G (Birthday Present) Reward offered for return in good condition. Call 272-5517 or 272-5610 after 3.
t2-44t-2tc

2. Lost & Found

LOST FEMALE Siamese cat wearing a white flea collar, last seen Oct. 13 on the 1400 block of Ave. C. If seen call 272-3581 after 5 p.m.
w2
w2-44s-3tc

3. Help Wanted

NEEDED: Cook and dishwasher, West Plains Medical Center. Come by the hospital for application.
w3-45s-tfc

NEEDED: LVN for Muleshoe Nursing Home. Contact Awilda Hayes RN-DON, at 272-3861, 9-5 Week-days.
w3-45s-3tc

5. Apts. For Rent

APARTMENTS FOR rent: Good Locations 1 and 2 bedroom furnished or unfurnished. 272-7575
p5-38s-tfc

8. Real Estate

4 BDRM. home in good location fenced in yard with storage building, 1621 W. Ave. C. Call 894-3889.
s8-15t-tfc

NICE 3 bedroom, 2 bath house, 2 miles west of Muleshoe. With large barn. Nice location. Call 946-3340.
d8-25s-tfc

FOR SALE: 2 bedroom 1 bath mobile home on 60 x 100 lot with 2 car carport in Country Club Addition. Call
Call: 925-6480 after dark.
08-45s-tfc

FOR SALE: by owner, 3-2 Large Living area plus game room. Detached 2-car garage on Chicago. Will consider a reasonable offer. (505) 257-7667.
v8-45s-4tc

FOR SALE BY OWNER
Frame Stucco, 3 bedroom house, 410 W. 2nd. Would make nice office space. Call (505) 965-2675.
m8-45s-3tc

9. Automobiles For Sale

AUTOS FOR SALE
BUY GOVERNMENT seized and surplus vehicles from \$100.00. Fords, Chevys, Corvettes, etc., in your area. For information call (602) 842-1050, ext. 2841.
p9-44t-3tp

FOR SALE 1972 Mercury, 400 engine 86,000 actual miles. Call 272-4561 or 272-3901 after 5.
c9-44t-3tc

12. Household Goods

KIRBY Sales and Service. 1012 E. 3rd, Portales, N.M. Call for service or free home demonstration on '89 model Kirby. Call 1-505-356-6110.
Kf2-42t-8tc

8. Real Estate 8. Real Estate

JAMES F. HAYES & CO.
AGRICULTURAL REAL ESTATE.
Vic Coker-Agent
(806) 965-2468

2 LABORS SOUTH OF MULESHOE
Longview Area, Good Soil, fully allotted
Call for more details.

313 ACRES on P. er County-Castro County line. 2 w. tailwater pits, good allotments, steel barn, terms available.

2-160 Acre tracts northwestern Lamb County good water-2 wells on each farm good soil; lay good, Immediate possession.

1-210 Acre Farm-Lamb County: Steel barn & other improvements, 2 wells lots of underground pipe good-soil & lays good. Immediate possession available.

640 ACRES NORTH OF LAZBUDDIE- ON PAVEMENT, 1 sprinkler, good soil water, some grass.

80 ACRES East of Muleshoe with center pivot sprinkler, alfalfa & alfalfa, good opportunity.

107 ACRES East of Muleshoe, center pivot sprinkler, many allotments, wheat & alfalfa. NICE

Call Vic for Farm & Ranch Appraisals

8. Real Estate

116 E. Ave. C. **BINGHAM & NIEMAN REALTY** 272-5285 or 5286
PRICES REDUCED UP TO \$7,000 on 2 & 3-1-1 Brick Homes, Cent. heat, Energy Efficient. PRICED FROM \$23,500!!! Approx. \$600.00 total move-in, payments based on income for qualified Buyers!!!

RICHLAND HILLS
IMMACULATE 3-2-2 Brick, corner lot, Cent. A&H, built-ins, FP, loads of storage & closet space, much more!

PRICE REDUCED 3-1-1 Brick, Cent. Heat, Evap. air, built-ins, fenced yard.....

JUST LISTED-Very nice 3-2-3 Home, Cent. A&H, built-ins, FP, fans, splkr. sys., fenced. PRICED TO SELL!!!!

JUST LISTED-3-2-2 Brick, Cent. A&H, built-ins, FP, nice patio, & more. \$60's!!!!

3-2-1 Brick, Cent. A&H built-ins, fenced yard, new carpets, painted interior, fenced yard!!!!

HIGHLAND AREA
JUST LISTED - Nice Large 2-2-2 Brick, Cent. A&H, utility, cov. patio, fenced yard & more!!!!

VERY NICE 3-2-2 Brick, Cent. A&H, newly remodeled kitchen with built-ins, storm windows, fenced yard, storage bldg. and much more!!!!

NICE 3-2-2 Brick Home (2 story), on corner lot, Cent. A&H, built-ins, and much more. LET'S LOOK TODAY!!!!

2-2-1 carport Brick, Cent. A&H, built-ins, fenced yard & much more. PRICED TO SELL!!!!

Nice 5-3 Brick Home, Cent. A&H, built-ins, utility earthtone carpets, covered patio, fenced yard & much more. \$60's!!!!

JUST LISTED-Nice 3-1-1 Brick Home, Cent. A&H, built-ins, large den w/fireplace, fenced yard, storage bldg. \$50's!!!!

HIGH SCHOOL
3-2-1 Brick+2 carport, Cent. A&H, built-ins, fenced yard. Eff. Apt. or workshop & storage area. \$40's!!!!

PRICE REDUCED FOR QUICK SALE! Nice 2-1-1 Home, Cent. Heat, carpets, work-storage area, and much more. \$19,950.00!!!

3-1-1 Brick, Cent. A&H storm windows & doors, nice carp.

3-1-1 home, corner lot, Cent. A&H, built-ins. \$30's.....

3-1-1 home, new carpets, floor furnace, evap. air, built-ins, storage. Completely repainted interior & exterior \$20's.

IMMACULATE 3-2-1+2 carport, Brick Home, Cent. A&H, built-ins, nice finished basement with fireplace, sprklr. sys., & much more!!!!

GEORGE NIEMAN, BROKER

8. Real Estate 8. Real Estate

SMALLWOOD REAL ESTATE
232 Main Muleshoe 272-4838

3 Bedroom, 2 Bath: Stucco House. Close to DeShazo School. \$500.00 down payment.

3 Bedroom, 1 Bath, 1 Car Garage Brick Homes. Starting at \$23,500.00 Around \$650.00 to move in.

1,000.00 Gallon Fuel Tank on skids, electric pump.

IRVIN REALTORS
(806)792-6373 Bus. (806)879-2348 Res.
FOR SALE

160 Acres West of Muleshoe. Lays perfect, good water, 2 wells, with lovely large home. 3 bedroom, 3 baths, 3 car garage, large game room, formal dining & living. Almost new equipment barn. Owner will carry with good down payment.

160 acres west of Muleshoe, lays good with 2 wells. Owner will carry down payment.
i8-45s-2tsc

Whitt-Reid
Real Estate
Homes, Farms, Ranches, Commercial
201 Main 272-3611

8. Real Estate 8. Real Estate

J. Sudderth Realty, Inc.
109 FIFTH STREET
(806) 481-3288 (806) 481-9194
FARWELL, TEXAS
Realtors/Certified Appraisers
WE NEED FARM LISTINGS

dealership log homes
Your complete Log Home Company has all of America's finest lines, starting at \$12,475. Great earning potential, will not interfere with present employment. investment 100% secured by model home. Call Don Hickman, Toll Free 1-800-633-0670.
c8-44s-1tpts

COUNTRY LIVING LOG HOMES
P.O. Box 171080
Nashville, TN 37217

11. For Sale Or Trade
REDUCE safe and fast with GoBese Tablets and E-Vap "Water Pills" Available at Damron Drug.
d11-43t-4tsp

SPORTSCOACH 26 ft. New tires, 5 KW Onan New tires, 5 KW Onan CB, Stereo, Awning, Storage Pod. Excellent Condition: \$11,500. Amherst 246-3292.
p11-44t-4tp

Opinions are necessary in life, but it's not necessary that anyone else agrees with yours.

15. Misc. 15. Misc.

Storm Cellars
Concrete & Iron Reinforced Ref. In Muleshoe.
Lynn Miller
Littlefield, Tx 385-6801

LIQUIDATION MERCHANDISE
Just received Semi-truckload. New close-out merchandise with savings to 70% off.

PARTIAL LIST:
300 pairs Men's Western Boots.....\$21.88
600 pairs Ladies' Hush Puppies Boots and Shoes.....\$7.99-\$14.99
800 New Padded Stack Chairs.....\$12.49
200 Pair Ladies' Acme Boots.....\$29.99
4000 Pair Name BRAND MEN'S AND LADIES' Jeans/Army Surplus 200 Mini-blinds
60 recliners
Paints, Carpets, Office Furniture and much more!
We Specialize IN Liquidations And Close-outs
For Information Call:
(505)356-4016 or 356-5827
SURPLUS CITY Portales
401 South Ave C
Mon-Sat 9-6

FOR LEASE 1050 acres wheat & grass pasture. Phone (806) 364-3427, ask for Larry or John.
c15-44t-3tc

FOR LEASE 1050 acres wheat & grass pasture. Phone (806) 364-4427, ask for Larry or John.
c15-44s-3tc

Which?
"Of course, I must ask you for a deposit," said the landlady.
"Certainly," replied the new tenant, handing over the required sum.
"Thanks. Now, shall we trust each other, or do you want a receipt?"

Creation by Helen
Flowers, Plants, Gifts.
For every occasion
Helen Hunter
Morton Hwy 272-4287

ONE MINUTE SPORTS QUIZ
By Christian Thorlund
1. Pete Rose played more games than Ty Cobb. Did he match Cobb in RBI's?
2. How did these two compare in strikeouts?

The Answers:
1. Cobb had 1959 RBI's, Rose 1266.
2. Cobb struck out 357 times, Rose 1077 times.

Says Who?
Husband—"You will never succeed in making that dog obey you."
Wife—"Nonsense! It is only a matter of patience. I had difficulty with you at first."
A Difference
"So your son is in college? How is he making it?"
"He isn't making it, I'm making it and he's spending it."

BASKETFUL OF SAVINGS

WILSON'S JUST FOR US
FULLY COOKED-2 LB. PORTION
ORIG. OR HONEY CURED

BONELESS HAMS

\$4.99



JUST FOR US
1 3/4 LB. PORTION

SLICED HAMS

\$4.99

EA.



LEAN TRIM FAMILY PAK
8 TO 11 ASSTD. CHOPS

PORK CHOPS

\$1.49

LB.



WRIGHT'S HICKORY SMOKED
SLICED SLAB BACON LB. **\$1.19**

SELECT LEAN TRIM CENTER CUT
PORK CHOPS LB. **\$1.99**

COUNTRY STYLE-LOTS OF MEAT
PORK RIBS LB. **\$1.49**

PURDUE GROUND
TURKEY MEAT 1 LB. ROLL **89¢**

OSCAR MAYER QUALITY
SLICED BACON 1 LB. PKG. **\$1.99**

OSCAR MAYER ROUND OR SQUARE
VARIETY PAK 12 OZ. PKG. **\$2.29**

LAUNDRY DETERGENT
SURF
147 OZ. BOX

\$5.69



NO CHOLESTEROL
CRISCO OIL
32 OZ. BTL.

\$1.68



ABSORBENT
HI-DRI PAPER
TOWELS
JUMBO ROLL

58¢



RANCH STYLE
BEANS
15 OZ. CANS

3 \$1

FOR



66 SM./48 MED./32 LG.
SUPER TRIM DIAPERS
HUGGIES
CONVENIENCE PKG.

\$9.99




6 ROLL PKG.
BATHROOM TISSUE
FAMILY SCOTT

\$1.19




18 1/4 OZ. BOX
PILLSBURY PLUS ASSORTED
CAKE MIX

79¢



16 OZ. CAN-ASSORTED
READY TO SPREAD
PILLSBURY FROSTING

\$1.49



SPECIAL ROAST
FLAKED COFFEE
FOLGERS
11 1/2 OZ. CAN

\$1.69

LAY'S®
POTATO
CHIPS
\$1.49 SIZE

\$1.19



ALL TYPES-2 LITER BOTTLE
COCA-COLA

99¢



FACIAL
TISSUE
PUFFS
175 CT. BOX

99¢



REYNOLDS STANDARD
FOIL
25 FT. ROLL

69¢



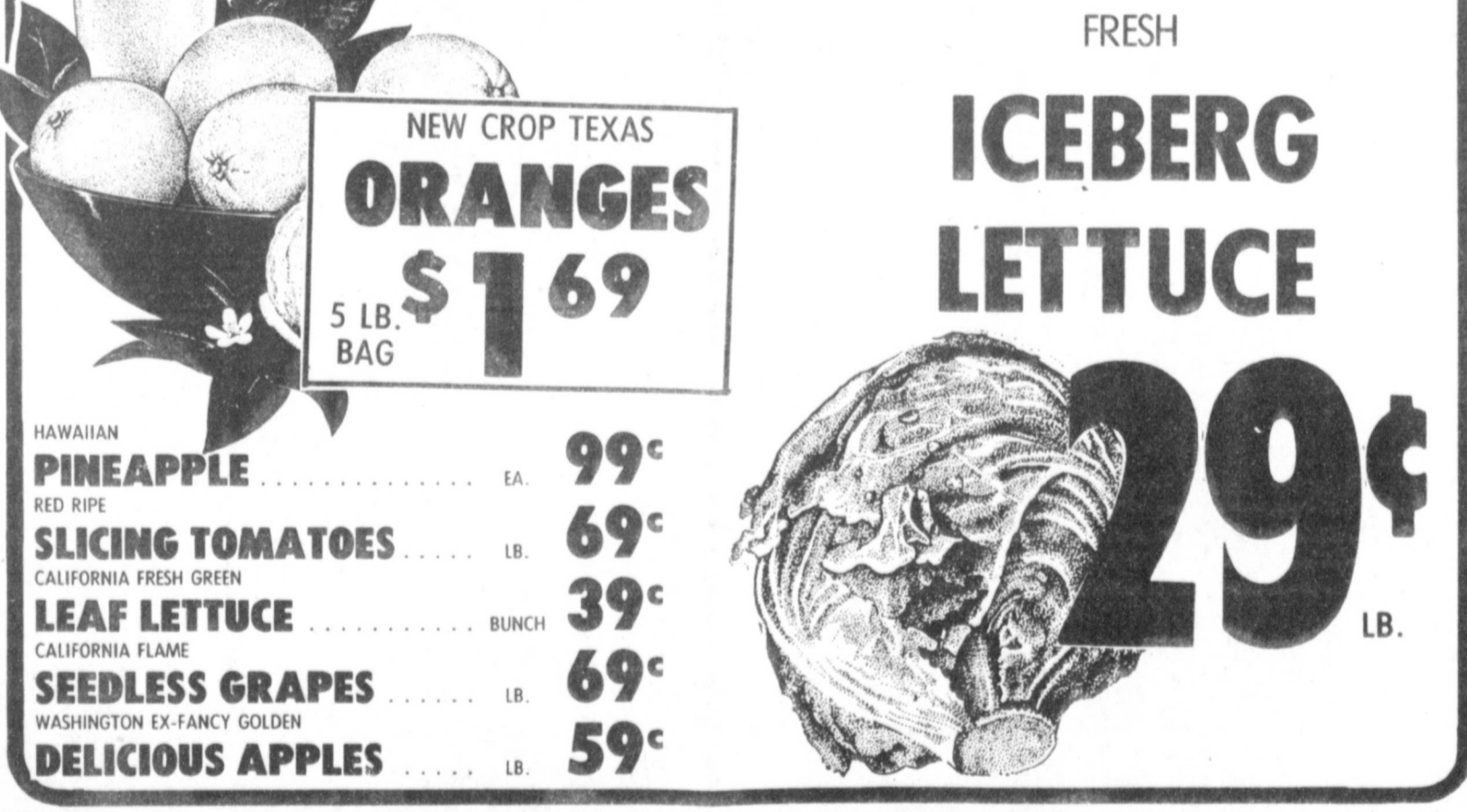
NEW CROP TEXAS
ORANGES
5 LB. BAG

\$1.69

FRESH
ICEBERG LETTUCE

29¢

LB.



LUNCHEON
MEAT
SPAM
12 OZ. CAN

\$1.59



BUY 3-
GET 1 FREE!
IRISH SPRING
4 BATH BARS

\$1.99

REG. OR SUPER
TAMPONS
KOTEX
24 CT. PKG.

\$3.19

HAWAIIAN
PINEAPPLE EA. **99¢**

RED RIPE
SLICING TOMATOES LB. **69¢**

CALIFORNIA FRESH GREEN
LEAF LETTUCE BUNCH **39¢**

CALIFORNIA FLAME
SEEDLESS GRAPES LB. **69¢**

WASHINGTON EX-FANCY GOLDEN
DELICIOUS APPLES LB. **59¢**

GENERAL MILLS
RAISIN NUT BRAN
CEREAL
14 OZ. BOX

\$2.19



CARNATION
EVAPORATED
MILK
TALL CANS

289¢

FOR



REG. OR SUPER
TAMPONS
KOTEX
24 CT. PKG.

\$3.19

GOLD MEDAL
BROWNIE
POUCH MIX
10 OZ. PKG.

59¢



DAIRY DELIGHTS

BORDEN 5 QT. BUCKET
ICE CREAM

\$4.89

NIGHTTIME COLD MEDICINE
VICKS ORIG./CHERRY
NYQUIL
6 OZ. BTL.

\$2.99



ALKA-SELTZER
PLUS
36 CT. PKG.

\$3.99



SELSUN BLUE
ASSORTED
SHAMPOO
4 OZ. BTL.

\$2.99



WEIGHT WATCHERS
SKIM MILK
1/2 GAL.

\$1.19

SWANSON
HOMESTYLE ASSTD.
ENTREES
6-10 OZ. PKG.

\$1.29

BANQUET
CHICKEN
NUGGETS
10 1/2 OZ. PKG.

\$2.89

TABLETS
ADVIL
100 CT. BTL.

\$5.99




SHURFINE
COTTAGE
CHEESE
24 OZ. CTN.

\$1.29



DOWNYFLAKE
WAFFLES
12 OZ. PKG.

\$1.09



HOME OWNED & OPERATED

AT AFFILIATED FOODS INC.
MEMBER STORE

PRICES EFFECTIVE
NOVEMBER 6-12, 1988

thriftway

WE ACCEPT FOOD STAMPS...WE RESERVE THE RIGHT TO LIMIT

PILLSBURY
ALL READY
PIE CRUST
15 OZ. PKG.

\$1.59

KRAFT
SLICES
VELVEETA
16 OZ. PKG.

\$2.69