

Reappraisal Notices

Near Release

Most Eastland County property owners will be receiving their 1982 property revaluation notices within the next few days. The revaluation or reappraisal notices are set to be mailed out from the Eastland County Appraisal District during the week of June 14, 1982.

The reappraisal notices will inform the owners of taxable property within the County as the new reappraised value of their property. Every type of taxable property—residential, commercial, business personal, and agricultural has been reappraised.

The reappraisal work is being done by the professional appraisal firm of McMorries and Company. The work has been going on for over 12 months in order to meet the State mandated deadline of 1982. The new State Property Tax Code requires that all taxing districts have a fair market value placed upon all categories of property for the 1982 tax year.

Romney School & Community

Observes Homecoming

The annual homecoming for the Romney school and community will be Sunday, June 13, beginning at 10 a.m. at the Christadelphian Church on the old school grounds. All former teachers, pupils, their children and grandchildren and surrounding communities are invited.

There will be singing plus special music by the Range Grass Boys from Ranger and by the Star Brites, senior citizens' band of Rising Star.

Bring your covered dish for a basket lunch at 12:30 and join in the visiting and fellowship.

Elwood Webb
President

Brag Corner



Kimberly Roberts
age 18 months

Parents: Mr. & Mrs. Kevin Roberts of Ennis
Grandparents: Mr. & Mrs. Arthur Atkeisson of Ennis
Great-grandparents: Mr. & Mrs. Bryan Milner and Mrs. Della Roberts, all of Rising Star

Rising Star Twirlers Win At State

Monday, May 31 at Austin, Texas, was the date and site of the annual Texas State Solo and Ensemble Contest. Several thousand of the state's top band and choir students competed for the top ratings. Each student is judged on their individual ability with no regard to the size or

classification of their school.

Leslie Alford, daughter of Mrs. Karen Davis won a medal for her twirling solo. She received a Division II rating. This is Leslie's first year as a twirler for the Wildcat Band but she has been twirling for several years. We are

very proud of her and can expect future honors during her next three years in high school.

The twirling ensemble; consisting of Gretchin Williams, daughter of Mr. & Mrs. Travis Williams, Melinda Finley, daughter of Mr. & Mrs. Dwain Finley and

Leslie Alford twirled as a trio. They also received a Division II rating on their routine. This is quite an accomplishment and places them with the top twirling ensembles in the state.

Melinda Finley twirled an outstanding solo, receiving a Division III rating. These young ladies put a lot of effort into preparing for this contest and Rising Star can be very proud of them.

1982 Yearbooks Arrive

The 1982 La Estrellita Yearbooks arrived the last week of school. The yearbook staff did an excellent job in covering this year's events for their classmates.

Each staff member had a specific assignment: Regina White, high school class section; Angela Clay, activities section; Damon Cooper and Edward Anderson, sports section; Joanie Hubbard, student life section; Debbie Geyer, junior high class section; Brad Barnes, photography, and Amy Dudley, librarian.

There are extra books available for \$14. Anyone wishing to purchase one, call Mrs. Linda Finley at 643-3989.

This year a supplement is being introduced which will cover all spring activities, sports and graduation. It will be printed by September and is included with the price of the original book. When the supplement arrives, an announcement will be placed in THE RISING STAR.



Eastland County Newspapers Receive Appreciation Certificates

H.V. O'Brien, Editor of the Eastland Telegram and publisher of the Eastland County Newspapers, received certificates of appreciation for all his papers during Texas Agricultural Extension Media Day, May 7, at Texas 4-H Center, Lake Brownwood. The area publications honored in this presentation were: The Eastland Telegram, The Cisco Press, The Ranger Times, and The Rising Star.

Dr. Jennie C. Kitching, Assistant Director for Home Economics, Texas Agricultural Extension Service, presented

these awards as the climax of an informative program geared toward the relationship of agriculture and the news media. The Eastland County Newspapers were cited as devoting much space to stories and information about various phases of agriculture.

Agriculture Extension Service personnel and representatives from radio stations and various newspapers attended the program. They were welcomed by Dave Farr, K.P.S.M. Radio, Brownwood, and Marshall Crouch, Director of the Center

Gene Denson, Editor of the Brownwood Bulletin, spoke on "How I Work With Extension And How I Expect Extension To Work With Me." Other items on the agenda included a film on The Relevance of Extension to Today's World". There were talks by members of the Extension Service, and discussions by individuals who work with agriculture and community life.

Members of the Extension Service of Eastland County who attended Media Day were DeMarquis Gordon, Janet Thomas, Christy Gentry, John Blair, and Gordon Woolam.

REACT Gets Child Size AmbuBag

On June 3rd the Rising Star REACT held their monthly meeting at 8:00p.m. at the REACT building with seven members present.

The last meeting's minutes were read and approved, with the financial report following and approved. Old business was discussed, with the appointing of John Bishop and Terry Horton for voting delegates and Dick Williams and Lewis Wilkerson alternates for the upcoming Area II meeting on June 26th in Brownwood.

The past few nights several members have been up with the local police department wat-

ching the clouds and keeping in touch with the Eastland County weather service while the bad weather bounced around and hit several surrounding communities very hard. The unit is on alert anytime there is bad weather close to us or headed our way.

We are proud to announce the purchase of a new infant-child ambu bag set, with an attachment for direct oxygen flow to the patient; this allows us to sustain the child or infant's breathing once they stop till they start breathing on their own, or till we reach the hospital. We have a complete adult-child-infant set on one am-

balance and were needing this to complete the second ambu-balance set. With the help of the community we were able to make this set complete.

The members discussed and helped plan our on-call schedule, we now have 24-hour coverage on the weekends with two 3-member crews. Each crew has either an ECA, LVN, or person qualified in RED CROSS emergency procedures. Weekdays, 6 a.m. - 6 p.m., we are eight people short of giving the community full 24-hour scheduled coverage; there is usually at least one two man crew available during these

hours for emergencies without being scheduled. From 6p.m. to 3a.m. there will be a two-three member crew on call with an ECA, LVN or person qualified in Red Cross emergency procedures on each crew with a back up crew on standby. We all work together to make this work, it would make it easier on you and us if we had a full 24 hr.-seven day a week scheduled crew. So if you are interested or know of someone who is, please contact us. We will help you all we can and we appreciate your help.

Summer is upon us BE CAREFUL and BE SAFE.

Amy Dudley Named Miss Rising Star

Amy Dudley was chosen Miss Rising Star by the Chamber of Commerce when the final votes were cast Friday, June 4. The announcement was made at the Chamber of Commerce luncheon June 7. Amy is the daughter of Mr. & Mrs. Harold Dudley.

First runner-up is Gretchin Williams, daughter of Mr. & Mrs. Travis Williams, and second runner-up is Cindy Cotton, daughter of Mr. & Mrs. Jimmy Cotton. In the event Amy Dudley is unable to attend functions representing Rising Star, a runner-up will be called on to take her



Amy Dudley, Miss Rising Star

place. Amy, who was attending cheerleading camp at the time of the announcement, will be formally crowned Miss Rising Star by the Chamber of Commerce next week.

Golf Tournament Begins June 12

There will be a golf tournament Saturday and Sunday, June 12 and 13, at Lakewood Golf Course. Entrance fees are \$60 a team and gift certificates will be awarded to winners. All players will receive two tickets to a fishry Sat. night beginning at 7:30 p.m. The tickets

will also be good for all facilities at Lakewood including the swimming pool and fishing in the lake. More tickets will be available at \$4 per ticket. Categories will be determined after entries are in.

Those interested in tickets to the fishry may get them from Travis Williams.

Crusade For Christ Set For June 20-25

The May Annual Crusade for Christ sponsored by the area churches will be held in the May Community Tabernacle June 20-25; services will be at 8:00p.m. each day.

Evangelist, Rev. Curry Juneau will preach at each service; Mrs. Juneau will be acting counselor. The Juneaus are from Houston, Tex.

Mr. & Mrs. Jim Runyon will be in charge of the music and song services. The Runyons are from Tulsa, Okla. A youth fellowship following each night's service will be held in the community center and will be directed by the Runyons.

Everyone is invited to attend these services. Come and worship with us.

4th. of JULY

The Chamber of Commerce has announced that there will not be an official 4th. of JULY celebration in Rising Star this year.

Dr. Carpenter's Office Will Be Closed For Vacation June 5 Through June 20. Office Will Open Monday, June 21 At 9:00 a.m.

BILFIELD DISPATCH



Oil Report

Thursday, June 10, 1982

P-T Operating Co. of Breckenridge has filed for permit to re-enter a plugged well in the Stephens County Regular gas field, seven miles south of the Caddo townsite. The well concerned is the No. 2 M. Langford. It carries projected total depth of 2,254 feet and is located in a 40-acre lease, T&PRR Survey.

Derby Oil of Ventura, Calif., has finaled a new oiler in the Stephens County Regular Field, five miles northeast of the Ivan

townsite. Tested on pump with open choke, the well indicated ability to produce oil at the rate of seven barrels per day, along with a small volume of casinghead gas.

The well is designated as the No. 2-A Ford-Derby. It went to total depth of 5,028 feet and was perforated in the Ellenberger Formation to produce from an interval 4,625 to 4,683 feet into the hole. The well is situated in a 320-acre unit in the J.W. Hallet Survey.

A wildcat well is planned within the Breckenridge townsite by Delta Oil and Gas Co. of Breckenridge. It will be known as the No. 1 Otto-Bendorf, with projected total depth of 5,000 feet. Drillsite will be in a 2,066-acre lease block in Stephens County's LAL Survey. The well's depth and location will enable it to test the producing zone of the Stephens County Regular Field, as well as wildcat strata.

Pumping at the rate of four barrels of oil per day, the No. 1 Caper has been brought on line in Stephens County's Stribling Field by Eldorado Oil and Gas Inc. of Dallas. Location is 15 miles

west of Breckenridge. The well bottomed at 3,660 feet and was perforated to produce from the Caddo Formation, 3,552 to 3,576 feet into the hole. Location is in a 158-acre lease in the J. Koehler Survey.

northwest of Breckenridge.

The well bottomed at 3,660 feet and was perforated to produce from the Caddo Formation, 3,552 to 3,576 feet into the hole. Location is in a 158-acre lease in the J. Koehler Survey.

Producing 1,566,000 CF of gas per day, the No. 1 Parker McClure was completed successfully in the Mineral Wells Field by Best Petroleum Exploration Inc. of Mineral Wells.

Drillsite is two miles south of Mineral Wells. It was drilled to 4,321-ft. total depth and will produce from an interval 4,144 to 4,152 feet into the wellbore. Production tests were run on a 1.25-inch choke, and absolute open flow was estimated at 4,700,000 CFPD.

The location is in a 45-acre lease in Palo Pinto County's James Dimpkins Survey.

Sun Exploration and Production of Oklahoma City has completed a potent new oil wildcat eight miles southwest of Strawn. The explorer well indicated ability to make 310 barrels of crude and 1,443,000 CF casinghead gas per day on a quarter-inch choke.

The well showed an impressive flowing tubing pressure of 1,230 PSI. Location is a 320-acre unit in the J.W. Copes Survey, the well bottomed at 3,600 feet and will produce from perforations 3,126 to 3,150 feet

into the hole. The new producer is designated as the No. 1 W. Gibson.

Also completing a lucrative new oiler in Eastland County was Ridgeway Oil Exploration of Dallas. This operator's No. 3 Delbert Tower, located on the Hawk Eye Field, flowed crude oil at the rate of 145 barrels of oil per day.

The location is in a 160-acre drilling unit in the H&TC Survey, about one mile west of the Romney townsite. The well was drilled to total depth of 1,158 feet and will produce from a set of perforations in the Adams Branch Formation 1,102 to 1,121 feet into the hole.

Pumping at the rate of 33 barrels of oil per day, the No. 1 Holder has been finaled in Eastland County's Scranton Field by Dale Oil of Breckenridge.

The well bottomed at 1,745 feet. It will produce from perforations in the Cross Cut Sand, 1,669 to 1,672 feet into the wellbore.

Location is in an 86-acre lease in the H&TC Survey, about half a mile southeast of Scranton.

The No. 1 Harbin, a successful gas wildcat, has been completed by Three Way

Energy Inc. of Arlington, one mile south of Olden, Eastland County.

Tested on a .75-in. choke, the well showed potential to yield 154,000 CF natural gas per day. On absolute open flow, it was given a 460,000 CFD rating.

The operator took the hole to total depth of 3,669 feet. Production will be from Duffer Formation perforations, 3,596 to 3,616 feet. Drillsite was in a 62-acre lease in Eastland County's S.J. Robinson Survey, A-423.

Operating out of Cisco, Nimrod Operating Co. has posted initial potential for a new oiler in Eastland County's Madewell Field, nine miles southwest of the Cisco city limits.

Bottomed at 1,432 feet, the well will produce from a set of perforations in the Crosscut Formation, 1,368 to 1,370 feet. Pumping open choke, the well indicated ability to produce 54 barrels of oil per day.

Location is in a 200-acre lease, H&TC Survey. The well is designated as the No. 14 C.W. Stroebel.

Trinity Exploration of Fort Worth has finaled the No. 1 Bennett as a pumping oiler in the Green Show Field, eight miles northwest

of Rising Star. The Bennett well showed ability to pump 34 barrels of oil and 34,000 CF casinghead gas per day.

The location is in a 106-acre lease in Eastland County's Mary Ann Clark Survey. Bottomed at 2,820 feet, the well will produce from perforations in the Upper Caddo Formation, 2,667 to 2,677 feet.

Also completed in Eastland County's Hawk Eye Field was the No. 1 Delbert Tarver, flowing 105 barrels of oil per day, open choke. The well is located in the 160-acre unit in the H&TC Survey, about a mile west of Romney.

Ridgeway Oil Exploration of Dallas is the operator.

The operator took the hole to total depth of 1,180 feet and perforated the Adams Branch Formation for production, 1,107 to 1,117 feet into the wellbore.

A marginal oil producer has been finaled by Sun Exploration of Abilene in the Eastland County Regular Field, 4.5 miles southwest of Ranger. Pumping two barrels of oil per day, open choke, the No. 3-51 North Central will produce from perforations 3,461 to 3,481 feet into the hole.

Location is in a 3,257-acre assembly of leases in Eastland County's John York Survey, A-557. Total drilling depth was 3,606 feet.

Operating out of Lovington, N.M., 3-B Oil Corp. has staked location for 13 developmental well in Eastland County's Hawk Eye Field. All are scheduled for 1,200-ft. bottoms at locations about one mile west of Romney. The wells will be spudded in an 80-acre unit in the H&TC Survey. They will be designated as the No. 4 through No. 16 Tarver.

Nimrod Operating of Cisco has filed for permit to drill the No. 1 and No. 2 Broyles, developmental wells in Eastland County's Madewell Field, a half mile north of the town of Nimrod.

Both ventures are scheduled for total depth of 2,000 feet. They will be spudded in a 35-acre lease in the H&TC Survey and will be aimed at either oil or gas pay in the Crosscut Formation.

At a location five miles north of Eastland, Snow Oil of Fort Worth is planning to start making hole for a 4,000-ft. oil or gas wildcat. The explorer well will be known as the No. 1 Clinton Kellar. It will be in a 65-acre lease in the H&TCRR Survey.

The No. 1 Midkiff, a 1,250-ft. developmental probe in the Eastland County Regular Field, is scheduled to be spudded three miles south of the Romney Community. Location is in a 36-acre lease in the Antonio Miller Survey, A-384. The well is a venture of B&L Operator of Hamilton.

Katiaco Drilling of Tahoka has staked location for a 4,200-ft. oil or gas wildcat one mile north of Cisco. It will be known as the No. 1 J.B. Boggs, with drillsite in a 40-acre unit in the H&TCRR Survey. The well will be able to test the Lake Sand Formation of the Kleiner Field in addition to wildcat territory.

Ceteo Oil and Gas of Miles has filed for permit to drill the No. 2 Seabourn, a developmental test in Eastland County Regular Field, 2.5 miles southwest of Eastland. Projected total depth is 1,500 feet. The operation will be in a 60-acre lease, H&TCRR Survey.

Operating out of Lubbock, Sentry Oil Exploration Co. has driven stake for the No. 1 Whiteside eight miles northeast of Rising Star. It is a projected 2,100-ft. developmental probe in

Eastland County's Sipe Springs gas field. The location will be in a 693-acre lease in the Joseph Rubarth Survey.

At a location 1.5 miles northeast of Poolville, Parker County, RAW Energy Corp. of Weatherford has staked drillsite for the No. 2 Hodges. It will be a 3,200-ft. developmental try in Parker County's Toto Field, which produces from the Strawn Formation. The location is in a 130-acre lease in the Jose Marie Mora Survey, A-854.

A 6,500-ft. wildcat is scheduled to be spudded six miles southwest of Weatherford by Min-Tex Exploration of Mineral Wells. It will be designated as the No. 2 Berkley-Waters "A." Location is in a 54-acre lease in the T. Smithers Survey, A-1166.

Fagadan Energy Corp. of Dallas has filed initial production statistics for the No. 1 C.W. Wulfjen, a developmental well in Stephens County's Four J's Field, eight miles southeast of Breckenridge.

Pumping open choke, the well indicated capacity to produce 14 barrels of crude and 70,000 CF casinghead gas per day. It was drilled to 4,318-ft. bottom and was perforated to reduce from a Conglomerate Formation, 3,706 to 3,710 feet into the wellbore.

Drillsite was in a 165-acre lease in the TE&L Survey.

A 4,300-ft. Stephens County wildcat for oil pay is scheduled to be drilled by Abilene-based Keystone Oil Inc. four miles south of Wayland. The explorer well will be known as the No. 1 J.B. Long. It is situated in a 160-acre drilling unit, T&PRR Survey.

Also planning a Stephens County explorer well is First

Texas Crude Inc. of Weatherford. The firm has staked location for the No. 8 F.T.C. Lake seven miles northwest of Breckenridge. It will be located in a 30-acre lease in the TE&L Survey. Aimed at either oil or gas pay, the wells is earmarked for 4,500-ft. total depth.

Flowing 10 barrels of oil and 287,000 CF casinghead gas per day on a 16/64 choke, the No. 1 Nolen has been finaled by LHG Resources Inc. of Midland in the Stephens County Regular Field.

Drillsite was in a 190-acre lease in the T&PRR Survey, four miles north of Ranger.

Showing 125 PSI tubing pressure, the well was bottomed at 3,990 feet and will produce from a set of perforations in the Marble Falls Formation, 3,560 to 3,520 feet into the hole.

The Jones Co. of Albany has driven stake for the No. 8 Roy, a developmental well in Stephens County's Corbett gas field. With projected total depth of 4,950 feet, the well is aimed at gas production in either the Duffer or Strawn Formations. Location is in the Ruthy Campbell Survey, four miles northeast of the Ivan community.

A 5,000-ft. wildcat is planned by Richard D. Atkins of Midland at a drillsite three miles southeast of Mineral Wells, Palo Pinto County. The location is in a 20-acre lease in the T&PRR County Survey. Well's designation is the No. 1 Barnes.

See M.H. Perry for GROUP INSURANCE 629-1566 or 629-1095 104 N. Lamar-Eastland

Snow Oil Plaza

Pipe & Supply

Drilling Corp.

Well Service

Petroleum Land Leasing

Terry Patty

Off. (817) 629-8521

Linda Nelson

Res. (817) 629-8123

Office Space for Rent Newly remodeled offices at 207 Lamar, up to 725 sq. ft. (5 offices) available. Start at %125 month. Pho. 629-8901 T-28

ACE WELL SERVICE INC.
— Dale Jones —

Completions -	Swabbing
Workovers -	Roustabout Crews -
	Rods & Tubing

Fully Insured For Customers Protection
Radio Equipped Call Day Or Night
200 S. Newton T-3 559-5439

Ken Snodgrass
Area Sales Manager
(915) 572-3663

METAL BUILDING SYSTEMS

Abilene METAL "building" SYSTEMS
"Manufacturers of Quality Pre-Engineered Steel Buildings"

Plant: P.O. Box 3516-Abilene-79604-(915) 677-1867
Dallas: P.O. Box 31631-Dallas-75231-(214) 445-0990 T-46

EXPLORATION SERVICES, INC.
Hydrocarbon Well Logging
Geological Services

MIKE DAWSON
DISTRICT OPERATIONS MGR
CENTRAL TEXAS DISTRICT

Home 817-442-1227
Office 817-629-8203
817-629-8549
P.O. Box 902
LASTLAND TEXAS 76448 T-6
Mobil 817-629-8162 Unit 9489

CARROLL ELECTRIC SERVICE CO

HWY. 69 EASTLAND, TEX
OILFIELD ELECTRICAL MAINTENANCE AND CONSTRUCTION

RADIO DISPATCHED 24 HR. CALL

OFFICE: 817/629-2842
or 629-2311
NIGHT: 629-1320

HOLE DIGGERS
BUCKET TRUCKS
TRENCHERS

XERXES FIBERGLASS OILFIELD TANKS
XERXES CORPORATION • A SUBSIDIARY OF PROFORM INC.

Fiberglass Oilfield Tanks and Gunbarrel Separators

1400 W. Overland Trail
Abilene, Texas 79601
1-800-592-4459
915-673-8238 T-6

WATS 1-800-592-4459
Bus. 915-673-8238
Res. 915-695-4623

H.D. Hash 915-7622443
Randy Hash 915-762-3062

3 H Drilling Co.
Rt. 1 Box 60, Albany, Tx. 76430
Rotary Drilling to 2500 feet.

Would consider interest in well.

H.D. Hash 915-762-2443
Randy Hash 915-762-3062
H.D. Hash Dozier 915-762-3062
Rt. 1 Box 60 Albany, Tx. 76430 T-6

SERVICE PIPE & SUPPLY CO.
New-Oil & Gas Well Equipment-Used
Subsurface Pump Sales & Service H-F

P.O. Box 587 Eastland, Texas 76448
Eastland
Jacksboro (817)567-5586
Milgore (214)984-8526

NBC NEWS/MUSIC FM 97
RADIO ★ 24 HOURS

G.W. Rabel & Son P-41ffc
Construction
Concrete Pump Jack Pads
442-4647 or 442-4212 Cisco, Tex

S & S DRILLING CO.
OIL & GAS
Route 4
CISCO, TEXAS 76437

BILL GARY 442-3048
LEE STARR 442-3226

Full line of New & Used Pipe, Rods, Pumping Units, and Fittings. Also Featuring Modern Pump Shop.

Nimrod Pipe & Supply
Route 2, Box 117A-Cisco, Texas 76437

Rick Roark, Mngr. (817) 442-4002
Eddie Pevehouse, After Hours
Pump Shop Mngr. (817) 442-3770 T-6

PHILLIPS DRILLING 11-ffc
For all your drilling needs up to 3,000 ft.
Call day or night. competitive prices and dependable workmanship
Vernon Phillips Cross Plains
(817) 725-6275 or (817) 725-7746

PETROLEUM LAND LEASING
"Don't Waste Another Day"
Terry Patty 817-629-1709
Located in Snow Oil Plaza T-6

Eastland National Bank
salutes the oil industry.

We are eager to help in your growth and welcome the opportunity to serve you. You've got a friend — in Eastland.

EASTLAND NATIONAL BANK
201 East Main Street 817/629-8551 Member FDIC
Equal Opportunity Employer M-F-H T-C

Oil Is Where You Find It...

.....so sayeth the oilmen. So is love, happiness, success and all of the other elements that make up our lives. Where do you go to find title information? Not on the street corner or the barber shop or any other place except in an abstract office. Yes, we have it, compiled, indexed and assembled daily, from the very beginning down to the present time, plus years of experience and training. Visit us soon and let us have an opportunity to serve you.

Eastland County Abstract Company
Abstracts and Title Insurance
Pat and Annelle Miller 629-1077

Hours: 9:00-2:00
Drive-In: 4:00-6:00
Fr. Night Deposit

J.B. HICKS President
THE FIRST NATIONAL BANK
Gorman, Texas 76454

- Full Service Banking
- Checking ● Savings ●
- Money Market Certificates
- Interest Bearing Checking Accounts

P.O. Box 38 Phone: 817-734-2255 Member FDIC T-C

PAT MAYNARD REAL ESTATE

INT. 20 E. NORTH SIDE

629-8568 EASTLAND

442-1880 Cisco



HOMES

A nice 3 bedroom home with two large lots. Carpeted, paneled, fireplace, double garage with storage. \$47,500

4 lots with this 2 or 3 bedroom, 1 1/4 bath home. This place is in real good repair. Has carpet, large storage area, pecan and fruit trees. \$38,000

On corner lot, a 3 bedroom, 1 1/4 bath home. Carpeted, beautiful fireplace in den. This home has 2,000 sq. ft. and priced at \$55,000.

A beautiful 2 story home on 2 1/2 lots. 4 bedrooms, 1 1/2 baths, formal dining room, study, carpet, central heat and air, thermostatically controlled attic fan upstairs. This home has approx. 3,000 sq. ft. and has been completely remodeled. \$93,500.

2,200 sq. ft. in this 4 bedroom, (could be 5), 1 1/4 bath brick home. Carpet, built-ins and a 400 sq. ft. master bedroom. Fenced back yard, large patio with bar b-q grill. All on a corner lot. \$79,500.

Under construction now! A 3 bedroom, 2 bath brick home, 1834 sq. ft. plus garage. It will be carpeted, a fireplace in a 30 x 24 den and dining area, snack bar and many other extras. Pick your own colors for this one.

Located close to downtown, a large 3 bedroom, 1 bath home that has been remodeled. Priced to sell at \$28,500.

Extra nice 2 bedroom, 1 bath home. Carpeted, central heat and air. This place has been completely remodeled, just like a new home. \$34,500.

A large 2 bedroom, 1 bath home. Living room with fireplace, formal dining room, carpeted and paneled. \$25,000.

A 2 bedroom, 1 bath within walking distance to post office, hospital and doctors' offices. Priced to sell at \$18,000.

If you are single or just a couple, this 1 bedroom, 1 bath home will be perfect. Just had a complete plumbing job, too. Only \$15,500.

An older 3 bedroom frame home on corner lot. Needs some work done on it. Terms can be arranged. \$16,000.

Want a new home? We have large lots available in exclusive area. City water, sewer and paved streets. This area is restricted to brick homes, only. Reasonably priced from \$4500 to \$4800.

CISCO HOMES

Nice 5 bedroom, 3 1/2 bath brick home with fireplace and living room, separate den, carpet, built-ins, central heat and air and fenced back yard. Present loan can be assumed.

Large 3 bedroom, 1 bath older home. Has large rooms, separate dining room. Bathroom and kitchen have been remodeled. Also, separate garage and storage. \$21,000.

A nice 2 bedroom, 1 bath mobile home on 2 large lots. Central heat and air, large rooms, fenced back yard. You'll have country equipment, but still in city limits. Priced to sell at \$11,500.

Home plus rental! We have 3 mobile homes on 7 lots in Cisco. Hookups for two more. Priced to sell at \$23,000. \$375 monthly income now.

New vinyl siding on this 3 bedroom, 1 bath home. Large rooms, carpeted, storage building, combination garage and shop, and fenced back yard.

A large 2 story with 5 bedrooms, 2 baths, den, separate dining and breakfast rooms, located on corner lot. Has apartment attached. A very scenic yard with lots of trees.

A nice 3 bedroom, 1 1/4 bath home on corner lot. Central air and heat, new carpet, modern kitchen and built-in dishwasher. Also, a garage and storage area.

Enjoy summer in your own swimming pool in privacy fenced yard. This large 3 bedroom, 1 1/4 bath, 2 story stone home also has large game room and a study, which could be a 4th bedroom. As a bonus, a fully furnished rent house goes with this property. 2 large corner lots. Only \$40,000.

SMALL ACREAGE WITH HOMES

A 3 bedroom, 1 1/2 bath home on 2 acres. Carpeted, some paneling. Has approx. 28 pecan and 12 fruit trees. Located in Olden. \$49,500.

Located approx. 2 miles north of Eastland, a 4 bedroom, 1 1/4 bath home on 5 acres. This home has approx. 2,000 sq. ft. and is fully carpeted. Insulated real well, and the utilities are small. Lots of oak and fruit trees. \$60,000.

2 houses and small apartment on approx. 2 acres. Located just outside city limits of Eastland. \$33,000.

20 acres located south of Eastland, with a nice 3,400 sq. ft. home on it. Carpeted, fireplace, central heat and air and lots of cabinets, bookcases and storage. \$125,000.

Located in Carbon, a 3 bedroom, 1 bath home on 10 acres. Extra large den with wood burning stove, carpeted, central heat and air, outbuildings, several wells and city water. Only \$49,500.

A 3 bedroom, 1 bath home on 40 acres located near Gorman. Has a 24 x 40 building, plus barn and other sheds. This land is all cleared and has been in cultivation. \$75,000 and owner will carry a note.

5 acres. A new 2 bedroom home that is carpeted, wood burning heater, heat pump and other extras. Also, on property is an old house that could be used for a barn. \$48,000.

FARMS & RANCHES

We have 2-4 acre tracts of land near Lake Leon. Water meter included with these. Owners will consider selling a large or smaller tract. Priced at \$8500 each.

74 acres located on highway 2526 out of Carbon. 35 acres of cultivation and 1/4 minerals. \$53,500.

12 acres located near Lake Leon on highway. Good hunting land, none of it has been cleared. \$16,500.

Near Lake Leon, a 20 acre tract of land. Some cultivation and good hunting area. \$30,000, owner will finance.

62 acres near Union Center. Approx. 25 acres in cultivation. Good fences, 1/2 minerals. \$800 per acre.

17 1/2 acres near Gorman off Desdemona highway. Water well, natural gas available, 1/2 minerals. \$25,000.

52 acres located north of Eastland on Wayland highway. All in cultivation, four tanks, 2 water wells, barn & pens, and good fences. \$52,000.

147 acres near Carbon with approx. 80 acres cleared. Fair to good fences, with road frontage on three sides and some minerals. \$500 per acre with terms.

25 acres south of Eastland near Lake Leon. Road frontage, new stock tank, 20% down, owner financed. \$35,000.

500 acres north of Eastland on highway. Kline and native. An older 2 bedroom, 1 bath home with fireplace. Barn and other outbuildings. \$530 per acre.

320 acres located between Carbon and Gorman. Some cultivation, but mostly wooded. Good fences and hunting, some minerals included. \$500 per acre. Owner financed at 9% interest.

10 acres near Eastland. 120 frontage. \$5000 per acre. Terms can be arranged.

Approx. 55 acres in Ranger. Ideal location for subdivision. Utilities available. \$1500 per acre.

A good place, this 85 acres between Carbon and Kokomo. 60 acres cultivation, the rest in pasture. Road frontage on two sides, 2 stock tanks, some minerals. \$600 per acre.

120 acres with a 3 bedroom home and out buildings. 80 acres has been in peanuts, the rest in coastal and kline. There are six irrigation wells with pumps, storage tank for water and two extra long wheel moves. \$128,000 with a 5 1/2% assumable loan.

COMMERCIAL

In Ranger, a large two story brick building with good size fenced yard. Located near railroad tracks, with spur. Will sell or lease.

Located near downtown! A two story brick building, 4 lots and a house. All this for \$40,000.

A good investment! We have a quick stop grocery doing a good business. All fixtures, shelves, and stock are included. Also, a trailer park with spaces for 21 trailers. There are assumable notes with good interest. \$105,000 for all.

Ideal location for business. A 4,400 sq. ft. building on large, paved corner lot. Close in. \$60,000.

2 acres on I20 Olden Ramp East. Ideal location for a business. \$20,000.

Approx. a 6 acre tract off highway 80 E. Ideal location for a business. \$25,000.

Valuable I20 property! Approx. 4,600 sq. ft. Building, very versatile. Easy accessibility. \$87,500.

In Cisco! A nice brick building with 5,000 sq. ft. in prime downtown location. \$60,000.

1.3 acre joining railroad tracks with spur. 3 buildings, one has office and bath, and a 2,000 gallon underground gas tank. \$65,000.

In Ranger! 4 1/2 acres on highway 80 W. 1,800 sq. ft. office, 24,000 sq. ft. shop building, 2,400 sq. ft. warehouse, other buildings and commercial antenna. Owner will consider terms. \$170,000.

Lot on Interstate 20 East, approx. 1/2 acre located near Best Western. Perfect for offices or business. \$16,000.

If you need I20 exposure for a business, we have 5 acres on the south side. \$27,000. Make Offer.

LEASE PROPERTY

For lease only, a 3 bedroom, 2 bath brick home in country. \$500 per month, plus \$500 damage deposit.

For Lease! Commercial 6 acres in Olden. Septic tank and utilities available. No building.

For commercial use only. One to five acres with I20 frontage.



We have other home, land, and commercial listings.

We appreciate your listings and business!

Office Open Saturday Mornings

Kay Bailey
Associate
629-2365

Pat Maynard
Broker
629-8063

Judy Orms
Associate
629-1218

Cindy Foster
Associate
629-8195

In Gorman **Russell Cordell**
Associate
734-2690

In Cisco **Ann Williams**
Associate
442-1880

Christian Scientists Hold Annual Meeting In Boston

Christian Scientists from around the United States and from many countries overseas heard the church's leaders appeal June 7, for greater attention to spiritual courage in the face of the world's present dangers.

"We face threats of conflict and the brutality of conflict," acknowledged Michael B. Thorne, Chairman of The Christian Science Board of Directors at the denomination's 87th Annual Meeting in Boston.

Several thousand members of The First Church of Christ, Scientist in Boston were present for the meeting which included three inspirational sessions as well as reports by church officers on the group's publishing, membership and informational activities. The

Romney

Homecoming

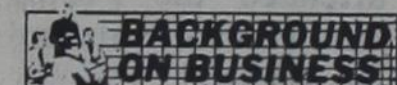
Sunday, June 13

The annual homecoming for Romney School and community will be Sunday, June 13 beginning at 10:00 a.m. at the Christadelphian Church, on the old school grounds, according to Elwood Webb, president.

All former teachers, pupils, their children and grandchildren and surrounding communities are invited.

There will be singing plus special music by the Range Grass Boys of Ranger and by the Star Brides, senior citizen's band of Rising Star.

Bring your covered dish for a basket lunch at 12:30 p.m., and join the visiting and fellowship.



Read The Contract

"I don't know," said a photocopier salesman when a prospective customer asked why a discount was being offered on a photocopier. But inquiry by the small businessman showed that the Xerox copier being offered was "remanufactured" — what many people would call "used!"

NBC NEWS/MUSIC FM 97
RADIO ★ 24 HOURS

Church was reported free of debt and details were given of expanding "secondary" use of its newspaper, The Christian Science Monitor, through print and radio syndication and, in a television news format test program.

Mr. Thorne told members: "Christendom, has its work cut out for it in these times. And Christian Scientists must do their part

with courage, wisdom, and much love."

Dorothy E. Klein, a practitioner and teacher of Christian Science from Boston, was named Church President for 1982-82. She told members it was time to meet the challenge of materialism through "cherishing spirituality and guarding individual integrity of thought."

52nd Annual Texas Cowboy Reunion

Stamford—Eugene C. Swenson, President of Texas Cowboy Reunion, Inc., announced that the Otwell twins, Merle Travis and Dawn Glass, and a special Bob Wills revue will highlight the entertainment portion of the 52nd Annual Texas Cowboy Reunion in Stamford, June 30-July 3, 1982.

July 1st arena entertainment will be a special Bob Wills salute featuring Leon Rausch and Bill Mounce and the popular Texas Panthers.

The Otwell twins, from Tulia, Texas, will perform during the rodeo performance Friday, July 2. The final night of the rodeo, July 3, will team Country Music Hall of Famer Merle Travis with fast-rising recording artist Dawn Glass.

In addition to performing in the arena, Leon Rausch and the Texas Panthers will play the rodeo dance following each rodeo performance June 30-July 3. The Texas Panthers will also

back the Otwell twins, Merle Travis and Dawn Glass for their performances.

A host of activities are set for the eve of the 52nd Annual Texas Cowboy Reunion. On Tuesday, June 29, the works of thirty-six of the top western artists in the nation will be unveiled during the ninth annual Stamford Art Foundation Collectors Preview in the John Selmon Memorial Gallery. All proceeds from the Preview and sales of art benefit the West Texas Rehabilitation Center.

That same evening a special art auction and horse auction are on tap as a benefit for the Center. Earlier in the day the annual Rehab Quarter Horse Sale will be held on the Reunion grounds.

As always, the Texas Cowboy Reunion Tradition includes the world's largest amateur rodeo, as well as a variety of activities such as rodeo events for old timers, a fiddlers' contest and the traditional parade.

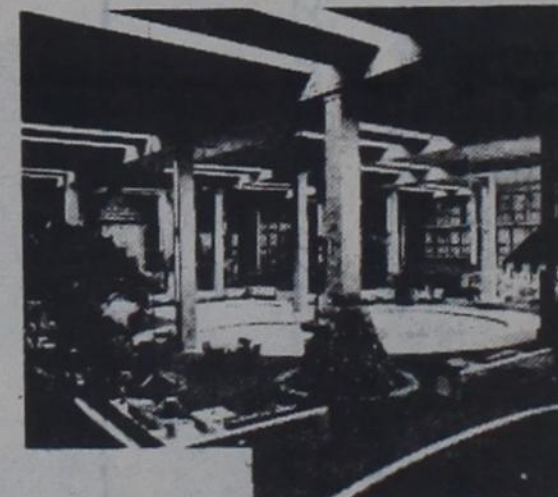
**WATCH OUT—
DRIVE CAREFULLY**

Thursday, June 10, 1982



**ABILENE'S YEAR ROUND
INN-DOOR SUMMER FUN**

Kiva Inn is Abilene's "In-Door Resort of Family Fun."



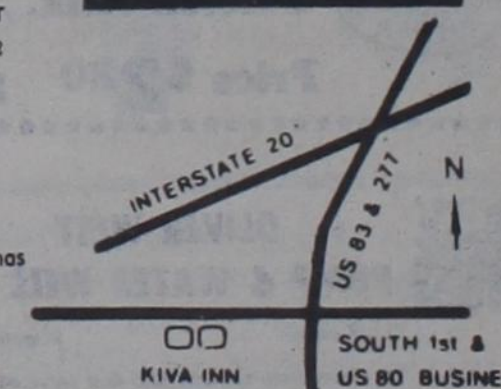
Within the giant, beautifully landscaped atrium, climate-controlled for total comfort, a world of activity unfolds before your eyes.

The distinctive blend of luxury hotel & resort. The best of two worlds.



Enjoy dining in your choice of restaurants at the Kiva Inn. In the Sidewalk Cafe overlooking our beautifully landscaped atrium area is the perfect place to relax for breakfast, lunch or dinner. Should a more formal or relaxed setting be your pleasure, try our Library recognized in service and excellence as Abilene's finest room.

- Two Restaurants & Cocktail Lounge
- Indoor & Outdoor Pool
- Game Room
- Two All Weather Surfaced Tennis Courts
- Exercise Area
- Whirlpool
- Cable TV
- Shuffleboard
- His & Her Saunas
- Indoor Putting Green



ABILENE TEXAS HWY 80 WEST

915-695-2150

For Reservations Call 1-800-592-4466
5402 S. First Street

Sipe Springs News

Mr. & Mrs. Glenn Nowlam honored her Aunt, Miss Lela Parker, with a party at their home, on her 90th birthday. It was enjoyed by friends and relatives who came from far and near.

Mr. & Mrs. Layne Cotter of Baird spent Sunday with their daughter Mrs. Jack Millwee and family.

Mr. & Mrs. Charles Rogers and daughters of Gorman have moved in Mrs. Thelma Price's home. We are happy to have them in our midst.

Mr. & Mrs. Dick Wyatt attended Memorial Day services at Stony Creek Sunday.

Mr. Jack Graham is home and much improved after a bout in the DeLeon Hospital.

Mr. & Mrs. Dick Wyatt of Sipe Springs, Mrs. Dorothy Robinson and Mrs. Joyce Burk of Comanche attended their aunt's (Mrs. Gussie Stanfield) 96th birthday party at Mrs. Fritz Foster's home in Gorman Saturday.

Mr. Rupert Cagels of Big Spring and Mr. Romie Cagel of Carbon were visitors in the T.A. Weaver home Sunday; the Weavers' grandson, Calon Joyce of Dallas was a weekend visitor.

Mr. & Mrs. Butch Graham & children and Mr. & Mrs. W.A. Reidel & son of Houston spent the weekend with their parents, Mr. & Mrs. Jack Graham, and attended Miss Lela Parker's birthday party.

Mr. & Mrs. Wheat Nowlin of Houston visited her sisters, Mrs. Mollie Franklin and Miss Lela Parker, over the weekend and attended Miss Lela's birthday celebration.

Mr. Ted Barton visited his sister, Mary Harper, at Eastland Hospital and returned her to the Rising Star Nursing Center Wednesday.

Visitors in the John McKeenan home were Mr. & Mrs. Buster Mitchell & daughter of Burburnett and Mr. & Mrs. Jim Mitchell & baby of Newcastle on Monday.

Mrs. W.A. Davis & son Marcus of Eunice, N.M., spent Tuesday night with Mrs. Ruby Boswell.

Parsons Family Hold Reunion

Family members of the late W.C. and Lillie Mae Parsons gathered for a family reunion at Lake Coleman on May 30.

Sixty-eight family members lunched and enjoyed swimming and renewing kinship at the Lake Coleman Community Center.

All family members reside in Texas with the list from Stratford, Ft. Worth, Meridian,

Kopperl, Rising Star, Midland, Odessa, Pampa, Dumas, Baird, San Angelo, Allen, Albany, and Dallas.

Members heading the reunion were the children. Anna Parsons Childers of Rising Star, Ola Parsons Childers of Odessa, E.O. Parsons of Baird, Edna Parsons Hines of Pampa and W.C. (Dub) Parsons of Dumas.

Pioneer News

Mrs. A.C. Halsell

Among our holidays, we have observed two during the month of May, Mother's Day and Memorial Day. Today (Sunday) is a very good time to study the life of Mary, the mother of Jesus.

Mary, "The handmaid of the Lord" Luke 1:26-38, is unique in the sense of her religious significance. Even with the limited information we get from the Gospels, we do conclude that she was a good mother, having wisdom, fortitude, unselfishness, submissiveness to God's will, faith, acceptance, and humility. Several times she was made to grieve because of what Jesus said about her and to her.

"Wist ye not that I must be about my Father's business?" at the Temple when they had searched for Him for three days; "Mine hour is not yet come," referring to his death; "Who is my mother and my brothers? Whosoever shall do the will of my Father...the same is my brother my sister and my mother."

Yet "Mary kept all these things in her heart" and at the time of His crucifixion, when Jesus said to John the beloved disciple, "Behold thy mother" her feelings were somewhat allayed. We think she may have fully realized his loving concern for her as his mother, when He then said, "Woman behold thy son."

Mr. & Mrs. Beggs visitors were his father, Mr. David Beggs of Eastland, Billy Zirkle of Rising Star and Mr. & Mrs. Dick Smith of Ft. Worth on

Sunday. Mrs. Smith remained for a longer visit.

Mrs. Ethel Brown's visitors were Billy McMillan, Mr. & Mrs. Tillotson and Mrs. Halsell. On Thursday Mrs. Cora Howland of Cross Plains and their cousin, Louise Starr of Oregon had, lunch with Mrs. Brown.

Mrs. Margaret Sipes visited Mrs. Joe Fleming Thursday afternoon. Other visitors were Mr. & Mrs. Vince Meiron of Rising Star.

Vi Harlow of Marble Falls and Tray Harlow of Belton visited Mr. & Mrs. Pete Fore during the week. They visited Paul and Juanita Harlow at the Recreation Center where they attended the Foster family reunion during the weekend.

We are glad to report that Mrs. Roody is much improved of her recent illness. Her visitors were Bob and Sally Roody and Billy and H. A. Freeman.

Mr. & Mrs. Ron Holmon went to Houston last week where they visited Mr. & Mrs. Birchfield and Mr. & Mrs. Rickey Smother. Their girls remained for a longer visit.

Recent visitors with Mr. & Mrs. Halsell were their grandson

Commentary

by Myrtle Owen

Ephesians 2:1,2 And you hath he quickened, who were in trespasses and sins; wherein in time past ye walked according to the course of this world, according to the prince of the power of the air, the spirit that now worketh in the children of disobedience: God pronounced judgment (Isaiah 14:12-17) and His messengers hastened to obey His will. God cried, "Thou shalt be brought down to hell" And in the fall of satan we have the story of the origin of sin in the universe. For when satan dared to say, "I will," he manifested the sin of rebellion which is even no hurling mankind to destruction. Satan was cast out from Heaven and thus as a spirit being he abides in the earth's atmosphere. For thousands of years he has carried on his

diabolical work against the Lord of Hosts. Therefore Paul calls him "the prince of the power of the air." (Eph. 2:2). On being cast out of Heaven, satan set about to scheme and plan the downfall of the human race which was made in the image of God. Hating the reflection of God in man, satan sought to bring about the fall of man through Eve. Thus, the great battle between earth and the throne of God. Jesus ascended far above all heavens, above all satan's principalities and kingdoms, above the spirit realm of demon spirits. Although satan has power, Jesus Christ has all power and therefore satan stands defeated. With Christ living within us, we can defeat any attack of satan on our lives.

100th Anniversary
First Baptist Church
Rising Star
August 7 & 8, 1982

and his wife, Mark and Kathy Rodenberger of Carrollton.

We extend our sympathy to the family of Mr. Wallace Johnson who passed away at his home in Clyde. His niece, Mrs. Glenda Phillips, and Mr. & Mrs. Gainer Boyd attended the funeral.

Mrs. Nora Phillips had lunch with Glenda and Vernon Phillips Sunday.

Visitors with Mr. & Mrs. W. G. Parrish were her brother and his wife, Mr. & Mrs. Dan Notgrass of Cisco and Raymond Parrish of Cross Plains. Mr. & Mrs. Parrish will attend their grandson's wedding later in the week. He is Micki Williams of Mesquite.

Estimated Tax Payments

Tuesday, June 15, 1982 is the date for the second payment of Individual Estimated Taxes (1040 ES). The Internal Revenue Service is currently mailing pre-printed vouchers to taxpayers who filed estimated tax declarations in April. These vouchers should be received no later than June 11, 1982.

REST TAKE A BREAK
Texas Office of Traffic Safety

Custom Hay Baling
Call T.O. Meador,
725-6662 or Phillip
Strength, 725-6479. ttc

Senior Citizen's News

This past Thursday about twenty-one Senior Citizens left their gardens and canning or whatever for a day of fun and games at the center.

Some domino games were going before lunch and afterward. The Star Bites had a practice session. We are learning some new numbers, well new to us anyway. We met for practice last Wednesday night at eight and will meet again this Wednesday night, same time. Hopefully we will have a new program ready for the annual reunion at Romney this Sunday. Several of our band members are from that neck of the woods. This will be an all day affair, with dinner on the ground and all that good stuff, the rest of us will join them in the afternoon.

I wandered by the center Thursday night where a couple of games of 42 were being played. Soon a few more came in and we sang a few songs, just visited and watched the clouds roll by.

At last report our vacationing seniors, Liz and Charlie, were in Fresno, having a great time with their daughter and her family. This weekend they plan on going to the state of Washington to see a son and then on to Canada before returning home. They are being missed. Julia-pinch hitting for Liz.

The B.J. Andersons Honored On Golden Wedding Anniversary



Mr. and Mrs. B.J. Anderson celebrate 50 years together.

Mr. & Mrs. B.J. Anderson will be honored with a reception in celebration of the fiftieth anniversary of their marriage on Saturday, June 19, from 3:00 until 5:00 p.m. in the First Baptist Church Activity Center in Rising Star. The couple's children and grandchildren will be hosts for the reception and they invite friends in the community to attend.

Some Vitamins Poisonous

COLLEGE STATION--Some vitamins can be poisonous if consumed in large amounts, says Dr. Cass Ryan-Crowe, a food and nutrition specialist. Ryan-Crowe is on the home economics staff of the Texas Agricultural Extension Service, The Texas A&M University System.

Fat-soluble vitamins are of particular concern because these nutrients are stored in the body when excess amounts are ingested, the specialist explains. Therefore, if a megadose, or an amount several times the recommended daily

allowance, is taken over a long period of time, toxic side effects may show up, she warns.

For example, Vitamin A can cause hair loss, increased cranial pressure and pain in the extremities if overtaken, Ryan-Crowe points out.

In addition, Vitamin D can cause anorexia, weakness, constipation and elevated serum calcium levels if doses exceed RDA, the specialist says.

Vitamin E in megadoses can cause weakness and fatigue as well as skin rashes and giddiness, she reports.

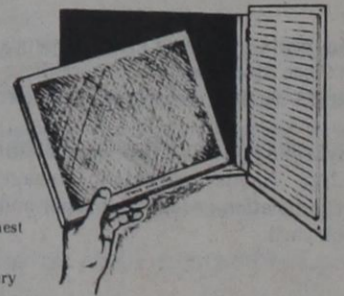
YOU can control your use of electricity and your bill by using energy wisely.

Higher fuel prices and inflation have pushed electric costs higher in recent years.

But YOU still are a key factor in determining the size of your electric bill. Because only you can control the amount of electricity you use, a large part of the control over your bill is in your hands.

We offer these wise-use suggestions as a guide for getting the most out of every dollar you spend for electricity:

- Make sure your house has insulation equal to at least an R-19 rating in the ceiling and R-11 in the walls. Insulation pays for itself within a few years in reduced heating and cooling costs.
- Weatherstrip windows and doors, then keep them closed.
- Eliminate excess heat with draperies, storm windows, reflective films, window shades and overhangs.
- Set air conditioning thermostat at the highest comfortable setting, around 78 degrees.
- Clean or replace air conditioner filters every month or—even better—every two weeks.
- Have leaky hot water faucets repaired immediately; they waste both water and the energy used to heat it.



• Check the temperature control on your water heater. For most needs, the correct setting is 135 degrees; water heaters used for baths only may be set at 110 to 120 degrees.

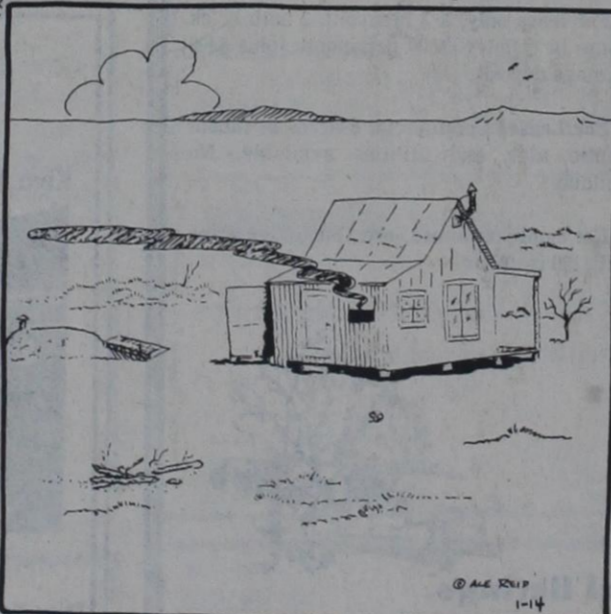
By following these tips, you should be able to control your use of electricity—and the size of your bill.



WEST TEXAS UTILITIES COMPANY
WTU
A Member of The Central and South West System

Remember REDDY Supplies the energy—but only YOU can use it wisely!

COW POKES By Ace Reid



"No, Paw, I ain't burning your dinner, I'm ironing and only scorchin' your shirt!"

IF YOU RECEIVE ANY GOVERNMENT CHECK, WE CAN "IRON OUT" YOUR DEPOSIT DIFFICULTIES! IF IT'S A BIG CHORE TO GET TO THE BANK...

JUST SIGN UP TO USE OUR HANDY "DIRECT DEPOSIT" SERVICE!

DRIVE-IN BANKING

STATE ST BANK

Member F.D.I.C.
RISING STAR, TEXAS 76471

EQUAL HOUSING LENDER

IN BANKING

Mammaw's Self Service Station

is now handling
Preston Milk.

Price \$2.20 per gal.

OLIVER WEST PUMP & WATER WELL SERVICE
domestic irrigation
complete systems sold and serviced
1/2 to 2 hp pumps in stock
Hell-arc welding machine work
Pulling Unit Equipped w/welder
call anytime **817 643-4683** 2 1/2 miles so. Rising Star

Spring Fashion Fling Seen Local 4-H Club

Several members and adults from the Rising Star "Stars of the Future" 4-H Club attended the Spring Fashion Fling Tuesday evening, June 1, at the Eastland High School Auditorium. County Extension Agents Christy Gentry and Janet Thomas sponsored the show.

Registration began at 6:30 p.m. First on the program was a skit, "If Kids Were Moms" presented by Cisco Good Times Gang 4-H Club. "Fashions for a Well-Balanced Wardrobe," a fashion show, was presented with fashion provided by Quetta's and My Shoe Shoppe, both of Eastland. The fashions were modeled by members of 4-H clubs throughout Eastland County. Our own Tabitha Hutton was one of the models. "Our Secret Ingredient," modeling tips, was presented by Carol Goode, 4-H Clothing Leader from Rising Star. Carol had

all members modeling what they had on—even blue jeans and a T-shirt.

Those attending broke for a snack of chips, dips, and refreshing cherry drink. Adult leaders from Rising Star provided the enjoyable snacks.

Russell of the International Hairport in Eastland presented "Ingredients for a Prettier You," hair care rules. "Whip Up Your Own Fashion Accessory" was instructed by Christy Gentry and member assistants. Those wishing to, made attractive hair clasps of clips and satin ribbon. Door prizes were drawn and Barbara Long was a lucky recipient of one.

Attending from Rising Star were Tabitha Hutton, Lori Finley, Stephanie Long, Stacy Wright, Karmen Hall, Sandy Hutton, Linda Finley, Carol Goode, Barbara Long, and Kathy Long.

New 4-H Scholarship Established

COLLEGE STATION—A special scholarship endowment has been established in honor of Floyd D. Lynch of Bryan, retired 4-H leader for the Texas Agricultural Extension Service, Texas A&M University System.

Trustees of the Texas 4-H Youth Development Foundation established the endowment to provide at least one scholarship each year to an outstanding 4-H member graduating from high school, said Tom Davison, executive director of the foundation and extension 4-H and youth specialist.

The first recipient of the \$1,000 Floyd D. Lynch Endowed Scholarship will be named June 8, during State 4-H Roundup at Texas A&M University.

Lynch was State 4-H leader from 1949 to 1970. During his tenure as head of the Texas 4-H program, he gave leadership to establishment of community and neighborhood 4-H clubs, leadership training for teenagers, involvement and training of volunteer leaders, establishment

of the Texas 4-H Council as a statewide youth governing body, establishment of district 4-H councils, organization of the Texas 4-H youth Development Foundation, expansion of private sector support to 4-H, expansion of 4-H to include urban youth and initial development of the Texas 4-H Center.

Prior to his appointment as state 4-H leader, Lynch served as a county agent and later as a district agent with the extension service.

Dr. John T. Pelham, current state 4-H leader, said that many of the 4-H programs enjoyed by members today were Lynch's ideas or innovations.

"Lynch was always seeking excellence in programming for both youth and adults," noted Pelham. "He designed a 4-H volunteer leader training program model as well as a special program for teen leaders."

"4-H is deeply indebted to Floyd Lynch, and the scholarship established in his name emphasizes the excellence he always pursued," said Pelham.

Fandangle Will Be June 17-19 & 24-26

For more than forty years the people of Albany, Texas have been entertaining West Texans with song and dance, depicting the lives of early Texas settlers through the production of the Fort Griffin Fandangle.

The two hour outdoor musical is scheduled to run for six performances June 17-19 and June 24-26 at the prairie theatre just outside the Albany city limits.

A cast of over two hundred local citizens begin rehearsing as early as February each year to make the historical narrative possible. With the exception of the directors and technicians, the cast and crew of the show volunteer their many hours of rehearsal and performance.

The Fandangle was created 44 years ago by Albany playwright and author Robert Nail as a senior class play. The production was such a success that local citizens encouraged Nail to expand the endeavor to include the townspeople.

Over the years scripts for the show were carefully constructed to tell the story of the old west and how it was settled. Following Nail's death in 1968, the town drew from within itself for continued leadership and guidance.

For two generations the Fandangle has pulled from Albany talents that otherwise would have gone undeveloped. All music and lyrics for the production are the products of Albany citizens as are the props and scenery.

The large outdoor stage is the setting for scenes that include a herd of longhorns, buffalo, a stage coach, countless cowboys and a replica of the Texas Central locomotive. Also used is a large street set that transforms the two acre stage into the wild and reckless Main Street of Fort Griffin, a cattle trail town and home of a military fort by the same name.

Albany celebrates the annual production with a parade scheduled this year to begin at 6:00 p.m. on Thursday, June 25. The sixty or more entries in the parade represent local organizations as well as several of the moving props from the show such as the steam powered calliope.

Fandangle visitors are encouraged to come early enough to view Albany's many historical buildings, including the courthouse which was constructed in 1883. Organ concerts are held each evening of performances on the handcrafted pipe organ in the Matthews Memorial Presbyterian Church located one block off

the square. Calliope concerts are held before each show at the theatre.

Albany's latest achievement is the founding of the Old Jail Foundation Art Museum which was a recipient of one of four cultural achievement awards given by the West Texas Chamber of Commerce this year. The prestigious award has been bestowed on Albany twice in the past, once to Robert Nail and then again to the people of Albany for the production of the Fandangle.

The art museum will be featuring an exhibit entitled "Taos Today" during the Fandangle dates.

Barbecue and all the trimmings are available on the court house lawn beginning at 5:00 p.m. each night of the performance.

Tickets for the outdoor extravaganza range in price from \$3.00 to \$7.00 and are available after June 1. For reservations contact the Fandangle Association office at 915/762-2525 or write to: Fandangle, Box 185, Albany, Texas 76430. Group discounts are available.

Love Run Set For July 3

The Mall of Abilene will sponsor the 4th annual Love Run to benefit MDA on Saturday, July 3rd.

Check in will be at 6 A.M., 5K run starts at 7 A.M. and 10K run starts at 7:30 A.M.

Trophies will be awarded for 1st and 2nd place winners, 3rd place medals, 4th, 5th and 6th place ribbons in the following divisions: Male and Female, 12 and under, 13-18; 19-24; 25-29; 30-34; 35-39; 40-49; 50 and over.

Pre-registration fee is \$4.00 with applications available at the Mall of Abilene office. Runners may also register the day of the run for a \$5.00 fee.

Free Love Run T-Shirts will be given to all entries.

This year's run is being co-ordinated by the Abilene Road Runner Club.

For further information, contact: Joseph M. Scott, Marketing Manager Mall of Abilene-698-4351

Roof Garden Dinner Theatre Begins Season

The Roof Garden Dinner Theatre in Cisco will open its summer season with **I Ought to be in Pictures**, one of Neil Simon's most recent comedy hits, Thursday, June 10, at 7 p.m. It will play June 10-12 and 17-19.

This play tells the story of Herb, a once-successful Hollywood scriptwriter, who is confronted with his almost forgotten past by the appearance of his teen-age daughter, Libby. Herb had abandoned his Brooklyn family sixteen years earlier. Now Libby appears and wants her

dad to get her into "the pictures."

The manner in which Herb and Libby attempt to pick up the pieces of a lost father-daughter relationship becomes a poignant, tender, and very funny story. Guest Artists Bob Straus and Betty Hukill play the parts of Herb and Libby.

All seats at the award-winning Roof Garden are reserved. Tickets are \$11, and reservations should be made by noon the day of the performance. Call (817) 442-2567 during business hours or 442-2589 after hours and weekends.



Bob Straus and Betty Hukill, guest artists at Cisco's Roof Garden Dinner Theatre, rehearse the parts of Herb and Libby in Neil Simon's comedy, "I Ought to be in Pictures," which opens Thursday, June 10.

GED Test Will Be June 12

The General Education Development (GED) test has been rescheduled for Saturday, June 12, at Howard Payne University, said Dr. Guy Nelson, director of testing. The test was moved to June 12 from June 5 due to late arrival of testing materials.

The exam is set for 8:30 a.m. in the Old Main, room 203.

The GED test is for those persons desiring a high school equivalency certificate. Cost for the test is \$15.

Other 1982 testing dates are July 10, Aug. 7, Sept. 11, Oct. 2, Nov. 6 and Dec. 4.

For more information, contact the HPU Office of testing at 915-646-2502, Ext. 278.

Library Begins Summer Schedule

The Rising Star Public Library will begin the summer schedule Tuesday, June 15, at 9 o'clock. Library hours will be Tuesdays and Thursdays of each week from 9:00 until 11:00 a.m.

Several new books have been added to the library and we wish to thank Mrs. Geneva Bo-

been for the set of "Little House" books. We now have two sets and numbers of other good books for young people.

We hope you take advantage of the free library service and enjoy a summer of good reading. "Reading maketh a full man!" Use the library!



An early alarm clock, invented in the 1800's, involved a candle that would come out of a box when it was time to wake up.



French Impressionist Paul Cezanne was such a slow worker that he was forced to use wax fruit in his still-life paintings since real fruit would often rot before he was finished.



- BIRTHDAYS**
JUNE 13
Pam Thompson
Priscilla Hebert
Sandy Clark
Jackie LeBleu
JUNE 14
Mrs. C.F. Carroll
Jimmy Roberts
Becky Wilson
JUNE 15
Jenny Walker
Cynthia Jones
JUNE 16
Ruby Goldston
Janetta Lawrence
Daryl Medford
Lola White
JUNE 17
Don Holaman
JUNE 18
Rosa Mae Nichols
Jimmie Fridge
D.J. Bass
JUNE 19
None

Thursday,
June 10, 1982

Majestic Theatre

Eastland 629-1220

One Showing Only Each Evening
Open 7:30 Show Starts At 7:50 P.M.

Now Showing

SOMEWHERE IN THE DARKEST REACHES OF THE UNIVERSE, A BATTLE IS ABOUT TO BEGIN. A BATTLE BETWEEN GOOD AND EVIL, BETWEEN A WARRIOR AND A MADMAN. BETWEEN THE AWESOME POWER OF THE STARSHIP ENTERPRISE AND THE WRATH OF KHAN.

FOR SOME IT WILL BE THEIR FIRST MISSION, FOR OTHERS IT WILL BE THE LAST.

STAR TREK II THE WRATH OF KHAN

RANGER DRIVE-IN THEATRE

Ranger 647-3802

One Showing Only Each Evening
Open 7:30 Show Starts At 8 P.M.

STARTING FRIDAY

GREASE IS STILL THE WORD!

PARAMOUNT PICTURES PRESENTS
A ROBERT STIGWOOD/ALLAN CARR PRODUCTION
Starring MAXWELL CAULFIELD-MICHELLE PFEIFFER
Choreography by PATRICIA BIRCH-Executive Producer BILL OAKES
Written by KEN FINKLEMAN
Produced by ROBERT STIGWOOD and ALLAN CARR
Directed by PATRICIA BIRCH

PG PARENTAL GUIDANCE SUGGESTED
SOME MATERIAL MAY NOT BE SUITABLE FOR CHILDREN

A PARAMOUNT PICTURE
Copyright © MCMLXXXIII
Paramount Pictures Corporation
All Rights Reserved

For top quality replacement parts
for your cars, trucks
and tractors,
come see us at

Cross Plains Auto Supply

840 Main 725-6212

IN QUOTES

Doing Right doesn't come so hard as getting credit for it.

—D. HOWE

CLASSIFIED ADS sure to get results

Thursday, June 10, 1982

FOR SALE

FOR SALE: Avacado green gas cook stove in very good condition. Call 643-1977 after 5:00 p.m. 21-4c

FOR SALE: 100-year-old upright piano with works made in England; hand-carved cabinet from France. See to appreciate. Has been maintained, but presently needs tuning. Call 629-2487 or 629-1671. tf

FOR SALE:

Drive a little, save a lot on your mobile home. Double wide and singles; several to choose from. Eastland Direct Factory Outlet. Interstate 20, Olden, Texas Ph: 817-653-2432 FHA financing and conventional.

FOR SALE: 13 year old gelding - super-healing horse and an excellent youth horse. Also a 5 horse walker. L Bar P Cutting Horses 559-6771, Eolian. T-48

For Sale: 1 Hereford bull and 8 pairs. Call 643-4604; Frank Winchester. 22-2tp

21" B&W Console TV in good working order. Cabinet real nice. Can be seen at 400 N. Anderson, Huddleston. Ph. 643-1703. Mornings and after 5. 22-2tc

FOR SALE: 1974 VIP 14' bass boat, 18 HP Evinrude, Little Dude Trailer, Motor Guide trolling motor. All in good condition. \$1050. 629-2075. T-47

For Sale 1978 FORD LTD, with power brakes, power steering, a-c, AM-FM radio, 8-track tape player, motor & transmission in good condition. \$1,000. 318 Dodge motor & transmission, \$150. Big heavy duty 3 1/2" elec. drill. Two black Angus cows-bred. Call 643-3110. 23-1tc

AUTOMOBILES FOR SALE

CARS \$200! TRUCKS \$150! Available to local gov't sales. Call (refundable) 1-714-569-0241, ext. 3878 for directory that shows you how to purchase. 24 hrs. 22-3tp

4020 JOHN DEERE L.P.G. \$3,800; 1969 Case 930 Diesel \$3,800; 1066 International clean, and some 2 plus 4 row equipment, shredder and breaking plow. Phone 893-6146 T-53

USED TRAILER SALE: 9 40 ft. Dropdecks \$6,000 to \$7,500.

2 40 ft. Doubledrops \$7,250. 18 40 ft. Flatbeds \$2,900 to \$6,900.

2 3 Axle Lobeds \$13,500. to \$14,900.

4 40 to 45 ft. cattle 25 to 4,800.

30 other trailers including Grains, goosenecks, flats, oilfield, dumps, oilfield and other trailers. For details Johnston Truck Cross Plains, Tex. Ph. 725-6181. 20-3tc

NEW FLATBED TRAILERS \$8,735. gets you a new 40 ft. 70,000 lb. Fontaine Flatbed with 10X20 tires. We have over 25 Fontaine flats in stock. 40, 42, 45 and 50 ft. All trailers are reduced for this sale. Johnston Truck Cross Plains, Tex. Ph. 725-6181. 20-3tc

REAL ESTATE

HAVE YOU GOT LAND YOU WOULD SELL? WE ARE BADLY IN NEED Of acreages from 1 to 1,000, improved or unimproved. Give us a call: 893-6666 or 893-5898, De Leon.

COGBURN REALTY Our 24th year selling in your area.

REAL ESTATE:

Brewster St: 2 BR, I.R., 1 bath, combination kitchen-dining area, carport; 1.2 acre lot.

Mill St.: 3 BR, I.R., 1 bath, combination kitchen-dining area, 4-car carport; large lot, water well, garden area, vinyl siding, new carpet & draperies.

Have buyers for house and land. Your listings would be appreciated.

Louis A. Mayfield Broker
Ph: 817-643-4073, Rising Star, Texas

REAL ESTATE FARM FOR SALE:

6 Rm. house on 4-A, 2 BDRM, 1 Bath, adjoining city limits of Rising Star, utility room, natural stone, newly decorated on inside, Hwy frontage.

Owner finance, low interests. Ph: 918-689-5146 MINI MO.

FOR SALE:

House and 8 acres on West Pioneer Street, Rising Star, Texas for \$20,000. Easy terms. Ph: Area (602)-458-2808 or write 788 Pampas Place, Sierra Vista, Arizona 85635 18-3 mo. Pd. mini mo.

FOR SALE: 2 Bedroom house with water well and garden spot. 302 Joyce St. Phone 643-5011 40-tfc

For Sale small house on E. Mill St., \$5,500. Call 643-6462. mini-mo.

FOR SALE: 4-rm. house, large utility and large closets. Covered patio with beautiful pecan trees on one acre. Good location on S. Main. Call 643-5541. 23-4tc

MOBILE HOME

MOBILE HOME TRAILER SPACE available. Septic tank, elec., telephone available, free water. Call 643-4421 or 643-5611.

FOR SALE

FOR SALE: Black Angus Bull, Registered 3 year old. T.D. Whitehorn, Eastland, 629-8376. T-48

FOR SALE: New 6 1/2 x 16, 7,000 pound tandem axle tractor or carry-all tractors. \$695. Ash Creek Trailer City, Azle, Tx. 1-444-3292. T-44

CLOTHES HORSE: Clothes sold on consignment. Ladies, babies, children and teenagers clothes. Terrific buys. 612 West 7th, Cisco. Wilma Waters.

FOR RENT

Single Garage for rent in Rising Star. 643-1222. 23-1tp

FOR RENT: 2 bdrm. house. Call before 8 a.m. or after 8 p.m. 817-643-4172. 20-tfc

NOTICE

Sand and Caliche Hauling
Willie Ezell
Phone: 643-5431

Fast, Dependable
Film Developing
Palace Drug Store
Rising Star, Texas

D. & E. HOME IMPROVEMENT
Vinyl Siding, Remodeling,
Insulation, Storm Windows,
Doors, Screens & Paneling,
Painting inside & out -
Concrete Work.
P.O. Box 623
Rising Star, Tx. 76471
Ph: 817-643-3606
"We Do It All."

OLIVER WEST
Water Well Service
2 1/2 mi., So. Rising Star
1/2 to 2 H.P. in stock
817-643-4683
Call Anytime

LUNCEFORD
ROUSTABOUT SERVICE

Have spray rig; will paint tank batteries, pump jacks.
Ph: 643-1515 or 643-2646
Home: 643-7183
6-4tc

For the best in home-care, housewares, personal-care, and multi-vitamin and mineral supplement products, call your local A M W A Y DISTRIBUTOR. PH. 643-3702.

Summer's coming! Have your evaporated air conditioner serviced. We clean, grease, replace pads on all 3,000 & 4,000 CFM a for \$17. T&C Plumbing, 643-6526 20-tfc

CLARK'S FLOOR SERVICE
1105 W. Lindsey-Breckenridge, Tx. 559-2157.
Carpet and vinyl samples, Pacific Fire Windows available. T-46

WANTED

WANT TO DO Hay Hauling square or large round bales. 639-2247, Carbon. T-53

HELP NEEDED cooks and waitresses, Elite Cafe, 1 blk. S. of red lightin Rising Star or call 643-6162. 23-2tp

R.N.'s, LVN's and Home Health Aids needed immediately to make in-home visits for Girling Health Care on a part-time basis. Flexible hours, good pay. Weekend work available. Call (915) 643-5525. T-52

WANTED: Part-time workers at home who have out-of-town newspapers and magazines of family interest with classified sections. Paid \$1 each for replies on clipped classifieds addressed onto postage-paid cards we furnish. Get details at the Eastland Telegram. Tf

WANTED Experienced automobile mechanics. Will pay above top salary. For appointment for interview call W.C.(Check) Smith, Smith Bros. Chevrolet Co., Gorman, Tx. 817-734-2233. 23-2tc

Count on the Classifieds

NOTICE

WELDING
Oilfield and Farm
Jim Ratliff
Ph: 643-6464
36-tfc

Gregg & Wilson Service, Inc.
Used Oilfield Equipment--Casing Pulling
P.O. Box 121
Cross Plains, Texas
76443

Bill Gregg
Phone (817) 643-3332

Willard Funderburg
Phone (817) 725-7519

Howet Wilson
Phone (817) 725-7464

T & C PLUMBING
General Repairs
New Installation
Sewer Repairs
Unstops
Gas Appliance
Repair & Adjustments
LICENCED PLUMBER
Tony & Charlie Chamberlain
Ph. 643-6526 or 643-3159
35-tfc

ALL TYPES vegetables, bedding and pot plants. Also all sizes and types of baskets. Open 9 a.m. to 6 p.m. 7 days weekly 7 mi. East Hwy. 36, 1/2 mi. S. of Hwy. 36. Dan's Greenhouse Dan or Dell Hamer, Rt. 2, Rising Star, Tex. 76471.

OPPORTUNITY

LADIES-CAREER OPPORTUNITY
Nation's #1 Gift/Toy Party Program hiring AREA SUPERVISOR. No investment. Weekly checks. Free training, supplies and sample kit. Detail without obligation. Call Linda COLLECT (214)644-9500.

GOOD OPPORTUNITY for the right persons. To operate his own full service Exxon Station. 2 dealers needed; 1 in Rising Star, 1 at Thurber Exxon Station on I-20. \$12 to \$15,000 capital needed. For information call 817-629-1551. T-48

EARN \$4.87 HR. We need assistance in evaluating and responding to daily work reports submitted by our agents throughout the state. No experience necessary; pay begins upon completion of Part One of training. Can work at home. For information send self-addressed, stamped envelope 9 1/2 inches long to AWGA, Dept.E., Box 49204, Atlanta, Ga. 30359. 23-1tp

To Give Away

To Give Away: One-yr-old reg. male Rat Terrier to home where he will be loved and cared for. Prefers country living. Reason: Father says kids have left too many dogs at home. Results: Mother drew short straw. Call 817-643-3226 before 8 a.m. or after 8 p.m. 23-2tp

FREE to good home 2 female puppies, 4 mos. old. Good watch or stock dogs. Call (817) 259-2252. 22-2tc.

SERVICE

NOTICE: Carpet cleaning-heavy shampoo followed by cold water rinse, extractor removes all dirt into barrel. Is your carpet flooded? Have machine to remove or extract water from carpet. references in Rising Star. Ph: Mike Boyd, (915)356-5559 tfc

SHAKLEE PRODUCTS: Do you really get a balanced diet? Let me tell you about Dr. Shaklee's Slim and Trim Plan. We also carry natural food supplements, concentrated biodegradable household cleaners, natural skin care products, toiletries and baby products. Barbara Jo Kanady, Shaklee Distributor PH: 643-5791

CISCO RADIATOR SERVICE
207 E. 6th St., Cisco (Breckenridge Hwy.)
Cleaning-rod-ding-recoring-auto-truck-tractor radiators heaters. New radiators and heaters. Auto gas tanks cleaned-repaired. Open Monday thru Friday, 8 a.m. to 5:30 p.m. Call 442-1547, Cisco. ttc

WELDERS WANTED
Stephens Tanks, Inc. in Abilene is taking applications for welders to work the night shift. Night crew will work 40 hours per week and will be paid for 50 hours. Two weeks paid vacation per year. Hospital insurance paid on employee and dependants. Uniforms furnished, \$5,000 insurance policy on employee and cancer policy paid by Stephens Tanks. We are also looking for daytime welders. For more information call Carrol Ewing at 915-677-0281 collect. TNF

CONSTRUCTION & PLUMBING SUPPLIES
Why go out of town for your plumbing supplies when Duggan Bros have all your needs right here in your own town? Call us at 643-2168 or drop in at 106 South Main St. next floor to Trails West in Rising Star, Tx. If we don't have it we will get it for you.

EXPERT Carpet installation. Install new or used carpet. Carpet repairs 734-2918 Carbon, Texas. T-103

NOTICE

FLEAS GONE FOREVER! Guaranteed organic, non-toxic flea spray. Patent Pending. Be with our earth, not against it! Send \$9.49 to pagrovian Research, P.O. Box 13, Pacific Grove, CA 93950. T-50

LARGEST INVENTORY of trailer parts in the Big Country at Abilene Trailer Sales. Complete repair on all stock trailers. Quality service on all makes and models. Over 60 trailers to choose from, in stock. 3608 Pine. 673-7841. T-50

JOBS OVERSEAS Big money fast. \$20,000 to \$50,000 plus per year. Call 1-716-842-6000, ext. 3145. T-45

LOST & FOUND

LOST: 2 black & brindle hounds, 1 mi. S. of Lakewood Recreation Center. Could be anywhere now. Any information, call after 5 p.m., Rusty Reed. 817-725-7363. Reward offered. 21-2tc.

SERVICE

Buddy Cook Residential and Commercial. Refrigeration and Plumbing. PH: 817-842-5950

Rising Star

RUST & SONS FENCING CONTRACTORS
Pipe Line and general fencing construction. Rt. 1, Box 120, Rising Star, Tex. 76471
PH: 817-643-3137

YOU WON'T NEED A PUSH with a Continental Battery in your car this winter. Free battery check and free installation
CENTRAL AUTO PARTS
801 East Central COMANCHE, TEX. 76442
Ph: 915-356-3925
OPEN 7 DAYS A WEEK

Guaranteed AMWAY PRODUCTS for every need are just a phone call away. We deliver. PH. 643-3702.

PASTORAL CARE AND COUNSELING
Cisco 442-1132

STONE ETERNAL MEMORIALS: Seal and certificate see Mr. and Mrs. L.C. Freeman representing Coleman Monument Works, Coleman, Texas. Phone 817-629-1631 or see 305 N. Dixie, Eastland, Texas 76448 T105

J & A Bargain Box
701 W. Main
New & Used Merchandise
629-1133

GROUP HEALTH INSURANCE THE TRAVELERS
Eastland County Farm Bureau
643-5951 TC

GARAGE SALES

GARAGE SALE Friday 11th & Sat. 12th. Variety of Items! Third house West of May traffic light. 23-1tp

GARAGE SALE Sat. June 12 from 8:00 to 5:00. Dishes, small appliances, jr. clothing sizes 3-11, women's clothing sizes 16-22, some men's clothing, ceramics, Kenmore range vent hood. No sales before 8 a.m. and no checks please. Red brick home on West side of hwy. 3 miles north of Rising Star on Cisco Hwy.

Yard SALE

Yard & Porch Sale: June 11, 12, & 13 from 9 a.m. to 8 p.m. 3-family sale. A little bit of everything. 210 S. Anderson.

YARD SALE Girls' clothing, many miscellaneous items. E. Pioneer St., 4th house on right from Hwy 183. Thurs. & Fri. from 9 until 4.

LISTEN! SWAP SHOP 8:15-8:30 Monday thru Friday mornings, KVMX Radio, FM 97, Eastland. Looking for something? Have an item for quick sale? Call in your message on the Swap Shop. 629-8588.

THE RISING STAR

Publication No. (USPS 466500)
643-4141 105 N. Main St. Rising Star, Texas Box 127 76471

Second Class Postage paid at Rising Star, Texas, under Act of Congress in March, 1870. Published every Thursday.

Publisher-Mr. & Mrs. H.V. O'Brien
Editor-Cisco-Herrel Hallmark
Editor-Eastland-H.V. O'Brien
Assoc. Editor-Eastland-Michelle Lindsey
Editor-Ranger-Betty McGee
Editor-Rising-Star-Carolyn Ratliff
Office Staff-Faye Merritt
Office Staff-Scott Stevens
Office Staff-Margaret Hallmark
Office Staff-Patricia Hallmark
Office Staff-Daisy Rutledge
Office Staff-Edra Butler
Columnist-J.W. Sitton
Production Supervisor-Ted Rogers
Production-Raymond McCoy
Production-Wayne McCoy
Adv. Production-Wanda Hallmark
Computer Operator-Kathy Willeford
Feature Writer-Viola Payne
Commercial Printing-Hale Dunson

CISCO-EASTLAND-RANGER
SUBSCRIPTION RATES: City and in county \$13.00. Out of county and out of state \$16.00. \$1.25 by the month.

RISING STAR SUBSCRIPTION RATES: By mail in Eastland and adjoining Counties: \$5.00 per year; in Texas: \$7.50 per year; elsewhere in U.S. and foreign counties \$10.00 per year.

REAL ESTATE

For Sale: Large commercial building in downtown Cisco, across from the soon-to-be-remodeled Hilton Hotel Museum. Ideal for retail sales, food service or central offices. 50 by 100 feet, with pretty front, and two large double loading doors, at back; one onto alley and the other only concrete pad at back. Adaptable for many uses in what is going to be a high-traffic area of the city. One block from the new bank location. Call 629-2413 for details. tf

SOUTHERN Missouri Farms, Homes, Ranches. Several good Grade A Dairy Farms. Box 474PF, Caboel, MO 65689. T-52

ARKANSAS Land. Clean, green with elbow room. Free list. Gatlin Farm Agency, Broker, Waldron, AR 72958. T-52

FLY FISHERMAN'S DREAM-Choice river frontage, Yellowstone River, 5 plus acres, certified building site, Box 384, Gardiner, Montana 59030. T-50

GORMAN FALLS will be open on a membership basis, bring your RV, stay 2 free nights with us and let us show you what we have to offer. Reservations required. Offer is good beginning May 10, 1982. Call 915-628-3251 or write Gorman Falls at Bend, Texas 76824. T-52

OZARK Farms, excellent grass, unlimited water, reasonable prices. Graven Realty, Inc., Box 234 ECN, Willow Springs, MO 65793. Phone 417-469-4040. T-52

ALASKA Homesteads \$1.25 acre Canadian land \$1.00 acre. Repossessed homes \$1.00 plus repairs! Each report \$2.00, all \$5.00. Homestead, P.O. Box 5741 ECN, Yuma, Arizona 85364. T-52

FOR SALE

25 FLOCKS PUREBRED BANTAMS 30 assorted chicks \$23.00. 30 guinea keets \$23.00. Jumbo quail 70 cents each. White 80 cents. Hatching weekly. Write for details. Woody's Hatchery, Rt. 1, Shawnee, OK 74801. (405) 273-0482. T-52

SUPER CERAMIC SALE Start your Christmas early - 20% all greenware, bisque and paint. Mayco and Duncan paint dealer. Ceramic and gifts 207 S. Ostrom. Ph. 629-2581. T-46

TEXAS PRESS ASSOCIATION

NOTICE

HOG BOOKS! "Pig Farmer, Veterinary Book." On-the-facta prevention symptoms, treatments, 176 pages, 300 photos, diagnosis chart, covers breeding, nutrition, farrowing, management, etc. \$80 illustration, \$18.95 special! Both above hardcover hog books, \$32.95, post paid. Diamond Farm Book Publishers, Dept. EC, Box 557, Alexandria, N.Y. 13607. T-45

FOR SALE: The Criswell Study Bible; hardbound; \$19.95 at the Eastland Telegram. Edited by Dr. W.A. Criswell, pastor First Baptist, Dallas; Presentation page; King James Version; Partial contents: Books of the Bible, Spelling changes, The Scarlet Thread, Charts of Kings and Prophets, Chronology, Between the Testaments, Calendar, Family Trees, Harmony of the Gospels, Prophecies, monies, weights and measures, archaeological discoveries, glossary, subject index, concordance, maps. tf

KNOW VALUE of antiques and collectables. 20,000 prices. Send \$10.95 to EJ Gifts, 404 Hamilton St., Union Mills, IN 46382. T-46

LEARN HOW to obtain relief of heel-bone spurs, joint pain, hemorrhoids, allergies, acne, insomnia, etc. Proven natural methods by leading nutritionist, Siri Khalsa. \$1. Health Publishers, Box 546, 1015 Gayley St., Dept. T1007, Los Angeles, CA 90024. T-52

SAVE A LIFE and unnecessary medical expenses! Learn emergency techniques. Professional Nurse tells how in easy to follow booklet. Send \$9.95 p.p.d. to Rescue Guide, P.O. Box 6882, Santa Rosa, CA. 95401. T-46

AGORAPHOBIA-Recovery is possible! Autobiographical narrative concerning devastating problems of multiple fears/phobias. \$8.95 postpaid. PGI Publishing, 14140 Beach No. 204P, Westminster, CA 92683. T-52

Secret of Dynamic Energy! Taught greats(Bell, Emerson, Gladstone) \$8.50 complete. Or Free book jacket. Also, Free! Multi-Level Food Plan plus thousands Monthly. For free information send stamped envelope to: Universal, Box 653-P, Plymouth, Michigan, 48170. T-53



Texas has 55 universities and colleges.

Notice To Rising Star Exes!!!
 Save part of your vacation for the 1982
RISING STAR HOMECOMING.
 The date has been set for October 16, 1982
 The Rising Star Wildcats will host the
Lometa HORNETS.

Put Yourself in the Marketplace in the **Classifieds**

SALES SALES

PURE WATER PRECISION performance water distiller-Distributors-dealers wanted. Excellent sales opportunities HEALTH-WISE DIST., Briardale, Rt. 2, Bismarck, North Dakota 58501 (701) 222-0753. T-47

HOME EC HINTS

To remove odors in a microwave, boil one cup of water and several tablespoons of lemon juice in the oven for five to seven minutes, suggests Bonnie Piernot, a family resource management specialist with the Texas Agricultural Extension Service.

Eastland County Reappraisal Forms to Be Issued Monday

The Eastland County Appraisal District will be releasing the new 1982 reappraisal values on Monday, June 14, 1982. The notices will show the new market value of the property as well as the estimated tax amount that could be due on the described property.

The appraisal work has been going on throughout the County for over a year. It is the result of the new State Property Tax Code which requires all taxable property to be valued equally and uniformly at market value for 1982. The reappraisal work was done by the firm of McMorries and Company, a professional valuation firm.

Property owners will receive notices on all property that they are shown to be the owners of within the boundaries of the taxing jurisdictions of Eastland County.

Owners of residential, commercial, and agricultural properties will be receiving notices. Automobile owners in the Eastland ISD, City of Gorman, and Gorman ISD jurisdictions will also receive notices.

A sample of the reappraisal notice is printed with this article. It is hoped that some of the confusion often associated with reappraisal notices will be eliminated with the information provided on the sample forms.

CORRUGATED METAL
 AMERICAN AND FOREIGN 26"
 16' \$7.79
 AMERICAN 36" HEAVY HIGH CORE
 8' \$ 7.08
 10' \$ 8.85
 12' \$10.62

C-CHANNEL
 4"-14 Ga. 58c ft.
 6"-14 Ga. 97c ft.
 8"-14 Ga. \$1.18

PIPE
 1 1/2" New Heavy 14 Ga. . 59c ft.
 2 3/8" New Heavy 80c ft.
 2 7/8" New Heavy 90c ft.
 3 1/2" New Heavy \$1.20 ft.
 4 1/2" Heavy \$1.75 ft.
 ASK ABOUT TRUCKLOAD PRICES

SQUARE TUBING
 1 1/2"-14 Ga. 37c ft.
 1 1/4"-15 Ga. 41c ft.
 1 1/2"-13 Ga. 50c ft.
 2"-13 Ga. 82c ft.
 3"-14 Ga. \$1.15 ft.
 4"-14 Ga. \$1.53 ft.

SQUARE TUBING
 (Seconds)
 1 1/2"-14 Ga. 28c ft.
 1 1/2"-12 Ga. 35c ft.
 1 1/2"-15 Ga. 35c ft.
 1 1/2"-14 Ga. 40c ft.

CULVERT PIPE 20"
 8' \$ 28.00
 10' \$ 50.00
 12' \$ 69.00
 15' \$112.00
 18' \$154.00
 24' \$339.00

4x4 & GURGE CORRAL WIRE
 150 Ft. Roll \$179.95

NON-CLIMB HORSE WIRE
 4' \$ 69.95 Roll
 5' \$ 87.95 Roll
 NET WIRE \$ 39.95 Up

CFI BALER WIRE
 \$36.95 per roll
 While One Truck Load Lasts!

FEEDERS
 ROUND BALE FEEDER W/METAL BOTTOM \$ 99.95
 ROUND BALE FEEDER \$ 69.95
 5' BUNK FEEDER \$ 49.95
 12' BUNK FEEDER \$119.95
 DOUBLE FEEDER FOR HORSE STRALLS \$69.95
 BEST MINERAL FEEDER \$ 69.95

WE HAVE ALL SIZES WOOD POSTS and POLES From \$1.29 up

CORRAL STOCK PANELS

16' COMBO 57" \$18.95
 16' STOCK PANEL 52" \$16.95
 16' HOG PANEL \$15.95
 10' PIPE PORTABLE \$39.95
 10' TUBING PORTABLE \$29.95
 10' TUBING (SECONDS) \$20.00
 16' HOG #2 \$13.95

GATES 4' THRU 16' IN STOCK

T-POST
 6' No. 1 \$2.08
 6' Unpainted \$1.79

SOME VARIOUS ASSORTED SIZE SECONDS—VERY LIMITED SUPPLY
 5 1/2' \$1.75 each
 6' \$1.99 each

BARB WIRE
 American 12 1/2 Gauge \$32.95
 Bakers 12 1/2 Gauge \$32.95
 13 1/2 Gauge CFI \$29.95
 American Guacho (Same strength as 12 1/2 Gauge) \$22.95

HENSON'S RANCH SUPPLY
 DUBLIN, TX 76446
 817/445-2601

ANTIQUE TRACTOR BOOKS! Make ideal gifts! New! "Farm Tractors in Color." 80 years of tractor history. 118 full color photos, 183 pages, \$11.95. "Steam power in Agriculture." Covers development of engines and machines to help break prairie lands. 103 full-color photos, 184 page, \$11.95. "Steam Traction Engines, Wagons, and Rollers." 158 colored photos, 180 pages, \$11.95. "Encyclopedia of American Farm Tractors." Covers tractors from 1890s to 1979. 1,500 photos, 352 large pages, hard leatherette cover, \$26.95. SPECIAL! Complete collectors library-four above hardcover books, \$62.80; value \$52.80; postpaid. New! "150 Years of International Harvester." Covers all tractors, equipment and stationary engines up to 1980. 416 large pages, 2000 photos, hard leatherette cover, \$26.95, postpaid. Diamond Farm Book Publishers, Dept. EC, Box 537, Alexandria Bay, N.Y. 13607, Phone 613-475-1771. T-45

CATTLE BOOKS! "Vet Book for stock farmers." On-the-farm prevention, symptoms, treatment, 176 pages, 300 photos, \$16.95. "Calving the Cow and Care of the Calf." 164 pages 338 photo, \$16.95. "Profitable Beef Production," revised edition, 160 pages, \$16.95. Special! Complete above beef library, three above hardcover books \$43.95, postpaid. New! Invaluable! "Veterinary Handbook for Cattlemen." Completely revised. Jammed with practical information, fully illustrated, 608 pages, quality hard cover, \$34.95. Diamond Farm Book Publishers, Dept. EC Box 537, Alexandria Bay, N.Y. 13607, T-45

CERAMIC BISQUE Catalog. \$2.50. Reply, 194 N. Huron Rd. Av Gres, MI 48703. T-46

The high cost of clothing doesn't always insure quality, warns Alma Fonseca, a clothing specialist with the Texas Agricultural Extension Service.

Price of garments more or less depends on:

- quality of fabric
- quality of workmanship
- number of design and construction details
- amount and quality of trim used
- brand name or designer label
- prestige of store selling the garment.

If you're on a sodium-restricted diet, read processed food labels for sodium compounds and salt content, advises Mary K. Sweeten, a food and nutrition specialist with the Texas Agricultural Extension Service.

Pickled products, such as pickles or relishes, are high in sodium. Spices, such as garlic and celery salt have salt added, she notes.

More than 98% of American homes have television sets, including some that don't have indoor toilet facilities, says Cindy Wilson, a family life education specialist with the Texas Agricultural Extension Service.

EASTLAND CO APPRAISAL DISTRICT
 P O BOX 914 EASTLAND TX 76448
 1-817-629-8297

PROPERTY DESCRIPTION
 Lt 22, B1K 99

APPRaised VALUE 12,940 CODE A1

TAXING ENTITIES	EXEMPTIONS	TAXABLE VALUE	RATE	TOTAL
EASTLAND COUNTY	12000H	940	.970	910
EASTLAND ISD	10000A	0	.720	0
EASTLAND CITY		12940	.430	5563
EASTLAND CO HD		12940	.040	519
E C R & B LEVY		9940	.040	398

TAX RATES & AMOUNT DUE ARE ESTIMATES ONLY. YOU MAY MEET WITH MCMORRIES & CO. JUNE 28 - JULY 2, 1982. IF YOU FEEL YOUR VALUES ARE NOT EQUAL, YOU MAY MEET WITH THE BOARD OF REVIEW JULY 3 - 7, 1982. HEARINGS WILL BE HELD IN SIEBERT ELEMENTARY SCHOOL AT SADDIS & MADERA - EASTLAND, TX 76448 FROM 9 AM TO 12 PM & 1 PM TO 4 PM EACH DAY.

DO NOT PAY FROM THIS NOTICE

SEE REVERSE FOR EXPLANATIONS
DO NOT PAY

NOTICE OF REAPPRAISAL ACCOUNT NO. EL-11649

PROPERTY DESCRIPTION
 #1

APPRaised VALUE #2 CODE

TAXING ENTITIES	EXEMPTIONS	TAXABLE VALUE	RATE	TOTAL
#3	#4	#5	#5	#5
#6	#7	#8		

SEE REVERSE FOR EXPLANATIONS
DO NOT PAY #11

NOTICE OF REAPPRAISAL ACCOUNT NO. EL-11649

Notice Information:
 #1 Description of property is given.
 #2 The new value of the property is given.
 #3 The value shown for agriculture land will have an "AG" after it, if the Open Space Land Exemption has been filed for and granted.
 #4 The word Frozen will indicate a freeze on school district taxes for Residential Homesteads for those Over-65 years of age who have previously signed up.
 #5 Exemptions given by the taxing jurisdictions will be indicated.
 #6 The taxable value of the property after any exemptions have been granted will be shown.
 #7 The estimated tax rate for each district or jurisdiction will be given.
 #8 The estimated tax amount due on the described property is indicated.
 #9 The name and address of the property owner is given.
 #10 Information concerning property owners right to meet with the appraisers in Pre-hearings and with the Board of Review, if they feel the values are not equal.
 #11 Indicates that the notice is IS NOT a tax statement and IS NOT TO BE PAID.

Thursday, June 10, 1982

BOYD CARPETS

FLOOR COVERING

SPECIALIST
 1100 W. Central
 Comanche, Texas 76442
 Bus. Phone 915-356-3813
 Owner Jack Boyd
 Home 356-2473
 Carpet Tile & Linoleum

Oil & Gas Leases Wanted

Wells Drilled Now Call or write
Wesview Oil Co.
 8538 Cedel No. 5
 Houston, Tx. 77055
 (713)-686-2178

G.W. Rabel & Son
 Construction
 Concrete Pump Jack Pads
 442-4647 Cisco, Tex

Tucker Auction Barn
 Monthly Consignment Sales
 First Saturday of Each Month
CONSIGNMENTS NEEDED
 Contact Fred Tucker—Licensed Auctioneer
 (TXS 082-1152)
 At (817) 629-1956 after 5:00 P.M.
 Approximately 1/2 mile off FM 2563 in Flatwood Community TC

SISTER ROGERS—PALM READINGS
 READER AND ADVISOR—Tells past, present and future. She will help you where all others have failed. Are you suffering, are you sick, do you need help? Let this palmist show the way to success and happiness. Are you separated from one you love? Has something or someone come between you and your loved ones? I can tell you why! I have re-united many who were separated and caused many speedy marriages. If you seem to be overcome with bad luck, sick in body or mind, I can help you!
 SHE WILL SUCCEED WHERE OTHERS HAVE FAILED
 Open Daily & Sunday - 8 A. M. Till 10 P. M. - Ph.
 4 blks. South of Goldthwaite on Hwy. 16 (915) 648-2446

Willies Ceramics
 203 N. Oak Eastland Tex. (817) 629-8605
 Paint Sale 30% & 40% Off
 Greenware - Mobiles - \$100 a set
 Remember Our County Fair START NOW We are giving gift certificates to the winner of the following 2 divisions this year: Glaze and Stains. Adults 12 years and above.
 All Materials Must Be Purchased At Willies In Order To Win

ACE WELL SERVICE INC.
 —Dale Jones—
 Completions Swabbing
 Workovers Roustabout Crews
 Rods & Tubing
 Fully Insured For Customers Protection
 Radio Equipped Call Day Or Night
 200 S. Newton 557-5439

Ken Snodgrass
 Area Sales Manager
 (915) 572-3663

METAL BUILDING SYSTEMS

Abilene METAL "building" SYSTEMS
 "Manufacturers of Quality Pre-Engineered Steel Buildings"

Plant: P.O. Box 3516-Abilene-79604-(915) 677-1867
 Dallas: P.O. Box 31631-Dallas-75231-(214) 445-0990

PLUMBING
 Repairs of all types, new installation, septic tanks installed. REMODELING - interior or exterior. Electrical works, refrigeration work ? appliances.
 Free estimates. Prompt 24 hr. service.
 Call 817-629-8849.
 Big Country Plumbing
 Eastland, Tex.

BRADFORD Realty
 Helen Bradford, Broker
 Ken Parrack, Associate
 Main Office-205 East Main-Ranger, Texas 647-3230
 Branch Office-116 North Seaman-Eastland, Texas 629-8641

3 Rent Houses located in Eastland, near High School - Good Investment.

Nice & Neat - 2 BR. home on Pine St. in Ranger. Beautiful yard front & back. Carport on back. Could be used as 3 BR. This will make some family a nice home!

Lake Cabin on south side of Lake Leon. Fireplace, 2 room and bath. Needs some repair. Excellent fishing area. Hurry - Be Ready for summer.

Investment Property - 18 1/2 A. located in city limits. This land had gas & oil produced on it during the boom. It is now leased and well to be drilled soon. All minerals goes with place.

Beautiful Brick 2 BR. home in secluded area on Lake Palo Pinto. Fishing pier, boat house, over 200' waterfront. Nice, quiet, as there is only two other houses in this area. Must see to appreciate!

2 BR House in Ranger Needs some repair would make a nice home or rent house. Some owner financing available. Small barn, horse stall.

22 ACRES Close in-I-20 Highway frontage-in Ranger. Large House, lots etc. Call for more details.

120 Acres Near Carbon, 1/4 minerals, wells on adjoining place. All cleared - 30 A. coastal - 80 A. peanut allotment, 6 irrigation wells, 2 wheel moves go with place. Large older house partially remodeled. Sheds, small barns, cross fences.

LARGE BRICK BUILDING downtown Ranger. Excellent buy for Mechanic. Living quarters, lots of room for Garage. Priced right to sell. \$28,000.00

IDEAL Hwy 80 E. Business property! 2 A. with house and shop building. Lots of highway frontage. Great location - call today!

TWO-STORY 5 Br. 2 bath, fireplace, hardwood floors, some carpet. Priced to sell! \$31,500.00

78.98 A. - 10 M. S. of Cisco-33 A. Cultivated land. Bal. native pasture - 2 Br. frame house. Income from one well producing now. 1/2 mineral rights. VA loan assumable - Partial financing on balance.

3 BR. House- Liveable - Needs some repair. Nice location. Owner will finance. \$12,000.

Really Nice! 3 Br. 2 B House - LR - DR and Breakfast room. C/H & C/A - storm cellar - privacy fence at back. No repairs. Just move in. Assumable FHA Loan. Attached garage.

KING INSURANCE AGENCY REAL ESTATE

CISCO
106 W. 6th
442-2552

Mrs. Opal C. King-Broker
Res. 647-1510

RANGER
207 Main
647-1171

RANGER

THREE BEDROOM, One bath, carpeted, newly decorated, new plumbing, corner lot, \$26,500.00.

APPROXIMATELY 10 1/2 acres just outside city limits. All utilities, tank, water pump, barn, beautiful trees, on paved road. \$21,500.00.

TWO BEDROOM, one bath, basement, carpet, carport, storage building, barn, fruit orchard, garden, several pecan trees, Approx. 10 acres. Close in, \$42,000.00. Assumable loan.

THREE STORY brick building, includes 2 offices (now rented) Four furnished apartments and plenty of space for business expansion. Owner will finance.

RANGER: Three bedroom, one bath, large kitchen with built-ins, carpeted, garden spot, chain link fence, \$26,000.00. Assumable loan.

OLDEN

OLDEN: Four bedroom, two baths, nice kitchen with plenty of cabinets and builtins, large closed in porch, carpet, attached one car garage, 300 ft. lot, \$48,000.00

STRAWN

Strawn-Neat two bedroom, one bath cottage near school in quiet neighborhood. Spacious yard, some carpet, very affordable.

Lovely two story cottage, 4 bedroom and spacious kitchen dining area. Has been re-wired, extensively remodeled, with fresh decorating ideas. Ceiling fans, unique wall treatments, beautiful carpets. Must see to appreciate.

RISING STAR

RISING STAR: Four-room house, 1 bath, utility room, insulated, 60 X 120 ft. lot. Priced \$10,500.00.

CISCO

IN CISCO 10 unit motel. 3 with kitchen, duplex living rooms, potential good income \$65,000.

We Need and Appreciate

Your Listings Conventional, VA, and FHA Financing Available

Ardyth Caldwell
442-2134

Patricia C. Nowak
672-5711
672-5521

Lee Russell
647-1383

Don Adair
629-2848

Lilia Pittman
734-2055



Eastco Inc.

A Franchise of Century 21

107 A Main Ranger
647-1302

Eastland Co.

Bill Griffith, Broker

Residential

EASTLAND

EXECUTIVE HOME. Perfect for entertaining in an exclusive area with a beautiful view overlooking Eastland. 3 bdr., 2 1/2 baths. Wet bar, sound system, vacuum system, unusual fireplace, sunken bathtub in master suite, microwave, trash compactor, Jenn-Air cooktop and more. \$85,000.00. E1

NEED TO INVEST? Home divided into two apartments. \$15,000.00. E-12

TWO BEDROOM, 1 bath - has wall furnace and refrigerated air condition, carport on side of house, carpeted. This is only \$25,000.00. E-5

THREE BEDROOM, ONE bath nice older home. New kitchen cabinets, carpet throughout. \$30,000.00. E-7

NICE OLDER home situated on four lots. Two bedrooms, one bath. All electric kitchen, beautiful fireplace, big beautiful porch. Call for more details and how to get this one. E-11

IN OLDEN: Nice 3 bdr., one bath home. 100 x 100 foot lot. Paved street. This is really a neat place. E-16

NICE; Newly redone two bedroom home. Central heat and air, draperies in house stay. Call Today. E-3

RANGER

NICE: Three bedroom, one bath, den home. Completely carpeted. Back of house has an efficiency apt. Call for details. R-3

GOOD LOCATION-Nice two bedroom, one bath home in THE HODGES OAK PARK ADDITION of Ranger. Call for more information. R-5

IN A REAL GOOD LOCATION sits this nice two bedroom one bath home in Ranger, with small equity. Call for details. R-8

NICE Four bedroom, one bath house with one acre of land in Ranger, at a very low price. Has a lot of fruit trees such as; APPLES, PEARS, APRICOTS. Nice garden spot TOO! Call for more information. R-15

CONSIDER YOURSELF AT HOME in this cozy three bedroom, two bath home with living room, dining room, and BREAKFAST ROOM! Central heat and air. AND MORE! CALL FOR THE MORE! R-11

IN RANGER: Three bedroom, one bath house in good condition. Two car garage, drapes stay, and so does one air conditioner. \$25,000.00. Call for more information. R-16

WE NEED AND APPRECIATE YOUR LISTINGS!

WE'RE HERE FOR YOU

OFFICE OPEN ON SATURDAYS

Shirley Griffith
647-1635

Bill Griffith, Broker
647-1635

IN RANGER WE HAVE a two bedroom, one bath living room, dining room, and kitchen home. Has a one car garage, cellar in back yard, drapes to be put in house. For more information call us today! R-1

CISCO

EXTRA NICE TWO BEDROOM, one bath home. Beautifully decorated, ceiling fan, one large garage and shop area. Call now. C-1

NICE well kept two bedroom, one bath home. Large utility room, garage, refrigerator, and dishwasher. Call for more information. C-2

COUNTRY HOMES & ACREAGE

INSIDE CITY LIMITS: 1.2104 acres. All cleared land. Great for building a new home or putting a mobile home on it. Like to know more? Call Now! A-19

55 ACRES good building site. Across from new high school in Ranger. May be subdivided or sold as a unit. A-6

DO YOU WANT TO OWN A HOUSE? Do you want to own some land? We have two together! A nice three bedroom, one bath home and approx. 5 acres. If this sounds good to you, call right now! HA-5

SMALL ACREAGE TO BUILD ON between 2 and 3 acre tracts about 6 miles south of Eastland on Hwy. 6. City water and electricity available. Call for details. A-17

FRESH ON MARKET! 167 2/10 acres. Approx. 16 miles S. of Cisco on Rising Star. Has small older house, two tanks, peanut field, and some wooded area. \$500 an acre. Call for more information. A-15

80 ACRES OF CLEARED LAND! In blue stem grass, fenced, with one tank, trap, and barn. CALL TODAY! A-7

COUNTRY LIVING-Close to Eastland. Three bedroom, two bath home on 13 acres. MANY EXTRAS! Priced in the Mid Seventies. Additional acreage available. HA-3

ACREAGE

41.0668 ACRES-1/2 cultivation, 1/2 wooded, large tank, stocked with fish, good turkey and deer hunting.

70 ACRES OF GRAZING LAND! 1/4 mile frontage, two tanks and mesquite trees. Located on I-20 access road. Call today. A-8

4 ACRES CLOSE TO BEST WESTERN. I-20 access road, ideal for restaurant location or any other kind of business. A-3

COMMERCIAL & LOTS

IN CISCO, 2 large lot with many oak trees. Utilities on property great for mobile home. L-15

PACKED WITH POTENTIAL Going business good income, excellent location. Call for details. CP-7

GOOD SOLID BUILDING to be moved. Would make good office building. Reasonably priced! Call Today. CP-3

EASTLAND

SPACIOUS HOME ON 2 LOTS-4 bdr., 1 1/2 bath, custom kitchen, storm windows, covered patio, fenced back yard, close to schools. E1

NEW BRICK HOME-Excellent neighborhood, 3 bdr., 2 baths, wet bar, fireplace, cathedral ceiling, indirect lighting & storm windows. E2

SHADED CORNER LOT-Nice 2 bdr., 1 bath home, fully carpeted, attached garage & garden spot. Very neat & in good condition. E3

NEAT, WELL KEPT-2 bdr., 1 bath, stucco home, potential for extra room in attic, sun porch, concrete cellar, deep lot for garden or playground. E4

NICE-2 bdr., on small lot, nice carpet, wall furnace, carport, storage area & fenced back yard. E6

LUXURIOUS BRICK HOME-Total electric, 3 bdr., 2 bath, fireplace, game room utility room attached double car garage. Enclosed and heated swimming pool. Underground sprinkler system. E6

SPACIOUS OLDER BRICK HOME-Like new inside and out. 4 bdr., 1 3/4 baths, 100 X 200 lot, in established neighborhood. E7

HANDY MAN'S HOME-3 bdr., 1 bath, older home with small house on back lot. E8

FOUR LOTS-will make good rental property. E9

IDEAL LOCATION-at the edge of Eastland, 3 bdr., 1 1/2 brick home on approx. .67 acres.

GORMAN

LARGE 2 STORY-4 bdr., 1 bath home on 2 lots. Frame & asbestos siding. G1

BRICK HOME NEAR SCHOOL-3 bdr., 1 1/2 bath, covered patio, attached garage, central H/A, especially clean and in good neighborhood. G2

BARGAIN PRICED-for handy man. Older home with 6 rooms in need of some repair. G3

AFFORDABLE LIVING-2 bath, frame home. Two lots, large area, water and trees. Will consider trade. G4



Town & Country REAL ESTATE

OFFICE HIGHWAY 80 E

EASTLAND, TEXAS

OTHER

OLDEN-neat is the word, 3 bdr., 1 bath, utility room, 2 ceiling fans, sits on 100 x 100 ft. lot. City water & well. O1

OLDEN-Small frame house on 15 lots, large shade trees, 2 storage buildings. Reasonably priced. O2

RANGER-3 bdr., 1 bath, attached garage sets on nice corner lot. O3

LAKE LEON

BEAUTIFUL WOODED LOT & HOME-with nice view of Lake Leon is this 3 bdr., 3 bath, 2 story home. Fireplace, Ben Franklin heater, sitting room, utility room, 2 car carport and brick Bar B Q pit. L1

WEEKEND FUN-3 bdr., 1 bath mobile home on large deeded lot. L2

WATER FRONT DEEDED LOT-2 bdr., 1 bath, mobile home, garden spot, fenced yard, owner financing or trade for Midland, Odessa or Lubbock property. L3

NEAR LAKE LEON-large lot just off F.M. 2461, ideal for week-end camping. L4

We have other deeded lots for sale, with water frontage. L5

FHA-VA CONVENTIONAL FINANCING

WE WANT YOUR BUSINESS—YOU ARE OUR BUSINESS

HAZEL UNDERWOOD 629-1188

PEGGYE SWAFFORD 647-1050

BARBARA LOVE 647-1397

ACREAGE

8.9 ACRES, CARBON-fronts on loop 389 near school. Excellent location, part wooded, part cleared. Owner will finance. A1

.725 ACRES-with frontage on South access of I 20, near two exists, excellent commercial location. A2

2.77 ACRES-on I20 East on access road. Ideal for your new business. A3

2 to 3 ACRE TRACTS-6 miles South of Eastland, build your dream home. A4

20 or 40 ACRES-conveniently located to Eastland, Cisco & Breckenridge. A6

12 1/2 ACRES-on blacktop near the dam, has water meter in access to lake thru permanent easement. A7

60 ACRES-about 12 miles South of Cisco. About 45 acres in grasses, the rest in timber. A8

74.189 ACRES-about 4 1/2 miles North West of Rising Star. 8 water wells, holding tank, pump for 4" wheel move, 2 oil wells pumping. This is high productive land. Owner financing. A9

16.61 ACRES-S.W. of Cisco, will sell in one track, or divide into 2 tracts of 8.306 acres each. Good coastal on entire acreage. A10

.746 ACRES-Approx. 250 ft. frontage on pavement, 2 miles North of Lake Leon Dam. Desirable wooded tract. A11

COMMERCIAL

OFFICE BUILDING-on Seaman, has 4 offices, reception area, conference room, 1,000 gal. gas tank with electric pump and large quonset hut. Owner financing available. C1

NEW 4-PLEX APARTMENTS-each unit has 2 bdr., living room & kitchen. 2 units have 1 1/2 baths, the 2 have 1 bath. Has FHA financing on it. Very nice. C2

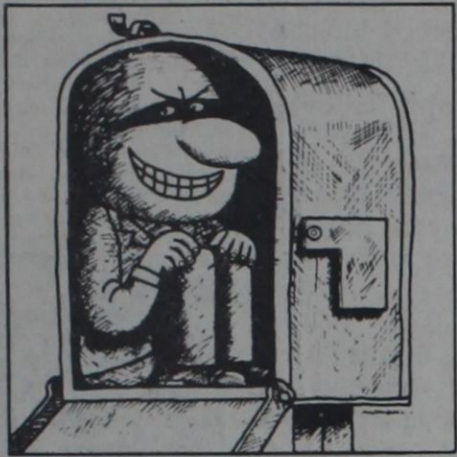
RENTAL INVESTMENTS-3 homes on large lot. 100% occupancy, minimum upkeep. Chain link fence, 3 car metal garage, good location and close to school. C3

RANGER COMMERCIAL BLDG.-with lots of potential. approx. 6 acres on I20 access, 3 truck stalls, office & parts storage area, built-in air compressor and overhead hoist. Approx. one year old. Good location. C4

IDEAL BUSINESS LOCATION-9 rooms, 3 baths, building on 1/2 acre. On Old Hwy. 80 East just off I 20. Owner financing available. C5

Mail Theft Prevention

THEFT?



PROTECT YOUR MAIL:

- Make sure your mailbox is secure.
- Promptly remove mail from mailbox (ESPECIALLY CHECKS)
- Immediately notify the post office and mailers if you change your address.
- Report non-receipt of checks, food stamps and ATP's to the issuing agency.
- Immediately advise the Postmaster or Postal Inspector when your mail has been stolen.

MAIL THEFT is a FEDERAL CRIME investigated by the Postal Inspection Service. REWARDS are payable for information leading to arrest and conviction of violators.



Notice: 10 November 1980

Theft of mail is a violation of Title 18, United States Code, Section 1708, which carries a maximum penalty of five years imprisonment and/or a \$2000 fine. Unfortunately, criminals pay little attention to the consequences of their immediate actions.

The Postal Inspection Service is attempting to prevent theft of mail from all sources by informing and educating as many elements of society as possible. The United States Postal Service

is a principle victim but the ultimate victim is a business or individual who depends on mail for their livelihood and existence. The loss of a social security or retirement check addressed to an elderly or retired person can have devastating emotional and financial significance.

Mail is most vulnerable at the point of delivery. An extra effort should be made by mail recipients to know their carrier's schedule and make every effort to be at

home to personally accept delivery of valuable mail. Retirement and social security checks are delivered on a fixed schedule which is known by the addressee and criminals as well. Have a neighbor retrieve your mail if you cannot be available and do the same for your neighbor. Also, deposit your mail for collection at a post office or collection box. If this is inconvenient, place letters on your house letterbox for collection shortly before your carrier arrives. Your personal mail can be used most effectively to defraud your bank, consequently creating a very inconvenient situation. Make every effort to protect your incoming as well as outgoing mail by using these common sense suggestions.

Crime prevention can be a community effort. Everyone receives mail almost on a daily basis. This provides common grounds for neighbors to become better acquainted and watch out for each others mail and mailbox. If a concentrated effort is made to protect your mail, potential mail thieves will not be given the opportunity to make you a victim.

If you have information regarding theft of mail, contact your local Postal Inspector or Postmaster.

Local OES Chapter Begins New Year

The Rising Star Chapter No. 277 Order of the Eastern Star met Monday night, June 7, 1982, in the Masonic Hall with twenty-three members present. All officers and appointed stations present except the Associate Patron.

Worthy Matron Claudia Mae Gardner conducted the opening and a short business meeting. The four ceiling fans purchased by the Eastern Star had been installed by members of the Masonic Lodge. The Chapter voted to purchase a floor fan to be of help to the organist. Bess Wright and Grace Glenn would serve on that committee.

Bess Wright, Sue and Bill Gardner have donated two Dearborn heaters to the hall, a standing ovation was given them in appreciation.

A letter was read from Deputy Grand Matron Lois Hodges, thanking the Chapter for their help in conducting the District III, Section IV Eastern Star School held in Eastland.

A standing ovation was given Worthy Matron Claudia Mae Gardner for an outstanding year of leadership. She then introduced Sister Elizabeth Robertson as Installing Officer. Sister Elizabeth introduced the other In-

stalling Officers: Marshall, Bess L. Wright; Chaplain, Mary Clark; Organist, Grace Glenn; Secretary, Opal Fleming; Sentinel, Ruby Murdoch.

After a short recess Officers for 1982-1983 were installed. They are: Opal Dean, Worthy Matron; Harold L. Evans, Worthy Patron; Golda Lancaster, Associate Matron; Doyle Lancaster, Associate Patron; Clestine Carleton, Secretary; Grace Morrison, Treasurer; Evelyn Chick, Conductress; Doris Griffin, Associate Conductress; Elizabeth Robertson, Chaplain; LaDell Key, Marshall; Grace Glenn, Organist; Bertha Mae White, Adah; Claudia Mae Gardner, Ruth; Pearl Anderson, Ester; Lila Jarrett, Martha; Mary Eakin, Electra; Wilson H. Carleton, Warden; Lester Mayes, Sentinel.

After the service, Worthy Matron Opal Dean asked Marshall LaDell Key to give the installing officers a gift from her.

Refreshments of assorted cookies and punch were served in an attractively decorated reception room. Claudia Mae Gardner and Bertha Mae White did the decorations.

Janet Shults Pacek Honored As Top Executive Secretary

NASA

In Network, published at Johnson Space center, Janet Shults Pacek was honored by NASA officials as a top executive secretary.

Janet is the daughter of Glen and Jean Shults and is the niece of Irene Mayfield, Ruby Ballew, O.R. Shults, Jack Shults and Willie L. Gray.

The article from NETWORK follows: Eugene Kranz Discusses the Duties of the Executive Secretary

The executive secretary is a key element in the development and management of an operating organization. FOD (Flight Operations Directorate) has a vast range of administrative, technical, and operational functions that must be accomplished on a tight schedule to support the Shuttle Program goals. Mrs. Jan Pacek's functions within FOD are typical of the executive secretary role and I am happy to discuss her role in FOD for this issue of NETWORK.

An executive secretary possesses all of the conventional secretarial skills and she has developed these skills to a high degree. The first attribute, however, that separates her from the general secretarial

ranks is that she possesses a strong motivation and desire to be an integral element of her organization and to participate in its overall management and direction.

She must possess an aptitude for management and be willing to undertake the necessary schooling and OJT (on-the-job) training needed to develop management skills. She must be willing to sacrifice a significant part of her personal time and be willing to live with the daily conflicts between conventional secretarial duties and the management OJT.

Pacek averages a 9 hour work day and is willing to work in unfamiliar areas. She must rapidly acquire institutional memory. The value of individuals to an organization is often a direct function of their institutional memory, and, from a secretarial standpoint, it is directly related to her time within an organization. The executive secretary utilizes this institutional memory to operate the office, process decisions, and manage the interfaces to her office to promote the highest possible efficiency and effectiveness. In doing so, she is a partner with her supervisor in the management of an

organization.

Pacek's ability to participate effectively in the many and diverse tasks of this organization is directly attributable to her 7 years in this organization. Every employee has a period of learning and the majority of our flight controllers spend 3-6 years before they become highly productive. The same is true of the executive secretary and, in many cases, it is more difficult for the secretary. A flight controller generally works within a selected area of technical knowledge. The secretary's knowledge must reach across all of the technical functions before she achieves proficiency to allow her to perform at the highest level.

The executive secretary is an ideal. It is that unique individual who possesses the above qualities and when provided the opportunity is willing to take it and use it. These individuals are few in number, but when they exist you know who they are and where they are. Pacek works in FOD as an executive secretary and I am proud and privileged to be working with her in support of spaceflight operations.

Thursday, June 10, 1982

Tips On Buying The Right Appliance

With appliances offering more features than ever, doing a little homework can help consumers to be certain they buy the right product.

Seven guidelines to help ensure satisfaction are suggested by Jean Hopwood of General Electric's Major Appliance Business Group.

1. **Think of the future.** Refrigerators and ranges, for example, last a long time. Individual and family needs can change considerably during an appliance's life span, so don't automatically buy to satisfy just today's needs. Instead, look for the appliance that will still meet your demands years from now.

2. **Consider your lifestyle.** Because singles and working parents spend more time outside the home, they should look for appliances that save time and work. Microwave ovens, for example, help eliminate the need for much planning and provide immediate meals. Large families should consider appliances with a variety of features. Examples are self-cleaning ovens, refrigerators with large capacity and food preservation capabilities, dishwashers with cycles to clean heavily soiled pots and pans, and dryers with sensors to turn them off when clothes are dry.

3. **Avoid impulse buying.** Read consumer publications, talk to different dealers, call manufacturers, contact your local utility company



and speak to neighbors whose lifestyle and needs most resemble yours. All can give important tips to help you make the right decision.

4. **Set your financial limits.** If you're on a limited budget, it is not always necessary to buy the top models when appliances with fewer features can still offer high quality. Also, when buying on credit consider finance charges prior to purchasing.

5. **Shop before you buy.** A good rule is to start with the manufacturers' top-of-the-line model. If you find features you won't use or need, move to the next level until you find the model that's right for you.

6. **Check electrical requirements.** Make sure your home or apartment's electrical system can handle the appliance you're planning to purchase. Have the wiring checked by a qualified person.

7. **Know your own requirements.** Have a good idea of the type of appliance you want before you go into the dealer's store. If you've done your homework thoroughly, you'll know which product is right for you.



The stethoscope was invented in the early 1800s by Dr. Renee Laennec, in Paris.

Don't Know What To Call It Sale

We have just bought out part of a pharmaceutical warehouse, and have proceeded to haul it to Cross Plains. This merchandise is valued at over . . .

\$100,000 Wholesale Cost

You know that we can't get all that in our store, so we are really going to be doing some tall selling. We don't even know what all we have, but there is a lot of it. In order to move it fast, we will be selling some of it at wholesale and below. We are only going to list a few items as it would take the whole newspaper to list them all.

Hundreds Of Sunglasses

Foster Grant, Opti Ray, Foreign Intrigue, and one rack by designer Oscar de LaRenta. Talk about smart looking, Wow! VALUES TO \$20.00
50% and more off pre-marked price.
If you can't find a pair to suit you out of these, forget it.

50 Foot, 1/2 - Inch, This Is Below Wholesale

Garden Hose \$239

Some Of These Are Priced At Least 30% Below Wholesale

Panasonic Radios 30% below wholesale

Cover Girl and Maybelline Cosmetics

Hundreds of Cosmetic Bags, Compacts Lighted and Regular and lots of Celebrity gift items.

Low, Low Prices

Infants' Needs

Dozens of Infant Coveralls in terry cloth and brushed nylon. Assorted colors and designs. Some really cute ones.

Nylon \$2.95 Terry \$4.50
BUY AT LEAST 3 AND SAVE EVEN MORE!

Many other infant items such as diaper bags, toys, crib sets, bath towels, bottles, nurse sets, booties, socks, etc.

Reusable

Barbecue Grill, on legs . . . \$150

Oh Yes! Let Us Not Forget . . .

Watchbands, thousands of them . . . 1/2 Price

Hospital Equipment Needs

Do you need a Hospital Bed, Wheel Chair, Walker? We Have Them and many other medical aids.

Dr. Pepper & Pepsi-Cola
\$4.99 per case of 24 cans

Clocks! Clocks!

If you need a clock . . .

WE HAVE THEM BY THE HUNDREDS!

TIMEX and WESTCLOX of almost every variety. Tiny digital quartz clocks, alarm clocks, travel clocks, wall clocks. Electric, battery operated or key wind. You name it.

Prices Start at \$4.95

In Several Models

Also have . . Sharp Calculators

Nylon Sports Wallets

With Velcro Fastener

Men's \$3.00 Women's Clutch \$5.00

ALMOST 1,000 OF THESE.

We have just listed a few of the items and we could go on and on, but Benny just allowed us this much space. You will have to come see for yourself.

We will be in a bargaining mood. No limits on quantities. Make tracks to . . .

Cross Plains Discount

MAIN STREET

CROSS PLAINS, TEXAS

PHONE, (817) 725-6113

First Baptist Church

PEOPLE IN THE NEWS



missed— now you are lost!

To hear well we must pay close attention. We must concentrate. We must hold preconceptions in reserve. We must give time to listen.

God would speak to us through His written word, The Bible.

So often we miss what God is saying because all our preconceived ideas, we do not concentrate, or really do not pay attention as we read what is written.

Maybe God is saying to us, "This is the way, walk ye in it." Will we get lost because we did not hear?

R. D. Williams, Pastor
High Blood Pressure

And Your Survival

Facts Checked By Experts
At Smith Kline And French Laboratories

What Can High Blood Pressure Do to You?



When high blood pressure is not treated, there can be serious damage to blood vessels that feed the heart, the brain, and the kidneys. The blood cannot flow freely when this happens. As the heart is made to pump harder, it can become too large. It may just stop. Blood vessels in the brain may burst. That can lead to what we call a stroke. If the kidneys are damaged, they can no longer clean the blood. Disease and death may follow. High blood pressure is the major cause of heart attacks, strokes, and kidney disease.

Danny and Cathy Scheffel of Lubbock spent Tuesday night in Rising Star where they visited with Jim, Carolyn and Melanie Ratliff and Jack and Lavonne White.

Lynn, Pam and Brandy Hutton of Cross Plains also visited with the Scheffel's.

James and Winnie Armstrong visited Rev. Bill and Joyce Easley in Kerens, Texas, last week.

Mrs. George Brooks from Winters visited James and Winnie Armstrong.

Opan Dean, Mary Eakin and Doris Griffin attended the Indian Creek Chapter No. 255, Order of the Eastern Star, open installation in Brownwood; Grand Chapter Officers served as the Installing Officers on Friday, June 4, 1982.

Opal Dean, Claudia Mae Gardner and Doris Griffin attended the Eastland Chapter No. 280, Order of the Eastern Star, on June 5, 1982. This was also an open installation.

React ambulance made two runs this week, Carl H. Bowers, from home to Hendrick Medical Center in Abilene on June 5, and Edith Curry from Rising Star to Eastland on June 3rd.

We want to thank those who have helped us in the past, however funds are getting low and as you know gas and supplies are going up, so we need your help to continue helping you.

100th Anniversary
First Baptist Church
Rising Star
August 7 & 8, 1982

Rising Star Nursing Center

Avis Massey - Activity Director

Monday 31- News gathering day
2:00 Exercise-7 residents and 4 visitors took part. Edie & Fran Anderson donated Green beans, thank you so much.

Tuesday, June 1
Early today we could find Martha Irby, Estell Bolding, Pearl Nunnally, Maggie Christian, and Roy Don Emfinger snapping the green beans.

Bingo at 2:00. Buster was here today to call numbers. Thanks Buster- it was nice to have you back. We had two people winning 4 games; Mary Hord and Mary Crisp. Earl Fussell won three, Martha Irby won two, Ethel Degman, Mary Bose, Annie Franke, Estell Bolding and Ada Foster won one game each.

Wednesday 2, The First Baptist Church had the Devotional from 11:30-12:00, our residents always enjoy Bro. & Mrs. Williams. Thanks for sharing your time with us. Edie

& Fran Anderson brought more snap beans. After lunch Mary Crisp, Estell Bolding, Maggie Christian, our administrator Marguerite Adams and activity director all had part in snapping them.

Thursday 3, 2:00 exercise class- several residents love to keep in shape. Anyone interested in helping with the exercise class please contact Avis Massey, activity director, at the nursing home Monday morning or in the afternoon Tue. through Friday.

Friday 4, Bible class at 2:00 sponsored by volunteers from May, Olive Odom in charge. Bea Kelton played piano and led singing. 15 residents and 3 volunteers studied the first chapter of Exodus We appreciate you all so much, Dorothy Harris is faithful to come and help, also Robert Sparkman was missed.

Saturday 5, Edie & Fran Anderson brought squash,

thanks for sharing your garden with us. Elza Witt brought flowers, they always brighten up the area, Lilly Alford brought squash from her garden. We thank you ladies.

Sunday 6, 3:00 Church services were held by the First Baptist Church, Bro. Dick Williams in charge. Eleven residents and 11 visitors enjoyed the service.

Visitors who registered during the week were Edra Butler, Fredra Montgomery of Renea City, Okla.; Mr. & Mrs. Frank Nelson of Abilene; Mrs. L.L. Tipton and Mr. & Mrs. Warren Crudgington of Breckenridge to see Martha Irby; Mr. Rex Goss of Mission to see Martha Irby; Shannon Dudley; Rilla Richburg; Bea Kelton; Berna Lee Chick; Alice Mayes; Kenneth Pittman; Jomey and Tracy Clark; Loretta Rutledge; James Hines; Allen Hines; Pearl Schlaepfer; Nell Fleming; Alice Mayes; Fredra Montgomery; Milton Montgomery; Robert Butler; Mike Koepen; Newt & Olive

Odom; Connie Hightower; Dorthy Harris; Ray & Nell Lancaster.

Other visitors registering included Gari Sue Maynard, Mammaw Duggan, Candy & Donnie Jo Wilkerson, Mrs. Ruby McCowen, Bobby Jack McCowen, Betty & Morlin Franke, Kala Franke; Mrs. Reynolds & Bob of Odessa, and Mr. & Mrs. Benny Williams & girls of Big Lake all came to see Mary Crisp; Elizabeth Robertson, Butch & Martha Hicks, Kyle & Jance, Rosa Barker, Sally Alexander; Kathy Wells & Tony of Midland to see Loraine Williams; Jo Barr of Lubbock & Bonnie Campbell of Abilene to see Mary Harper; Mrs. Conova, Rilla Richburg, Ladell Key, Annie M. Seale, Pat Schofer, Mae Leonard, Ruby Boswell, Ina Roberts, Yvonne Williams and Effie Williams.

TEXAS TOPICS

Statistics show that the Caribbean islands rank as one of the most popular locations for honeymoons by Texans. June bookings for Frenchman's Reef Beach Resort in St. Thomas, for example, were up 37 percent last year, due primarily to the increased popularity of the islands among honeymooners.



Richard Todd, captain of the New York Jets, and his bride chartered a boat from the Reef's Undersea Centre for daily scuba diving among the many wrecks of ships that went down in the area years ago. They were joined at the hotel by Mike Kadish, of the Buffalo Bills, and his wife who discovered the area on their honeymoon and decided to settle in St. Thomas during the off-football season.

Frenchman's Reef is the largest resort in the U.S. Virgin Islands. It has its own generating plant for electricity, a fresh water distilling plant and a sewage treatment facility. The hotel's air conditioning is powered by the largest solar system of its kind. A Texas bridegroom commented to Managing Director Nick Pourzal, "What, no oilwells?"

TEXAS PRESS ASSOCIATION



Texas raises more cotton than any other state.

GRAND OPENING!

June 14th thru June 19th

religious Gifts And Books

C&B Treasures
401 S High
629-2751

Register For Free Drawings

KJV BIBLE TURQ CROSS PEND GODS HAND
Drawing Saturday June 19 3:00p.m.

Indian Jewelry & Crafts Free Moccasin Catalog
Special Catalog Orders Available

C.W. & Betty Seago

WE BUY PRODUCING PROPERTIES & ROYALTIES

If you have unleased land and want a well drilled call or write

TEXAS UNITED OIL & GAS, INC.

4455 LBJ FREEWAY, SUITE 503
DALLAS, TX 75234
214/233-3421

Jones Real Estate

ROLAN JONES, Broker
HENRY BURKETT, Co-Owner

Office at 276 West Highway 36
Phone (817) 725-6434 or 725-7734
P.O. Box 313
Cross Plains, Texas 76443

FARM AND LAND INSTITUTE

MULTIPLE LISTING SERVICE, INC.

Farms and Acreages

28.9 AC 1 mile west of Cross Plains; 14 x 6 2 bdrm. mobile home. \$42,500, \$20,000 down. Carry at 15% for 10 yrs. 122 A., \$625 per A., 20% down owner financed.

9.44 A. behind grade school in Rising Star. Platted. Will make good subdivision, \$15,000.

5 lots in Rising Star. New 24'x36' building, wired, with concrete floor. Irrigation well, insulated pump house, pecan trees, all city utilities, \$15,000.

40 A. Approx. 9 miles south of Cross Plains, small tank, all pasture, good deer & turkey hunting. \$550 per acre. Would consider G.I.

40.953 A. 5 miles Northeast of Rising Star, 20 A. in cultivation, 13 A. Peanut Allotment, Water well 50 ft. deep, good deer & turkey hunting.

19 A. 5 miles North of Rising Star, love grass, soil sandy. \$1,000 per A. would consider \$7,000 down—carry balance at 15%. Good deer & turkey hunting.

Residential Properties

3 Br., 2 B. insulated, all electric home in Rising Star. Large, new out-buildings, trees, garden, extra nice. See to appreciate, \$40,000.

1 BR. house to be moved, \$2,250.

Business Locations

Commercial Corner lot on Odessa, Knox St. & 27th. 25% down, Owner Finance.

Need Listings - Others Listings To Choose From
ROLAN JONES (817) 725-7640
Sales Staff
Henry Burkett
(817) 725-7382

June 21st is Father's Day.

Style No. 849

Give Dad a La-Z-Boy.® He deserves it!

There's no substitute for America's number one reclining chair, La-Z-Boy Reclina-Rocker! It has nationally famous comfort, beauty and rugged construction. Select the style of your choice today! Give Dad the real thing, a genuine La-Z-Boy Reclina-Rocker! You'd better hurry. Supplies are limited!

10% OFF ON ALL RECLINING CHAIRS

Prices Start At **\$245⁰⁰**

1881-1981
Celebrating 100 years of quality and service

Main Street Rising Star

results you want? you want classifieds!

When high blood pressure is not treated, there can be serious damage to blood vessels that feed the heart, the brain, and the kidneys. The blood cannot flow freely when this happens. As the heart is made to pump harder, it can become too large. It may just stop. Blood vessels in the brain may burst. That can lead to what we call a stroke. If the kidneys are damaged, they can no longer clean the blood. Disease and death may follow. High blood pressure is the major cause of heart attacks, strokes, and kidney disease.

100th Anniversary
First Baptist Church
Rising Star
August 7 & 8, 1982

DO-IT-YOURSELFERS

We're Here to Help!

Get Your
Evaporative Cooler
Ready for Summer

Cooler Pads, #4000, reg 6.99
Now **6.49**

Replacement Pumps, reg. 9.25
Now **9.00**

12" Wind Turbine

Externally braced for extra strength. Galvanized steel construction Base included. **23.95**

Over 100 Years of Quality and Service

MAIN STREET RISING STAR