

Coming Home Queen And King

The Phillips have one son, Leeton Joe who is a sophomore in college.

Gloria is the daughter of Olice B. Jones of Rising Star.

Jerry Watkins, class of 1945 and Homecoming guest speaker was selected Coming Home King. Mr. Watkins is Supt. of the New Mexico School of the Visually Handicapped in Alamogordo. He attended McMurray College in Abilene where he received his B.S. Degree in 1953. He then attended New Mexico State University where he received his Master's Degree in 1958.

His 24 years of teaching experience includes elementary and secondary teaching, elementary principal, junior high principal, high school principal and Supt. of the NMSVH.

He and his wife, Eva are the parents of five children: Kay, Steve, Jan, David, and Kelly. They also have four grandchildren.

One of the highlights of Mr. Watkins address at the business meeting was the reading of the



Gloria Phillips

Named Coming Home King and Queen of the 25th Annual Rising Star High School Homecoming was Gloria Jones Phillips and Jerry Watkins.

Mrs. Phillips graduated from Rising Star High School in 1945. She attended North Texas State University where she received her B.S. and Masters Degree. She then taught Home Economics in Rising Star for three years. In 1951 she married Billy Phillips of St. Jo. Mrs. Phillips has since taught Home Economics in Saint Jo High School for 26 years.



Jerry Watkins

poem "HOMETOWN" by Sara Mansfield. For those who missed it—here it is.

HOMETOWN
It's good to see the hometown and the folks you used to know; I guess, outside of heaven, there's no better place to go. Nowhere else are folks more friendly, greetings more sincere and warm, Than you'll find them in your hometown, the place where you were born.

It's good to walk familiar streets and clasp an outstretched hand, And talk about the days gone by, with memories so grand. Why, there's they old post office which you visited each day, The school which you attended, helping teacher's hair turn gray.

And there's the church which several times a week you would attend, And there's the store where all your pennies happily you'd spend. There's where Jim lived, here, Aunt and this you once called "home." No other house will ever seem so dear, wherever you may roam.

It's good to see the hometown and the folks you used to know I guess, outside of heaven, there's no better place to go. Nowhere else are memories sweeter, welcomes more sincere and gay, Than you will find them right back here in your town, U.S.A.

Lord's Acre Fall Festival

The public is invited to attend the annual Lord's Acre Fall Festival to be held on Friday and Saturday, November 6-7, sponsored by the First United Methodist Church.

The festival will be held in the Fellowship Hall of the Church.

Booths will include country store with Winnie Armstrong, chairman; snack bar, Ruth Griffin; bake sale, Dorothy Shook; needlework and crafts, Flara Westerman; blood pressure check, Hazel McCollum; festival dinner, Juanita Boyett; table settings and decorations, Lenell Henry; poster publicity, Lela Shults; advance ticket sales, Vivian Koonce; take-out dinners, Lee Hughes; publicity, Mary Claborn.

Andy Griffin is the general chairman; also, for cash contributions, Elizabeth Robertson is the treasurer.

Church members are asked to contact the chairman to assist in the church project as your HELP is needed.

Prices of the tickets for the dinner on Saturday are \$3.50 for adults; \$2.00 for children under 12.

Serving will be from 11:00 a.m. to 1:00 p.m. Orders for take-out dinners need to be called in advance to Lee Hughes—643-4481.

On the morning of the dinner, please call the church number—643-3791; no later than 10:00 o'clock.

Mary Claborn, publicity

Wildcats Win No. 4 District To Begin Friday

After a scoreless first half, the Santa Anna Mountaineers took the lead 6-0 at the beginning of the fourth quarter. A high snap on a punting situation for the Rising Star Wildcats gave the Mountaineers the ball on the three yard line. Ernest DeLeon scored for the Santa Anna Mountaineers. The PAT was no good giving Santa Anna a short-lived lead.

The Wildcats received the kick-off and took only two play to tie the game. Jon Vaughn ran 68 yards for the touchdown with excellent blocking by his

teammates.

Thad Chambers kicked the PAT giving the Wildcats a 7-6 lead.

The Wildcats held off a last effort field goal attempt by Santa Anna and ran out the clock to record their fourth victory in a row.

Ed Anderson, Thad Chambers, Sam Scott, Damon Cooper and Billy Nall led the defense.

The Wildcats host the Lometa Hornets Friday night, October 9th at 7:30 p.m. in the opening District game. Lometa is 5-0 for the season and has a strong running back in Marvin Dubose.

Student of Of The Week



STUDENT OF THE WEEK

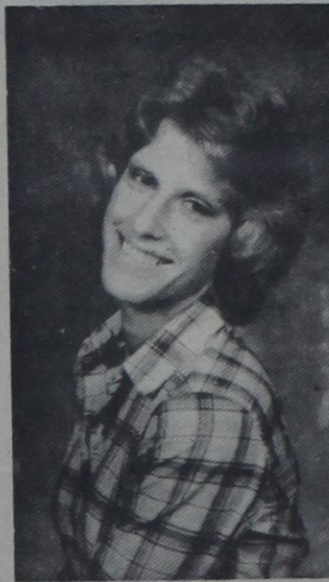
Jackie Harris, daughter of Mr. and Mrs. David Harris, was selected as this week's STUDENT OF THE WEEK at Rising Star Junior High. Jackie is a sixth grade student and was elected Secretary-Reporter for her

grade. She is a member of the Kitten's Pep Squad, 4-H and participates in all sports. Her teachers find her dependable, courteous, and helpful. Congratulations, Jackie.

Monday, October 12th, Columbus Day will be observed as a holiday by the Rising Star Post Office and also the First State Bank.

Mail will be boxed in the main Post Office but no rural routes will run. Outgoing mail should be put in the outside box by 9:00 a.m., stated Postmaster D.A. Boyett.

Three Brown County 4-H'ers Receive Gold Star



Lynne Whiteaker

Three Brown County 4-H members have been chosen as the 1981 4-H Gold Star Award recipients. Lynne Whiteaker, Kim Lee and Kim Fryar were honored at the annual 4-H Awards Banquet Saturday night, October 3, held at the Texas 4-H Center.

The 4-H Gold Star Award is the highest award given on the county level to a 4-H member. This award is often one of the most sought after 4-H awards; therefore, certain criteria must be met by each participant. The member must be at least 14 years of age as of January 1 of the current year and must have completed at least three years in 4-H. The 4-H member must submit an awards program record book in the year he or she is to be considered for the award. Completing three different project areas; participating in leadership and citizenship activities and working as a junior leader are all a part of the guidelines to be met.

Lynne Whiteaker is the 16 year-old daughter of Mrs. Kaye Whiteaker of May, a 7-year member of the May 4-H, and a junior student at May High School. Lynne has been an active participant in several project areas including foods and nutrition, clothing, home management and interstate 4-H exchange programs. She has entered method demonstrations on the county, district, and state levels and recently took third place honors at Texas 4-H Roundup when she and her partner presented their safety demonstration. On the county level, she has competed in food shows, fashion revues and the local youth fair, and has been a competitor in the



Kim Lee

district food show. She has attended leadership lab, has served the May Club as reporter, secretary, president and council delegate, and has been an officer of the county 4-H council for 2 years. Lynne is a member of the May First Baptist Church and the Senior High Youth Group. She is active in drill team, basketball and track. Lynne frequently gives programs for various organizations. Her intentions are to attend Texas A & M University and become an interior decorator.

Kim Lee is the 15 year-old daughter of Mr. and Mrs. Don Lee of Bangs. Kim has been a member of the Bangs 4-H Club for 7 years and is a sophomore at Bangs High School. Kim has been a strong competitor in the 4-H clothing and horse programs. In the county 4-H Horse Show she has taken the halter prize for grand champion gelding, 5 years and has participated in the district horse show 4 years. Kim has served her club as secretary-treasurer, vice-president, and council delegate. Her committee work includes decorations committee for awards banquet and gift selection committee for fashion revue.

Kim is a member of the Bangs Methodist Church, treasurer of MYF, Church Youth Council, representative to state FHA convention, FFA Sweetheart and plays piano for Vacation Bible School. She is active in cheerleading, volleyball, basketball, and track. Her future plans include attending college and majoring in fashion merchandising.

Kim Fryar is the 16 year-old daughter of Mr. and Mrs. Melvin Fryar of Early. She is



Kim Fryar

a sophomore at Early High School and has been in 4-H for 6 years. Kim is an active member of the Early 4-H Club. Her most significant 4-H projects include beef, horse, cooking, and sewing. Kim has shown beef projects at the local youth fair and several major stock shows during her 4-H career. She exhibited the reserve champion maine anjou heifer at the San Angelo Stock Show and was reserve champion in the horse division at the county level, attended leadership lab and Texas 4-H Congress. She has served her 4-H Club as secretary, vice-president and president. She has taught 2 year-olds at Vacation Bible School; hostess at teen youth meetings and is a volunteer church nursery attendant. She participates in basketball, track, choir and Key Club and has been FHA secretary and secretary of the Junior Maine Anjou Association. Her future career plans include college and teaching.

All three recipients received a gold medal and a \$150 scholarship provided by the Brown County 4-H Council-Adult Association.

Two 4-H members were awarded the Danforth "I Dare You" Leadership Award. They were Stefan Jameson and Tami Reeves.

The "I Dare You" Leadership Award is sponsored by William H. Danforth who, several years ago, wrote a book that is now in its twenty-sixth edition and is called "I DARE YOU". In his book, Danforth dared people to grow stronger...physically, mentally, socially and spiritually. Over the years many men and

-continued inside

Starbrites Participate In Eastland Fair

Thursday October 1st, of the 29 present—one, Mr. W.A. Morgan of De Leon was an out-of-town guest. Bonnie Johnson was a first time visitor. I hope you both felt welcome and will come again.

Saturday, October 3rd nineteen Starbrites, our driver and two boosters traveled to Eastland. We arrived in time to watch the parade or at least most of it. They had some interesting participants and several beautiful floats. I am sure they were justly proud of the events of the day. Starbrites played at 10:45 a.m. and enjoyed stew, cowboy cornbread and Dr. Pepper furnished by the two banks to all present. Displays at the Fair were good and several Rising Star people won

ribbons. Dates to remember for October are:

October 13th—we go to Baird Nursing Home where we play at 2:00 p.m.

Saturday October 17th—leave for Coleman at 5:30 p.m. to play at 7:35 p.m. We will be guests of the Senior Citizens who are raising money for the glass front of their new building.

October 19th—the Starbrites play for the Cisco Senior Citizens.

October 21st—we play at the May Senior Citizens, leaving the club at 10:00 o'clock.

There will be 22 people in the Goldthwaite Band as our guest for lunch this Thursday, October 8th. Come help us give them a big welcome. Rilla, Reporter

Dr. Sohns Released From Hospital

Dr. Sohns was dismissed from the hospital last Saturday and is now

recuperating at his home. He will be back in his office on October 26th.

WEATHER

The front didn't miss us this time as rain began falling Tuesday morning. Most of the time it was only a steady fall, but at

times a heavy downpour was recorded. Less than an inch of rain was recorded before nightfall. The precipitation continued throughout the night and was still fall-

Net a Winner.. CLASSIFIEDS

THE



Thursday, October 8, 1981

CASH! CASH! CASH!
MONEY IN YOUR POCKETS QUICK.

Do you have an extra pickup or car around you don't really need? If you do you're losing money every day! Don't sell or trade your pickup or car away for nothing — get our offer before you deal Chevrolets and Fords preferred — but will consider any make or model 1954 through 1974 that's clean and good running — with current license and sticker. Extra premium paid on small V-8's and 6 Cyl's and 2-dr's. The cleaner they are the more we will pay! NO clunkers or rusted-out junkers at any price please! ABSOLUTELY BY PHONE APPOINTMENT ONLY! Don't just drive out and find me gone — save gas — phone Rising Star (817) 643-1372, best early mornings or late evenings.

HELP WANTED: LVN for 3-11 shift. R.N. for 11-7 shift. Good working conditions with benefits. Apply in person to Kay Mosley, R.N., Director of Nursing Service, E.L. Graham Memorial Hospital. An Equal Opportunity Employer.

NEEDED: 7-3 LVN for Rising Star Nursing Center. Contact Barbara Alexander, Director of Nurses or Mildred Parnell, Administrator. 41-tfc

AVON NO EXPERIENCE NECESSARY Just a friendly personality. Call us, we're AVON. 817-643-5431 41-4tc

CARD OF THANKS
I would like to take this means of saying thank you to everyone that has been so extra specially nice to me in my stay at the hospital. Especially I would like to thank Brother Dick Williams and my Sudnay School Class for the little extra they gave—but for everyone, thanks for the cards, flowers and your visits and the food. May God bless each of you in my prayer.
Roby Kornegay

Auctions
FARM Equipment
AUCTION
SAT.-Oct.10 10:00 A.M.

August Garlitz Farm
From Cross plains follow Hwy. 279 South for 3 mi. to county line, then East for app. 3 mi. to farm or 30 mi. North of Brownwood on Hwy. 279 & turn East for app. 3 mi. at auction sign.
Mr. Garlitz has sold his farm & offers the following for sale by public auction.

TRACTORS
Ford 5000 Diesel, 1973 model-16 front, 3 pt. & quick change wheels (extra nice). 65 Massey Ferguson Diesel, 1965 model-16 front, 3 pt. mulch. power train.

FARM MACHINERY
Ford 9 shank 3 pt. cult. Ford 11 shank 3 pt. spring tiller. Ford 3 pt 3 bottom moleboard. Ford 3 pt. rear drive 2 row planter; Burch 3 pt. 6 ft. tandem; Burch 4 row 3 pt. section harrow; Dearborn 3 pt. 4 row fertilizer rig; Lulliston 3 pt. 2 row digger; JD 650 3 pt. PTO side delivery rake; Continental 6 ft. wheel type shredder; 5 ft. 3 pt. blade; Dearborn 3 pt. dirt scoop; IH 2 bottom moleboard; IH row blower (good cond.); 3 pt. boom; 8 ft. grain drill (iron wheel); peanut sacker; older M&W hammer mill; older Case side delivery rake; ACS 5 ft. drag type grain combine (good).

TRAILERS
John Deere 4 wheel 14ft. combination grain & peanut trailer; Bradley 4 wheel 15ft. peanut trailer; 14ft. tandem axle stock trailer; 2 wheel utility trailer; tumbler bag round bale trailer.

MISC.
Ssn. antique cable tool well rig w/ bits (iron wheels); new 3 pt. round bale mower; pump jack w/ hp elec motor; sm. river boat; loader GE shop welder; PTO pump w/spray bars & carrier; 300 ft. 1 in. plastic pipe; 1/2 ton chain hoist; awseps; used tires; app. 100 new cedar post; 4 in. pipe post; app. 60 bu. calf creep feeder; troughs; app. 50 gal. Texaco Uther motor oil; app. 25 lbs. grease; chains; brass windmill cylinders; app. 10 rolls used barb wire; 8 1/4 in. energy disks (near new); PLUS many misc. items.

HENRY R. STOREY & Associates
Brownwood, Texas
TXS 012-0005
For information call 915-646-3956.

CARD OF THANKS

I would like to thank each and every person for the cards, letters, flowers, visits, phone calls, and most of all for the prayers during my recent surgery and hospital stay. All of you have made the time in the hospital and the time recovering at home pass a lot faster. Thank you so much.
Lovie Jarrell

NOTICE

SHAKLEE PRODUCTS: Do you really get a balanced diet? Let me tell you about Dr. Shaklee's Slim and Trim Plan. We also carry natural food supplements, concentrated biodegradable household cleaners, natural skin care products, toiletries and baby products. Barbara Jo Kanady, Shaklee Distributor PH: 643-5791

D. & E. HOME IMPROVEMENT Vinyl Siding, Remodeling, Insulation, Storm Windows, Doors, Screens & Paneling, Painting inside & out—Concrete Work. P.O. Box 623 Rising Star, Tx. 76471 Ph: 817-643-3606 "We Do It All."

T & C PLUMBING General Repairs New Installation Sewer Repairs Unstops Gas Appliance Repair & Adjustments LICENCED PLUMBER Tony & Charlie Chamberlain Ph. 643-6526 or 643-3159 35-tfc

WELDERS WANTED Stephens Tanks, Inc. in Abilene is taking applications for welders to work the night shift. Night crew will work 40 hours per week and will be paid for 50 hours. Two weeks paid vacation per year. Hospital insurance paid on employee and dependants. Uniforms furnished, \$5,000 insurance policy on employee and cancer policy paid by Stephens Tanks. We are also looking for daytime welders. For more information call Carrol Ewing at 915-677-0281 collect. TNF

HELP WANTED: RN's and LVN's needed. Excellent wages and benefits, good working condition. Position provides a variety of nursing experience. An Equal Opportunity Employer. Contact Kay Mosley, RN, Director of Nursing Service, E.L. Graham Memorial Hospital, Box 321, Cisco, Texas 76437, or call 817-442-3951.

WANTED: 11-7 shift LVN at Blackwell Hospital in Gorman. Ph: 817-734-2294 13-tfc

Cisco Nursing Center is now taking applications for 7-3 LVN's and nurses aides for all shifts. Contact Frances Terry, 442-1471, Cisco. ttc

HELP WANTED: MAINTENANCE ENGINEER Experienced in refrigeration and plumbing with a working knowledge of electrical equipment. Must be able to direct hospital safety program. Good working conditions with retirement benefits. Apply in person to Helen Orr, Acting Administrator, E.L. Graham Memorial Hospital. An Equal Opportunity Employer. p-83

HELP WANTED: Cook. Dietary experience required. Hours from 5:30 a.m. to 2:00 p.m. Pleasant working conditions, fringe benefits. Apply in person to Dorothy McCune, Dietary Supervisor, E.L. Graham Memorial Hospital. An Equal Opportunity Employer. p-83

NOTICE

Sand and Caliche Hauling
Willie Ezzell
Phone: 643-5431

Earn extra Christmas money now. Service customers in your neighborhood. Fun, Fun, Fun. Money, Money, Money. Write to A. Cisneros; 1801 40th, Snyder, TX. 79549. t-100

COMPANY BUYING 1st and 2nd lien notes. Sage Mortgage Company, Rt. 4, Box 110 A, Dublin, Tex. 76446. Ph. 817-445-3007. t91

INSULATE NOW WITH ENERGY-SAVING SIDING T-LOCK, Vinyl, Viking by Masonite, and Insulated siding. Eliminate Painting Forever. Call S&M Supply, Cisco, Texas, 817-442-2077 or write P.O. Box 1637 For "Free Estimate." p-31tfc

HOLLIS WILLIAMS CONSTRUCTION Residential and commercial. Remodeling, add-ons, new homes, custom cabinets, concrete, electrical work, etc. 442-1933, Cisco. ttc

J & A Bargain Box 701 W. Main New & Used Merchandise 629-1133

FOR BARGAINS SHOP Marvallee's Dress Shop 611 E. 8th Cisco Dresses, lingerie, pants, tops, nurses uniforms, maternity wear. Open Monday, 2 to 5, Tuesday thru Saturday, 10 to 5.

CISCO RADIATOR SERVICE 207 E. 6th St., Cisco (Breckenridge Hwy.) Cleaning-rod-ding-re-coring-auto-truck-tractor radiators-heaters. New radiators and heaters. Auto gas tanks cleaned-repaired. Open Monday thru Friday, 8 a.m. to 5:30 p.m. Call 442-1547, Cisco. ttc

BUSINESS OPPORTUNITIES Diamond Direct started new company giving better chance to distributors. Break-away \$2000 level. 20% not 3% retirement and other bonuses. Finest household, commercial, cosmetic, vitamin. Sending information (817)466-3565 9TP

Cisco Nursing Center is now taking applications for 3-11 LVN's and nurse's aids. We are using the new Attends adult disposable briefs to make our residents more comfortable and our employees' job easier and more pleasant. Apply at 1404 Front Street, Cisco, or call Frances Carey, DON, 442-1471, Cisco. p-34tfc

FOR RENT: 2 Bedroom house, inquire at 306 East Ross St.

SERVICE

Buddy Cook Residential and Commercial. Refrigeration and Plumbing. PH: 817-842-5950

Rising Star
RUDY'S PLUMBING SERVICE Repairs & Remodeling. Call: Rudy Sayas 643-2442. All Work Guaranteed 49-4TP

Fast, Dependable Film Developing Palace Drug Store Risina Star Texas

HOME IMPROVEMENTS Isbell & Son Custom cabinets & trim, Add-ons & additions, Remodeling, New construction. Ph: 915-784-6239 or 915-677-4673, Harbor Point, Rt.1, Box 204, May, Texas 76857 21-4TP

RUST and WOLFE FENCING CONTRACTORS Pipe Line and general fencing construction. Rt. 1, Box 120, Rising Star, Tex. 76471 R.L. Rust-N.S. Wolfe, Jr. PH: 817-643-3137 TFC

STONE ETERNAL MEMORIALS: Seal and certificate see Mr. and Mrs. L.C. Freeman representing Coleman Monument Works, Coleman, Texas. Phone 817-629-1631 or see 305 N. Dixie, Eastland, Texas 76448 T105

WORK WANTED: House leveling, Painting, barns & houses inside & out. FREE ESTIMATES Ph: 643-3027, day or night. 28-4TP

NOTICE: Carpet cleaning—heavy shampoo followed by cold water rinse, extractor removes all dirt into barrel. Is your carpet flooded? Have machine to remove or extract water from carpet. references in Rising Star. PH: D.T. Boyd (915)-356-2454 TFC

WELL DRILLING Water Wells, Shallow Oil Wells, We sell and install Pumps, Clean out wells. Have 3-Cable Tool Rigs. Do Surface hole work. Call: J.R. Morrow 817-643-7364 or Dick Morrow 817-643-7801 26-4tc

Gregg & Wilson Service, Inc. Used Oilfield Equipment--Casing Pulling P.O. Box 121 Cross Plains, Texas 76443

Bill Gregg Phone (817) 643-3332
Willard Funderburg Phone (817) 725-7519
Howet Wilson Phone (817) 725-7464

REAL ESTATE

Spacious House, 500 BLK S. Main. 3BR, Large LR, Large Kitchen-Built-Ins 2 Baths, Cooking area, Laundry, large closets, 2 Car garage, 1 acre land well landscaped, lot fenced, beautiful trees.

303 N. MAIN 3 BR-2 Baths, Den, LR-Kitchen, 2 carports and garage, water well; Large lot with trees, yard fence.

401 MAYBEN 2 BR, 1 Bath, LR and Kitchen on 3 acres land, storm cellar. 39-

20 acres located approximately 1 1/2 miles SW of Rising Star. Small house w with water well, large septic system, electricity telephone lines.

Louis A. Mayfield Broker Ph: 817-643-4073 Rising Star, Tx.

LOOK!! House FOR SALE at 110 E. Ross; 3 BDRM., 1 Bath, on 1/2 acre; water well and city water. Ph: J.L. Garton, 915-646-5225 BROWNWOOD COUNTY REALTY 20-tfc

REAL ESTATE FARM FOR SALE: 6 Rm. house on 4-A, 2 BDRM, 1-Bath, adjoining city limits of Rising Star, utility room, natural stone, newly decorated on inside, Hwy frontage. 40 A. can be bought with it, some minerals. Some owner financing. Ph: 918-689-5146 34-4TP

HAVE YOU GOT LAND YOU WOULD SELL? WE ARE BADLY IN NEED Of acreages from 1 to 1,000, improved or unimproved. Give us a call: 893-6666 or 893-5898, De Leon. COGBURN REALTY Our 24th year selling in your area.

NOTICE: For Mineral Lease: 160 acres southeast of Rising Star. Call 643-4082 40-3tc

SANDY'S HAIR AFFAIR AND CLOTHES LINE Sportswear and dress shop located on Ave. A in Cross Plains, Texas. Sandy's Hair Affair Phone 725-6695 40-4tc

RISING STAR ELECTRONIC REPAIR featuring Repairs on TV's Stereo's Radios Tape Players Small Electrical Appliances 101 West College St. Ph: 643-3160, shop Ph: 643-3159, home 38-Pd. thru Dec.

NOTICE: Buying fall milo \$4.35 cwt Phone: 725-6635 41-tfc

WELDING Oilfield and Farm Jim Ratliff Ph: 643-6464 36-tfc

THE RISING STAR

Publication No. (USPS 466500)
643-4141 105 N. Main St. Rising Star, Texas Box 127 76471

Second Class Postage paid at Rising Star, Texas, under Act of Congress in March, 1870, Published Every Thursday.
Publishers—Mr. & Mrs. H.V. O'Brien
Editor—Cisco-Herrel Hallmark
Editor—Eastland—H.V. O'Brien
Assoc. Editor—Eastland—Michelle Lindsey
Editor—Ranger—Betty McGee
Editor—Rising Star—Evelyn Donham
Office Staff—Lisa Merritt
Office Staff—Faye Merritt
Office Staff—Margaret Hallmark
Office Staff—Patricia Hallmark
Office Staff—Diane Hughes
Office Staff—Edra Butler
Columnist: J.W. Sifton
Production Supervisor—Ted Rogers
Production: Raymond McCoy
Production Asst.—Wayne McCoy
Adv. Production—Rene Hill
Computer Operator—Kathy Willeford
Photo—Michelle Lindsey
Feature Writer—Viola Payne
Commercial Printing—Hale Dunson

CISCO-EASTLAND-RANGER
SUBSCRIPTION RATES: By carrier in city, 30 cents a week or 90 cents a month; \$10.50 a year; one year by mail in county, \$7.00; City P.O. Boxes \$7.00; one year elsewhere in state, \$10.00 out of state \$12 year.

RISING STAR SUBSCRIPTION RATES: By mail in Eastland and Adjoining Counties: \$5.00 per year; in Texas, \$7.50 per year; elsewhere in U.S. and foreign countries \$10.00 per year.

FOR SALE

PENNYRICH For the Figure you SHOULD Have-For the Comfort You need. Call (817)629-8298 for appointments after 5:00—Martha Elliott 38-4tc

For Sale—newly overhauled Old's Trombone. Excellent condition. Call Stacy Blair, 629-8266 or 629-1461. Tnf

FOR SALE: 1/2 acre on West Pioneer Street. City utilities, ideal for home or mobile home. Phone: 643-3066.

FOR SALE: Top quality BRANGUS BULLS. Breeding age. Ph: 646-5707, Brownwood, Tex.

FOR SALE: Three used gas air conditioners and one used gas furnace. As is, where is. \$450.00 for all four pieces. See at the Eastland Telegram. 629-1707. tf

For Sale: John Deer 33 Dragtype Cottonstripper Excellent condition. Call Gorman (817) 734-2378 after 7 p.m. T-83

SPECIAL NOTICE: Water pills and Laxatives can deplete potassium. New K-Forte maximum strength, recommended by your pharmacist at Palace Drug Store. 40-3tp

FOR SALE: House consisting of 2 apartments, 4 rooms on each side, lots of storage space, 2 garages. Phone: 817-643-4176 41-tfc

FOR SALE: Horse Sale, Ranger Livestock Auction, Ranger, Texas. Saturday, October 10, at 12 p.m. Call 817-647-3247. rs-41

FOR SALE: 10 pair cows, 10 heavy springers, call after 5. 817-442-2304. rs-41

FOR SALE Matching Couch and Chair in good condition. Phone 643-3888. 41-ttc

NOTICE

FOR LEASE: Excellent oil field supply or related - 260' of pavement frontage (1 acre total) 1400 sq. ft. shop/building located Highway 80 West, one block east of White Elephant in Cisco. Call 817-442-1245 or 817-442-1585 after 6:00 p.m.

HOMES FOR SALE

FOR SALE: 2 story house with 8 lots, located 3 blocks from school. All conveniences. Eugene Baber-734-2938 Gorman. t84

FOR SALE: 2 BDRM home; 2 Lots. 411 West Pioneer Ph: 817-643-5171 or 817-842-5937 27-tfc

FOR SALE: Nice 2 Bdrm, 1-Bath House on 1/2 A., Clean, IN GOOD CONDITION. Ph: 643-3082 or 643-3261 36-tfc

FOR SALE: 1973 Country Square Mobile Home, 2 Bdrm., 1-Bath.

2 Bdrm. House on Ross St.

8 ft. long 4x4 hard oak wood. Ph: 643-7711 36-tfc

FOR SALE: Lake lot at Lake Granbury. Also 2 bedroom house in need of repairs 607 West 11th St., Cisco. Priced to sell. Call 442-1005, Cisco.

FOR SALE: 2 Bedroom house with water well and garden spot. 302 Joyce St. Phone 643-5011 40-tfc

FOR SALE: 3 Bedroom home, carpet, dishwasher, disposal, oven-cooktop, nice fireplace, storm cellar, lots of big oak trees. West Pioneer Street. Cash or terms. Owner. 893-6666 or 893-5898 De Leon. 41-4tc

HELP WANTED: Ben-Jarch Mudlogging Inc. is now taking applications for trainees. Call 817-442-4132. Equal Opportunity Employer.

WANT TO BUY Ford Mustang, model 1968 on. Good condition, automatic, reasonably priced. School car. Call 629-2413. TF

JOB INFORMATION Alaskan and Overseas employment. Great income potential. Call 602-941-8014 Dept. 84. Phone call refundable. 40-4tp

NOTICE Will do welding for the public. Call 643-3240. 39-4tc

4-H'ers Looking At "Future Pathways"

College Station-4-H members across Texas and the nation are using the theme, "4-H Pathways To The Future," in observing National 4-H Week, October 4-10.

Nearly five million members of America's largest out-of-school youth organization and their 567,000 volunteer leaders are taking part in special activities, notes Dr. John Pelham, state 4-H Leader with the Texas A & M University System.

Texas boasts some 140,000 4-H members and 22,000 volunteer leaders.

As the youth program of the Extension Service of state land-grant universities and the U.S. Department of Agriculture, 4-H reaches boys and girls between the ages of 9-19 in every county of the United States, according to Pelham. Programs similar to 4-H also involve nearly 4.5 million youth in some 82 countries around the world.

Overall mission of the Extension Service in conducting 4-H programs is the development of youth individually and as responsible, productive citizens, says Pelham.

This year's theme challenges members to become self-directing, productive and contributing members of society.

4-H members learn specific skills of projects such as food-nutrition, animal science, forestry or gardening. They also learn to keep accurate records, make oral presentations and develop life-long management, consumer and communication skills.

They use their skills to contribute to community development through such projects as beautification, historic presentation, energy conservation and involvement in civic affairs, explains Pelham.

meals without meals are planned for October 12 and 13 at 8:00 p.m. Tickets for the dinner and show are \$8.

Tickets for the special performances are \$2 (\$1 for students).

Reservations may be made by calling 817/442-2567 during business hours or 442-2589 after 5 p.m. and on weekends.



International Year of Disabled Persons 1981

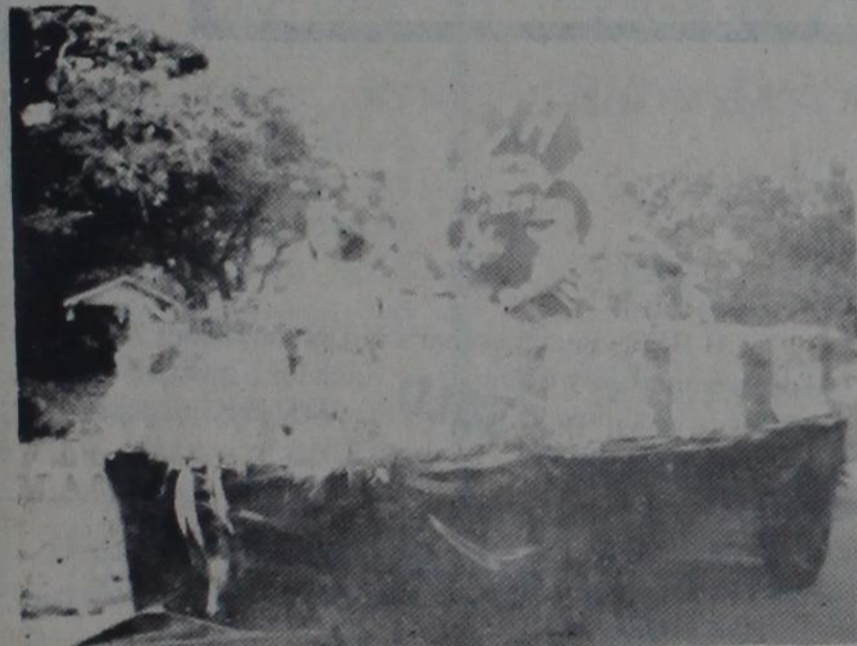


The John Matejka family of 7722 Knob Hill in Pasadena visited the nation's capitol recently, and met Congressman Jack Fields, who took them on a special tour of the House Floor. The Matejkas were joined on their vacation by Ellen Matejka, right of Galena Park. While visiting Washington, the Matejkas planned to see other attractions in the nation's capitol.

Family members of Mr. and Mrs. Bill Jr. Ghormley of Deer Park, Texas. The Ghormley's are natives of Rising Star.

Rising Star 4-H Participates in Eastland Parade

The Rising Star 4-H Club was very busy at the Eastland County Fair, October 1-3. We made a float and entered the big "Salute The Oil Industry" Parade. Members helping with the float were Shane Spencer, Stephanie and Toby Long, James Gray,



Jami and Jerry Long, Kelly Hill and Karmen and Jay Hall. Adult leaders helping were Tony and Barbara Long, Jim Gray, Trudi and Rex Long and Kathy Hall. Several members had individual entries at the Fair. Jerry Long entered plants and came home with 2 blue ribbons. Jami Long entered canned goods and received 2 blue ribbons. She also had a plant receiving a blue ribbon plus "Best-of-Show". Toby Long received 2 Honorable Mentions for his art. Stephanie Long entered two projects in the handicrafts and won a white ribbon. Karmen Hall won a red ribbon on her clothing. She also received a blue and red ribbon for handicrafts.

plus the good food and fellowship. This group will meet again in Cisco on December 29th.

Garden Theatre Presents 'Dracula'

The Roof Garden Dinner Theatre in Cisco will present DRACULA, a thriller by Hamilton Deane and John Balderston based on Bram Stoker's world famous vampire novel, as its first show of the season.

When the play begins, Lucy Seward (played by Mary McGrew) is mysteriously anemic. Her father (Fred Mullinax), a physician in charge of a sanatorium near London, receives help from Dr. Van Helsing (Philip Craik), a specialist in obscure diseases who suspects a vampire. Van Helsing is aided in his search by John Harker (Rocky Harris), Lucy's fiancée, who helps uncover Count Dracula (Stanley Davis) as a vampire who roams the earth at night, sustaining its earthly life by sucking the blood of approachable victims. Complications arise because Renfield (Randy Finch), one of Dr. Seward's lunatic patients who eats flies, has become a reluctant disciple of bloodthirsty Count. Comic relief is provided by the attendant Butterworth (George Gates) and the maid (Candi Dickson), in an otherwise somber and blood-curdling production, ending with, you guessed it, the hammer and the stake.

DRACULA will be presented as a dinner theatre production October 9 and 10, with the meal beginning at 7:00 p.m. and the Roof Garden Theatre atop the Laguna Hotel in downtown Cisco. Two special perfor-

OES Traces Early History

The Rising Star Chapter Number 277, Order of the Eastern Star met Monday, October 5th at 7:30 p.m. with Worthy Matron, Claudie Mae Gardner and Worthy Patron, Harold L. Evans presiding.

Elizabeth Robertson gave the early history of the Chapter, dating from the organization on April 5, 1905 through September 4, 1922, with emphasis on the growing early years and the years of struggle through World War I. Special tribute was paid to Charter members of the Chapter.

Refreshments were served.

On September 29th, the Rising Star Chapter hosted the meeting of the Past Matrons and Past Patrons Club of District 3, Section 4 in the Activity Building of the First Baptist Church. Antiques of Rising Star members served as table decorations and the history of each was given during the program. Sixty-seven people enjoyed

Dr. Ruth Y. Ackers
Podiatrist Inc.
Announces Our Newest Location
2150 S. Danville
Abilene, Texas
695-1890 Or 695-1891

Brazgon Jeans reg. \$28.00

NOW \$12.00

Action West Jeans \$15.00

4 Styles of Long Sleeve Fall Tops 1/2 price

4 Styles of Fall Dresses 1/2 price

MARVALLE'S DRESS SHOP

611 East 8th

We Give Green Stamps

Open 9 to 5:30 Mon-Sat.

Century 21

FOWLER REALTORS

820 West Main 629-1769
Bill Griffith, Broker

Residential Eastland

IN EASTLAND: Three apartments that gross monthly \$435.00. Upstairs can be made into another apartment. Carpet and furnishings stay with apartment. E-1

WE HAVE new homes under construction. Call for details.

COMFORTABLE LIVING ROOM, bedrooms, living room, formal dining room at \$25,000.00. E-5

NICE small 2 bedroom, central heat and air. Close to school. \$18,000.00. SOLD E-6

NEAT 2 bedroom, 1 1/2 bath, nice corner lot, close to school, owner financing available. \$24,000.00. SOLD E-4

UNDER CONSTRUCTION: Beautiful new four bedroom, 2 bath home in excellent location. To consist of 1854 sq. ft., fireplace, insulated windows, air drop-in oven, high efficiency heat pump, cabinets and other extras. This will be a beauty. SOLD E-4

EXCELLENT INCOME PROPERTY 3 apartments with 100% occupancy gross monthly income of \$435.00. Property needs some repair, if you are a handy man this is for you. E-1

FRESH ON MARKET Nice Brick home on large lot, house has approx. 2400 sq. ft. living area. 4 BR, 2 baths, Cent. H/A, Nice built in kitchen, custom made drapes, covered patio, Brick BBQ pit and smoker in back yard, nice large oak trees. You must see this one. E-7

3 BDRM, 2 bath home in good location. Needs some repairs. Carport, fenced back yard with storage bldg. Call for more information. E-2

ROCK CHURCH 412 N. Bassett. Very spacious could be converted into residence. Already has two baths, two rooms that could be bedrooms. Kitchen with dining room. Worship hall could be huge living room. Call for details. E-6

Rosezell Emerson 629-8183

NICE OLDER HOME on large city lot. Has three bedrooms, one bath all new large country kitchen. New carpet and tile throughout. Excellent condition. Special financing available. E-10

THREE BEDROOM one bath fenced back yard. Nice neighborhood. This is a very nice home. E-11

THREE BEDROOM one bath. Nice neighborhood. Close to town. This is a good solid older home in need of repairs. Priced to sell. E-4

Cisco

BEAUTIFUL HOME on large corner lot. Lots measure 212.5x125 feet. Three bedrooms, two baths, central heat and air with two car attached garage. Excellent condition. C-2

NICER THAN AVERAGE: Three bedroom brick home, has powder room and one complete bathroom. Has central heat and air. Cyclone fenced back yard, peach, pear and apple trees. House is furnished with stove and refrigerator. To be appraised FHA. Call for more details. C-3

A VERY GOOD BUY A nice well kept older home with approx. 1100 sq. ft. on 2 1/2 lots. Large storage building with electricity. 2 separate garages. Storm cellar. Nice garden spot. Beautiful fruit trees. 3 BR, 1 bath. Very comfortable home on a quiet street. Call about this one. C-1

Ranger 647-1302

14x75 MOBILE HOME: Three bedrooms, two baths, central heat and air. This mobile home is situated on three lots. R-4

NICE TWO BEDROOM, Living room, dining room, kitchen in a real good location. R-12

IN RANGER, nice home. Has a breakfast room and a 1 car garage. 1 1/2 baths. Close to school. R-2

TWO bedroom, 1 bath home with central heat, fireplace, fenced in backyard. FHA. R-13

NEW ON THE MARKET energy efficient home, 3 bedroom, 2 bath, central heat and air, only 2 years old. FHA

TWO bedroom, 1 bath home with two car garage on large lot. FHA appraised. R-11

BRICK home with 3 bedrooms, 1 1/2 bath in the Meadow Brook Addition. R-1

ATTRACTIVE 3 bedroom, central H/A excellent location. F.H.A. \$31,000.00. SOLD E-4

SMALL 2 bedroom home in good location for only \$9,000.00. R-2

3 bedroom, 1 bath home with den, wood heater, carport, FHA appraised. R-9

SMALL three bedroom fully carpeted home on large lot. SOLD E-6

REMODELED: Three bedroom, one bath carpeted home. One car garage, close to schools, church and shops. FHA. R-5

NICE: Three bedroom, one bath, den home. Completely carpeted. Back of house has an efficiency apt. Call for details. R-3

REMODELED: Three bedroom one bath home. Close to schools, church, and shops. Has one car garage. City Water. FAH appraised. Call for details. R-5

Lake Property

CHARMING CABIN IN REMOTE LOCATION Receding water does not detract from this cozy 1 bedroom with fireplace. Plenty of trees, fenced yard, and year-round neighbors. \$17,000.00. Some owner financing. LP-11

LAKE HOME: One bedroom, one bath large living room overlooks lake. Builtin kitchen, stove, dishwasher and disposal. Antenna with UHF attachment. Back of lot slopes gently down to the lake. Call for more information. LP-4

FRESH ON THE MARKET: Nice furnished two bedroom, one bath home on deeded lot. Covered boat dock, city water. A steal for \$28,500. LP-6

Country Homes & Acreage

55 ACRES good building site. Across from new high school in Ranger. May be subdivided or sold as a unit. A-6

FRESH ON MARKET 60 acres about 12 miles South of Cisco, 30 acres Coastal, 15 acres in Love Grass, rest in timber, 1 tank and 1 hand dug well. Call for details. A-1

4 ACRES off old hwy. 80 E. 1/2 block from city water main. Excellent for pipe yard or for oilfield storage. A-10

NEAR NIMROD with peanut allotment, some minerals, grass, tr. Good for dove hunting. A-9

SMALL ACREAGE TO BUILD ON between 2 and 3 acre tracts about 6 miles south of Eastland on Hwy. 6 - City water and electricity available. Call for details. A-17

IF YOU WANT a few acres close to town to build on, this is it! 10 acres on Rising Star Hwy. Nice view overlooking Leon River. This has already got all the facilities for mobile home hookup. Including city water. Call for details. A-11

BEAUTIFUL 5 1/2 acre tract. One mile north of I-20 in Olden. City water available. Excellent location for home. Has one tank and some timber. A-5

House with Acreage

10 ACRES 2 MILES SOUTH OF CISCO. Nice view for mobile home or to build on. Has mobile home hook-ups already, has city water. Some owner financing. Approx. \$10,000 down. Call for details. A-11

168+ ACRES North of Cisco. Three tanks, 1 water well 1/8 minerals, good soil. SOLD A-5

1.734 acres - Breckenridge Road, 3 bedrooms, 2 baths. Great condition. Call us. HA-7

1.10 ACRES with a four bedroom one bath house on it. Equity buy, loan assumption. Call now for more information. HA-9

EXTRA LARGE home energy efficient, five bedrooms, four baths. Nimrod area on two acres. \$75,000. HA-2

6.52 ACRES: with three bedrooms one bath. Has a fireplace and a two car garage. This is in a very good location. HA-8

Commercial & Lots

ATTENTION MERCHANTS - RELOCATE! ONE half to ONE ACRE TRACTS, all utilities and pave street, situated in new shopping development. Adequate parking space. \$8,500.00. C-2

IN CISCO, 2 large lots with many oak trees. Utilities on property great for mobile home. L-15

THREE lots 25 acres each. Original Town Site Addition (Commerce). SOLD E-4

LAKE LEON BUSINESS with 3 bedroom siding home on water front, 2 gas pumps, 4 trailer hook-ups, store is 500 sq. ft., 24' x 30' workshop, storeroom, storm cellar, staff water garden spot. GOOD LOCATION AND A GOOD BUSINESS. CP-5

CISCO, LARGE COMMERCIAL Bldg., includes nice size apartment, 2 bay car wash, mobil home hookup. Make offer. CP-6

DOWNTOWN CISCO Just 3 doors from proposed site of new bank, attractively remodeled for retail store or offices. CP-7

PACKED WITH POTENTIAL Going business good income, excellent location. Call for details. CP-8

EXCELLENT BUSINESS LOCATION on Old Hwy. 80 West has room for four office spaces, central heat and air, carpeted. CP-1

EXCELLENT commercial property on large corner lot central air and heat - perfect for business offices. Eastland. CP-12

LOOK US OVER BEFORE YOU LOOK AROUND

We Appreciate Your Business

Shirley Griffith 647-1635 Bill Griffith, Broker 647-1635 Hazel Underwood, Assoc. Broker 629-1188 Chris Frost Crum 629-8224

Eastland National Bank salutes the oil industry.

We are eager to help in your growth and welcome the opportunity to serve you. You've got a friend — in Eastland.



EASTLAND NATIONAL BANK

201 East Main Street 817/629-8551 Member FDIC
Equal Opportunity Employer M-F-H

Oil Is Where You Find It...

.....so sayeth the oilmen. So is love, happiness, success and all of the other elements that make up our lives. Where do you go to find title information? Not on the street corner or the barber shop or any other place except in an abstract office. Yes, we have it, compiled, indexed and assembled daily, from the very beginning down to the present time, plus years of experience and training. Visit us soon and let us have an opportunity to serve you.

Eastland County Abstract Company

Pat And Annelle Miller

Abstracts and Title Insurance

Eastland, Texas

Call 629-1707 to List Here.

BILFIELD DISPATCH



Oil News Report

October 8, 1981

Regency Petroleum Co., Dallas, No. 2 Sid Waynick will be drilled as a proposed 1,250-foot wildcat in Eastland County.

Location is two miles south of Eastland on a 160-acre lease. It spots 2,290 feet from the south and 2,290 feet from the west lines of Section 21, James Hannum Survey, A-163.

It will be a southwest twin to Bill Herod No. 1 Waynick, completed in the Marble Falls at 3,360 feet.

A proposed 1,000-foot wildcat is slated for the area 10 miles southeast of Cisco on a 336-acre lease.

It is Lawrence-Cannon Drilling Inc., Abilene, No. 81-1 Holt. Drillsite is 330 feet from the south and 330 feet from the east lines of Section 9, Block 2, H&TC Survey.

Location for a proposed 4,100-foot venture was staked in the Ranger, Northwest (Marble Falls) Field five miles north of Ranger.

It is Ridge Oil Co., Breckenridge, No. 1 G.H.

Turner, located on a 110-acre lease.

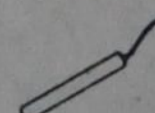
Drillsite is 1,670 feet from the south and 3,380 feet from the west lines of F.M. Harms Survey, A-161.

Oil News Report

October 8, 1981

Oil related businesses
We have best location
in Eastland for your
business
In Pogue Industrial
Park located across

Highway 80 from Service
Pipe & Supply
Sell by the lot or acre
A-1 Sales 215 S. Walnut
629-2102 Anytime



SOIL CONSERVATION

BLASTING

OIL FIELD BULLDOZERS

KOERNER CONSTRUCTION CO.

BOX 612 MINERAL WELLS, TX 76067

JACK KOERNER
OFC. (817) 682-4851
RES. (817) 682-4859

MOBILE: 325-0709
Unit 5376



Jerry Maxwell

Ksee Supply Co.

Oil Field Supply New - Used

806 Spring Road
RANGER, TEXAS 76470
817/647-1749



MULTIVERSAL PIPE COMPANY

Casing-Tubing-Drill Pipe-Sucker Rods
Polyethylene Pipe & Equipment

P.O. Box 831
EASTLAND, TEXAS 76448

O. L. RODGERS
817/442-3133

BUS. PHONE
817/629-6581
OR 817/629-2682

Triple S Roustabout

Kenneth Sowell Service Stuart Sowell

Box 575 FULLY INSURED & EQUIPPED
Cross Plains 76443

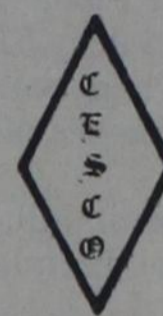
ROUSTABOUT CREWS
Winch Trucks,
Welder, Bulldozer
Pipe Trailer,
Tank Skids Extra Long Poles

(817) 725-7731

Dump Truck or 725-7444 — 725-7625

Back Hoe

AERIAL BUCKET TRUCKS • HOLE DIGGERS • DITCH DIGGERS



CARROLL ELECTRIC SERVICE CO.
ELECTRICAL MAINTENANCE CONSTRUCTION
OIL FIELD COMMERCIAL & RESIDENTIAL

P.O. Box 891
EASTLAND, TEXAS 76448

Bus 817/629-2842
629-8793
Night 629-1320

RON CARROLL-OWNER

KINCAID REAL ESTATE

817/629-1781

100 S. Seaman St. Eastland, TX 76448

RESIDENTIAL

NOT GETTING OLDER-GETTING BETTER! This older frame home has been recently improved with paint, panelling and carpet. Has 2 or 3 bedrooms, 1 bath. Roomy house on big pretty lot. Lots of trees in nice quiet neighborhood. \$24,500.

CLOSE TO DOWNTOWN-3 bdrm., 1 bath older frame house. Large rooms with some improvements. House solidly constructed. Located on extra large lot in nice neighborhood. Has several bearing fruit trees and garden spot. 1 car garage. Owner will finance with one half down. \$25,000 CASH; \$27,500 if owner finances.

NEWER BRICK HOME IN STEPHENVILLE-3 bdrm., 2 bath, fireplace, builtins, new carpet, custom drapes, central H&A, fenced yard, double attached garage. 2 blocks from high school.

LOW DOWN PAYMENT on this neat 2 bedroom, 1 bath mobile home on lot. Only \$1,000 down and owner finance. \$8,000.00

IDEAL MOBILE HOME SITE - City utilities available on this cleared lot in Olden. 150' x 75'. Owner finance. \$2,750.00

COZY & CUTE - 2 bdrm, new paint and carpet. Small yard, carport on paved street. Nice for single or starter home. \$25,000.

AFFORDABLE LIVING-Start with this small home 2 or 3 bdrms., 1 bath, 12,500. Owner will finance.

3 ACRE HOMESITE in Morton Valley. Hiway frontage. Lots of pretty trees. Would make a great homesite. Hurry before it's gone! \$4,750.

LARGE OLDER frame house on over sized lot. 7 rooms and full attic. Lots of space inside. Needs remodeling. Would like to trade for airplane or other. \$30,000.

WANT TO INVEST IN RENTAL PROPERTY? Small 1 bdrm., 1 bath rent house, stays rented continuously. Good return on investment. Call today. \$8,500.

LAKE PROPERTY

SUMMER HIDE-AWAY - Modern cabin on deeded lot. Good fishing. **SOLD** on this one! LL-07 \$11,700

LAKE LOTS- We also have many lots available some with excellent water frontage. The fishing is good and the price is right. LL-01

COMMERCIAL

OWN A FAMILY BUSINESS-locally owned convenience stor with gas pumps. Has good cash flow. Owner will consider financing for right person. Also has trailer park on 3 acres. Can accommodate 21 trailers. Good buy. Call for information.

COMMERCIAL PROPERTY 2.9 acres on I-20 frontage road in Cisco. Owner would finance part with good down payment. \$20,000.

PRIME RAILROAD SPUR LOCATION-1 building with office, 1400 sq. ft. floor space - dock height, 2 storage buildings on 1 1/2 acres. Excellent for bulk delivery shipping point. \$75,000.

THRIVING BUSINESS - Local business that grossed \$740,000 in 1979. Excellent cash flow and terrific location. Terms negotiable.

COMMERCIAL LOCATION-Large bldg. site on N. access of I-20. Excellent location., Good investment. Owner finance, 25% down. \$25,000.00

EXCELLENT LOCATION - 1.5 acres on Hwy. 80 near I-20. Unlimited potential. Older 3 bdrm. house. Call for more information.

DEVELOPMENT POSSIBILITIES 151 acres with I20 frontage, paved hwy. Numerous options. Owner finance. \$1,000.00/acre.

SEVERAL MOTELS - listed in various parts of the state. All excellent investments. Call for location and details.

INVESTMENT WITH RETURN 4 unit apartment house. Small 2 room units upstairs, larger 2 room downstairs. Washer & dryer, \$700 month income. \$35,000.

HOMES & ACREAGE

LIVE IN THE COUNTRY! In this 2 bedroom house on 66 acres. Has city water and water well. 36 acres of pasture with 3 stock tanks, and 30 acre fields. Also roping pens. Good fences and hiway frontage. Take a look - you'll like it. \$65,000.

COUNTRY HOME ON 120 ACRES- Income producing property-brings in over \$10,000/month in royalties! 120 acres is all in coastal, plus property has plenty of water with 5 water wells. The house is a 3 bedroom, 2 bath with approximately 1900 sq. ft. This is a very nice place. Call us for the details.

ACREAGE

38 ACRES-on Hwy 570 to Lake Leon. This is a bargain at \$550/ac. Has beautiful homesites, good all weather road, fronts the pavement. Lots of trees. Good investment!

SPORTSMAN RETREAT-78.9 acres of hunting and fishing! 3 stocked tanks for fishing with live creek. Dove, quail, turk **SOLD** deer. 20 acres coastal and 13 ac. wheat. 1 acre tenced garden. City water. Pretty campsite with all hook-ups. Some assumable financing. \$633/acre.

93.34 ACRES in Okra area. Has good stock tank, 57 acres cultivation, 18 acres of pretty timber. Also a 33 acre peanut allotment. Owner will finance with 29% down or will Texas VET/Also will divide. Has minerals that will go. Great buy at \$540/acre.

77 ACRES - Close to Ranger. Good pasture land, tank, easy access. Also good deer and turkey hunting. \$725/Acre.

49 ACRES - in northern part of Eastland County. Tank has been stocked. On good County Road less than 1 mile off pavement. \$700/Acre.

42.53 ACRES - Oak trees, pasture land. New tank - really pretty land. Come and look at it. Owner will finance. \$685/acre.

20 ACRES - available on paved highway about 4 miles from Eastland. All improved coastal bermuda. 1 tank, few trees, good fence. **SOLD** possible owner finance. Will Tex. Vet. \$15,000

12 1/2 ACRES - Pecan orchard at Carbon, about 70 producing trees, city water tank for a mobile home, all on paved hiway. **SOLD** Larry. Owner financed at 19% interest. \$25,000.

39.29 ACRES - Farm **SOLD** Pasture. 1/2 minerals. Has tank and water south of Cisco on Hwy. 183. Priced at \$700/acre.

20 ACRES - Scenic and rustic area. Scattered trees, city water available 5 **SOLD** of Cisco, ideal mobile home site: Owner finance. \$600.00

45 ACRES - All improved **SOLD** native grasses. Stock tank. Oak tree countr. TEXAS VET. \$525/acre.

60 ACRES - S. of Cisco close to Union Center, 25 acres peanuts, 1 good water well, good fences. Will divide. \$625/acre.

85 ACRES - All improve, **SOLD** native grasses. Scattered oak trees, stock **SOLD** good fences. Old frame house. WILL TEXAS **SOLD** \$525/acre.

63 ACRES - Some cultivation, beautiful trees. Excellent building site, fenced, city water. Some minerals. Pavement frontage. 750/acre. Assumable financing.

50 ACRES - Secluded 35 acres timber, river bottom, 2 tanks, well, 15 acres cultivation with small 1 bedroom house S. of Cisco. Some owner finance. \$850/acre.

97 ACRES-about 1/2 native pasture, some improvements. Older frame house and dairy barn. Owner finance. \$567.00/acre.

124 ACRES - Excellent **SOLD** g on this property. Travel Trailer included. \$50,000

300 ACRES - Two miles from Eastland, some timber, native and improved grasses, 2 tanks. Excellent ranch land. Financing arranged. 425/acre.

420 ACRES - Peanut farm. Fully cultivated and irrigated, 1/2 minerals. Beautiful 4 bdrm., 3 bath home with fireplace. Excellent investment. Call for more details.

We have several other tracts of land from 37 acres up to 78 acres. Priced from \$685/acre to \$900/acre. Each tract has trees and at least one tank. Owner will consider financing. Call for more details.

We also buy and sell Oil & Gas Leases. Any inquiries may be directed to Eddie Kincaid.

We have many other listings on ranches, motels, and apartments.

We want to SELL your listing.

Eddie Kincaid (817) 629-1781

Mitta Kincaid (817) 629-8757

Gilbert Meredith (817) 653-2877

Robert M. Kincaid, Broker

Rising Star Nursing Center
Avis Massey - Activity Director

MONDAY--News was gathered for the paper.

TUESDAY--Bingo numbers were called by Buster Rixford. Maggie Christian, Martha Irby, Ethel Degman, Ora Clark, Estell Bolding all won two games each; Emma West, Mary Crisp, and Cassie Allen (a visitor) all won one game a piece. Popcorn was enjoyed by all residents and visitors. After Bingo, Martha Irby, Mary Crisp, Estell Bolding and Cassie Allen enjoyed 42.

WEDNESDAY--The 11:30-12:00 Devotional brought by the First Baptist Church was enjoyed by everyone. The devotionals are appreciated greatly. New names tags were put on residents doors.

THURSDAY--Is the day for dominoes.

FRIDAY--Today Olive Odom started her fourth year of teaching Bible Study here at the Rising Star Nursing Center. We wish her lots more years of service for our Lord. Bea Kelton was at the piano and Robert Sparkman led the singing. Mildred blessed us with two specials, "What A Day" and "He Touched Me". The

lesson today was parable of Lazareth and the Rich Man, Luke 16:19-21. Sixteen residents and six others were present. Mrs. Estella Hudson and Mrs. Joe Sparkman visited with us.

SATURDAY--Just the usual routine.

SUNDAY--The 3:00 church service was held by the First Baptist Church. Rev. Dick Williams brought the message. Sixteen residents and eight visitors attended.

SPECIAL NOTICE--Willie Roper was transferred to a nursing home in San Saba to be near her family.

Alvin McNutt fell and broke his hip on Saturday and is now a patient in Hendrick Hospital in Abilene.

Considerations For Potential Club Calf Producers

College Station--More commercial cattlemen are investigating the club calf market each year. This is not surprising, for at least 10,000 show steers are fed annually in Texas, a few of which command very high prices.

Considerations important to the club calf producer include most of those which the purchaser must also heed, says Dr. Stephen Hammack.

Hammack, of Stephenville, an area beef cattle specialist with Texas A & M University System, says these include age, breed, color, type or body conformation, and price.

Regarding age, Hammack emphasizes that in order to show a calf at a major livestock show, the calf must have its temporary teeth. The first pair of temporary teeth are generally shed around 19 to 21 months of age but this may vary considerably.

"The oldest steers may not always be the best steers, but some degree of maturity generally allows maximum expression of skeletal size, muscling and some degree of fattening," Hammack says.

So, because most of the major livestock shows in Texas are held from January to March, steers born in late spring to mid-summer are often the most competitive, he continues.

It is well-known that calves born at this time usually weigh less (thus returning fewer dollars when sold commercially) at weaning.

Hammack notes that anyone contemplating changing their breeding program to a spring-summer calving period should carefully consider this disadvantage beforehand.

Breed is another important factor. Some shows have as many as 14 different breed and breed-cross classes.

"An important point here is that, at most shows, determination of breed is based on visual evidence of breed characteristics, a subjective evaluation," he says.

Genetic background is also important for another reason in small county shows, where separate breed classes many not exist, or in competing for overall grand champion at larger shows.

In these cases, where all breeds com-

pete against each other, steers with 3-8 to 3-4 of one of the large heavier muscled, "exotic" breeds are usually most competitive.

Hair color can be an important factor in showing placing. Solid black is probably the most frequently seen color on a grand champion.

Other popular colors are solid red, or red with a small amount of white markings. Other colors can be competitive but are just not as common as those mentioned.

Type or body conformation is important because most judges look for a balance of skeletal size, muscling, finish and a general blending of body parts, Hammack says.

In a tough show where several steers may be extremely close in these basic factors, such fine points as head and neck carriage, amount of brisket and sheath, extreme straightness of legs, and overall "style" and showiness are important, he adds.

Hammack says the easiest way to get started on club calf production is through the use of artificial insemination. "Good calves are possible through natural service, but it can be a problem to find and

buy the right sires," he continues.

The production of club calves might be a profitable sideline or even principle enter-

prise, Hammack says, but it does have special requirements and attention to detail is necessary. Many who attempt to enter this market are disappointed because they fail to realize the problems as well as the opportunities.

A reputation must also be established before meaningful price bonuses are realized, he adds.

PERSONALS

Mrs. Olice Jones and her daughter, Mrs. Gloria Phillips attended the Homecoming activities of Mukewater School on Saturday, October 3rd.



To the Ex-Students and Former Teachers of Rising Star High School:

For the unexpected privilege of representing you as the 1981 Homecoming Queen on September 26th, I thank you so much. The happy experience you provided me is truly a cherished honor. It is with much sincerity and appreciation that I say, "Thanks for the memories."

Sincerely, Gloria Jones Phillips

Name Brand Fashions



Thousands of Garments To Choose From Missy, Half & Large Sizes

Save 40-60% New Arrivals Each Week Open Mon.-Sat. 9:00 a.m.-5:30 p.m. 112 N. Lamar Eastland Next to Majestic Theater

PORTRAIT PACKAGE

14 PORTRAITS IN LIVING COLOR \$1.95 DEPOSIT WHEN PHOTOGRAPHED \$10.95 ON DELIVERY

2 - 8 x 10 2 - 5 x 7 10 - WALLETS

NO LIMIT ALL AGES

Date: Friday, October 9th 10-1:00; 2-5:00

Place: Higginbothams Rising Star, Texas

Rising Star 4-H

BAKE SALE

Saturday, October 10, 9:30 a.m.

Higginbothams

Proceeds to purchase Animal Blower-Dryer

Thursday, October 8, 1981

All-Savers One Year Certificate Of Deposit Minimum \$500

All-Saver Certificates from the First State Bank in Rising Star, Texas benefit you in the following ways:

1. You can earn up to \$2,000 of tax-free interest when you file a joint return. Or up to \$1,000 of tax-free interest on an individual return.
2. First State Bank pays the highest interest yield allowed by law.
3. Your All-Savers Certificate is insured by FDIC.
4. AND, MOST IMPORTANT, since All-Savers Certificates do not benefit everyone equally, we can help you decide if one is right for you.

12.14% TAX-FREE INTEREST

Annual yield for period October 6th through October 30th

\$8237.23 at 12.14% equals \$1,000.00

\$16,474.46 at 12.14% equals \$2,000.00

Penalty is required by law for early withdrawal of any Certificates of Deposit.

Deposits now insured to \$100,000.

First State Bank Rising Star, Texas 643-2811 Member FDIC

Get Ready for Winter at Higginbotham's

Homelite® Super 2

179.95

- 14" Power Tip guide bar and chain
- Automatic chain oiling
- Displacement 1.9 cu. in. (31.1cc)
- Weight 8 lbs. 14 oz.
- Chromed chain
- Exclusive Twin Trigger®
- Rubber coated handle bar

Our Best-Selling Fan Works All Year Long.

Marco Polo, our most popular fan has a special reversible motor that lets you push that valuable heated air back down from the ceiling and into the living space of your rooms for greater warmth at lower heating costs. Beautiful hardwood cane blades and included light kits makes this your best buy.

199.95

Area heating saves energy

And helps reduce your monthly heating costs.

Your heating requirements will be reduced by heating only those rooms that are used regularly... even if you already have central heating. Dearborn heaters are safe. They provide warm, even temperatures. And using them is less expensive than heating an entire home.

The energy shortage is today. Buy your Dearborn area heater while all sizes are still available.

DWC 10, 10,000 BTU	140.00
DRC 20, 20,000 BTU	184.00
DRC 30, 30,000 BTU	199.95
DRC 40, 40,000 BTU	239.95

Available in LP or Natural Gas

Firewood time is Homelite® Time.

Homelite® 150

239.95

- 16" Power Tip guide bar and chain
- Automatic chain oiling
- Displacement 2.6 cu. in. (42.6cc)
- Weight 11 lbs. 2 oz.
- Chromed chain

1881-1981

HIGGINBOTHAM'S

Celebrating 100 years of quality and service

Main Street Rising Star

Dearborn® STOVE COMPANY - DALLAS, TEXAS A Division of Addison Products Company

SIPE SPRINGS NEWS

Mr. Covie Weaver and son, Tod spent last weekend with his parents, the T.A. Weaver's.

Mr. and Mrs. Buddy Barton and daughter of Midland and G.E. Barton of Stephenville spent last weekend with their parents, Mr. and Mrs. Ted Barton.

Mr. and Mrs. Travis Boswell of Arlington were here Friday to see his mother, Ruby Boswell and to visit Ma Morgan in the Eastland Memorial Hospital.

Mrs. Dorthy Roberson and Joyce Burks of Comanche visited their sister, Mrs. Ruby Wyatt.

Mr. and Mrs. Squab Weaver attended his brother-in-law, Bill Gillian's funeral in Grapevine on Wednesday.

Visitors in the John McKeehan home last week were Buck and Vera Busten of Carbon and Debbie and George Ruth Jones of Brownwood.

Mrs. Betty Jo Kerr of Odessa spent several days with her uncle and aunt, Mr. and Mrs. Herman Anderson.

Mr. and Mrs. Glenn Nowlin of Houston are visiting Mr. and Mrs. Jack Graham.

Mrs. Ruby Boswell and Mae Leonard at-

tend the Dixie Land Concert with the Comanche 65 Club Saturday in Granbury

Reporter

Oil News

Regency Petroleum Co., of Dallas, No. 2 Sid Waynick will be drilled as a proposed 1250 foot wildcat in Eastland County.

Location is two miles south of Eastland on a 160 acre lease. It spots 2290 feet from the south and 2290 feet from the west lines of Section 21, James Hannum Survey, A-163.

It will be a southwest twin to Bill Herod No. 1 Waynick, completed in the Marble Falls at 3360 feet.

A proposed 1,000 foot wildcat is slated for the area 10 miles southeast of Cisco on a 336 acre lease.

It is Lawrence Cannon Drilling Inc., of Abilene, No. 81-1 Holt. Drillsite is 330 feet from the east lines of Section 9, Block 2, H&TC Survey.

Bruner Oil & Gas Inc. of Grand Prairie will drill two Brown County wildcats nine miles southwest of Brownwood.

No. 1 Davis Richmond is located on a 65 acre lease nine miles southwest of Brownwood. It spots 991 feet from the northwest and 330 feet from the southwest lines of O.F. Murphy Survey, A-1633.

The firm's No. 2 A Davis Richmond spots 3065 feet from the nor-

thwest lines of J.B. Chambers Survey, A-2040. Location is on a 320 acre lease.

Sabana Water Co. Inc. of Abilene will drill No. 2 Ruby Jennings as a wildcat 12 miles south of Brooksmith.

The planned 1000 foot venture is located on a 72 acre lease.

Drillsite is 150 feet from the northeast lines of G.W. Smith Survey, A-1745.

Gary Butcher, Fort Worth will drill No. 4 Rowland Winn in the Grosevor, Southwest (Duffer) Field three miles southwest of Grosevor.

The planned 2850 foot venture is located on a 123 acre lease.

It spots 1615 feet from the west lines of Section 46, HT&B Survey.

TWF Oil & Gas of Midland will drill No. 2 Brown as an Eastland County wildcat four miles west of Leeray.

The planned 4000 foot venture is located on a 160 acre lease.

It spots 990 feet from the north and west lines of Section 472, SP Survey, A-917.

Another wildcat will be drilled in the county one mile southeast of Carbon.

It is Premco Petroleum Inc. of Dallas, No. 1 H.D. Keith.

The planned 3800 foot venture is located on a 388 acre lease.

It spots 800 feet from the south and 2300 feet from the west lines of Section 38, Block 2, H&TC Survey

Gro-Tex from

Paducah completed No. 1 E.L. Murphy in Brown County Regular Field three miles southwest of May.

Wellsite is 800 feet from the north and 250 feet from the west lines of Section 72, HT&B Survey.

Absolute open flow was 1,300,000 cubic feet of dry gas daily from perforations at 2572-78 feet, treated with 500 gallons of mud acid.

Operator set the 4 1/2 inch casing at 2642 feet, three feet off the bottom.

Southeastern Resources Corp., of Fort Worth, No. 2 Kincaid has been completed as an Ellenburger discovery eight miles northeast of Cisco in Eastland County.

Wellsite is 3240 feet from the south and 467 feet from the east lines of Section 55, H&TC Survey, A-222.

Daily potential was 80 barrels of 40 gravity oil, pumping from an open hole at 3963-66 feet, treated with 250 gallons of acid.

It is producing from an open hole at 3963-66 feet.

North Ridge Corp., of Grand Prairie, completed No. 1 D.B. Thompson as a Marble Falls discovery well six miles northwest of Ranger.

Location is 700 feet from the north and 850 feet from the west lines of Mary Fury Survey A-127.

Completed on a pump, it had a daily potential of 31 barrels of 41 gravity oil, plus 22 barrels of water. Production is from perforations at 3334-54 feet, treated with 500

gallons of acid. The pay was fractured with 25,000 gallons of water and 60,000 pounds of sand.

Operator set the 4 1/2 inch casing at 3600 feet, total depth.

A Fry Sand discovery well has been completed four miles southeast of Cross Cut in Brown County.

The strike is K.L.H. Oil & Gas Inc. of Cross Plains, No. 19 O.B. Fomby, located 2373 feet from the south and 330 feet from the east lines of William B. Smith Survey 155.

Absolute open flow was 1,100,000 cubic feet of gas daily with a gaseous hydrocarbon ration of 280,000-1 of 57 gravity.

Production is from perforations at 1,314-10 feet. Operator set the 4 1/2 inch casing at 2053 feet. Total depth was 2060 feet and plugged back to 2053 feet.

4-H Activities

The Rising Star 4-H Club met Monday, October 5th at 7:30 p.m. in the Ag-Shop classroom. An enthusiastic discussion was heard concerning goals for the coming year. The four goals decided upon are:

1. To make cookies for the nursing home for Halloween.
2. To name our club by January.
3. To make decorations for the nursing home for Valentine's Day and
4. To put on a skit in April.

A committee for the Spirit Contest between all Eastland County Clubs during October was named. They are Tabitha Hutton, Stephanie and Toby Long, James Gray, Kimberly Wilson, Jami Long, Laura Cox, Shane Spencer and Karmen Hall.

All were reminded of the County Awards Banquet held at the Gorman High School gym. It is Saturday, October 10th at 7:30 p.m.

Carol Goode will hold Foods and Nutrition Workshops for those that are interested.

There were 27 members present. Charles Lunceford and Clarissa Atwood were enrolled as new members.

Willies Ceramics Awards \$105.00 in Gift Certificates to person winning ribbon in the ceramic division at the County Fair

The only qualification to meet to win a gift certificate was to purchase the items and materials at our shop. This will be carried over for the 1982 Fair. If you failed to win anything this year just remember there is always next year and we can start preparing now. The following people will be awarded gift certificates: Dana Fox, Sue Williams, Sandy Goode, Grady Goode, Kimila Koen and Robin White.

We should all strive toward a very successful 1982 County Fair.

The new building will be completed and this should be a great help. Eastland County covers a wide area of land and there are

several towns included in this area. In this County there is so much talent, lets fill the new building with entries in all categories in 1982.

Jones Real Estate

ROLAN JONES, Broker
HENRY BURKETT, Co-Owner

Office at 276 West Highway 36
Phone (817) 725-6434 or 725-7734
P.O. Box 313
Cross Plains, Texas 76443



Farms and Acreages

- 129 A. improved grasses, part wooded, good water, beautiful house and grounds, some peanut allotment, \$160,000.
- 28.9 AC 1 mile west of Cross Plains; 14 x 60 2 bdrm. mobile home. \$42,500, \$20,000 down. Carry at 15% for 10 yrs.
- Five, 1/2-acre lots in prime location just outside of city limit, \$3,000 each.
- 12 A. on Lake Proctor. Beautiful building site with electricity available. See to appreciate, \$1,100 per A. 1/2 down, owner carry, negotiable.
- Approximately 12.4 A., 3 Br., 1 B. home, 5 A. coastal, native pasture, pens, some minerals, \$27,500.
- 122 A., \$625 per A., 29% down owner financed.
- 10 A. near town, good for development, \$21,000.
- 9.44 A. behind grade school in Rising Star. Platted. Will make good subdivision, \$15,000.
- 5 lots in Rising Star. New 24'x36' building, wired, with concrete floor. Irrigation well, insulated pump house, pecan trees, all city utilities, \$15,000.
- 40 A. Approx. 9 miles south of Cross Plains, small tank, all pasture, good deer & turkey hunting, \$550 per acre. Would consider G.I.
- 40.953 A. 5 miles Northeast of Rising Star, 20 A. in cultivation, 13 A. Peanut Allotment, Water well 50 ft. deep, good deer & turkey hunting.
- 19 A. 5 miles North of Rising Star, love grass, soil sandy. \$800 per A. Would consider \$7,000 down—carry balance at 15%. Good deer & turkey hunting.

Residential Properties

- 3 BR., 2 B. insulated, all electric home in Rising Star. Large, new out-buildings, trees, garden, extra nice. See to appreciate, \$40,000.
- 1 BR., 1 B. house on 3 lots, carport \$11,000.
- 1 BR. house to be moved, \$2,250.
- Like new - 3 bdrm., 1 1/2 bath brick; large corner lot, chain link fence, fruit trees. \$36,000.

Business Locations

Commercial Corner lot on Odessa, Knox St. & 27th. 25% down, Owner Finance.

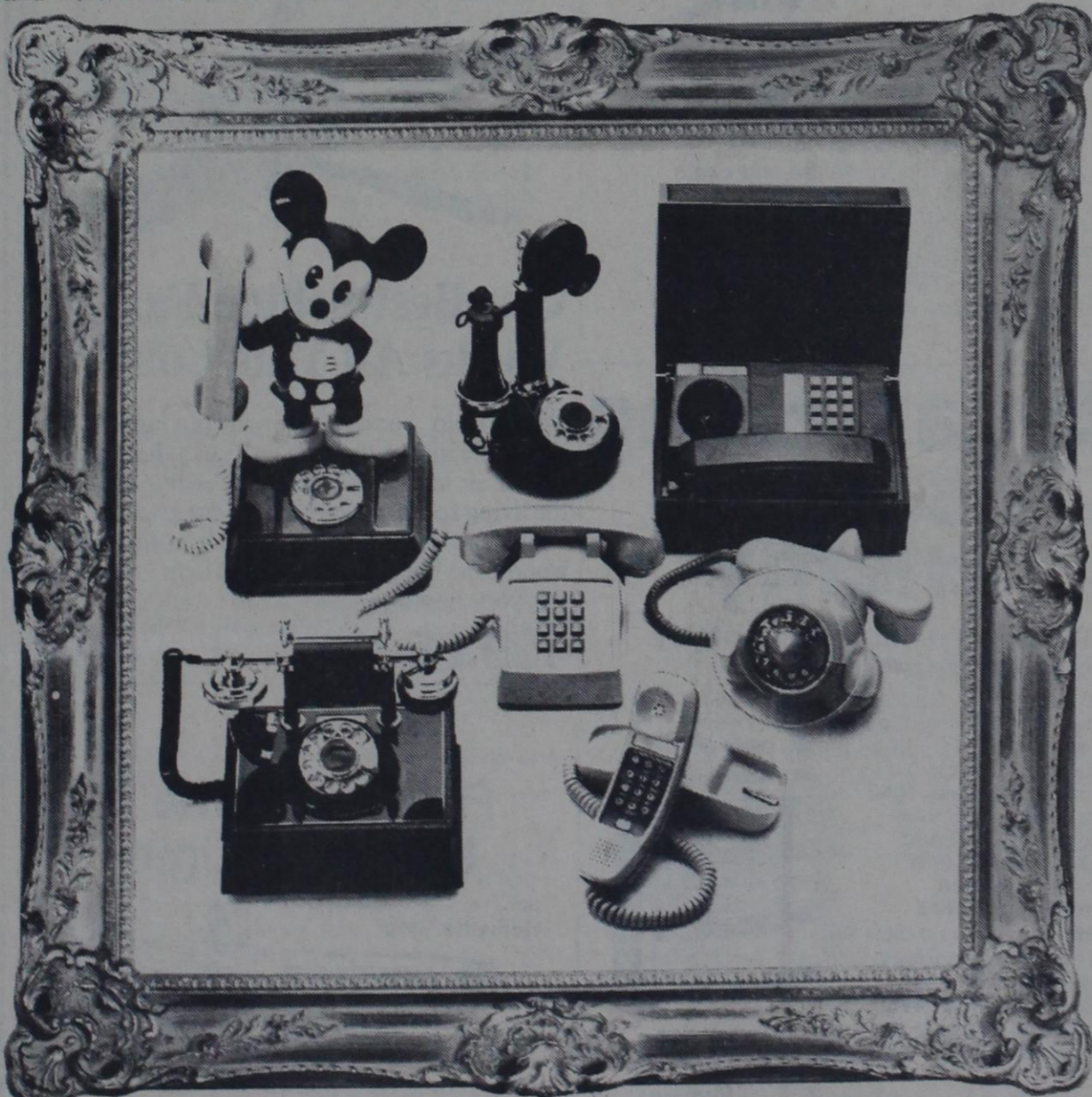
Need Listings - Other Listings To Choose From
ROLAN JONES (817) 725-7640

Sales Staff

Henry Burkett
(817) 725-7382

Sandra Jones
(817) 725-7640

Roger Klingberg



The Fine Art Of Conversation.

Decorator telephones from Continental. Like a work of art, these conversation pieces add color and life to any room in your home. Choose from a variety of styles—design line decorators, traditional phones and replicas of antique classics. And colors to suit every decor. Wouldn't it be nice to add a decorator telephone to that special room in your home?

Call or visit your local Continental Telephone business office or Phone Fair today. And find out all about the fine art of conversation.



Continental Telephone

Not all phones or colors available in all locations.

Thursday, October 8, 1981

OLNEY SAVINGS INTRODUCES

THE OLNEY SAVINGS INVESTMENT PLAN

HIGH YIELD. FLEXIBILITY. FLOATING RATE.

RATE

12.14%

Effective October 6 thru October 30

Olney Savings now offers a new way to invest your money. The Olney Savings/Investment Plan. It's designed to give you a high yield. And because you can withdraw amounts of \$500 or more at any time without penalty, it gives you the flexibility you need in these changing times.

The interest rate is determined daily by Olney Savings and may change from day to day. A minimum of \$2,000 is required to open your account. This plan is a repurchase agreement and you may renew by a simple phone call, by mail, or in person.

The Olney Savings/Investment Plan is backed by guaranteed U.S. Government securities, protected by the strength and resources of Olney Savings and is not insured by the F.S.L.I.C.

For the investor looking for short term, high yield and flexibility, the Olney Savings/Investment Plan is ideal.

Talk to one of our savings counselors. They're prepared to answer any questions you have. We want to help.

Come see us soon. Or call and we'll come see you.

RANGER SAVINGS



EASTLAND SAVINGS

Olney, Seymour, Jacksboro, Bridgeport, Nocona, Weatherford, Azle, Graham, Archer City, Brownwood, Bowie and Wichita Falls. Also Electro Savings in Electra, Ranger Savings in Ranger, Eastland Savings in Eastland. All Divisions of Olney Savings.



COMMENTARY

By Myrtle Owen

II Tim. 3:1-9 The coming Apostasy; This know also, that in the last day perilous (or dangerous) times shall come, For men shall be lovers of their own selves, covetous, boasters, proud, blasphemers, disobedient to parents, unthankful, unholy Romans 1:30, backbiters, haters of God, despiteful, proud, boasters, inventors of evil things, without natural affection, trucebreakers, false accusers, incontinent (no self-control, fierce, despisers of those that are good). Traitors, heady, high-minded, lovers of pleasures more than lovers of God; Having a form of Godliness, but denying the power thereof: from such turn away. For of this sort are they which creep into houses, and lead captive silly women laden with sins, led away with divers lusts, ever learning, and never able to come to the knowledge of the truth. II Tim. 3:1-5, This means that people are in darkness who suppose themselves to be children of God who are not in vital union with God, who are not using their faith and living on the level of faith. There's no light within them. They have a form of

godliness but they don't have vital union with Christ. They are not using their faith and therefore inside is darkness, spiritual darkness, spiritual unrest. Their own lack of faith has cast them into an arena of darkness, where they are not illuminated by the Holy Spirit. They don't grasp the healing Christ. They don't discern the works of the Holy Ghost. And it's because they take the form of Godliness and depend on it instead of seeking a vital union with Jesus. II Timothy 4:4, And they shall turn away their ears from the truth, and shall be turned unto fables. There is a deep-running stream of materialism in the world today. It is not enough for us to have a beautiful church to attend, We must have the Spirit of Christ in us. We must be able to differentiate between faith and compromise between what God offers and what the world offers, between truth and falsehood. And where truth is rejected, error is received.

Paul said, I CHARGE thee therefore before God, and the Lord Jesus Christ, who shall judge the quick and the dead at His appearing and His kingdom; Preach the word; be instant in season, out of season; reprove, rebuke, exhort with all long-suffering and doctrine. For the time will

come (and now is that time) when they will not endure sound doctrine; but after their own lusts shall they heap to themselves teachers, having itching ears; And they shall turn away their ears from the truth, and shall be turned unto fables, or fiction. II Tim. 4:1-4-Verse 5, But watch thou in all things, endure afflictions, do the work of an evangelist, make full proof of thy ministry- Acts 21:8.

REACT

The club would like to thank the following for their generous donations: Mr. and Mrs. Billie Dale Kornegay, Mr. and Mrs. J.W. Kornegay, Mr. and Mrs. Paul Maxwell, Mr. and Mrs. G.D. Parish, Mr. and Mrs. Cecil Wells, June Kiker, S.A. Horton Jr., Ima Smithy, W.G. Reed and the Rising Star Ex-Student Association.

The following runs have been made since last report:

September 22--Chester Keeton from Brownwood Regional Hospital to Garza Memorial in Post.

September 24th--Forrest Boone to E.L. Graham Hospital in Cisco.

October 1st--Bill Maynard to Eastland Memorial Hospital.

October 1st--Ruth Ellen Hernandez to Hendrick Medical Center in Abilene.

October 2nd--Alvin McNutt to E.L. Graham Hospital in Cisco and then on to Hendrick Medical Center in Abilene.

October 4th--Lela Ham to Eastland Memorial Hospital.

We are still in need for people qualified to drive and serve as attendants in the ambulance. If you are interested please contact any REACT member. We are losing two more good people this week as they are moving out of town.

Your help and moral support is always appreciated.

Many thanks to those who served this week.

Letter to the Editor

It is time once again to express appreciation to ALL those who were involved in the successful results of the 1981 Rising Star High School Homecoming. Boquets of thanks go to the: Officers of the Ex-Students:

Jack Shults
Karen Steel Davis
Sara Butler McGowen
Evelynn Donham
Bobbie Wilson.

Board of Directors:

Mary Claborn, Chairman
Jeannine Jacobs
Bailey
Lenell Clark Henry
Irene Shults Mayfield
Weldon Hill
James Steel.

Other former teachers and students
School Administration:

Gene Williams
Frank Gray
Weldon Hill

Other faculty members PTA officers and committees Cheerleaders, Majorettes, Band, Football teams and other students City officials, church ministers and other community leaders and members.

The united, cooperative efforts of so many, plus good planning and hard work provided the "coming-home-es-students" a wonderful day filled with lovely memories. Thank you all for everything. Sincerely, Gloria Jones Phillips

Ducks Unlimited Sets Banquet Date

The Brownwood Chapter of Ducks Unlimited has announced that its 4th annual banquet will be held at Charlie's Pioneer Club on October 29, 1981 at 6:00 p.m. Chapter Chairman, Cliff Waddell of 511 Early Blvd., feels the fund-raising function should be marked on the calendar by anyone who is interested in the future of North America's waterfowl.

"The Ducks Unlimited success story," said Waddell, "is really starting to spread around. Banquets much like our chapter event held throughout the country and last year contributed towards the Ducks Unlimited's national fund-raising effort which raised \$20 million during 1980 alone. But what's even

more important to realize," said Waddell "is that this national fund-raising total must increase this year if the North American waterfowl habitat race is to be won."

DU's sportsmen-conservationists founders discovered through surveys conducted forty years ago that seventy percent of North America's waterfowl production occurs in Canada. They figured out back in 1937 what hold true today. Since Federal duck stamp dollars cannot be spent beyond U.S. borders, sportsmen funds earmarked for waterfowl conservation are not getting to the places where the great percentage of production takes place. But through Ducks Unlimited's efforts, over \$100 million has been raised in the U.S. since 1937. And 80 cents out of every one of those dollars has been sent to DU (Canada) to reserve some 3 million acres of prime habitat encompassing over 1700 wetland projects.

The only problem in all this is that biologists estimate millions of additional acres of habitat must be reserved in order to stabilize North America's waterfowl population. When you consider that habitat today is diminishing due to agricultural and developmental pressures, and that DU is the only nonprofit conservation organization involved in the Canadian waterfowl habitat race, you can

Thursday, October 8, 1981

begin to see the significance attached to the organization's fund-raising events. Tickets, which are \$15.00 each, include a one-year DU member-

ship and a subscription to the organization's magazine. Call Bill Pancake at 817-725-6143 for tickets and further details.

Texas Banks Major Source For Agricultural Lending

Austin--As of the first of the year, 1212 of the 1500 banks in Texas held farm loans of more than \$2.9 Billion a spokesman for the Texas Bankers Association reports.

"Of the total amount Texas banks provided for agriculture, \$2.35 Billion went for non-real estate purposes, while over \$550 million was devoted to agricultural real-estate lending," said Bob Greer, TBA president, citing results of the American Bankers Association's annual agricultural credit activities report.

"By comparison, Production Credit Associations provided \$963 million; the Federal Intermediate Credit Banks, a \$146 million; the Farmers Home Administration, \$865 million; and the Commodity Credit Corporation, \$90 million in non-real estate farm loans in

1980," Greer said.

In real estate loans, Federal Land Banks provided \$1.8 Billion; Life Insurance Companies, \$994 million; Farmers Home Administration, \$324 million; and individuals and others, \$1.9 Billion.

Nationally, banks held a total of \$40.3 Billion in agricultural loans, 38.3 percent of the market share of non-real estate loans and 9.5 percent of the market share for loans secured by farm land. The total farm debt held by all major lenders during 1980 was up 11.3 percent from the year before.

Greer, who is also chairman, Cullen Bank, Houston, said that banks in Texas are making every effort, through improved lending programs, to meet the changing credit demands of Texas farmers.

Dr. Sohns Office
Will Be Closed
October 12th thru 25th
for Vacation and Sick Leave.
Will Reopen on October 26th.

INSTALLED AT YOUR LOCATION

AAA Windshields

Serving Clyde and Local Area

PH. 893-4147
PH. 893-4370
CLYDE, TEXAS


TED SAUNDERS
P. O. Box 188

PLUMBING

Repairs of all types, new installation, septic tanks installed. REMODELING - interior or exterior. Electrical works, refrigeration work ? appliances. Free estimates. Prompt 24 hr. service. Call 817-629-8849.

Big Country Plumbing
Eastland, Tex.

Contract Pumping



Williams Pumping Service
R.L. (Rocky) Williams

P. O. BOX 451
RISING STAR, TEXAS 76471

TELEPHONE
(817) 643-4692

CROSS PLAINS AUTO SUPPLY

Now has a brake lathe for the disc rotors and drum type brakes...so don't do half a brake job- a COMPLETE JOB and make them feel like new.

Ph: 725-6212 10-4TC

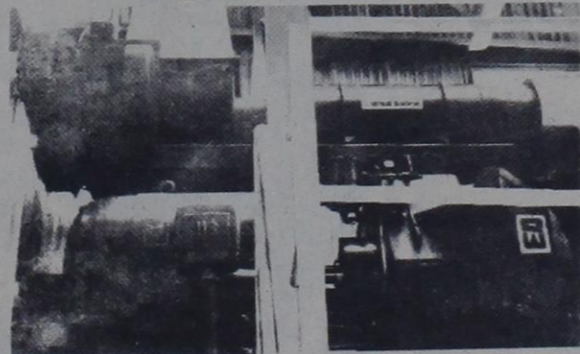
Introducing Gorman Milling Company's PEANUT HAY PROCESSING CENTER

ROUND BALE PROCESSOR



This machine will grind a large round bale of hay in less than 5 minutes.

PELLET MILL



250 HP Spout Waldron Pellet Mill for manufacturing Hay Pellets.

WHY A FORAGE PROCESSING CENTER AT GORMAN MILLING COMPANY?

1. Our area is suited for forage production but not large scale grain production.
2. We must learn to use feed stuffs that are available nearby. During the recent past freight rates have increased greatly, thus increasing the price our customers must pay for ingredients shipped in from distant points.

WE MUST BEGIN TO USE WHAT WE HAVE!



GORMAN MILLING CO.
GORMAN, TEXAS 76454
PHONE 817 - 734-2252
CLOSE AT NOON SATURDAY

PEANUT HAY PELLETS

F.O.B. OUR PLANT

Bulk \$100⁰⁰ per ton
50 Lb. Bag \$2.75

Advantage of Peanut Hay Pellets

1. It's a high quality legume forage.
2. Little or no waste.
3. Available in 50 lb. bags or bulk.
4. Easy to handle and feed.
5. Reduced storage problem.
6. Less money invested in hay inventory.

This Month's FEED SPECIALS

RED CHAIN	REDUCED TO
12% CREEP PELLETS	\$132 ton
CATTLEMAN	REDUCED TO
BREEDER CUBES	\$162 ton
RED CHAIN	REDUCED TO
NO. 12 MIX	\$122 ton
RED CHAIN (A New Feed)	
CORN HAY MIX	\$148 ton

Peanut Hay is a high quality legume forage .

Ask us about including it in your feed ration at Gorman Milling.

May News

By Entha Campbell

Dear Sis,
Here is a Mystery Pie recipe:
3 egg whites beaten stiff, beat in 1 cup sugar, 1 tsp. baking powder, 1 tsp vanilla; fold in 20 Ritz crackers crumbled fine, 1/2 cup pecans, 1/2 cup angel flake coconut. Pour into buttered pie plate (no crust). Bake 30 minutes in moderate oven. Chill for 4 hours. Top with whipped cream.

Mrs. Eva Ashworth and Mr. and Mrs. Bobby Driskill visited Mr. and Mrs. Fredrick Ashworth in Wichita Falls last weekend.

The sister of Mrs. Goldie Lancaster was buried in Fort Worth on October 6th.

Wilma Band of Cedar Park visited Mrs. Avis Massey last week.

George Osburn and Aline Parker of Houston, Dorothy Jordan of Dallas, Arra Lee Pittman and Mrs. Velva Bowden of Brownwood visited with Mrs. Alma Martin recently.

Mr. and Mrs. Gene Malone of San Antonio and Mrs. Pearl Burns of Brownwood visited Mrs. Magdelene Driskill during Homecoming.

Mr. and Mrs. Sid Hunt of Cross Plains visited Mrs. Dola Ritchie last Sunday.

Mrs. Jewell Harrell has as her guests for Homecoming and the past week: her sons, Joe and Ruth Harrell of Hagerman, New Mexico; Wayne and Eloise Harrell and daughter, Sue and granddaughter, Christi from Moore, Oklahoma; her brother, Jake Plummer from Bellingham, Washington; sister's, Mrs. Florence Harms of Amarillo; Mrs. Burrell Roitch of Lampasas; Mrs. Ann Harris of Brownwood; their children and grandchildren from Bedford, Texas; Mr. and Mrs. James Harris of Anson; Sheila Morgan Willis and Shirley Ake and children of Abilene; also Johnny Well's from Abilene.

Beta Upsilon Chapter Meets In Ranger

Beta Upsilon Chapter of Delta Kappa Gamma International met Saturday, October 3, 1981 at 9:30 a.m. in the Ranger Junior College Library, Ranger, Texas. President Anna Auvenshine presided and led the group in the

Collect.

Previously Beta Upsilon was a member of Area VII, with Helen Lyles coordinator. It is now Area X. All members were urged to attend the Area X Workshop at Clebourne High School, Clebourne, Texas Saturday, October 10, 1981.

Registration fees are \$3.50 and each person is to bring a sack lunch.

After the business meeting Marilyn Henderson, a delightful and witty speaker, brought a most informative program entitled "Women of Tomorrow". Using fourteen categories Mrs. Henderson cap-suled accomplishments of women whose fame, unusual attributes, or singular accomplishments are such that they could be chosen "Women of Tomorrow".

Fall colors dominated the beautifully decorated serving table where a wide variety of delicious refreshments were served by hostesses Ileana Beck, Catherine Golemon, Marie Mahaffey, Adeline Meredith, and Lorene Oliver.

Food Stamp Recipients Reduced

Some 65,000 Texans lost their eligibility for the food stamp pro-

gram at midnight Wednesday when the 1982 federal fiscal year began. Another 32,000 Texas residents became ineligible for the Aid to Families With Dependent Children program (AFDC).

The mandatory reductions were the result of the Omnibus Reconciliation Act signed by President Reagan in August. The Act created more restrictive eligibility requirements for both food stamps and AFDC, thereby reducing the numbers of participants in the programs.

Marlin W. Johnson, commissioner of the Texas Department of Human Resources, said the tighter eligibility requirements will reduce the AFDC program from its present 326,513 participants to 294,476. Benefits will fall correspondingly about \$9 million annually, from \$132.7 million to \$123.7 million.

Before Wednesday, there were 1,290, 250 Texans eligible for food stamps, Johnson said. The new eligibility requirements will reduce that number to 1,225,092. The food stamp program had been putting \$726.9 million annually into the Texas economy. This will fall to \$660.5 million, the commissioner said, for a reduction of \$66.4 million.

The new eligibility standards for AFDC

dictate that a family becomes ineligible if its gross income exceeds 150 percent of the state's need standard. For example, a family of four would be ineligible if its gross income exceeds \$301.50.

Also reduced is the total amount of resources permitted, excluding a home and car. The resource limit was \$3000 for a family and \$1800 for an individual. This has been reduced by federal regulation to \$1000 per family.

Food stamp eligibility now has a gross income limitation pegged at or below 130 percent of the poverty line with certain exceptions for the aged and disabled.

The AFDC program provides a cash assistance grant averaging \$34 monthly per person to dependent children deprived of the support of one or both parents.



Championship Tennis Tournaments held from December to May 1980 in Europe and North America. The prize money totals \$3 million.

STATEMENT OF OWNERSHIP, MANAGEMENT AND CIRCULATION

1. TITLE OF PUBLICATION: THE RISING STAR

2. FREQUENCY OF ISSUE: WEEKLY

3. DATE OF FILING: 10-1-81

4. ANNUAL SUBSCRIPTION PRICE: \$5.00, \$7.50, \$10.00

5. COMPLETE MAILING ADDRESS OF KNOWN OFFICE OF PUBLICATION: P.O. Box 127, 104 North Main Street, Rising Star, Texas 76471 (Fastland Co)

6. COMPLETE MAILING ADDRESS OF THE HEADQUARTERS OR GENERAL BUSINESS OFFICES OF THE PUBLISHERS: (Not printed)

7. FULL NAMES AND COMPLETE MAILING ADDRESS OF PUBLISHER, EDITOR AND MANAGING EDITOR: PUBLISHER: F.V. O'Brien, 121 S. Seaman St., Eastland, Texas 76448; EDITOR: EVELYN DUNHAM, BOX 343, RISING STAR, TEXAS 76471; MANAGING EDITOR: EVELYN DUNHAM, BOX 343, RISING STAR, TEXAS 76471

8. FULL NAMES AND COMPLETE MAILING ADDRESS OF ALL OWNERS: Eastland County Newspapers Co., 1201 S. Seaman St., Eastland, Texas; F.V. O'Brien, 1201 S. Seaman St., Eastland, Texas; Gay Nell O'Brien

9. FULL NAMES AND COMPLETE MAILING ADDRESS OF ALL STOCKHOLDERS: None

10. EXTENT AND NATURE OF CIRCULATION: A. TOTAL NO. COPIES (Net Press Run): 1200; B. PAID CIRCULATION: 1100; C. TOTAL PAID CIRCULATION (Sum of 10B1 and 10B2): 1100; D. FREE DISTRIBUTION BY MAIL, CARRIER OR OTHER MEANS: 20; E. TOTAL DISTRIBUTION (Sum of C and D): 1120; F. COPIES NOT DISTRIBUTED: 80; G. RETURN FROM NEWS AGENTS: 0; H. TOTAL (Sum of 10A, 10E, 10F and 10G): 1200

11. I certify that the statements made by me above are correct and complete.

TENNIS FACTS & FANCIES

In 1935 Britain's Frederick John Perry became the first person to hold all four of the world's major tennis championship titles (Wimbledon, the U.S. Open, the Australian and the French) at the same time.

Majestic Theatre

Eastland 629-1220

5 Days Only! Thursday thru Monday

Why is he watching?

Starring Sissy Spacek, Eric Roberts, and Sam Shepard. A William D. Wittliff-Burt Weissbourd Production. RAGGEDY MOUNTAIN. Music by Jerry Goldsmith. Produced by Burt Weissbourd and William D. Wittliff. Director of Photography Ralf D. Bode. Directed by Jack Fisk.

PG PARENTAL GUIDANCE SUGGESTED

RANGER DRIVE-IN THEATRE

Ranger 647-3802

One Showing Only Each Evening Open 7:30 p.m. Showtime 8:00 p.m.

Thursday, Friday, Saturday, & Sunday

MEL BROOKS' HISTORY OF THE WORLD PART I

Next Thursday, Friday, Saturday, & Sunday

Hollywood bull at its funniest and sexiest.

BLAKE EDWARDS' SOB

AUTUMN'S BARGAIN DAYS

1977 Dodge Eldorado Mini Motor Home Really Neat \$9500.	1976 Monte Carlo Landau Loaded! \$2550
1978 Fairmont Economy for the family \$3300.	1976 Lincoln Emerald Green - Luxury you can afford Only \$3500.
1978 Pontiac 4 door-One Owner \$3725.	1978 Mercury Bobcat 4 speed - good looks and good MPG \$2495.
1978 T-Bird Silver W/Vinyl top \$4195.	1980 Chev. Pickup Great Buy \$4495.
1980 Lincoln Town Car Moon Roof and More Save \$6,000.	1977 Chev. Silverado 3/4 ton Pickup \$2875.
1980 Granada 4 door - Warranty available \$5750.	1979 LTD II 1/2 vinyl roof - tilt - cruise - Am-Fm-Tape - SHARP \$3995.

\$500 REBATE ON NEW COURIERS — HURRY!

JOHNSTON TRUCK & SUPPLY

Cross Plains, Texas (817) 725-6181

PAT MAYNARD REAL ESTATE

INT. 20 E. NORTH SIDE

629-8568 EASTLAND

442-1880 CISCO

IF NO ANSWER CALL 442-1933

FARMS & RANCHES

One acre tracts on highway toward Lake Leon. City water guaranteed. Will make good building sites or mobil home sites either. \$5500 each.

11.19 acres with a nice 2 or 3 bedroom home. 3 car garage plus barn and other outbuildings. The house is carpeted, built-ins in kitchen and with a fireplace. Lots of fruit and pecan trees. A beautiful place. \$64,000

20 acres with an attractive 3 bedroom brick home. Carpeted, fireplace, bookshelves and many extras. The land is cleared with some cultivation. Small barn and pens, stock tank and good fences. \$100,000

5 acres. A new 2 bedroom home that is capreted, wood burning heater, heat pump and other extras. Also on property is an old house that could be used for a barn. \$48,000

181 acres located between Carbon and Gorman. Approx. 60 acres of cultivation. Included are: an extra nice 3 bedroom, 2 bath mobil home and a new 3 room and bath home that needs some finish work. Barn, pens, city water and good tanks. \$140,000

17 1/2 acres near Gorman off Desdemona hiway. Water well, natural gas available, 1/4 minerals. \$25,000

52 acres located north of Eastland on Wayland hiway. All in cultivation, four tanks, 2 water wells, barn & pens, and good fences. \$52,000

10 acre tracts near Gorman located on old Hiway 6. City water available. \$10,000

147 acres near Carbon with approx. 80 acres cleared. Fair to good fences, road frontage on three sides and some minerals. \$500 per acre with terms.

25 acres south of Eastland near Lake Leon. Road frontage, new stock tank, 20% down, owner financed. \$35,000

We have ten acre tracts and up on hiway near Lake Leon. \$11,000 and up, owner will finance.

500 acres north of Eastland on highway. Kline and native. An older 2 bedroom, 1 bath home with fireplace. Barn and other outbuildings. \$530 per acre.

320 acres located between Carbon and Gorman. Some cultivation but mostly wooded. Good fences and hunting, some minerals included. \$450 per acre with terms.

10 acres near Eastland. I20 frontage. \$5000 per acre for frontage. Terms can be arranged.

Approx. 55 acres in Ranger. Ideal location for subdivision. Utilities available. \$1500 per acre.

12 acres in edge of Ranger, good grass, fair fences. \$18,000

3 1/2 acres with stock tank located approx. 1 mile from Eastland. \$6500

Near Cisco! 4 acres, a large 3 bedroom home that is carpeted, paneled and with a woodburning heater. Lovely tree shaded yard with pecan and oak trees. Good water well, an assumable loan at 10% interest. \$45,000

42 acres with a beautiful 3 bedroom, 2 bath brick home with approx. 3000 sq. ft. Separate apartment, shop, barn and corrals. \$135,000

HOMES AND LOTS

A very nice 3 bedroom home in Olden. Carpeted, ceiling fans, water well and beautiful yard. \$39,600.

An older 3 bedroom frame home on corner lot. Needs some work done on it. Terms can be arranged. \$17,000

Owner Financed! A 3 bedroom, 1 1/4 bath frame home. Some carpet, panel ray heat. \$23,000

A large 2 bedroom, 1 bath home with permanent siding. Carpeted, some paneling, fireplace, carport and detached garage. \$29,900

A nice 3 bedroom frame home close in. Carpeted, fireplace, central heat and detached garage. \$37,500. 13 3/4% loan available.

A nice lake cabin on deeded lot. Good boat dock and boat storage. \$29,500. Terms available.

A large 5 bedroom home on corner lot. 2 story. Better hurry to this one. \$25,000

Close in, a 2 bedroom, 1 bath older home that is carpeted. Located on large lot. \$19,500.

Lake Leon! 1 bedroom, 1 bath home on deeded lot. Screened in porch, fully carpeted. \$25,000

One acre tracts in Ranger. Idea home sites near new school. All city utilities. \$2,500 each.

We have owner financed lots and others at Lake Leon. COMMERCIAL

Valuable I20 property! Approx. 4600 sq. ft. building, very versatile. Easy accesability. \$87,500.

In Cisco! A nice brick building with 5,000 sq. ft. in prime downtown location. \$60,000

In Eastland! A 25 x 100, 2 story building on square. Ideal for offices. \$67,000.

In Eastland! A 50' x 100' building. Close to downtown. Ideal for retail business. \$32,500.

On hiway 80 E. approx. a 10 acre tract and 20 acre tract of land. Ideal location for a business. Utilities available.

1.3 acres joining railroad tracks with spur. 3 buildings, one has office and bath, and a 2,000 gallon underground gas tank. \$75,000

In Cisco! Large lot on Hiway 80 E. with older building and garage. \$18,500, will divide.

In Ranger! 9 acres on Hiway 80 W. 1800 sq. ft. office, 24,000 sq. ft. shop building, 2400 sq. ft. warehouse, other buildings and commercial antenna. Owner will sell or consider long term lease.

In Cisco! Good commercial building with about 1100 sq. ft. Good location with main street frontage. Only \$19,500.

In Rising Star, established service station and garage. Located on busy highway near main downtown intersection. Good Income Potential. \$40,000

Lot on Interstate 20 East, approx. 1/2 acre located near Best Western. Perfect for offices or business. \$16,000

We have a place that would be a good location for most any business. There is an 1840 sq. ft. building with ample parking on 4 lots. This is a fast food business. It is now priced at \$60,000, which includes all equipment.

If you need I20 for exposure for a business, we have 5 acres on the south side. \$27,000. Make offer.

Located on Hiway 80 E. near I20, approx. 1 1/2 acres with old house and large metal garage. Now used as a wrecking yard. \$54,000

CISCO HOMES

2 bedroom, 1 bath stone home on 2 1/2 lots. Lots of pecan fruit and oak trees. Owner will consider terms. \$17,500

A large 2 story with 5 bedroom, 2 baths, den, separate dining and breakfast rooms, located on corner lot. Has apartment attached. A very scenic yard with lots of trees.

Extra large 3 bedroom 1 1/4 bath home, central heat, 2 window units. 2 bedrooms in other section by carport. Separate heat and air. Double garage and double carport, all on 4 chain link fenced lots.

Big 2 story older home. First floor could be used for a business and still have 3 bedroom, 1 1/2 bath upstairs. Also, has a basement and big attic, which could be used for more living space. Good location and reasonably priced. \$26,000

A nice 3 bedroom, 1 1/4 bath home on corner lot. Central air and heat, new carpet, modern kitchen and built-in dishwasher. Also, a garage and storage area.

A large 3 bedroom, 1 1/4 bath, 2 story carpeted home. Large game room and also a study which would be a 4th bedroom. As a bonus, two rent houses go with property, which are fully furnished. 2 large corner lots with several fruit and other trees.

LEASE PROPERTY

1600 sq. ft. rock building with extra lot for lease. \$600 per month.

For Lease! Commercial 6 acres in Olden. Septic tank and utilities available. No building.

For commercial use only. One to five acres with I20 frontage.

We have other home, land, and commercial listings.

We appreciate your listings and business!

Kay Bailey
Associate
629-2365

Pat Maynard
Broker
629-8063

Judy Orms
Associate
629-1218

Cindy Foster
Associate
629-8195

In Gorman Russell Cordell
Associate
734-2690

In Cisco Ann Williams
Associate
442-1880

Annual Awards Banquet Held At 4-H

Center Saturday Night

Thursday, October 8, 1981

Pathways to the Future was the theme of the 1981 Brown County 4-H Awards Banquet held Saturday night at the Texas 4-H Center.

The invocation and opening exercises were given by Stephan Jameson and Debbie Geye. Brown County 4-H Council President and Vice-President, respectively. Marshall Crouch welcomed everyone to the Texas 4-H Center. 4-H members, families and guests enjoyed a dinner of turkey and dressing with all the trimmings. After dinner Harold Stein, county agent, introduced Mr. Gordon Wood. Wood, Brownwood High School Head Coach and Athletic Director, gave a motivational speech to an audience of approximately 150 persons.

Stein, serving as Master of Ceremonies for the evening, then introduced Mr. Troy Sellers, Agri-Business consultant for Texas Power and Light Company, Southern Division, which is located in Waco. Sellers made the awards presentation to several 4-H'ers who had entered record books during the previous year. They were Chris Hallum, Achievement; Michael Hallum,

Stepahn Jameson, Kim Fryar, Tami Reeves, Beef; Kenda Jameson, Julie Banks, Kim Lee, Clothing; Tami Thomas, Consumer Education; Rena Conner, Shauna Perkins, Katy Lancaster, Wendy Nunn, Christy Cothran, Sheryl Heald, Debbie Burnett, Debbie Geye--Fashion Revue; Rhonda Lee, Food Preservation; Dean Banks, Home Environment; Glenn Penn, Leadership; Sandy Kaler, Home Management; Brad Ritchie, Horticulture; Jaysn Jameson, Rabbit; Al West, Sheep; Melissa Norris and Lynne Whiteaker, Santa Fe Achievement; Steve Gary, Shooting Sports.

The Gold Star Awards were presented to Lynne Whiteaker, Kim Lee and Kim Fryar. The Danforth "I Dare You" Leadership Awards were presented to Stefan Jameson and Tami Reeves.

Stefan Jameson and Debbie Geye presented yearly certificates to adult volunteer leaders. For one year of service the following received certificates: Lee Roy Cullins, Larry Avants, Helen Donham, Gary Chamberlain, Margie Michaels, Linda Lancaster; Two Years of

Service: Jane Penn, Wayne and Helen Chamberlain, Sam and Pat Nichols, Travis and Pat Gary, Ann Belz, Linda Burnett, Laura Lee, Guy Nell West, Jimmy and Glenas Minica, Hazel Dudley, Richard and Ruth Pierce; Three Years of Service: J.R. and Mildred Reeves, Freddy and Doris Carter, Wilma Penn, Reva Perkins; Four Years of Service: Russell and Connie Thomas, Jerry and Donna Jameson, Wayland and Linda Sanders; Five Years of Service: Sue Bennie, Don and Pat Lee, Nancy Burnett, John and Sandy Banks, Kaye Whiteaker, Kathleen Muckleroy; Six Years of Service: Gaylan and Edda Ratliff and Carol Nelson; Eight Years of Service: Melvin and Bobbie Fryar; Ten Years of Service: Wanda Russell; Fourteen Years of Service: Robert and Glenda Hallum; Twenty-Eight Years of Service: Grace Williams. Appreciation for their volunteer support was expressed.

ed to give his or her name, age, club and project. Approximately 62 4-H'ers were recognized in this manner.

On behalf of the Brown County 4-H, a small token of appreciation was given to Coach Wood and Troy Sellers for their time and effort displayed at the banquet.

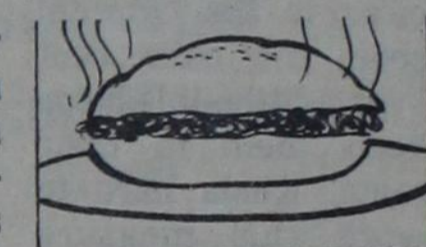
Ella Mentry

WHERE IS THE
GOLF CAPITAL
OF THE U.S.?



Here Is Where The HOME OWNER Can Get The VERY BEST PACKAGE OF PROTECTION, TAILORED TO COVER GOLF EQUIPMENT, Other PERSONAL BELONGINGS And FAMILY LIABILITY, At A VERY MODERATE COST! The Golf Capital? Hershey, Pa.

LEDBETTER
Insurance Agency
442-3640
809 AVE. D, CISCO, TX



Hamburgers may cook faster if you poke a hole in the centers when shaping.

The Rainbow Cafe

Is Now Serving

Daily Luncheon Specials

To Include The Following Items:

Center Cut Pork Chops, Roast Beef,
Hamburger Steak, Meatloaf, Stew, Fish,
Chicken Fried Steak, Etc.

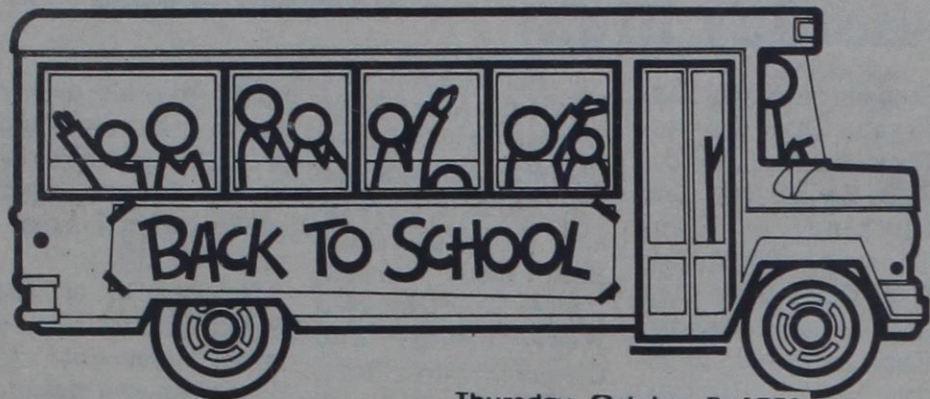
New Items On Our Menu

Boswell Special
Roast Beef on a Kaiser Roll
Fresh Water Catfish Fillets
and

Navajo Tacos--night only

Whole pan-fried trout--night only

Call 643-3000 for to go orders.



Thursday, October 8, 1981

Memories of Former Ag Teacher



Memories, memories, Yes, retired teachers have many memories. Some very pleasant and some not so pleasant. Isn't it wonderful that a classroom has a wooden floor? Why? Because, if a student just will not stay in his seat, it's easy for the teacher to put a few nails into the floor, real close to the culprits' shoe, the nails bent over a little--this helps keep them in their seats. Kinda hard to work this measure with a concrete floor. Boys love to lean back in their chair--even tilt on to one leg of the chair and turn back and forth, ratchet like, on one leg of the chair. Holes can be worn through the floor in this manner if it is worked a little each day for awhile. Great PE exercise, too, one of the best for the classroom--kinda tough though to keep a good set of class notes while doing this particular PE maneuver.

Requires special skill and dexterity. This can be treated, but not always cured, by using a special "training chair"--one with the four legs cut to different lengths. Lots of fun too.

Field trips--Ag teachers have more field trips than most other teachers--it's just the nature of their work. Field trips can be interesting. Teen age boys always know more about how to drive a school bus. I remember being stuck in the mud on one such trip--the boys get out to push and wouldn't you just know it--they pushed the bus in the ditch. We all walked back to school and got there after the bell. Other teacher love you for this.

"I believe in the future of farming," memorizing the FFA Creed. One of the requirements for becoming a Greenhand in the FFA. Thirty lines--credit in English too. Some COULDN'T learn it, but did. Some WOULD'N'T learn it, they did too, with some persuasion, bribery, etc.

Parliamentary Procedure--the most foolish thing to teach and learn in Agriculture class. What better way to find out which students have leadership abilities. What fun when they catch on and begin to play the game.

Farm Shop--this is where they all shine, especially those that don't shine very brightly in the classroom book learning. They learn to weld, cut and fit together pieces of wood, with hand tools no less. Well some could do it after much time and lumber was gone. Much more, too. Mr. Geye, when are we going to the shop?

Home visits, many times after football or basketball workouts--or before school in the morning--sometimes with parents--seeing home environment--here the teacher learns much about their students.

Judging contests, Stock Shows, County, District and State. Some even on a National Scope. Sometimes winning, sometimes losing. Lots of fun--joy in winning--disappointment in losing--but always learning and growing. Just like athletics but without the Pep Squad and Band.

"I believe in my own ability to work efficiently and think clearly" many reach this goal from the Future Farmers of America Creed. Perhaps some have not yet reached it. Seeing these young men grow into solid, useful citizens is better than the memories; but, the memories, I cherish them, too.

H.L. Geye

To The Wonderful People Of Our Adopted Town: Rising Star

Saying goodbye is so hard to do when you love and care for a community of people such as you. In the past years you have grown closer and dearer to us each day. We have shared our burdens, trials, and tribulations and without you support, sometimes, things would have looked pretty dismal. But, let us put those times behind and look at all the good times!

We cannot begin to count the wonderful times we have spent with you--Senior Citizens, Chamber of Commerce, Fire Department, REACT, football games, basketball games, track meets, parades--floats, youth activities, parties at the church, as well as other places, weddings, Lord's Acre programs, Pecan Queen pageants and on and on. We've had enough fun to last a life-time. We just hope the young people realize what happiness, fun and love they have brought into our lives. We cherish every experience we have had with the young people--They are great!!

When we begin to try to thank everyone for special things they have done, we find it impossible to name people because we would surely forget someone. We especially appreciate the ambulance service the several times we've needed to get to West Texas in a hurry, and the several times "Doc" has stayed by our sides when we needed him. You just can't find that kind of help and care everywhere. Things that people have done,

said, or shown in their own way will never be forgotten.

It has been so wonderful living and working in a community where everyone, whether Methodists, Baptists, Church of Christ, etc. share their love and friendship with you. We feel you have made us a real part of Rising Star.

We will be living in Kearns, Texas and we are looking forward to a successful ministry there. Many of you we won't have a chance to see or talk with before we leave October 14th, but we will never forget any of you.

May God be with you til we meet again.

Bill and Joyce Easley

TOO HOT TO HANDLE

The Wildcats are really movin on, bringing on a 5 and 1 record after beating Santa Anna Friday night.

The game went right down to the final seconds.

After a bad snap from the center, the Mountaineers were able to regain possession on the Wildcat four yard line. Three plays later, Albert Collins took it in for six points. The missed extra point proved to be the difference in the game. Three plays later, Jon Vaughn scampered 68 yards for a Rising Star touchdown. Thad Chambers booted through the winning extra point.

Later on in the fourth quarter, Santa Anna attempted a desperation field goal but momentum proved to be all Rising Star's as the ball went wide to the right.

From then on it was a matter of running out the clock.

Good game Cats!!

OBITUARY

Grady Clark

Grady F. Clark, 68, of Cross Plains, a

veteran of World War II, died Wednesday at West Texas Medical Center in Abilene after a long illness. Services were held at 2 p.m. Saturday at Higginbotham Funeral Home.

The Rev. Bruce Stovall of Cisco officiated. Burial was in the Rising Star Cemetery.

Born Nov. 28, 1912, in Marion County, Ark., he married Mamie Kent May 8, 1936, in Pioneer. He was a retired oil field driller who had moved to Eastland County in 1945. A U.S. Navy Seabee during World War II, he was a member of American Legion Post 433.

Survivors include his wife; three daughters, Mrs. E.W. (Selma) Adams of Las Vegas, Nev., Janice Country of Midland and Mrs. Don (Alice) Ballard of Rochester; a son, Keith of Abilene; a brother George M. of



MONDAY

Pizza
Corn
Salad
Cake
TUESDAY
Burritos
Chili
Cheese
Salad
Pork and Beans
Crackers
Fruit
WEDNESDAY
Hamburger Steaks
Gravy
Green Beans
Salad
Rolls
Peanut Butter & Syrup
THURSDAY
Pinto Beans
Fried Okra
Slaw
Corn Bread
Peach Cobbler
FRIDAY
Hamburgers
Lettuce
Tomatoes
Pickles
Onions
Potatoes
Cookies

BREAKFAST

MONDAY
Scrambled Eggs
Sausage
Jelly
Juice
Milk
TUESDAY
Biscuits
Gravy
Juice
Milk
WEDNESDAY
Fruit
Dry Cereal
Juice
Milk
THURSDAY
Toast
Rice
Jucie
Milk
FRIDAY
Pancakes
Syrup
Bacon
Juice
Milk

All menus subject to change due to change in deliveries.

Thursday, October 8, 1981

Cisco; and seven grandchildren.

INSTALLED AT YOUR LOCATION

AAA Windshields

Serving Clyde and Local Area

TED SAUNDERS
P O Box 188

PH. 893-4147
PH. 893-4370
CLYDE, TEXAS

REYNOLDS MANUFACTURING Co.

Customer Service Division



SUNGLAS...
THE ENERGY SAVING
GLASS FOR YOUR HOME

- Siding
- Storm Windows
- Replacement Windows
- Patio Storm Doors

105 E 8th - Cisco

442-1380

FREE ESTIMATES



RESIDENTIAL

OLDER 2 story house near **SOLD** in Carbon. Large lot with plenty of room for **SOLD** ag. Needs repair. Budget priced.

SPACIOUS HOME ON 2 LOTS-4 bedrooms, 1 1/2 baths, fully carpeted, custom kitchen with built-ins, energy saving storm windows. Covered patio faces large, fenced back yard. Near schools. See this one soon!

A LITTLE BIT OF HISTORY: One of the oldest homes in Palo Pinto County, moved from Thurber to present site in Strawn in early 1900's. Restorable condition. On 200' x 140' lot, and price includes 1975 14 x 80 total electric completely furnished mobile home. Price reduced!

PLENTY OF ROOM: This three bedroom or could be four bedroom, 1 3/4 bath home on corner lot. Assumable financing with \$190 monthly payment. Owner said trade for anything of value for his equity.

IDEAL WEEK-END RETREAT, or year-around residence. Attractively remodelled 2 bedroom, 1 bath home on large deeded lot at LAKE LEON. Many extras included.

COZY 2 br, 1 bath completely remodelled inside, new carpet, on shaded lot, located in Ranger. Budget priced. GORMAN: Ideal for retired or small family. This nice 2 bedroom with separate utility sits on two lots with large garden area. Excellent condition, well insulated. City utilities and well for garden use. Reasonably priced.

OWNER MUST SELL-Equity lowered - Lake Cisco: Lovely South side home on **SOLD** only 4 1/2 miles from downtown. Two **SOLD** baths, fireplace, central H/A, glassed sun **SOLD** opens to wooden deck, beautiful view, fenced yard. Numerous extras. Call for details.

RENTAL PROPERTY - 3 bedroom 1 bath home on large lot. \$12,500.00.

PRICE DRASTICALLY REDUCED Invest your money in duplexes and have a hedge against inflation while you enjoy the tax advantages of rental property. We have two duplex units, brick, builtins, carpet, carports, 100% occupancy. Inquire today.

SMALL ACREAGE with 3 or 4 bedroom Older home in good condition, garden **SOLD** trees, water well, huge carport and storage area **SOLD** don't miss this opportunity for country living at a reasonable price.

LAKE LEON: Deeded lot Approx. 200 ft. road frontage. Approx. 65 ft. waterfront. Willow Beach subdivision, old Staff Road.

NEW HOME COMPLETED on 2 1/4 ac. with own water well. 1300 sq. ft. Brick home, total electric.

DESERVE A BREAK-This home offers more foot per dollar value. Recently remodelled. All kitchen with built-ins, central A/H, den with fireplace and more. Call today.



Town & Country REAL ESTATE

OFFICE HIGHWAY 80 E
FHA-VA CONVENTIONAL FINANCING

Colonial Style Brick you will like the arrangement of this comfortable, well-kept home in one of Ranger's established neighborhoods for formal or informal entertaining. Features like living room with custom drapes, and formal dining area, den with fireplace, breakfast area off kitchen, 3 bedrooms, 2 baths. Patio yard is privacy fenced. Garden area and dog run separately fenced. Outside storage bldg. By appointment.

OWNER HAS MOVED! We are looking for a family who needs over 1600 sq. ft. 3 bedrooms, 1 bath on corner lot, shaded by huge trees, with excellent garden space. Recently remodelled, with almost new range and refrigerator. Separate utility room with space for ironing, sewing. Don't wait. Call us today!

COMPLETELY REMODELED - 2 bedroom with carport and storage room in Eastland. Perfect for the small family.

CHARM OF YESTERYEAR-With all of today's amenities! You'll love the spacious, light and airy interior which includes, 4 bedrooms, 3 baths, sunny yellow kitchen, glassed atrium. Upstairs bedroom-sitting room opens to redwood deck. You must see to appreciate the many unique features of this home.

WE WANT YOUR BUSINESS - YOU ARE OUR BUSINESS

PEGGYE SWAFFORD 647-1050

629-1725

BARBARA LOVE, BROKER

THRIVING BUSINESS-Ideal family operation. Retail sales and service in Ranger. Don't delay reap the holiday profits.

EXECUTIVE HOME in prestigious neighborhood. Beautiful brick home for gracious living and entertaining. Immaculate interior with 3 bedrooms, 2 1/2 baths, living room with fireplace, dining area, breakfast area, separate utility. Double garage, covered patio. Large paved area with detached workshop and storage. Call for appointment.

COMMERCIAL PROPERTY

NO VACANCIES - NO UPKEEP! 4 houses on 150x136' lot in Eastland. Rent all or live in large 3 bedroom, 2 bath, completely remodelled home. Many extras. Call today and take advantage of the fantastic rental market.

RISING STAR - Large commercial/shop building located downtown area. REASONABLE, and you convert to your own needs.

BRICK BUILDING with 20 x 25 ft. office on several lots in Gorman. Excellent for garage or small factory.

BARBARA LOVE 647-1397

ACREAGE

9 ACRES M/L only 8/10 mile West of Ranger City Limits. All cleared, county road two sides. \$2,000.00 down, owner finance balance on contract for deed.

5 ACRES of oak trees is the setting for this large brick home with 3 bedroom, 2 1/2 baths, separate dining room and living room. Lived in only 2 years. Good water well, 2 septic tanks, total electric. Located near Gorman.

53 ACRES convenient to **SOLD** Eastland. All cleared with scattered trees. Water a **SOLD** County Road. Will divide for Texas Vet. with papers.

60 ACRES So. of Cisco, 1 mile off Hwy. 206. Approx. 30 acres coastal, 15 acres love grass, some timber. One good stock tank, shallow hand-dug well.

79 ACRES sandy land **SOLD** tal, mostly cleared, good fences, at Olden. Will

3,965 acres in City Limits with mobile home hookup, city water. Cleared, fenced, some large pecan trees.

60 ACRES, 26 acres peanut allotment, 1 water well, sandy loam, south of Cisco. Approx. 1 mile off pavement.

HORSE LOVERS - You must see this 120 acres with large, completely remodelled rock home. This place is set up for convenience of horse breeders and safety fenced to protect your investment in your animals. 6 large sheds, numerous corrals, 3 water meters, 2 mobile homes, peanut allotment, 1/4 minerals, 4 stock tanks, cross-fenced, coastal and native grasses. CARBON AREA.

63.5 Acres near Eastland with frontage on blacktop.

One tank and old well. Part wooded, good deer and turkey hunting. Will divide for Texas

Vet. with papers in hand.

12.642 ACRES on FM 2461 near Lake Leon Dam. Blacktop frontage, staff water. Permanent easement to lake. Call today.

BUILD your dream house on one of these 2 to 3 acre tracts. Located on Hwy 6, 5 miles S. of Eastland. City water available.

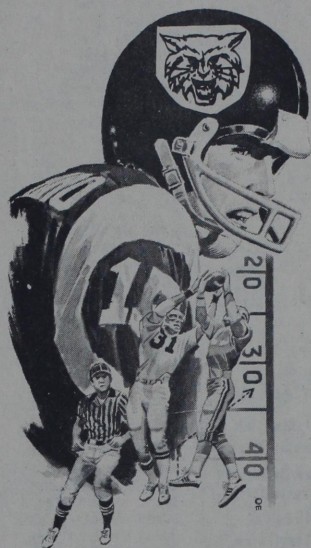
51 ACRES with beautiful 3 bedroom, 2 bath 5 yr. old brick home. Horse pens, 3 stock tanks, 25 acres in coastal, good fences. Located 4 miles NE of Gorman.

18 acres, m/l approx. **SOLD** So. of Eastland on Hwy. 6. Highway frontage **SOLD** are. 25% down and owner finance balance. C. soon.

6 1/4 ACRES with new large 2600 sq. ft., 3 bedroom, 2 full baths, family room, separate utility. Only 3 months old. Plenty of trees. Just outside the city limits of Gorman. Price reduced for quick sale.

20 ACRES approximately 3 miles west of Gorman. Co-Op water can be arranged. Some minerals

FOOTBALL



**D & T
Building Supplies**
643-4131

Burgess Conoco
643-2461

**Winfrey Feed
& Peanut Co.**
643-6251

**Kizer
Insurance Co.**
643-4421

**Pioneer
Farmers Co-Op**
725-6564

**Bibby's
Creations**
643-6691

**Medley
Motor Company**
643-5211

Trails West
643-1601

**Rising Star
Nursing Center**
643-2691

**Quickway
Grocery**
643-1490

FOOTBALL '81

Farm Bureau
Jack Shults
643-5951

Quik Stop
643-1441

**Chambers
Grocery**
643-5292

**Lunceford
Truck Stop**
643-2241

**Butler
Motor Company**
643-3261

**Twin Drilling
& Well Service**
643-7100

**Jenkins
Insurance Agency**
643-2251

Kountry Kitchen
643-6831

J & S Grocery
643-2221

Palace Drug Store
643-3231

Home Games

September 11	Tolar	8:00
September 26	**Abilene Christain	8:00
October 2	Santa Anna	7:30
October 9	*Lometa	7:30
October 30	Blanket	7:30

Away Games

September 4	Eden	8:00
September 19	Cross Plains	8:00
October 16	*Goldthwaite	7:30
October 23	*Gorman	7:00
November 6	*Evant	7:30

**Billy T. Carpenter,
D. O.**
643-3141

Higginbothams
643-2271

First State Bank
643-2811

Rainbow Cafe
643-3000

**Rising Star
Chamber
of Commerce**
643-2251

The Rising Star
643-4141

**Bramlett
Implement Co. Inc.**
643-4311

Show Our Team We're Behind Them 100%

Gold Star Award

(Continued From Front Page)



Tami Reeves



Stefan Jameson

women have taken the challenge of superior accomplishment. Each year 4-H recognizes two of its members who have met this challenge and have set a practical plan to go somewhere, be somebody, be of service and who exhibit superior leadership qualities.

Stefan is the son of Mr. and Mrs. Jerry Jameson of Early. He is 16 years of age and a sophomore at Early High School. His most important 4-H projects are horses and beef cattle. His future plans

indicate a career in agriculture.

Tami is the daughter of Mr. and Mrs. J.R. Reeves and a 17 year-old senior student at Brookesmith High School. Her most important 4-H projects are beef, citizenship, horse, leadership and recreation. Future plans include attending veterinary school and also taking archeology courses on the side.

The two recipients of the leadership award receive a copy of the book title, "I DARE YOU".

Corps Announces Temporary Winter Closing Of Some Parks

The U. S. Army Corps of Engineers announced the winter closings of some of its park areas from Oc-

tober 15, 1981 to March 31, 1982, but will keep open sufficient facilities to satisfy the needs of the public.

Colonel Donald J. Palladino, District Engineer and Commander of the Fort Worth District, U.S. Army Corps of Engineers, explained that the winter closures are "an attempt to reduce Federal expense while trying to provide a quality recreation experience to our visitors."

The projects affected by winter closures are:

Hords Creek--Flat Rock Park--October 15, 1981 to March 31, 1982.

Proctor--Copperas Creek Park (portion); Sowell Creek Park (portion); Promontory Park (portion)--November 1, 1981 to February 28, 1982.

Whitney: Lofers Bend Park (portion); Cedron Creek Park (portion)--November 1, 1981 to February 28, 1982.

These are the lakes most often used by people in our area only.

ART DISPLAY OCTOBER, 1981

The Eastland Chamber of Commerce artist of the month of October will be Iris Hummel and Dorothy Anderson, both of Ranger.

They are members of the Eastland County Art Association, and recently Mrs. Hummel was chosen artist of the month for the Association. Iris states she enjoys art as a hobby among other things

that keep her busy. Her instructors have included, Joe Bethany, Mrs. Myrtle George, Nell Boble, Mrs. Paul Taylor and Helen Marrs.

Mrs. Anderson is from Ranger and started painting in 1978, and enjoys painting landscapes, flowers and still-life in oils. She has studied under Joe Hubbard, Nell Boble, Carole Sudderth, Harley Murry, Bill Huffaker, David Slade, Billie Plaunch and Mrs. Myrtle George.

Mrs. Hummel and Mrs. Anderson invites you to come by the Eastland Chamber of Commerce and see their paintings while on display.

J & J
Air Conditioning & Refrigeration
Full Line GE & Coleman Dealer
Free Estimates on Installation
629-2251
Service on All Makes
Owner, James Schuman

Thursday, October 8, 1981
Australian Rodney George Laver won all four major tennis championships as an amateur player in 1962 and then won all four of them again as a professional in 1969.

Services Held Sunday For Retired County Agent

Services for C.T. Parker Jr., 59 of Rising Star were held Sunday at 3 p.m. in the Higginbotham Funeral Home Chapel. Mr. Parker was found dead at his home at 3:15 p.m. Friday.

The Rev. Jim Simpson, minister of First Christian Church in Brownwood officiated, assisted by the Rev. Bill Easley, pastor of the First United Methodist Church in Rising Star. Burial was on the Parker Ranch, four miles southeast of Rising Star.

Mr. Parker was a retired county agent where he served the Ballinger area for many years.

Born April 17, 1922 in Rising Star, he was a rancher. He married Sybil Proctor January 29, 1945 in Bryan. He was a member of the First Christian Church in Brownwood.

He is survived by his wife; his mother, Mrs. Ethel Parker of Rising Star; a daughter, Susan Ginnings of Round Rock; and two grandsons, John Paul and Joseph Anthony Ginnings, both of Round Rock.

Pallbearers were: Frankie Berry, Bill Sykes and Buddy Gray all of Ballinger; Joe Stalcup of Brownwood; Tex Evans and Jack Shults of Rising Star.

Honorary pallbearers were: Gus Frey, E.B. Underwood, Allen Turner, Buster Gabbeth, Morris Sweeney and Woodrow Hoffman all of Ballinger; Red Lyles, Clyde Modwell, Jelly Jenkins, and Dick Stack all of Brownwood; Jack Hubbard, George Steel, Jay Starkey and Albert Starkey all of Rising Star.



We Are Proud To Announce The CROSS PLAINS LAUNDRY
has all new equipment
--17 washers and 8 dryers.
Open 7 days a week
6 a.m. to 10:30 p.m.
Attendant on duty
8 a.m. to 12 noon. 1 to 3 p.m.
5 days a week
Located next to City Hall on North Main Street, Cross Plains.
Owned and Operated by Eddy Potty

WE ARE ENJOYING A WHOLE LOT OF A GOOD THING

For many years now, most of us have taken a plentiful supply of electricity for granted. We've found more and more uses for electricity, because, as Reddy Kilowatt kept telling us:

- Electricity is Reliable
- Electricity is Clean
- Electricity is Efficient
- Electricity is Quiet
- Electricity is Flexible and
- Electricity is Low in Price

Electricity is still all of these things... even low in price compared to other goods and services. But there's no escaping the fact that costs of supplying it are constantly going up... and so is usage.

People in WTU territory are using more electricity than ever before (9,020 kilowatt-hours per residential customer in 1980, compared to 5,856 in 1970).

With the demand for its product steadily increasing, WTU can't stand still. It must grow, too.

The growth is carefully planned, with the customer's welfare foremost in mind. WTU is considering only the necessities. But to keep giving the kind of service you're used to, we're going to be involved in some costly updating of production, transmission and distribution facilities. And, of course, we must maintain a staff of people qualified to keep the system operating. You can depend on WTU to continue providing a reliable supply of electricity. But let's all realize what it takes to produce it, and use it wisely.

It's too good to take for granted.

Reddy Supplies the Energy... But Only You Can Use It Wisely.

WEST TEXAS UTILITIES COMPANY
WTU
A Member of The Central and South West System

KING INSURANCE AGENCY REAL ESTATE

CISCO
106 W. 6th
442-2552

Mrs. Opal C. King-Broker
Res. 647-1510

RANGER
207 Main
647-1171

RANGER

NEW LISTING

REAL NICE two-bedroom, one bath dwelling, carpet, nice kitchen cabinets, car-port with storage room, small building, fenced back yard, corner lot. Owner will carry, with 1/2 down. Reduced for quick sale.

TWO BEDROOM HOUSE, 2 nice lots, paneled, carpeted, good neighborhood. \$21,000.

GOOD COMMERCIAL location: two bedroom house, store building, trailer park with six hook-ups, lots of beautiful trees, on 23 lots, on Hwy. 80, inside city limits.

Attractive home with 3 bedrooms and 2 1/2 baths. Well kept, good foundation and plumbing, insulation. Nice neighborhood.

Home with six comfortable rooms, one bath. Good location, paneling, two refrigerated air unit, assumable financing.

Very affordable mobile home with one bedroom. Located on fenced lot. Owner interested in sale or trade.

We Need and Appreciate Your Listings

Conventional, VA, and FHA Financing Available

Ardyth Caldwell
442-2134

Lee Russell
647-1383

Don Adair
629-2848

Patricia C. Nowak
672-5711 672-5521

Lilia Pittman
734-2055



YOUR LOCAL NEWSPAPER DOES COMMERCIAL PRINTING FAST, ACCURATE

\$1,000 minimum 2 1/2 year C.D.
Effective October 6 thru October 12
RATE **16.20%**
YIELD **17.58%**

Substantial penalty for early withdrawal.

\$10,000 minimum 6-month C.D.
Effective October 6 thru October 12
YIELD **14.468%**

Substantial penalty for early withdrawal.

This is an annual yield. The rate is subject to change at maturity. Federal regulations prohibit the compounding of interest during the term of the account.

To us, people are worth a whole lot more than money.

RANGER SAVINGS EASTLAND SAVINGS

ESLC

Come see us soon, or call and we'll come see you. 'Cause it's the Olney way to save. And check out the Olney Savings Checking Account... it pays 5 1/4% plus a whole lot more.

Olney, Seymour, Jacksboro, Bridgeport, N.cona, Weatherford, Azle, Graham, Archer City, Brownwood, Bowie and Wichita Falls. Also Electra Savings in Electra, Ranger Savings in Ranger, Eastland Savings in Eastland. All Divisions of Olney Savings.