

Progress Is—
Making
Good Things Happen

THE RISING STAR

Where Three
Good Texas Counties
Get Together

Rising Star, Texas

©1992 Eastland County Newspapers, Inc.

Established in 1890

50 Cents

Thursday, January 9, 1992

Number 2

Two New Items On WTU Bills

Customers of West Texas Utilities may notice two new items on their electric bill beginning in January. Both result from changes required by state officials and affect every investor-owned utility in Texas. "One item will not cost customers any more money but the second item will slightly increase bills" according to Travis Williams, WTU's area manager.

The first item involves the customer charge which has been part of the electric bill for several years. By order of the Public Utility Commission (PUC) of Texas it now must be listed as a separate item. The charge includes basic costs such as reading meters and processing bills. It does not change each month and is currently set at \$6.50 for residential customers. The customer charge has not increased and this change does not affect the amount of a customer's bill.

The second new item involves the tax increase bill passed by the Texas Legislature in 1991. The PUC recently decided how utilities should collect the new state tax. The Tax will be collected for each kilowatt hour a customer uses. The total tax for a month will be listed as separate item on the bill.

A typical WTU residential customer who uses 600 kilowatt hours will see about a 30 cent increase on their monthly electric bill as a result of the new tax. The factors used to collect the tax will vary according to the type of Customer. For example the amount of tax a commercial and a residential customer pays will be different.

These recent actions cap off a year of activity involving the PUC and WTU. Most of the activity was initiated by WTU and centered around reducing customer's bills or stimulating the West Texas economy.

In June and October customers received good news from the company in the form of reduced fuel factors and a fuel credit. These reductions were a

Continued on Back Page

Rising Star Needs a Christmas Tree

The success of Star Pride's Rising Star Christmas Tree Celebration in December makes everyone realize that we must continue this event on a permanent basis. Many oldtimers commented that the Christmas spirit developed around the tree lighting, arrival of Santa Claus, Christmas carols and the giving of small gifts, fruits, nuts and candies to the children reminded them much of an era of the 1930's.

At that time there was a large cedar tree growing where the current Winfrey's Market Building is located and there was a bandstand gazebo adjacent. The tree was lighted with 25-40 watt colored bulbs during the Christmas season and was the center for much merriment and enjoyment by the people.

Estimates Show More Than 1 Million in Damages to Rural Areas in Eastland County

Figures released by County Judge Scott Bailey's Office Thursday estimate that damages to rural areas of the County from recent rains total

\$1,021,750.00.

This estimate is for areas outside the Incorporated limits of the cities. There has been additional damage reported inside some of the cities.

The rural estimate includes road and bridge damage, private home damage, crops and fencing. Judge Bailey says that no estimate on livestock is presently available. Although some

people are reporting lost cattle, they are still hoping these will be found or return home.

A rough breakdown of the estimates in Precincts is: Precinct 1, \$8,000, Pct. 2, \$640,750 to homes and property around Lake Leon. An additional \$100,000 in Pct. 2 road damage is estimated. In Precinct 3, \$100,000 is estimated in damage to

CONTINUED

Local Livestock Show & Fair Is January 18

Local Livestock Show & Fair will be Saturday, January 18, at the Rising Star High School gym. There will be a craft and food fair (everyone is invited to enter), rabbit show, hog and lamb show and a cake auction. Please come and support our annual auction. A concession stand will be open.

The Livestock Show & Fair supports 4-H and FFA. There are 21 students who will show market animals and three students will show breeding animals.

Look for a fair entry form in this newspaper or get one from any 4-H or FFA student or sponsor.

91st District Grand Jury Indicts 14

The 91st District Court considered a total of 19 cases, and returned 14 indictments, passed 1 case and no billed 4 cases, Criminal District Attorney Leslie Vance announced.

Indicted are:
Fernando Aguilar - Possession of marijuana, 5 lbs. or more, but less than 50 lbs. - Eastland.
Nettie Carol Amox - Possession controlled substance: Cocaine, less than 28 gms. - Oklahoma.
Chris Earl Conner - Criminal mischief (interruption of a public communication) - Eastland.
Spencer Ross Hatten - Burglary of a habitation -

Rising Star.
Robert S. Henderson III - Driving while intoxicated, third offense - San Angelo.

Jesse Paul Klanke - Burglary of a building - Houston.

Johnny Larry Merrick - Driving while intoxicated, third offense - Big Spring.
Alton Ray Morales - Theft by check, over \$750.00, less than \$20,000.00 - Chico, Texas.
Many Shayesteh - Criminal mischief, \$750.00 or more, but less than \$20,000.00 - Ranger.
Douglas Ray Smith - Indecency with a child, three counts - Georgia.

Two indictments await arrests.

Creel, Marquez Paroles Are Being Opposed

Appeals to the State Board of Pardons and Paroles asking that two inmates not be released have been sent by Eastland County Criminal District Attorney Bill Dowell.

Others are urged to write the Appeals Board (Box 13401 Capitol Station, Austin, TX 78711) asking that Manuel Hernandez Marquez and James Duke Creel not be pardoned.

Assistant D.A. Dowell said in part in his letters: "Our office has received a notification dated 12/03/91 that the above referenced inmate, MANUEL HERNANDEZ MARQUEZ, convicted of murder in January 1989, is already being considered for release on parole. Please review the Statement of Facts previously sent and note that this

inmate not only committed the murder under no mitigating circumstances, but he also involved a juvenile in it's commission.

"After the jury returned a sentence of 30 years, I personally inquired of one juror as to why this inmate was not assessed a longer sentence. That juror was under the false belief that a 30 year sentence meant 30 years and was disappointed to learn otherwise. I believe that the jurors and this community would be shocked and appalled to learn that this inmate may soon be released after having served less than three years for murder. I submit that this was truly a case where the prohibition of informing jurors about the parole law re-

Continued

Rising Star ISD Board Meeting

The Rising Star Independent School District held its regular board meeting December 9 at 7 p.m. Members present were David Harris, Tony Long, Larry Chambers, Frances Agnew, Gary Wilson and Dale Wolf.

School personnel present were Dr. Donald E. Bryan, Robby Stuteville and Randy Mohundro.

Others present were Dale Murphree, Earl Wright and Cindy Wood.

The minutes of the regular meeting of November 11 were accepted as read.

Dale Murphree presented a forecast for the project completion date on the new high school building.

(Continued Inside)

Ambulance Fund Donations

Ambulance fund donations and memorials made during October, November, and December are listed below.

Donations have been made by J.W. Childers, Nadine Graham and family, Edd and Gladine Sergo and family, Derrell Madison, June Rankin, Bob and LaQuita Lucas, Ellie Elliott, Builders Sunday School Class of May First Baptist Church, Henry Robertson, Mary E. Carroll, John W. and Mary Lee, Helen Livingston, Union Center Community, Lee and Wanda Hughes, Jackie and Mitie Burson, Eula Grisham, Ann Pittman, Ervin and Frances Agnew, D.E. Jacobs, Victor and Jeanine Childers, X.L. Sherrill, Carl Taylor, Bob Shults, Wilbur Caudle, Cloyce and Virginia McBride, Dorothy Shook, Saturday Club, Senior Citizens Center, Mrs.

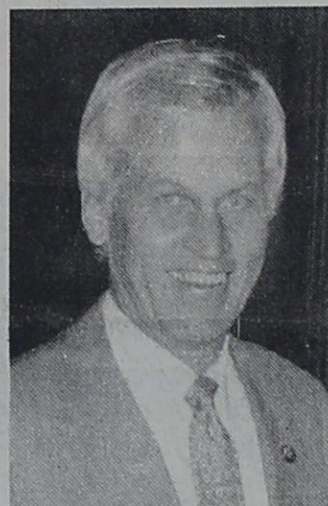
Vernon Jagers, Bobby and Inez Elliott, Mary F. Clark, Herman Ogden, Horace Witt Jr. and Pauline Witt, Grace Berry, J.D. and Wanda Wolf, Mrs. J.B. Harris and Ike Neal.

Memorials have been received for Inez Daves, Bill Maynard, Morgan Burson, Mrs. Elza Witt, Alta Mae Wilson, Inez Robertson and J. Alton Nunnally.

If any names have been omitted, please call (817) 643-4572.

Will Be in Abilene at 5

Stenholm to Be Here on Tuesday Afternoon, 2:30



Congressman Charles Stenholm will be in Abilene on January 14 for a Town Hall Meeting geared toward Health Care and the Economy.

A majority of House Democrats will be hosting Town Hall meetings in their districts on the same day in an effort to collect information from voters around the country on the issues that concern them the most.

"Public meetings are a great way for people to come together and share ideas that will benefit us all," said Stenholm. "I urge everyone to attend this meeting."

The town hall meeting will be from 5 p.m. to 7

p.m. in the Multipurpose Room of the Johnson Business Building at Hardin-Simmons University.

Stenholm, who is co-chairman of the Rural Health Care Coalition, says his group is already working toward legislation that will offer more affordable health care for Americans.

Prior to the meeting in Abilene, Congressman Stenholm will be in Rising Star Tuesday, January 14, from 2:30 to 3:15 p.m. at the Community Room of Peoples State Bank.

Meet with him here to share your ideas on the issues facing Congress.

Musical at May on January 20

The May Senior Citizens will have a musical January 20 at the May Community Center at 6:30 p.m. Stew and pie will be served as a fund raiser.

Come and enjoy the music by area musicians.

55 Alive, Mature Driving Course

Anyone 50 or older is invited to take a course produced by AARP which refines your defensive driving skills and helps save lives on the road.

The course will be held at the Senior Citizens building January 14 and 16 from 1 to 5 p.m. (Must come both days). The cost

Cong. Stenholm's Partial Agenda

Thursday, Jan. 9 2:30 to 3:15 p.m., First National Bank, Strawn.

3:45 to 4:30 p.m., Lillie's Coffee Pot, Ranger.

7 p.m., Speaker Eastland Chamber of Commerce Banquet, Siebert Elementary School.

Tuesday, Jan. 14 - People's State Bank, Rising Star, 2:30 to 3:15 p.m.

5-7 p.m., HSU, Town Hall Meeting.

Wet Weather Delays Tree Transplanting to the Park in City

The recent inundation of our area with moisture has caused some delay in transplanting live oaks and other decorative plants to the city's Colquitt Williams Memorial Park.

The contractor who was to move trees stated that water was waste deep on the Sabanna River bottoms where he was to pick up some live oaks donated by Bernie Barnes. The ground continues to be mushy and it may be many days before he can reasonably move these

lowland trees.

In the meantime, if anyone knows of trees which can be donated to the park and are located on higher ground for transplanting this winter, please let the City Administrative Officer, Mrs. Shirley Leonard, know so that we can get on with planting before Spring. She may be reached by telephone at city hall, 643-4261.

The park also needs decorative rocks, cactus and fill dirt in completing the master park plan.

Star Pride News

Star Pride would like to thank the workers who turned the downtown Christmas tree lights off. They were President Tonya Killion and workers David O'Connor, David Bronson, James Bronson, Daniel Rodriguez, Greg Stone, Cory Atwood, Tody Baker and Adam Rodriguez.

It is so good to see young

people take interest in our growing community. Each of us should take pride in Rising Star and do all we can in working together to make a more beautiful and pleasant place to live.

We would also like to say a big thanks to Don Cornett and Charles Barnes, as well as the city, for their efforts in the Christmas tree project.

at Cross Plains

Gospel Concert Will Be Saturday

Admission is free to the gospel concert to be held Saturday, January 11, at 7 p.m. in Cross Plains High School's main auditorium.

The concert features the Tim Ayers Singers and everyone is invited to attend the performance of the 15 singers and musicians from the Dallas.

Community Calendar

2ND THURSDAY
Masonic Lodge, 7:30 p.m.

EACH THURSDAY
Senior Citizens Center is open for lunch, activities.

City Library, 9:30-11 a.m.

EACH SATURDAY
Bingo, American Legion Hall, S. Main

2ND MONDAY
Rising Star School Board, 116 N. Main

Livestock Show & Fair

School Calendar
by Inga Williams

Fri., Jan. 10
Moran vs. Rising Star here at 6:30

Sat., Jan. 11
Jr. High Tournament at Rising Star

Sat., Jan. 14
Rising Star vs. Lohn here at 6:30

RENEW NOW
Rising Star, Eastland County,
Towns within 30 mi. of Rising Star
\$9.00 per year
Other Texas Counties
\$13.00 per year
Out of State
\$19.00 per year
The Rising Star
P.O. Box 127
Rising Star TX 76471

Fishing Outdoors

by Terry L. Wilson

ANGLERS CHOICE EXPANDING FOR YOU

1992 looks to be bigger and better for anglers across the country who are looking to hook up with a respectable well organized fishing circuit. Anglers Choice Tournaments Inc. has expanded in many directions for the upcoming year.

The Two Person Team events will cover Alabama two regions, Arkansas one region, Louisiana three regions, Oklahoma two regions, and Texas will have six regions. The Texas regions will be set up as follows: Central Texas directors Charles and Barbara Reagan, Feb. 23 Richland Chambers; March 22 Cedar Creek; April 26 Beleon; May 24 Richland Chambers; June 21 Waco; July 19 Limestone; August 23 Whitney.

East Texas Region Jerry and Darla Hope. Feb. 2 Toledo Bend, March 1 Sam Rayburn, April 5 Conroe, May 3 Richland Chambers, June 7 Livingston, July 18 Toledo Bend, August 9 Sam Rayburn.

North Texas Dan and Karen Watson. February 16 Palestine, March 15 Cedar Creek, April 12 Granbury, May 17 Possum Kingdom, June 14 Tawakoni, July 12 Whitney, August 16 Richland Chambers.

North East Texas Jerry and Darla Hope. Febru-

ary 23 Palestine, March 22 Lake of Pines, April 26 Sandlin, May 17 Richland Chambers, June 14 Wright Patman, July 19 Toledo Bend, August 16 Sam Rayburn.

North West Texas Floyd Yarbrough, February 16 Colorado City, March 8 Proctor, April 12 Possum Kingdom, May 3 Hubbard Creek, June 7 Twin Butts, July 12 Leon, August 2 Amistad.

The South Texas Region's director and schedule is pending.

For 1992 the Pro Draw Schedule will be directed by Jerry and Darla Hope and Anglers Choice Headquarters. This year's circuit will feature all Texas or Texas border lakes. February 6-9 Sam Rayburn, March 26-29 Richland Chambers, May 28-31 Texoma, June 25-28 Toledo Bend and July 23-26 Livingston.

Two Super Team events have been set up, with more events pending. Directors Jerry and Darla Hope, September 10-13 Sam Rayburn, October 15-17 Toledo Bend.

And by popular request Anglers Choice will host a Pro-Am Draw event where each amateur will be paired with a pro partner. The Pro entrants will have total control of the boat. Director for this event Johnnie Davis October 24-25 Sam Rayburn. The Team Champion-

ship which combines the cream from each region will be held September 30-October 3. Lake to be announced.

For the Draw Championship the dates and the lake will be announced.

Region Seven of the Amateur Field Trial Clubs of America will hold an amateur horseback shooting dog championship field trial open to all pointing breed dogs which meet entry requirements at the Charlie Jackson Ranch in Graham starting January 10, 1992. Starting time each day will be at 7:30 a.m. The braces will be one hour in duration.

Judges for this championship event will be Dempsey Williams of Brownsville, Tennessee and Mark Garrett of Kinmundy, Illinois. The reporter will be Texan Conrad Plevnic.

Field trial chairman, T.B. Alexander, invites the public (there is no admission) to bring their favorite horses to the Charlie Jackson Ranch in Graham for an enjoyable ride across great native quail country as part of the gallery.

It is anticipated that the field trial will attract entries from Oklahoma, Arkansas, Louisiana and of course, Texas.

The Texas Open Shooting Dog Championship will be contested on the Charlie Jackson Ranch immediately following the Region Seven Amateur Shooting Dog Championship. Open events are those which are open to professionals and amateurs while amateur stakes are limited to persons of amateur status.

Headquarters for these events will be the Plantation Inn in Graham. Terry L. Wilson

Drilling Bits

NEW TESTS

Dickens
SRG Oil Corp. Abilene, will drill a wildcat, No. 1 Holmes, to 4,500 feet 12 miles SE of Spur. Spots 582 FSL and 544 FEL, Section 161, H&GN.

Eastland
Monroe Exploration, Ranger, will drill a wildcat, No. 1 Hart Estate, to 4,200 in the Lee Ray 4 miles NE of Cisco on a 356-acre lease. Spots 660 FSL and 1,650 FWL, Section 66, Block 4, H&TC, A-944.

Jones
Durango Operating Co. Inc., Abilene, will drill a wildcat, No. 1 Heller, to 3,600 feet 4.5 miles east of Avoca on a 160-acre lease. Spots 330 FSL and 330 FEL, Section 179, BBB&C.

Kent
Spalding Energy Inc., Abilene, will drill a wildcat, No. 4-B.D.M. Cogdell, to 1,999 feet 12 miles south of Clairemont. Spots 1,009 FSL and 1,165 FWL, Section 713, Block 97, H&TC.

Throckmorton
Bearco Operating Co. Inc., Olney, will drill a wildcat, No. 4 Kunkel B, to 1,500 in the Regular, 16 miles south of Throckmorton on a 40-acre lease. Spots 175 FSWL and 600 FSEL, SPRR, A-252.

OIL COMPLETIONS

Scurry
Cisco Press - Eastland
Telegram - Ranger
Times - Rising Star - Callahan County Star
Thursday, January 9, 1992

Cockrell Production Co., Abilene, completed the No. 2 Vicary in the Hermleigh (Strawn) 11 miles east of Snyder. Spots 1,980 FNL and 1,980 FEL, Section 91, Block 3, H&TC.

Daily pumping potential was 60 barrels of 41 gravity oil and 104 barrels of water from perfs at 7,046-80. GOR 1,733:1. TD 7,554; 4 1/2-inch casing at 7,553.

Shackelford
Marshall R. Young Oil Co., Albany, completed the No. 283-A W.I. Cook in the Cook Ranch 7 miles NW of Albany. Spots 1,902 FSL and 220 FEL, Section 83, Block 10, ETRR, A-70. Elevation 1,714.6 GR.

Daily pumping potential was 15 barrels of 38 gravity oil and 19 barrels of water from perfs at 1,416-22. GOR 133:1. TD and 4 1/2-inch casing at 1,454; PB 1,445; TOP 1,416. Acidized with 150 gallons; fraced with 50 sacks of sand.

Taylor
Tex-Ann Oil & Gas Services Inc., Abilene, complete the No. 1 Sayles in the Regular 6 miles SW of Buffalo Gap. Spots 999 FNL and 393 FSWL, John Trussell No. 141. Elevation, 2,029 GR.

Daily pumping potential was 18 barrels of 39 gravity oil and 280 barrels of water from perfs at 4,190-96. GOR 1,111:1. TD and 4 1/2-inch casing at 4,290; TOP 4,190. Acidized with 500 gallons. TOPS: Flippen sand 2,544; Capps lime 4,190; Fry sand 4,214.

Texas ASC Committee Requests Flood Assistance

Farmers and ranchers in more than 50 Texas counties have suffered severe losses to crops and livestock due to some of the heaviest flooding in Texas history. Severe flooding occurred and continues on the Colorado, Brazos and Trinity rivers and their tributaries.

In response to these losses, U.S. Sen. Phil Gramm has requested that the Texas State Agricultural Stabilization and Conservation Committee take action to provide assistance to farmers and ranchers who suffered losses due to the current floods. At the senator's request, the Texas State ASC Committee has requested the Secretary of Agriculture to implement the Emergency Livestock Feed Program in 53 counties along the flooded rivers.

"The federal government should bring the full weight of its programs to bear in time of disaster," Gramm said. "That must include the agricultural programs aimed specifically at literally bailing out Texas farmers and ranches who have been inundated by the flood."

Jerry D. Harris, chair-

man of the Texas State ASC Committee, said, "Producers in these areas should keep records of all losses and contact their local Agricultural Stabilization and Conservation Service office to report losses of livestock pasture and feed. If implemented, the program would provide livestock owners suffering a 40 percent or more loss to hay and pasture assistance to ensure sufficient feed is available to provide for their livestock for 100 days."

The Emergency Livestock Feed Program would not cover losses to standing crops.

The ASCS is the United States Department of Agriculture's agency that administers farm programs passed by Congress.

Those counties covered by the Texas State ASC Committee request for feed aid are Anderson, Austin, Bastrop, Bell, Bosque, Brazos, Brazoria,

Brown, Burleson, Burnet, Caldwell, Chambers, Colorado, Coryell, Dallas, Ellis, Falls, Fayette, Fort Bend, Freestone, Galveston, Grimes, Hamilton, Harris, Hays, Henderson, Hill, Houston, Kaufman, Lampasas, Lee, Leon, Liberty, Limestone, Llano, Madison, Matagorda, McLennon, Milam, Mills, Montgomery, Navarro, Polk, Robertson, San Jacinto, San Saba, Travis, Trinity, Waller, Walker, Washington, Wharton and Williamson.

A Gift to the AMERICAN CANCER SOCIETY MEMORIAL PROGRAM can make a big difference in cancer control. 1-800-ACS-2345

Credit Cards Accepted
your marketplace the WANT ADS

CHILD ABUSE
24 HOUR HOTLINE
1-800-252-5400

D. J.'s Custom Firewood Service
Delivered & Stacked
Cut any size 12" to 24"
\$1 a mile after 10 mile radius.
\$70⁰⁰ Cord
\$40⁰⁰ Rick
Call: 817-629-2805
Oak - Mesquite
Also: Tree Trimming and Removal

IT'S THE LAW!
SEATBELTS
Buckle Up for Safety!

Over 100 Degree - Related Night Courses
TARLETON STATE UNIVERSITY
REGISTRATION
Tuesday, January 14, 1992 6 PM-8 PM
TARLETON CENTER
Call 817-9121 for Information
EVENING COLLEGE

Something Special
Open M-S 10:00-5:30
Store-Wide Sale
Thursday, Jan. 2
Inventory Reductions
Broom Skirts • Sweaters • Jewelry • Candies • String Jackets • Knit Suits
Hair Twistees • Potpourri
115 W. Main Eastland 629-8030

WAIT!!
Check With Us Before You Buy.
Local Owned Business For 35 Years
Siding: Vinyl - Steel - Aluminum
Windows: Storm - Replacements - Thermal Break
Sun Rooms - Solariums
100% FINANCING AVAILABLE
NO DOWN PAYMENT TO QUALIFIED BUYERS
ON INSTALLED (labor and material) JOBS
For Free Estimates Call 442-2077, or
If Out of Town Call 1-800-772-8532
CERTIFIED TEXAS VETERANS LAND BOARD CONTRACTOR
S & M Supply - Reynolds Manufacturing
105 East Eighth
Cisco, Texas 76437

The Earth Stove
Closeout Prices
On All Inserts
In Stock
BayView®
Model BV400C Features
* EPA Certified
* Catalytic
* Gold Plated etched side glass
* Large Gold Plated glass door
* 500 CFM variable speed blower
* Catalytic Temperature Probe
* Auto fan with manual override
* Built in flue by-pass damper
* Zero clearance fireplace approval
* Accepts up to 24" log
E.D.C.O.
817-559-2273
FM 3099 #204
Breckenridge, TX
Installation Available
Other models to choose from

I-20 MOTORS
19th & I-20
Cisco, Texas
(817) 442-4262 or 442-2161
87 Mercury Topaz, 4 door, all wheel drive, auto, air, cruise.....\$3350
89 Escort, 4 spd., w/air, nice car.....\$3495
87 Ford Ranger Pickup, 5 sp., air, nice pickup.....\$3350
85 GMC Cargo Van w/tilt, cruise, auto, air.....\$2995
89 Tempo 4 dr, auto, air, cruise, tilt, AM/FM Cassette, 1 owner.....\$3995
83 Oldsmobile, Delta 88 Royale Brougham, 4 dr., auto, air, extra clean car.....\$2250
81 Chevy Luv Pickup, 5 sp., deisel.....\$2550
87 Plymouth Horizon, auto, air, clean car.....\$1995
88 Chevy Celebrity Wagon, extra clean, fully loaded, auto, air.....\$4550
77 Chevy Blazer, auto, air, 4 WD, excellent condition.....\$2250
84 Dodge Good Times Van, Fully loaded.....\$5495
89 Tempo, 3500 miles, red, 2 dr.....\$4995
89 Ford Festiva L 5 sp., air, extra nice.....\$2995
89 Tempo blue, low miles, 2 dr, 5 sp., 3500 miles....\$4795
89 Ford Tempo Auto, air, cruise, tilt, wheel, AM/FM, tape.....\$4250
89 Escort Wagon, low mileage.....\$4950
90 Escort Wagon LX Auto, air cruise, tilt, extra nice.....\$4250
89 Ford Tempo, red, auto, air, low mileage.....\$4450
Also For Sale: Lake Cabin South of Lake Cisco.
Other Cars To Choose From

Pharmacy Topics
By Bob Mueller
By adding the drug analapril to standard treatments for heart failure, a common condition among senior citizens, doctors have been able to cut sharply the risk of hospitalization and even death. The study was sponsored by the National Heart, Lung and Blood Institute.

Omega-3 oils from fish offer more health benefits than Omega-3 found in vegetable oil, Tufts University nutritionists say.

Vitamin C may help protect against some forms of cancer, the Journal of the National Cancer Institute indicates. It may play a role against stomach, colon, breast and cervical cancers.

Victims of chronic fatigue syndrome responded well to injections of magnesium sulfate in a study at the University of Southampton General Hospital in England. They felt better physically and mentally.

Emotional support from another woman in the delivery room seems to reduce the need for forceps deliveries, cesarean section and other complications, the Journal of the American Medical Association reports.

You'll find emotional support - and everything you need for the new baby - at Walmart Pharmacy Hwy 80 East, Eastland, 629-3347.

Annual Benefit Telethon For West Texas Rehab Center January 11

The twenty-second annual benefit telecast for the West Texas Rehabilitation Center on January 11, is a delightful mix of newcomers and regulars. "Rehab '92" features first-timers Lorrie Morgan, popular country-western singer; Snyder native Brad Maule, a regular on the day-time series "Gen-

eral Hospital" for the past eight seasons; Rhonda Morrison, the reigning "Miss Texas," and Jonna Fitzgerald, winner of the talent category in the 1985 "Miss America" competition. Returning for the show are regulars Rex Allen, Anita Bryant, Rex Allen, Jr., Bill and Susan Hayes, Anacani, Arthur

Duncan, Karol Ann De-Long and Pedro Gonzales Gonzales.

The five-hour television special begins at 7 p.m. and originates lives from the Abilene Civic Center. The show will be seen in a dozen television markets.

The telecast culminates a day of activity at the Abilene Civic Center. Anita Bryant will be the

featured entertainer at a 7:45 a.m. prayer breakfast to start "Rehab '92" Day. At 1 p.m. there will be a live auction of more than 100 items that have been donated to the West Texas Rehabilitation Center. At 6 p.m., the annual live television auction will be carried by all three Abilene television stations as well as a station in San Angelo. During the telecast, viewers will have an opportunity to call in their bids on

featured items. All auction items will be on display at the Abilene Civic Center beginning Thursday night.

Other activities include the second annual Rock-A-Thon with almost 300 young people from throughout the area trying to rock continuously for five hours in rocking chairs; and, wind-up of the annual Junior Firefighters door-to-door campaign throughout West Texas.

By midnight, when the telecast signs off, it is hoped that more than \$1 million will have been raised toward the West Texas Rehabilitation Center's 1992 operational budget of \$7.6 million. Each year, the Center provides services to more than 13,000 disabled men, women and children.

Teenage Seminar At Calvary Baptist Church In Cisco

Talking with teenagers about sex can be very intimidating for parents. Nevertheless, they will receive the information from someone; and, because our teenagers are being bombarded daily with the wrong messages about sexuality, they have a desperate need to be taught Biblical truth. If parents do not commit to giving them God's loving counsel, our sons and daughters will not be equipped to resist the destructive temptations they face.

Join other parents in Eastland County and the area for a video seminar, "Preparing Your Teenager for Sexuality" that will help parents to know how to teach God's principles to their teens. Designed for parents of teens and pre-teens, the seminar consists of six hour-long sessions on: 1. The

Role of the Parent; 2. Breaking Down Communication Barriers; 3. God is Pro-Sex!; 4. God's King of Love; 5. God the Great Protector; 6. Practical Steps to Purity.

You can attend this valuable seminar on Saturday, Jan. 25, from 9 a.m. until 4 p.m. at Calvary Baptist Church, 1800 Conrad Hilton in Cisco. Advanced registration is \$10 per person or \$15 per couple and includes the training manual and lunch. Registration and payment must be received by January 17. For more information contact John Gonzales at 442-2183 or 442-2453.

Read The Classifieds

Cisco Press - Eastland Telegram - Ranger Times - Rising Star - Callahan County Star
Thursday, January 9, 1992

EVERY 3 MINUTES A WOMAN IS DIAGNOSED WITH BREAST CANCER.



EVERY 12 MINUTES A WOMAN DIES FROM BREAST CANCER.

Get the facts. It could save your life. Call (800) 221-2141, weekdays, 9 a.m.-5 p.m., central time zone.



cash in with a classified ad...



ANITA BRYANT



BRAD MAULE

Subscribe To Your Local Newspaper

MOBILE HOME TRANSPORTING

Complete Moves & Setups
Moving Throughout Texas

- Tie Downs
- Blocking & Leveling
- * Licensed
- * Bonded
- * Insured

18 Years Experience
817-893-6753



Over 100 Degree - Related Night Courses
TARLETON STATE UNIVERSITY

REGISTRATION
Tuesday, January 14, 1992 6 PM-8 PM
TARLETON CENTER

Call 817-9121 for information
EVENING COLLEGE

OAK FIREWOOD FOR SALE

\$60 Cord Picked Up
Extra For Delivery

Gorman 734-2491

817/629-3631 OPEN 8:00 - 5:30 SAT. 8:00 - 12:30

EXPRESS PHOTO
SAME DAY PHOTO PROCESSING
COLOR, BLACK & WHITE, PHOTO REPRODUCTION

BILL CULVERHOUSE, OWNER

601 W. Main
Wedding Sports Studio Pictures Passports I D Cards Immigration pictures

Serving all your photographic needs



You don't have to talk to your kids about sex...

but if you don't, somebody else will.

Wouldn't you rather it be you?

Preparing Your Son or Daughter for Sexuality...

A Video Seminar for Parents with DAWSON McALLISTER

Join other concerned parents for:

- Six hours of intensive discussion
 - Designed for parents of teens and pre-teens
 - Helps equip parents to share God's truths about sexuality
 - A step-by-step approach that helps break down communication barriers.
- This seminar is packed with insightful teaching, provocative discussion and music that will make you laugh and cry. It's a must for all concerned parents.

Dawson McAllister is a nationally-known speaker and author, husband and father, who has spent 20 years ministering to students and their parents.



YES! I would like to register. Enclosed is my check for

INDIVIDUAL COUPLE

SATURDAY, JANUARY 25, 1992
9:00-4:00

CALVARY BAPTIST CHURCH
1800 Conrad Hilton, Cisco

Advance Registration:
\$10 per person, or \$15 per couple including manual. Registration and payment must be RECEIVED by January 17.

Name

Address

City

State

Zip

Telephone (home)

(work)

Church

Please mail registration and payments to:

Calvary Baptist Church
P. O. Box 549
Cisco, TX 76437

Make Checks payable to:
Calvary Baptist

FOR INFORMATION CALL: 442-2183 OR 442-2453

RANDY GATTIS PLUMBING

Residential & Commercial Repairs
Remodeling & New Construction
Electric Sewer & Sink Cleaning Machines
Water Heaters & Plumbing Fixtures
State Licensed - Master License - M-18038

Free Estimates

Call: 442-1688 24 hrs/day
106 Ave. I Cisco, Texas

EASTLAND GREAT TIMES

I-20 Access, Eastland
629-3921

FLASHLIGHT NIGHT

January 17, 7 PM to 11 PM

\$5

PIZZA NIGHT



January 25, 7 PM to 11 PM

\$6

Fun & Games • Skating • Raquetball

AEROBIC ATTITUDES

Using Contemporary Christian Music

Who: Certified Instructors - Gail Williamson, Becky Clute, Kara Ford

What: New Aerobic Session Starting - Jan. 7

Where: Great Times Skating * New location*

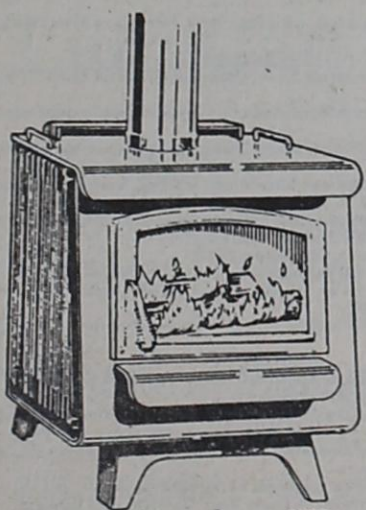
When: Tuesday, Wed. & Thursday, 8 - 9 p.m.

How Much: \$25.00 per month

Please Bring A Mat

The Earth Stove

Closeout Prices On All Stoves In Stock



Model 1003CL Features

- * EPA Certified
- * Long burning catalytic
- * Built in flue by-pass damper
- * Gold plated glass door
- * Accepts up to 18" log
- * Optional blower system

EPA Certified

E.D.C.O.

817-559-2273

FM 3099 #204

Breckenridge, TX

Installation Available

Other models to choose from

HAPPY HOLIDAYS

from all of us at EASTLAND FARM & RANCH INC.

Offering you only the best in service & products. We sure do appreciate you. Thanks for a very successful year.

629-2173

629-8035

k-4

LIQUID & DRY FEEDS • VETERINARY SUPPLIES • HERBICIDES • MORTON SALT • SWEETLIX • GARDEN-LAWN SUPPLIES • INSECTICIDES • ACCO

Sharp Announces Taxpayer Seminar For Abilene Area Set January 16

How will the tax changes made by the Texas Legislature affect business owners in the Abilene area? State Comptroller John Sharp is sending a tax expert from the State Comptroller's office to conduct a free seminar on these changes and more on Thursday, January 16, 1992.

Mike Brady, from the Comptroller's field office in Abilene, will be at the Commerce Plaza Office Building, 1290 W. Willis Ste. 211, in Abilene, at 3:30 p.m. Mike Brady will be on hand to discuss the new sales on boats and motor vehicles, the motor fuels tax and the new recycling fees on tires and batteries.

"While this seminar is geared particularly to new business operators, certainly anyone is welcome to attend," Sharp said.

"The Comptroller's Office is available to assist Abilene businesses with questions on collecting the correct tax, filing appropriate reports and other tax matters."

For those unable to attend the seminar, the State Comptroller's Office has a toll-free line available to assist Texas taxpayers. That number is 1-800-252-5555.

For more information about the upcoming seminar, contact the Comptroller's Abilene field office at (915) 695-4323.

Over 100 Degree-Related Night Courses Available at Tarleton State University

REGISTRATION Tuesday, January 14, 1992 6 PM-8 PM TARLETON STATE UNIVERSITY REGISTRATION CENTER

Call 817-9121 for Information EVENING COLLEGE

MAYNARD REAL ESTATE

629-8568 Maynard Building, Hwy 80 East, Eastland, Texas

WE APPRECIATE YOUR BUSINESS! Available Nights and Weekends

COMMERCIAL \$4,500 - lot 70 x 94' \$10,000 - 10 acre water system... \$10,000 - Commercial town lot 70 x 115' with 2x8 metal building...

EASTLAND HOMES AND LOTS \$2,500 for two lots 1/4 x 140' lot with trees...

LAND FARMS, RANCHES AND SMALL ACREAGE \$9,500 - 7.5 acres with small tank surrounded by willows...

RANGER \$3,000-28 lots on 5 acres. Two mobile home hookups. City water...

CARBON \$12,250-1BR, 1 bath, kitchen and living room. Approx. 600 sq. ft. home...

GORMAN \$72,000-3BR, 2 bath, brick home on 10 acres. CHVA, double car garage...

LAKE LEON HOMES AND LOTS \$3,950 - Two lake front lots at \$3,950 each...

ELIZABETH MAYNARD ASSOCIATE 559-2318

R.G. (BUCK) WHEAT BROKER

DEBRA MAYNARD ASSOCIATE 629-8568

Legal Notice

The Eastland Independent School District Board of Trustees is now accepting bids for a school vehicle.

County Child Protective Service Says 'Thank You'

The Eastland County Child Protective Services Board wishes to thank all contributors, both organizations and individuals,

Protecting Your Income In Uncertain Times

Provide for a comfortable retirement Earn more income now How to invest during a low interest rate period

Enjoy peace of mind about your investments

Investing a peace of mind approach to investing.

"Space is limited, so call today for reservations" Day: Tuesday, January 14th from 10:00 - 11:00 a.m.

Location: EDJ Office, 107 W. Main, Eastland

Eastland ISD Business Office at 900 W. Plummer, Eastland, Texas after January 2, 1992.

Bids will be opened for consideration at the Eastland ISD Regular Board Meeting, January 13, 1992, at 6:30 p.m.

The board reserves the right to accept or reject any or all bids.

Bids should be sealed with the statement "School Vehicle Bid Enclosed" clearly visible on the outside of the envelope.

Bids should be sealed with the statement "School Vehicle Bid Enclosed" clearly visible on the outside of the envelope.

Bids should be sealed with the statement "School Vehicle Bid Enclosed" clearly visible on the outside of the envelope.

Bids should be sealed with the statement "School Vehicle Bid Enclosed" clearly visible on the outside of the envelope.

Bids should be sealed with the statement "School Vehicle Bid Enclosed" clearly visible on the outside of the envelope.

Bids should be sealed with the statement "School Vehicle Bid Enclosed" clearly visible on the outside of the envelope.

Bids should be sealed with the statement "School Vehicle Bid Enclosed" clearly visible on the outside of the envelope.

Bids should be sealed with the statement "School Vehicle Bid Enclosed" clearly visible on the outside of the envelope.

Bids should be sealed with the statement "School Vehicle Bid Enclosed" clearly visible on the outside of the envelope.

Bids should be sealed with the statement "School Vehicle Bid Enclosed" clearly visible on the outside of the envelope.

Bids should be sealed with the statement "School Vehicle Bid Enclosed" clearly visible on the outside of the envelope.

Bids should be sealed with the statement "School Vehicle Bid Enclosed" clearly visible on the outside of the envelope.

Bids should be sealed with the statement "School Vehicle Bid Enclosed" clearly visible on the outside of the envelope.

Bids should be sealed with the statement "School Vehicle Bid Enclosed" clearly visible on the outside of the envelope.

Bids should be sealed with the statement "School Vehicle Bid Enclosed" clearly visible on the outside of the envelope.

Bids should be sealed with the statement "School Vehicle Bid Enclosed" clearly visible on the outside of the envelope.

Bids should be sealed with the statement "School Vehicle Bid Enclosed" clearly visible on the outside of the envelope.

Bids should be sealed with the statement "School Vehicle Bid Enclosed" clearly visible on the outside of the envelope.

Bids should be sealed with the statement "School Vehicle Bid Enclosed" clearly visible on the outside of the envelope.

Bids should be sealed with the statement "School Vehicle Bid Enclosed" clearly visible on the outside of the envelope.

Bids should be sealed with the statement "School Vehicle Bid Enclosed" clearly visible on the outside of the envelope.

Bids should be sealed with the statement "School Vehicle Bid Enclosed" clearly visible on the outside of the envelope.

Bids should be sealed with the statement "School Vehicle Bid Enclosed" clearly visible on the outside of the envelope.

Bids should be sealed with the statement "School Vehicle Bid Enclosed" clearly visible on the outside of the envelope.

Bids should be sealed with the statement "School Vehicle Bid Enclosed" clearly visible on the outside of the envelope.

Bids should be sealed with the statement "School Vehicle Bid Enclosed" clearly visible on the outside of the envelope.

Bids should be sealed with the statement "School Vehicle Bid Enclosed" clearly visible on the outside of the envelope.

Bids should be sealed with the statement "School Vehicle Bid Enclosed" clearly visible on the outside of the envelope.

Pleasant Hill Extension Club To Hold Meeting

The Pleasant Hill Home Extension Club will meet Thursday, Jan. 9, in the home of Allene Smith at 1408 Royal Lane, Cisco.

The meeting will begin at 1 p.m. and adjourn by 4 p.m.

Installation of new officers will include: president, Arleta Shirey; vice president, Ann Larkin;

secretary, Sheila Boyd; treasurer, Murl Campbell; reporter, Twila Lee; and council delegate, Dora Schaefer.

The president will appoint new committee chairmen, and plans for the new year will be discussed.

Janet Thomas will bring the program of the month. All members are urged to be present and visitors are welcome at any club meeting.

If you have a few hours of time a month that you would like to do volunteer work at the Canterbury Villa, Christmas in May project or help with a fund raising project to benefit the Rehab Center, Boys Ranch or Goodfellows, then attend this meeting and get involved!

Cisco Press - Eastland Telegram - Ranger Times - Rising Star - Thursday, January 9, 1992

Moving to Eastland County? Or anywhere in U.S.A. Call Toll Free 1-800-525-8910 Ext. 4365 for information.

RANGER MEADOWBROOK ADDITION, rock veneer 3 BR, 2 bath home with Cen. H/A, fireplace.

RANGER 2 BR, 2 bath frame home on shaded lot. Owner financing to qualified buyer.

TREES, TREES GALORE surround this beautiful brick home w/sun room on 1.77 ac, city water & well. Country living minutes from Eastland or Ranger.

CISCO BEAUTIFUL RURAL SETTING! 3.45 acres with 1 1/2 story 4 BR, 1 3/4 bath frame home at edge of city limits. Pecan, oak trees, MORE! HA3 RANGER PERFECT LOCATION! Only 3 mi. SE Ranger 6 ac. with 3 BR, 2B brick home on .7 to 80 trees.

COUNTRY CHARM on 10 acres. Beautiful oak trees surround this brick 3 BR, 2 bath with CHCA, HA6 PRICE REDUCED on executive home. 3 BR, 2 1/4 baths, beautiful pool. All on 3 acres. HA18 MINUTES FROM EASTLAND - Enjoy country living with city convenience! 3 BR, 2 bath brick home on 2.9 acres. Under \$50,000.00! HA8

160 ACRES - NW of Eastland. Approx. 90 ac of improved grass. 212 native pasture with scattered trees. 2 tanks. Possible assumption! A9 108 AC. SO. OF SCRANTON: Cult, 100+ Burckett peach trees, brush. Possible Own. Fin. A3, 327 ACRES - West of Carbon. Approx. 75 ac. in cult, improved grasses & wooded pasture. Peanut quota. Possible assumption! A13 20 ACRES - COMMERCIAL ACREAGE - Great location, 1-20 exit, North Access, Olden. A23 LAKE LEON: Excellent recreation or building site! 4 acres, highway and lake frontage. A1 29 AC in city limits of Cisco. Hi-way front, oak trees. A10 TWO BUILDING SITES: Approx. 3 acres each, with water meters. Highway frontage. A5 & A6 CARBON Area, 116.5 acres, fenced & cross-fenced, 3 tanks & equipment shed. Some minerals. A19 224 AC. SO. OF CARBON: Part brush, approx. 30 ac. coast, 2 tanks, fenced & cross-fenced. Some min. A20 30 AC. CARBON: Improved grass & cult. Fenced & cross-fenced, 6 tanks. Some minerals. A21 16 ACRES on pavement near Eastland. Fenced, beautiful oak trees. Be Quick! A11 65 ACRES E. of Carbon: approx. 21 ac. cultivated; paved road. Sandy land; some minerals. A7 82 ACRES NW of Gorman: Approx. 1/2 cult. Small tank, hand dug wells. Minerals. A14 245 ACRES S. of Carbon: Approx. 67 acres in cult, balance in improved grasses. Underground irrigation, large barn w/shed. 12x70 mobile home on property. Minerals & quota. A8 OLDEN: 80 ac. Beautiful homesite. Septic, tank & wells. A2

COMMERCIAL: ON THE SQUARE: 2 story bldg. in good location, some equip. & booths. Needs some repairs. C4 CISCO: Excellent office bldg., 5 rooms, 2 restrooms. Concrete parking area. 1000 sq. ft. Call today. C5 CISCO: 1-20-30 wooded acres, over 5000 ft. Frontage on North Access Road, edge of city limits. C6 RANGER: 2 story building, needs repairs. 1st floor open area w/restroom & kitchen. C8 FANTASTIC LOCATION! Hwy. 80 E. Eastland, near I-20, high volume of traffic. Currently occupied as office. Excellent for retail & expansion. C2 STOP LOSING - Office Space! Now's the time to buy this office building, 6 spacious offices, kitchen - confer. room, large reception area, plenty of parking. C3 DRAMATICALLY REDUCED! Seller says move this store building in excellent location on Eastland main thoroughfare & adjoining 3.7 acres with 5 trailer spaces, room for more! Don't delay! C7 GREAT LOCATION ON THE SQUARE! Large commercial building adaptable to many uses. Cen. H/A 1st floor, fireproof vault, moveable partitions. C9

COMMERCIAL: \$20,000 - 1BR, 3/4 bath cabin on good waterfront lot. Screened porch, stove, refrigerator, Staff water and septic system. \$30,000 - 4 BR, 2 bath mobile home approx. 1600 sq. ft. CHVA, built-in 2 storage buildings with workshop, cathedral ceilings, front and back. Large cement patio, T.V. Satellite, tele. and energy efficient. Irrigation system for lawn and fruit trees. Large yard. Kitchen has built-in dishwasher, breakfast bar, separate dining area, large windows and custom drapes. Wood burning stove with winter supply of cord wood. \$125,000 - 2 BR, 2 bath, mobile home on wooded lot. Large kitchen. Pump house with pump. \$30,000 - 2 BR, 1 bath mobile home on wooded lot. Great walk way and boat dock. Cemented, covered patio area. Private and serene location. \$47,500 - 2 BR, 2 bath, gorgeous mobile home with matching storage house. CHVA, kitchen built-in including two tier, cathedral ceilings, cement dock and boat ramp. Bulane tank and staff meter, excellent lake frontage property. \$29,900 - New and lovely lake resort home on deep water. CHVA, kitchen, built-in ceiling fans and skylight. Great direct and indirect lighting. Custom drapes, big utility area with built-in shelves and counters. Garden, air-air, barbed walkways and brick walkway. Storage house and neat guest house, sprinkler system, boat house with boat dock, winch and hoist. \$45,000 - 3 BR, 2 bath, beautiful and unique lake home on 125 x 350' lot. Built-in range, oven and dishwasher. Cathedral ceiling, large, spacious rooms with walk-in closets. New carpet and tile. Two storage buildings, staff meter and lake dock. Apricot, cherry, and many other fruit and native trees. Possible owner financing. \$67,300 - 2 BR, 1 bath log cabin on deep water exclusive location on wooded lot. \$110,000 - 3 BR, 1 3/4 bath two story house with approx. 3,000 sq. ft. located on beautiful lake front lot, CHVA Staff meter, septic system, covered boat dock and boat lift, concrete landing, yard, barbecue area and lots of trees. \$125,000 - Beautiful 3,000 sq. ft. two story home on one acre of water front property. CHVA, Staff meter, total electric, kitchen with all built-in, glassed in kitchen cabinets, kitchen bar and china cabinet. Master bedroom with beautiful tub area with 4 x 5 marble shower, huge sunroom and sitting area, sliding door to huge deck with hot tub. Large utility and laundry room with sink, clothes and lots of storage. 2 car garage with HVA, floodlights. So many extras, must see to believe. \$190,000 - 2 BR, 1 3/4 bath, brick house located on 100 acres of beautiful lake property. CHVA, staff water, built-in fireplace, carport and patio. Separate guest quarters with large game room and used as rental property. Horse barn, back house, horse hay barn, horse walker and irrigation system for lawns and fields. LAND FARMS, RANCHES AND SMALL ACREAGE \$8,500 - 7.5 acres with small tank surrounded by willows, access to Olden water. Possible owner financing. \$10,100 - 10 acres on 120 acre rd. Perfect building or commercial site. City water with electricity. \$10,000 - 6.81 acres in Olden. \$15,818 - 167 acres, 1500 ft. wide in beautiful location, 15 min. from Eastland. Exc. acreage upon which to build. Deep tank on property. \$20,000 - 40 acres near Carbon, 100% mineral rights on 20 to 40 acres. \$221,000 - 40 acres \$2525.00 an acre. Electricity, stocked tank, fenced. \$230,000 - 40 acres electricity and city water on property. 10 days rights. \$31,200 - 52 acres \$600.00 per acre. Good hunting and fishing. 20-25 minutes from Eastland. \$36,000 - 40 acres Hwy. frontage, well, stock tank, fenced. 5 mins. from Eastland. \$440,000 - 80 acres \$500.00 an acre with access to electricity and city water. Hand dug well and large spring. 10 days rights. \$43,000 - 80 acres in Carbon area, cultivation, water well, stock tank, fence, mineral rights. \$48,000 - 80 acres, \$600.00 per acre, 15 minutes from Eastland (east). 1 tank, excellent hunting and fishing. \$49,000 - 80 acres, \$400.00 per acre, good hunting and production land just west of Cisco. \$77,000 - 154 acres, \$500.00 per acre, 3 stocked tanks, barn and well. Electric well, excellent location. \$91,300 - 166 acres, \$550.00 per acre, near Eastland Lake. Can be divided into 40 or 80 acre tracts. Good fence, barn and pens. \$120,000 - 152 acres used near Eastland. \$180,000 - 220 acres. See under Eastland homes - \$180,000.00. \$200,000 - 300 acres, 3 tanks, petroleum production income, crop cultivation, excellent hunting area. \$226,000 - 411 acres at \$550.00 per acre. 3 tanks stocked with Bass and catfish, fenced and cross-fenced. 1/3 in coastal, buildings coralals and all mineral rights. 1970 acre ranch at \$250.00 per acre. Outstanding property with 10 tanks. 2 BR, 2 bath, brick country home with mineral rights, production income, rolling terrain and lots of trees. 1.76 acre ranch at \$340.00 per acre, fenced and cross-fenced, south west corner. Excellent hunting area. Pecan orchards available. \$3,000-28 lots on 5 acres. Two mobile home hookups. City water, well, electric and septic. Cedar rail fencing. Ideal for mobile homes. \$16,436-24.35 acres. \$23,375-42.5 acres. \$25,425-42.5 acres. \$28,100-48.87 acre, electricity. \$27,000 - Commercial building, 2 story, approx. 1950 sq. ft. double display windows in front. Includes all fixtures, dressing rooms, bathroom, carpeted, CHVA, built-in bins, shelves, racks and mirrors, \$66,000 - 3 or 5 bedroom, 2 1/2 bath, new brick home on 5.7 acres approx. 2,000 sq. ft. CHVA, fireplace, kitchen built-in, walk-in closets, large utility rooms, carport with storage and workshop, cyclone fence, barn with plumbing and electricity, 3 storage buildings, and tank. \$95,000 - 3 BR, 2 bath frame house with siding on approx. 80 acres. CHVA, brick, wood burning stove, huge porch, utility room storage building, small farm, hay shed and corral. CISCO \$10,700-3BR, 2 bath, approx. 2500 sq. ft. home on 1 1/2 acres. Hook ups for two mobile homes on back of property. \$14,000 - 2 story, commercial building approx. 3,000 sq. ft. bath-tub, double car garage and electric over. \$15,000 - 2 BR, 1 bath mobile home on 2 lots, fenced completely storage building, screened front porch, carport, and corral. \$17,000 - Commercial building, 2 story, approx. 1950 sq. ft. double display windows in front. Includes all fixtures, dressing rooms, bathroom, carpeted, CHVA, built-in bins, shelves, racks and mirrors, \$66,000 - 3 or 5 BR, 1 3/4 bath, CHVA, fenced yard, storage building garage with electric opener. Utility room, breakfast room, built-in large living room. \$54,000 - Commercial building with residence in rear. (3 BR, 2 1/2 bath), 175 highway frontage. GORMAN \$72,000-3BR, 2 bath, brick home on 10 acres. CHVA, double car garage, TV, satellite, total electric. Storage house. Any mineral rights owned go to buyer. \$77,000-3BR, 2 bath, beautiful brick home on 51 acres. CHVA, built-in, wood cook top, 3 pantries, sewing room, fireplace. Kitchen built-in all wood cook top, double ovens, trash compactor, dishwasher and water softener. Patio with Bar-B-Q, swinging gate with automatic controls. Separate horse lots with covered stalls, brick crowing pen and horse chute. Two horse starting stalls. Metal shed and 10 stall barn. BARBARA LOVE 647-1397 PEGGY SWAFFORD 647-1050 CINDY FOSTER 629-8227 ROSEMARY FERGUSON 653-2375

Defensive Driving

Eastland County Defensive Driving School will have classes Jan. 11, 8 a.m. to 4:30 p.m.

The fee for the call is \$20 and you may call 442-2673 or 442-4479 for enrollment.

The class is located at 600 E. 8th Street in Cisco at the Mountain Top Church Family Center.

Ann Williams REAL ESTATE

610 Conrad Hilton Ave., Cisco 442-1880 Business & Home Phone

CISCO HOMES

Workable With Your Budget! Homes priced under \$12,000. Some with owner fin. and \$150. mo. Combine Your Business and Home - large 2 story, corner property, only \$15,000. with owner financing. Room To Ramble, 4 BR, 2 baths, formal DR, 2 car garage, possible owner financing, only \$18,000. Great Terms, Great Price - only \$15,000, 3 BR, 2 baths, 2 1/2 lots, owner financing available. Numerous Large Pecan Trees Surround this 2 BR home, CH/CA, double garage, carport, storage bldgs. Garden Space - 5 lots, 2 BR brick, energy efficient, CH/CA city water plus well, \$25,000. Possible Financing for Low Income Family, 2 BR brick, central heat, workshop, large carport. Fantastic Kitchen - cabinets galore, spacious 3 BR, 2 baths, LR, DR, den, CH/A, 2 carports. Relax and Enjoy - Roomy 3 BR, 2 bath brick home, CH/CA, 2 storage bldgs, patio, carport, fenced yard. Time To Buy, Int. Rates Are Low, nice 3 BR, 2 bath, CH/CA, den or office, fireplace in LR, garage. The Search Is Ended, 3 BR, 1 1/2 bath brick, CH/CA, double garage, covered patio, nice yard, \$34,500. This Victorian Home Has Character, 3 BR, 2 bath surrounded by large oak trees, formal LR, DR, den with woodheater, insulated shop, carport, gazebo. Imagine This! Indoor Heated Pool, 4 BR, 3 baths, CH/CA, large garage and carport, poss. owner fin. Make This House Your Home, approx. 3500 sq. ft., 4 BR, 3 1/2 baths, numerous oversized closets, 2 CH/CA units, fireplace, large yard, many extras. LAKE CISCO - Several Homes and Cabins to choose from, call for more information. VACANT LOTS - 24 adjoining lots \$14,500; also 12 adjoining lots \$9,400, plus some individual lots. Call for details.

SMALL AND LARGE ACREAGE

Reduced to \$33,000., Nice brick home with CH/CA and guest house on approx. 1 1/2 acres, orchard, city water, just outside city limits. Approx. 61 acres, cultivation and wooded acreage, new 3 BR home in progress ready for your finishing touch, \$39,500. Approx. 152 acres, several tanks, water well, 2 BR country home, shop, barn, other outbuildings.

Kay Bailey Real Estate

P. O. Box 693 - Eastland, Texas 76448 R.G. (Buck) Wheat, Broker 629-2365 629-8514

EASTLAND HOMES

Wonderful 4 Bedroom, 2 3/4 Bath, Situated on Overized Lot, All The Amenities, Shown By Appointment, \$110,000. Beautiful Country Home on 8.66 ac, 3 Bedroom, 2 1/2 Bath, Brick, Custom Built, Professionally Decorated, \$115,000. \$75,000 - \$100,000. CUSTOM BRICK, 3 Bedroom, 1 3/4 Bath, Garage, Formal Living/Dining Den, Gameroom, Central Heat, \$80,000. Pantafide Country Home, 3 Bedroom, 1 3/4 Bath, Carport, on Approx. 1 1/2 ac, Edge of Town, Super Well-Kep Home \$79,500. BRICK DUPLEX, 3 Bedroom, 1 3/4 Bath, Each Side, or Could Be Large 6 Bedroom Home, Ideal Location Near Schools, \$75,000. \$60,000 - \$75,000. Crestwood Addition, Pretty 3 Bedroom, 1 3/4 Bath, Wooded Lot, Cathedral Ceiling, Extra Nice, Must See \$74,500. Victorian Charm, Outstanding 4 Bedroom, Yellow Frame, Formal Dining, Fireplace, Central Heat & Air, Don't Miss This! \$68,500. Another Country Beauty, 3 Bedroom, 2 Bath, Formal Dining, Jenn-Aire Range, Covered Patio, Fenced Yard, and More, \$68,500. Lake Leon, Near Dam, Deep Water, Comfortable Family Home on Huge Lot, Nice Dock, Staff Meter, Ideal Location, \$68,500. Contentment in Olden, Custom Built on Approx. 1 Ac., Completely Fenced, Abt. 1830 sq. ft., A Nice Place! \$63,900. \$40,000 - \$60,000. Family Site, 3 Bedroom, 1 3/4 Bath, Formal Dining, 3 Fireplaces, Carpet, Custom Drapes, CH/ Carbon Home, Extra Nice 3 Bedroom, 2 Bath, Brick, Carpet, Drapes, Central Heat & Air, Corner Lot, Fireplace, \$52,000. Bargain Of The Year! Lovely Valley View Addition, 3 Bedroom, 1 3/4 Bath, CH/CA, Carpet, Builins, Den, Fireplace, \$51,900. Cute At Car Be 3 Bedroom, 2 Bath, Situated on 12 ac. Country Setting, Carpet, CHVA, Covered Patio & Storage, Nice! \$45,000. Lake Leon, Hallsback Road, Super Nice 2 Bedroom, 2 Bath, Lake Home, Deeded Lot, Staff Meter, Satellite Dish, Fireplace, \$45,000. \$40,000 - \$40,000. Pine Trees surround this 3 Bedroom, 2 Bath, Brick Home on Overized Lot, 2 Car Carport, Pretty Patio, Owner Finance, \$39,500. Room To Roam, Large 2 Bedroom, Frame w/Siding, Carpet, Custom Drapes, Living/Dining Room, Central Heat, \$39,500. Lake Leon, Staff Area Across From Island, Two Deeded Lots, Deep Water, 14' x 80' Mobile Home w/80 Screened Porch, Dock has Elec. Shed, Super Place! \$33,000. Another Lake Leon Property, Two Beautiful Lots w/older house, Staff Meter, Electricity, Deep Country Living! This Lean, 3 Bedroom, 1 3/4 Bath, Frame w/Siding, Central Heat & Air, Carpet, Builins, Corner Lot, \$27,000. A Ray Of Sunshine! Freshly Painted Interior makes this Large 3 BR, 2 Bath Sparkle! Formal Dining, Brkfr. Nice, Fireplace, \$34,000. Owner Finance, Attractive Brick Home on larger corner lot, Carpet, Central Heat & Air, Fireplace, Nice! Delay on This One! \$30,000. Walking Distance To Leon, Near 2 Bedroom, Frame w/Brick Trim, Central Heat, Builins, Fenced Backyard, Assumable FHA Loan! \$28,000. If GOLF Is Your Game, Try this 3 Bedroom, 2 Bath, Doublewide on 1 ac. Lot across from Golf Course, CH/CA, Builins, Fireplace, \$27,500. Country Living! This Lean, 3 Bedroom, 1 3/4 Bath, Frame w/Siding, Central Heat & Air, Carpet, Builins, Corner Lot, \$27,000. Estate Sale, Well-kept 2 Bedroom, White Frame, Situated on Two Lots, Screened Porch, Storage Bldgs, Two 2 Car Garages, \$25,000. Country Living! This Lean, 2 Bedroom, 2 Bath, Central Heat & Air, Formal Dining, Nice Modern Kitchen, on approx. 3 ac. \$25,000. Homey Cottage situation at a Beautiful Wooded Lot, Assume Seller's Loan w/Small Downpayment, \$24,500. Good Looking 2 Bedroom, Yellow Frame, Big Front Porch, Fence, Extra Nice 1000 sq. ft. metal shop bldg., just \$22,000. UNDER \$20,000. Ninety 2 Bedroom Mobile Home on approx. 3/4 ac., Corner Lot, Central Air, Horse Stalls & Fence, Well Traded! \$19,500. Spacious 2 Bedroom, 2 Bath, Mobile Home, Large Living Area, Carpet, Drapes, Central Heat & Air, All Appliances, \$19,500. Needs Your TLC, 3 Bedroom, Frame, Formal Dining, Leaky Roof in one spot, but priced accordingly, \$16,000. Residential or Commercial, 4 Bedroom, Older Frame w/Siding, Screened Porch, Lot Also Would Be Worth This \$12,000. Nice 2 Bedroom, 2 Bath, Mobile Home, Carpet, Frame, Central Heat & Air, Builins, \$12,000. Lake Leon, Prime Commercial Property, Commercial Lot near Plaza, \$11,000. Carbon, 3 Lots near Baptist Church, City Utilities, \$11,000. Lakeside Country Club Area, 5.29 ac. overlooking Golf Course, \$8,000. Near Eastland Lake, Approx. 3/4 ac., Wooded, Fenced, Mobile Home Hookup & Utilities, \$7,800. Additional Ac. Area, \$7,800. Eastland Residential Lots, \$2,500 to \$10,000. ACREAGE Productive Land, 160 ac., 6 Pastures, Fenced & Crossfenced, Kline & Coastal, 4 Tanks, City Water, Scattered Oaks, 3 BR Home, \$700 per ac. 100 ac., Mostly Grass & Wooded, Good Fences, 2 Tanks, City Water, Good Hunting, \$675 per ac. Heiter's Paradise, Very Isolated, Sabera River runs through, Large Oak & Pecan, Lots of Deer & Turkey, Owner Home, \$400 per ac. Near Moran, 150 ac., Highway Frontage, Priced To Sell! \$425 per ac. 166 ac., Mostly Pasture, Some Cultivation, Corner Tract, Could Divide, \$550 per ac. STOP LOSING - Office Space! Now's the time to buy this office building, 6 spacious offices, kitchen - confer. room, large reception area, plenty of parking. C3 DRAMATICALLY REDUCED! Seller says move this store building in excellent location on Eastland main thoroughfare & adjoining 3.7 acres with 5 trailer spaces, room for more! Don't delay! C7 GREAT LOCATION ON THE SQUARE! Large commercial building adaptable to many uses. Cen. H/A 1st floor, fireproof vault, moveable partitions. C9

COMMERCIAL: \$20,000 - 1BR, 3/4 bath cabin on good waterfront lot. Screened porch, stove, refrigerator, Staff water and septic system. \$30,000 - 4 BR, 2 bath mobile home approx. 1600 sq. ft. CHVA, built-in 2 storage buildings with workshop, cathedral ceilings, front and back. Large cement patio, T.V. Satellite, tele. and energy efficient. Irrigation system for lawn and fruit trees. Large yard. Kitchen has built-in dishwasher, breakfast bar, separate dining area, large windows and custom drapes. Wood burning stove with winter supply of cord wood. \$125,000 - 2 BR, 2 bath, mobile home on wooded lot. Large kitchen. Pump house with pump. \$30,000 - 2 BR, 1 bath mobile home on wooded lot. Great walk way and boat dock. Cemented, covered patio area. Private and serene location. \$47,500 - 2 BR, 2 bath, gorgeous mobile home with matching storage house. CHVA, kitchen built-in including two tier, cathedral ceilings, cement dock and boat ramp. Bulane tank and staff meter, excellent lake frontage property. \$29,900 - New and lovely lake resort home on deep water. CHVA, kitchen, built-in ceiling fans and skylight. Great direct and indirect lighting. Custom drapes, big utility area with built-in shelves and counters. Garden, air-air, barbed walkways and brick walkway. Storage house and neat guest house, sprinkler system, boat house with boat dock, winch and hoist. \$45,000 - 3 BR, 2 bath, beautiful and unique lake home on 125 x 350' lot. Built-in range, oven and dishwasher. Cathedral ceiling, large, spacious rooms with walk-in closets. New carpet and tile. Two storage buildings, staff meter and lake dock. Apricot, cherry, and many other fruit and native trees. Possible owner financing. \$67,300 - 2 BR, 1 bath log cabin on deep water exclusive location on wooded lot. \$110,000 - 3 BR, 1 3/4 bath two story house with approx. 3,000 sq. ft. located on beautiful lake front lot, CHVA Staff meter, septic system, covered boat dock and boat lift, concrete landing, yard, barbecue area and lots of trees. \$125,000 - Beautiful 3,000 sq. ft. two story home on one acre of water front property. CHVA, Staff meter, total electric, kitchen with all built-in, glassed in kitchen cabinets, kitchen bar and china cabinet. Master bedroom with beautiful tub area with 4 x 5 marble shower, huge sunroom and sitting area, sliding door to huge deck with hot tub. Large utility and laundry room with sink, clothes and lots of storage. 2 car garage with HVA, floodlights. So many extras, must see to believe. \$190,000 - 2 BR, 1 3/4 bath, brick house located on 100 acres of beautiful lake property. CHVA, staff water, built-in fireplace, carport and patio. Separate guest quarters with large game room and used as rental property. Horse barn, back house, horse hay barn, horse walker and irrigation system for lawns and fields. LAND FARMS, RANCHES AND SMALL ACREAGE \$8,500 - 7.5 acres with small tank surrounded by willows, access to Olden water. Possible owner financing. \$10,100 - 10 acres on 120 acre rd. Perfect building or commercial site. City water with electricity. \$10,000 - 6.81 acres in Olden. \$15,818 - 167 acres, 1500 ft. wide in beautiful location, 15 min. from Eastland. Exc. acreage upon which to build. Deep tank on property. \$20,000 - 40 acres near Carbon, 100% mineral rights on 20 to 40 acres. \$221,000 - 40 acres \$2525.00 an acre. Electricity, stocked tank, fenced. \$230,000 - 40 acres electricity and city water on property. 10 days rights. \$31,200 - 52 acres \$600.00 per acre. Good hunting and fishing. 20-25 minutes from Eastland. \$36,000 - 40 acres Hwy. frontage, well, stock tank, fenced. 5 mins. from Eastland. \$440,000 - 80 acres \$500.00 an acre with access to electricity and city water. Hand dug well and large spring. 10 days rights. \$43,000 - 80 acres in Carbon area, cultivation, water well, stock tank, fence, mineral rights. \$48,000 - 80 acres, \$600.00 per acre, 15 minutes from Eastland (east). 1 tank, excellent hunting and fishing. \$49,000 - 80 acres, \$400.00 per acre, good hunting and production land just west of Cisco. \$77,000 - 154 acres, \$500.00 per acre, 3 stocked tanks, barn and well. Electric well, excellent location. \$91,300 - 166 acres, \$550.00 per acre, near Eastland Lake. Can be divided into 40 or 80 acre tracts. Good fence, barn and pens. \$120,000 - 152 acres used near Eastland. \$1

Wildcat Tales

Journalism Class
Rising Star High School

Wid's Wide World of Wildcats

by Wid Keeling

Prior to the holidays the Wildcats took on the Bulldogs at Zephyr. The game started out very close with neither team able to take a definite lead in the first quarter. The Cats began to lose their composure in the second quarter and the Dogs jumped ahead with a 10-point lead. This let-down of defense cost the Cats the game, as neither team gained ground against the other in the second half.

The Rising Star Tournament was held January 2, 3 and 4 with Gordon, May, Gorman and Rising Star taking part in the round robin.

May was Rising Star's first opponent and the first minutes began slowly as the players began to get back into it. The Cats were able to handle the press by May most of the time, occasionally allowing a bucket. Rising Star stopped May's comeback in the second quarter. Sloppiness hurt the Cats in the second half, even though they took a victory over the Tigers.

Scores were made against May, Gordon and Gorman by Chad Hill 12/15/5, Jarod Horton 7/18/9, Jason Bible 5/0/0, Wid Keeling 16/6/6, Rene Rodriguez 7/7/10 and Donnie Horton 0/3/0.

Basketball Babes

by Gherda Williams

The New Year began with excitement and disappointment for the Lady Cat basketball team. A three-day tournament beginning January 2 was hosted by the local teams, with invitations accepted by the May Tigers, Gordon Longhorns and Gorman Panthers.

In the round-robin tournament the Lady Cats played the May Tigers the first day. The game was fairly close until the third quarter when the Lady Tigers pulled ahead. The May team won with a final score of 49-31.

Scoring for the Lady Cats were Brandi Harris, 6; Gherda Williams, 5; Misti Bailey, Betty Jones, Jo Linney and Cheryl Robinette, 4 apiece; and Olivia West and Inga Williams, 2 each.

The second day of the tournament the Lady Cats played the Gordon Lady Longhorns. There seemed to be lingering effects from the previous day's game for the Lady Cats,

because the Lady Longhorns took the lead and completely broke away in the second quarter. The final score was 58-25.

Those Lady Cats who scored were Gherda Williams, 6; Brandi Harris, 5; Jo Linney and Olivia West, 4 apiece; and Andi Ferbrache, Cheryl Robinette and Emily Stuteville, 2 each.

Their opponent on the last day of the tournament took the lead right away, but did not completely break away from the Lady Cats until the second half. The Gorman Lady Panthers won with a final score of 64-31.

Putting points on the scoreboard for the Lady Cats were Gherda Williams, 15; Andi Ferbrache, 13; Olivia West, 2; and Brandi Harris, 1.

The Lady Cats returned to school Monday with an enthusiastic attitude and hoped to find a winning strategy in the last two games before district play begins.

Junior Cat Tracks

by Christy Hughes

The Junior Cats' last game was probably as close as any they've played this year, but the Novice Hornets managed to be ahead when the last buzzer went off, defeating the Cats.

Fast-break opportunities, combined with their excellent defense, gave the Jr. Cats the lead throughout much of the game. The quarter endings saw the Cats ahead 8-7 in the first, trailing 12-9 in the second,

regaining the lead 28-26 in the third, but behind 40-37 at the end of the game. A shot from the halfcourt line in the final seconds gave the Cats hope for an overtime, but after rolling around and around the rim, the ball fell outward.

Scoring for the Cats were Michael Perales, 22; Robert Hollis, 12; and Kirby Bush, 3. Post-holiday play began for the Jr. Cats at Abilene Christian Jr. High January 6.

Stuteville's Stats

by Emily Stuteville

The Junior Lady Cats traveled to Novice December 16 to were what the Little Lady Hornets had to offer. Although the Lady Cats had a tremendous second half, it was not enough to overcome and Novice took the victory, 25-21.

Starting the game were Shirley Smith, Tianay Chambers, Angelia DeLong, Amy Collins and Kristie Collins. They had a bit of trouble breaking the Hornet press but were able to hold their own defense, keeping the score down to 3-2 Novice at the end of the first quarter.

The Lady Hornets had a good second quarter, taking

advantage of Rising Star fouls. However the Lady Cats tried hard to do their best and think basketball thoughts. The score at half was 12-7 in favor of Novice.

Rising Star had trouble scoring against the tough Hornet defense after halftime. The score at the end of the third period was 22-9, Novice.

The Lady Cats made their comeback in the fourth quarter, with several steals by Smith and four points from Chambers while Smith contributed two. DeLong, who had had a problem scoring because of the tough defense, finally found the basket and dropped in two 3 pointers. In spite of these efforts, Novice triumphed.

Scoring for the Lady Cats were Angelia DeLong; 8; Tianay Chambers; 7; Shirley Smith; 4; and Amy Collins; 2.

Rising Star played again on Monday, January 6, against Abilene Christian there, at 6 p.m.

Fast Talk

by Cheryl Robinette

What senior (C.H.) lost one girlfriend and gained another one? Only this one is from Cross Plains!

What senior (L.M.) went skiing with some "friends"?

What seniors (C.R., R.W.) actually stayed home and out of trouble over the holidays? Maybe it was because they were "always" together.

What senior (C.H.) went out of town? I wonder where he went? (Hint: It has lots of casinos and gambling!)

I wonder who all were good guys and gals this year? ALL of the seniors, SOME of the juniors, a FEW of the sophomores and NONE of the freshmen spoke up about their holidays.

What teacher got beat in basketball by J.G.? Come on, C.W., he's only in the 5th grade!

What relationship finally ended? J.H. is just a bigger heartbreaker than he is tall.

What senior is moving again? I wonder how many more times this is going to happen?

What senior (S.W.) didn't want to come back to school?

What junior got caught parking in front of her house? Don't you know that stuff gets you into trouble?

What freshman (S.K.) got totally wasted Monday night?

What teacher (Mrs. W.) must have had a great holiday? Look out! She's playing games.

Santa brought Rising Star a new student over the holidays and she's a junior.

What junior and sophomore have the same problem on their face?

What ag teacher had to play basketball every day during the holidays? That's what happens when Santa brings a basketball goal to your house!

Amazingly enough—Coach Goodman and Coach Stuteville are both driving new vehicles to school. Santa didn't think they were very good boys—wait 'til you get a look at those "beaters"!

Laura's List

by Laura Rankin

Best and Worst of 1991:

Best Movies, 1. Robin Hood 2. Dances With Wolves 3. Sleeping With the Enemy
Worst Movies, 1. Joe vs. the Volcano (From 1990, but it was so bad we had to name it two years in a row.) 2. Dutch 3. Look Who's Talking Too
Best Actor, Kevin Costner 2. Mel Gibson 3. Patrick Swayze

Best Actress, 1. Julia Roberts 2. Jodie Foster 3. Angelica Huston
Best Songs, 1. Rodeo 2. Everything I Do 3. Cream 4. Shameless 5. Too Sexy
Worst Songs, 1. Too Legit to Quit 2. Black or White 3. Strollin'

Best Video, 1. Unbelievable 2. Wildside 3. Black or White
Worst Video, 1. Groove Is in the Heart 2. Too Legit to Quit 3. Ninja Rap 4. Promise of a New Day

Best Bodies Female, 1. Madonna 2. Cindy Crawford 3. Mrs. Pritchard
Best Bodies Male, 1. Jean Claude Van Damme 2. Keanu Reeves 3. Coach Browning
Most Memorable Happenings, 1. Desert Storm, 2. Reunification of Germany 3. Fall of Russia

New Construction * Add-Ons Steel Buildings * Remodeling Tape & Bed * Sheet Rock Texture * Acoustics L & J Construction

Lynn Hutton
817/725-7582
Cross Plains

Jim Ratliff
817/643-6464
Rising Star

From Page 1 ...

Rising Star ISD Board Meeting

Mohundro presented a report of the Lunch and Breakfast program for the month of November. There are 112 elementary students enrolled. Rising Star Elementary is in the final top ten finalists for the Partnership schools initiative Program; the board gives its support to this effort.

Stuteville reported 117 students enrolled. High school students were to compete in the Quiz Bowl December 16.

Bryan presented and updated qualifications and duties for maintenance and custodian personnel. He requested that he be able to secure bids on fleet and property insurance, presented chairs for the auditorium and gymnasium and presented the Compensatory Education Program and Service Report for the current school year.

The superintendent then presented the balance sheet for cash in bank, a list of checks written for November and compared revenue and expenditures to budget. Bills for the month were

voted to be paid, plus payment number five to D&D Construction for \$44,365.00 and a payment to Huckabee and Donham Architects for \$532.38.

The board entered into executive session at 8:41 p.m. to discuss personnel; re-entered regular session at 10:05 p.m. with no action taken.

The board president opened the single bid receives for the FDLIC lot, from George Fox in the amount of \$300. It was accepted, 6-0.

On a motion by Chambers, seconded by Harris, a vote of 6-0 was given to adopt the academic honor roll policy as presented by the administration. The first reading was given.

Agnew presented a newspaper article on the taxing authority of County Education District.

The meeting adjourned at 10:27 p.m.

Support Local Businesses

Rising Star High School 1991-1992 Basketball Schedule

Date	School	Place	Time
Jan. 10	Moran	Here	6:30 p.m.
Jan. 14	* Lohn	Here	6:30 p.m.
Jan. 17	* Paint Rock	There	6:30 p.m.
Jan. 21	* Novice	There	6:30 p.m.
Jan. 24	* Brookesmith	Here	6:30 p.m.
Jan. 28	* Lingleville	There	6:30 p.m.
Jan. 31	* Lohn	There	6:30 p.m.
Feb. 4	* Paint Rock	Here	6:30 p.m.
Feb. 7	* Novice	Here	6:30 p.m.
Feb. 11	* Brookesmith	There	6:30 p.m.

*District Games

RENEW NOW

Rising Star, Eastland County,
Towns within 30 mi. of Rising Star

\$9.00 per year
Other Texas Counties

\$13.00 per year
Out of State

\$19.00 per year
The Rising Star

P.O. Box 127

Rising Star TX 76471

Fullen Motor Co.

305 East Main Eastland 629-2676

THE Heartbeat OF AMERICA



TODAY'S CHEVROLET

Start Your New Year Off RIGHT With The
RIGHT Priced Vehicle Just RIGHT For You!

1991 Chevrolet 3/4 Ton Extended Cab Silverado, 4 X 4 - 350 V8 w/tilt, Cruise, Cassette, and Power Windows and Door Locks.....\$16,500.00

1990 Chevrolet 1/2 Ton Silverado Customized Short Wheel Base - Every Option.....\$12,950.00

1990 GMC 1/2 Ton Suburban - Fully Equipped including lots of extras - Only 19,000 miles.....\$16,850.00

1990 Chevrolet 3/4 Ton 4 X 4 350 V8 w/Tilt, Cruise and AM/FM Stereo.....\$10,500.00

1989 Chevrolet 3/4 Ton Extended Cab Silverado 4 X 4 - 350 V8, w/Tilt, Cruise, Cassette, Power Windows and Locks and Lots of Extras.....\$12,950.00

1990 Chevrolet 1/2 Ton Extended Cab Silverado - 350 V8, w/Tilt, Cruise, AM/FM Stereo Cassette, Power Windows, and Locks.....\$12,950.00

1991 Chevrolet S-10 Extended Cab Tahoe - V6, w/Tilt & Cruise, AM/FM Stereo Cassette.....\$10,450.00

1988 Chevrolet S-10 Pickup Tahoe - V6, w/Tilt, And Cruise.....\$5,750.00

1985 GMC 1/2 Ton Pickup V8, Automatic w/Air & Power, tilt, cruise and power windows and locks...\$4,950.00

Remember, if you do not see the new or used vehicle on our lot you're looking for, just let us know and we will locate one for you within two days if at all possible.

Call Collect 817-629-2676.
Open Monday-Friday 8 a.m. till 6 p.m. Closed Saturday and Sunday

BASKETBALL



WILDCAT BASKETBALL '91

Moran, Here
Fri., Jan. 10, 6:30

Lady Cats
Wildcats

Lohn, Here
Tues., Jan. 14, 6:30

BASKETBALL



Go!! LadyCats!!	Chamber of Commerce & Agriculture 515 W. College 643-1209	Peoples State Bank Rising Star Branch, Member FDIC 206 W. College 643-2811	Dr. B. T. Carpenter 512 W. College 643-3141	Palace Drug Store 100 N. Main 643-3231	Go!! Wildcats!!
L & J Construction 430 E. Mill 643-6464	Winfrey Feed & Peanut Co. E. Hiway 36 643-6251	Buddy's Plumbing & Appliance Serv. 430 E. Mill 643-6464	The Rising Star 105 N. Main 643-4141	BFI Waste Systems™ 800-683-4234	Rising Star One Stop J. Bible, Owner J. Burcham, Mgr. 109 E. College 643-7011
Higginbotham Funeral Home 803 N. Main 643-4321	Frank Agnew Farm Bureau Agent 104 N. Main 643-1010	Go, Cats! 	Green & Assoc. Insurance Agency 200 S. Main 643-7817	True Value Rising Star Lumber & Hardware 200 E. College 643-4131	Rising Star Nursing Center 409 S. Miller 643-2681
Murphree Oil Co. 308 W. Mills 643-2341	Main Street Auto Repair 127 N. Main 643-1701	#1 Video Mildred Childers, Owner 200 S. Main 643-1009	Jim Ratliff Welding 430 E. Mill 643-6464	Max's Quickway 200 W. College 643-1490	The Ole Store 124 N. Main 643-2221

This page is made possible
by the businesses below.

Senior Citizens Center

by Marjorie West

We had our first meeting in 1992 on Thursday, January 2. We had a good year in 1991 and are looking forward to a good year in '92.

Among our center members who are ill are Alvie Bible, Mearlyn Jones, Ladell Key, Evelyn Ward and Artie Jagers. We are sorry you are ill and hope you will be well soon.

Visitors at the center we Bob and Loveta Beaves of Cisco Senior Citizens Center and Hershel and Corene Benton of Rising Star. We are glad you came and hope you will come again real soon.

Marion and Marjorie West had a party Christmas Eve for relatives and friends of the family. Among those who came were Mr. and Mrs. Patrick Clark and boys of Arlington; Ray and Sallie Hutchinson, Oliver and Belinda West and girls;

Happy Birthday

JANUARY 10
Norma Lee Pernell, Ora White

JANUARY 11
Tammy Tatom, Jim Rutherford, Rex LeBleu, Brenda Ezzell

JANUARY 12
Doris Cox, Sharon Lassiter, Kaylon Maynard, Mandy Holmes

JANUARY 13
Thomas Bush, Bret Griffin, Andrea Alford

JANUARY 14
Delyn Purvis, Ruby Murdoch, Dave H. Sharp, Mrs. Carl (Ileen) Smith

JANUARY 15
Vicki Walker Vaughn, Kathy Woody Buckley, Mrs. Etta Brown

JANUARY 16
Doc Bass, Art Fisher, Mrs. C.W. Howard, Linda Michael, Melissa Norris, Lugene Michael Gouin

Lucille and Weldon Stillwell of Fort Worth. Everyone enjoyed the gift exchange from the tree and the refreshments served.

On Christmas Day Wanda West Brown, Kenneth and Kurt Brown of Carrollton and Steve and Juanita Hollis and children, Christina and Justin, of Clyde joined the Marion West family for Christmas lunch; gifts were exchanged from the tree for those who weren't here for the party.

We are sorry to get the message of the death of Dutch Shults and Beulah Cook. Our sympathy goes out to their families.

Murline Somerford is critically ill and in Humana Hospital in Abilene.

Mary Carroll spent the Christmas holidays in Abilene visiting her sister and brother-in-law, Alice and Darrell West.

Curtis and Stella Hill spent Christmas in Lancaster visiting their daughter and son-in-law, Kay and John Bradley, and their family. They also visited Marty Hill.

Two nurses from Coleman came and checked blood pressures at the center. Selinda Meadows L.V.N. and N. Lambo L.V.N. will be here the first Thursday of each month. Mark your calendar for the date.

PERSONAL

Bufford and Velma Carr's holiday guests were Beth, Kyle and Terry of Fort Stockton; Courtney and Joe Buff Carr of San Angelo; David Jr., Sam, Jean Ann, and David Sr. of Austin and Jewel Thompson of De Soto.

Rising Star Nursing Center

Vickie Majors Activity Director

Dec. 23-27

MON: We did daily visits, in-room activities, passed our mail and played bingo. Players were Albert Cline 1, Bryant Houston 3, Addie Green, Ruby Booth, Maggie Christian, Daisy Smoot, Opal Gattis 2, Jennye Turner 4, Rose Nichols 3, Laura Bennie 2, Velma Baker 5, Leona Welch, and Charles Rixford 5.

TUE: Activity director gone.

WED: Activity director gone.

THU: We did daily visits and everyone talked about Christmas with their families. We also watched a movie.

FRI: We did daily visits and some of the residents were still out visiting with family. We also played bingo. Players were Albert Cline 2, Bryant Houston 3, Addie Green 3, Mary Hord 3, Maggie Christian 4, Daisy Smoot 3, Ruby Booth 4, Opal Gattis 2, Laura Bennie 4, Jennye Turner 5, Leona Welch 3, Rose Nichols 5, Sandra Creech called bingo for us. Buster wasn't felling well.

We want to thank May Baptist Church for being here Sunday. Olive Odom, Allyne Jackson, Rosalee Glenn, Estellene and Micki Frankenberg and Jean Witt.

Charles Rixford went to Thornberry to spend Christmas with his family.

Rose Nichols went out to spend Christmas with her children.

Laura Bennie went to Faye Lamb's for Christmas.

Lena Scott went to her granddaughter and enjoyed her Christmas with her great-great-grand-

daughter in Burleson. Oleta Palmer went out to her son's house here in Rising Star for Christmas and got to talk to her grandson who is in Germany.

Addie Green went out with her family.

Dec. 30-Jan. 3

MON: We did daily visits and in-room activities, passed out mail and played bingo. Players were Albert Cline 1, Bryant Houston, Addie Green 1, Maggie Christian 1, Daisy Smoot 1, Opal Gattis 5, Ruby Booth 1, Rose Nichols 2, Leona Welch, Pauline Hill and Charles Rixford 1.

TUE: We did daily visits, care plans, passed out mail and Ruby McCowen and Bobby Jack were her to sing.

WED: We did daily visits, ring toss and exercise, passed out mail and played bingo. Players were Albert Cline 2, Bryant Houston 3, Addie Green 2, Pauline Hill 3, Maggie Christian 3, Daisy Smoot 2, Ethel Moore 2, Oleta Palmer 4, Ruby Booth 2, Leona Welch 4 and Charles Rixford 2.

THU: We did daily visits, exercised, snacked, passed out mail and watched a movie.

FRI: We did daily visits, exercised, snacked, passed out mail and played bingo. Players were Addie Green 3, Bryant Houston 4, Daisy Smoot 2, Opal Gattis 2, Leona Welch 2, Laura Bennie 5, Jennye Turner 1, Ruby Booth 2, Maggie Christian 4, Charles Rixford 4.

We want to thank the Baptist Church for Sunday services.

Having January birthdays are Maggie Clark Jan. 13, 1901; Idella Collins Jan. 20, 1901;

Pioneer Patchwork

by Irma Miller

The community was saddened Friday by the news of the death of our long-time friend and quilter, Winnie Flippin. Almost age 88, she was a lifetime resident of this community. A dinner was held for the family at the Pioneer Community Club at 1:30 p.m. on Monday. The funeral was at 3 p.m. We extend our heartfelt sympathy to the family.

Frankie and Oliver Smith went to Ranger Saturday and visited her father. On Saturday afternoon Ed and Sally Mcanally came by the Smiths' and played 42.

Jean Fore was visited this past week by Myrtle and Grasson Harlow and Myrtle's mother, Mrs. Morrow, of Arlington. Also, Paul and Juanita Harlow and Vi Harlow, all of Lovington, N.M. spent New Year's with Jean. On Friday afternoon Billy and Billie June Foster of Pecos and Vera Everett of Brownwood visited with them.

Visiting with John and Irma Miller on Wednesday evening were Ruby McCowen and daughter, Naomi McCowen, and Gertie Powell of Cross Plains.

Sipe Springs News

Visitors at the T.A. Weavers' were Mr. and Mrs. Covie Weaver and son David and Mr. and Mrs. Todd Weaver, all of Garland, Mr. and Mrs. Caylon Joyce of Dallas and local family members.

Mr. and Mrs. Lewis Barton and son of Knickerbocker, Mr. and Mrs. Eric Madison, Melinda Barton and children of Big Spring, Mr. and Mrs. John Barton and children and Mr. and Mrs. David Barton and children of Fort Worth, Mr. and Mrs. Mark Barton of McCamey and Mr. and Mrs. J.E. Barton and grandson of Dublin were visitors in the home of Mr. and Mrs. Ted Barton.

Mrs. Winnie Anderson of Rising Star spent Christmas with Mary Anderson and family.

Mrs. Ruby Wyatt spent Christmas day with her son, James, Bobby and

Elizabeth Robertson Jan. 30, 1903.

Our monthly birthday party will be January 21 at 2:30; the Church of Christ will host our party.

their family.

Holiday visitors with Mae Leonard were Gayle Leonard of Fort Worth, Linda Thompson of Tyler, Don Leonard of Temple, George Leonard, Mr. and Mrs. Nonnie Leonard Jr. of Rising Star, Clint Leonard of Amarillo, Mr. and Mrs. Taylor of Dublin and Mr. and Mrs. Paul Leonard and girls of El Paso, Lori Leonard of Fairfax, Va., Mr. and Mrs. Darin Leonard and Sandra Leonard and son Kevin Ray Leonard of Corpus Christi.

Mr. and Mrs. Travis Boswell spent last weekend in Arlington with relatives.

Mr. and Mrs. Jerald Maynard and Sue Harris of Rising Star visited the T.A. Weavers during Christmas.

Mr. and Mrs. Lane Cotter of Pioneer and Vicky Crow and girls of Hico visited the Jack Millwees.

We were saddened by the death of Dutch Shults and Beulah Cook; our sympathy is extended to their relatives.

Mr. and Mrs. Brice

Obituaries

Gorda Lucille Spence

Gorda Lucille Spence, 89, died Dec. 30, 1991 in an Abilene hospital. Services were at 2 p.m. last Thursday at Higginbotham Funeral Home Chapel in Rising Star with Herman Lancaster officiating. Burial was in Wolfe Valley Cemetery near Rising Star.

Mrs. Spence was born in May in Brown County and moved from there to Abilene in 1987. She attended school in Wolfe Valley.

She was a homemaker, a Methodist and the widow of Albert P. Spence.

Survivors include a son, Robert J. Spence of Odessa; a daughter, Wanda (Mrs. Howard) Pollock of Abilene; four grandchildren; four great-grandchildren; and several nieces and nephews.

O.R. 'Dutch' Shults

O.R. "Dutch" Shults, 93, died Dec. 31, 1991 in a local nursing home. Services were at 2 p.m. Friday at Higginbotham Funeral Home Chapel with Gary Adams and the Rev. Dick Williams officiating.

Mr. Shults was born in Rising Star. He worked as a wholesale distributor for Cities Services. He was a U.S. Army veteran of World War I. He belonged to Masonic Lodge No. 688 and was a member of the Church of Christ.

Survivors include his sister, Bill Shults Gray of Rising Star; a sister-in-law, Jo Beth Winter of Kerrville; a brother-in-law, Stanford Horton of Rising Star; and several nieces and nephews.

Beulah Lee Cook

Beulah Lee Cook, 92, of Baytown, died Jan. 1, 1992 at a Baytown hospital. Graveside services were at 10 a.m. Sat. at Rising Star Cemetery, directed by Higginbotham Funeral Home.

Mrs. Cook was born in Sipe Springs. She was retired from retail sales. She was a Methodist.

Survivors include a son, James Cook of Baytown; a daughter, Dorothea Hurst of Baytown; six grandchildren; and three great-grandchildren.

Phil. D. McCanlies

Phil D. McCanlies, 70, died Dec. 30, 1991 in Seattle. graveside services were at 3 p.m. Jan. 4 at Rising Star Cemetery, directed by Higginbotham Funeral Home.

Mr. McCanlies was born in Cisco. He was a U.S. Marine veteran of World War II. He worked for the management of Continental Airlines for 32 years in Texas, New Mexico, California and Washington before retiring.

Survivors include his wife, Virginia McCanlies of Seattle; three daughters, Mrs. Bill Sorenson of Poway, Calif., Mrs. Dave Young of Ridgeway, Wash. and Dr. Donna Housh of Lincoln, Neb.; a sister, Maudie Smith of Roswell, N.M.; a brother, Elroy McCanlies of Houston; seven grandchildren; and a great-grandchild.

Herschel Q. McGlothlin

FORT WORTH - Herschel Q. McGlothlin, 75, died Jan. 2, 1992 at a Dallas hospital. Services were at 9:30 a.m. Monday at Mount Olivet Funeral Home Chapel with Tom Hollingsworth officiating. Graveside services were at 2 p.m. Monday in Rising Star Cemetery, Rising Star.

Mr. McGlothlin was born in Rising Star and managed a sales department.

Survivors include a son, Larry McGlothlin of Carrollton; a daughter, Linda Yeatman of Austin; two sisters, Lona Raye Henderson and Faye Parnell, both of Corpus Christi; five grandchildren; and two great-grandchildren.

Winnie Flippin

CROSS PLAINS - Winnie Flippin, 87, died Jan. 4, 1992 at an Early nursing home. Services were at 3 p.m. Monday at Pioneer Baptist Church with the Rev. Rufus Wilson officiating and Dwayne Clowers assisting. Burial was in Pioneer Cemetery, directed by Higginbotham Funeral Home.

Mrs. Flippin was born in Cross Cut. She was a homemaker and a member of the Pioneer Quilting Club and of Pioneer Baptist Church.

She was the widow of the Rev. Tom Flippin. Survivors include three sons, Thomas Flippin and E.J. Flippin, both of Pioneer, and Freddie Flippin of Cleburne; a daughter, Wanda Cloud Nelson of Early; a half-sister, Fannie Thompson of Midland; 18 grandchildren; 34 great-grandchildren; and 15 great-great-grandchildren.

PERSONALS

Sipe Springs News

Continued

Burman and children of Dallas visited Mr. and Mrs. David Rainer a couple of days last week.

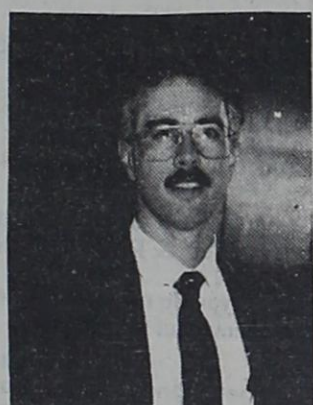
Shelton Breautigam is home from the De Leon hospital slowly improving.

Ruby Boswell of Whitney is visiting Mr. and Mrs. Travis Boswell this week.

Visitors in the home of Tom and Eula Grisham during the Christmas holidays were Shirley Hageman Adams of Hunt; Bob and Kim Winfrey of Sugar Land; Addean Winfrey, Glenn and Peggy Winfrey; Tony and Paula Winfrey and children, Cody and Emily; Mike and Malinda Winfrey and Don and Jaden all from Cross Plains; Lola Hageman, Nina Grisham and Tom and Eula of Rising Star.

"Why Farm Bureau life insurance?"

"Value. Their rates are competitive and help you get great value for your money. Your agent can help you plan for the future with a wide range of products. Life Insurance, Annuities, IRA's, Mortgage Cancellation, Disability Income, Whole Life ... you name it. No wonder Americans from every walk of life depend on Farm Bureau Insurance."



Frank Agnew
817/643-1010
817/629-1704



Southern Farm Bureau Life Insurance Company
Jackson, Mississippi

Helping You Is What We Do Best.

Lemon Tree Boutique Is Going Out Of Business

Everything in Store on Sale

1 bridal gown size 10 • Sportswear • Coordinators • Dresses • Suits • Lingerie • Jewelry • Robes • Accessories Items • Few Baby Items • Prom Dresses • Petticoats

612 Conrad Hilton Ave. Cisco 442-3294

Inventory Reduction Sale

At Buck Wheat Resources Building on I-20 in Eastland

Sherry's Handbags & Jazz By Jack

629-8764

Handbag Sale

25% to 50% OFF

Monday - Wednesday, Jan. 6, 7, 8
10 AM til 8 PM

Anything not sold will be shipped off

Custom Jewelry
Fashion Earrings
Handbags * Knit Sets
Jackets

Guest Slot

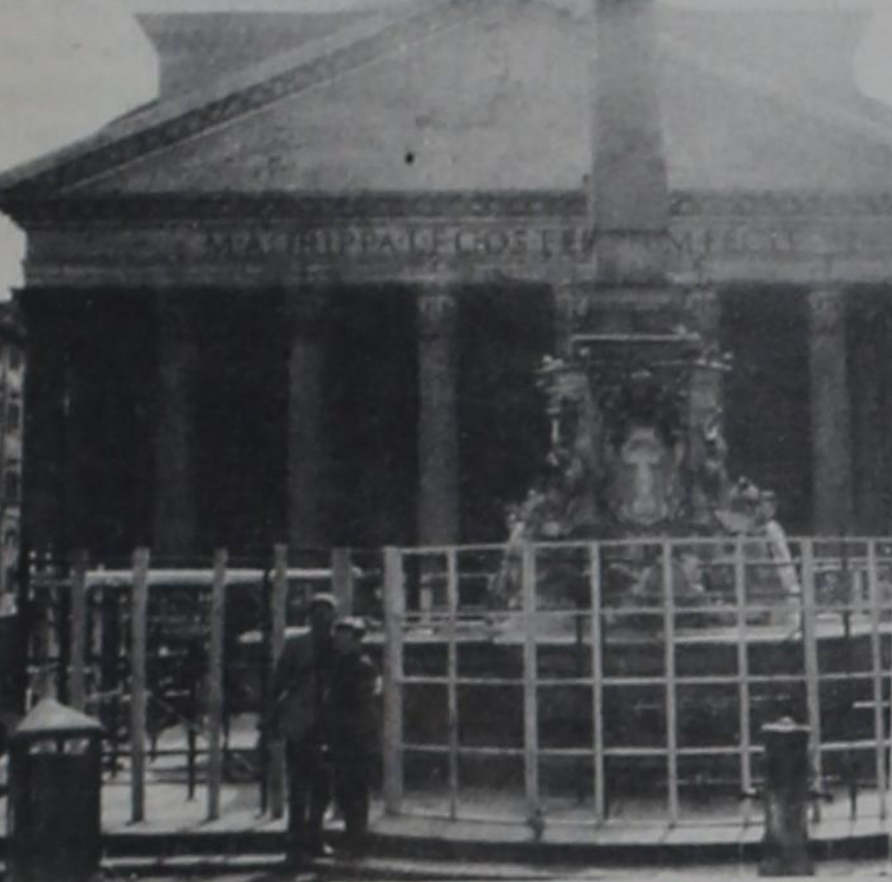
By HVO

A Rive Derci, Roma.

LAST DAY in Rome: how do you wrap it up? There's so much to see and do and such a short time? It's a sunny day, so there's a delightful breakfast on the roof overlooking the city. A quick pop back to a nearby shop with specials on lovely wool stoles; checkout and arrange to store bags in lobby for a quick last look at some missed must-sees.

A TAXI to The Pantheon (rotunda on the map), one of Rome's oldest structures. It was a temple to honor the Olympian gods and it's a reconstruction of the giant circular (42 3/4 meters in diameter and equal to the height of the building) hall roofed by a vault with a nine meter opening in the roof (ala Texas Stadium). The 16 columns are monoliths of Egyptian granite and there are columns inside.

The original, built in 27 B.C. by Marcus Agrippa in the reign of Augustus Caesar, and once in its long history, it even served as a



The Pantheon

Rome III

fish market. All the light comes from the hole in the giant dome. The artist Raphael is buried here.

The emperor presented the building as a gift to the pope in 609 who transformed it from a pagan temple into a Christian Church. The Pantheon is considered one of the great architectural masterpieces of the world. It's fronted by a plaza, surrounded by sidewalk cafes--and thousands of tourists.

If only briefly, we savored the joy of "just strolling Rome," and on advice, with maps and a few native directions, wound our way to Piazza Navona, which turned out to be serendipity. The tourists and locals were soaking the bright, October sun, and the plaza was alive. It faithfully preserves the outline of an ancient stadium, and is considered one of the great baroque localities of the city. In the center is Bernini's Fontana dei Fiuma, with two other smaller but impressive fountains on either side. The plaza is a gathering place for native artists and craftsmen, and it was here that we found "the" little framed



Amy & Gaynell in train compartment

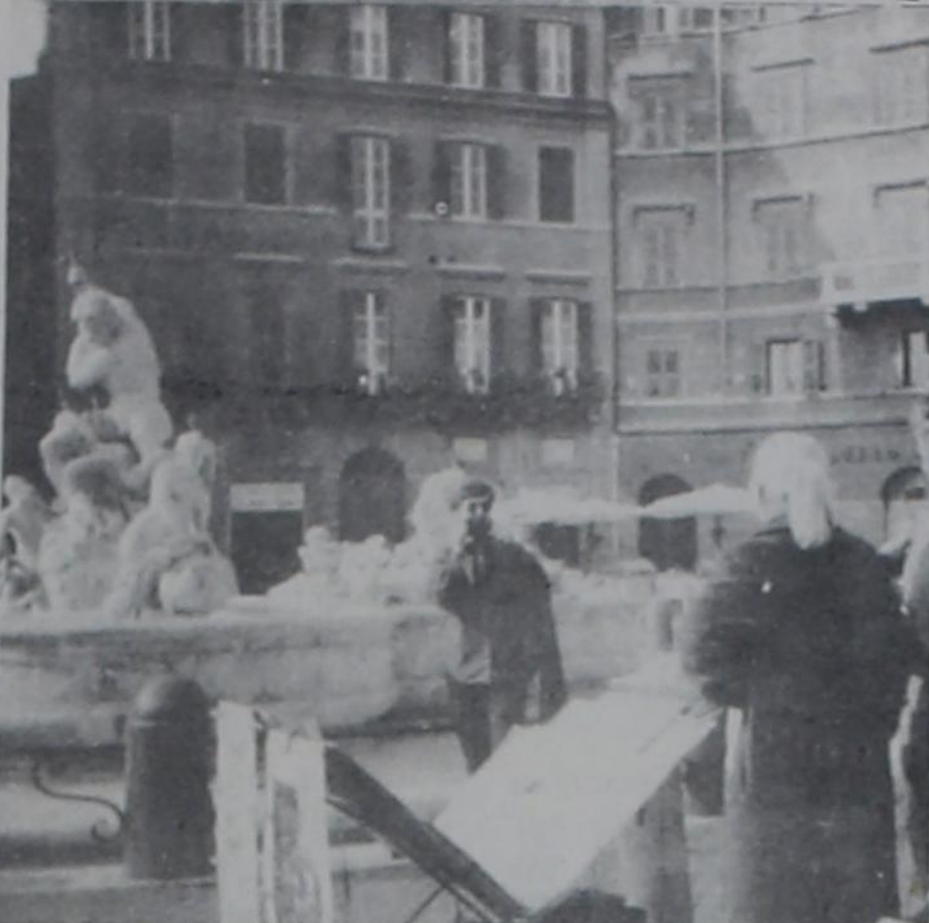
water colors that will be treasured memories for ever. The young artist was shy, but his mother wasn't: "He's the best; he does all original; no copies. This little grouping trio, to you, today, only 12,000 lira." It was the kind of place you'd love to spend days just browsing. We became regulars at a little cafe near our hotel, but still paid the add-on "table-fee" (\$2-\$3) to enjoy sitting.

Of the many things we missed, guess the catacombs we regret most, but we did a neat one to the station. Pincio Hotel Owner assured us we could have taxi stop at Church of St. Peter in Chains on the way to

the train station.

Built as a shrine for St. Peter's chains, displayed, it also has Michelangelo's beautiful heroic statue of Moses, a part of Julius II's (buried elsewhere) tomb. Why the horns on Moses? We're told, instead of having light beams radiating from his head, as the Old Testament describes him, he has horns -- reflecting a mistranslation in the Latin vulgate of the Hebrew word for "light." It is a beautiful piece; and it's a shame how little time we had to devote to it. But that's true of so much.

This tomb, which the sculptor worked on for 40 years, is considered



Artists being photographed

by many to be his greatest failure. The unfinished Captives, slaves emerging from the granite, were abandoned for the tomb and are seen elsewhere. Here again the church was under renovation, and the tomb with its Moses wasn't seen under the best of conditions.

The taxi, the termini Roma, the track, the compartment, and as the train slowly backs out of the station, the trio, with a bit of a sigh for all that's been seen and experienced, a thankfulness for not having been mugged, and maybe with a bit of a tear, whisper to each other, "Goodbye, Rome."

(Next: on to Firenze [Florence].)



Giant Columns of Pantheon



The Church on the Plaza



Bernini's Fountain

Bob Weeks Critically Ill

Robert D. (Bob) Weeks of Eastland is reported to be critically ill in Humana Hospital in Abilene. He had surgery there on Christmas Eve.

Persons wishing to send Bob cards and letters may mail them to Room 504, Humana Hospital, 6250 Hwy. 83-84, Abilene, Texas, 79606.

Bob Weeks regrets to announce that he must close his Texas Barber Shop, located in Eastland. He appreciates all the good customers who have patronized his shop.

Also appreciated are many other friends in the area - fellow musicians, the general public, all who have offered prayers and good wishes for his recovery.

Registration For Evening Classes To Be Held January 14 At TSU

Registration for evening classes for the spring 1992 semester at Tarleton State University will be held Tuesday, January 14, from 6 to 8 p.m. in the Tarleton Center. There are over 100 undergraduate and graduate courses included on the spring schedule representing just about every department.

The enrollment of non-traditional students has shown a significant increase at Tarleton and the University has responded by making every attempt to expand its selection of evening courses. These courses are fully accredited and can be applied toward a number of degree programs.

Registration for evening courses will also be accepted during regular spring registration on January 13 and 15 according to an alphabetized time table; however, most non-traditional students prefer the convenience and simplicity of registering during this special evening period.

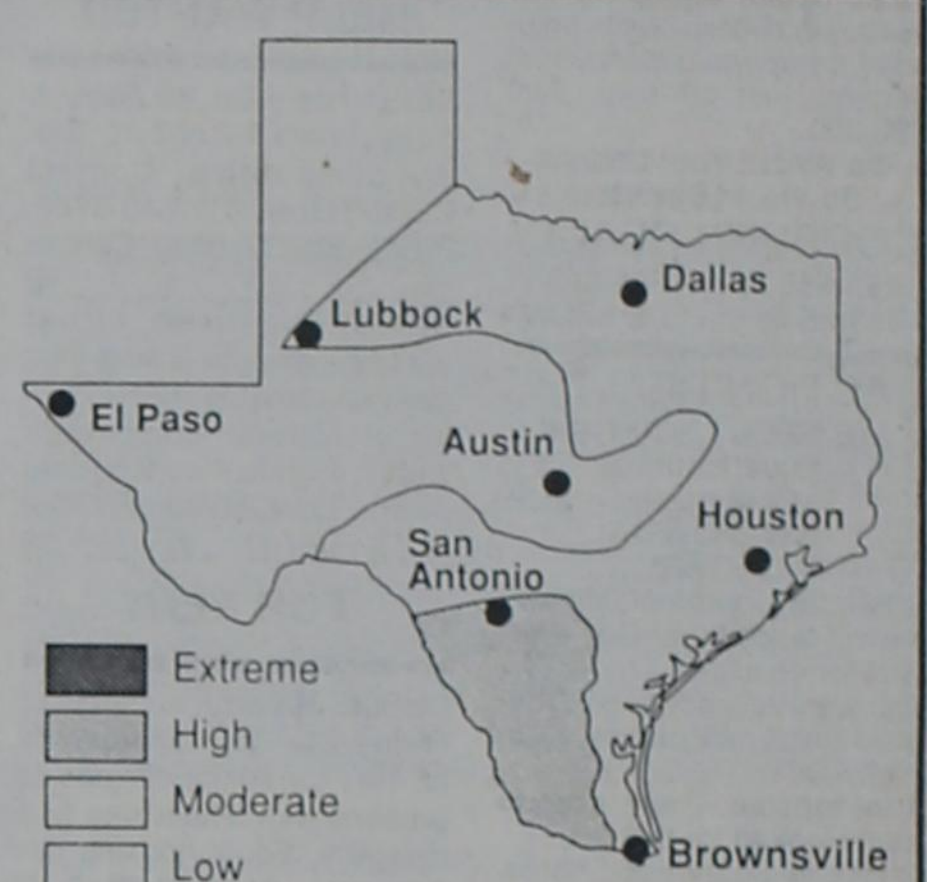
Students interested in enrolling in night classes at Tarleton for the spring semester must be accepted for admission to the University and cleared for registration by the Registrar. More information on

admission requirements is available by calling the Office of the Registrar at 817-968-9121 weekdays.

Thursday, January 9, is the last day to submit credentials for enrollment for the spring semester and the University offices will be closed December 23 until January 6 for the holiday.

Get ready for Rising Star Livestock Show & Fair Coming Soon!

WILDFIRE DANGER REPORT



Parts of Texas received scattered showers for temporary relief from wildfire danger, but conditions are expected to dry out again as cold fronts blow through. Source: Texas Forest Service and Texas Agricultural Extension Service. 11-21-91

Letter To Editor

Dearest Eastland County Citizens,

You have read some very alarming news about Manuel Hernandez Marquez of Cisco, inmate #504814. He was one of two people responsible for the death of a very beloved son (brother, father, brother-in-law, cousin, nephew, uncle, friend and grandson) Teofilo "Freddie" Valjejo Cortez. We lost Freddie July 7, 1988, around 2 a.m. in a very horrible crime. Manuel Hernandez Marquez murdered him and dumped his body at the Lake Cisco swimming pool.

Freddie was found 1 1/2 days later (Friday, July 8, 1988 around 6:30 p.m.) by a vacationing family of 4. Manuel Hernandez Marquez was convicted of Freddie's murder in January of 1989. He was given a 30 year sentence and now almost three years later he is due up for parole.

Freddie's entire family is against this release and we are asking each one of you Eastland County Citizens to please let your voice be heard if you oppose this release.

We encourage the 12 jurors who had to sit and listen to this horrible crime to please write in and oppose Manuel Hernandez Marquez's release. All of Freddie's

family would like to say "Thank you" so much in advance for all your support.

Sincerely,
Pedro/Inez Solis - Parents
Balvina/James Lewis & nieces & nephews
Guadalupe Valjejo Cortez
David/Janie Sancillo nephew & niece
Rafael Solis Sr., Grandfather
Christina/Natasha Valjejo Cortez, daughters

Gilbert & Virginia Valjejo & cousins
Frank/Guadalupe Valjejo & cousins
Terry Valjejo & cousins

Danny/Guadalupe Favila & cousins
Cousins of the late Carlos & Mary Garcia
Cousins of the late Moses Valjejo and Virginia Valjejo
Rudy/Mary Ann Solis & cousins

Fredrick/Virginia Rodriguez & cousins
Rafael/Micaela Solis Jr. & cousins
Rojelio/Gloria Solis & cousin

Alfredo Solis & cousins
Cousins of the late Guadalupe Solis & Guadalupe Solis (ED. NOTE: Address is Appeals Board, Box 13401, Capitol Station, Austin, TX, 78711.)

Over 100 Degree - Related Night Courses TARLETON STATE UNIVERSITY

REGISTRATION
Tuesday, January 14, 1992 6 PM-8 PM
TARLETON CENTER

★ Call 817-9121 for information ★
★ EVENING COLLEGE ★

New Construction * Add-Ons
Steel Buildings * Remodeling
Tape & Bed * Sheet Rock
Texture * Acoustics
L & J Construction
Lynn Hutton Jim Ratliff
817/725-7582 817/643-6464
Cross Plains Rising Star

RENEW NOW

Rising Star, Eastland County, Towns within 30 mi. of Rising Star
\$9.00 per year
Other Texas Counties \$13.00 per year
Out of State \$19.00 per year

The Rising Star
P. O. Box 127
Rising Star, TX 76471

The Rising Star Classifieds Sell

THANK YOU

The family of Gorda L. Spence wish to express their appreciation for the kindness, prayers, flowers and food.

**Bob Spence
Wanda Pollock
& Grandchildren**

We would like to thank all the fine people of the Cross Plains, Pioneer, and Rising Star area who helped us in our time of grief. A special thanks to Rev. Rufus Wilson, Cyde, Rev. Dwayne Clower, Pioneer, Pioneer Baptist Church, the wonderful women of the Pioneer quilting club, Mrs. Sheryl (Smith) Rankin, Mrs. Dorothy Renolds, Mrs. Jack Hubbard, and Mrs. Joe Dale Hubbard.

**The Family of Winnie
Flippin**

It has been heart-warming to receive the visits, telephone calls and cards since my accident. Thank you for those and for your prayers during the month I was at my daughter's.

I really appreciated my neighbors, the Funderburks and George Warfield, who helped me into the house and called Laveda for me.

I'm now home with my bones and bruises still mending. God Bless each of you.

Norine Boggs

THE RISING STAR
817-643-4141 P.O. Box 129
105 N. Main Rising Star TX 76471
©1992 Eastland County Newspapers, Inc.
Publication No. (USPS 466500). 2nd class postage paid at Rising Star TX under Act of Congress, March, 1870. Published every Thursday. Publishers, Mr. & Mrs. H.V. O'Brien. Subscription rates per year: Eastland County & 30-mi. radius of Rising Star, \$9; other Texas counties, \$13; out of Texas, \$19. No out of U.S. without APO. Postmaster: Send address changes to The Rising Star, Box 129, Rising Star TX 76471-0129.

TexSCAN
Statewide Classified Advertising Network
Advertiser 201 Texas papers for only \$250.
Reach 3 MILLION Texans.
Call this newspaper for details.

WOLFF TANNING BEDS: New commercial-home units from \$199. Lamps, lotions, accessories. Monthly payments low as \$18. Call today. **FREE NEW color catalog.** 1-800-228-6292.

DEER HUNTERS SPECIAL: 25 acres, \$795/acre, wooded, excellent hunting, adjoins paved road. Texas veteran or owner financing, prime acreage. Fox Realty, 500 Buchanan Dr., BURNET, TX 1-800-725-3699.

DRIVERS: KLLM INC., Dallas and Houston terminals are now hiring experienced tractor trailer drivers to run 48 states and Canada! Call 1-800-925-5556, Monday-Friday.

ARE YOU COLLECTING PAYMENTS on real estate you've sold? We'll give you cash now for those payments! Call National Fidelity Mortgage, Inc. today! 1-800-364-1072.

HAPPY JACK TRIVERMICIDE: recognized safe & effective by center for Veterinary Medicine against hook, round & tapeworms in dogs & cats. Available O-T-C at farmer co-ops & better feed stores.

LONG HAUL TRUCKING: Get into a high demand career as an owner/operator with north American Van Lines! Operate your own tractor. If you don't have one, we offer a lease-purchase program that is one of the best in the industry. No experience necessary. If you need training, we will train you, tuition free! You must be 21, have a good driving record, and pass substance abuse test. Call north American for information package. 1-800-348-2147. Ask for operator 489.

BECOME A PARALEGAL. Join America's fastest growing profession. Work with attorneys. Lawyer instructed home study. The finest paralegal program available. Free catalogue. 1-800-362-7070 Dept. LA722.

A WONDERFUL FAMILY EXPERIENCE. Australian, European, Scandinavian, Japanese high school exchange students arriving in August. Become a host family. American Intercultural Student Exchange. Call 1-800-SIBLING.

Davy Vestal Appointed County Agent

The Eastland County Commissioners Monday appointed Michael David (Davy) Vestal of Seymour as County Extension Agent (Agriculture) of Eastland County. Vestal fills the position held by David Tunmire, who resigned Nov. 25. Vestal will take over his duties here on Jan. 20.

**Brief Resume
Michael David
(Davy) Vestal**

Personal:
Work Experience-
June 1989 to Present - County Extension Agent-Agriculture Program Leader/County Coordinator Extension Programs Baylor County with headquarters in Seymour, Texas.

January 1985 thru May 1989 - County Extension Agent-Agriculture in Deaf Smith County with headquarters in Hereford, Texas.

June 1981 to December 1984 - Work while in college: I continued farming with my dad for two years which included growing peanuts, hay crops, wheat, oats and small herd for Limousin cattle. For one year after high school (while in college) I also worked on the Jim Barr ranch near Clyde.

May 1977 to May 1981 - My brother and I began a farming enterprise on my dad's farm for FFA and Vocational Agriculture projects.

Education:
1990 - Master of Education Agricultural Sciences Texas Tech University.

1985-87 - Masters work began West Texas State University.

1984 - Bachelor of Science Agricultural Education, Tarleton State University.
1982 - Associate Degree, Cisco Junior College.

1981 - High School Graduate, Baird High School.

Continued educational experience in crops and livestock production through Texas Agricultural Extension Service short courses, field days, and updates, etc.

Background:
I grew up in Baird, Texas, a small town in Callahan County near Abilene. I attended the public schools there and was active in all school sports, student government, Future Farmers of America and 4-H programs. I graduated in May of 1981 and attended Cisco Jr. College for a year and a half. I enrolled at

Tarleton State University in January of 1983.

My dad is a retired Vocational Agriculture teacher and an active member of community and state-wide organizations. My mother is a retired elementary teacher and instrumental in the building of their local church. I have four brothers and one sister, all of which are older than myself.

I was married in March of 1985 to LaChelle Wade

of Tuscola, Texas and presently have two sons, Colton age 5, Reed age 4, and one daughter, Kayla age 2.

I am an active member of Sacred Heart Catholic Church in Seymour.

Other Interests:
Cattle, water and snow skiing, golf and horticulture activities.

Defensive Driving

Cisco Junior College will offer a Defensive Driving Course Monday and Wednesday, January 20 and 22, from 6-10 p.m. in room 3, Schaefer Hall.

Fee for the course is \$20 and enrollment must be paid no later than 3 p.m. Jan. 20. Students must attend both nights of class and must bring a valid drivers license to class. CJC is an agency of Texas Safety Association.

For more information contact Charlotte Speegle 817/442-2567, extension 122.

**The Rising Star
Sells
RUBBER STAMPS**

REAL ESTATE

161 A. Lots of bottom land, 60 tillable; well fenced, 1/2 mi. Sabanna, good deer hunting, lots big oak, pecans. \$550 ac. Agent owned.

80.5 A. 7 mi. NE Rising Star, 30 coastal, app. 1/2 cult., well fenced, lots rd. front, \$560 ac. **95.43 A.**, 20 cult., 3-1 frame home, 4 mi. of Carbon. Good barn, native grasses. \$70,000, \$14,000 down, 10% int.

62 A. ML. about 1/2 cult. good peanut/melon land, some coastal, lots road front, with new fence. \$500 a. liberal terms, agent owned.

70.3 A. 7 mi. E. Hwy 36, timber, coastal, 3 water taps applied for, well fenced, barn, tanks, \$500 a. cash or equity/GI assumption.

54.35 A.-E. Carbon, most all good coastal, near pavement, well fenced, good well, 1 tank, minerals, \$750 A. cash or (?) terms.

App. 1.5 A.-E. Carbon, 2 BR frame home, clean, big oak trees, small barn, walls insulated, co-op water meter, fruit/pecans, just off hwy. Just \$20,000.

We WANT Your Listings 35 Yrs. in Business
COGBURN REALTY
893-666 893-5898
893-2642 DE LEON

ACTION REALTY
WE NEED LISTINGS!!!
Equal Housing Opportunity
914-643-6516

AT RISING STAR:
3 BR, 2b Corner lot, laundry room, fenced garden, well. Call for details!
Car wash! Ready to go! Covered stalls, new pumps. Main highway!
1 lot for sale. Trees, need to seal Hooked for trailer.
2 lots at Shamrock Shores. Just in time for summer!

First time on market. Close to town! Rock house, needs some inside repair, large tree covered lot, several sheds! Priced to sell. Call for details.
3 BR, 1 B Stucco sheds, large yard with trees, 10 acres, stock pond with fish. Call today!
2 BR, 1 B, owner willing to finance! Call.

James Smith, Broker
915-646-0297
In Rising Star Call
STELLA WARE
817/643-3591

PRICED TO SELL Modern 2 BR, 2B home at 416 S. Main. Well built home with good roof vinyl siding, CH/A, many extras. Sits on 100X80 lot, ha: good well & pump as well as city water, includes adjacent fenced lot 80X250. Call 817-643-3423 after 5. 52

SELLING YOUR HOME or buying? Call Stella Ware, 817/643-3591, your local real estate agent for Action Realty, Brownwood, James Smith, broker. 52

SERVICES

WILLIE VANDIVERE
Dirt, Caliche Hauling
Build Driveways,
Lease Roads, Etc.
9-5 Call 643-2023
After 5, 643-6451

CAMPBELL'S
Cabinet Shop
& Construction
817/842-5875

CARPET
Cleaned, Restretched
Repaired, Sold, Installed
Scotch Guarding Available
No charge for moving furn.
Dub Meador
Cross Plains 725-7720

DeLeon
IRRIGATION SUPPLY, INC.
Route 1 Box 22-A, De Leon
Phone 893-2123
**Zimatic Pivots • Ag Rain Hard Hose
Guns • Cornell Pumps and all other
types of irrigation equipment**
Complete Service And Installation 52

Paul Williams Roofing Co.
• FREE Estimates •
• All Work Guaranteed •
• Hot Tar & Gravel Composition •
• Shingles • T-Locks • Wood Shingles •
25 Years Experience In Eastland Area
Paul Williams Carbon, Texas
817-639-2330
If No Answer call 817-629-1020 52

FOR SALE

WRANGLER Denim shirts, sizes 14 1/2 to 17 1/2, sleeve 33-36, \$16.99. Johnson's Dry Goods, Cross Plains. 2
LADIES Rocky Mountain cape shirts, XS-L, \$36.99. Johnson's Dry Goods, Cross Plains. 2

Invitation to Bid

CITY OF RISING STAR is now accepting bids for the relocation of donated trees to the Colquitt Williams City park. Written bids will be accepted at City Hall by mail or hand delivery at 104 N. Miller, Rising Star, Tx 76471. 50-6
CITY OF RISING STAR is now accepting bids for the construction of the pavilion to be located at the city park. The approved design consists of laminated wood with steel posts. Written bids will be accepted at City Hall by mail or hand delivery at 104 N. Miller, Rising Star, Tx 76471. 50-6

HELP WANTED

NEED RN relief for Sats. & Suns., hours 6-2 or 2-10. Salary competitive. Contact Russell Gray, 817/643-6700, Rising Star Nursing Center. 52

NEWLY Remodeled, 61-bed nursing home in Rising Star seeks leadership of RN Director of Nurses; competitive salary, excellent working conditions. Contact Russell Gray, 817/643-6700. 52

FOR RENT

PUBLIC Housing authority of Rising Star has apartments for rent for senior citizens or persons with a handicap or a disability. Equal housing opportunity. 817/643-3812 or 643-6791. 52

Many subs
expire Jan. 1,

RENEW NOW!

Get ready for

**Rising Star
Livestock
Show & Fair**

Coming Soon!

SERVICES

TROY WARD CONST. New homes, remodeling, additions, commercial, agri. bldgs., barns, corrals, etc., metal bldgs. For free estimate call 817/725-6695 51-2

OLIVER WEST
PUMP SALES & SERVICE
817/643-4683
Rising Star, Texas
Complete Systems
Sold & Serviced
2 1/2 mi. south of town

JOHN DEERE TRACTORS
NEW AND USED
PEANUT EQUIPMENT
LILLISTON - KMC
PLANTERS-DISKS-
DRILLS-ROLLING
CULTIVATORS-
CHISELS
SELL OR TRADE
CLARK TRACTOR & SUPPLY, INC.
DELEON (817) 893-2061
COMANCHE (915) 356-3922
WHERE YOUR BUSINESS
IS APPRECIATED 52

POLITICAL CALENDAR

The following candidates have authorized this newspaper to list their names as candidates for the March 10, 1992 Primary Election.

County Sheriff
R.B. White
(Re-election)

**District 17
Representative**
Charles Stenholm
(Re-election)

**County
Commissioner**
Pct. 3
Dick Burgess

Home Phone 643-4236 Gasoline & Diesel
CAREY'S AUTOMOTIVE
Open Mon. - Fri. 7:30 a.m. - 5:30 p.m.
Sat. 8 a.m. - 12 Noon
James Carey, Mechanic
Hwy. 36 E. Rising Star
Shop Phone 643-7009 52

**Main Street
Auto Repair**
Open Monday - Friday 8-5 p.m.
**CUSTOM MUFFLER
& TAILPIPE WORK**
Jackie Palmore - Mechanic
643-1701 52
Hwy. 183 Rising Star, Texas

Mobil Oil Products Conoco Oil Products
All Other Major Oil Brands FINA We Deliver Bulk Fuel
Cross Plains Petroleum
(E.S.E. Inc.)
P.O. Box 219 6th at Ave. F
Cross Plains, Tx. 76443
David and Lenell Sliger Phone
Managers (817) 725-6582
We Accept FINA, VISA, Master Card & Discover 52

FARM BUREAU TEXAS
RETIREMENT PLANS
LIFE - LIABILITY
AUTO - HEALTH
HOMEOWNERS - FARM
FRANK AGNEW
AGENT
Rising Star Office Home P.O. BOX 470
817/643-1010 817/643-3189 EASTLAND, TEXAS 76448
Office 817/629-1704 52

**Don't let
your profits
get eaten up.**

Protect your income with U.S. AG Multi-Peril Crop Insurance.

Mary L. Anderson
Rt. 5, Box 105 Comanche TX 76442
(817) 842-5239
USAG
Insurance Services, Inc.

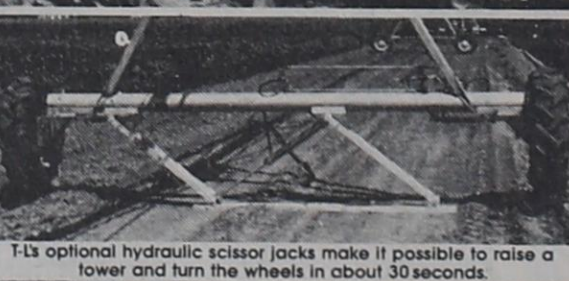
Sales and Service at
Buddy's Plumbing & Appliance
112 N. Main Rising Star 817-643-7312

T-L's Quick Tow.
The towable system
you move in minutes.

T-L's revolutionary new Quick Tow is the first towable center pivot that you can move in minutes, not hours. Optional hydraulic scissor jacks and a mobile pivot point, which houses all power components, make it possible to increase production on various size and shaped fields in less time, with less labor, and at less cost per developed acre. Choose the standard manual model or combine labor-saving options. The Quick Tow is available in several system lengths and designs to meet your exact irrigation and towing needs.

T-L's new Quick Tow features all the proven benefits that have made T-L the world leader in hydrostatic drive sprinkler irrigation. The continuous movement of T-L's Planetary Gears and hydrostatic drive delivers more uniform water application with less energy than stop-start electric systems. So you get years of trouble-free service with minimum maintenance and maximum performance.

Compare T-L's performance and history of success. You'll see that it pays to tow with T-L.



T-L's optional hydraulic scissor jacks make it possible to raise a lower and turn the wheels in about 30 seconds.

T-L Irrigation Company
P.O. Box 1047 / Hastings, NE 68901
(402) 462-4128 / TELEX: 438047 T-L IRRG HAST

The choice is simple.

Guest Slot

By H.V.O.

IT'S TRULY humbling for a West Texan to visit the likes of Rome, Florence, Venice and other such places. Once you get over the "Golly, Gee, can it really be?" syndrome, you begin to think about the centuries that have gone before, and you realize what a small niche we really touch. And when you see the splendor, you get a better feeling for the poets, the dramatists, the artists, the historians and the dreamers, who, for good and/or bad, have recorded so much, and it makes you grateful that it's been saved and passed down to us. And then you think and wonder about all that didn't make it; that got lost through plunder or natural disaster.

Folks have been nice to tell us that they're enjoying these pieces. Some are going over and have asked about safety, and we've tried to tell it as we saw it. Another precaution that was given us needs to be passed along. At a breakfast with Swiss tourists in Florence we were told that there is danger for unaccompanied women on trains because of the unscrupulous who knock on locked compartment doors, saying, "Conductor," and if admitted, spray the occupants with a dazing chemical, and proceed to rob and otherwise abuse the poor unsuspecting travelers. We were lucky, but have heard of a number who suffered losses, mostly from pickpockets. Money belts and tightly-clutched purses are highly recommended -- but isn't that also true for our own large cities?

Some of the translations in the tour books are good for laughs: "Each year there is in Venice the very famous historical regatta: the performance is unforgettable and the Grand Canal crossed by magnificent boats, seems magically (to) go back to the splendour of the times of

Out Of Italy

the Most Serene Republic." Or, this entry: "His (Venice) first inhabitants were the Venetian populations who were escaping from the barbaric invasions and from the IX century there are precise news (records?) of the development of Venices."

A NEW collection: it has always been our habit to pick up "pretty little pebbles" from various places, and this time we added chestnuts; new to us, but found hither and yon; and for the first time, seeing them

roasted and vended in squares and plazas all over.

In Florence we learned of the devastation in the floods of '63 when the Arno left its banks...In the Plaza overlooking the city, there is a bronze replica of the heroic David -- and it appeared to have been vandal-splashed with paint.

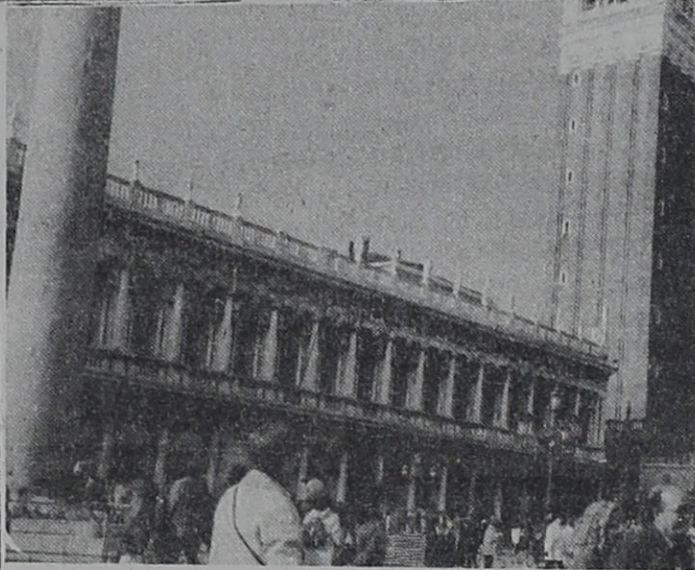
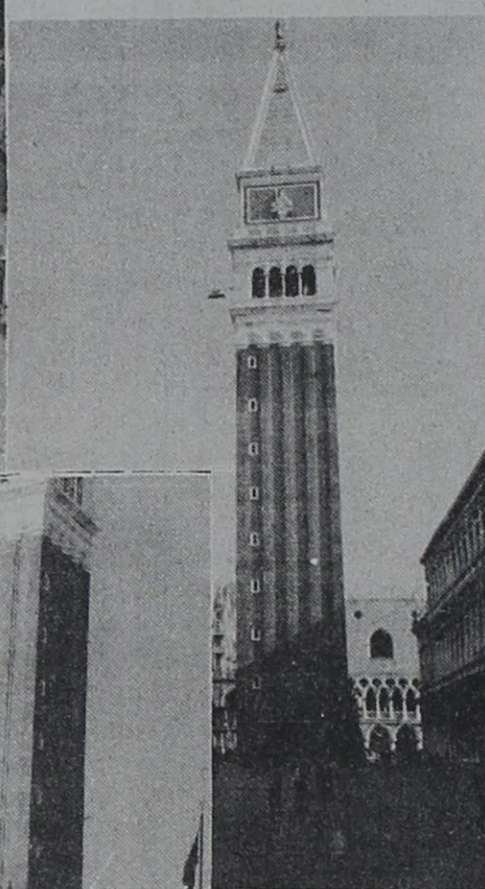
In Piazza della Signoria in Florence is Neptune Fountain dating to the 1500s; because the enormous white sea god is set in the center on a white chariot drawn by white sea horses, the Florentines renamed the sculpture the White Giant... Florence by night: unbelievably



USE THE CLASSIFIEDS



Glass-Blower



Tourists At St. Mark's Square, Venice

Classic Creations Jewelry

After Christmas Sale

New Merchandise In Stock

25-50% Off All Items In Stock

104 S. Seaman Eastland
629-3484



Make The Grade

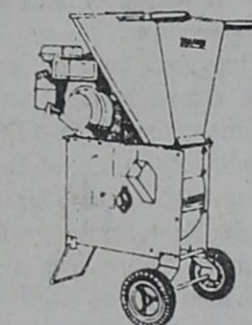


Buckle Up!

Texas Coalition for Safety Belts

Grandpaw's Tool Shed Rental

Grinder Turns Yard Waste To Garden Mulch.



Takes limbs up to 3" in diameter

1304 E. Main Eastland
Travis Chapman
629-3363

Cisco Press - Eastland
Telegram - Ranger
Times - Rising Star -
Callahan County Star
Thursday,
January 9, 1992

Over 100 Degree - Related Night Courses
TARLETON STATE UNIVERSITY

REGISTRATION
Tuesday, January 14, 1992 6 PM-8 PM
TARLETON CENTER

Call 817-9121 for information
EVENING COLLEGE

MAJESTIC THEATRE

629-1322

"ONE OF THE MOST SENSATIONAL
SUSPENSE MOVIES EVER MADE."

ROBERT DE NIRO • NICK NOLTE • JESSICA LANGE



Fri. • Sat. • Sun. • Mon.
All Shows: 7:30 p.m. - \$3.00

CHIROPRACTIC FOR BETTER HEALTH



DR. STEPHEN G. BARRY

CHIROPRACTOR

WHIPLASH TREATMENT BEGINS WITH EARLY CARE

Whiplash injuries commonly result when someone is rear-ended by another vehicle. The force of the impact causes your head to be "whipped" backward and forward in fractions of a second.

Fortunately, most whiplash injuries do not cause life threatening damage. Nevertheless, once the muscles have been overstretched, they often go into spasm in an attempt to protect themselves from further injury.

Occasionally a patient comes to my office complaining of headaches, back, neck or shoulder pain after an accident that occurred several weeks or months earlier. This is often the case when a

patient receives no care, inadequate care or improper care immediately following an accident.

Chiropractic training, which requires a minimum of six years, includes the latest research-proven and clinically tested programs for treating a variety of pain syndromes and musculoskeletal injuries.

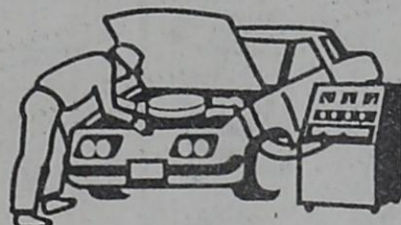
In the interest of better health from the office of:

Dr. Stephen G. Barry
--Chiropractor--
951 E. Main, Eastland
629-1771

Gaines Automotive

Hi Tech Care For Hi Tech Cars

Computer Control & Ignition Analysis



Owner
Blake Gaines
629-1008

Hours: Mon.-Fri.
8:00 till 5:30
Sat. 8:00 till Noon

314 W. Main

State Inspection Station
Eastland

DON'T OVERLOOK
YOUR INSURANCE NEEDS

Serving Eastland County Since 1919

CONTACT

D.L. KINNAIRD
GENERAL INSURANCE

629-2544

629-8606

Sallie Kinnaird

104 N. Lamar

Mike Perry

A-1 BUILDERS

Building & Remodeling

- ROOFING
- SIDING
- METAL BUILDINGS
- PLUMBING
- ELECTRICAL
- CONCRETE

Commercial * Residential

Jerry Maston • Owner 629-8148



Pearl Petty and Eula Bryant, residents of Rising Star Nursing Center, were greeted by Santa Claus at the center's Christmas party recently. The rest of the year Santa is known at the nursing home as Annie Ruth Christian.

Letter to the Editor

Have you driven by the City Park lately? If not, do. You will notice some great improvements—it's being cleaned, trimmed and getting an all-over face lift.

The City hired Don Cornett to do this job, which was an excellent choice because he goes beyond the description of employee and puts in extra work, with lots of pride.

I would like to say, "thanks, Don" and I think when you see what he's doing, you will too.

Lorrye L. Moore
Rt. 1, Rising Star

Congratulations, Grad

Mathilda Dennard

Mathilda Sisuwanin Dennard is now a graduate of the University of Texas at Arlington. Mathilda Dennard received the Bachelor of Social Work degree from the University of Texas at Arlington at graduation services held on December 21, 1991.

Mathilda is the wife of Glenn Dennard, whose parents, Bill and Peggy Dennard of Austin, attended the graduation exercise. The Dennards are former residents of Rising Star.

Kirby Bush to Participate in Rock-a-Thon



Kirby Bush, Rising Star 4-H member, will be participating in the annual Rock-A-Thon to benefit the West Texas Rehabilitation Center on January 11.

Kirby is the only Rising Star participant on a team of young people from Eastland County. The participants gather donations from sponsors and meet at the Civic Center with rocking chairs for five hours of rocking. They will then attend the completion of the Telethon.

Many Rising Star citizens donate to the Rehab center each year. The Rock-A-Thon is a fun way to participate in helping our neighbors. Kirby will be soliciting donations door to door this week, but if he fails to contact you and you would like to make your contribution through him, please call 643-4961 after 2 p.m. Be generous, support this youth, and make Rising Star shine when the donations are tallied this Saturday!

NAME _____		
CLASS: <u> </u> Subjunior (preschool-3rd) <u> </u> Junior (4th-8th)		
<u> </u> Senior (9th-12th) <u> </u> Adult		
DEPT. _____		
Photography	Needlework	Art
Single photo	Knitting	Oil
Picture story (6 or more photos mounted or in album)	Crochet	Acrylic
	Quilts	Watercolor
	Handstitchery	Elem. art
Clothing	Crafts	Foods
Daytime	Ceramics	Cookies
Sports	Toy, Dolls, Woodworking, Metal working	Pies
Formal (after 5)	Decorated Clothing	Candy
Misc.	Misc.	Breads
		Cakes
		Canned Foods

One high point award will be given from the above categories.

All proceeds go to Rising Star Livestock Raisers to be used on 4-H and FFA projects.

One high point award will be given in this category.

From Page 1 New Items on WTU Bills

WTU FORM # 3001-760
WEST TEXAS UTILITIES COMPANY
P.O. BOX L OZONA, TEXAS 76943

ABILENE TEXAS

ADDRESS CORRECTION REQUESTED

PLEASE DETACH AND RETURN THIS STUB WITH PAYMENT

ACCOUNT NUMBER	MAIL DATE	PREVIOUS	PRESENT	KWH	AMOUNT DUE
1084 801000	10120 92	48 54			

SERV ADDR 1015 1st STREET

10848010001 000000484200000000 000000000

ACCOUNT NUMBER	MAIL DATE	PREVIOUS	PRESENT	KWH	AMOUNT DUE
1084 801000	10103 92	47 95	0600	600	47 95

1015 1st STREET

WTU

APR - ANNUAL PERCENTAGE RATE

WTU FORM # 3001-760
WEST TEXAS UTILITIES COMPANY
P.O. Box L Ozona, Texas. 76943

Abilene TEXAS

Address Correction Requested

PLEASE DETACH AND RETURN THIS STUB WITH PAYMENT

ACCOUNT NUMBER	MAIL DATE	PREVIOUS	PRESENT	KWH	AMOUNT DUE
084 801000	10120 92	48 73			

SERV ADDR 1015 1st STREET

10848010001 000000487300000000000000 0

ACCOUNT NUMBER	MAIL DATE	PREVIOUS	PRESENT	KWH	AMOUNT DUE
1084 801000	0103 92	40 97	0600	600	40 97

1015 1st Street

WTU

APR - ANNUAL PERCENTAGE RATE

direct result of the company's efforts to reduce fuel costs.

From Page 1 Paroles Opposed

sulted in an unintended lenient sentence.

"We therefore protest any consideration of parole for this inmate."

x x x

"Once again our office has received notification dated 12/03/91 that the above referenced inmate, JAMES DUKE CREEL, is being considered for release on parole. Although Emory Walton is no longer the District Attorney of Eastland County, it is our intent to adopt his relentless position that this inmate

should never be paroled. Mr. Walton has previously submitted to the board forceful arguments which justify a denial of parole for this inmate. This inmate, serving a life sentence for the abduction, rape and murder of a 10 year old girl should never be paroled; therefore, we protest any consideration of leniency."

COMPUTER HELP

Do you need help in personal computers?

- Selection?
- Use (IBM or IBM Compatible)?
- Upgrade (Memory Addition)?
- Hard drive or floppy drive addition?
- Software selection/installation?

Phone Ron Jones 643-3942

Over 100 Degree - Related Night Courses
TARLETON STATE UNIVERSITY

REGISTRATION
Tuesday, January 14, 1992 6 PM-8 PM
TARLETON CENTER

Call 817-9121 for information

EVENING COLLEGE

Thank You

so much for participating in the Grand Opening and Open House at Gerrie's Beauty Salon. You made it a success and gave great support to the salon and to the sales of hand crafted sweatshirts, and handbags by Julia Devers and Felecia Bibby.

Gerrie Cornett
Julia Devers Felecia Bibby

From Page 1 Damages in County

roads and bridges. Pct. 4 has \$175,000 in damages to roads and bridges, according to estimates. Peanut damage is also estimated in figures from some of the precincts.

Judge Bailey is forwarding a request to the U.S. Department of Agriculture through the office of Congressman Charles Stenholm, asking for aid in this disaster. Ron Bailey, Head of the Eastland County ASCS office, is assisting the County in this request.

A new Department of Agriculture provision gives help on watershed and drainage damage. Judge Bailey and other officials are also seeking to have Eastland County declared a Disaster Area.

Recycle Your Trees

Have you disposed of your live Christmas tree yet? If not, let Star Pride and the City of Rising Star recycle it!

Bring your tree to City Park through the east entrance, just north of Dr. Carpenter's office, at the corner of Mill and Cooper streets. Look for a sign in the park. There are already some trees at the location.

These live Christmas trees will be turned into chips and used for mulch in our City Park (Colquitt E. Williams Memorial Park).

Thanks for your support and contribution to a beautiful park.

From Page 1 Christmas Tree Needed

who is enthusiastic about the plan. He suggests that we procure a large Eldarica Pine tree which grows well in this region and will increase in beauty each year. The pavilion is to be constructed on a four-foot elevated site and the Christmas tree could also be planted on a slightly elevated area to increase visibility to park visitors and travelers on State Highway 36.

The cost of such a tree properly transplanted and guaranteed to survive may be about \$300. Its planting can be a permanent memorial for our town. Is there an organization or citizen who wants to underwrite this

effort? The park has established a Park Improvement Fund at the Peoples State Bank where contributions of any size can be received. The planting needs to be now in the winter for maximum chance of survivability.

**CHILD ABUSE
24 HOUR HOTLINE
1-800-252-5400**

THE 'OLE' STORE

Main St. Rising Star
Trying To Keep Our Prices Down To Help Local Economy
643-2221
Sale Wed., Jan. 8-Sat., Jan. 11

Scot Paper Towels 79¢	Angel Soft Toilet Tissue 89¢	Fresh Like Corn Whole Kernel 2/\$1
Del Monte Peaches Sliced 16 oz. 89¢	Del Monte Fruit Cocktail 17 oz. 89¢	Del Monte Cut Green Beans 2/\$1
Prego Spaghetti Sauce 30 oz. \$1.79	Creamette Spaghetti & Macaroni 7 oz. 3/\$1	Pepsi & Dr. Pepper 2 Liter 99¢
Yellow Onions 5 lbs./\$1	Broccoli 99¢ bu.	Tomatoes 29¢ lb.
		Lay's Doritos \$1.69