

PROGRESS IS—
MAKING GOOD THINGS
HAPPEN

THE RISING STAR

WHERE THREE GOOD
TEXAS COUNTIES
GET TOGETHER

Rising Star, Texas

© 1982 Eastland County Newspaper Co.

Established in 1890

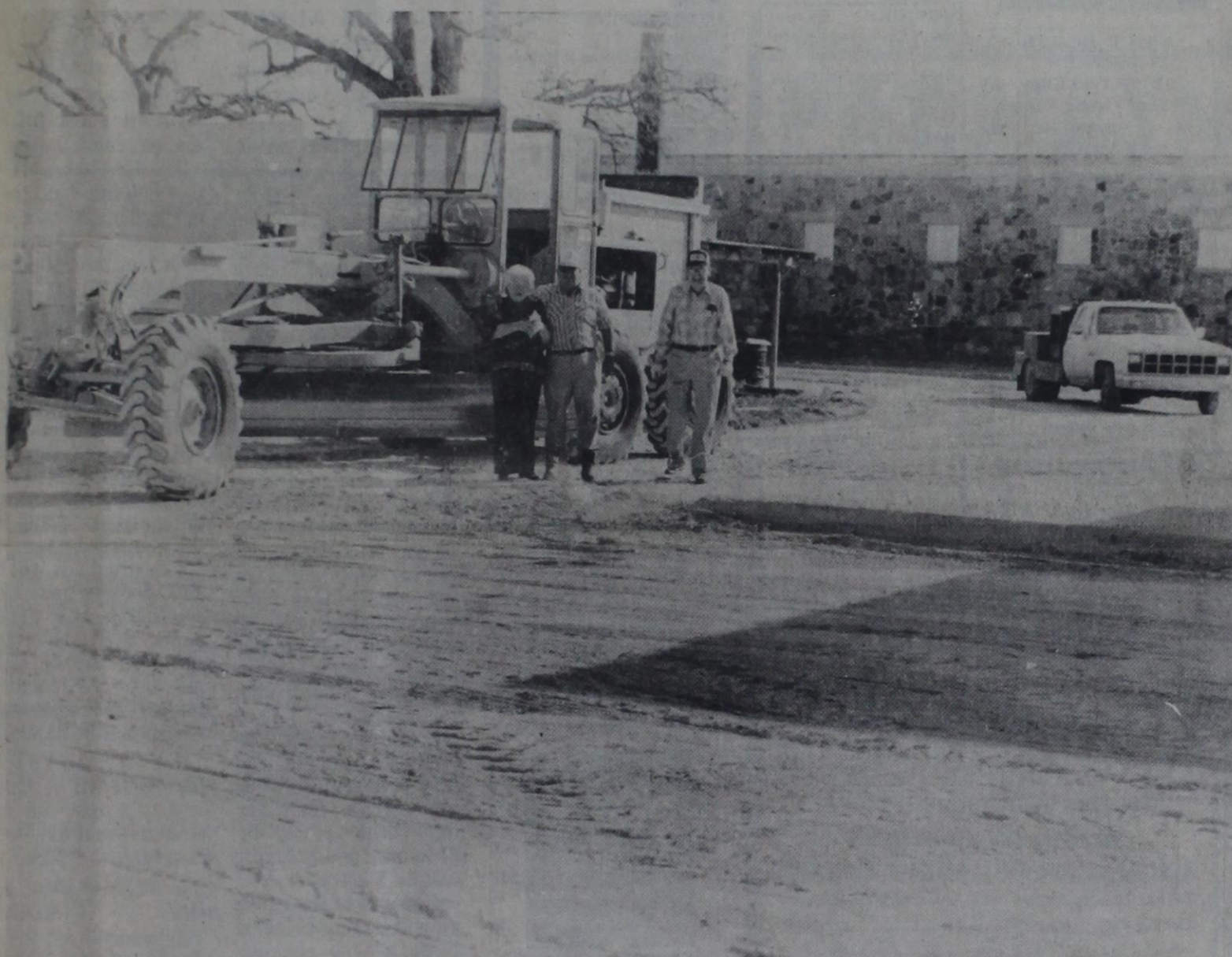
25¢

THURSDAY, DECEMBER 30, 1982

Number 52

Happy New Year

Benefactors Buy Caliche



Duby Jones, cnt, pushed and spread the caliche donated by weather. O.L. Burns and Lucille Huddleston stand beside postal patrons to alleviate the street conditions during wet Jones.

A number of residents of Rising Star became so weary of the sloppy mess the street in front of the post office becomes when the weather is wet that they banded together and donated money to have caliche and gravel hauled in and spread.

The city had caliche hauled in and spread

last summer but fell short of eliminating the soupy mixture that postal patrons have had to wade through every time it rains.

The following persons and businesses donated to the fund: First State Bank, \$100; Mrs. Dorothy Shook, \$50; O.L. Burns, \$25; Mrs. Irene Mayfield, \$10; Ellie Elliott, \$25;

Jack Shults, \$10; Bill Dennard, \$25; Higginbotham's, \$25; Eva Woody, \$5; J.C. Dunlap, \$10; and Don Boyett, \$27.50. The donations totaled \$312.50.

Melvin Henson was paid \$24 for 8 loads of caliche, Willie Ezzell was paid \$160 for hauling the 8 loads and Duby Jones was paid

\$27.50 for driving the maintainer and spreading the caliche. The \$101 above the expenses will be put into a bank account. Some of the contributors would like to have hand rails put up in front of the post office.

Everyone who uses the post office will benefit from these citizens getting together and doing something about that street and the area around the building.

City Receives Tax Rebate

Austin--State Comptroller Bob Bullock Tuesday sent \$42.1 million to 973 Texas cities as their share of the one-percent city sales tax for December.

The 1982 statewide total is up 8.8% over the 1981 year-end total. This payment reflects taxable sales made in October and reported to the state by the end of November.

Rising Star received \$1,065.27 for this period, compared to \$894.09 for the same period last year. Payments to date for 1982 total \$20,941.39, compared to \$17,822.02

for 1981 payments to date.

Cisco received \$10,488.70 for this period, compared to \$9,235.83 in the same period in 1981. Cisco's payments to date for 1982 total \$215,169.07, compared to \$173,261.65 to date in 1981.

Eastland received \$13,531.93 for this period and has received \$232,694.39 to date in 1982. Gorman received \$649.35 for this period, compared to \$1,971.51 for the same period in 1981, and has received \$26,950.95 to date in 1982, compared to \$31,122.02 to date in 1981.

Two Local 4'Hers Are Blue Ribbon Winners



Seven Eastland County 4-H members competed against 190 4-H'ers in the District 8 4-H Food Show Saturday, December 11 in Goldthwaithe. All district contestants won first place in their county contests. Winners are back row, left to right: Tabitha Hutton of Rising Star, Blue Ribbon; Patricia Ray of Cisco, Blue Ribbon; Melissa Bailey of Cisco, Blue Ribbon; and Sue Osborne of Gorman, Red Ribbon. Front row winners are, left to right: Albany Sargent of Eastland, Blue Ribbon; La Tonya Caraway of Gorman, Red Ribbon; and Stacey Wright of Rising Star, Blue Ribbon.

meeting notices ...

The May Housing Authority Board of Directors will hold its annual meeting on Thursday, January 6, 1983, at 5 p.m. in the May Community Center for the purpose of filling two vacancies on the board and conducting regular business.

May Industrial Foundation Board of Directors will hold its annual meeting on Thursday, January 13, 1983, at 6 p.m. in the May Community Center for the purpose of filling one vacancy on the board and conducting regular business.

The May Community Improvement Club will hold its monthly meeting on Monday, January 10, 1983, at 6 p.m. in the May Community Center.

The Saturday Club will meet at 2 p.m. on January 5, 1983, at the City Library. Helen Donham and Dorris Harrell will be hostesses, presenting a program on "Americans Take Vacations."

The American Legion is having a regular meeting at the hall Thursday, December 30, at 7 p.m.

Recent New Subscribers

- Pat Hight... Rising Star
- Mrs. Olene Claborn... Rising Star
- James Murphree... Sidney
- Franklin Graves Buena Pauk, CA
- Mrs. Tommie Crawford... Cleburne
- Bobby Burns... Bangs
- Stanley Chambers May Pauline Bell... Cisco
- Mrs. Jack Cox... Brownwood
- Joanie Hubbard... San Angelo

Higginbotham's
 Will Be Closed
Saturday, Jan. 1, 1983
 And
Monday, Jan. 3, 1983

Most subscriptions to The Rising Star expire January 1, 1983. Renew now

Education brings the joy of learning — a life-long experience. A student writes... and is answered with scholarships so you won't miss a single issue. Subscription rates are listed on the classified ad page.



Duby Jones puts the finishing touches on spreading the caliche around the post office.

drive safely in '83

CLASSIFIED ADS sure to get results

FOR SALE

FOR SALE:
Drive a little, save a lot on your mobile home. Double wide and singles; several to choose from. Eastland Direct Factory Outlet. Interstate 20, Olden, Texas Ph: 817-653-2432 FHA financing and conventional.

Mobile Scout, Self-contained travel trailer, sleeps 4, new appliances, \$4,000. Carter Jones 643-3335. 49-tfc

FOR SALE-2 AKC reg-female Pekinese pups, 1 blk., 1 sable, born July 12, \$150 firm. Can be seen at 301 E. College in Rising Star or Call 725-6271 in Cross Plains. 49-tfc

For Sale: Sudan and Kline grass hay - regular bales. Call 647-1155 or 647-1182. TF

Fertilized coastal hay, square or round bale. Oral Davis. 817-643-4586. 50-3t

COME AND SEE what B and W offers in new and used furniture. Lay away now for Christmas. 304 Commerce. 629-8903. Also new and used Dearborn heaters. T-107

MOTOR HOME SALE. All remaining new 1982 mobile traveler motor homes at cost 1983 at cost plus 3/4 all used motor homes & travel trailers are reduced. Trade ins accepted at wholesale on above. Johnston Truck and Supply Inc., Toll Free 1-800-792-2942, Cross Plains, Texas. 52-4tc.

Over 100 new & used lobeds dropdecks, flatbeds, oilfield folding goosenecks, double drops, stretch flats, grain cattle, mini floats, vans etc. Call now 1-800-792-2942 Toll Free for info on above & new ford cars, pickups, trucks, & mobile traveler motor homes. 25 used diesel trucks, fork lifts, graders, cranes etc. Johnston Truck and Supply Inc. Cross Plains, Texas. 52-2tc.

NEW FONTAINE 40' FLATBEDS \$7,700. With Factory Rebate, 10 X 20 tires on Cast wheels. Other specs slightly higher. Johnston Truck & Supply Inc., Toll Free 1-800-792-2942, Cross Plains, Texas. 52-2tc.

CARD OF THANKS

During a time like this we realize how much our friends really mean to us. Your expression of sympathy will always be remembered and your love shown to us during this time of sorrow will never be forgotten. Thank you for the cards, food, your support and your prayers.
Gaynelle Sansom
Family of Prentis B. Sansom

The gathering of our friends and relatives to join us in celebrating our 50th anniversary was a special treat. We appreciate each one who came and shared the occasion with us. Thanks so much for the lovely gifts and a big "Thank You" to our children for hosting the event.
Mr. and Mrs. T.A. Weaver

REAL ESTATE

HAVE YOU GOT LAND YOU WOULD SELL? WE ARE BADLY IN NEED Of acreages from 1 to 1,000, improved or unimproved. Give us a call: 893-6666 or 893-5898, De Leon.
COGBURN REALTY Our 24th year selling in your area.

REAL ESTATE: I have a variety of homes and land listed. Let's talk.
Louis A. Mayfield
Broker
817-643-4073

FOR SALE:
2 Bedroom house with water well and garden spot. 302 Joyce St.
Phone 643-5011 40-tfc

For Sale 116 acres, deer & turkey country, near Sipe Springs, \$480 an acre. Call weekdays after 6 p.m., anytime weekends. Mrs. Floyd Jones, 817-643-6815. No owner financing.

Two lots for sale, 94' X 120' and 120' X 150'. Larger lot has water well and old house which can be used for storage. On Slaton St. 915-387-2893, Mary Jo or Herbert Moening. 52-4tc.

HOMES FOR RENT

House for rent-3 bdrm. Inquire at 306 E. Ross. 52-2tp

LOST & FOUND

LOST: part Border Collie, has black and white freckles, on chest and feet. Answers to "Freckles". Call 643-2389. 51-2tc.

FOUND: 3 black faced cows, 3 bull yearlings, pay for ad, pay feed bill and come pick them up. 643-5951. 52-2t.

HELP WANTED

TEXAS REFINERY CORP. offers PLENTY OF MONEY plus cash bonuses, fringe benefits to mature individual in Rising Star area. Regardless of experience, write A.D. Sears, Pres., Texas Refinery Corp., Box 711, Fort Worth, Texas 76101. 52-1tc

CARD OF THANKS

The family of Bob Fortune would like to express their sincere thanks and appreciation to our many friends and relatives for the kind words of sympathy and love shown in the passing of our beloved husband, father, son, and brother. The flowers, memorials, cards, and telephone calls were sincerely appreciated. Many people of Rising Star have continued to show support and concern through Bob's lengthy illness which has helped to sustain the family.
We love you,
Martha, Brad, &
Karen
Flora Childers
Brothers and Sister

OPPORTUNITY

PROCESS MAIL AT HOME. \$30.00 per hundred! No experience. Part or full time. Start immediately. Details, send self-addressed, stamped envelope. Haiku Distributors, 114 Waipalani Rd., Haiku, HI 96708. 49-tfc

WANTED

USED PORTABLE Comb. squeeze chute and weight scale or portable squeeze chute. Call 629-8069. T-99

NOTICE

NOTICE-Hunters & trappers, we will be in Rising Star to buy furs starting Dec. 2 on Tues., Thurs. & Sat., 4:00-4:30 at Gulf truck stop on Highway 36. B&B Fur Co. 47-6tp

HIGGINBOTHAM FUR CO. will be open starting December 1 from 12:00 p.m. to 4:00 p.m. each, 3 1/2 miles west on Highway 36. Call Cross Plains 817-725-7350. T-104

BOAT STORAGE Don't leave your boat out in the weather, use our dry boat storage. 707 Ave. F. 442-1890. p-1

Babysitting in my home 5 days a week. Will babysit New Year's Eve all night long. 643-3051, 110 E. Ross, Lee Wilson, registered babysitter.

For the best diesel truck & trailer repair see Johnston Truck in Cross Plains, Tex. Pho. Toll Free 1-800-792-2942 for authorized Ford & International Parts & Service. 52-8tc.

CARD OF THANKS

I want to thank my friends and neighbors for the many things that were done for me while I was in the hospital and after I came home, for the prayers, visits, cards, and for the lovely gown.
A special thanks to Dr. Carpenter and Bro. Lewis.
Mrs. L.G. Crawford

CARD OF THANKS

The family of Bob Fortune would like to express their sincere thanks and appreciation to our many friends and relatives for the kind words of sympathy and love shown in the passing of our beloved husband, father, son, and brother. The flowers, memorials, cards, and telephone calls were sincerely appreciated. Many people of Rising Star have continued to show support and concern through Bob's lengthy illness which has helped to sustain the family.
We love you,
Martha, Brad, &
Karen
Flora Childers
Brothers and Sister

NOTICE

Fast, Dependable Film Developing
Palace Drug Store
Rising Star Texas

PORTABLE BUILDINGS
817-643-3104
Hwy. 36E Rising Star

SHAKLEE PRODUCTS: Do you really get a balanced diet? Let me tell you about Dr. Shaklee's Slim and Trim Plan.
We also carry natural food supplements, concentrated bio-degradable household cleaners, natural skin care products, toiletries and baby products.
Barbara Jo Kanady, Shaklee Distributor
PH: 643-5791

GROUP HEALTH INSURANCE
THE TRAVELERS
Eastland County Farm Bureau
643-5951 TC

Need things fixed up around the house? Need a new cabinet, kitchen or bathroom? Or wooden furniture made or repaired? Call Joe Campbell's Cabinet Shop, 817-842-5526. Rt. 5 Box 107B, Comanche, Tx. 76442. If no answer, call 817-643-2251. 26-6mo.

CISCO RADIATOR SERVICE
207 E. 6th St., Cisco (Breckenridge Hwy.)
Cleaning-rod-ding-recoiling-auto-truck-tractor radiators-heaters. New radiators and heaters. Auto gas tanks cleaned-repaired. Open Monday thru Friday, 8 a.m. to 5:30 p.m. Call 442-1547. Cisco. ttc

Tucker Auction Company
Monthly Consignment Sales
First Saturday of Each Month
MERCHANDISE CONSIGNMENTS ACCEPTED.
* Estate, Farm, and Liquidation Sales Also Conducted
Contact FRED TUCKER-Licensed Auctioneer 7:00 p.m.
(TxSO82-1152) At (817)629-1956 - Approximately 1/2 mile off FM2563 in FLATWOOD COMMUNITY

ATTENTION HUNTERS & TRAPPERS
Fur buyer will be in Rising Star at Truck Stop (on Hwy. 36 W) each Saturday from 12:30 p.m. till 1:15 p.m. beginning Dec. 4th.
We buy green and dry furs of all kinds. Skin case all furs, (like opossums), not open up the middle. We also buy deer hides. Well handled furs bring TOP PRICES!
Northwestern Fur Co. T-3
Colorado City, Texas
Red Veale

SERVICE

Sand and Caliche Hauling
Willie Ezzell
Phone: 643-5431

Buddy Cook Residential and Commercial. Refrigeration and Plumbing.
PH: 817-842-5950
Rising Star

LUNCEFORD ROUSTABOUT SERVICE
Have spray rig; will paint tank batteries, pump jacks.
Ph: 643-1515 or 643-2646
Home: 643-7183
6-4tc

NOTICE: Carpet cleaning-heavy shampoo followed by cold water rinse, extractor removes all dirt into barrel. Is your carpet flooded?
Have machine to remove or extract water from carpet. references in Rising Star.
Ph: Mike Boyd, (915)356-5559

OLIVER WEST
Pump and Water Well Service
Valley Aeromotor Pumps 1/2 hp & larger stocked 2 1/2 mi. so. Rising Star
817-643-4683
Call Anytime

CAIN'S GREENHOUSE
Has big thick flat sweet onion plants for sale. We dig them fresh for you.
West Pioneer Street
Herbert Cain

SERVICE

HUTTON INSULATION
Blown-in Cellulose Fiberglass Batts
Acoustical Ceilings
Free Estimates
725-6683 37-tfc.

WELDING
Oilfield and Farm
Jim Ratliff
Ph: 643-6464
36-tfc

RUST & SONS FENCING CONTRACTORS
Pipe Line and general fencing construction.
Rt. 1, Box 120, Rising Star, Tex. 76471
PH: 817-643-3137

D. & E. HOME IMPROVEMENT
Vinyl Siding, Remodeling, Insulation, Storm Windows, Doors, Screens & Paneling, Painting inside & out-Concrete Work.
P.O. Box 623
Rising Star, Tx. 76471
Ph: 817-643-3606
"We Do It All."

YOU WON'T NEED A PUSH with a Continental Battery in your car this winter. Free battery check and free installation.
CENTRAL AUTO PARTS
801 East Central
COMANCHE, TEX. 76442
Ph: 915-356-3925
OPEN 7 DAYS A WEEK

For your metal building needs get a Second Opinion
Rolston Metal Building Systems
915-698-1721

DRINKING DRIVING DEATH
A Combination we CAN'T LIVE WITH!
A message from this newspaper and the Troopers of the Texas Department of Public Safety.

Get These At Rising Star
Main Street

THE RISING STAR
Publication No. (USPS 466500)
©1981 - EASTLAND COUNTY NEWSPAPER CO.
643-4141 105 N. Main St. Rising Star, Texas Box 127 76471
Second Class Postage paid at Rising Star, Texas, under Act of Congress in March, 1870. Published every Thursday.
Publishers-Mr. & Mrs. H.V. O'Brien
Editor-Cisco-Herrel Hallmark
Editor-Eastland-H.V. O'Brien
Assoc. Editor-Eastland-Michelle Lindsey
Editor-Ranger-Betty McGee
Editor-Rising Star-Carolyn Ratliff
Staff-Gary Slade
Office Staff-Margaret Hallmark
Office Staff-Patricia Hallmark
Office Staff-Daisy Rutledge
Columnist-J.W. Sifton
Production Supervisor-Ted Rogers
Production-Raymond McCoy
Production-Wayne McCoy
Adv. Production-Wanda Hallmark
Computer Operator-Kathy Willford
Feature Writer-Viola Payne
Commercial Printing-Hale Dunson
SUBSCRIPTION RATES: year; Out of Texas \$12 per year; Eastland and adjoining counties \$6 per year; Other U.S. except APO's. \$8.50 per year.

THURSDAY, DECEMBER 30, 1982
Rate Increase Announced
Effective November 1, Advertising display rates are being raised \$.10 per inch. Classified advertising will be \$3.00 for the first 25 words and \$.05 for each word over the 25. Subscription rates November 1, Eastland and adjoining counties...\$6, other Texas counties...\$8.50, out-of-state...\$12, and foreign...NONE. The subscription card files are set up so that all subscriptions expire each January.

Publisher H.V. O'Brien has announced that advertising rates of the Eastland County Newspapers will be increased on November 1st of this year.
The Eastland County Newspapers consists of The Cisco Press, The Eastland Telegram, The Ranger Times and The Rising Star. Advertising may be placed for any one of the four papers or for a combination of the four.
Local rates will be increased 10 cents per column inch, from \$1.90 per column inch for one paper to \$2.00 per column inch. For any two papers the new rate will be \$3.00 per column inch, for any three it will be \$4.00 and for any four it will be \$5.00.
Repeats of the same ad will be half-price, if there are no changes and no editions of the paper are skipped.
Monthly displays will be increased by one dollar per paper per column inch. For one paper, the rate will be \$6.00 per column inch; for two, the rate will be \$9.00; for three, the rate will be \$13.00; and for four, the rate will be \$15.00. No monthly display ads will be accepted smaller than 2 columns by 2 inches.
Eastland County Newspapers will no longer offer mini-billboard (1x1) ads for the classified pages.
Classified ads will be \$3.00 for one insertion (up to 25 words) in one paper. Repeats of the same ad will be \$2.00 per time. A card of thanks of reasonable length will be \$5.00.
Advertising deadlines will be Monday at 5 p.m. for the Thursday edition, and Thursday at 5 p.m. for the Sunday issue for the Eastland Telegram, Cisco Press and Ranger Times.
The advertising deadlines for The Rising Star will be 4 p.m. Tuesday.

Most subscriptions to The Rising Star expire January 1, 1983. Renew now so you won't miss a single issue.

Subscription rates are listed on the classified ad page.

Texas during 1982."
The Texas State Hay Show is sponsored annually by the Texas Agricultural Extension Service. The program for this year's show is being sponsored by the Texas Forage and Grasslands Council.

DRIVE SOBER TO ENJOY IT!

Texas State Hay Show Set For January 19

Hay judging, the best hay samples in the state, and a program for hay producers will highlight the annual Texas State Hay Show at the Waco Convention Center Jan. 19.
The show is part of a three-day run of activities at the Waco Convention Center, including the Mid-Tex Farm and Ranch Show Jan. 17-19 and the annual B.I.G. (Blackland Income Growth) meeting Jan. 18.
Registration for the State Hay Show will be from 8 to 9 a.m., announces Don Dorsett, forage specialist with the Texas Agricultural Extension Service, Texas A&M University System.
Keynote speaker will be Dr. Bob Darst of Stillwater, Okla., southwest representative of the Phosphate-Potash Institute. Darst will talk at 1 p.m. on "The Place of High Fertility Forage in Modern Agriculture."
4-H and FFA youth will take part in a hay judging contest at 9 a.m.
An educational program at 9:30 a.m. will feature discussions on "Ammoniazation of Hay," "Feeding Different Qualities of Hay," and "Kochia-Weed or Forage."
Discussing "Ammoniazation of Hay" will be Dr. Dale Lovelace of Dallas, Extension forage specialist, and Dr. Al Lane of Stephenville, Extension dairy specialist. Ammoniazation involves injecting poor quality hay with anhydrous ammonia to improve its feeding value, explains Dorsett.
Johnny Cates, Wood County Extension agent, will talk about "Feeding Different Qualities of Hay."
Dorsett will lead the discussion on kochia, which some have hailed as a quality forage while others view it as a weed problem.
A meeting of the Texas Forage and Grasslands Council will round out the morning program.
Award presentations will follow the talk by Darst and will conclude the State Hay Show. Top hay judging teams and individuals will be recognized along with producers whose hay samples were tops in seven different classes. Special awards also will be presented to producers and industry personnel by the Texas Forage and Grasslands Council.
"The Texas State Hay Show is a culmination of more than 75 county and area hay shows held in the state each year," says Dorsett. "We expect about 300 samples of some of the best quality hay produced in

Carpenter-Paulk Vows Exchanged



Mr. and Mrs. Mitch Paulk will be at home in Abilene.

Jo Anne Carpenter and Mitchell Alan Paulk were united in marriage on Saturday, December 18, at 2:30 in the First Baptist Church of Rising Star with Rev. R.D. Williams, pastor, officiating the double ring ceremony.

Jo Anne is the daughter of Dr. and Mrs. Billy T. Carpenter of Rising Star. The groom's parents are Mr. and Mrs. J.W. Paulk of Abilene.

The church decorations consisted of a center bouquet of pink gladioli and burgandy carnations, accented with white spider lilies. Large green pot plants and white arched candleabras holding crystal votive cups with burgandy candles and entwined with greenery and bows were located on each side.

Mrs. Patsy Walker, organist, played traditional wedding music and accompanied Kathy Dow, a college friend of the bride, as she sang, "You Light up My Life," and "I Could Never Promise You."

The bride, given in marriage by her father, wore a formal Victorian style gown of satin overlaid with the chantilly lace. The bodice featured a sheer lace heart shaped neckline outlined in seed pearls and decorative stitching, short puffed sleeves and lace elbow-length gauntlets. The floor length skirt had deep tiered lace ruffles and a chapel length train. Adorning the bride's head was a lace covered Victorian style hat with a left side sweep and a large net bow accented with satin ribbons and trailing net streamers. The bride carried a white lace fan decorated with a burgandy, pink, and rose flower arrangement.

Karla M. Bowers served as Maid of Honor for her sister. She was attired in a Victorian style burgandy taffeta formal gown featuring a lace bodice and a matching jacket edged in ruffles. Her hat was a burgandy bowler style enhanced with a large net bow and wide trailing net ribbons. She carried an oval-shaped spray of

silk flowers.

Tracy Paulk, ten-year-old sister of the groom, served as flower girl and wore a cream color floor length spring dress with tiny pink, rose, and burgandy flowers and accented at the waist with a burgandy taffeta cummerbund. Tracy carried a decorated wicker basket filled with rose petals. The groom wore a white tuxedo and his best man, Marvin Scrivner, wore burgandy. The ushers were Dennis Paulk, brother of the groom, and Greg Beasley, a friend.

A reception in the church activity center followed the ceremony. The bridal table was covered with a white ruffled floor length table cloth and outlined in a scalloped edge of burgandy piping and tiny burgandy flowers. The centerpiece was the four-heart white wedding cake decorated in pink and burgandy roses and topped with the bride and groom ornament used thirty years before on Jo Anne's parents cake. The

servers were Janna Carpenter, cousin from Temple, Betty McKinney, college friend from Junction, and Delana Vandivere of Rising Star.

The burgandy draped groom's table featured a special surprise for the groom. The two layer chocolate cake was topped with 21 lighted candles and the words "Happy Birthday Mitch" because Mitch's birthday and wedding day coincided. The guests sang "Happy Birthday" and the groom blew out the candles. Brenda Escalona, sister of the groom, and Gay Paulk, sister-in-law, attended the groom's table. Both are from Abilene.

Many guests, local friends and out-of-town friends and relatives, attended the ceremony. Special

guests of the bride were her grandparents, Mr. Richard Carpenter of London, Texas and Mr. and Mrs. O.L. Turner of Temple.

A rehearsal dinner, with about 25 guests, was held in the bride's home on Friday night before the wedding with both mothers preparing the food.

The bride and groom were honored with two wedding showers. One was on November 22, in the home of Mrs. J.W. Paulk in Abilene. Guests were family members, friends, and college friends of the bride. The second shower, a community affair given by nineteen hostesses, was on December 4th, in the Baptist Church Activity Center. Many lovely gifts were gratefully received and will be used and treasured for many years to come.

Rewards, Bonuses Are Taxable Income

Taxpayers who were fortunate enough to earn awards or bonuses this year are being reminded by IRS that these amounts should be included as income on their 1982 federal income tax returns.

The IRS says rewards and bonuses include prizes such as a paid vacation trip awarded for attaining sales goals. If the prize or award is in the form of goods or services, its fair market value is the amount the taxpayer must include as income.

If the employer pays the bonus or award at a future time, it is not taxable until it is received by the employee, the IRS says.

If an employer distributes holiday remembrances such as turkeys, hams, or other items of nominal worth, the value of

these gifts is not taxable. However, if cash, gift certificates or similar items that may be easily exchanged for cash are given, the value of the gifts is taxable.

Further information

is detailed in Publication 525, "Taxable and Nontaxable Income." It can be obtained free by calling the IRS Tax Forms/Information number listed in the telephone directory under the U.S. Government.

MICROWAVE BASICS

Microwave A Pie

Fresh pies from the oven! Employ the assistance of your microwave oven to make pie "baking" a snap. The recipe below, prepared by the Banquet Foods Test Kitchen, includes easy step-by-step directions for a one crust pie. Surprise the family with this time saving but delicious dessert anytime.

Microwave Method

For Frozen Ready-To-Bake One Crust Pie Shells

- 1 (9-inch) frozen pie crust shell
- Remove pie from foil pan. Place in 9-inch glass pie plate.*
- Microwave at HIGH 3 to 4 minutes or until dry and opaque, rotating plate once.
- Cool crust before filling.

French Silk Pie

- | | |
|---|---|
| <ul style="list-style-type: none"> 1 cup sugar 1/2 cup butter, softened 3 ounces unsweetened chocolate, melted and cooled 1 1/2 teaspoons vanilla 3 eggs | <ul style="list-style-type: none"> 1 (9-inch) frozen pie crust shell, microwaved and cooled Whipped cream (optional) Chocolate shavings (optional) |
|---|---|

In mixing bowl, place sugar and butter; cream together until smooth and fluffy. Add chocolate and vanilla. Beat well at medium speed of electric mixer. Add eggs, one at a time, beating after each addition. Pour mixture into cooled pie crust. Refrigerate several hours or overnight. Serve topped with whipped cream and chocolate shavings, if desired. Makes one pie.

*To enhance the appearance of the crust, brush with molasses, corn syrup, maple syrup or vanilla before microwaving.

PAT MAYNARD REAL ESTATE

629-8568 EASTLAND

INT. 20 E. NORTH SIDE

442-1880 CISCO

Cisco Homes

An assumable 9 3/4% loan on this one! A 3 bedroom, 1 1/2 bath, brick home. Separate den, utility room and large closets.

Spacious rooms in this 3 bedroom frame home. Carpeted with large carpet, pecan and fruit trees. Two lots go with this one with a good garden spot. Reduced to \$20,000.

A 2 bedroom, 1 bath older home with separate dining and utility rooms. Partially carpeted, assumable loan. \$22,500.

A large 2 bedroom home with carpeting, screened in porch, fenced yard and a small office building for a business.

Large 3 bedroom, 1 bath older home. Has large rooms, separate dining room. Bathroom and kitchen have been remodeled. Also has separate garage and storage. \$21,000.

New vinyl siding on this 3 bedroom, 1 bath home. Large rooms, carpeted, storage building, combination garage and shop and fenced backyard.

A large 2 story with 5 bedrooms, 2 baths, den, separate dining and breakfast rooms, located on corner lot. Has apartment attached. A very scenic yard with lots of trees.

A nice 3 bedrooms, 1 3/4 bath home on corner lot. Central air and heat, new carpet, modern kitchen and built-in dishwasher. Also, a garage and storage area. \$25,000.

Three bedroom, 1 1/2 bath, brick home with carpet. Fenced back yard, fruit trees, double garage, \$3,000 and assume loan.

2 bed, 1 bath frame home. 1 1/2 lots. Pretty yard-lots of trees. Garage. Separate breakfast area. Master bedroom very large. \$24,500.

Homes-Eastland & Ranger

Located close to downtown, a 2 bedroom, 1 bath home with fenced yard and attached garage. Priced at only \$28,500.

Just been remodeled on inside! A 2 bedroom, 1 bath, home within walking distance to town and doctors. \$24,500.

Just like new, this very nice 3 bed, 1 3/4 bath brick home. Located near all school. Carpeted, built-ins, central heat and air. New loan or assume old one. \$59,900.

A large 2 bed, 1 bath home that is carpeted. Large double carport and also garage. Owner will carry second or down payment. \$29,500.

Close in! A 3 bed, 2 bath older home that has been remodeled. Fully carpeted, ceiling fan, fenced back yard. \$29,500.

Located in Carbon! A 2 bedroom home on one acre. Just like living in the country and only \$16,000.

Magnificent can only begin to describe the den area in this 3 bedroom, 2 bath home. Excellent location. 2400 sq. ft. of living area, and many other features. \$85,000.

Located in Ranger! A 3000 sq. ft. home on over an acre of land. 3 bedrooms, 2 baths, den, playroom dining area. A fantastic home priced to sell at only \$79,500. Extra bonus! An assumable loan.

This 2500 sq. ft. home has 4 bedrooms, 3 baths, living room and den. This is a very neat and attractive place with a fenced yard, double carport and storage. Assumable loan. Total price \$48,000.

8 lots located in the northwest part of Eastland. \$25,000.

We have other home, land and commercial listings.

Pat Maynard

Broker

629-8063

Kay Bailey 629-2365

Judy Orms 629-1218

Ann Williams

Associate

In Cisco 442-1880

Cindy Foster 629-8195

In Gorman Russell Cordell 734-2690

Holiday Service Specials

Tune Up

For Cars With Electronic Ignition-Replace Plugs, Check Timing

4 cyl. \$22.95-6 cyl. \$27.95-8 cyl. \$32.95

For Cars With Standard Ignition Replace Points, Plugs, Condenser. Check Timing. — Rotor & Distributor Cap Extra Charge if Needed

4 cyl \$36.45- 6 cyl \$41.45- 8 cyl. \$46.45

Oil & Filter Change (up to 5 Quarts oil) \$16.95

Replace Air Filter and Fuel Filter \$10.75 with Above Specials

Johnston Ford

725-6181 Call For Appointment

GIBSON'S

of
Eastland
County

going out of business sale

25% OFF

Entire Stock Of Merchandise

- ★ Health & Beauty Aids
- ★ Groceries
- ★ Sporting Goods
- ★ Toys
- ★ Auto
- ★ Electrical Appliances
- ★ Soft Goods

Plus Savings To 50% On

Other Selected Merchandise

SALE STARTS TODAY!

No Refunds, Exchanges or Lay-A-Ways

ALL SALES WILL BE FINAL

WHERE YOU ALWAYS GET THE BEST FOR LESS

GIBSON'S

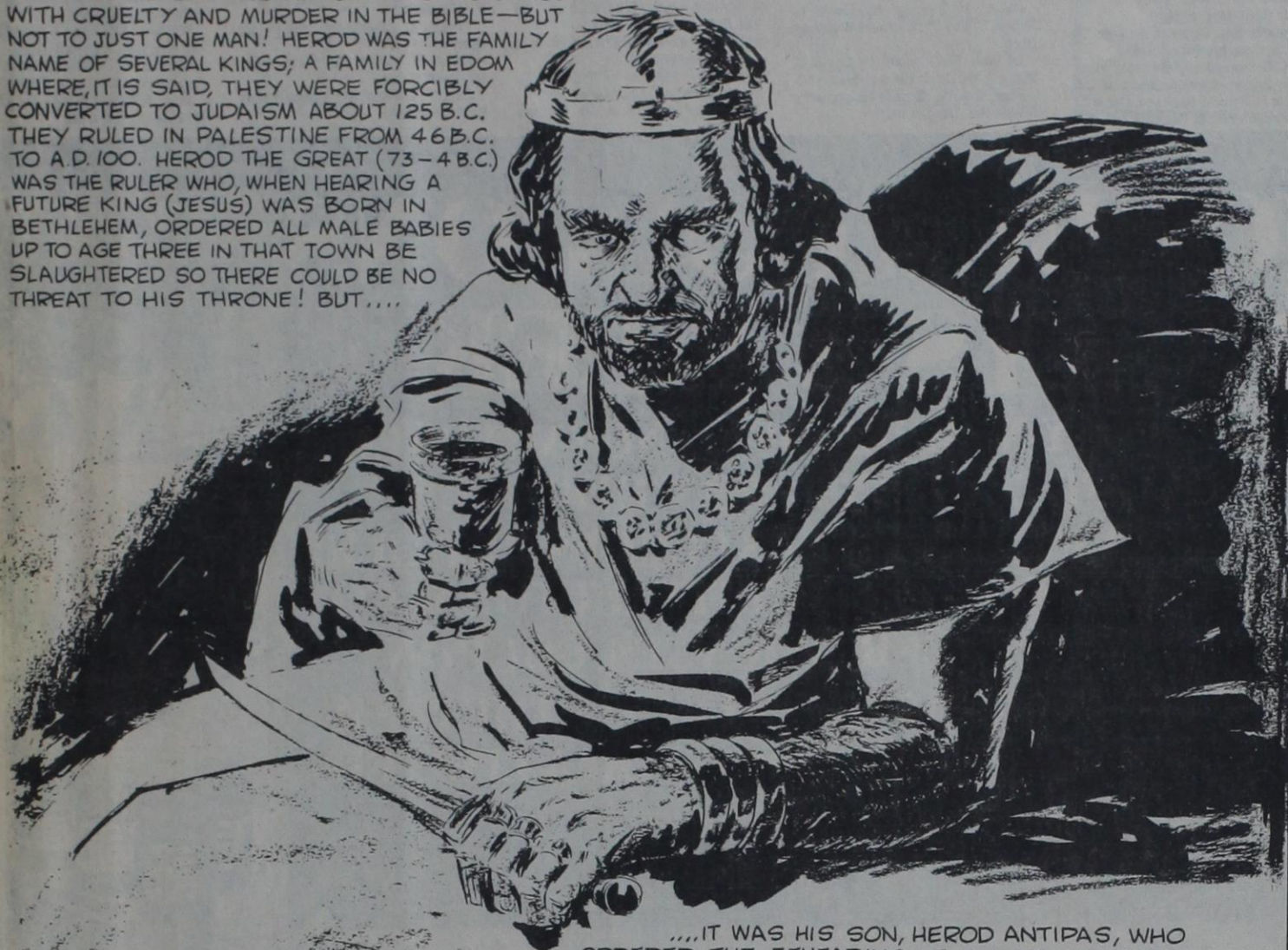
GIBSON'S

DISCOUNT CENTER

Facts About The BIBLE BY JOHN LEHTI

THE VILLAINOUS NAME OF HEROD!

THE NAME OF KING HEROD IS SYNONYMOUS WITH CRUELTY AND MURDER IN THE BIBLE—BUT NOT TO JUST ONE MAN! HEROD WAS THE FAMILY NAME OF SEVERAL KINGS; A FAMILY IN EDOM WHERE, IT IS SAID, THEY WERE FORCIBLY CONVERTED TO JUDAISM ABOUT 125 B.C. THEY RULED IN PALESTINE FROM 46 B.C. TO A.D. 100. HEROD THE GREAT (73-4 B.C.) WAS THE RULER WHO, WHEN HEARING A FUTURE KING (JESUS) WAS BORN IN BETHLEHEM, ORDERED ALL MALE BABIES UP TO AGE THREE IN THAT TOWN BE SLAUGHTERED SO THERE COULD BE NO THREAT TO HIS THRONE! BUT,...



...IT WAS HIS SON, HEROD ANTIPAS, WHO ORDERED THE BEHEADING OF JOHN THE BAPTIST AT THE INSTIGATION OF HIS WIFE, HERODIAS, WHO HATED JOHN FOR VILIFYING HER MARRIAGE TO HEROD ANTIPAS WHILE SHE WAS STILL THE WIFE OF HALF-BROTHER HEROD PHILIP! HEROD AGRIPPA I, A GRANDSON, KEPT FAMILY TRADITION ALIVE BY KILLING THE APOSTLE JAMES AND IMPRISONING PETER. HIS SON, HEROD AGRIPPA II, COMPLETED THE FAMILY ROLE OF VILLAINY BY FIGHTING ON THE SIDE OF THE ROMANS WHEN THE JEWS BEGAN THEIR REVOLT AGAINST ROME IN A.D. 66—A RECORD OF WHICH ONLY A HEROD COULD BE PROUD!

Commentary

by Myrtle Owen

1 Thessalonians 4:11-18, And that you study to be quiet, and to do your own business, and to work with your own hands, as we commanded you; and that you may walk honestly toward them that are without, and that ye may have lack of nothing. But I would not have you to be ignorant, brethren, concerning them which are asleep, that ye sorrow not, even as others which have no hope. For we believe that Jesus died and rose again, even so them also which sleep in Jesus will God bring with him. For this we say unto you by the word of the Lord, that we which are alive and remain unto the coming of the Lord shall not prevent them which are asleep.

For the Lord himself shall descend from heaven with a shout, with the voice of the archangel, and with the trump of God: and the dead in Christ shall rise first: Then we which are alive and remain shall be caught up together with them in the clouds to meet the Lord in the air: and so shall we ever be with the Lord. Wherefore comfort one another with these words. What a picture this is: the trumpets blowing, the archangel shouting, the Lord coming, the dead in Christ rising from their graves to be caught up with the Lord, with those who are alive following! The next event on the calendar of prophecy will be the catching away, or Rapture of the believers, at Christ's Second Coming. The signs of the times are being fulfilled and serve as signposts pointing to the Lord's soon return.

In fact, the Scriptures indicate that the Lord Jesus is getting ready at any moment to catch away His redeemed, Spirit-filled people from this world of sin and sorrow. The coming of the Lord remains ever imminent. The early Christians greeted each other with the word "Maranatha," which means "the Lord cometh." They were comforted when persecution confronted them on every hand. The thrones of the kings of their day mattered little in comparison with the throne of their King an Lord. For long centuries the true Church has waited. But now, at last, His coming draws nigh. 1 Thess. 5:2,3, For yourselves know perfectly that the day of the Lord so cometh as a thief in the night. (secretly) For when they shall say, Peace and safty; then sudden destruction cometh upon them, as travail upon a woman with child; and they shall not escape. But ye, brethren, are not in darkness, that that day should overtake you as a thief. Ye are all the children of light, and the children of the day: we are not of the night, nor of darkness. Therefore let us not sleep, as do others; but let us watch and be sober. (verses 4-6).

THURSDAY, DECEMBER 30, 1982

obituaries

Willie Ann Hughes

RISING STAR-Willie Ann Hughes, 81, of Rising Star, died at 11:30 p.m. Sunday at Cross Plains Nursing Home. Services were at 2 p.m. Tuesday at Higginbotham Funeral Home.

Herschell McDonald, Church of Christ minister, officiated. Burial was at Pioneer Cemetery.

Born Jan. 26, 1901, in Athens, Texas, she married Bryan Hughes Dec. 4, 1921, at Rising Star. He died July 1950. She was a homemaker and a Church of Christ member.

She is survived by a son, Boyd of Odessa; two daughters, Frances Wolf and Theresa Lewis, both of Rising Star; a brother, George Boyd of Hobbs, N.M.; eight grandchildren and 14 great-grandchildren.

Personal

Marilyn Davis of Hurst, visited her parents, Clyde and Doris Griffin, during the Christmas holidays. They spent Christmas day with Doris' mother, Mrs. D.W. Shaw, Goldthwaite.

Mr. and Mrs. C.W. Hensley and daughter Carol of Robstown, Mrs. Gracie Authar of Hood River, Oregon, and Mr. and Mrs. Howard Harris of Lake Brownwood, visited Belle Harris and her sister, Clara Kidd, before Christmas.

The W.C. Parsons of Dumas are visiting Belle Harris this week.

Belle spent Christmas day in Albany with the Elvin Mitchell families.

SUPPLIES

Get These At
The Rising Star

Twin Drilling & Well Service John G. Lee, Owner 643-7100	L & C Auto 643-3261	Bibby's Creations Winner of the Governor's Expansion Award 643-6691
Jim Ratliff Welding 643-6464	Rainbow Cafe Joyce Baker & Robin Reeves 643-3000	Jenkins Insurance Co. Mildred Childers and Juanita Boyett 643-2251
The Wishing Well Flowers and Gifts Rising Star, Texas 76471 643-2023	Chamber of Commerce Helping Your Town Grow	Trails West "The Way The West Is Clothed" 643-1601
Palace Drug Store Professional Prescription Service 643-3231	R.D.'s Printing 105 W. Austin	Chambers Grocery 643-5292
The Rising Star Your Hometown Newspaper 643-4141	J & S Grocery 643-2221 Open Daily 8 to 6	Butler Motor Company 643-3261
Higginbothams "We Have What You Want" 643-2271	Medley Motor Company Quality Workmanship 643-6211	Kountry Kitchen 643-6831
Kizer Insurance Co. All forms of insurance: life, health, auto, and fire 643-4421	<i>Count Your Blessings</i> AND BE THANKFUL	

THE CHURCH OF YOUR CHOICE THIS SUNDAY

COW POKES By Ace Reid

"Ole Apollo, you're sure named right, when you leave the launchin' pad there ain't no tellin' where you're goin'!"

LET'S TAKE OFF IN 1983! FIRST STATE BANK EXTENDS OUR SINCERE BEST WISHES TO ALL OUR CUSTOMERS AND FRIENDS! We guarantee to try even harder to furnish banking services to serve everyone and make this the greatest year ever!

DRIVE-IN BANKING

STATE ST BANK
Member F.D.I.C.
RISING STAR, TEXAS 76471

EQUAL HOUSING LENDER



Courthouse Report

Marriage Licenses

Leland Audice Hallmark and Meloday Jade Edwards
Waymon Daniel Smith and Mattie Lea Maxine Conner
Sewell Gene Smith and Cynthia Ann Way
Randy Neil Kinard and Pamela Ann Cockrell
Michael Todd Heflin and Linda Nell Spence
Matthew Craig Johnson and Sheila Kay Sawyer
Gene Arlington Frantz and Mary Louise Barner
Instruments Filed-Co. Clerk's Office
Pat Agnew & Wife To Marguerite

Lefevre & Husband M/D

B. Irene Allen To Virginia Moss Warrantly Deed
Opal Agnew & others To Christopher Haus & Wife Warrantly Deed
Boyd Builders To 1st St. Bk, Rising Star Trans. MML
Henry E. Baldrige, Dec'd To The Public Certified Copy Probate
Linton Batteas & Others To Henry W. Stanberry Deed of trust
Cecil Brownlee To Nina B. Leonard Skiles Quit Claim Deed
A. B. Black & Wife To Alton Campbell & Wife Warrantly Deed
Mickey Blair To Boots & Bottles, Inc. & others Notice Les. Pend.

Russell Leroy Baird Sr. To Russell Leroy Baird Jr. Gift Deed
Nonie Aura Bourland, Dec'd To The Public Certified Copy Death Cert.
Nonie M. Bourland, Dec'd To The Public Certified Copy Probate
James B. Bourland, Dec'd To The Public Certified Copy Death Cert.
James B. Bourland, Dec'd To The Public Certified Copy Probate
James B. Bourland, Dec'd To The Public Letter Test.
Tony M. Baxton & others To Wells Fargo Bk. N.A. Los Angeles Ca. Deed of trust
Philip C. Barrett To Dennis D. Barrett Warrantly Deed
Henry Burk To West Tex. Utilities R/W
Leon O. Breneman To John N. Loveless Warrantly Deed
Centerpoint Enterprises Inc. To Eastland Natl. Bk. Deed of trust
Kenneth Chapman & Wife To Olney Sav. Assoc. Deed of trust
Mar. Daniel Currie & Wife To Jean

Reid Warrantly Deed
Mac Arther Casey & Wife To McDaniel Currie & Wife Warrantly Deed
W.B. Cates To Bobby Johnson Rel. Deed of trust
Church of God To The Public Resolution Convey Prop.
Church of God To O.T. Killon & Wife Warrantly Deed
Alton Campbell & Wife To 1st Natl Bk-Cisco Deed of trust
Frances Cox To Greg Zelienski Ratif. OGL
Felix R. Casillas by Co. Adm'n. To R.W. Gossett Deed
Felix R. Casillas Dec'd To The Public Certified Copy Probate
Jessica O. Holley Catto To The Public Ratif. Unit Agree
Kenneth Ray Coleman & Wife To Tommy Cozart & Wife Rel. D-T
C.E. Drewery Jr. & Others To Robert Sidney Anderson & Others Stip. of Int.
Essie B. Ernst & Husband, Dec'd To The Public Proof of Heirship

Eastland Natl Bk To M.M. White & Assoc. Part. Rel. D-T
Eastland Natl Bk To Ch. of God. of Eastland Rel. Deed of trust
Eastland Industrial Found. Inc. To Morgan Port. Bldg. Corp. Warrantly Deed
Eastland Natl Bank To Centerpoint Enterprises Inc. Rel. D-T
1st St. Bk-Ranger To Bill C. Brister & Wife Rel. Deed of trust
1st Coleman Natl Bk To R.O. McCarty Rel. Deed of trust
Vada Tune Fleming & Others, Dec'd To The Public Proof of Heirship
1st Natl Bk, Gorman To James Jobe & Wife Rel. Deed of trust
First Run To The Public Assumed Name
Robert F. Fee Sr. by Exe'c To Robert F. Fee Jr. & Others Warrantly Deed
1st Natl Bk-Gorman To David C. Winge & Wife Rel. Deed of trust
First Natl Bk, Cisco To Ralph Berry & Wife Rel. Deed of trust

John Lewis Gregg To W.C. Dreinhofer & Wife Rel. Deed of trust
Harold David Grimmett & Others To Dorothy L. Greenhaw Warrantly Deed
Jimmy W. Gray & Wife To 1st Natl Bk-Gorman Deed of trust
Peggy Donica Gallagher to Peggy Jean McNeely Quit Claim Deed
Zandy Goode To West Tex. Utilities Co. R/W
Zandy Goode To West Tex. Utilities Co. R/W
William B. Griffith & Wife To Delmar E. McGlothlin & Wife Warrantly Deed
Ray Howe To Linda G. Jenkins & Others Warrantly Deed
Austin Montgomery Hinds, Dec'd To The Public Certified Copy Probate
Edwin E. Hobby & others, Dec'd To The Public Power of Atty.
Christopher Haas & Wife To Opal Agnew Deed of trust
William P. Hobby by Trustee To The Public Ratif. Unit Agree.
Paul Harlow To West Tex. Utilities Co. R/W

I.N. Hickman To West Tex. Utilities Co. R/W
Alton Byron Hale, Dec'd To The Public Certified Copy Probate
Jack U. Johnson To Billy C. Johnson Warrantly Deed
J&J Investments To 1st Natl Bk-Cisco Deed of trust
Gene Johnson & Wife To Olney Savings Assoc. MML
J&J Investments To James J. Jones Warrantly Deed
J&J Investments To James J. Jones & others Lease Agree.
J&J Investments To Alton F. Frazier & Others Deed of trust
Nona K. Kennedy To Vernon Cherry & Wife Sales Contract
Jack D. Kiser & Others To The Public Afdt
Preston C. Lightfoot To The Public Afdt
Ronnie N. Love & Wife To Fed. Ld. Bk, Deed of trust
John N. Loveless To Eastland Natl Bk Deed of trust

John N. Loveless To Leon O. Breneman Trans. Deed of trust
Frances Matthews To Pete O. Johnson Agn
W.C. Merrill, Dec'd To The Public Certified Copy Probate
Leo Myrick To Marie Jennings Corr. M.D.
Leo Myrick To Heidi Ericksen Corr. M.D.
Leo Myrick To Dorothy Jean Steele Corr. M.D.
Olney Savings Assoc. To Eastside Baptist Ch. Rel. Deed of trust
Roy L. Palmer, Dec'd To The Public Inher. Tax Return
Lloyd R. Rush & Wife To Kenneth Chapman & Wife Warrantly Deed
Jean Reid To McDaniel Currie & Wife Warrantly Deed
William D. Rainey & Wife To Ron Skiles & Wife Warrantly Deed
William D. Rainey & Wife To 1st Natl Bk-Gorman Deed of trust
Jerry Robinson & Wife To Eastland Natl Bk Deed of trust

DOUBLE COUPONS 7 DAYS A WEEK

BRING IN ANY NUMBER OF MANUFACTURERS CENTS OFF COUPONS AND WE DOUBLE YOUR SAVINGS OFFER EXCLUDES RETAILER OF FREE COUPONS, CIGARETTES OR TOBACCO COUPONS, OR REFUND CERTIFICATES. COUPON VALUE CANNOT EXCEED THE VALUE OF THE ITEM. LIMIT RIGHTS RESERVED. OFFER GOOD FOR A LIMITED TIME ONLY!

**SUPER
DUPER**

OPEN
7AM - 11PM
SEVEN DAYS



**Coc
Tab,
Mr.
\$1**





East Hiway 80
Eastland 629-3305

FLORAL
All Christmas Decorations **1/2 Price**

DAIRY
Minute Maid Orange Juice **\$1.49**
64 oz. Carton



Canada Dry Drink Mixers
57¢
1 Liter

Prices Good
Dec. 30 thru
Jan. 1, 1983

Gandy's Egg Nog **79¢**
Quart

Gandy's Sour Cream & Dips **8 oz.**
French Onion Green Chili

Ranch Style Blackeye Peas **3/89¢**
15 oz.



BAKERY

Iced Cupcakes Reg. 25¢ Each **6 FOR \$1.00**

French Bread Reg. 79¢ **59¢**

Ranger Cookies Reg. \$1.79
Buy One Dozen Get One Dozen **FREE**

1 Layer Fudge Nut Cake **\$1.29**
Reg. \$2.59

Gandy's Egg Nog **79¢**
Quart

Gandy's Sour Cream & Dips **8 oz.**
French Onion Green Chili

3 For \$1.00

All Grinds
Folgers Coffee
\$1.99
1 lb. Can

PRODUCE

Red New Potatoes..... **19¢ lb.**

Fresh Broccoli..... **59¢ lb.**

Snowwhite Cauliflower..... **59¢ lb.**

GOURMET ITEM OF THE WEEK
Fresh Alfalfa Sprouts..... 4 oz. Package **49¢**



Washington Red Delicious Apples
89¢
3 lb. Bag



Texas Ruby Red Grapefruit
\$1.00
4 lbs. For



Fab
With Softner
Laundry Detergent
\$1.99
49 oz.

Nabisco Snack Crackers
All Varieties

Planters Dry Roasted Peanuts
Decanter Special
\$1.99

Gebhardt Chili Powder **89¢**

Gebhardt Plain Chili **\$1.09**

Gebhardt Refried Beans **39¢**

Mayor Eris Richie To West Tex. Utilities R/W
 W.G. Reed To Aubrey M. Goss & Wife Warranty Deed
 S. Payton Scott & Wife To Boyd Builders MML
 Henry W. Stanberry & Wife To Linton Bateas Warranty Deed
 Ron Skiles & Wife To 1st Natl Bk-Gorman Deed of trust
 Nina B. Leonard Skiles & Husband To William D. Rainey & Wife Warranty Deed
 Irene Hall Stearman To H.L. Geyer Warranty Deed
 State of Texas To Howard Bookkeeping Ser. Inc. State Tax Lien
 State of Texas To Brittain Const. & Trucking Co. State Tax Lien
 State of Texas To Star Florist, Inc. State Tax Lien
 State of Texas To Stereo Central Inc. State Tax Lien
 State of Texas To Norris Steel & Manuf. Co. State Tax Lien
 State of Texas To Rogers Supply Inc.

State Tax Lien
 State of Texas To Bruce Pipkin Mtr. Co. State Tax Lien
 State of Texas To Dorwick Inc. State Tax Lien
 State of Texas To Beaty Aviation, Inc. State Tax Lien
 State of Texas To Eastland Office Supply State Tax Lien
 State of Texas To FAP, Inc. State Tax Lien
 State of Texas To Darvann, Corp. State Tax Lien
 State of Texas To Bar-J Bar Inc. State Tax Lien
 State of Texas To Browns, Inc. State Tax Lien
 State of Texas To Trans-Tex Tank & Equip. Inc. State Tax Lien
 State of Texas To Choate Supply Inc. State Tax Lien
 State of Texas To HTH Trucking Inc. State Tax Lien
 State of Texas To Freyschlag Ins. Agency State Tax Lien
 State of Texas To Gibson Pharmacy Inc. of Eastland State Tax Lien

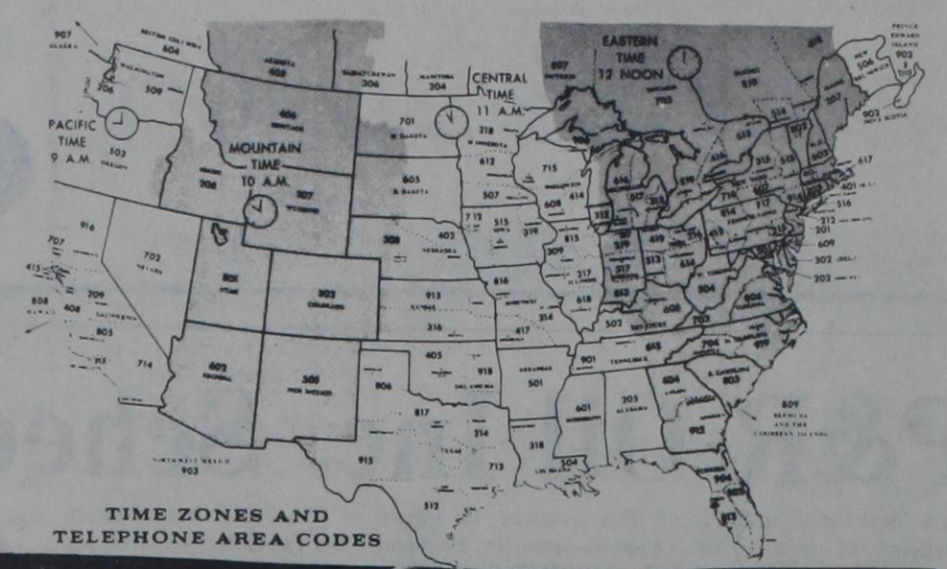
State of Texas To McKillip Livestock Farms Inc. State Tax Lien
 State of Texas To Bob M. Moore Transport Inc. State Tax Lien
 USA To John R. Shaw Fed. Tax Lien
 USA To Robert R. McBroom & Wife Rel. Fed. Tax Lien
 USA To Ralph I. Rose & Others Rel. Fed. Tax Lien
 USA To Alan Meyer & Others Fed. Tax Lien
 USA To Johnny C. Justice Fed. Tax Lien
 USA To Charles S. Watson & Wife Fed. Tax Lien
 USA To Jim Hollensworth & others Fed. Tax Lien
 Warran Wyatt To Eastland Natl Bk Deed of trust
 David C. Winge & others to Jimmy W. Gray & Wife Warranty Deed
 Frank White & Wife To Southern Saving & Ln. Deed of trust
 Faye Wells To Eastland Natl Bk Deed of trust

New Vehicle Registrations
 Harrison Bros. Trucking Chev. Sub. Cisco
 Robert M. Kincaid Bronco Eastland Tex. Elec. Serv. Co. Chev. 4 Dr. Eastland
 David Swearingin Chev. Pu. Comanche
 Terry J. Routh Chev. Sub. Eastland
 HHNC, Inc. Ford Bronco Abilene
 W.R. McPheeters Merc. 4 Dr. Ranger
 Joe-Bob Oil Field Serv. Ford Pu. Eastland
 Henry Lynn/Jessie Harrington Carter Ford Pu. Rising Star
 Norman C. Gilbert Ford Pu. Cisco
 Morning Star Oil & Gas Chev. Blazer Cisco
 Wag Well Service Chev. Pu. Eastland
 Dottie J. Cothran Chev. 4 Dr. Eastland
 Mrs. K.E. Falls Dodge Pu. Ranger
 Valero Transmission Ford Pu. San Antonio

THURSDAY,
 DECEMBER 30, 1982

CHECK THE CLASSIFIEDS For All Your Needs

BE A CRIME-FIGHTER
 Report Drug Abuse • Crime to this HOT-LINE number 629-3161
 Cash Rewards Available



a Cola, Seven-up
 (Reg. or Sugar Free)
38

DELI

Pork Spare **\$4.99**
Ribs
 Buy One Pound Get One Free

Potato Reg. *1.09 **89c**
Salad Pint
 Blackeyed Pint **89c**
 Peas Reg. *1.09

New Year Special
 Try Our Deli Lunch
 Including Blackeyed Peas
 and Cornbread

Fresh Salt
Jowl
48c lb

USDA Choice Heavy Beef Boneless Sirloin Steak
\$2.09 lb

12 oz.
Coke

Bordens
Cremora
\$1.79
 16 oz.

USDA Choice
 Heavy Beef Boneless
Chuck Roast
\$1.58 lb.

MARKET

Holly Farm Chicken
 Drumstick or Thighs... **79c** lb.

Holly Farm Split Fryer
 Breasts... **\$1.19** lb.

Gooch Blue Ribbon
 Franks... 12 oz. Package **99c**

Fresh Chuck
 Ground Beef Quality **\$1.78** lb.

Whole Fryers **45c**

Clairol 16 oz. **\$1.39**
 Shampoo or Conditioner II

Aim Reg. or Mint **\$1.19**
 Toothpaste 6.4 oz.

Maalox 12 oz. **\$1.99**
 Suspension Liquids

Alka Seltzer **\$1.49**
 Tablets 25 Count

Close Up 4.6 oz. **79c**
 Toothpaste

New Freedom **29c**
 Super Maxi Pads 5 Count

USDA Choice
 Heavy Beef Boneless
Arm Roast
\$1.98 lb.

FROZEN

Totino's Pizza Mexican Sausage, Sausage, Sausage & Pepperoni, Canadian Bacon, Cheese, Pepperoni, Hamburger Nacho **99c**

Jeno's Egg Rolls 6 oz. Shrimp, Chicken, Meat & Shrimp **89c**

Pillsbury Microwave Popcorn Reg. or Butter 3 pack **99c**

Island Inn 6 oz. Daiquiri, Margarita, Strawberry Daiquiri, Pina Colada **39c**

TV Blackeyed Peas 16 oz. **89c**

Banquet Fried Chicken 2 lb. **\$1.99**

Sara Lee Pound Cake 10.75 oz. **\$1.49**

Super Duper Premium Quality Ice Cream 1/2 Gal. Round **\$1.38**

89c
 Party Cups 16 oz. 20 Count **89c**

Solo Combination Plate 10 Inch 15 Count **\$1.29**

Good Value Dry Blackeye Peas 16 oz. Package **25c**

Joy Dishwashing Liquid 22 oz. **\$1.29**

Bama Strawberry Preserves 16 oz. **\$1.19**

Good Value
 Whole Hog
Sausage
\$1.59 lb. Roll

Glad
 Trash Bags
99c
 10 Count

Oil Belt

THURSDAY, DECEMBER 30, 1982

P&R Oil Inc. Schedules Wildcat In Eastland

A wildcat for oil or gas is scheduled for spudding six miles northwest of Eastland by P&R Oil Inc. of Eastland. The well will be known as the No. 3 White, with projected total depth of 4,200 feet. It will be situated in a 332-acre lease in Eastland County's H&TC RR Co. Survey, A-1913.

Westwind Exploration of Abilene has filed for permit to drill the No. 1 Wharton, a projected 4,200-foot wildcat for oil or gas, two miles southwest of Lee Ray. The venture will be in a 483-acre lease in Eastland County's H&TC Survey, Sec. 70, Blk. 4.

New West Exploration Inc. of Abilene has filed for permit to drill a 1,000-foot wildcat for oil, two miles north-northwest of Carbon in Eastland County's H&TC RR Co. Survey, Sec. 40, Blk. 2. The explorer will be known as the No. 1 T.E. Eaves. The operator has 307-acres under lease.

Location has been staked by Snow Oil Co. of Ft. Worth for a 4,000-foot developmental probe in Eastland County's Mary Fury Survey, A-126, three miles northeast of Eastland. The well is designated as the No. 2 Searight-Harrell. Drillsite will be in a 130-acre lease in the Eastland Regular Field.

Pumping 294 barrels of crude oil per day, a new producer has been finaled in the Hawk-Eye Field by Buck Wheat Resources Inc. of Eastland.

The location is in an 80-acre lease in Eastland County's H&TC Survey, Sec. 58, Blk. 3, 10 miles south of Cisco. Well's designation is the No. 1 T.P. Simpson.

Total drilling depth was 1,180 feet, and the pay zone was entered at 1,089 feet. The well was perforated to produce from an interval 1,089 to 1,093 feet.

At a location 10 miles northwest of Cisco, EnRe Corp. of San Antonio has completed the No. 4 Mitcham Estate H, new oil well in the S.E.D.R.S. Field.

Drillsite was in a 640-acre lease in Eastland County's SPRR Survey, Sec. 493.

The well showed daily potential for 184 barrels of oil and 347,000 CF casinghead gas on a 12/64 choke, with tubing pressure of 810 PSI. Production will be from an interval 3,856 to 3,881 feet. Well's total depth was 3,968 feet, with top of pay logged at 3,852 feet.

Ridgeway Oil Exploration & Development Inc. of Houston has revealed plans to drill a 2,000-foot developmental probe in the Hawk-Eye Field, one mile west of Romney. The well will be located in a 120-acre lease in Eastland County's H&TC Survey, Sec. 57, Blk. 3 and is to be designated as the No. 28 Delbert Tarver "A".

Two new oil producers in the Midkiff Field have been finaled by Dallas Energy Development Corp. of Dallas. Designated as the No. 1 and No. 2 A.H. Stover, the wells indicated capacity to produce 60 and 32 barrels of oil per day on an open choke.

The locations are 10 miles south of Cisco, in a 112-acre lease in the James Gann Survey, Sec. 77, Eastland County.

Both wells had a total depth of 1,200 feet with the No. 1 well entering the pay zone at 1,137 feet. It will produce from a perforated interval 1,137 to 1,143 feet into the hole. The No. 2 well entered the pay strata at 1,178 feet and is producing from perforations 1,178 to 1,183 feet into the hole.

North Ridge Corp. of Grand Prairie has posted initial production figures for the No. 1 Ray Mond Beck, new oil well in the REB Field, five miles north of Eastland.

The well indicated potential for 46 barrels of oil per day on an open choke. With drillsite in a 35-acre lease in Eastland County's H&TC RR Survey, A-305, the well had total drilling depth of 3,950 feet. It entered the pay horizon at 3,758 feet and will produce from a set of perforations 3,453 to 3,472 feet into the wellbore.

A natural gas wildcat has been successfully completed four miles north of Cisco by Brice A. Wilbanks of Midland. The new Eastland County producer, designated as the No. 3 J.C. Carr, is situated in a 320-acre lease in the SPRR Survey, A-465.

It was drilled to total depth of 3,986 feet and will produce from a perforated interval 3,558 to 3,568 feet into the wellbore.

Showing daily potential to yield 305,000 CF gas on a three-eighths choke, the well was given an absolute open flow rating of 850,000 CFD.

Tri County Oil of Abilene has revealed plans to drill a 1,300-foot developmental well in the Midkiff Field. The operator has 94-acres leased, with drillsite in Eastland County's H&TC RR Co. Survey, A-254 and has designated the venture as the No. 1 Morris. Drillsite is 10 miles south of Cisco.

The No. 2 Powell is slated to be drilled in the Madewell Field by Leslie Oil & Gas Inc. of Columbus, Ohio. With projected total depth of 2,000 feet, it will be spudded in a 40-acre lease of the H&TC RR Co. Survey, Sec. 58, Blk. 3, eight miles south of Cisco, Eastland County.

Hamilton-based B&L Operating Co. has turned in first production figures for its No. 8 Midkiff, a successful developmental well in Eastland County's Midkiff Field.

Pumping oil at the rate of 44 barrels per day, the well was tested on an open choke.

Drillsite was in a 35-acre lease in the Antonio Miller Survey, A-38, three miles south of Romney. The well was taken to a total depth of 1,170 feet after entering the pay zone at 1,083 feet. Production interval will be 1,083 to 1,093 feet into the wellbore.

Pumping at the rate of 39 barrels of crude oil per day on an open choke, the No. 6 Maxwell was completed in the Hawk-Eye Field by Nimrod Operating Co. of Cisco.

Drillsite is in an 80-acre lease in Eastland County's H&TC RR Co. Survey, Sec. 57, Blk. 3, one mile southwest of Romney.

After entering the pay strata at 1,084 feet, the well went to 1,520 foot bottomhole. It was perforated to

produce from an interval 1,086 to 1,101 feet.

Nimrod Operating Co. has also recorded another successful developmental well in the Hawk-Eye Field. It is the No. 21 McCall, showing potential for 23 barrels of oil per day on an open choke.

Drillsite was in a 42-acre lease in the G.A. McCall Survey, in Eastland County.

The well was drilled to a total depth 1,214 foot bottom after entering the pay structure at 1,152 feet. It was perforated to produce from an interval 1,154 to 1,169 feet into the hole.

At a location one mile north of Romney, Eaton Petroleum Inc. of Graham has completed the No. 2 Ford "A", new oil well in the Eastland Regular Field.

Drillsite was in a 74-acre lease in Eastland County's J.W. Simpson Survey.

The well showed daily potential for 8 barrels of oil on an open choke. Production will be from an interval 1,470 to 1,480 feet, with top of pay logged at 1,470 feet.

A new oil producer in the Eastland Regular Field has been finaled by Command Carriers Inc. of Ft. Worth. Designated as the No. 1 Peel, the well indicated capacity

to produce 4 barrels of oil per day on an open choke.

The location is five miles northeast of Eastland, in a 160-acre lease in Eastland County's TC RR Survey, A-819.

Bottomed at 3,650 feet, the well will produce from an interval of perforations 3,426 to 3,429 feet into the hole. The pay formation was first encountered at 3,426 feet.

A 1,750-foot wildcat for oil is planned by Investek Inc. of Wichita Falls at a drillsite four miles south of Caddo, Stephens County. The location is in a 31-acre lease in the T&P RR Co. Survey. Well's designation is the No. 4 Gardenhire "B".

Ridge Oil Co. of Breckenridge has staked location for the No. 1 Brittain in Stephens County's Ranger Field. It is scheduled for 3,750 feet of hole making. The location is in an 80-acre lease in the HT&B RR Co. Survey, about 14 miles southeast of Breckenridge.

The No. 9 R.W. Brooks, a developmental try in Stephens County's Manning-O'Conner Field, is scheduled to be spudded 15 miles southwest of Breckenridge. With projected total depth of 3,600 feet, the well will be in

a 300-acre lease in the T&P RR Co. Survey. Enserch Exploration Inc. of Dallas is listed as the operator.

Sun Exploration & Production Co. of Abilene has filed for permit to drill the No. 21

Oil Facts

DRILLING

A total of 23,940 wells were drilled in Texas last year, including 370 test and service wells. This represented 30% of U.S. drilling.

A daily average of 1,317 rotary drilling rigs operated in Texas during 1981, a 33.5% increase over 1980.

The Giddings Field on the Austin Chalk Trend led the nation last year in the number of producing wells completed with a total of 1,105, including 948 oil wells and 97 gas wells.

In 1980, the cost of drilling an offshore well averaged \$3,186,593; the cost of drilling an onshore well averaged \$376,527.

Crude oil production from Texas offshore wells totaled 14,471,000 barrels in 1981, with 12,782,000 from federal leases and 1,689,000 from state leases.

Ackers-State Unit, a 3,400-foot developmental well in the Stephens Regular Field, two miles northeast of Breckenridge. The operation will be in a 318-acre lease in Stephens County's ME&P RR Co. Survey.

Keystone Oil Co. of Abilene has posted first production data for the No. 1 Ledbetter, a new gas well located four miles southwest of Wayland. Drillsite was in a 160-acre lease in Stephens County's T&P RR Co. Survey.

With total depth of 4,257 feet, the well entered the pay stratum at 3,620 feet and will produce from an interval 3,620 to 3,628 feet. It showed potential for 1,183,000 CF gas per day on a half-inch choke.

Absolute open flow was rated at 2,220,000 CFD.

The Stephens Regular Field gained a new gas producer when the No. 1 Hagaman-Jennings was completed by Fishop Energy Co. of Archer City, six miles southeast of LaCasa.

On a half-inch choke, the well showed ability to yield up to 79,000 CF gas per day. The absolute open flow came in at 79,000 CFD. Location is in a 284-acre lease in Stephens County's E.L.R. & RR Survey.

Fishop took the well to 3,800 foot bottom and perforated for production 3,0509 to 3,064 feet into the hole.

REPORT OIL FIELD THEVES
1-800-OIL-COPS
TOLL FREE • REWARD

S & S DRILLING CO.
OIL & GAS
Route 4
CISCO, TEXAS 76437

BILL GARY 442-3048
LEE STARR 442-3226

XERXES FIBERGLASS OILFIELD TANKS
XERXES CORPORATION • A SUBSIDIARY OF PROFORM INC.

Fiberglass Oilfield Tanks and Gunbarrel Separators

1400 W. Overland Trail
Abilene, Texas 79601
1-800-592-4459
915-673-8238

WATS 1-800-592-4459
Bus. 915-673-8238
Res. 915-695-4623

**Computer Analysis
Of All Logs**

**Computer Preparation
Of Subsurface Structure Maps**

647-3324 T-101

Complete Drilling Services
OTIS DRILLING INC.
303 S. Madera 817/629-2040
Gene Cliff
Vice-President & Drilling Superintendent
24 Hour Service
Drill From 2500 ft. to 6500 ft.
Well Maintained Rigs Radio Controlled
Reliable Experienced Crews
817/629-8162 Unit 9862
Many Satisfied Customers

26 Years Experience

Regulators Causing Fires

AUSTIN-A combination of freezing weather and improperly positioned regulators on home propane and butane tanks has caused five building fires in the last month and prompted the Railroad Commission's Liquefied Petroleum Gas Division to issue a warning to both LP-gas users and dealers.

Regulators control the flow of the propane or butane from the storage tank to the appliances in a home, stepping down pressures of 200 pounds per square inch to a few ounces. Each regulator has a small vent opening which must be protected from dust, dirt, insects, rain, or snow.

If the regulator is not covered or protected, rain may collect in the vent opening and later freeze when the weather turns cold. Freezing rain, sleet or snow can also block the vent. When the moisture freezes, it can disable the regular, allowing the full 200 pounds of pressure from the tank to shoot to appliances in the home.

A normal 3/4 inch blue flame can suddenly become a roaring two-to-three foot torch, igniting walls, ceiling, or anything nearby.

That's exactly what happened in the five building fires recently reported to the LP-Gas Division. Four occurred on the same day, Nov. 27, as an icy cold weather front moved through the Panhandle.

Two residences and a mobile home office building in the town of Wheeler went up in flames with one injury reported due to smoke inhalation. A residence also burned in Shamrock. On Dec. 8, a frozen regulator vent caused a fire which destroyed a mobile home in the Reeves County city of Toyah, injuring one person.

Investigators in each case found unprotected regulators on LP-gas tanks installed with the vent opening pointing up making it easy for moisture to collect, freeze, and block the vent.

With more winter weather on the way, LP-Gas Division safety personnel urge everyone who uses propane or butane from tanks to have the regulator checked for proper positioning. Any certified LP-gas dealer can make the check. It's especially important to check older tanks and regulators. Many of the older regulators installa-

tions have exposed vents which can freeze easily.

Ideally, the regulator will be located under protective dome cover on the top of the tank. Exposed regulators should be positioned with the vent facing down and should have a vent assembly or vent suppressor to protect against freeze-ups. Protecting regulators need not be expensive. A slotted can or modified plastic container can provide adequate protection.

Snow Oil Plaza

Pipe & Supply
Drilling Corp.
Well Service
Petroleum Land Leasing
Terry Patty
Off. (817) 629-8521
Linda Nelson
Res. (817) 629-8123

ACE WELL SERVICE INC.
—Dale Jones—

Swabbing
Roustabout Crews
Rods & Tubing

Workovers
Fully Insured For Customers Protection
Radio Equipped Call Day Or Night
TC 200 S. Newton 559-5439

In All Sincerity

....we want to pause for a moment in this busy but troubled world to thank you for your friendship and good will and to tell you how much we have enjoyed doing business with you in the years past and gone.

May this Christmas Season be a joyous one for you and yours and the new year, 1983, bring you Peace, Happiness, and Prosperity in Abundance.

Eastland County Abstract Company
Pat and Annelle Miller, Sherry Johnson, Betty Ciaborn, Peggy Livingston, Linda Crowder and Alicia Gordon.

629-1077

Welding

Oilfield-Commercial-Residential
Gary Lindsey
629-2213
If no answer call: 647-1485
202 S. Hillcrest Eastland

**Hours: 9:00-2:00
Drive-In: 4:00-6:00
Fr. Night Deposit**

J.B. HICKS President
THE FIRST NATIONAL BANK
Gorman, Texas 76454

Member FDIC

Full Service Banking
Money Market Certificates
Interest Bearing Checking Accounts

Teller 24 Locations At:

Cisco 202 W. 8th
Eastland 601 W. Main
Ranger 112 Railroad Ave.

Rehab '83 To Be Telecast Jan. 8

Viewers throughout the Southwest will be entertained by a host of show-business greats and at the same time have an opportunity to give the handicapped a helping hand as the annual "Rehab '83" telecast to benefit the West Texas Rehabilitation Center airs on January 8, 1983.

Rex Allen will once again host the seven hour entertainment special with help from Rex Allen, Jr., Shari Lewis, and Bill and Susan Hayes.

Other entertainers slated to appear include Vikki Carr, Slim Pickens, Grandpa Jones, Helen O'Connell, Sammi Smith, Arthur Duncan, Anacani, Otwell Twins, Joey Schmidt, Pedro Gonzales Gonzales, Eddie Reasoner, Jimmy Weldon, Clyde Creel, and the Lone Star Travelers.

The annual "Rehab" telecast launches the year round funding program for the West Texas Rehabilitation Center with campuses in Abilene, San Angelo, and Snyder.

The West Texas Rehabilitation Center is a private, non-profit rehabilitation facility that provides services, without charge, to more than 10,000 handicapped children and adults.

Viewers will have an opportunity to call their pledges of support as well as bid on more than \$100,000 in auction items that have been donated for the show.

Rising Star viewers may see the telecast on KRBC-TV, Abilene.

The television special will air live from 7:00 p.m. until 2:00 a.m., Saturday, January 8, 1983.

Personal

Visiting during the holidays with Mr. and Mrs. Albert Shipp and David were Mr. and Mrs. Ike Gossett, Jr. of Lake Tawakenia near Dallas, Mr. and Mrs. Douglas Owen, Russell, Rebecca and Trudi, Bruce Rivers, Mr. and Mrs. Joel Shipp and Jason of Blackwell, Tex., Mr. and Mrs. Jarrel Shipp, Jennifer, Jaime, and Jeffery of Abilene, Mrs. Sallie Owen, Mr. and Mrs. Jerry Micheal Shipp, Christie and Stephen of Leander also Miss Marilyn King of Rising Star.

Mr. and Mrs. O.L. Burns and daughter, Peggy, and family spent Christmas in Andrews with her sisters family, Mr. and Mrs. Gaylon Swift.

Mrs. Mary Clark and all of her children had Christmas in her home at Rising Star.

Mr. and Mrs. Bob Lucas had both their children at their home for Christmas. Guy of Abilene and Becky and Jim Russell and children, Andy and Katie, of Denison, Texas.



- Birthday Greetings**
- JANUARY 2 NONE**
 - JANUARY 3**
Chuck Gilliland
Colleen Cannistraci
Lida Mae Howard
Kathy King Ezzell
 - JANUARY 4**
Ruth Griffin
Artie White
Maxine McKinnerney
 - JANUARY 5**
Ray Darnell
Charles Tepfer
Anna Ratcliffe
Irene Mayfield
Brad Barnes
 - JANUARY 6**
Mrs. W.C. Brush
Colleen (White) Hook
Loraine Williams
Mavis Hart
 - JANUARY 7**
David Grider
Larry McKinnerney
 - JANUARY 8**
Tommy Darnell
Mary Ann Lee

Recipes Worth Collecting

PECAN PIE

1 unbaked pie crust (10 inch)
1 overflowing cup of broken pecan pieces (not chopped)
Line bottom of pie crust with pecans.
Beat together:
3 eggs
2 oz. oleo
1 cup sugar
1 scant cup light syrup (Karo)
pinch of salt
1 tablespoon

Pour mixture over pecans. Bake at 300 degrees for 1 hour and 15 minutes.

This is one of Doris Griffin's recipes that she enjoys cooking up for those who drop in for a cup of coffee. Doris is a retired school teacher. Clyde, her husband, is retired from El Paso Products Co., both from Odessa. They moved here six years ago and have become active in the First Baptist Church, Masonic Lodge, Eastern Star and Senior Citizens. They have two children. Their son, Bill, is an engineer for Harley Co., Odessa. Marilyn, the daughter, is an art production director for Happy Hands Publishing Co., Fort Worth.

ENTERTAINING IDEAS

MICROWAVE SPECIAL: STRAWBERRY NUT CAKE

Chances are you've heard that cakes don't brown in the microwave oven. If you're one of the ever-growing number of microwave oven owners, that factor might dissuade you from regularly microwaving cakes.

That supposed disadvantage can sometimes turn out to be an asset. Here's a sumptuous example: This Strawberry Nut Cake has a brighter strawberry "blush" and a lighter texture because it was made in the microwave instead of a conventional oven.

Browning occurs when sugars in a batter caramelize. Oven heat causes strawberries strewn in a batter to also caramelize, turning their ruby brightness into a dull brown. In the microwave, that browning is avoided, and the berries maintain their vividness.

There's another advantage to microwaved cakes. Conventional oven heat first "sets" the edges where batter touches the sides of the pan, thereby limiting the height the cake can rise to. Not so in the microwave oven. Since the top surface stays softer longer, microwave cakes can climb the sides of the pan to their full potential. This produces extra light and fluffy cakes. With this "show-off" strawberry dessert, two layers are split into four generous rounds.

A third advantage of microwave cakes is the speed: A layer bakes in 8 minutes compared with 35-45 minutes in a "regular" oven. The energy cost is less, and there's no heat build-up in the kitchen.

Microwave cakes have been disappointing to some cooks when the tops have been lumpy or lopsided. That problem is usually alleviated if cakes are baked on a continually rotating turntable or, lacking that, if the pan is turned halfway through the cooking time. In this dessert, any unevenness is covered by the fluffy strawberry filling.

The strawberry sparkle and flavor of this unusual dessert are yours to enjoy year-round from the convenience of canned strawberry pie filling.



FOUR-LAYER STRAWBERRY NUT CAKE
Microwave Directions

CAKE:
1 pkg. (18.5 oz.) double-layer white cake mix
1/3 cup oil
1/3 cup water
3 eggs
1 cup Thank You Brand Strawberry Pie Filling
1/2 cup finely chopped nuts

FILLING/TOPPING:
1/4 cups strawberry pie filling (remainder of 21 oz. can)
8 or 9 oz. carton frozen whipped topping*
1/4 cup milk, as needed (see Note)

*1 cup heavy cream, whipped, can be substituted

minutes; rotate pan, then cook on High for 4 minutes or just until cake starts to pull away from sides of pan. Let set 2 minutes; use papertowel to blot any soft spots remaining on top of cake, then invert on rack to finish cooling. Repeat for rest of batter.

After cakes have cooled, divide each layer in half by cutting with a serrated knife or a taut piece of dental floss.

Prepare topping by gently folding pie filling into thawed whipped topping. **NOTE:** Some brands of non-dairy whipped topping sometimes tend to tighten or coagulate when mixed with an acidic food (such as strawberries). Adding 1/4 cup milk prevents and/or corrects this problem.

Spread filling between layers and on top of cake. May be chilled several hours before serving.

A variation of Strawberry Nut Cake can be baked in a regular oven: Prepare batter as directed and bake in 9x13x2-inch oiled pan at 350°F. for 35-45 minutes or until done. Cover cooled cake with topping, prepared as directed. Keep refrigerated until served.

Serves 12-16

Get These At **The Rising Star** Main Street

WISHING YOU

A MOST JOYOUS HOLIDAY SEASON AND THE BEST OF EVERYTHING IN 1983!

Ray Wright



207 S. Lamar
P.O. Box 785
817-629-8971

Al Rogers



207 S. Lamar
P.O. Box 785
817-629-8971

WOODMEN OF THE WORLD LIFE INSURANCE SOCIETY
HOME OFFICE OMAHA, NEBRASKA
"The FAMILY Fraternity"



Office Supplies Are Sold At **THE RISING STAR MAIN STREET**

For top quality replacement parts for your cars, trucks and tractors, come see us at **Cross Plains Auto Supply**

840 Main 725-6212

Majestic Theatre
Eastland 629-1220
One Showing Only Each Evening
Open 7:30 Show Starts At 7:50 P.M.

Ranger Drive-In Theatre
Ranger 647-3802
One Showing Only Each Evening
Open 7:30 Showtime 8:00 p.m.

AIRPLANE II THE SEQUEL

For the ride of your life... All you need for Christmas are your two front seats!

PARAMOUNT PICTURES PRESENTS A HOWARD W. KOCH PRODUCTION AIRPLANE II: THE SEQUEL ROBERT HAYS JULIE HAGEN LLOYD BRIDGES CHAD EVERETT WILLIAM SHATNER PRODUCED BY HOWARD W. KOCH WRITTEN AND DIRECTED BY KEN FINKLEMAN A PARAMOUNT PICTURE

Happy New Year
Closed thru Jan. 6th
Starting Jan. 7th

The teachers at Lincoln High have a very dangerous problem... their students!

"Class of 1984" a big hit. Well acted, exciting moving and controversial."
-ROGER EBERT, CHICAGO SUN-TIMES

A **MARK LESTER** FILM

CLASS OF 1984

Starring PERRY KING MERRIE LYNN ROSS TIMOTHY VAN PATTEN STEFAN ARNGRIM MICHAEL FOX and RODDY McDOWALL as Corrigan Director of Photography ALBERT DIJK, A.S.C. Music by LAALO SCHIFRIN (Song "I AM THE FUTURE" performed by ALICE COOPER)
Screenplay by MARK LESTER and JOHN SAXTON and TOM HOLLAND Story by TOM HOLLAND
Executive Producers MARK LESTER and MERRIE LYNN ROSS Produced by ARTHUR KENT Directed by MARK LESTER
Released by UNITED FILM DISTRIBUTION COMPANY
PG PARENTAL GUIDANCE SUGGESTED
ONE MATERIAL MAY NOT BE SUITABLE FOR CHILDREN

Town & Country REAL ESTATE

BARBARA LOVE, INC. HIGHWAY 80 EAST EASTLAND TEXAS 76448
629-8391 629-1725

EASTLAND
NEAR SCHOOLS 4 bdr. 1 1/2 baths on 2 lots. E1
NEW BRICK 3 bdr. 2 baths, fireplace, wet bar. E2
ASSUMABLE LOAN, Large 3 bdr., 2 baths. E3
OWNER FINANCE 2 bdr. 1 bath. Seaman St. E4
CHARMING 2 STORY 4 bdr beautifully decorated. E6
LIKE NEW older brick, 4 bdr. 1 1/2 baths. E7
IDEAL LOCATION, 3 bdr. 1 1/2 baths, .87 acre. E10
SPECIAL PRICE, frame 3 bdr., 2 baths, den. E11
FAMILY ROOM, fireplace, 2 bdr. 1 bath brick. E13
TASTEFULLY REMODELED 4 bdr. 3 bath, extras. E14
REMODELED frame 3 bdr., central heat. Neat. E8
NEW HOMES UNDER CONSTRUCTION, Call for details.
OLDER DUPLEX, many possibilities. Live in one side- Rent the other or will make large home. Reasonably priced. E5

GORMAN SOLD
SMALL EQUITY 2 bdr. sume 11 1/2% loan. G1
MUST SELL large home, garden spot, cellar. G2
UNIQUE 3-yr. old brick with furnished apt. G3

OTHER
BUY, LITTLE MORE THAN RENT, 2 bdr. Cisco O1
CISCO, partially remodeled 3 bdr. 1 bath. O4
RISING STAR, 1900's home needs TLC, on 8 Ac. O5
CARBON, mobile home, 2 lots, many extras. O6
RANGER EXEC HOME 3 bdr. 2 baths, fireplace. O7
RANGER 3 lots with utilities, totally fenced. O8

PEGGYE SWAFFORD 647-1050
HAZEL UNDERWOOD 629-1188
BARBARA LOVE 647-1397

The Travelling Frog

by Bucyrus

A PLACE TO LIVE
When the government asked me to move to Panama they offered what I considered a fantastic housing allowance. I was warned, however, by friends who said "the gov'ment don't pay no more than they have to" for anything. Therefore, we might expect that places to live could be extremely expensive. We found this to be true.

The first week we lived in an apartment hotel near my office-bedroom, bath, kitchenette, and sitting room with TV. Then began the process of looking. This was interesting in that a number of wives-turned-realtors took us to places they thought we would like. Ours was the wife of a prominent physician. Panama City has about 150,000 people and is a beautiful city (the new part) situated on the Pacific Ocean side of the Panama Canal. There is a bay, a fishing village harbor where numerous large boats are waiting their turn to go through the canal. There are several small, steep hills in this setting all having extensive tropical vegetation. Older Panama, built toward the end of the last century, is quite debilitated structurally but carries on a

brisk trade and business within the total complex. A new section includes numerous hi-rise apartments and bank buildings 20-25 stories high. Due to the high humidity it would seem ideal to live in a hi-rise apartment or condominium, above the crown, up in the breeze, looking over the entire panorama of old and new Panama, the sea, the islands the Canal, etc.

After 3 weeks of looking we found such a place on the 7th floor of a hi-rise near my office, convenient to the airport, etc. Now then, how do you get it? The realtor proposed a 2 year contract and lease so we took it to the embassy for a look-see by the legal staff and security. Legal suggested a redo of a couple of paragraphs and the owner agreed. The security inspector visited the place and said we would have an iron grill door installed in addition to the present door which had 3 locks and a chain already installed! In addition, there was a watchman on the front door and a talk-release mechanism whereby persons who want to get in the building press your button; you find out who they are, and then you either press a button to release the front door

lock or tell them to go away. If someone gets in by accident or comes from another floor, you still have the grill door and your regular 3-lock door to protect you. The problem with this whole cotten-picken mess is that while the owner is protected he has to open all those locks to get in or out everytime you want to enter exit. Further, the number of keys you have to carry will weight you down and wear a hole in you pocket particularly since you also need to carry your car keys, your office keys, your desk keys, and those to your personal filing cabinet. Be proud Eastland Countians that we haven't quite gotten to this point yet in our area of Texas.

Now how about that beautiful apartment? It's 3 bedrooms, 2 baths, living-dining room combination, kitchen, utility room and maids quarters which we use for a storage area since we don't really need a maid, at least full time. Most apartments don't furnish hot water heaters. Ours did—a magnificent 10 gallon, 110 volt system that won't even let you take a warm bath much less a hot one. No dishwasher, no stove, no refrigerator, no washer & dryer. We had to buy our own. Someone had left air conditioners in the bedrooms. We found out why. They make so much noise you can't sleep. No rugs, no drapes, terazzo floors and jalousie windows all the way round—all

for a measley thousand dollars a month. We furnish the utilities. Instead of the 6-7 cents per kw hour, which most folks pay in Eastland County, the rate here is 11 cents per kwh. Many people pay \$400 and more for electricity per month.

However, we have a view...the city, the ocean in all its splendor! Flocks of green parrots fly by our window and the sun comes up over the Pacific ocean every morning. Yes, I said the Pacific ocean, not the Atlantic. You see, due to the curvature of the narrow neck of land where the canal is located it does not go from east to west but runs from south to north when going from the Atlantic to the Pacific oceans. You might look at a blown up map of the canal area so you can see what I mean.

We enjoy every minute of our "place to live." After I have travelled to the jungle for a week or tromped the destitute hills in Nicaragua or Honduras, this beautiful city is a godsend place to rest. We have satellite TV on a cable and even sw the town any many citizens of Rising Star on the 10 o'clock news when our fair city was paraded about as a place gone broke!

And we don't starve here either. Fortunately we still have several military facilities in the Canal Zone with BX and Commissary items from the states. With many local fruits and vegetables and an abundance of

Senior Center News

We had a lovely Christmas party—and, it was well attended. Everyone was in a festive mood, as befits the Holiday Season. The tree was breathtakingly beautiful, laden with gifts for all. The refreshment table was heaped with some of the best tasting "goodies" ever eaten. The special music was lovely—and, we are always grateful to those men when they come to bring us their musical treats. All in all, the party was a very special occasion—enjoyed by everyone.

In my small way, I wish to express our deep appreciation for some of the special remembrances extended to our Club, during the Christmas Season. Especially, we send our thanks to the residents and staff of the Baird Nursing Home for their very thoughtful gift to the Starbrites. That was such a pleasant surprise—we just hope we can always live up to their confidence in us. Actually, it brings us so much pleasure when we, of the Band, can bring just a few moments of joy to help brighten their way!

Also, we express our appreciation to Sarah and Red for the nice turkeys and ham which they donated for our Christmas dinner at the Center. All our folks enjoyed them so much. Another "thank you" to all who brought the other good-tasting and pretty holiday food. You folks never let us down. We always have our Senior Citizens' table full—and, it is "yummy".

Last, but not least, a "thank you" must go to all who helped decorate our Center, this month—and, those who have seen to it that our Center is clean and warm. In fact, throughout the year of 1982, not once was the building neglected. We are so very grateful for the thoughtfulness of all of you!

Yes, 1982 has been an enjoyable year for our Senior Citizens. So many sweet memories have been made. We now look forward to the New Year with real anticipation.

Feliz Ano Nuevo a todos.
Elizabeth



Most subscriptions to The Rising Star expire January 1, 1983. Renew now so you won't miss a single issue. Subscriptions rates are listed on the classified ad page.

Campbell-Lawrence Will Wed January 1

Leslie Craig Campbell and Sherry Kay Lawrence would like to announce their approaching marriage on January 1, 1983 at 5:30 p.m.

The wedding will be held at the Romney

Christadelphian Ecclesia in Romney, Texas. No invitations have been sent but all friends and relatives are invited to attend this celebration. After the wedding, a reception will be held at the Bill Maynard farm.

Time to Apply for Internship Program

Students and teachers interested in participating in the fourth internship program sponsored by Congressman Charles W. Stenholm can request applications from the Congressman's Abilene District Office in the Federal Building.

Applications for the program, which will include two Omar Burleson Congressional Interns and two Lyndon Baines Johnson Congressional Interns, must be postmarked by midnight, February 17, an mailed to the Abilene office.

The interns selected will receive full Congressional experience in Stenholm's Washington office this summer, with one intern from each program to serve during June or July, 1983.

"We have been extremely pleased with the quality of applicants for internships ever since we began this program," Stenholm said, adding that since entrants were judged on a competitive basis, "anyone interested should get their applications in as soon as possible."

Selection for the internships is made by a District-wide selection committee, chaired by former Congressman Burleson.

Applicants must be at least 18 years of age when he or she is in Washington, allowing high school seniors who have enrolled in an institute of higher learning to be eligible. Others eligible include any student or graduate student who was enrolled during the preceding academic year at any of the District colleges, universities or technical institutes, or any other school, if the person's home of record is within the 17th Congressional District. Teachers, counselors or administrators are also eligible.

"The program is designed to provide the intern with a full Congressional legislative and office experience," Stenholm said.

Formal applications and further details may be obtained from the Abilene District Office, P.O. Box 1101, Abilene, Tx. 79604 or by calling Area Code 915-673-7221.

Randy Goldston's
Satellite Antennas
Sales & Service
643-2363 or 643-3077
Rising Star

Stallion Rocks and Shoals
TB \$500
50% off to all 4-H
FFA and Sheriff's
Pose Mares.
Call J.L. Murdock
817-643-3282

Hutton Insulation
BLOWN-IN INSULATION
Saves Blow-Up Energy Bills
Blown-in Cellulose
Acoustical Ceilings
Fiberglass Batts
FREE ESTIMATES
817-725-6683
FULL THICKNESS WALL INSULATION

Office Supplies
Are Sold At
THE RISING STAR
MAIN STREET

JOHN DEERE
SUPER TRACTOR SAVINGS
Purchase, or lease from Deere, any tractor model listed here and qualify for a John Deere money bonus
300 hp 8850 \$8,200 110 hp 4240 \$2,300
235 hp 8550 \$6,400 90 hp 4040 \$2,200
185 hp 8450 \$5,700 80 hp 3940 \$1,800
228 hp 8640 \$4,500 80 hp 3940 \$1,400**
179 hp 8440 \$4,000 70 hp 2640 \$1,300
180 hp 4840 \$3,600 60 hp 2440 \$1,200
155 hp 4640 \$3,400 50 hp 2240 \$1,100
130 hp 4440 \$2,800 40 hp 2040 \$ 900
**without Sound-Gard body
**with Sound-Gard body
PLUS
1 MAR. '83
WAIVER OFFER
Finance your new tractor with Deere and get a second bonus: finance charge can be waived to March 1, 1983. This waiver plus the money bonus is yours, from John Deere, over and above our new tractor discount. And we're making specially good trades on your older models—3020's, 4020's and other tractors of that age. (Financing and leasing subject to approved credit.)
Get our best deal... get a John Deere money bonus... get a waiver of finance charge from Deere. Get moving... the whole deal can be withdrawn on short notice from Deere.
BRAMLETT IMPLEMENT, INC.
RISING STAR TEXAS
817/643-4311
MARK COOKEY HOME 817 643-1882
GARY HARBISON HOME 915 356-5607



RENT NO MORE

As of January 1, 1983, Continental Telephone of Texas will sell rather than rent telephones to new customers and to existing customers seeking a change in service.*
Our action stems from plans to deregulate the telecommunications industry by the Federal Communications Commission (FCC).
Customers currently renting business or residence equipment will have the option of continuing to do so or they may purchase that equipment at a price far

below its replacement cost.
Your local Continental business office can answer any questions you may have about service changes including convenient ways to purchase your present telephones.
Private ownership. When you think about it, it has a nice ring to it.

Continental Telephone of Texas

*Party-line customers are not affected by the change in policy.