

Bobby Thornhill Begins New Business

Bobby Dean Thornhill of May has just opened a new business, Sepco Enterprises, to clean septic tanks, grease traps and sand traps.

He has invested in a new 2,200-gallon-tank truck and equipped it with a mobile phone. The truck is outfitted with the newest equipment for this line of work and Thornhill will service this general area.

A 1975 graduate of May High School, Thornhill has been a truck driver for the past eight years. Married to the former Jeannie Housel from Rising Star, he decided that with the new addition to their family, three-month-old Taylor Dean, that it would be nice to be home more often than his work as a truck driver allowed. After



Bobby Dean Thornhill of May stands behind the new service truck for his new business, Sepco Enterprises.

investigating the business possibilities in the area, Thornhill saw the need for septic tank service.

Thornhill is the son of Mr. and Mrs. Bob Thornhill of May and his wife is the daughter of Mrs. Mildred Housel of Rising Star and L.C. Housel of Winters. Jeannie was employed by West Texas Utilities Co. in

Rising Star for more than three years prior to the birth of young Taylor.

Sepco Enterprises grants a 10% discount to senior citizens, Thornhill said.

For service to your septic tank, grease trap or sand trap, call Bobby Thornhill at 259-2621 or call the mobile phone, 915-646-9713.

Cross Plains Jr. Rodeo & Parade Is This Week

The Cross Plains Junior Rodeo & Parade will be Friday and Saturday, August 12 and 13. The parade will be at 6 p.m. on Friday, August 12 and the rodeo performances will be at 8 p.m. each night.

Admission price to

the rodeo performances is \$3.00 for adults and \$1.00 for children under 12. Admission is free for children six and under.

There will be a dance after the rodeo each night at 10 p.m. Admission fees are \$3.00 for singles and \$5.00 for couples.

May Schools Begin Classes August 22

May Schools will begin classes at 8:15 a.m. on Monday, August 22. Classes will dismiss early Monday at 2:15 p.m. Classes will begin at 8:15 a.m. and dismiss at 3:15 p.m. thereafter.

Kindergarten will also begin this year on Monday, August 22, beginning at 8:15 a.m. and dismissing at 11:30 a.m.

All kindergarten students and students who have not previously attended May Schools are asked to register at 10:00 a.m. Friday, August 19.

Don Rhodes, superintendent of May Schools, reminds parents of students to please have the necessary immunizations before classes begin on August 22.

City Council Meets

The City Council of Rising Star met Tuesday night and voted to terminate the services of Police Chief Virgil Hagan. Mayor Doris Griffin stated, following an executive session, that the primary reason for the action was that Hagan is not certified in the state of Texas and that placed the city in a position of great liability. The council then voted to hire Herbert Hooten as police chief; he will be on probation for three months.

The council learned that Councilman Bill Carpenter, Jr., has moved outside the city limits and is no longer eligible to act as councilman. The council will meet Tuesday, August 16, at 7:30 p.m. to discuss this development.

Johnny Tabor, the engineer from Waco who drew the plans for the water, sewer and gas lines put in a few years ago, came to Rising Star to check the systems and offer suggestions to the city to correct problems that have arisen. Tabor and the present city employees who work with the utility systems checked the

equipment on Tuesday and he instructed them about the operation of the controls. Some of the problems were corrected, Tabor said.

However, he noted that the controls for the water system were no longer wired to operate the way they were set up to do when the contractor completed the ground storage tank located in the park. Tabor explained how the system should operate and how it is now operating. The way the controls are now wired leaves the city without sufficient access to water supply in the event of fire. He suggested the city hire an electrician to correct the wiring of the control panel.

Tabor said his company made a suggestion about paying for the utility systems at the time they were updated and still en-

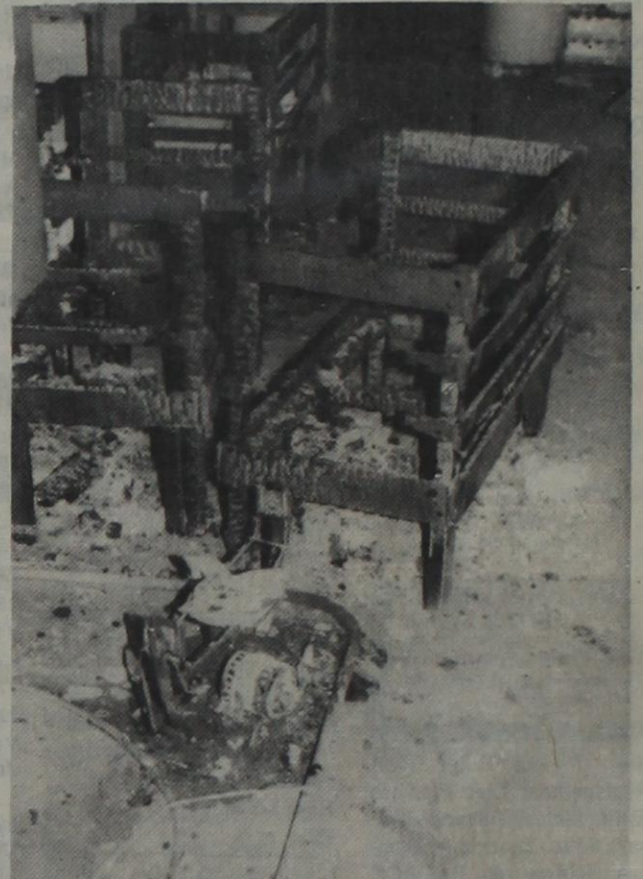
(Continued inside)

Local Industry Has Small Fire, Large Smoke Damage

A fan and three baskets of completed caps were completely destroyed by fire at the Rising Star Cap Co. and Bibby's Creations, Inc., on West College. The damage was found early Sunday morning by Arley Bibby, an officer of the corporation.

The fire was out and the ashes were cold at that time, Bibby said. Apparently it had occurred sometime between the end of the working day Friday and before he entered the building Sunday.

Although structural damage was minimal, the smoke damage to the contents was considerable. Everything in the building was covered with soot and most of the materials were unusable, said Jackie Bibby, manager of the business. The machinery can pro-



The completed caps held in the wooden bins were totally destroyed by a fire at Rising Star Cap Co.

bably be salvaged, he said.

Bibby's Creations manufactures hand-

bags and soft luggage and Rising Star Cap Co. manufactures caps.

REACT Members Earn for Ambulance Service



Truett Horton, foreground, Lewis Wilkerson, David and Garry Duggan were busily washing cars Saturday to raise money for the ambulance fund.

REACT members held a car wash Saturday, August 6, to raise money toward paying for the newest vehicle in the ambulance service for Rising Star. The 1978 Ford van was recently put into service and several thousand dollars are still owed on it. Approximately \$375 was raised

at the car wash.

Among those working at the car wash Saturday were Lewis and Terry Wilkerson, Garry and Betty Duggan, Debra Williams, Kenneth Hicks, Mary Wasacz, Terry Horton, Inell Robertson, Paul and Dorothy Maxwell, Gaynelle Sansom, Truett Horton, David

Duggan, Frankie Sayas and Mark Cooksey.

Donations are needed on a regular basis to meet the monthly payments on the ambulance and may be made directly to the new ambulance account set up in the First State Bank of Rising Star.

RSJH Drill Team Will Meet

643-4289.

The RSJH drill team will meet Saturday, August 20, from 9:00 - 10:30 a.m. in the high school typing room. If you plan to be a part of the drill team this year, please attend.

If you have one of last year's uniforms or patterns that you would like to sell or trade, please bring it to the meeting or call Frances Justice at

We are using Simplicity patterns #5598 (view 3) and #5597 (view 2). Because the material used for tights last year is not available now, all members will need to make new ones. The new material for the tights and the material for the tunic have been placed on reserve at TG&Y in Brownwood.

The trim has already been purchased and will be sewn on all the uniforms by Kathy Hall.

The plain white tennis shoes are available at TG&Y for \$4.97. The socks, however, should be purchased at school from Cindy Wood.

We're looking forward to seeing you Saturday, August 20. Be ready to spread "Kitten fever"!

Classes Begin Here August 22

Superintendent Gene Williams announces that the Rising Star Schools will open Monday, August 22, 1983. The school day will be from 8:10 a.m. to 3:45 p.m.

Registration of High School students will be Friday, August 19, 1983:

1:00 to 1:30 p.m. Freshman
1:30 to 2:00 p.m. Sophomores
2:00 to 2:30 p.m. Juniors
2:30 to 3:00 p.m. Seniors

Rising Star ISD Board of Trustees has amended the attendance policy to be af-

fective the 83-84 school year.

That: Students with more than ten (10) days absent will not be given credit in High School courses nor promoted in grades K-8. The only exception will be a statement by a doctor stating that it is necessary that a student be out of school.

Teacher inservice will begin Tuesday, August 16, 1983, with registration at 8:30 a.m. in the High School Library. 1st day will consist of orientation for new teachers and accreditation update and other local pro-

cedures. August 17 and 18 inservice will be at Early ISD for teachers and will be conducted by the Region XV Service Center. Friday 19 will be teacher workday at Rising Star.

Football

Coach Jack Gray has announced that the Rising Star Wildcats football team will have a scrimmage 7:30 at Santo August 19.

They will scrimmage again Hamilton JV in Hamilton Thursday, August 25, at 7:30.

May Exes Meet August 15

A meeting has been scheduled for Monday, August 15, at 6:30 p.m. for May school exes to address envelopes. The meeting will be held in the typing room of the school.

meeting notices...

Derrell White, Commander of the Rising Star American Legion Post, has called a special meeting for the

election of officers. The meeting will be at 7:30 p.m. on Friday, August 12, at the American Legion Hall.

public notices

Notice is hereby given that on the 18 day of August, 1983, the Board of the Rising Star Independent School District will hold a Budget hearing meeting at 8 o'clock p.m. in the Boardroom, 116 N. Main St.

The subjects to be discussed will be the 1983-1984 official School Budget. This notice is posted and filed in compliance with the statutes that govern notice for Budget hearing meetings. They are Art. 29e, Vernon's Civil statutes (V.T.C.S.); Art. 6252-17,

(V.T.C.S.); and Sec 23.45, Texas Education Code.

Jack Hubbard, President

NOTICE

The Rising Star Independent School District school board has been notified that some people have purchased sausage and/or magazines from students and have not received the goods purchased. Please bring your receipt to the school secretary's office, 116 N. Main, for reimbursement; 643-1981.

CLASSIFIED ADS sure to get results

Misc.

FREE Swap shop on KVMX-FM 97 Radio - twice every Monday through Friday at 7:10 a.m. and 12:30 noon - Call 629-8585 and tell the Micro-Plex what you have to sell, rent, give away are to announce! It's a free community service of KVMX-FM 97 Radio. TF

Real Estate

REAL ESTATE FOR SALE? Let us handle it for you. 25 yrs. selling your area. We have the buyers. Cogburn Realty, 893-6666, DeLeon nights 893-5898 or 893-2642. 6-tfc

Autos

FOR SALE: 1977 Dodge Van; five captain chairs and couch, sink and ice box. Low mileage and loaded. Also 1977 Courier pickup with radio and air, loaded and low mileage. See at Scott's Paint and Body or call 629-2372 or 1514. TF

SERVICE

Fast, Dependable Film Developing
Palace Drug Store
Rising Star Texas

SERVICE

SHAKLEE PRODUCTS: Do you really get a balanced diet? Let me tell you about Dr. Shaklee's Slim and Trim Plan. We also carry natural food supplements, concentrated bio-degradable household cleaners, natural skin care products, toiletries and baby products. Barbara Jo Kanady, Shaklee Distributor PH: 643-5791

NOTICE

D & E HOME IMPROVEMENT SALE
\$\$\$ Save Big \$\$
Siding & Remodeling
Custom made storm windows
Soffits & Fascias
One call does all.
817-643-3606

THE RISING STAR
Publication No. (USPS 466500)
©1981 - EASTLAND COUNTY NEWSPAPER CO.
643-4141 185 N. Main St. Rising Star, Texas Box 127 76471
Second Class Postage paid at Rising Star, Texas, under Act of Congress in March, 1870. Published every Thursday.
Publishers-Mr. & Mrs. H.V. O'Brien
Editor-Cisco-Herrel Hallmark
Editor-Eastland-H.V. O'Brien
Assoc. Editor-Eastland-Michelle Lindsey
Editor-Ranger-Betty McGee
Editor-Rising Star-Carolyn Ratliff
Staff-Gary Slade
Office Staff-Margaret Hallmark
Office Staff-Patricia Hallmark
Office Staff-Daisy Rutledge
Columnist-J.W. Sitten
Production Supervisor-Ted Rogers
Production-Raymond McCoy
Production-Wayne McCoy
Adv. Production-Wanda Hallmark
Computer Operator-Kathy Wilford
Feature Writer-Viola Payne
Commercial Printing-Hale Dunson
SUBSCRIPTION RATES: year; Out of Texas \$12 per year; No out-of-continental counties \$; per year; Other U.S. except APO's. Texas counties \$8.50 per

RANGER FLEA MARKET
Open 2nd & 4th weekend
Dealers & garage sales welcome
Spaces \$5 without electricity
\$8 with. 647-1992. TFC

502 E. Mill St. 4 Br., 2 bath, den, comb. kitchen and dining, carpeted. Lot 80 X 180. New storage room. 817-643-4073.

I have a variety of homes and land listed. Let's talk.
Louis A. Mayfield
Broker
817-643-4073

FOR SALE: 1946 Chevy Pickup runs great, tags and sticker \$1750.00. Refrigerator/freezer \$100.00, riding lawn mower 5 hp Sears \$150.00. 647-3848.

Mustang-1973-V8-Automatic-A good car-\$1850-Johnston Ford 725-6181.

'82 Escort 2 door-Automatic-air conditioner. Only \$4300. Johnston Ford 725-6181.

WELDING
Oilfield and Farm
Jim Ratliff
Ph: 643-6464
76-tfc

Sand and Caliche Hauling
Willie Ezzell
Phone: 643-5431

RUST & SONS FENCING CONTRACTOR
Pipe Line and general fencing construction.
Rt. 1, Box 120, Rising Star, Tex. 76471
PH: 817-643-3137

GROUP HEALTH INSURANCE
THE TRAVELERS
Eastland County Farm Bureau
643-5951 TC

CISCO RADIATOR SERVICE
207 E. 6th St., Cisco (Breckenridge Hwy.)
Cleaning-rod-ding-recoring-auto-truck-tractor radiators-heaters. New radiators and heaters. Auto gas tanks cleaned-repaired. Open Monday thru Friday, 8 a.m. to 5:30 p.m. Call 442-1547. Cisco. tfc

WATERLESS COOKWARE
22 Piece Sets
Life-Time Guarantee
Competitors Prices:
\$1000 to \$1400
Our Price:
\$400
Call: 817-629-8669

FOR SALE: 114 acres in Palo Pinto County near Sinto and Palo Pinto Lake. Fronts on black top county road, city water, and R.E.A. line. Ideal for development. \$1500 per acre. Call 817-442-1303 after 6 p.m. Terms. **TF**

78 LTD II-2 door-V8-Automatic-air conditioned and more-a very good car. \$3650. Johnston Ford 725-6181.

78 Buick Par Avenue-Loaded-this car has been cared for-\$3995. Johnston Ford 725-6181.

OLIVER WEST Pump and Water Well Service
Valley Aermotor Pumps 1/2hp & larger stocked 2 1/2 mi. so. Rising Star 817-643-4683
Call Anytime

YOU WON'T NEED A PUSH with a Continental Battery in your car this winter. Free battery check and free installation.
CENTRAL AUTO PARTS
801 East Central
COMANCHE, TEX. 76442
Ph: 915-356-3925
OPEN 7 DAYS A WEEK

CARD OF THANKS

May we extend our thanks and appreciation to all our friends and relatives for your help and concern during Tom's illness.

Thanks for all the visits, telephone calls and all the beautiful cards while he was in the hospital in Abilene.

A special thanks to our neighbors and friends for the delicious food and visits since we came home.

A special thanks also to the ambulance service for taking Tom to the hospital.

May God bless each one of you. Love
Tom and Eula

SCHOOLMASTER ANTIQUES
639-2228
We will buy one item or an estate. Call for appraisals, items for sale or special items you wish to purchase. TC

FOR SALE: 4 bdrm brick house, 2 story, 2 bath, dining rm., all electric, central heat & air. Large lot, water well, 7 large pecan trees & concrete cellar. Call 915-862-6386. 42-tfc

82 Bronco-XLS-351 V8-Automatic-air conditioner-we sold it new-\$11,250. Johnston Ford 725-6181.

81 Ford Pickup-1/2 ton-302 V8-automatic-air conditioned-a very good one-\$600. Johnston Ford 725-6181.

Need things fixed up around the house? Need a new cabinet, kitchen or bathroom? Or wooden furniture made or repaired? Call Joe Campbell, Campbell's Cabinet Shop, 817-842-5526. Rt. 5 Box 107B, Comanche, Tx. 76442. If no answer, call 817-643-2251. 26-6mo.

BUDDY COOK
Residential, Commercial Refrigeration & Plumbing
817-842-5950
Rising Star

For your metal building needs get a Second Opinion
Rolston Metal Building Systems
915-698-1721

FOR SALE: Brangus Bulls. 647-1182 or 647-1155. TF

CALL US FIRST for all auction needs:
TUCKER AUCTION CO.
Rt. 1 Box 90
Eastland, TX 76448
817-629-1956
Consignment sale 2nd Sat. of each month 7:00 p.m. TC

T BYRD REALTY
1100 EARLY BLVD
EARLY, TEX
915-643-2193 or 643-2317
BUSINESS OPPORTUNITY! Large brick bldg. on main street of Rising Star. Can be purchased with business or property only. A good buy! #281
THREE LOTS WITH 2 BR 2 BATH HOME Nice shady corner lot! Has another house that can be bought and moved. Also has good water well! Bargain! #280

80 Ford F150-Short, wide bed-351 V8 Automatic-Air conditioned-\$5325. Johnston Ford 725-6181.

82 Ford one ton-flatbed-only 27,000 miles-only \$8900. Johnston Ford 725-6181.

HELP WANTED

HELP WANTED: Custodian for the Rising Star Independent School District on a contract basis. Applications available at the School Tax Office at 116 N. Main, Talk to Mr. Grey or Mr. Hill. Call 817-643-1981 for more information. R-36

OPPORTUNITY

Own your own Jean-Sportswear, Infant-Preteen, Ladies Apparel, Combination, accessories or Quality Childrens Furniture Store. National brands; Jordache, Chic, Lee, Levi, Vanderbilt, Izod, Gunne Sax, Calvin Klein, Esprit, Zena, Ocean Pacific, Britanna, Evan Picone, Healthtex, 300 others. \$7,900 to \$24,500, inventory, airfare, training, fixtures, grand opening etc. Mr. Loughlin (612) 888-6555. 30-1tp.

INFLATION GOT YOU DOWN. We have the answer. Develop parttime business from your home. Excellent earnings. We train you! Respected company name with excellent product line. For appointment call 643-3674. 31-4tp.

FOR SALE: Two older type refrigerators, both work good; two used lawn mowers, run good. After 5 p.m. call 643-5126. 32-1tp

FOR SALE 3-yr-old Limousin bull. We have the papers. 259-3951. 29-tfc

ESTABLISHED BUSINESS
Buy station & shop or owner will keep muffler shop tools and reduce price! Priced to sell! Let's talk!
BARGAIN!! Good older home on Hwy 36 close to down town! Good location, bargain priced! #234
27-4tc

79 Super Cab F250-one owner-49,000 miles-V8-automatic-air cond. \$4950. Johnston Ford 725-6181.

79 Super Cab F150-we sold it new-A real good pickup-\$4975. Johnston Ford 725-6181.

HELP WANTED Cooks, dishwashers. Apply in person at the Star Plaza Restaurant. 32-1tc

BLACKWELL HOSPITAL is accepting applications for registered nurses for full-time and part-time work. RN work 6-12 hour shifts for two weeks. Pay periods and are paid for 80 hours. We also offer shift differential, mileage pay and group insurance. Apply in person to Director of Nursing, Blackwell Hospital, Gorman, Texas. T-65tfc

GARAGE SALES

GARAGE SALE: Fri. Aug. 12, at 8 a.m. at N. Maben and E. Austin, Stella Ware's house. Girls clothing thru size 4, boys thru size 10, ladies, men's; couch, tupperware, dishes, Clairol Foot Fixer and more! 32-1tc

Garage Sale: Fri. and Sat. Aug. 12 and 13 from 9 a.m. til 6 just West of traffic light. All proceeds benefit the local 4-H Club. 32-1

Garage Sale: Aug. 12, 13, 14. Have colored TV, china, glass, some furniture, clothing, afgans, door mirror, misc. 3 1/2 mi. E. 1 1/2 mi. N. of May. Watch for signs. 817-259-2679. 32-1t

FOR SALE: Goats milk, \$3.50 a gallon. Brian Bailey, 643-3888, S. Hwy 183. 31-4tp.

FOR SALE: Used Bundy Clarinet in good condition. Call 643-3357. 31-2tc.

Have 3 lots with old house would like to trade for acreage in country, near Rising Star. Call 915-387-2893. 32-4tc.

3 acres, 3 bedrooms, 2 baths, utility room, central heat and air, partially remodeled. Total electric. Storage house, Barn, all steel corals, water well. New fence around 2 1/2 acres. 643-7183. 32-2tc

OIL AND GAS leases wanted, send name, address, and legal description to R-V Petroleum Land Service, P.O. Box 2278, Abilene, Texas 79604. T-63

I've got a pasture of coastal bermuda grass. I want to pasture 20 head cattle for 5 mos. Bill Johnson. 32-1t

EARN \$4.87 HR.
We need assistance in evaluating and responding to daily work reports submitted by our agents throughout the state. No experience necessary; Paid to complete training. Work at home. For information send self-addressed, stamped envelope 9 1/2 inches long to AWGA, Dept. E, Box 49204, Atlanta, GA 30359. 32-1t

BE A WINNER. I'm looking for top achievers who want big commissions and rapid management growth for part time effort. Opportunity is knocking to earn while you learn. A little hard work pays off in a big way. Call Penny 442-1707.

HAY HAULING
Call Carl Bray
442-1447 p-71

HOMES FOR RENT

FmHA non-discrimination apartment for rent. Call 817-842-5294. 16-tfc

General Contractor--Specializing in Additions, Remodeling, skylights, panelling, drywall and acoustical ceilings. Small jobs welcome. For free estimates at reasonable rates call 817-259-2592, May, Tex. 32-4tp

HAY BAILING
Square or Lg. round
T.J. Parrish
442-3674. p-57tfc

REPORT OIL FIELD THIEVES
1-800-OIL-COPS
TOLL FREE • REWARD

LOST
Red Irish Setter, female, wearing orange collar, from 1/4 mile South of Rising Star.
REWARD
Call
817/643-5611 or 643-4421

Child care-licensed and insured. Birth to age 14, day and night. 2 snacks and hot lunch. 3 attendants. 502 E. Mill. 643-4675. 31-4tc.

THURSDAY, AUGUST 11, 1983



City Council
(Continued from page one)

RISING STAR Homecoming

Rising Star Ex-es should make plans now for the Annual Homecoming Activities. Mark your calendar and set aside Saturday, October 1st, 1983, for reminiscing, visiting and lots of fun. The Rising Star Wildcats will finalize the day long Homecoming with a battle against the Blanket Tigers.

courages cities to use that method. That is, to set the minimum rates of the utilities high enough to pay off the loans and cover the utility employee payrolls and set the additional per thousand gallons or cubic feet at nominal rates which would cover the expense of pumping the water and transporting the gas. With the higher minimum rates, income from the utilities would not fluctuate so drastically with the changing seasons and would not be so dependent on meter readings, he said. That method would have made quite a difference during the past when so many water meters were not working. Just a few months ago as many as 137 water meters in Rising Star were not working.

BOOKS
Give Hours of Pleasure
The library will be open Tuesdays and Thursdays from 9:00 until 11:00 a.m.

AUCTION
Farm Equipment
Area Farmers & Dealers & Repo
Consignment Sale
Comanche, Tex
10:30 a.m.
Sat. Aug. 13
Sale Site- M & S Equip. Sales, 1 mile east of Courthouse, Dublin Hwy.
Consignments Welcome
Tractors
285 M. P., W-F, 3 pt. (new); 3000 Ford, gas W-F, 3 pt.; 801 Ford Diesel, W-F, 3 pt.; 40 J. D. W-F, 3 pt.; 8-N Ford, W-F, 3 pt., overhauled and like new; 9-N Ford, W-F, 3 pt.
Trucks & Trailers
1967- Ford Truck w/250 cummins, - 10 spd, tandem duals; 45' Lufkin, drop deck float, tandem dual; 40' Mini- Float, tandem duals; 30' Hale Goose-neck implement trailer, triple axle; 16' Utility trailer, tandem axle; 1977 Chev. 3/4 ton, Flat bed- air and p.s.; 1978 Dodge Van- V-8, auto, p.s.; 20' self-contained travel trailer.
Farm & Hay Equip.
M. P. 13 shank spring chisel, 3 pt.; 12' 3 pt. M. P. Tandem; 10' offset tandem; 2 and 4 row 3 pt. planters; 2 and 4 row 3 pt. cultivators; 3 pt. 2-disc. breaking plow; 5 & 9 shank chisel; 3 pt. 2- bottom moldboard; 3 pt. 3- bottom moldboard; 3 pt. 5' & 7' shredders; 3pt. long 2 row peanut digger; 3 pt. 4 row Lilliston rolling cultivator; 12' J. D. tandem disc, (D.T.); 5' Drag shredder; 3 pt. 3- row Lister; Case D.T. Hay rake; 224 J. D. baler; 346 J. D. baler; 276 New Holland baler; New Holland Ensilage cutter.
Miscellaneous
Shanks; busters; tractor weights; hand garden plow; chains; boomers; Hyd. cylinders+ plus much more, too numerous to mention.
Lunch Available
Tharp and Associates
Rt 2 Rising Star, Texas
817-643-4288
Lic. #TXS-113-1449
For More Information Call (817) 643-4288 after 7:00 p.m.

Hellums Reunion

On July 29, 30, and 31, 1983 relatives gathered for a reunion honoring the heritage of W.H. Hellums and Sallie Rutherford. The gathering was held at Arrowhead Park, Lake Brownwood where many enjoyed volleyball dominoes, 42, horseshoe pitching, swimming and fishing. Jim Walker entertained with his singing and guitar playing.

A barbecue dinner was catered by Underwoods on Sunday when a short meeting was held. At this time the guests sang "Happy Birthday" to two-year old Scott Murphree and to Beverly Colwell. "Happy Anniversary" was sung to Skipper and Roberta Ezzell who were celebrating their eighteenth anniversary.

The Billy Paul Colwell family of Fayetteville, North Carolina was recognized as traveling the farthest Billy was also recognized as retiring from the army that day after 20 years service. Worley Linville was recognized as the oldest with Scott Murphree being the youngest at the meeting.

Guests registering over the entire weekend included Pauline Parsons, Baird; Jack and Uva Jones, Biboll; Bill and LaFond Ghormley, Nathan Hellums, Waco; Craig and Cindy Ghomley, and Joshua, Eddie and Sheryl Hasalbarth, Angie and Sara, Dear Park; Jack and Elaine Matejka, Scott and Steve, Pasadena; Georgia Walker, Lufkin; Billy Paul and Beverly Colwell, Brian and Tricia, Fayetteville, NC; Jim and Kathy Walker, Michael, Nathan, and Jessica, Carrollton; Skipper and Roberta Ezzell, Jackie, Kathy, and John, Arlington; Anna Ezzell, Big Spring; Benny and Kathy Ezzell and Cal,

Brownwood; Doc and Janet Murphree, Becki and Scott, Sidney; Bryan and Lisa Ezzell, and Tige, San Antonio; Mike and Linda Worley, Misti and Tommy, Hewitt; Effie Easthans and Eric, Austin; Paul Jones, Littlefield; J.N. and Doris Gallamore, Waco; Horace and Leo Roberts, Lubbock; Ruby Nell Collins and Shawn, Baton Rouge, La; Worley Linville, Durant, Okla.; Dan Linville, Ardmore, Okla.; Earl and Mary Hellums, Houston; R.T. and Olena Ezzell, Maurice Martin, Cassie Esther Allen, Willie and Brenda Ezzell, Will and Courtney, Rising Star, and Jake and Delia Walker.

Information about the Hellums family, dating back to 1824 have been recorded and at the present time Erle and Mary Lou Hellums is compiling a book of the "Hellums Family Heritage" to be published in the early part of 1984.

County Fair Association Meets

The Eastland County Fair Association will meet Thursday evening, August 11th at the Eastland Chamber of Commerce meeting room at 7:30 p.m.

The meeting will include reports by Fair division chairmen, and the County Fair brochure will be presented for approval.

County Fair dates are September 29, 30 and October 1st. The president of the County Fair Association is Craig Lund.

BOOKS
Give Hours Of
Pleasure
Visit The Library

Commentary

by Myrtle Owen

Romans 12:1-5. On Faith In God; I beseech you therefore, brethren, by the mercies of God, that ye present your bodies a living sacrifice, holy, acceptable unto God, which is your reasonable service. And be not conformed to this world: but be ye transformed by the renewing of your mind, that ye may prove what is that goes, and acceptable, and perfect, will of God. For I say, through the grace given unto me, to every man that is among you, not to think of himself more highly than he ought to think; but to think soberly, according as God hath dealt to every man the measure of faith.

For as we have many members in one body, and all members have not the same office; So we, being many, are one body in Christ, and everyone members one of another. V. 16 Be of the same mind one toward another. Mind not high things, but condescent to men of low estate. Be not wise in your own conceits. V. 17 Recompense to no man evil for evil. Provide things honest in the sight of all men. V. 19 Dearly beloved, avenge not yourselves, but it is written, Vengeance is mine; I will repay, saith the Lord. V. 20 Therefore if thine enemy hunger, feed him; if he thirst, give him drink: for in so doing thou shalt heap coals of fire on his head. V. 21 Be not overcome of evil, but overcome evil with good. Finding God's will and his personal plan: The fact that God, the Creator of this immense universe, cares about each of us, wants to guide us along life's pathway, and has a personal plan for each of our lives is one of the

most inspiring ideas the human mind could contemplate.

The Christian Scriptures make clear that the idea is factual. Those who write or speak about this concept use various terms to express it: understanding God's will, discovering God's direction, detecting God's desire, learning God's leading, gaining God's guidance, perceiving God's plan. That sounds great! "I want it," you say, "But how do I find it?" Prepare yourself! There are four preparatory steps or prerequisites stated or implied above in Romans 12:1-2) 1. Salvation. Make the great faith decision, accepting Christ into your own life as the Saviour He came to be. 2. Dedication. Present (give, yield, dedicate) yourself completely to God, telling Him that you are fully His, that you will do anything He asks and do anywhere He sends you. 3. Separation. Clean up your life. Separate yourself from the wrong and evil things in this world. They will obstruct your ability to gain God's guidance.

4. Transformation. Daily study the scriptures and talk to God to keep yourself growing, maturing, and changing for the better. Divine guidance is essentially a matter of God applying inner impressions on your mind. He gives you peace of mind when you decide correctly and remain on the track. When you decide wrongly, get off the track; or, when it is time for the next step in your program, He withdraws this peace of mind.

THURSDAY,
AUGUST 4, 1983

Obituaries

Chester Spencer

MAY - Chester Spence, 59, of Odessa, formerly of May, died Sunday morning at his home. Services were at 4 p.m. Tuesday at Higginbotham Funeral Home.

Burial was at Wolfe Valley Cemetery near Rising Star.

Born Jan. 3, 1924, in May, he married Dana May Bohlander April 17, 1969, in Odessa.

Survivors include his wife; two stepdaughters; a brother, Kenneth Dallas; and two stepgrandchildren.

Floyd Moffatt

Clifton-Floyd Moffatt, age 73, of Kopperl, died Monday, July 18, in a Marlin hospital. Memorial services were held July 19 in the Brister-Lawson Funeral Home Chapel in Meridian, with the Rev. John Shipman officiating. Interment was in the Kopperl Cemetery.

Mr. Moffatt was born Dec. 21, 1909, in Cayote; he was reared and educated in Clifton. He married Dorothy Bynum on Feb. 5, 1933, in Valley Mills.

He worked for Community Public Service, now known at Texas-New Mexico, for a number of years. He was a resident of Rising Star during the 1940's and was

manager of the Community Ice Company. Mr. Moffatt was well known in Rising Star during the years he lived there.

After 31 years in Fort Worth, Mr. Moffatt retired in 1978 and moved to the Kopperl area. He was a member of the First United Methodist Church there.

Survivors include his wife, Dorothy of Kopperl; one son, Danny Moffatt of Dallas; three sisters, Mrs. Mamie Seljos and Mrs. Lena New, both of Clifton, and Mrs. Lana Patterson of Meridian; and a number of nieces, nephews and other relatives.

Personal

Kimie Carr is here visiting with her grandparents, Mr. & Mrs. Bufford Carr this week. She had attended a Girl Scout camp in Alpine prior to this visit.

RUBBER STAMPS

at the
RISING STAR
643-4141

REPORT OIL FIELD THIEVES
CALL
1-800-OIL-COPS

Register Now for Octoberfest '83

Octoberfest '83 promises to be three fun-filled days of recreation and education at one of five camps designed for today's mature adults. Octoberfest '83 is an Extension camp for people 55 years of age and is sponsored by the Texas Agricultural Extension Service.

The camp is held in a resort atmosphere with all the modern conveniences at the Texas 4-H Center. The state 4-H Center is located on a lovely wooded area on the shores of beautiful Lake Brownwood. The facility is located 11 miles north of Brownwood on Texas Highway 279 and one mile east on F.M. Road 3021.

Many programs and activities are planned for you and the choice is yours! Programs will feature Extension specialists in horticulture, family life, entomology, and housing. At each session, participants can get "hands on" experience in oil painting and needlecraft. Nature hikes, boat rides, square dancing, bingo, dominoes, bridge and other games will be offered.

Some sessions will include workshops on chime making, chair caning, needlepoint, basic drawing, cake decorating, and anti-ques. And...don't forget your fishing

pole. There is plenty of good fishing on the shores of Lake Brownwood.

The cafeteria is under the supervision of a dietician and professional staff. They are happy to accommodate special dietary requirements with advance notification.

The 5 camp sessions will be held on: October 4-7, October 11-14, October 18-21, October 25-28, and November 1-4.

The cost for the entire camp is \$68.50. This includes room, board, all meals, refreshments, linens and accident insurance. Deadline for receiving reservations at the State 4-H Center is one week before the camp you plan to attend. A deposit of \$10 is required. Your \$10 deposit will be deducted from your total fee when you arrive at camp. This is the best camping deal in Texas! Participation is limited to the first 100 on a first come, first served basis.

Pre-registration forms are available at the local County Extension Office or by contacting Janet Thomas, County Extension Agent at 629-2222.



Majestic Theatre

Eastland 629-1220

One Showing Only Each Evening
Open 7:30 Show Starts At 7:50 P.M.

STARTS FRIDAY

ALEXANDER SALKIND
CHRISTOPHER REEVE · RICHARD PRYOR

SUPERMAN III



"SUPERMAN III"
JACKIE COOPER · MARC MCCLURE · ANNETTE O'TOOLE · ANNIE ROSS
PAMELA STEPHENSON · ROBERT VAUGHN · MARGOT KIDDER ·
KEN THORNE · LESLIE NEWMAN · GIORGIO MORODER
PIERRE SPENGLER · RICHARD LESTER
ALEXANDER · ILYA SALKIND

Ranger Drive-In Theatre

Ranger 647-3802

One Showing Only Each Evening
Open 8:30 Showtime 9:05 P.M.

Starts Friday

Tony Manero knows the old days are over
But nobody's gonna tell him
he can't feel that good again.



PARAMOUNT PICTURES PRESENTS
A ROBERT STIGWOOD PRODUCTION - A SYLVESTER STALLONE FILM
JOHN TRAVOLTA
"STAYING ALIVE"
CYNTHIA RHODES · FINOLA HUGHES · STEVE INWOOD · FEATURING SONGS BY THE BEE GEES
EXECUTIVE PRODUCER BILL OAKES · WRITTEN BY SYLVESTER STALLONE AND NORMAN WEXLER
PRODUCED BY ROBERT STIGWOOD AND SYLVESTER STALLONE · DIRECTED BY SYLVESTER STALLONE
A PARAMOUNT PICTURE

Town & Country REAL ESTATE
BARBARA LOVE, INC. BROKER
HIGHWAY 80 EAST EASTLAND, TEXAS 76448
629-8391 629-1725

EASTLAND
NEAR SCHOOLS-4 bdr. 1 1/2 baths on 2 lots. E1
ASSUMABLE LOAN, Large 3 bdr., 2 baths. E3
ASSUME FHA No qualifying, 3 br. 1 bath cen. H/A. E5
CHARMING 2 STORY 4 bdr. beautifully decorated. E6
LARGE 2 bdr., H/A, corner fenced. Assume FHA. E7
LARGE FAMILY? 4 bdr., 2 1/2 baths, brick, extras. E9
LIKE NEW-2 bdr., br sou ome, cent. H/A. E10
EXTRA NICE 2 br. home-Priced right. E11
BRICK 3 Br., 1 1/2 bath, 2 living area, patio. E12
LARGE LOT, 3 bdr., 1 b., frame, lots of extras. E13
TASTEFULLY REMODELED 4 bdr. 3 bath, extras. E14
NICE FRAME 3 bdr., 1 1/2 sou A, Storage, Big yard. E15
NICE OLDER-2 bdr., cent. H/A, new kitchen. E17
BEGINNING UNIQUE 1 1/2 story rock in Oakhollow. E18
ENERGY EFFICIENT new metal frame 2 bdr. home.
NEW HOMES UNDER CONSTRUCTION, Call for details.
CLOSE TO SCHOOLS, 3 bdr. 1 1/2 bath, nice house. E20
*PRICED RIGHT, 2 bdr., 1 bth, inside repainted. E21
BRICK 3 bdr., 1 1/2 ba., Will trade for Lake Leon. E22
OLDER 3 Bdr., Double garage, trees, Good area. E23

GORMAN
MOBILE HOME, 3 lots, 3 bdr., 2 bath. G1
ROCK HOME, over 1 ac. lot. G3
EQUITY BUY-3 bdr., patio and storage building. G8

OTHER
RANGER, Large 2 bdr., cellar, corner lot, nice. O1
1 1/2 STORY LAKE HOUSE, 3 bdr., 3 baths, leased lot. O2
CISCO, 3 bdr., 1 bath on 1 Ac. Greenhouse, trees. O3
PEGGYE SWAFFORD 647-1050
HAZEL UNDERWOOD 629-1188

Moving to Eastland County? or anywhere in U.S.A. Call Toll Free 1-800-525-8910 Ext. 4365 for information. (No Rentals Please)

LAKE LEON, 3 Br., 1 1/2 B., Mobile Home, good water. O4
RISING STAR, 1900's home needs TLC, on 8 Ac. O5
LAKE LEON, 2 bdr. 1 sou 3 deeded lots. Boat hse. O6
LAKE LEON, 3 bdr., 2 baths, on 2 deeded lots. O7
OLDEN, 2-3 Br., 1 B., Lg. fenced lot, carport. O8
RANGER ASSUMABLE, 3 Br. 2 B. Cent. H/A extras. O9
CISCO OWNER FINANCE, 2 Br. 2 1/2 lots, Appliances. O10
CARBON, 2 Br., 75% completed, you finish & SAVE. O11

HOUSE AND ACREAGE
OWNER FINANCED- 2 SOLD n 1 1/2 Ac.-Eastland HA1
7 1/2 ACRES, 2 bdr. home, bunkhouse and barns. HA5
5 AC., 2 bdr., 1 bath home in Olden. HA6
CROSS PLAINS, 116 ac., custom brick home. HA11
CISCO, 4 bdr., 2 1/2 bath home on 10 acres. HA15

ACREAGE
428 ACRES So. of Cisco, 1 sou hunting, minerals. A1
.725 AC. So. access of I-20, near 2 exits. A2
1.2 ACRES, city water, excellent homesites. A3
SMALL tracts So. of Eastland, building sites. A4
100 ACRES, good coastal, barns, corrals, 3 tanks. A5
78 ACRES, Necessity Comm., 2 tanks, some minerals. A6
12 1/2 AC. Near Lake Leon on pavement, staff water. A7
60 ACRES, NW of Cisco, Rd. frontage on 2 sides. A8
167 1/2 AC. 70 Ac. field, rest pasture, tanks, well. A14
30.87 AC. on FM571 SE of Lake Leon, trees, minerals. A15
RISING STAR, 8 ac., w/older home, owner carry. A17

COMMERCIAL
OFFICE BLDG. on Seaman, owner carry. C1
4-PLEX APTS. 2 bdr., 1 or 1 1/2 baths. FHA. C2
3 RENTALS, large lots, fenced, garage. C3
OFFICE BLDG., 2 lots on Commerce St. C4
HWY 80 E. near I-20, large bldg. 1/2 ac. C5
PRICE REDUCED-Office or Retail, Main Street. C6
BRECKENRIDGE, bldg. & older station on 2 1/2 lots. C7
N. SEAMAN, stucco bldg., 3 blks. from square. C8
GORMAN-Hwy. 6 Frontage-Cafe & Metal Building. C9

BARBARA LOVE 647-1397
ROGER AUTREY 442-3345
ELMER FOSTER 629-1972



Rising Star Independent School District personnel were among the 57 public school teachers and administrators from 13 Texas school districts who attended the second weeklong Classroom Disciplinary Management and Strategy Program workshop on the Southwest Texas State University campus in San Marcos July 18-22. The program, funded by a \$227,000 grant from the Criminal Justice Division of the Governor's Office, is a cooperative effort of SWT's Institute of

Criminal Justice Studies and School of Education. Program staff and visiting consultants reviewed model programs and approaches to dealing with school discipline during the workshop. Pictured left to right are Jim Cartier, training coordinator for SWT's Texas Juvenile Justice Center; Rising Star ISD personnel Weldon Hill, Cindy Wood, Jeannine Childers, Robbie Rutherford and Principal Frank Gray. (SWT News Service Photo)

Local Teachers, Administrators Attend Discipline Workshop

San Marcos--Teams from 13 Texas school districts finished a weeklong workshop on Classroom Disciplinary Management and Strategy July 22 and returned to their schools with a plan to solve some of their disciplinary problems.

The workshop, sponsored by the Southwest Texas State University Institute of Criminal Justice Studies and the SWT School of Education, was conducted by the Texas Juvenile Justice Center, a part of the institute. The pilot program is funded by a \$227,000 grant from the Criminal Justice Division of the Office of the Governor.

Participating in the workshop this week were teams of teachers, administrators and

others from school districts in Bastrop, Brackettville, Marble Falls, Johnson City, Chillicothe, Alice, Gonzales, Poth, Scurry-Rosser, Broaddus, Rising Star, Kountze and San Marcos.

The workshop brought together representatives from several successful public school programs in discipline, in-school suspension and alternative education for problem students. The programs, some of them identified as exemplary by the Texas Education Agency, are generally not well known outside their immediate areas. Other workshop presenters included specialists from state agencies involved in education or juvenile justice and from private firms offering educational con-

sultation.

Following each day's program sessions, each team worked on a plan to deal with specific, solvable problems that exist in their school district. Texas Juvenile Justice Center Director Margaret Dunn said the workshop goal is to turn each team into a "core of dedicated people who will go back to their districts and begin a program to fit their particular needs."

The workshop included sessions on communication, defining and redefining the problem, alternative education for disruptive students, principles of change, bringing service agencies into the schools, techniques of assertive discipline, building a

good relationship between the school and the police, finding support for a new program, school crime prevention and the Texas juvenile justice system.

Under the grant from the Office of the Governor, each workshop participant receives free room and board and a \$150 stipend. The grant also provides funds for follow-up service to participants and limited assistance for school districts not involved in the workshops. Many workshop participants receive course credit for the workshop through the SWT School of Graduate Studies.

DRINKING DRIVING DEATH
A Combination we CAN'T LIVE WITH!

Party Given for Avis Massey at May

A surprise going-away party, consisting of a covered dish supper and dominoes, was held on July 26th. The party was for the senior citizen president Mrs. Avis Massey. Mrs. Massey has moved to Comanche and is now employed as the activity director at the Rising Star Nursing center.

Among those atten-

ding were Mr. and Mrs. Troy Bandy, R.B. Hood, Fadie Ratliff, Mrs. Margaret Hood, Veda Barnes of Early, Mr. and Mrs. J.J. Smith, Marshall Crume, Dutch Montgomery, Bill McCartney, Mrs. Ozell Chambers, Estell Orr, Magdalene Driskill, Alma Martin, Entha Cambell, Joey Smith, Michael Jackson, Bill Walker and several other guests.

4-H Club Plans Garage Sale

The Rising Star 4-H Club is hosting the Eastland County 4-H Awards Banquet this October and plans are under way to have the best banquet ever to celebrate the 75th anniversary of 4-H in Texas.

4-H Fiesta is the theme for the banquet and the food and decorations will carry out the theme.

Committees have been set up for food and decorating. Kathy Hall, Velda Lee, Jackie LeBleu and

Shelly Bailey will serve on the decorating committee. Debbie Winfrey, Debbie Green, Doris Wilson and Debbie White will head the food committee.

The 4-H Club is sponsoring a gigantic 15-family garage sale Friday, August 12, and Saturday, August 13, in the building behind Connie's Beauty Salon; it opens on W. College. Proceeds from the garage sale will be used to meet the expenses for the banquet.



THURSDAY,
AUGUST 11, 1983

WATER WELLS
Ray Merworth
Rotary Drilling
Air & Mud
Major Brand Pumps
915/356-2844

Peanut Clinic Will Be August 18

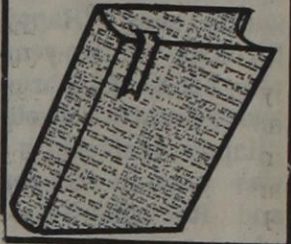
A peanut clinic will be held in Eastland County, Thursday, August 18. County Extension Agent DeMarquis Gordon says the purpose of the clinic is to diagnose peanut problems.

Peanut growers are asked to bring plant disease problems, insect problems, weed problems or nutritional problems to the clinic and discuss problems and recommended solutions with Extension Service specialists Drs. Chip Lee - Plant Pathologist, George Alston - Agronomist, Jesse Cocke - Entomologist and Gordon will be at the clinic to discuss individual peanut problems.

The clinic will be at the Carbon Farm Supply in Carbon from 9:00 to 11:00 a.m. and at the Pioneer Farmers Co-op from 1:00 p.m. until 3:00 p.m.

Peanut growers are invited to meet agent and specialists at the clinic, discuss individual peanut problems and bring plant specimens for diagnosis if they wish.

Read the Best Seller
Read the CLASSIFIED ADS



OFFICE SUPPLIES

at the
RISING STAR
643-4141

Opening August 22

The Dog House

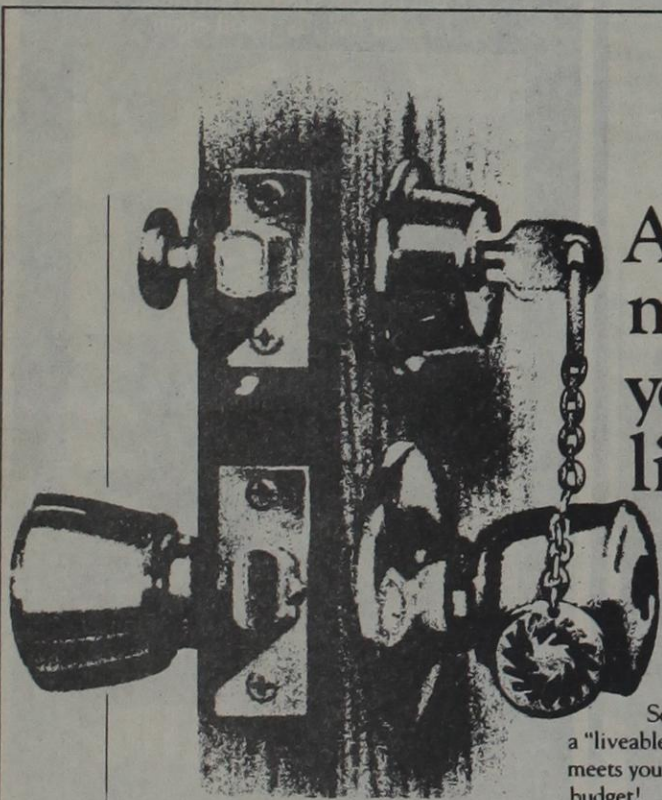
If your dog isn't becoming to you It should be coming to us.

Poodle Grooming and
Other small breeds
Hiway 80 West behind
Harps Cabinet Shop
817-629-1403

Penny Coplen

Susan Alexander
T-73

Family Food Store
Is Open
Monday-Saturday
7:30-6:30 p.m.
Sunday 8:00-6:00 p.m.
Sale Days - Wed. thru Sat.



A home mortgage you can live with!

Whether you're planning to build from the ground up or buy an existing home, you can count on the professionals at Southern Savings to design a "liveable" home mortgage plan that meets your own individual needs and budget!

At Southern, we offer fast, efficient service on competitive FHA, VA and conventional mortgage rates on the home of your dreams. Plus, we give you the type of financing terms that you can live with comfortably month after month! That's because once you've realized your dream, we don't want to be the ones to stand in your way!

For a home mortgage loan you can live with, come on over to Southern Savings... we're making life better the Southern way!

Financing also available for home improvement, manufactured housing and recreational loans.

Southern Savings
Member FSLIC

Cross Plains Branch, 200 N. Highway 36, 725-7724
Home Office: 501 Center, 646-4561, Brownwood

Branches: Bangs, Brady, Brownwood, Coleman, Comanche, Cross Plains, DeLeon, Goldthwaite, Lampasas, Stephenville

SOFT TOUCH SALE

Free MODULAR CONVERSION KIT
Streamline your telephone connections.
For details call our business office.

Last Chance to Save at Least \$35

Continental's Soft Touch Sale ends August 19th. So let us show you the advantages of Touch Call service. Place your order now and catch the phone company in a weak moment!

We're even waiving our service connection charges until August 19th.

Call your nearest Continental business office for details. You may be surprised at just how soft a touch we are.

CONTEL Continental Telephone of Texas

302 Chestnut
Baird, Texas 79504
(915) 854-1555

At this time, offer available only in: Cross Plains

Minutes of RSISD Board Meeting

THURSDAY, AUGUST 11, 1983

RIISING STAR INDEPENDENT SCHOOL DISTRICT REGULAR MEETING
August 8, 1983, 116 North Main Street, Boardroom.

MEMBERS PRESENT: Jack Hubbard, Dan Hughes, Sue Barnes, Joyce Baker, Terry Geye.

MEMBERS ABSENT: Joe McCollum, David Harris

SCHOOL PERSONNEL PRESENT: Gene Williams, Frank Gray, Weldon Hill, Jack Gray.

BUSINESS: Call to order by the president, Jack Hubbard.

1. Minutes of the Special meeting of July 25, 1983, were read and approved upon a motion by Dan Hughes and second by Sue Barnes. Motion carried.

2. Communications:
3. (a) Motion by Jack Hubbard second by Sue Barnes that the bills incurred by the

Rising Star ISD be ordered paid. Motion Carried.

(b) Terry Geye moved and Dan Hughes seconded the motion to set the 1983-1984 Official Budget Hearing to be in the board room at 8 o'clock on August 18, 1983. Motion Carried.

(c) Upon a motion by Jack Hubbard and second by Joyce Baker the Board unanimously approved the 1982-1983 Amended Budget.

(d) Sue Barnes moved and Dan Hughes seconded the motion to Certify the 1983 Delinquent Roll as presented by Angela White, Tax Collector: Real 19,781.44

Real Unknown 371.14
Oil 17,531.78
Oil unknown 2,710.19
for a total of \$40,394.55. Motion Carried.

(e) Motion by Jack Hubbard seconded by Sue Barnes to hire for FY 83-84 Frank Colvert teacher and Doris

Wilson for lunchroom worker. Ms. Sublett for Sp. Ed. Motion Carried.

4. Old Business:
(a) Motion by Jack Hubbard second by Sue Barnes to appoint Rowena Chambers to re-invest the General Operating funds; reserving maintenance and operating for Rising Star ISD. Motion Carried.

(b) Upon a motion by Terry Geye and second by Joyce Baker the Board unanimously accepted the Bid from First State Bank of Rising Star and in obedience to Subchapter E, Chapter 23 of Texas Education Code did select The First State Bank as the Rising Star ISD depository for the 1983-1985 biennium beginning September 1, 1983. Motion Carried.

(c) Motion by Sue Barnes second by Dan Hughes that upon the

second Reading of the attendance policy amendment the board unanimously adopted the policy to be affected 1st day of school for the FY 83-84. Motion Carried.

(d) Discussion; Litigation

5. New and Misc Business:

(a) The board by general consent regrets that people in the community has not received the goods purchased from students and agreed that the school will be responsible to reimburse the monies for these purchases.

(b) Discussion: Air Conditioners, Elemen-

tary
6. Reports of accounts by Superintendent:

(a) Discussion Athletic Budget and Coaches salary. By general consent the board agreed to pay Coach Gray's salary in thirteen equal increments.

7. Reports of Instructional Progress by Superintendent and Principals:

(a) Motion by Terry Geye second by Dan Hughes that the Annual evaluation report update for the Five Year Accreditation Plan be accepted. Motion Carried.

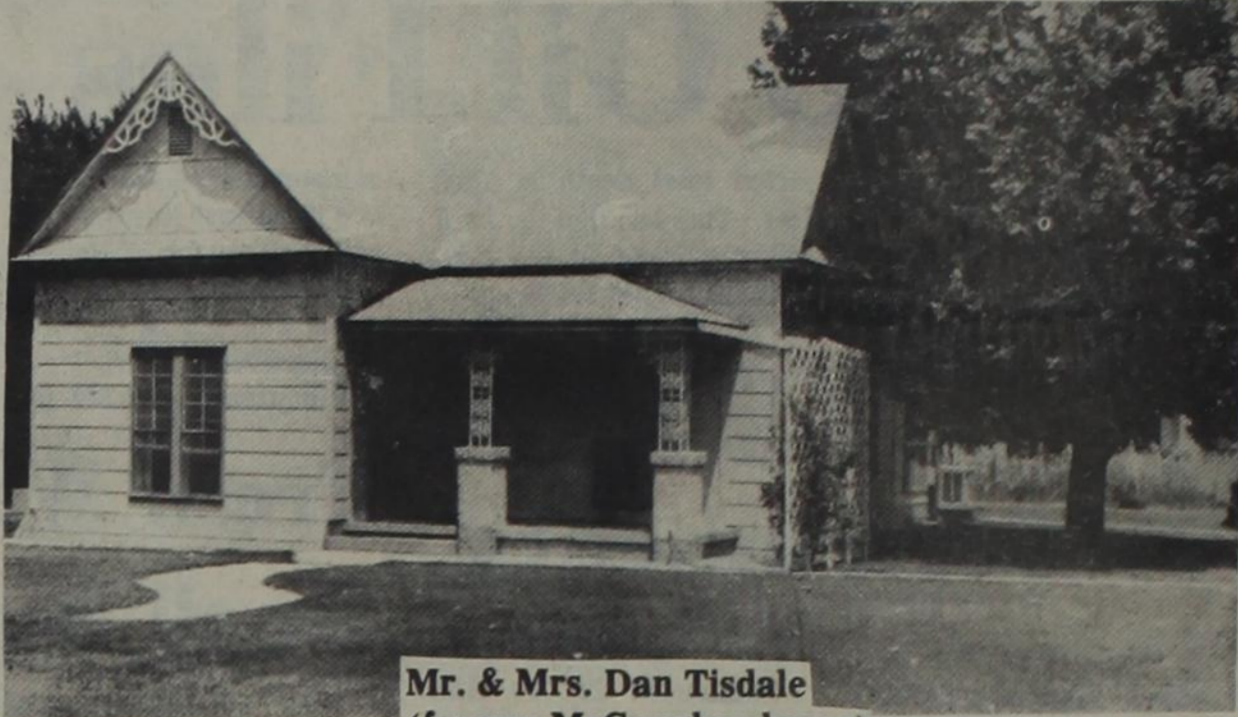
SPECIALIZING IN SEWER SYSTEM INSTALLATION AND SERVICE

Clovis' Septic Tank & Backhoe Service
CROSS PLAINS, TEXAS 76443

CLOVIS SIMONS
TELEPHONE (817) 725-7484

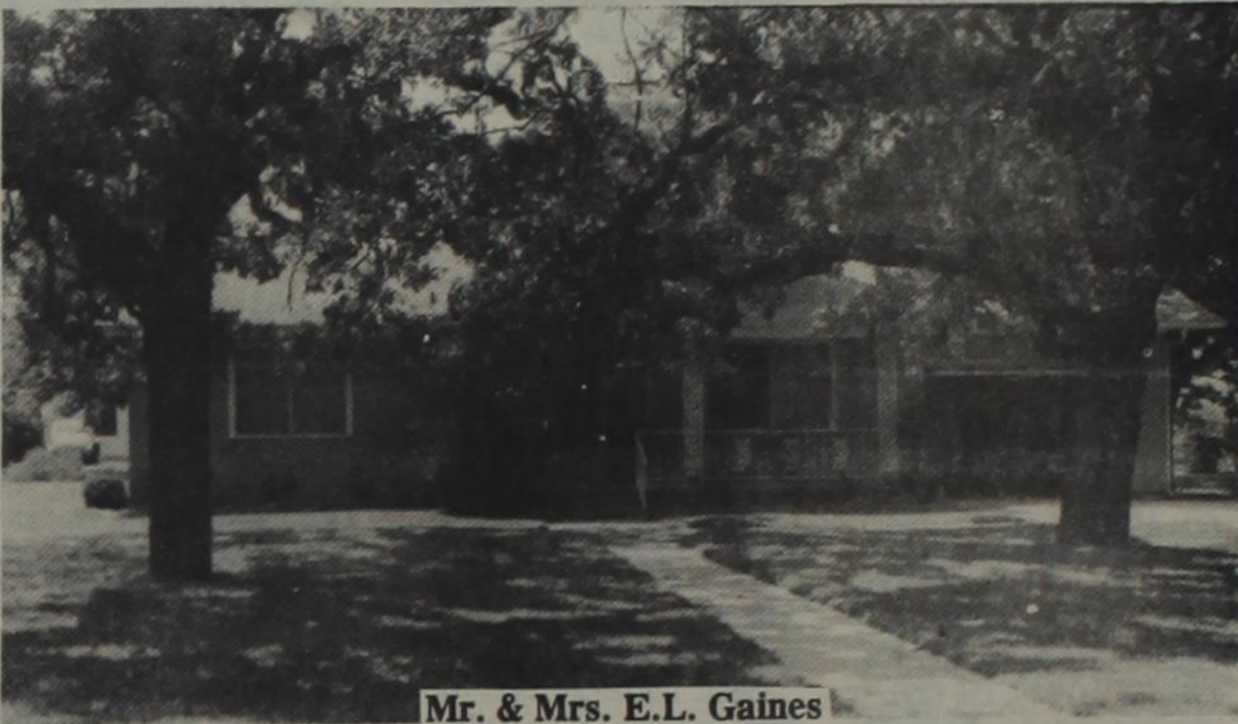
P. O. BOX 604

Home Improvement & Yard Beautification Yard of the Week

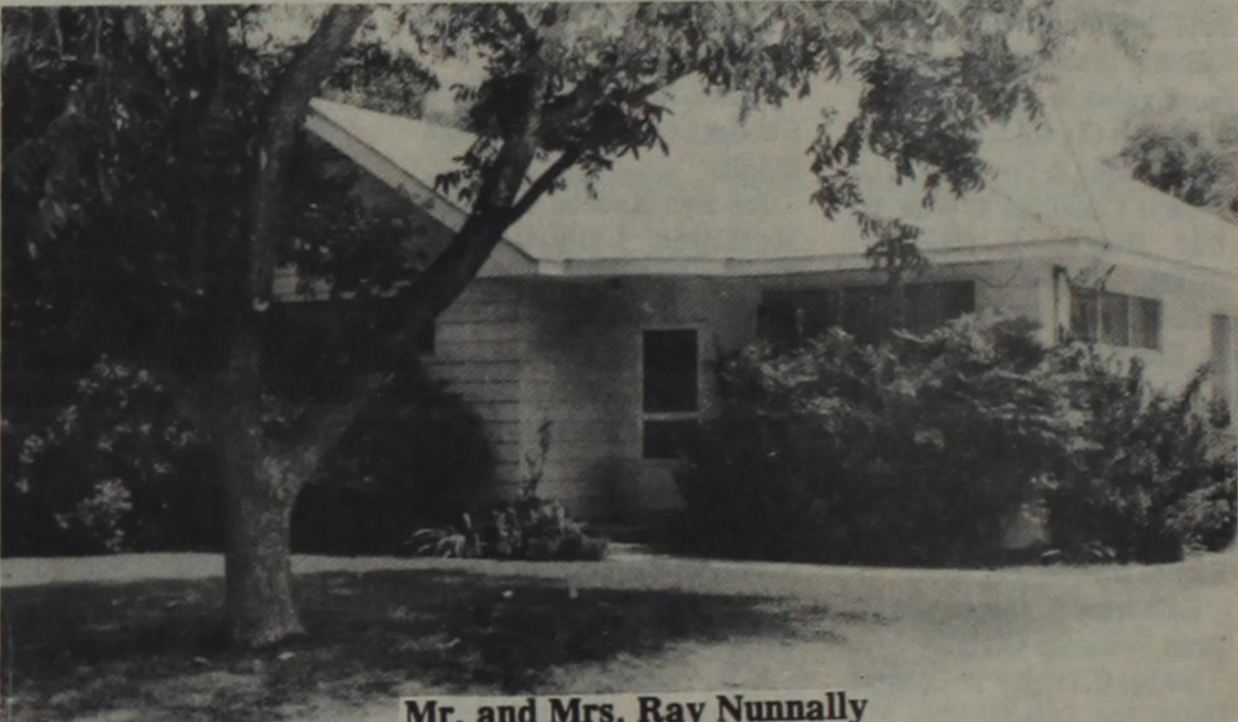


Mr. & Mrs. Dan Tisdale
(former McGaughey home)

Honorable Mention



Mr. & Mrs. E.L. Gaines



Mr. and Mrs. Ray Nunnally



Miss Elizabeth Robertson



Mr. & Mrs. Frank Agnew



Snak Shak

PAT MAYNARD REAL ESTATE

629-8568 EASTLAND INT. 20 E. NORTH SIDE 442-1880 CISCO

Homes: Eastland, Ranger and Carbon

Prestigious 2-story rock home on one of Eastland's finest streets. This is an exceptional home with approx. 5,000 sq. ft. and has all the extras including CH-CA, built-ins, trash compactor, intercom system, stereo hooks in each room, 2-car garage with electric door opener, drapes, fenced yard, and more. Definitely a quality place. Call for appointment.

Just listed: 3 bedroom, 1 bath with ceiling fans, refrig. air, big oak trees and nice garden spot, plus a large workshop. \$30,000.

Attention young couples: Good starter home, beats paying rent! 2 bedroom, 1 bath with detached garage. \$18,000.

3 bedroom, 1 1/2 bath frame home on large lot, living/dining room area with fireplace, large kitchen with separate utility, breezeway between garage, fruit trees. \$35,000.

3 bedroom, 1 1/4 bath brick home on large lot. Will have new carpet, paint and other repairs made. Built-ins with central heat and air. \$41,500.

3 bedroom, 1 bath 2-story frame home, separate living and den, large master bedroom and kitchen. \$27,500.

A 3 bedroom, 1 1/4 bath brick home in the desirable Crestwood addition, large living area with fireplace, beautiful lot. \$77,000.

In Ranger, a beautiful stucco 3 bedroom, 1 bath home, detached garage, storage buildings. \$39,000.

Assume loan on a 2 bedroom (could be 3), 1 bath, older brick home. Take up monthly payment of \$497.12 or can be refinanced.

In Gorman, 2 bedroom, 1 bath frame home on 2 1/2 lots with separate garage and storage. \$30,000.

Located in Carbon, a 2 bedroom home on one acre. Country living in town! Only \$16,000.

We have a very nice 4 bedroom, 3 bath brick home on 3 lots. This home has everything most anyone could ever want in a home. Call for details.

Want a new home? We have large lots available in exclusive area. City water, sewer, and paved streets. This area is restricted to brick homes only. Reasonably priced from \$4500 to \$5500.

New homes in the exclusive Oakhollow brick home addition. Call for an appointment.

New on the market! a 2 bedroom, 1 bath home, formal dining area, CH-CA, carpeted, nice modern cabinets with dishwasher. \$35,000.

Only 9 months old, this 3 bedroom, 1 1/4 bath brick home in exclusive area. Custom made drapes, fireplace, and other extras. \$67,000.

A very nice 3 bedroom, 1 1/4 bath brick home, separate living and den. \$50,500.

Large master bedroom in this 3 bedroom, 2 bath home on one of our better streets, furnished. Owner finance at 9% interest. \$40,000.

In Olden, we have a 2 bedroom, 1 bath older home that needs some repairs. Priced at \$16,000.

In Ranger, a nice 3 bedroom, 1 1/2 bath brick home with carpet, drapes, CH-CA, fenced back yard, and large work shop.

Small Acreage With Homes

2 1/2 acres on Staff road near Lake Leon with water well and tool house. Nice place for home. Only \$7500.

In Carbon, 3 bedroom, 1 1/4 bath, rock home on 4 acres, shop, barn, fruit trees. \$31,500.

A large 3 bedroom, 2 bath mobile home (14x72) on 5.69 acres, located on FM 2214, with 14x10 attached greenhouse, A-frame and other storage buildings, city water. \$43,000.

In Carbon, 9.3 acres with 3 bedroom, 1 1/2 bath mobile home (12x65) located on Hwy. 6, 52 pecan trees, wells, beautiful place, \$35,500. (Will consider small down, remainder over 10 years at 10% interest.)

Out of Cisco, 10 acres northwest off of old Abilene Hwy., city water and electricity. \$14,500.

120 acres south of Cisco on 206 and 569, 2 bedroom, 1 1/2 bath brick home, hay barn, corals, storage buildings, 2 irrigation wells and pipe, 11 pecan trees, 1/2 minerals. \$136,000.

In Olden, 3 bedroom, 1 1/4 bath brick home on 1 acre, carport, central heat/air, fruit trees. \$57,500.

Located in Ranger! A 4 bedroom, 1 bath frame home on 5 acres with an old motel on the property. Home is in good condition. All this for only \$55,000.

5.3 acres near Lake Leon with a 2 bedroom mobile home (14x70). Carpeted, central heat/air, house type windows, special siding, storage building and city water. \$35,000.

16 acres near Eastland, with I-20 frontage. \$4,000 per acre. In 4 acre tracts \$4500 per acre.

Located near Union Center: 2 bedroom 1 bath home on approx. 38 acres. This house is a dream place in the country. \$70,000.

A 3 bedroom, 2 1/2 bath, 2-story, approx. 3,000 sq. ft. brick home only 3 years old situated on 10 acres close to Eastland. Unique petrified wood fireplace. \$105,000.

Beautiful 3 bedroom, 2 bath brick home with built-ins, CH-CA, ceiling fans, covered patio, 2-car garage plus other extras. 3 acres near Breckenridge. \$82,000.

Farms & Ranches

40 acres located south of Cisco on 183, native pasture with scattered pecan trees, one well and tank, fenced (3) sides. \$42,000.

Near Eastland and Lake Leon, 49.6 wooded acres with six tanks and spring, on FM 2214, good place to hunt and fish, assumable loan. \$60,000.

Near Lake Leon, a 20 acre tract of land. Some cultivation and good hunting area. \$30,000.

Need exposure, we have an attractive 70 acres located on I-20. Nice tanks and weekend cabin. See to appreciate.

320 acres located between Carbon and Gorman. Some cultivation but mostly wooded. Good fences and hunting, some minerals included. \$500 per acre. Owner financed at 9%.

5 acres near Eastland. I-20 frontage. \$5,000 per acre. Terms can be arranged.

Located south of Cisco, 50 acres with approx. 35 acres of pecan trees. Owner will consider terms. \$74,200.

248 acres located on old Abilene Hwy. west of Cisco, mostly cleared with some wooded acreage, good fences, 1/2 minerals with leasing rights. \$530 per acre.

100 acres between Lake Leon and Desdemona, all in cultivation and coastal. good 5 wire fence and cross fence, shallow water, \$800 per acre. Owner finance at 9%.

640 acres approx. 17 miles northwest of Breckenridge, with 2 bedroom, 1 bath frame house, 175 acres cultivation with remainder in pasture. 45% minerals with leasing rights. \$583 per acre.

160 acres off of Hwy. 183 eight miles south of Cisco, 100 acres cultivation, remainder trees, oil/gas production. \$600 per acre.

Cisco Homes

A large 2 bedroom, 1 bath home with formal Dining and breakfast area. Vinyl siding, garage, storage building, on 2 1/2 lots with large oak trees.

Large 3 bedroom, 2 bath frame home with fireplace. Metal workshop and other buildings on several lots. Great potential. \$37,500.

A 2 bedroom, 1 bath frame home, double carport, storage building. \$22,000.

2 or 3 bedroom, carpeted home with central heat and air. Surrounded by beautiful oak trees. Paved street. Also has large shop and garage.

Nice 2 bedroom, 1 bath frame home. New carpet, large rooms. Nice trees and shrubbery. Owner financing available. \$22,500.

A 4 bedroom, 1 1/4 bath 2-story stone home on 2 big lots; privacy fence around swimming pool. Also has small efficiency rental unit. Reduced to \$29,500.

Large 2-story with 5 bedrooms, 2 baths, den, separate dining and breakfast rooms, located on 2 big corner lots. Also has a nice roomy apartment attached. Beautiful landscaped yard with lots of trees.

This large 2 bedroom, 2 bath frame home has separate dining and living rooms, spacious kitchen cabinets and a one bedroom apartment rental above garage. \$28,000.

A new 4 bedroom, 2 bath home on .46 acre lot, CH-CA, large carport and storage room, with fireplace and storm windows.

Weekend cabin on Lake Cisco.
A 3 bedroom, 1 bath home with a small apartment, storage building, situated on 2 lots. This nice home has been reduced to \$29,800.

WE NEED MORE CISCO LISTINGS!!

Commercial

Located near downtown, an older building that would make a good location for a business. \$35,000.

In Cisco, a 100'x50' building with office space and shop area of 4400 sq. ft. Owner will finance this one with reasonable down payment and interest. \$75,000 for building or \$95,000 for everything as is, as a business.

In Eastland, a new metal building, 2400 sq. ft. with dock area. \$38,000.

In Ranger, a large 2-story brick building with good sized fenced yard. Located near railroad tracks with spur. \$85,000.

Located near downtown! a 2-story brick building, 4 lots and a house. All this for \$40,000. Will consider splitting.

Valuable I-20 property! Approx. 4,600 sq. ft. building, very versatile, easy accessibility. \$77,500.

For commercial use only. 1 to 5 acres with I-20 frontage.

For lease. 2-story brick building near downtown Eastland. \$250 per month.

Located on Main Street, a 10,000 sq. ft. building. Ideal location for a business. Extra lots go with this one. \$135,000, owner will finance with good terms.

WE HAVE OTHER HOME, LAND AND COMMERCIAL LISTINGS.

WE APPRECIATE YOUR BUSINESS!

PAT MAYNARD	CINDY FOSTER	ANN WILLIAMS	WAYNE CHANDLER	KAY BAILEY	NOLAN BUTLER
Broker	Associate	Associate	Associate	Associate	Associate
629-8063	629-8195	442-1880	734-2782	629-2365	629-8106

The Oil Belt News

THURSDAY, AUGUST 11, 1983

Credo Oil Files To Drill In Adams Field

Beaumont-based Credo Oil and Gas Inc. has filed for permit to drill the No. 3 L.B. Jones in Eastland County's Adams Field. It is aimed at crude oil production in the Duffer Formation. Pro-

jected total depth is 4,200 feet. The location is in a 545-acre lease in the S.N. Mathias Survey A-376.

A new producer has been

completed in Eastland County's Northeast Nimrod Field with Wallace Inc. of Houston as the operator.

The well will be known as the No. 2 A.L. Cozart. It bottomed at 3,950 feet

and will produce from a perforated interval in the Caddo Lime, 2,854 to 2,857 feet into the hole.

Drillsite is in a 160-acre drilling unit in the H&TCRR Survey Sec. 101 Blk. 3, about

eight miles west of the Scranton townsite.

The No. 1 Ellis-Robbins "A" is scheduled to be drilled in the Stephens Regular Field, with Delta Oil and Gas of Breckenridge as the operator. It carries permit for 4,400-ft. total drilling depth. Location is in a 295-acre lease in the LAL Survey, about five miles southwest of Breckenridge.

Shillelagh Corp. of Wichita Falls is the operator.

Pumping oil at the rate of 17 barrels per day on open choke, the No. 1 P.C. Langford has been brought on line in the Stephens Regular Field by Bob I. Miller, independent operator from Granbury.

Location is in an 80-acre unit in the T&PRR Survey, 14 miles south-southeast of Breckenridge.

The well was taken to total depth of 2,077 feet and was perforated to produce from an interval 2,033 to 2,037 feet into the wellbore.

At a location six miles west of Albany, C&L Equipment of Albany has completed the No. 12 and No. 14 Merrick Davis, new oil wells in the Shackelford Regular Field.

Drillsite was in an 80-acre lease in Shackelford County's T&PRR Co. Survey. The No. 12 well showed daily potential for five bar-

rels of oil per day, and the No. 14 well indicated potential for nine barrels per day, both wells are on open chokes. The production will be from intervals 1,200 to 1,215; for both wells. Both wells entered the pay zone at 1,200 feet, with the No. 12 well bottoming at 1,499 feet, and the No. 14 well having a total depth of 1,276 feet.

Curtis Pryor of Lubbock has posted initial production figures for the No. 3 and No. 4 S.W. Compton, two new oil wells in Shackelford County's Moran Field, one mile west of Moran.

The No. 3 well indicated potential for 11 barrels of oil while the No. 4 well was flowing 26 barrels of oil per day and 442,000 CF casinghead gas, the No. 3 well is on a .75-inch choke and the No. 4 well is on a 20/64 choke. The wells have tubing pressure of 40 PSI and 280 PSI, respectively. With drillsites in a 133-acre lease in the University Lands Survey, the wells had total drilling depth of 1,970 feet and 1,974 feet. They entered the pay horizons at 2,043 and 2,050 feet, and they will produce from sets of perforations 1,972 to 1,996 feet.

Oil Instruments

John A. Adams to Trinity Exploration Co. OGML
Euell E. Allison to Flatwood Gas Inc. Esmt
Jimmie V. Burleson to PHI Resources Ltd. OGL
Roy Jack Burleson to PHI Resources Ltd. OGL
J.V. Burleson & Wife to PHI Resources Ltd. OGL
Bar H Bar Inc. To Trinity Exploration Co. OGL
Bar H Bar Inc. to Trinity Exploration Co. OGL
Lynn Bint Petroleum Co. To Coastal Petro. Inc. Asgn OGL
W.L. Basham To Southeastern Resources Corp. OGML
James Burette Basham & Wife To Southeastern Resources Corp. OGML
R.S. Burgess To Sun Exploration & Prod. Co. OGL
Trannie Teasley Berry To Pete O. Johnson Asgn
Helen Gholson Cherry To Sun Explor. & Prod. Co. OGL
Joan J. Clarke & Others To Ray Rickey & Co. Inc. OGL
Cecil Copeland & Wife To Ray Rickey & Co. Inc. OGML
Command Energy Corp. To The Public Notice
Cobata Energy Inc. To Paul Dunn Contract
W.B. Cates & Others To Vaughn Matney Ratif. OGL
Thelma J. Cowden To Sun Explor. & Prod. Co. OGL
Catherine B. Davenport To Brad Sutherland OGML
Mabel C. Dilger To Coastal Petro. Inc. OGL
Sandra St. John Doss To Sun Explor. & Prod. Co. OGL
Paul C. Dunn To Cobata Energy Inc. Asgn W/Int.
Enserch Exploration Inc. To Hanvey Prod. Co. OGL
Edwin Erwin To Adwell Oil Co. OGML
H.C. Edwards & Wife To Sun Explor. & Prod. Co. OGL
Enserch Exploration Inc. To Sun Explor. & Prod. Co. OGL
D.D. Feldman Oil & Gas To The Public Assumed Name
Agnes Gray Gholson To Sun Explor. & Prod. Co. OGL
Roy E. Gude To Arlie K. Whitley OGML

Halliburton Co. To H&S Production Inc. & Others Rel. MML
Ora Haynes To Flatwood Gas Inc. Esmt
James L. Hughes & Wife To Flatwood Gas Inc. Esmt
Imogene Harbin & Others To Flatwood Gas Inc. Esmt
Mary Tate Hendel To Rhodes Drig. Co. & Others OGML
Martha Shea Henson To Rhodes Drig. Co. & Others OGML
Lola Merrill Hester To Sun Explor. & Prod. Co. OGL
Lalla Foster Hill To Sun Explor. & Prod. Co. OGL
Kathleen Miller Holland To Sun Explor. & Prod. Co. OGL
Georgia Ann Burleson Iley To PHI Resources Ltd. Asgn
Joann Johnson Rec. No. 30680 To Snow Oil Co. OGL
James Jobe To Flatwood Gas Inc. Esmt
Vera L. Joyce & Others To Rhodes Drilling Co. & Others OGML
Joe Ben Koonce To Susie McMillen Langille, by Trustee Dec'd Rel. OGL
Bertha Helen Triplitt Kerr To Trinity Exploration Co. OGML
Joseph D. Kennedy & Wife To Alsup Dev. Inc. MML
Lyles Energy Inc. to Yellow Branch Inc. Rel. MML Aff'd
Leisure Dev. Co. To Dallas Group, Inc. Asgn OGL
E.W. Lawler To Conser Petroleum Corp. Asgn OGML & B-S
E.F. Lawson, Jr. To Sun Explor. & Prod. Co. OGL
Irlene T. Lobb To Pete O. Johnson Asgn
Martha Morgan & Others To D.A.B. Oil Ser. Inc. OGML
Vaughn Medford To Ray Rickey & Co. Inc. OGML
Larry Morrow & Wife To Flatwood Gas Co. Esmt
W.B. Norton & Others To Edwin Paul Schaefer ORR Asgn
Charles R. Owens To J.R. Struve & Others Asgn ORR
Pat Patterson To Patterson-Wilhite Asgn OGML

Fresh Water Use Small But Critical

The Texas petroleum industry long has been dependent on water for its production operations. The industry uses various kinds of water — salt, brackish, and fresh — in varying amounts.

Fortunately, most of the water the industry needs for secondary recovery operations comes up with crude oil as it is produced in a ratio of 2.5-barrels of water to one barrel of oil. This produced water is too salty for industrial or agricultural uses or human consumption. But, in most cases, it is suitable for reinjection into the same formation. This results in increased production of oil, while the environment is protected.

According to the Railroad Commission, 66.3-percent of water used in injections is salt water; 15.8-percent is brackish, with 17.9-percent fresh. Indeed, there are instances in which the only substance which can be used effectively in recovering more oil is fresh water.

In some cases, sufficient quantities of salt or brackish water are not available. In others, highly mineralized water is incompatible with the water or rock in the formation and the oil cannot be moved. Conversely, in some formations fresh water cannot be used because it is incompatible. So, the industry needs all kinds of water.

In a recent Association publication, *Fresh Water and the Public Interest: An Update*, it was reported that the use of fresh water in secondary recovery operations is quite small, particularly when compared with other beneficial uses. The figure statewide for 1980 was 687.4-million barrels, just one-half of one percent.

The economic result of this application? In 1981, for example, more than 281.5-million barrels of crude oil — 30-percent of Texas' production — was recovered through waterflooding, with almost 50.4-million barrels of oil attributable to the use of fresh water. The wellhead value of the oil recovered with fresh water exceeded \$1.7-billion, with state production taxes on it amounting to almost \$80-million.

Despite this, there are those persons who, for a variety of reasons, seek to prohibit the use of fresh water for production operations. Such a proposal would be detrimental to the Texas petroleum industry and to the people of Texas.

Our industry recognizes that an adequate supply of fresh water is critical to the future of our state. In order for Texas to continue to prosper and to grow, we must put our fresh water supplies to the best economic use. We also must preserve and protect the fresh water supplies we have by preventing pollution and supporting efforts designed to develop additional supplies.

One Thing After Another -

... can and may happen to land titles in the passing of moments. During the time it takes you to read this ad, something could happen to your title that would change your whole financial structure, or indeed it could alter your plans and aspirations for generations to come. The abstracter, in a sense, is your land title guardian, for he keeps the records day by day as you or others make them. Advise with him often about your title.

Eastland County Abstract Company

112 W. Commerce, Eastland, Texas

R. Pat Miller

Annelle B. Miller

Kiva inn

MOTOR HOTEL

Year Round Inn-Door Summer Fun
2 Locations

Abilene & Wichita Falls
915-695-2150 817-766-6000

The Library
Restaurant

Sidewalk
Cafe

BRUNCH 11 AM-2 PM SUNDAY
LUNCH 11:30 AM-2 PM WEEKDAYS
DINNER 6 PM-11PM WEEKDAYS & Saturday

OPEN 6 AM-10 PM
WEEKDAYS and SUNDAY.
TILL 11 PM SATURDAY

VIC'S WELDING & MUFFLER SHOPPE

Monday - Saturday - 8 to 5

106 S. Virginia
Eastland
629-2874



Snow Oil Plaza

Pipe & Supply

Drilling Corp.

Well Service

Petroleum Land Leasing

Terry Patty

Off. (817) 629-8521

Linda Nelson

Res. (817) 629-8123

EASTLAND DRILLING INC.

817/629-8512
24 Hour Number



3 Rotary Rigs

Drilling depth from 1500' to 6000'
All Rigs Radio Equipped with 24 hr. answering service plus phone patch.

Gary Snapp, Vice President & Operations Mgr.

Res. Phone 817/647-3416
23 Yrs. Offfield Experience

WATER WELL

Drilling & Pump Service

2nd Generation Driller

Pump sales & Service

Windmill Sales & Service

Call 24 hours

Driller - (817) 594-2029

Service - (817) 594-3909

1225 Ranger Hwy.



Herbert J. Walker

Water Well Drilling
State License No. 971

SAT-Tracker

Satellite Antenna 100 Plus Channels
Sports Channels Sports Specials 24 Hour Movies



Eastland Electric Supply Co. Inc.

400 S. Seaman Eastland, 629-3315

Hours: 7:30 - 5 Mon. - Fri.

7:30 - 12:00 Sat.

S & S DRILLING CO.
OIL & GAS
Route 4
CISCO, TEXAS 76437
BILL GARY 442-3048
LEE STARR 442-3226

ACE WELL SERVICE INC.
— Dale Jones —
Completions Swabbing
Workovers Roustabout Crews
Rods & Tubing
Fully Insured For Customers Protection
Radio Equipped Call Day Or Night
200 S. Newton 559-5439

GINGER ENDSLEY
Record Research
CISCO 442-4725

May Tigers 1983 High School Football Schedule

Date	Opponent	Place	Time
August 19	Trent	Here	6:00
August 26	Paint Rock	There	6:30
September 3	Carbon (Homecoming)	Here	8:00
September 9	Oustine	There	8:00
September 16	Strawn	There	8:00
September 30	Brooksmith	Here	8:00
October 7	Cherokee	Here	7:30
October 14	Richland Springs	There	7:30
October 21	Sidney	There	7:30
October 28	Zephyr	There	7:30
November 4	Malin	Here	7:00
November 11	Mozelle	Here	7:00

• District Games

May Senior Citizens Plan for New Van

Mrs. Brenda Elkins and Jennie Carmichael of Abilene COG and Brownwood Senior Citizens, respectively, visited the Senior Citizens building August 3. Mrs. Elkins commented that we have the best senior citizens area for working of any other in her region of 19 counties of supervision.

On July 28 Mrs. JoAnn Windham introduced John Arthur who is head of the distribution of new vans under section 16B2 for senior citizens. They explained that the van would be about \$11,000 but the

senior citizens would be responsible for 20% of the cost and the government would pay 80% of the cost.

The question was asked, how will the 20% needed for full payment for the new van be raised, and it was suggested that the money be raised by donations and sale of the old van.

The van is due to be available within one year from November with the senior citizens paying only 20% of the cost and the government paying the remaining 80%.

Entha Campbell

May News

Entha Campbell

The May senior citizens extend a hearty welcome to two new members, Mr. and Mrs. Glenn Bailey.

Twenty-one people attended the quilting party from 6:00 p.m. to 10:00 p.m. on August 2. The quilting and domino parties are held each Tuesday night beginning at 6:00 p.m. The 1st, 3rd and 4th Tuesday nights are fund raisers for the SC Center and each guest is charged 50 cents. The 2nd Tuesday night of each month is free and for social activities, usually with a covered dish supper. Everyone is welcome to come, so bring a covered dish and join in the supper and fellowship.

Mrs. Faye Wheeler visited her parents, Mr. and Mrs. Henry Rogers, in Bronte last Wednesday. Mrs. Rogers stays busy crocheting and canning.

Mike, Mark and Shannon Tubbs of San Antonio and Traci Harms of Granbury have recently returned home to get ready for school. They have been visiting their grandparents, Mr. and Mrs. Junior Michael, during the summer vacation.

Mrs. Junior Michael will enter the West Texas Medical Center for surgery on August 9th.

Mrs. Lillian Michael and Dorothy

McWilliams have gone to Riverside, Calif., to attend a 25th wedding anniversary of her cousin.

Mrs. Dutch Montgomery and Mrs. Wyman Glenn donate their services of checking senior citizens blood pressure each Wednesday. Both ladies are licensed nurses.

Roger Kuhlman, former youth director for First Baptist Church, resigned because of his transferring from HPU to the college in San Marcus.

Mr. J.J. Smith resigned his official church duties because he feels he needs more retirement freedom. However, he plans to work in and for the church when he is needed in an advisory capacity.

Rising Star Nursing Center Avis Massey Activity Director

MONDAY, Aug. 1--A.D. was off to move.

TUESDAY, 2--A.D. returned noon. News report got ready and shopping for residents.

WEDNESDAY, 3--10:00 crafts. 2:30 Bingo with Buster Rixford calling numbers. He barely got back from a birthday lunch to do it. Glad you had a good outing, Buster. Our big winner was Ada Foster with four games. Mary Crisp won three, Maggie Christian and Bister Rixford won two games each and Mamie Wells won one game. Everyone enjoyed popcorn. 4:15 Dorothy Reynolds and Ruby McCowen was here to lead in singing. 7:00 Bro. Lewis Wilderson led in Bible Study. A good crowd was in attendance.

THURSDAY, 4--Exercise 10:00. Dominoes 2:00. Four of our residents enjoyed a

game of Dominoes.

FRIDAY, 5--10:00 Resident Council with 7 present. Minutes of previous meeting read and approved. The new porch and patio addition discussed. President Buster Rixford asked for complaints and suggestions. Estell Bolding suggested that we make a quilt top and put each resident's name on a block and sell the top. We hope to start on it soon. 2:00 Bible Study with Olive Odom in charge, Cliffogene Witt at piano. Lois Richardson led singing. The bible study is always enjoyed.

SUNDAY, 7--3:00 Bro. Armo Bentley, of First Baptist Church, was in charge of the church services. There was a good attendance and good singing. The service was enjoyed by all.

To all of our volunteers. Would you please sign the volunteer sheet on the podium by the front door? We do appreciate each one of you.

Visitors for past 2 weeks:

Erma "Duke" Ray of Muleshoe, to see Zelma Morgan, Bobby Inglet, Marjorie West, John and Nell Nunnally of Kilgore, to see Pearl Nunnally, Frankie Miller of Anson, and Georgee Graham to see Artie Fleming, Helen Young and Connie Young of Glendale, to see Alice Odom, Vera, Donna Young and baby of Victoria to see Mary Crisp, Eve Landers, Jo Wayne Crisp of Abilene to see Mary Crisp, Cliffogene Witt, Anna Pittman, Arena Lovell, Olice B. Jones, Vera Westerman, Annie Mae Seal, Rilla Richburg, Linda Martin of Brechenridge to see Mrs. Fox, A.L. and Ora Breeding of Cross Plains to see Luther Forbes, Bob and Ruth Irby of Hagerston, Md. to see Martha Irby, Mary, Buford, Kimberly, Mrs. Myrl, Carolyn and Kimbrell Smith, Joe Allgood, and Charles Tepfer.



AUGUST 14

Rita Wilson

Sandy Hutton

AUGUST 15

Judy Butler

Maxine Crisp

Courtney Ezzell

AUGUST 16

H. L. Killion

Michael Clark

Dorothy Calloway

Mrs. W.P. Lyon

Danny Medley

Geneva Bobeen

Dianne Mitchell

Danny White

AUGUST 17

James Jackson

Betty Boudreau

James Hocket

Johni Weathersby

Larry Earp

Scotty Hutton

AUGUST 18

Inez Elliott

AUGUST 19

Vernettie Allgood

Dusty Bilbrey

Heather Wright

AUGUST 20

Steven Cox

Sybrinna Killion

Nikki Claborn

Ike Hickman

Lester Linney

Elizabeth Aldredge

Senior Center News

Everyone enjoyed the day at the center Thursday. The ladies outdid themselves on food. We had about anything you would desire in good food.

Tina and Roland Hassell went to Weatherford Monday and visited a son and his family. Their son had just returned from the Ruidoso races and was a four time winner. One of the horses is owned by Jerry Winfrey.

Sue Henry visited Lela Clark last week.

Louella had a busy week; July 30 & 31st was the annual Maynard reunion. Saturday night Billie Joe McKinnerney's youngest daughter got married. All of the McKinnerney children but one were at the reunion.

Marion and Marjorie West went to De Leon Wednesday afternoon to see the Peach and Melon Festival Parade; there were many beautiful floats and we were glad to see Rising Star represented by the Chamber of Commerce. Kathy Linney looked very pretty.

Our sympathy goes out to the Madison family in the loss of their loved one, Frank Madison.

We were sorry to hear Sybil Parker had a painful accident recently. We hope you will soon be recovered.

Wilburn and Lucy Curtis have the following visitors this week: Mr. and Mrs. J.B. Curtis, Grand Junction, Colo.; W.D. and Georgia Curtis, Ft. Worth; and Mr. and Mrs. Mike Belt,

Oklahoma City, Ok. Mrs. Belt is the daughter of J.B. Curtis.

Wilburn is doing much better after nail surgery on both feet. He has not been able to come to club for the last two or three weeks, but will be back soon. You have always heard the saying "You don't miss the water til the well runs dry" that is what happened at the Curtis farm, they got the well cleaned out and now have water again.

Mr. and Mrs. Marion West attended the Pioneer ex-teachers and students homecoming Saturday. There was a large crowd and the food, catered by the Colony Restaurant of Cisco, was delicious. Marion attended the Hickman and Pioneer schools.

Juanita Hollis and Marjorie West went to the Ceramic Center closeout sale at Brownwood last Monday.

Mrs. Maggie Steel Hosea passed away at Teague last Thursday, August 4. She and her husband, Mun Hosea, were former residents of Rising Star. Marion and Maggie West and George and Emma Jean Steel attended the funeral services at Teague Friday. Mrs. Hosea was a cousin of George and Marjorie.

Our recipe for the week is submitted by Helen Mitchell.

COCONUT PIE

½ cup biscuit mix
¾ cup sugar
1¼ cup milk
4 eggs
¾ cup butter
1½ teaspoons vanilla
1 cup coconut (last on pie)

Grease a 9 inch pie pan, let the above stand 5 min. Put coconut on pie after it is put in pie pan. Bake at 350 degrees for 40 min.

This sounds good, Helen. I hope to try it soon. I will see everyone at club next Thursday.

Marjorie West

Legal Notice

Notice to all persons having a claim against the Estate of Daisy F. Kizer, deceased.

Notice is hereby given that Letters Testamentary were issued on the 2nd day of August, 1983, in a proceeding styled "The Estate of Daisy F. Kizer, deceased" and bearing the number 9284, by the County Court of Brown County, Texas, to Ralph Kizer, whose address is P.O. Box 308, Rising Star, Texas 76471.

All persons having a claim against said estate are required to present them within the time prescribed by law.

Signed this 8 day of August, 1983.

Ralph Kizer

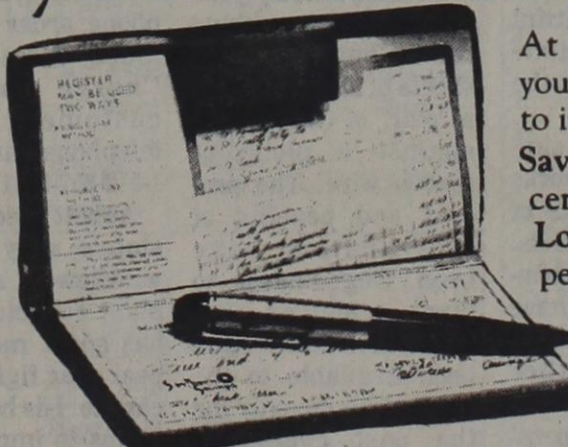
THURSDAY,

AUGUST 11, 1983

Matrimonial Bond



Working harder to serve you better!



At Southern Savings, we're working harder to serve you better with financial services specifically designed to improve your lifestyle . . .

Savings - Passbook to investment quality money market certificates

Loans - mortgage, home improvement, farm, auto, personal

Retirement Accounts - IRA, Rollover IRA, Keogh

Checking - earn 5¼% interest, regardless of balance, customers age 55 and over check free

. . . plus all of our accounts are insured up to \$100,000 by FSLIC!

Come on over to Southern Savings, we're making life better the Southern way . . . just for you!

Southern Savings
Member FSLIC

Cross Plains Branch, 200 N. Highway 36, 725-7724
Home Office: 501 Center, 646-4561, Brownwood

Branches: Bangs, Brady, Coleman, Comanche, Cross Plains, DeLeon, Goldthwaite, Lampasas, Stephenville

24 HR SERVICE - SENIOR CITIZEN DISCOUNT

Sepco

ENTERPRISES

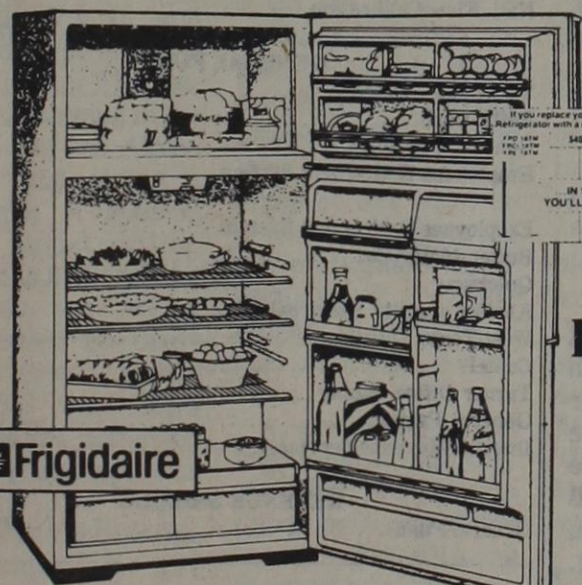
BROWNWOOD, TEXAS
SEPTIC TANKS - SAND TRAPS - GREASE TRAPS
COMMERCIAL / INDUSTRIAL / RESIDENTIAL

BOBBY DEAN THORNHILL
OWNER

DAY TIME 915-646-9713
NIGHTS 817-259-2621

WANT ADS

NOW. A REFRIGERATOR THAT DOES SOMETHING YOUR OLD ONE CAN'T.



**PAY YOU
BACK.**

If you own a frostless refrigerator 10 years old, or older, you can't afford to keep it. The reason? The rising cost of energy. Yesterday's refrigerators simply weren't made for today's energy costs. Today's Frigidaire Frost-Proof Refrigerators are. In fact, they're so energy efficient they'll almost pay for themselves.

To prove that, we've prepared the above chart. It shows how much money you'll save on energy, in just 10 years, by replacing a 10 year old 17.0 cubic foot Frigidaire Frost-Proof model with the new 18.0 cubic foot Frigidaire Frost-Proof model in this ad. (Even if your old refrigerator is another brand, your savings will probably be just as much, or more.) *Based on Frigidaire Engineering Analysis. Full details available.

So come in today. Let us show you the entire energy-saving, money-saving Frigidaire story. And take home the refrigerator that pays you back.

WEST TEXAS UTILITIES COMPANY



A Member of The Central and South West System

FRIGIDAIRE. HERE TODAY, HERE TOMORROW

WITH QUALITY, DEPENDABILITY AND THE BEST IN FACTORY TRAINED APPLIANCE SERVICE.

Homemaking Hints

County Extension Agent
Janet Thomas

School will be starting in a few days. There is so much excitement and anticipation with the beginning of school.

Being a parent to school age children and dealing with all the peer pressure problems can be frustrating for a parent.

For many years adolescence has been thought of as a period of "storm and stress." More recently, that "storm and stress" has been recognized as a critical period during which youngsters focus on special problems and concerns brought about by physical, intellectual, social and emotional changes.

Most early adolescents - 11 to 14 years of age - share concerns about their physical development and relationships with family and friends, yet they have exaggerated feelings of being very different from others.

Girls usually mature earlier than boys and more anxious about attracting boys than boys are to gain their favor.

Being an early- or late- maturer poses a special problem for early adolescents. These youngsters may feel "out of step" with their peers. Late maturing boys and girls, for example, may feel anxious and wonder if they ever will attain normal adult height and physical development.

Early adolescents seem sometimes to be emotionally unstable and overly sensitive. One 14 year old girl, for instance, had her hair done at a beauty shop before a special school party. But she became upset with the way her hair looked because the other kids might think it looked "funny." She cried and then completely changed the new hairdo. While her parents felt that her reaction was extreme and inappropriate, it is actually quite typical. The girl's strong need for peer approval interfered with a more sensible judgment about the hairdo.

Although incidents of this kind may not be pleasant and can cause tension in the family, they are a normal part of a youngster's struggle for identity and independence. Parents, middle-school or junior high teachers, 4-H leaders and others can be helpful to young people who are struggling for their own identity. Young adolescents need the support of parents and other adults who take the time to listen and ac-

cept them just as they are.

Early adolescence is a time of growth and frustration for both parent and child. But it is a necessary step in order for the young person to achieve a sense of identity and self-worth.

RECIPE FOR THE WEEK

The peaches this year are delicious and plentiful. A delicious, quick dessert is Peach Crisp.

PEACH CRISP

- 6 peaches
- 1/2 cup sugar
- 1/4 teaspoon almond extract
- 1/2 cup chopped pecans
- 1 cup flour
- 1/2 cup sugar
- 1/2 cup butter
- 1/4 teaspoon salt

Arrange peeled, sliced peaches in buttered baking dish. Mix sugar with almond extract and sprinkle over the peaches. Then sprinkle the nuts over the mixture.

Combine the next 4 ingredients and mix with fork until it looks like coarse corn meal. Sprinkle evenly over the peaches.

Bake at 350 degrees until brown. Serve with whipped cream. Will serve approximately 6 people.

Help Offered for Disabled Farmers

College Station-- Many farmers who become physically disabled are finding an alternative to leaving the farming business.

"With some help from technology, these farmers are learning to live and work with their disabilities," points out Dr. Gary Nelson, safety engineering specialist with the Texas Agricultural Extension Service, Texas A&M University System.

To familiarize disabled farmers with new technology to live more independent lives, Nelson is planning a conference October 4-5 at Texas A&M University.

The conference is designed to help participants identify available resources to support disabled farmers' independence; learn about practical alternative designs, modifications and accessories to aid disabled farmers in operating agricultural equipment and completing other farm-related tasks; design farm home modifications; identify sources of financial aid; and learn about farm accident prevention.

How can technology help a disabled farmer? Nelson gives this example. Robert Petrea is a 27 year old

No Action Taken By County On Assistant District Attorney

The County Commissioners Court failed to take action on the appeal of citizens Monday to adopt a resolution agreeing to accept a state-funded grant to maintain the office of assistant prosecutor for the county.

It was the third and apparently last, opportunity for accepting the grant, which now is presumably dead forever. The Commissioners split their votes, two for and two against with County Judge Scott Bailey absent and not able to break the tie at the first meeting; at a called meeting last Tuesday and at the regular meeting Monday, motion to accept the grant never came forward. (At the initial meeting, motion came from Commissioner L.E. Owens, seconded by Commissioner Jack Blackwell, both of whom voted for. Commissioners Runt Dill and Richard Robinson voted against.)

Representatives from M.A.D.D. (Mother Against Drunk Drivers) and P.A.D.D. (People Against Dangerous Drugs) Monday appealed to the court to adopt the resolution accepting the grant to fund the office. Commissioners Dill and Robinson were most vocal in questioning those who spoke for the post including Criminal District Attorney Emory Walton.

(Assistant Prosecutor John Hawkins resigned his position last Friday to accept a similar position at Tyler). Commissioners Robinson and Dill both indicated that they feared establishing a high-salaried position which they might have to fund locally in a few years after the grants cease. (Presently the grant would be in the

amount of some \$21,000 and about \$5,000 would be needed locally. Walton stated that the \$5,000 could be funded from local funds.) Indications are that the county expenses are running beyond budget.

It was pointed out repeatedly that assessed fines have increased by some \$60,000 during the year to date.

Line of questioning by the Commissioners indicated that they might be less than pleased with the performance of the District Attorneys office.

Dill questioned Walton about the case load of his office compared to other counties which are part of multi-county courts.

Walton said that the case load now is heavy and requires two prosecutors. "If it were like it was when I came here in 1968," the D.A. said, "we wouldn't need help."

"Eastland County isn't any different than any other county in the state," Dill said, "they've all got dope and crime."

Walton re-stated the case-load of Eastland's one-county court.

"They're consolidating courts all over the state," Dill said.

Past performance by Walton's office came into discussion when Robinson reminded the D.A. that after writing letters on county legal matters which had failed to get results, the Commissioners had been told "they'd probably have to hire themselves an attorney."

At one point Dill asked Walton if he was seeking the grant for "the man" or "the position?"

"The position," Walton answered.

Dill replied, "Good." Presentations by the MADD and PADD representatives were brief but Walton took a great deal of time explaining the need for an assistant in his office.

Shortly before 5 p.m. a court official reported that the Commissioners had taken no action on the prosecutor position.

In other business, the Commissioners approved minutes; voted to close a portion of County Road 185 south of Eastland; appointed election officers for the com-

ing year; heard MADD and PADD under an agenda item labeled Budgetary and Appropriative Matters; skipped an item on projected revenue figures for 1984 budget (reportedly because all the tax data isn't in yet.); heard, but took no action on an inquiry by Tommy Patterson of Patterson Ambulance Service as to whether county subsidiary might be available to help maintain the ambulance service; heard Resident Engineer R.P. Haun report on the possibility of improvements to Battle Creek Bridge; and paid bills and accounts.

Diabetics Still Need to Watch Sugar

College Station--A recent research study is being misinterpreted to mean that diabetics no longer have to worry about their sugar intake, says Dr. Alice Hunt, a foods and nutrition specialist with Texas A&M University's Agricultural Extension Service.

The study, which was published last month in the New England Journal of Medicine, has been widely publicized as good news for diabetics. But according to Hunt, the limitations of the study have not been thoroughly discussed in reports of the results.

For example, the study used only 10-12 insulin-requiring diabetics, an equal number of adult-onset diabetics and a control group. This is a small number from which to generalize to the more than four to five million American diabetics.

Most important, says Hunt, is the fact that diabetics in the study consumed their sugar with a meal containing protein. This

served to slow down the digestive processes, which helps diabetics metabolize both simple carbohydrates like sugar and complex carbohydrates like starch.

The results of the study indicated that diabetics did not differ from non-diabetics in their blood sugar levels after consuming meals which included sugar.

"That doesn't mean diabetics should start consuming sugar at will, however," states Hunt.

"It's still important to divide both complex and simple carbohydrates into at least three meals a day to be consumed with other foods," warns the specialist.

Simple carbohydrates such as soda or candy consumed by themselves as a snack will dangerously increase the diabetic's blood sugar level, she adds. Insulin-requiring diabetics should consult with their physicians before making changes in their diets, and all other diabetics should be wary of any radical changes, cautions Hunt.

Bluebonnet Plague Can Be Cured with Scarified Seeds

Bluebonnet Plague, a non-fatal but widely prevalent malady, afflicts many Texans when they attempt to grow the state flower. They sow seeds, but only reap frustration. Instead of beautiful patches of springtime blue, they just get the blues.

Now, there is a simple cure which works in nearly all parts of Texas: scarified seeds.

These are Bluebonnet seeds which have been scratched (scarified), either mechanically or by tumbling in a cement mixer with sharp sand. This process abrades the hard seed coat and allows moisture to penetrate to the embryo, triggering fast germination. And when seeds

sprout quickly, they generally produce bigger plants and more flowers for a longer period of time in the spring.

You can scarify your own seed by rubbing them between two sheets of sandpaper, or a pair of bricks, or against a piece of screen wire. The process and benefits of scarification have been long known to plant scientists, but scratched seed have been available to the general public only for the past couple of years. If you can't find them at your own garden center, you can order them by mail from Carroll Abbott's Green Horizons, 500 Thompson Drive, Ker-ville TX 78028.

A thousand scarified seeds from Green Horizons is \$4, which includes all costs; 5,000 seeds are \$11; 10,000 seeds are \$16 and a pound is \$20. Green Horizons even accepts phone order of \$10 or more from Master Charge and Visa customers. The telephone number is 1-512-257-5141.

Abbott used to be the state's only fulltime wildflower seed and plant collector, but he has spent most of the past year fighting lung cancer. His health continues to improve, but the ravages of the treatments have limited his activities. Abbott's mail-order firm offers the scarified Bluebonnet seeds on a first-come, first-serve basis.

The City of Rising Star

Balance of All Funds
July 31, 1983

Cash in First State Bank	
Utility Fund	\$1,408.95
Gas Systems Fund	\$4,556.30
General Fund	\$1,593.21
Ambulance Savings	\$2,888.98
Tax Funds	\$2,097.76
Revenue Sharing	\$237.03
Water & Sewer Sinking	\$12,000.00
Gas Sinking Fund	\$4,690.77
FHA-10	\$774.00
	\$30,247.00

Income - July 1983

Gas	\$7,508.58
Water, Sewer, Trash	\$9,340.97
Other Water	\$3.00
Meter Deposits	\$150.00
Regulator	\$37.50
Hookup	\$25.00
Dumping	\$4.85
Bibby Ins.	\$53.02
	\$17,122.92

Gas System Fund

Transfer from Utility	\$7,508.58 (Transfer - Not income)
General Fund	
Franchise-WTU	\$1,267.66
Fines	\$87.00
Shredding	\$70.00
Workmans Comp. Ins. Rebate	\$221.00
Adv. Sales-Drug Abuse	\$277.50
Ambulance Lease	\$1.00
Transfer-Revenue Sharing	\$150.00 (Transfer - Not income)
	\$3,424.16

Revenue Sharing

U.S. Treasury	\$1,536.00
---------------	------------

UTILITY FUND

Greg Clay	\$43.00
Alvin Spencer	\$30.00
U.S. Postmaster	\$79.95
Petty Cash	\$18.11
C&R Trash Collection	\$2,536.00
Gail Hunter	\$13.00
Ray Green	\$81.00
McCoys	\$45.00
Don Hutchison	\$9.00
Texas Gas Assn.	\$25.00
Internal Revenue Service	\$8.88
Utility Payroll	\$1,453.42
Joyce Texaco	\$141.17
Naomi Jones	\$5.00
Gas System Fund	\$6,511.98
Cross Plains Oil Field Supp.	\$59.94
Employees Retirement System	\$314.92
Texas Gas Association	\$25.00
U.S. Postmaster	\$20.00
Don Hutchison	\$9.00
Bankers Life	\$154.48
Allied Tank Services, Inc.	\$398.58
Bramlett Imp. Inc.	\$24.00
Butler Motors	\$82.50
D&T Bldg. Supply	\$172.21
Higginbothams	\$104.77
Hach	\$965.00
Medley Motors	\$10.00
Quickway	\$64.05
P.M. Water Well Co.	\$774.78
West Texas Utilities	\$1,314.66
Texas Mun. League	\$1,098.00
Odessa Natural Co.	\$85.40
Marilyn Cass	\$14.50
Utility Payroll	\$1,453.42
City F.H.A. 10	\$387.00
Internal Revenue Service	\$240.00
	\$17,817.47

GAS SYSTEM FUND

S.O. Operating	\$3,443.00
Dynamic Productions	\$4,177.29
First State Bank	\$4,000.00
First State Bank	\$670.00
Natl. Flow Calibration	\$110.00
	\$12,400.29

GENERAL FUND

T.V. Cable - Defense	\$12.04
Petty Cash	\$10.94
General Payroll	\$953.69
Employees Retirement System	\$180.44

Employees Retirement System	\$2.25
Butler Motor Co.	\$26.00
Quickway	\$43.90
Kustom Quality Electronics	\$82.49
West Texas Utilities	\$442.38
Contel	\$261.66
Turner Office Supply	\$189.86
General Payroll	\$482.74
Internal Revenue Service	\$116.00
	\$2,804.39

REVENUE SHARING

General Fund	\$1,500.00
--------------	------------

WEEKLY SPECIAL

Order any 2 Burgers, get a FREE Order of French Fries (reg. size)



Chicken Fried Steak Basket \$1.39

5p.m. until 9p.m. only

10% Discounts for Senior Citizens
Call in Order-643-3102

Snak Shak

Classified Ads Get Results

The Travelling Frog

by Bucyrus

One of the major complaints people have of the Panama Canal area is the incessant heat—this includes those people from the Houston area and also Rising Star. The temperature is about 90 degrees the year round with the only respite being the variation in the amount of moisture. From April through November is rainy season and you will average at least one pretty good rain each day. Together with the heat this provides for a lush, green tropical forest and marshlands which is just beautiful. This includes all of the tropical fruits and vegetables that can only grow in such a climate.

From November through March is the dry season and all of the plants which require less moisture for fruits to mature give forth with great flowering and production of their edible goodies. At this time we get 3 or 4 kinds of watermelons and cantaloupes as well as several other semi-tropical vegetables.

Another thing that influences maturation and crop production is altitude, since temperature varies inversely with altitude. Panama mountains (up to 11,000 feet) permit production of several crops that you just don't find in the lowlands. Potatoes, corn, apples, peaches, onions, beans, peas, beets, okra, etc....just like Texas. Unfortunately the amount of tillable soil at altitude is limited and many products are still imported into Panama to feed the people.

Last week I visited one of the mountain regions of Panama, Boquete, Volcan and other villages of Chiriqui province. The major joy is basking in the coolness of the Alpine forests and seeing a new type of housing and construction similar to Switzerland. Actually the region was settled by many people from Central Europe who now manage the numerous Grade A dairies, hotel resorts and coffee plantations of the area.

Chiriqui is the western-most Province of Panama near the border with Costa Rica. In fact we passed along one road on

which one side was Costa Rica and the other Panama. Many people of the area have dual citizenship.

Of course the province also has coastal marshlands where numerous banana and coconut plantations exist. However, it is so nice to "run up the mountain" to a cool hotel spa at the end of a work day near the hot coastland.

One interesting aspect of this region is that it is the home of a 40 inch petroleum pipeline which stretches from coast to coast. Its sole purpose is to transport Alaskan oil to Texas refineries. Who would have ever thought that Texas processes all the Alaskan oil and that it comes through a Panamanian pipeline! It seems that it is more economical to use super tankers to transport this oil and the supertankers are so wide they cannot go through the Panama Canal; they are 50-75 feet too wide in most instances. Therefore the oil companies made arrangements with Panama to build a pipeline across northwestern Panama. The tankers anchor in deep water on both sides and it is simply pumped from one side to the other. Why they don't build refineries on the west coast of the U.S. I don't know. The rise through the Panama mountains is over 1,000 feet and it costs about 5% of the oil costs for the pumping-transfer process.

One of these days there will be a sea level canal somewhere in Central America and the biggest of ships can transit without locks of any kind. One of the proposals I know about is the River Atrato in northern Colombia, on the Atlantic side. When combined with another smaller river on the Pacific coast only 3 miles of dirt must be moved to complete the sea level canal with the exception of a certain amount of dredging of the existing waterways.

A new canal is not only feasible but very practical. The Panama Canal was completed in 1913 and is still using technology of that era. Many millions of dollars of improvements need to be made in the current

canal. The same money could be used to build an new and better facility without the problems of locks. Another possibility for a sea level canal is in Nicaragua.

Don't know when the political situation will be such that we can assist either Colombia or Nicaragua in canal construction. It seems that many of our projects abroad do not win us many friends among the common people of Central and South America. Only the "politicos" want to make rabid speeches and stir up the populace against the United States. In my view it is very similar to the situation at home where the young people, anxious to make their mark in life, can be easily misled.

One fact is clear here, there are millions and millions of youngsters being born among our neighbors to the south and I hope we spend some time and energy helping to educate them to democratic principles. It is amazing to see in Panama the masses of young people struggling to get the 40 or so scholarships which the U.S. government offers each year. The Soviets offer 3,000 such scholarships for advanced education in Russia and they are all being accepted. What is going to ultimately come forth from this new "educational process" is going to be interesting to say the least!

In conversation with stateside friends I am constantly being asked as to whether I support the current U.S. position in strengthening the existing governments of El Salvador, Guatemala and Honduras. My answer is given with a good Rising Star term, "you bet". I am for anything that will create stability so that the people can move forward and progress. Probably there are numerous "bad" people working on both sides of most issues. Additionally there are uncounted numbers of good people on either side who are there because they, too, are seeking stability so that ordinary business and life itself can progress. They will shift their loyalty as the winner emerges.

HUTTON INSULATION
Blown-In Cellulose
Fiberglass Batts
Acoustical Ceilings
Free Estimates
725-6683

McKinnerney-Butler Vows Exchanged



Lorilei McKinnerney and Ronald David Butler II were married Saturday, July 30, 1983, at First Baptist Church in Ranger, Texas. The 3:00 p.m. ceremony was performed by Franklin Krause, pastor of First Baptist Church of Ranger.

The church was decorated in greenery accented by two candelabras, an archway entwined with greenery centered between two emerald trees, and the unity candle.

The pianist was Patsy Walker of Rising Star. Lyndell Cockburn played and sang "Sweet Sweet Spirit", "Let It Be Me", and "Baby I'm Yours"; and Richard Rossander sang "More", "Time In a Bottle", and "The Lord's Prayer".

Presented by her Father, Bill McKinnerney, the bride wore a sleeveless gown of sheer white organza with a pearled aliconlace bodice with a sweetheart neckline. The full skirt with a chapel train gathered at a neatly tucked empire waist. The gown was designed by Bernelle/Jeunella.

The bride's hat was accented with pearled alicon lace and a floor length train of sheer white organza, and her elbow length gauntlets were also trimmed with the alicon lace. She carried a cascade

bouquet of greenery and red roses.

The bride carried out the tradition of wearing something old by wearing her Mother's wedding band; something new by carrying a new lace handkerchief given to her by her Aunt Betty McKinnerney of Odessa; something borrowed by wearing pearl earrings borrowed from her sister, Toni Klein of Seagoville; and she wore the traditional blue garter.

The matron of honor was Toni Klein of Seagoville, sister of the bride. She wore a dress of red sand pebble crepe featuring a pleated bodice with long sleeves softly pleated at the shoulders and a gathered skirt. She carried a long stemmed red rose and red bible accented with red ribbon.

The bridesmaids were Dawn Duncan of Hobbs, New Mexico, Michele Butler of Ranger, sister of the groom; Kyra Dickerson of Venus and Karla Rogers of Rising Star, both cousins of the bride.

The bridesmaids wore red dresses made identically to the matron of honor's, and the carried long stemmed red roses and white bibles accented with red ribbon.

The groom was attired in a black tuxedo with white pleated

shirt, black cummerband and bow tie and wore a red rose boutonniere. The best man was Jimmy Vale and the groomsmen were Michael Butler, brother of the groom; Jay Rogers, Scott Tibbels, all of Ranger, and Clark McNabb of Breckenridge. They were all attired in identical black tuxedos, white pleated shirts, red cummerbands, and red bow ties; and they wore red rose boutonnieres.

The ushers were Billy Fox and Neal Wilhelm both of Ranger, Curtis Klein of Seagoville, and Howard Loftis of Lubbock. They all wore identical black tuxedos with white pleated shirts, gray cummerbands and gray bow ties. They wore white miniture cornation boutonnieres. Connie McKinnerney, of Malakoff, cousin of the bride, registered guests.

After the ceremony the parents of the bride hosted a reception in the fellowship hall of the First Baptist Church. The brides table was covered with a white lace tablecloth. Her four tiered cake was white on white accented with garlands held by white bells with a cake top of white bells. White bell shaped mints and red heart shaped mints and punch were served from crystal appointments.

The grooms table was covered with a white linen cloth and hosted a silver coffee service with a german chocolate cake and nuts.

Barbara Long of Rising Star, Connie McKinnerney of Malakoff, and Deniese Leonard of Robstown, all cousins of the bride, served at the bride's

table; and Mrs. Joan Landreneau, Mrs. Harry Soileau, and Mrs. Roberta LaFleur all from Ville Platte, La, and all aunts of the groom, served at the groom's table. Shawna McKinnerney of Odessa and Stephanie Long of Rising Star, cousins of the bride, passed out red rose rice flowers to the guests.

Lorilei graduated from Perrin High School and attended Cisco Jr. College, Angelo State University and received her BBA degree from Tarleton State University. She is employed as a business teacher by the Carbon ISD, Carbon, Texas, and will receive her Masters degree from Tarleton State University in August.

Ron graduated from Ranger High School, attended Ranger Jr. College and received his BBA from Texas Tech University. He is

employed as Branch Manager of Ranger Savings, a division of Olney Savings Assoc., in Ranger.

Lorilei is the daughter of Mr. and Mrs. Billy J. McKinnerney of Ranger and the granddaughter of Ruby Murdoch and Luella McKinnerney both of Rising Star.

Ron is the son of Mr. and Mrs. Ronald David Butler of Ranger and the grandson of Mr. and Mrs. Virgil Butler of DeWitt, Michigan, and Mrs. Vernice Wilson of Ville Platte, Louisiana.

The rehearsal dinner was hosted by the groom's parents, Mr. and Mrs. Ronald David Butler, of Ranger. A lovely sea food dinner prepared by Mrs. Butler was served at the Butler's home.

After a wedding trip to Old Mexico the couple will be at home at 1206 Westland in Ranger.

Mr. and Mrs. Aubrey G. Lawrence
and
Reverend and Mrs. P. Doyle Holmes
invite you to share in the joy of
the marriage uniting their children
Lanella Kay
and
Lanndy Rex
This celebration of love will be
on Saturday, the thirteenth of August
Nineteen hundred and eighty-three
at two-thirty in the afternoon
First Baptist Church
Rising Star, Texas

Classified Ads Get Results

HOME TOWN
COW POKES By Ace Reid

"Wui, we have driven 24 miles to the mail box to get a notice to drive 45 miles to town, to pay 3¢ postage due on a bill from the feed store!"

LOOK NO FURTHER... 1ST STATE BANK IS AS CLOSE AS YOUR MAILBOX! If You Live Far Out And Want The EASY BANK TO BANK WITH... LOOK TO 1ST STATE BANK! Our Handy Bank-By-Mail Service Was Designed With You In Mind!

DRIVE-IN BANKING **EQUAL HOUSING LENDER**

STATE ST BANK
YOUR CONVENIENCE IS FIRST WITH US!
Member F.D.I.C.
RISING STAR, TEXAS 76471

Marvallee's Dress Shop
Anniversary Sale
611 E. 8th, Cisco, Texas | 204 E. Dale Winters, Open 9-5:00
Our 6th Year In Cisco

Free \$25 Gift Certificate To Be Given Away At 4 P.M. the 6th, 13th, 20th & 27th of Aug. At 4 P.M.	Braxton & Action West Stretch Jeans \$15.95	Nurses Uniforms Panaluts \$21.95 Dresses \$15.95	Maternity Pants \$8.95 Tops \$6.95
Girls Tops \$6.95 Size 7-14 Values To '19"	1 Pair Free Panty Hose With Each Purchase \$30.00	All Lingerie 30% off Regular Price	Summer Skirts \$7.95 to \$11.95
Summer Dresses \$12.95	All Shorts \$2.95 & \$3.95 Short Sets \$5.95 Values To '17"	Knit Pants \$5.00 Size 6-46	Knit Tops \$3.95

New Fall Arrivals
Layaway For Back To School

Velour Tops \$7.95	Fall Dresses \$20.95 to \$24.95
Corduroy Jeans \$12.95 to \$15.95	Long Sleeve Blouses \$12.95 to \$16.95
Sweater Vest \$7.95	Corduroy Blazers \$26.95
Skirts \$10.95 to \$16.95	

STAR PLAZA RESTAURANT
Highway 36 West Best Coffee in Town

Combination Ham & Cheese \$1.29
with French Fries (Real Ham & Real Cheese)

All Orders Can Be Prepared To Go
This Week's Special effective Aug. 10-16

Don & Jean Farrow 643-6960

Continental Telephone Tells Details of Rate Request

Continental Telephone of Texas and Lakeside Telephone Company have announced details of their request for increased local service rates in their Texas serving areas. The companies, which serve 175 exchanges in Texas, filed for increased revenues with the Public Utilities Commission in Austin on June 30.

Continental's Director of Public Affairs, Loma O. Allen, Jr. said that "this request is a direct reflection of inflation as evidenced by the dramatic increases in the cost of labor since our last rate increase in 1978. The request also is strongly influenced by deregulation decisions of the federal government which are forcing the entire telecommunications industry into a different pricing structure. Because of these very fundamental changes now occurring in the industry, we see a new pricing structure evolving which is more sensitive to cost, individual usage and individual requirements. In other words, a telephone customer, like a customer of any other service, will be expected to pay for service according to its use and its cost."

Most exchanges in Continental's Texas operation fall into Rate Group 1, which includes all exchanges with 8,000 or fewer telephone customers. These customers may call anywhere within their exchange without a long distance charge. The proposed rates for this group are \$11.50 per month and \$27.60 per month for a residence or business one-party line, respectively. The proposed charge for connecting service is \$36.25. This includes processing the order for service, wiring the number in the switching office and extending the line to the outside of the customer's home or business. Internal wiring and the connection of telephone jacks are requirements that vary from customer to customer and may be done either by the customer or the company. If done by the company, charges will be based on actual costs of time and materials. Allen said that "telephone service is changing and we should all start to think of it more like we do electric or gas service. The company will install and maintain the line to the customer's location, but the internal wiring and telephones on the end of the line will become the responsibility of the customer."

Other new features in the rate petition include charging for directory assistance usage and for mobile telephone usage. The company has requested that customers be given a three-call allowance for directory assistance. All calls for assistance over this number will be 25 cents each. Mobile telephone users at certain locations will be charged 30 cents for each minute that they use their mobile telephones, or an additional \$20 monthly charge for unlimited usage. Allen pointed out that these new charges appear to be the most equitable from a customer standpoint. "These services are very expensive to provide," he said, "and customers who use them should expect to pay for them."

Continental has also requested that one-party service outside of the base rate area be zoned for pricing purposes. The base rate area generally conforms to the city limits. Customers living outside town who desire one-party line service currently pay the in-town rate plus a monthly mileage charge of \$4 per mile. Under the new proposal, rate group 1 customers up to 4 miles from the in-town area would pay a flat rate of \$15.50. Customers from 4 to 8 miles out would pay \$19.50. "Zoned rates for

one-party service outside town will mean a significant reduction in the cost of most rural area customers," Allen said, "and it will help us offer the best service available to rural customers and to best utilize our facilities." Allen explained that zoned rates would initially be offered only in exchanges where sufficient service cables are available, the company intends to request zoned rates as new

facilities become available.

Continental is also taking this opportunity to introduce a new method for pricing basic telephone service. The new method, Optional Usage Pricing, will be first introduced in the Nassau Bay and Wilmer exchanges. Both exchanges are bordering major metropolitan areas and both have shown the calling habits which are most likely to demand alternative pricing methods.

Gordon Spot County Extension Agent

DeMarquis Gordon

Now is the time to consider treating home lawns and improved turf for white grubs.

White grubs are the larvae or worms of the June or May Beetles, which feed on the root system of turfgrass. Each spring and summer June Beetles emerge from the soil, mate and the female lay eggs in turfgrass. Texas has well over a hundred species of white grubs and approximately 96 species of the Genus *Phyllophaga* are known to attack the estimated 3.1 million acres of lawn and turfgrass, as well as several millions of acres of field and vegetable crops.

Control of white grubs must be coincided with the flights of beetles and subsequent egg lay and young larval development. Eggs

usually hatch 3-4 weeks after they are deposited in the soil. Each of the various species of beetles may lay eggs over a 30-day period beginning in late June and early July in Eastland County.

Lawns suspected of having white grub problems should be examined by cutting and digging one-square-foot sections of soil and looking through the soil and roots to a depth of about 4". Four or more small grubs found per square foot justifies treatment. Grubs are most easily killed when small. Therefore, the best time to treat lawns in Eastland County is early August.

The most effective chemicals for treatment of white grubs in turfgrass are those which contain chloropyrifos and

Both granular and liquid formulations are available. Granular applications may be made with fertilizer applications, using a fertilizer spreader. At least 1/2 to 1" water should be applied for white grub control in liquid sprays. Lawns should be watered with 1/4-1/2" prior to applying liquid sprays. No less than 10-25 gallons of spray mix should then be applied per 1000 square foot of lawn. About 1/2-1" water should be used to wash the insecticide to the root zone.

Specific white grub control chemicals should be used according to label direction. Poor control of white grubs may result if:

1). Insecticides are applied too early and materials degrade before eggs hatch.

2). Insecticides are applied too late and grubs are too large to be killed.

3). Insecticides are inadequately applied to reach root zone.

4). Soil conditions are extremely alkaline, materials may degrade more rapidly.

5). Heavy thatch (accumulated grass clippings) is present to prevent chemicals being moved down to the root and grub zone.

6). A number of species are present and varying sizes of grubs are present.

Re-examination of the lawn 45-60 days after treatment should

High Temperatures Set New Energy Usage Records at WTU

The fact that hot weather and high utility bills go hand in hand apparently is being proven again by West Texans.

Electric energy usage in the West Texas Utilities Co. system soared to new records this past week as temperatures throughout the territory hit the 100-degree mark.

A new record was set on Monday, July 25, when WTU customers used 19,286,000 kilowatt-hours during a 24-hour period. This record was broken the following day when consumption totaled 19,318,000 kilowatt-hours. The old record was 19,216,000 kwh recorded on July 23, 1981.

The peak demand this year still has not reached the all-time record of 994,000 kilowatts, which was set at 5:00 p.m. August 27, 1982. Peak demand is the largest amount of electricity being used at any given moment during the day. Highest peak so far

reveal control or lack of control due to one or more of the above factors.

More information about white grubs, their damage, life cycles and treatment can be found in Extension Service Fact Sheet 1-1131.

this year was 982,000 on Tuesday, July 26.

"We expect the demand to go higher, but we should have no problem supplying our customers' needs," said Don Welch of Abilene, WTU vice president and director of customer services.

"But we do hope our customers realize that the more energy they use, the higher their

bills will be," Welch added. "We urge them to use electric energy wisely and to conserve when possible."

WTU's on-system generating capacity currently is 1,059,000 kilowatts. This means that with last year's peak demand the company had a reserve capacity of 6 per cent, while the safe reserve is considered to be 15 to

20 per cent.

To assure a reliable supply, WTU has contracts to purchase power when necessary from neighboring electric companies until the Oklahoma Power Station comes on the line in late 1986. This station, now under construction near Vernon, will increase WTU's generating capacity by about one third.

Women's Slowpitch Tourney Set For August 25 In Cisco

The Cisco Softball Association Ladies League will have a tournament August 25, 26 & 27.

All teams in the sur-

rounding area, with members 18 years old or older are urged to enter the tournament. There is a \$75 entry fee. The deadline is

August 16th, so make plans now to play in the tournament.

There are several awards to be given to winning teams. They are 1st, 2nd, 3rd & 4th place with trophies; 1st, 2nd & 3rd place individual trophies, 15 per team; and 10 All-Tourney trophies.

For more information call Sherry Ray 442-4278, Dorothy Rodgers 442-3980 or Teresa Ingram 442-1063.

THURSDAY,

AUGUST 11, 1983

CANCER ANSWER LINE

American Cancer Society
M. D. Anderson Hospital
and Tumor Institute

Question: Is fibro-cystic disease a cancer warning signal?

ANSWERline: It is an abnormality that should be constantly monitored by one's doctor. This condition, along with lumps, or thickening, nipple discharge and other abnormalities, places women at higher risk for breast cancer.

Question: What are the symptoms of cancer of the larynx?

ANSWERline: The most frequent and important sign of laryngeal cancer is persistent and progressive hoarseness. This is the result of a tumor on the vocal chords, the most commonly early site of the disease. Early growths can

also occur elsewhere on the larynx, causing such symptoms as change in voice pitch, lump in the throat, coughing, difficulty in swallowing, and even earache. In these instances hoarseness may not develop until much later, if at all. Any of these conditions that last more than two weeks should be checked by a doctor.

 Dorothy's
Sunshine Fabrics
10% OFF
EVERYTHING
IN THIS
STORE 

On Fabrics, Notions,
Patterns

To Introduce Our New Line
Of Fall Fabrics
60" Corduroy
Wool & Blends

1108 Conrad Hilton Ave.

Cisco 442-1782

Prices Good Through
August 20

TRAILS WEST

(817) 643-1601

Rising Star

103 S. Main

Back-to-School
Summer Clearance
1/3 OFF

Merchandise such as:

Boys & Student Shirts

in an Assortment of Colors

Boys & Student Twill Jeans

Girls Blouses & Jeans

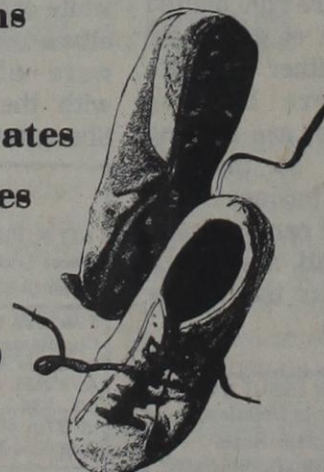
Jr. Dresses

Missy Dresses & Coordinates

Missy & Jr. Tops & Blouses

TRACK KING
TRACK SHOES

And Many Other Items



Dr. Gary Harris

D.D.S.

Announces The Opening Of His
Office Of General dentistry

Former Location Of Dr. Robert F. Blackstock

Office Hours 9 to 5 Mon. thru Fri.

602 Ave E.

Cisco 442-1166

TRAILER SALES
Complete line of Reasonably
Priced new stock and horse
trailers. Buy and sell Used
Trailers. Repairs & Painting
BARKER'S GARAGE
May, Texas 259-2252

JOHN DEERE RIDING MOWER



SUMMER SALE

Save Work...
Save Money

A John Deere riding mower is an easy way to take the legwork out of lawn work. And if you take advantage of the summer sale coupon offer, you can save an additional \$100 or \$150.

The \$100 coupon applies to the 5-hp 65 Rider with 28-inch mower. The \$150 coupon applies to the 8-hp 68 Rider, available in three models: with 30-inch mower and recoil or electric start, or with 34-inch mower and electric start. Availability is limited to current stock at participating dealers. So buy now and save both dollars and legwork.

This coupon worth \$100 toward the purchase price of a new John Deere 65 Riding Mower or \$150 toward the purchase price of a new John Deere 68 Riding Mower. Customer please fill in:

Name _____ (please print)
Address _____
Town _____ State _____ Zip _____
S/N _____

Customer: Coupon void where prohibited by law. Prices subject to change without notice and may vary by dealer. You are required to pay applicable sales tax on value of goods. And you must fill in your name and address in places provided on this coupon. Offer may be withdrawn on short notice by John Deere.

Dealer please fill in:

Name _____ (please print)
Branch Code _____
C.P. Acct. No. _____ ML _____

Dealer: You are authorized to act as our agent for redemption of this coupon in accordance with the terms thereof. Limit one coupon per rider. Dealer must fill in name and account number for presentation for redemption without such compliance constitutes fraud. Offer may be withdrawn on short notice by John Deere.

COUPON MUST BE PRESENTED AT TIME OF PURCHASE. SELLING PRICE AND DISCOUNT MAY VARY BY DEALER. DEALER PARTICIPATING IN DISCOUNT.

Bramlett Implement
Inc. Of Rising Star

Ph 43-4311 Mark Cooksey, Manager