

The Rising Star Record

Serving the Most Prosperous Sections of Eastland, Brown and Comanche Counties

WEATHER FACTS

Rainfall Monday and Tuesday53 inch
High temperature 72 dg.
Low temperature 49 dg.

FOUNDED IN 1890

RISING STAR, EASTLAND COUNTY TEXAS OCTOBER 15, 1959

VOLUME 69, NUMBER 53

Agriculture Leader Dies



George G. Goss, with plaque presented him by a Fort Worth Bank in recognition of his leadership in agricultural development of this area.

George G. Goss, Rising Star Farm Leader, Buried in Services Monday

George G. Goss, 77-year-old member of a pioneer Rising Star family and one of this section's outstanding agricultural leaders, died in Rising Star Hospital at 4:10 p.m. Sunday, October 11, after a long illness. The retired farmer and former president of the Brown and Mills Soil Conservation District, was a native of Brown County and lived all of his life in this community, his farm and residence being just over the Brown County line south of Rising Star.

Funeral services were held at

Robert J. Seale Buried at Amity Tuesday Afternoon

Robert J. Seale, 83-year-old retired farmer, died on October 11 in Rising Star hospital. Burial was in Amity cemetery after services at the Church of Christ in Rising Star at 2 p.m. Tuesday, October 13. Luther Dabney, minister, officiated and Higginbotham Funeral Home directed burial arrangements.

Mr. Seale was a native of Evant, Texas, where he was born October 8, 1876. He had lived in Rising Star since 1943. He is survived by two sons, James Seale of Sidney and Robert Seale of Rising Star; three daughters, Mrs. Opal Lindley of May, Mrs. H. D. Prater of Denver, Colo., and Mrs. G. R. Lee of Abilene; a sister, Miss Amanda Seale of Evant, and eight grandchildren.

Rising Star IOOF and Rebekahs Host Ass'n

The Rising Star Odd Fellow and Rebekah lodges will be hosts Saturday, October 17, to an all-day meeting of the Central West Texas Association of Odd Fellow and Rebekahs. Cities included in this association are Rising Star, Coleman, Brownwood, Bangs, and De Leon.

The meeting will be held at the American Legion Hall in Rising Star. Dinner and supper will be prepared and served by the ladies of the Rising Star Rebekah Lodge.

The program will be as follows: Morning Session—9:00, Registration; 10:00, Call to order by Rising Star Rebekah No. 6 Grand; seating of association officers, Coleman Rebekah lodge (followed by a drill); Presenting the flag, Rising Star Rebekah lodge; Prayer by Association Chaplain, Mildred McDonough; Song by audience, "Blest Be the Tie"; Altar ceremony, Bangs Rebekah Lodge; Introduction of Grand Lodge and Assembly officers;

Joyce Well Waiting To Drill Plug

The C. E. Joyce, et al, No. 2 Agnew, southeast of Rising Star and just east of the same operators' No. 1, a good producer, was waiting to drill plug this week after cementing pipe with a good showing last week. Bad weather was delaying completion operations.

Contract for construction of a six-inch gas line from Eastland to the Cook community was reported to have been let by the Lone Star Gas Company last week. The line will take gas from the southwestern Eastland County area. A four-inch line will be laid from the larger line to connect with wells in the Pioneer area, it was said.

Right-of-way for the new line was being cleared.

Meanwhile Coastal States Gas Associates of Corpus Christi was drilling another well on the Whiteside lease in the district east of Rising Star where a large block of acreage was being developed as a gas reserve. Edgar Davis of Abilene is contractor.

In the Pioneer area, where a water-flood project was being developed by Graham and Breckenridge interests, two wells were reported to have been contracted with a 60-day drilling permit.

To Kentucky on Business This Week

Wm. E. (Bill) Tyler, president of the First State Bank, went to Kentucky Sunday where he and his associates have oil interests. He flew from Brownwood to Dallas where he was joined by Jack Fogarty for a Braniff flight to Bowling Green near where Mr. Tyler and Sam Eakin have a lease on which a second oil well was completed early this week. The well, the Eakin-Tyler Scott No. 2 was drilled in Thursday of last week, 400 feet south of their Scott No. 1. Production is from about 700 feet. Mr. Tyler returned early in the week.

12 Rising Star Boys to Attend Waco RA Rally

More than 12 boys and their Counselors from Rising Star are expected to travel to Baylor University at Waco to attend the fourth annual Regional Royal Ambassador Rally, Saturday, October 17th.

The activities of the day for the boys will include addresses by President W. R. White of Baylor and Jimmy Bartley, missionary to Uruguay, a pep rally and tour of the campus before attending the Baylor-Texas Tech football game.

The Waco meeting is the first of our rallies which are expected to attract 8,500 persons through the state, said Robert Chapman, state RA secretary. A maximum of 5,000 boys and leaders can be provided for at the Baylor rally.

"The idea is to help boys get acquainted with life on a college campus and to heighten their interest in RA work," Chapman said.

"Building Tomorrow's Men Today" is the slogan of this Baptist youth organization. In Texas 30,100 Royal Ambassadors in 1,887 churches participate in programs of study, fellowship and recreation designed to help mold Christian character.

Mr. J. W. Bishop, Rising Star, RA Counselor First Baptist Church will attend with 12 boys and three men.

Mr. and Mrs. Carl M. Houser, and three sons from Charleston, N. D., where he is employed by Amarada Oil Co. are visiting his parents, Mr. and Mrs. Charles Houser of Rising Star.

Develop Coastal Bermuda Pasture



O. A. Criswell observes Coastal bermuda grass planted on his farm five miles north of Rising Star in 1957.

Coastal Bermuda Grass Is Proving to Be Success in Rising Star Area

Coastal bermuda grass is proving to be a success in the Rising Star area of the Upper Leon Soil Conservation District, according to Odus and Joe Criswell who live four miles north of Rising Star on U. S. Highway 183. Eight years ago Joe brought a few sprigs of coastal bermuda from the A&M College Station farm. Joe planted these sprigs in his mothers garden and from this plot they have established the 8-acre pasture

back of the store they operate. They also have approximately one acre of coastal bermuda south of their home, which they plan to use as a source of sprigs to establish an additional 25 acres of coastal bermuda.

Odus and Joe said that coastal bermuda is very palatable to livestock. Their management of the grass has consisted of grazing with 13.6 animal units of cattle from August 1 to March 15. The cattle are then moved to another pasture and the coastal bermuda is deferred until August 1. This is a stocking rate of 8.5 animal units for eight acres on a 12-month basis. Since no fertilizer was applied and no other special treatment, other than deferred grazing was used this is a fair return. Joe is convinced that if the coastal was fertilized and mowed for weed control the production would be much higher.

According to SCS technicians assisting the Upper Leon Soil Conservation District at Rising Star there are many acres of land located along the creeks and draws that are similar to the area the Criswells have in coastal bermuda. If these areas were established to coastal bermuda and returned grazing at the rate of one cow and calf per acre per year that would make a nice addition to the income of this section. Not only is coastal bermuda a good grazing grass, it is also excellent for tying down land to protect it from wind and water erosion.

Coastal bermuda grass was planted in the spring of 1959 by Freddie Cooper; Fred Brizendine, Wm. Tyler, George Hill, F. L. Merrill, A. L. Buchanan, J. W. Phillips; J. R. Rector; Gus Dunn, Lee Devers and Harold Pierson.

Harry White, 51, Dies in Collision Near El Paso

Funeral services for Harry White, 51, son of Mr. and Mrs. Sterling White of Rising Star, who died in a car crash between Sabens and Del City, near El Paso, Saturday night, were held at El Paso at 2 p.m. Tuesday. Burial was in an El Paso cemetery.

Mrs. White, who was riding with her husband when their car collided with another which was reported travelling in the wrong lane, suffered broken ribs and severe cuts and bruises.

Jack White, a brother, who teaches science in Rising Star and Scranton High Schools, went to El Paso to attend the funeral services. Mr. and Mrs. Sterling White were unable to go.

Besides his parents and brother here, Mr. White is survived by his wife, Jerry, a stepson, and six other brothers and sisters, none of whom live in Rising Star.

Mr. and Mrs. C. B. Bell of Fort Worth, Texas, are visiting their

Wildcats Tie May 8-8 in Defensive Struggle Friday

Time for the Rising Star-Baird football game at Baird this week has been changed from Friday night, October 16, to Saturday night, October 17, at 7:30 o'clock to coincide with the Baird High School homecoming program.

The Rising Star Wildcats made good on their promise to their coaches Friday night in a game in which neither the score nor the statistics left them anything to be ashamed of.

They held the potent May Tigers to an 8-all tie and only their mistakes could be blamed for the fact that the count was not in their favor.

May had a little the best of the statistics with an unofficial 126 yards on the ground to 121 for the Wildcats, one pass completed for ten yards to one five-yard completion for Rising Star team and an edge in first downs of eight to five.

But the play on the field was a nip and tuck affair from the beginning of the game to the end and the Cats could blame a poor punt on a third down with four yards to go for the May score.

The Cats scored midway of the first quarter on a sustained drive from the Rising Star 45-yard line. Rising Star kicked off to start the game, Tom Hardin booting to Bobby Compton, May half, who returned to May's 35 yard line. David Holt failed at the line and Compton picked up two yards. Don Newman, May quarter, fumbled passback on kick attempt and was downed on May's 39. Rising Star, taking over at that point, promptly fumbled the ball back on the May 34. Rising Star with Coy Edmiston, Charles Carroll, Clarence Chambers and Tom Hardin manning the defenses, threw up a barrier that forced the Tigers to punt again, Newman booting to the Rising Star 45.

Carl R. Martin, City Councilman, Buried Sunday

Carl R. Martin, retired Rising Star business many civic leader, was buried Sunday afternoon after services at the First Methodist Church at 2 o'clock. He was 76 years of age.

Death was due to a gunshot wound. He died in the bathroom of his home on South Main street about midnight Thursday. According to a son, Joe Martin, of Amarillo, the wound was caused by a shot from a single-barrel, 12-gauge shotgun which had been kept in a corner of the bathroom for years.

Mr. Martin retired from his leather working business about five years ago because of ill health. Some years before he was badly burned in a gas explosion which almost destroyed his plant located on East College street.

He had gone to Brownwood Thursday for an examination and was to have reported back to the doctor Friday morning. Two years or so ago he underwent major surgery.

Born January 28, 1883 in Lea County, Mr. Martin moved to Cross Cut in Brown County, when he was eight years. He grew up there and in 1916 moved to Rising Star. On October 2, 1904, he was married to Miss Beulah McMillan in San Saba County.

The Rev. Robt. Cook, pastor of the First Methodist Church officiated and burial in Rising Star cemetery was directed by the Higginbotham Funeral Home.

He had been a member of the council since May 1954.

From that point the Cats drove to their score, with Paul Freeman getting five at the line, Coy Edmiston taking a pitchout for four and Freeman picking up the first first down of the game with a five-yard slant through the line. The play ended on May's 40-yard line.

Coy got one at the line, Paul Freeman broke through for eight and Johnny Jones, who handed the team well at quarter, sneaked for four and another first on the May 26. Freeman gathered eight more yards through the right side of his line and then Coy Edmiston, taking a handoff from Jones, broke straight through guard and ran like an arrow for 18 yards and the touchdown. Freeman swept right end for the two points.

May returned the favor shortly after the second period opened.

Holt took Hardin's kick-off and was brought down on the May 30-yard line. Compton promptly broke around end for a 24-yard scamper that carried to the Rising Star 46. Rodney Smith stopped Newman after a four-yard gain and Rising Star stiffened forcing May to punt, Newman kicking out beautifully on Rising Star's seven-yard line. Freeman picked up four and Edmiston two and on third down Jones punted and May returned to the Rising Star 25-yard for the first definite threat offered by the Tigers. They cashed the opportunity, too, aided by a five-yard offside penalty against the Wildcats after Compton had picked up four yards and another down had gained two.

With first down ten to go May picked up two more and Rodney Smith dropped Compton after three yards gained as the quarter ended.

With the ball on the Rising Star seven-yard line as the quarter opened the Tigers went to work. Smith limited Newman to two yards and it was fourth and three to go when Compton lit out around right end and wasn't stopped until he reached the one-foot line. Newman sneaked for the count and David Holt ran over for the tying points.

That was the story of the scoring.

The rest of the game was an evenly fought contest with both teams moving the ball well, but stopped by a stubborn defense in the clutches, by intercepted passes and ill-timed penalties. Dwayne Rucker, who was injured late in the game and removed, and Pat Agnew each contributed stout defensive efforts to the Wildcat game. Once the Cats rose up to halt the Tigers on their three-yard line and the game ended with a May pass for touchdown attempt blocked on the one-yard line.

The Cats drew five penalties for 55 yards and the Tigers three for 35.

Friday night the Wildcats take on the Baird Bears, early season district favorites who, however, have not lived up to their first promise. The Bears will be favorites in this contest, however, which will be played at Baird.

E. E. WINFREY IN ABILENE HOSPITAL

E. E. Winfrey is receiving treatment in Hendricks Memorial hospital. He is improving, Glen Winfrey here to visit his father, who went back to his work at Abilene Sunday.

Guests in the home of Mr. and Mrs. J. Duke during week end were Mr. and Mrs. J. Duke, and their wives, Mrs. A. F. Stacks and Mrs. E. E. Stark.

WILDCAT TALES STAFF

EDITOR DANIELIA DARNELL
 ASSISTANT EDITOR BENNIE SUE MORRIS
 SENIOR REPORTER JANIS JONES
 JUNIOR REPORTER GARY JONES
 SOPH REPORTER SHERRY AARON
 FRESHMEN REPORTER KAY LEWIS
 BAND REPORTER LINDA KOONCE
 PEP SQUAD REPORTER OLLIE WINFREY
 LIBRARY REPORTER JETTA BUTLER
 SPORTS EDITORS BERYL MCKINNERNEY
 SHIRLEY HAGEMAN

QUALITIES FOR SUCCESS IN BUSINESS

As seniors in high school, most of us are planning a career in some field which interests us. The vocational interests are different, but the qualities which mark success are the same.

The main essential for success in business is a good education. We should strive to get the best education possible so we will have the ability to do our job well. We can learn much about our special kind of job from reading books and other helpful material. If you really want to be a success on the job, you will learn everything there is to learn about it.

Other fundamentals in business are honesty, sincerity, and imagination. Also, a cheerful, friendly person is appreciated much more than someone who is disagreeable.

Another necessary factor for business success is a pleasing personality. This means being agreeable, being willing to work, and having a desire to do more than is expected.

Being on time is very important. I agree with the old saying, "It is better to be an hour too early than a minute too late." Never be absent from work except in emergencies.

The proper qualities will bring success. Whether or not you cultivate these qualities is up to you. How successful will you be?

By . . . Bennie Morris

SELL MAGAZINES

The Senior class of Rising Star High recently successfully completed their sale of magazine subscriptions. The purpose of the project was to raise funds for the Senior class trip some time in May. We wish to thank the citizens of Rising Star who were so willing to help us out. You may expect to receive your first magazine copy with four to six weeks. If there is any question concerning your subscription or you would still like to renew, please contact Mrs. C. A. Claiborn, Senior class sponsor.

Recipients of the gifts awarded to the top salesmen were Pat Agnew and Bennie Sue Morris.

WITH THE JUNIORS

This first six weeks are gone already. I can hardly believe it. The tests were very hard and everyone really had a time with them. I don't believe that the school work can get much harder, but I guess it will.

Ollie—Do you really like to go to the rock crusher?

Jetta—Have you really been sick lately or do you just like to stay in the hospital.

Reverend—Did it hurt? I guess you have to quit laughing in Study Hall; one anyway.

The Wildcats played May last Friday. I guess you know how the score came out. I don't right now. Since May and Rising Star are big rivals we really went all out in the pep rally. All the students wore something blue and gold to represent the school colors.

One last thing, Elaine, is that you or the pigs squealing during the sixth period?

That's all, Reporter

SOPH HIGHLIGHTS

I guess most of you know by now, that I didn't get my news in; time slipped up on me, and I hope it won't happen again.

Most of the F.H.A. girls and Ag. boys are getting ready for the Dallas Fair this coming Saturday. I imagine the ones in that band will be worn out after going to the ball game Friday night at Baird then leaving at 4:30 to go to Dallas Saturday.

It's time for the down-payment on annuals and most of them will be in by the time this is published, but if you haven't paid down on one, please do so because it will help toward a bigger and better "La Estrellita".

The photographer is due here October 20, so let's keep that date in mind so we won't show up at school looking like Sloppy Joes to have our pictures taken.

Here's just a little bit of grapevine gossip:
 L. K., Bugs, bugs, and more

bugs!

W. W. "Love letters again?"
 S. B. "Going to France?"
 M. G. "A big hole, oh dear!"
 B. G. "Off beat Guernsey?"
 L. H. "Copy cat!"
 E. T. "Do you like Crackers?"
 Cloud and Kay—Behave!
 That's it for this week! Let's go, Cats!
 Sherry A.

FISH TALES

We're finally a part of high school, having had our six week's tests and written our first theme last week.

The F.H.A. girls and FFA boys are looking forward to the Dallas Fair, which will be October 17. This will be the first time at the Fair for the Freshmen and the upperclassmen are looking forward to another trip.

The Home Economics I girls are still cooking and eating it and so far we've survived. The class will soon start on our Home Experiences, which is also new to the Freshmen.

The Wildcats met the May Tigons last week for their next to the last home game.

Bye for now, Katy

F. H. A. NEWS

The Rising Star F.H.A. Chapter had its first meeting Tuesday, September 30, 1959. We had the installation of officers, and initiation of the new members. The officers put on the program by candlelight. Sherry and Bonnie, our song leaders, led us in some songs. Then a group of Sophomore girls sang "Sentimental Journey". Afterwards we elected our F.H.A. Beau, who is a Senior, Gary Maynard. Congratulations to you, Gary! Then refreshments were served; cookies and punch made by the Freshmen.

In Homemaking the Freshmen girls are cooking, I hear. They've been fixing up some fancy dishes! The Sophomores are sewing, making those flashy clothes.

The F.H.A. girls are looking forward to the Dallas Fair. We hope the new members are too, because we really had a ball last year. We are to go October 17, and we leave at 4:30. Early birds!

So long for this week.—Reporter.

TO PREACH AT BARNES CHAPEL

The pastor of the First Methodist Church, Rev. Robert Cook, will preach Sunday, October 18, at Barnes Chapel at 3 o'clock. Everyone is given a cordial invitation to attend.

Mrs. Tom Holcomb of Srum visited Mrs. Beryl Heath a few days last week.

NEWS FROM AMITY

By Mrs. I. A. White

Rev. Raymond Woodruff and Mrs. Woodruff were dinner guests of Mr. and Mrs. Homer Smith following preaching services at the Amity Baptist

Church Sunday morning. Other guests in the Smith home Sunday were Mr. and Mrs. Walter Henderson, and Mr. and Mrs. E. L. Stodghill.

Humble Will Telecast Michigan State-N. D. Game

A live telecast of the Notre Dame-Michigan State game and broadcasts of four Southwest Conference games will highlight The Humble Company's football coverage Saturday.

The Notre Dame-Michigan State telecast will originate in East Lansing, Michigan. Lindsey Nelson and Red Grange will describe the action and color beginning at 12:15 p.m. (CST) over WBAP-TV, Fort Worth and KRBC-TV, Abilene.

The TCU-Texas A&M game will be broadcast from Fort Worth by Kern Tips and Alec Chesser. Radio time will be 1:45 p.m. (CST) over KNIT, Abilene, 1280.

The Texas-Arkansas game will be broadcast from Little Rock by Bob Walker and Eddie Hill. Radio time will be 7:45 p.m. (CST) over KBWD, Brownwood, 1380 and WBAP, Fort Worth, 570.

The Baylor-Texas Tech game will be broadcast from Waco by Eddie Barker and Jim Wiggins. Radio time will be 7:45 p.m. WRR, Dallas, 1310; KFJZ, Fort Worth, 1270.

The Rice-SMU game will be broadcast from Houston by Ves Box and John Smith. Radio time will be 7:45 p.m. (CST) over KRBC, Abilene, 1470; KRDL, Dallas, 1080.

SCOUTS TO MEET

The Boy Scouts of Rising Star will meet next Monday evening at 7 p.m. at the Boy Scout lodge. All boys interested in the Boy Scouts are invited to attend the Scout meeting this coming Monday night.

Mr. and Mrs. Dale Rutherford visited in Rising Star on Sunday, October 11.

THE RISING STAR RECORD

PUBLISHED EVERY THURSDAY

B. A. BUTLER and G. W. (Jerry) LYON, Publishers
 Entered as Second Class Matter in Post Office at Rising Star

The publishers are not responsible for copy omissions, errors, or any unintentional errors that may occur. We will correct it in the next issue. All advertising orders are on this basis only.

Cards of Thanks, Resolutions of Respect, Obituaries and of church or lodge entertainments where an advertisement charged will be charged for at our regular line rates.

National Advertising Representative
 WEEKLY NEWSPAPER REPRESENTATIVES, INC.
 New York — Chicago — Detroit — Philadelphia — Boston

SUBSCRIPTION PRICES

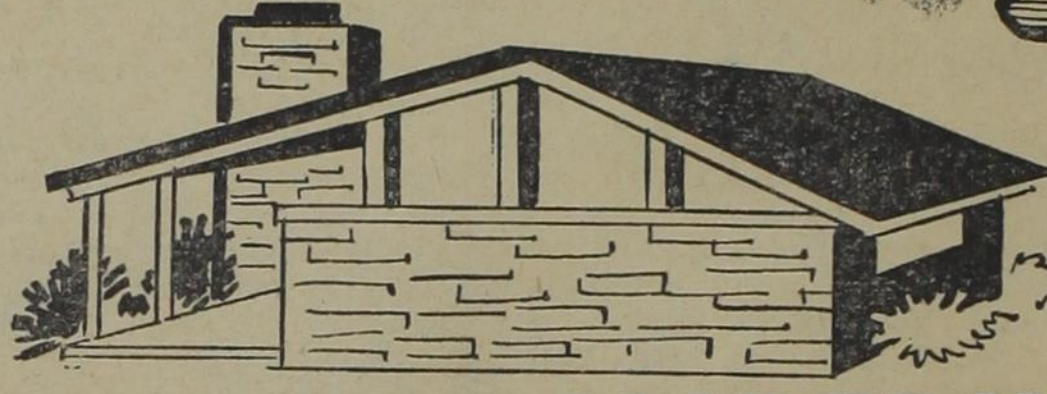
In Eastland and Adjoining Counties, \$2.00 Per Year.
 In Texas, \$3.00 Per Year. Elsewhere in U. S. and Foreign Countries, \$4.00 Per Year.

Mrs. Cecil Courtwright, who underwent surgery Wednesday in German, is recovering satisfactorily.

Mrs. E. D. Ware is visiting her son and wife in Midland.

Mr. and Mrs. Louis A. Mayfield of 1750 Albans St., Houston, Tex., are on vacation and are visiting his mother, Mrs. L. W. Mayfield, and members of the Shults family.

your home will do you PROUD...



when you MODERNIZE

WITH AN FHA LOAN. UP TO 60 MONTHS TO PAY. SEE US FOR DETAILS.

RUTHERFORD & STEEL CO.

LOWEST-PRICED LIGHT AND MEDIUM TRUCKS

Priced lowest of the leading makes*

NEW FORD TRUCKS for 60 with Certified Economy

CERTIFIED GAS SAVINGS • CERTIFIED DURABILITY
 CERTIFIED RELIABILITY • CERTIFIED LOWEST PRICES

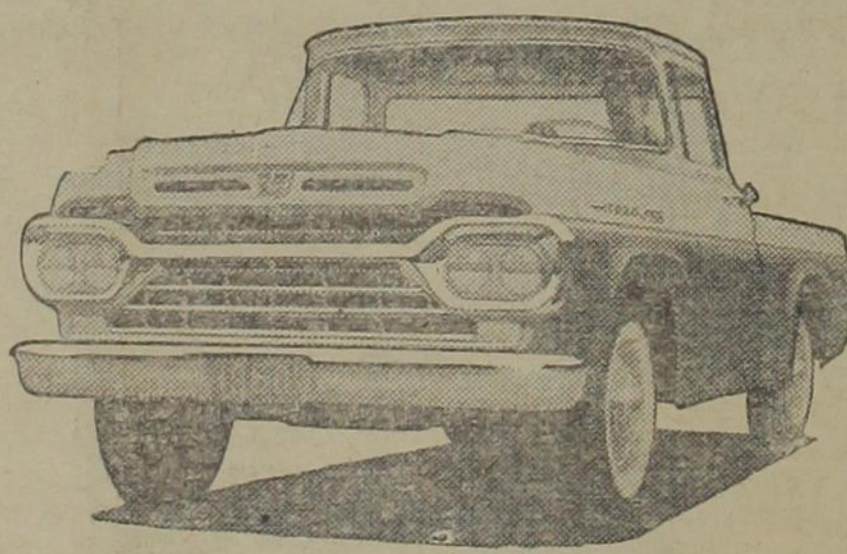
You get the best of the new in 1960 Ford Trucks. And economy backed by the Certified tests of leading independent automotive engineers. Certified gas savings! New tests verify the gas savings of Ford's modern Six—the engine that got 25% more miles per gallon than the average of all other makes in Economy Showdown U.S.A.!

Certified durability! Tests of key truck parts showed, for example, 20% longer brake-lining life for Ford's new F- and C-600's . . . 23.6% greater frame rigidity on half-tonners.

Certified reliability! Based again on Certified tests. Example: Ford's new wiring assembly operated without failure more than three times as long.

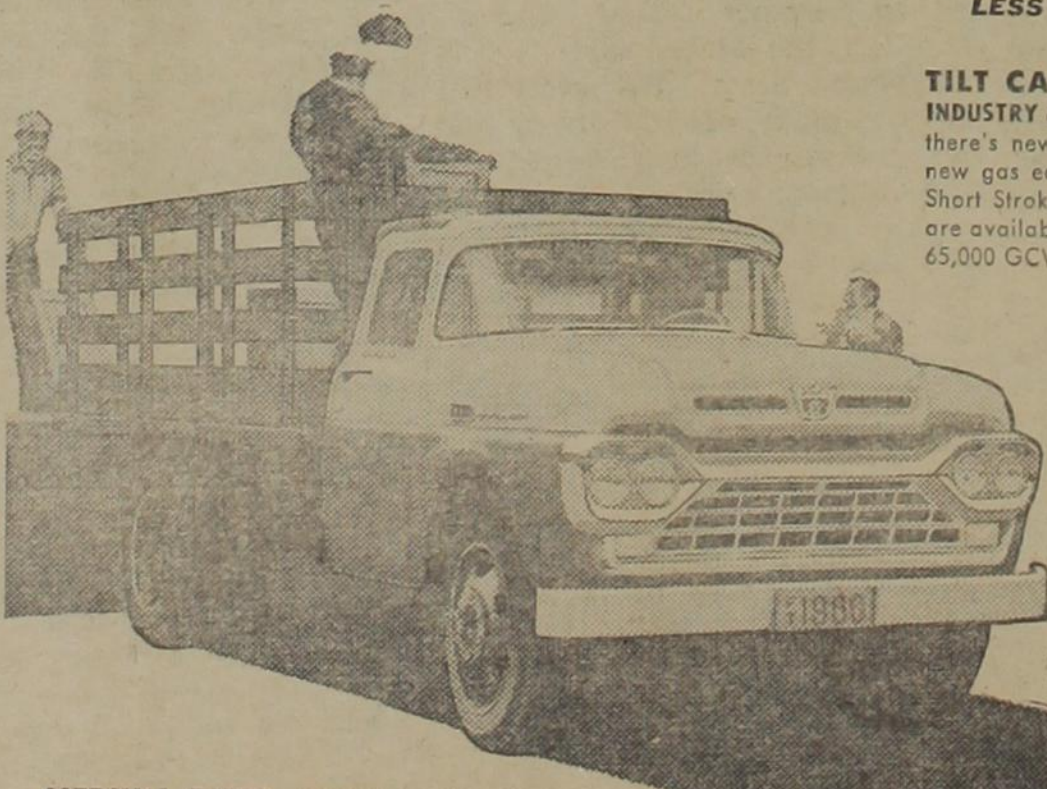
Certified lowest prices! See the price comparisons. See the Certified Economy Book at your Ford Dealer's now!

FORD TRUCKS COST LESS
 LESS TO BUY . . . LESS TO RUN . . . QUILT TO LAST LONGER, TOO!



LIGHT DUTY—LOWEST PRICED OF THE LEADING MAKES!
 And look what the low price of this half-ton Styleline includes! New 23.6% more rigid frame, new longer-lasting brakes, new styling and comfort, new Diamond Lustre Finish!

*Name available on request. Send inquiry to P.O. Box 2657, Ford Division, Ford Motor Company, Detroit 31, Michigan.



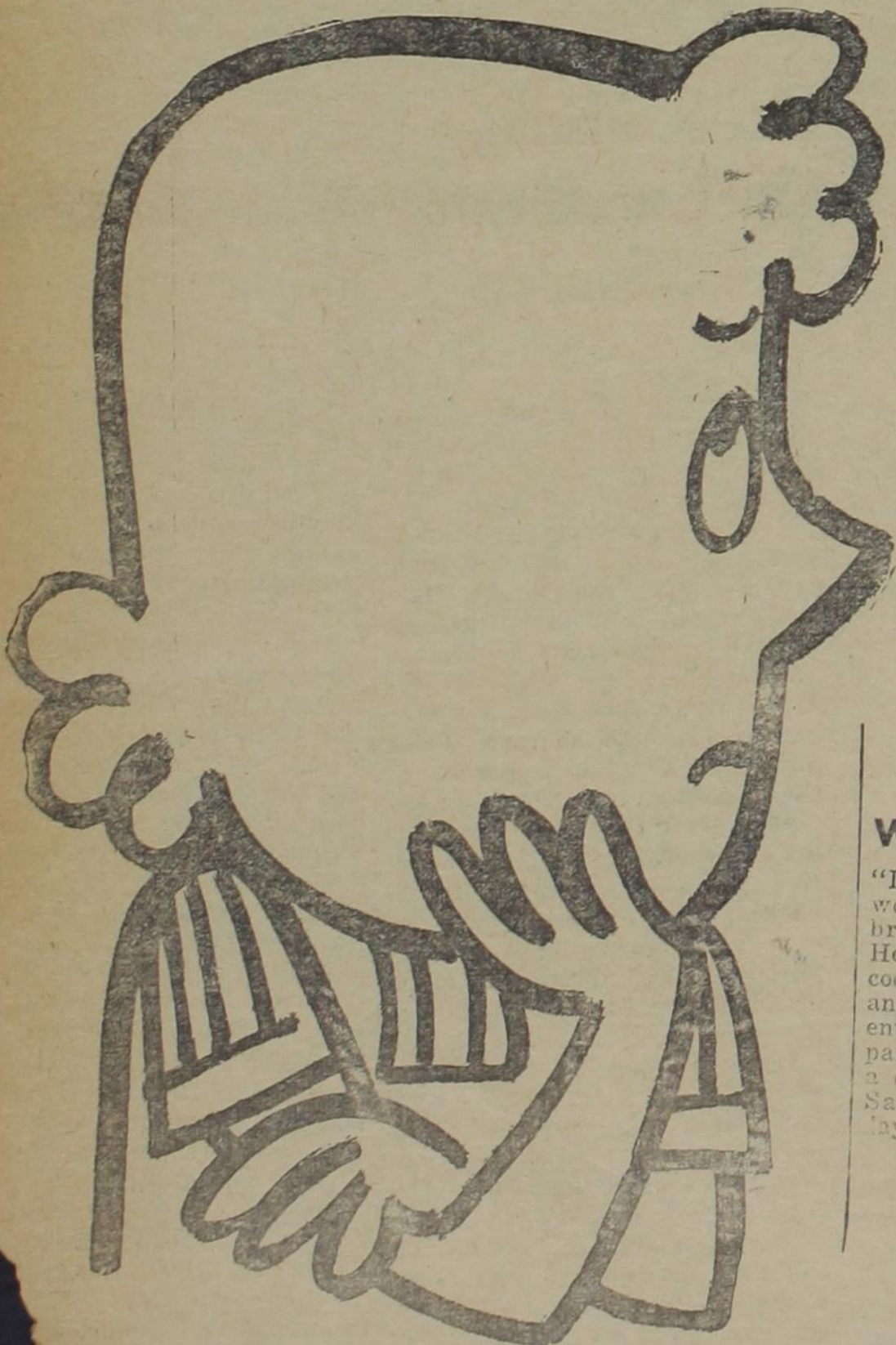
MEDIUM DUTY—LOWEST PRICED OF THE LEADING MAKES! In addition to lowest price, this F-600 Stake offers increased strength in frame and sheet metal . . . colorful new cab interiors . . . the gas savings of Ford's modern Six. Maximum GVW, 21,000 lb.

*Based on a certified comparison of the latest available manufacturer's suggested retail delivered prices, including Federal excise tax, excluding dealer preparation and destination charges.

Come in Now!



TILT CABS—LOWEST PRICED IN THE INDUSTRY and the most popular! For 1960, there's new comfort and driving ease . . . new gas economy and durability in Ford's Short Stroke engines! Nine Tilt Cab Series are available, ranging from 18,000 GVW to 65,000 GVW.



WANTED:

"Dependable, tireless woman to keep home bright and spotless. Help prepare meals, cook, do dishes, wash and iron clothes, provide entertainment. Be prepared to work 24 hours a day, 7 days a week. Salary: about 24¢ a day."

WHO WOULD TAKE THIS JOB FOR 24¢ A DAY?

It's not a job you'd consider. But electricity does it everyday!

Count up all the ways electricity helps in your home. You'll see right off it's the biggest bargain in your family budget.



WIRE—BEATS FIRE
 FOR MODERN COOKING
 less than 3¢ the average family
 can cook a complete
 modern electric way . . .
 safety and con-

On H-SU Exes Program To Eastland Meeting



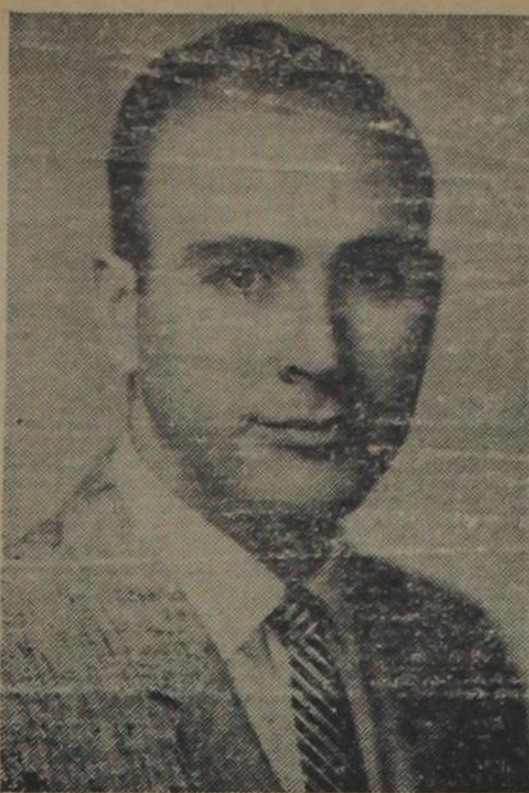
EVAN A. REIFF
President



DR. LEE HEMPHILL
Vice-President



BYRON BRYANT
Public Relations



TRUETT LATIMER
Alumni Director

H-SU Exes to Meet At White Elephant Cafe at Eastland

Rising Star region ex-students and friends of Hardin-Simmons University have been invited to join other H-SU exes in Eastland, Stephens and Shackelford counties at a fellowship dinner to be held at the White Elephant Cafe, Eastland, the evening of Monday, October 19, Truett Latimer, H-SU alumni director, has announced.

The gathering is set for 7 p.m. Monday. There will be no charge for the meal and no financial solicitation will be made during the evening, Latimer said.

"Your Ex-Students Association is attempting to organize local ex-student chapters throughout the state," Latimer has written the area alumni. "A nominating committee will present a proposed slate of officers on the night of the meeting. In cooperation with your local officers, we want to have at least one meeting each year in your area. Through this medium, we can help keep you informed on progress of the university, as well as help promote mutual friendships with your fellow ex-students."

The Eastland program will include a progress report on H-SU's current funds campaign and building program, to be given by the Rev. Byron Bryant, public relations director; a look at the future by Dr. Lee Hemphill, vice president for development; and a message from Dr. Evan Allard Reiff, president. Entertainment is to be furnished by a group of students.

The University's finance campaign, in which solicitation is to be completed by Dec. 31, has a goal of \$1.5 million. Approximately half the sum has been raised. The building program includes the new \$630,000 chapel-auditorium on which construction is just starting; a new student center slated for construction early in 1960, and other facilities. Already completed is a \$165,000 remodeling and enlargement program for Caldwell Hall, H-SU School of Music building.

Friends and Relatives At G. G. Goss Funeral

Friends and relatives from out-of-town who attended the funeral of George G. Goss Monday, October 12, were Mr. and Mrs. Louis Mayfield of Houston; Oscar Clark of Morton; Mrs. Fannie Clark and Mrs. Ocie Davis, Mrs. George Laswell, Mr. and Mrs. F. Scott Lanford, Mr. and Mrs. Anson Oden, I. Holamon, Mr. and Mrs. Bill Morrow, all of Brownwood; Mrs. Paul Brashear, Cisco; Mr. and Mrs. Pete Harrelson and Mr. and Mrs. Jasper Yendrey and daughter, Victoria; Mr. and Mrs. G. E. Scott Adams of San Antonio; Dr. and Mrs. E. H. Hisey of San Antonio; Mr. and Mrs. Arlie B. Phillips of Austin; Annie Stapps and Emma Jarrell of Fort Worth; Mrs. Maggie Rumph of Dallas; David Mozelle Kear Cleburn; Mr. and Mrs. Elbert Amis, A. W. Seefield, and R. H. Landers, of Abilene.

Mr. and Mrs. G. R. Allen and daughter, Joe Lynn of Gould; Mr. and Mrs. Kenneth Williams of Talpa; Mr. and Mrs. Dale Poe, Tyler; Mr. and Mrs. Brad Poe of Carbon; Mr. and Mrs. Bob Needham and Mrs. McDonald, Church of Christ minister, Cross Plains; Bill Garner of Eastland; Mr. and Mrs. Joe Shackelford of Abilene; Mrs. Mary Scott Evans and her brother, John W. Scott both of Wichita Falls; Mr. and Mrs. ...

LOCAL ITEMS

Mr. and Mrs. J. J. Kornegay had as their guests Sunday Mr. and Mrs. Merl Mayes of Brownwood, Mr. and Mrs. T. B. Garner of May, Lester Mayes of Rising Star, Mr. and Mrs. Raymond Mayes of Bangs and Mr. and Mrs. W. H. Kornegay of Rising Star.

Mrs. W. H. Kornegay is reported improving satisfactorily after returning from the hospital at Temple.

Mr. and Mrs. Raymond Mayes have purchased the Touchstone farm and ranch four miles south of Rising Star and have moved to this community to make their home.

Winfield Scott of Abilene visited his parents, Mr. and Mrs. Wilburn Scott, during the week end.

Mr. and Mrs. Lane B. Wells visited her sister, Mrs. Vonnie Wilson, and they also visited his cousins, Guy and Joe Zellars, in Odessa during the week end.

1960 4-H Tractor Program Includes Over 6,000 Boys

COLLEGE STATION.—More than 6,000 Texas 4-H Club boys and their adult leaders will get their annual 4-Club Tractor Program underway with a series of 25 two-day leader training schools, beginning November 5-6 and extending through March 8-9.

W. L. Ulich, extension service agricultural engineer in charge of the program, says leaders who attend the training schools will instruct 4-H boys in their home counties to give their tractors and other farm machinery care and maintenance, resulting in less repair expense.

Surveys show that from \$100 to \$300 can be saved per year by proper tractor maintenance, stresses Ulich. "The instruction the leaders and boys will receive includes safety of operation, kinds and uses of lubricants and proper maintenance of fuel, ignition and cooling systems."

Texas farmers own more than 300,000 farm tractors, over 2.5 million pieces of farm equipment, all of which needs proper maintenance care to keep them use of a piece of equipment in operation. Often the loss of when needed results in more loss to the farmer than the repair bill itself.

The farm machinery industry is cooperating in the 4-H Tractor Program also as often money is saved all the way around if a farmer can make small repairs rather than call the tractor mechanic.

In addition to the knowledge of caring for their own equipment, the 4-H Club boys who do the best jobs have opportunities to win county, district, state and national awards, which include college scholarships.

WMU to Meet in Circles October 19

The W. M. U. of the First Baptist Church met on Monday, October 12, for Bible Study led by Mrs. Earl Marsh. During the business session the three group captains, or circle chairmen, Mesdames Olice Jones, Love Shults, and Lela Clark, named chairmen for the circles. Prayers were led and hymns were sung. Fourteen members attended the meeting.

The next meeting, on Monday, October 19, the women will meet in circles, at 2:30 p.m.

HD Agent Meets With North Star

The North Star club met Tuesday, Oct. 6, with ten members present. Mrs. Carl Irby, president presided. The usual order of business, roll call, club motto and prayer, was held. A report from the council delegate, Mrs.

Will Ware, was presented. The agent's program, "Walks and Drives", was demonstrated by Mrs. Sandra Shelton, who showed slides to present different methods of laying walks and the correct places for drives.

The next meeting will be October 20. Visitors are welcome. —Ella Wells, Reporter

HOME MAKERS VIEWS AND NEWS

By Sandra Shelton, Eastland County Home Demonstration Agent

NEW BULLETIN ON QUICK MEALS . . . For you busy homemakers, here's just the thing . . . a new bulletin on Quick Meals. With this new guide, you can plan and prepare colorful, tasty and nutritious meals in just a minimum of time. Practical tips for menu planning, food shopping, preparation and serving are given in this bulletin. Also, there are some basic patterns for breakfast, dinner and supper menus.

You will find tasty recipes for preparing oven meals, one-dish meals, top-of-range and broiler meals, and pressure saucepans meals. Soups and sandwich menus are also mentioned.

Whether you live alone or cook for a big family . . . you will want a copy of this new bulletin. It is available without cost from your county home demonstration agent's office.

REDECORATING FOR FALL?

Thinking of doing some painting, papering, or refurbishing before winter comes? If so, choose colors for a reason—to get the special effects that you may want and, at the same time, provide a comfortable,

pleasant background for everyday living. Decide how you want the room to look. Will it be light and gay, restful or dramatic? Do you want it to be predominantly warm or cool?

A good color plan has few colors, usually no more than two or three, in different values and intensities. The best color schemes grow from a dark color, a light color and a bright color. Black, white, and grey are not considered colors, but are often used to give a needed accent of light or dark.

Choose your favorite color if you do not need to consider the color or colors of furnishings, which you must keep. Select a picture or print which has your chosen colors and plan your scheme from that, if you pre-

fer. Good proportion of the different colors is important. This means that your color scheme will be definitely dark or light and that either warm or cool colors will predominate. Proportions of 60 percent of area for one color, 30 percent for a second color and 10 percent for accent, insure good proportion.

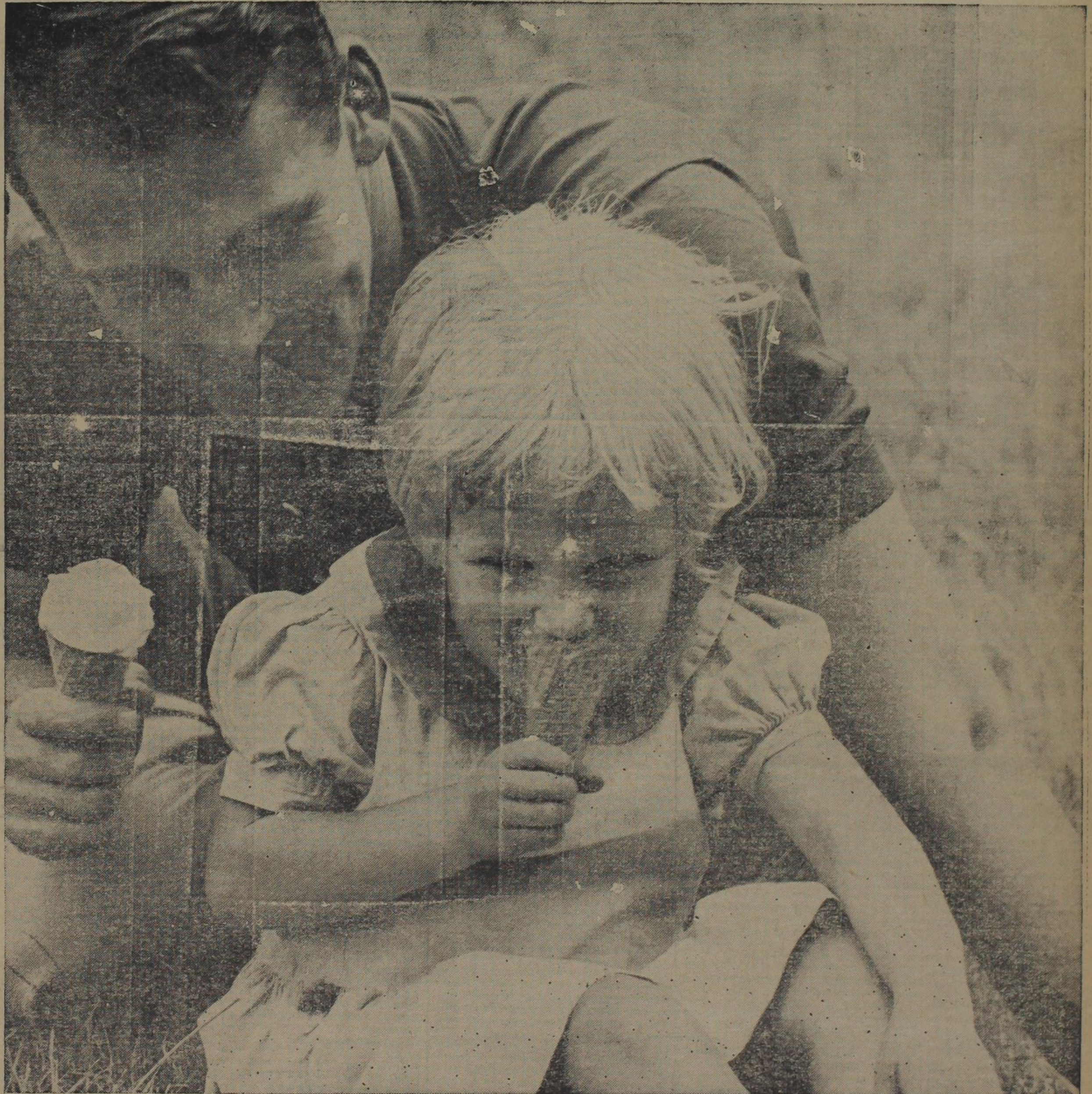
When you place the colors in a room, choose the color for the largest areas first—floor coverings, walls and large upholstered pieces. In most cases, these should be your most livable colors, or colors that are greyed in intensity. Next, choose colors for small upholstery and the window treatment. This treatment may be a blend of the room colors, or match or contrast with the walls. Lastly, choose your colors for accessories and small areas—pillows, lamps, ash trays, etc. Usually, this accent color is the brightest color.

HEADQUARTERS FOR LIVESTOCK SUPPLIES

FRANKLIN

VACCINES AND SUPPLIES

PALACE DRUG STORE



Photographed by Harold Halma

Help strengthen America's Peace Power

You've got the best reason in the world for wanting peace—right in your own back yard.

But peace costs money. Money to help us keep the peace, through industrial and military strength. To help make it lasting for the future, through science and education. And, most important, money saved by individuals.

Your Savings Bonds, as a direct investment in your country, make you a Partner in the job of strengthening America's Peace Power.

The chart shows how your Bonds will earn money for you. But the most important thing they earn is Peace. Are you buying as many as you might?

HOW YOU CAN REACH YOUR SAVINGS GOAL WITH SERIES E SAVINGS BONDS (in just 8 years, 11 months)

If you want about	\$2,500	\$5,000	\$10,000
each week, save	\$4.75	\$9.50	\$18.75

Buy U.S. Savings Bonds

The U.S. Government does not pay for this advertising. The Treasury Department thanks, for their patriotic donation, The Advertising Council and

LEGAL NOTICES

PROCEEDINGS IN EMINENT DOMAIN
STATE OF TEXAS, ET AL
VS.
MYRTLE G. MIXSON, ET AL
NOTICE OF HEARING
TO: Mrs. Grace Hudson Ruse
710 Eucalyptus
Inglewood, California

Notice is hereby given that the State of Texas and the County of Eastland, Plaintiffs, both acting herein by and through the Commissioners' Court of said County, pursuant to existing law, and the request of the State Highway Commission of the State of Texas, have filed Plaintiff's Statement with the Judge of the County Court of Eastland County, Texas, seeking an easement for highway right of way purposes over and across certain lands in the County of Eastland, Texas, through Proceedings in Eminent Domain, with title thereto vesting in the State of Texas, same to be paid for by the County of Eastland, a true and correct copy of which Statement is attached hereto and made a part hereof, and to which reference is here made for a description of the land involved in these Proceedings and for a statement of the public purposes for which such right of way is being acquired, and all other legal purposes.

Time: 9:30 a.m.
Date: December 2, 1959
Place: Courthouse, Eastland, Eastland County, Texas.

WITNESS OUR HANDS this 12th day of October, 1959.

A. D. JENKINS
RAYMOND GRAY
B. B. HICKMAN
Special Commissioners

PROCEEDINGS IN EMINENT DOMAIN
STATE OF TEXAS, ET AL
VS.

MYRTLE G. MIXSON, ET AL
NOTICE OF HEARING
TO: Myrtle Gracie Mixson and husband, Samuel C. Mixson, Grace Hudson Ruse and husband, Wilson V. Ruse, Charlie Hudson, J. C. Hudson, Buddy Hudson, Bill Hudson, Dora Hudson, Johnny Hudson, Mary Hudson Bell and husband, Homer Bell, Minnie Hudson, Franklin Hudson, the unknown heirs and legal representatives of J. F. Hudson, both in their individual and representative capacity, and all persons owning any interest in the real property herein described.

Notice is hereby given that the State of Texas and the County of Eastland, Plaintiffs, both acting herein by and through the Commissioners' Court of said County, pursuant to existing law, and at the request of the State Highway Commission of the State of Texas, have filed Plaintiff's Statement with the Judge of the County Court of Eastland County, Texas, seeking an easement for highway right of way purposes over and across certain lands in the County of Eastland, Texas, through Proceedings in Eminent Domain, with title thereto vesting in the State of Texas, same to be paid for by the County of Eastland, a true and correct copy of which Statement is attached hereto and made a part

hereof, and to which reference is here made for a description of the land involved in these Proceedings and for a statement of the public purposes for which such right of way is being acquired, and all other legal purposes.

Notice is hereby given that the undersigned Special Commissioners have set the following time, date and place for the hearing at which we will hear evidence and assess the damages accruing by reason of this acquisition through Proceedings in Eminent Domain, and have directed that notice be given to each of the parties interested accordingly:

Time: 9:30 a.m.
Date: December 2, 1959
Place: Courthouse, Eastland, Eastland County, Texas.

WITNESS OUR HANDS this 12th day of October, 1959.

A. D. JENKINS
RAYMOND GRAY
B. B. HICKMAN
Special Commissioners

PROCEEDINGS IN EMINENT DOMAIN
STATE OF TEXAS, ET AL
VS.

MYRTLE G. MIXSON, ET AL
PLAINTIFF'S STATEMENT
TO THE HONORABLE JUDGE OF THE COUNTY COURT OF EASTLAND COUNTY, TEXAS
NOW COMES the State of Texas and Eastland County, Texas, both acting herein by and through the Commissioners' Court of said County, hereinafter styled Plaintiffs, and file this statement in writing with Your Honor, and would respectfully show the following:

That the State of Texas is now constructing, laying out and reconstructing a highway, designated as a part of the State Highway System by the State Highway Commission of the State of Texas, in Eastland County, Texas, and that such construction, reconstruction and maintenance upon said highway is surveyed through, across and upon, and will cross, run through and upon the following described real property situated in Eastland County, Texas:

0.309 acres of land, more or less, same being out of a 17 acre tract of land out of the S W corner of SW 1/4 E. T. R. R. Co. Survey No. 15, Block 2, Abstract No. 94, conveyed by H. L. King et ux to J. F. Hudson, by deed dated October 9, 1941, of record in Vol. 366 page 26, of the Deed Records Eastland County, Texas, said 0.309 acres of land, more or less, being more particularly described by metes and bounds as follows:

BEGINNING at a point in the SW corner of said tract, same being 30 feet north and 25 feet east of the SW corner of said Survey No. 15, same being 45 feet left and perpendicular to centerline Sta. 361x48 of said highway survey;

THENCE S 43 dg. 31' E 70.7 feet with proposed R.O.W. line of said highway survey to a point 70 feet left and perpendicular to centerline Sta. 361x48;

THENCE S 88 dg. 31' E 471.3 feet with proposed R.O.W. line of said highway survey to a point 70 feet left and perpendicular to centerline Sta. P. C. 366x69.3;

THENCE N 89 dg. 51' W 815 feet to POINT OF BEGINNING, and containing 0.309 acres of land, more or less.

The State Highway Commission of the State of Texas has found and determined that it is necessary and convenient to run said highway across said hereinabove described tract of land, and the Commissioners' Court of Eastland County, Texas, has found and determined that it is necessary to acquire an easement across said tract of land, pursuant to existing law, same to be paid for by said County, with title thereto vesting in the State of Texas, for the purpose of constructing, reconstructing, maintaining, widening, straightening and lengthening said highway, through these Proceedings in Eminent Domain.

III
That the name or names of the owner or owners of said land, so far as known to Plaintiffs are as follows:
Grace Hudson Ruse and husband, Wilson V. Ruse, Myrtle Gracie Mixson and husband, Samuel C. Mixson, Charlie Hudson, J. C. Hudson, Buddy Hudson, Bill Hudson, Dora Hudson, Johnny Hudson, Mary Hudson Bell and husband, Homer Bell, Minnie Hudson, Franklin Hudson, the unknown heirs and legal representatives of J. F. Hudson, both in their individual and representative capacity.

leges that it has been unable to agree and cannot agree with said owner or owners upon the value of said land, or the damages, if any, and therefore brings these Proceedings in Eminent Domain to acquire said easement, as it is entitled to do under existing law, with title thereto vesting in the State of Texas.

PROCEEDINGS IN EMINENT DOMAIN
STATE OF TEXAS, ET AL
VS.

A. B. HUGHES, ET AL
NOTICE OF HEARING
TO: A. B. Hughes, W. O. Hughes, L. V. Hughes, Lee V. Hughes, Blain Hughes, Vaudir Prout and husband, Paul J. Prout, Wanda Mayo, and husband O. V. Mayo, Warene Hunn and R. O. Hunn, Athene Johnson and husband F. M. Johnson, Lolene Hughes Claborn and husband, Norman Claborn, Willie Boyd Hughes, a widow, The resa Lewis and husband, L. L. Lewis, Francis Wolf and husband, A. J. Wolf, William Boyd Hughes, Ava Hughes Talley and husband, J. F. Talley, Era Hughes Hagan and R. C. Hagan, and any and all unknown heirs and legal representatives of W. H. Hughes, deceased, both in their individual and representative capacity.

Notice is hereby given that the State of Texas and the County of Eastland, Plaintiffs, both acting herein by and through the Commissioners' Court of said County, pursuant to existing law, and at the request of the State Highway Commission of the State of Texas, have filed Plaintiff's Statement with the Judge of the County Court of Eastland County, Texas, seeking an easement for highway right of way purposes over and across certain lands in the County of Eastland, Texas, through Proceedings in Eminent Domain, with title thereto vesting in the State of Texas, same to be paid for by the County of Eastland, a true and correct copy of which Statement is attached hereto and made a part hereof, and to which reference is here made for a description of the land involved in these Proceedings and for a statement of the public purposes for which such right of way is being acquired, and all other legal purposes.

Notice is hereby given that the undersigned Special Commissioners have set the following time, date and place for the hearing at which we will hear evidence and assess the damages accruing by reason of this acquisition through Proceedings in Eminent Domain, and have directed that notice be given to each of the parties interested accordingly:

Time: 9:30 a.m.
Date: December 2, 1959
Place: Courthouse, Eastland, Eastland County, Texas.

WITNESS OUR HANDS this 12th day of October, 1959.

A. D. JENKINS
RAYMOND GRAY
B. B. HICKMAN
Special Commissioners

PROCEEDINGS IN EMINENT DOMAIN
STATE OF TEXAS, ET AL
VS.

A. B. HUGHES, ET AL
PLAINTIFF'S STATEMENT
TO THE HONORABLE JUDGE OF THE COUNTY COURT OF EASTLAND COUNTY, TEXAS

NOW COMES the State of Texas and Eastland County, Texas, both acting herein by and through the Commissioners' Court of said County, hereinafter styled Plaintiffs, and file this statement in writing with Your Honor, and would respectfully show the following:

I
That the State of Texas is now constructing, laying out and reconstructing a highway, designated as a part of the State Highway System by the State Highway Commission of the State of Texas, in Eastland County, Texas, and that such construction, reconstruction and maintenance upon said highway is surveyed through, across and upon, and will cross, run through and upon the following described real property situated in Eastland County, Texas:

TRACT NO. 1: (For purposes of construction, reconstruction and maintenance upon said highway)
0.245 acres, more or less, being out of and a part of a 160 acre tract, said tract being the NE 1/4 of E. T. R. R. Co. Survey No. 17, Abstract No. 95, conveyed by W. A. Philpot et al to W. H. Hughes, by deed dated January 26, 1901, of record in Vol. 39, page 619, Deed Records of Eastland County, Texas, and by deed from J. A. Porterfield et al to W. H. Hughes dated January 12, 1904, of record in Vol. 49, page 263, Deed Records of Eastland County, Texas; also Proof of Heirship, W. H. Hughes, deceased, dated February 29, 1958, of record in Vol. 445, page 29, Deed Records of said

BEGINNING at a point in the west line of said tract, and 40 feet south of the NW corner of said Sur. No. 17, said point being 60 feet right and perpendicular to centerline Sta. 280x33 of State Highway No. 36 as surveyed by the Texas Highway Dept.;

THENCE S 88 dg. 01' E with proposed R.O.W. line of said highway survey 1287.3 feet to a point, said point being 60 feet right and perpendicular to centerline Sta. 293x20.8 of said highway survey;

THENCE S 87 dg. 10' E with proposed R.O.W. line of said highway 1252.0 feet to a point, said point being 60 feet right and perpendicular to centerline Sta. 306x06 of said highway survey;

THENCE S 45 dg. 10' E with proposed R.O.W. line of said highway survey 70.7 feet to a point, said point being in the east line of said tract, and 99 feet south and 24 feet west of the NE cor. of said Survey No. 17, said point also being 110 feet right and perpendicular to centerline Sta. 306x56 of said highway survey;

THENCE north with east line of said tract 59 feet to a point, said point being 51 feet right and perpendicular to centerline Sta. 306x56 of said highway survey;

THENCE N 87 dg. 10' W 1302.0 feet to a point, said point being 57 feet right and perpendicular to centerline Sta. 293x20.8 of said highway survey;

THENCE N 88 dg. W 1287.3 feet to the POINT OF BEGINNING, and containing 0.245 acres, more or less.

TRACT NO. 2: (For purposes of opening, constructing and maintaining a permanent drainage channel adjacent to said highway) (CHANNEL EASEMENT) 50 feet in width and 200 feet in length, along the north line of NE 1/4 E.T.R.R. Co. Survey No. 17, Block No. 2, Abstract No. 95, Eastland County, Texas, same being more particularly described by metes and bounds as follows:

BEGINNING at a point in proposed R.O.W. line of State Hwy. No. 36, as surveyed by the Texas Highway Department, same being 60 feet right angle to Station 293x25;

THENCE S 2 dg. 59' W 200 feet; **THENCE** S 88 dg. 01' E 50 feet;

THENCE N 2 dg. 59' E 200 feet; **THENCE** N 88 dg. 01' W 50 feet to POINT OF BEGINNING.

The State Highway Commission of the State of Texas has found and determined that it is necessary and convenient to run said highway across said hereinabove described tract of land, and the Commissioners' Court of Eastland County, Texas, has found and determined that it is necessary to acquire an easement across said tracts of land, pursuant to existing law, same to be paid for by said County, with title thereto vesting in the State of Texas, for the purpose of constructing, reconstructing, maintaining, widening, straightening and lengthening said highway, and for the purpose of opening, constructing and maintaining a drainage channel, through these Proceedings in Eminent Domain.

III
That the name or names of the owner or owner of said land, so far as known to plaintiffs, are as follows:

A. B. Hughes, W. O. Hughes, L. V. Hughes, Lee V. Hughes, Blain Hughes, Vaudia Prout and husband, Paul J. Prout, Wanda Mayo, and husband, O. V. Mayo, Warene Hunn and R. O. Hunn, Athene Johnson and husband, F. M. Johnson, Lolene Hughes Claborn and husband, Norman Claborn, Willie Boyd Hughes, a widow, Thesesa Lewis and husband, L. L. Lewis, Francis Wolf and husband, A. J. Wolf, William Boyd Hughes, Ava Hughes Talley and husband, J. F. Talley, Era Hughes Hagan and R. C. Hagan, and any and all unknown heirs and legal representatives of W. H. Hughes, deceased, both in their individual and representative capacity.

IV
Plaintiff County specially alleges that it has been unable to agree and cannot agree with said owner or owners upon the value of said land, or the damages, if any, and therefore brings these Proceedings in Eminent Domain to acquire said easements, as it is entitled to do under existing law, with title thereto vesting in the State of Texas.

EARL CONNER, JR.
Attorney for Plaintiffs

PROCEEDINGS IN EMINENT DOMAIN
STATE OF TEXAS, ET AL
VS.

D. W. RODERICK, ET AL
NOTICE OF HEARING
TO: D. W. Roderick, if living, and if deceased, the unknown heirs and legal representatives of the said D. W. Roderick, both in their individual and representative capacity.

name of D. W. Roderick, Notice is hereby given that the State of Texas and the County of Eastland, Plaintiffs both acting herein by and through the Commissioners' Court of said County, pursuant to existing law, and at the request of the State Highway Commission of the State of Texas, have filed Plaintiff's Statement with the Judge of the County Court of Eastland County, Texas, seeking an easement for highway right of way purposes over and across certain lands in the County of Eastland, Texas, through Proceedings in Eminent Domain, with title thereto vesting in the State of Texas, same to be paid for by the County of Eastland, a true and correct copy of which Statement is attached hereto and made a part hereof, and to which reference is here made for a description of the land involved in these Proceedings and for a statement of the public purposes for which such right of way is being acquired and all other legal purposes.

Notice is hereby given that the undersigned Special Commissioners have set the following time, date and place for the hearing at which we will hear evidence and assess the damages accruing by reason of this acquisition through Proceedings in Eminent Domain and have directed that notice be given to each of the parties interested, accordingly:

Time: 9:30 a.m.
Date: December 2, 1959
Place: Courthouse, Eastland, Eastland County, Texas.

WITNESS OUR HANDS this 12th day of October, 1959.

A. D. JENKINS
RAYMOND GRAY
B. B. HICKMAN
Special Commissioners

PROCEEDINGS IN EMINENT DOMAIN
STATE OF TEXAS, ET AL
VS.

D. W. RODERICK, ET AL
PLAINTIFF'S STATEMENT
TO THE HONORABLE JUDGE OF THE COUNTY COURT OF EASTLAND COUNTY, TEXAS

NOW COMES the State of Texas and Eastland County, Texas, both acting herein by and through the Commissioners' Court of said County, hereinafter styled Plaintiffs, and file this statement in writing with Your Honor, and would respectfully show the following:

I
That the State of Texas is now constructing, laying out and reconstructing a highway, designated as a part of the State Highway System by the State Highway Commission of the State of Texas, in Eastland County, Texas, and that such construction, reconstruction and maintenance upon said highway is surveyed through, across and upon, and will cross, run through and upon the following described real property situated in Eastland County, Texas:

TRACT NO. 1: (For the purposes of construction, reconstruction and maintenance upon said highway)
0.733 acres of land, more or less, same being out of and a part of a 47 acre tract of land out of SE corner of NW 1/4 E. T. R. R. Co. Survey No. 13, Block No. 2, Abst. No. 93 Eastland County, Texas, as conveyed by C. Roderick and Texas Land and Cattle Company to D. W. Roderick, by deeds dated December 19, 1898, and August 23, 1904, of record in Vol. 164, page 164, and Vol. 52, page 327, Deed Records, Eastland County, Texas, which 0.733 acres of land, more or less, is more particularly described by metes and bounds as follows:

BEGINNING at a point in the NW corner of said tract 1360 feet south and 2699 feet east of the NW corner of said Survey No. 13, and being 41 feet right and perpendicular to centerline Sta. 428x14 of State Highway No. 36, as surveyed by the Texas Highway Department;

THENCE south 20 feet with west line of said tract to a point in proposed R.O.W. line 60 feet right and perpendicular to centerline Sta. 428x14;

THENCE S 88dg. 35' E 1596 feet with proposed R.O.W. line to a point in the east line of said tract 60 feet right and perpendicular to centerline Sta. 444x10;

THENCE north 20 feet with east line of said tract to a point 40 feet right and perpendicular to centerline Sta. 444x10;

THENCE N 88 dg. 35' W 1596 feet to POINT OF BEGINNING, and containing 0.733 acres of land, more or less.

TRACT NO. 2: (For purposes of opening, constructing and maintaining a permanent drainage channel adjacent to said highway)

CHANNEL EASEMENT: 50 feet in width and 100 feet in length along the south line of the north 1/4 of NW 1/4, E. T. R. R. Co. Survey No. 13, Block No. 2, Abstract No. 93, Eastland County, Texas, same being more particularly described by metes and bounds as follows:

State Highway No. 36, as surveyed by the Texas Highway Department, same being 60 feet right angle to centerline Sta. 437x85;

THENCE S 1 dg. 25' W 100 feet;

THENCE S 88 dg. 35' E 100 feet;

THENCE N 1 dg. 25' E 100 feet;

THENCE N 88 dg. 35' W 50 feet TO POINT OF BEGINNING.

The State Highway Commission of the State of Texas has found and determined that it is necessary and convenient to run said highway across said hereinabove described tract of land, and the Commissioners' Court of Eastland County, Texas, has found and determined that it is necessary to acquire an easement across said tract of land, pursuant to existing law, same to be paid for by said County, with title thereto vesting in the State of Texas, for the purpose of constructing, reconstructing, maintaining, widening, straightening and lengthening said highway, and for the purpose of opening, constructing and maintaining a drainage channel, through these Proceedings in Eminent Domain.

III
That the name or names of the owner or owners of said

land, so far as known to plaintiffs, are as follows:

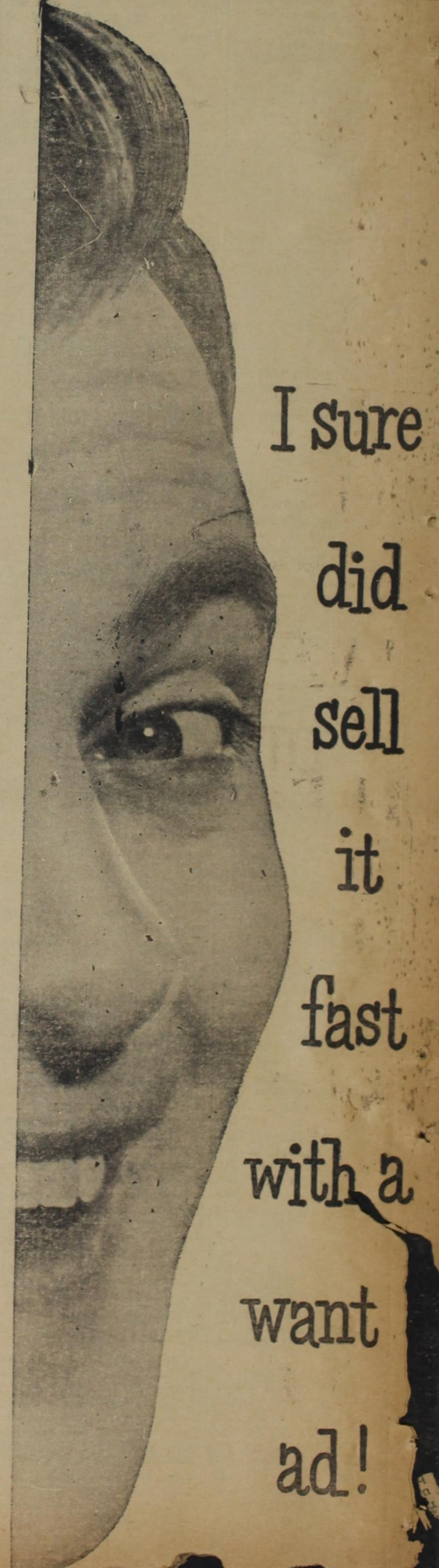
D. W. Roderick, if living, and if deceased, the unknown heirs and legal representatives of the said D. W. Roderick, both in their individual and representative capacity; and all persons owning any interest in the property described herein, in the name of Roderick.

IV
Plaintiff County specially alleges that it has been unable to agree and cannot agree with said owner or owners upon the value of said land, or the damages, if any, and therefore brings these Proceedings in Eminent Domain to acquire said easement, as it is entitled to do under existing law, with title thereto vesting in the State of Texas.

EARL CONNER, JR.
Attorney for Plaintiffs

Mr. and Mrs. M. G. Joyce visited their son and family, Mr. and Mrs. M. L. Joyce and their son, in Albany on Sunday.

Mr. and Mrs. Russell Buzbee of Austin have been visiting in Rising Star with Mrs. Buzbee's sister, Mrs. Eva Cargile, and brother, A. D. Jenkins, and their families.



I sure
did
sell
it
fast
with a
want
ad!

Tatum Buddy STAPLERS

Homemakers, hobbyists, students — every member of the family will want one in his favorite color... to fasten, fix or tack... easily and quickly. Staples for correspondence, recipes, clothes, school lunches, bulky packages; tacks for shelf paper, family bulletins... and does scores of other jobs at home and at work. Lightweight, rugged. No plastic parts. Adds a gay note to desk.

Uses standard size staples.

FOUR COLORS

It's Easy to Check Social Security Record

Social Security Administration has the responsibility of maintaining approximately \$1 billion in earnings records. Weatherly, Field Representative of the Abilene Division, pointed out today that it is the responsibility of

each individual social security card holder to check his record periodically to make sure it is correct.

Mr. Weatherly also stated that everyone should check his social security record at least once every three or four years. In most instances the Social Security records become final and not open to adjustment after three years, three months and fifteen days from the end of the taxable year for which the earnings were reported. There is another point to be considered too—the sooner an error is found, the easier it can be corrected. This applies to everyone whether he is working in his own business or for someone else as an employee.

Mr. Weatherly says that the manner of checking a particular record is simple. Just ask your social security office for post-card form 7004, fill in the blanks and drop it in a mail box. The form is a self-addressed post-card. In about two weeks you will receive a statement showing the total earnings credited to your social security account. It will also show a yearly

breakdown of your credited earnings for each of the past three full calendar years. If, after receiving this statement, an error is noticed, get in touch with your social security representative. He will be glad to help correct your account.

Mr. Weatherly stresses the fact that your social security benefits will depend on this record of your earnings. Social security is a valuable insurance for you and your family, so don't delay. Get form 7004 from your local social security office today, or from Mr. Weatherly when he is next in your town, and check your social security record. He will be in Rising Star on November 2 at the City Hall.

Mr. and Mrs. C. M. Cox visited their daughter, Mrs. Florene Forbes and her three children, and Miss Annie Mae Cox all of Abilene during the week end.

Mr. and Mrs. Lawrence Davis of Lubbock, are visiting Mr. and Mrs. J. T. Gardner and Mr. and Mrs. Oral Davis.

Reliable Prescription Service

Phone MI 3-3231

Palace Drug Store

Rising Star, Texas

B. H. Dennard

B. S. in Pharmacy

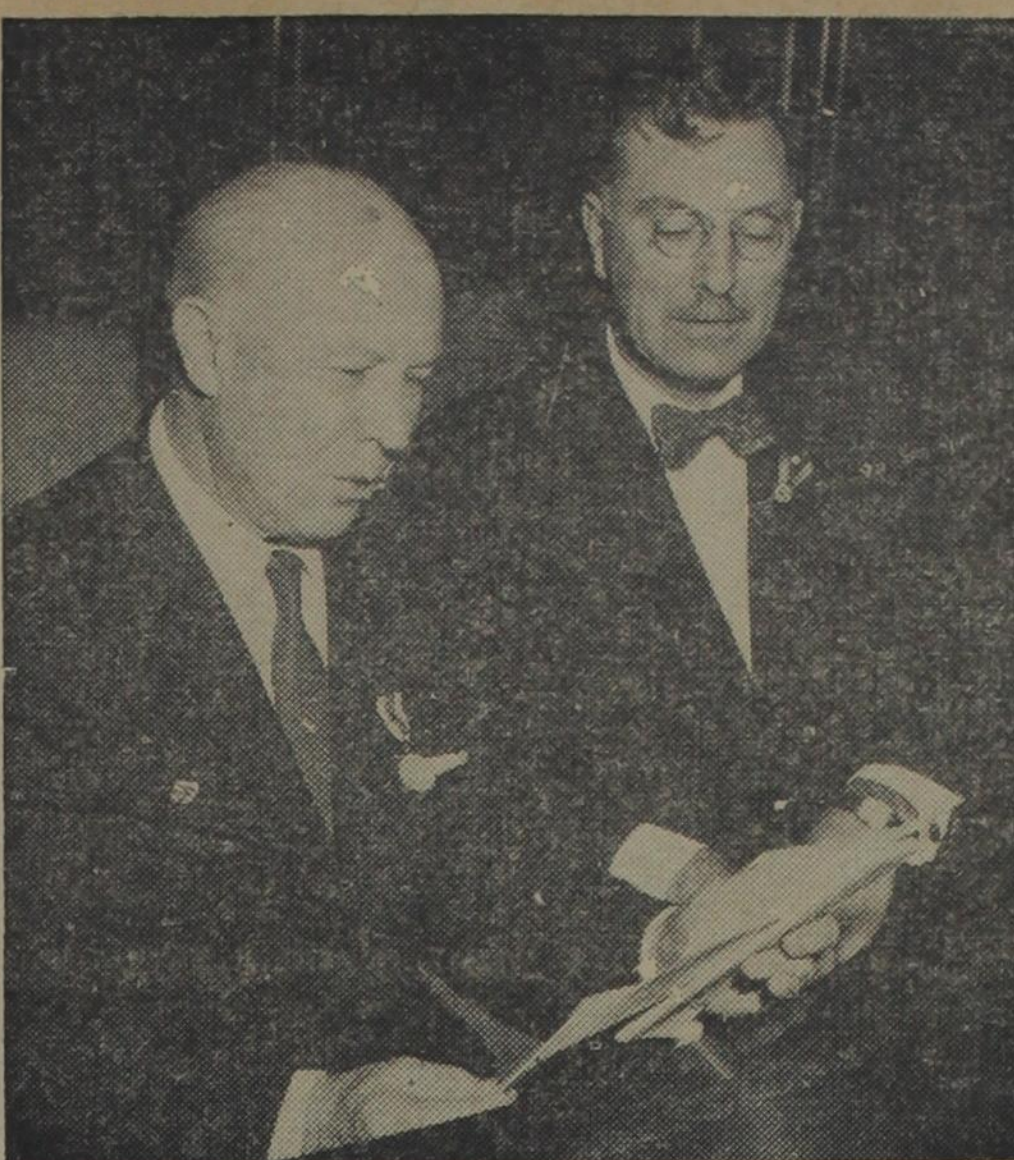
STATEMENT OF CONDITION OF THE

First State Bank of Rising Star

AS OF OCTOBER 6, 1959

ASSETS:		LIABILITIES:	
Loans and Discounts	\$ 730,445.72	Capital Stock	\$ 40,000.00
Overdrafts	400.17	Surplus (Certified)	40,000.00
Banking House, Furniture and Fixtures	7,302.70	Reserve	200,110.58
Other Assets	5.00	Deposits	2,512,466.45
Prepaid Insurance Premiums	487.80		
QUICK ASSETS:			
Cash in vaults and in other banks	\$ 489,079.13		
U. S. Govt., State, Municipal Bonds and Securities	1,382,556.75		
Bank Participation Loans	182,299.76		
Total Quick Assets	\$2,053,935.64		
TOTAL	\$2,792,577.03	TOTAL	\$2,792,577.03

Prominent Texan Receives Gold Medal Award



Lee Lockwood of Waco (left), Texas business and civic leader who also heads all Scottish Rite Masonry in the state, is presented the citation and highest gold medal award of the Sons of the American Revolution by Royce A. Mulholland of Austin past president of the Texas division. The coveted award is restricted to those individuals whose citizenship and service to their respective community, state and nation is such as can be unanimously approved by the Board of Trustees of the National Society of the Sons of the American Revolution.

Cotton Nematodes Can Be Controlled Says Pathologist

COLLEGE STATION.—Root-knot nematodes, which results in an average loss of more than 160,000 bales of cotton annually for all U. S. cotton-producing areas, can be controlled by using a chemical soil fumigant, reports Earlan E. Smith, extension plant pathologist. This pest occurs particularly in the irrigated areas of the Southwest, he adds, and accounts for 10 percent of U. S. cotton disease losses.

A nematologist of USDA's Agricultural Research Service in Arizona has shown that DBCP (marketed under the name of Nemagon or Fumazone) can effectively reduce populations of root-knot nematodes. This method of control, says Smith, is as effective as crop rotation and summer fallow in combating the pest.

Moreover, even with the added cost of the fumigant—about \$22 per acre—the cost per bale of cotton produced under the experiment was lower than when the nematodes were not controlled.

Applied at the rate of four gallons per acre, DBCP is injected about eight inches into the soil with equipment similar to that used to apply anhydrous ammonia. Then the soil is compacted with a roller to prevent the fumigant from escaping. Cotton planting should be delayed until about eight days following fumigation to avoid any possible toxic effects of the nematocide on the plants. Because this waiting period varies with the type of soil, growers are advised to follow the fumigant manufacturer's recommendations, says Smith.

Differences between the size of seedlings in the treated areas and those in the untreated areas are rapidly apparent. Plants in the fumigated plots are larger and more vigorous than those in the untreated plots and these differences become more pronounced as the plants mature.

Research showed that treatment after planting leaves a moderately heavy nematode infestation, and is not an effective means of control.

Observation in Texas indicates that spot treatment of localized infested areas may be better

than overall fumigation in the field. Smith adds that the fumigants Dowfume D-85 and D-80 are being used with good results in the irrigated cotton areas of Texas.

YOUNG PEOPLE TO SEE FILM

The Young People of the First Methodist Church are having a series of films following the evening worship hour in the basement of the church. Sunday night they will see a film called "Squaring Yourself", a story about an underprivileged boy in the slums. Everyone is invited to attend and refreshments will be served following the discussing of the film.

Read the Classifieds!



You Can't Beat The Comfort Style And Wear Of

WRANGLER

Jeans By BLUE BELL

- Authentic Western cut
- 13 3/4 oz. Sanforized Denim
- No-Scratch Rivets
- Bar Tacks at strain points
- 2 Front pockets
- 2 Back pockets

Boys' 6-12 \$2.35
Youths 27-30 \$3.25
Mens 31-42 \$3.45

Higginbotham's

Dorothy Perkins HAND and BODY LOTION



PETAL FRESH Body Lotion

WITH LANOLIN and SILICONES

Regular \$2.00

12 oz. bottle

Now \$1.00 plus tax

1/2 PRICE SALE

- NOT STICKY
- NOT GREASY
- DRIES FAST

WEATHER LOTION

FOR SOFT SMOOTH HANDS

Regular \$1.00

8 oz. bottle

Now 50¢ plus tax

FOR LIMITED TIME ONLY

PALACE DRUG STORE

B. H. DENNARD, Prop.

GET YOUR PEANUT SACKS

AT Higginbotham's
40 INCh x 50 INCH BAGS

13c Each

Baling Wire

Imported, Automatic Wire

Per Spool.. \$11

Electric Fence Chargers, Direct and Battery Type. Complete Stock of Accessories, including wire and insulators.

GOOD USED Pick-ups and Trucks

SEVERAL MAKES AND MODELS

18 MONTHS TO PAY.

SEE THEM ON OUR Lot.

Subscribe to:

The Abilene Reporter-News

Fall Bargain Offer

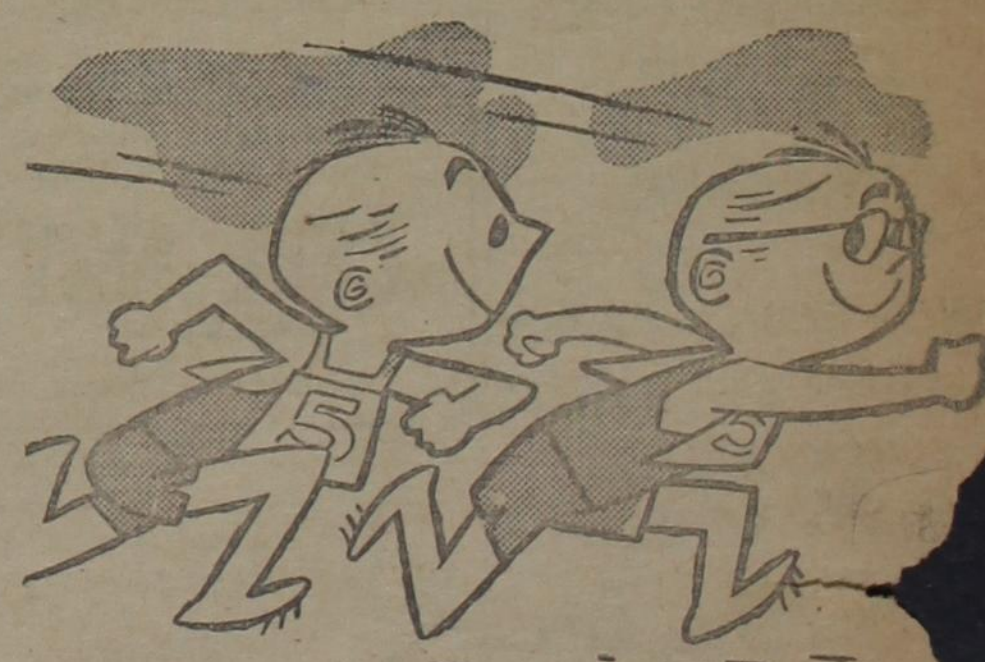
Regular	1 Year	\$13.75
\$18.00	Daily	
Price	And	
Now	Sund	

7 Days Weekly
\$12.75

DAILY ONLY

SUNDAY COMICS IN COLOR

You Read More Exclusive West Texas News Plus more West Texas Sport in The Reporter-News See Your Local Agent to Subscribe



Make certain your property insurance keeps pace with your property value

Chances are, rising real estate costs have increased the value of your home. Think a moment: could you rebuild that home with the money from your insurance policy? Call us for a free estimate.

CLASSIFIED ADS

WANTED—Baby sitter to take care of two small children two mornings a week. Call MI 3-3454. 52-tfc

JUST A LINE . . . Will bring our factory trained representative to your home for the selection of materials for the renovation of your old mattress. A new mattress guarantee, Box 5288, Western Mattress Company, San Angelo, Texas, or Mrs. Lee Culwell.

MEN WANTED—17½ through 29 years old. Start training for railroad position. Salaries up to \$400 per month, 40 hour week. Benefits include hospitalization, 2 weeks paid vacation, old age retirement. If in perfect health with eighth grade or better education write for interview giving phone number and correct address. J. A. Gray, Box 1075, Healdton, Okla. 1tp

FOR SALE—AC Peanut rake, good condition, good tires. Call MI 3-3538. 52-2tc

WANTED—To sell or trade three bedroom home in Abilene for home in Rising Star. See E. L. Amis, Phone OR 37018, Abilene, Texas, 49-3tp

"AVON'S BEAUTIFUL GIFTS" An Avon representative needed in Rising Star to work all homes just outside city limits and area around. High commissions 40% plus U. S. Saving Bonds and prizes. No obligation to inquire. Ask the Avon manager by writing today. Mrs. Sidney Ellis 1511 Bridge Ave., Abilene, Tex. 51-3tc

WANTED TO BUY—Good bundle feed. Charles Rutherford, Rising Star. 51-tfc

CARD OF THANKS

I wish to express my gratitude to my friends and neighbors for their kind thought and Dr. Ben Bradley and staff for their excellent care while I was in the hospital. God bless you all.
Carl Alford

CARD OF THANKS

We are deeply grateful for the kind helpfulness and the sympathy of our friends and neighbors in the loss of our husband and father. We appreciate the thoughtful words, cards, letters and the food. May God's blessings be upon every one.
The C. R. Martin Family

CARD OF THANKS

We wish to express our gratitude for the many kind words, cards, letters and evidences of sympathy which comforted us in our bereavement. Your thought of us expressed in flowers and words and your kind and helpful acts are deeply appreciated. God bless you all.
Mr. and Mrs. S. T. White and Family.

On Oct. 25, 1916, the keel was laid for the USS California at Mare Island Naval Shipyard, the first battleship to be built on the West Coast.

PIONEER Drive-in Theater

FRIDAY — SAT.
OCTOBER 16 - 17

KIRK DOUGLAS
ANTHONY QUINN

"Last Train From Gun Hill"
Technicolor

SUN. — MON. — TUES.
OCTOBER 18 - 19 - 20

GARY COOPER
MARIA SCHELL

"Hanging Tree"
Technicolor

WED. — THURSDAY
OCTOBER 21 - 22

BOB HOPE
LADD

NOTICE OF BIDS

Bids will be received by the Housing Authority of the City of Rising Star, Texas, for the sale of a seven room boxed and weatherboarded residence, located at the corner of North Main and Gibson Streets, Rising Star, Texas, and known as the Mc. Donald property, same to be moved from the site at once by the purchaser. Sealed bids will be received at the office of the Housing Authority in the City Hall, Rising Star, Texas on or before 2 o'clock, October 20, 1954. The Housing Authority reserves the right to reject any or all bids.

Ima Yocham,
Executive Director
Housing Authority of the City of Rising Star, Texas

WE HAVE in this vicinity 3 repossessed pianos — 2 trade ins, which include one small blonde Spinnet, and one dark finished Spinnet. Responsible parties may assume attractive balances. Write only—Credit Manager, McBrayer and Sons Piano Company, 3128 E. Lancaster Ave., Fort Worth, 50-2tc

FOR SALE—50'x120' two bedroom house and lot belonging to Pauline Graham. Located on West Pioneer. Contact Carl Alford. 44-tfc

ALFORD MATTRESS FACTORY, 114 E. College, gives ONE DAY service on new and renovated mattress. Ask about our Spring Bed One Day Service. Phone 5-3264, Rising Star, 16-tf

WANTED—Drilling, shallow oil well, water well, irrigation or domestic and surface pipe setting. Have plenty of pipe on hand. Curtis Alford. Ph. 5-4414. 42-tfc

STANDING—Moss Chief P 76, 728 Permanent registered quarter horse stallion. Fee \$35 at time of service. Guaranteed live foal. Kenneth Murdock, Rt. 1, May. Phone MI 3-3226.

WANTED—Ironing. Mrs. Drinkard, 308 West Pioneer Street. 51-tfc

DON'T SAY:

"I've Tried Everything,"
UNTIL YOU HAVE TRIED
"Chiropractic"

DR. JOEL MAYOR
Chiropractor
Ph. 5-3341 Cross Plains, Tex

OWL BARBER SHOP
A. P. and Curt Smith, Barbers

CALL ME FOR GOOD
Plumbing and
HEATING
Installation and
Service
CARL SMITH
Phone 5-4373

Custom Slaughtering
And Processing
Let Me Process Your Meat.
I CAN SAVE YOU MONEY.
Reasonable Prices
Expert Meat Cutting
CARL IRBY
Telephone 2973
Rising Star, Texas

Rising Star Lodge
No. 688 A. F. & A. M.
Meets Second Thurs
day night of each
Month.
JESS O. PERRY, W. M.
A. P. SMITH, Sec.

W. O. W. Camp No. 567
Rising Star, Texas
Meets First and Third
Tuesday Night Each Month.
Wayne Teague, C.
Paul Maxwell, Sec.

FOR SALE—1952 Pontiac. See Dixon Boggs at Boggs Service Station. 52-tfc

FOR RENT—Two or three room apartment. 204 Miller St. Mrs. Marvin West. 51-2tp

FOR SALE—2 4-room frame houses modern, must be moved. 1 1951 2-ton Chevrolet truck, flat bed, good condition. 1 No. 28 Tulsa winch with poles and power take-off. 1 2-wheel pole trailer with bolster. Pipe for water wells. Wanted to buy—500 bales good peanut hay. See Chas. A. Watson, North Main Street, Phone MI 3-3401. 51-tfc

FOR SALE—Nortex oats. Nonnie Leonard, Sipe Springs. 50-3tp

5 WINCH TRUCKS, 6 tractors, trailers and other equipment. Johnston Trucking and Supply Co., RA 5-3361, Cross Plains. 51-2tc

CLEAN '55 Chevrolet 2-door, 6-passenger; one old model 51-3tc

Dodge in good running order. Johnston Trucking Supply Co., RA 5-3361, Cross Plains. 2tc

CHAS. A. WATSON Equipment Co., North Main Street, Phone MI 3-3401. Used pipe and pipe fittings bought and sold. Will buy any kind of metal or salvage. Used oil field equipment. 51-tfc

2 1956 FORD half-ton pickups, one on butane. Johnston Trucking Supply Co., Call RA 5-3361, Cross Plains, Tex.

58 2-ton Chevrolet with grain bed. Johnston Trucking Supply Co. RA 5-3361, Cross Plains. 51-2tc

FOR SALE—3 lots: Corner of Ross and Graves Streets. See Mrs. J. D. W. Jones; Phone MI 3-4753. 47-tfc

GET RID OF RATS—Use Ryte Rat. Sold by Rising Star FFA. Two kinds—powder and liquid. It gets the job done! 51-3tc

BE SURE FIRE INSURANCE IS REALLY UP-TO-DATE

Rising property values mean higher replacement costs in case of fire. It pays to check your insurance to make sure you're adequately covered. Come in any time and talk it over.



We're always glad to answer your questions on insurance of any kind, without obligation.

JOYCE INSURANCE AGENCY

SHERWIN-WILLIAMS HOUSE PAINT

THE NEW, LONGER-LIFE HOUSE PAINT

IT'S THE GREATEST PAINTING VALUE YET!

- For all types of exterior surfaces
- Extra years of beauty and protection for your home
- Easier than ever to apply
- Wide range of fade-resistant colors
- Endorsed by leading painters



Super-Kem-Tone

- DE LUXE LATEX WALL PAINT
- Goes on over any interior surface
 - Easy to apply with brush or Roller-Koater®
 - One gallon does the walls of an average room
 - Dries in one hour
 - Guaranteed washable
 - Wide range of lovely colors

... and in the same beautiful colors ... **KEM-GLO.** MIRACLE ALKYD ENAMEL

- Best for kitchens, bathrooms, all woodwork
- Looks and washes like baked enamel
- No undercoater required
- One coat covers most surfaces

Watkins Food Market

FRIDAY AND SATURDAY SPECIALS!

FLOUR	GLADIOLA	10 Lb. Bag	89c
CORN	DEL MONTE		19c
Hominy	MARSHALL	3 for	25c
COFFEE	ANY BRAND	Lb.	75c
PEAS	DEL MONTE		19c
Cake Mix	GLADIOLA	3 for	\$1.00
SPUDS		10 Lb. Bag	39c
Apple Butter		1 Lb., 13 Oz.	28c
BACON		Lb.	39c
PICNICS		Lb.	30c
SAUSAGE		2 Lbs.	79c
BISCUITS			10c

CARD OF THANKS

We wish to thank each of you who were so kind and thoughtful during the recent illness and death of our beloved father. Especially do we thank Dr. Bradley and the nurses for their loving attendance while he was in the hospital. May God's richest blessings be with you.

The R. J. Seale Family

Mr. and Mrs. Earl Marsh visited her brother, J. F. Patton, at the Veteran's Hospital in Temple on Sunday, October 11. Mr. Patton is seriously ill there.

Guests of Mrs. Nettie Ellis this week were Wallace Hickman of Oklahoma, John McInnis of Byrd, Texas, and Jim Phares of San Diego, Calif.

On Oct. 3, 1921, the USS Olympia sailed from Newport, R. I., for France to return the body of the WWI Unknown Soldier for burial at Arlington, Va.

WANT TO BUY

Small or Large Quantities of good oak wood. See or Call ...

DAN JOHNSON

RA 5-3361 Cross Plains, Texas 51-6tc

IN JUST 15 MINUTES IF YOU HAVE TO SCRATCH YOUR ITCH—

Your 48c back at any drug store. Apply ITCH-ME-NOT. Itch and burning disappear! Use instant-drying ITCH-ME-NOT day or night for eczema, ringworm, insect bites, foot itch, other surface rashes. TODAY at DILL DRUG STORE, 42.4tc

The Little Things We Notice —

... in preparing your abstracts often grow into big things later on. For example, if a deed is drawn by a careless person it is sure to be full of errors and these errors will show up in your abstract as originally written. The moral is, have your title instruments prepared only by qualified conveyancers and from a legal standpoint the lawyer is the only person who can do this work for you.

EARL BENDER & COMPANY

Eastland, (Abstracts Since 1923) Texas

E. F. Agnew & Sons

RISING STAR'S FAVORITE FOOD STORE SINCE 1920

JELLO	Assorted Flavors	3 for	25c
Fudge Cookies	SUPREME CHOCOLATE	Lb. Bag	39c
CORN	Diamond Yellow Cream Style	2 Cans	29c
OXYDOL	Large Box		29c
Potatoes	IDAHO RUSSET	10 Lb. Bag	39c
Biscuits	KIMBELLS	Can	10c
Oleo	SOLID POUND	Per Pound	19c
"Our Market Dept. Is Never Surpassed"			
Beef Ribs	Per Pound		29c
PICNIC HAMS	Armours Half or Whole	Per Pound	32c