

Progress Is—
Making
Good Things Happen

THE RISING STAR

Where Three
Good Texas Counties
Get Together

Rising Star, Texas 1987 Eastland County Newspaper Co. Established in 1890 Thursday, December 3, 1987 25 cents Number 49

Local Artists Among Winners at Art Show

Lois Vaughn, a long-time member of the Paint and Palette Club, captured Best of Show, the highest award of the Art Show held in Cross Plains November 8. There were 197 paintings competing for honors.

Judith Terry of Coleman was the art show judge. She attended McMurry College. She has lived in Europe and painted there. She has taught art in Coleman and Abilene and illustrated several books. Terry has been a free lance display designer for 14 years. Primarily a portrait artist, she enjoys all mediums and subjects. She is the wife of Ralph Terry, a photographer in Coleman.

this time by Emily Winfrey, daughter of Mr. and Mrs. Tony Winfrey. Darcie Graves won the decorated sweat shirt donated by Marianne Taff. Donnie Dillard won the oil painting donated by Jewel Thompson.

A complete list of the winners in each category is as follows: Best of Show, Lois Vaughn of Cross Plains, prize \$85, donated by Citizens State Bank.

Best of Professional, Shirley Minzenmayer, Winters, \$75, donated by First State Bank of Rising Star.

Best of Advanced Amateur, Jean King, Clyde, \$65, donated by Art Club.

Best of Amateur, Marlene Sanders, Cross Plains, \$60, donated by Village Market.

Best of Beginner, Kim Merrill, \$50, donated by Higginbotham Bros. Dept. Store.

People's Choice, Adults, Barbara Dillard, Cross Plains, \$30, donated by Olney Savings Association.

Continued Inside...

All cash prize winners were presented at the Awards Ceremony Sunday afternoon. Ozella Huddleston served as Master of Ceremony. A large crowd was on hand to congratulate all the artists.

Door prizes were drawn at

Special Service at Calvary Assembly

Mrs. Ruby McCowan of Cross Plains will be speaking at the Calvary Assembly Church in Rising Star, Wednesday night, December 2.

"Sister Ruby" as she is fondly called by most everyone who knows her, is well known and loved through out this whole area. A lot of people profess to be Christians but Sister Ruby lives what she preaches, which is much to be said for this day and age! She and two sisters, Gertie Maude Powell of Cross Plains and the late Grace Aiken Hierholzier of Cross Plains, became known as the

"Curry Trio" many years ago and have been loved and well known for their beautiful singing through out the state.

Sister Ruby feels God has given her a special message for all churches. She speaks with a special sincerity and also with a great sense of

humor. We invite everyone who will to come, regardless of denomination, and enjoy the ministry of this lovely little dedicated lady minister of the gospel. She not only speaks the word, but lives the word. Service starts at 7 p.m.

Everyone is welcome!

SCORE Rep Will Visit

On Wednesday, December 16, Cullin Perry and Bill Maness, SCORE representatives of the Small Business Administration, will headquarter at the Brownwood Chamber of Commerce of-

rice. They will be available to discuss programs of the Small Business Administration. Meetings will be by appointment only. Appointments may be made by calling the Chamber office at (915) 646-9535.

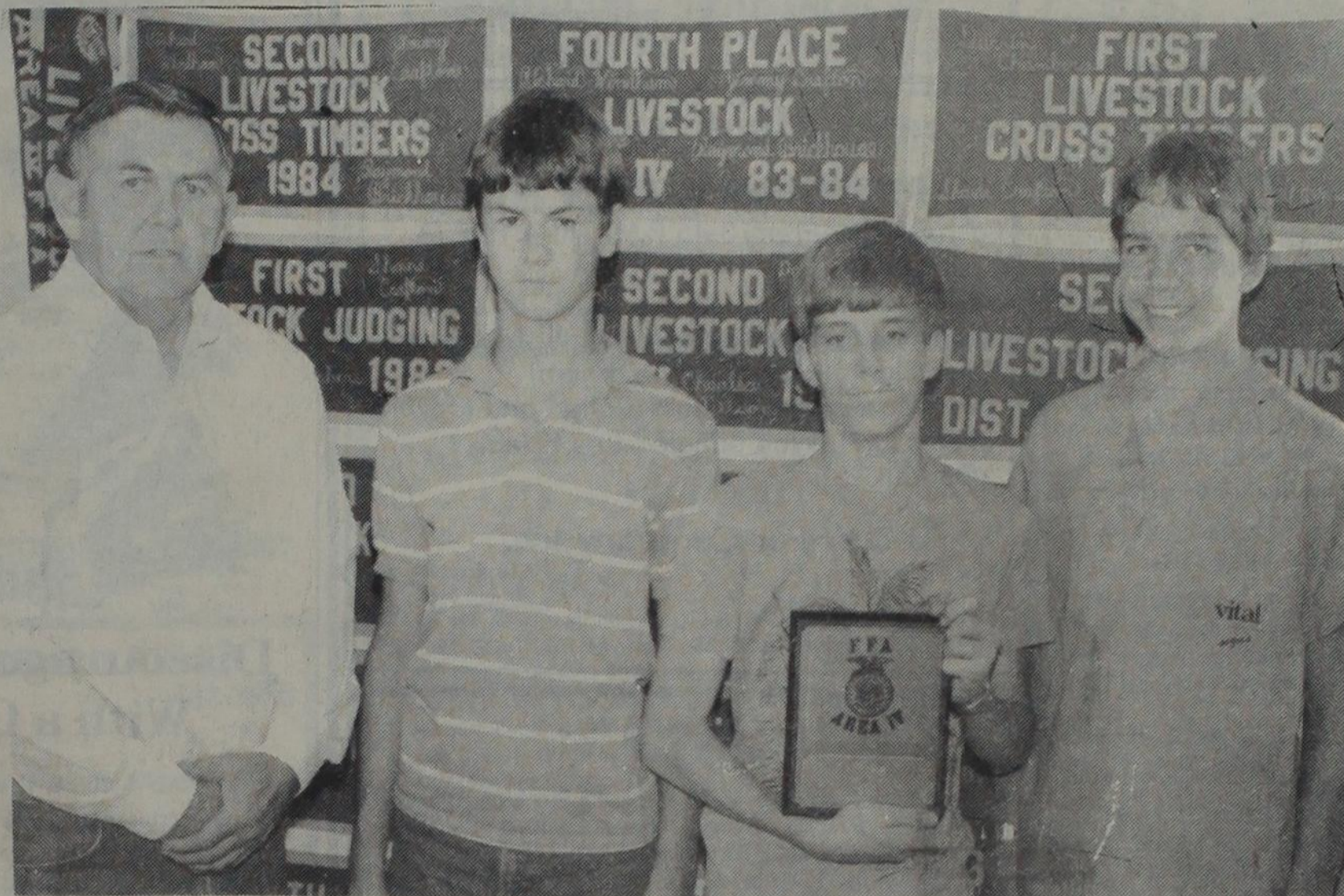
\$2,500.00 REWARD

Money may be mailed to First State Bank, Rising Star, 76471, to be deposited in the Witt Reward Fund. The account number is 72-360-6. No arrests have been made in the rape/murder case. Era Witt, 87, was found dead in her home on June 7.

Any person with information leading to the arrest and indictment of the person or persons responsible for the crime may call 643-4261 or 643-3421. Information may be given anonymously and arrangements will be made for the payment of the reward.

**Dr. Carpenter's Office
Will Be CLOSED
The Week of
Nov. 30-Dec. 4
Open 9am, Dec. 7**

May FFA Quiz Team Goes to State



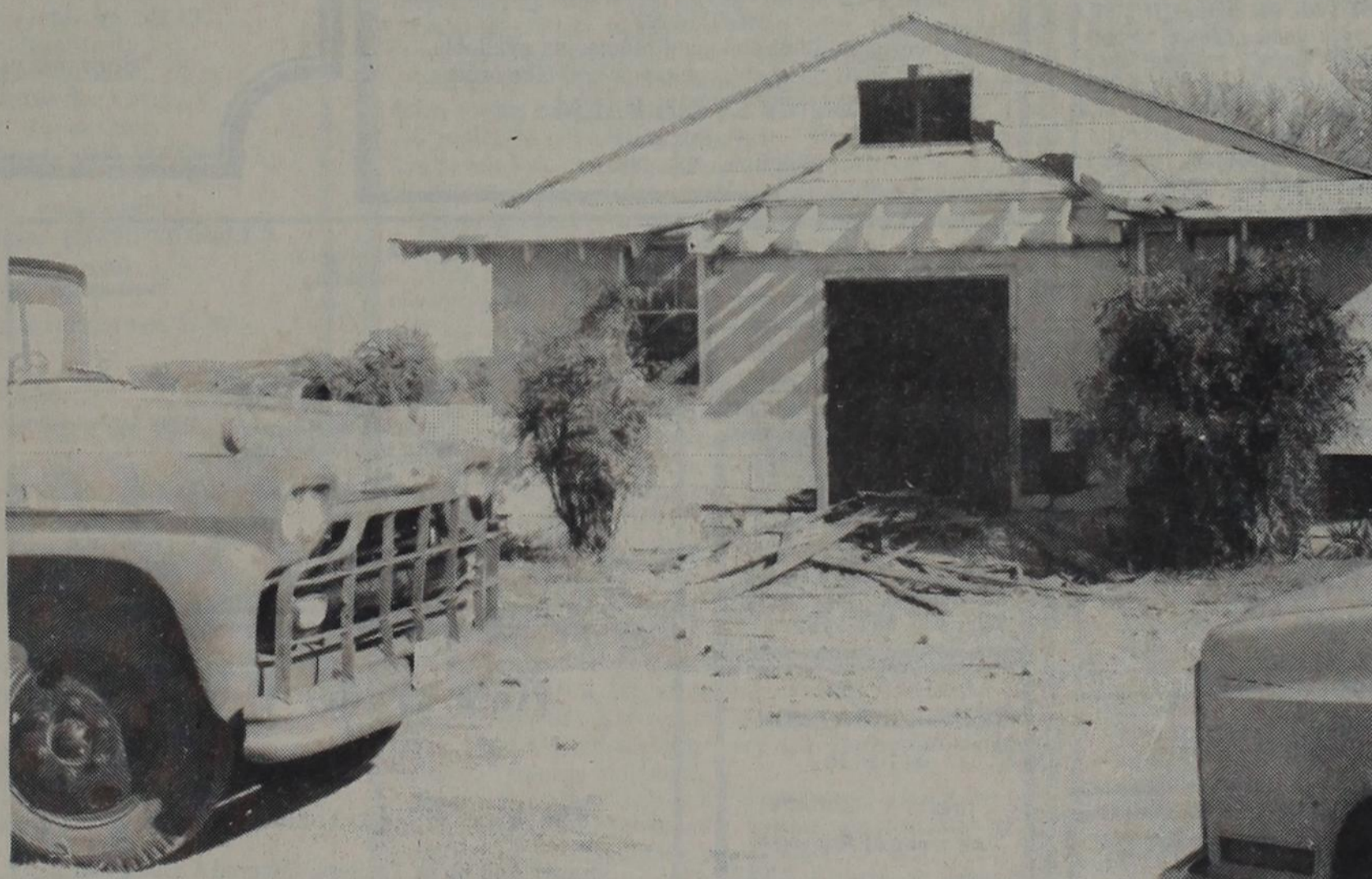
MAY FFA QUIZ TEAM will compete in the State Leadership Contest Saturday, December 5, at Sam Houston State University in Huntsville. The team won in district and area competitions to qualify for state.

Advisor for the May High School chapter of

Future Farmers of America is Bo Allen, far left. Team members are Cody Chambers, son of Curtis and Marie Chamber; James LeMond, son of Aaron and Rita LeMond; and Jeremy Jones, son of Ronnie and Debbie Jones.

Congratulations to the team and their advisor.

Work Continues on May Fire Station



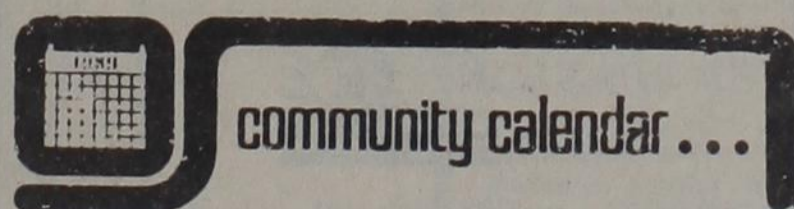
MAY FIRE TRUCKS are already being parked in front of the building being renovated to house them.

May Volunteer Fire Department Auxiliary was formed several months ago to raise funds for a fire station for the community. The group has raised about \$2,500 to be used on remodeling the building, which was donated. The work on the

building is being donated by community volunteers.

Current fundraisers are a 20-inch color TV giveaway (the drawing will be December 12) and a cookbook for which recipes are still being accepted.

The auxiliary will meet tonight at 7 p.m. at the Community Center.



MAY VFD AUXILIARY

The May Volunteer Fire Department Auxiliary will meet Thursday, December 3, at the Community Center at 7 p.m.

SIPE SPRINGS MUSICAL

The Sipe Springs musical will be Saturday night, December 5, at 6:30 p.m. Everyone is welcome.

In an EMERGENCY call 643-3001

1ST MONDAY FIRE DEPARTMENT

The Volunteer Fire Department will meet at 7 p.m. at the fire station.

Eastern Star

2nd MONDAY School Board

2nd TUESDAY City Council

Chamber Board

FFA Sausage Is on Sale

The Future Farmers of America still have sausage on hand! Orders will be taken through the end of this week. If you wish to place an order or would like to pick up some sausage, you may contact Gene Smith, chapter advisor, at 643-3521 at high school or Howard Lawrence at 643-6791 or any chapter member.

Stephanie Long

Pay CITY Taxes at Police Station 8-5, Wed.-Thu. *****

Most Subscriptions to This Newspaper Expire January 1

Most subscriptions to THE RISING STAR expire January 1, 1988. Subscribers are urged to renew their subscriptions soon, so that they will not miss any issues of the newspaper.

The first line on mailing labels gives the expiration.

Rising Star 4-H'er Wins Trip To Chicago

Stephanie Long, Rising Star 4-H member, was selected to attend National 4-H Congress, December 5-11th, at Chicago, Illinois. Stephanie was one of 4 winners in the Santa Fe division. Along with the expense paid trip to Chicago, Miss Long will receive a \$750.00 college scholarship.

Over 1600 youth from across the United States will attend the 66th National 4-H Congress. They will tour Chicago and participate in many activities designed to help them acquire knowledge and develop life skills that enable them to become self-



directing, productive and contributing members and leaders of our great nation.

Some Peanut Crops Are The Best In Eight Years

Peanut harvest is quickly reaching completion in Eastland County. Crop and yield reports vary from one part of the county to the next. In general, the dryland peanuts are producing very good yields, maybe the best in eight years, while the irrigated peanuts are only average says, County Extension Agent, DeMarquis Gordon.

The Pioneer Farmers' Coop reports that almost all producers are exceeding their quota. A Rising Star buyer says the yields are good, but not as good as last year's crop.

A hard freeze on November 11, stopped growth and maturity of the peanuts. This was bad news for many growers since most peanuts were planted about one month late this year. Many of the

peanut crops needed more warm weather to mature. The freeze resulted in lower yield weights and lower grades which meant

lower prices and lower yields. However, in spite of the early freeze the peanut crops looks like one of the best since 1981. The four years from 1982 through 1985 were all very poor years for peanuts in Eastland County. The 1986 crop yield average was 1,386 pounds per acre, about 300 to 400 pounds more than the previous four years. This year's crop will be as good or better than the 1986 crop, says Gordon.

There were about 26,000 acres of peanuts grown this year and if average yields reach 1,400 pounds per acre the county peanut crop will be worth about \$11 million.

County Pecan Show In Eastland Thurs.

Early December means Pecan Show time here in Eastland County. It is a time when attention is focused on one of the county's important crops. The tradition began 35 years ago when the county pecan show concept began and spread across the Southwest and Southern United States.

In 1952, Eastland County Extension Agent, J.M. Cooper, came up with the idea. Extension Horticulturists, Blueford G. Hancock, and John E. Hutchinson, helped him organize the pecan show that year. Travis, Hood, San Saba, and Guadalupe Counties followed the example.

This educational program has grown in interest over the years. There are

approximately 70 county pecan shows in 1987 with over 100 counties participating.

Three regional pecan shows were initiated in the late 1960's to handle the nearly 1,500 winning entries from the county show. These regional shows are the "Show Window" of the Texas Pecan Industry. They demonstrate the superior quality of Texas pecans and play a major role in the evaluation of new varieties. Many other states from New Mexico to Alabama have pecan shows patterned after the original one that began here 35 years ago.

The local show that begins Thursday morning will be in the Eastland County Courthouse lobby. Continued on back page...

Obituaries

R.C. Bowden

Robert Chester Bowden, 69, died at 6:30 a.m. Tuesday at a Brownwood hospital. Graveside services were at 2 p.m. Wednesday in Blake Cemetery, under the direction of Higginbotham Funeral Home.

Born in Trenton on Aug. 27, 1918, he moved to Rising Star from May a year ago. He married Maxine Frizzell in Big Spring on Sept. 30, 1939. He served in the U.S. Air Force and was a member of the Baptist church.

Survivors include his wife; two sons, W.R. Bowden of May and Bean Bowden of Brownwood; two daughters, Barbara Childers of Fort Worth and Brenda Mosier of Stephenville; one sister, Barbara Nichols of Columbus, Ohio; 11 grandchildren;

and four great-grandchildren.

Donna Blair

BANGS - Donna Blair, 57, died Sunday at a Brownwood hospital. Services will be at 2 p.m. Thursday at Bangs Church of Christ with Jim Hall officiating. Burial will be in Bangs Cemetery, directed by Davis-Morris Funeral Home.

Born in Lake City, Minn., she was a longtime resident of Bangs. She was a homemaker and a member of Bangs Church of Christ. Survivors include her husband, James Blair of Bangs; three daughters, Dianna Seymore of Bangs, Rita Lamond and Jamie Sue Moore, both of May; and eight grandchildren.

Brazos Electric Co-op Asks for Lower Rate

Brazos Electric Power Cooperative filed a petition with the Public Utility Commission today to lower the cooperative's rates by \$10 million.

"We continually monitor our revenue requirements. When there is an opportunity to pass on savings to our customers, we do it," stated Richard E. McCaskill, executive vice president and general manager of Brazos.

If approved, the temporary rate reduction will be in effect for the months of Dec. 1987 through March 1988. Consumers will see a reduction of about \$7.50 for each 1000 kilowatt hours used during the four-month period.

The cooperative filed a petition with the Public Utility Commission Oct. 12 to lower its fixed fuel factor.

Approval of that request will give consumers an additional reduction of about \$2.80 for every 1000 kilowatt hours used.

If approved, customers of Comanche County Electric Cooperative in Eastland County should see their rates reduced, Area Manager Johnnie Dye reports. The Comanche County Cooperative has approximately 14,000 customers in Eastland, Comanche, Stephens, Shackelford, Callahan, Brown, Mills and Coleman counties, he said.

With headquarters in Waco, Brazos Electric Power provides wholesale power to 20 member distribution cooperatives and 7 municipal customers. These wholesale customers serve 229,000 consumers in 66 counties of Texas.

Pecan Show

From page one...

The County Pecan Growers Association and the Eastland Chamber of Commerce sponsor the show.

The growers and Chamber of Commerce members will weigh, crack, and shell ten pecans from each of about 175 entries Thursday morning. At 1:00 p.m. judges will select the first three place entries in each class and award ribbons.

Three champion entries and three reserve champion entries will be selected. The champions will be from the In-Shell division, Shelling division, and Native division. The In-Shell pecans are the larger ones that are usually

sold in the shell. The Shelling pecans are the smaller pecans that usually are sold to a shelling plant. Natives are from native trees that have never been grafted nor planted with nuts from improved varieties.

One of the classes that attract attention is the smallest pecan class. Some are so small that a pound may contain 400 or more pecans.

All pecan entries, pecan bake show, and centerpiece division will be on display in the lobby of the courthouse Friday until 3:00 p.m.

Visitors are welcome and encouraged to attend the pecan show at anytime.

Celebrate with us
the 60th anniversary
of Ulysses and Nell Cooper
December 5, 1987 3:00 to 4:30 p.m.
at the home of Mr. and Mrs. Donald Cornett
202 S. Joyce, Rising Star
Hosted by children and grandchildren
Mr. and Mrs. Donald Cornett and family
Mr. and Mrs. Albert Witcher and family



One 8x10 Color Portrait
\$30.00 Value for only \$1.50

Your choice of family group or individual
One special offer per family, one per person

Higginbotham Furniture & Hardware
Rising Star, TX 76471

DATE: Tuesday, December 8, 1987
HOURS: 10:00 am - 5:00 pm

3133

Minors must be accompanied by an adult

Christmas Sale
Great Discounts Throughout Store
Sale Starts November 23 Thru
December 24, 1987
Art Supplies Not Included In Sale
Hubbard Gift & Gallery
Rising Star 817-643-6242

Regardless of rumor,
ROSE BUTANE
is still open for business under the same
management for the past 15 years.
Owners are Debbie & Donald Strength.
Please call
725-7410
for competitive prices.

Majestic Memo

Holiday schedule for top-flight movies at the Majestic Theatre have been announced as follows:

Dec. 4-6 - PICK-UP ARTIST starring Robert Downey and Molly Ringwald.

Dec. 11-13 - 3 O'CLOCK HIGH starring Casey Siemaszko and Richard Tyson.

Dec. 18-20 - DIRTY DANCING starring Patrick Swayze and Jennifer Grey.

Putnam Musical

On Friday night, Dec. 4 there will be another musical at the Putnam Schoolhouse, located south of I-20 in the town. The concession stand will open at 5 p.m., with the music beginning at 6 p.m. There will be no charge to the public. A number of area musicians will play, and Bob Weeks Sr. of Eastland will be Master of Ceremonies. His son, Robert Jr. and Brandy, will also play their violins during the program.

Pay CITY Taxes
at Rising Star
Police Station
on Wednesdays
and Thursdays,
8-5

Buddy's
Plumbing & Appliances
N. Main Rising Star
643-7312 Nights (817)842-5950

Peerless Circulating Space Heaters
Trenching & Backhoe Service

Hardware — Electrical Supplies — Water Heaters
Pipe Wrap & Insulation — Wide Selection Plumbing Supplies
Rheem Central Heating/ Air Conditioning
Fairbanks Morse Pumps — PVC Pipe 1/2" to 6"

STAR PLAZA
RESTAURANT & TRUCK STOP

Hwy. 36 Marie Farris - Manager 643-1404
NOW UNDER NEW MANAGEMENT
Catering in Private Dining Area-
Book Your Bridge, Family, Birthday or
Reunion Parties.

Buffet (Includes Salad Bar, Drink & Dessert)
Weekdays - \$4.50 Sundays - \$4.95
Friday Night - Catfish Buffet
Saturday Night - Mexican Food Buffet
All You Can Eat \$4.95

FAMILY FOOD STORE
North Main St. Affiliated Food Store Rising Star
Hours: Phone 643-2221
Mon.-Sat. 7:30 am-6:00 pm
Sun. 8-6
Prices Effective:
Wed., Dec. 2-Sat., Dec. 5

<p>USDA Choice Boneless Chuck Roast</p>  <p>\$1.28 lb.</p>	<p>Boneless Arm Roast</p>  <p>\$1.49 lb.</p>	<p>Shurfresh Sliced Meats 1 lb.</p>  <p>\$1.39 lb.</p>
<p>Shurfresh Franks</p>  <p>Meat 89¢ Beef 99¢</p>	<p>Shurfresh Boneless Hams</p>  <p>\$1.79 lb.</p>	<p>Cube Steak</p>  <p>\$2.39 lb.</p>
<p>Xtra Fancy Red Delicious Apples</p>  <p>12/\$1.00</p>	<p>Navel Oranges</p>  <p>39¢ lb.</p>	<p>California Red Emperor Grapes</p>  <p>89¢ lb.</p>
<p>Large Fancy Bell Pepper</p> <p>4/\$1.00</p>	<p>Green Cabbage</p> <p>15¢/lb.</p>	<p>Baker Russet Potatoes 4 lbs. for \$1.00</p>
<p>Surfine Coffee All Grinds 1 lb.</p> <p>\$1.79</p>	<p>Lucky Leaf Apple Juice 48 oz.</p> <p>\$1.19</p>	<p>Breast O' Chicken Tuna oil/water 6.5 oz.</p> <p>79¢</p>
<p>Del Monte Spinach 15 oz.</p> <p>2/\$1.00</p>	<p>Del Monte Tomato Sauce 8 oz.</p> <p>4/\$1.00</p>	<p>Del Monte Whole Tomatoes 14.5 oz.</p> <p>59¢</p>
<p>Del Monte Stewed Tomatoes 14.5 oz.</p> <p>59¢</p>	<p>Del Monte Peaches Sliced & Halves 16 oz.</p> <p>79¢</p>	<p>Del Monte Fruit Cocktail 16 oz.</p> <p>79¢</p>
<p>Del Monte Pineapple Sliced, Chunk, Crushed 15.5 oz.</p> <p>59¢</p>	<p>Del Monte Catsup 32 oz.</p> <p>99¢</p>	<p>Del Monte Green Beans Cut & French Style</p> <p>3/\$1.00 Limit 3 w/\$10.00 Purchase</p>
<p>Del Monte Corn WK/CS 17 oz.</p> <p>3/\$1.00 Limit 3 w/\$10.00 Purchase</p>	<p>Del Monte Peas 17 oz.</p> <p>3/\$1.00 Limit 3 w/\$10.00 Purchase</p>	<p>Del Monte Pear Halves 16 oz.</p> <p>79¢</p>
<p>Spillmate Towels</p> <p>59¢/Roll</p>	<p>Nice N' Soft Toilet Tissue 4 Roll</p> <p>99¢ Limit 1</p>	<p>Pillsbury Biscuits 7.5 oz.</p> <p>5/\$1.00</p>
<p>Kraft 1/2 Moon Cheese Cheddar/Colby 16 oz.</p> <p>\$2.29</p>	<p>Kraft Velveeta Reg., 1 lb.</p> <p>\$1.99</p>	<p>Palmolive Liquid 22 oz.</p> <p>99¢</p>