

Progress Is—
Making
Good Things Happen

THE RISING STAR

Where Three
Good Texas Counties
Get Together

Rising Star, Texas

©1992 Eastland County Newspapers, Inc.

Established in 1890

50 Cents

Thursday, February 6, 1992

Number 6

State Engineer Says Many County Bridges Need Repair

During the County Commissioners meeting last Monday the Court received a summary on County bridges from a Consulting Engineer for the Texas Department of Transportation.

Woody Howell, a Structural Engineer and Consultant for the State, reported on his recent survey of 64 off-system bridges. Six of these were in the City of Ranger, making a total of 58 owned

by the county. With Howell in the Courtroom were Resident DOT Engineer Brian Neaves, and District personnel Leon Taylor and Sam Swann.

Howell brought in some graphic pictures, several of bridge foundations which were partially undermined. Some of this scouring was obviously from the December flooding, which washed soil from foundations.

But some of the deterioration could be from the age of the structure, from the type of maintenance, or the way the bridge was built.

The Engineer said there were still 30 to 35 WPA bridges in the county.

Of the 58 county bridges, some were in danger of being washed out, he said. A number were unprotected around the footings, with a possibility they could crack up and start to collapse.

Continued Inside ...

Shults Quik Stop Opened Saturday



Jack Shults, left, and Doug Duncan at the newly reopened Quik Stop.

by Betty Duggan
Jack and Carolyn Shults are the new owners of the Quik Stop convenience store at the intersection of Highways 183 and 36.

The Shults' opened Saturday, February 1, and are expecting to bring the business back that the store has enjoyed and appreciated for so many years.

Continued Inside)

Sheriff Ronnie R.B. White Candidate for Eastland County Sheriff Office



of Eastland County. Since my appointment I have done the best job I can do to help improve this image.

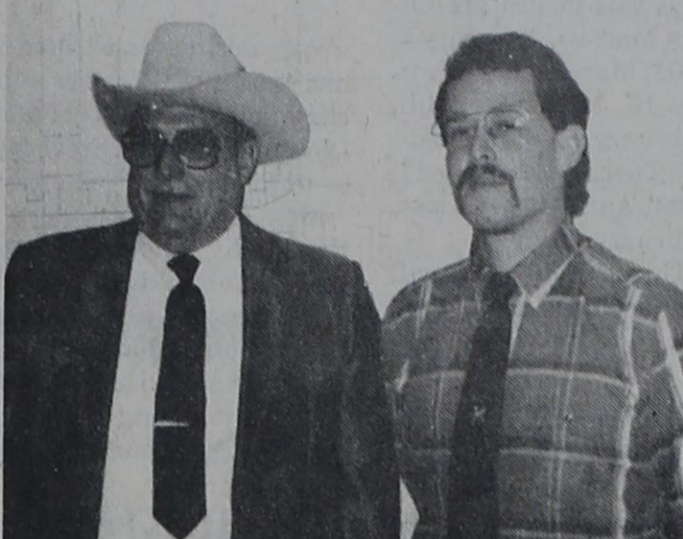
I have strived to employ honest, capable and hard-working employees who enjoy their work. I have implemented training programs to keep up with the ever changing laws, reduced the cost of the operations of the jail and the Sheriff's department.

I and my deputies have increased the follow-up investigation of offenses with a recovery rate of 42% for 1991. The recovery rate for the previous year was 17%. The department has been very active in drug investigation resulting in the closing of two drug labs and seizing three automobiles and one farm this past year. We have also implemented programs using the inmates in the jail to work for the county. My plans are to continue the drug investigations in earnest, implement a county truck farm operated by the inmates with the produce to be used to feed the

Continued

Dr. Carpenter's Office will be CLOSED 2 days, Thurs., Feb. 13, and Fri., Feb. 14

City Hires Police Chief, Patrolman



Clarence "Al" Jones, left, is the new patrolman for Rising Star and Philip Rodriguez is the Chief of Police.

by Betty Duggan
The Rising Star City Council hired Philip Rodriguez, a deputy sheriff from Colorado City, as the city's new police chief Saturday afternoon. They also hired a local resident, Al Jones, as the police patrolman.

Rodriguez has been a deputy in Colorado City for the past 13 months and before that served

with the police department in Coleman. He has also served with the Callahan County Sheriff's Department. His formal extensive education in law enforcement includes 444 hours in courses at West Central Texas Council of Government in Abilene and West Central Texas Interlock Crime Task Force (fires in drug labs). He has several hours courses in basic child abuse investigation, has had courses in fires in drug labs, search investigations, took a course in drug abuse resistance from San Angelo Police Department, studied fire and arson investigations

Continued Inside ...

Producers Hear About Growing, Marketing Fruits and Vegetables



Pictured with the speakers at the meeting is James Ramsay, center, president of the Chamber of Commerce & Agriculture. Bill Weeks, left, is executive vice president of Texas Citrus and Vegetable Association and at right is Dr. Frank Dainello, extension horticulturist with Texas A&M University.

by Betty Duggan

The recent fruit and vegetable production and production meeting, sponsored by the local Chamber of Commerce & Agriculture, drew an attendance of more than 64 people. Other than Rising Star, people from 12 other towns were present to hear and discuss the possibilities and the needs of fruit and vegetable growers in this area.

Chamber President, James Ramsay, introduced Eastland County's new Extension Service

Continued Inside ...

Emergency 911 Services Behind Schedule-- Testing Is Underway

At their regular meeting Monday, Jan. 27 Eastland County Commissioners discussed the Emergency 911 Services scheduled for Eastland County. They did not come up with a firm date for the services to begin here, however.

On Southwestern Bell Telephone bills it states that "911 Service is scheduled to be operating by Jan. 31, 1992." But it was obvious that the Commissioners did not expect this date to be met.

L.T. Owen Runs for Re-Election for Pct. 3 County Commissioner

L.T. Owen has announced his candidacy for re-election to be County Commissioner of Precinct 3 of Eastland County. L.T. was born and raised in Eastland County, and his wife, Josie, is also an Eastland County native; they have three sons, Johnny, Robert and Bill.

L.T. Owen has served as your commissioner in past years and stands on his record of fairness and service to each citizen in his precinct. As budgeted money and time allowed, he has made every effort to solve problems and work with the taxpayers of his precinct.

The work of being a county commissioner concerns much more than maintaining county roads, although this is very important. Decisions to be made and problems to be solved are varied and require sound judgment and clear thinking. Owen

The Eastland County Dispatch, which will handle 911 calls, was reported to be "hot testing" the system. Officers are calling the dispatch headquarters from locations around the county.

When the system is in full operation a computer at the dispatch will flash on information as to location, etc. when 911 calls are received.

The Commissioners mentioned that several rural roads and homes

has gained experience through years of dealing with budgets, grants, government programs and the various paperwork required by county government.

At the present time the county is expecting to receive help from FEMA (Federal Emergency Management Agency) in repairing county roads due to recent water damage. Facts and figures are available in the auditor's office at the Courthouse and are available to the public.

Experience makes L.T. Owen qualified to be your Precinct 3 commissioner. If reelected, L.T. pledges to you his cooperation, his continued interest, proven ability and willingness to listen to your problems concerning roads and county government.

L.T. is asking for your vote and support in the Democratic Primary on March 10.

Rains Continue

Thanks to the continual rains during the first few days of February, lakes are full and rising and rural roads are nearly impossible.

Lake Leon was reported at 1'4" over the spillway Tuesday morning and Lake Cisco was said to have risen 3' in a 24 hour period.

Lake Cisco residents are seeing water higher than

they have seen in years. The water mark is continually rising against the dam.

As of Tuesday morning, Eastland received just under 2" of rain and Rising Star reported 2.9".

Most rural residents are finding roads very difficult to travel. The mail on Rt. 2 was even delayed until the evening hours on one of the rainy days.

Rising Star City Council Meeting

Rising Star City Council met at City Hall Wednesday, January 15, at 7 p.m.

Mayor Jerrell Bible and council members Randy Goldston, Billy Harmon, James Cook, Edra Butler and Charles Barnes were present.

Guests were Herman Ogden, Roger Carroll, Tex Evans, C.W. Best and Gene Hicks.

Minutes of the December 9 meeting and called meeting of December 27 were approved as read.

The council approved bill paying and accepted the utility, treasurer's, police, court, park and animal control reports.

The council was informed that Texas Department of Parks & Wildlife approved the designs for Colquitt E. Williams Memorial Park. They were told County Commissioner L.T. Owen will help with hauling and leveling dirt needed to build up the pavilion site and that Craig Rogers of

Cottonwood Springs nursery will mark the trees to be relocated Sunday and begin moving them Monday, weather permitting. Prices of stainless steel and restroom supplies were discussed.

A motion by Barnes, seconded by Cook, for City Administrator Shirley

Continued Inside ...

Public Hearing

The public is invited to attend a public hearing during the regular school board meeting scheduled for Monday, February 10, 1992 at 7 p.m. for the purpose of discussing the Rising Star Academic Excellence Indicator System Report for the 1990-91 school year. This report takes the place of the Annual Performance Report used in previous years.

COMPUTER CLASSES...

Beginning Tuesday, February 11, and continuing on Tuesdays and Thursdays until Feb. 27. Early and late classes available for Beginning Computer. Call Diana White, 643-3521, to register. Early class, 5:30-7 p.m. Late class, 7:30-9 p.m. Space available in each one.

Rescheduled Due to Weather

Star Pride to Meet Tuesday

Star Pride's monthly meeting on Tuesday, February 4, was canceled due to the continuing rain making some roads im-

passable and because of illness.

The meeting was rescheduled for Tuesday, February 11, at Peoples State Bank at 5 p.m.

Community Calendar

1ST THURSDAY

Rural Fire Dept., meet and train, County Barn, 5:15 p.m.

Board of Directors, Fire Dept. meets after training session, 6 p.m.

Firefighters Assn., City Hall, 7 p.m.

Dept. of Human Services assistance regarding food stamps, aid to families with dependent children, Medicare, City Hall, 9-12.

EACH THURSDAY Senior Citizens Center is open for lunch, activities.

Free AARP tax service for elderly and low income persons on Thursdays at Senior Citizens Center. Call the center, 643-5141, for appointment.

City Library, open Thursdays, 9:30-11 a.m.

EACH SATURDAY Bingo, American Legion Hall, 205 S. Main

2ND MONDAY School Board, 121 N. Main

TUES., FEB. 11

Star Pride's rescheduled meeting will be held at 5 p.m. at Peoples State Bank.

2ND WEDNESDAY

License tag renewals, County Precinct offices, Hwy. 36 W

School Calendar

by Inga Williams
Thurs., Feb 6 Home Ec Valentine Party

Fri., Feb. 7 RS vs Novice, here, 6:30

Sat., Feb. 8 G/T to Abilene for library research and fun.

Mon., Feb. 10 RSJH vs Panther Creek, here, 6

Tues., Feb. 11 RS vs Brookesmith, there, 6:30

Jr. High to G/T Wine program in Abilene

Wed., Feb. 12 High School to G/T Wine program in Abilene

Thu.-Fri, Feb. 13-14 Eastland County Livestock Show

Fri., Feb. 14 End of 4th six weeks

Senior Citizens Center

by Marjorie West

Barbara Nixon, LVN, checked blood pressures at the center on Thursday. We appreciate this service.

Everyone was so glad to see the sun shining Thursday. It was great to be able to get outside without having to wear a raincoat and cap.

Marion West celebrated his 84th birthday Sunday. He enjoyed a delicious luncheon. Those attending the celebration were Clyde and Nina Bryant, a cousin, from Arlington; Oliver, Belinda, Amy and Olivia West; Norman and Lolene Claborn and Bernie Barnes.

Curtis and Stella Hill visited their children, John and Kay Bradley, over the weekend at Lancaster. They also visited their son, Marty.

Artie Jagers was back at the center after being sick for several days.

X.L. and Erma Sherrill were back at club Thursday. We have been miss-

ing them. Milton Walters was back at the center Thursday.

Marion and Marjorie West went to Cisco Wednesday, had lunch with the senior citizens at the center and practiced several numbers in the rhythm band for the month of February.

Mr. and Mrs. Charles Rutherford were visitors. We were glad they come and hope they come again soon.

Bobby Elliott and Henry Robertson had cataract surgery this week and are both doing good.

Delia Barnard was a visitor at the center Thursday. Come again, Delia, we need more members.

If weather permits, we will elect club officers Thursday, February 6. Everyone come, if at all possible. We have had to postpone the election in January due to weather and illness.

Rising Star Nursing Center

Vickie Majors,

Activity Director

MON: We did daily visits, in-room activities and passed out mail. Playing bingo were Maggie Christian 1, Addie Green 3, Bryant Houston 2, Daisy Smoot 2, Ruby Booth 1, Jennye Turner 2, Opal Gattis 1, Velma Baker 3, Rose Nichols 2, Laura Bennie 2, Leona Welch 2, Helen Mitchell 2 and Charles Rixford 4.

TUE: we did daily visits and care plans. Ruby McCowen and Bobby Jack McCowen were here to sing for us.

WED: We did daily visits, did exercises and ring toss and passed out mail. Bingo players were Jennye Turner 3, Rose Nichols 1, Bryant Houston 1, Addie Green 1, Maggie Christian 5, Daisy Smoot 1, Opal Gattis 1, Velma Baker 5, Ruby Booth 2, Oleta Palmer 1, Laura Bennie 4, Leona Welch 2, Helen Mitchell 2, Kala Robertson 3 and

Charles Rixford 4.

THU: After daily visits, we exercised, then watched a movie.

FRI: We did daily visits, exercised and passed out mail. Playing bingo were Bryant Houston 1, Addie Green 2, Ruby Booth 5, Maggie Christian 3, Daisy Smoot 2, Opal Gattis 2, Laura Bennie 1, Velma Baker 8, Jennye Turner 5, Rose Nichols 5, Helen Mitchell 2, Leona Welch 1 and Charles Rixford.

Thanks to First Baptist Church for Sunday services.

Residents having birthdays this month are Lillian Morrow, February 7, 1901; Mary Hord, February 15, 1906; Opal Hill, February 25, 1906; Jennye Turner, February 27, 1924; and Aubrey Goss, February 28, 1903.

The birthday party will be February 25 at 2:30 p.m.

Sipe Springs News

A real large crowd attended the musical at the center Saturday night.

Kenneth Foster of Austin and Joyce Burk of Comanche visited their sister, Ruby Wyatt last Tuesday.

Mr. and Mrs. Jimmy Monsey of Levelland visited friends here this past week.

Mr. and Mrs. Terry Jones and baby of DeLeon, Sid Greggs of Abilene and Margaret and Bobby Estrado of Wilmer visited the Jack Millwees this past week.

Visitors at the T.A.

Classified Ads
are the
People's
Market Place!

Weavers this weekend were Mr. and Mrs. Covie Weaver and son David and Mrs. Todd Weaver, all of Garland.

Mr. and Mrs. J.E. Barton of Dublin and Howard Barton of Archer City visited their parents, the Ted Bartons this weekend.

Word was received Monday morning by Conova Weaver that her brother, Vernon Cagle, of Abilene passed away. We extend our sympathy to all his relatives.

Obituaries

'Jake' White

John E. "Jake" White, 55, died Tuesday at an Abilene hospital. Services will be at 10:30 a.m. Thursday at Higginbotham Funeral Home Chapel with the Rev. Dick Williams officiating, assisted by the Rev. Darrell Dossy. Burial will be in Rising Star Cemetery.

Mr. White was born in Hamlin and lived in Rising Star most of his life. He served in the Navy Reserves and was a member of the Church of Christ.

Survivors include his wife, Barbara White of Rising Star; three sons, Darren White, Steve White and Toby White, all of Rising Star; a stepson, Greg Clay of Rising Star; four stepdaughters, Melissa Hayby of Cisco, and Angela White, Laura Alexander and Rebecca Clay, all of Rising Star; a brother, Billy Gene White of Baytown; a sister, Sue Horton of Fort Worth; and 12 grandchildren.

Wanda Hughes

Wanda Hughes, 68, died Monday, January 3, 1992 at her residence. Services will be at 3 p.m. Thursday at Higginbotham Funeral Home Chapel with the Revs. Dick Williams and Steve Nance officiating. Burial will be in Rising Star Cemetery.

Mrs. Hughes was born in Dimmitt and lived in Eastland County for 43 years. She was a clerk and postmaster for the U.S. Postal Service until her retirement. She was a Methodist.

Survivors include her husband, Lee Hughes of Rising Star; two sons, Dalton Hughes of Abilene and Danny Hughes of Rising Star; a sister, Myrtle Behrend of Amarillo; and four grandchildren.

Lucille Joyce

Lucille Bigby Joyce, 85, died at 2:30 p.m. Monday, February 3, 1992 at a local nursing home. Services were at 2 p.m. Wednesday at Higginbotham Funeral Home Chapel with the Rev. Steve Nance officiating. Burial was to be in Rising Star Cemetery.

Mrs. Joyce was born April 17, 1906 in Oklahoma. A 1924 graduate of Rising Star High School, she married Floyd Joyce February 12, 1924 in Rising Star. She was a homemaker, a member of the Saturday Club and a Methodist.

She was preceded in death by a daughter, Tena Marie McCloud.

Survivors include her husband, Floyd Joyce of Rising Star; a son, John J. Joyce of Rising Star; 10 grandchildren; and five great-grandchildren.

• Beverages that contain caffeine and alcohol stimulate the nervous system and provide energy — Drinks that contain caffeine and alcoholic beverages have dehydration effects, which offer no benefits to a person who works out regularly or an athlete in training.

RECIPE FOR THE WEEK

California Fruit Bars
1/2 cup unsifted flour
1 cup oats
3/4 cup firmly packed brown sugar
1/4 cup wheat germ
2 teaspoon vanilla extract

1/2 cup margarine
1 1/2 cups chopped pecans

1 cup golden raisins
1 (6 ounce) package dried apricots, chopped (1 cup)
1 (14 ounce) Sweetened Condensed Milk (NOT evaporated milk)

Preheat oven to 350 degrees (325 degrees for glass dish). In large bowl, combine flour, oats, sugar, wheat germ, margarine and vanilla; mix until crumbly. Reserving 1/2 cup crumb mixture, press remainder on bottom of greased 13 x 9 inch baking pan. In large bowl, combine nuts, raisins, apricots and sweetened condensed milk; spoon evenly over crust. Top with reserved crumb mixture; press down firmly. Bake 25 minutes. Cool. Cut into bars. Store at room temperatures. Makes 24-36 bars.

READ THE CLASSIFIEDS

Many subs
expire Jan. 1,

RENEW
NOW!

Billie B. West

Billie B. West, 77, died Sunday, February 2, 1992 in an Irving hospital. Services were at 2 p.m. Tuesday at Higginbotham Funeral Home Chapel with the Rev. Red Chamberlain officiating. Burial was in Amity Cemetery in near Rising Star.

Mrs. West was born in Dover, Ark., and had lived in the Amity community for many years. She was a nurse for Eastland Memorial Hospital before retiring.

Survivors include her husband, Tommy West of Rising Star; two sons, Tom B. West of Garland and Don G. West of Irving; two brothers, Jim Brooks and Moses Brooks, both of California; two sisters, Eva Smittle and Faye Brooks, both of California; eight grandchildren; and seven great-grandchildren.

Vernon C. Cagle

ABILENE - Vernon Clarence Cagle, 90, of Abilene, died Monday, February 3, 1992 at a local nursing home. Services were at 10 a.m. Wednesday at Elliott-Hamil Funeral Home Chapel of Memories with Terry Cagle and Eddie Sharp officiating. Graveside services were at 2 p.m. in Stag Creek Cemetery near Comanche.

Mr. Cagle was born in Eastland County and grew up there. He moved to Abilene in 1919. He served from 1918-20 in the National Guard. A brakeman with Texas & Pacific Railroad for 43 years, he was the last member of the Abilene Southern Railroad. He was also a member of Woodmen of the World and University Church of Christ.

Survivors include his wife, Elsie Hazel Glover Cagle of Abilene; a son, Howard Glen Cagle of Abilene; two brothers, T.L. Cagle of Comanche and Rupert Cagle of Big Spring; a sister, Conova (Mrs. T.A.) Weaver of Sipe Springs; two grandchildren; and four great-grandchildren.

Memorials may be made to Christian Service Center, 901 Mesquite, Abilene 79601.

Pearl Petty

CROSS PLAINS - Frances Pearl Petty, 89, died Saturday, February 1, 1992 at a Rising Star nursing home. Services were at 2 p.m. Monday at Church of Christ with H. McDonald officiating and Durward Weatherford assisting. Burial was in Cross Plains Cemetery, directed by Higginbotham Funeral Home in Cross Plains.

Mrs. Petty was born in Tennessee. She was a homemaker and a member of the Church of Christ.

She was the widow of Ed Petty.

Survivors include a daughter, Mrs. Celia "Sis" (Hubert) Belew of Cross Plains; a son, Eddie Petty of Cross Plains; a sister, Eula Bryant of Rising Star; seven grandchildren; 16 great-grandchildren; and two great-great-grandchildren.

Jim Followell

BROWNWOOD - Jim Followell, 96, died Saturday, February 1, 1992 at a local hospital. Services were at 2 p.m. Monday at Brownwood Evangelism Center with the Rev. Don Martin officiating. Burial was in Eastlawn Memorial Park, directed by Davis-Morris Funeral Home.

Mr. Followell was born in Coryell County and had lived in Brownwood for 48 years. He was a retired employee of the city and a member of Brownwood Evangelism Center.

He was the widower of Lucy B. Blackstock Followell. Survivors include four sons, Everett L. Followell of Lake Brownwood, Alvie D. Followell and O.D. Followell, both of Brownwood, and L.B. Followell of May; a daughter, Mozella Walton of Alamogordo, N.M.; 14 grandchildren; 34 great-grandchildren; and four great-great-grandchildren.

Breast Cancer Detection Unit to Be Here Tuesday

A mobile unit to detect breast cancer will be parked at Dr. Carpenter's office, 413 W. College, Rising Star from 9 a.m. to 1 p.m. on Tuesday, February 11. Appointments may be made by calling 643-3141.

According to the American Cancer Society, one out of every nine women in the United States will develop breast cancer sometime during her life-

time. Every year over 37,000 women die as a result of breast cancer.

According to a spokesman from TransAmerican Diagnostic Services, Inc. in Midland, "The death rate from breast cancer could be drastically reduced if women would have mammograms done before a problem exists." By using modern state of the art x-ray equipment breast cancers can be found when they are about the size of a grain of rice and well before the cancer can be felt. A woman who is diagnosed with breast cancer at this early stage has a 90-97% survival rate. However a woman who is not diagnosed until a lump can be felt has approximately a 50% survival rate in five years.

In an effort to find cancers at the earliest possible stage and prevent unnecessary deaths, a mobile breast cancer detection unit will be in Rising Star Tuesday, February 11.

For more information you may call TransAmerican Diagnostic Services, Inc. at 915-561-8888.

Happy Birthday

FEBRUARY 7

Benjy Clark, Steven Martin, Lillian Morrow, Kyle Bibb

FEBRUARY 8

Teresa Lawrence, Clinton Wilson, Clayton Wilson, Allison Agnew

FEBRUARY 9

Edith Bostick

FEBRUARY 10

Donnett Nall, Helen May, LaVerne Lee

FEBRUARY 11

Janna Jones, Darin Leonard, Roy Draper

FEBRUARY 12

Kelly Harris

FEBRUARY 13

Beverly Stuart, Johnny Cook, Theo Boyd, Sharon Cannistraci, Faye Medley

Pioneer Patchwork

by Irma Miller

The Quilters' Club worked on the same two quilts Tuesday and finished the Shooting Star.

The community received another two inches of rain this past week.

Frankie and Oliver Smith and Jean Fore went to Ranger Saturday and visited Frankie's father who was o.k. They then went to the Sipe Springs musical. Sunday, Frankie and Oliver visited their friends, Mr. and Mrs. James Blue, in Comanche.

Jewel Foster's visitors were Leonard and Helen Swafford of DeLeon on Wednesday. Charles and Lucille Foster of Clyde

went to lunch with them.

Novilia Barton's visitors Saturday were Cecil and Mary Barton of Waco and Bob Powell of the community, who dug some plants while it was still dry enough.

May and D.P. Jones' company Sunday was their son, Skip, and his friend, Pam, of Abilene.

Bob and Jane Dixon of Louisiana spent the weekend with Lottie Sooter.

John and Irma Miller were in Dallas Saturday and Sunday visiting, and Sunday night were badgering the rain from water laden clouds all the way back.

Walgreens

Heartland Mall
Early, Texas

PHARMACY

FREE Same Day Prescription Mail Out Service
Call Toll Free

FREE Call Toll Free 1-800-999-0969

**FREE Tax Records
FREE Insurance Records
FREE Mailout Prescriptions**
OPEN When You Need Us

Hours: Mon-Fri: 9-9
Sat: 9-6 & Sun: 10-6

Blue Cross and Blue Shield of Texas, Inc.
Medicaid, PCS, PAID and other insurance programs.

Fred Long, R. Ph.
Sharon Abbey, R. Ph.
Kristy Mitchell, R. Ph.

For Information CALL
915/646-4558

Fishing Outdoors

by Terry L. Wilson

ANGLERS CHOICE RULE CHANGE

A number of area anglers visited lakes around this weekend with mixed results. Possum Kingdom was kind to some Breckenridge Anglers with good numbers to 7 1/2 pounders. Ten foot plus was a good depth with jigs.

Leon turned loose with a few nice fish to six pounds using spinner baits in 10 to 13 feet of water. The crappie weren't to friendly with most around 5 or 6 inches.

Both of these lakes are reported to be off colored with P.K. having more clear water available. Leon is colored all over with the clearest being in the river section. Water temperatures are running from 45 to 51. Of course the better fishing is coming from the north shore near rocks where the water is warmer.

Anglers who are planning to compete in the west Anglers Choice Team events should be aware, this year you must pay

your entry fee prior to practicing the day before the event. I understand this will be a polygraph question. Headquarters for the February 16, 1992, opener at Lake Colorado City will be at the Villa Inn Motel. This is located just south of I-20 before the lake exit. The weigh-in site is pending, to watch the wind direction. This region's director is Mr. Floyd Yarbrough and may be reached at (817)428-1785. If I can answer any question please feel free to call me at 629-3255.

Bad weather and bass may not seem like a very good combination, but the seasoned anglers have the insight into some good catches. Bass are like any other animal, when conditions get bad, they seek shelter. When conditions get better, they feel better. Realize at depths of 5 ft. or deeper bass do not feel sudden temperature changes, wind shifts, rain, snow, etc. (Unless these

New Version Of "Beauty And The Beast" To Show At Majestic

A new Walt Disney version of the classic "Beauty and the Beast" plus a "Cartoon Classic" will make up an exciting double feature at the Majestic Theatre in Eastland this weekend.

There will be nightly showings at 7:30, beginning Friday, February 7, and running through Monday, February 10. There will also be Matinees at 2 p.m. on Saturday and Sunday.

Tickets at the box office conditions are prolonged.) What they do feel are barometric pressure changes. These changes are what determine the actions and reactions of the fish. This is as much a fact in warm weather as it is during cold weather.

Terry L. Wilson

will be #3, with all the usual concessions available.

The new animated "Beauty and the Beast" is interesting in many ways. First of all is the artistry of the Disney group involved in the creation.

"Beauty and the Beast" is only the fifth classic fairy tale adapted as a Disney animated feature. This assignment took over 3 1/2 years to accomplish and required nearly 600 animators.

Then there is the setting - by placing the location in a beautiful valley in France, the animators had a chance to bring the pastoral location to the screen. Many of the drawings are done from studies of the Loire Valley.

The voices of actors are full of personality, and the music and lyrics add to the special atmosphere. The part of Belle is spoken by Paige O'Hara, with the beast, narrated by Robby Benson, and Gaston by Richard White. Numerous other talented people also have speaking parts.

The "Beauty and the Beast" story dates as far back as Greek mythology. The tale became very popular in France during the 18th Century, and the Disney picture is set in that time frame.

Writer Linda Woolverton created a fresh screenplay, using the classic theme of a beautiful young girl and her encounter with an enchanted beast.

Woolverton says: "The lessons of this story are truly timeless, especially for kids growing up in the 90's. It tells them to look beyond the surface, and



Belle has the insight to understand that a warm and caring human being is trapped in a Beast's body in "Beauty and the Beast," a Walt Disney animated picture. An enchanted castle and beautiful settings make up this 1990's version of a classic tale. This animated movie will show this weekend at the Majestic.

Eastland Telegram, Cisco Press, Ranger Times, Rising Star, Callahan Co. Star
Thursday, February 6, 1992

that what is in their hearts and souls are the things that really matter."

MAJESTIC THEATRE

629-1322



NIGHTLY SHOWINGS:
7:30 P.M. FRIDAY THROUGH MONDAY

PLUS
2 p.m. MATINEE
SATURDAY & SUNDAY

629-1322

MAJESTIC THEATRE

New Business in Putnam
Dean Cavanah & Ruth Gary
Are Opening the
Shop & Snack Stop
Exit off 319 I-20 go south on Highway 880 3 streets turn right & go to 3rd street, watch for our sign.
Opening Jan. 18 at 11 AM. Our hours will be
Friday night, 5 PM-8 PM,
Sat. & Sun., 11 AM-8 PM
Shop at our Flea Market for the item you've been looking for. We might have it.
Snack - Try a slice of homemade pie & coffee or tea or a full home cooked meal.
All reasonably priced. Carry Out Orders 662-3333.

Eastland Cleaners
210 S. Seaman Eastland 629-3522
New Hours
7 AM-6 PM Mon.-Fri. - Sat. 9-3 PM
Mon. - 3 Blouses for \$6.95 reg. \$9
Tues. - 2-2pc. suits for \$7.50 reg. \$10
Wed. 2 dresses (no pleats) for \$7.95 reg. \$10
Thurs. - 2 Plain Skirts (no pleats) for \$4.50 reg. \$6.50
Fri. - 3 Pr. Starched Jeans for \$4.95 reg. \$6.75
* **Everyday Special** *
Dry Cleaning Trousers 3/\$4.25
You must bring clothes in day before or by 9:00 AM on the day of the special.

GARRETT Photography Studio
Children's Portraits Commercial Wedding Modeling
Call for appointment for that special Valentine Portrait
1011 West 11th
(817) 442-2285 Cisco, Texas

Beginning Sunday, Feb. 23, 1992
Twice Daily
1st Baptist Church, Eastland

LOOK FOR OUR CATALOG
Help us celebrate our Company's 90th Anniversary! Now get TWO \$5 certificates when you purchase your Spring & Summer Catalog at any JCPenney for only
\$5 OFF
in Catalog Merchandise Certificates when you buy your Catalog.
JCPenney Catalog
937 E. Main Eastland 629-2618

Heather's Hallmark
Hwy 80 E., Eastland 629-3521
We Can fill all your Valentine needs!
Cards Gifts
Partyware Candy
Jewelry
Balloons
Stuffed Animals Mugs
Balloon Wrap Special \$5.95
if order placed by February 8th
Orders placed after February 8th
Reg. price \$7.95 & up

Pre-Season Lawn Mower And Tiller Sale

<p>FRONT ENGINE RIDER</p> <p>\$799.99</p> <ul style="list-style-type: none"> 12.0 H.P. front engine rider (Cast iron sleeves) 38" deck (catcher capable) 93-7120-4 	<p>FRONT ENGINE RIDER</p> <p>\$899.99</p> <ul style="list-style-type: none"> 12.0 I/C Briggs & Stratton engine 38" cutting deck 93-7122-0
<p>FRONT TILLER</p> <p>\$299.99</p> <ul style="list-style-type: none"> 5 H.P. Briggs & Stratton engine Sealed chain drive 26" tiller width, 13" diameter 8" steel wheels Steel channel handle 94-2002-7 	<p>REAR TILLER</p> <p>\$599.99</p> <ul style="list-style-type: none"> 5 H.P. Briggs & Stratton engine CRT 17" tiller width, 12" diameter 16x4 pneumatic wheels w/lug tread 3 qt. gas tank Grip on handle 2 year warranty Tine shield w/adjustable side panels 94-3209-7

No payments plus no interest up to 6 months. Total charge w/approved credit. Details in store.

Western Auto Associate Store
201 Conrad Hilton Ave. Cisco 442-1460

White Elephant Restaurant
Serving Daily Luncheon Specials (As usual)
We Have Now Added Daily Steak Specials (Available after 5 p.m.)

No. 1 - Sirloin and Shrimp	\$7.50
No. 2 - Sirloin (Single)	\$5.00
No. 3 - Sirloin (Double)	\$8.95

All of the above served with baked potato or french fries, onion rings and Texas toast. (A trip to the salad bar \$1.00 extra.) Full menu of steaks available.

White Elephant Restaurant
I-20 Cisco, TX 442-9957

Classifieds Sell REAL ESTATE

161 A. Lots of bottom land, 60 tillable; well fenced, 1/2 mi. Sabanna, good deer hunting, lots big oak, pecans. \$550 ac. Agent owned.

80.5 A. 7 mi. NE Rising Star, 30 coastal, app. 1/2 cult., well fenced, lots rd. front, \$560 ac. **95.43 A.**, 20 cult., 3-1 frame home, 4 mi. of Carbon. Good barn, native grasses. \$70,000, \$14,000 down, 10% int.

70.3 A. 7 mi. E. Hy 36, timber, coastal, 3 water taps applied for, well fenced, barn, tanks, \$500 a., cash or equity/GI assumption.

182 A. -Desdemona, most native pasture, rolling, liveoak, deer, 2 BR frame home, FREE nat. gas, barns, corrals, fine well, \$600 A. 1/4 down. LOTS pavement.

54.35 A. -E. Carbon, most all good coastal, near pavement, well fenced, good well, 1 tank, minerals, \$750 A. cash or (?) terms.

App. 1.5 A. -E. Carbon, 2 BR frame home, clean, big oak trees, small barn, walls insulated, co-op water meter, fruit/pecans, just off hwy. Just \$20,000.

47 A. -M/L, app. 1/2 coastal, app. 50,000 lbs. peanut quota, 3 wells, buried mainline, wheel roll system, 10 HP lake pump, \$40,000.00

Have buyers for timbered, coastal, peanut, retirement & pasture lands. 35 Yrs. in Business

COGBURN REALTY
893-6666 893-5898
893-2642 DE LEON

ACTION REALTY
WE NEED LISTINGS!!!
Equal Housing Opportunity
914-643-6516

AT RISING STAR:
Why rent? You can be a home owner! This 3 BR, 2 B stucco has everything! Laundry, dining room, carpeted, garage, water well. Priced to sell. **Rock house** close to downtown. 1 BR, 1 B, dining room. Large tree shaded lot. Priced for quick sale.

2 BR, 1 B needs some work. Owner's willing to finance. **Car wash** in Rising Star. Owner anxious to sell. Covered stalls.

Lake Brownwood, 2 lots on paved road at Shamrock Shores. Call for details.

Several lots for building sites or to put trailers on. All these are in Rising Star. Call today, James Smith, Broker
915-646-0297
In Rising Star Call **STELLA WARE**
817/643-3591

PRICED TO SELL Modern 2 BR, 2B home at 416 S. Main. Well built home with good roof, vinyl siding, CH/A, many extras. Sits on 100X80 lot, has good well & pump as well as city water, includes adjacent fenced lot 80X250. Call 817-643-3423 after 5.

SELLING YOUR HOME or buying? Call Stella Ware, 817/643-3591, your local real estate agent for Action Realty, Brownwood, James Smith, broker.

FOR SALE 4 BR, 2 B, 2,240 sq. ft., fireplace, CH/A, Oak Creek doublewide home, 3-car carport, extra large lot with trees, \$40,000.00. 817/643-5106

OLIVER WEST
PUMP SALES & SERVICE
817/643-5683
Complete Systems Sold & Serviced
2 1/2 mi. south of Rising Star

JOHN DEERE TRACTORS
NEW AND USED PEANUT EQUIPMENT
LILLISTON - KMC
PLANTERS - DISKS
DRILLS - CHISELS
ROLLING CULTIVATORS
SELL OR TRADE
Clark Tractor & Supply, Inc.
DeLeon 817-893-2061
Comanche 915-356-3922
Where Your Business Is Appreciated

DeLeon IRRIGATION SUPPLY, INC.
Route 1 Box 22-A, De Leon
Phone 893-2123
Zimmatic Pivots • Ag Rain Hard Hose Guns • Cornell Pumps and all other types of irrigation equipment
Complete Service And Installation

Paul Williams Roofing Co.
• FREE Estimates •
• All Work Guaranteed •
• Hot Tar & Gravel Composition •
• Shingles • T-Locks • Wood Shingles •
25 Years Experience In Eastland Area
Paul Williams Carbon, Texas
817-639-2330
If No Answer call 817-629-1020

FOR SALE

LADIES Short sleeve Silver-lake shirts, Southwest prints, \$29.99. Johnson's Dry Goods, Cross Plains

MEN'S WRANGLER pullover knit shirts, short sleeve, bold stripes, 6-button placket front, \$24.99. Johnson's Dry Goods, Cross Plains

CONSOLE color TV for sale, as is. 400 S. Anderson, 643-3651, after 9 a.m. 6-7

ALL TYPES
Vegetables, bedding & pot plants. Also all sizes & types of baskets, plus onions, fruit trees & garden seed. Open 9 a.m. to 6 p.m. 7 days weekly. 7 mi. E. Hwy 36, 1 1/2 mi. S. of Hwy 36.

DAN'S GREENHOUSES
Dan or Dell Hamer, Rt. 2, Rising Star TX 76471 6-18

WORK WANTED

NURSING: Will care for elderly in my home. Planned activities and good meals. Call 647-5384. RS6

HELP WANTED

NEED RN relief for Sats. & Suns., hours 6-2 or 2-10. Salary competitive. Contact Russell Gray, 817/643-6700, Rising Star Nursing Center. 52

NEWLY Remodeled, 61-bed nursing home in Rising Star seeks leadership of RN Director of Nurses; competitive salary, excellent working conditions. Contact Russell Gray, 817/643-6700. 52

Exceptional income opportunity teaching skin care classes for reputable 36-year old international company. Potential \$200 to \$500 week. Training available. For information call Mary, 915-762-3802. RS8

MOBILE HOMES For Sale

BETTER THAN Site built. Before you buy, come to Art's Homes in Granbury & look at the newest in manufactured housing. The quality is unsurpassed in the entire industry. Singles & doubles at factory introductory prices--DON'T DELAY. 817/326-2392 or 1-800-621-7196. 6

REPOs Ex.: 3+2 singlewide, cathedral ceilings, new carpet, fireplace, comp. roof... only \$195.00 per month. Art's in Granbury 817/326-2392 OR 1-800-621-7196. 6

FOR RENT

PUBLIC Housing authority of Rising Star has apartments for rent for senior citizens or persons with a handicap or a disability. Equal housing opportunity. 817/643-3812 or 643-6791. 52

SERVICES

CAMPBELL'S Cabinet Shop & Construction
Joe Campbell
817/842-5875

CARPET
Cleaned, Restretched
Repaired, Sold, Installed
Scotch Guarding Available
No charge for moving turn.
Dub Meador
Cross Plains 725-7720

WILLIE VANDIVERE
Dirt, Caliche Hauling
Build Driveways,
Lease Roads, Etc.
9-5 Call 643-2023
After 5, 643-6451

THANK YOU

We wish to take this opportunity to thank the many friends of Murlene Somerford for your kindnesses shown to her and her family.

The food, flowers, cards and visits were appreciated. We loved her dearly and you helped us bear our sorrow. We do thank you.

Sincerely,
The family of
Murlene Somerford

Invitation to Bid

CITY OF RISING STAR is now accepting bids for the construction of the pavilion to be located at the city park. The approved design consists of laminated wood with steel posts. Written bids will be accepted at City Hall by mail or hand delivery at 104 N. Miller, Rising Star, TX 76471. 50-6

WANTED

Year round hunting lease wanted in good game area. Size not important. Careful, considerate, responsible hunters with local relatives. Top dollar paid. (817) 442-4752. RS6

The Rising Star Sells RUBBER STAMPS

Jeanne Sadowski for 17th District U. S. Congress (Republican)
P. O. Box 1234
Eastland, TX 76448
Paid for by the Sadowski for U.S. Congress Committee

POLITICAL CALENDAR

The following candidates have authorized this newspaper to list their names as candidates for the March 10, 1992 Primary Election.

County Sheriff
R.B. White
(Re-election)

District 17 Representative
Charles Stenholm
(Re-election)

County Commissioner
Pct. 3
Dick Burgess
L. T. Owen
(Re-election)

Pd. Pol. Advertisement

Cost-Share Assistance Requests Accepted At Eastland ASCS



Rudy Pack, ASCS Field Assistant, reviewing cropland acreage to be converted to permanent vegetation. ACP cost sharing funds will financially assist the landowner.

"Request for cost-share assistance to complete needed conservation measures are now being accepted at the Eastland County ASCS office located in the Pogue Industrial Park in Eastland," reports David W. Martin, County Executive Director, of the local office. "Some years ago, Congress realized the importance of protecting our soil and natural resources and provided legislation that provides cost sharing assistance to land owners who are unable to apply needed conservation practices with their own resources", Martin added.

Request for cost sharing assistance are accepted continually during the year and approvals are made by the county committee at announce intervals. The next approval period will February 20 for request filed by February 7, 1992. The county committee is a three person committee that are elected by the farmers and ranchers in the county. Current members of the committee are Ronnie Love, Cecil Self, and C. W. Richter.

"Emphasis will be on approving those requests that remove marginal cropland from production by establishing permanent vegetative cover and repairing damage caused by recent flooding. Cost Sharing assistance is targeted at 50% of the cost of the practice," Martin concluded.

Read The Classifieds

County Buys State Material



The County of Eastland has purchased approximately 3166 cubic yards of Reclaimed Asphaltic Pavement (RAP) from the Texas Department of Transportation. The material was purchased from the State, and the County is likely to begin using the RAP on area county roads.

The State is allowed to sell RAP to other governmental agencies. Private individuals are unable to purchase this material and should not attempt to take any material located on State right-of-way, according to Walter B. Neaves, P.E. Area Engineer.

Defensive Driving Agriculture Viewpoint

Driving
Cisco Junior College will offer a Defensive Driving Course on Monday and Wednesday, February 10 and 12, from 6 until 10 p.m. in room 3 of Schaefer Hall. Fee for the course is \$20. Enrollment must be paid no later than 3 p.m. February 10. Students must attend both nights of class and must bring a valid drivers license to class. Cisco Junior College is an agency of the Texas Safety Association.

For more information contact Charlotte Speegle at 442-2567, extension 122.

RENEW

Well it's beginning to be not near as hard to say "I'll be glad when it dries up." This weather is past the point of a draw back as far as agri-producer operations are concerned. Wheat has virtually "stopped" growing from the inclement weather and with the on-going situation peanut producers are feeling the pinch of set back as well.

Ground breaking that usually begins this time of year may be set back for sometime, depending on when this "thing" passes. Nevertheless, we can't control the weather and I know that before long we'll wonder if it's every going to rain.

For homeowners this may be just what the doctor ordered however.

Now, with this moisture situation, would be an excellent time to apply one of the pre-emerge herbicides for the control of unwanted broadleaf weeds such as hebit and dandelion. Added fertilizer at this point should be held off until at the earliest the last of February. Now would be a good time for some soil testing both on the farm and at home. After all, if we're going to spend dollars adding fertilizer it would certainly help to know just what fertilizer you need and how much.

For more information on fertilizers, soil testing or home herbicide usage, contact me at the Eastland County Extension Office at 629-1093.

IT'S THE LAW!
SEATBELTS
Buckle Up for Safety!

Don't let your profits get eaten up.
Protect your income with U.S. AG Multi-Peril Crop Insurance.
Mary L. Anderson
Rt. 5, Box 105 Comanche TX 76442
(817) 842-5239
USAG
Insurance Services, Inc.

REAL ESTATE - FERTILIZER EQPT. AUCTION
SAT. - FEB. 8 11:00 A.M.
GORMAN, TEXAS
1/2 Blk. South of Hwy. 6 & Hwy. 8 Intersection
formerly Clark Farm Supply & Brown Feed Store
STOREY & ASSOCIATES HAVE BEEN COMMISSIONED BY SECURED PARTIES TO LIQUIDATE THE FOLLOWING BY PUBLIC AUCTION.

REAL ESTATE
TRACT NO. 1: App. 11,000 sq. ft. metal bldg. in excellent condition w/ concrete floor, roll up & sliding doors, sky lights, 20x50 air cond. & heated merchandise display area. Carpeted & paneled offices. Situated on app. 115x250 ft. lot with 3 galvanized grain tanks (app. 7500 bu cap), unloading pit, elevator leg & 40,000 lb. truck scales.

FERTILIZER EQPT.
1979 GMC Big Wheel liquid applicator w/Detroit diesel engine, Allison automatic tran, 1200 gal stainless tank w/48 ft. boom; 1980 GMC Big Wheel dry spreader w/Detroit diesel engine, Allison auto tran & app. 8 ton dry spreader box (Big Wheels will be offered w/min.); Riley dry fert. transport (Kilabrew type) w/4 hyd. hoppers powered by Wisconsin engine & mid. on 40 ft. tandem axle float; 1000 gal poly nurse tank w/pump; 1000 gal poly tank on skids; 12,000 gal stainless upright liquid storage tank; 2-Red Ewald 10,000 gal fiberglass liquid storage tanks; transfer pump; 1600 gal stainless TK. tank; Dempster dry fert. bed; Detecto dry fert. hopper scales; 19. TK. mixer body.

TRACTOR - FORKLIFT - MISC. EQPT.
1086 IHC diesel tractor w/cab & air; 1979 Ford 1 ton truck w/12 ft. flat bed; 18 ft. shop built gooseneck flatbed trailer; 2-40 ft. railroad box cars; 20 ft. TK. bed; 2000 gal fuel storage tank w/pump; 1500 gal fuel tank w/pump; Datsun 4000 forklift w/pneumatic rubber; Honda G-300 power washer; Lincoln 200 amp welder w/gas engine; 76 White Freightliner TK. (salvage); 67 Chev 2 ton cab & chassis; 2 float trailers; Dayton port. air compressor w/10 hp gas engine; Champion upright air comp. w/5 hp elec motor & app. 100 gal tank; parts washer; 4 ton floor jack; 5000 lb air bumper jack; sm. hyd. press; bench vice; bench grinder; sm. drill press; roll-around tool box; battery charger; Dole 400 moisture tester; 3-19. kerosene space heaters; Mobil radios; platform scales; New Ace centrifugal pump.

STOCK - OFFICE EQPT. - MISC.
IBM Personal computer w/monitor & printer; 2-refrigerators; water fountain; 2-metal 4 dr. file cabinets; metal office desk; office chairs; telephones; wooden garden seed bin w/52 compartments & seed; older Burrough cash reg.; Dearborn heater; app. 40 ft. wood bolt bins; office supplies; bearings; pins; chain links; 19. lot bolts; drying agent; paint; paper feed sacks; 7-gal Dithane F-45; 21 bags Copper & Boron micronate; 7-New Catapillar batteries; eartags; garden & vet supplies; insecticides; LOTS OF MISC.
HENRY R. STOREY & ASSOCIATES AUCTIONEERS
BROWNWOOD, TEXAS
TXS 6487
For information call 315-646-3956 at night

TEXSCAN
Statewide Classified Advertising Network
Advertise in 281 Texas newspapers for \$250.
Reach more than 3 MILLION Texans.
Call this newspaper for details.

7070 Dept. LB722.

DEER HUNTERS SPECIAL: 25 acres, \$795/acre, wooded, excellent hunting, adjoins paved road. Texas veteran or owner financing, prime acreage. Fox Realty, 500 Buchanan Dr., BURNET, TX 1-800-725-3699.

COVENANT TRANSPORT: Hiring tractor trailer drivers. 1 yr. O.T.R. experience. Single 19-22e. East coast pay. Incentive pay. Benefits package. Minimum age 23. Teams 27-31c. 1-800-441-4394.

MAKE A FRIEND... FOR LIFE! Scandinavian, European, Yugoslavian, Australian high school exchange students arriving in August. Host families needed! American Intercultural Student Exchange. Call tollfree 1-800-SIBLING.

\$2,500 - \$5,000 FOR OLD GUITARS. Prefer Stratocasters, Telecasters, Les Pauls, Super 400s, L-5s, 335s, J-200s, D-28s, D-45s, White Falcons. Also others. Call free Kevin, 1-800-383-4361.

DRIVERS - WE'RE GROWING and need more teams. We offer competitive pay and benefits, bonuses, modern tractors, good freight. Call today!!! Celandon 1-800-729-9770.

MORTGAGES WANTED OR NOTES why wait? Get CASH now for owner financed real estate notes nationwide. Free brochure or quote Centurion Capital 1-800-759-2919 or 409-755-2919.

ECONO-MASTER STEEL BUILDINGS: 20 X 40 X 10...\$3,241; 30 X 40 X 10...\$3,930; 40 X 60 X 12...\$7,144; 50 X 100 X 14...\$11,995; 24 X 30 X 9 garage special \$2,795. Other sizes available. Call Jimmy 8-5 M-F at 1-800-766-6688.

GOLD CHAIN SALE 18" X 2.5m. 14Kt. solid diamond rope \$270 value \$149.90. Call 512-352-9400 or write to Billings Jewelry, P.O. Box 1243, Taylor, TX 76754 to order.

ADOPTION: EMPTY ARMS and loving hearts are waiting to welcome your baby. Loving, compassionate couple, well educated, long to adopt. Call Richard/Wendy 1-800-487-4611. It's illegal to be paid for anything beyond legal/medical expenses.

BECOME A PARALEGAL: Join America's fastest growing profession. Work with attorneys. Lawyer instructed home study. The finest paralegal program available. Free catalogue. 1-800-362-

Mobil Oil Products All Other Major Oil Brands
Conoco Oil Products We Deliver Bulk Fuel

Cross Plains Petroleum (E.S.E. Inc.)
P.O. Box 219 6th at Ave. F
Cross Plains, Tx. 76443

David and Lenell Slinger Managers
Phone (817) 725-6582
We Accept FINA, VISA, Master Card & Discover

FARM BUREAU TEXAS
RETIREMENT PLANS
LIFE - LIABILITY
AUTO - HEALTH
HOMEOWNERS - FARM

FRANK AGNEW AGENT
P.O. BOX 470
Rising Star Office 817/643-1010 Home 817/643-3189
EASTLAND, TEXAS 76448
Office 817/629-1704

65 County FFA Members To Participate In Houston Livestock Show February 15

A total of 65 FFA members from Eastland County will join other 4-Hand FFA members from throughout Texas for show ring competition at the upcoming Houston Livestock Show, February 15 through March 1 at the Astrohall.

These FFA and 4-H exhibitors compete in one of two divisions of the Houston Livestock Show, the junior show division. The other division, the open show, attracts its exhibitors from the world's agricultural industry, primarily professional breeders and ranchers.

Entries in both the open and junior shows combine with horse show entries to make the Houston Livestock Show the world's largest.

Gorman FFA exhibitors will be Shane Caraway, J.J. Clark, Reese Clark, Diana Glover, Janice Glover, Mark Glover, Ashley Laminack, Chris Laminack, Mandy Laminack, Christine Mauney, Don Mauney and Shannon Mauney, Marty McCormick, Pam Osborne, Kenneth Rainey, Ashley Rich, Jason Rich, Jennifer Scitern, Scott Scitern, Brent Skaggs, Marla Smith, John Stephens, Samantha Stephens, Jade Warren and Jason Warren. Each exhibitor will show a market barrow.

Tim Fox of Desdemona will show a market broiler. Pam Osborne of Gorman will also show a market lamb. Eastland FFA exhibitors will be Jason Aldredge, B.J. Carlton, Tommy Coxsey, Steve Jones, Brian Tucker and Brian Perry. Each will show a market barrow.

Susan Clark of Cisco will show a market barrow. Jancey Hamilton of Gorman will show a market barrow. Eastland FFA exhibitors Dylan Bowles, Adam Horn, Steve Jones, Jenny Mangum, Christy Monsey, Franklin Skinner, Brandon Wilson and Brian Perry will each show a market lamb.

Laurah Johnson and Kevin Ray Kanady of Carbon will show a market lamb. Ranger FFA exhibitors will be Ginger Cantwell, Todd Cantwell, Lynsey Cunningham and Mandy Cunningham. Each will

show a market lamb.

Rising Star FFA exhibitors will be Amy Agnew, Blair Bailey, Tim Burton, Christi Bush, Holly Butler, Rebecca Coleman, Mackey Elliott, Brandon Geye, Brandi Goldston,

Matt Harmon, Shawn Harrelson, Jeff Harris, Stephen O'Connor, Judy Ware, Terry Ware, Scotty Wilson, Clint Wolf, Heather Wright and Chad Hill. Each will show a market barrow.

County Family Planning Clinic Set February 13

The regular Family Planning Clinic will be held February 13, 1992. Applications are taken from 9 a.m. until 5 p.m. Family Planning services available in this clinic will include: consultation, physical exam with a Pap test, laboratory examination, appropriate methods of birth control, birth control supplies and education regarding birth control and continuing supervision.

This program provides services to income eligible clients and charges a small co-pay fee. Private patients are welcome to participate. The clinic is held monthly at 1509 Highway 80, Cisco, Central Texas Opportunities, Inc. of Coleman, Texas is the provider for the Texas Department of Human Services.

For more information concerning this clinic please call 442-4522.

County Art Assoc. To Hold Meeting Feb. 10

Eastland County Art Association will meet Monday, February 10th at 5:30 P.M. at the Reddi Room in Eastland for a

regular meeting. Mrs. Myrtle Weeks, a well known area artist will give a demonstration in mixed medias.

Legal Notice

Eastland Independent School District is seeking to secure a list of suppliers for gasoline and diesel fuel for the daily operation of approximately 8 buses and 4 school vehicles for the remainder of the 1991-92 school year. It is the intention of the district to obtain competitive bids from time to time, on an as needed basis. The list of approved vendors will be used to directly contact the vendors when purchases are needed.

Those wishing to bid to be included on this list should contact Keith Watkins, Superintendent, Eastland ISD Administration Office, 900 W. Plummer, P.O. Box 31, Eastland, TX 76448. (817) 629-8221. Deadline to submit bids is 4:00 p.m., Monday, February 17, 1992.

Bids to be included on the vendor list will be considered at 10:00 a.m., Tuesday, February 18, 1992, in the administration building at Eastland ISD. Eastland ISD reserves the right to waive formalities of the bid process and to accept or reject any or all bids.

(2-2, 2-5, 2-9, 2-12)
Read The Classifieds

LEGAL NOTICE
The Eastland Independent School District Board of Trustees is now accepting bids for weight equipment, flooring, and a wrestling mat for the athletic program. Bid specifications may be obtained by contacting Ronnie Hughes, Athletic Director, 900 W. Plummer, P.O. Box 31, Eastland, TX 76448. (817) 629-3441.

Sealed bids should be mailed to Ronnie Hughes, Athletic Director, at the above address, with the statement "Bid-Athletic Program" clearly visible on the outside of the envelope. FAX#817-629-3677. Deadline for receiving bids is Monday, February 10, 1992, at 3:30 p.m.

Bids will be opened for consideration Monday, February 10, 1992, at 3:30 p.m., in the Eastland ISD Field House Office, Sadosa & Ammerman Streets, Eastland, Texas. Eastland ISD reserves the right to accept or reject any or all bid.

Cisco Press - Eastland
Telegram - Ranger
Times - Rising Star -
Thursday,
February 6, 1992

Reunion For WWII Iwo Jima Survivors

Anyone involved in the Land, Sea, or Air Operations during the Iwo Jima invasion and battle in February and March, 1945 that might be interested in a reunion of all branches of service involved in this Historical Event, please send your name, address, phone number, branch of service, and approximate time at Iwo to: IWO JIMA SURVIVORS Association of Texas, P.O. Box 1657, Bowie, Texas 76230.

This small island (approximately 2x5 miles) was the scene where nearly 7,000 Americans lost their lives, and over 18,000 Japanese were killed. This was the most fiercely fought and bloody battle on this size battlefield of WWII. It was also the first invasion of Japanese owned territory of World War II.

Why wait for your federal income tax refund?



WE ARE THE FASTEST

- Others brag--we deliver.
- We print cashiers checks on the premises.
- No cash needed.
- We've been taking care of your tax returns for years.
- We have the know-how and closet association with IRS: 9,000 H&R Block offices with the largest tax staff in the world.

H&R BLOCK

THE ORIGINAL TAX OFFICE
South Side of the Square
Eastland 629-8121 8-6, M-F; 8-4, Sat.

Application Forms Available For 1992 Property Tax Exemptions

Eastland County property owners wishing to sign up for 1992 property tax exemptions and/or special land valuations may obtain the necessary application forms from the office of the Eastland County Appraisal District. The office is located on the second floor of the Eastland County Courthouse in Eastland, Texas. The telephone number is 629-8597 in Eastland, the necessary applications can be requested over the telephone.

The completed application form must be filed with the Eastland County Appraisal District by May 1, 1992 if it is to be considered timely filed.

There are numerous exemptions and/or special valuations available through the State Property Tax Code. A partial list of these is shown at the end of this article. If a property owner has a question as to his or her

eligibility, they should contact the Eastland County Appraisal District for assistance.

Homeowners can take advantage of the partial homestead exemption which is available. This exemption must be applied for before May 1, 1992. This exemption does not have to be applied for every year. If the residential homestead owner resides in the same

house for 1992 that he or she lived in for 1991 and they received a residential homestead exemption on it for 1991; they do not have to re-apply for 1992. An exception to this would be a person who received the exemption in 1991 but turned sixty-five during the 1991 year. This person would need to re-apply as he or she would be eligible for additional exemption amounts avail-

able to those residential homestead owners over sixty-five years of age.

If you have any question as to whether you are receiving a homestead exemption or as to your eligibility for it or one of the other available exemptions or special valuations; please contact the Eastland County Appraisal District for assistance.

Partial exemptions and/

or Special valuations available are:

Residential Homestead
Over 65 Residential Homestead
Disability Residential Homestead
Disabled Veteran
Open Space Land Valuation (ag use)

Defensive Driving Class Feb. 8

Eastland County Defensive Driving Classes are Now Forming! For early registration please call 442-4479 or after 10 a.m. 442-2673. The fee for the class is \$20. Classes are held at the Mountain Top Church Family Center at 600 E. 8th street in Cisco. The next class to be held will be February 8th and will begin at 8 a.m. - 4:30 p.m. Class materials and videos are interesting and designed to give positive learning reinforcement with class participation and interaction.

Workshop For Parents With Disabled Children Set February 18 In DeLeon

A workshop for parents of children with disabilities, and the professionals who work with them will be held on Tuesday, February 18, 1992, at Freedom Motor Bank, Hospitality Room, 206 S. Texas, DeLeon, Texas. Registration will be at 6:30 p.m., and the seminar at 7:00 p.m. Pre-registration is requested, but

not required.

The seminar is presented by the Big Country P.A.T.H. (Partnerships for Assisting Texans with Handicaps) Coalition and featured speaker will be Marilou Wright, Area Development Director of P.A.T.H. Project.

The seminar will cover regulations for educating children with any type of disability who do - and do

not - qualify for special education, and the parent's role in the process - how to effectively work with your child's school.

There will be NO fee for this seminar. For more information and registration, contact: Pam Tomsy, Key Volunteer, Rt. 3 Box 445, Eastland, Texas 76448 (817) 629-1239.

(2-6, 2-9, 2-13, 2-16)

Special Tax Credit For Low Income Families

Millions of low income families with children aren't claiming the special tax credits, worth up to \$2000, that they are entitled to. Many workers who miss out on this credit earn so little they had no tax withheld from their paychecks and were not required to file a return. Workers who list their jobs or only worked part time may be eligible for this credit.

You may be eligible for

this credit if you worked during the year, had at least one child and your earned income was less than \$20,000.

Working families with wages between \$6,000 and \$13,000 can qualify for a credit of at least \$1,000. There is also additional credit of up to \$375 for a child born in 1991 and another for help to buy health insurance.

The Earned Income Credit was provided to

give low-income parents an extra incentive for working and staying off welfare rolls.

Earned Income Credit is the only credit that is refundable. That means it can go to a family whose income is so low that it owes no tax but can receive a refund check of up to \$2,000.

To find out more about Earned Income Credit call your nearest Senior Center and make an appointment with an AARP Tax-Aide Counselor.

Radio Shack

SINCE 1921

AMERICA'S TECHNOLOGY STORE

VALUE-PACKED WINTER SALE

 <p>MEMOREX™ Four-Head, Double-Azimuth VHS VCR With On-Screen Programming Save \$40 27995 Reg. 319.95 #16-525 ■ Clearer Freeze, Slow Motion and Search ■ 179-Channel Cable-Compatible Tuner</p>	 <p>REALISTIC Truck/Van 2-Way Speakers Save \$50 13995 Reg. 189.95 PAIR #12-1712 ■ 200 Watts Capacity Per Pair ■ Digital Ready ■ 8" Woofer ■ Carpeted, Ported Enclosure</p>	 <p>TANDY Includes DeskMate Software And VGA Color Monitor Lowest Price Ever! Family PC Save \$500 69990 Reg. Separate Items 1199.90 #25-1452/25-4044 ■ Tandy 1000 RLX ■ MS-DOS[®] ■ 512K RAM</p>
 <p>REALISTIC 60-Ch. Scanner With Priority Save \$50 12995 Reg. 179.95 #20-129 ■ Hear News Firsthand, Unedited</p>	 <p>REALISTIC Powerful AM/FM Car Cassette Save \$50 9995 Reg. 149.95 #12-1940 ■ 15 Watts Per Channel ■ 30 Presets</p>	 <p>DUGFONE Beeperless Phone Answerer Save \$40 7995 Reg. 119.95 #43-711 ■ Remote Turn-On, Message Retrieval</p>
 <p>REALISTIC 8-in-1 Universal Remote HALF PRICE! 4995 Reg. 99.95 #15-1903 ■ Controls an Entire Audio/Video System</p>	 <p>REALISTIC Pocket Weatheradio[®] Cut 33% 1995 Reg. 29.95 #12-143 ■ Great for Travelers ■ Up to 50-Mile Range Crystal-Controlled on 162.400, 162.475, and 162.550 MHz</p>	 <p>REALISTIC Pocket-Size FM Walkie-Talkie 28% Off 1788 Reg. 24.95 Each #21-401 ■ 49 MHz ■ Call-Button ■ Up to 1/4-Mile Range</p>

Eastland Office Supply/Radio Shack Dealer
105 W. Main St., Eastland 629-89842

MS-DOS licensed from Microsoft Corp. Most battery-powered items exclude batteries. We service what we sell.

Most Major Credit Cards Welcome
Sale Prices End 2/15/92

Guest Slot

By H.V.O.

APOTHEKE & GESUNDHEIT.

That's the message on a plastic bag from a German pharmacy -- but it was an interesting ordeal getting to that point. Staying well on a foreign tour is a matter of great importance. We'd come out of Italy and exchanged our lire for DMarks, and it's a good thing we had; doctors and medicine aren't cheap there either. My minor frog-in-the-throat discomfort had been worn down, but Gaynell's bronchial condition was just getting worse and appeared to be a strip infection that needed attention. She'd really been miserable the last night in Venice so when we got back to Garmisch-Partenkirchen we decided we'd better get some professional help, before continuing.

We were told at the Gen. Patton Army Hotel where we were staying that we could "pop over" to the military infirmary and get help. Not so. After a rainy-day cab ride across town, we learned that "No, you'll have to go to the German civilian hospital." The military couldn't treat non-GI. Another long wet, ride to the other side of town to the hospital. It's educational.

You see the densely-populated towns, and eventually find the emergency room; fill out forms; talk to an aide; and wait for the doctor. She comes; speaks little English, except we make out that "No, there is no ambulance (clinic) service here." But the Army sent us here. "They should not. You must go to a specialist. I will call for you." She did take a quick look into the affected throat, and away we went again, armed with the address written.

This third cab takes us to "near" doctor's office and branch

bank where we needed to get some more DMarks. Bank was easy but second floor office took some time and effort, in raincoats and umbrellas. And so, in time we were ushered into the immaculate office of English-speaking Dr. med. Jan Vohradnik, Hals-Nasen-Ohrenarzt, Allergologie, who very professionally examines Frau Gaynell O'Brien.

The bill? Well, he apparently did four procedures, each of 2.3 minutes (?) duration, each at a different rate, for a total of 136.12 DM -- just under about \$100.00. We were given three prescriptions and directed to a shop, Brenner's Marien-Apotheke across the busy, busy street.

Very efficient clerk greeted us in the shop that deals only in prescription drugs, and health and beauty aids with heavy emphasis on natural products in the big choice over-the-counter items. She took our prescriptions, called the doctor to make sure they contained no penicillin to which the patient is allergic, went to drawers, took out packaged containers, (pre-priced) bringing them to the counter and explaining the use of each. A soothing lorence, a spray, and an antibiotic, the price for which she apologized. Total: 144.75DM, just under \$100.00.

Cab-ride back to the hotel, by now, dark, and in spite of the long, weary day in and out of the rain, medications eventually help.

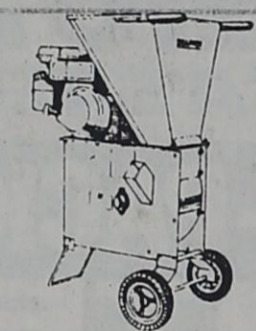
And now it can be told: An Italian, either intentionally or unintentionally, un-endured himself to me back in Venice. It was the night we arrived there, and because it was cold, we were all bundled

Remember To Renew Your Subscription Today!

READ THE CLASSIFIEDS

Grandpaw's Tool Shed Rental

Grinder Turns Yard Waste To Garden Mulch.



Takes limbs up to 3" in diameter

1304 E. Main Eastland Travis Chapman 629-3363

5-104

5-104

Common Drugs May Be Used To Help Prevent Brain Damage In Unborn Infants

Common drugs already in use may someday be given to pregnant women or to babies at birth to prevent brain damage, says a pediatric neurologist at Baylor College of Medicine in Houston.

Dr. Jan Goddard-Finegold, an associate professor of pediatrics at Baylor, says that drugs such as phenobarbital and indomethacin may stop fluctuating blood flow in the brains of premature infants. Such irregular blood flow, either low or high, can damage the brain, leading to problems like cerebral palsy, blind-

ness, seizures, or mental retardation.

"We would like to say, 'Here's a baby who is at risk. Let's monitor this baby and use appropriate drugs to prevent brain damage,'" Goddard-Finegold said.

Phenobarbital is used to prevent seizures. Indomethacin is given to shut the ductus arteriosus, a blood vessel that often fails to close in premature infants. The vessel keeps blood away from the lungs while the baby is still in the womb.

"Irregular blood flow to the brain is probably an

important cause of cerebral palsy in infants affected during and following birth," she said. "Premature infants, in particular, are susceptible to brain hemorrhages since certain blood vessels in their brains are not fully developed and are not able to withstand increases in blood pressure."

Low blood pressure and brain blood flow can also cause brain damage in premature and full-term babies.

Goddard-Finegold is examining the effects of these drugs on the blood flow in piglets, whose blood vessel development is similar to newborn babies. The studies test whether the drugs are safe during times when the brain blood flow changes naturally. She is also testing a technique called infrared spectroscopy that measures biochemical changes in the brain.

"These studies are important, because they may lead to noninvasive methods for predicting changes in brain blood flow," she said. "This could help in preventing abnormal biochemical changes that result in brain damage."

If doctors are able to predict when a baby is at risk, then giving the drugs to the mother before birth, or to the baby at birth, may stop the damage from occurring.

In more than 70 per-

cent of cases, the damage leading to cerebral palsy occurs before birth. The damage is caused by problems at birth only 14 to 15 percent of the time. The remaining 15 percent are due to other causes.

Cerebral palsy is a neurological disorder that can cause spasticity, loss of coordination and balance, contracted muscles, involuntary movements, hearing defects, seizures, and in some cases, mental retardation. It is often not apparent until well into the baby's first year, and affects from 1 to 3 of 1,000 babies born in the United States.

READ THE CLASSIFIEDS

Eastland Telegram, Cisco Press, Ranger Times, Rising Star, Callahan Co. Star
Thursday, February 6, 1992

MOBILE HOME TRANSPORTING Complete Moves & Setups Moving Throughout Texas • Tie Downs • Blocking & Leveling

* Licensed * Bonded * Insured
18 Years Experience
817-893-6753

5-104



CHIROPRACTIC FOR BETTER HEALTH

DR. STEPHEN G. BARRY
CHIROPRACTOR

MEDICAL RESEARCH SUPPORTS CHIROPRACTIC

The *British Medical Journal* reports that Chiropractic treatment of low back pain, which affects 75 million Americans, is superior to the standard regimen administered by medical doctors.

The study, published in the summer of 1990, indicated that chiropractic manipulation can relieve severe back pain quicker and at lower cost than medical treatment. Chiropractic patients experienced less pain and disability and missed fewer days work.

At Barry Chiropractic Clinic we are committed to not only getting

you free of back pain but treating those conditions which cause your pain. No symptom can be more depressing than persistent back pain. Don't delay treatment when help is readily available.

In the interest of better health from the office of:

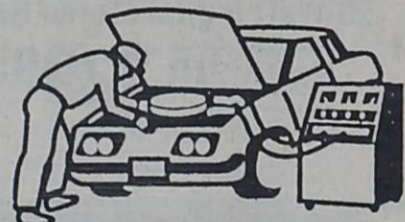
Dr. Stephen G. Barry
--Chiropractor--
951 E. Main, Eastland
629-1771

5-104

Gaines Automotive

Hi Tech Care For Hi Tech Cars

Computer Control & Ignition Analysis



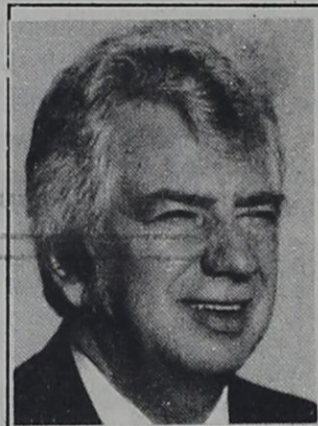
Hours: Mon.-Fri.
8:00 till 5:30
Sat. 8:00 till Noon

State Inspection Station
Eastland

314 W. Main

Owner
Blake Gaines
629-1008

5-104



Buddy Aaron
Managing General Agent
108 S. Seaman
P. O. Box 392
Eastland, Texas 76448
Business (817) 629-8533
Home (817) 629-1086

ATTENTION: All who are concerned with C.D.s, IRAs, Annuities, even Roll-Over IRAs

NOW'S THE TIME TO CONSIDER

GUARANTEED 7.50% ANNUAL RATE ANNUITIES

(7.25% monthly on \$5,000.00 to \$500,000.00)

Can leave interest in at the end of the year and it will be tax deferred

IT'LL PAY TO TALK TO BUDDY AS SOON AS POSSIBLE.

5-104



EASTLAND FARM & RANCH INC.
301 N. Seaman
Eastland, Texas 76448
(817) 629-2173 or 629-8035



Offering You Only the Best

Feed - Seed - Vet. Supplies - Liquid Feed - Pet Supplies
Lawn & Garden - Herbicides - Insecticides
Dry Fertilizer - Liquid Fertilizer - Custom Application

5-11

A-1 BUILDERS

Building & Remodeling

- ROOFING
- SIDING
- METAL BUILDINGS
- PLUMBING
- ELECTRICAL
- CONCRETE

Commercial * Residential

Jerry Maston • Owner 629-8148

5-104

DON'T OVERLOOK YOUR INSURANCE NEEDS

Serving Eastland County Since 1919

CONTACT

D.L. KINNAIRD GENERAL INSURANCE

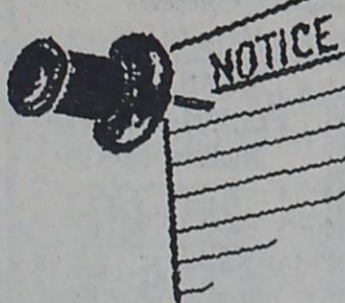
629-2544

629-8606

Sallie Kinnaird

104 N. Lamar

Mike Perry



Eleventh Court Of Appeals

AFFIRMED
11-90-217-CR Robert J. Milton v. State of Texas.-Stephens.

(Opinion by Judge Brown sitting by assignment). (Judge Arnot not participating).

11-90-226-CR Eddie Barnett Collins, Jr. v. State of Texas.-Taylor.

(Opinion by Judge Brown sitting by assignment). (Judge Arnot not participating).

11-90-277-CR Encarnacion Villasana v. State of Texas.-Scurry.

(Opinion by Judge Dickenson).

11-90-278-CR Encarnacion Villasana v. State of Texas.

(Opinion by Judge Dickenson).

11-91-054-CR Eddy Richardson a/k/a Eddy Woodrow Richardson v. State of Texas.-Erath.

(Opinion by Judge McCloud).

11-91-063-CR David Prado v. State of Texas.-Erath.

(Opinion by Judge McCloud).

REVERSED & REMANDED

11-90-269-CV V. L. J. v. J. E. C.-Jones.

(Opinion by Judge Dickenson).

APPEALS DISMISSED

11-91-191-CV Theodore Carrion v. State of Texas.-Taylor.

(Per Curiam Opinion).

11-92-022-CV The Town of Blanket, by and through its Mayor, C. T. Ham v. Leland C. Schulze and wife, Bettie Jo Schulze.-Brown.

(Per Curiam Opinion).

APPEAL ABATED

11-90-150-CR Ronald Matthew Cantrell v. State of Texas.-Palo Pinto.

(Per Curiam Order).

MOTIONS SUBMITTED & GRANTED

11-90-052-CR Louis William Alter, III v. State of Texas.-Harris.

Appellant's motion for extension of time to file motion for rehearing.

11-90-053-CR Robert Loyd Belcher v. State of Texas.-Harris.

Appellant's third motion for extension of time to file brief.

11-91-068-CV Miller Chemical & Fertilizer Corporation and ABM Chemicals, Ltd.

v. Kiser & Sons, Inc.-

Haskell. Appellants' fourth motion for extension of time to file statement of facts.

11-91-160-CR Jerry Wayne Taylor v. State of Texas.-Stephens.

State's third motion for extension of time to file brief.

11-91-183-CR Billy Ray Foster v. State of Texas.-Taylor.

State's motion for extension of time to file brief.

11-91-192-CR Kelvin Barnum v. State of Texas.-Taylor.

State's motion for extension of time to file brief.

11-91-196-CV In Re: K.C. and T.C., Children-Mitchell.

Appellant's third motion for extension of time to file statement of facts.

11-91-200-CR Delvin Jerome Livingston a/k/a Delvin Livingston v. State of Texas.-Erath.

State's motion to reset oral argument.

11-91-202-CV Horace Davis, Jr. et al v. Regina Greer-Netherly and Leatrice Greer.-Shelby.

Appellees' motion for permission to file late brief.

11-91-227-CR Benjamin Perea v. State of Texas.-Cherokee.

State's motion for extension of time to file brief.

11-91-239-CV Bob and Marsha Tice v. Ron Farish

Aircraft, Inc.-Smith. Appellants' motion for extension of time to file statement of facts.

Appellants' motion for extension of time to file brief.

11-91-275-CV Kenneth Walker c/b/a Superior Land & Cattle Company v. Glenn Winfrey d/b/a Cross Plains Grain & Peanut Company.-Callahan.

Appellant's motion for extension of time to file transcript.

11-91-281-CV Breckmor Production Company, Inc. v. Jim's Truck Service, Inc.-Stephens.

Appellant's motion for extension of time to file brief.

11-92-011-CV Exxon Corporation v. Hunt Graham.-Smith.

Appellant's motion for permission to file late statement of facts.

MOTIONS SUBMITTED & OVERRULED

11-90-070-CR Harold Ingram Burkett v. State of Texas.-Harris.

Appellant's motion for

rehearing. 11-90-206-CR Donald Gene Williams v. State of Texas.-Taylor.

Appellant's pro se petition for records.

11-90-207-CR Donald Gene Williams v. State of Texas.-Taylor.

Appellant's pro se petition for records.

11-90-273-CV Carl E. Collum et al v. City of Abilene.-Taylor.

Appellants' motion for rehearing.

11-92-022-CV The Town of Blanket, by and through its Mayor, C. T. Ham v. Leland C. Schulze and wife, Bettie Jo Schulze.-Brown.

Appellant's motion for extension of time to file notice of appeal.

Appellant's motion for extension of time to file motion for new trial.

Appellant's motion for extension of time to file bond.

CASES SUBMITTED

11-90-247-CV Chris Gould v. Gary Frost d/b/a Frost Motors.-Taylor.

11-91-008-CR Ivory Joe Walker v. State of Texas.-

Taylor. 11-91-028-CR Wesley Truitt Dixon v. State of Texas.-Stephens.

Social Security

People born after 1937 will have to be older than age 65 before they will be eligible to receive their full Social Security retirement benefits, Glyn Hammons, Social Security manager in Abilene said.

While life expectancies have increased dramatically since Social Security was enacted in 1935, the retirement age has remained the same.

People who are reaching retirement age now can start their Social Security benefits as early as age 62, but their benefit amount is reduced. If they wait until age 65 to start their Social Security, they receive a full, unreduced benefit.

The usual retirement age for people retiring now is age 65. Social Security calls this "full retirement age," and the benefit amount that is payable is considered the full retirement benefit.

Because of longer life expectancies, the full retirement age will be increased in gradual steps until it reaches age 67. This is the result of legislation enacted in 1983. This change starts in the year 2000, and it affects people born in 1938 and later.

Look at the chart below to find your full retirement age.

(Year of Birth, Full Retirement age)

1937 or earlier-65.
1938-65 and 2 months.
1939-65 and 4 months.
1940-65 and 6 months.
1941-65 and 8 months.
1942-65 and 10 months.
1943-1954-66
1955-66 and 2 months.
1956-66 and 4 months.
1957-66 and 6 months.
1958-66 and 8 months.
1959-66 and 10 months.
1960 and later-67.

For more information about Social Security benefits, contact the Abilene Social Security Office, 915-698-1360.

READ THE CLASSIFIEDS

Putnam Musical Set Friday

The regular Putnam musical will be Friday, Feb. 7, in the Putnam School. The concession stand will open at 5 p.m. and the music will start at 6 p.m. Everyone is invited to attend.

READ THE CLASSIFIEDS

Eastland Telegram, Cisco Press, Ranger Times, Rising Star, Callahan Co. Star
Thursday, February 6, 1992

Rust Processing Center & Rust Country Meats

Highway 80 East
Cisco, Texas
442-3495

Extra Clean Facilities

8:00-5:30 M-F Sat. 9-2
Owned & Operated by
Keith & Stacy Reich

Custom Processing

- Beef - 22¢ lb.
- Hogs, Goats, Lambs - 24¢ lb.

Cut to your order * We aim to please

1/2 Price Butcher Fee
During
Eastland County
Stockshow

Retail Sales

- All cuts of beef & pork
- Lunch meats & cheeses, sliced to your order.

Special This Month
25 lb. Freezer Pack **\$54.99**

We Accept Food Stamps

JOBS AVAILABLE

Feed Mill Maintenance Supervisor: Responsible for supervising and performing maintenance at our feed mill and other related facilities. Successful candidate must have:

- 1) A mechanical aptitude.
- 2) Cutting & welding skills.
- 3) No fear of climbing.
- 4) Be a self starter.
- 5) Previous experience in plant maintenance.
- 6) References.

Bulk Truck Drivers:

- 1) Must have good driving record.
- 2) Class A license.
- 3) References.

**TO ARRANGE INTERVIEW,
CALL 817-734-2252**

GORMAN MILLING CO.
Gorman, Texas 76454

SAVE \$25⁰⁰

Starting Feb. 5th, Clinton Hearing Aid Center will be offering a Special for a Hearing Aid Internal Repair for any brand for \$74.⁰⁰ (Reg. \$99.⁰⁰). The repair has a 6 month warranty for internal failure.

For service please come by
721 Conrad Hilton, Cisco
or Phone
817-442-2168

This Valentine's Day, give twice the love.



Give them Classic Sweets Chocolates now...

...and Hallmark mails them the Classic Sweets reminder later!

An exclusive selection of the finest milk and dark chocolates now, a delicious reminder of your love a few weeks later. Supplies are limited, so get yours today.

All for \$3⁹⁵ with any Hallmark card purchase

Hallmark
Heather's Hallmark
Hwy 80 E., Eastland
629-3521

817/629-3631 OPEN 8:00 - 5:30
SAT. 8:00 - 12:30



EXPRESS PHOTO

SAME DAY PHOTO PROCESSING
COLOR, BLACK & WHITE, PHOTO REPRODUCTION

601 W. Main

BILL CULVERHOUSE, OWNER


- Wedding
- Sports
- Studio Pictures
- Passports
- I D Cards
- Immigration pictures



Serving all your photographic needs

Pharmacy Topics

By Bob Mueller



Gallium nitrate, used against Paget's disease, seemed to slow its progress dramatically. Destructive bone process of Paget's often causes pain, deformities and fractures; treatment cut that in half.

Children who had a cold when they got the measles vaccine may not be adequately protected, research at the Army Medical Center in Tacoma, Washington, found. If there's a question, check with your doctor.

New form of interferon presents a specific treatment for chronic hepatitis B. In tests, large doses seemed to cure the disease; smaller doses stopped its spread.

Newer types of artificial knees are getting better long-term results, the British journal *Lancet* reports. Even younger, more active patients are doing well 10 years after the operation.

Oral contraceptive pills may be made less effective temporarily by the use of non-steroidal anti-inflammatory drugs and others. Check with your doctor; additional contraception may be advised.

You always get expert service when you bring your doctor's prescription to Walmart Pharmacy Hwy 80 East, Eastland, 629-3347.

cers104

I-20 MOTORS

19th & I-20
Cisco, Texas
(817) 442-4262 or 442-2161

<p>81 Chevy Luv Pickup, 5 sp., deisel.....\$2550</p> <p>88 Chevy Celebrity Wagon, extra clean, fully loaded, auto, air.....\$4550</p> <p>85 Plymouth Reliant Auto, Air.....\$1500</p> <p>87 Dodge Dakota, air & power, 5 sp.....\$4450</p> <p>89 Dodge Dynasty V-6, Auto, Air, Cruise, Elec. locks, AM/FM Cassette, 1 Owner.....\$5550</p> <p>87 Ford Taurus V-6, LX Auto, Air, Cruise, Tilt, Eletec. Windows & locks, AM/FM Cassette, 1 Owner.....\$4250</p> <p>87 Dodge Diplomat, Auto, Air, Cruise, Tilt, 1 Owner, Locally Owned, 8,000 actual miles.....\$4995</p> <p>89 Pontiac GrandAm 5 Sp, Air, AM/FM, Stereo Like new.....\$3995</p>	<p>89 Escort, 4 spd., w/air, nice car.....\$3495</p> <p>83 Oldsmobile, Delta 88 Royale Brougham, 4 dr., auto, air, extra clean car.....\$2250</p> <p>89 Tempo, 35000 miles, Red, 2 dr.....\$4650</p> <p>89 Tempo blue, low miles, 2 dr, 5 sp., 35,000 miles.....\$4450</p> <p>89 Escort Wagon, low mileage.....\$4950</p> <p>89 Ford Tempo, red, auto, air, low mileage.....\$4450</p> <p>88 Ford Aerostar Van, Fully Loaded w/Seats, 5 Sp.....\$4950</p> <p>88 Ford Tempo, Auto, Air, AM/FM, 60,000 miles, 1 owner, Extra nice car.....\$3750</p> <p>84 Ford Deisel Auto, Air.....\$3250</p> <p>89 Ford Tempo 4 dr., Auto, Air, Cruise, Tilt, AM/FM, 1 Owner, 45,000 actual miles New tires.....\$4200</p>
---	---

Other Cars To Choose From

RANDY GATTIS PLUMBING

Residential & Commercial Repairs
Remodeling & New Construction
Electric Sewer & Sink Cleaning Machines
Water Heaters & Plumbing Fixtures
State Licensed - Master License - M-18038

Free Estimates
Call: 442-1688 24 hrs/day
106 Ave. I Cisco, Texas

5-104

Eastland County Bass Club County Retired Teachers To Hold Meeting February 10

The Eastland County Bass Club will hold its monthly club meeting this Thursday, Feb. 6, at the Eastland National Bank. This meeting will begin at 7:30 p.m. At this meeting a report will be given about the challenge fishing tournament held on Possum Kingdom against the Breckenridge Bass Club on Sunday, Feb. 2. In this challenge meet the ECBC came in second place.

The ECBC will welcome guests at this meeting and explain questions about our club and its activities.

The next interclub monthly club tournament will be Sunday, Feb. 9. Interested anglers will meet at Double Vision Restaurant in Eastland for the drawing of the lake to be fished. All the anglers pay their entry fee

they can put their favorite lake into the hat. After the drawing of the lake, fishing hours will be set and Lake Cisco was fished last month so it can't be fished this month.

cash in with a classified ad...

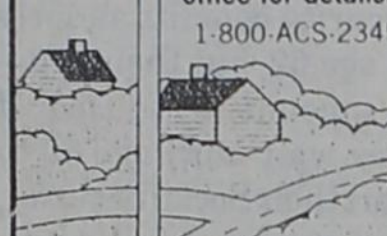
TAKE A MOMENT TO THINK ABOUT BREAST CANCER.

Approximately one in every nine women will develop breast cancer in her lifetime. Learn the facts about a disease that touches all our lives. For further information regarding early detection, call (800) 221-2141 weekdays, 9:00 a.m.-5:00 p.m. (central time zone).

Y-ME
National Breast Cancer Hotline

...that's what you'll get as an American Cancer Society Road to Recovery volunteer driver. Call now and learn how you can help someone down that road. Training and smiles provided.

Call your local American Cancer Society office for details. 1.800.ACS.2345



MAYNARD REAL ESTATE

629-8568 Maynard Building, Hwy 80 East, Eastland, Texas

WE APPRECIATE YOUR BUSINESS!! Available Nights and Weekends

COMMERCIAL
\$4,500 - lot 70 x 94', 10 acres on I-20 S. Access Rd. Perfect building or commercial site, city water with electricity.
\$10,000 - Commercial town lot 70 x 115 with 20' x 28' metal building with city utilities and 1/2 acre. Excellent vehicle port. Concrete floor.
\$25,000 - 160' x 150' land on N. I-20 service rd. Will owner finance.
\$38,500 - 3BR, 1 1/2 bath, CHA, "Friendship" mobile home on 2 acres of Interstate 20 frontage. Plus a 50' x 70' metal building with 20' x 70' attached metal shed on side. City water, electric, central air conditioning.
\$110,000 - 38.693 acres of commercial property on Interstate 20 S. access Rd. 50' x 100' metal building with partition N. to S. through building. Makes two offices or two living quarters. Approx. 5 managers' apartment, metal construction for low maintenance, picnic area and laundry facilities, window units with heat and A/C, in addition to back-up solar unit. Excellent opportunity for lucrative investment.

EASTLAND HOMES AND LOTS
\$2,500 for two 50' x 140' lot with trees. Centrally located.
\$5,000 for two lots in town, electricity and water available.
\$5,000 - 2 BR, 1 Bath, frame home on shady lot. Will sell in "as is" condition. May be used for commercial or residential venture.
\$6,000 - 3 BR, 1 Bath on good city lot. Very little needed to make a really cute home.
\$7,500 - Large 2 1/4 acre lot near school.
\$9,000 - Five 100' x 200' lots or may be sold separately for \$2,500.00 each.
\$10,000 - Four hillside residential lots in exclusive location.
\$10,000 - 3 BR, 1 Bath, frame home with swimming pool. Spacious, shady lot totally fenced. CHA with heat pump.
\$12,500 - Two centrally located homes on two adjoining lots. Needs work for great investment. One centrally located, one on corner.
\$12,500 - EVERYTHING GOES! 1 BR, 1 bath home with carpet, carpet, large yard, new plumbing. All furniture, dishes, refrigerator, stereo bed, dresser, good pool, etc. Call for details.
\$16,500 - 2 BR, 2 Bath "Arctic" mobile home on 3 beautifully landscaped lots. CHA, Dishwasher, range, lots of cabinet space and separate utility area. New carpet, tile floor, granite tub, in master bath. Back deck of redwood with white guard railing. Redwood playground area. 12' x 12' sauna for children's play.
\$16,800 - 3 BR, 1 Bath, 1 1/2 bath, mobile home on 1/2 acre. Great shady yard.
\$18,000 - 4 BR, 2 bath home in excellent location. Beautiful and outstanding master bedroom. Home with fantastic value at this price.
\$28,000 - 3 BR, 2 bath double wide mobile home on large lot with Pecan and Elm trees. CHA, built-in stove and microwave, washer and dryer hook-ups, carpet, covered front porch, 2 car garage, large storage building. Completely undepreciated and in very private area of town.
\$29,500 - 2 BR, 1 Bath frame with siding. Completely remodeled interior. New carpet. Built-in oven and countertop top range. Superior insulation in walls and ceiling. New plumbing and wiring. Double carport.
\$38,000 - 4 BR, 1 1/2 bath frame home and nice neighborhood. Built-in double oven, large utility room and fenced back yard.
\$42,000 - 2 BR, 2 bath newly remodeled home in nice neighborhood. Double car garage, workshop, and storage facilities, magnificent yard.
\$44,000 - 3 BR, 1 bath with double vanity. CHA, built-ins with new appliances, double car garage with matching workshop.
\$42,400 - 3 BR, 2 bath new brick with siding home in city limits. On large lot. CHA, large washing area, double car garage.
\$56,800 - 4 BR, 1 1/2 bath, two story formal and elegant home with European touches. Red tile floor with slucco wood exterior, imported fixtures, exquisite wallpaper, appointments and chandeliers from Spain and Italy. A truly lavish home, greatly undepreciated. Located on three large lots, this home has every offering. Call for details.
\$58,000 - 4 BR, 2 bath beautiful brick home total elec., double car garage, electric ovens. Professionally landscaped, extra building, swimming pool, hot tub, 3 car garage, house, and 1 1/4 acre.
\$60,000 - 3 BR, 2 bath, frame with siding home on 1 1/4 acres. Built-in CHA, swimming pool, large utility room and electric efficient home located across street from golf course.
\$74,000 - 3 BR, brick home with approx. 1,650 sq. ft. CHA, tiled floors, fireplace, walk-in closets with organizers, shelves, big windows with great view. 2 car garage, electric ovens, large utility room.
\$85,000 - 4 BR, 2 bath, 1 1/2 bath, mobile home on 1/2 acre. CHA, fireplace. Excellent location in shady and quiet neighborhood. Large, beautiful game and sun room. Two car garage with electric door openers. Formal living room, dining room, kitchen, and bathroom. Large closets in den and living area. Storage house. Truly lovely and "perfect condition" home.
\$88,000 - 3 BR, 2 bath, mobile home, garden bath and mirrored closets and bathrooms add a dramatic touch to this extremely unique home. CHA, energy efficient. Fantastic wet bar with awning and luxurious decorative touches throughout. Rock fireplace and beamed ceiling. All kitchen appliances built-in, with Jenn-Air Island range and breakfast bar. Large private lot in very exclusive part of Eastland.

LAKE LEON HOMES AND LOTS
\$3,950 - Two lake front lots, 100' x 100', 100' x 100', 100' x 100'.
\$116,500 - 100' x 100' x 100' lot, septic system, electricity, cement patios, walkways and steps to lake. 24' x 24' metal workshop with double doors with garage, built-in 100' x 100' x 100' x 500 gal. butane tanks, boat dock and beautiful landscaping.
\$18,500 - 2 BR, 1 bath mobile home in private and gorgeous green wooded and creek area. Staff meter, 500 gallon butane tank, fruit and pecan trees. Great water front property.
\$20,500 - 2 BR, 1 bath, mobile home on 1/2 acre. 344 acres. Staff meter, fenced, carport, storm cellar, storage house, 250 gal. butane tank and big T.V. antenna.
\$22,000 - Two deeded gorgeous lake frontage near Lone Cedar Country Club. Small boat dock, deep water.
\$25,000 - Large cabin with bath, high screened in porch, stove, refrigerator, refrigerator, built-in water front lot approx. 100' x 200' on deep water. Lake pump and filtration system, 250 gal. butane tank. Private area of the lake.
\$27,800 - Cabin - 2 story building with workbench and granite counter. Stove, refrigerator, built-in drawers and cabinets in bedroom, cement porch and two walk-in closets.
\$29,000 - 3 BR, 2 bath, mobile home on 1/2 acre. Screened porch, stove, refrigerator, Staff water and septic system.
\$29,000 - 1 BR, 3/4 bath, mobile home on 1/2 acre. Screened porch, stove, refrigerator, Staff water and septic system.
\$30,000 - 4 BR, 2 bath mobile home on 1/2 acre. 1600 sq. ft. CHA, carpet, 2 story building with workbench and granite counter. Guards rails, front and back. Large cement patio. T.V. Satellite, total electric and energy efficient. Irrigation system for lawn and fruit trees plus large deck, hot tub, shower, and concrete landing. Break fast bar, separate dining area, large windows and custom drapes. Wood burning stove, fireplace, and concrete landing. Yard.
\$30,000 - 2 BR, 1 bath home on deeded lot. Large kitchen. Pump house with pump.
\$30,000 - 2 BR, 1 bath mobile home on deeded lot. Great walkway and boat dock and cemented, covered patio area. Private and serene location.
\$35,000 - 2 Bedroom, 2 bath mobile home located on approx. 100' x 195' waterfront lot with dock on deep water. Lake pump and filtration system. CHA, T.V. and satellite and remote and location antenna, ceiling fans, hot tub, stove, washer and dryer. 500 gal. butane tank, storage building.
\$47,500 - 2 BR, 2 bath, gorgeous mobile home with matching storage house. CHA, kitchen built-ins including dishwasher, Cathedral ceilings, cement dock and boat ramp. Butane tank and staff meter, excellent lake frontage property.
\$55,000 - 3 BR, 2 bath frame home on 5 acres of very private Lake Leon property. Staff meter, carpet, paneled, large closets, huge utility room, covered back porch, garage with storage, storage building. Small pond in front yard, cultivation on property and landscaping. New and lovely lake front home on 1/2 acre. CHA, kitchen, built-in ceiling fans and skylight. Great direct and indirect lighting. Custom drapes, big utility area with built-in shelves and counters. Garden areas, brick walkways and lovely deck patios. Storage house and neat guest house, sprinkler system, boat house with boat dock, which and hose.
\$58,400 - 3 BR, 2 bath, total electric. Beautiful and unique lake home on 1/2 x 350' lot. Built-ins, range, oven and dishwasher. Cathedral ceiling, large, spacious rooms with walk-in closets. New carpet and tile. Two storage buildings, staff meter and lake pump. Apricot, cherry, and many other fruit and native trees. Possible owner financing.
\$67,300 - 2 BR, 1 bath log cabin on deep water exclusive location on deeded lot.
\$69,400 - Gorgeous 2 bedroom home on Lake Leon water front, large kitchen, lots of cabinets and storage, big screened in porch, double carport, large utility room, built-in water front lot approx. 100' x 100' x 100'. White rail fencing, double car port and guard lights. T.V. satellite, workshop, 2 horse stalls, paved parking tarport, separate guest house, walkway, and dock. Fruit trees and ducks go to.
\$110,000 - 3 BR, 1 3/4 bath two story house with approx. 3000 sq. ft. located on beautiful lake front lot. CHA Staff meter, septic system, covered back porch, large utility room, built-in shelves, lights, barbecue and lots of trees.
\$125,000 - Beautiful 3000 sq. ft. two story home on one acre of water front property. CHA, Staff meter, total electric, kitchen with built-ins, glassed in kitchen cabinets, kitchen bar and china cabinet. Master bedroom with beautiful tile floor. Full bathroom, dressing room, huge sunroom and sitting area, sliding door to huge deck with benches. Large utility and laundry room with sink, closets and lots of storage. 2 car garage with H.A. hook-ups. So many extras, must see to believe.
\$190,000 - 2 BR, 1 3/4 bath, brick house located on 100 acres of beautiful lake property. CHA, staff water, built-in, fireplace, carport and pool. Separate guest quarters with large garage room that could be used as rent property. Horse barn, tack room, large hay barn, horse water and irrigation system for lawns and fields.

LAKE LEON HOMES AND LOTS
\$3,950 - Two lake front lots, 100' x 100', 100' x 100'.
\$116,500 - 100' x 100' x 100' lot, septic system, electricity, cement patios, walkways and steps to lake. 24' x 24' metal workshop with double doors with garage, built-in 100' x 100' x 100' x 500 gal. butane tanks, boat dock and beautiful landscaping.
\$18,500 - 2 BR, 1 bath mobile home in private and gorgeous green wooded and creek area. Staff meter, 500 gallon butane tank, fruit and pecan trees. Great water front property.
\$20,500 - 2 BR, 1 bath, mobile home on 1/2 acre. 344 acres. Staff meter, fenced, carport, storm cellar, storage house, 250 gal. butane tank and big T.V. antenna.
\$22,000 - Two deeded gorgeous lake frontage near Lone Cedar Country Club. Small boat dock, deep water.
\$25,000 - Large cabin with bath, high screened in porch, stove, refrigerator, refrigerator, built-in water front lot approx. 100' x 200' on deep water. Lake pump and filtration system, 250 gal. butane tank. Private area of the lake.
\$27,800 - Cabin - 2 story building with workbench and granite counter. Stove, refrigerator, built-in drawers and cabinets in bedroom, cement porch and two walk-in closets.
\$29,000 - 3 BR, 2 bath, mobile home on 1/2 acre. Screened porch, stove, refrigerator, Staff water and septic system.
\$29,000 - 1 BR, 3/4 bath, mobile home on 1/2 acre. Screened porch, stove, refrigerator, Staff water and septic system.
\$30,000 - 4 BR, 2 bath mobile home on 1/2 acre. 1600 sq. ft. CHA, carpet, 2 story building with workbench and granite counter. Guards rails, front and back. Large cement patio. T.V. Satellite, total electric and energy efficient. Irrigation system for lawn and fruit trees plus large deck, hot tub, shower, and concrete landing. Break fast bar, separate dining area, large windows and custom drapes. Wood burning stove, fireplace, and concrete landing. Yard.
\$30,000 - 2 BR, 1 bath home on deeded lot. Large kitchen. Pump house with pump.
\$30,000 - 2 BR, 1 bath mobile home on deeded lot. Great walkway and boat dock and cemented, covered patio area. Private and serene location.
\$35,000 - 2 Bedroom, 2 bath mobile home located on approx. 100' x 195' waterfront lot with dock on deep water. Lake pump and filtration system. CHA, T.V. and satellite and remote and location antenna, ceiling fans, hot tub, stove, washer and dryer. 500 gal. butane tank, storage building.
\$47,500 - 2 BR, 2 bath, gorgeous mobile home with matching storage house. CHA, kitchen built-ins including dishwasher, Cathedral ceilings, cement dock and boat ramp. Butane tank and staff meter, excellent lake frontage property.
\$55,000 - 3 BR, 2 bath frame home on 5 acres of very private Lake Leon property. Staff meter, carpet, paneled, large closets, huge utility room, covered back porch, garage with storage, storage building. Small pond in front yard, cultivation on property and landscaping. New and lovely lake front home on 1/2 acre. CHA, kitchen, built-in ceiling fans and skylight. Great direct and indirect lighting. Custom drapes, big utility area with built-in shelves and counters. Garden areas, brick walkways and lovely deck patios. Storage house and neat guest house, sprinkler system, boat house with boat dock, which and hose.
\$58,400 - 3 BR, 2 bath, total electric. Beautiful and unique lake home on 1/2 x 350' lot. Built-ins, range, oven and dishwasher. Cathedral ceiling, large, spacious rooms with walk-in closets. New carpet and tile. Two storage buildings, staff meter and lake pump. Apricot, cherry, and many other fruit and native trees. Possible owner financing.
\$67,300 - 2 BR, 1 bath log cabin on deep water exclusive location on deeded lot.
\$69,400 - Gorgeous 2 bedroom home on Lake Leon water front, large kitchen, lots of cabinets and storage, big screened in porch, double carport, large utility room, built-in water front lot approx. 100' x 100' x 100'. White rail fencing, double car port and guard lights. T.V. satellite, workshop, 2 horse stalls, paved parking tarport, separate guest house, walkway, and dock. Fruit trees and ducks go to.
\$110,000 - 3 BR, 1 3/4 bath two story house with approx. 3000 sq. ft. located on beautiful lake front lot. CHA Staff meter, septic system, covered back porch, large utility room, built-in shelves, lights, barbecue and lots of trees.
\$125,000 - Beautiful 3000 sq. ft. two story home on one acre of water front property. CHA, Staff meter, total electric, kitchen with built-ins, glassed in kitchen cabinets, kitchen bar and china cabinet. Master bedroom with beautiful tile floor. Full bathroom, dressing room, huge sunroom and sitting area, sliding door to huge deck with benches. Large utility and laundry room with sink, closets and lots of storage. 2 car garage with H.A. hook-ups. So many extras, must see to believe.
\$190,000 - 2 BR, 1 3/4 bath, brick house located on 100 acres of beautiful lake property. CHA, staff water, built-in, fireplace, carport and pool. Separate guest quarters with large garage room that could be used as rent property. Horse barn, tack room, large hay barn, horse water and irrigation system for lawns and fields.

LAKE LEON HOMES AND LOTS
\$3,950 - Two lake front lots, 100' x 100', 100' x 100'.
\$116,500 - 100' x 100' x 100' lot, septic system, electricity, cement patios, walkways and steps to lake. 24' x 24' metal workshop with double doors with garage, built-in 100' x 100' x 100' x 500 gal. butane tanks, boat dock and beautiful landscaping.
\$18,500 - 2 BR, 1 bath mobile home in private and gorgeous green wooded and creek area. Staff meter, 500 gallon butane tank, fruit and pecan trees. Great water front property.
\$20,500 - 2 BR, 1 bath, mobile home on 1/2 acre. 344 acres. Staff meter, fenced, carport, storm cellar, storage house, 250 gal. butane tank and big T.V. antenna.
\$22,000 - Two deeded gorgeous lake frontage near Lone Cedar Country Club. Small boat dock, deep water.
\$25,000 - Large cabin with bath, high screened in porch, stove, refrigerator, refrigerator, built-in water front lot approx. 100' x 200' on deep water. Lake pump and filtration system, 250 gal. butane tank. Private area of the lake.
\$27,800 - Cabin - 2 story building with workbench and granite counter. Stove, refrigerator, built-in drawers and cabinets in bedroom, cement porch and two walk-in closets.
\$29,000 - 3 BR, 2 bath, mobile home on 1/2 acre. Screened porch, stove, refrigerator, Staff water and septic system.
\$29,000 - 1 BR, 3/4 bath, mobile home on 1/2 acre. Screened porch, stove, refrigerator, Staff water and septic system.
\$30,000 - 4 BR, 2 bath mobile home on 1/2 acre. 1600 sq. ft. CHA, carpet, 2 story building with workbench and granite counter. Guards rails, front and back. Large cement patio. T.V. Satellite, total electric and energy efficient. Irrigation system for lawn and fruit trees plus large deck, hot tub, shower, and concrete landing. Break fast bar, separate dining area, large windows and custom drapes. Wood burning stove, fireplace, and concrete landing. Yard.
\$30,000 - 2 BR, 1 bath home on deeded lot. Large kitchen. Pump house with pump.
\$30,000 - 2 BR, 1 bath mobile home on deeded lot. Great walkway and boat dock and cemented, covered patio area. Private and serene location.
\$35,000 - 2 Bedroom, 2 bath mobile home located on approx. 100' x 195' waterfront lot with dock on deep water. Lake pump and filtration system. CHA, T.V. and satellite and remote and location antenna, ceiling fans, hot tub, stove, washer and dryer. 500 gal. butane tank, storage building.
\$47,500 - 2 BR, 2 bath, gorgeous mobile home with matching storage house. CHA, kitchen built-ins including dishwasher, Cathedral ceilings, cement dock and boat ramp. Butane tank and staff meter, excellent lake frontage property.
\$55,000 - 3 BR, 2 bath frame home on 5 acres of very private Lake Leon property. Staff meter, carpet, paneled, large closets, huge utility room, covered back porch, garage with storage, storage building. Small pond in front yard, cultivation on property and landscaping. New and lovely lake front home on 1/2 acre. CHA, kitchen, built-in ceiling fans and skylight. Great direct and indirect lighting. Custom drapes, big utility area with built-in shelves and counters. Garden areas, brick walkways and lovely deck patios. Storage house and neat guest house, sprinkler system, boat house with boat dock, which and hose.
\$58,400 - 3 BR, 2 bath, total electric. Beautiful and unique lake home on 1/2 x 350' lot. Built-ins, range, oven and dishwasher. Cathedral ceiling, large, spacious rooms with walk-in closets. New carpet and tile. Two storage buildings, staff meter and lake pump. Apricot, cherry, and many other fruit and native trees. Possible owner financing.
\$67,300 - 2 BR, 1 bath log cabin on deep water exclusive location on deeded lot.
\$69,400 - Gorgeous 2 bedroom home on Lake Leon water front, large kitchen, lots of cabinets and storage, big screened in porch, double carport, large utility room, built-in water front lot approx. 100' x 100' x 100'. White rail fencing, double car port and guard lights. T.V. satellite, workshop, 2 horse stalls, paved parking tarport, separate guest house, walkway, and dock. Fruit trees and ducks go to.
\$110,000 - 3 BR, 1 3/4 bath two story house with approx. 3000 sq. ft. located on beautiful lake front lot. CHA Staff meter, septic system, covered back porch, large utility room, built-in shelves, lights, barbecue and lots of trees.
\$125,000 - Beautiful 3000 sq. ft. two story home on one acre of water front property. CHA, Staff meter, total electric, kitchen with built-ins, glassed in kitchen cabinets, kitchen bar and china cabinet. Master bedroom with beautiful tile floor. Full bathroom, dressing room, huge sunroom and sitting area, sliding door to huge deck with benches. Large utility and laundry room with sink, closets and lots of storage. 2 car garage with H.A. hook-ups. So many extras, must see to believe.
\$190,000 - 2 BR, 1 3/4 bath, brick house located on 100 acres of beautiful lake property. CHA, staff water, built-in, fireplace, carport and pool. Separate guest quarters with large garage room that could be used as rent property. Horse barn, tack room, large hay barn, horse water and irrigation system for lawns and fields.

LAKE LEON HOMES AND LOTS
\$3,950 - Two lake front lots, 100' x 100', 100' x 100'.
\$116,500 - 100' x 100' x 100' lot, septic system, electricity, cement patios, walkways and steps to lake. 24' x 24' metal workshop with double doors with garage, built-in 100' x 100' x 100' x 500 gal. butane tanks, boat dock and beautiful landscaping.
\$18,500 - 2 BR, 1 bath mobile home in private and gorgeous green wooded and creek area. Staff meter, 500 gallon butane tank, fruit and pecan trees. Great water front property.
\$20,500 - 2 BR, 1 bath, mobile home on 1/2 acre. 344 acres. Staff meter, fenced, carport, storm cellar, storage house, 250 gal. butane tank and big T.V. antenna.
\$22,000 - Two deeded gorgeous lake frontage near Lone Cedar Country Club. Small boat dock, deep water.
\$25,000 - Large cabin with bath, high screened in porch, stove, refrigerator, refrigerator, built-in water front lot approx. 100' x 200' on deep water. Lake pump and filtration system, 250 gal. butane tank. Private area of the lake.
\$27,800 - Cabin - 2 story building with workbench and granite counter. Stove, refrigerator, built-in drawers and cabinets in bedroom, cement porch and two walk-in closets.
\$29,000 - 3 BR, 2 bath, mobile home on 1/2 acre. Screened porch, stove, refrigerator, Staff water and septic system.
\$29,000 - 1 BR, 3/4 bath, mobile home on 1/2 acre. Screened porch, stove, refrigerator, Staff water and septic system.
\$30,000 - 4 BR, 2 bath mobile home on 1/2 acre. 1600 sq. ft. CHA, carpet, 2 story building with workbench and granite counter. Guards rails, front and back. Large cement patio. T.V. Satellite, total electric and energy efficient. Irrigation system for lawn and fruit trees plus large deck, hot tub, shower, and concrete landing. Break fast bar, separate dining area, large windows and custom drapes. Wood burning stove, fireplace, and concrete landing. Yard.
\$30,000 - 2 BR, 1 bath home on deeded lot. Large kitchen. Pump house with pump.
\$30,000 - 2 BR, 1 bath mobile home on deeded lot. Great walkway and boat dock and cemented, covered patio area. Private and serene location.
\$35,000 - 2 Bedroom, 2 bath mobile home located on approx. 100' x 195' waterfront lot with dock on deep water. Lake pump and filtration system. CHA, T.V. and satellite and remote and location antenna, ceiling fans, hot tub, stove, washer and dryer. 500 gal. butane tank, storage building.
\$47,500 - 2 BR, 2 bath, gorgeous mobile home with matching storage house. CHA, kitchen built-ins including dishwasher, Cathedral ceilings, cement dock and boat ramp. Butane tank and staff meter, excellent lake frontage property.
\$55,000 - 3 BR, 2 bath frame home on 5 acres of very private Lake Leon property. Staff meter, carpet, paneled, large closets, huge utility room, covered back porch, garage with storage, storage building. Small pond in front yard, cultivation on property and landscaping. New and lovely lake front home on 1/2 acre. CHA, kitchen, built-in ceiling fans and skylight. Great direct and indirect lighting. Custom drapes, big utility area with built-in shelves and counters. Garden areas, brick walkways and lovely deck patios. Storage house and neat guest house, sprinkler system, boat house with boat dock, which and hose.
\$58,400 - 3 BR, 2 bath, total electric. Beautiful and unique lake home on 1/2 x 350' lot. Built-ins, range, oven and dishwasher. Cathedral ceiling, large, spacious rooms with walk-in closets. New carpet and tile. Two storage buildings, staff meter and lake pump. Apricot, cherry, and many other fruit and native trees. Possible owner financing.
\$67,300 - 2 BR, 1 bath log cabin on deep water exclusive location on deeded lot.
\$69,400 - Gorgeous 2 bedroom home on Lake Leon water front, large kitchen, lots of cabinets and storage, big screened in porch, double carport, large utility room, built-in water front lot approx. 100' x 100' x 100'. White rail fencing, double car port and guard lights. T.V. satellite, workshop, 2 horse stalls, paved parking tarport, separate guest house, walkway, and dock. Fruit trees and ducks go to.
\$110,000 - 3 BR, 1 3/4 bath two story house with approx. 3000 sq. ft. located on beautiful lake front lot. CHA Staff meter, septic system, covered back porch, large utility room, built-in shelves, lights, barbecue and lots of trees.
\$125,000 - Beautiful 3000 sq. ft. two story home on one acre of water front property. CHA, Staff meter, total electric, kitchen with built-ins, glassed in kitchen cabinets, kitchen bar and china cabinet. Master bedroom with beautiful tile floor. Full bathroom, dressing room, huge sunroom and sitting area, sliding door to huge deck with benches. Large utility and laundry room with sink, closets and lots of storage. 2 car garage with H.A. hook-ups. So many extras, must see to believe.
\$190,000 - 2 BR, 1 3/4 bath, brick house located on 100 acres of beautiful lake property. CHA, staff water, built-in, fireplace, carport and pool. Separate guest quarters with large garage room that could be used as rent property. Horse barn, tack room, large hay barn, horse water and irrigation system for lawns and fields.

LAKE LEON HOMES AND LOTS
\$3,950 - Two lake front lots, 100' x 100', 100' x 100'.
\$116,500 - 100' x 100' x 100' lot, septic system, electricity, cement patios, walkways and steps to lake. 24' x 24' metal workshop with double doors with garage, built-in 100' x 100' x 100' x 500 gal. butane tanks, boat dock and beautiful landscaping.
\$18,500 - 2 BR, 1 bath mobile home in private and gorgeous green wooded and creek area. Staff meter, 500 gallon butane tank, fruit and pecan trees. Great water front property.
\$20,500 - 2 BR, 1 bath, mobile home on 1/2 acre. 344 acres. Staff meter, fenced, carport, storm cellar, storage house, 250 gal. butane tank and big T.V. antenna.
\$22,000 - Two deeded gorgeous lake frontage near Lone Cedar Country Club. Small boat dock, deep water.
\$25,000 - Large cabin with bath, high screened in porch, stove, refrigerator, refrigerator, built-in water front lot approx. 100' x 200' on deep water. Lake pump and filtration system, 250 gal. butane tank. Private area of the lake.
\$27,800 - Cabin - 2 story building with workbench and granite counter. Stove, refrigerator, built-in drawers and cabinets in bedroom, cement porch and two walk-in closets.
\$29,000 - 3 BR, 2 bath, mobile home on 1/2 acre. Screened porch, stove, refrigerator, Staff water and septic system.
\$29,000 - 1 BR, 3/4 bath, mobile home on 1/2 acre. Screened porch, stove, refrigerator, Staff water and septic system.
\$30,000 - 4 BR, 2 bath mobile home on 1/2 acre. 1600 sq. ft. CHA, carpet, 2 story building with workbench and granite counter. Guards rails, front and back. Large cement patio. T.V. Satellite, total electric and energy efficient. Irrigation system for lawn and fruit trees plus large deck, hot tub, shower, and concrete landing. Break fast bar, separate dining area, large windows and custom drapes. Wood burning stove, fireplace, and concrete landing. Yard.
\$30,000 - 2 BR, 1 bath home on deeded lot. Large kitchen. Pump house with pump.
\$30,000 - 2 BR, 1 bath mobile home on deeded lot. Great walkway and boat dock and cemented, covered patio area. Private and serene location.
\$35,000 - 2 Bedroom, 2 bath mobile home located on approx. 100' x 195' waterfront lot with dock on deep water. Lake pump and filtration system. CHA, T.V. and satellite and remote and location antenna, ceiling fans, hot tub, stove, washer and dryer. 500 gal. butane tank, storage building.
\$47,500 - 2 BR, 2 bath, gorgeous mobile home with matching storage house. CHA, kitchen built-ins including dishwasher, Cathedral ceilings, cement dock and boat ramp. Butane tank and staff meter, excellent lake frontage property.
\$55,000 - 3 BR, 2 bath frame home on 5 acres of very private Lake Leon property. Staff meter, carpet, paneled, large closets, huge utility room, covered back porch, garage with storage, storage building. Small pond in front yard, cultivation on property and landscaping. New and lovely lake front home on 1/2 acre. CHA, kitchen, built-in ceiling fans and skylight. Great direct and indirect lighting. Custom drapes, big utility area with built-in shelves and counters. Garden areas, brick walkways and lovely deck patios. Storage house and neat guest house, sprinkler system, boat house with boat dock, which and hose.
\$58,400 - 3 BR, 2 bath, total electric. Beautiful and unique lake home on 1/2 x 350' lot. Built-ins, range, oven and dishwasher. Cathedral ceiling, large, spacious rooms with walk-in closets. New carpet and tile. Two storage buildings, staff meter and lake pump. Apricot, cherry, and many other fruit and native trees. Possible owner financing.
\$67,300 - 2 BR, 1 bath log cabin on deep water exclusive location on deeded lot.
\$69,400 - Gorgeous 2 bedroom home on Lake Leon water front, large kitchen, lots of cabinets and storage, big screened in porch, double carport, large utility room, built-in water front lot approx. 100' x 100' x 100'. White rail fencing, double car port and guard lights. T.V. satellite, workshop, 2 horse stalls, paved parking tarport, separate guest house, walkway, and dock. Fruit trees and ducks go to.
\$110,000 - 3 BR, 1 3/4 bath two story house with approx. 3000 sq. ft. located on beautiful lake front lot. CHA Staff meter, septic system, covered back porch, large utility room, built-in shelves, lights, barbecue and lots of trees.
\$125,000 - Beautiful 3000 sq. ft. two story home on one acre of water front property. CHA, Staff meter, total electric, kitchen with built-ins, glassed in kitchen cabinets, kitchen bar and china cabinet. Master bedroom with beautiful tile floor. Full bathroom, dressing room, huge sunroom and sitting area, sliding door to huge deck with benches. Large utility and laundry room with sink, closets and lots of storage. 2 car garage with H.A. hook-ups. So many extras, must see to believe.
\$190,000 - 2 BR, 1 3/4 bath, brick house located on 100 acres of beautiful lake property. CHA, staff water, built-in, fireplace, carport and pool. Separate guest quarters with large garage room that could be used as rent property. Horse barn, tack room, large hay barn, horse water and irrigation system for lawns and fields.

LAKE LEON HOMES AND LOTS
\$3,950 - Two lake front lots, 100' x 100', 100' x 100'.
\$116,500 - 100' x 100' x 100' lot, septic system, electricity, cement patios, walkways and steps to lake. 24' x 24' metal workshop with double doors with garage, built-in 100' x 100' x 100' x 500 gal. butane tanks, boat dock and beautiful landscaping.
\$18,500 - 2 BR, 1 bath mobile home in private and gorgeous green wooded and creek area. Staff meter, 500 gallon butane tank, fruit and pecan trees. Great water front property.
\$20,500 - 2 BR, 1 bath, mobile home on 1/2 acre. 344 acres. Staff meter, fenced, carport, storm cellar, storage house, 250 gal. butane tank and big T.V. antenna.
\$22,000 - Two deeded gorgeous lake frontage near Lone Cedar Country Club. Small boat dock, deep water.
\$25,000 - Large cabin with bath, high screened in porch, stove, refrigerator, refrigerator, built-in water front lot approx. 100' x 200' on deep water. Lake pump and filtration system, 250 gal. butane tank. Private area of the lake.
\$27,800 - Cabin - 2 story building with workbench and granite counter. Stove, refrigerator, built-in drawers and cabinets in bedroom, cement porch and two walk-in closets.
\$29,000 - 3 BR, 2 bath, mobile home on 1/2 acre. Screened porch, stove, refrigerator, Staff water and septic system.
\$29,000 - 1 BR, 3/4 bath, mobile home on 1/2 acre. Screened porch, stove, refrigerator, Staff water and septic system.
\$30,000 - 4 BR, 2 bath mobile home on 1/2 acre. 1600 sq. ft. CHA, carpet, 2 story building with workbench and granite counter. Guards rails, front and back. Large cement patio. T.V. Satellite, total electric and energy efficient. Irrigation system for lawn and fruit trees plus large deck, hot tub, shower, and concrete landing. Break fast bar, separate dining area, large windows and custom drapes. Wood burning stove, fireplace, and concrete landing. Yard.
\$30,000 - 2 BR, 1 bath home on deeded lot. Large kitchen. Pump house with pump.
\$30,000 - 2 BR, 1 bath mobile home on deeded lot. Great walkway and boat dock and cemented, covered patio area. Private and serene location.
\$35,000 - 2 Bedroom, 2 bath mobile home located on approx. 100' x 195' waterfront lot with dock on deep water. Lake pump and filtration system. CHA, T.V. and satellite and remote and location antenna, ceiling fans, hot tub, stove, washer and dryer. 500 gal. butane tank, storage building.
\$47,500 - 2 BR, 2 bath, gorgeous mobile home with matching storage house. CHA, kitchen built-ins including dishwasher, Cathedral ceilings, cement dock and boat ramp. Butane tank and staff meter, excellent lake frontage property.
\$55,000 - 3 BR, 2 bath frame home on 5 acres of very private Lake Leon property. Staff meter, carpet, paneled, large closets, huge utility room, covered back porch, garage with storage, storage building. Small pond in front yard, cultivation on property and landscaping. New and lovely lake front home on 1/2 acre. CHA, kitchen, built-in ceiling fans and skylight. Great direct and indirect lighting. Custom drapes, big utility area with built-in shelves and counters. Garden areas, brick walkways and lovely deck patios. Storage house and neat guest house, sprinkler system, boat house with boat dock, which and hose.
\$58,400 - 3 BR, 2 bath, total electric. Beautiful and unique lake home on 1/2 x 350' lot. Built-ins, range, oven and dishwasher. Cathedral ceiling, large, spacious rooms with walk-in closets. New carpet and tile. Two storage buildings, staff meter and lake pump. Apricot, cherry, and many other fruit and native trees. Possible owner financing.
\$67,300 - 2 BR, 1 bath log cabin on deep water exclusive location on deeded lot.
\$69,400 - Gorgeous 2 bedroom home on Lake Leon water front, large kitchen, lots of cabinets and storage, big screened in porch, double carport, large utility room, built-in water front lot approx. 100' x 100' x 100'. White rail fencing, double car port and guard lights. T.V. satellite, workshop, 2 horse stalls, paved parking tarport, separate guest house, walkway, and dock. Fruit trees and ducks go to.
\$110,000 - 3 BR, 1 3/4 bath two story house with approx. 3000 sq. ft. located on beautiful lake front lot. CHA Staff meter, septic system, covered back porch, large utility room, built-in shelves, lights, barbecue and lots of trees.
\$125,000 - Beautiful 3000 sq. ft. two story home on one acre of water front property. CHA, Staff meter, total electric, kitchen with built-ins, glassed in kitchen cabinets, kitchen bar and china cabinet. Master bedroom with beautiful tile floor. Full bathroom, dressing room, huge sunroom and sitting area, sliding door to huge deck with benches. Large utility and laundry room with sink, closets and lots of storage. 2 car garage with H.A. hook-ups. So many extras, must see to believe.
\$190,000 - 2 BR, 1 3/4 bath, brick house located on 100 acres of beautiful lake property. CHA, staff water, built-in, fireplace, carport and pool. Separate guest quarters with large garage room that could be used as rent property. Horse barn, tack room, large hay barn, horse water and irrigation system for lawns and fields.

LAKE LEON HOMES AND LOTS
\$3,950 - Two lake front lots, 100' x 100', 100' x 100'.
\$116,500 - 100' x 100' x 100' lot, septic system, electricity, cement patios, walkways and steps to lake. 24' x 24' metal workshop with double doors with garage, built-in 100' x 100' x 100' x 500 gal. butane tanks, boat dock and beautiful landscaping.
\$18,500 - 2 BR, 1 bath mobile home in private and gorgeous green wooded and creek area. Staff meter, 500 gallon butane tank, fruit and pecan trees. Great water front property.
\$20,500 - 2 BR, 1 bath, mobile home on 1/2 acre. 344 acres. Staff meter, fenced, carport, storm cellar, storage house, 250 gal. butane tank and big T.V. antenna.
\$22,000 - Two deeded gorgeous lake frontage near Lone Cedar Country Club. Small boat dock, deep water.
\$25,000 - Large cabin with bath, high screened in porch, stove, refrigerator, refrigerator, built-in water front lot approx. 100' x 200' on deep water. Lake pump and filtration system, 250 gal. butane tank. Private area of the lake.
\$27,800 - Cabin - 2 story building with workbench and granite counter. Stove, refrigerator, built-in drawers and cabinets in bedroom, cement porch and two walk-in closets.
\$29,000 - 3 BR, 2 bath, mobile home on 1/2 acre. Screened porch, stove, refrigerator, Staff water and septic system.
\$29,000 - 1 BR, 3/4 bath, mobile home on 1/2 acre. Screened porch, stove, refrigerator, Staff water and septic system.
\$30,000 - 4 BR, 2 bath mobile home on 1/2 acre. 1600 sq. ft. CHA, carpet, 2 story building with workbench and granite counter. Guards rails, front and back. Large cement patio. T.V. Satellite, total electric and energy efficient. Irrigation system for lawn and fruit trees plus large deck, hot tub, shower, and concrete landing. Break fast bar, separate dining area, large windows and custom drapes. Wood burning stove, fireplace, and concrete

A Salute to Rising Star and Area Businesses

Serving The Community With Pride

121 Years

Church of Christ

Established by first settlers 1870
First building was a log house on present day
cemetery site

200 W. College 643-6162

116 Years

Rising Star Independent School District

A log building was erected in 1876
for school and church use.
Dr. Donald E. Bryan, Superintendent

P. O. Box 37 643-1981

72 Years

The Ole Store

Robert and Nancy Bostick
Owners Since Dec. 90

124 N. Main 643-2221

22 Years

Ole Rip Cap Co.



104 W. College 643-6692

5 Years

L & J Construction

Remodel, Add On
New Construction, Custom Cabinets

Lynn Hutton 725-7582 Jim Ratliff 643-6464

113 Years

First United Methodist Church

Steve Nance

300 W. College 643-3791

72 Years

Saturday Club

General Federated Women's Club
Organized 1920, Federated 1921

209 W. College Rising Star

16 Years

Gerrie's Beauty Salon & Lingerie Boutique

Gerrie Cornett, Owner Since 1991

101 N. Main 643-4673

5 Years

Buttons & Bows

Custom Sewing & Alterations
Brenda Williams, Owner

103 W. College 643-5705

110 Years

First Baptist Church

Established 1882
110 Years Praising the Lord

306 N. Main 643-4451

68 Years

West Texas Utilities Co.

Travis Williams, Manager

113 W. Smith 643-3321

12 Years

Max's Quickway

Gas, Groceries
All-Day Deli, Breakfasts
Max and Melba Ratliff, Owners Since 1988

200 W. College 643-1490

4 Years

Murphree Oil Co.

Texaco Wholesale products
Ted Murphree, Owner

308 W. Mill 643-2341

110 Years

U.S. Postal Service

Evelynn Donham, Postmaster

113 W. Smith 643-2191

29 Years

Rising Star Nursing Center

407 S. Miller 643-2681

11 Years

Jim Ratliff Welding

Farm, Oilfield, Commercial

430 E. Mill 643-6464

2 Years

Frank Agnew

Farm Bureau Insurance Agent

104 N. Main 643-1010

102 Years

The Rising Star

Your Hometown Newspaper
Established in 1890

105 N. Main 643-4141

28 Years

Winfrey Feed & Peanut Co.

We Clean, Dry and Buy Peanuts
Bulk Fertilizer and Custom Application

E. Hiway 36 643-6251

8 Years

Willie Vandivere Trucking

207 E. Ross 643-6451

Est. 1991

Rising Star Lumber Hardware

Jimmy and Bernell Guynes,
Owners since 1991

200 E. College 643-4131

83 Years

Peoples State Bank, Clyde Rising Star Branch

Member FDIC

206 W. College 643-2811

28 Years

Buddy's Plumbing & Appliances

In Rising Star Since 1984

115 N. Main 643-7312

6 Years

Main Street Auto Repair

Jackie Palmore, Owner

127 N. Main 643-1701

Est. 1991

Green & Associates Insurance Agency

200 S. Main 643-7817

82 Years

Higginbotham Funeral Home

Gene and Reba Lyon

803 N. Main 643-4321

25 Years

Rising Star Clinic

Billy T. Carpenter, D.O.
Old Hospital Building

512 W. College 643-3141

5 Years

Cooper's Texaco

David Cooper, Manager
All flats, oil changes, new & used tires

210 W. College 643-1805

Rising Star Chamber of Commerce & Argiculture

Box 189 643-3215

WTU Filed 'Safety' Suit About CEDs

ABILENE - West Texas Utilities Company filed a lawsuit January 27 in Travis County to protect rights to property taxes it will pay to the state's new county education districts (CEDs). WTU said it would pay its \$9.8 million in taxes, including \$4 million to CEDs by the January 31 deadline.

"The lawsuit is not being filed to deny necessary funds to the school districts, but to protect the rights of the company and its customers if the tax is declared unconstitutional," said Travis Williams, area manager. "Property taxes are an expense that goes into the cost of the product or service for any business and eventually are paid by customers."

"Because payments made without filing this suit would be considered voluntary payments by the Texas courts we have been forced to file a protective suit to reduce the risk of paying double taxes. We realize that the schools need the funds. That's why we do not want to withhold the taxes pending a court decision," said Williams. WTU joined a number of other

Texas companies in the action.

Cases are now pending before the Texas Supreme Court, raising questions about the legality of the Texas school property tax law passed in 1991.

The new law groups school districts into county education districts (CEDs) in an attempt to ensure a more equitable distribution of school taxes. Property owners must pay 1991 school taxes to both the previously existing school districts and the new CEDs, with the majority of the taxes allocated among the CEDs.

The constitutionality of the new law has been widely questioned, and the Texas Supreme Court is expected to decide the issue in early February. If the court decides that the county education districts are unconstitutional, tax payments already made to those districts may be considered "voluntary" and not subject to refund or credit. If the court rules that the tax is constitutional Williams said WTU will drop its lawsuit.

WTU serves 178,000 customers in 52 counties throughout West Texas.

School Finance Law - New Ruling Expected on CEDs

On Jan. 30 the Texas Supreme Court struck down the State's "Robin Hood" School Finance law. For the third time the Legislature was ordered to come up with another system for funding public schools.

In its ruling, the Court listed two major reasons for overturning the current system.

One, that the new County Education Districts and their authority to levy property taxes were established without a vote of the people. That violates a constitutional provision that requires voter approval of all new property taxes in Texas.

In another objection, the

Court stated that the property tax system set up in the County Education District was in reality a State property tax. That violates a Constitutional Amendment passed by the voters in 1982 that bans State property taxes.

But the Supreme Court also gave the legislature and Gov. Ann Richards some time to solve the problem, ordering that a new finance system be adopted by June 1, 1993.

This deadline deferral meant that the current system would remain in place this year and for the 1992-93 school year.

It also meant there would be no refunds for property taxpayers who had hoped to get their money back if the Court found the CED System unconstitutional.

But Eastland School Superintendent Keith Watkins Monday said he understood the matter of CED taxation was not definitely settled by last week's ruling. Watkins is Administrator of the Eastland County Education District.

"A temporary injunction against the CED's continuing tax collection is in District Judge Scott McCowan's Court in Austin, I hear," Watkins

said. "He is supposed to make a ruling on it tomorrow (Tuesday). If he rules in favor of the injunction it will speed up the cut-off date on taxation."

"But until the CED is given orders otherwise we will continue to assess and collect taxes," the Superintendent and Administrator said.

He noted that the County Education Districts were mandated by the State Legislature and set up in June 1991. Eastland County has five Districts and ten Board Members.

There are 188 such Districts in the State, and their job is supposed to be to equalize school funding. This means to take taxes from the wealthier School Districts and give to the poorer ones.

As soon as the Legislation was enacted last summer lawsuits began to spring up around the state.

"This whole thing has been confusing since day one," Watkins admitted. "But we had no choice - we had to follow the law."

He estimated that over 50% of this year's CED taxes in Eastland County have already been collected and dispersed to schools here. He said he knew of no means or plans to return taxes that have already been paid.

Watkins said he attended the State Commission of Education Mid-winter conference last week, and this group was concerned about laws, court decisions and the impact they could have on financing.

But the main burden of the educators according to Watkins, was to keep the schools open and that the children not have to take cuts because of an unstable situation.

"We here in Eastland County share those concerns," the Superintendent said. "I feel that something will be worked out."

Emergency 911 Services

had been missed in the recent county-wide addressing.

Pct. 1 Commissioner Richard Robinson also spoke of some complications involving the changeover of 911 addresses to use as postoffice addresses.

"If the Postoffice doesn't want to use the addresses they can leave them like they are," he said.

"There's going to be mistakes - people who don't get addressed. And when people change their addresses, we'll have to submit that to Southwest Bell."

After the Commissioners Court meeting Robinson was asked if he could give any idea when the 911 system might be in

operation here.

He said he really didn't know. He had heard that in some counties the system had to be "hot tested" for three months before it was fully ready.

Police Hired

at Texas A&M University and Cisco Junior College and DWI Detection and standardized field sobriety testing at the Lubbock Police Academy. He is also a certified emergency medical technician (EMT).

Rodriguez and his wife, Johnna, have two daughters, Shantel and Tori Lyn.

Clarence "Al" Jones is a local resident and has a total of 612 hours at police academy schools. He is a recent graduate of the basic law enforcement course at West Central Texas Council of Governments. He earned a certificate for successfully completing a specialized school in Basic Police Reserve in 1988 at Roysce City. He has over three continuous years of police work. He has worked as security guard for banks in Dallas, Garland and Preston.

Al is an army veteran who earned several decorations and citations. He and his wife, Jo, live in Rising Star and he is a relief rural mail carrier.

Producers

Agent, Davy Vestal. He talked briefly about himself and stated that he wanted everyone to know that he is here to help the people in the area in any way possible.

Dr. Frank Dainello, Extension Horticulturist from Texas A & M University, passed out a vegetable growers' handbook and talked about production of fruit and vegetables, planting procedures, etc. He emphasized quality over quantity.

Mr. Bill Weeks, executive vice-president of Texas Citrus and Vegetable Association, then spoke to the group on the marketing of produce. He discussed the commercial area of the vegetable market and suggested that a book called "Texas Farm Labor Handbook" might help keep the producer out of trouble on the labor laws.

Mr. Weeks offered his help by mail or telephone. His address is Bill Weeks, 6912 West Expressway 83, Harlingen, TX 78552-3701; his telephone number is 512 423-0304.

years. The store has been closed about 90 days and Jack is restocking and making some positive changes. The booths have been moved to the front of the store and a new deli will be serving such popular items as breakfast tacos, fried chicken, etc. As always, fountain drinks, coffee and delicious pastries are available.

Employees of the Quik

County Bridges

He recommended only one, however, for closing while repaired - a bridge in Pct. 2.

Howell urged that other defective structures also be repaired soon, however - especially those listed as "Top Priority."

He discussed the best ways to build bridges, saying that floors should be level with the footing. Other recommendations were also made.

A "bridge," as defined by the Texas DOT, is any structure with a span 20 ft. long. The county also has a lot of culverts which are shorter than that.

Howell had a written summary of Eastland County Bridges. It listed: Total number of bridges - 58.

Bridges unable to safely carry legal loads - 20.

Bridges inadequately posted for load limits - 5.

Bridges unnecessarily posted for load limit - 2.

Bridges that should be closed until repaired - 1.

Bridges needing priority repair - 7.

Broken down into Precincts, this said:

Pct. 1, Richard Robinson, Commissioner:

Number of bridges - 8.

Bridges unable to safely carry legal loads - 2.

Bridges inadequately posted - none.

Bridges unnecessarily posted - 1.

No bridges need to be closed until repaired, and

there are none needing priority repair.

Pct. 2, Calvin Ainsworth, Commissioner:

Number of bridges - 13.

Bridges unable to safely carry legal loads - 1.

There are no bridges inadequately or unnecessarily posted.

Bridge that should be closed until repaired - 1.

Bridges needing priority repair - 3.

Pct. 3, L. T. Owen, Commissioner:

Number of bridges - 20.

Bridges unable to safely carry legal loads - 7.

Bridges inadequately posted - 1.

There are no bridges unnecessarily posted, and none that should be closed until repaired.

Bridges needing priority repair - 1.

Pct. 4, Reggie Pittman, Commissioner:

Number of bridges - 17.

Bridges unable to safely carry legal loads - 10.

Bridges inadequately posted - 4.

Bridges unnecessarily posted - 1.

Bridges that should be closed until repaired - none.

Bridges needing priority repair - 3.

In the City of Ranger, there were 2 bridges listed as inadequately posted for the load limit. Two more were reported as being unable to safely carry legal loads. There were no bridges unnecessarily posted, none that should be closed, and none needing priority repair.

Howell said there was a bridge in the City of Cisco, but it was not included in this report.

Note: The Texas Highway Department recently changed its name to the Texas Department of Transportation.

Council Meeting

Leonard to hire someone on a part time basis, for no more than three months, at \$4.25 per hour to help Cornett at the park carried 4-1, Goldston against.

Leonard had talked with Regugio Negrete of Texas Department of Housing about Rising Star Vineyard; she said the deed of trust had been recorded and a packet from Texas Department of Commerce was expected.

The appointment of emergency management director was discussed, then tabled to await information on job requirements.

Regarding flood control, Leonard told the council of letters written to and from Mr. Yoes; the council agreed that Leonard talk with County Commissioner to see what it will take to stop flooding in the city.

After a 10-minute recess the council heard a report by Fire Chief C.W. Best on fire hydrant repair and that seven still need repairing. A motion by Harmon, seconded by Goldston, for Best to move money around in the fire department budget to get the four critical-point hydrants repaired and working as soon as possible carried 5-0.

The council was in executive session from 10:10 to 10:55 p.m.

A motion by Goldston, seconded by Cook, accepted with regret the resignation of Police Chief Roger Carroll effective February 15 carried 5-0.

Personnel performance was reviewed and discussed.

A motion by Goldston, seconded by Harmon, to raise Leonard's pay \$150 a month and Beverly

Willett \$60.00 a month carried 5-0.

The council received a letter from West Texas Utilities; they discussed the results of the Railroad Commission audit.

Mayor's comments: Bible talked about the centennial and about trying to find businesses to come here to add to the economy.

Council's comments: Barnes requested the council not meet on Wednesday nights due to those who wish to go to church.

Administrator's comments: Leonard informed the council that the culvert on Pioneer Street was fixed by the deadline; said the city has to get the complete telephone circuit system repaired; and said the process of making Willett a Public Notary is underway.

She told the council two-thirds of the misread gas meter bills had been paid and citizens of Rising Star had been very understanding.

Leonard informed them that School Superintendent Don Bryan had informed her that the school board had decided the bills for gas and the cost for repairing a damaged 3-inch gas main were too high and stated the amount the school would pay. The council stated that this would not work. The school must pay the billed amount or they will be treated as anyone else who has not paid their bill.

Meeting adjourned at 12:40 a.m.

Subscriptions Make Excellent Gifts Phone Today: 643-4141

LOTTERY BULLETIN!

If you're a retailer and want to sell

TEXAS LOTTERY TICKETS...

you can get a jump on the license application process by attending one of our special

LOTTERY RETAILER SEMINARS

MON., FEB. 10

◆ **DALLAS** ◆

7 P.M. **STOUFFER HOTEL**
2222 STEMMONS

◆ **FT. WORTH** ◆

7 P.M. **WORTHINGTON HOTEL**
200 MAIN STREET

TEXAS LOTTERY

FOR RESERVATIONS, CALL 1-800-37-LOTTO

Life's little ups and downs.




While little ups and downs may keep life interesting, some people prefer the predictable.

For those people, WTU created the Equal Payment Plan. You simply pay the same amount every month, as determined by your previous usage.

WTU's Equal Payment Plan. Because life is full of surprises. But your electric bill doesn't have to be one of them.

EQUAL PAYMENT PLAN

WEST TEXAS UTILITIES COMPANY

An Equal Opportunity Employer **WTU**
A Member of The Central and South West System

Contact your local WTU office for more information.

Wildcat Tales

Journalism Class

Rising Star High School

Basketball Babes

by Gherda Williams

The Lady Cats are really excited about winning both of their games last week. First they played the Lingleville Lady Cards Tuesday night at Lingleville. This game was a non-district game, but still a real spirit booster for the Lady Cats with a wide spread final score of 45-20.

Lady Cat scorers were Jo Linney, 14; Brandi Harris, 10; Gherda Williams, 8; Emily Stuteville, 5; Olivia West and Inga Williams, 4 each.

The Lohn Lady Eagles played the Lady Cats a much closer game Friday night at

Lohn. The final score was a heart stopping 37-35 with the Lady Cats on top!

Those contributing to the Lady Cat score were Gherda Williams, 10; Olivia West, 8; Andi Ferbrache, 6; Brandi Harris, 5; Jo Linney, 4; Inga Williams and Emily Stuteville, 2 each.

This last win brings the Lady Cats to a 3-2 record in district play and tied with Paint Rock for second place whom the Lady Cat basketball team hopes to beat this Tuesday night in Rising Star!!

Stuteville's Stats

by Emily Stuteville

The Lady Cats traveled to Lohn on January 27 to face the Lady Eagles. Rising Star fought desperately the entire game to stay ahead but at the end, a free throw by Lohn dashed the junior Cats hopes for victory. The final score was 16-15.

Eighth grader Angela DeLong stated, "We're finally starting to come together as a team and we learned from this experience."

The Lady Cats are keeping a good attitude and playing together as a team to achieve that main goal, winning.

Scoring for Rising Star against Lohn were Angela DeLong, 9; Kristie Collins, 3; Samantha Kerr, 2; and Tianay Chambers, 1.

Rising Star will play their last game against Panther Creek, here, at 6 p.m. on Monday, February 10.

Junior Cat Tracks

by Christy Hughes

Last Week the junior Cats traveled to Lohn and defeated the Eagles by a final score of 30-19. The Cats were much bigger than the Eagles and each team member was given the opportunity to play. Lohn, on the other hand, was forced to keep up with the junior Cats pace and they leaned strongly on one player to keep them in the game.

The Cats led this game from

the very beginning and never fell behind. They played strong defense all evening and outscored Lohn in every quarter except for the fourth.

Scoring for the Cats were Robert Hollis, 14; Gary Stone, 10; Larry Burcnam, 2; Landon Ratliff, 2; and Jeremy Hall, 2.

The Cats will host Panther Creek on February 10, beginning at 6 p.m. This will be their last game of the season.

Fast Talk

by Cheryl Robinette

What senior does not look behind her for cars?

What junior is not making a good impression? Sources say, "She better glue her eyes to her own boyfriend."

What sophomore guy persuades freshmen girls to do bad things?

Some freshman girl needs to look out for certain eyes when she's changing in the locker room.

Who is "Crocodile Crissy"? Hint: He plays with crocodiles in the tub.

What senior guy gets everything he wants?

What sophomore guy hits on a certain sophomore girl?

What sophomore can not chew gum without getting it all over her mouth?

What sophomore guy is really NOSY?

What freshman and senior are the champs at "fooze ball"?

What sophomore girl skipped three days of school?

What sophomore scored six points in the game? Guess she proved her point!

What senior plays with big, dangerous toys that hurt? Get well soon!

What senior would chew anything you give her? "Cry baby" gum?

What junior boys tried to skip class but chickened out?

What senior and junior girls had an understanding? I bet the junior watches her step from now on.

Update on Construction

by Laura Rankin

Next week, the bricklayers will return to the construction site. They will be finished in three more weeks, if weather permits.

The concrete for the roof structure is now being poured. The deck will be on in approximately ten days.

In two weeks, the roofing contractor will be on the job. Two weeks after that, they will have the roof work completed.

After the roof is up, the D&D construction workers will be working inside regardless of the weather.

Dear Marie

Dear Marie,
My sister is a pain. She's always reading my diary and the letters my boyfriend writes me, then when I get mad, it's my fault for getting mad. What can I do?

Stressed Out

Dear Stressed,
Talk to your sister. Her snoopiness may be a means for attention. When you talk to her, don't get angry, she'll only stop talking. Try spending more time with her. Talk about whatever it is you have in common, even if it's only the fact that you have the same parents. It may be hard at first, but you'll have more privacy.



Go, Cats!

Rising Star Wildcats Baseball Schedule

March 10	Gorman	4:30	There
March 17	Santo	4:30	There
April 3	Gordon	5:00	There
April 7	San Saba	4:30	There
April 24	*Eula	5:00	There
May 1	*Baird	5:00	There
May 5	*Eula	5:00	There
May 12	*Baird	5:00	There

Rising Star High School 1991-1992 Basketball Schedule

Date	School	Place	Time
Feb. 7	* Novice	Here	6:30 p.m.
Feb. 11	* Brookesmith	There	6:30 p.m.

*District Games

White Is Candidate County Sheriff Office

family and I moved to Eastland County 20 years ago because we thought it would be a healthy, wholesome place to raise our young children. We felt that way in 1972 and we still feel the same in 1992. Our children are grown, but our grandchildren and your children and grandchildren are growing up in this county and they deserve a safe and drug free society. I will do my very best to help rid the county of drugs or at least lessen the problem caused by the drug situation.

I am asking for your vote and support in my re-election bid for Sheriff of our county.

One last reminder. If you are not a registered voter, you have until February 10, 1992 to register at the Tax Assessor/Collector's Office at the Eastland County Courthouse. Each and every one of us should study the candidates and go to the polls to vote for the candidates of our choice.

Incredible Edibles

by Inga Williams

February 10-14
MON: Lunch: Frito pie, corn salad, crackers, cake, milk.
Breakfast: Scrambled eggs, sausage, biscuits, fruit, milk
TUE: Lunch: Hamburger pie, green beans, rolls, fruit, milk.
Breakfast: Pancakes, syrup, juice, milk
WED: Lunch: Chili beans, Spanish rice, cole slaw, cornbread, crunch, milk.
Breakfast: Bacon, toast, juice, milk
THU: Lunch: seafood caddole, corn, salad, rolls, pudding, milk.
Breakfast: Muffins, juice, milk
FRI: Lunch: Hamburger, fixings, French fries, cookies, milk.
Breakfast: Gravy, biscuits, juice, milk

P.A.Y. Now Or Pay Later

Positive Action for Youth is the theme for an Eastland County Conference set for Friday and Saturday, February 28 and 29.

An area-wide group of concerned parents and community leaders have been working for weeks to plan this special program.

It will be held at Eastland High School where 150 business and community leaders are being asked to commit themselves in a county campaign to educate themselves with tools to help today's youth deal with the problems and difficulties facing them.

Nationally recognized speakers will be presenting topics like "Developing Healthy Self-esteem," "Abstinence: A Critical Message," and "How To Tell When a Kid Is Really In Trouble."

Conference events will focus on specific strategies through which participants can involve the entire community in assistance for our young people, and will offer ways and means in which the kids themselves can help peers and others in dealing with those tremendous social battles facing them.

The PAY Conference, which stands for Positive Action for Youth, is being sponsored by the Eastland County Positive Action for Youth Coalition, and the Region 14 Education Service Center and their most able representative, Ms. Carol Burson.

If you have not been contacted as a business and community leader and would like to participate, please call Becky McIntire at 629-2601 or Janet Thomas at 629-2222.

RENEW NOW

Rising Star, Eastland County, Towns within 30 mi. of Rising Star
\$9.00 per year
 Other Texas Counties
\$13.00 per year
 Out of State
\$19.00 per year

The Rising Star
 P. O. Box 127
 Rising Star, TX 76471

Wid's Wide World of Wildcats

by Wid Keeling

The Wildcats traveled to Lingleville Tuesday, January 25, to play in a nondistrict game.

The Wildcats played very close to the Cardinals during most of the game. Unfortunately for the Cats, Chad Hill was injured in the second quarter and the team felt his absence keenly, resulting in a Cardinal run that the Cats never caught up with. The final score was 66-49.

The game was a great opportunity to keep the Cats in shape for district.

Lohn, with a record of 4-1 in district play, was the Cats' next opponent. Rising Star was not mentally prepared to go out and play. The entire game was in Lohn's favor.

Rising Star must win the next three games in order to play Lohn for the district championship.

Come out and see Rising Star take on Novice Friday night.

This page is made possible by the businesses below.

Support Local Businesses Go, Jr. Cats!

BASKETBALL

WILDCAT BASKETBALL '91

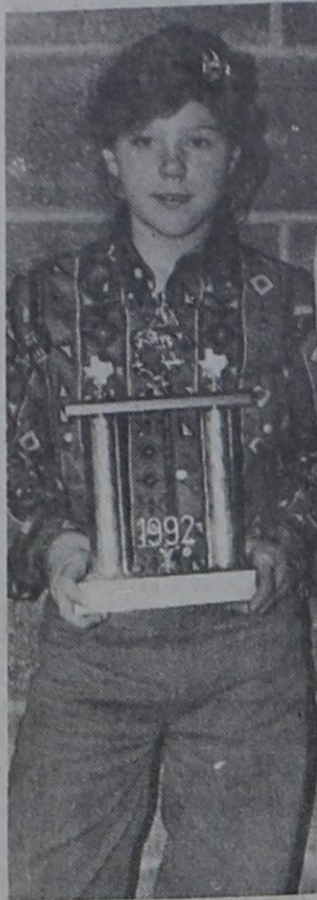
Novice, Here
Fri., Feb. 7, 6:30

BASKETBALL

Lady Cats Brookesmith, There
Wildcats Tues., Feb. 11, 6:30

Go!! LadyCats!!	Chamber of Commerce & Agriculture 515 W. College 643-1209	Peoples State Bank Rising Star Branch, Member FDIC 206 W. College 643-2811	Dr. B. T. Carpenter 512 W. College 643-3141	Palace Drug Store 100 N. Main 643-3231	Go!! Wildcats!!
L & J Construction 430 E. Mill 643-6464	Winfrey Feed & Peanut Co. E. Hiway 36 643-6251	Buddy's Plumbing & Appliance Serv. 115 N. Main 643-7312	The Rising Star 105 N. Main 643-4141	Waste Systems™ 800-683-4234	Rising Star One Stop J. Bible, Owner J. Burcham, Mgr. 109 E. College 643-7011
Higginbotham Funeral Home 803 N. Main 643-4321	Frank Agnew Farm Bureau Agent 104 N. Main 643-1010	Go, Cats! 	Green & Assoc. Insurance Agency 200 S. Main 643-7817	True Value Rising Star Lumber & Hardware 200 E. College 643-4131	Rising Star Nursing Center 409 S. Miller 643-2681
Murphree Oil Co. 308 W. Mills 643-2341	Main Street Auto Repair 127 N. Main 643-1701	#1 Video Mildred Childers, Owner 200 S. Main 643-1009	Jim Ratliff Welding 430 E. Mill 643-6464	Max's Quickway 200 W. College 643-1490	The Ole Store 124 N. Main 643-2221

Showmanship Award Winner



Tara Donham, 10, won showmanship honors for the junior division of the swine show at the Brown County Youth Fair recently.

Gray Infant to Be Shower Honoree

A baby shower honoring Braston Glenn Gray will be held Tuesday, February 18, at 2 p.m. at Rising Star Nursing Center. Proud parents of the newborn are Russell and Deedra Gray. Friends and family are invited to attend.

College Graduation

Art and Betty Fisher recently attended graduation exercises for James Frederick Fisher from the University of Texas-Permian Basin in Odessa. Jim earned a Bachelor of Arts degree in Sociology.

CJC Announces Dean's and President's Lists

Cisco Junior College recently released the President's and Dean's lists and for the fall semester of 1991. Students making the President's List have made a straight "A" record on a 4.0 system. Wanetta Parson of Rt. 1, Rising Star was named to the President's list. The Dean's List includes students earning a 3.5 or better grade point average on a 4.0 system. Making the Dean's List were Edward Anderson of Rising Star and Melissa Cloer of May.



Janet E. Thomas And M. Davy Vestal
County Extension Agents
Eastland County

4-H LIVESTOCK SHOW CONCESSIONS

The annual Eastland County Livestock Show is less than two weeks away! The 4-H Parents will be sponsoring the concessions. This is our BIG money raising project for the year. We need all parents' help and cooperation.

The money raised buys ribbons, trophies for 4-H events all year, pays a portion of each 4-Her's expenses to county 4-H camp, contests, leadership labs, etc. All 4-H members benefit.

ALL 4-H families are requested to donate baked goods...brownies, rice crispy bars, pies, etc.

4-H parents are requested to volunteer and work in the concessions. Call your 4-H club manager and sign-up.

Co-chairmen of the concessions are Patti Cozart, Arlene Thompson and Becky Siebert.

4-H OFFERS SUMMER EXCHANGE WITH RUSSIA

National 4-H Council is forging new ground with their summer travel program to Russia. Tentative dates are June 19 through July 26, 1992. U.S. participants, both 4-Hers and non-4-Hers, will experience the mystique and excitement of a country on a new political horizon.

U.S. outbounds will begin their journey on June 19, with an orientation in Washington, D.C. Before departing, participants will learn about new changes in the country and aspects of Russian culture.

Delegates will arrive in Moscow on June 24, and will be given an in-depth background on the culture and history of the county before beginning their homestays. While in Moscow, exchange participants will visit Red Square and tour the

Kremlin's Armory Museum which contains items from czarist Russia. As a part of their historical training, the U.S. visitors will take a trip to Zayorsk, home of the Russian Orthodox Church. While in the Russian capital, participants will sail up the Moscow River, attend the Russian Circus and experience Russian cultural performances including folk dances and marionette recitals.

Participants will spend a one-week homestay with host families from the area to find out what daily life is like in Mother Russia. Host families will be encouraged to make the U.S. participants "one of their own".

Before returning to the states, participants will

tour the Golden Ring Cities and Moscow for an evaluation and debriefing. Once back in Washington, D.C., participants will meet their Russian counterparts, who will

have been involved in touring Washington, D.C., experiencing a U.S. homestay and attending the World Focus program at the National 4-H Center, before returning home to their families on July 26.

Prices for the programs have not been confirmed at this point, but officials at National 4-H Council estimate a cost between \$4,060 and \$4,360 for U.S. participants.

Those interested in applying for the exchange are encouraged to do so by calling or writing to: Experiential Education—Russia Exchange, National 4-H Council, 7100 Connecticut Avenue, Chevy Chase, Maryland 20815-4999 by March 1, 1992.

Rising Star EMS to Respond Only in Emergencies

Effective immediately, the Rising Star Emergency Medical Service (EMS) will respond only to emergency situations. Emergency is defined as a sudden event requiring immediate medical attention and/or transport to a hospital emergency room. This new policy has been adopted due to the time-consuming nature of transporting people to their doctors' appointments.

The members of Rising Star EMS feel they should be available for emergencies at all times. The new policy will help insure that the people of the city and

surrounding areas are covered by ambulance service continuously. Guidelines for emergencies:

Emergencies to be responded to include, but are not limited to, the following: chest pain, respiratory distress, cardiac arrest/cardiac complications, stroke, shock/deteriorating vital signs, seizures, diabetic complications, childbirth, poisoning, drug abuse/unconsciousness, emotional and psychiatric emergencies, moving vehicle accidents, fire-structure, gunshot wound, trauma/sudden illness or injury.

9-1-1 House Numbers Are Now Available At City Hall

The numbers meet all specifications, are 4 1/2" tall, glow in the dark, and comes with a black background mounting. The complete kit sells for \$3.00 and can be charged to your utility bill or be paid for when you pick them up at City Hall.

City Employees and Fire Fighters will be happy to assist those unable to put the numbers up yourself.

Rising Star Wildcats Baseball Schedule

March 10	Gorman	4:30	There
March 17	Santo	4:30	There
April 3	Gordon	5:00	There
April 7	San Saba	4:30	There
April 24	*Eula	5:00	There
May 1	*Baird	5:00	There
May 5	*Eula	5:00	There
May 12	*Baird	5:00	There

Be My Valentine
Say it with a T-shirt, sweatshirt, hand painted or crafted by Felecia Bibby or Julia Devers at Gerrie's Beauty Salon 101 N. Main 643-4673

Vote For Efficiency and Better Management of your tax dollars,
VOTE FOR

DICK BURGESS
for Commissioner, Precinct 3 Eastland County
Pol. paid by Dick Burgess, P.O. Box 417 Carbon TX 76435

*** NOTICE ***
the Dental Office of **DR. JAMES D. GRAY**
435 Roosevelt
Gorman, Texas 76454
will be closed after **February 28, 1992**
We regret to announce the closing of our dental practice in Gorman. Thank you for your patronage the past ten years.
Dr. & Mrs. James D. Gray

"Why Farm Bureau life insurance?"

"Value. Their rates are competitive and help you get great value for your money. Your agent can help you plan for the future with a wide range of products. Life Insurance, Annuities, IRA's, Mortgage Cancellation, Disability Income, Whole Life ... you name it. No wonder Americans from every walk of life depend on Farm Bureau Insurance."



Frank Agnew
817/643-1010
817/629-1704

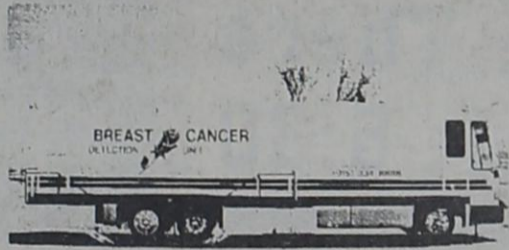


Helping You Is What We Do Best.

Southern Farm Bureau Life Insurance Company
Jackson, Mississippi

JIM RATLIFF WELDING
Farm, Oilfield Commercial
430 E. Mill Rising Star
817/643-6464

Accredited by the American College of Radiology
BREAST CANCER DETECTION UNIT AVAILABLE TO AREA WOMEN



Tuesday, February 11th
Dr. Carpenter's Office
413 West College
Rising Star, Texas
9:00 AM - 1:00 PM

CALL 643-3141 FOR APPOINTMENT

A Service of Transamerican Diagnostic Services (Providing Mammography Services for over 5 years)

According to the American Cancer Society, one out of every women in the United States will develop breast cancer sometime in her lifetime. It is currently estimated that over 37,000 women die each year as the result of breast cancer.

Ninety percent of breast cancers are diagnosed by women or their physicians finding a lump in the breast. Women who are diagnosed with a lump large enough to feel have a 50 percent five year survival rate. A woman who is diagnosed as having breast cancer by mammography, before a lump can be felt, has a 97% five year survival rate and a 90% 10 year survival rate.

A mammogram can detect a cancer this small, even before it can be felt.

Guidelines For Screening Mammography Established by the American Cancer Society.

- I. 35-40 years of age - One baseline mammogram.
- II. 40-50 years of age - A mammogram every 1-2 years depending on breast type and risk factor.
- III. 50 years of age and over - An annual physical examination and annual mammogram.
- IV. Asymptomatic women under 50 years of age with significant high risk factors should be examined at appropriate intervals. These risk factors include previous breast cancer and family history of cancer.

V. A symptomatic woman should have a mammogram at any age when she experiences a mass, nipple discharge, skin changes or unexplained breast pain.

A screening mammogram is an x-ray of the breast using extremely low dosages of radiation (usually comparable to dental x-rays) and is designed to find very early cancers.

A female technologist who is highly trained in mammography will perform the examination.

The charge for the screening mammogram is \$65.00. The Unit accepts cash, check, Visa, Mastercard and American Express.

Now filing Medicare (for your reimbursement)

THE 'OLE' STORE

Main St. Rising Star
Trying To Keep Our Prices Down To Help Local Economy
643-2221
Sale Wed., Feb. 5-Sat., Feb. 8

Jewel Shortening 42 oz. \$1.69	Freshlike Cut Green Beans 2/\$1	Shurfine Strawberry Preserves 99¢	Shurfine Grape Jelly 18 oz. 89¢
Strawberries 99¢ pint	Decker Jumbo Meat Franks \$1.49	Shurfine Corn Whole 2/\$1	Jumbo Tangerines 59¢ lb.
Pepsi 2 liter 99¢	Dr. Pepper 2 liter 99¢	Laundry & Dry Cleaning Service Pickup & Delivery on Tues., Thurs., Sat.	Lay's Fritos \$1.69
Register at The Ole Store A Participating Affiliated Food Store. Drawing to be held Feb. 18, 1992	2 Brand New Chevy 5-10 Pickup Trucks • 2.5 Liter Engine • Air Conditioning • Anti-Lock Brakes • 5 Speed Overdrive • Tinted Glass • Stabilizer Bar • And More		Shurfine Iodized Salt 26 oz. 35¢