

# THE RISING STAR

Rising Star, Texas

©1992 Eastland County Newspapers, Inc.

Established in 1890

50 Cents

Thursday, September 10, 1992

Number 37

**Junior Wildcats**  
vs. Santa Anna, home  
Thurs., Sept. 10, 6:30  
-----  
**Rising Star Wildcats**  
vs. Santa Anna, there  
Fri., Sept. 11, 8 p.m.



## Local Elementary Students in P.E. Are Achievers



Outstanding Achievement in P.E. K-1: Dusty Goldston, Veronica Ramirez



Outstanding Achievement in P.E. 2-3: Penny Winfrey, Jared Janes



Outstanding Achievement in P.E. 4-5: Justin Janes, Tabitha Barnhart

I am happy to report our elementary P.E. classes are going great. All elementary students are actively involved in our P.E. program. The classes have been combined as follows: kindergarten and first, second and third and fourth and fifth.

The sixth grade students are participating in Jr. High athletic workouts to prepare them for next year's sports events.

Each week two students

from each P.E. class, grades K-5, will be selected for outstanding achievement. The weekly winners will receive an achievement award and have their picture published in the newspaper.

This week's winners are: k-1, Veronica Ramirez and Dusty Goldston; 2-3, Jared Janes and Penny Winfrey; 4-5, Justin Janes and Tabitha Barnhart. Look for future winners in upcoming issues.

## New PTO Officers Introduced At First School Year Meeting

The Rising Star PTO had their first meeting for the 1992-93 school year Tuesday, September 1. New President Trina Nance introduced the other PTO officers for this year. They are: Vice-President, Kathy Herring; Secretary Shelly Bailey; Treasurer, Joy Harris; and Reporter, Betty Westerman.

Minutes of the executive meeting were given by Shelly and Joy gave the financial report. Trina then gave appreciation certificates to the outgoing officers: Nanette Goldston, Judy Butler, Debbie White, Tonya Killion and Cindy Wood. A certificate was also given to Bobbie Chambers for serving as Concession Stand Chairperson the past 2 years. The PTO would also like

to take this opportunity to thank Gene Smith for the repairs and upkeep on the concession stand.

Trina reported on a few ideas for projects the PTO will be considering this year. Tonya Killion will be in charge of the membership drive. The Finance Committee will consist of Principals Robbie Stuteville and Bob Campbell and parents Kathy Bush and Cindy Butler. Susan DeLong is in charge of the Homecoming luncheon and would appreciate any and all volunteers.

School Board President, David Harris, introduced members of the School board. Superintendent Wayne Calhoun then introduced the administrative staff. Elementary

Principal, Bob Campbell, thanked his staff including all teachers, aides, secretary and lunchroom personnel for making his adjustment to the new job much easier. High School Principal Robbie Stuteville introduced the teachers on his campus along with his secretary and custodial staff.

Following was the announcement of High School football players by Coach Dan Goodman and Junior High players by Coach Doyle Browning. Cheerleader Sponsors, Anna Ezzell and Dorothy Ivey introduced the High School and Junior High Cheerleaders. Band Director, Tim Riley, then introduced the band members present.

The class with the best percentage of parents present is to be given a Coke party by the PTO. Winners for this meeting will be the new Kindergarten class. Debbie Winfrey and Ann Bodenhamer each were the winner of a Rising Star Wildcat windbreaker as door prizes. You must be a member of the PTO and present at the meeting to register for the door prize.

In closing the meeting, the High School Band played the Wildcat Fight Song.

## Shriners Will Bring Circus To Brownwood

The Shrine Circus will be in Brownwood Coliseum September 24, and due to the generosity of Rising Star business owners, free tickets for children in grades 1 through 5 will be distributed to our school.

The proceeds from the circus performances support the Shriners Hospitals and Shriners Burn Center Hospital, which are dedicated to free care and treatment of children with physical handicaps regardless of race, creed or color. Each of you can be proud that some of our home town children have benefited from your support.

As a Shriner, it has been my privilege to call on you each year to accept contributions toward this

worthwhile cause. On behalf of all Shriners, many who donate long hours and labor to make the Circus a success and work diligently year round in support of these hospitals, thank you for caring.

Leroy Livingston

## Rising Star EMS Radio Equipment

Goal	\$3,700
Grant	1,850
Raised	504
Total	\$2,354
Needed	\$1,346

## Pioneer Cemetery Receives Gifts

Gifts to the Pioneer Cemetery since our last report in June have amounted to \$1,108.20, according to Irma Miller, treasurer.

The donors were Lyna L. Smith, Mrs. Cowan Hutton, Maxine Poindexter, Lynn and Ruby Daniel, Irma Miller, Mrs. Cora Harrell, Novilia Barton, John McFerrin and Lucille Harris.

The Pioneer Historical Association is grateful for all gifts, especially of late, as interest rates have been reduced. We will acknowledge these donations as names and addresses of donors are received.

Gifts may be given direct to the Citizens State Bank of Cross Plains or sent to Pioneer Historical Association (or Pioneer Cemetery Fund), c/o Irma Miller, Rt. 1, Box 210A, Rising Star, 76471.

## County Retired Teachers To Meet

Eastland County Retired Teachers and associates will meet September 14 at 11:30 a.m. at Grandma's Restaurant (Budget Inn). Located on

## Kay Fraley to Open Star Grocery Store

Kay Fraley will be opening Star Grocery this Saturday. The store, located at 108 East College, is probably known as the old Chambers grocery of many years.

Robert and Nancy Bostick had originally planned to remodel and open the little grocery store and help to serve the community until they could rebuild the 'Ole' Store, which recently burned. However, Robert has reported that due to circumstances beyond their control, they have turned their interest in the business and building over to Kay.

"She has been an excellent employee and manager at the 'Ole' Store, Robert said, "and we would like to encourage everyone to shop at home at Kay's Star Grocery and give her your full support."

Kay will have a full line of meat and produce, as well as other popular and necessary grocery products and will deliver to those who cannot pick up

their own supplies. Those requiring deliveries will need to check with her for dates and times.

Nancy and Robert say they regret not being able to continue in the business, but they will be catching up on some much needed R & R (rest and

relaxation).

Robert stated that he and Nancy would like to take this opportunity to thank the Rising Star Chamber of Commerce and Agriculture for the beautiful resolution they recently passed. It was very much appreciated.

## Lost to Rio Vista 12-7 Wildcats Go to Santa Anna Friday Night

by Wid Keeling

Anna Mounties at Santa Anna Friday, September 11, at 8:00 p.m.

Last Friday night the Rising Star Wildcats took on the Rio Vista Eagles. The end result in a 12-7 win for the Eagles.

The Cats had several chances to win the game. Little things like properly executing fundamentals held back the Cats.

The Cats will be working hard on fundamentals this week to get ready for the Santa



## Youths Plan Fund Raising Car Wash

The youth of Rising Star, which includes 7th through 12th graders, are sponsoring a car wash as a fund raiser for the 5th quarter food and entertainment. They had their first 5th quarter last Friday, September 4, after the football game at the Methodist Church. Everyone enjoyed the hot dog supper, music, games and basketball. The response

was great and future 5th quarter activities will be planned and supported by the youth.

Please support their fund-raising event by having your car washed on Monday, September 14, from 4:00-7:00 p.m. at the Methodist Church parking lot.

The charges will be \$3.00 for a regular car wash and \$5.00 for a car wash and vacuum.

## Star Pride Work Day Tues., Sept. 15 5:30 - 7:30 p.m.

Star Pride will have a Bake Sale at Homecoming

## Community Calendar

**2ND THURSDAY**  
Masonic Lodge, 7:30 p.m.

**EACH THURSDAY**  
Kiwanis Club, Peoples State Bank 6:30 a.m.

**Senior Citizens Center** is open for lunch, activities.

**City Library**, open Thursdays, 9:30-11 a.m.

**EACH SATURDAY**  
Bingo, American Legion Hall, 205 S. Main

**2ND MONDAY**  
School Board, 121 N. Main

**EACH MONDAY**  
Boy Scouts, Baptist Activity Bldg., 6:30 p.m.

**3RD WEDNESDAY**  
The Saturday Club, City Library

**MAY HOMECOMING**  
May Homecoming, Sat. Sept. 26

**RS HOMECOMING**  
Rising Star Homecoming, football game Fri., Oct. 2; other events Sat., Oct. 3

**What's Happening?**  
by Kristi White

**Thurs., Sept. 10**  
RS Jr. High vs. Santa Anna, at home, 6:30

**Fri., Sept. 11**  
Wildcats vs. Santa Anna, there, 8 p.m.

**Tues., Sept. 15**  
School holiday  
Staff Development  
RS FHA will go to West Texas Fair

**Thurs., Sept. 17**  
RS Jr. High vs. Hico, there, 6:30

**Fri., Sept. 18**  
Wildcats vs. Hico, home, 8 p.m.

## Rising Star High School 36th Homecoming Schedule of Events

Friday, October 2

3:00 p.m. .... Pep Rally ..... School Gymnasium

7:30 p.m. . Rising Star Wildcats vs. Gorman Panthers .. Wildcat Stadium

HALFTIME ACTIVITIES

Wildcat Football Sweetheart Band Sweetheart and Beau

Saturday, October 3

8:30 a.m. .... Open House ..... New High School Facilities

8:30-10 ..... Register, Coffee, Visit ..... High School Library

10 a.m. .... Assembly and Business Meeting ... High School Auditorium

12-1:30 ..... PTO Luncheon ..... School Cafeteria

2:00 p.m. ... Dedication of Ex-Student Gift ... Rising Star High School

2:30 p.m. .... Homecoming Parade ..... High School Parking Lot

3:30-5 p.m. ... Class Meetings at High School .. To Be Arranged by Classes

**Dr. Carpenter's Office**  
**WILL BE CLOSED**  
the last 2 weeks  
in September

Close at noon Sept. 18,  
Open Mon., Oct. 5

RS40

# Extension Home Economics

Mrs. Janet Thomas

County Extension Agent, Home Economics  
Texas Agricultural Extension Service

## SCHOOL ENRICHMENT CURRICULUM

The Eastland County Extension Service is offering FREE enrichment programs to complement school curriculum. The programs are designed to:

- \* provide hands-on educational experiences.
- \* build self-esteem.
- \* encourage creativity.
- \* teach important decision making and life skills.

Program topics include: For Grades K-2 - It's Up To Me (improving self-concept), Snackin' Healthy, and Plant Pals. Grades 3-4 - On Your Own (Latch Key Program), It's Up To Me, Toothfully Speaking

## (Dental Health)

Grades 6-8 - Food and Fiber, Texas Water Conservation, It's Up To Me  
Grades 9-12 - County Government Awareness. Materials supplied include lesson plans, suggested classroom activities and worksheets. All materials are delivered and picked up from your school at no charge. For further information, contact the County extension Office at 629-1093 or 629-2222. Join hands with 4-H today...these free enrichment programs and services are yours for the asking.

## TOWN AND COUNTRY CHURCH CONFERENCE

"Wholeness is more than a Doughnut: Ministers Need Care Too!" is the theme for the 1992 Town and Country Conference to be held in College Station, October 5-6. This year's program will emphasize how spiritual, mental and physical well-being of the minister affects the quality of the ministry. For additional information contact the Eastland County Extension Office.

## POSITIVE ACTION FOR YOUTH COALITION

The "Positive Action for Youth" Coalition will meet this coming Tuesday, September 8th at 10:00 a.m. in the Daugherty Street Church of Christ Fellowship Hall (across from the Eastland Memorial Hospital).

The Coalition members are planning a youth conference to be sponsored in the near future.

Those interested are invited to attend the September 8th meeting. Gary Montgomery serves as Coalition Chairman.

## RECIPE FOR THE WEEK ZUCCHINI-CARROT BREAD

3 eggs  
1 c. vegetable oil  
1 1/2 c. brown sugar, packed  
1 c. grated zucchini  
1 c. grated carrots  
2 tsp. vanilla extract  
2 1/2 c. whole wheat flour  
1/2 c. All-bran  
1 tsp. salt  
1 tsp. baking soda  
3 tsp. ground cinnamon  
1 c. chopped natural almonds (unblanched)  
Preheat oven to 350 degrees. Grease and flour a 9 x 5 x 3 inch loaf pan. In large mixing bowl beat eggs with oil. Stir in sugar, zucchini, carrots and vanilla. Mix together flour, All-Bran, salt, baking soda and cinnamon. Stir into zucchini mixture. Add almonds and mix well.

Bake for 1 to 1 1/2 hours or until a pick inserted in center comes out dry. Allow to cool for 15 minutes in pan, then invert and cool on wire rack.

Wrap well to store. (This bread stays moist for several days. It also freezes well.)  
Makes 1 large loaf or 2 small loaves.

# Agriculture Viewpoint

by M. Davy Vestal

## PECAN FIELD DAY

Previously scheduled for September 1st, the Pecan Field Day was postponed until September 10th at 5:30 p.m. at the Lin Boch Orchard.

Heavy rains the night before and the day of this event made travel to Mr. Boch's orchard nearly impossible. We hope you can come on Thursday the 10th.

## PEANUT TOUR

Make plans now to attend the Eastland County Peanut Tour. The scheduled date is Tuesday, September 15th. We will begin our program at the Benny Hagan Farm south of Cisco, and move to the Kokomo area for two more stops before a catfish luncheon at the Kokomo Community Park.

Call your neighbor and plan to ride together to help on the car traffic at each stop...."Car pool where possible".

## GENERAL

The recent rains were much welcomed for a thirsty forage and peanut crop. Now if we can get some nice warm weather, including nights, then we will have an excellent fall production season for peanuts and grass for grazing.

This should put our pecan crop at the max for this year. But, remember,

some of your varieties may be producing "too much". This can be detrimental to a pecan tree the following years. Check your trees, evaluate for crop set and determine if some measures should be taken to reduce this potentially devastating problem. Varieties such as Wichita and Tajas are very susceptible.

## LAWN TIPS

Fall is an excellent time to establish a beautiful turf with grass such as fescue. Prepare a well groomed and soft seed bed. Apply 8-10 lbs. of Tall Turf Fescue per 1000 square feet of yard, keep watered with a might mist of spray for most uniform establishment. For more information on turf establishment, contact me at the Eastland County Extension Office...629-1093.



Read The Classifieds

# Ann Williams REAL ESTATE

610 Conrad Hilton Ave., Cisco  
442-1880

## Business & Home Phone CISCO HOMES

Fresh and Clean, neat 2 BR home, rock garage, owner fin., \$11,500.  
Bargain! **SOLD** 2nd pmt., 2 BR home, CH/CA, garage, \$10,000.  
Cheaper Than Rent, 3 BR, 2 baths, CH/CA, garage, owner financing available, only \$12,500.  
Other 2 and 3 BR homes under \$14,000. Some with owner financing, call for details.  
FHA Assumable Loan, 2 BR home, large rooms, carpet, storage bldg.  
Numerous Large Pecan Trees Surround this spacious 2 BR home, CH/CA, garage, carpet, storage bldg.  
Budget Priced, 2 BR brick home, CH/CA, attached garage. Surrounded by Large Oak Trees, 3BR, possibly 4BR home, formal DR, garage, large carpet, \$23,000.  
Humbleton Area, Nice 2BR home plus office, large kitchen and dining area, covered deck, carpet, well insulated. Early 1900's, attractive woodwork, 3 or more BRs, 2 baths, 2 story home, shaded corner property.  
Need More Room? Spacious 3BR, 2 bath home, 2 living areas, large utility, 2 lots, carpet, shop, storage, \$27,000.  
Super Family Home, 3BR, 2 bath brick, large family room, bookshelves, CH/CA, 2 storage bldgs, patio, carpet. Memories Of Yesteryear, Create your own image in this spacious 3BR, 2 bath colonial home surrounded by large oak trees, many extras plus insulated shop.  
Family Pleasure **SOLD** 3 bath brick, large dining area, oversized deck, storage bldgs, 3 1/2 lots.  
Fantastic View **SOLD** Agency, Spacious custom built 3BR, 2 1/2 bath, CH/CA, wood heater, lots of trees, approx. \$25,000.

## LAKE CISCO

1 BR cabin on South Shore, carpet, only \$6,500.  
Attractive 1 BR, **SOLD** heater, 2 lots, \$11,500.  
North **SOLD** kitchen-dining area, concrete patio, boat.  
South Side near public ramps, 5 A-Frame cabins, bait house, screened pavilion, income opportunity for the handyman, \$25,000.  
North Shore, 3BR, 1 1/2 bath multi-level home, decks on 3 levels, large parking area, owner financing, \$26,000.  
North Shore **SOLD** 2 BR, CH/CA, deluxe filter system, great view, \$38,000.  
VACANT LOTS - 24 adjoining lots \$14,500, 12 adjoining lots \$9,400, 4 adjoining lots \$3,200, and some individual lots.

## COMMERCIAL PROPERTY

Small bldg. on large lot on main traffic drive, \$7,500.  
Nice Downtown Commercial Bldg., clothes hanging units, 2 dressing rooms, full bath, owner finance, \$12,500.  
Interstate 20 access road frontage - 3 large buildings on 1 1/2 lots, only \$48,500.

## SMALL AND LARGE ACREAGE

Scenic View, approx. 20 acres, wooded, \$15,500.  
Nice Brick Home, CH/CA, guest house, approx. 1 1/2 acres, orchard, city water, new satellite antenna, \$36,000.  
Peaceful, nice 3BR, 1 1/2 bath brick, CH, fireplace, garage, water well, approx. 4 acres.  
93.41 acres, nice oak trees, some cultivation, 2 tanks, owner financing, just outside city limits, \$58,000.  
Spacious 3BR, 2 bath home on approx. 312 acres, mostly wooded, 3 tanks, Westbound Water, owner financing, acreage with or without home.

# MAYNARD REAL ESTATE

629-8568 Maynard Building, Hwy 80 East, Eastland, Texas  
Out of Town Callers dial Toll Free (1-800-300-8568)

## WE APPRECIATE YOUR BUSINESS! Available Nights and Weekends

### COMMERCIAL:

\$5,850 - Lot 70 x 94'  
\$10,000 - Approx. 3 acres, 1-20 Frontage, WILL OWNER FINANCE.  
\$14,800 - 180' x 150' land on N. Service road. WILL OWNER FINANCE.  
\$25,000 - Large metal commercial building, excellent location. Over 13,000 sq. ft. on 6.3 acres.  
\$59,500 - "LILLIE'S RESTAURANT" One of Eastland Co., most popular eating location. Complete with separate large home. All equipment goes.  
\$110,000 - 38.693 acres of commercial property on I-20 S. access road. 50' x 100' metal building with partition N. to S. through building. Makes two offices or two living quarters. Approx. 5,000 sq. ft. CH/A, WILL OWNER FINANCE.

### EASTLAND HOMES AND LOTS:

\$5,000 - For two lots in town, electricity and water available.  
\$6,500 - 2 BR, 1 bath frame home.  
\$7,500 - Four hillside residential lots in exclusive location.  
\$8,000 - Old home and garage. 3 beautiful lots, 16 large shade trees.  
\$12,500 - Two centrally located homes on two adjoining lots. Needs work for great investment possibilities as homes or rental properties.  
\$12,500 - 2 or 3 BR, 1 bath home on large lot. Garage and old barn.  
\$16,800 - 3 BR, 1 bath lovely home with large shady yard. Located in ideal neighborhood. 4 ft. chain link fence around back yard.  
\$29,500 - 2 BR, 1 bath frame with siding, completely remodeled interior, new carpet, built-in oven and counter top range, superior insulation in walls and ceilings, new plumbing and wiring, double carport, large patio.  
\$35,000 - 4 BR, 1 1/2 bath frame home in nice neighborhood. Built-in double oven, large utility room and fenced back yard.  
\$40,000 - 2 BR, 2 bath, lavishly remodeled home in elite neighborhood. Double car garage, workshop and storage facilities. Magnificent yard.  
\$56,000 - 4 BR, 1 1/2 bath, two story formal and elegant home with European touches. Red tile roof with stucco wood exterior. Imported fixtures, exquisite wallpaper, appointments and chandeliers from Spain and Italy. A truly lavish home, greatly underpriced. Located on three large lots. This home has energy efficient CH/A, attic fan, excessive insulation and storm windows. Separate AC studio, guest house or office building located at back of property. Trees in abundance, storage house, fish pond and much more.  
\$58,000 - 3 BR, 2 bath, beautiful brick home total elec. Double car garage with electric openers. Professionally landscaped, extra building w/plumbing, phone hook-ups, 24' x 34' storage house and 12' x 14' barn.

\$79,800 - 3 BR, 2 bath large brick home with cathedral ceiling. Excellent location in shady and quiet neighborhood. Large, beautiful game and sun room fireplace and built-in desks, bookshelves and cabinets in den and living area. Storage house. Truly lovely and "perfect condition" home.  
\$86,000 - 3 BR, 2 bath brick home, garden bath and mirrored closets and bathrooms add a dramatic touch to this extremely unique house, CH/A, energy efficient. Fantastic weather with awning and luxurious decorator touches throughout this home. Rock fireplace and beamed ceiling. All kitchen appliances built-in, with Jenn-Air island range and breakfast bar. Large private lot in exclusive part of Eastland.

### LAKE LEON HOMES AND LOTS:

\$10,000 - Beautiful waterfront lot, 100' x 250' deep, great location. Marvellous building site.  
\$15,000 - 3 lots with small recreation building with swing set. Perfect for week-end fun.  
\$20,000 - 2 BR, 1 bath home on wooded lot, large kitchen, pump house with pump.  
\$22,000 - Two deeded lots on prime lake frontage near Lone Cedar Country Club. Small boat dock, deep water.  
\$27,000 - 2 BR, 1 bath furnished mobile home on deeded lot. Great walkways, boat dock and cemented, covered patio area. Private and serene location.  
\$34,600 - 2 BR, 1 bath, Pre-Fab home on deeded lot. Fruit and Pecan trees. Large covered back patio. Staff meter and well. Storage house. Gorgeous lot on deep water.  
\$63,000 - 2 BR, 1 bath, frame metal with wood home, overlooking lake, on deeded lot. CH/A, Satellite, large storage house, ceiling fans throughout, breakfast bar with custom chairs, interior is done in master craftsmanship of construction, plumbing and wiring. Built-ins with superior design.  
\$65,400 - 3 BR, 2 bath, total electric beautiful and unique lake home on 125' x 350' lot. Built-ins, range, oven and dishwasher. Cathedral ceiling, large and spacious rooms with walk-in closets. New carpet and fireplace. Two storage buildings, Staff meter and lake pump. Apicot, cherry and many other fruit and native trees. POSSIBLE OWNER FINANCE.

\$108,000 - Beautiful 3,000 sq. ft. two story home on one acre of water front property. CH/A, Staff meter, total electric, kitchen with all built-ins, glassed in kitchen cabinets, kitchen bar and china cabinet. Master bedroom with beautiful tub area with 4' x 5' marble shower, huge sunroom and sitting area, sliding door to huge deck with benches. Large utility and laundry room with sink, closets and lots of storage. 2 car garage with H/A, floodlights. So many extras, must see to believe.

### HOMES WITH ACREAGE:

\$32,500 - OLDER HOME - 3 BR, 1 bath, on approx. 14 wooded acres. Staff meter, 2 tanks, stocked with Catfish and Bass. Private and Lovely.  
\$49,300 - 2 BR, 1 bath, 12' x 60' "Baker" mobile home on approx. 10 acres. All fenced, 4 acres in coastal.  
\$60,000 - Beautiful 3 BR, 2 bath home on approx. 3 acres. Huge rock fireplace, Jenn-Air island range, skylights, ceiling fans in every room. Fenced back yard, arena, roping boxes and holding pens.  
\$76,000 - 3 BR, 1 3/4 bath beautiful brick home on 2.7 acres, CH/A, built-ins, ceiling fans, patio/deck, fireplace, double car garage and fenced yard.

### ELIZABETH MAYNARD ASSOCIATE 559-2318

### THOMAS H. HENNINGTON BROKER

### HOMES WITH ACREAGE (CONT.)

\$80,000 - 3 BR, 2 bath triple wide on 28 acres, 2 100 sq. ft. all fenced and cross fenced, barn, stock tank, Staff meter. Totally private.  
\$85,000 - 3 BR, 2 bath home with approx. 3,072 sq. ft. on 6.1 acres. New home with oak parquet flooring, built-ins, large recreation room, 2 car garage and storage building, city water. Excellent hunting and fishing in area.  
\$97,300 - 3 BR, 2 bath double wide on approx. 52 acres. CH/A, kitchen bar, fireplace, ceiling fans, skylight and lots of storage. Satellite, chain link fence, outdoor floodlights, storage building, metal garage, beautiful oak and cedar trees, and 1 tank.  
\$125,000 - Beautiful 3 BR, 2 bath home on 57 acres. CH/A, ceiling fans, total electric. Island range, bar, double oven and dishwasher. Huge utility room. Master bedroom with garden bath and shower. Totally fenced. Study, work shop, huge vehicle shed. Lots of trees, 5 tanks plus windmill, city water.  
\$135,000 - Beautiful 3 BR, 2 bath home on 52 acres. CH/A, Cable T.V. large recreation building, 2 fireplaces, hot tub and gazebo. 16' x 36' heated inground pool. Complete additional Bungalow next to pool. All land in coastal, 3 tanks, fenced and cross fenced.  
\$135,000 - Beautiful 3 BR, 2 bath home on approx. 40 acres. Separate large apartment with appliances and furniture. 30' x 30' workshop and huge vehicle storage shed plus carport. Home has cellar, all metal construction with steel beams, excellent insulation and design.  
\$148,000 - "SHOWPLACE" home on 10 acres of "Country Club" property. 3BR, each with private bath. Separate office. Kitchen with built-in ice maker, wine rack, double self-cleaning ovens, JennAir, blender, etc. on "pop-up" home center, counter controls. Revolving kitchen shelves with organizers. Room-to-room, built-in organizers and shoe storage. Huge master bath with private patio. "Matching" 15' x 30' storage house. All electric underground conduits, great fencing. Professionally decorated and landscaped.  
\$159,000 - 4 BR, 2 bath, five year old brick home on 122 acres. Located 8 mins. from Eastland. Approx. 2,000 sq. ft. CH/A, separate dining, utility room, total electric. All land in coastal bermuda. City water plus well and deep tank. New corrals and fencing. 1/2 mineral rights go to buyer. Rock building for barn.  
\$180,000 - 3 BR, 2 bath, brick and siding home with approx. 2,600 sq. ft. CH/A, native pecans and coastal grass. Branch of Leon River runs through this outstanding property. Approx. 1/4 mineral rights go with property. City water, 5 mins. from Eastland. Home is located on 220 prime area acres.

### LAND FARMS, RANCHES AND SMALL ACREAGE:

\$5,500 - 2 acres, close to Eastland Lake.  
\$8,500 - 7.5 acres with small tank surrounded by willows, access to Olden water, POSSIBLE OWNER FINANCE.  
\$16,436 - 24.35 acres.  
\$23,375 - 42.5 acres.  
\$25,300 - 40.5 acres, good tank.  
\$28,100 - 48.87 acres with electricity.  
\$31,200 - 52 acres, \$600.00 per acre, good hunting and fishing. 20 minutes from Eastland.  
\$35,000 - 56.3 acres with good tank.  
\$43,000 - 80 acres in Carbon area, cultivation, water well, stock tank, barn, fences and Mineral Rights.  
\$43,000 - Approx. 54 acres, excellent fencing all around. Barn, 3 tanks, city water, electricity. Pavement on 2 sides. 4 mins. from town.  
\$74,300 - 167 acres, \$454.00 per acre, good hunting and production land just west of Cisco.  
\$77,000 - 154 acres, \$500.00 per acre, 3 stocked tanks, barn and corral, well, electricity, totally fenced, cultivation, 1/3 mineral rights.  
\$82,500 - 150 acres, access to city water, fenced and cross fenced. Hwy. 80 frontage. WILL OWNER FINANCE.  
\$91,300 - 166 acres, \$550.00 per acre, near Eastland Lake. Can be divided into 40 or 80 acre tracts. Good fences, barn and pens.  
\$188,839 - 360 acres, \$525.00 per acre, 5 tanks, great fences, hand dug well, Branch of Leon River runs through property. Outstanding hills, trees, and pasture. All owners rights go with sale. Over one mile of I-20 Frontage.  
Approx. 200 acres, 60 acres in cultivation, 3 tanks, great fences. Creek runs through property. 1/2 mineral rights go to buyer.  
411 acres at \$550.00 per acre, 3 tanks, stocked with Bass and Catfish, fenced and cross fenced, 1/3 in coastal, building, corrals and loading chute.  
Approx. 434 acres, \$500.00 per acre. Lake stocked with bass. Plus mineral rights.  
"FAMOUS FEE RANCH" Approx. 1600 acres. \$400.00 per acre.  
PECAN ORCHARDS AVAILABLE.

### RANGER:

\$18,500 - Neat, large 2 BR, 1 bath home, separate garage and storage house. Fenced, workshop, and lots of trees.  
\$30,000 - New commercial building of Austin Stone on main thoroughfare. Totally cyclone fenced in office and work area.  
\$53,600 - New 2500 sq. ft. convenience store on one acre. Enormous walk-in cooler, 3 - 8000 gallon underground gas tanks.

### CARBON:

\$2,250 - 1 BR, 1 bath, kitchen and living room. Approx. 600 sq. ft. home.  
\$3,500 - 2 large lots, three large pecan trees on front of lots. Fenced on three sides, hook-ups available for all city utilities.  
\$11,000 - 3 BR, 2 bath mobile home on two lots. Cyclone fenced, 20' x 8' shop, 14' x 14' storage building.

### CISCO:

\$5,000 - Small country home on approx. one and one-half acres.  
\$10,000 - Large building with office upstairs, 1 bath, CH/A, and carpeted.  
\$10,700 - 3 BR, 2 bath, approx. 2,500 sq. ft. home on 1 1/2 acres, hook-ups for two mobile homes on back of property.  
\$54,000 - Commercial building with residence in rear (3 BR, 2 1/2 bath) 175' highway frontage.

### BARBARA LOVE 647-1397

### PEGGY SWAFFORD 629-8028

## Cisco Press, Eastland Telegram, Ranger Times, Rising Star September 10, 1992

### Town & Country REAL ESTATE

Barbara Love, Inc. 317 East Main Eastland, Texas 76448  
Broker  
629-1725 629-8391

### EASTLAND:

PRETTY STREET - CHOICE NEIGHBORHOOD! 3 BR, 2 bath frame home with Cen. H/A. Close to schools. In the 30's! E24  
THE PRICE IS RIGHT! This 3 BR, 1 1/2 bath frame home has central H/A, wood stove, fenced yard. Very Affordable. E25  
SOUTH SEAMAN STREET LOT! Excellent location, great building site - 100' x 200', frontage on 2 streets. AC/TODAY/DEAD!  
PRICED TO PLEASE! Only \$16,500.00 for this 3 BR, 1 1/2 bath frame home on large corner lot with trees! E22  
QUALITY, GRACIOUSNESS & CHARM describes this lovely 3 BR, 2 Bath custom built brick home with 3 car garage nestled amid oak trees in exclusive neighborhood. Split bedrooms, all amenities. PRICED TO SELL! E32  
PRETTY STREET, CHOICE NEIGHBORHOOD! 3 BR, 2 Bath frame home with central H/A. Close to schools. In the 30's! E24  
BEAUTIFUL AND ROOMY! 1 1/2 story 3 BR, 2 bath family home with large recreation room, gourmet kitchen & master bedroom. E21  
TENDER LILY **SOLD** shows in this well-maintained 2 BR, 1 bath home with cen. H/A, large bedrooms 7 LOTS MORE! E23  
WANTED! YOU BELIEVE only \$7,500.00 for this 2 BR, 1 in excellent neighborhood? It's a true! Needs TLC. E1  
NEED LOTS OF ROOM FOR LITTLE MONEY? See this 1 1/2 story, 4 BR, 1 1/2 bath home, great kitchen! Large lot, fenced, well. E2  
SO MUCH FOR SO LITTLE! 2 Bedroom, 2 bath mobile home with garden tub in master BR, open LR/Kit. area; large lot. E3  
WANTED! A family who needs a large 3 BR, 1 bath frame home with Cen. H/A, fireplace, fenced yard. Here it is! E5  
BUY ONE OR BOTH and owner will finance! 2 lots located in commercial/Residential area, 2 blks. from downtown. E6  
MAINTENANCE FREE! Neat 2 BR, 1 bath home with vinyl siding in one of Eastland's most preferred neighborhoods. Affordable! Tool E8  
PRICED TO SELL! 3 BR, 2 Bath frame home on large lot. Lots of extras, and affordable, too! Under \$30,000.00. Call Now! E13  
NICE NEIGHBORHOOD! Brick 3 BR, 1 1/2 bath home with Cen. H/A, kitchen built-in. Close to schools. E7  
ALL DOLLED UP! 2 BR, 1 bath home has fresh paint, new carpet, **SOLD** storm windows, Trees, Sig. bldg., central AC, etc. E9  
GREAT IN COOKING! 2 BR, 1 1/2 bath home with vinyl siding, **SOLD** views, Cen H/A. Attractive neighborhood. E10  
PRICE REDUCED! 3 BR, 1 bath brick home in person by **SOLD** on, 3 brick shaded lots; under \$40,000. **SOLD**  
TAKE ADVANTAGE OF PRICE REDUCTION on this 3 BR, 2 bath brick home in Oak Hollow. Fresh paint, large lot, priced to sell. O6  
34 ACRES - In restricted residential subdivision edge of Eastland. Utilities available. Reasonable priced. E10  
OWNER FINANCE with small down payment for qualified buyer! Large 3 BR, 1 3/4 bath, stucco home on large lot. Needs repairs, but great potential. E1  
CRESTWOOD home reduced! 3 BR, 2 Bath, built-ins, Sauna room. E36  
GREAT NEIGHBORHOOD for growing family. 3 BR, 2 bath brick, F/P, drapes, built-ins. Game room/sunroom. A well kept home. E17

### OTHER:

RANGER - A BRICK BEAUTY! We proudly offer this spacious 3 BR, 2 bath home in Meadowbrook for under \$40,000. Large fenced corner lot, many extras! O2  
LAKE LEON WATERFRONT HOME with guest house. Large tree shaded lot, many extras. Crapppie house, great fishing! O4  
OLDEN - RATED G FOR GREAT! Large 3 BR, 1 1/2 bath, LR, Den, DR, Trees, privacy & chain link fence. Dbl. garage, carport, Room for garden, animals & kids! O6  
RANGER - LARGE HOUSE, SMALL PRICE! This 3 BR, 1 1/2 bath frame home on 3 lots needs repairs. Great potential! O15  
RANGER - **SOLD** INVESTOR OR HANDYMAN! 3 BR, 1 bath, O13  
LAKE LEON - PERFECT GET AWAY for fishing, skiing, swimming or just loafing! Frame home on large waterfront lot; appliances, boat dock, Staff meter. O9  
RANGER - GREAT NEIGHBORHOOD, LOW PRICE! 3 BR, 2 bath rock home in Meadowbrook Addition. Needs repairs, but priced to sell. O6  
CISCO - YOU'LL LOVE THE PRICE and neat condition of this 2 BR, 1 bath frame home with sunroom, cellar, MORE! O1  
RISING STAR - LISTED! 3 BR, 1 1/2 bath brick home on corner lot. Cen. H/A, kit, built-ins. Possible owner finance or FHA. O11  
RISING STAR - NEWLY REMODELED 2 BR, 1 bath, Cen. H/A on extra large corner lot; water well for garden. O7  
LAKE LEON - PRETTY 2 BR, 2 bath brick home on large waterfront lot. Cen. H/A, fireplace, boat dock and carport. **SOLD**  
BREATHTAKING VIEW! Lovely, custom built 5 yr. old 3 BR, 2 bath brick home in Ranger. O30

Moving to Eastland County? Or anywhere in U.S.A. Call Toll Free 1-800-525-8910 Ext. 4365 for information. (No Rentals Please)

\$10,000 "AS IS" Handy-person can save a lot of money buying this 3BR frame home in Ranger. O14  
GORMAN: Numerous list, \$8,000-\$45,000. Call for details.  
RANGER: LOW UPKEEP/OWNER UTILITIES! This 3 BR, 1 1/2 bath frame home has storm windows and maintenance free siding. Cen. H/A. O21

### HOUSE & ACREAGE:

MOVE 'EM OUT to this 21.5 acres with a 2 BR, 1 bath frame home, only 1/2 mile from Ranger city limits. CALL FOR DETAILS!  
TREES, TREES, GALORE! Surround this beautiful brick home w/sun room on 1.77 ac., city water & well. Country living minutes from Eastland or Ranger. H44  
ALMOST COUNTRY! Set on 3.45 acres on outskirts of Cisco, this spacious 4 BR, 1 1/4 bath frame home with Pecan & Oak trees & lots MORE! H46  
100 ACRE PECAN ORCHARD. Highly productive; 2 homes, farm equipment; 23 ac. w/drip irrigation. Good Income! H49  
LOW ON CASH? Seller will help with closing costs on this 3 BR, 2 bath brick home in A-1 condition in Olden. H47  
PRICE REDUCED on executive home. 3 BR, 2 1/4 baths, beautiful pool. All on 3 acres. H418  
MINUTES FROM EASTLAND - Enjoy country living with city conveniences! 3 BR, 2 bath brick home on 2.9 acres. Under \$50,000! H48  
COUNTRY HOME ON 11 ACRES - Just what you've asked for! (2 or 3) BR, 1 bath frame home, Cen. H/A, city water. Fenced, barn, Must See! H42  
BEAUTIFUL RUSTIC COUNTRY HOME with 12 ac. or 27.8 ac. 6 yr. old 3 BR, 2 bath; fireplace, jacuzzi tub, full builtins and more! Close to town! H45

### ACREAGE:

5 ACRES near Lake Leon and country club. Minutes from Eastland and Ranger. Just listed - CALL NOW! A2  
160 ACRES - NW 1/4 and approx. 90 ac of improved **SOLD** or native pasture with excellent timber. Possible assumption! A9  
ATTENTION DEER HUNTERS & TEXAS VETS! 32 1/2 acres west of Gorman, Tx., wooded, secluded. Priced right! A12  
10 ACRES bet. Eastland and Cisco with county road frontage. Possible owner finance. A4  
108 AC. **SOLD** Own. Fin. A3  
327 ACRES - West of Carbon, 75 ac. in cult., improved grasses & wooded pasture. Peanut quota. Possible assumption! A13  
LAKE LEON: Excellent recreation or building site! 4 acres, highway and lake frontage. A1  
29 AC. in C. of Cisco. Hwy. frontage, oak trees. A10  
93 ACRES - **SOLD** of Colony. Fenced, cross-fenced, large **SOLD** production with some mineral. Possible owner finance! A18  
224 AC. SO. OF CARBON: Part brush, approx. 30 ac. coast. 2 tanks, fenced & cross-fenced. Some min. A20  
320 AC. CARBON: Improved grass & cult. Fenced & cross-fenced. 5 tanks. Some mineral. A21  
COMMERCIAL OR RESIDENTIAL! Over 1 acre on I-20 with large metal building with small office and attached shed; pavement home hook-up, Olden water meter. A22  
18 ACRES on mobile near Eastland. Fenced, beautiful oak trees. Be quick! A11  
296 ACRES North of Cisco - Native pasture with highway & county road frontage. 3 tanks; good hunting. A28  
155 ACRES So. of Cisco; cultivation, pasture & wooded, with deer. Highway frontage. A17  
274 ACRES - South of Cisco, Hwy. frontage. Approx. 185 ac. Low taxes. 40 ac. Cropland, balance timber windbreaks. Sandy soil, 2 wells, good fences. A15  
82 ACRES NW of Gorman: Approx. 1/2 cult. Small tank, hand dug wells. Minerals. A14  
245 ACRES E. of Carbon: Approx. 67 acres in cult., balance in improved grasses. Underground irrigation, large barn w/shed. 12' x 70' mobile home on property. Minerals & quota. A8  
80 ACRES HAS IT ALL! Oak trees, beautiful home-site, improv. pasture, good hunting & on pavement! A5

### COMMERCIAL:

CISCO - PRICE SLASHED FOR QUICK SALE! Minimal type commercial property on main thoroughfare. Adaptable for varied uses. C11  
PERFECT OPPORTUNITY to live and work at Lake Leon! Residence, store, auto, gasoline, trailer space! 7.42 acres, some waterfront. C1  
FANTASTIC LOCATION ON THE SQUARE! Large commercial building adaptable to many uses. Cen. H/A, 1st floor, fireplace, vault, move-in partitions. C9  
DRASTIC PRICE REDUCTIONS on 2 commercial properties; one in Cisco, one in Eastland. Call for information. C4 & C5  
ON THE SQUARE: 2 story bldg. in good location, some equip. & booth. Needs some repairs. C4  
RANGER - TOWNHOUSE APARTMENT BUILDING on paved street, near schools. 4 units, one needs interior finish. Reasonably priced for investor, or owner-occupied! C10  
CISCO: Excellent office bldg., 5 rooms, 2 restrooms. Concrete parking area. In good location. C5  
CISCO: 1-20: 30 wooded acres, over 500 ft. Frontage on North Access Road, east of city limits. C6  
FANTASTIC LOCATION! Hwy. 80 E. Eastland, near I-20, high volume of traffic. Currently occupied as office. Excellent for retail & expansion. C2  
CINDY FOSTER ROSEMARY FERGUSON 629-8227 653-2375

# Kay Bailey Real Estate

P. O. Box 693 - Eastland, Texas 76448  
R. G. (Buck) Wheat, Broker  
629-2365 629-8514

### EASTLAND HOMES AND LOTS

PRETTY 3 bedroom, 2 bath, brick, on approx. 10 ac., split-level, fireplace, formal dining, \$120,000.  
ELEGANT 2 story, 4 bedroom, 2 3/4 bath, large accommodating rooms, huge wooded lot, \$110,000.  
\$75,000 - \$100,000  
BEAUTIFUL 3 bedroom, 1 3/4 bath, brick, formal living/dining, den, fireplace, gameroom, \$79,800.  
MEMORABLE 3 bedroom, 1 3/4 bath, Rock Home on approx. 1 ac., CH/CA, covered patio, \$79,500.  
HIGHWAY 6, 3 bedroom, 2 bath, brick, on 2.77 ac., CH/CA, fireplace, privacy fence, \$76,000.  
\$60,000 - \$75,000  
LAKE LEON, Nice 3 bedroom, 2 bath, CH/CA, Open Living, Fabulous Deck, Gazbo/Bar, \$75,000.  
OAK HOLLOW, 3 bedroom, 2 bath, brick, CH/CA, fireplace, covered patio, Astoria, \$74,500.  
CRESTWOOD ADDITION, 3 bedroom, 2 bath, brick, corner lot, formal dining, isolated master, covered patio, \$68,500.  
LAKE LEON, Family Home near dam, situated on two lots, Staff Meter, nice dock, \$68,500.  
TALK ABOUT CURB APPEAL! Lovely yellow frame Victorian, CH/CA, wood floors, professionally decorated, \$68,500.  
MEADOWBROOK ADDITION, RANGER, 3 bedroom, 2 bath, brick, All The Trimmings! Very Nice. \$63,500 - \$60,000  
COUNTRY HOME, Large 3 bedroom, 1 3/4 bath, on approx. 5 ac., completely fenced, city water, close in, \$59,500.  
CUSTOM BRICK, 3 bedroom, 1 3/4 bath, on approx. 1 ac., chainlink, new carpet, CH/CA, \$59,000. Seller Financed.  
LOVELY SOUTH SEAMAN, 3 bedroom, frame, approx. 1877 sq. ft., excellent condition, CH/CA, fireplace, \$52,000.  
IMMACULATE 3 bedroom, 2 bath, brick home in Carbon, corner lot, CH/CA, fireplace, \$52,000.  
VERY VERSATILE, Approx. 2.5 ac. w/house, guest house, & former motel units, above-ground pool, \$50,000.  
NEWEST LISTING, 3 bedroom, 1 3/4 bath, brick, on approx. 1 ac. park-like setting, CH/CA, sep. living areas, \$49,500.  
PICTURE PERFECT, 3 bedroom, Victorian, beautifully decorated, CH/CA, plush carpeting, \$46,000.  
HILLCREST ADDITION, Exceptionally Nice 6 Neat 2 bedroom on two large lots, CH/CA, New Carpet, Fenced Yard, \$45,000.  
\$20,000 - \$40,000

LARGE 4 bedroom, 2 3/4 bath, frame w/siding covered patio, 2-car garage, storage shed, satellite, fence, \$39,000.  
POSSIBLE SELLER FINANCE! approx. 2,000 sq. ft. home on 65' x 250' lot, carpet, refrig, air, trees, \$35,000.  
NICE 3 bedroom, 1 3/4 bath, frame w/siding, on 2.96 ac., City water, plus 2 wells, Must See! \$33,900.  
LAKE LEON, Cozy Cabin on large needed Waterfront Lot, CH, Staff Meter, New Guest House, \$32,000.  
LAKE LEON, Older Cabin situated on two Deeded Waterfront Lots, Staff Meter, Beautiful HomeSite, \$30,000.  
LAKE LEON, Nice 2 bedroom, 2 bath, mobile home w/80' screened porch, on two lots, Electric Bolt Lift, \$30,000.  
NESTLED BENEATH THE TREES, 2 bedroom, Frame on 4 wooded lots, Assumable Loan, Make Offer! \$29,000.  
ASSUME SELLER FINANCE! 3 bedroom, 1 3/4 bath, frame w/siding, CH/CA, builtins, \$27,000.  
NOTHING DOWN if you qualify under FmHA Guidelines, 2 bedroom, brick, \$26,000.  
EDGE OF TOWN, 2 bedroom, 2 bath, frame, on approx. 3 ac., CH/CA, formal dining, modern kitchen, \$25,000.  
LAKE LEON, Cute 2 bedroom on deep water near dam, long-term lease lot, new paint, \$25,000.  
POSSIBLE SELLER FINANCE! large 4 bedroom, frame, also commercial location, \$24,000.  
ASSUME LOAN, 3 bedroom, 2 bath, doublewide on 1 ac. overlooking golf course, CH/CA, \$22,000.  
ESTATE SALE, 2 bedroom, white frame, sep. living areas, two 2-car garages, 12 ac. \$20,000.  
ATTRACTIVE 2 bedroom, refrigerated air, rock patio, fenced yard, ideal location near hospital, \$20,000.

### UNDER \$20

## Social Security: 57 Years And Still Going Strong

Fifty-seven years ago, this country was gripped by the Great Depression. Everywhere, people stood in breadlines and scavenged city dumps. Families

lived in tents along roads; freight trains carried vagabond men and boys wandering in search of steady work. One out of five children in New York

City was malnourished. One out of every four men nationwide lacked a job. The depression had an even more devastating impact on the elderly. Unemployment among older workers was estimated at 30 percent. Fewer than 18 people out of a hundred were covered

by pension plans. Businesses were bankrupt; savings institutions had folded. Agricultural prices fell. States lacked the resources to cope. Families and charities found it a heavy burden to provide for older people. For the first time in our history, American work-

ers were almost totally dependent on factors beyond their individual control for their economic security. This contrasted markedly to the preindustrial age, when more than half the Nation's adult workers were farmers.

A number of national solutions were proposed, most notably that of Dr. Francis E. Townsend, a Long Beach, Calif., physician. He advocated a program of giving people over age 60 \$200 a month on the condition they quit working and spend each month's pension within 30 days. Millions of frustrated older people rallied in support of Townsend's plan and, though it was dismissed, political leaders took careful note of the support it had received.

In 1934, President Roosevelt appointed the Committee on Economic Security to study the long-term problems that had been highlighted by the Depression.

What followed was this country's first major Federal government program to deal directly with the economic security of its citizens. Signed on August 14, 1935, the Social Security Act provides "for the general welfare by establishing a system of Federal old-age benefits and by enabling the several States to make more adequate provision...". Two programs were thus introduced on a national scale:

- A Federal system of old-age benefits for retired workers who had been employed in industry and commerce;
- A Federal-State system of unemployment insurance.

The choice of old age and unemployment as the risks to be covered by social insurance was a natural development, since the depression had wiped out much of the lifetime savings of the aged and had reduced opportunities for employment.

By January 1940, the new Federal system was ready to pay its first retirement benefits. Mrs. Ida Fuller, the first recipient, received \$22.54 that month. She had paid \$24 in FICA taxes to

qualify for benefits. She received checks every month for several years until her death.

Today, Social Security pays more than just retirement benefits. Through amendments to the Act over the years, the program now provides a package of protection for America's workers and families of all ages. Cash benefits are available in the event of a severe, long-lasting disability. Benefits are paid to young families when a breadwinner dies. And, of course, older widows and widowers are also eligible.

Over 40 million people — one in every 6 Americans — is receiving some type of Social Security benefit, financed with payroll taxes that are paid each year by 132 million workers. Social Security provides a floor of protection against the serious problems of economic insecurity.

Thanks to the wisdom of its founders 57 years ago, the Social Security program ranks as one of the most successful social insurance systems in the world.

Cisco Press, Eastland  
Telegram, Ranger  
Times, Rising Star,  
Callahan County Star  
Thursday,  
September 10, 1992

## Pastoral Care & Counseling To Present Seminar September 14

The Pastoral Care and Counseling Center will present a First Monday seminar on September 14, the second Monday of September due to Labor Day.

Olga Roman Roberts, staff therapist, will present an hour-long seminar

entitled "The Inner Child," which will begin at 7:00 p.m. in the conference room at the Pastoral Care and Counseling Center, 751 Hickory Street, and is free to the public.

For more information call 672-5683.

## Men In Service

Marine Lance Cpl. AirStation, Kaneohe Bay, HI.  
Johnny R. Herridge, son of Donna Herridge of Star Route 1, Baird, was recently promoted to his present rank while serving with 3rd Battalion, 3rd Marines, Marine Corps

He joined the Marine Corps in June 1991.

## READ THE CLASSIFIEDS

## REMEMBER TO RENEW YOUR SUBSCRIPTION!!

Check expiration date on top of mailing label.

## September Football Special

SIRLOIN STEAK

With Potato and Salad Wagon

\$6.79

K-BOBS STEAKHOUSE OF EASTLAND

## CHIROPRACTIC FOR BETTER HEALTH



DR. STEPHEN G. BARRY

CHIROPRACTOR

## MEDICAL RESEARCH SUPPORTS CHIROPRACTIC

The British Medical Journal reports that Chiropractic treatment of low back pain, which affects 75 million Americans, is superior to the standard regimen administered by medical doctors.

The study, published in the summer of 1990, indicated that chiropractic manipulation can relieve severe back pain quicker and at lower cost than medical treatment. Chiropractic patients experienced less pain and disability and missed fewer days work.

At Barry Chiropractic Clinic

we are committed to not only getting you free of back pain, but treating those conditions which cause your pain. Don't delay treatment when help is readily available.

\*\*\*\*\*

In the interest of better health from the office of:

Dr. Stephen G. Barry  
- Chiropractor -  
951 E. Main, Eastland  
629-1771

5-104

## Deiciséis DE Septiembre

## CELEBRATION

Saturday, September 12, 1992

South Side of the Square  
Eastland, TX 10 AM - 4 PM

Enchiladas

Fun For The Entire Family

Musica Con

Mayo Villa Lobo

Los Bravos Del La Brava

## Benefit Dance

Saturday, September 12, 1992

Ranger Jaycee Rodeo Barn  
Ranger, Texas

8 PM till 12 Midnight

Admission

\$7 por persona

avansados

\$8 por persona

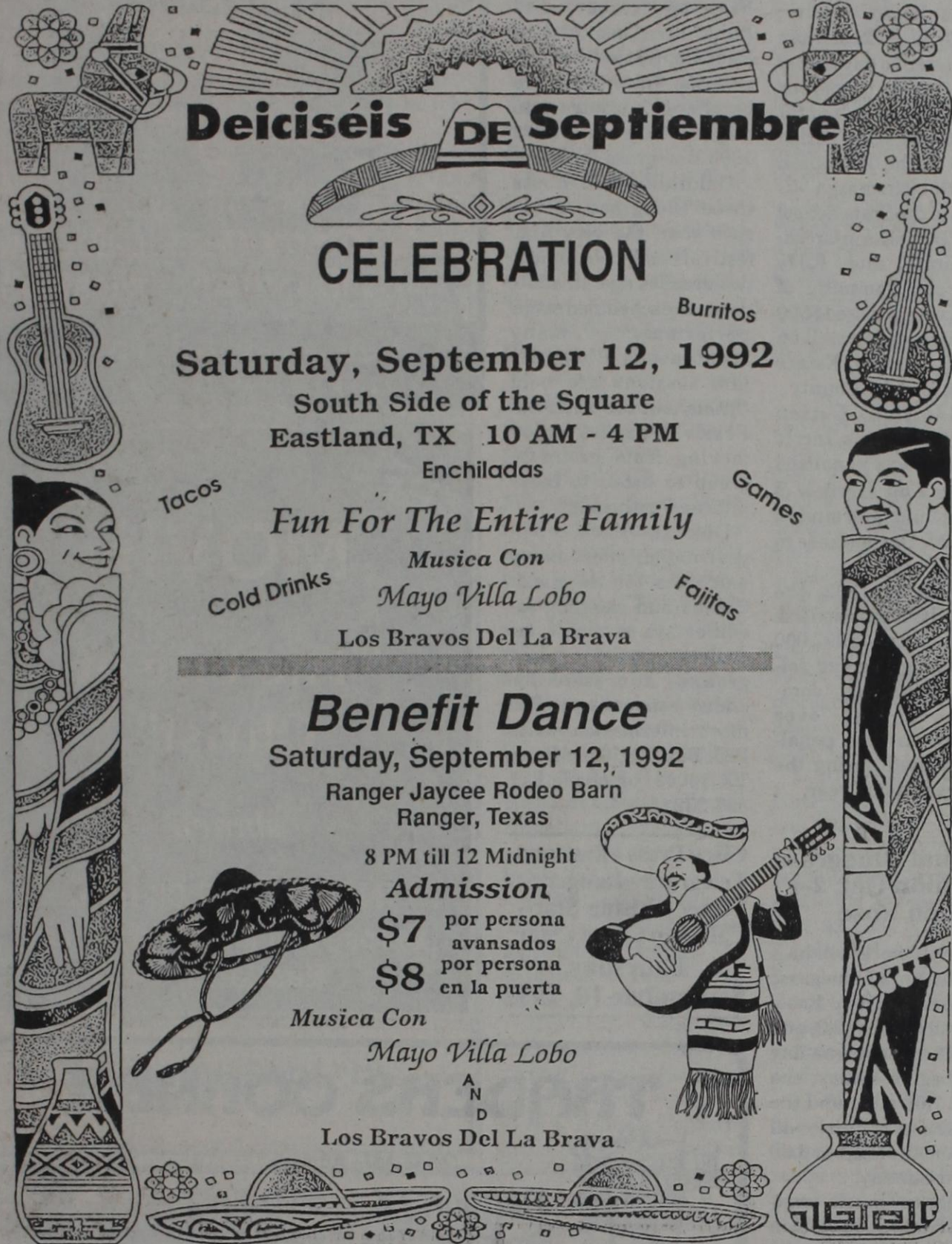
en la puerta

Musica Con

Mayo Villa Lobo

A  
N  
D

Los Bravos Del La Brava



# Now Call FREE With CELLULARONE®

Introducing the Free Calling Plan from CellularOne. Call from your CellularOne phone absolutely free (no airtime charges) Monday through Friday 7 p.m. to 7 a.m., and all day weekends and most holidays with CellularOne's 99 plan.

But you get a lot more than free calls with CellularOne.

You get lower rates, higher quality, more experience and more features. Plus toll-free calling throughout Central Texas. Plus instant service from our local office. All from the first name in cellular telephones.

### LOCAL CALLS - MOBILE TO LAND (817) AREA

259 MAY	643 RISING STAR	758 DESDEMONA	879 PROCTOR
442 CISCO	647 RANGER	764 ALEXANDER	893 DELEON
445 DUBLIN	653 OLDEN	785 CARLTON	965 STEPHENVILLE
629 EASTLAND	725 CROSS PLAINS	842 SIDNEY	968 STEPHENVILLE
639 CARBON	734 GORMAN		

### (915 AREA)

239 VOCA	357 MOZELLE	483 DOOLE	739 ZEPHYR
243 ROCHELLE	372 SAN SABA	623 LOCKER	748 BLANKET
251 PONTOTAC	382 LAKE COLEMAN	624 BURKETT	752 BANGS
258 KATEMICY	429 FREDONIA	628 BEND	784 LAKE BROWN
265 STREETER	446 JUNCTION	636 VALERA	785 ROCKWOOD
286 MELVIN	452 RICHLAND	643 BROWNWOOD	885 NEWBURG
344 LOHN	SPRING	646 BROWNWOOD	938 BIG VALLEY
348 SANTA ANNA	463 MERCURY	648 GOLDTHWAITE	966 PRIDDY
356 COMANCHE	469 EOLA	667 GUSTINE	985 MULLEN

Call us. And start calling free.

## TEXAS CELLULAR, INC.

1500 Coggin Ave.  
Brownwood, Tx 76801  
915/646-3794  
FAX 915/643-6521

1-800/925-4720

967 East Main  
Eastland, TX 76448  
817/629-8994  
FAX 817/629-8948

### ACROSS

- Baird's Estes is in Rodeo Hall of
- fishing line winder
- type of exam
- "there's \_\_\_ cloud in the sky"
- former Dallas Cowboy president Tex (init.)
- Heisman winner '87; Dallasite, \_\_\_ Brown
- TX boxer won gold in '68 Olympics (init.)
- TXism: "\_\_\_ high time we did it"
- TX R. Howard created this "Barbarian"
- "MASH's" Alan
- "\_\_\_ more beef"
- Kingsville university: Texas \_\_\_
- Spanish "six"
- TXism: "\_\_\_ a one-armed fry cook in a truck stop"
- on 1st live Texas TV: "Flying \_\_\_ Boys"
- TX Gary Morris hit: "One Fall \_\_\_ It Takes"
- TXism: "\_\_\_ big for his britches"
- Houston's has largest Boa collection
- J.R.'s TV series
- TX Relays is a track
- old pipeline from TX to N.Y.: "The Big \_\_\_"
- first TX newspaper: "\_\_\_ Mejicano"
- TX Keene who gave writer Stephen King a bomb scare
- TX Tubb's '43 hit: "Walking the Floor..."
- TXism: "I'll \_\_\_ your hide"
- Klux Klan
- sang "Pretty Woman" (init.)
- TX voted to secede from this in 1861
- Heisman's job at Rice
- Ruben Sierra gets a lot of these
- "Monkee" from Dallas
- hometown of Jeannie C.
- Texas crude
- Dallas' Reunion Tower is \_\_\_ stories high

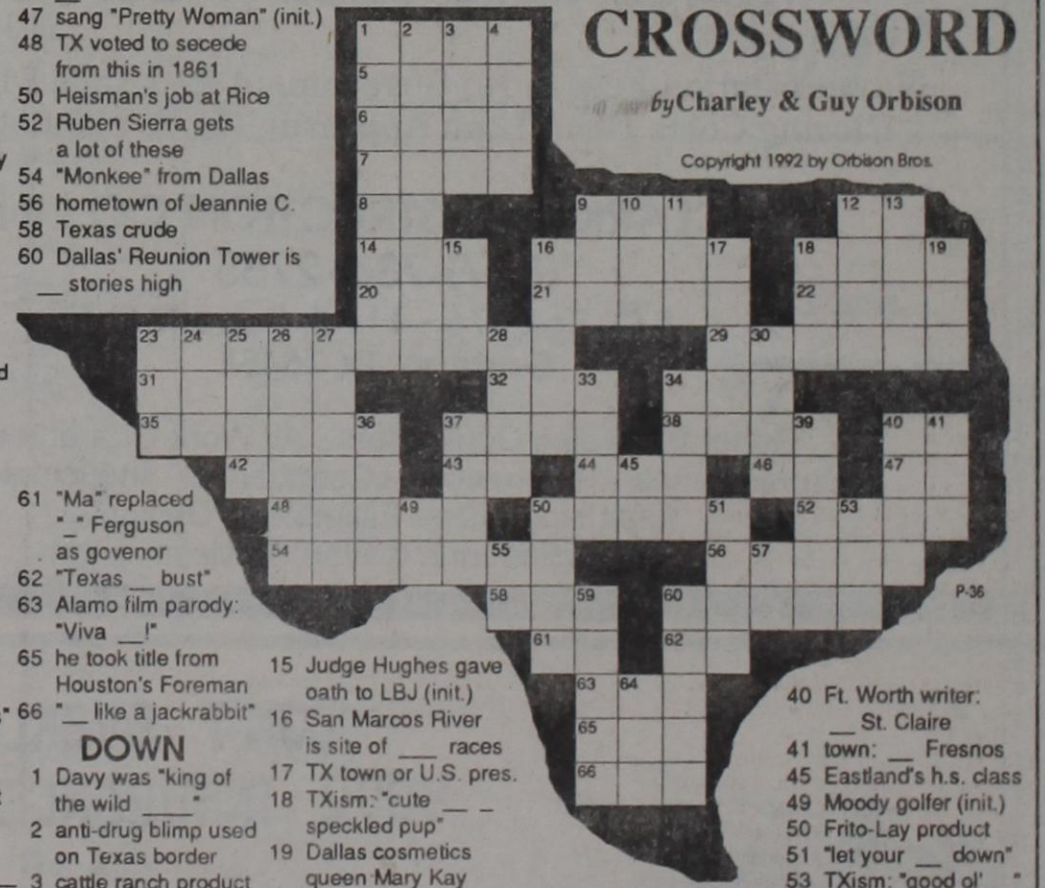
### DOWN

- Davy was "king of the wild \_\_\_"
- anti-drug blimp used on Texas border
- cattle ranch product
- "Babe" Didrikson's middle name
- TXism: "suits me \_\_\_ fare-thee-well"
- Salado eatery: "Stagecoach \_\_\_"
- TXism: "plum riled"
- "Galveston" singer \_\_\_ "juice" (coffee)
- Judge Hughes gave oath to LBJ (init.)
- San Marcos River is site of \_\_\_ races
- TX town or U.S. pres. speckled pup
- Dallas cosmetics queen Mary Kay
- auction action
- co-owner of "Fiesta Texas": Opyland \_\_\_
- bill of \_\_\_
- TX feud book: "I'll Die before \_\_\_"
- Steinbeck's TX wife
- TXism: "up and \_\_\_"
- TX bank insurer
- basalt is igneous \_\_\_ in Uvalde Co.
- director Preminger
- goddess atop capitol bldg. is made of \_\_\_
- snow sliders
- type of skirt
- on hwy. 10 between Ft. Worth & Dallas
- Ft. Worth writer: \_\_\_ St. Claire
- town: \_\_\_ Fresnos
- Eastland's h.s. class
- Moody golfer (init.)
- Frito-Lay product
- "let your \_\_\_ down"
- TXism: "good ol' \_\_\_"
- TXism: "raring \_\_\_ go" (anxious)
- "British Open" winner Nick (init.)
- third pres. of TX: Mirabeau \_\_\_
- TXism: "busy as a \_\_\_ a han house"
- pecan pie \_\_\_ mode

## Presents The Original TEXAS CROSSWORD

By Charley & Guy Orbison

Copyright 1992 by Orbison Bros.



This TEXAS CROSSWORD Puzzle is Sponsored by

## Eastland Drug

201 W. Main Eastland, TX  
629-1791

## RRC Assesses \$54,600 In Administrative Penalties

The Railroad Commission assessed \$54,600 in administrative penalties this week to twelve oil and gas operators for violations under Commission well plugging and pollution rules, according to RRC Chairman Lena Guerrero.

Castellaw Operating of San Marcos was ordered

to pay a total of \$100 for two inactive and unplugged wells on the Johnson lease in Dimmit County; Kodiak Oilfield Equipment of Rush Springs, Okla. was assessed \$500 for one well on the Jerry Mitchell lease in Stonewall County; Southern Oil & Gas, Ltd. of Chicago was penalized

\$3,000 for one well on the Milburn Kram Unit lease in Lavaca County; Ziegler Operating Company of Houston was ordered to pay \$4,000 for one well on the Westmoreland lease in Wharton County; S & S Oil & Gas of Banquete was assessed a total of \$16,000 for eight inactive and unplugged Jim Wells County wells; three on the Charles Muil lease, one on the Charles W. Muil

lease, and, four on the C. Muil lease; World Resources Development of Carson City, Nev. was penalized \$10,000 for five wells on the Pruett "B" lease in Callahan County; Tom Kid Oil Properties of Arlington and Furry Oil & Gas of Bangs were jointly ordered to pay a total of \$6,000 for two wells on the McFarlane "A" lease in Callahan County; and, Cadasco of

Fort Worth was assessed \$3,000 for one well on the Alice Jones lease in Sutton County.

Three Operators agreed to pay penalties without admitting any violation of Commission rules. Go Oil Corp. of Jacksboro was penalized \$1,000 for one well on the Kalina lease in Palo Pinto County; Gibbs Drilling Co. of Iraan was ordered to pay a total of \$10,000 for numerous spills of oil and saltwater over an extended period of time on the Thompson lease, the Thompson - B lease and the State School Board "BJ" lease in Crockett County; and, Riley Resources Company of Odessa was assessed \$500 for an unplugged well on the J.L. Daniel Estate lease in Concho County.

In addition, Cotton Valley Operations, Inc. of Longview was penalized \$500 for a pit overflow of drilling fluids and mud on the W. M. Harley lease in Gregg County.

To date in 1992, the Railroad Commission has levied more than \$997,000 in well plugging and pollution penalties, compared to just over \$562,000 in such penalties assessed during the same period last year.

House Band.

Jim Atchley of Austin will serve as the Master of Ceremonies of the program.

On Saturday morning, non-professional musicians will vie for over \$1000 in prize money. Individual competition will be held in Mandolin, Flat-top Guitar, and Banjo divisions. Also, a Band Contest will be held, with the winning band to be offered a contract to play in Oakdale Park's 1993 Bluegrass Reunion.

Oakdale Park hosts three Bluegrass events each year, the very first festival being held almost two decades ago. In addition to the scheduled stage performances, many spontaneous Bluegrass jam sessions are held throughout the weekend. Festival guests enjoy moving from group to group to listen to these informal gatherings.

Oakdale Park, open year-round, offers many amenities for its guest. Cabins and camping facilities are available, as well as a snack bar, playground, and store for added convenience. For more information write P.O. Box 548, Glen Rose, TX 76043; or phone 817 897 2321.

Cisco Press - Eastland  
Telegram - Ranger  
Times - Rising Star - Callahan County Star  
Thursday,  
September 10, 1992



'72 Ford 1/2 Ton  
\$1,395.00



'81 Dodge 1/2 Ton Standard  
\$775.00

See at Bond Town  
Lake Leon 647-5200

### WE NEED YOUR WORK

We do remodeling, repairs, electrical, plumbing, heating and air, new homes, patio covers, mobile homes, siding, and painting.

WE'RE LOCAL

25 yrs. of Experience  
647-3036 or 647-5334



**NEW LOGO** --For the past 75 years, the Texas Department of Transportation has made service and a commitment to safe and efficient transportation their top priorities. Now, the department has a new logo, soon to be seen on all department equipment and vehicles, that symbolizes that commitment.

District Engineer Wes Heald said the new logos will be in place on all 500 state vehicles in District 23 by August 31, 1993.

"This is a top priority," Heald said. "We want to get these new decals on as soon as possible so we can all begin to associate the new logo with the department."

In 1991, the highway department merged with the Texas Department of Aviation to become the Texas Department of Transportation. That name change has brought about a new red, white and blue logo that denotes the forward movement of the department and instantly recalls Texas and transportation with a bold "T" and lone star.

When the Texas Highway Department was created in 1917, its logo symbolized the department's "simple" beginnings. The first logo was a circle with a star in the middle. Later, the logo became a Texas flag surrounded by an oval and the words, Texas Highway Department. In 1975, the Texas Highway Department became the State Department of Highways and Public Transportation, and the oval logo remained the same, with the exception of the name change.

"Like its logo, the Department of Transportation has gone through many changes since it was created," said District Engineer Wes Heald. "We are always trying to advance and to modernize our business to make travel easier for the people of Texas. This new logo encompasses the entire realm of transportation and is only one example of our continuing effort to improve."

### Annual Bluegrass Reunion Oct. 2-4 In Glen Rose

Oakdale Park will host its 18th Annual Bluegrass Reunion in Glen Rose, Texas on October 2, 3, and 4, 1992. The three-day show begins Friday, the 2nd at 7:00 p.m., and the final strains of music will flow from the stage at 6:00 p.m. on Sunday.

Bluegrass music originated from deep within the hills of Kentucky and Tennessee and has been passed down for generations. Bands on the Oakdale stage perform true traditional Bluegrass music - all using acoustical instruments. Featured are the flat-top guitar, banjo, mandolin, fiddle, and upright bass.

Featured performers and bands for the Reunion are the Charlie Cline Band, the Lewis Family, River Mountain Valley Boys, Concho Grass, Twice As Nice, Bluegrass Reunion, Red Oak Bluegrass Band, The Double Mountain Boys, and W.S.T. Bluegrass Band as

## MAJESTIC THEATRE

629-1322

MICHAEL KEATON DANNY DEVITO MICHELLE PFEIFFER



### BATMAN RETURNS

Fri. • Sat. • Sun. • Mon.

All Shows: 7:30 p.m. - \$3.50

10-Admission Passes - \$30.00

5-Admission Gift Pass - \$17.50

Adults Only Balcony Ticket - \$5.00

### Majestic Classic Film Series

LUCILLE BALL • DESI ARNAZ

The LONG LONG Trailer



2:00 p.m. Sun Sept. 13  
7:30 p.m. Tue Sept. 15

9.5% A.P.R.

### HOME REMODELING LOANS

No Application Fees & No Government Red Tape \$100 Total Closing Costs Upon Loan Approval, Up To \$25,000 Loan

T. J. CLARK CONSTRUCTION CO., INC.

(817) 734-2755

P.O. Box 176 - 111 E. Roberts St.  
Gorman, TX 76454

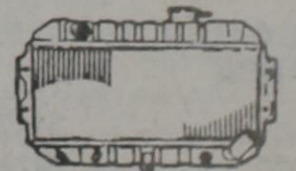
General Building Contractors - All Work Guaranteed  
Custom Homes - Remodeling - Commercial - Industrial - Farm  
Financing - Free Estimates - Design,  
Engineering & Plan Services

## Gaines Automotive

Hi Tech Care For Hi Tech Cars

### ANNOUNCING

The Opening of our  
Radiator Department



Recoreing • Cleaning & Repair  
Plastic & Copper

314 W. Main

Eastland

629-1008

DON'T OVERLOOK  
YOUR INSURANCE NEEDS

Serving Eastland County Since 1919

CONTACT

D.L. KINNAIRD  
GENERAL INSURANCE

629-2544

629-8606

Sallie Kinnaird

104 N. Lamar

Mike Perry

## A-1 BUILDERS

Building & Remodeling Commercial • Residential

- ROOFING
- SIDING
- METAL BUILDINGS
- ELECTRICAL
- CONCRETE

Jerry Maston • Owner 629-3118

## Eleventh Court Of Appeals

The following proceedings were had in the Court of Appeals, Eleventh District of Texas:

### APPEALS DISMISSED FOR WANT OF JURISDICTION

11-92-142-CV Cecil Lloyd Allen v. State of Texas. (Per Curiam Opinion).-Houston.

11-92-155-CV Thomas Elton Holder v. Texas Department of Criminal

Justice et al.-Anderson. (Per Curiam Opinion).

### MOTIONS SUBMITTED & GRANTED

11-92-003-CV TD Industries, Inc. v. NCNB Texas National Bank. Appellant's motion for permission to file reply brief.-Smith.

11-92-028-CR George Truitt Stone, Sr. v. State of Texas.-Eastland. Appellant's fifth motion

for extension of time to file brief.

11-92-034-CR Jackie Barney Hooper v. State of Texas.-Palo Pinto. State's motion for permission to file late brief.

11-92-035-CR Jackie Barney Hooper v. State of Texas.-Palo Pinto. State's motion for permission to file late brief.

11-92-049-CR Clifford Michael Glover v. State of Texas. Appellant's second motion for extension of time to file brief.-Palo Pinto.

11-92-058-CR Theodore Carrion aka T.J. Carrion v. State of Texas. Appellant's third motion for extension of time to file brief.-Taylor.

11-92-097-CR Antonio Fitzgerald Dotson v. State of Texas. Appellant's motion for extension of time to file brief.-Smith.

11-92-104-CV Joe Bush v. A. L. Graves. Appellee's motion for extension of time to file brief. Intervenor appellee's (Alford) motion for extension of time to file brief.-Shelby.

11-92-106-CR Larry Hammer v. State of Texas. Appellant's motion for extension of time to file brief.-Van Zandt.

11-92-135-CR Albert Wooten v. State of Texas. Appellant's motion for extension of time to file statement of facts.-Smith.

11-92-145-CV Sunwest Companies, Inc., Sunwest N.O.P., and Sunwest Development Co., Inc. v. L & L Asphalt Corporation. Appellants' motion

for leave to file supplemental statement of facts. Appellants' second motion for leave to file supplemental statement of facts.-Smith.

11-92-148-CV Roy Owens (Yazell Chevrolet-Oldsmobile, Inc.) v. Gaston Puckett.-Upshur. Appellant's motion for extension of time to file brief.

11-92-159-CR Charles Waters v. State of Texas.-Anderson. Appellant's motion for extension of time to file statement of facts. Appellant's motion to substitute counsel.

### MOTIONS SUBMITTED & GRANTED IN PART

11-92-029-CR Yolanda Soliz v. State of Texas.-Taylor. Appellant's third motion for extension of time to file brief.

MOTIONS SUBMITTED & OVERRULED  
11-91-028-CR Wesley Truitt Dixon v. State of Texas. Appellant's pro se motion to obtain record.-Stephens. (Per Curiam Order).

11-91-235-CV Floyd E. Hutson, Joyce N. Hutson, and BlendCo Fuels, Inc. v. Thomas W. Blow. Appellants' motion for acceleration of appeal.-Smith.

11-92-103-CV David L. Simpson v. Director, State Employees Workers' Compensation Division, State of Texas. Appellee's motion to dismiss appeal.-Anderson.

11-92-142-CV Cecil Lloyd Allen v. State of Texas. Appellant's pro se motion to supplement transcript.-Houston.

11-92-155-CV Thomas Elton Holder v. Texas Department of Criminal



Atop a building in Gotham City, the mysterious Catwoman (Michelle Pfeiffer) confronts Batman (Michael Keaton) in a dangerous clash of skills and wills in Warner Bros. new adventures of the Dark Knight. "Batman Returns" also stars Danny Devito. This picture will open at the Majestic September 11.

## "Batman Returns" At Majestic

Warner Bros. new epic adventure "Batman Returns" will open at the

Justice et al.-Anderson. Appellant's pro se motion to continue appeal.

### CASES SUBMITTED

11-91-073-CR Israel Ortega v. State of Texas.-Brown.

11-91-194-CV J. L. Davis, Individually d/b/a "J. L. Davis-Claytonville Gas Plant" Hydro, Inc. et al.-Fisher.

11-91-267-CV The Cadle Company v. Nunn, Griggs, Jones & Sheridan.-Nolan.

11-92-020-CR John Lavert Johnson, Jr. v. State of Texas.-Taylor.

11-92-043-CV Chris A. Ball v. Philip E. Osborne and Sandra S. Osborne.-Eastland.

11-92-062-CV Tracie Diane (Edwards) Doyal v. Gary Kent Edwards.-Taylor.

11-92-174-CV Myjinda Lynn Jones v. Hon. Quay Parker, Judge.-Orig. Proc.

Majestic in Eastland Friday, September 11, 7:30 p.m. It will show at the same time nightly through Monday, September 14. Admission will be

\$3.50, with balcony seats at \$5. Balcony seats are sold to persons age 21 and over.

The film brings a darkly dazzling and fresh picture

Cisco Press - Eastland Telegram - Ranger Times - Rising Star - Callahan County Star Thursday, September 10, 1992

of Gotham City and its inhabitants, as Batman battles against his evil opponents. Michael Keaton is the original Batman, whose portrayal of the mysterious hero made the first "Batman" history's sixth highest grossing motion picture.

Twice nominated for an Academy Award, Michelle Pfeiffer's impressive portrayal of the sinuous Catwoman adds interest to "Batman Returns."

The picture has some interesting photography, adding to the fantasy atmosphere. The story is based on Batman characters created by Bob Kane and published by DC Comics.

Remember To Check Your Mailing Label And Renew Your Subscription Now!!

## September Football Special

### SIRLOIN STEAK

With Potato and Salad Wagon

\$6.79

K-BOBS STEAKHOUSE OF EASTLAND

## "ACTIVELY SINGLE"

for Single Adults

Look For Us

at the

"Old R.I.P. Fest"

Saturday Sept. 19

5-76



**Buddy Aaron**  
General Agent  
108 S. Seaman  
P. O. Box 392  
Eastland, Texas 76448  
Business (817) 629-8533  
Home (817) 629-1086

## NOW'S THE TIME TO CONSIDER ANNUITIES

Call Buddy to learn about the interest rates.

Interest Same On \$5,000 to \$500,000

5-104

MOBILE HOME TRANSPORTING Complete Moves & Setups Moving Throughout Texas • Tie Downs • Blocking & Leveling \* Licensed \* Bonded \* Insured

18 Years Experience 817-893-6753

5-104

## READ THE CLASSIFIEDS



## Pharmacy Topics

By Bob Mueller

Large study to compare the drugs used to dissolve blood clots in a heart attack found all three equally effective, "The Lancet" reports. But the oldest and cheapest - streptokinase - was also the safest, according to the report.

Regular exercise seems to help people with mildly elevated eye pressure - an early symptom of glaucoma - to lessen the pressure and reduce or delay the need for drugs, according to a study at Oregon Health Sciences University in Portland.

Coming soon: a system that converts dental X-rays into images on a computer screen. It uses less radiation than conventional X-rays and can be fine-tuned for a better image, making diagnosis easier. System should be available in a couple of years.

Researchers at Jefferson Medical College in Philadelphia found that lying down on one's right side after a heavy meal is twice as likely to lead to heartburn as lying on the left side. Their advice: avoid fatty foods and alcohol; wait three hours before lying down.

To ease the discomfort of heartburn, we offer the most effective stomach soothers at Walmart Pharmacy Hwy 80 East, Eastland, 629-3347.

cenb104

817/629-3631



OPEN 8:00 - 5:30 SAT. 8:00 - 12:30

### EXPRESS PHOTO

SAME DAY PHOTO PROCESSING COLOR, BLACK & WHITE, PHOTO REPRODUCTION

BILL CULVERHOUSE owner

601 W. Main Eastland, TX 76448

Wedding Sports Studio Pictures Passports ID Photos Immigration Pictures

Serving all your photographic needs

5-104

## CISCO RADIATOR SERVICE

Over 30 Yrs. Experience

AUTO • TRUCK INDUSTRIAL

Gas Tanks & Heaters Repaired

442-1547

JIM BUTLER - Owner  
207 E. 6th Cisco, TX

5-72

## SALE ★ SALE ★ SALE

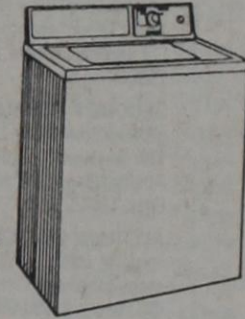
Washers • Dryers • Refrigerators

Washer

Stock #2100-7

\$369<sup>99</sup>

\*\*\*\*\*

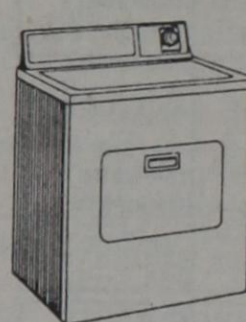


Dryer

Stock #85-3100-6

\$319<sup>99</sup>

\*\*\*\*\*



Washer

Stock #85-2160-1

\$459<sup>99</sup>

Super Capacity

Dryer

Stock #85-8246-2

\$399<sup>99</sup>

(These items may vary from actual picture.)



Designer White -

No-Frost Top Freezer Refrigerator

Model ET20RKKYW

- 19.9 cu. ft. capacity
- 30.3 sq. ft. total shelf area
- 4 Ice Cube Trays and Ice Bucket; will accept Optional ICEMAGIC™ Automatic Ice Maker
- Up-Front Temperature Controls and Lighting
- Humidity-Controlled Sealed Crispers with Glass See-Through Cover
- Adjustable Meat Pan with Glass See-Through Cover
- Super Storage door with shelf, covered utility compartments, and Button-Mount Door Storage Bins for gallon containers and 6-packs
- Adjustable Tempered-Glass Shelves
- Utility Bin
- 2 Freezer Shelves
- 2 Freezer Door Shelves with LOAD LOCK Dividers

#83-2054-1

\$779<sup>99</sup>



Designer White -

No-Frost Top Freezer Refrigerator

Model ET1BRKXYW

- 18.1 cu. ft. capacity
- 25.0 sq. ft. total shelf area
- 4 Ice Cube Trays and Ice Bucket; will accept Optional ICEMAGIC™ Automatic Ice Maker
- Up-Front Temperature Controls and Lighting
- Humidity-Controlled Sealed Crispers with Glass See-Through Cover
- Adjustable Meat Pan with Glass See-Through Cover
- Super Storage door with shelf, covered utility compartments, and Button-Mount Door Storage Bins for gallon containers and 6-packs
- Adjustable Tempered-Glass Shelves
- Utility Bin
- 2 Freezer Shelves
- 2 Freezer Door Shelves with LOAD LOCK Dividers

#83-2830-4

\$669<sup>99</sup>

## Western Auto Associate Store

1201 Conrad Hilton Ave.

Cisco, TX 442-1460





# Wildcat Tales

Rising Star High School  
Journalism Class

## Stuteville's Stats

by Emily Stuteville

If you attended the football game last Friday night, you probably noticed the wonderful performance of the flag corps at halftime.

The three girls, Christy Hughes, junior, Amy Collins, freshman and Athena Black, junior, have had after school practices and morning practices to perfect their routines. Captain Christy Hughes

stated, "I am really pleased with last Friday's performance. We are working really well together."

We can look forward to many more enjoyable exhibitions from these three young ladies as they continue to improve and work hard. There is always something going on at RSHS and the activities are varied and newsworthy.

## Catnip

by Christy Hughes

The Jr. Cats' football season starts tonight and the pep squad is ready to stand behind their team one hundred percent!

The pep squad this year consists of Angela Bradley, Lisa Bush, Racheal Bush, Lisa Calhoun, Traci Clark, Kelly Griffin, Melissa Johnson, Eva Rodriguez, Monica Rodriguez and Raquel Stuart.

I would also like to make

one correction concerning last week's article. In it I stated that Courtney Ezzell was a seventh grader, when in actuality she is in the eighth grade. I am sorry for this mistake.

As I mentioned, the Jr. Cats kick-off their football season tonight at 6:30 p.m. when they host Santa Anna. Their next game will be Thursday, September 17, at Hico, beginning at 6:30 p.m.

## Our Eccentric Elementary

by Inga Williams

Mrs. Bodenhamer is the teacher of all the English, Spelling and Drama classes for the fourth, fifth and sixth grades.

She has found some great ways to get her kids interested in what they learn.

This week, the fifth graders are doing a special section on punctuation and writing. Mrs. Bodenhamer gave the students many sentences to read and act out. They spell out the words with their bodies, working with all the letters of the alphabet, helping them in their spelling and reading. They also learn how to use periods, quotations, commas, question marks and exclamation marks by acting them out. This offers the pupils a fun way for them to understand and know how and when to use the correct punctuation.

Right now most of her classes are working with descriptive paragraphs. Mrs. Bodenhamer gives the students a piece of paper with an elaborate picture or photo on

it. After looking at the picture they can write about every small detail to the obvious ones, depending on what interests they have. All of her students seem to be enjoying this type of learning.

Mrs. Bodenhamer is soon going to have her pupils read a book called "The Indian in the Cupboard," and then moving on to a learning section on Indians. During this section, they will be doing book reports and other small but wonderful and exciting projects.

It seems to me that Mrs. Bodenhamer is doing a wonderful job with these kids. They have already learned so much from her methods of teaching.

I suggest if you have any children that are enrolled in one of her English, spelling and reading classes, that you should ask them about their progress as the year moves on. I am sure they will have plenty of exciting news and projects to explain to you.

## Nonnie's News

by Tianay Chambers

September tenth is almost here. This will be the first game for the Jr. High Wildcats. The RSJS will play the Santa Anna Mountaineers at the Wildcat Stadium Thursday night at 6:30. Be there to cheer on these wonderful guys to a victory!

I'm real sure these guys are ready for Thursday night and here are some of their thoughts: Jeff Harris is "ready

## Delicious Delicacies

by Kristi White

SEPTEMBER 14-18  
MON: **Breakfast:** Grilled cheese sandwiches, juice, milk. **Lunch:** Tacos, beans,

for the game" and he "hopes they do good." Don O'Conner said, "I think we will do pretty good and I am really excited about the Santa Anna game." Brandon Cook said, "I think we'll have a pretty good season and I think we'll win Thursday night."

salad, cake, milk.  
WED: **Breakfast:** Bacon, Texas toast, fruit, milk. **Lunch:** Corn dogs, baked beans, salad, brownies, milk.

THU: **Breakfast:** Breakfast pizza, juice, milk. **Lunch:** Chicken spaghetti, mixed vegetables, garden salad, rolls, pudding, milk.  
FRI: **Breakfast:** Sausage gravy, biscuits, juice, milk. **Lunch:** BarBQ on a bun, pickles, onions, fries, fruit, milk.

## Dear Rutherford

My dad is always trying to get me to work in the peanut fields, hoeing. I don't mind, but he only pays me 50 cents a day. I try to tell him that money is worth a lot less than when he was a kid. What

should I do?  
Poor  
Try to explain to him that the dollar is worth a lot less than when he was a kid. If that doesn't work, talk to your mom.

## Miscellaneous Musings

by Adela Chavez

There are two field trips that the high school will be taking this month. This Thursday, September 10, one of the Home Education classes will be driving around Rising Star and Cross Plains to study the structures of houses, so they can later decide how to design their "dream house."

This Home Ec class is taking an agriculture cluster in which they learn how to design and plan to build a house. The other trip will be to the West Texas Fair next Tuesday, September 15. This is also a teacher workday, which means it's a student holiday.

FHA reporter, Olivia West, has announced the 1992-93 FHA officers. They are: President, Heather Wright; Vice-

President, Christi Bush; Secretary, Rebecca Coleman; Treasurer, Andi Ferbrache; Reporter, Olivia West. Also in office are: Fourth Vice-President, Christi Hughes; Sergeants at Arms, Gwen Hollis and Adam Rodriguez; Parliamentarian, Wid Keeling.

High school students are urged to come and join the fun! Joining FHA only costs \$6.00. Some of our projects are the highway clean up program, home management (Home Ec.) and field trips. We're looking forward to this upcoming year and we hope you'll join us and be a part of it. Keep your eyes open for the notices that will be posted of our future meetings. Be a part of it, join today!

## Misti's Malarkey

by Misti Bailey

How about this new fashion statement? SK and AR decided to shave lines in their eye brows! I guess they think they're cool!

TW, I thought by now you

could at least pick out your own clothes! Did your mom make you change?

What Sr. guy RS was bustin' the move AGAIN! We won't mention 2nd party.

Hey! MS, are you trying to turn the Texaco into a dance hall? You know we can't do that in Rising Star! How dare you!

TW did you ever throw that grass adder away? What they do with hangers these days!

What fr. has a new boyfriend? You're moving up in the world JH.

What jr. JH went to the graveyard Sunday night and wouldn't even get out of the car? What jr. HW stopped liking the new guy for another new guy in town? Except this one is in college.

Who got pulled over twice in one night, once in Stamford and once in Anson, just for looking mysterious?

## Davitorials

by David Fisher

Davitorials is back for what looks like a great year for eye-opening events!

Plan on seeing a lot of opinions from the presidential primaries. You'll hear not only my opinion, but opinions of students.

Another sure fire eye-opener will be music. Madonna will release her first real CD in two years. Prince will release a CD in two versions. One of which will be the "Tipper Gore" version. Count on seeing articles on both of these subjects. All in all, I hope you like this year's Davitorials.

## NOTICE OF COMPARABLE TAX RATES AND REVENUES

The legislature has enacted a statute on school funding to comply with a court mandate enforcing the state constitution. Under prior statutes (SB 1) the tax rate for last year provides \$5205 per student in state and local revenues. Under this statute (SB 351) that same rate now provides \$5649 per student in state and local revenues.

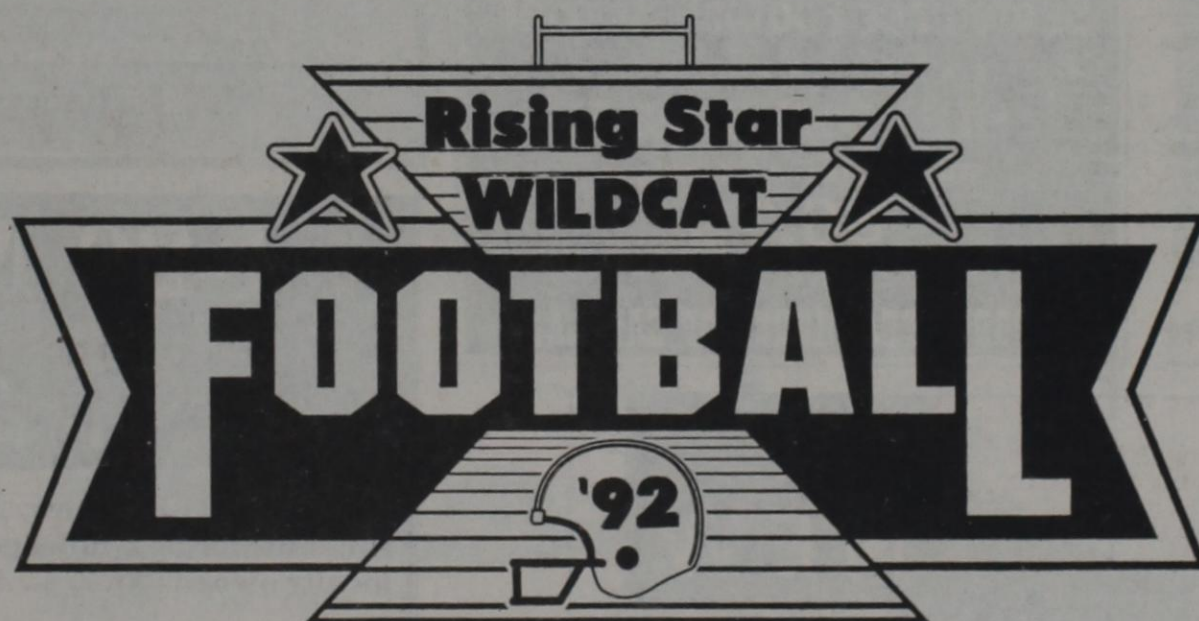
State law only requires a minimum tax rate of \$.93444 for county education districts. State law does not require a school district to adopt additional taxes. Neither does state law require a school district to adopt a tax rate that maximizes the receipt of state funds.

The board of trustees of the Rising Star Independent School District hereby gives notice that it is considering the adoption of a tax rate of \$.30556 that will provide \$5,609 per student in state and local revenues.



## Wildcat Cheerleaders

Inga Williams, Jo Linney, Laura Rankin, Adela Chavez, Andi Ferbrache, Inga Williams and Heather Wright

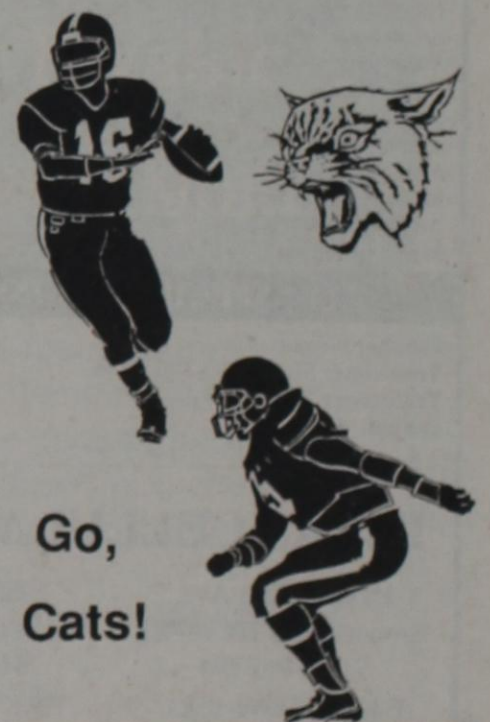


### Rising Star Junior High

Sept. 10	Santa Anna	Home 6:30
Sept. 17	Hico	There 6:30
Sept. 24	Throckmorton	There 6:30
Oct. 1	Gorman	There 6:30
Oct. 8	Santo	Home 6:30
Oct. 22	Baird	There 6:30
Oct. 29	Cross Plains	Home 6:30
Nov. 5	Evant	There 6:30
Nov. 12	Tolar	Home 6:30

### 1992 Rising Star Football

Sept. 4	Rio Vista	Home 8:00
Sept. 11	Santa Anna	There 8:00
Sept. 18	Hico	Home 8:00
Sept. 25	Throckmorton	Home 8:00
h*Oct. 2	Gorman	Home 7:30
*Oct. 9	Santo	There 7:30
*Oct. 16	OPEN	
*Oct. 23	Baird	Home 7:30
*Oct. 30	Cross Plains	There 7:30
*Nov. 6	Evant	Home 7:30
p*Nov. 13	Tolar	There 7:30
#Scrimmage		*District Games
h-Homecoming		p-Parents' Night



Go, Cats!

<b>White's Cafe</b> Home Style Cooking 118 S. Main	<b>Gerrie's Beauty Salon &amp; Lingerie</b> Dry Cleaning 101 N. Main 643-4673	<b>Quik Stop</b> 100 E. College at Main 643-1441	<b>Palace Drug Store</b> 100 N. Main 643-3231	<b>Peoples State Bank</b> Rising Star Branch, Member FDIC 206 W. College 643-2811
<b>Green &amp; Associates Insurance Agency</b> 200 S. Main 643-7817	<b>L&amp;J Construction</b> Lynn Hutton 725-7582 Jim Ratliff 643-6464	<b>Rising Star True Value Hardware &amp; Lumber</b> 200 E. College 643-4131	<b>Pioneer Farmers Cooperative</b> Pioneer 725-6564	<b>Cooper's Texaco</b> 211 W. College 643-1805
<b>#1 Video</b> Mildred Childers, Owner 200 S. Main 643-1009	<b>Buddy's Plumbing &amp; Appliance Serv.</b> 115 N. Main 643-7312	<b>Winfrey Feed &amp; Peanut Co.</b> E. Hlway 36 643-6251	<b>BFI Waste System</b> 800-683-4234	<b>Chamber/Commerce &amp; Agriculture</b> 515 W. College 643-1209
<b>Leonard, Butler &amp; Goldston</b> Bookkeeping & Tax Serv. 643-7430	<b>Frank Agnew Farm Bureau Agent</b> 104 N. Main 643-1010, 629-1704	<b>Rising Star Nursing Center</b> 409 S. Miller 643-2681	<b>Higginbotham Funeral Home</b> 803 N. Main 643-4321	<b>Dr. B.T. Carpenter</b> 512 W. College 643-3141
<b>Murphree Oil Co.</b> Ted Murphree 308 W. Mills 643-2341	<b>One Stop Automotive</b> Dave Scoville 109 E. College 643-5324	<b>Willie &amp; Brenda Ezzell Farms</b> Support the Wildcats	<b>The Rainbow Cafe</b> Buffet & Salad Bar N. Main 643-3000	<b>Max's Quickway</b> 200 W. College 643-1490

## Money Matters

By Bruce Redfield



### Lump Sum Distributions-Part 3

In our last few columns we have been covering options concerning lump sum distributions. Today I would like to cover how you can defer all of your taxes. The easiest way to do this is by using a rollover IRA. This would be a special IRA, separate from any others you might have. The earnings on the IRA will continue to grow tax-deferred and no taxes would be paid until you begin taking money out. What this accomplishes is that it gives you more money to work with in compounding your returns thus giving you a

more substantial nest egg in the years ahead.

Remember that you must establish a rollover IRA within 60 days of receiving your lump sum or you lose the chance. New legislation implies that after Jan. 1, 1993, 20% of all rollovers must be held back from all sum distributions for taxes and that this amount can only be recovered by filing for a refund at the end of the year. One can avoid this unfortunate situation by opening their IRA account by "direct transfer," between the employer and the new trustee of the IRA.

Almost any form of cash or securities can be used to fund your IRA. Most accounts focus on longer term investments that offer a higher return than short term instruments like savings accounts, money markets or C. D.'s. I would suggest diversifying into a strong family of mutual funds, or a proven money manager, or a good variable annuity with access to a number of mutual fund choices. This will give you the greatest amount of flexibility to respond

market conditions while allowing you to take advantage of professional management and great diversification.

If you open a rollover IRA and later move to another company, often you can transfer this IRA into your new employer's plan with no penalty. This would allow you to use forward averaging when you receive a lump sum from the new employer's plan, providing you have participated for at least five years. You may also have better access through borrowing privileges in an employer's plan.

If you would like to take some of the money and roll over some of the money you may. But you must rollover at least 50% to achieve any tax benefit.

Please address any questions you might have to Bruce Redfield, 424 W. Main Street, Ranger, TX 76470.

May the Lord richly bless you!

### CJC Registration Still Underway Through Sept. 10

Cisco Junior College's Dean of Admissions, Olin O. Odom III, reminds area residents that registration is under way and will continue through Sept. 10 at the Cisco campus and all off-campus centers.

Mr. Odom said, "Cisco Junior College offers a wide range of opportunities for expanding knowledge. We're anticipating a large enrollment this year, and we invite everyone, college age or older to enroll in one of the many programs we offer."

Students may register at the main campus in Cisco or at the Abilene Educational Center at 841 North Judge Ely Blvd. during regular office hours, 8 a.m. to 4 p.m. Monday through Friday. For more information call the appropriate campus at one of the following numbers: Cisco (817) 442-2567 or Abilene (915) 673-4567.

Cisco Press - Eastland  
Times - Ranger  
Times - Rising Star - Callahan County Star  
Thursday,  
September 10, 1992



Lucille Ball and Desi Arnez in the Classic Movie "The Long, Long Trailer," showing at the Majestic Theatre Sunday, September 13 and Tuesday, September 15.

## "The Long, Long Trailer," A Bright And Boisterous Comedy

The 1954 Classic film for September, "The Long, Long Trailer" brings back some of the brightest and most appealing of slapstick comedy. It also stars Desi Arnez and Lucille Ball (husband and wife) at the zenith of their careers.

The basis of the story is a recounting of the hazards of honeymooning in a trailer, with each succeeding situation a more hilarious variation on the theme.

Arnez tells the story in flashback to a man who is about to buy the trailer in which Arnez and Miss Ball spent their honeymoon-a honeymoon so eventful that the couple split up after several

weeks.

It all begins, Arnez shows, when Miss Ball got the bright idea of buying a trailer instead of a house.

The climax and comedy high point comes during a tour through Yellowstone National Park when Miss Ball hides a couple of tons of souvenir rocks and preserved jams and jellies in the trailer-the weight of which almost sends them crashing down an 8,000 ft. mountain.

This movie was rated "Excellent" by critics in the 1950's-it is still fun for the whole family.

The first showing at the Majestic will be a 2 p.m. Sunday Matinee on September 13, and the final

showing at 7:30 p.m. Tuesday, September 15. Admission will be \$3.50 at the box office. In addition to the Classic film, a cartoon and episode of Flash Gordon will be shown.



## THE CLASSIFIEDS SERVE EVERYONE

### September Football Special

\*\*\*\*\*

### SIRLOIN STEAK

With Potato and Salad Wagon

\$6.79

\*\*\*\*\*

K-BOBS STEAKHOUSE OF EASTLAND

# NEW

Incredibly Natural. Incredibly Flawless.

REMARKABLE FINISH LIQUID MAKEUP AND POWDERS

Lightweight, velvety makeup and face powder in natural skin tones, blends to matte perfection with light-diffusing microbeads for a softly radiant look. Powder available loose, pressed and in oil control formula. It's new. It's remarkable. It's from Merle Norman.

**MERLE NORMAN**  
COSMETIC STUDIOS

939 E. Main St.  
Eastland, TX  
629-3533

## ANDREW RELIEF EFFORTS

Organizations seeking donations for the hurricane relief effort:

**The Salvation Army** is accepting monetary donations, clothing and nonperishable food items. Checks may be sent to the Salvation Army Texas Divisional Headquarters, P. O. Box 2608, Dallas, Texas 75221. Clothing and canned food may be delivered to the Salvation Army, 5554 Harry Hines Blvd., Dallas, Texas, 75235.

**The American Red Cross** in Dallas is taking monetary donations. They can be sent to Dallas Red Cross, Disaster Relief Fund, 2300 McKinney Ave., Dallas, Texas 75204.

**The Baptist General Convention of Texas** is taking monetary donations. They can be sent to Baptist General Convention, c/o Texas Baptist Men, 333 N. Washington Ave., Dallas, Texas 75246-1789.

**The Catholic Diocese of Dallas** is taking monetary donations. They can be sent to Hurricane Andrew Fund, Catholic Diocese of Dallas, P. O. Box 19057, Dallas, Texas 75219. Donations will be forwarded to the Catholic Charities Disaster Response Office in Washington, D.C.

**The North Conference of the United Methodist Church** is taking monetary donations. They can be sent to North Texas Conference - Hurricane Andrew, P. O. Box 516069, Dallas, Texas 75251.

## CHILD ABUSE 24 HOUR HOTLINE 1-800-252-5400

## OPENING SPECIAL

Technophone Transportable

\$199<sup>95\*</sup>

Sept. Only Limited Quantities  
Call Now!

\* Most activate with Texas Cellular and CellularOne

### FEATURES

- Small, lightweight design
- Illuminated keypad and display
- Large send and end key
- Signal strength indicator
- User security and call barring
- Eight-NAM capability
- Speed dialing
- DTMF dialing
- Call status indicators
- Credit card calling from memory
- ESN in handset
- Adapts from mobile to transportable
- Battery kit (optional)



### FUNCTIONS

- 100 memory alphanumeric storage
- Scratch pad memory
- Automatic re-dial
- Call timers
- Memory search
- Audio volume control
- Audible key tones
- Mute key/clear key
- Any key answering
- Menu operation

### SPECIFICATIONS

- Handset Weight: 5 oz.
- Transceiver Size: 6 1/4 x 5 1/2 x 1 in.
- Transceiver Weight: 28 oz.
- Output: 3 watts

## TEXAS CELLULAR, INC.

1500 Coggin Ave. 967 East Main  
Brownwood, TX 76801 Eastland, TX 76448  
915/646-3794 817/629-8994  
FAX 915/643-6521 FAX 817/629-8948

1-800/925-4720

5-74

Charlie and Cindy Stenholm  
Invite you to the

# 14th Annual FUNDAY Festivities

September 26, 1992

4:30 p.m.

Ericksdahl Picnic Grounds

Doyle High,

Campaign Manager

P. O. Box 1032

Stamford, Texas 79553 Phone 915 773-5521

\$10 per person

Paid for by Stenholm for Congress Committee

5-75

## I-20 MOTORS

19th & I-20  
Cisco, Texas  
(817) 442-4262 or 442-2161

- |  |  |
|--|--|
| 78 Ford LTD like new, Auto, Air, 1 owner, low mileage, locally owned car. .... \$1995              | 87 Ford Taurus 4 dr. Auto, air, cruise, nice car. .... \$3500                                |
| 90 Dynasty, 4 Dr. loaded, electric seats, windows and locks. .... \$6250                           | 88 Ford Aerostar Cargo Van 55,000 miles, one owner, Auto, Air, extra, extra nice. . . \$5500 |
| 79 Chevettte 4 door, Auto, Air, Excellent Work Car. .... \$995                                     | 90 Mitsubishi PU 5 Speed, Air, Clean truck. .... \$4995                                      |
| 87 Escort GT 2 Dr. 5-Speed, Air, 72,000 actual miles, 1 owner. .... \$2995                         | 86 Mercury Lynx 5 Sp., Air, Clean Car. .... \$1950   |
| 90 Festiva LX, Cruise, Auto, Air, One Owner, 46 K miles. .... \$3650                               | 88 Ford Ranger Pickup 5 Sp. 1 Owner. .... \$2995   |
| 88 Pontiac 6000 Auto, air, fully loaded, low miles, one owner. .... \$4750                         | 89 Hyundai XL GLX Auto, Air, Power Steering 46,000 miles, 1 Owner. . . \$3250                |
| 90 Mercury Sable 4Dr., auto, air, cruise, tilt, AM/FM elec. windows and locks, one owner. . \$6500 | 89 Plymouth Voyager Van Grand LE 3 seats, fully loaded. .... \$6995                          |
| 89 Ford Tempo Air, Cruise, Tilt, One Owner. .... \$3995  | 89 Chevy Celebrity Wagon Auto, Air, V6, 1 Owner. . \$4350                                    |
|  | 88 Ford Tempo LX Auto, Air, Cruise, Tilt One Owner. .... \$4495                              |


Other Cars To  
Choose From

Financing Available  
On Most Cars

6-104



**State Capital**



**HIGHLIGHTS**

By Lyndell Williams  
TEXAS PRESS ASSOCIATION

**AUSTIN** — Suddenly last week, the political battle to overhaul the November election in favor of Texas Democrats was ended, and that was that.

In a brief explanation, Gov. Ann Richards said the state would not ask the U.S. Supreme Court to uphold her secretary of state's order voiding the primary.

Likewise, Attorney General Dan Morales said he would appeal to the U.S. Supreme Court, but not ask for an emergency ruling to replace the state Senate primary election.

Embattled Texas Republicans — who had just won a courtroom skirmish stopping Richards, Morales and Secretary of State John Hannah from tinkering with the state Senate election — the announcements were confusing.

It was unlike Democratic warriors Richards and Morales to retreat back into the woods, dragging their political wounded with them.

**Early Voting Pushed**  
At first, Democratic Party foot soldiers were puzzled with the haste of the dropped issue, but Richards provided the explanation, and it's certainly no retreat.

Her administration has installed a two-week period for early voting at shopping centers and retail stores in late October, but voters may not be able to sift the confusion.

"A lot of it is timing. We don't want to interfere with the oppor-

tunity of people to vote early," Richards said.

Maybe so. Some national pollsters are claiming Arkansas Gov. Bill Clinton has already overcome the convention "bounce" gained by President Bush, and Richards doesn't want to interfere with that.

Maybe not. Richards, Morales and Hannah received a hailstorm of criticism for tinkering, and confused voters tend to become angry voters.

**Over? No, Postponed**  
With redistricting put down for a nap, Richards joined Clinton and Al Gore on their campaign bus tour through Central Texas, bashing Bush along the way.

Richards told an Austin crowd of 15,000: "Since I have become governor, the Russian empire has dissolved, the Berlin Wall has come down. I had as much to do with that as George Bush did."

In San Antonio, former mayor Henry Cisneros rolled out his city machine before he pushed on to campaign for Clinton in other states.

Cisneros' one-time protégé, Morales, said the dormant redistricting issue will resurface in 1993 in the Legislature where they will vote again, two years past the deadline, to redraw political boundaries in Texas.

**11 State Parks Spared**  
Parks and Wildlife commissioners last week approved a \$135 million operating budget that includes a revised staff plan that prevents the closure of 18 state parks and historical sites.

Seven of the 18 remain on a 90-day review basis that could end with their being closed, but the other 11 were left untouched or with altered operating hours.

**State-Run Health Care**  
While officials debate the high cost of health care, a task force called by Richards urged Texas government to go forward with its own state-run health care program.

The Texas Health Care Policy Task Force report calls for creating a state government agency to run a basic health insurance plan, funded by a uniform tax instead of private-paid health insurance premiums.

It's called the single-payer system, and will take a long time to install, and is likely to be opposed by doctors, hospitals and insurance companies.

**Other Insurance Issues**  
In other insurance-related action, the State Board of Insurance adopted rules to speed up takeovers of financially weak insurance companies by strong ones.

Meanwhile, the board continues to push to abolish itself. All three members support creating a single insurance commissioner, either elected or appointed by the governor and confirmed by the state Senate.

Chairman Claire Koriath recently told the Sunset Commission the current system is not efficient and needs to be repaired.

Although the board is dominated by appointees of Gov. Richards, who campaigned heavily for pro-consumer insurance reform in 1990, abolishing the board is opposed by various consumer advocates who fear a single commissioner is more easily controlled by insurance companies.

**Other Highlights**  
Lt. Gov. Bob Bullock has been named 1993 Mr. South Texas by the Washington Birthday Celebration committee in Laredo. The title was begun in 1952 for public-service contributions to the Brush Country.

When asked whether people liked his less-than-prime-time speech at the GOP convention, Agriculture Commissioner Rick Perry said: "The ones in Texas did, and those 351 people out there watching on television did."

State Comptroller John Sharp warned that violent crime is increasing in Texas and the "bewildering" criminal justice system is "breaking down."

**"RICE" Can Be Used In Athlete Injuries**

If injured in school athletics this fall, try using RICE says a sports medicine expert at Baylor College of Medicine in Houston.

RICE is an acronym for rest, ice, compression and elevation — the basics for treating athletic-related injuries, says Dr. Albert C. Hergenroeder, an associate professor of clinical pediatrics at Baylor.

"Injuries are common after a summer away from the sometimes demanding physical rigors of school athletics," said Hergenroeder. "It is important to know how to care for an injury so that a minor injury remains minor and so the player

can return as soon as possible to the sport. Also, a more serious injury can be made worse if the initial treatment is not appropriate."

Hergenroeder recommends the following therapy for most injuries resulting from sports: **REST** — Avoid doing anything that hurts the injured area. However, the athlete should become active as soon as they can, providing it does not cause pain. **ICE** — A safe rule of thumb is to apply ice directly to injured area for 20 minutes each hour during the first 48 to 72 hours of injury or until swelling has ceased. **COMPRESSION** —

Pressure bandages such as "Ace" bandages should be applied to the injured area as soon as possible to help reduce swelling. Wear the bandage at all times. But if the bandage feels too tight or if the area below the bandage is blue/purple, it should be removed and a physician consulted.

**ELEVATION** — Elevate the leg or arm as much as possible to prevent too much blood from collecting in the injured area.

"Of course these simple treatments should not take the place of professional medical advice," Hergenroeder cautioned. "But they are common sense ways to manage many athletic injuries."

After the injury heals, Hergenroeder suggests three ways to rehabilitate injured muscles and to keep uninjured muscles in top form: proper stretching for flexibility, endurance training such as cycling for leg muscles or swimming for arm and shoulder muscles, and weight training for strength.

"Working the muscles to recovery involves determination, patience, a supportive coach and a physician's care," Hergenroeder said. "The doctor should determine when the patient is ready to play sports again, but input from the coach and athlete is crucial in making the decision."

Football is the top sport for injuries, followed by wrestling and gymnastics. The most common chronic injury is overuse of the knee, which is seen in almost all sports.

Other common sports-related injuries include:  
\* Tennis: calf strain, ankle and knee injuries, tennis elbow  
\* Swimming: shoulder strain

**Poetry Corner**

**REJECTED**  
There is an old, old story  
That's told so long ago  
How a kind, loving God  
Sent His Son to the world below.  
How we rejected Him  
The One that loves us so

We placed a crown of thorns on His head  
And led Him down the road.  
Oh how He must have loved us  
To have suffered, bled and died  
On the cruel cross of Calvary

Our sins on every side.  
He's waiting for us today  
With both arms open wide  
Come unto Me all ye that is weary

\* Running: shin splints, stress fractures, knee injuries  
\* Baseball: shoulder, elbow and knee injuries.

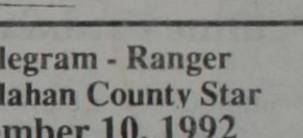


EVERY 3 MINUTES A WOMAN IS DIAGNOSED WITH BREAST CANCER.



EVERY 12 MINUTES A WOMAN DIES FROM BREAST CANCER.

Get the facts. It could save your life. Call (800) 221-2141, weekdays, 9 a.m.-5 p.m., central time zone.



**Wynonna To Perform At Six Flags Sept. 12**

Wynonna Judd will be in concert at Six Flags Over Texas on Saturday, September 12, in the theme park's Music Mill Amphitheater.

Since the break-up of the Judds, due to Naomi Judd's chronic active hepatitis, Wynonna has emerged as one of America's most popular singers. Her first album, *Wynonna*, which was released in April, has been on Billboard Magazine's

Top Country Albums chart for 21 weeks and is currently at number seven.

She also has two songs on Billboard's Hot Country Singles & Tracks chart. "I Saw the Light" and "No One Else On Earth" are in the top half.

Opening for Wynonna will be McBride & The Ride—named the 1991 Top New Country Group by *Cashbox* magazine.

Their second album *Sacred Ground* is also on Billboard's Top Country Albums chart. "Going Out of My Mind" is currently on the Hot Country Singles & Tracks chart.

All seats are reserved. There will be a \$2 concert fee in addition to Six Flags' regular admission price. The park will be open 10 a.m. to 10 p.m.

Tickets may be purchased at any Rainbow Ticketmaster outlet, or at Six Flags concert box office on regular operating days.

**REMEMBER TO RENEW YOUR SUBSCRIPTION TODAY!!**

**Watkins** SERVED FAMILY STYLE SINCE 1868

Those famous Watkins products you remember: Vanilla, Cinnamon, Pepper, Liniment and Salves are available at your door.

**Roxana Mathis**  
(817) 629-2019

**September Football Special**

\*\*\*\*\*

**SIRLOIN STEAK**

With Potato and Salad Wagon

**\$6.79**

\*\*\*\*\*

**K-BOBS STEAKHOUSE OF EASTLAND**

**Garrett Photography Studio**

BOBBY GARRETT  
Photographer

Children Portraits • Weddings  
Senior Portraits • Family  
8 Different poses and backgrounds

**Call For Appointment**  
Mon.-Fri after 5 p.m.  
Sat. 10 a.m.-1 p.m.  
Sun. after 1 p.m.

\*\*\*\*\*  
**442-2285**  
\*\*\*\*\*

1011 W. 11th St.  
Cisco, TX

817-629-3402 • 817-629-3403 • 1-800-300-3402 (Within 45 miles)  
8 a.m. - 6 p.m. Monday - Saturday

**AUTOMOTIVE SALES**  
1471 E. Main Eastland, TX 76437  
(Across from Sonic)

H. E. Austin Pat Davis

**WE FINANCE** **50 Automobiles To Choose From** **YOUR JOB IS YOUR CREDIT**

**WE FINANCE** 1989 FORD FESTIVA \$675. down. . . . . \$2,975.00

**WE FINANCE** 1986 CORVETTE Loaded, None nicer, 55,000 act. miles. \$12,500

1986 CADILLAC SEDAN DE VILLE Ladies car/one owner, a steal . . . . \$4,950.00

1986 DODGE RAM PICKUP Has all extras, red, 75,000 miles. . . \$3,950.00

**WE FINANCE** 1981 DIESEL 4 Dr. RENAULT Good transportation. . . \$295 down. . \$1,095.00

**WE FINANCE** 1986 FORD BRONCO 4 Wheel drive, Has all the extras, clean . . . \$4,750.00

**WE FINANCE** 1985 TOYOTA PICKUP Loaded, Customized, Solid Red, A Real Looker, Cold air. . \$4,450.00

1988 CHEV. PICKUP Diesel 3/4 ton, white, nice truck. . \$5,450.00 A Steal

1987 FORD AEROSTAR MINI VAN 66,725 miles, loaded, nine nicer, one owner . . \$6,950

**Why Buy? Rent It!**

*For your spring lawn care*

**We've got Lawn Aerators**

**Grandpaw's Tool Shed**  
1304 E. Main Eastland  
Travis Chapman  
629-3363

**6.00% = 8.33%**  
**Tax-free Taxable**

**SOMETIMES, LESS IS MORE.**

Tax-free investments mean more income for you. In fact, if you're in the 28% tax bracket, a tax-free bond yielding 6.00% pays as much after-tax income as a taxable bond yielding 8.33%.

**CALL TODAY FOR MORE INFORMATION.**

**Jim Bruton**  
Investment Representative  
107 W. Main  
Eastland, TX 76448  
(817) 629-3851

**Edward D. Jones & Co.**  
Member New York Stock Exchange, Inc. and Securities Investor Protection Corporation

\* Yield to maturity effective 9/3/92. Subject to availability. Market risk is a consideration on investments sold prior to maturity. May be subject to state and local taxes.

**EASTLAND FARM & RANCH INC.**

301 N. Seaman  
Eastland, Texas 76448  
(817) 629-2173 or 629-8035

**Offering You Only the Best**  
Feed - Seed - Vet. Supplies - Liquid Feed - Pet Supplies  
Lawn & Garden - Herbicides - Insecticides  
Dry Fertilizer - Liquid Fertilizer - Custom Application

**ACCO FEEDS**

## Obituaries

### Mildred Louise Stansbury

CROSS PLAINS - Mildred Louise Stansbury, 72, died Friday, September 1, 1992 in Cross Plains. Graveside services were at 10 a.m. Monday in Cottonwood Cemetery with the Rev. John Swift officiating, directed by Higginbotham Funeral Home. Mrs. Stansbury was born in Cottonwood, had been a nurse's aide and was a member of Cornerstone Methodist Church. Survivors include her husband, W.M. Stansbury of Cross Plains; three daughters, Sharon Fry of Abilene, Marlene Cowan of Laredo and Madenia Palmore of Rising Star; a sister, Marie Addis of El Paso; and nine grandchildren.

### 'Marie' Owens

CISCO - Sally Marie Owens, 75, died Friday, September 4, 1992, in an Eastland hospital. Graveside services were at 11 a.m. Tuesday in Rising Star Cemetery with Joe Philpott officiating, directed by Cisco Funeral Home. Mrs. Owens was born in Brown County. She worked for Boss Glove Factory until retiring in 1976 and was a Baptist.

Survivors include four daughters, Dorothy Jean Stewart of Douglasville, Willie Jo Preston of Arlington, Betty B. Harding of Midland and Helen Marie Williams of Snyder; a half brother, Charles L. Smith of Austin; a half sister, Opal Bible of Cisco; 12 grandchildren; and 20 great-grandchildren.

### Pauline Graham

Pauline Graham, 86, died Sunday, September 6, 1992 in an Odessa hospital. Services were at 10 a.m. Tuesday at Rising Star Cemetery with the Rev. Darrell Dossey officiating, directed by Higginbotham Funeral Home.

Mrs. Graham was born in Lohn and was a retired clerical worker from Dyess Air Force Base Supply. Survivors include a daughter, Sue Graham of Odessa; a son, Jimmy Graham of Odessa; five grandchildren; and seven great-grandchildren.

## Pioneer Patchwork

by Irma Miller

The Quilters worked on the Tumbling Blocks and the Jacob's Ladder on Tuesday. They had the first business meeting of the new season, with a good attendance, and everyone was glad to be back.

Jean and James Alexander were glad to have their children visit this weekend from Richardson; Jim, Maria, Doss, Jack, Will and Ashley.

Jewel Foster reported that the 42-84 game night Thursday was successful with 18 present, enough for three tables.

Novilia Barton received her children, Cecil and Mary, from Waco. Betty Beggs came to visit and Mary showed them pictures which she had taken in France.

Visiting Nell and Joe

Fleming were Nell's sister, Mary Mathews of Stephenville, who spent the weekend and Vince and Betty Meiron of Andrews. Tommy Bowden and Brian Fleming of Amarillo visited, as did Novilia Barton, on Saturday afternoon.

Frankie and Oliver Smith went to Temple on business Friday and to Ranger, with Jean Fore, on Saturday, to visit Frankie's father, Mr. Perry Vinson and her sister Dorothy Rogers. Saturday night they all three attended the Sipe Springs musical and on Sunday night, at Pioneer Baptist Church, enjoyed the presentation by missionaries, Jerry and Barbara Clower, who showed a film of activity in Taiwan. They are being reassigned to Singapore.

## County Extension Homemakers To Sponsor Bus Trip October 16

The Eastland County Extension Homemakers are sponsoring a chartered bus trip to the State Fair of Texas and Catherine The Great exhibit on October 16th.

Reservations are limited to the first 43 persons who pre-register by October 1st at the County Extension Service Office. Cost is \$33 which includes bus ticket, and admission tickets to the State Fair and Catherine The Great - Treasures of Imperial

Russia exhibit. Money is due at time of pre-registration.

Reservations are transferable, but **not refundable**.

The cost of trip does not include meals or refreshment breaks.

After October 1st, if seats are still available, reservations will be accepted from the public.

For additional information, contact Mrs. Janet Thomas, County Extension Agent-HE, 629-2222.

**Send Change of Address to  
The Rising Star Box 129  
Rising Star TX 76471-0129**

Free Consultation  
Cosmetics

Jewelry

Rising Star

AVON REPRESENTATIVE

Betty Duggan

643-1209 (After 6:00 P.M. on Mon. & Tues.)

## Senior Citizens Center

by Marjorie West

Thursday, September 3, was a good day at the center. Lucy Curtis is having some health test made. She has not been well lately. Her son, D.W. and wife, Georgia of Ft. Worth, have been on hand to carry Lucy to her doctors appointments. We hope she will be better soon.

Marion and Marjorie West went to the meeting of the Farmers Coop of Pioneer, which was held at the Cross Plains Multipurpose Center last Friday evening. The evening meal was catered by J.C. Cooks Fish Barn and was a lovely meal.

We were sorry to hear Norman Hubbard had passed away. The Church ladies and friends and family members served lunch for the family at the Senior Citizens Center. We wish to thank those who helped with the kitchen chores.

Marion and Marjorie West attended the funeral of J.H. Childs at Brownwood Saturday. J.H. and a sister, Lorena Childs, attended school with Marjorie in Cross Plains. Lorena and Mar-

jorie graduated together May 21, 1935. They had not met again since graduation until the service Saturday. Lorena married and moved to Artesia, N.M. and Marjorie married and moved to Rising Star.

Dell Bible, of Weatherford, called us at the senior citizens Thursday and said they were doing fine and was missing everyone at the center. She said to make the announcement they loved everyone so much in our area.

Ben and Berna Chick had their granddaughter and great-granddaughter, Davanna and Kiela Whitten, visiting on Sunday and Monday. Also, a friend, Dophna Densman, came on Saturday and Berna returned to Abilene with her for a two day visit.

Karen Mitchell, a nurse with Concept of Care, checked blood pressures for everyone at the center. We really appreciate this service.

Cecil and Mamie Joyce were at the center Thursday. They had been absent for a few meetings. Have a good week!

## Sipe Springs News

The musical at the Sipe Springs Center Saturday night was well attended and enjoyed by all.

Mr. Elton Richardson, of Levelland, visited Mrs. Ruby Wyatt and Mae Leonard last Friday.

Visitors over the holiday weekend at the T.A. Weavers were Mr. and Mrs. Covie Weaver; Todd Weaver and wife; David Weaver and friends of Garland; Caylon Joyce and wife of Dallas; Mr. and Mrs. Kenton Joyce of Austin; Dale Cayel; Mr. and Mrs. Kenneth Smith of Okra; Mr. and Mrs. Kim Joyce of Rising Star and Mr. and Mrs. Gerald Maynard of Rising Star.

Mrs. Virginia Boswell spent the weekend with her daughter, Nancy Robb, in Arlington. Mrs. Mary Anderson and mother, Mrs. Jessie Duncan, spent Sunday with Mrs. Winnie Anderson and others Sunday in Rising Star. Mr. and Mrs. Shelton Breautigan visited Mr. and Mrs. Duby Jones in Rising Star one day last week.

Visitors with the Jack Millwee family were Bonnie Campbell of Abilene, Mrs. Jo Bass of Lubbock, Bobby and Margaret Estrado of Wilmer, Stacy Jones and friend of Stephenville and Jerry Don Hawk of Clyde. Mr. Gary Leonard of Odessa, Mrs. Bonnie Campbell of Abilene and Jo Bass of Lubbock visited Mae Leonard this past week.

Mr. and Mrs. Howard Barton of Archer City, Mr. Lewis Barton of Knickerbocker and J.E. Barton of Dublin visited their parents, Mr. and Mrs. Ted Barton, this past weekend.

Mr. Jack Graham is home from the De Leon Hospital. We hope he has a speedy recovery.

Mr. and Mrs. John McKeehan visited her sister, Mr. and Mrs. J.D. Mitchell and family of New Castle, one day last week.

and Mrs. Duby Jones in Rising Star one day last week.

Visitors with the Jack Millwee family were Bonnie Campbell of Abilene, Mrs. Jo Bass of Lubbock, Bobby and Margaret Estrado of Wilmer, Stacy Jones and friend of Stephenville and Jerry Don Hawk of Clyde.

Mr. Gary Leonard of Odessa, Mrs. Bonnie Campbell of Abilene and Jo Bass of Lubbock visited Mae Leonard this past week.

Mr. and Mrs. Howard Barton of Archer City, Mr. Lewis Barton of Knickerbocker and J.E. Barton of Dublin visited their parents, Mr. and Mrs. Ted Barton, this past weekend.

Mr. Jack Graham is home from the De Leon Hospital. We hope he has a speedy recovery.

Mr. and Mrs. John McKeehan visited her sister, Mr. and Mrs. J.D. Mitchell and family of New Castle, one day last week.

## In Service

1st Marine Expeditionary Brigade, Marine Corps Air Station, Kaneohe Bay, Hawaii. He joined the Marine Corps in September 1991.

Marine Pfc. James L. Vaughn, son of Joy J. Harris of Rising Star, recently reported for duty with Marine Medium Helicopter Squadron-262,

## Ted and Iola Barton Celebrate 60 Years

Friends and family of Ted and Iola Barton of Sipe Springs met for a reception celebrating the couple's 60th wedding anniversary Saturday, August 15. About 125 guests enjoyed reminiscing about the past sixty years with family and in the community stories and seeing the many family photos.

Two refreshment tables were accented by a bride's cake and a groom's cake. A centerpiece of summer flowers was surrounded by a large assortment of finger foods. The reception was catered by The Back Porch of Comanche.

Family members began arriving on Friday from all over the country. Children, grandchildren, great-grandchildren and spouses in attendance were: J.E. and Ruth Barton and Nathan of Dublin; Jessie Barton of Empire, Calif.; Jim and Mary Ann Struthwolf of Lake Jackson; Dale, Dane and Erin Whittaker of College Station; George and Beth Barton of Midland; Kelly, Melanie, Katie and Cody Barton of Midland; David and Kia Hook of Midland; Kevin and Kim Barton of Cedar Park; Randy and Kelly Ann Minnix of Fort Worth; Jimmy and Susan McHughes of Midland; Lewis and Barbara Barton of Knickerbocker; Dusty Barton of Stephenville; Eric and Christi Madsen of Howell, N.J.; Howard and Patsy Barton of Archer City; David, Coy, Alayna and Ashlea Barton of Fort Worth; John, Sheryl, Lauren and Rachel Barton of Bowie; Don and Lydia Pellikan of West Frankfort, Ill.; and Mark and Tricia Barton and Chasity of McCamey.

Community friends, nephews, nieces and cousins signing the register were: Cecil McClatchy; Ozzie and Ollie Burns; Sharon Gentry; LaVern Gentry; Rhonda Morris Berry; Marlin Morris; Jess and Johnnie Jacobs; Dick and Vi Williams; Polly Price; Robert and Naome Burns; Nonnie Leonard; Jim and Carolyn Ratliff; Bobby and Inez Elliott; June Moore; Jewell Dukes Huddleston; Blanche Cawley; Mr. and Mrs. B.J. Anderson; La Moyné Houser; Buster and Norma Merworth; John and Irene McKeehan; Joyce Geye; Teresa and LaJean Lawrence; Ruby Wyatt, Chuck and



Iola and Ted Barton, seated, were honored with a 60th anniversary celebration recently, hosted by their sons and daughter, standing from left, J.E. Barton, Mary Ann Struthwolf, George Barton, Lewis Barton, Howard Barton and Mark Barton.

Elva May Woody, Lorene Jennings; Dick and Mickey Dillard; Shelton and Neoma Braeutigam; Mildred Rodriguez and daughter; Dale Coley; Curt Smith; Jack, Elaine and Josh Millwee; Lottie Mae Roach; Wayne Barton; Craig and Kay Madeen; Gayle Leonard; Grace Cober; Glen and Hope Nowlin; Minnie Shipman; Betty Torrant;

Squab and Conova Weaver; Gwen Edwards; George and Shirley Leonard; Ruth Green; Clayton and Roberta Wilson; Wyoma Jones; Wanda Ruth Barton-Barber; Dr. Charles M. Barnes; Todd; George and Emma Jean Steel; Opal Whiteside; Harry and LaNonne Holder.

Two of Mr. Barton's aunts, Mae Leonard and

Irene Wortham, were present and three of Mrs. Barton's sisters, Rosa Holder, Oma Meyers and Eula Morris, attended.

Mr. and Mrs. Barton, with the occasional help of their children, grandchildren and great-grandchildren, remain active in managing their farm/ranch at Sipe Springs that they started over sixty years ago.

## L&J Construction

CABINETS: ALL KINDS

- \* Add-Ons
- \* Remodeling
- \* Metal Buildings
- \* New Construction
- \* Tape & Bed
- \* Sheet Rock
- \* Acoustics
- \* Texture

Free Estimates

Lynn Hutton

Jim Ratliff

817/725-7582, Cross Plains 817/643-6464, Rising Star

Discover Some Extra Cash  
Floating Around  
Your House!



If your air conditioner won't make it through the final days of summer or your heating system can't face another winter, WTU's Marketing Consultants can help. We can measure your home and recommend whatever type and size of cooling or heating system that best fits your needs... and you may be eligible for a cash rebate up to \$500!

Our visit is FREE. So find out if you've got some money floating around your home by contacting a Marketing Consultant through your local WTU office.

WEST TEXAS UTILITIES COMPANY  
An Equal Opportunity Employer  
WTU  
A Member of The Central and South West System

Remember REDDY supplies the energy — but only YOU can use it wisely!

## "Why Farm Bureau life insurance?"

"Value. Their rates are competitive and help you get great value for your money. Your agent can help you plan for the future with a wide range of products. Life Insurance, Annuities, IRA's, Mortgage Cancellation, Disability Income, Whole Life... you name it. No wonder Americans from every walk of life depend on Farm Bureau Insurance."



Frank Agnew  
817/643-1010  
817/629-1704



Helping You Is What We Do Best.

Southern Farm Bureau Life Insurance Company  
Jackson, Mississippi

AUTO-TRUCK-TRACTOR  
GUARANTEED WORK  
Open Mon. - Fri. 8-5:30 p.m.

**CISCO RADIATOR  
SERVICE**

207 East 6th - Cisco, TX  
442-1547

Jim Butler Richard Butler

**THE STEVEN COMPANY**

Minolta • Savin • Standard  
• Kroy • Olivetti • Nec •  
Swintec • Panasonic  
Copiers, Facsimiles, Labeling Systems,  
Typewriters, Business Telephone  
Systems, Laser Printers

205 So. Lamar Eastland  
629-3378  
1-800-772-8581

**BARRACKS 5**

Catalog Order Store  
Firearms - Archery - Fishing  
Guns - Cost Plus \$25

Hours: 6 to 8 M-W-F Evening  
8 to 5 Sat.  
NEW LOCATION  
710 Ave. E. Cisco, TX

**K-BOB'S  
STEAKHOUSE**  
Eastland, TX

**A Good Steak  
At An  
Honest Price**

**\$2.00 COUPON**

**SLEEPHOUSE MOTEL**  
North Access Rd.  
1-20 East, Eastland  
629-3336  
Free Local Calls  
HBO, Clean Rooms

Bring this ad for \$2.00 Discount

**Cisco Community  
Association**  
**TRADE DAYS**

Sept. 11-12-13  
Interstate 20 East  
(By Ranch House Area)  
Cisco, TX

Call 442-1566 for reservations

**"For Memory  
Sakes Alive!"**

Let us make a video of your  
special event.  
Call for info or appt.  
817-639-2357

**Coats  
FURNITURE** Don &  
Jeanie Griffin

"Better Values For Your Home"  
Broyhill • Riverside •  
La-Z-Boy • Restonic • Sealy  
Complete line of floor covering  
Mon. - Fri. 9-5:30; Sat. 9-4:00  
305 So. Seaman Eastland, TX  
817-629-2614

**Quality Boot &  
Shoe Service**  
113 W. Main Eastland, TX

**OPEN  
Mon.-Fri. 8-5  
Closed Saturdays**

**Automotive  
Sales**  
1417 E. Main  
Eastland, TX  
(Across from Sonic)

**WE FINANCE  
Your Job Is Your Credit**

817-629-3402/3403  
1-800-300-3402

Weddings • Senior & Family  
Portraits • Fund Raisers  
School Pictures

**AJ's Photography**  
Box 193  
Ranger, TX

A. L. Hunter 817-647-5325

**Baptist Bible  
Hour**

"...stay tuned for another message  
of God's sovereign grace."  
Each Sunday morning  
8:00 - 8:30 a.m.  
KVMX-FM 96.7 or Channel 32

Lasserre Bradley Jr. Gorman Primitive  
Baptist Church Baptist Church  
Barry L. Brown  
Box 17037 1201 Hanover  
Cincinnati, Ohio Weatherford, TX  
45217 76086  
1-800-4734-BBH 817-594-9566

This space  
available for  
\$5.00 a week.  
Call 629-1707  
for more  
information.

Taxes • Computerized Service  
All Phases Bookkeeping

**Debits & Credits**

219 W. Main  
Ranger, TX  
817-647-3072

Linda Wells

Antiques, Crafts, Collectibles  
Tea Room

**Carousel Mall**

112 S. Seaman • Eastland, TX  
10:00 a.m. Til 5:30 p.m.  
Tues. thru Sat.  
817-629-8682

PAT SHOEMAKE BERTSY DYE

**R S R Mechanical  
& General Contracting**

Shane Reagles  
411 E. Sadosa  
Eastland, TX  
Phone (817)  
629-1225

**24 Hr. Pager  
Dial  
1-800-  
999-6710  
Then enter  
997-0809  
then enter your  
number**

Air Conditioning

**Carlina's Hair  
Fashions**  
1300 S. Seaman  
EASTLAND, TX  
629-8001

Open Tues.-Fri.  
8 a.m. to late  
Carlina Simmons/Owner  
Mary Ensor/Operator  
Ellen Thames/Operator

This space  
available for  
\$5.00 a week.  
Call 629-1707  
for more  
information.

This space  
available for  
\$5.00 a week.  
Call 629-1707  
for more  
information.

**Brandy's  
Boutique**

111 W. Main Eastland, TX  
629-1219

Fall Merchandise  
Ladies Clothes sizes 4-24  
Large Selection of  
75% Off Jewelry

Rhinestones, Sterling Silver, Plated Gold, Earrings

**images.**

"Total Beauty Care  
For Everyone"

Open Monday-Saturday

949 E. Main, Eastland  
629-8036

This space available  
\$5.00  
A Week  
Call 629-1707 or  
come by the  
Eastland Telegram,  
Cisco Press or  
Ranger Times Offices

**Pizza Heaven**  
442-4454  
304 E. I-20 Cisco

Open: Mon.-Fri. 11:30 to 2  
p.m., 4:30 to 9 p.m.; Sat. 11:30  
to 4:30, 4:30 to 10 p.m.; Sun.  
11:30 to 2 p.m., 4:30 to 7 p.m.

Sun. Open after  
7 p.m. Only by  
request for  
large group.

**FREE  
DELIVERY**

**ELMORE  
CONSTRUCTION  
& ROOFING**

\* All types of roofing \*  
\* Commercial & Residential \*

Free Estimates

Call 629-2060 or  
629-8319

# EASTLAND COUNTY HAS IT!

Promote your Business with Efficient, Effective and Consistent Advertising on the "Eastland County Has It!" Page.  
These spaces are available for only \$5.00 per week. Call 629-1707 Ask for Rose Marie Davis

**FARM  
BUREAU  
INSURANCE**

Eddie  
Clay,  
Agency Mgr.

P. O. Box 470  
1311 E. Main  
Eastland, TX  
B (817) 629-1704  
R 629-8103

**Pat's  
Potluck  
Pets**

204 E. Plummer  
Eastland, TX  
(817) 629-1984

Complete Pet Shop Line

Open: Tues. - Friday 10-12/1-5  
Sat. 10-12



THE KAT'S MEOW -- Kara Ford owner/operator invites the public to come in and take advantage of her specials. Sculptured nails \$40.00, fill-ins \$20.00, perms \$35 and up, colorgraphics \$30.00 and up. All Matrix products are used and Kara will take customers after hours by appointment only. The Kat's Meow is also a smoke free salon. Pictured above is Kara Ford.

Residential Commercial  
**Timco Roofing Co.**  
Above all a good roof  
629-2501

10% Discount for Senior Citizens  
Over 20 years experience  
Free Work  
Estimates Guaranteed

**AUTOMOTIVE REPAIR**

**Rick's Garage**  
629-8814

1103 Railroad Ave.  
(Off Eastland Lake Hi-way,  
before railroad tracks)

**Grandma's  
Kitchen**  
Eastland Budget Host Inn  
1-20 & E. Main St.

Daily & Nightly Specials  
Broasted Chicken, Baked  
Fish, Great Steaks  
Sunday Buffet 11 a.m.-2 p.m.  
Open 6 a.m.-2 p.m. and  
5 p.m.-10 p.m.

**The Kat's Meow**  
Phone 629-3433

Walk-ins welcome  
Open Mon.-Fri. 9-5:30  
Kara Ford - Owner/Operator  
Will stay after hours by  
appointment only  
605 W. Main Eastland

**Valley View  
Lodge**  
700 S. Ostrom  
Eastland, TX  
Peggy Pryor - Admin.  
629-1770

**A Medicare Wing  
With More Skilled Care**

See ad for more information

**Eastland County  
Bowling Center**  
Hwy 80 East Eastland  
629-1661  
Open 1-11 p.m.  
Thurs. & Sat. 8-11 p.m.

**VIDEO GAMES,  
SNACK BAR, POOL**

Special Rates For Parties  
New Owners Jennie & Jim Ewing

**WE'RE HERE WHEN  
YOU NEED US!**

**CENTRAL BAIL BONDS**  
Knoxville, America, Since 1888

600 Main Eastland, TX  
629-3804

For the fastest possible release  
Open 24 Hr. Service  
(1-800-999-4484)  
Credit Bonds

**Eastland Cleaners**  
210 S. Seaman  
Eastland, TX 629-3522

New Hours  
7 a.m. - 6 p.m. Mon.-Fri.  
Sat 9 a.m. - 3 p.m.

Everyday Special  
Starched Jeans  
@ \$1.99  
Short Sleeve Shirts  
@ \$1.25

This space  
available for  
\$5.00 a week.  
Call 629-1707  
for more  
information.

**MATHEWS  
MEDICAL SERVICES**

**RENTAL & SALES**  
WHEEL CHAIRS • WALKERS • SICKROOM  
SUPPLIES • BEDS • OXYGEN • CRUTCHES •  
BATHROOM AIDS • RESPIRATORY EQUIP

SET-UP & DELIVERY  
M-F 9-5; Sat 9-2  
24 Hr. Ph. Service

647-5246  
1-800-643-6658  
119 MAIN - RANGER TX

**Advance  
HOME MEDICAL INC.**  
201 S. Daugherty  
Eastland, TX  
(817) 629-3351  
Open 8 a.m. to 4:30

Depend on the ADVANCE team to come  
through for you 24 hours a day.  
1-800-749-7848

When the prescription calls for home  
medical care or equipment...

**R.D.'s Restaurant**  
442-4425  
116 E. 6th (Breck. Hwy.)  
Cisco, TX

Daily & Nightly Specials  
Chicken Frys \$3.99  
Sirloins \$4.99  
T-Bone \$7.99  
Open Mon.-Sat. 11 a.m. - 9 p.m.

**COLOR  
VISION INC.**  
RENT TO OWN SYSTEM

957 E. Main  
Eastland, TX  
629-1632

**Western Auto  
Associate Store**  
1201 Conrad Hilton Ave.  
Cisco, Texas

Mon.-Fri.  
8 a.m. to 5:30 p.m.  
Saturday  
8 a.m. to 5 p.m.  
442-1460

**Jafra**  
Discover a more  
beautiful you with  
Jafra's superior  
Skin Care  
Products.

Learn about:  
• How to care for your  
skin  
• Products recognized for  
their Quality and Effec-  
tiveness  
• Our 35 years of superior  
products and personal-  
ized services  
Call today to schedule  
your appointment.

Donna Maulden  
629-2213  
Anita Rivers  
629-8197  
Sherry Goad  
629-8057  
Vanessa Higgs  
442-3623

**EASTLAND  
TELEGRAM**  
215 So. Seaman Eastland  
629-1707

We have books including  
Texas Country Reporter  
Cookbook, That Cat Won't  
Flush, This Dog'll Hunt,  
Wildflowers of Texas.  
Plus we have Stationery,  
Bibles and more!

# 4-H News

by Janet Thomas, County Extension Agent

## 4-H CONSUMER LIFE SKILLS TRAINING

Attention 4-H parents! Do your children like to spend money and buy "things" for themselves? If they are average kids, they spend money on clothes, accessories, music tapes, stereos, hair care appliances, and much more! Would you like your kids to spend their money more wisely and judge quality of article to be purchased? If so, the new 4-H project CONSUMER LIFE SKILLS is certainly a project that all boys and girls need to participate in.

A training workshop on the 4-H Consumer Life Skills Project is scheduled for September 21st from 4-6 p.m. in the Eastland TU Electric Reddy Room. The training is being presented by Dr. Joyce Cavanaugh, TAEX Specialist from Texas A&M University.

Janet Thomas, Eastland County Extension Agent, request you pre-register by September 10th by calling 629-2222 so adequate training packets will be available for everyone.

## VOLUNTEER PROFESSIONAL DEVELOPMENT

If you are a 4-H parent volunteer and help with 4-H, then you are a member of the 4-H Volunteer Leaders Association of Texas. Plan to attend the annual fall meeting at the State 4-H Center on Sep-

tember 18-20.

Theme of the weekend meeting is "Volunteer Personal Development".

Speakers will include Dr. Lynne Thibodeux, addressing 4-H Update, Mike McKinney, State 4-H Specialist, will conduct a workshop on S.T.E.P. U.P. (See The Endless Potentials You Possess).

Registration forms are available upon request at the Eastland County Extension Service Office.

## SEPTEMBER 4-H ACTIVITIES SCHEDULED

Sept. 21: 4-H Consumer Life Skills Project Training 4-6 p.m. at TU Reddy Room, Eastland  
Sept. 21: 4-H Parent/Adult Leader Association Meeting 6:30 - 7:30 p.m. at TU Reddy Room, Eastland

Sept. 26: District 8 4-H Leader Extravaganza, Hamilton

Sept. 27: Eastland County 4-H Jr. Leader's Association Meeting 2:30

3:30 p.m. at Courthouse, Eastland

Sept. 28: County 4-H Foods & Nutrition Training Workshop 4:30 - 5:30 p.m. at TU Reddy Room, Eastland

(County 4-H Food Show is scheduled for Nov. 7th)

## WEST TEXAS FAIR

Eastland County 4-Hers will be showing at the West Texas Fair in Abilene from September 11-19.

Best of luck to the following 4-Hers: Tommy Seay, Kerstin Gerhardt, Grayson Gerhardt, Tommy Thompson, Morgan Moylan, Kristi Wright, Cullen Rabel, Jamie Agnew, Kimberly Reich, Elizabeth Koenig, Jessica Keith, Garrett Gerhardt, Jeremy Orsagh, Timothy Thompson, Kristal Brown, Ashley French, Becky Agnew, Blair Bailey, Hannah Reich and Joanna Wallace.

# Scramble Tournery Slated at Lakewood

Lakewood Recreation Center will have a two person, 18 hole, inter-club golf scramble tournament at 1:30 p.m. on Sunday, September 20.

Entry fee will be \$10.00 per person, paying first place in three divisions. All players are requested to bring a covered dish for the evening meal.

# Lakewood Board Holds Meeting

During the board meeting held September 1, the board voted to charge seasonal members a \$100.00 initiation fee to rejoin the club. Seasonal members are those who drop their memberships

in the fall and rejoin in the spring. This creates a hardship on the club, as well as members who pay their monthly dues year around. The clubs expenses continue throughout the year and it is not fair for members to pay only during the playing season.

New members joining for the first time will not be asked to pay the \$100.00 initiation fee.

## Happy Birthday

SEPTEMBER 11  
Stephanie Long, Frank Gray

SEPTEMBER 12  
Mrs. Jim Pittman, Carter Jones, Braxton Burcham

SEPTEMBER 13  
Eva Clark

SEPTEMBER 14  
Janet Murphree, Cindy Elliott, Regina Rust, Billy Nall

SEPTEMBER 15  
Franklin Cox, Robert Owen, Eva Woody

SEPTEMBER 16  
Yvonne McCutchen, Mary Lou Anderson, Ray Hutchinson, Terry Ware

SEPTEMBER 17  
Paul Maxwell, Mike Hamer, JoAnna Kinsey, Korey Morris, Kobey Morris, Craig Campbell

## County Defensive Driving Classes Now Forming

Eastland County Defensive Driving classes are now forming. For early registration please call 442-4479 or after 10 a.m. 442-2673. The fee for the class is \$20.

Classes are held at the Mountain Top Church Family Center at 600 E. 8th Street in Cisco. The next class will be held September 12 and will be from 8 a.m. until 4:30 p.m. Class materials and videos are interesting and designed to give positive learning reinforcement with class participation and interaction. Upon completion of the course, the student will be issued a certificate of graduation for court purposes and also a certificate for insurance discount purposes.

## Read The Classifieds



Chelcee Dyan Poteet

Chelcee Dyan Poteet was born June 14, 1992, weighing 6 lb. 11 oz. and 19 1/2" long. Her age in the above picture was six weeks.

Her parents are Roger and Tammy Poteet of Abilene. Grandparents are Bernie and Sue Barnes and Mrs. Auddie Wallace, all of Rising Star.

# Homecoming Reunion Set for Class of 1952

The Rising Star High School Class of 1952 members will have a car in the homecoming parade here Saturday afternoon,

October 3, and will meet at 6 p.m. at the home of Weldon and Arla Hill for a supper.

# CJC Offers Defensive Drivers Course

Cisco Junior College will offer a Defensive Driving Course on Monday and Wednesday, September 21 and 23 from 6 to 10 p.m. in room 3 of Schaefer Hall. Fee for the course is \$20. Enrollment must be paid no later than 3 p.m. on the first day of class. Students must at-

tend both nights of class and must bring a valid drivers license to class. Social Security number is needed for all forms. Cisco Junior College is an agency of the Texas Safety Association, TEA License #605.

For more information contact Charlotte Speegle at 817/442-2567, ext. 122.

## Gerrie's Beauty Shop

101 N. Main 643-4673

Sweat Shirts Sweat Suits  
Sweat Jackets Denim Jackets  
Striped or Solid Jumpers  
Purses

Fashioned by Julia Devers & Felecia Bibby

## Grand Opening

Legacy Gifts

Sept. 18, 10 a.m. - 7 p.m.

Free Gifts, Door Prizes,  
Refreshments

Hwy 36, 8 miles West of Rising Star

114 S. Main Cross Plains 725-7174

# Lakeway Grocery

6 A.M. - 10 P.M.  
OPEN 7 DAYS A WEEK  
WE ACCEPT FOOD STAMPS

SUBJECT TO STOCK ON HAND

LITTLE STORE - LITTLE PRICES  
Sept. 10 thru Sept. 16

Parade BREAD

59¢ or  
2 for \$1.00

PEPSI

2 Liter  
93¢



Basic CIGARETTES

\$10.99 ctn.

Hershey Assorted CANDY BARS

3/\$1.00  
49¢ ea.



Lays POTATO CHIPS

95¢

ICE CREAM CONES

29¢

CHECK OUR INSTORE SPECIALS

# TRUCK Fullen Motor Co. IN SALE



\$8,275<sup>00</sup>

'89 Toyota 2 Dr. MR2  
Black & Silver, low miles  
Stk #224c

\$7,875<sup>00</sup>

'91 S10 Pickup  
31,700 miles, white, extra clean  
Stk #287

\$9,890<sup>00</sup>

'90 Chevrolet 1 Ton Cab & Chassis  
Sandstone, must see  
Stk #418A

\$4,795<sup>00</sup>

'87 Chrysler Le Baron  
2 Dr., PW, PL, Tilt & Cruise. Excellent car!!  
Stk #115A

\$8,750<sup>00</sup>

'88 Chevrolet Reg. Cab LWB PU  
Silverado package, only 39,000 miles, black & gray. Stk#186

\$12,250<sup>00</sup>

'90 Chev. 1/2 Ton LWB Ext. Cab  
Crimson red & gray. Silverado pkg.  
Stk #382A

\$10,500<sup>00</sup>

'92 S10 Ext. Cab  
342 miles, only one like it  
Stk#387

\$14,790<sup>00</sup>

'90 Ford Conversion Van  
White & mauve, all the comforts, extra nice!  
Stk #424A

\$15,850<sup>00</sup>

'92 Pontiac Bonneville  
Power windows, locks, T/C, cass.  
Stock# 429

\$16,950<sup>00</sup>

'90 Cadillac Sedan DeVille  
White/Burgundy, leather, all options  
Stk #334

\$8,395<sup>00</sup>

'90 Volkswagen Wolfsburg Add.  
Very low miles, Very nice car  
Stk #360

\$9,350<sup>00</sup>

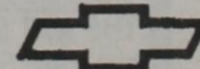
'89 Chevrolet Astro Van  
V6 Automatic, Black & gold, all the options.  
Stk #127B



## Fullen Motor Co.

305 East Main • Eastland • 817/629-2676

Call collect 817-629-2676. Open Monday-Friday 8 a.m. till 6 p.m. Closed Saturday and Sunday



TODAY'S CHEVROLET



New Construction \* Add-Ons  
Steel Buildings \* Remodeling  
Tape & Bed \* Sheet Rock  
Texture \* Acoustics

## CABINETS

Free Estimates

L & J Construction

Lynn Hutton  
817/725-7582  
Cross Plains

Jim Ratliff  
817/643-6464  
Rising Star