

PAGE ONE

A QUICK READ OF THE NEWS

**Bruton wins FB contest**

Just like Muleshoe, Peggy Bruton had to go into overtime to win in Week 11.

Bruton won a three-way tie-breaker to capture the Journal's football contest in games of Nov. 20-23.

Bruton correctly picked 16 of 18 college and NFL games and collected the first prize by coming closest to the actual score in Denver's 30-7 win against Kansas City Monday night.

Nathan Crawford of Lazbuddie won the \$15 second prize and Thomas Reed of Friona took home the \$10 third prize.

A total of 48 contestants entered this week's contest.

**Think about it . . .**

- A bus station is where a bus stops.
- A train station is where a train stops.
- On my desk I have a work station...
- If Fed Ex and UPS were to merge, would they call it Fed UP?
- I believe five out of four people have trouble with fractions.
- If quitters never win, and winners never quit, what fool came up with, "Quit while you're ahead?"
- Why do they put pictures of criminals up in the Post Office?
- What are we supposed to do . . . write to these men?
- Why don't they just put their pictures on the postage stamps so that mailmen can look for them while they deliver the mail?

— anonymous

**LOCAL WEATHER**

	High	low	Pre.
Tuesday	73	31	—
Wednesday	74	31	—
Thursday	55	33	—
Prec to date	13.24 inches		

**EXTENDED FORECAST**

Mostly sunny Sunday. Highs in the 60s to mid 70s. Partly cloudy Monday and Tuesday with highs in the upper 60s to mid 70s. Lows in the 40s to lower 50s.

# Crane(full) end to season

## ■ Second-half rally powers Golden Cranes past Mules

By RICK WHITE  
Managing Editor

DENVER CITY — The big-play bug jumped up and bit Muleshoe at the wrong time.

Donny Bishop rushed for two touchdowns and returned a kickoff for another score as No. 5 Crane rallied in the second half for a 28-14 win Friday in a Class 3A Division II area play-off game at Mustang Stadium.

"Crane has a great football team," Muleshoe head coach David Wood said. "We knew coming in we had to stop several things and I think we did. But they made the drives when they needed them."

Wood said it was the first time all season Muleshoe had given up big plays when it counted.

"They hit us in some spots we weren't used to," Wood said.

Rarely tested during the regular season, the unbeaten Golden Cranes (12-0) found themselves trailing at halftime for the first time all year. Muleshoe (10-2) appeared perched for an upset after dominating the first 24 minutes and taking a 14-7 halftime lead.

"Coach told us just to come out, play hard and wait for the momentum swing," said Bishop, who rushed for a game-high 111 yards.

It didn't take long.

Bishop returned the second-half kickoff 86 yards for a touchdown, helping the Golden Cranes pull within 14-13 and

changing the momentum for keeps.

Crane took the lead for good on its next drive when Eddie Murguia scored on a five-yard reverse. Clay McGuire (5 of 7 for 118 yards) hooked up with Murguia for the two-point conversion to give the Golden Cranes a 21-14 advantage with 3:50 left in the third quarter.

The District 2-3A champion Mules mounted one final challenge midway through the fourth quarter, driving to the Crane 21.

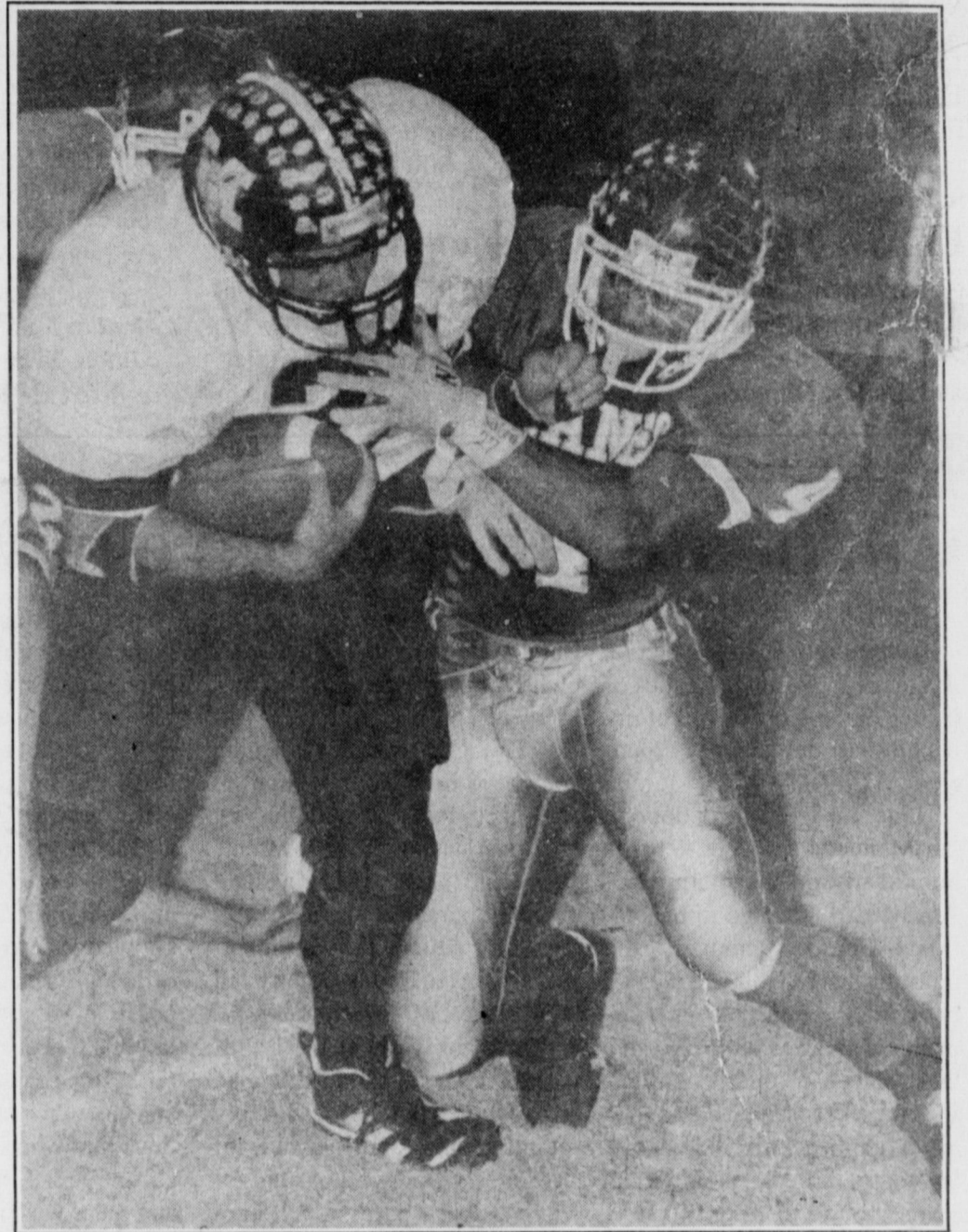
But on fourth-and-five, Matt McClanahan was sacked for a 12-yard loss by blitzing linebacker Tyler Nelson.

Keyed by a 40-yard pass from McGuire to Murguia, the Golden Cranes scored an insurance touchdown on Bishop's one-yard plunge with 1:30 left in the game.

The District 3-4A champion Golden Cranes advanced to next week's regional round where they face Iowa Park, a 51-35 winner against No. 4 Waco La Vega.

Muleshoe finished with 375 yards against the state's second-ranked scoring defense, but couldn't come up with the big play on either side of the ball in the second half. Crane finished with 328 yards.

McClanahan, who completed 9 of 14 passes for a season-high 164 yards and a touchdown, said Crane came out a different team in the second half — especially after the



JOURNAL PHOTO BY RICK WHITE

**Pena power**

Crane's Donny Bishops brings down Greg Pena Friday during the Mules' 28-14 Class 3A area playoff loss in Denver City.

kickoff return.

"They were jacked up," McClanahan said. "They were really flying around (on defense) in the second half."

After Bishop stunned the Mules with a sideline-hugging, 79-yard sprint on the Cranes' second offensive play, Muleshoe rebounded to score twice within a 16-second span early in the second quarter.

McClanahan capped a nine-play, 92-yard drive with a picture-perfect 48-yard bomb to Manuel Campolla on the first play of the second quarter.

One play after Matt Turney pounced on a Tubby Collins' fumble at the Crane 20, Carlton Lewis hauled in a halfback-option pass from Jesse Reyes in the back of the end zone to put Muleshoe up 14-7.



**United groundbreaking**

United Supermarkets officially broke ground Wednesday at its newest store site on American Boulevard in Muleshoe. In the background are United officials and Muleshoe Chamber of Commerce Board members.

## United pledges community partnership

Small communities are the backbone of the success of United Supermarkets, according to company officials.

Vowing to be a partner in helping Muleshoe grow, United Supermarkets officials Wednesday broke ground on a new 24,524-square foot store on American Boulevard.

"We're excited about coming here," United chief executive officer Kent Moore told about three dozen local dignitaries and company officials who gathered for the ceremony. "We got our start 80 years

ago in small communities like this."

Construction could start as soon as next week with an anticipated opening date in the late summer of 1999, according to United officials.

The store is expected to create approximately 50 jobs in the Muleshoe area.

Muleshoe City Mayor Robert Montgomery welcomed company officials and pledged that the city is ready to do its part.

"We're glad you're coming," Montgomery said. "You just can't imagine the amount of excitement the announcement

that you planned to build a store here has generated in the community."

"If there is anything the city can do to help, we stand ready to do that."

Robert Snell, president and chairman of the board of United, has been visiting relatives in the Muleshoe area for nearly two decades. He said he always felt there was something special about Muleshoe.

"When I visit here, I always notice the special vitality of this town," Snell said.

see UNITED on page 3

## Changing landfill sites could lessen proposed increase

By RICK WHITE  
Managing Editor

Switching to another landfill site could result in a substantial savings for the City of Muleshoe.

Duncan Disposal's proposed rate increase for sanitation services was one of several items discussed during Tuesday's Muleshoe City Council meeting.

In October, Duncan Disposal asked the city for a 12 percent increase in the rate the city sanitation contractor charges the city.

The request was made by Duncan because of an 84 percent increase at the City of Clovis, N.M. landfill site. With the help of city officials, Duncan Disposal is now negotiating with the City of Olton to use its landfill as the primary site to bring the City of Muleshoe's refuse.

With the rate increase, the disposal cost at the City of Clovis site was \$26 per ton. The City of Olton normally

charges \$20 per ton but that figure is still being negotiated.

Jack Reid, general manager of Duncan Disposal, said the savings in using the Olton site would be passed back to the city.

The City of Muleshoe must approve all rate increases.

Duncan's proposed increase would not have affected commercial and residential customers but would have cost the city about \$40,000 per year.

In other items, the Council issued a 45-day order repair or demolish order to Aurelio Cuevas of Muleshoe, owner of the dilapidated Muleshoe theater building on Main Street.

City attorney Jean Shotts told the Council that the building is in extreme disrepair and there appears to be little choice but to tear it down.

Cuevas owes approximately \$2,600 in back taxes on the property according to Shotts.

■ approved renovations to

see CITY on page 3

## AROUND MULESHOE

### Breast cancer screening set

The Women's Center of the Harrington Cancer Center and Baptist/St. Anthony's health system will conduct a breast cancer screening clinic Dec. 7 at Muleshoe Area Medical Center, 708 S. First St.

Breast cancer affects one in eight women. The key to winning the battle against cancer is early detection by having an annual breast exam, mammogram and performing a breast self-exam each month.

Participants will receive a low-cost screening that includes a mammogram and instruction in self-examination by a registered nurse.

Cost is \$75. A minimum of 15 women must register in order for the mobile mammography clinic to come to area towns. Funding is available through the Texas Dept. of Health for Texas residents who qualify for assistance. Exams are done by appointment only. Call (806) 356-1905 or 1-800-377-4673 for information.

### FFA, 4-H livestock workshop Dec. 5

A livestock workshop will be held Dec. 5 from 9 a.m. to 4 p.m. at the Friona Community Center.

The workshop is open to all 4-H and FFA members in Parmer and Bailey counties. Guest speakers from across the South

Plains will speak on how to properly select, feed, fit and show sheep, goats, swine and cattle.

There is no fee for youth or adults to attend the informative event.

A jackpot livestock show will follow each session. A \$5 entry fee per animal will be charged to enter the jackpot. A concession stand will be provided by the Parmer County 4-H Council.

### Volunteers seek donations for project

Christmas Card volunteers at Muleshoe Area Healthcare Center are seeking donations from community members and businesses for their annual fund-raiser.

The donations will be used for several different projects and renovations at the center.

Donations can be dropped off at the local banks or to Joy Stancell at the Nursing Home. Donations may also be mailed to Christmas Card Project, PO Box 202, Muleshoe, TX, 79347.

Donations need to be made by Friday, Dec. 18. All contributors will be individually recognized in the Bailey County Journal. For more information, contact Lona Embry or Joyline Costen.

The deadline for items to appear in *Around Muleshoe* is 5 p.m. Monday for Thursday's edition and 5 p.m. Thursday for Sunday's edition. Items can be mailed (PO Box 449), called in (272-4536) or faxed (272-3567).

## LETTER TO THE EDITOR

# Carpenter should have never been on trial

Editor:

Last month, I witnessed one of the most glaring travesties of justice in the murder trial of my nephew, Joseph Doyle Carpenter.

True, he lived next door to the Mendoza's and he left his home early on the morning of April 13, 1997 to go to his National Guard Maneuvers, the morning that Faviola Mendoza's body was found. Joseph Carpenter was arrested three days later, placed in solitary confinement, classified as a psychopathic killer, denied a lawyer for more than four weeks (even though he asked for one the day he was arrested) and

charged for a crime that he did not commit by the grand jury without being present or represented.

Though his bond was set the day he was charged, neither he nor his family was told this fact for over a month. His parents were told that he was being held without bond. As a result of this misinformation, he was incarcerated in the Bailey County Jail for 77 days.

His family spent thousands of dollars, everything they had in savings, defending Joseph. Judge Young and the State of Texas spent tens of thousands of dollars, perhaps as much as a quarter of a million dollars giving Joseph a fair trial, twelve men and women gave nine days, 108 man days, giving this accused mistreated man their attention and listening to the false accusations made by the arresting officer and the prosecuting attorney. (My thanks to all of you.)

Why did these "law officers" want to do this? Why did they

want to do this to Joseph Carpenter, his family, the jury and others that were involved. I wish I knew the answer. In my opinion, it was not to serve justice. I believe as long as that arresting officer carries a badge, as long as he is given any authority, this will happen to other citizens of our country. He should not be allowed to be a law enforcement officer in Texas ever again. If possible, we should do anything lawful to prevent this recurrence in Texas, New Mexico and all other states. I also believe that when the prosecuting attorney read the police report, and there was no evidence that could be found that connected Mr. Carpenter with the crime, the charges should have been dismissed. The family of Joseph Carpenter was put through 18 months of needless stress and heartache.

The year 2000 is an election year. We should be thinking, "Who do we want for prosecuting attorney?" Do we want a prosecutor that will bring any-

one to trial without examining the evidence? The next victim of miscarriage of justice might not be as fortunate as Joseph Carpenter. If a prosecuting attorney convinces a jury that an innocent person is guilty and they gave the death penalty, this wouldn't be a judicial murder. This would be just as bad as what happened to Faviola Mendoza.

Let us prevent this from ever happening again.

Sincerely,  
Sam Bradley  
Hawkins, Texas

## We Can Learn a Lesson from a Leper

On the way to Jerusalem Jesus . . . was met by ten lepers who stood at a distance, lifted up their voices, and said, "Jesus, Master, have mercy on us" (Luke 17:11-13).

The pathetic scene Jesus witnessed that day as he entered the village was, sadly,



**Focus On Faith**  
Curtis Shelburne

a very common one. Ten men, all afflicted with leprosy, stood at a distance. Very likely, they stood at that same place day in and day out begging. Certainly, they always "stood at a distance," away from those uninfected with the disease that bound them together like a cruel chain.

That phrase says a lot about their plight. From the time the boils and white patches on their skin, leprosy's calling card, appeared, they stood at a distance, forever separated from family and friends, from society in general. The only thing which could have separated them farther from society would have been death itself. Death would have been kinder.

A leper was a living soul chained to a corpse, his own body rotting away, numb and unfeeling, technically alive but visibly dying inch by inch.

As I thought about their plight, I found myself looking at my hands. How would I face life if they were mangled and leprous, and modern medicine was out of reach?

Then I realized that I was looking at the wrong spot. I should have been looking at my heart, for it is there that all of us have been infected with a leprosy worse even than the terrible disease that afflicted those poor men. A more ponderous chain than physical suffering binds humanity. It is called sin, and its hallmark is the malignancy so deep within us which shouts, "Not Thy will, but mine be done."

If you know the story, you know that Jesus healed those ten lepers. You probably also remember that only one of the ten returned to thank Him.

If you know THE story, the story of the Cross, you know that Christ knelt and prayed, "Not my will, but Thine be done", and died to deal once and for all with the far more serious leprosy which has infected every child of Adam.

That's the best reason I know to be thankful!  
Curtis Shelburne is minister of the 16th & Avenue D Church of Christ in Muleshoe.

### Lunch menus Nov. 23-25

#### MULESHOE

#### High school & Junior high Monday

**Breakfast** — Pancake wrap, fruit or juice and milk. **Lunch** — Grilled chicken patty, Au Gratin potatoes, peas, carrots, hot roll and milk.

#### Tuesday

**Breakfast** — Biscuit & gravy, fruit or juice and milk. **Lunch** — BBQ sandwich, tator tots, pickles, onions, pear halves and milk.

#### Wednesday-Friday

#### THANKSGIVING HOLIDAY

#### DILLMAN & DESHAZO

#### Monday

**Breakfast** — Pancake wrap, fruit or juice and milk. **Lunch** — Grilled chicken patty, Au Gratin potatoes, peas, carrots, hot roll and milk.

#### Tuesday

**Breakfast** — Biscuit & gravy, fruit or juice and milk. **Lunch** — BBQ sandwich, tator tots, pickles, onions, pear halves and milk.

#### Wednesday-Friday

#### THANKSGIVING HOLIDAY

#### LAZBUDDIE

#### Monday

**Lunch** — Subs, pizza, ham, macaroni & cheese, black eyed peas, Italian Veg., fruit, salad, jello and milk.

#### Tuesday

**Lunch** — Nachos, beans, Spanish rice, hominy, fruit, salad, jello and milk.

#### Wednesday-Friday

#### THANKSGIVING HOLIDAY

#### THREE WAY

#### Monday

**Breakfast** — Biscuits w/gravy, and bacon or Apple Cinnamon, graham crackers, juice and milk. **Lunch** — Chicken patty sandwich, ranch style beans, apple and milk.

#### Tuesday

**Breakfast** — Pancakes, sausage or Frosted Cherrios, graham crackers, juice and milk. **Lunch** — Cheese burger, lettuce, tomato, pickle, french fries, fresh fruit and milk.

#### Wednesday-Friday

#### THANKSGIVING HOLIDAY

## Trim Your Budget By Trimming Joe's Tree

1-800-658-6378 106 E. American Blvd. Muleshoe, TX

### And Country Junction

WITH YOUR PURCHASE YOU AUTOMATICALLY HAVE AN ORNAMENT ON JOE'S TREE!

For every \$20 purchase, you draw an ornament to get chances to win a **\$1000** Gift Certificate and/or over **\$4000** worth of Joe's Boot Shop Merchandise

Including:  
Bailey 100% Beaver Hat... (valued at \$650)  
Wagon Wheel Patio Bench... (Hand Designed by Darla, valued at \$350)  
NFR Rodeo Jacket... (valued at \$475)  
American West Ladies Purse... (valued at \$70)  
Western Sculpture Lamp... (valued at \$175)

**AND MANY, MANY MORE ITEMS!**

All to be given away Saturday, December 19th at 11 pm CDT. **MUST BE PRESENT TO WIN!!!**

FREE ENTERTAINMENT EACH MOONLIGHT MADNESS 7 PM-11 PM  
Nov. 27 Entertainment—Heather Shipman

## Moonlight Madness

# Friday Nov. 27th

**OPEN TILL MIDNIGHT!!!**

### Storewide 20% off Special

(excluding hats, boots and Wrangler)

Come in and register to win Two Las Vegas National Finals Rodeo tickets to be given away Nov. 27 (Rodeo dates-Dec. 4-6) NO PURCHASE NECESSARY (Sponsored by Joe's Boot Shop—Must register at Joe's)

#### BAILEY FELT HAT SALE

Felt 2X & 3X.....	\$59
Felt 5X.....	\$99
Felt 7X.....	\$129
Felt 10X.....	\$149
Felt 20X.....	\$229
Felt 30X.....	\$259

#### All Boots Get Cheaper By The Hour!!

6:00 p.m. —	\$6 OFF
7:00 p.m. —	\$7 OFF
8:00 p.m. —	\$8 OFF
9:00 p.m. —	\$9 OFF
10:00 p.m. —	\$10 OFF
11:00 p.m. —	\$11 OFF

\$ \$ \$ \$ \$ WESTERN FINANCE \$ \$ \$ \$ \$

## LOANS Up To \$900

**GUARANTEED WITH YOUR CLEAR CAR TITLE**

(CAR MUST BE LICENSED AND RUNNING. BE ABLE TO VERIFY INCOME AND ADDRESS)

**NO CREDIT? • BAD CREDIT? • BANKRUPTCY?**

# No Problem!!

NO CAR TITLE? GOOD CREDIT?  
COME SEE US FOR A PERSONAL PROPERTY LOAN

•IMMEDIATE SERVICE—WHILE YOU WAIT•

**1412 N. PRINCE • CLOVIS, NEW MEXICO  
769-0947**

**Bailey County Journal** USPS 040-200

Established March 31, 1963. Published by Triple S Publishing, Inc. Every Sunday at 304 W. Second, Box 449, Muleshoe, TX 79347. Second Class Postage paid at Muleshoe, TX. POSTMASTER: Send address changes to the Bailey County Journal, P.O. Box 449, Muleshoe, TX 79347. We are qualified members of: Panhandle Press Association, National Newspaper Association, West Texas Press Association and Texas Press Association.

WEST TEXAS PRESS ASSOCIATION

PPA Panhandle Press Association

MEMBER 1998

**TEXAS PRESS ASSOCIATION**

**Scot Stinnett, Publisher**  
Lisa Stinnett, Vice-President/Comptroller  
Rick White, Editor  
Mari Guadaluca, Classifieds  
Leah Bell, Advertising

© 1990

SUBSCRIPTIONS: Muleshoe Journal and Bailey County Journal By Carrier Yearly - \$22.00 Bailey County — by mail - \$24.00 Elsewhere - \$26.00 Advertising Rate Cards on Application

\*Advertisers should check their ad the first day of insertion. The Journals will not be liable for failure to publish an ad or for a typographical error or errors in publications except to the extent of the cost of the ad for the first day of insertion. Adjustment for errors will be limited to the cost of that portion of the ad where the error occurred.\*

Don Adams (*Get Smart*), Carroll O'Connor (*All in the Family*) and Michael J. Fox (*Family Ties*) are the only men to win the Emmy for Comedy Actor three straight years.

# GRAND OPENING



Continental Credit held its grand opening Tuesday with the help of the Muleshoe Chamber of Commerce & Agriculture. Pictured are (from left) Dawn Williams, Susie Sowder, Sheila Stevenson, employee Petra Avitia, Adrian Meador, assistant manager Norma Torres, Bill James, Muleshoe Mayor Robert Montgomery, Joe Flores, manager Jackie Grant, Hugh Young, supervisor Margaret Corwin and Wade King.

## UNITED

from page 1

He added that having family (in the Muleshoe area) was "extra motivation."

Gantt Bumstead, company director and great-grandson of United founder H.D. Snell, pledged United's commitment to "build up" the community. He noted that throughout its history, the supermarket chain has made community involvement an important part of its "personal touch."

Bumstead presented a \$5,000

check to Bill Moore, superintendent of the Muleshoe Independent School District, for the purchase of bleachers for the new baseball complex in the city park.

In addition, aging services director Berta Combs accepted a \$2,500 contribution from company officials for Bailey County's Meals on Wheels program, which serves more than 200 hot meals a week to elderly residents.

Amarillo District director

Bert Short presented a check to the Muleshoe Chamber of Commerce to officially pay the company's chamber dues. Hugh Young, immediate past president of the chamber, made a special presentation to the community's newest corporate citizen.

According to company officials, the Muleshoe store will include a full line of grocery items, fresh meats and produce as well as a bakery, hot and cold deli, drive-through phar-

macy and a customer service center with money transfers, FAX services and photo finishing, plus a gas station.

United Supermarkets was founded 82 years ago in Sayre, Okla. It was later separated into two companies, one based in Texas and one in Oklahoma. The family of H.D. "Jack" Snell owns the Texas operation.

The Muleshoe store will be the Lubbock-based grocery chain's 40th store.

## CITY

from page 1

the Muleshoe Public Library to convert unused office space into more shelf space for the reference section. The renovation costs would be paid for by the Friends of the Library organization.

■ adopted a customer service inspection program designed to monitor drinking water for household contami-

nation. No fee would be charged by the city for the service. Texas National Resource Conservation Commission had advised Ramon Sanchez, director of Public Works, that the city was in violation by not having the program.

■ awarded a bid to Muleshoe Motor Co. for a new city police vehicle, a 1998 Ford Crown Victoria, for the amount

of \$22,110. It was the only bid received.

■ Mayor Montgomery advised the Council that the city had received six to eight applications for the city manager position. After reviewing the applications, he didn't think it would be necessary to begin the interview process.

He also said the city continues to advertise the vacancy.

# Experts offer holiday travel tips

COLLEGE STATION — The holiday season can be a treacherous time on Texas roadways, but there are precautions drivers can take to protect themselves.

Janie Harris, passenger safety specialist with the Texas Agricultural Extension Service, said the most important priority for holiday travel is to plan the trip carefully.

"Find out what the weather conditions are going to be," Harris said. "Know what you are going to be facing as you head down the highway."

She added it is important to take into account where you will be traveling.

"If you are traveling to areas where you think there might be a possibility of ice or snow, make sure your tires are equipped to deal with those conditions," Harris said.

Drivers must also arm themselves with the tools necessary to deal with many situations if they should happen to have car trouble.

"Take extra blankets or coats with you so that if you happen to be stranded you have some extra protection against the cold temperatures," Harris said.

Harris added that another key tool in safe travel is to equip yourself with a cellular phone.

"I read an article about a lady who was lost in a blinding snowstorm somewhere in Nebraska and she stayed on her cellular phone with the authorities until they could find her," she said.

Col. Dudley Thomas, director of the Texas Department of Public Safety (DPS), agrees that it is important to be prepared in the event of an emergency.

"Keep blankets, a first-aid kit, flares, jumper

cables, tire chains, a flashlight, ice scraper and gloves in your car," he said. "Take a food supply of candy bars or dried fruit in case you become stranded."

When dealing with the mechanics of winter travel, it is important to remember to keep your car in tip-top shape.

"Check your car battery before cold weather sets in," Thomas said. "Battery power dips in colder weather."

Also, keeping the gasoline level as high as possible will prevent water from condensing in the gasoline tank.

"It also is a good idea to check the automobile's motor oil, transmission fluid, ignition system, lights, heater and wipers before leaving," Thomas said.

Once on the road, Thomas urges drivers to remember that winter travel conditions may change very quickly.

"Remember that ice forms first on bridges, overpasses and shady areas," he said. "If you hit a patch of ice, stay off your brakes and decelerate slowly, holding the car steady as you go over the ice."

He added that speed is a major problem when driving on ice and it is important to remain a safe distance behind the car in front of you.

"If your car goes into a skid, take your foot off the gas pedal but don't hit the brake," he said. "Steer gently in the direction you want the front of the car to go."

He said stranded motorists should call the DPS helpline at (800) 525-5555 for assistance from a DPS trooper.

**Looking for a car?**  
See Roger For All New & Used Vehicles!

**Roger Jackson**  
Sales Representative

**JONES**  
PONTIAC • GMC  
BUICK

(505) 762-2986 • FAX: (505) 763-5089 • RES: (505) 769-8217  
P.O. Box H • 3300 Mabry Drive, Clovis, NM 88101



**Come Check Our Rates!**

**WE HAVE MONTHLY AUTO INSURANCE**

*Delton E. Wilhite & Associates*  
INSURANCE AND FINANCIAL SERVICES

1631 West American Blvd. • 272-3652 or 272-5988



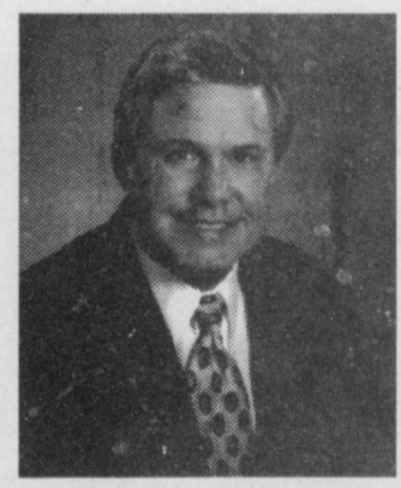
**DALE WAYNE VISE**  
Farm Bureau Agent in Bailey County awarded the LUTCF designation




The Texas Farm Bureau and Southern Farm Bureau Life are proud to announce that Dale Vise, agent of the Bailey County Farm Bureau, has recently received the LUTCF (Life Underwriter Training Council Fellow) designation. The LUTCF designation is conferred upon only those who can meet or exceed the exacting qualification standards determined by two professional organizations which jointly sponsor LUTCF: The National Association of Life Underwriters and The Life Underwriter Training Council.

*Dale Wayne Vise*

**Bailey County Farm Bureau**  
1612 West American Boulevard  
806-272-4567



CONGRESSMAN LARRY COMBEST

COMBEST CONGRESSIONAL COMMITTEE  
P.O. BOX 10667  
LUBBOCK, TEXAS 79408

LARRY COMBEST

Dear Friends,

I want to express my heartfelt thanks for the confidence you have placed in me by re-electing me to Congress. As I go forward to represent this district and serve you as Chairman of the House Agriculture Committee, I want you to know that each and every one of you is important to me. I am counting on all of us working together for this great country where we are blessed to live.

Best wishes.

*Sincerely,*  
*Larry*

Paid for by Combest Congressional Committee, Jane Anne Stinnett, Treasurer

# Frenship downs MHS in opener

WOLFFORTH—Muleshoe faced a tall task in its season-opener against Frenship.

Led by the imposing presence of 6-5 post Jennifer Bagwell, Frenship held Muleshoe to 16.7 percent shooting Tuesday in a 37-25 win.

"We just couldn't score on the inside," Muleshoe coach Jim Gruhlkey said.

Bagwell blocked nine shots.

Sophomore guard Myndi Heathington led the Lady Mules with 11 points, including a trio of 3-pointers in the second half. Senior post Erin Wilhite added six points and nine rebounds. MHS connected on just 6 of 36 attempts from the field.

Stephanie Holloway, a 6-1 post, scored 10 points to lead a balanced Lady Tiger attack. Frenship shot 47 percent from the field.

"We've got to learn from every game," said Gruhlkey, who significantly upgraded the Lady Mules' schedule this season. "If we don't, then playing this

kind of schedule is going to hurt us."

Amee Hillis scored all six of her points in the first half as the Class 4A Lady Tigers crawled to a 14-6 lead.

Muleshoe also struggled at the free throw line, where they made just 10 of 21 attempts.

Muleshoe played Farwell Saturday and hosts Nazareth Monday.

**Muleshoe (25)** — Black 1 1-3 3, Torres 0-0-10, Copley 0-0-0, Morris 0 0-0-0, Heathington 3 2-3 11, Williams 0 2-6 2, Wood 1 1-2 3, Wilhite 1 4-6 6. Totals 6 10-21 25.

**Frenship (37)** — Hubbard 4 1-2 9, Spain 0-0-0, Hillis 3 0-0-6, Blount 3 0-2 6, Corley 0 0-0-0, McClendon 0 0-0-0, Holloway 5 0-0-10, Bagwell 2 0-0-4, Lewis 0-0-4, Zetzche 0-0-0, Pettiet 1 0-0-2. Totals 18 1-8 37.

<b>Muleshoe</b>	3	3	7	12	25
<b>Frenship</b>	8	6	9	14	37

3-pointers: Muleshoe: Heathington 3, FG: Muleshoe 6-36 (16.7 percent); Frenship 18-38 (47 percent). 3-pt FG: Muleshoe 3-11; Frenship 0-5. Rebounds: Muleshoe 27, 10 off. (Wilhite 9); Frenship 26, 6 off. Blocked shots: Frenship 11. Steals: Muleshoe 6 (Morris 2). Assists: Muleshoe 5. Turnovers: Muleshoe 15; Frenship 16. Fouls: Muleshoe 11; Frenship 21.

# Frenship tops Lady Mule JV

FRENSHIP—Frenship used a balanced attack and beat Muleshoe 52-26 Tuesday in a girls junior varsity game.

Michelle Toscano scored 10 points for Muleshoe (0-1) in their season-opener while Melissa Flores chipped in four points.

Frenship led 37-14 at half-time.

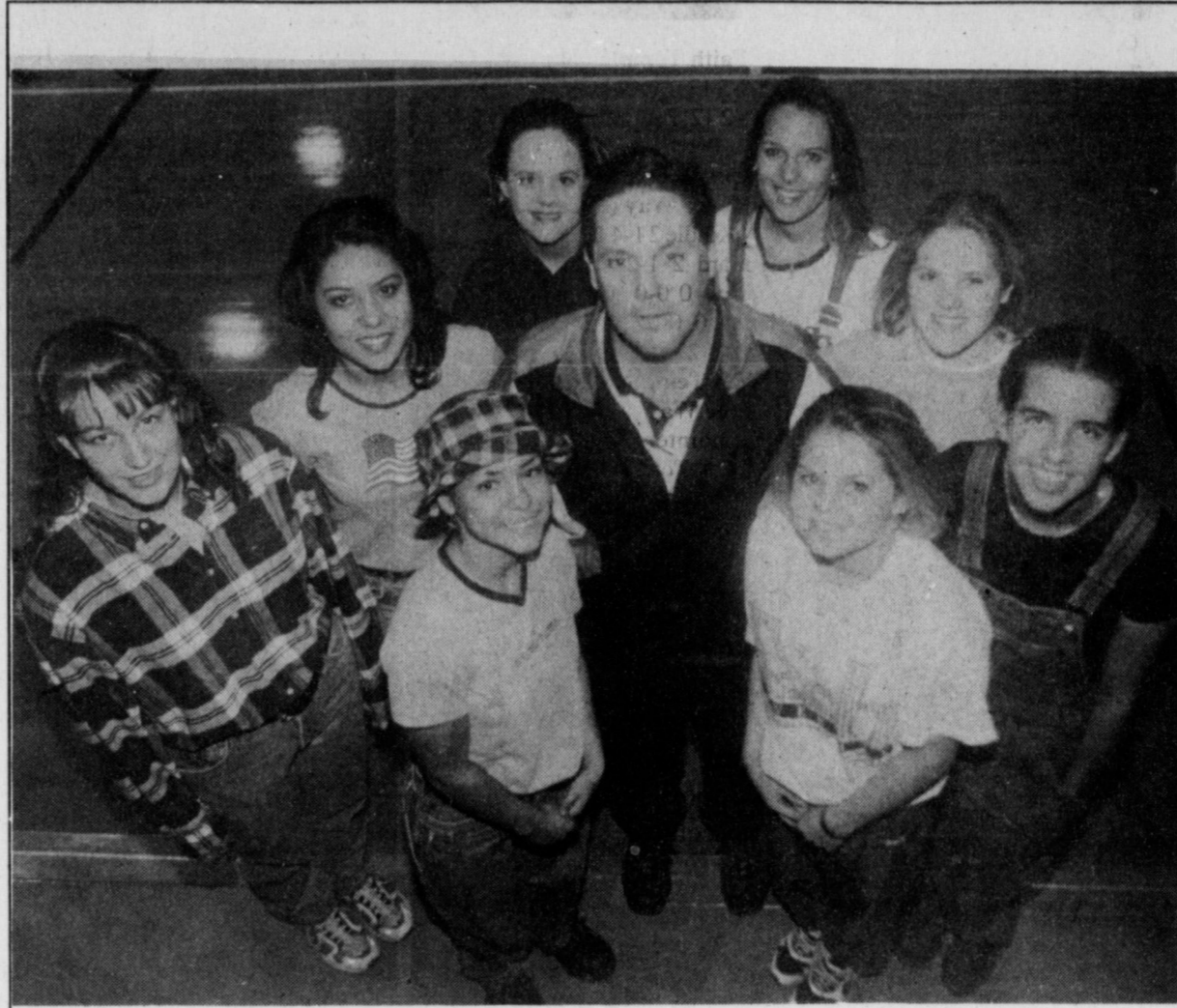
**Muleshoe (26)** — Benham 1 1-23, Flores 0 4-6 4, Garcia 1 0-0 2, Gonzales 0 0-0-0, Hancock 1 0-0 2,

Hernandez 0 1-2 1, Johnson 1 0-0 2, Locker 1 0-0 2, Robertson 0 0-0 0, Scott 0 0-0-0, Tipps 0 0-0-0, Toscano 4 2-5 10. Totals 9 6-12 26.

**Frenship (52)** — Matthews 1 0-0 2, Jenkins 3 0-0 7, Kelley 1 0-0 2, Russell 2 0-0 4, Byers 2 0-0 4, Longstruth 0 2-2 2, Crowley 1 0-0 2, Page 1 0-0 2, Showalter 2 0-3 5, Cartwright 1 0-0 2, Clark 3 0-0 6, Bell 6 1-2 13. Totals 23 3-7 52.

<b>Muleshoe</b>	5	9	9	3	26
<b>Frenship</b>	18	19	4	11	52

3-pointers — Frenship: Jenkins, Showalter. Records: Muleshoe 0-1. Next game: Hosts Farwell Saturday.



## 1998-99 Lady Longhorns

Members of the 1998-99 Lazbuddie girls varsity basketball team are (back, from left) Laura Jo Via, Maria DeLeon, Holly Engelking, Kia Morris, Leah Turner and Scottie Brown. (Front) Rachel Rodriguez, coach Carey Sudduth and Staci Turner.

# Three Way sweeps Faith Temple

MAPLE — Daniel Reeves scored 16 points and Gerald Perez added 13 Tuesday, leading Three Way to a season-opening 51-34 victory over Faith Temple, N.M.

The Eagles outscored the Conquerors 26-12 in the second and third quarters while breaking the game open.

Alberto Valderas added eight points for the Eagles and Jonathan Kindle chipped in six.

Josh Richards led Faith Temple (0-1) with 17 points and Micah Howard added 12.

**Faith Temple (34)** — Richards 7

3-5 17, McCain 1 0-0 2, Howard 5 1-2 12, Brown 0 0-0 0, Reese 0 2-2 2, Parrish 0 1-2 1, Todd 0 0-0 0. Totals 13 7-13 34.

**Three Way (51)** — Perez 5 3-9 12, Kindle 2 1-4 6, Reeves 7 1-2 16, Pollard 2 1-2 5, Davis 0 0-0 0, Kirby 0 0-0 0, Weekes 0 0-0 0, Soliz 0 0-0 0, McCaul 1 0-2 2. Totals 21 7-21 51.

<b>Faith Temple</b>	10	5	7	12	34
<b>Three Way</b>	9	13	13	16	51

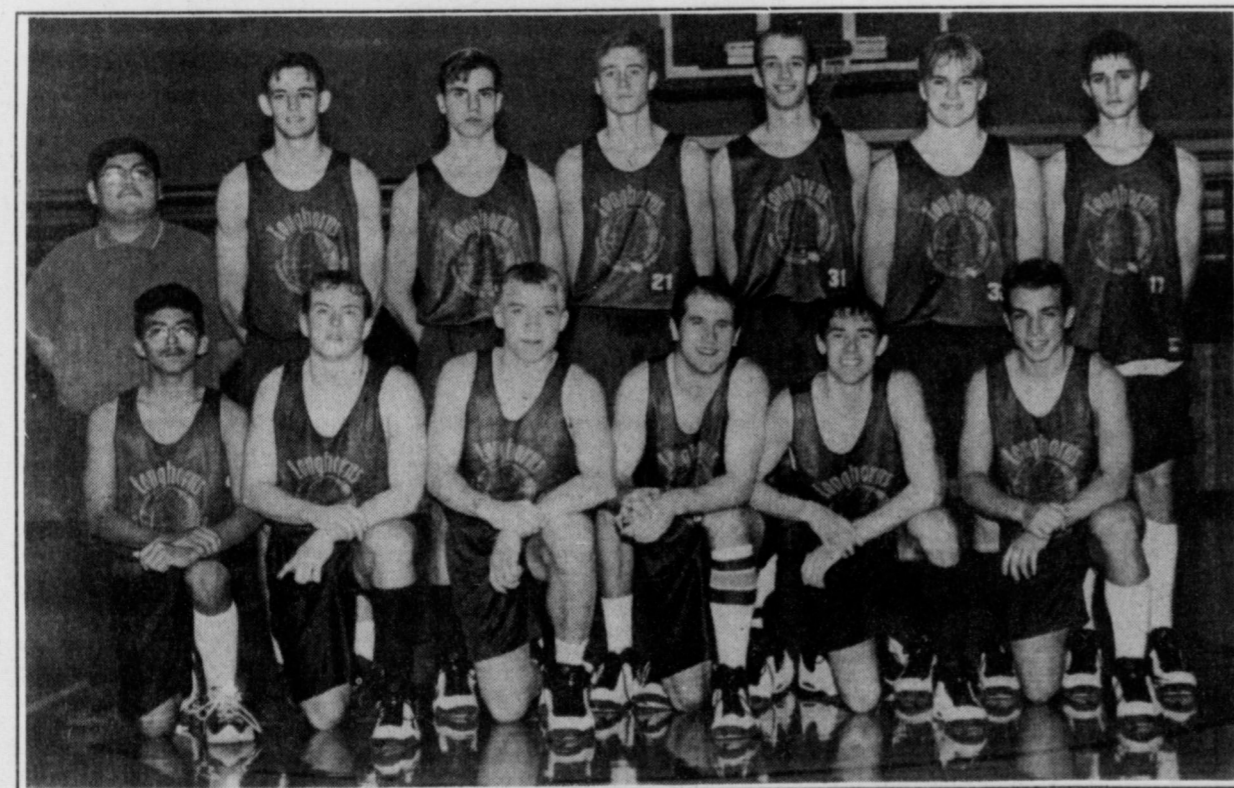
3-pointers — Faith Temple:

Howard. Three Way: Reeves, Kindle. Total fouls — Faith Temple 18, Three Way 10. Fouled out: none. Records: Faith Temple 0-1. Three Way 1-0.

## GIRLS

MAPLE — Alma Castillo scored 11 points and Three Way rallied to beat Faith Temple,

see SWEEPS on page 5



## 1998-99 Longhorns

Members of the 1998-99 Lazbuddie boys varsity basketball team are (back, from left) manager Robert Aguilar, Laramie Wood, Bryce Roneck, Tyler Gartin, Cade Morris, Adam St. Clair and Josh Morris. (Front) Gabriel Juarez, Seth Black, Cole St. Clair, Jeffery Seaton, Brandon Foster and Landon Parham.

# Lazbuddie falls 65-46 in opener

PLAINS — Rick Powers' Lazbuddie coaching debut went about how he expected.

Tanner Blount scored 21 points and Plains posted a 65-46 win against a Lazbuddie team struggling to learn a new offense.

Brandon Foster scored 14 points and Cade Morris had 13 points and six rebounds for Lazbuddie.

"We didn't match up well against their quickness and they're a lot further along than we are," Powers said.

Powers said the Cowboys' halfcourt man-to-man defense was responsible for most of the Longhorns' 29 turnovers, leading to too many easy baskets.

"We didn't do a very good job of taking care of the ball," Powers said.

Adam Garcia added 13 points for Plains, which broke the game open by outscoring Lazbuddie 18-10 in the pivotal third quarter.

Seth Black added nine points (two 3-pointers) for Lazbuddie while Jeffery Seaton chipped

in seven points and five rebounds.

Lazbuddie played Trinity Fellowship Friday in Amarillo.

<b>Lazbuddie</b>	8	16	10	12	46
<b>Plains</b>	18	14	18	15	65

**Lazbuddie (0-1)** — Foster 3 7-9 14, A. St. Clair 0 0-1 0, J. Morris 1 0-0 2, C. St. Clair 0 0-0 0, Black 3 1-1 9, Roneck 0 0-2 0, Seaton 2 3-6 7, C. Morris 5 2-9 13. Totals 14 14-32 46.

**Plains (1-0)** — Garcia 5 3-4 13, Tarango 1 0-0 2, Scisson 1 0-4 2, McGinty 2 4-6 8, Blount 7 7-8 21, J. Gallegos 2 1-2 5, Luna 1 0-0 2, Bell 1 1-2 3, Bennett 1 0-0 2, E. Gallegos 3 1-2 7. Totals — 24 17-28 65.

3-pointers: Lazbuddie: Foster, Black 2, C. Morris.

Overall odds of winning, 1 in 20. Must be 18 years or older to play. ©1998 Texas Lottery

**TEXAS MILLION**

To play Texas Million, just pick 4 numbers or Quick Pick (QP) for the \$1,000,000 cash prize, and you automatically get 6 more sets of random numbers for more ways to win. In fact, Texas Million offers a \$10 cash prize for matching just 2 numbers within any of the seven sets and \$300 for matching 3. What more could you ask for?

**7 Chances To Cash In.**

# Veteran Eagles primed for title chase

MAPLE — Three Way High School will look to their four returning starters to make a run at the district championship in 1998-99. The largest load will fall on the shoulders of the two returning seniors, and a host of experienced juniors.

Leading the way for the Eagles will be 1997-98 district MVP Gerald Perez and first team all-district selection Jonathan Kindle.

Perez led the Eagles in scoring (13.4) and rebounding (8.3), while Kindle put up 7.4 points per game and 7.7 rebounds per game. These two seniors have started since their sophomore season and have developed into to all around basketball players.

"Jonathan has become our best defensive player over the past two seasons," Three Way coach Shawn Harrison. "I really take comfort in knowing that he will guard the other teams best player."

Perez is relied on to guard the opponents post man, score and rebound. For Perez to be effective on the inside, the

## SWEEPS

from page 4

N.M. 34-28 Tuesday in the season-opener for both teams.

Trailing by seven at halftime, Three Way outscored the lady Conquerors 13-4 in the third quarter and grabbed a 25-23 lead.

Kara Heinrich added nine points and Rosa Soliz chipped in eight for the Lady Eagles.

Becky Aubuchant scored a game-high 16 points for Faith Temple.

**Faith Temple (34)** — Richards 7 3-5 17, McCain 1 0-0 2, Howard 5 1-2 12, Brown 0 0-0 0, Reese 0 2-2 2, Parrish 0 1-2 1, Todd 0 0-0. Totals 13 7-13 34.

**Three Way (51)** — Perez 5 3-9 12, Kindle 2 1-4 6, Reeves 7 1-2 16, Pollard 2 1-2 5, Davis 0 0-0 0, Kirby 0 0-0 0, Weekes 0 0-0 0, Soliz 0 0-0 0, McCaul 1 0-2 2. Totals 21 7-21 51.

**Faith Temple 10 5 7 12 34**

**Three Way 9 13 13 16 51**

3-pointers — Faith Temple: Riberts. Total fouls — Faith Temple 16, Three Way 15. Fouled out: none. Records: Faith Temple 0-1, Three Way 1-0.

Eagles look to the outside shooting of Alberto Valderas (9.1) to keep defenses honest.

"Birdie began to shoot the ball real well about mid-season," Harrison said. "The game that I felt helped build his confidence was at Wellman Union where he connected on all five 3-point attempts. Birdie also improved defensively throughout the year."

With the growth and off-season work of Valderas (6-0)

and the other returning starter Daniel Reeves (5-11) combined with Kindle (6-1) and Perez (6-2), the Eagles have the tools to attain their third consecutive district championship.

The road will not be easy for the Eagles. The UIL realignment have the Eagles moving south into a district with Meadow, Ropes and Whitharral. To help the Eagles win this new district, the Eagles

will look to the likes of juniors Scott Pollard and Monty Kirby.

Also vying for playing time will be several players up from the junior varsity. Juniors Kasey Davis and Sid Weekes, and sophomore Marvin McCaul and Michael Soliz will help solidify the Eagles team.

The Eagles also look to have a promising future with a talented junior varsity group. The freshmen (second at Whiteface tourney behind Shallowater) will be called upon to help the sophomores to continue the winning ways.

"This group of freshmen put together an AAU team this summer and really grew as a group," Harrison said. "They have developed into some fine looking ball players."

The sophomores that are returning to the JV are Ernesto Navarro (6'0"), Bobby Soliz, and Fernando DeLaRosa. This group with the likes of Jimmy James (6-0), Robert Rodriguez, Anthony Furgeson (5-11), Jordan Gray (5-11), Ivan Navarro, Taylor McDonald and Carlos Contreras.

# Three Way JV wins; junior high splits

Three Way topped Faith Temple 51-38 Tuesday in a junior varsity game.

Three Way jumped out to a 10-1 lead within the first two minutes of play with Anthony Furgeson scoring the first six points for the Eagles. From then until halftime the margin stayed the same.

At the half, Three Way was leading 24-13. The Eagles came out and played an excellent third quarter, outscoring Faith Temple tried to mount a comeback but were too far behind.

Three Way point guard Robert Rodriguez said "our defense and press looks great but our offense could use some improvement."

Vincent McCain of Faith

Temple led all scorers with 23 points.

Three Way's scoring was more balanced with Jimmy James scoring 11 points and Rodriguez adding 10 points.

— Jimmy James  
Special to the Journal

## JH boys fall in OT

Amherst beat Three Way 39-32 in overtime Monday in a boys junior varsity game.

Amherst jumped out to an 11-6 lead in the first quarter. By halftime, the Eagles had fought back to within two points of the Bulldogs. At the end of the third quarter, the game was knotted at 19-19.

Late in regulation, the Eagles were down by then points when

sixth-grader Chris Kindle nailed a 3-pointer to tie the game at 29.

The leading scorers for the game were Arturo Mata from Amherst with 23 points and Sammy Castillo and Antonio Jasso from Three Way each with 10 points.

— Anthony Furgeson  
Special to the Journal

## JH girls win opener

The Three Way Junior High girls celebrated a season opening victory over the Amherst Bulldogs by the score of 48-11.

"It was a good game to get us ready for district," said Julie Salamanca, a starting wing for Three Way.

Sarah Furgeson and Kaylie

# Gartin, Hodge led frosh past Cooper

Britni Gartin scored 13 points and Rendi Hodge added nine points as Muleshoe edged Lubbock Cooper 41-38 Monday in a girls freshman game.

Amanda Bell added seven points in the Lady Mules' season-opener.

Candace Hutto scored five point and Jessica Carpenter and Rendi Hodge added 3-pointers in the fourth quarter to help hold off the Lady Pirates.

Bethany Jones scored 13 points for Cooper, who led 10-8 after one quarter.

**Cooper (38)** — Jones 14, Kimmel 2, Lumbrell 2, Biram 7, Nettles 9, Mayberry 2.

**Muleshoe (41)** — Bell 7, Gartin 13, Carpenter 3, Glover 4, Hodge 9, Hutto 5, Felan, Magby, Herington, Messenger, Barrett, Rempe, Wood.

**Cooper 10 7 10 11 38**

**Muleshoe 8 11 11 11 41**

3-pointers — Muleshoe: Carpenter, Hodge. Records: Lubbock Cooper 0-1. Muleshoe 1-0. Next game: Hosts:

## WJHS scoreboard

### GIRLS

#### WJHS 8TH 49, COOPER 21

**Cooper (21)** — Baker 4, Acebedo 2, Boyd 2, McCasland 4, Adkins 2, Pritchard 2, Newton 3, Craddock 2, Patton 2.

**WJHS (49)** — Rasco 8, Hawkins 4, Flores 12, Locker 4, Bailey 1, Henderson 4, Adrain 16, Pylant, Kitchens, Allison, Cleavinger, Barrier.

**Cooper 6 7 4 4 21**

**WJHS 19 11 9 10 49**

3-pointers: none. Records: WJHS

1-0. Next game: at Sudan Tournament 19-21.

#### COOPER 27, WJHS 7TH 18

**Copper (27)** — Canales 2, Nedley 10, Chappel 2, Coffman 13.

**WJHS (18)** — Obenhaus 2, Mason 2, Hancock 4, Benham 7, Perez 3, Black, Whalin, Glover, Hamilton, Rudd, Morgan, Lopez.

**Cooper 2 14 5 6 27**

**WJHS 5 0 7 6 18**

3-pointers: none. Records: WJHS

0-1. Next game: at Sudan Tournament 19-21.

## HOSPITAL ADMISSIONS

**Nov. 12** — Beverly Beggs, Opal Durrett, Juan Garcia, Theola Hulcy, Carrie Knight, Winifred Orcutt and Loretta Roland.

**Nov. 13** — Opal Durrett, Ruby Hart, Theola Hulcy, Lucy Martinez, Winifred Orcutt, Maria Orozco, Theresa Pampage, Darrell Bryant and Loretta Roland.

**Nov. 14** — Darrell Bryant, Mary Fox, Ruby Hart, Elizabeth Lewis, Lucy Martinez, Dovie Matthews, Manuel Noriega, Winifred Orcutt, Roger Pena, Theresa Ramage and Loretta Roland.

**Nov. 15** — Mary Fox, Ruby Hart, Elizabeth Lewis, Dovie

Matthews, Manuel Noriega, Salvador Olivarez, Winifred Orcutt, Theresa Ramage, Eliana Ramirez and Loretta Roland.

**Nov. 16** — Mary Fox, Ruby Hart, Elizabeth Lewis, Dovie Matthews, Manuel Noriega, Salvador Olivarez, Winifred Orcutt, Theresa Ramage, Eliana Ramirez, Loretta Roland, Jo Nicole Chavez and Manuel Cardenas.

**Nov. 17** — Jo Chavez, Myztic Chavez, Mary Fox, Elizabeth Lewis, Dovie Matthews, Winifred Orcutt and Eliana Ramirez.

**Nov. 18** — Jo Chavez, Myztic Chavez, Mary Fox, Dovie Matthews, Winifred Orcutt and Velia Saldana.

*Carolyn's Christmas Creations*  
Special Handmade Gifts & Holiday Treasures


Just Arrived

- Hand Crocheted/Starched Santas
- Holiday Christmas Albums
- Santa Wind Chimes
- Lady Caroline's English Teas

Open: Wednesday—Saturday  
10 am to 6 pm

Open Thanksgiving Day from 2 pm to 6 pm

218 W. 18th Street • Muleshoe

CONGRATULATIONS 

# Jo Ann Ramirez



Crew Member of the Month for October 1998

"Jo Ann, we appreciate the hard work, dedication and 110% effort you continuously give to McDonald's."

— McDonald's Team



**McDonald's of Muleshoe**  
1315 W. American Blvd. • 272-3333

**Coming... Fri., Nov. 27 Sat., Dec. 5 & 19**

**Moonlight Madness**

\* Make your purchases with participating businesses and get a chance to win \$1,000 in Muleshoe's Mad Money (with every \$20 spent, every \$10 spent at participating restaurants) or a \$50 Gift Certificate from a participating merchant!

Harvey Bass Appliance	Lowe's Treasures from the Heart
Art Loft	Sheree's Attic & Merle Norman Cosmetics
Dairy Queen	Wilson Appliance
Bealls	Williams Athletics
Circle E Pets	Muleshoe Feed Barn
Fry & Cox	James Crane Tire Co. Leal's Mexican Restaurant
Higginbotham -Bartlett Co.	Joe's Boot Shop
McDonald's	Pizza Hut

Winners of the First Four Moonlight Madness Gift Certificates are Marie Castorena of Muleshoe (Lowe's) • Kristin Miles of Portales (Dairy Queen) • Sherry Embry of Muleshoe (Art Loft) • Jody Burrage of Clovis (Treasures from the Heart)

\* The winner of Muleshoe's Mad Money can be spent at any business participating in Moonlight Madness 1998.

**\$98 OVER INVOICE FIRST TIME EVER**

**\$1000 REBATE** **FINAL WEEK Ends 11/30/98**




Close-out prices and \$1000 rebate on all new 98 model Dodge Ram Trucks! 1/2 tons, 3/4 Tons, 1 Tons, Quad Cabs, Diesels, Everything! Hurry - They will go fast!

**BENDER DODGE** 

Hwy 60-70-84 East • Clovis, NM (505) 762-4511 • 1-800-466-4513

# BAILEY COUNTY DEVOTIONAL PAGE

1315 W. American Blvd.  
272-3333  
Muleshoe, TX 


 **Decorators Floral & Gifts**  
616 South First 272-4340  
Muleshoe, TX

◆◆◆◆ **TINO'S** ◆◆◆◆  
 104 W. American Blvd.  
272-7528 • Muleshoe, TX  
Daily Specials Owners: Tino & Linda Campoya

**MULESHOE AREA HEALTHCARE Center**  
"Committed to Caring"  
106 W. Ave. H Muleshoe 272-7578

**SHERLEY-ANDERSON LAZBUDDIE ELEVATOR**  
965-2922 Lazbuddie, TX


**Leal's Tortilla Factory, Inc.**  
"Serving West Texas since 1957"  
107 E. Ash 272-5772 Muleshoe, TX

**TERRA DISTRIBUTION**  
Hwy. 84 • 272-4203  
Muleshoe, Texas  Bruce Bruns - Mgr.

**MULESHOE FEED BARN**  
311 W. American Blvd.  
Muleshoe, TX  272-5626


**Shipman's Body Shop**  
Auto Painting • Wrecker Service • Free Estimates  
Tractor Glass & Windshields  
410 N. 1st Muleshoe, TX  
272-4408 FAX 272-3366

**MAPLE COOP GIN**  
927-5501  
Maple, Texas

Two locations to serve you—  
1900 W. American Blvd. 107 E. American Blvd.  
272-5337 272-3978  
Muleshoe, TX 

**Christian Center Church**  
Morton Hwy. South 272-3877  
Senior Pastor Sun. 10:00 AM  
Reydon Stanford Wed. 7:00 PM

**WEST CAMP GIN, INC.**  
Better Ginning & Courteous Service  
 Route 2 Box 1000 • 925-6681  
James Shepard / Phyllis Shepard Muleshoe, TX

**PINNACLE THERAPY SERVICES**  
 Speech/Language, Physical & Occupational Therapies  
305 5th St. • Farwell, TX • (806) 481-CARE


**BRUCE, INC.**  
AIR CONDITIONING   
Hwy. 214 North 272-5114  
Muleshoe, TX TAOL-B003350C, LP08638

**BAILEY GIN COMPANY, INC.**  
946-3397  
Sudan, TX  
Peanut Hawkins, MGR

**Henry Insurance Agency, Inc.**  
"Serving You Since 1964"  
 111 West Avenue B 272-4581  
Muleshoe, TX

**DALE OIL COMPANY, INC.**  
413 W. American Blvd.  
272-5576  
Muleshoe, TX 

**WINKLES TRUCKS, INC.**  
 Box 757 (806) 247-2724  
Frona, TX

**WESTERN DRUG**  
 114 Main 272-3106 Muleshoe

## Facts About The BIBLE BY JOHN LEHTI

### THE HARD LIFE OF THE MESSENGER

MESSENGERS IN BIBLICAL TIMES WERE IMPORTANT PERSONAGES. THEY CARRIED DICATES OF KINGS, GENERALS, AND STATESMEN, WITH GREAT DISPATCH ALTHOUGH THEIRS WAS NOT A JOB TO BE SOUGHT AFTER. THEIR TRAVELS WERE HAZARDOUS, THEIR HOURS WERE LONG, AND VERY OFTEN THEIR WORK WENT UNAPPRECIATED. IN FACT, IF THEY HAPPENED TO BE BEARERS OF EVIL TIDINGS THEIR OWN LIVES COULD BE ENDANGERED DUE TO THE FACT THAT OFTEN THE RECIPIENTS OF THE BAD NEWS WOULD ORDER THE DEATH OF THE MESSENGER WHO BROUGHT SUCH UNPLEASANT TIDINGS. ALSO, IT WAS NOT UNCOMMON FOR GROUPS OF MEN TO IMPEDE THE PROGRESS OF A MESSENGER TO KEEP THE COMMUNICATIONS FROM BEING DELIVERED FOR POLITICAL REASONS. MORE THAN ONE HAPLESS COURIER FELL VICTIM TO A ROADSIDE AMBUSH RESULTING IN CONFIDENTIAL MISSIVES FALLING INTO THE WRONG HANDS.



SAVE THIS FOR YOUR SUNDAY SCHOOL SCRAPBOOK

This devotional & directory is made possible by these businesses who encourage all of us to attend worship services.

- |  |   |
|--|---|
| <p><b>ASSEMBLY OF GOD</b><br/>FIRST ASSEMBLY OF GOD<br/>521 South First Street • 272-3017<br/>Jack Stone, Min. • 272-3984<br/>S.S. 9:45 a.m., W.S. 11 a.m. &amp; 6:30 p.m., Wed. 7:30 p.m.<br/><b>EL BUEN PASTOR</b><br/>415 E. Ave. F • 272-5455 • Pastor Felix Cadena<br/>S.S. 9:45 a.m., W.S. 11 a.m. &amp; 6 p.m.; Wed. 7 p.m.</p> <p><b>BAPTIST</b><br/><b>CALVARY BAPTIST</b><br/>1733 W. Ave. C. Rev. Jeff Coffman<br/><b>CIRCLE BACK BAPTIST</b><br/>Intersection FM 3397 &amp; FM 298<br/>Jessie Shaver, Min • 946-3676<br/><b>FIRST BAPTIST</b><br/>220 West Ave. E.<br/>Stacey Conner, Min.<br/><b>FIRST BAPTIST</b><br/>Lazbuddie • 965-2126<br/><b>PRIMERA IGLESIA BAUTISTA</b><br/>223 E. Ave. E. Rev. Greg Guzman<br/><b>PRIMITIVE BAPTIST</b><br/>621 South First<br/>Elder Cleveland Bass, Min.<br/><b>PROGRESS BAPTIST</b><br/>Progress, TX<br/><b>PROGRESS SECOND BAPTIST</b><br/>Arthur Hays, Min.<br/>1st &amp; 3rd Sundays<br/><b>RICHLAND HILLS BAPTIST</b><br/>17th &amp; West Ave. D<br/>George Malis, Pastor<br/><b>ST. MATTHEWS BAPTIST</b><br/>Corner of W. Boston &amp; W. Birch<br/>Floyd R. Monroe, Min.<br/><b>THREE WAY BAPTIST</b><br/>927-5467<br/><b>TRINITY BAPTIST</b><br/>314 E. Ave. B<br/>Robert Brown, Min.</p> <p><b>CATHOLIC</b><br/><b>IMMACULATE CONCEPTION CATHOLIC</b><br/>805 E. Hickory<br/>Joseph Augustine, Min.<br/><b>CHRISTIAN</b><br/><b>THE CHRISTIAN CENTER</b><br/>Morton Hwy. • 272-5105<br/>Reydon Stanford, Min.<br/><b>CHURCH OF CHRIST</b><br/><b>LARIAT CHURCH OF CHRIST</b><br/>Sam Billingsley, Min.<br/>S.S. 10 a.m.; W.S. 11 a.m. &amp; 6 p.m., Wed. 7 p.m.</p> | <p><b>LAZBUDDIE CHURCH OF CHRIST</b><br/>Nathan Crawford, Min.<br/>S.S. 9:30 a.m.; W.S. 10:20 a.m. &amp; 5 p.m.; Wed. 7 p.m.<br/><b>MULESHOE CHURCH OF CHRIST</b><br/>22nd &amp; W. American Blvd.<br/>John Knox, Min.<br/>S.S. 9:30 a.m.; W.S. 10:20 a.m. &amp; 6 p.m.;<br/>Wed. 7:30 p.m.<br/><b>16th &amp; AVE. D</b><br/><b>CHURCH OF CHRIST</b><br/>Curtis Shelburne, Min. • 272-4619<br/>W.S. 10:30 a.m. &amp; 1:30 p.m.;<br/>Wed. 7:00 p.m.</p> <p><b>LUTHERAN</b><br/><b>ST. JOHN LUTHERAN</b><br/>Lariat, TX<br/>Richard Greenhaner, Min.<br/>S.S. 10:30 a.m.; W.S. 9:30 a.m.</p> <p><b>METHODIST</b><br/><b>FIRST UNITED METHODIST</b><br/><b>HISPANIC MINISTRIES</b><br/>E. 5th and E. Ave. D<br/>Pastor Benito Cavazos<br/><b>FIRST UNITED METHODIST</b><br/>507 W. 2nd St.<br/>Pastor Brad Reeves<br/><b>LAZBUDDIE METHODIST</b><br/>965-2121<br/><b>EL DEVINO SALVADOR</b><br/>814 W. Ave. C, Muleshoe, TX<br/>Guadalupe Ballinas, Min.</p> <p><b>NAZARENE</b><br/><b>NEW VISION CHURCH OF THE NAZARENE</b><br/>814 W. Ave. C • 272-3622<br/>Hugh Hayes, Interim-S.S. 10 &amp; 11 am; W.S. 7 pm</p> <p><b>PENTECOSTAL</b><br/><b>UNITED PENTECOSTAL LIGHTHOUSE</b><br/>207 East Ave. G • 1-800-454-6051<br/>Pastor McKibben, 10 am Sunday Service<br/>Thursday, 7 pm Bible study</p> <p><b>INTER DENOMINATIONAL</b><br/><b>NEW COVENANT</b><br/>Plainview Hwy. Jimmy Low, Min.<br/>Steve Claybrook, Assoc. Pastor<br/>W.S. 10 a.m.; Wed. 7 p.m.</p> |
|--|---|

**Lowe's**   
MARKETPLACE 515 W. American Blvd.  
401 W. American Blvd. Muleshoe 272-4406  
Muleshoe 272-4585

**WES-TEX FEED YARDS, INC.**  
Custom Cattle Feeding  
272-7555 Muleshoe, TX

**Muleshoe Area Medical Center**  
"Your Hospital"  
708 S. First St. • 272-4524  
Muleshoe, TX

**"THE FIVE AREA TELEPHONE COOPERATIVE ORGANIZATION"**  
West Plains Telecommunications Co.  
Five Area Systems, Inc., Plateau Cellular Network  
Five Area Long Distance - Five Area Internet  
302 Uvalde Muleshoe, USA (806)272-5533

**JAMES CRANE TIRE CO., INC.**  
107 Main 272-4594  
Mike Hahn Muleshoe, TX

**IRRIGATION PUMPS & POWER**  
**ZIMMATIC CENTER-PIVOTS**  
W. Hwy. 84 272-4483

**O & C OSONS**  
Erection Sprinkler Ser. Welding & Repair  
Repair & Assemble 272-5018 909 W. American Blvd. 272-3475  
Lupe Olivarez

**AMERICAN VALLEY VALVE INC.** West Hiway 84 272-4266 Muleshoe

**1ST BANK** MEMBER FDIC  
202 South First 272-4515

And the Lord shall guide thee continually, and satisfy thy soul in drought, and make fat thy bones: and thou shalt be like a watered garden, and like a spring of water, whose waters fail not. -Isaiah 58:11

**FIRST TEXAS FLBA MULESHOE**  
"Serving Farmer & Bailey Counties"  
272-3010 • Fax 272-5388  
316 Main • P.O. Box 424 • Muleshoe, TX

**PACO FEED YARD, INC.**  
Commercial Cattle Feeders  
P.O. Box 956 265-3281  
Frona, TX  
Feller Hughes-Mgr.

**NEEDMORE Co-op Gin Company**  
946-3361 • Sudan, TX

**Silver Screen Video** VIDEO  
VCR, PSX, N-64 & Camcorder Rentals  
803 W. American Blvd. • 272-5540 • Muleshoe, TX

**MULESHOE PEA & BEAN, INC.**  
RR 2 Box 297 272-5589  
Muleshoe, TX

**DAMRON DRUG, INC.**  
308 Main St. 272-4210  
Muleshoe, TX

**MULESHOE LIVESTOCK AUCTION**  
Muleshoe, TX • Sale Every Saturday  
Clayton Myers • 272-4201

Teach me thy way, O Lord, and lead me in a plain path, because of mine enemies. -Psalms 27:11

**FARWELL CONVALESCENT CENTER**  
"In Christ's Love, Everyone Is Someone Special"  
305 5th St. 481-9027 • FARWELL, TX

**MULESHOE MOTOR CO.**  
1225 W. American Blvd. 272-4251

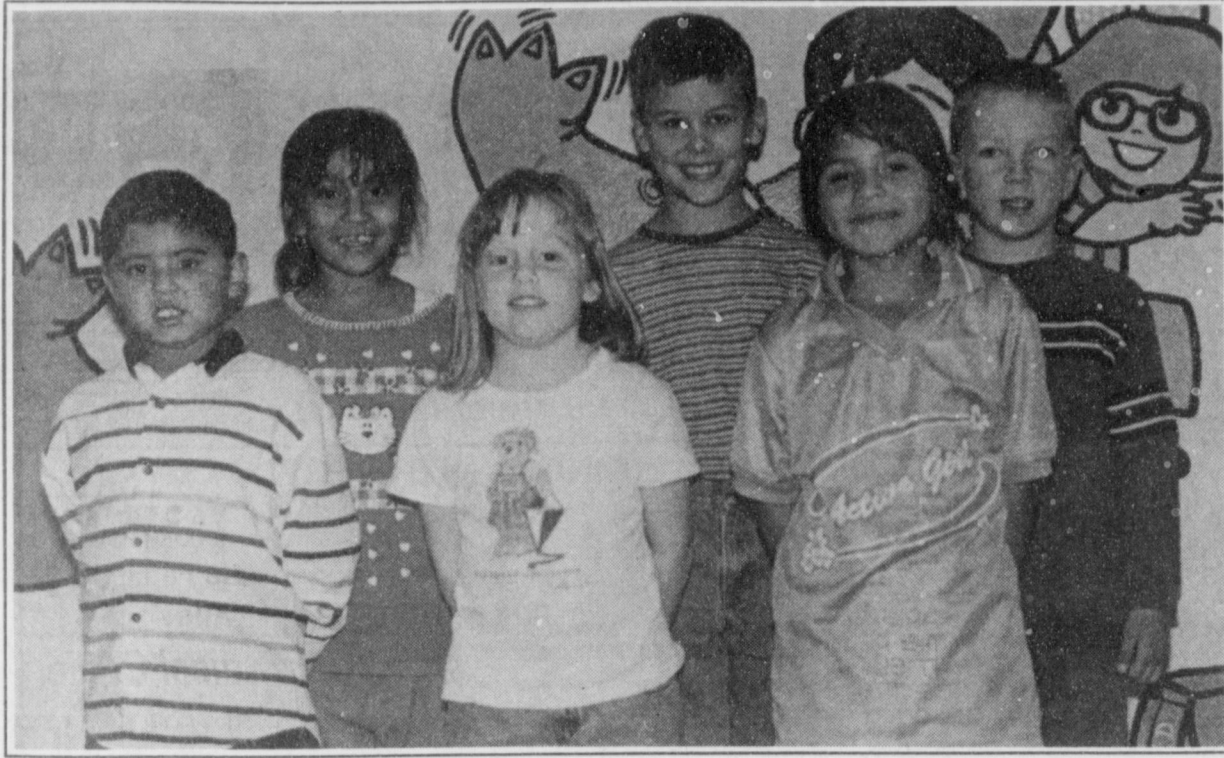
**SIMNACHER NATIVE GRASSES**  
Darwin Simnacher (505) 762-7817 Vince Simnacher (806) 946-3461 Thomas Simnacher (806) 285-2491

**MENDOZA IRRIGATION SERVICE**  
 272-5511  
Sprinkler Erect, Repair & Move Muleshoe, TX

**LEO'S BLACKSMITH & MACHINE SHOP**  
310 W. AMERICAN BLVD. 272-4418  
MULESHOE, TX

**SAIN IRRIGATION & MACHINES**  
Complete Pump Service  
W. American Blvd. 272-4397  
Walt Sain Muleshoe, TX 272-4148

**Springlake Potatoes, Inc.**  
P.O. Box 280 • Springlake, TX 262-5542



**Dillman Super Kids**

Selected as Super Kids at Dillman Elementary for the month of November are (from left) Gilbert Gomez, Erika Tovar, Cassi Stegall, Dillon Gallman, Gabby Agundis and Cooper Washington. Not pictured are China Williams and Chris Pizarro.

*The Family of Zeffa Shafer would like to express our heartfelt thanks to so many in our community for the acts of love and concern shown during the illness and death of Zeffa. Thanks so much for the prayers, cards, flowers memorials and food that was provided so generously to our family in loving memory of Zeffa.*

Make the Muleshoe Journal Classifieds Work For You! Call us, (806) 272-4536

**L AZBUDDIE HONOR ROLL**

Students from Lazbuddie Junior High and High School listed on the second six weeks honor roll are as follows:

**"A-B" honor roll**

**2nd grade:** Alexandra Ballenger, Jose Cervantes, and Leticia Mendoza.

**3rd grade:** George Alvarez Jason Davis, Samantha Hudson, Megan McGuire, Rochelle Smith, and Rowdy Smith.

**4th grade:** Brandy Hudson and Kyra Kimbrough.

**5th grade:** Kirby Kimbrough and Roper Smith.

**6th grade:** Chris DeLeon, Tanner Gartin, Mandy Haney, Ana Hernandez, and Melanie Winders.

**7th grade:** Suzanne Aragon, Kelli Harris, Amanda Martinez, Raul Mata, Michelle Scott, and Sterling Via.

**8th grade:** Brittany

Brakebill, Lucas DeLeon, Lucinda Guzman, Brady Mimms, and Michelle Puckett.

**9th grade:** Jeffrey Guillen, Kelsey Jones, Kayla Kimbrough, Shannon Redwine and Triston Thorn.

**10th Grade:** Julio Aguilar, Kendra Gallman, Stephanie Sharp, and Laura Via.

**"A" honor roll**

**2nd grade:** Richie Aguilar, Jessica Aree, Trevor Coker, Alejandra Estrada, Ryan Mason, Jacob Schacher, Morgan Smith, Cassie Steinbock, Brock Steinbock, RaJon Thorn, and Stephanie Welker.

**3rd grade:** Crescent Crawford, Jonathan Lennon, Regina Mata, Chelsey Nichols, Brianna Sanchez, Brittany Schacher, and Dakota Williams.

**4th grade:** Castle Crawford, Amberlee Steinbock, Montana

Steinbock, and Stephanie Williams.

**5th grade:** Madison Smith and Richard Welker.

**6th grade:** Kaylee Burnett.

**7th grade:** Shonnah Black, Nicole Lewandowski, Katy Loudder, Robby Martin, Shawndee Nichols, Bethanie Sanchez, Kolby Wilkerson.

**8th grade:** Andy Martin and Tobin Redwine.

**9th grade:** Savannah Black, Jodie Coker, Candice Randolph, Jay Seaton.

**10th grade:** Kati Mimms and Crystal Scott.

**11th grade:** Veronica Mata and Jeffery Seaton.

**12th grade:** Seth Black, Jill Hodges, Josh Morris, Kia Morris, Cade Morris and Shena Seaton.

**NOW OPEN!!!**

*Continental Credit*

**Loan\$ from \$100 to \$446**

**Come by and see Jackie or Norma today!**

☎ Phone Applications Welcome ☎

Open: Monday thru Thursday—9 am to 5 pm & Friday—9 am to 6 pm

206 South Main Street • Muleshoe • 272-3673

**T OPS NEWS**

The T.O.P.S. #34 meeting was held Nov. 12 at the Church of Christ on American Boulevard.

Thirteen members were present. Laverne James presided at the meeting.

Alma Robertson was the best loser again this week. She was best loser last week also.

Rose Sain was first runner up and Aurora Mata was second runner up.

**ONE OF THE MOST IMPORTANT WEAPONS IN THE FIGHT AGAINST BREAST CANCER**



**IS AT HAND.**

Early detection is the key to the fight against breast cancer.

A simple breast self-examination every month can make a huge difference.



The doctors and staff at Arrington Comprehensive Breast Center encourage you to take the time to closely examine your breasts regularly.

If you do find something, please contact your doctor.

The cure for breast cancer starts with you.

**YOUR ELECTED Officials**

■ **U.S. Sen. Kay Bailey Hutchison (R-Dallas)**  
703 Hart Building  
Washington, DC., 20510-4301  
(202) 224-5922

■ **U.S. Sen. Phil Gramm (R-College Station)**  
370 Russell Building  
Washington, DC., 20510  
(202) 224-2934  
Lubbock Office: Federal Building, Suite 113, 1205 Texas Ave., Lubbock, TX 79401  
(806) 743-7533

■ **U.S. Rep. Larry Combest (R-Lubbock)**  
**19th Congressional District**  
1026 Longworth building  
Washington, D.C. 20515  
(202) 225-4005  
Lubbock Office: Federal Building, Suite 810, 1205 Texas Ave., Lubbock, TX 79401  
(806) 763-1611

■ **State Rep. Pete Laney (D-Hale Center)**  
**Legislative Dist. 85**  
1400 N. Congress Ave.  
Austin, TX 78701  
(512)463-1000

■ **State Sen. Teel Bivins (R-Amarillo)**  
**Senatorial Dist. 31**  
203 W. 8th Street, Suite 301  
Amarillo, TX 79101  
(806) 374-8994

■ **Bailey County Commissioners Court**  
300 S. First Street • 272-3307  
**Precinct 1:** Butch Vandiver  
**Precinct 2:** C.E. Grant  
**Precinct 3:** Joey Kindle  
**Precinct 4:** Bennie Claunch

■ **Muleshoe City Council**  
215 S. First Street • 272-4524  
**City Manager:** vacant  
**Mayor:** Robert Montgomery  
**Councilmen:** Cliff Black, Juan Chavez, Larry Kirk, Eugene Hawkins

■ **Muleshoe Area Hospital District**  
708 S. First Street • 272-4524  
**Hospital Administrator:** Jim Bone  
**President:** Buck Campbell  
**Vice President:** Victor Leal  
**Secretary:** Phil Kent  
**Board Members:** L.T. Johnson, Mike Miller

■ **Muleshoe Independent School District**  
514 W. Ave. G • 272-3389  
**Superintendent:** Bill Moore  
**President:** Cindy Purdy  
**Vice President:** Curtis Shelburne  
**Secretary:** Frank Saldana  
**Board Members:** Arnold Price, Thurman Myers, David Tipps, Nick Bamert

Brought to you by the **Muleshoe Journal**

4101 22nd Place • (806) 725-8000



**COVENANT**  
ARRINGTON COMPREHENSIVE BREAST CENTER  
A Ministry of St. Mary Hospital & Lubbock Methodist Hospital System

**Employee of the Month**

Cari Ann Kidd (center) was named the Muleshoe Chamber of Commerce and Agriculture's Employee of the Month for November. Cari Ann is a volunteer at the Muleshoe Area Health Care Center. Pictured are (from left) Wade King, Hugh Young, Dawn Williams, Lavon Hunt, Cari Ann, Hubert Kidd, Yolanda Luna, Nancy Kidd, Clay Kidd and Ruth Kitchens.



*For Home Cookin' At Its Best*

**Muleshoe Country Club Restaurant**

NON-MEMBERS WELCOME!

**OPEN** TUESDAY—WEDNESDAY—FRIDAY  
Lunch—11:30 am to 1:30 pm  
WEDNESDAY NIGHT  
"Steak Night"  
Dinner—6 pm to 9 pm

Connie Dominguez starts cookin' Tuesday, Nov. 24!!

**ONE DISH BUFFET**  
Tuesday—Spaghetti, garlic bread and salad  
Wednesday—Homemade soup and sandwiches  
Friday—Menu Only, No Buffet.  
*The buffet comes with salad, dessert & a drink*

We Will Be Closed Thursday For Thanksgiving

*To assure that we will be able to accommodate you, please call 272-4004 in advance and let us know you'll be dining with us!*

**MARRIAGE**



**Johnson — Thompson**  
Neshell Johnson of Farwell and Michael Thompson of Muleshoe were married Saturday, Nov. 21 in Farwell. The bride is the daughter of Mr. and Mrs. Tony Johnson of Farwell. The groom is the son of Donna Thompson of Muleshoe. The wedding was held at the home of the bride's grandmother, Mrs. Margaret Coleman. Paternal grandparents of the bride are Sam and Pauline Johnson of Kokomo, Ind. Grandparents of the groom are Mr. and Mrs. Don DeHay of Amarillo and Mrs. Jo Lockeby of Amity, Ark. They will reside in Muleshoe.

**Mule-Plex members discuss "Keepers of the Legend"**

A general meeting of Mule-Plex members was held November 2 in the board room of West Plains Telecommunications, Inc.

Present were Rhonda Calvary, Myrt Feagley, Maxine Ragsdale, Nelda Merriott, Barbara Blackman, Dale Griswold, Kem Bales, Hugh Young, Chuck Smith, Becky Conklin and Marsha Lewis. Details regarding Keepers of the Legend, as well as other upcoming

events, were discussed. Mule-Plex is a non-profit organization with the mission of providing Muleshoe with concerts, plays, and other types of fine arts and cultural events. Membership is open to the public for a \$10 annual fee. All interested persons are cordially invited to attend the next monthly meeting scheduled for Monday, December 7. For more information please call Kem Bales, president or any other member listed above.

**BIRTH**

**MANUEL REYNA, JR.**

Manuel and Regina F. Reyna of Anton announce the birth of a son, Manuel Reyna, Jr.

He was born at 8:20 a.m. Thursday, Nov. 12, 1998 at Lamb Healthcare Center in Littlefield. He weighed 7 lbs., 9 oz. and was 20 inches long. He has a sister, Devin Reyna.

Grandparents are Ben and Natalie Flores and Lupe and Ester Cardenas. Great-grandparents are Johnny and Nati Alvarado.

**KEY KEY DAYS**

**10 Percent Off Regular Price:**

- Men's Polar King Jacket With Hood
- Men's Polar King Insulated Bib Overalls
- Boys' Unlined Bib Overalls
- Boys' Polar King Jacket W/Hood
- Boys' Insulated Bib Overalls

**Men's Unlined Blue Denim Bib Overalls With Zipper Fly:**  
(#0666-103/146)  
30-46 - \$23.49  
48-52 - \$25.49  
54-56 - \$27.99

**Gebo's**

101 N. Sycamore St.  
762-1631

Prices are good through December 2.

**KENW-TV**

Public Television

**NERDS: 2.0.1: A Brief History of the Internet**

The sequel to *Triumph of the Nerds* is here: *Nerds 2.0.1: A Brief History of the Internet*. This provocative three-hour special is hosted by industry specialist, Robert X. Cringely. The man who made sense out of the dramatic birth of the personal computer industry in *Triumph* now shows us how computers around the world were wired to create the Internet, an industry fundamentally altering the nature of business, communications, and world culture.

*Nerds 2.0.1* explains the Internet in such a way that even the most Web-shy will get it and be able to tell their friends, too. Cringely demystifies Net jargon like packet switching, Internet protocol, router, JAVA, client/server, and so on.

Featured along the way are the digital titans of the networked world: Bill Gates, Bob Metcalfe, Scott McNealy, Marc Andreessen, Steve Case, Larry Ellison (founders of Microsoft, 3Com, Sun, Netscape, America Online, and Oracle). This impressive gang helps tell the story of how the networked world became a mega-industry, making geeks into billionaires.

In *Nerds 2.0.1* you'll also hear first hand how this networked world began, told by the actual people who made it happen. We learn how the seeds of the Internet were planted by Uncle Sam and how we owe it all to Sputnik.

In reaction to the Russians' leap ahead in technology, President Eisenhower pushed for a government meld of scientific minds and technical catch-up. As an army man, he gave the responsibility to a new Pentagon venture called ARPA. The Pentagon hired a small Massachusetts company, BB&N, to create the ARPAnet. It was Bob Taylor at ARPA who decided to connect computer researchers at universities across the nation. With the help of the universities and their brainiacs, Bob Taylor achieved his goal: connecting computers under one shared network. In nine months flat, the technology was invented, built, and installed. The ARPAnet was completed on time and on budget. (And this was a government project?)

Fast forward 30 years and we see how the technical engineers hired by the Pentagon accidentally created a revolution in global communication — making geography irrelevant and communication instantaneous.

The Web is a major 21st century business opportunity and a revolution in the communications world with effects as profound as the telephone or television have had. Internet traffic is doubling every one hundred days; tens of millions of computers are now connected; billions of dollars of business are shifting to the net.

People are selling sex, books, flowers, information, and friendship on the Web. With 85% of Americans still not hooked up to the Net, it's just the start. Right now, we're in the roaring 20s!

The three-hour *Nerds: 2.0.1: A Brief History of the Internet* airs Wednesday, November 25th at 8:00 p.m. It repeats Tuesday, December 1st at 11:00 p.m.

Channel 3 Television from  
Eastern New Mexico University, Portales, New Mexico

**GOBBLE**

Up The Savings

**1996 Geo Prizm**  
Cash Price \$8,700 - Cash Down \$168.00  
60 mo. @ 6.99% APR  
**\$168<sup>90</sup>** per mo. W.A.C.

**1998 Chevy Cavalier**  
Cash Price \$10,921.31 - Cash Down \$212.00  
60 mo. @ 6.99% APR - 4 to choose from  
**\$212<sup>00</sup>** per mo. W.A.C.

**1998 Chevy Malibu**  
Cash Price \$13,857.45 - Cash Down \$269.00  
60 mo. @ 6.99% APR - 4 to choose from  
**\$269<sup>00</sup>** per mo. W.A.C.

FREE TURKEY WITH ANY CAR PURCHASE

<p><b>1990 MERCURY COUGAR</b> <b>\$149<sup>49</sup></b> Cash Price \$4,500 mo. Cash Down \$146.49 82027A - 12.90% @ 36 mo.</p>	<p><b>1981 Chevy Crew Cab</b> <b>\$189<sup>79</sup></b> Cash Price \$4,995 mo. Cash Down \$150.00 5393B - 12.90% @ 30 mo.</p>	<p><b>1997 Geo Metro</b> <b>\$155<sup>20</sup></b> Cash Price \$7,995 mo. Cash Down \$155.00 6.99% @ 60 mo.</p>	<p><b>1997 Geo Metro</b> <b>\$155<sup>00</sup></b> Cash Price \$7,995 mo. Cash Down \$155.00 6.99% @ 60 mo.</p>
<p><b>1994 Mazda Pickup</b> <b>\$166<sup>00</sup></b> Cash Price \$6,339.78 mo. Cash Down \$166.00 5282A - 12.90% @ 54 mo.</p>	<p><b>1996 Chevy Corsica</b> <b>\$174<sup>62</sup></b> Cash Price \$8,995 mo. Cash Down \$174.00 To choose from - 6.99% @ 60 mo.</p>	<p><b>1996 Chevy Lumina</b> <b>\$203<sup>84</sup></b> Cash Price \$10,500 mo. Cash Down \$203.00 6.99% @ 60 mo.</p>	<p><b>1995 Chevy Lumina Van</b> <b>\$211<sup>50</sup></b> Cash Price \$10,895 mo. Cash Down \$211.00 96052B 6.99% @ 60 mo.</p>
<p><b>1998 Chevy Lumina</b> <b>\$232<sup>86</sup></b> Cash Price \$11,995 mo. Cash Down \$232.00 6.99% @ 60 mo.</p>	<p><b>1997 Buick LeSabre</b> <b>\$319<sup>00</sup></b> Cash Price \$16,433.14 mo. Cash Down \$319.00 5360 - 6.99% @ 60 mo.</p>	<p><b>1995 Olds Aurora</b> <b>\$328<sup>00</sup></b> Cash Price \$16,897.00 mo. Cash Down \$328.00 5264 - 6.99% @ 60 mo.</p>	<p><b>1998 Buick LeSabre</b> <b>\$359<sup>00</sup></b> Cash Price \$18,483.92 mo. Cash Down \$359.00 Several to choose from - 6.99% @ 60 mo.</p>
<p><b>1993 Ford Aerostar Van</b> <b>\$159<sup>00</sup></b> Cash Price \$6,847.17 mo. Cash Down \$159.00 86365A - 12.90% @ 54 mo.</p>	<p><b>1995 Dodge Intrepid</b> <b>\$225<sup>69</sup></b> Cash Price \$10,850 mo. Cash Down \$225.00 86266A 9.99% @ 60 mo.</p>	<p><b>1997 Chevy S-10 Blazer</b> <b>\$368<sup>74</sup></b> Cash Price \$18,995 mo. Cash Down \$368.00 2 to choose from - 6.99% @ 60 mo.</p>	<p><b>1998 Chevy Venture</b> <b>\$382<sup>27</sup></b> Cash Price \$19,585 mo. Cash Down \$382.00 2 to choose from - 6.99% @ 60 mo.</p>
<p><b>1998 Astro Van</b> <b>\$388<sup>14</sup></b> Cash Price \$19,995 mo. Cash Down \$388.00 96050A - 6.99% @ 60 mo.</p>	<p><b>1997 Buick Park Ave.</b> <b>\$399<sup>00</sup></b> Cash Price \$20,554 mo. Cash Down \$399.00 96050A - 6.99% @ 60 mo.</p>		

BENDER

CHEVROLET - OLDMOBILE-CADILLAC - 763-4465 - 2500 Mabry Drive



**\$50 AWARDED EACH WEEK**



**YOU PLAY!  
WE'LL PAY!**

# BAILEY COUNTY JOURNAL'S FOOTBALL CONTEST

**1<sup>ST</sup> PLACE \$25**

**2<sup>ND</sup> PLACE \$15**

**3<sup>RD</sup> PLACE \$10**

NAME: \_\_\_\_\_  
 ADDRESS: \_\_\_\_\_  
 PHONE: (\_\_\_\_) \_\_\_\_\_

**GAMES OF NOV. 26-29, 1998**

**• RULES •**

- Circle your choice as the winning team in each of the 18 games below.
- The entry with the most correct selections will win. In the event of a tie, the entry which picks the closest to the actual tie breaker score will win.
- Entries may be mailed to Muleshoe Journal, P.O. Box 449, Muleshoe, TX 79347 or dropped off at the office during business hours (8:30-5:00). Please mark the envelope FOOTBALL CONTEST.
- Entries for this week's contest must be received by the Muleshoe Journal or postmarked by **5 P.M. WEDNESDAY, NOV 25, 1998.**
- Muleshoe Journal employees are not eligible to win the contest.
- Decision of the judges will be final.

## TIE BREAKER



**ATLANTA  
AT  
ST. LOUIS**


Combined Total of Both Teams: \_\_\_\_\_

**NOTICE!!!**

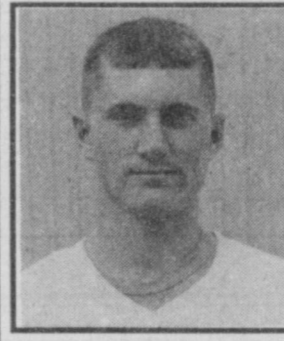
Due to the Thanksgiving holiday, this week's deadline is Wednesday!!!



**DECORATORS  
FLORAL & GIFTS**  
 616 1st • 272-4340  
**BUFFALO  
AT  
NEW ENGLAND**



**SUDDUTH  
FIELD & Co.**  
 104 W. 2nd • 272-4291  
**JACKSONVILLE  
AT  
CINCINNATI**



**WES TEX  
FEED YARDS**  
 Custom Cattle Feeding • 272-7555  
**TENNESSEE  
AT  
SEATTLE**




**MCCORMICK  
SEED, INC.**  
 400 E. Ash Ave. • 272-3156  
**DENVER  
AT  
SAN DIEGO**



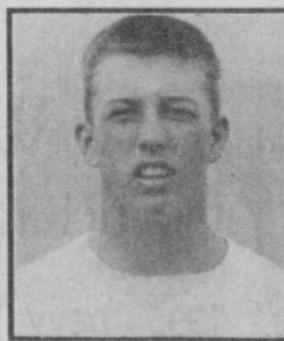
**BOB STOVALL  
PRINTING**  
 221 E. Ave. B • 272-3373  
**WASHINGTON  
AT  
OAKLAND**



**JOE'S  
BOOT SHOP**  
 106 E. American • 272-7504  
**MINNESOTA  
AT  
DALLAS**




**H-PRO  
MULESHOE  
FEED BARN**  
 311 W. American • 272-5626  
**PITTSBURGH  
AT  
DETROIT**



**MULESHOE AREA  
HOSPITAL DISTRICT**  
 708 S. 1st • 272-4524  
**ARIZONA  
AT  
KANSAS CITY**



**WEST CAMP  
GIN, INC.**  
 West Camp • 925-6681  
**TAMPA BAY  
AT  
CHICAGO**



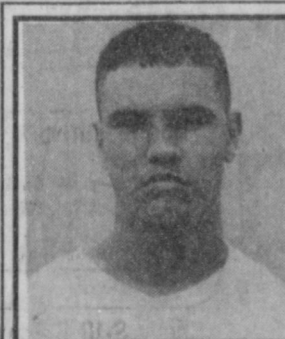
**TERRA  
DISTRIBUTION**  
 Mgr. Bruce Bruns • 272-4203  
**GEORGIA TECH  
AT  
GEORGIA**




**BAILEY COUNTY  
FARM BUREAU**  
 1612 W. American • 272-4567  
**MIAMI  
AT  
SYRACUSE**




**MAPLE  
COOP GIN**  
 Maple • 927-5501  
**MICHIGAN ST.  
AT  
PENN STATE**



**SHERLEY-ANDERSON  
GRAIN ELEVATOR**  
 Lazbuddie • 965-2922  
**NOTRE DAME  
AT  
SOUTHERN CAL**



**MULESHOE  
MOTOR CO.**  
 1225 W. American • 272-4251  
**TEXAS A&M  
AT  
TEXAS**



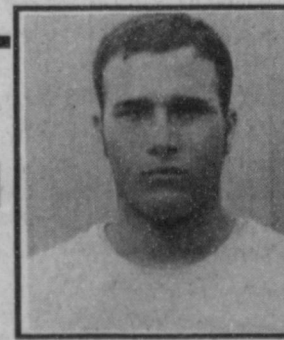
**MCDONALD'S  
OF MULESHOE**  
 1315 W. American • 272-3333  
**VIRGINIA  
AT  
VIRGINIA TECH**



**meet me at  
DAIRY  
QUEEN**  
 1201 W. American Blvd. • 272-3412  
**MISSISSIPPI  
AT  
MISSISSIPPI STATE**



**JAMES CRANE  
TIRE Co.**  
 107 Main St. • 272-4594  
**ARIZONA STATE  
AT  
ARIZONA**



**HIGGINBOTHAM-  
BARTLETT CO.**  
 215 Main • 272-3351  
**COLORADO  
AT  
NEBRASKA**

**ENGAGEMENT**



**STONE-HULL**

Rev. and Mrs. Jack Stone of Muleshoe, announce the engagement and upcoming marriage of their daughter Misty, to Steve Hull. Misty is a graduate of Texas Tech University and has a bachelor of science degree in human development and family studies. She is employed by Interim On Premise at Howmet Corporation, in LaPorte, IN. Steve is the son of Harry and Sandy Hull of New Buffalo, Mich. He is a senior at Purdue University and will graduate in December with a bachelor of science degree in building construction management. After graduation, he will be employed at Gerald H. Phipps General Contractors, in Denver, Colo. The couple will marry on Jan. 22, 1999 at 11 a.m., at the Trinity Church Chapel in Lubbock. They will reside in Denver.

**ENGAGEMENT**

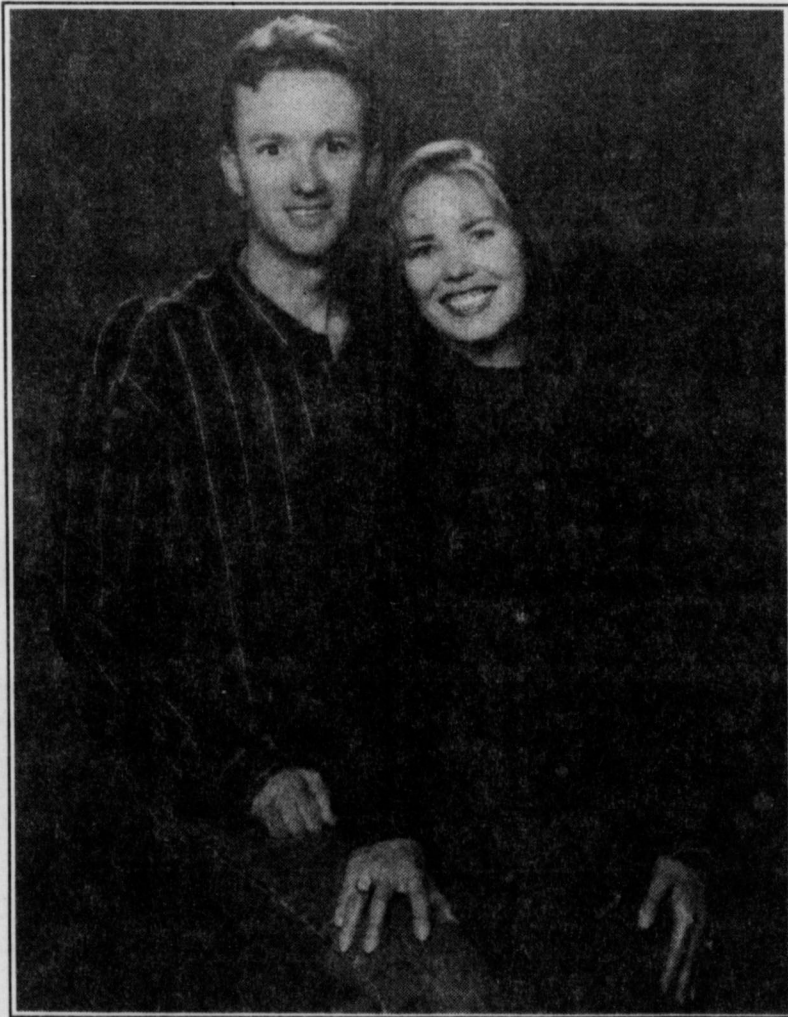
**Coleman — Foster**

Danny and Pat Coleman of Lubbock announce the engagement and approaching marriage of their daughter, Jody, to Wesley Foster of Lubbock. The future groom is the son of Jim and Chera Foster of Muleshoe.

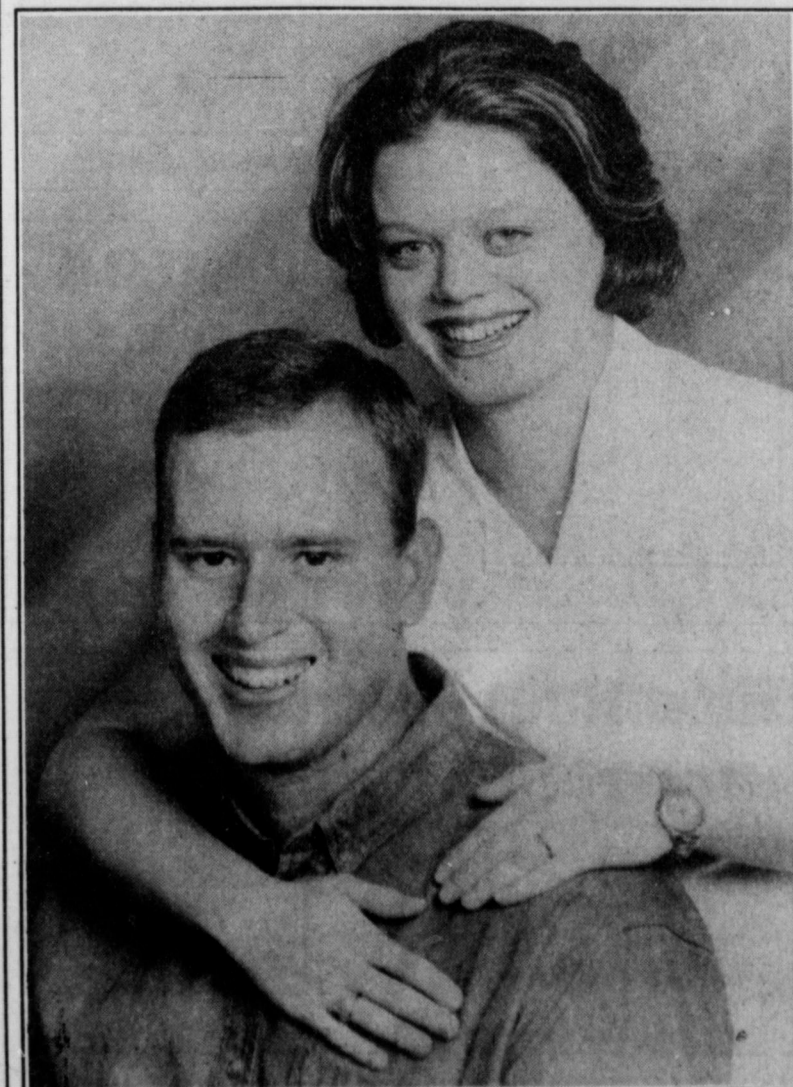
Jody is a Texas Tech graduate and works as an RN in the emergency room at Lubbock Methodist Hospital.

Wesley attends Texas Tech and works in the surgical intensive care unit at Lubbock Methodist Hospital. He is a graduate of the Methodist nursing school.

The wedding will be held at 7 p.m. on Dec. 30 at the Market Center on the campus of Texas Tech in Lubbock. A reception will follow.



**ENGAGEMENT**



**OBITUARY**

**MINNIE COX CHILDS**

MORTON — Minnie Cox Childs, 89, of Morton died Wednesday, Nov. 18, 1998 at Methodist Hospital in Levelland.

A graveside service was held Friday at Morton Memorial Cemetery with Ken Peterson, pastor of First United Methodist Church in O'Donnell, officiating. Burial followed under the direction of Ellis Funeral Home of Morton.

She was born Feb. 28, 1909 in Estancia, NM. She married L.B. Childs on Oct. 31, 1945 in Portales, NM. He preceded her in death Sept. 4, 1973.

Mrs. Childs moved to Morton with her family in 1932. She owned and operated Minnie's Dress Shop in Morton for 37 years. She was a member of the First United Methodist Church of Morton. She was preceded in death by her parents, Henry and Cornie Cox; and three brothers: Jim, Willard and English Cox.

She is survived by one daughter, Jeanette and husband John Tucker of Maple; one step-daughter, Sheila Tucker of Lubbock; three nieces, Minnie Howell of Albuquerque, NM, Carolyn McDermitt of Seymour, and Myrlan Coleman of Weatherford; and

two nephews, Willard Cox, Jr. of Dallas and Andrew Cochran of British Columbia, Canada.

The family suggests memorials be made to a favorite charity or First United Methodist Church of Morton, 418 W. Taylor, Morton, TX 79346.

*Thank you, voters of Parmer County, for your support in the General Election.  
I will continue to serve as Parmer County Treasurer in a manner deserving the trust you have exhibited in me by your vote.  
Anne Norton*

**Lady Mule Basketball . . .**  
Keep up twice weekly in the Journal!

**Brighton Daze at Rips**

Receive 10% off a full line of Brighton accessories including their new Brighton aromatherapy home items (picture frames and candles), purses, jewelry, belts, shoes and treasures

20% Off Ladies Fall & Holiday Fashions (One rack 30-75% Off)  
20% Off Suits & Sportscoats  
10% Off Men's Belts and Accessories

OTHER IN STORE SPECIALS

Register to win a trip to the Broadmoor Hotel and a Brighton Bath Basket

- Complimentary Gift Wrapping
- Major Credit Cards Accepted
- Layaways Welcome

**Rip's** 314 Wheeler • Texico 482-3363

**Your Wish Come True!**  
Quality Used Vehicles. Incredibly Low Prices.

1995 Chevy Crew Cab Diesel, fully loaded.....only **\$19,995**

1989 Mazda RX7 Convertible AM/FM, cassette, CD player.....now only **\$7,495**

1982 Kawasaki 750.....only **\$1,495**

1983 Ford F250 S/C and 5th Wheel Together! Hunter's special.....only **\$6,995**

1979 Mercedes 300 D 4 door.....was \$3,695.....now only **\$3,495**

1990 Nissan Sentra 4 door.....only **\$2,995**

1989 GMC Sonoma.....only **\$2,995**

1992 Ford Escort Wagon.....only **\$3,495**

Have A Safe and Happy Thanksgiving holiday!

Portales' Premier Pre-Owned Vehicle Headquarters  
**TRADER HORN MOTOR COMPANY**

620 S. Ave. C • Portales, NM (505) 359-0947 (505) 359-1775

**Hodges — Fritz**

Mack and Rhonda Hodges of Muleshoe announce the engagement and approaching marriage of their daughter, Lori Diane, to Donald Ray Fritz of Bryan. He is the son of Weldon and Helen Fritz of Rockdale. They will marry at 2 p.m. on Jan. 9, 1999 at Brentwood Oaks Church of Christ in Austin.

Lori is a 1994 Muleshoe High graduate and has a bachelor's degree from Texas A&M. She attends the University of Texas at Austin and will receive her master's degree in May. She is employed by Radian International in Austin.

Donald has a bachelor's degree from Texas A&M University and is employed by American Fire and Safety in Bryan.

They will make their home in Bryan.

# NURSING HOME NEWS

The residents, family and employee Thanksgiving pot luck supper Thursday was a great success with great attendance, good entertainment, good fellowship and good food. Everyone pitched in to make it a very special event.

The youth group of the Menno-nite Church of Farwell came to sing to the residents Friday evening.

Karen Cook, assisted by Maxine Rogers, taught a crafts class for the residents Saturday morning. Refreshments were served.

Saturday afternoon Harold and

Mary Jo Burge directed the bingo class. Homebaked cookies by Clark Price were served.

Sunday afternoon the members of the Primitive Baptist Church sang gospel hymns to the residents.

The Spirited Five blue grass group entertained at the nursing home Sunday afternoon. Everyone had a toe-tapping, hand-clapping good time.

Dorena Proudfoot directed the exercise group Monday and Clara Lou Jones read to the Reading Group.

Claudine Embry, Beverly Wagnon, Mary Jo Burge, Karen Cook, Ozell Cherry, Kimberly Dickerson and Joy Stancell shampooed and set the ladies hair and gave nail care Tuesday.

Pat Watson came Friday morning and directed a session of music therapy. The theme was based on Veterans Day.

Five Area Telephone delivered and picked up folding chairs for us to use at our Thanksgiving pot luck supper Thursday evening.

Our deepest sympathy to the

family and friends of Rosie Sneed. We too shall miss her.

Holly Ann Milsap visited the Care Center Thursday afternoon.

Dee Clements was visited by his son Olon Clements and his wife Ruth on Sunday.

Ada Murray brought lap robes that were made by the ladies of Progress. Every stitch was sewn with love and every block cut with friendship.

The Truth Seekers Sunday School class of the First Baptist Church made a donation to the

Healthcare Center.

Betty Ramage brought quarters for the Bingo games Wednesday.

Buster and Wanda Kittrell, Harold and Mary Jo Burge and Loyce Killingsworth served coffee, juice and donuts to the residents Wednesday morning. Buster and Loyce directed our Singspiration.

Glenda Jennings and Jackie Scoggins came Wednesday afternoon to direct our sing-a-long and puppet show.

Joe Embry and Velta Fyie visited this week.

Our November Birthday party was held November 20. Residents being honored were: Bill Maddox, Nov. 10, 1913; Birdie Warren, Nov. 21, 1903 and W.M. Daniel, Nov. 25, 1902. Entertainment was provided by Buster Kittrell and Loyce Killingsworth.

Coursages and boutonnières were donated by Lasting Impressions.

Happy Thanksgiving from the residents and staff of M.A.H.C.C.

# Journal Classifieds

REAL ESTATE  
AUTOMOBILES  
HELP WANTED  
GARAGE SALES

## STOP & SHOP

Deadlines are 5 p.m. Monday and Thursday

Call 272-4536

Deadlines are 5 p.m. Monday and Thursday

### LEGAL

Sealed bids for mowing highway right of way will be received at the Texas Department to Transportation, 135 Slaton Rd., Lubbock, TX., 79404. Bailey County, Highway SH0214, Estimate \$110,812, Project Number, RMC 603547001. Pre-bid Meeting on December 3, 1998 at 9:30 a.m. Lubbock District Conference Room, 135 Slaton Rd., Lubbock, TX., 79404. This meeting is not mandatory, but is highly recommended that bidders be in attendance. Guaranty, \$2,300. Only a cashier's check, money order, or teller's check on a state or National Bank, on a State or National Savings and Loan Association or a State or Federally Chartered Credit Union for the guaranty amount listed above will be accepted. The Proposal Guaranty must be in the amount stated and may be payable at or through the institution the instrument or may be drawn on a non-bank and payable at or through a bank. The Department will not accept personal checks, certified checks, other types of money orders and bid bonds. Bids received until 1:40 p.m. December 17, 1998. Bids will be publicly opened and read at 1:40 p.m., December 17, 1998. Mail proposals to Attn. Ann Finley, Texas Department of Transportation PO Box 771 Lubbock, TX. 79408-7711. Deliver proposals to Attn. Ann Finley, Texas Department of Transportation, 135 Slaton Rd., Lubbock, TX., 79404. Approximate limits of work are north county line to south county line and east county line to west county line. Plans are required for this project and may be obtained from plan companies. Questions regarding this proposal may be addressed to Steve Perez, Area Engineer, PO Box 21, Littlefield, TX., 79339 or call (806) 385-3661, or Ann Finley, Contract Tech at (806) 748-4403. Bidding proposal are issued to pre-qualified bidders only. Pre-qualification information and questionnaire may be obtained from the Maintenance Division, Austin, (512) 416-2496 or from the district maintenance office, Lubbock at (806) 748-4403. Bid proposals may be requested from the Maintenance Division, Austin, by telephoning (512) 416-2496 or by contacting the district maintenance office in Lubbock at (806) 748-4403. Published in the Bailey County Journal on November 22 and 29, December 6 and 13, 1998.

### LEGAL

The City of Muleshoe is currently accepting sealed bids from persons desiring to purchase the following described city-owned property. Bid #1 - 4872.3 acres, more or less, out of League No. 220, Castro County School Lands, Labor 4, League No. 205, Garza County School lands, and of Secs. 9, 10 and 11, Block S-2, John H. Stephens Survey, Bailey and Lamb Counties, Texas. This land is commonly known as the East Well Field. The City of Muleshoe reserves the right to accept or reject any and/or all bids. Bids will be accepted until 10:00 A.M. Tuesday, December 8, 1998. All bids must be clearly marked "East Well Field Bid" and should be delivered to the City of Muleshoe, 215 South First Street, Muleshoe, Texas 79347. No bid will be accepted after the deadline. For further information, City Hall at (806) 272-4528. Published in the Bailey County Journal November 22 and 26, 1998.

### AUCTION

**Machinery Auction**  
**SPECIAL BIG TWO DAY SALE!**  
**Friday & Saturday Dec. 11 & 12 9 am**  
Tractors + Trucks + Trailers + Vehicles + Livestock Equip. + Industrial Equip.  
**PLUS MUCH, MUCH MORE**  
We Appreciate All Consignments One Item or Complete Set-Up Bring It On In!!!  
When only the best will do...  
3 miles north of Portales on U.S. Hwy. 70

**Bill Johnston Auctioneers**  
Portales, NM  
**(505) 356-5982**  
Nights Mike (505) 760-6195 or Clint (505) 356-3368  
Merry Christmas & Happy New Year to all our valued customers and friends!

### SERVICE

**Sewing & Alterations All types.**  
One day service on most.  
**310 W. 16th • 272-6764**

### FOR RENT

Nice, Large, 3 bdrm 2 bath home. In nice area. \$475 per month. 272-4480 or (602) 816-4004.45s-tfc

### HELP WANTED

Make extra money for Christmas. Call Carol at 272-3011 after 5 p.m.48s-4tch

We need you! To Deliver the new GTE Levelland/Littlefield and Muleshoe Telephone Directory in your area. Earn up to \$8 per hour or more depending upon your speed of delivery. Must have a valid driver's license, a vehicle with a current license plate and have 4-8 daylight hours available. For More Information Call 1-800-657-4131, Mon-Fri, 10:30 a.m.-6p.m.48s-2tch

Needed: Vehicle maintenance person. Apply in person. Cattleman's Feedlot, Olton, Tx. (806) 285-2616.47s-2tch

Needed: Welder, Apply in person. Cattleman's Feedlot, Olton, Tx. (806) 285-2616.47s-2tch

Pizza Hut is now hiring for waitstaff and delivery drivers. Apply on Mondays from 1 to 5 pm.37t-tfc

Need truck drivers to haul cotton seed from Sudan to Lubbock. \$800 per week. CDL required. Call (806) 946-3461, (806) 946-7998.38t-tfc

### MINSO SOUTHWEST CORPORATION

A rapidly expanding company needs a full-time receptionist/secretary to work in a fast pace environment.  
**JOB SKILL REQUIREMENTS:**  
• Bilingual: proficient in Spanish & English a Must  
• Knowledgeable in General Office and Computers  
• Able to handle multiple phone lines  
**PERSONAL REQUIREMENTS:**  
• Initiative  
• Self-motivation  
• Organizational Skills  
**COMPETITIVE SALARY & GREAT BENEFITS**  
Bring resume to 1 1/4 Miles E Hwy 81 Muleshoe, Tx 79347 or Fax to (806) 272-5135 by November 20, 1998. Attention: Gina Smith/Office Manager, Pastor Ayala/Human Resource manager.  
Eligibility requirements must be met.

### REAL ESTATE

**Country Living at It's Best** - 6 miles west of Muleshoe on Highway 1760. Approx. 3500 sq. ft. Gorgeous 3-3-3 Brick home with lots of built-ins, fireplace, central heat, ref. air, sunroom with hot tub, lots of storage, large family room and utility room, every woman's dream. All on 2 1/2 acres. Also 30x50 metal barn with corrals. If you want it, this place has it! **PRICE DROPPED \$5,000!!**

**South of Clay's Corner**-160 acres, 2-8" irrigation wells, electric sprinkler system, lays well. Reasonably Priced. Call for more details!!

**(806) 481-3846 • Toll Free: 1-888-999-3846**  
Ronald Byrd, GRI Licensed Broker  
Home: (806) 481-9318  
Crista Bass, Sales Associate • Home: (806) 925-6464

### Jo Ann Chester Realty 806-227-2368

**BRICK**—Approx. 2160 sq. ft. living, plus 750 sq. ft. double garage w/large work bench and storage room and electric door openers; or 3-1 3/4-2, kitchen w/built-ins, living room w/fireplace, dining, utility, playroom or office, breezeway, upstairs room, central heat-air, storm windows, fenced corner lot.

**1815 W. AVE I, MULESHOE BRICK**—Approx. 2000 sq. ft., plus double garage w/openers; or 3-1 3/4-2, kitchen w/built-ins, livingroom, den, utility, office, central heat and a large, two year old shop with RV storage w/office and upstairs apartment.  
**1003 W. AVE K, MULESHOE**

### REAL ESTATE

**In Muleshoe Good Location 3 bedroom 1 bath home w/central heat & evaporative air 1 car attached garage and fenced backyard.**  
47t-tfc

Nice 3-1-1 brick home, Country Club addition, central heat and refrigerated air, new roof, wooden deck, 272-5879 evenings or leave message.36t-tfc

### REAL ESTATE

**FOR SALE BY OWNER**  
**Brick home**  
Large living and kitchen area. 3-2-2 with fireplace, lots of built-ins, sprinkler system, storage building, storm cellar, water softener and osmosis. Large covered patio.  
**272-4643**  
42t-4tpd

### James F. Hayes & Co.

AGRICULTURAL REAL ESTATE SERVICES

• 320 Acres Northwest of Muleshoe. Lays good, good soil, 2 center pivot sprinklers, modest home.  
• 320 Acres with exceptional 3 or 4 bedroom home. Large barn, 2 center pivot sprinklers adjacent to above farm. HOUSE, BARN & ACREAGE CAN BE SOLD SEPARATELY.  
• 181 Acres, Bailey County. Center pivot, 2 wells, fronts U.S. Highway 84. Joins 320 acre tract above.

**SOLD**  
• 78 acres North of Muleshoe on Highway 214. Has pad for pivot. Lays good. 2 wells.

• 450 Acres - Arch, New Mexico area. C.P. sprinklers. Modest home.\*

**SOLD**  
• 160 Acres just north of Muleshoe. 2 irrigation well with new pumps. New underground pipe and wire. Late model Valley Sprinkler. Good F.S.A. payment. Immediate possession possible.

\* In cooperation with a New Mexico Broker

### Vic Coker, Agent

310 Main St. Suite 103 Muleshoe  
Office 272-3100 Home 965-2468  
WHEN LAND INVOLVES COWS AND PLOWS

## Nieman Realty

116 E. Ave. C • George Nieman, Broker • 272-5285 or 272-5286

**RICHLAND HILLS — PARK RIDGE**  
• We have several single and multi-family lots in this area!!!!  
• NICE 3-2-2 Brick, Cent. A&H, built-ins, FP, cov. patio, fenced yd. \$50's!!  
• NICE 3 bdrm. 2 bath w/3 car detached garage/workshop-storage, Elec. Heat Pump, built-ins, FP, 2,380' lv. area, auto. splkr., fenced yd., More!!! RH-2

**HIGHLAND AREA**  
• Very Nice 3-2 Mobile Home, 2-car carport, Cent. Heat, Evap. Air, built-ins, workshop-storage, fenced yd., MORE!!!  
• 3-2-2 Brick, Cent. A&H, built-ins, gas log FP, fenced yd., stor. bldg., MORE!! Price Reduced!! HL-5  
• 2-1-1 carport home, wall furnace heat, evap. air, DW, 5 fans, cov. patio, gas grill, fenced yd., MAKE OFFER!!!  
• 3-2-2 Brick Home, corner lot, wall furnace heat, Cent. Evap. Air, fenced yd., stor. bldgs., MORE!!! HL-4

**LENAU - COUNTRY CLUB AREA**  
• 2-2-1 Carport home, Cent. A&H, fenced yd., concrete cellar, stor. bldg. !!! \$25K!!! L-2  
• 2-2-2 Brick Home, Cent. A&H, nice carpets, fenced yd. \$40's!!! L-4  
• PRICE REDUCED 2-1-1 Carport Home, wall furnace, nice carpet, storm shelter, stor. bldg., fenced yd. \$19K!!! CC-3  
• 2-1-1 Home, floor furnace, win. ref. air, fenced yd, stor. bldg., \$18,500 !!! L-1

**COMMERCIAL**  
• Six Unit Apartment Complex (4-2 bdrm. & 2-1 bdrm. units)!!!  
• 100' x 140' tract, approx. 7,400' business & warehouse building on American Blvd., PRICED TO SELL!!!  
• Established Business: Land, Bldg. & Equip., \$75K!!  
• 56' x 140' tract, approx. 4700' bldg., \$35K!!!  
• NICE R.V. STORAGE, 14' x 40' metal bldg, 12' doors, 50x140 corner lot!  
• SNACK SHACK - Lot, Buildings, furniture & fixtures!!!  
**HIGH SCHOOL**  
• 2-2-2 BRICK, Cent. A&H, built-ins, corner lot, approx. 1800'

lv. area!!! \$35K!!! HS-4  
• NEWLY REMODELED 3-1-1 Home, cent. A & H, new carpet & vinyl, fenced yd., MORE!! \$30's!!! HS-2  
• VERY NICE 3-1-1 Brick, Heat pump, DW, nice carpets, fenced yd., MORE!!! \$30's!!! HS-1  
• NICE 2-1-1 Brick, Heat Pump, nice carpets, well insulated, storm windows & doors. \$30's!!! HS6  
• VERY NICE 3-1-1 Home, nice carpets and vinyl, heat pump, fans, fenced yd., stor. bldgs., MORE!!! \$30's!!! HS-5  
• 3-2-1 Brick, Heat Pump, built-ins, fans, screened porch!!! \$30's!!! HS-7  
• JUST LISTED- 2-1-2 CP Home, corner lot, metal siding, storm win. & doors, stor. bldg. \$20K!!! HS-8  
1-14' x 60' and 1-12' x 40' Mobile Home on a 98' x 75' lot, both have cent. heat, evap. air, stove, & ref., cov. patios, fenced yd.!!! \$20k!!!  
**RURAL**  
• PRICE REDUCED- NICE 3-2 home, 40 acre tract, Geo. Heat Pump, built-ins, 5" irrig. well, Hi-Pres. lines, sprinkler pipe, barn, pens, tractor & equip!!! \$69K!!!  
• W. of SUDAN-NICE 3-3-2 Brick Home, 5 acre tract on Hwy. 298, Cent. Air & Heat, built-ins, large Quonset Barn, MORE!!! \$95K!!!  
• 5 Acre tract on pavement close to town!  
• LONGVIEW AREA- 4 labors, (2 in CRP, other 2 out of CRP) PRICE TO SALE!!!  
• FOR BID: Approx. 4,870 acres (Bailey and Lamb Co.), water rights negotiable, 54 wells (only 2 pumps and motors), approx. 33 circles w/ center pivot pads, 40'x86' tile block barn, 40'x100' Quonset barn w/elec., 20'x30' shop, 3 sets pipe corrals, 2 sets wire corrals!!  
• LAZBUDDIE-PRICE REDUCED-NICE 3-2-2 Brick Home on pavement, 2200' Lv. area, Cent. A & H, built-ins, FP, large sunroom!! \$70's!!  
• Approx. 108 acres on Hwy. 70, approx. 2100' office area, 16,900' of commercial bldg. w/loading dock, 3,400' warehouse!! 2,800' runway!!  
• LARIAT-240 acres, 3 wells, underground tile, good productive land!!!

FOR ALL YOUR CLASSIFIED NEEDS CALL 272-4536

### HELP WANTED • CAREER OPPORTUNITIES

### THE TOWN & COUNTRY DIFFERENCE



### STORE MANAGER TRAINEE

- RETAIL OR FAST FOOD MANAGEMENT BACKGROUND PREFERRED
- STRONG LEADERSHIP SKILLS A MUST
- EXCELLENT BENEFITS PACKAGE
- STARTING SALARIES FROM \$18,000 - \$24,000 YR. COMMENSURATE WITH EXPERIENCE

MAIL OR FAX RESUME TO:

TOWN & COUNTRY FOOD STORES

c/o BLAIR WILLIAMS

1802 W. AVE. I • MULESHOE, TEXAS 79347

FAX: 806/272-6889

A CAREER CHOICE WITH A DIFFERENCE  
AN EQUAL OPPORTUNITY EMPLOYER  
PRE-EMPLOYMENT DRUG TESTING REQUIRED

THE TOWN & COUNTRY DIFFERENCE

GO BIG BLACK

Serve your Thanksgiving Dinner on beautiful Blue Willow Dinnerware!  
See store for details

# THANKSGIVING FEAST Favorites

PRICES EFFECTIVE NOVEMBER 18-25, 1998

## MEAT

- All Sizes Self-Basting Young  
Limit One-Additional Purchases 49¢
- Shurfine Turkeys** .....lb. **39¢**  
Hormel Bone-In  
W/Honey Glaze Package  
**Spiral Cut Half Ham** .....lb. **\$1.99**  
Butterball or Honeysuckle  
**Turkeys** .....lb. **89¢**  
Bar S Boneless  
**Whole Ham** .....lb. **\$1.29**  
Bar S Boneless  
**Half Ham** .....lb. **\$1.49**  
Tip Top  
**Baking Hens** .....lb. **79¢**  
Pilgrim's Pride  
**Fryer Gizzards** .....lb. **99¢**  
Hormel  
**Smoked Pork Chops** .....lb. **\$2.99**  
Cook's Bone-In  
**Shank Portion Ham** .....lb. **\$1.19**  
Bone-In  
**Pork Butt Roast** .....lb. **79¢**  
Superb Ground Round Quality  
**Ground Beef** .....lb. **\$1.89**  
Beef  
**Top Sirloin Steaks** .....lb. **\$1.99**  
Cook's Bone-In  
**Butt Portion Ham** .....lb. **\$1.39**  
Hormel Regular or Hot  
**Little Sizzlers** .....12 oz. **99¢**  
Sunday House Delicious Whole  
**Smoked Turkeys** .....lb. **\$1.19**  
Marval Bone-In Basted  
**Turkey Breast** .....lb. **\$1.19**  
Unbreaded  
**Popcorn Shrimp** .....lb. **\$4.99**  
Premium Select  
**Beef Rump Roast** .....lb. **\$1.59**  
Bar S 2 lb. Honey Chunk or 1.5 lb. Sliced  
**Extra Lean Ham** .....ea. **\$5.59**  
Hormel Boneless  
**Cure 81 Half Hams** .....lb. **\$2.99**  
Bar S  
**Cooked Ham** .....10 oz. **\$2.19**  
Bar S  
**Meat Franks** .....12 oz. **69¢**  
Bar S  
**Franks** .....2 lb. bag **\$2.69**  
Assorted  
**Owens Sausage** .....2 lb. roll **\$3.39**  
Black Label Assorted  
**Hormel Bacon** .....1 lb. **\$1.99**  
Bar S  
**Chopped Ham** .....10 oz. **2/\$3**  
Regular or Thick Sliced  
**Bar S Meat Bologna** .....1 lb. **\$1.19**  
Assorted  
**Owens Sausage** .....1 lb. roll **\$1.79**  
• Chopped Ham • Ham & Cheese  
• Oven Roasted White Turkey • Combo  
Pack Bologna/Ham/Turkey  
**Oscar Mayer Lunch Meats** .....1 lb. pkgs. **2/\$5**  
Louis Rich Carving Board Chicken  
**Breast Strips** .....6 oz. pkg. **\$2.19**  
Oscar Mayer 1 lb. Regular Sliced  
VP or 12 oz. Center Cut  
**Bacon** .....your choice **2/\$5**  
Louis Rich Sliced  
**Turkey Bologna** .....1 lb. pkg. **99¢**  
Louis Rich Smoked or Oven Roasted  
**Breast of Turkey** .....lb. **\$2.99**  
• Club Sandwich • Fat Free  
Turkey/Ham • Ham & Turkey  
**Oscar Mayer Variety Pak** .....8 to 9 oz. pkg. **\$1.99**
- 
- All Types  
**Coca-Cola, Sprite or Dr. Pepper** .....6 pk.-12 oz. cans **\$1.37**  
All Types  
**Coca-Cola, Sprite or Dr. Pepper** .....3 liter btl. **\$1.39**  
All Types  
**Coca-Cola, Sprite or Dr. Pepper** .....6 pk.-5 liter **2/\$5**

## PRODUCE

- Yellow  
**Onions** .....lbs. **4/\$1**  
Crisp  
**Celery** .....bunches **4/\$1**  
Washington Extra Fancy  
**Red Delicious Apples** ..lbs. **3/\$1**  
New Crop  
**Navel Oranges** .....lbs. **2/\$1**  
Dole Classic  
**Salad** .....1 lb. bag **2/\$1**  
Fresh  
**Cauliflower** .....ea. **89¢**  
Fresh  
**Broccoli** .....lb. **59¢**  
Green  
**Onions** .....bunches **3/\$1**  
Baking  
**Potatoes** .....lbs. **4/\$1**  
Delicious  
**Sweet Potatoes** .....lbs. **2/\$1**
- 
- Sunny  
**Vanilla Wafers** .....11 oz. box **79¢**  
Panasonic AAA or AA  
**Batteries** .....6 pack **2/\$3**  
Assorted Lay's® or Wavy Lay's®  
**Potato Chips** ....13.25 to 14 oz. bag **3/\$5**  
Assorted  
**Fritos® Bean Dip** ....9 oz. cans **2/\$3**  
Hefty  
• 12 oz.-50 ct. Bowls • 8 7/8" -50 ct. Plates • 10"-24 ct. Compartment Plates  
• 9"-50 ct. Color Plates  
**Bowls or Plates** ....your choice **3/\$4**  
Assorted 3 oz. Regular or .3 oz. Sugar Free  
**Jell-o Gelatin** ..... **3/99¢**  
Assorted Regular, 1/3 Less Fat or Fat Free Kraft  
**Salad Dressing** .....16 oz. btl. **\$1.69**  
Selected Varieties  
**Stove Top Stuffing** ....6 oz. pkg. **\$1.19**  
Kraft Assorted  
**Cheese Spread** .....5 oz. jar **\$1.19**  
Baker's  
**Angel Flake Coconut** .....14 oz. bag **\$1.59**  
Baker's Semi-Sweet Real  
**Chocolate Chips** .....12 oz. bag **\$1.17**  
• 20 oz. Honey Nut Shredded Wheat • 17.2 oz. Shredded Wheat Spoon size • 19 oz. Frosted Shredded Wheat • 24 oz. Grape-Nuts  
**Post Cereal** .....your choice **2/\$4**  
Jalapeno, Regular or Light  
**Kraft Cheez Whiz** .....16 oz. jar **\$2.79**  
Kraft Selected Varieties  
**100% Grated Parmesan** .....8 oz. can **\$2.99**  
Regular or Light  
**Kraft Mayo** .....32 oz. jar **\$2.49**  
Horseradish, Regular/Fat Free Tartar or Cocktail  
**Kraft Sauce** .....9 oz. jar **99¢**  
• .9 oz. Ground All Spice • 1.5 oz. Cream of Tartar • .8 oz. Ground Ginger • 1.10 oz. Ground Nutmeg • .65 oz. Poultry Seasoning • 1.12 oz. Pumpkin Pie Spice • .6 oz. Ground Sage  
**Schilling Spices** .....your choice **\$1.99**  
Almond, Lemon or Pure Vanilla  
**Schilling Extract** .....1 oz. btl. **\$1.85**  
Shurfine Stuffed  
**Spanish Olives** .....5.75 oz. jar **89¢**  
Shurfine  
**Sweet Gherkins or Whole Sweet Pickles** .....16 oz. jars **2/\$3**  
Shurfine  
**Pumpkin** .....15 oz. cans **3/\$1**  
Reynolds  
**Cut-Rite Wax Paper** .....75 ft. **\$1.09**  
Regular or Light  
Celery, Mushroom or Chicken  
**Campbell's Cream Soups** .....10.7 oz. can **79¢**  
Assorted Chicken, Beef or Vegetable  
**Swanson Broth** .....14 to 15 oz. can **55¢**  
Lightly Tangy, Cocktail or Picante  
**V-8 100% Juice** .....46 oz. can **2/\$3**

## FROZEN & DAIRY

- Pedro's Fiesta  
**Pork Tamales** .....12 ct. **\$2.89**  
Mild or Spicy  
**Pedro's Tamales** .....12 ct. **\$3.49**  
Kraft Philadelphia Regular or 1/3 Less Fat  
**Cream Cheese** .....8 oz. box **99¢**  
Assorted Homestyle  
**Sara Lee Pies** .....37 to 40 oz. **2/\$5**  
Shurfine Regular or Lite Non-Dairy  
**Whipped Topping** ....8 oz. tubs **2/\$1**  
Assorted  
**Blue Bunny Ice Cream** .....5 qt. pail **\$3.99**  
Birds Eye  
**Broccoli Cuts** .....16 oz. bag **99¢**  
Grade A Shurfine  
**Large Eggs** .....dozen **69¢**  
Shurfine Deep Dish  
**Pie Crust Shells** .....12 oz. pkg. **88¢**  
Assorted  
**Kraft Cool Whip** .....8 oz. tub **99¢**  
Blue Bonnet  
**Quarters** .....16 oz. pkgs. **2/\$1**  
Blue Bonnet  
**Spread** .....48 oz. tub **\$1.39**  
2 Ct.  
**Pillsbury Pie Crusts** ....15 oz. **\$1.69**  
Shurfine • 15 oz. Ready Pie Crusts • 8 oz. Crescent Rolls • 11 oz. Breadsticks • 13.9 oz. Orange Danish Rolls • 12.4 oz.-8 Ct. Cinnamon Rolls  
**Crusts, Rolls or Breadsticks** .....your choice **\$1.07**  
Assorted  
**Daisy Sour Cream** .....16 oz. tub **\$1.09**  
Selected Varieties Regular or Super Slice  
**Kraft Cheese Singles** .....12 oz. pkg. **\$1.79**  
Colby, Colby/Jack or Longhorn Cheddar  
**Kraft Halfmoon Cheese** ....10 oz. pkg. **\$1.69**  
Pre Price \$4.19  
Regular or Light  
**Kraft Velveeta Spread** .....32 oz. box **\$3.99**  
Taco, Mexican Style, Cheddar Jack or Italian Style Mozzarella & Parm.  
Excludes Light  
**Kraft Finely Shredded Cheese** .....8 oz. pkg. **\$1.88**  
Kraft Reg. or 1/3 Less Fat  
**Philadelphia Cream Cheese** .....8 oz. box **99¢**  
Selected Varieties Kraft-Excludes Light  
**Shredded Cheese** .....8 oz. pkg. **\$1.78**
- 
- Selected Varieties  
**Campbell's Family Size Soups** .....26 oz. can **2/\$3**  
Coronet Print  
**Paper Towels** .....roll **59¢**  
• 64 ct. Ex. Strength • 70 ct. Plus  
W/Lotion • 175 ct. Assorted/Pop-Up  
**Puffs Facial Tissue** ....your choice **99¢**  
Keebler 9"  
**Graham Pie Crust** .....6 oz. pkg. **89¢**  
Keebler  
**Graham Cracker Crumbs** .....13.5 oz. pkg. **\$1.69**  
Regular or Reduced Fat  
**Keebler Club Crackers** ....14 to 16 oz. box **2/\$4**  
Assorted  
**Keebler Sandies** ....16 oz. pkgs. **2/\$4**

## HEALTH & BEAUTY

- 8 oz. Maximum Strength-12 oz. Regular  
**Pepto-Bismol** .....your choice **\$3.79**  
Assorted  
**Secret or Sure Ultra Dry** .....1.7 oz. **\$1.99**  
Assorted  
**Scope Mouthwash** ....24 oz. btl. **\$3.19**  
Assorted  
**Thera Flu** .....6 ct. **\$3.95**  
Western Family Assorted  
Special Package  
BUY ONE 6 OZ. GET ONE FREE  
**Nighttime or Daytime Medicine** .....lb. **\$1.79**
- 
- EZ Foil Super  
**Roaster** .....each **\$1.29**  
Pepperidge Farm Herb Seasoned or Cornbread  
**Stuffing** .....8 oz. pkg. **\$1.48**  
Ready To Spread Assorted Betty Crocker  
**Frosting** .....12 to 16 oz. **\$1.29**  
Betty Crocker Assorted Super Moist  
**Cake Mixes** .....18 to 18.25 oz. box **78¢**  
Pure Cane  
**Imperial Sugar** .....4 lb. bag **\$1.38**  
Shurfine Regular or Mini  
**Marshmallows** ....10 to 10.5 oz. **2/\$1**  
Shurfine  
**Whole Yams** .....23 oz. can **88¢**  
Regular or Low Fat  
**Eagle Brand Milk** .....14 oz. can **\$1.88**  
Regular or Unbleached  
**Gold Medal Flour** .....5 lb. bag **85¢**  
White Shursaving  
**Bath Tissue** .....6 roll pkg. **99¢**  
• CS/WK Golden Corn • Vac-Pack WK Corn  
• Sweet Peas • Cut/French Sliced Green Beans  
**Libby's Vegetables** .....12 to 15.2 oz. cans **3/\$1**  
Shurfine White Flaked  
**Coconut** .....14 oz. pkg. **87¢**  
Shurfine  
**Corn Syrup** .....32 oz. btl. **99¢**  
Shurfine  
**Chicken Broth** .....14.5 oz. cans **3/\$1**  
Jellied or Whole Shurfine  
**Cranberry Sauce** ..16 oz. cans **2/88¢**  
Shurfine Poly  
**Powdered or Brown Sugar** .....2 lb. bag **88¢**  
Assorted Shari  
**Almond Bark** .....14 to 20 oz. **2/\$3**  
Halves or Pieces  
**Ellis Pecans** .....6 oz. bag **\$1.99**  
Ellis Raw  
**Spanish Peanuts** ...16 oz. bag **2/\$3**  
General Mills  
**Corn, Rice or Wheat Chex** ..12 to 16 oz. box **2/\$5**  
Assorted Nabisco  
**Ritz Crackers** .....14.5 to 16 oz. **\$1.99**  
Shurfine Heavy Duty  
**Aluminum Foil** .....18", 37.5 sq. ft. **99¢**  
Reynolds  
**Turkey Oven Bags** ....2 ct. pkg. **\$1.15**  
Shurfine Real  
**Chocolate Chips** .....12 oz. pkg. **69¢**  
Lowe's Brown n' Serve  
**Rolls** .....12 ct. pkg. **2/\$1**  
Shurfine  
**Mandarin Oranges**...11 oz. cans **2/\$1**  
Kelllogg's  
**Rice Krispies** .....19 oz. boxes **2/\$5**  
Kraft  
**Marshmallow Creme** ..7 oz. jar **96¢**

WESTERN MONEY UNION TRANSFER<sup>SM</sup>  
"The fastest way to send money"

# Lowe's MARKETPLACE

515 W. American Blvd.  
401 W. American Blvd. Muleshoe 272-4585

**Pay-n-Save**  
515 W. American Blvd.  
Muleshoe 272-4406

WE RESERVE THE RIGHT TO LIMIT QUANTITIES IN TEXAS