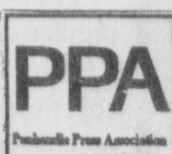




# Bailey County Journal



Volume 35, No. 32

Published every Sunday at Muleshoe, Bailey County, Texas 79347

Sunday, August 11, 1996

## Downing was there to catch a rising star

By RICK WHITE  
Managing Editor

Although time clouds some of his memories, Elmer Downing can still vividly recall the day he met Waylon Jennings.

Living a few miles west of Littlefield at the time, Downing went to town one day. He doesn't quite remember why. It was about 1948.

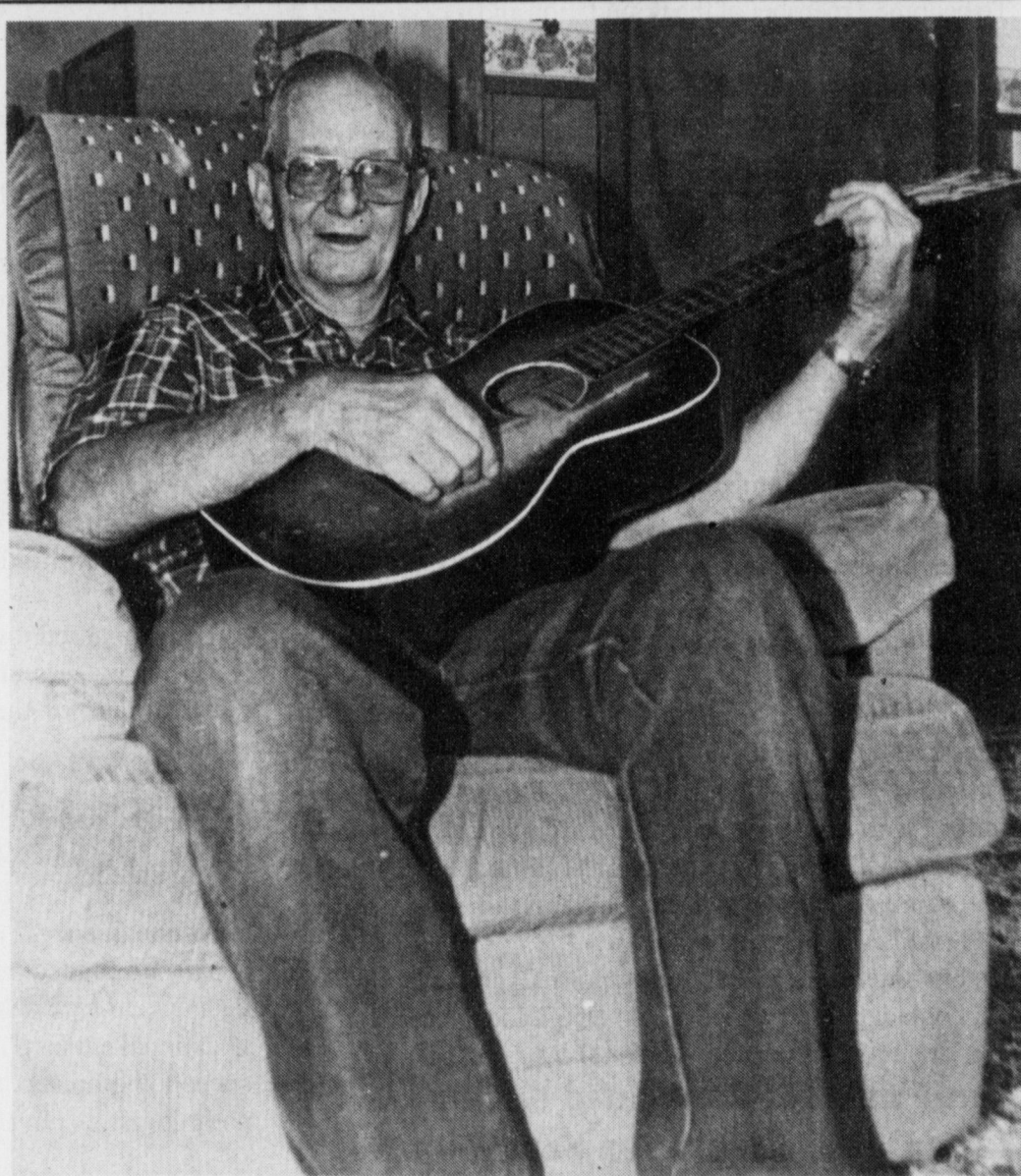
"I was walking down the street, when I heard someone plunkin' up a storm," said Downing, who taught himself to play guitar as a child. It was Jennings playing at his dad's creamery.

"So I turned around and went back," said the 68-year-old Downing, a retired farmer who moved to the Muleshoe area in the 1950s. "We talked for a while and he asked me if I played. He told me next time I came to bring my guitar."

They started to play together, and eventually formed a band called the Texas Longhorns. Also in the group was current Lamb County Commissioner Emil Macha, who worked at KZZN, a Littlefield radio station that featured live music.

In his late teens then, Downing played rhythm guitar and sang a little. Macha played a bass fiddle made out of a #3 wash tub. Jennings, probably on the short side of 16, played lead guitar and handled most of the vocals.

They played a lot of Ernest Tubbs, a Jennings' favorite, and Hank Williams.



**Guitar man**

As a teenager, Elmer Downing of Muleshoe played in a band with country & western legend Waylon Jennings in his hometown of Littlefield.

For about two and a half years they played twice a week live at the radio station and at other functions.

Jennings was a temperamental, even back then. "He quit the band a couple times for a week or two," Downing recalls. "He always wanted things his way."

"I always liked him, although a lot of people didn't," Downing said. "He was just a big kid."

Jennings obviously went on to bigger things. He was one of the "outlaws," who

Continued on page 9

## Council reviews 1996-97 budget

By JOANNA GALLMAN  
Journal staff writer

City Manager Dave Marr reviewed with City Council members Wednesday the preliminary draft of the 1996-97 fiscal budget.

Marr indicated that the \$2.5 million budget hinges on the Council's decision on several issues, including the construction of handicap ramps on Main Street and the City's solid waste removal system. Marr is also awaiting an estimate for the re-roofing of City Hall.

The largest portion of the budget involves City employee salaries and several capital outlay projects, including the replacement of several police cars and garbage trucks.

The Council will discuss in detail additional budget issues at their meeting Monday.

In other action, councilmen

### CITY COUNCIL

accepted a \$61,016 bid from Watson Junior High Principal Shelia Joyner on Marr's home at 1808 W. Ave. I.

The City of Muleshoe purchased the home from Marr as part of a severance package approved by the Council June 13.

The minimum bid on the home was set at \$61,000. The Council rejected bids of \$53,000, \$48,000, and \$46,500.

Councilmen also accepted the low bid from Williams and Peters Construction of \$266,270.56 on a paving project in the flats. The bid was amended for the deletion of several streets from the project, and will have to be approved by the Texas Department of Community Affairs.

This issue includes a special pullout section with

## Back to school

information on the Muleshoe, Lazbuddie and Three Way School Districts.

## Hospital, doctors benefit from symbiotic relationship

By JOANNA GALLMAN  
Journal staff writer

Doctors can survive without hospitals. But hospitals can't survive without doctors.

That's the way Muleshoe Area Hospital District administrator Jim Bone described the somewhat symbiotic relationship between doctors and hospitals.

Although they receive no financial support from the Muleshoe Area Medical Center, independent practitioners in the hospital have admission privileges that allow them to provide services otherwise sought in larger facilities.

"A lot of people would rather not go to Lubbock if they can take care of it here,"

said the hospital's Chief of Staff Bruce Purdy, who was raised in Muleshoe.

Dr. Mark McClanahan, who has been in private practice in Muleshoe since 1988, said the hospital has upgraded its capabilities considerably.

"The hospital had just barely opened its doors when I got here," McClanahan said. "Of course, at that time, it wasn't Medicare certified and was operating on a shoestring."

"Now the hospital is much more capable. We have a surgeon, CAT scan access, the home health service, and physical therapy that we never had before. There's been a big growth process, it's just been a slow, steady



**No pressure**

Dr. Purdy (right) checks the blood pressure of patient Lucy Faye Smith.

thing."

The hospital surgeon, Dr. Robert Johnson, and a nurse practitioner and medical team that handles emergency room coverage is provided to the hospital through contractual agreement.

Although not contracted by the district to practice in the hospital, the five independent

doctors are part of an "active staff" that provide services like emergency room back-up coverage and inpatient care — services that not only the doctors, but the hospital benefits from.

"The hospital benefits from the medical staff utilizing the

Continued on page 3

## Home health agencies continue upward climb

By RICK WHITE  
Managing Editor

The Muleshoe Area Home Health agency is hospital care on wheels, delivering extended services to patients in the comfort and convenience of their own home.

The home health field has exploded in recent years, as third-party payers like Medicare and insurance companies continue to emphasize shortening the amount of time patients stay in hospitals, which is one of the major costs of health care.

Home health has grown from less than 200 state-licensed agencies in 1980 to 3,650 today.

"The district is committed to serving the service area," said Jim Bone, interim admin-

### Fast fact

The number of home health agencies in Texas has grown from 160 in 1980 to 3,650 today.

istrator of the Muleshoe Area Hospital District. "This is a change in the approach to deliver the kind of health care that is compatible to this area."

"This allows us to have more continuity in our care and also enables the hospital to extend its services."

Muleshoe Home Health averages 1,500 to 1,600 visits per month. The agency made a little less than 900 visits per

Continued on page 2

## MHS turnout impressive as rebuilding process begins

Rain on the first day of practice failed to dampen the enthusiasm of 81 Muleshoe High School football players and its new head coach.

Wednesday's rain did force the Mules inoors for a few minutes during the morning sessions of two-a-days, but otherwise everything was running smoothly for a program bent on changing its fortunes after an 0-10 season.

The 81 players in the ninth through 12th grade is a substantial improvement from past years.

"It indicates they're excited," said David Wood, tackling a major rebuilding effort at Muleshoe in his first head coaching job.

"The words out that we're going to work hard; that we have high expectations. And most of all, we're having fun."

The emphasis of the first few days of two-a-days has been learning the system, and learning what the whole program is about.

"We're teaching them what's expected of them; the discipline part of the program," Wood said.

Personnel is evaluated after every practice, but Wood said he'll get a much better handle on his team starting Monday when they begin full contract.

"We'll find out a whole lot more once we put on the pads," Wood said. "Some of them look like Superman in shorts. But you can't

tell what kind of heart they have or how tough they are in shorts."

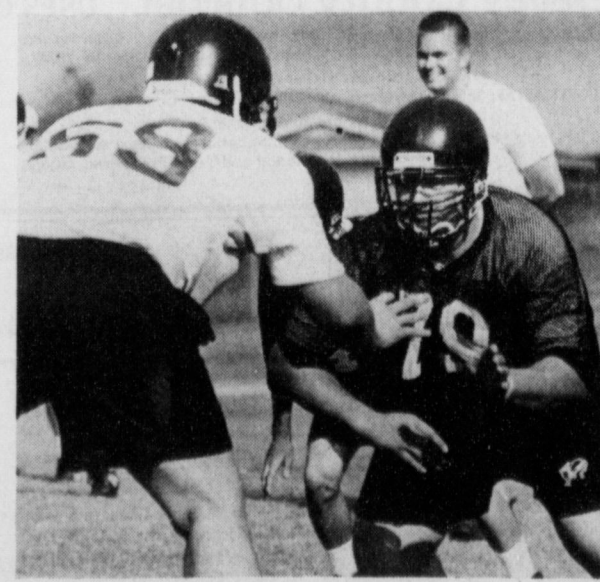
Muleshoe holds its first scrimmage Aug. 23 against Floydada. The Class 3A Mules open the season Sept. 6 at Portales.

Lazbuddie has 23 players out for practice and head coach Mark Scission expects a few more when school starts.

Conditioning has been the major focus, a problem Scission thought cost the Longhorns a couple of games last year.

"I didn't think we were in good shape last year. And it showed in the fourth quarter of some games," said Scission. "We're doing more

Continued on page 2



**Gladiators**

Matt Turney (left) blocks Raul Aguirre during a MHS football practice Thursday.

### Bailey County Commissioners slate meeting Monday at 10 a.m.

The Bailey County Commissioners Court will meet in regular session in the courthouse Monday at 10 a.m. Items on the agenda include consideration of corrective adjustments in the County and District retirement plan and review of the expenditure budget submitted by Sheriff Hicks for purchases made from the General Seizure Fund. Commissioners will also consider authorization of the use of county road machinery and equipment for soil conservation.

### Muleshoe ISD slates Board of Trustees meeting Monday at 7 p.m.

The Muleshoe Independent School District Board of Trustees will meet Monday at 7 p.m. in the Administration Building. Items on the agenda for the meeting include discussion of the district and campus accountability ratings from the Texas Education Agency, and consideration of exempting the College Board Advanced Placement Courses from No Pass, No Play provisions of the University Interscholastic League.

### City Council slates meeting Monday at 7:30 p.m. to discuss budget

Muleshoe City Council members will hold a special meeting Monday at 7:30 p.m. to discuss the 1996-97 fiscal budget. Other items on the agenda include discussion in executive session of applicants to the city manager's position.

### Laney named Crime Fighter of the Year by crime commission

DALLAS — James E. "Pete" Laney, speaker of the Texas House of Representatives for House District 85, was named the Crime Fighter of the Year Thursday by the Greater Dallas Crime Commission. Laney accepted the award Thursday at the annual luncheon of the commission.



Pete Laney

Under Laney's leadership, the state's penal code was completely rewritten in 1993 to restrict parole of felons, increase penalties for sex offenders, and increase laws for victims' rights. Laney's legislative district includes Bailey, Briscoe, Castro, Cochran, Crosby, Dickens, Floyd, Hale, Lamb, Motley, Parmer and Swisher counties.

### National Arbor Day Foundation awarding free trees to new members

The National Arbor Day Foundation will be giving away 10 free trees to each person who joins the foundation during the month of August as part of its Trees for America campaign.

The trees include two white flowering Dogwoods, two flowering Crabapples, two Golden Raintrees, two Washington Hawthorns, and two American Redbuds. The 6-12 inch trees will be shipped postpaid between Oct. 1 and Dec. 10 with planting instructions. They are guaranteed to grow, or will be replaced free of charge.

Members will also receive a subscription to the Foundation's bimonthly publication, "Arbor Day," and The Tree Book, which details information about tree planting and care.

To become a member of the Foundation and receive free trees, send a \$10 contribution to Ten Free Flowering Trees, National Arbor Day Foundation, 100 Arbor Avenue, Nebraska City, NE 68410 by Aug. 31.

### Aug. 19 entry deadline set for South Plains Fair livestock exhibitors

Aug. 19 has been determined as the entry deadline for junior and open livestock show exhibitors at the Panhandle-South Plains Fair Sept. 21-28.

Exhibitors will be competing for more than \$91,000 in prizes in nine categories, including junior market goat, junior swine, open beef cattle, open dairy, junior dairy, open sheep, junior lamb, junior steer, and junior beef heifer.

Entries for the fair shows must be postmarked no later than Aug. 19, and must be accompanied by a non-refundable fee. Junior entries and fees must be submitted by an extension agent or ag-science teacher who can certify the exhibitor is a 4-H or FFA member. Open livestock entries and fees will be accepted until the Aug. 19 deadline at the fair office, 105 E. Broadway, Lubbock, TX 79408.

Junior exhibitors must be enrolled in public or private elementary or secondary Texas schools. Junior dairy cattle exhibitors are not limited to Texas students, but must meet the 4-H or FFA requirements.

Persons interested in exhibiting animals in the shows should contact the fair office at 744-9557, local extension offices, or an ag-science teacher for show times.

### Friena Fall Art Show slated during "Maize Days" celebration Sept. 7-14

The tenth annual Friena Fall Art Show has been scheduled during the annual "Maize Days" celebrations Sept. 7-14 in the depot.

All area artists are invited to display their artwork in any of four categories, including oils and acrylics, water colors, drawing, pastel, pencil, pen and ink, and miscellaneous.

The entry fee for each art piece is \$9, and there is no limit on the number of pieces an artist can submit.

For more information regarding the art show, call Carol Ellis at 247-3053.

In addition to the art show, the Friena "Maize Days Celebration" will include the Parmer County Fair, Miss Friena Pageant, Prairie Acres Appreciation Day, Gospel Gathering, and parade beginning Sept. 7.

For more information or entry forms for the events, call the Friena Chamber of Commerce at 247-3491.

## Home health

Continued from page 1

month in the first year after opening in April of 1993.

The health agency is also a way to drastically increase the district's customer base. About 50 percent of the agency's referrals come from outside the district. The projected impact on the district this year is \$1 million.

"More and more it's seen as the way of the future," Bone said. "It's really become a key element in a lot of hospital districts."

Although a patient's original care might take place at another hospital or outside the district, Muleshoe Area Home often provides the follow-up care.

The agency has 25 employees, including 11 nurses and several rehabilitation therapists.

Six registered nurses serve as case managers, supervising the treatment of the agency's patients.

"We serve as a liaison between the patients and doctors," said Margaret Heathington, an RN and director of the agency.

Also included among the agency staff are five licensed vocational nurses (LVNs), two speech therapists, a speech pathologist, a physical therapist and home health aids.

Home health is for patients who need part-time and intermittent care. A RN is on call 24 hours a day.

Patients include both young and old, and range from skilled nursing needs to major medical attention. The agency is able to do lab work on blood and other samples through the hospital, report the results to the patient's doctor, who then decide the proper treatment. All without a patient leaving their home.

A large portion of the patients are elderly people who don't yet need full-time care.

"It's real important to let people stay at home and be independent as long as they can, before they have to depend totally on other people," Heathington said. "I also think it enhances their health once they get back into their environment. It helps in the recovery."

With quality care at lower costs, the home health care field will most likely continue to grow.

"I see a continued growth as people gain confidence in the services that can be provided to them," Bone said.

All delivered to your door.

## Mules

Continued from page 1

of a cross country type training. Lots of miles."

Lazbuddie slipped to 5-5 last year, missing the playoffs for the first time since starting a football program in 1988.

The Class 1A six-man Longhorns scrimmage Groom at

Silverton Aug. 23 and open the regular season Sept. 6 at Meadow.



In colonial days, cooked tea leaves were sometimes salted, but-tered and eaten on bread.

**WEST PLAINS TELECOMMUNICATIONS, INC.**  
"THE PHONE COMPANY"  
P.O. Box 1012 - Muleshoe - 1-800-741-5533

## NEW DIGITAL TELEPHONE SERVICE

MULESHOE - SUDAN - EARTH - SPRINGLAKE - OLTON

Call Waiting -- Cancel Call Waiting -- Call Forwarding  
Tone Dialing -- Speed Calling -- Three Way Calling  
Remote Access to Call Forwarding -- Toll Control

(Additional Features available as tariffs are approved)  
Such as Caller ID & Voice Mail

*Call our office for details*

**Bailey County Journal** USPS 040-200  
Established March 31, 1963. Published by Triple S Publishing, Inc.  
Every Sunday at 304 W. Second, Box 449, Muleshoe, TX 79347.  
Second Class Postage paid at Muleshoe, TX 79347.  
POSTMASTER: Send address changes to the Bailey County Journal, P.O. Box 449, Muleshoe, TX 79347.

We are qualified members of:  
Panhandle Press Association, National Newspaper Association,  
West Texas Press Association and Texas Press Association

WEST TEXAS PRESS ASSOCIATION MEMBER 1995

PPA Panhandle Press Association

**TEXAS PRESS ASSOCIATION**

Scot Stinnett, Publisher  
Lisa Stinnett, Vice-President/Comptroller  
Rick White, Editor  
Holly Millsap, Classifieds  
Pat Durben, Advertising

© 1990

SUBSCRIPTIONS: Muleshoe Journal and Bailey County Journal  
By Carrier Yearly - \$22.00  
Bailey and surrounding counties: by mail - \$24.00  
Elsewhere - \$26.00  
Advertising Rate Cards on Application

\*Advertisers should check their ad the first day of insertion. The Journals will not be liable for failure to publish an ad or for a typographical error or errors in publications except to the extent of the cost of the ad for the first day of insertion. Adjustment for errors will be limited to the cost of that portion of the ad where the error occurred.\*

# Curry County Fair

## August 12-17

**Live Entertainment - Free With Admission**

**7:00 PM NIGHTLY ENTERTAINMENT CENTER**

<p>Aug. 12 - Kim Blakey Aug. 13 - Texas Playboys Aug. 14 - Southern Sky Aug. 15 - Los Palominos Aug. 16 - Hank Thompson Aug. 17 - Tommy Shane Steiner, Don Walsar</p>	 Kim Blakey	 Texas Playboys	 Tommy Shane Steiner
---	----------------	--------------------	-------------------------

**Jose Bros. Appearing Nightly**  
Tuesday, 7:00 p.m. - Cousin Sis, Square Dance Arena  
Friday & Saturday, 9 p.m.-12 midnight - Cindy Nix, Square Dance Area

 Hank Thompson	 Los Palominos	 Don Walsar	 Cindy Nix	 Jose Bros
-------------------	-------------------	----------------	---------------	---------------

Exhibits open Tuesday - Saturday for viewing 10 a.m. - 10 p.m.

General Admission Daily:  
Adults \$4.00 Children \$2.00

**-Young or Old - There's Fun For Everyone!**

**Gates Open To The Public 8:00 p.m. Monday**

**SUNWEST BANK**

**# Holiday Inn**

Monday, Aug. 12 - Entry Day  
Tuesday, Aug. 13 - Merchants Day  
Wednesday, Aug. 14 - 4-H & FFA Day  
Thursday, Aug. 15 - Parents Day  
Friday, Aug. 16 - Agriculture Day  
Saturday, Aug. 17 - Pioneer Day

**Carnival Daily**

**Advance Tickets For Week Passes Now On Sale ONLY \$10**

Available At These Locations

- Taco Box - Clovis Locations
- Clovis/Curry County Chamber of Commerce
- Joe's Boot Shop - Muleshoe, TX

All Advance Tickets Come With Discount Coupons

## MHS students attend camp in Austin

Eight Muleshoe High School students recently returned from a six-week work/study summer migrant program at St. Edwards University in Austin.

The trip allowed the students to accumulate math and English credits required to graduate.

Ruben Lopez, Rosemary Franco, Abraham Mendoza, Miguel Tafolla, Jimmy Villa, Jennifer Rojas, Maya Mendoza, and Elizabeth Lopez lived on the campus, attended school, and worked various jobs.



### Summer school

Eight MHS students recently returned from the summer migrant program in Austin. Pictured are (back, from left) Ruben Lopez, Rosemary Franco, Abraham Mendoza, Miguel Tafolla (front, from left) Jimmy Villa, Jennifer Rojas, Maya Mendoza, Elizabeth Lopez.

Two of the students worked at the State Capital building, while others worked at the police station, the university library, and the book store.

The trip was not all work and no play, however. The students enjoyed a weekend trip to Six Flags and another to San Antonio.

The group was escorted on

the trip by Janie Balderas, the Migrant Service Coordinator for MISD.

The program is jointly funded by the Migrant Divi-

sion of the Texas Education Agency, St. Edwards University, Muleshoe ISD, and J.T.P.A.

by the active staff.

Doctors interested in the position make application to the hospital, which then considers the information and passes it on to the active staff for review. The staff makes the determination of whether the individual meets the criteria for medical staff membership, and refers the application to the hospital board of directors for approval.

Purdy said the main attraction for small town doctors is something other than medicine.

"Small towns have lots of advantages as far as raising a family goes. I did not originally intend to stay here forever, but it looks like I have."

Dr. Homer Allgood, another

Muleshoe family medicine practitioner, learned of Muleshoe from a pharmacist in Mobile, Ala.

"The pharmacist was Henry Malone. He had been out here, and told me they needed doctors," Allgood said. "It was a hot day and I was tired and mad, so I just came out and looked at it and moved."

McClanahan was a physical therapist in Muleshoe for three years before he came back to establish a family practice.

"I had every intention of coming back," McClanahan said. "There were still a lot of ties with people at the hospital that I had worked with, and I felt it was a good environment for raising a family."

## Doctors

Continued from page 1

hospital for outpatient and inpatient services," Bone said. "The hospital can only provide services on a doctor's admission."

The only problem in the system, according to Purdy, is attracting doctors.

"I think it's difficult to get doctors to come to small towns," said Purdy, a Muleshoe High School graduate, who was urged by another doctor to come back to Muleshoe to practice. "Most of them want to be in the big city. I think that's why, because otherwise there would be more of them out here."

The need for additional doctors in the hospital is identified

**T**hink of us as the perfect home remedy for your recovery.



HomeHealth Preferred from St. Mary Hospital and University Medical Center is the perfect home remedy for anyone recovering from an illness or recent surgery. When you're ill, it is most comforting to be in familiar surroundings. With the help of the professional nurses and staff of HomeHealth Preferred, you can recover at home, where you're most comfortable. HomeHealth Preferred works with your physician to develop a plan that offers skilled nursing care, physical therapy or home health aide assistance.

**HomeHealth Preferred**  
SERVICES OF UMC AND ST. MARY HOSPITAL

2401 SOUTH HALL • LITTLEFIELD, TEXAS 79339 • 806-385-5754 • 800-298-4554

## Community calendar

For more information, call Norma Perez at 272-4248.

The deadline to appear in the Journal's Community Calendar is Thursday at 5 p.m.

### Monday, August 12

4-H meeting, Bailey County Coliseum, 6-8 p.m.

Breast cancer screening clinic. To schedule an appointment, call Women's Cancer Center, 1-800-377-4673 or 806-359-4673.

Department of Health immunization clinic, high school cafeteria, 10 a.m.-1 p.m., 2-6 p.m.

Bailey County Commissioners' Court, Bailey

County Courthouse, 10 a.m.

MISD Board of Trustees, 7 p.m., 514 Ave. G.

### Tuesday, August 13

Alcoholics Anonymous, 7 p.m., 723 W. Ave. E. For more information, call 272-3002.

Rebekahs, 7:30 p.m., Rebekah Lodge.

The Rotary Club, 12-1 p.m., Bailey County Coliseum meeting room.

Masonics, Masonic Lodge, 8 p.m.

Jennyslippers, Library, noon.

Wednesday, August 14  
Watson Junior High registration, 9-11 a.m., 2-4 p.m.

Thursday, August 15  
Alcoholics Anonymous, 7 p.m., 723 W. Ave. E. For more information, call 272-3002.

Oddfellows, 8 p.m., Oddfellows Lodge.

Chamber meeting, 5:30-7:30 p.m.

### Friday, August 9

Kiwanis, 6:30-8 a.m., Snack Shack.

*Editor's note:* The Community Calendar appears in Sunday's Bailey County Journal.

WIN THIS COOL '96 FORD XLT PICK-UP AT



ALLSUP'S

NO PURCHASE NECESSARY! REGISTER AT ANY ALLSUP'S STORE THROUGH AUGUST 17, 1996

CHECK OUT the FIREWORKS at ALLSUP'S

<p>6 pk., 12 oz. cans <b>\$1.99</b></p>	<p>COMBO MEAL Piping Hot Link, Potato Wedges &amp; Tallsup <b>\$1.99</b></p>
<p>CHEETOS &amp; LAY'S® Grab Bags REG. 75¢ <b>2 FOR \$1.00</b></p>	<p>HORMEL SLICED LIGHT &amp; LEAN Ham or Turkey 8 OZ PKG <b>\$1.79</b></p>

ALLWAYS a LOW PRICE on

<p>BLUE BUNNY VANILLA OR NEAPOLITAN Ice Cream Sandwiches EACH <b>2 FOR \$1.00</b></p>	<p>SHURFINE Ultra Detergent 110 OZ. BOX <b>\$4.99</b></p>	<p>SHURFINE Colby Cheese 10 OZ. PKG. <b>\$1.59</b></p>	
<p>You'll find all this and more at your Allsup's store Store #34 318 W. American Blvd. 272-4862 MULESHOE</p>	<p>WESTERN FAMILY 35 MM Disposable Camera 27 EXPOSURE <b>\$5.99</b></p>	<p>LANA'S Egg Rolls <b>2 FOR \$1.00</b></p>	
<p>6 OZ. PKG. SUNNY COOKIES.....</p>	<p><b>2/\$1</b></p>	<p>12 OZ. SNAPPLE DRINK.....</p>	<p><b>79¢</b></p>

**Instantly Win up to \$1,000** or other great cash prizes & free products!

Get a Free Game Ticket With Every HONCHO 44 oz. Fountain Drink Purchase!

Take this coupon to any Strebeck location. If you purchase a new vehicle before August 31, 1996, you will receive \$50.00 worth of free gasoline courtesy of ALLSUP'S.

**ALLSUP'S**  
*Always*  
LOW PRICES, GREAT PRODUCTS 24 HOURS A DAY

PRICES EFFECTIVE AUGUST 11-17, 1996 OFFER GOOD WHILE SUPPLIES LAST

# Turner, Keller united in marriage June 8

Amy Suzann Turner and Todd Alan Keller were united in marriage June 8, 1996 at 7 p.m. in the home of the bride's parents, Mr. and Mrs. Doyce Turner of Muleshoe. Officiating was Rev. Richard Edwards of Dumas.

The bride is the granddaughter of Mrs. Doyle Turner and Mr. A.R. McGuire of Muleshoe. The groom is the son of Dr. and Mrs. Michael Keller of Sonora and the grandson of Mr. and Mrs. Chester Keller of Mason and Mrs. R. A. Manter of Carrizo Springs.

The backyard was the setting for the double ring ceremony. Vows were exchanged before an arbor entwined with

ivy garlands and summer flowers.

Amy was presented for marriage by her father. She wore an ecru silk crepe dress with a lace jacket and carried a bouquet of white tulips and asters.

Becky Wiggins of Dallas, sister of the bride, was the matron of honor. Bridesmaids were Amy Overstreet of College Station and Pene Fox of Davey, Neb. They wore nutmeg linen dresses and carried bouquets of summer flowers.

Shane Keller of College Station served as best man. Groomsmen were Tracy Love of Odessa, Jesse Lynch of Rowlett, and Chanco Cahill and Keith Wallace of Sonora.

Turner Wiggins of Dallas, nephew of the bride, served as the ring bearer.

Musical selections were presented by harpist Joyce Walker of Hobbs, N.M.

A buffet reception followed the ceremony. Lucinda Pullen of Rockwall and Amy Henderson of Eldorado served the groom's cake.

The rehearsal dinner was a fiesta, featuring a Mexican theme in food, decorations and entertainment at the home of Mr. and Mrs. J.D. Cage. Hosts for the occasion were the groom's parents, Mr. and Mrs. Joe King, Dr. and Mrs. Charles Lewis and Mr. and Mrs. Cage.

A bridal luncheon was held on the wedding day at the home

of Maurine Hooten. Hostesses for the luncheon were Lynn Campbell, Kerma McGuire, Sydna Flowers, Anita Allgood and Maurine Hooten.

After a wedding trip to Cozumel, Mexico the couple will make their home in San Antonio.

Amy is a graduate of Muleshoe High School and Texas A & M University, where she was affiliated with Zeta Tau Alpha sorority. She is employed with Prism Technologies. Todd is a graduate of Sonora High School and Texas A & M University. He is attending the University of Texas Health Sciences Center Dental School.



Mr. and Mrs. Todd Keller

## PUBLIC RECORD

### OBITUARIES

#### Mary L. Williams

MULESHOE — Services for Mary L. Williams, 39, of Muleshoe were held Thursday, Aug. 8, at the Ellis Funeral Home Chapel with Stacy Conner, pastor of the First Baptist Church of Muleshoe officiating.

Burial was in Tom Cemetery in Tom, Okla. Friday with the Rev. Leroy Wood, Pastor of the First Assembly of God Church of Broken Bow, OK officiating.

Mrs. Williams died Aug. 6 at St. Mary Hospital in Lubbock.

She was born Sept. 11, 1956 in Hobbs, N.M. She married Don P. Williams June 25, 1983 in Broken Bow, Okla.

Mrs. Williams moved from Broken Bow, Okla. to Muleshoe in 1984. She was a homemaker and a member of the First Assembly of God Church of Broken Bow, Okla.

Survivors include her husband, Don P. Williams of Muleshoe; one son, Christopher R. Jennings of Pensacola, Fla.; her mother, Jane Spillman of Broken Bow, Okla.; two brothers, Raymond O. Spillman of Denison and Henry R. Spillman of Garland; and one sister, Barbara Bendler of Altus, Okla.

The family suggests memorials be made to National Alaxia Foundation, 750 Twelve Oaks Center, 15500 Wayzata Blvd., Wayzata, Minn. 55391.

#### Odessa Shanks

MULESHOE — Services for Odessa Shanks, 82, of

Muleshoe, were held Friday, Aug. 9, at the First Baptist Church with the Rev. Stacy Conner, pastor, officiating.

Burial followed in the Muleshoe Memorial Park Cemetery under the direction of Ellis Funeral Home.

Mrs. Shanks died Wednesday, Aug. 7, at the Methodist Hospital in Lubbock.

She was born Dec. 18, 1913, in Denton. She married J.C. Shanks Jan. 14, 1940, in Texico, N.M.

Mrs. Shanks lived in Mangum, Okla. before moving to the Muleshoe area in 1940. She was a member of the First Baptist Church of Muleshoe, where she was a member of the Joy Choir. She was a member of the Bailey County Senior Citizens organization.

Casket Bearers were Tim Shanks, Jeep Shanks, Ed Nickels, Frank Wuerflein, Wendell Robison, Dewey Moore, and R.L. Scott.

Survivors include her husband, J.C. Shanks of Muleshoe; two sons, Gerald Shanks of Muleshoe and Donald Shanks of Springdale, Ark.; three brothers, Cleo Vaughn of Amarillo, S.E. Vaughn of Earth, J.C. Vaughn of Fort Walton Beach, Fla.; one sister, Juanita Aiman of Riverside, Calif.; three grandchildren and two great-grandchildren.

#### Lillie F. Prather

ERICK, Okla. — Services for Lillie F. Prather, 81, of Erick, were held Saturday, Aug. 10, at the Erick First Baptist Church with Ed Wrather and Bro. Jeff Avery officiating. Interment followed in the Erick Cemetery under the direction of Fathere-

Albert Funeral Home.

Mrs. Prather was born April 23, 1915 in Bowie, to Sarah and Elmer Deweber. She died Aug. 7, 1996 in the Erick Nursing Center.

Mrs. Prather moved with her family as a small child to western Oklahoma. They lived in the Sayre area, where Lillie attended Victory School. She married L.H. "Hugh" Prather June 24, 1932. They lived in the Lone Oak and Carter communities before moving to Erick in 1936. Lillie worked at the Corner Drug Store for 26 years.

She was a member of the Erick First Baptist Church.

She was preceded in death by her parents, one infant brother and one sister.

Survivors include her husband, Hugh Prather of Erick, Okla.; two sons and daughters-in-law, Donald and Norma Prather of Muleshoe, Kenneth and Gail Prather of Erick, Okla.; one daughter, Sue Pierce of Overland Park, Kan.; two sisters, Thelma Wimberly of Granbury and Lucille Pruet of Elk City, Okla.; six grandchildren and 12 great grandchildren.

### HOSPITAL ADMISSIONS

August 2 — Belinda Mills, M.T. Hukill, Daniel Hernandez, Manuel Dehoyos, Pearl Cox, Maria Vasquez, Jesus Espinoza, Ramona Bolin

August 3 — Belinda Mills, M.T. Hukill, Leopoldo Barrera, Manuel Dehoyos, Carlos Guerra II, Pearl Cox, Maria Vasquez, Jesus Espinoza, Romona Bolin

August 4 — Belinda Mills, M.T. Hukill, Leopoldo Barrera, Pearl Cox, Maria Vasquez, Jesus Espinoza, Romona Bolin

August 5 — Jerry Moncrief, Leopoldo Barrera, Wayne Tunnell, Lucia Vanegas, Larry Sutton, Pearl Cox

August 6 — Jerry Moncrief, Leopoldo Barrera, Lucia Vanegas, Pearl Cox, Reuel Kirby, Dorothy Wenner

August 7 — Flora Sanchez, Leopoldo Barrera, Leola Stroud, Pearl Cox, Lillie Gatlin, Dorothy Wenner

August 8 — Flora Sanchez, Dorothy Nix, Leopoldo Barrera, Leola Stroud, Pearl Cox, Lillie Gatlin, Dorothy Wenner

### Wilson Appliance

Authorized Representative for Plateau Cellular Phone Service

## NEC 820

- Talk Time 820
- 135 minute Talk Time
- 36 Hours Standby Time
- One Touch Dialing
- 24 Number Memory
- Full/Partial Locking Capabilities
- Battery Level Indicator
- Individual Call and Total Air Timers
- Two NAMs
- Large, Illuminated Display
- Call-In-Absence Display
- Rechargeable NiCd Battery
- Authentication Ready



**\$49**

Requires New Activation With Plateau Cellular Service

\*Some restrictions may apply Offer Good Thru Aug. 31, 1996 Limited Quantity

### Wilson Appliance

(L.A.C. Cellular)

117 Main Muleshoe 272-5532

*You Are Invited  
To A  
Reception Honoring  
Dave Marr Jr.  
at City Hall On  
Thursday, Aug. 15,  
1996  
3:00-5:00 p.m.*

### Death: It Is an Unwelcome Invader

This week I share with you a column my brother Gene penned for the Amarillo Globe News.

Death has invaded my life again. Rudely. Callously. And I don't mind telling you that I am freshly affronted by this cruel scheme Satan keeps using to disrupt the equilibrium of my world.

about his cardiac problems prepared me a little better for his untimely demise, but I still ache a bit when I open my Sunday morning paper and he's not there. And, to make matters worse, Calvin and Hobbes "died" too. (Along with "The Far Side," I might add.—CS)

Now Erma Bombeck is gone. Dear Erma, whose grass was indeed greener on the septic tank. Cancer has eclipsed her irrepressible humor, and there's a new hole in my universe. An emptiness. Where her chuckle used to be.

In a sober moment not long before she died, Erma wrote, "A serious illness is marriage's unspoken fear. The chances of a couple staying healthy together and dying at the same time are Las Vegas odds. Life is a dance you want to finish on the same beat. And I was the first to stumble."

One day each of us will "stumble." Hopefully the people we leave behind will be as indignant about our departure as I have been about these whose end came far too soon to suit me. It's a cinch we don't want folks to be glad we're gone!

My anger at death's intrusion into my world has only one adequate answer. The Bible tells us that Jesus used Satan's own dirty trick to ruin him. "By death," we're told, Jesus destroyed "him who holds the power of death." That's justice.



#### Focus On Faith

Curtis Shelburne

I first remember feeling this sense of total outrage when Nat King Cole died young. His mellow tones had charmed my adolescent soul. Even today, more than 30 years later, I never hear his husky rendition of "Stardust" without feeling anew my indignation that cigarettes silenced decades of his musical mastery. What a waste!

Then it was Karen Carpenter's turn. With her brilliant smile and brighter melodies she enchanted and delighted my heart. And then one awful day, without warning for those of us who knew nothing of her anorexic struggles, her angelic voice was suddenly silent. I have not yet accepted her dying.

In the past decade I made the mistake of getting addicted to Lewis Grizzard's irreverent brand of humor. Occasional columns

Curtis Shelburne is minister of the 16th & Avenue D Church of Christ in Muleshoe.

*Jammy Flores  
would like to announce...  
she is now running the  
fountain at*

**DAMRON DRUG**  
308 Main Muleshoe 272-4210

*Subscribe today!*  
Call the Muleshoe Journal  
272-4536

# The Journal's

# Back to School

## Issue

Local superintendents believe

## TAAS system holds schools accountable

By JOANNA GALLMAN  
Journal staff writer

Success appears to be on the brain as local campuses are receiving TAAS accountability ratings and making final preparations for the start of the school year.

School begins Aug. 12 at Three Way, Aug. 15 at MISD, and Aug. 19 in Lazbuddie. As teachers are beginning to return to their classrooms, a major emphasis is being put on results of the TAAS Accountability and Accreditation Rating provided by the Texas Education Agency.

The TAAS accreditation system ranks a school's success according to a variety of factors, namely student scores on the TAAS test. However, factors such as drop-out rates, attendance rates, ACT scores, and socio-economic subgroups figure into the rating.

The system ranks schools into three categories: exemplary, if 90 percent of each

subgroup passes the test, recognized if 70 percent passes, and acceptable if 30 percent of each group passes.

MISD Superintendent Bill Moore said Muleshoe was rated "academically acceptable," with "recognition" for ACT scores.

Lazbuddie ISD was ranked "academically acceptable with acknowledgment of exemplary" ACT scores, according to Superintendent Phil Warren.

Three Way was also ranked acceptable.

While many are wary of the emphasis put on TAAS scores, Moore and Warren believe the ranking system is credible.

"It's a pretty comprehensive tool," Moore said. "The public and legislature made it pretty plain they want wide assessment. I think it's a pretty equitable way to do it."

"We need to be held accountable for the education of

Continued on page 7



**TAAS master**

Muleshoe Independent School District Administrator Bill Moore believes the TAAS Accountability and Accreditation Rating system is a fair way of measuring academic progress.

## SCHOOL BUS

### 1996-97 Muleshoe Independent School District bus routes

**Bus # 1**  
301 East 6th Housing Authority  
Apartments  
East 6th & Ave. F  
DeShazo  
Dillman  
High School/Watson  
**Bus # 2**  
East 6th and Ave. F  
East 6th Housing Authority Apartments  
East 5th & Ave. D  
DeShazo  
Dillman  
High School/Watson  
**Bus # 3**  
East Austin & East Cedar  
East Austin & East Elm  
Friona Highway

**Bus # 5**  
East 4th and Ave. F  
DeShazo  
Dillman  
High School/Watson  
**Bus # 6**  
West Birch & Chicago  
Muleshoe Cotton Compress  
West Date & Boston  
West Cedar & Dallas  
**Bus # 7**  
West Ave. I & South First  
West Ave. J & 8th  
East 4th & Ave. D  
East 4th & Ave. B  
DeShazo  
West 10th & Ave. D  
West 14th & Ave. D  
West 18th & Ave. D  
Dillman

West 18th & Ave. D  
West 14th & Ave. D  
West 10th & Ave. D  
DeShazo  
West 7th (between I & J)  
High School/Watson  
**Bus # 10**  
Behind Ranch House  
**Bus # 12**  
18th & Ave. B  
East Hickory (across from Roger Miller Park)  
East Birch & East Fir (next to church)  
East Gum (between Ithaca & Joliet)  
DeShazo going West  
10th & Ave. C  
14th & Ave. C  
Dillman Elementary

14th & Ave. C east-bound  
10th & Ave. C east-bound  
DeShazo Elementary  
High School/Watson  
**Bus # 13**  
Behind the Carrousel  
Reno & Ash  
Quincy & Railroad Ave.  
Pasadena (middle of the street)  
**Bus # 14 (PM Only)**  
West 10th & Ave. D  
West 14th & Ave. D  
West 18th & Ave. D  
Dillman  
West 18th & Ave. D  
West 14th & Ave. D  
West 10th & Ave. D  
**Bus # 27**  
Behind the Dinner Bell  
Kinder Corner - West 9th & Ave. G

Routes will remain the same as last year. New families to the area should call Transportation Director Richard Hawkins at 272-4710 to arrange for student transportation on a rural bus route.

City of Muleshoe Bus Routes for the 1996-97 school year have changed slightly and will stop only at the designated stops. Students living in the general area should walk to one of these locations to board the bus.

Students will ride the same bus to and from school each day. Students and parents are reminded that it is a privilege to ride the bus.

Questions about specific stops may be answered by calling Hawkins at 272-4710. Questions about regulations and policy may be answered by the Assistant Superintendent, Adrian Meador at 272-3325.

## Program offers aid to preschool children with disabilities

Early education can be critical because of the amount of learning that takes place in the preschool years.

The Preschool Program for Children with Disabilities provides services for children ages 3-5.

Public schools in Texas provide for the special education of children who have a disability. Children with identified physical, mental, perceptual, speech, language, social and/or hearing problems may be eligible for the program. Children with vision and/or hearing problems may be eligible for services beginning at birth.

Districts will use information from a variety of sources to determine eligibility according to Texas Education Agency guidelines.

The services provided are developed by the Admission, Review and Dismissal Committee. The committee typically consists of the school's parents, an educator, an administrator, and someone involved with testing.

The programs are designed to meet individual needs.

For additional information and/or referrals contact the Special Education office in the Muleshoe High School building at 272-5239.

## Budgeting for school important lesson for children

**PLAINVIEW**—As the summer break draws to an end and children begin preparing to go back to school, Consumer Credit Counseling Service wants to remind parents to start planning for the sometimes forgotten cost of going back to school.

Parents often remember to plan for school supplies and clothes, but often forget expenses such as immunizations, extra-curricular activities, band instruments, travel, and graduation costs.

CCCS offers the following tips to help parents avoid back-

to-school expense problems:

- Establish a realistic budget and spending limit for each child to obtain their school clothing and supplies. Determine how much money you can safely afford to spend and follow your plan as closely as possible. Parents who have

children leaving for college this year should establish a budget for the entire semester and if they are allowing their child to use a credit card, a strict monthly limit should be set.

- Once you've established a dollar figure, let your children (with your help) list the

items and prices of the things they feel are needed for school. Help them determine priorities and emphasize the idea that sticking to a budget may mean sacrificing unnecessary items.

Continued on page 7

## Area School Administrators

**MISD Administration**  
**Muleshoe High School**  
 272-7571  
 Al Bishop, principal  
 David Jenkins, asst. principal  
 Gayla Gear, counselor  
 Cordy Aguirre, secretary  
 Beatrice Padilla, secretary

**Watson Junior High School**  
 272-7521  
 Shelia Joyner, principal  
 Ronnie Jones, asst. principal  
 Brian Arnold, counselor  
 Pam Thomason, secretary  
 Diana Gallegos, secretary

**DeShazo Elementary**  
 272-7546  
 Barbara Finney, principal  
 Connie Kenmore, counselor  
 Liz Tipps, nurse  
 Mary Janice Brantley, secretary

**Dillman Elementary**  
 272-7541  
 Helen Grigsby, principal  
 Cindi Pace, nurse  
 Frankie Lunsford, secretary  
 Anna Gutierrez, secretary

**Board of Administration**  
 Cindy Purdy, president  
 Sam Harlan, vice president  
 Curtis Shelburne, secretary  
 Members: Max King, Edwin Cox, Frank Saldana, Arnold Price

**Administration**  
 Bill Moore, superintendent  
 Adrian Meador, asst. superintendent  
 Jo Mayhugh, business manager  
 Don R. McElroy, technology coordinator  
 Dr. Linda Godsey, director of special education  
 Georgia Pena, director of federal programs

**Three Way ISD Administration**  
 927-5315  
 William L. Hood, superintendent  
 Danny James, principal  
 Sabra Watson, administrative assistant  
 Jean Parker, administrative officer  
 Beverly Turney, secretary

**Lazbuddie ISD Administration**  
 965-2156  
 Phil Warren, superintendent/elementary principal  
 Hardy Carlyle, secondary principal  
 Gwen Warren, counselor/test coordinator  
 Kim Puckett, business manager  
 Susie Sterling, administrative secretary  
 Carolyn Scott, PEIMS/student services  
 Paulette Foster, elementary secretary  
 Sheryl Morris, secondary secretary

**School District Board of Trustees**  
 Gail Morris, president  
 Robert Gallman, vice-president  
 Rick Seaton, secretary,  
 Tommy Martin, member  
 Tommy St. Clair, member  
 Randy Thomas, member  
 Steve Foster, member

## Lazbuddie School supply list

- Lazbuddie Elementary**
- Pre-Kindergarten**  
 4 - #2 regular size pencils  
 2 - boxes of 8 count regular size crayons  
 1 - Elmer's Glue (no glue sticks or colored glue)  
 1 - box Kleenex - 200 count  
 1 - supply box
- Kindergarten**  
 4 - #2 regular size pencils  
 1 - 8 count crayons  
 1 - Elmer's Glue (no glue sticks or colored glue)  
 1 - pair sharp pointed scissors  
 1 - rest mat  
 1 - 200 count box Kleenex  
 1 - box for supplies  
 1 - large paint shirt  
 1 - box watercolor paints  
 1 - extra set of clothing (pants, shirt, undergarments and socks)
- First Grade**  
 4 - #2 regular size pencils  
 1 - pair sharp pointed scissors  
 1 - box 24 count crayons  
 1 - 12 inch ruler (metric and standard)  
 1 - box watercolor paints  
 1 - small supply box (needs to fit in desk)  
 1 - box Kleenex  
 1 - eraser  
 1 - box map colors
- Second Grade**  
 1 - map colors  
 4 - #2 pencils  
 1 - large pkg. wide rule notebook paper  
 1 - large Elmer's Glue (not paste)  
 1 - pair sharp pointed scissors  
 1 - box 24 count crayons  
 1 - small box for supplies (needs to fit in desk)  
 1 - 200 count box Kleenex  
 1 - clipboard (no 3 ring notebooks)  
 1 - set tempr poster paints and brush  
 1 - set magic markers
- Third Grade**  
 4 - #2 pencils  
 1 - Elmer's Glue  
 1 - 24 count of more box of crayons  
 1 - pair sharp pointed scissors  
 3 - folders with pockets  
 1 - 12 inch metric and standard ruler  
 2 - erasers  
 2 - red pens (not felt tip)  
 1 - box tempr poster paints  
 1 - glue stick
- Fourth Grade**  
 1 - large box Kleenex  
 1 - large pkg. wide rule notebook paper  
 2 - spiral notebooks  
 1 - map colors  
 1 - set markers  
 1 - yellow highlighter  
 1 - clipboard  
 1 - supply box
- Fifth Grade**  
 1 - 12 inch ruler (metric and standard)  
 1 - erasable pen  
 1 - pair sharp pointed scissors  
 1 - 3 ring notebook  
 1 - thesarus  
 1 - large pkg. wide rule notebook paper  
 1 - protractor and compass

## Lazbuddie ISD Calendar

**Aug. 12** — junior high registration 9 a.m.-12 p.m., 1-4 p.m./registration for new elementary students 9 a.m. - 12 p.m., 1-4 p.m.  
**Aug. 13** — high school registration 9 a.m.-12 p.m., 1-4 p.m./registration for new elementary students 9 a.m.-12 p.m., 1-4 p.m.  
**Aug. 14** — teacher inservice/registration for new elementary students 9 a.m.-12 p.m., 1-4 p.m.  
**Aug. 15** — teacher workday/high school registration 9 a.m.-12 p.m., 1-4 p.m.  
**Aug. 16** — teacher inservice  
**Aug. 19** — school begins at 8:15 a.m.  
**Sept. 27** — end first six weeks  
**Oct. 7** — fall holiday  
**Nov. 8** — end second six weeks  
**Nov. 28-29** — Thanksgiving Holidays  
**Dec. 20** — end third six weeks/first semester  
**Dec. 21** — teacher workday  
**Dec. 23-Jan. 3** — Christmas break  
**Jan. 24** — teacher inservice  
**Feb. 14** — end fourth semester  
**Mar. 10-14** — spring break  
**Mar. 28-31** — Easter break  
**April 11** — end fifth semester  
**April 21** — weather day  
**May 5** — weather day  
**May 28** — end sixth semester  
**May 29** — teacher workday

- 1 - yellow highlighter  
 1 - large box Kleenex  
 2 - spiral notebooks  
 1 - tempr poster paint and brush  
 1 - large pkg. wide notebook paper  
 1 - set magic markers  
 1 - red pen and black Sharpie marker  
 3 - folders with pockets and brads
- 1 - small Elmer's Glue  
 1 - glue stick  
 1 - box crayons - 24 count or more  
 1 - clipboard  
 1 - 12 inch metric and standard ruler  
 1 - erasable pens  
 1 - pair sharp pointed scissors  
 1 - map colors  
 1 - #2 pencils

## Three Way School supply list

- Three Way School**
- Kindergarten**  
 Elmer's Glue  
 metal scissors  
 Kleenex  
 roll of paper towels  
 washable markers  
 crayons  
 pencils  
 school box  
 back pack  
 squeeze water bottle  
 Ziplock bags  
 extra clothes - with name on them  
 empty cereal box
- First Grade**  
 (each item should be labeled with child's name)  
 small school box  
 crayons  
 2 red pencils  
 sharp pointed scissors  
 school glue  
 watercolors  
 large box of Kleenex  
 20 #2 pencils  
 recipe box for 3 X 5 cards  
 1 pkg. 3 X 5 cards with alphabet dividers  
 Ziplock bags  
 roll of paper towels  
 glitter  
 coloring book
- Second Grade**  
 school box — cigar size  
 crayons — 36 or larger  
 2 red grading pens  
 2 #2 pencils  
 wide rule notebook paper (no spirals)
- Third Grade**  
 3 folders with pockets  
 2 red pencils or pens  
 2 #2 pencils  
 Elmer's School Glue  
 large box of Kleenex  
 wide rule notebook paper  
 eraser  
 crayons  
 pointed scissors  
 ruler with centimeters and inches  
 three-ring notebook  
 school box  
 map colors  
 water colors
- Fourth Grade**  
 2 spiral notebooks - wide rule  
 wide rule notebook paper  
 2 #2 pencils  
 2 red pencils  
 map colors  
 scissors  
 glue  
 Kleenex
- 3X5 file box with alphabet dividers  
 Ziplock bags  
**Fifth Grade**  
 notebook paper  
 pencils  
 three-ring notebook  
 dividers  
**Sixth Grade**  
 crayons  
 map pencils  
 ruler — metric and regular  
 2 boxes Kleenex  
 red ink pen  
 #2 pencils  
 notebook paper  
 markers  
 2 - 2 pocket folders  
 school glue - no larger than 4 oz.  
 map pencils  
 Fiskars sharp point scissors  
 box of watercolors  
 1 box Gladlock gallon freezer bags  
 large box of Kleenex

## Three Way ISD Calendar

**Aug. 12** — first day of school  
**Sept. 2** — Labor Day Holiday  
**Sept. 20** — end first six weeks  
**Oct. 14** — holiday  
**Nov. 1** — end second six weeks  
**Nov. 27-Dec. 1** — Thanksgiving Holidays  
**Dec. 20** — end third six weeks/end first semester  
**Dec. 21** — workday  
**Dec. 22-Jan. 5** — Christmas Holidays  
**Jan. 6** — first day of second semester  
**Jan. 17** — holiday  
**Feb. 3** — holiday  
**Feb. 14** — end fourth six weeks  
**Feb. 28** — holiday  
**Mar. 8-16** — spring break  
**Mar. 31** — bad weather day  
**April 9** — end fifth six weeks  
**April 21** — bad weather day  
**May 23** — end sixth six weeks/end second semester  
**May 24** — workday

Subscribe  
 To The  
 Journals  
 Today!  
 272-4536



**ALCO**  
**Back to School SALE**  
 SALE STARTS TODAY... ENDS SUNDAY, AUGUST 25TH  
 CHECK OUT THE FREE ITEMS ON BACK PAGE

**1.99** K&M! SHOW-OFF BINDER, 1" STORAGE POUCH, 1.49

**2/3** REG. 2.99 & 2.99 EA. NEATBOOKS. Wide or college ruled, 132 or 180 ct.

**2/3** REG. 1.99 EA. FISKARS FOR KIDS. Blunt or pointed school scissors.

**200** MEAD NOTEBOOK FILLER. College or wide ruled.

1401 W. American Blvd.  
 272-5525  
 Monday-Saturday 9 am-9 pm;  
 Sunday 12 noon-9 pm

**Stable running shoe.**  
 (Your horse is wondering, How does that work?)

**Williams Athletics**  
 322 Main 272-MULE (6853)

Give a man a fish and you feed him for a day. Teach man to fish and you feed him for a lifetime.

# Back to School

## New Area Teachers

**Three Way**  
Lisa Barfield, secondary history/Spanish  
Mandi Coffee, secondary English  
Doug Cook, secondary science/coach  
Dawn Harrison, secondary math  
Shawn Harrison, P.E./coach  
Gregg Drew, maintenance

**Lazbuddie**  
Ralph Welker, math  
Edith Nordine, Spanish  
Brian Hill, vocational agriculture

**Muleshoe High School**  
Flint Bigham, coach/P.E.  
Kevin Douglas, special education  
David Downum, choir  
Robin Ellis, physical science & biology  
Jesse Russell, coach/geography  
Judy Steinbock, algebra  
Bill Wall, special education  
Jack Willis, physics and chemistry  
Kimberly Zollinger, coach/U.S. history

**Watson Junior High**  
Susan Bigham, life management skills/resource math  
Jason Inman, coach/7th English  
John Tuttle, 7th science  
Robin Welch, math

**DeShazo Elementary**  
Jessie Hanna, 4th grade  
Kristy Orr, 3rd grade  
Patty O'Hare, music

**Dillman Elementary**  
Debbie Lovelady, 1st grade  
Rosemary Lowe, kindergarten  
Beth Mims, kindergarten  
Diane Skipworth, 1st grade  
Dr. Linda Godsey, Special Education Director

## Muleshoe School supply list

### Muleshoe School

#### Pre-K

1 - change of clothes (shirt, pants, socks, undergarments)  
1 - box of Kleenex

#### a.m. class only

1 - large package of cookies  
25¢ a day for milk

#### Kindergarten

2 - regular size #2 pencils  
2 - 4 oz. Elmer's Glue All (not paste)

2 - boxes of 8 crayons - large (not fluorescent)

1 - package Crayola markers - classic colors - large size

1 - large box of Kleenex

2 - package construction paper 9 X 12 - assorted

1 - pair metal (Fisker's brand) scissors (right or left, which ever your child needs)

1 - complete change of clothes; boys: shirt, pants, undergarments, and socks. girls: dress or pants and blouse, undergarments and socks

2 - pocket folders

1 - kinder rest mat or large towel

1 - box of gallon-size Ziplock bags

1 - plastic school box

1 - box of water colors - 8 primary colors

**First Grade**

1 - school box

6 - regular size #2 pencils

2 - large boxes of Kleenex

2 - medium size Elmer's Glue (white)

3 - pocket folders

1 - box of 8 crayons (offly eight) each 9 weeks

1 - pair small pointed Fisker's metal scissors (not plastic blades) for kids, right or left-handed according to child's preference

2 - packages construction paper 9 X 12 assorted

1 - spiral bound notebook - wide rule 80 to 100 count pages

1 - package stickers

**Second Grade**

24 - #2 pencils

1 - box crayons (16 count)

2 - red pencils

2 - Kleenex (large boxes)

1 - eraser

2 - Elmer's Glue - 8 oz.

1 - pair of scissors (sharp pointed)

1 - standard size school box (no Trapper Keepers)

2 - spiral notebooks, at least 90 wide-ruled pages

1 - package construction paper 9 X 12 assorted

1 - box Crayola markers

2 - folders with pockets

**Third Grade**

2 - #2 pencils

1 - stick glue for homeroom

2 - large box of Kleenex

2 - notebook paper - 200 count (wide ruled) colored notebook paper approved

1 - Crayons (24 Count)

1 - sharp pointed scissors

1 - plastic zipper holder

1 - 12 inch ruler (metric/standard)

5 - flat pocket folders

1 - small bottle of Elmer's glue for art

1 - package multi colored construction paper

Additional supplies at individual teacher's request. Please check with your child between semesters for any additional supplies needed.

**Fourth Grade**

1 - crayons

#2 Pencils (no mechanical pencils)

Red pencils

1 - notebook paper - 200 count wide ruled

1 - pointed scissors

1 - ruler (metric/standard)

7 - pocket folder

2 - boxes of Kleenex (200 count)

map pencils

Additional supplies at individual teacher's request. Please check with your child between semesters on any supplies they may need.

**Fifth Grade**

#2 pencils

proven that if they set the goal we'll run at it. It's a never-ending battle."

Warren said the size of success and the size of the school go hand-in-hand.

"I think smaller schools have a better handle on getting kids in school and keeping them in school," Warren said. "Of course, I'm a little biased, but I would consider Muleshoe a small school too. A lot of success goes back to where they are, and if they're being supported. The bottom line is that they are learning and they are showing that on tests."

## Muleshoe ISD Calendar

**Aug. 12-13** - staff development/registration for students new to Muleshoe, 9-11 a.m. and 1:30-3:30 p.m./student lockers issued 9:30-11:30 a.m. and 1:30-3:30 p.m./registration for all PEP students in Mr. Jenkins office, 9-11 a.m. and 1:30-3:30 p.m.

**Aug. 14** - teacher preparation day/late registration for Watson Jr. High students

**Aug. 15** - first semester begins at 8:05 a.m.

**Sept. 2** - Labor Day Holiday

**Sept. 27** - first six weeks ends for HS & JH

**Oct. 14** - staff development day

**Oct. 18** - end first 9 weeks for elementary schools

**Oct. 21-25** - TAAS exit tests

**Nov. 6** - second six weeks ends for HS & JH

**Nov. 11** - staff development day

**Nov. 27-29** - Thanksgiving Holidays

**Dec. 20** - first semester ends

**Dec. 21- Jan. 3** - Christmas Holidays

**Jan. 6** - teacher preparation day

**Jan. 7** - second semester begins

**Jan. 17** - holiday

**Feb. 13-14** - holiday

**Feb. 21** - fourth six weeks ends for HS & JH

**Feb. 24-28** - TAAS tests

**Mar. 14** - end third 9 weeks for elementary schools

**Mar. 24-28** - spring break

**Mar. 31** - bad weather make up day

**April 11** - end fifth six weeks for HS & JH

**April 14** - staff development day

**April 29-May 2** - TAAS tests

**May 9** - bad weather make up day

**May 20-22** - TAAS end of course exams

**May 28** - second semester ends

**May 29** - teacher preparation day

**May 29** - graduation

## Budget

### Continued from page 4

■ Then add up the prices, comparing the totals don't match, explain that there is a limited amount of money and it must cover all expenses. Suggest that perhaps a \$30 pair of jeans could be substituted as an alternative for the \$60 pair they want.

■ Shop with your children. Point out the benefits of sales, discount stores and lay-a-way. Discourage them from buying faddish items or shopping impulsively.

■ Try to spread purchases out over an extended period of time in order to avoid having to spend a large amount of money at one time. Make purchases with cash whenever possible.

## TAAS

### Continued from page 4

everybody, and this is one way to do that," agreed Warren.

Both superintendents admit the rating system is a formidable goal, since the required accreditation percentages increase by five percent each year.

"One thing that's frustrating for us is that they continually change the targets we've been shooting at," Moore said. "It's hard to hone in on one thing when the targets keep moving. It's a pretty ambitious goal, but districts around the state have

**15% OFF Selected Fall Merchandise**

Teachers Sweaters and Coordinates



**The Fig Tree** Don't Forget The Back To School Lay-A-Way!

220 Main Muleshoe 272-7561  
Visa & Mastercard accepted

Welcome Back Students and Teachers

With Gift Baskets Full of Sweets, Gift Certificates For Nails & Feet.

Don't Forget Our Balloon Bouquet Special That's Really Neat!

If things get rough, try a massage by Darlene and/or Amanda.

**Jan's Unique Nails and Balloons, Tanning & More**  
203 S. Main 272-5827

Savings of **10% - 70% OFF**

- Specializing in -

- Screen Printing • Computer Graphics
- T-Shirts/Hats • Embroidery

Call us for all your sporting events

- Softball • Little League
- Football • Basketball

**Design-A-Tee**  
North Plains Mall, Clovis, NM  
505-763-6062

**NEW**  
ALL NEW NFL LOGO'S AVAILABLE

- NFL Caps
- NFL Pillows
- NFL Body Hugger Pillows

**Dancing Makes YOU Special**

Jeffie Sturman Hamar - Directress  
Hilltop Plaza Shopping Center  
Clovis, NM  
**762-7372**  
762-0186 (residence)

**THE DANCE ACADEMY**

**FALL CLASSES**  
Beginning Soon...  
Openings still available  
Call **762-7372** or **762-0186**

- \* BEGINNING PRESCHOOL & KINDERGARTEN  
Combination Classes Only  
Ballet • Tap • Tumbling
- \* JAZZ  
3rd Grade to Adult  
Beginner through Advanced

**MEMBER OF:**  
Texas Assoc. Teachers of Dancing,  
Professional Dance Teacher's Assoc.,  
International Dance-Exercise Assoc.,  
National Dance Educator's Assoc.

Dancewear will be sold Friday, August 9 ONLY!



# Back to School

## General school information

School will begin Aug. 15 at 8:05 for Muleshoe High School students. All students will meet in the auditorium at 8:10 for orientation, information and schedules before reporting to first period.

Students are asked to bring a pen and notebook, social security number, home phone number, home address, and name and address of an emergency contact person to the auditorium.

The high school class schedule is as follows:

- 8:05 bell
- 8:10 tardy bell
- 8:10-8:30 zero hour
- 8:40-10:10 first period
- 10:15-11:45 second period
- 11:45-12:15 lunch
- 12:20-1:55 third period
- 2:00-3:30 fourth period

Parking permits and lockers will be issued at Muleshoe High School according to the following schedule:

seniors: Monday, Aug. 12, 9:30-11:30 a.m.

juniors: Monday, Aug. 12, 1:30-3:30 p.m.

sophomores: Tuesday, Aug. 13, 9:30-11:30 a.m.

freshmen: Tuesday, Aug. 13, 1:30-3:30 p.m.

The cost for a parking permit is \$3. Students will need their drivers license and license plate number to purchase a permit.

### DeShazo Elementary

Students in the third, fourth or fifth grades that are new to MISD should register at DeShazo Elementary from 8 a.m.-12 p.m. and 1-4 p.m. weekdays. Parents should bring the child's birth certificate, health records, social security number and previous school's withdrawal sheet or report card.

Homeroom placement for all students will be posted on the front doors Monday, Aug. 12.

School starts Aug. 15. Students should report to their homeroom each morning by 8:10. Class will begin at 8:15. Students will be counted tardy at that time.

Breakfast will be served from 7:45 to 8:10 each morning. Students planning to eat breakfast should arrive after 7:45 a.m., but no later than 8 a.m.



### Booking it

Cruz Barrere (left) helps her daughter Letti cover her school books at Watson Junior High registration Wednesday.

Lunch schedules are as follows: third graders eat at 10:45 and 11 a.m., fourth graders at 11:15 and 11:45 a.m., and fifth graders at 12 and 12:15 p.m.

Regular lunch price is \$1.20, reduced lunch is 40¢. Regular breakfast is 50¢ and reduced breakfast is 30¢. Students may eat at the yellow jacket or go home for lunch, but must have written permission from their parents.

All students will be dismissed at 3:20. Parents who pick up students should park on the north or east side of the building. Students who live in town may ride the bus to a designated stop close to their home.

For more information, call Mrs. Brantley or Mrs. Hartline at 272-7546.

### Dillman Elementary

School begins Aug. 15. Students should be in their homeroom by 8:10 daily. Classes will begin at 8:15, and students will be counted tardy at 8:20.

Breakfast will be served from 7:45-8:10 a.m. Students are encouraged not to arrive before 7:45. Parents are asked to drop their children off on the north side of the building near the gym.

The price for regular breakfast at Dillman is 50¢ and 30¢ for reduced breakfast. Lunch is \$1.20 for regular and 40¢ for reduced lunch.

Kindergarten will eat at 11 a.m., first grade at 11:30, and second grade at 12:15. All students will eat in the cafeteria unless parents make other arrangements with the principal or office staff.

Students who will be enrolled in pre-kindergarten through second grade and were not enrolled last year should register at Dillman from 8 a.m.-4 p.m. weekdays.

Parents should bring shot records, birth certificates, and withdrawal sheet or report cards from previous schools to registration. Homeroom placements will be posted on the

doors next to the cafeteria Aug. 12.

Students who walk or are picked up by parents will be dismissed at 3:15. Parents should pick students up on the north side of the building near the gym.



**HAVING TROUBLE  
PUTTING YOUR FEELINGS  
INTO WORDS?  
PUT THEM IN A VASE.**

Sometimes the best way to express how you feel is to say nothing at all. Flowers can say *thank you, have a nice day, welcome back or your special* even if you can't. So stop by or call us today and say it with flowers.

**Decorators  
Floral & Gifts**

TRUST YOUR  
FEELINGS  
TO YOUR  
FLORIST

616 S. 1st 272-4340

**Randy's SHOES**

Your Kids

Back to School Headquarters



Save Up To 50% OFF Selected Styles

CHOOSE FROM FAMOUS BRANDS:

- Nike
- Reeboks
- Keds
- Stride Rite
- Jumping Jacks
- Little Capazio
- Eastland
- Hush Puppies
- Mia

**Randy's SHOES**

410 MAIN - DOWNTOWN Clovis

**Back to School  
Special**

**Kids** AGES 5-17

Comprehensive Eye Exam

NOW \$35<sup>00</sup> 8-15 to 8-31

EYE CARE CLINIC/EYEWEAR, ETC.

Dr. Keith D. Barker, Optometrist  
501 Commerce Way, Clovis

505-769-2339  
CALL FOR APPOINTMENT

**Federal Land  
Bank  
Association**

316 Main St., Muleshoe  
806-272-3010

Long Term Financing for  
Farms, Ranches, Rural  
Housing, Operating and  
Improvements.

**Current Variable  
Rate 8.15%.**

Fixed rates are available.

Call for quote.

A Property Rights Advocate  
and Equal Opportunity Lender.

**Muleshoe Area  
Medical Center**

**Announces that effective  
August 15, 1996  
the hospital joins**

**Blue Cross of Texas**

**as a provider facility for  
HMO Blue, Blue Choice  
and Traditional Insurance**

**Muleshoe Area  
Medical Center**

is also a provider for

- HealthSmart
- FirstCare
- National Healthcare Alliance Inc.
- Medical Control
- Champus
- MultiPlan Inc.



## Wilson, Chapman wed July 12 in Muleshoe

Kristi Michele Chapman and Jason Wade Wilson were united in marriage Friday, July 12, at the Muleshoe Church of Christ. John Knox officiated. The Church choir provided the music.

The bridesmaids were Jacki Chapman, sister of the bride, and Gisela Perez. Jr. bridesmaids and flower girls were Traci Chapman and Nicole Wilson.

The groomsmen were Shawn Wilson, cousin of the groom, and Mike Smith.

The matron of honor was Vanessa Reep. The best man was Cody Wilson, brother of the groom.

The couple will reside in Levelland.

Kristi is the daughter of Larry and Jeri Chapman of Muleshoe. She is a 1993 graduate of Muleshoe High School and attends South Plains College. She is currently employed as assistant manager at McDonald's in Levelland.

Wade is the son of Rod Wilson of Maple and Jerri Wilson of Clovis, N.M. He is a 1993 graduate of Three Way High School. He is currently employed at the West Plains

Veterinary Hospital as a veterinary assistant.

The bride wore a satin gown with a basque waistline, puff shoulders, a cathedral length train with cut-outs of lace and pearl appliques, sequin and pearl appliques on the bodice, a mesh keyhole back, satin bow and a queen anne neckline. The veil was a tiara style with pearls.

The bride had her grandma's diamond earrings as something old. Her dress was something new. Jerri Wilson's pearl necklace was borrowed. The garter was blue.

The groom wore a black tuxedo and tie, vest shirt and jacket. He wore black wranglers with a black belt make out of leather house hair and conchos, a silver belt buckle with horse and gold border, and black boots.

The reception was held in the Church family room. Peggy Williams, Melanie Reed, Suzanne Drohena, Jenny Wilson, Kathy Thomas, and Trena Wilson were hostess at the reception.

The couple went to Durango, Colo. for their honeymoon.



Kristi Michele Wilson

## Waylon

Continued from page 1

left Nashville for Austin, where he and Willie Nelson started a grittier, honky-tonk sound emulated by many of the stars today. He's recorded nearly 30 albums in a career that's spanned more than three decades.

"I knew the first time I heard him he had talent," Downing said. "He could just pick up a guitar and play it up one side and down the other."

Downing hasn't played the guitar in years because of arthritis. But his love for the music never stopped.

Downing went to a wall where an old guitar was hanging. It had seen better days. It was his first guitar, a Maybelle,

which he figured cost him about \$8-10 at the local 5-and-dime store.

Hours of strumming had sanded away some of the varnish. The back was splintered like an old park bench.

It would be kindling wood to most, but for Downing, it held it housed the memories of days long gone.

Days when as a youngster when he played with his dad, an accomplished fiddler, at the neighbors on Saturday nights. Days when he would listen to the Grand Ole Opry on the radio.

And days when he played with a country & western music legend.

## Walker feted with bridal shower July 28

Tina Walker, bride elect of Matt Bohler, was honored with a bridal shower Sunday, July 28, at the Lazbuddie Methodist Church in Lazbuddie.

The hostesses were Connie Kemp, Rickie Warren, Teresa Slayden, Stephanie Foster, Diana Harrison, RayAn Doshier, Belinda Steinbock, Roxanne Hurst, Claire Brown, Debbie Jo Kemp, Tanya Steinbock, Alice Barber, Paulette Foster, and Holly Hooten. The hostess gift was a vacuum cleaner.

Special guests were Elaine Walker, mother of the bride, Geneva Rentley, grandmother of the bride, Terri Bohler,

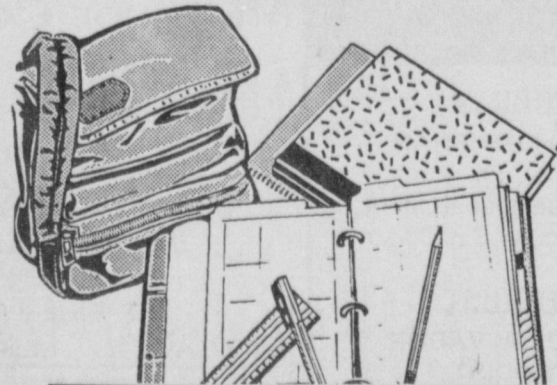


Tina Walker

mother of the groom, and Ruth Barnett and Joyce Bohler, grandmothers of the groom.

Got a news tip? Call 272-4536

Know of an interesting human interest story, news worthy event or photo opportunity in Bailey County? The Bailey County and Muleshoe Journal strives to offer complete coverage of area events but many times, we do not know about things unless our readers let us know. Give us a call today! We will be glad to listen! Call us at (806)272-4536.



Send That College Student A Subscription So They Can Keep Up With The Local News!

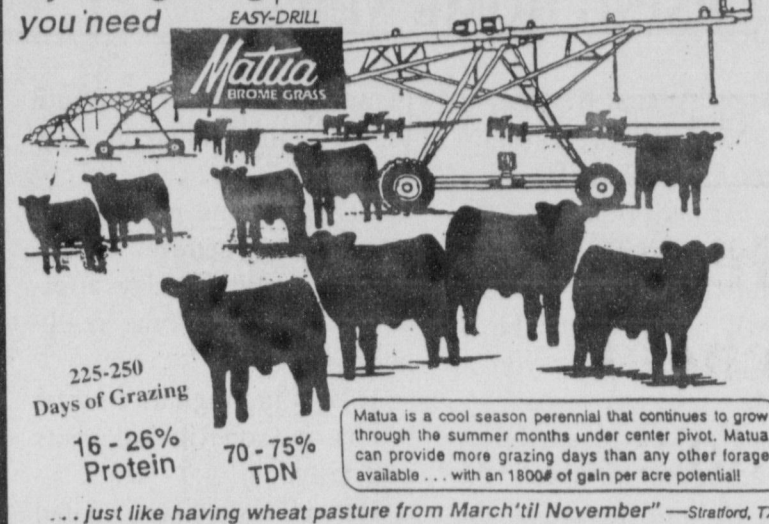
## Muleshoe Journal and Bailey County Journal

### SUBSCRIPTION RATES

Carrier .....	\$22 <sup>00</sup> Year
Muleshoe-By Mail .....	\$24 <sup>00</sup> Year
Out Of Town .....	\$26 <sup>00</sup> Year

Call Today 272-4536

If you're grazing cattle under a center pivot... you need



225-250 Days of Grazing  
16 - 26% Protein

70 - 75% TDN

Matusa is a cool season perennial that continues to grow through the summer months under center pivot. Matusa can provide more grazing days than any other forage available... with an 1800# of gain per acre potential!

... Just like having wheat pasture from March 'til November" —Stratford, TX

## Wiedebush & Co.

1516 W. American Blvd. • Muleshoe, Texas  
(806) 272-4281

## FIVE STAR AUCTIONEERS 25th Annual Special Harvest Equipment Auction

Note: New Harvest Auction Location  
WE ARE NO LONGER AT THE PLAINVIEW AIRPORT  
Plainview, Texas, 3 Miles North On I-27 To Exit 54,  
Then Across Overpass To West Side (Same Being Just Southwest Of Excel Beef Packers)

### FIVE BIG DAYS

Tuesday, August 13, 1996 — Sale Time 10:00 a.m.  
Combines, Cornheads, Headers, Attachments, Grain Carts, Augers, Combine Trailers

Wednesday, August 14, 1996 — Sale Time 10:00 a.m.  
Grain Trucks, Truck Tractors, Implement Trucks, Trailers, Cars, Pickups, Buses, Hopper Bottom Grain Trailers, Livestock Pot & Straight Trailers, Float Trailers, Motor Homes & Travel Trailers

Thursday, August 15, 1996 — Sale Time 10:00 a.m.  
Cotton Strippers, Module Builders, Boll Buggies, Cotton Trailers, Livestock Equipment, Stock Trailers, Irrigation, Hay Equipment, Ensilage & Peanut Equipment

Friday, August 16, 1996 — Sale Time 10:00 a.m.  
Tractors, Backhoes, Loaders, Front End Loaders, Construction Equipment, Motor Graders, Forklifts, Crawlers, Tractor Makeups

Saturday, August 17, 1996 — Sale Time 10:00 a.m.  
Selling All Farm Implements, Fertilizer Equipment, Utility Trailers, Tanks, Toolbar Makeups, Shop Equipment, Grain Drills

Five Star Auctioneers  
P. O. BOX 1038 - PLAINVIEW, TEXAS 79073-1038 • OFFICE: (806) 296-6379 OR (806) 296-7252  
Merv Evans (Home): (806) 293-8195 • Jimmy Reeves (Home): (806) 864-3362  
Jim Summers (Home): (806) 864-3011  
Cashiers: Gail Hanna (806) 647-5115, Donna Noel (806) 293-1124  
Winch Service: Darrell Tyler (916) 758-5318 • Caterer: Smockey's Of Plainview

## ST. MARY MOBILE SERVICES



Mobile Mammography Unit will be here for breast cancer screenings

Friday, August 16, 1996  
Bailey County Courthouse  
Back Parking Lot

Please Call 1-800-388-6266  
for an appointment  
COST - \$60.00

(INCLUDES MAMMOGRAM, RADIOLOGIST'S READING FEE AND REPORT)  
• Insurance filed, if requested.  
• If payment is a problem, please contact Community Health Outreach Department at 1-800-636-2462  
• THIS UNIT IS ACR ACCREDITED, TDH CERTIFIED & MEDICARE APPROVED.

TO PARTICIPATE IN THE SCREENING PROGRAM YOU MUST MEET THE FOLLOWING CRITERIA:

1. You must be at least 40 years of age.
2. You must not have a definite palpable lump.
3. You must never have had a mastectomy or currently have breast implants.
4. You must not have had any other type of breast surgery within the last 12 months.
5. Must not have had a mammogram within the last 12 months.

ST. MARY OF THE PLAINS HOSPITAL  
4000 24th Street Lubbock, TX 79410 1-800-388-6266

Have A Nice Day!

# NURSING HOME NEWS

By Joy Stancell

Happy August Birthday to Leta Neely 8-6; Kathrine Rogers 8-14; Nell Parkinson 8-19; Arnald Beckett 8-20; Mildred Boatis Tiller 8-28.

Thursday, Aug. 29th at 3 p.m. will be our August birthday party. We invite you to attend.

The residents planned their meal of the month. Back to the 50s it is, with the era of the drive-in chicken strips, salad and onion rings in a basket and frosted cokes. We plan to put on our Elvis records, wear our poodle skirts and bobby socks and have a good ol' time Friday, Aug. 16th at noon.

We are getting excited about

planning our trip to the South Plains Mall, Thursday, Aug. 22.

The residents participated in a thrilling "setting" volleyball game Wednesday afternoon. We have some really good players.

R.B. Cunningham's wife, Melba, and son Richard, visits him daily.

Helen Tinskey was visited by her daughter, Linda Foster, Tuesday.

Kathrine Rogers' pastor from Circle Back visits her often.

Sunday afternoon, the Calvary Baptist Church came for Church services.

Sunday morning, Pastor David McIntire taught the Sunday School class.

Mr. Harold Aubrey brought three watermelons for the residents to feast upon.

Friday afternoon, Benny and Jean O'Brien visited the Healthcare Center.

Saturday afternoon, Melvin and Wanda Griffin directed the Bingo Bananza Time.

Tuesday morning, Pearl Helmer, Rosie Sneed, Helen Tinskey, Lillie Wuerflein, Mrs. Gibbs and Mr. Hukill went on a "tour of the town" (and some country), a stopped for a cold drink with Buster Kittrell on the Senior Citizens Van.

Chickie Henderilite also went on the ride.

Tuesday afternoon, Beverly Wagnon, Claudine Embry, Lanell Stancell, Pat Watson, Skeet Bradshaw, Chickie and Joy shampooed and set the ladies hair and gave nail care. Velta Frie came by for a visit and to bring us a lot of good reading material.

Billy Crouch was visited by his family this week.

Bill Darnell was visited by Joe Embry, Claudine Embry, Lanell Stancell and Beverly Wagnon Tuesday.

Able Tompkins was visited by Joe and Claudine Embry Tuesday.

Buster Kittrell brought fresh squash for the residents to have for a meal Tuesday.

M.T. and Jeanette Hukill's daughter, Mary, from Ark., and her family is here visiting this week.

The Followers Sunday School Class made a donation to the Healthcare Center. They are from the First Baptist Church.

Mrs. Gibbs' granddaughter and her family visited her Wednesday. Her son from Clovis also visited.

Wednesday morning, Buster and Wanda Kittrell and Jane Reeder hosted Coffee and Donut time and "around the table" discussion.

Retha Tighe entertained the residents with songs and music Wednesday morning.

**Local news about local folks.**  
**Muleshoe Journal**  
 To Subscribe, 272-4536

# BAILEY COUNTY DEVOTIONAL PAGE

**Scoggin Ag Center, Inc.**  
 "Where Fertilizer Is Our Business"  
 1532 W. American Blvd.  
 272-4613

**IRRIGATION PUMPS & POWER**  
**ZIMMATIC CENTER-PIVOTS**  
 W. Hwy. 84 272-4483

**MAPLE COOP GIN**  
 927-5501  
 Maple, Texas

**Leal's Tortilla Factory, Inc.**  
 "Serving West Texas since 1957"  
 107 E. Ash 272-5772 Muleshoe, TX

**Muleshoe Country Club & Golf Shop**  
 900 Country Club Dr. 272-4250  
 Swimming, Dining, Golf Lessons Available Golf Accessories & Clothing

**Henry Insurance Agency**  
 Auto, Home, Life, Health, Property & General Insurance  
 111 West Avenue B  
 Muleshoe, TX 272-4581

**BOBO INSURANCE AGENCY**  
 108 E. Ave. C 272-4264

**Shipman's Body Shop**  
 Auto Painting • Wrecker Service • Free Estimates  
 Tractor Glass & Windshields  
 410 N. 1st Muleshoe, TX  
 272-4408 FAX 272-3366

**SAIN IRRIGATION & MACHINES**  
 Complete Pump Service  
 W. American Blvd. 272-4397  
 Walt Sain Muleshoe, TX 272-4148

**Bob STOVALL Printing**  
 Quality -- Service  
 221 E. AVE. B 272-3373  
 C.R. & EVA NELL DALE MULESHOE

**Ellis Funeral Homes**  
 Muleshoe - Morton - Earth - Sudan  
 Texas

**RONNIE HOLT INSURANCE AGENCY**  
 Specializing in Crop, Life & Health Insurance  
 Western 66 Office Bldg.  
 272-3614 Muleshoe, TX

**PACO FEED YARD, INC.**  
 Commercial Cattle Feeders  
 P.O. Box 956 265-3281  
 Friona, TX  
 Feller Hughes-Mgr.

**WEST CAMP GIN, INC.**  
 Better Ginning & Courteous Service  
 Rt 2, Box 1000  
 925-6681 Muleshoe, TX  
 James Shepard • Phyllis Shepard

**JAMES CRANE TIRE CO., INC.**  
 322 N. First 272-4594  
 Muleshoe, TX  
 Mike Hahn

**Facts About The BIBLE** BY JOHN LEHTI

THE BIBLE HAS BEEN THE WORLD'S "BEST SELLER" FOR MANY YEARS. ONE CAN TRAVEL TO THE FAR CORNERS OF THE EARTH AND STILL FIND A COPY OF THE BIBLE WAITING FOR HIM THERE. IT HAS BEEN TRANSLATED INTO 195 DIFFERENT LANGUAGES AND MILLIONS OF COPIES ARE SOLD EACH YEAR. IN A SINGLE YEAR, ENOUGH COPIES ARE DISTRIBUTED TO AVERAGE 47 FOR EVERY MINUTE OF EVERY HOUR, NIGHT AND DAY. WITH SO MANY EDITIONS AND SO MANY PRINTINGS OF THIS GREAT BOOK, OVER THE YEARS, SMALL MISTAKES THAT THERE HAVE BEEN OCCASIONAL ERRORS MADE IN ITS PRINTING! HERE ARE A FEW:

- THE BREECHES BIBLE:** IN 1560 AN EDITION OF THE BIBLE SAID ADAM AND EVE "SEWED FIG LEAVES TOGETHER AND MADE THEMSELVES BREECHES."
- THE VINEGAR BIBLE:** IN 1717, AN EDITION HAD THE 20<sup>TH</sup> CHAPTER OF LUKE HEADED AS "THE PARABLE OF THE VINEGAR" INSTEAD OF "VINEYARD."
- THE WICKED BIBLE:** IN 1631, A PRINTER WAS FINED 300 POUNDS BECAUSE HE LEFT OUT "NOT" IN ONE OF THE TEN COMMANDMENTS SO THAT IT APPEARED IN EXODUS 20:14 "THOU SHALT COMMIT ADULTERY."
- THE TREACLE BIBLE:** AN EDITION IN 1568 HAD JEREMIAH 8:22 READING "IS THERE NO TREACLE IN GILEAD" INSTEAD OF "BALM."
- THE PRINTERS BIBLE:** IN 1702 THE 119<sup>TH</sup> PSALM, VERSE 161, READ "PRINTERS HAVE PERSECUTED ME WITHOUT CAUSE" INSTEAD OF "PRINCES."

NOTWITHSTANDING THE ERRORS, THE BIBLE, IN THE THOUSANDS OF EDITIONS PUBLISHED AND THE MANY MILLIONS OF COPIES THAT HAVE BEEN DISTRIBUTED, CONTINUES TO BRING TO HUMANITY THE SPIRITUAL AND MORAL VALUES SO NEEDED BY THE WORLD AT LARGE!

NEXT WEEK: WOMEN'S LIB IN THE BIBLE?!!

SAVE THIS FOR YOUR SUNDAY SCHOOL SCRAP-BOOK

This devotional & directory is made possible by these businesses who encourage all of us to attend worship services.

- ASSEMBLY OF GOD**  
 FIRST ASSEMBLY OF GOD  
 521 South First Street • 272-3017  
 Jack Stone, Min. • 272-3984  
 S.S. 9:45 a.m., W.S. 11 a.m. & 6:30 p.m., Wed. 7:30 p.m.
- BAPTIST**  
 CALVARY BAPTIST  
 1733 W. Ave. C.  
 Ben Davis, Min.  
 CIRCLE BACK BAPTIST  
 Intersection FM 3397 & FM 298  
 Jessie Shaver, Min • 946-3676  
 EMMANUEL BAPTIST  
 107 East Third  
 Isaias Cardenas, Min.  
 FIRST BAPTIST  
 220 West Ave. E.  
 Stacey Conner, Min.  
 FIRST BAPTIST  
 Lazbuddie • 965-2126  
 PRIMERA IGLESIA BAUTISTA  
 223 E. Ave. B  
 Roy Martinez, Min.  
 PRIMITIVE BAPTIST  
 621 South First  
 Elder Cleveland Bass, Min.  
 PROGRESS BAPTIST  
 Progress, TX  
 PROGRESS SECOND BAPTIST  
 Arthur Hays, Min.  
 1st & 3rd Sundays  
 RICHLAND HILLS BAPTIST  
 17th & West Ave. D  
 Brad Gathright, Min.
- CATHOLIC**  
 IMMACULATE CONCEPTION CATHOLIC  
 805 E. Hickory  
 Joseph Augustine, Min.  
 CHRISTIAN  
 THE CHRISTIAN CENTER  
 Morton Hwy. • 272-5105  
 Reydon Stanford, Min.
- CHURCH OF CHRIST**  
 LARIAT CHURCH OF CHRIST  
 Sam Billingsley, Min.  
 S.S. 10 a.m.; W.S. 11 a.m. & 6 p.m., Wed. 7 p.m.  
 LAZBUDDIE CHURCH OF CHRIST  
 Nathan Crawford, Min.  
 S.S. 9:30 a.m.; W.S. 10:20 a.m. & 5 p.m.; Wed. 7 p.m.  
 MULESHOE CHURCH OF CHRIST  
 22nd & W. American Blvd.  
 John Knox, Min.  
 S.S. 9:30 a.m.; W.S. 10:20 a.m. & 6 p.m.; Wed. 7:30 p.m.  
 SIXTEENTH & AVE. D CHURCH OF CHRIST  
 Curtis Shelburne, Min. • 272-4619  
 W.S. 10:30 a.m. & 6 p.m.; Wed. 7:30 p.m.
- LUTHERAN**  
 ST. JOHN LUTHERAN  
 Lariat, TX  
 Richard Greenhaner, Min.  
 S.S. 10:30 a.m.; W.S. 9:30 a.m.
- METHODIST**  
 EL DIVINO SALVADOR METHODIST  
 E. 5th and E. Ave. D  
 Guadalupe Ballinas, Min.  
 FIRST UNITED METHODIST  
 507 W. 2nd St.  
 John Wagoner, Pastor  
 9 a.m. Holy Communion-Chapel,  
 9:45 a.m. Sunday School,  
 11 a.m. Morning Worship  
 LAZBUDDIE METHODIST  
 965-2121
- NAZARENE**  
 NEW VISION CHURCH OF THE NAZARENE  
 814 W. Ave. C • 272-3622  
 David R. McIntire
- PENTECOSTAL**  
 IGLESIA PENTECOSTAL UNDA  
 207 East Ave. G • 272-3636  
 Wencilado Trevino, Min.
- OTHER**  
 NEW COVENANT  
 Plainview Hwy.  
 Jimmy Low, Min.  
 W.S. 10 a.m.; Wed. 7 p.m.

**1ST BANK** MEMBER FDIC  
 202 South First 272-4515

**WES-TEX FEED YARDS, INC.**  
 Custom Cattle Feeding  
 272-7555 Muleshoe, TX

**AMERICAN AVIATION** West Hiway 84 272-4266 Muleshoe

**BAILEY GIN COMPANY, INC.**  
 946-3397  
 Sudan, TX  
 Peanut Hawkins, MGR

**WESTERN DRUG**  
 114 Main 272-3106 Muleshoe

**Church's CHICKEN** 272-5581  
 1411 W. American Blvd., Muleshoe

**HERITAGE HOUSE INN**  
 2301 W. American Blvd. 272-7575  
 Muleshoe, Texas  
 Clint & Evelyn Peat - Resident Owners  
 Reservations 1-800-253-5896

**BRUCE, INC.**  
 AIR CONDITIONING  
 Hwy. 214 North 272-5114  
 Muleshoe, TX  
 TACL-B003360C, LP08638

**MULESHOE COOPERATIVE GINS**  
 P.O. Box 569  
 272-4794 Muleshoe, TX

**MULESHOE AREA HEALTHCARE Center**  
 "Committed to Caring"  
 106 W. Ave. H Muleshoe 272-7578

**MULESHOE MOTOR CO.**  
 1225 W. American Blvd. 272-4251

**"THE FIVE AREA TELEPHONE COOPERATIVE ORGANIZATION"**  
 West Plains Telecommunications Co.  
 Five Area Systems, Inc., Plateau-Cellular Network  
 Five Area Long Distance - Five Area Internet  
 302 Uvalde Muleshoe, USA (806)373-5533

**WANDA BROWND INSURANCE AGENCY**  
 118 E. Ave. C Muleshoe 272-7548

Since 1957 - The Original  
**Leal's Mexican Restaurant**  
 1010 W. American Blvd. 272-3294  
 Muleshoe, TX Victor & Debbie Leal

**Risinger Plumbing**  
 Serving Muleshoe Area  
 NO CHARGE TIL I ARRIVE AT DOOR!  
 1-800-749-4472

# Journal Classifieds

Call 272-4536 Deadlines: For Thursday, 5 p.m. Monday; for Sunday, 5 p.m. Thursday Call 272-4536

### Legal Notice

**Notice for bids**  
The Bailey Central Appraisal District is accepting bids for a mortgage loan in the amount of \$65,000, which will be used to purchase an office building. Bids will be accepted until 5:00 p.m., Wednesday, August 22, 1996, at the Bailey Central Appraisal District, 104 E Ave C Muleshoe, Texas 79347. For specifications contact the Appraisal District. The Board of Directors of the Bailey Central Appraisal District reserves the right to reject any and all bids. 33s-2tc

### Real Estate

**For Sale - By owner, 3 bdrm, 1 3/4 bath, single garage in Richland Hills Addition of Muleshoe.** For more info call 806-965-2477. 22s-tfc

### House For Sale

Nice 3 bdrm, one bath, in Lenau addition. Call 272-3920. 31s-6 sun c

### House for Sale

3 Bedroom, 2 bath, den, kitchen, livingroom, diningroom, laundry, carpet. On 2 lots. Needs some work. \$17,500 as is. We fix it \$20,000. Call for appointment 272-4662 or 272-3162. 214 Quincy. 32t-4tc

### Wanted

#### \$\$\$WANTED\$\$\$

We buy used mobile homes. We pay top dollar, any year, any condition. We need your used mobile home. Please call 1-800-404-1321. 7t-tfc

### For Rent

#### For Rent

3/2 brick home in Country Club addition. Large fenced back yard and storm cellar. Call 965-2361. 32t-4tc

### Automobile

**For Sale:** '93 Ford F150 XLT, Extended cab, white, loaded great condition. 806-965-2471 31s-tfc

1993 Ford OLT Supercab 4x4 pickup. Very clean. \$9,500 OBO. 272-3102 or 925-6766. 31s-tfc

1992 Ford Aerostar Van - brown and tan, 56,000 miles, \$10,900 (505)359-0947, Portales.

1995 Jeep Grand Cherokee, 13,000 miles, factory warranty, \$24,000 (505)359-1775, Portales.

1994 Chrysler LHS - 4 door, loaded including sunroof, 26,000 miles, \$18,900 (505)359-0947, Portales.

1993 Cadillac Sedan DeVille, 53,000 miles, \$18,500. (505)359-1775, Portales.

1995 Dodge Intrepid - 4 door - white - 30,000 miles, \$13,900. (505)359-0947, Portales.

### Farm For Sale

2,600 acres, west of Muleshoe. 9 sprinklers, 3-1 3/4 - 2 home, 3 baths, some working pens, about 900 acres in native grass.

**Jerry Leatherman**  
broker  
806-799-0799  
31s-2sun pd

### Personals

Female, Non-smoker, would like to share living Expenses with other Non-smoking female. If interested, Call 272-3349 Leave a message. 33s-2tpd

### Classifieds sell

Call 272-4536

### For Sale

**For Sale:** Kenmore close dryer \$75; Built-in GE double ovens \$150; Hanging light fixture \$50. Call 272-3535. 32t-2tc

**For Sale:** Barely used tanning bed \$500. Call 272-5500 after 5pm. 32t-2tc

**For Sale:** Good King size waterbed mattress, has pump and baffles. \$40 OBO. 272-3378. 32t-2tc

**Over 100 yards Canyon Red Carpet, like new.** Will sell highest offer. Call (806) 272-4480. 33s-1tpd

### For Sale

Gemeinhardt Flute used 3 years. \$175  
Call 272-4680  
33s-2tpd

**For Sale:** Full Blood Black Lab Puppies 10 weeks old. Call (806) 272-3303 Leave a Message. 33s-2tc

### PRIMESTAR

Available for your home TODAY  
Call Gabriel at  
272-3072 or 1-800-815-2358  
pin 9240  
28t-tfc

### Auto Insurance

1 Mon. - 12 Mon.  
Payment Plans  
Jennings Insurance  
1-800-413-4444  
Littlefield  
26s- sun tfc

### BETTER LIVING

#### MOBILE HOMES

Summer Special  
6 - 1800' sq. ft. Double  
Wides to choose from.  
\$10,000 SAVINGS  
WAS \$59,000  
SUMMER SPECIAL  
\$49,995

Hurry in - these won't last long!  
Model #8952  
\*Approximate

1-800-404-1321  
(505)356-5448  
Portales

Lic. # D00681  
'Se Habla Espanol'

Classifieds  
Sell!

### Miscellaneous

**Round-Up Applications**  
Pipe-Wick mounted on high-boy. 30" or 4" rows. Cotton, Milo, Soy Beans and Corn.  
Call Roy O'Bryan  
806-265-3247  
25t-tfc

Must move 28x24 house. Excellent for strage building or remodel. Ready to move. See at Shamrock Station in Sudan or Call Mike Hill at 227-2373 or 227-2587. 32t-4tc

### Elderly Care Home

State licenced family style. Good food. RN owned/operated. Daily, weekly, monthly 806-794-7603. 31s-4tc

### Paws & Claws

**Pet Grooming**  
405 E. Austin  
272-4303

### Help Wanted

**Attention Mothers and Others**  
House of Lloyds, Christmas Around the World is now hiring demonstrators. Free \$300 kit. Get \$50 in Free merchandise for holding a party. Call Cammy 505-769-8377 31s-4sun c

**No Experience Needed. \$500/ \$900 weekly potential.** Process mortgage refunds in your area. Part or full time, Call 1(216)233-4209. EXT. 111 (24hrs). 33s-2tpd

### Help Wanted

**Churchs Chicken and Dairy Queen** now accepting applications for all positions. Uniforms paid for. Insurance available. Birthdays paid, one week paid vacation after one year. Please apply in person at Churches. 31s-4tc

Wanted: Full or Part time help at Town and Country Apply in person. 31s-4tc

### Help Wanted

Set up worker - Truck driver Must Have CDL license and experience.  
Contact Hal or Sam  
272-5514

31t-4tc  
**Muleshoe McDonalds** is accepting applications for crew positions. Flexible hours, performance based pay and room for advancement. Pick up applications at McDonalds or the Texas Employment Office. 31t-4tc

### Smallwood Real Estate

232 S. Main 272-4838  
**Commercial - with large house.** Storage or apartments. Make repairs and make money. This is for someone who can repair and paint. Owner financed. 31s-2 sun c

### Certified

**NURSE AIDES** for all shifts. Temporary and full-time positions. Excellent benefits. Shift defferential. Contact Terri Brown or Julia Smith at Muleshoe Area HealthCare Center, 106 W. Avenue H, Muleshoe, TX 79347. (806) 272-7578.

### DeAnna & Larry Rasco

Muleshoe, TX 79347  
806-272-5269  
29s-tfc

**D&L Upholstery**  
Farm Equipment  
Auto - head liner  
Residential  
Commercial  
Marine  
Free Estimates  
Non-Smoking Environment



### VIP PLUS, Ltd.

#### PERSONNEL SERVICES

**JOBS! JOBS! JOBS!**  
Immediate Openings  
Valley Grain Products and Texas Sesame has positions open for the Masa Plant and Grain Mill. No appointment needed. A total of 30 positions will need to be filled. Apply at either location. No Appointment Necessary. "Never A Fee" 1-800-242-5369  
31t-2tc

### A leader in the telecommunications field.

**SALES**  
Expansion and growth requires us to add to our sales team. We are now recruiting energetic, enthusiastic, motivated outside sales representatives for the Levelland area. Experience preferred but not required, will train.  
We offer a great opportunity within one of the fastest growing industries that includes: stability of a base salary, plus an attractive commission/bonus structure, vehicle allowance, cellular telephone, medical/dental/life, 401 (k) retirement savings plan, vacation and more. Rapid advancement opportunities. EOE. Please submit your resume and cover sheet to:  
Human Resource, 1005 College Avenue  
Levelland, TX 79336 No Phone Calls Please  
22t-tfc

### CONSIGN NOW!!!

## AUCTION

25th Annual

### Special Harvest Equipment Auction

**AUGUST 20 THRU 24, 1996**

Tuesday thru Friday -- Sale Time: 10:00 A.M. Each Day

Saturday, August 24 -- Sale Time: 9:00 A.M.

LOCATED: Plainview, Texas--South Side of Town on Interstate 27 Business Route on Hale County Airport Property (NOTE: If you are flying in, Sale Site close to Airfield). Take exit 45 on 99 off I-27. Deadline for getting equipment into place is Saturday, August 17, 1996 at 6:00 p.m. -- Consignments will be accepted until August 17, 1996.

### \* \* \* \* FIVE BIG DAYS \* \* \* \*

**TUESDAY, AUGUST 20, 1996 -- SALE TIME: 10:00 A.M.**  
Combines--Cornheads--Headers--Attachments--Grain Carts--Augers--Combine Trailers--Grain Equip.

**WEDNESDAY, AUGUST 21, 1996--SALE TIME: 10:00 A.M.**  
Grain Trucks--Truck Tractors--Implement Trucks--Trucks--Trailers--  
Float Trailers & Other Truck Pulled Trailers--Motor Homes & Mobile Homes

**THURSDAY, AUGUST 22, 1996--SALE TIME: 10:00 A.M.**  
Cotton Strippers (Self Propelled)--Cotton Strippers (Tractor Mount)--Module Builders--Boll Buggies--  
Cotton Trailers--Stock Trailers--Livestock Equip.--Pipe & Irrigation Equip.--Hay Equip.--Ensilage Equip.

**FRIDAY, AUGUST 23, 1996--SALE TIME: 10:00 A.M.**  
Tractors--Loaders--Front-End Loaders--Tractor Make-Ups--Grain Drills--  
Buckhoes--Motor Graders--Forklifts--Crawlers--Miscellaneous Related Items

**SATURDAY, AUGUST 24, 1996--SALE TIME: 9:00 A.M.**  
Implements & Tools--Implement Trailers--Utility Trailers--Tanks--Toolbar Make-Ups--Non-Classified  
PLEASE NO SMALL MISCELLANEOUS ITEMS

NOTE: ALL EQUIPMENT MUST BE REMOVED FROM PROPERTY BY SEPTEMBER 10, 1996

### COME AS BUYER OR CONSIGNOR

For more information or to consign, call:

## Cruce & Fletcher

P.O. Box 609 -- Wolforth, Texas 79382

JAMES G. CRUCE Plainview, TX (806)296-5050 Lic # 4704

BOBBY FLETCHER Wolforth, TX (806)866-4201 Lic # 7131

AUCTIONEERS & REAL ESTATE BROKERS



Ronald Byrd  
Licensed Broker  
Farwell, Texas

Office (806) 481-3846  
Mobile (505) 760-1495  
308 Third St., Farwell, TX

**Crista Bass**  
Sales Associate  
Home (806) 925-6464

**In The Country, 3 bedroom, 1 3/4 bath, 2 car garage. Additional 2 bedrooms, 1 bath home. 30' x 80' quonset barn, large domestic well, 2 x 6 metal R.V. storage building. Highway frontage. All on 8 acres. Many, Many extras! Call For Details**  
**78 Acres NW of Muleshoe, Highway Frontage.** Excellent development property. Owner will sell as one unit for \$40,000 or will divide into 5 or 10 acre tracts at \$750.00 per acre. If you have wanted a small acreage, this is your prime opportunity

Northwest of Muleshoe - Nice 3 bedroom, 1 3/4 bath home, has nice utility room and large living room with single car garage. Also large storage building and an additional mobile home hook-up. Call for more details

### MUST SELL! 1995 Ford Contour

Power windows, power locks, air conditioning, AM/FM cassette, automatic, cruise, power mirrors, rear window defroster, and much more. No old contract to assume, no back payments to make, just need responsible party to make reasonable monthly payments.

Contact Freddy in the credit dept.  
Friona Motors, 806-247-2701

### MUST SELL! 1994 Chevrolet Silverado

4x4, Power windows, power locks, tilt, cruise, AM/FM stereo, 350 V-8, 4 speed automatic with overdrive, air conditioner, rally wheels, rear chrome bumper and much more No old contract to assume, no back payments to make, just need responsible party to make reasonable monthly payments.

Contact Freddy in the Credit Dept.,  
Friona Motors, 806-247-2701

### MUST SELL 1995 Ford Mustang

Convertible, power windows, power locks, AM/FM Stereo cassette, tilt steering wheel, cruise control, dual electric mirrors, aluminum wheels and much more. No old contract to assume, no back payments to make, just need responsible party to make reasonable monthly payments.

Contact Eddie in the credit dept.  
Friona Motors, 806-247-2701

## Nieman Realty

**George Nieman, Broker** 272-5285 or 272-5286

**116 E. Ave. C**

**RICHLAND HILLS**  
JUST LISTED-IMMACULATE 3-2-2 Brick Home, Geo. Heat Pump, Built-ins, FP, Nice landscaped yd., Stor. Bldg., MORE!! \$70's!!! RH3  
NICE 3-3-1 Brick, cent. Heat, Evap. Air, built-ins, 2000' + Iv. area, fenced yd., stor. bldg., MORE!! \$60's!!! RH-2  
VERY NICE 3-2-2 Brick, cent. A&H, built-ins, FP, approx. 2,000' + Iv. area, auto, spkrl., storage bldg., fenced yd., MORE!!! \$60's!!! RH-1  
NICE 3-2-2 Brick, cent. A&H, built-ins, FP, approx. 2150' Iv. area, fenced yd., MORE!!! \$69K!!! RH-7  
**HIGHLAND AREA**  
VERY NICE 2-1-1 Home, wall furnace, window air, nicely decorated, storm cellar, stor. bldg. \$20's!! HL-7  
2 Bdrm, 1 bath home, fenced yard. \$16,500!!! HL-4  
VERY NICE 3-2-2 Brick, Cent. A&H, built-ins, fenced yd., spkrl. sys., MUCH MORE!!! \$60's!!! HL-1  
3-2-2 home, Cent. A&H, built-ins, fenced yd., corner lot. \$30's!!! HL-2  
VERY NICE 3-2-1 carport Home, heat pump, built-ins, nice carpet, fans, storage-workshop! MUCH MORE!!! \$40's!!! HL-6  
NICE 3-2 Home, Heat Pump, FP, fenced yd., stor. bldg. \$30's!! HL-3  
VERY NICE 3-11/2-2 carport home, Geothermal Heat Pump, built-ins, FP, fenced yd., Stor. Bldg.!!! HL5

**COUNTRY CLUB**  
2-1-1 carport home, wall furnace heat, nice carpet, storm shelter, storage bldg., fenced yd. MORE!!! \$20'S.

**RURAL HOMES**  
NICE 3- 2-2 Brick, cent. A&H, built-ins, FP, approx. 15 acres, irrig. well & equip., barns, corrals, MUCH MORE!!! \$95K!!! HR-4  
NICE 3-2-2+2 Carport Brick Home on 2.5 acres on pavement, close to town, Heat Pump, built-ins, FP, MUCH MORE! \$70K!!! HR-3  
JUST LISTED -3-2-2 Home 1.36 ac. on pavement, Cent. A&H, built-ins, freshly painted interior & exterior, fans, fenced yd., 31' x 40' barn!!! \$40's!!! HR-2

**ASK ABOUT OUR COMMERCIAL LISTINGS!!!**  
160 acre tract, 8" well, circle spkrl. w/drops, fully allotted!!  
PARMER - BAILEY CO. Area-Elevator & Cleaning Facility - 12 million lb. Capacity, Scales, Dryer, & Office on approx. 6.5 acres!!! PRICED TO SELL!!! POSSIBLE OWNER FINANCING!!!

**LENAU ADDITION**  
Nice 2-2-2 Brick, on corner lot, heat pump, fenced yard, storage bldg., MORE! \$40's!!! L-1  
NICE 3-2-1 carport Home, geothermal heat pump, fenced yd., storage bldg. \$27,500!!! L-3  
NICE 3-2-1 Home, built-ins, heat pump, extra insulation, fenced yd., stor. bldg., \$30's!!! L-4

**HIGH SCHOOL**  
NICELY REMODELED 3-2-2 carport Home, Heat Pump, built-ins, fans, fenced yd., stor. bldg., & MORE!!! \$40's!!! HS-8  
NICE 2-1-1 Brick, Heat Pump, nice carpets, well insulated, storm windows & doors. \$30's!!! HS6  
NICE 3-1 3/4 - 1 Brick Home, Cent. Heat, Evap. Air, Built-ins, fans, fenced yd., MORE!!! \$30's!! HS-2  
JUST LISTED -2-1-1 Home, floor & wall furnace, evap. air, siding exterior, stor. bldg., fenced yard!!! \$20's!!!! HS-7  
JUST LISTED-NICE 2-1-1 Home, nice carpets, stove, refrig., wall furnace, covered deck, fenced yd., stor. bldg., MORE!!! \$20's!! HS-4  
NICE 4-3 Home on corner lot, Heat Pump, built-ins, FP, fenced yd., stor. bldg., 3100+ Lv. area, storage basement, MORE!!! \$70's!!! HS-9

# Shurfine & Shursaving Back To School Sale

All Types  
**COCA-COLA, SPRITE OR  
DR. PEPPER**  
6 pack, 12 oz. cans **\$1.99**



All Types  
**Coca-Cola, Sprite  
or Dr. Pepper**  
6 pack, 20 oz. btl.  
**2/\$5**

## MEAT

- Sliced Bologna
- Salami • P & P Loaf
- Spiced Luncheon
- Garlic Bologna

Shurfine  
**Luncheon Meat**  
12 oz. pkg. **79¢**



Family Pack,  
Preferred Trim Boneless  
**Round Steaks**  
lb. **\$1.19**

- Small Package Preferred Trim Boneless **Round Steak** ..... lb. **\$1.39**
- Preferred Trim Sirloin **Tip Steak** ..... lb. **\$1.99**
- Preferred Trim Boneless **Rump Roast** ..... lb. **\$1.99**
- Tenderized Beef **Cube Steak** ..... lb. **\$2.19**
- Fresh **Ground Round** ..... lb. **\$1.19**
- Pilgrim's Pride Grade A **Drumsticks or Thighs** ..... lb. **79¢**
- Shursaving Smoked, Boneless **Whole Hams** ..... lb. **\$1.59**
- Fresh **Pork Butt Roast** ..... lb. **\$1.29**
- Fresh **Pork Steak** ..... lb. **\$1.39**

- Shurfine Quality, 1 lb. pkg. **Sliced Bacon** ..... **\$1.79**
- Shurfine Regular or Polish **Smoked Sausage** .... lb. **\$1.39**
- Shurfine, 12 oz. pkg. **Meat Wieners** ..... **69¢**
- Shurfine, 12 oz. pkg. **Beef Wieners** ..... **99¢**
- Shurfine, 12 oz. pkg. **Chopped Ham** ..... **\$2.19**
- Shurfine Breakfast, 11 oz. pkg. **Link Sausage** ..... **99¢**
- Shurfine, 7.5 oz. pkg. **Chicken Salad** ..... **99¢**
- Shurfine, 7.5 oz. pkg. **Ham Salad** ..... **\$1.19**
- Shurfine, 12 oz. pkg. Sliced Ham or **Turkey Breast** ..... **\$2.49**
- Shurfine, 1 lb. roll, Mild or Hot **Breakfast Sausage** .... **\$1.29**

## PRODUCE



Extra Large  
Sweet Juicy  
**Peaches**  
lb. **89¢**

- Shurfine Cereal, 14 oz. box **Magic Stars** ..... **\$1.99**
- Shurfine Cereal, 17.3 oz. box **Bran Flakes** ..... **\$1.99**
- Shurfine Cereal, 18 oz. box **Corn Flakes** ..... **\$1.29**
- Assorted Varieties Hershey's **Candy Bars** ..... 6 pack pkg. **\$1.99**
- Shursaving All Purpose **Flour** ..... 5 lb. bag **79¢**
- Shurfine Crushed/Chunk/Sliced Natural Juice **Pineapple** ..... 15 oz. cans **2/\$1**
- Shurfine, 8 oz. cans **Tomato Sauce** ..... **6/\$1**
- Shurfine, 12 oz. can **Luncheon Meat** ..... **\$1.29**
- Shurfine, Creamy or Crunchy **Peanut Butter** ..... 18 oz. jar **\$1.39**
- Shurfine **Ketchup** ..... 32 oz. btl. **89¢**
- Shurfine Asstd., 12-15 oz. boxes **Instant Oatmeal** ..... **2/\$3**
- Shurfine, Regular or Unsalted **Crackers** ..... 1 lb. box **69¢**
- Shurfine Gravy/Chuck **Dog Food** ..... 40 lb. bag **\$7.89**
- Shurfine, Orig. or Hickory **BBQ Sauce** ..... 18 oz. btl. **59¢**
- Shursaving, 12 oz. cans **Evaporated Milk** ..... **2/89¢**
- Shursaving **Napkins** ..... 250 ct. pkg. **\$1.69**

Dole Salad Mix  
1 lb. bag **\$1.49**

**BUY ONE, GET ONE FREE!**

- New Crop, Texas Zucchini or **Yellow Squash** ..... lb. **69¢**
- Fresh Crisp **Stalk Celery** ..... ea. **39¢**
- Fresh **Hot Jalapenos** ..... 1 lb. pkg. **99¢**
- Sweet Valencia **Oranges** ..... 4 lb. bag **\$1.29**
- Fresh Ruby Red **Grapefruit** ..... extra large **2/\$1**
- Giant Size Sno-White **Cauliflower** ..... ea. **\$1.49**
- Italian Sweet **Red Onions** ..... lb. **49¢**

- Shurfine White Facial **Tissue** ..... 175 ct. box **89¢**
- Shurfine, 150 ct. box **Sandwich Bags** ..... **89¢**
- Shurfine Reg./Clear Tall **Kitchen Bags** ..... 15 ct. box **\$1.19**
- Shurfine, 12"x75" roll **Aluminum Foil** ..... **\$1.79**
- Shurfine Plastic, 100' roll **Food Wrap** ..... **99¢**
- Shursaving Concentrated Laundry **Detergent** ..... 10 lb. pail **\$3.99**
- Shurfine Fabric Softener **Sheets** ..... 40 ct. boxes **2/\$3**
- Shurfine Plain or Iodized **Salt** ..... 26 oz. ctns. **3/\$1**
- Shurfine Asstd. Deluxe **Dog Food** ..... 13 oz. cans **5/\$2**
- Shursaving Quality **Cat Litter** ..... 25 lb. bag **\$2.29**
- Shursaving, 200 ct. bag **Coffee Filters** ..... **89¢**
- Shurfine Reg./Lite, 16 oz. jar **Coffee Creamer** ..... **\$1.19**
- Shurfine With Sports Cap **Spring Water** ..... 1 liter, 33.8 oz. **69¢**
- Shurfine Asstd., 11 oz. box **Toaster Pastry** ..... **99¢**
- Shurfine Complete, 32 oz. box **Pancake Mix** ..... **\$1.19**
- Shurfine Asstd. 24 oz. btl. **Pancake Syrup** ..... **\$1.39**

## BACK TO SCHOOL VALUES!!

- Shurfine, 18 oz. jar **Grape Jelly** ..... **99¢**
- Shurfine, 18 oz. jar **Apple Jelly** ..... **99¢**
- Shurfine Seedless **Raisins** ..... 6 ct. pkg. **99¢**
- Shursaving, 25 oz. jar **Apple Sauce** ..... **79¢**
- Shursaving Cocktail, 64 oz. jar **Apple Juice** ..... **\$1.39**
- Ruby Red Tangine or Grapefruit **Shurfine Juice** .... 64 oz. btl. **\$1.99**
- Shurfine, Assorted Cranberry **Cocktail** ..... 64 oz. btl. **2/\$5**
- Shursavig Pieces & Stems **Mushrooms** ..... 4 oz. jar **69¢**

- Asstd. Spagging & Spag. W/Cheese Sauce **Shurfine Pasta** ..... 18 oz. cans **2/\$1**
- Asst. Spaghetti & Ravioli, With Meat **Shurfine Pasta** ..... 15 oz. can **79¢**
- Shurfine Pitted Large **Ripe Olives** ..... 6 oz. jar **\$1.19**
- Shurfine Kosher Dill/Sour **Pickles** ..... 32 oz. jar **\$1.59**
- Hamburger Sliced or Whole Kosher/Dill/Sour **Shurfine Pickles** ..... 22 oz. jar **\$1.39**
- Shurfine Whole Sweet **Pickles** ..... 22 oz. jar **\$1.89**
- Shurfine Asstd. Reg. or Lite **Salad Dressing** ..... 8 oz. btl. **89¢**
- Shurfine White **Vinegar** ..... 32 oz. btl. **69¢**
- Shurfine White **Vinegar** ..... 128 oz. btl. **\$1.69**

- Pork & Beans • Pinto Beans
  - Mexican Style Chili Beans
  - Short Cut Green Beans
  - Blackeye Peas • Sauerkraut
  - Golden or White Hominy
  - C.S./W.K. Golden Corn
  - Sweet Peas • SHURSAVING
- Vegetables**  
14-15.2 oz. cans **4/\$1**

- Shurfine Asstd. **Ice Cream** ... 1/2 gal. sa. ctns. **3/\$4**
- Shurfine, 6 pk **Ice Cream Sandwiches** ..... **\$1.39**
- Shursaving 2-Ply **Paper Towels** ..... **2/89¢**
- Shurfine Liquid **Bleach** ..... gal. jug **69¢**
- Shurfine Assorted **Coffee** ..... 13 oz. can **\$1.69**
- Shursaving All Purpose **Flour** ..... 25 lb. bag **\$2.99**
- Shursaving, 4 roll pkg. **Bath Tissue** ..... **69¢**
- Shurfine, 3 liter btl. **Soda Pop** ..... **89¢**
- Shursaving Macaroni & Cheese **Dinners** ..... 7.25 oz. boxes **5/\$1**
- Shurfine Asstd. Varieties **Potato Chips** ..... 6 oz. bag **69¢**
- Shurfine All Varieties, 40 oz. bag **Nacho or Tortilla Chips** ..... **\$1.99**
- Shurfine Medium or Mild **Salsa** ..... 11.5 oz. jar **\$1.19**

## Frozen Specials

- Shurfine White or Pink **Lemonade or Punch** ..... 12 oz. can **59¢**
- Shurfine **Sliced Strawberries** ..... 16 oz. size **\$1.39**
- Shurfine **Whipped Topping** ..... 12 oz. can **\$1.19**
- Shurfine Citrus Cut or Regular Cut **Potato Fries** ..... 32 oz. pkg. **2/\$3**
- Shurfine Nuggets/Patties or Chicken **Bread Tenders** ..... 9-10 oz. size **\$1.79**
- WK Golden Corn • Green Peas • Cut Green Beans • Mixed Vegetables **Shurfine Vegetables** ..... 16 oz. bag **99¢**
- Shredded Mini **Corn On The Cob** ..... 8 ear pkg. **\$1.39**

- Shurfine **Orange Juice**  
16 oz. can **\$1.19**
- Shurfine Round, Blueberry or Buttermilk **Waffles**  
11 oz. pkg. **\$1.19**

## Dairy Specials

- Shurfine Soft **Vegetable Oil Spread**  
3 lb. tub **\$1.19**
- Shurfine Buttermilk or Butter Flavor **Jumbo Biscuits** ..... 16 oz., 8 ct. **99¢**
- Shurfine Jumbos **Cinnamon Rolls** ..... 16 oz. can **\$1.89**
- Shurfine M&S **American Singles** ..... 16 oz. pkg. **2/\$5**
- Shurfine Colby/Colby Jack/Longhorn Cheddar **1/2 Moon Cheese** ..... 10 oz. pkg. **\$1.89**
- Shurfine Brick **Cream Cheese** ..... 8 oz. pkg. **89¢**
- Shurfine Grated **Parmesan Cheese** ..... 8 oz. can **\$2.39**
- Shurfine Shredded Cheddar/Cheddar Jack/for Mozzarella **Shurfine Cheese** ..... 8 oz. pkg. **\$1.69**

- Shurfine, Assorted Basic Med./Large **Diapers**  
18-24 ct. bag **\$3.49**

## Super Students Values

- Kleenex 175 ct. Classics, 70-95 ct. Boutique or Ultra **Facial Tissue** ..... ea. box **89¢**
- Sunshine Regular or Hot & Spicy **Cheez-It** ..... **\$1.69**
- Shurfine, 10 oz. box **Snack Crackers** ..... **\$1.69**
- Hornel Assorted Microwave Cups **Kid's Kitchen** ..... 7.5 oz. cups **4/\$3**
- Assorted Sugar Sweetened Drink Mix **Kool-Aid** ..... makes 8 qts. **\$2.39**
- Twix, Mar's Almond Bar, Milky Way, Snickers, or 3 Musketeers **Candy Bars** ..... 6 ct. pkg. **\$1.99**

Shurfine **Charcoal Briquets**  
10 lb. bag **\$1.49**

Shursaving **Granulated Sugar**  
4 lb. bag **\$1.29**

- Shurfine, 32 oz. btl. **Charcoal Lighter** ..... **99¢**
- Acco **Neon Binder** ..... ea. **79¢**
- Black or Blue, Round Side **Bic Pens** ..... 10 pack **89¢**
- 3 Subject **Mead Notebook** ..... 120 ct. **99¢**
- 16 ct. pkg. **Crayola Crayons** ..... **99¢**
- Painted **Scissors** ..... each **59¢**
- Safety **Scissors** ..... each **59¢**
- Elmers School Glue Stick-.21 oz.
- Elmers School Glue-1.25 oz.
- Small Zipper Pouch
- Yellow Pencils - 7 ct. **YOUR CHOICE 99¢**

## BACK TO SCHOOL LIST

- Mead Original **Big Chief Tablet** ..... 115 sheets, 7 7/8x12 in. **\$1.19**
- Black, Blue, or Red **Marks** ..... **69¢**
- A Lot ..... ea. **69¢**
- Wide Ruled, 60 sheets **Garfield Notebook** ..... **\$1.59**
- Small **Zipper Pouch** ..... ea. **39¢**
- Mead Bond, 200 sheets **Typing Paper** ..... **\$1.79**
- Mead, 120 sheets **3 Subject Notebook** ..... **99¢**
- Mead Wide Ruled, 5 Subject, 180 sheets **Theme Book** ..... **2/\$3**
- Original **Trapper Keeper®** ..... ea. **\$5.99**
- 5 Tab **Index Dividers** ..... **39¢**
- Helping Hand **Combination Padlock** ..... ea. **\$1.99**
- Portfolio **Twin Pocket** ..... **2/\$1**
- Crayola®, 96 ct. box **Crayons** ..... **\$4.99**
- Pink Eraser ..... **3/\$1**
- Yellow **No. 2 Pencils** ..... ea. **1¢**
- Eberhard Faber **No. 2 Pencils** ..... **2/\$1**
- Medium Black or Blue **Write Bros., 2 pack** ..... **2/\$1**
- Red Fine or Black Fine/Black Ultra Fine, Sharpie **Ball Pens** ..... **2/\$1**
- Blunt or Sharp, 5" Fiskars **Scissors** ..... ea. **\$1.88**
- Eberhard Faber **Scissors** ..... ea. **39¢**
- Pointed or Safety **Scissors** ..... ea. **39¢**
- Brile **Liner Yellow** ..... **59¢**
- Washable, 8 ct. box **Watercolors** ..... **59¢**
- Glue-All or Regular/Gel, 4 oz. btl. **Elmer's® School Glue** ..... **59¢**
- 12" Plastic **Ruler** ..... ea. **29¢**
- Mead 3 Brad Cover With Pockets **Portfolios** ..... **5/97¢**
- Elmer's®, 1.25 oz. btl. **School Glue** ..... ea. **39¢**

## Health & Beauty Aids

- Asstd. Baking Soda
- Tartar Control Gel or Paste
- Cool Fresh Flavor
- Western Family **Tooth Paste**  
5-7 oz. box **99¢**
- Western Family, Med. or Soft Angle **Tooth Brushes** ..... 1 ct. pkg. **79¢**
- Western Family Baking Soda/Peppermint or Mint **Mouthwash & Gargle** ..... 24 oz. btl. **\$1.49**
- X-Strength 500 MG •X-Strength Caplets •325 MG Tablets **Western Family Non-Aspirin** ..... 24 ct. btl. **\$1.29**
- Children's Chewable •Children's Chewable With Iron **Western Family Multi Vitamins** ..... 100 ct. btl. **\$2.69**
- Western Family, Vitamin-COMPARE TO PRO-V **Shampoo & Conditioner** ..... 13 oz. btl. **\$1.99**

- Western Family, Skin Care **Lotion**  
15 oz. btl. **\$1.69**
- Western Family, Assorted **Dental Floss**  
100 yard roll **99¢**

WESTERN MONEY UNION TRANSFER™  
"The fastest way to send money"

# Lowe's MARKETPLACE

515 W. American Blvd. Muleshoe  
401 W. American Blvd. Muleshoe 272-4585  
Muleshoe 272-4406

WE RESERVE THE RIGHT TO LIMIT QUANTITIES IN TEXAS

PRICES EFFECTIVE AUG. 7-13, 1996  
OPEN MONDAY-SATURDAY 7:30 A.M. - 9:00 P.M., SUNDAY 8:00 A.M. - 8:00 P.M.