

The PLAINSMAN

Formerly The Ropes Plainsman

TEXAS PRESS ASSOCIATION
MEMBER

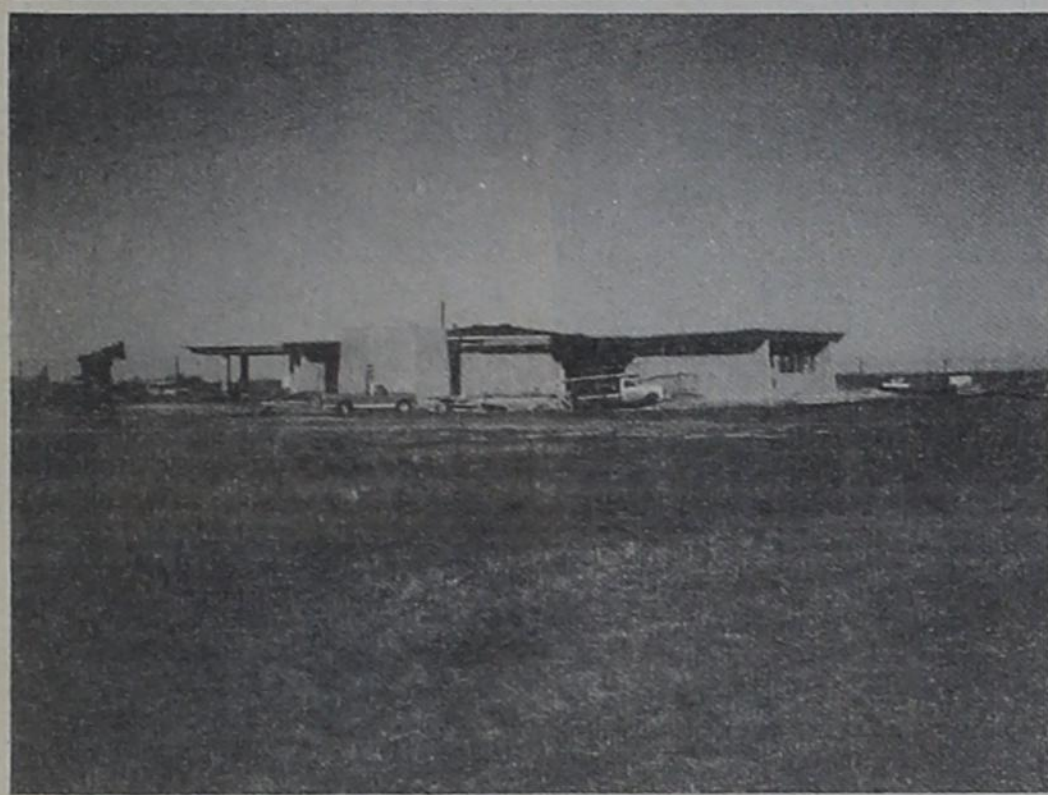
Eight Pages

Vol. 41, No. 30 — Thursday, December 23, 1976

Second Class Postage Paid at Wolfforth, Texas 79382

Ten Cents

Regional EMS May Hint Hospital District Expansion



Progress on the American Bank of Commerce at Wolfforth continues as the building nears completion.

Yule Legends Span Many Years and Many Lands

Did you know that the first Christmas tree erected in a church in U.S., in 1851 shocked its Cleveland congregation. It was considered too heathenish!

America gave the world its most Beloved Christmas plant—the poinsettia. The plant is a native of tropical America.

Slow Down For Safety

The hustle, bustle and excitement of the holidays are part of what makes the Christmas-New Year time a special season. That same exuberance can also lead people to drop their guard, and all too often the season is marred by the tragedy of an accident.

Slow down during the holidays and take time to be safe, advises the Texas Safety Association. Take a minute to read these holiday safety reminders.

Get yourself organized well ahead of meals, parties, decorations and such holiday activities. Frantic, poorly organized preparation times can set you up for an accident, as well as causing increased fatigue.

Take time to check wiring and extension cords for broken insulation, loose sockets and electric load limitations. Remember that metallic Christmas trees should not have lights strung on them, but should be highlighted with indirect lighting. Real candles should never be used on

Bayberry candles, which are said to fortell good luck for the coming year if they burn bright at Christmas, were first made by early settlers in America. They dipped bayberry branches in wax and burned them during the holidays.

The story is told that over a hundred years ago, a parish priest in Salsburg, Austria, returning late one night from administering last rites to a dying woman, was awed by the particular majesty of the still, sparkled-with-stars night; he went home, wrote the lovely, haunting words of "Silent Night, Holy Night." With his organist, Franz Gruber, playing the great music on his guitar, the Father, Joseph Mohr, first introduced the strains of this popular hymn to a small congregation in Austria.

any kind of tree, or around any flammable decorations. Natural trees should be in stands that hold water or buckets of wet sand to keep dry trees from becoming a fire hazard.

Be safety minded when buying gifts for children. Consider the age and physical ability of the child and check manufacturers' age suggestions. Be especially careful in purchasing electrical toys and other gifts, which should have the UL label. Flame-retardant clothing gifts provide an added measure of safety and thoughtfulness.

The Texas Safety Association asks that you take time for safety all during the holidays.

by Cliff Avery
Residents in nearby counties may be seeing Emergency Medical System ambulances on their streets soon, if the Lubbock County Hospital District and the Texas Tech Medical School get a federal grant to expand the service.

The hospital district staff is preparing an application for the grant from the Department of Health, Education and Welfare, after the LCHD board of managers authorized the staff to proceed at its Monday meeting.

While residents of the outlying counties may be seeing the

ambulances, they could also be seeing higher tax bills, if their counties are incorporated into an expanded hospital district.

State Rep. Joe Robbins of Lubbock is preparing legislation to expand the district to a 15-county area. The plan, it is hoped, would increase the tax base to pay for the financially-troubled teaching hospital the district is building. (The managers Monday set the opening date for the new facility back to February, 1978, to see if they can resolve financial difficulties before taking in patients.)

Privately, hospital district officials express some reservations about the Robbins measure, noting that there may be problems reconciling the legislation with the state constitution, and that residents in the counties near Lubbock would have to vote themselves into the district — a process which could take years to complete.

Rather, hospital district managers are concentrating support on legislation designed to have the state assume financial support for teaching operations at the hospital. The local district officials met in Dallas with officials of other teaching hospitals recently to coordinate efforts to pass the legislation.

The hospital group named Jerry Hall, former press secretary for Gov. Preston Smith and a former Lubbock reporter, as coordinator for the legislative effort. The bill for the Hall's services, managers said Monday, will be picked up by local chambers of commerce.

The catch in this cooperative effort is that other teaching hospitals have turned thumbs down to any measure which might give start-up costs to the Lubbock facility. But without those start-up costs, any money the state might give to the teaching hospital will be a drop in the bucket, some officials fear.

But recognizing their colleagues' reluctance to have the state pay for Lubbock's problems, local district managers have opted to present a united front to the legislature and declared Monday, in the words of chairman pro tem Jack Strong, that including start-up costs in any legislation is "a dead issue."

Manager Joe Stanley said that the subject of start-up costs was broached at the meeting in Dallas and was "poorly received" by other teaching hospital officials.

The hospital district doesn't know how much money the legislature will give the local facility, but apparently believes that a one-two punch — a right cross with the state paying teaching costs and a jab with an enlarged district — will knock the problems of the hospital — which would bring in about \$35 million a year to the Lubbock economy — to the canvas.

The EMS grant is one step in that direction. Stanley said the expansion of the ambulance service is "a forerunner to expanding the district."

He said that in talks with the South Plains Health Systems officials, "there is some interest. If we solidified a regional EMS we could earn our spurs with other counties to expand the district."

West Texans Named to State Task Force by Gov. Briscoe

Four area persons have been named by Texas First Lady, Mrs. Dolph Briscoe, to a state wide task force to seek community solutions to the problems of elderly Texans. They will work with groups of retired persons and with agencies concerned with problems of the aging to sponsor a public forum in Lubbock early next year to gather ideas for grass roots solutions to local problems on the South Plains.

Local task force members include Mrs. Carolyn Jordan, Lubbock city council member and past president of the South Plains Association of Governments; Dr. Walter Cartwright, professor and past chairman of the Texas Tech University sociology department; Garza County Judge Giles Dalby of Post; and former Hale County Judge C. L. Abernathy of Plainview.

The forum, to be called The Generation Connection, will seek to arouse public concern, solicit ideas to help older persons continue to be productive, self-reliant, and self-determining. It will involve business and industry by urging them to employ those still able and eager to work, encourage churches, civic groups, and local governments to meet volunteer needs for transportation, housing, medical help, and other needs, and advocate new legislation for the protection of older citizens from life-threatening situations, and assure legal representation for old people when others are seeking guardianship over them.

Pointing out that the number of people over 65 is increasing at more than double the rate of persons under 65, Mrs. Briscoe said, "We have had notable success in prolonging life. We have had considerable less success in making that longer life more enjoyable and productive. We must view these mature people as a resource, not a burden, and we must build a society where one can age with dignity and purpose."

Cosponsors of The Generation Connection whose local representatives will work with the task force members in planning the Lubbock forum include The Texas Association of Regional Councils,

Ropes School Holidays Begin

Ropes schools will be out from Dec. 22, 1976 through Jan. 2, 1977. Classes will resume Jan. 3, 1977. Ropes varsity basketball teams will play Bledsoe on Dec. 31 at 6:30 at Bledsoe.

Texas Senior Citizens Association, National Retired Teachers Association, American Association of Retired Persons, National Association of Retired Federal Employees, First Lady's Volunteer Program, Governor's Committee on Aging, and the State Department of Public Welfare.

Vanessa Word

Vanessa Word, a senior at West Texas State University from Wolfforth, is a member of the women's bowling team which placed second in the recent New Mexico-West Texas Collegiate Bowling Conference.

In the women's division of the conference meet hosted by WTSU, New Mexico State placed first with Texas Tech University in third place, and ENMU taking fourth place.

After three conference meets, NMSU is sitting in the top position in the conference with WTSU in second and Tech and ENMU in third and fourth place.

Before the recent meet, the WTSU women were in the top conference position. Three conference meets remain on the schedule for the team for next semester.

Miss Word, a major in health, physical education and recreation, is the daughter of Maurine Word.

Ropes Basketball

Ropes varsity boys defeated Roosevelt Dec. 14, 58-55. Ropes Gary Means scored 21 points and Roosevelt's David Taylor and Sylvester Jackson each scored 16.

Ropes varsity girls lost to New Home Dec. 14 by 53-58. Sherry Means scored 23 points for Ropes and Rene Burrow put in 34 for New Home.

Ropes junior varsity girls defeated New Home 47-30 Dec. 14. Cheryl Fowler scored 17 high points for Ropes and J. Johnston scored 20 for New Home.

Ropes varsity boys topped Abernathy junior varsity 83-53 Dec. 17. Gary Means scored 21 points for Ropes and Lee McCune scored 11 for Abernathy.

Ropes varsity girls lost to Whiteface 52-65 Dec. 17. Sherry Means scored 34 points for Ropes and Lynette Joiner scored 26 for Whiteface.

Ropes junior varsity girls lost to Whiteface Dec. 17 with a score of 45-49. Regina Melton scored 22 high points for Ropes and Elise Castaneda scored 27 for Whiteface.

Comptroller Sends \$302.8 Million Rebate to Cities

State Comptroller Bob Bullock said last week that Texas cities received a total of \$302.8 million in city sales tax rebates during the 1976 calendar year, a 14.4 percent increase over 1975.

"The jingling of those cash registers has been music to ears, both at the state and city level," Bullock said.

Bullock said his office mailed checks totaling \$50.6 million

today to 864 Texas cities as their December rebate of the one-cent city sales tax.

The December rebate was \$9.8 million over that for the same month a year ago.

The biggest check — \$10.3 million — went to the City of Houston. Tiny Bloomburg will receive the smallest — \$4.42.

The city sales tax is collected by retailers

"Extension Update"

by Georgia Doherty

One of my favorite foods available during this time of year is squash. Not only does it taste great, but it is also excellent nutritionally.

Squash is no longer classified "summer" or "winter"—but by

hardness of the shell and maturity.

What may be called summer squash is more correctly labeled soft shell. And hard shell is the name of squash more plentiful during the winter.

This is the season of the year when hard shell squash is coming to market. Varieties now available include acorn, buttercup, butternut and hubbard.

If you are buying hard shell squash be sure the rind is firm. This vegetable will keep for several weeks if stored in a moderately cool, dry place. It does not require refrigeration.

Winter squash has golden-colored flesh which is dry with a "sweetish" taste.

Golden or yellow-orange-colored flesh is the sign of Vitamin A content. In fact, winter squash is a very good source of Vitamin A.

Smaller types of hard shell squash, like the acorn, are usually cut in half, seeds removed, baked, seasoned and served in the shell. An excellent seasoning to use is butter, sugar and/or brown sugar.

The larger squash, such as hubbard, are usually cut into pieces, baked, pulp removed, mashed and seasoned. Or, you may prefer to remove seeds, cut off the rind, boil, mash and season. Hard shell squash may be

more easily cut if placed in boiling water for about 10 minutes.

Create New Looks with Border Print Fabrics

Border print fabrics are strong fashion design favorites because of their creative, interesting and different effects for a variety of garments.

Everywhere you look, border prints are present—in all types of cloth goods!

Featured in ready-to-wear and homesewing pattern illustrations and fabrics, border prints are moving into greater popularity.

A wide range of spring border print fabrics will be available—knits and wovens, natural fibers, synthetics and blends. Prints will vary from large scale florals, abstracts and scenes to small scale, more subtle choices. Some fabrics also will feature borders along both selvages rather than traditionally along one selvege.

Special pattern layouts and fabric yardages usually are included in pattern designs that are illustrated in border prints. When choosing a border print for other designs, additional yardage is required depending upon how the border design is to be utilized.

Easiest and most common way to emphasize a border print is to first choose a fabric with a border along one selvege. Then consider the fabric width in relation to the garment pattern piece length. Unless seamed, such as at the waist or a yoke or inset, the garment cannot be any longer than the width of the fabric.

Also, A-line and flared patterns are not suitable for border prints since side seams cannot be matched. Lay the pattern

crosswise on the fabric so that the border falls at the hemline. Position the pattern so that the hemline fold lies along the part of the border design that creates the best illusion.

4-H Club News

Ropes 4-H Club will have a caroling and hay ride Christmas party on Dec. 23. All members and guests are to meet at the cafeteria at 6:30 to prepare fruit baskets for the elderly. The caroling will begin at 7:30.

Savings Bond Sales Steady

September sales of Series E and H United States Savings Bonds in Lubbock County were reported today by County Bond Chairman Jimmie Holder. Sales for the nine-month period totaled \$2,800,091 for 85% of the 1976 sales goal of \$3,290,000.

Texas sales during the month amounted to \$21,049,995, while sales for the first nine months of 1976 total \$198,746,369 with 73% of the yearly sales goal of \$272.4 million achieved.



☆ A churchman, John Pierpont, composed the gay Christmas song, "Jingle Bells," which has been popular for over a century.

140 acres with big 8-in. well, with pump and motor, on natural gas, with electric pivot sprinkler. In Bailey County. All in corn in 1975 except corners which are in wheat. \$800. Includes sprinkler and all equipment for irrigation. Possession.

\$250,000 motel. \$50,000 down or will trade for land

LUBBOCK REAL ESTATE CO. 797-3310, DAVE AYLESWORTH 765-6168

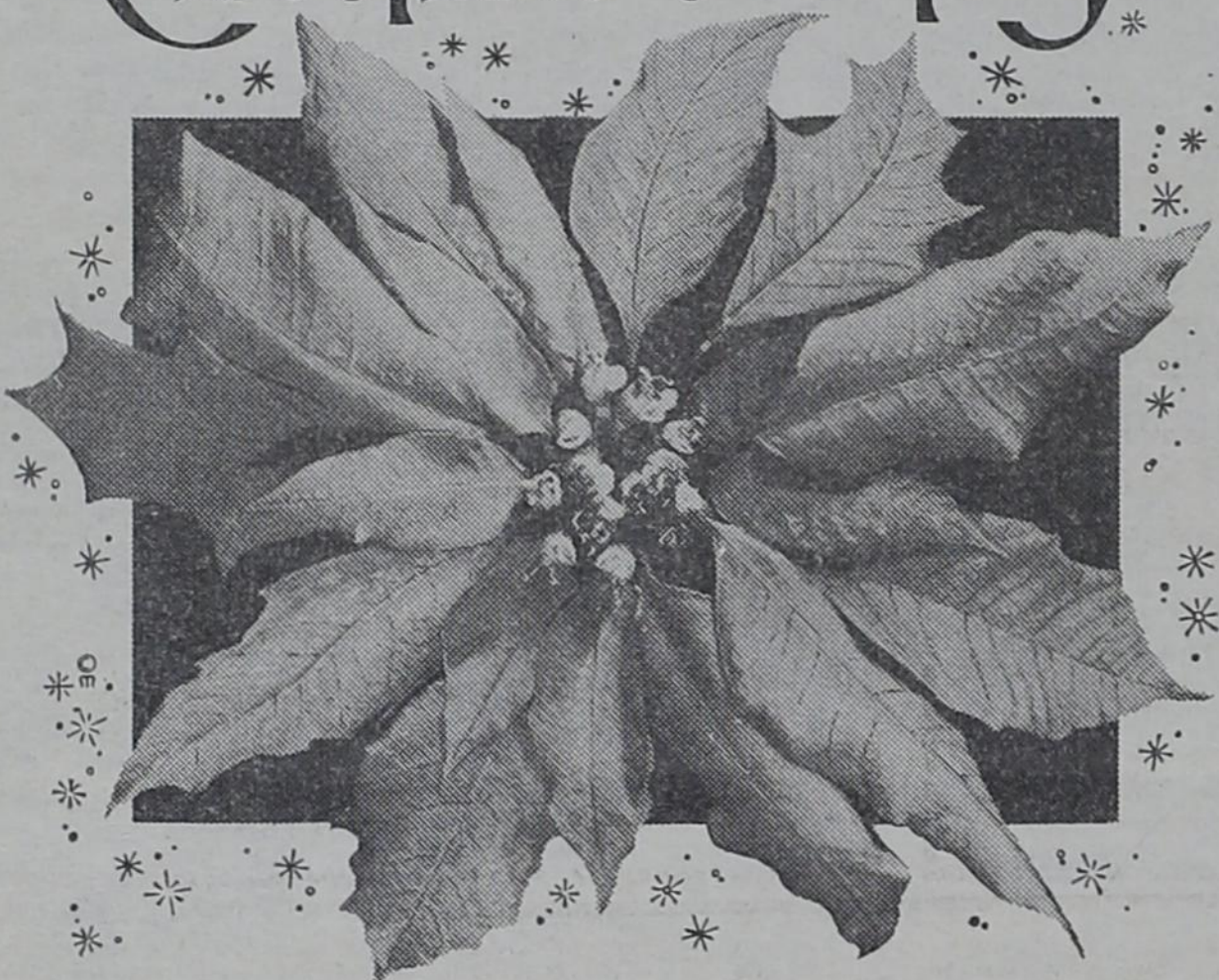
JACK BRANCH 797-3318

CHARLES GOSSETT 797-3310

LUBBOCK REAL ESTATE AND INSURANCE AGENCY

Complete Insurance & Real Estate Service

Christmas Greetings



Our wish is simple and sincere. May the holiday bring gladness to you all. Thanks to everyone.

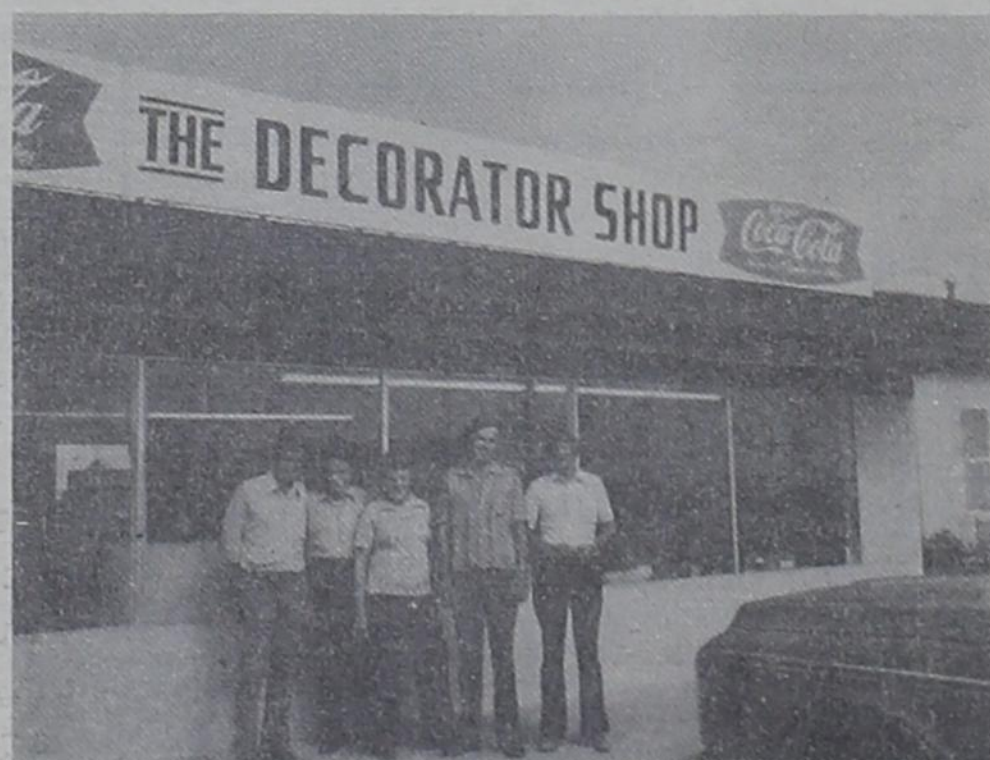
RIVERSIDE CHEMICAL COMPANY

Charles Mathis

Ropesville, Texas

Zeb Pittman

We Salute . . .



Cliff Nicholson, Mr. and Mrs. W.S. Alford, Ronald Dudley and Bill McDonald have been operating the Decorator Shop for 6 months. They have a combined experience of 68 years in custom upholstery. Cliff & Bill own the shop as a partnership. Cliff and his wife Sue have 3 children, Stacey, Slade and Leah. Bill and his wife Margy have 3 children, Jimmy, Bryan and Tanya.

doing our part to help build a better community through local commerce!



AMERICAN BANK of COMMERCE

at WOLFFORTH
P. O. DRAWER 9
WOLFFORTH, TEXAS 79382
TELEPHONE (806) 866-4218

Member F.D.I.C.



PETE'S FEED BARN

Highway 179
Wolfforth, Texas
Phone 866 4244

CUSTOM GRINDING AND MIXING

Complete line of Purina Feeds
and Animal Health Products

OPEN 6 DAYS A WEEK 7:30 a.m. to 7:00 p.m.

866-4869

Phone

THE DECORATOR SHOP

Custom Upholstery

Wolfforth, Texas

Across Across From City Hall

CHRISTMAS SALE

50% OFF

Stock Material

Many Fine Velvets

Also Have Some Nice Antique Furniture

The PLAINSMAN

(Formerly The Ropes Plainsman)

The Plainsman is an independent, privately owned newspaper, published weekly on Thursday except the first week in January and the next to the last week in July by Publication Service Company of Lubbock, Texas. Local office for The Plainsman is 818 9th Street. Address all mail and other correspondence to P. O. Box 549, Wolfforth, Texas 79382. Telephone A/C 806 866-4895.

Lubbock address of the publisher is Publication Service Company, P. O. Box 225, Lubbock, Texas 79408. Telephone A/C 806 763-4883.

Subscription Rates: One year in Lubbock and adjoining counties; \$4.50, elsewhere; \$5.00 per year.

Second Class Postage Paid at Wolfforth, Texas 79382.

Any erroneous reflection upon the character, standing or reputation of any person, firm or corporation, which may appear in the columns of this newspaper will be gladly corrected upon due notice of same being given to the managing editor personally at the office of the publisher in Lubbock, Texas, 816 Ave. Q.

Publication Service Company Publisher
Norman L. Williamson Managing Editor

Animals, Bees & Birds Play Important Parts at Christmas

One legend tells us that the barnyard animals show their adoration of the Child by falling on their knees just at midnight on Christmas Eve.

When the American Indians learned of the Baby Jesus, quite naturally they believed that the deer knelt at midnight on Christmas Eve.

The people of Norway honor all animals, even fish, at Yuletide. Cattle, birds, fish are assured of safety during the time which is known as the Peace of Christmas. No snares are set during this period. The farmers feed their cattle salt from a cow-bell in the belief that they would be able to find their way home at night.

In old Italy on Christmas Eve a curious ceremony often took place in the farmer's barn. The farmer and his shepherd would carry lighted candles into every corner of the animals' shelter holding the tapers high so that light was shed into every dark corner.

In Scandinavian literature there is a story of Jesus as a boy helping His playmates to make clay birds. When he had finished modeling his bird, He would clap his hands and the bird would take wing and fly off into the skies.

Even the bee has his niche in Christmas lore. In England long ago it was believed that the bees sang to the Christ Child at midnight on Christmas Eve. Some beekeepers still place a bit of

holly on the beehives at Christmas.

Rather than be caught up in the many meaningless chores of Christmas, why not let some of them go undone and concentrate your efforts on the true meaning of Christmas. You'll find you've created a warm feeling of family closeness and love. When Christmas morning comes, you'll be able to meet it with a new joy in having found the way to express the real meaning of the Lord's feast.

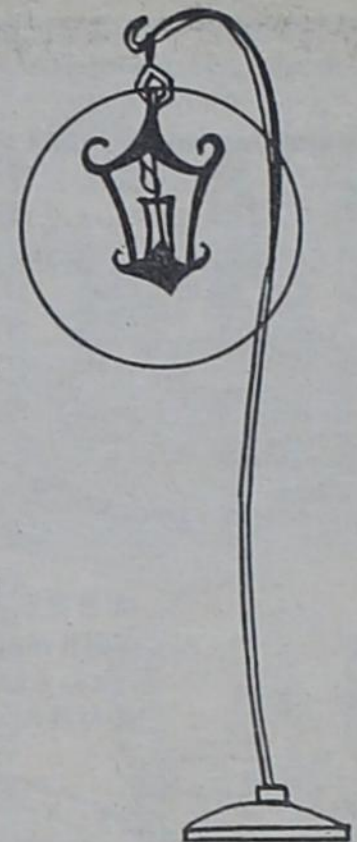
THE LAMPLIGHTER

Robert Louis Stevenson

My tea is nearly ready and the sun has left the sky;
It's time to take the window to see Leerie going by;
For every night at teatime and before you take your seat,
With lantern and with ladder he comes posting up the street.

Now Tom would be a driver and Maria go to sea,
And my papa's a banker and as rich as he be;
But I, when I am stronger and can choose what I'm to do,
O Leerie, I'll go round at night and light the lamps with you!

For we are very lucky, with a lamp before the door,
And Leerie stops to light it as he lights so many more;
And oh! before you hurry by with ladder and with light,
O Leerie, see a little child and nod to him to-night!



ATTENTION
Roberta Nusz is now with
MAGIC MIRROR BEAUTY SALON
in Wolfforth, taking early and late appts.

Spirit of Christmas

In tune with the spirit of
Christmas, we extend
our note of thanks.



J.T. & Wanda Allen

ALLEN'S DRIVE IN

Ropesville



Merry
Christmas

Everybody's preparing for the big Day.
Hope it's merry in every way. Our thanks.

BUSTER'S GIN INC.

We Make All Cotton Better

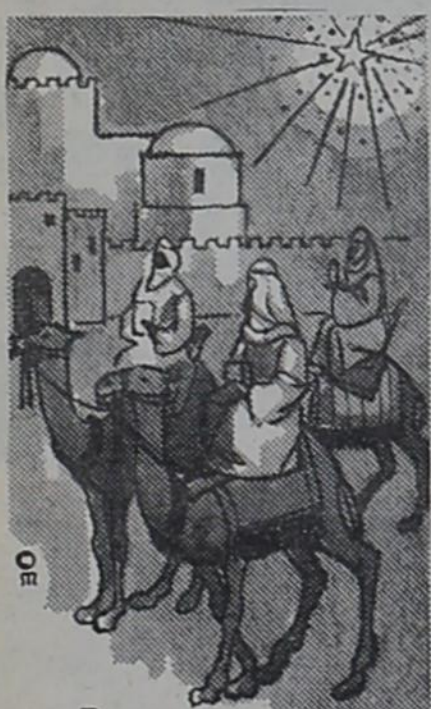
Ropesville, Texas

HAWAIIAN CHRISTMAS

Although many Hawaiians have never seen ice except in the form of a cube, they paint their Christmas trees white to simulate snow.

Christmas dinner is an elaborate affair—but one reserved for the intimate family group, behind locked doors and drawn blinds.

Hawaiian hospitality is such that were the doors not locked and the blinds not drawn, strangers would wander in, expecting the host and hostess to offer open-house hospitality of food and drinks. However, inexpensive gifts are exchanged by everyone.



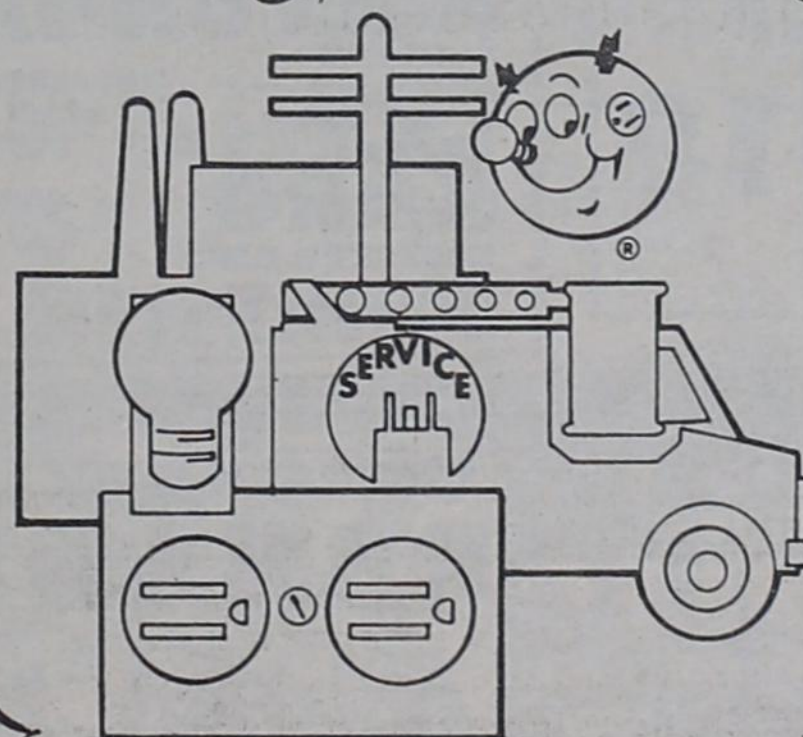
Joyous
Greetings

As the glory of the
Star shines anew,
we greet you and
thank you warmly.

ED'S DRIVE IN
GROCERY

Formerly
Bob's Quick Stop
Ed & B.J. West
Wolfforth

From Our Family
To Your Family
Happy Holidays



ELECTRICITY-IT DOES SO MUCH GOOD



The
ELECTRIC
Company

FOR SO MANY PEOPLE



DOUBLE STAMPS!

UNITED SUPER MARKETS WILL BE

WE RESERVE THE RIGHT TO LIMIT QUANTITIES



PRICES GOOD THRU DEC. 24TH

UNITED

SUPER MARKETS

WE GIVE S&H GREEN STAMPS

"HOLIDAY DAIRY CASE SPECIALS!"

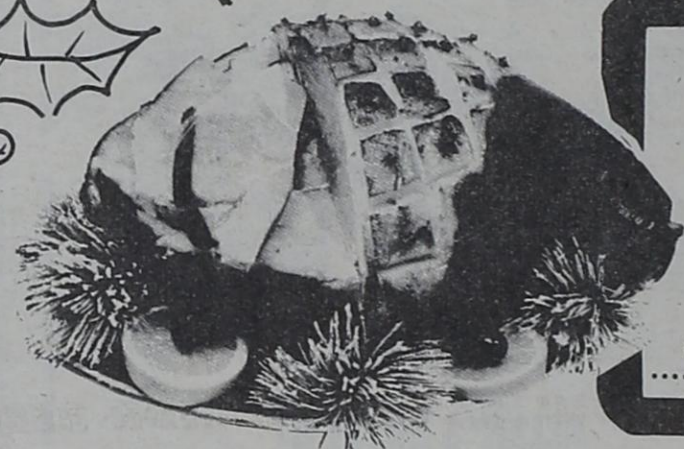
BUTTER FINE FARE SOFT 1 LB. CRTN. **99¢**

OLEO 2-8 OZ. TUBS **45¢**

CREAM WHIPPING OR SOUR BELL & DIPS 3 8 OZ. CRTNS. **\$1**

UNITED CAGED **EGGS** GRADE "A" LARGE DOZ. **79¢**

MAXWELL HOUSE **COFFEE** ALL GRINDS **\$1.79** 1 LB. CAN

ARMOUR'S STAR BONELESS **HAM** 3 TO 5 LB. AVG. FULLY COOKED WATER ADDED **\$1.89** HALF OR WHOLE LB.

SNOWDRIFT ALL VEGETABLE **SHORTENING** **99¢** 3 LB. CAN

"HOLIDAY FIXIN'S"

CHOC. **CHIPS** FINE FARE 12 OZ. **89¢**

BAKERS ANGEL FLAKE **COCONUT** 20' OFF 14 OZ. **88¢**

PECANS PECOS VALLEY 6 OZ. **98¢**

PEANUTS FISHER RAW 12 OZ. **58¢**

KRAFT REG. OR MINATURE 16 OZ. **MARSHMALLOWS** **48¢**

MANDARIN **ORANGES** GOOD DAY 11 OZ. **3 FOR \$1**

FINE FARE **PINEAPPLE** 2 15 1/2 OZ. CANS **88¢**

DATES DROMEDARY CHOPPED 8 OZ. **55¢**

BLUELAKE CUT GREEN **BEANS** FINE FARE 303 CANS **3 FOR 89¢**

KRAFT'S REAL **MAYONNAISE** 32 OZ. **\$1.09**

ALUMINUM **FOIL** FINE FARE REGULAR 12" x 25 FT. ROLL **34¢**

RED LABEL **KARO** WHITE 32 OZ. BOTTLE **99¢**

LIBBY OR DEL MONTE **PUMPKIN** 3 303 CANS **\$1**

FINE FARE JELLIED **CRANBERRY SAUCE** NO. 300 CAN **3 FOR \$1**

ALKA-**SELTZER** 25 CT. BOTTLE **59¢**

GOLD MEDAL **FLOUR** 5 LB. BAG **69¢**

BELL LUXURY ICE **CREAM** ASSORTED FLAVORS **\$1.18** ROUND HALF GALLON

RED OR GOLDEN DELICIOUS **APPLES** WASH. X-TRA FANCY LGE. **3 LBS. \$1**



CENTRAL AMERICAN **BANANAS** 5 LBS. **\$1**

YELLOW **ONIONS** NO. 1 MEDIUM LB. **12¢**

SWEET **POTATOES** JUMBO LB. **18¢**

GREEN PASCAL **CELERY** LGE. CRISP STALK **18¢** EACH



MON. THRU' FRI. !! DEC. 20TH THRU DEC. 24TH

CLOSED SAT. AND SUN. DEC. 25TH & 26TH !!

UNITED BROWN 'N SERVE
ROLLS
3 12 CT. PKGS. \$1

CHINET COMPARTMENT
PLATES
10 INCH 15 COUNT **79¢**

TOWELS
DELTA JUMBO ROLL **39¢**

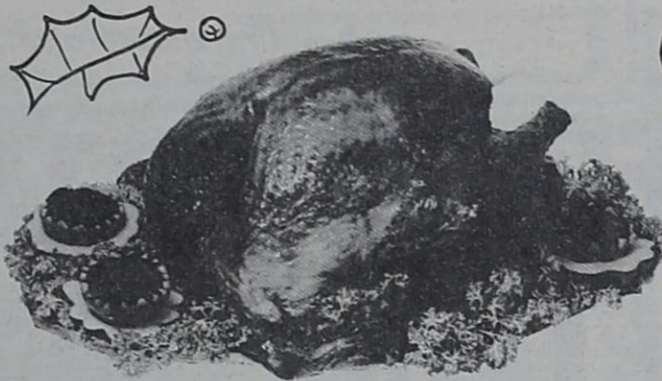


CANADA DRY
GINGER ALE
28 OZ. **39¢**
• CLUB SODA
• TONIC WATER
• TOM COLLINS MIXERS

"SHOP UNITED'S HOLIDAY MEAT BUYS!"
CHICKEN LIVERS FRESH FROZEN LB. CUP **59¢**
CHICKEN GIZZARDS FRESH FROZEN LB. **69¢**

FARMLAND BONELESS
HAMS FULLY COOKED 3 LB. CAN **\$4.98**

KRAFT PHILADELPHIA CREAM
CHEESE
8 OZ. PKG. **49¢**



FINE FARE GRADE "A"
SELF BASTING TURKEYS
16 TO 22 LB. AVG. **59¢**
LB.

GROUND **BEEF**
FRESH FAMILY PACK
LB. **69¢**

"UNITED'S TRU-TENDR BEEF!"
STEAK RIB OR ROUND **\$1.09**
CHUCK
STEAK BLADE CUT **69¢**
RUMP
ROAST **\$1.09**

NEW! FINE FARE
BACON
SLICED VAC. PAK LB. **\$1.09**

FREE BICENTENNIAL STICKER WITH PURCHASE OF EACH ITEM!
JAN. 8TH IS FINAL DAY TO REDEEM YOUR CARDS FOR EXTRA STAMPS!
ROUND OUT YOUR CARDS WITH THESE BICENTENNIAL BONUS BUYS!

REYNOLD'S TURKEY
BAGS FREE STICKER! 2 CT. PKG. **69¢**
PITTED RIPE
OLIVES LINDSEY FREE STICKER! 6 OZ. CAN **69¢**
BELL
EGG NOG FREE STICKER! QT. **79¢**
GLAD KITCHEN
BAGS HEAVYWEIGHT 10 CT. FREE STICKER! **58¢**

MERICO CRESCENT
ROLLS FREE STICKER! 8 OZ. CAN **45¢**
OVALTINE COCOA REG. OR LO-CAL. FREE STICKER! 10 CT. **59¢**
MIX
STUFFING PEPPERIDGE FARMS FREE STICKER! 16 OZ. **88¢**
MIX
DELTA BATHROOM 6 ROLL FREE STICKER **99¢**
TISSUE

CORONET
NAPKINS 60 COUNT **19¢**
FINE FARE DISH
DETERGENT 50 OZ. **99¢**



WRIGLEY PLENTY-PAK **GUM** 4 REG. 29¢ PKGS. **\$1**
CLOSE-UP 6.4 OZ. 15¢ OFF REG. 94¢ **59¢**
AQUA-NET 13 OZ. REG. 89¢ **73¢**

WE RESERVE THE RIGHT TO LIMIT QUANTITIES **U** PRICES GOOD THRU DEC. 24TH

"HOLIDAY FROZEN FOODS"

JOHNSTON FROZEN
PIES MINCEMEAT 36 OZ. \$1.18 APPLE 40 OZ. PUMPKIN 40 OZ. **98¢**
FINE FARE WHIP **TOPPING** 9 OZ. CARTON **48¢**
JOHNSTON **PIE SHELLS** REG. 59¢ 2 CT. **39¢**
FINE FARE **CORN OR PEAS** 16 OZ. PKG. **49¢**
FINE FARE **BRUSSEL SPROUTS** 16 OZ. PKG. **79¢**

UNITED
SUPER MARKETS
WE GIVE 8x GREEN STAMPS

Lost Workers to Receive Checks Totaling \$2,394 to Pay Christmas

Dallas — The U.S. Labor Department has checks totaling \$2,394.15 to help 23 unsuspecting former employees of New Mexico and West Texas establishments pay their Christmas bills. Unfortunately, the current addresses of they payees are unknown. the largest check is for \$453.20.

Robert B. Snyder, head of the Labor Department's Wage and Hour regional office here, said "These are not Christmas bonuses. The money represents back pay earned by employees who were paid less than amounts required by federal laws during periods of past employment." Snyder said most of the wages

represent underpayments for overtime work or for hourly pay rates less than the minimums set by the federal Fair Labor Standards Act.

He explained that Labor Department Wage and Hour investigators uncovered the illegal underpayments and the Department interceded with the employers on behalf of the underpaid workers for wages due. In some instances the Department took the employers to court to obtain back pay.

In the meantime, Snyder explained, some workers left their jobs and their current addresses are unknown.

"We have checks for these 'lost workers', we just don't know where to send them. We hope they will see their names in the paper and get in touch with us," Snyder said.

Snyder said lost workers should contact the Employment Standards Administration, Wage and Hour Division; 555 Griffin Square Bldg.; Griffin and Young Sts.; Dallas, Tx. 75202 (phone: 214-749-7460) or the Albuquerque Wage and Hour Area Office. It is located at 421 Gold Avenue SW; P.O. Box 1869; Albuquerque, New Mexico 87103 (phone: 505-766-2477).

Claimants must prove their identities by giving their social security numbers.

Following are names of lost workers and establishments for which they were employed in various New Mexico and West Texas cities:

Albuquerque

ARA Services — Wilma Cachora, Michael Lopez, Rose M. Herrera, Eloise Trujillo, Marlene R. Lopez, R. Pedro Zamora.

Indian Contractors, Inc. — T.J. Boyles, Orval Myers. James-Thomas, Inc. — William C. Ingerly and Richard Lucero. New Mexico Equipment Co. — Randy C. Buttrill and James Wenrich.

Amarillo

Hudson-Onan (Hornet) Oil Co. — Charles H. Summers, Jr.

Carlsbad

Michael & Corinne Grace — Daniel Burris, Lydia Jaure, and Angela-Griego.

Lubbock

Hudson-Onan (Hornet) Oil Co. — Barry A. Moore. Brady Plumbing — James W. Moore, Wady Massengale, Russell B. Pierce, Frank Lara, Mark Yates, and Robert L. Dobbing. Interstate Securities Co. — Adrian Lapka. Lovell Co. — Larry Edwards, Jose Soto, Beth Hartness, and Gary W. Ray. Modern Chevrolet — Billy Gray, Bob Bronson, Clarence Thompson, Paul Howard, Ernest Peloquin, Charles Pope, and Frank Puga. Texas Agricultural Research Associates — Martha Gollihane, Carolyn J. Moulder, Elaine N. Johnson, and Sue Johnson.

Seminole

Raymond Buhman Construction Co. — Jessie Acosta, Salvador Cano, James Cenicerros, Paul Cenicerros, Hap Flud, Felix Limas,

Continued On Page Seven

**NOW IN
SOUTH PLAINS MALL**

Hester's
office supply, inc.

793-0977

15th and Texas Ave. and South Plains Mall

Discount Watch Repair Engraving Jewelry Repair



Powers Jewelry

500 Main Street Ph. 866-4893
Wolfforth, Texas

*Christmas LayAway
Free Gift Wrapping*

Costume Jewelry - Elgin Pocket and Wrist Watches
Spiedel Watch Bands and ID Bracelets

CRAIG BUILDERS SUPPLY

4600 CLOVIS HIGHWAY-LUBBOCK

762-8719

Paint • Floor Covering • Lumber
Building Materials

1976-77 FRENSHIP TIGERS BASKETBALL TEAMS



This page sponsored by the following merchants

<p style="text-align: center;">Central Auto & Truck Parts</p> <p style="text-align: center; font-size: small;">82nd Street & Brownfield Highway P.O. Box 16228 Lubbock, Texas 79490</p>	<p style="text-align: center;">McPherson True Value Hdw.</p> <p style="text-align: center; font-size: small;"><i>Rick McPherson</i> Wolfforth, Texas</p>	<p style="text-align: center;">Edward's Lumber Co.</p> <p style="text-align: center; font-size: small;">Wolfforth <i>Go Tigers</i> 866-4228</p>
<p style="text-align: center;">Pete's Feed Barn</p> <p style="text-align: center; font-size: small;"><i>N.G. Ryals</i> Wolfforth 866-4244</p>	<p style="text-align: center;">American Bank of Commerce</p> <p style="text-align: center; font-size: small;"><i>Good Luck Tigers</i></p>	<p style="text-align: center;">Handy Food Center</p> <p style="text-align: center; font-size: small;">Wolfforth 866-4272</p>
<p style="text-align: center;">Elmer's Weights, Inc.</p> <p style="text-align: center; font-size: small;"><i>Good Luck Tigers</i> Wolfforth 866-4661</p>	<p style="text-align: center; font-size: x-small;">FREE ESTIMATES PICK UP & DELIVERY</p> <p style="text-align: center;">THE DECORATOR SHOP</p> <p style="text-align: center; font-size: x-small;">CUSTOM UPHOLSTERY WOLFFORTH, TEXAS PHONE 866-4869 CLIFF NICHOLSON 407 Cedar BILL McDONALD P.O. Box 629</p>	<p style="text-align: center;">Ed West Drive In Grocery</p> <p style="text-align: center; font-size: small;">Ed and B.J. West (Formerly Bob's Quick Stop) Wolfforth 866-4825</p>

The First Christmas Music Over Fields of Bethlehem

Hymns and carols to celebrate the Child's birth have come down to us through the ages. Mortals from many different ethnic origins have expressed their love, awe, joy and praise, the music varying according to their particular culture and the customs of the day.

Certainly inspired, the beloved favorites still retain all their charm and appeal, probably because of their simplicity and sincerity which generations identify with, through the ages.

Carols are primarily folksongs, even if motivated by religious impulse. As such, they are often

songs of praise for God, according to St. Augustine. To quote the Saint, writing about hymns by St. Ambrose: "I wept at the beauty of thy humns and canticles . . . the truth streamed into my heart; so that my feeling of devotion overflowed, and the tears ran from my eyes, and I was happy in them."

St. Ambrose, 340-397 A.D.

Every century has contributed to the treasury of Christmas carols. From the earliest recorded hymns and carols of the 4th century to the late 19th century and the present time, the world is richer because of the many heart-felt, sincere expressions of devotion, joy and praise.

Lost Workers . . .

Continued From Page Six

Manuel Montoz, Ernesto Segura, Bennie Castillo, Louis Balderama, Amalio Cenicerros, Joe Cenicerros, Roy Cenicerros, Abdon Jananillo, Leo Limas, Albert Oxley, Robert Strickland, George Byford, Frank Cenicerros, Junior Cenicerros, Bobby Esparza, John Jones, Larry Lopez, Jessie Ramos, and William Villa.



in the popular vein, and some are even comically unrestrained.

Hymns, on the other hand, are



GREETINGS

This Christmas, let the bright rays of love, peace and understanding enter our hearts and shine there always.

We extend grateful thanks to our loyal customers.

HIGGINBOTHAM-BARTLETT CO.

Lumber and Building Materials

Builder's Hardware

Ropesville, Texas



The Christmas spirit reigns all over the land. Hope it fills and warms your heart with happiness. For your treasured patronage, sincere thanks.

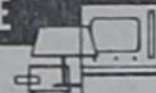
FRENSHIP COOPERATIVE ASSOCIATION

Wolfforth, Texas

CLASSIFIED * ADS

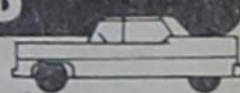
CALL
763-4293
FOR CLASSIFIED ADS

MISCELLANEOUS
FOR SALE



Mac's Antiques of Shallowater has lots of gift items priced \$2 and up. New and antique. Use our lay away plan for Christmas. Free gift wrapping. 832-4405.

AUTOMOBILES
USED



1967 Cadillac Sedan Deville, red with white vinyl top, tilt wheel, air conditioning, all power, \$495. Call Owen Gray days 763-4291, nites & weekends 763-0183.

WANT TO RENT: Garage or other storage space to store antique car. Must be dry, secure space. Contact Owen Gray, 763-4291 weekdays, or 763-0183 nights and weekends.

Storage and parking space for trailers for rent. Call Billie McElroy, Billie's Flower & Gift Shop, 832-4389 or 797-3967.

1972 Plymouth Fury III 4-dr., loaded. 1971 Volkswagen, 1951 Chevrolet cream puff, 1963 Cadillac, 1965 Volkswagen station wagon, 1970 Chevrolet Caprice 4-dr. loaded. 1966 Ford pickup V/8, automatic, LWB.

CECIL'S AUTO
1802 Avenue J

Tradition Has It That Yule Tree Began in Egypt

The Christmas tree, now almost a universal symbol, probably came to America from Germany, although tradition has it that Christmas trees originated in Egypt. The palm tree is supposed to put forth a branch every month, and a spray of this tree, with 12 shoots on it, was used in Egypt.

German writers mention the tree as early as 1605. The German prince Albert, consort of Queen Victoria, introduced the Christmas tree in England when he had a tree for his daughter.



Rejoice and be merry in song and mirth! O praise our Redeemer, all mortals on earth! For this is the birthday of Jesus our King, who brought us salvation, His praises we'll sing!
Anonymous



Heavenly Christmas blessings and joy to friends young and old. For kindness shown to us . . . gratitude.

ROSALES WELDING SHOP

Jose & Nina Rosales

Sylvia, Johnny Joe, Joe Johnny, Isaias,

Tony Banvelas, Al Lopez

MADAM LISA

PALM READER

This woman has the God-given power to heal by prayer. Everyone welcome at MADAM LISA'S home. What you see with your eyes your heart will believe. Are you suffering? Are you sick? Do you need help? Do you have bad luck? Bring your problems to MADAM LISA today and be rid of them tomorrow. She advises on all affairs of life. There is no problem so great she can't solve (how to hold your job when you have failed, how to succeed, and she reunites the separated). Upon reaching womanhood she realized she had the God-given power to help humanity. MADAM LISA has devoted a lifetime to this work. From the four corners of the world they come to her. Men and women of all races and walks of life. Guaranteed to remove evil influence and bad luck. There is no pity for those knowing they are in hard luck and need help and do not come for it. MADAM LISA is here for the first time. MADAM LISA invites you to her home.

2302 4th St. 744-9391

Book Now!

For Spring Planting



PIONEER
BRAND

In Wolfforth & Shallowater Areas

CALL HAMILTON & SON

763-0983 or 762-2323

Similar recipe is just about the same as that for a nervous breakdown. —Pilot, Norfolk.

No man has an absolute right to free speech—especially married men.

One of the peculiar things about truth in general is that it requires very little argument to support itself.

Bells Have Special Music at Christmas

Medieval people considered bells almost living beings. They were dedicated before being hung and the dedication was almost like a baptism. During the ceremony prayers were offered that the sound of the bell might summon the faithful, stimulate devotion, drive away storms and banish evil spirits. One document of days long ago comments: "in those dark chambers, high above the turmoil and strife of human life, dwelt the apostles of peace, whose salutations were never so welcome as at the time of the great Winter feasts of Christmas."

The novelist Victor Hugo calls the ringing of the bells "the opera of the Steeples."

Bells come in all shapes and sizes. Their moods span the ages . . . from the rattle of the African chieftain to the sweet-toned church bells.

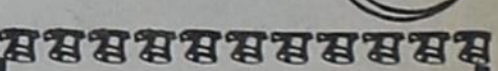
Bells were originated according to legend by Bishop Paulinus, in Nola, in Campania, in the fifth century.

From his town and district are derived the name Campanula, the Latin for bell.



Thou shalt know Him when He comes, Not by any din of drums, Nor by vantage of His airs, Nor by anything He wears, Neither by His crown Nor His gown. But His presence known shall be By the holy harmony Which His coming makes in thee.

Author Unknown



Merry Christmas

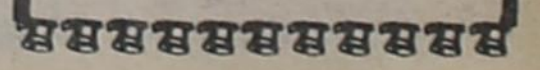
Some words from Santa simply to say, "Have a wonderful holiday!"

Thanks!

Harold & Joy

HANDY FOOD CENTER

Wolfforth



Greetings

May you and your family enjoy a happy holiday. We thank you warmly.

OCHOA SHELL SERVICE STATION

Ropesville, Texas

7-AFRICAN POWERS CURIO SHOP

PHONE 226-9311 1408 TEXAS AVE.

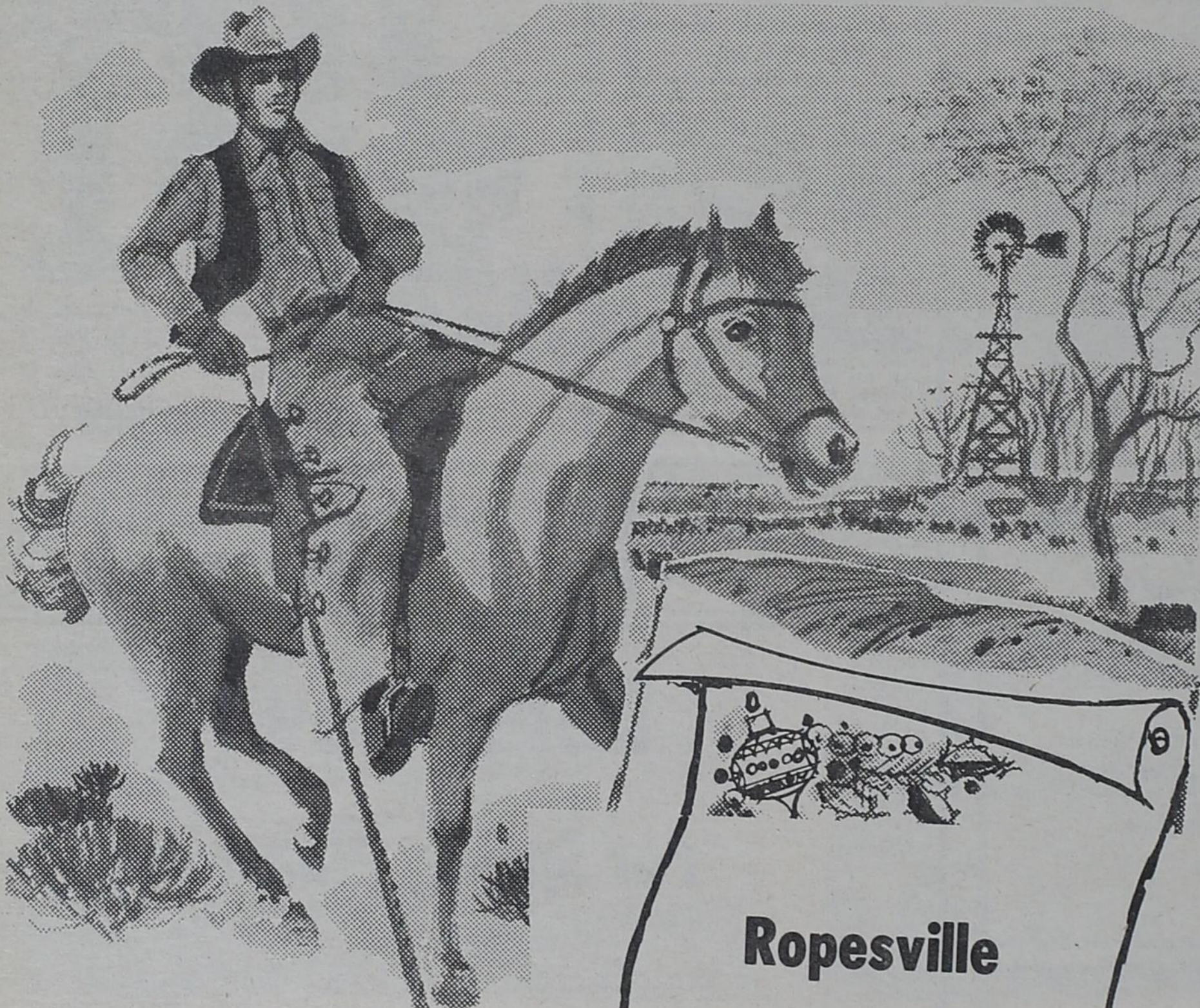
HOUSTON, TEXAS 77002

(By Greyhound Bus Station)

SUPPLIERS OF QUALITY OCCULT CANDLES, OILS, PERFUMES, BATHS, INCENSES, SCRUBS, TOBYS, PRAYERS AND OTHER ALLEGED LUCKY ITEMS.

Hours 9:00 A.M. to 5:30 P.M. Monday thru Saturday

SEND FOR FREE CATALOG & GIFT



There's no holding back the wishes we have rounded up for you. Enough to fill a corral with happiness. Thanks, folks!

Ropesville Farmers Cooperative Gins

Ropesville