

# The Slaton Slatonite

An Old Established Friend Serving the Interests of Slaton Since 1911

Vol. 53 No. 27

Thursday, April 18, 1963

10 Pages

Slaton, Lubbock County, Texas

TEN CENTS

## Small Wheat Grower Registration Explained by ASCS County Head

Just why "small-farm" wheat operators are being asked to register at their ASCS County Office more than seven days in advance of the 1964 wheat program referendum was clarified today by Charles G. Bragg, office manager of the Lubbock County Agricultural Stabilization and Conservation Service Office.

"Small farms" are those with wheat allotments of less than 15 acres. All growers on such a farm will be eligible to vote in the May 21 referendum if the operator of the farm indicates in advance an intention to participate in the program as an allotment grower if the program is approved. This choice has to be made at the county office by May 13.

According to Bragg, voter eligibility for the 1964 wheat refer-

endum is established by law, much the same way as State law provides that voters be legal residents of the state, subject to state laws, and registered to vote at a prescribed time in advance of the election.

No one is being told how to vote, Bragg emphasized. The referendum ballot is secret, and the procedure does not have to declare in advance how he will vote on the program.

What the small farm wheat operator indicates on the form MQ-24, which he files at the county office by May 13, is that, if marketing quotas are approved, he wants his farm to be eligible for wheat price support, for marketing certificates, and for acreage diversion payments. He is aware that these various parts of the wheat program will be available to growers who keep within their acreage allotments and meet other program provisions. The "small grower" is merely "choosing to participate as an allotment grower" in advance of the vote.

## Loyalty Campaign Planned By Church

"Found Faithful" is the theme of the annual 1963 Loyalty Campaign of the Assembly of God Church, 14th and Jean Streets which will begin Sunday April 21st, and continue through June 2nd. Sub-themes of the main topic will be developed each Sunday pointing up stewardship in the church.

Rev. Nola Stout, pastor of the church, states that the local campaign is a part of a nationwide program of the Assemblies of God designed to emphasize the importance of loyalty to the Sunday School and church.

## Hatchett Is Re-Named To Head School Board

## Lions Aid School Library



Dr. Lee Vardy, superintendent of schools, is shown at right holding a check presented by Ed Williams, left, in behalf of the Slaton Lions Club, the funds given for purchase of books for the school library.

The Lions Club gift of \$800 is reported by Librarian Mrs. Elizabeth Martin as the largest donation to the library in her 10-year tenure.

Most of the books, scheduled for arrival before end of the present school term, will be of non-fiction character, with many of them to be up-to-date science studies, together with English and American literature selections, dramas and poetry.

Some 275 volumes will be added to the library by virtue of the Lions gift.

The Slaton School Board met last Thursday morning, canvassing votes of the recent trustee election, electing officers and attending to routine business.

Election tabulation confirmed earlier announcement of votes as follows: Joe Miles, 160; Willie Heinrich, 156; and Don Crow, 126. Two write-in votes were counted among the 232 ballots cast.

Miles and Heinrich were administered the oath of office at this session, each to serve 3-year terms.

Organization of the board was conducted, with Dr. Don Hatchett re-elected president; J. T. Kendrick was re-named vice president; and Joe Miles was selected as secretary, a post formerly held by Harold Tucker who did not ask for re-election to the board.

Decision was reached to defer action on construction of an addition to the Austin school until final disposition of House Bill No. 690 now before the State Legislature, the bill involving financing of school construction on short term loans. Some nine bids for the construction are in the hands of the school administration.

Present at the meeting were Dr. Hatchett, Dr. Lee Vardy, superintendent; and R. E. Ayers, J. T. Kendrick, J. W. Martindale, Joe Miles and W. A. Heinrich.

## State Degrees To Be Conferred

Six members of the Slaton High School Future Homemakers of America organization left this morning to attend the state meeting of that body in Dallas this week-end.

Highest achievement award in FHA activity, the state degree, will be conferred at the meeting on Kathy Brown and Nelda Ray. Nelda, who is appearing in the Senior play here, will be unable to attend, and Jan Scott will accept the degree for her.

Belinda Becker and Jane Tefertiller, high point girls in the local organization, also are attending.

Others making the trip are the two chapter presidents, Janis Henry and Charlene Kitten; Mrs. Martha Brown, honorary member, and sponsors Mrs. Judy Davis and Mrs. Dick Cheatham.

The group left from Lubbock by chartered bus at 6:30 a. m. this morning, joining a group there from the surrounding area. They are expected to return to Lubbock at 7:30 o'clock Saturday night.

While in Dallas, the FHA members will attend the meetings in the downtown area, and will probably attend a Broadway musical.



"Blessed are they that mourn; for they shall be comforted," Matthew 4:4.

Oh Lord, from whom all blessings flow Do bless thy creatures here below— And for those crushed in sorrow, We pray that upon tomorrow They will forget their present pain; And looking to Thee, smile again.

WILL CURTIS

## Old Building, Documents Bring Memories Early Developments



ANOTHER LANDMARK GOING— Workmen prepared this week to raze one of the oldest buildings in Slaton, "Charles' Trading Post", built in 1921 by G. H. Orr to house a woodworking shop. Later owned for a number of years by Charlie Smith, latest owner of the old house near downtown Slaton is Joe Wicker.

BOOKKEEPING A LA 1921— G. H. Orr, whose repairs and handiwork were utilized at one time or another by just about everyone in the vicinity, kept a careful record of transactions in a pocket size ledger. At right is pictured a page from his 1921 records, itemizing work performed, together with charges and whether or not "paid."

Having weathered the elements and near constant usage for 42 years, one of the oldest buildings in Slaton this week is scheduled for emolition. Erected in 1921 by G. H. Orr, early-day carpenter and wood-working shop entrepreneur, the structure served for many years as a woodworking shop and headquarters for the various services offered by Orr.

Orr's reputation of "being careful with the dollar" without doubt had foundation, as evident by the carefully-kept pocket ledgers brought to light this week when Charlie Smith, present holder of the records, made them available to The Slatonite. Day by day accountings, from 1921 through the early '30's, have been retained in

these books, all still legible. Following are transcripts from several notations, all indicative of the times and the talents of the man:

A fly-leaf scribble tells of a 25c loan made to a friend on March 25th, 1925, with payment verified by a big "X" marked over the entry.

A January 5, 1933, item discloses that Orr cut a type plate for the Slatonite at a charge of 25c. (also marked "paid").

Earlier entries, 1921 vintage, gave the following values: saw sharpened, 50c; axe sharpened, 25c; one binder tongue, 75c; numerous entries of sawdust sales, from 15c to 25c each; one money tray for the First State Bank 4.00 and a knife sharpened for 25c.

Aug 5-1921

B Bailey  
1 sign board 250  
paid

R. G. Smith  
1 table 12 00  
8-11 6 paid

Slaton  
saw dust 25  
paid

Hamer  
film box 2 00  
6 paid

W. G. Olive  
meter 50  
9 paid

Gentry  
1 axe sharp 25  
1 handle set 25  
paid



BUT HEALTHY— Barbara Ann Slay, shown in the arms of Sister Mary Joelen of Mercy in Slaton, was dismissed from the hospital today, weighing 3 lbs. 14 oz. at time of dismissal. Growth from the 2lbs. 7 oz. birth weight on May 27th.

The tiny baby, attended by Dr. John C. Locke, calmed the hearts of the entire hospital staff during its stay there. It was retained in an incubator for one month after its birth.

The infant is the daughter of Mr. and Mrs. Slay of Slaton.



Clark Self, Sr., spent several days fishing at the Lake.

J. D. Holt, Mrs. and John have returned from a trip. Mr. Holt said Mrs. Holt visited friends from Slaton. The Slaton highly impressed soil fields in and

Ed Williams "Letters To" column that we enjoy this feature to read other

wonder when the freeze will recede. Suppose there is an increase in machinery is bright now, but I much it will cost being equipment

newspaper carry this week. The story carried details of Mrs. schedule for the months and also of child bear to me that even's wife should privacy.

anticipate changes, we would notifying us of dress at least one to the change if Post Office De your Slatonite greatly appreciate in this matter. want you to miss your Slatonite.

their subscriptions this week: Miss Regina Jess Burton, Hus R. C. Hall, Jr., Lyntegar Electric, H. R. Schwertner, W. T. Davis, Sr., M. P. Gentry, Harold Tucker, J. A. Smith, Fred W. L. Davis, C. Alfred Kitten, W. Lawrence Melcher, Lt. Lenro Keeten, Willie Lee Tomlin

to your Slatonite Bobby Greer of Slatonite office today was Mr. Irmer resident of ones said that he went to California to visit her relative of weeks. ever since that manager of a de- Kendall's Inc., an firm. has two brothers.



PROMOTING MIGHTY GOOD ENTERTAINMENT— Lundie Roche, left, and Karen Buskemper, right, were among students distributing advertising this week in downtown Slaton, telling of the forthcoming Senior Play to be staged this Friday evening at 8 p. m. Reports are that the old-fashioned melodrama has a chuckle a minute, and a large attendance is invited and anticipated.

## District American Legion Meet Underway In Lubbock this Weekend

Several Slaton Legionnaires are expected to attend the Spring Convention of the 19th Congressional District of the American Legion convening in Lubbock this Saturday and Sunday.

Local Commander Luther Gregory is District chaplain and will serve in that capacity throughout the session.

The convention will open with registration at 2:00 p. m. on Saturday followed by a Rehabilitation Session headed by Fred Brookman, Department Service Officer, at 4:00 p. m. A social hour will begin at 5:00 p. m. Saturday's activities will be concluded with a dance at 9:00 p. m. in the Hotel Ball Room with music furnished by Jake Miller and his Orchestra.

The joint session of the American Legion and Auxiliary will convene at 9:00 a. m. Sunday, with District Commander Wilfred Stoerner of Plainview, calling the meeting to order. The District Color Guard from Seminole will advance Colors, followed by the Invocation by L. R. Gregory, District Chaplain from Slaton. Mayor Jack Strong will give the welcome address and response will be by Virgil Crawford of Brownfield. Department Commander V. F. Taylor of Austin, will deliver the principal address to the joint session. Lt. Raymond Stark, Reese AFB, will have charge of the Memorial Service. The joint session will adjourn at 10:45 a. m. in order that all delegates may attend the church of their choice.

Lunch will be served at 12:00 noon in the Hotel Ball Room to all registered delegates and guests.

At 2:00 p. m., the American Legion and Auxiliary will hold their separate business sessions. Lee and Virgil and one sister, Mrs. R. L. Hegler who reside in Slaton. This is the first visit that the California couple has made to Slaton in 17 years.

## Legion Baseball Tryouts Begin

Tryouts for positions on the local American Legion baseball team have commenced. Commander Luther Gregory has announced, and eligible boys are urged to secure application blanks at an early date.

The Legion program is open to youths 16, 17 and 18 years of age (the later born after Sept. 1st), and the registration forms are available at the high school principal's office or from Claude "Hook" Simmons. The tryouts are being conducted at the gin lot on the Wilson highway.

Conference play among the area Legion teams will commence soon after May 15th. Gregory feels. Sixteen boys are necessary for the local team.

## Texas Highway Maps Available

A new supply of the official 1963 Texas Highway travel maps has been received at the Slatonite office and are available for the asking.

Initial supply of the beautiful and comprehensive map brochure was depleted last week at the Slatonite, after scores had been distributed.

Prepared for free distribution, the maps not only give latest road information, but present vacationland hints, a pictorial section of Texas vistas all deemed to offer the state as "Today's Frontier"

# EDITORIALLY SPEAKING

## Observations and Potpourri

If a nation expects to be ignorant and free in a state of civilization, it expects what never was and never will be. . . where the press is free and every man able to read, all is safe.

—Thomas Jefferson

We heartily endorse Police Chief Martin's plea for vaccination for rabies of all pets in Slaton. As announced elsewhere in this issue, a special session for vaccination of dogs and cats will be held Monday evening at the local police station.

Last summer a four-year old boy died of rabies in Texas. Although, there was no history of an animal bite, circumstances pointed to the possibility that he was bitten by a puppy or dog.

There was no doubt that rabies was the cause of death. The case was diagnosed clinically and confirmed by the State Department of Health Laboratory.

Dramatically, rabies is still very much a fact in Texas, when viewed in the misery which surrounds the death of a small boy—to his family, friends and even to public health veterinarians and record keepers.

The fact is that rabies, although changing in complexion, was laboratory-diagnosed in 124 Texas counties during 1962.

The total number of cases, while down from the previous year's 656 cases, reflects an increase in the number of rabid domestic animals other than pets.

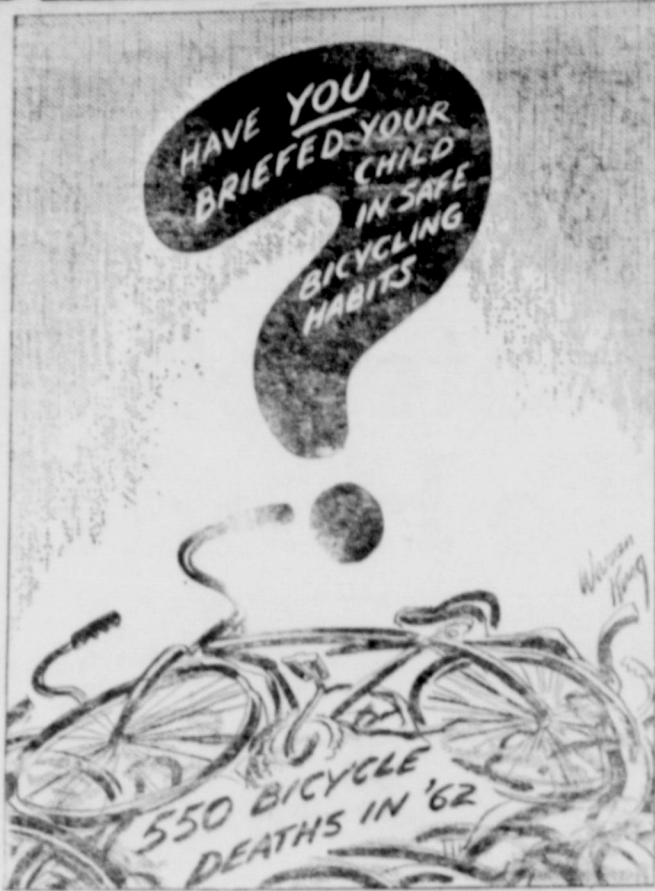
A few years ago pets accounted for the majority of cases. Today, wildlife rabies outstrips the disease among pets and domestic animals by far. Skunks continue to lead the statistical columns, but each year foxes and bats are diagnosed as rabid.

Diagnostic evidence indicates that animal rabies is present in approximately half of the counties in Texas. The widespread distribution probably means that at least wildlife rabies occurs in most of the other Texas counties as well.

In counties which do show some rabies, past experience points to the fact that an undercurrent of wildlife rabies is ever present.

What this means to the man-on-the-street is that rabies is a constant threat in most areas of Texas. With the growing sprawl of suburbs into formerly wild areas, it is only natural that pets may be readily exposed to wildlife.

Anti-rabies vaccination of all pets is the surest protection against the disease.



Plans were made for the annual Tourist Information School and Tourist Appreciation Day at the meeting of the Tourist and Historical committee of the Fort Stockton Chamber of Commerce Monday at 5 p.m.

Jud Hird, committee chairman, announced that dates were set for the Tourist Information School to be held May 7, and the Tourist Appreciation Day for June 21. This will be the third year that both events have been held.

Hird said sessions of the school will be held in the morning, afternoon and evening for the purpose of instructing employees of any business affected by the tourist trade. Instructions will include answers to possible questions tourists will ask about the Fort Stockton area.

Goal of the school will be to enable employees of local businesses to give the best impression possible of Fort Stockton to tourists and visitors.

On Tourist Appreciation Day, all vehicles between the hours of 10 a.m. and 6 p.m.—will be halted at both the east and west entrances of U.S. Highway 290, and given an official welcome to Fort Stockton.

Hird said that prizes will be awarded to some of the vehicles consisting of free lodging for the night to two persons, two free meals and a tank full of gasoline.

Last year a total of 671 vehicles were halted on Tourist Appreciation Day, with 32 receiving prizes.

—Fl. Stockton Pioneer

### Floyd Pioneers to Meet

With president H. E. Frizzell at the helm, plans got underway Monday night for another big Floyd County Pioneers Reunion.

Date of the reunion is Tuesday, May 28.

—Floyd County Hesperian



the **BEST** way to **BEAT HEAT** is with year 'round

# GAS

air conditioning!

- \* Cools in summer for little more than the cost of winter heating. Available in two types—a compact, dual unit for pre-planned installations, and an add-on cooling unit for existing central heating systems.
- \* Call us tomorrow for all the facts.

LIVE MODERN FOR LESS... WITH GAS!  
Pioneer Natural Gas Company



## Notes from Neighbors

### Events and Opinions

From the Exchanges of the Slatonite

#### Oil Tax Increase Would Hurt

Whether aware of it or not, all Texans have a very vital stake in the oil industry's efforts to block the proposed tax law changes which affect it specifically.

Although President Kennedy did not recommend any changes by Congress in the present 27.5 per cent depletion allowance for oil and natural gas, he did propose changes in the rules governing the computation of depletion by producers as a means of recovering for the federal government some of the revenue that would be lost through a cut in tax rates.

These changes, it has been estimated, would cost oil and gas producers \$380,000,000 a year in additional taxes.

The administration's thesis is that present high taxes are a throttle on economic growth, which, incidentally, is a point no one will dispute. It follows, however, that any proposal to increase existing taxes on a particular industry would be additionally repressive for that industry. And, if the industry occupies as important a place in the total economy as the oil and gas industry does, especially in Texas, the effects are certain to be far-reaching and perhaps disastrous for some.

Texans do not need to be told that the domestic oil and gas industry already is suffering from depressed conditions. Contributing to these conditions is a severe price-cost squeeze, a decrease of some 40,000 in the number of persons employed in production, a drop of 50 per cent since 1955 in exploration in search of new reserves, a 30 per cent decrease in exploratory drilling and a 20 per cent drop in total drilling.

J. Clyde Tomlinson of Longview, president of the Texas Mid-Continent Oil & Gas Association, said that Texas' share of the proposed tax increase would amount to more than \$92,000,000 a year. That is equivalent, he pointed out, to the annual wages of 15,878 Texas petroleum industry employees or about 8 per cent of the industry's present work force. It is more than half the state collects in oil and gas severance taxes and four times the annual oil and gas income Texas schools receive from public lands.

Tomlinson also pointed out that the administration plan would be a serious setback for efforts to promote economic growth in Texas because of the extent to which the state's economy is keyed to the oil and gas industry. And, because oil and gas are the most important resources on which to build more industry and job opportunities in the state, Tomlinson said, the tax increase would be an obstacle to Gov. John Connally's efforts to promote development in the state through industrial expansion.

#### To Publish Delinquencies

City Manager Bill York this week recommended that a list of those delinquent in paying property taxes will be published.

Publication of such a list as required by the city charter. Publication will begin the latter part of the month. The charter requires that "said delinquencies be published not later than 90 days after the end of the year or as soon as possible thereafter once each four consecutive weeks." Canyon's fiscal year ends on September 30.

The city levies taxes both on real and personal property. York pointed out. Personal property includes automobiles and other motor vehicles as well as business equipment. York said some people probably are not aware that personal property taxes have not been paid since the city companies pay taxes on their homes. The city manager said all property owners have been mailed two tax notices last September and one in January.—The Canyon News

#### Doug Meador Says . . .

Since the advent of the automobile the financial well-being of the average citizen has been dependent on the automobile.

Pity the greedy rich man who forget that he is not the well he lined with wealth. He is his own prison. His sentence is renewed each day.



# Now Is The Time

.. To Get that air conditioner ready for use. Special for April will:

Clean, oil where necessary, adjust belt, repack panels with clean oil, replace filter, check and oil pump, check and adjust float and valve on condenser, check and adjust fan motor, check and adjust fan belt, check and adjust fan motor, check and adjust fan motor, check and adjust fan motor.

## \$9.00

Our April Price For This Service Plus Tax

This does not include any new parts except Aspen pad. Call V.A. and just say "I want my air conditioner ready for hot weather . . ."

For the best in new Wright Coolers see our fine selection today. The 4000 CFM Wright Cooler complete with pump for \$99.95 plus tax. In door in original shipping carton. This is not a cheap, off brand cooler. It is a new current model.

# Bland's Furniture

## The Slaton Slatonite

163 S. 9th Street Phone VA 8-4201

John H. King II, Publisher

SLATON TIMES PURCHASED JANUARY 20, 1927

Entered as Second Class Matter at the Post Office at Slaton, Texas, under the act of March 3, 1897.

NOTICE TO THE PUBLIC — Any erroneous reflection upon the reputation or standing of any individual, firm, or corporation that may appear in the columns of the Slatonite will be gladly corrected when called to our attention.

SUBSCRIPTIONS: Payable in advance. Lubbock, Lynn, Garza, and Crosby Counties — \$3.00 per year plus tax. Outside these counties — \$5.00 per year plus tax.

MEMBER:  
West Texas Press Association  
Panhandle Press Association



## COMPARE WHITE'S INCOMPARABLE MAGIC '50' TIRE

The only tire in the world guaranteed 40,000 miles—

- Triple Written Guarantee
- 1. Free 30 Day Replacement
- 2. 40,000 Mile Guarantee
- 3. Lifetime Workmanship Warranty

SEE THIS FAMOUS TIRE AT WHITE'S

# Slaton News



**Summerlin Graduates**

Marine Lance Corporal Billy J. Summerlin, son of Mr. and Mrs. J. R. Summerlin of Route 2, Slaton, graduated March 21, from the Aviation Machinist's Mate school at the Naval Air Technical Training Center, Memphis, Tenn.

The nine-week course included jet power plant sections, safety precautions and aircraft upkeep.

He is now qualified for duties as a jet mechanic with the Aviation Branch of the Marines. Summerlin entered the Marines in September 1959.

**HERE FROM DALLAS**

Mr. and Mrs. Fred R. Potthast of Dallas are spending the week in Slaton, visiting his mother, Mrs. C. R. Potthast, and his sister, Mrs. Joe Holland.

Jerri Clem spent the weekend in Wilson with Joen Bartley and visiting the Sam Crowns.

Mr. and Mrs. Tommy Burns of Lubbock visited Friday night with Mr. and Mrs. E. L. Walker.

Miss Sharon Lumsden, freshman at Baylor, was home for the holidays with her parents, the William Lumsdens, and grandmother, Mrs. Lonnie Lumsden.

Mr. and Mrs. Floyd Bankston and family, Mrs. Ada Bankston and Blondie Bankston of Lubbock visited Sunday evening with the Sears Bartley family.

St. Paul Lutheran Church  
Rev. R. F. Kamrath

First Nazarene Church  
635 W. Seurry  
Rev. Charles Stuart

Westview Baptist Church  
830 S. 15th  
Rev. Clinton Eastman

First Methodist Church  
305 W. Lubbock  
Rev. Rollo Davidson

Church Of God  
206 Texas Ave.  
Rev. D. E. Coker

Church Of Christ  
11th & Division  
Roy Dean Verner

Assembly Of God  
340 W. Division

Missionary Baptist Church  
1010 South 21st  
Ray Smith

First Baptist Church of Southland  
Eddie Fortson, Pastor

Southland Methodist Church  
Rev. B. B. Byus

First Baptist Church Wilson  
Rev. H. F. Scott

Acuff Baptist Church  
W. O. Donley, Pastor

Our Lady Of Guadalupe Church

St. Joseph's Catholic Church  
Magr. Peter Morsck  
19th & Lubbock

Gordon Church Of Christ  
Cline Drake, Minister

Acuff Church Of Christ  
Brooks Terry, Minister

Grace Lutheran Church  
840 W. Jean  
Rev. Leroy R. Deans

St. John Lutheran Church  
Wilson  
Rev. John W. Onda

First Baptist Church  
255 S. 9th  
Dr. Charles Wood

First Christian Church  
145 E. Panhandle  
John L. Floyd

Immanuel Lutheran Church  
Posey  
Rev. F. A. Wittig

First Presbyterian Church  
425 W. Lubbock  
Rev. Fred Ryle

Bible Baptist Church  
W. Panhandle  
Rev. H. E. Summar

Wilson Methodist Church  
Wilson  
Rev. W. A. Rucker Jr.

Pentecostal Holiness Church  
105 W. Knox  
Rev. W. L. Comstock

Trinity Evangelical Methodist Church  
Rev. Weldon Thomas

African Methodist Church  
Rev. J. S. Gilbert

First Assembly of God  
14th & Jean  
Miss Nola Stout, Pastor

Miss Norma Elliott, Associate

## Silver Anniversary Meeting South Plains Electric Cooperative Set Saturday; Open House on Friday

A "silver anniversary" annual meeting of the South Plains Electric Co-op will be held from 10 a.m. to 2 p.m. Saturday at Lubbock.

Site will be the 25-year-old cooperative's new headquarters building at 110 N. Amarillo Road adjoining Mackenzie State Park at Municipal Drive.

Open house for the public will be held Friday from 6 to 9 p.m. with an open house for members of the cooperative and their families to follow the annual meeting on Saturday.

Program for the annual mem-

bership meeting includes: business session for reports of the president and manager and election of two directors; awarding of three college scholarships to winners of the co-op's historical essay contest; dedication address by R. A. Yarbough, Childress, immediate past president of the National Rural Electric Cooperatives organization; musical entertainment by the Griffin Sisters, Crosbyton; special dedication ceremonies by SPECT employees; presentation of a General Electric Scholarship to Tonda Curry, Miss Rural

Electrification of America; a Pt. 5. Lubbock; E. W. Lambert, Abernathy; Elton G. Settle, Rt.

South Plains Electric Cooperative, Inc., serves more than 8,000 connections and has 2,338 miles of rural electric lines in Lubbock, Hale, Hockley and Crosby counties. It has 60 employees and is a \$7.8 million member-owned business.

The business board of directors includes: R. C. Pace, president; Acuff; Edwin Merrell, Shallowater; O. F. (Bud) Kitten, Slaton; Sherman B. Nelson;

### Doyle Tucker Is Fraternity Pledge

Doyle Tucker of Slaton was among 80 men who recently pledged the four national fraternities and one local fraternity on the West Texas State campus. Tucker pledge Lambda Chi Alpha. He is son of Mr. and Mrs. W. F. Tucker, 635 North Ninth Street, Slaton, and is a sophomore business major.

2. Abernathy; and M. D. Cherry, Lorenzo. W. G. Newton is manager.

Get Your Quality  
**INTERNATIONAL HARVESTER**

**Farm Equipment PARTS AND SERVICE**

**SLATON IMPLEMENT CO.**  
Lubbock hi-way VA 8-4933

**Wilson Oil Company**  
Wilson, Texas Phone 2251

\*BUTANE, PROPANE \*PHILLIPS GAS OIL  
COMMERCIAL INDUSTRIAL GREASES AND BATTERIES  
\*PHILLIPS TIRES and TUBES \*AUTO ACCESSORIES

**41%** Of The National Homes  
FINANCED BY SAVINGS AND LOAN

LET US HANDLE YOUR HOME FINANCING  
**SLATON SAVINGS AND LOAN**

**BRYANT Farm Supply**  
March 20th  
Slaton, Tex.  
1970  
3 D. Tractor  
3 P. Equipment  
\$2,350.00  
1 V. B. Special  
M. A. Tractor  
& Equipment  
\$1,650.00

**YOUR Independent AGENT**  
SERVES YOU FIRST  
**BREWER INSURANCE AGENCY**  
139 So. 9th.

### Slaton Students Are Candidates For WT Degrees

Two Slaton students are listed among the 397 candidates who will be seeking degrees at West Texas State College's spring convocation May 25.

Sandra Jean Wells and Douglas Corley are both seeking the Bachelor of Science degree.

Miss Wells is the daughter of Mr. and Mrs. C. A. Wells, 835 West Garza, Slaton. Her major is elementary education, and she is president of Zeta Tau Alpha, national social sorority.

Corley is the son of Mr. and Mrs. C. E. Corley, 900 S. 22 St., Slaton, and is major in Education. He is a member of Kappa Alpha Order, national social fraternity; president of Phi Epsilon Kappa, men's physical education club; and was Personality King and runner-up to Most Handsome in 1962.



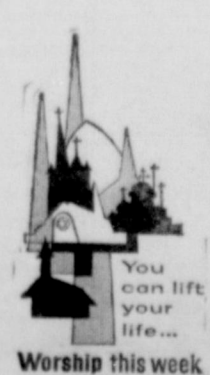
### How to strengthen the bridge of love at your house

For some couples, of course, the honeymoon is never over.

But most husbands and wives aren't so lucky. The problems and pains of day-by-day living, the awesome conflicts of our swiftly changing world itself, all come smash together sometimes... in what seems a concerted effort to shake the very foundations of marriage. Love just seems to go right out the window. And as the divorce courts can testify, sometimes it goes forever.

What can you do to strengthen the bridge of love in your family? Many a troubled couple has found rewarding and unexpected answers in their church or synagogue.

Discover in yourself forgotten resources of successful, purposeful living. Worship together this week and find a deeper contentment in the life you lead.



THIS MESSAGE IS MADE POSSIBLE BY THESE MERCHANTS:

O. D. KENNEY  
AUTO PARTS  
"Your Automotive Parts Distributor"

SLATON CO-OP CINS  
"Owned And Operated By Farmers"

SLATON SAVINGS & LOAN ASS'N.  
"We Pay You To Save"

WILL AYERS  
FARM STORE  
555 Railroad Ave. VA 8-4992

JANES - PRENTICE, INC.  
SAND & GRAVEL  
For The Construction Industry

HOWARD GIN

BECKER HUMBLE  
PRODUCTS SERV. STA.  
400 S. 9th VA 8-7108

UNION COMPRESS AND WAREHOUSE COMPANY

CARROLL OIL COMPANY  
Lubbock Hwy. A 8-4206

WILLIAMS FUNERAL HOME  
Unlimited Insurance Protection  
Cadillac Ambulance Service

RAY C. AYERS & SON, INC.  
Grain - Feed - Seed

SLATON IMPLEMENT CO  
Lubbock Hwy.

SOUTHWESTERN PUBLIC SERVICE

WILSON STATE BANK

ACUFF FRIENDS  
ACUFF CO-OP CINS  
"It's Your Association"

THE GIFT GALLERY  
139-A S. 9th Ph. VA 8-5349

**MARK TWAIN**  
PEN NAME OF SAMUEL CLEMENS, AMERICAN HUMORIST WHOSE WRITINGS BROUGHT JOY TO HIS READERS.

(HEH, HEH) I GET KIND OF GET A KICK OUT OF THEM MYSELF.

IT'S WORTH WRITING HOME ABOUT!

You will enjoy the convenient banking services of our bank.

**CITIZENS STATE BANK**  
AS AVENUE VA 8-4543  
Member F.D.I.C.



**W Girls At Breakfast**  
 Mark Sexon, founder of the Rainbow members of the local set for breakfast at their Mother Advisory Boyd, Sunday.

ending Sunday School churches, the girls, the Mother Advisor, members, and several set for group worship at the Baptist Church.

ending this special are: Patsy Bryant, ant, Judy Jones, Lynn Linda Langlin, Kay nces Cowdrey, Paula nda Eanes, Elaine Eddy Eddings, Patricia Joy Fagin, Barbara Vicki Nowlin, Anna Pettigrew, Diana Siler, ee, Charlotte Vaughn, ankford, Treva Mont-felda Kinder and Laur-

Butler family of La- re Easter visitors in y Boyce and J. B. mes.

**Happy Birthday**  
 APRIL 18 — Ruby Schwertner, Larry Heinrich, Scott Lekey.  
 APRIL 19 — Jimmy Lee Lowry, Lynn Swanner, Mrs. Onas Ray, Meredith G. Harper, Perry Schilling.  
 APRIL 20 — Nestor Kitten, Janet Kitten, Joe Lester, Mrs. H. H. White.  
 APRIL 21 — Mrs. James Caldwell, J. D. Barry, Diane Martin, Walter Denzer, Judy Marie Denzer.  
 April 22 — Mrs. Ben Sokoll, Mrs. Gordon Burrell, Albert Dee Walston, Francis Grabber, Mrs. E. L. Norris.  
 APRIL 23 — Rebecca Walston, Mrs. Ed Maeker, Judy Schwartz, Judy Dawson, Mrs. Barney Wilson, Jackie Pearson.

Mrs. Shirley Butler and daughter Sue, and son Don of Cactus, Texas, spent the Easter week-end with her folks, Mr. and Mrs. E. R. Burns and the J. B. Butlers.

A flower Show, open to the public, will be staged at the Slaton Clubhouse on May 8, from 3 to 5 p. m. according to the reporter for the Slaton Garden Club.

# Society - Clubs

## The Slaton Slatonite

MERLE KING, SOCIETY EDITOR PHONE 5314  
 The Slaton Slatonite THURSDAY, APRIL 18, 1963



### Maples, Bride Will Reside in El Paso

After their wedding ceremony on the evening of April 12, Norman Cooksey Maples and his bride, the former Miss Catherine (Catha) Joanna Walker, left on a trip to New Mexico.

The couple will later live in El Paso, Texas.

The bride, daughter of Mr. and Mrs. Joe S. Walker, Jr. is a graduate of Slaton High School. Her husband, son of Mr. and Mrs. W. N. Oatis, also graduated from Slaton High School.

The Rev. J. B. Sharp of Levelland read the double ring vows in the First Methodist

### Grace Mission Workers Meet

The Parish Hall was the scene of a regular meeting of the Grace Mission Workers Thursday evening at 7:30.

The opening hymn was "O Take My Hand, Dear Father". Mrs. Tommie Wilke presented the cause for the month, Higher Education.

Mrs. Fred Kahlich gave the worship offering and Mrs. Ruby McMinn led the round table discussion on the Bible study, "Christ is Our Treasure," taken from Colossians.

Refreshments were served to twenty members by the hostesses, Mrs. Alvin Becker and Mrs. Libby Schneider, following a business session.

### Family Together For First Time In 15 Years

Mr. and Mrs. G. N. Smallwood of Southland had all their children and families with them on Easter Sunday, the first time the entire group had been together in 15 years.

Present were Mr. and Mrs. Bill Ramsey, Glen, Sandra and Stanley, all of Midland; Mr. and Mrs. Neal Smallwood, Janie and Richard, of Odessa; Mr. and Mrs. Albert Smallwood, Kay Lynn, Sharon and Gary, of Odessa; Mr. and Mrs. Arthur Smallwood, Dogie and Ronnie, of Slaton; Mr. and Mrs. Sidney and

Smallwood of Lubbock; Mr. and Mrs. Harvey Smallwood, Stevie and Susan, Corpus Christi; Mr. and Mrs. E. C. Smallwood and Terry Scott of Slaton. All were present with exception of Susan Smallwood who stayed with her grandmother at Brownwood.

The evening was spent in visiting and picture making. Mrs. Smallwood stated that this was the most happy occasion, and they felt very fortunate in having the entire family together once more.

Dale Burleson attended his cousin as best man. Jimmy Burleson and Wayne Burleson, also cousins of bridegroom, were groomsmen.

Lawrence King and Don Basinger seated the wedding guests.

### WEDDING RECEPTION

Fellowship Hall was the scene of the reception following the ceremony. The serving table held arrangements of pink and red roses and was appointed in silver. Members of the houseparty included Mmes. August Kitten, Howard Hoffman, Glenn Payne, J. S. Edwards, Jr., Clarence Heaton, and Cecil Scott.

For her wedding trip the bride donned a suit of pale pink Italian silk with which she wore black accessories and the orchid from the bridal bouquet.



### Chilcoat-Henderson Vows Exchanged Friday, April 12

Miss Joann Chilcoat and Lex Henderson were married in a ceremony on the evening of April 12 in the First Baptist Church of Slaton, with Rev. Joe R. Green officiating.

The bride is the daughter of Mr. and Mrs. Carl Chilcoat, Route 1, Post. Mr. and Mrs. J. B. Henderson of McCamey are parents of the bridegroom.

Green foliage formed the background at the altar where baskets of white gladioli were flanked by candelabra holding white tapers.

### BRIDAL ATTIRE

Given in marriage by her father, the bride wore a formal gown of lace and tulle. It was fashioned with a fitted bodice, elbow length sleeves and a bateau neckline. The bouffant skirt was encircled with a bias band of silk satin.

Candlelight illusion formed the bridal veil which fell from an open crown of orange blossoms and rhinestones. The bridal bouquet consisted of white rose buds surrounding a white orchid.

George M. Wilson of Post provided nuptial music and accompanied Miss Margie Harrison who sang "Always" and Robert Smith of Odessa, brother-in-

### Centurettes Have Annual Guest Nite

The Centurettes Study Club met Monday at the clubhouse for its annual Guest Nite program; 21 members and guests were in attendance.

Hostesses for the evening were Mrs. Tim Bourn, Mrs. T. Culver and Mrs. D. P. Case. Refreshments of punch, sandwiches, potato chips and strawberry shortcakes were served. Mrs. Culver poured the punch.

Mrs. Casey and Mrs. R. Wilkins introduced the program. Mrs. Donald Basinger presented a monologue, Miss Martha Ell presented a piano solo; Miss G. Bowman entertained with "Minnie Pearl" act; Mrs. R. Wilkins gave a solo, and M. Jan Holton and Miss Margie Tillery presented a hat dance and Mrs. Wilkins and Mrs. J. Holland gave a monologue.

Members attending were M. dames Jackie Allred, Donald singer, Tim Bourn, Arlie wends, D. P. Casey, Tip Culv Truman Ford, Jackie Hal Jack Haliburton, Robert H ton, Joe Holland, Dwayne P ton, Joe Ross, Jerry Don Re Pat Taylor, Ralph Thorpe, Te my Tomlin, Ray Wilkins, W. Wilks, Randy Sanders and T ey Basinger.

Guests were Mmes. Pam nes, Linda Martin, June P. Donna Basinger, Betty Sm Pat Blackerby, Nancy Cul Linda Thomas, Betty Si Polly Bowman, Othel Cha chers and Misses Martha Ellis, Bowman, Jan Holton and M garet Tillery.

### Mrs. B. N. Ball Club Speaker

Mrs. B. N. Ball presented program, "Colleges and Careers", for members of the Daughters of the Pioneer Study Club when they met in the home Mrs. Rush Wheeler on Monday evening.

The next meeting will be in the home of Mrs. Jo Walker, Jr. Mrs. R. H. T. Jr. will be in charge of the program.

### COMING EVENTS OF INTEREST TO WOMEN

The Slaton Art Club sponsor an open Art Exhibition on Sunday, May 4, from 3 p. m. at the Slaton Clubhouse.

For her wedding trip bride wore a suit of gold beige brocade with gold sashes and the orchid from bridal bouquet.

The couple will establish residence in Corpus Christi, where both are students at the University of Corpus Christi.

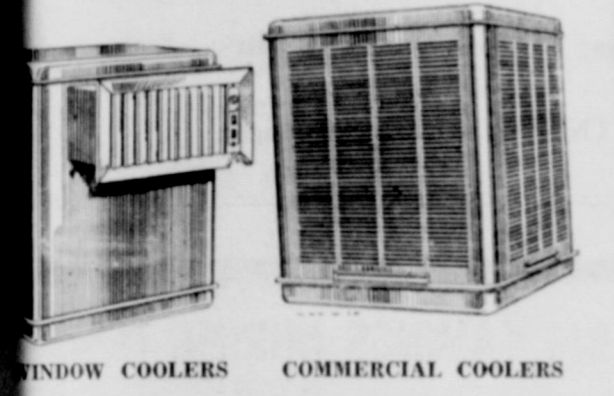
### OUT OF TOWN GUESTS

Guests coming from out of town for the wedding were Mrs. Bryan Landers, Hattie Burkett of Lubbock; and Mrs. C. P. Orrick, W. Carrill, and Pat Orrick, of Abilene, George Seaman Midland; and Billy Duke of McCamey.

### KEEP COOL - ALL SUMMER

15 YEARS WE HAVE SOLD AND INSTALLED—

## Lawson Air Conditioners



WINDOW COOLERS COMMERCIAL COOLERS

### We Service All Brands

Pads	Tubing	PUMPS
Fittings	3c Ft.	D10 - \$12.95
Comps \$8.95	Floats	D50 - \$19.50
		\$1.69

WE HAVE SEVERAL USED 4,000 AND 4,500 CFM IN STOCK

**HURRY HURRY HURRY!**

## SELF FURNITURE CO.

PHONE VAB 4407 SLATON, TEXAS

**YOUR MONEY BUYS MORE IN A REAL DRUG STORE**

- MORE QUALITY
- MORE VALUE
- MORE SELECTION
- MORE SERVICE

SHOP AT OUR **Rexall** DRUG STORE



### WE ARE... PRESCRIPTION SPECIALISTS

"Betty, I'll bet Johnny becomes a pharmacist some day," said Martha proudly. "He's always playing 'pharmacy' and concocting 'medicines'!"

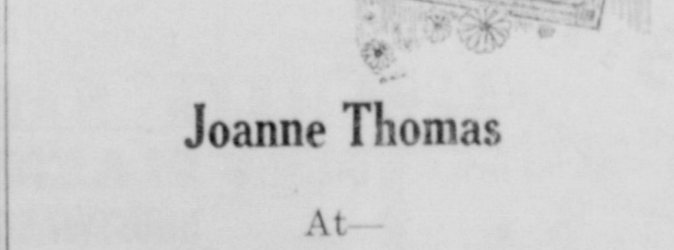
It takes 5 years preparation, Johnny, but as a pharmacist you'll be a professional specialist—an important partner on the health team!

## Slaton Pharmacy

**PROMPT DELIVERY SERVICE**

"Where Pharmacy Is A Profession"

Announcing—  
 A New Operator



**Joanne Thomas**  
 At—  
**DAWSON'S BEAUTY SHOP**  
 325 So. 12th  
 FOR APPOINTMENT PHONE VAB 3834  
 PAT DAWSON and JOANNE THOMAS, Operators

Tables with GENUINE IMPORTED MARBLE TOPS!

- ITALIAN PROVINCIAL
- FRENCH PROVINCIAL

Chain of Any Piece... **39**

Now, you can bring old world beauty into your living room at a price you would never think possible for such lovely pieces. New authentic, carefully detailed groups to choose from. The graceful, curving lines of Italian Provincial or the grand, curving beauty of French Provincial, and they all have rich GENUINE Imported Portuguese 100% MARBLE tops, giving a special touch of glamor to your decor. The solid antique brass drawers really add to the rich quality of the pieces. Don't miss these unusual, Slaton-quality low priced.

**Budget Terms Available**

## SELF FURNITURE CO.

235 W. Garza Phone VA8-4407

### After Attended Lutheran Program

Gerald Duane Walter from the Lutheran Church, Slaton, ended the college day program at Texas Lutheran College March 30.

The days program included tour of the campus, special orientation sessions, a musical program, and a baseball game. Texas Lutheran, a liberal arts college owned and operated by the American Lutheran Church, this year celebrating its 50th anniversary in Sequin.

**LATEX WALL PAINT**  
**DRIES IN AN HOUR**  
 Completely Washable  
**SPRING FRESH COLORS**  
 BRUSHES CLEAN easily WITH SOAP & WATER

**MOORE'S REGAL WALL SATIN**



**5.50** gallon

**Benjamin Moore**  
 VA 8-4106  
 250 So. 9th

### Ideal for Mother's Day Gift

## NEW!...AMAZING!...

# "Flora-Scent"

An Entirely New Idea in Air Refreshers...

**REFRESHES the air AND BEAUTIFIES your rooms the SAME TIME!**

Your choice of...  
 Sweetheart Roses  
 Gardenias \* Pine  
 Orchid (Lilac fragrance)



Complete arrangement of colorful flowers or pine enclosed in a rising glass amphora or makes charming addition to bedroom, living room or dining room. The lid and Flora-Scent baskets in colors, refreshes the air—no oils—with the delicate fragrance. Does it work? Stop by and we'll show you the "secret"...

**Only \$2.98 each**

SOLD BY  
**TEAGUE DRUG**  
 SLATON  
 Authorized Franchised Distributor

### Grandmother's Brown Sugar Beans



You hardly need a recipe for making Brown Sugar Beans. Like your grandmother, you'll cook up a good-sized batch of Idaho's famous dried Great Northern (large white) beans to the almost-tender stage. Then it's one layer of beans about an inch deep in a shallow baking pan or casserole, a liberal sprinkling of brown sugar—the dark variety for deeper flavor, a pinch or three of dry mustard; a good dash of salt and of coarse-ground black pepper, quartered bacon slices laid hit and miss over the top, the bean liquid added. The whole to bake in a 350 degree F. (moderate) oven about an hour. For extra goodness, just before serving sprinkle the bacon with brown sugar and toast gently under the broiler until the sugar is bubbly and the bacon lightly browned. M-m-m, good!

This is a treat that goes well with any meat, especially those from the barbecue grill. With a more generous use of bacon atop, it can serve as a hearty and economical main course dish in itself. Perfect partners are coleslaw or sliced tomatoes, corn sticks or hot brown bread slices, with fresh fruit or chilled cup custards and cookies for dessert. These beans are good warmed over and may even be frozen for future use. But then, you had better not count on leftovers!

If you haven't tried the "large white" Idaho-grown Great Northern variety of beans, you have a taste-treat in store. Pull of the flavor, these beans may be used in every recipe calling for their "small white" cousins. Versatile too, they turn into many tempting dishes—dips, soups, salads, casseroles, croquettes.

### Interest In Soil Testing At High

Soil sample numbers handled by the three soil testing laboratories operated by the Texas Agricultural Extension Service at College Station, Seymour and Lubbock set a new record during January and February. W. F. Bennett, extension soil chemist, said 4,543 soil samples were received during the two months as compared with 4,231 samples for the same period in 1962.

This, Bennett said, indicates the strong and growing interest in soil testing. Samples were submitted, he added, from more than 200 of the State's counties with 16 in the 100 plus group. The top grouping included Bailey, Castro, Foyette, Floyd, Garza, Gonzalez, Hale, Harris, Hockley, Kaufman, Lamb, Lubbock, Milam, Parmer, Parmer and Pothier with Hale, Hockley and Parmer ranking one, two, and three.

### Maeker Is Head Of Student Body

Rodney Maeker of Wilson is currently serving as president of the Lutheran Student Association at Texas Lutheran College, Sequin, Texas.

The LSU is an organization for Lutheran students at T.L.C. The purposes of the organization are study, recreation, and Christian service.

Maeker, son of Mr. and Mrs. Edmund Maeker, Wilson, is a sophomore sociology student at T.L.C.

## STATE CAPITAL Highlights AND Sidelights

by Vern Sanford  
 TEXAS PRESS ASSOCIATION

### Clean up the roadsides is a message being delivered by the Texas Good Roads Association and the Texas Junior Chamber of Commerce.

Project is described as an "important contribution to the pleas of Governor Connally and the Legislature to seriously and systematically promote tourist travel into and through Texas."

Texas Junior Chamber will encourage its members to join in a project to remove debris and litter from city streets, county roads, and state highways.

Texas Good Road Association will give the junior chambers money prizes for the best local progress to make their areas more attractive to visitors of Texas.

### Water

Final legislative action is near on the bill by Sen. George Parrish of Dallas and Rep. Eligio de la Garza of McAllen to set up machinery for the state to help out financially on big water projects.

Both Houses have adopted the bill, with a small difference. Sen. Ralph Hall of Rockwall added an amendment to give county commissioners courts approval power on recreation facilities planned at reservoirs built under the program. Since no county money will be involved, the House took out this provision.

Voters approved the plan last November by which the Texas

Water Development Board will be allowed to use up to half of its 100,000,000 borrowing power to pay for, or contract to pay for, the building of added height on dams to be built by local or federal agencies.

Highly complicated procedures were written into the bill to safeguard tax money. Cash from future sales of water or storage space will repay the bonds issued to finance the projects.

that it would have lower interest rates, and the difference in interest would pay costs of administering the program.

**Tax Cut**  
 While legislators begin consideration of tax increases to help finance state activities, mainly the higher education, they are about to get the word from both Houses of the Legislature that they have passed a bill to raise taxes on oil and gas producers.

## KUSS ELECTRIC WIRING

Motor Appliance Repair  
**SUPPLIES**  
 VA 8-3225 850 S. 14th.

## DEAL'S MACHINE SHOP

155 No. 9th St.  
 SLATON, TEXAS  
 Ph. VA 8-4507

FOR YOUR IRRIGATION PUMP AND GEAR HEAD REPAIR

### General Welding And Machine Shop

IT PAYS TO TRADE AT

# Cecils LIQUOR STORE

Just Follow the Signs in  
 Odessa - Lubbock

# T.G.&Y. OUTSTANDING SELECTIONS...BIG SAVINGS DURING OUR

## SHOWER OF VALUES

5¢ TO \$100 STORES  
 PRICES GOOD IN ALL STORES WHILE QUANTITIES LAST!

<p>THURS., FRI., and Sat.  <b>Rose Bushes</b>                  Regular \$7c  <b>17c WITH COUPON</b>                  Regular \$7c                  Coupon COUPON                  This coupon is worth 20¢ toward the purchase of Rose Bush at T.G.&amp;Y. Thursday, Friday and Saturday.                  COUPON COUPON</p>	<p>Michigan  <b>PEAT MOSS</b>                  50 pound bag  <b>34c</b></p>	<p>"LITTLE TOYS"  <b>ELF BOOKS</b>                  Fascinating, enjoyable reading for children. Twenty-Four Assorted Titles.                  25c VALUE  <b>2 FOR 33c</b></p>	<p><b>BANDEAU ASSORTMENT</b>                  4 IN. PICO.                  An assortment of styles and colors to wear during the summer. Decorative...                  39c VALUE  <b>27c</b></p>	<p><b>GARMENT BAG</b>                  \$1.39 VALUE  <b>97c</b></p>
<p><b>FERTILIZER</b>                  50 Pound Bag  <b>99c</b>                  Phillips "66"                  Ammonium Sulphate</p>	<p><b>CLOTHESPIN BAG</b>                  2 DOZEN CLOTHESPINS                  73c VALUE  <b>57c</b></p>	<p><b>DAMPENER BAG</b>                  20" x 27"                  Keep your ironed clothes ready for ironing. Durable, clear plastic with handy zipper.                  39c VALUE  <b>33c</b></p>	<p><b>PAD &amp; COVER</b>                  20" x 20"                  WITH COVER-TRIGGER GARMENT HANGER.                  Search &amp; save...                  \$1.59 VALUE  <b>97c</b></p>	<p><b>BED PILLOW</b>                  20" x 20"                  \$1.49 VALUE  <b>97c</b></p>
<p><b>GERANIUMS</b>                  4 inch Pot <b>47c</b>                  3 inch Pot <b>3 for 99c</b></p>	<p><b>10-SHELF SHOE BAG</b>                  37" x 13" x 8"                  Heavy steel frame... Full Length Zipper...                  \$2.49 VALUE  <b>\$1.88</b></p>	<p><b>WALL MIRRORS</b>                  Let these mirrors make your room look larger and reflect the beauty of your home. Quality Glass with Brass Frames.                  9" x 13" \$1.49 VALUE <b>88c</b>                  17" x 25" \$4.49 VALUE <b>\$2.44</b></p>	<p><b>16 OZ. BRITENOL SPRAY ENAMEL</b>                  Perfect for furniture, interiors &amp; exteriors. Simply press along or spray. Assorted Colors.                  DISCOUNT PRICE <b>88c</b></p>	<p><b>FOR LIMITED TIME ONLY! SAVE 20% A PINT ON Super-TEX ODOORLESS-QUICK DRY ENAMEL</b></p>
<p><b>POLY PLASTIC HOUSEWARES</b>                  Ideal for summer picnics...                  67c VALUE  <b>47c EACH</b></p>	<p><b>PAINT BRUSH</b>                  2" Flat Varnish Brush, Red Smooth Handle, Long Lasting Pure Bristle Grippable in Rubber.                  39c VALUE  <b>23c</b></p>	<p><b>5 GAL. PAINT &amp; UTILITY PAIL</b>                  Durable...                  29c VALUE  <b>17c</b></p>	<p><b>PAINT BRUSH</b>                  2" Flat Varnish Brush, Red Smooth Handle, Long Lasting Pure Bristle Grippable in Rubber.                  39c VALUE  <b>23c</b></p>	<p><b>PAINT BRUSH</b>                  2" Flat Varnish Brush, Red Smooth Handle, Long Lasting Pure Bristle Grippable in Rubber.                  39c VALUE  <b>23c</b></p>

ALWAYS SHOP T.G.&Y. FOR OUTSTANDING VALUES AT LOW DISCOUNT PRICES!

# HIGGINBOTHAM-BARTLETT'S

## Magnificent Jones-Blair Paint Sale Continues

### POLY FLEX

Latex House Paint For Those Who Want  
A Fast Drying Outside House Paint.  
Regular \$6.60 Gallon—

**4.75**  
Gallon

### JIFFY SPRAY ENAMEL

16 Oz. Can  
Regular \$1.25 Can

**99c** each

### GLAMOR

Alkyd Wall Paint

Washable Wall Paint  
Regular \$5.90 Gallon

**3.99**  
Gallon

### Regular 1.35 7 inch Roller & Pan Set

**99c**

Regular 1.40 9 inch

### Roller & Pan Set 1.19

### VAX

Washable Wall  
Paint. . . Regular  
\$4.95 Gallon

**3.39**  
Gallon

### SUNDIAL House Paint

Our Finest  
House Paint  
White and  
Colors. . . .  
Regular  
\$6.95 Gallon

**5.25**  
Gallon

### GLIDE House Paint

White Only

**4.35**  
Gallon

Regular 5.90. . . Made in  
Outside Primer At the  
Same Price

### TUFF KOTE

Proof Paint, All Colors. . . Ideal Paint  
for Cotton Trailers  
Gallon **\$2.95**

### EVERYTHING

In our Paint Department  
Reduced  
**20%**

### VelvaGlo Enamel

Matches Colors in Vax and  
Glamor  
quart **\$1.44**

### FREE FLASHLIGHTS

2 Cell Flashlights with each purchase  
of Jones-Blair Paint During This Sale

### NOW AVAILABLE

NOW AVAILABLE . . . FHA — GI And Conventional Homes in The  
Russell Addition West of Slaton High School . . . Call Ed Williams,  
VA8-4523 or Phil Brewer, VA8-3241

# HIGGINBOTHAM-BARTLETT

SLATON, TEXAS

PHONE VA8-4523

### Police Activity

Jail arrests since last Thursday: 6 vagrancy, 5 drunk, 2 burglary.

Thefts, burglary and vandalism monopolized a relatively quiet week in Slaton.

Theft of produce from in front of the Drive Inn Food Mart, 150 N. 9th, was reported early Saturday morning, with missing items including two dozen boxes strawberries, five 10-lb bags of potatoes and one-half box of bananas.

A paper vending rack was reported missing from Sanders Grocery the same morning.

A window was broken at the Junior High School gym Saturday night.

Two juveniles were arrested and turned over to juvenile authorities on charges of entry through a window at the James White residence, 130 S. 3rd, about two months ago, a Hamilton watch, four cans of beer, five silver dollars and an ash tray said taken.

Lin Gallegos was tried in Judge McClewsy's court and placed under \$1500 bond on charges of burglary of a motor vehicle. Gallegos who has previous burglary convictions on his record, was said to have admitted theft of copper wire and other items from a pickup belonging to Magouirk Electric and parked at rear of the local T. G. & Y. store.

Mirrors were taken from a station wagon early in the week, the vehicle belonging to Raymond Smoot.



### April 10

Born to Mr. and Mrs. J. D. Maxwell, Slaton, a baby girl, Ruth Ella, 5 lbs. 10 1/2 ounces.

### April 11

Antonio, 8 lb. boy, born to Mr. and Mrs. Guadalupe Aleman, Tahoka.

### April 15

A baby girl, Teresa Ann, 7 lbs 15 oz., born to Mr. and Mrs. Jerry Taylor of Lubbock.

### April 16

To Mr. and Mrs. Julio Escobar, Slaton, a baby boy, Steve, 5 lb 4 1/2 ounces.

Mr. and Mrs. C. R. Harris, Slaton, a baby boy weighing in at 8 lbs 2 1/2 ounces.

### April 17

A baby girl, 7 lbs 14 oz., born to Mr. and Mrs. Baldomero Benavidez of Lorenzo.

### EASTER VISIT

Mr. and Mrs. R. H. Todd Jr and family spent the Easter week-end in Richardson visiting his brother, Frank Todd and family.

### School Menu

MONDAY — Salsbury steak with gravy, buttered corn, English peas, salad, oatmeal cookies with apple sauce.

TUESDAY — Hot bread, hamburger casserole, green beans, cabbage and apple salad, apricot cobbler.

WEDNESDAY — Vienna sausage, pinto beans, buttered spinach, cheese and onions, cornbread and butter, jello with fruit.

THURSDAY — Ham, sweet potatoes, blackeyed peas, okra, sliced tomatoes, hot rolls and butter, gingerbread.

FRIDAY — Tuna and cheese sandwiches, potato chips, deviled eggs, strawberry upside-down cake.

**ROEBIC ROOT K-77 KILLER**  
DESTROYS ROOTS AND PREVENTS CLOGGING IN SEWER PIPES AND SEPTIC TANK-CESSPOOLS DRAIN FIELDS.  
ONE TREATMENT LASTS A FULL YEAR  
\$3.95 MONEY BACK GUARANTEE

Slaton Farm Store

### Tucker Makes Honor Roll List

Names of 82 students on the 3.0 honor roll and of 477 on the 2.5 honor list for the fall semester at North Texas State University have been announced by Vice-President J. J. Sparlock.

On the 2.5 honor list is Dee Allan Tucker of Slaton, the son of Mr. and Mrs. Delmar D. Tucker, 130 E. Dawson. Tucker is a senior music major at NTSU and is a member of Phi Mu Alpha Sinfonia, national music fraternity for men.

Those in the 3.0 group made a grade of "A" in all of their course work. The 2.5 listing includes all others whose grade average came at least midway between an "A" and a "B".

### CARD OF THANKS

To our many wonderful friends and good neighbors.

We want to say Thank You for the prayers, kind words, the lovely flowers, cards of sympathy, and food. All of these kind deeds are more deeply appreciated than you will ever know.

May God bless each of you will be our prayer.

The family of  
Billy L. Brackeen



### WILL AYERS says

You can't take it WITH you but that's about the only place you can go WITHOUT IT.

Will Ayers Farm Store

**1963**  
**PROGRESS PARTNERS**  
APPRECIATION TIME  
FOR CUSTOMER & EMPLOYEE LOYALTY  
**NEIGHBORS ON THE JOB ROUNDUP**

MEET AND KNOW YOUR SLATON NEIGHBORS SERVING WITH YOU IN SLATON'S PROGRESS!

TODAY SLATON HAS MUCH TO OFFER ITS CITIZENS, EXCELLENT CHURCHES AND SCHOOLS

The fertile soil was formerly a part of the IOA Ranch. Managed by ROLLIE BURNS from 1888 to 1896.

The first train arrived in Slaton in January 1911.

Best wishes for Slaton's future accomplishments. —Thank you!

J. W. BELOTE, O. D.  
OPTOMETRIST

MY JOB  
OPTOMETRIST



Dr. Joe W. Belote, Jr. first saw the light at Paducah, October 4, 1920. He attended school at Paducah, Hardin Simmons University at Abilene and received his O. D. degree from Southern College of Optometry in March 1950.

Dr. Belote and his wife, Ora, have two children William Earl and Betty Jo. The Belote family reside at 925 South 17th Street in Slaton.

Dr. Belote is a member of the American Optometric Association, Texas Optometric Association, South Plain Optometric Society, and Optometric Extension Program. He is a World War II veteran serving with the 20th Air Force in the South Pacific.

DIAL

VA8 - 3766

115 S. Ninth  
SLATON, TEXAS

# Southland News

**VISIT OLD HOME**  
Mr. and Mrs. Edgar Moseley visited Vernon for the Easter days. On Sunday they went to church at Odell where they attended, and they saw



**BRUCE PEMBER**  
**PEMBER INSURANCE AGENCY**  
N. 8th. VA 8-3541

## FREE AIR

AT M & S SERVICE STATION

sailed the ocean blue; had his troubles as well as you.

days and days he drove to work.

and a place where he could park.

thing you know some will put out a new car you can use once and throw away.

yourself," is right advice but it's more to watch the rest of the

as we know the U. S. is the only country that has won a victory just as expensive as a defeat.

ation on a cigarette "To my matchless

**M and S**



**ATION**

For Your Convenience We Have Installed

An Open

## PARTY ICE BOX

Now You Can Have All the Crushed Ice You Need For All Occasions

ICE ONLY	35c
ICE ONLY	50c

LOCATED AT—

**M. D. GEER TEXACO SERVICE STATION**

North 9th VA8-4773

**PEMBERTON ICE CO.**

people they had not seen in 20 years. The Moseleys were married there and raised their family there also.

On Monday, after they returned from their trip on Sunday night, Mrs. Moseley was surprised on occasion of her birthday with a dinner prepared by her daughter, Mrs. Harley Martin. Others attending were Mr. and Mrs. Jack Lancaster, Jonathan and Kevin, of Amarillo; Mr. and Mrs. Ed Moseley, Nedra, Rhonda and Rheda of Slaton; and Tyra, Paul Ray and Kandice of the home.

Mr. and Mrs. Herman Dabbs received word Saturday that their son and daughter-in-law, Mr. and Mrs. Jerrell Dabbs, are the parents of a boy born April 13th, weighing 7 lbs. 12 oz. Dr. Jerrel Dabbs is an intern in Boston, Massachusetts.

Breonne Winterrowd celebrated her 10th birthday Friday. Ten guests were present for the occasion, and they went to the park for the evening entertainment.

A 3-night meeting series was held last week at the Baptist Church. Laymen speaking included Harley Martin of Slaton on Friday night; Sam Ellis of Southland on Saturday; and James McEachern of Post on Sunday evening.

Mr. and Mrs. Earl Morris received word Monday that his brother, Cecil Morris of Gonzales, Texas had died. Cecil once attended school at Hackberry. Earl Morris was unable to attend the funeral because of his health.

Rev. and Mrs. Ray Bassett and 18-month-old boy, Clifford, are moving from Amarillo this week to our community where he is assuming pastorate of the Methodist Church here. Rev. Campbell, whose son is pastor at Buchanan Street Church in Amarillo, has gone to assist as pastor there in his son's place until the younger Campbell recovers from his heart attack.

Brenda Dabbs and Beatrice Klesel returned to Tech Monday after being home for the Easter holidays.

Fred and Ned Myers of Post spent Easter with their parents, the Jack Myers.

J. W. Goalsby of Lubbock, uncle of Mrs. Don Pennell, visited her Monday.

Dickie Kendrick of Lubbock and Jelly Myers visited Pete McKee at Slaton Sunday.

Mr. and Mrs. F. W. Calloway went to Walnut Springs on Sunday to attend a family reunion.

Mr. and Mrs. Bandy Cash and son Clyde Allen of Justiceburg were visitors last week in the J. B. Butler home here. They reported that their famous baseball player son, Norm Cash, had told of high hopes for the Tigers during the coming season. Norm had accompanied his team on a tour of Japan engagements, and he reported a very enjoyable time there.

VIENNA SAUSAGE, Libby's	19c
All Meat, No. 1/2 Can	65c
TEA BAGS, Lipton's, 48 Count Box	61c
Drip, Fine, or Regular, COFFEE, Chase & Sanborn, 4c Off Label	65c
1 Pound Can	25c
BISQUICK, Biscuit Mix 60 Oz. Pkg.	49c
TUNA, Bits O Sea, Chunk, No. 1/2 Can	2 for 25c
BEEF STEW, Libby's 24 Oz. Can	33c
POTTED MEAT, Libby's No. 1/2 Cans	2 for 25c
MUSTARD, French's Pure 24 Oz. Jar	10c
SHOE STRING POTATOES Alma, No. 300 Can	2 for 23c
SPINACH, Allen's No. 300 Cans	15c
YAMS, Stillwell, No. 303 Can	2 for 35c
MUSHROOMS, Fanfar, Stems and Pieces, 2 Oz. Cans	33c
SALAD DRESSING, Brockle's Special, 8 Oz. Jar	25c
CHILI, Ellis, Yith Beans, 15 1/2 Oz. Can	

### Fresh Frozen Foods!

## LEMONADE

Libby's 6 oz. **2 FOR 23c**

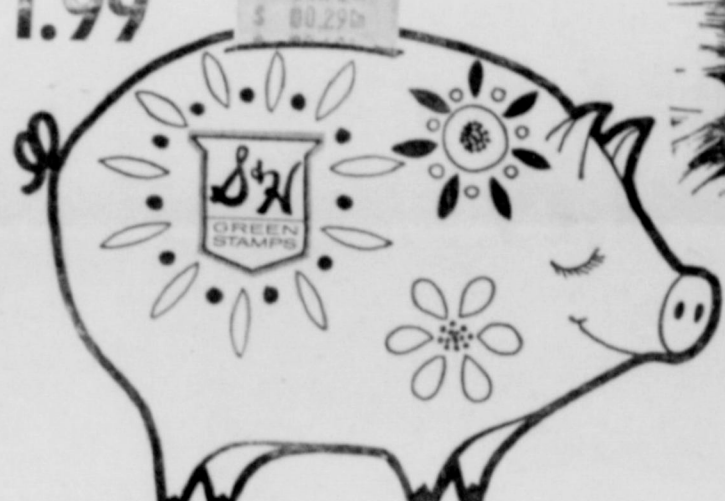
MEXICAN DINNERS, Patio 16 Oz. Size	39c
YELLOW PUNCH, Hawaiian, 6 Oz. Can	10c
Peas, Silverdale, Green 10 Oz. Pkg.	2 for 25c
TATER TOTS, Ore. Ida. 16 Oz. Pkg.	2 for 45c

### Health And Beauty Aids

## PICNIC JUGS

Burrough, Insulated, Two Tone, Plastic, 1 Gallon, \$3.49 Retail **1.99**

KITCHEN TOOL SET, Chrome Plated Black Plastic Handle, \$3.00 Value, 6 Piece Set	\$1.10
HAIR SPRAY, White Rain, Regular \$1.49 Retail, Plus 9c Tax	88c
SUPER SET, Nestle's, Regular 35c, Clear Or Green, Plus 3c Tax	27c



Fresh Quality Meats Always At Piggly Wiggly!

## GROUND BEEF

**3 \$1**

Lean 100% Pure Peef, Dated For Freshness

## FRYER BREAST

**2 79c**

Blue Ribbon, U. S. D. A. INSPECTED	
CHUCK ROAST, Armour's Star, Aged Heavy Beef, Lb. "Valu Trim," Lb.	39c
SIRLOIN STEAK, Armour's Star, Aged Heavy Beef, "Valu Trim", Pound	79c
BOLOGNA, Butcher Boy All Meat, 6 Oz. Pkg.	19c
BRAUNSCHWEIGER, Armour's Star, 8 Oz. Roll	19c

LINK SAUSAGES, Blue Morrow's, Lil Piggy 12 Oz. Pkg.	39c
FRANKS, Value Brand 2 Pound Pkg.	59c
LONGHORN CHEESE, Southern Style, Half Moon, Pound	49c
BREADED SHRIMP, Booth's Breaded Tibbits, 2 Lb. Pkg.	\$1.29

PICKLES, Del Monte, Dills, Kosher Dills, or Sour, 22 Oz. Jar	39c
DOG FOOD, Rusty, No. 1 Cans	6 for 47c
KOTEX, Sanitary Napkins, 12 Count Box	33c
TOILET TISSUE, Valecia 4 Roll Pack	25c



THE TAPE TELLS THE TALE!  
*more*  
**SAVE MONEY**  
AT PIGGLY WIGGLY

<b>CORN</b>	Rosedale, Golden Cream Style No. 303 Can	10
<b>MELLORINE</b>	Plains Or Home Treat, Asst. Flavors 1/2 Gallon	39
<b>SUGAR</b>	C & H or Imperial Pure Cane	5 Lb Bag 49
<b>COKES</b>	Or DR. PEPPER	12 Bottle Carton 57
<b>JUICE</b>	Tomato, Stokely's Finest	2 46 Oz. Cans 39

**YOU ALWAYS SAVE MORE MONEY AT PIGGLY WIGGLY! LOWEST PRICES IN TOWN!**

<b>Tea</b>	Lipton's 1/4 Lb. Package	39c
<b>Eggs</b>	Ideal Grade A Large, Dozen	39c
<b>Oleo</b>	Elgin, Colored Pound Pkg.	12 1/2c
<b>Flour</b>	Pillsbury's Best	5 Lb. Bag 49c
<b>Cocktail</b>	Fruit Stokely's In Heavy Syrup No. 303 Can	19c

### Freshest Quality Produce!

<b>STRAWBERRY</b>	California Extra Fancy Pint Box	29c
<b>CELERY</b>	California Green Large Stalk	225c
<b>NEW POTATOES</b>	Pascal Fresh Red,	325c
<b>GREEN ONIONS</b>	Fresh Large Bunch	215c





# THE WANT ADS



great for getting things done  
a personal  
extension phone

As busy homemaker finds her days are  
shorter and she gets more done because a  
personal extension phone in the kitchen often helps  
her do two things at once, like watching  
the TV and phoning a PTA list. For a  
personal extension phone from the tele-  
phone business office.

SOUTHWESTERN BELL

## Rural Accident Toll Continues Climb In County; 13 Are Injured

The Highway Patrol investigated 36 rural accidents in Lubbock County during the month of March according to Sergeant O. C. Guthrie, patrol supervisor of this area.

These wrecks accounted for one person killed, thirteen persons injured and an estimated property damage of \$16,645.00.

The rural traffic accident summary for Lubbock County from January through March of 1963 shows a total of 110 crashes resulting in 2 persons

killed, 52 persons injured and an estimated property damage of \$54,179.00.

Each year, with the coming of April, it seems natural for motorists to want to get back to the invigorating atmosphere out on the highway and enjoy and colorful countryside. Many of these motorists are apt to forget that increased violations of traffic laws play a vital roll in the annual traffic accident toll.

The motorist should realize that highway travel multiplies by leaps and bounds in April. The Sergeant stated, "What's better time than April to remind motorists, pedestrians, and all street and highway users about the importance of knowing and obeying traffic laws."

## Veterans Affairs Clinics Slated

A Regional Rehabilitation Clinic for Veterans Service Officers is to be held at the Plainsman Hotel in Lubbock, April 18-19. This announcement was made by Charles L. Morris, Executive Director of the Texas Veterans Affairs Commission in Austin. The Clinic is conducted by the Veterans Affairs Commission in cooperation with the various veterans organizations and the Veterans County Service Officers Association of Texas.

This Clinic will serve as a refresher training course for County Service Officers and Post, Chapter, and Barracks Service Officers within the 79-County area served by the Veterans Administration Regional Office in Lubbock.

All Service Officers, as well as other persons interested in veterans affairs, are invited to attend this clinic. The main topics for discussion will deal with disability compensation and pension, all types of death benefits for veterans' dependents, GI loan benefits, educational and training benefits for veterans and war orphans, and hospitalization and medical treatment for veterans.

Symptoms of Distress Arising from  
**STOMACH ULCERS**  
DUE TO EXCESS ACID  
QUICK RELIEF OR NO COST  
Ask About 15-Day Trial Offer!

Over five million packages of the WILLARD TREATMENT have been sold for relief of symptoms of distress arising from Stomach and Duodenal Ulcers due to Excess Acid—Poor Digestion, Sour or Upright Stomach, Gasiness, Heartburn, Sleeplessness, etc., due to Excess Acid. Ask for "Willard's Message" which fully explains this home treatment—free—at

Eblen Pharmacy  
Teague's Drug Store

## Public Wheat Meetings Are Set

High Plains wheat growers are invited to attend either of two special public meetings to inform growers on all provisions of the May 21 wheat referendum. Director John E. Hutchison of the Texas Agricultural Extension Service announced today.

The meetings will be held in Plainview at the High School Auditorium today, Thursday, and in the Lamesa District Courtroom on Friday. Both will begin at 10 a.m.

District Agent W. H. Jones of Lubbock will preside at the meetings. All aspects of the referendum will be discussed by a panel of Texas A&M College specialists composed of Thomas D. Aaron, grain marketing specialist; Ben Spears, agronomist; and Cliff H. Bates, farm management specialist. Similar meetings are being held in other wheat-producing sections of the state.

Hutchinson said that Extension personnel would present factual and objective information with no attempt to tell wheat growers how they should vote.

## A. A. Meredith, Longtime Water Authority, Dies

Funeral services were conducted in Borger Monday for A. A. Meredith, known region-wide as the "father" of the Canadian River water project from which Slaton expects to secure a water supply along with several other South Plains cities.

Meredith, 72, died Saturday following a long illness. He had undergone surgery three weeks ago.

A native of Louisiana, Meredith moved to Texas in 1909. He went to Amarillo in 1931 as director of the Potter County relief program and in 1935 was named Works Administration director for the Panhandle district.

He served as Borger city manager from 1941 to 1949 when he became manager of the Canadian River Municipal Water Authority, formed to build a reservoir and connecting pipelines for 11 Panhandle and South Plains cities. The project lake is named for Meredith.

Survivors include his wife, a son, six daughters, two stepdaughters and a stepson.

## Edwards Soloist Ft. Worth Concert

Donald Edwards of Slaton was soloist Wednesday with the Texas Boy's Choir and the North Texas State University chapter of Phi Mu Alpha Sinfonia at America.

The male choruses presented a joint concert in the Will Rogers Auditorium at Fort Worth. Edwards is a member of Phi Mu Sinfonia, national music fraternity.

W. A. Alspaugh Elected To American Angus Association

A sophomore music student at NTSU, he also sings with the NTSU A Cappella Choir.

He is the son of Mr. and Mrs. J. S. Edwards Jr., 745 S. 18th.

Typewriter and adding machine ribbons for all make machines. Available in Slaton at The Slatonite.

W. A. Alspaugh, Slaton, has been elected to membership in the American Angus Association at St. Joseph, Missouri, announces Frank Richards, secretary.

Alspaugh was one of 57 breeders of purebred Aberdeen-Angus in Texas elected to membership during the past month.

86 PROOF • ©1962, OLD CHARTER DIST. CO., LOUISVILLE, KY.

# Every day more people enjoy Kentucky's Finest BOURBON

10 years old  
or  
7 years old



Tick-tock, tick-tock...the BOURBON that didn't watch the clock

## OLD CHARTER

KENTUCKY'S FINEST BOURBON

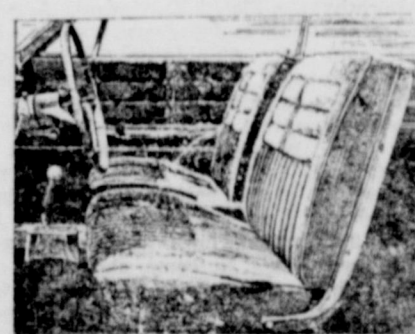


Only a superior whisky improves with age. Old Charter goes into the cask the finest whisky obtainable. Long years later, it emerges with all the subtle bouquet, flavor, and mellowness nature can bestow. Whether you select the popular 7 year Old Charter or the extra age 10 year old—you know it's Kentucky's Finest.

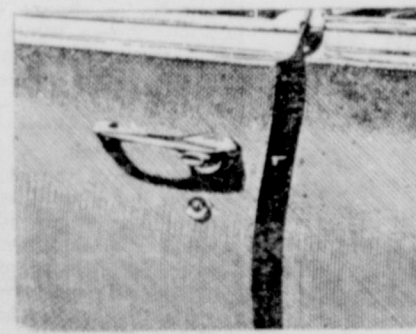
## NOW SEE WHAT'S NEW AT YOUR CHEVROLET DEALER'S



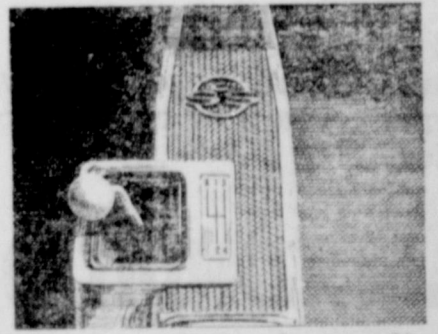
'63 CHEVROLET IMPALA SUPER SPORT



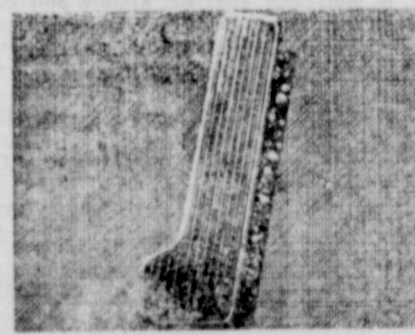
Front buckets and Impala elegance.



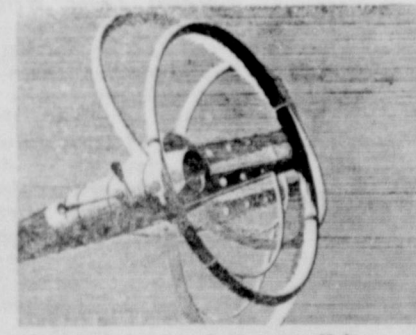
Solid, quiet Body by Fisher.



With Powerglide\* or the 4-speed\*.



Seven 200000th engine choices.



Comfortilt\* is what we call it.



CHEVROLET

Super Sport equipment\* is available on both Chevrolet Impala Convertible and Sport Coupe (shown above). \*Optional at extra cost.

See four entirely different kinds of cars at your Chevrolet dealer's... Chevrolet, Chevy II, Corvair and Corvet

"There's no doubt about it—electricity is the biggest bargain  
in Mommy and Daddy's budget."



120 NORTH NINTH STREET

## "Doc" Crow Chevrolet

VA 8



**BIRTHDAY ON EASTER SUNDAY**—Among the fortunate few marking their birthdays on Easter, Lem C. Jameson, 84 years of age, is shown above as he paid a visit to the Slatonite club last week. Mr. Jameson recalls that this is the first year his birthday has fallen on Easter Sunday in his entire life. Jameson came to Slaton six years ago from Matador where he resided for 35 years. A retired farmer, he lives with his son, Creed Jameson, at 320 South 7th in Slaton. He is another member of the growing family of Slatonite subscribers.



**CLINTON EASTMAN**  
Preaching

### Revival Begins At Westview Baptist Church

A week-long revival meeting has been announced for the Westview Baptist Church, 830 South 15th, in Slaton.

Rev. Clinton Eastman, pastor, will conduct the daily preaching services that commence Sunday, April 21st, continuing through the following Sunday. Two services daily are scheduled at 10 a. m. and 7 o'clock in the evening.

Rev. Eastman has been pastor here since December of '62, coming from the Calvary Church in Andrews.

Music will be under direction of Virgil Coffee, educational director of the First Baptist Church at Grand Prairie. Coffee formerly was at the First Baptist Church in Andrews, and was music and educational director of the Slaton First Baptist Church during 1952 and 1953.

Two choirs will be featured: The Crown Choir for children, and the large Crusade Choir composed of young people and adults of the congregation.

Rev. Eastman extends an invitation for the public to attend.



**VIRGIL COFFEE**  
Singer

Miss Conzada Lee, student at Texas Tech spent the Easter holidays with her parents, Mr. and Mrs. R. E. Lee.

Miss Pat Stansell, English teacher at Levelland High School, and Miss Pam Stansell, student at Texas Tech, visited their parents the past week-end.

### Old Friends

By J. J. Maxey

The executive committee along with a number of other interested exes met last Monday night in the directors room of the Slaton Savings and Loan Association to discuss plans for our forthcoming reunion. Those present were Virta Zuma Shepard, Cecil and Pauline Scott, Harold Wilson, Oma Faye Brown, Dorothy Jones, Billie Jean Edmondson, Madeline Halburton, Billie Miles, Mardel Childress, Wilma White, Pauline and I.

The general plans are as follows — The date will be June 22nd. The meeting place will be the Junior High School Cafeteria and Auditorium. Registration will begin at 9:00 a. m. with the following committee in charge — Virta Zuma Shepard, Oma Faye Brown, Pauline Maxey, Jean Edmondson, Mardel Childress, Wilma White, Billie Miles, Billie White and Billie Melton. Name plates will be used again this year in order that some of us that have grown older can be recognized.

The luncheon will be served cafeteria style by a catering service to 12:00 noon. After plates have been filled, exes will be directed to rooms designated for the various classes in order that the classes can eat together. Rooms will be marked showing where each class is to eat. The marking of the rooms will be in charge of Dorothy Jones, Wilma White and Madeline Halburton. The food committee will be Harold Wilson, Connie Locke and John Schmidt. Luncheon tickets will be \$2.50 each.

After every one has had time to eat and reminisce for awhile the entire group will re-assemble in the auditorium at 2:00 p. m. for a program. Exes will be formally welcomed by John Schmidt. Texas A&M's gift to Slaton. The main speaker will be former Coach Paul W. Wright. Coach Wright is well known to a great many exes and in our opinion is a first rate speaker. Since the theme of this reunion is the recognition of all of the football teams of the past we feel that the committee made an ideal choice in getting Coach Wright as the speaker. After the speaker has finished the entire group will be led in songs that have

been popular over the years in our schools by Wayne Liles with Patsy Pettigrew at the piano. After that anything can happen since we will play it entirely by ear from that point on. Coffee, tea, soft drinks and cookies and cakes will be provided so that everyone can stay as long as they desire.

There will be some curricular activities that will probably begin on Friday night and end up some time Saturday night. This will be in charge of an entertainment committee composed of Charles Marriott, Chris Kirksey and Tommy Davis.

Advertising will be in charge of Curly Martindale. Curly will probably name several exes to help in this activity.

Cecil and Pauline Scott were appointed as chairmen of the overall arrangements committee. They will coordinate the work of the various committees and see that everything is ready at the proper time. Any committee chairman desiring information will please contact Pauline or Cecil.

A nominating committee composed of Dorothy Jones, Harold Wilson and T. A. Worley were appointed to bring nominations for a full slate of officers to serve for the ensuing year.

As we have said many times the Slaton Ex-Students Association is for every one that has ever gone to school in Slaton and our annual re-union is a gathering of the clan so to speak. Let's make this reunion the biggest and best ever. To do so, each of us will have to have a part in it. If you have friends that are exes and live out of town, write and invite them to come and spend the week end of June 22nd with you. It is surprising how much fun can be had with old friends getting together and reminiscing, hugging, kissing and bragging about how good we were in school. Make your plans now to be here June 22nd.

Those paying dues since our last report were—Veneta Bowen Byars, Audra Marriott Thompson, Jack and Joan Clark, Harold and Audra Wilson, Cecil and Pauline Scott, Billie Miles and Addie Lou Williams.

...in a PINCH? always CALL **E. W. Ham & Son Plumbing** 175 Teas Ave. Ph. VA8\_3361

### OBITUARIES

#### Father of Slaton Resident Dies At Lubbock Friday

Funeral services were conducted Saturday afternoon in Lubbock for Lon Cromer, 61, longtime area resident and father of Mrs. Martha Robertson of Slaton.

Mr. Cromer died early Friday morning in a Lubbock hospital, and funeral rites were held Saturday in the Asbury Methodist Church in Lubbock. Rev. Clarence Collins, pastor, officiating, assisted by Dr. J. Chess Lovern of the First Methodist Church there.

Cromer moved to Lubbock in 1916 and then to the Petty community in 1934 where he farmed until 1946, at that time returning to Lubbock.

Surviving are the wife, three daughters, two brothers, six sisters, and four grandchildren.

#### Mrs. Tumlinson Rites Pending

Funeral arrangements are pending for Mrs. Maud Ellen Tumlinson, 68, who died in Mercy Hospital Wednesday afternoon at 1:15 o'clock.

Mrs. Tumlinson had been visiting here and suffered a stroke March 31st, hospitalized since that date in the hospital here. She was born in the Indian Territory of Oklahoma, and moved to San Angelo from Central Texas in 1927, making her home at San Angelo.

Surviving are the husband, B. E. Tumlinson of San Angelo; two daughters, Mrs. Laverne Smith and Mrs. Willie Marie Parrott, both of San Angelo; four sons, Melvin and Earl of Slaton, Wilmer of Fresno, Calif., and Wallace B. of Lubbock; three sisters, Mrs. Lynn Hayley and Mrs. Sam James, both of Corpus Christi, and Mrs. J. B. Mullins of Lampasas; one brother, Bill Isbell of Florence, Texas; 11 grandchildren and five great grandchildren.

#### Family Members Die Within Week

Mr. and Mrs. J. T. Hammonds of 1025 S. 21st St returned home the last of the week from Childress. Mrs. Hammond's father, Irvin Morton, 80, died on Monday and was buried in Amarillo on Wednesday.

Surviving are the wife, Nora; daughters Mrs. Hammonds, Mrs. Fred Grayson of Amarillo, Mrs. V. F. Love, Lubbock; one son, Joe Morton, Childress; and nine grandchildren and 12 great grandchildren.

Two days after Mr. Morton's death, Mrs. Hammond's brother's wife, Mrs. Mary Morton, 56, died following major surgery. She also was buried in Amarillo Llano Memorial Cemetery. Her survivors include the husband, two sons, Noble Ray Morton of Amarillo, and Rudolph Morton with the U. S. Army in Korea; and one grandson.

Mr. and Mrs. Hammonds are distributors of the Avalnache Journal in Slaton.

#### CARD OF THANKS

We wish to thank the many people who aided financially when Harvey Alexander was confined a number of months in the hospital. Harvey, the colored boy who worked at Palace Barber Shop for 10 years, joins with his wife, Cora, in expressing deep appreciation to the following:

Clark Wood, H. G. Stokes, Bill Smith, Leon Davis, Travis Reynolds, Charlie Walton, Joe Teague, Ray C. Ayers, Elton G. Smith, R. E. Lee, Earl Reasener, F. T. Longtin, James Vanoy, Jack Cook, J. Cain, Mel Tudor, Lee Vardy, H. C. Sammer, Otis Neill, Spud Barry, M. C. Todd, A. L. Saaze, T. H. Basinger, B. H. Bollinger, E. R. Burns, John Butler, K. H. Davis, VFW, Carl Tevis, Casey Walling, L. B. Posey, Wayne K. Smith, C. R. Bain, G. B. Middleton, Bing Bingham, Alex Webb, John A. Schmidt, B. B. Castleberry, Jim Hughes, B. M. Pember, P. M. Wheatley, T. C. Reynolds, Jerry Reynolds and any others whose name we may have omitted.

Harvey and Cora Alexander

Mrs. N. P. Tate had as her Easter holiday guests, Mrs. Dale Tate and sons, Johnny and David of El Paso; and Arthur Tate of Plains, Texas.

Mr. and Mrs. Louie Melcher and family were in San Antonio Friday where they attended the wedding of a nephew, Don Cloninger, son of Mr. and Mrs. Ed Cloninger.

#### CARD OF THANKS

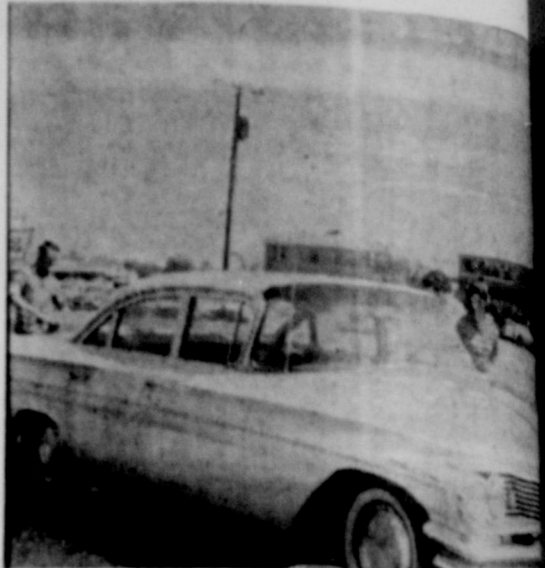
During a time like this we realize how much our friends mean to us. We thank all of those that prepared and served food, those that sat at the funeral home.

And thanks so much for the beautiful flowers and the donations made to the American Cancer Society, and to the Baptist Memorial Geriatrics Hospital.

We are deeply grateful for the thoughtfulness and expressions of sympathy by so many friends during the long illness and passing of our loved one.

Also we would like to thank Dr. Jaynes and the Sisters at the hospital for standing by until the very end. May God bless each one of you.

The Walter Savell family.



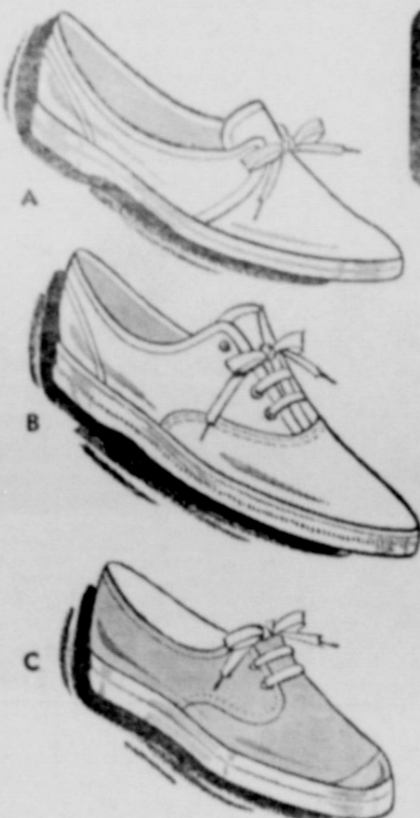
**CLEAN 'EM UP—HEAD 'EM OUT**—Sophomore members of the Methodist Church applied the elbow grease in conducting a car wash on the Slaton City Hall lawn. They plan to make a trip later plan to make. They plan to make car washes for the next two succeeding Saturdays at the same location.

Shown above, giving final touches to the car, are Marilyn McSween, Kay Choate, Larry Dowell, and Mike Ball.

Mr. and Mrs. W. E. Robertson of Marynale, Texas, visited the J. H. Trussell last week and for the Easter holidays. Tommy Trussell, who attends school at Abilene, and Mrs. Pauline Scrivner and daughter Kathy of Snyder also visited.

Everyone is invited to attend services at the church, with Sunday School at 10 a.m., and the evening preaching service at 6:30 o'clock.

**DR. S. R. BYRNE**  
VETERINARIAN  
Will be at —  
POLICE STATION  
April 22, 5 till 9  
to Vaccinate Your  
and Cats for —  
RABIES



**Anthony's**  
SHOES

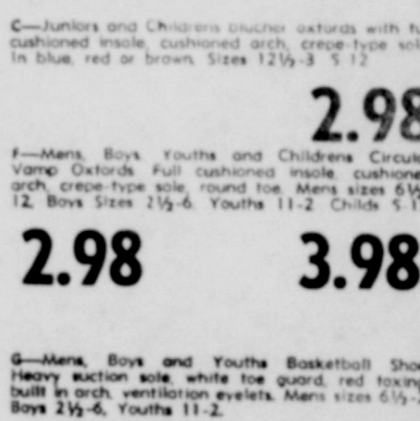
**FOOTWEAR IN CANVAS FOR THE ENTIRE FAMILY**

A—The "Sandpaper" one-eyelet oxford with full cushioned insole, cushioned arch, crepe-type sole, pointed toe. In white, red, black and green. Women's sizes 4-9. Men's 12-13.

2.98

B—Women's and Misses' crepe sole oxford with full cushioned insole, cushioned arch, crepe-type sole, pointed toe. In white, red, black and green. Women's sizes 4-9. Men's 12-13.

2.98



C—Juniors and Childrens' oxford with full cushioned insole, cushioned arch, crepe-type sole. In blue, red or brown. Sizes 12 1/2-3 1/2.

2.98

D—Men's, Boys' Youths and Childrens' Crepe Sole Vamp Oxford. Full cushioned insole, cushioned arch, crepe-type sole, round toe. Men's sizes 6 1/2-12. Boys sizes 2 1/2-6. Youths 11-2. Childs 5-12.

3.98

E—Men's, Boys and Youths Basketball Shoe. Heavy suction sole, white toe guard, red lacing, built in arch, ventilation eyelets. Men's sizes 6 1/2-12. Boys 2 1/2-6. Youths 11-2.

4.98

F—Men's and Boys' Lace to toe Basketball Oxford. White duck upper, full cushioned, shapely sole, special cushion arch, suction molded sole. Men's sizes 6 1/2-11. Boys sizes 2 1/2-6.

3.98

### BLACK TRACK SHOES

- For Indoor and Outdoor Track
- With three White Stripes
- Anti Scuff white to E Cap
- Washable
- Size—Boys' and Men's

**\$4.98**

### Leather Little Leaguer

- Rubber Cleats
- White Collar
- Leather Upper
- Full Tongue
- Size 1 to 9

**\$4.95**

**See Us Before You Buy YOUR Air Conditioner**  
WE HAVE  
**Essick • Koolmore • Artic Circle**  
**New Fiberglass Air Conditioners**  
First time ever offered on the market. Rust-proof . . . will give many years of comfortable service.  
**AIR CONDITIONER SUPPLIES**

**Pumps • Floats • Tubing**  
And Other Fittings

**BAIN AUTO STORE**  
146 West Garza