

# The Slaton Slatonite

Published Each Week In The Interest Of Slaton And Surrounding Area

Forty-Nine Number 35

Slaton, Lubbock, Texas, Thursday, June 9, 1960

10c per copy

Twelve Pages



## SUMMER FUN

A group of teenagers from Slaton High School is enjoying the cool water and fun of the Municipal Swimming Pool. They are, in front, Pam Henry, left, Betty Pettigrew, and, in back, Gene Talbert, left, and Dale Burleson. With summation on their hands and a hot sun above, the pool has been drawing students from local schools in fairly good-sized numbers.

## Slaton Backs Quilliam For State Representative In Light Voting

About 200 Slaton voters cast their voting right in today's run-off election for state representative and the Court of Criminal Appeals post, McDonald, 14; Davidson, 7.

three Slaton boxes and Posey and McClung; Box 19, McClung, Quilliam, 10; Hensley, 6; McDonald, 14; Davidson, 7. Box 25, Posey, Quilliam, 28; Hensley, 4; McDonald, 20; Davidson, 12. Box 26, NW Slaton, Quilliam, 38; Hensley, 18; McDonald, 32; Davidson, 12. Box 27, E. Slaton, Quilliam, 58; Hensley, 16; McDonald, 36; Davidson, 33. Box 28, SW Slaton, Quilliam,

49; Hensley, 20; McDonald, 32; Davidson, 29. Quilliam, 30-year-old Lubbock attorney, has been described as a "middle-of-the-roader." He led the county in the May primary, getting 8,372 votes to 6,664 for Hensley and 4,477 for D. L. Jones, farmer known well locally who ran as a write-in candidate. Quilliam's county-wide total Saturday was 2,723 votes to 1,073 for Hensley, exclusive of the Roosevelt box.

## CARNEGIE CLASS CONTINUES

The third session of the Dale Carnegie Class, being sponsored here by the Board of Stewards of the First Methodist Church, will be held at 7 p.m. today in the church. This is the final session which prospective members can attend free of charge, except for the final session, to which visitors are invited.

## JC'S TO SPONSOR TV GUIDE

The Slaton Jaycees, meeting Tuesday night, voted to sponsor a TV guide in Slaton, as a project of the Ways and Means Committee. Darrell Weaver, director in the club, will sell the ads in the guide, which will feature a month's TV schedules and will be distributed by participating merchants.

## Police Have Busy Month With Traffic And 58 Jail Arrests

Slaton Police Department report for the month of May shows traffic arrests were amounting to \$1,025 in fines, of which was "laid off."

Five were held for the Texas Highway Patrol and four were arrested on charges for the juvenile court. These four were later released to their parents. Four of five theft over \$5 cases were cleared, one of one theft under \$5, two of three vandalism, two of two burglary, and one "dog bite" case.

The 106 traffic arrests included 36 for no drivers license, 13 for speeding, one for improper control of motor vehicle, one for disobeying officer's audible signal, one for running a red light, one for passing on wrong side, three for improper start from stopped position three for backing without proper clearance, 10 for driving in a dangerous manner, two for no tail light, one for driving on wrong side of street, 14 for excessive noise by mufflers, one for passing in intersection, five for driving while license expired, eight for running stop sign, three for following fire truck, one for failure to grant right-of-way, two for following too closely, one for illegally parked, and one for permitting unlicensed driver to drive.

Accidents investigated included three on Garza street, at 8th, 9th and 10th. Another was at 9th and Scott. Total damage was estimated at \$995. The police department used 624.4 gallons of gasoline in patrol cars during the month. Police Chief Eugene L. Martin reported that the 99th District Court had sentenced two men for burglarizing Slaton High School last December. Arch T. Baker of Lubbock and Gerald Hones were given penitentiary sentences on the burglary. Baker four years and Hones three.

Clark Self Sr. won a free 3 day trip to Las Vegas by being 3rd in a selling contest of 33 Admiral dealers from all over the South Plains. He will arrive there Friday, June 17 and come back June 19.

James N. Ludlum has left his post as first assistant attorney general to go into private law practice with Jake Jacobsen, former administrative assistant to Governor Daniel.

## World War I Veterans To Meet Saturday

The Veterans of World War I will meet at 7:30 Saturday night in the old courthouse at Lubbock. R. R. McKinney of Big Spring, commander of District 19, and Mrs. Eula Hudson, department deputy chief of staff, Ladies Auxiliary, will be present to do organizational work. Re-organization is one of the purposes of the meeting. Pensions will also be discussed. The meeting is expected to be of benefit to wives and widows, as well as the veterans themselves, representatives said. Roger Q. Evans, commander, Department of Texas, will give the principal address.

## Rites Are Held For Paul Walker

Funeral services for Paul A. Walker, 58, were at 2:30 p.m. Monday in the Slaton First Methodist Church with the Rev. Rollo Davidson, pastor, officiating.

Walker, a resident of Slaton since 1916, died in his home here at 1:30 p.m. Saturday. He had been a carpenter.

Survivors include the wife, a daughter, Mrs. Henry Wolter, Tampa, Fla.; a son David, a serviceman on leave from the Navy; and a brother, Tom Walker, Lubbock. Burial was in Slaton Cemetery under the direction of Williams Funeral Home.

## Slaton Flying Club Gets Organized

The Slaton Flying Club was organized recently to promote model airplane flying in the community.

Bentley Page Jr. will head the group as president, Howard Henry is vice-president and Ray Wilkins, secretary.

The club will meet on the flying field at 5 p.m. each Thursday and will fly models until 8:15 p.m. Then the members will gather at 1005 W. Garza for the club meeting. Today, Lanny Swanner will have the program on flying for beginners.

The club has been divided into two teams in a current drive for new members. The losing team will "treat" the winners. Representatives of the club asked that all interested young boys of the community attend today's meeting if possible.

## Church Schools Attendance Totals 1,547

Attendance at church schools in Slaton Sunday, June 5 totaled 1,547 in the 12 churches which reported. Churches reporting and their attendance was as follows: First Christian - 63; Church of God - 27; First Methodist - 257; First Baptist - 319; Church of the Nazarene - 57; Westview Baptist - 211; Grace Lutheran - 100; Church of Christ - 256; First Baptist Mission - 42; Assembly of God - 64; Pentecostal Holiness - 81; Bible Baptist - 81; Evang. Methodist - 23.

## New Water Rate Suggested For CRMWA Cities; Slaton... 20.19

A new schedule of proposed water rates member cities would pay when and if the Canadian River Municipal Water Authority gets its dam built near Borger was presented at a CRMWA meeting in Plainview Monday.

The schedule, which would have Slaton paying 20.19 cents per thousand gallons for water,

Mr. Bland Tumlinson underwent surgery June 2. He is doing as well as can be expected.

## American Legion Baseball Team Gives Schedule; Pee Wees Finish

The schedule for the American Legion Baseball team has been announced.

The schedule: June 8, Slaton vs. Anton, here; June 10, Slaton vs. Plainview, there; June 15, Slaton vs. Lubbock, Auto, here; June 22, Slaton vs. Abernathy, here; June 24, Slaton vs. Anton, there.

met with some disapproval from the smaller cities of the authority.

Just last week, it was reported that Amarillo and Lubbock had "gotten together" on proposed water rates and the agreement of these two large cities was supposed to be the big hold-up on getting construction of the long-planned dam underway.

The new schedule of rates, presented by Leon Hill, director of the Bureau of Reclamation's regional office, ranged from a low of 12.79 cents per thousand for Borger and Amarillo to 38.01 cents for Brownfield. Water charges to other cities

would be: Pampa, 13.30 cents; Plainview, 13.85; Lubbock, 17.03 cents; Tahoka, 20.19 cents; O'Donnell, 24.81 cents; and Lamesa, 32.40 cents.

Director Lee of Brownfield said the price was too high for his town and others from the area apparently were in agreement with his opposition.

Chairman C. T. Johnson of Plainview asked that directors take the proposed rate formula to their city government for study and reaction, and asked for passage of resolutions by city governments on the formula within 30 days if possible. The matter will be discussed at the Slaton City Commission's

next meeting, Monday night, June 13.

Slaton's total cost for the 50-year project, according to a formula which includes each city's cost in the dam and reservoir, its share in the aqueduct, interest and operation, maintenance and repair, would be approximately \$4,916,000, based on the amount of water the community would possibly take.

## LIONS SEE FILM

The continuation of a film presented by Southwestern Public Service was the program at Tuesday's meeting of the Slaton Lions Club. The film was not completed at last week's meeting.

The film, concerning use of the atom, was shown by Melvin Kunkel, local SWPS manager.

Chuck Erwin, who recently assumed the practice of law here in partnership with George S. Lemon, Jr., was inducted into the club as a new member.

## ROTARIANS TO SEE FILM

Bill Able of Lubbock, employed by Texas Equipment and Cat Co., will show a film at today's meeting of the Slaton Rotary Club. Able's film is entitled "Road Ahead," and concerns highways going around cities.

## Slaton Will Be 'Dusted' For 'Skeeters' During Next Week

Recent rains have not only provided a better chance for a good cotton crop, they have increased prospects for a large mosquito crop, Lubbock City-County Health Unit representatives feel.

To offset this prospect, the unit will "dust" Slaton to kill mosquitoes next week.

The "dusting" process, which will take place at night, involves the use of trucks with two "buffalo" turbines, throwing the dust to areas where mosquitoes might concentrate.

Some people are allergic to the "dust" used in the process

and might want to spend the night out of town since there is little "getting away from" the dust. The trucks will cover the town about every two blocks. Most people will never know the "dusting" has taken place, except for perhaps an odor for a couple of hours. Others, who know they are allergic to or suspect they might be allergic to the "dust" will want to take appropriate "defensive" measures.

Millard Bruce of the Unit, in Slaton Wednesday, said he did not yet know the exact date of the proposed "dusting" but

said the date, which will be next week, will be announced over area radio and television stations in order to let those know who might want to spend the night elsewhere.

No great number of mosquitoes exists in Slaton right now, principally because all dry lake beds for two miles in every direction out of Slaton were "treated" before the rains came. However, areas outside that two miles were not treated and high winds can bring the unwanted pests to town most anytime. That, coupled with the breeding areas created by

recent rains, presents a threat which the "dusting" is expected to diminish.

There is nothing harmful in the dust, observers point out, other than to those who are allergic to it. It is used widely in the South Plains every year. This, however, will be new to most Slatonites.

Other suggested mosquito control measures include seeing that stagnant pools of water don't develop beneath one's air conditioner, in old cans, bottles or tires.

## Coming Events

Thursday, June 9— Rotary, Club House, noon; Jayceeettes, Jaycee Office, 7:30 p.m.; Ladies Auxiliary to the VFW, VFW Hall, 7:30 p.m.; Masonic Lodge, 8:00 p.m. Friday, June 10— Senior Citizen, Club House, 10:00 a.m. Saturday, June 11— Visit shut in friends Sunday, June 12— Attend the church of your choice Singing, Church of God, 2:00 to 4:00 p.m. Monday, June 13— American Legion, Legion Hall, 7:30 p.m.; Knights of Columbus, St. Joseph Hall, 8:00 p.m. Tuesday, June 14— Eastern Star, Masonic Hall, 7:30 p.m.; Vota Vita Class; Jaycee Board Member Meeting, 8:00 p.m.; W.O.W., W.O.W. Hall, 7:00 p.m.; Drivers License Examiner; Lions, Bruce's Cafe, noon



SLATON GIRL HONORED

Marilyn Clark, Slaton High School student, third from left, is shown being presented a certificate of merit as one of the 10 top winners in Texas in an essay contest sponsored by the Disabled American Veterans and, on the local level, the Lubbock County Committee for Employ The Physically Handicapped. The essay theme was "Jobs for the Handicapped . . . Passports to Dignity." This was the first year the contest has been conducted in Lubbock County. From left to right above are Richard Bunting, director of the Texas Employment Commission in Lubbock; Mrs. Clifford Sharp, contest chairman for Lubbock County; Miss Clark; and W. G. Lawrence, national service officer for the DAV in Lubbock and the current commander of the Lubbock Post of DAV. (Photo courtesy Avalanche-Journal.)

# The Slaton Slatonite

103 S. 9th Street VA 8-4201  
Slaton Times purchased January 20, 1927

Member 1960  
TEXAS PRESS ASSOCIATION

MEMBER OF  
NATIONAL PRESS ASSOCIATION

Member, 1960

WEST TEXAS PRESS ASSOCIATION

National Advertising Representative

WEEKLY NEWSPAPER REPRESENTATIVES, INC.  
NEW YORK • CHICAGO • DETROIT

Entered as Second Class Matter at the Post Office  
at Slaton, Texas, under the Act of March 3, 1897.

Thursday, June 9, 1960

NOTICE TO THE PUBLIC—ANY ERRONEOUS REFLECTION UPON  
THE REPUTATION OR STANDING OF ANY INDIVIDUAL, FIRM OR  
CORPORATION, THAT MAY APPEAR IN THE COLUMNS OF THE  
SLATONITE WILL BE GLADLY CORRECTED WHEN CALLED TO OUR  
ATTENTION.

SUBSCRIPTIONS—PAYABLE IN ADVANCE. LUBBOCK, GARZA &  
CROSBY COUNTIES, \$3.00 PER YEAR. OUTSIDE THESE COUNTIES,  
\$5.00.

| DEADLINES              |                    |
|------------------------|--------------------|
| GENERAL NEWS           | 3 P.M. TUESDAYS    |
| SOCIETY NEWS           | 12 NOON TUESDAYS   |
| PAGE ONE NEWS          | 9 A.M. WEDNESDAYS  |
| ALL PICTURES           | 5 P.M. MONDAYS     |
| CLASSIFIED ADVERTISING | 10 A.M. WEDNESDAYS |
| DISPLAY ADVERTISING    | 12 NOON TUESDAYS   |

\*\*\*\*\*  
JOEL R. COMBS EDITOR AND PUBLISHER  
BOBBY COMBS BOOKKEEPER  
DARRELL WEAVER ADVERTISING MANAGER  
SHARON BOYD SOCIETY EDITOR  
JOSE RUBIO MECHANICAL SUPERINTENDENT  
CHESTER REESE PRINTER  
DON HOWELL PRESSMAN

## EDITORIALS

### A VITAL DECISION

It is a big temptation to go off the deep end and add a few thousand words to those already printed concerning to world situation.

It would be like adding a pint of stagnant water to the Pacific ocean.

Those who are close to the front and in position to have some information are unable or unwilling to give advice on what to expect or what is coming next. Perhaps the confusion that exists in Slaton, in every city and town in the United States and in most every part of the world, is no worse than it has been in most of our past history but the pressure is getting more pronounced as each day dawns.

Those of us who can remember the years preceeding the last world war are reminded of the years of 1937, 1938 and 1939 when the atmosphere was electrified by the spreading of the war into the nations of Europe and we wondered from day to day when our nation would be pulled into the conflagration.

The predictions of the people on the street in Slaton are not reassuring but there are none who want to have our nation refuse to face up to its responsibilities. "Never," said one prominent Slaton man, "has the naming of a new President been such a responsibility as it will be in the next election. Let us hope he will be a man of courage and good judgment."

—A.M.J.

### METROPOLITAN LUBBOCK ?

Is Slaton a part of the Lubbock Metropolitan area? The recent census report as published in a Lubbock paper claims that it is, as it does the communities of Idalou, Abernathy, Ralls and several other area towns.

That a city as large as Lubbock is nearby has its advantages and disadvantages to a growing community and it is evident that Slaton is progressing in many ways as the last census count shows.

The report for 1950 gives our population as 5,036 and the 1960 count as 6,554, which is a gain of a few over 1,500. Not impressive, but a healthy showing that means we are prosperous but not as overburdened with inflation as some areas and not in an area that is losing ground.

Perhaps our business development would have been greater had our town been a little further away from Lubbock than it is, but it is also true that the competition of the firms in Lubbock has kept our Slaton merchants more in line with lower prices because the competition in Lubbock is a healthy condition.

With the city limits of Lubbock and Slaton only nine miles apart there is no denying that Slaton is a part of the Lubbock metropolitan area. Webster's dictionary gives metropolitan as a large city that is the mother city to communities in its area. We must give Lubbock such a title, but it is doubtful that there are many people who live in Slaton who desire Slaton to become a part of Lubbock.

It would not be a very big bite for our fast expanding neighbor to the north to gobble us up as it has several budding communities in the past.

—A.M.J.

"The human race is just not constituted to stand uninterrupted prosperity. It takes only a few prosperous years to make men and women careless, vain, and extravagant; it makes them neglect their homes and their churches."—C. W. Barron.

## THE AMERICAN WAY



Ripe for the Picking

### The Sounding Board

(Editor's Note: Here are a couple you'll like, we think.) It's hard to keep up with the Joneses. Although we have tried every way!

Our house and our car are about on a par. . . . But the Joneses had triplets today!

With the entire world in a seemingly chaotic state of distrust, bickering and possibly on the very brink of conflict, here's a garden we all might plant.

Four rows of peas: Presence, Preparation, Promptness, Perseverance.

Three rows of squash: Squash gossip, Squash indifference, Squash criticism.

Five rows of lettuce: Let us obey rules, Let us be true to obligations, Let us be faithful to duty, Let us be loyal and unselfish, Let us love one another.

Three rows of turnips: Turn up at work, Turn up with a smile, Turn up with determination to make everything worthwhile.

Parents are people who always think their children would behave if they didn't play with the kids next door.

Did you ever hear such a ruckus? Every city and hamlet in Texas is up in arms because some census taker missed counting Aunt Sadie. Frankly, most of the city fathers who are doing the most bellyaching will have to count tombstones to come anywhere near the total they

"guessed" prior to census time.

This clamoring reminds us of the fighter who has been belted from corner post to corner post, had to be lifted, at the bell, from the canvas, yet when the referee called for the towel, he's a fighting tiger, fit as a fiddle, but plumb "guv out."

And who get the blame for all this mathematical balderdash? The poor census taker who has worn out two pair of Endicott-Johnsons and maybe a set of tires, in an effort to get the count. And all the time this under paid public servant is trudging the highways and the byways, some "brain" down at city hall has it all figured out. Better Uncle Sam saved a half billion dollars and just put in a long distance call to the ivory-towered brain trust and he's have his count.

—Big Bend Sentinel.

#### CLIPPED QUIPS

Some husbands are hard to please. Like the fellow who demanded his wife fix him his breakfast with one egg scrambled and one egg fried. She did. The guy sat down at the table. Then he looked at the eggs and jumped up and flew into a rage and threw his knife and fork down on the floor. He yelled, "Damn it, you scrambled the wrong one."

—Amarillo Globe-Times.

The U. S. is flag-maker to the world. America's skilled flag makers manufacture the flags of more than 150 countries.

## TODAY'S Meditation



THURSDAY, JUNE 9

Read Philippians 1:12-20. I know that this shall turn to my salvation through your prayer, and the supply of the Spirit of Jesus Christ. (Philippians 1:19.)

The famous preacher Charles H. Spurgeon was fond of this story. Some children were being taught the Apostles' Creed. Each child repeated a clause. Thus they proceeded through the Creed.

One day the minister came into the classroom and asked the children to repeat the Creed to him. All went well for a time. Then there was an awkward pause. "Well," said the minister, "What is wrong?" A little boy replied, "Please sir, the boy that believes in the Holy Spirit isn't here today."

Someone has said that the Holy Spirit is the lost cord of the church. How little is known of His working in the heart! Yet we need Him so much. He is the One who brings conviction of sin, accomplishes His saving

work in the heart, reveals the things of Christ to us, and leads us into all truth. Happy indeed is the man blessed by the Holy Spirit.

PRAYER: Almighty God, grant unto us to know and experience the power of the Holy Spirit in our lives. Convict us of sin, purify our hearts, grant us wisdom in living as Christ would have us live. In His holy name we pray. Amen.

THOUGHT FOR THE DAY  
"As many as are lead by the Spirit of God, they are the sons of God."  
Caroline Morton (North Ireland)  
World-wide Bible Reading—  
Exodus 18:1-27

#### Reunion To Be Held

The annual Van Zandt County Reunion will be held, June 12, in Mackenzie Park in Lubbock, where the 1959 reunion was held. It can be reached through the park's West Entrance. All free staters and friends are invited to attend.

## Local Business

MORE AND more businessmen are taking the viewpoint that a company may make a serious mistake to cut its advertising budget when sales are down.

One company official has said that cutting an advertising budget when sales drop is like stopping a watch to save time. Don G. Mitchell, Chairman of the Board of Sylvania Electric Products, expresses the idea this way:

"I WOULD no more advocate taking arbitrary slices out of our advertising budgets than I would tell a salesman that he has to increase his sales 20 percent, and then take his travel budget away from him." Mitchell points out that some companies make the mistake of treating advertising as a result of sales instead of a cause of sales.

"THE FUNCTION of advertising is to help move the merchandise." Instead of taking away from the sales dollar "it helps to create that sales dollar," he says.

Mitchell believes that many companies are in more danger of going broke from spending too little on advertising than from spending too much.

"SOMEONE ASKED me if there were any limit on the amount a given company should spend on advertising. My answer was that you should keep on increasing your advertising and

forget about the limits as long as one thing happens—as long as the gross income from advertising exceeds the cost of advertising.

"Too many companies today are not spending enough on advertising. But they don't know this to be the case, and so they have some arbitrary break-off point," Mitchell said.

## Crossroads Report

D. E. Scott  
Wellington, Tex.  
Jan. 9, 1960

Dear Editor:

I see where England's SPCA says stray dogs are getting more numerous in that country on account of television, as they would rather leave home than play second fiddle to a one-eyed box.

My dog-owned neighbor says the answer is to make TV fans of the dogs, which can be done even if some commercials are affronts to any intelligent pooch.

Says his dog likes Westerns with lots of saloon hostesses, and makes use of the time during commercial interruptions to rearrange his fleas.

D. E. Scott  
Crossroads, U.S.A.

## O. D. Kenney Auto Parts

Your Automotive Parts Distributor  
VA 8-4147

HEADQUARTERS For The Doctor Of Motors

SERVING YOU WITH A COMPLETE LINE OF QUALITY AUTOMOTIVE PARTS



Listen to KUKO 1370 Post Sundays 8:30-9:45

## Real Cooling!



the all NEW Dearborn Air Coolers

with Fashion Flairing . . . and . . .

Slip-Stream louvers permit a maximum amount of cool air to flow quietly into your room. INTEGRIP® protective barrier interlocks with the surface of the metal to protect against rust and wear.

Priced from

Uniloc "one-piece" construction makes your Dearborn skyscraper-tough.

## SELF FURNITURE CO

235 W. GARZA

## ON TOP OF EVERYTHING ELSE—'60 MERCURY



IT'S AMERICA'S MOST BEAUTIFUL STATION WAGON—BAR NONE—AND WE'RE SELLING EVERY MODEL AT NEW LOW PRICES  
SLATON MOTOR CO.

9TH AND LYNN

# Will Recharging Water Pay Off Farmers On The High Plains?

per-acre-foot it costs when used to irrigate cotton land. "What collects in playa lake depressions over the High Plains after a rainy season is potentially the biggest source of added ground water for this region," he said. Noting that the technical problems associated with arti-

ment cost plus interest (\$3,000) and divide it by the total amount of water recharged (1,000 acre-foot). Thus when Farmer Jones starts using recharged water, his total compounded cost amounts to \$3 per acre foot. Jones now must know how much income he can realize from the use of each acre-foot of water. If he is an average farmer and produces cotton (assuming costs and prices do not change), his income from the irrigated cotton (using recharged water) over dryland yields will amount to about \$45 per-acre-foot of water used, the economist said.

But, the cost of recharged water can be estimated quite accurately if you know (1) the cost of installing the recharge equipment, (2) the length of time that the ground water in the aquifer will last without recharge, and (3) the cost of money or interest rate," he said. Billingsley explained how such costs may be figured in terms of a hypothetical farmer who grown cotton in this area. Suppose Farmer Jones has a half-section of land, 300-acres of which is irrigated cotton land and 50-acres of which is a plays (wet-weather) lake that collects more than 50-acre-feet of water each year. An acre-foot of water equals 325,829 gallons.

Jones invests \$1,500 into a recharge well. His present supply of ground water lasts an estimated 20-years. During that 20-year period, the recharge well in the plays lake collected and placed 1,000-acre-feet of water into inventory for future use. In the meantime, the interest charged to the original recharge installation has increased its value to \$3,000.

To find how much the recharge water costs, said Billingsley, you take the total invest-

ment cost plus interest (\$3,000) and divide it by the total amount of water recharged (1,000 acre-foot). Thus when Farmer Jones starts using recharged water, his total compounded cost amounts to \$3 per acre foot. Jones now must know how much income he can realize from the use of each acre-foot of water. If he is an average farmer and produces cotton (assuming costs and prices do not change), his income from the irrigated cotton (using recharged water) over dryland yields will amount to about \$45 per-acre-foot of water used, the economist said.

But, the cost of recharged water can be estimated quite accurately if you know (1) the cost of installing the recharge equipment, (2) the length of time that the ground water in the aquifer will last without recharge, and (3) the cost of money or interest rate," he said. Billingsley explained how such costs may be figured in terms of a hypothetical farmer who grown cotton in this area. Suppose Farmer Jones has a half-section of land, 300-acres of which is irrigated cotton land and 50-acres of which is a plays (wet-weather) lake that collects more than 50-acre-feet of water each year. An acre-foot of water equals 325,829 gallons.

Jones invests \$1,500 into a recharge well. His present supply of ground water lasts an estimated 20-years. During that 20-year period, the recharge well in the plays lake collected and placed 1,000-acre-feet of water into inventory for future use. In the meantime, the interest charged to the original recharge installation has increased its value to \$3,000.

To find how much the recharge water costs, said Billingsley, you take the total invest-

# 'Stars And Stripes Forever' But Why Colored Red, White And Blue?

The "Stars and Stripes" was adopted as the national flag of the U. S. on June 14, 1777, by a resolution of the Second Continental Congress. But why red, white and blue? World Book Encyclopedia says the Founding Fathers may have been influenced by the flag of the British East India Company, a group of merchants organized for exploration and trade. Their flag bore seven red and six white stripes. In 1782 the U. S. Department of State explained the colors this way: red stands for hardness and courage, white is a symbol of purity and innocence, and blue is the color of vigilance, perseverance and justice. According to legend, however, George Washington gave us a more dramatic explanation when he reportedly said, "We take the stars and blue from our mother country, separating it by white stripes, thus showing we

have separated from her, and the white stripes shall go down to posterity representing liberty. The original "Old Glory" was a world traveler, a refugee from the Confederacy, and a souvenir of the Smithsonian Institution. A young sea captain named William Driver introduced the nickname in 1831, when he was given command of the brig "Charles Doggett." A group of citizens of Salem, Mass., presented him with a U. S. flag and he hailed it as "Old Glory." Driver traveled twice around the world with the flag, according to World Book Encyclopedia. When he retired in 1837, he took the flag with him to Nashville in 1862. Driver brought out the flag and it was raised over the state Capitol. In 1922, "Old Glory" retired to the Smithsonian Institution in Washington, D. C.

# 'Mixed Train' To Have A Special Group Of Riders On June 10 Run

One of the last mixed trains operating in West Texas and New Mexico will have a special group of riders between Carlsbad, N. M., and Pecos, Tex., on its June 10 run. The Railroad Club of New Mexico is sponsoring a fan trip on that date on the Santa Fe's Trains 45 and 46 which may soon be discontinued. Henry Beader, 2737 Grace-land, N. E., Albuquerque, who is organizing the fan trip reports that so far about 15 rail fans in New Mexico and West Texas have indicated they will make the all-night round trip. The mixed train leaves Carlsbad at 8 p. m. MST Friday, June 10, reaching Pecos at 1 a. m. MST on Saturday, June 11. After an hour layover when the train does local work at Pecos, the return run leaves Pecos at 2 a. m. MST and arrives Carlsbad at 6:45 a. m. Saturday. The New Mexico Corporation Commission has already granted the Santa Fe permission to discontinue these trains on the New Mexico portion of the line. The hearing before the Railroad Commission of Texas has been set for June 9 at Pecos, Texas. If the Santa Fe receives permission from the Texas body to discontinue the passenger service, it will do so promptly. Freight service over the line

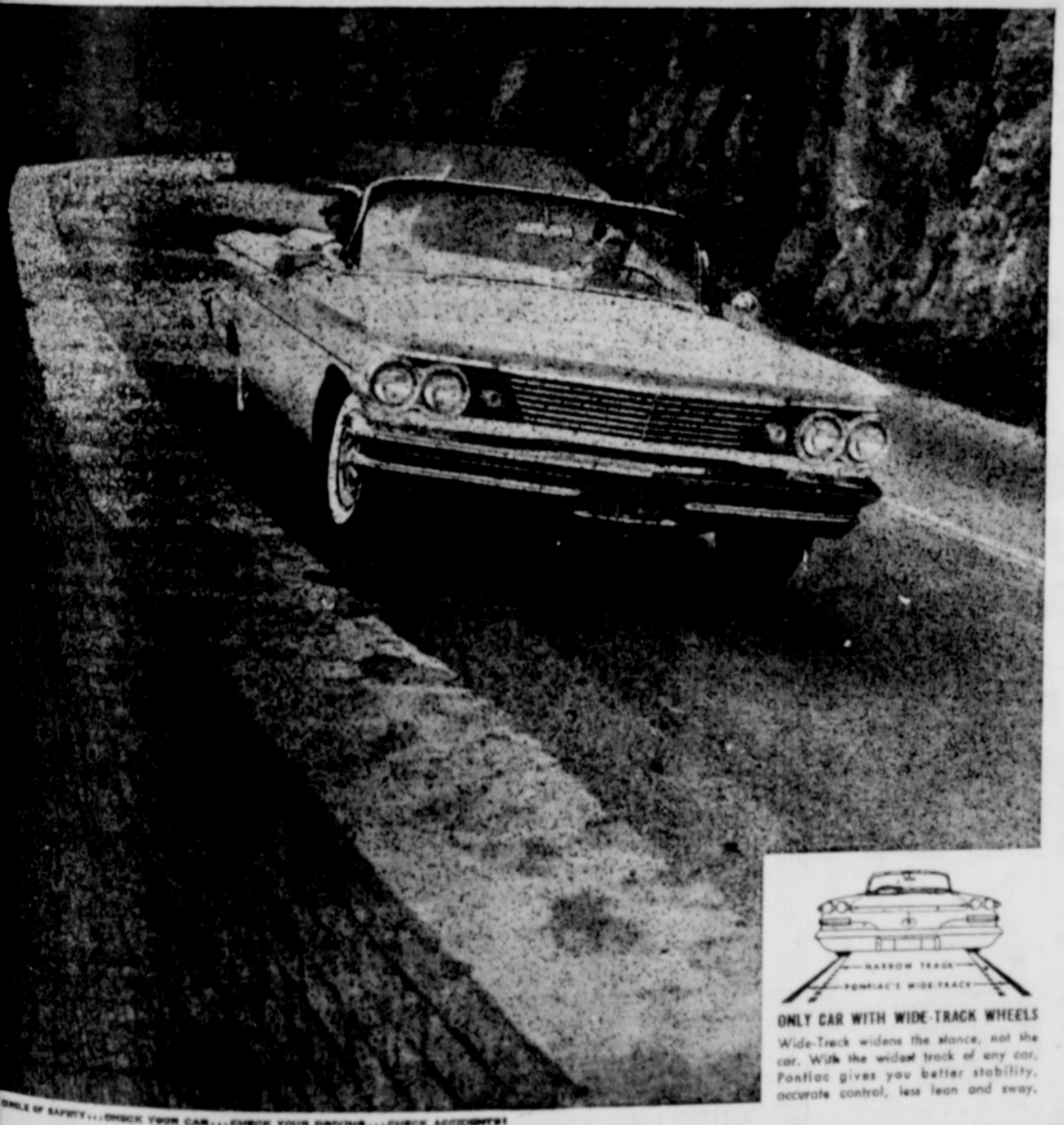
will be continued. The line from Carlsbad to Pecos was built in 1895 as the Pecos Valley Railway with the portion in Texas operated as the Pecos River Railroad to comply with Texas state law. The Pecos Valley Railway became the Pecos Valley and Northern which became part of the Eastern Railway of New Mexico, which was in turn absorbed by the Santa Fe on February 1, 1912. The branch connects with the Texas and Pacific Railway and the Pecos Valley Southern Railway at Pecos and with the Carlsbad to Clovis line of the Santa Fe at Carlsbad. Anyone interested in riding the mixed train should contact Bender at Albuquerque, or Fred M. Springer, Route 2, Box 238, Midland, Texas. The Santa Fe's Carlsbad ticket office which normally closes at 7 p. m. will remain open until 8 p. m. on June 10 to accommodate rail fans who will be purchasing tickets for the ride. Bender indicated a widespread interest in riding unusual rail services, as attested by 391 rail fans who made a narrow-gauge excursion in Colorado on May 28, and an advance reservation list of some 300 people for another narrow gauge ride on June 4.

**ODD CHALKINS**  
**PENNSYLVANIA MANU-FACTURES MORE ICE CREAM THAN ANY OTHER STATE IN THE UNION.**  
105  
FIDELITY FEATURES CO.

More Health-Giving Benefits in Drugs by Leading Manufacturers... Check with your doctor. Check with us when you want a Prescription Filled Promptly and Skillfully!

**TEAGUE DRUG**  
Phone VA. 8-4535

**N. H. Roberts**  
Standard Prices With Cement Contractor  
**The Best Yet In A "Finish"**  
Also House Leveling "Dashing"  
Pho. VA 8-3151



ONLY CAR WITH WIDE-TRACK WHEELS  
Wide-Track widens the stance, not the car. With the widest track of any car, Pontiac gives you better stability, accurate control, less lean and sway.

Something straightens S-curves like a Wide-Track Pontiac. You come out of a curve scarcely aware you've been in one. You wind your way with feather-touch control. You feel a reassuring sense of lean and sway, better balance and stability. Narrow track cars can't compare.  
**TRY THE EXTRA MEASURE OF A WIDE-TRACK DRIVE**  
SEE YOUR LOCAL AUTHORIZED PONTIAC DEALER... WHO ALSO SELLS GOODWILL USED CARS WITH MORE BARGAIN MILES PER DOLLAR!  
**KENDRICK PONTIAC**  
SLATON, TEXAS

**KUSS ELECTRIC**  
850 So. 16th  
VA 8-3225

### HUMBLE TIPS

by Richard and Charles Becker



Five quart-five gallons or five pounds... whatever your car needs. We are only too happy to be of service. We like to KNOW your car-drive in regularly.

**BECKER HUMBLE SER.**  
Where Customers Send Their Friends  
Free Pickup & Delivery Ser  
400 S. 9th 7/29-7809

### Farm Bureau Family Night Is June 16th

The Lubbock County Farm Bureau's Family Night will be held Thursday, June 16, at the Slide Road Club House at 8 p. m. The program will feature a musical variety show. All farmers in the area are invited to attend. There will be a covered dish supper and a drawing for door prizes.

### 'Hack' Lasater WTCC Director

Abilene—M. H. Lasater, co-owner and manager, Lasater-Hoffman Hardware, has been chosen director of the West Texas Chamber of Commerce for Slaton. Announcement was made by J. Carter King, Jr., of Albany, newly-elected president of the 132-county regional chamber. Local directors of the WTCC represent local members of the regional chamber in meetings of the organization's board. They determine policy for the nearly 4,000-member body and are responsible for maintaining local financial support for the work of the WTCC. Six major fields of activity for the organization are state and national affairs, community services, industrial development, agriculture and livestock and water resources. The 42nd annual convention of the organization was held recently in San Angelo. The 1961 convention is to be conducted in Mineral Wells. Flag Day was established as an annual national celebration in 1916 by President Woodrow Wilson. It is not an official but the President proclaims a public observance every year.

**We Clean UPHOLSTERY**

**QUALITY ECONOMY SERVICE**  
**SPRADLEY'S Upholstering Co.**  
108 Tenth Ave. VA 8-7143 Slaton, Texas

### The Reader's Angle

The Slatonite Slaton, Texas Dear Editor: Will you through your columns help our Northwest Texas Chapter of the Myasthenia Gravis Foundation to locate patients of myasthenia gravis or relatives of patients, so that they can get in touch with our organization by writing to me. The Northwest Texas Chapter covers 38 counties from the south line of Cochran, Hockley, Lubbock, Crosby, Dickens and King counties north to the Oklahoma Panhandle. We are trying to make contact with all sufferers of myasthenia gravis (MG) in this big area in order to bring to them reports of new medicines and progress in research into the cause and cure of this baffling disease as the information comes to us from the national headquarters. Unknown until 1835, untreated until 1935, MG has probably always been with us. We do know that diagnosis is most difficult and that neither cause nor cure has been determined. MG has been described as a neuro-muscular ailment of the voluntary muscles. Most recent study points to a chemical block at the muscle-nerve junction. Common symptoms are drooping of the eyelids, tiring of arm, leg and back muscles. Involvement of muscles of face, jaws, tongue, and throat bring difficulty in smiling, chewing, talking, and swallowing. MG is no respecter of person, position or age. It attacks both children

and adults. Sometimes it kills more often it incapacitates. Through the financial support of the Myasthenia Gravis Foundation, Inc. research is continuously going on to find cause and cure. Recently a new drug, Phospholine iodide, not yet on the market, is being used experimentally in northern clinics and even by a few patients in our chapter area. We have made contacts with fifteen persons who have been diagnosed as having MG, and we ask your help in locating others. We have films on MG which we would be glad to bring before any organization or group of people if they will write me and give the time and place for the showing. Thanking you for your cooperation in publishing this letter in your paper, we wish to assure you of our deep appreciation. Gratefully yours, Mrs. B. M. Harris, Chairman, Northwest Texas Chapter Myasthenia Gravis Foundation, Inc. Route 1 Plainview, Texas

**C. R. Bivens**  
Distributor of the **Avalanche-Journal**  
VA 8-3815

**Wedding Commercial**  
For Any and All Picture  
**R - C Photo**  
Charles & Rita Chism  
600 S 14th VA 8-4646

**TELEPHONE TALK**  
by J. C. Oakley, Manager

### NEW STYLE TELEPHONE BILL

All of you have received by your new style telephone bill with the punched card. This punched card replaces your old type bill with the one stub for your receipt and the short stub we have kept for our records. Some of you have asked the reason why we have gone to this type billing. It is simply this, it increases our operating efficiency and it is a faster and more economical way of billing. May I remind you again that if you pay in person, please bring both the punched card and your copy of the bill with you. If you pay by check through the mail, please enclose only the punched card with your check. Your check will be your receipt. Last, but certainly not least, do not fold, tear, or mutilate the card in any way. If you ever have any question concerning your bill or your service please call the business office, VA8-4591 and your question will be answered.

### ONE MINUTE OF COURTESY

It's been my experience that most folks in Slaton try to answer their phone calls promptly. But in the summer-time so many are busy outside—with gardening, yard work or just reaxing in the sun or under the stars—that it takes a little longer to get to the phone. If you're ever just missed a call after running in from outside to answer the phone, you know how disappointing it is. Most folks can get to their telephones within a minute, even when they aren't in the house. One minute is about the time it takes for the phone to ring 10 times. By waiting at least 10 rings before you hang up, you have a much better chance of getting your call through, especially when the person you're calling is not near the phone. In the long run, you'll save yourself the time and trouble of calling again, and your friends will certainly appreciate your courtesy and patience. So please remember to wait 10 rings—it takes just a minute.

### VACATION TRAVEL TIPS

If you plan to go out of town on vacation, there are a couple of things you can do to make your trip more enjoyable and carefree. First, call ahead for reservations. Second, make arrangements with a relative or neighbor to keep an eye on your house while you're away. Give the our vacation address and phone number so they can reach you in an emergency. Remember, too, Long Distance rates are lower on Sundays and weekdays after 6 p. m. And you save more than one-third when you call station to station.

Call by number. It's twice as fast. **SOUTHWESTERN BELL TELEPHONE COMPANY**

**SMALL APPLIANCE REPAIR**  
**RILEY'S FIX-IT-SHOP**  
140 N. 8TH VA 8-4393

the coming season. Smith, a native of Alabama, has long been in the cotton textile business. He is a director and partner in the American Cotton Manufacturers Institute, a national organization of cotton mill owners. He has been a delegate to the National Cotton Textile Association since 1943, a NCC member since 1951 and a member of the Sales Committee of the NC Cotton Textile Institute. Hagen is set for fourth term as representative of the 14th California Congressional District. He represents Kern, Tulare, and Inyo counties—all cotton producing areas. Hagen is a professional engineer, a recognized speaker in Congress on western matters, Hagen supports development projects, and use of natural resources. He has broadened social benefits and a soundly public service since 1935. Hagen has been in the staff of the Cotton Institute in Washington since 1942.

About 18 percent of the nation's plasma goes to traffic victims.





**FORUM FOUNDER VISITS**  
 P. Garcia of Corpus Christi, founder of The G. I. Forum, was a visitor in Slaton recently. He toured the city in general and the schools in particular. The forum's motto is, "Education is our business and freedom should be everybody's business!"

**Jobs for the Handicapped!**  
 ... Passports to Dignity...  
**Hire the HANDICAPPED**  
 Call Your Local Office of the State Employment Service

**CARD OF THANKS**  
 I would like to express my appreciation to Dr. Locke, the nurses, and friends who were so kind during my recent illness.  
 Mrs. Garland Brown

**CARD OF THANKS**  
 It is with grateful hearts that we say thanks for the many kind and thoughtful things done for us during the illness and passing of our beloved Husband and Father. May God bless each of you.  
 Mrs. Paul Walker Phern and David

**CARD OF THANKS**  
 We wish to thank everyone for all they have done during our sorrow. Thank you for the floral offerings, food, cards, and words of sympathy. We wish to thank Dr. Locke and the Sisters and nurses of Mercy Hospital.  
 May God's richest blessings be with you always.  
 Mrs. J. C. Crow  
 Mr. & Mrs. J. W. Crow and Dianne

Donna and Steven Teinert of Heckville spent the week end with their grandparents Mr. and Mrs. A. A. Teinert and Mr. and Mrs. B. G. Weid. They also visited in the homes of Mr. and Mrs. Milton Weid and Mr. and Mrs. Pete Bohrend.  
 Mr. and Mrs. Eugene Gryder and daughter of Lubbock spent the week end with his parents, Mr. and Mrs. Carl Gryder.

**HELP WANTED FEMALE**  
 Avon cosmetic has Slaton established territory open. 3 hours daily can earn you \$20 to \$30 a week. Full training provided. Write District Manager, Box 935 in Lubbock or phone PO 5-9914.

**GET YOUR CRUSHED BUBBLES**  
 for your Summertime Needs at  
**DELBERT GEER'S TEXACO SERVICE**  
 855 S. 9TH VA 8-7100

**SPECIALS JUNE 9 - 10 - 11**

|                                      |         |
|--------------------------------------|---------|
| FRYERS Armour's Star                 | lb. .38 |
| FLOUR 10 lbs. Gold Medal             | .98     |
| COFFEE Folger's                      | lb. .71 |
| SUGAR 5 lbs.                         | .53     |
| OLEO Kimbells                        | lb. .16 |
| FROZEN PIES Family Size Apple        | .39     |
| PINEAPPLE Dole's 9 oz. Crushed       | .17     |
| BACON 2 lbs. Certified or Puritan    | 1.08    |
| PANCAKE MIX Aunt Jemima 2 lbs.       | .37     |
| CAKE FLOUR Softas Silk 2 lbs.        | .37     |
| ROUND STEAK                          | lb. .86 |
| MIRACLE WHIP Quart                   | .53     |
| GRAPE JUICE Welch's 24 oz.           | .39     |
| ORANGE DRINK Jus made 1/2 gallon Jug | .37     |
| WELCH ADE Grape Drink Quart          | .33     |

Medel Grocery and Market 118 West Garza Phone VA 8-3402

**SPRING IS FIX-UP, CLEAN-UP, PAINT-UP TIME AT GGINBOTHAM-BARTLETT CO.**

| VELVA-GLO                             | GLIDE                   | GLAMOR                      |
|---------------------------------------|-------------------------|-----------------------------|
| Semi Gloss Enamel All Colors          | House Paint White only  | ALKyd Wall Paint All Colors |
| Reg. \$1.95 qt. \$6.95 gal.           | Regular \$5.95 gal.     | Reg. \$5.50 gal.            |
| SPRING SPECIAL \$1.75 qt. \$5.35 gal. | Spring <b>4.50</b> gal. | Spring <b>4.50</b> gal.     |
|                                       | Special                 | Special \$1.80 qt.          |

**"THE BEAUTY IS THE BEAUTY LAST"**

|  |  |   |
|--|--|---|
| <p><b>VAX-Latex Wall Paint</b><br/>                 all colors<br/>                 Regular \$4.95 gal. Reg. \$1.90 qt.<br/>                 Spring Special <b>3.95</b> gal. <b>1.30</b> qt.</p> | <p><b>TUFF KOTE</b><br/>                 Trailer Paint<br/> <b>2.95</b> gal.</p> | <p><b>Polyflex House Paint</b><br/>                 White &amp; Colors<br/>                 Reg. \$5.95 gal.<br/>                 Spring Special <b>4.75</b> gal.</p> |
|--|--|---|

ENDING OUR SALE - DUE TO THE POPULAR DEMAND OF OUR CUSTOMERS. We ended our paint supply began to run out, but by the overwhelming request for these Jones Blair we have decided to continue for a while longer. We will restock and give you the same outstanding service as before.  
 WE DELIVER  
 VA 8-3159

**FASCINATION HOMES**  
 RUSSELL ADDITION  
 RESTRICTED F. H. A. APPROVED Sub-Division  
 F. H. A. Homes From \$400.00 DOWN  
 WE HAVE 36 DIFFERENT F.H.A. PLANS  
 WE DO CUSTOM BUILDING ALSO.  
 TWO SHOW HOMES OPEN.  
 Drive West on Lynn Past High School  
 J. F. REISSIG, Bldg. Contractor  
 PHIL BREWER, Exclusive Agent  
 VA 8-3241  
 139 S. 9th VA 8-3241

**FREE AIR AT SELF'S SERVICE STATION**  
 Experience is what permits you to make the same mistake again without getting caught.  
 A supermarket is a place where you can find anything you want, except the kids.  
 A psychologist claims that big men make the most willing husbands, so do big women.  
 We hope that you will be willing to drive in soon, where you can find anything for your cars performance improvement in our PHIL-LIPS 66 line. Experience has taught US to give you quality service every time you come by.

**QUALITY... YOU CAN MEASURE BY YOUR CAR'S PERFORMANCE**  
  
**SHAMROCK**

**We're in business for your health**  
 Latest advances in the field of medicine, as reflected in your doctor's prescription, speed recovery from illness.  
 Your registered pharmacist co-operates with your doctor to shorten the days of convalescence. May we help?  
**SLATON PHARMACY**  
 109 S. 9TH VA 8-4815  
 PRESCRIPTIONS FIRST AID ITEMS SICKR'M SUPPLIES DRUGS, SUNDRIES

**SELF'S Station**  
  
 About 18 percent of the plasma from the banks goes to traffic

**RECLINERS BY CLINERS**  
  
**STRATOLOUNGER**  
 STARTING AT **\$89.50**  
 Put one on Lay-away 'til Father's Day  
**SELF FURNITURE**  
 235 W. GARZA VA8-4407

31, Increase (Decrease)  
 \$ 108,632.49  
 23.15  
 (318.37)  
 311.15  
 (90.50)  
 3.29  
 (20.00)  
 (874.63)  
 \$ 107,666.58  
 \$ 6,356.83  
 465.79  
 1,145.28  
 4,787.60  
 9,858.94  
 31,178.98  
 3,002.36  
 (379.58)  
 1,598.04  
 11,411.11  
 \$ 69,421.83  
 \$ 177,088.49  
 \$ 710.00  
 \$ 222.53  
 119.74  
 (200.95)  
 6,238.75  
 80.00  
 166.75  
 1,907.32  
 \$ 9,544.15  
 \$ 132,800.00  
 \$ 26.14  
 (19.25)  
 6.81  
 \$ 142,050.83  
 35,037.50  
 \$ 177,088.49

the coming se Smith, a na ham, Ala., has in the cotton ar is a director ar of the Americi facturers Institi the Alabama t ment contest ar dent of the Alabi ufacturers Assn. having been a d to the National since 1943, a Nt ber since 1951 ar man of the St Committee of the Cong. Hagen fourth term as re the 14th Califc comprised of Ke Tulare countrie- ton producing i Southern Joaqui California. An profession, Hagen crat. A recognize in Congress on v matters, Hagen su development projec use of natural resu public, broadened i ty benefits and a so of veterans benefi Paper, a native Carolina, has been ment service since the staff of the Cot in Washington since

**THERE'S A FRIENDLY CHURCH NEAR YOU!**

- First Presbyterian Church  
425 W. Lubbock  
Rev. C. N. Wylie
- First Nazarene Church  
635 W. Scurry  
Rev. Charles Stuart
- Westview Baptist Church  
830 S. 15th  
Rev. C. M. Fields
- First Methodist Church  
305 W. Lubbock  
Rev. Rollo Davidson
- Church of God  
206 Texas Ave.  
Rev. E. E. Malone
- Grace Lutheran Church  
840 W. Jean  
Rev. Leroy E. Deans
- First Baptist Church  
255 S. 9th  
Rev. Ted E. Gaze
- First Christian Church  
145 E. Panhandle  
Rev. Claude Wiago
- Immanuel Lutheran Church  
Posey  
Rev. F. A. Wittig
- St. John's Lutheran Church  
Wilson  
Rev. J. P. Burnett
- Bible Baptist Church  
W. Panhandle  
Rev. H. E. Summar
- Wilson Methodist Church  
Wilson  
Rev. Harold Rucker
- Pentecostal Holiness Church  
105 W. Knox  
Rev. W. L. Comstock
- Trinity Evangelical Methodist Church  
Rev. Weldon Thomas
- African Methodist Church  
Rev. J. S. Gilbert
- Church of Christ  
340 W. Division  
Harold D. Mobley
- Assembly of God  
950 S. 14th  
Rev. V. E. Love
- Missionary Baptist Church
- Southland Baptist Church  
Southland  
Rev. Eddie Fortson, Pastor
- Southland Methodist Church  
Rev. Beane
- St. Paul Lutheran Church  
Wilson  
Rev. G. W. Heinzeier
- First Baptist Church  
Wilson  
Rev. F. E. Scott
- Our Lady of Guadalupe Church  
700 S. 4th
- St. Joseph's Catholic Church  
Msgr. T. D. O'Brien  
19th & Lubbock
- Gordon Church of Christ  
Marion J. Crump, Minister
- Acuff Church of Christ  
Brooks Terry, Minister
- Acuff Baptist Church  
W. O. Donley, Pastor

# HIS FEET ARE ON THE GROUND!

This man can see for many, many miles, but he's not up in the clouds; his feet are on the ground!

Contrary to what some people think, that's what the Church does for a man, too. Certainly it gives him a broader vision; it lifts up his eyes to see God and the eternal values of love, truth, justice and service which God inspires. It gives him a divine perspective from which to view his job, his family, his country — his life!

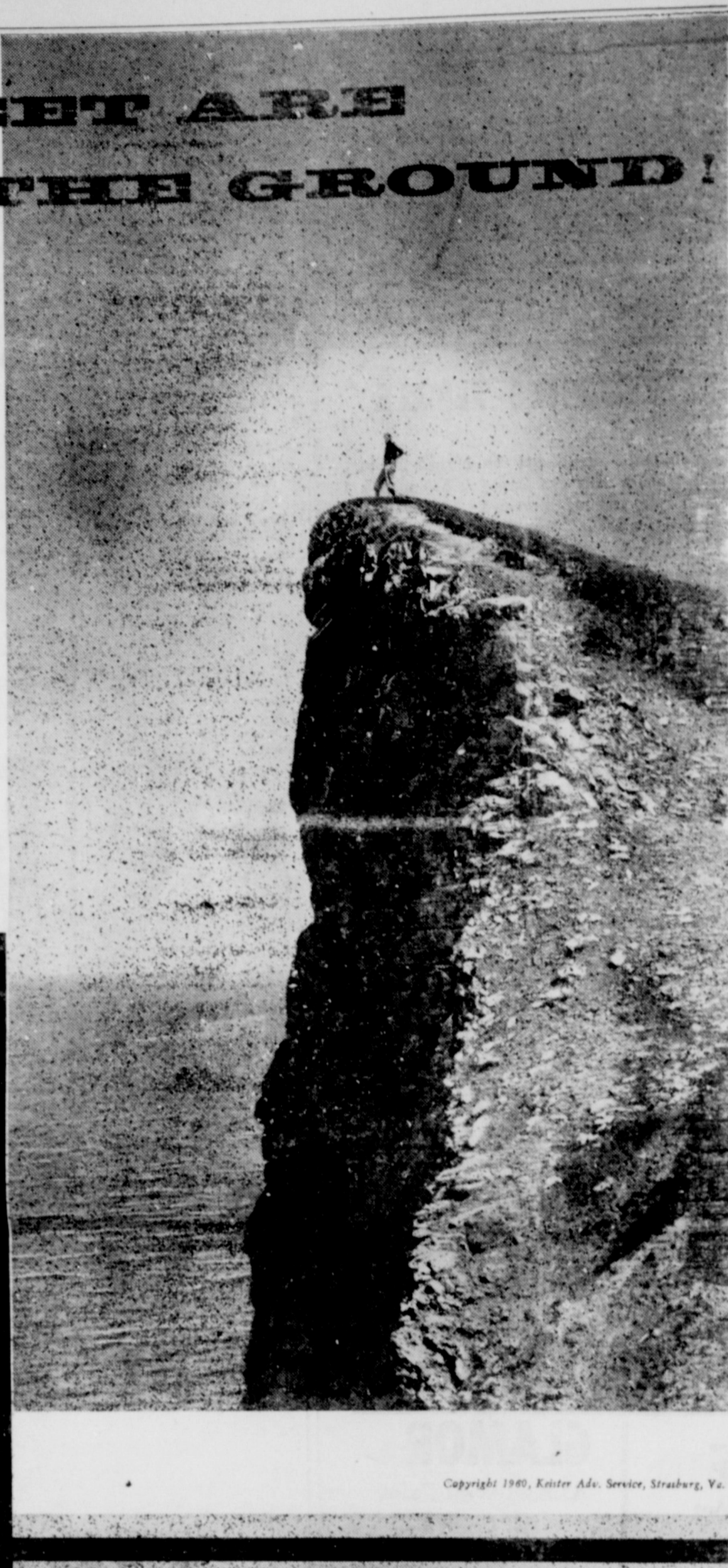
But the Church always keeps that man's feet on the ground! It accepts him for what he is — regardless of the clothes he wears or the job he holds. It looks evil in the face and sees it for what it is — a devilish cancer which only God can cure. It keeps a man squarely in this world while it lifts up his eyes to see another beyond the horizon.

And this is what the Church can do for you! It can give you greater vision. But it's not up in the clouds. It keeps your feet on the ground!

**THE CHURCH FOR ALL . . . ALL FOR THE CHURCH**

The Church is the greatest factor on earth for the building of character and good citizenship. It is a storehouse of spiritual values. Without a strong Church, neither democracy nor civilization can survive. There are four sound reasons why every person should attend services regularly and support the Church. They are: (1) For his own sake. (2) For his children's sake. (3) For the sake of his community and nation. (4) For the sake of the Church itself, which needs his moral and material support. Plan to go to church regularly and read your Bible daily.

| Day       | Book         | Chapter | Verses |
|-----------|--------------|---------|--------|
| Sunday    | Luke         | 6       | 46-49  |
| Monday    | I John       | 1       | 1-3    |
| Tuesday   | II Peter     | 3       | 13-14  |
| Wednesday | John         | 12      | 24-26  |
| Thursday  | Ecclesiastes | 2       | 12-26  |
| Friday    | I Peter      | 3       | 10-17  |
| Saturday  | Psalms       | 67      | 1-7    |



Copyright 1940, Kester Adv. Service, Strasburg, Va.

THIS SERIES OF MESSAGES IS MADE POSSIBLE BY THE UNBROKEN SUPPORT OF THESE CHURCH-AND-CIVIC-MINDED BUSINESS PEOPLE:

|  |   |   |  |
|--|---|---|--|
| <p><b>OUR WILSON FRIENDS:</b></p> <p><b>WILSON CO-OP GIN</b><br/>Owned and Operated by Farmers<br/>M. L. Murray, Mgr.</p> <p><b>WILSON STATE BANK</b></p> <p><b>CLUBB GRAIN CO.</b><br/>Jimmy Coleman and Associates</p> <p>From Acuff:</p> <p><b>ACUFF CO-OP GINS</b><br/>"It's Your Association—<br/>Why Not Use It?"<br/>BUTANE — PROPANE</p> | <p><b>Our Southland Friends:</b></p> <p><b>BASINGER DRILLING</b></p> <p><b>Hackberry Co-op Gin</b><br/>"It's A Pleasure to Serve"</p> <p><b>BASINGER GIN</b></p> <p><b>GORDON GIN CO.</b><br/>Raymond Gatzki—Sam Gatzki<br/>Gus Gatzki</p> <p><b>Southland Hardware</b><br/>"In Southland Since 1920"</p> <p><b>Southland Butane Co.</b><br/>and<br/><b>Big State Gauge</b></p> | <p><b>Slaton Supporters:</b></p> <p><b>Slaton Co-Op Gins</b><br/>"Owned and Operated by Farmers"</p> <p><b>JIM-DAN-DY CLEANERS</b><br/>Free Pick-Up and Delivery<br/>180 North 100 — VA 8-4347</p> <p><b>Bruce's Cafe</b><br/>"Where Friends Meet and Eat"</p> <p><b>Jack Berkley Trucking Company</b></p> <p><b>WILLIAMS FUNERAL HOME</b><br/>Unlimited Insurance Protection<br/>Gettline Ambulance Service</p> <p><b>Union Compress and Warehouse Company</b></p> | <p><b>D. D. KENNEY AUTO PARTS</b><br/>Your Automobile Parts Distributor<br/>Slaton, Texas — Box 846</p> <p><b>SLATON PHARMACY</b><br/>"Service Is Our Motto"</p> <p><b>Slaton Savings &amp; Loan Association</b><br/>"We Pay You to Save"</p> <p><b>Ray C. Ayers &amp; Son, Inc.</b><br/>Grain — Feed — Seed</p> <p><b>The Slatonite</b></p> |
|--|---|---|--|

**JUST TALK**  
BY A. M. J.

Because of laziness and because I have just returned from a vacation trip and am thoroughly worn to a frazzle. I am reprinting a "Just Talk" column that was published in January, 1943, one of the war years.

There are many things to worry about besides war, income tax, victory tax, social security tax and just ordinary garden variety tax such as shortage on newspaper, gasoline rationing and a shortage of help and I have been putting in a good deal of time on what effect shortages on all lines of merchandise is going to do to business in general, but so far it has done no good for the merchants and business men seem to be as busy as ever, in fact most of them who should, according to all calculations, be out of still everything they sell, are still doing business at the same old stand and report that business has been better than ever.

Two and two do not make four. Just what they do add up to is a mystery to me and I have made up my mind to go ahead and carry on my worrying campaign about business regardless of what happens because it may come in handy some time.

Whether K. C. Scott ever gets out of humor I do not know but I envy him and his happy disposition. He is optimistic about everything including war, the future and what he will get for Christmas next year.

And another man who always has a happy outlook on life is Tess Bruner. Any one who can make the rafters shake with laughter at eight o'clock, midnight, opening time for the Post Office, has a disposition that deserves a blue ribbon and a gold loving cup, a medal for

**Life Insurance Annuities**  
**PHIL BREWER**  
American United Life Insurance Co.  
139 S. 9th Slaton

**For great baked potatoes Cheez Whiz 'em!**



**KRAFT'S amazing pasteurized process cheese spread for dozens of fast cheese treats**

**WATCH FOR OPENING OF THE NEW M. & W. PHARMACY**  
Slaton's Most Modern Pharmacy Will Be Here Soon.

**BUY MORE MOW WITH ROTOC**  
**THE ISLANDER**  
POWER  
5 1/2 h.p. 4 cycle engine  
SAFETY  
No tip over wheels  
PERFORMANCE  
long lasting, clean  
**ROTO-HOE**  
The rugged durability of the Islander makes it a pleasure to use and operate. This 1 1/2" rotary blade mows fast. Four speeds forward plus reverse. Complete electrical lighting system. Compare the Islander with any mower, even those priced in the \$200 and \$300 range. Come in for a demonstration today.  
640 S. 9TH BOURN CYCLE SHOP

bravery in the course of a and a raise in salary.

If business picks up we get more work in the than we can easily turn get in a dither, thrash the and run around in circles business gets light I be the air and run around circles and the air around place is full of holes and rug will soon look like frayed out pancake.

Sure signs of spring benches on the City Hall beginning to fill. . . . potatoes in the market pound . . . Mrs. Ray digging in her flower . . . girls in slacks . . . on the street corners . . . handles on the wash line birds nests in the eaves onions on the brush of the prominent citizens . . . the iron in my blood lead in my feet.

Most women believe to be very systematic, continually after the throwing clothes on the and brag considerably how well they keep their tedious house work as like a man's when mud is tracked in, or ashes are dropped, or should open most cases without being prepared he would get knocked falling vases, discarded pots and broken electrical equipment watch a woman who decides to go after some her purse, a fox terrier for a rat is slow enough her frantic efforts to stick or a comb.

A certain young in Slaton has just completed details on the Waves and she tell me last week that success amounts to really what we are ing for. Which may true but there's a little gray with it it will be pretty have never seen any could get along enough money to grocery bill.

Here are some facts about an interesting taken from the look:

**WHICH ARE YOU?**  
If a fellow tries to woman and gets away he's a man; if he doesn't get away with brute; if he doesn't get away with tried he's a coward; doesn't try and get gotten away with he's wise.  
**WELL DEFINED**  
Teacher: "Phras kises."  
Pupil: "This word but it is usually conjunction. It is in that it is usually plural. It agrees CHARACTERIZED"  
A kiss a peculiar Of no use to one. Phras kises to two. The gets it for nothing. man has to lie for old man has to baby's right, the leg, and the hypocrite. To a young girl, a married woman, an old maid, charity

### Church Schools Attendance Totals 1,543

Attendance at church schools in Slaton Sunday, May 30, totaled 1,543 in the 13 churches which reported.

Churches reporting and their attendance was as follows:

|                        |     |
|------------------------|-----|
| First Christian        | 69  |
| First Methodist        | 225 |
| First Baptist          | 322 |
| Church of the Nazarene | 33  |
| Westview Baptist       | 198 |
| First Presbyterian     | 82  |
| Grace Lutheran         | 97  |
| Church of Christ       | 223 |
| First Baptist Mission  | 58  |
| Assembly of God        | 46  |
| Pentecostal Holiness   | 76  |
| Bible Baptist          | 67  |
| Evang. Methodist       | 47  |

The headquarters of the United Nations in New York, where the UN flag is supreme, is the only place within the U. S., its territories or possessions where a flag may be displayed in a position of higher prominence or honor than the U. S. flag.

**THE STATESMEN QUARTET**  
plus  
**THE BLACKWOOD BROS. QUARTET**  
SATURDAY - JUNE 11  
8:00 P.M.  
Rock City Auditorium  
Tickets on sale at U. V. W. Club  
Jenkins Music Co.  
Children 50c  
General Adm. \$1.25  
Reserve seats \$1.50

## LITTLE LEAGUE STANDINGS

As of June 3rd the Pee Wee League team standings were Cubs and Pirates with 5 games won out of 8 played, the Braves and Red Sox with 8 games played and 3 wins.

There were 2 more scheduled games for June 6 and 7 and then they will have 2 play off games to finish their 1960 season.

In the Minor League, there was an error in the last team standings reported. As of June 3rd, the Minors have played 20 games with the Cardinals 5 wins and 1 tie out of 7 played; Yankees have won 5 out of their 7 games; Indians 4 out of 7, Giants 3 out of 6, the Dodgers 2 wins and 1 tie out of 6 games and the Tigers 6 games with 0 wins.

In the Major League there are 3 games to be made up in July, the Cardinals, Yankees, Dodgers and Indians all have one game to make up and the Tigers have 2.

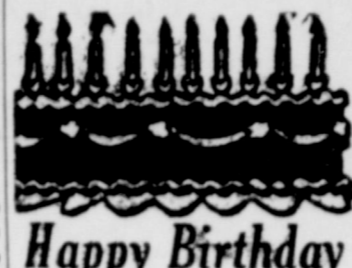
Team standings through June 3 with 17 games played were:

|                  |                |                            |    |    |   |      |
|------------------|----------------|----------------------------|----|----|---|------|
| <b>Cardinals</b> | A. B. R. H. BA | Douglas Keese              | 4  | 0  | 0 | .000 |
|                  |                | Johnny Hodges              | 5  | 2  | 0 | .000 |
|                  |                | Jerry Burrell              | 12 | 3  | 0 | .000 |
|                  |                | Delefino Ortego            | 19 | 4  | 3 | .156 |
|                  |                | C. Hernandez               | 14 | 3  | 3 | .214 |
|                  |                | Clifford West              | 18 | 4  | 6 | .333 |
|                  |                | Jimmy Height               | 2  | 0  | 0 | .000 |
|                  |                | Stanley Martin             | 5  | 0  | 0 | .000 |
|                  |                | Larry Pickens              | 17 | 6  | 7 | .412 |
|                  |                | Tommy Williams             | 4  | 0  | 0 | .000 |
|                  |                | K. Winchester              | 10 | 1  | 0 | .000 |
|                  |                | Billie D. Martin           | 7  | 0  | 0 | .000 |
|                  |                | Dale Pierce                | 8  | 0  | 0 | .000 |
|                  |                | Carlton Jones              | 6  | 1  | 0 | .000 |
|                  |                | Tyree Clemons              | 2  | 3  | 2 | .000 |
| <b>Dodgers</b>   |                | Same as week ending May 27 |    |    |   |      |
|                  |                | Arthur Enloe               | 2  | 0  | 0 | .000 |
|                  |                | Teddy Dawson               | 0  | 0  | 0 | .000 |
|                  |                | Gary Brush                 | 17 | 4  | 4 | .235 |
|                  |                | Henry Johnson              | 15 | 3  | 2 | .200 |
|                  |                | C. Underwood               | 13 | 2  | 4 | .308 |
|                  |                | Don Simmons                | 4  | 1  | 0 | .000 |
|                  |                | Jim Foster                 | 2  | 0  | 0 | .000 |
|                  |                | Danny Heinrich             | 3  | 0  | 0 | .000 |
|                  |                | Larry Bownds               | 6  | 1  | 1 | .166 |
|                  |                | H. Thomas                  | 15 | 5  | 2 | .133 |
|                  |                | Larry Nall                 | 10 | 1  | 3 | .300 |
|                  |                | Ruchard Cooper             | 15 | 3  | 2 | .133 |
|                  |                | Phil Goad                  | 14 | 9  | 7 | .500 |
|                  |                | Byron Johnson              | 17 | 3  | 6 | .353 |
|                  |                | Larry Meicher              | 0  | 0  | 0 | .000 |
| <b>Giants</b>    |                |                            |    |    |   |      |
|                  |                | G. Hennington              | 1  | 0  | 0 | .000 |
|                  |                | Mike White                 | 1  | 0  | 0 | .000 |
|                  |                | Joe Basinger               | 6  | 1  | 0 | .000 |
|                  |                | Dubbon Englund             | 9  | 1  | 2 | .222 |
|                  |                | Rodney Farrell             | 18 | 3  | 5 | .278 |
|                  |                | Mike Williams              | 16 | 4  | 2 | .125 |
|                  |                | Bobby Morrison             | 18 | 7  | 3 | .166 |
|                  |                | Kyle Page                  | 18 | 5  | 5 | .278 |
|                  |                | G. Glascock                | 5  | 1  | 1 | .200 |
|                  |                | Steve Jones                | 17 | 2  | 2 | .118 |
|                  |                | Bobby Ball                 | 5  | 0  | 1 | .200 |
|                  |                | David Thompson             | 2  | 1  | 0 | .000 |
|                  |                | David Edwards              | 3  | 1  | 1 | .333 |
|                  |                | Arthur Davis               | 9  | 0  | 1 | .111 |
|                  |                | J. B. Bednarz              | 19 | 6  | 4 | .211 |
| <b>Indians</b>   |                |                            |    |    |   |      |
|                  |                | David Tucker               | 14 | 3  | 3 | .214 |
|                  |                | Johnny Franke              | 2  | 0  | 0 | .000 |
|                  |                | Dennis Altman              | 6  | 2  | 0 | .000 |
|                  |                | Duke Altman                | 18 | 4  | 8 | .444 |
|                  |                | Randell Johnson            | 0  | 0  | 0 | .000 |
|                  |                | William Kitten             | 5  | 0  | 0 | .000 |
|                  |                | Tommy Davis                | 17 | 2  | 1 | .059 |
|                  |                | Jim Coffield               | 16 | 4  | 5 | .313 |
|                  |                | V. Christian               | 19 | 5  | 4 | .211 |
|                  |                | Steve Stone                | 19 | 5  | 3 | .158 |
|                  |                | Gordon Kitten              | 17 | 5  | 6 | .353 |
|                  |                | Ronald Perdue              | 18 | 2  | 2 | .111 |
|                  |                | Richard Miller             | 0  | 0  | 0 | .000 |
|                  |                | James Hodges               | 2  | 0  | 0 | .000 |
|                  |                | Bennie Fields              | 2  | 3  | 0 | .000 |
| <b>Tigers</b>    |                |                            |    |    |   |      |
|                  |                | Allen Miles                | 16 | 4  | 2 | .125 |
|                  |                | Charles Thomas             | 7  | 2  | 1 | .124 |
|                  |                | Kenneth Kitten             | 14 | 10 | 7 | .500 |
|                  |                | Niebes Gonzales            | 2  | 0  | 0 | .000 |
|                  |                | George Cooper              | 15 | 5  | 4 | .367 |
|                  |                | James Holton               | 1  | 0  | 0 | .000 |
|                  |                | Bernard Wall               | 8  | 3  | 1 | .125 |
|                  |                | Paul Kahlich               | 7  | 5  | 2 | .286 |
|                  |                | David Rappy                | 15 | 3  | 1 | .067 |
|                  |                | R. Hampton Jr.             | 10 | 4  | 2 | .200 |
|                  |                | R. Washington              | 12 | 1  | 1 | .083 |
|                  |                | Earl Ehlen                 | 8  | 0  | 2 | .250 |
|                  |                | Dennis Morgan              | 15 | 3  | 5 | .333 |
|                  |                | Calvin Klaus               | 0  | 0  | 0 | .000 |
|                  |                | Dale Harris                | 0  | 0  | 0 | .000 |
| <b>Yankees</b>   |                |                            |    |    |   |      |
|                  |                | Loyd McCullough            | 1  | 0  | 0 | .000 |
|                  |                | Tommy Biggs                | 14 | 2  | 3 | .214 |
|                  |                | Sammy Warties              | 11 | 2  | 2 | .182 |
|                  |                | Terry Watts                | 5  | 0  | 1 | .200 |
|                  |                | D. McCullough              | 10 | 4  | 0 | .000 |
|                  |                | David Dabbs                | 10 | 2  | 0 | .000 |
|                  |                | T. Etheridge               | 2  | 0  | 0 | .000 |
|                  |                | Danny Lain                 | 4  | 1  | 1 | .250 |
|                  |                | Danny Scott                | 19 | 1  | 4 | .211 |
|                  |                | Ronald Henry               | 13 | 1  | 2 | .155 |

Pat Wheeler 8 1 1 .125  
H. Martinez 12 3 3 .250  
Randy Martin 15 1 1 .067  
David Hunter 9 0 3 .333  
Rickey Summar 3 0 1 .333

### Eugene Townsend Enlists in Army

Floyd Eugene Townsend, son of Mr. and Mrs. Claud Townsend, Rt. 1, Slaton, enlisted in the US Army, May 31 at the Lubbock Recruiting office in Lubbock. He is going to Ft. Ord, Calif. for 8 weeks basic training and will then go to the Navy School of Music for 16 weeks in Washington, D. C. After which he will be assigned to the 266 A. G. Army Band, Ft. Hood, Texas.



### Happy Birthday

JUNE 10—  
Rhonda Eanes Robby Edmondson, Don and Danny Edwards, Loyd Tucker, J. R. Heard, Mrs. Hern Pettigrew, Robert Wellborn.  
JUNE 11—  
Mrs. LeRoy Holt, Rudy Anders, Irene Richey  
JUNE 12—  
Mrs. A. Wilke, Mrs. Bryan Ross, Aloys Mosser, Mrs. T. C. Barnes, Duane Walter  
JUNE 13—  
Mrs. Malcolm Limmer, Mrs. C. J. Johnson, David Thompson, Judy Dell Woolever, Henry Hollinden, Tony Privett, Scharlene Morris, Leona Haral  
JUNE 14—  
Mrs. R. D. Hickman, Searcy O. Henry, Cheryl Clark, Mrs. J. H. Boyle, Mrs. R. J. Bednarz.  
JUNE 15—  
Lee Meurer, Phil Brewer, Bobby Tefertiller, Jeane McGehee, Jay C. Rogers  
JUNE 16—  
Joe Sparkman, Mike Kitten, Linda Grabber, Mrs. Hugo Mosser, Oscar Buxkemper, Mrs. Bill Addison, Bert Polk

### New Laundry Is Now Open

A new Scottie Coin-O-Matic Laundry is now open for business at 950 S. 9th.

The laundry will be operated by Mrs. Jean McKinnon, who has had 10 years experience in operating a laundry in this area and Tahoka.

The laundry will have 16 Scottie Washers and six Scottie Huebsch dryers. According to

Mrs. McKinnon, the new laur includes many of the features, with comfort charis and a well-lighted laundry for the children to play in. Laundry will be open at hours.



**BREWER INSURANCE AGENCY**  
139 So. 9th

### Temperatures Average 72

Pioneer Natural Gas Company said that the temperatures for the week of May 29 to June 4 were Sunday, 67 and 60; Monday, 74 and 50; Tuesday, 83 and 59; Wednesday, 92 and 58; Thursday, 90 and 60; Friday, 95 and 66; and Saturday, 96 and 58.

The average temperature was 72.

**Phillips 66 Wilson Oil Company**  
Wilson, Texas Phone 2251

- Butane, Propane
- Commercial, Industrial
- Lee Tires and Tubes
- Auto Accessories
- Phillips 66 Gas, Oil, Greases and Batteries

A COMPLETE AUTO SERVICE FOR WILSON

**DEAL'S MACHINE SHOP**  
SLATON, TEXAS  
Ph. VA 8-4307 Res. VA 8-1114  
155 No. 9th St.

FOR YOUR IRRIGATION PUMP AND GEAR HEAD REPAIR  
All Makes

**General Welding and Machine Work**

## Why Install a Gas Light?

If you are a home owner who takes justifiable pride in the appearance of his property... if you have a regard for the convenience and safety of folks who come to see you... and if you have a keen sense of economy as well as for things functional... then a Gas Light will be a satisfying addition to your yard.

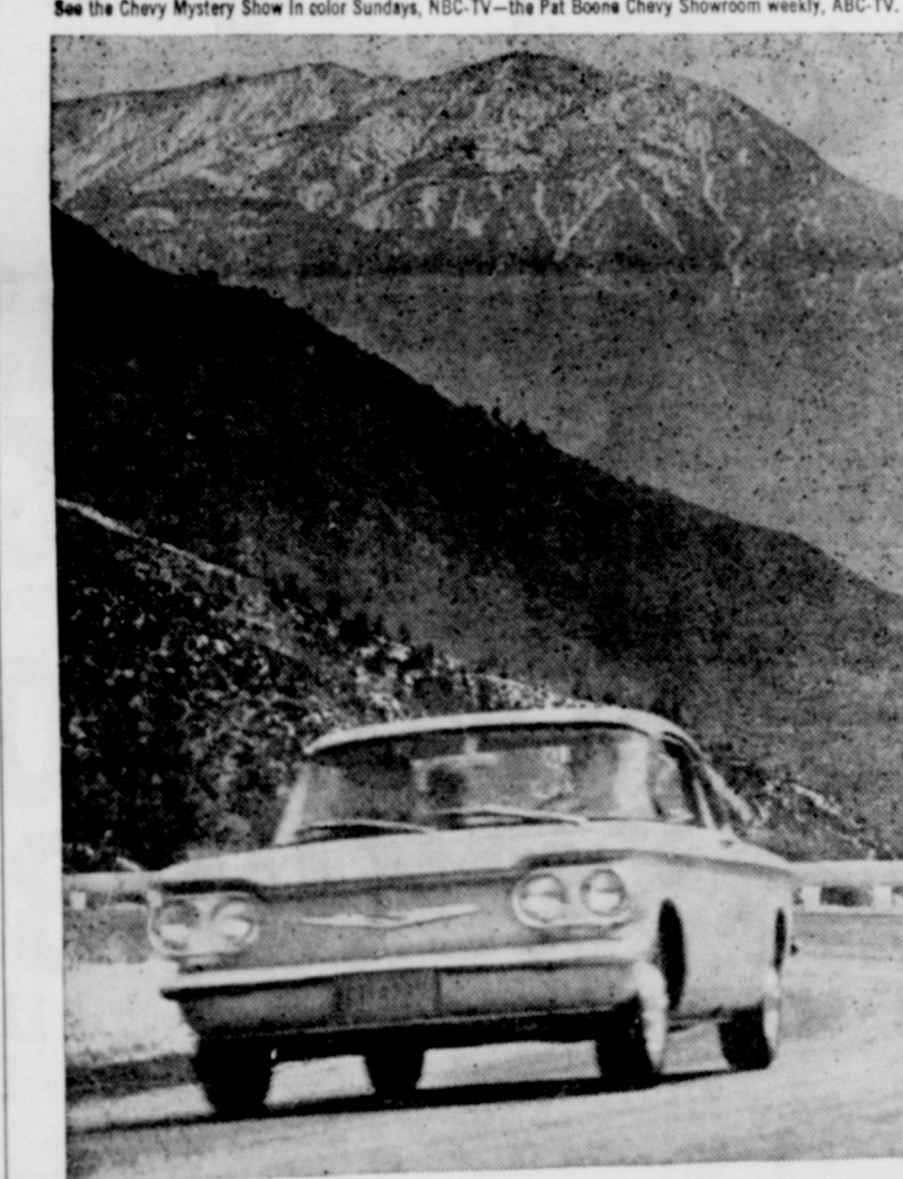


Neighbors welcome its glareless illumination... insects give its soft, mellow glow a wide berth. And regardless of the architectural style of your home, gas lights provide an indefinable "something" that adds noticeably to the appeal of any residence, at an amazingly small cost of operation.

Why not call Pioneer tomorrow and find out all the details about Gas Lights? Special Budget Prices start at just \$49.50, installed.

*fuel for a growing empire*  
**Pioneer Natural Gas Company**

**WATCH FOR OPENING OF THE NEW M. & W. PHARMACY**  
Slatons Most Modern Pharmacy  
Will Be Here Soon.



## GAS STRETCHING ECONOMY mountain shrinking performance CORVAIR GIVES YOU BOTH!

The same Corvaair that rolled up a whopping 27.03 miles per gallon\* in the Mobilgas Economy Run turned around to scale snow-glazed Pikes Peak earlier in the season than any other car has ever dared to try. What better proof could you ask (official United States Automobile Club observers were aboard every mile of the way) of Corvaair's rare combination of light-fingered steering, sure-footed traction and tight-fisted economy? Drop down to your dealer's and see for yourself what it took to make a gallon of gas look so big and 14,110 feet of mountain look so small!

*\*See Angeles to Minneapolis (over 8,000 miles) with professionals at the wheel.*

See your local authorized Chevrolet dealer for economical transportation

**"Doc" Crow Chevrolet**  
120 N. 9TH VA 8-4261

**IT'S COOK-OUT TIME**  
SHOP FOR THESE VALUES at T. G. & Y.

Large 24-Inch Bowl BRAZIER with HOOD and MOTORIZED SPIT

- GOLDTONE 24" Bowl with Chrome Plated Grid
- Extra-Sturdy, Double Front Legs
- TILT-GRID Ends Flare Ups
- 5 1/2" Rubber Tired Wheels
- Adjustable Hi-Low Crank

\$16.99 Value \$13.88 SALE PRICED

Outstanding Values At T. G. & Y.'s Everyday Low Prices

24-Inch GOLDTONE Bowl BRAZIERS  
All the important new features including sturdy double front legs and chrome plated grid. Remarkable Values! Makes barbecuing fun for the whole family!

\$8.98 Value \$7.77 NOW JUST

FAST ACTING ENERGINE 1 Pt. STARTER FLUID 25¢

White Glove CHARCOAL BRIQUETS  
Make your outdoor cooking really fun with these cleaner burning charcoal briquets.  
89¢ Value Discount Priced 57¢ 10-lb. Bag

FOR THAT TANTALIZING FLAVOR! 3-lb. Bag 69¢ VALUE  
SPECIAL 49¢

THESE SPECIAL PRICES GOOD AT ALL... T.G.&Y. 5¢ TO 50¢ STORES

the coming season Smith, a native ham, Ala., has long in the cotton textile is a director and p of the American ( facturers Institute, the Alabama Cott annual contest and a dent of the Alabama ufacturers Assn., in having been a deleg to the National Cot since 1943. A NCC l ber since 1951 and a man of the Sales Committee of the N

Cong. Hagen is s fourth term as repres the 14th California comprised of Kern, Tulare counties—all ton producing area Southern Joaquin California. An att profession, Hagen is erat. A recognized s in Congress on west matters, Hagen suppo development projects, use of natural resource public, broadened socia ty benefits and a sound of veterans benefits.

Raper, a native of Carolina, has been in ment service since 135 the staff of the Cotton in Washington since 194

About 18 percent plasma from the nation's banks goes to traffic vict

FOR THAT EXTRA FLAVOR, BUY 'EM FROM PIGGLY WIGGLY



# Cook 'em Outdoors!

USDA GRADED MEATS  
PLUS EXPERT CUTTING EQUALS  
TENDER, DELICIOUS STEAKS  
COOKED INDOORS OR OUT!!



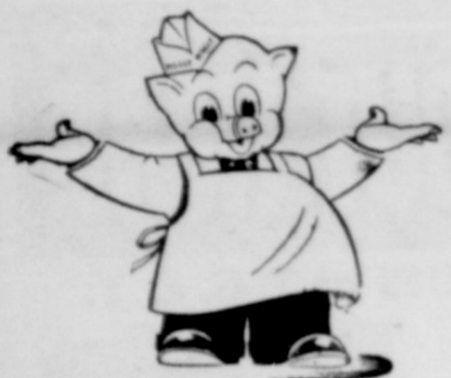
PIGGLY WIGGLY QUALITY MEATS

|   |  |            |
|---|--|------------|
| <b>BOILED HAM</b>                             | BEST FOOD IMPORTED SLICED 5 1/2 OZ. PKG. | <b>39c</b> |
| <b>LOIN STEAK</b>                             | U.S.D.A. CHOICE BEEF LB.                 | <b>89c</b> |
| <b>FRANKS</b>                                 | E & R Skinless 2 LBS.                    | <b>69c</b> |
| Kraft's Cracker Barrel, Mellow, 10 Oz. Bar    |  | <b>49c</b> |
| CHEESE  |  |            |
| Quality Beef, Armbone, For Broiling           | LB.                                      | <b>79c</b> |
| SWISS STEAK                                   |  |            |
| Ideal For Cookouts, Thick Cut, Center Cut Lb. |  | <b>79c</b> |
| PORK CHOPS                                    |  |            |
| Top Quality, Lean GROUND BEEF                 | LB.                                      | <b>45c</b> |
| Swift's Premium SLICED BACON                  | LB.                                      | <b>53c</b> |



**DOUBLE**  
Every Tuesday  
(WITH \$2.50 PURCHASE OR MORE)

**HOW TO GRILL A STEAK OUTDOORS**  
Wipe meat with cloth and sprinkle both sides with salt and pepper. Spread with softened butter and season with garlic to taste, if desired. Place over glowing red charcoal. For a rare steak 2 inches thick, allow 15 to 18 minutes. Increase time for medium and well-done steak. Turn only once. Allow 1/2 pound per serving. Ask your Piggly Wiggly meat experts to prepare special cuts to your specifications.



## SHOPPER'S BONUS

- Arrow 10 Lb. Bag **49c**
- CHARCOAL **73c**
- Kraft Velveeta 2 Lb. Box
- CHEESE **15c**
- Tuxedo No. 1/2 TUNA **35c**
- Jewel Quart Bottle COOKING OIL **19c**
- Pacific Gold Yellow Cling In Heavy Syrup No. 2 1/2 Can **25c**
- PEACHES Good Hope Tall Can 2 FOR **23c**
- MILK Gladia 5 Lb. Bag **39c**
- FLOUR Gerber Strained **23c**
- 3 FOR BABY FOOD **55c**
- Vegetole 3 Lb. Can **39c**
- SHORTENING 12 Oz. Can
- SPAM

## COOKES AND Pepsi-Colas

12 BOTTLE CTN.  
**39c**  
PLUS DEPOSIT

|                     |                                      |               |
|---------------------|--------------------------------------|---------------|
| <b>ALKA SELTZER</b> | LARGE SIZE                           | <b>39c</b>    |
| <b>LILT</b>         | PUSH-BUTTON HOME PERMANENT DEODORANT | <b>\$1.50</b> |
| <b>BAN</b>          | 5-DAY ROLL ON FOR MEN                | <b>34c</b>    |
| <b>HAND LOTION</b>  | WOODBURY \$1.00 SIZE                 | <b>31c</b>    |

**NAPKINS**  
SCOTT FAMILY PACK 60 CT. **9c**

**PAPER PLATES**

DIXIE 150 CT. WHITE **1.29**



# Shop Piggly Wiggly

Prices In This Ad Good In Slaton, Thursday, Friday and Saturday

**Orange Drink** JUS MADE HALF GALLON JUG **27c**

**PICKLES** BETTY SOUR, DILL, KOSHER DILL FULL QUART **19c**

**VIENNAS** SWIFT'S ALL MEAT SAUSAGE NO. 42 CAN 3c OFF LABEL NET PRICE **15c**

**EGGS** CAPROCK GRADE A LARGE DOZEN **39c**  
FRESH FRUITS & VEGETABLES

**POTATOES** NEW TEXAS GROWN LB. **7 1/2c**

**CUCUMBERS** LONG GREEN LB. **10c**

- California Vine Ripened CANTALOUPE LB. **12 1/2c**
- Firm Heads LETTUCE LB. **10c**
- Texas, Yellow SQUASH LB. **5c**

- Bama 18 Oz. Jar PEANUT BUTTER **49c**
- Ma Brown 13 Oz. Jar, Hot Dog, Hamburger or Sweet 3 FOR **\$1.00**
- RELISH French 18 Oz. Bottle 7c Off, Net Price **39c**
- BARBECUE SAUCE Par Strawberry 18 Oz. Jar **35c**
- PRESERVES Hershey 16 Oz. Can CHOCOLATE SYRUP **23c**
- CANTON 50 Foot, Green GARDEN HOSE **\$2.19**
- Hi Ho 16 Oz. Package CRACKERS **37c**
- Del Monte No. 303 Can SEASONED LIMA BEANS **19c**
- Del Monte No. 303 Can SPINACH **15c**
- Hunts Solid Pack No. 300 Can TOMATOES **17c**
- Carnation 8 Quart Size INSTANT MILK **73c**

**PIES..29c**  
LEMONADE 3 FOR **25c**

- TIP TOP REG. OR PINK 6 OZ. CAN 3 FOR **25c**
- Suzanne 24 Count FROZEN ROLLS Minute Maid 6 Oz., Frozen ORANGE JUICE Deerfield 28 Oz., Frozen GREEN PEAS

**CANNED DRINK** 12 FOR **8c**  
MISSION ASST. FLAVORS

**SALAD DRESSING**

SUZAN QT. JAR **25c**



# The Slaton Slatonite Society Clubs

The Slaton, Texas Slatonite,

Thursday, June 9, 1960

## MISS MELINDA CLIFTON IS INSTALLED AS WORTHY ADVISOR

Installation was held for the incoming officers for the Order of Rainbow, June 4th at 7:30 p.m. in the Masonic Hall. The following girls were installed: Melinda Clifton, Worthy Advisor; Patty Clark, Associate Worthy Advisor; Rhonda Eanes, Charity; Pam Stansell, Hope; Sherree Belt, Drill Leader; Marilyn Mc-

Sween, Musician; Charlotte Vaughn, Recorder; Barbara Henderson, Chaplain; Linda Longtin, Choir Director; Paula Dunn, Confidential Observer; Margaret McKinnen, Religion; and Carol Waiston, Fidelity.

The installing officers were Janice Hill, Worthy Advisor; June Johnson, Drill Leader; Gale Johnson, Chaplain; Mrs. Mildred Lokey, Recorder and Mrs. Audrea Thompson, Musician.

Melinda introduced her mother and presented her a gift. She also introduced her sister, Mrs. Davis and niece from Ft. Worth.

Miss Sue Liles sang a solo, "He", accompanied by Miss Sharon Perdue.

Melinda was honored by the new officers forming an archway of roses through which she was conducted and then Patty Clark presented the roses to Melinda. Miss Sue Liles sang, "In the Garden," during the ceremony.

The Rev. Rollo Davidson gave an inspiring message on the meaning of the Rainbow.

Awards were presented to several girls. Melinda presented the Past Worthy Advisors pin to Janice Hill.

Refreshments were served to 43 in attendance.

The first meeting of new officers will be June 13, at 7:30. Girls will meet at 2 p.m. in the dining hall of the Masonic Hall for study on the same day.

## Sharon Boyd Is Shower Honoree

A bridal shower honoring Miss Sharon Boyd, bride-elect of Kenneth Melcher, was held Sunday afternoon from 4 to 5 p.m. in the home of Mrs. Don Crow.

The guests were greeted by Mrs. Crow.

The receiving line was composed of the honoree, her mother, Mrs. Floyd Boyd, Mrs. Louie Melcher, mother of the groom-to-be, and Mrs. Curtis Bradford, grandmother of the bride-elect.

Mrs. Henry Adamek and Mrs. Gary Ward presided at the guest book.

The table was centered with an arrangement of blue and white flowers. Milk glass appointments were used. Misses Jeanette Price, Paulette Dowell, Fonda Patterson and Judie Bishop served refreshments.

Hostesses for the occasion were Mesdames Leland Scott, Frank Chapple, Curtis Dowell, Leonard Foster, Charles Dickson, Allie Grace Bentley, Henry Adamek, Sr., George Harlan, J. C. Smith, Elton Smith, Joel Combs, Mark Elter, Don Crow, R. J. Hurst, Audean Nowell, Bill Brake, Lois Rogers, L. C. Bonds, Darrel Weaver, J. E. Eckert Jr., Hobart Trimpa, F. A. Strube, S. H. Verkamp, Ben Sekoll, Clarence Kitten, August Kitten, Willis Farrell, Rose Kahich, Alex Bednarz, and Ray Kitten.

The hostess gift was a mixer.

## Athenian Club Installs Officers

New officers for the Athenian Study Club were installed at the May 24th meeting held in the home of Mrs. Leeman Reasoner. Mrs. Dick Cheatham conducted installation ceremonies for the following: president, Mrs. George Privitt; vice president, Mrs. Peggy May; secretary, Mrs. R. C. Hall, Jr.; treasurer, Mrs. George Harlan; and corresponding secretary, Mrs. Virginia Bellows.

Gifts were exchanged among the members. Those present other than the officers were Mesdames Phil Brewer, Surman Clark, M. G. Davis, Jr., John Forbes, S. H. Jaynes, Randall Lain, George Lemon, Jr., Weldon Meador, Joe Miles, Hugo Mosser, Leeman Reasoner, and Elwood Schmidt.

## IF THEY MUST GET IT

Said the kind old lady to the Internal Revenue clerk: "I do hope you'll give my money to some nice country."

SANTA FE Magazine



MR. AND MRS. LESTER DON HOWELL

## Marilyn Nelson Marries Don Howell In Double Ring Ceremony May 29

A decor of white mums, fashioned after that of the maid of honor except they had straight skirts made of blue taffeta with a full organza overskirt. They wore light blue hats of flowers.

They carried blue carnations with white streamers.

**CANDLELIGHTERS**  
Wayne Burleson and James Cole were candlelighters. The candlelighters also served as ushers.

**THE BRIDE**  
The bride, who was given in marriage by her father, wore a gown of Chantilly lace and net over taffeta. The dress was designed with a scalloped scoop neckline and bracelet length sleeves. The skirt was of tiered lace and net. Her fingertip veil of net was attached to a head piece of sequins and pearls. The veil was accented by a row of lace attached to the bottom. A white orchid and carnations formed her bridal bouquet.

**BRIDE'S ATTENDANTS**  
Miss Peggy Gentry was maid of honor. Her dress featured a low neckline with a pleated piece of organza over taffeta. Her billowey full skirt was of blue organza over taffeta.

Mrs. Joe Rhyne and Miss Carolyn Howell, sister of the bridegroom, were the bridesmaids. Their dresses were

blue carnations completed the decorations.

Guests were registered by Miss Lola Hopkins. Lettie Traveek poured and Neida Brooks served.

The bride chose a blue and white check cotton suit with white accessories for their trip to Carlsbad, New Mexico.

## AT HOME

The couple will make their home at 1235 S. 13 here in Slaton.

Mr. and Mrs. Howell are both graduates of Slaton High School. He is employed by the Slaton Slatonite.

Out of town guests included Luther Faulkner and family, Ulysses, Kansas; Mrs. J. E. Luster, De Queen, Arkansas, grandmother of the bride; Mrs. Roy Maines, Lubbock, aunt of the bride; Mr. and Mrs. Raymond Maines, Wolfforth; Mr. and Mrs. James Maines, Acuff; Mrs. Wesley Smith, Acuff; Mrs. Lena Brown, Lubbock; Mr. and Mrs. Dewey Hester, Lubbock; and Mrs. Kenneth Williams, Lubbock.

Would Your Wife Get The Total Value—  
from your business where there is a partnership involved in the event of your death? Contact your local Travelers Agent, Travis C. Reynolds.

**Reynolds Insurance Agency**  
210 W. Garza VA 8-4834

**NEED CLOSET SPACE?**  
Only \$4.95 Storage Charge  
Plus Cleaning and Pressing

For Your Whole Wardrobe All Season!!!

Winter Clothes Cleaned and Hung On Hangers In Our Cold Storage Vault

Pressed Next Fall On Your Notice

Complete Fur Service  
**COLD STORAGE**  
Cleaning — Glazing — Electrifying  
(BONDED and INSURED)

**QUALITY DRIVE-IN CLEANERS & LAUNDRY**

**MOSSER RADIO & TV SERVICE**  
135 N. 9th VA 8-4475

**MAKE BANKING AS EASY AS MAILING A LETTER**

Let the postman do your banking for you. It's comfortable to bank by mail... no worries about the weather, and you save time, steps, trouble. We supply free bank-by-mail forms.

Always carry money only YOU can spend? Carry TRAVELERS CHEQUES, immediate refund if lost or stolen, good throughout the world.

**CITIZENS STATE BANK**  
TEXAS AVE. MEMBER F.D.I.C. VA 8-4545

**Woodrow Club Meets In Home Of Mrs. Hagen**

"Preparing and Cooking a Meal Outdoors" was demonstrated by Mrs. Bennie Hagens when the Woodrow Home Demonstration Club met at her home Wednesday.

The club has adopted one of the boys at the Austin State School Farm Colony and will send a small gift each month.

A contribution was made to the county to help carry on 4-H Club activities.

The meal Mrs. Hagens prepared was served at the social hour.

The next meeting will be June 22, 9:30 a.m., at the Slide Road Club Home at which time Mrs. Jack Adkins will demonstrate shoe covering. Those attending are ask to bring a sack lunch. Visitors welcome.

Brings out the ZEST in you!

Fun is where you find it... and the '60 Oldsmobile is the right place to look! Here's all the flash, dash and spirit you can imagine... with all the comfort, smoothness and styling grace you expect in an Olds. See your dealer today! Get out of the ordinary... into an Olds!

**YOU'LL DO BETTER AT YOUR OLDS QUALITY DEALER'S**

...arded the coming season. Smith, a native of Alabama, has long been in the cotton textile industry and is a director and past president of the American Cotton Manufacturers Institute, State of Alabama Cotton Manufacturers Assn., in having been a delegate to the National Cotton Conference since 1943, a NCC member since 1951 and a man of the Sales Committee of the NC...

Cong. Hagen is serving his fourth term as representative of the 14th California district, comprising Kern, Kings, Tulare counties—all important producing areas of California. An attorney by profession, Hagen is a recognized speaker in Congress on western development projects, a use of natural resources, public, broadened social benefits and a sound policy of veterans benefits.

Hagen, a native of North Carolina, has been in public service since 1935 as the staff of the Cotton Institute in Washington since 1941.

About 18 percent of the plasma from the nation's banks goes to traffic victims.

## Bowling Activities

| SLATON CITY                      | WON    | LOST   | Slaton Co-op            | 47     | 37     |
|----------------------------------|--------|--------|-------------------------|--------|--------|
| Posey Gin                        | 94%    | 33%    | Slaton Motor            | 46     | 38     |
| Melcher Trim                     | 84     | 44     | Lasater-Hoffman         | 40     | 44     |
| Dents                            | 74     | 54     | Wheeler's               | 41     | 40     |
| Slaton Co-op Gin                 | 68     | 90     | Chamber of Commerce     | 35 1/2 | 48 1/2 |
| Hackberry Gin                    | 66 1/2 | 61 1/2 | Pin Busters             | 37 1/2 | 46 1/2 |
| Caprock                          |        |        | Bell Milk Co.           | 31     | 52     |
| Auto Parts                       | 67     | 61     | Slaton Gas              |        |        |
| Palace                           |        |        | & Equipment             | 44 1/2 | 39 1/2 |
| Beauty Shop                      | 56 1/2 | 71 1/2 | Hackberry Co-op         | 44 1/2 | 39 1/2 |
| Pleasant                         |        |        | <b>SLATON BOWLETTES</b> |        |        |
| Valley Gin                       | 54     | 74     | Bowling Grill           | 27     | 40     |
| Otis Rogers Ins.                 | 55 1/2 | 72 1/2 | Dental                  |        |        |
| Arrants Meats                    | 53     | 75     | Assistants              | 64 1/2 | 45 1/2 |
| Quality Cleaners                 | 51     | 77     | Jim Dan-Dy              | 75     | 53     |
| Jack's Egg Farm                  | 47     | 81     | Slaton Motor            | 70 1/2 | 58 1/2 |
| TOWN & COUNTRY                   |        |        | Slaton Aux.             |        |        |
| Axes                             | 93 1/2 | 38 1/2 | Police                  | 67     | 61     |
| Lumberjacks                      | 84 1/2 | 47 1/2 | Sanders Grocery         | 57 1/2 | 78 1/2 |
| Kendrick                         | 79     | 53     | Toague Drug             | 65     | 65     |
| Becker Humble                    | 70 1/2 | 61 1/2 | Citizens                |        |        |
| Slaton Co-op                     | 64     | 68     | State Bank              | 66     | 70     |
| Bownds                           |        |        | Hackberry Gin           | 54     | 73     |
| Body Shop                        | 62     | 70     | Slaton                  |        |        |
| Brewer Ins.                      | 58     | 74     | Savings & Loan          | 36     | 78     |
| Cinderella                       | 58     | 74     | Mossar TV               | 49 1/2 | 78 1/2 |
| West Butane                      | 54     | 78     | Slatonite               | 46     | 89     |
| Piggly Wiggly                    | 47     | 85     |                         |        |        |
| Rinne Implement                  | 48     | 84     |                         |        |        |
| <b>INDUSTRIAL BOWLING LEAGUE</b> |        |        |                         |        |        |
| Doc Crow                         |        |        |                         |        |        |
| Chevrolet                        | 80     | 24     |                         |        |        |
| Hestand                          |        |        |                         |        |        |
| Wholesale                        | 44 1/2 | 39 1/2 |                         |        |        |
| Liles                            |        |        |                         |        |        |
| Sheet Metal                      | 43 1/2 | 41 1/2 |                         |        |        |

## Southland News...

The new Methodist pastor, Rev. and Mrs. Yeatts have moved to the parsonage in Southland.

Mr. and Mrs. Kenneth Calloway and E. L. Dunn went to Jacksboro where they ushered in the wedding of a college friend of E. L. and Kenneth's.

Mrs. Bill Kane of Amarillo and her sister, Mrs. Herb Ausburn, Long Beach, Calif., spent Saturday night with their parents, Mr. and Mrs. T. L. Barnes, and Mrs. Agnes Rinker. Mrs. Ausburn was joined by Mr. Ausburn Monday in Amarillo and they will continue their visit with her parents, Mr. and Mrs. Barnes.

Mr. and Mrs. E. L. Hitt were host to all their children and families for a family dinner Sunday in their home. Those present were Mr. and Mrs. J. R. Robinson and sons, Mr. and Mrs. Wesley Scott and sons, Mr. and Mrs. Horace Hitt and family. Jerry, who is home for a few days vacation, a granddaughter, Mr. and Mrs. Jerry Dixon of Plainview and the host.

Guests in the home of Mr.

A/1c Ned Myers returned to Dyess Air Base Thursday of last week and started the processing of his papers and will get his discharge, June 13.

Congratulations to Mr. and Mrs. Fred Myers on the birth of a son, Stephen J., born at Meridian, June 5, weighing 8 lbs. 5 ozs.

Harvey Pennell is spending the week with Mr. and Mrs. Mitchell Marlowuf Jr. at Plainview.

Kelly Jo Myers spent last week in Spur visiting friends and relatives. Her parents, Mr. and Mrs. Jack Myers went to Spur Sunday where they visited Mrs. Myers mother, Mrs. O. M. Hart and brought their daughter home Sunday afternoon.

Mrs. Leo Barker was released from the Mercy Hospital in Slaton the first of last week and later in the week she returned to the hospital where she underwent surgery again. She is home and doing fine at this writing.

Mrs. C. S. Oats, who underwent major surgery some two weeks ago is improving satisfactorily at the Mercy Hospital in Slaton at this writing.

Nedra Sue Myers, little daughter of A/1c and Mrs. Ned Myers, Lubbock, spent last week with her grandparents, Mr. and Mrs. Jack Myers.

Recently Mrs. Kenneth Rackler in Slaton honored her daughter, Thesa with a birthday party. J. B. Jr. and Beverly Rackler were among guests of her party.

Visiting Mr. and Mrs. T. L. Bares and Mrs. Agnes Rinker, Sunday afternoon were her niece and husband, Mr. and Mrs. Curtis Watson from Lubbock, and Mr. Barnes' niece and husband, Mr. and Mrs. S. H. Eubanks from Hale Center.

The speaker at Gordon Church of Christ Sunday and Sunday night was E. R. Davis from Acuff, who spoke in the absence of the pastor. He will be the speaker again Sunday and Sunday night. Visitors were Davis and Edwin Reed from Pampa, Clarky Cowdrey from Graham, and Mr. and Mrs. Orville Stanley and family from Grassland.

Jerry Hitt left Tuesday for Glorietta, N. M. where he will be pianist for the Baptist Camp this summer.

Mrs. J. F. Rackler spent Wednesday with her daughter and son-in-law, Mr. and Mrs. Claude Roper and Linda at Wilson.

J. B. Jr. and Beverly attended the Bible school at Southland

with her grandparents, Mr. and Mrs. Jack Myers.

Recently Mrs. Kenneth Rackler in Slaton honored her daughter, Thesa with a birthday party. J. B. Jr. and Beverly Rackler were among guests of her party.

Visiting Mr. and Mrs. T. L. Bares and Mrs. Agnes Rinker, Sunday afternoon were her niece and husband, Mr. and Mrs. Curtis Watson from Lubbock, and Mr. Barnes' niece and husband, Mr. and Mrs. S. H. Eubanks from Hale Center.

The speaker at Gordon Church of Christ Sunday and Sunday night was E. R. Davis from Acuff, who spoke in the absence of the pastor. He will be the speaker again Sunday and Sunday night. Visitors were Davis and Edwin Reed from Pampa, Clarky Cowdrey from Graham, and Mr. and Mrs. Orville Stanley and family from Grassland.

Jerry Hitt left Tuesday for Glorietta, N. M. where he will be pianist for the Baptist Camp this summer.

Mrs. J. F. Rackler spent Wednesday with her daughter and son-in-law, Mr. and Mrs. Claude Roper and Linda at Wilson.

J. B. Jr. and Beverly attended the Bible school at Southland

Baptist Church last week and the commencement Friday night.

Spending Thursday of last week with Mr. and Mrs. Ed Milliken was their son, Bryon from Lake View. Mrs. D. H. Hatchett from Lubbock, and Mrs. Molly Black from Jacksboro were week end guests in the Milliken home.

Mrs. Jack Myers and daughter, Kelly Jo, left Monday morning for Meridian to visit her son and daughter-in-law, Mr. and Mrs. Fred Myers and their new baby.

The Southland OES met Thursday night. There were 2 new members initiated. They

were Mrs. Dora Smallwood, Mrs. Peggy Wheeler and Mrs. Fortson came in on the train from Lancaster.

Attending the Graduate Jerry Pennell Sunday night were his parents, Mr. and Mrs. D. D. Pennell, Don and Mrs. and Mrs. Kenneth Calloway, Mr. and Mrs. G. C. Egan, daughters from Houston, Sergeant and Mrs. Charles Pennell and children from Okla.

Jerry was a mechanical engineer major and a member A.I.M.E., Engineering. He was a 1955 graduate of Southland High School.

**Triangle Manufacturing Co.**  
 BOX 486  
 STEEL BLDGS. FOR FARM OR HOME, BAL  
 UTILITY, ETC.  
 STEEL OR MASONRY COMMERCIAL BLDG  
**JACK SCHUETTE, Mgr.**

**WATCH FOR**  
 OPENING OF  
 THE NEW  
**M. & W. PHARMACY**  
 Slaton's Most Modern Pharmacy  
 With Big Name Sales.

**FATHER'S DAY**  
**IS JUNE 19**

Shop our Lay-away for Father or Gramps on their day.  
 We think you will find our watch and jewelry repair can't be beat.

**FINDLEY'S JEWELRY**  
 129 S. 9th SLATON, TEXAS

**USE THE WANT ADS**

**RUSSIANS**  
 don't have private property to insure but Americans do and that's what keeps the Browning and Marriot Insurance Agency, over Teague's Drug, in business. We try to

**SELL**  
 people on the idea of letting us handle all their insurance needs because we honestly believe our

**IRON**  
 determination to do a good job will be worth money to our clients. We try to stand between them and financial loss like a protective

**CURTAIN!**

**ATTENTION**  
**Mr. FARMER**

**KEEFON CATTLE COMPANY** is ready to contract  
 Your Silage.

Call SHERWOOD 4-1473 Lubbock, Texas

Or come by the office located 5 miles out of Lubbock on the Slaton Highway

**YOU MAY HAVE A HALE HARVEST OR HAIL AND NO HARVEST**

**GET HAIL INSURANCE**  
 ASK US NOW!

**PEMBER INSURANCE AGENCY**

BOB KERN Jr., res. VA 8-3024



You've been waiting... So here it is.

**Anthony's**  
 C. R. ANTHONY CO.

**Annual Father's Day shirt sale**

Our entire stock of mens shirts reduced for this one big event... Buy now for gift.

We've taken a vast collection of the newest fabrics in the smartest colors and designs, they've been put together with the utmost care and tailoring, we've priced them all special for this big shirt sale, so plan now to pay Anthony's a visit. You'll agree they're tops for Pops in solving your Father's Day gift problem. Dress types, sport types, long sleeves, short sleeves, button fronts, slip-overs and continental... name it... we've got it. Shop now... Save Now.

**MEN'S SPORT AND DRESS SHIRTS**  
 1.88 each 2 for 3.75 3 for 5.50

**MEN'S SPORT SHIRTS - DRESS SHIRTS - PAJAMAS**  
 2.88 each 2 for 5.50 3 for 8.00

**MEN'S SPORT SHIRTS - DRESS SHIRTS - PAJAMAS**  
 3.88 each 2 for 7.50 3 for \$11

**MEN'S SPORT AND DRESS SHIRTS**  
 4.88 each 2 for 9.50 3 for \$14

### LUBBOCK BUILDING & REMODELING COMPANY

Storm Cellars — Fences  
 Additions  
 Complete Remodeling Service  
 Complete Financing Plan  
 BONDED & INSURED  
 Call collect for free estimates, SH 4-3695  
 Lubbock, Texas

### Posey Society Has Meeting

The Posey Ladies' Aid Society met at the educational building on Thursday afternoon, June 2, with ten members present. Mrs. Adolph Walter being the hostess. Various individuals led prayer. Rev. F. A. Wittig had charge of the Bible Study based on the Gospel of Mark 9:30 - 10:52. Mrs. Margaret Johnson read a letter from the Children's Home in Waverly, Iowa giving case histories of the emotionally disturbed children that the ladies are corresponding with.



**NEW ARRIVALS IN SLATON**  
 Congratulations to Mr. and Mrs. Melvin Adams, Durante, Oklahoma, on the birth of a son, Dennis Kevin, born May 28 in Brian Memorial Hospital,

weighing 4 lbs. 14 1/2 ozs.  
 Congratulations to Mr. and Mrs. Lawrence Edward Schwertner, Rt. 2, Slaton, on the birth of a son, born June 2, weighing 8 lbs. 2 ozs.  
 Congratulations to Mr. and Mrs. Hubert Calvin Teinert, Rt. 1 Box 51, Slaton, on the birth of a son, born June 3, weighing 6 lbs. 13 ozs.

Congratulations to Mr. and Mrs. Dewey Paul Engle, Box 184, Tahoka, on the birth of a son, born June 4, weighing 7 lbs. and 2 ozs.  
 Congratulations to Mr. and Mrs. Barney Dural Wilson Jr., 606 W. 7th, Post, on the birth of a daughter, born June 4, weighing 6 lbs. 4 ozs.

Congratulations to Mr. and Mrs. Guadalupe Pina, Rt. 1, Hamilton, on the birth of a son, born June 5, weighing 8 lbs. 11 ozs.  
 Congratulations to Mr. and Mrs. Donald Jones, 1030 S. 12 Slaton, on the birth of a son, born June 5, weighing 8 lbs. 12 1/2 ozs.

Congratulations to Mr. and Mrs. Warren Dale West, 725 S. 20th, Slaton, on the birth of a daughter, born June 6, weighing 6 lbs. 14 1/2 ozs.  
 Congratulations to Mr. and Mrs. D. R. Roberts, 335 North 3rd, Slaton, on the birth of a son, born June 6, weighing 8 lbs. 5 1/4 ozs.

Congratulations to Mr. and Mrs. Troy Horton, Box 914, Post, on the birth of a son, born June 6, weighing 7 lbs. 4 ozs.  
 Congratulations to Mr. and Mrs. S. T. Brooks, Box 1102, Post, on the birth of a son, born June 6, weighing 6 lbs. 9 ozs.

Congratulations to Mr. and Mrs. Williams A. Lee, 905 S. 17th, Slaton, on the birth of a daughter, born June 7, weighing 6 lbs. 3 ozs.



## STRENGTH FOR THE WEEK

What makes a "real" Christian stand out among men? No doubt there are some in your life, perhaps many, that you find a real joy just to be around. Some of those are ones that have never taught a lesson or preached a sermon. You will find that these are those who have yielded themselves to the Lord.

Jesus said in Matthew 5:14 "Ye are the light of the world." This is to be a dependable light. A sure light. It is to be a heartwarming light that will bring gladness and cheer in the darkness of this world.

The light in the Christian is a gift from God who is Light—and in Him is no darkness at all." I John 1:5. The more we walk with Him the brighter our light. The brighter our light the more humble and trustworthy we become in His service. All of this works together to make outstanding Christians that will be real blessings to others.

Two men go into the same business. One fails and the other makes a success. There may be a number of reasons. However one ingredient in a MUST. One must apply himself. This is also true in church life. Much space and time would be necessary to completely develop this. However I believe one fundamental thing is found right here. Matthew 5:16 "Let your light so shine before men, that they may see your good works and glorify your Father which is in heaven."

Letting your light shine is to be the kind of Christian that would please the Lord and reflect Christ your life. The kind of life resulted in the disciples being called Christians first at Antioch.

It is easy to be kind and loving to those who love us. Does that prove us to be Christians? Jesus spoke concerning this. "For if ye love the which love you, what reward have ye? do not even the publicans the same?" Matthew 5:46. The lesson is this: Christ died for a world of sinners who had rejected Him while here on earth. He died for all sinners like you and me and made it possible for us to receive salvation. "For whosoever shall call upon the name of the Lord shall be saved." Romans 10:13.

We see by these things from the Word that if we want to be a success in our Christian life and to be a blessing to others we must look to Him who first said, "Follow Me."

Rev. H. E. Summar, pastor  
 Bible Baptist Church

## Our Men In Service

Fort Sill, Okla. (AFTNC) — Army Pvt. Ed R. Reynolds, 22 son of Mr. and Mrs. H. R. Reynolds, Route 2, Slaton, completed eight weeks of advanced individual artillery training June 3 at The Artillery and Missile Center, Fort Sill, Okla. He received training in the duties of a cannoneer in a 100 millimeter section. Reynolds entered the Army last January and completed basic training at Fort Ord, Calif. He is a 1955 graduate of Roosevelt High School.

# Anthony's BLANKET

## LAY-WAY Sale

Look at this sensational blanket buy!

### 2" x 90 RAYON SINGLES

4 Inch Rayon Acetate Binding

**2.99** each

A. 100% Rayon for extra warmth, beauty and wear. Wide four inch rayon acetate binding. In lovely solid colors of pink, tan, red, yellow, blue and green. Truly one of the greatest blanket buys ever at this thrifty Anthony price.

B. Add color and smartness to your bedroom with these beautiful horizontal stripe. 100% Rayon single blankets. 4 inch rayon acetate binding. White ground with either pink stripe, tan stripe, red stripe or yellow stripe design.

### OUR OWN "ANCO SUPREME" Automatic Electric BLANKET

Automatically adjusts to compensate for changes in room temperature. Unconditionally guaranteed for two years. Softest advanced 3-wire waterproof system. 6 lovely solid colors in turquoise, oyster, red, bon bon pink, mist blue, sea foam green and honey beige. Lay-away now. Be ready for cold weather.

• Size 72" x 84"  
 • Rayon-Cotton & Nylon  
 • Nylon binding top & bottom  
 • Guaranteed Washable

**12.88**

### The "RIBBON OVAL" Hand Screen Print BLANKET

72" x 90" Rayon & Nylon

**6.99**

Hand screen printed. Ribbon Oval design on ground. 3 1/4 pound Rayon and Nylon for warmth and weight. 6 1/2 inch binding. One of the sensational blanket buys you'll find anywhere. Now see these in all the delightful colors.

For extra warmth - Comfort & Beauty  
 Luxurious 72" x 90"

## Plaid Solids

In all of the Most Wanted Colors

**3.99** each

Plaid design in favorite colors of red, tan, turquoise. 72" x 90 for double bed. 90% Rayon, 10% cotton for extra warmth and wear. Acetate binding. Comes in poly-bag for easy storage.

Anthony's famous "A-PLUS" 94% 6% Olen single blanket. In beautiful colors of pink, tan, red, blue and white 6 inch satin binding. Compare prices, see for yourself this is the most outstanding blanket buy.

### 3 Wonderful Choices - 1 Low Price

## BIG 72" x 90 SINGLES

Choose from solid colors, plaid or record design. Superbly made in every detail for warmth, beauty and long satisfactory use. In all of the most wanted colors, and just look at this low, low price.

**The "NYLONITE"**  
 94% Rayon, 6% Nylon with 6 inch satin binding. 3 1/4 pound weight. Comes in polyethylene bag.  
**4.99** each

**The "MAC DUFF"**  
 Bright colorful plaid design. 94% Rayon, 6% Nylon. Wide 6 1/2 inch satin binding. 3 1/4 pound weight. Comes in polyethylene bag.  
 Choose from tan, red, green, blue and pink.

**The "DRAKE"**  
 Warmth without weight. 3 pound record design in plaid. 90% Rayon, 10% Nylon. Looks so much more expensive.  
 In beautiful colors of red, hunter, toast or turquoise. Buy now on our convenient Lay-Away plan and save.

## "IT WAS BUY A DISHWASHER OR BE ONE. I BOUGHT ONE!"

SAYS  
**MR. FRANK BARTLETT,**  
 1010 2nd Street  
 ABERNATHY  
 TEXAS

"Our family has time for games after dinner while our dishes are washed electrically," say Mr. and Mrs. Frank Bartlett.

Both Mr. and Mrs. Bartlett are school teachers, and before the children arrived, Mr. Bartlett helped by taking care of the dishes. When Mrs. Bartlett returned to her teaching duties, Mr. Bartlett decided to let Reddy do the dishes.

The Bartletts bought a portable because they like the convenience of loading dishes at the table. When they built their new home, they kept the portable, designing space to accommodate it.

**WATCH AND WIN!**  
 You can WATCH AND WIN at your Reddy Kilowatt dealer store. Just ask for a demonstration of an electric range, electric clothes dryer, electric dishwasher or electric home freezer (or, all four) then register for each demonstration you receive. There are three appliances yet to be given away.

SEE YOUR PARTICIPATING REDDY KILOWATT APPLIANCE DEALER

warded the coming season  
 Smith, a native  
 ham, Ala., has long  
 in the cotton textile  
 is a director and p  
 ze to of the American  
 fo of facturers Institute  
 the Alabama Cotte  
 ment contest and a  
 of the Alabama  
 ufacturers Assn., in  
 having been a deleg  
 to the National Cot  
 since 1943, a NCC  
 ber since 1951 and a  
 man of the Sales  
 Committee of the N  
 at  
 Cong. Hagen is s  
 fourth term as repres  
 the 14th California  
 comprised of Kern, I  
 Tulare counties—all  
 ton producing areas  
 Southern Joaquin  
 California. An att  
 profession, Hagen is  
 erat. A recognized s  
 in Congress on waste  
 matters, Hagen suppor  
 development projects, e  
 use of natural resources  
 public, broadened social  
 ty benefits and a sound  
 of veterans benefits.

Raper, a native of  
 Carolina, has been in  
 ment service since 135  
 the staff of the Cotton I  
 in Washington since 194

About 18 percent  
 plasma from the nation's  
 banks goes to traffic vict

## Wilson Events...

By Glenda Ward  
 Congratulations to Mr. and Mrs. Hubert Teinert on the birth of a son weighing 6 lbs. and 13 oz., Friday, June 3rd in Mercy Hospital at Slaton. The baby was named Paul Calvin. Mr. and Mrs. E. J. Brandt of Littlefield visited their daughter, Mrs. Hubert Teinert and baby, in Mercy Hospital at Slaton Saturday. Lisa Teinert accompanied her grandparents home to spend a few days.

Mr. and Mrs. Norris Raymond and family of Abernathy and Mr. and Mrs. Ed Crowder were upper guests of Mr. and Mrs. former Campbell, Jr. Wednesday evening. Vivian Campbell went home with the Raymonds for a few days visit.

Mr. and Mrs. Frank J. Benak and family of Lubbock ate dinner with her parents Mr. and Mrs. Ed Crowder Sunday.

Mr. and Mrs. Roy Riddle and daughter of Jackson, Alabama, have been visiting his parents, Mr. and Mrs. T. R. Riddle of Tahoka and grandparents, Mr. and Mrs. Ollie Riddle of Wilson. Mr. Roy Riddle is in the Air Force.

Dinner guests in the home of Mr. and Mrs. Ollie Riddle Saturday were Mrs. and Mmes. Roy Riddle and baby of Jackson, Ala. Joe Coffey of Lamesa, R. L. Christopher and family of Wilson, T. R. Riddle and family and E. W. Roe and daughter of Tahoka.

Mr. and Mrs. R. L. Christopher and family visited their daughter, Mrs. E. W. Roe and family, in Tahoka Sunday night. Elizabeth Christopher remained to spend the week with her sister and attended vacation Bible School at Sweet Street Baptist Church.

Mr. and Mrs. Jimmy Riney of Levelland visited his parents, Mr. and Mrs. F. B. Riney over the weekend.

Mr. and Mrs. Pharell Bennett, and Mr. and Mrs. J. E. Bandy and family of Amarillo visited Sunday with Rev. and Mrs. Tom Bandy.

Waltham League of the St. Paul's Lutheran Church had a social Sunday night at Carl Herzog's. About 25 attended.

Rev. and Mrs. Tom Bandy and family left Monday on a vacation trip to Colorado and New Mexico. They were accompanied by a niece, Carol Bandy of Amarillo.

Mrs. N. A. Rodgers and Mrs. A. L. Rodgers and daughters of New Home visited Mr. and Mrs. David Peterson and family Monday. Valeta Peterson accompanied them home to spend the week with her grandparents, Mr. and Mrs. Jim Porter and family of Post visited her parents, Mr. and Mrs. Chester Swope Sunday and attended the closing exercises of Vacation Bible School at the Wilson Methodist Church Sunday night.

Jack Mason, Harry Hewlett, Jr., and Larry Petty drove Charles Ray Mason's car to Ft. Bragg, North Carolina last week. Leaving the car there for Charles Ray, the boys returned home by bus on Tuesday.

Mr. and Mrs. Charles Waters of Lubbock were supper guests of her parents Mr. and Mrs. Ed Crowder Friday.

Mr. and Mrs. Vernon Teinert and family of Heckville visited Mr. and Mrs. M. G. Weid and family Sunday.

Mr. and Mrs. Ollie Riddle visited their son, Mr. T. R. Riddle and his wife in Tahoka Sunday.

Mr. and Mrs. Clarence Church and Jerry and Mr. and Mrs. Tommy Harkey of Lubbock attended the wedding of Mr. Church's niece, Miss Linda Dwiggin, in Anson Friday.

Mrs. and Mmes. Jake Mueller and Alfred Krause were supper guests of Mr. and Mrs. R. A. Kahle Sunday.

Mr. and Mrs. Leroy Crews and sons of Abilene visited his brother, Mr. and Mrs. Olen Crews Sunday. Donnie remained for a few days visit with his cousin, Rodney Crews.

Mrs. H. H. Hewlett, Dixie, Neita, and Jeanie Sue attended graduation exercises for Mrs. Hewlett's nephew, Duane Cookston, in Whiteface recently.

Judson Hewlett, who has been attending Texas Tech, left Sunday for six months army duty at Fort Hood.

Mrs. Marie Surovik of Lubbock is visiting in the home of her son-in-law and daughter, Mr. and Mrs. E. J. Hewlett.

Mr. and Mrs. David Peterson were dinner guests of her parents Mr. and Mrs. N. A. Rodgers at New Home Sunday.

Memorial Day guests of Mr. and Mrs. Baker and family were Mr. and Mrs. John F. Meyers of Lubbock.

Vacation Bible School of the Wilson Methodist had its closing exercises Sunday night. Perfect attendance certificates were presented to 19 children from the Primary, Intermediate, and Junior departments. A program of verse, song and prayer was presented by the children through demonstration of the week's work. The Bible School was under the directorship of Mrs. Glen Ward.

Saturday dinner guests of Mr. and Mrs. E. C. Staben and family were Mrs. Bertha Betts and Mrs. Leroy Mueller of Sundown. They spend the weekend with their mother, Mrs. A. Wilke in Slaton.

Mr. and Mrs. Ollie Riddle, Mrs. R. L. Christopher and daughter of Tahoka attended capping ceremonies for the Ollie Riddle's granddaughter, Miss Carol Riddle at Hendrix Memorial Hospital in Abilene Saturday.

Mrs. and Mmes. Claud Coleman and Joe White attended an annual reunion and homecoming at Lipan Sunday.

Mr. and Mrs. Lester Brewer and baby of Lubbock visited his parents, Mr. and Mrs. Herman Brewer Sunday.

Mrs. Joe Bryant of Slaton spent the weekend with her parents, Mr. and Mrs. E. L. Blankenship and Jimmy.

Closing of Vacation Bible School at St. John Lutheran Church will be held Friday, June 10 at 8 p.m. with a short program by the children who attend. Interesting displays will be set up and ice cream and cake will be served.

The Women's Missionary Society of St. John Lutheran Church met Wednesday afternoon, June 7 at the church.

Miss Barbara Brewer of Lubbock spent Friday night with her parents, Mr. and Mrs. Herman Brewer.

The MYF of Wilson Methodist Church had a swimming party at the Slaton swimming pool Wed., June 1. Those attending

were Doris and Carol Lamb, Sue Coleman, Joe Hewlett, Bobby and Sammy Crowson, Johnny Long, Jerry Church, Mike Gatzki, Carolyn Clary, Mrs. Sam Gatzki and Mrs. Jim Coleman.

Mr. Kirby Boles of Austin arrived Wednesday for a visit with his sister, Mrs. H. R. Williamson and family. Mr. Boles became ill and had to be taken to the hospital Sunday.

Mr. and Mrs. Frank Blue and family of Fort Worth visited with Mr. and Mrs. Ray Foster and family over the weekend. Also visiting in the Ray Foster home were Mr. and Mrs. Edwin Foster and girls of Lubbock.

Mrs. Eli Scarbrough and sons of Rockdale spent from Tuesday until Friday in the home of Mr. and Mrs. H. R. Williamson and Eva Pearl.

Mrs. Myrtle Stanley and children and Mrs. Lowell Wagner and children of Clovis, N. M. spent Saturday night with Mr. and Mrs. Roy Robinson.

Visitors in the home of Mr. and Mrs. B. E. Webb and Don over the weekend were Mr. and Mrs. John D. Young.

Mr. and Mrs. Dickie Thomas and son of College Station, are visiting in the home of her parents, Mr. and Mrs. Sam Crowson and family.

Your Down Town Florist



**CHRISMAN FLORAL**  
 142 Texas Ave.  
 VA 8-3462

# All the Brands You like Best!

**Cherries** Sturgeon Bay 303 Can 2 For ..... **35c**

**Snow Drift** 3 Lb. Can ..... **59c**

**Mellorine** Swift 1/2 gallon ..... **35c**

**Ice Cream** Swift 1/2 gallon ..... **69c**

**APPLE SAUCE** 303 Can ..... **10c**

**PICKLES** Alabama Girl 48 oz. Jar. .... **39c**

**PORKS & BEANS** Van Camps 300 Can ..... **12 1/2c**

**WELCH ADE** - 32 Oz. Can ..... **29c**

**WELCH'S GRAPE JUICE** - 24 oz. Bottle ..... **3 for \$1.00**

**TOMATO JUICE** - Hunt's 32 Oz. Can ..... **19c**

**Preserves** Mary Ellen's Pure Fruit, 10 oz. Jar 5 For ..... **1.00**

**KOOL AID** - Assorted Flavors ..... **6 for 25c**

**BACON** Armour's Star, lb. .... **53c**

**FRYERS** Armour's Star, lb. .... **35c**

**HAM** Armour's Star, Can Picnic ..... **1.98**

California Sunkist Lemons ..... lb. **12 1/2c**

California Gold Cantaloupes ..... lb. **10c**

Crisp Stalk Celery ..... each **12 1/2c**

Sunshine Honey Grahams lb Box **39c**

Supreme Club Crackers lb Box **39c**

Nabisco Veri Thin Pretzel Sticks 7 1/2 oz. .... **29c**

Banquet Brand Beef, Chicken, Turkey Pot Pies ..... **19c**

Town & Country 8 to Pkge Beef Steaks ..... **79c**

Keith's 10 oz. Pkge Breaded Shrimp ..... **49c**

10 Oz Pkge Strawberries ..... **2 for 35c**

We give and redeem Town Value Stamps double on Tuesday with \$2.50 purchase or more.

## HADDOCK FOOD STORE

240 W. GARZA

VA 8-3466

**WE DELIVER IN SLATON**



"Your Want Ad said the freezer would pay for itself - when it does, send it over!"

## Screen Doors

Take Advantage of Our Low Prices to Install New Screen Doors.



Beautiful Clear Doors in sturdy kiln dried No. 1 Hemlock with galvanized screen wire. Only

Screen door hardware sets including spring, door pull and hinges and screws priced from \$1.00 to \$1.50. Sash and Door Paint \$1.00.

VA 8-4111  
 250 S. ...



EVERYTHING FOR THE BUILDING

**WATCH FOR OPENING OF THE NEW M. & W. PHARMACY**

Will Be Here Soon. Slaton's Most Modern Pharmacy

**GOODPASTURE FERTILIZER CO.**

ANNOUNCING - Liquid fertilizer now in SLATON. For all dressing needs call VA 8-3334, or go by Highway 177, our temporary headquarters.

**Scottie Coin O Matic Laundry**

Open for business the New Scottie Coin O Matic Laundry. Visit & see our new Full 10 lbs. Scottie Washers and see the difference. Attendance on duty all day. Plenty of Free Play area, for children. Open All Hours.

SCOTTIE COIN O MATIC LAUNDRY  
 950 So. 9th (Next to Henzler Gro.) Slaton, Texas