

## Write a Headline!

What headlines would you most like to see during the new year, 1963?

What world-wide or national news stories would you like to see atop the front page of your morning paper? And what local interest would you be happiest in finding in the headlines during the new year?

Using your imagination, foresight or plain desire... the Slatonite, giving one or more local headlines you would like to see, and one or more national or world-wide headlines. With every entry received before Tuesday night, January 8, we will give one "Want Ad" of 25 words or less to one ad to a person, however).

We are confident a number of headlines come to your mind, so won't you join in the fun and let's see if any of them might develop into a real story?

**JUST WRITE YOUR SUGGESTED HEADLINES AND SEND THEM, TOGETHER WITH YOUR NAME AND ADDRESS TO THE SLATONITE, SO THEY WILL REACH US TUESDAY NIGHT, JANUARY 8. YOUR NAME IMMEDIATELY WILL BE PLACED ON FILE AS ELIGIBLE FOR A FREE WANT AD. DON'T DELAY.**

# Souvenir Edition

We at the Slatonite like to think that we have chronicled the newsworthy events of 1962 from week to week in a factual and informative manner. Assuming some degree of success in this attempt, we are this week compiling a number of the pictures that have appeared throughout the year in these columns; we are reprinting some of the headlines that made news; this designed to present a souvenir package of the "1962 Passing Parade in the Slaton Area".

Extra copies of this edition are being printed for those of you who might wish additional copies to send to friends, or simply for distribution to publicize your hometown!

Reporting of the current week news events has been sacrificed, or condensed, in this issue. However, the paper of next week will resume publication of news as it occurs; all departments again will appear within its pages, and every attempt will be made to start the new year, 1963, with all facilities geared to bring you a better newspaper with each passing week. With your help it can be done!

## First Baby Awards

A number of local merchants have seen to it that "First Baby of 1963" is indeed a lucky child in Slaton.

Awards of merchandise and services are announced elsewhere in this Slatonite edition, all to be given the first child born in Mercy Hospital after the magic hour of 12:01 a.m. January 1, 1963.

Merchants are posting prizes of really "usable" items varying from free wash service to feeding utensils, trays, sets, a Bible, and other items.

Parents of babies born in the local Mercy Hospital after first of the year should have their physician call Slatonite or sign an affidavit as to time of birth. This information will be checked against any other entries, and parents of the "first baby" will be notified, after which parents should come to the Slatonite office to pick up a letter of introduction to the merchants giving prizes. The award can be claimed with this letter at the various places of business of the sponsoring firms.

# The Slaton Slatonite

An Old Established Friend Serving the Interests of Slaton Since 1911

Vol. 53 No. 11

Thursday, December 27, 1962

12 Pages

Slaton, Lubbock County, Texas

TEN CENTS



**CHAMPIONS TO THE CORE** — These boys took the top honors in minor league competition in Slaton. Operating as the "Mets" they edged out such other famous name teams as the Angels, Twins, and Colts.



First bale of cotton ginned in Lubbock County this year is displayed here at front of the Citizens State Bank in Slaton, flanked by Posey ginner Fred Tudor, grower Bill Klattenhoff, Jr., and John Schmidt, Slaton Chamber of Commerce president.

## Kuykendalls 1st Jeffcoats 2nd Home Decorati

The Jack Kuykendall on Union Road has been revealed as 1st Place winner the Christmas decoration test sponsored by the Garden Club. Shrubs awarded as prize to the Kuykendalls, and shrubs also won on second place winner L. S. Jeffcoat home at 600 Lubbock. The Jeffcoats were cited for their act, and interest in local affairs.

Homes and decorations in for commendation originality are listed by Garden Club committee as follows:

S. A. Peavy, 325 West C  
Ells Schmid, 655 West C  
E. C. Davidson, 120 South  
H. E. Isabel, 245 North 3rd  
Harold Wilson, 755 South  
Honorable mention for  
introduction went to the H. E.  
dersons, 750 South 17th;  
Frooks, 905 West Lubbock  
Crow, 650 South 17th; Dea  
lland, 830 South 19th; a  
N. Dickerson, 850 South 3

Mrs. Dudley Berry, chairman of the yard committee sponsoring club, was profuse congratulations to the Slaton residents going "all in" in the holiday decorating their premises. She added, actually more homes in Spanish and colored are the town were decorated proportion to population were the homes in other towns.

Mrs. August Kitten is president of the Slaton Garden

# Headlines of the Local News in '62

SCHMIDT, BOWND, BREWER HEAD C-C DURING '62  
BIDS LET FOR CANADIAN RIVER DAM  
ST. JOSEPH'S CATHOLIC CHURCH CELEBRATES 50TH ANNIVERSARY MARCH 4  
TWO-WAY RADIOS PROVIDED FIRE DEPARTMENT  
DR. HATCHETT CHOSEN TO HEAD SCHOOL BOARD  
SCHOOL AUDIT REPORT GIVEN APPROVAL

LOCAL VOTERS NIX HORSERACING;  
SUPPORT MOST PARTY LEADERS  
MERCY HOSPITAL GETS ACCREDITATION STATUS  
SLATONITE OWNERSHIP-OPERATION ASSUMED BY KING  
CITY HALL BOND ELECTION CALLED FOR AUG. 14 VOTE  
ORAL POLIO PROGRAM IS SCHEDULED FOR SLATON  
DR. VARDY GETS 3-YEAR EXTENSION ON CONTRACT  
ENROLLMENT SETS 1ST WEEK RECORD  
LOCAL CASE SLEEPING SICKNESS PROMPTS CALL FOR INSECT CONTROL  
WANTED ESCAPEE NABBED IN WILD SLATON CHASE  
SLATON MAPS ARE NOW AVAILABLE AT CHAMBER OFFICES  
EVANS GYM CONTRACT IS AWARDED  
DRIVE LAUNCHED TO PROVIDE NEW, EXTENSIVE STADIUM FACILITIES  
MONDAY DRILL TO TEST CIVIL DEFENSE IN ACTION  
LOCAL VOTE TREND STATEWIDE  
DISASTER MOBILE UNIT GIVEN TO FIRE DEPARTMENT  
ORDINANCE APPROVED FOR NEW WATER RATES  
HARD FREEZE IN LATE NOVEMBER  
BAKER, HENNINGTON ARE SEASON AWARD WINNERS

COUNTY TREASURER TESTS PROCEDURE OF DISBURSEMENT  
REV. RYLE NAMED MINISTERIAL ALLIANCE HEAD  
SEVEN CONTRACTS AWARDED FOR CITY HALL REMODELING  
TIGER BIG BROTHER ORGANIZATION FORMED  
WILLIAMS NAMED HEAD '63 CHAMBER OF COMMERCE



"Decapitating" of the Slaton City Hall preceded remodeling



SUPERINTENDENT G. A. ALEXANDER of the Santa Fe displays the Western Lines Safety Trophy recently awarded the Slaton Division for outstanding safety performance during the year of 1962.

## Rail Employee Plan Meeting Jr. High Scho

The January 8th meeting of railroad employees will be at the Junior High School auditorium rather than at the house as first announced.

Hosted by the Brother Railroad Trainmen, the meeting is designed for all railroad employees and their wives. Highlighting the session will be a 30-minute film, "Line to Security" after a question and answer period.



"Every good gift is from above, and cometh down to us from the Father of lights, whom no variableness nor shadow of turning shall alter. James 1:17. Heavenly Father of kind Oh bring, at last, my peace of mind. Then end our worry our fear— Bring happiness instead cheer; By faith, that Thou can give— Through hope, my day we live!

## second splance

By JOHN H. KING II

At this time of year most of us seem to reflect about friends who are standing, some that are with us and some that have recently. During our reflection we see how our lives have been enriched and guided by these close friends.

How can we count the many friends that we have acquired in the past year and find it hard to remember when we don't know them since they have become so much a part of our daily lives.

The other day I received a letter from Mrs. Herbert Taylor of Dallas which read in part: "Do appreciate receiving the Slatonite each week, and am amazed how much there is in it I can find of interest — an angle of interest, aside from writing angle."

I loved the story about Santa Claus you remember when you used to climb down from the roof to the balcony at S-T's San Angelo Standard-Times (San Angelo Standard-Times) "Labour Street Plant?" He would dress as Santa Claus and throw candy to hundreds of San Angelo children every year.

Herb is Mrs. Taylor's late husband and was a close friend of mine. Before he became vice president in charge of general advertising for the nine Harte-Hanks newspapers headquartered in Dallas, he was vice president and general manager of the San Angelo Standard-Times.

Herbert O. Taylor was best known for his accurate spelling of the English language, including trade names.

He not only contributed greatly to the successful establishment of the San Angelo Morning Standard, but he has probably helped develop more newspaper advertising men than anyone else in the state of Texas. He was dedicated to the newspaper profession, the people his newspaper served and had an undying loyalty for the man he worked with for more than 32 years, Houston Harie.

Herb believed in giving more than the customer paid for... it would go many, many steps further to give service to the newspapers' clients that wasn't expected. The people that worked with him in the 9 different newspapers of the Harte-Hanks group could help but receive the same enthusiasm and loyalty from Herbert Taylor.

What improvements or changes would you like for Slaton to experience in 1963? Why not write us a letter telling of your wishes? We really would like to hear from you.

## Ducats for Demo Dinner Available

Tickets to the Democratic Victory Dinner to be held in Slaton the evening of Jan. 14 are now being distributed all over the state.

Distribution of the tickets in this area is being handled by the two State Democratic Executive Committee members from the 28th District, Travis Shelton of Lubbock and Mrs. Edward Hurd of Brownfield.

The \$25-a-plate dinner will precede the inaugural ceremon

# EDITORIALLY SPEAKING

## Observations and Potpourri

IN LOOKING BACK over the fiscal developments of 1962 we find one bright spot in the tax picture . . . this was the first year in 17 years in which there were no increases in state gasoline taxes in all the United States!

We naively hope this situation continues, for after all, \$6 billion a year is the price added to the cost of driving because of the gasoline taxes. Authorities reveal that on the average, these taxes amount to 50 per cent of the basic price of the fuel itself.

Gasoline no longer is a luxury, but a necessity, and it looks to this editor as if this is a pretty large tax tab on a basic necessity.

AND IN LOOKING AHEAD for tax signs in 1963 . . . we see the rude awakening that will come immediately with the advent of the new year: on January 1st, Social Security taxes will rise once more. Both employees and employers will pay at the rate of three and five-eighths per cent on earnings to \$4800. The self-employed rate will be 5.4 per cent on earnings to that figure. A-N-D additional increases are scheduled, by law, for 1966 and 1968.

CHRISTMAS DAY, that most joyful of all celebrations, again is history and the holiday festivities are well along toward their finale. Throughout the world hearts were made lighter, were drawn nearer to their Maker, with the observance of the Holy season.

Again it is going to be mighty interesting to observe the lasting effects, during 1963, of the holiday spirit, the new year resolutions, the application of Christ's teachings of peace, solace, understanding, tolerance and love. Acceptance or denial of these tenets will make many of the news stories and headlines in the big newspapers and magazines during 1963 . . . let's hope for pleasant reading!

In extolling the value of savings, our banker friend points out that if the Indians of Manhattan Island had taken the \$24 in cash instead of trinkets and invested it at 6 percent, compounded quarterly, theoretically their descendants today would be worth more than the assessed value — \$10,000,000,000 — of Manhattan's land and buildings.

Then there was the wife who thought she was Teddy Roosevelt, running from store to store yelling "Charge"!

A fellow editor opines that he heard of a man in New York who was arrested in the street for trying to give away all his money. The item didn't say what the charge was, but it was probably because he was in competition with the government.

We like this one, stolen from a Wyoming weekly: "There were two rounds of applause at the last Chamber of Commerce meeting. One was for the announcement of a federal grant for a local project, the other for a resolution against government spending."

If all misfortunes were laid in a common heap, whence every one must take an equal portion, most people would be content to take their own and depart — Socrates

## The Slaton Slatonite

163 S. 9th Street Phone VA 8-4201

John H. King II, Publisher

SLATON TIMES PURCHASED JANUARY 20, 1927

Entered as Second Class Matter at the Post Office at Slaton, Texas, under the act of March 3, 1897.

NOTICE TO THE PUBLIC — Any erroneous reflection upon the reputation or standing of any individual, firm, or corporation that may appear in the columns of the Slatonite will be gladly corrected when called to our attention.

SUBSCRIPTIONS: Payable in advance. Lubbock, Lynn, Garza, and Crosby Counties — \$3.00 per year plus tax. Outside these counties — \$5.00 per year plus tax.

MEMBER: West Texas Press Association Panhandle Press Association



# These Events Made News



JOHN H. KING II assumed ownership and operation of The Slatonite in mid-May of this year, coming here from Robert Lee, Texas.



JOHN CONNALLY received local and statewide nod as governor-elect in the November elections.



PRESTON SMITH of Lubbock won handily in a race for Lt. Governor.



WAGGONER CARR, also of Lubbock, assumed a state office, copping the Attorney General post.

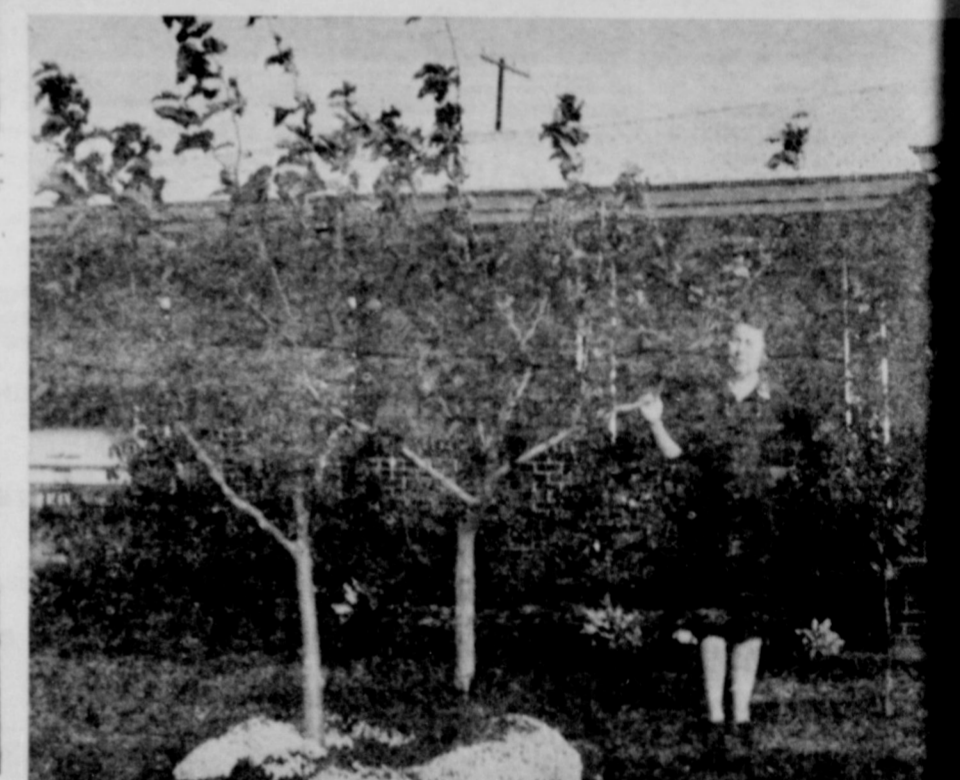


J. J. MAXEY, Slaton City Secretary was named to the select group of Certified Tax Assessors, his appointment coming after seven months study and a written examination.

## Old Growth Removed in Preparation of Landscaping



Removal of the trees on the City Hall square marked the mid-December preparation of the grounds for landscaping and completion of the remodeled building. Below is shown the municipal building in its present state, with upper floor removed. Completion of the facelifting is anticipated in the first quarter of the year.



The gorgeously colorful and well-tailored lawn of the Bruce Pemberton was one of the monthly winners of the "Yard of the Month" award.



POSSIBLY SKIPPING IN ANTICIPATION of the fun ahead, three students, of Evans school, 1035 East Geneva in Slaton, cross the newly-erected of the large gymnasium under construction there. Steel is being delivered, and completion of the 12,240 sq. ft. building is scheduled within days.

## Notes from Neighbors: Events and Opinions

From the Exchanges of the Slatonite

### On Traveling Congressmen . . .

In this season of junkets, far too many of our senators and representatives spend far too much of our nation's money on fancy vacations throughout the world.

Somehow they seem to have "business" — committee assignments, etc. — in the countries they want to visit most. Uncle Sam (you and I) picks up the tab, providing not only the transportation but also spending money for them after they reach their destination.

Our "counterpart fund," as we understand it, is money certain countries keep on deposit for the United States, instead of sending the cash for the goods they receive from us.

It's one sure way those nations have of not draining their reserves.

At a time when our gold reserve is dwindling rapidly, as other nations take the gold, perhaps we should have a similar arrangement.

Instead of letting them take our gold, keep it in reserve and make them come here and spend it. — McLean News

### Retrospective

I had to turn the world over to President Kennedy the past several weeks while we moved and it seems he did alright without our sage advice. But we'll soon be back in the groove. I was afraid things might go to pot. However, having failed to look at news reports for those several weeks and checking them today, it seems I missed very little.

I have always been conscious of the fact that our lives are a lot like a man dropping a pebble in a placid pool and watching how it disturbs the water. Life seems to go on, undisturbed, whether we comment or not. But a lot of little ripples can eventually stir up something. So we'll ripple on. — Cecil Waggoner in The Claude News

### The New Look at the Postoffice:

Crosbyton post office employees donned new uniforms this past week, in compliance with recently passed federal legislation. White uniform shirts have a round, green shoulder patch identifying their job.

Unfortunately, long sleeve shirts are not yet available here. As a result, Olen Littlefield and Jack Brashear suffered mildly from the rigors of December weather.

For old soldier Littlefield, used to the inconsistencies of World War I supply corps, a bit of bungling about uniforms should come as no surprise.

The uniforms were part of postal legislation passed by the last congress. Most controversial of these items were rate increases in postage.

It will cost the Crosbyton letter writer a full nickel to get his message delivered anywhere in the U.S. after first of the year. Second class rates are also rising, possibly meaning the demise of several national magazines.

Postal rate increase has no effect on department budget deficit. Postal employees were given rate increases at the same time, to be effective before last election. — Crosbyton Review

### And Swish . . . Out the Window!

A California fellow told a judge how easy it is to get rid of a million dollars in 18 months.

One of the heirs to a \$13-million Boston investment fortune, he inherited \$1,037,000 from his grandfather in 1961. He told the court he only has \$4,000 of it left. On insistence, he gave the court this accounting of money he spent after the inheritance:

- New York cooperative apartment — \$135,000.
- To furnish same — \$325,000.
- For jewels and furs for present wife — \$100,000.
- For boat charter — \$4,500.
- For cufflinks — \$3,000.
- For two shotguns — \$7,100.

Smith told Judge Mervyn A. Aggeler he was willing to pay \$500 a month for two daughters by his 9-year marriage to Miss O'Connell, which ended in divorce in 1950. He is now paying \$20,000 a year.

His request was denied. Smith's attorney told the judge that Smith's income "is limited to a specified account, and he cannot touch other assets held in trust."

Said Judge Aggeler, "Apparently, it's a good thing he can't." — Texas Tech Toreador

### Better Not Agree . . .

Here are a few statements you'd better contradict no matter how heartily you agree:  
We've had a lovely time, but I'm afraid we've stayed much too long.

I feel terrible about Johnny spilling ice cream on your new dress. You must send us the cleaning bill for it.

I'm afraid I'm not very good at telling jokes. You must be furious at me for being so late.

It was nice of you to give up your bed for me. It must have been awfully uncomfortable for you, sleeping on the davenport. I ought to take off at least five pounds.

I'll bet you're mad at me for not returning your ladder right away as I promised.

I'm afraid I'm not much of a cook. I'm getting too old to wear a two-piece bathing suit. I hope you'll excuse the way the house looks. It's an awful mess.

I'm afraid my telephone woke you up.

That's the first time in my life I ever sank a 30-foot putt. But of course it was just luck. — Big Lake Wildcat

### Doug Meador Says --

Wisdom gained by experience is elastic enough to allow compassion and tough enough to defend the will against tears.

Small effort is required to generate hate if the boiler is properly fired with bitterness and suspicion.

Old cowboy expression to describe a poor cow: "She would have to stand twice to make a shadow."

# WANT ADS

**WANTED RATES:** Minimum of 100 words. Legal notices per word first week, 10¢ per word for subsequent weeks of same length.

## FOR SALE

One good used electric foot freezer. Store, 146 West 11th St.

Nice chrome 5-bermion top ex. Only \$15. Mrs. Phone VA 8-7476

Nice chrome 5-bermion top ex. Only \$25. Mrs. Phone VA 8-7476

Three tubes, and Miller, cars and 20 S. 9th Street. Ted & Jewel's 35-36

Factory rebuilt straight 8-1111 cc. gas and carburetor. Garage, 1200 S. 47th tfe-22

New bedroom suite, bed and chest, \$100. Covered couch, \$30. Ward Automatic Electric dryer, \$45. 25 S. 11th. 9-tfe

1955 Chevrolet V8, Call VA 8-4123. 8-3tc

1950 for sale. Rea-son, 11th. Phone VA 8-4123

Two bedroom home, 75 foot lot, well worth the money. 42-tfe

LEASE: Wickler. Enjoy good contact Mrs. C. C. Dec. 27th. 305 S. 10-2c

1955 Plymouth, 2-4r conditioned, \$950. Vic Hus-berly. 5-tfe

TRUCK TIRES. All 66 Service. Ph. 10-2c

Practically new estate. C. B. VA 8-4038. 7-tfe

9 x 12 Linoleum on Trading Post. VA 8-4032. 4-tfe

For 2&3 bed-rooms if you have one. Mrs. Hickman & Deal Est. 145

90' x 140'. St., one block on pavement. See at. Phone VA 8-34-tfe

**WANTED** Clothing Trading Post with 9th

2 bedroom garage. Low Loan, \$40 S. 10-1708, if no 10-1708.

AGENCY PH. VA 8-2141 53-tfe

**FOR SALE** and Well Furniture Slaton

**FOR SALE** Furniture Slaton

**FOR SALE:** Group of used doors, various sizes. City of Slaton. 11-tfe

## FOR RENT

**RENTALS** — Furnished and unfurnished W. E. K.d.l. VA 8-4215.

**FOR RENT:** Business building. Also furnished apartment for rent. Contact Mosser Radio & TV or call VA 8-4475. 51-tfe

**FOR RENT:** Bedroom, private entrance, 335 N. 6th St. or call VA 8-3465. If no answer, see Mr. R. T. Brookshire at Had-locks Grocery. 29-tfe

**FOR RENT:** Drive-Inn cafe located on east side of square. Call McWilliams Dry Goods, VA 8-3307. 52-tfe

## WANTED

**WANTED:** Someone for part time typing and posting, work lasting two or three weeks. Apply Bowman Cotton Office, 125 W. Lynn. 11-1c

**WANTED:** We operate a van truck for moving locally. Call VA 8-4487. Pick-up and delivery service. tfe-31

**WANTED TO BUY:** Used clothing, any kind. Will pick up. Need men's and boys' jackets and shoes of any kind. Also children's clothing. Call VA 8-3681 or VA 8-4942. J. E. Evans. 5-tfe

**WANTED:** If you have good pen notes for sale, contact B. B. Castleberry at VA 6-4731. Slaton Savings and Loan Association. tfe-28

## Miscellaneous

**IF YOU DRINK,** that's your business. . . If you want to stop drinking, that's our business. Call Slaton Alcoholic Anonymous, VA 8-4812 or VA 8-3777. 52-tfe

**TOY POODLE PUPPIES,** nice pets at pet prices. Also tiny Toy Chihuahuas. Stud service both breeds. Mrs. Frank Pinkert, UN 3-2745, Woodrow, Tex. 7-1p

**TRY Purina Liquid hog wormer** No change in feed schedule. Just add to the drinking water Huser Hatchery.

**TILLIE'S FURNITURE** Upholstering offers free estimates, reasonable prices and guaranteed work. Mrs. Fred Perdue, 445 W. Scott, phone A 8-3760. 28-tfe

**HAVE YOUR prescriptions filled** at TEAGUE DRUG STORE by a registered pharmacist. tfe-31

**SERVICES** Automotive Machine Shop Cylinder H id and Valve Grinding, Pin-fitting, Brake Drum Turning, Cylinder Head Milling, Complet. line of Quality Parts for Car, Truck and Tractor.

**O. D. KENNEY AUTO PARTS** VA 8-4147 53-tfe

**Need salesbooks?** A new stock has been received at The Slatonite.

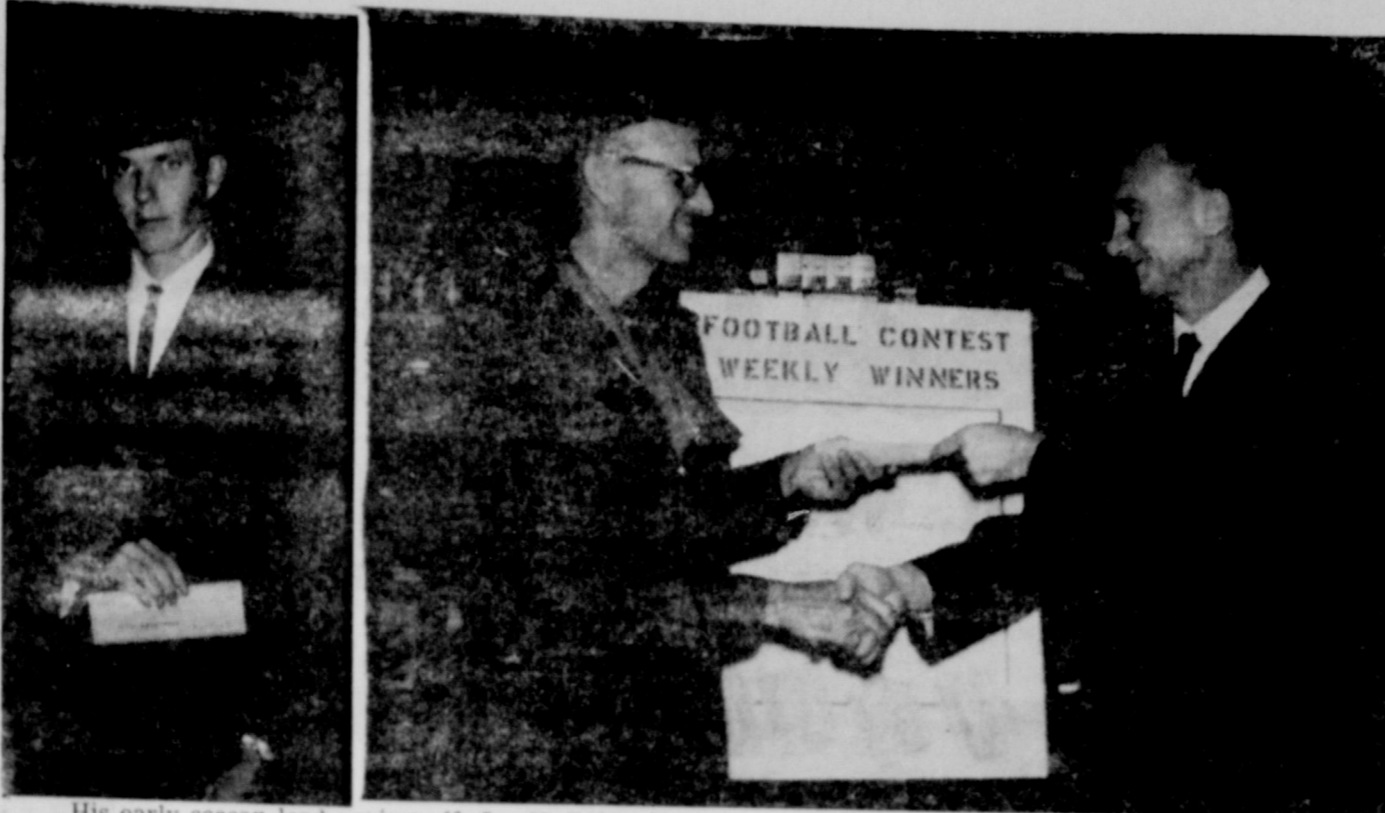
**FARM FOR SALE?** We need your listing. We are getting ready for what we expect to be the biggest farm season yet, and have buyers right now for farms, ranches, and grassland. If you want a larger place — more water — income property — or just money, we can sell or trade your farm. We are West Texas' largest, most active real estate firm with the reputation for honest, dependable, courteous service to seller and buyer, experience, and the know-how to trade or handle tax-free exchanges. Charter members of West Texas Farm Multiple, too. Call or write us today if you are interested in selling or buying West Texas farms or ranches.

**J. W. CHAPMAN & SONS** 3212-34th Street Phone BW 9-4322 LUBBOCK

**"Bob Stephens" Farm Hour,** Saturday, 9:30 a.m., KDAV."

**LET US PLAN Your Complete General Insurance Program . . .**

**KENDRICK INSURANCE Your Travelers Agent Telephone VA 8-4791**



His early season lead paying off, Joe H. Baker is shown, left, adjacent to the Slatonite Football Score-board that revealed him as winner of first place tie position in a 10-week contest of football-champion pick-up skill. At right, John H. King II, Slatonite publisher, is seen delivering Bowl tickets awarded by this newspaper and sponsoring merchants.

Job printing is a fine art at the Slatonite. Rush orders are welcomed. Phone VA 8-4201.

**FEED GRINDING and Mixing** Service offered by Huser Hatchery. 15-tfe

**YOU'LL FIND VALUES** galore at Round-Up Surplus & Supply located across from bank on Texas Avenue. Tools, clothes, boots, trapaulins, camping needs.

**9th St. Trading Post Used Clothing STORE**

920 South 9th J. E. EVANS

**FOR SALE CAFE and 3-Bedroom HOME**

Across From Junior High School 950 South 10th St. SLATON LUMBER CO. VA 8-4255

**FOR SALE**—Lot 11, block 22, South Slaton addition, \$1500.

**FOR SALE** — 486 A. of land all in cult., 3 good 5 in. wells, 3-4 in. wells, 13800 ft. concrete pipe, 4 room modern home, 40 x 60 steel barn, 20 x 40 barn with seed bins, natural gas, 219.4 a. cotton allotment, 3/4 M. from Slaton on paved highway.

2-bedroom and den, attached garage, on West Lubbock. 3-bedroom on South 11th. 2-bedroom, garage, South Tenth. 2-tfe

**Browning & Marriott Insurance** 116 1/2 W. Garza Phone VA 8-3216 Slaton, Texas

**See Us For Your**

- Auto Collision and Liability . . .
- Commercial and Residential . . .
- Outboard and Boat Insurance . . .

**LET US PLAN Your Complete General Insurance Program . . .**

**KENDRICK INSURANCE Your Travelers Agent Telephone VA 8-4791**



Miss Sharla Taylor was accorded signal honors recently, with her designation as Football Sweetheart of the Southland school added to other recognitions she has received during her school career.



Jimmie Davis of the Midway community displayed this huge careless weed in Slaton, here showing it to LaWanda Henry. First asserting the weed came from a neighbor's field, he later admitted importing it from Florida. But wherever it was grown, it caused comment, plenty wherever shown.

Thursday, December 27, 1962 The Slaton Slatonite

**JANUARY DRAFT QUOTA** Texas draft boards have a quota of 163 men for January. Col. Morris S. Schwartz, State Selective Service director, said the call represents a decrease from the 235 quota for December. In November, 153 were called.

**TAX TAKE FALLS** State Treasurer Jesse James reports a decrease of \$69,798 in November from the sale of stamps on cigarettes, liquor and wine, compared to the same month in 1961. Revenue from the same sources dropped \$913,904 from October in November of this year, James said.

From the country of 1100 springs

CLIFF "SLIM" PROFFITT Distributor

**SLATON LIQUOR STORE**

Largest Stock To Select From

**BEER - WINE - LIQUOR**

Come By the Y to Buy

HOME - OWNED

By Long Time Slaton Resident

**J. A. WARREN VA 8-7178**

**SHUTTLES Implement Co.** Phone 35 Post, Texas

**FARMERS** Let Me Figure With You On Your COTTON

I Pay the Lowest And Highest Prices

**HARRY BRYANT** Office Rear of Butler Monument, No. 9th Ph. VA 8-5321

**SCHLITZ BEER** in the handy 6-Pak

SEE YOUR DEALER TODAY

IT PAYS TO TRADE AT

**Cecil's LIQUOR STORES**

Just Follow the Signs in Odessa - - Lubbock

**SOUTHLAND SEED AND DELINTING** is now **OPEN AND OPERATING!**

**CUSTOM SEED PROCESSING**

Saw Delinted, Gulled, Treated and Fertilized

**\$20.00 Ton for Delinting and Treating**  
**1/2¢ lb. for Fertilizer**

**SOUTHLAND SEED AND DELINTING**

Five Blocks East of Lubbock Highway In Southland Owned and Operated by C. E. Basinger

**SOUTHLAND WY 6-2766**

# BLAND'S



# Clean

There Is No Secret. We Want To Sell The Merchandise We Have, Now!

If You Received Money For Christmas . . . Buy A Bargain . . . Bring Your Pickup or Trailer, Or We Will Deliver!

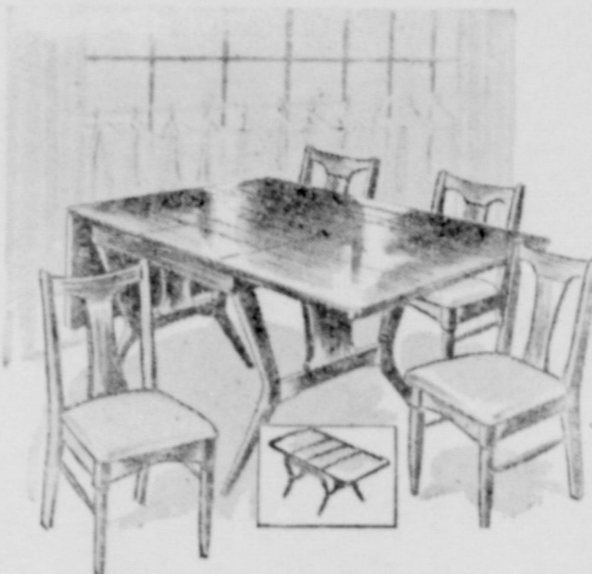
## PLATFORM ROCKERS

Platform Rockers of solid oak frame covered in 100% Nylon and leather combination Vinyl on seat and back in 100% Nylon. Variety of colors to choose from. REGULAR \$24.95 VALUE.



Sale **18<sup>38</sup>**

## Diningroom Suite



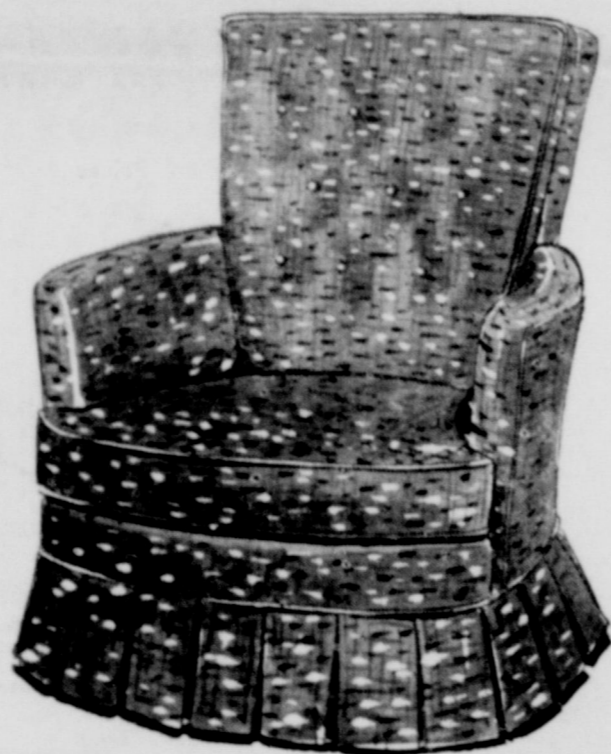
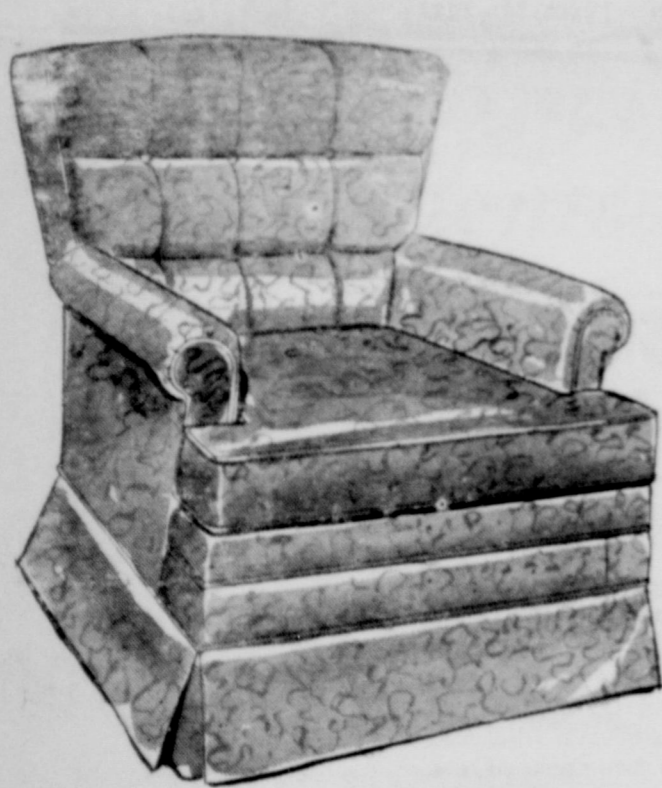
As shown, made of the very finest American Walnut, hand-rubbed, with matching Formica table top . . .

REGULAR \$255

**\$175**

Other dining room suites in round or dropleaf tables in maple with or without Formica top.

## YOUR CHOICE

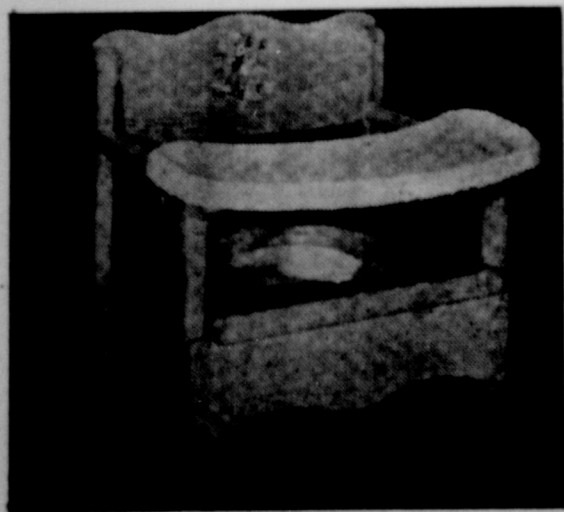


of either the No. 4477 Swivel Rocker or No. 4429 Princess Spot Chair. Southern hardwood frames, doubled-screwed — corner block construction with tapered steel spring bases, foam cushions with zipper in special selected fabrics.

Precise tailoring, quality controlled production. Bench made by one experienced craftsman, engineered and constructed for comfort and service.

Reg. Price \$79.50 . . . Clean Sweep Sale . . .

**48<sup>84</sup>**



Regular \$5.95

SALE PRICE

**3<sup>88</sup>**

## POTTY CHAIR

Made of kiln-dried material, finely finished plastic chamber, plastic tray (both white). White plastic deflectors available for all chairs.

**"DOUBLE YOUR EXTRA SAVINGS"**

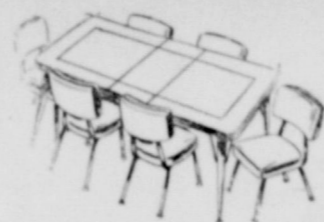
Plus Plus

*2 Complete Hollywood Bed Outfits*

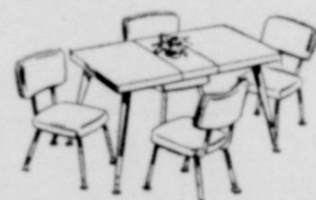
**\$9995**

ONLY \$2 WEEKLY

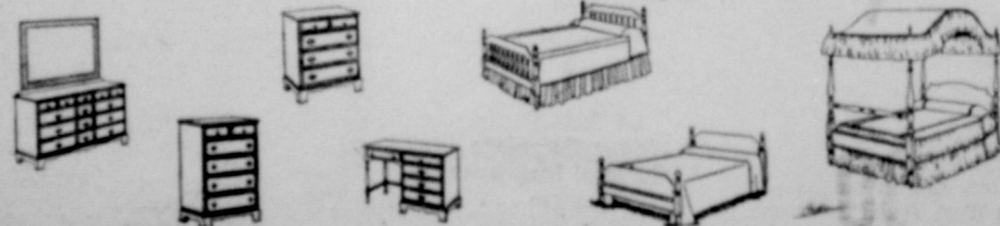
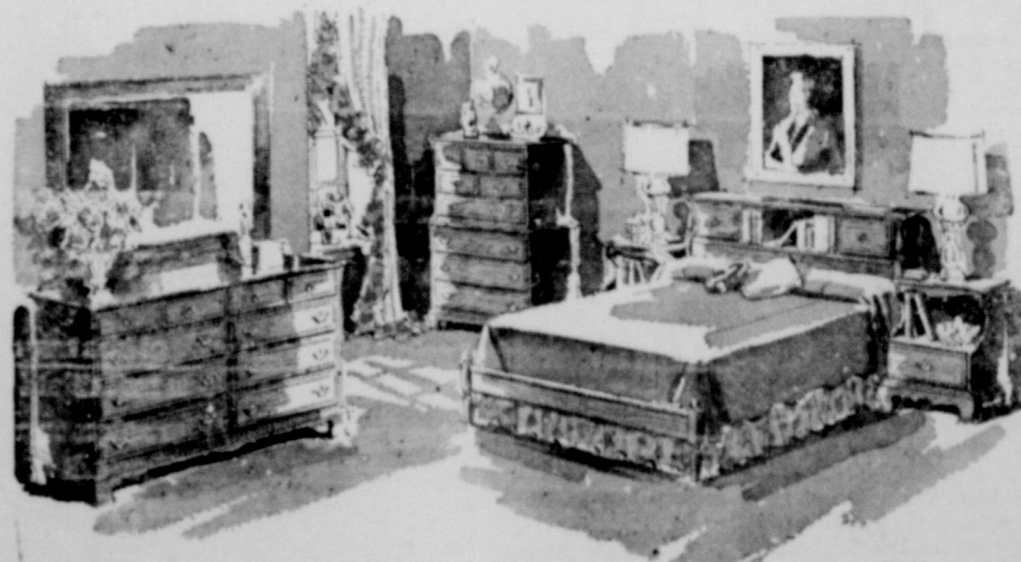
TWO COMPLETE BED OUTFITS at ONE LOW PRICE! Perfect for guest room, children's room or your own bedroom. See them . . . buy them tomorrow . . . SAVE!



Special Budget Prices! 5-piece and 7-piece dinettes at savings you can't afford to miss!



## Have You Discovered Early American



Warm finishes, fine construction, best of material and it is so easy to live with. Check our tremendous stock and let us show you how versatile it is, all at reduced prices, too.

- CARPETS • DECORATORS
- GENERATORS • LAMPS • MIRRORS
- Buy A Bedroom Suite . . . Chest of Drawers

Nylon Genu  
Long, clean  
quality nylon  
zippered,  
brass ferris  
for the life

# Price Sale

# STARTS DECEMBER 27

## IT GOES .. IT ALL GOES ON SALE THURSDAY, DECEMBER 27

We Can . . . Buy The Way You Like, 30 to 90-Day Open Account Or Up To 3 Years To Pay . . .

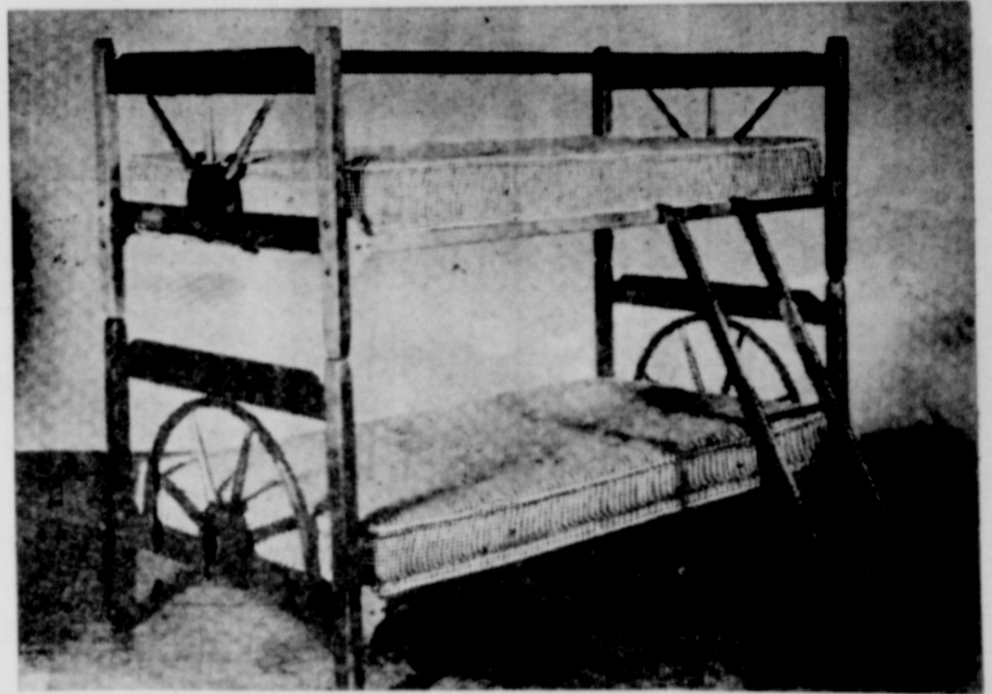
### DOOR BUSTERS

CHILD'S ROCKER, solid hardwood vinyl covers. One of the best on the market . . . Blond only

\$8.95 Value --- Sale Price . . . . . **5<sup>35</sup>**

Regular \$4.25 Value  
Bedlamps for Bookcase Bed . . . . . **1<sup>00</sup> each**

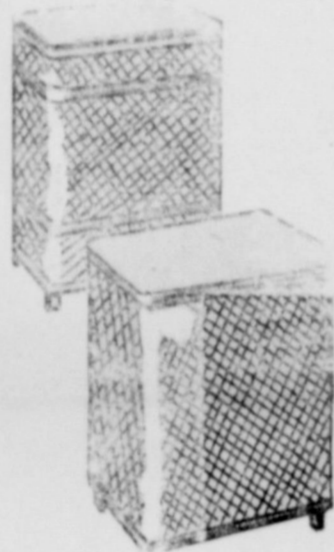
One Group Regular \$9.95  
LIVING ROOM TABLES . . . each **6<sup>66</sup>**



Not Exactly As Shown

### LIME OAK BUNK BED

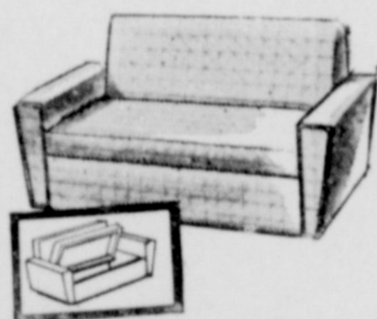
• Height 58 1/2"  
• Posts 2 1/4 x 2  
• Weight: Lime Oak --- 120 Lbs. . . **35<sup>00</sup>**



One Only  
**Clothes Hamper**  
\$7.95 Value  
Pink . . . . . **3<sup>50</sup>**

50c Size Lemon Oil Furniture Polish **19c**

Reg. \$14.95 General Electric  
HAIR DRYER . . . . . **6.88**



### DAVO CHEST

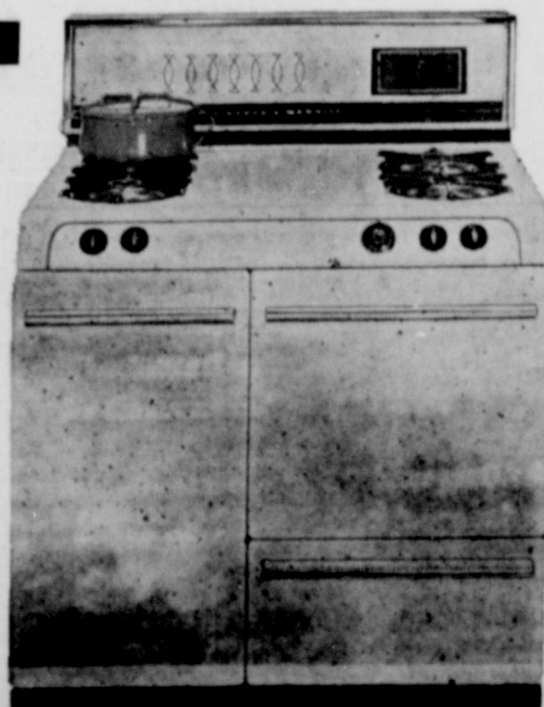
A wonderful seat for children, plus toy box storage under seat . . .

\$27.50 Value  
On Sale . . . . . **17.55**

Regular \$4.95 Ridgefield  
ELECTRIC HEATING PAD . . . . . **19c**

SPECIAL SAVINGS  
AND LOADED  
WITH FEATURES

- ★ Glass back panel with Baking Chart
- ★ Exclusive 4 Star Jet Burners
- ★ Exclusive One Piece Lift Top
- ★ Smokeless Broiler
- ★ Automatic Oven Lighting



JUST CHECK  
THESE BARGAIN  
BUYS!

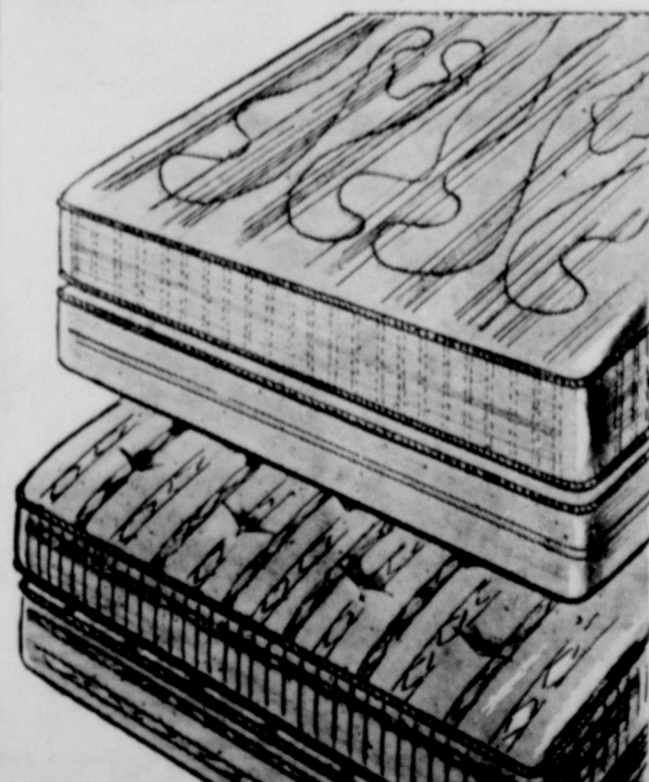


*Nylon* need not be expensive

KROEHLER  
Regular \$294.00  
**2-Pc. CHANNEL BACK SUITE**  
Sale Price **\$187<sup>00</sup>**  
With Trade

84" SOFA and MATCHING CHAIR  
With solid brass ferrules and levelizer glides.  
Add a note of elegance to your home with this exciting contemporary grouping! You'll love the comfortable thick zippered, reversible full foam cushions, foam cushioned slope arms and back.  
Spring unit guaranteed for life of sofa.  
Nylon Frieze in choice of smart decorator colors!

### SOME ODDS And ENDS



Boxsprings  
And  
Mattresses

**1/2 price**

Matched Sets  
20 to 30  
Percent Off

5 INCH  
LENGTH SOFA

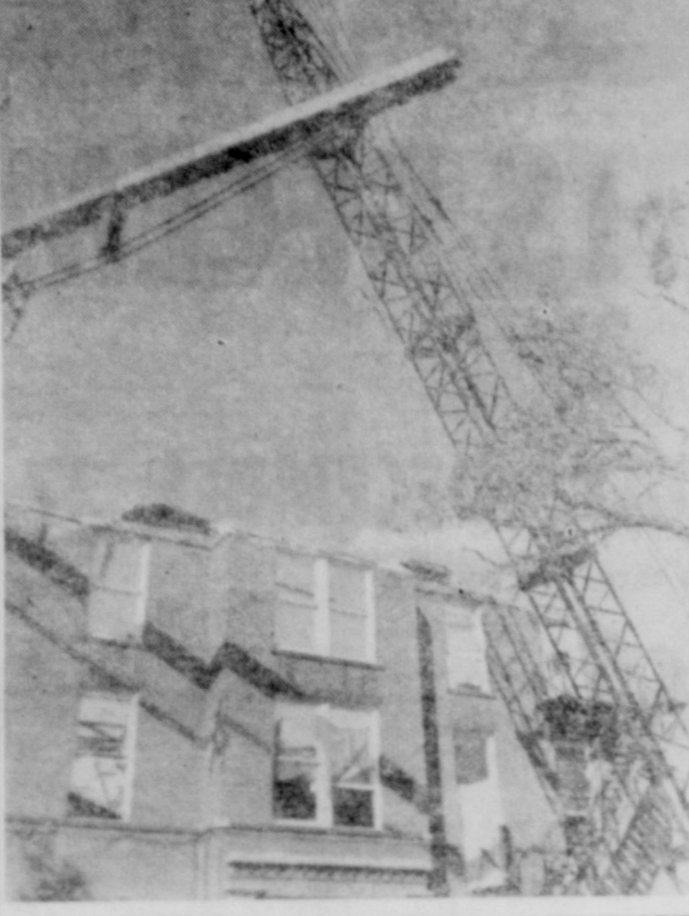


**\$219<sup>00</sup>**

EASY TERMS



Above is shown the "gimmick" used to spur interest in a membership drive late this year. The structure was set on a member's lawn, remaining there until he had provided a new member.



Shown above is the most unusual Christmas tree in the Earlsoner home at 1015 West Lubbock. Symbolic of "Stairway to Stars" the manzanita branch is hung with small Italian hand-dyed angels and accented with tiny, sparkling lights.



Authentically Texas-size and Texas-grown, this is a 13-pound taloupe measuring 31 1/2 inches in circumference. Grown 12 miles west of Slaton on the D. J. Hlavaty farm, was displayed at the Slatonite office by Mrs. Hlavaty and daughter, Debbie.



B. H. BOLLINGER, retired railroad engineer of Slaton, was honored in December as "Shriner of the Year" in Khiva Temple, Amarillo. He was cited for Masonic accomplishments beginning with his first Masonic work in 1920.

**TEXAS 41st IN WELFARE**  
Texas ranks 41st in the nation in point of per capita expenditures for public welfare. Department of Public Welfare says the state's per capita expenditure of state and local funds is \$5.15. National average is \$10.56. In total spending for public assistance, Texas' average of \$17.35 ranked the state 37th in the nation. National average is \$22.53.

**YOUR Independent Insurance AGENT**  
"SERVES YOU FIRST"  
**BREWER INSURANCE AGENCY**  
139 So 9th.

Need desk trays, blotter pads to bring your office up to date? Call VA 8-4201 for prices on enlarged supply of office supplies.

**IF YOUR PLATES DON'T GET "CUSHION" NEW**  
A new Plastic Jelly, Acrylic "Cushion" plates for plates. Place in mouth and bite down. "Cushion" flows and molds to shape of "Cushion" mouth and forms soft, comfortable pads for work. To remove, just peel out cushion. Try it. Plates can be washed and reused. 100¢ each only \$1.49 At all drug stores.

**FATHER TIME**  
BEST WISHES, FOLKS!  
This bank wishes you a most happy and prosperous New Year.  
LET'S START ANEW TOGETHER!  
**CITIZENS STATE BANK**  
100 TEXAS AVENUE VA 8-45  
Member F.D.I.C.

**Get Your Quality INTERNATIONAL HARVESTER**  
Farm Equipment PARTS AND SERVICE  
**SLATON IMPLEMENT CO.**  
Lubbock hi-way VA 8-4933

**Phillips 66 Wilson Oil Company**  
Wilson, Texas Phone 2251  
\*BUTANE, PROPANE \*PHILLIPS 66 GAS, OIL, COMMERCIAL, INDUSTRIAL, GREASES and BATTERIES \*LEE TIRES and TUBES \*AUTO ACCESSORIES

- St. Paul Lutheran Church Mo. Synod, Wilson Rev. R. F. Kamrath
- First Nazarene Church 635 W. Scurry Rev. Charles Stuart
- Westview Baptist Church 830 S. 15th Rev. Clinton Eastman
- First Methodist Church 305 W. Lubbock Rev. Rollo Davidson
- Church Of God 206 Texas Ave. Rev. B. E. Coker
- Church Of Christ 11th & Division Roy Dean Verner
- Assembly Of God 349 W. Division
- Missionary Baptist Church 1010 South 21st Ray Smith
- First Baptist Church of Southland Eddie Fortson, Pastor
- Southland Methodist Church Rev. B. B. Byus
- First Baptist Church Wilson Rev. H. F. Scott
- Acuff Baptist Church W. O. Donley, Pastor
- Our Lady Of Guadalupe Church
- St. Joseph's Catholic Church Msgr. T. D. O'Brien 19th & Lubbock
- Gordon Church Of Christ Cline Drake, Minister
- Acuff Church Of Christ Brooks Terry, Minister
- Grace Lutheran Church 840 W. Jean Rev. Leroy R. Deans
- St. John Lutheran Church Wilson Rev. John W. Onda
- First Baptist Church 255 S. 9th Dr. Charles Wood
- First Christian Church 145 E. Panhandle John L. Floyd
- Immanuel Lutheran Church Posey Rev. P. A. Wittig
- First Presbyterian Church 425 W. Lubbock Rev. Fred Ryle
- Bible Baptist Church W. Panhandle Rev. H. E. Summar
- Wilson Methodist Church Wilson Rev. W. A. Rucker Jr.
- Pentecostal Holiness Church 105 W. Knox Rev. W. L. Comstock
- Trinity Evangelical Methodist Church Rev. Weldon Thomas
- African Methodist Church Rev. J. S. Gilbert
- First Assembly of God 14th & Jean Miss Nola Stout, Pastor Miss Norma Elliott, Associate

*There's a Friendly Church Near You*



*His measure as a man depends on your measure as a parent!*

How can you add to your measure? Going to worship is the simple act of faith that makes man and boy just a little taller. In our complex and often trying world, faith offers its own answers to the problems that weigh on you. Next time you say to yourself, "But what can I do?" about the "unsolvable" difficulties of today, remember that peace in the world starts with peace in you. Go to worship, take your family to church or synagogue with you, this week. Your faith reaffirms the sacredness of Man and Life. And a better world starts with this very idea!

Contributed to Religion in American Life by

THIS MESSAGE IS MADE POSSIBLE BY THESE MERCHANTS:

- O. D. KENNEL AUTO PARTS "Your Automotive Parts Distributor"
- SLATON CO-OP GIN "Owned And Operated By Farmers"
- CUSTER'S GULF SERVICE STATION 350 S. 9th VA 8-45
- SPRADLEY'S FURNITURE AND UPHOLSTERY
- SLATON SAVINGS & LOAN ASSOCIATION "We Pay You To Save"
- WILL AYERS FARM STORE 555 Railroad Ave. VA 8-45
- CROW'S GROCERY AND STATION, COSDEN GIN 1320 S. 9th Slaton, Texas
- JANES - PRENTICE, SAND & GRAVEL For The Construction Industry
- HOWARD GIN
- BECKER HUMBLE PRODUCTS SERV. STATION 400 S. 9th VA 8-45
- BRUCE'S CAFE Lubbock Hwy. VA 8-45
- PIGGLY WIGGLY GIN Slaton, Texas
- WEST TEXAS GRANITE AND MARBLE WORKS Searcy O. Henry, Owner
- UNION COMPRESS AND WAREHOUSE COMPANY
- Higginbotham - Bartholomew Lumber Company 225 N. 7th VA 8-45
- CARROLL OIL COMPANY Lubbock Hwy. VA 8-45
- WILLIAMS FUNERAL HOME Unlimited Insurance Protection Cadillac Ambulance Service
- RAY C. AYRES & SON, INC. Grain - Feed - Seed
- HENZLER GROCERY
- SLATON IMPLEMENT CO. Lubbock Hwy VA 8-45
- SOUTHWESTERN PUBLIC SERVICE
- WILSON FRIENDS
- WILSON SUPER MARKET Pat Campbell, Owner
- KATZKI GIN COMPANY
- WILSON STATE BANK
- CAMPBELL GRAIN AND FERTILIZER CO. INC.
- ACUFF FRIENDS
- ACUFF CO-OP GIN "It's Your Association"
- SOUTHLAND FRIED BASKING DRILLING

**ODD CHALKINS**

**WIVES ARE BOUGHT WITH MONEY MADE OF FEATHERS IN THE SANTA CRUZ ISLANDS OF THE SOUTH SEAS...**

**Money cannot buy back Health! Make it a point to visit your Doctor soon ... Make it a habit to have his Prescriptions filled Here!**

**TEAGUE DRUG**  
Phone VA 8-4535

Time to bid the  
old year adieu  
and to say...  
Happy New Year  
to you!

**STATE CAPITAL**  
*Highlights*  
*AND Sidelights*  
by Vern Sanford  
TEXAS PRESS ASSOCIATION

After a four-year test, Texas' May-June primary election set-up may be on its way out.

A cursory check of legislators at a recent gathering here found strong support, particularly among the big-city members who had Republican opponents, for a return to the August-September primary system.

Growth of the Republican party in Texas means that Democrats now face hard campaigns, in many districts, in the fall months, in addition to the strenuous spring campaigns. Many legislators are talking seriously about moving the primaries to August and September. This, so voters won't have to be whipped up to voting moods twice in a year.

There is some strong resistance to returning to the old way, however.

Sen. Abraham Kazen Jr. of Laredo, a member of the special election law revision committee, said a change like this would require a complicated revision of the code that would be impossible to accomplish during a regular session.

Kazen represents an area in South Texas where thousands of migrant farm workers, who leave home for the summer and fall, have had their first chance to vote in the primaries under the May-June system.

Some legislators would block a change because so many school teachers are at home to vote in May, but are in colleges or on trips in the summer. The late Rep. Marshall O. Bell of San Antonio, who pushed for the change to spring primaries, once said that August run-offs worked a real hardship on candidates like himself, since many of their best financial backers were out of state during the summer.

**POLL TAX CONTROVERSY**  
The Texas Election Study Committee heard many divergent opinions on the requirements for a voter registration law during its public hearings in the senate chamber.

Main point of discussion was whether or not a literacy test should be required if the poll tax system is abolished.

League of Women Voters, represented by Mrs. Maurice H. Brown of Waco, did not approve of a literacy test. Mrs. Brown said her group recommended a uniform registration plan for all voters, and offered the committee a draft of a bill which calls for permanent registration.

Several witnesses, including Isaac Satterfield of Marshall, a member of the State Democratic Executive Committee, advocated a literacy test.

Senator Kaben spoke out against it. He said since no literacy test now is required, he saw no reason why it should be necessary. "The only reason for a literacy test is to keep someone from voting," Kazen retorted.

Roy R. Evans, secretary-treasurer of the state AFL-CIO, said his organization opposed any discrimination against a person's national origin, financial status or educational background. The AFL-CIO also advocated a permanent registration plan, under which a voter would have to re-register only if he failed to vote in a two-

year period.

**PARK OFFER WITHDRAWN**

Just four months after the State Parks Board jubilantly announced that Mr. and Mrs. C. A. Wheatly of San Antonio had given the state a 4,788-acre ranch in Blanco County, the Wheatlys withdrew their offer.

Reason, according to Mrs. Wheatly, was that the couple learned that existing state parks need at least \$5,000,000 to serve the public, and "we have no assurance that our ranch could be properly developed."

The Wheatlys made the gift offer in July with the stipulation that the Parks Board obtain a legislative appropriation of \$250,000 to improve and develop the ranch which runs along the Pedernales River. Board planned to ask for \$600,000.

Mrs. Wheatly said their offer will not be wasted if the publicity surrounding the episode makes the public aware of the inadequacy of the state parks system.

Meanwhile, puzzled board officials were hoping to persuade the Wheatlys to change their minds before the deed to the ranch was returned.

**WATER AID CHEAPER**

Cities and water districts will be able to borrow from the State Water Development Board at a slightly lower interest rate as the result of the sale of \$15,000,000 more in bonds.

First Boston Corporation, Bank of America and Mellon National Bank and Trust were low bidders with an effective net interest rate of 3.1325 per cent.

This will lower the Board's present lending rate .04 per cent to a rate of 3.7132 per cent. The lower rate will apply to loans made after mid-January.

**LIVESTOCK EQUAL PEOPLE**

Texas has as many head of livestock as it does people.

According to an estimate by the Texas Animal Health Commission the livestock population is 10,000,000.

State Health Department estimated that the people population reached 10,000,000 last summer.

An audit of the State Board of Veterinary Medical Examiners showed that there's more than one veterinarian for every 10,000 head of livestock. During the 1962 fiscal year, 1,181 vets renewed their licenses, 78 took exams to become veterinarians, and seven took out reciprocal licenses.

There are 8,700 medical doctors licensed to practice in the state, or one doctor for every 1,150 persons.

**ENROLLMENT DOWN**

The much-publicized firing of Dr. Rupert Koeningger from Sam Houston State College's sociology department may not be the reason, but enrollment there, which increased by annual leaps of 500 in 1959, 1960 and 1961, increased only 215 this fall.

Increase rate for Sam Houston State was about four per cent. Average increase for all state colleges was nine per cent.

**CRIME CLIMB SLIGHT**

Major crime in Texas was way below the five per cent nationwide increase for the first nine months of 1962, according to an FBI report. A survey of crime in 12 representative cities showed an increase of only 0.29 per cent over the same period last year.

Report is a tabulation of murders and non-negligent homicides, forcible rapes, robberies, aggravated assaults, burglaries, larceny over \$50 and auto thefts.

Total major crimes in 12 Texas cities amounted to 49,747 offenses for the first nine months of 1962, compared to 59,599 for the same period in 1961.

Amarillo, Austin, Beaumont, Corpus Christi, Dallas, El Paso, Fort Worth, Houston, Lubbock, San Antonio, Waco and Wichita Falls are the cities referred to.

The FBI warned merchants to be alerted to the shoplifting trend as the Christmas shopping season progresses. They cautioned shoppers against leaving packages unattended in unlocked cars or in plain view in locked cars.

**TAX PROPOSALS**

The Texas Commission on State and Local Tax Policy recommended that the state abandon the ad valorem tax as a source of revenue in 1968.

The state property tax, which once was a primary source of income, now comprises only four per cent of the state's total tax take.

Commission stated that under the current system of assessment, the tax is "so patently inequitable that there can be no reasonable argument for retaining it as a part of the state's revenue system without substantial change."

**LAV PROGRAM**

The Board of Vocational Nurse Examiners brought the total of vocational nurse training programs in the state to 114 when it accredited Deaf Smith County Hospital School of Vocational Nursing at Hereford and Groom Memorial Hospital School at Groom.

Licensing of 781 new vocational nurses as a result of October examinations brought the total number of licenses to 26,507 for women who have qualified since the Vocational Nurse Law went into effect on September 7, 1951.

**TRANSITION GOVERNOR**

A suite of rooms in Austin's Driskill Hotel has become the seat of "transition government" for Governor-elect John Connally.

He works four days a week in a suite which, appropriately, is titled the Caucus Room.

In this office, just six blocks from the Governor's office which he will take over on January 15, is a staff of fifteen persons.

Connally's administrative assistant, Bill Fowler, says their present task is to send out 18,000 thank-you letters, study applications and recommendations for the 278 appointments the new governor will make to state boards and commissions in 1963.

In what amounts to a cram course in state operation, Connally is conferring with officials of state agencies and members of the legislature.

Most of the mail flowing toward his desk already is addressed to "Governor" Connally.

thought redistricting should be in the top 10 issues of the session.

Thirty-seven per cent said it would be one of the top five controversies.

**NEW BUILDING DEDICATED**  
State officials have dedicated another state office building representing the sixth mammoth edifice in the fast-expanding Capitol complex.

Gov. Price Daniel told a gathering of state officials and contractors who worked on the building that the building is dedicated to "continued integrity in good government in our state."

The \$3,400,000, five-story John H. Reagan State Office Building will be occupied next spring. It will house the Game Fish Commission, Department of Agriculture, Department of Public Welfare, Finance Commission, Building Commission, Board of Pardons, Board of Registration for Professional Engineers.

Reagan was a Texas jurist, congressman, U.S. senator, chairman of the Texas Rail Commission, and postmaster general and secretary of treasury of the Confederacy.

Typewriter and adding machine ribbons for all makes available in Slaton The Slatonite.

Thursday, December 27, 1962

The Slaton Slaton

**DON'T FORGET TRIP-ACCIDENT INSURANCE**

For That Holiday Journey

Low Cost Protection From The Moment You Leave Home 'til You Return —  
**DEATH - INJURY - DISABILITY BENEFITS**  
For You And Your Family  
— ONE LOW PREMIUM — ONE POLICY —  
A Phone Call Is All That It Takes

VA 8-4791

**Kendrick Insurance Agency**

1100 S. 9th St.

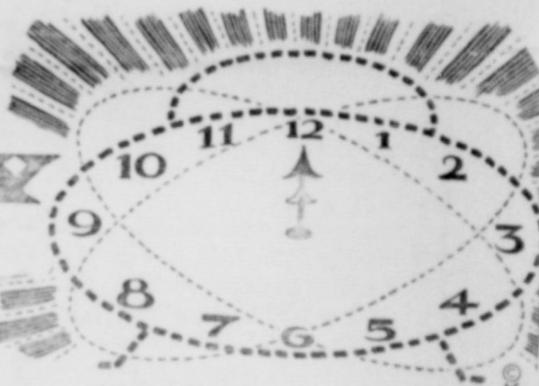
**ROMA W. PEMBERTON**

Now Owner of

**ARNOLD ICE COMPANY**

Wishes You A

**HAPPY NEW YEAR**

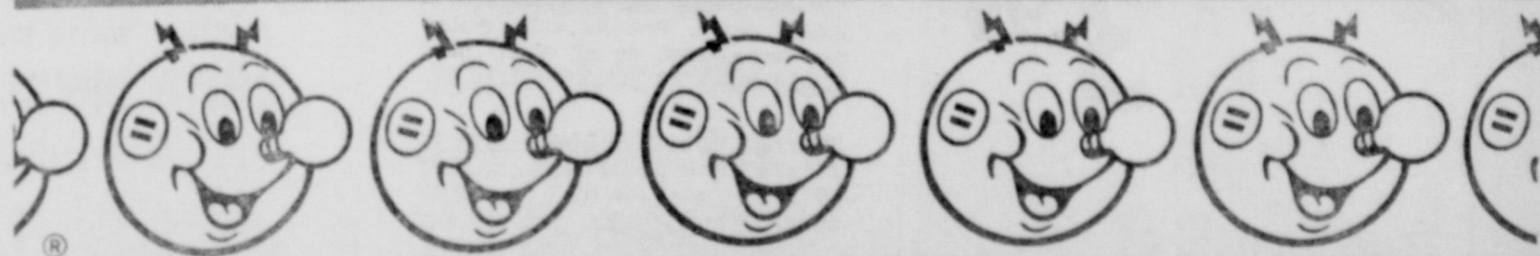


It's time to extend our best wishes for happiness in 1963, to our many friends and customers — and to say "thank you" for your patronage.

**ARNOLD ICE COMPANY**

ROMA W. PEMBERTON, Owner

**RESOLVED**



**TO KEEP ELECTRIC SERVICE THE BIGGEST BARGAIN IN YOUR FAMILY BUDGET**

*Reddy Kilowatt*  
YOUR ELECTRIC SERVANT®



**PUBLIC SERVICE COMPANY**



Charlie Couldn't Sleep Until He Had Wished Everyone A Happy New Year!

**Mosser Radio & TV**

NIGHT

**Pinkies**  
SWEET STORES



# ANNUAL GET MORE FOR YOUR MONEY

## WHITE SALE

First Quality - Fine Construction - Famous Brands

### FLAT OR FITTED SHEETS

- The Original Pacific Contour
- Anthony's Own "World Wide" Brand

Famous cotton muslin Pacific Contour sheets with Flexi-corners that keep them smooth and neat. Cuts bed making in half. Superbly constructed for extra wear. Or choose from Anthony's own World Wide fine quality cotton muslin flat sheets that have been tried and proven by millions of homemakers. 134 thread count after laundering. Wide hems, strong selvege edges. Two of the greatest sheet buys you'll find in town.



- Pacific Double Size Bottom Contour
- 81"x108" World Wide Flat Sheets

1.77

- Pacific Single Size Bottom Contour
- 81"x99" World Wide Flat Sheets

1.57 Each



### Famous "DAN RIVER" Type 180 WHITE OR COLORED PERCALES

Wear long — stay pretty are the famous Dan River sheets made of superb fine percale. Luxurious and smooth with fine combed yarns. Balanced construction for longer wear. Closely sewn hems and wide selveges. Choose from pretty shades.

72 x 108 WHITE PERCALES	2.17
81 x 108 DAN RIVER WHITE PERCALES	2.37
72 x 108 DAN RIVER COLORED PERCALES	2.47
81 x 108 DAN RIVER COLORED PERCALES	2.67
42 x 36 DAN RIVER WHITE CASES, Pair	1.17
42 x 36 DAN RIVER COLORED CASES, Pair	1.27

### Multi-Stripe -- Bath and Hand TOWELS



Luxurious bath towel, hand towel and wash cloth to match. In lovely multi-stripe colors that will add beauty to your bathroom. Bought and priced special for this White Sale Event. See these now.

SIZE 22x44      SIZE 15x25  
**2 FOR \$1      3 FOR \$1**

12x12 Matching Washcloths 6-41

### Famous "DAN RIVER" Type 128 WHITE OR COLORED MUSLINS

Dan River sheets are famous for quality and wearability. Strong Bob White muslin and durable tape selveges. Closely sewn hems, minimum shrinkage. In white or a choice of colors. Stock up today and save.

72 x 108 DAN RIVER BLEACHED MUSLIN	1.77
81 x 108 DAN RIVER BLEACHED MUSLIN	1.97
42 x 36 DAN RIVER PILLOW CASES, Pair	77¢
72 x 108 DAN RIVER COLORED MUSLIN	2.07
81 x 108 DAN RIVER COLORED MUSLIN	2.27
42 x 36 DAN RIVER COLORED CASES, Pair	97¢

### Hi-Low Sculptured THROW RUGS

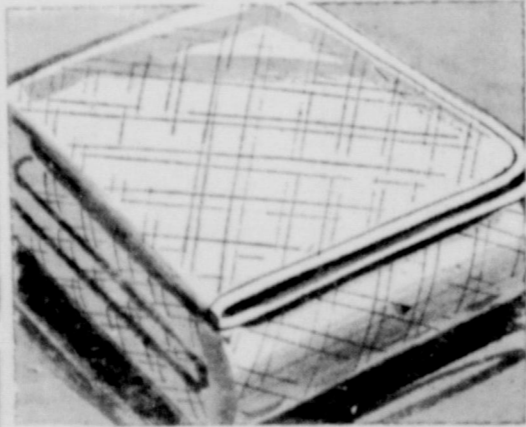
Choose from Oval with roller coated back or Oblong with foam rubber back. In the newest and smartest decorator colors. Popular hi-lo sculptured designs. Ideal for use in any room in the home. Thrifty priced during White Sale.

OVAL OR OBLONG SIZE 30" x 54" **1.99**



SIZE 4' x 6' **3.99**

### QUILTED MATTRESS PROTECTORS



Now at real money saving prices. Sturdily constructed mattress protectors in quilted design. Provides extra protection. Snow white. In all of the most wanted sizes.

39"x76" Twin Size Flat	2.27
54"x76" Full Size Flat	3.27
39"x76" Twin, Fitted	3.47
54"x76" Full, Fitted	4.47

### Colorful Deep-tone CHENILLE SPREADS

Luxurious deep-tones with contrasting shaded colors. So much more extensive looking. In colors of Geranium, Red, Lilac, Honey Beige, Pink Whisper, Turquoise and Golden Topaz. Fringed for extra beauty.

**4.57**

- Fulls
- Twins



### JANUARY WHITE SALE SPECIAL WHITE DRESS SHIRTS

REGULAR 2.98 VALUE

**2.67**

Requires little or no ironing. Wash-N-Wear finish, fine combed cotton oxford cloth. Button down collar, convertible cuffs . . . self button or link. Master fully made with that new TAPERED body for perfect fit and smart appearance. One pocket. Sizes 14 to 17. Stock up now and really save.

**88¢** Each

## Special • BIG • THICK • THIRSTY Cannon Towel Sale

Size 24 Inches by 46 Inches  
 You will buy these beautiful towels by the dozen when you see them. Extra Heavy, Extra Thick, Extra Big, Extra Thirsty. Fine Cannon quality in a grand array of the most beautiful decorator colors. Bought special to sell during our big White Sale at this thrifty, thrifty Anthony saving. Truly a value any homemaker will appreciate.



MAYOR FOR A DAY — J. J. Maxey, left, president of the Slaton ex-student association presented Louie Welch a certificate honoring him as mayor of Slaton for a day, the occasion of the ex-student banquet and reunion late in June. Welch, a Houston resident and former member of the city council there, was a 1936 graduate of Slaton High School. In the above Mrs. Cecil Scott, vice president of the Exes organization, looks on as the presentation is made.

### Research Grants Seek Solution In Cotton Production

Research grants to find answers to three key problems of cotton growers have been announced by the Cotton Producers Institute. Grants are for projects aimed at developing effective systemic insecticides, a way to control verticillium wilt, and a rapid method of measuring fiber strength, according to Roy Forkner of Lubbock and LeRoy Durham of Plainview, Institute trustees in West Texas. Russell Giffen, Fresno, Calif., cotton grower who is chairman of the Institute's trustees, said direct support of research on cotton is one prong of the Institute's drive to increase markets and profits. It also has a consumer advertising program under way to sell cotton products.

Basic and applied research on systemic insecticides is being done at the University of California, Riverside. Aim is to get facts that will make it possible for an insecticide, placed in the plant's sap stream, to join forces with predatory insects in destroying the insects that attack cotton. The grant is for \$50,000, with matching funds from the University.

The verticillium wilt research will be conducted under a \$10,000 grant to New Mexico State University Agricultural Experiment Station. The work is seeking basic information that will lead to a systemic method to control the disease. The co-operating agency will expend \$21,000 on the project.

A \$35,000 grant was made to Stanford Research Institute to design and construct a laboratory prototype of a high-speed, fully mechanized instrument for measuring cotton fiber strength. This is a vital step in determining the spinning and performance value of cotton and in improving the fiber's competitive position at the market place.

An Institute agreement with the Board of Directors of the National Cotton Council makes the Council staff available without charge for developing and supervising research and promotion projects.



First "patient" admitted to Mercy Hospital in alert staged by the Civil Defense organization was shown here with Dr. John C. Locke.

**WILL AYERS** says  
 Happy New Year  
 Will Ayers Farm S

**DEAL'S MACHINE SHOP**  
 SLATON, TEXAS  
 155 No. 9th St.  
 Ph. VA 8-4307

FOR YOUR IRRIGATION PUMP AND GEAR HEAD REPAIR  
**General Welding And Mach Shop**

**COMPLE UPHOLSTER Service**

**AUTO UPHOLSTERY**  
 Let us help dress up your car  
**WILEY'S**  
 Call VA 8-4965 — Or Come By  
 Just 2 Doors Behind Porter Lumber on Main

**YOUR Independent Insurance AGENT**  
 "SERVES YOU FIRST" ONLY  
**PEMBER INSURANCE AGENCY**  
 135 N. 8th VA 8-3541

**41% Of The National Homes FINANCED BY SAVINGS AND LOAN**  
 LET US HANDLE YOUR HOME FINANCING  
**SLATON SAVINGS AND LOAN**





Hundred and fourteen members of the Slaton High School Homemaking I and III classes participated in a mid-December style show, "Angels in Fashion Land". Mrs. Joyce Cheatwood and Mrs. Judy Davis, homemaking instructors were in charge. Narration was by Janis Areta Privett furnishing background music. Programs were designed by Paula

## The Slaton Slatonite

Thursday, December 27, 1962



First load of maize delivered to the Southland Grain Co. is exhibited here by Arthur Smallwood, Van Foster, E. C. Smallwood and Larry Stallings. The Smallwoods raised the grain. Foster harvested it, with Stallings as manager of the receiving grain firm.



The Little Sisters Chapter of the Slaton Future Homemakers of America recently installed officers for a year planned for maximum activity and benefit of the members of this popular organization.

Pictured left to right are Janis Henry, president, Pam Davis, Donna Stricklin, Cindy Sherwood, Nancy McSween, Deborah Scott and Jan Teferitiller, Joan Claiborne, Peggy Kirksey, Charmaine Heinrich, Caron Caldwell, Colette Holt and Mary Briseno.

--- Want Ads Get Results ---

# WHO'LL BE THE FIRST BABY IN '63?

ROYAL TREAT IS IN STORE FOR THE FIRST CITIZEN BORN IN 1963 AT MERCY HOSPITAL . . . YOURS IS THE FIRST BABY BORN IN 1963 AT MERCY HOSPITAL IN SLATON YOUR BABY WILL RECEIVE A GALAXY OF GIFTS FROM THE MERCHANTS AND DISTRIBUTORS LISTED ON THIS PAGE . . .

To think your child may be the first baby born in Slaton, you must be born in Slaton, Texas, at Mercy Hospital after 12:01 a.m., Jan. 1, 1963, just get a statement from your physician as to time of birth, or bring this affidavit to the Slatonite before noon, Friday, Jan. 5th (or just have your doctor call us.)

THE RULES ARE SIMPLE: The Slatonite will check your entry against any others, double-checking with the Mercy Hospital and local doctors, and will arrive at decision as to the qualifying baby. Decision of the judges will be final. THEN . . . come to the Slatonite at your earliest convenience, and a letter will be presented you, affirming your qualification for the awards posted by the firms on this page. You then take this letter as introduction to each merchant, and your gift will be presented by him at his place of business.



Westminster Study Edition

The Holy Bible  
will be our  
Gift  
to Slaton's First  
1963 Baby

THE  
SLATON SLATONITE

Baby Travel Set

A Gift To  
Welcome

The First  
1963  
Slaton  
Citizen

WALTON'S

It's On Us!

We Will Say  
CONGRATULATIONS  
And Give  
10 Free Tickets

To Wash 10 Washer Loads  
Of Mr. or Miss 1963's  
Wardrobe

HIGHLANDER  
CENTER

Case of Milk

awaits  
The First 1963  
Slaton Baby  
a gift  
from

EBLEN PHARMACY

245 West Lubbock

A Bassinet  
For His (Or Her)  
Highness!  
Our Gift  
To Slaton's First  
1963 Baby

Anthony's  
CR ANTHONY CO

Baby World's  
Gift Set

Clothes Hangers -- Feeding Dish  
Cup With Cover  
Novelty Keys  
Our Gift to Slaton's  
First Baby in 1963

Slaton  
Pharmacy



Prompt Delivery Service  
"Where Pharmacy Is a Profession!"  
COURTEOUS PRESCRIPTION SERVICE

Serva-Tot  
Junior Hot Plate  
With Suction Cup  
Will Be Given To  
Baby Number 1  
Of Slaton  
In 1963

LASATER-HOFFMAN  
HARDWARE

We Are Waiting  
To Present  
A Gift  
To Slaton's First  
1963 Baby

(Our Gift . . . A  
Tommee Tippee Feeding Set)

Teague Drug

PRESCRIPTION CHEMISTS  
Phone VA 8-4535 For Dependable D  
Copyright 1962 (M-11-62) Printed

**BULLETIN**

**Daughter of Slaton Couple Killed In Morning Explosion**

Jeanette George, 20, daughter of Mr. and Mrs. James George of 210 South 6th Street here, was killed resulting from an explosion that occurred in her San Angelo apartment at 5:15 a.m. December 26.

Complete details of the tragedy were not known at press time Wednesday.

Funeral services will be held at 2:00 p.m. Saturday at the First Baptist Church with Dr. Charles Woods officiating.

Williams Funeral Home will be in charge of arrangements. Miss George, a 1960 graduate of Slaton High School, was employed as a clerk for General Telephone Company in San Angelo for the past two years.

Survivors other than the parents include two brothers: James Ed and Johnny; one sister, Janie all of Slaton; Grandparents Mr. and Mrs. James George of San Angelo.

**WETS WIN**

Wets have come out on top in local option elections this year, according to the Texas Liquor Control Board.

Eleven elections were held to legalize the sale of liquor. Four met with voter approval.

Two elections were held to prohibit the sale of liquor. Both were unsuccessful.

**NOTICE OF ELECTION TO BE HELD TUESDAY, JANUARY 8, 1963**

for Water District Director and County Committeeman

Polling Places in Lubbock County:

1. Community Clubhouse, Shallowater
2. City Hall, Wolforth
3. Old County Courthouse, Lubbock
4. City Hall, Idalou
5. Community Clubhouse, Slaton

For District Director:

(One to be Elected)

1. Russell Bean, Lubbock
2. \_\_\_\_\_

For County Committeeman:

(One to be Elected)

1. Edward C. Moseley, Rt. 1, Slaton
2. Howard M. White, Rt. 1, Slaton
3. \_\_\_\_\_

**BE SURE TO CAST YOUR VOTE**

**HIGH PLAINS UNDERGROUND WATER CONSERVATION DIST. NO. 1**

BEST QUALITY! GREEN STAMPS BEST MEATS LOWEST PRICES! MOST OF EVERYTHING!

**resolved to SAVE**

at **Piggly Wiggly** all year long!

WE GIVE S. & N. GREEN STAMPS

**T.G. & Y.** VALUES GOOD ONLY WHILE QUANTITIES LAST!

5 TO 10 STORES

**1/2 Price Sale!** SAVE 50% OR MORE ON CHRISTMAS CARRY-OVER MERCHANDISE

**DOLLS** ALL DOLLS \$3.97 AND UP!

**GIFT WRAPPINGS** TAGS, SEALS, RIBBONS AND PAPER

**CHRISTMAS CARDS** BOXED, PACKAGED OR BULK

**TREE LIGHTS SETS**

**DECORATIONS** FOR TREE, TABLE & HOME Plus Many, Many Other Items Not Listed!

Shop Today For Choice Selections Of Christmas Items You'll Use & Enjoy Next Year!

Availability: All Items Subject to Carry-Over Stock!

**ALL SALES**

Northern Ass't. Colors, TOILET **TISSUE**

8 Roll Pack **57c**

COFFEE, Folger's, Drip, Fine, or Regular, 2-Pound Can	\$1.29
HYDROX COOKIES, Sunshine, 16-oz. Box	49c
METRECAL, Liquid, Assorted Flavors, 6-Can Pack	\$1.49
CAT FOOD, Friskies, Chicken or Fish Flavor	2 15-oz. Cans 27c
BEEF STEW, Austex, 24-oz. Can	49c
RANCH STYLE BEANS, No. 300 Can	15c
JOY SUDS, Bubble Bath, 16-oz. Box	27c
HONEY, Sioux Bee, Extracted, 16-oz. Jar	39c
PEANUT BUTTER, Zestee, 3-Pound Jar	89c
TAMALES, Ellis, No. 300 Can	23c

All Purpose Detergent, CHEER, Regular Box	35c	Low Suds Detergent, DASH, Giant Box	79c	Personal Ivory TOILET SOAP, 4 Bars	29c
---	-----	-------------------------------------	-----	------------------------------------	-----

**Piggly Wiggly**

- CHILI, Swift's, With Beans, 24-oz. Can
- TOMATO JUICE, Hunt's, Fancy, California, 46-oz. Can
- SHORTENING, Snowdrift, All Vegetable, 3-Pound Can
- PEARS, Pacific Gold, In Syrup, No. 2 1/2 Can
- GREENS, Hallmark, Turnip or Mixed
- SPAGHETTI, Hallmark, Canned
- FLOUR, Sunlight, Guaranteed

**HIGH PLAINS Tomato**

THIS COUPON SAVE 20% TO YOU WHEN YOU BUY A 6 OUNCE JAR OF INSTANT FOLG COFFEE. Clip this coupon present with your purchase of a 6 ounce jar of INSTANT FOLG COFFEE.

For YOUR NEW YEAR'S DINNER, SHOP PIGGLY WIGGLY!

# CHUCK ROAST SALT JOWELS BACON

Armour's  
Star, Aged  
Heavy Beef,  
"Valu-Trim"  
Pound

55c

For Black Eyed Peas,  
The Traditional,  
New Year's Meal,  
Pound

15c

SLICED,  
DECKER'S  
KORN KIST

2 Pound  
Package

89c

SIRLOIN STEAK,  
Armour's Star, Aged, Heavy Beef, "Valu-Trim", Pound 89c  
SLICED BOLOGNA,  
Butcher Boy, Thick or Thin, Sliced, Pound 49c  
PORK CHOPS,  
Lean Northern Pork, Center Cut Rib Chops, Pound 59c  
BEEF STEAKS,  
Blue Morrow's, Thrif-T, 20-oz. Pkg. 89c

DUCKS,  
Swift's Premium, Long Island, Small Duckling, Pound 39c  
CHICKEN GIZZARDS,  
For Your Giblet Gravy, Pound 29c  
CHEESE LINKS,  
Kraft's, Variety of 5 Flavors, 6-oz. Link 33c  
CREAM CHEESE,  
Borden's, 8-oz. Pkg. 29c

SHOP PIGGLY WIGGLY for THE FRESHEST PRODUCE!

81c

AVOCADOS

Thin Skin, Large Size, 3 for

25c

99c

CELERY

California, Green Stalk, Each

10c

CARROTS

California, Table Size, Clipped Tops, ll

10c

APPLES

Roman Beauty, lb. ...

12 1/2c



DETERGENT, GIANT BOX

TIDE  
73c

FRESH FROZEN FOODS!

## BLACKEYE PEAS

12 1/2c

Hills O' Home  
10-Oz. Package . . . . .

FRENCH FRIED POTATOES,  
Brookdale 3 9-oz. 27c  
OKRA, 2 10-oz. 45c  
Seabrook, Cut or Whole Pkgs.  
YAMS, 25c  
Seabrook, 12-oz. Pkg.  
CAKE, 89c  
Colonial, German Chocolate or Banana, Big 26-oz. Size

CHIEF CHUM, NO. 1 TALL CAN

# SALMON

49c

Health And Beauty Aids!

## SHAMPCO

VO-5, Dry  
or Regular,  
Retail \$1.75

99c

These Values  
Good in Slaton  
Dec. 27, 28, 29  
and 31. We Re-  
serve the right  
to Limit Quan-  
tities

CREAM RINSE, 88c  
VO-5, \$1.75 Retail, Plus 9c Tax  
HAIR TONIC OR CREAM, Vaseline, With \$1.00 Tie Clip, 66c  
Retail Value \$1.69, Plus 7c Tax  
BUBBLE BATH OIL, Charm, 4 Fragrances, 16-oz. Bottle, 49c  
Regular 69c Value, Plus 5c Tax

Lowest Prices . . . Greatest Variety . . . always at . . .

# Piggly Wiggly



RECEIPT OF PRIZE MONEY IN EXCESS OF \$2,700 PROBABLY ACCOUNTED for the wide smiles of the five winners and director of the big 5-week subscription contest held by the Slatonite. Pictured are: back row, left to right, Mrs. Patti Bednarz, \$250 winner in 4th place; Mrs. Gladys Williams, winner of \$250; Mrs. Rhoda Price, contest director; front row: Mrs. Evelyn Brookshire, winner of the \$1,200 grand prize; Mrs. Clara Miller, runner-up and winner of \$500; and Mrs. Lula Gamble, 3rd place contestant also receiving \$500.

### Cotton Grades Reported High

The largest week of classing has just been completed by the three South Plains cotton classing offices according to W. K. Palmer, Officer-in-Charge of the Lubbock Cotton Classing office. Palmer went on to say that due to the good job being done by the farmers and the gins the cotton being classed is very good for this time of year. Palmer also stated that from now until after the peak of the harvest the Lubbock office would be classing seven days a week. The total samples classed for the week ending December 14 was 255,400 samples with the Lubbock office classing 207,000 samples, the Lamesa office 18,700 samples, and the Brownfield office 29,700 samples. The three offices reported a total

carry-over of 90,500 samples. The past week's classing brings the total for the year to 1,002,500 samples. The Lubbock office has classed 742,000 samples for the year, the Brownfield office 158,000 samples, and the Lamesa office 102,000 samples. In the Lubbock office the majority of the cotton classed for the week of December 14 was light spotted. The breakdown for the Light Spotted grades is: Middling Light Spotted 22 percent, Strict Low Middling Light Spotted 25 percent, and Low Middling Light Spotted 2 percent. The largest volume of grades was in Strict Low Middling, which accounted for 35 percent. Other White grades were: Middling 1 percent, Low Middling Plus 4 percent and Low Middling 10 percent. One percent of the cotton classed was Spotted. The average staple length was shorter for the week, with

### 1963 Grain Program Is Outlined for State

The voluntary feed grain program for 1963 will generally follow provisions for the 1961 and 1962 crops by giving feed grain producers an opportunity to reduce acreages and receive payments, the Texas Agricultural Stabilization and Conservation Committee has announced. The program again will apply to corn, grain sorghum and barley. Participating farmers will receive diversion payments for shifting acreage from production to a conservative use and price-support payments on the normal production of the 1963 feed grain acreage. They will also be eligible for price-support loans and purchase agreements for the 1963 actual feed grain production. Rates for diversion are somewhat smaller than in previous years, but the decrease will be more than offset for most farmers by the price-support payments, the Committee said. A major change was listed. To be eligible for payments or price support on any of the three grains included, the farmer must divert the total acreage for which he signs up, the Committee explained. Farmers may take part in the program by reducing the total of their 1963 feed grain acreage (corn, grain sorghum and barley) by at least 20 percent. The maximum diversion is the higher of 40 percent of the base acreage or 25 acres, provided this is not more than the base acreage. The acreage of the three crops (1959-60 acreage, as adjusted) will be combined into a single feed grain base for the farm, and the farmer may choose to divert one or more of the feed grains, with the diversion payment being made at the per-acre rate applicable to the grain or grains diverted. Farmers who have planted their 1963 barley crop will be able to take part in the 1963 program by reducing their total feed grain acreage by at least 20 percent. Price support to participating farmers will be available partly through loans and purchase agreements and partly through price-support payments. Loans and agreements will reflect a national average price of \$1.02 per bushel on corn; \$1.62 per cwt. on grain sorghum and 79 cents per bushel on barley. In addition, price-support payments will be made on the normal production of the 1963 feed grain acreage at the rate of 18 cents per bushel on corn; 29 cents per cwt. on grain sorghum and 14 cents per bushel on barley. Participating farmers can put all of their 1963-crop corn, grain sorghum and barley under price-support loans and purchase agreements. This is a change, noted the Committee, from earlier programs, which limited support to the normal production of the 1962 crop. Acres taken out of feed grains may be planted to guar, sesame, safflower, sunflower and castor beans, but at a lower diversion rate — with no payment on acres planted to safflower. Malting barley in 1963 will be treated like all other

### Roma Pemberton Is Arnold Ice Firm Operator, Owner

Ownership and operation of the Arnold Ice Company in Slaton has been assumed by Roma W. Pemberton, formerly of Plainview, who extends a greeting elsewhere in this paper. Pemberton has purchased a home at 750 South 19th Street, and his wife, Helen, will join him there after the first of the year. She now is employed at a bank in Plainview. Both Roma and Mrs. Pemberton are pilots, having their private Tri-pacer 4-place plane. Another hobby pursued by Mrs. Pemberton is her art work, being an artist of some note, winning first awards at the Texas State Fair in Dallas. Pemberton is an army veteran of World War II, having served in the 32nd Infantry Division through New Guinea and the Philippines. He is a member of the Slaton Lions Club, and the family belongs to the Presbyterian Church. For the past several years, the new owner has been a cotton buyer and has been associated with gins in the Plainview area. He avows his early impressions of Slaton as "a home of mighty friendly people... we know we will really like it here."



Mr. and Mrs. J. D. Barry

### Family Gathering Marks Anniversary

Mr. and Mrs. J. D. Barry, 755 West Garza, observed the 50th anniversary of their wedding with a family gathering, Saturday, December 22. The couple was married December 22, 1912 at Dallas by the Rev. James Kirkland, a Presbyterian minister.

Both Mr. and Mrs. Barry grew up in Dallas, although Mr. Barry was born in Arkansas. Mrs. Barry is the former Miss Carrie Dorris. They moved to Slaton thirty-two years ago from Can Marcial, New Mexico. Mr. Barry joined the Santa Fe Railroad in 1915 and retired as a conductor in 1958. They have one son, J. C. Barry, who makes his home in Los Angeles, California, with wife and two sons, John Dale. The son and his wife were present for the gold anniversary celebration. Present were Mrs. I. brother and sister-in-law and Mrs. J. Ray Dorris Las.

**FOR SALE**  
New 3-bedroom h with attached garage carport. FHA-Gl-Cor tional Loans.  
**SLATON LUMBE COMPANY**  
VA 8-4335

### Old Friends

The old saying that time tide waits on no man is certainly true. Elbert Wilson, our genial Building Inspector, and myself were doing a little checking on recent building in our city one day last week when he remarked that he had to go to Lubbock and meet his grandson on the train from Amarillo. My grandchildren all being small I just imagined that the boy was taking his first ride on the train. You can imagine my surprise when Elbert introduced me to his grandson, Dick Bickerstaff. Dick, a real nice looking twenty year old student of Washburn University, had just come down to visit his grandparents for a couple of days. Dick is the son of Mr. and Mrs. Troy Bickerstaff of 1161 Collin, Topeka, Kansas. Troy was a member of the class of 1933 and Vena (Vena Wilson) was in the class of 1934. If Elbert and Mrs. Wilson are anything like some more folk that I know, they really enjoy having their grandchildren.

is 8423 Washington Boulevard, Apt. B-4, Pico Rivera, California. Vickie Allen (Vickie Kirksey), class of 1961, and son Bret have been visiting in Slaton for the past several days. Vickie's husband, Jerry Allen, class of '60, is a student at Texas A&M this year. Since this is being written and printed on Friday prior to Christmas we will not have had an opportunity of seeing the many exes that we know will be visiting in Slaton during the holidays but we know that every Slaton Ex will have enjoyed seeing and visiting with all of our out of town friends. We hope to have a meeting with all of the executive committee and all that are interested in having a real good reunion in June of '63 some time in the first week after Christmas. At that time we will begin to make plans for our reunion. In talking with Virta Zuma Shepard we find that we are still solvent but we note that many of our local exes have not paid their dues for this year. As was decided by the executive committee our fiscal year runs from one reunion to the next. We will need your two bucks in order to make our reunion the kind of success that each of you want. Let's start early and make our reunion for '63 the best ever.

**Slaton Electric**  
1020 S. 14th  
**Residential Wiring**  
• Commercial and  
• Minor Repairs  
• Contracting  
• Small Appliance Repair  
• Washer and Dry Repair  
Experienced and Conscientious  
Derrel Baugh, ov  
Call  
VA 8-3434

**LOOK LOOK**

**BIG FIREWORKS DISPLAY**

**8:30 p.m. NEW YEAR'S EVE**

**AT**

**CAPROCK DRIVE — IN**

**PLUS**

**ON THE SCREEN**

**THE INTERNS**

**Starring: Haya Haracet and Cliff Robertson**

**LEMON NUT FRUIT CAKE**  
Sift together 2 cups flour and 1 tablespoon baking powder. Sift over 1 lb. chipped pecans, 1/2 lb. candied cherries, and 1/2 candied pineapple. Beat 6 egg yolks. Add 1 lb. brown sugar, 1 lb. butter, and 1 1/2 oz. lemon extract. Pour over nut and fruit mixture. Beat until stiff 6 egg whites. Fold beaten egg whites into nut and fruit batter. LET SET OVERNIGHT. Cook in tube pan well lined with waxed paper at 300 degrees.

**ORANGE SLICE CAKE**  
2 cups sugar  
4 eggs  
1 cup Wesson Oil  
1 1/2 cup buttermilk  
1 lb. dates, chopped  
4 cups flour  
1 teaspoon soda  
1 cup pecans broken in fine pieces  
1 lb. orange slices cut fine  
1 teaspoon vanilla  
Pour buttermilk with soda over dates and let stand while mixing batter. Cream sugar and Wesson Oil. Add eggs, beating after each. Sift all flour over nuts and candy. Bake in tube pan 2 1/2 hours at 250 degrees.

**PRETZEL CHIVE BALLS**  
Combine two (8 oz.) packages cream cheese, 1/2 cup frozen chives, one teaspoon mustard, 1/2 teaspoon salt and two-thirds teaspoon freshly ground black pepper. Cream well and shape into balls. For easy service, insert a pretzel stick in each ball to lift it by.

**FROSTING**  
Melt 1 (6 oz.) package semi-sweet chocolate morsels with 1/2 cup confectioners sugar and 1 tablespoon of water over hot water. When smooth, blend in 1 (3 oz) package cream cheese. Beat until smooth. Cool before spreading on cookies. You may use white frosting and top with green gum drops to resemble a Christmas Tree.

**FRUIT CAKE POINTERS**  
Store cooled fruitcakes in foil, saran-wrap, or airtight container. Keep in cool place. Keep fruitcakes at least a week be-

and be come mellow. Make fruitcake for the holidays 3 or 4 weeks ahead. Chill fruitcake before slicing. It's easier to cut thin, perfect slices. (When you freeze ahead of time for the holidays, print time and temperature for baking on outside of package. Saves searching for recipes during last minute preparations.)

**PIE CRUST**  
For a special flavor in pie crust add 1 teaspoon grated orange rind and use orange juice instead of water or milk. Especially good crust for Chess

**FREE A**

**AT MARTINDA SERVICE STAT**

Butcher — "What a running for Benny?"  
Boy — "I'm trying to two fellers from fight"  
Butcher — "Who are ows?"  
Boy — "Johnny Jones!"

Calling a spade a spade for the one who gardened.

If the Government fire a traveling salesman an expense account have a man on the so time.

After death the Chi to live with their A lot of our young couples don't wait!

We appreciate the nity of seeing you year and we're loo ward to another year of serving y

**Martinda**

**WYLIE OIL COMPANY**  
1400 S. 9th VA 8-7110



That Sahara Desert Sign Is Paying Off.