

SHOPPING DAYS
UNTIL
21
CHRISTMAS



**CHOOSE
YOUR
CHRISTMAS
GIFTS
IN
SLATON**

Attractive Christmas-colored badges inviting selection of Christmas gifts from Slaton merchants have been provided local store employees, and indications are that many of the local businesses will utilize this service of the local chamber of commerce. Mrs. Julia Bisbee, C-C secretary, has a large supply of the badges at her office, and merchants are asked to call for them if they have not received delivery.

The Slaton Slatonite

An Old Established Friend Serving the Interests of Slaton Since 1911

Vol. 53 No. 7

Thursday, November 29, 1962

12 Pages

Slaton, Lubbock County, Texas

TEN CENT

Christmas Lights Will be Installed By December 1st

Slaton again this year will be bedecked with extensive Christmas street decorations, word comes from the Chamber of Commerce office.

Plans are to have all street lighting and decorations installed by this Saturday, December 1st. Addition of life-size "wise men" has been arranged for the elaborate nativity scene that customarily is placed on the city square.

Light strands, together with the shining silver foil, bells and stars, will be strung across 9th Street at frequent intervals from Floyd Avenue to Lynn Avenue.

Through efforts of the Chamber organization, Slaton is provided annually with some \$7,000 worth of public holiday decorations. No special solicitation for funds has been necessitated for at least six years, C-C Secretary Mrs. Bisbee states.

Hospitalized Veterans To Be Remembered

Members of the American Legion Auxiliary in Slaton again are participating in the nation-wide program of supplying gifts to the veterans in hospitals, a two-fold program wherein the hospitalized veteran is presented items for his own use, together with a selection of gifts for him to present family members.

Gifts donated locally will be taken to the veterans hospital at Big Spring on December 10th.

Anyone wishing to assist the local organization by giving items should contact Mrs. E. C. Davidson, chairman of the program, before December 9th, according to Mrs. L. R. Gregory, publicity chairman. Mrs. H. E. Woods is assisting Mrs. Davidson in the drive. Mrs. Glenn Payne is president of the Auxiliary here, and she joins in urging cooperation in this program.

SANTA COMING TO TOWN SATURDAY

County A.S.C.S. Lists Pertinent December Dates for Farmers Here

This Friday is the last day for A. C. P. applications for Practice E-4, Application of Cotton Burrs to Cropland, according to reminder from the county office of the Agricultural Stabilization and Conservation Service.

Applications for ACP practices, to be carried out after December 31st under the 1963 ACP, will be accepted beginning December 17th.

Cotton producers are urged to vote in the referendum on December 11th, according to J. M. Whitfield, office manager of the county ASCS, as he outlines important December dates for the farmers of the county. If marketing quotas are approved, penalties will apply to any excess cotton of producers who do not comply with their allotments. Price support to complying farms will be at a level within the range of 65 to 90 percent of parity. If the marketing quotas are not approved, the allotment program will remain in effect, and price support to complying farms will be at a rate equal to 50 percent of parity.

Individual farm allotments will be mailed around December 1st, Whitfield stated.

Skip row planting will again be applicable in 1963, the ASCS office advises, with minor changes in regulations. Provision that four rows of fallow,

in a skip row pattern, may be designated as diverted acreage will also be applicable again next year.

National average price support rates, as announced by Secretary of Agriculture Freeman for the 1963 crops, are:

Grain sorghum: \$1.90 per cwt, compared to \$1.93 this year; and unchanged support rates for corn, \$1.20; rye, \$1.02; oats, .62; and barley, .93.

Santa is coming to Slaton this Saturday at 2 p.m. for his initial greeting to the boys and girls of this area.

The kindly old gent will be on hand with candy and bubble gum for the younger children, his ears wide open for hints of the desires of every child.

Arriving on a big red firetruck, Santa will be led into town by a city police escort, followed by the Slaton High School marching band and a sound truck. The parade will end in the downtown section, Santa alighting on the south side of the City Hall square on Lubbock Street. It is believed that after greeting the crowds he will walk through the downtown area later in the afternoon.

Indications are that Santa will return for three more successive Saturday afternoons of visiting.

Christmas lighting and downtown decoration is expected to be completed by Saturday, and Slaton should have a gala holiday air in full evidence.

Audit Report Is Given Approval

Examination of the Slaton Independent School District audit was conducted Tuesday evening of last week in a special school board meeting called to enable submission of the report to Austin by December 1st.

The 20-page audit report was prepared by Hallmark, Brasher and Hearn, certified public accountants, whose examination of the records reflected a properly adopted budget and efficiently managed district during the review period ending August 11th of this year.

Summary of the audit is printed elsewhere in this issue of The Slatonite.

Expenditures for the year were revealed at \$696,867.90, a figure \$32,832.10 below the budget estimate of \$729,700.00.

Administration costs were listed as \$27,474.29, with instructional expenditures heading the expense list at \$415,352.93 (\$2,147.07 below estimate). Other expenditures included \$5,009.36 for health service (below estimate by \$90.64); \$13,850.48 for pupil transportation (only \$149.52 below estimate of \$14,000); \$28,416.50 for operation of plant (salaries, heat, utilities and supplies); \$13,477.82 for plant maintenance; \$2,732.23 fixed charges (insurance and judgments); and capital outlay of \$114,571.58 (below estimate of \$116,500.00). Debt service expense totaled \$75,982.71.

Total instructional salaries for the 87 teachers and principals added to \$401,862.50, this being broken down into figures of \$28,540 for elementary principals, \$7,285 for secondary principals, \$239,419.50 to elementary teachers, \$110,478 to secondary teachers, and \$16,140 to special education teachers.

Ten "exhibits" were included in the report, these being state-

SEE NO. 1, BACK PAGE

Mail Early Plea

Postmaster Barry Ford has launched the 1962 "Mail Early for Christmas" campaign with helpful suggestions for guidance in planning of Christmas mailing.

For expeditious handling of the heavy seasonal load, Ford emphasizes the following:

BRING YOUR CHRISTMAS CARDS AND LETTERS UP-TO-DATE IMMEDIATELY. Be sure each address is complete, with full name, street and number, city, zone and state. Avoid abbreviations of city and state names.

SEND YOUR CHRISTMAS CARDS AND LETTERS BY FIRST CLASS MAIL, using the new 4c Christmas stamps, to secure priority of dispatch and delivery forwarding without additional charge, and return to you without cost, providing you put return name and address on the envelopes. Also, Christmas cards sent First Class may be sealed and carry written messages.

SEPARATE YOUR CHRISTMAS CARDS AND LETTERS INTO "LOCAL" and "OUT OF TOWN" bundles, using the handy labels you can secure from the Post Office or your letter carrier.

STOCK UP ON THE NEW 4c CHRISTMAS POSTAGE STAMPS. They will "dress up" your Christmas cards and gift packages.

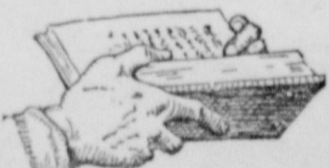
SCHEDULE YOUR CHRISTMAS MAILINGS so that your cards and gift packages going to most distant points are mailed by December 10th. Mail Christmas packages for local destinations by December 15th, and by all means, be sure to mail your Christmas cards for friends and relatives in this area at least a week before Christmas.

Last Call Made For Listing In City Directory

Deadline has been set for listings in the Slaton city directory now being prepared, Mrs. Julia Bisbee, Chamber secretary, has announced, with Slaton residents asked to cooperate in furnishing directory information in event they have not been contacted.

No charge is involved in the listing of individuals or employees. Mrs. Bisbee stated that her office would be glad to accept directory listing information over the phone this week, final period in compilation.

The finished directory should be available in Slaton early next year.



Be still

"A word fitly spoken is like apples of gold in pictures of silver." Proverbs 25:11.

Oh Lord, help us not to say anything in a bitter way. A word can be a poisoned dart.

That mortally wounds another heart; While a simple act of being kind.

Can mend that soul and heal that mind.

WILL CURTIS

County Officer Tests Procedure Of Disbursement

A lively hassle erupted in Lubbock County administration circles this week, events popping in rapid-fire order after being triggered in action taken by recently re-elected County Treasurer Mrs. Jane Rieger.

—In a letter dated November 20th, Mrs. Rieger directed the Lubbock National Bank to cease cashing, as of December 1st, all county checks not bearing her signature.

—County commissioners stated that they lacked authority to tell the bank whose signature to honor, the treasurer's or the auditor's.

—The county treasurer requested the Commissioners Court to call for an audit of county funds by an "outside" auditor, a thoroughly qualified certified public accountant.

—Bank officials were reported planning to file suit for declaratory judgment this week to obtain court ruling on whose signature to honor.

—Mrs. Rieger announced that an attorney was being supplied her to carry her case to conclusion, the legal aide coming from the state association of county treasurers.

—The Lubbock daily paper editorialized on the office of County Treasurer, asserting that office to be non-essential.

—County commissioners in a Monday meeting, granted Mrs. Rieger additional office help to carry out functions of her office, authorizing an assistant for the month of December. Motion for this action was made by Commissioner George Green, with second by Commissioner Les Derrick.

Because of obvious "slanted" reporting of the questions at hand and events of the week in a widely-circulated publication on Tuesday, the Slatonite has attempted to ascertain the actual situation trimmed of its side-issues and politics.

Mrs. Rieger was contacted by the Slatonite in order that her story might be fully voiced in her own words. She refuted some allegations, clarified others, and cooperated fully in outlining her position.

"The action on my part, coming into focus with my letter to the bank on Nov. 20th, was not to 'add stature to my office', as claimed by some representatives of the press, nor was it to hurt any individual, but

rather it was the final course open to me in a fight I have waged since first coming into office — a constant effort to place handling of county disbursements and finances within the law, carrying out my duties as I understand the law to define them. It is dangerous when anything is conducted contrary to prescribed procedures of law."

Mrs. Rieger continued, "I first talked to the county attorney when I took office for my first term (not the present attorney, in this case) several years ago asking that the treasurer be granted her proper function of registering and approving for payment all disbursements of the county. When I asked why the prescribed duties were not assigned to me, the attorney stated 'it has always been done this other way

in Lubbock County, and probably always will be'."

"Repeated attempts have been made on my part", the treasurer stated, "and over 20 months and years I have talked individually with both the county judge and the separate commissioners, asking that the law be honored. My action of this week has come because continuing efforts had been fruitless, and I had to make decision, to fight for a principle."

As to need of the treasure office, overlapping duties of auditor and treasurer, Mrs. Rieger asserted that she had repeatedly had to work over and often on holidays to prepare the county payroll also citing the magnitude of what entailed by deductions included.

SEE NO. 2, BACK PAGE



POSSIBLY SHUFFLING IN ANTICIPATION of the fun ahead, three young students of Evans school, 1035 East Geneva in Slaton, cross the newly-poured floor of the large gymnasium under construction there. Steel is being delivered to the site, and completion of the 12,225 sq. ft. building is scheduled within 40 working days.



CHRISTMAS TINSEL AND related decorations were installed this week across Slaton streets in preparation for the Saturday visit of Santa. Atop the ladder in the operation pictured above W. L. Hendricks, Ernest Alverado immediately below. Grady Inder, barely got into the scene at left, while tractor operator D. Deane smiles broadly at the Slatonite photographer.

and
ance
BY H. KING II
The Slatonite of
Mr. Tye
always a pleasure to
Cobb... for one
usually sits down at
machine and sets
type for us...
often Mr. Cobb.
Chamber of Com-
purchased badges
of member mer-
during the re-
Christmas shopping
provides space
owner's name and is
decorated with San-
it reads "Choose
Gifts in Sla-
lines of choosing
Gifts from Sla-
I would like
The Slaton
area and it's the policy
to promote
commerce
benefit the residents
story.
conviction
town" communi-
should at all
mind what will
harm the people
when there is a
payroll to meet, the
income tax payment,
premiums and host of
to meet, it's
tempting to accept the
back" from sources
competitive to your
merchants.
we do not believe
"Home Town" media
its obligation by
build the community
encourages its resi-
pend their money
bargain centers in
do not contribute
taxes, civic pro-
grams, schools or any
while Slaton pur-
Slatonite makes
services available to
merchants and sub-
of this newspaper for
of our town.
Locally
way Funds
ted for '63
in County
of 17.6 miles of high-
improvement in Lubbock
has been approved for
the Texas Highway
according to an-
by District High-
O. L. Crain of
none of the work
in the immedi-
area, with improve-
items itemized as 8.9
deal coat, at a cost
allocated on U.S. 62
mile south of Doud
east to the Hock-
line, and on U.S. 84
Hockley county line
southeast of Shal-
involving grading and
on two additional
lines at an expense
Engine Crain said
of 12.5 miles in this
District, District Five,
involved in the over-
at a total cost of
is part of the 1963
BACK PAGE
WEATHER ---
mornings with some
clouds have been fa-
weather conditions
Slaton receiving
of rain Sunday.
is for clearing
cloudy weather,
warmer.
day temperature
high and low are:
56-36
62-38
64-40
64-41
64-40
70-50
56-36
61-44

EDITORIALLY SPEAKING

Observations and Potpourri

Elections have been over for several weeks now, and presently the emphasis is not on WHOM was elected but on HOW our representatives perform. This is true, not only for the officeholders chosen in November, but should be the situation every month of every year as regarding all positions from city officials, school boards, and on up to state and national levels.

And this editor thinks the manner in which any official performs can be governed to a considerable extent by our own actions — our own recognition of his responsibilities, our own aid in informing him of our desires.

In simple words, our contribution to good government on any level cannot end with the vote that we cast. Good citizenship and our obligatory contribution to democratic government demand that we become "aware" citizens, not mere voters and gripers!

To foster this condition, we quote some suggestions made by one of America's prominent oil firms, the Humble Oil Company. Though the Humble remarks specifically cite aid to our Congressmen, we suggest that the same code be applied to assistance to all office holders.

We quote:

Among the do's:

- Get to know your Congressman. Either in person or by mail, take the opportunity after the election to wish him well. Let him know who you are and what your interests are.
- Write to him about matters on which you have some information and in which you are concerned. Be sure that your letters reflect real information which you know personally. In discussing issues, show specifically, from your own experience, how the proposal affects you.
- Acknowledge things your Congressman does that you approve. Let him know that you are aware of his work.
- When you have an interest in a subject, inform your Congressman or Senator while there is still time for him to take effective action.

Among the don'ts:

- Don't try to instruct your Congressman or Senator on how to vote on every issue that comes up. And don't nag at him if his votes do not match your precise thinking every time.
- Don't rely on pressure campaigns of petitions, mass mailings, mass telegrams on subjects that you don't know about personally. A thoughtful letter has more meaning than a sheaf of identical telegrams or post-cards.
- Don't berate your Congressman or Senator, or call him names if he does not agree with you. If you disagree with him, give reasons for your disagreement.
- Don't pretend to represent more political influence than you have. Write or talk with your Congressman as an individual with personal concern about issues, but don't attempt to speak for all your neighbors.
- Don't rely blindly on "voting records" kept by pressure groups as appraisals of your Congressman's attitude. Base your judgments on the work your Congressman does in committee or in representing his district or state in the interest of the nation.

THE AMERICAN WAY



MATTHEW ARNOLD

The Bible — Plain and Noble

The Slaton Slatonite

163 S. 9th Street Phone VA 8-4201

John H. King II, Publisher

SLATON TIMES PURCHASED JANUARY 20, 1927

Entered as Second Class Matter at the Post Office at Slaton, Texas, under the act of March 3, 1897.

NOTICE TO THE PUBLIC — Any erroneous reflection upon the reputation or standing of any individual, firm, or corporation that may appear in the columns of the Slatonite will be gladly corrected when called to our attention.

SUBSCRIPTIONS: Payable in advance. Lubbock, Lynn, Garza, and Crosby Counties — \$3.00 per year plus tax. Outside these counties — \$5.00 per year plus tax.

MEMBER:
Texas Press Association
West Texas Press Association
Panhandle Press Association

HOW TO TRAVEL IN LUXURY WITHOUT REALLY FLYING

The exciting new '63 Chevrolet has captured the silence and effortless ease of jet flight and translated it to highway travel. Every new Chevrolet, whether it's a luxury Impala, a low-priced Bel Air or a Biscayne, now has self-adjusting brakes, a Delco-tron generator to extend battery life, and the ingenious new flush-and-dry system. A test drive of a few miles will amaze you. This '63 Chevrolet is a quality automobile, built to travel with the very best. When you're driving a Chevrolet, you don't take a back seat to anyone!



The make more people depend on.

GO JET-SMOOTH '63 CHEVROLET-IT'S EXCITING!



'63 Chevrolet Impala Sport Coupe

Ask about "Go with the Greats," a special record album of top artists and hits and see four entirely different kinds of cars at your Chevrolet dealer's—'63 Chevrolet, Chevy II, Corvair and Corvette

"Doc" Crow Chevrolet

120 NORTH NINTH STREET

VA 8-4261

Notes from Neighbors: Events and Opinions



From the Exchanges of the Slatonite

No Cars on the Campus

The University of Oklahoma's Board of Regents voted to ban student cars during the daytime hours Monday through Friday, starting in the fall semester of 1963.

The board approved two recommendations of OU's President Cross, one of which will prohibit student automobiles from being operated on campus between 7 a.m. and 5 p.m. The second car restriction will deny the use of automobiles at the University to undergraduate students on academic probation and to freshmen who do not rank in the upper 50 per cent of the students participating in the American College Testing program.

Students violating the regulation will be subject to a \$20 fine, which will be reduced if paid within 48 hours.

A second violation in the same semester will result in loss of all automobile privileges for the remainder of the school year. Handicapped students are excluded from this regulation.

Students violating the regulation will be suspended from the university for the remainder of the academic term in which the violation occurs and the next full term.

Of 13,396 OU students, 7,000 have cars.

—Toreador, Tech

The Things We Remember!

Several years ago, Bill Rutherford was editor of the County News at Dumas and he wrote a weekly column in which he not only commented upon events of the day but also included a human interest item now and then.

I recall vividly a statement made by Bill after a column included a paragraph or so about his dropping his fishing commode.

"A man can write column after column in which he pours out his heart on something worthwhile and not get a response, but just let him write something trivial and he calls him to say how much they enjoyed reading it."

Time has borne out the truth of Bill's observation.

—Stanford

The younger generation has a big advantage over the old — it still has plenty of time to outgrow what it ails it.

An Uncompromising Editor . . .

A colleague, owner of a weekly newspaper in the valley, wrote boldly a week or so ago:

"We will never win a popularity contest, nor, we imagine, will we ever amount to a hill of beans, financially speaking."

"That's because we won't get on anybody's band wagon, hide behind anybody's back, lick anybody's hand, or say or write anything we don't believe. We are a non-compromising character, blunt, outspoken and of the old school of journalists. We call a spade a spade, and if it's a black spade, we call it a black spade, and if it's a yellow spade, we call it a yellow spade."

Admirable if slightly bragadocious words. Even so, I like journalists of the ilk he describes. And they are a rare item. Of the nearly 100 newspapers that cross this desk every week, perhaps five percent offer anything in the way of an idea, and it is a rare editor indeed who says what he thinks. There are, of course, as many people in the newspaper business who long ago abandoned whatever ability they have to think for themselves as there are in the other trades. Read their papers!

Let no one misunderstand me. I am not running down other newspapermen. There are good newspapers, however few. At the same time, newsmen stand about as high as those in other lines of endeavor, businessmen, lawyers, doctors, preachers, teachers, truck drivers farmers, mechanics. If you belong in any of these categories, consider all the people you know in the others and see how many stack up to the standards you expect of them. And then, how are you doing yourself?

With our friend in the valley, we share a great many likes and dislikes and agree with him on other counts. And there are some he mentions that I'd rather not go into.

For example, I like Lyndon Johnson and he doesn't. He likes cats and I hate 'em. With him I agree that "We like people who are human, those who will never win any popularity contests or grow very affluent or powerful off the fat of the land, and those who disagree with us without becoming angered or proselyting."

To me it is sometimes slightly ironical that many of my very best friends are and always have been people whose ideas, social, political, and philosophical, are at odds with my own. At the same time, I suspect it is the reason I like them.

—Robstown Record

Expense of Court Trials . . .

It may be of interest to many local people how much cost is involved in a trial such as State of Texas vs Billy Hugh Ervin held here last month.

The total cost of the trial to Culberson County thus far has been \$1,659.76, considerably less than many people had thought, yet more than a lot thought, who didn't know that the County had to foot the bill in such cases.

Due to the unusually large venire called for the case almost half the cost, \$792, went for jury fees. With the exception of those excused in advance, prospective jurors are paid \$2 and \$4 per day they were involved. 232 jurors were summoned but after absences and excuses, 129 remained from which to select the 12-man jury panel.

\$300 went for the travel expenses to bring Mrs. Sam Keener, wife of the shooting victim, back here for the trial. The rest of the expense was for room and board for the jury. There will be some additional expense for travel expense, and room and board for the court reporter, the County Clerk said. Also aside from the trial, the County has to pay to prisoner's room and board while here and while being held in the El Paso jail.

—Van Horn Advocate

Conscience is something that makes a kid tell his mother before his sister does.



CHARLIE Said he would go 'stir-crazy' if his TV set wasn't repaired. He is out calling

Mosser Radio & TV
DAY VA 8-4475 NIGHT VA 8-4510

SOUTHLAND SEED AND DELINTING

is now

OPEN AND OPERATING!

CUSTOM SEED PROCESSING

Saw Delinted, Cullied, Treated and Fertilized

\$20.00 Ton for Delinting and Treating
1/2¢ lb. for Fertilizer

SOUTHLAND SEED AND DELINTING

Five Blocks East of Lubbock Highway In Southland
Owned and Operated by C. E. Basinger

SOUTHLAND

Southland Eagles Season with Win

The Southland Eagles closed their football season with a bang Friday before Thanksgiving when they defeated the Dawson Dragons by a score of 36-34.

In the first quarter, Southland received the kick-off, then started a march down the field which was climaxed when halfback Webster Crawford crashed through from the ten yard line to score a touchdown. The try for the extra points failed.

After the Eagle's touchdown, Dawson scored twice, complete with extra points. Then Don Altman, halfback, scored for the Eagles. The extra points again failed. The score at the half was 16-12 in favor of the Dragons.

At the beginning of the second half, Dawson scored, but didn't make the extra point. Then Southland's Johnny Haire caught a thirty yard pass and carried the ball 39 yards for a touchdown. Haire also ran the extra points.

In the last minutes of the third quarter, the Dragons scored, making the score 28-20, in favor of the Dragons.

In the first part of the fourth quarter, Larry McNeely, quarterback for the Eagles, scored a touchdown from 15 yards out, and Haire ran the extra points to tie the ballgame at 28-28. Then Dawson scored again. Southland received the kick-off, but after four downs, they lost it again.

Dawson received the ball and was marching down field when Don Altman stole the ball about midfield. With the help of excellent blocking by the right side of Southland's line, led by guard Jackie Dunn, halfback Webster Crawford carried the ball 39 yards to the goal line on a series of dive plays. Then halfback Johnny Haire ran it over, making the score 34-34. Larry McNeely carried it over for the extra points to score the winning points, making the final score 36-34, in favor of the victorious Eagles.

Defensive stalwarts for Southland Eagles have included Webster Crawford, Jackie Dunn, Bobby Albright, Robert Mock, Larry McNeely, Don Altman, and Joe Hall.

Slaton Student In Chorus Presented With Symphony

Donald W. Edwards of Slaton sang with the 140-voice North Texas State University Grand Chorus Sunday and Monday (Nov. 18 and 19) in a joint performance with the Dallas Symphony Orchestra.

The chorus and symphony, under the direction of Conductor Donald Johanos, performed Mozart's "Grand Mass in C Minor" in Dallas as part of the Dallas Symphony's Subscription Series. The NTSU group and the orchestra have been appearing together regularly since 1941.

Soloists for the "Grand Mass" were Miss Margaret Kallil, NTSU resident soprano; Miss Beverly Wolff, mezzo-soprano; John McCollum, tenor; and Norman Farrow, baritone.

Edwards, the son of J. S. Edwards Jr., 745 S. 18th, Slaton, is a sophomore music education major and is a member of Phi Mu Alpha Sinfonia, national music fraternity for men. He sings second tenor in the chorus.

Thursday, November 29, 1962

The Slaton Slatonite

Annual Income Questionnaires To Be Sent with Nov. 30 Veterans Pension Checks in West Texas

The Veterans Administration will mail some 11,800 annual income questionnaires with the November 30 pension checks to beneficiaries in the West Texas area, Robert W. Sisson, manager of the VA Regional Office in Lubbock, has stated.

These annual income questionnaires go to veterans and dependents of deceased veterans who are receiving dependency and indemnity compensation.

The questionnaires are punched cards which must be filled out with the required information and returned to the VA before the usual deadline—January 31—or payments will be suspended. If after suspension no questionnaire is submitted, the pensioner will be required to pay back all payments received in 1962.

The VA manager emphasized that the cards should be returned promptly.

Sisson pointed out that the earlier distribution will permit those with fixed incomes to return the cards at once, while those with earnings or changing incomes may still wait until they get their W-2 forms or other information they need to know in order to answer the questions.

Veterans and dependents receiving pension under the law in effect prior to July 1, 1960 are required to report only their annual income. Persons on the rolls under the pension law that went into effect July 1, 1960, must also fill in a new worth item as required by law.

Laws governing nonservice connected pension payments require that the VA receive this income information every year. Payment of pension depends on the individual's need as determined by the amount of income received annually from sources other than pension, the VA added.

Christmas lights go on in downtown Slaton. Bring the children to see them!

Catholic Daughters, 2:00 p.m. at St. Joseph's Hall. A warm welcome awaits you at the church of your choice.

Ladies Auxiliary Firemen, 7:30 o'clock p.m. Daughters of the Pioneers Study Club, 8 p.m. Centurettes, 7:30 p.m.

Junior Civic and Culture group, 7:30 p.m. Athenian Study Club, 7:30 p.m.

Chamber of Commerce meets at 7:30 p.m. in community room of Citizens State Bank. Lions Club, noon at Bruce's Cafe.

L. S. of B. L. F. & E., 9 a.m. at Legion Hall.

B. of L. F. & E. No. 278, 1 p.m. at Legion Hall.

School Board, 7:30 p.m. at school administration office, 300 S. 9th Street.

Alcoholics Anonymous, 8 p.m. at 205 S. 11th.

Jaycees, 8 p.m. Garden Club, 3 p.m.

YOUR Independent AGENT
"SERVES YOU BETTER" ORAIA

PEMBER INSURANCE AGENCY
135 N. 8th. VA 8-3541

formation and returned to the VA before the usual deadline—January 31—or payments will be suspended. If after suspension no questionnaire is submitted, the pensioner will be required to pay back all payments received in 1962.

The VA manager emphasized that the cards should be returned promptly.

Sisson pointed out that the earlier distribution will permit those with fixed incomes to return the cards at once, while those with earnings or changing incomes may still wait until they get their W-2 forms or other information they need to know in order to answer the questions.

Veterans and dependents receiving pension under the law in effect prior to July 1, 1960 are required to report only their annual income. Persons on the rolls under the pension law that went into effect July 1, 1960, must also fill in a new worth item as required by law.

Laws governing nonservice connected pension payments require that the VA receive this income information every year. Payment of pension depends on the individual's need as determined by the amount of income received annually from sources other than pension, the VA added.

Christmas lights go on in downtown Slaton. Bring the children to see them!

Catholic Daughters, 2:00 p.m. at St. Joseph's Hall. A warm welcome awaits you at the church of your choice.

Ladies Auxiliary Firemen, 7:30 o'clock p.m. Daughters of the Pioneers Study Club, 8 p.m. Centurettes, 7:30 p.m.

Junior Civic and Culture group, 7:30 p.m. Athenian Study Club, 7:30 p.m.

Chamber of Commerce meets at 7:30 p.m. in community room of Citizens State Bank. Lions Club, noon at Bruce's Cafe.

L. S. of B. L. F. & E., 9 a.m. at Legion Hall.

B. of L. F. & E. No. 278, 1 p.m. at Legion Hall.

School Board, 7:30 p.m. at school administration office, 300 S. 9th Street.

Alcoholics Anonymous, 8 p.m. at 205 S. 11th.

Jaycees, 8 p.m. Garden Club, 3 p.m.

Martindale's
Phillips STATION

Coming Events

Thursday, November 29

Rotary Club, noon at clubhouse.

Friday, November 30
Senior Citizens Club, 10 a.m. at clubhouse.

Saturday, December 1st

Christmas lights go on in downtown Slaton. Bring the children to see them!

Sunday, December 2

Catholic Daughters, 2:00 p.m. at St. Joseph's Hall. A warm welcome awaits you at the church of your choice.

Monday, December 3

Ladies Auxiliary Firemen, 7:30 o'clock p.m. Daughters of the Pioneers Study Club, 8 p.m. Centurettes, 7:30 p.m.

Tuesday, December 4

Junior Civic and Culture group, 7:30 p.m. Athenian Study Club, 7:30 p.m.

Chamber of Commerce meets at 7:30 p.m. in community room of Citizens State Bank. Lions Club, noon at Bruce's Cafe.

L. S. of B. L. F. & E., 9 a.m. at Legion Hall.

B. of L. F. & E. No. 278, 1 p.m. at Legion Hall.

School Board, 7:30 p.m. at school administration office, 300 S. 9th Street.

Alcoholics Anonymous, 8 p.m. at 205 S. 11th.

Wednesday, December 5

Jaycees, 8 p.m. Garden Club, 3 p.m.

Hampshire Breeders Are Preparing January Lubbock Conference

The Swine Registry of Texas plans to hold a Hampshire Meat Show January 7 and 8 at the South Plains Fairgrounds in Lubbock. The show program will include special carcass type discussions, a judging contest, a display of breeding animals, and a big hog dinner. Breeders from the United States and other countries will join Southwest-ern hogmen in the activities scheduled for the two day event. T. D. Tanksley, swine extension specialist at Texas A&M College will judge barrows on the afternoon of January 7. Breeding animals will be placed by Francis Callahan, well-known Milford, Ill. swine breeder and judge. Callahan will judge bred and open gilts on the afternoon of January 7. Boars will be driven the following morning. Specialists from two Texas colleges will evaluate carcasses. On the carcass committee are

Dale Zinn, J. B. Pruitt and Wendell Kent, all of Texas Tech, Lubbock and G. T. King and R. W. Snyder, Texas A&M College Station.

The type discussion committee will include Callahan, Tanksley, Bernard Ebhing, Rath Packing Co., Waterloo, Iowa; Larry Tackitt, Happy, Texas; Sears Koch, Jr., Anadarko Okla.; Wilbert Meinhart, Huson, Wis., all Hampshire breeders.

Jesse Belle, Fresno State College, Fresno, Calif. will serve as moderator for the type discussion with the assistance of L. D. Wythe, Jr., Texas A&M College and Ronald Davenport, Texas Tech.

A judging contest will be held jointly with type discussion activities.

The judging contest will include a division for ladies, men and juniors. Attractive, valuable prizes will be awarded the winners of each division. Everyone is invited to participate. John T. Crumley, Lubbock and O. L. Christie, Dalou are in charge of the judging contest.

The conference opens January 7 with the judging of hoof-carcass and certified litter barrows. Emphasis will be placed on an efficient, well muscled animal yielding a high quality, Thomas Neely and Earl Madmeaty carcass. Bill Jackson, ding of Lubbock will serve on the hoof-carcass and certified litter committee.

Other activities on opening morning will include the judging contest and the type discussion program.

Monday afternoon activities are barrow, open and bred gilt shows, with a banquet at the Pioneer Hotel scheduled for the evening.

On Tuesday morning, boars will be exhibited, awards presented to contest winners and a carcass demonstration will be held.

The sale of breeding animals will close the conference on Tuesday afternoon.

Mr. and Mrs. R. A. Thompson Jr. and son, Clay Allen, of Lubbock spent Thanksgiving with his parents, the R. A. Thompsons of Slaton.



PRESENTING... **OLDSMOBILE FOR 1963**

Here's the year's most tasteful combination of elegance and performance—Oldsmobile for 1963! Wide new choice of exciting body styles! Stunning interior detailing! Responsive V-8 engines with up to 345 h.p. There's even a new 7-position Tilt-Away Steering Wheel, optional at extra cost on all full-size models. See and drive the style-leading 1963 Oldsmobile—now on display at your local Oldsmobile Quality Dealer!

MEET THE **FUN-TO-DRIVE F-85**



A longer look... a zesty feel... and every inch an Oldsmobile! That's the F-85 for '63! Powered by a spirited aluminum V-8 with up to 195 horsepower! Handles like a dream—turns full circle in 37 feet! Features a smooth coil-spring ride! And there's a choice of coupes, sedans, station wagons, convertible... plus the revolutionary turbocharged JETFIRES! See the fun-to-drive F-85—on display at your Dealer's!

SEE YOUR LOCAL AUTHORIZED OLDSMOBILE QUALITY DEALER

DAVIS OLDS INC. 130 WEST LYNN STREET

DON'T MISS THE AWARD-WINNING "GARRY MOORE SHOW" • TUESDAY NIGHTS • CBS-TV!

FREE

WITH EVERY GAS LIGHT PURCHASE!

Buy a Gas Light... get a handsome 14" green holly wreath with red berries, simulated snow flocking and dashing red ribbon, at no extra cost! Quantity is limited, so hurry!

fuel for a growing empire **Pioneer Natural Gas Company**

The Old Timer

WILL AYERS says

The Future Is Something Everyone Reaches at the Rate Of Sixty Minutes an Hour, Whatever He Does, Whoever He Is.

Will Ayers Farm Store



IT'S
**CHEESE 'N'
CRACKER**
TIME AT
Piggly Wiggly



These Prices Good in
Slaton, Nov. 29, 30,
Dec. 1 & 3, 1962
We Reserve the Right
to Limit Quantities.

COKES
12 BTL. CTN. **57c**



WATCH IT REFILL ITSELF!
SAFE, FUN
EVERY LITTLE GIRL WANTS ONE!
98¢ VALUE ONLY 49¢
WHEN YOU BUY

PET MILK
3 CANS 39¢

PACIFIC GOLD
Freestones, in Heavy Syrup
PEACHES
NO. 2 1/2 CANS **\$1**

Garden Fresh Produce at Piggly Wiggly!

ORANGES	Florida, Sweet and Juicy, Lb. . .	10c
LETTUCE	Fresh and Crisp, Large Heads 2 For	29c
TANGERINES	Fresh, Florida, Thin Skin, Lb. .	19c
BRAZIL NUTS	New Crop, Lb.	49c

Health And Beauty Aids

GLASSWARE, Currier & Ives Ovenware, Asst. Pieces, Values to \$1.00

HAND LOTION, Derma Fresh, \$1. Size with FREE VO-5, 35c Size, Total Retail Value \$1.35, Plus 7c Tax

BUCK CREAM RINSE \$1.00 Retail

BUFFERIN, Regular 89c, 60 Count Bottle



THE CHIEF
Complete FIREMAN
Unbreakable H
Battery Operated
Unbreakable FI
*PUMPER T
*HOOK & LA
ALL TH
ONLY
\$6.9

WHITE SPRAY
CHUNK, LIGHT
TUNA
5 NO. 1/2 CANS **\$**

Fresh Frozen Foods!

Cream Pies Morton's, Banana, Caramel, Chocolate, Coconut, Lemon, and Strawberry, Family Size **39c**

Seabrook, Fordhooks, BABY LIMAS, 10-oz. Pkg. **19c**

Morton's, Beef, Chicken, Turkey POT PIES 2 8-oz. Pies **39c**

Roserita, COMBINATION PLATE, 12-oz. Pkg. **39c**

Seabrook, Crinkle Cut or French Fries, POTATOES 2 9-oz. Pkgs. **35c**

HALLMARK
**PORK 'N'
BEANS**
12 NO. 300 CANS **\$1**

Green Beans LIBBY, FANCY CUT, 5 NO. 303 CANS **\$1**

Golden Corn Libby, Cream Style or Whole Kernal CANS NO. 303 **\$1**

Crackers WORTZ, SALTED, POUND BOX **19c**

Flour PILLSBURY BEST, WITH 10c COUPON IN LUBBOCK AVALANCHE JOURNAL **43c**

SCOURING PADS SOS, 10-Count Box **27c**

BREEZE Detergent, Giant Box **81c**

LIQUID LUX Mild and Gentle, 13c Off Label, Quart Bottle **85c**

RINSO Blue Detergent, 10c Off Label, Giant Box **69c**

ALL Detergent for Automatic Washers, 3-Pound Box **79c**

SWA For Cleaner Dish 10c Off Label, 22-oz. Bottle

VIM Detergent Tablets 38-Count, Box

TOILET Lux Assorted 3 Colors **3**

TOILET Lux, Assrt. 2 Colors **2**

FLUFFY All Purpose Detergent, 3-Pound Box

KOTEX, Sanitary Napkins, Junior, Regular, or Super, 12-Count Box **33c**

PURPLE PLUMS, Payette Valley, in Heavy Syrup 4 No. 2 1/2 Cans **\$1.**

INSTANT COFFEE, Maxwell House, 6-oz. Jar **99c**

VIENNA SAUSAGE, Van Camp's 5 No. 1/4 Cans **\$1.**

FRUIT COCKTAIL CATALINA, IN HEAVY SYRUP **6** NO. 300 CANS

VELVEETA KRAFT'S CHEESE FOOD **2** LB. BOX

SNOWDRIFT ALL VEGETABLE SHORTENING **3** LB. CAN

JUICE ORANGE, SEALD SWEET, FROZEN, WITH 15c COUPON FROM PAPER **6** 6-OZ. CANS **59c** WITH COUPON

Protein Packed Meats at Piggly Wiggly!

CHEESE KRAFT'S, LONGHORN, BLOCK TYPE, WHOLE MILK, POUND **49**

Chuck Roast ARMOUR'S STAR, AGED HEAVY BEEF, VALU-TRIM, BLADE CUT, POUND **55**

FRYERS FROZEN FRESH, U.S.D.A., GRADE A, WHOLE, POUND **33**

CREAM CHEESE, Kraft's, Whipped, All 6 Flavors, 4-oz. Pkg. **29c**

CHEDDAR CHEESE, Kraft's, Cracker Barrel, Mild or Mellow, 10-oz. Stick **49c**

SLICED CHEESE, Kraft's, Natural Big Eye, Swiss, 6-oz. Pkg. **33c**

SLICED BACON, Hormel's, Dairy Brand, Pound **59c**

CANNED HAM, Rath's Blackhawk, Hickory Smoked, Boneless, Cooked, 3-Lb. Can **\$2.**

LUNCHEON MEAT, Butcher Boy, Bologna, Olive or Pickle, 6-oz. Pkg. **2**

SAUSAGE, Blue Morrow's, All Pork, Pound **5**

GROUND CHUCK, Extra Lean, Dated for Freshness, Pound **4**

Lowest Prices . . . Greatest Variety . . . always at
Piggly Wiggly

The Slaton Trade Area Again Has a

Complete Office Supply



and
Commercial Printing Service

WE INVITE YOU
 TO VISIT OUR OFFICE DISPLAY
 Comparing
 • SELECTION
 • PRICE
 • SERVICE

Our Shelves Again Are Full Of Popular Items --- If Your Particular Need Calls For An Item Not Stocked, We Offer Speedy Order Service. You Will Find, However, That Our Stock Exceptionally Complete. Won't You Pay Us a Visit?

CHECK THESE ITEMS:

Typewriter Paper
 Copy Sheets
 Typewriter Ribbons
 Adding Machine Ribbons
 Desk Pads, Blotters
 Check Racks
 Cash Boxes
 Metal Files
 File Folders
 Hole Punches
 Swingline Staplers

Lindy Pens
 Stamp Pads, Ink
 Color Paints
 Scotch Tape
 Glue
 Rubber Bands
 Poster Board
 Expansion Files
 Mimeograph Paper
 Stencils, Ink
 Manila Envelopes

Carbon Paper
 Receipt Books
 Ledgers
 Bookkeeping Systems
 Acco Fasteners
 Farm Record Books
 Sales Pads
 Gem Clips
 Manuscript Covers
 Clip Boards
 Stick Files

Jiminy Christmas!
 EVERYBODY
 wants this new
Smith-Corona!



Naturally, Santa!...
It's the World's Fastest Portable!

• It's so lightning-fast that in correct rhythm it's impossible to jam the keys! Has 38 features, full-size professional keyboard and *Colorspeed Keys* that are fingerprint-shaped to cup your fingertips. It's the most popular portable we've ever sold—perfect for students, typists, busy families. Come in and let us show you all its many advantages!



\$ 71⁹⁵



IF YOU NEED A FILE . . .

Its price and features entice you to buy this H-O-N

Here is a filing case that has exceptional rigidity . . . a full suspension drawer cradle that floats smoothly on 10 roller bearings . . . new side action compressors . . . plunger lock . . . thumb latches . . . Steel is chemically treated against rust . . . with a sprayed and baked enamel finish all for a long, long life of satisfactory service. The price is a reasonable one of only . . .

\$ 60⁴⁵

The Slatonite

Widow's House Write-Up Has Interest for Slatonites

More interesting than most over the press recently, tales of the Winchester House in Santa Clara valley, meaning for the family with Dow, Bradley Winchesters being descendants of the Winchester mansion. The Winchesters are sons of William Winchester, also of Slaton.

proved wrong when she died in 1922. While she was alive, Mrs. Winchester kept to herself. One story has it that Theodore Roosevelt once indicated a desire to pay his respects, but she refused to see even the President of the United States.

In contrast to those years, thousands of visitors from all parts of the country and abroad are now permitted inside the patchwork mansion.

They pay 50 cents for the privilege of touring Mrs. Winchester's eccentric dream house. And just to ensure that nobody gets lost in the maze of hallways and rooms, every visitor must be accompanied by a guide.

Recent legislation has amended Title V of the Housing Act of 1949 by adding new provisions which authorize loans and grants for moderate cost housing and related facilities for elderly persons and families in rural areas, according to announcement made by Ralph E. Griffiths, local county supervisor of the Farmers Home Administration.

It liberalizes some regulations on rural housing loans now being made by Farmers Home Administration and sets up new direct and insured loan programs.

This new legislation will be administered in Lubbock County by USDA's Farmers Home Administration. Rural housing loans are made by this agency to farmers and other families living in rural areas who need improved housing and cannot qualify for credit from other sources.

One new provision will give those people, who are 62 years of age or over, special advantages not available under the earlier loan program. First, they can buy previously-occupied existing housing as well as improve their homes. Second, they can finance the cost of the building site as well as the dwelling with the loan program.

For detailed information concerning rural housing loans for the senior citizen, Mr. Griffiths, local county supervisor, Farmers Home Administration, may be contacted.

FHA Housing Program Now Affords Advantages to Elder Citizens

Other families must own the land on which to build the homes before they can apply for a loan. Third, cosigners may be used by elderly applicants who are deficient in repayment ability. Like rural housing loans now being made by Farmers Home Administration, these direct loans will bear interest at the rate of 4 percent and may be repaid over a period not exceeding 23 years.

For detailed information concerning rural housing loans for the senior citizen, Mr. Griffiths, local county supervisor, Farmers Home Administration, may be contacted.

LETTERS TO THE EDITOR

Dear Editor:
A great many of us were disturbed when the Slatonite carried the picture of three liquor store representatives and the announcement of their intention of making a contribution to six Slaton organizations. We were disturbed for two reasons only.

First, to accept a gift and publicize it would lead some people to think the liquor industry was interested in them and would soften their attitude toward the industry. This is especially true in this case because the recipients are youth organizations.

The second reason is that making such a gift eases the conscience of the liquor industry and might be used to persuade the uninformed that they

Slaton Slatonite

Dear Sir:
In your issue of November 22, 1962, you printed a prepared statement of Charles Wood in reference to donations by the people in the liquor business making contributions to the youth activities in this community.

I wonder if Mr. Wood has ever attended a scout meeting or read the Boy Scout Handbook. Has he ever had the opportunity of seeing a group of boys voluntarily prepare themselves for better citizens? Has he had the privilege to see the boys take pride in serving their community? I wonder if he realizes the difficulty in raising funds to carry on this work for better citizens for tomorrow.

We invite you, Mr. Wood and all Members of the Clergy to our Meetings at any time. Scoutmasters: G. L. Hartley, J. W. Pettigrew, J. W. Dunn, Troop 123, W. L. Hendricks, Troop 128, K. J. Baker, Troop 128.

Letters to Santa

Dear Santa:
I want a basketball and a wagon. I want a rope and a cowboy shirt too and two guns, too. I want a farm set.
Tony Thomas,
Route 2, Slaton

Dear Santa:
I love you so. I want a watch and a baseball suit, and I want a football too. I have three brothers and one sister. They will like the football, too. My brother Randy will play with it too.
Love,
Rex Thomas,
Route 2, Slaton, Texas

MOVE TO SLATON

The Harlan Browns, formerly of Conway, Arkansas, are new residents in Slaton where he is employed with Paul E. Hardeman in construction work. Brown is the son of Mr. and Mrs. J. H. Brown, 737 S. 5th St. in Slaton.

Mr. and Mrs. Brown have four children, John Arthur, 14; James Michael, 12; Terry Lynn, 3½, and Yvonne Marie 2½ years old.

Mrs. Joe Teague, Jr., spent Thanksgiving in Morton with her daughter and family, the Courtney Sanders.

Wow-That's really clean! the seat covers.

We're just thorough enough in our Methods service to do a GOOD job. We know HOW and we prove it to you—any time!

WYLIE OIL COMPANY
1400 S. 9th VA 8-7111

Wilson Oil Company
Wilson, Texas Phone 2261

- *BUTANE, PROPANE
- *PHILLIPS 66 GAS, OIL, COMMERCIAL, INDUSTRIAL GREASES and BATTERIES
- *LEE TIRES and TUBES
- *AUTO ACCESSORIES

Get Your Quality **INTERNATIONAL HARVESTER** Farm Equipment PARTS AND SERVICE
SLATON IMPLEMENT CO.
Lubbock hi-way VA 8-4933

41% Of The National Homes FINANCED BY SAVINGS AND LOAN
LET US HANDLE YOUR HOME FINANCING
SLATON SAVINGS AND LOAN

- St. Paul Lutheran Church
Mo. Synod, Wilson
Rev. R. F. Kamrath
- First Nazarene Church
635 W. Scurry
Rev. Charles Stuart
- Westview Baptist Church
830 S. 15th
- First Methodist Church
305 W. Lubbock
Rev. Rollo Davidson
- Church Of God
206 Texas Ave.
Rev. B. E. Coker
- Church Of Christ
11th & Division
Roy Dean Verner
- Assembly Of God
340 W. Division
- Missionary Baptist Church
1010 South 21st
Ray Smith
- Southland Baptist Church
Rev. Ray Minor, Pastor
- Southland Methodist Church
Rev. B. B. Byus
- First Baptist Church
Wilson
Rev. H. F. Scott
- Acuff Baptist Church
W. O. Donley, Pastor
- Our Lady Of Guadalupe Church
700 S. 4th
- St. Joseph's Catholic Church
Msgr. T. D. O'Brien
19th & Lubbock
- Gordon Church Of Christ
Cline Drake, Minister
- Acuff Church Of Christ
Brooks Terry, Minister
- Grace Lutheran Church
840 W. Jean
Rev. Leroy R. Deans
- St. John Lutheran Church
Wilson
Rev. John W. Onda
- First Baptist Church
255 S. 9th
Dr. Charles Wood
- First Christian Church
145 E. Panhandle
Rev. E. A. Wilbur
- Immanuel Lutheran Church
Posey
Rev. F. A. Wittig
- First Presbyterian Church
425 W. Lubbock
Rev. Fred Ryle
- Bible Baptist Church
W. Panhandle
Rev. H. E. Summar
- Wilson Methodist Church
Wilson
Rev. W. A. Rucker Jr.
- Pentecostal Holiness Church
105 W. Knox
Rev. W. L. Comstock
- Trinity Evangelical Methodist Church
Rev. Weldon Thomas
- African Methodist Church
Rev. J. S. Gilbert
- First Assembly of God
14th & Jean

There's a Friendly Church Near You



Who is master?

Are the hands holding the money; or, is the money holding the hands?

That's an important question for every one. Either a man masters his money or is mastered by his money—or even by the lack of it. Riches are not evil and poverty is not a virtue; but either the love of money or the hatred of poverty can so captivate a person that he becomes a slave to whichever he allows to possess him.

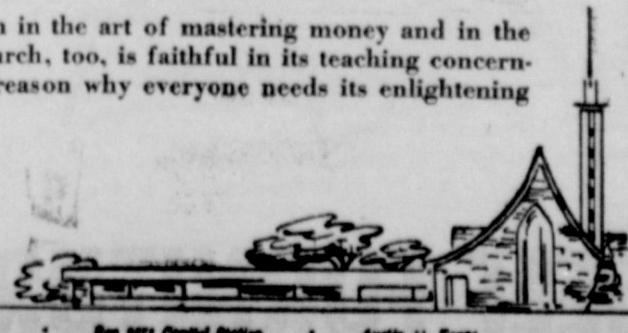
The prayer of the man in the Old Testament was wise:

"Give me neither poverty nor riches; feed me with food convenient for me: lest I be full, and deny thee, and say, Who is the Lord? Or, lest I be poor, and steal, and take the name of my God in vain."

The Bible is our faithful guide, both in the art of mastering money and in the grace of enduring poverty. The church, too, is faithful in its teaching concerning these things—which is another reason why everyone needs its enlightening ministry and continuing inspiration.

*PROVERBS 30:8,9

"Other foundation can no man lay than that is laid, which is Jesus Christ."



Religious Feature Publications - Wm. B. Walker, Director • Box 9711 Capitol Station • Austin 11, Texas

THIS MESSAGE IS MADE POSSIBLE BY THESE MERCHANTS:

- O. D. KENNEDY AUTO PARTS
"Your Automotive Parts Distributor"
- SLATON CO-OP GINS
"Owned And Operated By Farmers"
- CUSTER'S GULF SERVICE STATION
350 S. 9th VA 8-7128
- SPRADLEY'S FURNITURE AND UPHOLSTERY
- SLATON SAVINGS & LOAN ASS'N.
"We Pay You To Save"
- WILL AYERS FARM STORE
555 Railroad Ave. VA 8-4902
- CROW'S GROCERY AND STATION, COSDEN GAS
1320 S. 9th Slaton, Texas
- JANES - PRENTICE, INC. SAND & GRAVEL
For The Construction Industry
- HOWARD GIN
- BECKER HUMBLE PRODUCTS SERV. STA.
400 S. 9th VA 8-7108
- BRUCE'S CAFE
Lubbock Hwy. VA 8-7114
- PIGGLY WIGGLY GRO.
Slaton, Texas
- WEST TEXAS GRANITE AND MARBLE WORKS
Searcy O. Henry, Owner
- UNION COMPRESS AND WAREHOUSE COMPANY
- Higginbotham - Bartlett Lumber Company
225 N. 7th VA 8-4523
- CARROLL OIL COMPANY
Lubbock Hwy. A 8-4206
- WILLIAMS FUNERAL HOME
Unlimited Insurance Protection
Cadillac Ambulance Service
- RAY C. AYRES & SON, INC.
Grain - Feed - Seed
- HENZLER GROCERY
- SLATON IMPLEMENT CO.
Lubbock Hwy VA 8-4933
- WILSON FRIENDS
- WILSON SUPER MARKET
Pat Campbell, Owner
- KATZKI GIN COMPANY
- WILSON STATE BANK
- CAMPBELL GRAIN AND FERTILIZER CO. INC.
- ACUFF FRIENDS
- ACUFF CO-OP GINS
"It's Your Association"
- SOUTHLAND FRIENDS
- DASINGER DRILLING CO.

NAVY CROCKETT
FRONTIERSMAN WHO HELPED DEFEND THE ALAMO.

cancelle
protects
Open a
checking
account today.

WILSON STATE BANK
VA 8-4543

Floral Arrangement Was Program Topic

The Athenian Study Club met Tuesday in the home of Mrs. Doug Galassini, with Mrs. Bob Kern in charge of the business session. It was noted that the club project for 1962-63 of remodeling the Girl Scout house in Slaton was well underway.

Mrs. R. C. Hall Jr. introduced Mrs. Bill Chriesman who presented the program on "floral arrangements". Mrs. Chriesman demonstrated several basic arrangements for the group. Present were guests Mrs. Bruce Pember and Mrs. Dick

Cheatham, and members Mesdames Marlin Bumpass, Willard Childers, Surman Clark, M. G. Davis, Tommy Davis, Floyd Guelker, R. C. Hall Jr., George Harlan, S. H. Jaynes, Bob Kern, Joe Miles, James Perkins, George Privett, Lee-man Reasoner, Harley Martin and J. D. Stell.

The December 4th meeting will be held in the home of Mrs. J. D. Stell.

Mrs. J. A. Warren and grandson, Randy Warren, spent Thanksgiving with her son and family, P. A. Warren at Denver, Colorado.

Civic-Culture Club Has Guest Program

Guest night was conducted by the Junior Civic and Culture club at its November 20th meeting held at the Slaton club-house. The program was presented by Mrs. J. A. Wright and Mrs. Webber Williams Sr. Mrs. Wright played at the piano, with Mrs. Williams at the organ.

Hostesses were Mrs. Joe Wickler, Mrs. L. T. Kincer, Mrs. J. A. Wright, Mrs. Mary Gilmore and Mrs. Yates Key.

Brenda and Susy Crowson had Thanksgiving dinner with their grandparents, Mr. and Mrs. C. W. Phillips.

Arson Charged

Radio Antennas Topped Thefts During Holiday

A rash of vandalism and theft over the Thanksgiving weekend ended with a charge of arson in Slaton to highlight police activity during the past seven days.

At least eight reports of car radio antennas stolen or damaged were made to city police Friday. Among residents reporting antenna theft or damage were R. W. Bowman Jr. of 808 S. 18th, Don Britt who told of a Forrest Lumber firm pick-up antenna being broken off, R. J. Hurst of 1900 S. 17th losing both an antenna and hubcaps, Paul Mosser of 805 S. 19th, Roman Pemberton, 750 S. 19th, both losing antennas, Ray Wilkins of 230 S. 16th missing antenna, gas cap and fender skirts, and Ellis P. Schmid, 655 West Garza, having two antennas bent or broken.

Raymon Rolfe of East Park Addition, 4th & Scurry, reported Sunday that a .32 caliber automatic pistol had been stolen from his trailer house.

Eva Nell Hindman, 130 W. Geneva, was charged in district court Monday with arson at her home in Slaton. She was released from jail custody in Lubbock after being placed under \$2,500 bond. Slaton city patrolman answered a fire call at 11:30 a.m. Sunday to the West Geneva address when Mrs. Hindman was reported to have told Patrolman Edward Taylor that she had started the fire with gasoline, as a revenge on her husband. Considerable damage was done to the residence. Police records show that Mrs. Hindman refused to sign a statement at the time, however.

City jail arrests in the Nov. 21 - Nov. 26 period included 19 for drunk, one simple assault, eight of possession by a minor, two juvenile delinquency, one abusive language and insulting an officer, one vagrancy, and one arson.

SCHOOL MENU

DECEMBER 3-7

Monday - Baked meat loaf, buttered blackeyed peas, carrot sticks, cornbread, butter, rice pudding, 1/2 pint milk

Tuesday - Corn dog with mustard, spaghetti with tomatoes, tossed vegetable salad, plum cobbler, 1/2 pint milk

Wednesday - Baked turkey and dressing, green beans, celery sticks, fruit salad, 1/2 pint milk

Thursday - Beef patties with gravy, creamed potatoes, cabbage salad, hot rolls, butter, 1/2 pint milk

Friday - Special fish sticks, tartar sauce, baked potato, butter, pear salad, 1/2 pint milk

Mr. C. W. Phillips was admitted to Post Memorial Hospital Saturday with a broken rib.

Slaton Art Club Entertained In Anderson Home

Members and guests of the Slaton Art Club met Tuesday evening in the home of Mrs. Claude Anderson, with Mrs. Yates Key hostess.

During the business session, Mrs. Key, president, appointed Mrs. Byron Johnson, Mrs. Glenn Atnip, and Mrs. Truett Fulcher to make arrangements for the club's annual Christmas party, tentatively set for December 11. Names were drawn for the Christmas party.

"A Painting of Your Impression of Fall" was displayed by each member as roll call was answered.

Mrs. Key presented a most informative program on "Still Life and Arrangement". She lectured from Leon Franks, "How To Do Still Life", and displayed a number of her own still life paintings. Samples of evocative paintings were distributed to each member, who with a marker completed the painting according to their own impression.

A dessert plate was served to members Mesdames Martin Collins, Jess Tims, Glenn Atnip, Truett Fulcher, M. L. Turnbow, G. A. Jaynes, Byron Johnson, Claude Anderson, Ellis Schmid, Clyde Doherty, Yates Key, and Betty Burks, and guests, Claudia Anderson, Mrs. Kirk, and Mrs. John H. King.

Convicted Arsonist Files Appeal for Hearing in Austin

Hearing was scheduled in Austin yesterday before the Court of Criminal Appeals on application filed by Kelly Mack Bounds, 19, of Slaton, who was convicted in March and sentenced to two years in prison on an arson charge.

Bounds and Wayne McCain, 25, also of Slaton, were charged with setting fire to two vacant houses in the Slaton area; McCain pleaded guilty and was assessed a two year sentence.

Reports are that Bounds' appeal is based primarily on his assertion that his signed statement was involuntary in that it was prompted by implied promises of a lesser penalty.

BRELANDS RETURN FROM VACATION

Mr. and Mrs. J. M. Breland have returned from Los Angeles, California, where they were guests of Mr. and Mrs. Truett Loudamy. Mr. Loudamy, formerly manager of the Safeway Store in Snyder, is now manager of one of the grocery stores in the Los Angeles area. The foursome spent two days in Las Vegas, where they saw the Danny Thomas show being filmed to be shown December 31.

Enroute home the Brelands visited friends in Snyder and San Angelo for a week. Their grandson, Tony Breland, accompanied the Slaton couple home for a visit.



Travis W. "Pee Wee" Kendrick was hospitalized late Tuesday afternoon after accident at intersection of 9th Street, Garza and Panhandle in Slaton. He was taken to Mercy Hospital for 2 broken ribs, a cracked rib, possible knee injury and bruising.

The accident happened, according to city police report, when a near-collision between the Kendrick scooter and a car driven by Terry Lee Hendrix. Hendrix, 9th street, stated he applied his brakes to avoid a collision with the 13-year-old southeast on Panhandle. Kendrick was said to have fallen off his scooter, rolling down the street.

Kendrick is the son of Mr. and Mrs. M. G. Kendrick of 370 East Panhandle. Kendrick is pictured above as ambulance attendants reached the scene of the accident to transport him to the hospital.

Townsend Rites Held on Tuesday

Funeral services for William Oscar Townsend, 72-year-old Slaton resident, were conducted Tuesday afternoon in the Church of Christ in Slaton. Mr. Townsend died Sunday afternoon in Mercy Hospital following a lengthy illness.

Officiating at the services was Roy Verner, minister, assisted by Horace Coffman of Lubbock. Burial was in Englewood Cemetery under direction of Williams Funeral Home.

Pallbearers were Jonah White, Leon Bunkemper, T. D. Bishop, Herbert Garrett, Raymond Wilkins and Paul Kitchens.

Survivors are his wife and three sons, Carl Lee Townsend, Odessa, and Wayne and Billy Townsend, both of Lubbock; three daughters, Mrs. T. C. Workman, Edmonson, Mrs. L. G. White, Bakersfield, Calif., and Mrs. L. E. Patterson, Fresno, Calif.; three brothers, Wyatt Townsend, Booneville, Ark., Omer Townsend, Clovis, N. M., and Charlie Townsend, Holdenville, Okla.; three sisters, Mrs. M. L. Emerson, Dallas; Mrs. C. A. Sims, Holdenville, and Mrs. Olen Dagggs, Booneville; 15 grandchildren and four great-grandchildren.

Mr. and Mrs. J. A. Warren, Randy Warren and Miss Ora A. Mining attended the funeral of Mrs. H. L. Bullard, at Duke, Oklahoma, Monday.

Mr. and Mrs. Charles Schroeder and children of Winthorst have been visiting Mrs. Schroeder's parents here. Mr. and Mrs. C. V. Kitten.

E. L. Dunn, son of Mr. and Mrs. Hubert Dunn, was home from San Francisco to spend the Thanksgiving holidays. He has finished his basic training in the Air Force at Lackland base in San Antonio.

No. 3 Continued From Page 1

State Highway Safety and Betterment Program just authorized by the Highway Commission.

Under this plan, a total of 2,369 miles of U.S. and State highways will be improved. Work will be done on 356 projects in 164 counties. Total statewide cost will be about \$20,640,000.

The annual Safety and Betterment Program is one of the prime factors responsible for a significant 26 per cent drop in the number of traffic deaths on primary highways during the last eight years, the Commission said.

"Together with programs for new construction and careful maintenance, the Safety and Betterment Program has helped achieve a meaningful reduction in traffic fatalities on the primary highway system," said Herbert C. Petry, Jr., Chairman of the Highway Commission.

Petry termed the Safety and Betterment Program as "not only desirable but essential for the safety and comfort of people who travel Texas highways in record numbers."

The program, he said, will "perpetuate and protect the taxpayers' investment of well over \$2 billion in the Texas highway program."

No. 1 Continued From Page 1

ments of financial condition, cash receipts and disbursements, comparison of official budget with revenues, comparison of budget with expenditures; and statements of indebtedness, non-funded debt, delinquent taxes and collection, cash in bank, and cash receipts and disbursements of the athletic fund.

Further findings by the auditors indicated a complete clean bill of health on 13 specific items including properly adopted budget, properly amended budget, properly bonded tax assessor-collector; bonded bus drivers, properly drawn vouchers, adequate security of bonded depository; absence of nepotism in personnel employment, absence of pecuniary interests of board members in firms transacting business with the district, business-like assessing and collecting of taxes, properly separated tax revenues, proper deposits in correct accounts, and following of accounting procedures as prescribed by the State Board of Education.

Copies of the audit report are

in the hands of Dr. Lee Vard members.

Principal of school district Hatchett, board member Kendrick, board member Harold Tucker, and member J. W. Martin, and R. E. Ayedy, superintendent, and C. L. W. manager.

No. 2

ing income tax security. Assertion was opponent in tion, and also back newspaper's position essential every auditor system several years. Upon being tonite if her concerted effort statewide trustee, Mrs. Rick negative, station is my question the services were tended."

Advertisement for KUSS ELECTRIC WIRE SUPPLIES. Includes a graphic of a hand holding a wire and contact information: Motor Appliance REPAIR, VA 8-3225.

Advertisement for Hamilton Beach, 2-Year Guarantee ELECTRIC BLANKETS. Includes a graphic of a blanket.

Advertisement for a flashlight with a 2-Year Guarantee for \$13.88. Includes a graphic of a flashlight.

Advertisement for a flashlight with a \$1.39 Value for \$98c. Includes a graphic of a flashlight.

Advertisement for Corning Ware for Christmas. Includes a graphic of a Corning Ware dish.

Advertisement for a Mirror Automatic PERCOLATOR for \$10.88. Includes a graphic of a percolator.

Advertisement for Lasater-Hoff HARDWARE. Includes a graphic of a hammer.

Large advertisement for EARL EBLEN, Is Now Owner and Operator of The Eblen Pharmacy. 245 West Lubbock. This is the former Bill Ware Pharmacy. We urge you to come and visit us.

Advertisement for 'Thanks Folks' for loyal support and patronage during the time served at Bill Ware Pharmacy. We know that you will continue to support Mr. and Mrs. Earl Eblen who have purchased our store. Again, Thank You... Betty and Bill Ware.

Large advertisement for Home Gifts. 'EVERYONE WILL ENJOY!' Features a 7-PC. CONTEMPORARY LIVING ROOM GROUP for \$188.00. Includes a graphic of a living room set. SELF FURNITURE COMPANY, 235 West Garza, Slaton, Phone VA 8-4407.



AND ACCOMPLISHED — Slaton Majorettes Dee Chappie and Shera Harris were caught by the camera here as they led the Slaton School Band in precision marching competition last Tuesday at Jones Stadium in Lubbock. The Slaton aggregation copped top honors for marching and excellent playing in this annual Interscholastic League Band competition. Other members of the organization in the above picture, left to right, are Sheila Carter, Dianne Underwood, Dennis Morgan, Barbara McCook, and Nancy Buxkemper.

Club Donates Fund To Boys Ranch

Mrs. Joe Teague Jr. entertained members of the Bluebonnet Club the afternoon of November 14th, with Mrs. T. E. McClanahan, president, in charge of the business meeting.

A donation was made at this time to the Boys Ranch at Amarillo.

Games were played, and refreshments were served to Mesdames McClanahan, Sammer, Jarman, Boyd, Patterson, Upham, Parks, Wicker, Hodge, two new members Mrs. Bert Lamb and Mrs. Travis Taylor, and two guests, Mrs. Dan Liles and Mrs. O. Z. Ball.

Carol Ann Self Is Member Theta Rho

Carol Ann Self, daughter of Mr. and Mrs. Cecil Self, 255 South 17th, recently was initiated into Theta Rho, a woman's social club at Lubbock Christian College, Lubbock, Texas.

Organized last year as a result of LCC's fifth consecutive record enrollment, the club participates in inter-campus sports events, competes for the highest cumulative grade average of the 11 social clubs at LCC, and holds special events such as banquets and picnics.

Miss Self, a May graduate of Slaton High School, is a freshman at LCC.

RELATIVES VISIT

Mr. and Mrs. O. G. Burns of Big Spring visited during the Thanksgiving holidays with his brother and family here, the E. R. Burns'. Also visiting with Mr. and Mrs. E. R. Burns were their two daughters, Mrs. S. G. Butler and son Dan of Cactus, and Mr. and Mrs. J. L. Carothers and daughters Carol, Jan and Gina of Levelland.



MRS. A. W. BALMANNO nee Diane Heinrich

Heinrich-Balmanno Vows Exchanged in Slaton

Wedding vows were exchanged in a double-ring ceremony Saturday for Miss Diane Heinrich and Arthur William (Billy) Bal-

manno, both of Slaton. The bride is the daughter of Mr. and Mrs. W. A. Heinrich of 1055 W. Lynn; and the groom is the grandson of Mrs. L. W. Walston, Sr., 350 W. Crosby, Slaton.

The vows were read by The Rev. Fr. Clinton at 4 p.m., Nov. 24th, at the St. Joseph's Catholic Church in Slaton. The church was decorated with white mums and greenery.

Given in marriage by her father, the bride wore a gown of imported flowered brocade, fashioned with a fitted bodice and bouffant skirt with an added arrangement of roses made of self brocade, cascading down skirt. A lovely headpiece was a creation of finger-tip imported illusion, fashioned on a rose surrounded by orange blossoms. She carried a cascade of an orchid and off-white roses.

Charmaine Heinrich, sister of the bride, was maid of honor, wearing a street length dress of autumn gold, fitted bodice, and matching accessories. She carried off-white roses.

Bridesmaids were DeEtta Buxkemper, cousin of the bride, Rosa Walston, sister of the groom; Mrs. Wendell Brierley all of Slaton, Brenda Cordell of Amarillo was junior bridesmaid; she is a cousin of the bride. The bridesmaids wore royal blue satin dresses identical to that of the maid of honor. They carried cascades of off-white roses.

Zoe Ann Preston was flower girl.

Society - Clubs

The Slaton Slatonite

MERLE KING, SOCIETY EDITOR

PHONE 4202

Thursday, November 29, 1962

The Slaton Slatonite

Anniversa Is Observed

Mr. and Mrs. J. R. Mueller of Wilson were honored on their Fiftieth Wedding Anniversary with a reception and dinner Friday afternoon at the St. John's Lutheran Parish Hall.

Hosts for the occasion were the children and their families, Mrs. Marcus Wilke of Southland, Leroy Mueller, Sundown; Mrs. L. H. Traweek, Wilson, and Burnell Mueller of Lubbock.

The serving table was laid with a cloth of gold satin covered with golden net. The centerpiece consisted of bronze mums intermingled with open

balls of cotton edged with golden glitter. Golden colored punch and coffee were served with the wedding cake.

Approximately 200 guests registered during the calling hours. Guests registered from Lockney, Dimmitt, Sundown, Levelland, Lubbock, Morton, Tahoka, Post, Southland, Wilson, Slaton, Stephenville, and Portales, New Mexico.

Out-of-town relatives that attended were Mr. and Mrs. Gus Schaffner, Mr. and Mrs. Ed Wagner, Mr. and Mrs. J. B. Mueller, W. A. Luddeke, Mrs. Alma Leick and Werner Afflerbach, all of Cuero, Texas, Mr. and Mrs. Carlton Mueller and family, Mr. and Mrs. Elmo Weischwell and family, Mr. and Mrs. Arlen Mueller and family

SEE NO. 2, BACK PAGE

Music Groups To Entertain At Rotary Meeting

The Choraleers and Mixed Choir of the Slaton High School are presenting the music program today at the local Rotary Club meeting.

Approximately 100 members of the groups will perform under direction of Mrs. M. G. Davis.

Expected selections will include Japanese Lullaby, Christmas Bells, Silent Night, Jingle Bells and Once in Love with Amy.

SEE NO. 1, BACK PAGE



Christmas decorating?
EASY! USE YOUR READY-LITE
JUST PLUG IN!!!



SOUTHWESTERN
PUBLIC SERVICE
COMPANY



Honored in late October on occasion of their Golden Wedding Anniversary, Mr. and Mrs. J. J. Kitten experienced the rare privilege of their entire family being together under one roof. Numbered were five sons, a daughter, 28 grandchildren and two great-grandchildren.

Shown in the picture above, front row left to right, are Clyde Kitten, Cassandra Kitten, Derek Kitten, Deana Wimmer, Diana Wimmer, Wade Wimmer, Lois Marie Wimmer, Carol Kitten, Edward Kitten, and Lloyd Kitten; second row: Floyd Kitten, Larry Kitten, Joyce Kitten, Charlene Kitten, Rodney Kitten, Mrs. Rodney Kitten, Doris Kitten, Janet Kitten and Clifford Kitten; third row: Charles Kitten, Leroy Kitten, Mrs. Wm. Earl Kahlich, William Earl Kahlich holding great-granddaughter Phyllis, Mrs. James Kitten, James Kitten holding great-grandson Wesley, Douglas Kitten, and David Kitten; fourth row: Joe L. Kitten holding Lester, Edmund Kitten, Mrs. E. J. Wimmer, The celebrants, Mr. and Mrs. J. J. Kitten, J. B. Kitten, Mrs. P. (Sad) Kitten, and Nestor Kitten; and back row: Mrs. J. I. Kitten, Mrs. J. B. Kitten, Mrs. J. B. Kitten, Mrs. G. F. Kitten, and Mrs. J. B. Kitten.

Use Want Ads

IF YOUR PLATES DON'T FIT GET "CUSHION" NOW
A new Plastic Jelly, Apple "Cushion" from tube to dry plates. Place in mouth and bite down gently. "Cushion" flows and molds to shape of your mouth. "Cushion" congeals and forms soft seal in plates that holds for weeks. To remove, just suck out and apply more. Plates can be washed and used without damage. Try it.
3 mts. supply only \$1.49 At all drug stores.

Letters to Editor

It has been published in a local paper under the heading, "Beverage Group Pledges Aid to Local Causes". We note that several youth organizations are

to share in this gift. Since liquor has never caused anything but heartache for its users and caused many to waste a life that our youth organizations are dedicated to help, we cannot believe the motive of these liquor groups are for the help and well being of our youth. We call upon all leaders of the youth organizations to let it be known that they will neither seek nor accept such gifts from an organization of liquor interests. Read and approved by a unanimous vote of the congregation of the Bible Baptist Church 11/25/62.
H. E. Summar

- Copies sent to:
Slaton Journal
KCAS Radio
Mr. Luther Gregory — American Legion League
Mr. Ellis Schmid — Pony League
Mr. Alex Webb — Little League
Mrs. Larkin Taylor — Slaton Welfare Group
Mr. Bill McElroy — Boy Scouts
Mrs. W. L. White — Girls' Summer Youth Program

VISIT IN KENTUCKY

Mr. and Mrs. Joe Holland and children Terri Anne and Bubby have returned from a 2-week vacation taking them to Dallas and to Kentucky. They visited Mr. Holland's parents in Kentucky, and they visited Mrs. Holland's brother and family in Dallas. Mr. and Mrs. Fred R. Potthast.

Is your bookkeeping system up to date? Check at the Slatonite for ledgers, fillers, Ideal Systems, tax records. Phone VA 8-4202.

Happy Birthday

- November 29: Rebecca Jayne Carpenter, Mike Murphy, Lonnie Gerngross.
November 30: Richard Schelling, K. W. Campbell, R. H. Todd Jr., Mrs. M. A. Pember, Roy W. Carpenter, Mrs. J. E. Eckert Jr., Ervin Roberts, Mrs. Wilburn Macker, Mrs. Don Howell.
December 1: C. D. Kitchens, James M. Barton, Mrs. Milton Pivonka, Betty Brookshire, Tom Roche, Louise Davidson, Mrs. Ginber (Barton) Bowles.
December 2: Mrs. Oscar Schwertner, Donnie Schilling, Buddy Jones, Mrs. Joe Shelton, Mrs. J. B. Caldwell, Evelyn E. Martin.
December 3: Mrs. Howard Swanner, LeRoy Holt, Mrs. A. A. Russell, Mrs. Jack Carpenter, Sandra Brake, Sue Brake, Mrs. H. E. Isbell, Kathie Mann.
December 4: C. E. Smith, Rodney Banks, Mrs. H. L. Moore, Mrs. Hugo Pivonka, Janice Kahlich, Margie Sue Lowe, O. M. Baxley, Mrs. F. H. Lowry, Raymond Buxkemper, A. B. Lockett, Rudolph Gerngross, Lois Comstock.
December 5: Roxann Schwertner, Mrs. Leon Heerin, H. H. White, Robert Brake, Cheryl Baugh.

LAND FOR SALE
PUBLIC AUCTION

December 10, 1962, Post, Texas

Approximately 147 acres of farm land in Garza County, Texas, being a part of the S. W. Potter estate. This land is located about 1 mile Southeast of Southland. All of this land is in cultivation and State Highway 84 goes through it. It is the Northeast Quarter of Section 1261, Cert. No. 170, J. H. Gibson Abstract No. 310, less highway right-of-way.

Also a lot 198 feet by 110 feet located in Southland, Texas.

This land will be sold at public auction to the highest bidder at the Courthouse door in Post, Texas, at 10:00 o'clock A.M., on Monday, December 10, 1962.

Seller reserves the right to reject all bids if he deems bid insufficient.

Major A. Taylor, Trustee
1419 E. Lons
Brownfield, Texas

LEGAL NOTICE

The Zoning Board of Adjustment has received a request for special permit for the construction of a commercial building to be used as a grocery store and self service laundry on Lots 1 & 2, Block 51, South Park Addition, belonging to Jim Gallegos. Said lots are in A R-3 zones.

The Zoning Board of Adjustment will meet in the directors room of the Slaton Savings and Loan Association building at 5:15 p.m. on Tuesday, December 4, 1962, to consider this matter. You are hereby invited to attend and give any testimony that you desire.



SHYTTLES
Implement Co.
Phone 35 Post, Texas

Give The Gift That Keeps On Giving . . . RCA VICTOR

No Finer Gift For All The Family
RCA VICTOR
Mark 8
COLOR
TV

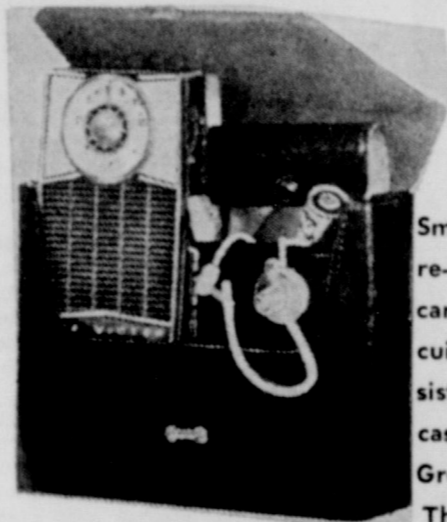


Powerful, Dependable Black-&-White TV

All-new MARK 8 Color Television

What better way to say "Merry Christmas" than with RCA Victor Mark 8 Color TV! Here is unexcelled viewing excitement . . . a picture so bright, so true you have to see it to believe it. RCA's High Fidelity Color Tube is the industry standard. For unsurpassed performance in any TV signal area, see the amazing New Vista Color TV. Come in . . . see why RCA Victor is your best buy in Color TV!

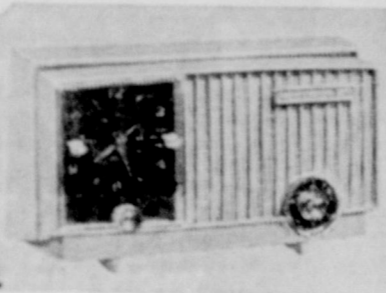
RCA VICTOR
GIFT POCKETTE
PERSONAL RADIO



Smartly packaged "Powerlift" Pockette Radio in re-usable cosmetic case. Earphone, battery and carrying case included. Exclusive "High T" circuit for longer battery and transistor life, 6 transistors and sharp, direct-drive tuning. "IMPAC" case in Charcoal/Storm Grey and Blue/Storm Grey. H—4 1/32"; W—2 1/2"; D—1 3/32".
The CHARM 3RH2-G Series

Versatile Clock Radio

Lulls you to sleep with music! Sleep switch provides up to 60 minutes of music, shuts off automatically. Set clock for "Wake to Music" or buzzer alarm. In Antique White, ar. Cream, Turquoise, Maple Sugar.
H—6 5/8"; W—12 3/4"; D—5 1/2".

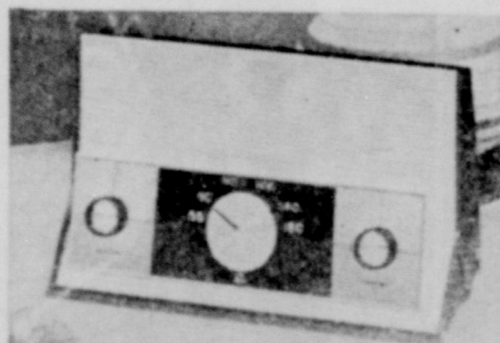


RCA VICTOR "FLITELINE"
Tape Cartridge Recorder



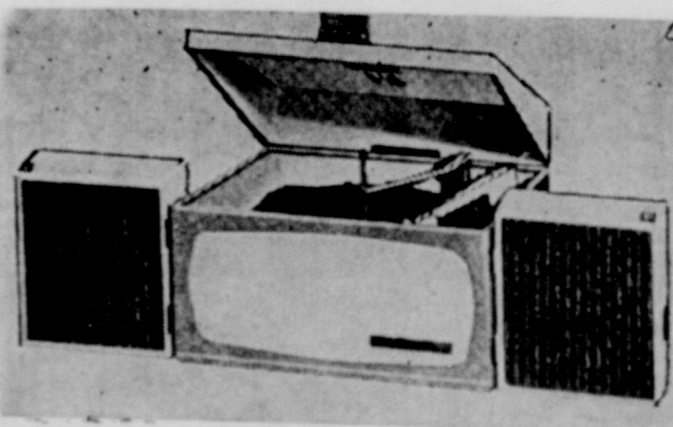
Tape cartridge convenience — No reels to thread — just put on a cartridge and turn the dial to record or play! Two speeds, up to four hours of playing time. Complete with microphone. In Dark/Light Grey with Aluminum trim. H—7 1/8"; W—9 7/8"; D—11 3/4".
The PROMPTER, 1YB1 "Fight Line" Series.

RCA VICTOR TABLE
AM RADIO



Deluxe AM radio with "Filteramic" Antenna. Screens out "nuisance noise" from electrical appliances. Other top-quality features include precision Vernier tuning, lighted dial, Security Sealed Circuitry. In four two-tone colors: Iceberg White and choice of Mist Brown, Black Pearl, Shrimp or DarkGreen.
H—7 3/4"; W—12 5/8"; D—4 1/2".
The SPLENDOR 3RA6 Series.

FINEST IN PORTABLE
Total Sound Stereo
By RCA VICTOR



True stereo sound at a modest price. Handsome portable comes with two detachable 4" speakers; dual amplifier; automatic 4-speed changer with dual sapphire styli; plus continuous tone control and separate volume controls for each speaker. In Turquoise/White.
H—11 1/8"; W—17 1/2"; D—17 3/4".
1VC1 Series.

FHA Loan Program Is To Aid Recreational Enterprises

L. J. Cappleman, State Director of Farmers Home Administration, has announced that loans may now be made to farmers and ranchers who personally manage and operate no larger than family farms for providing recreational facilities which will enable these family farmers to supplement their farm income.

Loan funds for recreational enterprises may be used to develop land and water, construct buildings, and to purchase land, equipment and other related recreational items including the payment of operating expenses. Recreational enterprises which may be financed on family farms include camping grounds, swimming facilities, riding stables, vacation cottages and lodges, lakes and ponds for boating and fishing, docks, nature trails, picnic grounds and hunting preserves.

Each loan is scheduled for repayment within a period consistent with the borrower's ability to repay, taking into account his income from farming, recreation enterprises and any other income he may have. The maximum repayment period of the loan depends on what the funds are used for and the security provided for the loan. Repayments on loans secured by real estate may not exceed 40 years. Repayments on loans for non-real estate purposes may not exceed 7 years. The interest rate is 5 percent per year on the unpaid principal.

The county or area committee of the Farmers Home Administration determines the eligibility of the applicant. The committee consists of three farmers who know rural farming and credit conditions in the local area.

Technical management assistance will be provided with each loan. The amount of the loan depends upon the applicant's needs and repayment ability. A borrower's total principal indebtedness for intermediate-term FHA loans and equipment and operating expenses may not exceed \$35,000. A long-term loan secured by real estate may not exceed \$100,000.

Tech Thinclads Host Nebraska In Season Opener

Texas Tech's basketballers open their season against University of Nebraska in the Lubbock Coliseum at 8 p.m. Saturday.

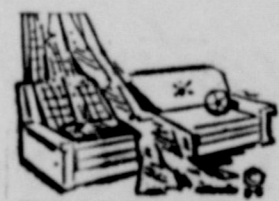
Preceding the clash with the Big Eight team will be a game between the Texas Tech frosh and the West Texas State freshmen at 6 p.m.

Texas Tech, the leading team in the Southwest Conference the past two seasons, is re-building following the loss of four starters by graduation. These four men — Harold Hudgens of Ballinger, Del Ray Mounts of Perryton, Roger Hennig of Mathis, and Mac Percival of Vernon — accounted for 79 percent of the Red Raider scoring the past two years.

Coach Gene Gibson is expected to choose his starters from the only returning starter, Bobby Gindorf of Pampa, Harold Denney of Amarillo, Sid Wall of Dallas, Mike Farley of Lubbock, Mike Gooden of Lubbock, and Bill Murren of Atlantic City, N. J., a Decatur Baptist College graduate.

Next week the Red Raiders meet University of New Mexico in Albuquerque Thursday and entertain University of Florida Saturday night. Both season and individual game tickets are still available.

Need desk trays, blotter pads to bring your office up to date? Call VA 8-4201 for prices on enlarged supply of office supplies.



Selection and Craftsmanship is a Fine Art

AUTO UPHOLSTERY

Let us help dress up your car

WILEY'S

Call VA 8-4905 — Or Come In
Just 2 Doors Behind Porter Lumber on

Convenient Terms
We'll Be Happy To Deliver
Christmas Eve

WENDELL

RADIO & SERVICE
Authorized Dealer
West Side of City Square, Slaton, Texas

Slaton
10
Reside
• Comm
• Minor
• Contr
• Small
• Repair
• Wash
• Repair
Expes
Cos
Derrel
V
Spra
10
BUY
LIGH
CHR
The soft g
extends a
visitors, y
determent
fictive loc
cost, a G
unusual an
friends, or
Visit PNG
five new s
play, or
Pioneer on
PIONEER
GAS
COM
Uphol
Service
In,

Mr. and Mrs. Noble Wynn have returned home after a visit to Truth or Consequences and other points in New Mexico.

Mrs. Jack Myers and Nedra Myers visited Clifford Leddy and Florene Maley at Abilene recently.

A Train of Thought Is Useless Without a Timetable

Railroad Events . .

News about Railroad Folks For Railroad Folks



(Special for the Slatonite)

HERE AND THERE: Our Slaton High School Band did us mighty proud last week in Lubbock where they took a "1" in the Marching Contest, and a lot of those good little marchers are sons and daughters of Railroaders! Congratulations!

Mrs. Bisbee of the Chamber of Commerce tells me that us railroaders are slipping up when it comes to cooperating with that office in publishing the new City Directory. She says they have only 170 employee slips from the Santa Fe and that means there are quite a bunch of us who haven't filled one out. This is a new undertaking for Slaton and we should all be mighty proud of it and get our slips in. If you haven't filled one out you can pick them up at several places — The Division Engineer's Office, the Master Mechanic's Office, the Yardmaster's Office or at the Chamber of Commerce Office.

Mrs. Bisbee says she will even take the information over the telephone if some of you are too busy to give her the information any other way! Let's get going and get the Santa Fe represented in the City Directory like it should be!

VACATIONS AND TRIPS
Lots of rail hands are running around to spend Thanksgiving with their relatives and friends this past week and quite a few had relatives and friends visiting for Thanksgiving . . . Steno Lori Anne and Fireman Wayne spent Thanksgiving with Lori Anne's sister in Lockney along with her mother and father, Retired Librarian and Mrs. Claude Young . . . Call Boy and Mrs. J. E. Eckert and their children made a trip to Six Flags at Dallas over the Thanksgiving weekend. That is quite a little place and well worth the trip if you have children — even if you don't have children, I think!

File Clerk Vivian Williams spent Thanksgiving Day in Hamlin with her mother and friends . . . Senior Clerk Bill Brown and family spent the weekend with his family at Sylvester, Texas . . . Roadmaster Allen Crowley of Wellington, Kansas stopped by the Division Office for a minute on his way to visit relatives. Allen is an ex-Slatonite and ex-railhand on the Slaton Division.

Relief Clerk Billie Pitts is back with us again for awhile after being off about a month and making a trip to St. Louis, Missouri with her husband and two boys. Dispatcher Dudley Berry is taking his three-weeks vacation and is attending the Grand Lodge Assembly of Texas at Waco, Texas, as instructor.

VISITORS
Claim Adjuster and Mrs. Arthur Martin of Lubbock have their son Bruce and his family visiting with them . . . Yardmaster and Mrs. Fred England have had their son and his family visiting with them over the Thanksgiving holidays . . . Car Distributor and Mrs. Norman Spears have had Norman's mother, Mrs. J. P. Spears of Newton, Kansas, visiting in their home over the Thanksgiving holidays.

The Rev. B. B. Byus is able to be back in the pulpit after having his arm broken several months ago. Pastor of the Methodist church here, he has preached the last two Sundays after recuperating.

Letter To Santa Claus

Dear Santa Claus:
I am four years old. I want a Teddy Bear, a stage coach, and a covered wagon. I want a gun and holster set, a fire truck and a cannon. I also want an Alamo set of men. I want a toy bus also.
Love Always,
Danny Montgomery

Dear Santa Claus:
I am six years old and I want an army combat set, an arm cannon, and a covered wagon. I want a big Teddy Bear for my bed, some Chinese Checkers and a gun and holster set. I want a fire truck, too. I want a boxer and navy mickey at a boat that runs, 3-piece can and boat set.
Love Always,
Jerry Montgomery

Let Us Make Your

FURNITURE Versatile! Decorative!
For The Festive Holidays

will have a warm feeling of pride and contentment if your furnishings are up to date with the "new look" that our expert craftsmen will give your home. Ask about our large collection of fabrics.

Give A Gift Certificate That Can Be Used When Needed . . .
A Gift Certificate For Upholstery Work From . . .

Spradley's Upholstery

166 Texas Ave. Phone VA 8-7143

for the Holidays



BRIGHT BROCADE
Blossoms bloom upon brocade in this A-line gown. Rose trims the low-cut back.

Slaton Dress Shop

108 So. 9th VA 8-4621

STUCK ?

Ideas for the PLIGHT Before Christmas

- Electric WASHERS
 - Electric REFRIGERATORS
 - SLIPPER CHAIRS
 - Worm Rockers
 - Accessories
 - Motor Pillows
 - PICTURES
 - SOCKS
 - WALL LAMPS
 - TABLE LAMPS
 - STEP TABLES
- Marble Top Tables
 - DESKS
 - DESK LAMPS
 - BUNK BEDS
 - DINETTES
 - TOY CHESTS
 - Juvenile Rockers
 - Training Chairs
 - TABLE LAMPS
 - Cocktail Tables
 - STEP TABLES
- JUVENILE SOFAS
 - Juvenile Chair & Table Sets
 - Stuffed Animals
 - GUN CABINETS
 - GUN RACKS
 - Stereo Phonograph
 - TAPE RECORDERS
 - China Cabinets
 - HUTCH
 - Maple Dining Room Suites
 - BED SPREADS
- Artificial Fruits & Flowers
 - DOOR MIRRORS
 - RUGS
 - CARPETS
 - LINOLEUM
 - BEDDING
 - CARD TABLES
 - CRADLES
 - CRIBS
 - WALL MIRRORS
 - Framed Mirrors

In, Bring Your List, Browse Around, Shop For Gift Favorites From . . .

Bland's Furniture

FINANCIAL STATEMENT of the Slaton Independent School District for the year 1961-62

DISBURSEMENTS	
Administration	\$ 27,687.34
Instruction	414,834.01
Health Service	5,011.32
Pupil Transportation	13,850.48
Operation of Plant	28,118.89
Maintenance of Plant	13,000.44
Fixed Charges	2,762.23
Food Service	35,056.98
Capital Outlay	114,571.58
Debt Service	105,582.71
Total Disbursements	\$760,475.98
ENDING CASH BALANCES — AUGUST 31, 1962	\$ 53,995.18
BEGINNING CASH BALANCES — SEPTEMBER 1, 1961	\$ 99,348.42
RECEIPTS	
Local Sources	\$206,069.83
County Sources	44.94
State Sources	410,340.50
Federal Sources	6,647.47
Loans	29,600.00
Incoming Transfers	7,420.00
Sale of Bonds	55,000.00
Total Funds Available	\$814,471.16

These statistics are taken from the audit of the accounts of the Slaton Independent School District made by Hallmark, Brasher, and Hearn, Certified Public Accountants, Lubbock, Texas.

Bazaar-Dinner Plans Finalized

Final plans for the dinner-bazaar to be sponsored Saturday by the Cuba Circle of the First Methodist Church were made last Wednesday at home of Mrs. M. G. Davis. The bazaar opens at 2 p.m. Saturday in the Fellowship Hall of the First Methodist Church. Christmas gifts and decorations will be featured, as well as food items. Mrs. W. S. McWilliams is in charge of the sales. Mrs. V. C. Wheeler, Mrs. Bill Ware and Mrs. Bob Kern are members of the gift committee.

A free nursery, staffed by Rainbow Girls, will be provided for shoppers at the bazaar. The nursery will be open throughout the dinner also.

There will be two dinners, one at 6 p.m., the other at 7

p.m. both featuring roast beef. Food committee members are Mrs. W. S. McWilliams, Mrs. Calvin Lamb, and Mrs. D. Galasini.

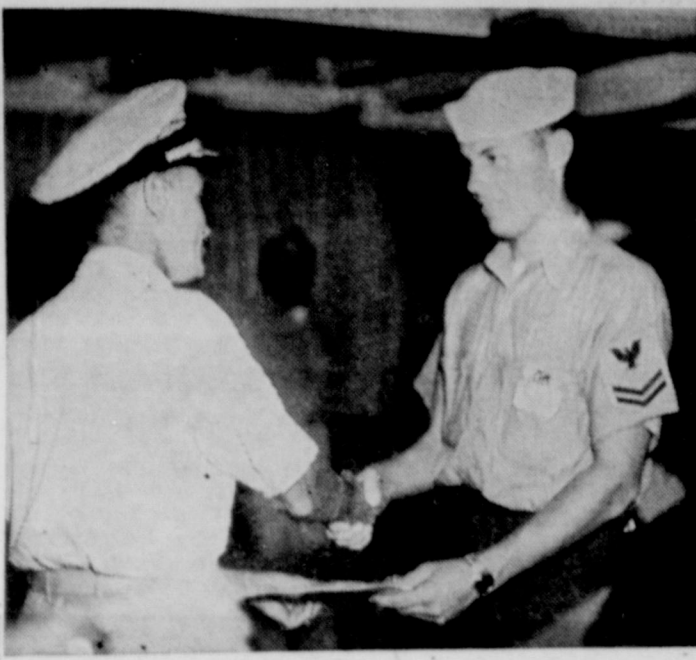
Tickets for the dinner may be purchased from any W.S.-C.S. member, or at the door. Tickets are \$1.50 for adults, and \$.75 for children.

A Christmas program under the direction of Mrs. M. G. Davis, and Mrs. Phil Brewer, will be presented at 6:30 p.m. and 7:30 p.m.

Publicity committee members are Mrs. H. Wade Krizan, and Mrs. Bob Kern.

Mrs. R. C. Hall, Jr. is coordinating chairman for the event.

Mr. and Mrs. Hurman Dabbs, Mr. and Mrs. Hansel Hallman, Mr. and Mrs. Charlie Dabbs and Mrs. Sam Martin went to the funeral of Bill Dabbs at Amarillo on Monday. The deceased was a brother of Hurman and Charlie Dabbs and Mrs. Hallman.



John Elmer Todd Jr., son of Mr. and Mrs. John Todd of 525 West Crosby, Slaton, is shown, above, as he received promotion in the Naval Reserve while assigned to Pearl Harbor, Hawaii. Todd was accorded the rank of Electronics Technician (Radar) Second Class in the ceremony on November 16th.

Rites at Post For Mrs. Rogers

Funeral services were held Sunday in Post for Mrs. J. W. Rogers Sr., longtime Garza County resident and sister of Mrs. J. W. Pettigraw of Slaton.

Mrs. Rogers, 54, died Saturday evening in Mercy Hospital in Slaton where she had been hospitalized for one day.

Services were held in the Calvary Baptist Church, Post, with burial in Terrace Cemetery.

Surviving are the husband, four daughters, Mrs. Dolan Dempsey, Seagraves; Mrs. Curtis Williams, Post; Mrs. Joe McCowan, Post, and Miss Joan Rogers, of the home; two sons, J. W. Jr., Post, and Bobby, Borger; two sisters, Mrs. J. W. Pettigraw, Slaton, and Mrs. Frank Rogers, Lubbock; two brothers, Weldon Dodson, Monahans, and R. B. Dodson, Post, and 11 grandchildren.

Mexican Supper Is Served Centurettes

"Memories of Thanksgiving" was the program topic presented by Mrs. Truman Ford at the November 19th meeting of the Centurette Study Club in Slaton. The meeting was held at the T. H. Basinger home. Mrs. Pat Taylor as co-hostess with Mrs. Donald Basinger and es. Mrs. Tim Bourg presided at the business session.

A Mexican supper, pumpkin cake and cokes were served to the twenty members and one guest present.

Members present were Mmes. Jackie Allred, Wayne Banks, Arlie Bownds, Harley Castleberry, Tip Culver, Jack Haliburton, Joe Holland, Jack Haire, Hobert Limmer, Dwayne Preston, Jerry Don Ross, Randy Sanders, Joe Ross, Ralph Thorpe, Ray Wilkins, W. B. Wilks, and Basinger, Taylor, Bourn, Ford and the guest, Mrs. W. M. McElroy.

No. 1 Continued From Page 1

girl, and acolytes were Douglas Cordell, Amarillo; Danny Heinrich, Slaton, cousins of the bride.

Ring bearer was John Edward Lott of Ft. Worth, cousin of the bride.

Best man was James Kitten; and groomsmen were Dan Shelby, Wendell Brieger and Ronnie Bagby. Junior groomsmen was Stanley Heinrich, brother of the bride.

Ushers included Gerald Heinrich, Eugene Heinrich, Jerry Kitten, Billy Bednarz, all of Slaton and cousins of the bride; and James Beardon, Canyon, Dale Edmunds, Lubbock.

Wedding music was afforded by the St. Joseph's choir, with Mrs. D. J. Hlavaty as soloist.

Out of town guests were present from Ft. Worth, Amarillo, Salem, Oregon; and Plainview, Montana.

For her going-away attire, the bride wore a Kelly green wool suit with matching accessories.

TO LIVE IN LUBBOCK

The couple will live in Lubbock where the groom is employed by Amco Electric.

The bride attended North Texas State University and Texas Tech where she plans to continue her studies. Balmanno attended Tarleton College and Texas Tech.

Members of the houseparty included Misses LaNelle Heinrich, Jan Lott, Carol Sue Walston, Pam Henry, Pat Shelby and Rose Kahlich.

Mesdames Wilson Lott, Ervin Heinrich, Oscar Buxkemper, Victor Heinrich, Oscar Heinrich, Durwood Cordell, Herbert Heinrich, Lewis Droemer, Leon Walston, D. W. Walston Jr., Alvin Droemer, Keith Stovall, Pete Bruedigam, Franklin Kitten, Dale Edmunds, Clarence Kitten, Bud Kitten, Paul Mosser, Nestor Kitten.

Mesdames A. A. Kahlich, C. O. Heinrich, A. B. Bednarz, Hugo Mosser, Charlie Walton, Walter Bednarz, August Kitten, Truett Bownds, Ed Haddock, M. M. Brieger, Paul Buxkemper, Robert Striet, W. O. Heinrich, Dan Winn, S. O. Henry, Willford Kitten and A. A. Wimmer.

No. 2 Continued From Page 1

and Mrs. Julius Baca, all from Yorktown, Texas; also Mr. and Mrs. Otto Helbrick and Mr. and Mrs. Walter Mueller of Westhoff. Others were Mr. and Mrs. T. D. Denny and family of Oklahoma City, Mr. and Mrs. L. D. Mueller, Seguin, and Mrs. C. N. Roth, Wetmore; Mr. and Mrs. Herbert Geohring, Austin, and Mr. and Mrs. Piermont Schaffner and family from Yoakum.

THE OLDER THEY ARE THE HARDER THEY FALL



SURPRISE HER With A Dream Gift For Now or for Xmas

Slaton Gift Shop

Rely on your PHARMACIST

Facts about PHARMACY

America's PHARMACISTS PRESCRIPTIONS BY MILLIONS

Week in and week out, millions of prescriptions are being filled for Americans by pharmacists. These prescriptions relieve suffering, lengthen life and help keep our citizens healthy.

Slaton Pharmacy

Prompt Delivery Service

"Where Pharmacy Is a Profession"

COURTEOUS PRESCRIPTION SERVICE

NOW IS THE TIME TO BUY Christmas Appliances WHILE Reduced Prices ARE ON ALL RCA WHIRLPOOL WASHERS DRYERS Refrigerators FREEZERS

During The Month Of November You Will Make The Biggest Savings Ever On The Appliances At

BAIN AUTO STORE

146 W. GARZA

NOW at Anthony's

C. R. ANTHONY CO.

Where You Always Get The Highest Quality Merchandise At The Lowest Prices

PRE-CHRISTMAS SALE

OF

LADIES' DRESSES

Now Is The Time To Buy Several Dresses For Christmas Gifts Or For Yourself ... At This Low Price You'll Want Several



REGULAR \$6.95 LADIES'	DRESSES	Sale Priced 5⁸⁸
REGULAR \$8.95 LADIES'	DRESSES	Sale Priced 6⁸⁸
REGULAR \$10.95 LADIES'	DRESSES	Sale Priced 8⁸⁸
REGULAR \$12.95 LADIES'	DRESSES	Sale Priced 9⁸⁸
REGULAR \$14.95 LADIES'	DRESSES	Sale Priced 10⁸⁸
REGULAR \$16.95 LADIES'	DRESSES	Sale Priced 12⁸⁸

TAKE ADVANTAGE OF THESE TERRIFIC BARGAINS TODAY!