

The Slaton Slatonite

A MEMBER OF MOST FAMILIES IN THE SLATON TRADE AREA
SLATON, TEXAS, LUBBOCK COUNTY

15¢
PER COPY

65th Year, No. 12

Dec 18, 1975

Signing Up Dream Trips

Persons in the area have already made deposits and are waiting for the upcoming trip. Europe which are being arranged by the Slatonite.

by the Slatonite and Wholesale Tours International. Your plane tickets will be made beforehand, and all you need do is sit back, relax, and enjoy the tour of whichever country you choose.

For more information on the tours, come in and see Sandy, or call her at 828-6201 today.

Next Two Issues Of Paper To Be On Tuesdays

Schedules for news and advertising copy for the Slatonite will be all out of whack for the next two weeks, since issues normally scheduled for Thursdays will be printed on the next two Mondays and in the hands of subscribers Tuesday morning.

The early publication date will allow Slatonite advertisers to offer last-minute gift and grocery items in time for the holidays each week.

Copy deadline for next week's issue will be 10 a.m. Monday (the Slatonite will open at 8 a.m. that day), with the same deadline to be observed the following Monday, Dec. 29.

The Slatonite office will be closed from noon Dec. 24 to 8 a.m. Dec. 29, closing again on Dec. 31 and open on a regular schedule Jan. 5.



PAIS FOR SURE — This youngster and Santa Claus hit it off right away as Santa met with the small fry for the first of two Friday afternoons at Slaton Chamber of Commerce last week. Santa talked with lots of kids and drew names for free turkeys given away by Slaton merchants. Twenty-eight more turkeys will be given away Friday, and Santa will be on hand again at the chamber office starting at 4 p.m. (SLATONITE PHOTO)



HOOP HUNTING—Bill McClesky is seeking the basket with this shot during the Slaton-Idalou basketball game Monday night. Behind Bill is Danny Kenney, and at left is Jack Whaley. Idalou won the game. (SLATONITE PHOTO by Gary Jones)

Tigers To Play Mules Today

Slaton Tigers will play Muleshoe at 4 p.m. today in the first round of the Reese Air Force Base Christmas Classic basketball tournament.

The winner of the game will play the winner of the Denver City-Christ the King game. Winners of these games will play at 7 p.m. Friday; losers will play at

2:30 p.m. Friday. Slaton is now 0-4 after losing to Crosbyton 62-55 Tuesday, despite Jack Whaley's 22 points.

A winter fashion energy-saving tip for the lady at home. Wear slacks, they'll keep you 1.5 degrees warmer than a skirt.

WEATHER

Courtesy of Pioneer Natural Gas Co.

Date	Low	Hi
12-11	40	78
12-12	26	40
12-13	36	68
12-14	46	72
12-15	20	44
12-16	28	62
12-17	25	32

Rain—1975—22.00

Trained Volunteers Needed So City Can Get Ambulance

By SANDY MARTIN

A new modular ambulance stocked with \$5,000 worth of sophisticated emergency equipment sets in Lubbock, awaiting delivery to Slaton.

Before the emergency vehicle can be put to use in the city, a crew of six Emergency Medical Technicians (EMTs) has to be trained. These EMTs must be community volunteers who are willing to devote their time as ambulance attendants.

"A volunteer EMT crew is as important as a volunteer fire department. EMTs can save lives. That's an important public service to the community," said Stuart E. Haggard, Emergency Medical Services Coordinator for the Lubbock City-County Hospital District.

The distribution of the

modular ambulances is part of a county-wide effort to establish an emergency medical system. Three of the ambulances are in operation in the city of Lubbock, with one each in the communities of Shallowater, Abernathy, Wolf-orth, Idalou and Slaton.

Restriction

Because of the equipment in the ambulance and the goal of trained medical emergency care, no one may operate the vehicle except EMTs.

"In the past," said Haggard, "ambulance attendants had only 20 hours of basic first aid. It takes more than a thousand hours of training for a beautician to be qualified to fix hair, but ambulance attendants were going out to give emergency treatment with just the slightest training."

The contract between the

Hospital District and the city of Slaton calls for at least six EMTs to be available in the city for ambulance attendant duty. At the moment, Mike Whitley, a Slaton police officer, is the only Slaton resident who is a certified EMT.

A new class of EMT training will begin in January, and it is hoped that several citizens will volunteer for the training. The city will pay the cost of the schooling for those who will volunteer for ambulance attendant duty.

The classes will be conducted each Monday and Thursday night, from 6 to 10 p.m. at Lubbock Christian College. The entire EMT training consists of approximately 80 hours of classroom work, 40 hours of hospital emergency room work, a written final, a practical skills test, and a defensive driving course.

Varied Training

Included in the training will be instruction in the following areas: airway obstruction; pulmonary arrest; mechanical aids to breathing; cardiac arrest; bleeding; shock; wounds; fractures; head, face, neck and spine injuries; eye, chest, abdomen, pelvis and genitalia injuries; medical emergencies and cardio-pulmonary resuscitation; childbirth; lifting and moving patients; environmental emergencies; extraction from automobile; and the operational aspects of responding to ambulance calls.

The EMTs will be familiar with all the equipment aboard the ambulance and will be skilled in its use. Some of the ambulance equipment includes portable resuscitation, anti-shock trousers, installed and portable suction, airways, bandages and splints, a trauma kit, oxygen, and extraction equipment.

The EMTs will also be trained in removing patients from wrecked cars and other entrapments. The ambulance is equipped with a gas power saw and a tool that is best described as a giant can opener.

When the Slaton volunteers finish the training in mid-March, the ambulance will be delivered. It is to be used for emergency runs only. The city's present ambulance will be used for transport purposes.

The details of how the EMTs will split shifts, care for the ambulance, etc. will have to be worked out once their training is complete and the ambulance is in operation.

Slaton citizens who are interested in the EMT program should contact city secretary Alex Webb. The next class begins in January, so those interested should speak with Webb immediately.

Bale Count Grows

Total number of bales ginned in the Slaton area reached at least 63,636 this week. Actually the total is more than that, but two gins in the Wilson area could not be reached by phone Tuesday, so their totals for the previous week

were carried again. Totals for the individual gins: Wilson Farmer's Gin 2483, Moses Gin 2790, Gatzki Gin 1575, Wayside Gin 3230, Wilson Co-Op 5650, Hackberry Co-Op 5875, Southland Gin 2800, Farmers Gin of Slaton 3660, Posey Gin 2561, Union Co-Op 4945, McCung Co-Op 4021, Acuff Co-Op 8046, and Slaton Co-Op 16,000.

Grower prices were \$7.50 to \$15 per bale higher during the week ending Dec. 12, reported Paul R. Dickson, of the Lubbock Cotton Classing Office. Farmers sold mixed new crop lots of mostly grades 41, 32 and 42, staples 29 through 31, mikes 3.3 through 4.9 for 46.30 to 47.50 cents per pound. Mixed lots of mostly grades 41, 51, 32, 42 and 52; staples 28 through 30, mikes 3.2 and lower brought 37.75 to 39.40 cents.

The USDA's Agricultural Marketing Service reported trading was active and growers offered new crop cotton in moderate volume.

Prices paid growers for cottonseed ranged from 75-110 dollars per ton, mostly 75 to 85 dollars.

Five Auto Accidents Reported

Five auto accidents were investigated by Slaton Police Dept. during the last week, with the driver of one of the cars being taken to St. Mary's Hospital in Lubbock for treatment of injuries.

Linda Longtin Payne, 725 W. Division, was injured when the 1970 Chevrolet she was driving Friday morning skidded on wet pavement and overturned on U.S. 84 near Woodrow Rd.

Last Wednesday on the high school parking lot, a collision involved a 1964 Chevrolet driven by Timmy Leo Gaydos, 1135 S. 14th, and a 1970 Chevrolet driven by Jimmy Louis Steffens, 355 N. 18th.

Two accidents occurred Saturday. At 9th and Garza a 1969 Olds driven by Lynn Edward Jackson of Lubbock and a 1958 Chevrolet truck driven by Refugio Faz of Somerset, Texas, collided. And in the 1800-block of Division, a 1968 Ford driven by R.G. Copeland struck a tree.

On Monday in the 100-block of N. 9th, a 1974 Chevrolet pickup driven by Pedro Cantu, 1025 N. 6th, and a 1968 Buick driven by

Ann Haddock Edmunds, Rt. 1, collided.

A bicycle earlier reported stolen from Joyce Montgomery, 745 1/2 S. 7th, was recovered, with the recently inscribed identification number used in determining ownership.

A plate glass window, approximately 6x8 feet, and valued at \$300, was damaged by vandals who apparently fired an air rifle at the building at 1350 S. 9th.



ROLLOVER INJURES DRIVER — Driver of this vehicle, Linda Longtin Payne of Slaton, was injured as the car skidded on wet pavement on U.S. 84 and rolled over twice. She was taken to St. Mary's Hospital in Lubbock after the wreck Friday morning. (SLATONITE PHOTO)



WELL EQUIPPED — This is a view of the modular ambulance looking in through the back doors. Equipment and supplies are stored all throughout the vehicle. The ambulance can carry two patients comfortably, but can be used to transport four if necessary. The ambulance will be delivered to Slaton as soon as an EMT crew is trained.

Cooper-Vance Vows Recited In Woodrow

Delsey Latrice Cooper and Jerry Douglas Vance recited vows of matrimony at 7:30 p.m. Dec. 6 in the Cooper Church of Christ in Woodrow.

Dennis Atherton, a Lubbock Christian College minister, officiated at the double ring ceremony.

Parents of the couple are Mr. and Mrs. Bobby C. Cooper of Rt. 6, Lubbock, and Mrs. Dub Tippit and George Vance, both of Lubbock.

Given in marriage by her father, the bride wore a formal white gown of silk organza styled with a high neckline, puff sleeves and a chapel length train. Lace and pearls accented the dress. She wore a long white net veil trimmed in lace.

The bride carried a white covered Bible, topped with white carnations accented with red and white baby's breath.

Missy Cooper, sister of the bride, was maid of honor. Sherry Cooper, sister-in-law of the bride, was bridesmatron.

The attendants wore red

velvet long dresses styled with empire waistlines with cummerbunds trimmed in white lace. A lace inset at the neck accented the dresses. They carried white carnations with red baby's breath and white lace streamers.

Best man was Forrest Mayes. Groomsman was Dale Schaffner, and Ricky Denzer and Buddy Cooper were ushers.

A reception in the home of the bride's parents followed the wedding.

Following a wedding trip to Dallas, the couple is at home in Lubbock, where Vance is employed with Allied Electric Co.

Both the bride and groom are Cooper High School graduates.

A rehearsal dinner was given in the Cooper Church of Christ.

BIRTHS

12-11-75—Mr. and Mrs. Joe Sanchez Jr., Idalou, a boy, Joe Jr. III, 8 lbs, 2 oz.



MRS. JERRY DOUGLAS VANCE
Delsey Latrice Cooper

Santa Draws Turkey Winners

Santa Claus sat patiently as kids of all sizes, shapes and ages crawled into his lap and made their Christmas wishes known Friday when the jolly old elf visited Slaton.

Approximately 75 youngsters spoke with Santa before he drew the winning names in the Chamber-sponsored turkey give away.

Those who won turkeys were Gertrude Stolle, Iva Crumbley, Susie Jameson, Bertha Quijada, Erlene Shenzler and Walter Dworaczyk.

Also, Jane Terry, Zella Morgan, Ferrill Creswell, Mike Tumlinson and T.H. Basinger. Ruth Mathis, Rita Mayo, Johnnie Pettie, Carmen Martinez and Norma Pike were also winners.

Other turkey winners were Mary M. Taylor, Lou Shackelford, Lupe Jimenez, Mrs. W.W. Rogers, Louis

Hernandez, Lona Bickers, Mrs. S.G. Butler and Welton Self.

Rounding out the winners were Lettie Traweck, Mrs. W.R. Greer, George R. Brake and Bill Townsend.

Santa will again be at the Chamber offices Friday at 4 p.m. He will hear the younger folks then draw again for the remaining 28 turkeys to be given away.

OFFICE SITE CHANGING

Relocation of the Lubbock County Hospital District offices to Metro Tower (formerly the Great Plains Life Building) was scheduled this week when the LCHD Board of Managers approved a lease contract. The move from the fifth floor of the Courthouse to the 17th floor of Metro Tower is planned Dec. 26.

Reception To Be Given For Evans Couple

Mr. and Mrs. L.E. Evans of Route 6 will be honored Sunday with a reception in their home from 2 to 5 p.m. in observance of their golden wedding anniversary.

Grace Vera Raymond and Gene Evans were married Dec. 20, 1925 in Southland. The Evans family came to the Southland area in 1919 from Dayton. The Raymonds, originally from East Texas, came to Southland in 1922.

The couple has lived in the Union-Woodrow community since 1935 where they farmed until his retire-

ment in 1971.

They are members of the Woodrow Baptist Church where Evans is a deacon.

The couple's three daughters, Mrs. Zack Payton of Rt. 6, Lubbock, Mrs. Ted Evans of Gruver, and Mrs. Bill Roberts of Grass Valley, Calif., and their families will host the event. The couple has 11 grandchildren.

Granddaughters will serve a cake, made by Mrs. Roberts, from a table decorated with gold sequinned bells and gold satin ribbon, handmade by Mrs. Evans.



MR. AND MRS. L.E. EVANS

Club Roundup

PIONEER STUDY CLUB

Daughters of Pioneer Study Club met Monday evening in the home of Mrs. F.E. Gill for the annual Christmas party.

Mrs. Bill Ball and Mrs. Bing Bingham were in charge of the program. Mrs. Ball read "Christmas in Jerusalem," written by Mrs. Evalyn Rucidlo of Fort Worth.

Eighteen members exchanged gifts. The next meeting will be Jan. 19 in the home of Mrs. Rush Wheeler.

PAST MATRONS

The Past Matrons Club met Dec. 15 in the home of Mrs. R.J. Clark. She was assisted with the hospitality by Mrs. Mary Gillmore.

Mrs. Lorene Berry gave the program, reading from Ideal magazine. Selections included "My Prayer, Let Christmas Be a Bright and Happy Day," by Mrs. B. Buck.

Everyone drew for the gift exchange.

The next meeting will be Jan. 19.

TOPS

Members of the TX69 Tops Club met Thursday night for their annual Christmas party and three month awards night.

Seventeen weighed in with 15 losing 17 1/2 pounds. Four Kops and one Kiwi maintained.

Thelma McCarver was weekly queen, and Sandra Johnston was both the November queen and the three month queen.

Mrs. McCarver and Joyce Biggs were graduated as Kops.

Winning the attendance contest were Sandra Johnston, Mickey Jones, Helen Meeks, Veida Gage, Margie Green, Uawana Johnston and Thelma Johnson.

Gifts were exchanged, secret pals were revealed and drawn for again, and new contests were started. Tonight will be auction night again.

GARDEN CLUB

The Slaton Garden Club met Wednesday for a luncheon in the home of Mrs. George Harlan, with Mmes. Fred Englund, Gertrude Arranis and Harley Martin serving as co-hostesses.

Mrs. J.L. Cartrite gave the program on the Christ child, assisted by singing from Linda Robinson and Barbara Jones.

There were 30 guests and members present for the exchange of gifts.

BLUE BONNET CLUB

The Blue Bonnet Club met Dec. 10 in the Clubhouse for their annual Christmas party.

Club sisters were revealed and gifts were exchanged. Pumpkin pie and coffee were served. The next meeting is Jan. 14.

Christmas Gifts

Commemorative coins make great gifts!

Select from:
SINGLE COINS
COIN SETS
PENDANTS
BELT BUCKLES
BOLO TIES
KEY CHAINS

PRICES RANGE FROM
\$2.50 TO \$100.

On display now at the
Slaton Chamber of
Commerce.



Available in gold, silver, antiqued bronze, brushed silver.

OPEN EVENINGS TIL 7 P.M.

Anthony's

CR ANTHONY CO



JR. FASHION PANTS

The smooth good looks of polyester gabardine is combined with smart styling for the Jr. Miss. Sizes 5-15.

ON SALE THROUGH SATURDAY ONLY

\$12. EACH 3 FOR \$33.

JR. NYLON SHIRTS

BY HUK-A-POO SPORTSWEAR INC.

Printed novelty pattern long sleeve shirts that will mix and match with our Jr. Pants, S., M., or L.

\$11.

2 PIECE JR. SHIRT-VEST SETS

These polyester/cotton easy care shirts have been combined with corduroy vests with matching insets. Sizes 5-13.

\$15.

Shower Honors Bride-Elect

Carolyn Croslin, bride-elect of Bruce Jones, was honored with a miscellaneous bridal shower Dec. 12 in the home of Mrs. S.H. Jaynes.

The 21 hostesses presented the honoree with a vacuum cleaner. Special guests were the engaged couple's mothers, Mrs. William Lloyd Croslin and Mrs. R.C. Hall Jr.

Buying new Christmas tree lights? You'll save electricity by selecting strands of miniature or midget bulbs. They use only 18 watts per hour per set.

Coty
Gifts of glowing beauty
a reflection of your love.

Emeraude As Precious as the Emerald Jewel

EMERAUDE DUSTING POWDER A silken-soft, luxurious powder for after the bath, richly imbued with Emeraude fragrance. \$3.50

EMERAUDE SPRAY MIST "Want him to be more of a man? Try being more of a woman." Provocative Emeraude in a 1.8 oz. spray, gift-boxed. \$4.25

EMERAUDE PARFUM DE TOILETTE Versatile and long-lasting... all the deep sensuality of Emeraude in graceful, golden-capped flacons, elegantly gift-boxed. 1.25 oz., \$3.00 2.50 oz., \$5.00

SLATON PHARMACY
"THE DOCTORS' AID"
PHONE 828-6815 SLATON, TEXAS

Helen's R. Corn Recipe
(Makes 2 S)

- 1 cup cream
- 2 tablespoons
- 1 cup shredded cheese
- Salt and pepper

Heat corn at desired consistency and heat stirring frequently with salt. Serve over crisp noodles, bite-size or crisp buttered.

House P
Inside or
Call 828
SLATON LUN

Cooper High

Highlights

By CASSIE KITTEN

PROJECTS

Characters con-... dishes were... last week's... projects...

HONOR ROLL

There were 65 students announced as making the First Quarter Honor Roll this quarter. Honor Roll requirements are to have at least two A's, and to have no grade lower than a B.

Nursing

Lucy Butler is in the hospital. We hope her a speedy recovery. Our sympathy goes to the family of John Thomas, who died last week.

Home News

INA'S CRACKER BOX On the Old Post Highway (Fm. Rd. #2150) IS NOW OPEN ALL KINDS OF FIREWORKS ASSORTMENT BOXES WE ARE WELL STOCKED SHOP NOW FOR CHRISTMAS See MARVIN & LEE

TEMC To Give Song Program

"God Gave A Song," a Christmas musical, will be presented Sunday night at 6 p.m. in the Trinity Evangelical Methodist Church.

Classified Advertising Gets Results!

Make it easier for your friends and relatives to turn their heat down at night and save on energy costs. Electric blankets use little energy themselves, but keep that winter chill out.

THE Slaton Slatonite

DALTON WOOD, Publisher

Second Class Matter at the Post Office at Slaton, Texas under the act of March 3, 1897. Published at 163 S. 9th St., Slaton, 79364. TIMES PURCHASED JANUARY 20, 1977.

TEXAS PRESS ASSOCIATION



PARTY GIVEN - Pictured here are the guests of honor at a party Tuesday in the Slaton Care Center. The party was for those celebrating birthdays in December. Standing from left are Mrs. Jesse H. Camp and John Hartnett. Seated from left are Lutie Geer, Ed McKinney and Carrie Parker. (SLATONITE PHOTO)

Stancek Joins Hospital Staff

Katherine Stancek, a 1972 graduate of Texas Lutheran College, has joined the Baptist Memorial Hospital System's public relations staff with the primary responsibility of editing their publications.

arts, was formerly employed in the public relations office at Trinity University, and has taught journalism at Incarnate Word Schools in Corpus Christi for the past two years.



KATHERINE STANCEK

According to development and public relations director Janice O'Brien, Mrs. Stancek will also handle feature writing assignments and maintain contacts with the news media.

Mrs. Stancek is married to Jerry W. Stancek, an accountant. She is the daughter of Mr. and Mrs. William H. Walter, Rt. 2, Slaton.

Mrs. Stancek, who holds a degree in communication

ADVERTISING DOES NOT COST!

IT PAYS! SEE THE SLATONITE

Mi-Ree's formerly Sanders Fashions

NEW SHIPMENT

Mr. Mench pants suits

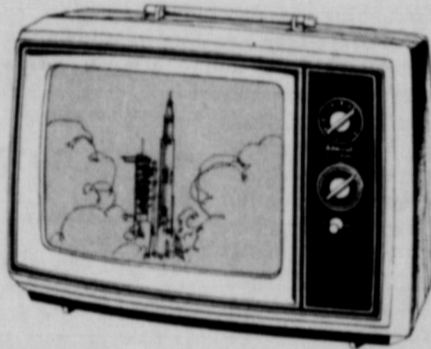
JEAN BLOUSES



828-3929 720 S. 6th

Admiral

The Smart Money Set.



• 13" (diag.) Super-Solarcolor TV. 3117P

• Compact styling made to order for small-area convenience.

\$288. W.T.



Admiral

One of the greatest values in Color TV history. Compact 18" (diag. meas.) portable gives you a Super-Brite color picture that's big enough for the whole family to watch. Come in and see it in action.

\$329.95

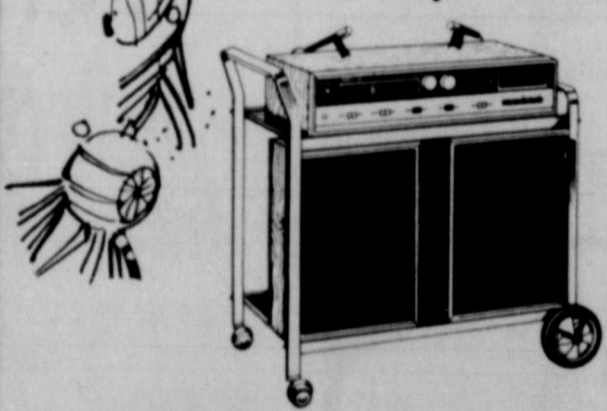


Admiral The LEXINGTON Model 25L08

25" (diag. meas.) Super-Solarcolor TV

Super-Solarcolor performance with Color Master Control convenience. A great combination at a great price!

\$588. W.T.



Admiral

Stereo FM/AM Radio, 8-Track Tape Player/Recorder

STC971 Superb sound in a compact system. Play/record stereo 8-track tapes; dial stereo FM/AM radio. Four full-fidelity quality speakers.

STC971

\$219.95



19T957

Admiral

100% Solid State Super-Solarcolor TV 19" (diag. meas.)

Portable color with console quality performance. Super-Solarcolor Black Matrix Tube brings brightest picture ever!

\$419.95

W.T.

SELF'S

Furniture & Carpets— T.V. & Appliances

W. GARZA,

SLATON

828-6584

Roosevelt News

by Lynda Hall and Sandra Patschko



KYLE MCLEOD

SBG

Nine members of the Roosevelt Student Body Government along with their sponsor, Coach Powell attended the District 5 Student Council convention at South Plains College in Levelland last Wednesday. They attended workshops on school spirit and assemblies.

Those that went are Milton Morgan, president; Connie Jordan; Michelle Smith; Judy Holmes; Twila Reid; Becky Mathis; Nancy Adams, treasurer; Cassie Adams and Charlie Ross.

FHA

Members of the Roosevelt FHA chapters, the La Petite and Katiebeth caroled at the Slaton Care Center last Saturday morning. Nancy Howard and Phyllis Orr, sponsors, also caroled. Adding more of the holiday spirit to the singing was the jolly ole man from the North Pole, Santa Claus. She, instead of he, handed out candy to the residents.

NEW FACILITIES

The new Title I Remedial classrooms building has been completed and the students are really enjoying the new facilities. The building is located just south of the kindergarten area with the entrance in the same area as the entrance to the kindergarten.

In case you're not familiar with the kindergarten area location, it is where the old cafeteria used to be.

The inside of the new facilities is paneled, carpeted, and well lighted. It also has its own rest room facilities.

This new building is a great asset to our school and something to be very proud of.

NEWS BRIEFS

Donnie Maines (Senior) and the Tommy Lee Band in which Donnie is a member will perform Friday at 2 p.m. at the school for the Toys for Tots. Each student is to bring a new toy or pay a dime to attend.

Friday is the last day of school until classes take up Jan. 5. Last day of this 6 weeks is Jan. 9.

Congratulations to the Roosevelt varsity girls for winning first place at the Idalou Tournament. This is two tournaments in a row the girls have walked away with firsts, after receiving first at the Roosevelt Tournament.

FUTURE FARMER

Donnie Maines, 18-year-old senior, son of Mr. and Mrs. James Lloyd Maines, has been chosen as the Roosevelt FFA member who has done the most outstanding job this month.

Donnie currently is vice president of the Roosevelt chapter after serving as

secretary last year. He served as president on the 6th place senior chapter conducting team and as a member on the second place Radio Broadcasting team in the District leadership contest against the 17 schools in the Lubbock district.

Also Donnie won first place at the District Banquet at South Plains College in the talent contest. This was the second year in a row he has picked his guitar and sang country music to the delegates. This qualifies Donnie for a chance to represent the district in area competition this spring.

BASKETBALL

In games played Dec. 8 the seventh grade girls beat Cooper 29-23. Karri Roberts led the scoring with 18 points. The eighth grade girls won 28-17 with Kelli Powell making 21 points. The ninth grade girls lost by a score of 36-34. Myra Mann was high point with 16 points.

In the boys action the seventh grade lost 31-24 and Jewel Fountain made 10 points. The eighth grade won 37-11 with Worthem Smith booting in 10 points. Ray Smith led the ninth grade to victory with 13 points making the score 29-20.

In the games played at Roosevelt Dec. 9 the J.V. boys lost to Abernathy 47-43. Darren Mann was high with 13 points.

The varsity girls defeated Abernathy 60-57 and Kay Harrison led with 30 points. The varsity boys lost 60-44 and David Taylor had 11 points.

At the seventh grade tournament at Slaton the girls played Abernathy Thursday and lost 32-19. Carla Seary led with 5 points. Friday the girls played Slaton and lost 24-8 with Carla Seary leading with 6 points. This put Roosevelt out of the tournament.

In the first game played Thursday the boys to Abernathy 34-27. Jewel Fountain had 15 points. Friday the boys played Ralls and lost by a close score of 28-27. Jewel Fountain led again with 10 points. This also put Roosevelt out of the tournament.

In the varsity tournament at Idalou the girls beat Christ the King Thursday 57-39. Debbie Trammel led with 21 points. Friday the girls defeated Freshup 50-38 and Kay Harrison tipped in 22 points. Saturday night Roosevelt beat Idalou for first place with a score of 62-48. Senior Ella Brown, guard, made all tournament.

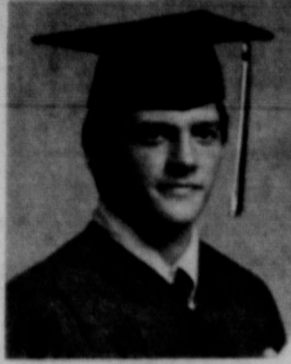
In the boys action Thursday Richard Adams led the winners with 20 points after defeating Christ the King 54-50. Friday Petersburg whipped Roosevelt 43-31 with Roger Daniel booting in 10 points. Saturday the boys were defeated for third place by McAdoo by a score of 58-52.

TURKEY WINNER

Carl Miller, 800 S. 14th, Slaton, was winner of the Christmas turkey given away by C. and V. Simmons, distributors of Amway.

FAVORITES

Class favorites for this school year are as follows: Seniors, JoAnn Lyles and Donnie Maines; Juniors, Karla Craig and Sammy Rojas; Sophomores, Cindy Thompson and Darren Royal; Freshmen, Rhonda Killian and Kyle McLeod.



DONNIE MAINES



CINDY THOMPSON



JOANN LYLES



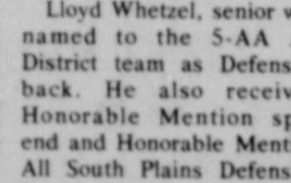
KARLA CRAIG



SAMMY ROJAS



DARREN ROYAL



RHONDA KILLIAN

HONORS

Lloyd Whetzel, senior was named to the S-AA All District team as Defensive back. He also received Honorable Mention split end and Honorable Mention All South Plains Defensive Back. Charles Baker re-

WEEDS IN YOUR

Bermuda & St. Augustine?

use **ferti-lome** WEED & SPECIAL FEED

Feeds and weeds your lawn at the same time. A complete, organic base plant food with pre-emergence herbicide added for weed control in established St. Augustine and Bermuda grasses. (Not for re-seeded or newly seeded lawns.)

LOOK FOR OUR GRAY BAG

ferti-lome

WE ALSO CARRY POTTING SOIL AND PEAT MOSS
Slaton Farm Store

During this busy season, shop
LUBBOCK'S QUALITY MEAT MARKET
Home of USDA choice quality beef.
Place Orders while shopping South Plains Mall. Pick up order same day.
Dec. Special
USDA Choice Side lb. 87c
5612 SLIDE RD. 793-0090

Thank you to all our customers and friends for making our Grand Opening a success.
Congratulations to the winners of our prizes:
Dorothy Brush
Won the Velvet Patchwork Bedspread.
Rosa M. Hughes
Won the AM-FM Stereo Radio, Tape and Speakers.

New Merchandise Arriving Daily
Sunshine Place
Southwest corner of square Downtown Slaton

Eblon's COURTEOUSNESS IS PART OF OUR PRESCRIPTION SERVICE!

We're never too busy to serve you with care...that's because your health is our first concern!

YOU KNOW YOU CAN TRUST YOUR PHARMACIST!

EBLEN PHARMACY

828-6537



OUTSTANDING TEACHER

Robert L. Becker, vocational agriculture teacher at Brownfield High School, was awarded the Honorary American Farmer Degree when the National FFA Organization honored 93 outstanding teachers in 1975. Becker is the son of Mr. and Mrs. Willie A. Becker of Rt. 2 Slaton. He is married to former Sally Buchanan of Slaton and they have three children. A representative Tractor Operations presented the award.

Coon Supper Draws Large Crowd Here

The thirteenth annual Coon Supper, sponsored by Post 438 of the American Legion, was Saturday night in the Legion and Auxiliary Home in Slaton.

There were 172 members and their guests present, with many local and Department dignitaries on hand for the evening.

Local members who were recognized at the banquet included Gold Star members Mrs. William Pohl, Pearl Pinchert and Ray Miller. Mrs. Henry Alice Jarman, a charter member of the Legion Auxiliary, was also recognized. Miss Poppy, Angie Forsythe of Lubbock, was presented to the banquet crowd.

Other officials from both the Auxiliary and Legion were introduced. Officials came from Plainview, Odessa, Big Spring and Lubbock.

Also on hand for the banquet were Slaton Mayor J.N. Landreth, Judge Rod Shaw, Sheriff Choc Blanchard, and County Commissioner Max Arrants. Larry Lahai was pre-

47 Accidents Listed In Area

The Texas Highway Patrol investigated 47 accidents on rural highways in Lubbock County during the month of November, 1975, according to Sergeant O.C. Guthrie, Highway Patrol supervisor of this area.

These crashes resulted in one person killed and 19 persons injured.

The rural traffic accident summary for this county during the first 11 months of 1975 shows a total of 474 accidents resulting in 18 persons killed and 287 persons injured.

Perfect Balance

Paper Tiger Checking Accounts
Budget up in the air? For your next act, open a Paper Tiger checking account. Then you can handle all your finances with the greatest of ease—and have an exact record of each move. Paper Tiger checking puts you on top of the situation, and everything balances perfectly.
A good bank has more answers than questions.

THE BEST OF ALL POSSIBLE BANKS
Wilson State Bank

O'Neal No To Who's Who

Mrs. Velma O'Neal, teacher at Stephentown school, has been named as an Outstanding Elementary Teacher Who's Who in Texas for 1975-76.

Mrs. O'Neal is notified of the honor by Mrs. M.E. Woolley, president of the National Research Development Corp.

The worst thing with the symptoms of arthritis can do is to see a doctor, even if you are busy with holding a job. The Foundation. Get help if you have: pain and stiffness up in the morning tenderness or swelling one or more joints repeated episodes of symptoms, particularly if they occur in more than one joint.

Call the Experts at SLATON LUMBER CO

828-6255

INSUR-MATION

By Bob Kern
Pember Insurance
828-6251

Although I've heard the term "underwriter" several years, I'm not sure I understand what it means. Can you explain this?

Technically an underwriter is the person who writes his insurance contract. Realistically the underwriter is the person who, after collating about the prospective insured and the relevant risk factors, whether the risk should either be accepted or declined on the terms of the specific policy. A soliciting insurance agent underwrites in that he does exercise the initial underwriting choice of prospects... thus eliminating the most uninsurable risks or finding the policy best suited to the prospect.

Christmas Tour Of Homes Here Praised

STAN VAUGHAN
 Sunday afternoon from Christmas for the "Tour of Homes" sponsored by the Women's Chamber of Commerce, but approached the home of Gill, 500 W. The festive look where met the door with pink decor of poinsettias. Inside the and furnishings to the Christmas table was laid cloth centered arrangement of pink roses, poinsettias with a filler and white dried

branches in a golden white glass container. Silver candle holders with pink tapers and silver appointments were featured. As visitors drank coffee and ate Christmas cookies they toured through the master bedroom with one wall of mantel with various Christmas decorations in a snow scene. A stained glass window in a bathroom was of special interest. The den had a lighted fire place with a Christmas tree nearby and a tall votive candelabra on the stereo.

room had at least two quilts displayed in them with the master bedroom displaying a poinsettia quilt. It was white background with red poinsettias. At the end of the hall was a most unique and beautiful arrangement of lighting surrounding a gold framed mirror. The living room had a white Christmas tree and all white decorations.

Finger sandwiches, cookies, coconut balls and punch were served from a table with a flowing fountain surrounded by red carnations. This was one trip to the country that all of the guests seemed to enjoy very much.

Quilts Admired

At the home of Mrs. Kenneth Davies south of Slaton lots of "ahs" were expressed over the breathtaking beauty of the quilts she had made. Each bed-

News And Views Of St. Joseph's

This past weekend the girls' and boys' basketball teams were busy in the Tahoka tournament. Thursday the girls played O'Donnell and won with a score of 24-21. Pam Mosser was high scorer, making 12 points.

On Friday they played Tahoka and won by 39-31, with Pam again being high scorer. In the finals Littlefield beat the Chargerettes by 26-18, with Gail Wimmer being the high scorer in the last game. In spite of the loss, the girls won a second place trophy.

The boys also beat O'Donnell on Thursday, but they were not able to beat Christ the King on Friday or Tahoka on Saturday. High scorers for the games were Darryl Heinrich and Mark Heinrich.

Christmas preparations are still underway with the second graders making a new decoration each week. The new decorations are used in the room and ones made the previous week are taken home to be used on family Christmas trees. All classes are collecting food, clothing and toys for the needy. In this way they want to share with others during this season.

Seventh and eighth graders are still busy polishing their Christmas play which will be presented on Monday at 7:30 p.m. We invite everyone to join us at this time, to enjoy the wonderful talents of our students.

The Christmas holidays begin at 11:00 a.m. Dec. 23 and will last until Jan. 5, 1976. Each room will close

This play was the story of a young girl who gave a Christmas party for nine unfortunate children.

The question of the week was "What are you going to do over the Christmas holidays?" Carla Basinger, Jill Basinger, and Leslie Brewer—Sit under the mistletoe and wait. Joe Ramirez — watch cartoons. Jody Overturf — Practice roping. Mark Meurer — open Christmas presents.



"— And then I says to him —"

SEASONS GREETINGS
 WATKINS QUALITY PRODUCTS, INC.
 Celebrate the 200th year with our
 old company. For dealer nearest you
 dealer opportunity information
 call..806-744-8212
 2222 27th st. Lubbock Texas 79411
 Helen Cummings



By JEFF BUSBY

Friday at 1:30 the 8th grade girls' basketball team will play the men teachers in a benefit game. Several women teachers will perform as cheerleaders.

Last week there was a seventh grade tournament here at the junior high gym. The boys won second when Levelland beat them by only 2 points. The Slaton girls won consolation and Abernathy won first in the girls competition.

Last Tuesday there were two plays presented by Mrs. Englund's sixth grade class and Mrs. Davies's sixth grade class.

Some of the characters in the play "The Forgotten Christmas" were as follows:

Prosecutor—Tommy Burrow

Defense Attorney— Jill Sikes

Santa — Bob Eakin
 Mrs. Claus — Cathy Davis

Rudolph — Jose Reyna
 Merry Elf—Jo Brewer
 Mr. Slaton—Ricky Jones

Officer Lawman — Jerry Graves

The year was 2975. Santa was arrested for breaking and entering and was on trial. Rudolf, Merry Elf, and Mrs. Claus testified for Santa.

Some of the characters in Mrs. Davies' play, "The Bird's Christmas Carol" were as follows:

Narrator — Phillip Harris
 Carol Bird — Angie Walton

Mrs. Ruggless — Joanne Carpenter

Mrs. Bird — Dana Boyd
 Grandma — Mary Wright

Stationery
 Let us show you our beautiful wedding invitations, thank you notes, napkins, etc. You can select your complete paper trousseau from a wide variety of styles in every price range. For wedding invitations, prices begin at \$10.95 per 100.
 by Carlson Craft

RIVERSIDE FERTILIZER COMES TO SLATON

any Fertilizer & Anhydrous Ammonia
 Riverside Fertilizer and Chemical
 THIS YEAR'S PRICES ARE EVEN LOWER THAN LAST YEAR'S

Custom Spreading Available
 CALL MAX LEE
 806 828-3272
 560 W. Garza
 on, Texas 79364



SUZI HOLDER
 of
 South Plains Electric Cooperative, Inc.
 Will be demonstrating the
LITTON 418 MICROWAVE OVEN
 SATURDAY, DEC. 20
 10 a.m. to 4 p.m. at
BAIN AUTO
FREE
 Litton Microwave COOKING CLASSES
 When You Purchase A Litton Microwave Oven.

LITTON MODEL 418
 Microwave Cooking
 © 1975 Litton Systems, Inc.

PRICES START AT JUST **249** SAVE **\$70** UNTIL CHRISTMAS

COME IN AND FIND OUT WHY LITTON MICROWAVE COOKING IS SWEEPING THE COUNTRY.
BAIN AUTO
 146 W. GARZA SLATON

Bentsen Report

BY LLOYD BENTSEN
United States Senator

A young woman in Washington was recently shot in the back by four robbers. Today, after an operation, she walks with a cane, requires psychiatric care and has lost her job because of recurring health problems.

She also lives in constant fear. You see, her would-be killers were all released without bail pending trial. Now they have all disappeared. And the victim is afraid they may come back gunning for her.

This amounts to criminal negligence on the part of our criminal justice system itself.

How can we then wonder why the rate for all serious crimes has more than doubled since 1961? Just from 1973 to 1974, this rate shot up by 17 percent—the largest increase since we began keeping statistics.

Yet, the guilty are going free. The innocent are living in fear. And, all because we have failed to make certain that punishment of criminals is swift and sure.

When criminals are apprehended, there are often appalling delays in bringing them to trial. In our own state of Texas, a man this year was arrested for theft and released eleven times in eighteen months without ever going to trial.

It has been said that justice delayed is justice denied. To that, we should add that it is also crime undeterred.

Even when offenders are brought to trial and convicted, the severity of punishment is far from sure. Nationwide, ninety percent of all serious crimes brought to court are disposed by plea bargaining. What this usually means is that the defendant pleads guilty to a lesser crime than the one he actually committed. In return, he receives a reduced sentence or probation.

This isn't justice. It makes a mockery of our court system and, at the same time, perpetuates the fear that today lives with every law-abiding American.

It's time to call it to a halt. It's time to set some clear standards, to insure that plea bargaining serves the interest of justice, and not the interests of hardened criminals.

Convictions for various crimes should carry mandatory sentences, which can be mitigated only within strict limits for specific reasons. These sentences should increase with the severity and violence of the crime, and they should become especially harsh for repeat offenders.

In many cases, punishment for first offenders does not need to be severe. Many of

these law-breakers are young, and might only be hardened in their criminal careers by long terms in prison. At the same time, I don't believe they should be allowed to go totally unpunished. Youthful first offenders don't seem to learn a lesson by a slap on the wrist, a lecture by the judge or a period of probation. All too often, they see non-

punishment as evidence that the law is weak, and that it can be violated with impunity.

I feel they would learn better from even a short stay in prison. In Arkansas, 1-day sentences for minor offenses have proven effective in giving a therapeutic jolt to kids who cross the line of the law. These short but sure sentences can be a strong deterrent to criminal behavior in the young, and

they can keep the first offender from becoming a repeat offender.

I am encouraged by the success of these short-term sentences in preventing further crime, and right now I am looking into the possibility of applying them in Federal courts.

This would be one way we can begin restoring hard meaning to the phrase, "Crime Does Not Pay," a phrase that our present

Fluvanna Falls To Southland

Both Southland junior high teams won this week over Fluvanna.

The boys took a 23-6 lead at halftime, capitalizing on the margin to win with a big 46-14 surplus.

High point for the boys were Sherman Daughtery

system of justice is making virtually empty.

with 10 and Perry Hill with eight points.

In the girls action, Camille Wheeler paced the team with 19 points to lead the Eagles to a whopping 41-16 win over Fluvanna.

Cindy Courtney netted a dozen points for Southland.

The next game will be Jan. 5 at Wilson, beginning at 5 p.m.

CARD OF

The family Gindorf want each and every many ways it helped us during our loved one. Thank you for expressions of needed you.

ADVERT Does Not Cost SEE THE SL

Merry



Prices good thru December 20, 1975. We reserve the right to limit quantities. None sold to dealers.



All Grinds
Folger's Coffee
99¢

1-Lb. Can

Limit one (1) with \$10.00 or more purchase excluding cigarettes.



For Hours of Baking Pleasure
Holly Sugar
99¢

5-Lb. Bag

Limit one (1) with \$10.00 or more purchase excluding cigarettes.

We Give S&H Green Stamps



Ocean Spray Cranberry Cocktail **\$1.39**

1/2-Gal. Jug

Folger's Coffee

Gala, 100 Sheet **Paper Towels** **49¢**

2-Ply Roll

Standard **Reynold's Foil** **33¢**

25-Ft. Roll

Piggly Wiggly, Assorted **Napkins** **57¢**

180-Ct. Pkg.

White, 9 Inch **Paper Plates** **89¢**

100-Ct. Pkg.

Delsey Assorted 500 Sheet, 2 Ply **Bath Tissue** **39¢**

2-Roll Pkg.

Kraft's Italian or **1000 Island Dressing** **49¢**

8-Oz. Btl.

Fancy **Le Sueur Peas**

Shady Lane, **Maraschino Salad Cherries**

Kraft's **Orange Juice**

Carol Ann Apricot, Peach or **Strawberry Preserves** **99¢**

2-Lb. Jar

"Del Monte Sale"

Del Monte Fruit Cocktail	3	17-oz. Cans	\$1
Del Monte Green Peas	3	16-oz. Cans	\$1
Del Monte, Cream Style or Whole Kernel Golden Corn	3	16-oz. Cans	\$1
Del Monte, Italian or Whole Beans	3	16-oz. Cans	\$1
Piggly Wiggly, All Cuts Beets	3	16-oz. Cans	\$1
Piggly Wiggly Sliced Carrots	3	16-oz. Cans	\$1
Piggly Wiggly Mixed Vegetables	3	16-oz. Cans	\$1

Frozen Food

"Your Choice" Piggly Wiggly
Cut Broccoli, Cauliflower Florets or
Cut Broccoli, Cut Corn, Mixed Vegetables or
Green Peas

Frozen Vegetables **59¢**

18-oz. Pkg.

Pot-Ritz, 10 Inch Pie Shells	39¢
2-Pk.	
Piggly Wiggly Whipped Topping	49¢
10-oz. Ctn.	
Mrs. Smith's Apple, Dutch Apple, Cherry or Peach, Frozen Fruit Pies	89¢
26-oz. Pkg.	

Swift Fully Cooked Boneless Ham **\$1.99**

Lb.

Hormel Canned Ham	3-lb. Can \$7.89
	5-lb. Can \$12.19
Pork Loin Roast	\$1.28
Lb.	
Rump Roast	\$1.69
Lb.	

Grade A, 16 to 18 lbs. Yearling Turkey **65¢**

Lb.

10 to 18 lbs., Grade A Butterball Turkeys	89¢
Lb.	
Swift's Premium, Aged Beef Large End Rib Roast	\$1.28
Lb.	
Hormel Sizzlers Link Sausage	\$1.28
12-oz. Pkg.	

Meat Guarantee

At Piggly Wiggly we are so confident of the superior quality of our fresh meats that we proudly offer an unconditional guarantee that gives you double your money back on any fresh meat purchase which does not completely please you. So if the meat you buy does not completely satisfy you, see our store manager and the purchase price will be refunded. 000-001

We Welcome Federal Food Stamp Customers

TEXAS TALK



By FRED MYERS

Significant changes are on the horizon for researchers working on agricultural projects. Underlying factor for these changes is the growing consensus among scientists that current research with its aims at yield increases through better fertilization and cultivation technique may be nearing its peak. In short, there is a growing feeling that we are reaching the stage of making a plant produce all that is possible. That's the reason for the change in direction. Scientists are now beginning to experiment on changes in the biological potential of plants. Basic changes in photosynthesis are being considered. Methods of limiting a plant's respiration are under study and the strange yield increases of some plants when exposed to carbon dioxide are being examined. In short, the new direction for research involves changing the plant itself in ways which could develop new and much greater yield increases.

SENTRY SAVINGS ASSOCIATION

Southland GLE Roundup

Band Concert, 9
Auditorium.
— O'Donnell
high school

boys and girls.
Dec. 19 — School Christmas parties. School dismisses 2:30 p.m.
Dec. 19-Jan. 2 — Christ-

mas holidays, no school.
Jan. 5 — School resumes at 8:50 a.m.

TOURNAMENT
Southland's high school girls lost the first game to Anton 50-49 in a heart breaker at the Anton Tournament Dec. 4. Anton took the lead after trailing 6 points at the half. Southland scored in the last few seconds of the game to make the one point difference. Kelly Chaffin and

Joy Basinger headed the scoring with 18 and 17 points, respectively. Donna Shelton put in 12 points.
Anton defeated the high school boys, 87-19. Ricky Cardona scored 4 points.
Lazbuddie outlasted the high school girls 69-65 in overtime Dec. 5. The score was 61-61 before the overtime period. Kelly Chaffin headed the scoring with 34 points. Donna Shelton added 16. Joy Basinger and

Stacy Rush had 9 and 6 points, respectively.
Lazbuddie defeated the high school boys 57-33. Kendon Wheeler scored 8 points. Bobby Flores and Nathan Wheeler each made 6 points.
JUNIOR HIGH WINS
The junior high girls defeated St. Joseph 27-15 Dec. 8. Mary Hill was high scorer with 15 points. Camille Wheeler made 10.
The junior high boys B

team romped over St. Joseph 38-8. Ambrose Davila was high scorer with 14 points. Freddie Lucero and Eddie Johnston put in 9 and 8 points, respectively.
The junior high boys A team won over St. Joseph 49-30. Sable Rodriguez headed the scoring with 21 points. Gerry Hill added 10.
MEADOW WINS
Meadow outscored the high school girls 97-60 Dec. 9. Kelly Chaffin topped all

scoring with 35 points. Donna Shelton and Joy Basinger put in 13 and 10 points, respectively.
The high school boys lost to Meadow 93-46. Kendon Wheeler was high scorer with 14 points. Frankie Valdez and Curt Wheeler each scored 12.

Classified Ads
GET RESULTS!
See THE SLATONITE
by 5 p.m. Tuesday.



KAREN TUCKER
Granddaughter
Of Slatonite
Wins Honors


Karen Tucker, 17-year-old daughter of Mr. and Mrs. J.C. Tucker of Brawley, Calif., recently was named "Cattle Call Queen" at Brawley, and during the year will represent the city in various rodeos, parades and appearances in California and Arizona.
She is a senior at Brawley Union High School, where she is involved in girls' softball and the tennis team. She also is a 4-H member and rides in horse shows. Her father is a former resident of Slaton, and her grandmother is Mrs. I.C. Tucker, 300 S. 12th St.

Consider getting a living, rather than cut, Christmas tree this year. You can use it indoors during the holidays. Then plant it on the windward edge of your property. As the tree grows larger, it will protect your home against cold winds — and reduce your heating bills for years to come.

Christmas




Enriched Medal Flour
79¢
1-Lb. Bag
Limit one (1) with \$7.50 or more purchase excluding cigarettes



Delicious Apples
4 Lbs. \$1
Red or Golden



Looking for a convenient holiday gift idea?
Give Piggly Wiggly Gift Certificates to friends, employees, and business acquaintances.
For more information, see your local Piggly Wiggly Store Manager.



49¢
18 1/2-oz. Box

49¢
7-oz. Jar

79¢
12-oz. PKG.

49¢
14-oz. PKG.

Sweet Potatoes Lb. **19¢**
East Texas Yams or Maryland

59¢
1-Lb. Bag
Ocean Spray, Fresh Cranberries

88¢
Lb.
Medium Snow-White Mushrooms

68¢
Lb.
Jumbo White Cauliflower

25¢
Lb.
Premium, Baker Potatoes

4/\$1
Lbs.
Texas Sweet Ruby Red Grapefruit

69¢
Lb.
New Crop, Large Walnuts

"Del Monte Sale"

Green Beans 4 16-oz. Cans **\$1**

French Beans 4 16-oz. Cans **\$1**

Pineapple 2 15-oz. Cans **89¢**

Cling Peaches 29-oz. Can **49¢**

Tomato Juice 46-oz. Can **49¢**

Grapefruit Juice 46-oz. Can **49¢**

Whole Potatoes 4 16-oz. Cans **\$1**

99¢
Qt. Btl.

Pascal Celery Lb. **29¢**
Crisp California

59¢
1-Lb. Bag
Sunkist Navel Oranges

Dairy

Cottage Cheese Size **66¢**

Egg Nog qt. Ctn. **79¢**

Sour Cream 8-oz. Ctn. **55¢**

Refrigerated Cookies 16-oz. Pkg. **79¢**

Cinnamon Rolls 2 9 1/2-oz. Cans **89¢**

Smoked Ham Lb. **\$1 59**
1/2 butt, 1/2 whole

Navel Oranges Lbs. **5 \$1**
Sunkist

Ham Lb. **\$1 39**
Smoked Picnic, water added

Sausage Lb. **\$1 49**
Roll, Farmer Jones

Ham Lb. **\$1 49**
Smoked Picnic, water added

Sausage Lb. **\$1 49**
Roll, Farmer Jones

Ham Lb. **\$1 39**
Fresh Boneless Buffet, Farmer Jones

Ham Lb. **\$2 69**
Fresh Boneless Buffet, Farmer Jones

FOR SALE

Newly decorated 2 and 3-bedroom houses

SEE US FOR CHOICE 2 & 3-BEDROOM RENTAL PROPERTY

Browning and Marriott

100 N. 8th 828-3216

Christmas Favorite

CROSS SINCE 1846

Writing Instruments in Lustrous Chrome
Pen or Pencil \$ 6.00
Set \$12.00

12 k. GOLD
Set 24.00
Pen or Pencil, ea. . . 12.00

Lifetime Guarantee

The Slatonite

RAIN CHECK

If we are sold out of the sale item you particularly wanted, we will gladly give you a "Rain Check" guaranteeing you of the sale price if presented within 30 days.

Advertised Items

Piggly Wiggly now marks the price of all its advertised items on the package itself... so that you can be assured that you are being charged the advertised price at the check-out.

Slaton Gridders On Star Teams



Slaton landed six players in seven spots on the first offensive and defensive teams of the 5-AA All-District units announced last week, and two Slaton players, running back Bill McClesky and guard-linebacker John T. Basinger were chosen to the Class AA All-South Plains team named by the Avalanche-Journal.

Basinger was on the first offensive and defensive teams of both the all-district and all-South Plains teams, and was a unanimous choice in the all-district voting.

Also on the first offensive team for the all-district was End Darrell Bednarz, while named to the first all-district defensive team in addition to Basinger at linebacker were Defensive End Greg Basinger, Tackle

Loran Roberts and Cornerback Gary Aycock.

Aycock was honorable mention on the all-South Plains squad.

Slaton head coach Ed Cook shared the All-South Plains coaching honor with Tom Ritchey of Idalou.

The all-district team:

OFFENSE

Ends—Bednarz and Ricky Lehnert, Denver City.

Tackles—Steve Snead, DC, and Dale Odums, Post.

Guards—Basinger and Ray Martinez, Post.

Center—George Hester, Post.

Quarterback — Bryan Davis, Post.

Backs—McClesky, Ed Price, Post; Jeff Ham, DC.

DEFENSE

Ends — Greg Basinger, Mike Mansell of Frenship, Odums, Kevin Munn of DC.

Linemen — Snead, Roberts, Danny Saldivar of Post.

ALL HONORS — These Slaton players and Coach Ed Cook were honored in week by being named to all-star teams. Cook, right rear, shared the All-South AA Coaching Award with Idalou's coach. From left, back row, are Mike Bednarz, honorable mention all-district defensive back; Bill McClesky, all-district running back; and Loran Roberts, all-district defensive tackle. Front row, are John T. Basinger, all-district and all-South Plains guard on both offensive and defensive teams; Gary Aycock, all-district defensive back and honorable mention all-South Plains; and Darrell Bednarz, all-district defensive end; and Darrell Bednarz, all-district offensive end. (SLATONITE PHOTO)

Call the Experts at
SLATON LUMBER CO.
828-6255

Lower indoor temperatures are IN this year—for economical and energy conservation reasons. How about putting some sweaters and long warm underwear on your gift list to help keep your loved ones warm in their cooler homes and offices?

It's time to really concentrate on Christmas now. If you haven't already done so, finish your gift list today—and chart your shopping expeditions to save traveling time and fuel.

YOUR SAVINGS

Earn maximum rates and help the community grow. All loans are local.

the BANK with a HEART

THE LIVING BIBLE

NOW ON SALE FOR ONLY \$5.95

AT The Slatonite

FREE GIFT WRAPPING

Many other Bibles and Books Available

"I'd rather explain higher gas bills than why you don't have gas."

Your natural gas bill is higher. And, you have every right to know why.

One reason is lower temperatures brought on by winter.

The main reason, however, is simply that you are paying more for natural gas. Because we are paying more. This chart shows how much:

This increase hurts both you and Pioneer. It adds to your bill and to our cost... a cost for which Pioneer is not entirely compensated. It is passed through without mark-up or additional charges.

Why does gas cost more? Competition... particularly from petrochemical and other industries. The competition for gas has never been so fierce.

We will have to pay more for gas than in the past. But by working together, and without outside interference, you'll have the gas you need today and in the future.

K.B. Watson
K. B. (TEX) WATSON
President
PIONEER NATURAL GAS COMPANY

ZENITH

GIFTS OF QUALITY

COMPARE!

ZENITH

No cords! No wires! No batteries!

TUNE TV FROM ACROSS THE ROOM!

Quality

ZENITH SOLID-STATE CONSUMER PROTECTION PLAN
Full One-Year Warranty on Parts and Labor. Two-Year Warranty on Picture Tube. For full details of the Zenith Solid-State Color TV Warranty, see the TV Warranty Section of the Zenith Solid-State Color TV Specification Book.

GRAINED ROSEWOOD COLOR CABINET
Remote control convenience! Smart styling! Cabinet finished in rich-grained Rosewood color. Recessed black base has a subtle cantilevered look. Screen is tilted to create a dramatic but natural angle. Illuminated channel numbers are displayed on a distinctive translucent Ebony color vertical acrylic lens. All tuning controls are completely concealed behind control panel door. Cabinet size: 17 1/2" H. 25 1/2" W. 20 1/2" D. Dimensions exclude controls and antenna protrusions.

BUILT AS ONLY ZENITH BUILDS COLOR TV!

It's a whole new TV system, from chassis to picture tube. Result: the best color picture Zenith has ever brought you, and the best color TV Zenith has ever built.

1 POWER SENTRY PROTECTION: Another Zenith first. Regulates the voltage to guard your chassis and picture tube and keep your picture sharp under varying voltage conditions. Improves picture tube life.

2 100% SOLID-STATE CHASSIS: The most powerful chassis Zenith has ever built, for cleaner, more naturally brilliant colors. Zenith solid-state design means years of cool, dependable operation. No chassis tubes to burn out.

3 ADVANCED CHROMACOLOR PICTURE TUBE: The brightest picture tube in Zenith history. And you get more contrast and detail than Zenith has ever brought you before. It's the standard of excellence in color TV.

SOLID-STATE Electronic Tuning System

Chromatic One-button Tuning

PATENTED POWER SENTRY VOLTAGE REGULATOR

Solid State Titan 3000 with 3 Stage I.F.

CHROMACOLOR PICTURE TUBE

SPACE COMMAND™

Just press buttons to adjust volume, brightness, contrast, and color. No knobs or dials. And gas! (Regulates gas flow to picture tube.)

Brilliant Chromacolor Picture

Ultramodern Styling

16" CHROMACOLOR DIAGONAL \$299. W.T.

The HALS-F3721L Compact portable with Zenith advanced Chromacolor Picture Tube. Exceptional low price for color. Beige with Dark Brown front.

MEDITERRANEAN THE TITIAN F4088

SAVE! SAVE! SAVE!

\$499.95 W.T.

109 S. 9th, Slaton 828-6226

Wendel's

2828-34th, 792-2751

GO CLASSIFIED FOR THE ACTION YOU WANT

FOR RENT

FOR RENT — fenced mobile home spaces, storm shelters, two miles of Lubbock city limits on Highway 84. Call 828-5140. 2-tfc

PLAZA DUPLEXES
Manager, E. Ray Brown
Furnished & unfurnished two-bedroom apartments.
828-6740

FOR RENT
Slaton's Finest. Two-bedroom, central refrigerated air conditioning, central heat. Unfurnished or Furnished

MARK 4 APARTMENTS
274A 22nd Street
828-5407

PERSONAL NOTICES

Alcoholics Anonymous meet each Tuesday 8:00 p.m. Fellowship Hall in First Christian Church. For information call 828-3171, or 828-5231. All calls and information kept confidential. 45-52tp

AL-NON for families of Alcoholics. For information call 828-3185 or 828-3171.

AUTOS FOR SALE

BARGAIN '67 Pontiac Wagon, needs some work, \$150. Call 828-6814. 10-tfc

FOR SALE — 1967 Chevrolet Impala, clean, good condition. Call 628-3511. 11-3tp

WANTED

WANTED TO BUY, junk cars and scrap iron. Call 828-6814. 21-tfc

NOTICE

I will not be responsible for debts incurred by anyone but myself. Richard H. Reed. 12-4tc

REAL ESTATE FOR SALE

188 ACRES, 3-bedroom, double garage home, barns, corrals, tractors, equipment, cattle, hay. Paved on two sides, 166 acres in cultivation, 9 miles south of Slaton. Antwine-Davis & Kiser Realtors, 129 S. 9th, 828-6332, Wayne Edwards, mgr. 12-tfc

20 ACRES in city limits, 10 acres grass, 10 acres farm land. Earthen tank holds 1,000,000 gal. water. Barn, corral, storage shed, lake pump, 930 ft. aluminum pipe. Clark Self Sr. 828-3542. 12-1tc

LOTS for sale. Mobile home space for rent, \$30 a month, water furnished. C. E. McCoy, 828-6276. 4-tfc

FOR SALE — New 3-bedroom home, 2 full baths, on Golf Course Road. Call 828-6276 days, or 828-3888 nights. 38-tfc

FOR SALE—Two-bedroom, one bath, living room and dining area combined, kitchen and carport. 315 S. 13th. 828-6852 or 828-3205. 37-tfc

NICE TWO-bedroom house for sale, 950 S. 17th St. Call 828-6684. 8-tfc

THREE-room house, beautiful paneling and carpet, fenced, cellar, on 12th St. Antwine-Davis & Kiser Realtors, 129 S. 9th, 828-6332, Wayne Edwards, mgr. 8-tfc

COMPLETELY remodeled two-bedroom home. Double garage, very nice. 605 S. 12th St. Call Slaton Lumber Co. 828-6255 or Tommy Davis, 828-3787. 46-tfc

TERMS FOR CLASSIFIED ADS: Cash in Advance DEADLINE: Tuesday, 5 p.m.

Getting Married?
See the good selection of Announcements and Invitations at **THE SLATONITE** (\$10.95 per 100) Compare our prices

MISCELLANEOUS FOR SALE

MOOD RINGS — Get your Mood Rings at Sunshine Place, southwest corner of square. 12-1tc

FOR SALE — 12x24 two-room house, \$200, to be moved; I Bamboo bar and 6 matching stools, \$225; stereo with radio and record player, \$65; 10-speed 28-in. bicycle, \$45; used tires with wheels, \$5 each; large vise, \$25; 3 solid wheel axles, \$15 each; Chevrolet pickup bed, \$25; new rabbit hutch with 6 rabbits, \$45; baby things, stroller \$6, padded car seat \$5. New Mexico paper shell pecans, 65c and 70c lb., English Walnuts, 60c lb., 200 S. 2nd, phone 828-3595. 12-1tp

GIFT CERTIFICATES — Give a gift certificate for the Slaton Pioneer Cookbook for Christmas. Call 828-5287, 828-3685, or pick them up at the Chamber of Commerce. 11-2tc

PAWNED — Unclaimed merchandise, diamonds, TV, stereos, guns, dinner ring, 815 Broadway, Lubbock. 11-3tc

KEEP your carpets beautiful despite constant foot-steps of a busy family. Get Blue Lustre. Rent electric shampooer \$1. Lasater-Hoffman Hardware. 12-1tc

FOR SALE — Brand new 30-30 Marlin, leather case, box of shells, \$100. 828-3718. 12-1t

FOR SALE — Live baking hens, 21 months old, \$1.00 each. Phone 828-6001. 12-2tp

FOR SALE — (Sacrifice price) Tappan stove, Hot-point refrigerator, Whirlpool washer. All in working order. Call 744-6419. 12-1tp

FOR SALE — House to be moved, 14x28, two-room, solid sheeting inside and out. Like new, large baby buggy. 828-6991. 10-tfc

HEATERS, bicycles, beds, refrigerators, cookstove, dinette sets, lamps, dishes, Antiques of all kinds, new dog houses. Ted's Trading Post, 1205 S. 9th. Phone 828-6820. 5-tfc

TRASH BARRELS for sale at Perkins Auto Supply. Phone 828-6240. 29-tf

SLATON FARM STORE has a wide selection of work boots, coveralls, and insulated coveralls. 166 S. 8th St., 828-6487. 52-tfc

LOSE weight with New Shape Tablets and Hydrex Water Pills at Eblen Pharmacy. 9-4tp

DO YOUR CHRISTMAS SHOPPING IN SLATON!

MISCELLANEOUS FOR SALE

REAL NICE 20-inch bicycle, would make a nice Christmas present. \$17.50. Clark Self Sr. 828-3542. 12-1tc

FOR SALE — Piano benches. Pianos tuned and repaired. Bill Baker, 1025 W. Dickens, 828-6874. 12-tfc

FOR SALE — Registered male Poodle puppy, six weeks old. Call 828-5706. 12-1tc

FOR SALE — Macrame hangers, Christmas bicycles, 10% off on all bicycles bought before Christmas, one two-seated bicycle. Ted's Trading Post, 1205 S. 9th, 828-6820. 12-2tc

FOR SALE — Four tires, 15 inch white wall, Goodyear. Call 828-6434. 12-tfc

SINGER, 1974 model, zig-zag, blind hem, buttonhole, fancy stitches. One year guarantee, \$50. Cash or terms. Sewing Center, 1801 34th, 744-4618. 10-tfc

Fire Chief Gasoline
51.9 per gal.
M.D. Geer Texaco
305 N. 9 St.

SINGER TOUCH & SEW Deluxe models, these machines zig-zag, blind hem, make button holes, fill bobbin in machine, etc. Desk cabinets, with drawer space. Used only three months. Several left out of public school systems. Your choice \$65 each. Fully guaranteed. Sewing Machine Service Center, 1801 34th, 744-4618. 10-tfc

HELP WANTED

EURA'S BEAUTY SHOP needs a good beauty operator. 930 S. 11th, or call 828-3647. 11-tfc

LVN needed. Contact Bobbie Greer or Ida Rushing at Slaton Care Center. 828-6268 or 828-6269. 12-tfc

MATURE, responsible persons needed for both day and night shifts. Apply in person, Dairy Queen. 48-tf

BEAUTY OPERATOR WANTED
Juanita's Hair Styles
Call Thursday or Friday, or Saturday till noon
828-5175

BUSINESS SERVICES

HAVE YOUR PRESCRIPTIONS filled at TEAGUE DRUG by a Registered Pharmacist. 50-tf

WANT TO BUY
Burned, Wrecked or Abandoned Cars
828-6240
PERKINS WRECKER SERVICE

Magouirk Electric
ELECTRIC REPAIRING AND WIRING
1400 S. 5th
Phone 828-6809

KIRBY
VACUUM CLEANERS
For Service
Call MOSSER TV
828-6475

Furniture Rebuilt
Upholstery
Good Fabric Prices
Good Work
Evenings 828-5231

N. H. ROBERTS
Cement Contractor
Free Estimates
828-6991

BILL REED
DITCHING
Backhoe Sewer Service
Dump Truck
Plastic Pipe
Phone 828-6814

White's Auto
SLATON
LET US
Steam Clean
YOUR CAR OR TRUCK ENGINE
call 828-3946



SPECIALS

- 1/2" C.D. Plywood \$5.49
- 3/4" C.D. Plywood 8.95
- 4x8 A.D. Plywood 11.95
- 2/4 & 2/6—10—thru 16' #1 Y.P. bd. ft. 23c
- 18"—20" #1 Y.P. bd. ft. 28c
- 1/6 Rgh YP #2 up to 16', bd. ft. 23c
- 18"—20" #2, bd. ft. 28c
- 1/4—#2 YP up to 16', bd. ft. 23c
- #2 YP, 18", 20", 28c
- 2/4 & 2/6, 10 thru 16', new stock #2 and better, bd. ft. 19 1/2c
- 2/4 Fir Studs, ea. 79c
- 1/12 #3 Resawn (good) 15.99
- Portland Cement Ea. 2.69
- White Commode Seats, ea. 3.95
- 48" x 1" Poultry Netting, roll 29.99
- 48" x 2" Poultry Netting, roll 16.95
- 60" x 2" Poultry Netting, roll 19.90
- 4x8 Pre-finish wood paneling, ea. 3.95
- 6-6-10-10 Mesh Wire 35.50
- 1/2 Rebar 11.95
- 1/2" 4x8 Gypson Board, ea. 1.59
- White Exterior Latex Paint, gal. 4.50
- 30-Gal. Water Heaters 79.50
- 6" Steel Drive Post w/flang, ea. 1.19

250 S. 9th
828-6586

Mosser Radio & TV
SALES AND SERVICE
110 Texas Ave.
Call 828-6475

ELECTRIC WIRING & REPAIR
APPLIANCE & HEATING & MOTOR REPAIR
Kuss Electric
828-3225 — 850 S. 16th

HOUSE NEED PAINTING?
for a good job priced right, call D. H. RUDD 828-6937
FEATURING ALL TYPES PAINTING, TAPING AND BEDDING ACOUSTIC CEILINGS AND WALL TEXTURE BLOWN ALSO AIRLESS SPRAYING FOR BIG JOBS. 48-4tp

CHAMPION'S SWAP SHOP & JEWELRY
NEW-USED-ANTIQUE FURNITURE
Jewelry — Watch Repair and Engraving
BUY—SELL—TRADE ANYTHING OF VALUE
JOHN C. CHAMPION
828-3751—330 S. 9th St.

FOR THEIR Christmas



Crosley Gift
CROSS
SINCE 1948

Man's Pen and Lady's Pen* in 14 Kt. Gold Filled or Sterling Silver. Attractively Gift packaged \$30.00

with Pen Purse
The Slatonite
Free Gift Wrapping

SELF'S T.V. APPLIANCE
ACROSS ST. FROM SELF FURNITURE
FEATURING A FULL LINE OF ADMIRAL APPLIANCES AND TELEVISIONS, AS WELL AS A COMPLETE LINE OF MAJOR WASHERS, DRYERS & DISHWASHERS, KITCHEN-AID DISHWASHER COMPACTORS & HARDWARE ELECTRIC RANGES.
COMPLETE SERVICE DEPARTMENT
828-6584 240 W.

GIVE A GOOD BOOK THIS CHRISTMAS
ANGELS, by Billy Graham
TRAMP FOR THE LORD, Boom
THE HIDING PLACE, Boom
MIRACLE OF SEED FAITH, Boom
SOMETHING MORE, Marshall
ADVENTURE IN PRAYER, Marshall
TOTAL WOMAN, Morgan
MANY, MANY MORE GOOD BOOKS TO CHOOSE FROM
* FREE GIFT WRAPPING *
The Slatonite

SPARE TIME BUSINESS

Own your own profitable vending business. \$25 monthly earnings possible in your spare time. NO SELLING. If selected, you will be company established EXCLUSIVE locations.

OUR COMPANY IS A SUPPLIER OF NABISCO SNACK ITEMS.

REQUIREMENTS: \$1,000 to \$5,000 CASH INVESTMENT (secured by machines and merchandise) good character, dependable auto, and 6 to 9 sq. weekly. Income starts immediately! We supply machines, locations, expansion financing, option, and professional guidance. If you are interested in applying for this genuine opportunity toward financial success, please call or write (phone number) for personal interview in your area.

MR. ROBERT L. ANDERSON
WORLD INDUSTRIES INC.
Executive Suite 303
1919 East 52nd Street
Indianapolis, Indiana 46205
Telephone (317) 257-5767

Land for Sale — Yoakum County
640 acres cultivated land, 3 irrigation wells, land lays well, fertile, \$375 per acre.
320 acres cultivated land, level and fertile, two 6" irrigation wells, \$375 per acre.
100 acres, 2 irrigation wells, \$375 per acre.
1300-acre ranch, good soil, lays well, nice home w/improvements, all land could be put into cultivation, \$225 per acre.
350-acre dry land, has history of good yields, \$225 per acre.
200-acre cultivated land, two 5" irrigation wells, \$200 per acre.
320-acre native grass, \$50 per acre.
640-acre, 4" irrigation, close to Plains, Tex. on Hwy. \$185 per acre.
320-acre, 270 in cultivation, 1 1/4" well, \$170 per acre.
240-acre dry, fertile, \$175 per acre.
OTHER FARMS FOR SALE
H.P. COLE Real Estate
Plains, Texas, Phone 456-6805
or Brownfield, Tex. 637-7374 & 637-3770

HOLIDAY
Mobile Home Park
OF SLATON
Located on N. 20th St.
2 1/2 blocks north of High School
Free Local Moving
Phone 828-5304
or 795-8891

Sikes Machine Shop
Complete Welding and Machine Shop
155 N. 9th Slaton

1—1962 4010 LP—\$3600
Good Selection of Used Strippers
1—Used JD 12' Disk Harrow—\$950
BRYANT FARM SUPPLY
North 20th St. Phone 828-6646

TO BE ELECTRIC HEAT

BE SWITCHED

Two hundred years ago, the witch hunters would have burned up at the stake for even daring to dream of a clean, practical means of heating our homes, like electric heat. Fortunately, things have changed since then and today you can choose a heating system that is not only clean and efficient, but also economical and environmentally sound. You don't even have to look for a witch to give you a great deal like this one. Call the electric company... we'll show you how easy it is to BE SWITCHED to real comfort home heating that's as modern tomorrow as it is today.

ASK ABOUT THE HEAT PUMP
IT'S NOT MAGIC... IT JUST ACTS THAT WAY

You'll think it's magic when you see what the heat pump does, but it's not at all. It probably will seem quite impossible that one unit can provide clean, efficient electric heating and cooling with only one unit. Call your electric company today. The important thing to remember is the heat pump is today's answer to improving your lifestyle—economically and efficiently. Sound like magic? Not at all.

ENERGY EFFICIENCY ALLOWANCE

We, at Southwestern, are interested in your getting the most for your energy dollar. That's why we're offering an Energy Efficiency Incentive Allowance to our customers on certain homes who install electric comfort heating. Ask us about it.

CALL US FOR A FREE PERSONALIZED HOME HEATING COST

Prevent Burglary Lock Out Thieves

constitutes be- 70 percent of index crimes enforcement most common in the United States— is one of the most common ways to prevent.

turning your property into a fortress, there's no way to make your property thief-proof. However, many things you can do, often easily, to discourage burglars and other criminals from entering your home.

Marking deters the burglar because people are wary about purchasing marked equipment—and that includes the "fence" used by the professional burglar.

The next step in discouraging the intruder is to "lock up and lock out."

Rule number one is to keep the doors and windows locked—even when you're home. Some burglars specialize in small items such as purses or money they can pick up while residents are working in the yard, hanging up laundry, or visiting with friends.

Most people are unaware that most locks on their apartments and homes, no matter how new or expensive the home is, are what the burglar refers to as "10-second" locks. That is approximately how long it takes him to open the door and gain entrance.

The crime prevention unit suggests these precautions: *Ideally, doors should be of solid, heavy wood without a window. If your home is not constructed in this manner, there are still steps you can take to protect your home.

*The stronger and more sophisticated the lock, the better your protection. A burglar cannot risk the

noise required to force or break down a solid door with a good lock.

*Instead of replacing the principal lock on outside doors if they do not already have a deadbolt, install a secondary security device with a minimum one-inch throw deadbolt.

*All deadbolt locks should have hardened cylinder guards. The crime prevention unit has a booklet showing how locks should be installed and what to do for special situations, such as doors with glass panels, sliding glass doors or windows, louvered doors and windows, and garage doors.

*Install a wide-angle peephole in your front door so you can identify callers before unlocking. A peephole or a door knocker with a peephole and grill you can talk through can be purchased very inexpensively and is simple to install yourself.

*Chain locks on the side of doors do not offer any protection. They can be easily forced, unlatched, or cut.

*Garage doors are just as important as other outside doors. Once a burglar gets in the garage, he has complete privacy to break into your home. A single lock or padlock on the outside of your garage is not sufficient to protect your home.

*Windows should be secured with locking devices or with a pin placed through special holes drilled in the frame. The crime prevention

unit booklet also illustrates how this is done.

*The finest locks in the world will not keep out an intruder if a burglar gets possession of your keys. When you change residences, have a locksmith re-key your outside locks. It is not necessary to have the entire lock replaced. Former residents, apartment complex employees or employees of building contractors may still have keys in their possession.

*Be careful about giving or lending duplicate keys. Always separate your home keys from your ignition key when you leave your car in a parking lot or garage. Avoid identification tags on keys, including license plate numbers. They tell burglars what locks they fit.

*Make sure no one in your family tries to "hide" a door key outside. Burglars know more about where to look for hidden keys than anyone. If you are worried about locking yourself out, leave a house key with a trusted neighbor or friend.

Since citizen compliance with these suggestions is the way to prevent burglary, the crime prevention officers say they can't emphasize enough the fact that no lock is a lock unless it's locked.

To learn more about Operation Identification and other crime prevention programs sponsored by the Slaton Police Department, contact them at 828-6211 or drop by their office at 175 N. 8th Street.



TO HEAD COMMITTEE — Larry Williams, Slaton Chief of Police, will chair the South Plains Association of Governments Law Enforcement Training Committee. He was elected to the position during a recent SOAG meeting.

Williams To Head SPAG Committee

Slaton Police Chief Larry J. Williams was elected chairman of the South Plains Association of Governments Law Enforcement Training Committee at a regular meeting Dec. 9 in Lubbock. In accepting the position, the Slaton Police Chief said that he considers training the most important aspect of professionalizing law enforcement.

Prairie Police Department. Ronnie Smith, SPAG Law Enforcement Training Coordinator stated, "I am very impressed with Chief Williams' capabilities and his interest in training and believe he will do an outstanding job as chairman of the training committee."

Chief Williams holds the Intermediate and Instructor's Certificates from the Texas Commission on Law Enforcement Officer Standards and Education, and is working toward an Advanced Certification. A native of Post, Williams served over six years with Grand Prairie Police Department before his appointment as Chief of Police in Slaton. Williams received a law enforcement degree from Tarrant County Junior College in May 1975. He is a member of the International Association of Chiefs of Police, Texas Peace Officers Association, and the Masonic Lodge.

Williams was elected Outstanding Officer of the Year in 1971, 1974 and 1975 as a member of the Grand

The South Plains Association of Government is certified by the Texas Commission on Law Enforcement Officer Standards and Education as a regional law enforcement training academy. The Law Enforcement Training Committee is a sub-committee of the Criminal Justice Advisory Committee which makes recommendations to the SPAG Board of Directors on matters relating to law enforcement training.

Follis Heating & Air Conditioning

Arkla-Servel, Bryant and Payne Equipment, Sales, Installation & Service. Gas units financed by approved credit. Call for free estimate. Wilson, Texas Phone 628-3271

Oscar Follis

ADVERTISING PAYS See THE SLATONITE before 5 p.m. Tuesdays.

Cagers Split With Idalou

Slaton High School basketball teams split with Idalou here Monday night as the Tigerettes won 57-37 while the Tigers went down 34-21. Terri Holland scored 22 points for Coach Gay Benson's girls, who also won the consolation title in the Tulia tournament last week.

Bill McClesky hit 14 points for Coach Jerry Tucker's cagers against Idalou, who was led by Lad Harris' 12 points.

Slaton's boys opened their season last Thursday against Abernathy in the Tulia tournament, losing 60-42. Jack Whaley had 15 points for Slaton. Bob Melton led Slaton with 12 points as the Tigers lost in the consolation round to Valley, 62-46.

Slaton's girls lost a close one to Abernathy, the Tigerettes' fourth loss of the year, by 47-46 in the first round at Tulia. Teresa Wright had 17 points, and

the Does' Karen Lambert scored 35. In the consolation round, Slaton beat Valley's girls 53-47 behind Robin Kerr's 18 points, and then won the consolation title by downing Friona 57-51 as Holland tallied 22. Friona's Terri Patterson scored 42 points.

Slaton's boys are to play in the Reese Air Force Base Tournament this weekend. The Tigerettes play at Canyon Friday.

THANK YOU

We would like to thank all of our friends and neighbors who helped harvest our crop for us, to the Gatzki Gin, and also to the ladies who brought food and helped serve dinner. We really appreciate it. May God bless each of you.

Mr. and Mrs. Jerry Moczgyemba



MARILYN PAYTON

Thirty students at Western Texas College have been named to Who's Who lists. Dr. Duane Hood, Dean of Student Services and Registrar, has announced.

Students are nominated for Who's Who by committees of faculty members and students. The selection of students is made on the basis of campus and community involvement, academic standing and promise of future accomplishment.

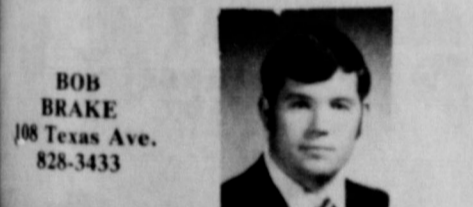
Appearing in Who's Who Among Students in Ameri-

can Junior Colleges will be Marilyn Payton, co-captain of the WTC Dusters, women's basketball team, and a member of the All-Conference Team last year. She is the recipient of a basketball scholarship. She is a member of PTK, the BSU Executive Council, and was a Homecoming Queen nominee. She is majoring in physical education.

Miss Payton is the daughter of Mr. and Mrs. Zack Payton.

We built the world's largest car insurance company on low rates and good service...

When you consistently offer better service and protection at low rates, the word gets around. Drop in for a call. You'll find there's a world of difference with State Farm.



BOB BRAKE
108 Texas Ave.
828-3433

Like a good neighbor, State Farm is there.

STATE FARM MUTUAL AUTOMOBILE INSURANCE COMPANY
Home Office: Bloomington, Illinois

Free! [28 Turkeys Will Be Given Away This Friday.]
ONE TURKEY PER FAMILY DURING ENTIRE CONTEST (MUST BE OVER 16)

WIN A TURKEY FOR THE HOLIDAYS!

Kids! Talk to Santa Claus at the Chamber of Commerce office Friday at 4 p.m. — candy for all the kiddies.

- REGISTER HERE FOR FREE TURKEYS!**
- SMITH FORD
 - SELF FURNITURE
 - L & H HARDWARE
 - GIFT GALLERY
 - ANTHONY'S
 - PIGGLY WIGGLY
 - T.G. & Y.
 - SLATONITE
 - TEAGUE DRUG
 - EBLEN PHARMACY
 - HANDY HUT
- ELLER GROCERY
Y'S WESTERN LEATHER
Y'S OLDS-PONTIAC-GMC
CHMAN
DEL'S
ED SUPERMARKET
E'S AUTO
& COUNTRY CHEVROLET
FURNITURE HOUSE
NORTHWESTERN PUBLIC SERVICE
ON PHARMACY

Christmas penpal

Free Gift Wrapping

CROSS
SINCE 1848

Writing Instruments in 12 Karat Gold Filled

Pen or Pencil . . . \$12.00
Set \$24.00

CHROME

Set \$12.00
Pen or Pencil, ea. \$6.00

The Slatonite

Growing old used to be a game we played.

There was a time when choosing a profession was like a game. It was playing grown-up. And we've all done it.

But growing up also means growing older. It means assuming responsibilities. Preparing yourself for the future. And the Sentry has a plan that will help you do just that.

Introducing the Individual Retirement Account (IRA). A guaranteed tax savings that turns into a guaranteed income when you retire.

If not participating in other pension funds, you can put as much as 15% of your annual income (up to \$1500 a year) into an IRA at Sentry Savings Association. The amounts deposited in IRA's are tax deductible within the above limits, and earnings on these accounts are not taxable until withdrawn. At that time your income will probably be less and so will your taxes.

Give us a call today or come by one of our convenient offices for full details. Growing old could be fun again . . . if you've got something to look forward to.

This chart shows the advantages of the IRA plan over a 30-year period. It is assumed the money invested earns 7% interest compounded daily.

YEAR	TOTAL IRA CONTRIBUTIONS \$1500/YEAR	TOTAL INVESTMENT VALUE
5	7,500	9,520
10	15,000	23,545
20	30,000	74,646
30	45,000	185,558

NOTICE — Deposits in IRA's before Jan. 1, 1976 are deductible on 1975 income tax returns.

SENTRY SAVINGS ASSOCIATION

Slaton 828-6557 / Post 495-3696 / Tahoka 998-4586 / Lamesa 872-2654 / Lubbock 745-2004

(opens Jan. 1976)





READY TO YELL — These young ladies at St. Joseph School are ready to lead cheers at the Charger and Chargerette basketball games. Back row from left are Connie Buckemper, Marsha Dea Davis and Gail Wimmer. Center row from left are Toni Huckabee and Conda Bruedigam. Seated is Patricia Kitten. (SLATONITE PHOTO)

Kennedy Named Fireman Of Year

Retired members of the Slaton Volunteer Fire Department were special guests at a Christmas Dinner held Monday night at the West Ward Cafeteria. The retired firemen and their wives were introduced by Fire Chief Bob Kern. Those firemen and their wives included, Elbert Wilson, Curtis Dowell, John Richey, Walter Smith and M.G. Kendrick. The widows of retired firemen also were present. They included Mrs. Julia Burton of Lubbock and Mrs. Nell Sartain of Slaton.

A newly created award, Outstanding Fireman of the Year, was presented to Ronnie Kennedy. The award, first of its kind for the department, was given in recognition of outstanding service to the department.

interest, cooperation and attendance meetings, practices and fire calls, both rural and those in the city. Kennedy attained an 85 percent attendance at fire calls and surpassed that average in attendance at

meetings and practices. He is a 13-year veteran of the department.

Some 85 people attended the event including the firemen and their families and Mayor and Mrs. John Landreth, City Secretary

Alex Webb, Co. Hesikize Thomas, Max Arrants, Cates were present and Department Arvin Stafford. Weldon Self, linson and W were in charge ments.

Library

News

The annual Christmas Storyhour will be given at the Slaton Branch Library Saturday from 2-3 p.m. Filmstrips and a movie will be shown and each child will be served a refreshment.

A Christmas tree has been decorated in the library.

There were 18 children present for the last Storyhour. Mrs. Lisa Nowlin read stories and the movie shown was entitled, "The Most Marvelous Cat".

The new curtains arrived for the library and a special thank you goes to Bob Kern for hanging them. The Friends Club of the Slaton Branch purchased the curtains.

New books arriving recently are: "Bicentennial Collection of Texas Short Stories", by White; "Power" by Korda; "The Greek Treasure" by Stone. Men from Lubbock Mahon Library waxed the floors at the library last Thursday.

LIBRARY HOURS:
11:30 a.m. - 6 p.m. weekdays, 9-4:30 Saturday.

With the Christmas holidays fast approaching, you may need extension cords for new appliances, or to light your tree. Undersized cords can waste electricity. They can be a safety hazard too. Check your supply early, and be sure you have some heavy duty cords on hand.

If you need a new

ROOF

Call 828-6255
SLATON LUMBER CO.

Shopper, beware this holiday season. According to law enforcement officers, it's a prime time for burglars, thieves, pick pockets and confidence artists.

Joe Hester and Mike Whitley of the Crime Prevention Unit of the Slaton Police Department explained that not only are people careless about locking up valuables, but are also susceptible to criminal activity during this festive season.

"We're asking people to take some basic precautions to prevent burglary and theft while they're out shopping. We're also warning them to be aware of what they're buying to guard against fraud and to avoid receiving stolen property," said Whitley.

The first rule is Lock Up. When you leave home, don't leave the opportunity for someone to gain easy access to your house and walk off with your property, Hester and Whitley cautioned.

Hester explained that burglary is a crime of opportunity. Eliminating that opportunity is what Crime Prevention is all about.

Lock Up are the key words when shopping too. Hester and Whitley emphasized the importance of locking packages or any valuables in the trunk of the car to keep "temptation out of sight."

"It's important, too, that you lock the car for your

Are you using your radiators as bookshelves or catchalls? Clear them off. Clutter on radiator tops impedes the flow of heat—and increases your fuel bill.

Home Decorating News

BY CLARK SELF, JR.

You put everyone else down on your Christmas list...but how about yourself? How long has it been since you have bought something good for the house? A gift for the house is something you'll enjoy all year long, an enjoyment your family and friends can share.

Does your old sofa look all right to you until just before company arrives? And then do you look at it and wish you could hide it somewhere? Perhaps you remember that old faithful furniture as it looked when it was new. But if you can stand the shock, really open your eyes and see it as it looks today. One shabby piece of furniture can destroy the effect of your living room. Why not replace that furniture for the holidays and choose something to replace it from our big collection at Self's?

Put yourself on that Christmas list right now; come in and ask our salesman to help you choose that new sofa, a chair, a handsome lamp to brighten the scene, a big dramatic picture to go over your sofa, or a fine wood coffee table. Our salesman will be glad to help you select accessories for period furnishings, early American or contemporary. Whether you want to mix or match, you'll find what you want at Self's.

SELF Furniture

235 W. Garza
Phone 828-6584

personal protection," Whitley said. "Also, separate your home keys from your ignition key when leaving your car in a parking lot or garage."

"We discourage leaving home with only Christmas tree lights lit since it calls attention to the presents arranged around the tree. That's like a neon advertisement that there are new items to be had, and

that no one's around to see them taken," Hester said.

Hester and Whitley said that the Crime Prevention Unit of the Slaton Police Department has more information on personal and property security precautions. He suggested that individuals call for printed materials on the subject.

"There's more to reducing crime than the work of the law enforcement agencies. It takes action on the



Some government services are a lot more than they might seem to be at first glance. That's the case with the family planning project of Texas Department of Health Resources, Public Health Region 7 in East Texas.

As one might expect, the family planning project provides birth control information and assistance to women of childbearing age. But there's a lot more to it than that.

Planning one's family is only the beginning. When a woman comes to one of the 21 clinics held each month throughout the 35-county region, the first thing that happens is a complete physical examination, including blood tests, Pap smear, diet analysis, and screening for venereal disease, diabetes, and other diseases. Immunization clinics are often held in conjunction with the family planning program, so the children in the family can be given whatever shots they need at the same time. In addition, medical case-workers are available to discuss any kind of medical or health-related problem, or to help the family find any other kind of assistance they need.

Dr. Wilmer F. West, director of the program, explains that the family planning project serves women in many ways. He says, "We give them contraception methods or help

them to become pregnant, to control the spacing and the size of their families, whichever they want. And we work with husbands also in either sterilization or infertility problems."

Health Program Specialist Charles Hayden, who is Dr. West's assistant, describes the program this way: "The basic purpose of family planning is to give each mother the opportunity to decide when she wants to have children, and to let her make her own choice within the family unit." Hayden says, "Nobody thinks that we have the right to tell a family how many children they want. If they want ten children, that's their business. If they don't want ten children and they come to our clinic, our medical staff, our nurses, our aides, all of us will explain to them how not to have children, or how to space their children so that they can raise them."

These services are available to anyone who needs them, according to Dr. West. There are no restrictions on eligibility; in fact, he explains, "The regulations set down by the federal government (which provides funding for the project) require us to take anyone from anywhere. We cannot refuse anyone."

Hayden explains that many of the family planning patients, although they are not poor, can be considered

part of the in prevent crime ting the opportu take place."

We want ev have a happy h son, so protect ables by locking you leave your b it with a 'someb appearance. At year, be particul the door-to-door and of 'fly-by-n sales," they said

medically indige "They still owe f before last, so th go to the doctor, to go to him a want you to giv In fact, they do because they o Sometimes," Ha

"We have young will never be o I'm reminded of wife who came to They'd had two she couldn't e came to our cl birth control he wouldn't have children."

Until a year ag restriction on eli that the woman b child-bearing age the family plann now includes cancer screeni that is open to w ages. The cancer patients genera the same full ran and screenings family planning g given. Hayden think it's a grea It really just e program whole, complete circle, can offer this ser lady." According the cancer scree is one of the me ing parts of the

ADVERTIS PAY See The Sla

West Texas Savings ... Your Headquarters for Farm and Ranch Savings

Agriculture income from most areas of the South Plains has been good this year. Much of this income will be placed into savings to make it grow even more. West Texas Savings wants to be your savings

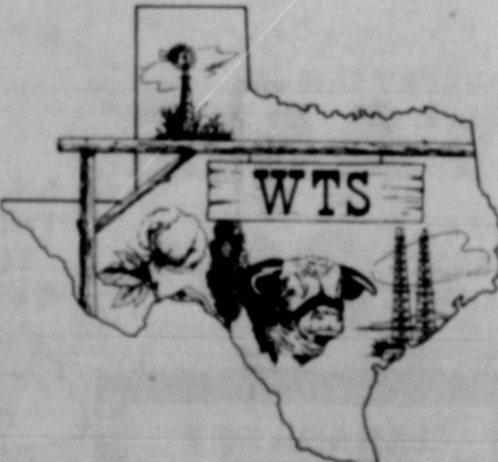
headquarters. The officers and directors are just plain folks and talk your language. Give us a chance to be of service to you.

We pay you the highest rates allowed by Federal Regulations—

From **5 1/4%** to **7 3/4%**

Savings are compounded daily—day in—day out on passbook savings.

Savings deposited by the 10th, earn from the 1st on all savings plans other than passbook. Withdrawals prior to maturity are subject to prescribed penalties.



West Texas Savings Association

3400 50th. Street - Lubbock, Texas 79413 - Ph. 792-3755

City Gifts of glowing beauty a reflection of your love.

CLASSIC FRAGRANCE CANDLES in Emeraude and L'Aimant

Warm, glowing lights to grace holiday tables! Richly fragrant, long-burning, and beautifully embossed in a rich classic design. They'll keep the magic mood of Christmas burning bright! Gift-boxed.

Just \$4.50

SLATON PHARMACY
"THE DOCTORS AG" SLATON, TEXAS
PHONE 828-6815