

The Slaton Slatonite

15¢

PER COPY

64th Year, No. 49

A MEMBER OF MOST FAMILIES IN THE SLATON TRADE AREA

SLATON, TEXAS, LUBBOCK COUNTY

Sept. 4, 1975

Tigers, Wolves To Open Season



A PLAY THAT WORKS—Slaton fans hope to see more of this sort of thing as the Tigers open their season here Friday night. In this action from last week's scrimmage against Tulia, Bill McClesky moves for a gain while Gaylon Buxkemper blocks out a Tulia player. (SLATONITE PHOTO)

By DALTON WOOD
In 1969, the Slaton Tigers opened their football season with a 20-7 victory over San Angelo Lake View. This was the last time Slaton won its opening football game, but a lot of Slaton fans, players and coaches figure the Tigers have a good chance of winning the first one this year when the Colorado City Wolves come to town Friday night for a game starting at 8 p.m.

Last year, Slaton lost 13-6 to Colorado City, and the Wolves could be tough this season, too. According to Slaton coaches, the visitors have lost some of their speedier running backs, but have a real cruncher at fullback in Bill Everett, a 190-pound senior, plus a big defensive tackle, 262-pound Steve Belvin. They also have good size at other positions, Slaton Tiger Club members were told Monday night.

Slaton coaches, however, are optimistic about their own players, although the Tigers have been outscored by both scrimmage opponents. The coaches feel that the mistakes that have been made are being corrected and Coach Eddie Cook and assistants are pleased at the spirit and aggressiveness of the youngsters.

Wear Red
Tiger Clubbers urged everyone to wear red Friday night and to turn out in force to show the team support.

Preceding the game will be a pancake supper at the clubhouse, sponsored by Slaton Lions Club. Serving will be from 5 to 7 p.m., with price set at \$1.50 for all persons 12 and older, and \$1 for those under 12.

Against a veteran Tulia Hornet team last Friday, Slaton was scored on twice, and did not score against the Hornets, although the Tigers' best effort was rubbed out by a motion penalty.

The freshman and junior varsity teams also scrimmaged against Tulia, with

these sessions ending in a draw.

Against Colorado City, Slaton is expected to field a starting lineup on offense averaging 172 pounds in the line and 175 in the backfield. Loran Roberts, the biggest Tiger at 201, who plays tackle, is to handle the place-kicking this season, while Quarterback Mike Tumlinson again is expected to be the punter.

Probable starters on offense for Slaton:

- Ends—Bill Burks, 160, and Darrell Bednarz, 176.
- Left tackle—Michael Bednarz, 176.
- Left guard—Russell Heinrich, 155.
- Center—Mark Ethridge, 165.
- Right guard—John T. Basinger, 172.
- Right tackle—Loran Roberts, 201.
- Quarterback—Mike Tumlinson, 150.
- Tailback—Bill McClesky, 194.
- Fullback—Gaylon Buxkemper, 190.
- Slotback—Ernest Gipson, 165.

Bicentennial Presentation Set Tuesday

The City of Slaton will be presented State and National Certifications as a Bicentennial City at 11:30 a.m. Tuesday in the Slaton High School Auditorium. Ann Simmons of Lubbock, representative of National and State Bicentennial organizations, will make the presentation of the certificates and a Bicentennial Flag to the city. This is the official certification of Slaton being qualified as a Bicentennial City.

The Slaton High School Band will furnish the music for the occasion.

The general public is invited and urged to attend.



REST STOP WORKERS—Scott Harris and Gregg Nowlin, president of the Greater Slaton Area Jaycees, were among several of the club members who worked at the Jaycee Rest Stop west of town Monday from 4 to 10 p.m. Jaycees from Slaton, Idalou and Lubbock manned the station throughout the Labor Day weekend. (SLATONITE PHOTO)

New Site Needed For City Post Office

OKLAHOMA CITY—The U. S. Postal Service is seeking a suitable site on which to build a new post office at Slaton. C. B. Bolar, manager, Oklahoma City Postal District, said here today.

factors considered." The Postal Service would acquire an option to buy the site and at a later time assign that option to a successful bidder for construction of the building.

The post office will have 4,440 sq. ft. of interior floor space and will be leased to the Postal Service when completed.

Sites offered by property owners should have dimensions of 150 feet by 200 feet, for a total of 30,000 sq. ft. and should be located in or near the general business area of Slaton.

Land offers should be made not later than Sept. 22 to Bolar's office at 4545 Lincoln Blvd., Oklahoma City, 73105. He manages postal operations throughout Oklahoma and the Texas Panhandle.

Bolar said site selection will be made on a basis of which site is "most advantageous to the Postal Service from a standpoint of location, price and other

Thomas Still Commissioner

Ward IV Commissioner Hesizke Thomas will remain in office as a recall election Saturday failed to remove him from the city post.

Thomas received 51 votes against the recall and 17 in favor. The 17 votes supporting his removal from office were only two more than the 15 signatures which appeared on the petition calling for the special election.

Ward III voters will go to the polls Friday to elect a new commissioner to fill the seat vacated by J.P. Spears, who resigned last spring. Ira Keys, B.A. Hanna and B.H. Bollinger are the Ward III candidates. Voting will take place in City Hall, with the polls open 7 a.m. to 7 p.m. Mrs. E.C. Davidson will be election judge.

WOODWORK



by dalton

Tuesday seems like Monday, you get behind in a hurry. After the holiday, we at the newspaper office had with the problem of getting the day in a shorter time than usual. The thing probably faced many others around here have so much to do every week, they take off a day or not.

Best Labor Day chuckle I had was by Don Kendrick when he was at the Lions Club to see if they wanted to have Labor Day. Immediately several men proclaimed that "It's just another day and 'we don't ever close,'" and such that, to which Kendrick explained that Monday in September is when "all of work take off for a day."

Monday, the Lions Club voted to meet and I suppose they did. I really don't know those of us who work took the day

All of my farmer friends know, I'm dumb about farming. I am not the only one. I unashamedly asked a farmer one day what a compress does, other than to pack cotton bales all over the place, and that was all they did. How come then, I thought they call it a compress? I figured it was some kind of machinery to make little bales out of big ones. He said he didn't know what it was, but he said he should know better.

So I called my friend Jay Gray at the Co-Op Gin, and he explained that they use a compress to talk to Milt Ardrey, and the season hadn't started yet, he said. So I called my friend Jay Gray at the Co-Op Gin, and he explained that they use a compress to talk to Milt Ardrey, and the season hadn't started yet, he said. So I called my friend Jay Gray at the Co-Op Gin, and he explained that they use a compress to talk to Milt Ardrey, and the season hadn't started yet, he said.

What they could do with my machinery, I may go out and talk to the Chief or whatever they call the guy in charge of the compressing machinery.

COFFEE HOLES: Plains Cotton Growers has had an analysis of last year's crop and says that it was the smallest in the area since 1950. This is surely not anybody's fault...The shallow waters of the Gulf are yielding some old shipwrecks...Nominally, the Good For Them Dept.: those who have decided to undertake a project to prove that there is no basis for the government shouldn't be the one to blame New York City from its financial woes...The Grouch says some folks with a sense of being cheerful are just proud of

Fearless Forecasters Again To Do Their Thing

The same team of Fearless Forecasters which last season astounded so many persons with their predictions of the outcome of football games will be back this season intact to demonstrate their prognosticating abilities anew.

Traditionally, the members of the team make their choices of winners and then, at the end of the season, the one with the poorest record buys steak dinners for the others. Tradition has been bent considerably, however, if not broken, since last year's co-losers, J.W. Holt and Joe Sparkman, never did fulfill their obligation to the others.

Still, operating on the theory that the longer they wait, the higher will be the price of steak, the other

members of the team have decided to let Sparkman and Holt play again.

"Besides, they make us look good," said Pete Williams, last year's winner, who appears all set for another big year after gaining 114 pounds in the off-season weight program.

Dalton Wood, who now can bench press 37 pounds, is back again to try harder after finishing second last season.

Sparkman learned all his football in a correspondence course from Howard Cosell. Holt once tried out as a quarterback, but every time he handed off the ball he tried to keep 9 per cent of it. He claims, however, to have been a ICU halfback. Ball was an LSD flashback.

First choices of the season by all of these stalwarts are listed somewhere or other in this issue of the Slatonite.

Thefts, Auto Accidents Are Investigated

Thefts, a shooting and three wrecks were major items on the police report in Slaton during the last week.

Austin Lee Jones, who lives on E. Division, was treated at Mercy Hospital early Sunday for buckshot wounds in the legs, thigh, side and hand after an incident near a cafe on New Mexico St. Two other men were questioned in the shooting.

On Monday, a bicycle was reported stolen from the front yard of the Bobby Miller home, 350 W. Scurry. It was an orange 10-speed.

Also Monday, Kyle Simonton, manager of Fina Cafe, reported theft of about \$70 worth of meat from an outside refrigerator. A suspect was described.

At U.S. 84 bypass and Woodrow Rd. last Wednesday a 1972 car driven by Joel Mask, 860 S. Oklahoma, and a 1973 auto driven by Jack Cofield, 1355 (See **POLICE**, Page 3)



HAPPINESS IS MONEY FOR MERCY—Arnold Ingraham, administrator for Mercy Hospital, accepts a check for \$3800 from Greeley Sanders, chairman of the July Fourth celebration, as Bill Sewell, member of the board of governors of the Slaton Hospital Memorial Foundation, looks on. All are happy because of the amount raised by the July 4th festivities for the benefit of the hospital. The check was presented at last Thursday's meeting of the Slaton Rotary Club, which spearheads the continuing campaign for donations to the hospital. (SLATONITE PHOTO)

Football Contest Again Offers Cash To Winners

Cash prizes just for guessing the winners of football games again will be offered each week by the Slatonite, with the first list of games being presented on page 10 of this issue.

Each week, residents may mark their choices on the entry blank at the

bottom of the page, and bring the blanks to the Slatonite office before 5 p.m. Friday. Each entry must be signed or stamped by one of the participating sponsors of the annual contest. Other rules of the contest are listed on the page.

First prize each week is \$10, second

prize is \$5 and third is \$2. And a \$25 jackpot is offered for a perfect entry, although this hasn't been claimed in the last two years. Also, in event of a tie, each contestant should mark what he thinks will be the total combined score of the two teams in the tie-breaker game, which this week is

Colorado City at Slaton.

Winners of this week's contest will be announced in next Thursday's paper. And they must pick up their prize money by 5 p.m. the following Monday or forfeit the prize.

WEATHER		
Courtesy of Pioneer Natural Gas Co.		
Date	Low	Hi
28	60	76
29	60	86
30	60	88
31	60	88
1	58	88
2	60	86
3	60	86
Rain—1975—16.70		

A weekly public service feature from
the Texas State Department of Health

Accent on Health

J.E. PEAVY, M.D., Commissioner of Health

It's that time of year again when parents should attempt to "safety proof" their youngsters—many of whom are entering school for the first time. Whether walking, riding in a bus or car, or bicycling to school, plans should be made to ensure the safety of every child, reminds the Texas Department of Health Resources.

Darting across streets without looking, crossing at mid-block from between parked cars, and doing bicycle tricks in traffic are just a few of the pitfalls that should be avoided, advises the Health Resources Department.

Parents can caution their children about all careless practices, and they also can show them. If your child is starting to school—or going to a new school—it's a good idea to make the trip at least once with the child. If he will be pedaling to and from school every day—often in inclement weather—you'll want to be doubly sure that your child is observing safety rules. If you're a motorist in the vicinity of schools, be especially wary, says the Health Resources Department.

What are the trouble spots for bicyclists and motorists? Collisions between motor vehicles and bicycles occurs about as follows: Well over half at intersections. Seven out of ten during daylight hours. Most bicycle riders killed or injured in traffic accidents were violating a traffic law at the time of the incident.

Half of the motor vehicle-bicycle accidents involved a violation on the part of the motor vehicle operator. One out of five bicycles involved in accidents had some mechanical defect. Some of the most common traffic violations of cyclists are (not in order of frequency): Failure to yield right-of-way. (In most cases, the cyclists did not "see" the car; in some cases he intentionally infringed on the motorist's right-of-way.) Riding in the center of the street. Speed too fast for conditions of traffic and road surface. Disregard of traffic control devices—signal lights

and stop signs. Improper turn. To avoid such as just described some safety rules for cyclists: A skillful cyclist always has his control. He never fast and he never far. He always hands free to the road. The cyclist's skill in balancing on the bicycle is essential to avoid such traffic, hitting objects, running into parked cars, etc. Parents have the duty to be certain that the child has the skill to cope before permitting the child to ride on the street. Every bicyclist should be familiar with laws governing his community, in which he is riding. Rules are usually through the school police. Cyclists must ride on the right side of the road, the flow of traffic, facing left, facing traffic. Hand signals used by the cyclist now commonly known as a safe riding practice. Cyclists should stop signs, or automobile and carrying more than a designed and is dangerous. Two on a bike stopping distance or "banana" sign equipment on bike, appears to carry two. Such case! Never holding vehicle nor attach to the vehicle. Always ride. Trick riding dangerous. Do not ride against traffic. Bicyclists are often stopped against bike rear up and back wheels on the bike on

... get b... holiday... with... at in a... ing prob... have... they ta... best Lat... by D... the Lions... Labor I... proclaim... and "w... that, to... Monday... work tal... by, the... and I si... ince thos...
... Tuesd... LL of n... umb abc... wever. I... day v... ack cottor... that was... do they... of some k... of big... call... mber thi... own bet... the co... the s... here. Sc... the Co-O... too, ma... ing thi... density r... on and... candy... dained, t... the bi...
... gift-giving, so... good psycholo... finest. Take col... truly good cup... really care. An... proof way to... coffee is the fil... disposable paper... grounds and... your coffee is... flavorful, with... taste of perke... good filter coff... is the quality m... available at y... ket. At home... think enough of... to give them the...
... ENTERTAINING... THE G... anybod... are y... are y... who l... prove... and l... govern... New Yo... needs Ni... Gro... for b...
... It is a wise faith... his own child.



Jerry Lewis and Kimberly Clark's Muscular Dystrophy Paper Sale

Teri Towels 49¢
Delsey Tissue 89¢
Kotex 51.49



Piggly Wiggly Grade A
Fresh Eggs
63¢ Doz.



Tomato
Heinz Ketchup
69¢ Qt. Btl.



Kraft's Salad Dressing
Miracle Whip
89¢ Qt. Jar



Piggly Wiggly
Potato Chips 59¢ 8-oz. Twin Pkg.
Pringles Chips 89¢ The Chips In A Can 9-oz. Twin Pack Cannister

Prices good thru August 30, 1975. We reserve the right to limit quantities. None sold to dealers.

Husband Pleasin'
Ranch Style Beans
25¢ 15-oz. Can

Macaroni
Kraft's Dinners
25¢ 7 1/4-oz. Box

COKE'S
6 PK CANS
99¢

USDA Good Beef, Full Cut
Round Steak
\$1.39 Lb.

USDA Good Beef, Bone In
Rib Steak
\$1.39 Lb.

USDA Good Beef
Sirloin Steak
\$1.39 Lb.

Farmer Jones
Tasty Franks
79¢ 12-oz. Pkg.

Orchard Sweet
Freestone Peaches 3/\$1.00 Lb.

BARLETT PEARS 49¢ Lb.

Crisp Firm Heads, Iceberg
Lettuce 29¢ Lb.
Large Stalk for Stuffing, Pascal
Celery 25¢ Lb.

Sandwich and Cookout Slicers
Tomatoes 39¢ Lb.
Salad Favorite, Haas
Avocados 4/\$1.00

Swifts Rock Cornish
Game Hens \$1.09 20-oz.

Tart Sweetness, Italian
Prune Plums 59¢ Lb.

USDA Grade A, Breast or Leg
Fryer Quarters 69¢ Lb.

Piggly Wiggly Regular or Pink Frozen
Lemonade 5 \$1 6-oz. Cans
"Mix or Match" Frozen Wes Pac French Fries, Steaks Fries or Flavor Pac Hash Browns
Potato Sale 2 89¢ 2-Lb. Bags

Sugar, Chocolate Chip, Fudge Drop
Keebler Cookies 99¢ 20-oz. 100-Ct. Pkg.

CHECKOUT SPECIAL
SEPTEMBER
Reader's Digest
ONLY
69¢

New Low Prices

Libby's Vienna Sausages	3 5-oz. Cans	\$1.00
Trappery's Pork & Beans	3 15-oz. Cans	\$1.00
Margarine Quarters Parkay	Lb. Pkg.	59¢
All Varieties Patio Dinners	11-oz. Pkg.	59¢
Creme Cookies Nabisco's Oreos	15-oz. Pkg.	79¢
Pineapple-Grapefruit Del Monte Juice	46-oz. Can	49¢
Piggly Wiggly Facial Tissue	2 200-Ct. Boxes	79¢
Italian Ragu Sauces	15 1/2-oz. Jar	59¢
Hi-Wi Dog Food	8 15-oz. Cans	\$1.00
Grape Welch's Jelly	qt.	\$1.09
Peanut Butter Koogles	12-oz. Jar	69¢
Chungold Soft Oleo	Lb. Tub	59¢

New Low Prices

Del Monte Whole Potatoes	3 16-oz. Cans	\$1.00
Kraft's Miracle Whip	Pt. Jar	69¢
Del Monte Prune Juice	qt. Jar	69¢
Piggly Wiggly Napkins	180-Ct. Pkg.	49¢
Rainbo, Hamburger Dill Pickles	qt. Jar	79¢
Diet Shasta Pop	6 12-oz. Cans	\$1.00
Libby's Potted Meat	3 3 1/2-oz. Cans	\$1.00
Chef Boy-Ar-Dee Pizzas	13-oz. Pkg.	89¢
Sunny Delight, Florida Citrus Punch	6 8-oz. Btls.	\$1.00
Reg. or Sugar Free A&W Root Beer	16-oz. Btls. 6-Pack	\$1.29
Dry Fry Oil Pam	9-oz. Spray Can	99¢
Larsen's Veg-All	3 15-oz. Cans	\$1.00

Soft-Medium-Hard, Pepsodent Adult
Toothbrushes 79¢ Ea.
4.6-oz. Tubes Close-Up
Toothpaste \$1.54 Twin Pak

PIGGLY WIGGLY SHAMPOO SALE COMPARE AND SAVE

Piggly Wiggly, Baby Shampoo	16-oz. Btl.	\$1.59
Piggly Wiggly, Balsam or Lemon Shampoo	16-oz. Btl.	\$1.39
Piggly Wiggly, Egg Shampoo	16-oz. Btl.	99¢
Piggly Wiggly, Herbal Shampoo	16-oz. Btl.	\$1.49
Piggly Wiggly, Apricot, Green Apple, Strawberry or Golden Shampoo	16-oz. Btl.	\$1.29

PEOPLE PLEASIN' STORE

We Give S&H Green Stamps
We Welcome Federal Food Stamp Customers



The Slaton Slatonite 15¢

PER COPY

64th Year, No. 49

A MEMBER OF MOST FAMILIES IN THE SLATON TRADE AREA
SLATON, TEXAS, LUBBOCK COUNTY

Sept. 4, 1975

Tigers, Wolves To Open Season



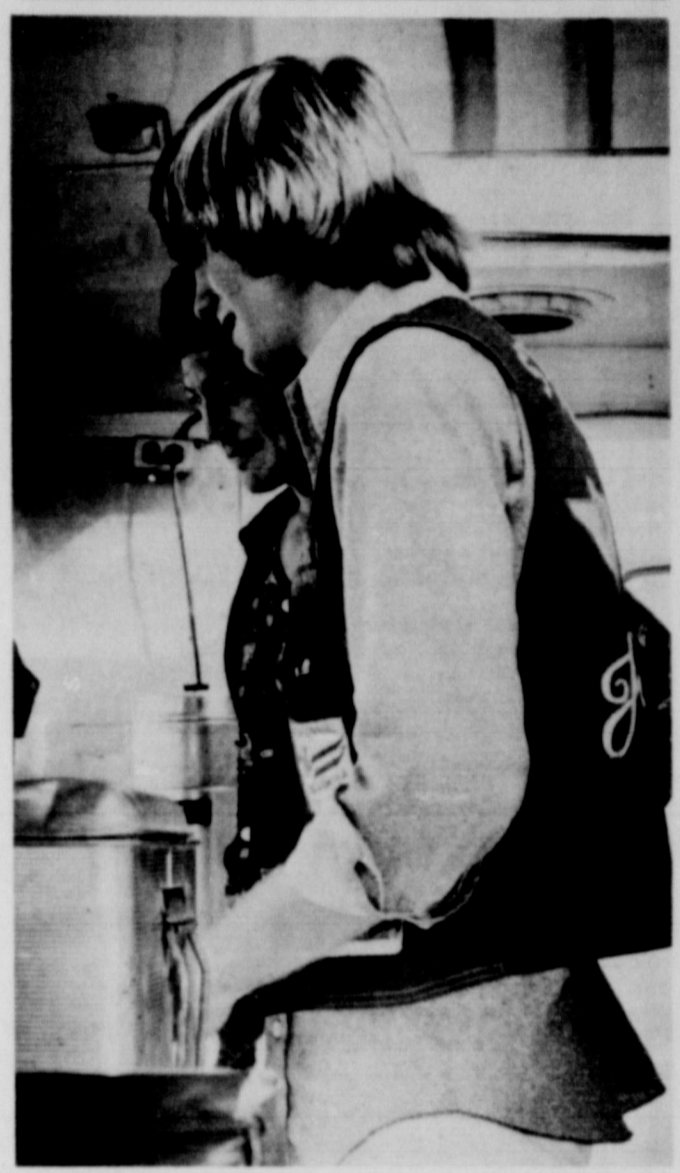
A PLAY THAT WORKS—Slaton fans hope to see more of this sort of thing as the Tigers open their season here Friday night. In this action from last week's scrimmage against Tulia, Bill McClesky moves for a gain while Gaylon Buxkemper blocks out a Tulia player. (SLATONITE PHOTO)

By DALTON WOOD
In 1969, the Slaton Tigers opened their football season with a 20-7 victory over San Angelo Lake View. This was the last time Slaton won its opening football game, but a lot of Slaton fans, players and coaches figure the Tigers have a good chance of winning the first one this year when the Colorado City Wolves come to town Friday night for a game starting at 8 p.m.

these sessions ending in a draw.
Against Colorado City, Slaton is expected to field a starting lineup on offense averaging 172 pounds in the line and 175 in the backfield. Loran Roberts, the biggest Tiger at 201, who plays tackle, is to handle the place-kicking this season, while Quarterback Mike Tumlinson again is expected to be the punter.

Last year, Slaton lost 13-6 to Colorado City, and the Wolves could be tough this season, too. According to Slaton coaches, the visitors have lost some of their speedier running backs, but have a real cruncher at fullback in Bill Everett, a 190-pound senior, plus a big defensive tackle, 262-pound Steve Belvin. They also have good size at other positions, Slaton Tiger Club members were told Monday night.

Probable starters on offense for Slaton:
Ends-Bill Burks, 160, and Darrell Bednarz, 176.
Left tackle-Michael Bednarz, 176.
Left guard-Russell Heinrich, 155.
Center - Mark Ethridge, 165.
Right guard - John T. Basinger, 172.
Right tackle - Loran Roberts, 201.
Quarterback - Mike Tumlinson, 150.
Tailback - Bill McClesky, 194.
Fullback - Gaylon Buxkemper, 190.
Slotback - Ernest Gipson, 165.



REST STOP WORKERS — Scott Harris and Gregg Nowlin, president of the Greater Slaton Area Jaycees, were among several of the club members who worked at the Jaycee Rest Stop west of town Monday from 4 to 10 p.m. Jaycees from Slaton, Idalou and Lubbock manned the station throughout the Labor Day weekend. (SLATONITE PHOTO)

WOODWORK



by dalton

Tuesday seems like Monday, you get behind in a hurry. After the holiday, we at the newspaper office read with the problem of getting the out in a shorter time than usual. The probably faced many others around to have so much to do every week, they take off a day or not.
Labor Day chuckle I had was by Don Kendrick when he was at the Lions Club to see if they wanted to Labor Day. Immediately several men proclaimed that "It's just another day and "we don't ever close," and such that, to which Kendrick explained that Monday in September is when "all of work take off for a day."
The Lions Club voted to meet and I suppose they did. I really don't know those of us who work took the day

Fearless Forecasters Again To Do Their Thing

The same team of Fearless Forecasters which last season astounded so many persons with their predictions of the outcome of football games will be back this season intact to demonstrate their prognosticating abilities anew.
Traditionally, the members of the team make their choices of winners and then, at the end of the season, the one with the poorest record buys steak dinners for the others. Tradition has been bent considerably, however, if not broken, since last year's co-losers, J.W. Holt and Joe Sparkman, never did fulfill their obligation to the others.
Still, operating on the theory that the longer they wait, the higher will be the price of steak, the other

members of the team have decided to let Sparkman and Holt play again.
"Besides, they make us look good," said Pete Williams, last year's winner, who appears all set for another big year after gaining 114 pounds in the off-season weight program.
Dalton Wood, who now can bench press 37 pounds, is back again to try harder after finishing second last season.
Sparkman learned all his football in a correspondence course from Howard Cosell. Holt once tried out as a quarterback, but every time he handed off the ball he tried to keep 9 per cent of it. He claims, however, to have been a TCU halfback. Ball was an LSD flashback.
First choices of the season by all of these stalwarts are listed somewhere or other in this issue of the Slatonite.

Bicentennial Presentation Set Tuesday

Tiger Clubbers urged everyone to wear red Friday night and to turn out in force to show the team support.
Preceding the game will be a pancake supper at the clubhouse, sponsored by Slaton Lions Club. Serving will be from 5 to 7 p.m., with price set at \$1.50 for all persons 12 and older, and \$1 for those under 12.
Against a veteran Tulia Hornet team last Friday, Slaton was scored on twice, and did not score against the Hornets, although the Tigers' best effort was rubbed out by a motion penalty.
The freshman and junior varsity teams also scrimmaged against Tulia, with

Thefts, Auto Accidents Are Investigated

Thefts, a shooting and three wrecks were major items on the police report in Slaton during the last week.
Austin Lee Jones, who lives on E. Division, was treated at Mercy Hospital early Sunday for buckshot wounds in the legs, thigh, side and hand after an incident near a cafe on New Mexico St. Two other men were questioned in the shooting.
On Monday, a bicycle was reported stolen from the front yard of the Bobby Miller home, 350 W. Scurry. It was an orange 10-speed.
Also Monday, Kyle Simonton, manager of Fina Cafe, reported theft of about \$70 worth of meat from an outside refrigerator. A suspect was described.
At U.S. 84 bypass and Woodrow Rd. last Wednesday a 1972 car driven by Joel Mask, 860 S. Oklahoma, and a 1973 auto driven by Jack Cofield, 1355 (See POLICE, Page 3)



HAPPINESS IS MONEY FOR MERCY—Arnold Ingraham, administrator for Mercy Hospital, accepts a check for \$3800 from Greeley Sanders, chairman of the July Fourth celebration, as Bill Sewell, member of the board of governors of the Slaton Memorial Foundation, looks on. All are happy because of the amount raised by the July 4th festivities for the benefit of the hospital. The check was presented at last Thursday's meeting of the Slaton Rotary Club, which spearheads the continuing campaign for donations to the hospital. (SLATONITE PHOTO)

New Site Needed For City Post Office

OKLAHOMA CITY—The U. S. Postal Service is seeking a suitable site on which to build a new post office at Slaton, C. B. Bolar, manager, Oklahoma City Postal District, said here today.
The post office will have 4,440 sq. ft. of interior floor space and will be leased to the Postal Service when completed.
Sites offered by property owners should have dimensions of 150 feet by 200 feet, for a total of 30,000 sq. ft. and should be located in or near the general business area of Slaton.

Thomas Still Commissioner

Ward IV Commissioner Hesikize Thomas will remain in office as a recall election Saturday failed to remove him from the city post.
Thomas received 51 votes against the recall and 17 in favor. The 17 votes supporting his removal from office were only two more than the 15 signatures which appeared on the petition calling for the special election.
Ward III voters will go to the polls Friday to elect a new commissioner to fill the seat vacated by J.P. Spears, who resigned last spring.
Ira Keys, B.A. Hanna and B.H. Bollinger are the Ward III candidates.
Voting will take place in City Hall, with the polls open 7 a.m. to 7 p.m. Mrs. E.C. Davidson will be election judge.

WEATHER		
Courtesy of Pioneer Natural Gas Co.		
Date	Low	Hi
28	60	76
29	60	86
30	60	88
31	60	88
1	58	88
2	60	86
3	60	86
Rain—1975—16.70		

... of my farmer friends know, I'm dumb about farming. I am not the only one. I unashamedly asked a farmer one day what a compress does, other than to pack cotton bales all over the place, and that was all they did. How come then, I thought they call it a compress? I figured it was some kind of machinery to make little bales out of big ones. He said he didn't know what it was called. It turns out he was right, because he should have called it a compress. I figured I'd go to the compress to talk to Milt Ardrey, but the season hadn't started yet, he was out there. So I called my friend Jay Gray at the Co-Op Gin, and he explained that they make little bales out of big ones, using them with machinery to meet the density requirements of the people who buy them and make towels and shirts and candy and stuff out of it. In fact, the bales are pressed down to the bulk of the ones which come out of the gin. I may go out and talk to the Chief or whatever they call the guy in charge of the compressing machinery.

... HOLES: Plains Cotton Growers has issued an analysis of last year's crop which says that it was the smallest in the area since 1950. This is surely not anybody... The shallow waters of the well are yielding some old shipwrecks... I'm sure could use a haircut... Nominations for the Good For Them Dept.: those who have decided to undertake a project to prove that there is no basis for the government shouldn't be the one to take New York City from its financial woes. New York City anyway?... The Grouch says some folks with a reputation for being cheerful are just proud of

Football Contest Again Offers Cash To Winners

Cash prizes just for guessing the winners of football games again will be offered each week by the Slatonite, with the first list of games being presented on page 10 of this issue.
Each week, residents may mark their choices on the entry blank at the

bottom of the page, and bring the blanks to the Slatonite office before 5 p.m. Friday. Each entry must be signed or stamped by one of the participating sponsors of the annual contest. Other rules of the contest are listed on the page.
First prize each week is \$10, second

prize is \$5 and third is \$2. And a \$25 jackpot is offered for a perfect entry, although this hasn't been claimed in the last two years. Also, in event of a tie, each contestant should mark what he thinks will be the total combined score of the two teams in the tie-breaker game, which this week is

Colorado City at Slaton.
Winners of this week's contest will be announced in next Thursday's paper. And they must pick up their prize money by 5 p.m. the following Monday or forfeit the prize.

Cooper High Highlights

By CASSIE KITTEN

MEETING
The year, Home-
bicycle relays
the Constitu-
discussed Tues-
in the first
(STUCO)
of the '75-'76
ing," a group
the main event
ing. For five
members pooled
this "brain-
suggestions were
community ser-
money-raising

president, Bob
vice-president,
reported on the
ship they at-
Texas State

My goal as
to bring stu-
to a better
and to provide
environment for

mented that
taken serious-
and should be
n Kay,
ffman,
Buddy
ton,
ir plan
s in P
t Bapt

de-elect
High S
n, a 19
stest sup-
s emp
on bus

e Re
In K
sie Mo
was he
day in
in Post
cimate
nded th

resident
the M
id Mr
tufus
and fa
nd fam
nd fam
nd fam
nd Bett
Joe and
atter
Midlan
Dallas
l. Aust

ry F
Reu
ity fam
on Sun
reunion
0 atten
and reu

, and
illies
ere M
f Posey
f Pe
nd M
of Lab
d Jim
and N
hallow

OF TH
o thank
otes. Th
d so far

he Post
897,
79364
20, 192
reflected
vidualy,
column
n call

7BBOC
15,00
was 77

RE
IAT

contest sponsored by Junior Chapter of the Future Homemakers of America. Eligible contestants were all high school boys who kept their pants legs rolled up through the school day. A voting booth was set up outside the Homemaking Department where the student body voted for the hairy legs of their choice. Ricky Montemayor and Tony Blizzard were announced as the winners Friday morning. The two boys received a cash prize of \$5 each.

PERSONAL

Out of town guests attending the Dru Ann Beard and George Michael Barecky Jr. wedding were from Tennessee, Illinois, Oklahoma, Colorado, Amarillo, El Campo, Beeville, Mineral Wells, Hamlin, Abernathy and Plainview.

CARDS OF THANKS

We desire to express to our kind neighbors and thoughtful friends our heartfelt thanks for their many expressions of sympathy. The beautiful floral offerings, cards and prayers will always be remembered. And a special thanks to Dr. Glen Payne, Dr. Jaynes, Dr. Mardia, nurses and Slaton Care Center.

Mr., Mrs. C.B. Bloxom and family
Mr., Mrs. Roscoe Rackler and family
Mr., Mrs. J.E. Mayo
E.D. Bloxom and family

ADVERTISING PAYS



SILVER ANNIVERSARY—Mr. and Mrs. Jimmy Coleman of Wilson observed their 25th wedding anniversary with a trip to Colorado. They were married Sept. 1, 1950, in Roswell, N.M. They have two daughters, Sgt. Cathy Coleman USAF, Sembach, Germany, and Kim Coleman of Wilson; and one son, Chris Coleman of Wilson.



This beaver-like coat by Allez, made of Acrilan acrylic pile, is the ultimate coverup for fall. Hob Nobber's costume, (right) made of Monsanto polyester, takes the place of a jacket in early fall. Both outfits are Wear-Dated by Monsanto.

Coverups for fall are taking on fresh new shapes and directions. Take sweaters, for instance. Lean or oversized, they run the gamut from skinny Acrilan acrylic pulis and patterned cardigans to hooded wraps and long tubes for evening.

Even dresses are involved in the coverup scheme. Costumes are stretching wardrobes and substituting for heavy wraps during fall's warmer days. Hob Nobber takes a twosome—a classic dress in muted beige—and adds a jacket to create a costume that works during the day and after five. The dress goes it alone, too. For cooler climes, Allez takes a beaver-like car coat of Acrilan acrylic pile and wraps it stylishly at the waist. It works with dresses or pants and has a hidden asset, besides. The coat is Wear-Dated by Monsanto which means it is warranted for a full year's normal wear, refund or replacement when returned with tag and sales slip to Monsanto.

GAME	WILLIAMS	WOOD	BALL	SPARK	HOLT
New Deal-Idalou	Idalou	New Deal	Idalou	Idalou	N.Deal
Cooper-Littlefield	Little.	Little.	Little.	Little.	Little.
Post-Coahoma	Post	Post	Post	Post	Post
Lorenzo-Roosevelt	Roose.	Roose.	Roose.	Roose.	Roose.
Frenship-H. Center	Frenship	H.Center	Frenship	H.Center	Frenship
DC-Seminole	Seminole	Seminole	Seminole	Seminole	DC
Abernathy-Petersburg	Petersburg	Abernathy	Petersburg	Abernathy	Abernathy
Olton-Tulia	Olton	Olton	Tulia	Tulia	Tulia
Miss.-Baylor	Baylor	Baylor	Baylor	Baylor	Baylor
SMU-Wake Forest	SMU	SMU	SMU	SMU	SMU
Houston-Lamar	Houston	Houston	Houston	Houston	Houston
Wichita St.-West Tex	WT	WT	WT	WT	WT

Club Roundup

TOPS CLUB

Seven members of the TX69 Tops Club weighed in last Thursday, with three losing 5 1/2 pounds. Two Kops maintained.

Weekly queen was Sandra Johnston, who also won the Spoon Woman Contest.

Craft auction was held by Thelma McCarver. Next week is auction time again.

HD CLUB

Members of the Home Demonstration Club met Tuesday afternoon and answered roll call with "The Best Book I've Read Lately."

Eight members and guest Billie Meeks were present. Helen Meeks gave the council report and the county committee recommendations for the 75-76 plan of work were read and adopted.

Plans were made to help in the Fiesta 75 booth at the Garden and Arts Center in Lubbock and also to help with the HD Club booth at the South Plains Fair.

Mrs. Meeks instructed the group in etching on glass for the program. The next meeting will be Sept. 16 and Peggy Allison will demonstrate dough art.

ATHENIANS

The Athenian Study Club met Tuesday night with Mrs. Curtis Aycock as hostess.

The club had a salad supper for the first meeting of the year. Guests were Nancy Norman, Sandy White, Anita Myers, Donna Forehand and Poodle Mize. Seventeen regular members attended.

VFW

The VFW #6721 and Auxiliary visited the VA hospital in Big Spring Thursday night, August 28. Members going from Slaton were: Commander Keith Price and Dorothy Price, Delmar and Eileen Tucker, Travis and Geraldine Mann. Auxiliary president Brookse-nell Davidson, and Mickey Anderson.

Bingo was played and forty Bicentennial coins were given away as prizes. The ladies served cake and punch following bingo.

The Post and Auxiliary will meet Monday night, Sept. 8 with the men meeting at 8 p.m. and the ladies at 7:30 p.m., and the ladies will serve a pot luck supper.

Dues for 1976 are still being accepted for the Auxiliary. Please send your

check or money order to: Elizabeth Klaus, 855 So. 14th St. Slaton, Texas.

LONG LIFE

Twenty-one years ago the T. A. Bownds residence at 1135 S. 10th St. was built. At the time, a light bulb was installed in the porch light, and last week it finally burned out. According to several people the Slatonite spoke with, this is somewhat of a record.

SHOP IN SLATON

POLICE

(Con't. from Page 1)

S. 8th, collided.

On Friday in the 1100-block of 9th St., a 1968 auto driven by Jose Louis Trevino of Tahoka was involved in a wreck with a 1970 car driven by Jimmie Cordova, 535 N. 9th.

A collision Saturday at S. 9th and E. Edwards intersection involved an auto driven by Seldon Wilborn of Slaton and a 1973 car driven by Celestino Rodriguez, 120 E. Edwards.

A tire valued at \$50 was stolen last Thursday from a new car at Town and Country Chevrolet.

Getting Married?

See the good selection of Announcements and Invitations

at
THE SLATONITE
(\$10.95 per 100)

Compare our prices

WORSHIP SCHEDULE

The First Christian Church of Slaton will observe a new worship time schedule beginning Sunday Sept. 7.

Sunday School will be at 9:30 a.m. and morning worship will follow at 10:45 a.m. Evening worship will be at 6 p.m.

Due to my wife being in the hospital since August 1. I have been unable to contact the voters of precinct 3. I will appreciate your vote and influence.

B.H. [HENRY] BOLLINGER

WE'RE PROUD OF OUR TEAM!



We have a well-earned reputation for settling claims fairly and promptly without a lot of paperwork and small talk. You too can be a WINNER when you insure with the agency that prides itself on fast claim service! Consult us and see.

Kendrick Insurance

DON KENDRICK
145 W. Lubbock
828-6576

Think MORE MORE FOR YOUR MONEY

More Return — We pay the highest interest rates allowed by law. Our new 6-year Certificate of Deposit at 7 1/4% yields a whopping 8.06% Compounded Daily. Other savings plans are also available with shorter maturities along with Day-in, Day-out Passbook Accounts paying 5.25% or 5.39% Compounded Daily.

More Safety — Accounts are insured to \$40,000 each by the Federal Savings & Loan Insurance Corporation.

More Convenience — Home office at 100 W. Garza in Slaton. Branch offices in Post, Tahoka, & Lamesa.

More Service — Ask us about our new IRA (Individual Retirement Account) as a way to save taxes now while you're working and provide additional income when you retire.

Also inquire about our new direct deposit program for social security checks.

SLATON SAVINGS and Loan Association
100 W. Garza 828-6201

FRANCISCAN'S BIRTHDAY CELEBRATION!

10% OFF ON FRANCISCAN BIRTHDAY CERAMICS!

On 20-piece sets!
Dinner plate, salad plate, cup and saucer, and more.

On 9 most-wanted dishes!
Cereal, bread & butter plate, salad plate, creamer, sugar with lid, medium vegetable, and salt/pepper.

On 12 favorite patterns!

10% OFF ON CABARET CASUAL CRYSTAL!

On 8-piece sets of Cabaret Casual Crystal!
Glasses, iced teas, juice/wines, sherbets—Green, Pink, Cornsilk, Blue, or Persimmon.

SALE ENDS SEPT. 30th

The Gift Gallery

Eblen's COURTEOUSNESS IS PART OF OUR PRESCRIPTION SERVICE!

We're never too busy to serve you with care...that's because your health is our first concern!

YOU KNOW YOU CAN TRUST YOUR PHARMACIST!

EBLEN PHARMACY
828-6537

Now Open Under New Management

SHAMROCK CAFE

Free Libby Glass Given with each meal

Open 24 hours a day, 7 days a week

Hwy. 84 by-pass Slaton

Roosevelt News

by
Lynda Hall
and Sandra Patschke

FHA
The Roosevelt FHA Katiebeth chapter held their first meeting of the school year last Tuesday. The program of work was presented to the chapter by the officers and Nannette Carnes, chapter president, introduced each officer.

For August, the chapter had a watermelon bust last Thursday after school at the home of Sandra Patschke.

The Slaton Nursing Home will be the Impace project for the chapter. They have several different events planned for the home plus caroling at Christmas.

They are now preparing for entries in the South Plains Fair.

The La Petite chapter also presented their program of work to their chapter. Now they are working on the Little Sister week.

SPANISH CLUB
The Spanish club elected their new officers for the 75-76 school year last week during activity period. They are Mary Beth Baze, parliamentarian; Pricilla Stevens, historian; Marta Torres, treasurer; Kayla Barnett, secretary; Berta De Los Santos, reporter; Lorenza Cantu, vice president; and Georgia Lucero, president.

FTA
Friday after school the Roosevelt Future Teachers held a get together for all of the new teachers at the clubhouse. The teachers and FTA members each introduced themselves and enjoyed refreshments.

SBG
The Student Body Government is getting things rolling for this school year. Milton Morgan, president, presided over the meeting. An activity com-

mittee was appointed to see about scheduling assemblies and money making projects were discussed. The council is selling the remaining Eagle floor mats left over from last year.

SCIENCE CLUB
Lloyd Whetzel was elected as the 75-76 Science Club president at their first meeting of the school year. Other officers are Mark Reynolds, vice president; Tina Belcher, secretary; and Judy Whipple, treasurer.

PEP SQUAD
Ella Brown will be heading this year's pep squad and backing her are Janise Lyndsey as vice president, (she will be head of all the skits); Debbie Shelton, secretary and Debbie Thomson, treasurer. They plan to attend four of the five away games, and voted to wear maroon pants with the capes.

Sponsors for the group are Coach Margaret Adams and Linda Daniel.

FOOTBALL
The Roosevelt freshman, junior varsity and varsity football teams scrimmaged Idalou last Friday at Idalou. The varsity will play their first game of the season at Roosevelt against Lorenzo Friday night beginning at 8 p.m.

The freshman play New Deal for their first game at New Deal.

The junior varsity's first game is on Thursday, Sept. 4 against Lorenzo at Lorenzo.

The junior high teams start off against Crosbyton Thursday, Sept. 11 beginning at 5:30 at Roosevelt.

NEWS BRIEFS
Nineteen members of the annual staff and their sponsor, Mrs. Gale Rains, went

to the Photo Shoppe last Thursday morning for a tour.

Mr. and Mrs. George Railsback and Mr. and Mrs. C.T. Bessent, Tony and Scotty attended the J.R. White reunion at Abilene over the weekend.

Spending the Labor Day Holiday camping out along the Rio Grande River on the King's Ranch were Mr. and Mrs. Charles Miller and Jimmy, Mr. and Mrs. W. D. Killian Jr., Rhonda, Melanie and Mark and Jeri Parchman.

The first Eagle Pep Rally will be held Friday, in the high school gym at 2:40 p.m. Everyone is encouraged to attend and give your support.

Mr. and Mrs. Edward Jordan, Connie and Donna visited with Dr. and Mrs. Robert Hawkins in Midland and with Mr. and Mrs. Buck Walding in Dell City over the Labor Day Weekend.

Supper guests of Mr. and Mrs. James Daniel and sons last Tuesday night were Mr. and Mrs. Leland DuVall of Little Rock, Ark., Mrs. Ruby Dickson of Coushatta, La., Mr. and Mrs. David Jones, Jay and Amy, of Amarillo, Mr. and Mrs. Ronnie Daniel and Jennifer of Lubbock, and Mr. and Mrs. Carl Jones.

Recent visitors in the Horace Sides home were her brother, John David McLean and Davy of Beeville and her sister, Miss Virginia McLean of Amarillo. John David is a professor in the Science Department at the junior college in Beeville.

Randy Daniel and a friend, David Clemons of Dallas, spent the Labor Day

Roosevelt Eagles Counting On Depth

By DALTON WOOD
Only three starters are included in the 10 returning lettermen for Roosevelt High School's football team this fall, but with the Eagles' habit of winning football games strongly ingrained and with Coach Houston Powell's success in rounding his team into shape by district time, Roosevelt can be counted on to be in the thick of the running again this season.

Depth, despite the apparent shortage of regulars from last year's 7-3 team, will be a strong point for Roosevelt. Coach Powell pointed out that he has 18 seniors, 19 juniors and 26 sophomores out for the team, and all of the senior lettermen logged a lot of playing time last season even though all weren't considered starters.

"I feel that right now, we're two-deep in every position with boys who can play," Powell said.

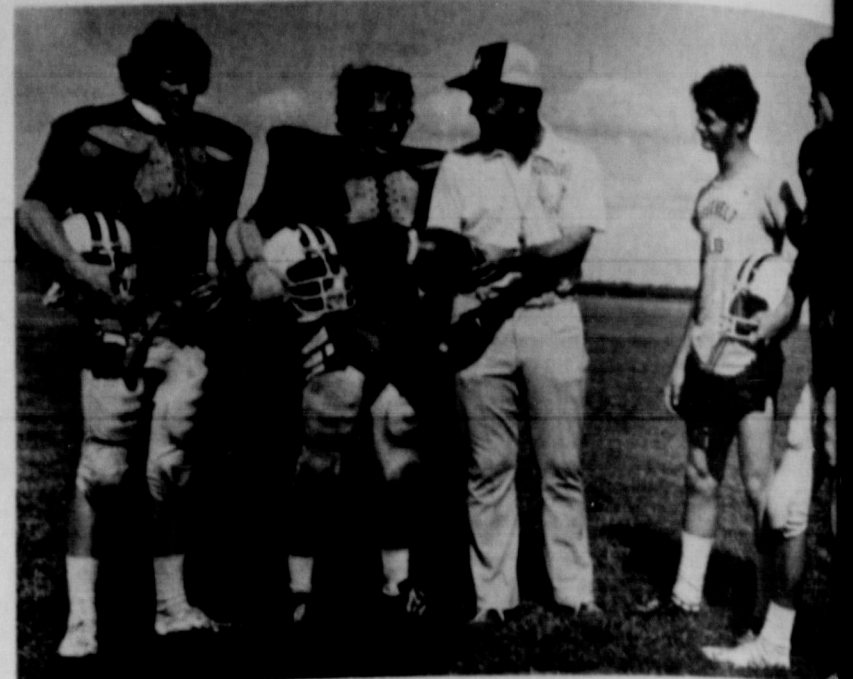
Three Starters
Only returning starters, all on defense, are Mark

Reynolds, 205-pound senior tackle, Lloyd Whetzel and Lowell Bridges, who were starters in the defensive secondary.

In eight years as Roosevelt's head coach, Powell has a record of 50 wins, 32 losses and one tie. Indicative of the kind of football program he has installed is the fact that almost 200 boys are playing football at Roosevelt this season, including the 63 varsity players, 29 or 30 freshmen and the junior high teams.

The Eagles open their season at home Friday against Lorenzo, a big, talented and experienced Class A team.

The Roosevelt schedule:
Sept. 5 - Lorenzo
Sept. 12 - at Crosbyton
Sept. 19 - at Seagraves
Sept. 26 - Open
Oct. 3 - at Frenship*
Oct. 10 - Littlefield
Oct. 17 - at Slaton*
Oct. 24 - Cooper*
Oct. 31 - at Tahoka*
Nov. 7 - Post*
Nov. 14 - Denver City*
* District games



"THIS THING IS A FOOTBALL"—Roosevelt Coach Houston Powell is explaining the points of the game to his team captains this year. From left in the above photo are Lowell Bridges, Milton Morgan, Coach Powell, Doug Gentry and Roger Dan photo below are other seniors who will provide leadership for the Eagles as their season Friday against Lorenzo. From left, kneeling, are Jerry Tennant, Hettler, Lloyd Whetzel, Bobby Shelton and Allan Thompson. Top row, from left, Peel, Mark Reynolds, Charles Baker, Lonnie Patton and Jimmy Meigsar. (SLATONITE)

weekend with Randy's parents and family, the James Daniels. Also visiting in the Daniel home Sunday were Mr. and Mrs. Glen Speer of New Deal, Norman Ray Speer of Louisiana, Mr. and Mrs. Ricky Daniel of Lubbock and Miss Joden Polyak of WTSU, Canyon.

Mr. and Mrs. Bennie Sides and family, Mr. and Mrs. Bill Sides and family and Jack Sides spent the Labor Day weekend in the mountains of New Mexico.

Mr. and Mrs. Clyde Powell and Kevin of Lubbock visited recently in the James Daniel home.

Mrs. John Sherrod fell at her home and broke her wrist.

BOOSTER CLUB
The election of new directors and officers was the main topic of the last Roosevelt Booster Club meeting. New directors are Ed Shelton, Leon Whetzel, Judge McLeod, James Walsh and Don Byers. Officers are Roy Railsback, president; Judge McLeod, vice president; Mellie Killian, secretary; and Bertha Daniel, treasurer.

4-H NEWS
A county wide 4-H Fair and Fun Day will be Saturday at the Merchants Building, South Plains Fair Grounds. Entries will be taken from 8-9 a.m. and judging will begin at 9:30 a.m. Exhibits will be open from 10:45 a.m.-1 p.m.

At noon there will be a picnic lunch with everyone bringing a sack lunch and the Adult Leaders Association furnishing punch. Baked goods for the fair will be auctioned off to the highest bidders after lunch. At 1 p.m. the recreation will begin. At 4 p.m. plaques will be awarded to Senior high point boy and girl and junior high point boy and girl.

The Fair is open to all types of projects except beef, sheep, and swine. Roosevelt 4-H leaders who will participate as supervisors and their departments are Mrs. Pauline

Ragland, hobbies and Mrs. Sylvia Bessent, textiles.

Panhandle South Plains Fair will be held on Sept. 20-27 and Roosevelt 4-H members are urged to exhibit their items at the fair.

FFA NEWS
Adding to the Roosevelt FFA chapter this year will be 40 freshman. Out of these 40 young farmers five are girls.

Lynn Walling, Ag teacher said this is the most Ag 1 students he could remember ever having. They brought the chapter total up to 83.

The 40 first year farmers should better the chapter in stock shows and contests. The chapter is looking forward to a very successful year.

BAND AIDS
Twenty-five interested parents turned out Tuesday night, Aug. 26, for the first meeting of the Roosevelt Band Aids for the current school year.

Elected to serve as president was Mrs. Bobbie Aldridge and Mrs. Sandra Seary was elected as secretary.

This organization is not a fund raising organization. The prime purpose is to give moral support to the band members and to keep abreast of the band programs. Also to help out in any way such as sponsors and bus drivers.

There are no membership fees and anyone who's interested in the band programs is invited to become a "Band Aid".

NEWS BRIEFS
Jeff Matsler broke two bones in his arm while riding in the rodeo at Roaring Springs Friday night. He was taken to the Crosbyton Hospital and transferred to Methodist Hospital Saturday where he underwent surgery. He was released Sunday.

Visiting this weekend from Austin in the home of Mr. and Mrs. S.N. Jones were their daughter and her husband, Janice and Earl Eblen Jr.

Visiting Mr. and Mrs. Charles Ray Dickey and Cheryl during the Flatlander Labor Day Weekend Jamboree were Pat (Towman) and Bonnie (Tinkerbell)



Martin from McComb, Mississippi.
C.B. NEWS
The Flatlander Jamboree last weekend was a financial success. All money generated will be donated to the Texas Boys Ranch. Next year the jamboree will be held in the Fair Park Coliseum on the Fair Grounds Sept. 4th, 5th, and 6th-1976.

REUNION '65
We would like to take time to say how very much we appreciate the lovely Ivy plant that was given to us, during your reunion last weekend, in memory of our son and brother, Larry.

During his school years, each of you and his teachers touched his life in some way and in doing so, have also touched ours.

Thank you, Mr. and Mrs. Bennie Moeller and Jill

CARD OF THANKS
We are at a loss for words that would describe our thankfulness to you for your concern for us in our bereavement. For your prayers, lovely food and words of comfort we are grateful.

God bless each of you. The family of Robert L. Hagler Rt. 2 Box 105 Post, Texas 79356

BEAT COLORADO CITY

We are backing the

ROOSEVELT EAGLES

all the way

ROOSEVELT FOOTBALL SCHEDULE

- Sept. 5 — Lorenzo
- Sept. 12 — at Crosbyton
- Sept. 19 — at Seagraves
- Sept. 19 — at Seagraves
- Sept. 26 — Open
- Oct. 3 — at Frenship*
- Oct. 10 — Littlefield
- Oct. 17 — at Slaton*
- Oct. 24 — Cooper*
- Oct. 31 — at Tahoka*
- Nov. 7 — Post*
- Nov. 14 — Denver City*

* District games

THE FAMILIES OF

CHARLES AND MARY MILLER
NORMAN AND WANDA GENTRY
JAMES AND BERTHA DANIEL
LEON AND CECILIA WHETZEL
LARRY AND SUSIE MANN
W.D. AND MELLIE KILLIAN
POWELL AND CAROL ADAMS
W.L. AND INEZ SPEED
JUDGE AND LYNDA MCLEOD

AUGUST AND NORINE PATSCHKE
JOE AND BETTI HALL
J.C. AND MARY REYNOLDS
BUDDY AND JERRI HETTLER
LEON AND DELORES LIGHT
EDDIE AND PEARL SHELTON
ARLEN AND ERNESTINE STENNETT
R.A. AND PAT PEEL

ACUFF CO-OP GINS

Rt.1 Lubbock

842-3251

NASSCO STEEL BUILDING

IDALOU HIGHWAY
763-9221

McClung Co-op Gin

RT. 2, SLATON — 842-3374

TEXAS TALK

By FRED MYERS

Getting it together may be the secret for grain sorghum planting in the next few years. Results from agricultural experiment stations indicate work will probably be intensified toward a grain sorghum which will grow well in rows as narrow as ten inches. Soil fertility scientist Dr. Lawrence Morrill at the Oklahoma Experiment Station says major yield increases are possible with a hybrid developed for the narrow row. Requirements of such a hybrid would be a different leaf angle and toleration for a high plant population. In experiments with current varieties of sorghum, the extremely narrow (10 inch) rows showed consistently better yield with 40,000 plants per acre than with 80-thousand. The highest yields recorded in the test plots with non-irrigated sorghum involved planting 30-inch rows with 80,000 plants per acre and 120 pounds of applied nitrogen. Tests on irrigated sorghums are underway.



The Red Arrow Is Now Open

Under New Management
The Red Arrow will be open from 6 a.m. until 5 p.m. Monday thru Saturday to serve the Slaton area with the finest food around.

THE RED ARROW WILL FEATURE: HOME MADE ROLLS & PIES, DAILY LUNCHEON SPECIAL AND FRIDAY ALL THE CATFISH YOU CAN EAT \$2.25

New Owner: Julie Plante' and manager Yvonne Hardage invite you to stop in for breakfast, lunch or coffee.

121 S. 9th

828-7

BICENTENNIAL BITS

By NEWMA CARNES

as Master of and the Slaton Tiger Band will be a presentation of Slaton's state Bicentennial. The public is the ceremony at Tuesday, Sept. school. noticed? The is getting bigger! Are you each Friday show visits part of its Bicen Bicentennial "actions" listed you sewing clothes as the new issue Day? tear out the issues Forum the Bicenten- the September? Have you thought about ne-inspired nee- crevel-embroid- ings, stationery, shings, even gings? Do you the Courses by 23, starting Sun- 1, based on the helping Bicen our own home- you bought a Slaton Souvenir have you turned cepe for your book? Do you ton Bicen Mo- KCAS? Have your items for

interest in helping a Slaton museum? Are you boosting your town in your advertising efforts? These are some of the recollections of a lady who has taught school here for quite a few years: "I remember having long yellow curls. My mother saved rainwater to wash our hair and she used a little vinegar in the rinse water to get out the soap. The stoves that I remember were kerosene, as were our lamps. I did not live in a house that had electricity until about 1929. Then the lights were just single bulbs hanging from a cord in the middle of each room. When you turned your back on one, you threw a shadow so dark you couldn't see anything. My fondest recollection of summertime is when the Harley Sadler tent show would come to town. The schools I attended were small town schools, not country schools. I can remember how plain our textbooks were. We understood that we attended school to learn (our parents took care of that) and we didn't have to have books full of pretty pictures to fool us into doing it. The nearest thing we did to a game in school was to have oral spelling bees."



CLASS OF '65 — Members of the Slaton High class of '65 gathered in the clubhouse Saturday for a reunion. Saturday night, a get together and dance was held in the VFW Hall. They plan to have another reunion in 1980. Those attending were, back row from left, Larry Smith, Larry Melcher, Keith White, Don Settle, Billy Bownds, Larry Luman, George Cooper, Joe Hargrave, Joe Bob Bednarz, Len Dodson, Marlin Payne, Richard Bednarz, David Jaynes, Sonny Lee, Larry Gamble and Bobby Brake. Center row, from left, Mary Louise Ruiz, Patsy Nelson, Anita King, DeEtta French, Lynette Settle, Joy Maynard, Linda Carey, Rosa Walston, Marilyn Wade, Elaine Townsend, Bobbie Thomas, Mary Beth Smith, Judy Dooley, Marilyn Orr and Kathy Simonton. Seated on the floor from left are Judy Ross, Carol Atzbach, Belinda Schmidt, Dee Walton, Sherilyn Simmons, and Robin White. Billie McCullough, who is not pictured, traveled the farthest for the reunion, coming from North Dakota. (SLATONITE PHOTO)



A hockey game is divided into (a) 2 periods of 45 minutes each (b) 3 periods of 20 minutes each (c) 4 periods of 30 minutes each?

The hockey player who has scored the most goals, assists and total points is (a) Gordie Howe (b) Bobby Hull (c) Bobby Orr?



Hockey equipment is now being distributed in America by what imported car manufacturer (a) Fiat (b) Citroen (c) Volvo?

The two countries which dominate world hockey are (a) Russia and Canada (b) Canada and Sweden (c) Russia and the United States?

Answers: 1. (b) 2. (a) 3. (c) Volvo's Recreational Product Division is now marketing in America lightweight but durable hockey equipment made by the 50-year-old dofa company of Sweden. 4. (a)

Accent on Health

Early detection of disease or a physical problem often can be the difference between a bright future or one filled with continuing medical problems.

Texas youngsters—more than 376,000 of them to date—have a better chance of good health through special medical and dental programs carried out by the Texas Department of Health Resources.

Preventive health services are being given Texas children through an agreement between the State Health Department and Department of Public Welfare. Those eligible for medical screening and dental diagnosis and treatment services are those youngsters on the Welfare Department's aid for dependent children rolls.

It is anticipated that the early detection and treatment of disease in children served by this program will have a significant impact on their lives now and in the future.

The program—called the Texas Medical Assistance Program—is designed to create awareness of existing health care services, to stimulate the use of these

services, and to make services available so that children can receive medical and dental care before health problems become chronic and permanent damage occurs.

The dental program concept is to provide eligible children a certain level of dental care through utilization of services of private dentists in the state. The more than 170,000 children participating in this program have received examinations, preventive care, remedial and emergency dentistry where necessary. A definite freedom of choice on the parts of both the recipient and dentist is

strictly maintained. The Department of Public Welfare is responsible for identifying eligible children, obtaining and seeing that dental appointments are kept, and providing local administrative services to the program. The Health Department monitors the statewide program, provides a list of participating dentists for each county, issues and processes dental invoices, and maintains statistical data.

The program is charged with giving "early and periodic screening, diagnosis and treatment" of eligible children below age of 21.

Medical screening, performed by medical screening teams, is conducted in a different manner under different operational procedures.

GO TIGERS — WIN!



YOUR SAVINGS

Earn maximum rates and help the community grow. All loans are local.

WESS AND PROFESSIONAL DIRECTORY

Wendel TV **Whirlpool**
Quality Products Service you can trust **Amana.**

Anthony's
CR ANTHONY CO

the Slatonite

AUTO
Service We Sell
Whirlpool

O.D. Kenney
AUTO PARTS
Your Automotive Parts Distributor
828-6147

GRAND JAMAICA
OUR LADY OF GUADALUPE
SEPT. 13, 14 & 15

S. 4th, SLATON, TEXAS

Members of Our Lady of Guadalupe Arch would like to invite everyone in surrounding area to share with them 3 filled days of celebration.

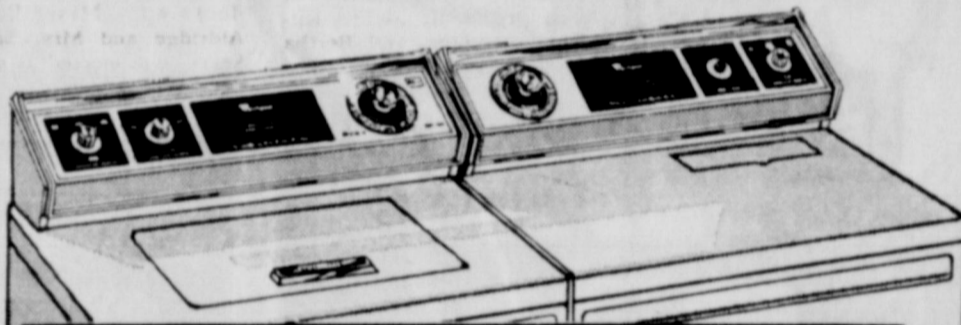
ACTIVITIES INCLUDE:

- * DUNKING BOARD
- * LIVE MUSIC & DANCE
- * BINGO
- * GAMES
- * BASEBALL GAMES
- * LIVE KARATE
- * TASTY MEXICAN DISHES
- * MEXICAN DANCES

A very special thanks to the following merchants in Slaton and Lubbock for their cooperation in making this event possible:

- SPONSORS**
- WERT'S AUTO SUPPLY [Lub.]
 - WAY TEXACO
 - "CARRETA"
 - AS CAFE [Lub.]
 - BRICK INS. AGENCY
 - WINDS STATE BANK
 - Y'S BEER DEPOT [Lub.]
 - Y'S REST. [Lub.]
 - GE HENZLER GROC.

- PRIZE DONATION**
1. WHITE'S
 2. WENDEL'S T.V.
 3. SELF FURNITURE
 4. FLOWER PATCH
 5. C. R. ANTHONY
 6. FORREST LUMBER CO.
 7. SLATON FARM STORE
 8. GUEST DRUG
 9. LASATER-HOFFMAN HDW. CO.
 10. KERTAN STUDIO
 11. SILVA'S BEER & LIQUOR
 13. RAYMOND GARCIA



Whirlpool WASHER and DRYER PAIR

Wash and dry Permanent Press garments ready to wear

Super-size, 2-speed WASHER

- 4 automatic cycles: NORMAL, GENTLE, KNIT and PERMANENT PRESS
- 4 water-level settings including one for extra-small loads
- 3 wash/rinse water temp selections
- 2 wash speeds and 2 spin speeds

3-cycle, 3-temp DRYER

- Choose from 3 drying temps for any type fabric
- TUMBLE PRESS* control helps restore creases in clean Permanent Press garments wrinkled from storage
- Special cool-down care for no-iron Permanent Press and Knits

BUY THE PAIR AND SAVE! Only..... \$436.00
With Trade



HURRY FOR THIS ONLY..... \$378
With Trade

OPEN MONDAY
109 South 9th
Slaton

RCA

FREE DELIVERY! TERMS UP TO 36 MONTHS. EXPERT SERVICE AFTER THE SALE!



Only..... \$499.00
With Trade



2828-34th
792-2751
Lubbock

PLENTY OF FREE PARKING!!

Southland EAGLE Roundup

Class Officers
 Southland High School and Junior High officers for the 1975-76 school year are as follows:
 Seniors-president, Kendon Wheeler; vice-president, Kelly Chaffin; and secretary-treasurer, Nedra Myers.
 Juniors-president, Donna Shelton; vice-president, Bobby Flores; and secretary-treasurer, Nathan Wheeler.
 Freshmen — president, Ed-

die Davila; vice-president, John Sertuche; and secretary-treasurer, Stacy Rush.
 Eighth Grade-president, David Becker; vice-president, Debra Crawford; secretary, John Valdez; and treasurer, Sable Rodriguez.
 Seventh Grade-president, Camille Wheeler; vice-president, Gerry Hill; secretary, Cynthia Wheeler; and treasurer, Peter Diaz.
Band in Progress
 Mrs. Yolanda Jeffery is the new band director at Southland. She is a graduate of Crane High School and received her B. S. in speech and music from Sul Ross. She lives in Lubbock

with her husband and 15-month-old daughter.
 Southland High School band officers for the 75-76 school year are as follows: president, Kelly Chaffin; vice-president, Curt Wheeler; and secretary-treasurer, John Chaffin.
 The junior high band officers will be: president, Samra Rush; vice-president, Sherman Daugherty; and secretary-treasurer, Cynthia Wheeler.

Coach Hospitalized
 Coach James Thomason was recently in Mercy Hospital in Slaton with a virus. He was hospitalized last Sunday morning and released Monday. He returned to school Tuesday.
Dates to Remember
 Sept. 4 - "Meet the Eagles." at 8 p.m., pep rally in the gym. Ice cream and cake in the cafeteria afterwards.
 Sept. 5 - Southland vs. Wellman, there, 8 p.m.

New Personnel
 Cecilia Diaz, 1975 Southland High School graduate, is the new special education teacher aide. She lives in Slaton and has eight sisters and four brothers.
 Mrs. Orville Smith, new head cook for the school cafeteria, is a widow with six children and seven grandchildren. This is her first job, although she has had teacher aide training. Her children are: Harry, living in Colorado; Bunny, living in Galveston; Mariam O'Neal, living in Tuba City, Ariz.; and Sylvia Smith, a Hardin-Simmons student. Three of the children, Bunny, Clinton, and Kathy graduated from Southland High School and participated in sports. Kathy was also valedictorian of her class. Mrs. Smith is active in the Pleasant Valley Baptist Church.

Steve Vasquez, the school's custodian this year, has lived near Southland all of his life. He worked previously on a farm near Slaton. He and his wife, Delores, have three children in school. They are Mary, seventh grade; Steve, fifth grade; and Marcela, fifth grade.
Jr. High Football
 Sept. 8 - Patton Springs, there, A & B 6-man games, 5 p.m.; Sept. 18 - Klondike at Southland, A & B 8-man games, 6 p.m.; Sept. 25 - Dawson, there, 8-man game, 6:30 p.m.; Oct. 2 - Loop, there, 6-man game, 6:30 p.m.; Oct. 16 - Whitharral at Southland, 6-man game, 6:30 p.m.; Oct. 30 - Smyer, there, 8-man game, 6:30 p.m.
Interviews
 The kindergarten and first graders were interviewed about how they liked their first week of school, and here are their responses:

Heith McGehee, a first grader, says, "I like school a little. I am going to read harder words this year than last year. I will be very happy to graduate."
 Kenneth Daughtery is in kindergarten. "I don't do nothing at school," Kenneth says. "I would rather stay home with my momma."
 Findencio Vasquez, a first grader, likes school. "I like to play tic-tac-toe," he says. "I only like Darell and Heith," Michell McGehee announces. Michelle, who is in kindergarten, also likes school because she plays and works.
 Tammy Weaver, also in kindergarten, likes to sing, color, and play games. She says that her boyfriend is Terry Scott Smallwood.
 "I haven't learned anything," says John Perez. John is in the first grade. He likes to play outside and have fun.
 David Flores, a kindergarten, likes to play

outside, walk, and play inside. He says, "I want to learn how to read and write, but not right now when I get home to my house tomorrow."
 "I have learned everything, but I don't remember what," says Jesse Cabal-
 lero, a first grader. "I like school," he says. "I think girls are better than boys," Mendez, a first grader, says. "I like to play outside."

INSUR-MATION
 By Bob Kern
 PEMBER Insurance
 828-6251

I've been told that after a period of time a policy can pay its own premiums. How possible?
 There are two ways: automatic policy loans term insurance. The use of the first method policy in force and the death benefit would be the policy minus the total amount of the loan, always be repaid and restore the policy to its amount for a period, usually of several years, the policy to its original condition you must the sum required but prove you are still insurable the automatic premium loan is usually the better

PRICES GOOD THRU SEPT 6th

QUANTITY RIGHTS RESERVED

UNITED GRAIN FED

"STOCK YOUR FREEZER"

SIRLOIN STEAK BONELESS LB.	\$1.59
SWISS STEAK ROUND BONE CUTS LB.	\$1.19
T-BONE STEAK LB.	\$1.69
CLUB STEAK FULL CUT LB.	\$1.69
CHUCK ROAST BLADE CUTS LB.	79¢
STEAK BONELESS FAMILY WASTE FREE RANCH LB.	\$1.29
STEAK 7 BONE CENTER CUT CHUCK LB.	\$1.09
HAMS FARMLAND BONELESS FULLY COOKED 3 LB. CAN	\$4.98
HENS FRESH FROZEN BAKING 5 to 6 LB. AVG. OSCAR MAYER	59¢
WEINERS OR BEEF FRANKS LB.	\$1.39

DOUBLE STAMPS WED.
 WITH \$2.50 PURCHASE OR MORE EXCLUDING CIGS

OLE SOUTH COBBLERS
 BLUEBERRY
 APPLE PEACH
 CHERRY
 STRAWBERRY
 REG. 1.11

FLAV-R-PAC FROZEN ORANGE JUICE
 4 6 OZ CANS
89¢

Banquet Frozen Boil 'n Bags
 Assorted Varieties 4 FOR 5oz Bag
\$1

MR. COFFEE II ... the greatest automatic coffee brewing system ever.
 REG. \$37.55
VALUE \$24.95

GLEEM TOOTH PASTE 5 OZ. TUBE 15¢ OFF LABEL
49¢

U.S. NO. 1 RUSSET POTATOES 10 LB. BAG
98¢

Van Camp's PORK 'N BEANS
 4 300 CANS
PINTO BEANS RANCH STYLE 4 300 CANS
SAUCE DEL MONTE TOMATO 6 8 OZ. CANS

"SHOP UNITED'S FRESH PRODUCE"

WASH. BARTLETT PEARSLB.	29¢	FANCY BELL PEPPERLGE. POD	2 FOR 25¢
PRUNE PLUMSLB.	29¢	LONG GREEN SLICERS CUCUMBERS ...	2 FOR 25¢

CALIF. ICE BERG. LETTUCE
19¢

Roundup

urged to attend the free program, sponsored by the Slaton Friends Club.



New best sellers arriving recently were: Rubean, M.D.-SAVE YOUR LIFE DIET, Bloomfield, M.D., T.M. DISCOVERING INNER ENERGY, Allen-WITHOUT FEATHERS, Doctorow - RAGTIME. Other adult books: Adoff, POETRY OF BLACK AMERICA, Ornithology OF ISRAEL, Juvenile books - Walden - ESCAPE ON SKIS, Lawrence-THE WYNDCLIFFE, and new Easy reading books.

LIBRARY HOURS: 11:30 to 6 p.m. weekdays, 9-4:30 p.m. Saturdays.

IT PAYS TO ADVERTISE IN THE SLATONITE

Lubbock-based Plains Cotton Growers, Inc., with an eye on maintaining and increasing the High Plains' share of the mushrooming market for cotton in the world's open-end spinning mills, will be cooperating September 10 and 11 with the National Cotton Council in the sponsorship of an open-end spinning seminar at Lubbock's Hilton Inn.

The seminar will bring to Lubbock a large number of the world's most knowledgeable and experienced technicians in the field of open-end spinning machinery and its use, says PCG Executive Vice President Donald Johnson, "and we think it will be a definite help to PCG's two-pronged push toward increasing demand for this area's cotton and attracting other open-end spinning operations to join the five such mills now in operation or announced for the High Plains area."

For example, Johnson points out, "Our research and that of many others has shown that acceptable and even superior yarns, other things being equal, can be produced on the open-end system from low micronaire cotton, which is normally in abundant supply on the Plains. And the more mill people who

come to accept that fact, the more people will become interested in buying High Plains cotton and/or locating a mill in the Plains area."

In addition to airing the present favorable characteristics of High Plains cotton, Johnson continues, the interplay of ideas during the seminar may help to point PCG's agricultural research in directions that will lead to varieties, cultural practices and ginning procedures that will make High Plains cotton even more desirable for open-end spinning.

Joining the NCC and PCG in producing the seminar is the International Institute for Cotton (IIC), Texas Tech University, Cotton Incorporated, the American Textile Manufacturers Institute, U.S. Department of Agriculture, and land-grant universities across the Cotton Belt.

Noted open-end technicians are on the two-day program from England, West Germany, Japan and the U.S.

Foreign speakers will be S. Allen Heap, International Institute for Cotton, Manchester, England; H. Landwehrkamp, Schubert & Salzer Company, Ingolstadt, W. Germany; H. Hergeth, Hergeth Company, Dulmen, W. Germany; and T. Konishi, Daiwa Spinning Company, Osaka, Japan.

U.S. participants include Jack Towery of Texas Tech's Textile Research Center, Lubbock; Clifford W. Palm, Omintex, Charlotte, N.C.; Peter Lord, North Carolina State University; Edward A. Vaughn, Clemson University; Dwight Carlisle, Russell Corporation, Alexander City, Alabama; and Carl Feaster of USDA's Cotton Research Center, Phoenix, Arizona.

Omintex, Russell Corporation, Hergeth, and Schubert and Salzer are companies involved in the manufacture and sales of open-end spinning machinery. Daiwa is one of the largest textile firms in Japan, has several open-end spinning mills there

SLATON SLATONITE, SEPTEMBER 4, 1975, PAGE 7 and has broken ground for the construction of an open-end plant at Levelland.

Don Anderson of Slaton, cotton producer delegate to the NCC, past president of PCG and author of the NCC Board resolution which made the seminar possible, will give the welcome and opening statement for the seminar at 8:30 a.m., September 10.

An industry reaction and discussion panel of farmers, cotton breeders, merchants, machinery manufacturers and researchers will conclude the program.

Record Those SPECIAL HAPPENINGS

- Reunions
- Family Groups
- Birthdays
- Meetings
- Parties
- Wedding Anniversaries

WE PHOTOGRAPH ANYTHING IN YOUR HOME OR ON LOCATION

FOR APPOINTMENT CALL 828-6997 or 828-6748

Colorcraft Photographers

MAKERS OF FINE PORTRAITS

UNITED TENDER STEER BEEF SALE!

AT THESE LOW-LOW PRICES!"

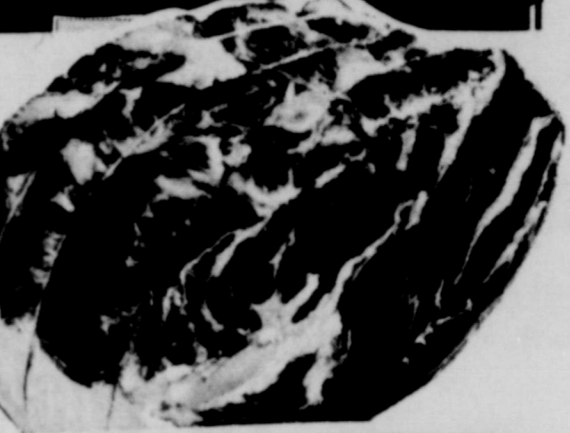
BEEF RIBS THICK & MEATY	LB.	69¢
BEEF GROUND FRESH 100% ALL BEEF	LB.	79¢
STEW BONELESS EXTRA LEAN CUBES OF BEEF	LB.	\$1.19
ROAST BONELESS WASTE FREE SHOULDER BEEF	LB.	\$1.29
CUTLETS WASTE FREE BEEF	LB.	\$1.79

RUMP ROAST BONE IN

LB. **\$1.09**

CENTER CUT 7-BONE CHUCK ROAST

LB. **98¢**



PLAY **BONUS "BLACK-OUT" BINGO**

GET 1000 EXTRA S & H GREEN STAMPS



Sirloin **STEAK**

LB. **\$1.29** CENTER CUT

Rib **STEAK**

GRILL OR BROIL

LB. **\$1.19**

ROUND **STEAK**

FULL CUT

LB. **\$1.29**

UNITED ASSORTED **MELLORINE** HALF GAL. **59¢**

PURINA **DOG CHOW** REG. \$5.99 25 LB. BAG **\$4.99**

GRADE "A" EXTRA LARGE **EGGS** UNITED CAGED DOZ. **69¢**

FINE FARE REG. QTRS. **OLEO** ALL VEGETABLE LB. **39¢**

WHITE SWAN **BISCUITS** SWEETMILK OR BUTTERMILK 6 PACK **59¢**

BAMA GRAPE **JELLY** 2 LB. JAR **79¢**

CRACKERS FINE FARE LB. BOX **39¢**

GLADIOLA FLOUR 5 LB. BAG **69¢**

KRAFT'S MIRACLE WHIP QT. JAR **98¢**

UNITED SUPER MARKETS

WE RESERVE THE RIGHT TO LIMIT QUANTITIES

PRICES GOOD THRU SEPT. 6th

WE GIVE S & H GREEN STAMPS

PRaise THE LORD

By LENDA WOOD

(The following is a reprint from Personal Christianity magazine, by Dr. C. S. Lovett, of Baldwin Park, Calif.)

THE DEVIL WANTS YOU DEEP IN DEBT

"Honey, it will only add \$10 to our monthly payments. That little bit can't hurt anything. Besides, we owe so much already, how can \$10 make any difference!"

Indebtedness is one of Satan's most unsuspecting traps. He uses it to bind believers and diminish their capacity for Christ. It is one of his stratagems to lead people with debt. Those who can't see their way out of the financial trap, often worry to the point of despair.

In that condition they do strange things. Some say,

"As long as we're this far in debt, we might as well go all the way." So they plunge until they can't borrow another cent. Then it's tranquilizers and sleeping pills. But what kind of relief is that? Others spend what tiny bit is left them to go on a vacation, hoping it will ease the pain some. All the while Satan rubs his hands gleefully as they sink deeper into despair. He has them right where he wants them — depressed, filled with anxiety and ready to blame God for their situation.

Even those who tithe can get in over their heads. When they throw wisdom to the winds and buy what they don't need, they too can be trapped. God is not obligated to protect people from themselves — just because they tithe. He lets His people go into debt

when their passion for things is greater than their hunger for Him. Listen to this pathetic letter from a trapped believer:

"Dr. Lovett, don't laugh when I say my credit card is my worst enemy. I make a decent wage, but somehow it's impossible to get by on what I make. I spend every cent and then use my credit card. I borrow from finance companies to consolidate my debts and then do the same thing all over again. The devil says to me, 'You can always refinance.' But with this recession I'm out of work, and can't refinance any more. I'm so depressed I'm ready to take my own life. You'd be doing God a real service if you wrote an article warning Christians that easy credit is a satanic trap."

Satan Wants Us In Debt
In this country, with goods so plentiful and credit so available, the devil easily lures people to buy things they don't need. If something strikes their fancy, he leads them to see themselves owning it and enjoying it. With many offering to finance it for them, the temptation is hard to resist. As a result, many Christians go deeply into debt for things they could easily get along without. Satan makes them think they have to have it.

The devil knows the power of worry. He knows what it does to people's bodies — and their spirits. Those deeply in debt tend to panic when things slow down. They turn their eyes from Jesus to their circumstances and you know what that does to one's spirituality. He becomes depressed, wondering how he'll survive. All of his

energies are turned to finding a way out of his situation. That's right where Satan wants him.

We Should Desire To Be Debt Free

When the apostle Paul says, "Owe no man anything," he doesn't mean that Christians shouldn't borrow (Rom. 13:8). He means they are not to contract for more than they can pay for. Why? They can hurt others when they do. For that reason God wants us as debt-free as possible. This is not to say we can't buy a house or car on time. Of course we can, provided we do not commit more than one-third of our income for payments. It's dangerous to pledge more than that. We become slaves when we do.

Do you think I'm off base when I say we should try to be debt free? That's what God expects. He didn't call us to indulge ourselves in the luxuries and conveniences of this world. He asks us to put Him first, guaranteeing "all these things will be added unto you," if we do (Matt. 6:33). You see, He wants to be the obsession of our lives. When we go into debt for comforts and leisure items, it shows where our affections are really centered. We have His Word on this: "Be content with such things as ye have" (Heb. 13:5).

Why does He ask that? Because He has promised, "I will never leave you nor forsake you." In order that He might become the obsession of our lives, He has pledged Himself to abide with us continually. It's a sign of disaffection when our hearts long for things of this world so badly that we're willing to go into debt

Westview Baptist Church To Host Singing Jordans

Westview Baptist Church will host The Jordans, a gospel singing group, Sunday evening at 7 p.m. There will be no charge for the concert, and the public is invited.

The Jordans have been a touring group for approximately four years. They now have a successful country-western comedy record entitled "Phone Call From God." This week's Billboard

lists the album as No. 2 in June, while Cash Box and Record World list it as No. 1.

All the members of the group agree that the gospel singing is their favorite. They are booked to appear on the Gospel Opry in Nashville and have already taped a half hour of songs and testimony for the Oral Roberts television show.

MID-WEEK SCHOOL

St. Paul Lutheran Church, Wilson, began Mid-Week School Wednesday. Classes are from 4 to 5 p.m. and they include kindergarten through sixth grade. Anyone interested is welcome.

Shifting from the World To Christ

Deep in our hearts we know it's wrong to go into debt to keep up with the Joneses. But how does the man who wants to live debt-free make the shift? All right, here's the 3-step plan that works:

1. If you're not already doing so, start giving the Lord 10 percent of your gross income. This is called tithing. Everything we have is from the Lord. It is a firm biblical principle that 1/10 is to be returned to Him as an acknowledgment of our dependence upon Him. Don't worry about making ends meet with the remaining 90 percent. Put Christ first, give Him that 10 percent and He will make that 90 percent go farther than if you kept the whole amount for yourself.

Don't think I've turned legalistic. Tithing has little to do with the Law. It was a principle that God had in operation long before the Law was given to Moses. Abraham paid tithes to God (through a priest) 500 years before tithing was included in the Jewish Law (Gen. 14:18-20).

2. When Satan whispers, "Buy this, buy that," tell him to "Beat it!" Answer his suggestion with, "God says we are to be content with what we have!" You'll be delighted at the way the pressures ease off. You'll find yourself saying, "I didn't need that anyway!"

3. God offers thrills no earthly possessions can bring. One of the greatest is witnessing in the power of His Spirit. It's easy to become obsessed with serving the Lord when you find His power working in you as though it were your own power. This offers you more adventure than the most expensive vacation trip you can think of. And you won't have to go into debt to enjoy it.

There now, that is a 3-step plan for shifting to a debt-free life. If you tithe, your money will be sufficient for every need. If you resist Satan, your desire to borrow will fade away. And if you witness, you embark on an adventure money can't buy.

Shift your desire from worldly possessions to our heavenly Obsession — Jesus!

lists the album as No. 2 in June, while Cash Box and Record World list it as No. 1.

All the members of the group agree that the gospel singing is their favorite. They are booked to appear on the Gospel Opry in Nashville and have already taped a half hour of songs and testimony for the Oral Roberts television show.

MID-WEEK SCHOOL

St. Paul Lutheran Church, Wilson, began Mid-Week School Wednesday. Classes are from 4 to 5 p.m. and they include kindergarten through sixth grade. Anyone interested is welcome.

CARD OF THANKS

Words cannot express my appreciation to my friends for their prayers, flowers, cards, food and visits during my illness. God bless you.
Cora Baker

Campaign Set In Slaton

Judy, who is seven years old, must spend almost two hours every day in treatments designed to keep her alive.

She suffers from cystic fibrosis, an incurable lung-damaging disease which is the number one genetic killer of children.

The life-maintaining treatments followed by Judy and the thousands of other children with cystic fibrosis include three-daily chest physical therapy. Because of her disease, Judy's digestive system is also handicapped. Therefore, she also must follow a special diet and take more than 40 pills a day.

Timmy celebrated his eighth birthday in a local children's hospital. For his birthday, his mother baked a chocolate birthday cake-his favorite.

Like Judy, Timmy has severe lung damage - his caused by bronchiectasis so, Timmy didn't have the breath to blow out the birthday candles on his cake.

While his father blew out the candles for him, Timmy did make a typical child's wish for a game set he saw in a TV commercial. But, his mother's wish was not so typical-she prayed that her son would be well for his next birthday.

"Judy and Tim are among the millions of children in this nation who need our help," said Mrs. Frank Moore, co-chairman for the 1975 Breath of Life Campaign to be held in Slaton September 25, 1975.

"The Breath of Life Campaign is so appropriately named," Mrs. Moore pointed out. "We'll be raising money to finance research, care and educational programs that will give these children a better chance for the breath of life."

The Cystic Fibrosis Foundation, now in its 20th

Obituaries

SMITH INFANT

Graveside services for Tona Kay Smith, the infant daughter of Mr. and Mrs. Wayne Smith of Slaton were held at 2 p.m. Saturday in the City of Lubbock Cemetery with the Rev. Dale Cain, pastor of the Calvary Baptist Church in Lubbock, officiating.

Arrangements were handled by King Funeral Home of Crosbyton.

The Smith infant was stillborn Thursday at Methodist Hospital.

Survivors include her parents; her grandparents, Mr. and Mrs. Willie Smith of Crosbyton and Dr. and Mrs. Keith Patzer of Floydada; her great-grandparents, Mr. and Mrs. Ferrin Smith and Mr. and Mrs. B.C. Askew, all of Crosbyton.

SAM G. HAM

Sam G. Ham, a retired postmaster, died Saturday at Falls hospital after illness. Services were held Tuesday at United Methodist Church in Lubbock.

The Rev. E. H. pastor, officiated by the Rev. W. Burial was in Gore.

Hampton was of the Methodist Church, and also member of the Valley Postal Association.

Survivors include a son, Jack G. Chicago, Ill.; a Mrs. Naomi P. Dallas; three daughters, M. D. Gamble, Mrs. Maye Cade and Mrs. Faye Fort Worth; and grandchildren.

Relatives from attending the service were Mrs. M. D. Gamble and Mrs. Joe G. George Gamble.

Hampton was of the Methodist Church, and also member of the Valley Postal Association.

Survivors include a son, Jack G. Chicago, Ill.; a Mrs. Naomi P. Dallas; three daughters, M. D. Gamble, Mrs. Maye Cade and Mrs. Faye Fort Worth; and grandchildren.

Relatives from attending the service were Mrs. M. D. Gamble and Mrs. Joe G. George Gamble.

Hampton was of the Methodist Church, and also member of the Valley Postal Association.

Survivors include a son, Jack G. Chicago, Ill.; a Mrs. Naomi P. Dallas; three daughters, M. D. Gamble, Mrs. Maye Cade and Mrs. Faye Fort Worth; and grandchildren.

Relatives from attending the service were Mrs. M. D. Gamble and Mrs. Joe G. George Gamble.

Hampton was of the Methodist Church, and also member of the Valley Postal Association.

Survivors include a son, Jack G. Chicago, Ill.; a Mrs. Naomi P. Dallas; three daughters, M. D. Gamble, Mrs. Maye Cade and Mrs. Faye Fort Worth; and grandchildren.

Relatives from attending the service were Mrs. M. D. Gamble and Mrs. Joe G. George Gamble.

Hampton was of the Methodist Church, and also member of the Valley Postal Association.

Survivors include a son, Jack G. Chicago, Ill.; a Mrs. Naomi P. Dallas; three daughters, M. D. Gamble, Mrs. Maye Cade and Mrs. Faye Fort Worth; and grandchildren.

Relatives from attending the service were Mrs. M. D. Gamble and Mrs. Joe G. George Gamble.

Hampton was of the Methodist Church, and also member of the Valley Postal Association.

Survivors include a son, Jack G. Chicago, Ill.; a Mrs. Naomi P. Dallas; three daughters, M. D. Gamble, Mrs. Maye Cade and Mrs. Faye Fort Worth; and grandchildren.

Relatives from attending the service were Mrs. M. D. Gamble and Mrs. Joe G. George Gamble.

Hampton was of the Methodist Church, and also member of the Valley Postal Association.

Survivors include a son, Jack G. Chicago, Ill.; a Mrs. Naomi P. Dallas; three daughters, M. D. Gamble, Mrs. Maye Cade and Mrs. Faye Fort Worth; and grandchildren.

Relatives from attending the service were Mrs. M. D. Gamble and Mrs. Joe G. George Gamble.

Hampton was of the Methodist Church, and also member of the Valley Postal Association.

Survivors include a son, Jack G. Chicago, Ill.; a Mrs. Naomi P. Dallas; three daughters, M. D. Gamble, Mrs. Maye Cade and Mrs. Faye Fort Worth; and grandchildren.

Relatives from attending the service were Mrs. M. D. Gamble and Mrs. Joe G. George Gamble.

Hampton was of the Methodist Church, and also member of the Valley Postal Association.

Survivors include a son, Jack G. Chicago, Ill.; a Mrs. Naomi P. Dallas; three daughters, M. D. Gamble, Mrs. Maye Cade and Mrs. Faye Fort Worth; and grandchildren.

Relatives from attending the service were Mrs. M. D. Gamble and Mrs. Joe G. George Gamble.

Missionary Baptist Church

14th & Scurry
Jack N. Bell, Pastor

Sunday School.....10:00 a.m.
Worship Service.....11:00 a.m.
Evening Service.....6:00 p.m.
Prayer Meeting, Wednesday.....7:30 p.m.

Subject for Sunday Morning:
"All Upon the Altar"
Subject for Sunday Evening:
"What Then?"

YOU ARE INVITED TO ALL SERVICES

Attend The Church of Your Choice Sunday

Slaton Churches

ALL SAINTS CHURCH OF GOD IN CHRIST

7th & Jean Sts.
Eld. J. W. Butler

CHURCH OF CHRIST

11th & Division
Grandol Forehand

IVORY ST. CHURCH OF CHRIST

896 Ivory St.
Lester Means

CHURCH OF GOD

206 Texas Ave.
Rev. Bruce E. Coker

FIRST ASSEMBLY OF GOD

14th & Jean
Rev. Floyd Schaeffer

BIBLE BAPTIST

525 West Panhandle
Rev. H. E. Summar

FIRST BAPTIST

255 S. 9th
Rev. J. L. Carritte

FREE WILL MISSIONARY BAPTIST

Rev. E. Canady

MT. OLIVE BAPTIST

Rev. Clifton Peoples

TEMPLO BAUTISTA

(Latin Baptist Mission)
East Panhandle
Rev. Pablo Pequeno

TRIUMPH BAPTIST

East Geneva
Rev. M. A. Brown

21st ST. BAPTIST

1010 S. 21st St.
Rev. Jim Franklin

WESTVIEW BAPTIST

830 S. 15th St.
Rev. Birdie Jones

MISSIONARY BAPTIST

14th & Scurry
Rev. Jack N. Bell

FIRST CHRISTIAN

150 S. 22nd
Rev. Gene Cherry

ST. JOSEPH'S CATHOLIC

19th & Lubbock
Msgr. Peter Morsch

OUR LADY OF GUADALUPE

710 S. 4th
Rev. James Daly

GRACE LUTHERAN

840 W. Jean
Rev. Delma L. Luedke

GOSPEL CHAPEL A.M.E.

996 Johnson St.
Rev. James Green

FIRST METHODIST

305 W. Lubbock
Rev. Merriel Abbott

TRINITY EVANGELICAL METHODIST

700 S. 19th St.
Rev. Linam Prentice

PENTECOSTAL HOLINESS

905 W. Knox
Rev. Darryl Manning

FIRST PRESBYTERIAN

435 W. Lubbock
Rev. Henry Chisholm

Area Churches

ACUFF CHURCH OF CHRIST

Jay Don Rogers

ROOSEVELT BAPTIST

Rev. Oscar Newell

PLEASANT VALLEY BAPTIST CHURCH

Rev. Bruce Giles

WOODROW COOPER METHODIST

Rev. Clarence Collins

WOODROW BAPTIST

Rev. Clarence Collins

CHURCH OF CHRIST

Jerry Tallman

GORDON CHURCH OF CHRIST

Joe Cross

WILSON WILSON BAPTIST

Rev. E. K. Shepherd

ST. JOHN LUTHERAN

Rev. Curtis Jackson

ST. PAUL LUTHERAN

Rev. Curtis Jackson

WILSON METHODIST

Rev. James Taylor

ASOCIACION BAUTISTA EMANUEL

Rev. James Taylor

POSEY IMMANUEL LUTHERAN

Rev. Delmas Luedke

CANYON UNITED CHURCH

Baptist—1st & 3rd Sunday
Rev. Curtis Jackson

Methodist—2nd & 4th Sun.

Rev. Grady Adcock

SOUTHLAND SOUTHLAND BAPTIST

Rev. P. D. Fullingim

SOUTHLAND METHODIST

Rev. Charles Hastings

Church Listings

Presented as a

Public Service By

Becker Bros.

Mobil Sta.
405 So. 9th 828-7127

O. D. Kenney Auto Parts

"Your Automotive Part Distributor"

R. E. Janes Gravel Co.

FOR THE Construction Industry

Bownds Body Shop

100 S. 9th 878-6647

Slaton Co-op Gins

878-6647

Citizens State Bank

The Bank with a Heart

Acuff Co-op

"It's Your Association"

Wilson State Bank

828-7127

White's

The Home of Greater Values

Slaton Savings Assn.

"We Pay You To Save"

The Joy of Obedience

One of the most rewarding advantages of serving the Lord is the rich experience of being able to influence others to follow your example of obedience. Paul wrote to the Ephesians and challenged them to "be ye imitators of me, even as I also am of Christ" (1 Corinthians 11:1). When we are imitating Christ we are establishing a safe pattern for our loved ones and others to follow. We cannot successfully recommend the Lord to others unless we are showing daily the delights and the practicality of His way.

In addition to the joy of winning stars for a heavenly crown, the most basic advantage of obedience is found in the fact that it justifies—it causes a man to become acceptable in God's sight, through the cleansing blood of Christ. In Acts 10:34, 35, the apostle Peter declared: "Of a truth I perceive that God is no respecter of persons; but in every nation he that feareth him, and worketh righteousness, is acceptable to him." WHO IS ACCEPTABLE? Peter affirms that it is the man who fears God and works righteousness! This is the great, basic advantage of obedience!

Joyful, loving, trusting obedience must be learned in this life. Jesus said, "If ye love me, ye will keep my commandments" (John 14:15). Are you a dropout from the school of obedience?

God requires obedience! Yet, God's rule is benevolent, not tyrannical. God's commands are manifestations of His grace. Man's highest happiness here and hereafter lies along the pathway of obedience to God!

A sincere welcome is yours at every service of the church of Christ:

Sunday morning Bible classes.....9:45 a.m.
Sunday worship.....10:40 a.m. and 6:00 p.m.
Wednesday Ladies' Bible class.....10:00 a.m.
Wednesday night Bible study.....7:30 p.m.
"Five Minutes with the Bible"
Monday - Friday on KCAS.....7:30 a.m.

CHURCH OF CHRIST
11th and Division
Slaton

Turning Key Players Give Mustangs Hope

Wilson, he said he feels that the problem areas with the team right now are those of changing to his philosophy and his style of coaching. "I'm new to them, and my methods are new too," he said.

All-South Plains last year, is listed in the Top-O-Texas Football magazine as a possible candidate for All-State.

The magazine also lists Richard Cedillo, Greg Bednarz and Wes Wilke as possible candidates for the honor.

Seagler said Brieger as fullback and Wilke at flanker are the key to the Mustang offense. Wilke is a 6-0, 156 junior.

Sparking the offense, according to Seagler, are Brieger, Bednarz and Ricky Rice. Bednarz, a senior, is 6-1, 155. Rice, a junior, is 6-3, 177.

Captains for the Mustangs this season are Cedillo, Carlton Henderson, Brieger and Bednarz.

Henderson, a junior, is 5-10, 145.

Top-O-Texas predicts that Wilson and Sundown will compete for the district title. The two teams will

face each other in the final game of the season, Nov. 7 at Sundown.

The rest of the season schedule is as follows: Sept. 5, Ralls, there; Sept. 12, O'Donnell, home; Sept. 19, LCHS, there; Sept. 26, Ropes, home; Oct. 3, Anton, there; Oct. 10, Meadow, home; Oct. 17, Amherst, home; Oct. 24, Whiteface, there; Oct. 31, New Home, home, and Nov. 7, Sundown, there.

Seagler spent the last two years as assistant coach at Levelland. He has also coached at Sanford-Fritch High School and Southwestern Oklahoma College. He is a graduate of Eastern New Mexico University, where he played football.



MUSTANG POWER—Coach Seagler and four of his most promising players, from left, Ricardo Cedillo, Carlton Henderson, Mark Brieger and Greg Bednarz, are gearing up for their first game Friday night at Ralls. (SLATONITE PHOTO)

Spaghetti Supper Planned In Wilson

be a spaghetti dinner sponsored by the Boosters prior to the Friday, Sept. 5, 7 p.m. in the gymnasium. Tickets are \$2 for adults and \$1 for children. The door or from the Wilson School.

Mr., Mrs. Bob Ray
Mr., Mrs. Dean Daniell

Meadow - Oct. 10 - 7:30
Mr., Mrs. B.W. Hobbs (c)
Mr., Mrs. Sam Kirbie
Mr., Mrs. Olan Crews
Mr., Mrs. Roland Stegemoeller

Mr., Mrs. B.L. Arnold
Mr., Mrs. Billy Jones
Amherst - Oct. 17 - 7:30
Joyce Kahlich (c)
Linda Stone
Mr., Mrs. Carl Stone
Mr., Mrs. Jackie Bishop
Mr., Mrs. Gilbert Steinhauer

Mr., Mrs. Gary Houchin
New Home - Oct. 31 - 7:30
Janice Lee (c)
Jerry Don Ross
Mr., Mrs. Eual Davis
Mr., Mrs. Billy Weaver
Mr., Mrs. Alan Day
Mr., Mrs. Preston Hall
Junior High

Ropes - Oct. 11 - 5:30
Madeline Rice (c)
Jo Ann Cook
Anna Vaca

Jeanette McCleskey
Mrs. Tommy Ortega
Sundown - Oct. 25 - 5:30
Mary Henderson (c)
Arla Mae Breiger
DAVID & MITZ Sue Henderson
Mrs. Pete Nava
Anton - Oct. 2 - 5:30
Mary Wilke (c)
Ginger Swope

Carolyn Klaus
Helen Autry
Mrs. Romulo Trevino
Christ the King - Oct. 23 5:30

Lavonne Spence (c)
Margaret Bednarz
Mrs. Raymond Joy
Mrs. Daniell Castro
Mrs. Bene Garcia
New Home - Oct. 30 - 5:00
Linda Wilke (c)
Maxine Nolte
Ludy Lehman
Ethelyn Zant
Mrs. Isidoro Ybarra

WILSON LUNCH MENU

Monday - Tamale pie, ranch style beans, hot rolls, slaw, milk, and applesauce.
Tuesday - Cheese & macaroni, mixed vegetable salad, corn bread, milk, peach halves.

Wednesday - Tacos, lettuce & tomatoes, milk, corn crackers, pineapple pudding.

Thursday - Spanish rice, green beans, milk, sliced carrots, hot rolls, fruit jello.
Friday - B-B-Q on bun, baked beans, milk, sliced tomatoes, orange juice, cake.

A memorial gift to The Arthritis Foundation is a thoughtful expression to the bereaved family. A memorial gift today makes possible a cure tomorrow for those suffering from arthritis. Call Shirley Dodson at Citizens State Bank, 828-6544.

Wilson Events Set For Scouts

Mr. and Mrs. Dean Daniell of Wilson will host a cookout and campout Saturday beginning at 6 p.m. for all girls interested in Girl Scouts in Wilson.

Girls in grades one thru 12 and their mothers are urged to attend. Cost for the cookout is \$1 per person.

A campout for girls fourth through twelfth grades will cost 50¢ per participant.

Permission slips for girls attending either the cookout or campout without their mothers is required.

AMERICAN INGENUITY

We are a nation of innovators, as is shown by these excerpts from the new Life Bicentennial issue on the 100 great events in U.S. history.

George Eastman took the trouble out of picture making in 1888. His cameras were



small, inexpensive, easy to use and came with a roll of film—a big change from bulky glass plates—which was developed free.

Anesthesia was first used in America in 1842 when some young men, seeing laughing gas extolled by a traveling patent medicine salesman, got Dr. Crawford Long to give them ether. Noting that his turned-on friends felt no pain when they fell down, he applied his discovery to a tumor operation and opened the way to modern, painless operations.

In 1939, a Harvard instructor named Howard Aiken began work on a machine that could solve problems better and more accurately than the human brain—the world's first computer.

Follis Heating & Air Conditioning

Arkla-Servel, Bryant and Payne Equipment, Sales, Installation & Service. Gas units financed by approved credit. Call for free estimate. Wilson, Texas Phone 628-3271

Oscar Follis



NEW DESIGN—First of its kind in the railroad industry, new Santa Fe bi-level rail car is designed to carry 12 trucks in a protected environment from factory to dealer.

New Railway Car Unveiled Recently

A newly designed railway car for shipping trucks from factory to dealer was unveiled in Fort Wayne, Ind. when Santa Fe Railway's new enclosed bi-level car received its first load of International Harvester Scouts.

A first in the railroad industry, the unique car is capable of carrying 12 trucks in a protected environment. The car will go into initial service between Fort Wayne and Los Angeles, Calif., with later shipments during a test period destined to other markets. Santa Fe officers said results of the experimental shipments will be analyzed to determine benefits derived.

The experimental car is similar in size and configuration to wide-bodied bi-level cars that have been used for some time to transport trucks, with the exception that this one is enclosed to decrease the possibilities of vandalism or other damage while trucks are en route. The concept is similar to that which has been de-

veloped for tri-level cars designed to handle automobiles.

Santa Fe mechanical engineers designed and built the first multi-level car for handling automobiles in 1959, which became the prototype for thousands of freight cars which carry more than half of all new automobiles and trucks.

ADVERTISING PAYS See The Slatonite

after you see your doctor ...

bring your prescription to
Teague's Drug Store
828-6530 Night 828-6500

GO BLUE GO

WILSON FOOTBALL SCHEDULE

9-5 - Ralls	there
9-12 - O'Donnell	home
9-19 - LCHS	there
9-26 - Ropes	home
10-3 - Anton	there
10-10 - Meadow	home
10-17 - Amherst	home
10-24 - Whiteface	there
10-31 - New Home	home
11-7 - Sundown	there

SE MERCHANTS PROUDLY SUPPORT THE WILSON MUSTANGS

MORTON & SON
EQUIPMENT
628-2751

WILSON STATE BANK
Old Fashioned Courteous Service
FDIC Dan H. Cook Pres. 628-2311

Oscar Follis
Arkla-Servel, Bryant and Payne Equipment, Sales, Installation & Service. Gas units financed by approved credit. Call for free estimate. Wilson, Texas Phone 628-3271

If Time's Running Out On The Old Water Heater Get Reddy!

How long has it been since you checked your water heater out? Two years? ... Five years? ... Can't remember? ... You depend on your water heater to give you fast, efficient service, and when the old thing gets to be ten years old or more, it's time to replace it.

An electric water heater is the perfect replacement. Fully insulated so water stays hot longer, no flue or vent, so you put it just about anywhere and have extra storage space, too ... and fast recovery ... all this means an electric water heater is the dependable one. Don't let time run out. Buy an electric water heater this week!

WE SELL, SERVICE, INSTALL, FINANCE & GUARANTEE 'EM!
WE SELL 'EM - Call Us!

Modern Electric Water Heating FOR 10 THOUSAND PEOPLE

MAN'S BEST FRIEND is the paper tiger!

He's always there when you need him. For spur of the moment buys of any sort. You name it. With Paper Tiger Checks there's no bones about who's been paid what.

His upkeep is low. And it's fun to watch his fierce appetite for bills. What more can you ask? Open a Paper Tiger Checking account now.

A good bank has more Answers than Questions!

Wilson State Bank

FOOTBALL CONTEST!

ENTER TODAY AND WIN CASH PRIZES

It's so easy. You don't have to be a football expert in order to win. Just select the winners on the handy official blank printed below. No scores. Just check the teams you think will win.



WINNERS
WILL BE
ANNOUNCED
IN THIS
SPACE
EACH WEEK

\$10 1st PRIZE

\$5 2nd PRIZE

\$2 3rd PRIZE

\$25
JACKPOT
PERFECT

RULES OF THE GAME:

★ Teams playing in this week's contest games are listed in the ads and are numbered 1 through 52. Use the entry form at the bottom of the page and circle the numbers of the teams you think will win. To pick a tie, circle both numbers of the teams playing.

★ Be sure to guess total score on the "tie breaker" game. In case of ties, the entrant nearer to that total score will be the winner. If tie also occurs on total score, prize money will be split between place winners. This also applies to "jackpot" winner.

★ Have your entry blank signed or stamped by a participating merchant, and get it to The Slatonite office by 5 p.m. Friday before the games are played. Only one entry per person; all persons 12 years old or older eligible except Slatonite employees and their families. Each entrant eligible for one prize, and prize money must be picked up at the Slatonite office by 5 p.m. on Monday after the winners are announced Thursday. No two members of the same immediate family and living at the same residence may win prizes the same week.

SUPPORT THE SLATON TIGERS

<p><i>The Flower Patch</i> 205 w 205 W. Garza 828-3511 1. Crosbyton at 2. Floydada</p>	<h1 style="margin: 0;">GO TIGERS</h1>		<p>HANDY HUT 22 & W. Division 3. New Deal at Idalou</p>
<p>TOM'S 8 'TIL LATE 828-7102 5. Cooper at 6. Littlefield</p>	<p>O.Z. Ball & Co. 7. Lorenzo at 8. Roosevelt</p>	<p><i>Self Furniture</i> 235 W. Garza 828-6584 9. Coahoma at 10. Post</p>	<p>CITIZENS STATE BANK SLATON, TEXAS the BANK with a HEART 11. Frenship at 12. Hale Cent</p>
<p>SLATON BAKERY 650 & W. Division 828-3253 13. Denver City at 14. Seminole</p>	<p>BOWNDS BODY SHOP 828-6447 15. North Caolina vs 16. East Carolina</p>	<p><i>Anthony's</i> C.R. ANTHONY CO. 17. Abernathy at 18. Petersburg</p>	<p>DEPENDABLE PRESCRIPTION SERVICE SLATON PHARM 19. North Carolina vs 20. William</p>
<p>Whites Auto Store 828-3946 Slaton 120 N. 9th 21. Olton at 22. Tulia</p>	<p>Slaton Co-op Gins "Owned and Operated By Farmers" 23. Villanova vs 24. Maryland</p>	<p>Becker Bros. Mobil 405 S. 9th 828-7127 25. Georgia vs 26. Pitt</p>	<p>Wendel TV & Appliances Remember...you're always welcome at Wendels 27. Fresno St. vs 28. Fullerton</p>
<p>bring your prescription to <i>Teague's Drug Store</i> 828-6535 29. Mississippi St. vs 30. Memphis State</p>	<p>828-5443 SLATON 31. Long Beach vs 32. S.W. Louisiana</p>	<p>TG&Y Your Family Store in Slaton 33. Mississippi vs 34. Baylor</p>	<p>SLATON GOLF CLUB Courtney White, Pro. 35. SMU vs 36. Wake Forest</p>
<p>HAM'S MART 9th & Division Slaton 37. N.M. State vs 38. Drake U. Eva Keck Mgr.</p>	<p style="text-align: center;">OFFICIAL ENTRY FORM</p> <p>Name _____ Address _____</p> <p style="text-align: center;">CIRCLE THE NUMBER OF THE TEAMS THAT YOU PICK TO WIN.</p> <p>1-2 3-4 5-6 7-8 9-10 11-12 13-14 15-16 17-18 19-20 21-22 23-24 25-26 27-28 29-30 31-32 33-34 35-36 37-38 39-40 41-42 43-44</p> <p>Tie-Breaker Guess Total Game Score SLATON VS COLORADO CITY _____</p> <p>Participating Merchant _____</p>		<p>SIKES MACHINE SHOP W.A., Don and Jim 39. Houston vs 40. Lamar 155 N. 9th 828-6</p>
<p>Ebb Stricklin Builders Let us take care of your building needs. See our electric homes on Terry Drive. 828-6434 41. Wichita St. vs 42 West Texas St.</p>			<p> Dependable ELECTRIC Serv 43. Michigan vs 44. Western Mich</p>

CLASSIFIED FOR THE ACTION YOU WANT

ROOM furnished for rent. Reasonable. Call 828-6814. 48-tf

RESPONSIBLE party, furnished, paneled large rooms. 5 down town reasonable. 49-tf

— furnished apartment. Call 828-5443. 49-tf

HOUSE for rent. Call 828-5411 for appointment. 48-tf

— PRIVATE N. 6th St., or R. T. Brook. 48-tf

IVE AWAY 828-3806. 49-1

SONAL MEETINGS Anonymous meet 8:30 p.m. Hall in First St. For info call 828-6810, 828-5231. All calls kept confidential. 45-52tp

families of information or 828-3171.

RENT Finest. Two central refrigeration. Unfurnished. 6419

APARTMENTS 2nd Street 6419

Compare 2-bdrm. a before you rent. We rent. FURNISHED FURNISHED

is paid (Electricity)

DUPLICATES 5-5165

SALE decorated 2-bedroom houses

US FOR VOICE BEDROOM APARTMENT

William

pplicant re Vendels

ullerton

CLUB Pro.

Forest

NE SHO and Jim

Lamar 828-6

ree Local Moving

Phone 828-5304 or 795-8891

Phone 828-5304 or 795-8891

REAL ESTATE FOR SALE

COMPLETELY remodeled two-bedroom home. Double garage, very nice. 605 S. 12th St. Call Slaton Lumber Co. 828-6255 or Tommy Davis, 828-3787. 46-tf

LOTS FOR SALE. Trailer camper space for rent, \$30 a month, water furnished. 828-6276. C. E. McCoy. 46-tf

FOR SALE at Southland, 6-room house with 4 lots and a good well. Mrs. Anderson. 996-2377. 48-1tp

For Sale — Six-room house plus two-room house, concrete storm cellar, and garage, on 1 1/2 lots. Needs some repair. \$8500 cash. 900 S. 14th. 828-3506. 44-2p

FOR SALE — New 3-bedroom home, 2 full baths, on Golf Course Road. Call 828-6275 days, or 828-3888 nights. 38-tf

MOVING TO COUNTRY MUST SELL — Three-bedroom, two bath, large living room and den, game room, utility room, plenty of storage, fruit trees. Raymon Wilkins, 900 S. 15th, 828-3373 or 828-6951. 45-tf

FOR SALE—Two-bedroom, one bath, living room and dining area combined, kitchen and carport. 315 S. 13th. 828-6852 or 828-3205. 37-tf

ADVERTISING PAYS

See The Slatonite

HELP WANTED

COORS
RECEPTIONIST and book-keeper, some typing, NCR posting machine, posting mornings, heavy telephone and office traffic in afternoon. Looking for career minded person. Apply in person 10 a.m. to 4 p.m. Thursday through Wednesday. Great Plains Distributors, Slaton Highway. 49-1tc

BABYSITTER wanted, 8-5, Monday through Friday. Call Joyce Gamble 828-3196. 49-1p

WANTED — Kirby salesman for this area. Call Mosser Kirby Co., 108 Texas Ave., 828-6475. 46-tf

SALE

MATURE, responsible persons needed for both day and night shifts. Apply in person, Dairy Queen. 48-tf

APPLICATIONS being taken at Shamrock Cafe, Hwy. 84 by-pass. Apply in person. 48-2tc

MANAGER TRAINEE, career opportunity, excellent training, security and retirement program. Guaranteed salary. Call 792-2721 for appointment 8 a.m. to 4 p.m. 47-tf

WANTED — Kirby salesman for this area. Call Mosser Kirby Co., 108 Texas Ave. 828-6475. 46-tf

HOLIDAY

Mobile Home Park OF SLATON

located on N. 20th St. 1/2 blocks north of High School

Free Local Moving

Phone 828-5304 or 795-8891

MISCELLANEOUS FOR SALE

BE GENTLE, be kind, to that expensive carpet, clean it with Blue Lustre. Rent electric shampooer \$1. Laster-Hoffman Hardware.

SEARS Console color TV, 24", \$175. Call 828-3935. 49-1p

LOSE WEIGHT with New Shape Tablets and Hydrex Water Pills at Eblen Pharmacy. 49-4p

FOR SALE — Alto saxophone and cornet, excellent band instruments at bargain price. Phone 828-6287 or call 828-3852 after 5 p.m. 48-tf

LAWN MOWERS, bicycles, beds, refrigerators, cookstove, dinette sets, lamps, dishes. Antiques of all kinds, new dog houses. Ted's Trading Post. 1205 S. 9th. Phone 828-7132. 9-tf

TRASH BARRELS for sale at Perkins Auto Supply. Phone 828-6240. 29-tf

WATERS TROPICAL FISH 400 West Lubbock St. Open 9 a.m. to 5 p.m. Monday thru Saturday. After hours call 828-3817. 19-tf

RABBITS, supplies for breeding and eating or as children's pets. Will build pens, you furnish supplies or we furnish supplies for pens and labor. 740 S. 14th. 37-tf

WANTED

WANTED TO BUY, junk cars and scrap iron. Call 828-6814. 21-tf

THURSDAY and Friday, at 745 S. 15th. Clothes, shoes, household items, much more. 49-1p

SATURDAY from 8 to 6, 705 S. 16th. Gun cabinet, half bed, some tools. 49-1p

FOUR-family garage sale Thursday and Friday, Sept. 4 and 5, from 8 a.m. till 6 p.m. Miscellaneous items. 1150 S. 8th Street. 49-1p

CLOTHES, none over \$2. Lots of size 9, books, tapes, cassettes. Lots of junk. 9-6 Thursday and Friday, 605 S. 5th. 49-1p

THREE family garage sale at 520 W. Crosby, Thursday and Friday. Clothes and miscellaneous items galore. 49-1p

Tomatoes

Fresh, already picked

29c lb.

or 20c lb. by Bushel or Half Bushel

RUDD'S

FRUITS & VEGETABLES

1435 S. 9th—Slaton

828-5748

RUDD'S

FRUIT & VEGETABLES

1435 South 9th Street

SLATON, TEXAS

828-5748

Watermelon

Apples Tomatoes

Onions Potatoes

Sikes

Machine Shop

Complete Welding and Machine Shop

155 N. 9th Slaton

1—1962 4010 LP—\$3700

Good Selection of Used Strippers

1—4320—Good Tires, Front Weights, Cab \$13,150

BRYANT FARM SUPPLY

North 20th St. Phone 828-8648

MISCELLANEOUS FOR SALE

GOOD BUY! Bundy clarinet for only \$50. Good condition, well taken care of. Excellent for beginning student. 828-6201, Sandy Martin. 45-tf

RUBBER STAMP orders filled at The Slatonite.

AUTOS FOR SALE

1970 OLDS Cutlass Sport 2-door, low mileage, good condition. Phone 828-6287 or 828-3852 after 5 p.m. 48-tf

LOST & FOUND

FOUND — wedding ring, near tennis courts. Owner should describe, at The Slatonite. 48-tf

WANTED

WANTED TO BUY, junk cars and scrap iron. Call 828-6814. 21-tf

GARAGE SALE

THURSDAY and Friday, at 745 S. 15th. Clothes, shoes, household items, much more. 49-1p

SATURDAY from 8 to 6, 705 S. 16th. Gun cabinet, half bed, some tools. 49-1p

FOUR-family garage sale Thursday and Friday, Sept. 4 and 5, from 8 a.m. till 6 p.m. Miscellaneous items. 1150 S. 8th Street. 49-1p

CLOTHES, none over \$2. Lots of size 9, books, tapes, cassettes. Lots of junk. 9-6 Thursday and Friday, 605 S. 5th. 49-1p

THREE family garage sale at 520 W. Crosby, Thursday and Friday. Clothes and miscellaneous items galore. 49-1p

BUSINESS SERVICES

HAVE YOUR PRESCRIPTIONS filled at TEAGUE DRUG by a Registered Pharmacist. 50-tf

FREE-STANDING carports, 12x22, \$395; 22x22, \$695. 828-3276. 47-4tc

ANNOUNCING. . . Mary Kay Skin Care products. Beauty Consultant, Deana Wood, 620 S. 16th, 828-5236. 48-3tp

ADVERTISING PAYS

See The Slatonite

Save energy—save money

Have storm doors and windows installed. Rain gutters installed.

Free Estimates.

PAUL MOSSER

828-3855

KIRBY

VACUUM CLEANERS

For Service

Call MOSSER TV

828-6475

HOUSE

NEED PAINTING?

for a good job priced right, call D. H. RUDD 828-6937

FEATURING ALL TYPES PAINTING, TAPING AND BEDDING ACOUSTIC CEILING AND WALL TEXTURE BLOWN ALSO AIRLESS SPRAYING FOR BIG JOBS.

48-4tp

BUSINESS OPPORTUNITY

AREA DISTRIBUTORSHIP — first time offering, full or part time. Year-round business, ideal for men or women. We establish your accounts, you replace merchandise. Investment required, \$2,395 to \$10,290. Phone Mr. Richards collect 314 997-3800 or write including phone number to P. O. Box 28235 St. Louis, Mo. 63132. 49-1p

CHAMPION'S SWAP SHOP & JEWELRY

NEW-USED-ANTIQUE FURNITURE

Jewelry — Watch Repair and Engraving

BUY—SELL—TRADE ANYTHING OF VALUE

JOHN C. CHAMPION

828-3751—330 S. 9th St.

Forest LUMBER

SPECIALS

2/4 & 2/6 #1 YP R/L up to 16', bd. ft. . . . 20

1x6 Rgh #2 YP, bd. ft. . . . 23

1x4 #2 YP, bd. ft. 22 1/2

1/2" C.D. Plywood Ea. . . . \$5.99

3/4" C.D. Plywood Ea. . . . \$8.95

Good White COMMODES, ea. . . . 34.95

48"x1" Poultry Netting Roll 29.99

30-gal. Water HEATER 79.50

48"x2" Poultry Netting Roll 16.95

60"x2" Poultry Netting Roll 19.90

72"x2" Poultry Netting Roll 24.95

4x8 Pre-finished Wood PANELING, ea. . . . 3.95

1/12-1/8, 1/6-1/4 Molding W.P., 100 bd. ft. . . . 49.20

6-6-10-10 Mesh Wire 750 sq. ft. roll. . . . 38.50

#3-18" Wood SHINGLE, sq. . . . 34.75

1/2" 4x8 Gypson BOARD, ea. . . . 1.59

15 or 20 lb. FELT, #1, ea. . . . 6.95

1/2" REBARS 14.95

BARB WIRE, roll 23.95

White Comode SEATS, ea. . . . 3.95

White Ext. Latex House PAINT, gal. . . . 4.50

2x4-92 5/8 Fir STUDS, ea. . . . 79c

2x4 & 2x6-10' thru 16' New stock, #2 & better Per 100 bd. ft. . . . 19.50

1x12 - #3 RESAWN (good) . . . 15.95

PORTLAND CEMENT . . . 2.59

250 S. 9th 828-6586

NOTICE TO CREDITORS OF ESTATE

No. 15,428

ESTATE OF LILLIE MAE BELL, DECEASED, IN THE COUNTY COURT OF LUBBOCK COUNTY, TEXAS

Notice is hereby given that original Letters Testamentary upon the Estate of LILLIE MAE BELL, Deceased, were issued to me, the undersigned, on the 26th day of August, 1975, in the proceeding indicated below my signature hereto, which is still pending and that I now hold such Letters. All persons having claims against said estate, which is being administered in the County below named, are hereby required to present the same to me respectively, at the address below given before suit upon same is barred by the general statutes of limitation, before such estate is closed and within the time prescribed by law. My post office address is 1628-15th Street, Lubbock, Lubbock County, Texas.

DATED this 26th day of August, 1975.

FORD BELL

Independent Executor of the Estate of LILLIE MAE BELL, DECEASED, Cause No. 15,428, in the County Court of Lubbock County, Texas.

BUSINESS SERVICES

WANT TO BUY

Burned, Wrecked or Abandoned Cars

828-6240

PERKINS WRECKER SERVICE

Furniture Rebuilt Upholstery Good Fabric Prices Good Work Evenings 828-5231

N. H. ROBERTS

Cement Contractor

Free Estimates 828-6991

BILL REED

DITCHING

Backhoe Sewer Service Dump Truck Plastic Pipe

Phone 828-6814

Mosser Radio & TV

SALES AND SERVICE

110 Texas Ave. Call 828-6475

Magourik Electric

ELECTRIC REPAIRING AND WIRING

1400 S. 5th Phone 828-6809

ELECTRIC WIRING & REPAIR

APPLIANCE & AIR CONDITIONING REPAIR

Kuss Electric

828-3225 — 850 S. 16th

BRUSH PLUMBING

GARY BRUSH, OWNER

A HOME GROWN PLUMBER

*Remodeling *Painting *Formica and Tile Work

DAY 828-6275 NIGHT 828-3888

Guaranteed Satisfaction

CANCER Answerline

American Cancer Society

Question: "Is X-ray treatment effective for all kinds of cancer and is it safe?"

ANSWERline: X-ray or radiation treatment is only one of several ways to control cancer. Other methods include surgery, treatment with drugs and hormones. Indeed, radiation is often combined with these other methods for best results. Radiation is used or not used, depending on the type and location of a cancerous growth. When it is administered by a specially-trained physician (called a radiologist), it is safe and valuable.

A young mother asks: "How do you explain the name of the Pap test. I had one after the birth of my baby and would like to know. Also, should I have more Pap tests or is one enough?"

ANSWERline: The name of the test honors Dr. George N. Papanicolaou, the Greek-American physician who discovered this test for cancer of the uterine cervix. The American Cancer Society which helped support Dr. Papanicolaou's research is now working to have all women at risk of uterine cancer have a Pap test. The American Cancer Society urges you to have a Pap test on a regular basis. One test is not enough. Your local American Cancer Society office has special free leaflets to explain everything you need to know about the test. Please ask for them.

A reader asks: "Is it true that the Russian author Boris Pasternak died of lung cancer? I thought that was our problem?"

ANSWERline: Yes, it's true. But it is not true that lung cancer is strictly an American problem. It is worldwide, including Russia, The British Isles, the Netherlands, Finland and Japan have higher lung cancer death rates than we do. Recently the American Cancer Society hosted a World Conference on Smoking and Health in New York with delegates from 53 countries because this is truly a global problem.

A senior citizen asks: "Does a sudden unexplained pain mean cancer -- is it like a heart attack?"

ANSWERline: Pain is usually a late sign of cancer. Cancer is not a sudden disease, it takes time to develop. That's why regular checkups are a wise idea. Naturally, when you feel recurring pain, you should consult a physician.

A businessman notes: "I have heard that there is a kind of do-it-yourself test for bowel cancer. Is that correct and is it enough?"

ANSWERline: There is a test for hidden blood in the stool. If the test is positive, further investigation is necessary because it could mean early cancer or other

Question: "In a state the size of Texas, how many people will get cancer?"

ANSWERline: According to the American Cancer Society, some 32,000 Texans will get cancer this year. The size of the state doesn't matter, the size of the population does. For example, there will be just 300 cases in all of Alaska.

A regular feature of this newspaper is paid by your American Cancer Society to help save your life from cancer. P. O. Box 9803 Austin, Texas 78766

WALK FOR THE BLIND

unique fund-raising project for Guiding Eyes For The Blind. This is a 19-year-old non-profit agency that provides guide dogs — and mobility — to the visually handicapped. On Oct. 4, it will be sponsoring a 15-mile walk in New York's Westchester County with the hope of getting sponsors to contribute money for each mile walked by school, organization, youth group and private participants. For more information contact Guiding Eyes For The Blind, 106 East 41st Street, New York, N.Y. 10017.

Wedding Stationery

Let us show you our beautiful wedding invitations, thank you notes, napkins, etc. You can select your complete paper trousseau from a wide variety of styles in every price range. For wedding invitations, prices begin at \$10.95 per 100.

by Carlson Craft

The Slatonite



Piggly Wiggly **2** **89¢**
Paper Towels 145-Ct. 1-Ply Rolls
 Piggly Wiggly **2** **69¢**
Bath Tissue 2 Ply - 375 Sheet Rolls 4-Roll Pkg.



Piggly Wiggly Cream Style or Whole Kernel
Golden Corn
4 **\$1**
 16-oz. Cans



Piggly Wiggly Cut or French Style
Green Beans
4 **\$1**
 16-oz. Cans



Piggly Wiggly
Sweet Peas
4 **\$1**
 16-oz. Cans



Pork N' Beans **4** **\$1**
 15-oz. Cans
Peanut Butter **79¢**
 18-oz. Jar

Prices Good Thru September 6, 1975. We reserve the right to limit quantities. None sold to dealers.

Piggly Wiggly Choice, In Heavy Syrup, Halves or Sliced, Cling
Peaches
3 **\$1**
 16-oz. Cans

Piggly Wiggly
Fruit Cocktail
3 **\$1**
 16-oz. Cans

Piggly Wiggly
Chunk Tuna
39¢
 6 1/2-oz. Can

USDA Good Beef, Full Cut
Round Steak
\$1.39
 Lb.

USDA Good Beef
Sirloin Steak
\$1.59
 Lb.

3-Lbs. or More, Fresh
Ground Beef
78¢
 Lb.

USDA Grade A, Breast or Leg
Fryer Quarters
63¢
 Lb.

Great Baked With Rice
Turkey Hindquarters Lb. **49¢**

Farmer Jones
Tasty Franks 12-oz. Pkg. **79¢**

Lean Meaty Beef
Short Ribs Lb. **69¢**

Country Sweet, Fresh
Corn On Cob
\$1.00
 12 Ear
 For Slaw Hot Or Cold, Firm Solid
Cabbage
15¢
 Lb.

New Red
Potatoes Lb. **10¢**
 Give Oomph To Any Sandwich
Mild Yellow Onions Lb. **25¢**

For Easy Salads And Tempting Desserts
Bartlett Pears Lb. **59¢**
 Gay In Color And Taste
Tokay Grapes Lb. **68¢**
 Passport To Health
Valencia Oranges Lb. **39¢**

Piggly Wiggly Sliced American
Cheese
\$1.09
 12-oz. Pkg.

Piggly Wiggly Halfmoon
Cheese
79¢
 8-oz. Pkg.

Nabisco's
Oreo Cookies
79¢
 15-oz. Pkg.

Piggly Wiggly Values

Piggly Wiggly Regular or Non-Phosphate
Laundry Detergent 49-oz. Box **89¢**
 Piggly Wiggly Liquid
Bleach 1/2-Gal. Btl. **49¢**
 Piggly Wiggly Pink Or Yellow Dish
Detergent Qt. Btl. **69¢**
 Piggly Wiggly
Fabric Softener 1/2-Gal. Btl. **59¢**
 Piggly Wiggly Dishwasher
Detergent 35-oz. Box **79¢**
 Piggly Wiggly Spray
Starch 20-oz. Can **59¢**
 Piggly Wiggly
Lawn & Leaf Bags 5-Ct. Box **89¢**
 Piggly Wiggly 30-Gal. Size
Trash Bags 10-Ct. Pkg. **89¢**
 Piggly Wiggly Tall
Kitchen Bags 15-Ct. Pkg. **89¢**

Piggly Wiggly Values

Piggly Wiggly
Waffle And Pancake Syrup Qt. Btl. **89¢**
 Piggly Wiggly Instant
Orange Drink 18-oz. Jar **\$1.09**
 Piggly Wiggly Toaster
Pastries 11-oz. Pkg. **59¢**
 Piggly Wiggly Orange, Red,
Root Beer Or Cola 1/2-Gal. Btl. **68¢**
 Piggly Wiggly Buttermilk
Pancake Mix 2-Lb. Box **63¢**
 Piggly Wiggly Long
Grain Rice 2-Lb. Bag **79¢**
 Piggly Wiggly Dry
Dog Food 25-Lb. Bag **\$4.29**
 Piggly Wiggly Mixed
Vegetables 3 16-oz. Cans **\$1.00**
 Piggly Wiggly
Flour 5-Lb. Bag **69¢**

Freezer Queen All Varieties Frozen

Cook N Pouch 5-oz. Pkgs. **4** **\$1**
 Slim Jim Frozen Shoestring
Potatoes 20-oz. Pkgs. **4** **\$1**

Grape Jelly, Peach Preserves or Strawberry Preserves
Bama Jelly
99¢
 2-Lb. Jar



We Give S&H Green Stamps

PIGGLY WIGGLY BRAND SALE

We Welcome Federal Food Stamp Customers



P
I
G
G
L
Y
W
I
G
G
L
Y

P
I
G
G
L
Y
W
I
G
G
L
Y