

# The Slaton Slatonite 15¢

A MEMBER OF MOST FAMILIES IN THE SLATON TRADE AREA

64th Year, No. 44

SLATON, TEXAS, LUBBOCK COUNTY

July 31, 1975

PER COPY

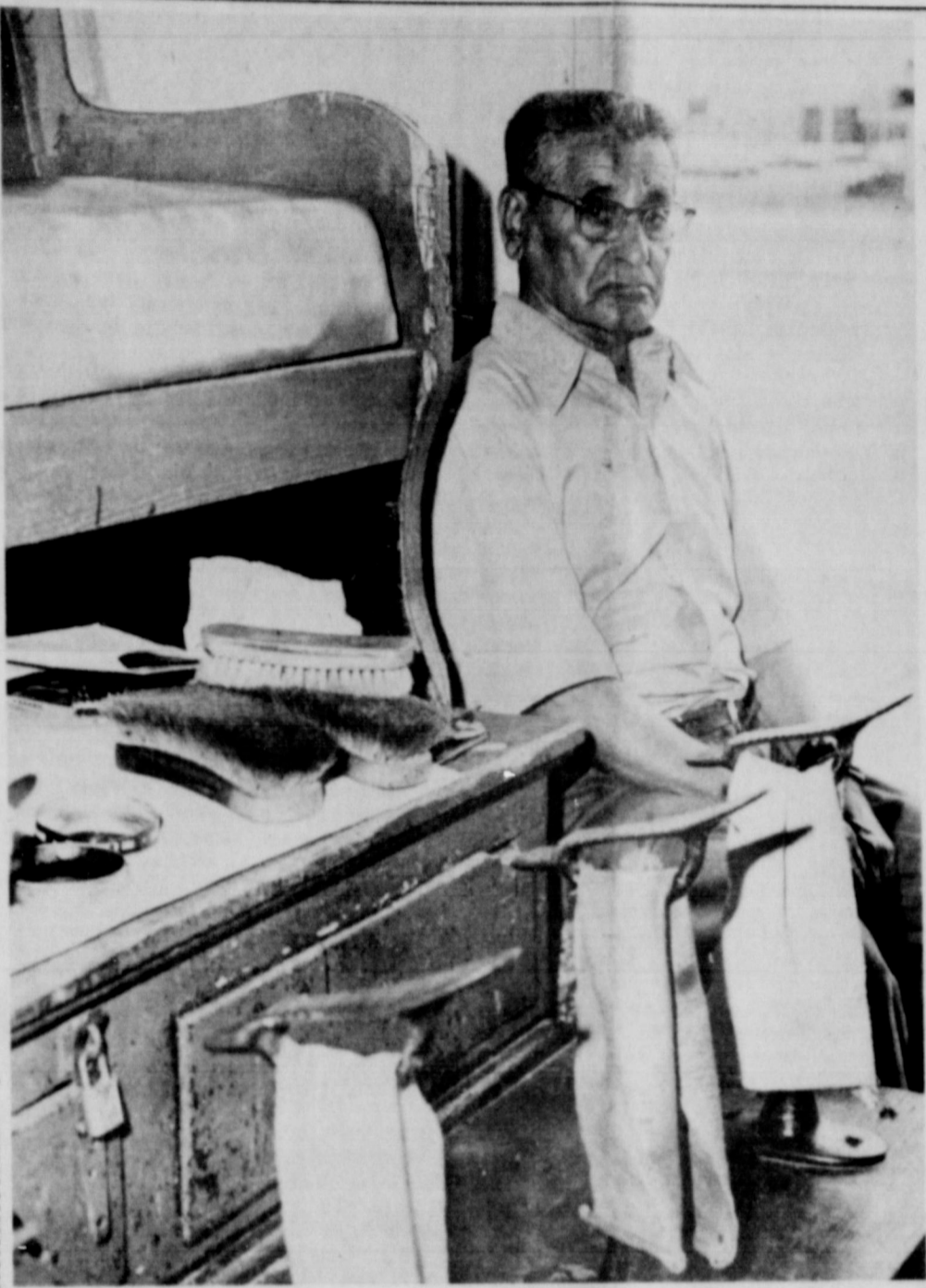
## Tennis Tournney Planned Here

Tournament for the county park and residents of school districts will be held at Dalton Wood, Box 775, Slaton, 79364, or at the Slatonite office, before 5 p.m. Tuesday, Aug. 12. Checks should be made to "Slaton Tennis Tournament."

Trophies will be awarded for first and second place winners in each event, but no event will be held with fewer than four entries. Play will be two-out-of-three sets, with 9-point tiebreaker used at 6-all.

Junior high and high school divisions will begin play at 9 a.m. Thursday, Aug. 14. Adult division play will start at 5 p.m. Friday for some players, and at 8:30 a.m. Saturday for those who indicate they cannot play Friday evening.

The tournament was organized at a meeting last Thursday of persons interested in promoting tennis in the Slaton area. Also helping to get the tournament organized are Jo Holt, Nancy Harlan, Ralph Gage and Mr. and Mrs. Roger Evans.



HE SHINES — Ben Diaz, who has been operating the shoeshine stand at Lemons Barber Shop in Slaton for more than 20 years, is a popular and respected downtown fixture. Diaz, who was 81 in May, is a lay preacher at the Spanish mission here. A resident of Slaton since 1947, he has two sons and three daughters. (SLATONITE PHOTO)

## School Tax Valuation Protested By SWPS

Several persons appeared before the Slaton School District Board of Tax Equalization last Friday to protest newly-imposed taxes on vehicles in the district, and Southwestern Public Service Co. came in with a team of attorneys, appraisers, accountants and other officials to present their case disputing the assessed valuation of their property in the

district. Attorney Joe Boerner brought in a court reporter, tape recorder and sworn witnesses to present the SWPS case.

Buford Duff, Levelland accountant who formerly was tax assessor for the Slaton district, testified that he held that job in 1968 when property was revalued in the district, and said that "to the best of my recollection, they used a value of 90 per cent of what they really thought it was worth."

L. T. Davis and Glenn Antwine, Lubbock real estate dealers, testified that they conducted spot and random appraisals of residential and farm property in

the district and found it to be appraised at less than actual value. The figures they quoted were at an average of less than 60 per cent for farm and ranch property and less than 75 per cent for residential property.

After these and other witnesses were heard by the tax board of Earl Foerster, Tommy Davis Jr. and M. L. Abernathy, Boerner summarized the SWPS position, commenting that the utility firm is paying "approximately 38 per cent of all the taxes in the district," and questioning whether the SWPS holding represent 38 per cent of all the value of property in the district.

He also asserted that a value of \$332.50 per irrigated acre of farmland in the district "is not 100 per cent of value," adding that "We're saying you're putting us on at 100 per cent and putting others in at 70 per cent."

The board took no action, but indicated a decision would be made on the assessment soon.

## Puppies Among Articles Stolen

Theft of seven German Shepherd puppies was among reports of items stolen in Slaton during the last week. Ben Douglas, 178 Texas Ave., told police Sunday the puppies, worth \$70, had been stolen from that address.

On Saturday, John Grantham reported that an impact wrench valued at \$500 had been stolen from Shamrock Truck Stop.

Lorene Berry, 501 Plaza Dr., told police Sunday that someone had taken an electric vibrator from her car while it was parked at First Baptist Church.

On a tip from a resident of the area, police recovered a stolen newspaper vending machine from weeds off Roma road north of the city limits.

Mrs. Maurice Scott Jr., 405 S. 2nd, reported a load of clothing stolen July 22 from a washing machine at Highland Laundry.

In another theft report not on file until this week, two nurses at Mercy Hospital reported July 20 that their purses had been stolen from a room in the hospital, with a small amount of cash and personal papers missing. The complainants were Clara B. Martin and Lena Bell Randolph.

Several arrests were made for drunk driving and public intoxication.

## Tiger Club To Meet Monday

The first meeting of the year of the Tiger Club will be Monday at 8 p.m. in the Chamber of Commerce Board Room.

President Curtis Aycock said the public is invited to the meeting, and that all the coaches will be present.

"This meeting will be only about 30 days before our first ball game, and we need all the support and enthusiasm we can round up," said Aycock.

## Kindergarten Screening Set

In order to determine proper placement for all kindergarten students, the Slaton School personnel will conduct screening sessions Aug. 6-8 at West Ward Elementary.

Those who did not pre-register their kindergarten child last May, are urged to call the school office (828-6504) or write Slaton ISD, Box 12, and give the child's name, address, and birthday in order that he or she may be scheduled for one of these sessions. Letters will be mailed to all kindergarten parents who are registered stating their child's appointment time.

WEATHER		
Courtesy of Pioneer Natural Gas Co.		
Date	Low	Hi
7-24	60	76
7-25	60	70
7-26	60	76
7-27	60	84
7-28	62	86
7-29	62	88
7-30	64	92
Rain—1975—13.65		

## Thomas Named In Commission Recall Petition

A petition demanding the recall of Ward IV Commissioner Hesikize Thomas was presented to City Secretary Alex Webb Wednesday morning by Willie Mimms.

Thomas now has until Tuesday to decide whether to resign or face the recall election.

The petition contained a total of 15 names, two more

than the required amount.

A special election will have to be called if Thomas doesn't resign. According to

### RAIN!

More rain fell last Thursday and Saturday, totaling .90 here in town. This brings the year's total to 13.65.

Webb, this election cannot be held on the same date the special election to fill the vacancy of Ward III commissioner has been called for.

As of Wednesday morning, three men have filed for the position of Ward III Commissioner. They are B. A. Hanna, Ira Keys and B. H. Bollinger.

## Airport '75 In Slaton: Vital To Progress

By SANDY MARTIN

Fifty years ago barnstorming was in its heyday, and the sight and sound of an airplane brought people running to marvel at the machine that freed man of his earth bound existence.

Today, only a half century later, the skies host every type of aircraft known, from two seater single engine propeller planes to monstrous 747 super jets which tower three stories high.

Commercial airlines, a multi-million dollar business, whisk people across the country in a matter of hours. Flying is an important aspect of both industry and agriculture, and the legion of private pilots is growing daily.

**Vital Role**  
Flight is an integral part of 20th century living, and Slaton is firmly established in the world of flying.

The Slaton Municipal Airport, which was dedicated on Nov. 2, 1969, is used daily by businessmen, agriculturalists and pleasure pilots. Several weekends ago, a Lear jet landed here. Its pilot and passengers flew to Slaton to visit friends in the Lake Ransom Canyon area.

Plains Helicopter Inc., Slaton Flying Service, which is the fixed-base operator of the airport, trains between 300 and 400 pilots annually. The Slaton airport is a busy place these days and the future indicates nothing but growth.

Earl Eblen, who was instrumental in the push to procure an airport for the city, emphasized the impor-

ance of such a facility. "A town without an airport is like a town without roads. An airport is a direct link to any city in the world."

**Closed In 1951**  
The first airport Slaton had failed. It was located near what is now the golf course. "It closed down in 1951," said Eblen, "after the city put the sewage plant on the northwest side."

A dozen years later, in 1963, the process for building another airport was begun. "At the time, Slaton was the largest town of its size without an airport," said Eblen. "It was about that time when Slaton started getting some bigger industry to come to town,

and all the application forms asked about airport facilities. The Industrial Foundation was formed and an airport committee of the Chamber of Commerce was selected, and that's how we got started," he said.

Selecting a spot for the airport was no haphazard duty. A group of professionals from the Texas Aeronautics Commission came to Slaton and helped the committee choose a spot.

"They picked out 320 acres for the location, which the city then bought. Only 90 acres are actually involved in the operation of the airport now," said Eblen. "The rest is being farmed."

The cost of buying the

land and constructing the runway was approximately \$200,000. Eblen explained that the federal government paid for 50 per cent of the cost and \$20,000 came from the Texas Aeronautics Commission. That left the remainder of the funding to the city.

**Bonds Approved**  
"The people of Slaton wanted that airport," said Eblen. "They approved the bond by a wide margin." The \$8,800 bond was voted in August of 1966 and will be retired Nov. 15, 1982.

The 3,800-foot paved and lighted runway was completed in 1968. "We wanted parallel taxiways," said Eblen, "but the FAA (Federal Aviation Administration)

was against it."

After the runway was complete, the city began looking for an operator. "It took a while and there was some heartbreak involved, but we finally got Roger and Fred (Evans) and they're doing a great job."

Roger and Fred Evans, president and vice president respectively of Plains Helicopter Inc., were operating off the roof of the Villa Inn in Lubbock at the time the city approached them to be the airport operator.

Since that time, Plains Helicopter Inc. has grown from a two-aircraft operation to one with 13 planes and helicopters, and has increased its staff from three to 10.

Roger Evans said Slaton has a good reputation in flying circles and is well known. "We advertise in national magazines. If no one else knows Slaton is here, pilots do. Over the years, we've gotten a good reputation by word of mouth."

### Foreign Trainees

Between 300 and 400 pilots train at the Slaton Airport each year and many of them are from out of state and from abroad. Pilots from Belgium, Dominican Republic, Mexico, Puerto Rico, Bolivia, the Netherlands, and many other countries have undergone training in Slaton.

The Flying Service is now in the process of erecting flag poles so that when a student comes here from another country, his flag can be flown while he's here. "We're asking them to

bring flags of their countries," said Evans. "I think it will be nice to fly each different flag while the student is in Slaton."

There are 17 courses available, and Evans said the agriculture pilot rating is the most sought after.

"We've had several countries send their pilots here for ag training," said Evans. "The government pays for their training and then they go back and work for their country."

According to Evans, pilots stay from two to three weeks for an ag rating. The average cost of the training is \$2,800. There are facilities at the airport to board six pilots at a time, a feature which attracts many out of state pilots.

### Safety Angle

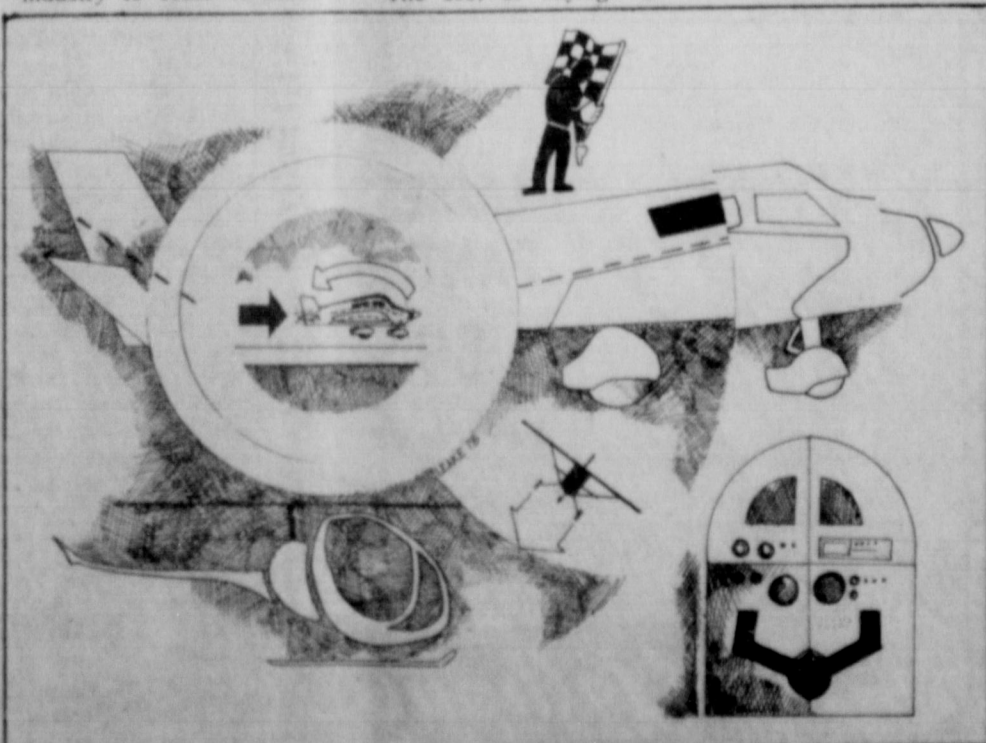
The ag training includes the instruction of safety procedures when handling chemicals, mixing and calibrating chemicals, and making minor repairs.

Slaton was the first school to use the two seater Pawnee Fledgling for ag instruction. The corporation has 19 years experience in the spraying field and all instructors have more than 2,000 hours actual spraying time.

In addition to the ag training, other fixed wing courses are private pilot, commercial, instrument, airline transport single engine and instrument flight instructor.

Although airplane instruction is more often requested, Slaton Flying Service

(See AIRPORT, Page 4)



by dalton

LOWERS AND JAR LIDS are topics of these days, and both are getting even mention as the summer goes by. I heard one farmer grumbling the other used to do everything in his power sunflowers from growing around his house now a lot of folks are planting them. The other day, we noticed some sunflowers south of Wilson and were surprised by the difference in those and the hybrids that farmers are raising all especially north of here.

jump from 5,000 acres of sunflowers to more than 300,000 acres this year watched with a lot of interest by just anyone. If the farmers make a good crop this year, there likely will be a greater increase in acreage next

don't know much about sunflowers or are in demand. I understand they use them for cooking, and perhaps for some unexplainable reason. (I saw one.) Probably if some of those seeds were x-rayed, one could see what was growing in their stomachs.

picked up a big hybrid sunflower and brought it home. It was about the size of a plate, and must have weighed two pounds. If good for nothing else, it would be a good weapon in an emergency (I remember, Doc, when my wife hit me on the head with a sunflower).

going back to that farmer's house that he likely won't be able to grow now that they are valuable made us wonder what it would be if a market could be developed for careless weeds. Of course, wild cotton plants probably would be out.

if someone discovers that you can wash halibut and rub it on your left hand you'll never have a common cold or flu. Then all the farmers would be growing for hail, so they could gather up the beans and freeze them for a big money

...  
...GATE will be just a dim memory if federal investigation of the fruit jar turns up any hanky-panky. When fooling around with something as innocuous as canning green beans and corn, who is found guilty of deliberately causing a problem in this area is sure to be the target of wrath from zillions of angry home canners.

There are no lids around because they're hoarding them. My wife says she'll name anybody for that, and wishes she could find them. "I'd certainly buy a big lid if I could find them," she said. "I'm sure, we've got all these beans and things, but few lids for the jars. It's a real sticky situation."

## Jar Lid Production Now In Full Swing

MUNCIE, Ind. — Ball Corporation, one of the nation's leading producers of home food preservation supplies, said it is continuing to manufacture replacement lids for home canning on an around-the-clock basis, seven days a week.

Despite this production schedule, in effect since Jan. 2, the company is not able to meet the continuing unprecedented nationwide demand for its products, Ball President John W.

Fisher said. "We produce an astounding 3 million replacement caps and lids daily," Fisher said. "or over 20 million lids each week." All productive capacity is being utilized fully during every moment of time available, he said.

The surge in home canning, which began in 1973, rose sharply in 1974 and reached even higher levels in the first half of 1975. Most of this demand has

been fueled by inflation and the overwhelming response of millions of American families to suggestions that they plant new gardens to help relieve inflationary pressures on their income. "This is a reflection of the immense demand generated by the American economy as people respond to a recognized need," Fisher said.

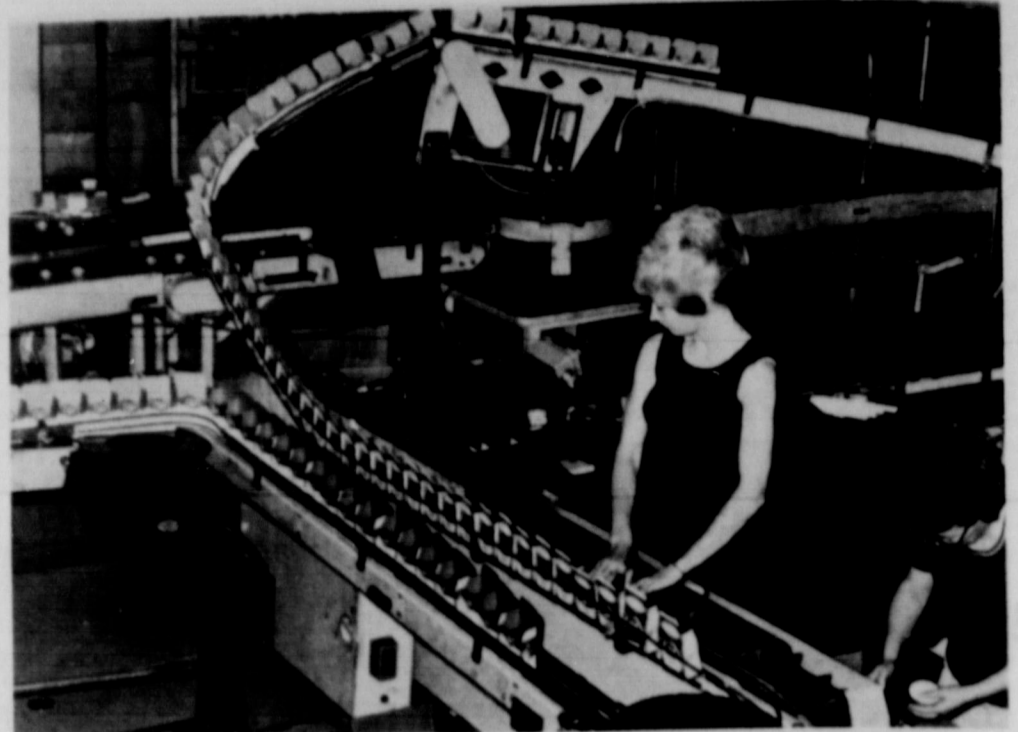
Ball Corporation does not sell its home canning products directly to the end-

user. The company markets its products in its traditional manner to wholesale grocers, chain store warehouses, and hardware distributors which, in turn, ship directly to retail outlets. The actual sale of the product and its distribution to individual retail stores and to the ultimate user is, therefore, not under Ball's control.

"Purchase of lids at the retail level and resale at higher prices — what is normally called black marketing — is beyond our control but is totally deplorable at any time but especially during times of severe national shortages," Fisher added. "Consumers are the best check against this practice. Refusal to buy at anything other than a reasonable market price will drive the blackmarketers back under their rocks," he said.

Ball placed orders for additional lid-making machinery in 1974 when it realized the substantial demand was likely to continue. Approximately 18 months are required to engineer, build and install the equipment needed to complete the complex, highly-automated lid - manufacturing line, which should be operating by year-end.

The present home canning equipment supply situation, Fisher said, can be traced to events beginning in 1973. As inflation pressures built, Ball's market information indicated heavy sales of garden seed and projected many new gardens and more new home canners. The company built its inventories in anticipation of a good home canning year. Demand rose sharply in July 1973 at the same time a shortage developed in supplies of tinplate for lids and soda ash for glass fabrication. While sales



**PRODUCTION CONTINUES** — Nearly three million home canning lids roll off Ball Corporation's production lines in Muncie, Ind., each day of the week. Here they are sent in dozens for shipment daily to distributors in all parts of the United States.

were up in 1973, there were, nevertheless, shortages of glass and lids.

With these shortages fresh in mind, the consumers in 1974 were acutely aware of their food preservation needs. Ball's sales vastly exceeded any other winter quarter in the company's history as the consumers demanded supplies early. There was a general shortage of both glass and lids during the remainder of the year.

At the beginning of 1975, consumers again bought earlier and additionally in response to the urging of the President and other governmental officials to plant gardens. Ball's sales of home canning products alone in the first quarters (January, February and March) of the last three years have been \$166,000 in 1973; \$5.75 million in 1974; and more than \$13 million in 1975.

Ball products are being distributed to its customers on an allocation basis. Allocation formulas are based on an item by item average of the previous two years' sales (1973-1974) to each Ball customer. The increased 1975 production is assigned on an item basis to these customers.

Ball is presently shipping five replacement caps or lids for each lid which is shipped with a complete jar and cap unit. Ball home

canning glass jar production will not be greater than it was in 1974 because of the apparent plentiful supply of jars already in consumers' homes or available in the marketplace.

The large supplies of complete jar and cap units on the market today, Fisher said, is due to the free enterprise system catching up with demand. At the beginning of 1973 there were only two manufacturers of the complete canning unit. This year there are six other manufacturers which have the complete jar and cap units for sale.

The company has received thousands of letters and telephone calls weekly,

many of which ask for lids to be sold directly to consumers by mail; however, it is not possible to do so. "The additional personnel, order processing, postage and potential damage to the lids would make the price prohibitive to home canners. Our present method of distribution is still the fastest, most efficient and economical for the consumer," Fisher said.

"Ball Corporation is a publicly-owned company," Fisher emphasized. "The allegations that it is in anyway controlled by or has conspired with commercial food processing companies are without foundation and untrue."

**INTRODUCING... Slendo**  
Another line product of Kayser-Roth

**WHY-WEAR-A-GIRDLE PANTY HOSE**  
with sheer Multi-Filament Legs

**WHY-WEAR-A-GIRDLE PANTY HOSE**  
with sheer Multi-Filament Legs

**Slims & Trims & Makes the Girdle Obsolete!**

Now you can control the little bumps and bulges and still move as freely as if you were bare!

Slendo's WHY-WEAR-A-GIRDLE panty hose does all the slimming and trimming you'd expect of a girdle without a girdle's constricting tugging and binding. A blend of nylon and spandex in the ribbed control panty gently molds and holds you as the luxuriously sheer legs cling to every curve for perfect day-long fit.

**Anthony's**  
C R ANTHONY CO

**\$1.69** pair

**Anthony's**  
C R ANTHONY CO

**TODAY'S GIRL KNEE HI HOSE**  
**2 PR. FOR 99¢**

Comfortable knee high nylons in several different shades at a special savings to you. One size fits all.

**Home Decorating News**  
BY CLARK SELF, JR.

**Bath Towels**  
**3 FOR \$4.**

Cotton terry solid colors, prints, stripes and jacquards, bath towels that are sure to enhance any bathroom decor. And now they're on sale at a special price to you.

**Blanket Sale**

**PRINTED BLANKETS**  
Reg. 5.99  
**5.34**  
**3 for \$15.00**

Blankets to beautify the room where you sleep. Choose from our selection of Fantastic Florals! 72" x 90" size, 100% polyester. Solid color nylon binding on both ends.

**School Time**

**BASKETBALL OXFORDS**  
Men's, Boys', & Youth's

At the top of the sports polls, these great looking navy and white basketball shoes really rate! Sizes: men's 6 1/2-12, boys' 2 1/2-6, youth's 10-2

**4.99**  
**3 for \$12.**

**Anthony's**  
C R ANTHONY CO

**Sassy Pants**

**LADIES' PANTIES**  
**89¢**  
**3 Pr. For \$2**

You'll want several of these cute little novelty print bikini panties of easy-care 100% nylon. In soft pastel colors. One size fits 4 to 7.

**Anthony's**  
C R ANTHONY CO

**Home Decorating News**  
BY CLARK SELF, JR.

**THE MEDITERRANEAN MOOD** is gaining wide-spread favor among homeowners and interior decorators, with the major furniture manufacturers quick to answer their demands.

Owing its origins to the massive grandeur and rich artistry of furnishings found in Spanish and Italian castles of the 17th and 18th centuries, this Mediterranean style is bold and dramatic, and it lends itself to use in the most contemporary setting or a traditional one.

Pieces tend to be large, especially the beautiful storage units. Woods are usually finished in rich browns (pecan is a favorite wood), with emphasis on detailing in doors and framing. Wrought iron is frequently used, reflecting the Spanish influence, as well as brass.

Mediterranean welcomes strong colors, from bold greens and blues to the hot yellows, oranges and reds of sunny Spain.

You'll find this mood interpreted by leading designers and furniture manufacturers in our showroom. Whatever the decorating mood you favor, stop in and see our selection.

### TOPS CLUB

Fourteen members weighed in Thursday night at the regular Tops Club meeting with half of those losing 9 3/4 pounds. Two Kops and one Kiwi maintained.

Queen of the week honors went to Thelma McCarver. Frances Keane won the weigh in contest.

Fina Hirachita read "The Secret of Plenty and Hunger" for the devotional, and Leader Helen Meeks read "A Self Test for a Compulsive Eater."

The auction was held by Llawana Johnston. Next week, as a club money project, each member will bring a homemade craft and these will be auctioned.

### LEGION AUXILIARY

Six delegates from the American Legion Auxiliary attended the recent Department of Texas Convention in Fort Worth.

Mrs. Betty Anders, Mable Isbell, Micky Anderson, Loree Polk, Gerry Waugh, Geri Schmid and Eliene Tucker plus alternate Mrs. Carter Shaw, represented Unit 438.

The new officers for the coming year will be in-

stalled Aug. 21 at 7:30 p.m. in the unit room of the Post Home.

### PARAPLEGIA GROUP

There will be a meeting at 7:30 tonight at 505 W. Lubbock for those interested in forming a local chapter of the National Paraplegia Association.

### THE Slaton Slatonite

DALTON WOOD, Publisher

Entered as Second Class Matter at the Slaton, Texas under the act of March 3, 1947. Published at 163 S. 9th St., Slaton, Texas. POSTAL NOTICE: PURCHASED JANUARY 1975. Notice to the Public: Any erroneous reputation or standing of any individual or corporation that may appear in the Slatonite will gladly be corrected when attention.

SUBSCRIPTIONS: Payable in advance. LUBBOCK, GARZA, AND CROSBY counties -- \$5.00 per year. Outside these counties -- \$6.00 per year. Member of West Texas Press Assn., Tex.

**TEXAS PRESS ASSOCIATION**  
MEMBER 1975

**COTY BEAUTY**

**NEW! GLOWING FINISH CREME MAKEUP IN A COMPACT**

First time in a compact—sheer coverage, weightless and velvety-light, warmed to give you a special, young and tender glow!

Little flaws seem to disappear. All you see is you—fresh, natural and radiant all day!

Enriched with Hydrolyzed Protein Conditioners. In True Beige, Tawny Beige, Warm Beige, Basic Bisque, Golden Beige and Sunny Tan.

In mirrored compact with "see thru" base \$3.00

**SLATON PHARMACY**  
"THE DOCTORS AID"  
PHONE 828-6815 / SLATON, TEXAS

**Dru Ann Pre-Nupt Hosted**

Dru Ann... elect of... was honored... nuptial... A miscell... was given... home of... kins.

Mrs. Jerry... sided at... which was... pink and... piece, feat... elect's cho... Guests we... Linda Rob... guests we... Beard, mo... elect, and... Warren an... Kocich, au... mother of... Twenty... sented the... with a ch... mixer.

A lingere... honored... in the ho... Fondy wi... assisting... Refreshm... to 11 gues... Special... bride-elic... Gillie Beard... and Mrs. K... The couple... Aug. 30 in... Church here.

Recent... Rhea Pier... Union Com... cousin, M... of Oklaho... in-law, M... of Lubbo... Mrs. Pier... wife, Mr... Shipman, a... Shipman, a... Mr. and M... of Route 1... visited.

The cost... for arthri... US is more... a year.

**COTY BEAUTY**

**SHO... FOREVER**

**COTY GLOWING FINISH CREME MAKE-UP**

**FOR A LOOK IN A FEEL**

# Rheumatoid Arthritis Cure Claimed

an Associated from London the claim of a medical specialist has found both the cause of arthritis, one of its most crippling

Wyburn-Mason, a specialist physician and Houndslow West London, interviewed that he of protozoal in-

are minute one- like the amoeba as parasites in stream. Among they cause are sleeping sickness

Mason said rheu- arthritis could be with the drug Clo- which is already successfully to protozoal infections malaria. He said the be administered rheumatoid arth-

ritis sufferers. The doctor's findings have met with cautious enthusiasm in British medical circles.

A spokesman for Dr. F. Dudley Hart, a rheumatism specialist at London's Westminster Hospital, said: "We certainly think this appears to be a major advance, but we also feel that more tests must be carried out before it can be accepted as a definite medical fact."

Wyburn-Mason, an associate professor of medicine at Yale University in 1958, read his findings to the ninth International Congress of Chemotherapy which ended in London last Saturday. His audience of medical specialists gave him a standing ovation.

"I have always thought that rheumatoid arthritis was a protozoal infection," Wyburn-Mason said. "People who suffer from this disease develop a substance in the blood known as the rheumatoid factor, or RF."

"In my examination of patients with protozoal diseases like infective hepatitis, bacterial inflammation of the heart and leprosy I found the RF factor present, although there was no arthritis involved," Wyburn-Mason said.

"I deduced from this that the RF factor was produced in both cases as a defense mechanism against the same type of infection."

The doctor's next step was to treat rheumatoid arthritis with Clotrimazole.

"The effect was dramatic," he said. "In some cases the symptoms of rheumatoid arthritis disappeared within three days, although in other cases it took up to four weeks."

"It was found that doses had to be continued for 8 to 10 weeks to clear up the disease. Follow-up tests 15 months later showed that the patients were still clear of rheumatoid arthritis."

In his lecture to the chemotherapy congress, Wyburn-Mason described experi-

ments with 12 patients ranging in age from 47 to 77.

He said rheumatoid arthritis symptoms had been present for periods ranging from two months to 23 years. In eight of the patients there was a swift reaction to the drug, he said. Within 24 hours swelling of the joints, accumu-

lation of body fluids (edema, stiffness and restricted movement) had all eased.

In two other cases the patients found that the drug made them sick and caused diarrhea. But Wyburn-Ma-

son said those effects could be countered by administering an antiemetic drug

and a kaolin mixture at the same time as the Clotrimazole.

The doctor stressed that the discovery applies only to rheumatoid arthritis.



**MILDRED MAXWELL Maxwell Chosen**

Mildred Maxwell, a May graduate of Slaton High School, has been selected to Who's Who Among American High School Students.

Her activities during high

school included choir, choir vice president last year, ROTC, Pep Club and freshman cheerleader.

Mildred was also a stand-out basketball player for SHS. She was selected as All-District guard, most valuable player and was a member of the State Champion Tigerettes in 1974.

She also ran track and was a regional qualifier two years. Mildred played golf her junior year, also qualifying for region.

Her honors include being named Choir Sweetheart her sophomore year and Wittiest last year.

She plans to attend Western Texas College in Snyder this fall.

"Alcohol constitutes the country's greatest mental health problem."  
—Dr. Karl Menninger, Menninger Clinic

## Dawsons To Celebrate Golden Anniversary

A reception honoring the golden wedding anniversary of Mr. and Mrs. W. H. Dawson will take place Sunday from 2 to 4 p.m. in the parlor of the First Baptist Church in Slaton.

The former Mary Nickel and Hammer Dawson were married Aug. 3, 1925 in Lubbock, and have made Slaton their home since.

Hosting the reception will

be the children of the couple, Mr. and Mrs. Bill Dawson, Lubbock; Mr. and Mrs. Pip Dawson, Slaton; Mr. and Mrs. Glyn Dawson, Kentucky; Judi Holt and Mr. and Mrs. Ted Dawson, all of Slaton.

The couple has 14 grandchildren, and one great-grandchild.

Dawson is a retired Santa Fe railroader.



MR. AND MRS. W. H. DAWSON

### BICENTENNIAL BITS

By NEWMA CARNES

By NEWMA CARNES Great news! John Tower's mailgram, informing us that the Slaton Bicentennial Committee and its projects have been accepted by the national American Revolution Bicentennial Commis-

sion and Slaton has been proclaimed a Bicentennial City, effective July 24, arrived here ahead of the ARBC's notification. More news about this later.

Sometimes, in the last 11 columns, there have been quotations from several Slaton citizens. Have you recognized yourself or a friend? Some of those quoted were Ella D. Trotty, Mary Louise Stephens Henzler, Wayne Kenney, Morton Watley and William Loyd Green. Reminiscences of others will follow.

Mary Grace Privett recalls many interesting things about the movies in Slaton. . . she sold tickets at two of the early theaters.

Audean Nowell has a 1926 Slaton Tiger annual, and a bound copy of the 1925 Tiger's Cage.

It was Audean who called to tell of an early Slaton newspaper called the Slaton-South Plains Radio-Gram published by W. T. Florence from an office north of the present Fondy's.

Mary Taylor called to say that her home was one of the first residences built in Slaton, and several others have indicated their homes were among the earliest constructions in Slaton. Our house is a latecomer, begun in 1926, but the abstract on our lot, commencing in 1902, reads like a who's who of Slaton!

This 40-year-old man, resident of Slaton for 26 years, recalls, "I bought my first car when I was 14. It was in 1945. I paid for it by carrying out groceries at Piggly Wiggly. It was a 1939 Ford. I was making 35 cents an hour. I had saved about two years. The car run real good until one day I broke out goosing it and it was down. It sat in my driveway another year and a

half before I earned enough to fix it. When I got it fixed, I sold it!"

A 72-year-old woman who has lived 53 years in Slaton remembers about early cars. "We had buggies and surries that we rode in to church and town. When we would meet a car, my father would tell all of us to get out of the buggy and he would get in front of the horse to hold it while the car went by so the horse couldn't run away."

#### PERSONAL

A 6 lb. 10 oz. girl, Alexivalee, was born July 10 to Mr. and Mrs. Ric Massie of Lake Jackson. Grandparents are Mr. and Mrs. Charlie Walton of Slaton.

### GENTRY REUNION

Time: Sunday, Aug. 3

Hope that our kintfoks and friends can be at the Slaton Club House. Come and covered dish. Lots of visiting and singing will be held in the afternoon. We have met every first of August since 1962.

WE ARE EXPECTING YOU  
— Mrs. Mert Gentry

## RONA'S SHOPPE

STARTS JULY 31 - 9am

1/2 Off

Ladies & Children's Dresses Air Step Shoes

Specials on

SPORTSWEAR

Jane Colby

also

Strell & DVP

Men & Boys

Shirts & Shoes

ALL SALES FINAL .. NO REFUNDS .. NO EXCHANGES  
225 W. Lubbock St. Ph. 828-3597

Specials on

PLATEX

Bras & Girdles

also

Piece Goods

1/2 Off

**R. FARMER**  
DO YOU WANT MORE MONEY FOR YOUR GRAIN?



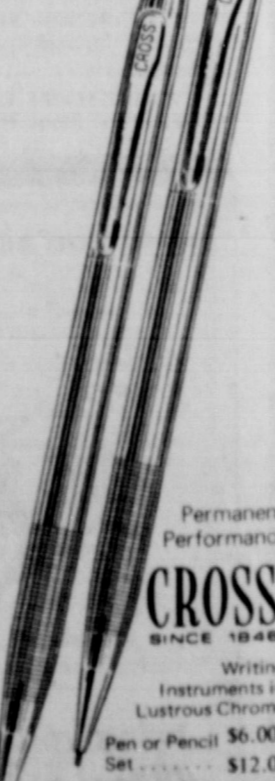
WE OFFER YOU A GUARANTEED MARKET FOR YOUR GRAIN, F.O.B. FARM DELIVERY, THAT IS SUBSTANTIALLY HIGHER THAN THE ELEVATORS ARE OFFERING AT THE TIME.

LET US BUILD YOU ON FARM GRAIN STORAGE AND WE WILL BUY YOUR GRAIN AND FINANCE YOUR STORAGE FACILITY.

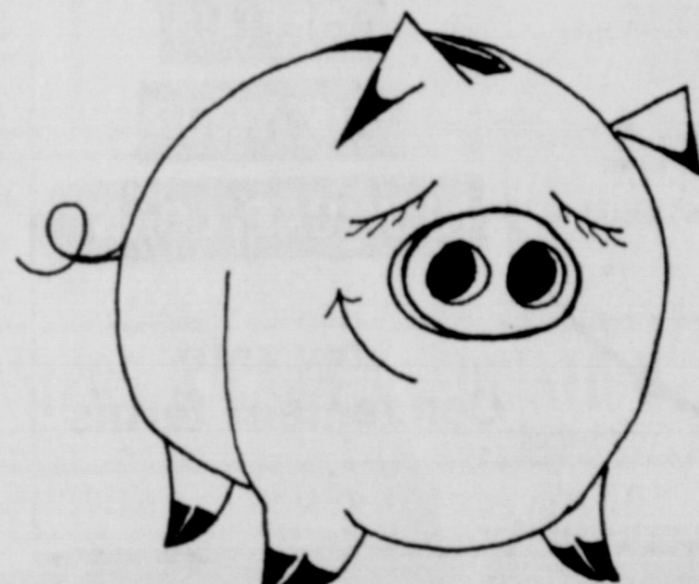
- WE CAN OFFER YOU
1. LEASE-PURCHASE FINANCING
  2. STRONG TAX ADVANTAGES RESULTING IN INCREASE TO YOUR FINANCIAL STATEMENT.
  3. GREATER FLEXIABILITY IN MARKETING YOUR GRAIN.
  4. FACILITY SHOULD PAY OUT IN THREE YEARS, OR LESS.

**SAL-TED MORTGAGE CORP**  
LOCKNEY, TEXAS 806-652-2309

Popular Price



Permanent Performance **CROSS** SINCE 1848 Writing Instruments in Lustrous Chrome Pen or Pencil \$6.00 Set \$12.00  
**THE SLATONITE**



THE TROUBLE WITH PIGGYBANKS

They don't make money. That's the way it is with piggybanks.

An account at Slaton Savings helps you make money... more money... with insured safety.

Let us help you make the most of your money.

WE'LL DO MORE FOR YOU.



**SLATON SAVINGS and Loan Association**

100 W. Garza

828-6557

# Roosevelt News

by  
**Lynda Hall**  
and **Sandra Patschke**

**BOOSTER CLUB**  
The Booster Club will meet Aug. 4 at 8 p.m. in the high school building.

**CLINIC**  
Roosevelt has eight coaches attending the coaches clinic at Fort Worth this week, of which five of them are new at Roosevelt.

New ones are Randy Smith, Jim Carson, Derrell Selke, Jimmy Taylor and Bud Clowers.

Also attending are Houston Powell, James Gibson and Dean Elliot.

**CONVENTION**  
The three Home Economics teachers attended the Home Economics Teachers convention in Dallas. Attending were Nancy Howard, Phylis Orr and Glenda Harris.

**NEWS BRIEFS**  
Mr. and Mrs. Bobby Copeland and family and her father, Holly Shaw, spent several days camping and fishing in the White Mountains at Showlow, Ariz.

Mr. and Mrs. Charles Miller and Jimmy visited her parents, Mr. and Mrs. Romi Fults at Saquache, Colo.

Visiting briefly with the Patschke family last Friday were Mr. and Mrs. Curtis Unnasch and family of Thorndale.

Spending the weekend in the Patschke home were Mr. and Mrs. Bill Pratho, Donnie and Curtis, of Houston.

Mrs. Barbara Fulton and children have returned to their home in Houston after

a visit with Mrs. Fulton's parents, Mr. and Mrs. George Railsback. While on vacation, the Railsbacks, Mrs. Fulton and children went trout fishing at Surprise Valley, N.M.

**CORRECTION**  
The union between Susan Martin and Rick Maines is scheduled for Aug. 8 at 8 p.m. in First Methodist Church of Petersburg, instead of Aug. 2 as previously reported.

## Wilson Board Considers Agenda

The Wilson Board of Education considered a long agenda Tuesday evening, passing on several matters.

The board accepted the resignation of James Satterwhite as band director and junior high principal. Mike Chance was interviewed and hired for the band director position.

Kay Annette Fry was employed as a junior high teacher and Ben Higginbotham was rehired as transportation supervisor for the coming year.

In other action, the board selected Wilson State Bank as the official depository for all school funds. They also voted to construct a sidewalk from the home economics building to the vocational ag building and also in front of the concession stand at the football field.

The board also voted to accept bids from Borden Milk Company, Rainbow Bakery and Weather Doctors to supply Wilson ISD for the coming year.

After discussing the budget, the board scheduled a budget workshop for Aug. 12 at 8 p.m.



**CLASS OF 1955 REUNION** — The Slaton graduating class of 1955 met Saturday night in the West Ward cafeteria for a catered dinner. It had been five years since the last reunion. Ron Barry won an award for traveling the longest distance coming from California. Skip Tumlinson and Betty Willis Lamb won awards for having changed the least. Those present, seated left to right: Marilyn Kitten Kahlich, Mary Miller Reynolds, Jan Bagby Sorrels, Norma Corley Tumlinson, Betty Willis Lamb, Marion Foster Brooks and Natrell Limmer Love. Back row: Charlie Woodfin, Loran Gilland, Hobart Limmer, Ron Barry, Bobby Tefertiller, Tommy Shearer, W. L. Polk, Buddy Sexton, John Richey, Skipper Tumlinson and Jerald Draper. Next meeting will be in 1980.

## Airport

(continued from Page 1)

also offers helicopter training. Ratings available are private, commercial and agricultural. Hughes 300 helicopters are used in training.

Slaton Flying Service boasts seven qualified instructors. Roger Evans is chief instructor. Fred and Robert E. Evans are instructors for both helicopter and fixed wing. H. Robert Hall is also a dual instructor.

Julian Perez, Susie Evans and Bob Mohon are airplane flight instructors.

Another popular course offered is the training for a private pilot's license. "You get an entire education when you learn to fly, not just a pilot's license," said Evans.

**Fees Listed**  
The cost for a private pilot's license is \$750. It requires 35 hours flying time and 35 hours ground school.

In ground school, each student completes the study of a flight manual. Included in it are such procedures as preflight check, taxiing, tie-down, straight and level flight, climbs and descents, turns, takeoffs, landings and slips, crosswinds and slow flight.

## Cooper Sets Registration

Registration for all new students not enrolled in Cooper Elementary School last year will be Aug. 4-8 from 1 to 4 p.m. in the elementary building, said Mary Frances Vinson, elementary school principal.

All five year olds, regardless of when their birthdays are, should register at that time also. This year there will be two half day sessions for kindergarten, rather than an all-day session.

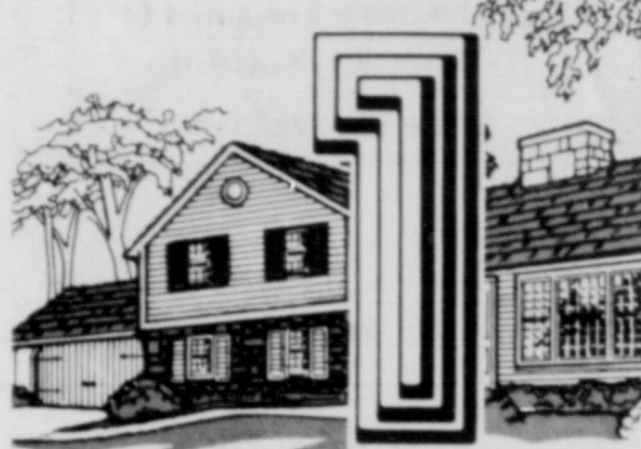
All other students will register Aug. 13 from 9:30 a.m. to 4 p.m.

## Cooper Sets Registration

Registration for all new students not enrolled in Cooper Elementary School last year will be Aug. 4-8 from 1 to 4 p.m. in the elementary building, said Mary Frances Vinson, elementary school principal.

All five year olds, regardless of when their birthdays are, should register at that time also. This year there will be two half day sessions for kindergarten, rather than an all-day session.

All other students will register Aug. 13 from 9:30 a.m. to 4 p.m.



## STATE FARM - The World's Number One Homeowners Insurer

More people insure their homes with State Farm than with any other company. That's because they've found State Farm offers the best in service, protection and economy. Give me a call. I'll be glad to give you all the details.

**BOB BRAKE**  
108 Texas Ave.  
828-3433

Like a good neighbor, State Farm is there.

STATE FARM FIRE AND CASUALTY COMPANY  
Home Office Bloomington, Illinois

Arthritis sufferers in the US lose a total of 14 million working days a year.

## House Painted

Inside or Outside  
Call 828-6255  
SLATON LUMBER CO.

## PERSONAL

Mr. and Mrs. Jim Tye of Lubbock became the parents of a girl, Britta Lynnae, born July 24. She weighed 7 lbs. and 10 1/2 oz. Grandparents are Mr. and Mrs. Bill Tye of Floydada and Mr. and Mrs. Walter W. Bednarz of Slaton.

**TEXAS TALK**  
By FRED MYERS

Another Federal Agency is moving closer to the farm. This time it's the Environmental Protection Agency. EPA officials are now analyzing through the chemical synthesis of nearly 35-thousand pesticides to decide which ones will require a government restriction. Those chemicals classed as restricted may be applied only by persons certified. Although the starting date for the certification requirement is more than a year away (October, 1976), many farm operators are all ready checking the requirements for certification. The establishment of two levels of certification will make things easier for most ag producers. To be certified as a private applicator (applying pesticides on your own land) boils down basically to being able to read and follow instructions. Commercial certification will involve passing a written test which will cover chemical formulas, equipment specifications and EPA rules and regulations.

**SLATON SAVINGS**

## PERSONAL

Sonny Boy and May Henderson brought a 5 and a half pound catfish to the Slatonite which they caught at Horseshoe Bend Saturday. Henderson said he used liver for bait on a rod and reel.

The Hendersons are employed at the Steak House.

## Two Local Women To Cystic Fibrosis Campaign

Chuck Laurent, president of the Lone Star Chapter of the Cystic Fibrosis Foundation, announced this week the acceptance of the annual Breath of Life Campaign by Mrs. W.T. Davis Jr. and by Mrs. Frank Moore, both of Slaton.

The Foundation concerns itself with research and care programs for the millions of children affected by lung-damaging diseases such as Cystic Fibrosis, severe asthma, chronic bronchitis, bronchiectasis and a condition known as "childhood emphysema."

Cystic Fibrosis, a genetic disease for which there is presently no known cure, is inherited when both parents carry the recessive gene for C/F. It is believed that one in 20 persons or 10 million Americans may carry the C/F gene, usually without knowing it. Current research funded by the Cystic Fibrosis Foundation is seeking a practical test to identify carriers.

Because of improved therapy and constant research, many C/F patients are

Call the Experts  
**SLATON LUMBER**  
828-6255

For Home Remodeling

## Five Week Horse Judging Contest

PRIZES GIVEN WEEKLY  
For More Information  
Entry Cards Come  
Slaton Feed & Supply

## ENERGY CONSERVATION

**LET GEORGE DO IT**

When it's 101 in the shade, and your energy conservation runs a poor air conditioning. But the prudent use of energy, oil, gas, coal and electricity is your body's responsibility.

The South Plains Electric Cooperative, Inc. suggests that if you use what you need but need what you use, there will be enough power for both you and George.

it all adds up...  
**1 Heat Pump = 2 Systems**  
heating & cooling

A heat pump provides heating and cooling. Now you can have one unit that does both jobs and like any other electric, the heat pump is 100% efficient at the point of use. When the heat pump is heating, it actually produces more energy than it uses. Call us this week for a FREE personalized heating cost survey. You'll find out how you can be a wise energy user!

**THE ELECTRIC COMPANY**  
FOR 10 YEARS PEOPLE

The Future Is Electric!

after you see your doctor...

bring your prescription to  
**Teague's Drug Store**  
828-6536 Night 828-6500

**South Plains Electric Cooperative, Inc.**



# Officials Say UW Action Won't Affect Local Scouts

Two weeks ago the United Way directors voted 21-1 to terminate funding for the South Plains Council of the Boy Scouts of America. Scout officials say the loss of \$115,000 for the coming year won't affect local scouting.

Since the money won't be coming from United Way, BSA personnel and community volunteers will have to raise the money themselves.

"We're formulating plans right now to have a fund-

raising drive," said Bob Bouse, Scout Executive for the local council. "We'll hold our drive sometime after the United Way has theirs."

Slaton businessmen are familiar with Boy Scout fund drives as many are asked to participate in the Sustaining Membership Enrollment (SME) each year. This annual event, separate from the United Way drive, usually raises \$23,000, according to Bouse. "The SME has been a part of

scouting since 1916," he said.

Now, there will have to be another campaign for money to make up for the lost funds from United Way. Some businessmen are somewhat reluctant to give to the Scouts because they say the money is never returned to the local scout groups.

Dave Parkhill, field director for 13 counties, including Lubbock, said this is not true. "One hundred percent of every dollar donated is returned to the local groups. This is done through special services, district and council functions, program ideas, etc.," said Parkhill.

One criticism of the funding is that too much of the money goes for administrative salaries. The starting salary of a district

executive is \$8,400.

Bouse said this is not unusually high for a person with a college degree. "Look at the starting salary of postmen, who only have to have a high school education. They make \$10,800. A policeman, also with a high school education, makes \$9,120. Every man we've lost has been because of salary or to other councils for \$1,000 increase."

Bouse said a professional scout has to work with 50 or 60 institutions, such as churches and schools.

According to Parkhill, the scouts sell service. He said each volunteer leader in the community works with 25 to 30 boys.

Parkhill said there has been some problem throughout the nation getting volunteers, but no particular

problem in Slaton.

There are 113 boys in the scouting program in Slaton, which is approximately one third of the eligible boys.

Both Parkhill and Bouse said the cut in funds will not affect the program here.

The official statement of the South Plains Council, issued by Jack Baker, president, concerning the United Way action is below.

The South Plains Council of the Boy Scouts of America sincerely regrets that the Lubbock United Way has decided to terminate our affiliation as a participating agency.

The Boy Scouts have always supported and will continue to support the United Way programs in Lubbock as well as in the 13 other United Ways in the 20 county Council.

The local Scout Council takes pride in the fact that it is chartered by, and is a part of, the National Boy Scout Council. The Boy Scouts of the South Plains wholeheartedly support the program, principles, and policies of the national organization and the worldwide Scouting program. The boards of directors of the United Ways have always been aware of Scouting's national affiliation, regardless of the recent statement of the Lubbock United Way to the contrary.

For over 27 years, the South Plains Council, Boy Scouts, has been a member of the Lubbock United Way. The local Scout Council was a charter member of the organization. It seems strange, indeed, that Lub-

bock's present United Way Board has taken exception to the Scout charter obligations and suddenly terminated the affiliation of the local Scout Council.

Over 450 other Scout Councils throughout the United States are affiliated with more than 2500 United Way organizations. Obviously those United Ways have by-laws which are continuing to permit Boy Scouts Councils to participate. Why not Lubbock?

The South Plains Council will continue to conduct the business of the local Boy Scouts of America with enthusiasm and vigor, to the best of its ability, in order to serve the approximately 10,000 boys and 3500 volunteer leaders with a quality program. With the full support of all friends of

Scouting in this shall succeed."

More than 20 Americans suffer from enough to require care. One in 10 Americans has a share of arthritis. Arthritis is a number one killer.

**Follis Heating Air Conditioning**

Arkla-Servel, and Payne Equip. Sales, Installation Service. Gas financed by approved credit. Call for free estimate. Wilson, Texas. Phone 628-1311.

**Oscar Fo**

Call the Experts at **SLATON LUMBER CO.** 828-6255

For Home Remodeling

PRICES GOOD THRU' AUGUST 2nd

**UNITED DISCOUNT**

QUANTITY RIGHTS RESERVED

**UNITED SUPER MARKETS**

WE GIVE  $\frac{3}{4}$  GREEN STAMPS

**PATIO FROZEN MEXICAN DINNERS... 49¢**

OR ENCHILADA REG. 63¢

SWIFT'S JEWEL PRE-WHIPPED SHORTENING

42oz. CAN \$1.19

MORTON POT PIES

- BEEF
- CHICKEN
- TURKEY

4 FOR 89¢

**COKES \$1.59**

6 Btl., 32-oz.

**PIES 3 FOR \$1**

BANQUET CREAM ASSORTED FLAVORS

WHILE SUPPLY LASTS

**3 FOR \$1**

HUNT'S CATSUP

LARGE 32 OZ. BOTTLE 79¢

GLADIOLA FLOUR

5 LB. BAG 69¢

WILSON'S SOLID OLEO

1 LB. CRTNS 3 FOR \$1

WHITE SWAN BISCUITS

BUTTERMILK OR SWEET MILK 8OZ. CAN 10¢

UNITED GRADE "A" EGGS MEDIUM CAGED DOZ. 49¢

FIRESIDE CRACKERS Lb. BOX 47¢

COMSTOCK CHERRY PIE FILLING 21 OZ. CAN 79¢

FINE FARE SALAD DRESSING

QT. JAR 79¢

UNITED BUNS HAMBURGER OR CONEY 8 CT. PKGS. 3 FOR \$1

UNITED POTATO CHIPS

TWIN-PAK 79¢ BAG 59¢

*Farm Fresh United Produce*

CALIFORNIA SANTA ROSA **PLUMS** OR CALIFORNIA SWEET AND JUICY **NECTARINES** LB. 39¢

FRESH GREEN **CUCUMBERS** LARGE SLICERS 2 FOR 25¢

RUSSET **POTATOES** BAKER'S SIZE LB. 19¢

RED RIPE CHERRY **TOMATOES** PT. BOX 39¢

# Santa Fe Income Down First Half

Revenues for the second quarter were \$342 million compared with \$358 million for the same period last year. The \$16 million decline reflects a drop of 15 per cent in carloads handled by Santa Fe Railway.

Reed said, however, there are some encouraging signs which are not fully reflected in the reported revenue and earnings figures for the first half. "The decline in our railroad business has now begun to level off. Aided by substantially increased carloads of grain in July the gap between last year's carloadings and this year's is narrowing. Rail contribution to pre-tax net was \$4.7 million for the second quarter, compared with a \$12.3 million pre-tax loss in the first quarter. This improve-

ment is attributed to both a strict control of expenses and the effect of a 7 per cent freight rate increase effective April 27. The additional 5 per cent increase effective June 20, coupled with an improved level of business expected in the second half, should increase the contribution from our rail operations during balance of the year," he predicted.

Referring to Santa Fe's oil operations, Reed pointed out that average daily production during the first six months was 47,700 barrels, compared with 45,700 a year ago. June production averaged 48,700 barrels per day versus 46,000 last year, an increase of 5.9 per cent. "This increased production, along with increased prices for 'new and released' oil, allowed us to realize pre-tax

income from oil operations of \$41 million during the first six months, compared with \$37.9 million in 1974," he reported.

Results from forest products operations showed a decided improvement during the second quarter, producing a pre-tax income of \$2.2 million compared with \$4 million during the first quarter and \$2.0 million during the second quarter last year. Plywood production is running at a high capacity, and outlook for the balance of the year is good, Reed said.

Pipeline operations also improved significantly, he said, showing a pre-tax profit of \$500,000 for the second quarter of 1975 compared with pre-tax loss of \$600,000 during the same period last year and loss of \$300,000 for the first quar-

ter this year. May and June were both profitable months for Gulf Central Pipeline, the 1,900-mile anhydrous ammonia line.

## Area Men In Service

Airman Charles M. Boreing, son of Mr. and Mrs. William V. Boreing of Southland, has graduated at Sheppard AFB, Tex., from the U. S. Air Force communications specialist course conducted by the Air Training Command.

The airman, who learned to operate teletypewriter equipment used in the world-wide Air Force communications systems, is being assigned to Altus AFB, Okla., for duty with a unit of the Air Force Communications Service.

Airman Boreing is a 1971 graduate of Santa Rosa, N.M. High School.



SWPS CAMP — The annual 4-H Electric Camp is being held this week in the Sacramento mountains of New Mexico. The camp, sponsored by Southwestern Public Service Company, is located 28 miles southeast of Cloudcroft and those attending from Lubbock county are, front row, left to right: Marty Mimms, Kevin Mitchell, Mike Ragland, and Kenneth Berry. Back row, left to right: Corine Burton, Terry Daniel, Cindy Mitchell, and Stanley Young, agent. The Southwestern instructor is Bill Harr from Lubbock.

Married?  
the good  
selection of  
amenities  
Invitations  
at  
SLATONITE  
\$5 per 100)  
are our prices

# PRICES *Plus* THE EXTRA VALUE OF FREE S&H GREEN STAMPS

### "UNITED'S PROTEN MATURE BEEF"

**STEAK** ROUND FULL CUT **\$1.49** LB.  
**STEAK** SIRLOIN **\$1.49** LB.  
**STEAK** RIB **\$1.49** LB.

**RANCH STEAK** CENTER CUT CHUCK **\$1.29** LB.

**BONELESS SHOULDER ROAST** **\$1.39** LB.

OSCAR MAYER BEEF FRANKS OR **WEINERS** **\$1.39** LB.

FRESH WATER **CATFISH** STEAKS **\$4.39** 5 LB. BAG

**GLOVER'S BACON** SLAB SLICED **\$1.49** LB.

**CHUCK ROAST** TENDER LEAN BLADE CUT **89¢** LB.

FRESH BABY **BEEF LIVER** **49¢** LB.

FINE FAIR FABRIC **SOFTNER** **89¢** GAL.

FINE FARE **BLEACH** **39¢** HALF GAL.

UNITED ICE **CREAM** ASSORTED FLAVORS **88¢** HALF GAL.

FINE FARE CUT **GREEN BEANS** SLICED OR WHOLE  
**BEETS** FINE FARE  
 WHOLE OR SLICED NEW **POTATOES** FINE FARE  
 FINE FARE SAUER **KRAUT**  
 MIXED FINE FARE **VEGETABLES**

**3 89¢** 303 CANS

BRECK **SHAMPOO** **\$1.19** 15 OZ.  
 • NORMAL • DRY • OILY

WE RESERVE THE RIGHT TO LIMIT QUANTITIES **U** PRICES GOOD THRU' AUGUST 2nd

DAWN **LIQUID** DISHWASH DETERGENT 13¢ OFF LABEL 22oz. **69¢**

ADMIRATION **COFFEE** • DRIP • REG • ELECT **79¢** LB. CAN

**UNITED SUPER MARKETS**  
 WE GIVE S&H GREEN STAMPS

# Officials Say UW Action Won't Affect Local Scouts

Two weeks ago the United Way directors voted 21-1 to terminate funding for the South Plains Council of the Boy Scouts of America. Scout officials say the loss of \$115,000 for the coming year won't affect local scouting.

Since the money won't be coming from United Way, BSA personnel and community volunteers will have to raise the money themselves.

"We're formulating plans right now to have a fund-

raising drive," said Bob Bouse, Scout Executive for the local council. "We'll hold our drive sometime after the United Way has theirs."

Slaton businessmen are familiar with Boy Scout fund drives as many are asked to participate in the Sustaining Membership Enrollment (SME) each year. This annual event, separate from the United Way drive, usually raises \$23,000, according to Bouse. "The SME has been a part of

scouting since 1916," he said. Now, there will have to be another campaign for money to make up for the lost funds from United Way. Some businessmen are somewhat reluctant to give to the Scouts because they say the money is never returned to the local scout groups.

Dave Parkhill, field director for 13 counties, including Lubbock, said this is not true. "One hundred per cent of every dollar donated is returned to the local groups. This is done through special services, district and council functions, program ideas, etc.," said Parkhill.

One criticism of the funding is that too much of the money goes for administrative salaries. The starting salary of a district

executive is \$8,400. Bouse said this is not unusually high for a person with a college degree. "Look at the starting salary of postmen, who only have to have a high school education. They make \$10,800. A policeman, also with a high school education, makes \$9,120. Every man we've lost has been because of salary or to other councils for \$1,000 increase."

Bouse said a professional scouter has to work with 50 or 60 institutions, such as churches and schools.

According to Parkhill, the scouts sell service. He said each volunteer leader in the community works with 25 to 30 boys.

Parkhill said there has been some problem throughout the nation getting volunteers, but no particular

problem in Slaton. There are 113 boys in the scouting program in Slaton, which is approximately one third of the eligible boys.

Both Parkhill and Bouse said the cut in funds will not affect the program here.

The official statement of the South Plains Council, issued by Jack Baker, president, concerning the United Way action is below.

The South Plains Council of the Boy Scouts of America sincerely regrets that the Lubbock United Way has decided to terminate our affiliation as a participating agency.

The Boy Scouts have always supported and will continue to support the United Way programs in Lubbock as well as in the 13 other United Ways in the 20 county Council.

The local Scout Council takes pride in the fact that it is chartered by, and is a part of, the National Boy Scout Council. The Boy Scouts of the South Plains wholeheartedly support the program, principles, and policies of the national organization and the worldwide Scouting program. The boards of directors of the United Ways have always been aware of Scouting's national affiliation, regardless of the recent statement of the Lubbock United Way to the contrary.

For over 27 years, the South Plains Council, Boy Scouts, has been a member of the Lubbock United Way. The local Scout Council was a charter member of the organization. It seems strange, indeed, that Lub-

bock's present United Way Board has taken exception to the Scout charter obligations and suddenly terminated the affiliation of the local Scout Council.

Over 450 other Scout Councils throughout the United States are affiliated with more than 2500 United Way organizations. Obviously those United Ways have by-laws which are continuing to permit Boy Scouts Councils to participate. Why not Lubbock?

The South Plains Council will continue to conduct the business of the local Boy Scouts of America with enthusiasm and vigor, to the best of its ability, in order to serve the approximately 10,000 boys and 3500 volunteer leaders with a quality program. With the full support of all friends of

Scouting in this shall succeed."

More than 20 Americans suffer from form of arthritis enough to require care. One in Americans has of arthritis. Arthritis nation's number pler.

Follis Heating Air Conditioning

Arkia-Servel, and Payne Eggs Sales, Install Service. Gas nanced by ap credit.

Call for free m Wilson, Tex Phone 628-3

Oscar Fo

For Home Remodeling



Call the Experts at  
**SLATON LUMBER CO.**  
828-6255

PRICES GOOD THRU AUGUST 2nd

QUANTITY RIGHTS RESERVED

# UNITED DISCOUNT

**SUPER MARKETS**

WE GIVE  GREEN STAMPS

PATIO FROZEN MEXICAN DINNERS... **49¢**

OR ENCHILADA REG. 63¢

SWIFT'S JEWEL PRE-WHIPPED SHORTENING

42oz. CAN



**\$1.19**

MORTON POT PIES

- BEEF
- CHICKEN
- TURKEY

**4 FOR 89¢**

**COKE** \$1.59

6 Btl., 32-oz.

**PIES** BANQUET CREAM ASSORTED FLAVORS

**3 FOR \$1**

WHILE SUPPLY LASTS

**3 FOR \$1**

HUNT'S CATSUP

LARGE 32 OZ. BOTTLE

**79¢**

GLADIOLA FLOUR

5 LB. BAG



**69¢**

WILSON'S SOLID OLEO

1 LB. CRTNS

**3 \$1**

WHITE SWAN BISCUITS

BUTTERMILK OR SWEET MILK

8OZ. CAN

**10¢**

UNITED GRADE "A" EGGS MEDIUM CAGED

**49¢** DOZ.

FIRESIDE CRACKERS Lb. BOX **47¢**

COMSTOCK CHERRY PIE FILLING 21 OZ. CAN **79¢**

FINE FARE SALAD DRESSING

QT. JAR **79¢**

UNITED BUNS HAMBURGER OR CONEY

8 CT. PKGS. **\$1**

UNITED POTATO CHIPS

TWIN-PAK 79¢ BAG **59¢**

Farm Fresh United Produce

CALIFORNIA SANTA ROSA **PLUMS** OR CALIFORNIA SWEET AND JUICY **NECTARINES**

LB. **39¢**

FRESH GREEN CUCUMBERS LARGE SLICERS **2 FOR 25¢**

RUSSET POTATOES BAKER'S SIZE LB. **19¢**

RED RIPE CHERRY TOMATOES PT. BOX **39¢**





## Santa Fe Income Down First Half

Revenues for the second quarter were \$342 million compared with \$358 million for the same period last year. The \$16 million decline reflects a drop of 15 per cent in carloads handled by Santa Fe Railway.

Reed said, however, there are some encouraging signs which are not fully reflected in the reported revenue and earnings figures for the first half. "The decline in our railroad business has now begun to level off. Aided by substantially increased carloads of grain in July the gap between last year's carloadings and this year's is narrowing. Rail contribution to pre-tax net was \$4.7 million for the second quarter, compared with a \$12.3 million pre-tax loss in the first quarter. This improve-

ment is attributed to both a strict control of expenses and the effect of a 7 per cent freight rate increase effective April 27. The additional 5 per cent increase effective June 20, coupled with an improved level of business expected in the second half, should increase the contribution from our rail operations during balance of the year," he predicted.

Referring to Santa Fe's oil operations, Reed pointed out that average daily production during the first six months was 47,700 barrels, compared with 45,700 a year ago. June production averaged 48,700 barrels per day versus 46,000 last year, an increase of 5.9 per cent. "This increased production, along with increased prices for 'new and released' oil, allowed us to realize pre-tax

income from oil operations of \$41 million during the first six months, compared with \$37.9 million in 1974," he reported.

Results from forest products operations showed a decided improvement during the second quarter, producing a pre-tax income of \$2.2 million compared with \$4 million during the first quarter and \$2.0 million during the second quarter last year. Plywood production is running at a high capacity, and outlook for the balance of the year is good, Reed said.

Pipeline operations also improved significantly, he said, showing a pre-tax profit of \$500,000 for the second quarter of 1975 compared with pre-tax loss of \$600,000 during the same period last year and loss of \$300,000 for the first quar-

ter this year. May and June were both profitable months for Gulf Central Pipeline, the 1,900-mile anhydrous ammonia line.

## Area Men In Service

Airman Charles M. Boreing, son of Mr. and Mrs. William V. Boreing of Southland, has graduated at Sheppard AFB, Tex., from the U. S. Air Force communications specialist course conducted by the Air Training Command.

The airman, who learned to operate teletypewriter equipment used in the world-wide Air Force communications systems, is being assigned to Altus AFB, Okla., for duty with a unit of the Air Force Communications Service.

Airman Boreing is a 1971 graduate of Santa Rosa, N.M. High School.



**SWPS CAMP** — The annual 4-H Electric Camp is being held this week in the Sacramento mountains of New Mexico. The camp, sponsored by Southwestern Public Service Company, is located 28 miles southeast of Cloudcroft and those attending from Lubbock county are, front row, left to right: Marty Mimms, Kevin Mitchell, Mike Ragland, and Kenneth Berry. Back row, left to right: Corine Burton, Terry Daniel, Cindy Mitchell, and Stanley Young, agent. The Southwestern instructor is Bill Harr from Lubbock.

# PRICES *Plus* THE EXTRA VALUE OF FREE S&H GREEN STAMPS

**"UNITED'S PROTEN MATURE BEEF"**

<b>STEAK</b> ROUND FULL CUT	LB.	<b>\$1 49</b>
<b>STEAK</b> SIRLOIN	LB.	<b>\$1 49</b>
<b>STEAK</b> RIB	LB.	<b>\$1 49</b>

**RANCH STEAK** CENTER CUT CHUCK LB. **\$1 29**

**BONELESS SHOULDER ROAST** LB. **\$1 39**

**OSCAR MAYER BEEF FRANKS OR WEINERS** LB. **\$1 39**

**FRESH WATER CATFISH** STEAKS 5 LB. BAG **\$4 39**

**CHUCK ROAST** TENDER LEAN BLADE CUT LB. **89**

**GLOVER'S BACON**

SLAB SLICED LB. **\$1 49**

**FRESH BABY BEEF LIVER** LB. **49**

**FINE FAIR FABRIC SOFTNER** GAL. **89**

**FINE FARE BLEACH** HALF GAL. **39**

**UNITED ICE CREAM** ASSORTED FLAVORS HALF GAL. **88**

**FINE FARE GREEN BEANS** FINE FARE CUT SLICED OR WHOLE

**FINE FARE BEETS** FINE FARE

**FINE FARE POTATOES** FINE FARE WHOLE OR SLICED NEW

**FINE FARE KRAUT** FINE FARE SAUER

**MIXED FINE FARE VEGETABLES**

**3 89** 303 CANS

**BRECK SHAMPOO** \$1 19

• NORMAL • DRY 15 OZ.

• OILY

**DAWN LIQUID** DISHWASH DETERGENT 13¢ OFF LABEL 22oz. **69**

**ADMIRATION COFFEE** DRIP • REG • ELECT LB. CAN **79**

**UNITED SUPER MARKETS**

WE RESERVE THE RIGHT TO LIMIT QUANTITIES

**U** PRICES GOOD THRU' AUGUST 2nd

WE GIVE S&H GREEN STAMPS

# PRaise The Lord

By LENDA WOOD

"So don't worry at all about having enough food and clothing. Why be like the heathen?" Matt. 6:31. Most of the people I know don't really worry about food and clothing. Most of them have plenty of food and clothing. Some worry about their children. Some worry about their health. Some worry about finances.

## Salvation — How and When?

Practically all religious people who profess to believe in Christ are in agreement as to the source of our justification—the grace of God and the blood of Christ. And, practically all religious people are agreed upon the principle by which we are justified—the principle of faith.

Men disagree over the moment or time of our salvation, that is, exactly when we are saved by the blood of Christ and by faith. Is man saved the moment he believes, without any further act of obedience on his part? If there is more to salvation than just faith only, then at what point of obedience does a man become a child of God? In other words, when does the blood of Christ wash away our sins?

God has always required some overt act of obedience—some positive response—by which the individual's faith is tested. If a man's faith is strong enough to produce obedience, God accepts him. If a man's faith is not strong enough to lead him to submit to the will of God, he is rejected. It is not obedience, as such, which secures or earns the reward, but the faith which expresses itself in obedience. As the apostle Paul explained in the New Testament church: "For in Christ Jesus neither circumcision availeth anything, nor uncircumcision; but faith working through love" (Galatians 5:6).

A sincere welcome is yours at every service of the church of Christ:

- Sunday morning Bible classes ..... 9:45 a.m.
- Sunday worship ..... 10:40 a.m. and 6:00 p.m.
- Wednesday Ladies' Bible class ..... 10:00 a.m.
- Wednesday night Bible study ..... 7:30 p.m.
- "Five Minutes with the Bible"
- Monday - Friday on KCAS ..... 7:30 a.m.

**CHURCH OF CHRIST**  
11th and Division  
Slaton, Texas

17. Living like an orphan without an heavenly Father.  
18. A crime against God, man, nature, and better judgment.  
19. Mental cruelty to self and others.  
20. Foolish, for whatever is going to happen cannot be stopped by worry; and if it doesn't happen, there is nothing to worry about. Should adversities actually come, one may still be victorious by trusting in God.  
"So don't be anxious about tomorrow. God will take care of your tomorrow too. Live one day at a time." Matt. 6:34.

## BIRTHS

7-22-75 — Mr. and Mrs. Cruz Perez, Slaton, a boy, David, 7 lbs. 8 oz.

7-25-75 — Mr. and Mrs. Samuel Demingas Jr., Lubbock, a boy, Jerry Lee, 6 lb. 15 1/2 oz.

7-26-75 — Mr. and Mrs. John Alonzo, Wilson, a girl, Sally Ann, 6 lb. 4 oz.

7-27-75 — Mr. and Mrs. George Pina Jr., Slaton, a boy, George Lewis, 6 lb. 10 oz.

7-28-75 — Mr. and Mrs. Gerald David Garlick, Slaton, a girl, Brandy Dawn, 7 lbs. 6 3/4 oz.

In Lubbock County alone, there are estimated to be 20,000 arthritics. Many more probably have the disease but have not sought medical attention.

## Obituaries

**JIMMY BRUSTER**  
Services for Jimmy R. Bruster, 28, of Slaton, were held at 2 p.m. Wednesday in First Baptist Church with the Rev. W. F. Ferguson, retired minister of Lubbock, officiating.

Burial was in Englewood Cemetery under direction of Englund's of Slaton. Bruster was dead on arrival at Methodist Hospital Sunday after receiving massive chest injuries in a traffic accident.

Bruster was killed when the motorcycle he and his wife were riding was in collision with a car at Loop 289 and Slaton Hwy. in Lubbock. Driver of the car involved, a Levelland woman, was charged with negligent homicide in the incident. Mrs. Bruster was injured in the accident.

Bruster was a Slaton native and had lived here all his life. He attended Slaton schools. He was a mechanic for Town and Country Chevrolet.

Survivors include his wife, Carol; a daughter, Tonya Michelle of the home; and his parents, Mr. and Mrs. Norman Bruster of Slaton.

pastor of the Tulia First United Methodist Church, officiating.

Burial was in the Southland Cemetery under direction of Englund's.

Mrs. McNeely died Thursday in Lubbock Medical Center Hospital following a lengthy illness.

A native of Post, she was a former Southland resident. Her husband, Aubrey, died in August, 1968.

Survivors include a son, Larry of Fort Worth; a sister, Mrs. Julia Hegi of Lubbock; and three grandchildren.

**ERNESTINE LICHEY**  
Services for Ernestine (Rudie) Lichey, 68, of Wilson, were held at 2 p.m. Sunday in the Grace Lutheran Church with the Rev. Delmas Luedke, pastor, officiating. Burial was in Englewood Cemetery in Slaton under direction of Englund's.

Miss Lichey died Friday at Methodist Hospital after a long illness. She was a native of Colorado County, moving to Wilson in 1913.

Survivors include five sisters, Erna Lichey of Wilson, Mrs. Lydia Knott of Slaton, Mrs. Pauline Lovett of Amarillo, Mrs. Adela Hetzell of Torrance, Calif., and Mrs. Billie Neugebauer of Post.

**MARY LOIS McNEELY**  
Services for Mary Lois McNeely, 58, of Lubbock, were held at 2 p.m. Saturday in the Slaton First Baptist Church with the Rev. Charles Hastings, pastor of the Southland First United Methodist Church, and the Rev. Bruce Parks,

## Mason Couple Completes Trip

Mr. and Mrs. James Mason of Southland recently returned from a 7,500 mile trip.

The couple first went to Kimball, Neb., where they participated in a Church of Christ crusade for five days. The local Church of Christ helps to support the church in Kimball.

The Masons spent the 4th of July weekend with friends in Columbus, Ohio.

They also visited friends in Salem, N.H. and Lawrence, Mass. Several days were spent in Rockland, Maine, where Mason was stationed in the Navy at the time the couple married.

After touring Quebec and Ontario Canada, they returned home by way of Nashville, Tenn., visiting Jeanne Austin, granddaughter of Charley Austin of Slaton.

**CARD OF THANKS**  
We want to thank all of our many fans and supporters for the past season. We really appreciate the good attendance at the games and enthusiasm shown by our fans.

Coach Alvin Schmidt  
Mgr. Wayne Moses  
The Little League All Stars

SHOP IN SLATON!

GENERAL REVENUE SHARING

GENERAL REVENUE SHARING PROVIDES FEDERAL FUNDS DIRECTLY TO LOCAL AND STATE GOVERNMENTS. YOUR GOVERNMENT HAS THIS REPORT ADVISING YOU HOW THESE FUNDS HAVE BEEN USED OR OBLIGATED DURING THE YEAR FROM JULY 1, 1974 THRU JUNE 30, 1975. THIS IS TO INFORM YOU OF YOUR GOVERNMENT'S PRIORITIES AND TO ENCOURAGE YOUR PARTICIPATION IN DECISIONS ON HOW FUNDS SHOULD BE SPENT. NOTE: ANY COMPLAINTS OF DISCRIMINATION IN THE USE OF THESE FUNDS MAY BE SENT TO THE OFFICE OF GENERAL REVENUE SHARING, WASHINGTON, D.C. 20226.

ACTUAL EXPENDITURES		
(A) CATEGORIES	(B) CAPITAL	(C) OPERATING / MAINTENANCE
1. PUBLIC SAFETY	\$19,165.14	\$
2. ENVIRONMENTAL PROTECTION	\$12,191.70	\$1,040.38
3. PUBLIC TRANSPORTATION	\$15,427.14	\$
4. HEALTH	\$	\$
5. RECREATION	\$	\$ 800.00
6. LIBRARIES	\$	\$
7. SOCIAL SERVICES FOR AGED OR POOR	\$	\$
8. FINANCIAL ADMINISTRATION	\$	\$ 1,972.80
9. MULTIPURPOSE AND GENERAL GOVT	\$ 1,283.00	\$
10. EDUCATION	\$	\$
11. SOCIAL DEVELOPMENT	\$	\$
12. HOUSING & COMMUNITY DEVELOPMENT	\$	\$
13. ECONOMIC DEVELOPMENT	\$	\$
14. OTHER (Specify)	\$	\$
15. TOTALS	\$48,066.98	\$ 3,813.18

NONDISCRIMINATION REQUIREMENTS HAVE BEEN MET  
(E) CERTIFICATION: I certify that I am the Chief Executive Officer and have not been used in violation of either the priority expenditure requirements (Section 103) or the matching funds production (Section 104) of Act.

*J. N. Landreth* July 24, 1975  
Name and Title: Mayor

**THE BANK FOR ALL SEASONS**

No matter which way the wind blows — we're here to serve your financial needs. Whether it's to save ... borrow or spend.

Whatever the season — we're here to best we can ... and with understanding.

**THE BEST OF ALL POSSIBLE BANKS**

A good bank has more Answers than Questions!

**Wilson State Bank**

### ACTUAL USE REPORT

GENERAL REVENUE SHARING PROVIDES FEDERAL FUNDS DIRECTLY TO LOCAL AND STATE GOVERNMENTS. YOUR GOVERNMENT HAS THIS REPORT ADVISING YOU HOW THESE FUNDS HAVE BEEN USED OR OBLIGATED DURING THE YEAR FROM JULY 1, 1974 THRU JUNE 30, 1975. THIS IS TO INFORM YOU OF YOUR GOVERNMENT'S PRIORITIES AND TO ENCOURAGE YOUR PARTICIPATION IN DECISIONS ON HOW FUNDS SHOULD BE SPENT. NOTE: ANY COMPLAINTS OF DISCRIMINATION IN THE USE OF THESE FUNDS MAY BE SENT TO THE OFFICE OF GENERAL REVENUE SHARING, WASHINGTON, D.C. 20226.

THE GOVERNMENT OF	
Slaton City	
HAS RECEIVED GENERAL REVENUE PAYMENTS TOTALING \$96,163.18 DURING THE PERIOD FROM JULY 1, 1974 THRU JUNE 30, 1975.	
ACCOUNT NO. 44 2 152	31 Slaton City

1. Balance as of June 30, 1974	\$ 2,948.00
2. Revenue Sharing Funds Received from July 1, 1974 thru June 30, 1975	\$ 96,163.18
3. Interest Received or Credited (July 1, 1974 thru June 30, 1975)	\$ 650.00
4. Funds Released from Obligations	\$ 99,780.00
5. Sum of lines 1, 2, 3, 4	\$ 99,780.00
6. Funds Returned to ORS	\$ 99,780.00
7. Total Funds Available	\$ 0.00
8. Total Amount Expended (Sum of line 15, column B and column C)	\$ 51,880.00
9. Balance as of June 30, 1975	\$ 47,899.00

(F) THE NEWS MEDIA HAVE BEEN ADVISED THAT A COMPLETE REPORT HAS BEEN PUBLISHED IN A LOCAL NEWSPAPER OR CIRCULATION I HAVE A COPY OF THIS REPORT AND RECORDS DOCUMENTS. THEY ARE OPEN FOR PUBLIC SCRUTINY AT City Secretaries Office, Slaton.

# Attend The Church of Your Choice Sunday

- Slaton Churches**
- ALL SAINTS CHURCH OF GOD IN CHRIST**  
7th & Jean Sts.  
Eld. J. W. Butler
  - CHURCH OF CHRIST**  
11th & Division  
Grandol Forehand
  - IVORY ST. CHURCH OF CHRIST**  
896 Ivory St.  
Lester Means
  - CHURCH OF GOD**  
206 Texas Ave.  
Rev. Bruce E. Coker
  - FIRST ASSEMBLY OF GOD**  
14th & Jean  
Rev. Floyd Schaeffer
  - BIBLE BAPTIST**  
525 West Panhandle  
Rev. H. E. Summar
  - FIRST BAPTIST**  
255 S. 9th  
Rev. J. L. Cartrite
  - FREE WILL MISSIONARY BAPTIST**  
Rev. E. Canady
  - MT. OLIVE BAPTIST**  
Rev. Clifton Peoples
  - TEMPLO BAUTISTA**  
(Latin Baptist Mission)  
East Panhandle  
Rev. Pablo Pequeno
  - TRIUMPH BAPTIST**  
East Geneva  
Rev. M. A. Brown
  - 21st ST. BAPTIST**  
1010 S. 21st St.  
Rev. Jim Franklin
  - WESTVIEW BAPTIST**  
830 S. 15th St.  
Rev. Birdie Jones
  - MISSIONARY BAPTIST**  
14th & Scurry  
Rev. Jack N. Bell
  - FIRST CHRISTIAN**  
150 S. 22nd  
Rev. Gene Cherry
  - ST. JOSEPH'S CATHOLIC**  
19th & Lubbock  
Msgr. Peter Morsch
  - OUR LADY OF GUADALUPE**  
710 S. 4th  
Rev. James Daly
  - GRACE LUTHERAN**  
840 W. Jean  
Rev. Delma L. Luedke
  - GOSPEL CHAPEL A.M.E.**  
996 Johnson St.  
Rev. James Green
  - FIRST METHODIST**  
305 W. Lubbock  
Rev. Merriel Abbott
  - TRINITY EVANGELICAL METHODIST**  
700 S. 19th St.  
Rev. Linam Prentice
  - PENTECOSTAL HOLINESS**  
905 W. Knox  
Rev. Darryl Manning
  - FIRST PRESBYTERIAN**  
435 W. Lubbock  
Rev. Henry Chisholm

- Area Churches**
- ACUFF CHURCH OF CHRIST**  
Jay Don Rogers
  - ROOSEVELT BAPTIST**  
Rev. Oscar Newell
  - PLEASANT VALLEY BAPTIST CHURCH**  
Rev. Bruce Giles
  - WOODROW COOPER METHODIST**  
Rev. Clarence Collins
  - WOODROW BAPTIST CHURCH OF CHRIST**  
Jerry Tallman
  - GORDON CHURCH OF CHRIST**  
Joe Cross
  - WILSON WILSON BAPTIST**  
Rev. E. K. Shepherd
  - ST. JOHN LUTHERAN**  
Louis Balderach
  - ST. PAUL LUTHERAN**
  - WILSON METHODIST**  
Rev. James Taylor
  - ASOCIACION BAUTISTA EMANUEL**
  - POSEY IMMANUEL LUTHERAN**  
Rev. Delmas Luedke
  - CANYON UNITED CHURCH**  
Baptist—1st & 3rd Sunday  
Rev. Curtis Jackson  
Methodist—2nd & 4th Sun.  
Rev. Grady Adcock
  - SOUTHLAND SOUTHLAND BAPTIST**  
Rev. P. D. Fullingim
  - SOUTHLAND METHODIST**  
Rev. Charles Hastings

**Church Listings Presented as a Public Service By**

<b>Becker Bros. Mobil Sta.</b> 405 So. 9th 828-7127	<b>Bownds Body Shop</b> 100 S. 9th 878-6647	<b>Citizens State Bank</b> The Bank with a Heart	<b>Wilson State Bank</b> White's The Home of Greater Values
<b>R. E. Janes Gravel Co.</b> FOR THE Construction Industry	<b>Slaton Co-op Gins</b>	<b>Acuff Co-op</b> "It's Your Association"	<b>Slaton Savings Assn.</b> "We Pay You To Save"

Ben and Rick... chelle Dickerson... munds, John... Tina and Sandra... Cheryl and... Amanda and... bard, Charlene... nette and Susan... Also Jeffrey... Johnston, Che... Penny Mahari... yo, Alex Rey... Rinne, Missi... Jerry Rodgers... ye, Jim Sande... Michele and... ing, Beth St... Swanner, Diana... Tamez, John... Warner, Debra... Frances Willis... son, Kay Wilm... Bounds, Leia... and Bobby Co... Edmunds, Jan... Brenda Kitten... ter and Brenda... Victor Flores... ker, Sofia, Sonia... Zertucha, Stepha... Angela Forrest... don, Jerry Copel... and Bell Rey... Dodson, Kelly... dy Caywood, ... Kitten, James... Sikes, Angela... Linder, Mark... Edmunds and J... The next Sta... gram will be Sa... p.m. Lisa Nowlin... will be in charge... ties. There were... dren registered... ing club. Library hours... 6 week days and... on Saturdays.

# GO CLASSIFIED FOR THE ACTION YOU WANT

## FOR RENT

Mobile home for rent. Excellent condition. 37-tfc

Apartment. No dogs. Bills paid. 20th St. 828-3000. 42-tfc

3-bedroom house. Seven miles south of town. 44-1tc

House for rent. 44-1tc

NICE CABIN. RUIDOSO, by weekend. Call 44-3tp

PRIVATE. 135 N. 6th St., or See R. T. Brook. tfc

FOR RENT. Finest. Two-bedroom. central air conditioning. Heat. Unfurnished. 44-1tc

APARTMENTS. 22nd Street. 828-6419

Compare. Competed and air conditioned 2-bdrm. apts before you rent. We rent. FURNISHED. (Bills paid. Electricity)

DUPLEXES. 828-5165

Public Notice. is hereby given. Board of trustees of Highland Independent School District will meet in session on Aug. 11, 11 a.m. in the school auditorium. Consider and adopt budget for the 1975-76 school year. William Becker Jr., President. My Ellis, Secretary. Highland Independent School District Board of Trustees. 44-2tc

FOR SALE. Fully decorated 3-bedroom houses. SEE US FOR CHOICE. 3-BEDROOM RENTAL PROPERTY. Homeing and Marriott. 8th 828-3216

## REAL ESTATE FOR SALE

FOR SALE — 15 ft. Whitehouse. 35 Johnson and Little Dude trailer. See Coy Biggs. 42-tfc

FOR SALE — New 3-bedroom home, 2 full baths, on Golf Course Road. Call 828-6275 days, or 828-3888 nights. 38-tfc

HAVE a two-bedroom mobile home for rent or sale. Call 828-3383. 35-tfc

FOR SALE—Two-bedroom, one bath, living room and dining area combined, kitchen and carport. 315 S. 13th. 828-6852 or 828-3205. 37-tfc

THREE BEDROOM house for sale. 365 W. Panhandle. 43-2tc

For Sale — Six-room house plus two-room house, concrete storm cellar, and garage, on 1 1/2 lots. Needs some repair. \$8500 cash. 900 S. 14th. 828-3506. 44-2p

LOTS FOR SALE — Trailer camper space for rent, \$30 a month, water furnished. Mobile home for rent, furnished or unfurnished. 828-6276, C. E. McCoy. 41-tfc

BEAUTIFUL 3-bedroom, 2-car garage, and all the extras, on Smith Avenue in New Home. Shown by appointment only. New Home Farm Store, Joe D. Unfred, agent, 806 924-4253, res. 924-3683. 41-4tp

HOUSE FOR SALE — 3-bedroom brick near Wilson School and Green Park, on the main drag to Lubbock, Slaton, Tahoka or Post. Shown by appointment only. New Home Farm Store, Joe D. Unfred, agent, 806 924-4253, res. 924-3683. 41-4tp

FARM FOR SALE — 160 acres near New Home, well improved, bench leveled, 1 1/2 miles underground pipe, plenty feed pens, barn, bunk house, three-bedroom brick home, swimming pool, trees galore. Shown by appointment only. New Home Farm Store, Joe D. Unfred, agent, 806 924-4253, res. 924-3683. 41-4tp

FOR SALE. 1 1/2 lots on Industrial Drive, with SERVICE STATION BUILDING ON IT. \$1500. ERNEST CARROLL 828-3264

CUSTOM SPRAYING. Treflan — Milogard — Caparol — Green Bug Spraying & Sudan Defoliating. MAX LEE 828-3272

## MISCELLANEOUS FOR SALE

LAWN & GARDEN fertilizers, rose food with Systemic poison, garden seed, IRRIGATION SUPPLIES & several varieties of GRAIN SORGHUM SEED. Slaton Farm Store. 29-tfc

WATERS TROPICAL FISH, 400 West Lubbock St. Open 9 a.m. to 5 p.m. Monday thru Saturday. After hours call 828-3817. 19-tfc

RABBITS, supplies for breeding and eating or as children's pets. Will build pens, you furnish supplies or we furnish supplies for pens and labor. 740 S. 14th. 37-tfc

For Sale — Mobile home, ultimate three bedrooms, 1 3/4 baths, fireplace, central heating, evaporative cooling, dishwasher. Call 828-5688. 44-1tp

TAKE UP payments on 1971, 12x65 Astro, dishwasher, partly furnished, anchored and skirted. 828-3362. 44-2tp

LADY JO PEA SHELLER — Bushel in 30 minutes, \$12.95 plus tax and postage. Lady Jo Sales Co., 4607 29th, Lubbock. 799-3968. 44-2tp

CONN ALTO Sax, excellent condition, used two months, \$100 below cost. 828-6287, or 828-3852 after 5 p.m. 44-1tc

FRESH VEGETABLES for sale. 1435 S. 9th. 44-1tc

PIANO BARGAIN. Extra nice spinet piano now in storage. Available soon on small payments. Write at once for details. McFarland Music Co., P. O. Box 805, Elk City, Okla. 73644. 44-1tp

FROST-FREE 2-door Frigid-aire refrigerator for sale. Top door freezer, bottom refrigerator. See at 930 S. 14th. 828-6182. \$100. 44-2tc

HELP WANTED. COOK — full time cook in pre-school learning center serving 40 children. From August to May. Plan menus, and prepare nutritional meals and snacks. Experience in institutional food preparation desired. Child Center, location is Slaton, Texas. Apply 1717 Ave. K, Room 206, Lubbock. 44-2tc

NEED SOMEONE to live in with elderly lady, not an invalid. Mrs. J. P. Haliburton, 828-3581. 44-2tc

## MISCELLANEOUS FOR SALE

LAWN MOWERS, bicycles, beds, refrigerators, cookstove, dinette sets, lamps, dishes. Antiques of all kinds, new dog houses. Ted's Trading Post. 1205 S. 9th. Phone 828-7132. 9-tfc

RUBBER STAMP orders filled at The Slatonite.

TRASH BARRELS for sale at Perkins Auto Supply. Phone 828-6240. 29-tfc

CLEAN RUGS like new, so easy to do with Blue Lustre. Rent electric shampooer \$1. Lasater-Hoffman Hardware.

GET YOUR lifetime Golden Metal Social Security Card at The Slatonite. Your social security number on polished lightweight aluminum plate with red, blue and gold design. Guaranteed for life. Wallet size. 39-tfc

TWO PIANOS for sale, refinished, good condition. Baker Piano Tuning, 828-6874, 1025 W. Dickens. 34-tfc

GARAGE SALE. FANTASTIC SALE — Friday and Saturday, a little bit of everything, dining table and chairs, furniture, clothes, dishes. 805 W. Panhandle. 44-1t

TWO-FAMILY garage sale, ladies clothes, bed, tires and miscellaneous items. Thursday and Friday, 505 W. Garza. 44-1t

GARAGE SALE — Thursday and Friday, 10 to 6, sheets, bedspreads, curtains, adding machine, vacuum cleaner, dishes and many miscellaneous items. Holiday Mobile Park #56. 44-1tp

GARAGE SALE — 1215 S. 9th. Thursday and Friday 8-6. Miscellaneous, Junior sizes, and men's clothing. 44-1tp

## BUSINESS SERVICES

HAVE YOUR PRESCRIPTIONS filled at TEAGUE DRUG by a Registered Pharmacist. 50-tf

WANT TO BUY Burned, Wrecked or Abandoned Cars 828-6240 PERKINS WRECKER SERVICE

Mosser Radio & TV SALES AND SERVICE 110 Texas Ave. Call 828-6475

Magourik Electric ELECTRIC REPAIRING AND WIRING 1400 S. 5th Phone 828-6809

KIRBY VACUUM CLEANERS For Service Call MOSSER TV 828-6475

HOUSE NEED PAINTING? for a good job priced right, call D. H. RUDD 828-6937 FEATURING ALL TYPES PAINTING, TAPING AND BEDDING ACOUSTIC CEILINGS AND WALL TEXTURE BLOWN ALSO AIRLESS SPRAYING FOR BIG JOBS. 48-4tp

CHAMPION'S SWAP SHOP & JEWELRY NEW-USED-ANTIQU FURNITURE Jewelry — Watch Repair and Engraving BUY—SELL—TRADE ANYTHING OF VALUE JOHN C. CHAMPION 828-3751—330 S. 9th St. 44-2tp

## BUSINESS SERVICES

Furniture Rebuilt Upholstery Good Fabric Prices Good Work Evenings 828-5231

N. H. ROBERTS Cement Contractor Free Estimates 828-6991

Public Notice. BID NOTICE. The Lubbock Independent School District will receive sealed bids for Sound Systems until 2:00 p.m. (CDT) August 5, 1975, in the office of the Director of Purchasing, 1628 19th Street, Lubbock, Texas 79401. Bids will then be opened and read aloud. Bid forms may be obtained upon request in the above office.

Rupert Pearce Director of Purchasing Lubbock Independent School District 43-2tc

SECURITY. In 3 1/2 years, working from our home, first part time then full time, my wife and I have built a business that brings us the best income we have ever had — in spite of inflation, depression, etc.

We have created a position from which we can neither be fired or laid off, and our income continually rises. If you have an income but want to improve it — let us send you some information. We have been able to help several other people to higher levels of income. Write WALLY THARP, P. O. Box 475, Lubbock, Texas 79408. 44-2tp

## AUTOS FOR SALE

FOR SALE — 1968 BelAir Chevrolet, nice clean family car, new tires, radio, heater, air, good gas mileage, good engine. \$495 cash. 828-6131, 1535 W. Lynn. 44-1tc

1968 PONTIAC 2-door HT, cold air conditioner, power steering, power brakes, nice car. \$495. Holiday Mobile Park #56, Slaton, 828-3331. 44-1tp

1963 BUICK Electra 225, 4-door HT, loaded, good work or school car, \$195. Holiday Mobile Park #56, Slaton, 828-3331. 44-1tp

NEED A SCHOOL CAR? I have a dependable '65 Catalina that never fails to start. Automatic, air, power, new shocks on the front. Rebuilt radiator. The tires are good and the price is right. 540 W. Garza, 828-5726. 44-tf

ELECTRIC WIRING & REPAIR APPLIANCE & AIR CONDITIONING REPAIR Kuss Electric 828-3225 — 850 S. 16th

## Need a RUBBER STAMP? See THE SLATONITE



## SPECIALS

- 1/2" C.D. Plywood Ea. \$5.99
- 3/4" C.D. Plywood Ea. \$8.95
- Good White COMMODES, ea. \$34.95
- 48"x1" Poultry Netting Roll \$29.99
- 30-gal. Water HEATER \$79.50
- 48"x2" Poultry Netting Roll \$16.95
- 60"x2" Poultry Netting Roll \$19.90
- 72"x2" Poultry Netting Roll \$24.95
- 4x8 Pre-finished Wood PANELING, ea. \$3.95
- 1/12-1/8, 1/6-1/4 Molding W.P., 100 bd. ft. \$49.20
- 6-6-10-10 Mesh Wire 750 sq. ft. roll. \$39.95
- #3-18" Wood SHINGLE, sq. \$34.75
- 1/2" 4x8 Gypson BOARD, ea. \$1.59
- 15 or 20 lb. FELT, #1, ea. \$6.95
- 1/2" REBARS. \$14.95
- BARB WIRE, roll. \$23.95
- White Commode SEATS, ea. \$3.95
- White Ext. Latex House PAINT, gal. \$4.50
- 2x4-92 5/8 Fir STUDS, ea. 79c
- 2x4, 12' thru 20' Fir. All in one Bd., bd. ft. 14c
- 2x4 & 2x6 - 10' thru 16' New stock, #2 & better Per 100 bd. ft. \$19.50
- 1x12 - #3 RESAWN (good) \$15.95
- Portland CEMENT. \$2.59

250 S. 9th 828-6586

# Three ways to travel by Long Distance!



Emmett Kelly Jr. for Southwestern Bell

**Cheap**  
Call One-Plus

One-Plus is always the cheapest way to call Long Distance. For example, a coast-to-coast call during business hours (8 a.m. to 5 p.m., Monday through Friday) is only 56¢ for the first minute. Out-of-state calls spanning shorter distances cost even less.

**Cheapest**  
Save 60 percent nights and weekends

Our lowest rate. Save 60 percent over the day rate when you call out of state the One-Plus way on weekends (all Saturday and Sunday until 5 p.m.) and nights (11 p.m. to 8 a.m. daily). For example, a coast-to-coast call costs only 22¢ for the first minute.

**Cheaper**  
Save 35 percent evenings

You save 35 percent over the day rate when you call out of state the One-Plus way evenings (5 p.m. to 11 p.m., Sunday through Friday). For example, a coast-to-coast call costs only 36¢ for the first minute.

Want to know more ways to save on out-of-state Long Distance calls? Return this coupon and we'll send you a free calling guide.

Southwestern Bell  
P.O. Box 787  
St. Louis, Missouri 63188

Name \_\_\_\_\_  
Address \_\_\_\_\_  
City \_\_\_\_\_ State \_\_\_\_\_ Zip \_\_\_\_\_

Remember, additional minutes are always less than the first on out-of-state calls. Where One-Plus dialing isn't available, One-Plus rates apply on station calls. If you dial direct and reach a wrong number, call the operator. You won't be charged.

Travel by Long Distance... and stay awhile. Southwestern Bell

For rates to Alaska and Hawaii, call the operator. One-Plus rates don't apply to person, coin, hotel-guest, credit card or collect calls, or calls charged to another number.

**Sikes Machine Shop**  
Complete Welding and Machine Shop  
155 N. 9th Slaton

1 — 1963 4010 LP new overhaul, cab — \$4500  
1 — 4430 W/S. Guard Body, HT & AC — \$16,300  
1 — 4320 — Good Tires & Cab — \$12,900  
BRYANT FARM SUPPLY  
North 20th St. Phone 828-6646

**HOLIDAY**  
Mobile Home Park OF SLATON  
located on N. 20th St.  
1/2 blocks north of High School  
Free Local Moving  
Phone 828-5304 or 795-8891



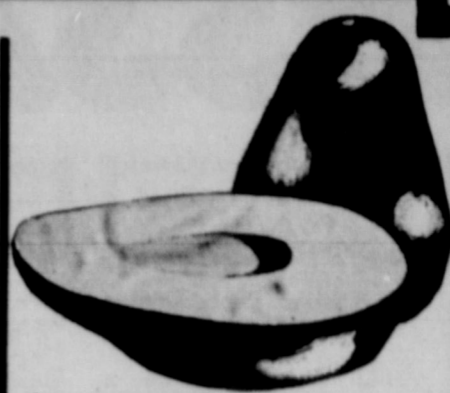
*Cheese Special*  
Kraft's Philadelphia  
**Cream Cheese**  
**45¢**  
8-oz. Pkg.



US No. 1  
**White Potatoes**  
**\$1 59**  
Bag



For That Summer Salad  
**Iceberg Lettuce**  
**29¢**  
Head



Rich In Minerals  
**Hass Avocados**  
**4 for \$1**



*Poultry Special*  
Baked, Turkey  
**Hindquarters**  
**49¢**  
Lb.

Prices Good Thru Aug 2, 1975. We reserve the right to limit quantities. None sold to dealers.

Delicious Freestone  
**Peaches**  
**39¢**  
Lb.

Red Grand  
**Nectarines**  
**59¢**  
Lb.


Thompson Seedless  
**Grapes**  
**69¢**  
Lb.

USDA Good Beef, Full Cut  
**Round Steak**  
**\$1 59**  
Lb.

USDA Good Beef  
**Sirloin Steak**  
**\$1 59**  
Lb.

Lean Meaty Beef  
**Short Ribs**  
**67¢**  
Lb.

USDA Grade A, Breast or Leg  
**Fryer Quarters**  
**59¢**  
Lb.

  
Tomato Rich  
**Hunt's Ketchup**  
**3 \$1**  
14-oz. Btls.

Piggly Wiggly Fancy  
Small Sieve  
**Sweet Peas**  
**3 \$1**  
16-oz. Cans

Piggly Wiggly Pure Vegetable  
**Shortening**  
**99¢**  
3-Lb. Can  
Piggly Wiggly  
**Golden Corn**  
**4 \$1**  
16-oz. Cans  
Limit one (1) with \$7.50 or more purchase excluding beer, wine and cigarettes.

Piggly Wiggly Cut  
**Green Beans**  
**5 \$1**  
16-oz. Cans  
Van Camp's  
**Grated Tuna**  
**3 \$1**  
6 1/2-oz. Cans

  
Libby's  
**Vienna Sausages**  
**3 \$1**  
5-oz. Cans  
Piggly Wiggly  
**Macaroni Dinners**  
**4 \$1**  
7-oz. Boxes

Piggly Wiggly Regular Quarters

**Oleo**  
**3 \$1**  
Lb. Pkgs.

Piggly Wiggly Texas Style  
**Biscuits**  
**5 \$1**  
12-oz. Cans

**MEAT GUARANTEE**  
**DOUBLE YOUR MONEY BACK**

We are so confident of the superior quality of our meats that we offer an extraordinary guarantee. You must be completely satisfied with all the fresh meat you buy at Piggly Wiggly or your money will be cheerfully refunded... DOUBLE!

**Advertised Items**

Piggly Wiggly now marks the price of all its advertised items on the package itself... So you can be assured that you're being charged the advertised price at the checkout!

**New Low Prices**

- Spaghetti Ragu Sauce 15 1/2-oz. Jar **59¢**
- Welch's Grape Jelly qt. Jar **\$1 09**
- Honey Boy Salmon 16-oz. Can **\$1 59**
- Koogles Peanut Butter 1-oz. Jar **69¢**
- Piggly Wiggly Instant Potatoes 15-oz. Box **59¢**
- Bama, Strawberry Preserves 18-oz. Jar **89¢**
- Larsen's Veg-All 3 15-oz. Cans **\$1 00**
- Coronet 375 Sheet, 2 Ply Rolls Bath Tissue 2-Roll Pkg. **39¢**
- Calrose, Mandarin Oranges 3 11-oz. Cans **\$1 00**
- Hi-Vi, Beef Dog Food 8 15-oz. Cans **\$1 00**
- Del Monte Prune Juice qt. Btl. **69¢**
- Trappay's Pork & Beans 3 15-oz. Cans **\$1 00**

**New Low Prices**

- Patio, All Varieties Dinners 11-oz. Pkg. **59¢**
- Rainbo Hamburger Dill Pickles qt. Jar **79¢**
- Armour's Luncheon Meat Treet 12-oz. Can **89¢**
- Bama, Grape Jelly 18-oz. Jar **69¢**
- Del Monte, Whole Potatoes 3 16-oz. Cans **\$1 00**
- Libby's, Potted Meat 5 3 1/4-oz. Cans **\$1 00**
- Purina, Tender Vittles Cat Food 12-oz. Pouch **59¢**
- Piggly Wiggly Paper Towels 2 145-Ct. 1-Ply Rolls **89¢**
- Piggly Wiggly, Facial Tissue 2 200-Ct. Boxes **79¢**
- Churngold Soft Oleo 16-oz. Tub **59¢**
- Piggly Wiggly, Frozen Lemonade 12-oz. Can **39¢**
- Cal-Ida, Frozen, French Fry Potatoes 2 2-Lb. Bags **89¢**

Spartime Frozen  
**Pot Pies**  
**6 \$1**  
6-oz. Pkgs.

"Mix or Match" Piggly Wiggly Frozen  
**Vegetables**  
**3 \$1**  
10-oz. Pkgs.

5 Grain Each Tablet  
**Bayer Aspirin**  
**\$1 09**  
100-Ct. Btl.  
Slightly over one cent per tablet  
Piggly Wiggly 5 Grain  
**Aspirin**  
**49¢**  
100-Ct. Btl.  
Less Than 1/2 cent per tablet.



We Give  
S&H  
Green  
Stamps

**PEOPLE PLEASIN' STORE**

We Welcome  
Federal  
Food Stamp  
Customers

