

# THE SLATON SLATONITE

(The Slaton Times Absorbed by Purchase January 20, 1927.)

Vol. XVII.

Slaton, Lubbock County, Texas, Thursday, April 12, 1928.

Number 33.

## NEXT WEEK IS TIME FOR CITY CLEAN-UP TASK

### City Health Officer in Plea for Everyone to Assist Campaign.

Next week, April 16 to 21, inclusive, is designated as Clean-Up Week in Slaton, having been so designated by city officials, and strict observance is being asked by Dr. S. H. Adams, city health officer. Chamber of Commerce officials have pledged their help in the campaign to really make Slaton a clean and attractive city, and various women's clubs of the city are also giving valuable assistance to the move.

The city officials will have wagons to haul away all trash, cans, or other rubbish which is placed in boxes, barrels, sacks or other convenient containers near the alleys. This will be a free service and therefore, and for

"As city health officer, I want to call your attention to the Slaton Clean-Up campaign, next week, April 16, to 21, and urge every family to thoroughly clean their premises of all trash, rubbish cans or other unsanitary materials. This is being done in the interest of your health and should have your hearty assistance.

(Signed) S. H. Adams, City Health Officer

many other reasons, it is pointed out that every Slaton family should take advantage of the week to get rid of all sorts of rubbish.

Not only does the rubbish and waste materials encourage the breeding of flies, which are carriers of deadly disease, but unsightliness and unattractive premises leave bad impressions upon the public. Such is the comment made by many who have expressed their approval of the clean-up drive.

The slogan is "Make Slaton the cleanest spot in all West Texas."

### Show Playing Here Auspices Fire Boys

The Greater Imperial Shows, a carnival company of wide reputation, is playing here this week under auspices of the Slaton Volunteer Fire Department. Eddie Lynch, advance man for the show will be remembered here as the man who conducted the "Miss Slaton" contest here last October. The show is being well attended, it is stated.

Bob Stephens of the Slaton Cotton Oil Company, is driving a new model Ford Coupe, brought from the Slaton Motor Company.

### Appreciation.

In disposing of the printing plant, building and equipment of The Slaton Slatonite, I feel that the people of Slaton and surrounding territories have made a material gain, due to the fact that the present owners, Messrs. Nunn, Roderick and Roderick, are newspapermen of broad experience, and are in better position than I to give this section the kind of newspaper it is justly entitled to.

In the face of these facts, I feel sure the general public heartily sanction my selling, and will give the new owners their whole-hearted support and co-operation. I sincerely trust you will do this, for in so doing I am sure you will be well repaid in the kind of paper you get.

I want to sincerely thank my many friends here, who have been so loyal to The Slatonite, and to me, during the past several years. I hope you will see fit to give this paper your continued support and liberal patronage.

Sincerely,  
MRS. W. DONALD.

### Little Interest Is Manifest in Election Saturday

In the election held here Saturday, when four trustees for the Slaton Independent school district were elected, little interest was shown, according to figures given when the polls closed Saturday evening. Only 160 votes were cast, according to J. W. Hood, election judge, who was assisted by J. W. Henry and M. P. Coltharp. Election clerks were J. B. Caldwell and Jessao Brasfield.

The following is the vote cast, according to Mr. Hood: F. A. Drewery, 188; W. H. Armes, 110; W. E. Payne; 100; G. M. Cullar, 92; W. C. Foutz, 92; C. F. Anderson, 68, and Carl Greer, 54.

Since there were four trustees to elect, and fourth and fifth places were tied, Mr. Cullar declined to qualify as trustee, it was stated, hence, Mr. Foutz was declared elected.

### Local Conductor Honored at Meet

GREENVILLE, Texas, April 7.—Greenville was selected as the 1930 convention city and officers were elected by the Railroad Brotherhoods at the close of the 1928 biennial convention here Friday.

The order of Railway Conductors elected C. F. Goodridge of Fort Worth representative at the capitol at Austin W. D. Johnson of Sillbee chairman of the state committee, W. B. Montague of Slaton vice-chairman, C. A. Graham, of Smithville, secretary-treasurer and W. T. Maher, of Teague alternate delegate. The auxiliary elected Mrs. Mary Melton, Denison, state chairman, Mrs. Nora Demoss, Houston, vice chairman and Mrs. Nora Wilton, Fort Worth, secretary.

### Local Poultryman Has Freak Egg

Last Saturday, J. C. Burton, local poultry raiser, brought to The Slaton office an egg within an egg, laid by one of his purebred Rhode Island Red hens. The freak egg is about the size of an ordinary turkey egg, and inside the outer shell is another egg, seemingly perfect, about the size of bantam egg. A complete yolk and white was within the outer shell, Mr. Burton says. He believes the smaller egg, which was inside the outer shell is also perfect. This is the second of the large double egg variety Mr. Burton has noticed from his flock within the past few weeks, he states.

### Revival at Baptist Church Closed Sunday

A revival meeting that had been in progress at the First Baptist church here for two weeks closed last Sunday night with a baptismal service. About twenty-five conversions were reported during the meeting.

Rev. Layton Maddox, pastor of the First Baptist Church, Belton, was the preacher for the meeting, and he emphasized the subject of "Prayer" thru out his series of sermons. He returned to his home Friday night, and Rev. B. G. Holloway, the Slaton pastor, conducted the services Saturday night and through Sunday.

Miss Madge Brown, of Seminary Hill, and Miss Beryl Hardesty, of Slaton, were the pianists for the meeting.

### TWO RELATIVES OF SELMON DIED LAST WEEK

Sam Selmon, of Slaton, received sad news last week of the deaths of two relatives. T. C. Beasley, brother-in-law of Mr. Selmon died at his home at Kerns, Texas, Thursday, and an aunt, Mrs. Lish Brewer, died Friday at Kemp, Texas.

A brother of Mrs. Selmon is very ill at his home in Eureka, Mr. Selmon stated, she having returned from there Sunday, after being at her brothers' bedside for several days.

Ed Childress, of the Slaton Motor Company, was a Dallas visitor early this week.

Tell City Secretary Harvey Austin to order a garbage can for you.

### Postal Receipts For First Quarter Show Healthy Gain

Receipts at the Slaton post office during the first quarter of 1928 showed gain of eight and one-half per cent over the record for the same period in 1927, according to figures announced by Postmaster James S. Bates.

First quarter receipts this year were \$4,165.19. For the same 1927 period they were: \$3,837.38. The gain is thus seen to be \$327.81, an average monthly increase of \$109.27.

### Sanitation Topic At Rotary Meet Held Last Friday

"How a grocery store should be run in hot weather to insure sanitation in preserving and dispensing foods," was the topic for discussion at the regular weekly Rotary luncheon held last Friday noon at the club house.

The program was in charge of W. B. Hestand, local wholesale grocer, who addressed the body, very intelligently, on points of sanitation. H. C. Burrus, H. G. Sanders and L. T. Garland, local retail grocers, also made brief statements as to their opinions on sanitation methods for retail grocery stores.

The topic was an interesting one, according to those present, and the remarks made as to Slaton's needs for better sanitary conditions along all lines, were received with interest and noticeable enthusiasm. A more adequate garbage disposal, and better sanitary conditions generally for Slaton was encouraged by those who expressed themselves.

Included in the list of visitors were Rotarians Paul W. Horn, president of the Texas Technological College, of Lubbock; R. D. Erwin, also of Lubbock; Van Stokes, of Idalou, a guest of his father, P. G. Stokes; T. E. Roderick, publisher of the Slatonite, and R. W. Collier, Jr., advertising manager of The Slatonite, the latter two being guests of L. A. Wilson, secretary of the Chamber of Commerce.

Tomorrow's program will be a championship contest on "The Biggest Yarn I Ever Heard," with O. Z. Ball, L. R. Cypert, Jess Swint, R. P. Burks and Lee Tudor taking leading parts on the program.

### Slaton Physician Receives Honors

Dr. Sallie Whitin Miller, of Slaton, is one of the eighty physicians, and the only one from Texas, exhibiting paintings at the second annual exhibition of works in the Plastic and Graphic Arts by American physicians under the auspices of the New York Physicians Art club, held at the New York Academy of Medicine, New York City, April 1 to 15. The Slatonite was advised early this week.

Two hundred and sixty-eight paintings are being exhibited, it was stated. Dr. Henry A. Bancel, secretary of the club, in a recent letter to Dr. Miller here, writes:

"May I say that not only were your paintings received in good shape, but they occupy a prominent place on the walls of the exhibition room and are among the very best of our paintings.

"I wish to congratulate you on your work which is far above the average of the work shown here.

"This is not merely my opinion, but that of most of the observers.

"It may interest you to know that while I admire your Saddle Mountain best, the Blue Bonnets appear to get the public eye best.

"I am very glad indeed that you sent us these three pictures, and I sincerely hope you will favor us again next year.

The above is high praise indeed, as Dr. Bancel is an artist of note and has eight paintings in the exhibition this year.

A note from F. H. Lanham, who, with his family, recently moved to Midland, states a sandstorm was raging there when the note was written. It's evident, therefore, that Slaton isn't the only good town that has sandstorms.

### Will Hold Local Try-out to Select 'My Town' Speaker

A dozen students of the Slaton High School have started work on their speeches for a local tryout to select a speaker who will represent Slaton in the "My Home Town" contest to be conducted this year by the West Texas Chamber of Commerce.

Judges will decide the winner of the try-out here and the speaker selected will represent Slaton at the District Convention in Lamesa on May 10, and again at the annual West Texas Chamber of Commerce convention to be held in Fort Worth, June 18, 19, and 20. Slaton's speaker will attend these conventions with expenses paid by the Slaton Chamber of Commerce, says J. W. Hood, president.

Valuable prizes are offered in the contest this year. The first prize will be \$100, second \$50, third \$25, fourth \$15, and fifth \$10. Five Texas colleges are offering scholarships to these winners. The next ten high losers will receive \$5 each, making at least fifteen prize winners of the contest. About 100 speakers are expected to contest for these prizes in the June convention.

L. A. Wilson, Chamber of Commerce secretary here, met the local try-out speakers at the high school Wednesday morning and told them details of the contest. The try-out date has not been definitely set, but will be about three weeks hence, it was announced.

### Good-Will Trips Into Communities To Start Apr. 27

A series of good-will trips to be made by Slaton business men into about sixteen different communities surrounding Slaton is to begin Friday night, April 27, according to plans worked out by the Public Relations committee of the Chamber of Commerce. The plan is to visit one community each week on Friday night until all of the sixteen communities have been visited. Additional details for these trips are being worked out so that all will be ready by the time for the first trip to be made, it is announced.

When the communities' banquet was held recently, representatives of these communities extended cordial invitations to Slaton people to visit them under this plan, and they promised co-operation in making each trip a successful event. A meeting will be held in each community at the school building or other public meeting place and a program will be given, participated in by Slaton people and people of the community visited.

The Public Relations committee is composed of W. H. Smith, chairman; A. Kessel, A. G. Taggart and C. F. Anderson. These committees men and also other Chamber of Commerce officials are anxious to have a large number of Slaton people go along on each of these good will trips. Better acquaintance, better understanding of mutual problems and closer relations in general are the goals in view in arranging the schedule of visits, it is explained.

### Grocery Opens at Lynn and Ninth

What was formerly the Star Grocery here, located at the corner of Lynn and Ninth Sts., just across the street west of the Slaton Motor Company, has been opened for business by A. N. Harper, who recently moved here with his family from Lubbock.

Mr. Harper, who, for the past three years, has been manager for W. O. Stevens Co., of Lubbock, and who, doubtless, is known by many of the people of this community, states that, in addition to carrying a complete stock of staple groceries, he will buy produce, paying the highest market prices.

The Star Grocery will be operated on the cash and carry basis, Mr. Harper states, thereby dispensing with the necessity of paying for the maintenance of a delivery truck. He invites Slaton and community people to drop in, get acquainted and see his grocery bargains.

### American Legion Mock Trial Draws Large Attendance

A mock trial conducted last Monday evening by the Luther Powers Post No. 438, American Legion, meeting in the Odd Fellow's hall was attended by a large crowd of local legionnaires and other Slaton people, and also there were forty or fifty members of the Lubbock legion post present. It was an open meeting.

The court-martial hearing centered around J. B. Hankins, Slaton legionnaire, who has been serving as a team captain in the Slaton legion's membership campaign. Hankins was charged with overstating to a fellow legionnaire the number of men he had signed up as members. This charge gave a basis for other charges, and an effort was made by local members to make those charges so serious as to give grounds for a heated trial, though merely a mock trial having behind it desire for fun and amusement.

The presiding judge was D. E. Kemp, local attorney and member of the Slaton legion post. F. C. Rector and P. G. Meading were the prosecution attorneys. L. A. Wilson and H. M. Peveyhouse represented the defense.

The jury was composed of all Lubbock visitors present. After a general harangue, with many witnesses for both sides testifying, the jury brought in a verdict of "not guilty". However, due to certain testimony brought out tending to show the defendant guilty of an entirely new and different charge, he was sentenced to drink sweet milk from a baby's nursing bottle, and his main attorney, L. A. Wilson aided him in that task at the instruction of the jury, on the ground that he had, in his final defense plea, cast reflections upon the intelligence of the jury.

The trial provoked much mirth on the part of the crowd of about two hundred who were present. Included in the visiting delegation from Lubbock were: Mayor H. D. Woods, Judge Clark M. Mullican, A. B. Slagle and Tom Carter, of the Avalanche-Journal, and numerous others.

### Local Hatchery Gives Turkeys Perfect Turnout

For the first time since its establishment here, the Progressive Hatchery this week completed a test of its ability to hatch turkey eggs, according to E. L. Hicks, owner and manager who states he believes the Mammoth Petersime Incubator is just as dependable in hatching turkey eggs as it is in turning out chicken hatches.

One hundred per cent of fertile eggs placed in the incubator were hatched, Mr. Hicks states, all of the young turkeys being healthy and strong. A turkey hatch demands 28 days, while chickens are hatched in 21 days, it is stated, though the same heat is required for hatching both turkey and chicken eggs.

The Progressive Hatchery, equipped with two Mammoth Petersime Incubators is doing a splendid service for poultry raisers of this section, according to local poultry breeders.

Tell City Secretary Harvey Austin to order a garbage can for you.

## GARBAGE PLAN BEING WORKED OUT FOR CITY

### Definite Steps Decided On in Meeting Held Tuesday Night.

At the regular meeting of the board of directors of the Chamber of Commerce Tuesday night, a thorough discussion was had on the matter of garbage disposal in the business and residence section of Slaton. Mayor W. G. Reese, Commissioner John T. Lokey, and two local grocersmen, Chick Garland and H. G. Sanders, were present besides eleven members of the board of directors.

The unanimous belief, as expressed in the meeting, was that the establishment of efficient garbage disposal in Slaton is positively imperative now, and more especially so since the installation of natural gas, leaving small opportunity for burning refuse foods and other waste material in stoves. It was declared by those present that the health and safety of Slaton people depends largely upon garbage disposal, thus ridding the city of many flies during the hot weather. The grocersmen of Slaton believe a city-wide garbage plan would aid them in keeping their stocks of food in more sanitary conditions, thus guaranteeing better health for the patrons. Every possible measure of precaution is being taken by these dealers now, with better garbage disposal it is certain that there will be better sanitation, they said.

The city officials said Tuesday night that regular removal of garbage from all parts of the city would be started as soon as the people will secure garbage cans in which to place their waste materials. There is already a sanitary ordinance which empowers the enforcement of sanitary observance in all parts of the city. Garbage cans may be had at a reasonable cost, it was said, and the people will be expected to place their garbage in these cans and leave them setting near the rear property line in convenient location for the garbage wagon to reach them when making the rounds.

The belief is that a complete round of the city will have to be made two or three times per week in order to keep the garbage disposed of as rapidly as will be necessary. The city expects to bear the expense of the removal of all garbage and the removal service will be a permanent thing, it is believed.

It was pointed out Tuesday night that a uniform type of garbage can is highly desirable. Therefore, it will be necessary, officials said, to order the cans in quantities. The exact cost of a strong container with a tight lid over it has not been determined, but they can probably be had at a reasonable figure, it is thought. Immediate investigation on this point was promised. Cans with tight-fitting lids are the only kind to be considered. This will prevent the breeding of flies in the garbage before its removal from the premises.

Each Slaton family is urged to report to City Secretary Harvey Austin at once as to whether a garbage can is wanted. As soon as a sufficient number of orders are placed, these cans will be ordered and distributed.

(Continued on Last Page.)

**ENTRY BLANK**  
**Chamber of Commerce**  
**"Pretty Lawn Contest"**

(Fill out and mail or bring this coupon to the Chamber of Commerce.)

I wish to enter the contest, subject to all rules and judges' decisions.

Name \_\_\_\_\_

Street and Number \_\_\_\_\_

Age of lawn \_\_\_\_\_

If entering as corporation, check here.

**CLASSIFIED ADS**

**TYPEWRITERS**—For sale, trade or rent.—G. W. Bcwnds. 27-tfc

**SEEDLING**—Peach and plum trees for sale.—E. Barton, Phone 88. 28-6c

**RESIDENCES**—New and modern, at bargain prices.—T. J. Abel, at Home

**WANTED**—2nd-Hand Windmill, Tank and Towers.—S. A. Cummings, Wilsco, Texas. 32-2c

**SIX ROOM**—Modern house on East front corner lot, located near depot. Real buy at \$2,250. Terms \$250 cash and balance like rent.—J. T. Overby, Slaton State Bank Bldg. 32-2c

**WHAT THE DOCTOR SAYS OF OUR MILK**

"Slaton, Texas, March 21, 1928. This certifies that my family has used the Florence Dairy milk, cream and butter continuously for 14 years and have found it always unexcelled in richness, flavor and sanitary conditions, and I heartily recommend it as a good and safe food for old or young. Signed: S. H. ADAMS, City Health Officer and Asst. County Health Officer."

We are increasing our capacity for service and desire some new customers. Therefore, we publish the above assurance that our milk is equal to the best.

Deliveries twice daily and on special call. MR. AND MRS. W. P. FLORENCE, 30-4c

**FOR SALE**—Big German millet and Sudan seed, corn and cotton seed. Also have a few nice pigs and shoats.—E. E. Wilson. 31-3tc

**NOTICE TO CONTRACTORS**

On and after June 1, 1928, the wage scale for Union Carpenters will be \$1.00 per hour, or \$8.00 per day. U. B. of C. and J. Local No. 1266. 30-10c

**SUDAN SEED**—4 cents per lb.—at Fred Kahlich place, on Rt. 1, 3 mi. northwest of Slaton.—George Anger. 26-5p

**BARRED ROCK EGGS**—\$5.00 per hundred. Won four prizes out of five entries at Slaton show last December.—Mrs. W. B. Leavelle, 2 1-2 mi. north of Posey. 31-2tp

**FOR RENT**—Two furnished apartments.—Mrs. J. A. Adams, 289-J. 32-tfc

**EGGS** from Burtons Blue Ribbon Rhode Island Reds, \$1.00 and \$1.50 for 15. Baby Chicks 20c and 25c each.—Mrs. John C. Burton, 1150 S. 11th St., Phone 115. 4-tp

to order a garbage can for you. Tell City Secretary Harvey Avstin

**WANTED**—A man to write insurance on growing crops in the vicinity of Slaton, Texas. This will be our 14th year. Our rates are lower than other reputable companies. We have never failed to pay our losses. We have never been sued by a policy holder nor levied an assessment. We have a good reserve. Write, phone or wire at our expense.—The Groom Mutual Hall Association, Groom, Texas. 31-3c

**MADAME BURBERRY**—noted Payco Analyst, Psychologist, Lecturer, will arrive in our city Saturday, at Singleton Hotel. Phone for appointment.

**WE HAVE**—A seed culler running at our plant. Have man on job every day for your convenience.—Slaton Gin Company. 33-4tc

**FOR RENT**—Two furnished rooms for light horse keeping. Apply at 325 South 11th St., between 9 and 2 p. m.—A. A. Hillyer. 1tp

**FOR RENT**—3 room furnished apartment, modern.—Call 88, Mrs. Lee. 1c

**WANTED**—Man and wife for ranch work.—Call No. 909-F-3.—Mrs. A. B. Robertson. 1tp

**ACREAGE**—One twenty acre tract priced at \$100 per acre if sold at once, well located and a bargain with good terms. Party listing will not consider trade.—J. T. Overby. 32-2c

**WAIT**—For the Rexall 1c Sale, April 19, 20 and 21.—Red Cross Pharmacy. 1c

**WANTED**—Sewing. Prices reasonable. 435 West Lynn St. 32-2p

**FOR LOTS**—In district west of County Park where better homes are being built.—See J. T. Overby, Slaton State Bank Bldg. 32-2c

**MORE FOR YOUR MONEY**—At the Rexall One Cent Sale, April 19, 20, 21. Save by buying your drugs and drug sundries then.—Red Cross Pharmacy. 1tc

**FOUND**—Purse containing some money and Woodman Circle receipt.—Margaret Dalton, Rt. 2, Box 182, Slaton, Texas. 1tp

**ONE CENT**—Sale at the Red Cross Pharmacy, April 19, 20, 21. Then will be the time to buy your stationery, toilet articles, drugs, etc. 1c

**FOR SALE**—Modern 6 room house at Slaton.—Miss Clay, 2313 10th St., Lubbeck. 33-3tp

**ACREAGE**—Eleven and one-half acre tract located one-quarter mile east of Roundhouse on Ralls road, has natural gas, and priced at \$150 per acre, with terms if desired.—J. T. Overby, Slaton State Bank Bldg. 32-2c

Good No. 244 Letz Feed Crusher for sale or trade, worth the money. See me at once.—J. A. Bartlett, Box 375, Slaton, Texas. 33-2c

Mrs. Pat Trammell and daughter, Miss Mary, of Pyote, were visitors here the first of the week at the home of the former's mother, Mrs. M. C. Robinson.

**Washes, Carries Coal, Woman Gains 18 Pounds**

"I wash, iron and carry coal and don't get tired since taking Vinol. Also, I have gained 18 pounds."—Mrs. S. Cortese.

Vinol is a delicious compound of cod liver peptone, iron, etc. Nervous, easily tired, anemic people are surprised how Vinol gives new pep, sound sleep and a big appetite. The very first bottle often adds several pounds weight to thin children or adults. Tastes delicious.—CITY DRUG STORE. 1tc

**Union News.**

(By Ninth Grade English Class)

Miss Ella Fae Petersen spent Saturday night with Miss Dollie Toney.

Miss Enid Griffin and Miss Eloise and Earl Peterson visited Mr. and Mrs. W. H. Tomby and family Sunday.

Mr. and Mrs. J. R. Lamb visited Mr. and Mrs. J. W. Lane Sunday.

Misses Crystell Ussery and Modess Denny visited Misses Jessie Mae and Pauline Gilbert Sunday.

Mr. and Mrs. J. N. Mullenix spent Sunday with Mr. and Mrs. C. R. Mullenix Sunday.

J. W. Lamb has been working for Mr. J. R. Hamilton of Wilson, the past week.

Misses Louise Staples and Elaine Smith visited Miss Minnie V. Gamble Sunday and Sunday night.

Mr. R. V. Mullenix visited Mr. Wright Johnson Sunday.

Miss Marie Marten and Miss Ella Fae Peterson were absent from school Monday.

Miss Enid Griffin spent the night with Miss Eloise Peterson Sunday night.

Mr. W. E. Jeter has been ill for the past week.

Mrs. Bill Shaw spent the week-end with her sister, Mrs. Clarence Halen of Lubbock last week.

Misses Jessie Mae and Pauline Gilbert and Mr. R. D. Presley were absent from school Monday morning. Trustee election was held at the school house Saturday. Mr. Dearing was re-elected and Mr. J. A. Russell was elected to take Mr. Gamble's place which expires this year. Only nineteen votes were polled.

Leo Sinnacher, who has been ill with pneumonia, returned home from the Lubbock sanitarium last week. He is now able to be up part of the time.

Mr. C. D. Griffin was a visitor at the Plainview Dairy Show last week.

The club ladies met at the school house and set out some flowers one day last week. An attempt is being made to beautify the school ground.

**SCHOOL NOTICE**

If your children have not been enrolled for school for next school term or if you know of a family moving into the school district lately, please notify me at the city hall, and I will make the enrollment in behalf of our school, and earnestly solicit your cooperation in this matter, as everyone overlooked means a loss of about \$15 toward the support of the schools. Respectfully, J. W. BUCHANAN

**Add New Man to Textile Dept.**

Another new professor has been added to the teaching staff of the Textile Department; Mr. E. L. Murphy, a graduate of the New Bedford Textile school at New Bedford, Mass., shouldered the responsibility of directing the Junior textile students in the dyeing and knitting laboratories at the beginning of this term.

Mr. Murphy is the second man to be added to the Textile teaching staff this year; Mr. Harry Garden, a Georgia Tech man, joined the force at the beginning of the Fall Term.—Texas Tech Treader.

Tell City Secretary Harvey Avstin to order a garbage can for you.

**Adam and Eve Set the Fashion**

For comfort's sake any kind of clothes would do. Be they floursack, horsehide, many or few. But since Adam and Eve left the garden for sin, Fashion and style have gradually crept in, Till man no longer thinks himself well dressed Unless his suit be cleaned and neatly pressed.

(Copr.)

PHONE 16

We Call For And Deliver

**O. Z. BALL & COMPANY**  
"Pay Less and Dress Better"

**Hokus Pokus Specials for Saturday**

10 lb. CLOTH BAGS	
SUGAR	\$ .66
OUR SEAL, 48 lbs.	
FLOUR	1.81
OUR SEAL, 24 lbs.	
FLOUR	.95
ANY FLAVOR, 3 for	
JELLO	.25
KELLOGGS, 3 for	
BRAN FLAKES	.25
3 lbs. B. C. C.	
CRACKERS	.37
ROYAL KITCHEN, Gallon	
PEACHES	.46
No. 2 HORSESHOE, 3 for	
TOMATOES	.25
TRINITY CREPE, Per roll	
TOILET PAPER	.05
P. AND G., 10 Bars	
SOAP	.38
BLUE LABEL, GALLON	
KARO	.55
MARKET DAY SPECIAL, 4 lbs. Pkg.	
RAISINS	.34
ARMOURS BABY	
MILK	.05
SWIFT JEWEL, 8 lbs.	
COMPOUND	1.07

We Handle Leonard Bulk Garden Seed.

AMOUNTS OF \$2.50 AND OVER DELIVERED. PHONE NO. 197.

**Money Talks**

**Let Cleanliness Be First**

Substantiality means more than anything else for a town, but, the "LOOKS" of the town makes the first impression on the visitor or passer-by, so why not have Slaton look good?

And, besides, cleanliness means much to us who live here—cleanliness improves the value of our property, it gives us better health, and better protection against fire hazards.

Let's cooperate with the city commission in their efforts to make Slaton a clean town. Next week, Apr. 16 to 21, is Clean-Up Week in Slaton.

Let us make a noticeable effort. We'll try to do our part.

**Slaton Gin Co.**  
R. H. TUDOR, Manager

**CLEAN-UP PAINT-UP**

TIME TO

Clean Up--Paint Up

And do your Spring Repairing.

Let us all try to make Slaton the

CLEANEST,

PRETTIEST

AND BEST

CITY IN TEXAS

**ROCKWELL BROS. & CO**  
Lumbermen

**The Slaton Slatonite**

Published weekly on Thursday at Texas Ave. at 7th St. Phone 20

Slaton, Lubbock County, Texas.

T. E. Roderick - - - - - Publisher  
R. W. Collier, Jr. - - - - - Editor

Subscription price, per year - \$2.00

Display advertising rate, per single-column inch - - - - - 35c

Entered as second class mail matter at the postoffice at Slaton, Texas.

Brevity, they say, is the soul of wit, and a woman's costume by this standard is funnier even than some people thought.

And, we imagine, the new Easter frocks, this past Easter Sunday, felt as thin as they really were.

The loco weed grows down in the state you know, and it may be a good idea to keep a close watch on the Democratic donkey next June.

Asking a proud young mother if her first baby is healthy and bright is just about as sensible as giving a college boy a pair of hose supporters for a birthday present.

Possibly one of the most pathetic cases on record is that of the man found weeping because he had discovered a great recipe for home brew—and had no home.

**BUY AT HOME**

A community thrives when its merchants thrive. Home town buying and trading is as essential to its growth and progress as its streets, alleys, churches and schools. It is the duty of every citizen of a community to make his purchases at home. Numerous buy at home campaigns have stressed this fact, and have taught this important lesson. But still, there are some people who go elsewhere than their own home surroundings when making their purchases. The truth is, that as good merchandise can be obtained at home as can be secured through the mails from any of the larger cities, and, as patronage increases, the quality of the local merchant's stock is bound to grow even greater. There are numerous reasons why you should patronize your local merchants. They have invested their money and their future in your town. The wide-awake citizen should boost his town in every way. He should take a lively interest in every activity of a local nature, join the local clubs, attend the local theatres. No need to go elsewhere. All the real pleasures of life are available right here at your doorstep. And, to put in a word for The Slatonite, it is a mighty good idea to be a regular reader of your local paper, and to keep posted as to what your merchants have and the prices they are quoting.

**MRS. GARLAND'S MOTHER DIES AT HOME IN GUNTER**

Mrs. W. M. Gunter, age 67 years, 5 months and 10 days, died at her home in Gunter, Texas, Sunday, April 1, and was buried Tuesday, April 3, following funeral services conducted in the auditorium of Gunter College.

Mrs. Gunter is survived by her husband, five sons and three daughters, one of whom is Mrs. I. T. Garland, of Slaton, who, with her family, was with her mother at the time of her death. The Garland family returned here Thursday evening.

Mrs. Garland has numerous friends here and elsewhere, who will regret to hear of her mother's passing.

**McCLINTOCK FURNITURE MOVES TO NINTH ST.**

This week, the G. D. McClintock Furniture stock was moved to the Forrest building on Ninth St., and now occupies the south half of the building, the Worley Hardware occupying the other half.

"Do you travel much in that old flivver of your?"

"From coast to coast."

"Goodness! Have you really gone from Maine to California in that boat?"

"Oh, no. I mean I coast down one hill and then tow it up another one and then coast again."

**AN EXHILARATING EFFECT**

A bottle of Hebine on the shelf at home is like having a doctor in the house all the time. It gives instant relief when the digestion gets out of order or the bowels fail to act. One or two doses is all that is necessary to start things moving and restore that fine feeling of exhilaration and buoyancy of spirits which belongs only to perfect health. Price 70c. Sold by

CATCHING'S DRUG STORE

**EXCHANGE SHOTS**

**WHAT KIND OF TOWN WOULD YOU LIKE TO HAVE**

Not so long ago we asked a well known citizen to write down for us in black and white just what kind of town he considers perfect that our readers might compare it with their own town. He has done so and here is his idea of a perfect town:

"It should be a moral town where citizens obey the laws and a woman can walk down the entire length of Main street and feel the men she passes respect womanhood. A town that forgets individual squabbles and unites for the common good of all; a town with a good public library and churches that are well attended and pastors reasonably paid; a town where nobody has to lock a chicken coop door; where each citizen is made to feel that he is needed in every movement of importance, no matter what his financial standing. The perfect town should have pure water and streets that the taxpayers are proud of; a town whose citizens never say "they" but always say "us", a town fit to raise children in without blushing for what they hear on the streets and with public comfort stations for both men and women. It should be a town that grows without knocking a neighboring town; one whose people are always courteous, one with faith in itself and its ability to get whatever it goes after."

"Now read over carefully and see how near you think your town measures up to it. If it does not, then ask yourself if there is any way in which you can make it measure up." —Lamb County Leader.

The above describes, of course, the kind of town we all would like to live in. But, where is such a town? Where is the town that will measure up to all the above descriptions. It is not in West Texas—nor in Texas. We all like our respective towns, of course, and Slaton will come as near filling the bill, as above described, as any of them. Slaton is a good town.

**WHAT MAKES A GOOD TOWN**

According to a Detroit factory specialist it takes 14 things to make a good town. He says there are 14 important points necessary to get some men to consider locating a plant outside of the larger cities. And here

they are: Land at fair prices; reasonable taxes; good shipping facilities and favorable freight rates; conservative banking; good houses for workers and at a reasonable rental; pure water and lots of it; safe sewerage disposal; good schools and churches; dependable fire and police protection; skilled medical service; adequate telephone service; progressive merchants; a community friendly to outside capital and industrial development.

Read over these specifications and figure for yourself just how many of them Muleshoe can boast. And if there are in the list some things we cannot lay claim, ask yourself why we can't since hundreds of other towns of like size are pointing to them in their efforts to induce outside capital to locate in their midst.—Muleshoe Journal.

To say the least, that list of fourteen points covers the principal things of importance. We believe Slaton measures up fine in most of these points, though perhaps not to every one of them as she should. Really, the only difficulty Slaton now has, as we see it in connection with the fourteen points here mentioned, lies in the matter of fire protection. And, on the second Tuesday in next month Slaton voters will decide upon a bond issue which, if they support it, will give the city adequate protection. We believe Slaton voters will vote for the bonds because it is nothing but good business sense to do so.

**SOMEBODY SAID**

SOMEBODY SAID there is plenty of evidence that financial conditions in Slaton are much better than a year ago: increased bank deposits, increased postal receipts, better tax collections, steady advance in building operations, business experiencing a healthy growth, produce sales mounting higher each week, fewer bad accounts reported by merchants, etc., etc. Why not smile and be exceedingly cheerful? The Slaton country is the best ever.

SOMEBODY SAID Slaton needs a community chest or a united charities organization of some sort to care for the urgent needs arising from time to time and for which there is no provision now existing whereby aid can be given even to worthy people. Charitably inclined Slaton citizens should support a movement to remedy this condition.

SOMEBODY SAID the health of the people is a thing of first importance to any community. Health is menaced by garbage and filth allowed to collect in the streets and alleys. Garbage disposal is highly necessary to the common welfare. If it isn't removed, it breeds flies and flies carry deadly disease germs to food eaten by children and grown-ups. Lives are lost as a result of typhoid and other diseases. Slaton needs an efficient method of garbage disposal.

SOMEBODY SAID the best sign of a progressive and growing town or community is the existence of good will, neighborliness and friendliness between the people living there. Let's cultivate these things and learn to appreciate our fellow-citizens more.

Mrs. Jack Whatley went to Fort Worth this week to be with a sister who was reported injured in an automobile accident.

Logan Rogers is building a nice resident house in the southeast part of town.

**DON'T FAIL**

to investigate  
**Lightning Cotton**  
EARLY—40% LINT  
Easy-to-Pick, Hard to Blow Out—1 to 1-16 inch staple.  
You should try some of this cotton.  
SEE  
**J. H. BREWER**  
First State Bank

**BEAUTY SHOP**  
WE ARE PUTTING ON ANOTHER SPECIAL ON  
**PERMANENT WAVES**

Until May 1, for ..... \$8.00  
Special on hot oil treatments ..... \$1.00  
Facials ..... \$1.00  
Ladies' and Children's Hair Cuts ..... 50c  
Marcelling ..... 75c

We have a new Marcel Operator. She is good

**VANITY FAIR BEAUTY SHOP**

**BETTER BAKING SERVICE**

WE HAVE JUST INSTALLED THE VERY LATEST MODEL

**MEEK REEL OVEN**

—and, with our baking staff of first class workmen, are in position to give you baked goods second to none. Fancy pastry is a specialty with us. Call around and see our stock equipment.

**CITY BAKERY**  
ASK FOR SLATON BAKED GOODS

**Millions of Model T Fords are still in active service**

FOR nearly twenty years, the Model T Ford led the motor industry and it still is used by more people than any other automobile. More than eight million Model T Fords are in active service today—an indication of their sturdy worth, reliability and economy.

Because of the tremendous investment which people have in these cars and because so many of them will be driven for two, three, and even five more years, the Ford Motor Company will continue to make replacement parts until, as Henry Ford himself says, "the last Model T is off the road."

For the Ford Motor Company has always believed that its full duty consists not only in making a good automobile at a low price, but also in keeping it running efficiently for you as long as possible at a minimum of expense.

No matter where you live, therefore, you can still buy Model T Ford parts with the same assurance as formerly, knowing that they will give you the kind of service you have a right to expect, and at the same time protect the money you have invested in your car.

All Ford replacement parts, as you may know, are made of the same materials and in the same way as those from which your car was originally assembled, and are low in price because of the established Ford policy.

So that you may get the greatest use from your Model T Ford over the longest period of time, we suggest that you take the car to the nearest Ford dealer and have him estimate on the cost of any replacement parts which may be necessary. You may find that a very small expenditure will maintain the value of your car and will be the means of giving you thousands of miles of additional service.



**FORD MOTOR COMPANY**  
Detroit, Michigan



The Cream of the Tobacco Crop



**FRED NIBLO**

Photoplay Director, writes:

"To a moving picture director there is no comfort or luxury like a good cigarette. Such a cigarette I have found in 'The Lucky Strike'—and during the filming of big pictures like 'Ben Hur' I smoked 'Luckies' even while directing in the open air thousands of supernumeraries, and never once did I ever suffer from throat irritation."

*Fred Niblo*

**"It's toasted"**

No Throat Irritation—No Cough.

©1928, The American Tobacco Co., Inc.

To Begin Two Weeks Mission Here Sunday



Father Thomas J. S. McGrath, S. J.

A two weeks' mission will begin at St. Joseph's Catholic Church, Slaton Sunday morning, April 15, Father Thomas D. O'Brien, pastor of that church announced Sunday.

A mission in a Catholic church corresponds, more or less to a revival in a Protestant church, and has for its purpose the spiritual rejuvenation of the members of the parish. Father O'Brien announced that while the mission is being given for the special benefit of Catholics, those of other or no denomination are most cordially welcome.

There will be two services every day, one in the morning and one in the evening. The morning services will take place at eight o'clock and will consist of mass, communion and a short instruction by the missionary. The evening services will be held at 7:30 and will consist of Rosary, sermon and benediction of the Blessed Sacrament. In addition to these two services each day during the two weeks' mission, there will be special instruction for the children every morning at 11:15 in which the missionary will couch his sermons in language suited to the tender years of children and will make use of copious examples to keep their interest alive and make his meaning clear to them.

The mission will be given by Father Thomas J. S. McGrath, S. J., a Jesuit Missionary who, since 1922 has been giving missions, lectures and retreats through the South and Southwest. He gave a two weeks' mission for Father O'Brien when the present Pastor of St. Joseph's church, Slaton, was in charge of Sacred Heart Parish, Amarillo. Father O'Brien says of him: "Father McGrath is a speaker after

the heart of Texans. He uses language that everyone can understand and makes abundant use of comparisons taken from things and happenings well known to his audience. He has a voice so strong and penetrating that it carries to the very end of the largest churches and cathedrals.

Even people who are hard of hearing have no difficulty in understanding him. He makes many telling gestures and means every word that he says. And he has a big heart that puts his audience in touch with him from the moment that he opens his lips to speak. He speaks the plain unvarnished truth, but offends no one. I invite the people of Slaton to come out and hear him.

Father McGrath is a native-born American. He was born in 1886 at Brookhaven, Mississippi and went to school at St. Francis parochial school for two years, and for three years to the public school of Clay City, Ill., whither his mother moved in 1897. After the death of his mother in 1899, he returned to Mississippi and lived with his paternal grandmother who sent him in 1900 to Spring Hill College, Mobile, Alabama. It was while studying in this Jesuit institution that he felt that he was called to the priesthood and entered the Jesuit seminary at Macon, Georgia, in September 1902 where he studied for five years. In 1907 he was sent to Woodstock, Maryland, for his course of philosophy and science and in 1910 was entered as professor at Spring Hill College. In 1910 saw him a student of Colegio de San Ignacio, Barcelona, Spain, where he was ordained a priest in 1918. Returning to America in 1919 Father McGrath became secretary of Loyola University of New Orleans, and in 1920 went to Plough-terprie, New York, for ten months of ascetical theology.

In 1922 his talent for preaching gave him a permanent place on the Missionary Band of Southern Jesuits and since then he has given missions and lectures in the principal cities of the South and Southwest, Phoenix, El Paso, Houston, San Antonio, Dallas, Amarillo, Fort Worth, Palm Beach, Memphis, Nashville, Knoxville, Charleston and many other cities and towns being on his schedule. He says, however, that the Texans are his favorite audience.

The list of sermons to be preached are as follows:

**First Week**  
 Sunday, April 15 at the 10:00 o'clock Mass "Christ Knocking at the Door."  
 Sunday, April 15 at 2:30 p. m., "88 from Infinity."  
 Monday, April 16, at 7:30 p. m., "Tinsel for Gold."  
 Tuesday, April 17 at 7:30 p. m.,

"When friendship fails."  
 Wednesday, April 18 at 7:30 p. m., "Christ or Sophist."  
 Thursday, April 19, at 7:30 p. m., "United Yet Divided."  
 Friday, April 20, at 7:30 p. m., "Seventy times Seven."  
 Saturday, April 21, No sermon. Confessions.

**Second Week**  
 Sunday, April 22 at the 10:00 o'clock Mass, "The Liturgy of the Mass."  
 Sunday, April 22, at 7:30 p. m., "Why I am a Catholic."  
 Monday, April 23 at 7:30 p. m., "The authority of the Catholic church."  
 Tuesday, April 24 at 7:30 p. m., "The Infallibility of the Catholic Church."  
 Wednesday, April 25 at 7:30 p. m., "Can Priests Forgive Sins?"  
 Thursday, April 26 at 7:30 p. m., "Where Catholics and most Protestants Differ."  
 Friday, April 27 at 7:30 p. m., "Other Christs."  
 Saturday, April 28, no sermon—Confessions.  
 Sunday, April 29 at the 10:00 o'clock Mass "The Peerless Woman."  
 Sunday, April 29 at 7:30 p. m., "Back to Christ."

NURSERY OPENED

The Ruth Wesley class of the Methodist Sunday school opened a nursery in the church basement last Sunday. All mothers are urged to come to church, and if your baby gets fretful take it to the basement and it will be cared for. Any child under four years of age is welcome. The nursery will open each Sunday at the morning service.

"I just loaned that singer ten dollars."  
 "I see—must be a tenner."

Announcements

The Slatonite has been authorized to announce the following persons as candidates for public office, subject to the action of the Democratic Primary in July, 1928. Voters of Slaton and Lubbock county are requested to give careful consideration to those whose names are listed as follows:

**For District Judge, 99th Judicial District:**  
 CLARK M. MULLICAN, of Lubbock. (for re-election)  
 CHAS. NORDYKE, of Lubbock.

**For County Judge:**  
 D. E. KEMP, of Slaton.  
 GEORGE W. FOSTER of Lubbock

**For County Attorney:**  
 BENJAMIN KUCERA, of Lubbock.  
 VAUGHN E. WILSON (of Lubbock)

**For Sheriff:**  
 H. L. (Bud) JOHNSTON, of Lubbock. (for re-election)  
 WADE HARDY of Lubbock  
 C. A. HOLCOMB, of Lubbock  
 ROSCOE PARKS, of Lubbock.

**For County Clerk:**  
 AMOS H. HOWARD, of Lubbock. (for re-election to 2nd term)

**For County Treasurer:**  
 VIRGINIA FANN, of Lubbock.  
 MISS ANNIE FORD, of Lubbock.

**For Tax Collector:**  
 A. J. CLARK, of Lubbock.

**For Tax Assessor:**  
 R. C. (ROLLIE) BURNS, of Lubbock. (For Re-Election)  
 CHAS. B. METCALFE, of Lubbock.

**For Justice of Peace, Precinct No. 2:**  
 J. H. PHILLIPS

**For Commissioner of Precinct No. 2:**  
 J. T. PINKSTON, of Slaton (Re-election)

**For Public Weigher, Precinct No. 2:**  
 I. E. MADDEN (for re-election)  
 J. G. HARPER

NOTICE FLOWER LOVERS

If you have a surplus supply of flowers, bulbs, plants or seeds of any kind and would like to assist in beautifying your city or if you desire bulbs, plants or seeds for home planting to help beautify your city; the civic committee of the Civic and Culture Club, co-operating with the Chamber of Commerce, will be glad to help you arrange an exchange.

If you are interested please phone either Mrs. A. L. Robertson, Mrs. Bessie Donald, or Mrs. P. G. Stokes.

New Drawing-in Frames Added

The Textile Engineers are the proud possessors of two new drawing-in frames that have been recently received from England. These machines have been a long felt need in the Textile Department; they will be installed and started working immediately.

Slatonite Want Ads Pay!

Ray Kirby, returned Monday morning from a several days visit in Fort Worth and Nevada, Texas, with friends and relatives.

A. KESSEL

Graduate of School of Podopedic, using Dr. Scholls foot appliances, specializing in correct shoe fitting. No charge for consultation, carrying full stock of corrected shoes.

At Kessel's Department Store.

WILLIAMS Transfer & Storage

L. M. WILLIAMS, Owner

Prompt, Courteous and Economical Transfer and Drayage Service

Long Hauls a Specialty.

Economical, Fireproof Storage Room. Satisfaction Guaranteed.

TELEPHONE 51

Get Your Car Washed!

500-lb. pressure washer. Will clean your engine of dirt and grease. Also first class mechanic to do your repair work. All work guaranteed. Also rent cars and taxis, at Selmon Bldg., Phone 444.

Selmon & Clark

Greater Imperial Shows

Auspices Slaton Volunteer Fire Department  
 April 10 to 14

Riding Devices, Circus, Side Shows and Other Feature Attractions

PECOS TOM'S RODEO

22 Head of Bucking Horses, including that famous outlaw, "Blue Bird"

Lady Riders — Trick Ropers

SPECIAL SHOW SATURDAY AFTERNOON

Let'er Buck!

Ride 'em, Cowboy!

Fun for All -- All for Fun

The

most up-to-date refining processes, the most capable chemists and engineers, the most advanced methods of distribution—these are just a few reasons why CONOCO stands for utmost dependability.

THE triple test MOTOR FUEL



- 1 Starting
- 2 Acceleration
- 3 Power and Mileage

Just Tottering, So Weak

"I was in a bad state of health and was going through a critical time of my life," says Mrs. Ella Scarborough, R. F. D. 5, Dothan, Ala. "Several different things were recommended to me, but I did not get any real relief until I began to take Cardui.

"I was just as weak as could be. My legs were shaky, and often I would just totter around the house. I finally got so bad that I was in bed several weeks.

"It was then that I began to take Cardui. I kept it up for quite a while, and at last I regained my health. Cardui was certainly a friend to me in time of need.

"My health is splendid now, and I seldom have to use medicine, but I gladly say a word about Cardui whenever I find a friend going through the same suffering which I endured."

For sale by all druggists.

TAKE CARDUI A PURELY VEGETABLE TONIC

O. N. ALCORN

Transfer and Storage

Daily Truck to Lubbock Long Hauls Our Specialty.

All Work Guaranteed.

Night Phone 278-J

Day Phone 99

**Dist. Conference to Meet in Slaton**

The District Conference of the Methodist Women's Missionary Society, of Lubbock District will meet in Slaton, April 15 and 16, at the local Methodist church.

Mrs. Ina Davis Fulton, council treasurer and Miss Ethel Wells, graduate of Scarritt Bible school and former missionary will be distinguished guests. The following program will be given:

April 15.  
7:45 p. m.:  
"The day is dying in the West"—Girls' Choral Club.  
Hymn No. 408.  
Introduction of Lubbock District Secretary—Mrs. S. H. Adams.  
Devotional—Miss Ethel Wells.  
"Now the Day is Over"—Girls' Choral Club.  
Recognition of Pioneer Women—Lubbock District Secretary.  
Violin solo—Miss Guffin.  
Triumphs of the Past Fifty Years—Mrs. Ina Davis Fulton.

**Announcements.**  
Hymn No. 350.  
Benediction.

April 16.  
9:00 a. m.:  
Hymn No. 461.  
Devotional—Mrs. Ina Davis Felton.  
Sacramental Service—Rev. Doak and Rev. Leveridge.  
Hymn No. 348.  
Welcome address—Mrs. David Tudor.  
Violin solo—Howard Hoffman.  
"History of Lubbock District"—Mrs. S. H. Adams.

**Reports from Zones**  
Zone 1—Mrs. W. B. Downing.  
Zone 2—Mrs. George Wolfforth.  
Zone 3—Mrs. Claude Ledger.  
Zone 4—Mrs. H. C. Pierson.  
Zone 5—Mrs. R. A. Metcalfe.  
Zone 6—Mrs. W. K. Crowley.  
Extension of the organization—Conference Delegate.

Re-evaluation of Our Task:  
Young people—Mrs. B. L. Cogdell.  
Children—Mrs. J. W. Chisum.  
Social service—Mrs. A. W. Evans and Mrs. J. C. Granberry.  
Study—Mrs. G. M. Stewart.  
Supplies—Mrs. J. D. Peters.  
Publicity—Mrs. J. B. Hoskins.  
Local Work—Mrs. A. C. Hyatt.  
Vocal solo—Mrs. N. A. Sturat.  
Spiritual cultivation—Mrs. H. T. Kimbro.

Luncheon from 12:30 to 2:00 p. m.  
2:00 p. m.:  
Hymn No. 633.  
Devotional—Mrs. V. H. Fisher.  
Financial goal and how it is to be obtained—Mrs. Ina Davis Fulton.  
The honor roll and Jubilee standard  
How and why obtained—Mrs. C. P. Carlock.

Memorial service—Mrs. W. R. Graber.  
Round table discussion—Lubbock discussion—Lubbock District Secretary.  
Order of business.  
Hymn No. 564.  
Benediction.

**ATTENDS CONVENTION**

Mr. and Mrs. A. G. Taggart were in Amarillo Monday, Tuesday and Wednesday, where Mr. Taggart attend the annual meeting of the Panhandle Hardware and Implement Association, representing the Slaton Hardware Co., of which he is manager.

A. Kessel was in Abilene the latter part of last week, attending a meeting of the West Texas Federated Store managers.

**MISSIONARY SOCIETY**

The junior girls of Mrs. Adam's class of the Methodist Sunday School met Wednesday, March 28th, at 4:30 for the purpose of organizing a Missionary Society.

The following officers were elected: Murrel Wicker, president; Le Moine Barnes, vice-president; Katrina Houston, corresponding secretary; Rachel Darwin, recording secretary; Joan Drewery, treasurer; Mildred Rucker, local treasurer; Helen Hatlan, social society superintendent; La Verne Bloodworth, superintendent of supplies; Mrs. Adams, superintendent of studies; Estelle Tunnel, local worker; Mildred Bloodworth, reporter; Mildred Rucker, delegate to district conference.

We will meet the third Wednesday of each month at 4:30 at the Methodist church.

Miss Daisy Cross returned Wednesday from visits with relatives at Canadian and other points.

J. W. Elrod and family are moving to Sweetwater this week, where Mr. Elrod is opening a furniture store.

E. N. Twaddle, of Lubbock, transacted business here Tuesday. Tell City Secretary Harvey Avatin to order a garbage can for you.

**ANNOUNCEMENT**

We have moved our furniture stock to the Forrest Building on Ninth St., next door south of Worley Hardware.

In our new location, we have more room, and are more conveniently located.

Our large stock of high grade furniture and gas stoves will be added to, and we expect to be in position at all times to care for the needs of our customers.

Visit us in our new location and get our prices before you buy.

**O. D. McCLINTOCK FURNITURE**

The Home of the White Star Stove.

**SWIFT & COMPANY is Installing a Cream Station at the STAR GROCERY**

200 Ninth Street, Slaton, Texas.  
We will be ready to buy Cream SATURDAY

You Can Save Money on Your Grocery Bill by Trading With Us.

- Vinegar, 1 Gal. ....20c
- Peaches, 1 Gal. ....59c
- Spuds, 10 lbs. ....29c
- Oranges, 1 doz. ....25c
- Sugar, 10 lbs. ....69c
- Maxwell House Coffee, 3 lb. can ..\$1.49

We Will Pay Cash For Eggs And Chickens

Come in and look our stock over. Everything fresh, just opened up.

A. N. HARPER.

**P-A-L-A-C-E THEATRE**

**"The Bright Spot of Slaton"**

FRIDAY AND SATURDAY, APRIL 13-14

The Dynamic Drama of a Dog's Devotion



WILLIAM FOX presents **WOLF FANGS**

With THUNDER, the Canine Marvel - Also 2-act Fun Comedy

MONDAY AND TUESDAY

A Romance of the Oklahoma Oil Gushers  
William Fox Presents **BLANCHE SWEET** in

**"Singed"**

The Strength of a Woman's Love Effects the Rescue of a Soul! Also a Real Funny Comedy

WEDNESDAY AND THURSDAY

Gigantic Sets! Hundreds in the Cast! A Thrill in Every Scene!



Wasn't there a single man in this crowd of pirates and slave smugglers? Must she be the slave to the highest bidder? The answer is climaxed in a series of breath-taking scenes in this colorful drama of Old Louisiana.



**CHEVROLET USED CARS**  
with an OK that counts

Because we are delivering more new Chevrolets than at any other time in our history, we are offering a number of exceptional values in reconditioned used cars.

Our used cars carry an official O. K. tag which is reproduced on this page. Attached to a used car by a Chevrolet dealer it signifies that every vital part of the car has been inspected, properly reconditioned

and where worn, replaced by a new part. This plan enables anyone to select a used car with absolute confidence as to its satisfactory operation, and the price is absolutely fair and right.

**Reasons why you should buy your used car from a Chevrolet dealer**

- 1—Chevrolet dealers have been selected by the Chevrolet Motor Company on the basis of their financial responsibility and dependability.
- 2—Chevrolet dealers offer used cars on a plan originated and endorsed by the Chevrolet Motor Company.
- 3—Chevrolet dealers have the best every modern tools and equipment to properly recondition used cars.
- 4—Chevrolet dealers desire the good will of used car buyers they care as they enjoy from new car buyers.

A few of our exceptional Used Car values "with an OK that counts"

MAXWELL TOURING 1926  
Driven only 18,000 miles, 5 good tires, top and body in good condition. Engine runs perfectly. Bargain at \$450.00.

FORD TOURING 1924  
In good condition, 4 good tires, engine in good shape, ready to go—with red tag. Price only \$110.00. Terms.

CHEVROLET COACH  
Five good tires, good paint, runs good. Must be seen to be appreciated. Price \$175.00, with terms.

**Jackson Chevrolet Co**

Dependability, Satisfaction and Honest Value



## THIS INDUSTRY IS INSURED FOR FIFTY MILLION DOLLARS

**D**ON'T put all your eggs in one basket, might easily be the slogan of the pineapple industry in Hawaii, built up during the last twenty-five years on a single variety of pineapple, the Smooth Cayenne. This variety was selected by John Kidwell, a pioneer of the industry, as being the fattest and juiciest for canning purposes.

**Pineapple, King's Delicacy**  
For many years this petted pineapple was raised by English horticulturists under glass, and served as a delicacy for only Kings' and potentates' consumption. Today, something like 200,000,000 cans a year of this pineapple are sent out from Hawaii for the dinner tables of the world!

Putting all one's eggs in one basket? It looks like it, since should anything happen to this incomparable variety the pineapple industry would presumably be destroyed.

It has happened before to other soil products, since every product of the soil has its insect enemy.

Coffee growing was formerly a rich industry in Ceylon and Java. It was built up on a single variety of Arabian berry. The berry became ill, an unknown and apparently uncombatable plant disease seized it, and the berry was destroyed. There were types of coffee immune to the disease, but they had not been bred to meet the requirements of commercial coffee. The East Indian coffee industry vanished like a whiff on the wind.

**One Hundred Thousand Dollars**  
Insurance against the pineapple industry vanishing in like manner costs that industry just one hundred thousand dollars a year.

The pineapple experiment station of the University of Hawaii is con-

stantly growing all sorts of types of pineapple from seedlings, from parts of other pineapples, from different varieties, in a never ending search to find a variety possibly better than the Smooth Cayenne, or to replace the Smooth Cayenne should anything happen to it. And here remedies for the Smooth Cayenne's "diseases" have been evolved. The "yellows," for instance, which was thought to be a form of disease, eradicated by feeding the pineapple iron, and the "wilt" overcome by plant selection!

Sometimes in the big canneries, that rare thing, a pineapple with seeds, is found. The Japanese, Chinese, Filipino, Korean and Hawaiian girls who make up the "personnel," guard it as though it were worth many millions of dollars. And indeed it may be. For, from one of its many seeds may possibly be grown that single, priceless new type which the pineapple planters of Hawaii are seeking!

**A Priceless Type**

This pineapple is dispatched at once to the University in Hawaii for planting. Sometime in 1929 or 1930 the results will be known. For from this seedling will be grown several dozen plants entirely different from the parent fruit, and all different from each other. Maybe the priceless pineapple will be among them. But probably not. For if this seedling runs true to form, there will probably be just a few dozen more freak fruits of no particular value.

Some of these seedlings are delicious to eat, because they contain twice as much natural fruit sugar as the Smooth Cayenne. Have you ever eaten one? If you have, you'll be able to tell the usual fairy tale of this

exclusive tropical fruit, which makes, so you will say, the ordinary pineapples taste like potatoes. But when a tourist, lured by the tales of this mysterious fruit, asks you for one of them, you will probably have to sadly shake your head, and inform him that this marvelous pineapple is available only two or three weeks in the year, and now it is out of season!

**Plant Trials**

Ninety acres at the University of Hawaii experiment station are devoted to plant trials, the growing of seedlings and the study of new varieties brought to the islands by plant explorers. Steady progress is being made in acquiring knowledge, but nature has not yet bestowed any dazzling prize in the shape of a new variety.

Pineapple growers themselves are raising millions of plants every season in the field, for canning fruit. It may be that nature will prefer to introduce a valuable new strain among these millions of field plants, rather than in the wholly scientific acres of the Hawaii experiment station.

**Hawaii on Guard**

Who can tell? Anyway Hawaii is on the lookout for anything which might destroy her magnificent variety of pineapple, the Smooth Cayenne, just as Java was on guard against the destruction of the "Cheribon," a variety of cane sugar which was attacked by a disease which annihilated it. But in the latter case, scientific selection of seedlings had produced more satisfactory varieties immune to the disease, and the Java sugar industry was saved. So the fifty million dollar investment of the pineapple industry in Hawaii is protected through its one hundred thousand dollar policy, the annual cost of the experimental work at the University of Hawaii.

# FURNITURE

At **Extraordinary Values**

We are now showing attractive values in house furnishings. Complete suites, and odd pieces. For furnishing the home, a room, or, for even an odd piece of furniture, we know we can make a saving for you—and at the same time give you up-to-date, dependable merchandise.

A Big Assortment of **LEONARD'S REFRIGERATORS**

"The Best on Earth"  
Beautiful—Economical—Practical

**Home Furniture Company**

Texas Avenue

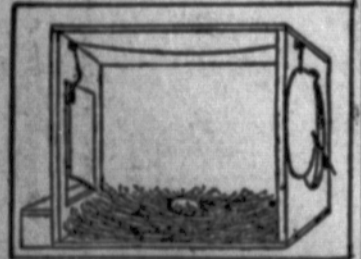
FOR SALE—Mesquite Grubs for sale at my place, 2 mi. northeast of Posey. Foster Carroll.

### TRAP NEST TO TELL PROFITABLE FOWLS

One of the principal objections to the trap nest generally employed where individual records of hens are desired is that too much time is required to take the hens out of the nests and record their achievements, says Orange Judd Farmer. Many farmers and poultrymen who would like to know which hens are profitable and which not, in their flocks, will therefore welcome such a nest as pictured herewith.

As will be seen, the nest is an ordinary box. The front is provided with a very light door made of a shingle or other light wood, and swung on a pivot from the top. Near the middle of the right-hand side is shown a little bar, also pivoted where it touches the door. Toward the lower end of this little bar is a notch, which as the door is lifted engages on the latch on the side below.

When the hen enters to lay she lifts the door and disengages the latch.



Hen-Releasing Trap Nest.

As she passes through, the door drops again and closes the entrance. When she has laid she notices the opening at the back of the nest and passes into a different pen or alleyway. As soon as she does so she raises this back door, which is hung from the top on hinges, and a string which passes over two spools lifts the front door and releases the latch, so that another hen may then enter the nest.

The only objection to this method of trap nesting hens is that it is not possible to know which egg is laid by any one hen, but it is possible to know which hens are and which are not laying in the flock; and the hens can be credited with the number of eggs they lay, so that the poultryman may know which are the most profitable birds and can select them for the following year's breeding flock.

# PIGGLY WIG

*It's Foolish to Pay More and Risk*

# SPECIAL

# SATURDAY

## Panop

<b>Sugar</b>	PURE CANE 15 Pound
<b>Post Toasties</b>	LARGE PACKAGE
<b>Peaches</b>	AUTO BRAND 2 1-2 Can
<b>Spuds</b>	EXTRA FANCY 10 Pound
<b>Peas</b>	VAN CAMPS EARLY JUNE No. 1 Can
<b>Salmon</b>	GENUINE PINK Per Can
<b>Peaches</b>	BLUE RIBBON 5 Pound Package
<b>Peaches</b>	CALIFORNIA PAC Per Gallon
<b>Jel Sert</b>	The New Desert 3 Packages
<b>Pumpkin</b>	RIDERS No. 2 Can
<b>Soap</b>	BIG FOUR 10 Bars
<b>Milk</b>	CARNATION Large Can
<b>Peaches</b>	SUNKIST Heavy S No. 2 1-2 Can
<b>Pineapple</b>	Del Monte, Gold B No. 1 Flat Crushed
<b>MARKET SPECIALS</b>	
<b>Pork Roast</b>	PER POUND <span style="float: right;">.20</span>
<b>Cured Ham</b>	SLICED Per Pound <span style="float: right;">.38</span>
<b>Meat Loaf</b>	PER POUND <span style="float: right;">.20</span>
<b>Pork Sausage</b>	PER POUND <span style="float: right;">.20</span>

How Should One Prepare When  
ing to Worship? — Mrs. Benno  
like.  
Recitation—Wallace Becker.  
Quartet—Southland Leaguers.  
Address—Rev. C. N. Roth.  
Hymn 184.  
Bible Questions—Miss Frieda Wal-  
r.  
Hymn 51.

where you need  
sheds, or, at least,  
ainting. Look the  
and if you do need  
lines, get it attend-  
  
e stock of Lumber,  
uilding Materials—  
  
elp improve the  
ndle.

**Handle**  
**er Co.**

**nt-up**

a clean town,  
oughly clean our  
institutions, are  
ible to make Sla-  
  
od see that Sla-  
breeding impuri-  
  
lean-up Week is

**ABERNATHY BLAZE RAZES BUILDINGS**  
**ABERNATHY**, April 11.—The "bucket brigade" was employed at Abernathy early tonight in combatting a fire of unknown origin which destroyed two frame buildings, for a few minutes, threatened the entire business section, and which occasion-

ed a loss estimated at \$5,000. Scores of Abernathy men and boys, rushing to the scene of the blaze, immediately formed a line and bucket after bucket of water was tossed on the flames. A call was immediately placed for a pumper from Lubbock but when the more modern apparatus reached the

site, the buildings had been levelled to the ground. However, the determined efforts of the Abernathy men, aided by other willing bystanders, enabled them to rescue all of the contents of one store and part from another. Sufferers from the blaze were the Hardin Produce company, owned by J. E. Hardin; the D. L. Williams Grocery, and the C. L. Smith garage.

The Hardin company, contents and building, were a total loss, estimated at \$3,500 by the owner, with \$1,000 insurance. Stock from the Williams grocery was carried to safety but was damaged by water and breakage to the extent of about \$500; loss on the building housing the grocery and garage, owned by Sam Merrill, was put at \$1250; and the garage had a loss of several hundred dollars.

April 16th to 21st is  
**CLEAN-UP WEEK**

We have the fencing, tools, water hose, chopping hoes, rakes, sprays, sprinklers, lawn edgers, etc., which will enable you to observe this Clean-up Campaign.  
 "The House of Satisfaction"

**WORLEY HARDWARE CO.**

Hardware at Popular Prices

Quality :-: Service

Phone 121 Slaton, Texas

**Extra Specials in Spring Dresses**



The marked vogues in the style for spring time wear are especially well interpreted in this showing of the new modes. Special for Saturday and Monday: One group of Dresses valued up to \$13.75— Two of these Dresses for \$15.00 For the Two Days Only

**Kessel's**

"Where You Do Better"

An Extra Measure  
 Of Good Value in Our

**Suits**

With Two Pairs of Pants

We usually sell these same suits with one pair of pants only, but a special purchase enables us to offer this great value to you tomorrow!

- New Fabrics!
- New Shades!
- Single and Double Breasted
- Two and Three Button Models!

Not a style, color or fabric missing! Fine for Spring wear too! In all sizes.



Remember Every Suit With  
 Two Pair of Trousers

**The Men's Store**

Uzzell and Thomas



BILLIE DOVE and GILBERT ROLAND in "THE LOVE MARI"

Coming to Palace for Two Days Starting Wednesday, April 18

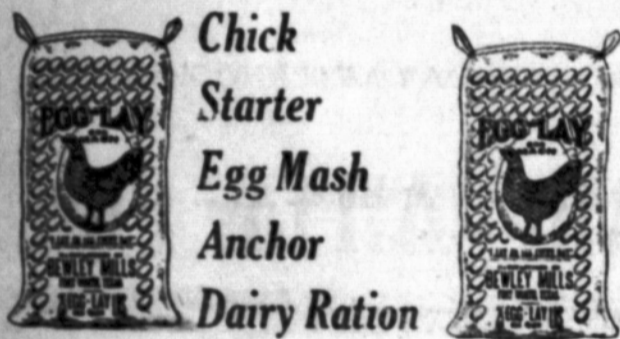
**Clean-Up Week**

The week of April 16th to 21st has been designated as CLEAN UP WEEK. This is a good time to rid your premises of all fire hazards. Provide proper receptacles and burn all trash. And do not forget to inspect your wiring. Less fires means cheaper insurance.

We will be glad to assist you with your insurance problems.

**Rector Insurance Agency**

First State Bank Building Phone 248



The health of your cattle and flock depends largely on the feed they are given. Feed them right at no more cost. Use BLUE RIBBON Feeds—from the Bewley Mills.

**Texas Grocery**

ASK FOR THIS LABEL

ON YOUR PRINTING—

It is your guarantee of good work produced under better working conditions, at fair wages.

The Slatonite and all printing from its plant is the product of Union labor.

Typographical  
 Union  
 No. 888

**Protected everywhere**



**Goodenit TRIPLWEAR**

\$1

Made of Special Super-shrunk 80x88 Pajama Check Regulars Slims Stouts

The extra strength and extra wear of TRIPLWEAR is in the protective features built into every garment. 1. The cross of tape on back prevents tearing. 2. The patented loop of tape across washing prevents washing tearing. 3. The buttons are reinforced with tape. 4. The seat button is attached with tape—will not pull off. 5. Armholes are reinforced with tape on inside. 6. Each garment cut extra full for comfort, too.

**FANCY MADRAS**  
 A triplewear garment with all protective features, made of fine Fancy Madras, a quality garment at a moderate cost—

\$1.25

**BROADCLOTH**  
 A triplewear garment with all protective features. Made of extra fine white Broadcloth. A quality garment for extra wear, at moderate cost—

\$1.50

SEE OUR WINDOW  
 The Bean Test is on.  
**O. Z. BALL & COMPANY**  
 "Pay Less and Dress Better"

## Sheriff Bud Johnston and Bonding Firm Face Suits Totaling \$55,600

Two civil suits, aftermath of the fatal shooting of W. H. Richardson here the night of last January 4, when members of the sheriff's department raided an alleged liquor cache near the Lubbock Compress were filed in the 72nd district court here Monday afternoon. The suits aggregate \$55,600.

Sheriff H. L. Johnson and the Fidelity and Deposit Company of Maryland are defendants in each suit. J. E. Richardson, son of the deceased W. H. Richardson, is plaintiff in the first suit; and Mrs. Naomi Richardson, widow of the deceased, is plaintiff in the other.

J. E. Richardson asks \$15,000 as damages for his alleged unlawful arrest made the night before the shooting; and makes the allegation that Sheriff Johnson and Deputy Vernice Ford arrested him in order to prevent him from interfering in what he term-

ed an unlawful plan to kill his father. Ten thousand dollars are asked for actual damages and \$5,000 for exemplary damages.

He further alleges that the officers arrested him the night of January 3 in front of the Lubbock Inn while he was in company with George Roberts and that the arrest was made without the slightest cause or justification, and without warrant to his arrest and without any order or legal authority. Whiskey confiscated by the officers at the time of the arrest belonged to Roberts, and was in a car belonging to Roberts, the plaintiff alleges.

Further allegation is made that Deputy Ford searched him for weapons and then forced him to place his hands on his knees with the threat that he (Ford) would kill him if he moved.

As a result of the alleged unlawful arrest, the plaintiff says he was made to suffer and will continue to suffer great physical pain and mental anguish and inconvenience, and that he "suffered a great nervous shock—his nervous system has been deranged, and he has been ever since a nervous wreck."

The suit brought by W. H. Richardson's widow asks for damages aggregating \$40,600. She alleges that her husband had one thousand dollars on his person at the time of the shooting, and that the defendant and his deputies took \$600 from the person of the dead man.

She asks for \$15,000 actual damages against Sheriff Johnson individually and as sheriff of Lubbock county, and for the further sum of \$20,000 against Johnson as exemplary damages.

She alleges that Johnson and his deputies acting in their capacities as officers, "unlawfully, willfully, wickedly, and maliciously, and with formed design to kill and murder her husband," deprived her of all of her means of support.

John G. Wilson of Dallas is attorney for both plaintiffs. —Lubbock Morning Avalanche.

### Creations of Dickens Real to the Author

Many of Charles Dickens' creations were worse than nightmares, as all strong characters in fiction must necessarily be. They were daymares. They were with him in his long mechanical walks, governed by mile-stones and timed by a stop-watch. He was glad of a congenial companion to exercise these spirits. They came back to him in the evening, and in the dead of night they often moved him to rise and walk that long tramp's tramp of 27 miles from Tavistock square to Gadshill through the mists of early morning.

In writing his strongest characters, Dickens always acted them. He could hardly do otherwise with his dramatic temperament and the dramatic nature of his works. Why more dramas have never been manufactured out of these works is found in the fact that they contained too much dramatic and "objective" material than too little.

From this creation of dramatic fiction the step to dramatic recitation was easy and simple. It was always a mistake to call these efforts "readings." They were the most dramatic of recitations. —Cleveland Plain Dealer.

### BLUE BONNET CLUB.

The Blue Bonnet Club met in regular session April 11, at the home of Mrs. Fred Tudor. After a business session, the evening was spent in playing "42". Delicious refreshments were served to fourteen members.

The next meeting will be held at the home of Mrs. Roy Cobb, 410 S. Ninth St. All members are requested to be present.

Reporter.

### A FAREWELL PARTY.

On Thursday evening a group of friends of Mr. and Mrs. Elrod and family met at the Clubhouse in a farewell party. The evening was spent in a social way until late, when there were farewell addresses made by Bro. Berry and Mr. Foviz, responded to by the honorees. Refreshments of delicious cake and ice cream were served. A Guest.

Tell City Secretary Harvey Austin to order a garbage can for you.

Slatonite Want Ads Pay!

### LUTHERAN CHURCH.

There will be no services next Sunday. The Luther League will meet at Southland Sunday evening at 8 o'clock.

Program:  
Hymn 182  
Psalm 84  
Hymn 277.

How Should One Prepare When Going to Worship? — Mrs. Benno Wilke.

Recitation—Wallace Becker.  
Quartet—Southland Leaguers.  
Address—Rev. C. N. Roth.  
Hymn 184.  
Bible Questions—Miss Frieda Walter.  
Hymn 51.

# After the Cleanup

—You are likely to see where you need some new fencing, new sheds, or, at least, some repairing and painting. Look the premises over good, and if you do need something along these lines, get it attended to early.

We carry a complete stock of Lumber, Paints, Fencing and Building Materials—and want to serve you.

We are here to help improve the Panhandle.

## Panhandle Lumber Co.

## Announcement

The Justright Bakery—located next door north of Chick's Grocery and Market, will open for business

SATURDAY, APRIL 14

—With a full and complete line of Fresh Baked Goods, including most anything in the Fancy Pastry Line.

We invite you to visit us.

**JUSTRIGHT BAKERY**  
LIPSEY & BOYKIN

### City Appoints Local Pound Man

W. N. Martin, of Slaton, was appointed by the city commission last week as pound man and dog catcher for the City of Slaton, it was stated early this week by city secretary Harvey Austin. Mr. Martin has instructions to catch and impound all dogs on which license for the year 1928 have not been paid, it is stated.

### Target Practice.

Mrs. Peck: "Henry, did you see anything in the paper about Mr. Blinker running over his mother-in-law?"

Peck: "Not yet. I haven't come to the sporting news." — Boston Transcript.

Tell City Secretary Harvey Austin to order a garbage can for you.

J. D. Jordan, of Dallas, brother-in-law of Mrs. T. A. Kirby, was in Slaton last Sunday on business and visiting with relatives.

## NEXT WEEK--- CLEAN-UP WEEK

Let's clean our premises of all trash and rubbish. Let's make Slaton a clean town. It will take some effort, and hard work, but we believe in keeping our town clean—and we are willing to do our part.

For your convenience during cleanup week, we have—  
**Hoes, Rakes, Shovels, Spades, Forks, Mowers, Lawn Hose, Sprinklers, Spray, Fencing, etc., etc.**

You will find here anything you need for spring work

## Demonstration Friday

From 3 until 5:30 Friday, April 13, we will conduct a demonstration of our new improved Kelvinator refrigerator. We want the women, especially, to call at our store, and see this remarkable refrigerator system.

**Slaton Hardware Co.**  
"The Winchester Store"

## Clean-up Paint-up

If Slaton is to be a healthy town, and a clean town, we must join in the campaign to thoroughly clean our city. We, as one of Slaton's substantial institutions, are anxious to co-operate in every way possible to make Slaton the cleanest town in this section.

It takes effort—let's put it forth, and see that Slaton is rid of all trash, rubbish and fly-breeding impurities.

It can be done, and it will pay to do it. Clean-up Week is

NEXT WEEK

**Slaton Cotton Oil Company**

YOURS FOR A CLEANER TOWN  
E. F. KING, Manager



**ABERNATHY BLAZE RAZES BUILDINGS**  
 ABERNATHY, April 11.—The "bucket brigade" was employed at Abernathy early tonight in combating a fire of unknown origin which destroyed two frame buildings, for a few minutes threatened the entire business section, and which occasioned

a newspaper of general circulation published in the City of Slaton, which notice shall be published once each week for five successive weeks, the date of the first publication being not less than thirty days prior to the date of said election.

S. F. KING,  
 Mayor, City of Slaton, Texas.  
 ATTEST:  
 HARVEY AUSTIN,  
 City Secretary. 32-5c

April 16th

**Interesting Map Is Received by College Library**

The college library has received an exceedingly interesting and valuable map which will be made available to students as soon as possible. Mr. Clifford B. Jones, chairman of the Board of Directors said in presenting the map to the college:

The map shows:  
 This map was "prepared by one of our engineers from military surveys and data made in the very early days and recently procured by us from Captain R. G. Carter, U. S. A., retired."

Trail and routes used by the 4th U. S. Cavalry under command of General Ronald Suddell MacKenzie in its operation against hostile Indians in Texas, Indian territory (New Oklahoma), New Mexico and Old Mexico, during the period 1871 to 1875, inclusive and including:

- 1. Old forts, posts and camps;
- 2. Actions with Indians by 4th U. S. Cavalry 1871 to 1875;
- 3. 4th Cavalry detachments, 1871 to 1876;
- 4. Camps of General MacKenzie's command 1871 to 1876;
- 5. The Chisholm Trail from San Antonio to Dodge City and Abilene, Kansas;
- 6. The raid into Mexico, May 17th and 19th, 1873;
- 7. Identifying by the names of those early years the creeks, springs, lakes, and peaks, particularly of West Texas.—Texas Tech Toreador.

"I presume your daughter's education was quite extensive."

"No, expensive."

Slatonite Want Ads Pay!

**Tech Wins Many At Plainview's 1st Dairy Show**

The first annual dairy show which was held at Plainview recently, and was restricted to 54 counties had a total of 77 exhibitors with 230 individual entries.

Texas Tech with Simms and Stancil were the principal prize winners. Tech exhibited both Jersey and Holstein-Friesians.

Tech won second in the production contest with Sadie Vieman Creamell-Hartog, Grand Champion Holstein cow, being beaten by the grand champion Jersey cow.

The other winnings made by the Tech entries were:

- Jerseys**
1. 1st Bull—2 yrs. and under 3.
  2. 1st Junior Yearling Heifer.
  3. 3 and 4—Cows, 4 yrs. and under 5.

- Holstein Friesian**
1. 1st Bull—2 yrs., under 3 yrs.
  2. 1st Jr. Yearling Bull.
  3. 2nd and 4th Junior Bull Calves.
  4. Senior Champion Bull.
  5. Senior Champion Calf.

- Holstein Cows**
6. 1st Cow—5 yrs. and over.
  7. 1st and 2nd cow, 4 yrs., under 5.
  8. 1st cow, 3 yrs., under 4.
  9. 1st cow, 2 yrs., under 3.
  10. 1st and 2nd Senior Heifer Calf.
  11. 1st Junior Heifer Calf.
  12. Senior Champion Cow.
  13. Junior Champion Cow.
  14. Grand Champion Holstein Cow.

**DOG SCORES AS SCREEN HERO IN CURRENT STORY**

"Thunder" Portrays Dramatic Part in "Wolf Fangs," A Tale of Dogs Gone Wild.

"Thunder," the newest dog discovery whose work in "Wings of the Storm" created such a sensation last year, has added new honors to his name through his performance in "Wolf Fangs," his second starring vehicle for Fox Films which will be at the Palace next Friday and Saturday.

Thunder more than lives up to his reputation as a dog with almost human intelligence and understanding. His reactions to every situation are

**Wind Velocity In Lubbock is Not so Great**

Contrary to the belief of many of the new students, Lubbock is not the windiest region in the United States—in fact it compares favorably with many other places; during the recent severe windstorm on last Wednesday night, Professor C. H. Mahoney visited the wind gauge on the campus, and calculating the wind velocity, found it to be only 44.8 miles per hour.

This is a comparatively calm period if contrasted with St. Paul with a maximum velocity of 102 miles per hour; Galveston with 91 miles per hour; Cape Hatteras with 105; Buffalo, N. Y., with 90.

Lubbock and West Texas are not so bad after all

spontaneous and true and the way in which he leads the other dogs amazes every member of the audience.

The story is well suited to the dog in every respect. It deals with the novel situation of a puppy lost among the wolves and raised as one of their pack. Through his superior intelligence he becomes their leader and incidentally a great menace to the flocks of sheep who come to the forest to graze each summer.

The manner in which Thunder's civilized instincts assert themselves and force him to turn against his pack is the high point of the story.

Supporting Thunder are a trained cast of dogs and a pack of wolves which provide the most thrilling moments in the picture.

Charles Morten, a newcomer to the screen, does very fine work, his dramatic talent winning the audience from the first flash of the screen. Cary Lincoln gives a splendid performance in the role of the abused niece of Bill Garside, a role depicted by James Gordon, who portrays the part in his usual finished manner. Frank Rice and his dog Mutt provide the comedy in a very clever manner.

**ON HONOR ROLL**

Miss Eula Raye Simmons, of Slaton, daughter of Mr. and Mrs. J. M. Simmons, is reported on the honor roll at Texas Tech, during the last term, having carried six courses with an average grade of "B", according to college officials.

**FOR HOME AND STABLE**

The extraordinary Borozone treatment for flesh wounds, cuts, sores, galls, burns and scalds is just as effective in the stable as in the home. Horse flesh heals with remarkable speed under its powerful influence. The treatment is the same for animals as for humans. First wash out infectious germs with liquid Borozone, and the Borozone Powder completes the healing process. Price (liquid) 30c, 60c and \$1.20. Powder 30c and 60c. Sold by CATCHING'S DRUG STORE!

**Tech Textile School Fame Spreads to Eng.**

And still the fame of Texas Tech spreads! The Engineering school recently received a catalogue from the Bury Textile school of England. The English school asked for one of Tech's catalogues in return.

T. R. Cobb transacted business in Wilson Tuesday afternoon.

**WOODS BEAUTY SHOP**

Room 9, Conley Bldg., Lubbock, Tex. Telephone No. 554  
 T. D. Woods, graduate permanent waving; Mrs. Wood, all round operator; Miss Sinclair, expert operator, of Ft. Worth.  
 Special attention given out-of-town customers. When you are pleased, we are.

**HAVE YOUR SHEET METAL WORK DONE BY EXPERTS**

Orders Promptly Filled—Work Guaranteed. Tanks, Troughs, Suctions, etc.

**LILES SHEET METAL WORKS**

165 N. Panhandle Ave. Phone 195



**Which Will You Save?**

YOU can save pennies or save chicks. Poultry yard facts show that ordinary untested rations and mixtures such as hard boiled eggs and oatmeal save pennies but not chicks. Usually 50% of them die. Poultrymen who are making money invest one penny more per chick and save 90 to 100% of their chicks. They feed Purina Chick Startena, the buttermilk starting ration containing Cod Liver Oil. We'll be glad to tell you of a feeding plan that's as simple as A B C. It saves chicks and brings them through to early maturity.



**HILL & KING**

215 West Garza Phone 233



**Chick Starter Egg Mass Anchor Dairy Ration**

The health of your calves depends largely on the feed. Feed them right at no BLUE RIBBON Feeds Mills.

**Texas G**

**ASK FOR LABEL ON YOUR PRINTING**

It is your guarantee of good work under better working wages.

THE BIGGEST LITTLE STORE ON THE PLAINS Groceries, Gas and Tubes—A Good Place to Trade.

**The Union Store**

IF

You are looking for a GOOD REAL ESTATE LOAN Here it is.

\$1,374.48 pays out \$1,000.00 loan, including interest in 100 months in UNITED SAVINGS BANK, Detroit, Michigan.

No stock to buy. Investigate and save the difference.

J. H. BREWER, Agt. City, Farm and Ranch Loans 1st State Bank, Slaton, Texas

**EXPERIENCE IS COSTLY**

Success is won by him who tries, Who uses the experience his neighbor buys. The man who always knows it all, By his own research, is sure to fall. Your banker has the inside dope On many a scheme intended to rope An honest customer out of his dough Without him having a ghost of a show. The First State Bank will give you advice On questionable schemes; goldbrick to dice.

The

**First State Bank**

(From 1925 Adam Brown Building)

Capital \$40,000.00

"Sixteen Years Serving Slaton and Slaton Community"

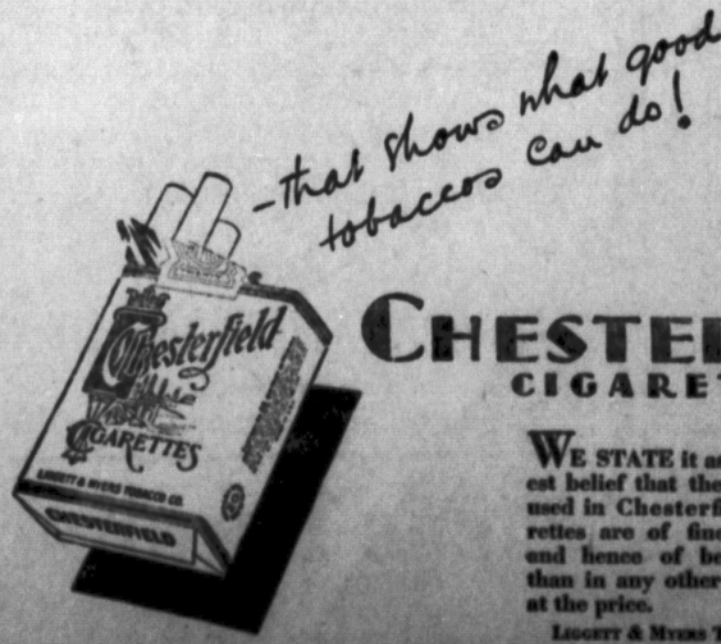
**Use Numetal WEATHER STRIPS**  
 FOR WINDOWS AND DOORS  
 On the Job Continuously Rain or Shine Cold Weather or Warm Weather—They are Permanent and Economical

Shut out bad weather  
 Shut out cold, draughts, rain and snow  
 Keep out dust and noise  
 Inexpensive—Quickly installed

Save Coal!

**PLAINS LUMBER CO.**

Phone 282



**CHESTERFIELD CIGARETTES**

WE STATE it as our honest belief that the tobaccos used in Chesterfield cigarettes are of finer quality and hence of better taste than in any other cigarette at the price.

LEGGETT & MYERS TOBACCO CO.

### Tigers Meet Post Wednesday; Rotan Friday - Saturday

The fighting Tigers' baseball club is contesting its ability against that of the Post team. Post has a reputation of being strong in that line, and if the competition in baseball is like that in the memorable football game at Post, the Slaton fans will be assured of a fast game.

With the team produced to represent Slaton High, Mitchell has material which will qualify him to enter our team into various minor league contests of high standing. In the recent games with Floydada on Friday and Saturday, the Tiger's ability was improved to a great extent, and proved that the qualifications were sufficient to contest the highly classed team of Rotan, at Rotan.

These games, which are to be Friday and Saturday of this week, will probably be the most outstanding dates of the Tiger's schedule. Players from the Rotan school have won recognition in the higher leagues of the country, and from all reports, several are now headed in that direction.

On the other hand, Slaton has a team of well-balanced, cool-headed players, who concentrate upon the plays on hand. Undoubtedly, several players will take steps toward the professional baseball field, and the time has come to match their skill against strong teams of this section.

Students! Back your Tigers, and see them in action.

Don't forget the game at Tiger Park this evening.

#### BOY'S DEBATING TEAM

The boys' debating team, winners of the Lubbock County Meet are getting deeper and deeper into the state subject.

Farm relief is an important theme at this time that new measures are being proposed almost every day in Congress. Remedies are being suggested in the various organizations of the country that have for their purpose the betterment of the farming interests of the country. All this is furnishing the debaters with a rich supply of material and bringing the contest to the present as one of the liveliest issues of the day. W. L. McAttee and I. J. Thornton are taking every advantage of this and are well prepared to enter the district contest at Lubbock on April 20.

The Slatonite, \$1.50 per year anywhere within 50 miles of Slaton. Other points \$2.00 per year.

### PROFESSIONAL DIRECTORY

**DR. L. W. KITCHEN**  
VETERINARY SURGEON

POST, TEXAS

**FOSTER**  
Funeral Home  
Slaton, Texas

Embalming and Funeral Directing. Ambulance Service.  
Phone 125 - Day or Night.  
Agents for Lubbock Floral Co.

**A. H. FINE**  
SLATON, TEXAS  
Will Contract your Concrete and Stuccoing Work  
Let me figure your bill.

**DR. J. B. JACKSON**  
DENTIST  
208-210 Ellis Building  
Phone 535-1873W Lubbock, Tex.

**Hightower & Shanks**  
DENTISTS  
Benton Bldg. Slaton, Texas

**W. L. Huckabay, M.D.**  
Slaton, Texas  
Special Attention Given to Diseases of Women and Children  
Office in City Drug Store  
Phones: Office 243; Res. 175

**BOONE and BOONE**  
CHIROPRACTORS  
301 Myrick Bldg.  
LUBBOCK, TEXAS

**ELLIOTT & LOKEY**  
Wiring, Electrical Supplies and Radios  
PHONE 340  
Service Calls Answered Promptly

Ine: "Tish punch ish getting awful queer."  
Briated: "Well, why don't you stop dipping your cup into the gold fish bowl?"

#### SLATON PEOPLE HEAR MADAME GALLI-CURCI

Mrs. Jno. P. Hardesty and daughter Beryl spent last weekend in Abilene with Mrs. Hardesty's daughter, Mrs. H. H. Hutto. They were in Abilene to attend the song recital given by Madame Galli-Curci, world renowned grand opera singer. They returned to Slaton Tuesday accompanied by Rev. Jno. P. Hardesty.

Miss Beryl played for Mr. Allison when she was in Abilene. He offered many encouraging observations to her. She will study piano, this summer under Mr. Allison, head of the Music Department of Simmons University. She will enter Simmons University next fall as a senior in Fine Arts graduating from that department the following spring. She will be the first freshman to enter the Fine Arts department of that University as a senior.

#### GRADUATION COSTUMES

The Senior Class of 1927-28 is using caps and gowns again for graduation. These costumes are of light grey color and of excellent material. They are very becoming to our young people.

The wearing of caps and gowns has become a fixed custom in Slaton High school as well as most of the larger schools of the state. It carries out the very beautiful democratic spirit which is so prevalent among the students of our local school.

These caps and gowns are nice enough for a queen and yet within the reach of every boy and girl. Without their use, many young men and women would be embarrassed financially when compelled to supply themselves with suitable garments for graduation.

It is gratifying to know that this large class is so thoroughly democratic in their attitudes toward each other that they want to use this uniform.

#### JEWISH EASTER NOW

The Jewish Easter event, which began last Wednesday, to continue for eight days, is being properly commemorated by the Jewish people of this section, according to A. Kessel, owner of Kessel's department store here. Like in business ethics, Mr. Kessel and family live up to their teachings: the letter, he states.

#### LOCKHART DENTIST BUYS INTEREST HERE

Dr. J. A. Hightower, recently of Lockhart, Texas, has purchased an interest in the dental firm of Williams & Shanks, having bought the entire interest of Dr. Williams, it was announced early this week. The firm, which occupies rooms in the Garland building, will now be known as Hightower & Shanks, it is stated. Dr. Williams and wife will make their home in Austin.

#### CLASS PRIVILEGES FOR WEST TEXAS ARTISTS

ABILENE, April 10.—Master classes in piano for the benefit of West Texas artists and piano instructors will be offered by Prof. Irl Allison, concert pianist of the Southwestern Musical Bureau, and head of the piano department of Simmons University at that school this summer, it is announced by the bulletin of the school recently published.

#### CANDIDATES' NAME ACCIDENTALLY OMITTED

The name of Judge J. H. Phillips, candidate for the office of Justice of the Peace, and who is now serving an appointive term in that office, was omitted from the regular announcement column in last week's issue of The Slatonite.

This omission was an error on the part of The Slatonite force, and we hasten to remind the voters that Judge Phillips is still in the race for election to the office he now holds. His name appears in the column this week, as it should.

#### THE COMMERCIAL DEPT.

The commercial department of the Slaton High school continues to be very popular with the student body. Seventy have enrolled in bookkeeping classes alone. A few have moved away; thirty-five are working for a whole credit and twenty-four for a half credit. Four are completing two years of work.

Fifty have enrolled in typing and out of this number a very few are now in line for completing their year's work.

There are thirty-five enrolled in commercial law courses and are reported as doing above the average work for high school students in such work. This work is made intensely interesting and deals with the practical laws of every day business transaction. Many warm disclosures arise that bring out facts connected with the common everyday problems of business life.

The Commercial Geography Class is doing interesting work with twenty-eight young men and young women. This class is doing a large amount of inspection work and making a general survey of the industrial plants in the city and nearby towns of the South Plains country. Visits have been made to the textile mills at Lubbock and Post. Inspection trips will be made to the compress, oil mills, ice factories, roundhouses and shops of the Santa Fe system.

This school system is fortunate in having so many opportunities to see the common industries in their normal condition of operation.

Eighteen students are doing short hand at this time. The same system is taught and the same thoroughness required as at the best business schools in the cities.

Fifty pupils made business arithmetic in the first half of the year. This

course as is indicated by the title is very practical and is given at a time in the high school course that it means most to the pupils.

The six courses of the commercial department mentioned above are optional. The pupil may select any of them during his high school years. Quite a number of our students have gone out of the school into a nice position. We are glad to be able to offer our citizenship these opportunities. We know that all graduates cannot go to college and it is the purpose of the management of the

school to do as much as possible for its students.

#### FATHER AND SONS BANQUET

The ladies of the Methodist Sunday school will serve a "Father and Son" banquet in the basement of the church Friday evening, April 13, it is announced. Fathers are urged to be there and bring their sons, or some one else's son.

George Herd is driving one of the new Model A Ford roadsters.

Mother: "Jimmy, why are you making your little brother cry?"  
Jimmy: "I'm not making him cry, Mother. He dug a hole and is crying because he can't bring it in the house."

**CHILDREN'S FATAL DISEASES**  
Worms and parasites in the intestines of children undermine health and so weaken their vitality that they are unable to resist the diseases so fatal to child life. The safe course is to give a few doses of White's Cream Vermifuge. It destroys and expels the worms without the slightest injury to the health or activity of the child. Price 35c. Sold by **CATCHING'S DRUG STORE**

Successful Six  
now winning Even  
Greater Success

**\$745**  
2-Door Sedan

# Sensational Success

—based on sensational value

You need to know only a few of the exclusive superiorities offered by today's Pontiac Six to understand that its sensational success is based on sensational value. It is the lowest priced six in the world with body by Fisher. It is the lowest priced six offering the G-M-R cylinder head, the cross-flow radiator and the AC fuel pump.

Add to these evident advantages in design the fact that it is the lowest priced six built by General Motors—and then you will know why Pontiac Six sales are continually reaching new record-breaking heights!

Coupe, \$745; Sport Roadster, \$745; Phaeton, \$775; Cabriolet, \$795; 4-Door Sedan, \$827; Sport Limousine, \$885; Custom All-American Six, \$1045 to \$1,065. All prices at factory. Delivered prices include minimum handling charges. Easy to buy on the liberal General Motors Time Payment Plan.

**MARTIN MOTOR CO.**  
At Green's Garage --- Slaton, Texas

## PONTIAC SIX

PRODUCT OF GENERAL MOTORS



**HOW DO THEY  
GET THAT WAY?—**

In spite of the fact that our farmers, as a class, are ordinarily hard put, there is an increasing number of them who are winning out and becoming independent.

In practically every such case you will find a diversified farm rather than a one-cropper.

Not an Argument—Just a suggestion

## Slaton State Bank

Directors:  
R. J. MURRAY, Pres.,  
W. E. SMART, Vice Pres.,  
W. E. OLIVE, Active Vice Pres.,  
CARL W. GEORGE, Cashier,  
J. S. TEKILL, Asst. Cashier.

Officers:  
R. J. MURRAY,  
W. E. SMART,  
W. E. OLIVE,  
CARL W. GEORGE,  
W. S. POSEY.

## We Solicit

—Your patronage, assuring you quality merchandise, prompt service, and have a comfortable place for you to spend your idle moments.

Cold Drinks, Candies, Confections,  
Magazines, Periodicals

# Teagues' Drug Store

**JUSTRIGHT BAKERY TO OPEN HERE SATURDAY**

Messrs. M. J. Lipsy and R. H. Boykin, recently of Odessa, Texas, will open the Justright Bakery here Saturday, it is announced by the owners. The new bakery is located next door north of Chick's Market and Grocery.

The owners and their employees are experienced in the bakery business, it is stated, and they ask that the public call at their place of business and test their products.

Special attention will be given to fancy pastry work, the management states.

**Adoration of Both North and South is Lavished Before Stone Statue of Lee**

STONE MOUNTAIN, Ga., April 9.—The adoration of the nation was lavished today before the greatest stone carving in history, immortalizing the Confederate Chieftain, General Robert E. Lee, and those who followed the "lost cause."

On the 63rd anniversary of their defeat and under grey skies, that symbolized the April day in 1865 when Lee surrendered to General Grant and bade his scarred veterans return to their homes, a vast assembly watched two flags drop from the mountain-side revealing the features of Lee, preserved in granite for all time.

Great Grandson Talks After Mayor James J. Walker of

New York City had accepted the memorial for the nation five-year-old Robert E. Lee IV, great grandson of the commander, climbed to a ceiling before the crowd, released a cage of doves and delightedly watched them flutter free. Symbolizing the status that contributed to make the memorial possible, the doves, whirred up alongside the mountain as a signal for the dropping the veils.

Slowly in the breeze, the curtains, a flag of the confederacy, on one, and the standard of the United States on the other, fell away, leaving in white relief on the cliff, the nearly completed bust of Lee and the outline of his equestrian figure.

**Plumbers Attend Amarillo Meet**

E. V. Woolever, T. O. Petty and T. M. Harris, local plumbers and fitters, attended the Panhandle Plumbers' convention held at Amarillo last Saturday. On returning, they reported a very interesting and profitable meeting.

Tell City Secretary Harvey Avatin to order a garbage can for you.

**Slaton Pastor Aids In Lorenzo Revival**

Rev. B. G. Holloway, pastor of the First Baptist Church here, went to Lorenzo Monday to assist the Baptist church there in a revival meeting. He will do the preaching. The Lorenzo pastor is Rev. B. F. Dickson. The meeting will continue ten days or two weeks, it is thought.

Slatonite Want Ads Pay!

**Official Program District Interscholastic League Meet Held at Texas Technological College.**

April 20 and 21, 1928.

**FRIDAY**

8 A. M. Registration in the Lobby of the Administration Building for all literary and athletic event, tennis, volley ball, and all other events connected with the District Meet to 10 A. M. (unless contestants have previously registered).

On the first floor of the Administration Building will be found headquarters of the Director General, Committee on Housing, Business Office, and Information Committee. No contestant will be permitted to enter any contest unless he presents a contestant's badge which may be obtained on the payment of fifty cents entry fee for each contestant. Only one entry fee will be charged any single contestant.

All badges, athletic numbers and full instructions concerning the time and place of each event will be given out at this time.

10 A. M. Preliminaries in all declamation contests, both high school and rural school. Preliminaries in boys' debate and girls' debate.

12:00 Noon Noon—Meals will be served at the College Cafeteria from 11:30 A. M. to 2:00 P. M.

1:30 P. M. Preliminaries in tennis. Preliminaries in volley ball. Preliminaries in 120 yards high hurdles. Preliminaries in 100 yards dash. Preliminaries in running broad jump. Preliminaries in 440 yards dash. Preliminaries in running high jump. Preliminaries in standing broad jump. Preliminaries in such other field events as may be found necessary from number of entrants.

2:00 P. M. Extempore speaking contest. Semi-finals in boys' debate. Semi-finals in girls' debate. Typewriting Tournament (AT THE LUBBOCK BUSINESS COLLEGE, 1302 Texas Avenue, Phone 335).

**FRIDAY NIGHT**

7:45 P. M. At the College Gym. A program of music, followed by FINALS IN HIGH SCHOOL DECLAMATION, and Rural School Declamation, senior boys and senior girls. Medals and prizes will also be awarded successful contestants.

**SATURDAY**

9:30 A. M. Finals in rural school declamation for junior girls and junior boys. Finals in high school declamation for junior boys and junior girls. Finals in girls' debate (At the College Gym) Finals in boys' debate (At the College Gym)

1:30 P. M. Finals in all track and field events.

2:00 P. M. Semi-finals and finals in all events not otherwise provided for.

**CREOLE YOUTHS WERE LOYA TO DAME FASHION**

The Creole society of the early nineteenth Century in New Orleans was decidedly elite and the costumes of the period, First Empire in design, were exceptionally attractive. Examples of these are seen in "The Love Mart" the romantic story of New Orleans in the days of slave running and piratical exploits along the Gulf of Mexico. It is to be at the Palace Theatre next Wednesday and Thursday. The picture was produced for the First National by George Fitzmaurice, with Billie Dove, Gilbert Roland and Noah Berry in the leading roles.

The director of the film must always pass upon costumes, and Fitzmaurice is a stickler in such matters. He demands that beauty shall be the keynote wherever possible, and so, in "The Love Mart," the gowns worn by Miss Dove, as well as by the men in the cast, were admirably designed by Max Res costume creator at the West Coast Studio of First National pictures.

Gilbert Roland in the masculine lead, wears the caped coats, tight-fitting trousers and fancy vests of the time; where Noah Berry as a slave runner, looks like a figure of Smollett or Stevenson. Armand Kaliz is a Creole dandy and as such wears costume Creole fashion.

**A SURPRISE PARTY.**

On Friday evening a host of the girl friends of De Nola Elrod met at Mrs. Melvin Hunt's, and gave her a handkerchief shower. She received fifteen beautiful handkerchiefs as tokens of love.

The evening was spent in playing games, after which angel cake and lemonade were served by Mrs. Hunt and Mrs. T. L. Kimmel.

A Guest.

**DAIRY AND POULTRY SPECIALIST IS HERE**

R. L. Lawrence, of Ft. Worth, representing the Bewley Mills, of that city, is here this week with his company's agent, the Texas Grocery. Mr. Lawrence is a specialist in the care of dairy cattle and poultry, it is stated, and will be glad to give his assistance to dairy farmers and poultry raisers of this section.

His consultation and advice is given without charge, Mr. Sanders, of the Texas Grocery states, and he requests farmers to come into the store and meet Mr. Lawrence.

According to advertisements carried in State daily papers, the Bewley Mills had more blue ribbon winners at the recent Fat Stock Show, held at Ft. Worth, than all other feed manufacturers combined. That is, more of the winners of premiums there, fed their cattle and stock with Bewley Mills feeds.

Mr. Lawrence will be at the Texas Grocery until Saturday evening, it is stated.

M. F. King, manager for Hill & King feed and poultry house, returned Tuesday from a business visit to Midland. Mrs. King, who accompanied him there, remained for a few days' visit.

Mr. and Mrs. W. E. Stockman, parents of Mrs. Carl Lewis, arrived here Thursday and will spend some time visiting with Mr. and Mrs. Lewis.

**COAL OIL**

5 Gallons ----- 70c  
—and for the accommodation of my customers, I am now handling ice. Drop in when you need ice and let us serve you. Potatoes, Peanuts, Sugar, Cane Syrup, Bananas, Apples, etc. Musical entertainment Saturday evening if weather is favorable. Remember we are just across from the Acorn Store. THE BERG NO. 1 H. G. GENTRY, Owner

**Bond Election is To be Held Here Tuesday, May 8**

The \$25,000.00 bond election to be voted upon in Slaton for the erection of a modern fire station and the extension of the water system will be held on Tuesday, May 8, instead of Tuesday, May 1, as first announced. The official election call, which appeared in last week's issue of The Slatonite, gives May 8 as the date.

When the city commission first decided to call the election, May 1 was tentatively chosen as the time for holding it, but in order to meet with legal requirements for publishing the call of the election the date had to be moved up to May 8, it was said.

If the bonds are voted, \$15,000.00 will be available for building a new fire station and \$10,000.00 will be used for water system improvements. This will make it possible for funds now being used from the general revenues for water system extensions to be applied to the purchase of the new fire department equipment which Slaton is in need of to have adequate protection, it is declared.

Figures said to be absolutely reliable show that the saving Slaton will effect in fire insurance rates by getting the new equipment will amount to considerably more each year than the amount required annually to retire the bonds.

Election officials named in the election call are J. A. Elliott, J. H. Brewer, J. F. Merrill and W. E. Smart. The city hall will be the voting place.

J. B. Miller, formerly of Idalou, now manager for the Acorn Stores at Abilene, was here Wednesday on business.



**Spring — 1928**

The newest 1928 Spring Millinery Modes are here in great variety. Chic styles for the young girl, the matron and the elderly woman. All the newest style touches appear in the new hats.

Specially priced at \$1.95 to \$14.95

**Men's New Spring Hats of Distinction**



Your new hat is here! All the up-to-the moment spring styles and colors. These hats are snappy and full of style pep. Just the kind of hat for the man who wants to be well dressed.

Wonderful values, at

\$2.95 to \$7.45

**Cypert Dry Goods Co.**

We Give and Redeem Gold Bond Stamps

**Clean-Up Week**

April 16 to 21

Let's Make Slaton a Cleaner Town

--- And ---

While you're at it, Have Your Spring Clothes Properly

CLEANED and PRESSED

And Your Winter Garments Cleaned and Put Away.

**EVANS'**

Cleaning Plant

PHONE 235

CLIP THIS COUPON  
50c — SAVE — 50c  
(Limit One Coupon to Customer)

This coupon is good for fifty cents on any cleaning and pressing job of \$1.50 or more. Clip it out and bring or send it with your next order.

Name \_\_\_\_\_  
Street Address \_\_\_\_\_  
GOOD FOR CLEANUP WEEK ONLY

**CHICKEN FEEDS**

feeds of the

**ECONOMY LINE**

We have a complete assortment of poultry — for any chick you have in your flock — the baby chick, growing chick and laying hen. As good a feed as you can buy.

**PROGRESSIVE HATCHERY**

Commercial Incubation—Economy Feeds  
Baby Chicks  
E. L. HICKS, Owner

# SPECIALS

FOR

# SATURDAY

COMPOUND	SWIFT JEWEL, 5 lbs.	\$1.09
COMPOUND	SWIFT JEWEL, 4 lbs.	.59
LETTUCE	PER HEAD	.07 1-2
PINEAPPLE	NO. 2 CRUSHED	.21
HOMINY	NO. 2 VAN CAMPS	.07 1-2
HOMINY	NO. 2 1/2 VAN CAMPS	.09
TOMATO SOUP	VAN CAMPS	.07 1-2
PORK & BEANS	VAN CAMPS, 3 Cans	.25
BLUE KARO	PER GALLON	.58
SOAP	10 BARS P. AND G.	.38
SUGAR	25 POUND SACKS	1.72
CORN FLAKES	KELLOGS	.10
SHREDDED WHEAT BISCUIT	KELLOGS	.11
<b>FREE</b> Market Specials <b>FREE</b>		
For Saturday, to introduce our Steaks, each person buying one or more pounds of Beef or Pork Chops, we will give one pound of Steak Free. Limit, one lb. Free to Customer.		
BACON	ARMOURS STAR SLICED, Per lb.	.39

## Garbage Plan.

(Continued From Page 1.)

at cost to the people ordering. It is not planned to force anyone to buy the garbage can, but regular sanitary inspection by a sanitary officer is planned, and the home occupant will be expected to keep his premises sanitary, and therefore the purchase of a garbage can is believed to be by far the best and easiest method of keeping the premises sanitary, and therefore the purchase of a garbage can is considered highly desirable. With a garbage can at each home, and with regular removal of garbage at the city's expense, the belief is that practically every family in Slaton will be anxious to secure the garbage container and thus make use of the free garbage removal service offered.

The quicker a report is made to the city secretary about whether you desire a garbage can for your home, the quicker will the garbage removal service be in force. Chamber of Commerce officials said Tuesday night that a more important thing had not been considered in Slaton for a long time, and that quick response on the part of the people is expected, because

the garbage nuisance has been a con- years. They said there should be 1,000 orders for garbage cans within a very short time.

Tell City Secretary Harvey Austin to order a garbage can for you. Start worry in Slaton for several

Tell City Secretary Harvey Austin to order a garbage can for you.

## Fire Alarm Sounded Thursday Afternoon

Shortly before two o'clock this (Thursday) afternoon, the Slaton Volunteer Fire Department answered an alarm calling them to a threatening blaze in the alley behind the business block on the west side of the square.

Trash being burned in a can had ignited a nearby pile of timbers, and the flames were spreading to the sheetiron warehouse used by the Worley Hardware Co. The blaze was quickly brought under control with only slight damage, it was reported. A brisk south wind was blowing which, without ready assistance from the fire department, could easily have caused heavy losses in that part of the city.

Carroll Wilson, druggist of Lorenzo, was here Wednesday visiting with his brother, L. A. Wilson, and family.

Post high school baseball team here Wednesday by a score of 9 to 6. Batteries were: Slaton, Owens and Cooper; Post, McCreary and Coleman.

The Slaton Tigers defeated the

Slatonite Want Ads Pay!

## ALL ACCOUNTS

Are Due and Payable on the 1st and 15th. Please govern yourselves accordingly.

## CYPERT DRY GOODS



The Outstanding Dress Event of the Season

# FROCKS

in Three Groups of the Most Favored

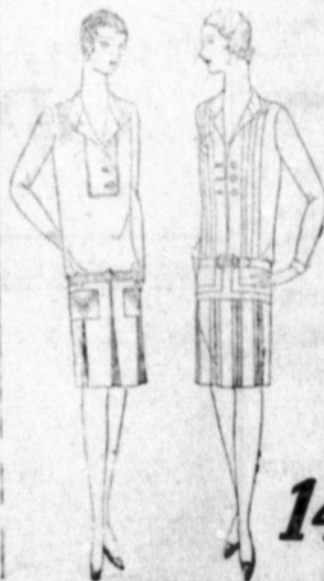
## WASHABLE SILKS

IN these groups, we interpret the newest fashion themes of foremost Parisian couturiers—new necklines, new trimmings, little touches here and there which will endear them to your heart. And the fast color fabrics are irresistibly beautiful and washable. So versatile are the styles that the dresses may be worn for almost any occasion. And the remarkable price at which they are sold is particularly low for such irreproachable quality of workmanship and fabric.

CREPE Savonelle  
GUARANTEED WASHABLE  
Developed in  
TAILORED MODES

ORIENTAL FLOWER  
FROCKS  
MADE IN  
CREPE Savonelle  
GUARANTEED WASHABLE

Colorful Silk Prints  
Developed in Genuine  
RAJAH and VO-SAN  
GUARANTEED WASHABLE



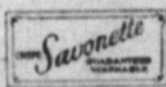
14 95

14 95

A fascinating group of tailored dresses for the promenade or the sports event. The newest style ideas in pleats, collars, cuffs and pocket effects are emphasized in these smart, washable dresses. In the season's predominating colors, which may be rubbed successfully without loss of color. One-piece, two-piece and two-piece effects.

51286  
14 to 44

Look for this label in each garment.



There is no need to tell you about Rajah and Vo-San. Naturally advertised, these washable silks are well-known in every woman's home closet to come. But never before have such styles and fabrics in print exclusive with us been combined in such lovely array at so low a price. The dresses are in tailored models, sport and street styles, one-piece, two-piece and one-piece effects and occasion. Size 14 to 44.

On Sale Only at

Like a flower garden in color—only Oriental in design of embroidery, rich exclusive color effects—yet smart and in refined taste withal. These frocks also feature distinctive style suggestions adapted from the latest Parisian modes—and all may be successfully rubbed. In one-piece and two-piece effects.

51288  
14 to 42

Look for this tag on each garment.



The **ACORN STORE**  
- ALWAYS -  
DEPENDABLE MERCHANDISE

Slaton, Texas



SLATON'S  
PIONEER  
SELF-SERVING  
GROCERY

—PIONEER  
M SYSTEM  
OF THE  
SOUTH PLAINS