

The Slaton Slatonite

PUBLISHED EVERY FRIDAY IN THE INTEREST OF SLATON AND SLATONITES

VOL. XXXVII

Slaton, Lubbock County, Texas, FRIDAY, NOVEMBER 7, 1947

NO. 16

Spook Parade Is Success Thursday

A large crowd gathered last Thursday afternoon to view the weird freaks who took part in the Halloween Parade, the second of its kind to be held in Slaton.

Over two hundred and fifty costumed children took part in the event dressed as ghosts, goblins, skeletons, witches, etc. The High School Pep Squad and drum corps led the parade and each child marched by the reviewing stand where Mesdames Elbert Lovells, C. A. Porter, Claud Anderson, and Rev. G. H. Hodges, Mr. J. H. Freeman and Supt. Vardy of the Public Schools, made the awards of \$5.00 each to the following: Pre-School boy and girl, Paulette Dowell and Roby Merrell; School age, Jimmy Hyatt and Patsy Hickman, Don Watkins and Kay Porter; and W. L. Polk and Katharine Ann Smith as the funniest, Magnus Klattenhoff and Kay Castleberry as the most original.

The Elementary P.T.A. promoted the parade and the Civic Clubs of the town sponsored it and made up the money for the prizes.

The P.T.A. Directors reported that the cooperation of Mayor Lee Wootton, Chief of Police E. H. Ward and the their assistants was greatly appreciated and the work of others beside the Judges who took part in the success of the venture were: Mrs. Gordon Burrell, Chairman and Mesdames Ewell Morgan, T. E. McClannahan, Carl Hyatt, Jack Sheppard, Lee Vardy, Jack Pearson, Harold Wilson, W. D. Cooper, Ben Kerns, R. D. Hickman, Charles Walton, Cullen Brown, W. L. Holloman, Louis Merrell, Dean Gilliland and J. F. Ritchey.

Slaton Students Take Patch Test

The Tuberculosis patch test for Slaton students, that was started last week by the Lubbock County Tuberculosis Association proved very successful so far as the number of students who underwent the tests was concerned. Slaton Doctors will visit the schools today to read the tests. Dr. M. Jay McSweeney, Jr., will be at the High School, Dr. J. L. Cobb at West Ward, Dr. W. E. Payne at East Ward, Dr. B. F. Edwards at Saint Joseph's Catholic Schools and Dr. Elbert Lovells at the Evans Colored School.

A moving picture was given at the High School last Thursday night on T.B. under the direction of Mrs. Nancy Green, Executive Secretary of the Lubbock County T.B. Association, she also lectured on the subject to students and to their parents. It was estimated that about 450 of the students in the first to sixth grade took the tests.

While T. B. is still one of the greatest health risks of the modern age it has come under strict control under the efforts of the T.B. Association and Lubbock Co. has had fewer cases than most of the other counties of the state. The Lubbock County Association has been very active during the past year and plans to be even more so during the remainder of 1947 and all of 1948.

DAUGHTERS OF PIONEER

MEET NOVEMBER 3RD.

The Daughters of the Pioneer Study Club met November 3rd at the home of Mrs. Curtis Dowell. The club voted to donate a case of canned milk to the Friendship Train. Following the business meeting, Mrs. Maurice Middleton discussed "Period Furniture," and Mrs. Edwin Forrest "The House of Tomorrow." Roll call was a "News in Furniture." Members present were: Misses Wilda Hannah and Myrtle Teague and Mesdames J. S. Edwards, Jr., Jack Edwards, Robert Hall Davis, Oree Glasscock, Howard Hoffman, W. T. Howard, V. J. Johnson, Troy Pickens, Earl Reasoner, Cecil Scott, John Sims, M. B. Tudor, Joe Walker, Jr., James Watkins, Middleton, Forrest, and the hostess. The next meeting will be the Annual Guest Day at the Club House, November 24th, at 8:00.

"THE YEARLING" IS TO BE SHOWN AT SLATON THEATRE



Bringing to the screen an undisputed new star in the person of ten-year-old Claude Jarman, Jr., M-G-M's filmization of Marjorie Kinnan Rawlings' Pulitzer Prize-winning novel, "The Yearling," opens Sunday at the Slaton Theatre to provide filmgoers with an unforgettable motion picture experience.

With Gregory Peck and Jane Wyman cast as Penny and Ma Baxter, and young Jarman as the lovable Jody, the film faithfully transcribes in Technicolor motion picture terms the story of this courageous, hard-working family who encounter both happiness and tragedy in their struggle to eke out a living from their small plot in Florida's dense scrub country.

All the high points of the Rawlings novel are here—the hunt for the marauding bear, Slewfoot, the pulsating episode in which Penny is bitten by a deadly rattlesnake, the free-for-all village brawl of the roistering Forrester, Jody's adoption of his little fawn, the tragic results that ensue when the gamboling deer

eats the young corn shoots and tramples down the tobacco crop, rising to the climax of an embittered Jody running away from home only to return later to take his place as a man in the Baxter household.

Gregory Peck and Jane Wyman are perfectly cast as Penny and Ma Baxter; Claude Jarman, Jr., has terrific appeal as Jody, and other fine portrayals are contributed by Henry Travers as the genial storekeeper, Joan Wells as the little mix, Eulalie Boylles, Jeff York as the seagoing Oliver, June Lockhart, as his girl, Twink, and B. M. "Chick" York as Doc Wilson.

Producer Sidney Franklin, Director Clarence Brown, Paul Osborn, author of the screen play, Herbert Stothart, whose themes from Delius give the woodland scenes a hauntingly beautiful musical accompaniment, and Charles Rosher, director of the brilliant photography, are among the artisans who are to be congratulated for producing "The Yearling." It will go down as one of the wondrous pictures of the age.

A Record Crowd Attends The Formal Opening Of Slatons New Theatre

Police Force Has Busy Week End

Last week was one of the busiest of the season for the Slaton police force. Arrests were made of negroes, Mexicans and whites in all parts of the business section and in the flats for drunkardness fighting and many other infringements of the law. The jail was full and overflowing most all of Saturday and Sunday, although no major criminals were arrested.

GINNERS HAND HURT

J. E. Brake, who had his hand caught in a gin saw was seriously hurt last Wednesday afternoon. If he had not used his presence of mind he would have been more seriously hurt and probably killed. His injuries were covered by insurance by the Gin Co.

ELECTION RESULTS

In the Commission Election held for Ward 2 last Tuesday the results were Howard Hoffman 29 and Fred England 9.

Mr. and Mrs. A. P. Wilson had as their guests over the last week end the following: Mr. and Mrs. D. D. Davis and Mrs. Rabe Davis of Acuff and Misses Inez, Wanda and Sula Raye Davis of Lubbock.

R. B. Maxey, of Fort Worth, was a visitor in the L. A. Harral home this week. Mr. Maxey is a brother of Mrs. Harral.

Miss Buxkemper FFA Sweetheart



MISS DOROTHY BUXKEMPER

In a recent contest to elect a F.F.A. Sweetheart for this year, Dorothy Buxkemper, nominated by the Junior class, was elected over representatives from the other three high school classes. Dorothy is the daughter of Mr. and Mrs. A. J. Buxkemper, who reside about three and a half miles south of Slaton.

This is an annual contest, and the funds raised during the contest go into the chapter funds. Dorothy will be an honor guest of the chapter at the Father-Son banquet and will wear the colors of the chapter often during the year.

Junior Tigers Win Over Tahoka Team

The Junior Tigers of Slaton Elementary Schools defeated the sixth and seventh grades of Tahoka Elementary Schools with a score of 20 to 0 Wednesday afternoon, October 29th.

A good spirit of sportsmanship prevailed both teams and it was a most enjoyable game particularly for the Junior Tigers. They were looking forward this week to going to Tahoka for a return game. Mr. McLeod, Elementary Principal, is coaching the Slaton junior team.

Coach Tillery and some of his high school players officiated. The good attendance and enthusiasm was greatly appreciated by the players.

Abernathy Couple Married 50 Years



Mr. and Mrs. I. P. Shipman, above, who were married in Montague County in 1897, celebrated their Golden Wedding Anniversary Friday, October 24th with an open house held in their home at Abernathy. The couple have lived in Lubbock and Hale counties since 1909. Mr. and Mrs. Shipman have five children, Floyd E. Claud C., Furman and Gretna of Abernathy and Mrs. Rhea Pierce of Slaton; also 14 grandchildren and three great-grandchildren all of whom were present for the anniversary. About 100 relatives and friends called during the occasion and were received at the door by the youngest of the five children, Miss Gretna Shipman. All were registered in the guest book by two grand daughters, Misses Norma June and Beryl Jean Shipman.

Many firms sent them compliments with floral offerings. Mrs. Joe Tate and Jolene are visiting in Galveston.

SLATON TO HELP WITH FOOD FOR PEACE TRAIN

IT LOOKS LIKE A BLOOD THIRSTY TIGER EAT TIGER GAME TONIGHT

Legion To Have Installation Of New Members 10th

Arrangements have been completed by C. C. Hoffman, Chairman of the Arrangements Committee for the Slaton Post of the American Legion for initiation ceremonies to be held for new members of the Post at the American Legion Hall, November 10th. At which time a Lubbock Ritual Team will be here to install the new members. Anyone who wishes to attend will be welcome.

Elementary PTA To Meet Nov. 20

At the first meeting of the Elementary P.T.A. held October 16 at the Slaton Club House, Supt. Vardy, of the Public Schools, talked on "Visual Education," and Principal McCloud on "Good Citizenship." Mrs. Jimmie Watkins was elected treasurer and Mrs. Virgie Hunter and Mrs. P. G. Meading were awarded pictures for having perfect attendance records.

At the next meeting at the Slaton Club House 7:30 p. m. on November 20, Mrs. Elton West, chairman of Visual Education, from Lubbock will speak.

Building Permits

Building permits reported for October as reported by City Secretary J. J. Maxey are as follows: 6 dwellings to the amount of \$19,000.00, 1 warehouse \$1000.00, 1 additions and alterations \$1200.00, and 8 less than \$1000.00, alterations to the amount of \$2205.00.

Secretary Maxey stated that the actual amount of money that will be spent will probably be many times the amounts given here.

The last home game of the season so far as the schedule shows will be played here tonight between the Slaton Tigers and the Snyder Tigrs with the Snyder aggregation having somewhat the advantage. Slaton men are still pretty badly bunged up and will be hampered by Gentry's broken finger and by minor injuries to most of the players.

It will be a Tiger eat Tiger contest and may turn out to be one of the best games of the year so far.

In the game last week it was a tug of war that ended up as it started, nothing to nothing with the O'Donnell boys strong in the air and the Slaton Tigers strong on defense and on ground plays. The Tigers threatened a couple of times but were stopped by fumbles, the O'Donnell Eagles were good and so were the Tigers.

According to the schedule the Tigers will go to Abernathy next Friday, be idle on November 21 and meet Post on Thanksgiving in Post.

As usual the Post game will be the highlight of the season as both teams save all their best tricks for that game. The rivalry is always at fever heat and Slaton fans are planning on invading Post in a big way.

The starting line up for the game tonight will likely be:

SLATON	
30 Joe Tucker	155 E
62 Guy Gentry	170 T
16 Ed Burton	135 G
28 Jim Cherry	165 C
27 Sam Burnett	160 G
63 Gene Moore	170 T
24 Tom Smith	160 E
10 Tip Culver	140 QB
11 John Schmidt	132 B
13 Ray Walters	145 B
12 Lawrence Morgan	135 B

SNYDER	
22 Jack Gorman	171 B
25 Donnie Everett	146 B
33 Billy Don Burk	170 B
44 Willie Martin	147 B
50 Billy Deffebach	173 C
80 Billy Joe Middleton	180 E
40 Elwood Blakely	146 E
71 E. J. Moore	263 T
77 Rex Milhollon	161 T
60 Jack Longbothma	172 G
67 Dan Bynum	171 G

Hot coffee and cakes will be served at the football game tonight by the Elementary P.T.A. organization.

O.E.S. Delegates Return From Trip

Those returning from the Grand Chapter meeting of the Order of Eastern Star, which was held recently at San Antonio were: Mrs. Birdie Culver, Mrs. Fannie Patterson, Mrs. Vera Bailey, and Mrs. Collie Mae Smith. The Eastern Stars will hold its regular meeting Tuesday, Nov. 11 at 7:30 p. m. at which time their Annual Memorial Services will be held.

The Rev. and Mrs. C. C. Wright, Mrs. Wilkerson, Mrs. Edwin Forrest, Mrs. W. R. Lovett, Mrs. Bill Layne, and Mrs. W. L. Hollamon are attending the Methodist Annual Conference at Seminole.

Miss Eunice McDonald with the Santa Fe Railway Company in Slaton for the past several years has recently transferred to San Angelo where she has accepted a position with the Santa Fe, in the Trailway Transportation Department.

Mrs. W. D. Cooper from Albuquerque, is visiting in the home of Mrs. B. H. Cooper.

Mrs. C. T. Scroggins' mother is very ill.

Beginning today the people of Slaton and this area are being asked by the Civic Clubs and Churches to take part in the going of food to the stricken people of Europe and the far East by donating to the "Food for Peace Trains" that are to be on their way by November 15th.

To date over seven trains have been scheduled to take the food to the ports where it will be embarked for its destination. The food, the packing, the transportation by the transit companies, and labor for handling will all be given free and the food that is purchased with money collected for the purpose, will be bought at wholesale prices from food handlers.

Only such foods as dried and canned milk, macaroni, dried fruits, flour and sugar will be shipped as anything containing water will not keep long enough for delivery.

Hundreds of car loads of food have already been donated and it is expected that a great amount more will be provided. The food will be distributed by agencies outside of the Government and it will go to all parts of the world.

Donations of money or food will be accepted by any Secretary of and Civic organizations such as the Lions Club, the Rotary Club and by all the Ministers of town, there also will be places to donate your money or your purchases of food at Grocery stores over the town. It is imperative that you make your donations at an early date if you wish to take part, as the supply will be sent with the food that will leave Lubbock on or before November 15th.

Formal Opening Of Alford Grocery

Holding its place among the more progressive business establishments of Slaton the Alford Grocery Store at 215 South 4th Street has almost doubled its floor space, remodeled the entire interior of the store, added a refrigerated Fruit and Vegetable Department and several other departments where home and drug needs are carried.

The formal opening of the newly remodeled store is being held today and tomorrow and visitors as well as customers are invited by Mr. Alford to come inspect the new arrangement. Mr. Alford is greatly pleased with his new store and will serve hot coffee and cookies all day tomorrow.

Aviation Show To Be Held Dec. 4-6

The program planned for the third annual International Aviation Celebration to be held in El Paso on December 4, 5, 6 and 7th will again include many interesting and skilled contests for the light plane pilot. All the contests which have been planned to stress flying safety, will be directed by individual flying schools located on the El Paso Municipal Airport.

The main event, a \$1500.00 Spot Landing Contest is considered to be the first of its kind in the country. The idea behind this event was planned for many months by a group of flying enthusiasts who have gone ahead and underwritten the entire cash prize. With safety in mind this group decided to use a maneuver which would tend to increase the practice of an emergency procedure and at the same time the contestant would enjoy all the benefits of entering an air celebration and contest.

Mrs. W. L. Housour returned on Tuesday from Fresno, California, where she had been visiting her daughter Mrs. Ruth Usery.

In one year, a female moth and her descendants can destroy as much wool as 13 sheep can produce in the same period.

Farmers spent about \$300 million for new farm machinery in 1946, not counting tractors.

An hour of work on the farm now, as compared with 1920, results in about a third more milk, a half more corn, and more than twice as much wheat.

"Frost-proof" vegetables simply means that the seed has been planted in open field plant-beds and as the weather becomes colder, the plants become "frost-proof" or toughened to cold weather.

According to an estimate by the Fish and Wildlife Service, rats are destroying grain at the rate of 200,000,000 bushels each year.

WANT ADS GET RESULTS

SHORTER GRAZING



CALLS FOR CONCENTRATES

Your grass may look as tall as ever this month—but hot summer weather reduces the protein content of grass, and it's likely to be much "shorter" in feeding value.

More protein in your dairy mixture is needed to make up the protein loss in grazing. Feed enough protein Meal to maintain milk production during summer months—more protein means more production and more profit.

West Texas Cottonoil Mill

Slaton, Texas

Texas Business News Reported

FRUITS AND VEGETABLES

RAIL SHIPMENTS
AUSTIN, TEX., November 1 — Sharp declines in rail shipments of fruits and vegetables from Texas stations lowered the Sept. total of 159 carloads compared to August's 2,279 carloads, the University of Texas Bureau of Business Research reported.

Shipments were more than doubled last September's 75 carloads, however.

REVENUE FREIGHT LOADED IN SOUTHWESTERN DIST.
AUSTIN, TEX., November 1 — Freight carloadings in the Southwestern district were 53 per cent above prewar loadings in Sept., according to the University of Texas Bureau of Business Research.

Loadings dropped off 4 per cent between August and September, but the Bureau's seasonally-adjusted index crept upward a cog, since the decline was not as great as the usual September setback.

WHEAT GRINDINGS AND FLOUR PRODUCTION

AUSTIN, TEX., November 1 — August wheat grindings in Texas shaved 9 per cent of July's total in a sharper decline than the seasonal pattern calls for, according to latest Bureau of the Census reports to the University of Texas Bureau of Business Research.

BUILDING PERMITS
AUSTIN, TEX., November 1 — Optimism prevailed in the building outlook for the remainder of 1947 and 1948.

COTTONSEED PRODUCTION

AUSTIN, TEX., November 1 — Receipts of cottonseed at Texas mills double between July and August and then almost doubled again between August and September, The University of Texas Bureau of Business Research reported.

CREDIT RATIOS

AUSTIN, TEX., November 1 — September sales in department and apparel stores in Texas cities were bolstered by increased credit buying, according to The University of Texas Bureau of Business Research.

More than 60 per cent of all department and apparel store sales were charged during September.

This gain represents the second consecutive month in which the ratio of credit sales to net sales has taken a leap. Since March of this year, the usual ratio was 57 per cent, with very slight fluctuations from month to month. Then in August the ratio moved forward to 59 per cent, and the 60 per cent chalked up in September places credit buying at its peak for this year.

The end it not in sight, however. With the November 1 relaxation of consumer credit controls and the return of installment buying on a larger scale, Texas retailers expect to place more and more goods "on the cuff."

FEDERAL INTERNAL REVENUE COLLECTIONS

AUSTIN, TEX., November 1 — With no signs of relief in sight, Texas taxpayers fed Uncle Sam's bill in September to the tune of \$109,097,551, according to The University of Texas Bureau of Business Research.

Total federal internal revenue collections for the State from July 1 through September 30 reached \$241,309,020, to exceed last year's intake for the same period by 5 per cent.

Income taxes slid 4 per cent lower than during the three-month period in the 1946-47 fiscal year, but all other kinds of taxes shoveled more money into government coffers.

"Make maximum use of pasture" is a good general rule to follow in feeding stock, whether beef or dairy cattle, hogs or lambs. It will save badly needed grain as well as reduce costs of operation.

Baptist To Meet In Amarillo 11th.

Five thousand Texas Baptists will attend the Texas Baptist General Convention in Amarillo November 11-13 to hear reports on denominational work of the past year and messages from outstanding Baptist ministers and laymen.

Featured on the three-day program will be Robert S. Kerr of Oklahoma City, former governor of the state of Oklahoma; Dr. L. D. Newton of Atlanta, Ga., president of the Southern Baptist Convention, and Dr. J. M. Dwason of Washington, D. C., public relations secretary for the Baptist of America.

The Convention will open on

Tuesday evening, Nov. 11, with an address by the president, Dr. Wallace Bassett, pastor of the Cliff Temple Baptist Church of Dallas. Dr. J. Howard Williams, executive secretary of the Texas Convention, will then make the State Mission report.

An American resident in China renounced with her husband for taking her linen into her bedroom without knocking.

"That's all right, Missy," said the native. "Every time come, lookie in keyhole. Nothing on, no come in."

A study in Texas shows that costs of producing cotton in the state range all the way from 19.4 cents to less than 4 cents per lb.



From where I sit... by Joe Marsh

Square Biscuits, Yet!

I see by a neighboring paper, that the round biscuit is on the way out. Yes, sir, home-management specialists have found that the square biscuit lends itself to assembly-line production and easy storage better than those customary ovals.

Well, we're all for progress, but that's one new idea we just don't cotton to. A round biscuit, spread nicely amidsthips with snappy country cheese, looks like a biscuit! And accompanied by a mellow glass of beer, it's a combination that you can't improve on!

So at the risk of being called old-fashioned, I'm voting for round biscuits, that fit a hungry man's mouth like no square imitation ever will... and for American beer served in the good old-fashioned way, in tall, cool mugs or ordinary glasses, with frosty sides and bubbles winking at the brim!

Think I'll step out to the kitchen for a snack right now!

Joe Marsh

NOW - make a date to OIL-PLATE!



Some things it's hard to make up your mind about. But not about changing dirty, worn-out summer oil for fresh, winter-grade Conoco Nth!

Free-flowing Conoco Nth Motor Oil (patented) includes an added ingredient which quickly fastens an extra film of lubricant to metal surfaces so closely that cylinder walls are actually OIL-PLATED!

This extra OIL-PLATING resists gravity... stays up, won't all drain down even overnight! That's how Nth Oil extra-protects you from metal-eating, combustion acids... from "dry-friction" starts... from carbon and sludge caused by wear!

For extra power, extra smoothness, extra engine performance, make a date to OIL-PLATE, today!



Your Conoco Mileage Merchant

Copyright 1947, Continental Oil Co.

CONOCO PRODUCTS

Sold in This Territory By:

HEINRICH BROS.
Slaton, Texas

RAYMOND GENTRY
Posey, Texas

B. W. WEST
Slaton, Texas

KISER AND HINZ
Wilson, Texas

M. L. MURRAY, Agent

Watch your thrills go up with BIG-CAR QUALITY and your bills come down AT LOWEST COST



It's great fun to have Big-Car beauty—Big-Car comfort—Big-Car performance and dependability! It's even greater fun to enjoy these motoring advantages... at lowest cost in purchase price, operation and upkeep! You get this enviable combination in the new Chevrolet—the only motor car giving BIG-CAR QUALITY AT LOWEST COST! Chevrolet is outstandingly beautiful... with the smartest of lines, colors, upholstery and appointments—the only low-priced car with a luxurious Body by Fisher.



GO—WITH LESS GAS! Chevrolet is powered by a world's-champion Valve-in-Head Engine—the engine that gives great performance with great savings in gas and oil.

ENJOY THIS EXTRA COMFORT AND SAFETY without extra cost because only Chevrolet gives you the United Knee-Action Ride—travel in the high-safety of United body construction, the United Knee-Action Ride and Positive-Action Hydraulic Brakes.



While waiting for your new Chevrolet, protect your present car—and preserve its trade-in value, as well—by bringing it to us for skilled, dependable service, now and at regular intervals. Come in—today!


CHEVROLET
LOWEST-PRICED LINE IN ITS FIELD

Crow-Harral Chevrolet Co.

120 N 9th. St.

Phone 470

HOT WATER

- Abundantly
 - Everlastingly
 - Automatically
 - Economically
- With **GAS** 



**NEXT TIME YOU BUY
A WATER HEATER**

**USE THIS GUIDE TO HELP
SELECT THE RIGHT SIZE**

**Automatic Storage
Gas Water Heaters**

Number Bedrooms	Number Bathrooms	Storage Capacity Gallons
1 or 2	1	30
3 or 4	1	40
2 or 3	2	40
4 or 5	2	50
3	3	50
4 or 5	3 or 4	75

West Texas Gas Company

THIS IS OUR TWENTIETH YEAR OF SERVICE

POSEY ITEMS

R. L. BOYD

About \$70 was raised Friday night at the Halloween School Carnival. The fund will be used to purchase various furnishings for the school house.

The Posey Gln continues to turn out many bales of cotton. Farmers have been bringing their cotton here from other areas. The farthest coming from Lamb Co. near Littlefield.

Mr. and Mrs. W. E. Lawrance have had as a visitor, Mrs. Lawrence's brother.

Several hunters have been making plans for the deer hunting season which opens about the middle of the month.

Wanna Lou Elder of Slaton was a Sunday School visitor.

The REA has been making efforts to provide the remaining farm homes with electricity. The first lines were installed almost ten years ago.

Some cotton is now being gathered with machines. More may be gathered after a heavy frost as hand pulling is becoming more expensive.

Mr. and Mrs. J. M. Sain have recently installed a butane system in their home.

Edwin Meyers of Woodrow was visiting here Sunday.

Guy Gentry and Alton Perry have been playing their positions well with the Slaton Tiger football team.

R. B. Boyd, who purchased about 300 acres of growing cotton in August says that the harvest to date has been satisfactory.

A new curtain and furnishings has been purchased for the stage at the school house. The cost was reported to be several hundred dollars and was raised by the advertisements of over 50 business concerns in Lubbock and Slaton.

Mr. Loyd of Lubbock was in the community the first of the week on business.

Many Trees Needed
Seventy-five million acres of denuded and poorly stocked forest lands in the United States must be planted to trees to grow the necessary timber for present day children.

Texas Tech Notes

LUBBOCK, Tex., November 3.

Dairy products judging team from Texas Technological College tied with Michigan representatives for fifth place in the recent International Dairy Products Judging contest in Miami, Fla., in competition with teams from 17 other schools.

LUBBOCK, Tex., November 3.

Seed from improved stormproof cotton recently developed by the agricultural experiment station at Lubbock will probably be very scarce and hard to find until the 1949 planting season, according to Dr. A. W. Young, head of the Texas Technological College plant industry department.

Dr. Young, who recently described superior features of the new variety as shown on the col-

lege farm, has received numerous inquiries from farmers who wish to obtain seed.

Small lots of seeds were distributed for planting in seed blocks this year, he explained, and most of the receivers will probably wish to keep this year's seed yield for next year. However seed should be more plentiful during the following season.

LUBBOCK, Tex., November 3.

Cheddar cheese, recently introduced in Japan by Americans, caused at least one native considerable difficulty. Mistaking it for a new type soap, the hapless fellow attempted to bathe with it, but found it would not lather, according to J. C. Leukhardt of Washington, D. C., who addressed a recent meeting of the Texas State Nutrition Council at Texas

Technological College.

LUBBOCK, Tex., November 3.

The new campus infirmary at Texas Technological College is scheduled to open Nov. 10, Pres. W. M. Whyburn announces. War surplus buildings were furnished free to the college for the health service and the college has spent \$17,500 on remodeling and equipment.

Raw Fish Eaters

Eskimos of the Arctic regions of America and extreme northeast of Asia received their name from the Algonkian Indians, living to the south of them. The name means "those who eat their fish raw." The sustenance of the Eskimo is chiefly seals and cetaceous animals which comprise the whales, dolphins and porpoises.

Territory Population
Every American territory outside the United States except Alaska is more thickly populated than the United States.

MODERN LIVING CLAIMS VICTIMS

Soft, refined foods and lack of exercise are responsible for increasing thousands of constipation victims. Intestinal muscles become sluggish, waste matter accumulates and gas is formed. Often there is a tired, restless, listless feeling. It's cases like this that the new improved ADLERKA is designed to help. This scientifically compounded Tone-Up laxative is quickly absorbed by the gastro-intestinal system. Gas pressure is relieved and waste matter is moved gently through the digestive canal. When you eat well and digest your food well, you'll find a new joy in living. Order a bottle of ADLERKA today.

Caution: use only as directed.



SHOP THRIFTILY

and **PLEASANTLY** at your **PIGGLY WIGGLY**

Eagle Brand, MILK, can 29c	CHERRIES No. 2 Can 25c Sour Red Pitted
Crystal White SOAP, 3 for 25c	GRAPEFRUIT JUICE 46 oz. can 15c Texas
SUGAR, 10 lb. cane 95c	PUMPKIN, 2 1/2 Libbys, can 23c
	CRANBERRY SAUCE, lb. can, Ocean Spra, 25c
	CRUSTENE, 3 lb. carton 95c
	FRUIT COCKTAIL, no. 1 tall, Eveready 25c



A WORD TO THE WIVES

about **Adequate Wiring**

Maybe you feel that the wiring in your home is your husband's affair. If you do, you're badly mistaken. For, without adequate wiring you are unable to enjoy the many conveniences and luxuries that all of the new modern appliances and low cost electric service have made available.

And, so, that's why we say a "word to the wives" about adequate wiring is important. Call or write your nearest Public Service Company office for free survey.

Adequate Wiring MEANS:

1. ENOUGH CIRCUITS for serving efficiently and safely all the appliances you have.
2. LARGE ENOUGH WIRE for serving your present and future needs.
3. ENOUGH OUTLETS AND SWITCHES for convenient living.

We have nothing to sell but good electric service.

SOUTHWESTERN

PUBLIC SERVICE COMPANY

23 YEARS OF GOOD CITIZENSHIP AND PUBLIC SERVICE

MEATS

PRESSED HAM, 2 1/2 Lb. Can	1.09
BACON, No. 1 Slab, Sugar Cured	73c
CHEESE, 2 Lb. Box	97c
Seasoning Bacon, Smoked, 1 Pound	29c
SAUSAGE, Armour's, Pound	59c

PRODUCE

GRAPES, Red, pound	12 1/2c
WALNUTS, New Crop, pound	43c
BRAZIL NUTS, New Crop, pound	49c
APPLES, lb. Delicious Reds, pound	15c
BANANAS, Pound	15c
POTATOES, 10 lb. Mesh Bag	59c

Special

CORN
Milford No. 2 Cream Style
22c

Special

Oleo PARKAY
lb. 35c

Special

Tall Can Pink SALMON
each 54c

Pinto Beans 5lbs. 95c

JELLO, pkg. 8c

Hersheys, bar 5c

Cracker Jax, bx 5c

VEL, lg. bx. 35c

Fri. and Sat.

PINEAPPLE

No. 2 can Libbys, cru. 29c

No. 2 can Libbys, sli. 29c

46 oz. can Libby, juice 43c

No. 2 can Libby, juice 19c

Libbys VIENNAS can 19c

MODART Jar 39c

No. 1 Pears, Hunts 25c

Green Beans, whole 17c

Rex Jelly, 5 lb. 63c

FLEXO, pkg. 27c

SUPER VALUES EVERY DAY - EASY SHOPPING IN EVERY WAY

PIGGLY WIGGLY

Warehouse

SLATON THEATRE

FRIDAY — SATURDAY

"PLAINSMAN AND THE LADY"

—with—
WILLIAM ELLIOTT
VERA RALSTON
—and—
3 Exciting Short Subjects

"Picture of the Year"
—Redbook



"Best of the Year"
—Dorothy Kilgallen
"Movie magic!...
A classic!"
—Look Magazine



IN TECHNICOLOR

The Yearling

GREGORY JANE
PECK · WYMAN

—Plus—
Cartoon — News

MIDNITE SATURDAY, SUNDAY — MONDAY

A TREAT TO SWEEP YOU OFF YOUR FEET!

Dane CLARK
Martha VICKERS

THAT WAY WITH WOMEN!

SYDNEY GREENSTREET · ALAN HALE
TUESDAY ONLY

YOU'LL TALK AND TALK AND TALK ABOUT IT!

IT'S
SO
EASY
TO
CRY

SHAME!

IF SHE WERE YOURS
COULD YOU FORGIVE?

ANN SHERIDAN
LEW AYRES
ZACHARY SCOTT

THE UNFAITHFUL

Cartoon — News

WED.

Mary Martha Class
Mrs. Dave Draper and Mrs.
Leon Walston entertained the
Mary Martha Class of the Baptist
Sunday School with a Halloween
Social at the Club House Thurs-
day evening.

Guests were dressed in costume and wore masks. Prizes were given for the funniest and spookiest costume and for the person who was the hardest identified.

A number of games were played and a ghost story was read.

Refreshments of hot dogs, candy and coffee were served to Mesdames Ira McCraver, R. C. Patton, George D. Harlan, Bill Parks, Fern Pettigrew, Charles Felty,

Jerome Burns, Floyd Gullker, Gordon Burrell, Allen D. Crowley, Misses Linda McCarver, Barbara Felty, Janet Burrell and Ethlyn Young.

Demonstration And Lecture To Be Given

The pre-natal group of the Slaton Child Study Forum will meet in the basement of the Methodist Church next Wednesday November 12th at 3:45.

A lecture and demonstration, "How to bathe the baby" and "Preparation of the formula" will be given by Miss Estelle Weimer of the staff of Mercy Hospital.

SPARTAN DESK PIN
MIMEO Paper and Sheets
At The Slatonite

QUICK RELIEF FROM Symptoms of Distress Arising from STOMACH ULCERS DUE TO EXCESS ACID

Free Book Tells of Home Treatment that Must Help or it Will Cost You Nothing
TREATMENT have been sold for relief of symptoms of distress arising from Stomach and Duodenal Ulcers due to Excess Acid—Poor Digestion, Sour or Upset Stomach, Gasiness, Heartburn, Sleeplessness, etc.—due to Excess Acid. Sold on 15 days' trial! Ask for "Willard's Message", which fully explains this treatment—free—at
TRAGUE DRUG STORE

EAR NOISES?



If you suffer from those miserable ear noises and are Hard of Hearing due to catarrh of the head, write us NOW for proof of the good results our simple home treatment has accomplished for a great many people. NOTHING TO WEAR. Many past 70 report ear noises gone and hearing fine. Send NOW for proof and 30 days trial offer.
THE ELMO COMPANY, Dept. 1727, Davenport, Iowa

FOOTBALL

TONIGHT



Your Home Town

SLATON TIGERS

vs. Snyder Tigers

Your Support and Encouragement is Needed to Make Your Slaton Team What it Should be! Be at Every Game! This Publicity Is Made Possible by the Following Civic Minded Firms:

Carrolls Service Station

Slaton Bakery

Palace & Slaton Theatres

Brasfield Plumbing

Cudd Implement Co.

Slaton Slatonite

PAYNES DRY GOODS

Self Service Station

SLATON PHARMACY

O. D. KENNEY AUTO PARTS

White Auto Store

Citizens State Bank
Member F.D.I.C.

U
W
Compress And
Co., Slaton

Slaton Implement Co.
Farmall

Layne Plumbing & Electric Co.

Fix Loose Bricks
Loose bricks can lead to expensive damage suits. Be sure they are cemented firmly in place.

Whipping Cream
A little lemon juice placed in cream will make the cream easier to whip.

Small in Size Only
Smallest fish in Hawaii is called the Humuhumunukunua.

Slaton Students Show Progress

The following names comprise a list of students in Slaton Elementary Schools who had a ninety five (95) or above per cent average on their first six-weeks report cards:

First Grade: Magnus Klattenhoff, Harriett Hyatt, Martha McCormick, Katherine Ann Smith.

Second Grade: Peggy Ray, Darlene Meyers, Jimmie Hyatt, Dal Stanley, Ronda Campbell, Gloria Edwards, Pauline Martin, Sunny Jean Mudgetts, Jud Hodge, De Wayne Richardson, Venita Green.

Third Grade: Scott Mack, Karen Deaver.

Fourth Grade: Billy Earl Caldwell.

Fifth Grade: Ronald Barry, Ruth Yandell, Johanna Clevenger.

The following students in the Slaton Elementary Schools had a ninety (90) or above per cent average:

First Grade: Ronald Bagby, Pat Fondy, Richard Edwards, Jean Forrest, Betty Joyce Green, Suzanne Neill, Shirley Ann Smith, Sandra Wells, Maria Kirksey, Janelle McGuire.

Second Grade: Beunger Dickson, Tom McClannahan, Dan Watkins, Ronald Trice, Carolyn Brunson, Kay Castleberry, Barbara Wilke, Charlotte Ferguson, Dorothy Heaton, Linda Hart, Mary Jane Lovelady, Beverly Kerchival, Pam Maxey, Carol Parks, Linda Smith, Sue White.

Third Grade: Melvin Osborn, Neutie Nan Watson, Mittie Bell Waite, Mary Ann Klattenhoff, Gregory Tomlinson, Taylor Sinis.

Fourth Grade: Gracy Crawford, Jeanette Burrell, Billie Nell Farmer, Donna Pearson, Erin Moore, Sally Patricia Cooper, Carrol Ann Mann, Judy Thomas, Ova Sue Wilson.

Fifth Grade: Buddy Sexton, Jolene Tucker, Joy Herod, Marian Foster, Ronald Wolever, Nancy Clifton, Nelda Lemons, Julia Nell Brasfield, Mary Alice Kenney, Donita Brown, Billy Robert McCarver, Lee Roy Brown, James

Wade Osborn.
Sixth Grade: Jonn Kerns, Jerry Reynolds, Barbara McGinley, David McLeod, Carolyn Fondy, Anette Wilson.
Seventh Grade: John Petty, Larry Johnston.

Mr. and Mrs. Joe Walker and Mr. Walker's mother, who has been visiting them from Ranger, Texas, went last week to Friona where Mr. Walker's mother remained to visit Mrs. Robert Stokes who is her daughter.

Development of Telescope
The first practical refracting telescope was invented by Hans Lipperhey, a spectacle-maker in Middelburg, Holland, in 1608. As originally devised, it was a monocular opera-glass, composed of a convex and a concave lens fitted at opposite ends of a tube. This original telescope was a toy compared to the 200-inch Mt. Palomar telescope, which astronomers expect will penetrate space six septillion miles.

News Summary Featured Weekly

"Should A Woman Tell Her Age?" Why do so many women lie about their age? See the absorbing article about this controversial topic in the American Weekly, the great magazine distributed with next Sunday's Los Angeles Examiner.

"Was An Alcoholic" Read the stark story of a desperate battle against alcoholism. A former alcoholic tells about her "round-the-clock" cure in the American Weekly, that great magazine distributed with next Sunday's Los Angeles Examiner.

A new floating roof for use on storage and filling tanks has a vapor-tight seal, which is obtained by means of a fabric-covered stainless steel shoe, held tightly against the tank wall by spring-actuated arms.

FOR
PLUMBING
HEATING
AIR CONDITIONING
REPAIRS
BRASFIELD
PLUMBING SHOP



PREPARE NOW-

Service Battery
Balance Wheels
Lubricate
Change Oil
Replace worn Tires, Tubes, and Accessories.
AND FILL 'ER UP WITH MOBIL GAS & MOBIL OIL AT

SELF
Service Station
Phone 95

IN PUNTING OR GASOLINE ...

IT'S Control THAT COUNTS!

PHILLIPS 66 IS CONTROLLED* FOR QUICK STARTING AND FAST WARM-UP!

When you watch a kick bounce out on the 1-yard line in coffin-corner—Boy!—that takes control. And make no mistake—it takes plenty of control to make Phillips 66 what it is.

We do it by careful selective blending of Phillips 66 high-quality components—controlling so that in cold weather or hot, you'll get quick starting and fast warm-up from your tankful of Phillips 66!

Just drive with "power-by-Phillips 66" and see what we mean. Stop where you see the orange-and-black "66" sign!

**PHILLIPS 66 IS SELECTIVELY BLENDED FOR HIGH-LEVEL PERFORMANCE ALL YEAR 'ROUND!*

Phillips 66 PHILLIPS 66 GASOLINE

"VOLATILITY CONTROLLED" to give you POWER, PICK-UP and PEP!

KRUEGER, HUTCHINSON AND OVERTON CLINIC
Lubbock, Texas

GENERAL SURGERY J. T. Krueger, M. D., F.A.C.S. J. H. Stiles, M. D., F.A.C.S. (Ortho) H. E. Mast, M. D., F.A.C.S. (Urology)	INFANTS AND CHILDREN M. C. Overton, M. D. Arthur Jenkins, M. D. J. B. Roundtree, Jr., M. D.
EYE, EAR, NOSE & THROAT J. T. Hutchinson, M. D. Ben B. Hutchinson, M. D. E. M. Blake, M. D.	INTERNAL MEDICINE W. H. Gordon, M. D., F.A.C.P. R. H. McCarty, M. D.
OBSTETRICS O. R. Hand, M. D. Frank W. Hudgins, M. D. (Gynecology)	GENERAL MEDICINE G. S. Smith, M. D. (Allergy) R. K. O'Loughlin, M. D.
	X-RAY AND LABORATORY A. G. Barsh, M. D.

J. H. Felton, Business Manager

Time for FORD Care

Let our 4-way Ford service get your Ford set for winter!

- Ford-trained Mechanics** know your Ford from the ground up. Never miss a chance to give you faster, money-saving service.
- Genuine Ford Parts** are made right to fit your Ford right and last longer. That means fewer expensive replacements later on.
- Special Ford Equipment** is designed by Ford engineers to give your Ford a thorough check-up.
- Factory-approved Methods**, designed by Ford engineers, save time and money—do any Ford service job better.

Ford Dealers Know Fords Best!

There's no place like HOME for Ford Service

WILSON'S... EXTRA FINE BREAD

When you want the best - - - when you want a home product - - - when you want full weight, vitamin enriched bread accept only - - -

WILSON'S EXTRA FINE BREAD

It is made in Slaton by Slaton Bakers fresh daily - - and when you have a desire for - - -

COOKIES, FRIED PIES, DONUTS AND CAKES

Get them fresh from the ovens of the

SLATON BAKERY

Slaton Motor Co.
150 West Lynn Phone 133

Pyramids of Mexico
Although pyramids have always been thought of in connection with Egypt, there are actually more of them in Mexico, built by the Incas and the Aztecs.

Saving on Batteries
Hearing aid users, by setting up a timing schedule and rotating batteries during the day, can prolong their life and save as much as 50 per cent on the costs.

GIRL SCOUTS HAVE POT LUCK SUPPER AND JAMBOREE HERE

The Slaton Council of Girl Scouts entertained Tuesday, Oct. 28, at 6:30 on the Club House Lawn with a Pot-Luck Supper and Girl Scout Jamboree.

There were about one hundred and fifty people present including the Brownies and Girl Scouts. Miss Melvina Jarrott South Plains Area Executive had charge of the program. Miss Bettye Jo Crisler also an Area Executive entertained the Girls with games songs and story telling. Miss Jarrott spoke to the adults and explained the plan of Girl Scouting.

Four new leaders volunteered to take troops, they were:

Mesdames Geo. R. Hodges, Gus Clevenger, J. H. Freeland and T. P. Wren.

Mr. T. N. Duckett, council president was in charge of the meeting. The food was prepared by Mrs. W. D. Cooper, camp chairman, with the help of Mesdames Chas. Felty, T. N. Duckett, Jay Moore, Roy D. Meyers, Delma Hodge and Chas. Walton. The pot-luck meal was cooked in an old fashioned wash pot and was reported very delicious, this was served with bread, pickles and camp fire coffee.

The Girl Scout organization in Slaton is increasing in interest and size. With these new leaders it will enable sixty more girls to be Brownies or Scouts.

The following is a list of the troops that are already working and registered.

Mrs. Roy Mack, Leader, Mrs. C. S. Wilkinson, Co-Leader, 24 girls.

Mrs. Jay Moore, Leader, Mrs. M. L. Murray, Co-Leader, 12 girls.

Mrs. Tom Herod, Leader, Mrs. Leon Kenney, Co-Leader, 17 girls.

Mrs. Roy D. Meyers, Leader, Mrs. W. J. Thomas, Co-Leader, 10 girls.

Mrs. W. L. Pearson, Leader, Mrs. Chas. Walton, Co-Leader, 15 girls.

Mrs. W. J. Thomas, Co-Leader, 10 girls.

Mrs. W. L. Pearson, Leader, Mrs. Chas. Walton, Co-Leader, 15 girls.

Mrs. W. J. Thomas, Co-Leader, 10 girls.

Mrs. W. L. Pearson, Leader, Mrs. Chas. Walton, Co-Leader, 15 girls.

Mrs. W. J. Thomas, Co-Leader, 10 girls.

Mrs. W. L. Pearson, Leader, Mrs. Chas. Walton, Co-Leader, 15 girls.

Mrs. W. J. Thomas, Co-Leader, 10 girls.

Mrs. W. L. Pearson, Leader, Mrs. Chas. Walton, Co-Leader, 15 girls.

Mrs. W. J. Thomas, Co-Leader, 10 girls.

Mike Bain Has Birthday Party

Mrs. C. R. Bain honored her son, Mike, Wednesday, October 29th, on his fourth birthday at 625 South 9th Street.

The house was decorated with orange and black streamers throughout. Black and orange candles were lighted, casting a Halloween reflection upon the large cats and pumpkins around the rooms. A Halloween table linen was placed on the dining table, centered with a white birthday cake with orange pumpkins and black cats around the edge. The number four written on a large orange candle signified the number of years. Yard and house games were played and prizes were given to Ronnie Bagby and Lasuetta Polk.

Refreshments were served to Kay Short, Jud and Carol Hodge, Ronnie Bagby, Lynda McCarver, Stephanie Johnson, Laquetta Polk Joy Herod, Barbara Kay Ely, and Tommie Karen McCall. Mrs. Bain was assisted by Mrs. Bert Polk and Mrs. Tom McCall.

Gifts were sent from Mr. and Mrs. Marion Jones, Mrs. L. G. Bain, and Janis Bagby.

Halloween Party Given Miss Young

Ethelyn Young entertained with a Halloween party Thursday night at the home of her parents, Mr. and Mrs. Clifford Young. A gay evening was spent playing games, playing the piano and singing.

Sandwiches, cookies, orange punch, roasted peanuts and candy was served to the following: Ruby Jo Lamb, Geraldine Maxey, Donna Singleton, Patsy Hickman, Jo Ann Douglas, Martha Mack, Ruth Burton, Maizie Brookshire, Patsy Holloman, Johnette Berkley, Billy Butler, Jerry Short, Grady Smith, Duane Sooter, Jerry Lemons, R. A. Thompson, Donald Sikes, Webber Williams, Douglas Drewery and Ethelyn.

Tom McClannahan Has Birthday Party

Honoring her son Tommy on his eighth birthday Mrs. T. E. McClannahan gave him a party last Friday afternoon.

Birthday cake and punch was served to the following: Binger Dickson, Larry Young, Rose Marie Custer, Janette Burrell, Jimmy Hyatt, Billy and Kay Castleberry, Linda Sue Smith, Barbara and Dana Wilke, Linda K. Hart, Jane Lovelady, Kenneth and Vanetta Green, Dannie Watkins, Jimmy Sikes, Hal Stanley, Pam Maxey, Richard Edwards, Beverly Kercheval and David Watkins. Mothers present were: Mrs. W. A. Wilke, Mrs. Custer and Mrs. W. A. Sikes.

Little Miss Is Given Birthday Party

Mrs. Ira McCarver entertained her daughter, Linda Louise, on her 6th birthday with a Halloween party last Thursday, October 30th at the family home. Betty Jane Green won first prize and Betty Brazzell second prize. Refreshments and candy was served.

Those present were: Betty Jane Green, Stevie Edwards, Linda Brown, Laquetta and W. L. Polk, Patsy and Ronda Pettigrew, David Childers, Bonnie, Deannie Silva and James Cole, Martha Jean and Jerry McCarver, Mollie Henzler, Dianne and Don Baggett, Mary, Pauline, Billy, Bobby and Freddie Miller, Barbara Childress, Mike Bain, Lauretta Neighbors, Carroll Hunter, Bobby Sue Brasfield, Ronnie and Donald Burns, Kenny Melcher, Linda Mae Buxkemper, Shirley Kitten, George Angerer, Gale Huser, Chas. Williams, Nancy Miller, Harold Brotcher and Carolyn Brasfield.

Founder of the Army
William Booth, founder of the Salvation Army, preached 60,000 sermons in 60 years and traveled five million miles. Pioneering in the use of the automobile, he led a caravan of four of the earliest model Napier cars on a 62-day revival tour through England and Scotland, holding an average of three meetings each day. He was 74 years old at the time. He remained vigorously active until the day of his death, August 20, 1912, at the age of 88.



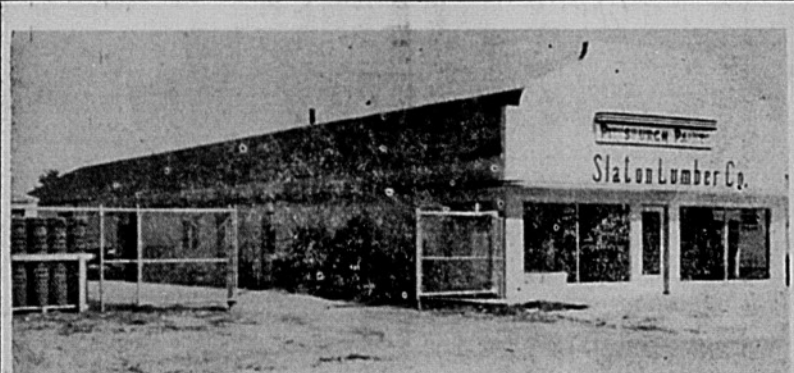
34.50



Justin McCarty

Save Vegetable Juice
Cook vegetables in little water and do not throw that water down the sink, put it in the soup pot.

ESTERBROOK FOUNTAIN
PENS \$1.50 at the Slatonite



The Home of Quality Building MATERIALS

WE NOW HAVE IN STOCK

- Kiln Dried Lumber
- Screen Wire
- Bath Tubs and Fixtures
- Insulation For The Home
- Comp. Shingles
- Coleman Floor Furnaces
- Builders Hardware
- Slab Doors
- Linoleums

For The Finest Name In Kitchen Cabinets SEE THE



ALSO ASK ABOUT OUR

Wall Paper Sale---A 50 % Saving
SLATON LUMBER CO.

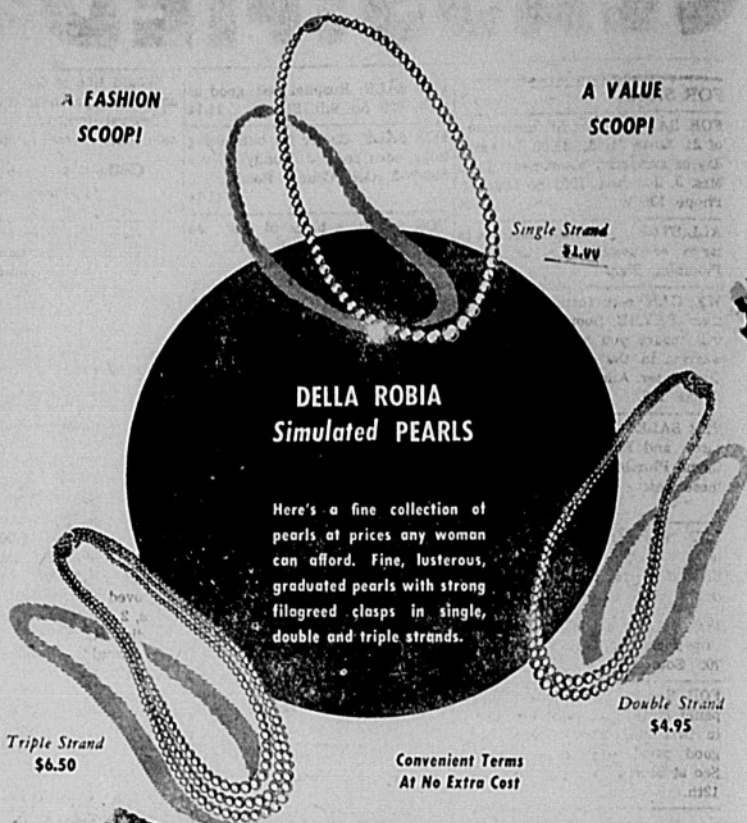
Phone 777

220 W. Crosby St.

ALWAYS LOOK TO LESTER'S FOR QUALITY

A FASHION SCOOP!

A VALUE SCOOP!



DELLA ROBIA
Simulated PEARLS

Here's a fine collection of pearls, at prices any woman can afford. Fine, lustrous, graduated pearls with strong filigreed clasps in single, double and triple strands.

Triple Strand \$6.50

Convenient Terms
At No Extra Cost

LESTER'S

JEWELERS-SILVERSMITHS SINCE 1910

1010 BROADWAY

Eaves Produce Bring Us Your Eggs - Cream GROCERY SPECIALS

PORK AND BEANS
2 Cans 25c

TURNIP GREENS
no. 2 can, 2 cans 25c

GREEN BEANS
whole stringless 15c

PINTO BEANS
tall can 10c

Peach Butter 39c
QUART JAR

COFFEE Glass Jar 39c



PORK CHOPS 64c

BAR-B-Q HOT

BOLO 39c

CHUCK ROAST 42c

Vienna Sausage² Cans 25c

DREFT 35c | Hominy Tall Can 10c

EAVES PRODUCE
Grocery and Market
WE DELIVER

Phone 289

CLASSIFIED

FOR SELLING BUYING RENTING LOANS SERVICE

FOR SALE 12

FOR SALE: Beautiful assortment of 21 Xmas Cards. \$1.00. 14 birthday or sympathy assortments \$1.00. Mrs. J. Johnson, 1205 So 11th St. Phone 139-W. 11-14

ALL STEEL—Kitchen cabinets in large or small units at Allred Plumbing Shop. 11

WE CAN now furnish you with that PAYNE floor furnace that will insure you with comfortable warmth in the coldest days of this winter. Allred Plumbing Shop. Phone 128. 11

FOR SALE: Commodore, Bath Fixtures, and Floor Furnaces at the Layne Plumbing and Electric. See these before you buy and save. 11

GET ready for winter. See the new PAYNE CONSOLE HEATERS at Allred's Plumbing, 650 South 12th. Phone 128. 11

FOR SALE: Sugar and Potato (Toe-Sacks) at Key Ely Grocery, 705 South 9th. 11-7

FOR SALE: 1939 Dodge Dodge panel truck. Reconditioned motor in first class shape, good body, good paint, good tires. \$1300.00. See at Slaton Bakery or 630 South 12th. 11

Cheap acreage in S.W. Lubbock 4 room house, 6 lots, So. 12th. 3 lots on So. 15th. 240 acres close to Crosbyton. \$87.50 per acre. Good home in Lubbock close to Tech. \$6500. 19 lots, S. W. Slaton. F. D. BOSTICK 545 W. Garza Slaton, Texas

FOR SALE: 12 inch band saw with motor and stand, new 2 1/4 H. P. air cooled grain loader engine, new 1-4 and 1-3 H. P. electric motors, rebuilt Firestone motor bike with new engine, 75 amp. electric welder. Don Bourn, 650 S. 9th. Phone 297-J. 11-5

SEE THIS NEW Permaglass Hot Water Heater: "Heated with gas, stored in glass" now for sale at Allreds Plumbing Shop. Unconditionally guaranteed for ten years. 11

FOR SALE: Cut Flowers. Large Greenhouse Chrysothamnus. 900 W. Dickens. 11

FOR SALE: Southwind auto heater. J. B. Brooks, Jr., 645 So. 9th. Phone 47-W. 11-7

FOR SALE: Good enclosed horse trailer, 3 tires and 3 wheels, good rubber, priced to sell. Pete Grandons Garage, 200 block on Texas Avenue. 11

FOR SALE: Garage doing good business in heart of city center. Reason for selling, have other business. Jim Hughes, Triangle Cafe. 11-14

FOR SALE: 1941 Ford tractor with four implements and combine A-1 condition. Buddy McKenney, Wilson, Rt. 1. 11-14

FOR SALE: 1-2 inch heavy duty electric drill. A. C. McKenney Slaton. 11-14

FOR SALE: Sows, suckling pigs weaning pigs, and bred gilts. Arthur Kahlich, 3 1/2 miles South west Slaton. 11-14

FOR SALE: 14 ft. all porcelain Frederick Meat Case. Berkley and Haddock. 11-14

FOR SALE: 7 weeks old pigs. — good breeds, F. A. Strube, 4 miles northeast Slaton on Canyon road. 11-21

FOR SALE: ABC Spinner type electric washing machine. See Mrs. Tanner at Kertain Studio, 125 N. 9th, Phone 756. 11-21

FOR SALE: No. 1 Sweet potatoes \$3.00 bushel, field run \$2.25 per bushel, canners, \$1.25 bushel. See Joe Teague, Jr., at Teague farm on Post highway. 11-21

FOR SALE: One Studio Couch, 3 gas stoves. Mrs. Dudley Berry, 405 South 9th. Phone 152-J. 11-21

FOR SALE: Two small size inner-spring mattresses at Slaton Mattress Co. 435 N. 9th. Phone 121. 11

FOR SALE: Pure blood beautiful black male cocker spaniel, 3 years old \$20. Cecil Long Garage, So. 9th. St. 11

FOR SALE: Hospital bed, good as new. 825 So. 9th. Slaton. 11-14

FOR SALE: Choice fat butchering hogs, corn fed. J. Fondy. Phone 590-W-2. Golf Course Road. 11-14

FOR SALE: A block of land on West Panhandle with well and windmill or will sell almost new wind mill and piping. Phone 191-W. See Harvey Tunnell, 105 N. 5th. St. 11

FOR SALE: Pre-War bedroom suite and breakfast set. 905 W. Lynn. Mrs. Pete Grandon. Must be sold at once. 11

FOR SALE: Hegari bundles, also no. 1 shingles. See A. B. Dozier. nov. 7

FOR SALE: New quilts, hand made, very pretty. See J. P. Wright, 855 So. 11th. St. 11-7

FOR RENT 9

FOR RENT: Have a nice 3 room apartment, gas, lights and bath. Want man and wife. Would like for his wife to help my wife with housework. A. E. Whitehead, call 261. 11

FOR RENT: Private office: F. A. Drewery, 145 Texas Ave. Phone 53. 11

FOR RENT: Front bed room. 325 South 5th. Phone 191-J. 10-17

FOR RENT: New Johnson's floor polisher at Ely Grocery, 705 So. 9th. 11-7

FOR RENT: Trallor house, bills paid. 400 E. Scurry. 11-7

FOR RENT: Front Bed room. 855 South 10th. Phone 583. 11

FOR RENT: Two adjoining bed rooms, outside entrance, \$5 each per week. 240 N. 5th. Phone 140. 11-5

FIRESTONE STORE AND FRANCHISE NEAR LUBBOCK. Equipment plus franchise, \$1,000. Stock invoice approximately \$3,000, netting approximately \$300 per month. 11

3 furnished apartments in Slaton, income \$115 per month, \$5,000. 11

5 room 2200 block—29th. St. \$10,500. 11

5 room frame 1900 block, Ave. N. \$8,400. 11

3 bedroom brick and tile close in double garage with living quarters. \$8,500. 11

Modern 6 room, double garage, 2 1/2 acres on bus line and pavement. 6 miles from courthouse. \$15,000; \$4,500 will handle. 11

One 4 room and 3 room modern house in Arnett-Benson on one lot \$6,500; a real buy. 11

4 room Ave. V. \$6,850. OSCAR KILLIAN 212 Conley Bldg. Office 5932; Res. 8114

HELP WANTED 2

WE have a place open in our modern new plant for an experienced presser who can turn out first class work rather than volume. This is a good job and permanent, salary open. Evans Dry Cleaners. 11-7

REAL ESTATE 6

6 rooms and bath on W. Panhandle. 11

6 rooms and bath, West Lynn. We would appreciate additional listings on city property. 11

Extra good 320 acres of land west of Slaton. In irrigation district. Priced reasonable. 11

4 room house located on 2 lots on 6th St, priced at \$2250. 11

5 room and bath and out buildings on South 10th. 11

2 room house on South 6th. St. 7 room and bath, floor furnace, weather stripped, insulated, garage attached in west part of Slaton. Priced at \$4750.00. 11

160 acre farm 6 miles south of Slaton. Brick building 22 x 60. Priced \$2500.00. 11

Good barn for sale. 3 good farms in Garza County, close to Southland. 11

Hickman and Neill Agency Citizens' State Bank Bldg. Phone 60

Would like to have listings on small acreages near town. Several irrigated farms for sale. Also several houses in town. 11

Clifford & Ethel Young Telephone 786

4 room and bath home, close in, two lots, on pavement. \$3250. 6 room & bath home on corner lot, East front. Located on South 10th, immediate possession. 11

140 north 5th. St. A large 6-room and bath. Newly decorated inside and out. with garage and 2 lots. 11

6 room Stucco and bath. Garage and other nice new outbuildings on West Panhandle. 11

One new 4 room and bath. Close in on pavement. 11

Well located suburban store with 5 room home attached. Corner lot. Price 8,000. 11

We have several desirable small acreage tracts also several well improved farms from 40 to 640 acres, 2 of them located in irrigation district. 11

We would appreciate additional listings. 11

5 room and bath, double garage, on north 3rd St. 11

New 3 room modern home, built on FHA plan, hardwood floors, east front on South 13th. 11

ATTENTION G I's

We are now making G. I. and F. H. A. Loans MEURER and BROWNING

Claude S. Cravens

Attorney-at-Law Teague Drug Building

New 4 room modern, well located only \$1350 down, balance like rent. 11

5 room modern home on 5th Street. \$1000 down. Balance like rent. 11

Cafe, business and good lease price right. 11

2 acres with 5 room modern home and out buildings in good location for only \$5500. 11

Grocery store fixtures and stock with new clean modern living quarters in west part of town. 11

7 room modern home, well located and really priced right. G. I. HOMES can be financed 100%. Let us help you if you want this kind of a deal. 11

Pember Insurance Agency 27 Years Your Agent. 11

MISCELLANEOUS 8

POULTRY RAISERS—Quick-rid poultry tonic is one of the best all around poultry remedies on the market; prevents and stops coccidiosis, a good conditioner and a positive flock wormer. Guaranteed by your dealer. 11-14

SEE: A. P. WILSON FOR YOUR LIVESTOCK and POULTRY MINERALS Phone 345-W 855 S. 21 St.

POULTRY RAISERS—Quick-rid poultry tonic is one of the best all around poultry remedies on the market; prevents and stops coccidiosis, a good conditioner and a positive flock wormer. Guaranteed by your dealer. 11-14

SEE: A. P. WILSON When you want to buy or sell REAL ESTATE of any kind Phone 345W 855 S. 21st St.

"Streamline"
YOUR PERSONAL APPEARANCE with a Royal TAILORED-TO-MEASURE SUIT



ROYAL Tailored-to-Measure Clothes give you the "well turned out" look of the man who's going places! In these fine suits and topcoats you enjoy the added comfort and self assurance that comes only from faultless attire. Every ROYAL suit or topcoat is tailored individually for the wearer... in the fabric and style he chooses. Come in and see if you don't agree that ROYAL Tailored-to-Measure Clothes are your most practical investment in good appearance!

Also A Good Selection of Rose Ready-Made Suits Extra Pants If Desired.

McWilliams Dry Goods
PHONE 755

Help Make Some One's **CHRISTMAS** Worth Living **GIVE** Flour, Canned Milk, Sugar, Beans Macaroni, etc. to the **FRIENDSHIP TRAIN**

Slaton is taking part - - Make donations of food or money - - All money buys food at wholesale prices for the starving people of Europe - - This appeal is made by the **HOME FURNITURE COMPANY** 112 Texas Ave. Phone 9 Slaton, Texas

Tire Toll
Hot weather takes an annual toll of six million tires in the summer.

Vitamin Sources
Leafy vegetables are among the richest sources of vitamin A.

LOOK
Why Pay More When You Can Buy Good Furniture At C. E. WAGERS FURNITURE. 11-7

Public Owned Utilities
Nebraska and Tennessee are the first states to have all electric utilities publicly owned. Throughout the nation, there are some 3,400 cities now served by electric systems owned by municipalities, cooperatives or public power districts. Greatest concentration of publicly owned electric facilities is in Tennessee valley states, the Middle West and states bordering the Gulf of Mexico.

For Extra Service From Your Furniture REUPHOLSTER -It Pays-



We Also Specialize In Auto Reupholstering, Seat Covers, Taylor Made, Slip Covers, And Special Orders Of Any Kind. Come By Any Time, We're Ready To Help You.

DON'T FAIL TO MAKE YOUR CONTRIBUTIONS TO THE FRIENDSHIP TRAIN

SPRADLEY'S UPHOLSTERING
166 Texas Ave. Phone 10

IT PAYS

TO SHOP HERE

Schilling's **COFFEE** pound 45c

EXTRACT Van. KB 11c
8 oz.

CATSUP White Swan 19c
14 oz. bottle

Apricots Syrup Pack No. 2 1/2 Can 25c

Cleang **TISSUE** 29c
Lady Dainty Lg. Box

Jello Asst. Flavors 8c
1 Box

Prune Plums Hunt's heavy syrup, no. 2 1/2 25c

Van Camp's Vienna **SAUSAGE** can 17c

MILK Eagle Brand 29c
1 Can

Lemons lb. 14c

Tomatoes No. 1 Can 10c

F. Key Ely Grocery
705 So. 9th OPEN DAILY UNTIL 9 p. m. Phone 794

SOUTH PLAINS BUSINESS AND INDUSTRIAL GUIDE

AUTO LOANS
AUTO INSURANCE
F. A. Drewry
 145 Texas Ave. Phone 53
 We write all kinds of Insurance

George W. Gibson
 ATTORNEY-AT-LAW
 Citizens State Bank Building
 PHONES
 Res. 182 Office 758

See the big assortment of Personal Stationery at the Slatonite.

Nat D. Heaton
 Attorney-at-Law
 General Practice
CITIZENS STATE BANK BLDG.
 Slaton, Texas

THE Branchway
RUG CLEANERS
 Wash Carpets and Furniture Cleaned
 Pick Up and Delivery
 DIAL 2-1628 1905 AVE. O
 LUBBOCK, TEXAS

Direct Mattress Company
 Felted mattresses and inner-spring mattresses made to order.
 1715 Ave. H Phone 5081
 Lubbock, Texas

DR. CHAS. C. MURRAY, JR.
 OPTOMETRIST
 2408 BROADWAY
 LUBBOCK
 Dial 2-5575

Williams Funeral Home
 Member West Texas Burial Association
 Phone 125 - Day or Night
 SLATON, TEXAS

YOU KNOW BOB —
 Bob Knows Your Ford and Chevrolet
BOB'S GARAGE
 1205 South 10th St.

DEAL'S MACHINE SHOP
 All Kinds of Machine Work
 155 N. Ninth Slaton

Your Patronage Appreciated
Groce Furniture Company
 Complete Home Furnishings
 Free Parking
 1801 Broadway, Lubbock

Insure in **SURE Insurance**
 with the **J. H. Brewer Agency**
 For Sure Protection

Band Instruments Records Teaching Material Sheet Music
B. E. ADAIR MUSIC COMPANY
 Complete Stock Musical Supplies
 1012 Main St. Next to Hilton Hotel
 Lubbock, Texas
 We Solicit Your Mail Order Business

LICENSED — BONDED
PLUMBING
 REPAIRS A SPECIALTY
 Fixtures, Tubs, Lavatories, Commodes, Sinks, Water Heaters.
 650 S. 12th St. Phone 128W
Allred Plumbing

DUNLAP MOTOR FREIGHT
 Formerly Alcorn Motor Freight
 Daily Truck Service To and From Lubbock. Pick Up and Delivery Service
 Phone Day 80 Lubbock Phone 6303 Evenings 781-W

LIVESTOCK OWNERS
Free Removal of Dead Animals
 CALL CALVIN KLAUS SERVICE STATION
 Slaton, Texas Phone 684
 Gulf Tires Gulf Batteries
 OR
KEETON PACKING CO.
 Lubbock, Texas Phone 6671 — Collect

CHICK CHATS
 By Robert Huser of Huser's Hatchery

LICE, MITES ARE SERIOUS PROBLEM

Few poultry flocks are free of lice or mites; many are infested heavily with the tiny creatures. It behooves every poultryman to examine the birds in his flock regularly and to take steps to get rid of external parasites when they are detected. For these pests can cause considerable economic loss among poultry flocks.

Species of Lice
 There are many species of lice, but those that cause the most trouble are the common body louse, shaft louse, head louse, and wing louse. All of these lice live continuously on the chicken's skin or feathers and use the fowl's body as a source of food.

When examining a bird for lice, part the feathers on the back of the fowl's head, along the back, under the wings, and around the vent. These are the regions in which lice infestations usually are heaviest. If you see small brownish or grayish insects or grayish-white nits, you should treat the birds immediately with a reliable delousing preparation.

Mites Are Hard To Find
 Unlike lice, poultry mites live in cracks and crevices in the poultry house and crawl onto the chicken's body only when it is their time to feed. Generally, they spend the day in their hiding place and then emerge at night to feed on the birds' bodies while the flock is on the roosts. Mites are difficult to find. Unless gorged with blood, which gives them a red appearance, they are of gray color and often even a thorough examination of the house will not reveal their presence to one who is unfamiliar with their appearance. Mites are small—only 1/32 of an inch in length.

Apparently, one of the easiest and most effective means for controlling mites is through the use of commercial mite-killer surface paints. Preparations of this kind are painted onto surfaces within a poultry house, and mites die when the contact the residue.

Glad to Let You Know
 If a fellow has a black eye, it may be said that "he suffers from a contusion of the periorbital integument, subcutaneous hemorrhage, oedema of the conjunctive and the periorbital cuticular tissues, discoloration, tumefaction and abrasion of the supramalar epidermis."

Air Army Problem
 Army chiefs estimate they will need 5,000 large transport planes on a minute's notice to meet a future emergency like World War II. If only one company produced them, it would take more than five years to turn out the first 300 planes.

George Had a Mule
 Production of mules in the United States dates back to colonial times. George Washington was presented with a jack by the Spanish king about 1787.

Have That Old Mattress Made New
 WE PICK UP AND DELIVER — PHONE 121 FOR FREE ESTIMATE
Slaton Mattress Co.
 435 N 9th

TONTINE SHADE SHOP
 "HOME OF THE BLIND PEOPLE"
 Manufacturers of WINDOW SHADES — VENETIAN BLINDS
 1107 19th St. Lubbock Dial 7851

DR. P. K. PALMER
 OPTOMETRIST
 OFFICES IN LESTER'S JEWELERS
 LUBBOCK
 1010 Broadway Phone 5794
 USE YOUR CREDIT
 PAY ONLY \$1.00 A WEEK

LAFF - A - DAY



Copyright 1947, King Features Syndicate, Inc., World rights reserved. 7-4

"Filing is easy. I just label all the drawers 'Miscellaneous' . . . then I can toss the stuff in any place!"

Have your prescriptions filled at **TEAGUE'S DRUG STORE** by a registered pharmacist.

WOODMEN OF THE WORLD
 Camp No. 2871
 Slaton, Texas
 Meets 1st. & 3rd. Mondays
 7:30 p. m. Woodman Hall
 Over Teague Drug

ODIE A HOOD
 REPRESENTING
Southland Life Insurance Co.

TEXAS ROOFING COMPANY
 Roofing, All Kinds, Overhead Doors
 Window Type, Evaporative Air Conditioners
 1902 Ave. F., Lubbock, Tex
 Telephone 8577

Auto Repairing
 ALL MAKES. ALL KINDS
 ALL WORK GUARANTEED 100%
Pete Grandon and Leo Wendel
 218 Texas Ave. Phone 588

Electro-Magnetic Rays
 Television utilizes electro-magnetic waves which are cousins to light rays.

Expert **Upholstering**
 in Slaton at **Spradley's**
 Upholstering and Repair Shop
 166 Texas Ave. Phone 10

Learn To Fly
 With The **E & L Flying SERVICE**
Piper Cub Dealer
 C.A.A. & G. I. Approved School
 Pleasure Rides

See our display of Granite Monuments, or our representative will call at your invitation.

South Plains Monument Co.,
 2909 Ave. H Lubbock

SLATON LODGE
 NO. 1094, A. F. & A. M.
 Stated Meetings on Second and Fourth Thursdays Of Each Month
 J. H. Gordon, Worshipful Master
 W. T. Brown, Secretary
 All Members and Visitors Invited.

Morriset Pen Points
 Stapling Machines
 Adding Machine Paper
 Paper clips, hooks, & punches
 Indelible Marking Sets
 Many Other Items at the
SLATONITE

Get Your Christmas Gift Portraits Now
 We Are Ready To Give You Early Service On All Portrait Work. Avoid The Rush.
 ALSO We Will Print Christmas Cards From Any Negative.
CARD PORTRAIT ENVELOPE 25c
KERTAN STUDIO
 "OUR PORTRAITS SPEAK FOR THEMSELVES"
 125 North 9th. Phone 756

FOR PROMPT ATTENTION AND EXPERT WORK
N. J. Wicker
 FOR **ELECTRICAL Wiring and Repairs**
 105 North 19th St. Phone 759-J

DR. C. M. NEEL
 Optometrist
VISUAL TRAINING
 1620 Broadway Phone 7155

DOCTORS CAULEY & WELCH
 OPTOMETRISTS
 1114 Ave. L Lubbock, Texas
 (One block west Hotel Lubbock) Dial 7180

REPAIRS ELLIOTT'S
 RADIO AND ELECTRIC SHOP
 ON ALL RADIOS
 Will repair your REFRIGERATORS RADIOS — MOTORS and all Electrical Appliances at reasonable prices
Pick Up and Delivery Service
 Phone 120

New Heavy 16" Casing \$3.25 A Foot
 Early delivery with genuine Byron Jackson pumps. Make your reservation now—
F. M. DENTON
 "DEPENDABLE IRRIGATION EQUIPMENT AND SERVICE"
 Attractive Yearly Payment Plan
 2806 AVENUE H DIAL 4209

NOTICE STOCKMEN
WE PICK UP DEAD STOCK No Charge
KIRK'S SERVICE STATION
 SLATON PHONE 873

Santa Fe
...that's the System!
 for swift, dependable
 freight and passenger
 transportation



Let your Santa Fe
 Agent help with
 your transportation
 problems

1550

**Native Belgian
 Tells Of Home**

Mrs. R. O. Hayes, program leader for the Civic and Culture Club for October 25, presented a study of Belgium for the consideration of the Club. She gave some pertinent facts about the geography and significance of Belgium and presented Mrs. R. G. Underwood, a native of Belgium who gave an informal talk about life in her home country.

Mrs. P. G. Meading was hostess to the following members and guests: Mrs. J. S. Bates, Mrs. W. T. Cherry, Mrs. J. L. Fertig, Mrs. S. S. Forrest, Mrs. R. O. Hayes, Mrs. H. Hollis, Mrs. W. R. Lovett, Mrs. D. J. Neill, Mrs. H. G. Sanders, Mrs. R. G. Shankle, Mrs. R. H. Todd, Mrs. B. M. Pember, Mrs. M. A. Pember, Mrs. Billy Ball, and Mrs. R. G. Underwood.

SENIOR P.T.A. TO MEET

The Junior-Senior P.T.A. will hold their regular meeting on Thursday, November 13 at 4:00. It will be an important meeting and all members should be present.

Need a LAXATIVE?

Black-Draught is
 1-Usually prompt
 2-Usually thorough
 3-Always economical
 25 to 40 doses only
 25¢.

BLACK-DRAUGHT

CAUTION: USE ONLY AS DIRECTED

**Short Corn Crop
 Goes Farther
 When Ground**
 4 bushels equal 5
 say feeders



**Amazing New Hammer Mill
 Grinds 1/3 Faster**

Delivers 80 to 280 feed smashing blows per second...extra large screen area and super-high-powered blower fan deliver more feed with less power. "Here's a hammer mill," say users, "that grinds more feed per horse-power per hour than any other mill we've known." Yes, the Harvey Red Hed will do just that—and it grinds thoroughly, too.

Compare the Harvey with any other hammer mill point by point. See why it is the greatest hammer mill buy on the market.

Come in and see it today.

Harvey RACINE
 SEE U. S. PAT. OFF.

**OFFICE
 SUPPLIES**
 AT THE
SLATONITE

**Now Is Time To Rid
 Cattle Of Worms**

COLLEGE STATION, Oct. 31 — A little time and trouble now, plus some rotenone, can put Texas cattle and dairymen on the road to saving \$5 million.

How? By spraying for cattle grubs.

Statistics show that forty-two percent of all Texas cattle are grubby. Grubby cattle are discounted on the market at about one cent a pound. The total loss to Texans in the cattle and dairy business in terms of milk, meat and leather each year comes close to five million dollars.

Most farms and ranches cause their own trouble with grubs. Extension entomologists for Texas A. & M. College points out. Heel flies are the parents of grubs, and the flies seldom migrate over

SCHOOL PAPER OUT
 The first issue of the Slaton Elementary School News, a mimeographed weekly paper put out by the students of the elementary classes of the Slaton Schools made its first appearance last week. It is well edited and the work well done.

half-a-mile. So treatment for the grubs in the fall and winter will control the heel fly on the farm and ranch in the spring.

Spray the backs of the animals with a mixture of 7 1/2 pounds of 5 percent rotenone in 100 gallons of water at about 30-day intervals in the fall and winter, the entomologists say. Rotenone dust can be used on small herds.

Control now will help to save feed next year, too, as it takes from 10 to 15 percent more feed to fatten a grubby steer than one free of grubs.

TECH STUDENTS VISIT HERE
 Students from Texas Tech visiting in the L. A. Harral home over the wee kend were: Miss Mary Harral, Miss Jane Wilson, of Eastland, John Jackson, of Dallas, Winnifred Chunn, of Plainview and James Penson of Plainview.

**Relief At Last
 For Your Cough**

Creomulsion relieves promptly because it goes right to the seat of the trouble to help loosen and expel germ laden phlegm, and aid nature to soothe and heal raw, tender, inflamed bronchial mucous membranes. Tell your druggist to sell you a bottle of Creomulsion with the understanding you must like the way it quickly allays the cough or you are to have your money back.

CREOMULSION
 for Coughs, Chest Colds, Bronchitis

TEAGUE MERCANTILE COMPANY

Phone 796 330 N. 9th. St. on Highway
 Let's All Back Our Football Team.

SUGAR Pure Cane 10 lb. Bag **95c**

TORTILLAS 2 1/2 doz. in can **79c** **HONEY** 5 lb. Can **1.15**

Pork Chops Pound **59c** **SAUSAGE** Pure Pork, 1 lb roll **45c**

PRUNES, No. 1 Jar Dried **15c** **Pork & Beans** No. 1 Tall Can **12 1/2c**

PEAS Blue Haven No. 2 Can **10c**

PINEAPPLE, Sliced, Grated Libby's, no. 1 can **15c** **CORN** Cream Style, no 2 **15c**

LIVER More Good Liver, lb **25c** **BEANS** Green Lima, no. 2 **29c**

POPCORN Happy Jack Corn **10c** **CHERRIES** RSP, No. 2 **29c**

PEACHES Bonny-Lass In Heavy Syrup No. 1 tall can **12 1/2c**

We Can't Help It Cause We Sell So Cheap.

Beautifully feminine is the fashion trend in Dresses

HAT \$4.98

HAT \$4.98

\$9.90

In longer lengths the fall dresses go feminine. Anthony's have the newest in dresses with that feminine look and the prices are unbelievably low. At these very modest prices you will find gabardines, crepes and strutter type materials. Sizes range from small juniors to the larger dresses for women.

Your color selection will be large because of the new daily arrivals in our dress department . . . greens, melon, blues, blacks, wines, browns, natural, nude and gray.

Anthony's
 Slaton, Texas

A small down payment will hold your dress until wanted.

**SOUTHLAND
MRS. FLOY KING**

Last Wednesday night at the regular monthly conference Rev. E. Brooks resigned to accept the pastorate of Wilson. Monday night he is to be the speaker at the monthly Brotherhood meeting, and Tuesday night he is to address the Sunday School Association meeting at Brownfield. They will move Wednesday of this week to Wilson.

The Dickens football team didn't come over to play Southland Friday as it was scheduled our next game is supposed to be this Friday but don't know where.

Mr. and Mrs. C. Whittington of Slaton were Sunday guests of his sister Mrs. C. W. Gary and family. The Jack Hargroves left Thursday to visit relatives in Dallas for a week.

Mr. and Mrs. Bill Ramsey of Midland spent the week end with her parents Mr. and Mrs. G. N. Smallwood.

Mr. and Mrs. C. Minor of Lubbock visited Mr. and Mrs. Fred Wood Sunday evening.

Mrs. J. C. Harris went to Plainview last Wednesday to visit her daughter Mr. and Mrs. Glenn Allen.

Mrs. Gregory, Mrs. Hazel Craft and Mr. Bill Gregory were through Southland recently enroute to Oklahoma to visit a sick relative.

Visiting the Harry Kings over the week end and Sunday was Mr. and Mrs. Pete King and baby.

Fireman A. C. Elmer Trimble, Jr., is spending his leave with his parents, Mr. and Mrs. E. Trimble.

Betty Jackson spent Friday nite and Saturday with the Winterrowd girls.

Mr. and Mrs. Edd Martin are still with their daughter, Mrs. Loyd McNabb who underwent an appendicitis operation and is still very sick.

Mrs. G. W. Basinger left Friday morning for Oklahoma to be with her mother Mrs. Donahoo who is still very sick.

Bennie Harvin and wife are visiting his father J. J. Harvin and sister Irene who was in Mercy Hospital in Slaton last week.

Mrs. Leonard Andersons uncle Elisah Stewart left by plane for Hollywood, Calif., last week to visit his daughter Mrs. Lillian Jones.

Mrs. Jack Myers and her sister Mrs. Clifford Leddy visited another sister at Spur this week.

Supt. and Mrs. C. S. Lindsey returned home from Quitman last Monday afternoon.

Mr. and Mrs. Clyde King and

children visited the G. M. Kings of Muleshoe last Sunday.

Ding Martin of Borger and his aunt and uncle Mr. and Mrs. Manuel Presswood of Abilene came to see his parents, Mr. and Mrs. Edd Martin and found them gone so they visited Mrs. Matlock before leaving early Sunday morning.

Mr. and Mrs. Don Pemell and children visited in Wichita Falls,

children visited the G. M. Kings of Muleshoe last Sunday.

Ding Martin of Borger and his aunt and uncle Mr. and Mrs. Manuel Presswood of Abilene came to see his parents, Mr. and Mrs. Edd Martin and found them gone so they visited Mrs. Matlock before leaving early Sunday morning.

Mr. and Mrs. Don Pemell and children visited in Wichita Falls,

Texas and Oklahoma over the week end.

Mrs. Ella Permell returned to her home in Oklahoma last week.

Mrs. Claud Cooper left last week to visit her brother who is very sick at his home at Clarksville.

Mrs. Portwood is on the sick list again.

Mr. and Mrs. R. E. King of

Plainview visited their son, Mr. and Mrs. Skimney King and baby over the week end.

The Southland football boys all went out to Mr. August Beckers and pulled bolls to help buy their new sweaters. Coach Green and his wife accompanied them out to the field. They all had a jolly day. They worked like they play ball, to win.

Mr. and Mrs. Wortis and children visited his parents, Mr. and Mrs. W. C. Wortis of Petersburg Sunday.

Tunie Basinger and Glenn Hill spent Sunday night with Gene Anderson.

Mrs. T. H. Basinger and little daughter visited Mrs. Bell Winterrowd Saturday.

Mrs. Fred Sooter and baby of

Slaton visited her sister Mr. and Mrs. Fred Wood Sunday night.

Up to now, Monday, Southland has ginned 1605 bales of cotton.

The Halloween Carnival was a real success they sold everything they had to sell and made every thing be as much like a real carnival as possible and all enjoyed the occasion.

Mr. and Mrs. A. M. Hawthorne,

Mr. and Mrs. Gale Hawthorne all of Monroe, Mr. and Mrs. George McMahon of Lubbock all visited Mrs. Nellie Mathis Sunday.

Mrs. Nettie Kelleem visited at the lunch room Tuesday.

Scratch pads of good grade bond paper, 25c per pound at the Slatonite.

GRAND OPENING

Of Alfords Enlarged And Remodeled Store

Featuring Many New Departments, Refrigerated Vegetable and Fruit Room, Drug Needs, Cosmetics and Home Needs of all Kinds. ALL VISITORS WELCOME.

Pork & Beans White Swan 4 No. 300 Cans 55c	MILK, Daricraft, 3 tall cans 41c
Fresh - Blackeyes, no. 300 15c	JELLO, Package 8c
PEAS,	Amarillis - 25 lb. Sack 1.95
Wapco, 2 no. 2 cans 29c	FLOUR,
SPINACH,	W-P-Maple Flavored, pint 23c
White Swan-Mustard, 2 no.2 25c	SYRUP,
GREENS,	White Swan-1/4 lb. 25c
TAMALES, With Gravy, 15 ozs. 15c	TEA,
WALNUTS, New Crop-English, lb. 45c	CHOCOLATE SYRUP, Bonus-1 lb. 5c
Magic - Lge. Pkg. 29c	Hunts. CHB, 6 oz. Bottle 5c
WASHER,	MUSTARD,
White Swan-Bartlett no. 2 1/2 48c	Old Dutch-Reg. Can 10c
PEARS,	CLEANSER,
CLOTHES PINS, Good Springs - each 1c	White Swan-Salad - pint 34c
	DRESSING,

WHITE SWAN

COFEE

49c

All guess and customers will be served cookies and White Swan Coffee

SATURDAY

WHITE SWAN Grapefruit Juice 46 oz. can **21c**

Salmon White Swan No. 1 Can **68c**

PALACE THEATRE

NOW SHOWING

ALAN LADD
GAIL RUSSELL

—in—

"SALTY O'ROURKE"

SATURDAY

ALLAN LANE
RED RYDER

Homesteaders of PARADISE VALLEY

SUNDAY - MONDAY

GARY COOPER
MERLE OBERON

—in—

"THE COWBOY & THE LADY"

TUESDAY - WEDNESDAY

CRIMINAL COURT

—in—

THOMAS CHURCHILL
and HENRIETTA WOODS

Quality **MEATS AND POULTRY**

VEAL SEVEN ROAST Lb. **49c**

WIENERS Lb. **49c**

Dry Salt Bacon Lb. **55c**

Veal Loaf Meat Fresh Ground Lb. **35c**

Veal Round Steak LB. **69c**

fresh **PRODUCE**

ORANGES LB. **11c**

FIRM LETTUCE Crisp Lge. Head **15c**

LEMONS LB. **12c**

TOMATOES LB. **15c**

Delicious Apples LB. **15c**

SPECIALS FOR Friday AND Saturday

ALFORD GROCERY

Phone 184 SLATON, TEXAS 215 S. FOURTH STREET

SPECIALS FOR Friday AND Saturday

THE SLATON SLATONITE
 SLATON PUBLISHING COMPANY, Slaton, Lubbock County, Texas
 Slaton Times purchased 1-20-27.
 Entered as second class mail matter at the postoffice, Slaton, Texas.
 A. M. JACKSON, Editor and Publisher

ADVERTISING RATES
 Display Advertising 50 cents per column inch to all agencies, with usual discounts.

Local Readers, set in 8-pt. 10 cents per line of five words, net. To agencies, 10 cents per line with usual discount.
 Card of Thanks, 75 cents.

NOTICE TO THE PUBLIC—Any erroneous reflection upon the reputation or standing of any individual, firm or corporation, that may appear in the columns of The Slatonite will be gladly corrected when called to our attention.

Obituaries, Resolutions, Memorials (excepting accounts of death, news originating in this office), 5 cents per line. Poetry 10c per line.

SUBSCRIPTIONS IN ADVANCE
 Lubbock, Lynn, Garza Counties, \$2.00. Outside these counties, \$2.50.



JUST TALK

by
A.M.J.

that J. D. Holt and me are about the jumpiest with Ed Haddock and Carl Evans running close behind. It is my suspicion that J. D., Ed, Carl and myself picked out some nerve wracking business to do while Preaching is easy on the nerves and then there must be some reward for being good.

My ego went way us last week when some sweet voiced young lady, I assume from the tone of her voice that she was young, phoned me and asked when I am predicting a freeze. There was no doubt in her voice that she would have full confidence in what I predicted and I almost forgot myself to the extent that I nearly predicted a certain date. I stopped just in time. "What," I asked myself "would a first class predictor do in a case like this," then my better judgement answered, "dodge the question like the Government weather prophets do," so I told her that we usually have a freeze by this time of the year and that it might come this week or perhaps by Thanksgiving and that she could likely tell by the fact that the first cold spells usually creep up on us slowly and that we'd likely have a light frost some morning soon and that she could look for a freeze soon after that."

Whether being a Preacher makes one seem always in a good spirits and without indigestion or whether the preachers have a little trouble I do not know, but it seems to me that Reverends Ferguson, Wright, Moyer, Medearis and Hodges are about the most serene men in town and

Whoever this nice voiced woman was, said that they have a

lot of green tomatoes and that she is getting worried about a freeze. My sage advise to her was that she pull the tomato vines up by the roots and hang them in a garage or some place that will stay cool, they will ripen and be much better tomatoes than hot house ones that will soon be on the market. As for waiting for the freeze one might as well pull the tomatoes now for they won't grow much from now on regardless of the weather.

Has any one heard anything out of Judge Smith lately about his roses? The Judge used to tell me a lot about the big, fine roses he had in his rose garden but his crop must have failed this year like mine did. Its a mistake to put ones chest out too far when it comes to roses, they are undependable as farmers and newspaper folks, they let you down just at the wrong time.

The following information clipped from the Colorado Record shows what the Chamber of Commerce is doing in that town. The members of this organization pay dues and work for the betterment of their town. Colorado City is known for its activities all over West Texas.

The Colorado City Chamber of Commerce now has more than three hundred members, approximately 95 per cent of the business in Colorado City are affiliated with the Chamber of Commerce. The Chamber of Commerce works through twenty one communities and sponsors or assists the 4-H and FFA Livestock Show, the West Texas Chamber of Commerce, Schools, National Affairs, Legislation, City Government, Fire Prevention, Frontier

the Colorado River dam will be its main project through 1948. The Chamber of Commerce serves as a clearing house for people coming in looking for homes by helping them to get located.

—Colorado Record
 Slaton needs some organization that would work with our present Chamber of Commerce so that all of the business firms in Slaton could have an opportunity to take part in the work. We have an active and aggressive class of business men and their services on civic matters should be utilized.

Herbert has been taught to rise when his mother entered the room and remain standing until she was seated or until she withdrew.

One day a boy friend came to see him. Herbert's mother came into the room where the boys were and Herbert arose. His friend made no move, so Herbert asked him to stand up.

A few minutes later mother again entered the room and Herbert arose, while his friend reluctantly arose to his feet.

When Herbert's mother entered Roundup, Parking surveys, Soil Tour, Amateur Hour, Farm Lab

or, Convention and work with all civic clubs, for the betterment of Colorado City. This years program of work set out as the number 1 project, the paved route to Robert Lee which is well on its way to completion. Work on ed the room for the third time and her son arose, the guest said, disgustedly: "Say, what do you think your mother is, the National Anthem?"

A beggar clutched at the sleeve of a benevolent-looking passer-by.

"Five cents, sir, for a cup of coffee?" he whined.

The other turned to survey him "Why should I give you five cents?" he asked. "What brought you to this sad plight?"

"A terrible catastrophe, sir" the beggar replied. "Two years ago, like you, I enjoyed business prosperity. I worked industriously. On the wall above my desk was the motto: 'Think Constructively, Act Decisively.' Wealth poured my way. And then—and then—"

The beggar's frame shook convulsively. "The scrub lady burned my motto!"

TURKEY DINNER

6:00 to 8:00 P. M.

Nov. 17, 1947

At The Slaton Club House

Sponsored by Slaton

CATHOLIC LADIES

Adults \$1.00 — Children 50c

Also A

BAZAAR

Toys And Many Beautiful Articles

Open 1:00 To 8:00 P. M.

NOTICE

TO GRAIN GROWERS

We Pay
TOP PRICES

for

MILO MAIZE

40 car storage, excellent unloading facilities - - - can handle high moisture content grain at standard discount.

SOUTHLAND GRAIN CO.

S. A. Westergren, Mgr.
 Phone 32 or 52 Southland, Texas

Dr. M. J. McSween, Jr.

announces the association of

Dr. John Little Cobb

in the general practice
 of medicine and surgery

Congratulations

TO T. H. DUCKETT

and to the

LEON THEATRES

Your New and Modern

SLATON THEATRE

is a credit to our town and this area - - - We believe you deserve the support of the people you serve - - - We have full confidence that you will bring the very best of clean amusements in the most attractive Theatre Slaton has ever had - - - You have spent a large sum of money to bring this Theatre here - - - You have confidence in Slaton and have shown that they expect to give us the best in their line.

SLATON SLATONITE

A. M. Jackson
 Publisher



"It takes a lot more than just a telephone"

"I'm a telephone installer. I put in telephones for new customers. And, believe me, I'd like to put 'em in right now for everybody.

"But telephone service takes a lot more than just a telephone. It takes wire, cables and poles, and complicated switchboards. These things have to be ready and working first.

"It takes time to make switchboards and dial equipment, and it takes time to fit them into the present telephone system. But factories are turning them out faster than ever before, and we're putting them in as fast as we get them.

"It's not a short job or an easy job. But we're hard at work. Since V-J day, we've put in one million telephones in the Southwest. That's nearly twice as fast as prewar speed. Just as soon as we can, we'll be coming your way with telephone service."

SOUTHWESTERN BELL TELEPHONE CO.



We Now Have Our Stock Of Shrubs and Evergreens

And Extend To You An Invitation To Visit The
SLATON FLORAL CO.

Let Us Show You Our Selection — These Shrubs Were Grown
In This Vicinity And Are Of The Very Best Quality.

Baker Arborvitaes, all sizes	\$2.50 to \$7.50
Bonita, all sizes	\$2.50 to \$3.50
Elceisa, all sizes	\$2.50 to \$4.00
Spitney Greek Juniper, all sizes	\$2.50 to \$4.00
Pfizer Juniper, all sizes	\$2.75 to \$4.00
Italian Cypress, 3 to 4 foot	\$5.00
Mahonias, 18 to 24 inches	\$3.00
Nandinas, 12 to 24 inches	\$2.25 to \$3.00
Pyracanthas, 18 to 24 inches	\$2.00

Beautiful Your Home By Putting Out A Few Shrubs And
Evergreens, By Doing So You Are Helping Beautify Your
Town.

Slaton Floral Co.

145 So. 9th St. Phone 489
Open Sundays 1:00 to 6:00 P. M.
FOR YOUR CONVENIENCE

Jolly Quilting Club Met November 4th.

The Jolly Quilting Club met
November 4th with Mrs. Jack
Smith for an all day meeting and
covered lunch. Two quilts were
completed and officers elected for
the coming year. The following
members were present: Mesdames
J. F. Ritchey, E. M. Lott, Jess
Burton, J. A. Smith, Stella Shel-
ton, E. E. Wilson, H. H. Edmond-
son and the following visitors:
Mesdames Fred Stottlemire, Irby
Smith, E. E. Jarman, H. E. Cav-
ener and R. C. Sanner.
A called meeting will be held
at the Club House November 12.

Miss Gertrude King spent a
very enjoyable week end in Lev-
elland. She visited in the home of
H. E. Clingan.

Catholic Daughters Plan Bazaar Here

The Catholic Daughters of
America held their regular meet-
ing November 2 at 2:00 p. m.
Twenty-three members were pre-
sent.
Final plans were made for the
bazaar which will be held at the
Club House November 17.
A Christmas party was dis-
cussed and decided upon for the
next meeting December 7.
Ada Mae Kitten gave a timely
reading "I'm No Theologian" after
which a social hour was held and
refreshments served.

Mrs. Hugh Brian, former resi-
dent of Slaton, from Albusuerque,
visited in Slaton. He is moving to
San Angelo.

WANT ADS GET RESULTS

Catholic Ladies To Serve Turkey Dinner

The Annual Turkey Dinner that
has made the Catholic Ladies of
Slaton famous all over this area
will be served again this year at
the Slaton Club House on Nov.
17, at which time a Bazaar will
also be held offering toys and
gift articles for sale.
Choice turkeys have been re-
served by the ladies and a boun-
tiful dinner may be expected. Tick-
ets will soon go on sale.

Pennsylvania Farm Land
According to the 1945 U. S. farm
census, the 171,761 Pennsylvania
farms contain 15,019,675 acres of
land. The total possible cropland is
8,001,335 acres, and land used for
crops in 1944 both harvested and
failure, amounted to 6,663,799 acres.
Planted pastures totaled 4,240,673
acres, and woodland totaled 3,312,
084 acres.

Milton Kessel visited his par-
ents, Mr. and Mrs. A. Kessel last
week. Mr. and Mrs. Kessel and
Milton visited in Roswell last
Sunday.

Electricity in Iowa
Iowa now has 190,000 farms—75
per cent of the total in the state—
served by electric lines. The total
in 1940 was about half this number
or 86,000 farms having electricity.

Help The Slaton Band Fund
by subscribing to
CURTIS PUBLICATIONS
Saturday Evening Post and
Ladies Home Journal etc.
Through The
**SLATON HIGH SCHOOL
BAND MEMBERS**

Thrifty VALUES

SOAPS

FREDERICK Powder, Two Large Boxes	25c
TEXANA SUDS Two Large Boxes	25c
LADY GODIVA Flakes Large Box	25c

SUGAR

Pure Cane
10 lbs.

98c

PURASNOW FLOUR

5 pounds	39c
10 pounds	79c
25 pounds	\$1.89
50 pounds	\$3.69

Cake Flour

SNO-SHEEN
Large Box

39c

Miracle Whip	Pint Jar	29c
FIG PRESERVES	Garth's lb. Jar	23c
PEACHES	Hunt's 2 1/2 Can In Heavy Syrup	25c
Coffee	Red & White 1 lb.	49c

MEATS

HAMS,	lb.	53c
Picnic, 1/2 or whole		
WEINNERS,	lb.	39c
SKINLESS		
FISH,	lb.	39c
White Trout		
BACON,	lb.	89c
Wilson Certified or Morrell Pride		
TOMATOES,		12 1/2
No. 2 Can		
GRAPE JUICE		45c
Pure Concord, Qt. Bottle		
PUMPKIN		19c
White Swan Fancy No. 2 1/2 Can		

OLEO
Bluebonnet
lb. 34c

CRANBERRY SAUCE	25c
Red & White, tall can	
MINCEMEAT	25c
Bordens None Such, 9 oz. pkg.	
GRAPEFRUIT JUICE	15c
Texun, 46 oz. can	
PRUNE PLUMS	19c
Hunt's 2 1/2 can in heavy syrup	

VEGETABLES

LETTUCE, lg. heads	15c
Lemons, Cal. Sunkist, lb.	10c
ORANGES, Cal. Full Juice lb	7 1/2c
Grapefruit, Tex., lb.,	5c
Celery, lg. bunch	19c

APPLES
Washington
Extra Fancy
lb.
15c

THE MOTOROLA Radio Phonograph Combination

This Beautiful Golden Voice In-
strument provides complete home
entertainment in FM and AM radio
Short Wave reception, and phono-
graph. The sheer beauty of the
cabinet is a decorator's dream and
is acceptable by the most fastid-
ious home owner.

COME IN AND
LET US SHOW YOU

Phone 55 **SLATON HARDWARE CO. Inc.**
106 W. GARZA STREET
A friendly store for the world's friendliest people

BERKLEY & HADDOCK

★ RED & WHITE FOOD STORES ★