

# THE SLATON SLATONITE

ESTABLISHED SEPT. 8, 1911

SLATON, LUBBOCK COUNTY, TEXAS: JUNE 9, 1916.

FIFTH YEAR

## Big Celebration and Barbecue at Slaton Will Last Two Days

The Chamber of Commerce had a very interesting session Wednesday night with Col. A. B. Watson, president, in the large representation of members were present and considerable enthusiasm was manifested in disposing of the business on hand.

Arrangements are being perfected for a rousing barbecue and celebration in Slaton on July 3rd and 4th. Watch for large posters and programs.

The next meeting will be held Wednesday night, June 21st, and every booster for Slaton is urgently requested to be present.

### Prefers the South Plains

E. L. Deavers returned to Slaton last Friday from his home at Loveland, Okla., where he had been for a few days making arrangements to harvest his wheat crop, and he is shipping his big traction engine from Slaton to Loveland for threshing the crop. The early wheat made a fair crop, but the late wheat made a total failure. Mr. Deavers says that the Slaton country has a much better season than his section of Oklahoma, and he has already decided to move to the South Plains in the fall. The Slatonite is pleased to learn this.

When Mr. Deavers bought a section of land south of Slaton he said that he was buying it merely for an experimental investment; now after having become familiar with the crop conditions and the agricultural possibilities on the South Plains, he has experienced the environments he has known in this vicinity. He has large land in this home place in this section of that state, and he has decided to move to the South Plains and active to this vicinity. The South Plains wins the prize. Just give the

plains a try. The South Plains is a better place to live in than any other place in the state. The South Plains is a better place to live in than any other place in the state. The South Plains is a better place to live in than any other place in the state.

W. R. Wilson left Slaton Monday for his home at White-wright, Texas. He purchased another section of land while on this trip, his last purchase being twelve miles north of Slaton. Mr. Wilson likes this section so well that we expect him to sell out all his possessions in old Grayson County and move to the South Plains.

M. F. Cannon purchased the rooming house on the east side of the Square last week from L. P. Imboden, and will move to Slaton at once from Sweetwater. J. C. Stewart negotiated the deal.

### Racing for An Oil Lease

The Slatonite now has the explanation of the mysterious auto race referred to last week. The two men were attorneys representing clients in or near Fort Worth, and each was after a lease on land in Jack County. Oil has been struck there, and the owner of some valuable oil land in that county was on a ranch near Gomez. Both attorneys started for the Plains at the same time to secure this lease without knowing what the other fellow was about. They dodged each other all the way up the Denver to Amarillo, and then telegraphed to Lubbock for their cars. One man secured a four cylinder car which was supposed to be a mover, and he left town a mile and a half ahead of the other fellow. The car waiting for the second man was an eight cylinder make, and it soon overtook the first car and passed it. The run of fifty miles was made in one hour's time, and the lease was made out, executed and sworn to by the time the four cylinder arrived at the ranch.

Going fifty miles in one hour's time over uncertain roads is moving pretty rapidly. We can only wonder why the men traveled all over the Panhandle to get to Gomez. The quickest route would have been to Sweetwater over the T. & P. and then on the Santa Fe to Post where they would have had the Southern Highway right into Gomez.

F. W. Denham of Seminole was in Slaton last week visiting his father-in-law, W. S. Adams, and looking up the insurance business. Mr. Denham says that Seminole believes that O'Donnell will build his road out of Midland, and that work will commence at an early date. The report that the Santa Fe had secured the C Ranch between Seminole and Midland was an error, founded on gossip only.

W. R. Wilson left Slaton Monday for his home at White-wright, Texas. He purchased another section of land while on this trip, his last purchase being twelve miles north of Slaton. Mr. Wilson likes this section so well that we expect him to sell out all his possessions in old Grayson County and move to the South Plains.

M. F. Cannon purchased the rooming house on the east side of the Square last week from L. P. Imboden, and will move to Slaton at once from Sweetwater. J. C. Stewart negotiated the deal.

## Howerton Will Build Modern Brick With Frontage of 50 Feet

A. E. Howerton has the architect's plans for a handsome brick building with a front of fifty feet on Texas Avenue, and will probably let the contract in a few days for work to start. The building will be modern in every respect, and will be a splendid addition to the business section of Slaton; it will also greatly enhance the appearance of the Avenue. The building will be built especially for Mr. Howerton's furniture and undertaking business, and it will give him a store room unsurpassed on the South Plains, as we understand that it will be constructed after the best and most substantial plans for structures of this kind.

### Judge Blanton Speaks

Brownfield Herald:

Despite the fact that people are very busy at this time, Judge Thomas L. Blanton, of Abilene, Texas, candidate for Congress of this the 16th or Jumbo District, was given a respectable and attentive hearing at the District Court room on Wednesday afternoon at 2 p. m., and from what we could gather before and after the speaking, no one was sorry they spent the time in hearing what he had to say about National politics.

Judge Blanton is one of the most brilliant speakers ever heard in Brownfield, and is so full of his subject, and so endowed with natural energy, that he holds his audience spell bound. Even the most uninteresting subject, becomes a living, active issue under the spell of his oratory.

For instance he found more fun in a solemn candidate or a dull Congressional Record than most fellows would with a sack of monkeys. There happened to be something less than a wagon load of unopened Congressional Records in an adjoining room, and he called four men to the door to view them, then proved by the Herald man that the cost of paper was tremendous, not to say anything about postage.

His talk on preparedness was especially good, and fully caught the sentiment of his hearers. He showed conclusively that if there was any spot on the American continent that should be in favor of preparedness, it ought to be the Jumbo District, as it has a long border on old Mexico, and from that direction we must expect an invasion if attacked by a foreign foe.

Judge Blanton's platform is good from start to finish, and he presented its merits without the usual mud slinging toward anyone.

While he lacked a few votes of carrying this county before, his friends freely predict that he will not only get this county this year, but will so increase his majority in the rest of the white belt that he will overcome the El Paso pork barrel and border Mexican votes—as the latter are scattered like chickens—and will carry the district by a good, safe majority.

Tahoka News:

Judge Thomas L. Blanton, district judge of the 42nd Judicial District of Texas, and candidate for congressman of the 16th Congressional District, spoke to a goodly sized and attentive audience at the Star Theater in Tahoka Wednesday night.

Judge Blanton is capable, energetic and fearless, and a very forceful speaker. He apparent

### Faculty for Next Year's Schools

The complete faculty for the Slaton Schools for 1916-17 has been selected by the School Board of the Slaton Independent School District, and the personnel of the faculty is:

Superintendent, M. B. Johnson.

High School Principal, Mrs. R. G. Shankle, graduate Peabody Normal of Nashville.

High School, Miss Helm, graduate University of Texas.

Grammar School, Miss Lulan Vaughn, graduate Southwestern University of Georgetown; and Miss Myrtle Robertson.

Grades, Mrs. W. E. Smart, graduate North Texas Normal; Mrs. J. W. Wallace, and Miss Johnson.

Primary, Miss Pearl Dunscomb.

### Jones Taken to Lubbock

From a telephone message to the sheriff at Lamesa Wednesday it was learned that Milton Jones, who murdered Miss Noble at Plainview school house May 10, was transported thru Tahoka Tuesday enroute for Lubbock where he will be placed in a sanitarium for treatment. While incarcerated in the Big Springs jail, he was lodged with a cigarette smoker, and the use of cigarettes caused a puss to form in the self inflicted wound in his breast. The Lamesa Sanitarium is reported to have refused to longer treat the case. Thus the change was made.—Tahoka News.

Melton Jones, the slayer of Miss Noble, is now in the Lubbock County jail. The Howard County authorities refused to keep him. It was a hard problem for our local officers to solve, but they finally placed Jones in Lubbock. Sheriff Marr feels that a load has been taken off his shoulders.—Lamesa News.

### Booze Peddlers Entertain Sheriff

Sheriff Robinson of Garza County put out a drag net recently and the haul was three bootleggers who were put in jail in lieu of a bond which they could not make. The sheriff's elation was not for long, as the wet goods peddlers broke jail and took French leave. The Post City Post said that when the fellows were arrested the evidence went to prove that the sheriff "had the right hog by the ear." The men have not been apprehended.

A train was sent out of Slaton Tuesday morning for Woodward, Okla., carrying a bridge crew to help take care of the track at Woodward which was about washed away by the heavy rain.

ly created a favorable impression upon his audience.

Seminole Sentinel:

Last Tuesday at 11 o'clock, Judge Thos. L. Blanton of Abilene, candidate for representative from this congressional district, spoke to a fairly good audience for about an hour. The Judge made a fine talk and was clear on all points.

Lamesa News:

Hon. Thomas L. Blanton of Abilene, candidate for Congress from this the Sixteenth District, was a visitor here Thursday. Mr. Blanton was for eight years district judge of the 42nd Judicial District, and he points with pride to the record he has made as such. A goodly number of our people heard Mr. Blanton's address in the forenoon and he made a very favorable impression upon all whom he met while here.

## THIS WEEK'S ARRIVALS

Champagne Kid Oxfords, White Canvass Oxfords, Black Dull Vici one strap Oxfords, The New White Canvass Sport Oxford.

We are now operating by far the largest and most up to date Shoe Department in Slaton, even ranking with the best in northwest Texas in quality and up to dateness.

We have perfected arrangements with the leading shoe houses for prompt delivery of their newest designs the moment they are manufactured.

Our shoe section is being hurriedly enlarged to accommodate the increasing volume of business which that department is enjoying.

OUR BIG WHITE SALE STARTS SATURDAY, JUNE 17—UNLIMITED TIME—WATCH FOR THE CIRCULARS FOR PARTICULARS AND ALL ABOUT THE BIG PRIZE.

Slaton's Leading Dry Goods Store



### Popular Voting Contest at the Movie Theater is the Big Event With Many Candidates

The popular voting contest at the Movie Theater is now attracting much attention, and there are several candidates for the diamond ring. The boys are after the watch. It is still early in the contest and any one can enter. The ring is a real beauty with a diamond of unusual brilliance, and some girl or woman is going to be the proud possessor of the jewel when the contest closes. While the voting is progressing steadily already there is yet time for any girl to enter and become a real contestant right among the leaders.

Then there is the watch. Some boy will fall heir to this watch in a few weeks, and it will be a splendid present for him. Boys, get in the contest at once, and begin counting votes. There is plenty of time to enter and take your place right among the leaders. Don't let this opportunity of securing so nice a watch pass.

We would desire especially to call the attention of the public to the class of pictures which the Movie is giving to Slaton. Slaton is now on the same circuit of the Mutual pictures that are shown in Sweetwater, Clovis, N. M., Roswell, and other prominent places in the Southwest. We get the best here. The Movie equipment is entirely new and the Slaton folks have the very

best of motion picture entertainment. Pass a pleasant evening by seeing the splendid programs now being given.

### A Good Snake Story

The Times editor in continually stumbling onto some new industries in this diversified country, but last week we discovered one which tested our credulity.

Abilene has a real live snake market which buys black snakes, bull snakes, garter snakes, and the deadly rattler. The prevailing price is ten cents per pound, and last Saturday R. E. Hornsby, out on route 2, brought in a bull weighing seven pounds for the market. The buyer ships these snakes to New York, and last week a shipment amounting to nearly \$1,000 was made.—Times, Abilene.

A. B. Robertson and S. I. Johnson got in behind the big barbecue and celebration which Slaton will hold on July 3rd and 4th by furnishing yearling steers for the barbecue. The biggest event of the South Plains will be this celebration in Slaton.

The grand jury returned a true bill against Leonard Darnell, charging him with the murder of his brother-in-law, G. G. Dunn. The date of the trial has been placed as June 19th.

Scurry County experienced a severe hail storm last week which damaged crops considerably.

## Here's Your Opportunity:

Stores and Cottages Built in the new town of Southland, a fast growing farming town adjacent to the best settled farming community of any town on the South Plains Country. If you are figuring on going into business or building a home. SEE SOUTHLAND.

The Golden Opportunity of a life-time within your grasp. Lots and acres, or buildings, sold on easy payments. Would consider cattle, horses, hogs or good auto in exchange for some of the lots or acre tracts. Call up write

Wm. N. HILL care of Singleton Hotel  
OR HARRY T. McGEE. SLATON, TEXAS

## Wear-Ever ALUMINUM Wears

"There is a Reason" why "Wear-Ever" Aluminum gives satisfaction. It's made with the most modern machinery and has the best possible finish. Cannot rust, crack, scale or form any poisonous substances. Distributes heat evenly—less liable to burn. Cheapest in the long run.

See Our Windows

FORREST HARDWARE  
HARDWARE and FURNITURE

# The Western Telephone Company



Local and Long Distance

Speedy and Sure

Slatonite want ads get results.

## COLTS AS A SIDE LINE

No Other Thing Fits Into Average Farm Conditions as Well.

Many Farmers Make Mistake of Keeping Youngsters in Barn Too Much—Steady Increase in Prices for Good Animals.

The high price of horses has led many farmers to raising colts, as a side line. And there is no other thing that fits into average farm conditions as well. During the winter and early spring little farm work is performed and the horses might as well raise a few colts.

On most farms it is best to have the mares foal in the spring so that by the time the spring work starts the horses are ready for the harness. Colts should be weaned at six months in some cases. A great number of colts stop growing after being weaned. This is due to the owner in almost every case. The colt should be eating grain before weaning and good pasture provided. In this way no setbacks will occur in the colt's growth.

Many farmers make the mistake of keeping their colts in the barn too much. A good warm stall is a fine thing on stormy days and at night, but let them out during the day, even

If it is a little cold. For the last few years there has been a steady increase in the price



This Type Always in Demand.

of good horses. There never will be a time when horses will pay better than at the present. The farmer who has money in the bank or who is looking for a good paying investment should consider raising colts. Suppose you have a team of mares worth \$500. If you had that amount in the bank you would not get over \$10 interest, but if you raise two colts you would get \$100. Is there any other thing that will pay as well?

Of course there is an element of risk to it as well as to any other business, but where common sense methods are used, raising colts is no harder than raising a crop of wheat; and there is a lot more money in it.

### LIKE THE WHISKERED MAN

War Has Caused Quite a Change in the Views of Waiters in New York Hotels.

Broadway hotels, theaters and lobster palaces are full of whiskers. They are not the alfalfa variety that are raised in Kansas or the hayseed kind from the small towns. These whiskers are luxurious looking, nicely trained, groomed and perfumed, writes the New York correspondent of the Pittsburgh dispatch. Each hirsute appendage bears the stamp of Russian, Persian, Italian and Latin-American cultivation. The war has driven thousands of foreigners of great wealth and social position to these shores, and they have brought plenty of money with them to enjoy the gay life. The facial drapery is a ready-money sign to the servitors. Let any man with whiskers and a polished manner take a seat at the restaurant tables and the waiter immediately begins to figure up the size of the tip he will receive. Some of the tips are said to be so large from these foreigners that the waiters are almost on the verge of nervous prostration. Strange, too, not long ago the man who hid his face behind a beard was looked upon by the serving men as a tightwad. Gascon gave him the once-over and cursed fate for having to serve him. But now they welcome the man with whiskers with a smile and an itchy palm.

### MUCH PLANT FOOD REMOVED

Interesting Table Published by Experiment Station at Purdue University on Soil Elements.

One hundred bushels of corn remove 292 pounds of plantfood from the ground, according to a table published by the experiment station at Purdue university. Of this amount, 168 pounds is contained in the ears and 124 pounds in the three tons of stover which is the average amount produced with 100 bushels of ear corn.

Besides this draft on the soil for the production of a corn crop, a large amount of organic matter in the soil is caused to decay or burn out with the frequent cultivation given and by leaching. Soils vary so much in their losses at any one time and under similar conditions that the other losses can hardly be calculated with exactness. Since corn or any other crop takes certain elements of plantfood from the soil and leaves others remain, the problem of feeding the soil consists in furnishing those elements of plantfood which are needed.

### PROFESSOR COBURN ON CORN

Great Authority Intimates It Will Be Many Years Before Purebred Corn Can Be Developed.

F. D. Coburn, the great authority on alfalfa and corn, says there is no such thing as purebred corn, and intimates that in his judgment it will be hundreds of years before such a thing can be developed.

It has taken more than five hundred years to bring about the present development in purebred stock, and it is only a few years since it was known that plant life had any sexuality. We have improved corn, more or less improved, but no purebred corn worthy the name, and certainly none worth the price some schemers ask for it.

### Always Place for Horse.

There will always be a place for the horse in spite of opinions to the contrary. Gasoline may run out, tires blow up and the differential get out of whack, but the horse can always be depended upon to get us home.

## ENGINEER'S WORK IN ALASKA

Record of Achievements in Which All Americans May Well Take a Special Pride.

The recent decision of congress to devote \$40,000,000 toward railroad building in Alaska calls attention to the many daring feats which the engineer has already to his credit in this wonderful land. Here, amid the terrors of an Arctic climate, he has thrown the iron road over steep mountain passes, across gaping ravines and over swiftly moving rivers, work which has only been accomplished after a stern battle against ice and snow, bitter cold and cruel winds.

Before enumerating what the railroad engineer has done away up under the Arctic circle here, it is interesting to note that when the United States paid Russia \$7,200,000 for Alaska almost everybody agreed it was one of the worst real estate transactions ever consummated. Then came the discovery of gold, the famous rush to the Klondike, and icebound Alaska was found to be in every sense of the word a veritable gold mine. Since its purchase from Russia something like \$420,000,000 worth of products, represented mostly in minerals and fur, have been taken out of the country—certainly not a bad return on the money invested.

What is badly needed, however, for the successful development of this interesting land is better transportation facilities. In its whole 600,000 square miles of area there are today only some 400-odd miles of railroads, all of which have been built by private enterprise. Now that coal and oil are known to exist, in addition to gold, silver and copper, and the summer, though short, permits of the cultivation of grain and vegetables, thus enabling the land to support a large population, the government intends to open up the country by at once laying down a number of railroads.

## CHURCHES.

### METHODIST CHURCH.

T. C. Willett, Pastor.  
Preaching services every Sunday at 11 o'clock a. m., and at 7:30 p. m.  
Sunday School every Sunday at 9:45 a. m. C. C. Hoffman, Superintendent.  
N. A. Terrell, Asst. Supt.  
Womans' Missionary Society meets every Monday at 3 p. m.  
Union Prayer Meeting every Wednesday night at 8 o'clock at the Methodist church. Everyone welcome.

### FIRST BAPTIST CHURCH.

W. J. Durham, Pastor.  
Sunday School every Sunday at 10 a. m. D. J. Hubbard, Supt.  
Prayer meeting Wednesday nights.  
Preaching services every first and third Sundays in the month at 11 a. m., and at 7:30 p. m.  
Ladies Aid Society meets every Monday at 3 p. m.

### CHURCH OF CHRIST.

The Church of Christ meets every Lord's Day at 2:30 o'clock for communion. Preaching every Fourth Lord's Day in each month at the Methodist Church at 3 o'clock p. m. by Elder Liff Sanders.

### FIRST CHRISTIAN CHURCH.

At the McRea Hall.  
Sunday School at 10 a. m.

## LODGES.

### I. O. O. F.

Slaton Lodge No. 861 I. O. O. F. meets every Tuesday at 8:00 p. m. Visiting brothers cordially welcome. J. C. Stewart, N. G. L. P. Loomis, Secy.

### A. F. AND A. M.

Slaton Lodge A. F. and A. M. meets every Thursday night on or before each full moon, at 7:30 o'clock. Joe H. Smith, W. M. Joe Kuykendall, Secy.

### O. E. S.

Slaton Chapter No. 555 O. E. S. meets the second and fourth Tuesday evenings of each month, over Houston Lumber Company. Visitors invited. Mrs. Joe H. Smith, W. M.; A. E. Howerton, Secretary.

### WOODMEN.

Slaton Camp No. 2571 W. O. W. meets 1st and 3rd Friday nights in the month at the MacRea Hall. W. E. Olive, C. C. B. C. Morgan, Clerk.

### WOODMEN CIRCLE.

Slaton Grove Woodmen Circle No. 1320 meets every other Thursday at 2:30 o'clock in the MacRea hall. Visitors cordially welcomed. Mrs. Pearl Conway, Guardian. Mrs. Nellie Wade, Clerk.



The Brotherhood of American Yeomen meets every second and fourth Friday at 8:00 p. m. at the hall. J. C. Stewart, Correspondent.

**If You Have a Printing Want**  
WE WANT TO KNOW WHAT IT IS

Putting out good printing is our business, and when we say good printing we don't mean fair, but the best obtainable. If you are "from Missouri" give us a trial and we will

Show You

# Overland CARS

We have the Slaton Agency for the popular OVERLAND automobile

Call on us for a demonstration

Accessories and Supplies

Our stock of Accessories has been largely increased. Whenever you need any supplies or repairs, come and see us.

# Slaton Garage

PHONE No. 73

Lee Green and Son. A. K. Green, Manager

## Summer! Summer! Summer!

What's the temperature?

Your CLOTHES are the real gauge of comfort.

Real SUMMER CLOTHES are of SUMMER WEIGHT, not

Early Spring or Fall Weight

That's our idea of SUMMER WEAR

Silks, Pongees, Crashes and Palm Beach Cloth

And all the light weight accessories in Hats, Underwear, etc.

## Chris Harwell & Gents Furnisher Lubbock, Texas

We Will Make Right That Which is Not Right

## If you want Bargain

Trade at

# The RACKETS STORE

SELLS IT FOR LESS

## SLATON PLANING MILL

R. H. TUDOR, Proprietor

Contracting and Building

Estimates furnished on short notice. All work given careful and prompt attention. Give us a trial.

North Side of the Square

## FARM RISKS

Farmers! Insure in the old reliable St. Paul Fire Insurance Company against Hail, Lightning and Tornado. Call and see

G. H. Jones & Insurance Agent

Office at First State Bank, Slaton, Texas

Fire, Tornado, Plate Glass, Auto, Accident, Health, Burglary Insurance

Slatonite Classified Ads Get Quick Results  
1c a word first insertion, 1-2c thereafter

# ? Have You Been ? Nominated in the Big Contest

at the

## Movie Theater Now Going On

Prize No. 1: Diamond Ring

Prize No. 2: Gold Watch

Inspect these prizes at Red Cross Pharmacy

Four Big Reels Every Night. Come

Show Starts at 8.30 p. m.

## LISTEN!

THE HOUSE FLY IS A GERM BREEDER

Especially in Typhoid Fever Cases it is Accountable for Distribution

KEEP THE FLY OUT OF YOUR HOUSE

Call on us for Screens

Slaton Lumber Company

## Beauty and Service at Low Cost Congoleum Art Rugs

Our line of Congoleum Rugs presents many attractive designs, and offers the least manner of tastefully covering floors. These Rugs are all waterproof, washable and sanitary. No beating and cleaning—water and a mop are all you need. They lie flat without fastening, and never curl up nor "kick up" at the edges.

Size 9x12 . . . \$8.50

Size 9x10 1-2 . . \$7.50

Call and see them at

## Howerton's

Quality Service

Racket Goods

Furniture

Undertaking





**RAILWAY TIME TABLE.**

**SANTA FE.**  
California and Gulf Coast Trains.  
Limited, daily.

No. 921 (west bound) from Galveston arrives in Slaton at 4.25 a. m. Departs for all points west to California 4.35 a. m.

No. 922 (south bound) from California arrives in Slaton at 12.10 p. m. Departs for central Texas and Galveston 12.35 p. m.

Slaton-Amarillo Trains, Eastern and Northern Points, daily.

No. 903 leaves Slaton for Amarillo at 6.40 a. m.

No. 904 from Amarillo arrives in Slaton at 11.55 a. m.

Slaton-Lamesa Local.  
Daily Except Sunday.

No. 908 from Lamesa arrives in Slaton at 11.15 a. m.

No. 907 departs from Slaton for Lamesa at 2.00 p. m.

**H. ADAMS**

Physician and Surgeon  
Office at Red Cross Pharmacy  
Residence Phone 36  
Office Phone 3

**Newest Designs in JEWELRY**



For Anything in the Jewelry Line, see me. Special Attention Given to Watch and Jewelry Repairs

**J. W. WILLIAMS**

**The Western Telephone Company**



Local and Long Distance  
Reliable and Sure

**Slaton Druggist Pleases Customers**

Anderson & Blanton, druggists, report customers greatly pleased with the QUICK action of simple buckthorn bark, glycerine, etc., as mixed in Adler-i-ka. This simple remedy drains the old foul matter from the bowels so THOROUGH that ONE SPOONFUL relieves almost ANY CASE of constipation, sour or gassy stomach. It is so powerful that it is used successfully in appendicitis. Adler-i-ka never gripes and the INSTANT action is surprising.

**We Like To Have People Say:**

Can You Clean, Press and Repair My Suit in a Hurry?

**Emergency Calls Please Us**

WE CAN, and will give you service that's worth while. Even in haste we are painstaking and thoro.  
**CALL US ANYTIME WE'LL ANSWER**

**Nobby Pressing Parlor Phone 100**

**SLATON PLANING MILL**

R. H. TUDOR, Proprietor

**Contracting and Building**

Estimates furnished on short notice. All work given careful and prompt attention. Give us a trial. North Side of the Square

**We Write All Kinds of Insurance**  
Fire, Lightning, Tornado, Hail, Automobile, Life, Sick, and Accident

FOR FURTHER INFORMATION Call on or Write  
**R. J. Murray & Co.**  
Agricultural Lands. City Property. Slaton, Texas

**LOCAL AND PERSONAL**

Wait for the Big White Event, Robertson's.

Born, to Mr. and Mrs. Orr of near Southland, a son on June 1.

For Best Milk, Cream and Butter call on Rose Hill Jersey Dairy. Phone 86.

Joe Kitten is riding in a new Overland which he purchased from A. E. Whitehead.

J. H. Cowan, candidate for judge of Lynn County, was in Slaton Monday from Tahoka.

Mr. and Mrs. R. L. Roland of Denton, Texas, are visiting their daughter, Mrs. C. F. Anderson.

Suits for the seasons mean summer suits now. We have the line you want.—DeLong, the Tailor.

J. S. Edwards and family returned home Saturday from their visit in central Texas and in North Carolina.

Fred Higbee returned Tuesday from Abilene, Texas, where he had been attending Simmons College during the winter.

Mrs. Effie Dunn and her son, Raymond, of Hedley, Texas, are visiting Mrs. Dunn's parents, Mr. and Mrs. J. F. Berry.

S. I. Johnson of the O Six has a new Cadillac Eight. Bud Johnson went down to Abilene and got the car and drove it home.

J. S. Edwards, president of the First State Bank, and J. G. Wadsworth of the Paul Bank went to Clovis Tuesday to attend the Panhandle Bankers Convention.

Mrs. Joe H. Smith went to San Antonio, Texas, last Friday to visit her uncle, Dr. Albert T. Finch. Doctor Finch is chief physician of the Southern Department of the United States Army, which has its headquarters at San Antonio.

J. F. W. Maeker, of Green, Texas, has purchased a section of land three miles east of Wilson from L. Lumsden and will move to it this fall. He is a cousin of Rudolph Maeker who has been a successful farmer on the South Plains for the past four years.

N. A. Terrell and family left Slaton Saturday for Wingate, Texas, where they will visit before deciding on a new location. Mr. Terrell is considering entering into business, and if he does will not return to the school room. He has been superintendent of the Slaton High School for two years. The family is a very estimable one, and Mr. and Mrs. Terrell have many friends in Slaton who send their very best wishes with them wherever they may locate.

The Big White Event starts June 17th.

Kool Klothes for hot weather. Select a suit today at DeLong's place.

The Slaton High School boys played ball in Tahoka Sunday, winning by a score of 8 to 9.

A White Sale in season at prices far below original. Robertson's.

Leo Hubbard went to Glazier this week to accept a position in the Santa Fe depot with his brother-in-law, W. F. Maxwell.

Mrs. W. H. Proctor and Mrs. S. H. Adams attended the Missionary Conference of the Methodist Church, held at Sweetwater this week.

The Lubbock team played the Monograms in Slaton Sunday and won by a score of 6 to 1. The Slaton boys couldn't play that day.

A daughter was born to Mr. and Mrs. J. H. Teague Jr. on June 1st. Grandpa Teague is the most important man in town right now.

We want to figure your bills for lumber and we will be glad to help you with your plans of a building.—A. C. Houston Lumber Company.

W. P. Wadsworth is visiting his son, J. G. Wadsworth, and family in Slaton. Mr. Wadsworth has been spending several weeks at Mineral Wells for the improvement of his health.

Ties, collars, shirts, Sox or suits? Look our line over. DeLong.

H. F. Grounds and H. L. Grounds, both of Post City, purchased the Chatwell restaurant and bakery last week, taking possession Thursday. These gentlemen are experienced in this line of work, and they expect to supply the trade with as fine a line of pastries as can be secured anywhere. They ask for a share of your trade.

The most gorgeous White Sale in the history of Slaton. Robertson's.

Quite often some one appears with a large hen egg which they think is some egg for a hen to lay, and it always is; but Chas. Acker has a Plymouth Rock hen that makes sport of all big egg records. This hen is now and has been all summer laying eggs that weigh three ounces each. The eggs have only one yolk each, and are in every way perfectly formed. The Leghorn egg usually weighs an ounce, so you can see what this hen is accomplishing in the egg business.

Just put on display, some bright, snappy samples of Kool Klothes. Come in and measure up for a comfortable summer suit.—DeLong, the Tailor.

The arrangements for a new depot and office building in Slaton has made quite a number of changes in the Santa Fe yards. Old tracks are being taken up and new tracks laid. The old depot was moved to the west so the new building can be erected on the site of the old one. All this has been a source of curiosity to visitors, and many pleasures have passed between Slatonites and visitors from neighboring towns. Every town on the South Plains has cast envious eyes at the Slaton division and shops and some are yet foolish enough to think that the division will be moved to their town in the near future.

Make your credit gilt edge by taking care of your obligations. Pay your coal bill today. The winter is over.—Houston Lumber Company.

**We Received by Saturday's Express**

A Complete Shipment of

**Men's Suits**

in Mohair, Crash, Silk, Palm Beach and Kool Kloth. New colorings and new designs are characteristic in these garments. Tailored to fit the most careful purchaser who demands neatness toned with style. Large range of sizes. Priced at \$7, \$8.50 and \$10.

**ROBERTSON'S**

"NONE BUT THE BEST"

**CLASSIFIED LOCALS**

WANTED—One or two tons of maize heads.—G. L. Sledge.

FOR SALE—Good Poland China brood sow. C. W. Olive.

WANTED, 2,000 customers for the first day at our Big Sale Event.

SECOND HAND ORGAN for sale. Enquire of Miss Myrtle Robertson.

FURNISHED or unfurnished rooms or board. Apply to Mrs. J. D. Haney.

MY HOME PLACE in Slaton Sale. Good terms. See C. W. Olive.

FOUR Jersey Cows for sale, cash or good notes. All young cows and now giving milk. See A. C. Benton.

FOR SALE.—A scholarship in the Tyler Commercial College. We can save you money on a business course.—Slatonite office.

FOR SALE or TRADE—Good secondhand folding bed cheap. C. W. Olive.

WANTED—Room and board in private family, or light house-keeping rooms, by couple with child. Can give first class reference. Address, Box 45, Slaton.

NOTICE.—I purchased the P. O. Williams Jack of Hamlin, Texas, and will stand him for the season at my farm three miles north of Wilson.—W. R. Hampton.

Nearly Fifty Years on Road. Uniformed employees of an eastern railroad are being decorated with gold stars and bars on their coat sleeve. The star signifies 25 years' continuous service and each of the bars five years.

Probably the oldest division employee in point of service is Conductor Frank Norris of Brunswick, Md., who is wearing one star and four bars. On January 16 next he will have the bars taken off and another star added, making 50 years of service.

**Wanted—Light Hauling**

Trunks, baggage, express, light loads of all kinds. Have had several years experience and can please you. The wagon at your call at any time. Phone 16. G. L. Sledge.

The contract for the new depot and office building in the Slaton Santa Fe division will be let on June 10th, so report goes. Until that time nothing will be known as to the detailed plans that will be adopted for the building.

If you are going to build a house, barn, or even a chicken coop, we have just the kind of lumber you need. Figure with us.—A. C. Houston Lumber Co.

**CONTROLLING FLOW OF MILK**

Cow is Necessarily Delicate Piece of Mechanism—Nervous System Must Be Developed Highly.

There are many conditions that may affect the flow of milk from the dairy cow. Part of these may be controlled by man and part cannot. It should always be borne in mind that an animal capable of consuming large quantities of grass or rough feed and turning it out in the form of milk must necessarily be a delicate piece of mechanism. The nervous system must therefore be developed very highly.

Milk secretion is involuntary, but may be affected indirectly by several factors. Incomplete and irregular milking and long periods between milking even the presence of a stranger or a dog is sufficient to affect the milk flow of many cows. Such practices as sending the dog after the cows at milking time should never be encouraged, as it is a regular source of excitement and irritation.

Pay your coal bill and make the coal man happy. We want to close our coal books on the winter's business.—Houston Lumber Company.

**City Garage**

Guaranteed Automobile Repairing, Auto Mechanics, and Automobile Access.

Your Car will be properly looked after if left

**MATTHES & MARTIN**

South Side Texas Avenue, Slaton

**Dr. Luther Wall**

Physician and Surgeon

Eyes Tested and Glasses Fitted. Piles and Rectal Diseases Cured Without the Knife. Auto Service to Answer Calls. Office Phone No. 21. Residence No. 60

Office in Talley Building Northwest Corner Square, Slaton

**Photographs**

Monday Your Last Chance

Come to my Tent just east of the Movie Theater AT ONCE for sittings. Only three days more.

High class work a specialty. Recommendations furnished right here in S L A T O N

**Higginbotham**  
PHOTOGRAPHER

**Announcement**

We have just completed arrangements to equip every kitchen in this community with pure Aluminum Cooking Ware. Your choice of the beautiful utensils now on display in my window for \$50.00 of your trade. Not something for nothing, but something instead of nothing.

**The Simmons Grocery**

J. M. SIMMONS, Manager

Phone 7 Robertson Block

**SLATON SLATONITE**

Slaton, Lubbock County, Texas

Issued Every Friday Morning  
Loomis & Massey Owners  
L. P. Loomis Editor and Manager

SUBSCRIPTION, THE YEAR \$1.00

Entered as second class mail matter at the post office at Slaton, Texas, on Sept. 15, 1911, under the act of March 3, 1879.

Boost the Big Barbecue and Celebration at Slaton.

The number of automobiles in Lubbock County has increased at a very rapid rate during the past two years. The registry number now has almost reached the 600 figure.

The citizens of Post City held a mass meeting one day last week and unanimously resolved that the negro was not wanted in that city. So the coor was shoo'd away and told not to come back.

The big naval battle cost Germany and England \$150,000,000. This money if put into homes costing \$500 each would give 300,000 men nice places to live in. War certainly is a waste as well as what Sherman said.

L. G. Wilson, delegate from Hale County, has made affidavit that he cast the votes of Hale for Love and that the votes were not counted. Mr. Wilson said to Jess Adams, editor of the Plainview News: "There is no question but what Love was elected."

"The newspapers of every community are doing the most of the fighting in favor of local business as against the mail-order houses of the country. To reward the local press for its loyal and consistent support many of the business men of this and every other community in Kansas are buying their printing and blanks from mail-order houses in Kansas City, Topeka and cities even more distant. Every dollar sent out of town for the purchase of any material that is sold here is added to the resources that the business men of other cities are using to fight the growth and expansion of business in Salina. The papers are going to keep right on doing their duty to the home people and they have the undoubted right to expect patronage and support in return."—Salina, Kans., Sun.

**AN EXPLANATION.**

Sometimes a little remark in a newspaper which was intended solely as a news item is taken personally by some one as an attempt to prejudice the public unjustly. The old time newspaperman was temperamentally disposed to wound with his pen on every side, and some writers today take a delight in that kind of journalism, but the newspaperman of this day doesn't. Last week an item appeared in the Slatonite that was intended solely as news, but may have been taken as an attempt to injure the trainmen in their fight for an eight hour law. The item was:

"The Santa Fe is retrenching all along the line on account of the threatened strike of trainmen, and the improvements made will be the very least that the road has to make to keep up the business, at least this is the opinion of prominent railroad employees."

Some may have thought that the item appeared in the Slatonite with intent aforesaid, or was prompted by railroad officials. It was not. The only idea was as a news item. The editor has heard time and again the very same idea, "On account of the threatened strike the railroad won't do so and so. They are preparing for trouble ahead." Now whether the railroad actually means this or whether it is just a bluff the Slatonite doesn't know. Whether the idea that the railroads will have to raise freight and possibly passenger rates to meet the proposed eight hour law is correct, we don't know, but these ideas are being published all over the United States at this time.

The trainmen say this is not true. That all they want by the eight hour law is to compel the railroads to put them over their runs in eight hours. That often a run which should be made in eight hours holds them over for ten, twelve and even sixteen hours because the dispatcher puts them on sidetracks for an hour at a time. They want the dispatcher to let them move out without putting in so much time on sidetracks. They say that if this is done they will not be drawing any overtime.

Love says that the steam roller took an unfair advantage of him and stampeded the convention so that it was impossible to make a count of the vote. The Ferguson crowd just laughs and says that it was only a manifestation of old time Democracy.

**FARM MACHINERY WASTE**

More machinery rusts out than wears out. More machinery is thrown away on account of a few parts giving out than because of the wearing out of the entire machine.

Who pays the bill? Who keeps the many large machinery concerns in business?

The farmer. When other lines of business are slack or dead, there is practically no decrease in the manufacture of farm machinery, because the farmer is a steady buyer and always in the field for another machine or for some new type of farm machine.

How waste may be stopped:  
1. By more careful selection.  
2. By buying from reliable dealers and manufacturers.  
3. By keeping machinery in repair.  
4. By sheltering machinery when not in use.—F. M. White, University of Wisconsin Bankers' Bulletin.

**FEAR "TABOO" IS CONTAGIOUS**

So Eddystone Islanders Ascribe Their Ills to the Charm—How "Cure" is Made.

Many interesting facts with regard to the practice of leechcraft and sorcery, the imposition and removal of taboo, and the belief in the infliction and cure of disease by rites among the natives of Melanesia were related recently by Dr. W. H. R. Rivers in the second Fitzpatrick lecture on "Medicine, Magic and Religion" at the Royal College of Physicians, says the London Times.

In Eddystone islands, where Doctor Rivers spent several months some years ago, nearly every disease is ascribed to the infraction of a taboo on the fruit of certain trees, especially the cocconut and betel vine, the taboo as well as the sign by which it is known being called kenjo.

When anyone suffers from epilepsy or other convulsive seizure which is recognized as kfrage he and his friends consult one known to have the power of imposing the kenjo kfrage. This man visits the patient and strokes him from the head downwards with four leaves called myou, some moss, soot, and scrapings of wood, uttering the formula: "Stroke away. Stroke down and away. Cease thou. Let the man live; do not return. They have given me a good ring." The last clause of this formula and two in that used in removing the taboo refer to the fee, the chief money of the island consisting of arm rings.

Sixty Years With One Line. A. W. Dewitt, who died a short time ago, worked 60 years for the Erie railroad, having begun in the day of the old diamond stack, wood-burning, four-wheeled locomotive. Dewitt invented a duplex train check, which is now in nation-wide use.

Owners of Railroad Stock. Exactly 622,284 people in the United States own railroad stock. The average amount held figures out at \$13,968.

**Announcements**

**POLITICAL**

Price for carrying political announcements in the SLATONITE:  
District Offices.....\$15.00  
County Offices.....\$10.00  
Precinct Offices.....\$5.00

The following named candidates have authorized the SLATONITE to announce their campaign for office before the Democratic primaries held July 22, 1916. They solicit your support to their candidacy and will appreciate your vote at the polls.

For District Judge of 72nd Judicial District:

**W. R. SPENCER**  
RE-ELECTION.

For Representative of the 122 Legislative District:

**J. M. BOREN** of Post City

For County Treasurer of Lubbock and Attached Counties:

**CHRIS HARWELL**  
RE-ELECTION.  
**W. R. BUCHANAN**

For County and District Clerk of Lubbock and Attached Counties:

**SAM T. DAVIS**  
RE-ELECTION.

For Sheriff and Tax Collector of Lubbock and Attached Counties:

**W. H. FLYNN**  
RE-ELECTION.  
**VAN SANDERS**

For Tax Assessor of Lubbock and Attached Counties:

**L. C. BURNS**  
RE-ELECTION.

For County Judge of Lubbock and Attached Counties:

**R. HAYNES**  
RE-ELECTION.

**The Freshest and Best**

In GROCERIES will be found at the Sanitary Store. A trial will convince you of the superior service we render to our customers.

**Telephone 19**

and note the promptness with which your orders delivered, and the quality of goods you will receive.

**Slaton Sanitary Grocery**

W. E. SMART, Proprietor

**Go After Business**

In a business way—the advertising way. An ad in this paper offers the maximum service at the minimum cost. It reaches the people of the town and vicinity you want to reach.

Try It—It Pays

55c THIS COUPON IS WORTH 55 CENTS TO YOU 55c IF PRESENTED AT ONCE

Together with 45c cash for the regular \$1.00 bottle of "THE ONE" KIDNEY REMEDY, containing 60 days treatment for a man and 90 days for a woman. "THE ONE" is not recommended for everything, but if you suffer from annoying bladder troubles, frequently passing water night and day, smarting or irritation in passing, brick dust or sediment, headache, backache, lame back, dizziness, poor digestion, sleeplessness, nervousness, heart disturbance due to bad kidney trouble, skin eruptions from bad blood, neuralgia, rheumatism, lumbago, bloating, irritability, worn-out feeling, lack of ambition, may be loss of flesh or sallow complexion,—kidney trouble in its worst form may be stealing upon you. "THE ONE" Remedy is guaranteed to give you relief or money refunded at

**RED CROSS PHARMACY**

**Founded and Owned by the Pecos & Northern Texas Ry. Com**

4-Way Division Santa Fe System



**SLATON LOCAL**

SLATON is in the corner of Lubbock, the center of the central west Texas of the new main Transcontinental Line of the Santa Fe system at Canyon, South Texas lines of Fe at Coleman, Texas New Mexico and Pacific the same system at M. SLATON is the the Lamesa road, Santa Fe System.

**Advantages and Improvements**

The Railway Company has Division Terminal Facilities at this point, constructed mostly of reinforced concrete material and including a Round House, a Power House, Machine and Blacksmith Shops, Coal Chute, a Sand House, Water Plant, Ice House, etc. Also have a Fred Harvey Eating House, and a Reading Room for Santa Fe employees. Have extensive yard tracks for handling a heavy trans-continental business, both freight and passenger, between the Gulf and Atlantic Coast and the Pacific Coast territories, and on branch lines to Tahoka, Lamesa and other towns.

**BUSINESS SECTION AND RESIDENCES BUILT**

3000 feet of business streets are graded and macadamized and several residence streets are graded; there are 26 business buildings of brick and reinforced concrete, with others to follow; 200 residences under construction and completed.

**SURROUNDED BY A FINE, PRODUCTIVE LAND**

A fine agricultural country surrounds the town, with soil dark chocolate color, sandy loam, producing Kaffir Corn, Milo Maize, Cotton, Wheat, Oats, Indian Corn, garden crops and fruit. An inexhaustible supply of pure free stone water from wells 40 to 90 feet deep.

**P. and N. T. Railway Company, Owners**

THE COMPANY OFFERS for sale a limited number of business lots remaining at original low list prices and residence lots at exceedingly low prices. For further information address either

**J. C. Stewart**

Local Townsite Agent, Slaton, Texas

....or....

**Harry T. McGee**

Local Townsite Agent, Slaton

**Children's Day Program**

The following program will be given at the Methodist Church Sunday morning, June 11th, beginning promptly at 10.30 o'clock. Everybody invited.

**"THE KING'S GARDEN"**

- Processional, "The Children's Hosanna"..... Group of Children
- Prayer..... Rev. Willett
- Song, "Children's Day"..... Group of Children
- Announcement of Program Theme..... Supt. C. C. Hoffman
- Greeting, "The King's Garden"..... Fay Hoffman
- Recitation, "Butterfly Flowers"..... Charles Smith
- Recitation, "The Forget-Me Not"..... Francis Adams
- Duet, "Birds and Butterflies"..... Ruth Smith, Inez Hanley
- Recitation, "My Heart Is God's Little Garden"..... Cleo Hazelwood
- Recitation, "A Rainy Day"..... Jack Wadsworth
- Recitation, "The Father's Care"..... Dorothy Posey
- Cradle Rollers March and Recitation..... Nine Little Girls
- Presentation of Flowers..... Ethel Caldwell
- Recitation, "A Blessing for the Blessed"..... Exie Smith
- Cradle Roll Lullaby..... Francis Hoffman
- Recitation, "No Use"..... Addie Lou Posey
- Recitation, "Awful"..... Alene Loomis
- Recitation, "Needs and Deeds"..... Noel Cooper
- Recitation, "How Birds and Flowers Pray"..... Howard Hoffman
- Reading, "Mother Hearts In the Garden"..... Marguerite Hoffman
- Recitation, "Everybody's Business"..... Eunice McDonald
- Song, "Outside the Garden"..... Twelve Little Girls
- Offering Speech..... C. C. Hoffman Jr.
- General Offering.
- Recitation, "No Children's Day"..... Ruth Smith
- Story, "The Coming of the King"..... Francis Hoffman
- Song, "The Norel Children"..... Eight Girls
- Doxology and Benediction.

# SHAPED LIKE TULIP

SEASON'S DRESSY SKIRTS ARE PARTICULARLY CHARMING.

Sketch Shows One of the Most Modern Designs, Suitable for Use in All of the Light Cotton Materials.

Don't you think that dressy skirts look like tulips dipped in the dyes of the rainbow wrenched from the fields of Holland, where one fringe of petals overlaps the next?

The skirt design gives just such a charming impression, especially as it is built in the wonderful color combi-



Tulip-Effect Skirt.

nations that are now in vogue. For instance, the upper overskirts of pinkish-mauve chiffon, over a pink chiffon loose facing that sends a glow through the outer skirt without making it pink. Under this falls a chiffon skirt of a

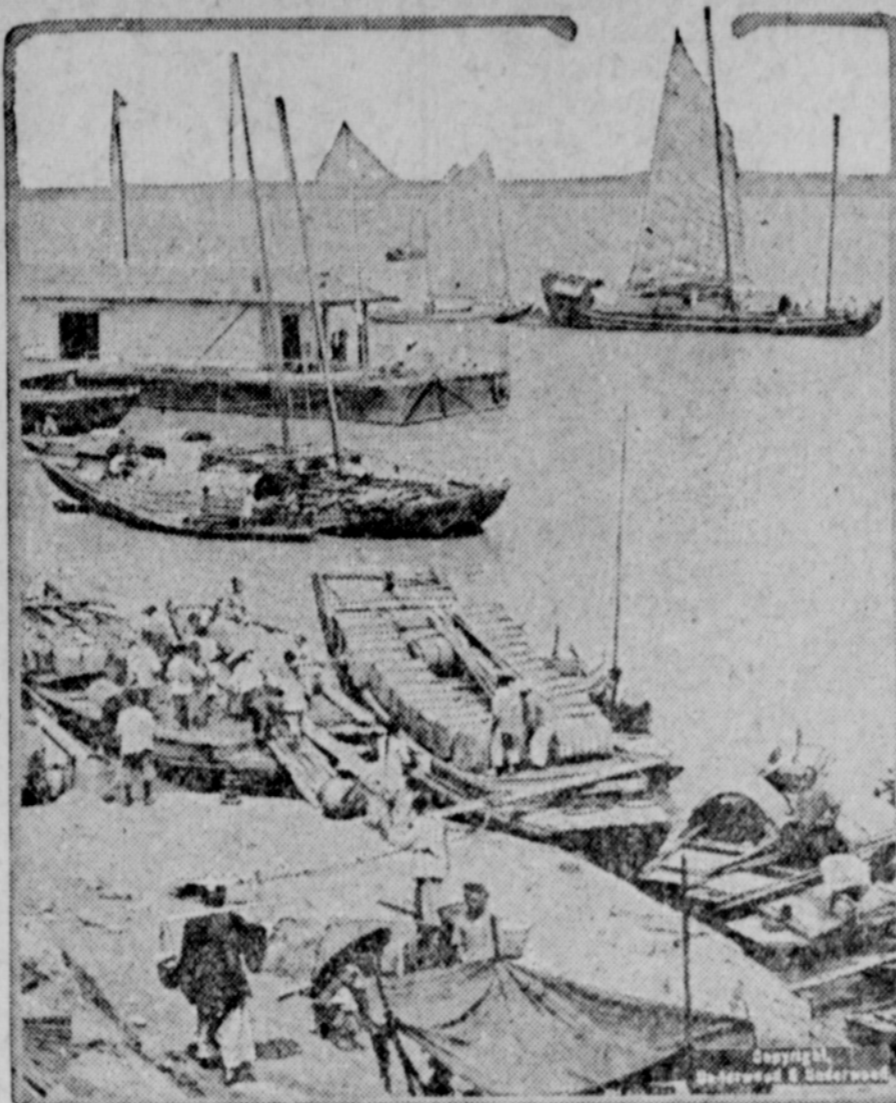
deeper shade of wistaria over a silk skirt of changeable pink and purple with a general tone of purple. It is quite the fashion to mingle pinks, fire colors and purples so that the whole garment looks like a design in orchid, dipped in purple shadows and sunny highlights. One must be an artist to know how to mingle colors effectively, so that you will find it much more simple to drape a full chiffon or voile overskirt above a silk skirt. It is also fashionable to make the overskirt of flowered taffeta draped over a skirt of plain taffeta of the same general color scheme, as, for instance, rose-colored taffeta where roses form the color plan of the overdress.

This design is also suitable for use with swisses, lawns and other thin cotton material. It would be more attractive to make the overdress of plain or dotted swiss, edged with lace or with narrow ruffles, and drape this over with a skirt made of plain swiss or mull and trimmed with many small ruffles or with several rows of ruffles edged with lace. A still more simple plan would be to buy three or four yards of thin embroidered flouncing and make the lower skirt of that. You will find, however, that good swiss flouncing of such width costs a good deal, although it is very beautiful, and narrow ruffles of swiss cost next to nothing, while pretty imitations of valenciennes lace are inexpensive.—Washington Star.

### New Petticoat.

For the economical woman, is a new reversible petticoat for wear with evening frocks. The petticoat is made of flesh-pink debutante satin and a twelve-inch flounce, faced within the deep hem with very light, resilient stiffening material so that there is crisp flare at the edge. Rows of inch-wide ribbon are stitched on the flounce, and the ribbon matches the color of the petticoat. On the reverse side of the flounce are rows of ribbon in a faintly contrasting color, stitched exactly over the rows on the other side. These petticoats come also in white and in pale corn-color, the corn-colored model having self-toned ribbon on one side and lavender ribbon on the other.

# CHINA'S SECEDED PROVINCE



THE PEARL RIVER AT CANTON

THE great province of Kwang-tung, third in size of the eighteen political divisions of China proper, in modern times has been the center of many of the political activities which have disturbed the Celestial empire, and it is not surprising that its people should be among the first to declare their independence from the national government, says a bulletin of the National Geographic society.

It was in this province that the young China movement had its birth in 1895. The secret societies of Canton, the capital, practically financed the revolution which followed, resulting seventeen years later in the overthrow of the Manchu dynasty and the establishment of a republic with Doctor Sun Yat-sen as the first president. Doctor Sun himself came from Canton and was the first graduate of the College of Medicine at Hongkong.

The Cantonese have been an inspiration to phrasemakers for years. Because of their gift for political organization they have been called 'the Irish of China,' while their penchant for political unrest has caused them to be dubbed 'the rebellion makers of ordinary to the Chinese people.' Historians see a striking analogy between Canton's relation to the Chinese nation in 1912 and that of Paris to provincial France in 1789.

Population is Very Dense. Many factors have contributed to the unrest in the province of Kwang-tung, one of the most important being the struggle for sheer existence in a state which with an area equal to South Dakota has to support a population fifty times as great.

Canton itself is a city of seething humanity with streets so narrow that only coolies can be employed as 'beasts of burden.' A large percentage of the people live in small boats which form a floating floor on the thick waters of the Pearl river. So precious is space that the shops are reduced to mere boxes; so close is the margin of profit and so small the purchases that beans and peanuts are sold by individual count.

Geographically, the two provinces of Kwang-si and Kwang-tung are cut off from northern and central China by mountain ranges which are moderately rich in minerals—iron, gold and a cheap grade of coal. The soil is fertile and some of the chief products are sugar, cocconuts, matting, ginger and palm-leaf fans are the chief exports.

The Cantonese were among the first Chinese people to come in general contact with the outside world. The Arabs reached the shores of the maritime province in the tenth century, and soon these hardy sailors were acting as captains of Chinese junks sailing to Manila, Java, Borneo and Siam. The first Europeans to reach Canton by sea were the Portuguese. Two years before Cortez landed in Mexico, Emanuel, king of Portugal, sent an ambassador with eight ships around the Cape of Good Hope to induce the emperor of China to sanction trade relations with the nation of navigators. The mission was successful and the visitors were allowed to enter the harbor of Canton.

More than a hundred years later the English arrived and met with a hostile reception on account of a recent rupture in the friendly relations between the Portuguese and the natives. It was not until 1685 that the emperor finally sanctioned trade relations with Great Britain, naming Canton as the only port of entry.

Few Foreigners in Canton. Of Canton's population, variously estimated from 900,000 to 1,500,000, only about 400 are foreigners, most of whom reside in the Sha-meh settlement, an artificial island reclaimed

by the British for just such a purpose from an extensive mud flat.

Although characterized by Caucasian observers as sullen in their political antipathies, the Cantonese are a cheerful, industrious and intelligent people in their daily lives. They accept philosophically their many hardships and receive with stoical fortitude the visitations of pestilence, which from time to time remove much of the surplus population. Perhaps it was the scarcity of food which caused the Cantonese to include in their menus many 'delicacies' not so classed by western people. For example, there is a breed of dog which is fattened in this great city and much prized by those who can afford more than a rice diet. Cats, hawks and birds' nests, are also regarded as appetizing viands.

### SHEERNESS IS A WAR PORT

Garrison Town and Harbor on Thames Estuary Are Protected by Mighty Fortifications.

Sheerness, the pivot point in the English blockade of the North sea and control of all the Channel waters, situated behind a powerful shelter of fortification on the southern shore of the Thames estuary. The garrison town and seaport are situated on the Isle of Sheppey where the Medway estuary joins with the Thames, 51 miles east of London, and joined with the metropolis by the Southeastern and Chatham railway. Thrown around the port are a chain of formidable modern fortifications, opposing such an enemy fleet almost impossible. There are also extensive barracks here, and acres of warehouse space piled high with naval stores. Residences for the admiral of the home fleet and other naval officers constitute the most important part of the city.

The dockyard and works of Sheerness, equipped for the carrying out of all kinds of naval repairs, cover about sixty acres, including three basins and large modern docks. The harbor is a spacious and excellent one. Sheerness is primarily a war harbor, with little importance as a place of trade. It has fallen once before the attack of a hostile fleet, but that was before the days of formidable ordnance, when the Dutch admiral De Ruyter captured the fort of Charles II at Sheerness on July 20, 1667.

### Cocconut's Three Eyes.

Who can tell why the cocconut has three eyes? Luther Burbank explains it this way: Cocconuts usually grow at the edge of the sea or rivers. The nuts are surrounded with a thick husk with a waterproof covering so that when they drop into the water they will float. In floating, the three eyes are always on top.

Once in the water nature gets busy. From one of the eyes there comes a shoot which develops broad leaves like sails. The wind catches the sails and waits the cocconut on a journey sometimes many miles long. As it sails the other two eyes develop roots, which at first grow among the fibers of the woody husk. In good season, the cocconut is swept upon another shore, perhaps on another island. The roots imbed themselves in the soft earth, the sail becomes the trunk, and a cocconut palm is growing where none grew before.

### A Rest Cure.

"What a horrible reader that girl is you got for your invalid husband! She would put me to sleep in no time." "Sh! don't let her hear me, but that's just what we got her for."

### How It Happened.

"I got bunged up dish-uh-way at de white folks' peace meetin' last night, sah." "Go 'long! White folks wouldn't let a nigger fluctuate 'round deir meetin'." "No, sah. But I was listenin' outside de open winder and two gen'llemen dat was tryin' to choke each udder to death done fell out onto me!"—Kansas City Star.

### Second Sight.

"I love the heiress, and I'm going in to win." "You always want everything in sight."

"I want more than that, my dear boy. The heiress is out of sight."

### COVETED BY ALL.

but possessed by few—a beautiful head of hair. If yours is streaked with gray, or is harsh and stiff, you can restore it to its former beauty and luster by using 'La Creole' Hair Dressing. Price \$1.00.—Adv.

### Logical Result.

"Nobody likes the umpire." "It's the logical result of trying to be strictly neutral."

# Being Well Prepared

means much towards the preservation of your health. The stomach must be kept strong, the liver must be active and the bowels regular. As soon as there is any deviation from those conditions you should try



# Health for Sick Women

For Forty Years Lydia E. Pinkham's Vegetable Compound Has Been a Woman's Most Reliable Medicine—Here is More Proof.

To women who are suffering from some form of woman's special ills, and have a constant fear of breaking down, the three following letters ought to bring hope:—



North Crandon, Wis.—"When I was 16 years old I got married and at 18 years I gave birth to twins and it left me with very poor health. I could not walk across the floor without having to sit down to rest and it was hard for me to keep about and do my work. I went to a doctor and he told me I had a displacement and ulcers, and would have to have an operation. This frightened me so much that I did not know what to do. Having heard of Lydia E. Pinkham's Vegetable Compound I thought I would give it a trial and it made me as well as ever. I cannot say enough in favor of the Pinkham remedies."—Mrs. M. A. McCASLAND, North Crandon, Wis.

### Testimony from Oklahoma.

Lawton, Okla.—"When I began to take Lydia E. Pinkham's Vegetable Compound I seemed to be good for nothing. I tired easily and had headaches much of the time and was irregular. I took it again before my little child was born and it did me a wonderful amount of good at that time. I never fail to recommend Lydia E. Pinkham's Vegetable Compound to ailing women because it has done so much for me."—Mrs. A. L. McCASLAND, 509 Have St., Lawton, Okla.

### From a Grateful Massachusetts Woman.

Roxbury, Mass.—"I was suffering from inflammation and was examined by a physician who found that my trouble was caused by a displacement. My symptoms were bearing down pains, backache, and sluggish liver. I tried several kinds of medicine; then I was asked to try Lydia E. Pinkham's Vegetable Compound. It has cured me and I am pleased to be in my usual good health by using it and highly recommend it."—Mrs. B. M. Osgood, 1 Haynes Park, Roxbury, Mass.

If you want special advice write to Lydia E. Pinkham Medicine Co. (confidential) Lynn, Mass. Your letter will be opened, read and answered by a woman and held in strict confidence.



### Seasonable.

"In what direction does the village lie, my friend?" "Well, it's liable to lie in any old direction that comes handy, but at this time of the year, it's mostly about fish."

### Perkins' Paradox.

"Can't Perkins support his wife?" "Why, he can support her all right, but he claims that she is insupportable."

### WHY HAVE CHILLS AND FEVER?

"Plantation" Chill Tonic is guaranteed and will do the work in a week. Your money cheerfully refunded by dealers if it fails after giving it a proper trial. Price 50c.—Adv.

### Political Asset.

"That candidate is two-faced." "Fine! He can kiss twice as many babies."

The females of the species do a lot of figuring about their figures.

### The Vocal Belligerent.

"My voice is for war." "But are you willing to offer the rest of yourself?"

Weak, Fainty Heart, and Hysterica can be rectified by taking "Renovine" a heart and nerve tonic. Price 50c and \$1. Adv.

If one man in a thousand pays attention to what you say, you are in luck.

# JACKETS OF COLORED SILKS

Made Without Sleeves, They Most Effectively Dress Up Last Year's White Gowns.

Bright-colored silk sleeveless jackets reminiscent of the '60's, which are being worn with white dresses of net and organdie, are some of the prettiest fashions of many years. These little coats are edged with double quiltings of pinked or picot taffeta and are very full and ruffy around the hips.

They hold possibilities for the made-over dress, too. A tumbled and scant-skirted net dress of last year can be washed, hung round with four or five ruffles of fresh material edged with bebe ribbon of velvet or satin in a favorite color, say cherry, and then a yard and a half of cherry taffeta will make a little sleeveless coat. This will conceal the waist's cut, and if the sleeves are kimono, so much the better.

Another pretty fashion is the sleeveless jumper of crepe or chiffon. This is usually in bright colors also, but can be made in pastel shades for semi-evening dresses and with its little

pocketed peplum, sometimes embroidered and sometimes beaded, it is sure to be used by the younger set, as it completely changes the look of a white dress. With waist tied in by very long cords and tassels reaching to the bottom of the skirt, or by narrow ribbons in different shades of the same color, forming bunches over the distended hips, this little Peggy blouse is indeed a dainty novelty.

### Darning on the Machine.

In darning on the machine (it does not make any difference what the piece may be—tablecloths, napkins, socks, stockings, or anything that has a hole in it) take the foot of the machine off and run the stitches all the way across the hole just as you do by hand, then across the other way just as you would if done by hand, only it is done so much neater. Use an embroidery hoop to hold the goods firm and even, put it over the hole and slide under the foot of the machine whatever color the material is, and use the same color thread.

# WINTERSMITH'S CHILL TONIC

Sold for 47 years. For Malaria, Chills and Fever. Also a Fine General Strengthening Tonic. 50c and \$1.00 at all Drug Stores.

# Biliousness Means Suicide

The functions of the liver is to purify the blood and keep the system free from poison and decay. Constipation, biliousness, weakness, dullness, general lassitude and headache result from an unclean liver. It is nothing less than slow suicide to allow such a condition to continue. The established remedy is

### Dr. Thacher's Liver and Blood Syrup

It is a pure, harmless and effective vegetable remedy, prescribed by reputable physicians for liver complaints, biliousness, kidney trouble, impure or bad blood, pimples, indigestion, sour stomachs, sick headaches. It contains gentle laxatives, which encourage the liver to do its duty. The response is quick, pure and lasting. Buy a bottle today, 50c and \$1 at your dealer's.

THACHER MEDICINE CO., CHATTANOOGA, TENN.

