

# The McLean News

Commerce Bank Building No. 5

779-2141

## Miss McLean Crowned Saturday

Amy Ward was selected Miss McLean at the Miss McLean Pageant on Saturday, February 11. She was chosen from a group of 23 beautiful pageant contestants

She was selected from 10 finalist consisting of Danna Watson sponsored by Alberta's Hair Fashion, Sally Worsham sponsored by Richardson's Texaco, Dollie Haynes sponsored by Simpson Agency, Kim Beaver sponsored by

Country Corner, Cindy Coleman sponsored by McLean Veterinarian Clinic, Misty Magee sponsored by B & B Electric Co., Leeann Jordan sponsored by Lamb Flower Shop, Amy Ward sponsored by McLean Hardware and Darla McAnear sponsored by Corrines.

From these ten young ladies were chosen the three runner ups and third runner up was Misty Magee, second runner up was Danna Watson and first runner up was Juliana Crockett.



Amy Ward

The escorts for these ladies were J.T. Haynes, Tres Hess, James Martin, Todd Stump, Rob Sanderson, Cash Carpenter, Dwayne Hill, Dale Barker, Cal Holwick, Grant Mann, Johnny Mann, Tony Poletto and Kyle Wood.

Miss McLean was chosen Amy Ward was crowned Miss McLean 1989 the 57th Miss McLean.

Master of ceremonies was Dan Fish and he gave the presentation of girls in street-wear and in formal wear. The girls were pre-

sented by their escorts of the evening.

Sally Worsham was declared Miss Congeniality. The judges truly had their work cut out for them, as all these beauties were worthy to be crowned Miss McLean, but only one could be chosen. The judges were Kay Adams, Secretary to the Director of Clarendon College, Pricilla Alexander-Educational Coordinator, Pampa, Tex and Lee Cornelison owner of A Cut Above, Pampa, Tx.

## Along With Her Court, Miss Congenial



Juliana Crockett

First Runner-Up



Danna Watson

Second Runner-Up



Misty Magee

Third Runner-Up



Susan Worsham

Miss Congenial

## Tigers End Regular Season



Coach Miller

The McLean Tigers won Tuesday, February 6, game against Silverton giving them a 10-0 conference mark, this captured the boys district 6-1A play. The Tigers lead both the district and overall standings with 9-0 and 17-8 marks respectively. Last year, the Tigers completed a 5-3, 11-12 record and finished third in district 2-1A behind

Claude and Groom. Miller's teams have had plenty of success during his first year as head football and boys basketball coach. Miller

credits this fine success to a well rounded squad that keeps their opponents defence wondering what is going on. No one can point out one player as the key for "one of our kids might score 20 points tonight and then his next game eight or nine, but someone will score 20 to 25 points. We've got strong players in different positions. Seniors Sid Brass, Quinton Brown and junior Donald Harris average double figures in scoring after 25 games. Brass now leads the Tigers with 19.2 points per game, followed by Brown with over 12 and Harris with over 10 points per game. McLeans fast break offense and dead eye scoring together with good rebounding is one of the keys, however Brown's 36 steals of the ball from oppos-

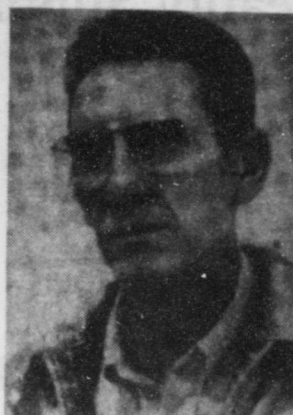
ing offenses is another key. Senior Johnny Mann rounds out the starting five. Contributing 30 steals and hitting a 48 percent field goal is another key.

Even though McLean has a perfect district record 10-0 there has been no give-aways. The Tigers have had to earn every victory. The Tigers lost three players because of no pass no play rules.

This district has been all we could handle. Lakeview took us into overtime to beat them.

After the McLean / Silverton game the Tigers will have two weeks to prepare for bi-district play. This is scheduled for the weekend of February 23-25. See the Booster Page of the McLean News for the schedule of the Bi-District Playoffs.

Tigers will play Lazbuddie at Highland Park School on February 24.



Coach Wilson

The Lady Tigers went into the February 6, game locked into a first place tie with the Lady Eagles of Samnorwood each with a 8-1 loop record. McLean Lady Tigers were 17-8 overall going into Tuesday's game against Silverton but stomped Silverton and are now 9-1 beating the Lady Eagles. Coach Bill Wilson has been coaching the Lady Tigers three years and the

Lady Tigers have never been beaten by Samnorwood until Fridays game February 3.

Last year Wilsons Lady Tigers finished second behind Claude in District 2-1A with a 19-5 overall record, 6-2 in conference, the Lady's were defeated by Vega in bi-district round of the playoffs. It appears the Lady Tigers will have their work cut out this year as it looks as they will face Happy 22-5 ranked seventh in the state by the Texas Association of Basketball Coaches in Bi-District.

McLean uses an offense, featuring a point-guard, two wings and double low wings. Three young ladies; Kim Beaver, Misty Magee and Alicia Reynolds have provided most of the Lady Tiger's points this season. Beaver has averaged 48 percent from the field and Magee 45 percent, while adding 15 points each per game. Reynolds is shooting

37 percent, has added her 14 points average per day during district play.

Darla McAnear and Danna Watson are the main defences of the Lady Tigers. McAnear is the primary ball handler, while Watson shows her stuff in defensive powers. The whole team in controlling rebounds. But don't count Darla or Danna out at the basket, they both are there when needed most. Tiffany Lopez plays well and good defence, Holly Hauch, similarly provides the same bench strength. Anyway the crowd looks at it Coach Wilson and these Lady's are giving it all they have.

### Bi-District Basketball Schedule

Lady Tigers-Will play Happy on Friday, February 17, at Highland Park School at 8:00 p.m.

# The McLean News

Commerce Bank Building No. 5

779-2141

## Miss McLean Crowned Saturday

Amy Ward was selected Miss McLean at the Miss McLean Pageant on Saturday, February 11. She was chosen from a group of 23 beautiful pageant contestants

She was selected from 10 finalist consisting of Danna Watson sponsored by Alberta's Hair Fashion, Sally Worsham sponsored by Richardson's Texaco, Dollie Haynes sponsored by Simpson Agency, Kim Beaver sponsored by

Country Corner, Cindy Coleman sponsored by McLean Veterinarian Clinic, Misty Magee sponsored by B & B Electric Co., Leeann Jordan sponsored by Lamb Flower Shop, Amy Ward sponsored by McLean Hardware and Darla McAnear sponsored by Corrines.

From these ten young ladies were chosen the three runner ups and third runner up was Misty Magee, second runner up was Danna Watson and first runner up was Juliana Crockett.



Amy Ward

The escorts for these ladies were J.T. Haynes, Tres Hess, James Martin, Todd Stump, Rob Sanderson, Cash Carpenter, Dwayne Hill, Dale Barker, Cal Holwick, Grant Mann, Johnny Mann, Tony Poletto and Kyle Wood.

Miss McLean was chosen Amy Ward was crowned Miss McLean 1989 the 57th Miss McLean.

Master of ceremonies was Dan Fish and he gave the presentation of girls in street-wear and in formal wear. The girls were pre-

sented by their escorts of the evening.

Sally Worsham was declared Miss Congeniality. The judges truly had their work cut out for them, as all these beauties were worthy to be crowned Miss McLean, but only one could be chosen. The judges were Kay Adams, Secretary to the Director of Clarendon College, Pricilla Alexander-Educational Coordinator, Pampa, Tex and Lee Cornelison owner of A Cut Above, Pampa, Tx.

## Along With Her Court, Miss Congenial



Juliana Crockett

First Runner-Up



Danna Watson

Second Runner-Up



Misty Magee

Third Runner-Up



Susan Worsham

Miss Congenial

## Tigers End Regular Season



Coach Miller

The McLean Tigers won Tuesday, February 6, game against Silverton giving them a 10-0 conference mark, this captured the boys district 6-1A play. The Tigers lead both the district and overall standings with 9-0 and 17-8 marks respectively. Last year, the Tigers completed a 5-3, 11-12 record and finished third in district 2-1A behind

Claude and Groom. Miller's teams have had plenty of success during his first year as head football and boys basketball coach. Miller

credits this fine success to a well rounded squad that keeps their opponents defence wondering what is going on. No one can point out one player as the key for "one of our kids might score 20 points tonight and then his next game eight or nine, but someone will score 20 to 25 points. We've got strong players in different positions. Seniors Sid Brass, Quinton Brown and junior Donald Harris average double figures in scoring after 25 games. Brass now leads the Tigers with 19.2 points per game, followed by Brown with over 12 and Harris with over 10 points per game. McLeans fast break offense and dead eye scoring together with good rebounding is one of the keys, however Brown's 36 steals of the ball from oppos-

ing offenses is another key. Senior Johnny Mann rounds out the starting five. Contributing 30 steals and hitting a 48 percent field goal is another key.

Even though McLean has a perfect district record 10-0 there has been no give-aways. The Tigers have had to earn every victory. The Tigers lost three players because of no pass no play rules.

This district has been all we could handle. Lakeview took us into overtime to beat them.

After the McLean / Silverton game the Tigers will have two weeks to prepare for bi-district play. This is scheduled for the weekend of February 23-25. See the Booster Page of the McLean News for the schedule of the Bi-District Playoffs.

Tigers will play Lazbuddie at Highland Park School on February 24.



Coach Wilson

The Lady Tigers went into the February 6, game locked into a first place tie with the Lady Eagles of Samnorwood each with a 8-1 loop record. McLean Lady Tigers were 17-8 overall going into Tuesday's game against Silverton but stomped Silverton and are now 9-1 beating the Lady Eagles. Coach Bill Wilson has been coaching the Lady Tigers three years and the

Lady Tigers have never been beaten by Samnorwood until Fridays game February 3.

Last year Wilsons Lady Tigers finished second behind Claude in District 2-1A with a 19-5 overall record, 6-2 in conference, the Lady's were defeated by Vega in bi-district round of the playoffs. It appears the Lady Tigers will have their work cut out this year as it looks as they will face Happy 22-5 ranked seventh in the state by the Texas Association of Basketball Coaches in Bi-District.

McLean uses an offense, featuring a point-guard, two wings and double low wings. Three young ladies; Kim Beaver, Misty Magee and Alicia Reynolds have provided most of the Lady Tiger's points this season. Beaver has averaged 48 percent from the field and Magee 45 percent, while adding 15 points each per game. Reynolds is shooting

37 percent, has added her 14 points average per day during district play.

Darla McAnear and Danna Watson are the main defences of the Lady Tigers, McAnear is the primary ball handler, while Watson shows her stuff in defensive powers. The whole team in controlling rebounds. But don't count Darla or Danna out at the basket, they both are there when needed most. Tiffany Lopez plays well and good defence, Holly Hauch, similarly provides the same bench strength. Anyway the crowd looks at it Coach Wilson and these Lady's are giving it all they have.

### Bi-District Basketball Schedule

Lady Tigers-Will play Happy on Friday, February 17, at Highland Park School at 8:00 p.m.





**Commodity Day** will be Feb. 21 Tues. from 9 a.m. to 2 p.m. Everyone will have to be recertified at this time so come prepared to give this report and you current income.

**IF You Like  
The New Look  
Tell  
Our Advertisers**

**Year-round Marketing Is  
Critical**

Agricultural producers should stay abreast of happenings in the national and international market-places, said Anderson, and they should develop a year-round marketing program. This is important because of the tremendous price uncertainty in today's agricultural markets.

Changes in weather and government policies can cause unpredictable price swings, he said. So producers should carefully evaluate forward pricing alternatives of cash contracts, futures and options hedging to manage prices received.

**Young Men Turning 26 In  
1989**

Young men who will turn 26 in 1989 will be reaching an important milestone, according to the Selective Service System.

Beginning on January 1, 1989, men who were required to register with Selective Service in 1981 will be turning 26. Selective Service does not have the authority to accept late registrations after a man reaches his 26th birthday.

Selective Service State Director Harold D. Doyle warned that, with few exceptions, a man who fails to register before turning 26 will permanently forfeit his eligibility for certain federal benefits such as student aid, job training, and most

federal employment, in addition to facing possible prosecution as a felon.

Some states also require registration for state student aid, entrance to state-supported colleges and universities, state employment, and permission to practice law.

Many of the men who have not registered may be unaware of the requirement or do not understand the importance of the obligation to register. Some may even have served in the military but failed to register either before entering the armed forces or after leaving active duty. Others may have been institutionalized or incarcerated at the time of their 18th birthday and did not realize they were required to register if released prior to age 26.

State Director Doyle points out that men age 18 through 25 who have not yet registered can avoid the risk of prosecution and loss of benefits by registering promptly at any local post office. Failure to register is a felon punishable by a fine of up to \$250,000, up to 5 years in prison, or both.

For those men born in 1963 who have registered, 1989 alas marks the year

that ends their eligibility for selection for induction under present law.

Over 21 million men have registered with Selective Service since registration was reinstated in 1980. Currently, over one million Texas men age 18 through 25 are registered.

**Knights  
of Columbus  
Polish Sausage**

The Pampa Knights of Columbus are having their 37th Annual Polish Sausage Dinner Sunday, March 5, from 11:00 a.m. to 2:00 p.m. and from 4:00 p.m. to 6:00 p.m. at the K of C Hall at the corner of Ward and Buckler Streets in Pampa.

The proceeds of the dinner are used for the charitable works of the Knights of Columbus, particularly their work with the deaf and the youth.

Tickets for all you can eat are \$5.00 for adults, \$3.00 for children under 12, and children under six are free. Take out plates are available and sausage to go will be available. Tickets may be purchased at the door or from any member.

This year 3000 pounds of Polish sausage, 400 pounds of potato salad, 200 pounds of beans, and 60 gallons of cole slaw will be served.

The secret recipe for the Polish sausage was brought to this country from Poland over 130 years ago by the great grandparents of two of the council's members. Only these two know the recipe.

For further information contact Gene Schaefer, (806) 665-9229.

**Major Impact From Beef**  
Since cattle make up about 45 percent of the state's agricultural cash receipts, the benefits of favorable cattle sales should

reach most parts of Texas. The U.S. cattle herd has been downsized to the lowest level since 1961, and the stocker and feeder calf market should remain strong.

\*\*\*\*\*  
\* **B & B ELECTRIC** **LOYD BYBEE** \*  
\* Bus. 779-3252 Res: 779-2517 \*  
\* SALES & SERVICE \*  
\* SERVICE ON ALL MAKES OF APPLIANCES \*  
\* AUTHORIZED WARRANTY SERVICE ON \*  
\* SEARS • WHIRLPOOL • MAYTAG \*  
\* HEATING AND AIR CONDITIONING \*  
\* ELECTRIC CONTRACTOR \*  
\* 117 N. Main/P.O. Box 284/McLean, Texas 79057 \*  
\*\*\*\*\*

**Sunday Special**  
Turkey & Dressing, salad,  
mashed potatoes, giblet gravy,  
green beans, cranberry sauce,  
cherry cobbler  
**Take out orders available! \$3<sup>95</sup>**  
Ample parking behind.  
**GATELY'S CAFE**  
Business I-40 and Cedar St.

**REMODELING**  
Steelsiding  
**ROOFING — PAINTING**  
Insulation  
All types of Repairs  
Call after 6:00 p.m.  
**Mike Bybee 779-2007**

**SARNA'S  
BOOKS & LOOKS**  
SPECIAL THROUGH FEBRUARY.....  
Harlequin "Presents" Romances  
35c each or 3/\$1.00  
No trades or credit used  
Cash Only On Specials  
Open Saturday Only 9-6  
111 McCarty, McLean, Texas

**Tell Our  
Advertisers  
You Saw Their  
Ad In The  
McLean News**

**Country Corner**   
**SUNDAY SPECIAL**  
Child's \$2.25 Adult-\$3.95  
Daily Luncheon Specials **\$3.00** under  
Magazines and new  
video tapes due soon!  
**Faithful Country Burgers**   
Exit 142, McLean-779-2391.

**Quality  
Dry Cleaning**   
We clean your custom drapery bedspreads  
coverlets. nothing to delicate or bulky  
You can trust that prom dress or wedding gown  
to our tender loving care.  
You can Trust that hat leather jacket or the tux  
Well handle yours as if it was ours.  
**BoB Clements, Inc.**  
Custom Draperies  
Pampa  
**1437 N. Hobart 665-5121**

**"LAST CHANCE"**  
Final Markdown  
On Winter Merchandise  
UP TO **70%** OFF  
Starts  
Monday, February 13, 1989  
**images**  
663-1091 Downtown  
123 N. Cuyler—Pampa, Texas  
10-5:30

**Alanreed 20th Century Study Club Met**  
The Alanreed 20th Century Study Club met on February 9, in the home of Bertha Smith in McLean. For the usual meeting, the club collect led by Cliffie Heasley was said in unison. The business meeting was chaired by Lena Carter. The minutes were read by Cliffie in the absents of Rose Hall. A year book committee was appointed by President-

Lena Carter, including Rose Hall, Cliffie Heasley, Mary Davis. The roll call was "My Favorite Herione in History". The call was answered by Rella Ayers, Lena Carter, Mary Davis, Cliffie Heasley, Safrona Pettit, Ada Simmons, and Bertha Smith. The program was on Women in History and was given by Cliffie Heasley, who gave Joan of Ark, Rella Ayers who gave Mary Queen of Scotland,

and Lena Carter who gave Florance Nightingale, in the absence of Louise Dickinson. Refreshments of cake and ice cream, coffe, and hot chocolate were served by hostesses.

**News Brief**

Tula Ellis of Lefors was admitted to the Coronado Hospital in Pampa.

Lorene Arbuckle of McLean was admitted to the Shamrock Hospital.

Mildred Nevada Giesler of McLean was released from the Pampa Hospital.

Mary Sue Griffin of McLean was released from the Shamrock Hospital.

**Mr. & Mrs. Richard Drago Celebrate Their 50th Anniversary**

Mr. and Mrs. Richard Drago celebrated their fiftieth wedding anniversary on February 14, 1939. Nora Harris wed Richard Drago at Tranquillity, California. From this union three children Charles Dragon of Suisun Calif, Denva Tidwell and Shirley Armbruster both of Alanreed. Eight grandchildren, and six great grandchildren. The Drago's have lived 18 years in the Alanreed area. The family is holding an open house at the James Armbruster home in Alanreed on February 19, from 4:00 p.m .till 6:00 p.m.



**Cowboy Cafe!** 

**SUNDAY SPECIAL**  
**CHICKEN FRIED STEAK**  
Small - \$2.95      Large - \$4.50

Mashed potatoes, green beans,  
salad & toast

Daily Breakfast Specials 95¢  
Lunch \$2.95

**Pruning Doesn't Have To Cost \$60—\$100 A Tree.**

**Call us for a free quote.**  
You'll be pleasantly surprised  
at how little correct pruning costs.



We also will soon offer landscape, in-home and commercial pest control services to the Claude, Groom, Panhandle and Clarendon areas.  
Ray & Laurie Minkley

Local, Independent, Certified MacCLEAN Dealer  
**Dwayne Myers**

FINANCING AVAILABLE WITH APPROVED CREDIT

Myers Water Well Service  
Dwayne Myers  
Phone (806) 256-3027


**MacCLEAN**  
WATER TREATMENT SYSTEMS


 **James Hefley**   
"The Sound that Sells"  
**Auction Co.**

Now taking consignments for Auction to be held in March

McLean, Tx. 79057      Box 42      (806) 779-3134

**Swanson Construction**  
Remodeling-Additions-New Home Construction-All Concrete Work-Metal and Asphalt Roofing-Ceramic Tiling-Carports-Cabinets  
Call Larry at 779-3101 or -2950






**I will "PULVERIZE" anybody's Price on a new Oldsmobile or Cadillac!**

That's Right McLean and Groom  
Robert Knowles will not just meet their price but will "beat any bonafide sales price offered by another Olds or Cad. Dealer  
\*Remember FREE oil & filter change every 4,000 miles for as long as you own your car.

Come by and see the selection of Oldsmobiles & Cadillacs in stock, if we don't have what you want, we will get it quick.

 **Robert Knowles**  
**Oldsmobile-Cadillac**  
121 N. Ballard St.—Pampa, Tx.— 669-3233

**Alanreed 20th Century Study Club Met**

The Alanreed 20th Century Study Club met on February 9, in the home of Bertha Smith in McLean. For the usual meeting, the club collect led by Cliffie Heasley was said in unison. The business meeting was chaired by Lena Carter.

The minutes were read by Cliffie in the absents of Rose Hall. A year book committee was appointed by President-

Lena Carter, including Rose Hall, Cliffie Heasley, Mary Davis. The roll call was "My Favorite Herione in History". The call was answered by Rella Ayers, Lena Carter, Mary Davis, Cliffie Heasley, Safrona Pettit, Ada Simmons, and Bertha Smith. The program was on Women in History and was given by Cliffie Heasley, who gave Joan of Ark, Rella Ayers who gave Mary Queen of Scotland,

and Lena Carter who gave Florance Nightingale, in the absence of Louise Dickinson. Refreshments of cake and ice cream, coffe, and hot chocolate were served by hostesses.

**News Brief**

Tula Ellis of Lefors was admitted to the Coronado Hospital in Pampa.

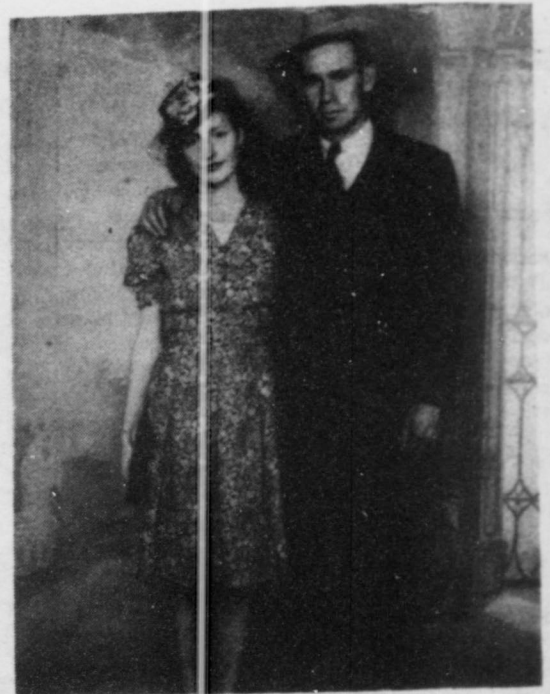
Lorene Arbuckle of McLean was admitted to the Shamrock Hospital.

Mildred Nevada Giesler of McLean was released from the Pampa Hospital.

Mary Sue Griffin of McLean was released from the Shamrock Hospital.

**Mr. & Mrs. Richard Dragoo Celebrate Their 50th Anniversary**

Mr. and Mrs. Richard Dragoo celebrated their fiftieth wedding anniversary on February 14, 1939. Nora Harris wed Richard Dragoo at Tranquillity, California. From this union three children Charles Dragon of Suisun Calif, Denva Tidwell and Shirley Armbruister both of Alanreed. Eight grandchildren, and six great grandchildren. The Dragoo's have lived 18 years in the Alanreed area. The family is holding an open house at the James Armbruister home in Alanreed on February 19, from 4:00 p.m. till 6:00 p.m.



**Cowboy Cafe!**



**SUNDAY SPECIAL**

**CHICKEN FRIED STEAK**

Small - \$2.95      Large - \$4.50

Mashed potatoes, green beans,  
salad & toast

Daily Breakfast Specials 95¢

Lunch \$2.95

**Pruning Doesn't Have To Cost \$60—\$100 A Tree.**

**Call us for a free quote.**

**You'll be pleasantly surprised**

**at how little correct pruning costs.**

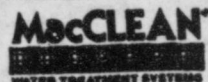
We also will soon offer landscape, in-home and commercial pest control services to the Claude, Groom, Panhandle and Clarendon areas.

Ray & Laurie Minkley

Local, Independent, Certified MacCLEAN Dealer  
**Dwayne Myers**

FINANCING AVAILABLE WITH APPROVED CREDIT

Myers Water Well Service  
Dwayne Myers  
Phone (806) 256-3027



**James Healey**  
"The Sound that Sells"  
**Auction Co.**



**Now taking consignments for Auction to be held in March**

McLean, Tx. 79057      Box 42      (806) 779-3134

**Swanson Construction**  
Remodeling-Additions-New Home Construction-All Concrete Work-Metal and Asphalt Roofing-Ceramic Tiling-Carports-Cabinets  
Call Larry at 779-3101 or -2950



I will "PULVERIZE" anybody's Price on a new Oldsmobile or Cadillac!

That's Right McLean and Groom  
Robert Knowles will not just meet their price but will "beat any bonafide sales price offered by another Olds or Cad. Dealer  
\*Remember FREE oil & filter change every 4,000 miles for as long as you own your car.

Come by and see the selection of Oldsmobiles & Cadillacs in stock, if we don't have what you want, we will get it quick.



**Robert Knowles**  
**Oldsmobile-Cadillac**

121 N. Ballard St.—Pampa, Tx.— 669-3233

## City Of McLean Office Of The Mayor Proclamation

Where as many veterans of America's Armed Forces, who have served their country in war and peace, are now hospitalized and separated from families and friends. Let us not forget the sacrifice of these veterans who fought with full measure of their valor and loyalty to protect our country.

I urge the citizens of McLean, Texas to join with the Veterans of Foreign Wars Post # 8565 and their Ladies Auxiliary to find appropriate ways to pay tribute to these men and women through community ceremonies, activities, and visits to veterans hospitalized in VA Medical Centers, Nursing Homes and Domiciliaries.

Our Nation is eternally grateful for the contributions our hospitalized veterans have made to the cause of

### February Birthdays

- February 14-Rita Jo Crockett, Lynn Swanson
- February 15-Grace Glenn and Gaylia Long
- February 16-Loyd Hunt
- February 17-Cindy Glass
- February 18-Faris Jake Hess, Jim McDonald and Karen Williams
- February 19-Mildred Hill, Walt Bailey, Jennifer Barker and Mike Bybee
- February 21-Linda Haynes.

world peace and it is fitting and appropriate to pay special tribute and honor their sacrifices.

Therefore, I, as Mayor of McLean do hereby designate the week of February 14, 1989 as "Salute To Hospitalized Veterans Week" in the City of McLean and urge appropriate recognition thereof.

In Testimony Whereof, Witness my hand and the Seal of the City of McLean this 10 day of February, 1989, George Green Mayor

### Pioneer Study Club Met

Pioneer Study Club met on February 2, 1989 at McLean Lovett Memorial Library.

Hostess Mary Lou Glass served Valentine cookies, candies, nuts, coffee and tea for refreshments.

Margret Grogan introduced Hallie Burrell from Shamrock who gave a most interesting program on historical sites in the Eastern United States.

Attending were: Mary Emma Woods, Charlie Marie Shurley, Clara Hupp, Nancy Billingsley, Kathy Bailey, Loyce Murray, Velma Kinard, Irene Pakan, Mary Dwyer, Margaret Coleman, Ruth Magee, Hollie Burrell, Martha Parker, Margret Grogan and Mary Lou Glass.

## Obituaries Cheryl Dean Evans Care Center News

### Douglas Ivey

Douglas (Jocko) Ivey, 64, died Wednesday morning at Coronado Hospital. Services were at 2:00 p.m. on Saturday, February 11, in Lamb Funeral Home Chapel with the Rev. Jeff Messer, pastor of First Baptist Church of McLean, officiating. Burial was in Hillcrest Cemetery.

Mr. Ivey was born June 29, 1924 north of McLean. He was a U.S. Army veteran of World War II. Following his discharge from the service in 1946, he moved to Pampa. He has been an employee of the J.T. Sims Ranch for 43 years. He was a Methodist.

Survivors include one sister, Grace Harlan of Dalhart, and several nieces and nephews.

### School Menu

**February 16**-smoked sausage, potato salad, carrot sticks, cheese rolls, jello and milk.

**February 17**-cornbread dressing, giblet gravy, green beans, fruit salad and milk.

**February 20**-pigs-in-a-blanket, tator tots, coleslaw, chocolate cookie and Milk.

**February 21**-hamburgers, lettuce, tomatoes, pickles, onions, french fries, lemon pie and milk.

**February 22**-soft tacos chile and cheese, spanish rice, salad and sopillias, honey and milk.

Cheryl Dean Evans, 36, died Thursday, February 2, 1989.

Services were at 2:00 p.m. on Monday, February 13, in First Baptist Church Family Life Chapel with Dr. Travis Hart, pastor, and the Rev. Joe Weldon, pastor of Parkview Baptist Church, officiating. Burial was in Plainview Memorial Park by Lemons Funeral Home of Plainview.

Mrs. Evans, born in Plainview, moved to Pampa in 1987. She grew up in Plainview and attended Plainview schools. She worked at the Hale County State Bank at Plainview, and for two insurance companies. She and her husband operated Rainbow Carpet Cleaning Co. She was a member of Plainview First Baptist Church. She married Steven "Buz" Daffern in 1973 at Plainview. He died in 1984. She married Larry Don Evan in 1985 at Clovis, N.M.

Survivors include her husband; two stepdaughters Sara Evans of Canyon and Elana Evans of Plainview; two sons, Pat Daffern of Irving and Steven Daffern of Pampa; a stepson, Steven Davis of Shamrock, four sisters, Linda Roberson of Kermit, Laveta Veal, Vaneta Hatch and Teresa Leeson, all of Plainview; her parents, Mr. and Mrs. Jack B. Collis of plainview; grandmothers, Mrs. Joe B. Collis of Plainview and Mrs. Mae Gipson of Hale Center; and a grandson, Brent Daffern of Irving.

Cheryl was a niece of Howard and Davie Gipson of McLean.

Ruby King is in the hospital in Wheeler, we wish her a speedy recovery.

Sunday Bro. Jeff Messer pastor of the Baptist Church was here to conduct services.

Residents making valentines in crafts were Eula Morrow, Teresa Richardson, Imogene King, Earl Tolleson, Leon Burch, Adelle Walker, Ruby Ayers, Mattie Wheeler, Lillie Knox, Annie Eudey, Delbert Murray and Lucille Cullison. In the afternoon Bua Gudgel and Ann Wolf were here to assist the following resident in bingo; Lona Jones, Ruby Ayers, Adelle Walker, Dick Wheeler, Mattie Wheeler, Kittie Hessey, Eula Morrow, Lillie Knox, Annie Eudey, Teresa Ricahrson, Inez Fields, Earl Tolleson, Clyde Trusty, Ruby Trusty, Delbert Murray, and Leon Burch. Bananas were furnished for all bingo players, by the Lions Club.

Tuesday morning the following residents worked in crafts; Teresa Richardson, Imogene King, Earl Tolleson, Leon Burch, Adelle Walker, Ruby Ayers,

**CALCOTE ELECTRIC**  
SUBMERSIBLE PUMP  
AND  
ELECTRICAL WIRING  
Shop-779-2652  
Home-779-2084

Mattie Wheeler, Lillie Knox, Annie Eudey, Lona Jones, Delbert Murray, Lucille Cullison and Monnie Matthews. In the afternoon Dick Wheeler, Teresa Richardson, Leon Burch, Imogene King, Annie Eudey, Earl Tolleson, Inez Fields, Eula Morrow, Monnie Matthews and Ruth Kemp played dominos. Our volunteer helper was Ted Robertson.

Wednesday afternoon members of the Baptist church were here for a bible study.

Thursday morning the residents enjoyed the donuts furnished by Leta Mae Hess. In the evening the Hallelujah Squares were here to entertain us, there were 15 volunteers and we enjoyed everyone of them.

Friday Martha Parker was here to show her great movies.

Our birthday party for the month of February will be Wednesday February 22, at 2:30 p.m. Residents celebrating will be Leon Burch, Pearl Hudson and Barbara Hambricht.

**MCLEAN LODGE**  
No. 889  
AF&AM

Stated Meeting  
2nd Thursday  
Practice Every Thursday  
7:30 p.m.

VISITORS WELCOME  
Doyal Billingsley, W.M.  
J. Boyd Smith, Secretary

## COWPOKES By Ace Reid



"Wul the coyotes and mountain lions have eaten' about all our calves and sheep. I'm shore gettn' tired of livin' on fresh air and scenery!"

**BANK OF COMMERCE**

**McLean, Texas**

**779-2461**

A Subsidiary of GrayCo BancShares, Inc.

**PORTABLE BUILDINGS**  
\*All Sizes & Types \*Free Delivery  
\*Quality Built \*Financing Arranged.  
**BABB CONSTRUCTION**  
Pampa, Tx. 829 W. Kingsmill 688-3042

**Richardson Texaco**

TEXACO TEXACO

119 W. 1st 779-2798 McLean, Tx.  
Home-779-3231

**24-Hour Road Service**

Full Service Station Truck & Tractor Flats

Call  
**Jerry Cook**  
At  
**ATLAS PLUMBING**  
779-2784  
Now Offers  
Ditching services.  
30 cents a foot  
including back fill.

**Housing Authority of McLean**

**FmHA Subsidized Apartments available.**

**Rental Assistance Available.**

Contact office at  
**709 N. Wheeler**

Equal Opportunity Housing 9-11 a.m. Mon. - Fri. Phone: 779-2101

## D.A.R. Honors Dollie Haynes As Good Citizen At Tea

Dollie Lee Haynes is the daughter of Sam and Linda Haynes of McLean. She is Commended Scholar from the National Merit Exam and a member of the Student Council at McLean High School.

She has served as drum major for two years and participates in golf, tennis and basketball. She has been a regional qualifier in University Interscholastic League spelling and ready writing, and she has received Student of the Year awards in physical science, biology, English, Spanish, band and American history.

Haynes is a member of First Untied Methodist Church, where she is active in UMY and has been selected as one of three young people to represent the Northwest Texas conference on a "Mission for Peace" trip to the Soviet Union next summer.

Her hobbies include reading, writing, working with children and playing the piano, which she has studied for 12 years.

### McLean News Brief

Bob and Ara Leddingham visited with J.Boyd Smith here as they were on their way home from Mrs. Todd's Funeral in Shamrock, Tx. They recently were transferred from Monahans to Jul, New Mexico. They have sold their home in Monahan to Sam Slandish, Sam has been transferred from Perryton to Monahans.

### The Lighthouse News

by Rev. R.L. Winebrinner  
Thank God that cold, cold weather is behind us and now we can get back to normal functions. We at the Lighthouse are still working at putting in bathrooms and a study for pastor R.L. Little by little we are making progress but as it warms up a little, things should go better. We have been studying Forgiveness of Others, and loving even the unlovely in our regular church messages. God has given us a vision for this area and it is time we get on by bringing in the lost and the wounded of the McLean area.

The Youth Group of the Lighthouse had their Valentine Party Friday 10, by going out for pizza and then bowling.

The adults had a banquet at a steakhouse on February 14 and everyone brought their valentine and all enjoyed the fine food and fellowship.

The lighthouse is non-denominational and everyone is invited to attend our services. Sunday services are at 10:30 and 7:00 p.m. Youth services is at 5:30 p.m. Sunday and our midweek services is on Wednesday at 7:00 p.m. Come enjoy the excitement of building for Christ.



She plans to attend the University of Oklahoma next year to major in biology and minor in literature and Russian studies. She hopes to become a research biologist.

### Cash Receipts up 10 percent; some drop expected in '89

Despite the weather adversities in 1988, cash receipts from Texas farm and ranch products should be up about 10 percent from the previous year.

That would put 1988 cash receipts at roughly \$11.5 billion, said Dr. Carl Anderson, Extension economist.

While cotton, hog, milk and egg prices were down in 1988 compared to the previous year, prices of

other commodities were up sharply, according to Anderson.

The price farmers received for wheat, for instance, was up more than 32 percent, averaging \$3.10 per bushel. Corn, averaging

\$2.48 per bushel, was up more than 29 percent. Farmers got almost 39 percent more for their grain sorghum, which averaged \$3.93 per hundred weight. Hay, at \$70.80 per ton, and calves, at \$88.90 per hundredweight, were both up more than 16 percent from 1987. The average price for beef cattle, in general, stood at \$67.40 per hundredweight, up more than 9 percent.

The price of Upland cotton was off about one-half percent, hog prices dropped more than 18 percent, milk prices were down more than 5 percent, and egg prices averaged about 3 percent lower in 1988 than in the previous year.

With generally average production, fairly good prices for most commodities,

and high producer participation in the government's farm program, farmers and ranchers survived the year.

### A Glimpse At 1989

Most Texas farmers and ranchers are optimistic as they look at 1989, but, as usual, much will depend on the weather situation. A major concern going into the new year is the lack of soil moisture, particularly deep moisture, in many locations. Unless soil moisture is replenished before 1989 crops are planted and before warm-season grasses begin to grow, producers could be in for a tough year.

Because of plentiful supplies of crops and total meat, 1989 cash receipts from Texas agricultural commodities will likely drop below those of the past year, Anderson said. Net income

will be further squeezed by a moderate rise in production expenses and smaller government payments. Cost for seed, fertilizer and pesticides are expected to be up significantly in 1989.

The brightest spot for Texas' agricultural industry in 1989 is expected to be beef cattle operations, according to the economist. Abundant supplies of poultry, pork, cotton and rice and larger acreages of grain sorghum, corn and wheat will likely curtail sales from these commodities.



Thomas Jefferson was the first president to wear long trousers instead of knee-breeches.

# Culberson-Stowers

Pampa, Texas

## We have a large Selection of Pick-Ups To Choose From.

Financing Available  
See: Bill Harris  
Johnny Golleher  
LaVerne Hinson  
or  
Steve Raymond

1986 Silverado Blue & White 26,000 miles \$9800.00

1984 Silverado Black & Red 47,000 miles \$7450.00

1985 Silverado Blue & White 30,000 miles \$8450.00

1987 S-10 Black 20,000 miles \$5900.00

1985 GMC Red & Gray 80,000 miles \$6900.00

1984 1 Ton 454 Red & Tan Automatic 60,000 miles \$5450.00

1982 Dodge 1/2 Ton 4 Speed-318 78,000 miles \$3900.00

Heart  
Warming  
DEALS

Chevrolet-Pontiac-Buick-GMC - TOYOTA

805 N. Hobart

1-800-345-8355

665-1665



# CLASSIFIEDS

are for everyone!

THE GROOM NEWS  
THE McLEAN NEWS

All ads cash with order unless customer has an established account with The Groom or McLean News.

**RATES**  
15c per word per insertion  
Minimum Ad—\$3.00  
Card Of Thanks—\$4.00

For Sale—Queen size sofa, earth tones. Call 248-7365.

Help Needed—part or full time. Must have ability to run IBM P.C. Light Book-Keeping and General Office Work. Send Resume to Post Office Box H. McLean, Tx.

For Sale—Two Bedroom House with large double garage in Lefors. Make an offer. Call 835-2773 between hours of 10:00 a.m. to 6:00 p.m.

Notice is hereby given that original Letters of Administration for the Estate of James Lawrence Case were issued on February 1, 1989, in Cause no. 2872, pending in the County Court of Carson County, Texas, to Lucille Marie Case, p.o. Box 124, Groom, Texas 79039.

All persons having claims against this Estate which is currently being administered are required to present them within the time and in the manner prescribed by law.

Dated the first day of February, 1989.

The First Baptist Church of Groom will be transported youth from the sixth grade up to the Dawson McAllister Seminar on March 3 and 4 in Amarillo. The Church is asking all who are interested to contact the church by February 19. A \$10:00 deposit is required, the church will cover the additional expense.

For Sale: Carl's Barber Shop complete two chair shop and all equipment. Building available for rent. For further information call 779-2042.

Men's Night at Tina's Hair Care-A-Sel has been changed to Thursday night at 5:00 p.m. to 8:00 p.m. Call 248-7415 for appointment.

Kirby Service Center  
512 S. Cuyler  
In Pampa  
669-2990  
Parts and Repairs Of Most Makes of Vacuums

For Sale—New and Used Whirlpool Sears and Maytag appliances. Payment plan available on used appliances.

B & B Electric  
117 N. Main  
779-3252  
McLean

Custom Shredding  
Custom Farming  
Call Bryan Bickel  
944-5510

Lots Of Dishes are at the First Baptist Church, that were left from the last two funerals. You are asked to pick them up between 9:00 a.m. and 12 noon.

For Sale—small cane bales in barn, phone 248-7509.

For Sale—three bedroom, large den, two baths, cellar, pavement. Very good location. Priced to sell. Have to see to appreciate all features. Call 779-2451 or see Jane Herndon at the Simpson Agency.

For Sale—Three bedroom two bath, double garage—Immediate occupancy, terms. Call 779-2451 or see Jane Herndon at the Simpson Agency.

Saddle Repair  
[John Dickson-Saddlemaker]  
Jedco Leather Shop  
205 Elsie  
Panhandle, Tx.  
806-537-5256

Greenbelt Lake  
Super neat two bedroom brick with large open living/dining, central heat, new paint, carpet, separate sun-room, all on two tree covered lots, low, low, down and low payments.

Groom Family Home  
Nice three bedroom, two baths, basement, central heat and air, double car garage with rental. Owner will carry.

Bralley Real Estate  
359-4525

For Sale—Two bedroom, one bath, newly remodeled kitchen, chain link fenced yard, nice location. For information call 779-3223.

Get Paid for reading books! \$100.00 per title. Write: PASE-J5420, 161 S. Lincolnway, N. Aurora, IL 60542.

Custom Land Levelling—Laser-controlled equipment, Save time and money on crop irrigation, and increase dryland yields. Guaranteed satisfaction and long-term results. For more information, call 248-7551.

We Would appreciate the opportunity to discuss your CRP Grass Needs. All varieties available. Call Grass Sees Services at 806-385-5229.

Nights and Weekends:  
806-385-5357 Tommy Thrash  
385-3653 Dick Hopping  
792-3424 Terry Thrash

For Sale—Heavy Duty irrigation pump. 800 Ft. setting, 8 inch column-3 inch tubing -wood lined-115/16 inch shafting-11 statag-S-1100 bowls. Pump in excellent condition.  
(806) 264-5337

Applications Being Sought—For cook at Groom ISD. For an application see Rex Peebles at School Administrative Offices.

Cesspools—\$250  
trash holes—\$275  
Big hole drilling  
806-372-8060, 383-2424

**Notice To Creditors**  
Notice is hereby given that original Letters Testamentary for the Estate of Martin B. Britten, Deceased, were issued on February 13, 1989, in Docket No. 2874, pending in the County Court of Carson County, Texas, to Bob Britten, 107 N.E. 7th, Amarillo, Texas 79107.

All persons having claims against this Estate which is currently being administered are required to present them within the time and in the manner prescribed by law.

Dated the 13th day of February, 1989.

Marshal Sherwood  
Attorney For The Estate  
Marshal Sherwood  
Attorney at Law  
State Bar No. 18255000  
P.O. Box 947  
Panhandle, Texas 79068  
806 537 3591

For Sale—Home McLean, price reduced. See at 103 East 6th.

For Sale—Former Elizabeth Nepper residence. Call Bill Bohr at 248-7332.

HUD taking applications for three bedroom apartments, for families of three to six people. Call 779-2101.

Sarna's  
Books & Looks  
111 McCarty, McLean, Tx.  
Paperbacks  
Our Price % Publisher's  
Price Minimum \$.60  
Trade 4 Publisher's  
Price On Acceptable  
Books

Help Wanted—Housework, light cooking, hours flexible. Approximately 20 hours a week. Call 779-2951.

House For Rent—On Martin Street, 2 Bedroom, One and one-half bath, \$150.00 a month. Contact Curtis Whatley at 248-7920.

THE GROOM/MCLEAN NEWS—Page 15  
Thursday, February 16, 1989

Country Junction  
Now has a new shipment of pastel T-Shirts.

Country Junction  
Is sponsoring a Flora Glen Hammer's sweatshirt workshop on February 13, from 8:00 a.m. to 1:00 p.m. and February 16, from 5:30 p.m. to 9:30 p.m.

Call Country Junction for further details at 248-7478.

Open your own beautiful discount apparel store. Jean/sportswear, large lady, infant-pretteen, maternity. Over 400 nationally known brands. Fixtures-inventory-training, etc. \$13,000 - \$22,000. Mademoiselle Fashions 501-849-2134.

Lamp Shades,  
Light Bulbs,  
Replacement Glass  
House Of Shades  
& Lamp Repairs

2613 Wolflin Ave.  
Wolflin Village  
Amarillo, TX

Wieberg  
Welding

Nathan Wieberg  
Shop-248-7270  
Home-248-7301

A MEMBER OF THE SEARS FINANCIAL NETWORK  
**COLDWELL BANKER**

ACTION REALTY

Groom

Excellent cash flow  
Brick 4-plex built in 1965. Four apartments are in nice condition and stay rented \$975 monthly gross. Only \$28,500 and owner motivated. Super investment. Call Gene 669-1221 or 665-3458

JANNIE LEWIS  
Broker / Owner



109 SOUTH GILLESPIE  
PAMPA, TX 79065  
BUS (806) 669-1221  
RES (806) 665-3458  
BUS (800) 251-4663 EXT 665

MLS

Let us haul your cattle and grain

**G & J TRUCKING**

(806) 248-7922

FULLY INSURED

GREG BRITTEN  
248-7007

P.O. BOX 114  
GROOM, TX 79039

JOHN HOMEN  
248-7463

**Chamberlain MOTOR COMPANY**

Highway 287

Clarendon, Texas

**Buick Oldsmobile Pontiac**

**Cadillac GMC Trucks**

Susan Brown  
248-6241  
Groom, Texas 79039

Clarendon (806) 874-3527  
Amarillo 376-9041  
Texas WATS (800) 692-4088

**Carson County Abstract Co.**

Realtors, Abstractors of Titles

222 Main St.

537-3561

Panhandle, Texas

**DEAN'S pharmacy**

2217 Perryton Parkway

669-6896

Looking forward  
to serving our  
Groom customers.

Ask about our  
mail service.

Welcome Welfare Recipients

Special Discounts  
to Senior Citizens on all  
Prescriptions.

Dean Copeland  
Home 665-2698

Business 669-6896

Jim T. Pepper  
Home 669-9710

**WHEELER-EVANS**

**ELEVATORS**

**Groom & Corner North**

Wheeler Evans In White Deer

Has Announced

The Seed Wheat Cleaner Has Been Modified  
To Eliminate Joint Grass.

Phones: 248-7262 or 248-7278

Corner 248-7011

**Nadine Thornton**

248-7359

**Groom, Texas**

**Don Miller**  
Radiator Service

Is Our Business  
Not a Sideline  
New & Rebuilt Radiators  
Gas Tanks & Heaters  
Repaired

612 S. Jefferson  
Amarillo, Texas

376-6666

 <p><b>Santitas Chips</b> REG. \$1.89 <b>\$1.09</b></p>	 <p>REG./BUTTER FLAVOR <b>Crisco Shortening</b> 3 LB. CAN <b>\$2.69</b></p>	 <p>ABSORBENT PAPER <b>Bounty Towels</b> JUMBO ROLL <b>89¢</b></p>	 <p>\$1.50 OFF LABEL REG./UNSC./W/BLEACH LAUNDRY <b>Tide Detergent</b> 147 OZ. BOX <b>\$6.99</b></p>
 <p>TENDERCRUST SPLIT TOP WHITE <b>Bread</b> 1 1/2 LB. LOAF <b>69¢</b></p>	 <p>PILLSBURY PLUS ASSTD. <b>Cake Mix</b> 18 1/2 OZ. BOX <b>89¢</b></p>	 <p>66/48/32/28/ DIAPERS <b>Huggies</b> BOX <b>\$10.99</b></p>	 <p>BATHROOM TISSUE <b>Charmin</b> 4 ROLL PKG. <b>\$1.19</b></p>
<p><b>SHELF SPECIALS</b></p> <p>QUAKER REG./CINNAMON <b>Life Cereal</b> 15 OZ. BOX <b>\$2.09</b></p> <p>CRUNCHY/REG./HONEY GRAHAM <b>Oh's Cereal</b> QUAKER 12 OZ. BOX <b>\$2.09</b></p> <p>CEREAL ASSTD. <b>Cap 'n Crunch</b> 15-16 OZ. BOX <b>\$2.29</b></p>	<p><b>WARM-UP</b> TO OUR WINTER FOOD VALUES</p> 		<p><b>SHELF SPECIALS</b></p> <p>OCEAN SPRAY REG./PINK <b>Grapefruit Juice</b> 48 OZ. BTL. <b>\$1.99</b></p> <p>SENECA <b>Apple Juice</b> 46 OZ. CAN <b>\$1.99</b></p> <p>COCKTAIL/SPANISH/DRY ROASTED PLANTER'S <b>Peanuts</b> 12 OZ. JAR <b>\$1.99</b></p>
<p>QUAKER ASSTD. CHEWY <b>Granola Bars</b> 8 OZ. BOX <b>\$1.99</b></p> <p>SNACK SIZE MILKY WAY/ SNICKERS/3 MUSKETEERS <b>Candy Bars</b> 16 OZ. PKG. <b>\$2.59</b></p>	<p><b>HEAVY GRAIN FED BEEF</b> <b>Round Steak</b> <b>\$1.79</b> LB.</p> <p>February is National Meat Month</p> <p>BONELESS CENTER CUT <b>Round Steak</b> LB. <b>\$1.99</b></p>		
<p>SLICED BLACK LABEL <b>Hormel Bacon</b> 1 LB. PKG. <b>\$1.69</b></p>	<p>LOUIS RICH TURKEY <b>MEAT FRANKS</b> 12 OZ. PEG. <b>99¢</b></p> <p>OSCAR MAYER SLICED BEEF <b>BOLOGNA</b> 12 OZ. PEG. <b>\$1.49</b></p> <p>OSCAR MAYER SLICED MEAT <b>BOLOGNA</b> 12 OZ. PEG. <b>\$1.39</b></p> <p>HORMEL SAUSAGE <b>LIL' SIZZLERS</b> 12 OZ. LINK/10 OZ. PATTIES <b>99¢</b></p>	<p>BONELESS BEEF <b>RUMP ROAST</b> LB. <b>\$1.99</b></p> <p>LEAN BONELESS SIRLOIN <b>TIP STEAK</b> LB. <b>\$2.59</b></p> <p>LITTLE HOT BLUE <b>CORN DOGS</b> 12 OZ. PEG. <b>\$1.29</b></p>	<p><b>GROCERIES</b></p> <p>DUTY FREE <b>BEEF STEW</b> 48 OZ. CAN <b>\$2.89</b></p> <p>Gilbert <b>TAMALES</b> 28oz. CAN <b>\$1.29</b></p> <p>SHRINE TOASTER <b>PASTRIES</b> 11 OZ. BOX <b>89¢</b></p> <p>TEXSON PINEAPPLE <b>JUICE</b> 48 OZ. CAN <b>\$1.29</b></p> <p>Sunshine Hi-Ho <b>CRACKERS</b> pkg. <b>\$1.59</b></p> <p>JIF SMOOTH/CRUNCHY <b>PEANUT BUTTER</b> 38 OZ. JAR <b>\$3.39</b></p> <p>HORMEL BUNS CHEWY <b>BROWNIE MIX</b> 12.5 OZ. BOX <b>89¢</b></p> <p>HORMEL BUNS BLUEBERRY <b>MUFFIN MIX</b> 23 1/2 OZ. BOX <b>\$2.09</b></p> <p>10% OFF LABEL <b>Joy Liquid</b> 22 OZ. BTL. <b>\$1.19</b></p>
<p><b>DAIRY-FROZEN</b></p> <p>SARA LEE <b>Pound Cake</b> 10 1/4 OZ. BOX <b>\$1.89</b></p> <p>ASSTD. PARTY Totino's <b>Pizza</b> 9-16 OZ. BOX <b>\$1.39</b></p> <p>VAN DE KAMP FILLETS OR <b>Fish Sticks</b> 7-8 OZ. BOX <b>\$1.99</b></p> <p>TEXAS STYLE BM <b>MERICO BISCUITS</b> 2 10 CT. CANS <b>89¢</b></p> <p>BUDGETS CORN ON THE COB SUNNY DELIGHT CHILLED CITRUS <b>FRUIT JUICE</b> 4 8 OZ. BTL. <b>99¢</b></p> <p>4 LAR. <b>\$1.49</b></p>	<p>CALIFORNIA <b>Lemons</b> 7 FOR <b>\$1</b></p> <p>D'ANUNIO <b>PEARS</b> 2 LB. <b>\$1.00</b></p> <p>PREMIUM RED <b>POTATOES</b> 4 LB. <b>\$1.00</b></p> <p>TEXAS RUBY RED <b>Grapefruit</b> OR SWEET TEXAS <b>Oranges</b> 5 LB. BAG <b>\$1.39</b></p> <p>CALIFORNIA CRISP <b>CELERY</b> 2 STALKS <b>89¢</b></p> <p>SWEET...YELLOW <b>ONIONS</b> 5 LB. <b>\$1.00</b></p>		
<p><b>DENTAL HEALTH MONTH</b></p> <p>Colgate <b>TOOTH PASTE</b> 4-4 OZ. TUBE <b>\$1.79</b></p> <p>COLGATE PEPPERMINT/MINT <b>MOUTHWASH</b> 16 OZ. BTL. <b>\$2.49</b></p> <p>COLGATE ASSTD. <b>TOOTHBRUSHES</b> EACH <b>\$1.49</b></p> <p>PLUS MEDICINE <b>ALKA SELTZER</b> 20 CT. PEG. <b>\$2.49</b></p>	<p>PRICE FIGHTER <b>venture</b> FOODS WE RESERVE THE RIGHT TO LIMIT</p>	<p>PRICES EFFECTIVE FEBRUARY 12-16, 1989</p> <p><b>Frozen Lent Special</b> Delta Pride Hush Puppies lb. pkg. <b>\$1.19</b> Catfish Fillets lb. <b>\$2.79</b> Fish Cakes lb. <b>\$1.59</b> Red Snapper Fillet lb. <b>\$2.39</b> Perch Fillet lb. <b>\$2.39</b></p>	

**Groom Grocery**