

NOV 00  
LUVETT MEMORIAL LIBRARY  
BOX B  
MCLEAN, TX 79057-9998

# The McLean News



Bank Of Commerce Building  
Office No. 5, 201 N. Main St.

Published Weekly  
Thursday, February 3, 2000

1-806-779-2141  
1-888-849-6599

## McLean Alanreed Area Museum Loses Funding

Recently, Gray County officials chose to discontinue \$2,000 annual funding for the McLean-Alanreed Area museum located at 116 Main St. in McLean, Texas. This unexpected loss, after almost thirty years of payments poses a serious threat to the future operations of the museum. The Board of Directors are exploring several avenues to replace this financial shortage.

The museum was established in 1969. A grant from the M.K. Brown Foundation allowed the group to move into larger quarters and refurbish into a modern facility. The non-profit entity serves the south half of Gray County as an archival repository for artifacts, photos, and historical objects pertinent to the local area. In the past, the museum has been open five days each week and has one paid employee and numerous volunteers.

In addition, the museum hosts hundreds

of visitors each year operating as a visitor and information center for the city and county. Tourism is promoted by the printing and distribution of brochures on McLean, Old Route 66, The McLean P.O.W. Camp and co-sponsoring an extensive Internet Web Site telling about the area.

Projects in progress today include compiling a data-base and publishing a record of people buried and plot identification in both the McLean and Alanreed cemeteries, and publishing a book listing the obituaries appearing in the local newspapers down through the years. All will be displayed in the museum in an effort to aid the growing requests by genealogists. A future project hopes to place these records on the Internet available to anyone searching such information.

The Museum Board reminds everyone that memorials to loved ones, in any amount, can be

See Museum, pg. 8



Students Of The Week January 24 - January 28: Kindergarten Kelby McClellan, 1st Grade Tanner Cadra, 2nd Grade Lisa Ellis, 3rd Grade Tex Bencomo, 4th Grade Anna Shackelford, 5th Grade Charli Jarvis, 6th Grade Russell Anglin, 7th Grade Mitchell Steward, 8th Grade Traci Rigby.

## Jessica Fish Wins Grand Champion

The Gray County 4-H Stock Show was held on January 15 in Pampa.

In the sheep category, Jessi Fish won Grand Champion, Champion Senior Showman, Champion Fine Wool,

Champion Fine Wool Cross and Champion Medium Wool. Travis Fish won Champion Junior Showman, Reserve Champion Fine Wool and Reserve Champion Fine Wool Cross.

Others participating in the sheep division were Anna Shackelford, Kristen Odom and Nicholas Odom.

Amanda Loya and Carrie King participated in the swine division.

McLean  
Reminders...



REMEMBER your sweetheart on Valentine's Day February 14.

HARRINGTON Cancer Center will have a mammogram van at the library on February 7. Cal 1-800-377-4673.

THE NATIONAL Honor Society will have their yearly induction ceremony on Feb. 10 at 7 p.m. in the Fellowship Hall of the United Methodist Church.

THE PIONEER Study Club will meet today at 2:00 p.m.

THE JR. HIGH will compete in a tournament in Hedley on February 4 & February 6.

THE HIGH School basketball teams will travel to Silvertown on February 4.

THE TIGERS and Lady's will host Groom on Feb. 8 at 4:00 p.m.

THE CITY Council will meet on February 10 at 7:00 p.m.

THERE WILL BE no School on February 11.

THE MCLEAN Beauty Pageant is Feb. 12 at 7 p.m. in the High School Auditorium.

4-CLOVER 4-H Club meets Monday, Feb. 7 at 7 p.m. at the McLean Church of Christ Annex.

PRESIDENT'S DAY is February 21.

IF YOU WOULD like to have you or your family added to the birthday list. Call The McLean News at 779-2141.

## School Has Plan To Counter Violence

Any school day. Anytime. The threat of school violence could happen and did happen in a small town twenty miles away. Could it happen in McLean? Possibly. Is the McLean school system prepared for it? Absolutely.

"Unfortunately, we have to have a plan," stated Elementary Jr. High principal Dick Crockett. According to Principal Crockett and Assistant Principal Herring, all the buildings have plans and codes for the teachers and staff to follow. All visitors must go through the offices at both buildings and a parent or guardian must sign out students.

On the day of the Shamrock incident. Principal Crockett called for an extra fire drill to prepare students and

teachers for such an emergency. The children have also viewed videos on school violence.

In response to an increasing number of episodes of school violence, Attorney General of Texas, John Cornyn joined with the Texas Education Commissioner to form the Attorney General's School Violence Prevention Task Force. "Our challenge is not simply to have a crisis plan, but to help facilitate plans and programs that can prevent school violence," stated Attorney General, John Cornyn.

The Task Force is divided into three groups. One group focuses on student and parent issues. The second group focuses on school issues. The third group works on community issues such as violence in the media,

gangs and the need for after-school and weekend activities.

The Task Force will release the report in the spring of 2000. Every school in the state will receive a copy of the report.

To find our more about the Prevention Task Force contact the Juvenile Crime Intervention Division at (512)463-4024 or at the Attorney General Web site at www.oag.state.tx.us in the "Criminal Justice" section.

"Only by working together," said Cornyn, "can we make our schools safe places where our children can learn and grow. Their future, and ours, depends upon our success."



4-H food project group members Jessi Fish, Travis Fish, Nicholas Odom and Kristen Odom were able to assist with the Loaves & Fishes meal program during the holidays.



**McLean School  
Lunch and Breakfast  
Menu for Feb. 7-11**

February 7 - 11  
**Monday** Breakfast: Waffles, ham, fruit, juice, milk. Lunch: Spaghetti, meat sauce, green beans, salad, bread sticks, fruit, milk.  
**Tuesday** Breakfast: Scrambled eggs, sausage, toast, fruit, juice, milk. Lunch: Sub sandwich, lettuce, tomato, pickle spears, fritos, cobbler, milk.  
**Wednesday** Breakfast: Cinnamon toast or toast & jelly, sausage, fruit, juice, milk. Lunch: Chicken fried steak, mashed potatoes, gravy, black-eyed peas, hot rolls, fruit, milk.  
**Thursday** Breakfast: Cinnamon rolls, or toast & jelly, fruit, juice, milk. Lunch: Soft tacos, pinto beans, salad, fruit, milk. Friday: No School.



**It's  
A Girl!**

Proud big sisters Lacey Lee and Shaley Rose Steel are excited to announce the arrival of a new baby sister. Jacey Ray was born on January 29, 2000 at 5:39 p.m. in Pampa, Texas. She weighed 7 pounds and 14 ounces and was 19 inches long. Her proud parents are Dale and Rose Steel.  
 Grandparents are Mary Dwyer and the late John Dwyer and Bud and Gene Steel all of McLean, and Jackie and Bill Byars of Eufala, Oklahoma.

**BRIEFS**

**McLean Birthdays & Anniversaries**

February 3 - Vance Coleman, Jeff Kingston,  
 February 4 - Teresa Eubank.  
 February 5 - Monty Joiner, Lester Lee, Bill Fuller.  
 February 6 -  
 February 7 - Vestal Bailey, Maybelle Nash.  
 February 8 - Doris Guyton, Tom Trostle, Doris Stillwell, Vera Glenn, Lanasa Sutton, Tamme Pike.

**Printing  
The Groom  
News  
The McLean  
News  
Would like to be  
your printer.  
From Business  
Cards to  
envelopes, sales  
fiddbits, to  
invitations to  
handbills - We  
print almost  
anything at  
competitive  
prices. We will  
beat or match  
any price." Call  
248-7333 or  
779-2141**

**Museum**  
 made to the museum who will send notification cards to the recipient's families. Cards can be

Dale and Mary Lou Glass had daughter Mary Dale come visit last weekend along with her two daughters.

Marie Boyd born on Ground Hog Day February 2, 1910 celebrated her 90th birthday at Highland Baptist Church, Pampa, Texas on January 29, 2000.

There were 62 signatures in her guest book of family and friends. She received approximately 100 birthday cards at the celebration and through the mail.

Marie wore a blue dress with a red and white corsage presented to her by son Charles Boyd. Fruit punch and coffee was served with a birthday cake and homemade cookies made by Mary Evans and Mary Ann Boyd. Marie cut her cake and "Happy Birthday" was sang to her. She enjoyed visiting with all the guests who were able to be there.

Family members that were flying in were stopped at Dallas, Texas due to the ice storm in that area and had to return home. Others were stopped from coming due to the ice storm in Oklahoma City.

picked up at the museum or requested by phone or mail. No card is necessary for a memorial. We invite and encourage you to become a "Friend Of The Museum." Your tax

deductible donation in any amount will be appreciated and acknowledged. Mail memorials and donations to The McLean-Alanreed Area Museum, Box 354, McLean, TX 79057. Phone (806)779-3164.

**Elizabeth's Gifts & More**

has everything you need to surprise your Love on Valentine's Day!



Valentine cards, soaps, and gifts  
 Come by and see the selection at

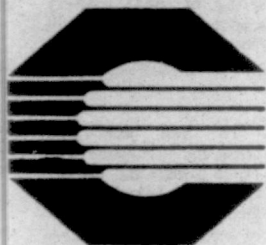
115 W. 1st. St.  
 McLean

**JAMES HEFLEY**  
 "The Sound That Sells"  
 Licensed AUCTIONEER Bonded  
 COMPLETE AUCTION SERVICE  
 806-779-3134  
 Box 42 - McLean, Tx ♦ FAX 806-7792438

**Thank You Card**  
 We would like to thank the McLean Fire Department for their quick response and efficiency, when we experienced a fire in our home. Your kindness and reassurance during this stressful incident will always be remembered.  
 Bobby, Jack, Ella Mae and Brent Massey

As part of the Bank of Commerce's commitment to serve the financial needs of the community we would like to take this opportunity to remind you of some of the service's available.

- PASSBOOK SAVING ACCOUNTS
- CERTIFICATES OF DEPOSIT
- MONEY MARKET DEMAND ACCOUNTS
- CHECKING ACCOUNTS
- SAFE DEPOSIT BOXES
- TRAVELERS CHECKS
- CASHIER CHECKS
- LOANS FOR:
- PERSONAL
- AUTO PURCHASES
- HOUSEHOLD GOODS
- BUSINESS OPERATING
- AGRICULTURAL PRODUCTION
- REAL ESTATE LOANS



MEMBER  
 F.D.I.C.

**BANK OF  
 COMMERCE**

A Subsidiary of GrayCo BancShares, Inc.



**779-2461**



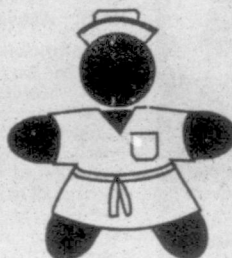
**Family Healthcare  
 Clinic Of McLean**

**NEW HOURS**

MON., WED., & FRI.

AFTERNOON, 1:00-4:30

Jerry Wilson, P.A.



Carol Carroll, L.V.N.

**DR. CRAIG SHAFFER  
 MEDICAL DIRECTOR**



## Obituary

Jesse Obed Coleman

Services for Jesse Coleman, 90, formerly of McLean, were Sunday, January 30, 2000, at McLean Church of Christ with Jim Rena officiating.

Burial was in Hillcrest Cemetery in McLean, under the direction of Resthaven Funeral Home.

He died January 27, 2000 at Bender Terrace Nursing Home.

He was born November 24, 1909 in Dozier, Texas to John and Sarah (Nelson) Coleman.

He married Margaret Lois Hess, August 28, 1938, at the Hess family ranch home in Collingsworth County.

Jesse was a graduate of Wellington High School, where he got the nickname "Mud." He attended Arlington Military School, and Abilene Christian College, and West Texas State University in Canyon, where he received a Bachelors of Science

Degree in Agriculture. Jesse gave the State of Texas land to build the F.M. 3143 Highway, from Dozier to McLean. He was a member of the Texas Farm Bureau, Shamrock Sheriff's Posse, and the Soil Conservation Service. He attended the McLean Church of Christ.

Survivors include one son, Jesse Max Coleman of Dalhart; two daughters, Sarah Margaret Fox of Irving, Texas and Jan Ella Watts of Lubbock; two brothers, John Coleman of Wellington, Texas, and Leon Coleman of Edmond, Oklahoma; 5 grandchildren; and 3 great-grandchildren.

The family would like memorials to be made to the McLean Church of Christ.

## Feedyard Women Open Season With Loss

The McLean Feedyard Women's basketball team had their season opener last Wednesday night at the Pampa Middle School against Lefors' Quality Cleaners. We put forth a good effort, since we have had very little practice this year. We also had only eight available players that night, compared to twelve on the Lefors bench. The game ended with McLean 27, Lefors 39, but the loss will not count, as this was a non-conference game. Julie Reynolds was high point with 9, Sheila McFtridge had 6, Leslie Darsey had 4, Dee Ann Burkes had

3, Connie Nicklas and Joetta Kirkland each had 2, and Kristie Crockett had 1. Carla Russell also helped out offensively and defensively. Leslie Darsey, acting as coach for the team attended a Mandatory Coaches meeting prior to the game. The meeting was to stress that there would absolutely be no back talking the referee, no trash talking or profanity would be tolerated. If a team receives a technical, then the player is subject to removal from the league for the rest of the year. The women's games in the past have

been known to get a bit out of control, and it was decided that the voluntary ref's should not have to

be subjected to that kind of abuse. Anyone interested in coming out to watch the women's team can contact any player for a schedule of upcoming games. Games are on Monday or Wednesday nights, all to

be held in Pampa at the Middle School. Other players not able to be at the game, but that are carried on the roster are: Angie Billingsley, Alicia Reynolds, and Paula Waters. This is McLean's third year to have a women's team sponsored by McLean Feedyard, to be playing in the City of Pampa League.

## J B's Restaurant

Alanreed

Friday, February 4

**Catfish All Day!!!**

Calf Fries 4 til Closing

### Defensive Driving Course Offered

Clarendon College will be offering a defensive driving course February 7-8 from 7:30 p.m. to 10:30 p.m.

The course is contracted by USA Training School, USA C-1374. For more information please contact Clarendon College at (806) 874-3571.

### Complete Satellite System For Only

DISH NETWORK OR



Reg. \$149.99  
**\$79.99**

SPECIAL

One Call Does It All!  
**(806) 256-2781**

Single System

programming as low as \$10.00 a month

Mahnken Drug - Radio Shack  
Ask Us How To Get FREE Programming

**EARN**

**5.50%**

### OUR CURRENT FLEX II ANNUITY INTEREST RATE.

Guaranteed for one year upon issue, subject to change on policy anniversary date. The guaranteed rate is 4% for the life of the policy.

Your contributions, less any applicable maintenance fees and state taxes, accumulate wealth for the future. Surrender charges apply only during the first eight policy years.

HELPING YOU is what we do best.

David S. Haynes  
McLean, Tx  
(H) 779-2217  
(O) 665-8451

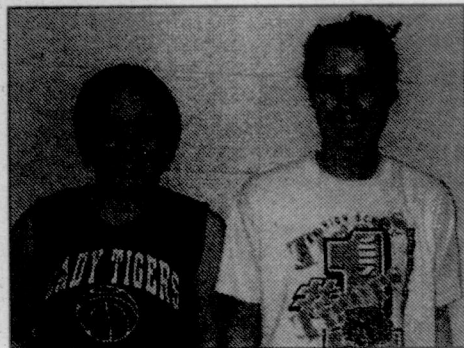


Southern Farm Bureau Life Insurance Company

# 1999-2000 Tiger & Lady Tiger Basketball



Amanda Hauck & Shaley Steel  
Freshmen members of the Lady Tigers



Nikki Hefley & Randi Riley  
Sophomore members of the Lady Tigers

#### Season's

Johnny & Mary Ann Carpenter

McLean Plumbing

Elizabeth's

McLean Home Health Agency

#### McLean Feedyard

Kirk's Auto Supply

Calcote Electric Service

Family & Farm

Financial Services

Mark, Kim, Cesily, Trent, & Tanner Cadra

#### Simpson Insurance

Agency

Red River Steak House

McLean Care Center

Windom's Auto Supply

Prairie Flowers

Mary Dwyer

#### Puckett's Grocery

Bank of Commerce

C & H Supply

Country Corner

Taylor's Food Mart

The McLean News



# Miss McLean Beauty Pageant

## February 12, 2000



**Jessi Fish**  
Senior  
Sponsored by  
Red River  
Steakhouse  
Good Luck!  
Mom, Dad & Travis



**Mandy Delgado**  
Senior  
Sponsored by  
The  
Hair Gallery  
Good Luck!  
Love, Mom



**Annie Weaver**  
Senior  
Sponsored by  
B & B  
Turbine  
We love you.  
Mom, Grandma &  
Grandpa



**Pamela Greer**  
Senior  
Sponsored by  
Bank of  
Commerce  
We are very proud of  
you. We love you.  
Mama, Jennifer &  
Randy



**Cesily Cadra**  
Junior  
Sponsored by  
'McLean  
Veterinary  
Clinic  
God bless you in your  
efforts. We love you.  
Mom, Dad, Trent &  
Tanner



**Alexis Dampier**  
Junior  
Sponsored by  
Pucketts  
Grocery  
We are very proud of  
your accomplishments.  
You'll always be our  
little girl. Love, Mom  
& Dad



**Nikki Hefley**  
Sophomore  
Sponsored by  
Elisabeth's  
Gifts & More  
Good Luck Nikki!



**Randi Riley**  
Sophomore  
Sponsored by  
Simpson  
Insurance  
Agency  
We are proud of you!  
Keep smiling! Love,  
Mom & Dad



**Bethany Rogers**  
Sophomore  
Sponsored by  
JdeK  
Love to a special  
granddaughter.  
Grandma & Grandpa



**Sara Hall**  
Sophomore  
Sponsored by  
McLean  
Feedyard Ltd.  
Good luck!  
We love you.  
Mom & Dad



**Teddra Simmons**  
Sophomore  
Sponsored by  
Prairie  
Flowers  
We love you.  
Dad & Teresa  
Mommy & Roger



**Ashley Comer**  
Freshman  
Sponsored by  
C & H Supply  
You're already a  
winner! Beautiful  
inside & out. We love  
you. Dan, Sasha &  
Taylor



**ShaleyRose Steel**  
Freshman  
Sponsored By  
McAneer's  
Germainia  
Insurance  
We love you. Love,  
Mom, Dad, Lacey Lee  
& Jacey Ray



**Katrina Routon**  
Freshman  
Sponsored By  
Country  
Corner  
Texaco  
Wish you lots of luck  
Love,  
Mom & Dad



**Amanda Hauck**  
Freshman  
Sponsored By  
Farm &  
Family  
Financial  
Lots of love,  
Mom, Dad, Chris &  
Bonnie



**Jennifer Smith**  
Freshman  
Sponsored By  
Hefley  
Auction  
Always & forever  
Love, Mom & Dad

7:00 p.m.

McLean High School Auditorium

Sponsored by McLean High School Theater Department



## The Classified Section

**CLASSIFIED RATES:** 20¢ word with a minimum of \$5.00. A "Card of Thanks" is \$5.00 up to 25 words. Wedding stories are printed free up to 300 words, after 300 words the rate is 20¢ per word. There is no charge for pictures as space permits.

**PAYMENT:** Required at the time of placing the ad. Advertisers with an established account may be billed on 30 day accounts. An extra charge will be incurred if tear sheets are required.

**ERRORS:** Check your ad the first time it comes out. Errors or mistakes that are not corrected after the first printing are the responsibility of the advertiser. The Groom-McLean News does not vouch for the legitimacy of any ad, job or money making opportunities. We suggest that you thoroughly check out any offer before making a commitment.

### Legal Notice

The Carson County Commissioner's Court will consider bids for the purchase of one used Semi-Truck Tractor. For specifications contact Mike Britten, Pct. 1, P.O. Box 277, Groom, Carson County, Texas, or call 806-248-7277.

The Carson County Commissioner's Court reserves the right to accept or reject any or all bids.

This procedure and notice is in accordance with Chapter 262 of the Local Government Code, Vernon's Texas Codes Annotated which requires publication of this notice for at least three consecutive weeks immediately preceding the day of the scheduled bid opening. Bids are to be delivered to Jackie West, County Auditor of Carson County, Texas, prior to 10:00 a.m., on Monday, February 14, 2000, the date and time at which such bids shall be publicly opened, read and considered by the Commissioner's Court. The Court shall award the contract to the responsible bidder who submits the lowest and best bid, or reject all bids and publish a new notice or take such other action as is authorized by said Local Government Code. Additionally, the award of the contract, if at all, shall be made to the responsible offeror

whose proposal is determined to be the lowest evaluated offer resulting from negotiation, taking into consideration the relative importance of price and other evaluating factors in accordance with Section 262.030 of said Code.

### Political Calendar

The Groom News is authorized to present the names of the following candidates for office, subject to the Elections to be held on Nov. 8. A fee of \$35.00 has been paid by each candidate for listing in this column from now till the final election in November.

- .....
- ..... **Republican Party** .....
- ..... District Attorney .....
- ..... 100th Judicial District .....
- ..... Stuart Messer .....
- ..... Carson County Sheriff .....
- ..... Gary Robertson .....
- ..... Gray County .....
- ..... Tax Assessor/Collector .....
- ..... Sammie Morris .....
- ..... Constable Precinct 4 .....
- ..... Frank Sparling .....
- .....
- ..... **Democrat Party** .....
- .....
- ..... Carson County District .....
- ..... Commissioner Precinct 1 .....
- ..... Mike Britten .....
- .....
- ..... Carson County .....
- ..... Tax Assessor/Collector .....
- ..... Barbara Cosper .....
- .....
- ..... District Attorney .....
- ..... 100th Judicial District .....
- ..... Randall Sims .....

**WHEAT HAY** For Sale \$30.00. Call 537-5050.

**FOR SALE:** 3-piece sectional w/hide-a-bed and 2 recliners \$500.00. Electric Dryer \$25.00. 248-7027 Darlene Jones.

**WORK WANTED:** Call Cody Shaffer or Robert Newton (Little). Please call 248-7925, 248-7913, or 248-7079.

**AKC REG.** Black Lab puppies for sale. Born 11-12-99. Call 665-1983 or 665-1208.

**HOUSE SETTLING?** Cracks in brick or walls? Doors won't close? Call **Childers Brothers Stabilizing & Foundation Leveling.**

1-800-299-9563 or 806-352-9563, Amarillo, TX.

**ROUTE 66** Mini-Storage has space for rent. Call Kevin Noack at 248-1103.

### McLean Church Directory

**Church of Christ** 4th & Clarendon  
779-2548  
Sunday Bible School 10 am  
Worship 10:40 am & 6 pm  
Wed. Bible Class 7:30

**First Baptist Church** 206 E. 1st  
779-2175  
Sunday School 9:45; Worship 11 am & 7 pm  
(Youth) & Wed. Bible Study, Prayer Meeting 7 pm

**United Methodist Church** 2nd & Gray  
Pastor Thacker Haynes 779-2049 & 779-2337  
Sunday School 9:45 am Worship 10:50 am & 6 pm  
Sun. Sr. High Youth Alpha Chi 5 pm  
Wed. Choir 7:00 pm

**Heald United Methodist Church**  
Kellerville Road  
Sunday 9:15

**Trinity Baptist Church** 603 Commerce  
James Mantooth 779-3207  
Sunday School 9:45 am Worship 11 am  
Sunday Evening Worship 7 pm  
Bible Study & Prayer Meeting Wed 7 pm

**GREAT OPPORTUNITY**  
Established, fully stocked, fully equipped convenience store business for sale. Good merchandise, lottery and money order sales. Combining your existing business with ours is encouraged. Financing is available. Buyer must operate business himself or with family. Send a summary of your interest to Box P, P.O. Box 460, Groom, Texas 79039.

**NEEDED:** Activity director assistant, 5 days a week, 8:30-1:30, wages based on experience/education. Call Palo Duro Nursing Home 226-5121, Claude.

**NEEDED:** Housekeeper. Call Palo Duro Nursing Home, 226-5121, Claude.

**JIM DAVIDSON**  
Century 21  
Pampa Realty, Inc.  
Business 669-0007  
Home 669-1863

**NEEDED:** CNA's 6-2 and 2-10 shifts, part-time and full-time. Call Palo Duro Nursing Home 226-5121, Claude.

**NEEDED:** Part-time RN every other weekend, salary negotiable, 6-2 days. Call Palo Duro Nursing Home, Claude, 226-5121.

**BECOME A "Friend Of The Museum"** and buy your fresh, shelled, packaged pecans at the McLean-Alanreed Area Museum, 116 Main St. - McLean (806)779-2731.

**JENNY'S**  
Alterations, Mending & Custom Sewing  
(Over 25 years experience)  
618 W. 3rd, McLean  
Call for Appt. 779-3223

**Country Corner Texaco**  
Gas - Diesel-Dell  
"The Friendly Place" McLean, Texas  
Exit 142 --779-2391  
**Menu's Posted**  
Daily  
Sunday  
Lunch Special  
Chicken Fried Steak  
Coconut Cake  
Our Pumps Are Open 24 Hours, 7 Days A Week

### Lamb Funeral Home

1001 North Main - P.O. Box 230  
McLean, Tx 79057

806-779-2424 FAX 779-2475

*Sewing You With The*

*Dignity & Respect That You Deserve*

Offering Pre-Arranged Funeral Plans & Monument Needs

### Card Of Thanks

The family of R. L. Brown wishes to thank everyone for the support shown us during the loss of our beloved husband and father. We are very grateful for all the food, flowers, cards and memorials, and are comforted by the fact that he was loved by so many.



**C & H**

SUPPLY-MCLEAN

Custom Fertilizer Blends & Applicators  
Farm Bureau Tires & Batteries  
Tire Repair - Mounting & Balancing  
Evergreen Feeds - bulk & sacks  
Have Your Keys Made By Us!

301 E. Foster

779-2209

### The Armstrong County Museum & Gem Theatre

Claude, Texas

**January 28th at 7:30 pm**

The 1999 Gemmy Awards and Box Lunch  
Gourmet Box Lunches by Country Contessa for \$7.00

**February 26th at 7:30 pm**

Blue Prairie "A Salute to the Sons of the Pioneers"

**March 24th at 7:30 pm**

Two One Act Plays by The Wild Bunch

Adults \$9.00, Seniors \$7.00, Children \$3.00  
Call 226-5409 or 226-2187 for Reservations

Come See Our Selections At The Gift Shop!

## Farm Equipment Consignment Auction at LISCO TRACTOR

W. Highway 60, Miami, Texas

Call

Five Star Auctioneers  
@ 806-296-0379

Or

Lisco Tractor

@1-800-301-6341

to consign equipment

[tractors, tillage equipment,  
trucks, etc.]

Sale Date:

**FEB. 23, 2000**

**McLean Feedyard Ltd**

Developing more and better ways to find value for your cattle.  
Ask us about our **B3R** and **CAB** programs.  
Neal Odom - 806-779-2405





REGULAR, CHURN  
STYLE OR LIGHT  
**Shedd's  
Country Crock**  
48 OZ. TUB  
**2\$3**  
FOR



ASSORTED  
**Patio  
Burritos**  
5 OZ. PKGS.  
**4\$1**  
FOR



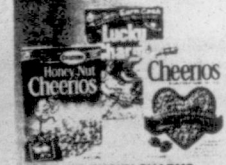
QUAKER ASSORTED  
**Instant  
Oatmeal**  
11.8 TO 16.2 OZ. BOX  
**2\$4**  
FOR



REG. HOT NO BEANS,  
REG. WITH BEANS  
**Hormel  
Chili**  
19 OZ. CAN  
**99¢**



HEINZ  
**Tomato  
Ketchup**  
24 OZ. BTL.  
**99¢**



14 OZ. LUCKY CHARMS,  
14 OZ. HONEY NUT CHEERIOS  
OR 15 OZ. REG. CHEERIOS  
**General Mills  
Cereal**  
MIX OR MATCH  
**3\$5**  
FOR

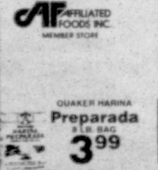
# NATIONAL BRANDS Winter Sale

PRICES EFFECTIVE - FEBRUARY 3 - FEBRUARY 8  
Not all items available at all stores.  
We reserve the right to limit quantities.  
Not responsible for pictorial or typographic errors.

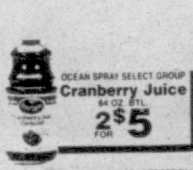
Phone Number  
248-0408



IDAHO SUPREME  
ASSORTED  
**Stuffed  
Tater**  
1.4 TO 1.5 OZ. CUP  
**2\$1**  
FOR



QUAKER MARMALADE  
**Preparada**  
4.1 LB. BAG  
**3\$99**



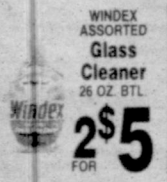
OCEAN SPRAY SELECT GROUP  
**Cranberry Juice**  
14 OZ. BTL.  
**2\$5**



ASSORTED REG.  
KRAFT FREE, LIGHT  
DONE RIGHT OR  
TASTE OF LIFE  
**Kraft Salad  
Dressing**  
14 TO 16 OZ. BTL.  
**2\$4**  
FOR



JOLLY TIME BUTTER  
OR BAKST O BUTTER  
**Popcorn**  
3 CT. PKG.  
**1\$19**



WINDEX ASSORTED  
**Glass  
Cleaner**  
26 OZ. BTL.  
**2\$5**  
FOR



RANCH STYLE  
Beans  
15 OZ. CAN  
**2\$1**  
FOR



WATER OR OIL PACK  
CHUNK LIGHT TUNA  
**Star-Kist**  
6 OZ. CAN  
**2\$1**  
FOR



ASSORTED SPAGHETTI SAUCE  
**Ragu**  
26 TO 28 OZ. JAR  
**2\$3**  
FOR



VLASIC SELECT GROUP  
SANDWICH  
**Stackers**  
15 OZ. JAR  
**2\$4**  
FOR



100 FT. CLASSIC OR  
200 FT. CLING PLUS  
**Saran Wrap**  
MIX OR MATCH  
**2\$5**  
FOR



SELECT GROUP  
PRECISION OR WAVE  
**Colgate  
Toothbrushes**  
MIX OR MATCH  
**2\$5**  
FOR



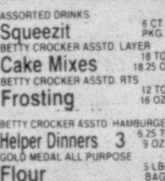
MRS. BUTTERWORTH'S  
**Pancake  
Mix**  
32 OZ. BOX  
**2\$3**  
FOR



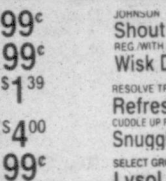
BANQUET ASSORTED  
VALUE MENU OR  
SELECT MENU  
**Dinners**  
6.7 TO 11 OZ.  
**99¢**



WATER PACK  
SOLID ALBACORE TUNA  
**Star-Kist**  
6 OZ. CAN  
**2\$3**  
FOR



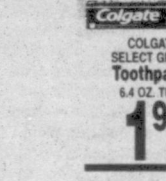
SELECT GROUP  
PASTA WITH MEAT  
**Chef Boyardee**  
14.7 TO 15.5 OZ. CAN  
**99¢**



VIENNA'S CHICKEN  
**Vienna Sausage**  
2 OZ. CAN \$1.00  
1 LB. REGULAR VIENNA  
SAUSAGE 2 OZ. CAN \$1.00



SHOUT  
**Shout Refill**  
REG. WITH BLEACH LIQUID  
100 OZ. JUG  
**\$4.99**



COLGATE  
SELECT GROUP  
**Toothpaste**  
6.4 OZ. TUBE  
**1\$99**



OLD FASHIONED  
OR QUICK  
**Quaker  
Oats**  
18 OZ. BOX  
**2\$3**  
FOR



PLAINS ASSORTED  
**Cottage  
Cheese**  
24 OZ. CTN.  
**\$1.99**



BLUE BUNNY  
ASSORTED  
**Ice Cream  
or Hi Lite**  
1/2 GAL. 90. CTN.  
**\$2.99**



KRAFT ASSORTED  
**Chunk  
Cheese**  
8 OZ. PKG.  
**3\$5**  
FOR



OLD EL PASO REG. WHITE CORN  
**Taco Shells**  
12 CT. PKG.  
**\$1.39**



LUZIANNE FAMILY SIZE (NO DECAF)  
**Tea Bags**  
24 CT. BOXES  
**3\$5.00**



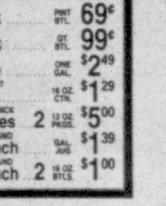
NABISCO  
CHIPS AHOY  
**COOKIES**  
14-18 OZ.  
**2\$5**  
FOR



CORONET  
PRINTS  
**Paper  
Towels**  
REG. ROLL  
**2\$1**  
FOR



WHITE MAID APPLE JUICE OR ASSORTED  
**Orange Juice**  
4 1/2 CT. \$5.00  
SELECT GROUP  
Sara Lee Desserts 1.10 TO 2.30 \$2.99  
BANQUET ASSORTED  
Pot Pies 2 1/2 OZ. \$1.00  
WRIGHT WATCHERS ASSORTED  
Smart Ones Entrees 3 1/2 OZ. TO 11.3 OZ. \$5.00  
BANQUET ASSORTED FROSTING  
Fried Chicken 16 OZ. \$2.99  
HAM & CHEESE LEAN POCKETS OR ASSORTED  
Hot Pocket 2 1/2 OZ. \$4.00  
MIXED ASSORTED  
Mexican Dinners 11.7 TO 13.0 OZ. \$99¢  
VAN DE KAMP'S  
Van de Kamp's 16 OZ. \$3.99



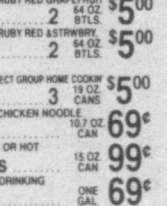
WHITE MAID ASSORTED  
**Orange Juice**  
16 OZ. BTL. \$2.99  
PLAINS ASSORTED  
Snack Attack 6 OZ. BTL. 69¢  
PLAINS ASSORTED  
Snack Attack 6 OZ. BTL. 99¢  
PLAINS  
Orange Juice 6 OZ. BTL. \$2.49  
PLAINS REG. OR NON-FAT  
Sour Cream 16 OZ. BTL. \$1.29  
KRAFT REG. OR EXTRA THICK  
Velveeta Slices 8 OZ. BTL. \$5.00  
CITRUS, MANGO OR ISLAND  
Tampico Punch 6 OZ. GAL. \$1.39  
CITRUS, MANGO OR ISLAND  
Tampico Punch 2 1/2 BTL. \$1.00



OLD EL PASO ASSORTED THICK & CHUNKY  
**Salsa**  
15 OZ. JARS  
**3\$5.00**



HEFTY 12 OZ.  
**Foam Bowls** 2 50 CT. PKGS. \$3.00  
HEFTY 9 INCH REG. COLOR  
**Foam Plates** 2 50 CT. PKGS. \$3.00  
HEFTY 10 INCH COMPARTMENT  
**Foam Plates** 2 24 CT. PKGS. \$3.00



CAMPBELL'S SELECT GROUP HOME COOKING  
**Soup** 19 OZ. CANS \$5.00  
CAMPBELL'S CHICKEN NOODLE  
**Soup** 10.7 OZ. CAN \$69¢  
HORMEL REG. OR HOT  
**Tamales** 15 OZ. CAN 99¢  
SPARKLETT'S DRINKING  
**Water** ONE GAL. 69¢



NABISCO  
CHIPS AHOY  
**COOKIES**  
14-18 OZ.  
**2\$5**  
FOR

SHANK PORTION BONE IN  
**Cook's Hams**  
**79¢**  
LB.  
COOK'S BONE IN HAM  
Butt Portion 99¢

PREFERRED TRIM BONELESS BEEF RUMP ROAST OR  
**Bottom Round Roast**  
**\$1.59**  
LB.

PREFERRED TRIM BONELESS SIRLOIN CUT  
**Pork Chops**  
**\$1.89**  
LB.

BONELESS SKINLESS PREVIOUSLY FROZEN  
**Chicken Breast**  
**\$1.99**  
LB.

PREFERRED TRIM SMALL BEEF Bottom Round Steak 1 LB. \$1.79	Oscar Mayer Chopped Ham 11 LB. PKG. \$2.49	OSCAR MAYER Ham & Cheese Loaf 11 LB. PKG. \$2.49	OSCAR MAYER ROASTED White Turkey 11 LB. PKG. \$2.49	OSCAR MAYER MEAT COTTO SALAME OR Red Rind Bologna 7 LB. \$1.39	OSCAR MAYER Breast of Turkey 1 LB. \$2.99	OSCAR MAYER Franks 1 LB. PKG. 89¢	OSCAR MAYER Bologna 11 LB. PKG. 99¢	OSCAR MAYER Chopped Ham 11 LB. PKG. \$2.49	OSCAR MAYER Ham & Cheese Loaf 11 LB. PKG. \$2.49	OSCAR MAYER ROASTED White Turkey 11 LB. PKG. \$2.49	OSCAR MAYER MEAT COTTO SALAME OR Red Rind Bologna 7 LB. \$1.39	OSCAR MAYER Breast of Turkey 1 LB. \$2.99	OSCAR MAYER Franks 1 LB. PKG. 89¢	OSCAR MAYER Bologna 11 LB. PKG. 99¢	OSCAR MAYER Chopped Ham 11 LB. PKG. \$2.49	OSCAR MAYER Ham & Cheese Loaf 11 LB. PKG. \$2.49	OSCAR MAYER ROASTED White Turkey 11 LB. PKG. \$2.49	OSCAR MAYER MEAT COTTO SALAME OR Red Rind Bologna 7 LB. \$1.39	OSCAR MAYER Breast of Turkey 1 LB. \$2.99	OSCAR MAYER Franks 1 LB. PKG. 89¢	OSCAR MAYER Bologna 11 LB. PKG. 99¢
--	---	---	--	---	--	--------------------------------------	--	---	---	--	---	--	--------------------------------------	--	---	---	--	---	--	--------------------------------------	--

ASSORTED COLD, FLU OR SINUS  
**Alka-Seltzer Plus**  
12 TO 20 CT. PKG.  
**\$3.29**

GELCAPS, TABLETS OR CAPLETS  
**Aleve**  
40 TO 50 CT. PKG.  
**\$3.99**

ASSORTED  
**Speed Stick**  
1.8 TO 2.25 OZ.  
**3\$5**  
FOR

COLGATE ASSORTED  
**Shave Cream**  
11 OZ. CAN  
**79¢**

LARGE CELLO WRAPPED  
**Iceberg Lettuce**  
EACH  
**59¢**

RED RIPE  
**Large Tomatoes**  
LB.  
**89¢**

U.S. NO. 1 BAKING Potatoes 5 LBS. \$1.00	GARDEN FRESH Broccoli 1 LB. 69¢
LARGE STALK Celery 2 PKG. \$1.00	DEL. BRIGHT SWEET Cantaloupe 1 LB. 49¢
LARGE Navel Oranges 3 LBS. \$1.00	CELLO PACK WHOLE Mushrooms 8 OZ. CTN. 99¢

# GROOM S & H GROCERY

We Accept  
Wic  
Credit Cards  
& Lone Star  
Cards



# The Groom News

50¢

Volume 73 Number 38

The Groom/McLean News 79039

Thursday, February 3, 2000

## Groom's Tracy Britten Recently Named Tennis Coach Of The Year

Tracy Britten, tennis coach at Grady High School, was recently named the 1999 Conference A Coach of the Year by the Texas Tennis Coaches Association.

Britten, who has bachelor's and master's degrees from Texas Tech, is in his eighth year at Grady.

During that time, the girls have won the past four district team championships while the boys have won five consecutive titles. He has coached 16 district

champions, 27 regional qualifiers, two regional champions, and seven state qualifiers.

Grady has also made two consecutive appearances in the TTCA Conference A-AA State Team Tennis Tournament and finished eighth in 1999, the highest finish by a Conference A school.

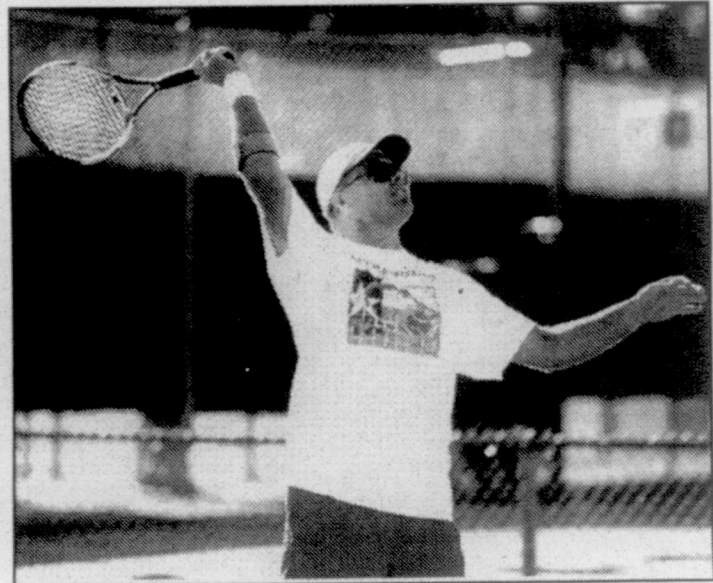
In the spring of 1999, the Wildcats captured first and second at district in girls' singles, girls' doubles, and boys' doubles, and finished second and third in boys'

singles.

At regional, Grady won the girls' doubles, finished second in boys' singles, and earned second and third places in boys' doubles.

At the state tournament, Greg Gibson and Jim Bob Haggerton captured second place after having advanced to state for the third consecutive year.

Tracy is the son of Jiggs and Janie Britten and brother of Jiggs Britten and Tammy Bivens, all of Groom.



## Tigers, Ettes To Play Important Games

The Groom Tigers and Tigrettes are both facing pivotal games as the

season comes to an end. The Tigers are at presstime in a three way

tie for the district championship.

"Anything can happen at this point," stated Coach Rainer. "There are several different scenarios that could play out. The outcome of several Tuesday games could decide who will be vying for the number 1

and 2 seeds in the playoffs or we could be looking at going all the way to the last game, February 8, of the season for a decision."

The Tigers are 4-1 in district play and are tied with Hedley and McLean.

The Ettes, who are

See Games, pg. 5

## All School Reunion, Ex Student Directory Planned

Groom Day 2000 is set for August 5th. This year the committee has voted to have an all school reunion.

Any student who has attended Groom Schools or teachers who taught from 1921 to the present are invited to attend.

If anyone knows of someone they would like

added to the Groom School Ex-Student Directory please contact Doris Kuehler. We will be sending a letter to the ex-graduates we have on file, but we would like your assistance in adding students who may have gone to school here, but did not actually graduate

See Groom Day, pg. 3

## Kerry Jenkins Named EMT Of The Year

The Panhandle Emergency Medical Services System (PEMSS) held its annual Awards Presentation on Saturday, January 15th in Amarillo to honor area Emergency Medical Services for their excellent care and to recognize regional health care providers for an outstanding year. At the annual event Kerry Jenkins was awarded the EMT-Intermediate of the Year.

Kerry Jenkins received the award through

nominations from colleagues and friends and was selected because of her dedication to offer the community the best care possible. Kerry is a busy spouse, parent, student, scout leader, former coach, EMT-Intermediate and full-time employee in law enforcement. As you can see Kerry is never one to rest on past or present laurels and to add to these responsibilities serves on the Board of

See Jenkins, pg. 2

## COMMUNITY CALENDAR

**WOMEN SAFETY** Issues will be discussed at a meeting on Saturday, February 12, 10 a.m. at the Groom Community Center. See ad on page 6 for more information.

**UNITED Methodist Youth** will hold a Pancake Supper Wednesday, February 9th, 5:00-7:30 pm. Donations accepted.

**THE 4TH & 5th graders** from Groom will put on a skills demonstration at halftime of the Varsity girls game. They will then be scrimmaging at halftime of the Varsity boys game on Fri. Feb. 4.

**TUESDAY, Feb. 8** will be the final regular season game at McLean for Varsity girls & boys.

**THE JUNIOR High Miami Tournament** has been rescheduled for this weekend after weather cancelled the event last week.

**CALL DORIS Kuehler ASAP** with your updated class reunion list and addresses. Deadline Feb. 29 for listing in the Ex-Student Directory.

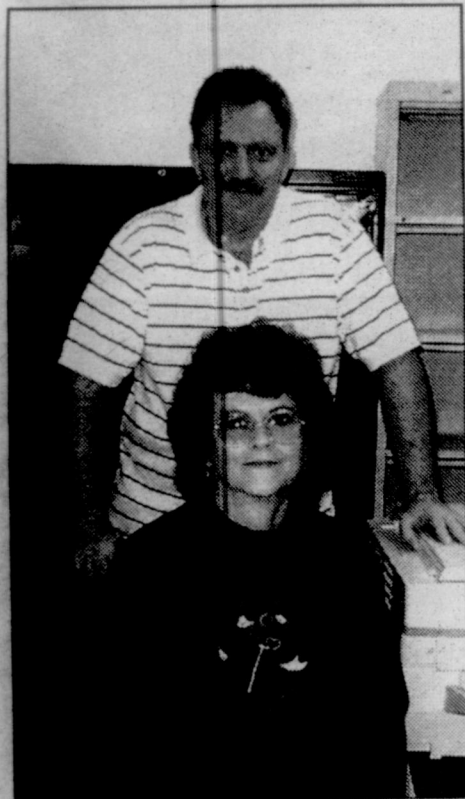
**FRIDAY, FEB. 4** is Senior night at the Hedley game.

**TUESDAY PRICES AT ATTEBURY GRAIN CO.**  
Wheat-\$2.13  
Milo-\$2.98  
Corn-\$3.43  
Soybeans-\$4.20  
1/2" to 1 1/2" Snow  
Reported This Week

## The City Of Groom

Has several health care items for residents who may need them temporarily.

They are: A wheelchair, 2 walkers, a potty chair, and a bath stool.



**Clinic Closes** - Groom said a sad "good-bye" to Groom Community Clinic staffers, Jerry Wilson and Loretta Britten on Monday. Clinic operations were closed after officials felt the medical facility was no longer economically viable. The community appreciated the service of these devoted professionals and wish them well in all their endeavors.



# The Groom News

USPS 230-380  
 Periodicals Postage Paid at Groom, Tx.  
 Carson County, Texas, under the Act of Congress  
 of March 3, 1879  
 Published weekly except Christmas Week  
 Publisher - Phillip J. Miller  
 Managing Editor - Donna A. Burton  
 McLean Editor - Terri Adams

Postmaster: Please send address changes to  
 P.O. Box 460, Groom, Tx 79039-0460  
 Carson & Gray County Subscription Rate  
 - \$18.00 Yearly  
 Annual Rate elsewhere in U.S. - \$20.00 Yearly

**TPA** MEMBER 2000  
**TEXAS PRESS ASSOCIATION**

**R & L Fuel**  
 Open From 7am - 6 pm, Mon-Fri.  
 Closed Sat. Noon & Sunday  
 Fuel \* Oil \* New & Used Tires \*  
 Car Care Service Like Oil Changes  
 Corner of Old Rt. 66 & Main Street  
 248-7586

## Local Happenings

Katie Tally recently returned home from a visit with her brother in Oklahoma.

Mr. & Mrs. David Brusco recently spent the day in Amarillo at the VA for a check up.

Several college students who were home for winter break have returned to school.

Vicki Ham is recently returned after welcoming a new grandbaby into the world.

### Jenkins

Directors for local EMS. Despite these multiple responsibilities, when Kerry's pager goes off Kerry is on the way with a caring spirit and willing hands. Kerry had been awarded the 1997 EMT-Basic of the Year and continues to take classes for skills improvement. Kerry is working on completing her educational requirements for Paramedic as well as a nursing degree.

Special thanks and congratulations to Kerry Jenkins for all the hard work!

### Water Trivia.....

How much water does it take to make one pound of plastic? 24 gallons.

How much water does it take to process one board foot of lumber? 5.4 gallons.

How much water does it take to process one barrel of beer? 1,500 gallons.

How much water does it take to process one can of fruit or vegetables? 9.3 gallons.

How much water does it take to process one chicken? 11.6 gallons.

How much of an earthworm is water? 80%.

Water is precious. Make every drop count.

This information came from the Panhandle Groundwater Conservation District newsletter.

### Groom School Menu February 7 - 11

Monday Breakfast: Cold cereal, muffins, juice, milk. Lunch: Chicken fried steak, mashed potatoes, green

beans, hot rolls, chocolate cake, milk.

Tuesday Breakfast: Pancakes, peanut butter, sausage, juice, milk. Lunch: Fajitas, shredded lettuce, sauteed onion and green peppers, pineapple, milk.

Wednesday Breakfast: Breakfast burritos, hash brown potatoes, juice, milk. Lunch: Frito pie, pinto beans, graham crackers, pears, milk.

Thursday Breakfast: Biscuits, gravy, bacon, juice, milk. Lunch: Baked ham, scalloped potatoes, blackeyed peas, hot rolls, rice krispie treats, milk.

Friday Breakfast: Donuts, cinnamon rolls, juice, milk. Lunch: Sandwiches, pork & beans, chips, fruit cocktail, milk.

### Groom Birthdays Anniversaries

February 3 - Amy Lynn Brown Williams, Mrs. Kenneth Payton, Leon J. Bohr, Jackie Rennie, Mr. and Mrs. Randy C. Sustaire (A).

February 4 - Larry and Karen Reid (A), Mr. and Mrs. Leon Schaffer (A).

February 5 - Mrs. Robert West, Mrs. Alfred Homer, Mrs. Bill Hinson, Mike Friemel, Louis Leven, Jeanie Wakefield, Esmeralda Medellin.

February 6 - John Adam Stephens.

February 7 - Rick Prather, Mitzi Moranic, Susan Noack, Mr. and Mrs. Bobby Jones (A).

February 8 - Mrs. C.F. Hermesmyer, Dewey Cave, Bill & Jo Ann Musser (A).

February 9 - Jolee Burger, Connie McMahan.



### Fields Named Sorority Sweetheart

Alpha Mu Xi Sorority is pleased to announce that Carole Lynn Fields has been selected as Sweetheart 2000.

Carole has lived in Groom since 1970 and graduated from Groom High School in 1975. Carole is married to Barry Fields, they have three children, Brenda, Dean and Doug.

The Fields' have farming interests east of Groom. Carole has been

a member of Alpha Mu Xi for three years. She currently holds the office of corresponding secretary. The sorority holds many annual activities including Thanksgiving Dinner for Senior Citizens, making stew for special residents, Mothers Day Luncheon and various fund raisers. Carole enjoys quilting and reading in her spare time. She is also a quilting instructor.

**COW POKES** By Ace Reid

http://www.cowpokes.com

**CATTLE MENS BANK**

LOANS MADE ON ANYTHING OF VALUE

© Ace Reid 9/19/99

"But Sir, it says ANYTHING OF VALUE and I'm holdin' four aces down at the feed store right now!"

Bring your financial needs to us! We LOVE to say YES! We're your HOMETOWN BANK... loan decisions are made right HERE, not in Minneapolis

**THE STATE NATIONAL BANK**  
 MEMBER FDIC GROOM, TEXAS 248-7531

**Koetting Construction**  
 Mike Koetting  
 1-800-250-1023 or 248-1022  
 Remodeling-House Levelling  
 Brick & Stone Work  
 New Construction  
 FREE ESTIMATES - BONDED & INSURED  
 "When Quality Counts"

**A Gift For Your Sweetheart  
 For Valentines Day!**

**"Cross My Heart I Love You"** ©Courteau Designs  
 A child's promise of friendship, a parents vow of devotions, the fathers commitment... "Cross My Heart I Love You" is a powerful symbol of unconditional love.  
 Sterling Silver Pendant and Chain. **\$29.95**

**RHEAMS**  
**DIAMOND SHOP**  
 HOURS: MONDAY-FRIDAY 9:30-5:30; SATURDAY 10:00-4:00  
 111 N. CUYLER • 665-2831



## Tigerettes Need To Beat Hedley

Groom Varsity girls are definitely in the play-offs according to Coach Chris Sumrall.

"If we win Friday night against Hedley we will be co-champions with the Lady Owls and have to compete in a play-off game," stated Sumrall.

The Ettes battled Valley last week and sailed past them 44-23.

Carrie Davis had an awesome night scoring 18 points. Candace Bohr contributed 11 points. Amanda Conrad earned 8. Jessica Kepley added another 5 and Krisanne Davis connected on 2.

The Ettes played Samnorwood on Friday night. The Ettes barreled past the Lady Eagles, 54-25.

Carrie Davis was again high point with a whopping 23 points. Krisanne Davis added 12 points. Amanda Conrad earned an additional 7 points. Candace Bohr and Jessica Kepley each added 4 points while Jodi Homen and Nichole Barnett tossed in another 2 points each.

Some of the Ettes success is attributed to their much improved defense.

"I am very pleased with the effort the girls have put out," stated Sumrall. "Our defense has been improving as the season continued. The past few games the girls have greatly improved."

"The offense has come along as we expected," he continued, "The girls are still continuing to refine their skills in

practice and have an enthusiastic attitude."

We would appreciate everyone's help with this list and we know most of the classes have had reunions, and could possibly have updated addresses for all students.

These lists need to be presented to Doris Kuehler before the end of February to have time to work on the directory.

## Groom Day

There are many who left before graduation including some who were called into service during all the



**Thanks For Your Support In 2000!**  
Our sincerest thanks to the following business and individuals for their support of the  
**Carson County Junior Livestock Show and Sale.**  
Without your continued support, the event would not be possible.



### BUYERS:

Celanese  
Clay Farms  
Attebury Grain  
Britten Feed & Seed  
Elten Vance  
Don Vance  
Bill Murray  
Burnett 6666 Ranch  
Red's Ditching  
Sun Bank

B & B Solvent  
Orville Craig  
First National Bank-  
Panhandle & Borger  
Robinson Grain  
Robinson Fuel  
Panhandle Butane & Oil  
Panhandle Thriftway  
Phil Freeman  
State National Bank, Groom  
Greg Sherwood  
Mr. & Mrs. Jerry O'Neal

Vibra Whirl  
Gary Pope Builders  
Stamps Spraying Service  
Amarillo Natural Gas  
Wood Flying Service  
Carson County Feedyard  
Hi Pro Feeds  
A & E Stovall Farms  
L & M Seed - Clarendon  
David Cummings  
Randy Meacham  
DeBruce Grain

Crown of Texas Hospice  
Hansford Implement  
John Paul Dauer  
Panhandle Breeders Pig Sale  
David Lang-Dralco  
Beddingfield Real Estate  
Tip Top Used Cars - Pampa  
Scott & Brenda Sherwood  
Brett Sinclair

### Contributors:

Jack & Beth Hodges  
Mr. and Mrs. W. H. Lane  
Mr. and Mrs. Shawn Smith  
Claude Veterinary Hospital  
Carson County Farm Bureau  
Golden Spread International Services  
American Equipment and Trailer, Inc.  
Haravey Tire Company  
Scott Tractor & Equipment Co., Inc.  
Max Reno D.D.S.  
Hairways-Sherry Wright & Carrie Henderson  
Jon Kenneth Wych  
Metcalf Motors  
Main Street Gallery  
Mike and Carin Vance  
Leslie Rohan  
Panhandle Medical Clinic  
Neal and Gale Bennett  
Texas Tractor  
Briscoe Implement  
Double N Motel  
Texas Pipe and Metal

SPS  
5 Star Auction Service  
DeBruce Grain  
Paramount Supply  
Luskey's Western Wear  
West Texas Western Wear  
Texas Cattle Feeders  
Steve Sterling Investment Center  
Mrs. Ralph Randel  
The Shirt Shop  
Tee Pee Trailer  
Gebos  
Amarillo Feed Mill  
Carson County Abstract  
Panhandle Car Wash  
Lane and Co.  
Surratt Ranch-In Memory of Bill  
Mike MacCartney, Builder  
Eugene's Service Center  
Buttons, Bows, & Balloons  
Rex and Julie Young  
Dale Gabel CPA  
Gabel Farms  
Liberty Club  
Amarillo National Bank

Jackie and Sally Smith  
West Texas Equipment  
W.D. Jones Irrigation  
Hobbs Heating and Air Conditioning  
Circle L Irrigation  
Minton Chatwell  
David and Kelly Sparkman  
Les Taylor Drilling  
Les Taylor Pump & Supply  
Quorum Software  
Mr. & Mrs. James B. McCray  
Reining Construction  
Gerald J. Ford  
Brice Gabel  
Hartman Roofing  
John Dale Kelly  
KOMX-FM Radio  
Dairy Queen  
Coast to Coast  
F & L Accounting  
Stewart Messer  
Scott Mills - Edward D. Jones  
Kevin Powers  
Greg and Belinda Britten

Art Jewett  
David Lewis  
Charley Russ  
H & H Feed and Supply  
Gerald's Office Supply  
Levens Feedlot  
Amarillo Grain Exchange  
Amarillo Truck Center  
Andrews Transport - Amarillo  
Barkley Auto  
Bichsel Trucking  
Bill Homer Enterprise  
Bivens Auto  
Brumley Insurance  
Cactus Feeders  
Desperodos  
S & H Grocery  
Don's Electric  
Doug Hershey Co.  
D.C.D. Dirt Works  
Evans Fertilizer - Clarendon  
Friemel Brothers  
Groom News  
Haynes Fire Extinguisher  
Herring National Bank  
Koetting Construction

Amarillo  
North Texas Gas - Dumas  
Pav's Tire Shop  
R & L Fuel  
Schooler Funeral Home  
Short Grass Feed  
Soliz Trucking  
Southwest Scales - Amarillo  
Stop-N-Shop  
Tejas Feeders  
Trinity & Co.  
Tri-State Chemical  
Wieberg Welding  
NC + Seed Co.  
Novartis Seed Co.  
Dekalb Seed Co.  
Richardson Seed Co.  
Airspeed Oil Company  
B & G Electric  
Bartlett Lumber  
Bee Equipment  
Mr. & Mrs. Timmy Bichsel  
Big Country Tire Co.  
Mr. and Mrs. Nelson Britten  
Brown's Electric  
Cabot-IRI Credit Union  
Bana & Terra Carnes

Cellular One  
Crown Supply  
Culberson Stowers Chevrolet  
D & B Neighborhood Shop  
Daie Ann  
Dealers Equipment  
Diamond G Pest Control  
Disco  
Doan's Truck Repair  
Dobson Cellular  
Dorman's Tire Co.  
Dyer's BBQ  
Energas  
Engine Parts  
Farmers Equipment  
Farrell's Trailer  
Fat Tony's

First Bank & Trust Co.  
First Bank of Southwest  
First State Bank of Miami  
Five Star Equipment Co.  
Freeman Bros.  
Mr. & Mrs. Sonny Freeman  
Gene Goss Engine Co.  
Germania Insurance  
Peggy Chaney  
Joe & Mack Grange  
Mr. & Mrs. Ruben Guerrero  
Harold McKinney/Memory of Sally McKinney  
Harvey Tire Company  
Mr. and Mrs. Walley Holley  
Jeff's Quick Auto  
Joan's Hallmark

K & K Inc.  
David Kalka  
Larry Beck Heating & A/C  
Laurie, R.T.  
Mr. and Mrs. Terry Lewis  
M & M Plumbing  
Mama Jo's  
McCann, Jim Wayne  
Miami Roustabout  
National Bank of Commerce  
Richard Nichols  
Mr. and Mrs. Ray Norton  
Mr. and Mrs. Robert Parks  
Parsley Roofing  
Parts in General Supply Co.  
Petro Source  
R & B Ag Services/Bill

Ragsdale  
Mr. and Mrs. Darrell Ruthardt  
Mr. and Mrs. R. J. Sailor  
Salt Fork Company, Inc.  
Mr. and Mrs. Robbie Salzbrener  
Smith Auto  
Special Effects  
Mr. and Mrs. Tam Terry  
The Hair Shoppe  
Clyde Tidwell  
T-L Irrigation  
Top O Texas Pig Sale  
Truck & Stuff  
Upshaw Insurance  
Mr. and Mrs. Jerry Urbanczyk

Vicki's Paw Parlor  
Mr. and Mrs. Stephen Warminski  
Mr. and Mrs. Randy Warminski  
Weldon Walser & Sungle Feeds  
Wayne's Feed  
Wayne's Western Wear  
West Texas Caterpillar  
White Deer Creek  
White Refrigeration  
Dutch Williams  
Yellowhouse Machinery

Special Thanks to Deborah Arnold, Marilyn Dudenhoeffer, Carrie Smith and Jeanene Montgomery for helping with the book work. Also a special thanks to Mr. and Mrs. Keith Merrick and the parents for doing an outstanding job running the concession stand.



## Jr. High Teams Split Win With McLean

Groom Junior High battled McLean last week and split wins.

The girls had a good night scoring 45 points to McLeans 23. Karen Wilson scored 16 points to lead the Ettes to victory. Caren Howard added another 11.

Magan Bivens and Jennifer Jenkins each contributed 6 points. Britteny Martin sank 5 points and Mallorie Homen added 1.

The Cubs lost their game against McLean, 36-23.

Clay Britten led the scoring with an impressive 18 points. Willie Leven added 4 points, Calvin Schaffer

added 2, and Cody Schaffer put in 1 point.

The Junior High will compete in the Miami Tournament which was rescheduled after last weeks snow storm.

### Groom Tigers Varsity Boys Basketball Report

By Brad Rainer

Last week the Tigers took on Valley in a non-district match up and then began the second round of district by hosting Samnorwood on Friday night. Valley came in on Tuesday with a good record and in contention for a playoff berth in their district, so this was a good test for us. They also play very good pressure man defense, so this game was a chance to see our kids handle pressure and get into our offense. We

came out and played well, maybe our best overall game from start to finish. We played with great intensity and gave our total effort. We led from start to finish and won the game 47-34. The Samnorwood game was a little different, we played hard the first half but we had lapses in our defense which caused us to be trailing at halftime. But the kids responded well in the second half outscoring the Eagles 37 to 15 in the final two quarters to cruise on to victory by the score of 61-42. Our defense in the second half is what won the game, we put a lot of pressure on them and recorded 14 steals as a team. This win upped the Tigers record to 6-4 and 4-1 in district. We remain in a first place tie in district with Hedley. This week we travel to Lefors on Tuesday and then host Hedley on Friday night. Everyone come out Friday night and cheer on the Tigers against the Owls. It will be Senior night and also it is the final home game for this season.

The Tigers were led in the Valley game by Dustin Babcock with 9 points, on 4 of 4 shooting from the field. He also had 2 rebounds, 1 steal, 1 assist, and 3 blocked shots. Clay Ritter had 9 points on 4

of 6 shooting, 10 rebounds, 2 steals, 2 assists and 3 blocked shots. Russell Conrad had 9 points on 3 of 5 shooting, 1 blocked shot, and took a charge. Chris Ollinger had 8 points on 4 of 6 shooting, 5 rebounds, and 4 assists. Garrett Britten had 6 points, 2 rebounds and 3 assists. Dewayne Gray had 1 point, 2 rebounds and 1 assist. Dusty Crump had 2 points, 3 rebounds and 2 steal. Grant Weinheimer had 3 points, 5 rebounds and 1 steal.

The score by quarter showed Groom 6 points 1st quarter, 10 in the 2nd, 15 in the 3rd and 16 in the fourth for a total of 47 points compared to Valley's quarter scores of 4, 8, 11, and 11 points for their total of 34 points.

Clay Ritter led the way in the Samnorwood game with 26 points on 12 of 19 shooting. He also had 8 rebounds, 4 steals and 1 blocked shot. Dewayne Gray had 6 points, 1 rebound, 4 steals, 3 assists and 1 blocked shot. Dusty Crump had 7 points, 11 rebounds and 1 blocked shot. Dustin Babcock had 2 points, 2 rebounds, 2 steals and 2 assists. Chris Ollinger had 8 points, 5 rebounds, 4 steals, 3 assists and 2 blocked shots. Grant Weinheimer had 6 points and 2 rebounds.

The score by quarter was Groom 11, 13, 20

and 17 points for their total of 61 points. Samnorwood had 12, 15, 7, and 8 points for a total of 42 points.

### Thought For The Day

It's not so much what you say as the manner in which you say it; It's not so much the language you use as the tone in which you convey it.



**Internet Service**  
 3505 Olsen, Suite 103  
 Amarillo, TX 79109  
 Telephone: (806) 355-3539  
 Facsimile: (806) 355-2705




## STOP N SHOP

1-40 & FM 2300  
 806-248-7977

**Our Pumps Are Open  
 24 Hours, 7 Days A Week**

Accepting Texaco, Visa,  
 Master Card, Discover,  
 American Express,  
 Voyager, Wright Express,  
 Diners, Most Debit Cards  
 and Check Cards




HARVEY ELMS  
 Owner

## HARVEY'S PRECISION BODY SHOP

806-352-9662      3026 BLACKBURN  
 AMARILLO, TEXAS 79109

\*Honoring All Other Funeral Home Pre-Arrangements



## SCHOOLER

Armstrong Chapel  
 On the Square,  
 Claude, Texas  
 226 4040  
 Mrs. Schooler, Jim Schooler

# Groom Tigers & Tigerettes



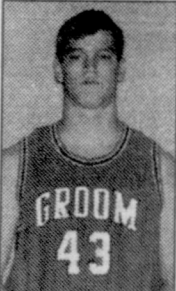
Laurissa Noack



Hugh Weinheimer



Jessica McMahan



Clay Ritter



Jill Britten



Luke Pavlovsky



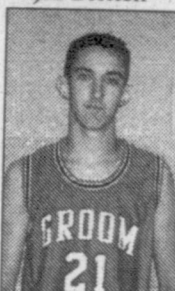
Amanda Martin



Wyatt Britten



Jessica Bates



Garrett Britten

Barkley Auto Repair  
 West Texas Gas  
 State National Bank MEMBER FDIC  
 Friemel Brothers  
 Attebury Grain, inc.

Blackwell Supply  
 Groom Dairy Queen  
 Great Plains Crop Service  
 Groom Flying Service  
 Groom S & H Grocery

Wieberg Welding  
 City of Groom  
 The Groom News  
 Biven's Automotive

Pav's Tire Service  
 R & L Fuel Service, Inc.  
 Koetting Construction  
 Kelvin & Debbie Ollinger  
 Juandell Ritter  
 Don & Margie Smith



## Federal Landbank Pays Out \$1 Million To Stockholders

Approximately \$1 million was returned in January to member-stockholders of the Panhandle-Plains Federal Land Bank Association. The cash patronage refund continues a tradition for the Association following like distributions in 1997, 1998, and 1999.

Chairman of the Board of Directors, Jerry Oswalt announced the January 2000 payment to members. "This payment to our stockholders is the fourth consecutive cash distribution we have made. The Association is financially strong and we have enjoyed outstanding growth since 1997," according to Oswalt. "Our Cooperative structure allows us the opportunity to share profits through the patronage program; while at the same time building capital to maintain our financial strength."

Panhandle-Plains FLBA has approximately \$150 million in loans outstanding to farmers, ranchers and agribusinesses in 17 Texas Panhandle counties. Offices are located in Amarillo, Pampa, Perryton and Plainview. The association is under the direction of a

stockholder-elected board of directors. Members include Jerry K. Oswalt of Abernathy; Larry E. Fairchild, Adrian; Dennis Babcock, Groom; Ervin J. Davis, Happy; Ronnie N. Hopper, Petersburg; Dean H. Burger, Pampa; Daniel Krienke, Perryton; Wayne Garrett, Gruver; and Steve Brown, Floydada.



Superintendent Wilson accepts a donation to the Groom High School scholarship fund from Texas State Teachers Association member Leatrice Nelson. Her students witness the event and anticipate that maybe when they are seniors they will have a chance at earning one of several scholarships that Groom School administers. Anyone can donate to the fund by contacting Business Manager, Joyce Hutsell. The T.S.T.A. gift was nearly \$500.00.

### Games

also 4-1 in district competition have a little clearer picture of what they must do. While assured a play-off berth, they must beat Hedley in Friday nights game to tie

Hedley for district. Then a play-off game would be necessary to decide if the Ettes would take the number 1 or number 2 seed for Bi-District competition. The seniors will be

honored at Friday nights game. Contact the school for more information.

### Words Of Wisdom

Marriages are made in heaven; so are thunder and lightning.

"Our 1800 member-stockholders are realizing that there truly is Value to Membership in the Association. Serving producers in the Panhandle and South Plains with the highest quality service at the lowest possible cost is, and will remain the goal of this Association," said Oswalt.

### Obituary

W.A. Shockley  
DUMAS - W.A. "Bill" Shockley, 87, died Sunday, January 30, 2000.

Services were Tuesday at Ninth and Bliss Church of Christ with Mr. Steve Walker, minister, officiating. Burial was in Northlawn Memorial Gardens by Morrison Funeral Directors.

Mr. Shockley was born in Quay County, New Mexico, was raised in Groom and graduated from high school in Groom. He had lived in Moore County since 1941 and in Dumas since 1958. He retired as a maintenance foreman from Phillips Petroleum Company in 1973. He was a member of Ninth and Bliss Church of Christ.

He married Frances Nelson in 1939 at Shamrock.

Survivors include his wife; two daughters, Sue Shockley of Eules and Anne Crain of Dallas; a sister, Beulah Shockley of Groom; five grandchildren; and nine great-grandchildren.

The family suggests memorials to Memorial Hospice, 224 E. Second, Dumas, TX 79029; or Memorial Nursing Home, Activity Fund, 302 E. Second, Dumas, TX 79029.

## Biven's Automotive

Groom, Texas  
Now Offers Complete Tire Sales & Service For Auto, Truck and Farm

New & Used Tires  
24 Hour Road & Field Service  
call 248-7471

After Hours Call: Mark 248-7010  
or Jeff 248-7255

Flat Fixed  
Computerized Wheel Balancing

Free Quotes Over the Phone  
AMEX, DISCOVER, VISA, M/C ACCEPTED

## Brumley Insurance Agency

Johnny Brumley,  
Agent

Office (806) 248-7550  
Home (806) 7315

## ATTEBURY GRAIN INC.



Serving you at the following locations:

Groom - 248-7544  
Lark - 248-7591  
Grandview - 669-3961  
The Corners - 248-7011  
1-800-299-7544

"We don't think there is a better place to haul your grain!"

**We're Moving**

**Speedway Discount**

**Tires & Service**

To: 401 W. Foster, Pampa  
(806) 665-0880

- Tires & Wheels
- Flat Repair
- Wash & detail
- Shocks
- Brakes

**Grand Opening SALE**

**FEB. 1, 2000**

TO ALL OUR VALUED CUSTOMERS,  
WE'VE INCREASED OUR SERVICE LINE  
TO BETTER SERVE YOU.

**FREE Pickup & Delivery (in town)**

**and L & M SEED**

P.O. Box 68 Clarendon, Texas

**Carson County CRP Contract Holders**

With the CRP sign up done and the contracts complete, it's time to think about preparing to seed and establish a cover on these acres.

When we are planning for a grass legume and forbs to be put on this land for lengthy period of time, we need to take the commitment seriously. That is exactly what we do.

We want you to know that we will attempt to provide you with the best quality seed at a fair price.

Also, we will be available for seeding if you want us to take care of the complete job. We will have at least 12 grass drills planting or available for you to plant if you so desire.

We are looking forward to helping you with a successful CRP program. Contact us and give us an opportunity to quote you a price on your seed needs or a complete job.

**Jack A. Moreman**  
**L & M Seed Co.**  
(806)874-3434  
(806)874-9286 Fax  
(806)673-1348 Cell



*Thought For The Day* I started out with nothing and still have most of it.

## JV Teams Play Valley

Groom Junior Varsity teams battled Valley last week.

The girls easily won, 48-8. Staci Britten led the scoring with 11 points. Brin Burgin added 8 to the scoreboard. Jill Britten put in another 7. Amanda Martin had 5 points. Michelle Stephens and Laurissa Noack each earned 4 points for the Ettes.

Jessica Bates sank 3 and Jessica McMahan, Claudia Neugebauer, and Lauren Crowell added 2 points a piece.

The Junior Varsity boys ran into a bit of trouble with Valley's defense. They lost 31-16. Doug Fields was high point with 5. Hugh Weinheimer added another 4. Luke Pavlovsky, Wyatt Britten and Brett Britten each contributed 2 points.

Trey Britten netted 1 point for the Tigers.

The J.V. girls also handily beat Samnorwood, 69-11.

Staci Britten was once again a team standout sinking 17 points. Lauren Crowell added 15 and Jill Britten put in 13. Amanda Martin sank another 10 to Groom's credit. Jessica Bates put in 6 points. Brin Burgin had 5 and Claudia Neugebauer earned 1 point.

**DANGER!**  
**DRY CONDITIONS.**  
**BE CAREFUL WITH FIRE!**

**LEFORS FEDERAL CREDIT UNION**

*CU*

SERVING RESIDENTS LIVING IN THE LEFORS AND McLEAN SCHOOL DISTRICTS  
 CALL 806-835-2773

SAVINGS AND LOANS

117 E 2nd • P.O. Box 425  
 Lefors, Texas 79054

Your savings federally insured to \$100,000

**NCUA**  
 National Credit Union Administration,  
 a U.S. Government Agency

**Mighty's**

Movies  
 Feb. 1:  
*Stir of Echos & Chill Factor*  
 Feb. 8: *Astronauts Wife*

**DEAN'S PHARMACY**

2217 Perryton Parkway 669-6896

"Looking forward to serving our Groom-McLean customers."


9:00 - 6:30 Monday - Friday  
 9:00 - 1:00 Saturday

WELCOME WELFARE RECIPIENTS  
 SPECIAL DISCOUNTS TO SENIOR CITIZENS  
 ON ALL PERSCRPTIONS



Jim Pepper Home 669-9710

**Women's Safety Issues**



An educational program  
 Sponsored by Alpha Mu Xi &  
 The Rape Crisis Center of Amarillo  
**Groom Community Center**  
 Feb. 12, 2000 - 10:00 A.M.

Teenagers through the Elderly will learn useful information on being safe at home, shopping, and traveling.

For More Information contact  
 Donna Barnett at 248-7058  
 or Charlotte Whatley at 248-7963

**ALLSUP'S**

Store #79  
 Groom, Texas  
 248-7074

**ALLWAYS**  
 LOW PRICES!

**ALLSUP'S .5 LITER BOTTLED WATER**  
 CASE OF 12  
**\$3.99**

**PICK UP A SILK Long Stemmed Rose**  
 For Your Valentine or Special Someone  
 For Only **99¢** ea.  
 with fill up of 8 gallons of gas or \$1.99 without gas

**6 pack - \$1.69**  
**3 liter - \$1.59**  
**12 pack - \$3.49**

**2 ALLSUP'S WORLD FAMOUS BURRITOS & 32 OZ. TALLSUP \$1.99**

**ALLSUP'S 1%, 2% OR WHOLE MILK GALLON \$2.29**

ALL VARIETIES <b>FRITOS &amp; CHEETOS</b> REG. \$2.29	<b>\$1.79</b>	<b>HORTENSIA NAPKINS</b> 200 CT.	<b>99¢</b>
SHURFINE <b>PAPER TOWELS</b> 1 ROLL	<b>69¢</b>	BLUE BUNNY VANILLA OR NEOPOLITAN <b>ICE CREAM SANDWICHES</b>	<b>2 \$1</b> FOR

PRICES EFFECTIVE JAN. 30 TO FEB. 12, 2000 WHILE SUPPLIES LAST