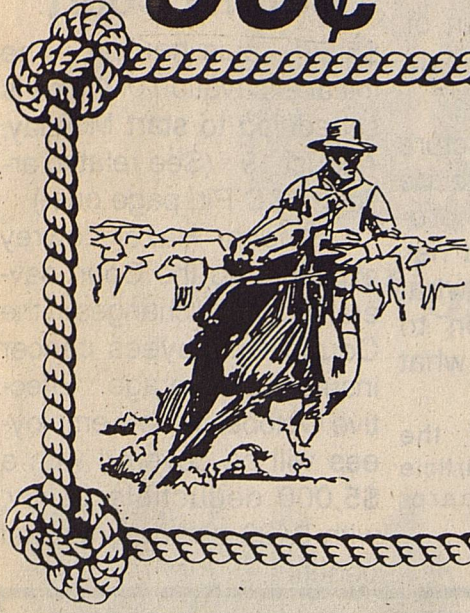


50¢

BULK RATE
US POSTAGE PD.
PLAINS, TX
PERMIT #21

Cowboy Country News
P. O. Box 179
Plains, Texas 79355
Address Correction Requested



Cowboy Country News



Published each Wednesday at the County
Seat of Yoakum County, Plains, Texas.

Volume 2, Issue 49, Wednesday, August 14, 1996

Farm Aid

Producers face new ballgame with tougher rules, regulations

For sixty years it was business as usual, with the federal government providing price supports for many of the nation's largest commodities. Federal farm programs meant big bucks for Texas. But, the business of farming is getting ready to change in revolutionary ways.

The Federal Agriculture Improvement and Reform Act of 1996 overhauls farm programs that have existed since the Great Depression, cutting billions of dollars from these programs over the next seven years.

Production flexibility contracts, or transition payments, will be offered to any eligible producer who participated in or had certified acreage in the wheat, feed grains, rice or cotton programs during any one of the last five years.

From 1990 to 1994, a yearly average of 79,000 Texas farmers participated in the federal programs, ranging from direct payments to emergency assistance. In 1994, federal support to Texas farmers producing cotton, wool, mohair, wheat, rice, sorghum, corn, barley or oats totaled about \$857 million. In 1993, price supports on these commodities reached \$1.4 billion.

While backers of farm support programs used to stave off efforts to reduce federal funding by arguing the programs preserved low food prices, this year's budget minded lawmakers ushered in a new era of farming operations.

The overhauled law allows farmers more freedom in what and how much they plant, while phasing out government price supports.

Previously, farmers could only plant certain crops to be eligible for government assistance. Then, when market prices fell below a government-set target, the growers received a deficiency payment.

This year, the government has lifted most crop restrictions. No longer will participating farmers be ordered to hold land out of production. They can now grow what they want on wheat, feed grain, cotton and rice land, with the exception of fruits and vegetables. Farmers will continue to receive transition payments until 2002. Nationwide, farmers will receive \$5.6 billion in guaranteed payments in 1996, then lesser amounts each year, down to \$4 billion in 2002.

From 1990 through 1994, federal payments to Texas farmers averaged about \$1 billion, with the total value of commodities produced averaged \$12.1 billion, the price support payments amounting to about 8% of total production. Because the programs were designed to augment farm income after production expenses are paid, the federal support accounted for one in every five dollars in Texas' net farm income during that period.

Ronald Knutson, a professor and economist at Turn to Page 2, 'Farm Aid'

County Court Meets

Commissioner's Court for Yoakum County met in regular session Monday, August 12. Agenda items discussed and acted on included examining and accepting the Tax Assessor-Collector's tax report for the month of July, presented by Sheila Stephens, showing tax collections of \$12,966.

Gary Walker, County Landfill Supervisor, reported to the Court on the current status of the facility. He told the Court he had arranged to lease a large Track Hoe from West Texas Caterpillar, to start excavation of the new C&D pit at the site. The Court expressed their satisfaction with the rental agreement of 30 days or 200 hours use of the machine for

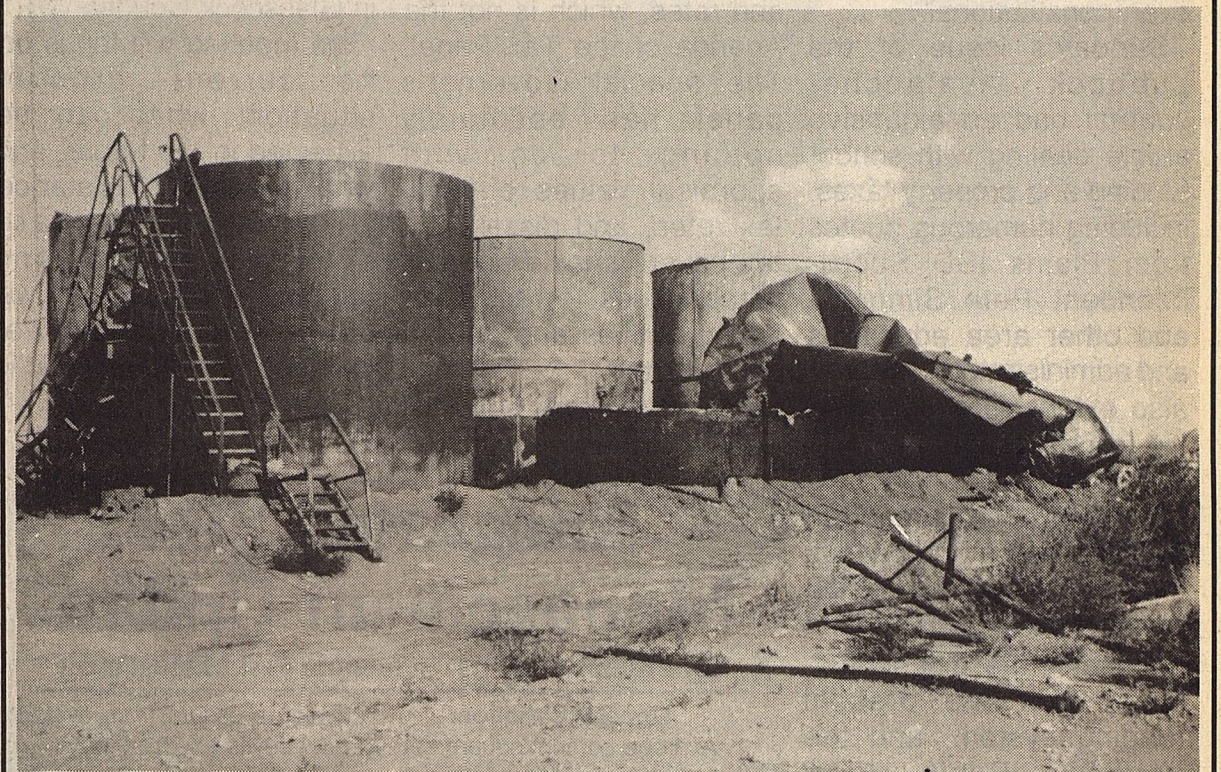
New C&D Pit At Landfill To Help With 'Weighty' Problem

The devastating hail storm which struck Denver City, and to a lesser extent Plains in late June, has created a mountainous problem at the County Landfill. During the last few days of June, and during the month of July, scores of trucks have crossed over the scales at the landfill, bulging at the seams with destroyed and replaced roofing shingles and other storm related debris. Well over 1,400 tons of this Construction and Demolished material (C&D) have been dumped at the site, with more trucks still arriving daily.

Immediately after the storm, Landfill Supervisor Gary Walker applied for a special C&D permit from the Texas Natural Resources Conservation Commission (TNRCC) to construct a new pit specifically for the C&D materials. Without the permit, the enormous tonnage of shingles would have counted against the landfills permitted daily tonnage limit, costing county taxpayers very large dollar amounts in additional fees payable to the State.

Walker reported in Monday's session of Commissioner's Court the permitting process is now

When The Rains Came So did some bad events.



At the scene of last Wednesday's tank battery fire just west of town. The crumpled tank in the right of this picture was originally located on the east, or left side of this picture. When it exploded, it was propelled over the other tanks to land in this position.

Last weeks thunder storm lightning damaged a distribution circuit breaker which swept through the County in the wee hours of Wednesday morning brought beneficial rains to much of the area. Moisture amounts ranged from a reported 4.5 inches to a scant .02 inches, all of which greatly appreciated by agriculture producers.

On the down side, the moisture was also accompanied by high winds and fierce lightning, causing serious problems in many areas of the County.

According to Michael Sarkis, spokesman for Lea County Electric Cooperative, the supplier of electricity to the City of Plains and many rural customers,

requested assistance from the Denver City Fire Department. The oil field facility, owned by Permian Brine Sales of Odessa, was completely destroyed by the fierce flames, and both teams of fire fighters battled the blaze some four hours, according to Plains Fire Chief Charles Diamond.

A large oil spill resulting from the ruptured storage tanks flowed down a hill and into an adjacent pasture, adding to the fire-fighters problems. About two dozen members of the two Volunteer Fire Departments joined forces to battle the blaze.

Lightning was also the culprit causing a fierce fire at a tank battery just west of town, behind Texas Equipment Company. The Plains Volunteer Fire Department responded to the fire call, and soon

complete, and he is ready to start digging a new straight walled pit for the C&D material. The

additional pit will be just east of the huge main dumping pit. The storm debris is now dumped in a

long north to south line, and when the new pit is complete, will be pushed into it.

Tragic Accident Claims Two Lea County Electric Employees

At approximately 5:45 p.m. on August 8, 1996 two employees of Lea County Electric Cooperative, Inc., Jackie Noack, Assistant Manager/Working Crew Foreman and David Palmer, Equipment Operator, were electrocuted while responding to a trouble call immediately following a thunderstorm. Mr. Noack and Mr. Palmer were found in a field with standing water. There were no witnesses. An investigation is continuing. At the time of the accident Mr. Noack and Mr. Palmer were working around a 7200 volt primary line.

Mr. Noack, age 48, had been employed by Lea County Electric Cooperative for 28 years. Mr. Palmer, age 36, had 8 years of service with Lea County Electric Cooperative. At the time

of the accident Mr. Noack and Mr. Palmer were working on restoration of power in and around the City of Lovington in conjunction with an outage.

Federal and State Occupational and Safety Health officials have been notified. It is expected an OSHA investigator will likewise investigate the matter. Other details of the accident are unavailable at this time.

Michael Dreyspring, General Manager of the Cooperative, reported there will be a meeting Thursday morning in the Lovington Corporate office, and at that time details established by extensive investigations will be revealed to the public and media.

This additional information will be featured in the August 21 issue of CCN.



Almost 3,000,000 pounds of hail damaged shingles.

School Funding, Property Taxes Still Red Hot Items

Funding of Texas Public School with property tax funds remains a complex and confusing issue for state tax payers, and the notorious Senate Bill 7, or "Robin Hood" plan enacted by the legislature in 1993 continues to draw fire from critics including the general public, school administrators, and many legislators. The general consensus of opinion seems to be, "It isn't working the way it should, it isn't fair, probably not even constitutional".

Sunday's issue of the Lubbock Avalanche-Journal had an extensive article dealing with school funding and property taxes, including numerous quotes from Plains ISD Superintendent Pete Simmons and other area educators and administrators. He was also extensively quoted in the following Monday issue of the A-J.

On July 24, CCN reported on the growing and serious problem of ever increasing local property taxes around the state, the disenchantment with the present funding system, and the hardship "Robin Hood" places on both 'poor and rich' school districts.

The article outlined Governor George W. Bush's series of town hall type meetings in cities around the state, where citizens may express their views on possible alternative plans for school financing, hopefully giving some relief to Texas property owners paying ever increasing taxes. The input to the Governor's Citizen's Panel on Property Tax Relief, after the meetings conclude, will assemble their findings of citizens opinions and ideas, and make their report to Governor Bush, in effect saying, "This is what Texans have told us about the issue all around the State". Bush can then present alternative plans to the legislature when it convenes in January.

The next scheduled meeting of the Tax Panel will be held in Lubbock on August 29 at 9:30 a.m. in the Knipping Center of Methodist Hospital. There

has been some concern of some of the panel members about the public's perception of what the true purpose of the meetings is - to find possible other means of adequately financing the education of our children.

State Representative Gary Walker said he had learned members of the public attending the statewide meetings have used the panels time to discuss their grievances about tax appraisal values and rates, which is not the Agenda of the Tax Panel. The special Governor's panel has absolutely nothing to do with appraisal values or local tax rates, and dissatisfied tax payers should address these issues to their local taxing entities and appraisal districts.

Hopefully, the Lubbock meeting will be well

attended by those seeking tax relief, with timely, constructive and workable ideas on alternative methods of funding state public schools.

Drought Relief Meeting Set

West Texas Senators and House Members will hold a drought relief information meeting August 22 at the Community Center in Saint Lawrence, rather than in Midland-Odessa as previously announced. The meeting starts at 1 p.m.

St. Lawrence is a rural farm community located 12 miles south of Garden City in Glasscock County.

The meeting will focus on the current drought situation, what can be expected in the future, and what types of assistance and programs are available. State and federal agency officials will be on hand to answer questions, and the public is invited to attend.

Integrated Pest Management Update

By Phillip Kidd, Terry-Yoakum Pest Management

General Situation:

Average percent square set in scouting program fields is still very high at 95%. Most of Terry and Yoakum Counties received rainfall last Wednesday morning ranging from 0.2 to 2.5". Above average moisture is present in irrigated and dryland fields throughout the area.

Bollworms:

Few bollworms eggs are being found in area fields at this time, but treatable populations of small larvae are present in some fields. Many fields have been treated in the Brownfield - Union - Wellman area. Some fields have been treated in other areas of Terry and Yoakum Counties as well. Many different insecticides have been applied across the area and efficacy has been questionable. I have not seen what I would call a failure, but I have seen cases where it took as many as five days to reach an adequate level of control with synthetic pyrethroids. The only thing I have found in common in these cases is the fact that some type of foliar feed was thrown in with the pyrethroid. After consulting with other research and extension personnel, it appears that some foliar feeds may alter the pH in the tank mix and possibly bind or inhibit the insecticide to some extent.

Boll Weevils:

Some area fields have been treated for first field generation weevils. The majority of these fields are very near urban areas. These are the same spots which

had high pressure from overwintered weevils about 30 days ago. If you utilized the trap index system and made one or more insecticide applications targeting the boll weevil based on trap counts, then there are probably some weevils in your field at this time. This does not mean you need to treat the field again now. Treatments should be based on square counts at this time, as pheromone trap counts are now virtually meaningless. Divide a field into four equal parts and collect at least 25 large squares from each quadrant. Examine each square for boll weevil egg or feeding punctures. Treatments may be justified when 20% of these squares are punctured. In some instances treatment of field margins may be effective. Therefore, it is important to cover the entire field when collecting squares so you can locate hot spots. If counts are high in only one area of the field, it may not be necessary to treat the rest of the field.

Cotton Aphids:

Cotton aphid populations are increasing in many area fields, but no treatable levels have been reported. Single applications of synthetic pyrethroids (SP) targeting bollworms do not appear to be promoting rapid increases in cotton aphid numbers. However, you should be very cautious if a second pyrethroid application is required. Two applications of a SP 10-14 days apart have been shown to promote rapid increases in aphid numbers.

Cont'd from Page 1, 'Farm Aid'

Texas A&M, predicts the new law will have varying effects on producers. He feels feed grain and soybean farmers will fare best, because of the expected worldwide demand for these commodities. Peanut producers will be adversely affected, Knutson feels. Under the new law, the minimum national poundage quota is eliminated, so quotas will be set according to domestic demand.

Historically, the majority of commodities produced on Texas farms did not receive direct federal support. Virtually no price support was available for the cattle industry, the state's largest agricultural sector, except for some small payments to dairy farmers.

From 1990 through 1994, Texas cotton growers received the largest amount of federal support, averaging about \$295 million annually. Rice has relied most heavily on government support, with growers receiving an average 64 cents support for each dollar of production. Cotton and peanuts received nearly equal subsidies, averaging 24 and 23 cents, respectively, per dollar of production.

The regional distribution of federal assistance in the state has been dominated by payments to cotton producers. Among Texas counties that received price support, nine of the top 10 produced cotton as the primary crop.

The overall cost of U.S. farm programs in the next seven years will run about \$47 billion, including transition payments and spending on export promotion, conservation, insurance, research, and a three year \$300 million investment fund for rural development. The farm bill extends the sugar and peanut programs, although it makes several cost reducing changes in the peanut plan.

Many small and mid-size farmers feel there will be no safety net for them if commodity prices plunge, or a crop disaster occurs. A&M's Knutson predicts up

to half of medium size operators could go out of business, given the right scenario.

The new support structure will require farmers to be good growers and producers, but also good risk managers, knowing what to plant from season to season, according to what the market dictates.

(Ed. Note: Much of the information for this article courtesy John Sharp, Comptroller, and USDA)

Cont'd from Page 1, 'County Court'

\$5,500, plus hauling. The initial excavation of the pit is scheduled to start Monday, August 19. (See related article, C&D Pit, page one.)

Auditor Hazel Lowrey explained to the Court several proposed changes in the County employees cancer insurance coverage. Effective October 1, new employees will be covered with a \$5,000 deductible policy, with \$400 per day hospital benefits



Crop Revenue Coverage for Texas Wheat Producers

Making the
Downside
Go Up



Our protection from revenue loss due to fluctuating crop prices and/or low yield.



Crop Revenue Coverage.....
The USAG Advantage

- *Protects farmers against the perils of price and yield.
- *Uses the producer's own Actual Production History to guarantee on a unit basis.
- *Uses the KCBOT to establish revenue guarantee.
- *Premium subsidy provided through USDA.
- *May be used in place of MPC.
- *Secures Loan repayment and enhances borrowing power.
- *Increases confidence when using alternative marketing strategies.

So Why Risk It?
 Contact your USAG Agent today!

Ag Insurance Plus
James F. (Jim) Brown
 Off. 456-2788 Fax 456-2792
 Home 592-3490 Mobile 456-7365

Yoakum County Hospital

Providing the people of Yoakum County a well-rounded, modern health care program for 46 years.

Quality Care For Neighbors, Not For Numbers

A 24 bed short term, acute hospital with the following complete services:

- *Physical Therapy
- *Surgery, Recovery and Critical Care
- *Obstetrics
- *Respiratory Therapy
- *Diagnostic Radiology
- *Monthly Cardiology Clinic
- *Monthly Urology Clinic
- *Laboratory Service
- *24-Hour Emergency Department

Yoakum County Is Licensed By The State Of Texas and is a member of American Hospital Association & Texas Hospital Association

'Watermelon Roundup' August 31

* Employment Notice

The City of Plains is accepting applications for a Utility Supervisor. This position will be responsible for operation and maintenance of water, sewer, gas and electric systems. Applicants should have current Class "C" water and wastewater license. Supervisory skills, effective oral and written communication ability, and public service skills required. Computer knowledge and bilingual beneficial. Application form and job description can be obtained by calling 806-456-2288. Salary range from \$22,000 to \$26,000 plus health insurance and retirement benefits. Send application, resume and references to: City of Plains, PO Box 550, Plains, Texas, 79355. Deadline: August 30, 1996.EOE.

PLAINS STATE BANK

601 9th Street
 Plains, Texas 79355
 (806) 456-2022

HOME OWNED AND OPERATED
 TO BETTER MEET ALL
 YOUR BANKING NEEDS
All Decisions Are Made Locally!

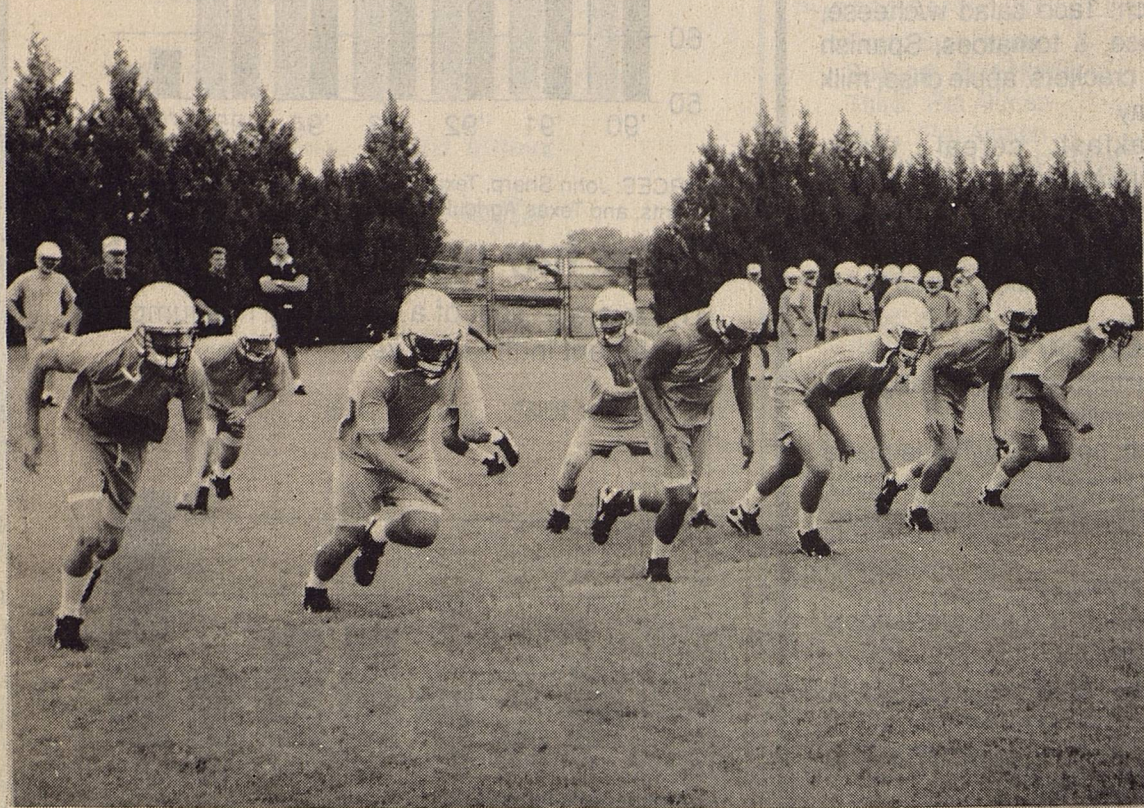
Serving Yoakum County and the Surrounding Area Since 1957

MEMBER F.D.I.C.
 Each Depositor Insured to \$100,000.



'PISD ACTIVITY PAGE'

Cowboys Working For 2-A Season Elementary Girls In Cheerleaders Camp



The PHS Cowboy football squad has been working hard the last few days, preparing for their regular season match-up against Abernathy on September 6. Thirty-one Cowboys have been taking part in grueling two-a-day workouts. This will be the first year for Plains to enter the season as

a class 2-A contender. Some things about football never change, including the dreaded twice per day workouts, stressing physical conditioning, and practicing plays over and over. The Coaching staff is busy yelling instructions, encouragement, criticisms, congratulations and chastisements,

while the young players are busy sweating, learning, panting and puffing in summer heat and humidity. It will all be worthwhile when the first kickoff whistle sounds that September 6 night.



Belgium Basketball Tour '96

(Editor's Note: The following article by Steve Osborn, PHS Girl's Basketball Coach, details his and his daughter Kelli's recent trip to Europe, to play in the big girls tournament in Belgium. He coached the team Kelli was selected to play with.)

Our trip was a great success and a fantastic opportunity. Kelli and I left Lubbock early on Monday, Aug. 5. We met up with the rest of our team in Dallas. The team included 3 girls from Borger, 3 from Whitharral, 2 from Bovina, and one from Friona. From there we flew to Detroit where we were delayed for a couple of hours because of severe thunderstorms.

Because of the 7-hour time difference, we arrived in Amsterdam at 1:00 p.m. on Tuesday, Aug. 6. We then rode a bus through the Netherlands to our hotel in Brussels, Belgium. We enjoyed our evening meal at the Grote Market, which is the oldest section of Brussels. Most of the buildings here date back to the 16th and 17th centuries.

We spent the next day on an all-day excursion to Paris where we "quickly" viewed the main attractions, the Eiffel Tower, Notre Dame Cathedral, Arc de Triump, and, of course, spent some time shopping.

Our next day was spent in Belgium at Dostende, which is the main port and beach area on the North Sea. Kelli and the other players did venture into the ocean here, but not for long, because the weather was quite cool and the water was very cold. We all enjoyed famous Belgium waffles at the seaside cafe. From there we went to the city of Brugge, known as the "Venice of Italy". This is one of the oldest cities of Belgium, with over 14 miles of winding canals and some of the most beautiful architecture and historical buildings. It is also the lace capitol of Europe. There were many shops of their



Twenty young ladies, aspiring to top billing later on as a PISD Cheerleader, attended a four day camp last week. Coordinated by Mrs. Byron Morgan, and instructed by the PHS Varsity Cheerleaders, the youngsters learned yells, dances, tricks and new techniques

from the older girls. Varsity Cheerleaders are Kristi Guetersloh, Amanda Maranda Box, Kristle Blundell, Sylvia Avila and Shyloh Winn. Girls enrolled in the camp included: Callie Howell, Meghan Garcia, Nicole Culwell, Maretta Trent, Amber Friesen, Jamie Cavarrubias,

M'Leah McKinzie, Katie Winn, Meagan Olenik, ShaLisa Marcum, Megan Allsup, Joani Bell, Lauren Hise, Lauren Davis, Chelsea Blount, Kimberly Trent, Allison Friesen, Jill Gay, Mackenzie Winn, and Jessica Rodriguez.

and hospitable, and I would like to visit there again. But I know Kelli and I shared an anxiousness to return home! I am truly glad to be an American and I really am glad to be able to call Plains home! Lastly, Kelli and I would like to thank the many people who do-

nated to help make this trip possible. It was a great experience and we will have great memories of a great trip.

--- GO ---
COWBOYS!

Bid Proposals

Plains ISD invites interested parties to make proposals for providing new playground equipment for the school playground. Proposals will be received until Noon on August 23, 1996 at the Business Office. Proposals should be addressed to Eric Banfield, Business Manager, Plains ISD, 1000 10th Street, Box 479, Plains, Texas 79355. For questions or other information, please contact Eric Banfield at 806-456-7483.

Plains ISD reserves the right to contract with the vendor that represents the best value to the district.

Plains ISD invites interested parties to make proposals for providing the hardware and software to support technology based research capabilities for the school resource center. Proposals will be received until Noon on August 23, 1996 at the Business Office. Proposals should be addressed to Eric Banfield, Business Manager, Plains ISD, 1000 10th Street, Box 479, Plains, Texas 79355. For questions or other information, please contact Eric Banfield at 806-456-7483.

Plains ISD reserves the right to contract with the vendor that represents the best value to the district.

Plains Independent School District will accept bids for re-roofing certain school properties. The specified roofing system will be shingles. Proposals will be received until 12:00 noon on August 19, 1996 at the Business Office. Bids will be opened and read at that time. Bids should be addressed to Eric Banfield, Business Manager, 1000 10th St., Box 479, Plains, Texas 79355. For information, please contact Eric Banfield at 806-456-7483.

Plains ISD Board of Trustees reserves the right to accept or reject any and all bids and to waive all technicalities.

State Line Insurance

Multi-Peril Crop ** Crop Hail
Danny Bell

Office-456-3521 Home-456-6325
Mobile-456-7517



Spring Things
Tomato Plants, Pepper Plants, Bedding Plants, Roses, Geraniums, Garden Seed, Soil Conditioner, Garden Fertilizer, Potting Soil, Spring Bulbs
IRON will make your lawn greener!
No Burn Formula...Long Lasting
Free use of spreader with purchase of fertilizer

ferti-lome®

SONNY'S FEED & SUPPLY CO.
The Plant & Animal Folks
1001 West Main Brownfield, TX 637-2815

Cowboy Country News
P.O. Box 179
Plains, TX 79355
Office 806-456-8451
Fax 806-456-2010

Published each Wednesday, Plains, Texas
by Holly and Gary Dyer. Subscription Rate \$15.00 per year.
Call for Advertising Rates.

BAYER LUMBER & HARDWARE

WELL, NOW THAT OUR PRAYERS
HAVE BEEN ANSWERED,
LOOKS LIKE WE'RE IN FOR THE
HOE - HOE - HOE SEASON

BUY YOUR STRAW HATS FOR ONLY \$3.99 EA.
KEEP YOUR COOL WITH AQUA COOL TIES \$4.35 EA
AND WHILE THE SUN SMILES UPON YOU THIS
SUMMER, REMEMBER WE HAVE MOST OF YOUR
PLUMBING, GARDENING, AND WORK NEEDS AT

BAYER LUMBER & HARDWARE
1018 AVE. E
PLAINS, TX 79355
(806) 456-6044

Two J-S

FLYING SERVICE

AERIAL APPLICATION SPECIALISTS



LUBBOCK 793-5004
PLAINS OFFICE -- 456-3580 OR 456-7436
MIKE COBB **JACK COBB**
456-7165 << HOME >> 456-7452
456-7511 << MOBILE >> 456-7512

PISD Teachers, Staff, Welcomed Back To Jobs

A large group of school administrators, teachers and staff gathered Monday morning in the school cafeteria, receiving a welcome address by Superintendent Pete Simmons.

Simmons lauded the entire staff, stating he considered the system's personnel the finest he had ever been associated with. He also announced the school system had once again been honored for student academic achievements in last spring's session. Based on test scores on the Texas Assessment of Academic Skills, Plains Elementary earned the highest rating, an Exemplary Campus. Both the Junior High and Senior High schools were awarded recognized status, both narrowly missing the Exemplary rating.

A number of new staff members were introduced, including Don Weems, Elementary Principal formerly from Ruidoso; Gary & Camela David, new High school instructors from Lovington; Kathy Weems, new on-campus Evaluation Diagnostician, the wife of Don Weems; David Williams, new Head Boys Basketball Coach and High School Social Studies teacher. Local Pam Burgess was also introduced, now elevated to a full time teaching position.

Extension Agents Kathy Adair and Tadd Knight distributed lists of materials available for curriculum in all three schools, including printed materials and instructional videos, all furnished by Texas A&M's Agricultural Extension Service.

County Employees Enjoy Cookout

Some 93 County employees and family members gathered at the County Park on Friday evening for a cookout, and recognition of longevity in their jobs.

Judge Dallas Brewer and Precinct 3 Commissioner Jim Barron served as 'Master Chefs', grilling hamburgers for the employees and families.

Receiving 5-year service awards were: Faye Nelms, Macky McWhirter, Beth Ann Cain, Teresa Howard, Claudine Robinett, and Dora Lozano

Receiving 10-year awards were: Sheron Smith, Melba Crutcher, Donald Booth, Rebecca Carr, Nancy Dickson, Vennum Fitzgerald, Loretta Houck, John Matus, Clara Doggett, and Evaristo Flores.

15-year Awards were given to: Ronny Cowart, Jimmy Rice, Nancy Campbell, Mildred Butler, and Virginia Cummings.

20-year Awards were presented to: Billie Bonds and George Dye.

One 25-year award was given to Joy Goodwin.

Johnny Jones, County Veterans Service Officer, presented safety awards, and Kathy Adair, County Extension Agent, handed out continuing Education Unit certificates.

Final Rites For David Stowe

Services for David Stowe, 66, of Lubbock will be at 2 p.m. Wednesday at Resthaven Funeral Home Chapel with the Rev. Glen Harlan of North Side Baptist Church in Odessa and the Rev. Chris Sutton of Calvary Baptist Church in Lubbock officiating.

Burial will be in Resthaven Memorial park under the direction of Resthaven Funeral Home.

He died Monday, Aug. 12, 1996 at his residence.

He was born Jan. 30, 1930 in Aiken. He married Sarah R. Miller on June 16, 1948 in Lockney.

He was a retired cotton gin manager, having worked at the Yoakum County Co-op Gin for 27 years.

He moved to Lubbock three years ago from Plains. He was a member of the Calvary Baptist Church.

Survivors include his wife; a son, Gary David Stowe of Albany, Ga.; a daughter, Connie Ruth Palmer of Lubbock; six grandchildren; and two great grandchildren.

PISD Bulletin

August 14-20, 1996
Saturday: Volleyball- Denver City/Lamesa (Scrimmage), 9th/JVV
Tuesday: Volleyball- Lubbock High, 9th/JVV, Here, 6:00 PM

A Great Big Thank You!

to all the people that helped in putting our yearly show together. Being the juried show person this year, I would never have made it without all the great help that was given. Thanks again, Inetta Teaff

* FOR SALE *

7300 SERIES MAX EMERGE PLANTER- 8 ROW, VACUUM MODEL W/CHEM BOXES, MONITOR. SEE AT JACK SPEARS DRILLING, MAKE OFFER

For Sale

AKC Registered Mini-Dachshund Pups. Call Lynne, 456-4800 or 456-2122 after 5pm.

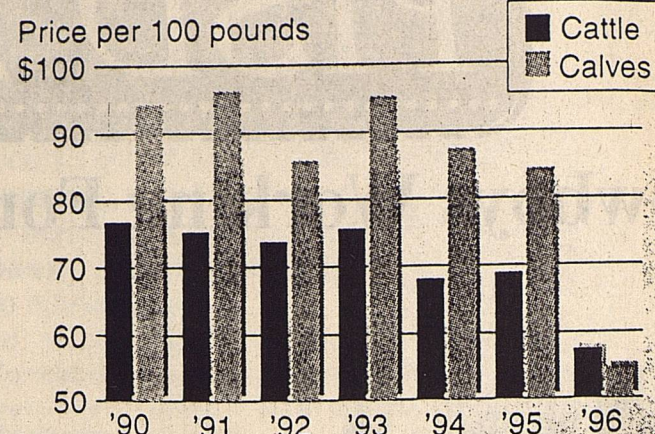
"And here's the happy bounding flea-- You cannot tell he from she--The sexes look alike, you see--But she can tell, and so can he."

PISD Menu

August 14-20, 1996
Wednesday
Breakfast: donuts, toast, orange juice, milk
Lunch: all American cheese-burger, chips, pasta salad, mixed fruit, coconut cookies, milk
Thursday
Breakfast: cereal or pan-cakes w/syrup, fruit punch, milk
Lunch: Taco salad w/cheese, lettuce, & tomatoes, Spanish rice, crackers, apple crisp, milk
Friday
Breakfast: cereal, toast, orange/pineapple juice, milk
Lunch: spaghetti & meat-balls, garden salad w/dressing, hot rolls, shortcake w/peaches, milk
Monday
Breakfast: cereal, toast grape juice, milk
Lunch: hot dogs w/home-made chili, French fries, pasta salad, diced pears, graham crackers, milk
Tuesday
Breakfast: c. toast, toast, apple juice, milk
Lunch: steak patties w/gravy, buttered noodles, corn, hot rolls, vanilla wafers, sliced peaches, milk

Texas cattle prices, 1990-1996

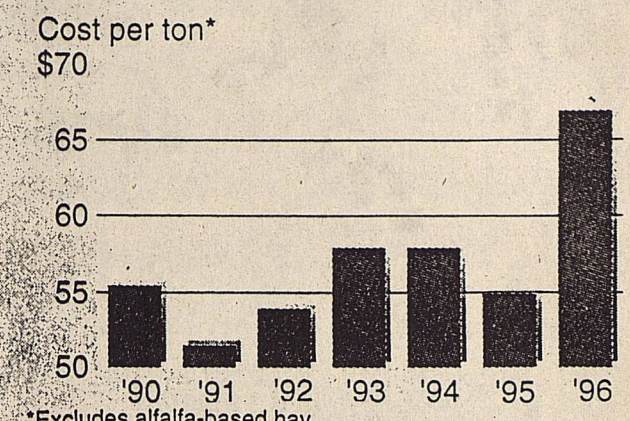
Prices for Texas beef cattle have dropped by 23 percent since 1993.



SOURCES: John Sharp, Texas Comptroller of Public Accounts, and Texas Agricultural Statistics Service.

Texas hay prices, 1990-1996

The average cost of a ton of hay has jumped 21 percent in the past year.



*Excludes alfalfa-based hay.

1996 Property Tax Rates in City of Plains

This notice concerns 1996 property tax rates for the City of Plains. It presents information about three tax rates. Last year's tax rate is the actual rate the taxing unit used to determine property taxes last year. This year's effective tax rate would impose the same total taxes as last year if you compare properties taxed in both years. This year's rollback tax rate is the highest tax rate the taxing unit can set before taxpayers can start tax rollback procedures. In each case these rates are found by dividing the total amount of taxes by the tax base (the total value of taxable property) with adjustments as required by state law. The rates are given per \$100 of property value.

Last year's tax rate:	
Last year's operating taxes	\$ 95,846.80
Last year's debt taxes	\$ 0.00
Last year's total taxes	\$ 95,846.80
Last year's tax base	\$ 18,611,030.00
Last year's total tax rate	\$ 0.515 /\$100
This year's effective tax rate:	
Last year's adjusted taxes (after subtracting taxes on lost property)	\$ 95,640.80
This year's adjusted taxes (after subtracting value of new property)	\$ 18,101,380.00
This year's effective tax rate	\$ 0.528 /\$100
1.03 = maximum rate unless unit publishes notices and holds hearing	\$ 0.543 /\$100
This year's rollback tax rate:	
Last year's adjusted operating taxes (after subtracting taxes on lost property and adjusting for transferred function)	\$ 95,537.80
This year's adjusted tax base	\$ 18,101,380.00
This year's effective operating rate	\$ 0.527 /\$100
1.08 - This year's maximum operating rate	\$ 0.569 /\$100
This year's debt rate	\$ /\$100
This year's rollback rate	\$ 0.569 /\$100

Schedule A: Unencumbered Fund Balances

The following estimated balances will be left in the unit's property tax accounts at the end of the fiscal year. These balances are not encumbered by a corresponding debt obligation.

Type of Property Tax Fund	Balance
Property Tax Account	\$ 0.00
NO UNENCUMBERED FUND BALANCES	

Schedule B: 1996 Debt Service

The unit plans to pay the following amount for long-term debts that are secured by property taxes. These amounts will be paid from property tax revenues (or additional sales tax revenues, if applicable).

Description of Debt	Contact Payment to be Paid	Interest	Other Amounts to be Paid	Total to be paid payments
Total required for 1996 Debt Service	\$			0.00
Amount (if any) paid from fund listed in Schedule A	\$			0.00
Excess collections last year	\$			0.00
Total to be paid from taxes in 1996	\$			0.00
Amount added in anticipation that the unit will collect 100% of its taxes in 1996	\$			0.00
Total debt Levy	\$			0.00

This notice contains a summary of actual effective and rollback tax rate calculations. You can inspect a copy of the full calculations at YOAKUM COUNTY TAX OFFICE, PLAINS COURTHOUSE, PLAINS, TEXAS.

Name of person preparing this notice: WANDA SMITH

Title: YOAKUM TAX ASSESSOR COLLECTOR

Date Prepared: 7/29/96

COOK-OFF ENTRY FORM

1996 Yoakum County Watermelon Round-up August 31, 1996

Brisket \$75 Chili \$25

Team Name: _____

Team Captain: _____ Phone No.: _____

Address: _____

Team Members: _____

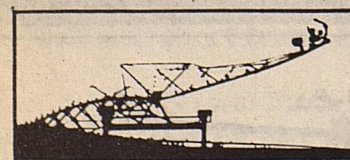
Total Entry Fees: _____

Make checks payable to Yoakum County Connection. Entry Fees must accompany this form.

All entries must be received at the Yoakum County Extension Office, Plains, Texas by August 23, 1996. Entries may be mailed to: BCCO, PO Box 360, Plains, Texas 79355

I CAN HELP YOU MAKE THE MOST OF YOUR

Water



HELPING YOU MAKE THE MOST OF YOUR RESOURCES

JACK SPEARS Drilling Company

Water Well Drilling & Pump Service

456-4925 - 456-3845

Jim Warren Sales Manager - 456-7444



ED MOSELEY FORD MERCURY LINCOLN

1-800-658-6259 BROWNFIELD, TEXAS

'96 CROWN VICTORIA #6077

Power Steering, Power Brakes, A/C, Tilt, Cruise, AM/FM Cass., Power Locks, Power Windows, Power Seats, Power Mirrors, Automatic, V-8 Auto, Keyless Entry

\$335 per Month

*Payment figured with TT&L plus 20% down. 23 payments @ \$335. One @ \$14,440. Interest = 11.5% W.A.C.

'96 Ford Windstar #3177

Power Steering, Power Brakes, Tilt, A/C, Cruise, Rear A/C & Heat, Power Mirror, Remote Entry, 7 Passenger Seats, V-6 Auto, AM/FM Cass.

\$289 per Month

*Payment figured with TT&L plus 20% down. 23 payments @ \$289. One @ \$13,514. Int. = 11.5% W.A.C.

90 Days - No Payment

2-3-4 BEDROOM

MANUFACTURED HOMES AVAILABLE.

FREE Washer/Dryer and Freezer with

New Home Purchase!

Call Bryan at (800) 333-8803

USED AND REPO'S

2-3 BEDROOM MANUFACTURED HOMES

FOR SALE.

Financing Available!

Call Bryan at (800) 333-8803



Femme Friends



An Invitation To The People of Plains

Mr. Gary Stowe and Ms. Jrita Winn

request the honour of your presence

at the marriage of their daughter

Jubree Anzoinlette

to

Greg Alan Corman

son of

Mr. and Mrs. Bruce Corman

on Saturday, the seventeenth of August

nineteen hundred and ninety-six

at seven o'clock in the evening

Godbold Cultural Center

2601 Nineteenth Street

Lubbock, Texas

Reception and Dance immediately following

Engagement Announced

Mr. & Mrs. Danny Tuggle of Granbury, TX wish to announce the engagement of Carri Avette Combs to their son, Steven Wade Tuggle. She is the daughter of Debbie Hill of LaVeta, CO, and Mr. & Mrs. Larry Combs of Cleburne, TX. He is the grandson of Dorris & Louise Tuggle of Plains, TX and Dockie Hulse of Brownwood, TX.

The bride-elect is employed by Hwy 377 Market Place in Granbury. The prospective bridegroom graduated from Granbury High School and is studying Criminal Justice at Weatherford Jr. College. He is currently employed by



Classic Car Wash in Granbury.

The couple plans to marry at 7:00 p.m., September 14, 1996 at Lakeside Baptist Church in Granbury.

More Art Show Winners

- PHOTOGRAPHY: STILL LIFE: First: Sue Holder
Second: Sue Holder
Third: Pat Altman
H.M.: Pat Altman
- PHOTOGRAPHY: GRAPHICS: First: Kassie Lowe
Second: Betty L. Askew
Third: Amber Easter
- COPIES: MINATURES: First: Eileen Fillipp
Second: Wilma McDonnell
Third: Inetta Teaff
H.M.: Betty Estep
Jimmie Bayer
- COPIES: LANDSCAPES: First: Eileen Fillipp
Second: Juanita Chamberlain
Third: Helen Hunter
H.M.: Sue Holder
Juanita Chamberlain
- COPIES: STILL LIFE: First: Wilma McDonnell
Second: Wilma McDonnell
Third: Jimmie Bayer
- CLASSWORK: STILL LIFE: First: Eileen Fillipp
Second: Eileen Fillipp
Third: Jimmie Bayer
H.M.: Juanita Chamberlain
Juanita Chamberlain
Jimmie Bayer
- CLASSWORK: WILDLIFE: First: Jimmie Bayer
Second: Jimmie Bayer
Third: Jimmie Bayer
H.M.: Jimmie Bayer
- CLASSWORK: LANDSCAPE WATERCOLOR: First: Helen Hunter
Second: Helen Hunter
Third: Jimmie Bayer
H.M.: Jimmie Bayer
- CLASSWORK: LANDSCAPE OIL: First: Inetta Teaff
Second: Sue Holder
Third: Inetta Teaff
H.M.: Jimmie Bayer
Jimmie Bayer
- NOVICE: First: Mary Dale Forbus
- STUDENT: LANDSCAPES: First: Lindsey Welborn
Second: Elizabeth Wilmeth
Third: Scott Addison
H.M.: Blake O'Quinn
Blake O'Quinn
Jarrod Cheatham
- STUDENT: STILL LIFE: First: Vicki Bayer
Second: Kelly Bowers
Third: Elizabeth Wilmeth
- STUDENT: WILDLIFE: First: Vicki Bayer
Second: Laura Flores
Third: Abel Ramos
H.M.: Jarrod Cheatham
Abel Ramos
- CRAFTS: NEEDLEWORK: First: Susie Powell
Second: Vickie Delgado
Third: Vickie Delgado
H.M.: Vickie Delgado
Vickie Delgado
- CRAFTS: First: Herman Burkhalter
Second: Sheila Stephens
Third: Vickie Delgado
H.M.: Sheila Stephens



HOWDY!

By: Kathy Adair

THE BEST THIRST QUENCHER

Canned drinks can be among the worst when it comes to truly quenching your thirst. Water is cheaper and it quenches your thirst more effectively than juices or soft drinks. Sugar can inhibit the rate of absorption, so water or a sugar-free drink will replenish better. Avoid caffeinated beverages because they cause you to urinate more and lose fluid. Water is recommended over sports drinks that claim to restore your electrolytes. The trend toward bottled water may help make people more aware of water's importance, but it can be a great expense. The next time you head for the soda machine, think twice and look for the water fountain instead.



Area Locals At Olympics



Some of our very own West Texans traveled to Atlanta during the Olympics, with very different goals in mind. Their mission was to join with 5,000 Christians from around the world, train, and spread the Gospel of Jesus to as many people as possible.

There was a group of 120 from the Panhandle, West Texas and East Texas that made up the group. The cities representing West Texas were Brownfield, Denver City, Levelland, Lubbock, Plains, and Seagraves. Melissa Asebedo from First United Methodist Church in Denver City, and Craig Deaton from

Shadow Hills Baptist Church in Lubbock made up the South Plains College Wesley Foundation participants.

The Texans were in Atlanta from July 15 to July 24. While in Atlanta, they were a part of street ministry which consisted of dramas, praise singing, and witnessing. "God used everyone in some way to glorify and spread the name of Jesus," said Elaine Vallie. The home churches represented by these individuals graciously supported and sponsored these participants who went to Atlanta.

Elaine Vallie is the daughter of Frank & Judy Vallie of Denver City, TX.

Melissa Asebedo, a PHS student, is the daughter of Rita & Jesus Coronel.

Help Wanted! Apply at Lalito's Restaurant



806-456-2233

Lalitos
FOR GREAT
MEXICAN FOOD
Open 11am til
9:30pm, closed
Monday

Plains Depot

Already 20% off

Now an extra 10% off on
Summer items and western jeans.

Get ready for *The Rodeo!*

Wholesale prices on all
Remaining Fall Items.

Laundry & Dry Cleaning Now accepted for Delivery to
Brownfield on Monday, returning here each Thursday PM
Brownfield Hwy. (456-7112) Plains, TX

Silk Floral creations, Gifts,
Custom Home Deco, & Consultation

P.J.'S Designs

(806) 456-4161
Peggy Welch, Owner
Plains, Texas 79355

Now Open To Serve You Plains Memorial Chapel

Norman & Judy Head, Owners
910 Ave. E, Plains P. O. Box 40
(Across from Old Courthouse) 806-456-2152

Meet The
**Cowboys &
Cowgirls**
Friday, Aug. 16th,
at 8:00 p.m.
Cowboy Field

ATTENTION!
The New
**BAND
CALENDARS**
are at the
Library!

Larry C. Boyd, M.D.
Family Practice & OB

Yoakum County Clinic
Each Thursday
Office Hours 1-4 PM

Appointments are preferred!
Please call 456-6365 or 592-9501

Your Business Is Appreciated

For All
Your
Pharmacy
Needs
1-800-658-9604



Our
Toll-Free
Number Is
For Your
Convenience

**NELSON PERSCRIPTION
Pharmacy**
805 Tahoka Rd.
Brownfield, Texas

Darlene's
Dress Shop

**Lawman Jeans
& Shorts**
20% Off

NEW FALL CLOTHING
Arriving Daily

Darlene's - BeautiControl Cosmetics
110 N. Main 592-9524 Denver City, TX

From The Hack



"Pride is the work of Satan" so sayeth my Good Book, and numerous Ministers I've known. OK, so be it, I'm a prideful sinner.

The first time in my life, I am actually growing tomatoes in our mini-garden out back. Big, big green plants, actually bending the wire frame baskets down to the point I had to prop them up, all seven plants unbelievably loaded with still growing, still green fruit (or vegetables, actually) in size from softballs to thumb-nails.

Never in history have the Bride and I managed to come up with such an amazing crop of our favorite summer produce. I mention her as part of the project only to insure continued Peace... she has actually done very little in their successful cultivation and nurturing, words I shall probably regret. She did accompany me to Sonny's Nursery in Brownfield to buy the scrawny little plants, and she did write the check for them. I think she may have watered them twice, to my knowledge, the extent of her contribution to this amazing crop and local effort to feed the world.

I mean, these suckers are big and healthy. I can recall dozens or more years when my efforts produced a scrawny little runt of a plant which looked like it was struggling in the Sahara during a real dry spell. One year, we originally had an even dozen tomato bushes. Two of them managed to gasp out their lives until September, and I joyfully pulled a total of three runt sized tomatoes, one partially devoured by one of those huge, nasty, fat, horned looking green worms. I still recall rushing into the house, beamingly telling the Bride, "Look dear, fresh, home grown tomatoes"! She briefly in-

spected my produce yield for the year, and sniffed, "Get rid of that one that's been gnawed on, I'll grind up the other two into something we won't recognize".

Not this year, you doubting Thomas'es. I am thinking of petitioning the County to change the 'Watermelon Round-Up' fiesta on August 31 to "The Tremendous Tomato Travaganza", and suggesting I serve as the entire judging panel. I can sense a groundswell of support already.

I don't recall the Scotsman's name who is credited with inventing the 'game' of golf. I do know he must have been a demented, sadistic monster, probably a wife beater, child abuser and town drunk. No one with an ounce of goodness could have dreamed up such a cruel game. A game which attracts the cruelest, most ruthless of players. A game which punishes the upright, the pious, the truthful players, like your writer.

I once again fell victim to a murderous slaughter on the County Links last week.

Knowing the nature of my group's murderous nature of retaliation, I will call no names in this epistle. I will tell you this; one was a retired John Deere dealer, one is a rather rotund cotton ginner near the state line, one is a venerable attorney, with horribly bad knees, and a penchant for about a pound of Beechnut chewing tobacco every nine holes. These three beguiled me the entire afternoon with, "Great putt, Dyer", "Oh, man, what a shot, Gary boy!", and "Don't worry, Editor, we'll help you find your ball". Very sociable, very gracious, you know. Also very quick to add up the dollars they claimed I owed after both nine holes.

Listen, I'm telling you true,

I hit some of the most beautiful golf shots witnessed in the entire galaxy, only to have some stupid quirk of fate screw them up. Like on number 8; I hit the best tee shot of my distinguished career. Addressed my second shot, struck the ball like a Pro at Augusta, only to have a crop dusting spray plane zoom by and chew my ball in it's prop.

Facing a critical (money involved) putt on #13, I addressed my ball calmly, gave it a smooth, velvet like stroke, dead towards the hole. Half-way there, one of those brown beetle things appeared and decided it needed a ride on my golf ball, causing it to veer 'bout four feet from the hole. Riotous laughter, hands again held out for my dollars.

Dragging up to the final 18th hole, feeling like one of the Christians in Nero's Roman Arena, the guys were joyously toting up the score cards, and my losses. Checking my financial resources, I timidly asked if they could possibly carry me until the next weekend. The Cotton ginner said, 'You bet, no problem, just gimme the keys to your pickup for now, you can probably get a ride home with somebody, and if you got cash next week, you get your truck back'.

Nothing but kindness and goodness in my group of golfers.

Massey Ferguson, Kubota, Bush Hog Shredders, Lilliston Peanut Combines & Rolling Cultivators, UFT & Lorenz Minimum Tillage Equipment, Baker disc & Switch Plows, & Much More.

Terry County Tractor

637-4569 Brownfield

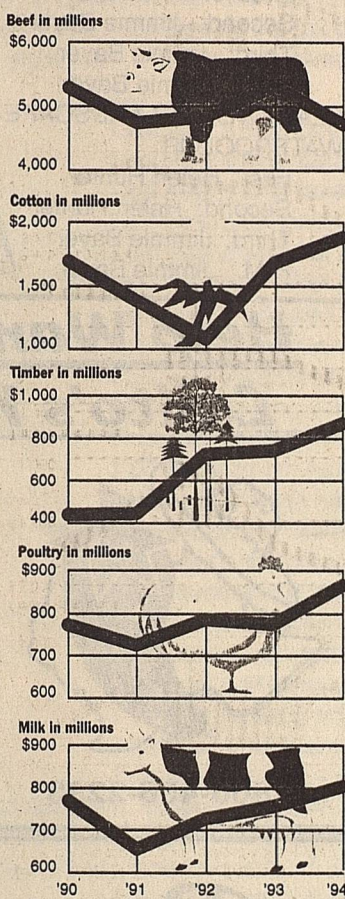
The tallest, officially recorded man in the world, Robert P. Wadlow, born in 1916 in Alton, IL, measured 8ft., 11.1 inches on June 27, 1940. On his 21st birthday, he weighed 491 pounds, his shoe size was 37AA(18 1/2 inches), and his hand measured 12 3/4 inches from wrist to the tip of his middle finger.

The shortest ever female, one Pauline Musters, was born in the Netherlands in 1876, measuring 11.8 inches long. At age nine she measured 21.65 in. tall, and weighed 3 lbs., 5 oz. Upon her death in 1895, she measured exactly 24 inches. Her body measurements of 18.5-19-17in. suggest she was a bit over weight for her height.

In modern times, the battle with the greatest number of military casualties was the first battle of the Somme, France, from July to November 19, 1916, with 1,043,896 casualties, 624,000 of them Allied troops.

Timber advances

Timber is one of the leading agricultural commodities produced in Texas. In recent years, it has climbed from fifth place in overall value to third place.



G. B. AERIAL APPLICATION, INC.

David & Sarah Guetersloh
Office/Home 456-6300
Mobile Phones:
David - 456-7536 Sarah - 456-7974

Associated Farmers Delinting, Inc.

THE COTTON BRED FOR WEST TEXAS
.....BY WEST TEXANS!

EXPLORER **ROCKET**

Tommy & Terry Thrash
office: 1-800-292-7333

Classic Car Show A Feature of Watermelon Round-Up

Plans are being finalized for an area wide Classic Car Show to be held August 31, a feature attraction of the Yoakum County Watermelon Round-Up, sponsored by Yoakum County Connection.

Coordinated by Terry Davis of Plains, the show will hopefully draw entries in ten different classes of older, restored autos. Trophies will be awarded for the first three places in each class, and spectators will vote on one 'Over All People's Choice' entry.

The beautifully restored vehicles will be on display in the parking lot in front of the school complex.

Watermelon Roundup Classic Car Show Entry Form

Location: Plains, TX, in front of school on Cowboy Way
Time: August 31, 1996, 9:00 a.m.

Owner's Name _____
Mailing Address _____
City, State, Zip _____
Phone () _____
Vehicle Year _____ Make _____ Model _____
Body Style _____ MODIFIED STOCK _____
(circle one)

Entry Fee: \$ 5.00 Advance
\$10.00 Day of Show

PAYABLE BY CHECK OR MONEY ORDER ONLY, TO:
Yoakum County Connection
c/o Terry Davis
P. O. Box 294
Plains, Texas 79355
Phone: (806) 456-6789

I, the undersigned, do hereby agree to release all liability from the Yoakum County Connection, it's sponsors and the City of Plains, for any damage, injury, or stolen property resulting from this event.

SIGNED _____ DATE _____
Entry form may be copied for multiple entries. THANK YOU FOR YOUR ENTRY, SEE YOU IN PLAINS.
August 31, 1996 9:00 a.m.

NOTICE OF BUDGET HEARING

Sandy Land UWCD will hold a public hearing on the District's 1997 budget at 9:00 a.m.; August 14, 1996, in the District office located at 1012 Avenue F, Plains, Texas.

1996 Property Tax Rates for the Sandy Land Underground Water Conservation District

This notice concerns 1996 property tax rates for the SANDY LAND UNDERGROUND WATER CONSERVATION DISTRICT. It presents information about three tax rates. Last year's tax rate is the actual rate the taxing unit used to determine property taxes last year. This year's effective tax rate would impose the same total taxes as last year if you compare properties taxed in both years. This year's rollback tax rate is the highest tax rate the taxing unit can set before taxpayers can start tax rollback procedures. In each case these rates are found by dividing the total amount of taxes by the tax base (the total value of taxable property) with adjustments as required by state law. The rates are given per \$100 of property value.

Last year's tax rate:	
Last year's operating taxes	\$ 175,516.59
Last year's debt taxes	0.00
Last year's total taxes	175,516.59
Last year's tax base	1,431,619,800.00
Last year's total tax rate	0.01226/\$100

This year's effective tax rate:	
Last year's adjusted taxes (after subtracting taxes on lost property)	\$ 175,352.72
This year's adjusted tax base (after subtracting value of new property)	1,438,787,384.00
= This year's effective tax rate	0.01218/\$100

x 1.03 = maximum rate unless unit publishes notices and holds hearing	0.01254/\$100
---	---------------

This year's rollback tax rate:	
Last year's adjusted operating taxes (after subtracting taxes on lost property)	\$ 175,351.85
This year's adjusted tax base	1,438,787,384.00
= This year's effective operating rate	0.01218/\$100
x 1.08 = this year's maximum operating rate	0.01315/\$100
+ This year's debt rate	/\$100
= This year's rollback rate	0.01315/\$100

Schedule A Unencumbered Fund Balances

The following balances will probably be left in the unit's property tax accounts at the end of the fiscal year. These balances are not encumbered by a corresponding debt obligation.

Type of Property Tax Fund	Balance
GENERAL FUND	\$115,700.00

Schedule B 1996 Debt Service

The unit plans to pay the following amounts for long-term debts that are secured by property taxes. These amounts will be paid from property tax revenues (or additional sales tax revenues, if applicable).

Description of Debt	Principal or Contract Payment to be Paid From Property Taxes	Interest to be Paid from Property Taxes	Other Amounts to be Paid	Total Payment
	-0-	-0-	-0-	-0-
Total required for 1996 debt service				\$0.00
- Amount (if any) paid from funds listed in Schedule A				0.00
- Excess collections last year				0.00
+ Total to be paid from taxes in 1996				\$0.00
+ Amount added in anticipation that the unit will collect 100% of its taxes in 1996				\$0.00
= Total Debt Levy				\$0.00

This notice contains a summary of actual effective and rollback tax rate calculations. You can inspect a copy of the full calculations at: SANDY LAND UNDERGROUND WATER CONSERVATION DISTRICT, 1012 Ave. F., Plains, Texas 79355.
Name of person preparing this notice: WANDA SMITH
Title: YOAKUM COUNTY TAX ASSESSOR-COLLECTOR
Date Prepared: July 29, 1996

W. E. (Red) BERRY Real Estate DENVER CITY, TX.

W. E. BERRY, BROKER - 210 N. MAIN
Res. 915-758-5200 - Off. 806- 592-3523

Specialist in Residential, Commercial

Farm & Ranch Properties

Gary Dyer 456-8451
Olivia Robertson 592-2786

Now Ready!
Blackeyes, Purple Hull, Cream Peas, Corn and Onions....
You Pick or We Pick.
Visit our Garden Greenhouse & Gift Shop!
Shoestring Cattle Co.
Hwy. 83 west at Stateline...
turn in at old red tractor.
For more Information, call 806-732-8611
Come See Us!

Hicks Carpet MAYTAG

Appliances Heating & Air Conditioning

It's Hard To Stop A Trane

204 n. Main, Denver City
806-592-3973 or 592-3930