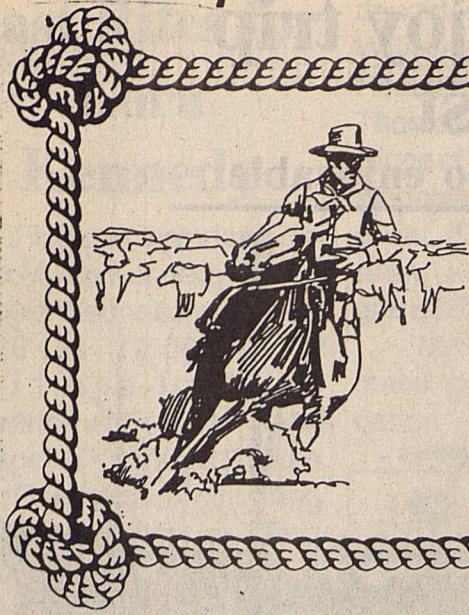


50¢

BULK RATE
US POSTAGE PD.
PLAINS, TX
PERMIT #21

Cowboy Country News
P. O. Box 179
Plains, Texas 79355
Address Correction Requested



Cowboy Country News



Published each Wednesday at the County
Seat of Yoakum County, Plains, Texas.

Volume 2, Issue 46, Wednesday, July 24, 1996

Sprucing Up Of Town Underway

Business firms, clubs putting on best face for Rodeo, Old Settlers Reunion and Watermelon Round-Up



Recently painted Art Association Building

The City of Plains will probably experience more visitors in the month of August than the balance of the year. The first attraction is the 43rd Rodeo and Old Settlers Reunion August 1 thru 3, followed by the very first Yoakum County 'Watermelon Roundup' on August 31, hopefully drawing good numbers of out-of-towners. Preparing for the visitors, business owners, local service clubs and individuals have been busy cleaning, scraping, painting around the town.

The Courthouse Square complex, the popular site for viewers of the Rodeo-Reunion parade on August

3, is in the best condition of many years. Virtually all of the business firms around the square and along Cowboy way have been decorated with painted "Welcome Rodeo Fans" signs.

Barrels containing multi colored flowers sit in front of most all businesses. The Yoakum County Art Association Building recently received a fresh paint coat in Santa Fe pink and turquoise, and a large Southwestern theme mural will soon be finished on the front doors.

The community image is taking shape for the many expected visitors.

Flap Over Property Tax Continues

Legislature likely to battle with thorny issue next session

Probably one of the hottest, if not THE HOTTEST issues being discussed around the State of Texas is some form of relief for property taxpayers, the prime revenue source for public school funding.

Austin was the site for a large tax reform conference on July 18. Titled "Texans Talk Taxes", the conference was organized by the Texas Women's Alliance, Texas Citizens for a Sound Economy Foundation, and the Tax Foundation. A host of noted speakers from business, State Government agencies and the private sector delivered detailed presentations on the problems inherent with the ever increasing burden of property taxes.

Dale Craymer, Deputy Director for Budget and Planning for Governor George W. Bush, reported property tax relief is a top priority of the Governor for the next session of the Legislature. He said, "The property tax is the most important source of revenue for Texas School Districts. However, the tax base has stagnated over the past decade, driving a doubling of tax rates". He reported the Governor's key objective is to achieve property tax relief by providing state revenues to replace local property taxes. He has ruled out initiating a State income tax, and insists any adopted alternative be revenue neutral, not creating new taxing programs in lieu of the property tax.

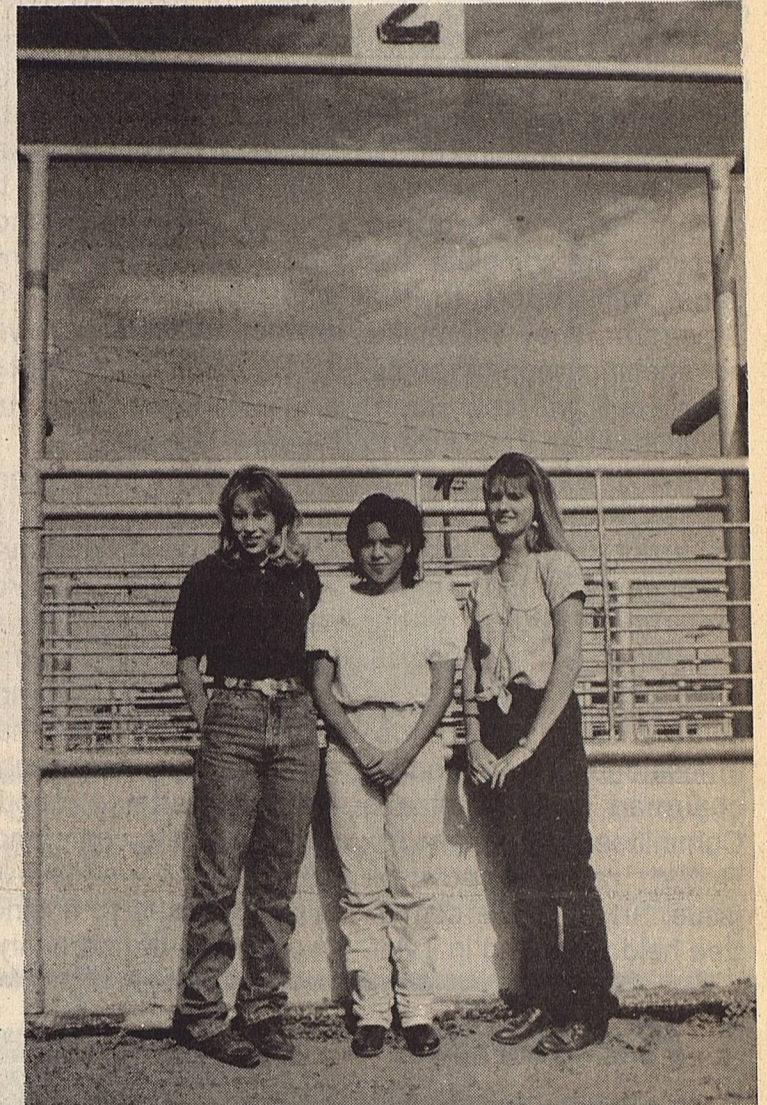
There are 3,564 taxing units in the state, levying \$15.4 billion in taxes annually, and 58.5% of these taxes are property taxes earmarked for public school funding. In the period of 1985 to 1995, property tax increases are up almost 120%.

The consensus of opinion expressed by dozens of speakers at the "Texans Talk Taxes" conference outlined the inherent problems with the current property tax funding of public education; the tax is a barrier to the American dream of homeownership, the tax is a barrier to capital investment and economic growth, the

Please turn to PG. 2, "PROPERTY TAX BATTLE"

Rodeo Queen Candidates Busy Selling Tickets

Bought your share yet?

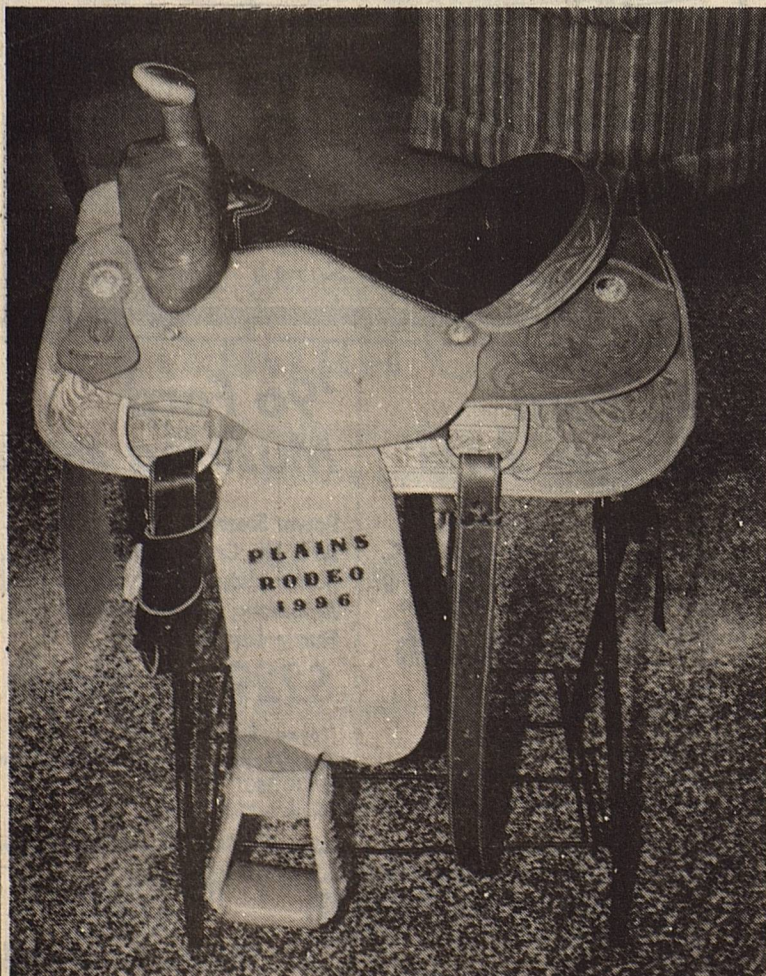


L-R, Dacia Humphrey, Tanya Vasquez, Lindsey Six

The young ladies shown above are working hard to help make the upcoming 43rd annual rodeo a big success. Dacia Humphrey is the candidate representing the Plains Chamber of Commerce. The 16 year old is a Senior at PHS, and is the daughter of Joe and Freda Humphrey. Tanya represents the Lions Club. She is an eighth grader in Junior High, and is the daughter of Paul and Gloria Vasquez. Lindsey, a Junior at PHS, is the candidate choice of the Roping Club, the daughter of Gary and Kathy Six.

Proceeds from the sale of tickets for the saddle to be drawn for at the final rodeo performance will go to the clubs to defray expenses in promoting the rodeo and reunion, with the Queen candidates keeping a percentage for their hard work.

You could be the winner of this saddle Aug. 3!



Rodeo Queen Candidates are now selling \$1 tickets for the August 3rd drawing for the saddle, valued at approximately \$1100.00

'NACO' Conference draws County Officers

Houston was host city for the very large and 61st annual meeting of the National Association of Counties (NACO). Local County officials attending the event July 12 thru 16 included Judge Dallas Brewer, Treasurer Toni Jones, and Commissioners John Avara, Pct. 1, Bob Thurston, Pct. 2, and Jim Barron, Pct. 3.

The business sessions and various programs and workshops were held in downtown Houston's George R. Brown Convention Center, and the conference drew delegates, speakers and members from virtually every state. Hundreds of workshops were featured, to enable attendees to better serve and function as elected officials in their local county governments.

Judge Brewer reported one of the featured guest

speakers was James Lovell, the former NASA Astronaut of Apollo 13 fame. He said his address was entertaining and inspirational. Almost 80 Corporate sponsors helped stage the large meeting, including many of the top Fortune 500 companies. A brief sampling of the hundreds of topics covered in workshops and programs included Business Incentives for Economic Development; Voting by Mail; The Coming Crisis in Public Pensions; Community Development Through the Arts; Better Service Through Technology; Tackling Youth Violence, and scores more.

The local officials attending the Houston Conference rated it excellent. Next year's NACO meeting will be held in July at Baltimore, Md.

Lions Meet, Rodeo Plans Set

The Plains Lions Club met Thursday, July 18, with one visitor present. Tanya Vasquez, the Club's candidate for this years Rodeo Queen, was introduced, and did a brisk business selling tickets for the annual drawing for the custom built saddle, to be presented to a lucky winner on the Saturday night final performance of the rodeo.

Club President Jerry Morphis conducted a brief business session, in which work assignments were announced for the three rodeo performances. Lion volunteers handle vehicle

parking and man the concession stand during the rodeo.

Members saw a video outlining the 1995 74th session of the State Legislature meeting. The overview briefly reviewed some of the accomplishments of the Solons in the session, which earned favorable reviews from both the State and National news media. Some of the passed bills included HB 1, the so called School Reform Bill, which included a \$1.8 billion increase in school funding. Also reviewed were portions of Tort Reform, Juvenile Justice revisions, Welfare Reform, Utility Deregulation measures, and individual property right provisions.

The 74th Session has been termed the most productive in many years.

Cont'd from Page 1,
'Property Tax'

cost of the tax administration, and skyrocketing tax rate with a diminishing tax base.

The three alternative taxing proposals most commonly suggested are, (1) a business gross receipts tax, (2) a business activity tax, and (3) an expansion or rate change of the current 6.25% state sales tax. All three proposals have advocates and opponents, and all three will probably find support in the next legislative session, as well as opposition from special interest groups.

Governor Bush recently appointed a Citizens Panel on Property Tax Relief, a group of citizens, business leaders and elected officials. The panel is conducting a series of town hall type meetings across the state to hear and gauge public sentiment for any type of tax reform. When the scheduled meetings are complete, the panel will report to the Governor. They will make no specific recommendations, but will tell Bush, "This is what the citizens have expressed to us at these meetings". The Governor can then present the findings, with any of his recommendations to the Legislature next January.

At the recent tax conference, Insurance Commissioner Elton Bomer, chairman of the Citizens Committee on Property Tax Relief, addressed the issue. "In June, our committee held a hearing in Tyler.

A gentleman who manages a major tire plant there told us his company pays more in property taxes in Tyler than the combined property taxes on plants in four other states. Recently Tyler was rejected for a \$100 million plant expansion by the company because of the high taxes, and the expansion went to Oklahoma."

A frequently heard suggestion expressed by many Texans is to utilize the State Lottery profits in public education. As mandated when the Lottery won statewide approval, and was passed by the Legislature, the funds now go into the General Revenue Fund. A major problem with the suggestion is, the Lottery simply does not generate enough money. A chart displayed at the Austin conference showed current Lottery money would fund public education only one and one half weeks of the normal 36 week school year. Property taxes now fund 16 weeks, with the balance of the school year funds coming from State and Federal aid, and revenue bonds.

The three most mentioned methods of replacing the property tax, a business value added tax, a gross receipts tax on business and investment income, and a broader, perhaps higher sales tax, have serious flaws, according to David A Hartman, another speaker at the conference.

Adding the needed \$13 billion in taxes to business "would add dangerously to

the burden of doing business in Texas, where businesses currently pay 60% of the tax burden, compared to 40% in most states", he said. To make the state sales tax broad enough to fund education in lieu of the current property tax would require a raise in the tax rate itself, and broadening the tax base to include food, utilities, legal and medical care, a move sure to draw the wrath of citizen advocates and special interest groups.

Frequent complaints are heard about establishing values of property for taxing purposes. There are 253 Appraisal Districts across the state, assessing values of some 13.7 million parcels of property. The Districts have a combined annual operating budget of \$180 million. This indicates the District's are spending about \$13.14 administering valuation of each state property parcel. This is the cost of valuation only, not actual collection of the taxes, a figure many critics of property taxes contend is too expensive.

(Editor's note - there are 36,774 taxable properties in Yoakum County, including real property and mineral related properties. The proposed Appraisal District budget for fiscal year 1997 is \$250,758, indicating an appraisal administration cost of \$6.82 per parcel of taxable property, roughly half the statewide rate. The properties have a total valuation of \$1,246,902,815.)

A 'Citizens Panel on Property Tax Relief' is scheduled to conduct another town hall type meeting in Lubbock next month. Any citizen can attend this meeting to voice their opinion on the thorny issue. There are apparently no easy 'fixes' on hand for the huge problem.

McNabb's enjoy trip back east

Tropical storm not too enjoyable

The Eastern Seaboard in the Chesapeake Bay region of Virginia and Maryland is both beautiful and historic. It is no place to be, however, when a hurricane, such as the recent Bertha, decides to visit the area. These are Tommie McNabb's sentiments, following a recent vacation trip to the area.

Tommie, her mother Pat and brother Grady flew from Lubbock to the Baltimore-Washington International Airport recently for a two week visit with Pat's family and friends in the two state area.

They visited many historical and interesting sites during their stay, including St. Mary's City, the oldest town in Maryland, the Gettysburg National Monument, Johns Hopkins University in Baltimore, many famous museums in Washington D.C., and visited family and friends in Waynesboro and Highland Counties in Virginia.

Tommie stayed an additional few days after Pat and son Grady returned home, to see the last vestiges of the Hurricane bring torrential rains to the entire area. She told her parents upon arriving home, "I didn't know it could rain so much. I saw more rain then than I'd seen my entire life, and I thought I would mold!"



Grady, Pat & Tommie and restored frigate on Chesapeake Bay



McNabb's and historical marker in Virginia

Redwine Brothers



Construction

Former resident Brad Redwine and son Gerald are currently doing construction work here. Brad, a former Production Mgr. for Morgan Portable Buildings of Eastland, has been a contractor since 1977, and his skills include framing, drywall, tape & bed, ceramic tile, plumbing and roofing. You may contact Brad thru Buddy or Janelle Brantly. He is staying in his travel trailer at the Alan Bell's, next to the D.Q.
FREE ESTIMATES ON ALL JOBS!



*** FOR SALE ***
7300 SERIES MAX EMERGE PLANTER- 8 ROW, VACUUM MODEL W/CHEM BOXES, MONITOR. SEE AT JACK SPEARS DRILLING, MAKE OFFER

USED HOME SALE!!
OVER 10 USED HOMES
WHOLESALE
1-800-388-0987
Ask For Paul
Young's Mobile Home Sales
Hobbs

Repo Doublewide
28' X 62' 3+2 1993
Make Offer - Call
1-800-388-0987
Ask For Paul
Young's Mobile Home Sales
Hobbs

Massey Ferguson, Kubota, Bush Hog Shredders, Lilliston Peanut Combines & Rolling Cultivators, UFT & Lorenz Minimum Tillage Equipment, Baker disc & Switch Plows, & Much More.

Terry County Tractor
637-4569 Brownfield

REPO 16' X 80 CRESTRIDGE 3+2 1993 Model Finance Co. Must Sell!
1-800-388-0987
Ask For Paul
Young's Mobile Home Sales
Hobbs

THE PLAINS CHAMBER OF COMMERCE MEETS TUESDAY, AUGUST 30, 7 AM AT JOHNNIES RESTAURANT.

HELP!

Need someone to do general yard work.

Louise Goehry 902 3rd Street 456-8558



Insurance Plus

Announces Good Rates Available For Crop Hail, Many Basic And Specialty Crops....Coverage Available On Irrigation Systems and Farm Equipment

James F. (Jim) Brown

Off. 456-2788 Fax 456-2792 Home 592-3490 Mobile 456-7365

W. E. (Red) BERRY Real Estate
DENVER CITY, TX.

W. E. BERRY, BROKER - 210 N. MAIN Res. 915-758-5200 - Off. 806- 592-3523 1-800-874-4576

Specialist in Residential, Commercial

Farm & Ranch Properties

Gary Dyer 456-8451

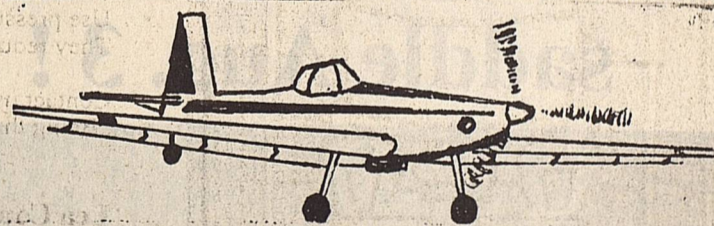
Olivia Robertson 592-2786



Lalitos FOR GREAT MEXICAN FOOD
Open 11am til 9:30pm, closed Monday

806-456-2233

G. B. AERIAL APPLICATION, INC.



David & Sarah Guetersloh
Office/Home 456-6300
Mobile Phones:
David - 456-7536 Sarah - 456-7974

'96 Ford Ranger #3173

Power Steering, Power Brakes, Dual Airbags, AM/FM Cass., A/C, XLT, Chrome Near Bumper, Sliding Rear Window, Chrome Windows
\$139 per Month Only 2 Left!

*Payment figured with TT&L plus 20% down. 23 payments @ \$139. One @ \$8,436.68. Int. = 11.5% W.A.C.

'96 Ford Mustang #6072

Power Steering, Power Brakes, A/C, Tilt, Cruise, AM/FM Cass., Power Locks, Power Seats, Automatic, V-6, Keyless Entry, Hurry--Last One!
\$229 per Month

*Payment figured with TT&L plus 20% down. 23 payments @ \$229. One @ \$10,560. Interest = 11.5% W.A.C.



TOP DOLLAR FOR TRADES... FINANCING AVAILABLE

1-800-658-6259 BROWNFIELD, TEXAS

Last Rites for Lora Kennedy

Funeral services for Lora Myrtle Kennedy, 94, will be held Wednesday, July 24, 1996 at 10:00 AM at Waldrope-Hatfield-Hawthorne Funeral Home Chapel in Kingsland, Texas, with Dwight Faulk officiating. Burial will follow at Terry County Memorial Park in Brownfield on Thursday, July 25, 1996 at 2:00 PM.

Mrs. Kennedy died Sunday, July 21 at Kingsland, TX. She was born October 18, 1901 at Johnson County, TX. She was a homemaker. She was formerly from Plains, TX and moved to Marble Falls, TX in 1983. She was a member of the Marble Falls Church of Christ.

She was preceded in death by her first husband Jefferson Houston Riggs in 1951, and former husband Joe Kennedy in 1983. Also two sons Delbert Riggs and Felton Riggs, 4 sisters and 3 brothers.

Survivors include 2

daughters, Jackie Harris of Wilson, OK and Joyce Roden of Burnet, TX; 1 son, Thomas Jefferson (Tommy) Riggs of Lone Grove, OK; 11 stepchildren; 14 grandchildren; 23 great grandchildren; and 13 great great grandchildren.

Memorials may be made to the Arthritis Foundation.

IRS & Tax Facts

The federal tax code fills two volumes, totalling 1,378 pages. The accompanying federal tax regulations fill four volumes, totalling 6,439 pages.

Over the past forty years, the number of sections in the code has increased by 578%.

The IRS mails enough forms and instructions annually to encircle the Earth about 28 times!

293,760 Trees are chopped down annually to print all these pages.

Since 1962, IRS staff has more than doubled, reaching 114,642 employees in 1993.

The General Accounting Office found that if you call the IRS for tax help, you will only get through one-fourth of the time.

In 1993, 8.5 million callers to the IRS received the wrong answer.

County Court Meets

Commissioners Court for Yoakum County met Monday, July 22, to discuss and act on the following agenda items; The Court accepted a bid from Jerry Everett, Denver City, in the amount of \$1,850 for one 1981 GMC haul truck form Precinct 2.

Approval was granted for the hiring of Michael McPherson, Denver City, as a road hand for Precinct 2.

The Court approved the release of FNMA securities pledged by Norwest Bank to the County. The two securities were in the amounts of \$6,078,410 and \$1,000,000.

All County bills and part time salaries were approved for payment.

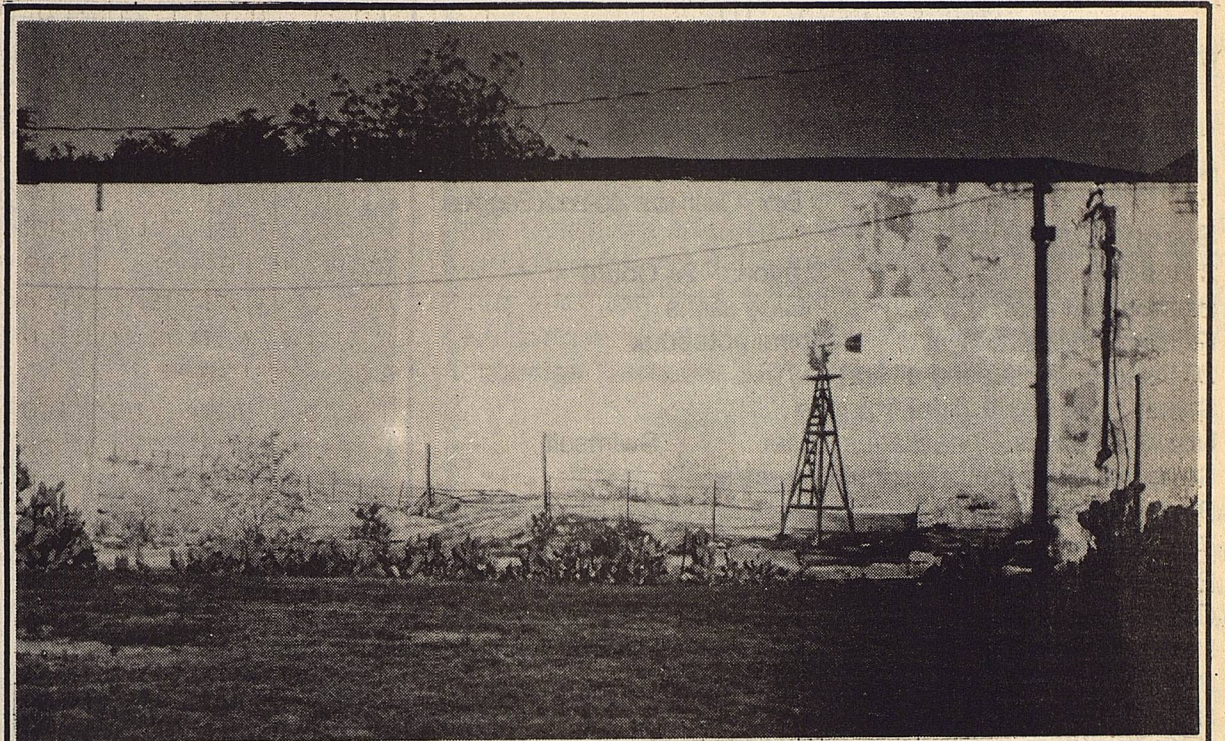
Precinct Commissioner John Avara requested the Court to declare a state of emergency to enable construction of 30 new golf cart storage sheds at the County Golf Course. The new sheds will be of all steel construction. Avara said he had received one bid on the project, and will obtain two more prior to starting the sheds, which will replace the same number destroyed in a recent fire.

Prior to the Court session, DPS Trooper Tom Hunt furnished the Court a copy of Texas Traffic Laws. There has apparently been confusion among motorists about the maximum limits on County roads. State law says the maximum speed limits on County maintained roads is 60 mph in daytime, and 55 mph at night. By definition, a county road is "a highway that is outside an urban district, and not a highway numbered by the State of Texas or the United States."

This Would Make Lots Of Onion Rings!



This photo shows a field of harvested onions grown just in New Mexico on the State Line Highway south of New Tex. The bagged onions will be transported to the Kent Hilburn produce shed for processing and shipping.



Pictured is the mural on the old Mac Theater building, which received a needed touch up point job last week. Lea County Electric furnished a bucket lift truck, hoisting local artist Linda Powell in the air to give the mural its face lift.

DELICIOUS !!

TEXAS LEAN

CHICKASAW TRADING CO.

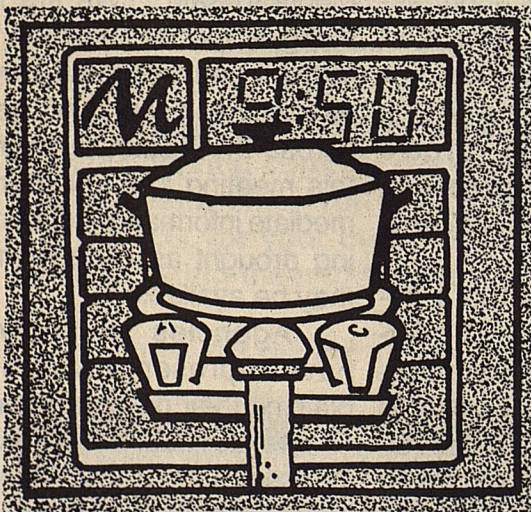


BEEF JERKY

A TRUE TEXAS MADE PRODUCT OF CHOICE, LEAN BEEF, HICKORY SMOKED 8-10 HOURS, WITH NO ARTIFICIALS ADDED. CONTAINS NO FAT OR CHOLESTEROL, AND MAKES A GREAT GIFT PACK! CALL US FOR PRICE AND PACKAGING INFORMATION.

CHICKASAW TRADING COMPANY
592-3515, DENVER CITY, OR
1-800-848-3515

Make Your Kitchen Energy Efficient.



Wise energy use in your kitchen can save you time and money — a good deal for anyone's busy schedule and pocketbook.

- Use cold water rather than hot to operate your food disposer.
- Install an aerator in your kitchen sink faucet.
- Never boil water in an open pan — water will come to a boil faster and use less energy in a covered pan.
- Match the size of the pan to the heating element; more heat will get to the pan — less will be lost into the air.
- Use pressure cookers and microwave ovens. They reduce cooking time and save energy.

Contact us for more everyday wise-use energy tips. Being thrifty and efficient always pays off.

1-800-510-5232

Lea County Electric Cooperative, Inc.
"Owned By Those We Serve"
Michael A. Dreyspring, General Manager
Lovington Tatum Plains
(505) 396-3631 (505) 398-2233 (806) 456-3322

Yoakum County Hospital

Providing the people of Yoakum County a well-rounded, modern health care program for 46 years.

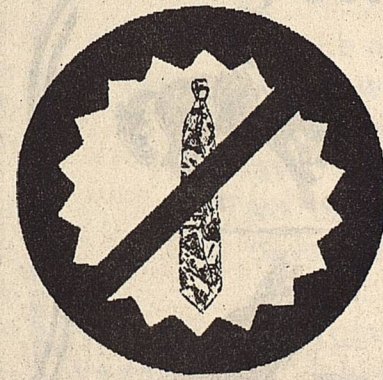
Quality Care For Neighbors, Not For Numbers

A 24 bed short term, acute hospital with the following complete services:

- *Physical Therapy
 - *Surgery, Recovery and Critical Care
 - *Obstetrics
 - *Respiratory Therapy
 - *Diagnostic Radiology
 - *Monthly Cardiology Clinic
 - *Monthly Urology Clinic
 - *Laboratory Service
- *24-Hour Emergency Department

Yoakum County Is Licensed By The State Of Texas
and is a member of American Hospital Association & Texas Hospital Association

The NO TIE GUYS



NOW HAVE NO CHARGE CHECKING



Unlimited Check Writing, NO minimum Balance.

SUNDOWN
STATE BANK

101 South First Street • Brownfield • 806/637-7712
1102 Austin • Levelland • 806/894-7799

Member FDIC 5th & Slaughter • Sundown • 806/229-2111



Plains Elementary School Student Supply List

1996-97

PRE-KINDERGARTEN

- 1 Box of 16 crayons
- 2 glue sticks
- Kleenex
- Scissors - steel edge
- 1 school box
- Pencil

Kindergarten and First Grade

Please write your child's name on each item. We may ask for other items as needed during the year.

Kindergarten

- 3 Glue Sticks
- School box (plastic)
- 2 Elmer's School Glue - medium size
- Regular crayons - 8 count (2nd semester 24 count regular)
- 2 Large pencils with erasers (2nd semester 2 regular pencils)
- 1 package of stickers (for positive reinforcement)
- Non-toxic, large point water color markers (Regular colors)
- Tote bag or back pack (to carry materials to and from school)

First Grade

- 2 Glue Sticks
- 2 - #2 Pencils with erasers
- Scissors - Fiskar
- Elmer's glue (not school glue) Medium size WHITE
- 1 - 12 inch/30 centimeter ruler
- 1 Plastic zipper pocket organizer
- Crayons (Box of 24)
- Pink pearl erasers
- Kleenex (large box)
- Swimsuit

Mrs Morris Room

- 1 Trapper Keeper
- 4 Folders for trapper keeper

Mrs. Davis & Mrs. Ramos Room

- 2 Wireless Neatbook
- 2 highlighters
- 1 Box - Quart size Zip-Lock Baggies

Second Grade

- 2 Red Pencils
- Pink pearl eraser
- Kleenex (Large box)
- 20 Pencils - #2's (send all first day)
- School box - small, cigar box size
- Notebook paper - 2 packages
- Scissors - ones that will cut paper easily

- Crayons - 24 Count
- 2 Glue sticks
- Spiral notebook
- Swimsuit

Third Grade

- Pencils - 3
- Crayolas
- Notebook paper - 2 packs
- Spiral Notebook (House & Avila class only)
- Swimsuit
- Scissors
- Elmer's Glue - Small or glue stick
- Ruler (House & Avila class only)

- Two Highlighters
- Three #2 pencils
- wide line notebook paper
- Map colors
- Kleenex - 2 large boxes
- Glue stick

Fourth Grade

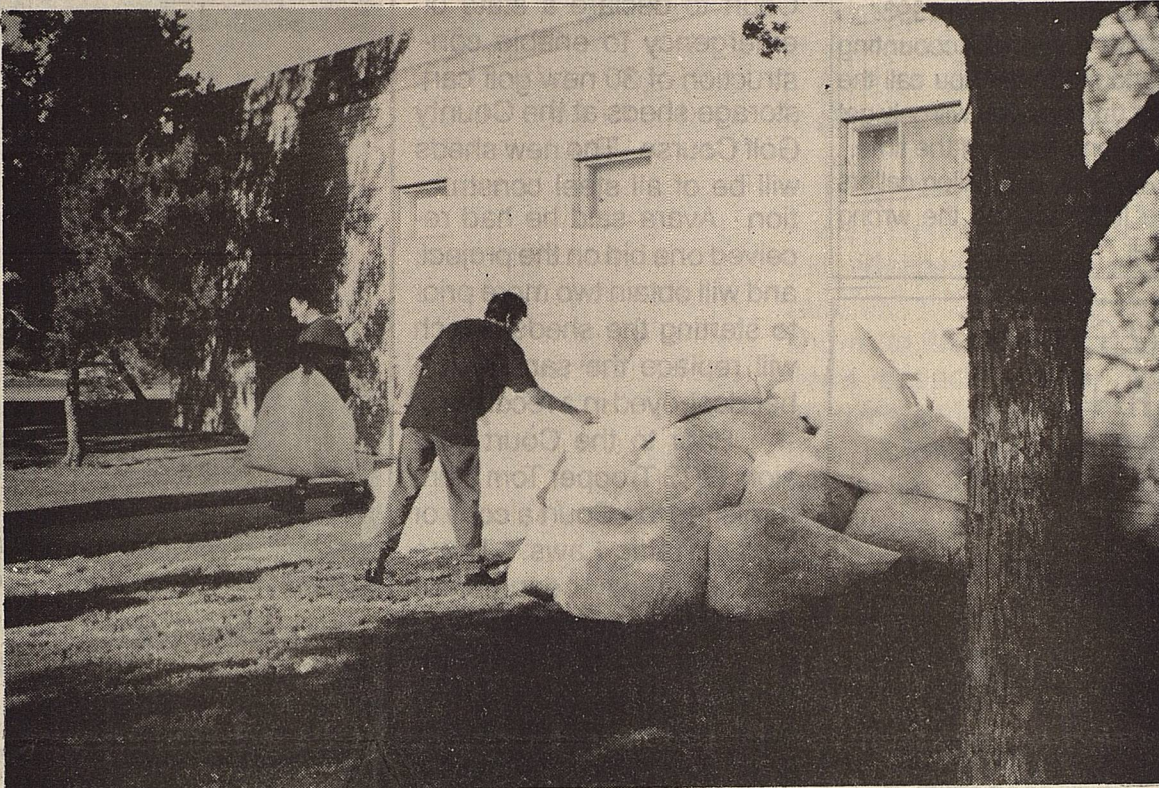
- 4 Plastic 3-Ring Notebooks
- 4 pocket folders with brads
- Notebook
- Crayons
- Ruler (combination inches and metric)
- Scissors
- Eraser
- Swimsuit

Volunteers Working On Art Association Building



Volunteer workers Amber Easter, Pat Altman, Anne Hartman and Linda Powell are shown preparing to repaint the Yoakum County Art Association building.

'The Great Paper Chase'



Courthouse employees are shown disposing of a small mountain of shredded paper from the many offices there. The pile, much larger when the truck loading began, completely filled a large county dump truck and pickup.

EMT Medical School Slated

LEVELLAND: An EMT Tactical Medical School begins July 29 at South Plains College offered by SPC and the Texas Tech University Health Sciences Center.

The class will meet 7:30 until 9 a.m. daily through Aug. 2 in the SPC Petroleum Technology-Law Enforcement Building, room 107. Cost is \$125. Tuition is payable to South Plains College, attention George Lawless.

"This is a rigorous five-day, 58-hour course consisting of a mixture of classroom lectures, practical exercises and problem solving, always utilizing and stressing teamwork," said George Lawless, chairperson of SPC's Professional Services and Energy Department and professor of law enforcement technology. The course is designed for EMT's and paramedics.

Course requirements include documentation of Basic EMT Certification, letter of recommendation from an EMS agency and local law enforcement agency, participation in all activities for credit, and proof of health and accident insurance. The insurance may be purchased at the college.

Advance registration is required. Registration fee is payable in advance by July 25. The class will be limited to 30 students.

For further registration information, contact the SPC Law Enforcement Office at 894-9611, ext 2291 or 743-3218.

The Texas School System

Information for this article obtained from the Texas Center For Educational Research, Austin.

The current system of public schools comprises 1,045 independent school districts. Each district is governed by an elected board of trustees with statutory authority and limitations in governing the schools of the district. Districting for school purposes was authorized by constitutional amendment in 1883, but school districts were not fully available throughout Texas until 1909. School attendance was not made compulsory until 1916. According to a constitutional amendment of 1926, the Texas Legislature may create school districts only by "general law."

The Texas public education system serves 3.68 million students in prekindergarten through grade 12. The Average Daily Attendance (ADA) enrollment continues to increase annually, although the annual growth rate has slowed to 2 percent over the past two years. In 1993, only 5.5 percent of Texas students attended private schools, compared with a national average of 11 percent.

In 1992-93, approximately 174,133 public school students were enrolled in the same grade as in 1991-92. These 174,133 retainees represent a 5.1 percent statewide retention rate. Students are usually retained in a grade when their academic progress is poor. Another explanation of the retention rate may be the efforts of schools to reduce the dropout rate through programs to keep students in school. Since 1985, the statewide dropout rate for students in grades 7 through 12 has declined from nearly 7 percent annually (more than 90,000 students) to 2.6 percent in 1993-94 (40,211 students).

The financing of public elementary and secondary education in Texas is the state's highest budget priority. The most recent data indicate that about 29 percent of all state expenditures go to public education in Texas, compared to a national average of about 20.3 percent. About 42.1 percent of state general fund revenues are allocated to public education.

Texas ranks ninth among the states in the reliance on property taxes (expressed as a percentage of all state and local taxes). State costs for education, although impressive in absolute numbers, reflect low tax effort compared with other states.

Special Drought Meeting Set

Farmers, ranchers, city and county officials of Yoakum County can get immediate answers about assistance which state and federal agencies can provide to combat problems created by the area's drought by attending a meeting Wednesday (July 24) in Lubbock.

It is the latest in a series of drought relief briefings organized by State Sen. John Montford (D-Lubbock) and Rep. Bob Turner (D-Voss). Co-hosts with Montford for the Lubbock meeting are Reps. Robert Duncan (R-Lubbock), Delwin Jones (R-Lubbock), James E. "Pete" Laney (D-Hale Center) and Gary Walker (R-Plains).

The program will be held at the Texas A&M University Agricultural Research and Extension Center in Lubbock from 1 to 4 p.m., said Yoakum County Agent, Tadd Knight. The A&M center is north of the Lubbock airport on FM 1294, just east of I-27 at the Shallowater exit.

Representatives of 14 state and federal agencies will detail types of assistance and programs which are available to help offset problems created by the pro-

longed lack of rainfall.

"We want everyone who is interested to come," Montford said. "We are issuing a special invitation to farmers and ranchers as well as to city and county officials across the district to attend this meeting and obtain immediate information concerning drought assistance that may be available."

Agencies which will have representatives explaining their programs are:

Texas Natural Resource Conservation Commission, Texas Water Development Board, Texas Department of Health, Texas Department of Agriculture, High Plains Underground Water District, Small Business Administration.

Also, Texas Agricultural Extension Service, Farm Service Agency, Natural Resource and Conservation Agency, Rural Development Agency, Texas State Soil and Water Conservation Board, Comptroller's Office, Attorney General's Office and Department of Public Safety Governor's Disaster Coordination Office.

Further information about the meetings is available from the offices of Montford, Duncan, Jones, Laney or Walker.

It's Rodeo Time

August 1, 2, & 3

Plains Depot

Already 20% off

Now an extra 10% off on Summer items and western jeans.

Get ready for *The Rodeo!*

Wholesale prices on all Remaining Fall Items.

Laundry & Dry Cleaning Now accepted for Delivery to Brownfield on Monday, returning here each Thursday PM

Brownfield Hwy. (456-7112) Plains, TX

Silk Floral creations, Gifts, Custom Home Deco, & Consultation

P.J.'S Designs

(806) 456-4161
Peggy Welch, Owner
Plains, Texas 79355



Femme Friends



'95 Rodeo Queen Ends Reign Aug. 3



Jennifer Lollar, daughter of David and Jerri Lollar, will give up her Rodeo Queen crown at the Saturday night performance of this year's rodeo, when the new Queen will be announced.

She is a Sophomore at Plains High School and her activities there include: playing the flute in the Cowboy Band; playing volleyball for three years; ran track as an 8th grader; was a member of FHA for two years; is a member of FCA; a member of Cadette Girl Scout Troup 74; a member of the Plains 4-H Club, where she rides her horse, Lightning, in the 4-H Playdays; and last year she sold the most tickets ever (3330) representing the Plains Chamber of Commerce.

Jennifer is a member of the First Baptist Church and is active in all youth activities there, including the ACTS, INC. Puppet Ministry Team, and Youth Council.

REMINDER
WHAT; Cheerleading Camp.
WHEN; August 5-8
WHO; Grades 1-6, 1996-97 school year
TIME; Register 8:15-9:00 Aug. 5
 Aug. 5-7 9-11:30 am
 Aug. 8 10-11:00 am,
 awards, parents welcome
COST: \$15, includes T shirt
WHERE; High School Boys Gym

Senior Citizens Corner

Summer news is so hard to find. I believe we need to revive a few Aggie Jokes or join the Redneck Fan Club. Someone is always having the kids home or visiting away.

Wednesdays Pool tournament was well attended. Billie O'Neal and Shirley won 8 and 9-Ball games in the ladies contests. Toakie and Patman won the events in the men's contests.

Recent visitors for lunch were Sue Courtney and Wilma Warren. Van Willson is back after several weeks-maybe working in his garden. Wanda and Layne Black have returned from a tour to the far off state of New York.

The Senior Jamboree in Lubbock is coming in August. Its a fun thing and everyone is urged to be there.

Also, the Watermelon Festival will be here soon. The Center will have a booth, and anyone wishing to make items for it need to be getting ready.

Our Site Council is sponsoring a Friendship Quilt. Those who would like to make a block for the quilt need to call Wanda Black for instructions.

Don't forget these dates --
 Line Dancing - Mon., Wed., Fri. at 9:45 AM
 Board Meeting-12:30 PM, Mon.
 Pool Games - 6:30 PM on Mon.
 Tatum Pool Tournament - Wed., 1 PM MST
 Lunch at 11:30 each day

All visitors are welcome. So You'll come on in. We appreciate company.

See you next week,
 Smitty

New Arrival

Todd & Janie Thompson of Plains would like to announce the birth of their daughter, Madalyne Jade.

The little miss was born July 16, 1996 at 12:07 AM in South Park Hospital at Lubbock. She weighed 6 lbs. 9 oz and was 19-1/2 inches long.

She has an older brother, Blake, and her Grandparents are Lee & Diane Brown and Angel & Elva Ruiz, all of Plains; and Mr. & Mrs. Mickey Thompson of Indiana.

Parkinson's Support Group To Focus On Memory Problems

LUBBOCK, TX: The Parkinson's Community Support Group of St. Mary Hospital Neurology Research and Education Center (NREC) will meet Thursday, July 25, 1996 at 1:30 PM.

The meeting will feature a program on memory problems by Texas Tech Research Psychologist Jeff Elias, Ph.D.

Participants in the Parkinson's Support Group, which includes individuals suffering from the disease as well as family members and caregivers, help each other cope with the various challenges of Parkinson's--educating each other about the disease and giving one another devotional support.

Support Group meetings are open to the public at no charge, and there is free valet parking at the NREC. For more information, call Judy Ribble in the Parkinson Disease Information & Referral Center at (806) 796-2647.



HOWDY!

By: Kathy Adair



KEEP TEA FROM GETTING CLOUDY

Brewed ice tea becomes cloudy when it is put directly into the refrigerator after brewing. That's because steeping tea releases tannins from the tea that produce a cloudiness when the tea is chilled, causing the tannins to precipitate out of solution. To avoid cloudiness, steep tea at a low temperature (never boil it). This is why "sun" tea can avoid the cloudy appearance. It never gets hot enough to extract the tannin.

WHY SOAK BEANS?

Some people experience discomfort after eating beans because they contain specially bonded sugars called oligosaccharides. Humans cannot digest these sugars and bacteria in the large intestine which convert them into carbon dioxide. Soaking leaches the oligosaccharides into the water but this also releases some of the protein, carbohydrates and flavor. Gradually incorporating beans into your diet and drinking more fluids can also help. Remember that the nutritional benefits of beans far outweigh their drawbacks.

SAFE STORAGE OF EXPRESSED MILK

Working moms who plan to express and store their breast milk should refrigerate the expressed milk and use it by the following day or freeze the milk. Frozen breast milk can be used for up to three months. Store the milk in portions no larger than needed for a single feeding. A small infant may take two or three ounces while an infant over three months of age may want eight to twelve ounces.

Penny Green's Tumbling

Fall Registration for Plains students Monday, August 5, 5PM - 8PM, at the Royal Bounders Tumbling Gym (old sheep barn)

Registration \$20 per student, covers insurance from Sept. '96 - Sept. '97.

Lesson costs;

One day per wk., 45 min. class \$28
 One day per wk., 1 hr, \$32
 Two days wk., 45 min. class \$40
 Two days wk., 1 hr, \$44
 Two days wk., 1hr 15 min. \$55

We will be tumbling on Mondays and Wednesdays this year. Classes begin week of August 19, and in August there will be two weeks of lessons. Parents meeting for recreation students 8pm, for advanced students 8:30pm, following registration.

If you have any questions, or need more information, call Karen Williams, 456-7485

Hey, Ladies!

This is a reminder:

COBBLERS WILL BE NEEDED AGAIN AT THE OLD SETTLERS REUNION SATURDAY, AUGUST 3.

Once again, the local Dairy Queen will furnish plastic serving cups for everyone taking a cobbler to the event. When you have your cobbler ready, go to the D.Q. for your cups, or dishes, and fill them before taking them to the Park, or dish it up at the site.

An average size cobbler will only require 10 to 12 cups.

Your Business Is Appreciated

For All Your Pharmacy Needs
 1-800-658-9604



Our Toll-Free Number Is For Your Convenience

NELSON PERSCRIPTION Pharmacy
 805 Tahoka Rd. Brownfield, Texas



Larry C. Boyd, M.D.
 Family Practice & OB

Yoakum County Clinic
 Each Thursday
 Office Hours 1-4 PM

Appointments are preferred!
 Please call 456-6365 or 592-9501

Darlene's Dress Shop

Semi-Annual Clearance Sale
 20% to 50% Off

NEW FALL CLOTHING Arriving Daily

Darlene's - BeautiControl Cosmetics
 110 N. Main 592-9524 Denver City, TX

Now Open To Serve You Plains Memorial Chapel

Norman & Judy Head, Owners

910 Ave. E, Plains
 (Across from Old Courthouse)

P. O. Box 40
 806-456-2152



Hicks



Carpet Appliances Heating & Air Conditioning

It's Hard To Stop A Trane

204 n. Main, Denver City
 806-592-3973 or 592-3930

From The Hack



Within 24 hours after publishing last weeks edition of CCN, I received four phone calls from local ministers expressing their gratitude to me for not printing a 'Hack' column that week. I also had a call or so from several of our more pious ladies praising me for my good judgment and taste in omitting the column.

Sorry to disappoint all of you folks. Taste and judgment had nothing to do with it. We just didn't have room in that issue. In all honesty, I did have a few calls in which I was severely chewed out for the omission. One guy said the only reason he subscribed was to clip the column and mail it to his brother in law, "who has a sick, perverted sense of humor". Another said he used the column as a teaching tool, telling his youngsters, "Don't write like this!"

THE OLYMPIC GAMES - GO, USA!

There is no sporting event in the world which draws more media and audience attention than the Olympic Games, which started in Atlanta last week. Spread over almost three weeks, the stupendous event will feature the cream of amateur athletes, and those not so amateurish.

No sporting event will ever create the spirit of Nationalism the way the Olympics do. If you watch the events, you cannot help but cheer when our nation's athletes go head to head with competitors from almost every nation on the globe. Sunday evening the Bride and I were viewing the events, which included the Women's Gymnastic contests. It amazed us both how such tiny, (but muscular) little young ladies could fly through the air, leap and cavort with such beautiful grace. I

suppose the amazement may have been prompted from the fact, we have a combined total of five daughters, none of which have been able to gracefully walk and chew gum at the same time. Genes, I suppose.

Speaking of the Olympics, and all the hype leading to the impressive opening ceremonies, we read where the game of Chess, now an Olympic event, may be joined by the world wide card game, Bridge.

How absolutely exciting. Now, in addition to spending a geological period watching the Masters contemplate a Chess move, we can doze off while watching Bridge partners lightly kick one another under the table, signaling a preferred move, and hear, "I bid two no trumps".

If this nonsense continues, I suppose the next Olympic event will be checkers, followed by crocheting, needle point, and paint by numbers. It could be extended to youngsters with great talents in sand box play and clay modeling, even picking non winning Lottery numbers. Come on, get serious, there's enough stuff out there right now. Just leave it alone, and yell for the USA!

Update on Integrated Pest Management, Terry and Yoakum Counties

By Phillip Kidd, Extension Act., IPM

General Situation

Area irrigated and dry-land cotton ranges from 1/3 grown square to peak bloom and is growing rapidly. Adequate moisture is present in fields throughout the area. Many producers are applying growth regulators to slow internodal elongation and promote earliness. Insect pressure is increasing and many area fields have received insecticide applications.

Bollworms

A considerable egg-lay has occurred and is still in progress. The highest pressure in our area is in southern Terry County from the Brownfield area south through the Union area and west to the Loop area in Gaines County. The older irrigated cotton is most attractive to bollworm moths, and drastic differences in egg counts have been noted between older and younger cotton within single fields. Counts as high as 60,000 eggs per acre have been reported from this area. These are high counts, but not as high as reports from other counties. Clyde Crumley, Gaines County EA-IPM, has reported 90,000 eggs per acre, and Tommy Doederlein, Dawson-Lynn Counties EA-IPM, has reported over 550,000 eggs per acre (12.5 eggs per plant).

These eggs are being laid all over plants, which is somewhat unusual for this time of year. Therefore, examination of entire plants is

essential for making sound management decisions.

I do not normally advise treatment based solely on egg counts because there is usually high mortality due to environmental conditions and predation. However, if 60,000 or more eggs per acre are present, treatment with an ovicide may be justified. Mortality of these eggs seems to vary widely from field to field, so individual fields should be intensively scouted to determine whether an insecticide application is needed. Do not base treatments on what your neighbor is doing.

If treatable worms (<1/2") from a previous egg-lay are still present in the field, you should consider treating with a product which will clean them up, too. Avoid the use of synthetic pyrethroids as long as possible. Though these products are generally very effective and have good residual activity, they are known to flair aphid populations, especially when applied more than one time. To date, I know of several fields which have been treated once with pyrethroids and no increases in aphid numbers

have been reported.

Boll Weevils

The first field generation (or F1 generation) of boll weevils has begun to emerge from cotton fruit in area fields. Newly-emerged weevils are red in color and will immediately begin to feed on squares and small bolls. After feeding for about four days they will mate and begin to lay eggs. Females deposit an average of 100 eggs in their 30-day life span. The developmental period from egg to adult averages 17 days. I know of only one treatment which has been made for F1 weevils. This was only around field margins which border optimum overwintering habitat in southwestern Terry County. This was an isolated case where there was high pressure from overwintered weevils early in the season.

Cotton Aphids

Small colonies of cotton aphids have been found in many fields throughout Terry and Yoakum Counties. Though predator numbers are somewhat low in most cases, they are quickly finding these aphid colonies and cleaning them up. No treatable populations have been reported.

Note To Producers

Remember that you are responsible for posting signs when insecticide applications are made on your field.



RAMS

REINKE AUTOMATED MANAGEMENT SYSTEM
for Computerized Center Pivot Irrigation

- Provides Greater Efficiency
- Offers Simplicity of Operation
- Gives Precision Sensing
- Designed for Operator Convenience
- Allows Selection for Specific Amount of Water Applied to ANY Segment of the Field
- Provides Lower Operating Costs

More User-Friendly than Any System on the Market

JACK SPEARS
Drilling Company

Water Well Drilling & Pump Service
456-4925 - 456-3845

Jim Warren
Sales Manager - 456-7444

REINKE
THE FIRST NAME IN IRRIGATION

HOME RAISED BEEF FOR SALE
1/2 OR WHOLE
Contact
Tommy Burrus
(505) 398-6137
(505) 369-6621



Spring Things

Tomato Plants, Pepper Plants, Bedding Plants, Roses, Geraniums, Garden Seed, Soil Conditioner, Garden Fertilizer, Potting Soil, Spring Bulbs
IRON will make your lawn greener!
No Burn Formula...Long Lasting

Free use of spreader with purchase of fertilizer

ferti-lome

SONNY'S FEED & SUPPLY CO.
The Plant & Animal Folks
1001 West Main Brownfield, TX 637-2815

BAYER LUMBER & HARDWARE

WELL, NOW THAT OUR PRAYERS HAVE BEEN ANSWERED, LOOKS LIKE WE'RE IN FOR THE **HOE - HOE - HOE SEASON**

BUY YOUR STRAW HATS FOR ONLY \$3.99 EA.
KEEP YOUR COOL WITH AQUA COOL TIES \$4.35 EA
AND WHILE THE SUN SMILES UPON YOU THIS SUMMER, REMEMBER WE HAVE MOST OF YOUR PLUMBING, GARDENING, AND WORK NEEDS AT

BAYER LUMBER & HARDWARE
1018 AVE. E
PLAINS, TX 79355
(806) 456-6044

PLAINS STATE BANK

601 9th Street
Plains, Texas 79355
(806) 456-2022

HOME OWNED AND OPERATED
TO BETTER MEET ALL
YOUR BANKING NEEDS
All Decisions Are Made Locally!

Serving Yoakum County and the Surrounding Area Since 1957

MEMBER F.D.I.C.
Each Depositor Insured to \$100,000.



State Line Insurance

Multi-Peril Crop ** Crop Hail
Danny Bell
Office-456-3521 Home-456-6325
Mobile-456-7517

Associated Farmers Delinting, Inc.



THE COTTON BRED FOR WEST TEXAS
.....BY WEST TEXANS!



Tommy & Terry Thrash
office: 1-800-292-7333

Two J-S FLYING SERVICE

AERIAL APPLICATION SPECIALISTS



LUBBOCK 793-5004
PLAINS OFFICE -- 456-3580 OR 456-7436
MIKE COBB **JACK COBB**
456-7165 << HOME >> 456-7452
456-7511 << MOBILE >> 456-7512

Sharp Releases Encouraging Report

AUSTIN: "Higher Texas stock prices, booming new home construction and an increase in the number of new business incorporations are the chief signals that the Texas economy will continue to grow in the coming months," State Comptroller John Sharp said, as he released the latest *Index of Leading Texas economic Indicators*.

"When you have entrepreneurs taking the risk of starting new businesses, investors willing to back Texas-based companies, and a need for new homes for a growing population and to meet the demand of trade-up home buyers, those are all signs of a strong economy," Sharp said.

"The *Index of Leading Texas Economic Indicators* is at 126.6, an increase of 1.8 percent compared to one year ago. Eight of the 10 Index components forecast continued moderate growth in the Texas economy," Sharp said.

The *Texas Stock Index* tops the *Index of Leading Texas Economic Indicators* for the eighth month in a row. The TSI is 30.3 percent above the level of one year

ago. The stock value of Texas-based businesses has risen for 14 consecutive months.

New home construction is up 22.3 percent compared to one year ago. Rising mortgage interest rates caused only a temporary lull in the demand for new homes. Building activity is particularly strong in Austin, Dallas and Houston. Housing starts are down in the rest of the nation.

Texas consumer confidence is up 2.9 percent compared to this time last year, with consumers expressing very few worries about the economic future. As a result, retail sales increased 3.7 percent in May, compared to the same period last year. Automobile dealers report brisk sales of new cars and trucks. Building materials, furniture and department store sales are up, reflecting the home construction boom.

After double-digit growth earlier in the year, Texas crude oil prices in May were just 6.3 percent higher than the same time last year, at \$18.82 per barrel. Petroleum supplies have stabilized, and the outlook is for steady or declining crude oil prices in the next few months.

New Pit To Be Dug At Landfill

Yoakum County Landfill Supervisor Gary Walker reported he had received verbal authority from the Texas National Resources Conservation Commission (TNRCC) to start construction of a new Type 4 dumping pit at the local facility. TNRCC is expected to formally issue the new permit in the next few days.

The new pit is sorely needed at the landfill. It will be used solely for construction and demolition refuse. The recent fierce hail storm in Denver City, destroying

many roofs and store front glass, has already produced a staggering 800 plus tons of refuse, mainly roofing shingles. When the new straight wall pit is finished, the demolished material will be pushed into it. The Type 4 permit will enable the landfill to dispose of this type material, and it will not count against the presently permitted 20 tons maximum limit. If more than 20 tons are dumped in one day now, additional fees must be paid to the state.

Walker reported the new, simplified trench type pit will cost the County a modest sum, but will quickly pay for its cost and save taxpayer dollars.

It Happened In Texas In July

July 25, 1543: Hernando de Soto blown ashore in the vicinity of Lake Sabine.

July 09, 1716: Mission Nuestra Senora de Guadalupe located at the principal town of Nacogdoches County; established by Domingo Ramos. Father Antonio Margil de Jesus given charge of the mission.

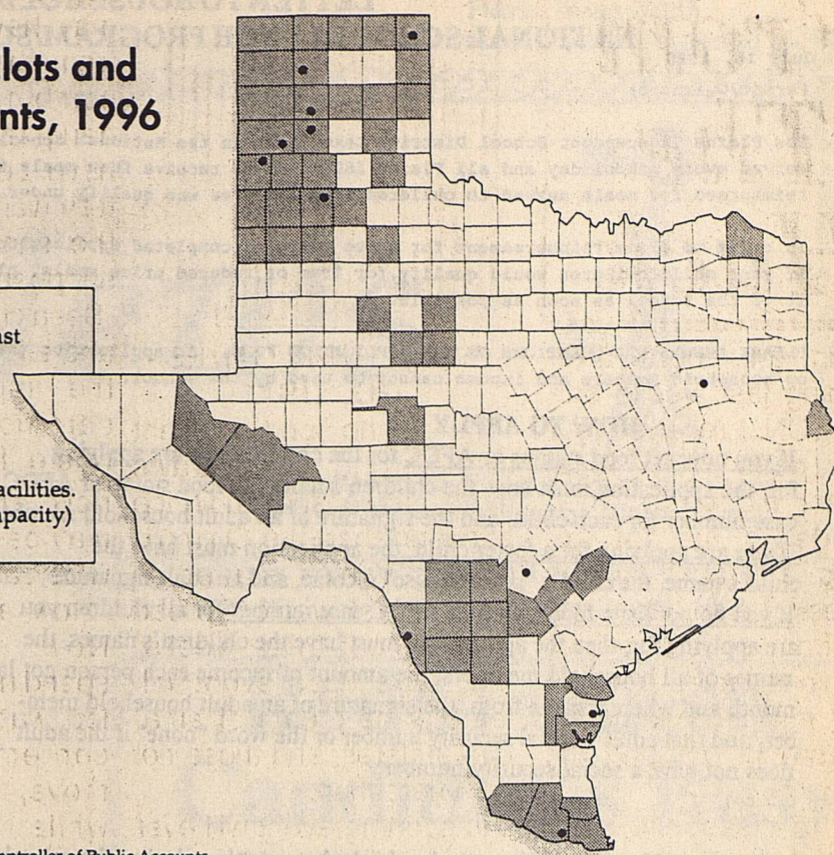
July 26, 1823: San Felipe de Austin established. 1863: Sam Houston died at Huntsville

July 04, 1845: Texas Convention formally accepted annexation offer from U.S. Congress. Constitution for the state adopted.

Texas Feedlots and Packing Plants, 1996

Counties with at least one large cattle feedlot (capacity of 1,000 or more head of cattle)

Large beef packer facilities (at least 200 head capacity)



Sources: John Sharp, Texas Comptroller of Public Accounts, National Cattlemen's Association and Texas Cattle Feeder's Association.

National Grain Sorghum Producers Petition Denied By Court

The U.S. Court of Appeals for the District of Columbia recently denied NGSP's petition for a review of the Environmental Protection Agency's ban on granular carbofuran.

Sorghum producers in Kansas, Nebraska, Missouri, Oklahoma, New Mexico and Texas used the product for many years to control several insect pests that can severely damage grain sorghum.

However, EPA pesticide officials canceled the federal registration label for the product because of its toxicity to birds. NGSP protested the cancellation, saying that the EPA records failed to document that the product actually caused any bird kills in sorghum-growing areas.

NGSP disagreed with the EPA's decision and initiated the petition to gain a more balanced review of the data.

"The appeals court used a very lenient standard for EPA in this case," said NGSP's legal counsel, Gary Baise, with the Washington, D.C. - based law firm of Baise and Miller.

Baise said that the court also agreed with EPA's argument that EPA need not demonstrate that granular

carbofuran actually causes an unreasonable number of bird deaths in any crop.

Instead, EPA needed merely to show that granular carbofuran creates a significant probability that such consequences may occur.

Under the court's decision, EPA does not have to demonstrate that a pesticide actually causes harm, but only must show that it provides a risk of harm.

"EPA can limit or ban a pesticide with very little evidence or risk and no evidence of any actual harm, and future courts will likely uphold EPA's decision if the court's decision here is followed," he added.

Even though the judges ruled in EPA's favor on this issue, bringing the litigation did have positive results, Baise said.

"This case has let EPA know that they can't run rough-shod over users of pesticides. They are now aware that producers will fight back.

"EPA has held up on reviews of other granular products for the past three years," he said. "Our efforts kept them at bay, and as a result, EPA officials will have to be much more careful in

the future about asserting the risk of avian kills."

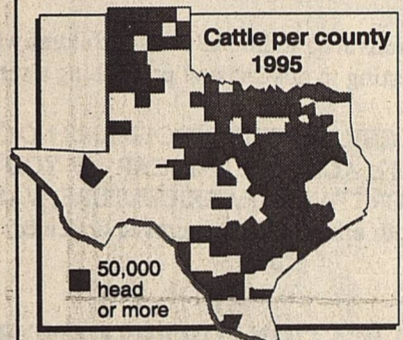
NGSP is pursuing the matter with a request for reconsideration of the court's decision.

Baise has already filed the request with the court to reconsider the decision because of mistakes made by the judges in writing their decision.

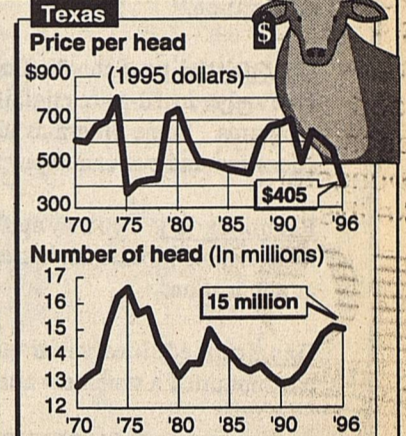
Keeping an eye on Texas

Cattle ranchers suffer losses

The price per head of cattle has dropped to its lowest point since 1975 due to an abundance of cattle, the Texas drought and the increased cost of supplemental feed. Imports from Mexico appear to have little effect on the market.



SOURCES: John Sharp, Texas Comptroller of Public Accounts, U.S. Department of Commerce.



Correction

We recently reported the Rodeo Parade was scheduled for Thursday morning, August 1. That is incorrect. The annual event will take place Saturday morning, 10 PM, August 3. The parade will form up in the parking area in front of the school buildings. If you plan to take part in the parade, please arrive early enough for the event to start at the scheduled time. Once again this year Wayne House will be the Parade Coordinator.

10,000,000,000 Number of bird deaths each year.

190,000,000 Number of bird deaths caused by humans. (Includes deaths caused by hunting and research and deaths caused by birds flying into buildings, cars, trucks and other man-made objects.)

0 Number of recorded bird deaths caused by granular carbofuran use on grain sorghum.

25% Estimate of sorghum yield reductions caused by insect pests in some areas if granular carbofuran is not available.

Farm Fresh Vegetables!

Now taking orders for green & yellow zucchini, tomatoes, peas, okra, squash... call your order in NOW!! Box Farm 806-456-5058

90 Days - No Payment

2-3-4 BEDROOM

MANUFACTURED HOMES AVAILABLE.

FREE Washer/Dryer and Freezer with New Home Purchase!

Call Bryan at (800) 333-8803



ANNOUNCING THE Class of '76

Reunion Party

Saturday, August 3, 2-7 PM, Plains Community Building Classmates, friends, class teachers urged to attend!

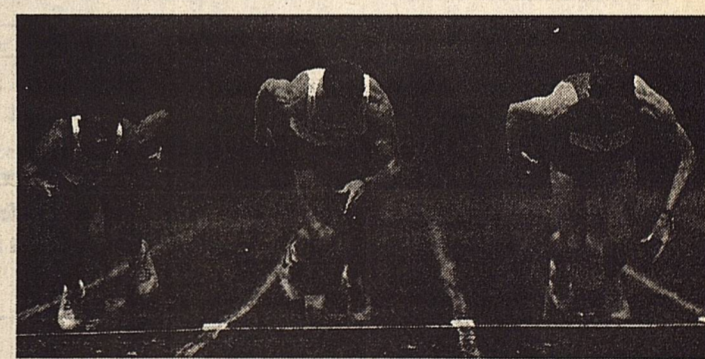
USED AND REPO'S

2-3 BEDROOM MANUFACTURED HOMES

FOR SALE.

Financing Available!

Call Bryan at (800) 333-8803



There's a new race in long distance. And we think second place is for losers.

That's why we were the first long distance company in the U.S. to offer customers up to 50% savings. And that's why we will continue to go the extra mile by offering lower basic rates** and personal, independent representatives. Switch your long distance service to a winner. Choose Excel. For more information on residential and small business long distance services, call today.

Holly Dyer 456-8451

INDEPENDENT REPRESENTATIVE EXCEL TELECOMMUNICATIONS

Calling Plans for Every Part of Your Life.

Cowboy Country News

P.O. Box 179

Plains, TX 79355

Office 806-456-8451

Fax 806-456-2010

Published each Wednesday, Plains, Texas by Holly and Gary Dyer. Subscription Rate \$15.00 per year. Call for Advertising Rates.

**LETTER TO HOUSEHOLDS (Multi-Child)
NATIONAL SCHOOL LUNCH PROGRAM/SCHOOL BREAKFAST PROGRAM**

July 16, 1996
Parent/Guardian:

The Plains Independent School District takes part in the National School Lunch Program/Breakfast Program. Meals are served every school day and all Plains ISD students receive free meals from our cafeteria; however, Plains ISD may be reimbursed for meals served to children from families who qualify under the stated guidelines.

In order to claim reimbursement for these meals, a completed application form must be on file for each ELIGIBLE child. If your child/children would qualify for free or reduced price meals, please complete the application form and return it to the school as soon as possible.

PLEASE ANSWER ALL QUESTIONS ON THE APPLICATION FORM. An application that does not contain COMPLETE information on household members and income cannot be used by the school.

HOW TO APPLY

If you now get food stamps or AFDC for the children you are applying for, the application must have the children's names, a food stamp or AFDC case number for each child, and the signature of an adult household member. If you are applying for a foster child, the application must have the child's name, the child's "personal use" income, and an adult signature. If you do not list a food stamp or AFDC case number for all children you are applying for, then the application must have the children's names, the names of all household members, the amount of income each person got last month and where it came from, the signature of an adult household member, and that adult's social security number or the word "none" if the adult does not have a social security number.

INCOME CHART			
Household Size	Annual	Monthly	Weekly
1	14,319	1,194	276
2	19,166	1,598	369
3	24,013	2,002	462
4	28,860	2,405	555
5	33,707	2,809	649
6	38,554	3,213	742
7	43,401	3,617	835
8	48,248	4,021	928
For each add'l member add.....+4,847.....+404.....+94			

Verification: Your eligibility may be checked at any time during the school year. School officials may ask you to send papers showing that your children should get free or reduced-price meals.

Fair Hearing: You may talk to school officials if you do not agree with the school's decision on your application or the results of verification. You may also ask for a fair hearing. You may do this by calling or writing:

Name Pete Simmons Phone (806) 456-7401

Address P.O. Box 479 Plains, TX 79355

Reporting Changes: If your children get free or reduced-price meals because of your income, you must tell the school if your household size decreases or your income increases by more than \$50 per month or \$600 per year. If your children get meals because you get food stamps or AFDC, you must tell the school when you are not getting AFDC or food stamps for them. You may then fill out another application giving income information.

Confidentiality: School officials use the information on the application only to decide if your children should get free or reduced-price meals. Free and reduced-price eligibility information may be subject to release to other federal, state and local education, health, or other means-tested programs. Some programs already identified are the National Assessment of Educational Progress and officials collecting data for Title I allocation and evaluation purposes.

Reapplication: You may apply for meals anytime during the school year. If you are not eligible now but have a change in status, like a decrease in household income, an increase in household size, become unemployed or get food stamps or AFDC for your children, you may then complete an application.

Handicapped: Meal substitutions at no additional cost for children who meet the definition of "handicapped" will be served, provided a physician has submitted a statement attesting to this fact and prescribing a substitute.

IN THE OPERATION OF THE CHILD FEEDING PROGRAMS, NO CHILD WILL BE DISCRIMINATED AGAINST BECAUSE OF RACE, SEX, COLOR, NATIONAL ORIGIN, AGE OR HANDICAP. IF YOU BELIEVE YOU HAVE BEEN DISCRIMINATED AGAINST, WRITE IMMEDIATELY TO THE SECRETARY OF AGRICULTURE, WASHINGTON, D. C. 20250. We will let you know when your application is approved or denied.

Sincerely, *Pete Simmons*

APPLICATION FOR FREE AND REDUCED-PRICE MEALS (Multi-Child)

To apply for free and reduced-price meals, complete this application, sign your name and return the application to the school. Call the school if you need help. # 456-5485

1 Print STUDENT INFORMATION.	2 List the child's FOOD STAMP or AFDC case number, if any.
NAME _____ GRADE _____	NAME OF SCHOOL _____ FOOD STAMP NUMBER OR AFDC NUMBER _____
_____	_____
_____	_____

3 FOSTER CHILD: List the child's monthly personal use income. Write "O" if the child has no personal use income. \$ _____

4 HOUSEHOLD MEMBERS AND MONTHLY INCOME: If you gave a food stamp or AFDC case number for the child, skip to PART 5.

NAMES OF HOUSEHOLD MEMBERS	Gross MONTHLY Earnings (Before Deductions)		MONTHLY Welfare Payments, Child Support, Alimony	MONTHLY Payments from Pensions, Retirement, Social Security	Any Other MONTHLY Income
	Job 1	Job 2			
_____	\$ _____	\$ _____	\$ _____	\$ _____	\$ _____
_____	\$ _____	\$ _____	\$ _____	\$ _____	\$ _____
_____	\$ _____	\$ _____	\$ _____	\$ _____	\$ _____
_____	\$ _____	\$ _____	\$ _____	\$ _____	\$ _____
_____	\$ _____	\$ _____	\$ _____	\$ _____	\$ _____
_____	\$ _____	\$ _____	\$ _____	\$ _____	\$ _____

5 SIGNATURE AND SOCIAL SECURITY NUMBER: I certify that all of the above is true and correct and that all income is reported. I understand that this information is being given for the receipt of federal funds; that school officials may verify the information on the application; and that deliberate misrepresentation of the information may subject me to prosecution under applicable state and federal laws.

X _____ X _____
Signature of Adult Household Member Social Security Number*
HOME TELEPHONE NO. _____ WORK TELEPHONE NO. _____ PRINTED NAME _____
STREET/APT. NO. _____ CITY/STATE/ZIP _____ DATE _____

6 RACE: Please check the racial or ethnic identity of your child(ren). You are not required to answer this question.
 White, not Hispanic Black, not Hispanic Hispanic Asian/Pacific Islander American Indian/Alaskan Native

*PRIVACY ACT STATEMENT: SECTION 9 OF THE NATIONAL SCHOOL LUNCH ACT REQUIRES THAT, UNLESS YOUR CHILD'S FOOD STAMP OR AFDC CASE NUMBER IS PROVIDED, YOU MUST INCLUDE THE SOCIAL SECURITY NUMBER OF THE ADULT HOUSEHOLD MEMBER SIGNING THE APPLICATION OR INDICATE THAT THE HOUSEHOLD MEMBER DOES NOT HAVE A SOCIAL SECURITY NUMBER. PROVISION OF A SOCIAL SECURITY NUMBER IS NOT MANDATORY, BUT IF A SOCIAL SECURITY NUMBER IS NOT GIVEN OR AN INDICATION IS NOT MADE THAT THE SIGNER DOES NOT HAVE SUCH A NUMBER, THE APPLICATION CANNOT BE APPROVED. THE SOCIAL SECURITY NUMBER MAY BE USED TO IDENTIFY THE HOUSEHOLD MEMBER IN CARRYING OUT EFFORTS TO VERIFY THE CORRECTNESS OF INFORMATION STATED ON THE APPLICATION. THESE VERIFICATION EFFORTS MAY BE CARRIED OUT THROUGH PROGRAM REVIEWS, AUDITS, AND INVESTIGATIONS AND MAY INCLUDE CONTACTING EMPLOYERS TO DETERMINE INCOME, CONTACTING A FOOD STAMP OR WELFARE OFFICE TO DETERMINE CURRENT CERTIFICATION FOR RECEIPT OF FOOD STAMPS OR AFDC BENEFITS, CONTACTING THE STATE EMPLOYMENT SECURITY OFFICE TO DETERMINE THE AMOUNT OF BENEFITS RECEIVED AND CHECKING THE DOCUMENTATION PRODUCED BY HOUSEHOLD MEMBERS TO PROVE THE AMOUNT OF INCOME RECEIVED. THESE EFFORTS MAY RESULT IN A LOSS OR REDUCTION OF BENEFITS, ADMINISTRATIVE CLAIMS OR LEGAL ACTIONS IF INCORRECT INFORMATION IS REPORTED.

FOR SCHOOL USE ONLY DO NOT WRITE BELOW THIS LINE

MONTHLY INCOME CONVERSION: WEEKLY x 4.33 EVERY 2 WEEKS x 2.15 TWICE A MONTH x 2

TOTAL HOUSEHOLD SIZE _____ MONTHLY INCOME _____ FOOD STAMP _____ AFDC _____

ELIGIBILITY DETERMINATION: APPROVED FREE _____ APPROVED REDUCED-PRICE _____ DENIED _____ TEMPORARY UNTIL _____ UNTIL _____ UNTIL _____

REASON FOR DENIAL: INCOME TOO HIGH _____ INCOMPLETE APPLICATION _____ OTHER _____

CHANGE IN STATUS _____ REASON _____ DATE _____ DATE WITHDRAWN _____

SIGNATURE OF DETERMINING OFFICIAL _____ DATE _____

DATE VERIFICATION NOTICE SENT: _____ RESPONSE DUE FROM HOUSEHOLD _____ SECOND NOTICE SENT _____

VERIFICATION RESULT: NO CHANGE _____ FREE TO REDUCED-PRICE _____ FREE TO PAID _____ REDUCED TO FREE _____ REDUCED-PRICE TO PAID _____

REASON FOR ELIGIBILITY CHANGE: INCOME _____ HOUSEHOLD SIZE _____ REFUSED TO COOPERATE _____ OTHER _____ CHANGE IN FOOD STAMP/AFDC _____

DATE NOTICE OF CHANGE SENT TO PARENT GUARDIAN: _____ SIGNATURE OF VERIFYING OFFICIAL: _____ DATE: _____

**NATIONAL SCHOOL LUNCH AND CHILD NUTRITION PROGRAMS
1996-97 INCOME ELIGIBILITY GUIDELINES**

FAMILY SIZE	ANNUALLY		MONTHLY		WEEKLY	
	FREE	REDUCED PRICE	FREE	REDUCED PRICE	FREE	REDUCED PRICE
1	\$10,062	\$14,319	\$839	\$1,194	\$194	\$276
2	\$19,166	\$28,860	\$1,598	\$2,405	\$369	\$555
3	\$24,013	\$43,401	\$2,002	\$3,213	\$462	\$742
4	\$28,860	\$58,248	\$2,405	\$4,021	\$555	\$928
5	\$33,707	\$73,095	\$2,809	\$4,828	\$649	\$1,104
6	\$38,554	\$87,942	\$3,213	\$5,635	\$742	\$1,280
7	\$43,401	\$102,789	\$3,617	\$6,442	\$835	\$1,456
8	\$48,248	\$117,636	\$4,021	\$7,249	\$928	\$1,632
9	\$53,095	\$132,483	\$4,425	\$8,056	\$1,021	\$1,808
10	\$57,942	\$147,330	\$4,828	\$8,863	\$1,114	\$1,984
11	\$62,789	\$162,177	\$5,232	\$9,670	\$1,207	\$2,160
12	\$67,636	\$177,024	\$5,635	\$10,477	\$1,300	\$2,336
For each additional family member add:						
+ \$ 3,406 + \$ 4,847 + \$ 284 + \$ 404 + \$ 66 + \$ 94						

BID NOTICE

Plains ISD invites interested parties to make proposals for providing milk for its school lunch program beginning August 13, 1996. Proposals will be received until 11:00AM on August 2, 1996, at the Business Office. Proposals should be addressed to Eric Banfield, Business Manager, Plains ISD, 1000 10th Street, Box 479, Plains, Texas, 79355. For questions or other information, please contact Eric Banfield at 806-456-7483.

Plains ISD reserves the right to contract with the vendor that represents the best value to the District.

Plains Independent School District will accept bids for cafeteria produce until 11:00AM, August 2, 1996, in the Administration Office. Bids will be opened and read at that time. Information can be obtained by contacting Eric Banfield, Business Manager, Plain ISD, Box 479, Plains, TX 79355, or by calling 806-456-7483.

Produce should be bid for a weekly period from August 12, 1996, through December 20, 1996, and from January 6, 1997 through May 22, 1997.

Plains ISD will purchase cafeteria food and supplies through the Region 17 Education Service Center CoOp with the exception of produce and milk.

Plains ISD Board of Trustees reserve the right to accept or reject any and all bids and to waive all technicalities.

**Notice of public hearing on the
Yoakum County Appraisal
District Budget**

The Yoakum County Appraisal District will hold a public hearing on the budget for the 1997 fiscal year. The public hearing will be held on August 13, 1996 at 2:00 PM in the office of the Yoakum County Appraisal District.

A summary of the appraisal district budget follows:
Total amount of the budget is \$250,758.
The total amount of increase over the current year's appraisal budget is \$17,800.
The total number of employees compensated in the 1997 budget will be two full-time employees.
The total number of employees under the current budget is two full-time employees.

The appraisal district is supported solely by payments from the local taxing units served by the appraisal district.

By final approval by the appraisal district Board of Directors at the public hearing, the budget will take effect automatically unless disapproved by the governing bodies of the county, school districts and cities served by the appraisal district.

A copy of the budget is available for inspection in the office of each of the governing bodies. A copy is also available at the appraisal district office.

**Yoakum County Appraisal District
500 Cowboy Way
Plains, Texas 79355
806-456-7101**

**ATTENTION
PROPERTY OWNERS!**

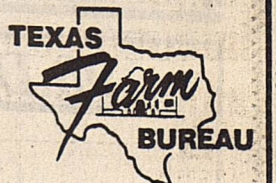
Your County Farm Bureau is conducting a petition drive to demonstrate support for property tax relief.

The Governor has appointed a Citizens Committee to review alternatives to the property tax in Texas.

Let the Citizens Committee know your views on property taxes.

Sign our petition at your local county Farm Bureau office.

**Yoakum County
Farm Bureau
902 Avenue E
(west side of square)
Plains, Texas**



Support the Rodeo & Reunion