

# The Earth News-Sun

"A CONSOLIDATION OF THE EARTH NEWS & EARTH SUN, OCTOBER 12, 1967"

VOLUME 18

10 CENTS

EARTH, LAMB COUNTY, TEXAS, THURSDAY, SEPTEMBER 16, 1971

12 PAGES

NO. 6



BILLIE McELROY and Reeves Tungkind, pistol experts from the Texas Department of Public Safety in Austin, displayed a fantastic collection of police weapons at the Teachers Appreciation Banquet Tuesday night.

## Springlake-Earth Teachers Honored At Appreciation Banquet

Springlake - Earth teachers were honored at an Appreciation Banquet Tuesday, September 14, in the school cafeteria by the Springlake and Earth Lions Clubs.

Master of ceremonies Bob Belew opened the program and then "America" was led by Dale Riggs.

Phillip Haberer, president of the Earth Lions, led the Pledge to the Flag and Reverend Glen Smith, minister of the First Baptist Church of Springlake, gave the invocation.

A delicious dinner of steak, baked potatoes, combination salad, asparagus, cake topped with strawberries and whipped cream, hot rolls, butter and tea or coffee was prepared by the lunchroom staff and served to those present by members of the Junior High Honor Society.

Les Watson, president of the Springlake Lions Club, welcomed the approximate 160 persons who attended the affair.

Superintendent of schools, Bill Mann, introduced the Lions Club Queen Suzy Temple, Lions, Lionesses, faculty members and spouses at the head table. Lions seated elsewhere in the room were asked to stand and introduce their spouses and guests.

Billy Braden introduced Billie McElroy and Reeves Tungkind, both officers of the Texas Department of Public Safety in Austin.

Both officers are members of a four man shooting team which has won national championship honors for several years. Tungkind and McElroy first displayed guns used by policemen. A riot gun which shoots tear gas shells was shown. Each shell costs eighteen dollars and because of such high costs there are not very many of the guns in use.

A rifle and fifty round machine gun were shown along with a hand grenade which can be divided into three parts.

After the display, Officer Tungking presented an outstanding shooting exhibition.

He shot balloons which were in a trap straight on, backwards by looking through a mirror and by holding his gun upside down.

Next, four pieces of chalk were lined up and the officer clipped off each piece using one shot for each piece of chalk.

Eight strings of spaghetti were placed in a styrofoam base and were lined up parallel to Tungking. He shot out the inside six strings and left the two outside strings standing.

A card, the ace of spades, was turned with the edge toward Tungking and he shot out the center of the card with one perfectly aimed shot.

Next, two candles were shot out by the officer firing at the



PART OF THE CROWD --- These people were among the approximate 160 who attended the Springlake-Earth Lions Clubs



BOB BELEW is shown here as he is preparing to open ceremonies at the Teachers Appreciation Banquet sponsored by Springlake and Earth Lions Clubs. Mrs. Belew is seated beside her husband.

candles with guns in each hand. Only one shot per candle was needed.

The final shooting exhibition consisted of three lighted candles being placed in a triangle position with an axe placed behind the center candle.

The purpose of this was for the officer to shoot one bullet, put out the center candle, have the bullet hit the axe, divide into two parts and put out the two side candles. Each of the first two attempts put out the center candle and one side candle. The axe was then moved just a little and on the third attempt, all candles were extinguished.

Tungking used a 357 magnum service revolver which is the type gun used by the Department of Public Safety and he demonstrated a 38 police special which city policemen carry.

Tungking announced that the training facilities for the police academy at Austin are be-

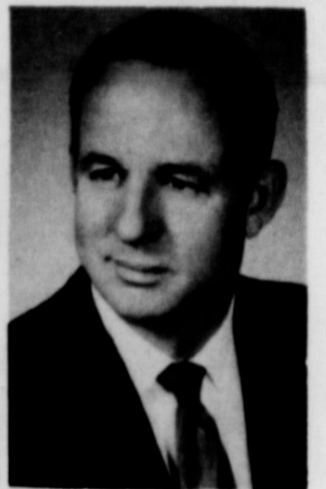
ing enlarged and should be completed in 2 or 3 months. A few years ago there was a shortage of good recruits for the 17 week training program at the academy, but there are now plenty of good recruits for the training program.

Tungking named better working conditions, higher pay and the requirement of 15 college hours as being reasons for the increase of good recruits.

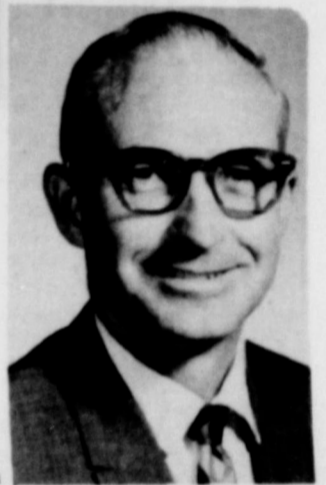
Tables for the banquet were beautifully decorated by being covered with white linen tablecloths and featuring entwined purple and gold crepe streamers down the length of the tables.

Large centerpieces of purple and gold dahlias were set off by small bowls of floating flowers being placed at different places on the tables. Each bowl contained one large purple dahlia and two small yellow pom poms.

Teachers Appreciation Banquet. They are shown as they visited and enjoyed the delicious food which was served.



BILL MANN



CECIL SLOVER

## Administrators Elect Officers

School administrators of Lamb County met for their first meeting of the 1971-72 school year at 7 p.m. Thursday, September 9, at Olton in the school cafeteria there.

Administrators enjoyed a tantalizing supper meal while getting acquainted.

During a short business session, officers for the forthcoming year were elected and they are Bill Mann, Springlake-Earth, president; Cecil Slover, Springlake-Earth, vice president; and Roy Stevens, Littlefield, secretary.

The group planned various programs for the coming year and set dates for their future meetings which will be November 15, Springlake-Earth; January 17, Amherst; and April 15, Littlefield.

Bill Mann, who is superintendent of Springlake-Earth schools, came here from Crosbyton sixteen years ago to fill that position.

Mann received his Bachelor's Degree in Education from Abilene Christian College at Abilene and his Masters Degree in Education from Texas Tech University. He is currently serving on the 14th District Board of the Texas Congress of Parents and Teachers and is also serving as secretary-treasurer of District 17 Texas Association of School Administrators.

Mann was selected as Man of the Year by the Earth Chamber of Commerce a few years ago.

Cecil Slover, who has been principal at the junior high school since 1962 came to Springlake-Earth schools fifteen years ago as an English teacher.

He graduated with a Masters Degree in Education from Texas Tech University and has served as president of the Lamb County Teachers Association.

Slover was chosen Teacher of the Year and presented an award by the XIT Study Club.

## Doug Jones Takes 1st Place In Weekly Football Contest

Just by guessing, imagination and sending in their entry blanks, three football fans have taken top honors in the first week's football contest.

Taking first prize of five dollars was Doug Jones, who had chosen nine games correctly, to receive 90 points. He also received twenty-five extra points for being in top place to make him a total of 115 points to begin the weekly contest.

Close behind Jones was Guy Lynn Davis, who had nine games correct also and received twenty extra points to make 110 points in all. This second place winner received a prize of three dollars.

Taking the third place prize of two dollars was Raul Minoz, who also had 90 points after guessing nine games correctly. For being third place winner he received fifteen extra points to make a total of 105 points.

It is not too late for you to also begin entering the weekly football game contest. All you need to do is find the contest page in the Earth News-Sun each week, mark out the teams you predict will lose, fill in the tie breaker, sign your name and mail or deliver your entry to the Earth News-Sun office by 4 p.m. each Friday.

You could win the grand prize of two tickets to the New Year's Day football classic at the Cotton Bowl in Dallas plus twenty-five dollars in cash. The person with the highest amount of points will win the prize. Each game you choose correctly will add ten points to your score.

Listed below are others who entered last week's game and their scores:

90 POINTS -- Larry Price; 80 POINTS -- Tony Barton, James Thomas, Douglas Freeman, Percy Parsons, Brad Halsey, Richard A. Moore, Norman Clayton and Jo Eddie Riley;

70 POINTS -- Jerry W. Jones, E. C. Hudson, Bill Freeman, Guy Kelley, Dale Parsons, Margaret Parsons, Terry Riddle, Dennis Criswell, Dale Riggs, J. W. Dear, Dickie Brown, Floyd Henderson, Teresa Lunsford, Scott Lee and Dale Wheatley;

60 POINTS -- Tom Sanders, Karen Layman, Troy Layman, Rodney Gettler, Wendy Branscum, Kenny O'Hair, Rhonda Parsons, Randy Bills, Danny O'Hair, Sherry Pittman, Johnny Kelley, Carolyn Stephens, David Hanson, Glenn Branscum, Terri Smith, Mrs. M. E. Kelley and Kevin Riley;

50 POINTS -- Cindy Barton, Lynn Glasscock, Monty Price, Paul San M'guel, Eric Freeman, Marvin Been, Jr., Bob Myers, Sunnie Randolph, Don Randolph, Bobby Gover and J. Allen Gover;

40 POINTS -- Edwin O'Hair; 30 POINTS -- Greg Gettler.

## Earthquakes Perform In Olton

The Earthquakes, a local singing group comprised of teenagers from different Earth and Springlake churches, performed at the evening service of the Hopewell Baptist Church in Olton on Sunday, September 12.

The talented group, directed by Wayne Anderson, was reported to have put on a splendid performance.

Among those attending from Earth were Mrs. M. W. Messer, Mrs. Venona Lee, Mrs. Beula Coker, Mrs. E. C. Hudson, Mrs. L. Z. Anglin and Mr. and Mrs. Frank Butter.

## NOSIN... With Polly

Little Stevie, who joined the Joe Ellis family register a little less than a year ago, brought sunshine to their lives even though his brief stay here was filled with pain and illness.

He was a little fighter for he came through surgery treatments and much pain in order to smile again at those who loved him so much.

Stevie had a purpose in life. He touched many lives during his brief stay here on this earth. He caused many prayers to go up in his behalf. But his mission here was filled and God

reached down his loving hand and gently took the little lad with the tiny red boots and miniature football to his eternal home where there is no pain and suffering. There Stevie brightens the heavens like a flower in the Master's bouquet.

Though his parents' arms ache with emptiness and the house is vacant of his charm, this is only temporary, for it is sweet to know that it's only one step more to heaven where they can someday join their precious baby in that home beyond the sunset.

## 4-H Members Win 67 Ribbons At Fair

Eleven members of the local 4-H Club won a total of 67 ribbons at the Lamb County 4-H Fair held at Littlefield Saturday, September 11.

The club had entries in each of the eight possible fields which were field crops, paintings, crafts, canning, baked goods, garden vegetables, sewing and flowers.

The local chapter won third place in the county for winning the most ribbons. Alayne Slover was presented

a beautiful plaque for being chosen high point junior girl in the county after scoring 106 points on her twenty entries.

Other 4-H members and their number of entries are as follows: Petra Lewis, 4; Sheila Lewis, 4; Tommy Graham, 10; Michael Graham, 9; Joyce Ingram, 8; Rosie Lewis, 1; Timmy Craft, 1; Jennifer Templeton, 6; Wendy Branscum, 3; and Dawn Branscum, 1.

## Homecoming Activities Set For October 8

Members of the Ex-Students Association of Springlake-Earth schools met last week to prepare for and plan activities for October 8th when the Wolverines will play Bovina at Earth.

A bar-be-que supper will be served by the association in the school cafeteria from 5:30 to 8 p.m. before the football game. The lunchroom staff of the school will prepare the tantalizing meal.

Tickets are on sale now from members of the association and will be on sale at the cafeteria door that night. Tickets are priced at \$1.50 for adults and 75¢ for students.

Following the homecoming game, a program honoring 1941, 1951, 1961 and 1971 graduates will be held in the school cafeteria. A door prize of an instamatic camera will be given away and doughnuts and coffee will be served at the program.

The next planning meeting of the group will be at 8 p.m. Tuesday, September 21, in the high school library.

Attending last week's meeting were Glenn Bills, presi-

dent; Jerry Jones, vice president; Mrs. Norma Dawson, program chairman; Mrs. Kathie Shirey, secretary; Doug Parish, finance committee; and Miss Helen Gover.



4-H CLUB members brought home 67 ribbons from the Lamb County 4-H Fair. Left to right they are, back row, Dawn Branscum, Jennifer Templeton, Sheila Lewis, Rosie Lewis and Timmy Craft. Front row, Alayne Slover, Petra Lewis, Joyce Ingram, Wendy Branscum, Tommy Graham and Michael Graham.

## Art Exhibit To Be Held At Bank

Monday through Friday, September 20 through September 24, paintings done by many local Springlake-Earth artists will be on display in the lobby of the Citizens State Bank of Earth.

Mackey McCarty, who is president of the local bank, would like to invite everyone to come in to view the paintings and have coffee with the bank staff. He explains that everyone is welcome to visit the bank at any time, but they are especially welcome this week to view the paintings.

McCarty stated that he had been very impressed with the talent he had seen in this area and he feels that our local artists are extremely good.

## LIONS TO HOLD BROOM SALE

The Earth Lions Club will hold a broom sale Wednesday, September 29.

Such useful household products as brooms, mops, dust cloths, pot holders and numerous other items will be on sale.

All articles will be made by blind persons at the Lighthouse for the Blind.

The exact time and place for the sale will be announced at a later date.

MODERN GREEK differs greatly from the Greek spoken in classical times.



## Death Came To Our Town Again

By DAVID HARTMAN



Last Friday morning a bit past 8:00 o'clock, death tipped into room 510 at Methodist Hospital in Lubbock and quietly stole Steven Ellis away. We don't like him taking away one of our youngest citizens like that. We count every person near and dear and do not like to give them up for any reason.

There is a whole lot I don't understand about death. For one thing there is such a lack of consistency to it. It is always difficult to understand why the young are taken. We often wonder sometimes why men with such gifted hands for healing are suddenly snatched from their place in society. The times that I feel most helpless as a minister is in the presence of serious illness and death. The question "What can I do to help?" is always running through my mind. I always say a silent prayer in behalf of those suffering the

loss. I know how a doctor must feel when he has done everything medically possible to save a life and couldn't. Nothing is more certain than death. This is almost the unspeakable word today and yet it is one of the grim realities of life. Every home in our town has been faced with this reality at one time or another. Some have come through it successfully and others have not.

Grief is real and we need to be aware of its importance at a time of loss. The worst thing to do is to try ignoring it. One of the best little books I have found on the subject to help people work through great loss is entitled "Good Grief" by Granger E. Westberg. To Joe, Minnie, Sherrie, Lorie, Brenda and the Grandparents we express our deepest heart felt sympathy. We are standing with you in your time of deep grief over the loss of your precious son, Steven.

## Postmaster Announces Overnight Mail Goal

Postmaster Harold D. Miller, amplifying on a new mail service program recently announced by Washington headquarters, today identified local areas which are to receive overnight delivery of first-class mail originating within the Amarillo area.

Postmaster Miller said eight areas contiguous to Amarillo will benefit from the next-day deliveries under a new mail service goal announced by Postmaster General Winton M. Blount.

These areas, Postmaster Miller said, include the following Sectional Centers: Amarillo, Texas; Childress, Texas; Clovis, New Mexico; Liberal, Kansas; Lubbock, Texas; Roswell, New Mexico; Tucuman, New Mexico; and Wichita Falls, Texas.

Postmaster General Blount on August 26 unveiled the Postal Service's new goal of overnight delivery of local area first-class mail deposited by 4 p. m.

"The Postmaster General has pointed out that this program will affect more than half of all first-class letter mail sent in the United States," Postmaster Miller said. "So customers of every post office in the country will be benefitting

from the new service goal." Substantially more than half of the \$2 billion pieces of first-class mail handled annually are for delivery in the city where deposited or in nearby communities.

The areas outlined today by Postmaster Miller are those which next-day delivery will be provided for ZIP Coded first-class mail deposited by 4 p. m. on weekdays in business areas, and at collection points on main thoroughfares.

The Postal Service set October 31 as the deadline for achieving the 95 per cent goal.

The areas to which next-day delivery can be provided include a total of 308 post offices, the most distant of which are more than 200 miles from the Amarillo Sectional Center Facility.



"He is a real liberal-generous with his opinions and everybody else's money."



S-E JUNIOR HIGH FOOTBALL PLAYERS are working hard to become the future Wolverine squad. Top row, left to right, Larry Hood, Brent Been, George Flores, Ken Smith, John Garza, Ray Jones, Bryan Taylor, Rodney Geisler and Joe Fuller. Middle row, Manager, Glen Branscum; Johnny Salinas,

Roger Werner, Max Price, Polo Gonzales, Terry Hood, Scott Cooksey, Billy Houston, coach Bert Leaverton. Bottom row, Mark Barton, Steve Green, Royce Jordan, Brent Washington, Danny James, Jesse DeLa Garza, Kirk O'Hair, Ricky Kennedy, Dickie Brown and Timmy Thomas.

## School Board Approves Placement Of Marker

The Springlake-Earth school board met in regular session at 8:30 p. m. Monday, September 13, in the high school building with all board members present.

Minutes of the previous meeting were read and approved with all monthly bills being reviewed and approved for payment.

The enrollment figures were presented and discussed. At present there are 340 elementary students, 199 junior high students, 217 high school students and 35 special education students making an over all total of 791 students in Springlake-Earth schools.

Last September a year ago, enrollment figures stood at 408 elementary pupils, 125 junior high pupils, 216 high school pupils and 26 special education pupils making a total of 775 pupils.

There is an increase of 16 students in the schools this year.

The difference in last year's and this year's elementary and junior high enrollment figures was explained to be because of moving the sixth grade to junior high this year.

Mrs. Eula Kelley, who is a member of the Historical Survey Society, met with the board and asked permission to place an historical marker on the school campus designating the junior high building, which is 46 years old, as the first permanent school building in the Springlake-Earth area.

The board okayed the placing of the marker and agreed to help various organizations raise funds to pay for the marker.

Bus bids were next opened by the board members. Five bids were submitted to the board.

A \$647 bid from Earl Jones was accepted for the International bus and a bid of \$267 was accepted from Billy Russell for the Chevrolet bus.

The audit report for the 1970-71 school year was read and studied. This report includes audits for federal funding, regular school funding, lunchroom funds and activity funds.

A decision was made by board members to purchase some new furniture, primarily for the second grade.

The members of the board discussed attending the joint meeting of the Texas Association of School Administrators and the Texas Association of School Boards at San Antonio September 24, 25 and 26. Some of the members indicated they might attend.

Delinquent taxes were discussed with a view toward filing suit on some delinquent accounts.

The board inspected, accepted and approved payment for the new bleachers which were built on the south side of the football field.

Approval of employment of Miss Sandra Garlington as special reading teacher for the elementary school was granted. Miss Garlington is from Muleshoe but received her degree from West Texas State University in Canyon.

Approval was also granted for an addition to the industrial arts shop to provide more storage space for projects to serve the growing number of students in the program. The project is estimated to cost \$5,000.

Attending the meeting were Bill Mann, Norman Hinchliffe, Jerry Kelley, K. B. Parish, Ardis Barton, Jimmy Craft, Ed Dawson and P. A. Washington.

Mrs. Gene Brown and Dickie flew to Oklahoma City, Oklahoma, over the weekend to take Dickie for his check up at the Oklahoma Allergy Clinic.

## Springlake Church Assists Boy

The Church of Christ at Springlake is helping to spread brotherly love in our country by assisting a blind boy from Colorado to complete two years of schooling at the Sunset School of Preaching at Lubbock. The boy must tape each of his instructors lectures on a tape recorder and the church at Springlake will purchase the tapes for the young man until he completes his schooling in Lubbock.

The church also helps to support the Christian Children's Home at Portales, New Mexico. Other donations went to the home last year from Springlake church members in the form of housekeeping. Various members traveled to Portales once a month to help clean house, sew for the children and so forth.

The home has sent the church a very nice letter thanking them for their help and asking if they would continue it throughout the next year. The church is trying to organize a floating lectureship which will be formed of five

## Worse Than We Thought..

If, as the Bureau of Labor Statistics indicates, the annual cost of living increase is actually running at only four or five percent while wage gains over two-year contracts range around 25 and 30 percent, why is it still difficult to make ends meet? West Coast columnist Gerry Pratt quotes an expert that comes up with some interesting answers to this puzzle.

The expert says, "We have long felt that a lot of items are not given proper weighting in the rising cost of living -- possibly because they do not represent what the President's Bureau of Labor Statistics considers significant purchases." In the opinion of this expert, based on peripheral items which everyone purchases, the annual rate of price increases over the last two-and-one-half years has been not four to six percent, but more than 22 percent. Shoeshines have increased 100 percent. Haircuts have risen from a \$1.75 a couple of years ago, to at least \$2.50. As Gerry Pratt comments, "Make a list of your own. Start with a first-class postage stamp, up from 5 cents to 8 cents -- 60 percent price increase. A McDonald's package of French fries, up from 15 cents to 20 cents -- a 25 per cent increase."

As inflation continues, official cost of living statistics will probably become increasingly deceptive measures of what the politicians in Washington are doing to the value of the dollar as they spend and tax away the substance of a weary and disillusioned nation.

## Final Rites Conducted For Steven Neal Ellis

Final rites for Steven Neal Ellis, eleven-month-old infant son of Mr. and Mrs. Joe Neal Ellis, were conducted at 2 p. m. Sunday, September 12, in the First Baptist Church of Earth.

Reverend David Hartman, pastor of the First Baptist Church, officiated the services.

Interment was in Earth Cemetery under the direction of

Parsons-Ellis-Singleton Funeral Home of Earth.

The baby passed away Friday morning, September 10, in Methodist Hospital in Lubbock where he had been a patient for about two weeks.

Survivors other than his parents include three sisters, Sherri, Lorie and Brenda, all of the home; and grandparents, Mr. and Mrs. Harold Ellis and Ed Wheat, all of Earth.

## Rites Held For Frank Miles

Final rites were conducted Monday, September 13, for Frank Miles, the brother of Mrs. Elaine Been, at Coulterville, Illinois.

Miles, who had been hospitalized two days, passed away Friday night, September 10, in a Coulterville hospital.

Survivors other than his sister, Mrs. Been, include his

area preachers who will preach one night each at the church where the lectureship will be held for the week.

one brother, one other sister, and two grandchildren.

L. K. Anderson is still a patient in University Hospital at Lubbock. Sunday evening he was reported to be improving.

Mrs. Iona Martin is still a patient in Medical Arts Hospital at Littlefield. She still is not feeling very well.

Mrs. and Mrs. O. M. Cramer of Breckenridge visited in the Gene Brown home last week. Mrs. Cramer is the aunt of Mrs. Brown.

## The EARTH NEWS-SUN



Published at Earth Texas 79031 every Thursday except the first Thursday following Christmas.

Entered as Second Class Matter at the Post Office at Earth, Texas 79031, October 1, 1954--Under Act of Congress March 3, 1970.

### SUBSCRIPTION RATE

Earth and Trade Territory, per year, \$3.50  
Elsewhere in United States, per year, \$5.00

### CLASSIFIED RATES

6¢ per word, first insertion, 5¢ per word thereafter--60¢ Minimum.

### ADVERTISING RATES GIVEN ON REQUEST

ROSS AND POLLY MIDDLETON-----Publishers

## SALE OLTON MUSIC CENTER

SALE ON ALL BAND ACCESSORIES IN STOCK ENDS SEPTEMBER 18

Rico Reeds 19¢  
Valve Oil Reg. 79¢ now 49¢  
Many Other Values

See our selection of guitars, amplifiers, drums, pianos, organs and sheet music.

Music lessons for adults and children will begin Sept. 11. Register now. Lessons will be given for guitar, bass guitar, classical guitar, ukelele, banjo, drums, and combo organ. Guitars will be rented. Rent money may apply on the guitar or after two months on another guitar. Come soon and get signed up. Instructor - L. W. Venable.

### ALSO

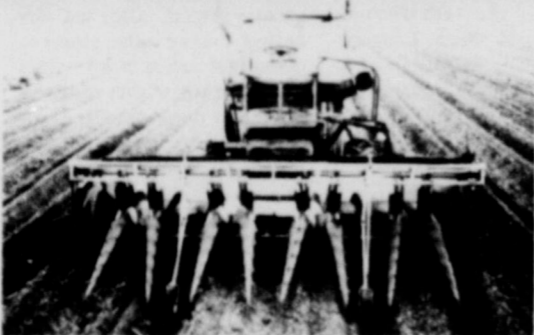
8-Track Tape Sale Continues  
\$6.98 tapes for \$3.98

### USED BAND INSTRUMENTS

1 Valve Trumpet (Conn)  
1 Cornet (Cleveland)  
1 Wooden Clarinet (Martin-Busine)  
1 Used Leblanc Alto Sax

COMPLETE FINANCING

## Don't leave your profit in the field



### Roll-A-Cone

Pick the profit off the ground with the time-tested combine attachment.

Use the superior design cone principle of the Roll-A-Cone Combine attachment to harvest the irregular, leaning, tangled, fallen or flat grain sorghum. Get more bushels per acre in less time. The Roll-A-Cone gets far better results than other gathering methods. It is simple to install and operate. You haven't harvested all your grain unless you've used the Roll-A-Cone.

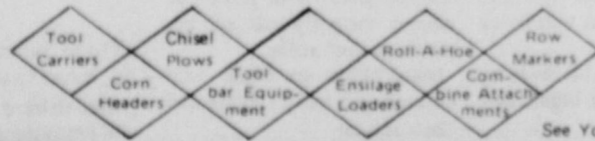
### Universal Corn Header

Now corn and milo farmers, for the first time ever, can harvest both crops with one inexpensive attachment.

Costs about half as much as other corn headers. Cuts any size row 20" to 40".

Crops need not be standing to do a good job. Positive chain drive prevents stops from clogging. Picks up fallen crops.

Why go to the field with less than the best...



MANUFACTURING & DISTRIBUTING CO.  
Phone: 806-868-2410

Rt. 2, Box 25, Tulsa, Texas 79088

## Introducing The New A-M-C COTTON HARVESTER

For Single Or Double Row Cotton Harvesting



Big 500 cubic foot, low profile basket... saves a lot of dumping time.

MODEL 200

Available in Basket Or Trailer Models

THEY ARE NOW ON DISPLAY AT...

## MULESHOE FORD TRACTOR

Muleshoe



## Kent Parish Enlists In Navy

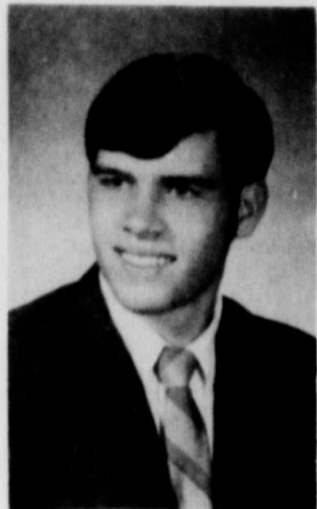
Kent Parish, 19, the son of Mrs. Vivian Parish, left Monday for induction into the U.S. Navy for an enlistment period of four years.

He will go to Orlando, Florida, for basic training.

Parish, who is a 1971 Springlake-Earth graduate had signed up to attend Tech this fall, but when his lottery number, no. 6, was drawn, he decided to enlist in the Navy.

Parish stated that he would like to study pharmaceuticals while serving in the Navy and perhaps continue his studies in that field upon completion of his enlistment period.

While attending Springlake-Earth schools, he was a member of the student council, belonged to the Future Teachers of America his junior and senior years, was a member of the track team, the basketball team and the Wolverine football squad. He was an All District football player in his junior year and captain of the football team in his senior year plus being a member of the junior and senior class play casts.



KENT PARISH

## PTA To Meet

The first regular meeting of the Springlake-Earth Parent Teachers Association is set for 8 p.m. Monday, September 20, in the school cafeteria.

A panel discussion will be held on the grading system in our schools today. The audience will ask the questions.

Anyone who is interested in the program is invited to attend this meeting.

Brigham Young was the father of 57 children.

## Rites Held For Brother Of Local Resident

Funeral services for Roy C. Simmons, Sr., 54, of Vega, who died Thursday night in Northwest Texas Hospital in Amarillo where he had been a patient for one day, were conducted Saturday afternoon in the First Baptist Church of Vega at 4:00 p.m.

Graveside services were conducted later that afternoon in the Oton Cemetery of Oton.

Officiating for both services were Rev. Charles Wyatt, pastor, and Rev. Bobby Blaylock, pastor of the Palo Duro Baptist Church of Wildorado, N.S. Griggs and Sons Funeral Directors of Amarillo were in charge of arrangements.

Simmons was a native of Kerens, and had resided in Vega the past 20 years. He was a farmer and a Baptist.

Nephews, Gary Simmons, Kenneth Williams, Melvin Williams, Albert Miles Simmons, Alton Hollingsworth and Bobby Free, were pall bearers.

Surviving are a son, Roy C. Simmons, Jr. of Lubbock; a daughter, Mrs. Brenda Perkins of Wildorado; two brothers, William C. Simmons of Shreveport, Louisiana, and G. W. Simmons of Vega; two sisters, Mrs. Dean McCrory of Goodwell, Oklahoma, and Mrs. Melton Welch of Earth; and two grandchildren.



BILLIE McELROY is shown setting up three lighted candles and an axe in triangle position so his partner, Reeves Tungkind, can shoot the center candle out, split the bullet on the axe, and put out both side candles. The pair belong to a national championship pistol shooting team from the Texas Department of Public Safety.

## Former Earth Resident Seriously Injured In Accident

Sgt. Harold Campa, the son of Mrs. Kay Campa, who lives near Earth, was seriously injured in a one car accident at 11:45 a.m. Saturday, September 4, on Highway 66 at Shamrock.

Campa, who was on leave from Fort Riley, Kansas, was enroute back to his base when he reportedly lost control of his car after a tire blew out on the vehicle.

He received a broken right hand, severe head injuries, a broken toe on his left foot plus severe lacerations and bruises over the rest of his

body in the accident and was transferred from a Shamrock hospital to Brooks Army Hospital at San Antonio.

At present, doctors are unsure how long Campa will require hospitalization in the Brooks Army Hospital. When he is dismissed from the hospital he will return to his base at Fort Riley, Kansas.

A former Earth resident, Campa is a 1969 graduate of Muleshoe High School where he was a member of the football squad. He entered the service shortly after graduating from high school.

## Census On Children's Immunization To Be Taken

A number of families in this area will take part in the 1971 National Immunization Survey to be conducted the week of September 20 by the Bureau of the Census, according to Walter A. Freeman, Jr., Director of the Bureau's regional office in Denver.

The annual immunization survey is part of a national program coordinated by the U.S. Public Health Service to determine the number of children and teenagers who have been immunized against influenza, smallpox, polio, diphtheria, whooping cough, tetanus and measles.

The questions on immunization will be in addition to the usual ones asked in the Bureau's monthly survey of employment conducted for the U. S. Department of Labor. Results of this monthly survey provide a continuous measure of economic conditions in the country.

Facts supplied by individuals participating in this voluntary survey are kept strictly confidential by law and results are used to compile statistical totals.

The interviewer who will visit families in this area is Mrs. Rosemary McNeese of Amberst.

## My Neighbors



"Watch where you're going, can't you, you clumsy bird brain!"

## Randy Hestand To Inform Rural Residents On Jobs

Randy J. Hestand, the grandson of Mrs. Edith Brockett, has been appointed as one of a two man team to start a pilot project to inform rural residents of employment training programs and job opportunities.

The project is beginning in Sierra and Socorro counties and Hestand has been employed for the Sierra County position with headquarters at Truth or Consequences, New Mexico.

The programs will be coordinated through County Extension Agents, with Eugene Ros in charge. In his new position, Hestand will help identify employment opportunities, develop community awareness of manpower problems and programs, serve as manpower exchange

center and refer applications for employment or training to the Employment Security Commission.

## 4-H Club To Have Program

The first regular meeting of the local 4-H Club is set for 8 p.m. Monday, September 20, at the show barn in Earth.

A program on "Safety" will be presented to the club.

An inspirational will be presented by Glenn Branscum while Michael Graham will be in charge of recreation.

Anyone who is interested in joining the 4-H Club is invited to attend the meeting.

**DRIVE WITH CONFIDENCE...**

**GO TO Plains**

AUTO PARTS  
P. O. Box 606  
MULESHOE, TEXAS  
79047

**Tune In to Scientific Tune-Ups**

We have the very latest in scientific tune-up equipment to insure proper performance from your engine. Isn't it about time you had a tune-up? Tune in to a better running car with our scientific tune-up. Hurry.

South Main MULESHOE Phone 272-4576

SUCCESS!...

*Is just a matter of training:*

Lubbock's leading specialized training institute is now interviewing students for the most up to date courses in

No Payments While In School  
Make Reservations Now For  
**SEPTEMBER CLASSES**

- ★ Automation Secretarial
- ★ Senior Accounting
- ★ Computer Programming
- ★ Leader Drafting
- ★ Commercial Art

Day And Evening Classes

For More Information Write, Call or Visit

COMMERCIAL COLLEGE

OF LUBBOCK  
5007 34th Street Lubbock, Texas 79411 Phone 747-4371

It's Time TO THINK About New Tires For Your Tractors And Trucks!!!

DUTCH HAS THE BEST

ALSO FOR THOSE COOL MORNING STARTS BE SURE TO GET A TROP-ARTIC BATTERY AND TROP-ARTIC OILS

For All Your Automotive Needs Drive In To

Earth Oil and Gas

BIG STORAGE and that ain't hay!

IT'S GRAIN

Load It Up And Bring It On In To DIMMITT AGRI INDUSTRIES FLAGG FACILITIES

It Pays To Trade With Your Farmer Owned Elevator...

DIMMITT AGRI INDUSTRIES, INC.



# Town And Country Study Club Meets For Breakfast Prayer Group Has Devotional Notice

Fourteen members of the Town and Country Study Club met at 7 a.m. Thursday, September 9, in the home of Mrs. Sam Cearley for a delicious breakfast and their first regular meeting of the year. Each member answered the roll call with highlights of their vacations.

A short business session was held with club president, Mrs. Ray Kelley, presiding.

A letter was read from the Red Cross requesting ditty bags. The club voted to send a donation of \$10 to the Red Cross.

The club has received a new shipment of pecans which they will sell for \$2.50 per pound. Anyone interested in purchasing some of the pecans can contact any Study Club member.

It was reported that Mrs. Marie Ross and Mrs. Sam Cearley visited the XIT Study Club at Springlake Tuesday, September 7.

A very enjoyable program was presented at the Springlake club by a group from Girlstown.

The next meeting of the Town and Country Study Club will be September 23 in the home of Mr. and Mrs. L. Z. Anglin.

Members attending the Study Club meeting were Mrs. Clay Beavers, Mrs. B. Campbell, Mrs. L. Z. Anglin, Mrs. Lena Hite, Mrs. M. E. Kelley, Mrs. N. Ray Kelley, Mrs. Carra Morgan, Mrs. B. F. Orteg, Mrs. Gladys Parish, Mrs. Marie Ross, Mrs. Wayne Rutherford, Mrs. John Welch, Mrs. R. W. Fanning, co-hostess and Mrs. Sam Cearley, hostess.

India has 220 vernacular languages.



TOWN AND COUNTRY STUDY CLUB OFFICERS who will be serving the club during the 1971-72 club year are, left to right, Mrs. B. F. Orteg, Mrs. N. Ray Kelley, Mrs. B. Campbell, Mrs. Marie Ross and Mrs. M. E. Kelley.

Seven members of the Ladies Prayer Group of the First Baptist Church of Earth met for their regular weekly meeting at 10 a.m. Tuesday, September 14, in the home of Mr. and Mrs. Hershel Hulcy.

Mrs. Helen Hulcy delivered a short devotional before the regular session of prayer. Mrs. Hulcy served lunch to the members of the group who could stay.

The next meeting will be held in the home of Mr. and Mrs. Clinton Green.

Attending the meeting were Mrs. David Hartman, Mrs. Clarence Kelley, Mrs. Billy Pittman, Mrs. Ted Haberer,

## Friendship Class Holds Luncheon

The Friendship Class of the First United Methodist Church had its monthly luncheon Tuesday, September 14, in the home of Mrs. R. A. Axtell.

After lunch, Mrs. H. S. Sanders, president, conducted the business meeting during which new officers were elected. Officers selected to serve during the forthcoming year are Mrs. Marie Ross, president;

Mrs. Bessie Cearley, vice president; Mrs. Gladys Goodwin, secretary; and Mrs. Beula Coker, treasurer.

Games of 42 and 84 were played following the business session.

Those ladies attending the meeting were Mrs. H. S. Sanders, Mrs. Naomi Burgess, Mrs. Beula Coker, Mrs. Marie Ross, Mrs. Ruel Fanning, Mrs. Gladys Goodwin, Mrs. Bessie Cearley, Mrs. John Welch, Mrs. R. H. Belew, Mrs. Grill Bulls and Mrs. R. A. Axtell.

Mrs. Pete O'Hair, Mrs. Clinton Green and Mrs. Hulcy.

## Girl Scout Neighborhood Meet Thursday

Due to conflicts of interest and the death of a relative of Mrs. Donald Clayton, the Girl Scout Neighborhood meeting, scheduled for September 14, has been re-scheduled for 9:30 a.m. Thursday, September 16, in the home of Mr. and Mrs. Donald Clayton at Springlake.

The meeting is to plan programs for the forthcoming year for members of Girl Scout and Brownie Troops.

Anyone interested in helping with a Girl Scout or Brownie Troop should attend this meeting.

Girls who are in the second grade are eligible to become Brownies. Those girls interested in joining Brownies should have their mothers attend the meeting or contact Mrs. Donald Clayton.

Mrs. Clayton requests that, if at all possible, troop leaders serving last year to please be present for the Neighborhood meeting.

## Party Line

First United States Census was taken in 1790.

Piccolo is the highest toned wind instrument.

Vanilla combined with almond is pistachio flavor.

Thursday, September 16, at 8 p.m. the Young Farmers will meet in the Ag Building at school.

A program will be presented by Ray Joe Riley, area director for Water Incorporated, on Texas Water Planning.

Anyone who is interested is cordially invited to attend this meeting.

Mrs. Gary Strahan, nee Janis Bridge, will be honored with a bridal shower in the home of Mr. and Mrs. James Sanderson from 5 to 6:30 p.m. Monday, September 20.

The bride has made selections of china and pottery at Howell's 216 Floral in Earth.

An Appreciation Tea honoring Bernice English is scheduled from 4 to 6 p.m. Thursday, September 16, in the home of Mrs. M. E. Kelley.

The Earth Roping Club will have a Fun Night Saturday, September 18, at 7:30 p.m. at the rodeo grounds.

There will be a hamburger fry and all types of entertainment.

Everyone is invited to attend this affair.

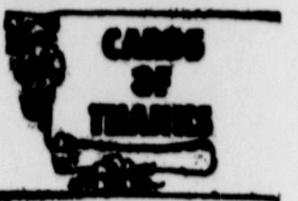
## Party Line

Mrs. Jim Robbins, Lynda, Johnny and Bobbi Parker visited in Hereford Tuesday with Mr. and Mrs. Wayne Robbins and family.

Mr. and Mrs. Forrest Simmons visited with relatives last week at Marble Falls, which is close to Johnson City.

BODIES OF POET William Blake and his wife lie in pauper's graves in Buyhillsfields, Finsbury.

LONGEST RECORDED period for which a person has voluntarily deprived himself of sleep has been 276 hours.



Our hearts are so filled with appreciation for the thoughtfulness, prayers and concern of all our neighbors and friends while Alfred and I were in the hospital. Where on earth could we find such lovely people except at Earth.

Alfred and Cleste Durton

Words are inadequate to express our thanks to the many friends that have stood by offering assistance, kindness and love throughout the months that our precious little son, Steven, remained on this earth. During his brief stay his days of hospitalization were many but we always felt your prayers were with us.

Our son is now in heaven and you, our dear friends, have made our loss a little easier to bear by your prayers, words of sympathy and many, many acts of kindness.

May we say thanks for the flowers, food, visits and for all the many things each of you have done during Steve's lifetime.

May God richly bless each of you.

Mr. and Mrs. Joe Neal Ellis And Girls

## Home Demonstration Club Meets With Mrs. Bills

Ten members of the Springlake Home Demonstration Club met in the home of Mrs. Odeal Bills Thursday, September 9, for a regular meeting.

The meeting was called to order by club president, Mrs. A. E. Hollingsworth.

Mrs. Odeal Bills presented a very interesting invocation entitled "The Invisible Barrier."

Minutes of the previous meeting were read by Mrs. Keith Boone, club secretary.

Club members answered the roll call by telling of new products they have used.

Mrs. Bruce Higgins presented an outstanding program entitled "Social Culture Psychological Influence on Food Patterns."

Mrs. Higgins also received

the hostess gift.

A "Tasting Bee" was held by those members present during which they sampled dishes prepared by club members using ground beef.

"Tasting Bee" dishes and assorted beverages were served to Mrs. Bruce Higgins, Mrs. Keith Boone, Mrs. Marvel Caruthen, Mrs. R. W. Fanning, Mrs. Herman Cooper, Mrs. A. E. Hollingsworth, Mrs. T. V. Murrell, Mrs. Orlan Bibby and club visitor, Mrs. Tonya Branscum, by the hostess, Mrs. Odeal Bills.

Those ladies attending the meeting were Mrs. H. S. Sanders, Mrs. Naomi Burgess, Mrs. Beula Coker, Mrs. Marie Ross, Mrs. Ruel Fanning, Mrs. Gladys Goodwin, Mrs. Bessie Cearley, Mrs. John Welch, Mrs. R. H. Belew, Mrs. Grill Bulls and Mrs. R. A. Axtell.

Minutes of the previous meeting were read by Mrs. Keith Boone, club secretary. Club members answered the roll call by telling of new products they have used. Mrs. Bruce Higgins presented an outstanding program entitled "Social Culture Psychological Influence on Food Patterns." Mrs. Higgins also received the hostess gift.

## Young Homemakers Attend Area I Convention

Six members of the Springlake-Earth Young Homemakers of Texas attended the 11th annual Area I Young Homemaker Convention at the XIT Steak House in Muleshoe Saturday, September 11.

The Young Homemakers enjoyed a style show, sponsored by various Muleshoe merchants, at the luncheon to begin the convention.

During the afternoon session, Mrs. Edward Whittner of Plainview spoke to the Young Homemakers on "The Fine Art of Liking Yourself."

## Homemakers Sponsor Luncheon

The Future Homemakers of America held a luncheon for the public Sunday, September 12, in the school cafeteria.

Two hundred persons purchased tickets and attended the luncheon. The organization made a \$150 profit which they will use to help finance other projects throughout the forthcoming year.

The menu of delicious food, which consisted of baked ham,

potato salad, tossed salad, assorted Jello salads, hot rolls, apricot pie and coffee or tea, was prepared and served by FHA girls.

Mrs. Jearl James and Mrs. Larry Hausmann were voting delegates from the Springlake-Earth Chapter of Young Homemakers.

Mr. and Mrs. Larry W. Hausmann and Mr. and Mrs. Jerry Jones attended the Awards Banquet in the evening.

Attending from the Springlake-Earth area were Mrs. Jerry Jones, Mrs. Johnny Collins, Mrs. Jearl James, Mrs. David Metcalf, Mrs. Larry Hausmann and Miss Sue Smith, sponsor.

## OMAR KHAYYAM'S poetry

is probably the most widely read in the world.

FANNY CROSBY, the blind hymn writer, wrote some 2,000 songs and hymns.

## ST. CLAIR'S

IS HAVING A  
**FABRIC SALE**  
THAT IS A REAL DREAM

<b>One Table - 99¢ - \$1<sup>99</sup></b>
<b>Bonded Knits</b> \$4.00 Value NOW <b>\$2<sup>99</sup></b>
<b>Assorted Prints</b> 3 Yards For <b>\$2<sup>00</sup></b>
<b>Assorted Trim</b> 22¢ A Yard

**St. Clair's**  
Muleshoe

# WE GOT 'EM!

## COME AND GET 'EM....

THE ALL NEW '72 MODEL

### BUICKS AND OLDSMOBILES

# BROCK MOTOR COMPANY

## Tutu's

### SCHOOL OF BALLET

507 Main Sudan, Texas

**Classes To Begin**  
**Saturday, September 18**  
**Registration Sept. 11**  
**2 p.m.**

**Monday Through Saturday Classes**

- \* PRE-BALLET.....CHILDREN 6 & 7
- \* BALLET ONE.....AGES 8 TO 10
- \* BALLET ONE.....AGES 11 AND UP
- \* DANCERIZE CLASS FOR TEENAGE AND ADULTS

FOR MORE INFORMATION, CALL 227-3561

We would like to extend a personal invitation to the good people at Earth, Texas to come in, visit a while, and see our selection of fine carpets and name brands furniture.

**TRADERS FURNITURE**

Clovis, New Mexico



## 5 County Women To Attend Annual Homemakers Conference

More than 2,000 homemakers from across the nation have pre-registered for the 35th annual conference of the National Extension Homemakers Council in Dallas, September 20-24.

The Dallas Convention Center and Baker Hotel will serve as headquarters. Besides those who have pre-registered, total attendance for the conference is expected to be approximately 3,000 persons including more than 700 from Texas.

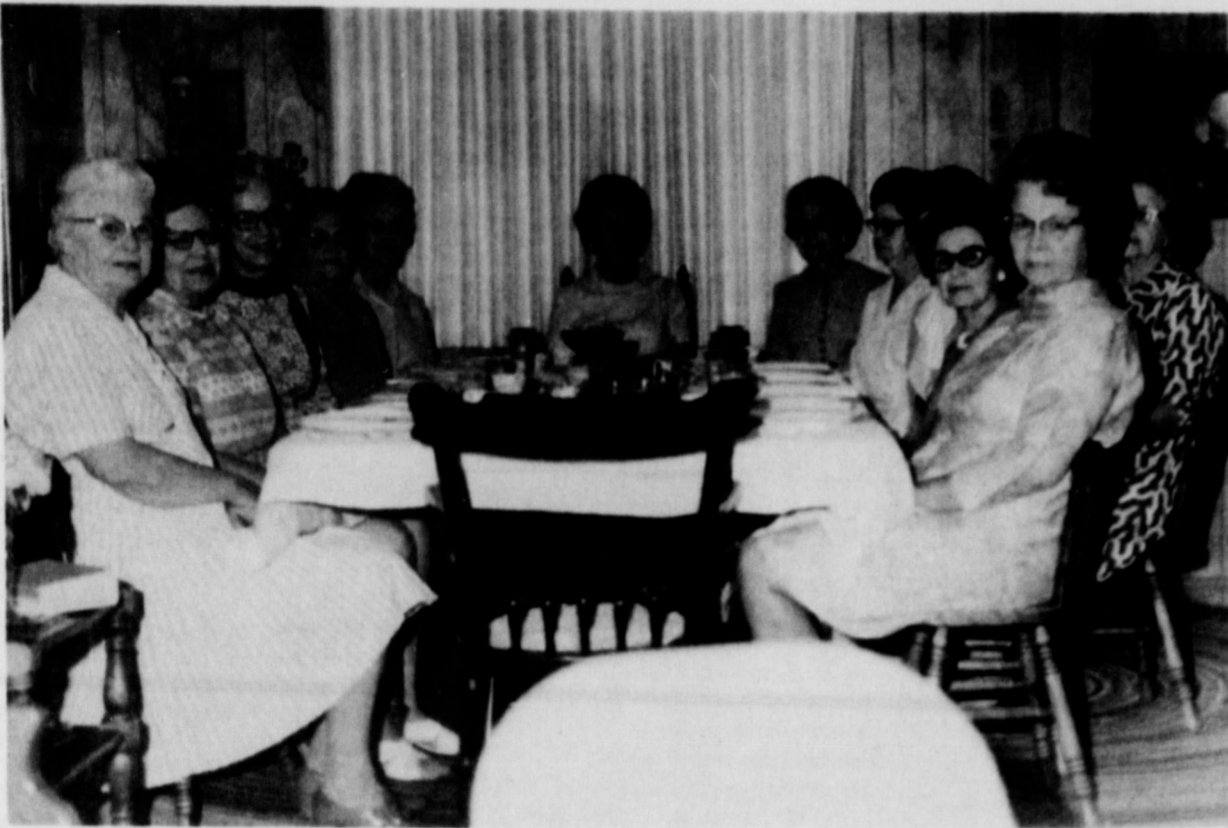
Theme for the Homemakers Council conference will be "Priorities for Progress."

Mrs. Keith Blackner, national president for the homemakers organization from Lyman, Wyoming, will open the meeting at 9 a. m. September 21. Director John E. Hutchison of the Texas Agricultural Extension Service will welcome the group and Mrs. A. E. Hodges of Hereford will bring greetings from the Texas Home Demonstration Association which she heads.

Seven workshops ranging from citizenship to cultural arts, family life, international safety and public information are scheduled, along with panel discussions, rap sessions, an awards luncheon, regional dinners, and speakers at general conference sessions.

Featured speaker the morning of September 23 will be Edwin L. Kirby, administrator, the Extension Service, Washington, D. C.

Those attending from Lamb County are Mrs. Shine Miller, Littlefield; Mrs. T. V. Murrell, Earth; Mrs. Walter Struve and Mrs. Homer Curry, Olton.



ENJOYING A DELICIOUS BREAKFAST during the first meeting of the year for the Town and Country Study Club. They are, left to right, Mrs. Marie Ross, Mrs. C. P. Parish, Mrs. M. E. Kelley, treasurer; Mrs. B. F. Orteg, vice president; Mrs. B. Campbell, Mrs. Ray Kelley, president; Mrs. Sam Gearley, Mrs. John Welch, Mrs. Wayne Rutherford, Mrs. R. W. Fanning, Mrs. Carra Morgan, federation counselor; and Mrs. Clay Beavers.

## Teenagers May Prefer Unconventional Breakfast

Do you have a normally active teenage girl in your home -- one who doesn't like to eat a conventional breakfast? She could choose to eat a sandwich for breakfast, according to Frances Reasonover, Extension foods and nutrition specialist at Texas A&M University.

Why not? Miss Reasonover says the important point is that you eat as you like, as long as the foods you choose for the entire day include specified amounts from the basic four food groups, and as long as you meet calorie needs.

She explains that a day's eating might start like this: a cheese sandwich for breakfast along with a banana and a glass of milk. If that doesn't appeal, you may want to begin the day with spaghetti, chili, baked beans or deviled eggs.

For a normally active girl of average height -- 5 feet 3 in-

ches -- weighing 117 pounds, multiply 117 by 20 calories and you find that she needs approximately 2,300 to 2,400 calories each day.

Her food intake should include 4 cups of milk or the equivalent; 4 servings of fruits and vegetables, making sure to include those rich in vita-

mins A and C; 4 or more servings from the bread-cereal group; and 2 servings from the meat group.

The guide is flexible. The specific foods chosen from each group and the time when eaten, either as meals or snacks, is largely a matter of food preferences and family meal routine, she says.

But, the specialist adds, remember to choose right and maintain a desirable weight.

SOY BEANS impart the characteristic flavor to Worcestershire sauce.

## Kathy Rumbaugh Presents TOPS Program

TOPS Happy Losers met Thursday, September 9, at the office of the late Dr. Richardson. Eleven members answered roll call with leader, Emily Clayton, presiding

over the meeting. Jean Rumbaugh was Queen of the Week with a 2 pound loss and Pauline Hucks was runner-up with a 1 1/2 pound loss. Mrs. Elaine Been's name

was drawn for the dollar but she was not present to receive the gift.

Kathy Rumbaugh received a lovely pair of crocheted beads in a grab bag for 8 weeks per-

fect attendance. Jean Rumbaugh received a grab bag for 6 weeks continued loss which contained a green scarf.

Kathy Rumbaugh wore an inspiring apron to the meeting with "Eat, Drink and be Merry, for Tomorrow we Diet" inscribed on it. She furnished the program about the Trim Away Wrap process of losing inches. A discussion was held later and all members agreed that the only permanent way to lose pounds and inches is to cut down calorie intake and exercise to firm the body.

The meeting was adjourned with the Serenity Prayer. Those present were Mrs. Emily Clayton, Mrs. Jo Houchin, Mrs. Inez Inglis, Mrs. Pauline Hucks, Mrs. Florence Gover, Mrs. Lois Rudd, Mrs. Oma Pearl Mirrell, Mrs. Odal Billie, Mrs. Kathy Rumbaugh, Mrs. Jean Rumbaugh and Mrs. Bettye Hausmann.

Lungs cleanse and purify blood in a human body.

BARRACUDAS are more apt to attack man than sharks.

MUSCLES NORMALLY account for 40 per cent of the body weight.

LONGEST RECORDED interval in post-mortem birth is 29 minutes.

METAL USED in coins is cold at the time the coins are stamped.

COINAGE of the United States silver dollar commenced in 1794.

**EASIEST PLACE ON EARTH TO BUY A HOME...**

**COUNTRY ESTATE MOBILE Homes**

**USE FEATURE TOWN AND COUNTRY MOBILE Homes...**

• 3040 W. 7<sup>th</sup> CLONIS 762-4200

**20% OFF**

Lay-a-way now for Christmas

ON ALL OUR




BY *Noritake*

CULEBRA

This exquisite fine china features a fresh youthfulness, a get-up-and-enjoy-yourself spirit that hosts and guests can share alike.

- Notice, too, the exciting new shape...
- ...And the gentle flare of the plates and serving pieces.

- \*BARBADOS
- \*BIMINI
- \*ESPERANZA
- \*DOMINICA
- \*BAHAMA
- \*CULEBRA

Flowers and Gifts for all Occasions

**Howell's 216 Floral**

EARTH PH. 257-2051

**YOU ARE INVITED TO ATTEND**

Something Special is Going On At The Bank, Abner!



**THE ART DISPLAY IN THE LOBBY THIS WEEK**

(Monday Through Friday)

There Will Be Approximately **50 Paintings On Display** —

**DONE BY LOCAL ARTISTS**

↓

**CITIZENS STATE BANK**

Member Of F. D. I. C. — Earth

WE ARE PROUD OF THE ARTISTIC TALENT IN THE AREA

DON'T MISS SEEING IT THIS WEEK

HAVE A CUP OF COFFEE WITH US

**Anthony's**

MULESHOE, TEXAS

**Golden Anniversary Home Furnishings**

**SPECIALS**

**LADY PEPPERELL<sup>®</sup> BRIDAL BOUQUET SHEETS**

2 Color Combinations

Twin or Full Cases

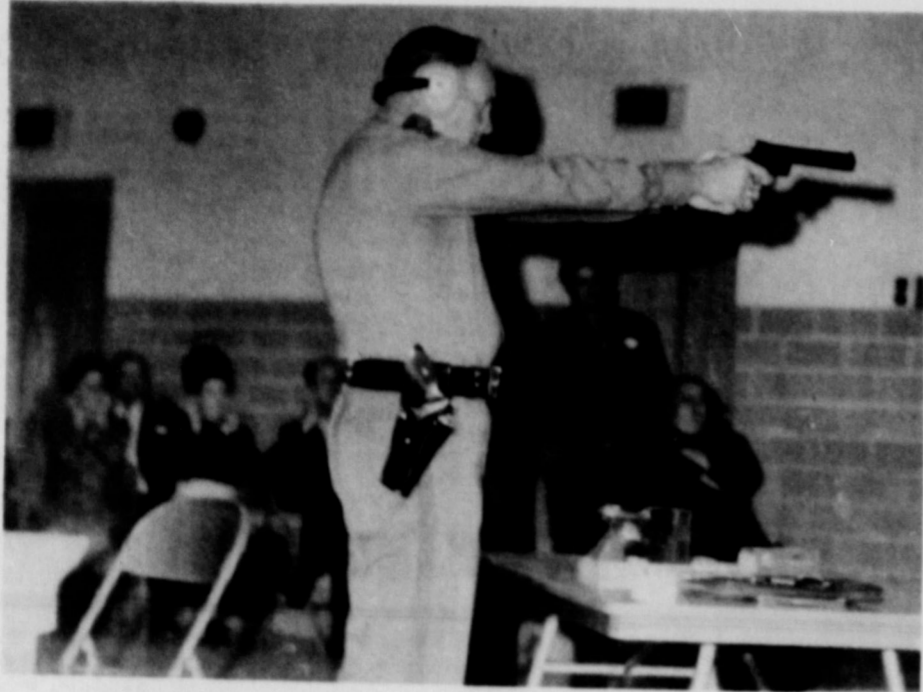
**2 For \$5 \$2 Pair**

Lady Pepperell<sup>®</sup> brings you an all new beautiful print. Bridal Bouquet in two lovely color combinations of Gold and Blue. These never need ironing and shed wrinkles. Twin or full, flat or fitted with matching pillow cases.









REEVES TUNGKIND astonished all who were present for the Teachers Appreciation Banquet when he put on an exhibition displaying his shooting ability.

## Early Retirement Popular Today

Does time really affect a worker's enthusiasm for early retirement?  
No, reports Monte Bell, Extension specialist in family life education-aging.  
According to a study by Michigan's Survey Research Center, workers are enthusiastic about the prospect of early retirement.

Then, after retiring, they are satisfied with the experience.  
Workers in increasing numbers have a choice of early retirement, Miss Bell explains. Their greatest worry is having an adequate income. Other important concerns revealed by the study are keeping rel-

atively active, remaining involved with life and maintaining good health.  
The study showed no significant dissatisfaction among retirees past 65, who lost the early retirement supplement, even though the younger retirees are receiving full pensions.

## Young Farmers Local Students Hausmann Elected Area Teen Week Sept. 18-25 Enroll At LCC President Of Young Farmers Registration

September 18-25 has been officially designated as Young Farmer Week in Texas by proclamation of Governor Preston Smith.  
The proclamation, signed recently, gives additional recognition to this rapidly growing farm group. The Young Farmer Association is sponsored under the auspices of vocational agriculture departments in high schools across Texas and the Texas Education Agency.

Over 250 Young Farmer chapters have been organized on a local school district or county wide basis to carry out educational activities which will help the members keep abreast of the technological advancements in the field of agriculture and to develop greater skill and efficiency in management, production, and marketing. Governor Smith points out in the proclamation that, in addition to educational activities, Young Farmers incorporate in their planned chapter programs civic and community service projects and leadership activities that are designed to improve their communities, State, and Nation, and to promote the welfare of all citizens. He further points out that through these efforts they are helping to strengthen the economy of our country and are promoting good citizenship.

In closing the proclamation, the Governor predicted that as the organization continues to grow, it will play an increasingly important role in the life of rural America.  
Dick Britten, a 25-year-old rancher from Bryan, is President of the State Association of Young Farmers, which has a membership of over 3,600. State officer for this area is Glen Odom of Dimmitt. Area president is Danny Burton of Dimmitt and area supervisor is Walter Labay of Plainview.

Per acre values of farmland and buildings went up 3 per cent nationally in the year ended March 1, 1971.

CASES OF THE growth in late life of a third set of teeth have been recorded several times.

Myra Dear, daughter of Mr. and Mrs. J. W. Dear of Springlake, and Mike Wilson of Springlake, have enrolled for the fall semester at Lubbock Christian College.  
Tom Mann, son of Mr. and Mrs. W. L. Mann, and Lilah Gainey, daughter of Mr. and Mrs. Allison Gainey have enrolled for the fall semester at LCC.

Tom is a sophomore majoring in Liberal Arts. Lilah is a junior majoring in Music.  
Dear is a returning junior majoring in Elementary Education with a teaching field in English. She is a member of Alpha Epsilon Chi, women's social club. Wilson is a transfer student majoring in Bible with a History minor.

Lubbock Christian College is a small, private, senior college offering BA and BS degrees in 16 majors.

Jerry Jones and Larry W. Hausmann were delegates from the Springlake-Earth Chapter of Young Farmers to the 11th annual Area I Young Farmer Convention held at Muleshoe Saturday, September 11.

The business conducted at the convention included election of officers where Larry W. Hausmann was elected president for the year 1971-1972. He is retiring area treasurer.

The New Holland Division of Sperry Rand notes that the assets of American agriculture equal about half the market value of all U. S. corporations listed on the New York Stock Exchange.

Dr. A. W. Young, past professor at Texas Tech, presented a slide program on agriculture in Argentina.

At the awards banquet, held Saturday evening, Larry W. Hausmann was presented a plaque for being selected runner-up for the Area I Star Young Farmer Award.  
Attending the banquet from Springlake-Earth were Mr. and Mrs. Jerry Jones and Mr. and Mrs. Larry W. Hausmann.

By the time he is 70, the average American will have used 26 million tons of water, 10,000 pounds of meat, 14 tons of milk and cream, and 9,000 pounds of wheat.

MOST INFECTIOUS of all diseases is the pneumonic form of plague.

Only 189 young people aged 18, 19 and 20 have registered to vote in Lamb County thus far.

Voters under 21 aren't expected to cause much of an impact on next year's elections, based on the figure given on registration.

Even though the voter registration for those under 21 was recently extended again only two more had registered in the tax collector-assessor's office through Friday.

Though the 18-20 year olds are newly enfranchised, they will not be called for jury duty until they are twenty-one years of age.

Confusions about the status of the under 21 year olds and jury service came about mid-July when the law was changed limiting jury selection to those who are registered voters.

**Announcing...**  
**NEW HOURS EFFECTIVE**  
**Beginning September 20**  
(Till Further Notice)

**Daily 6 A.M. - Midnight**  
**Sunday 8 A.M. - Midnight**

Your Patronage deeply Appreciated

**EARTH CAFE**  
**Dine Here**

WE  
WANT TO BUY  
YOUR  
CORN...

**EARTH  
ELEVATOR**

# FREE PORTRAIT Event!

**Top Quality Professional**  
**ONE 8x10 COLOR PORTRAIT**  
CUSTOM LINEN FINISH

Your portrait is free with either a new or renewal subscription. Tell your friends, family and neighbors of this free offer.

- All Portraits Will Be Taken Locally
- You Select Final Portrait From Several Poses
- You'll be Notified by Phone or Mail of your Appointment

**EARTH NEWS-SUN P. O. Box 568 EARTH, TEXAS 79031**

Send This Coupon To The Above Address

**SUBSCRIPTION ORDER BLANK**

Please enter my new subscription for one year.

Please extend my present subscription for one year after the present expiration date.

I am enclosing my check or money order for \_\_\_\_\_ in full payment of my subscription.

Approx. Best Time for Appmt: \_\_\_\_\_

Name \_\_\_\_\_ Phone \_\_\_\_\_

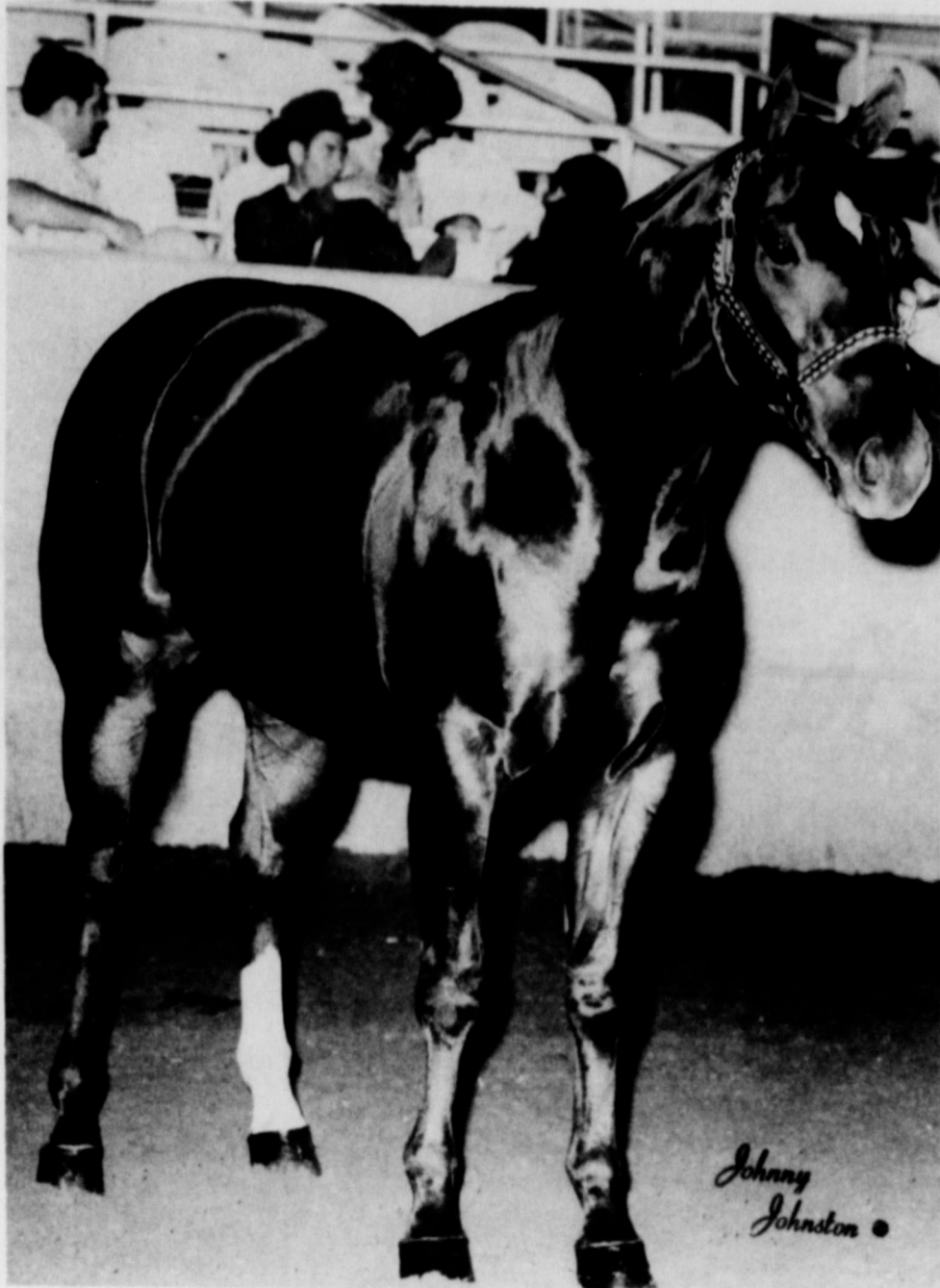
Address \_\_\_\_\_ Zip \_\_\_\_\_

Town \_\_\_\_\_

Only use gift. Rate of my own child, adult or group. This offer may not be used to obtain additional gift portraits of the same subject by more than one subscription.

**Portrait May Include Single Child Group of Children or Family Group**





## Jerri Bar Named Grand Champion

Friday, September 10, and Saturday, September 11, Jerri Bar, owned by Marvin Been, Jr., was named Grand Champion Gelding in two county fairs.

At the Quarter Horse Show at the Curry County Fair in Clovis, New Mexico, Friday, Jerri Bar placed first over one hundred and thirteen other entries.

Traveling to Tulsa Saturday for the Quarter Horse Show at the Swisher County Fair, the horse again won the Grand Championship prize after competing with one hundred and nine other entries.

Last year, Jerri Bar placed first in the Quarter Horse Show at the State Fair of Texas and third place in the National Quarter Horse Congress in Columbus, Ohio, after competing with 912 other entries.

### Party Line

Mr. and Mrs. R.S. Cole were accompanied by Mrs. Odeal Bills of Olton Sunday to visit Mr. and Mrs. Clifford Bills and daughters at Denver City.

Johnny Dale McNamara was home last weekend on a 3 day pass from Fort Leonardwood, Missouri.

## Quarantine Of Hogs Hits Southeast Corner Of County

Quarantines for hog cholera have been placed on portions of Lubbock, Hockley and Lamb counties by Federal and state animal health agencies, according to Dr. Gilbert R. Hollis, area swine specialist.

The quarantines were enacted because of two confirmed outbreaks of hog cholera, one each in Lubbock and Hockley counties. The action is part of a stepped-up campaign to wipe out this costly swine disease, Hollis adds. The quarantine will be removed when the threat of disease spread has been eliminated.

The area in Lubbock County is bounded by a line extending from the northeast corner of the Lubbock County line,

west along the county line to the intersection of Highway 87, then south along Highway 87 to the north bank of Yellow House Canyon. Then east along the north bank of Yellow House Canyon to the Lubbock County line, then north along the county line to the point of origin.

The quarantine area for Hockley and Lamb counties is bounded by a line from Smyer, north along Farm Road 168 to the intersection of Farm Road 54, then west along Farm Road 54 to the intersection of Farm Road 303. From there, south along Farm Road 303 to the intersection of State Highway 116, then east along State

Highway 116 to Smyer.

The specialist explains that no swine in the quarantined areas can be moved without health certification from an accredited state or federal veterinarian. Any producer within the area who wants to take hogs to slaughter may call the Ramada Inn at 763-9343, and ask for any member of the Hog Cholera team. The producer can then obtain farm inspection and a certificate for movement.

"All swine farms within the federally - quarantined areas will be inspected by the state animal health officials for signs of sickness," Hollis says, "and this inspection will be completed as quickly as possible."

Swine producers within the quarantined areas who wish to exhibit at the Panhandle-South Plains Fair may do so as long as the hogs are accompanied

by a certificate of inspection. After the fair, these hogs must be taken directly home and isolated for 30 days.

The specialist urges any producer who has sickness in swine to notify a veterinarian, county agent or the animal health officials. Hollis will also receive reports at 763-9451.

### Party Line

Debrah Parish spent Sunday and Monday of last week visiting her mother, Mrs. Vivian Parish, and brother, Kent.

MEDICAL WRITINGS indicate that influenza has been recognized since 400 B. C.

IN 1888, a 15-year-old female was reported to have yawned continuously for a period of five weeks.

# WE WANT YOUR GRAIN

## SOYBEANS AND CORN

ALL GRAIN, ESPECIALLY CORN, WILL BE STORED LOCALLY

\*HIGHEST MARKET PRICES

\*PROMPT COURTEOUS SERVICE

The **SPRINGLAKE ELEVATOR** Has Merged With **3-WAY GRAIN COMPANY**

Ownership Remains The Same

**WE SOLICIT YOUR BUSINESS AT BOTH PLACES**

## SPRINGLAKE ELEVATOR AND 3-WAY GRAIN CO.

In SPRINGLAKE

## HEAT-N-CLEAN

in the **Electric Climate**

...put in **ELECTRIC HEATING** and we'll wash your dishes with a **FREE** **ELECTRIC Dishwasher...**

■ Put clean electric heating in your single family residence and we'll give you an electric dishwasher to clean your dishes. You may choose either a built-in model or the convertible in your choice of colors - Dark Copper, Avocado, Harvest Gold, or White. We'll deliver it to your door and you take care of the installation as you see fit.

■ To qualify for this "most wanted" appliance, the dishwasher, you need only be a customer of Southwestern Public Service Company and put permanently installed, whole-house electric heating in your present or new home with installation beginning not later than December 1, 1971, when the offer expires.

■ Call us this week for complete information on the desirability of comfort electric heating. Don't miss out on the opportunity to receive an electric dishwasher free of extra cost!

■ Enjoy clean living in the electric climate.

**Call us this week!!!**

GOLDEN ANNIVERSARY

**Comfort ELECTRIC Heating**

1921-1971

P.S. If you already have a dishwasher - don't despair. We have a substitute you'll like.



## "Shadow Of The Boomerang" At Sudan Church Monday

Evangelist Billy Graham's newest feature-length dramatic film, "Shadow of the Boomerang," will have its Sudan showing Monday, September 20 at 7:30 p.m. at the First Baptist Church.

Starting vivacious Georgia Lee and television's Buffalo Bill, Jr., Dick Jones, "Shadow of the Boomerang" is an outdoor action picture with all of the excitement and breath-taking scope of the land, "Down Under". Setting for the screen drama is Australia's "Outback", the continent's vast interior region where some of the world's largest cattle stations are located.

The two young Americans head an All-Australian supporting cast, playing brother and sister roles in a turbulent story of homestead life. Their arrival in Australia to manage newly acquired family holdings, plunges the couple into strange surroundings and situations with which they find it difficult to cope. The brother is immature and impetuous, slow to accept Australian ways. His sister is much more democratic, readily accepted by her new friends with whom she joins in an attempt to instill understanding and tolerance in her brother.

Filed against the backdrop of the Billy Graham Australian Crusades, "Shadow of the Boomerang" seeks to underline the Godly reaction to human crises and conflicts. Spokesman for the Christian position is Billy Graham, seen in dramatic Crusade footage photographed at the site of the Evangelist's record-breaking crowds in Melbourne and Sydney. An authentic landline relay meeting which shared the big city Crusades with the stockmen of the "Outback" is used as an effective dramatic device in the story climax.

"Shadow of the Boomerang" was produced and directed by Dick Ross, President of World Wide Pictures, the organiza-

tion which has created such previous Billy Graham film successes as "The Heart is a Rebel", "Souls in Conflict" and "Oiltown, USA". The new picture will be shown free of charge under the auspices of the Billy Graham Evangelistic Film Ministry.

## Phil Middleton Is Manager Of Public Finance

Phil Middleton was named manager of Public Finance in Midland last week. He assumed his duties there Tuesday of this week.

Middleton has served as assistant manager of Public Finance in Amarillo since February of this year. He has been associated with the company for 17 months.

Middleton is a graduate of Springlake-Earth High School with the class of '65. He attended South Plains Junior College and West Texas State University.

Mr. and Mrs. Middleton moved to Midland Tuesday. Middleton is the son of Mr. and Mrs. Ross Middleton of Earth. Mrs. Middleton is the former Becky Sanders, daughter of Tom Sanders of Earth.



Do not fear, only believe.— (Mark 5:36)

We believe in God, the almighty power for good, operating now in every condition of our lives. His healing power is right now doing its work of perfecting our bodies. Whatever our needs, God will provide. Belief in God will help solve life's problems.



HAROLD FIELDS, industrial arts instructor at Springlake-Earth, made this bell from aluminum pistons while attending an advanced machine shop course this summer at Southwestern State College at Weatherford, Oklahoma. He hopes to be teaching this sort of thing in the school shop before the school year is over.

## 27 Graduates College Bound

Twenty-seven 1971 graduates of Springlake-Earth High School are currently enrolled and attending colleges and universities from Lubbock to San Angelo.

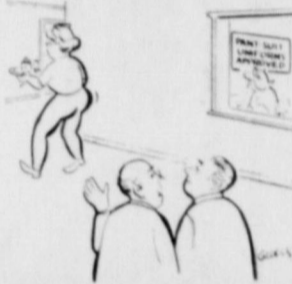
Some of the girls will be cited to hear wedding bells and some of the boys will be joining the service.

The institutions this year's graduates will attend, based on their transcript requests are as follows:

South Plains Junior College, Levelland, Mary Arrendondo; San Angelo State College, San Angelo, David Bradley; Hardin-Simmons University, Abilene, Ronda Clayton; Wayland Baptist College, Plainview, Donnie Galloway; Texas Tech University, Lubbock, Kent Coker, Roberta Gaston, Mary Carlene Jones, Connie Kelley, Johnny Kelley, Jennifer Myers, Danny O'Hair, Mike West, Monty Winders, Jerry Lynn Barden, Tony Bar-

ton, Weida Barton, Kathy Bibby and Jan Cleavinger; West Texas State University, Canyon, Sanul Lewis, Martha Koite, Elaine Hanson, Camille Haberer, Julie Templeton, Karen Armstrong, Jenna Banks and Jimma Banks. Denise Morgan will attend college but the location is uncertain at this time.

## My Neighbors

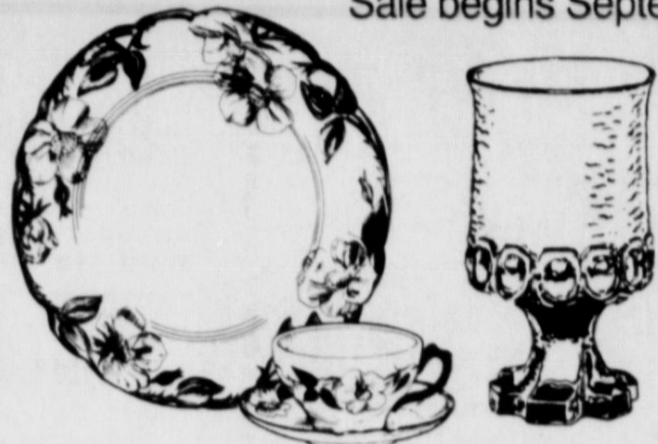


"I wish there were some way to assure that the end justifies the jeans."

# Franciscan earthenware

## Fall Sale

Sale begins September 20



Save \$7.00 on 20-piece sets \$28.95 Regularly \$35.95

\$31.95 Regularly \$38.95

Also 25% Off Franciscan Crystal Madeira all shapes, all colors

Now you can save \$7.00 on 20-piece Sets in every pattern of Franciscan Earthenware during this once-a-year Fall Sale. California-designed and made, Franciscan Earthenware is chip-resistant, color-fast and will never craze. It is safe in your oven and dishwasher. A 20-piece Set includes four each dinner plates, salad plates, cup, saucer and soup/cereal.

For the first time, Franciscan Crystal/Madeira is available at substantial savings. Designed as the perfect coordinate to Franciscan Earthenware, this jeweled casual crystal is available in six shapes and four colors, suitable for every serving occasion.

Come in now... sale ends October 2.



### POUNDS PHARMACY



1972 MUSTANG



1972 MAVERICK



1972 THUNDERBIRD



1972 FORD



The Best Deals Await You Here...

YOU CAN'T AFFORD TO BUY UNTIL YOU SEE US...

# We have a '72 just for you!

THESE NEW CARS WILL BE ON DISPLAY HERE SEPTEMBER 24

## MULESHOE MOTOR CO.

MULESHOE, TEXAS



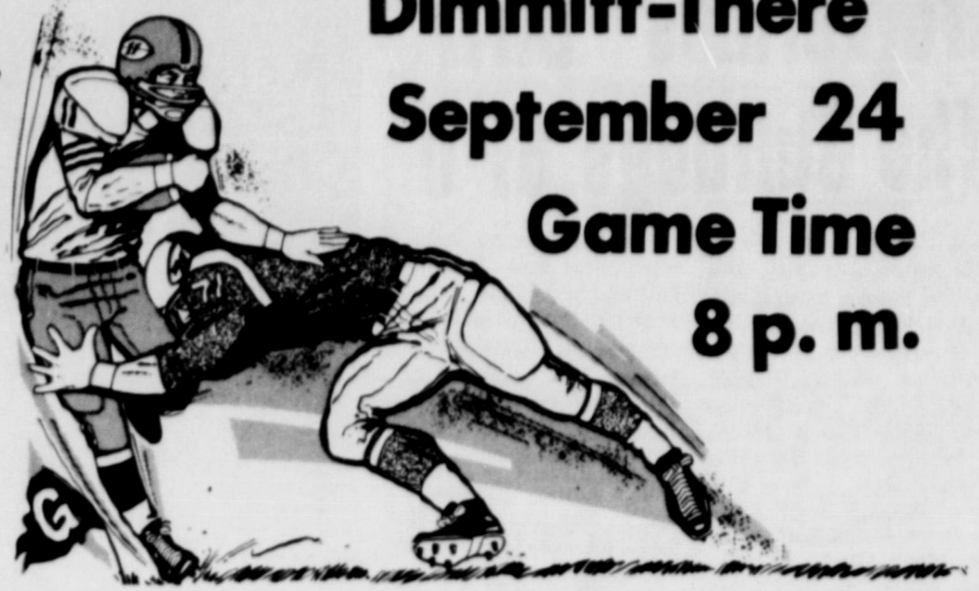
1972 TORINO



1972 PINTO



# FOOTBALL CONTEST



**Dimmitt-There**  
**September 24**  
**Game Time**  
**8 p. m.**

**Nothing to subscribe to—Nothing to buy**  
**—No obligation—** **JUST FILL OUT AND SEND**  
**IN YOUR ENTRY**

ENTRIES MUST BE TURNED IN BEFORE 4PM  
 FRIDAY, SEPTEMBER 17

**OFFICIAL ENTRY BLANK**  
 SEPTEMBER 24

TEAM	TEAM
HAPPY	ALAMO CATHOLIC
VEGA	CLAUDE
BOVINA	LAZBUDDIE
SUDAN	SEAGRAVES
HART	AMHERST
FARWELL	MORTON
KRESS	PETERSBURG
TEXAS TECH	TEXAS
LITTLEFIELD	SLATON
DALLAS	PHILADELPHIA

--- TIE BREAKER ---  
 WOLVERINES..... DIMMITT.....

Name.....  
 Address.....  
 City..... State.....

## CONTEST RULES

The teams that are playing in this week's contest games are listed side by side in the official entry blank on this page.

Use the handy entry and mark out the teams you predict to lose. Print the scores you predict in the tie-breaker game in the spaces provided.

Each week's entry must be turned in or mailed to the Earth News-Sun office. Contestants are given a week to prepare and turn in their entries.

Entries must be in by 4:00 p.m. Friday or postmarked on that date. All late entries will be discarded.

In case of ties, a coin will be flipped to determine the winners.

Each week the number of games correctly predicted will count toward each contestant's season total. The person picking the most games correctly for the entire season will receive the grand prize. In the event of a tie on the season total, a coin will be flipped to determine the winner.

The weekly prizes will be given to the persons picking the most number of games for that week. The tie-breaker will count as one of the games picked, and the predicted score will be used to determine the top three places in that week's contest, if necessary.

Only one entry per person is allowed.

## 3 Big Prizes



**First Prize—\$500 Second Prize—\$300 Third Prize—\$200**  
**GIVEN AWAY WEEKLY**

<b>CITIZENS STATE BANK</b> MEMBER F.D.I.C. -- Earth	<b>H. S. SANDERS LUMBER</b> Earth 257-2005
<b>PATTERSON PAY &amp; SAVE</b> EARTH Phone 257-2175	<b>GOOD EARTH FOOD STORE</b> "Foods Fit For A King"
<b>EARTH AG SUPPLY, INC.</b> EARTH Phone 275-3762	<b>SPRINGLAKE GIN, INC.</b> W. H. AND BILLY BRADEN
<b>TEXACO PRODUCTS</b> Jim Robbins - Earth Sam Fox - Muleshoe	<b>EARTH OIL &amp; GAS CO., INC.</b> <b>SPRINGLAKE MOTOR SUPPLY</b>
<b>Production Credit Assoc.</b> Oilton phone 285-2651	<b>FARM CHEMICAL CO.</b> EARTH-SPRING LAKE
<b>FEEDERS GRAIN</b> Sudan phone 227-5321	<b>FIRST NATIONAL BANK</b> MEMBER F.D.I.C. -- Amherst
<b>OLTON FEED YARDS, INC.</b> OLTON Phone 285-2616	<b>DODD FERTILIZER</b> Forrest Collins Phone 965-2315
<b>Gilbreath Seed &amp; Grain Co.</b> MULESHOE	<b>FARMERS GRAIN</b> Sunnyside
<b>Littlefield Federal Savings &amp; Loan</b> phone 385-5197	<b>THOMPSON Chevrolet Co.</b> OLTON
<b>COBB'S of Muleshoe</b> Quality Clothing For The Entire Family	<b>Wayne Rutherford "66" Station</b> Wayne & Zella Mae Rutherford Earth
<b>DENT FARM SUPPLY</b> Your John Deere Dealer--Earth	<b>MARCUM OLDS</b> <b>-CADILLAC-PONTIAC-</b> LITTLEFIELD
<b>POUNDS PHARMACY</b> EARTH	<b>BARTON BROS. Gin Co., Inc.</b>
<b>EARTH CO-OP GINS, INC.</b> EARTH	<b>EARTH GIN CO.</b> We Appreciate Your Business
<b>HOWELL'S 216 FLORAL</b> "Football Mums" Gid & Mildred Howell, Owners 257-2051 - Earth	<b>EARTH GIN CO.</b> We Appreciate Your Business
<b>SAWYER FERTILIZER &amp; CHEMICAL</b> EARTH 257-2085	<b>Service Seed &amp; Delinting</b> EARTH
<b>CENTRAL COMPRESS</b> Pleasant Valley <b>NICKELS GIN</b> Sudan	<b>EARTH AUTO PARTS</b> "Your Hometown Parts Dealer"
<b>Tri-County Savings &amp; Loan</b> Muleshoe	<b>LAYMAN BROS. Butane &amp; Garage</b> EARTH "We Appreciate Your Business"
<b>CHOW TEX FEEDLOTS, INC.</b> LAZBUDDIE PH. 965-2900	<b>EARTH ELEVATOR</b> "YOUR ACCO DEALER" Earth PH.257-3301
<b>Bailey County Electric Cooperative</b> Muleshoe	<b>BROWND - JORDAN Equipment Co.</b> Sales and Service Earth phone 257-3484
<b>FIRST STATE BANK</b> MEMBER F.D.I.C. -- Dimmitt	<b>PARSON - ELLIS - SINGLETON Funeral Home</b> PHONE 252-3350
<b>C and B FERTILIZER</b> Anhydrous, Liquid, and Dry Fertilizers and Chemicals George Poteet' phone 965-2965	<b>OLTON PUMP &amp; MACHINE</b> <b>Olton Drilling Co.</b> Phone 285-2022 Bill and Gene Chaney
<b>BIG T PUMP CO.</b> DIMMITT	<b>DON'S SHAMROCK STATION</b> Earth
<b>STATELINE IRRIGATION</b> Littlefield	<b>EARTH NEWS SUN</b>



# Wolverines Blitz The Bulldogs 81-0

The Wolverines opened the 1971 season Friday night with an 81-0 victory over the Amherst Bulldogs.

Guy Lynn Davis started the Wolverine scoring rampage with a 60 yard punt return in the first quarter with Hoyt Glasscock kicking the extra point.

The scoring by quarters was 29 in the first quarter, 22 in the second quarter, 20 in the third quarter and 10 points in the final quarter.

Leading the scoring was Glasscock with 29 points. Others doing the scoring were Davis, 18 points; Mike Cleavinger, 14; Tommy Alair, 8 points; and Gregg Slover and Larry Thomas had 6 points each.

In the statistic column the Wolverines had a total of 371 yards rushing in the first half and 231 yards in the second half for a total of 602 yards rushing.

In passing plays the Wolverines had 16 yards in the first half and in the second half 25 yards for a total of 41 yards.

Rushing and passing the Wolverines had a total of 643 yards with an additional 55 yards on penalties to make a total of 698 yards for the game.

Davis led the Wolverines in rushing with 5 carries for 159 yards for an average of 32 yards per carry.

Thomas was next with 6 carries for 145 yards, averaging 24 yards per carry. Glasscock carried the ball 8 times for 142 yards.

Also contributing to the rushing total were Slover with 90 yards; Cleavinger, 60 yards; and Alair, 47 yards.

Outstanding players on defense were Pittman and Glasscock.

The Wolverines will meet the Hale Center Owls Friday night here at 8 p.m.



EDDIE ALAIR NO. 22, plunges over two of his 8 points, adding to his 40 yards rushing Friday night. Larry Thomas, No. 21, and Doug Freeman, No. 62, get in on the play.

## S-E "B's" Defeat Plains 12-10

The Springlake-Earth "B" team defeated Plains "B" team 12-10 Saturday at Plains. Plains scored first after blocking a S-E punt, scoring on the next play from scrimmage. They made a 2 point conversion, making the score 8-0.

Springlake-Earth scored next with Dickie Bradley scampering 65 yards for the TD. The conversion try failed, making the score Plains 8, S-E 6 at the end of the first quarter.

In the second quarter, Tommy Clayton scored from 8 yards. The try for extra points failed once again.

With 58 seconds left in the game, Plains got a safety. The game ended S-E 12,

Plains 10. Outstanding players for the Wolverine B's were Brian Britton, Del Davis, Edwin Fulfer, Lewis Palacio and Doug Jones.

Dickie Bradley carried the ball 9 times for 140 yards for an average of 15½ yards per carry.

Tommy Clayton carried the ball 8 times for 31 yards and Doug Jones carried 4 times for 11 yards.

## Sorghum For Pigs Research Underway

LUBBOCK --- In the South-west and certain Corn Belt "fringe" areas sorghum grain is the primary feed grain for swine diets, but little research has been conducted using sorghum grain as a primary energy source for early weaned pigs.

Texas Tech animal science faculty have undertaken research to determine additives and the processing methods necessary to produce the best results using grain sorghum for the young pigs.

Dr. A. Max Lennon is the principal investigator for the project. Working with him are Prof. Leland F. Tribble and Keith D. Lind.

"Early weaning, at three weeks, is becoming more and more common in the swine industry," Prof. Lennon said, "and excellent performance can be achieved with early weaned pigs when milk is used as the major source of protein."

The increasing price of dried skim milk, however, restricts its use as a diet ingredient, he said, and there is a "real need for a lower cost source of protein that will produce fast and efficient gains with young pigs."

The researchers propose to base the young pig diet on fortified grain sorghum-soybean

meal.

In general, Lennon said, the performance of early weaned pigs fed soy protein is inferior to the performance of pigs fed milk as the major source of protein, and diets based on soybean protein supplemented with enzymes have produced inconsistent results.

"It has been shown, however, that alkali-treatment of soybean protein prior to feeding it to early-weaned pigs results in increased gains and efficiency," he explained. "Various additives -- dried whey or yeast -- have further improved significantly the performance of young pigs fed com-soybean meal diets."

There are indications, Lennon said, that whey, yeast and alfalfa protein concentrate will improve the amino acid and vitamin profiles for the young pig as well as improve the digestibility of other nutrients in the diet.

"There is a good possibility that one or more of these products can economically be included in a sorghum grain-soy diet for early weaned pigs."

The diets under consideration will be formulated for early-weaned pigs fed from three to nine weeks of age, Lennon said. Weight gains and feed efficiency data will be recorded during the feeding trial.

Then subsequent performance up to slaughter weight and back fat measurements at slaughter will be recorded.

Foremost McKesson Foundation is supporting the research.

## Vicki Messer Begins Career

Mrs. Doug Messer, the former Vicki Sanders, is teaching English at Midland Christian School in Midland. This school is a private school for grades one through 9.

Mrs. Messer, who is a 1967 graduate of Springlake-Earth High School, graduated from Texas Tech University in May with degrees in math and English.

Mrs. Messer married her husband, Doug, in July of this year.

The couple resides in Midland and Doug is employed as the head of the advertising department for Grammer-Mirphy Department store there.

Parents of the couple are Tom Sanders and Mr. and Mrs. Marcus Messer, all of Earth.

RICE IS MORE extensively grown and more widely used than any other foodstuff.

**SAVE!!!**

**ON THESE QUALITY USED PICKUPS AT MONEY SAVING PRICES**

1969 Ford 1/2 T. Pickup, Long-wide, White, 6 Cylinder, 3 Speed -- LIKE NEW --	<b>\$1995</b>
1968 Chevrolet 1/2 T. Pickup, Long-wide, Gold And White, V8, Automatic, Radio & Heater -- SEE AT --	<b>\$1995</b>
1968 Chevrolet 1/2 T. Pickup, Long-wide, White, 6 Cylinder, 3 Speed -- VERY NICE -- ONLY --	<b>\$1795</b>
1968 Dodge 1/2 T. Pickup, Long-wide, Beige, V8, 3 Speed, Radio & Heater -- JUST --	<b>\$1595</b>
1967 Chevrolet 1/2 T. Pickup, Short-wide, 6 Cylinder, 3 Speed, Red -- ONLY --	<b>\$1295</b>

**FRIDAY AND SATURDAY SPECIALS ON USED SCHOOL CARS!!!**

1965 Chevrolet Super Sport Impala Coupe, V8, Automatic, Air And Power -- RED --	<b>\$1095</b>
1965 Dodge Dart, 2 Dr. Hardtop, White, 6 Cylinder, Automatic -- VERY NICE --	<b>\$895</b>
1965 Ford Fairlane 500 Hardtop Coupe, White, V8, Automatic, Radio & Heater, ONLY --	<b>\$895</b>

**OVER 30 CARS TO CHOOSE FROM**  
Everyone Drives A Used Car.  
Why Not One Of Ours?

**TOMMY'S AUTO SALES**

Tommy Zorns      Bill Quarles  
W. 7th & Edwards      763-4589      Clovis

## Hale Center Dumps S-E

The seventh and eighth grade football teams of Springlake-Earth played their first games of the season Tuesday, September 7, at Hale Center.

The seventh grade squad lost their game 12 to 0 while the eighth grade squad lost their game 24 to 6.

Armando DeLeon ran 70 yards to score S-E's only points in the eighth grade game.

Coach Tom Phelps points out that this was the first game of the season and that he firmly believes both teams will improve.

### HAROLD POWELL SECURED BY IRVING BANK

Harold Powell of Irving has been secured by the credit and loan department of the Irving State Bank and Trust Company of Irving.

Powell was previously employed for the last year in the credit and loan department of Beneficial Finance Company at Irving.

He is a 1965 graduate of Springlake-Earth High School and served with the U.S. Army for three years. While serving in the Army, Powell spent one year in Vietnam. Powell's wife is the former Janet Martens of Earth.

GRAND OPENING

IN OUR NEW LOCATION AT 601 MAIN STREET

WE HAVE BEEN IN BUSINESS AT 209 MAIN SINCE 1939. IN APRIL OF THIS YEAR A FIRE DESTROYED THE BUILDING AND ALL OUR STOCK. NOW WE HAVE RE-OPENED AT 601 MAIN. WE WELCOME ALL OUR OLD FRIENDS FROM EARTH.

REGISTER EACH TIME YOU ARE IN OUR STORE

FREE DOOR PRIZES

TO BE GIVEN AWAY SAT. OCT. 2, 1971

**FIRST PRIZE: Module Portable 8-Track Stereo TAPE PLAYER with AM/FM Multi-plex • \$179.00 RETAIL VALUE**

**SECOND PRIZE: Morning Glory Southern Living MATTRESS & BOX SPRINGS SET • \$119.90 RETAIL VALUE**

YEARLY

601 Main Clovis

ASSETS					LIABILITIES, RESERVES AND UNAPPROPRIATED SURPLUS				
	OPERATING FUND	GENERAL FIXED ASSETS	INTEREST & SINKING	TOTAL		OPERATING FUND	GENERAL FIXED ASSETS	INTEREST & SINKING	TOTAL
<b>CASH IN BANK:</b>					<b>CURRENT LIABILITIES:</b>				
State & County Available	\$ 7,840.47			\$ 7,840.47	Overdraft-Consolidated	\$ 2,977.02			\$ 2,977.02
Local Maintenance	53,027.72			53,027.72	Application Fund			31,000.00	31,000.00
Transportation	13,081.31			13,081.31	Bonds Payable 1971-72			13,016.25	13,016.25
Interest and Sinking			9,820.82	9,820.82	Interest Payable 1971-72				
<b>TOTAL CASH IN BANK</b>	<b>\$ 73,949.50</b>			<b>\$ 83,770.32</b>	<b>TOTAL CURRENT LIABILITIES</b>	<b>\$ 2,977.02</b>		<b>\$ 44,016.25</b>	<b>\$ 46,993.27</b>
<b>TEMPORARY INVESTMENT:</b>					<b>FUNDED INDEBTEDNESS:</b>				
U.S. Treasury Bills	\$ 19,763.20		\$ 9,479.69	\$ 29,242.89	Bonds Payable-Future Yrs.			\$363,000.00	\$ 363,000.00
Time Deposit-Citizens State Bank			5,000.00	5,000.00	Int. Payable-Future Yrs.			79,683.12	79,683.12
Littlefield Savings & Loan	15,000.00		1,494.06	16,494.06	<b>TOTAL FUNDED INDEBTEDNESS</b>			<b>\$442,683.12</b>	<b>\$ 442,683.12</b>
<b>TOTAL TEMPORARY INVESTMENT</b>	<b>\$ 34,763.20</b>		<b>\$ 15,973.75</b>	<b>\$ 50,716.95</b>	<b>RESERVES &amp; UNAPPROPRIATED SURPLUS:</b>				
<b>FIXED ASSETS:</b>					Res. for Investment in Fixed Assets	\$ 1,264,512.35			\$ 1,264,512.35
Land		\$ 39,873.81		\$ 39,873.81	Res. for Retirement of Indebtedness			25,794.57	25,794.57
Buildings		964,421.99		964,421.99	Unappropriated Surplus	105,735.68			105,735.68
Furniture & Equipment		260,216.55		260,216.55	<b>TOTAL RESERVES AND UNAPPROPRIATED SURPLUS</b>	<b>\$105,735.68</b>	<b>\$1,264,512.35</b>	<b>\$ 25,794.57</b>	<b>\$1,396,042.60</b>
<b>TOTAL FIXED ASSETS</b>		<b>\$1,264,512.35</b>		<b>\$1,264,512.35</b>	<b>TOTAL LIABILITIES, RESERVES &amp; UNAPPROPRIATED SURPLUS</b>	<b>\$108,712.70</b>	<b>\$1,264,512.35</b>	<b>\$512,493.94</b>	<b>\$1,885,718.99</b>
<b>AMOUNTS TO BE PROVIDED FOR:</b>									
Bonds			\$394,000.00	\$ 394,000.00					
Interest			92,699.37	92,699.37					
<b>TOTAL TO PROVIDE FOR</b>			<b>\$486,699.37</b>	<b>\$ 486,699.37</b>					
<b>TOTAL ASSETS</b>	<b>\$108,712.70</b>	<b>\$1,264,512.35</b>	<b>\$512,493.94</b>	<b>\$1,885,718.99</b>					



# Sunnyside News...

By Tenny Bowden.

Kent Bradley was dismissed from Plains Memorial Hospital in Dimmitt Monday after suffering an acute attack of asthma following an allergic reaction to fresh cut insilage last Saturday. Kelby and Kyle spent last weekend with their grandparents, Mr. and Mrs. Jess Matlock of Springlake.

Mrs. Roy Phelan, Mrs. Alton Louder and Mrs. E. R. Sadler attended the Art display of Father Stanley and his students in Nazareth Monday.

Arthur Ruiz of Sunnyside sold the winning ticket that won for Macky Oldfield of Dimmitt a Chester White hog weighing between 200 and 250 pounds. It was raffled Monday at 5:00 p.m. over KMUL Muleshoe by the Parish Council of Saint Mary Magdalene Catholic Church of Earth.

Father O'Leary is the Parish Priest. Mr. and Mrs. Arthur Ruiz had helped sell over 300 tickets. The lucky number was 236. They wish to thank all who bought tickets.

Mr. and Mrs. Mokey Ivey recently returned from a week's vacation at Pagosa Springs, Colorado, where they used pack mules and horses to take them to a camp site where they camped out and hunted and fished. Paula stayed with her grandparents, Mr. and Mrs. Floyd Ivey.

Mr. and Mrs. Jim Davis of Ohio recently spent a week here with her sister, Mr. and Mrs. Floyd Ivey and Paula. They visited in Amarillo with their sister, Mr. and Mrs. E. W. Barnard and in Abilene and Gainsville with other relatives and took them to see "Texas" while they were here.

Mr. and Mrs. Wendell Payte and children of Big Springs spent last Saturday through Monday with her grandparents, Mr. and Mrs. R. E. Duke and Mr. and Mrs. Robert Duke and family. Last Sunday Mr. and Mrs. A. M. Duke and Mr. and Mrs. Dave Gilley of Amarillo had dinner with them.

Mr. G. H. Blewett went to Fort Worth last Saturday and visited with relatives there until Wednesday.

Mr. and Mrs. Mokey Ivey attended the funeral services of her grandmother in Bowie recently.

Mr. and Mrs. Donnie Lilley and Audrey Gay spent last weekend in Canyon with her parents, Mr. and Mrs. Hancock. Monday Mrs. Lilley and Audrey went back to a family gathering to help her mother celebrate her birthday. One of her nieces came home with her.

Mr. and Mrs. E. R. Sadler received a call Tuesday night from Myles from Goldsboro, North Carolina, to let them know they had arrived in the States safely from Brussels, Belgium. They visited with

FOR SALE: 1970 Honda SL350. In excellent condition. Phone 965-2613. 9/16/1tp

FOR SALE: 9'x12' handmade 100% wool Early American rug. Phone 257-3923. 9/16/2tp

GARAGE SALE: Friday and Saturday, September 17 and 18. 1 1/2 miles north of Springlake on Dimmitt Highway. K. B. Parish 9/16/1tc

**MEN NEEDED**  
in this area to train as **LIVESTOCK BUYERS**  
LEARN TO BUY CATTLE, HOGS AND SHEEP  
at sale barns, feed lots and ranches. We prefer to train men 21 to 35 with livestock experience. For local interview, write age, phone, address and background to:  
**NATIONAL MEAT PACKERS TRAINING**  
1805 East Ave., Dept. WT-153 Ft. Worth, Texas 76102

Experienced **MECHANIC WANTED**  
See **LeRoy Hughes**  
Company Benefits And Pleasant Working Conditions  
**FRY & COX BROS.**  
Muleshoe

her sister and children whose husband is in Vietnam before coming on to Austin to be with her parents a few days before arrival here next week.

Mrs. Floyd Ivey visited in Dimmitt Tuesday with Mrs. Melvin Summers.

Mrs. Mokey Ivey was admitted to Central Plains Hospital in Plainview, underwent minor surgery Wednesday morning and was dismissed Thursday. Paula is spending a few days with her grandparents in Canyon.

Mrs. Roy Phelan was admitted to Central Plains Hospital in Plainview Wednesday. She was dismissed Saturday.

Mrs. John Gilbreath, Mrs. E. R. Sadler and Mrs. L. B. Bowden attended the Plains Memorial Hospital auxiliary meeting in Dimmitt at the hospital Wednesday morning. Francis King of Amarillo brought his mother, Mrs. Irving King, home Wednesday after she had spent several days in Amarillo with relatives.

The Acteens, Girls in Action, Mission Friends and Crusaders met after school Wednesday for their first meeting since the last part of July. There was a good attendance in all groups.

Mrs. Mack Turner had charge of the general Baptist Women's meeting Wednesday night in the absence of Mrs. Roy Phelan, study chairman.

Mr. and Mrs. J. Paul Waggoner left Thursday morning for Houston to visit a few days with their son, Mr. and Mrs. Mickey Waggoner, and also with his dad, Mr. and Mrs. Ernie Waggoner at Kerrville on the way. They took her mother, Mrs. Bob Ball, to Big Springs to visit with the Randall Balls while they are away.

This is beginning to sound like a broken record, but there will be another two week delay in the book, "This Land We Hold." I talked with Ed Eakim, the publisher, over the phone Saturday morning and he had been having trouble with the bindery holding to their commitments, so he

has decided to put in his own bindery at Quanah instead of using the Wichita Falls or Abilene binderies. My book will be the first one bound by the new company. I guess it must be hard on a new company getting established but it is getting hard on first customers also. Maybe they will be out in time to give them as Christmas gifts. The pre-publication price will remain in effect until I get the books.

Rev. and Mrs. Mack Turner and Lisa Orr attended the Church Council Banquet in the First Baptist Church of Earth Tuesday night.

The Day Bible Study group met at the church Thursday afternoon with Mrs. L. B. Bowden, group leader, in charge. Six attended.

Kathy Crawford is one of the candidates for the Hart Homecoming Queen. The Queen will be crowned before the Hart-Turkey game Friday, September 17.

Mrs. Curtis Snitker entertained in her home Thursday with a Upperware party.

Mr. and Mrs. Ed Townsend are spending a few days with relatives in Durant, Oklahoma.

Lisa Orr is a member of the National Honor Society at Springlake - Earth this year. She and Debbie Wilson are also members of the speech club.

Debbie Wilson, Marian Dawson and Renee Jones were among those attending the Springlake-Earth installation services last Thursday and first regular meeting Wednesday. Marian was installed as first

vice president, Renee was on the program.

Mr. Bill Morgan and Denise visited in and near Oklahoma City Friday and Saturday with two of Mr. Morgan's sisters.

Tommy and Michael Graham entered garden vegetables, field crops, baked goods and crafts in the Lamb County Youth Fair at Littlefield Saturday and received several ribbons. Tommy received 6 blue ribbons, 1 red one and 3 white ones. Michael received 4 blue ribbons, 2 red and 3 white. They are members of the Springlake-Earth 4-H.

Coby and Matt Gilbreath and Bob and Larry Duke helped with the 4-H Youth Fair at Dimmitt Saturday. They represent the Flagg 4-H.

Mr. and Mrs. E. R. Brown of Lubbock came up Thursday afternoon to visit with the Cliff Brown family and watch Lee play his first football game of the season. The Springlake-Earth 8th graders played at Hale Center and were beaten.

Kelley Haydon is a cheerleader for both the 7th and 8th grade teams.

Mr. and Mrs. Cliff Brown and boys and Mrs. Gale Sadler attended the wedding ceremony of Janis Bridge and Gary Strahan in the First Baptist Church of Springlake Friday night. Mrs. Sadler played the wedding music. Terry Bridge ushered his mother and lit the center candle. Mark Bridge was a candle lighter. Freddy James was an usher. Marquetta James helped with the serving at the reception and Jason James was the ring bearer.

Mr. and Mrs. David Sadler and girls of Lubbock spent the

weekend with relatives here and in Hereford.

Mr. and Mrs. Larry Odom and Lisa of Sumnerfield visited with Leslie Louder Sunday night.

Mrs. Bonnie Swinney and Dawn of Lubbock were up Saturday afternoon for the painting class.

Mr. and Mrs. Weldon Bradley and Mr. and Mrs. Ezell Sadler met Mr. and Mrs. Cleo Widner of Melrose at the park at Clovis for dinner Sunday and visited for awhile with them.

Keith Calhoun plays with the Dimmitt Bobcats this year. They lost to Muleshoe by two points, 18-16 Friday night in their first game.

Springlake-Earth Wolverines beat the Amherst Bulldogs 81-0 Friday night in their first game. Eddie Alair plays on this team.

The Hart Longhorns were defeated by Lazbuddie 6-0 at Lazbuddie Friday night. Stanley Harris plays on the Hart team.

Mr. and Mrs. Winston Waggoner showed several head of dairy cattle at the Curry County Fair at Clovis this week and I am sure they won several first places but was unable to find out the details before mail time.

Sixty-three attended Sunday School with 23 in Training Union Sunday.

## Christians Attend Youth Rally

Sixteen local teenage Christians attended a Teenage Christian Youth Rally Saturday, September 11, at the Greenlawn Church of Christ in Lubbock.

A panel discussion was held on "Speaking in Tongues", "Jesus Christ -- Super Star" and "Jesus Movement".

The panel was made up of four young Christian men plus Maxie Boren, minister at the Greenlawn Church of Christ in Lubbock, Ed Horton and Richard Baggett, both instructors at the Sunset School of Preaching in Lubbock.

The rally lasted all day with the group breaking for lunch at Furr's Cafeteria.

Adult sponsors for the local teenagers attending the rally were Norman Clayton, Mrs. Joan Branscum and Leonard Harper.

Mrs. Sarah Clark was hospitalized last week at Medical Arts Hospital in Littlefield. Although Mrs. Clark is not feeling well, she would appreciate all cards and visits.

Sixty-three attended Sunday School with 23 in Training Union Sunday.

## Brothhood Meets For Breakfast

Friday, September 10, eight members of the Baptist Brotherhood of the First Baptist Church of Earth met at 7 a.m. in Fellowship Hall of the church for breakfast and fellowship.

After enjoying a breakfast prepared by J. B. Thomas and Paul Wood, the group dismissed following a prayer.

Attending the meeting were

Rev. David Hartman, Clinton Green, Ross Middleton, Bill Scott, Billy Pittman, Pat McCord, J. B. Thomas and Paul Wood.

Mrs. L. T. Smith was admitted to Methodist Hospital at Lubbock Tuesday for tests and possible surgery.

**It's Happening Now**

Excellent Stock Of New Model Cars  
ALL CLOSE OUT PRICES....  
Also Large Selection Of Used Cars  
NO MONEY DOWN With Approved Credit

See Or Call Sandy Sanders At  
**DICK RUSSELL FORD**  
Clovis, New Mexico N.M.

**Going Out Of Business SALE**  
Discounts 20% to 50%

- \* New Toys On Hand
- \* Tires
- \* Power Lawn Mowers
- \* Tools
- \* Bicycles
- \* Guns
- \* Furniture
- \* Appliances

ALL STOCK IS ON DISCOUNT SALE ENDS SATURDAY

**SAM'S AUTO STORE** Muleshoe

**ATTENTION Cotton Farmers**

If You Wish To Contract To Sell Your Cotton At This Time, CALL

**J.L. Murdock Cotton Office**  
Littlefield, Texas Phone 806-385-4419

**WANTED TO RENT Wheat Or Stalks For Cattle Grazing...**

(TOP PRICES PAID)

CALL **Diamond A Cattle Co.**  
Or **Sunnyside Feedlot**

Call Collect 647-3570 Or After 7 P.M. 846-2241

# BUY SELL CLASSIFIED ADS

**HOMEMADE PIES** and cakes being sold by Mrs. Earl Walker. For more information call 257-3839. 9/9/2tc

**WANTED:** Baby sitting to do in my home. Call 986-2631. 9/16/4tc

**FOR SALE:** Nine City lots south of Earth Elevator, contact Citizens State Bank in Earth. 1/18/tfc

**FOR SALE:** Living room suite in good condition. Call 257-3967 after 5:30 p.m. or 257-2145.

**FOR SALE:** Eight room modern home, recently redecorated with new carpeting, new wall furnace, paneling and acoustical ceilings. Call 257-3967 or 257-2145.

To party with good credit, late model Singer sewing machine. Winds bobbin through the needle. Will blind hem, zig-zag, stretchstitch, etc. Assume 4 payments at \$7.50 or will discount for cash. Write Credit Department, 1116-19th Street, Lubbock, Texas 5/13/tfc

**FOR SALE:** 1963 Valiant station wagon clean. Phone 257-2197 or see Bill Freeman at the barber shop. 9/16/1tc

**YARD SALE:** On Laing farm, 3 1/2 miles west of Earth. Starts Friday -- Sewing machine, '59 Olds station wagon, wigs, bunk bed frames, insulators and children's clothing. 9/16/1tc

**QUICKBALL PRYOR CO., INC.**  
Automobile Parts Supplies & Equip. P.O. Box 567 Earth Texas

**HOUSE FOR SALE:** 2 baths, 2 or 3 bedrooms, storm windows, corner lot at Main and Elm, convenient to shopping. Phone 257-2159 after 5 p.m. or 795-3779 Lubbock. 8/12/tfc

**FOR SALE-Sewing Machines.** We are franchise dealers for Singer, Necchi, Nelco and Good Housekeeper. We repair any make. Scissors and pinking shears sharpened. Call 272-3030 in Muleshoe, Texas. Harvey Bass Appliance. 6/1/tfc

**AAA TRUCK & Auto Parts**  
WE NEED WRECKED OR JUNKED TRUCKS AND PICK-UPS  
LOCATED NORTH 385 LITTLEFIELD

**GARLAND MOTORS**  
CLEARANCE ON ALL 1971 CARS IN STOCK NOW'S THE TIME TO SHOP LOW, LOW PRICES  
GARLAND MOTORS 385-4454 Littlefield See B. D. Garland, Jr. or Archie Curry

**JUSTIN BOOT CO.**  
WRANGLER Perma-Press LEVI-Ste Press  
**USHERS Western Wear**  
3406 Olton Rd. Plainview-Ph: 296-2221

**Littlefield Frozen Food Center**  
R. B. KIRBY  
We Specialize in Meats for your Lunch & Home Freezer  
DIAL 385-3818 LITTLEFIELD, TEXAS  
ON SPRINGLAKE HIGHWAY

**EASY Living**  
MOBILE HOMES  
NEW AND USED  
LARGEST SELECTION OF MOBILE HOMES IN THE AREA  
2921 WEST SEVENTH CLOVIS, NEW MEXICO  
Open 8 a.m. till 9 p.m. Sunday 12 till 7 p.m.  
505-762-4767 505-762-4768

**TELEX Hearing Aids**  
**Clovis Hearing Aid Center**  
Batteries & Molds. Free Tests. Service All Makes.  
416 Mitchell Phone 763-6900  
Clovis, N.M.

**BUSINESS and INDUSTRIAL DIRECTORY**

**FEEDERS GRAIN, INC.**  
DAILY BUYERS FOR CATTLE  
FEEDERS  
Federal Storage License 3-4451  
We Can Use Your Grain  
SUDAN LIVESTOCK and FEEDING CO.  
Ph: 227-5321-Sudan

Your **BUICK OLDSMOBILE DEALER**  
**BROCK MOTOR**  
Muleshoe, Texas

To Rest Assured use **SAFETY DEPOSIT BOX** Protection  
**FIRST STATE BANK**  
Dimmitt, Texas

**TRUCK SEATS EXCHANGED 15 MINUTE SERVICE**  
**MCCORMICK'S AUTO SUPPLY AND TRIM SHOP**  
PHONE 385-4555 LITTLEFIELD

**TEXAS PRESS ASSOCIATION**  
MEMBER 1971

**HAMMONS FUNERAL HOME**  
Ambulance Service  
Phone 385-5121  
LITTLEFIELD TEXAS

**JOB PRINTING**  
EARTH NEWS

**MONUMENTS**  
Winnboro Blue Granite White Georgie Marble And Others  
Including Bronze For Memorial Park Specifications  
See or Call Collect Percy Pearson, Olton Phone 285-2621 or 285-2767 Frank Ellis, Muleshoe Phone 272-4572

**COMMERCIAL PRINTING**  
EARTH NEWS-SUN





EVERYONE at the Teachers Appreciation Banquet Tuesday evening seemed to be listening in earnest as master of ceremonies, Bob Belew, opened the ceremonies.

## Ecology Should Start At Home

Most advocates of a better ecology concentrate their activities on outdoor environmental improvement and neglect to stress the importance of creating a more comfortable, beautiful and liveable atmosphere in the home, according to J. L. Foxworth, president of the Lumbermen's Association of Texas, an 85 year non-profit trade association.

The Texas Senate and House passed a Concurrent Resolution, which was signed by Governor Smith, designating July, August and September as "Keep Texas Homes Beautiful" months a program to urge the continuing need for home beautifi-

cation both inside and out. "This campaign serves two purposes," Foxworth stated, "one is to promote home improvement for better living, and the other to help the homeowner protect his investment." "Many people would rather 'improve than move' in order to preserve their close relationships in their chosen neighborhood," he added. "Better ecology should start in the home," Foxworth stated, "and the members of the Lumbermen's Association of Texas will continue their year-around efforts to assist homeowners to keep homes beautiful and investments protected."

## Governor Smith Approves Training Grant

Governor Preston Smith approved a grant Friday, September 10, which will enable the South Plains Association of Governments at Lubbock to continue operation of its regional law enforcement training program.

The award, \$32,326, comes from the Criminal Justice Council. This body oversees statewide law enforcement planning and administers funds from the U.S. Department for crime control projects in Texas.

Participating cities will match the CJC grant with an in-kind contribution of \$48,100.

This is the third year of CJC funding of law enforcement training for South Plains police agencies.

In the coming year it is expected that fifty officers will be trained in two 240-hour basic classes. Seven one week advanced courses will be offered also.

The South Plains Academy is approved by the Texas Commission on Law Enforcement Officer Standards and Education.

The award was among 39 action grant applications and one for a planning grant considered by the Criminal Justice Council at its monthly meeting. Applications were for a total of \$2,705,274.

Counties served by SPAG are Bailey, Cochran, Crosby, Dickens, Floyd, Garza, Hale, Hockley, King, Lamb, Lubbock, Lynn, Mxley, Terry and Yoakum.

## Party Line

Teresa Lively, daughter of Mr. and Mrs. T. D. Lively, is at home now after being hospitalized for two weeks, first at Muleshoe and then Lubbock. Teresa is reported to be feeling better.

## PTA Serves Mexican Food

Approximately 165 people enjoyed the delicious food that was served by PTA members in the school cafeteria before the football game Friday, September 10.

A menu of enchiladas, tacos, beans, Spanish rice, tossed salad, cherry cobbler and tea or coffee helped add to the pleasure of everyone when they watched the Wolverines go on to glorious victory over Amherst.

Money earned through this project of the Parent Teachers Association will be used to help finance other PTA activities throughout the forthcoming year.

Helping with the supper were Mrs. Ryan Button, Mrs. Marvin Sanders, Mrs. Ray Joe Riley, Mrs. Nathaniel Ingram, Mrs. Smythie Lawrence, Mrs. Bill Mann, Mrs. Ward Cooksey, Mrs. Bill Verden, Mrs. Dennis Criswell, Mrs. Norman Ellis, Mrs. C. L. Houchin and Mrs. Billy Pittman.

## PTA Holds Course

The Lamb-Batley Bi-County PTA Council held their annual leadership training course and parliamentary course Tuesday, September 14, from 9 a.m. to 2 p.m. in the Springlake-Earth High School Library with 14 members present.

Mrs. Francis Sams, president of the 14th PTA District, taught the leadership and parliamentary course. Representative officers from local PTA's at Spade, Littlefield, Muleshoe, Olton and Springlake-Earth attended the course.

Mrs. Norman Ellis, Mrs. Sam Sarden, Mrs. Ray Joe Riley and Mrs. Larry Hausmann attended from Springlake-Earth.

Every Day Your Dollar Will Buy More At Your  
**GOOD EARTH FOOD STORE**

S & H GREEN STAMPS



exquisite "Autumn Harvest"

## DINNERWARE

by Taylor, Smith & Taylor



Lifetime guarantee against crazing! Each piece ovenproof! Dishwasher safe!

### Here's How Our Plan Works

With each purchase of \$3.00 you are entitled to buy one piece of Dinnerware... with \$6.00 purchase, two pieces... and so on.

### Follow This Weekly Schedule:

SEP. 13 - SEP. 19	10" Dinner Plate	1.35 value	29¢
SEP. 20 - SEP. 26	6" Salad Plate	.90 value	29¢
SEP. 27 - OCT. 3	Dessert Dish	.95 value	29¢
OCT. 4 - OCT. 10	Coffee Cup	1.45 value	29¢
OCT. 11 - OCT. 17	Saucer	.90 value	29¢
OCT. 18 - OCT. 24	10" Dinner Plate	1.35 value	29¢
OCT. 25 - OCT. 31	6" Salad Plate	.90 value	29¢
NOV. 1 - NOV. 7	Dessert Dish	.95 value	29¢
NOV. 8 - NOV. 14	Coffee Cup	1.45 value	29¢
NOV. 15 - NOV. 21	Saucer	.90 value	29¢
NOV. 22 - NOV. 28	10" Dinner Plate	1.35 value	29¢
NOV. 29 - DEC. 5	6" Salad Plate	.90 value	29¢
DEC. 6 - DEC. 12	Dessert Dish	.95 value	29¢
DEC. 13 - DEC. 19	Coffee Cup	1.45 value	29¢
DEC. 20 - DEC. 26	Saucer	.90 value	29¢

EACH PIECE ONLY **29¢**

WITH EACH \$3 PURCHASE  
MATCHING COMPLETE PIECES  
TO BE SOLD AT SPECIAL LOW PRICES.

During a 15 week period you can build a complete dinner service! Don't miss a single week!

# ANNOUNCING

*Jack* WILLIAMS  
**MOTOR CO.**

316 W. 7th, CLOVIS

IS NOW YOUR AUTHORIZED DEALER FOR

# AMERICAN MOTORS

WE NOW HAVE 40 EXTRA NICE USED CARS that will Be Sold at EXTRA SPECIAL LOW PRICES to make room for our initial stock of 20 New American Motors Automobiles to be Shown Sept. 22.

ALL 1972 AMERICAN MOTORS CARS WITH THE BEST OWNER'S WARRANTY OF ANY AUTOMOBILE ON THE AMERICAN MARKET. FULL Warranty on EVERYTHING, except tires, for 12 months or 12,000 miles. YES, even spark plugs, carburetor, points, light bulbs, etc. NOTHING EXCLUDED, except tires No periodic inspections required. JUST A SIMPLE GUARANTEE THAT 1972 AMERICAN MOTORS OWNERS ARE ASSURED OF 12,000 MILES OR ONE YEAR OF COST FREE DRIVING!

ALSO IF YOUR CAR IS IN OUR SHOP, YOU WILL BE FURNISHED A 1972 AMERICAN MOTORS AUTOMOBILE TO USE.

IN ADDITION TO OUR DEAL ON THESE DISHES WE HAVE THE FOLLOWING DOWN TO EARTH PRICES THROUGH WEDNESDAY SEPTEMBER 22

BUTTERFIELD Shoestring	Potato Sticks 1-5/8 oz. Can	5¢	WHITE SWAN Canned MILK	6 Tall Cans	\$1
FOLGERS COFFEE	1 Lb. Can	88¢	WHITE SWAN SUGAR	5 Lbs.	55¢
2 Lb. Can... \$1.75	3 Lb. Can... \$2.59		WHITE SWAN CATSUP	3 20 oz. Bottles	89¢
DELSEY ASSORTED Toilet Tissue	2 Roll Pak	29¢	WHITE SWAN Sweet Milk or Buttermilk BISCUITS	6 8 oz. Cans	49¢
FLOUR SOFT-N-LITE	5 Lb. Bag	37¢	Mellorine BORDEN'S Assorted	1/2 Gallon	29¢
BONUS	38 oz. Dish Cloth Packed	59¢	Pot Pies BEEF-CHICKEN or TURKEY	8 ozs.	19¢
CRACKERS FRESIDE SALTINE	Lb. Box	19¢	GOLDEN FRESH Orange Juice	5 6 oz. Cans	\$1
BEEF ROAST	CHUCK---Lb.	53¢	BANANAS GOLDEN YELLOW	Lb.	9¢
ARM----Lb.	69¢		AVOCADOS Large Size	Each	10¢
NICE-LEAN PORK CHOPS	END CUTS---Lb.	69¢	LETTUCE Fresh Crisp California	Lb.	15¢
CENTER CUTS---Lb.	79¢		U. S. GRADED FRYERS	Lb.	27¢
			FRESH GROUND BEEF	3 Lbs.	\$1
			HORMEL BLACK-LABEL BACON	Lb.	69¢

YOU WILL SEE BETTER DAYS-DAILY FOR EARTH FOOD SHOPPING

SUPER SAVE

at YOUR

# GOOD EARTH FOOD STORE