









FHA INSTALLATION HELD-during a lovely candlelight service Tuesday afternoon 11 young ladies became officers of the local FHA Chapter. New officers are: left to right; Connie Kelley, DeAnna Cavitt, Janice Miller, Jan Cleavinger, Kathy Lee, Mrs. Jimmy Shirey (installing officer) DeAnne Brock, Kathy Bibby, Tresea Glasscock, JoAnne Temple and Becky Littleton.

### Future Homemakers Hold Installation Service

Mrs. Jimmy Shirey served as installing officer for the Spring-lake-Earth Chapter of the F. H. A. Tuesday evening as eleven young ladies took office. Assuming the position of president of the organization was Kathy Lee. Other officers installed were: Jan Cleavinger, first vice-president; Janice Miller, second vice-president; De-

Anna Cavitt, third vice-president; Connie Kelley, fourth vice-president; JoAnne Temple, fifth vice-president; DeAnne Brock, secretary-treasurer; Kathy Bibby, parliamentarian; Tresea Glasscock, historian and Becky Littleton, pianist. The ceremony began with the lighting of eight candles representing the purposes of FHA.

Candlelighters were: Janice Miller, Jenna Banks, Joan Dudley, Janet Britton, Marion Dawson and Karen Dear. Connie Kelley, song leader, led the group in the singing of the FHA song to close the installation service. Prior to the serving of refreshments, seventeen freshmen girls were initiated into the chapter.

New members are: Vicki West, Darla Dear, Lesa Morgan, Laura Dudley, Welda Barton, Gail Wages, Paige Gaston, Kim Welch, Shelley Gaston, Barbara Buckner, Mary Almaguer, Vickie McClure, Coelita Biles, Vicki Wislan, Renay James, Toni Sanders and Mary Arredonda. Punch and cookies were served in the dining room from a table centered with a bouquet of red roses.



FHA INITIATES NEW MEMBERS seventeen students were initiated into the local FHA Chapter Tuesday afternoon. New members are: first row; Vicki West, Darla Dear, Lesa Morgan, Laura Dudley, Welda Barton; second row; Gail Wages, Paige Gaston, Kim Welch, Shelley Gaston, Barbara Buckner; third row; Mary Almaguer, Vickie McClure, Coelita Biles, Vicki Wislan, Renay James and Toni Sanders.

### Mrs. Claude Ellis Hostess To LCC Associates

The L. C. C. Associates met Thursday morning September 4 in the home of Mrs. Claude Ellis. Wylene Cleavinger president, presided over a short business meeting. Mrs. Emily Clayton chairman of the projects committee discussed new projects for the L. C. C. Gift Fair. Program chairman, Mrs. Cullen Hay discussed programs for the year. Lemon Ruff and coffee were served to the following members: Mrs. Fred Clayton, Mrs. Bill Mann, Mrs. Ellen Hay, Mrs. Bill Freeman, Mrs. Norman Clayton, Mrs. Ronald Cleavinger, Mrs. Dale Ward, Mrs. Norman Ellis, Mrs. Claude Ellis and Mrs. Perry Martin. The next meeting will be in the home of Mrs. Fred Clayton September 16.


### FHA To Collect Articles For Girls Town

Members of the local Spring-lake-Earth Chapter of F. H. A. is sponsoring a drive to collect canned foods and other needed articles for the girls at Girlstown U. S. A. at Whiteface. There will be boxes for such articles, placed in Pound's Pharmacy, B&W Supermarket, Patterson's Pay & Save, and Tylor Market Basket, by September 15. Your contributions would be greatly appreciated by the Lo-

cal Chapter as well as the recipients at Girlstown.

### Notice

Mrs. Gene (Norma) Cotton will be honored with a come and go layette shower, Thursday, September 18, 4:00 to 6:00 p. m. in the home of Mrs. Don Runyon.



**Financial Facts**  
By Norlan Dudley

**WATCH NEXT WEEK FOR "BUDGET PERCENTAGES"**

Most people find that in trading at home they save more money in the long run. Money supposedly changes hands eight times before it leaves the community. Let's see to it that each dollar is spent 8 times HERE.

We are always ready to discuss your financial needs at CITIZENS STATE BANK. We are glad to be of service to our customers and the community. The quality bank offering complete banking services is CITIZENS STATE BANK, Box 70, 257-3451. Open 9 to 3 Monday thru Friday.



### State HD Meeting In Dallas September 17-18

By Mrs. Lady Clare Phillips  
County Home Demonstration Agent

Those attending from Lamb County will be Mrs. C. P. Davis, Littlefield, Mrs. T. V. Murrell, Earth and Mrs. Homer Curry, Oton. These women will hear outstanding speakers as well as plan and accept recommendations for programs in 1970. They will attend workshops in Family Living, Health, Citizenship, 4-H, Cultural Arts and Safety. This information will help to promote similar programs in the Lamb County for 1970.

The state meeting of the Texas Home Demonstration Association will be held September 17-18 in Dallas with headquarters in the Baker Hotel.

### TOPS Lose 14 1/2 Pounds

Seventeen local TOPS members weighed-in Thursday evening with a total loss of 14 1/2 pounds recorded. Delores Gover was crowned Queen of the Week. Inez Inglis presented the program on losing weight. The meeting was opened with the TOPS Pledge and closed with the Serenity Prayer.

### Party Line

Visiting in the E. C. Kelley home over the weekend were Mr. and Mrs. S. N. Tawwater, of Oklahoma City, Mrs. Tawwater is Mrs. Kelley's sister.

### Friendship - Topic Of Eastern Star Meeting

The Earth Chapter, Order of the Eastern Star met Monday evening with Mrs. Fern Bock, Worthy Matron and Melvin Bock, Worthy Patron. Mrs. Oetha Sanders presented a program entitled "Friendship and Goodwill." Several invitations for Friendship Nights were read from Oton, Littlefield, Muleshoe, and Hereford. Refreshments of cake and coffee were served by Mrs. Joy Runyon and Mrs. Lajuana O'Hair.

### Jr Hi MYF Elects Officers

Members of the Junior High MYF met Sunday evening at the First United Methodist Church with nine members present. Scott Lee presided during the election of officers with the following results: Scott Lee, president; Jimmy Coker, vice-president; JoAnn Coker, secretary; Pat Cleavinger, treasurer; Kevin Alexander, refreshment chairman; Darlene Sulser, recreation chairman. Following the election officers were installed by Mrs. Bud Matlock. Mr. and Mrs. Matlock are serving as sponsors for the group.

### What's Cooking at School

- SEPTEMBER 15-19
- MONDAY Super dogs and mustard Oven fried potatoes Red Devil Slaw peaches and cookies milk
  - TUESDAY Spaghetti and meatballs English peas and carrots stuffed celery Banana pudding orange juice hot rolls, butter milk
  - WEDNESDAY Hamburgers with mustard pickles, onions, lettuce, tomatoes, catsup oven fried potatoes raisin cobbler milk
  - THURSDAY Chicken fried steak and gravy green beans cantaloupe prune cake hot rolls, butter milk
  - FRIDAY Roast and gravy creamed potatoes tossed salad strawberry short cake wheat rolls, butter milk

# Franciscan earthenware

## FALL SALE



DESERT ROSE

**SAVE \$5.00**  
ON  
**16 PIECE STARTER SETS**  
\$16.95 Regularly \$21.95  
Also on Sale - Madeira & Pebble Beach  
Reg. \$23.95 - now \$18.95

---

**SAVE ON**  
**4 PC. PLACE SETTINGS**  
\$4.49 open stock \$7.50  
Also on Sale - Madeira and Pebble Beach  
open stock \$8.60 - now \$4.99

Now you can save \$5.00 on 16 pc. Starter Sets and as much as \$3.60 on 4-piece place settings during Franciscan's once-a-year Fall Sale. California-designed and made Franciscan Earthenware is chip resistant, color-fast and will never craze. It is absolutely safe in your oven and dishwasher. ALL patterns offer you a wide choice of multi-use accessories. □ A place setting includes one dinner plate, bread and butter plate, cup and saucer; a starter set includes four each of these items. □ Come in now... sale ends October 4.

 HACIENDA (Gold or Green)	 APPLE	 PEBBLE BEACH
 MADEIRA	 TULIP TIME	 IVY

# POUNDS PHARMACY



slight steal from the male bag!

The best of the sassy-brassy look... bold detail, swashbuckling strap, extended sole and handsewn vamp! It's the boy-girl bit that makes you look even more the real girl.

**Personality.**

Advertised in SEVENTEEN and GLAMOUR

**\$15.00**

**Bryant's EARTH**

## Class Officers And Sponsors Named

Officers and sponsors for the our classes of Springlake-Earth High School have been announced by principal J. W. Sallis. Class officers, elected in meetings held last week are: Senior class, Steve Busby, president; Kirby Kelley, vice-president; DeAnn Brock, secretary; Kathy Lee, secretary; Sharla Haberer, and Debbie Martin, historians; and Janice Miller and Jimmy Littleton, student council representatives.

Jerry Barden, president; Kent Coker, vice-president; Joan Dudley, secretary-treasurer; Jennifer Myers, Johnny Kelley, student council representatives. Carl Sulzer will lead the Sophomore class, as president. Other class officers are Charles Smith, vice-president; Tony Keith, secretary-treasurer; Criss Dent and Mike Cleavinger, student council representatives. Serving as freshman class officers are Brian Sanderson, president; Barbara Buckner, vice-

president; Toni Sanders, secretary-treasurer; Kim Welch and Larry Thomas, student council representatives. Senior class sponsors are Miss Donna Benke and Bill Anderson, Billy Singleton and Mike Purcell are sponsoring the Junior class and Duane Fryar and Harold Fields are serving as sophomore class sponsors. Acting as sponsors for the freshman class are Gene Gaston and Smythe Lawrence.

## Young Homemakers Tea Slated September 16

The local chapter of Young Homemakers will host a tea for prospective members and FHA members at 4 p. m. Tuesday, September 16 at the Homemaking Cottage.

Members of the local FHA will bring the devotional and the program will include an explanation of the organization's purpose and creed. The club's "Blue Book", a guide for all Young Homemakers Chapters in Texas, will also be reviewed. Also on the club's calendar is the Area 1 Young Homemakers

convention slated for Saturday, September 13 at Gates Hall, Plainview. Registration will begin at 8:30 a. m. All members are urged to attend. The local chapter will serve at the Field Day at the High Plains Research Center, Thursday, (today) from 4 to 5 p. m.

## Letters to the Editor

Mr. Ross L. Middleton, Publisher The Earth News-Sun Earth, Texas 79031

Dear Ross:

Of all the rodeos Boys Ranchers have been putting on over the past 25 years, the one held over the Labor Day Weekend was

probably the most successful of all, and we feel much of the credit for this must go to you and other fine members of your staff who helped with the advanced publicity. Even with the possibility of inclement weather, nearly 10,000 people drove to the Ranch for this Silver Anniversary event. This large crowd was a real in-

spiration to the boys and one of the reasons each boy did his best to make everyone proud of him. Thirty-five state flags encircled the rodeo arena, this year, to indicate the number of states represented by our boys, and nearly 300 young men who have lived at the Ranch over the past 30 years returned with their families for a reunion that has become traditional. The rodeo also gave the boys in the band an opportunity to show what they have learned the past year and they did a great job, too. Cal and Mimi Farley would certainly have been proud of their boys, this year, as all of us were who were at the rodeo. Thanks again, for the way you and your staff pitched in to help them. It is our hope that you will be going to the Ranch in the near future to see what your help means to a great bunch of kids. With all good wishes, I am

Sincerely,  
CAL FARLEY'S BOYS RANCH  
Louie Hendricks

Mrs. Lawrence Honored With Lullaby Shower

Mrs. S. D. Lawrence was honored with a surprise lullaby shower Monday afternoon at the Homemaking Cottage. A white net cloth draped the serving table which was centered with a miniature baby under a larger pink umbrella. Miss Kay Caudle served punch and cupcakes to the guests. Hostesses were Mrs. J. W. Winders, Mrs. Harold Fields, Mrs. Dewayne Fryar, Mrs. Dean Jones, Mrs. Paul Wood and Mrs. Gene Gaston.

### ADELLE'S BEAUTY SCHOOL

708 Quincy - Ph: 293-3693  
Plainview, Texas

**Enroll Now and Take Advantage Of Our Fall Special**

You May Work Out All Or Part Of The Tuition Fee.

For Further Information Call

**WILMA EARNEST**

Phone 986-2581 Springlake  
After 7PM Or Sunday or Monday



## 21st. Anniversary Sale

*Help us celebrate our gala store-wide Anniversary Sale!*

**Now is the time to buy that new Sofa, Bedroom Suite or Living Room Chair you have been wanting.**

**In the Bedding Department, PRICES ARE SLASHED!**

**Famous Name Brands:**  
SIMMONS SEALY SERTA U.S. KOYLON  
Mattress sets in twin, regular, queen & king size.  
**KING SIZE MATTRESS For Only \$149.95!**

**OUTSTANDING BUYS ON A COMPLETE LINE OF:**

- \* Carpeting (in all the latest Fibers)
- \* Famous GE Appliances... Washers, Dryers, Ranges, Freezers and Refrigerators. Shop today and furnish your entire home during our storewide 21st. ANNIVERSARY SALE at:

**JOHNSON FURNITURE CO.**      HIGHWAY 84 WEST  
IN MULESHOE



A SENIORS HAND is a thing of beauty at this time of the year. Local classmates are pictured photographing their hands five minutes following the distribution of class rings.

## Microwave Ovens May Replace Old Methods

College Station, --Microwave ovens may replace conventional methods for barbecuing of meats and poultry; they do the job more than three times faster.

Mrs. Doris Myers, Extension home management specialist with Texas A&M University, says conventional methods of barbecuing are time-consuming and cumbersome and she cites some new studies on microwave barbecuing.

Researchers at Southern University, Baton Rouge, La., were smoked in a separate unit, while those barbecued over coals were smoked during cooking. Combined cooking and smoking time a pound by the microwave technique was one-third or less than for conventional methods.

Mrs. Alice Martin left Friday for a few days visit with her son and family the Calvin Martins in Carlsbad. She stopped in Denver City and spent the night with her granddaughter and family Mr. and Mrs. Clifford Bills, on the way down.

Actual cooking time by microwave was only 3 minutes a pound for spare ribs and chicken halves, 5 minutes for beef brisket, and 6 minutes for fresh ham.

A trained taste panel rated all meats barbecued by microwaves as good as meats over hardwood coals, adds Mrs. Myers. Pieces cooked by microwave

## Women Must Learn To Protect Themselves

Dallas --Prevention is the major step for women to protect themselves against crimes, believes Paul Boesch, Houston.

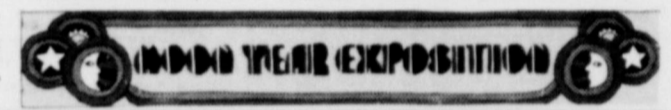
Boesch is an author and expert in the field of self-defense for women. During the past 10 years, major crime has increased across the nation at an alarming rate. Crimes against the person, a large number involving women, have been among those showing

the greatest increase. "If women would just use common sense they would prevent many offenses," Boesch believes. He cites locking car doors, not opening doors to strangers, shying from dark places and screaming if attacked.

"Each woman must make herself responsible first for her own safety," he says. "Each must believe it can happen to her."



A World's Fair of fun and excitement in just 16 days! "George M!" with Broadway cast, mind-stretching "Moon & Beyond" N.A.S.A. Exhibit, "Hey Look!" magic screen experience, authentic "Tahiti Nui Revue", big-time Cotton Bowl Football, 5 big free "Spectaculars" each ending with fireworks, gorgeous "Fountasia", Colossal Free Circus, giant 1970 Automobiles Show, Pan-American Livestock Exposition, State Fair Horse Shows, thrill-packed Midway ... AND MUCH, MUCH MORE!



**OPEN 9-9 DAILY 12-6 SUNDAY**

## HIGH FASHION WIGS E-X-P-A-N-S-I-O-N SALE

**HI FASHION WIGS OF LUBBOCK IS GOING TO DOUBLE THE FLOOR SPACE AND DOUBLE THE PARKING AREA FOR YOUR CONVENIENCE. WE SAY THANKS TO THE AREA PEOPLE FOR MAKING THIS NECESSARY.**

**BANKAMERICARD**

**WIG CASES \$3.99**

ALIGATOR OR VINYL Free Head With Case

**2 Oz. Flat Base WIGLETS \$3.99**

**2. MINI FALLS \$16.95**

This is our cascade mini fall that is pictured to the right. Perfect for curls or as a fall.

**S-T-R-E-T-C-H WIGS \$12.88**

At work or play, look your best during your busy schedule with this 100% human hair. Its versatility allows it to be styled any way. Choose from our array of natural shades. A made in France sensation.

**Close Out While Selections Last**

**WIG HEAD \$2.99**

**PETAL SCARVES 99¢**

**WIGLET CASES \$2.99**

**HUMAN Hair Eyelashes 99¢**

**SHOW GIRL WIG \$65.00**

Sometimes Called THE WIG FALL Our Prestige Wig Extremely Thick and Long.

**Reg. \$135.00**

**FREE WIG CASE**

**1. DOME WIGLETS \$9.95**

A raised base that has as much added height as you need. No need to tease or back comb. Long, luxurious 100% human hair. Can be worn on top of head or on the back in cascade of curls.

**Reg. \$17.00**

**For Back to School or Summertime Wear**

**2. CASCADES \$9.95**

Our beautiful cascade of curls is Texas' newest sensation. A very versatile piece that can be worn in curls or as a large wiglet. 100% long human hair.

**Reg. \$19.95**

**HAND TIED STRETCH WIGS \$45.00**

This is the finest wig made. A completely double-knotted hand tied wig. All hard to get colors available including hard to get frosted.

**FREE CASE AND HEAD**

**3. STYLED WIGS \$14.88**

Beautiful styled wigs on display. We have some very cute styles on display in all colors. If you ever wanted a wig, you must see our huge selection. \$1 will hold your choice in layaway.

**WHILE THEY LAST (3)**

**LONG FALLS \$29.95**

Hi Fashion Wig's beautiful long fall on sale during Lubbock's expansion sale. Compare almost anywhere at 49.95.

**HURRY WHILE COLOR SELECTION LASTS**

BANKAMERICARD WELCOME HERE • \$1 HOLDS ANY LAYAWAY • MAIL ORDERS ACCEPTED

# HI FASHION WIGS

**1915-19th St. 763-1963**

# Highlights Of Our European Trip

By: Mrs. Sam Cearly

On the morning of July 31, 16 people of the South Plains area boarded Braniff Air Lines with Dr. Edward E. Hamilton, Pastor of First United Methodist Church of Clovis, New Mexico as Tour Leader. Included in this group were three local ladies Mrs. Marie Ross, Mrs. Edith Brockett and myself Mrs. Sam Cearly.

Four people joined us from McAllen, Texas and one from Oklahoma City joined us in New York City. (21 in the group)

We were delayed about 7 hours at J. F. Kennedy Air Terminal. Finally we were off to Paris by Air France and arrived in Paris at 11:38. Since we had missed our plane to Amsterdam, where our tour was to start we were transferred by bus to Dutch airlines terminal. It was late afternoon when we arrived in Amsterdam. We were finally met by our guide and bus driver Nadine and Adam who were to be with us for the entire tour until we went to London.

Both Nadine and Adam lived in Holland. He had been driving a tourist bus for seven years and was real informative. Nadine wasn't so experienced but was interested in everyone having a great tour.

We missed our tour of Amsterdam which we regretted very much.

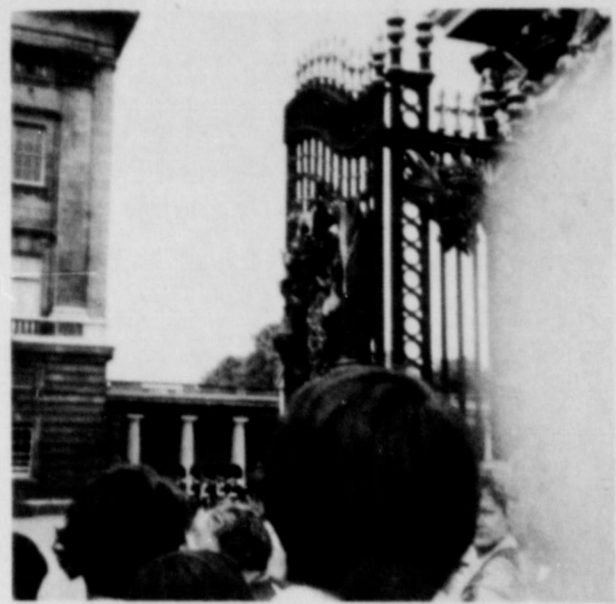
We drove through the country saw many Dutch Windmills and the beauty of this beautiful level country which is Holland.

We drove through the Hague and saw many interesting buildings belonging to the Government.

Holland has the second largest Harbor (next to N. Y.) in the world.

It is a country of bicycles. Population is 12,000,000 with 600,000 bicycles.

Saturday morning August 2 we were off on our tour of Western Holland. Our guide told us the people of Holland loved their Country and kept it very clean which was obvious. There were



CHANGING OF THE GUARD AT WESTMINSTER ABBEY

no flies. In fact we saw no window screens on homes or buildings anywhere while we were in Europe.

In speaking of the government in Holland our guide stated that every person 65 and over receives \$100.00 monthly from the government. The rich and poor alike, there are no beggars in Holland.

There are many dairies, and along the Highway one can view the beautiful pastures, small farms of corn, sugar beets, potatoes and beans. Highways are very good through Holland.

In Cologne, Germany, we saw the famous Cathedral with two towers. All other buildings were almost totally destroyed during World War II, but luckily the Cathedral was just slightly damaged. Our drive through Germany took us along the Rhine River for several miles. We went aboard a private boat for a 15 mile sail up the Rhine River, which took about 14 hours.

The scenery along the River was beautiful there were many old Castles, Churches and small towns back in the hills. The hillsides were cultivated. There were acres and acres of vineyards on these hills which looked as though it were impossible to cultivate. From the boat we were taken to the beautiful Swan Hotel in the city of Rudesheim. The gardens around the Hotel were indescribable, they were truly out of this world.

Beauty is quite important there, all through Holland, Germany, Austria, and Switzerland beauty was noticeable. Many of the buildings and homes in the city and the country (which were two or three stories high) had window boxes filled with beautiful flowers Geraniums and Petunias. They were so colorful.

Heidelberg, located on the Neckar River is the sight of the Heidelberg University famous the world over for its high academic rating. There we saw an Old Castle and the Rhine River falls. A very beautiful sight. Leaving Heidelberg we drove through 100 miles of black forest. Along mountains drives in this area.

In Lucerne Switzerland we stayed at the beautiful Hotel Europa. Monday we spent the morning sightseeing and shopping in Lucerne. Many of the group purchased Swiss watches.

We rode cable cars to the top of Mt. Pilatus, a 7000 foot Peak in the Alps. The view of the city and surrounding areas was marvellous. We returned by train down to Lucerne Lake and by boat back to the city. We toured a Catholic Cathedral with twin spires, it was very beautiful inside as well as out-



WESTMINSTER ABBEY IN LONDON

side. We left Lucerne Tuesday morning and saw the other side of Lake Lucerne which is located in the Alps. The lake is 650 ft. deep and has an area of 14 sq. miles.

In this area, as well as through Italy and Austria we saw small patches of hay on the hillides. They have many ways of harvesting it. Some were using the Scythe, some used small push mowers and others used mowers drawn by small tractors. We saw two yoke of oxen that were pulling hay wagons.

In the mountains between Switzerland and Austria lies the Principality of Liechtenstein. Here we stopped for lunch in the town of Veduz. The Mayor came aboard the bus and gave us some historical facts about the Little Country which is 69 miles square and has a population of 2200. The President lives in a castle in the mountains.

The principal crop in this area seems to be fruit. The apple, plum and pear trees well loaded with fruit.

We reached Austria about 2:30 p.m. This country is much more rugged than the part of Switzerland we had seen. Austria is half the size of England with 700,000 population, located in Central Europe. The highest mountain peak in Austrian Alps is 12000 feet.

We crossed the Brenner Pass into the Alps. The bridge is 600 feet high. The highest in Europe. At 7:35 Wednesday we were in Italy where we drove through mountains most of the day. Leaving the mountains we saw small hay farms many orchards and vineyards. They expect everyone to drink their wine.

Italy is different to the other countries we had seen. Venice was much warmer too. We arrived in Venice about 6:30 p.m. at Hotel Caprice, after almost 12 hours on the bus. We had to do a lot of walking in Venice. The bus couldn't drive up to the Hotel.

Venice is located on the Adriatic Sea and quite different to west Texas, instead of streets for walking, there are canals and they use boats. There is also bridges.

We took a ride on a Gondola

only six could be seated in a boat, it took several for our group. A group of musicians followed along and provided the traditional music.

We toured many interesting places in Venice. Included in these was the building which is the seat of Government, built in the 16th century. It was very Ornate with many Venian Paintings.

In Florence we saw a very beautiful area of Italy. Drove through Bologna, it has a very famous medical school and hospital. Doctors from everywhere come to study.

In this area of Italy, fruit seems to be the principal crop. We saw apples, grapes, pears, peaches and apricots. They also grow berries, sugar beets and all kinds of garden vegetables. Corn and hay.

We had a beautiful highway our guide told us that it was built in 1961. Reaching the mountains she said it had 74 bridges, 47 tunnels and 38 viaducts.

We arrived in Florence at 7:30 at the Ambasciatori Hotel. This

was the first time we were to stay in the same hotel two nights. Friday morning early we began a tour of Florence. We visited a Cathedral we were taken to a leather goods store to shop, most everyone bought gloves and other leather articles, not too expensive.

Florence is the home of Michelangelo. We had a special Italian guide to give lectures about his sculpture and paintings.

It is a beautiful city. Many rich people live there in beautiful mansions.

Saturday we drove to Siena, Italy. Siena has a beautiful Cathedral that was under construction back in the 14 century. It has a collection of famous old painting.

We had to walk on this tour of Siena the streets were too narrow for the bus to make the turns. There are three different towns on three different hills and three separate governments, but all work together for the betterment of all.

In Rome we stayed at the Villa Radieuse (Residence) this was the nicest Hotel of all. We even

had our first air conditioning here. Rome is a city of 3,000,000 has 70,000 Catholic Churches. We saw the ruins of Old Rome, some of it has been replaced by more modern buildings. We went through the Catacombs, this is the place where the poor buried their dead and where the Christians went for protection during the time of the Persecution of the Christians.

We saw the inside of several Catholic Churches, all were beautiful with sculpture and paintings.

As we returned that day to a cafe to eat lunch. There was a wedding taking place in the street in front of the cafe. When the ceremony was over the Wedding Party came inside for lunch.

Following lunch we went to Trevi, called the city of Fountains. We toured the garden of many beautiful flowers, shrubs, trees and Fountains.

Monday, we toured the Vatican City. This is called the Vatican or St. Peters Square. St. Peters Church is the largest in the world and located in the center of the Square. It is very beautiful inside.

We saw the window when the Pope appears on Sunday morning to Bless the People. He was out of town on vacation when

we were there. The museum is also located here. We saw as much of the museum as was possible in our limited time. This tour of the Vatican ended our tour of Rome.

We were on our own in the afternoon. In the Italian cities we visited. We found they closed up at noon and didn't open again until 3 or 4 p.m.

We were told that Rome had 1700 tourist and this year 3200. We left Rome for Pisa. We traveled a very modern four lane highway. They have irrigation in parts of Italy. We saw many patches of tomatoes. There olive trees all over Italy. Most of the major oil companies have stations in Europe, but didn't see any Phillips stations. All cars over there are small. The people can't afford to drive large cars, gasoline is \$1.00 per gal.

This is a country of Umbrella Pines - these make the most beautiful shades. Many people were seen camping in this area. They use small tents among the trees.

In Pisa we saw the leaning Tower of Pisa. We also toured a church with the Baptistery built in the center, also a Cathedral.

Leaving for Milan we traveled (Cont. On Page 8)

## QUITTING BUSINESS

**Furniture Appliances Television**

All Remaining Stock To Be Sold At

### DEALER COST or less

Some Office and Shop Equipment

1966 Pontiac - 1962 Falcon

Terms Available

Family Mart, Inc. d/b/a

## WAREHOUSE

**Furniture - TV - Appliances**

121 S. E. 2nd., Dimmitt, Phone 647-3128

Too Good to Miss!! **Pontiac Irrigation Engines**

At Bargain Prices Through September **\$525** in Crate

**LADD PONTIAC**

Phone 272-3308 Muleshoe

## BETTER SAFE THAN SORRY

### PROVIDE PROTECTION For Your HOME

While You Are Providing Protection For Your Home, Check All Your Other Insurance Needs...

**We Have Insurance To Cover**

- \*Life
- \*Hospitalization
- \*Fire
- \*Casualty
- \*Workers Comp.
- \*General Liability
- \*Boat
- \*Hail
- \*Group Hospitalization
- \*Group Life
- \*House
- \*Farm Equipment
- \*Car

**We Render Prompt Service**

**POOL Insurance Agency**

Phone 272-4531

P O BOX 423 • MULESHOE, TEXAS 79347

## IT PAYS TO TRADE WITH YOUR

**FARMER OWNED ELEVATOR**

**These Two Men Are Ready To Serve You**

**Prompt Courteous Efficient Service Is Yours**

**When You Patronize Your 5,000,000 BUSHEL STORAGE ELEVATOR**

**Flagg Elevator**

**Lazbuddie Elevator**

**DIMMITT WHEAT GROWERS, INC.**

**NEW Low Ash AMALIE XLO MOTOR OIL**

Cuts inventories and saves you money.

Recom. mented for all diesel and gasoline engines requiring Series 3, MIL-L-45199B, MIL-L-2104B or MS Level Oils.

Exceeds car manufacturers' latest Warranty Requirements.

See Your Nearest Amalie Dealer

**Howard Schulte**

**Junior Lawson**

# Support Your Team... Go to the Games

September 12 NEW DEAL at WOLVERINE STADIUM Game Time 8 PM

## FOOTBALL CONTEST

Nothing to Subscribe to... Nothing to buy...

No Obligation...

JUST FILL OUT AND SEND IN YOUR ENTRY...



### 3 Big Prizes

Given Away Weekly

FIRST PRIZE \$500 SECOND PRIZE \$300 THIRD PRIZE \$200

### CONTEST RULES

The teams that are playing in this week's contest games are listed side by side in the official entry blank on this page.

Use the handy entry and mark out the teams you predict to lose. Print the scores you predict in the tie-breaker game in the spaces provided.

Each week's entry must be turned in or mailed to the Earth News-Sun office. Contestants are given a week to prepare and turn in their entries.

Entries must be in by 4:00 p. m. Friday or postmarked on that date. All late entries will be discarded.

In case of ties, a coin will be flipped to determine the winners.

Each week the number of games correctly predicted will count toward each contestant's season total. The person picking the most games correctly for the entire season will receive the grand prize. In the event of a tie on the season total, a coin will be flipped to determine the winner.

The weekly prizes will be given to the persons picking the most number of games for that week. The tie-breaker will count as one of the games picked, and the predicted scores will be used to determine the top three places in that week's contest, if necessary.

Only one entry per person is allowed.



ENTRY FROM MUST BE TURNED IN BEFORE 4 PM FRIDAY, SEPTEMBER 19

### OFFICIAL ENTRY FORM

GAME TO BE PLAYED

TEAM	TEAM
BUFFALO	NEW YORK
PETERSBURG	IDALOU
HEREFORD	PLAINVIEW
FRIONA	MORTON
OLTON	CANYON
BOVINA	HAPPY
VEGA	BOYS RANCH
SUDAN	AMHERST
FARWELL	DIMMITT
KRESS	RALLS

TIE BREAKER Indicate Score Game To Be Played  
WOLVERINES SEPTEMBER 19 - 21  
HALE CENTER

Name \_\_\_\_\_

Address \_\_\_\_\_

City \_\_\_\_\_ State \_\_\_\_\_

<b>LAYMAN BROS.</b> Butane & Garage 257-3385 Earth	<b>OLTON STATE BANK</b> Member of F. D. I. C. Olton	<b>SPRINGLAKE GIN, INC.</b> "We appreciate Your Business" Phone 986-2401 Springlake	<b>SPRINGLAKE WELDING</b> Billy Russell Phone 986-2671 - Springlake
<b>EARTH AUTO PARTS</b> "Home Owned & Home Operated" Phone 257-3305 - Earth	<b>THOMPSON Chevrolet Co.</b> Phone 285-2646 - Olton	<b>Flagg Grain Co. - Dodd Elevator</b> George Blanton, Mgr. - Flagg Carl Gregory, Mgr. - Dodd	<b>EARTH GIN CO.</b> Phone 257-3371 - Earth
<b>BRYANT'S Dept. Store</b> "Nationally Advertised Wearing Apparel" Earth	<b>PARSON-ELLIS-SINGLETON Funeral Home</b> Phone 257-3350 - Earth	<b>KITTRELL ELECTRONICS</b> Zenith-RCA-Whirlpool N. Broadway, Hart 101 E. Bedford, Dimmitt Phone 938-2197 Phone 647-2197	<b>FULFER GULF STATION</b> Phone 257-3355 - Earth
<b>POUNDS (Rexall) PHARMACY</b> Phone 257-2170 - Earth	<b>Bailey County Electric Cooperative</b> Phone 272-4504 - Muleshoe	<b>EARTH OIL &amp; GAS CO., INC.</b> <b>SPRINGLAKE MOTOR SUPPLY</b> Earth Springlake	<b>BUSBY AUTO PARTS</b> Phone 986-2441 - Springlake
<b>KMP Lake Pump Mfg. Co.</b> Phone - 257-3411 - Earth	<b>Production Credit Association</b> Martel LeVeque, Olton 285-2651 W. B. LeVeque, Muleshoe 272-3162	<b>REDI FUEL</b> Phone 257-2195 - Earth	<b>BARTON BROS. Gin Co., Inc.</b> Phone 257-3911 - Earth
<b>CITIZEN STATE BANK</b> Member F. D. I. C. Earth	<b>HOWELL'S 216 FLORAL</b> "Football Mums" Gid & Mildred Howell, Owners 257-2051 - Earth	<b>PAYNE FUNERAL HOME</b> Phone 246-3351 - Amherst	<b>SUN-VUE FERTILIZERS, INC.</b> "your Smith-Douglass fertilizer dealer!" No. Amherst Road-Don Curtis, Manager-Office Ph: 257-2135 Home Phone 257-3747 - Truck Phone 965-2429
<b>EARTH CO-OP GIN</b> Earth	<b>EARTH ELEVATOR</b> "Your Purina Dealer" Phone 257-3301 - Earth	<b>SANDERS LUMBER CO.</b> Phone 257-2005 - Earth	<b>CENTRAL COMPRESS</b> Sudan <b>NICHOLS GIN</b> Pleasant Valley
<b>FARM CHEMICAL CO.</b> Earth and Springlake	<b>HARVEY BASS Appliance</b> "Your Frigidaire Dealer" Phone 272-3030 - Muleshoe	<b>WHITE'S AUTO STORE</b> "The Home Of Greater Values" Phone 257-2120 Earth	<b>EARTH TEXACO</b> Don Taylor, Owner Earth
<b>Wayne Rutherford "66" Station</b> Zella Mae & Wayne Rutherford Phone 257-3375 - Earth	<b>Northern Propane Gas Co.</b> Phone 647-2135 - Dimmitt	<b>TAYLOR MARKET BASKET</b> "Home Owned and Home Operated" Earth	<b>EARTH NEWS SUN</b> Ross and Polly Earth
<b>FEEDERS GRAIN CO.</b> Phone 227-5321 - Sudan	<b>BROWND - JORDAN Equipment Co.</b> Phone 257-3484 - Earth	<b>GERALD'S BARBER SHOP</b> Phone 257-3982 - Earth	<b>SUPPORT THE WOLVERINES</b>



SIDEWALK CAFE IN PARIS

### European Tour

(Cont. From Page 6)

miles along the Mediterranean Sea. It really is the Blue Mediterranean. It is the Harbor for shipping marble. Three fourths of all the marble in the world is mined in Italy. Milan is a beautiful city of 2,000,000. Here we sited the Milan Cathedral. The most ornate and extravagantly decorated of any we saw, it is often compared to a jewel. We also visited monastery where the original painting of the last supper was painted on the wall of the dining room. Most of the monastery was destroyed during world war two except the wall where painting is. Milan is a very pretty town compared with most towns in Italy. We left Milan about 10:30 August 13 and began the climb

toward the summit of the Alps. Mt. Blanc is the highest Peak in Europe, 18,000 ft. We drove through the Mt. Blanc tunnel which is 7 1/4 miles long. The longest tunnel in the world. After 15 minutes in the tunnel we came out to see many beautiful scenes. There was snow on the mountains and flowers along the highway. Geneva is the mother city of reformed Christianity. The spiritual center from which came Protestant Christianity and Democratic Institutions of Colonial America. We saw the immense monuments of the Reformation Cathedral of St. Pierre, also the John Knox Chapel and the University founded by Calvin. The beautiful Lac Lemans has a water spout that can be seen for miles. We saw the U. N. building, Council of Churches building and the first Red Cross building. As we approached Paris our guide told us there were 12,000,000 people in Paris and that 8



OPEN AIR ART GALLERY IN PARIS

million were out of town for the weekend. Arriving there very disappointed in our Hotel in Paris, but the food was good. We saw the Eiffel tower with fountains all around, it was very beautiful. Sunday, we had a Devotional in the Blue Room of the Hotel before breakfast. We toured the arts museum where there is Greek sculpture and painting also French paintings. Saw the original painting of the Mona Lisa. We were told about the Government buildings and many historical events. We saw the building where the Peace talks are held. The U. S. Embassy was good to see, we all enjoyed seeing Old Glory flying in the breeze. We toured the Notre Dame Church which was built in the 12th century. It was very beautiful. Monday, we left early for our

flight to London. Our guide and busman, Nadine and Adam left us here. We arrived in London and were met by our new guide and bus driver. We went to our Hotel, Mount Royal. Touring London our first stop was the John Wesley Chapel where John and Charles Wesley preached. The Chapel has not been changed. The Charles Wesley Organ is still in use there. Wesley's grave is in the yard back of the Chapel. We saw Kingway Hall a mission where many people get help. We toured a part of Westminster Abbey and saw the arches of gold where the Queen was crowned. There is a 640 acre Park (Hyde Park) and a Lake in the Heart of London. This is very beautiful. We drove out of town to Windsor Castle where the Queen spends many weekends. We toured the room of Windsor, visited Hampton Court, (Hampton Court was built by Cardinal Wolsey and taken over by Henry VIII) The Hampton Court Gardens were most beautiful. There were acres and acres of flowers of all kinds and beautiful chestnut trees. We returned to our Hotel and our guided tour had ended. August 21 we left our London Hotel at 9:45 for the Air Terminal to begin our trip back to the States. But with us were many memories of our trip we shall never forget.

## TV SCHEDULE

Table with TV schedule for KCBT-TV Lubbock, Texas, Channel 11. It lists programs for Thursday, Friday, Saturday, and Sunday across various time slots, including shows like 'The Heckle and Jeckle Show', 'The Pink Panther', 'The Flintstones', and 'The Tonight Show'.

SHOP WITH THE Merchants That Advertise IN The News-Sun, THEY WANT YOUR BUSINESS

# M STANDS FOR GRAZE TWICE THE CATTLE

## McNair Vita-Graze

The 'extra vigor' pasture that makes extra money for you.

Now you can graze two cows where one grazed before, through fall and winter, and into spring, with McNair Vita-Graze. Acre for acre, this 'extra vigor' pasture will feed twice as many cows as you used to feed with barley, oats, wheat, or ryegrass. Twice the cows on the same acreage as before, or half the acreage for the same cows as before. In official Experiment Station tests in 1967-1968, it yielded 17% more forage through January 8 than the next best rye variety (Florida Black) at Jay, Florida, and 32.5% more forage than the next best rye variety (Elbon) through February 12 at Overton, Texas. So, McNair Vita-Graze offers quite a saving, especially during the critical fall and winter months, as the following livestock producers and dairymen have discovered already!



What is McNair Vita-Graze? A uniquely developed rye variety which is a revolutionary fall and winter grazing crop. An exclusive development of McNair Seed Company, McNair Vita-Graze is a strains cross of foundation rye lines developed and maintained by McNair Research. The extra vigor in growth and regrowth of McNair Vita-Graze is generated by the random cross-pollination of these specially selected rye foundation lines planted in McNair Seed Company fields. Since second generation seed is not equal to first generation seed in forage production, the name "McNair Vita-Graze" refers to first generation seed only, and is available only in the familiar McNair bag.



Central Florida south, it should be planted later. This means your herds can be grazing McNair Vita-Graze from early October, throughout the winter, and into spring. Rapid regrowth produces abundant green chop and high quality haylage. Vigorous spring regrowth also makes an excellent plow-down crop for green manure. How to multiply the benefits of McNair Vita-Graze. Rapid regrowth produces more green chop, even from limited acreage. You can green chop it anytime, after it is tall enough to cut, and have a feed that is highly palatable and digestible, rich in protein and energy. Beneficial plow-down crop. Makes an excellent, fast decaying, green manure crop to plow under. Even after it has provided profitable pasturing all winter, McNair Vita-Graze has such vigorous regrowth that the spring surplus can be used as plow-down to improve the condition of your soil. Dependable fall and winter grazing. Beef cattle. McNair Vita-Graze provides abundant nutrition for beef cattle when other pasture is hard to come by, and there's no over-eating or bloating to worry about. Grows off much faster than wheat, oats, barley, and ryegrass. Luxurious regrowth for winter and spring pasturing. Also excellent for grain-on-grass fattening programs, and for wintering steers, brood cow herds, or weaned calves. If you want to breed yearling heifers early, McNair Vita-Graze will keep heifers growing rapidly during the winter so they will be large enough to breed in the spring.

# FARM CHEMICAL CO.

### SEPTEMBER BIRTHDAYS

- September 14, 1814 - The words of the Star-Spangled Banner written by Francis Scott Key at Baltimore, Maryland.
September 18, 1851 - The first issue of the New York Times published.
September 23, 1837 - DePauw University, Greencastle, Ind., opened.
September 27, 1732 - The first issue of the Rhode Island Gazette, published by James Franklin, brother of Benjamin Franklin.
September 30, 1906 - Electric locomotives installed by New York Central Railroad.

Wealthy Can Be Healthy. Whether our society is too materialistic is not to be measured by the amount of wealth that is produced, but by how it is applied.—IPA Facts

Advertisement for Six Mutual Funds by IDS, featuring a portrait of David LeRoy Thompson and contact information: 272-4477.

Table with TV schedule for KLBK-TV Lubbock, Texas, Channel 13. It lists programs for Thursday, Friday, Saturday, and Sunday across various time slots, including shows like 'Dastardly & Muttley in Their Flying Machine', 'The Archie Show', and 'The Tonight Show'.





★ ★ ★ ★ ★ ★ ★ ★ ★ ★  
**Our Boys  
 In Service** ★ ★ ★ ★ ★ ★ ★ ★ ★ ★

USS CONCORD--Machinist Mate First Class Robert G. Parish, USN, son of Mr. and Mrs. Clyde D. Parish of Earth, and husband of the former Miss Audrey L. Kooy of Norfolk, Virginia, is serving aboard the combat store ship, the USS Concord. The ship recently left its homeport at Norfolk, Va., for a seven month deployment to the Mediterranean. This is the Concord's first deployment since its commissioning last November. The Concord is the fifth of a new class of advanced supply ships which will serve as floating supply bases. The Concord will serve the U. S. Sixth Fleet in the Mediterranean.

Biloxi, Miss.--Airman Roger D. Cleaver, son of Mr. and Mrs. Odell Cleaver of Route 2,

personnel from Keesler, AFB, Miss., who have joined the massive effort to help nearby communities recover from the devastation of Hurricane Camille. Airman Cleaver and others from the Air Training Command base located at Biloxi are aiding Civil Defense teams and city crews in the distribution of food, clearing debris, and directing traffic. Heavy equipment is assigned throughout the Biloxi area to help clear wreckage. Medical teams from the base are augmenting health staffs in the stricken communities of Bay St. Louis, Waveland, Pass Christian and Gulfport as well as Biloxi.

The Keesler airfield is the center of airlift operations for giant cargo planes bringing in food, supplies and medicines, and for continuous shuttle missions by helicopters. The airman is a graduate of Hart High School. Studies have shown that work output is less when breakfast is skipped than when some food is eaten in the morning, reports Sally Springer, Extension foods and nutrition specialist.



SENIOR RINGS EVEN MAKE A TEACHER HAPPY Bill Anderson, senior class sponsor, breaks into a smile as he issues class rings to 1969-70 seniors.

PECAN WEEVILS--Pecan producers should be on the alert for the destructive pecan weevil. The adults begin emerging from the soil in August and

early September and begin feeding on the developing nuts. Feeding punctures cause the nuts to drop. The females puncture the pecan hull and deposit their eggs. The grubs feed on the kernel and destroy it. Local county agents can supply detailed information on the insecticides to use for control and precautions about their use.

**IT MAKES DOLLARS AND SENSE To Own A ROLL-A-CONE**

**The Combine Attachment That Really Saves GRAIN SORGHUM—CORN—SOYBEANS**

Standing or down, set it for normal or severe conditions. Either way the cones save you money by saving more of your crop. Easily installed on all combines.

Superior to a reel in normal thrashing. No shatter . . . puts irregular high grain in the bin. Good insurance. If your maize falls into tangles, the cones get it all. Will roll up the "Hot spots" with the standing maize.

**Absolutely No Substitute on the American Market**

For more information See your Dealer or write

**ROLL-A-CONE** Manufacturing and Distributing  
 Route 2, Box 75 Tulla, Texas Area Code 409 646-2419

**Agricultural Conference Set September 18**

College Station,--Secretary of Agriculture Clifford M. Hardin will hold the fifth in a series of "listening conferences" on September 18 at Texas A&M University. The conference will be held in G. Rollie White Coliseum on the A&M campus, beginning at 9:30 a. m. Farmers and farm industry leaders from five Southwestern States, Arkansas, Louisiana, New Mexico, Oklahoma and Texas, will attend and through their spokesmen will tell the Secretary what's on their minds. Cooperating in the arrangements for the conference are the vice presidents and deans of agriculture in the Land Grant Universities of the five states. Dr. H. O. Kunkel, dean, College of Agriculture, Texas A&M will preside at the conference. The conferences are designed to give every person who attends an opportunity, either through oral presentations or written briefs, to present his ideas on an expected wide range of topics. These are expected to include opportunities for maintaining and increasing farm income; opportunities in rural America; rural - urban balance; proper nutrition and diets; development of natural resources and conservation and related subjects. Secretary Hardin said several members of the Agriculture Committee of the House of Representatives, including Chair-

man W. R. Poage of Waco, will attend at least a part of the conference. Senior members of the Secretary's staff will accompany him on the visit to Texas. Scheduled speakers, representing virtually every major farm organization and agricultural commodity in the Southwest, will have an opportunity to make brief oral statements. Speakers are requested to bring at least 75 copies of their remarks to the conference. The program also allows time during the morning and afternoon sessions for unscheduled speakers, provided they register. Any person who does not have an opportunity to speak due to the lack of time may file a written statement with the Secretary. Dr. Kunkel said speakers should register in the Lettermen's Lounge in the Coliseum beginning at 8:30 a. m. The conference will adjourn at 4:30 p. m., Kunkel said.

DAIRY CALVES DO WELL IN FEEDLOT--Research at Texas A&M revealed that dairy calves can compare favorably with beef-type calves in overall feedlot performance. Rate of gain was comparable, feed efficiency was greater, and there was no major difference in physical and chemical properties of the meat. The tests showed that feedlot dairy calves will do a better weight gaining job on high level protein rations than those receiving less protein.

**DON'T SEND THEM BACK TO COLLEGE**

Without A STUDENT'S SUBSCRIPTION



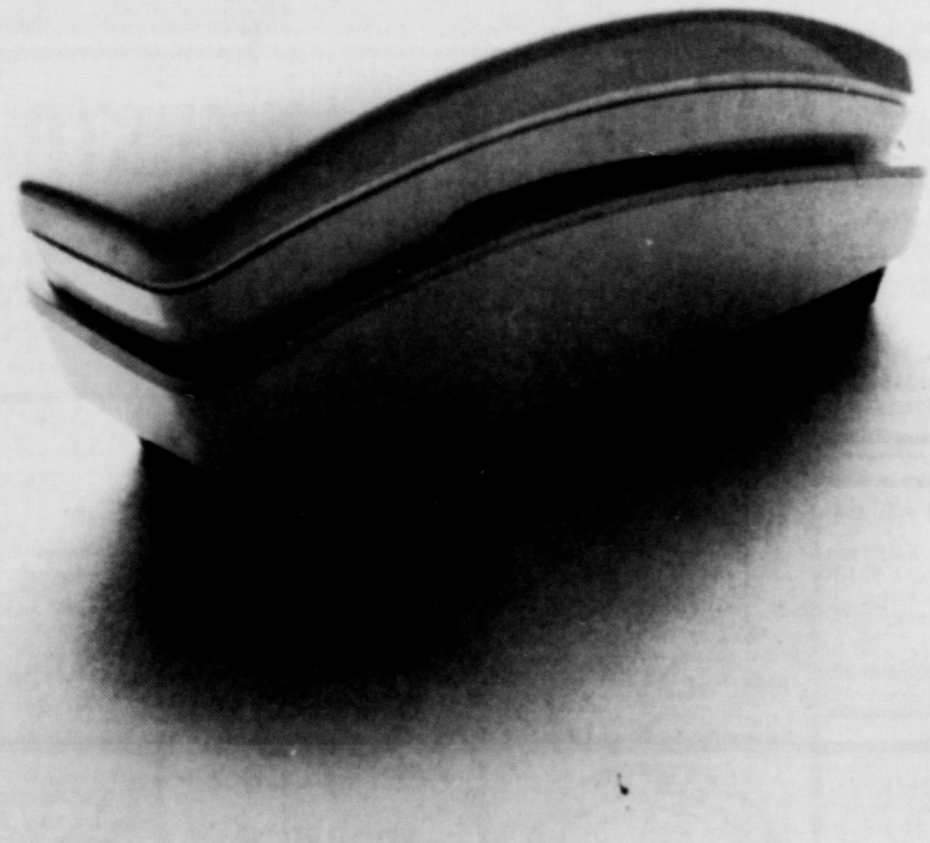
It's Like A Regular Long Letter from Home — and saves you writer's cramp.

**ORDER BEFORE THEY LEAVE!**

**Only \$3.00**

For 9 Month's School Year

**EARTH NEWS-SUN**



**Pick it up and it turns into a telephone.**

Introducing the new Styleline telephone—so beautiful you can mistake it for a piece of modern sculpture. But beneath that lovely exterior is a phone that's all business, with the dial built right into the receiver where it's easy to use.

For more information about the Styleline telephone (table or wall models), call your General Telephone business office.

**General Telephone**



**HEY, THEY'RE HEAVY**

DANCE TO THE MUSIC OF **BROTHER LOVE**

4pc Band from Clovis

They Play The Old, The New and Contemporary

APPEARING NIGHTLY AT THE **COPPER PENNY**

1305 Mabry Drive Clovis