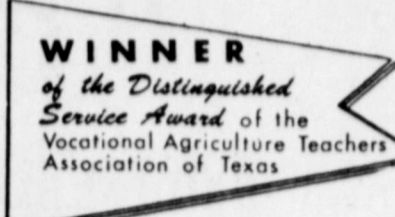




The Earth News-Sun

"A CONSOLIDATION OF THE EARTH NEWS AND EARTH SUN, OCTOBER 12, 1966"



VOLUME 13

10 CENTS

EARTH, LAMB COUNTY, TEXAS, THURSDAY, SEPTEMBER 29, 1966

12 PAGES

NUMBER 7

Earth Area Receives First Bale of Cotton

Bob Waide, who lives seven miles northwest of Earth delivered the first load of cotton grown in the Earth area to the Campbell Cotton Gin in the Dodd Community at 6:30 p. m. Monday.

The load weighed 1890 pounds and turned out a bale weighing 475 pounds with 830 pounds of seed.

Waide was paid the premium price of 21 cents per pound for his cotton, plus receiving the ginning and wrapping free. He was also paid at the rate of \$70 per ton for the seed.

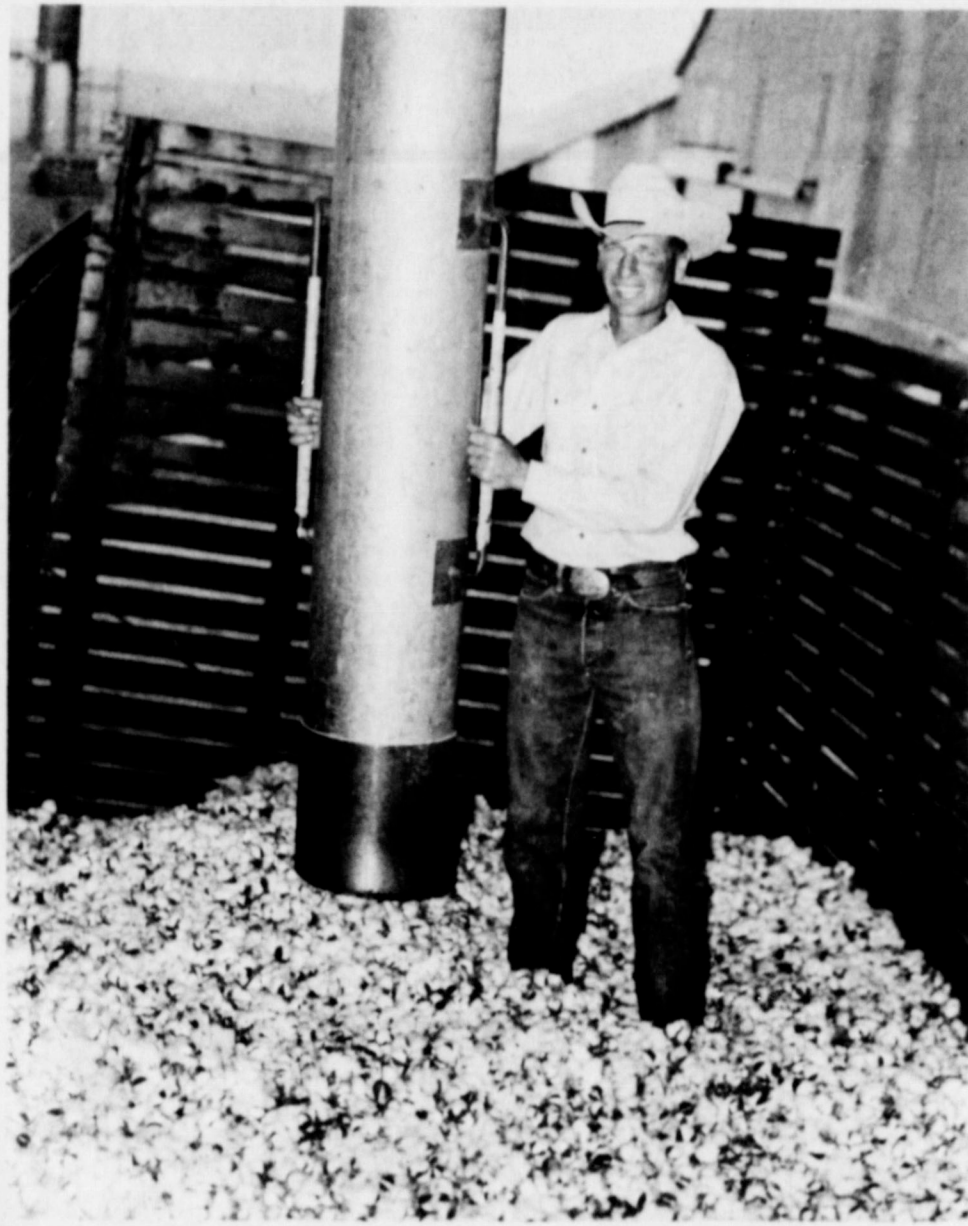
To show Waide additional appreciation for his bringing the first cotton to the Dodd Community to be ginned, three local business firms, Dodd Fertilizer, Gregory Grocery and Station, and Dodd Welding and Blacksmith presented Waide with a \$20 check.

Waide planted the cotton on May 2 and irrigated the patch twice. It was fertilized with

100 pounds of 11-48-0 and 100 pounds of nitrogen per acre. Campbell Cotton Gin has for the past six years received the first bale of cotton to gin.

O. C. Fry, manager for Campbell Cotton Gin, named other farmers, H. W. Kendrick, Kenny Hamilton and Johnny Pelham, who had expressed their wishes to pull the first bale of cotton but pullers were unavailable. Waide was fortunate, Fry said, to get pullers from Springlake and Dimmitt. They were paid \$3 per hundred for pulling the bale. The amount of time it took the pullers to gather the load, gave them an average of 85 cents an hour for their time.

O. C. Fry, who classed the cotton as SLM-15/16 said the cotton was good quality. Although it received hail damage on August 18, it made about 1/4 bale per acre, with approximately 45 percent of the cotton open.



BOB WAIDE BRINGS IN FIRST BALE OF COTTON in the Earth Area on Monday afternoon. The load weighed 1890 pounds. Waide's crop had received hail damage on August 18.

Cynthia Busby Named Semi-Finalist In 1966-67 National Merit Scholarship Competition

Principal D. H. Koening has announced that one senior at Springlake-Earth High School has been named semi-finalist in the 1966-67 Merit Scholarship competition.

The student cited for her high achievement is Cynthia Busby. She was among the highest scoring students in the state of Texas on the National Merit Scholarship Qualifying Test, administered last spring in 47,500 schools nationwide. More than 14,000 semi-finalists were appointed across the country.

The semi-finalists can advance to finalist status by receiving the endorsement of their schools, substantiating their qualifying test performance on a second examination, and submitting information about their achievements and interests. All Merit Scholars for 1967 will then be selected from the finalist group.

Semi-finalists are representative of the country's most intellectually able young people, according to John M. Stalaker, president of the National Merit Scholarship Corporation. "From them will come much of our future leadership," he said.

"These students bring honor not only to themselves, but also to their families, their teachers, and their communities," Stalaker said. "Their success is the result of their own efforts, including well directed energy, usually coupled with the effective direction and encouragement of parents, friends, and teachers."

To improve the opportunities of financial assistance of those needing aid, NMSC sends the names of semi-finalists to all regionally accredited colleges and universities and to scholarship-granting agencies and other sources of financial aid. Studies show that about half of the semi-finalists in former years have received financial aid from sources other than the Merit Program.

In past programs at least 97 percent of semi-finalists have become finalists. Each finalist receives a Certificate of Merit in recognition of his distinguished performance in the program. Finalists are eligible for the scholarships sponsored by NMSC and some 340 corporations, foundations, colleges, unions, trusts, professional associations, other organizations, and individuals.

Names of the Merit Scholars chosen from among the 1966-67 finalists will be announced about May 3, 1967. The exact number of awards will depend upon the extent of sponsor support. In 1966, over 2,250 Merit Scholarships were awarded 1,700 of them by sponsors.

High school grades, creative accomplishments, leadership qualities, extracurricular activities, and school citizenship of the students are evaluated along with test scores, in selecting Merit Scholars.

Each Merit Scholarship is a four-year award covering the undergraduate years of college. Each stipend is individually determined after the winner's need is assessed. For the stud-



CYNTHIA BUSBY

ent already financially able to attend the college of his choice the stipend may be as little as \$400 for four years. Those with high need may receive the normal maximum of \$6,000 or \$1,500 per year. Winners choose their own colleges and courses of study.

More than 13,000 students won Merit Scholarships in the first eleven years of the Merit Program, which was founded in 1955 with grants from the Ford Foundation and the Carnegie Corporation of New York. Over \$48 million in financial assistance to Merit Scholars and their colleges has been expended or committed through the program to date.

District FFA Meeting Held

On September 21, the Littlefield District meeting was held in the Springlake-Earth School Auditorium.

Approximately 50 boys attended with 17 schools represented. In the absence of Ken Dawson, last year's president, Eddie Jones, a local FFA member, presided over the meeting until the president was elected.

Local delegates were Jimmy Blair and Eddie Jones, with Steve Jackson, serving as alternate.

The dues for the year were set at 25 cents for each boy of the district chapter.

The following boys were elected to district offices: Kenneth Carr, president, Littlefield; Rodney Bowling, vice president, Sudan; Stanley Sadler, secretary, Whitharral; Lonnie Dear, treasurer, Springlake-Earth; Dean Black, sentinel, Muleshoe; Ronald Mayfield, reporter, Lazbuddie; Perry Lindsay, parliamentarian, Three-Way; and Randy Brownlow, historian, Whiteface.

OVER 30 MILLION IN COUNTY

Local Bank Shows Gain, County Deposits Are Up

The progressive Citizen State Bank of Earth continues to show an increase in deposits each time the bank examiner makes his call, indicating a steady growth in the economy of the Earth-Springlake area.

Although the bank call came to Lamb County Banks about 18 days earlier than usual this year, for a comparable period over last year, the local Citizen State Bank showed an increase of \$449,997.03. It is possible that had the call come in mid-October as is the usual time, the increases in the local bank deposits, as well as other banks in the county, would have been greater.

However, most banks throughout the county showed an increase, indicating Lamb County's economy to be sound

and on the climb.

Total deposits from the six banks in the county and including the Anton bank is apparently \$30,513,221.49.

The Littlefield Federal Savings and Loan Association reported deposits of \$10,224,726.35. If this amount were added to the total bank deposits in the County, Lamb County would have over 40 million dollars currently on deposit.

Much of the county banks present increase in deposits can be attributed to the ten million dollars in checks mailed to Lamb County farmers from the ASCS office during the month of September.

Reports were as follows with 1965 figures in the second position.

- Security State Bank--Littlefield, \$8,311,328.06 Dep. and \$7,780,216.72.
- First National Bank--Littlefield, \$5,148,326.41 Dep. and \$4,830,715.29.
- First National Bank, Sudan--\$2,552,366.95 Dep. and \$2,725,814.86.
- First National Bank, Amherst--\$3,212,001.16 Dep. and \$3,483,516.54.
- Citizen State Bank, Earth--\$2,678,917.32 Dep. and \$2,228,920.29.
- Olton State Bank, Olton--\$6,116,149.88 Dep. and \$6,141,334.73.
- Citizen State Bank, Anton--\$2,494,131.71 Dep. and \$2,215,162.00.

AFTER GAME FELLOWSHIP SET FOR FRIDAY

There will be an after game fellowship for all high school students and for any college students who may desire, immediately following the football game on this coming Friday night, September 30. Food, fun, frolic and fellowship will be the order of the day in the school cafeteria. Serving as co-hosts for this gala occasion is the First Baptist Church of Springlake and the Earth Methodist Church.

"Speaking of tranquilizers there was even back in grandpa's time, there was something to make you sleep. They called it work."—Louis Graves, The Nashville (Ark.) News.

City Voters Decide On Paving Saturday

No Tax Increase If Bonds Voted

Voters will go to the polls here Saturday for a second chance at the proposed \$35,000 paving program.

Polls will be open from 8 a. m. to 7 p. m. at the city hall community room.

Voters turned down the paving proposal in a July 30 vote, 70-63.

Backers of the program then asked for a new election, saying that the turnout was light and that the issue would have been approved if more facts had been made known.

City council then agreed to call a new election.

The proposed \$35,000 bond issue concerns about 30 blocks of new paving and a large amount of repairs and curbing and guttering to other streets in the city.

City Dads have held many long conferences trying to figure a way to pave the streets of Earth and modernize the

town without having to raise city taxes to do so. The bond issue was found to be the most feasible way, and involved less cost to city dwellers in the long run than would the raising of taxes. City voters are told there will be no tax increase if the bond election is approved.

Anticipated cost to property owners on the new paving is expected to be approximately \$5 per front foot. Property owners may pay for paving upon completion, or if they choose, may make a down payment and make installment payments over a period of three years.

Qualified voters are those who have taxable property within the City and have rendered the same for taxation. These voters are expected to go to the polls and vote Saturday. The City of Earth needs your vote!



BOBBY DUPLER

Rites Held Monday For Bobby Dupler

Funeral rites for Bobby Clay Dupler, 24, were held at 3 p. m. Monday in the First Baptist Church of Earth. M. B. Baldwin, pastor of the church, and Don Larkin, pastor of the Springlake Baptist Church, officiated.

Dupler died Saturday at 3 p. m. in the South Plains Hospital in Levelland, where he had been hospitalized since September 7, when doctors there diagnosed his illness as acute leucemia.

He was born on August 1, 1942 at Maple, Texas. He moved from Maple to Earth five years ago when he was employed for Earth Oil and Gas Company, where he was employed at the time of his death.

He was married to Nancy Glass on August 23, 1960, in Muleshoe.

He was a member of the Springlake Baptist Church. Pallbearers were Marvin Been, Jimmy Fullenwider, Clinton Williams, Jimmy Baldwin, Larry Weaver, and Joe Clark.

Honorary pall bearers were his employer and co-workers, M. H. Been, Phil Clayton, Eldon Upchurch, Shorty Randolph, Dennis Simmons, and Almadaz Guentzner.

He is survived by his wife, Nancy, and daughter, Dianne, of the home, his mother, Mrs. L. M. Dupler, Maple, six brothers, Hugh and Clifford Dupler of Morton, Leon, Gib, and Billy Dupler of Maple, and Carl Dupler of Pettit, two sisters, Mrs. Al Griffin, Pueblo, Colorado, and Mrs. Bertha Hayes of Wichita Falls.

Interment was in the Muleshoe Cemetery under the direction of Parsons-Ellis-Singleton Funeral Home in Earth.

Kent Parish First Good Guy In Junior High

Kent Parish, eighth grade student at Springlake-Earth Junior High School, was chosen by popular ballot, the first Junior High Good Guy of the year. Kent was elected for the courage shown in facing his recent personal sorrow.

This is the first year the "Good Guy" contest has been held, and is open to all students of junior high, male or female. Sponsored by the W. L. Mann Chapter of the Springlake-Earth Junior High National Honor Society, the purpose is for the students to notice specific good actions by their fellow students during the course of the week.

Balloting is done during the week involved, and both the students and teachers may vote. It has been emphasized that balloting be done on the basis of the actual and specific actions by the students involved, and not simply because he or she happens to be a good guy making the rounds of the campus, nor for his



KENT PARISH

personal popularity with the fellow students. Supervisors of the "Good Guy" contest are Mrs. Peggy Lindley and Coach Earl McKinley.

Dear-Myers Contest Winners

Competition in the local football contest increases as the gridiron season progresses. Area champions are becoming more accurate in their selection of winning teams.

J. W. Dear, first place winner this week guessed all the games correctly with the exception of the tie between Levelland and Denver City, which Dear apparently did not anticipate as he selected

Levelland over Denver City. The score was Levelland, 0, Denver City, 0.

His tie breaker guess was off as was most of the contestants. His score was Wolverines 6, and Dimmitt, 16.

Mrs. Lucille Myers of Route 2, Muleshoe, won second place. She also picked Levelland to win over Denver City and missed the Floydada-Post game. She had, however, selected the Wolverines to win over Dimmitt with a score 12-6.

Both winning contestants will receive free dinners Sunday at the local Wolverine Drive In. Mr. and Mrs. John Hall of the Wolverine Drive In are sponsoring the weekly contest.

Local PP-K Contest Slated For October 8

Earth Auto Sales, Inc. is still registering boys between the ages of 8 and 13 who want to try their skill in the Punt, Pass and Kick Contest sponsored locally by the Earth Auto Sales Firm in connection with Ford dealers all over the nation.

The local contest is slated for 9 a. m. on Saturday, October 8 on the local Wolverine Football field, with head coach, Danny Smith in charge.

All boys within the above ages are invited to register and compete in the contest for free local prizes and a chance at outstanding prizes over winning district and zone competition.



IN THEM OLD COTTON FIELDS BACK HOME... Scenes like this bring back old memories to some. So clear are the memories that one has a tendency to rub the ole back and knees. This group of cotton pullers was in the fields Monday and pulled the first bale of cotton in the Earth area. The cotton belonged to Bob Waide and was ginned at the Campbell Cotton Gin at Dodd.

Guest Editorial--

In an age when bigness seems to have become a necessity in government, and industry--in fact in virtually any activity you can name--it is gratifying to find one place where size is not necessary to success and has no relationship to quality of service nor the importance of the enterprise. That is the hometown community newspaper.

A national directory of weekly newspapers reports that there are more than 8,000 "hometown" newspapers in the country. These newspapers reach approximately 32 million homes. While metropolitan papers have been beset by circulation troubles, strikes and shutdowns, the smaller papers have been flourishing and enjoying steady circulation increases.

The thousands of smaller papers are a bulwark of independent thought. Without them, there would be no freedom of the press. There would be no record of community life, no reporting of important community events, no expression of editorial views or opinions that gradually crystallize into public sentiment on issues of the day.

In fact, without the thousands of editors to give it meaning, the institution of a free press would wither and die and with it the freedom of the people. The local newspaper is a small enterprise that does a big job.

From the Globe-Times

ABSCISSA...

By DPW

It is said that people are universal. In so many traits of nature, this statement is indisputable. But there is also an intangible something; a trait so fine and seemingly indiscernible as to defy description. And the people of the plains area and this one in particular abound in the intrinsic ethos of which I speak.

A professor once told me to "can" the war stories and stick to the facts. I hope the kind readers do not misconstrue the foregoing contents and feel as though I am tootin' my horn and reliving my vast world of travels and experiences. They have not been that vast.

But be that as it may, I have traveled to other territorial climes. Overseas during the

"War to end All Wars" and a few flights to the Caribbean area. The states too, have been numerous and the cities almost countless. The neighbors to the south have been "graced" by a few visits and intrastate travels rather common.

Simply, this adds up to seeing and being with a great number of people. I have observed them, listened to them, and in some cases have made it a particular point to study as much of their behavior as time would permit. And I can truthfully say that nowhere else have I felt this intangibility spoken of above.

It is something akin to goodness. A feeling of well being and a sense of belonging. The security one has when he knows his neighbors are always there ready to help in times of need but also knowing they will never interfere nor tread where not wanted.

They are people with compassion and understanding, but who can measure up to whatever adversities may come their way, regardless of the outward hardness of heart sometimes necessary to counteract those adversities. They are possessed with genuine love for their fellow man no matter what his social status and though politically they may be at odds, togetherness is also a part and parcel of their true nature.

It is quite possible all this is not too clear due to personal inability. It seems contradictory and rambling. What I am really trying to say is simply this. The people of the Plains of Texas and the citizens of this area in particular are really the finest people I have ever encountered. They have not only been good to me but for me and I am by no means the only person who has received beneficial treatment at the hands of these fine people.

The beneficial treatment is not necessarily materialistic, though this too has been received in various ways. But material things notwithstanding, the good that possesses the people of this area, and the good they do with their actions are far more important to the fellowman than any of the worldly possessions one could ever receive.

This is a good feeling I have. I look around at these people

and an indefinable twinge comes over me and I am unexplainably serene and content. It is a very good feeling and I hope it will never leave me. I don't believe it will!

Booster Clubs See Film Of Friday's Game

Approximately 35 members of the men and women booster clubs met with the coaching staff at the school cafeteria at 8 p. m. Monday night and was shown films of the Wolverine's recent victory over Class AA Dimmitt.

Narrating the film and explaining some of the important aspects of the game, Coach Danny Smith told the members that he was well pleased with the Wolverines and that they played a very good game.

After the joint session, the WAC's held a short business meeting and discussed buying the Wolverines a meal, but it was decided it would be against the rules of the Interscholastic League and the idea was tabled. Both clubs will meet with the coaching staff again next Monday at the school cafeteria at 8 p. m.

What's Cookin' At School

October 3-7

MONDAY
Salmon Loaf
English Peas
Tomato
Hot Rolls
Applesauce
Milk

TUESDAY
Spoonburgers
Oven Fried Potatoes
Tomatoes, onions
Pickles
Apricot Cobbler
Milk

WEDNESDAY
Pinto Beans, Salt Pork
Potato Salad
Spinich
Corn Bread
Plain Cake, Icing
Milk

THURSDAY
Beef Casserole
Green Beans
Cantaloupe
Plain Jello
Whipped Cream
Cookie
Rolls
Milk

FRIDAY
Stew
1/2 Sandwich
Peach Cobbler
Milk
Crackers

PARTY LINE

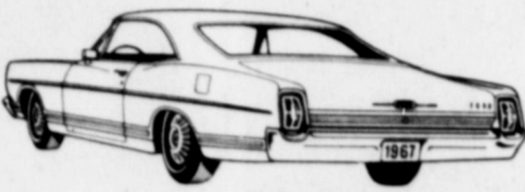
Mrs. Marie Ross and Mrs. Myrtle Clayton returned with a group of area folks Monday night from a 28 day vacation which included a trip to Alaska.

EARTH AUTO SALES

brings you these exciting



LTD by FORD



FORD XL



FAIRLANE GT



FAIRLANE 500 WAGON



FALCON FUTURA CLUB COUPE



MUSTANG 2+2



MUSTANG HARDTOP



NEW 4-DOOR THUNDERBIRD



THUNDERBIRD HARDTOP

new
Fords
for '67

LOOK
Free!

G. E. PORTABLE TV
AND
Electric BAR-B-QUE GRILL
Will Be Given Away
SATURDAY-4 P. M.

JUST COME BY AND REGISTER
THURSDAY, FRIDAY OR SATURDAY

You May Be The
BIG WINNER

YOU DO NOT NEED TO BE
PRESENT TO WIN



1967 FORD XL 2-Door Hardtop--
the ultimate in sports/luxury cars



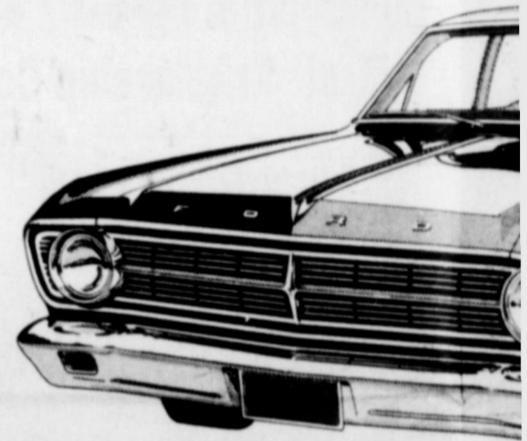
IT'S SHOW
IN EARTH
AND THE ALL NEW '67

HERE NO
EARTH AUTO
IS HAVING A BIG 3 D

FREE COFFEE
DOOR PR

Be Sure To Register F

Falcon for 1967 retains its distinctive, long-hooded "Mustang look" and offers the buyer an even greater selection of engines, transmissions and optional features. The engine lineup now includes a 225-horsepower, four-barrel 289 CID V-8 with Select Shift Cruise-O-Matic which permits manual or automatic gear shifting.



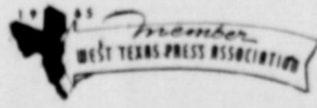
FALCON FUTURA



LTD by F

you're ahead
in a FORD

The EARTH NEWS-SUN



Published at Earth, Texas 79031 every Thursday except the first Thursday following Christmas.

Entered as Second Class Matter at the Post Office at Earth, Texas 79031, October 1, 1954--Under Act of Congress March 3, 1879.

SUBSCRIPTION RATE

Earth and Trade Territory, per year, \$3.50
Elsewhere in United States, Per year, \$5.00

CLASSIFIED RATES

6¢ per word, first insertion, 5¢ per word thereafter--60¢ Minimum.

ADVERTISING RATES GIVEN ON REQUEST

ROSS AND POLLY MIDDLETON-----Publishers

LOW TIME EARTH NEW '67 FORDS ARE NOW... AUTO SALES

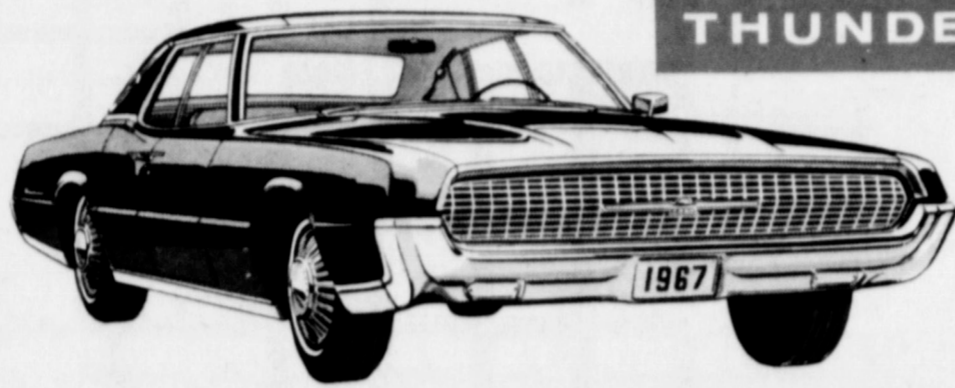
3 DAY CELEBRATION

COFFEE & DONUTS

FOR PRIZES

Register For Our Big Prizes

Ford Thunderbird brings a new dimension to the field of personal luxury car transportation with the introduction of its 1967 product line which includes this 4-door Landau model. All Thunderbird models present a markedly changed yet unmistakably Thunderbird look with a thrusting, long hood line, shorter rear deck and recessed air-scoop type intake grille. The 2 and 4-door Landau models feature vinyl-covered roofs and the traditional S bar on roof quarter panels. The two Landau models plus the 2-door Hardtop have ventless side windows and headlights located in the grille sides that are covered by matching doors which retract when the light switch is actuated.



NEW 4-DOOR THUNDERBIRD

A workhorse with class describes Ford Division's all-new top-of-the-line Styleside pickup, the F-100 Ranger for 1967. Sporting a handsome new exterior appearance with luxurious accent moldings and bright grill, the F-100 Ranger interior features cloth-like vinyl pleated upholstery, with color-keyed carpeting and door trim panels and more leg and hip room in a cab that is more than three inches wider inside. Improvements in the F-100 for 1967 include larger tires, bigger clutch and heavier, stronger frame permitting increased carrying capacity with standard equipment.



F-100 RANGER

FALCON



Styling changes for the 1967 Fairlane, which was completely redesigned for 1966, include taillights divided by back-up lights as shown on the Fairlane X/L Hardtop above and a dramatic new grille treatment as illustrated on the Fairlane 500 4-door Sedan below. Interior styling is new as well with color-coordinated, cloth and vinyl combinations.



FAIRLANE

Free TV-Electric Barbeque Grill----

Earth Auto Sales Plans 3-Day Open House To Show New '67 Fords

Area folks will get an idea of the beauty, power and comfort built into the all new 1967 Ford, when they go on sale Thursday at the Earth Auto Sales, Inc.

A big three day celebration has been planned in connection with the weekend showing at the local firm.

A lovely GE Portable Television will be given away as first prize and an electric bar-b-que grill will go to some lucky winner as second place prize.

These will be given away Saturday at 4 p. m., with winners not requested to be present to win. Registration for these prizes will begin at 8 a. m., Thursday and continue until 4 p. m. Saturday.

Door prizes will be available for all who attend.

John Adrian and his personal will be on hand to welcome all who attend the showing, and will serve coffee and doughnuts throughout the three day open house.

Thunderbird, pacesetter in the personal luxury carfield for more than a decade, will broaden its scope of appeal in 1967 with the addition of a 4-door model, reflecting the greatest changes in its history.

John Adrian, manager at Earth Auto Sales, Inc., said the objective of the new design is to retain the Thunderbird unique personality and offer the convenience of four doors in addition to two-door models.

With styling that is markedly changed yet unmistakably Thunderbird, the new models present a long, lean GT-car look. A thrusting, long hood line, which sweeps down to a massive grille with headlights concealed behind retracting doors, keynotes the new styling. Rear-deck length has been shortened to give added emphasis to the GT appearance. Body side panels accentuate the new styling with a classic, clean appearance.

The 4-door Landau has a vinyl covered roof with the elegant Thunderbird S-bar motif on roof quarter panels. The rear window on the 4-door Landau, smaller than on the 2-door models, suggests a still more luxurious appearance.

Interiors on all models are trimmed with richer upholstery materials than in previous

years. The traditional Thunderbird "cockpit" motif for the driver's compartment has been retained but now offers added convenience with new, expanded instrumentation and controls.

Newly styled for the first time since its introduction in April of 1964, the 1967 Mustang will seek to enhance its already impressive reputation as the most popular new car ever introduced.

"The leadership we've established with the national production of 1,285,000 Mustangs through the 1966 model year will be challenged for the first time in 1967," said Earth Ford Sales Manager, John Adrian, says he plans to sell his share of the nation's Mustang sales.

However, with new styling, a wider selection of engines and optional equipment plus new ride and handling qualities, the 1967 Mustang is ready to retain the popular appeal it has achieved in little more than two years.

To insure its phenomenal sales pace, Mustang for 1967 will include such new options as the Select Shift Cruise-O-Matic transmission which allows manual or automatic gear shifting and a line-up of engines that culminates with a 320-horsepower 390 CID V-8.

Completely new interior styling adds to Mustang's long list of standard equipment luxury features. Sculptured bucket seats, color-keyed, all vinyl upholstery, molded nylon carpeting, padded instrument panel, glove box and courtesy lights and sporty floor-mounted shift levers are standard on 1967 Mustangs.

The 1967 Fairlane is well equipped to capture an even larger share of the burgeoning intermediate car market.

Fairlane styling changes for 1967 include an attractive new body side panel trim, smart new taillight design and luxurious new interior trim combinations. The sporty GT models again will be available with distinctive racing stripes.

Engineering refinements include new valve train design on V-8 engines which increase durability and reliability. Carburetion also has been improved for added smoothness and economy.

Area Children To Receive Summer Reading Certificates

By Lorene Sooter, Librarian

Now that summer has come to a close for our children and they are back in school, I would like to let you know that we had several children busy reading this summer.

Those who read twelve books or more in the Texas State Reading Club this summer and are receiving certificates are as follows:

Kim Wallace from Bula School read 12 books.

Six (6) children from Springdale-Earth School read 12 books. They were Benny Ortiz, Jo Ann Coker, Judy Herriage, Ruth Street, Margaret Street, and Quency Lewis. Nisha Jay Lewis read 15 books.

Two (2) children from Earth received the reading certificates. They were Fonda Goodwin and Brad Haley.

From Sudan we had the following to receive the Reading certificates, Susan Black, Kelly Ann Riley, Rex Baccus, Bonnie Ruth Riley, Sheryl Black, Janice Cannon and Mickey Gelbert.

Debra Williams from Morton read 12 books.

Three-way school had five (5) students who received the award. They are Pamela Ann Roberts, Pam Partlow, Jerry Roberts, Kenneth and Richie Meyers.

At Lazbuddie, Lisa Brown read 12 books and Joseph Fox read 16 books.

Priona children to receive the certificates were Leslie Nossama, David Whitaker, Tim Elmore, David Sides, Karen Erdman and Debbie Erdman. Mary Alice Schillings read 14 books.

Farwell students are Mickie Jonet, Terri Sue Boling, Deborah Joyce Harding read 15 books and Patti Lyn London read 16 books.

Whiteface students receiving the awards are Jeanetha Wemken, Elden Trent Miller, Gloria Beth Purcell, LaVanna Lee Purcell, Francis Purcell, Aletta Jean Miller, and Bonnie Lou Purcell.

At Bovina, Janet Vaughn, Jan Vaughn and Honey Sue Mast read 12 books. Karen Merrell read 15 books and Richard Mast 16 books. Marilyn Allen read 24 books.

Spade is always such a busy stop with so many children looking for books. Those receiving certificates are Holly

Sue Walker, Paula Parks, Richard Garza, Linda Ramage, Jimmy McCurry, Cirilo Garza, Jimmy Caldwell read 14 books, Fran Gray, 15 books, Carol Prentice read 19 books, Jan Glanzner read 16 books, Terrill Wallace read 26 books, Vivian Thompson read 27 books, and Sharon Wallace read 36 books.

Olton students reading were LaFonda Hodges, Glenda Miller, Romelia Moralez, Deanna Lynn Stewart read 12 books, Sievie Kennedy read 14, from Littlefield, Leigh Kirby, Steve Herren, Jerry Cox, Kelly Brock, Jimmie Leon Wedel of Mule shoe read 15 books and Susan Heckerson read 12 books.

We know these children had a very enjoyable summer reading. The State sent the Bookmobile 41 new books in September. We're always glad to receive new books for our readers.

Three Earth Residents Enroll At LCC

Three Earth students have enrolled for the fall semester at Lubbock Christian College and are now attending classes.

Mrs. Pam Boozer, daughter of Mr. and Mrs. W. D. Beasley, is a 1965 graduate of Lubbock Christian High School. She is an English major. Lavern Clayton, daughter of Mr. and Mrs. Phil Clayton, is an elementary education major at LCC.

Mike Dent, son of Mr. and Mrs. T. L. Dent is a 1966 graduate of LCHS. He is an agriculture major at LCC.

LCC is celebrating its tenth anniversary this year. All campus events will be directed toward highlighting this decade of development.

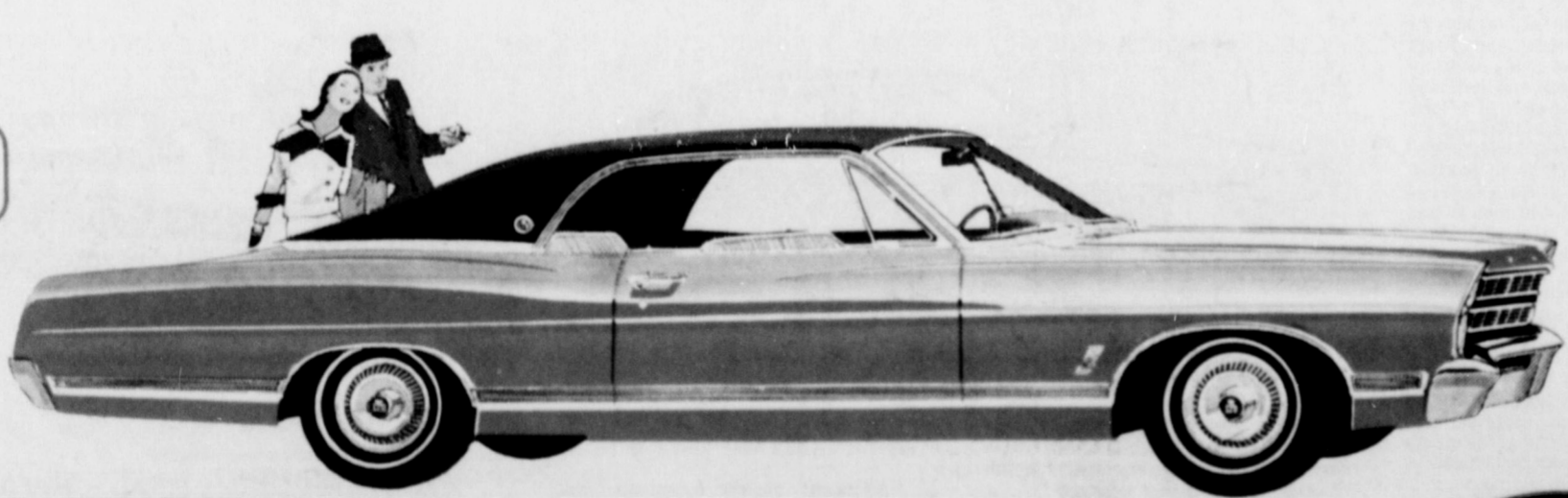
An evening college has been initiated this year allowing students to earn up to 6 hours credit at night.

PARTY LINE

Mr. and Mrs. A. C. Barton recently returned from a week's visit with Mr. and Mrs. Norris Endley of Highmore, South Dakota. Mrs. Endley and Mrs. Barton are cousins.



by FORD



1967 FORD LTD 2-Door Hardtop— one of the world's quietest luxury cars



Head
FORD from

EARTH AUTO SALES

JOHN ADRIAN MGR.

PHONE 257-3341

EARTH

Edd Haley To Instruct Clinic In Orient

Edd Haley, who has traveled most of the earth and officiated basketball games all over the United States and 3 foreign countries, left Earth Saturday to add 7 more foreign countries to his list as he launches his tour to the Orient to conduct basketball clinics for people officiating at basketball games.

This oriental tour is sponsored by the U. S. State Department for the benefit of the Armed Forces as well as overall purpose of developing uniformity in basketball officiating.

Mrs. Haley and son Brad plan to join Haley in Tokyo on October 8. The tour will continue until around November 20.

Haley will hold clinics at Hawaii on September 26-29; Philippines, October 4-7; Okinawa, October 10-13; Japan, October 17-20; and Korea, on October 24-27.

Upon completion of the clinics, Haley will return to Japan, and from there the Haley family will go together to Hong Kong, Taipei, and back to Japan, where they will visit their friends, Mr. and Mrs. Bob Lawrence and family.

On their return trip home, the Haleys will come via Alaska, Seattle, and Los Angeles.

Haley has had 25 years of experience in refereeing in five major collegiate conferences. He coached 14 years in high school and junior college, and served as head of South Plains official organization for three terms.

For two terms, Haley was District representative to the Southwest Conference. He has held many rules and interpretation meetings through out Oklahoma, Texas, and New Mexico, and has worked in two NCAA region play offs.

Speaking of his coaching background, Haley said, "I have had the privilege of working with the outstanding officials in the country, from the Big Eight, Missouri Valley, Southwest, Border Conference and Rocky Mountain Conference."

Haley has developed a definite philosophy about basketball officiating, which he has incorporated along with other do's and don't's in a compendium being sent ahead of him to be printed and distributed wherever he will work. He feels that the most important aspect of refereeing is summed up in one sentence, "It's not WHO is right but WHAT is right that is important." And so he states in his compendium.

He does not think that lending an ear to a legitimate gripe of a player will hurt respect for an official but rather when properly used and ad-

ministered can win respect and confidence.

To gain respect as an official, an official must of course know the ground rules of the game well and then by honesty off the court as well as on, coupled with demonstrated ability and a greater knowledge than just the rules themselves, such an official can properly show the final requisites for good officiating, courage, and judgement.

With such a philosophy and interest in the game, we can gladly wish bon voyage to this ambassador of good will to the Orient.

Hello World



Mr. and Mrs. Kenneth Powell of Oklahoma City, are the parents of a son born at 5:33 a. m. Friday, September 23.

The lad has been named David Cary. He weighed 7 pounds and 8 ounces.

The couple have two other children, Terry 7 and Bruce, 4.

Grandparents are Mr. and Mrs. W. W. Powell of Earth, and Mr. and Mrs. K. K. Leonard of Lawton, Okla.

Mr. and Mrs. Eddie Townsend are the proud parents of a baby boy, born Wednesday, September 21, at 12:16 a. m. in the Littlefield Hospital.

Trenton Todd, as the infant was named, tipped the scales at 9 pounds and 6 ounces.

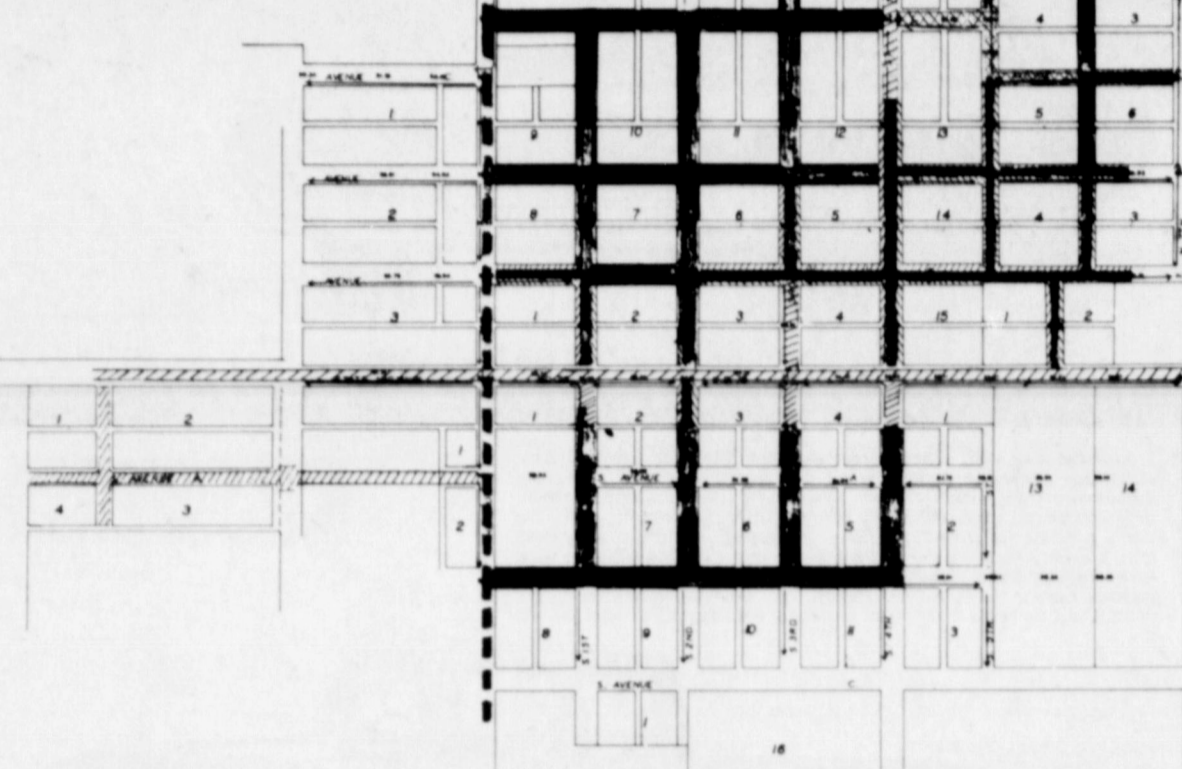
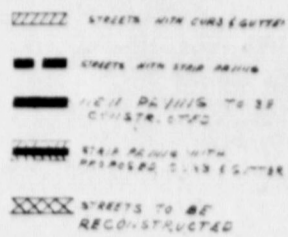
The couple have one other child, Gregg, aged 2 years.

Grandparents are Mr. and Mrs. E. S. Townsend of Earth and Mr. and Mrs. Bill Watson of Plainview.

Great grandmother is Mrs. C. O. Washington of Tulsa.

Townsend is employed at Watson Bros. Butane in Springlake.

As the "light of the world" we accept the role we play in dispersing darkness. We realize where there is light people are fearless, nothing remains hidden and the people express warmth. This is a world of faith where the truth's path is plain, and where God's good is revealed, where men glorify their Heavenly Father.



PROPOSED PLAN FOR PAVING--Above is a map showing streets that are included in the proposed street improvements for the City of Earth.

Anyone wishing to purchase Wolverine Stadium Cushions may contact Mrs. Richard Bills at 965-2608 or Mrs. Mike Simmons, at 257-5691. Cushions are selling at \$1 each. They will be delivered to those who wish to purchase them.

The Rainbow Girls installation will be held on Monday at 6:30 p. m. in the lodge hall, at which time Pansy Been will be installed as Worthy Advisor. Friends are invited to attend.

On October 4, a second half of the training for leaders in Brownies and Junior Girl Scouts will be held at the club house in Friona from 9:30 until 2:30.

Each worker attending is asked to take a covered dish.

Members of the LCC Associates will meet at 10 a. m. Thursday (today) in the Earth Community Room for an all day workshop. All ladies are asked to bring a salad to serve at lunch time.

Mr. and Mrs. Oscar Irvin Anderson will be honored on their 50th wedding anniversary Sunday, October 2, with a come and go reception from 2 to 4 p. m. in the home of their daughter and family, Mr. and Mrs. Zeph Robnett of Earth.

LCC Associates Work On Gifts For Fair

The LCC Associates met Thursday at the home of Mrs. Fred Clayton to work on their projects for the gift fair to be held in Lubbock in November.

At noon, a salad luncheon was served.

Attending the meeting were Mrs. Perry Martin, Mrs. Cullen Hay, Mrs. Lexie Branscum, Mrs. Ronald Cleavinger, Mrs. Lewis Faver, Mrs. Bill Freeman, Mrs. Norman Clayton, Mrs. Edd Bell, Mrs. Floyd Bills, and the hostess, Mrs. Clayton.

Springlake Lions Net \$118 At Pancake Supper Friday Night

The Springlake Lions Club made \$118.00 Friday night at the pancake supper sponsored by the club and served prior to the Dimmitt-Springlake Earth game.

The groceries were furnished by two Springlake Stores and one Earth Store.

The next money making project for the club will be a turkey shoot. Tentative date has been set for October 29.

COOLING HEATING

A-1

MECHANICAL SERVICE

PHONE 647-2480

217 JONES--DIMMITT

AIR COND. - HEATING - REFRIGERATION
ELECTRICAL - PLUMBING - CONTRACTING

Cast Selected For Senior Class Play

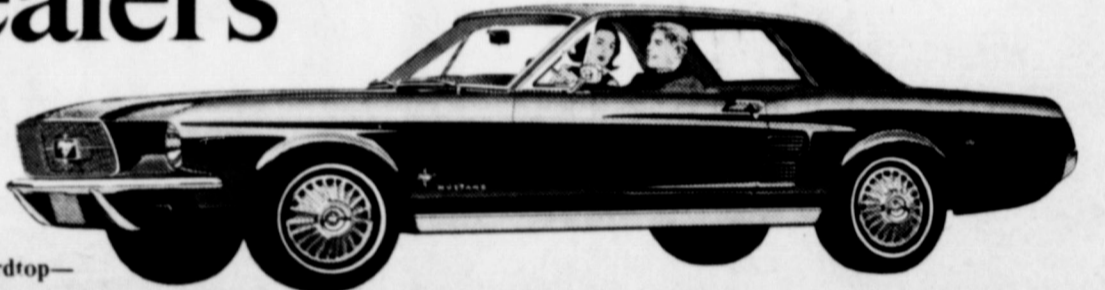
NOTICE

A layette shower honoring Mrs. Ray Tom Packard is slated for 8 p. m. Tuesday, October 4 in the home of Mr. and Mrs. Perry Martin. Everyone is invited to attend.

The Boy Scout Mother's Auxiliary will meet on October 4 from 7 to 8 p. m. in the home of Mrs. Wilson Lewis. All mothers of Boy Scouts are invited. The annual bake sale as well as other business will be discussed.

The Girl Scout Leaders will meet at the home of Mrs. Wilson Lewis on October 3 at 9:30 a. m. The purpose of the meeting is to plan the Court of Awards. All troop leaders and committee mothers are urged to attend.

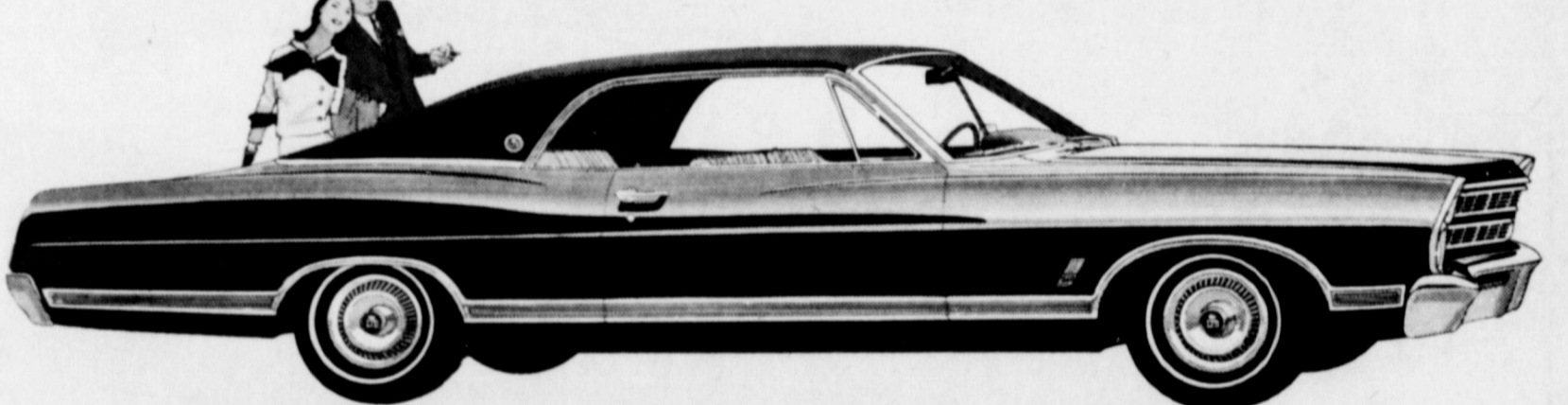
Ride Ford's New Wave for '67! At your dealer's Friday!



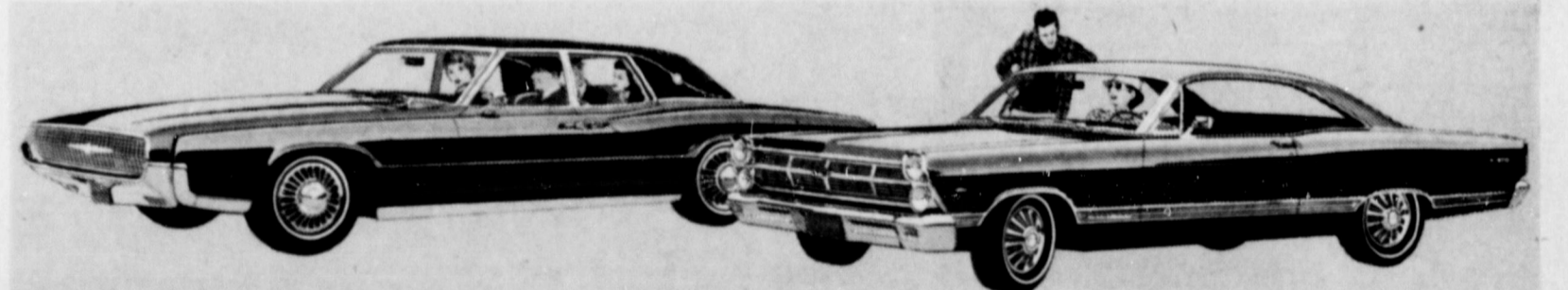
1967 Mustang Hardtop—bred first to be first



1967 FORD XL 2-Door Hardtop—the ultimate in sports/luxury cars



1967 FORD LTD 2-Door Hardtop—one of the world's quietest luxury cars



1967 Thunderbird Four-Door Landau—one of three all-new Thunderbirds

1967 Fairlane 500 Hardtop—the car that gets sportier and more popular every year

18 Fords: The strongest, quietest, best built Fords in history. Choose from luxurious new LTD's, sporty XL's, stylish Galaxies, Customs and wagons.

3 Mustangs: Bred first... to be first. All-new hardtop, convertible and fast-back 2+2. Mustang is longer, wider, sportier than ever. And more than ever designed to be designed by you.

3 Thunderbirds: Unique, exciting, the ultimate in luxury. There are two new

two-door models, and for the first time in history... an elegant new four-door.

13 Fairlans: Big-car roominess and performance in a lean middleweight. You can pick from exciting XL's and GT's, convertibles, smart sedans and wagons.

10 Falcons: Low price and big economy combined with new luxury. Some people even call them short limousines. Choose from classy Sports and Club Coupe, sedans and wagons.

Better Ideas from Ford for '67...

SelectShift Cruise-O-Matic transmission that shifts automatically and manually... automatic door locking... Comfort-Stream Ventilation that lets you close windows, yet be refreshed by a silent flow of air... adjustable Tilt-Away Steering Wheel... automatic speed control for foot-free turnpike cruising... a Magic Doorgate on wagons that swings out for people and down for cargo. And for '67, Ford Motor Company Lifeguard-Design safety features are standard on all models. Ride Ford's new wave for '67!

You're ahead in a

FORD

MUSTANG • FALCON • FAIRLANE
FORD • THUNDERBIRD

JACKSON FORD, INC. EARTH, TEXAS

COVER GIRL GOES WHERE THE ACTION IS...

WOULD YOU LIKE TO WIN A VACATION TO

ACAPULCO

WELL COVER GIRL SHOE CO. WILL AWARD AN EXPENSE PAID VACATION FOR TWO IN ACAPULCO TO SOME YOUNG LADY IN THIS AREA.....

AND IT MIGHT BE YOU.....

ALLISON SHOES

IS HAVING A SWINGING COVER GIRL RECORD PARTY THE FIRST 100 GIRLS

WHO COMES INTO OUR STORE WILL RECEIVE ABSOLUTELY FREE, A 45 RPM "TOP TEN" RECORD AND EVERY GIRL CAN REGISTER FOR THE FREE TRIP.

NOTHING TO BUY, JUST THE CHANCE OF WINNING A FABULOUS TRIP TO ACAPULCO.....

JOIN IN THE FUN WITH COVER GIRL

COME BY TODAY

ALLISON SHOES

224 SOUTH MAIN MULESHOE

Youth Suffers Minor Injuries In Accident

Steve Sanderson, 15 year old freshman at Springlake-Earth High School was rushed to the Littlefield Hospital Thursday afternoon as a result of injuries received in a four vehicle collision, occurring at the intersection of the County School Road on Highway 70.

Investigating patrolman, Bill Angel of Littlefield, advised that Terry Ott, also a freshman at the school, was driving a 1964 Chevrolet pickup south on the school road, when he failed to stop and collided into the rear end of a 1968 Chevrolet pickup driven by Fidel Vega, which was stopped waiting for traffic to proceed.

The initial impact knocked the Vega vehicle into a 1966 model Honda, also stopped and driven by Steve Sanderson, knocking the Honda into the rear of a 1967 Chevrolet driven by Randy Kelley, who was stopped at the stop sign governing traffic at the intersection.

The impact knocked Sanderson off the scooter inflicting severe bruises, sprains, and abrasions. He was given emergency treatment in Littlefield and released.

Angel further advised that damage to the Ott vehicle would be approximately \$250 to \$300 and that the Kelley and Vega vehicles received relatively minor damage. The Honda scooter was half under the Vega vehicle after the accident and sustained heavy damage.

Two citations were issued as a result of the accident.

Sanderson has resumed his classroom studies and apparently there were no permanent injuries sustained.

The EARTH NEWS-SUN Women's Page

County Faculty Hears Talk On Fine Arts of Teaching

Members of the Lamb County Teacher's Association met in the Amherst School cafeteria for a salad supper Monday night, September 26, at 7:00 P. M. Guest speaker for the occasion was Dr. Roy McClung, President of Wayland Baptist College of Plainview.

Entertainment was furnished by the Springlake-Earth High School stage band under the direction of Dean Foshee. Special music was provided by Mrs. Marie Slover, Mrs. Mona Rae Cummings and Miss Carolyn Reynolds, accompanied by Joan Dawson, as they presented a beautiful rendition of "This is My Country."

Dr. McClung gave a brief but well-planned speech as he talked on the fine art of teaching. Two of the more important points he stressed were moral commitment and intellectual curiosity.

During the business meeting held after the supper and entertainment, James Settle of Amherst was elected 1st vice-President to replace Robert Wheeler of Spade who has moved out of the county. Two committee chairmen were appointed: Bill Mann, local superintendent, was appointed Public Relations Committee Chairman and Roy Stephens, County Superintendent, was appointed Legislative Committee Chairman.

Following the business meeting, adjournment came at 9:30 p. m. The next meeting for the association will be held November 14 at 7 p. m. in Sudan, when the Guest speaker will be State Senator, Jack Hightower of Vernon.

Mrs. Earl Walker visited in Plainview, Monday afternoon, with her son and family, Mr. and Mrs. J. B. Griffis. The couple accompanied Mrs. Walker to Dallas Tuesday to visit her two sons, Virgil Griffis of Dallas and Pvt. Billy Glenn Griffis, who is spending a 14 day furlough in Dallas from the army base at Fort Dix, New Jersey. Before returning home on Thursday, Mrs. Walker visited her sister, Mrs. Ruby Anderson in Terrell, Texas.

Glasscocks Surprised With Party Tuesday

Mr. and Mrs. L. A. Glasscock were honored with a surprise 57th wedding anniversary party Tuesday night in their home.

Ice cream and a lovely cake decorated in red roses were served to Mr. and Mrs. Lynn Glasscock, Mr. and Mrs. Bemie Glasscock, Mr. and Mrs. Henry Randolph, Pat and Janey, Mrs. Charlie Jones and children, Mr. and Mrs. Don Randolph and children, Jerry Townsend, Mrs. Lorene Palmer, and Mr. and Mrs. Eldon McCormick of Bledsoe.

Tops Club Membership Reaches Twenty-Five

Twenty three members and two new members of the Springlake-Earth Happy Losers Tops Club weighed in at the High School September 22 at 7 p. m.

A total showed 25 3/4 pounds lost and 8 1/4 pounds gained as reported by Florence Gover, weight recorder.

Members of the club were served a delicious salad supper at the Springlake Community Center. A skit entitled, "Hilda Hippy" was put on by the losing team of chosen sides.

Leader Mrs. W. B. Hucks conducted a short business session. Two lapel tops were awarded, and plans were made to make aprons to wear to Littlefield on October 8 to the area recognition day meeting.

Everyone who plans to attend this meeting is asked to attend the meeting September 29 at the high school building or call Mrs. R. E. O'Hair for details of the important meeting.



SWELL GROUP OF GALS DO A SWELL JOB in keeping the school spirit alive as the Wolverines tangle each Friday night with their opponents. Left to right, LaCretia Washington, Jan Hedges, Cynthia Busby, Kathie Clayton, Anita O'Hair, Vicki Sanders, Diane Avery, Linda Packard, Becky Parish. In front are Linda Jordan and Pansy Been.

Local FHA Chapter Adopts Daughter

Mrs. Marie Slover, local Home Economics teacher and sponsor of the local FHA Chapter announced recently a new project for the local chapter. The FHA girls and their sponsor have adopted through the Christian Children's Fund, Inc. a new "Daughter."

The little girl, who is eight years old, is named Fang Ming-Chu and lives on the Island of Taiwan. Her father, a soldier, was killed in an accident, leaving, in addition to Fang Ming-Chu, his wife and five other children.

Though the young girl's mother tried desperately to care for her family, times were hard, and she turned to the CCF for assistance. The CCF, in turn, turns to the people of the Free World to assist them in caring for the underprivileged children of other nations not as fortunate as the United States.

Mrs. Slover, in discussing the project, stated that the local chapter wrote the CCF at the beginning of this school year, and received their reply sometime last week. The CCF sent the local FHA Chapter information concerning the "adoption" and a picture of their young charge.

The project will encompass the entire school year, and projects of the local girls will be directed toward the care of the little girl. The salad



will go toward sending the necessary items and finances to the CCF. Mrs. Slover was explicit in explaining that the Exchange Student Fund, in charge of the FHA, will not be used in caring for this adoption. Some of the better things the sponsorship will entail for little Fang Ming-Chu will be education, clothing, textbooks and emergency food

rations. More important, as stressed by the director of the CCF, the sponsorship will enable the little girl to remain with her mother rather than being placed in an orphanage on the Island. This is a good thing the local

Sorority Plans Tea for Sunday

The Beta Sigma Phi Sorority met Tuesday, September 27, at 7:30 p. m. at the Earth Community Building.

President Mrs. Tommie Bills called the meeting to order. Business for the night began with a discussion on ways to advertise the stadium cushions which are presently on sale.

A committee was appointed to make plans for a Bridge Tournament to be held in October. Those on the committee are Mrs. Bobbie Simmons, Mrs. Betty Packard, and Mrs. Robbie Parish.

Social committee chairman, Mrs. Bobbie Simmons, read the socials planned for the coming year.

A Perferential Tea was planned for Sunday, October 2 at 2:30 p. m. in the home of Mrs. Robbie Parish. All members are urged to attend.

Mrs. Bobbie Simmons gave a very interesting program on "Your Day Socially." She gave ways on how to make the breakfast table more pleasant and get the feeling of "O What A Beautiful Morning."

Members present for the meeting were Mrs. Tommie Bills, Mrs. Betty Packard, Mrs. Sunny Randolph, Mrs. Bobbie Simmons, Mrs. Sue Taylor, Mrs. Mary Williams, Mrs. Sherri Tunnell, Mrs. Karen Tunnell, Mrs. Noreen Taylor, and hostesses, Mrs. Linda Laing, and Mrs. Glenda Ott.

Eastern Star Studies Symbolism

The Eastern Star met Monday at 7:30 p. m. at the lodge hall for a regular stated meeting. Mrs. Kenneth Parish presented a program on symbolism, telling the meaning and the work of the Eastern Star.

Mrs. Forrest Simmons served refreshments of cookies and coffee to the 15 members and one visitor present.

The next meeting will be on October 10 at 7:30 p. m. girls are doing, and was very humane of Mrs. Slover to take the responsibility in securing this adoption. We would quickly ask that the local citizenry lend their support for this benevolent project.

Town and Country Study Club Honors Faculty With Supper

"I Am Education--Six Full Hours", was presented in reading by Mrs. B. Campbell as Town and Country Study Club hosted a 7 o'clock salad supper Thursday evening in the Earth Community Building for the women of the Springlake-Earth School faculty.

Mrs. M. E. Kelley gave clever "Magic Words" using names of the honored guests.

Music was played by a comical band composed of Earth Eastern Star Members including Mrs. George Laing, Mrs. Donald Kelley, Mrs. B. Campbell, Mrs. Ray Kelley, Mrs. Jimmy Craft, Lena Hite, Mrs. Melvin Bock and Mrs. Marvin Sanders.

Anita, Donita, and Connie Kelley sang a number of musical selections, one of which was the "Club Collect." They were accompanied at the piano by Mrs. Larry Tunnell.

The club president, Mrs. Wayne Rutherford, presided over the meeting.

The invocation was given by Lena Hite.

Hostesses were Mrs. Roy Neal, Mrs. B. T. Hamilton, and Mrs. L. K. Anderson.

Fall flower arrangements of yellow and bronze mums and gladioli, accented by yellow candles, were used throughout all table decorations.

Members present were Mesdames L. V. Anglin, Clay Beavers, B. Campbell, Lena Hite, M. E. Kelley, N. Ray Kelley, Carra Morgan, C. T. Richardson, Wayne Rutherford, H. S. Sanders, C. W. Terry, L. K. Anderson, and B. T. Hamilton.

Guests included Mesdames James Stewart, Donald Kelley, Sharon Tunnell, Marvin Sanders, George Laing, Jimmy Craft and Melvin Bock, Anita, Donita, and Connie Kelley, and the faculty members.

County Farmer's Union Meet in Earth Community Room. Lamb County Farmers Union members will gather at the Earth Community Building at 7:30 p. m. on Monday, October 3. The local membership will be host for the covered dish supper. During the business meeting, resolutions will be adopted to send to the State Convention.

Girl Scouts Study Morse Code

Girl Scout Troop no. 178 met Thursday at the Scout Hut, with the Model T Patrol in charge of the opening ceremonies.

The Model T's led the group in the flag salute, in singing "The Star Spangled Banner", and the patrol song.

Mrs. Richard Stockstill and Mrs. Bert Weil instructed the group in a study of the Morse Code. The girls learned eight letters of the Morse Code alphabet.

The troop presented La Quinta Clark, troop scribe, with a scrapbook in which to keep an up to date record of the activities carried on by the local troop.

Refreshments of Spudnuts and Cokes were served by La Quinta Clark to Marilyn Eagle, Debra Weil, Frances Faver, Kim Kelley, Kim Stockstill, Gaye Ellis, LaJuana Marshall, Marianne Messer, DeLoice Temple, Nicola Conner, Debra Schellar, Darlene Sulser, Terri Inglis, and Loretta Flores.


Brownies Have Outside Flag Ceremony

Brownie Troop no. 398 met at the Scout Hut Tuesday. Mary Bee Marshall led the outside flag ceremony.

Games were played by the group and several songs were sung.

Next week all registration fees of \$1 must be turned in to scout leaders. Diane Eagle served refreshments of candy bars to Kim Clayton, Karen Eagle, Janet and Bonita Fields, Dina Jo Hampton, Terri Harper, Kelley Hayden, Marquetta James, Nisha Lewis, Mary Marshall, Jason Schellar, Margaret Street, Cynthia Williams, and Kelley Jo Wheatley.

DOUGH-SI-DO
... Get In Step!



TROT ON DOWN TO BROCKS. . . .

WHERE THE NEW 1967

BUICKS

AND

OLDSMOBILES

ARE ON DISPLAY IN OUR SHOW ROOM

ENJOY THE REFRESHMENTS & ETC.

YOU ARE ALWAYS WELCOME AT

Brock Motor Co.

422 N. FIRST MULESHOE PHONE 272-4588

10 DAY FREE TRIAL

PLAYTEX *Living* BRAS

you love it or your money back!



you don't risk a penny! Buy any Playtex Living Bra and take 10 days to discover why so many women love them. If you don't agree it's the happiest bra of your life, just send it to Playtex with the sales slip for a full refund. And so many beautiful styles to choose from, including:

a. Playtex Living Sheer Bra with Stretch-ever sheer elastic back and sides for lovely lightness, coolness. Machine washable. White 32A-42C. ONLY \$3.95. "D" sizes \$1.00 more.

b. Playtex Living Stretch Strap Bra with adjustable, cushioned stretch straps, sheer elastic back and sides. Machine washable. White 37A-40C. ONLY \$4.95. "D" sizes \$1.00 more.

c. Playtex Living Long Line Stretch Bra with adjustable, cushioned stretch straps, sheer elastic back and sides. Exclusive backband plus elastic Magic Midriff for smoothest bust-to-hip line ever. Long Line and 3/4 Length Long Line. White 32A-42C. ONLY \$7.95. "D" sizes \$1.00 more.

HURRY—OFFER GOOD FOR A LIMITED TIME ONLY!

All bras with cotton lined nylon lace cups.

AS SEEN ON TV

RUTHERFORD & CO.

PHONE 257-4751 EARTH, TEXAS

National 4-H Club Week September 24-October 2

National awards given to 4-H Club members are arranged by the National 4-H Service Committee, a non-profit organization of voluntary citizens who assist in furthering the 4-H program. The committee organized in 1920, along with the national 4-H Club Congress.

One of the highest 4-H Club awards is a trip to the Club Congress in Chicago each fall. Each delegate to the Congress

is selected on the basis of his 4-H Club work as shown in a 4-H Club record. This record summarizes the club's member's 4-H activities and project work.

Fifty-six companies and foundations currently support 4-H through the National 4-H Service Committee. The tenure of support of these 4-H donors averages more than 18 years, and ranges upward to 47 years. The awards program



Dee Miller's your man for Congress

18th Congressional District

A native son, a Democrat, experienced in public service

"an uncommonly able man"

Pol. Adv. --Paid for by Mrs. James Shotwell, chairman of Lamb County Miller for Congress Committee.



WHEN IT'S ROUNDUP TIME IN TEXAS and the bloom is on the sage, how I long to be in Texas. . . Texas Cowboys are pictured as they branded cattle on the Halsell ranch Saturday. Each fall ranchers brand the spring calves. This year they branded 174 calves. Cowboy, Barney Glasscock was in charge of the branding.



RIDING, ROPING, BRANDING TIME at the Halsell Ranch near Earth, where Cowboys gathered Saturday to brand their spring calves. The calves apparently took a dim view of the entire thing, from the bawling that could be heard echoing across the ranch.

has provided motivation, recognition and educational opportunities to young people. In 1965, 279 college scholarships and fellowships valued at \$147,000 were arranged through the National 4-H Congress, other 4-H events, and educational awards were given. Some 300 awards of savings bonds, watches, pen and pencil sets, plaques and chests of silver were presented to 4-H'ers over the country.

There are many state awards given each year based on the judging of the individual's 4-H record book. These provide scholarships and other meaningful types of recognition. There are also separate state-wide contests, such as the State 4-H Horse Show and the State 4-H Dress Reveal.

In August, a local 4-H club member competed in the State 4-H Horse Show held in San Antonio. Welda Barton, Springlake 4-H Club came within .005 of a second of winning the barrel race.

The week of Sept. 24-Oct. 2 is National 4-H Club Week. If you would like to win or compete in some of these 4-H awards programs, first, you must be a 4-H member. Welda encourages anyone between the ages of 9-19 to join 4-H. Contact a local member or adult leader to learn more about 4-H.

4-H Club work is a family affair. Much 4-H work is centered around the home and family. Many parents who were 4-H Club members

themselves want their children to have the same opportunity, explain Extension Agents, Buddy C. Loosdon, Lady Clare Phillips and Ronny F. McNutt, of Lamb County.

Many 4-H projects call for work similar to that being done on a larger scale by the parents of a 4-H member. "This allows club members to work hand-in-hand with their parents, and enables these young people to start learning the duties involved in operating a farm, ranch, business or a home at an early age," say Extension agents.

If you enroll the parent, you also enroll the boy or girl, the agents add.

For example, the success of a boy or girl in 4-H depends a great deal on the parents. They help the youngsters decide on projects that will best suit the family farm or home situation, and generally they finance or help finance the project.

Typical "4-H Families" of Lamb County include Marvin Bowlings of Sudan, Don Carters of Amherst; John Bridges of Springlake-Earth; Kirk Fitts of Pleasant Valley; T. B. Wheeler of Olton; Ralph Matthews of Spade and the Doug Waldens of Littlefield.

Mrs. Claud Ellis underwent major surgery Thursday in the Methodist Hospital in Lubbock. She is reported to be in good condition, but may have to remain hospitalized for several days.

McNutt Moves To Parmer County As Ag Agent

Farwell--Ronnie F. McNutt, 28, who is currently the assistant county agent in Lamb County, will become the new Parmer County Agricultural Agent effective October 16.

He will replace Joe Van Zandt who recently resigned to become the Moore County Agricultural Agent, according to a joint announcement made here by Parmer County Judge Loyde Brewer and Extension District Agent, W. W. Grisham, Jr., of Amarillo.

McNutt has been with the Extension Service in Lamb County since 1961.

He holds a BS Degree from Texas Tech where he majored in agricultural education.

A native of Stonewall County, McNutt was raised on a live-stock farm there. He was active in the FFA and 4-H Club work.

His parents are Mr. and Mrs. John McNutt, of Peacock. He is married to the former Miss Vera Sue Parker, also of Peacock.

It Pays To Let Cattle Be Choosey

Angleton--Let your cattle be choosey.

It pays, says Marvin Riewe, researcher at Texas A&M University's Gulf Coast Pasture-Beef Cattle Experiment Station, here.

Riewe says some cattlemen think it's wasteful to allow cattle to graze selectively. "It's not wasteful at all," he says, "in fact the animals will perform much better if they're allowed to graze selectively."

Given the chance, cattle will eat the leaves of forages in preference to the stems.

And this is fine, says the A&M researcher, since leafy material is much higher in digestible energy than stemmy material. In some cases the stems of forage are so low in digestible energy that they serve no useful productive function on cattle.

Pastures which look to be uniformly grazed are generally grazed too short for maximum production, says Riewe. If cattle are given the chance to graze selectively, the pasture will have an uneven, ragged look.

In fact, he says, a property grazed pasture always has a good deal of what appears to be lightly grazed or ungrazed forage.

This is one way to judge the proper stocking rate. According to the A&M researcher,

EARL G. LANE

AT THE
TOM BURRIS ELEVATOR
IN SPRING LAKE

**Is Anxious To Buy
Your Grain**

Top Market Prices
Prompt Courteous Service



Fruits & Vegetables

MILK

Gallon

89¢

GRADE A
FRYERS

Ea. **79¢**

APPLES FOR
THE
TEACHER

BREAD

1 1/2 Pound Loaf

2 For 49¢

EGGS

3 Doz. **\$1**

B & D FRUIT MARKET

410 AMERICAN BLVD. MULESHOE

Command Performance Camaro By Chevrolet



Camaro Sport Coupe with style trim group you can add.

You've been waiting for a Chevrolet like this. Now it's here.

Camaro! Long, low hood. Short rear deck. Big-car stance for stability. Strato-bucket seats. A 140-hp Six or 210-hp V8, depending on model. Camaro gives you a car full of comforts from carpeting on the floor to vinyl upholstery all around. There's a lot of security, too, with new safety features like the GM-developed energy-absorbing steering column. Camaro! Sport coupe or convertible. You can order a Rally Sport with hideaway headlights or an SS 350 with Camaro's biggest V8. See your Chevrolet dealer now!



Everything New That Could Happen . . . Happened! Now, at Your Chevrolet Dealer's!

42-2421

THOMPSON CHEVROLET COMPANY

OLTON, TEXAS 79064

B. & W. PUMP & MACHINE

SALES and SERVICE of U.S. PUMPS



SERVICE & REPAIR

ON ANY MAKE OF

GEARHEAD & PUMP

CUSTOM WELDING & MACHINE WORK

OF ANY KIND

ANY BUSINESS LARGE OR SMALL APPRECIATED

B. & W. PUMP & MACHINE

OLTON, TEXAS - SPRING LAKE PHONE (936) 2971 - JIM BALDWIN

CAMPBELL COTTON GIN, INC.

IN DODD COMMUNITY
BOX 432 EARTH, TEXAS

Congratulates...

TO
BOB WAIDE

FOR BRINGING IN THE FIRST
BALE OF COTTON
FOR 1966

1965 - C. P. GAMBLIN

September 15, 1965

1964 - RONNIE HABERER

September 7, 1964

1963 - BILLY CHESTER

September 19, 1963

1962 - EARL KELLAR

September 13, 1962

1961 - G. PELHAM

September 11, 1961



O. C. FRY IS PICTURED presenting Bob Waide with a check for the first bale of cotton.



THE COMPLETELY NEWLY remodeled Campbell Cotton Gin.

WE AT CAMPBELL COTTON GIN, WERE HAPPY TO HAVE BEEN SELECTED TO GIN THE FIRST BALE OF COTTON FOR THE EARTH TRADE TERRITORY. BOB WAIDE IS AN OUTSTANDING YOUNG FARMER AND CITIZEN. WE ARE FORTUNATE TO BE NEIGHBORS TO SUCH A FINE YOUNG PERSON LIKE BOB AND HIS FAMILY.

O. C. FRY B. CAMPBELL RALPH DENHAM



BOB SEEMS TO BE ALL SMILES for the privilege of working the suction on the first bale of cotton.

FIRST BALE
SEED COTTON 1890 lbs.
BALE...470 lbs.
SEED...830 lbs.
Classed...SLM-15/16
Bale Brought...\$100
Seed Brought...\$70 per ton



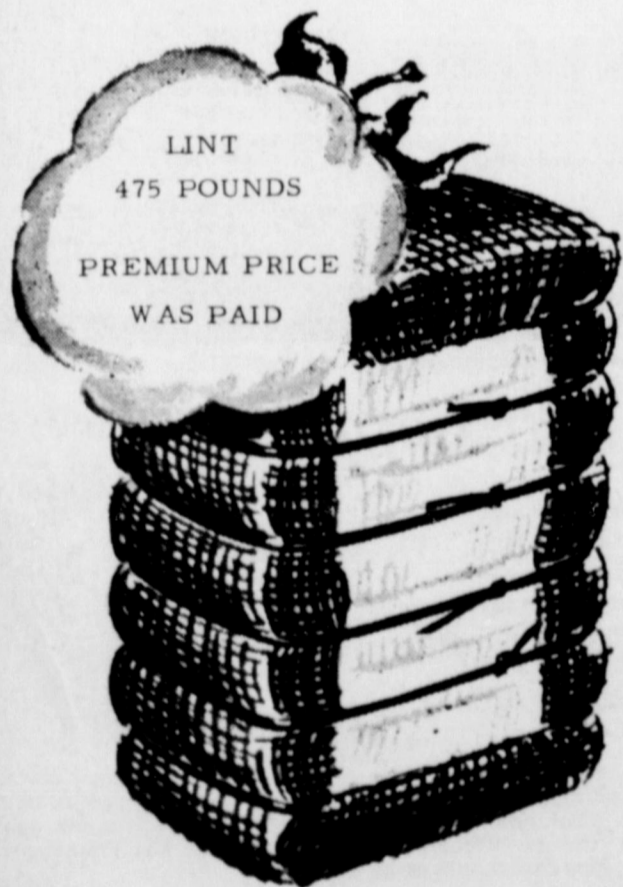
POSING WITH THE FIRST BALE OF 1966 COTTON is O. C. Fry, gin manager, Bob Waide, grower, and Ralph Denham, ginner.

GINNING IS OUR BUSINESS

WE COMBINE OUR EFFORT IN KEEPING ALL MACHINERY UPDATED, AND EQUIPPED WITH EVERYTHING THE NEW 1966 MODELS HAVE.

WE TRY TO ABIDE WITH OUR SLOGAN

"WHEN BETTER GINNING CAN BE DONE... CAMPBELL WILL DO IT"



PICTURED LEFT TO RIGHT is W. F. Tate, Tom Anne, gin manager, Bob Waide, producer of the first bale, O. C. Fry, gin manager, Roy Page, ginner for Tom Anne Gin, Ralph Denham, Ginner at Campbell Gin, Gerald Campbell, ginner at Flagg Gin, Pave Fry, manager at Flagg Gin, kneeling, and "Charlie" the gin mascot.

WE ALWAYS WANT TO BE FIRST

- ★ In Service To Our Customers
 - ★ In Turnouts
 - ★ Top Quality Ginning
 - ★ Sincere Appreciation
- For Your Business**

FLAGG GIN, INC.
PAUL FRY Mgr.

CAMPBELL COTTON GIN, INC.
B. CAMPBELL

TAM ANNE GIN, INC.
W. F. TATE Mgr.

FOR THE BEST IN GINNING SERVICE, GIN WITH US, WE APPRECIATE IT.

FHA To Serve Salad Supper Friday Evening

Mrs. Marie Slover, sponsor of the local FHA Chapter has announced that there will be a salad supper for the public on Friday, September 30, from 6 to 7:30 p. m., prior to the Springlake - Earth - Friendship football game.

Prices are to be \$1 for adults and .75 for children.

Funds are to be used in various projects for the coming year such as "Salute to Soldiers", Christmas Cards, and various projects usually sponsored by the local FHA.

One of the biggest and most important projects to be sponsored this year will be the adoption of a child, reported in another article in this issue of the News-Sun. We sincerely urge as many of the local fans as possible to take advantage of this supper and help support the local FHA in their many worthy projects for this year.

Twenty Boys Attend Meeting

Approximately 20 boys attended the Boy Scout meeting Tuesday night in the Scout Hut, with their leaders Travis Jaques and Jerry Hawthorne.

Three new patrols were organized, with Aaron Schellar and Rudy and Freddie Aguirre appointed as patrol leaders.

The group worked on their steps for advancement on the Tenderfoot, first and second class.

The remainder of the meeting was spent playing games.

Next Tuesday the mothers of all boy scouts will meet at the home of Mrs. Wilson Lewis from 7-8 p. m.

Brownies Have Skating Party In Olton

Brownie troop no. 398 and Brownie troop no. 308 were honored with a skating party Saturday in Olton.

Twenty girls attended the party which lasted from 4 to 6 p. m.

Following the party, Cookies were served to the girls.

Mothers attending the party were Mrs. Barmie Schellar, Mrs. Jim Williams, Mrs. Truman Stine, Mrs. Donald Street, Mrs. Tom Lively, Mrs. Jim Bitner, Mrs. Wendell Clayton, Mrs. Gerald Inglis, Mrs. Wilson Lewis, and Mrs. Noreta James.

Francee Faver Feted With Birthday Party

Francee Faver was honored on her 11th birthday Tuesday, September 27, with a birthday party in her home, immediately after school.

The group was entertained by playing games. Among those played were cops and robbers, life saver relay, and spin the light bulb.

The birthday cake fed in white and trimmed in pink and blue rosettes was decorated with the words, "Happy Birthday" and topped with 11 candles. Guests were served cake, pink punch, and cherry popicles.

Those attending were Kim Kelley, Kim Stockstill, Debbie Weil, Debbie Schellar, Cindy Hall, La Quintia Clark, Gay Ellis, Nicola Conner, Marianne Messer, La Renda and Strela Faver and the honoree.

DON'T FORGET TO VOTE SATURDAY



FOOD PRICES—In stating that the farmer, rancher and housewife cannot be blamed for higher food prices, Sen. John Tower (R-Tex.) said, "It is about time the Federal Government quit pointing its accusing finger at somebody

else and resolved to get its own spending house in order. The road to lower living costs and to improved farm prices lies in the resumption of Federal sanity. It is time the Federal Government attacked inflation, not its citizens."



GRAIN HARVEST is currently underway in the Earth-Springlake area, with combines in operation in grain fields everywhere in the area making short time of harvest period.

GSPA Asks For Release Of 10 Million Acres From Government Program

The Grain Sorghum Producers Association has called on Secretary of Agriculture, Orville Freeman, to release at least 10 million acres of feed grains from the Government program for the production of corn and grain sorghum for the 1967 crop. The association, through its Executive Vice President, Bill Nelson, made the appeal in Washington this week and presented the following reasons for the appeal: Severe depletion of reserve stocks, prospects for a short feed grain harvest this fall because of reduced acres and deteriorating crop conditions, increased feed grain use at home and abroad, and the need for rebuilding adequate stocks.

In reviewing the feed grain stocks situation, the Association executive pointed out that as of July 1, 1966, Commodity Credit Corporation inventory of corn was only 91 million bushels compared to 477 million bushels just a year ago. In reference to grain sorghum, Nelson said that July stocks in all positions were 534 million bushels, down 19% from the 659 million bushels figure just a year ago. Of the current stocks of grain sorghum, CCC owns only 355 million bushels as compared to 560 million in July, 1965. Nelson said that on casual observation it may appear that since grain sorghum stocks are equal to almost one full year's production that stocks would be adequate but he indicated that many people are overlooking the fact

that we have new disappearance and use figures to look at. For instance, livestock feeding in the sorghum belt is up 45% over a year ago, while the increase is only 1% nationwide and in addition exports of grain sorghum during this marketing year ended September 30, are likely to be at least 100 million bushels larger than that of a year ago. He said that these facts coupled with the fact that since there is a shortage of wheat, and grain sorghum is the nearest grain in supply that can be substituted for wheat along with the fact that there is a shortage of corn--and grain sorghum is the nearest substitute for corn, that it can be reasonably expected that in the months ahead there will be a "run" on grain sorghum stocks.

In consulting with USDA officials, GSPA indicated that the Association and individual farmers recognize the delicate balance between releasing an adequate amount of acres to obtain the desired production for use and reserve while maintaining a price structure that will maintain and strengthen income of grain producers. GSPA President, Elbert Harp, at his farm near Abamathy indicated that this early appeal is being made to USDA in order that farmers may plan next year's cropping systems and so that commercial firms serving the feed grain industry may be prepared for any expansion that may be forthcoming.

particularly it is recognized that the seed industry will need to take the utmost care in preserving and distributing seed stocks, and the equipment and fertilizer industry alerted early to increased demands placed on these important segments of the grain producing industry as well as long range planning by country and terminal elevators.

State Fair Date Set For October 8-23

Big Tex, a colossal ringmaster in a 75-gallon hat and size 27 jeans, will preside over a thousand-ring hippodrome of happiness Oct. 8-23 in Dallas.

The 1966 State Fair of Texas, a kaleidoscopic "happening" in full color and exciting action, will have as its theme Exposition of Young America.

Entertainment will feature the Broadway hit musical "Fiddler on the Roof" Oct. 7-23; Ice Capades International 1967 Oct. 11-16; the Girl Carousel Riders of Mexico galloping sidesaddle through the Horse Shows Oct. 8-16; free Esplanade "Pops" Concerts by the 92-piece Dallas Symphony Orchestra Oct. 8, 9, 10, 12, 14; and the Young American Singers' "Explosion of Happiness!" in free performances Oct. 18-23.

Big free shows daily will include the three-ring colossal Free Circus, Mark Wilson's Land of Allakazam, daredevil high acts in the Mobil Sky Revue, the Parade of Young America around the fairgrounds, and fashion shows, Texas Kitchen Window food demonstration and Let's Face It!

Lamb Men Have Weight Problem

Men of the county, you're 56 tons overweight. Collectively, that is! With about 5,900 males in Lamb County over age 25, the "average" male of medium height and frame weighs 168 pounds today, well over the 149 pounds listed as desirable from the standpoint of health.

So to get down to the recommended average, the men of Lamb County need to lose approximately 112,000 pounds of excess weight, or about 56 tons.

These figures are based on nationwide studies conducted by the Public Health Service, the Society of Actuaries and others.

The male part of the population, particularly out of line in the weight department, is shown to be considerably heavier than he once was.

What with eating more and exercising less, he tips the beam at about six pounds more than his father did at his age. In fact, you gentlemen in this county weigh about 35,000 pounds more than Pop did at your age.

The ladies are shown to be overweight, also, but not to the same extent. Actually, compared with the women of the previous generation, they are slimmer. Fashions have had a lot to do with it since, when style dictates a slender look, they proceed to diet and reduce.

However, results of the survey indicate that those in the 18 to 24 age group now average 129 pounds, as against the 119 pounds considered best for health.

Follow it up with a dish of ice cream, only 193 calories, which should cost you about 37 minutes of walking, 24 minutes of bicycling or 17 minutes of swimming.

So arise... From the table!

Above that age, the average for the ladies is 145 pounds, much more than the 131 pounds thought desirable.

The experts tell us that the best way to lose weight and keep it off is to step up physical activity and to make a permanent change in eating habits.

Now enjoy your spaghetti, it's only 396 calories which you can easily burn up by, say walking for 76 minutes, or riding a bicycle for 48 minutes or swimming for 35 minutes.

STATE BANK NO. 1814 REPORT OF CONDITION OF CITIZENS STATE BANK OF EARTH, IN THE STATE OF TEXAS, AT THE CLOSE OF BUSINESS ON SEPTEMBER 30, 1966.

| ASSETS | |
|---|---------------------|
| Cash, balances with other banks, and cash items in process of collection..... | 434,591.04 |
| United States Government obligations, direct and guaranteed..... | 370,619.35 |
| Obligations of States and political subdivisions..... | 4,444.94 |
| Other loans and discounts..... | 2,146,569.98 |
| Bank premises, furniture and fixtures, and other assets representing bank premises... | 23,594.06 |
| Other assets..... | 15,000.00 |
| TOTAL ASSETS..... | 2,994,819.37 |
| LIABILITIES | |
| Demand deposits of individuals, partnerships, and corporations..... | 1,615,177.09 |
| Time and savings deposits of individuals, partnerships, and corporations..... | 817,028.46 |
| Deposits of United States Government..... | 94,688.93 |
| Deposits of States and political subdivisions, Certified and officers' checks, etc..... | 146,897.04 |
| TOTAL DEPOSITS..... | 2,678,917.32 |
| (a) Total demand deposits | 1,775,888.86 |
| (b) Total time and savings deposits..... | 903,028.46 |
| Other liabilities..... | 15,000.00 |
| TOTAL LIABILITIES..... | 2,693,917.32 |
| CAPITAL ACCOUNTS | |
| Common stock--total par value..... | 75,000.00 |
| Surplus..... | 125,000.00 |
| Undivided profits..... | 100,902.05 |
| TOTAL CAPITAL ACCOUNTS..... | 300,902.05 |
| TOTAL LIABILITIES AND CAPITAL ACCOUNTS..... | 2,994,819.37 |

I, Ann Jones, Cashier, of the above-named bank, do solemnly swear that this report of condition is true and correct to the best of my knowledge and belief.

Correct--Attest: Ann Jones, cashier

Directors: Joe B. Temple, Ella Mae Temple, A. A. Parish

ADVERTISING WILL MAKE YOU MONEY!

State of Texas, County of Lamb, ss: Sworn to and subscribed before me this 27th day of September, 1966, and I hereby certify that I am not an officer or director of this bank. My commission expires June 1, 1967.

W. R. Stockard, Notary Public, Lamb County, Texas.

BUSINESS and INDUSTRIAL DIRECTORY

| | | | |
|--|--|--|--|
| MURRAY'S MULESHOE JEWELRY | To Rest Assured use SAFETY DEPOSIT BOX Protection FIRST STATE BANK Dimmitt, Texas | Social PRINTING Earth News-Sun | LA-Z-BOY Johnson Furniture Muleshoe, Texas |
| COMMERCIAL PRINTING EARTH NEWS-SUN | Ford FARM - INDUSTRIAL EQUIPMENT TRACTORS DIESEL GASOLINE 2 to 5 PLOW SIZES FRANCIS IMPLEMENT Muleshoe, Texas | Your BUICK OLDSMOBILE DEALER BROCK MOTOR Muleshoe, Texas | Harvey Bass Appliance YOUR DEALER FOR • FRIGIDAIRE • RCA VICTOR • MOTOROLA PHONE 272-3030 Muleshoe, Texas |
| Cobb's MULESHOE'S COMPLETE DEPARTMENT STORE MULESHOE, TEXAS | YOUR DISTRIBUTOR FOR TEXACO PRODUCTS SAM FOX PHONE 272-4688 MULESHOE, TEXAS | JOB PRINTING EARTH NEWS | ALLEN ELECTRIC Complete Motor Service REBUILDING • REWINDING REPAIRING Located at Rear Of Motor Machine Shop PHONE 385-5472 817 East Ninth Street Littlefield Texas |
| Your Dealer For MAYTAG ZENITH ADMIRAL KELVINATOR KITCHEN AID JOHNSON-POOL FURNITURE Muleshoe | Quality PRINTING EARTH NEWS | YOUR DEALER FOR Massey-Ferguson GLENER Combine ALLIS-CHALMERS B & P Implement Co. Dimmitt, Texas | |

now **'67 CHEVROLET**

With an Impala Sport Coupe you can get all the comforts of home, maybe even more.

Everything new that could happen... happened!

New styling that speaks beautifully for itself. More things to add than ever before: A new stereo tape system. Comfortron automatic heating and air conditioning. Front disc brakes. A better Cruise-Master control system. Plus all the power you could want in a car: up to 427 cu. in. available in Chevrolet's exclusive Turbo-Jet V8. And, standard with every new Chevrolet, a new road feel thanks to improved Full Coil suspension. You really should see the new Chevrolets. Very soon.

And all this for your added safety: GM-developed energy-absorbing steering column, dual master cylinder brake system with warning light, energy-absorbing instrument panel, four-way hazard warning flasher, plus many others.

Everything new's happening now... at your Chevrolet dealer's

THOMPSON CHEVROLET COMPANY
OLTON, TEXAS 79064

42-2421

Wolverines Skin Bobcats of Dimmitt 31-12

The Springlake-Earth Wolverines, riding the passing arm of quarterback Doug Messer, spotted the Dimmitt Bobcats two first quarter touchdowns and then moved in and mauled the Cats for a 31 to 12 upset victory.

Getting off to a very slow start which lasted till midway of the second quarter, Doug Messer took to the air, trying to loosen up the Bobcat defense, and did so with 8 out of 11 pass completions in the second quarter.

Ronnie Hutton, the speedy fullback of the Dimmitt Bobcats, crashed through the center of the line for 2 yards and the first Bobcat touchdown. The point after failed and Dimmitt took an early 6-0 lead.

Late in the first quarter halfback Tommy Stafford found running room up the middle and set sail for a 67 yard gallop for Dimmitt's second touchdown, again the try for extra point failed and the first quarter ended with the Bobcats out in front of the Wolverines 12-0.

Midway in the second quarter, after Doug Messer had loosened up the Bobcat defense on several pass completions, he rolled out to the right side of the field and with good blocking up front, jumped over the last would-be tackler and went over from 20 yards out, for the first Wolverine touchdown. The point after failed and the first half ended with Dimmitt, 12, Wolverines, 6.

At the beginning of the second half it looked as though the Wolverines had run in a completely new squad, and for the first time this season, they began to work as a unit, doing everything they were supposed to do.

Doug Messer wasted no time in letting the Bobcats know that the Wolverines were out to skin them. Striking on the ground and in the air, Doug hit Logan Armstrong with a pass over center for 15 yards and a Wolverine TD. The point after failed and the ball game was tied up 12-12.

A stubborn Wolverine defense forced the Bobcats to take to the air and speedy Randy Washington intercepted a pass on the 20 yard line and ran it all the way for another Wolverine touchdown, which seemed to break the spirit for Dimmitt. This time Jose Triana booted the extra point.

The Wolverines, still riding the hot arm of Doug Messer wasted no time in the final quarter. Messer hit Terry Parish on a 45 yard pass, and moments later tossed the final touchdown pass of the night to Randy Washington for 9 yards. Both points after failed and the Wolverines came off the field victorious 31-12.

The Wolverines gained 743 yards on the ground and through the air, completed 16 of 23 passes. They had 14 first downs and Logan Armstrong punted the ball 3 times for 85 yards. The Bobcats gained 279 yards with 85 of that yardage received through the penalty route. Completed 3 of 9 passes and punted the ball 3 times for 85 yards. The Bobcats had 10 first downs and were penalized



DAVID LAND NO. 33, halfback for the Dimmitt Bobcats was stopped at the line of scrimmage by no. 31, Randy Washington, no. 32, James Thomas, and no. 72, Jose Triana. This action took place in the third quarter. No. 73 is Tommy

Barlow, 26 is Randy Clayton, and no. 51 is Wayne Henderson. Bobcat players pictured are no. 70 Mike Bruegel, and no. 40, Beelee Goodwin.

Showing of 1967 Chevrolets Slated for Today

For the 1967 car buyer, Chevrolet stresses Choice with a capital "C". Fred Thompson of Olton, and Marcus Messer of Earth, said this week.

"Introduction of the Camaro as Chevrolet's sixth line of cars matches the American public's growing preference for individualized transportation," they declared.

Messer said the 48 new models of Chevrolet, Chevelle, Chevy II, Corvair, Corvette and Camaro, offer an "unparalleled variety of sizes, body styles, options and safety features." They will go on sale Thursday (today) September 29.

Open house will be held Thursday and Friday at Thompson Chevrolet Company in Earth and Olton. Marcus Messer told reporters Monday that if at all possible he will have a new '67 Chevrolet for show by Thursday. If not, he will have a lovely model for show Friday. He said dealers were finding it real hard to get enough autos for show.

Two models of the personalized Camaro—a coupe and a convertible that Messer terms "four-passenger packages of excitement"—are built on a 108-inch wheelbase.

"Camaro offers the greatest choice of engines, trims, options, and accessories Chevrolet has ever introduced with a new line of cars," Messer said. "The buyer can literally tailor his own automobile."

Regular Chevrolet—The industry's top-selling automobile has a longer, lower "big car" look to its 19 models in five series on a 119-inch wheelbase. A wraparound grille includes front fender identification

2 times for 20 yards. This week the Wolverines will remain at home and entertain Preship, who dropped a close one last week to New Deal, 20-16. So we can expect to see another good game. See you at the Wolverine Stadium.

lamps standard on luxury Caprice models, optional on all other series.

Long body lines carry to the tip of the rear fender. Rear fender skirts are available for added body smoothness. Twin horizontal tail lamps above the bumper are recessed into the rear panel.

Caprice and Impala sport sedans have a new roofline that ends in a larger, more sloping back window. An exclusive new roofline on Impala sport coupes stresses fastback styling with the rear window blending into the deck.

Chevelle—The volume leader in the fast growing intermediate car market increases its selection to 13 models in five series with the addition of the luxury Concours station wagon. Wheelbase continues at 115 inches.

There is a look of motion to the forward thrust of the restyled front fenders which give a family resemblance to the regular Chevrolet.

The simulated hood louvers identifying SS 396 models are redesigned. Bold horizontal bars highlight the new full-width grille. Wraparound tail lights are a major 1967 styling feature.

Chevy II—The clean restyling that helped Chevy II take second place among all small car sales in 1966 is refined for 1967. Seven models are offered in three series on a 110-inch wheelbase.

Larger headlamp bezels, together with a redesigned extruded aluminum grille, give a broader, "big car" look to the front end. All models have 14-inch wheels and tires. Corvair—Chevrolet's distinctive rear-engine car will be offered in five models in two series for 1967 on a 108-inch wheelbase.

New Strato-bucket seats are standard in Monza models. Corvette—America's only sports car carries into its 15th year on the market all the features which made 1966 its most successful model year in history.

A sport coupe and convertible are again offered on a 98-inch wheelbase.

Styling refinements include redesign of fender side louvers and a new rear end panel incorporating a wide, centrally located back-up lamp.

Five V-8 engines are available including two new triple-carburetor versions of the 427 cubic-inch engine. Horsepower ranges from 300 to 435. There are three transmissions.

Mr. and Mrs. Truman Layman and Mr. and Mrs. Gayland Stephens returned Sunday from a week's vacation in Colorado.

Mr. and Mrs. M. E. Bland of Albuquerque, N. M., visited Friday and Saturday in the A. C. Barton home and also in the homes of Mrs. Nellie Barton and Mrs. Minnie Pate. Mr. Bland is a nephew of A. C. Barton and Mrs. Pate.

Mr. and Mrs. M. E. Bland of Albuquerque, N. M., visited Friday and Saturday in the A. C. Barton home and also in the homes of Mrs. Nellie Barton and Mrs. Minnie Pate. Mr. Bland is a nephew of A. C. Barton and Mrs. Pate.

Mr. and Mrs. M. E. Bland of Albuquerque, N. M., visited Friday and Saturday in the A. C. Barton home and also in the homes of Mrs. Nellie Barton and Mrs. Minnie Pate. Mr. Bland is a nephew of A. C. Barton and Mrs. Pate.

"Hard Travelers" Entertain Friday Night

Approximately 130 football players, their coaches, and high school and college students attended the after-game fellowship Friday night in the school cafeteria, sponsored by individuals from the Earth

The Earth News-Sun, Thursday, September 29, 1966--Page 9

Church of Christ. The Spanish theme was carried out throughout the cafeteria.

The table was laid with a white tablecloth, featuring long orange streamers down the center, and graced by a lovely floral arrangement in the center of the table.

The "Hard Travelers" a group of singers from LCC presented the program. Frito pie, tossed salad, onions, pickles, home made pie, tea,

and coffee were served to the guests attending.

PARTY LINE

Mr. and Mrs. M. E. Bland of Albuquerque, N. M., visited Friday and Saturday in the A. C. Barton home and also in the homes of Mrs. Nellie Barton and Mrs. Minnie Pate. Mr. Bland is a nephew of A. C. Barton and Mrs. Pate.



DOUG MESSER ON THE MOVE, picking up a first down late in the third quarter. Doug was dropped by no. 33, David Land, and no. 44, Ronnie Hutton. No. 40 is Beelee Goodwin. Wolverine players are no. 72 Jose Triana, and no. 32, James Thomas.

NOTICE

YOU ARE INVITED TO ATTEND OUR COSMETIC PARTY

EVERY DAY, SIX DAYS A WEEK, ALL YEAR LONG.

WE HAVE A COMPLETE LINE OF Max Factor, Coty, Revlon and Clairol

WE ALSO HAVE Allercreme

FOR THOSE THAT ARE ALLERGIC TO SOME COSMETICS.

WE HAVE THE BEST SELECTION

OF FRAGRANCES IN TOWN, SO COME BY AND VISIT OUR COSMETIC DEPARTMENT. WE WOULD LOVE TO HAVE YOU.

Counselor-LEONA PARISH POUNDS **Rexall** PHARMACY

TEST YOUR SKILL WEEKLY BY PLAYING FOOTBALL

EASY TO DO-----WIN PRIZES

Play Ball With The WOLVERINE DRIVE IN

1st Prize will be a Sunday Dinner for 4 and 2nd Prize will be Dinner for 2.

Fill out entry blank below and bring it to the DRIVE IN before deadline 4 pm each Friday before game time.

Black out the team you do not want to win, and on the tie breaker, put in final score of both teams. Prizes become void if not used the following Sunday after winning names appear in News-Sun.

NAME _____ ADDRESS _____ CITY _____

GAME TO BE PLAYED OCTOBER 7, 1966

| | |
|-------------------|------------------|
| SNYDER _____ | LAMESA _____ |
| SEAGRAVES _____ | FARWELL _____ |
| MONTEREY _____ | PLAINVIEW _____ |
| DENVER CITY _____ | MULESHOE _____ |
| DIMMITT _____ | MEMPHIS _____ |
| BOVINA _____ | MORTON _____ |
| SUDAN _____ | PLAINS _____ |
| AMHERST _____ | ANTON _____ |
| LEVELLAND _____ | SWEETWATER _____ |
| LOCKNEY _____ | FRIONA _____ |

Tie Breaker-----Total Score

WOLVERINES _____ SLATON _____

Coming September 29 ALL NEW 1967 CHEVROLET



Left to right—1967 CORVAIR MONZA Sport Sedan; CORVETTE STING RAY Sport Coupe; CHEVY II NOVA Super Sport Coupe; CHEVELLE MALIBU Sport Sedan and the CHEVROLET IMPALA Super Sport Coupe. Latest addition to the Chevrolet line the CAMARO Super Sport Coupe is shown in the foreground.

You Are Invited To Our Show Room In Olton To See The ALL NEW '67 CHEVROLET

FREE REFRESHMENTS & DOOR PRIZES

THOMPSON CHEVROLET CO.

"WHERE YOUR CAR DOLLAR BUYS MORE"

OLTON

EARTH

Earth Tire & Supply
Earth's Only Complete Car Care Center
Phone 257-5231 Earth, Texas

Perkins Tractor & Industrial
Mr. & Mrs. Carl Perkins
Springlake, Texas

Layman Bros. Butane
Phone 257-4721 Earth, Texas

Pounds *REXALL* Pharmacy
YOUR HOME TOWN PHARMACY
Phone 257-2861 Earth, Texas

KITRELL ELECTRONICS
ZENITH TELEVISION | *Kelvinator APPLIANCES*
NO. BROADWAY • HART 131 East Bedford DIMMITT
Phone 938-2197 Phone 647-2197

Springlake Gin Co., Inc.
W. H. Braden & W. B. Braden Mgrs.

H. S. Sanders Lumber
Earth, Texas

Texaco Products
Jim Robbins Sam Fox
Earth 257-5061 Muleshoe 272-4688

Patterson Bros. Grocery
Earth, Texas

B & P Implement Co.
Atlas Chalmer-Massey Ferguson Dealer
Dimmitt, Texas

The Fashion Shop
WHERE SMART WOMEN SHOP
206 Main Muleshoe, Texas



IT WAS IMPOSSIBLE for the Wolverine coaches to pick a lineman or back of the week in the game against Dimmitt so the entire squad that played are players of the week. They are left to right, back row, Gary Haberer, Terry Parish, Jimmy Stockstill, Bobby Cummings, Randy Clayton, Wayne Henderson. Middle row, Kelley O'Hair, Doug Messer, Randy Washington, Tommy Barlow, David Templeton, Ricky Byers. Front row, Jose Triana, Logan Armstrong, James Thomas, Neal Armstrong, and Gary Kelley.

STARS OF THE WEEK

WOLVERINES

-VS-

FRENSHIP

FRIDAY NIGHT - 8 P.M.

WOLVERINE STADIUM

Citizen State Bank
Member F.D.I.C. Earth, Texas
Lamb County's Fastest Growing and Most Progressive Bank

Earth Pump & Machine Earth Drilling Co.
Earth, Texas

Watson Bros. Butane
Phone 986-2131 Springlake, Texas

Piggly Wiggly
Earth, Texas

Springlake Elevator
Phone 986-2311 Springlake, Texas

Earth Auto Parts
Your One Stop Parts Store
Earth, Texas

Earth Oil & Gas Co., Inc.
Box 411 Earth, Texas Phone 257-3011

Service Seed & Delinting
Phone 257-3911
Earth, Texas

E. R. Hart Co.
"BERKLEY PUMP CO."
MULESHOE, TEXAS

Earth Co-op Gins, Inc.
L. K. ANDERSON MGR.
PHONE 257-4971 EARTH

The Following Merchants and Businessmen Are Backing The Wolverines All The Way . . .

| | | | |
|---|--|---|--|
| K. M. P. Lake Pump Mfg. Co. TAIL WATER PUMPS "The Non Priming Pump" Phone 257-2061 Earth, Texas | B. & W. Pump and Machine "YOUR U.S. PUMP DEALER" PHONE 986-2971 SPRINGLAKE | Central Compress SUDAN, TEXAS | Murry's Muleshoe Jewelry 226 MAIN STREET MULESHOE, TEXAS |
| Whites Auto Store Doug Avery Owner-Manager Earth, Texas | Feeders Grain, Inc. PHONE 227-5321 SUDAN, TEXAS | The Earth News-Sun EARTH, TEXAS | Poynor's White Stores, Inc. HANEY & PAUL POYNOR MULESHOE, TEXAS |
| Johnson Furniture Muleshoe, Texas | Earth Insurance PERRY MARTIN PHONE 257-3461 EARTH | Southwestern Public Service Earth, Texas | Parsons-Ellis-Singleton FUNERAL HOME INC. PHONE 257-2481 EARTH |
| Farm Chemical & Grain Co. EARTH SPRINGLAKE PHONE 257-2301 PHONE 986-2161 | Springlake Motor Supply Phone 986-2291 Springlake, Texas | Earth Auto Sales JOHN ADRIAN MGR. EARTH, TEXAS | Brock Motor Co. OLDSMOBILE-BUICK MULESHOE, TEXAS |
| First State Bank Member F.D.I.C. Dimmitt, Texas | E. S. S. Co., Inc. "Your Butane Gas Dealer" Phone 257-4951 Earth, Texas | Earth Floral & Gift PHONE 257-4341 EARTH, TEXAS | The Glamour Shoppe YVONNE LAYMAN PHONE 257-5441 EARTH |
| Brownd-Jordan Equipment Co. Your International Dealer Phone 257-3951 Earth, Texas | Springlake Welding Phone 986-2522 Springlake, Texas | Earth Gin Co. EARTH, TEXAS | Cooper Texaco PHONE 986-9831 SPRINGLAKE, TEXAS |
| Rutherford & Co. Nationally Advertised Quality Clothing Earth, Texas | Harvey Bass Appliance Your Frigidaire Dealer Muleshoe, Texas | BMG Motors, Inc. CHRYSLER-DODGE-PLYMOUTH DODGE TRUCKS MULESHOE | First National Bank Member F.D.I.C. AMHERST, TEXAS |
| City Drug Your Friendly Drug Store Gladys & Odom Earth, Texas | Earth Cleaners We Give Gunn Bros. Stamps Phone 257-3662 Mr. & Mrs. Edwin O'Hair | B. & D. Fruit Mkt. MEATS-PRODUCE-FRUITS MULESHOE, TEXAS | Barton Bros. Gin Co., Inc. EARTH, TEXAS |
| Wayne Rutherford 66 Station Phone 257-3661 Earth, Texas | Decorators 216 Floral PHONE 272-4340 Football Mums Muleshoe, Texas Gid & Mildred Howell | Earth Texaco PHONE 257-3761 DON TAYLOR OWNER MGR. | Olton State Bank Member F.D.I.C. Olton, Texas |
| Sunset Drive In Theatre Movies Are Better Than Ever Earth, Texas | | | Thompson Chevrolet Co. Earth-Olton |

BUY SELL **CLASSIFIED ADS** TRADE LEASE

Lazbuddie News...

by Mrs. C. A. Watson

Mrs. N. M. McCurdie is in Dallas this week visiting her brothers, Joe and Homer Ragen.

May Mahan spent the weekend in Lubbock with her son and family, the Don Jordans.

Lazbuddie School Superintendent, Sam P. Barnes is in Austin this week attending special superintendent and school board meetings.

Congratulations to Mr. and Mrs. Jimmie Dale Seaton, Lazbuddie, on the birth of a daughter born Monday morning in the Green Memorial Hospital. The baby weighed six pounds, two ounces and has been named Barbara Lynn Seaton. Grandparents are Mr. and Mrs. Jimmie Seaton and Mr. and Mrs. R. B. Bureson, Lazbuddie.

day night of last week. The theme of the discussion was "Far Away Places" as Tamra set in a panel with the following girls, Leslie Cooper, Janis Billingsley, and Lanell Christian. The girls have recently been on a trip to Europe. The girls showed a table display of scrap books. They also had many unique souvenirs brought from abroad. Moderator for the panel was Ann Core, of Bovina.

Gary Wayne Darrell Foster is enrolled at WTSU, Canyon for the new college year. Gary is a senior at the University and has been named Cadet ROTC major. The Redwine twins, Harold and Carol have also returned to WTSU. The boys are graduates of Lazbuddie High School.



SOMEWHERE DOWN UNDER is no. 44, Ronnie Hutton, making the first touchdown for Dimmitt on a 2 yard dive. Wolverine players are no. 73, Tommy Barlow, no. 12, Doug Messer, no. 52 Bobby Cummings, no. 51 Wayne Henderson and no. 72 Jose Triana.

CRAWFORD-VAUGHN VOWS READ RECENTLY

Wedding vows were exchanged between Beverly Kay Crawford, daughter of Mr. and Mrs. V. O. Crawford and Theron Vaughn, Jr., son of Mr. and Mrs. T. D. Vaughn, Lazbuddie, Wednesday September 15 in the Trinity Baptist Church in Muleshoe. L. Caloway, pastor of the Trinity Baptist Church, read the double ring ceremony at 5:30 p. m.

The bride, given in marriage, by her father, wore a formal length gown of peau de seau, encircling the empire bodice and long lace pointed sleeves. The shoulders embroidered with seed pearls, attached the long chapel train. Her veil tulle held a cluster of satin flowers. The bouquet was stephanotis, centered with orchids.

Maid of honor was Carol Hall of Lubbock. Her brocade red satin gown was styled identical to the bride's, with red tulle attached to a floret cluster of red. She carried a bouquet of white carnations and stephanotis with long streamers.

Larry Vaughn, brother of the bride served as best man. Larry Crawford and Tommie Black were candlelighters. Ushers were Lloyd Bradshaw and Max Eubanks both of Lazbuddie.

Jim Mason played traditional wedding music. Sherri Smith, accompanied by Neil Finley, sang "More".

A reception followed in the church dining hall.

Beverly Kay is a 1964 graduate of Muleshoe. She graduated from Lazbuddie high in '65. They have attended Texas Tech the past year and are presently enrolled at the Tech college.



"Well goodnight John—we certainly enjoyed your wife's hospitality."

Mrs. Vaughn Honored With Bridal Shower

Mrs. Theron Vaughn was honored with a bridal shower Thursday afternoon September 22 at 2:30 p. m. in the Lazbuddie Fellowship Hall. The table was laid with white lace over white, and centered with an arrangement of red carnations flanked by candelabra.

Refreshments of punch and cookies were served to all who attended by Cynthia Walls and Sheila Vaughn. Sheila also registered the guests.

The hostess gift to the honoree was a rotisserie.

Hostesses for the occasion were Mrs. T. L. Gleason, Mrs. Calvin Embry, Mrs. Bamey Floyd, Mrs. James Mabry, Mrs. John McGehee, Mrs. C. W. Bradshaw, Mrs. Clarence Mason, Mrs. J. T. Eubank, Mrs. Harvey Blackstone, Mrs. Clyde Monk and Mrs. Roy Miller.

LABELING—"While the Congress is considering 'mislabeling,' wouldn't the dollar be a good place to start?" queries Sen. Norris Cotton (R-N. H.).

WANTED: Ironing to do in my home, 608 First Street, Phone 257-4942. 9-15-3tp

CASTRO County. Improved 480 acres; three 10" wells, natural gas. Contact Cain Farm, 9509 Wyandotte, Willow 2-3658, Kansas City, Missouri 9-22-2tc

WANTED
Men, Women, and Couples

One of the world's fastest growing companies needs applicants for Training in full or part time career. Highest bonuses and retirement plan offered to those with desire to advance financially.

For appointment
Write Box 227
or Call 272-3777
Muleshoe, Texas
9/29/2tp

FOR SALE: Good used television, refrigerator and freezer. Taylor Furniture. 9/8/tfc

FOR RENT: Unfurnished apartment in Earth. Call 965-2615 after 5 p. m. 8-11-tfc

TRUCK SEATS EXCHANGED 15 MINUTE SERVICE
MCCORMICK'S AUTO SUPPLY AND TRIM SHOP
PHONE 385-4555
LITTLEFIELD

GET
La-Z-Boy
AT
Taylor Furniture

PAYNE FUNERAL HOME
PHONE 246-3351 AMHERST, TEXAS

WIN WOLVERINES QUALITY FLOWERS
Phone 257-3441
EARTH 9-8-10tc

MONUMENTS
Winnboro Blue Granite
White Georgia Marble
and Others
Including Bronze for Memorial Park Specifications
See Percy or Connor Parsons or Call Collect
Oilton, Texas
Phone 285-2621 or 285-2767

FOR SALE OR RENT
LUXURY HOME WITH 3250 SQ. FT. OF LIVING SPACE
Call C. H. Bausman, M.D. at Post, Texas.
Key Will Be With L. D. Henderson Or Neil Pounds

Horace Clay, Wellington, had surgery Friday, September 23 in an Amarillo hospital. Herbert Clay from Clays Corner is with his brother at present and says he is doing as well as can be expected at this time. Horace Clay has been in serious condition for several weeks in a Wellington Hospital prior to being moved to Amarillo.

Congratulations to Mr. and Mrs. Pete Jesko of Lazbuddie on the birth of a daughter, born Sunday, September 18 in Clovis Memorial Hospital. She has been named Ettie Maureen, and weighed 10 pounds, 1 ounce. Grandparents are Mr. and Mrs. Joe Jesko, Lazbuddie, and Mr. and Mrs. Frank Mussil of Stamford.

Leatrice Gallman was a medical patient last week in the Green Memorial Hospital. Also Carrie Withroe was a medical patient in the West Plains Hospital in Muleshoe last week.

Mark Ramage had the misfortune of spraining his ankle real bad in ball practice last week. According to Mark he will be back in the game soon.

Sue Davis, Mother of Freeman Davis, is in Andrews this week visiting her sister, Amy Vineing.

Mr. and Mrs. R. C. Davis attended the State-Wide Democratic Convention in Austin last week. R. C. Davis went as a delegate representing the Lazbuddie area and Mrs. Davis was honored guest. They reported a very enjoyable trip.

Tamra Jennings was one of the guest speakers for the Modern Study Club in Friona Tuesday.

FOR SALE: 75 foot front lot in Hite Park Addition. See Fred Usery, 257-4931. 9-22-3tp

FOUND: FFA ring near Piggly Wiggly building. May claim by trying it on and paying for adv. 9-29-ttc

"GOOD CREDIT: Repossessed 1965 model, zig-zag equipped Singer Sewing machine in walnut console. Embroidery patterns, buttonholes, etc. Six payments of \$5.46. Cash discount. Write Credit Manager, 1114 19th Street, Lubbock, Texas. 9/15/tfc

REFINISHING SHOP NOW OPEN
QUALITY WORKMANSHIP
FURNITURE-PIANOS-TV'S
ANYTHING MADE OF WOOD
ANTIQUING
NOT A CHEAP COVER UP JOB
RADIO & TV LAB
PH. 385-5633 Littlefield
11 1001 E. 8th.

FEEDERS GRAIN, INC. DAILY BUYERS FOR CATTLE FEEDERS
Federal Storage License 3-4451
We Can Use Your Grain
SUDAN LIVESTOCK and FEEDING CO.
Phone 227-5321
Sudan

QUICKBALL PRYOR CO. INC.
Automobile Parts
Supplies & Equip.
P.O. Box 567
Earth Texas

Johnnie M. Haberer Real Estate
Farms and Ranches
HAVE BUYERS
Need More Listings
Rt. 4 Muleshoe
Pho. 965-2206

FOR RENT: Three bedro in house. \$50 per month. See or call Danny Smith, Phone 257-4711, Earth. 8-11-tfc.

FOR SALE: Registered Dachshund puppies, 3 months old. Registration papers included. Jay Anderson, phone 257-2881. 9-22-3tc

TAYLOR FURNITURE
G. E. Appliances
Check Our Prices Before You Buy
We Finance

HAMMONS FUNERAL HOME
Ambulance Service
Phone 385-5121
LITTLEFIELD TEXAS

STATE LINE IRRIGATION CO. Inc.
IRRIGATION SYSTEMS
Clovis Phone 762-4557
Littlefield Phone 385-4487 Muleshoe Phone 272-3109

OCTOBER BIRTHDAYS

October 5, 1921—Baseball fans heard the first radio broadcasts of a World Series, with the play-by-play description given by sports writer Grantland Rice.

October 8, 1918—In the heart of the Argonne Forest, France, in World War I, Sgt. Alvin C. York captured a hill, killed 20 enemy soldiers and captured 132 others. In the words of Marshal Foch, the hero's feat was "the greatest thing accomplished by any private soldier of all the armies of Europe."

October 9, 1701—Yale College was founded.

PUBLISHER'S STATEMENT

STATEMENT OF OWNERSHIP, MANAGEMENT AND CIRCULATION: (Act of October 23, 1962; section 4396, Title 39, United States Code) September 28, 1966.
The Earth News-Sun Published weekly (except first week following Christmas.)
Located in Earth, Lamb County, Texas, 79031.
Publisher: Ross L. Middleton,

P. O. Box 568, Earth, Texas, 79031. Editor: Mrs. Polly Middleton, P. O. Box 568, Earth, 79031. Owner: Ross L. Middleton.
Known bond holders, Mortgagees, and other Security holders owning or holding 1 percent or more of total amount of bonds, mortgages or other securities (none).
Average each issue during preceding 12 months: Total No. copies printed, 1250; Paid Circulation:
1. Sales through dealers and carriers, street vendors and counter sales, 250.
2. Mail subscriptions, \$13. Free distribution (including samples) by mail, carrier or other means, 100.
Total distribution, 1163.
Office use, left-over unaccounted, spoiled after printing, 97.

Total, 1250.
Single issue nearest to filing date:
Total number copies printed, 1250.
Paid circulation:
1. Sales through dealers and carriers, street vendors and counter sales, 210.
2. Mail Subscriptions, \$15. Free distribution (including samples) by mail, carrier or other means, 125.
Total distribution, 1150.
Office use, left-over, unaccounted, spoiled after printing, 100.
Total, 1250.
I certify that the statements made by me above are correct and complete.
Signed
Ross L. Middleton
Publisher and Owner

BUS FOR SALE
1957 Chevrolet School Bus
6 Cylinder, 54 Passenger Bus. Seal Bids Should be Submitted to Springlake-Earth School by October 10.
9-29-2tc

Welcome to Earth



MR. AND MRS. JERRY HUNT

Welcome to Earth to Mr. and Mrs. Jerry Hunt who moved here recently from Portales, N. M. Mr. Hunt is employed at Earth Oil & Gas Co.

Hunt recently received discharge from the Navy. He and Mrs. Hunt are affiliated with the Baptist Church.

THE FOLLOWING MERCHANTS EXTEND THEIR WELCOME TO ALL NEWCOMERS

| | |
|--|---|
| PATTERSON BROS. GROCERY EARTH | PIGGLY WIGGLY EARTH |
| The EARTH NEWS-SUN EARTH | EARTH OIL & GAS CO., INC. M. H. BEEN, Manager |
| EARTH FARM SUPPLY PHONE 257-5941 EARTH | CITIZENS STATE BANK MEMBER F. D. I. C. EARTH |
| The EARTH NEWS-SUN EARTH | E. S. S. CO., INC. |

Sunnyside News...

By Teany Bowden

Mr. and Mrs. Ed Thompson visited in Hobbs, N. M. last Saturday through Monday with his twin brother, Mr. and Mrs. Orville Thompson.

Gene Carson enrolled this week at Tech for his freshman year.

Mrs. Charlie Hall Jones entertained in her home Monday afternoon with a Stanley party.

Mrs. E. R. Sadler worked at Plains Memorial Hospital in Dimmitt Monday afternoon at the gift shop and desk.

Rev. and Mrs. M. D. Durham, Rev. Orvel Brantley of Plainview and Johnny Burnett of Dimmitt were dinner guests of Mr. and Mrs. Milburn Haydon, Monday.

The WMU Executive Committee met at the church Monday afternoon for the last meeting of the new year and the first one for the new year.

All officers and chairmen elected for the next term were present.

Gary Lilley received a serious wound in the left arm Monday afternoon when his gun, a .22 rifle, went off accidentally.

He was treated at Dimmitt and sent on to Northwest Texas Hospital in Amarillo, where he was hospitalized. Mrs. Lilley spent the night with him Monday night.

About .50 inch of rain was received Monday night with some light hail.

Mrs. Cecil Curtis attended a Sunday School Superintendent's Workshop in Lockney Tuesday.

She came home by way of Petersburg and visited with her parents, Mr. and Mrs. E. M. Stephens.

Rev. and Mrs. M. D. Durham and Rev. Orvel Brantley were dinner guests of Mr. and Mrs. Glen Wilson Tuesday.

Bobby Cummings was elected favorite boy for the Springlake-Earth Junior class this week.

Robert Duke won a 10th place and a 6th place in the Dekalb Dealer's division at the Tri-State Fair in Amarillo this week.

Odele James won a 6th place in the Dekalb Customer Division.

Mrs. Edd Duke entered an arrangement in the KGNC sorghum bouquet division and won 8th place. She and Mr. Duke attended the fair Thursday.

The Springlake-Earth FFA was host for the district Wednesday.

Jimmy Alair and Eddie Sam Jones were the voting delegates for the Springlake-Earth chapter.

Mr. and Mrs. Earl Phelan of Fickton were visitors in the revival services Tuesday night and Mrs. Phelan again Wednesday night.

They visited with the Roy Phelans Tuesday through Thursday and spent Wednesday night with Mr. and Mrs. Hershel Wilson and children.

Rev. and Mrs. M. D. Durham, Rev. Orvel Brantley, and Johnny Burnett were dinner guests of Mr. and Mrs. A. L. Wilson Wednesday.

Mr. and Mrs. M. H. Fowlkes returned to the E. R. Sadler home Thursday after a visit in New Mexico with relatives.

Mrs. Fowlkes attended the "Elephants" dinner in Dimmitt Friday afternoon.

Bob Duke played with the Dimmitt 7th grade football team against Tulia at Tulia Thursday. The game was a tie, six and six.

Mrs. Robert Bridge entertained in her home Thursday afternoon with a party.

Mrs. Raymond Lilley, Mrs. Floyd Ivey, Mrs. J. Paul Waggoner, Mrs. Calvin Lippard, Mrs. Ezell Sadler and her mother, Mrs. Elton Lilley attended a shower tea in Dimmitt Thursday afternoon honoring Twila Lilley West, Mrs. Lynn West.

Floyd Ivey and Mokeey Ivey of Dimmitt left Friday for a bear hunt near Raton, N. M. for a few days.

Mrs. W. E. Louder, Mrs. Ezell Sadler, Mrs. L. B. Bowden, and Sandy Louder visited Thursday afternoon with Mrs. James Powell and children of Dimmitt.

Rev. and Mrs. M. D. Durham, Rev. Orvel Brantley, and Johnny Burnett were dinner guests of Mr. and Mrs. Alford Crisp, Thursday.

Mr. and Mrs. L. B. Bowden visited with Gary Lilley in Northwest Texas Hospital in Amarillo, and in Canyon with Mr. and Mrs. Ben Louder and Lucy Jo Friday afternoon.

Mrs. Alden Ryan and Lucille Daniels of Big Springs visited Saturday with their cousin, Mrs. Raymond Lilley and with Mr. Lilley and Doonie.

Mr. and Mrs. Irving King spent Saturday night in Amarillo with Mr. and Mrs. Francis King and family and spent the day Sunday with Mrs. F. M. Sweeney and Bill.

Seventeen attended the Brotherhood Breakfast at the church Sunday morning.

Mrs. E. R. Sadler and Ezell Sadler were honored with a birthday dinner in the home of Mrs. Pearl Sadler in Dimmitt Sunday. Those present were Mr. and Mrs. E. R. Sadler and her parents, Mr. and Mrs. James Powell and children of Dimmitt, Mr. and Mrs. Larry Sadler and Carrie, Mr. and Mrs. David Sadler and Mr. and Mrs. Ezell Keeler and J. B. Hensley of Hale Center.

Rev. and Mrs. M. D. Dur-

ham, Rev. Orvel Brantley, and Johnny Burnett were dinner guests of Mr. and Mrs. Roy Phelan Friday and again Sunday.

Ninety attended Sunday School, with 69 in Training Union Sunday.

Promotion Day was observed in the departments of the Sunday School Sunday morning. Lonnie Follis had charge of the singing Sunday night.

Mr. and Mrs. Roy Phelan visited in the Heritage home in Plainview with A. J. Morrison Saturday.

Mr. and Mrs. Bill Morgan have had charge of the booster band this week during revival services.

The deacons of the church met for their regular meeting after the Sunday evening services.

Baptismal services were held at the close of the evening services.

Sixteen congregations of Jehovah's Witnesses will meet in Lubbock, October 7-9 to discuss the theme, "Become Spiritual Men with Everlasting Life in View."

The presiding minister of the Littlefield Congregation, Loyd Lowery, said, "The object of the program is to equip every one of the preaching fellowship of Jehovah's Witnesses in the practical use of Bible as a means of fortifying the spiritual morale of people in our community."

District Supervisor, A. A. Catanzaro, Watchtower Society's representative over 10 circuits in Texas, Oklahoma and New Mexico, will be chairman at the Texas Circuit 9 assembly.

E. A. Grover, supervisor of the circuit, met with some 20 department heads, September 8, at Childress in preparation for the Lubbock meet. To overcome existing ministerial weaknesses in the circuit, various ones in the 16-congregation circuit have been selected by Grover to discuss and demonstrate ways to bring weaknesses up to district and national averages in producing the "fruitage of the spirit."

College Station--Agricultural researchers have found a dark-grass turfgrass that actually grows better in moderate shade than in the sunlight.

It's called "No Mow" and thrives in moderate shade, says Dr. George McBee, turf specialist at Texas A&M University.

Most lawn grasses do not grow well in shady areas such as under trees or along buildings, he says. In A&M tests, No Mow a variety of Bermuda grass, grew better under low light levels than ordinary St. Augustine, Bermuda, Tifway and Bahiagrass.

Part of the reason it grows better under shady conditions, says McBee, is its short internodes. An internode is the distance between nodes or the joints in grass.

Ordinary grasses, with longer internodes, usually become spindly and weak under shade. But No Mow grows to just the right height and density under low light levels.

No Mow will not grow without some light, however, cautions McBee. It needs about 35 per cent of the sunlight to do its best, he says. This means it grows well under trees, since some light filters through. It also grows well along shady sides of buildings, where the sun may shine for only a short time each day.

The grass offers possibilities for shopping centers that may want grass along malls or other indoor areas, says McBee. It could also be grown in parks or recreational areas where there's too much shade for ordinary grasses.

The grass was developed in Florida and it supposedly needs mowing less often than other grass.

Many nurseries have, or can get the No Mow, grass he says.

Be not...anxious for the morrow.--(Matt. 6:34)

We live in God's eternity. We have all the time there is. Whenever there is a sense of being rushed, it is well to relax and remember that God blesses us with all the time we require so that we may perform needful tasks in divine order. Do today's work today. Yesterday is gone; tomorrow is yet to appear. God blesses you today.

Jehovah's Witnesses To Meet in Lubbock

Sixteen congregations of Jehovah's Witnesses will meet in Lubbock, October 7-9 to discuss the theme, "Become Spiritual Men with Everlasting Life in View."

The presiding minister of the Littlefield Congregation, Loyd Lowery, said, "The object of the program is to equip every one of the preaching fellowship of Jehovah's Witnesses in the practical use of Bible as a means of fortifying the spiritual morale of people in our community."

District Supervisor, A. A. Catanzaro, Watchtower Society's representative over 10 circuits in Texas, Oklahoma and New Mexico, will be chairman at the Texas Circuit 9 assembly.

E. A. Grover, supervisor of the circuit, met with some 20 department heads, September 8, at Childress in preparation for the Lubbock meet. To overcome existing ministerial weaknesses in the circuit, various ones in the 16-congregation circuit have been selected by Grover to discuss and demonstrate ways to bring weaknesses up to district and national averages in producing the "fruitage of the spirit."

College Station--Agricultural researchers have found a dark-grass turfgrass that actually grows better in moderate shade than in the sunlight.

It's called "No Mow" and thrives in moderate shade, says Dr. George McBee, turf specialist at Texas A&M University.

Most lawn grasses do not grow well in shady areas such as under trees or along buildings, he says. In A&M tests, No Mow a variety of Bermuda grass, grew better under low light levels than ordinary St. Augustine, Bermuda, Tifway and Bahiagrass.

Part of the reason it grows better under shady conditions, says McBee, is its short internodes. An internode is the distance between nodes or the joints in grass.

Ordinary grasses, with longer internodes, usually become spindly and weak under shade. But No Mow grows to just the right height and density under low light levels.

No Mow will not grow without some light, however, cautions McBee. It needs about 35 per cent of the sunlight to do its best, he says. This means it grows well under trees, since some light filters through. It also grows well along shady sides of buildings, where the sun may shine for only a short time each day.

The grass offers possibilities for shopping centers that may want grass along malls or other indoor areas, says McBee. It could also be grown in parks or recreational areas where there's too much shade for ordinary grasses.

The grass was developed in Florida and it supposedly needs mowing less often than other grass.

Many nurseries have, or can get the No Mow, grass he says.

Be not...anxious for the morrow.--(Matt. 6:34)

We live in God's eternity. We have all the time there is. Whenever there is a sense of being rushed, it is well to relax and remember that God blesses us with all the time we require so that we may perform needful tasks in divine order. Do today's work today. Yesterday is gone; tomorrow is yet to appear. God blesses you today.



HUNT'S SALE

| | | | |
|---------------------------|--------------------|--------|--------|
| HUNT'S PEACHES | No. 2 1/2 Size Can | 4 Cans | \$1.00 |
| HUNT'S WHOLE NEW POTATOES | 300 Size Can | 5 Cans | \$1.00 |
| HUNT'S SPINACH | 300 Size Can | 6 Cans | \$1.00 |
| HUNT'S TOMATO SAUCE | 8 Oz. Can | 9 Cans | \$1.00 |
| GOLDEN WEST OLEO | Lb. Pkgs. | 5 Lbs. | \$1.00 |

JIFFEE CAKE MIXES Yellow-Devil-White 2 Boxes 25¢

| | | |
|------------------------|----------------|-----|
| ALL BRANDS SUGAR | 5 Lbs. | 49¢ |
| IVORY LIQUID DETERGENT | 22 Oz. | 59¢ |
| AJAX DETERGENT | Giant Size Box | 69¢ |
| W-P BLEACH | 1/2 Gallon | 29¢ |

| | | |
|-------------------------|--------------|---------------|
| CANARY VIENNA SAUSAGE | Can | 10¢ |
| CADET POTTED MEAT | Can | 10¢ |
| RANCH STYLE BEANS | 300 Size Can | 7 Cans \$1.00 |
| SO SOFT FABRIC SOFTENER | Qt. | 49¢ |

TOMATOES
300 Size Can
5 Cans \$1.00

| | | |
|------------------------------------|------------|---------------|
| ZESTEE APPLE or GRAPE JELLY | 18 Oz. Jar | 3 Jars \$1.00 |
| ZESTEE RED PLUM or PEACH PRESERVES | 18 Oz. Jar | 3 Jars \$1.00 |

HUNT'S Fruit Cocktail
300 Size Can
5 Cans \$1.00

| | | |
|--------------------------------|-----------|-----|
| ASSORTED FLAVORS WAGNER DRINKS | 3 Cans | 89¢ |
| WHITE SWAN COFFEE | 1 Lb. Can | 67¢ |

HUNT'S TOMATO CATSUP
14 Oz. Bottle
4 Bottles \$1.00

| | | |
|---|---------|------------|
| JOE SAYS IT'S CHICKEN TIME at PIGGLY WIGGLY | | |
| FRYERS | Lb. 29¢ | CUT UP 39¢ |
| BREASTS | Lb. | 69¢ |
| DRUMSTICKS | Lb. | 59¢ |
| THIGHS | Lb. | 59¢ |
| WINGS | Lb. | 29¢ |
| NECKS | Lb. | 19¢ |
| BACKS | Lb. | 19¢ |

| | | |
|-----------------------|------------|-----|
| WHITE POTATOES | 10 Lb. Bag | 39¢ |
| SWEET POTATOES | Lb. | 10¢ |
| VINE RIPENED TOMATOES | Lb. | 10¢ |
| AVOCADOS | Each | 10¢ |
| BANANAS | Lb. | 10¢ |



Here's How Our "Piece-A-Week" Dinnerware Plan Works...

Complete Your Dinnerware Set at Savings of 50% and MORE!!

Delight your family and guests with beautiful "MapleLeaf". With each food purchase of \$5 you are entitled to buy 1 piece of durable Salem China "MapleLeaf" Dinnerware. And so on.

Delicately Hand Decorated—yet amazingly durable. Start your set today! It's an UNMATCHED Dinnerware Value!

THE SALEM CHINA CO.
60¢ Value only 9¢

BISCUITS 12 \$1.00

LOW-LOW PRICES---IN FACT THE LOWEST---JERRY DOUBLE DARES YOU TO COMPARE...

DOUBLE S & H GREEN STAMPS ON TUESDAY WITH PURCHASE OF \$2.50 OR MORE

SPECIALS GOOD THURSDAY THROUGH WEDNESDAY

Lowest Prices... Greatest Variety... always at...

Piggly Wiggly

HARRY'S PIGGLY WIGGLY NO. 3 EARTH