

# 1969-70 Basketball Season Opens Monday

The 1969-70 basketball season will get underway Monday night, November 17, when the Girls "B" team will play Muleshoe at 7:00 p. m. The Wolverette varsity team will meet Muleshoe immediately following the "B" game.

Three games are slated for Friday night, November 21. The games will begin at 5:00 p. m. with the "B" team boys game, followed by the varsity girls, and varsity boys. The teams will be meeting the respective teams from Quitque.

Admission to the games this season will be 50¢ for students and \$1.00 for adults.

The 1969-70 basketball season is expected to be a thrilling one and fans are encouraged to support the local team.

The NEWSpaper Dedicated to the Development of the World's Richest Irrigation Area

# The Earth News-Sun

"A CONSOLIDATION OF THE EARTH NEWS & EARTH SUN, OCTOBER 12, 1968"

VOLUME 16

10 CENTS

EARTH, LAMB COUNTY, TEXAS, THURSDAY, NOVEMBER 13, 1969

10 PAGES

NUMBER 12

## Hudson Wins Weekly Contest, Jumps To Second In Season Rating

E. C. Hudson took first place this week in the weekly gridiron contest sponsored by the News-Sun. Hudson took the lead spot by guessing closer to the tie-breaker score than did two other contestants who tied with Hudson, on the number of games correctly picked. The three top winners this week each picked nine games correctly. Monty Price and Eric Freeman were the two who tied with Hudson. The tie-breaker score placed Price in second place and Freeman, third.

E. C. Hudson by placing first in the contest this week, jumped from ninth place to second place.

Tom Sanders, held on to first place in the overall standings for the sixth consecutive week. Mrs. Wanda Sanders who has been in second place for the past few weeks was edged down to third place. There was many changes in

all positions this week, due to the upsets in games and low scores listed by most contestants. Standings of the top 15 places are as follows:  
1st-Tom Sanders-710 points.  
2nd-E. C. Hudson-705 points.  
3rd-Wanda Sanders-700 points.  
4th-Mark Barton-695 points.  
5th-Larry Price-690 points.  
6th-Floyd Henderson - 680 points.  
7th-Alma Stockstill-675 points.  
8th-Jim Winder, Percy Parsons and Bill Freeman-670 points.  
9th-Karen Layman-665 points.  
10th-Richard A. Moore-645 points.  
11th-Cindy Barton-640 points.  
12th - Margaret Parsons - 625 points.  
13th-Troy Layman and Dale Riggs-620 points.  
14th-Karen Dear, C. W. Conway and Mike Parsons-605 points.  
15th-Alan Duncan and Jo Eddy Riley-600 points.



THURSDAY, NOVEMBER 6 was the day for the first bale of cotton to be brought into Earth. The cotton was received by Barton Brothers Gin Company. Left to right are: Billy Wayne Barlow, who brought the cotton in; George H. Angel; Lupe Montez, ginner; and Mack McCarty, gin manager.

## Cotton Harvest In Swing With First Bale Received In Earth

The 1969 cotton harvest is finally underway in the Earth Community following a freeze, lengthy rains, and snow. The first bale of cotton ginned in Earth was brought in Thursday, November 6, by Billy Wayne Barlow and ginned at Barton Bros. Gin Co. in Earth.

The 2110 pound load of seed cotton produced a 530 pound bale and 800 pound of seed with a 25% turnout. The cotton was produced from Gregg seed and was grown 2 miles north and 4 miles west of Earth. The cotton was gathered from a plot containing just a fraction over one acre.

The seed was planted on May 11 and 12 and was fertilized with Olin 12-39-0 fertilizer purchased from Farm Chemical in Earth. Ardis and Weldon Barton owners of Barton Bros. Gin Company provided ginning services free.

The first bale brought in by Barlow seemed to have set the harvest in motion with other ginner in the local vicinity reporting receipt of cotton.

One area ginner said that if the excellent sunny warm weather we are currently having continues and we receive no more moisture the 1969 cotton harvest will be completed within 2 weeks or a month.

## Senior Play Slated For Thursday, November 20

The annual Senior Play entitled "Rest Assured" is slated for Thursday, November 20, at 7:30 p. m. in the High School Auditorium.

The play is a three act rollicking comedy by Donald Payton, that hammers home a point. Mr. Morlock and Luigi start a feud that puts the Hatfield - McCoy fracas to shame. Mr. Morlock says "If Mary weeps with Joe it will be over my dead body." Luigi says "If they don't it will be over mine. They both join the immortals. In the end Mr. Morlock realizes what a heel he has been and asks for another chance, which, strange as it may seem he gets.

The play cast will consist of Mr. Morlock, played by Steve Sanderson; Mrs. Morlock, De-Ann Brock; Mary, Kathy Lee; Jessica, Gloria Stephens; Mildred, Linda James; Joe Lanconi, Terry Bridge; Luigi Lanconi, Jimmy Littleton; Martha, Jo-Anne Temple; Lucifer, Kirby Kelley; Mrs. Akers, Cindy Bar-

ton; George Plew, Jimmy Goodwin; Mrs. Schmaltz, Becky Sanders; Doctor Brown, Elroy Wisian; Mr. Black, Terry Ott; Jake, Galen Bock; and Mrs. Frenck, Jan Blackburn.

Student directors are Ken Sanderson and Treasa Glasscock. Steve Busby, class president will act as Master of Ceremonies. Tickets may be obtained from any Senior for \$1.00 for adults and 50¢ for students. There will be no charge for pre-school children. Funds obtained from ticket sales will be used for the annual "Senior Day" in May.



"To bear fruit, most grapevines, trees, and speeches need pruning."

## Band Subscription Sales Begin November 24

One of the activities of the High School Band of Springlake-Earth School, was to plan for this Fall's Magazine Subscription Program. Kirby Kelley, President of this student group, announced that the campaign is scheduled to start November 24 and will be worked with the Quality School Plan. The profit earned by selling new and renewal subscriptions of the Earth News-Sun as well as over 160 top quality magazines, including such leaders as Reader's Digest, Life, Time, Look, McCall's, Better Homes and Gardens, Sports Illustrated, etc., will be used to defray expenses to (1) Marching and concert contests for Jr. High and High School Bands. (2) Entry fees to Stage Band and Concert Band festivals. (3) New band instruments. (4) Social activities. (5) Workshop fees for clinics etc.

Student participation in such a program affords families of this school area the opportunity to purchase subscriptions through a known local source. This is appreciated as, most probably, these families will be purchasing the subscriptions anyway, and doing so through the Band helps this group finance the year's activities. And, as J. R. Starks, director, pointed out, "Students sell at regular subscription rates and may also accept a good number of special offers. There is absolutely no additional cost, purchasing through the school."

The Band hopes for your help and would like to remind you that:

1. Their Fall subscription program is planned for about the same time as last year's. Therefore, renewals will continue any subscriptions taken during last year's campaign, without loss of copies.
2. We will have a school subscription program, scheduled to start November 24. No other school group is authorized to sell before that time.

We hope you will save your subscriptions, new or renewal for the Band Newspaper and Magazine Subscription Campaign next Fall.

The staff at the Earth News-Sun are pleased to help the Band in anyway possible. We sincerely hope you will buy one, two or five year subscriptions to your local paper through members of the Band. This encourages the Band when they realize that area people are behind them all the way.



SGT. DEMPSEY-Department of Public Safety officer for this district, presented a program to the Earth Lions Club Tuesday on some of the new laws and regulations passed by the legislature this past session.

## Wolverine Band To Compete In Marching Contest

The Wolverine Band will be representing Springlake-Earth High School at the University Interscholastic League Marching Contest Tuesday at Lowery Field in Lubbock.

The band will leave at 7:15 a. m. and has scheduled a practice at Monterey High School starting at 9:00 a. m.

There will be sixteen bands in Class A competition with the Springlake-Earth Band giving their presentation at 10:20 a. m. Class AA and AAA will be marching in the afternoon.

The Wolverine Band will be going for its seventh "Sweepstakes" award in the past nine years. This honor is given to bands receiving 1st division ratings in marching, concert, and sight reading contests. Last year there were only eight awards won in the entire West Texas area.

The three judges for the contest will be Bill Bradley, currently serving as band director of Big Spring High School and formerly a band director in Memphis and Muleshoe. G. T. Gilligan, band director of Kermit High School, and Phil Hewitt band director at Kansas State University, formerly National Stage Band winner of the Ft. Worth Paschal.

The twirlers of the band; Gloria Stephens, Marian Dawson, La Donna Sigman, and Suzy Temple, will be twirling for contest ratings. Their judge will be Mrs. Alex Schroeter of Hereford. The twirling time will be 9:55 a. m. in front of the East stands at Lowery field.

Executive secretary for Region 16 is Chief Davidson of Plainview Wayland College. Contest chairman is Jim Sudduth of Coronado High School, Lubbock.

## Addresses Of Servicemen

In response to the Earth News-Sun plea for the names and addresses of servicemen the news office to date has received only a few addresses. We ask all those knowing of any serviceman from this area to bring, phone, or call these addresses into the Earth News Office. These addresses are needed immediately since the deadline for mailing packages overseas to assure them of reaching their destination before December 25 are:

(1) SAM (Space Available Parcel Airlift) October 20 to November 22.  
(2) PAL (Parcel Air Lift) October 27 to November 29.

We hope that all our men will be remembered during this holiday season.

Lt. Boyd Clayton  
104 Phillips Street  
Warner Robins, GA. 31093

Sp/4 Floyd D. Bennett  
451-76-8787  
E. Co. 2/60th, 9th Inf. Div.  
APO SF 96371 Vietnam

Pvt. Harold Campa  
RA 456-88-7694  
Co B, TNG, 3rd BN, 3rd BCT,  
B. DE  
Fort Bliss, Texas 79916

Pfc. Arthur Ray Haberer  
U. S. 54423355  
Co. C. USA TC & Inf.  
Fort Lewis, Washington 98433

1st Lt. Hal H. Hudson  
0-464-78-3039  
ADTM-91-MAT-III-3  
APO SF 96314

Sp/4 W. B. Washington  
459-94-3479  
Co. A 2 BN 51st Inf, 4th AD  
APO 09140 New York N. Y.

Sgt. Alfred E. Washington  
454-72-2937  
Co. B 2/41 Inf.  
Ft. Hood, Texas, 76545

Freddy Kelley  
AEANB 731081  
VR-30 Wing 3-2  
Naval Air Station  
Alameda, CA. 94501

Sp/4 Thomas Bryant  
465-66-8663  
B Co. 502 S & T BN  
2nd ARMP Div.  
Fort Hood, Texas 76546

Robert G. Parish MMI  
"A" Division  
USS Concord AFS-5  
% FPO N. Y. N. Y. 09601

Pvt. Deppy Biquas  
RA 1570601  
Co B 1st Ave. BN  
4th Infantry Division  
APO 96202



1969-70 WOLVERETTE TEAM: This local Wolverette team will play their first game of the season Monday night with Muleshoe as their opponents. The girls are, first row, Daisy Washington, Sandra Henderson, Bobbi Jan Blackburn, Cindy Barton, Janis Bridge, and Jan Hedges. Second row, Coach Dallas Clymch, Janet Britton, Debbie Martin, Vicki Gregory, Becky Sanders and Jennifer Myers.

## Soil and Water Conservation District Elects Officers

The Lamb County Soil and Water Conservation District recently elected new officers for 1970. The five-man board of directors will govern the local district. W. L. Barton of Earth will serve as chairman, W. B. Jones of Spade as Vice-Chairman, Marvin Bowling of Sudan as Secretary, with T. C. Fador of Littlefield and Frank Struve of Olton as members.

Chairman W. L. Barton stated that he thought the Lamb County Soil and Water Conservation

District would have a good year in 1970. "The importance of conservation in this country is getting greater each year," Barton said. "Our chance to do something on the local level can be achieved through the Soil and Water Conservation District." All land owners and operators in Lamb County are invited to attend all district meetings of 1970. The meetings will be held the first Thursday of each month at 7:30 p. m. in the Court House.

## Goodwill Centre Killion Holds In Need Of Childrens Clothing Band Clinic

The Earth Goodwill Centre was open Saturday for its regular business day under the supervision of members of the Springlake Home Demonstration Club. The Centre took in a total of \$20.00 for the days activities. The Centre is in need of items of winter clothing for children of all sizes.

Home Demonstration members aiding with sales were Mrs. A. A. Hollingsworth, Mrs. Hilbert Wisian, and Mrs. Herman Cooper.

The Earth Goodwill Centre will be open for business Saturday under the direction of the Earth Rebekah Lodge.

Dean Killion, Director of Texas Tech Band, held a Marching Clinic Monday for members of the Springlake - Earth High School Band. Jerry Starks, local band director, stated that our local bandmen were very appreciative for the help and suggestions they received from Killion. The director of that "goin' Band from Raiderland" told the local band about their strong and weak points in order to better prepare the band for the Interscholastic League Marching Contest slated for Tuesday at Lubbock's Lowery Field.

December 14, 1910 - An drew Carnegie established the Carnegie Peace Fund and endowed it with \$18 million.



# The EARTH NEWS - SUN



Published at Earth, Texas 79031 every Thursday except the first Thursday following Christmas.

Entered as Second Class Matter at the Post Office at Earth, Texas 79031, October 1, 1964--Under Act of Congress March 3, 1879.

### SUBSCRIPTION RATE

Earth and Trade Territory, per year, \$3.50  
Elsewhere, in United States, per year, \$5.00

### CLASSIFIED RATES

6¢ per word, first insertion, 5¢ per word thereafter---60¢ Minimum.

### ADVERTISING RATES GIVEN ON REQUEST

ROSS AND POLLY MIDDLETON-----Publishers

## Baptist Youth Attend Rally In Muleshoe

Members of the Youth Department of the Earth First Baptist Church attended a Youth Rally Monday night at the First Baptist Church in Muleshoe. Guest speaker for the occasion was Rev. Frank Pollard, pastor of the First Baptist Church in Tulsa. His theme for the rally was "God Loves You". He pointed out that because God loves each individual he is concerned about their problems, frustrations, and what happens to them. Pollard emphasized that it was because God loved humans he created man with a free will. Entertainment was furnished by a singing group from Wayland Baptist College in Plainview. Sandwiches and punch were served to the visiting youth groups by the host church.

Those attending from the Earth Baptist Church were Rhonda Clayton, Connie Kelley, Leah Galloway, Guy Lynn Davis, Berry Pittman, Larry Thomas, Kevin Anderson, Bryan Hulcey, Johnny Kelley, Kent Kelley, Tony Keith, Danny O'Hair, Donnie Galloway, and adult sponsors Mrs. Rex Clayton, Mrs. Claude Holder, Mrs. Bill Anderson, and Bro. David Hartman.

### FTA Plans Salad Supper For November 24

The FTA members had a meeting Tuesday morning in the High School study hall at 8 o'clock. The group voted to have a Salad Supper on November 24 for the members of the chapter.

It was decided that everyone was eligible to attend the state meeting in February. The first District Meeting will be held at Estracado High School in Lubbock, December 13. All members are urged to attend.

## Springlake - Earth School Campus Scene Of Two Car Crash

The intersection of FM 302 and FM 2901 at the Springlake-Earth School Campus was the scene of a grinding two-car crash Saturday morning at approximately 7:30 a. m.

Lloyd Lowery and his family were traveling south on FM 302 in a 1966 Ford and Norman Ellis driving a 1964 Chevrolet was traveling east on FM 2901. Patrolman Bill Angel of the Littlefield Highway Patrol reported that the two vehicles collided at the center of the intersection. The force of the impact pushed the car driven by Lowery into a highway sign on the left side of the road and into a utility pole where it came to rest.

Other occupants in the Lowery car were his wife Joyce and their two daughters Donna and Sharla. None involved in the accident sustained serious injuries.

Bill Angel reported that Ellis was issued a citation for failure to yield right of way. Both automobiles received total damage.



**AUTOMOBILE TOTALLED.** This 1966 Ford driven by Lloyd Lowery received total damage Saturday morning when it and a 1964 Chevrolet driven by Norman Ellis collided at FM 302 and FM 2901 at the Springlake-Earth School Campus. No one was injured in the mishap.

## Booster Club Holds Meeting

A large number of Wolverine fans along with the Senior football boys were present at 7:00 p. m. for the weekly meeting of the Springlake-Earth Booster Club in the school cafeteria. Coach Travis Sursa gave a scouting report on Kress, followed by the film of the Vega-Wolverine game. Coach Dean Wright gave his comments on the game and prospects for this week's clash with Kress. The last meeting of the Booster Club for the 1968 Football season will be held Tuesday, November 18, at 7:00 p. m. in the Springlake - Earth School Cafeteria.

## My Neighbors



## Now Open

The Gallery

• Decorator Items • Craft Supplies  
Mrs. Cecil Hall  
222 Phelps Ave. Phone 385-4162 Littlefield

## Dr. Mattox Speaker At TSTA Meeting

Dr. F. W. Mattox, president of Lubbock Christian College, was the featured speaker at the Lamb County TSTA dinner and program Monday night at the Springlake-Earth School Cafeteria.

Dr. Mattox spoke to the group of nearly 200 on preserving the American way of life. He compared the capitalistic way of life against the socialist form. Dr. Mattox also spoke out against the extremist groups that are becoming more prevalent in our society today. He also outlined the educators role in these activities.

Dr. Mattox has been the President of Lubbock Christian College for the past thirteen years and had a key part in establishing L. C. C.

Before going to L. C. C. he was associated with Harding College in Searcy, Arkansas.

Dr. Mattox received his BA degree from Central State College in Edmond, Oklahoma; his PhD from George Peabody College for Teachers in Nashville, Tennessee.

Decorations for the dinner were carried out with Thanksgiving being the theme. Turkeys, pilgrims, Indians, pumpkins, fall leaves, and streamers were used on the tables to carry out the theme. Those in charge of the decorating were Mrs. Tona Whitson, Mrs. Howard Cummings, Mrs. Hugh Alexander, Mrs. E. G. Gaston, Mrs. Vic Coker, and Mrs. Z. E. Robnett. The next meeting of the TSTA will be February 16 in Olton.

## Mrs. Glasscock Appointed Acting Postmaster In Delaware, Oklahoma

Mrs. Dorna Glasscock, former employee of Earth Post Office was sworn into office as Acting Postmaster of office in charge at Delaware, Oklahoma. Mrs. Glasscock was sworn in by Inspector B. I. Roethe from Tulsa, Oklahoma. She will be acting Postmaster until approved by the Senate and appointed by the President.

Delaware, Oklahoma is a third class Post Office with receipts of \$5,723.00 in 1968. Mrs. Glasscock has two rural carriers from her office. She has one clerk who works four hours per day Monday through Friday and has charge of the office on Saturday and Sunday which are Mrs. Glasscock's days off.

At the time of Mrs. Glasscock's employment as acting Postmaster she was working as a clerk in the Nowata, Oklahoma Post Office which is a first class office with \$64,888. receipts in 1968.

Mrs. Glasscock was a former employee of the Earth Post Office 5 years working as a temporary clerk. Two hours a day in the Earth Office prior to moving with her husband Barney to Delaware. Mr. Glasscock is employed on a ranch owned by T. V. Marrell of Earth. Since moving to Oklahoma Glasscock has purchased cattle of his own and has leased ranch land there for his cattle. The Glasscocks have one son Larry (Pete) Glasscock who is a Junior in Tech University in Lubbock.

Pray For Peace...



ASK FOR

## TONY LAMA BOOTS TORRENCE'S WESTERN STORE

217 W. 7th St. 763-6852 CLOVIS

## NEW WESTERN WEAR JUST ARRIVED

LADIES UN-CUT CORDUROY HIPHUGGER, BELL BOTTOMS.

LADIES PLAIDS IN VIVID COLORS - STRETCH DENIM.

LADIES PRIOR SUITS AND BLOUSES.

MEN'S WESTERN SHIRTS, BEAUTIFUL COLORS AND ALSO WHITE.

MEN'S H.B.C. STA PRESS PANTS.

ALSO A LARGE SELECTION OF CHILDREN'S CLOTHING RECEIVED IN THE LAST WEEK.

- 69 CHEVY Impala 4-dr. Hard Top, only 10,000 miles with vinyl top, aspen green with matching interior, air and power. Factory warranty in your name thru 50,000. Only. **\$2900**
- 69 PLYMOUTH'S Fury III 4 \* Hard Top, less than 10,000 miles, air and power. **\$2875**
- 69 FORD Galaxie 500 4-dr. Hard Top, only 12,000 miles, like new and only. **\$2750**
- 68 CHRYSLER Newport Custom 4-dr. hard top, gold with vinyl top, only has 28,000 miles, warranty thru 50,000 miles. **\$2595**
- 68 PLYMOUTH Satellite cpe, with factory air, mag wheels and new tires, only has 26,000 miles, blue color and like new in every way. **\$2250**
- 68 MERCURY Montego, with air and power, white with vinyl top, only 13,000 miles, still factory warranty. **\$2295**
- 66 CATALINA 4-dr. sedan air and power, white with blue interior, very nice, low mileage. **\$1475**
- 66 LTD FORD, bronze with white top, a luxury Ford, low mileage and one owner **\$1600**
- 66 FAIRLANE 500 4-dr., with air and power, white with blue interior, only has, 34,000 one owner miles. **\$1350**
- 67 PONTIAC Catalina Cpe., gold with white top, newest '67 to be found, has air and power, and new tires, call original owner. **\$2095**
- 67 FORD Galaxie 500 4-dr. hard top, with air and power, local car and in very good condition only. **\$1595**
- 68 GREEN with vinyl top, his and hers auto-a-matic, with power, a one owner car, only 14 months old, has 13,000 miles of factory warranty left, new tires just on ground, never raced, FM radio, only. **\$2650**
- 67 GOLD with vinyl top, auto-a-matic, his and her transmission, air and power, very nice. **\$2250**
- 68 396 SUPER SPORT Chev. (bucket seats-console) vinyl top, air and power, very nice **\$2395**
- Only 10,000 Actual Miles---Ruby Red **\$1450**
- 68 VOLKSWAGON. **\$695**
- 63 IMPALA Station Wagon, red and white and nice. **\$995**
- 63 BUICK Riv. Coupe, with power and air. **\$350**
- 59 OLDS 88 4-dr., has been kept in excellent condition, the best '59 model in town. **\$400**
- 57 CADILLAC 4-dr., see this one to appreciate, looks as new as '67 inside, only. **\$650**
- 63 FAIRLANE Cpe, standard shift, real nice. **\$295**
- 62 RAMBLER 4-dr. 6 standard shift, real nice. **\$150**
- 55 CHEVY Standard Shift, runs good. **\$125**
- 60 FORD 4-door only. **\$125**

## Johnston Motor Inc.

"We Sell To Sell Again"

296-6363 Plainview 5th and Denver

## Services Held Friday For Aunt Of Local Woman

Funeral services for Mrs. Ozelia Hundley, 74, of Hollis, Oklahoma were held Friday afternoon at 3:30 p. m. in the Hollis Church of Christ in Hollis, Oklahoma.

Mrs. Hundley died Thursday morning November 6 at Hollis Hospital where she had been a patient.

Mrs. Hundley was an aunt to Mrs. Perry Martin of Earth.

Survivors include three daughters and two sons.

Burial was in Hollis Cemetery.

## The Old Times



"A bright eye indicates curiosity; a black eye, too much."

## PTA Meeting Slated For Monday

There will be a meeting of the Springlake-Earth PTA Association Monday, November 17, at 6:00 p. m. in the Springlake-Earth School Cafeteria.

The program will consist of a panel discussion by elementary, junior high, and high school principals of the Springlake-Earth School system. Persons attending will also have the opportunity to ask the principals questions concerning any matter related to the school system.

The meeting is open to the public and the local PTA invites all those interested to attend the meeting.

## Young Farmers To Present Program

The Springlake-Earth Young Farmers Organization will meet Thursday night, November 20, at 8:00 p. m. in the agriculture room on the Springlake-Earth School Campus.

The outlined program will be presented by Arthur P. Onkin of the Texas Experimental Station.

Anyone interested in receiving helpful information on this subject is invited to attend.

## GIVE TO THE CANCER MEMORIAL FUND ...

ANYONE WISHING TO DONATE TO THIS FUND MAY SEE

## MRS. DALLAS CLYNCH

AT THE CITIZEN STATE BANK in Earth

(All Donations Will Be Used For Cancer Research)

## SUMMARY of RECEIPTS and DISBURSEMENTS CITY OF EARTH, TEXAS October 1, 1968 To September 30, 1969

Fund Balance 10-1-68

| TOTAL        | GENERAL   | WATER        |
|--------------|-----------|--------------|
| \$ 20,276.82 | \$ 952.35 | \$ 19,424.47 |

### RECEIPTS:

|                                    |                     |                     |                     |
|------------------------------------|---------------------|---------------------|---------------------|
| Taxes - Ad Valorem                 | \$ 21,604.93        | \$ 21,604.93        | \$                  |
| Sales Tax                          | 3,303.84            | 3,303.84            |                     |
| Utilities and Penalties            | 40,305.93           |                     | 40,305.93           |
| Paving Liens                       | 232.80              | 232.80              |                     |
| Interest on Paving Liens           | 2,101.20            | 2,101.20            |                     |
| Franchise Tax                      | 4,234.14            | 4,234.14            |                     |
| Fines                              | 2,328.00            | 2,328.00            |                     |
| Occupation Tax                     | 32.50               | 32.50               |                     |
| Building Permits & License         | 55.00               | 55.00               |                     |
| Swimming Pool                      | 2,170.00            | 2,170.00            |                     |
| Dog Tags                           | 46.00               | 46.00               |                     |
| Community Room Rent                | 430.00              | 430.00              |                     |
| Mosquito Spraying                  | 2,498.70            | 2,498.70            |                     |
| Mowing and Dump Grounds            | 258.50              | 61.50               | 197.00              |
| Sale of Trash Barrels              | 228.00              |                     | 228.00              |
| Turn-On Charges                    | 12.00               |                     | 12.00               |
| Other Receipts                     | 45.00               | 15.00               | 30.00               |
| Returned Checks Collected - Net    | 9.20                | (1.00)              | 10.20               |
| Meter Deposits - Net After Refunds | 400.00              |                     | 400.00              |
| Inter-Fund Transfer                |                     | 9,789.16            | (9,789.16)          |
| <b>TOTAL RECEIPTS</b>              | <b>\$ 80,295.74</b> | <b>\$ 48,901.77</b> | <b>\$ 31,393.97</b> |

### TOTAL RECEIPTS

### TOTAL FUNDS AVAILABLE

|              |              |              |
|--------------|--------------|--------------|
| \$100,672.56 | \$ 49,854.12 | \$ 50,818.44 |
|--------------|--------------|--------------|

### DISBURSEMENTS:

|                                |                     |                     |                     |
|--------------------------------|---------------------|---------------------|---------------------|
| Administrative Expense         | \$ 11,077.43        | \$ 5,613.22         | \$ 5,464.21         |
| Police Department              | 8,902.64            | 8,902.64            |                     |
| Fire Department                | 2,435.14            | 2,435.14            |                     |
| Park and Street Department     | 15,221.90           | 15,199.40           | 22.50               |
| Swimming Pool                  | 2,598.64            | 2,427.14            | 171.50              |
| Community Room                 | 561.75              | 561.75              |                     |
| Water and Sewer Department     | 12,860.75           |                     | 12,860.75           |
| Trash Department               | 5,616.87            |                     | 5,616.87            |
| <b>DEBT SERVICE:</b>           |                     |                     |                     |
| Notes Payable                  | 1,098.50            |                     | 1,098.50            |
| Bonds                          | 10,000.00           | 6,500.00            | 3,500.00            |
| Interest and Fiscal Agents Fee | 9,998.22            | 3,064.80            | 6,933.42            |
| Capital Outlay                 | 1,220.00            | 320.00              | 900.00              |
| <b>TOTAL DISBURSEMENTS</b>     | <b>\$ 81,591.04</b> | <b>\$ 45,024.09</b> | <b>\$ 36,567.75</b> |

### FUND BALANCE 9-30-69

|              |             |              |
|--------------|-------------|--------------|
| \$ 19,080.72 | \$ 4,830.03 | \$ 14,250.69 |
|--------------|-------------|--------------|



## Services Held For Wilborn McCarty Sunday

Funeral services for Wilborn F. McCarty, 61, a former area resident, now of Springdale, Arkansas, were conducted at 2:30 p. m. Sunday in Singleton Funeral Home Chapel of the Chimes in Muleshoe with Rev. Don Holmes, pastor of the Springlake First Baptist Church, officiating.

McCarty died as a result of injuries received Wednesday night near Arkansas City, Kansas. A native of Dickens County, McCarty resided in Sudan from 1920 to 1934 and was a rancher in Springdale at the time of his death.

Survivors include two daughters, Mrs. Harry Ralph of Gentry, Arkansas, and Mrs. Paul Spranger of Fullerton, California; six sisters, Mrs. Orna Hammock of Espanola, New Mexico, Mrs. Robert Mitchell of Lubbock, Mrs. Claude Blanchard of Sudan, Mrs. Carl Essary of Floyd, New Mexico, Mrs. Bud Brasher

## Clayton Promoted To First Lieutenant

Lt. Boyd L. Clayton, son of Mr. and Mrs. F. D. Clayton of Earth, received his promotion to the rank of first lieutenant on September 28, 1969.

Lt. Clayton was presented his silver bars by Colonel William R. Kelso, Chief of the Service Engineering Division of Warner Robins Air Material Area (WRAMA) at Warner Robins Air Force Base, Georgia.

Clayton graduated from Springlake-Earth High in 1963 and went to college at Abilene Christian College where he earned a B. S. Degree in business administration.

He entered the Air Force, December 29, 1967 by attending Officers Training School in San Antonio, Texas. Clayton was then transferred to Big Spring, Texas. After serving three months at Big Spring in pilot training he attended Maintenance Training School, near Chicago, Illinois. He was then assigned to Warner Robins Air Force Base, Warner Robins, Georgia, where he is now serving.



CLAYTON PROMOTED... Boyd Clayton, son of Mr. and Mrs. F. D. Clayton, is shown being promoted to the rank of first lieutenant by Colonel William R. Kelso of Warner Robins Air Force Base, Georgia.

## Services Held For Kin Of Local Resident

Services for Cleveland H. Mitchell, 84, were held Wednesday, November 5 at the First Baptist Church of Iowa Park with Rev. William G. Etheridge officiating.

Mitchell died Monday, November 3, in an Electra hospital.

Survivors include two daughters, Mrs. Carl Vestal of Electra and Mrs. Floyd Sands of Kamsay; a son, R. M. of Oklahoma City; two brothers, Archie of Blackwell, Oklahoma, and Clarence of McKinney; two sisters, Mrs. Bertha Lynch of Burkburnett and Mrs. Pearl Barlow of Earth; nine grandchildren and 20 great-grandchildren.

Interment was in Burkburnett Cemetery under the direction of Owens and Brunley Funeral Home of Wichita Falls.

Attending services with Mrs. J. J. Barlow were Alice Williams of Earth and Billy Wayne,

### OLDER MODEL SPECIAL BARGAINS

THESE 15 CARS MUST BE SOLD thru Monday HURRY for Best Selection During This Sale.

|  |        |   |        |
|--|--------|---|--------|
| '64 CADILLAC Sedan DeVille, PS, PB, air, power seat & windows, bucket seats, exceptionally clean | \$1795 | '63 FORD Fairlane Station Wagon, V8, radio, heater, standard transmission ... | \$695  |
| '65 CADILLAC Calais, fully equipped, local owner, Exceptionally clean                            | \$2395 | '65 OLDSMOBILE 2-dr. H'top, PS, PB, air, vinyl interior ...                   | \$1395 |
| '65 CHRYSLER Station Wagon, PS, PB, air, new tires ..  | \$1395 | '65 VOLKSWAGEN STATION WAGON Reduced to .....                                 | \$1195 |
| '65 DODGE 2-dr. H'top, V8, automatic, PS, PB, air, bucket seats .....                            | \$1495 | '62 BUICK Electra 225, PS, PB, air .....                                      | \$695  |
| '63 DODGE Station Wagon, V8, automatic, exceptionally clean for the model                        | \$695  | '64 PONTIAC LeMans 2-dr. H'top, bucket seats, factory air ...                 | \$995  |
| '65 FORD Custom 2-dr., 6 cyl., auto., air, vinyl interior ..                                     | \$1195 | '65 PONTIAC Star Chief, 4-dr. sedan, PS, PB, air, local owner .....           | \$1195 |
| 1959 Pontiac 2 DOOR AS IS .....  | \$495  | '66 PLYMOUTH Fury II, PS, PB, air, Real Clean .....                           | \$1095 |

LOW Down Payment with Approved Credit

G.M.A.C. or Bank Financing

# BENDER

OLDSMOBILE - CADILLAC INC.  
800 MAIN CLOVIS 762-4511

## Leonard Harpers Honored At Church Fellowship

Leonard Harper, the new Church of Christ Minister, in Earth, his wife Cheryl, and their daughter Laurie were honored by members of the Church at an old-fashioned "pounding" and fellowship Sunday night immediately following Church services at the Earth Community Building.

The large group enjoyed a covered dish supper which was prepared by the ladies of the church.

Bill Mann, acting as speaker for members of the church, presented the Harpers with many useful gifts such as money, canned foods, and other useful items. Mann also expressed the joy of members of the church for having the Harpers associated with the Earth Church of Christ.

The remainder of the evening was spent in upbuilding fellowship.

## Rites Conducted In Plainview For Oatis A. Stout

Services for Oatis A. Stout, 67, were conducted Saturday in the Wood-Dunning Funeral Home Colonial Chapel in Plainview with Rev. Robert Brown, pastor of the Trinity Methodist Church, officiating. Burial was in the Plainview Cemetery.

Stout died Friday morning at 8:45 in a Plainview hospital. He had resided at Rt. 1 Hale Center since 1926 and was a rancher and farmer.

Survivors include the wife, Lillian Mae; three sons J. I. of Lubbock, J. W. and O. A. Jr., both of Hale Center; two daughters Mrs. Lucille Elvinger of San Antonio, and Mrs. Johnny Johnson of Hamlin; two sisters, Mrs. Agnes Flippin of Quanah and Mrs. Cloy Flippin of Hart; a brother W. C. of Earth; and 11 grandchildren.

A gentle tongue is a tree of life.—(Prov. 15:1).

How many times have we wished that we could recall words said in anger or frustration? Thoughtless words and comments foster anything but the peace and harmony desired. Let us be tolerant of one another and let pleasant talk grace our homes. The Lord, in His love, can help us guard our tongue, and He can and will endow us with grace if we but let Him.

## SHOP Anthony's C.R. ANTHONY CO.

In Muleshoe

### FOUNDER'S DAY SALE

Thursday - Friday - Saturday  
November 13th - 14th - 15th

EXTRA SAVINGS FOR YOU

Every Item Specially Purchased For This Event

LAY AWAY NOW FOR CHRISTMAS

## Anthony's C.R. ANTHONY CO.

Muleshoe

## CHRISTMAS IS JUST AROUND THE CORNER....

BUY IN NOVEMBER eca\*

shop christmas in november  
pay 1/3 jan., 1/3 feb., 1/3 march  
no finance charges

Shop Now While Selections In Every Department Are Excellent.

# Bentley's

Plainview

# GIFT CENTER

Christmas Gifts for all the family

Western Auto THE FAMILY STORE AND CATALOG ORDER CENTER 6TH ANNIVERSARY

Your Guide to Easy, One-Stop Christmas Shopping

228 MAIN MULESHOE PHONE 272-3112

Lay Away Now For Christmas While Selections Are Good





## Area GA's Attend Llanos Altos GA Meeting

Members of the Springlake and Earth GA's of the First Baptist Church attended the Llanos Altos Associational GA Quarterly Meeting in the First Baptist Church in Amherst Saturday at 2:30 p. m.

The scripture and Prayer Calendar was presented by the Sunnyside GA's.

Several helpful suggestions were given the GA's in the form of skits. The Sunnyside GA's presented a skit on the Mission book entitled "To Be Free" which all GA's in the Association will be discussing in November. The Amherst GA groups presented a short skit on the effective planning of programs.

Guest speaker for the occasion was Mrs. James Tidenburg, a missionary from Tanzania, Africa. The topic for her ad-

dress was "Man's Roll In God's Mission Plans." Mrs. Tidenburg told of the different customs in Africa, the form of dress and the missionary work being done there.

Refreshments of cookies and punch were served to those visiting by the host church.

EarthGA's and leaders attending were Mary Johnson, Pam Hood, Alice Johnson, Margaret Hood, Juanita DeLeon, Angelita DeLeon, Anita DeLeon, Linda Hood, Joyce Ingram, Christy Thomas, Carreen Hulcey, Mrs. Frank DeLeon, Mrs. Lillie Wuerliem, and Mrs. R. S. Cole.

Those attending from Springlake were Bobbie and Robbie Mostley, Gail Mills, Susan Clayton, Ranae Windet, Sandy Stevenson and Mrs. Delvin Walden.

## Becky Littleton Hostess To Rainbow Workshop

Becky Littleton was hostess to a Rainbow Workshop in the home of her parents, Mr. and Mrs. J. A. Littleton Jr. Saturday afternoon.

The girls worked on their annual charity projects. The groups are currently involved in making items to be given as Christmas gifts. They are also gathering old nylon hose to be bundled and sent to rest homes. These hose will be used in making such items as pillows and

rugs. If anyone would like to donate nylons, they can do so by contacting any Rainbow girl. They will be happy to pick these up.

Rainbow girls attending the workshop were Connie Kelley, Kathleen Anderson, Vicky Wilian, Karen Hinchliffe, and Mrs. Donald Kelley.

Mrs. Bertha French is visiting this week in the home of her brother the L. S. Giffins.

## Baptist Youth Enjoy Field Trip

Members of the High School Department of the Earth First Baptist Church visited Sunday at the Sacred Heart Catholic Church in Littlefield.

The class is currently studying the different types of religions prominent to this area, and this was an extension of their study.

The Rev. James of the Sacred Heart Church acted as host to the group. He explained certain points of their religion, explained the order of services conducted, and gave a tour of the church.

Those attending from Earth were Rhonda Clayton, Regina Cole, Johnny Kelley, Kent Kelley, Guy Davis, Berry Pittman, Kevin Anderson, Mrs. Bill Anderson, and Mrs. Billy Pittman, adult sponsors.

## Mrs. Bills Is Weekly TOPS Queen

Mrs. Floyd Bills was named Queen of the Happy Losers TOPS Club Thursday night at the weekly meeting held at the Earth Goodwill Centre. Mrs. Bills showed a loss of 34 pounds. Mrs. Ralph Radd was runner-up with a weight loss of 34 pounds.

The meeting was called to order by Mrs. Fred Clayton and the group recited the TOPS Pledge. Mrs. A. W. Gover weighed in seventeen members to record a total loss of 134 pounds.

Members discussed and voted to change their meeting to 5:30 p. m. during the winter months instead of the regular 6:30 p. m. meeting time. Also the TOPS Club will be meeting three Tuesdays during November and December rather than the regular Thursday night meetings. The dates of the Tuesday night meetings are November 25, December 23, and December 30.

The group was dismissed with the Serenity Prayer.

Mrs. Bertha French is visiting this week in the home of her brother the L. S. Giffins.



BETTE ALYNN JONES

## Jones-Dial Engagement Told

Mr. and Mrs. James Edwin Jones of Springlake announce the approaching marriage of their daughter, Bette Alynn, to Danny Dial, son of Mr. and Mrs. G. C. Dial of Ozona and nephew of Mrs. Dan Daniels of Olton.

The couple will exchange vows at the First Baptist Church of Springlake, January 1, 1970 at 7:00 p. m.

Miss Jones is a 1969 graduate of the Springlake-Earth High School and is attending West Texas State University.

Dial, a 1968 graduate of Olton High School, is also attending West Texas where he is a sophomore majoring in data processing.

Friends are cordially invited to attend.

## Earth MYF Have Program On Religious Holidays

The Earth Jr. High MYF met Sunday afternoon in the United Methodist Church for their regular weekly meeting.

During a short business meeting the group decided that the MYF would send a donation to UNICEF.

The program was given by ad-

ult leader, Mrs. Bud Matlock on the religious significance of the various special seasons of the year with special emphasis on the Christmas season.

Members present were Brad Haley, Jimmy Coker, Pat Cleavinger, JoAnn Coker, Dyke Gaston, and Darlene Sulser.

## A. J. Davis Honored With Birthday Dinner

A. J. Davis of Antlers, Oklahoma, was honored by his children, grandchildren, and great-grandchildren at a birthday dinner in the Antlers Community Building Sunday, November 9. Davis was 90 years of age on November 12.

Decorations were carried out in his favorite sport, wolf hunting, in which he is still active. The stage was decorated as a hunters campfire. Center pieces for each of the tables were trophies surrounded by colorful autumn leaves.

Following the noon meal, birthday cake was served to family and guests. The cake made by his granddaughter, Mrs. Peggy Reich, was decorated with a replica of a wolfhound and trophies.

Davis was assisted by his great grandchildren in opening his gifts.

Approximately 100 friends and relatives attended the event and were registered by his great granddaughter Pam Reich.

A. J. Davis was born November 12, 1879 in Bonham, Texas. In November of 1927 he moved with his family from Spaulding, Oklahoma to Springlake where

he resided until about seven years ago. He now makes his home in Antlers, Oklahoma, and Springlake.

Davis has two sons, Ashley of Muleshoe and Tut of Antlers, six grandchildren and ten great grandchildren.

Among those attending were Mr. and Mrs. Ashley Davis and Mrs. Kenneth Hicks, Muleshoe; Mr. and Mrs. Wayne Davis, Del and Tommy and Mrs. Dimples Sanders of Springlake; Mr. and Mrs. Tut Davis and Kenneth Davis of Antlers, Oklahoma, and Mr. and Mrs. Virgil Reich, Pam, Alan, Lynette, and Andy of Ada, Oklahoma.

## Notice

There will be a come and go bridal shower honoring Miss Brenda Clayton bride elect of Allen Hatfield, November 22, from 3:00 to 5:00 p. m. in the home of Mr. and Mrs. James Sanderson.

Pottery selections are at Pounds Pharmacy Earth.

## Earth Brownies Hold Investiture Ceremony

Earth Brownie Troop 101 met Monday afternoon at 4:30 p. m. in the home of Mr. and Mrs. Larry Price for their weekly meeting.

The meeting was opened with the group participating in the Flag Ceremony and Brownie Pledge.

The program consisted of five girls being installed as members of Earth Brownie Troop 101 in an informal ceremony. Installing officer was their leader, Mrs. Larry Price.

New Brownies are Mona Price, Lisa Camarillo, Sylvia Gonzalez, Jodi Daniels, and Mona Truelock.

Refreshments of cookies and punch were served by Kim Holder to the newly invested Brownies and Elaine Bills, Beth Pounds, Rosie Lewis, Petra Lewis, Donice Taylor, DeAnn Clayton, Cheryl Riggs, and Anita DeLeon.

Lila Sims was released from West Plains Hospital in Muleshoe, Sunday, and is now resting comfortably at her home in Muleshoe. Lila Sims is a sister to Mrs. Walter Lackey of Earth.

## What's Cooking at School

NOVEMBER 17-21

**MONDAY**  
Fried fish-tartare sauce  
New potatoes-cheese sauce  
Combination salad  
Red Devils food cake  
Hot rolls-butter  
Milk

**TUESDAY**  
Barbecue beef  
Potato Salad  
Buttered spinach  
Cherry Cobbler  
Corn bread-butter  
Milk

**WEDNESDAY**  
Fried chicken-cream gravy  
Baked potato  
Tossed salad  
Banana pudding  
Hot rolls-butter  
Milk

**THURSDAY**  
Macaroni and tomatoes  
Jello salad  
Cinnamon rolls  
Milk

**FRIDAY**  
Hamburgers  
Lettuce, tomatoes, pickles  
Mustard, onions  
French fries  
Strawberry Short Cake  
Milk



Mr. and Mrs. Jack Rylant Jr. of Lubbock are proud parents of not one, but two daughters born November 1. Sherri Ann was born at 2:50 a. m. and weighed 6 lbs. 10 oz. and Terri Jan was born at 3:02 a. m. and weighed 6 lbs. 12 oz.

Grandparents are Mr. and Mrs. Jack Rylant I of Hobbs, New Mexico and the Raymond Rudds of Post. Both families are former residences of Earth.

The new twins have one brother, Jack Rylant III, who is 3.

Mr. and Mrs. Jim Stockard of Canyon are the proud parents of a son, Shawn Gregory, born Sunday, November 9, at 5:40 a. m. in Canyon Hospital. The young man weighed 6 pounds. Grandmother is Mrs. Jim George of Lubbock.

Great grandfather is W.R. Stockard of Earth.

Mrs. Polly Middleton and Mrs. Gene Chaney were in Lubbock on business Thursday.

## Brownie Troop 308 Met For Regular Meeting

The Springlake Brownie Troop 308 met Tuesday, November 11, at the Springlake Community Building for their weekly meeting under the direction of Jr. assistant leaders Carleen Jones and Kathy Bibby.

The meeting consisted of the Flag Ceremony, Brownie Pledge, "America," "Brownie Smile Song" and "Girl Scouts Togeth-

er." The meeting was concluded with a supervised activity period of various games. Refreshments were provided by Sue Bradley and the Springlake Home Demonstration Club. Brownies attending were Carrie Barden, Lindsay Fields, Kim Haden, LaCretia James, Belinda Hampton, Nellie Palacio and Treasa Lunsford.

## Sunbeams Study Equador

The beginner group of the Sunbeams of the First Baptist Church of Earth met Tuesday afternoon under the direction of Mrs. Charles Parish.

The Sunbeams are currently involved in the study of various countries throughout the world.

The weeks study was based on the religion and customs of Equador.

Refreshments of chocolate milk and candy were served by Mrs. Parish to Greg Hulcey, Gary Davis, and Stacey Tunnell.

SATURDAY, NOVEMBER 15

8 99¢

KING SIZE WALLET CREATIVE COLOR PORTRAITS FOR ONLY





NO LIMIT

PHOTO HOURS 9 A.M. TO CLOSING

GET PICTURES MADE OF GRANDPA, GRANDMA, DAD, MOM AND ALL THE LITTLE ONES AT THESE SAME LOW PRICES!

SHUGART COLOR PHOTOS PATTERSON

Pay & Save Earth

Bachelor Girl

SEAMLESS PANTY HOSE



Proportioned Sizes \$1.69 Beautiful Fall Shades

PRE-HOLIDAY SPECIAL  
**DACRON FABRICS**  
Beautiful Selections \$5.99 yd

Bryant's  
Department Store  
Earth

## Jr. GA's Study "What Is A Word"

The Jr. group of the GA's of the First Baptist Church of Earth met Tuesday afternoon with eleven members present.

The topic for this weeks study was "What is a Word?" The theme was carried out by a discussion of the following topics "The Published Word," by Carreen Hulcey; "The Talking Word" by Joyce Ingram; and "The Written Word" by Pam Hood.

Mrs. Lillie Wuerliem presented each girl with simple cookie recipes suitable for beginners to bake.

Those present were Pam Hood, Angelita DeLeon, Joyce Ingram, Carreen Hulcey, Anita DeLeon, Juanita DeLeon, Linda Hood, Huttie Thomas, Christy Thomas, Cletha Thomas, and Jaqueline Lewis.

Herbert Miller was admitted to Littlefield's Medical Arts Hospital Friday suffering from a heart attack.

CHRISTMAS GIFT SUGGESTIONS . . .

- ROBES
- GOWNS
- PAJAMAS
- BABY DOLLS
- BIKINIS
- DRESSES
- SUITS
- JEWELRY
- SPORTSWEAR
- HOSE


- Dress & Car Coats
- Gloves and Handbags
- Crystal & Silver Boutiques

CORDIAL INVITATION TO COME IN AND SEE OUR GIFT SELECTIONS AT THEIR BEST

LUCILLE'S

Hilltop Plaza CLOVIS, N. M. 762-2441

If Thanksgiving Is Just Around The Corner Can Christmas Be Far Behind? THINK CHRISTMAS - THINK POUNDS PHARMACY



We Are Proud Of Our New Gift Department... The Ideal Gift For The Ideal Person... EYE - IT, BUY - IT...SHOP EARLY - SHOP HERE!

POUNDS (Rexall) PHARMACY  
Earth



## Earth Girl Scouts Elect Patrol Leaders

Members of the Earth Jr. Girl Scouts met Monday afternoon at the Earth Community Building for their weekly meeting.

The Flag Ceremony was conducted by L'Anna Sulser, Margaret Street, Pam Ott, Toni Inglis, Mel Don Truelock, Lydia Smith, and Bren Belew.

During a brief business meeting the scouts elected patrol officers, Pam Ott and Neshia Lewis will serve as patrol leaders, Lydia Smith and Bren Belew as secretaries, and L'Anna Sulser and Margaret Street as treasurer.

For their activity period the girls pressed fall leaves and did doodle drawings with colored chalk.

Refreshments were served by L'Anna Sulser and Toni Inglis. Those attending were Margaret Street, L'Anna Sulser, Toni Inglis, Pam Ott, Joyce Ingram, Pam Hood, Treasa Lively, Lydia Smith, Margaret Street, Mel Don Truelock, Bren Belew, Carmen Wimberley, Neshia Lewis, and Deberoh Daniels.

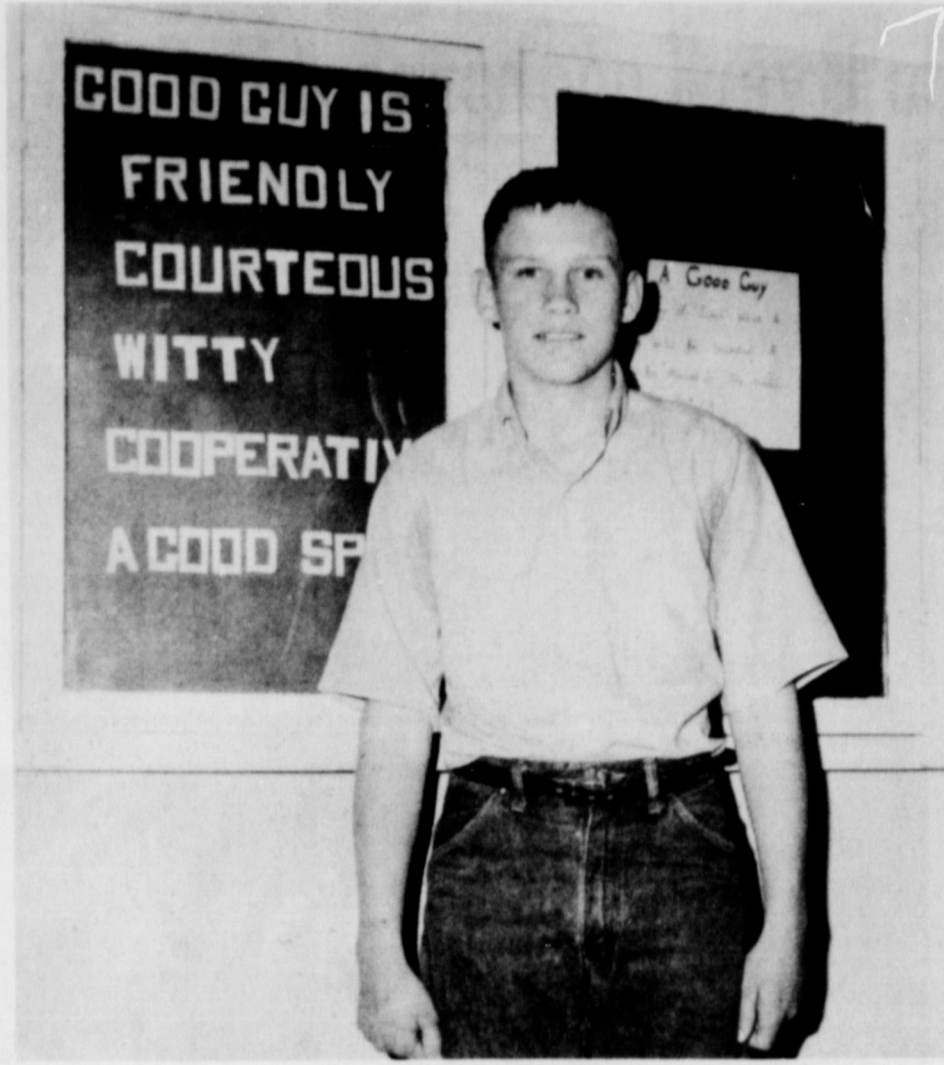
Adult leaders attending were Mrs. Thomas Livley, Mrs. Ivora Ford Daniels, and Mrs. Ivora Ingram.

## Doug Jones Junior High "Good Guy"

Doug Jones, son of Mr. and Mrs. Keith Jones, was elected by members of the seventh grade classes at Springlake-Earth Jr. High as "Good Guy" of the week. Doug was elected on the basis of his outstanding courtesy to students and faculty.

Doug is a seventh grader, a star football player for the seventh grade team, member of the National Jr. Honor Society, and a member of the Springlake Jr. High Band.

Weekly "Good Guy" is sponsored by the National Jr. Honor Society. The Society has placed a ballot box in the hall in the junior high building, and each student has the opportunity to vote for the person of their choice in a specific category each week.



GOOD GUY-DOUG JONES-Was selected by the Junior High School student body as the Good Guy this week. Doug is in the seventh grade and was seventh grade and was selected as the most courteous.

## Earth GA's Study Missionary Work

Members of the Earth GA's of the First Baptist Church met Tuesday afternoon for their weekly meeting under the direction of Mrs. Jerry Starke, leader.

The meeting was opened with Margarette Hood reading the Prayer Calendar and scripture taken from 1 Cor. 16: 1-14. The opening prayer was given by Mrs. Starke.

The GA's considered two programs for this week's study. The first program was titled "Do Definitions Change?" The aim of the study was to determine if each girl's definition of a missionary was correct in light of modern day missions. The type of persons needed for mission work was also discussed. The aim of this program was to learn what skills and talents missionaries are using today. Mrs. Starke assisted the group in listing the skills a person should develop to dedicate them to God.

The next study will be on the book "To Be Free," a study on Israel.

Refreshments were served by Mary Jo Johnson and Joyce Thomas to Alice Johnson, Margaret Hood, and Mrs. Jerry Starke.

BY THE TIME the average American reaches seventy, he will have consumed the equivalent of 150 head of cattle, 24,000 chickens, 225 lambs, 26 sheep, 310 swine, 26 acres of grain and 50 acres of fruits and vegetables, reports Gwendolyn Clayatt, Extension consumer marketing specialist with Texas A&M.



We extend our sincere thanks to our friends for all the flowers, letters, cards and telephone calls during the period of hospitalization in the Big Springs Hospital. Your thoughtfulness will long be remembered.

Mr. and Mrs. Buddy Free

My sincere thanks to each and everyone of you for the visits, flowers, gifts and cards during my recent hospitalization. Your kindness was so appreciated. These times make us realize anew just how wonderful friends are.

Mrs. Myrtle Clayton

## Springlake Girl Scouts Work On Painting Badges

The Springlake Jr. Girl Scouts met Monday afternoon for their weekly meeting in the Springlake Community Building under the direction of Mrs. Wayne Davis and Mrs. Sam Barden, leaders.

The Flag Ceremony, "America," and Scout Promise were conducted by Jill Barden and Susan Clayton.

As a step toward the Scout Painting Badge, the girls learned how to take care of pastels and charcoals. Each girl did a picture using both of these items.

At the next meeting Monday, November 17, the group will be working with Tempera paints.

Refreshments of cookies were served by Dina Jo Hampton to Jill Barden, Susan Clayton, Connie Dear, Kay Howell, Ranae Winder, Tammy Davis, and Kathy King.

## Mrs. Cummings Hostess To S S Class

The home of Mr. and Mrs. Howard Cummings was the scene of a salad supper for ladies of the "Ruth" Sunday School Class of the First Baptist Church in Earth. Following the delicious supper the ladies enjoyed an evening of upbuilding Christian fellowship.

Members of the Ruth Sunday School Class attending were Mrs. Bobby Green, Mrs. David Hartman, Mrs. Donald Runyon, Mrs. Robert Geissler and the hostess, Mrs. Howard Cummings.

## WMU Study "The Mission Message Of The Bible"

The Womens Missionary Union of the Earth First Baptist Church met Tuesday afternoon at the church for their weekly meeting.

Mrs. Ruby Hodge conducted the Bible study on "The Mission Message of the Bible." Mrs. Hodge showed how it is God's plan for his people to carry out the missionary work and it is from the heart that people love God enough to be a missionary.

After the Bible study the group discussed sending cards to the sick and bereaved in the community. The group also planned to make and wrap candy to be sent to area servicemen next Tuesday.

Those attending were Mrs. Price Hamilton, Mrs. Alice Marten, Mrs. Ray Kelley, Mrs. Frank Anderson, Mrs. Pete O'Hair, Mrs. Lillie Wuerflein, and Mrs. Ruby Hodge.

## Eastern Star To Attend Banquet

The Earth Eastern Star met Monday night at the Masonic Lodge Hall with Mrs. Marvin Sanders, Worthy Matron, in charge.

The program was presented by Mrs. Pete O'Hair on "The Biography of Robert Morris." Morris was the founder of the Eastern Star. Mrs. O'Hair gave the history of his life and his contributions to the Christian woman by forming the Eastern Star.

Mrs. Sanders conducted a business meeting with members of the local Star planning to attend the Mystic Banquet slated for Thursday night (tonight) at

the Congress Inn in Plainview. The meeting concluded with the banquet is for members of the Grand Cross of Color, who rest Simmons and Mrs. Johnny have worked with Rainbow girls. Marrell.

Mrs. Marvin Sanders of the local Star will be in charge of the meeting will be Mrs. Bobby program. Her theme will be Marshall, Deputy Grand Matron "The Cross and the Colors," from Hale Center.

**Use Our Lay-A-Way Plan**  
**Do Your Christmas Shopping Early**  
**POUNDS (Rexall) PHARMACY**

Earth

## Springlake GA's and Sunbeams Canvass For "Cans For Kids"

The Sunbeams and GA's of the Springlake First Baptist Church met Wednesday afternoon November 5 at the church for a joint meeting.

The groups met and were organized in groups to canvass Springlake for the project called "Cans For Kids". The group collected a large amount of canned goods in various varieties to be donated to the Baptist Children's Home in Lubbock. Following completion of the

project, the group gathered back at the church for refreshments of cookies and hot chocolate which was served by the directors.

GA's participating were Ranae Winder, Robbie Mosley, Tammy Davis, Susan Clayton, and their director Mrs. Delvin Walden.

Beginner Sunbeams were Kyle Holmes, Rocky Lunsford, Michael Field, Kathy Cain, Diane Jones, Kelley Walden, and their leader Mrs. Bill Lunsford.

## TO OUR COMMUNITY:

We would like to thank you for your cooperation in helping us to support the 1969 Springlake-Earth Wolverines. Our success has been made possible because of your continuous spirit and support. We are especially grateful to the businessmen and those citizens who have willingly and eagerly helped us in our various projects to build the spirit.

As the season closes this Friday night we want to invite all of you to attend the Bon Fire at 6:00 p. m., tonight, on the Barton Brothers Gin lot and the final pep rally at 3:30 Friday afternoon in the gym.

Be there to support your Wolverines.

Sincerely,  
The 1969 Springlake-Earth Cheerleaders



## Financial Facts

By Norlan Dudley

For three centuries banking was the profession of the Medici family of Italy.

The first of the family to win fame was Giovanni de Medici. He was born in 1360.

Giovanni rose to wealth and power. He conducted his banking business from a palace in Florence. He also established branch banks in a number of Italian cities.

In 1929 his estate included 180,000 gold florins. At that time such a sum represented enormous purchasing power.

When he died, his son Cosimo took over. Cosimo increased the bank's holdings considerably.

In 1449 Cosimo's son Lorenzo was born. Called "Lorenzo the Magnificent," he became a great patron of the arts.

Two centuries after Lorenzo's death the family withdrew from banking.

## WATCH NEXT WEEK FOR "EARLY SWEDISH BANKING"

Money spent at home, builds your community, lets all be builders.

Whether you are interested in saving money--or borrowing, we are most accommodating at CITIZENS STATE BANK! You will also receive fast, accurate service with a smile. Give us an opportunity to say "yes" at CITIZENS STATE BANK, Box 20, 257-3451. Open 9 to 3 Monday thru Friday.

a tip to Smart Santas:



## early christmas account

enables you to do your christmas shopping in november, pay nothing until next year, with on finance charge!

do your christmas shopping in november, when our stocks are most complete, selections are bigger and shopping is unhurried and easier. pay nothing until next year, with NO FINANCE CHARGE! our usual fancy gift-wraps, of course.

pay 1/3 in january,  
1/3 in february... 1/3 in march

SHOP EARLY WHILE SELECTIONS ARE EXCELLENT



21st & THORNTON CLOVIS, N.M.

LAY AWAY NOW FOR CHRISTMAS  
BUY NOW AND SAVE

HARVEY BASS APPLIANCE

WHY GET "SNOWED UNDER" at the last minute?



Select your

Hallmark  
PERSONALIZED  
Christmas  
cards now!

Office Supply  
509 Phelps Ave Littlefield  
385-4646

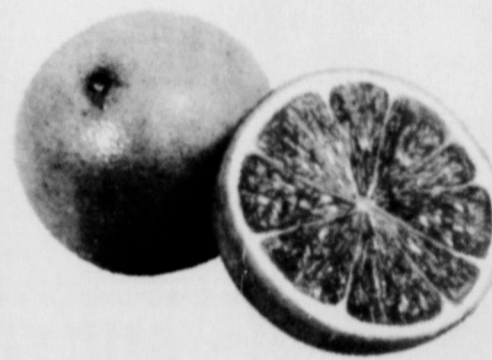
## The Annual FFA CITRUS FRUIT SALE

Is Now In Progress

No. 1 Navel Oranges

RUBY RED

No. 1 Grapefruit



Fruit  
May  
Be  
Mixed  
Half  
And  
Half



TOP QUALITY FRUIT - GROWN IN THE VALLEY

GUARANTEED TO PLEASE

CONTACT

E. G. Gaston Or Any Member Of The  
Springlake - Earth FFA Chapter

Fruit Will Be Delivered December 15



# Wolverines Stampede Over Longhorns 50-6

The Wolverine squad took the field Friday night to show fans they had the spirit and know-how to take a game away from their opponents. They set to the task like professionals and scored a 50-6 victory for the Wolverines over Vega.

It was the Wolverines games all the way, as they were never really threatened by Vega.

Terry Bridge scored three touchdowns, he also carried and kicked for three additional points to make a total of 21 points to lead the Wolverines in their defeat of Vega.

Jerry Barden and Tony Barton scored twice for 12 points each, Hoyt Glasscock kicked a 22 yard field goal and Mike Cleavinger had a two point conversion to total up the scoring by the Wolverine squad.

Bridges scored his points on an 80 yard run, a 60 yard run and a 13 yard run, kicking one extra point and plunging over for a two point conversion.

Barden did his scoring from 3 yards and 1 yard, with Barton scoring from 66 yards out and 29 yards.

On defense the Wolverines held the Vega team to 11 first downs and a total of 210 yards rushing and 21 yards passing for a total of 231 yards.

While the Wolverines ran up a total of 30 yards passing and 496 yards rushing, for a total of 536 yards and 16 first downs, Bridge carried the ball 10 times for an average of 22.5 yards and a total 223 yards.

Barton carried 11 times for 159 yards.

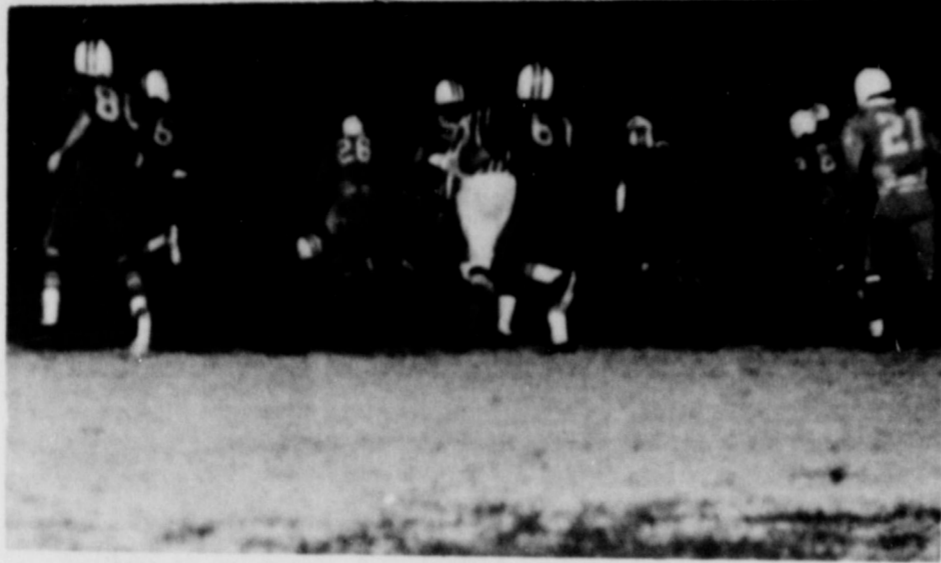
Hoyt Glasscock carried two times for 47 yards.

Other yardage was Barden, 31 yards, Cleavinger, 16 yards, Huby 9 and Sulser 9 yards.

The Wolverines are the top scoring team in the 3A district, having scored 144 points during the 4 district games. The Wolverines have scored 332 points throughout the season.

The second highest scoring team for the season is Farwell with 230 points. Farwell who is in the number 1 place in the district has scored 103 points during the four district games they have won this season.

Terry Bridge is in first place as top scorer in district 3A. He is credited with 19 touchdowns. Johnny Jackson of Kress has 15 to his credit, and rates second position. Tony Barton has 13 touchdowns and is currently in third place in the scoring of district 3A.



TERRY BRIDGE-Hidden was off and running after breaking through an 80 yard scamper for paydirt Friday night.



TONY BARTON-Who had 159 yards Friday also scored 12 points to move him into third place in district 3A scoring for the season, with 80 points.

**IDS** *Investment Services*

Exclusive National Distributor for  
**SIX MUTUAL FUNDS**  
for a prospectus (information booklet)

CALL YOUR **IDS MAN**

David LeRoy Thompson  
Muleshoe Phone 272-4477

SEE OR CALL  
**BUSTER SMITH**  
For The  
**Best Deal To Be Found**  
On A  
**New or Used Car**

Bus. Phone 296-2788  
Res. Phone 333-1733

**Don Riererson Pontiac - Cadillac, Inc.**  
3110 Olton Road-Plainview

**3A SEASON STANDINGS**

| Team             | W  | L | T | Pts. | Opp. |
|------------------|----|---|---|------|------|
| Sudan            | 10 | 0 | 0 | 225  | 108  |
| Farwell          | 8  | 2 | 0 | 230  | 152  |
| Kress            | 6  | 3 | 0 | 150  | 80   |
| Springlake-Earth | 4  | 4 | 0 | 219  | 80   |
| Vega             | 4  | 4 | 0 | 132  | 197  |
| Bovina           | 2  | 7 | 0 | 104  | 284  |

**3A DISTRICT STANDINGS**

| Team             | W | L | T | Pts. | Opp. |
|------------------|---|---|---|------|------|
| Farwell          | 4 | 0 | 0 | 62   | 42   |
| Johns            | 4 | 0 | 0 | 75   | 54   |
| Springlake-Earth | 2 | 2 | 0 | 114  | 112  |
| Kress            | 2 | 2 | 0 | 17   | 47   |
| Vega             | 2 | 2 | 0 | 42   | 111  |
| Bovina           | 0 | 4 | 0 | 31   | 140  |

**Last Week's Results**-Farwell 22, Bovina 19, Springlake 36, Vega 8, Sudan 25, Kress 14.

**Friday's Schedule**- Bovina at Vega, Springlake at Kress, Sudan at Farwell.

**SCORING LEADERS**

| Player            | Team       | TD | Pts. |
|-------------------|------------|----|------|
| Terry Bridge      | Springlake | 19 | 120  |
| Johnny Jackson    | Kress      | 15 | 90   |
| Tony Barton       | Springlake | 13 | 78   |
| Larry Hinton      | Sudan      | 12 | 72   |
| Jerry Barden      | Sudan      | 8  | 48   |
| Jackie Richardson | Vega       | 8  | 48   |
| Wesley McMeans    | Bovina     | 7  | 42   |
| Dean Stroud       | Farwell    | 6  | 36   |
| Hoyt Glasscock    | Springlake | 4  | 24   |
| Mike Neuschamp    | Bovina     | 3  | 18   |

\*Includes field goals.

## Eighth Graders Down Vega 14-16

The Springlake-Earth Eighth Graders won their first game of the season Thursday at 5:00 p.m. in Wolverine Stadium when they met the eighth grade team of Vega.

After the tough battle was over the scoreboard read Wolverines 16 and Vega 14. Donnie Henderson, an eighth grader, scored one touchdown and ran for two extra points as did Pete Rodriguez to total the 16 points for Springlake-Earth.

Coach Travis Sursa stated that he is pleased with the results and the team showed real spirit and played as a team to attain this win.

Both the seventh and eighth grade teams will meet Kress Thursday, November 13, at 4:30 p.m. in Wolverine Stadium. These will be the last games of the season for both high teams.

## TV SCHEDULE

KCBD-TV LUBBOCK, TEXAS  
**CHANNEL 11**  
C-Denotes Color

**THURSDAY**  
November 13

7:00-Early Report-C  
7:05-Farm Report-C  
7:25-Today Weather-C  
7:30-Today-C  
8:25-Morning Report-C  
8:30-Today-C  
9:00-It Takes Two-C  
9:25-News-C  
9:30-Concentration-C  
10:00-Sale of Century-C  
10:30-Hollywood Squares-C  
11:00-Jeopardy-C  
11:30-Name Droppers-C  
11:55-News-C  
12:00-Mid-Day Report-C  
12:15-Community Closeup-C  
12:30-You're Putting Me On-C  
1:00-Days of Our Lives-C  
1:30-The Doctors-C  
2:00-Another World-C  
2:30-Bright Promise-C  
3:00-Letters to Laugh In-C  
3:30-Peyton Place  
4:00-Hazel-C  
4:30-Big Valley-C  
5:30-Huntley-Brinkley-C  
6:00-Evening Report-C  
6:30-Daniel Boone-C  
7:30-Ironside-C  
8:30-Dragner-C  
9:00-Dean Martin-C  
10:00-Final Report-C  
10:30-Tonight Show-C  
12:00-New Mexico Report-C  
12:15-Sign Off

**FRIDAY**  
November 14  
(7:00-6:00 Same as Thursday)

6:30-High Chaparral-C  
7:30-Name of the Game-C  
9:00-Brackens World-C

**SATURDAY**  
November 15

10:00-Final Report-C  
10:30-Tonight Show-C  
12:00-New Mexico Report-C  
12:15-Sign Off

**MONDAY**  
November 17  
(7:00-6:00 Same as Thursday)

6:30-My World and Welcome to It,-C  
7:00-Laugh In-C  
8:00-Movie-Madigan, Richard Widmark, Henry Fonda-C  
10:00-Final Report-C  
10:30-Tonight Show-C  
12:00-New Mexico Report-C  
12:15-Sign Off

**TUESDAY**  
November 18  
(7:00-6:00 Same as Thursday)

6:30-The Wolfman-C  
7:30-Julia-C  
8:00-Movie-No Man an Island, Jeffrey Hunter, Marshall Thompson-C  
10:00-Final Report-C  
10:30-Tonight Show-C  
12:00-New Mexico Report-C  
12:15-Sign Off

**WEDNESDAY**  
November 19  
(7:00-6:00 Same as Thursday)

6:30-Virginian-C  
8:00-Kraft Music Hall-C  
9:00-And Then Came Bronson-C  
10:00-Final Report-C  
10:30-Tonight Show-C  
12:00-New Mexico Report-C  
12:15-Sign Off

**SUNDAY**  
November 16  
(7:00-6:00 Same as Thursday)

8:00-Faith for Today-C  
8:30-Glory Road-C  
9:00-Insight  
9:30-Herald of Truth-C  
10:00-Ask Your Minister-C  
10:45-First Baptist Church  
12:30-AFL Kansas City at New York-C  
3:00-AFL-San Diego at Oakland-C  
6:00-Evening Report-C

**SHOP**  
WITH THE  
**Merchants That Advertise**  
IN  
**The News-Sun,**  
**THEY WANT YOUR BUSINESS**

KLBK-TV LUBBOCK, TEXAS  
**CHANNEL 13**

**THURSDAY**  
November 13

6:28-Sign Off  
7:00-The Jetsons-C  
7:30-Bugs Bunny Road Runner  
8:30-Farm & Ranch News-C  
7:00-CBS Morning News-C  
8:00-Captain Kangaroo-C  
9:00-The Lucy Show-C  
9:30-Beverly Hills 90210-C  
9:45-Apollo Preview  
10:00-Andy Griffith-C  
10:30-Love of Life-C  
11:00-Where the Heart Is-C  
11:24-CBS Midday News CBS-C  
11:30-Search for Tomorrow-C  
12:00-Channel 13 News-C  
12:12-Farm & Ranch News-C  
12:22-Paul Harvey-C  
12:30-As The World Turns-C  
1:00-Love is a Many Splendored Thing-C  
1:30-Guiding Light-C  
2:00-Secret Storm-C  
2:30-Edge of Night-C  
3:00-Matinee Theatre  
4:30-Three Stooges  
5:00-Gomer Pyle-C  
5:30-CBS Evening News-C  
6:00-Channel 13 News-C  
6:10-Weather-C  
6:20-Sports Report-C  
6:30-Family Affair-C  
7:00-Jim Nabors Variety Hour-C  
8:00-Movie-Mister Buddwing-James Garner, Jean Simmons-Susanne Plashette  
10:00-News & Weather-C  
10:30-Merv Griffin Show-C  
12:00-Little Bit of News & Weather-C  
12:05-Sign Off

**FRIDAY**  
November 14

10:00-Apollo Launch  
2:00-Pictures from Space  
6:30-Get Smart-C  
7:00-Good Guys-C  
7:30-Hogan's Heroes-C  
8:00-Movie-Panelope-Natalie Wood, Jonathan Winters  
10:00-News & Weather  
10:30-Merv Griffin Show-C  
12:00-Midnight Theatre-The Bandit of Zhobe-Victor Mature  
1:20-Sign Off

**SATURDAY**  
November 15

6:58-Sign On  
7:00-The Jetsons-C  
7:30-Bugs Bunny Road Runner  
8:30-Dastardly & Muttley in Their Flying Machine-C  
9:00-Perils of Penelope Pitstop-C  
9:30-Scooby Doo Where Are You-C  
10:00-The Archie Show-C  
11:00-Wrestling-C  
12:00-Superman-C  
12:30-N.C.A.A. Football-C-National Wild Card Teams TBA  
4:00-Wide World of Sports-C  
5:30-CBS News-C  
6:00-Three Stooges  
6:30-Jackie Gleason-C  
7:30-Lawrence Walk-C  
8:30-N.C.A.A. Football-C-Notre Dame @ Georgia Tech  
11:30-Double Feature-Barabas-Antony Quinn, Ernest Borgnine  
2:00-Sign Off

**SUNDAY**  
November 16

7:58-Sign On  
8:00-Tom & Jerry-C  
8:30-Batman-C  
9:00-Oral Roberts-C  
9:30-Movie Theatre-Good Day for a Hanging-Fred MacMurry  
10:55-Palmer Writers-C  
11:00-American Favorite Hymns-C  
11:15-Tom Landry Show-C  
11:45-N.F.L. Football-C-Dallas @ Washington Baltimore @ San Francisco  
6:00-Lassie-C  
6:30-To Rome with Love-C  
7:00-F.B.I.-C  
8:00-Leslie Uggams-C  
9:00-Mission Impossible-C  
10:30-News & Weather-C  
10:15-Red Raider Highlights-C  
10:30-Curtain Call-Cowboy-Glenn Ford, Jack Lemmon  
12:00-Sign Off

**MONDAY**  
November 17  
(5:58-6:00 Same as Thursday)

6:30-Gunslinger-C  
7:30-Here's Lucy-C  
8:00-Mayberry & F.D.-C  
8:30-Doris Day Show-C  
9:00-Carol Burnett-C  
10:00-News & Weather  
10:03-Lunar Pictures  
10:30-Merv Griffin Show-C  
10:53-Lunar Pictures  
12:00-Little Bit of News & Weather-C  
12:15-Sign Off

**TUESDAY**  
November 18  
(5:58-6:00 Same as Thursday)

6:30-Lancer-C  
7:30-Red Shelton-C  
8:30-Governor & JJ-C  
9:00-M/ Three Sons-C  
9:30-Green Acres-C  
10:00-News & Weather-C  
10:03-Lunar Pictures  
10:30-Merv Griffin Show-C  
12:00-Little Bit of News & Weather-C  
12:00-Lunar Landing

**WEDNESDAY**  
November 19  
(5:58-6:00 Same as Thursday)

6:30-Glen Campbell Goodtime Hour-C  
7:30-Beverly Hills 90210-C  
8:00-Medical Center-C  
9:00-Hawaii Five O-C  
10:00-News & Weather-C  
10:05-Lunar Pictures  
10:30-Second Lunar Walk  
12:00-Little Bit of News & Weather-C  
12:05-Sign Off

**We Congratulate**

**Barton Bros. Gin Co., Inc.**  
On Ginning The  
**First Bale Of Cotton**  
In Earth

WE ALSO CONGRATULATE  
**BILLY WAYNE BARLOW**  
ON BRINGING IN THE FIRST BALE OF 1969 COTTON IN EARTH

We are indeed proud of this cotton growing area and we encourage everyone to buy cotton products, wear cotton clothing, and use cotton in their daily lives.

**Central Compress & Warehouse**  
Sudan

**Letters to the Editor**

Polly,  
We enjoy the paper so much. We especially liked the big anniversary issue a while back. I learned things about people I never knew happened-even about my own father Gus Parish. I never knew he had a garage. We are now getting two copies of your paper, which is a little more than we can read. So please check your list.

Thanks,  
Mrs. James Riddle  
November 4, 1969  
Littlefield, Texas 79339

Mr. Ross Middleton  
Earth News-Sun  
Earth, Texas 79031

Dear Mr. Middleton:  
We would like to extend to you and your wife a special invitation to attend our Annual 4-H Achievement Awards Program & Banquet, which will be held Saturday, November 15, 1969, at 7:00 P.M. at the Littlefield High School Cafeteria, in Littlefield, Texas.

This is the time of year that we take time out to honor those boys and girls in Lamb County 4-H work for their outstanding accomplishments. Your attendance would be sincerely appreciated, just fill out the enclosed card and return as soon as possible.

Very truly yours,  
Buddy C. Logsdon  
County Agricultural Agent

Mr. and Mrs. Gene Chaney and Mr. and Mrs. Bill Chaney, and S. H. Chaney went Deer hunting in Uvalde over the weekend.

J. B. Inglis of Mangum, Oklahoma, visited from Thursday through Sunday in the home of Mr. and Mrs. Gerald Inglis. J. B. Inglis is the father of Gerald Inglis.

**AUCTION SALE**  
**2: P.M. Saturday, Nov. 15**  
In The Rear Of Knowles Auction Building  
At 105 Main Street In Muleshoe

**All Kinds Of Farm Machinery**

BELOW ARE A FEW OF THE ITEMS TO BE AUCTIONED

\*-1 '68 Ford Tractor \*Cotton Trailers  
\* 14 Ft. Hail Trailer  
ALSO  
CARS AND PICKUPS  
\* - '63 Ford Pickup  
\* - '59 GMC Truck (with 16ft. Van)  
- CONSIGNMENT WELCOME-

**Knowles Auction**  
Call Day or Night 272-4311 Muleshoe



## Beware Of The "Up and Down Drugs"

(Second in a Series)

Amphetamines and barbiturates are the "up and down" drugs usually taken in pill form.

They are said to "pick you up when you're down and bring you down when you're up." For most people, amphetamines do have exhilarating effects, while barbiturates bring calming.

They are powerful drugs, too powerful to play around with. Yet too many people are doing so. No one knows how many, but the best estimates are that about 200,000--and perhaps as many as 400,000--persons regularly abuse these and other non-narcotic drugs.

The case of Mary Jones illustrates the matter. It's a hypothetical case, not a real name, but it is true.

Mary takes amphetamines to get going and barbiturates to put her to sleep. She does this

day in and out. She takes the "up and down" pills without the supervision of her family doctor.

Mary is--or is on the way to being--a slave of these drugs, addicted to them, a "junkie" as the slang goes. What is worse, she doesn't know it. She doesn't know facts she needs to know, like these:

The "updrugs," pep pills also called "bennies" and "speed," are a group of drugs known as amphetamines. They form one-half of what is perhaps the biggest part of the drug abuse problem in the U. S. today.

The other half of the problem are the "down drugs"--sedatives, sleeping pills, the large family of drugs made for medical purpose to relax a person.

What do the "down drugs" do? They produce a relaxing effect for most people, in normal, medically supervised doses, they mildly depress the action

# Black is beautiful.

# Black and on stuff isn't.

of the nerves, skeletal muscles and heart muscle. In abnormal doses, the effects resemble alcoholic drunkenness.

Are these drugs addicting? The amphetamines or "up drugs" produce "psychological" dependence--a practice that

can become a habit for mental or emotional reasons.

The "down drugs," barbiturates usually, are physically addicting. Some experts consider barbiturate addiction more difficult to cure than dependency upon a narcotic like heroin or cocaine.

Are these drugs dangerous to use?

They have definite medical and health values if properly used under a physician's direction.

None is properly available without a physician's prescription. This is for the very good reason that their misuse or abuse can be dangerous.

Barbiturates are a leading cause of accidental poison deaths. Sleeping pills distort

how people see things; they slow down reactions and responses. They are an important cause of automobile accidents.

Amphetamines misused can lead to accidental deaths and to accidents because they can severe mental derangement.

For a free leaflet on "The Up and Down Drugs," write to Box 1080, NIMH, Washington, D. C. 20013.

NONFAT DRY MILK contains all the nutritive elements of whole fluid milk except vitamins A and D. And it has only half the calories, reports Extension foods and nutrition specialists.

## Red Cross Intensifies Efforts Toward Relief Of U.S. Prisoners In Vietnam

The American Red Cross is intensifying its efforts to open channels of communication and relief to U. S. servicemen being held prisoners of war in North Vietnam, according to word received this past week at the local Red Cross office from National Red Cross headquarters in Washington, D. C.

Mrs. Roy Wade, executive secretary of the local chapter said at a regular monthly meeting of the Board held Friday afternoon in the Red Cross offices in Lambs County Court House, that a resolution sponsored by the American society urging that prisoners of war be given the benefits and protection of the Geneva Conventions was adopted without dissenting vote last month by the representatives of 77 governments and 91 national Red Cross societies attending the quadrennial International Conference of the Red Cross in Istanbul.

It was also stated that American Red Cross followed this action with a cable message to Red Cross societies in all parts of the world, asking that they appeal to the Red Cross society of North Vietnam to take appropriate steps to insure that American prisoners are receiving the humane treatment called for in the Conventions.

Mrs. Bonnie Haberer, Earth Board Chairman presided at the meeting, which opened with a prayer led by Rev. C. P. McMaster. A new board member, Mrs. John A. Price, was introduced by Mrs. Norman Frey. Mrs. Price will serve as Public Information chairman.

It was announced that the 1970 Fund Drive will get underway early in January and chairman for area towns will be announced at the January meeting.

Judge G. T. Sides read a letter from National Red Cross Headquarters, commending the local chapter for meeting its quota for Hurricane Camille disaster.

Attending were Mesdames D. R. Leonard, A. H. Scivally, Roy Wade, John A. Price, Norman Frey, Bonnie Haberer, and Judge G. T. Sides, James P. Arnold and Rev. C. P. McMasters.

★★★★★★★  
★ Our Boys ★  
★ In Service ★

### WISH I'D SAID THAT



Don't worry about how the ball bounces unless you are the one who dropped it--Harold S. May, The Florence (Ala.) Herald.

Be as anxious to help others as you are to accept favors. --Eugene Gay, The Calvert (Tex.) News-Messenger.

Group, participated as one of several ships in demonstration formation.

"I wish I had some pots and pans  
a couple of classy canister cans  
Some decorative items - one or two  
To start life right, now with you."

**FOR THE BRIDE TO BE...**

|  |                       |
|--|-----------------------|
| Linens   | Stainless Flatware    |
| Wall Clocks  | Electrical Appliances |
| Decorative Candle Holders  |                       |
| Delightfully Patterned Dishes  |                       |
| Personal Shopping By Phone,<br>FREE GIFT WRAPPING and<br>S&H Green Stamps. |                       |

**PAGE'S GIFT STORE**  
Hours 9-7  
Ph: 293-4020 Plainview 707 24th St.

David T. Bechtol, D.V.M.  
announces that  
W. J. Hill III, D.V.M.  
is now associated with the  
Dimmitt Veterinary Clinic  
for the practice  
of general veterinary medicine.

**Congratulations**  
To

**BILLY WAYNE BARLOW**

For The  
**First Bale**  
Of Cotton Ginned  
In  
**EARTH**

Thank You Mr. Barlow  
For Planting  
**GREGG SEED**

For Better Yields and Early Maturing

**GREGG SEED FARM**

Plainview

Congratulations  
and  
Thank You

We Congratulate You On Bringing In The  
**FIRST BALE OF 1969 COTTON**

We Thank You For Purchasing  
**AMMO-PHOS 13-39-0**  
FERTILIZER  
FROM OUR  
FIRM

See Us Today For  
**PLOW-DOWN FERTILIZERS**  
**FARM CHEMICAL CO.**

Earth Phone 257-2050



# Tragedy Stirs Little Horror

DALLAS, --A disaster equal to killing and injuring the populations of two towns has struck Texas, but few people are horror-stricken or even concerned. The disaster killed slightly more people than live in the town of Comanche in north-central Texas, population 3,415. Corpus Christi wasn't touched, but enough men, women and children were injured last year by the tragedy to almost equal that city's 202,000 population. The reason this disaster has too few people concerned is that the tragedy kills and injures one-by-one and two-by-two in automobile accidents on Texas' streets and highways.

Specifically, 3,481 people met death in auto crashes last year in this state. This represented an increase of three per cent over the 1967 traffic toll. Traffic injuries jumped five per cent to count 216,972 people requiring some medical attention or hospitalization. A total of 940,272 auto accidents were recorded last year.

What these auto crashes signify--besides the personal suffering and loss of loved ones--is rising automobile insurance rates, according to the Insurance Information Institute.

Automobile insurance premiums are directly affected by the number and severity of accidents in which insured autos are involved, the I.I.I. stated.

Texas Governor Preston Smith has backed this statement saying that the only alternative to higher and higher auto insurance rates is an effective traffic safety program resulting in fewer accidents, injuries and deaths.

Insured liability claims costs for personal injuries jumped more than 14.7 per cent during a recent three-year period, insurance companies reported to the Texas State Board of Insurance. Claims paid have risen to an average \$846 in December, 1968, from an average \$737 per person in September, 1965.

Liability claims paid for property damage show an even higher increase of 29.4 per cent during the same period. The average property damage claim paid by insurance companies was \$180 in December, 1965, but higher auto repair costs had pushed this average paid claim to \$223 in December, 1968.

Personal injury liability claims reflect higher medical and hospitalization costs. The cost of medical care--measured by the consumer price index from the base period 1967-69--has risen nearly 40 per cent. In just one year, from 1967 to 1968, the average daily charge for a semi-private hospital room in Texas jumped from \$23.80 to \$27.70, an increase of 16.4 per cent, according to the American Hospital Association. In Dallas the increase during the one-year period was 24.4 per cent; in Houston, 19.8 per cent, and in San Antonio 20.5 per cent.

Inflation, of course, is making matters worse. But the basic problem causing past increases in auto insurance rates--and guaranteeing future increases if the trend is not reversed--is the continually rising death and accident toll.

If a hurricane injured the great majority of people living in Corpus Christi, or if one of Texas' frequent tornadoes wiped

Comanche off the map--killing all its residents--the citizens of this state would be shocked and concerned. The Insurance Information Institute says that Texas' citizenry must develop that kind of concern about the ever-increasing deaths, injuries and property damage on the state's highways.

Mr. and Mrs. David Johnson visited over the week-end with their son and family M. and Mrs. Ronny Johnsons of Amarillo.

### PARTY LINE

Mrs. B. J. Brockette spent last week visiting with her daughter and her family the Elvis Hestands of Portales, New Mexico.

Mr. and Mrs. Seymour Evans and children of Lubbock were dinner guests Sunday in the home of the Perry Martins.

Mrs. A. C. Barton visited with relatives in Dallas from Wednesday until Friday. She was accompanied by her son Melvin Barton of Dimmitt.

# 62 Bulls To Be Tested In Research At TT Farm

PANTEX--Sixty-two bulls from 15 co-operators have been consigned for performance testing at the Texas Tech University Research Farm at Pantex for the annual field day and sale next spring.

Four breeds--Hereford, Angus, Charolais and Brahm--will be tested, according to announcement by Dr. R. Hollis Klett, superintendent of the farm and the Killgore Beef Cattle Center. The co-operators who are furnishing animals for the beef cattle improvement and meaty sire evaluation tests are Emmett

Levors of Pampa, Parcel Herefords of Coldwater, Kan., G. W. Banks of Sumner, Texas, Henry Leven of Panhandle, T. G. Millican of Panhandle, Paul Dauer of Panhandle, Clarence E. Mason of Muleshoe.

F. Jake Hess of McLean, John D. Hawn of Corpus Christi, 3 S Cattle Company of Amarillo, Harold V. O'Seal of Panhandle, Dan and Richard Sell of Booker, Robert O. Andrews of Olney, Breeding and Caldwell Herefords of Miami, Texas, and Max A. Blau of Follett.

"Bulls will be tested for rate of gain during the experimental period and this information will be given to prospective buyers of the animals at the field day and sale March 19, 1970," Keith Hansen, animal husbandman working with the project, said.

"Careful statistics are kept so that final figures will be as accurate as possible," Hansen said. Initial weight assigned to the animals represents the average of two weights taken two days apart in order to reduce variation due to fill.

Weight per day of age is calculated by dividing the initial weight by the age of the calf in days. This gives the lifetime growth rate.

Weight is dependent largely on pre-test treatment of the calves, and comparisons are most accurate at this stage only between animals in the same sire group, Hansen said.

Fat thickness figures have been added to the test program to make more valid evaluation of the bulls' gain. Measurements will be taken at 28-day intervals throughout the test period.

so that the pattern of fat disposition may be followed and a better evaluation of meatiness of the animals may be determined.

Test ration is made up of cottonseed hulls, 39.2%; molasses, 8%; milk, 35%; cottonseed meal, 15%; with the remainder made up of a steamed bone meal, calcium carbonate, T-M salt, vitamin A and aureomycin "10".

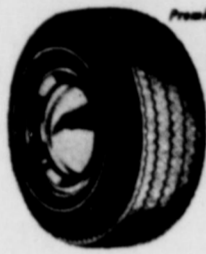
Mrs. Terrell Davis and sons, Mr. and Mrs. O. M. Dudley of Silverton, Mr. and Mrs. Buddy Comer and daughter of Lubbock, and Del Vining of Wink were guests in the home of the Norman Dudleys Sunday.

## Shook Tire Co.

Service after the Sale

Free Rotation and Balance every 5,000 miles on any new passenger tire bought at SHOOK.

LEE POLYESTER 4 PLY



Proven Extra Mileage Polyester Cord  
**GS-300**  
78 Series

• Four full plies of polyester cord  
• Low profile and wide tread for sure-footness--fast starts, quick stops  
• Contour-Cured for comfortable ride, right from the start.

| LEE POLYESTER | Regular | Sale  |
|---------------|---------|-------|
| 775x14 or 15  | 31.04   | 25.38 |
| 825x14 or 15  | 34.87   | 27.38 |
| 855x14 or 15  | 38.18   | 29.38 |
| 885x14 or 15  | 42.80   | 31.38 |

Plus Old Tire - F.E.T. Included



Let's save mileage! Stability! Handling Ease!  
**LEE GT Belted 78 RM**

| LEE BELTED   | Regular | Sale  |
|--------------|---------|-------|
| 775x14 or 15 | 36.85   | 30.38 |
| 825x14 or 15 | 40.12   | 32.38 |
| 855x14 or 15 | 44.18   | 34.38 |
| 885x14 or 15 | 49.40   | 36.38 |

Plus Old Tire - F.E.T. Included



Attention Truck Owners.  
**LEE'S PREMIUM HIGHWAY RIB WAT!**

| LEE HIGHWAY WAT | Regular | Sale  |
|-----------------|---------|-------|
| 670x15 6 ply    | 28.27   | 25.38 |
| 700x15 6 ply    | 33.44   | 28.38 |
| 700x16 6 ply    | 34.56   | 28.38 |
| 825x20 10 ply   | 82.30   | 64.38 |
| 900x20 10 ply   | 93.96   | 73.38 |
| 1000x20 12 ply  | 100.54  | 89.38 |

plus old tire-F.E.T. included--Installation free



4-Ply Nylon Cord  
**XL-200**

• Lee's "True Grip" tire  
• Four full plies of nylon cord for tire body strength  
• Step-around tread design for superior grip, steering control  
• Tougher rubber added to tread for longer life

| LEE XL200    | Regular | Sale  |
|--------------|---------|-------|
| 775x14 or 15 | 25.99   | 21.38 |
| 825x14 or 15 | 29.13   | 23.38 |
| 855x14 or 15 | 31.93   | 25.38 |
| 885x14 or 15 | 37.33   | 27.38 |

Plus Old Tire - F.E.T. Included

Monroe Shock Absorbers  
Buy 3 at Regular Price

FOURTH ONE FREE  
Free Installation

Shook Tire Co.

1028 East 9th Street Littlefield, Texas Phone 385-4405

# Shook Tire Co.

38 Years As Texas Largest Tire Dealer

Celebrates its

# 1st Anniversary

in Littlefield

Yes, Shook Tire Co. has served Texas for 38 years. But, this is Orville Bassett's 1st anniversary serving the people of Littlefield and the surrounding area. Orville is proud of that year. A year of progress and meeting some of the nicest people anywhere.



Shook Tire Co. is celebrating their 1st Anniversary in Littlefield and invites everyone in to save on quality tires and expert service!

Extra Safety with the real radial tire!



You can get big town tire prices at home!

FREE BALANCING AND ROTATING

Each 5000 miles on all new passenger tires purchased from us.

Complete brake and alignment department.

Front end alignment Brake alignment

Set camber, caster, and toe-in \$7.50

\$16.95

Muffler Guaranteed life-of-car Free Installation

Shock absorbers free installation

Field and road service on all farm tires

OFFICIAL STATE INSPECTION STATION

MICHELIN X\* Radial--the tire with safety-plus advantages--more car control, accurate braking action... virtually eliminates risk of heat blowouts.



MICHELIN X\* Radial also gives you these high-performance features: full grip in all weather, far fewer punctures, shock-cushioning abilities, long tread life (at least twice that of regular bias-ply tires). Plus gasoline economy (up to 10%).

Guaranteed 40,000 miles  
**MICHELIN X\***  
the steel-cord belted radial tire

Buy with Confidence from TEXAS' LARGEST TIRE DEALER

For West Texas' Best Tire Buy... LOOK TO SHOOK

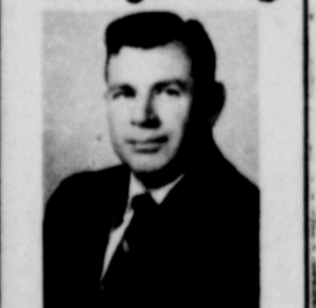
Shook Tire Co.

THE KING-OF-HOW to advise you THE FACILITIES to serve you THE PRODUCTS to please you

Stores in Pampa • Amarillo • Hereford • Plainview • Lubbock • Brownfield • Lamesa • San Angelo • Odessa • Sweetwater • Abilene • Brownwood

1028 E 9th LITTLEFIELD 385-4405

Don't Forget!



To See George Long  
For Your Automotive And Truck Needs Pontiac, GMC, Rambler, And Better Used Cars Rierson Pontiac

Clarks, New Mexico Home Phone: 481-3876 Farwell, Texas



# Sunnyside News...

By Tenny Bowden.

Mr. and Mrs. Eldon Lilley left last Friday morning for Abilene to attend a Shriner's crippled Children's clinic with friends who are from Dallas. They returned home last Sunday night.

Mr. and Mrs. Donnie Lilley went to Big Springs last Friday evening to spend the week-end with Mr. and Mrs. Raymond Lilley and other relatives.

Ezell and Larry and Gale Sadler all went hunting sand hill crane at the game reserve near Milesheo last Saturday morning. Ezell and Gale went back Monday morning. Ezell brought back one and shot down the second one, but couldn't find it. The others didn't have any luck.

The WMS met at the church Monday morning for the Baptist Women's Day of Prayer. Only four members attended.

Wanda Laxon of Lubbock, bride elect of Spec-5 Harold Spencer, was honored with a bridal shower at Fellowship Hall of the church Monday afternoon. Hostesses for the occasion were Mrs. E. R. Sadler, Mrs. J. Paul Waggoner, Mrs. Garner Ball, Mrs. Alton Louder, Mrs. R. V. Bills, Mrs. Gale Sadler, Mrs. M. I. Burn Haydon, Mrs. Roy Phelan, and Mrs. Roy Lilley of Dimmitt. Mrs. Haydon, Mrs. Phelan and Mrs. Lilley were unable to attend. Her mother and sister, Jeanette, from Lubbock attended. As well as his mother and grandmother from the community.

Larry Sadler and Robert Duke were called Monday, Tuesday, and Wednesday mornings for jury duty. Larry sat at the hospital with his grandfather Monday night to Mrs. Sadler and the girls stayed in Dimmitt with the Tex Conards Monday, Monday night and Tuesday.

Troy Jones was admitted to Plains Memorial hospital in Dimmitt Monday afternoon after having blacked out down town. He was dismissed Thursday. It apparently was a severe cramp in his upper leg that caused him to faint. He got a had cut over his eye and a black eye in the fall.

Mr. and Mrs. Lynn West and children of Dimmitt visited Monday night with Mr. and Mrs. Eldon Lilley.

Mrs. Ezell Sadler spent Tuesday night with Mr. and Mrs. James Powell, Randy, Tresa, and Cheryl while Mr. Sadler sits up at the hospital with W. E. Louder.

Mr. and Mrs. Roy Phelan returned home from Weatherford Tuesday evening after spending a week with relatives there and attended the wedding of one of his nieces. They also visited at Wills Point with Rev. Turner's father and Elveta with Mrs. Rogers, mother of Rev. Murlie Rogers.

Rev. Mack Turner flew with Dr. Raymond Perkins and Bill Myers of Dimmitt and Rev. David Owens of Milesheo to the Baptist General Convention of Texas meeting in San Antonio Tuesday through Thursday. Dr. Perkins is a pilot. It was the first cross country flight for Rev. Turner.

The WMS met Wednesday night for the General Society program with Mrs. Roy Phelan in charge. After the program some business was transacted.

Mrs. Norma Conard of Dimmitt spoke during the prayer meeting period. Wednesday night in the pastor's absence on her work with the Satellite Day Care Program for the mentally retarded.

Mr. and Mrs. Larry Odom spent Monday and Tuesday nights with Leslie Louder. They have moved from Dalhart back to Dimmitt and don't have a house yet. He is working for Dimmitt UPH & Garage. They also spent the day Sunday with him.

Mr. and Mrs. Ezell Sadler visited in Hale Center Wednesday night with Mr. and Mrs. Ercell Keeler.

Mr. and Mrs. Charles Axtell, Mr. and Mrs. Jerry Jones and Kyle, and Miss Kim Halley, who teaches in the Springlake-Earth High School were guests of Mr. and Mrs. R. A. Axtell for a buffet supper in their home last Thursday evening, November 6th.

Mrs. R. A. Axtell attended the monthly luncheon of the Earth United Methodist Church Friendship Sunday School class Tuesday in Earth.

Marian Dawson attended a slumber party at the home of Regina Cole last Friday night in Earth.

Sue Bradley, Kim Haydon and Belinda Hampton attended the Springlake-Brownie meeting in the Springlake Community Building last Thursday afternoon.

Bob Dyke was named Castro County's Gold Star 4-H boy for 1969 last Saturday night at the annual 4-H Awards banquet which was in the South Elementary School Cafeteria. His father attended the banquet with him. He is a member of the Flagg 4-H, and his main field project during the year has been soil and water conservation. He received an individual medal for his work in this field and a gold trophy from County Judge Raymond Wilson. He is a sophomore and has been in 4-H six years. The Flagg Club as a group also won certificates with blue seals. Larry got a pin and a ribbon on his work. Stanley Harris who is a member of the Hart 4-H also received an individual award medal or achievement award.

The airline hostess who was shot to death in Dallas recently lived in the upstairs apartment above Mr. and Mrs. Larry Don Bills and she and Mrs. Bills were friends and visited each other quite often. Mr. and Mrs. R. V. Bills had been down to visit with them and had just left that day for Quitman for a family reunion October 26. Larry and his wife had gone with them. They also spent one night in Klondike with her sister. There were 110 at her family reunion.

Mrs. Houston Carson went to work Tuesday selling Fountain Brand dispensing machines to small businesses. She has been quite busy this week, and thinks the machines are going to sell themselves, because they are small and yet give a variety of hot drinks that are very tasty.

Stanley Harris has played tackle this year with the Hart Longhorns in Jr. High. They beat Lazbuddie 38-0 Thursday. Sue



**EIGHT GRADE WOLVERINES**-Front row left to right, John Compean, Donnie Henderson, Charles Winder, Randy Stephens, David Kelley, Brad Freeman, Johnny Olds, Jimmy Coker, Edwin Fuller, Scott Lee and Israel Zomora. Back row, Travis Sursa, coach, Kenny O'Hair, Tommy Clayton, Lonnie Wilson, Mario Salas, Monty Watson, Brian Britton, Brad Haley and Hal Wood.

is in the pep squad in class, rough School and both attend all the games.

Mr. and Mrs. Duard Harris and family went to Wellington over the week-end to visit with his mother who is quite ill.

Mrs. Mack Turner attended the Dimmitt High School Thursday afternoon.

The Springlake-Earth 8th grade played Sudan last Thursday and won 32-12. Steve Morgan scored one touchdown and two points in the game. The 8th grade lost their game the same afternoon 48-0. Lonnie Wilson played on this team. Billy DeBusk plays on the freshman team.

The GA's and their leaders went to Amberst Saturday to the Llanos Altos GA Associational meeting. Mrs. Bill Morgan, and Mrs. Johnnie Epperson took Cindy Sadler, Tonya DeBusk, Resa Carson, Lesa Morgan, Theresa Elliott and Renee Jones who had charge of the prayer calendar and put on a skit for the program.

Randy Bills of Earth spent Friday night with his grandparents, Mr. and Mrs. R. V. Bills, Mr. and Mrs. Richard Bills and Elaine came over Saturday afternoon to take him home.

Mrs. Ruby Wolf and a friend, Mrs. Hamilton of Belen, New Mexico spent Wednesday night with Mr. and Mrs. E. R. Sadler and visited with the Gale Sadlers.

Mr. and Mrs. Henshel Wilson and family spent the week-end in Levelland to be with his brother who has just returned from overseas.

Dwayne Louder of Flagg sits at the hospital with his grandfather, W. E. Louder Thursday night as he has once a week since April.

Rev. and Mrs. M. D. Durham of Lubbock had supper Friday

night with Mr. and Mrs. Roy Phelan.

Mr. and Mrs. Walter Meeks of Hamlin and Mr. and Mrs. Jesse Wilson of Seymour visited Monday through Thursday with their brother, Mr. and Mrs. Arthur Wilson.

Saturday a mother dog, part chihuahua and part poodle, disappeared from the El Paso Gas camp. She had pups the 26th of October. Her name is Precious and that is just what she is to the Morgan family. She is two years old and black and white. If you have seen this dog please let them know.

Spec-5 Harold Spencer and Wanda Laxon of Lubbock were married Saturday afternoon in double ring vows performed by Rev. George L. Brittain of Grants, New Mexico in the Central Baptist church in Lubbock. Richard Eckel of Waco was best man. Otvis Spencer of Rome, Georgia was one of the ushers. Mrs. Milburn Haydon was the soloist.

After the reception at the fellowship hall of the church they left for a honeymoon trip to New Mexico. They will make their home at 426 16th St. in Kilbuck as long as he is stationed at Fort Hood. Several relatives attended and have spent the week-end with the Noah Spencers and the John Spencers.

A Mission action group interested in lifting the morals of the community met at the church Friday afternoon for a discussion period. No definite action was taken, but many needs and some solutions came from it.

Seventy four attended Sunday School with 27 in Training Union Sunday. Choir practice followed the evening service.

## County - Tax For Lamb Totals \$418,768.65

As the month of October comes to a close approximately \$504,258.14 had been billed to local and county tax payers in the form of school, city, and county tax statements.

In the Springlake-Earth School District real and personal property had an assessed valuation of 14,410,000. Approximately 1200 accountants were billed for \$63,585.00. These statements were in the mail October 1.

This year's tax rate for school taxes was \$1.75 per \$100 evaluation. January 31, 1970 is the deadline for paying school taxes before the penalty is assessed.

Approximately 747 tax receipts were mailed to persons within the city limits for real or personal property. An assessed real estate value of \$1,207,728.26 and an assessed personal value of \$21,904.49 totaled \$1,224,623.75 in taxable property and netted the city 21,904.49.

Lamb County figures show 12,762 accountants billed for a total of \$418,768.65 in taxes for real and personal property.

Mrs. J. D. Cochran who has been a patient in West Texas Hospital in Lubbock is visiting in the home of the D. S. Simmons. Mrs. Cochran is Mrs. Simmons' mother.

**J & R PAINT & BODY SHOP**

**BODY REPAIR**

**AUTO PAINTING**

**DU PONT**

**LACQUER - PAPER - QUALITY**

**ADAPTIVE FINISHES**

**AUTO GLASS**

Body & Fender Repairs • Expert Refinishing  
One Day Service On Auto Glass

**John Stanford and Ronnie Hathaway**

505 S.E. 3rd St. DIMMITT, TEXAS Phone 647-4426

## FORT WORTH STAR-TELEGRAM TEXAS' FINEST NEWSPAPER

# BARGAIN DAYS

ANNUAL REDUCED MAIL RATES

NOW! FOR A LIMITED TIME YOU CAN SUBSCRIBE TO A LARGE METROPOLITAN DAILY BY MAIL—AND SAVE

MORNING EXCEPT SUNDAY REG. \$24 YOU SAVE

**\$7.05**

**\$21.95**

7 DAYS A WEEK ONE YEAR BY MAIL

**\$16.95**

6 DAYS A WEEK ONE YEAR BY MAIL

MORNING WITH SUNDAY REG. \$32 YOU SAVE

**\$10.05**

EVENING EDITION AVAILABLE AT FULL RATE

Expanded news coverage of the Star-Telegram means a greater STATE newspaper for you than ever before, more sports coverage and women's news, too... more than any other Texas newspaper. There's more reading enjoyment for every member of the family. Large, easy-to-read type, too... that's why we say the Fort Worth Star-Telegram's "TOPS IN TEXAS." And if you subscribe now, you can save.

BY MAIL IN TEXAS AND BORDERING STATES ONLY

Fill out and mail to the Star-Telegram today or see your hometown agent

**FORT WORTH STAR-TELEGRAM**  
400 W. 7th, Fort Worth, Texas 76101

Sir: Attached is check or money order for \$ \_\_\_\_\_

Morning with Sunday  Morning without Sunday

NAME \_\_\_\_\_

ADDRESS \_\_\_\_\_

CITY \_\_\_\_\_

STATE \_\_\_\_\_ ZIP \_\_\_\_\_

The FORT WORTH STAR-TELEGRAM... Now, even more so, Texas' Final Newspaper

# BUY SELL CLASSIFIED ADS

### PARTY LINE

Mrs. Agnes Andrews and Mrs. Sam Counts of Albuquerque, New Mexico spent Tuesday night in the home of Mrs. Marie Ross.

### BUSINESS OPPORTUNITY

FARMERS or anyone with agricultural background please contact us. Responsible Agri-businessmen looking for area distributors, investment returnable. This opportunity has excellent potential for solid income. Please write Farmco Inc, Suite 200, 1203 University Ave, Lubbock, Texas or call 762-2225, evenings or week-ends 795-9164. 11/13/2c

FOUND: Set of Chrysler car keys near Barton Gin Company. Call for at news office and pay for advertisement. 11/13/tfc

LOST: Small black and white dog, has puppies, answers to "Precious". Reward offered. Call 986-2558. 11/13/tfc

FOR RENT or SALE: 2 bedroom house, washer and dryer connections, garage, antenna. Call 257-3765. 10/9/tfc

SEE ME FOR ALL Types of Insurance, Ivey Insurance-210 W. Bedford, Dimmitt. 7/17/tfc

SEWING MACHINE REPAIR SERVICE-all work fully guaranteed call Olton 285-2906. 7/17/tfc

FOR SALE-Pug Puppies AKC registered, champion bloodline, call 227-4031 or 257-3441. 8/7/tfc.

FOR SALE: G.E. Range, like new and a 1961 Chrysler automobile. Call 257-3884 after 5:00 p.m. 10/31/3tc

### CALL

**JOHNNY ENLOE**  
Phone 257-3776  
For All Your Cleaning Needs Your Local Representative For **JACK SPRATT JANITOR SUPPLY CO.**  
We Can Supply Your Needs For Business, Church and Home.

NEED PARTY WITH GOOD CREDIT in Earth area to take over payments on 1968 Model Singer Sewing Machine in Walnut console. Will zig zag, button hole, fancy patterns, etc., Five payments at \$5.50 or will discount for cash. Write Credit Dept., 1114 19th St., Lubbock, Texas 79401.

FOR SALE: Nine City lots south of Earth Elevator, contact Citizens State Bank in Earth. 1/18/tfc

FOR RENT-Two bedroom house, carpet, utility room. \$50 per month. Phone 257-2461. 6/8/tfc

FOR APPLIANCE REPAIR call Edwin O'Hair, Phone 257-2154 or 257-3346. 4/4/tfc

WELL kept carpets show the results of regular Blue Lustre spot cleaning. Rent electric shampooer \$1. Glamour Shoppe. Phone 257-3405.

FOR SALE: '66 Mobile Home 12x50, day phone, 257-3305, night 257-3825. Price \$3,700 Troy Layman. 11/6/tfc

FOR SALE-Sewing Machines We are franchise dealers for Singer, Necchi, Neclo and Good Housekeeper. We repair any make. Scissors and pink-ing shears sharpened. Call 272-3030 in Milesheo, Texas, Harvey Bass Appliance. 6/1/tfc

### MONUMENTS

Winnboro Blue Granite White Georgia Marble and others Including Bronze for Memorial Park Specifications See or Call Collect Percy Parson, Olton Phone 285-2621 or 285-2767 Frank Ellis, Milesheo 272-4572

**TRUCK SEATS EXCHANGED 15 MINUTE SERVICE**

**MCCORMICK'S AUTO SUPPLY AND TRIM SHOP**

PHONE 385-4555 LITTLEFIELD

**QUICKBALL PRYOR CO., INC.**

Automobile Parts Supplies & Equip. P. O. Box 567 Earth Texas

**HAMMONS FUNERAL HOME**

Ambulance Service

Phone 385-5121 LITTLEFIELD TEXAS

**FEEDERS GRAIN, INC. DAILY BUYERS FOR CATTLE FEEDERS**

Federal Storage License 3-4451 We Can Use Your Grain

**SUDAN LIVESTOCK and FEEDING CO.**

Phone 227-5321 Sudan

## BUSINESS and INDUSTRIAL DIRECTORY

**Social PRINTING**

Earth News-Sun

**TEXAS PRESS ASSOCIATION MEMBER**

Your **BUICK OLDSMOBILE DEALER**

**BROCK MOTOR Muleshoe, Texas**

**JOB PRINTING**

EARTH NEWS

**Harvey Bass Appliance**

YOUR DEALER FOR

- FRIGIDAIRE
- RCA VICTOR
- MOTOROLA

PHONE 272-3030 Milesheo, Texas

To Rest Assured use **SAFETY DEPOSIT BOX** Protection

**FIRST STATE BANK**

Dimmitt, Texas

SHOP FOR ALL YOUR OFFICE SUPPLY NEEDS AT

EARTH NEWS-SUN

PHONE 257-2145 EARTH EARTH NEWS-SUN

**SEE US FOR ALL YOUR HUNTING, FISHING, and SPORTING EQUIP.**

SELECTIONS EXCELLENT

- BEAR ARCHERY
- WINCHESTER
- REMINGTON
- BROWNING
- PARKER HALE
- RUGER
- SMITH & WESSON
- FISHING TACKLE
- CAMPING EQUIP.
- DOG BOOTS
- COMFY SLEEPING BAGS
- WHITE METAL DETECTORS
- WINTER AND SPORTS WEAR
- RELOADING EQUIPMENT
- HOLSTERS

**SPECIAL**

Case Lot Ammo At Dealers Cost

**EASY CREDIT TERMS**

**REB'S GUN & SPORTS**

212 MAIN CLOVIS, N.M.



## Conference Set December 3-5 To "End Hunger In America"

Dr. James E. Peavy, State Health Commissioner and executive chief of the Texas State Department of Health, will participate in a December 3-5 White House Conference on Food, Nutrition and Health designed to "end hunger in America for all times."

Dr. Peavy, president of the Association of State and Territorial Health Officers, will represent that group on one of 26 panels, his being the State and Local Governments panel.

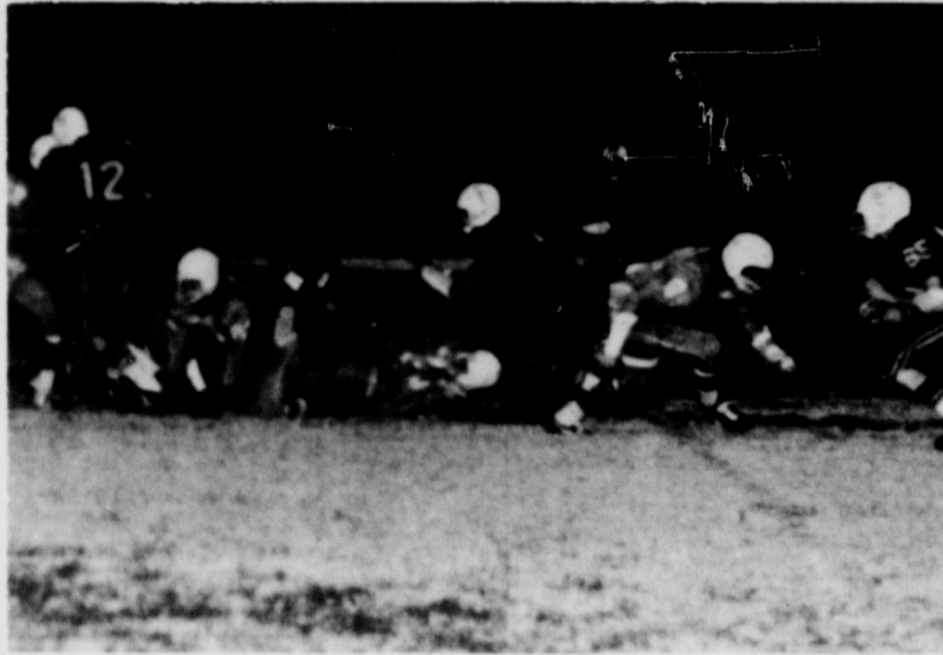
The conference, called by President Nixon, will be under the direction of Dr. Jean Mayer, special consultant to the president, and will bring together top educators, scientists, medical and health professionals, representatives of agriculture and the food industry, spokesmen for consumer and social action groups—including the poor—and federal, state and local governmental officials.

Peavy, Dr. Mayer said "The White House Conference will advise the President and the American people on how best to fulfill our National commitment, 'to put an end to hunger in America... for all time.'"

Prior to the conference, the 26 panels will consider a wide range of food and nutrition problems and draft sets of provisional recommendations. The panel on which Dr. Peavy will be working is expected to gather in Washington in mid-November.

Participants in the conference will begin their work with these recommendations. In small sessions, they will review the various proposals critically and discuss them with the panels which prepared them.

From this interchange the conference will provide its final report—a carefully developed and broadly acceptable body of recommendations for the President, for federal, state and local governments, for the private



THE WOLVERINE DEFENSE—first and second string did an outstanding job of holding Vega to a total of 231 yards Friday night.

vate sector of the economy and for the American people.

Some of the questions to be seriously considered during the conference include how to insure surveillance of the state of nutrition for citizens, or, how to detect malnutrition; how to improve the nutrition of the more vulnerable groups—the poor, pregnant and nursing mothers, children and adolescents, aged, etc.

In announcing the conference, President Nixon said, "that hunger and malnutrition should persist in a land such as ours is embarrassing and intolerable... something very like the honor of American democracy is at issue."

## Chamber of Commerce Discuss Business Building Project

Members of the Earth Chamber of Commerce met Friday, November 7, at 10:00 a. m. at the Chamber of Commerce office in Earth for their monthly business meeting.

Business discussed by the directors was the possibility of placing a sign at the intersection of the Lazbuddie road and farm road 1055 north of Earth. The Chamber plans to get Earth merchants to purchase advertisements to be placed on this sign in hopes of increasing trade in Earth.

Following the meeting directors were assigned to contact other members of the Chamber of Commerce who were not attending monthly noon meetings as well as other local merchants to encourage support of this sign project.

Chamber of Commerce Directors attending were Neil Founds, Doug Parish, M. H. Been, Roger Haberer, and Tom Sanders.

Also present was Mrs. Zou Wilson, secretary.

### THOSE WHO ARE ILL

Mrs. Ted Borum will be in Houston receiving treatments for approximately six weeks.

Buddy Adrian who recently suffered a heart attack and was hospitalized in Muleshoe's West Plains Hospital is reported greatly improved.

### My Neighbors



"Please, fellas—I'm just doing my thing..."

## Scouts Make "Cap Catchers"

Earth Cub Scouts, Den 2, met Monday afternoon for their weekly meeting under the supervision of Mrs. Bobby Green, Den Mother.

The Flag Ceremony was observed by Cub Scouts present. In an activity period the boys made "cap catchers" which they are to use to keep their Cub Scout things in at home.

Mark Bridge and Timmy Craft were named Denners for the month of November. Kelley Green and Lexie Pennell were Denners in October.

Ice cream bars and bubble gum were served by Timmy Craft to Allen Moore, Mark Bridge, Kelley Green, Lexie Pennell, and Cory Sawyer.

### PARTY LINE

Mr. and Mrs. C. A. Simmons and Mrs. C. G. Cavitt of Plainview visited Sunday in the home of the D. D. Cavitts. The C. A. Simmons are Mrs. Cavitts parents and Mrs. C. G. Cavitt is D. D. Cavitts mother.

## Farmers Insurance Group Seek Twins To Ride In Roses Float

"Farmers Insurance Group is seeking four sets of twins, age 18 through 21, to ride our float in the 1970 Tournament of Roses parade," announces Robert E. Early, president.

Twins may be brothers, sisters, or a sister and brother.

Winners of the contest will receive an all-expense-paid trip to Pasadena, California, to ride in the four floats on the company's "A Holiday in the Park" Tournament of Roses float attend the Rose Bowl football game, plus sightseeing tours of southern California. Winners

will share these activities with the float queen and her attendant, also selected in a national contest.

The float, which depicts people enjoying a holiday outing in a park, is done in the "Art Nouveau" style popular at the turn of the century. It contains an island in a park lagoon centered by a band playing on a bandstand whose canopy is reminiscent of the shape and stained glass effect of a Tiffany lampshade. Couples, dressed in the costumes of the period, listen to the band as they go

boating in the lagoon. The bed of the float will be covered with roses, while the boats are surrounded by water made of swirls of white mums.

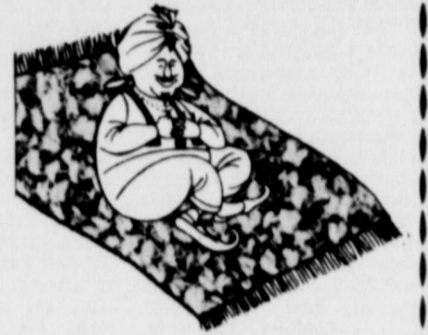
Twins wishing to enter the contest should write for entry blanks and contest rules to Twin Contest Coordinator, Farmers Insurance Group, 4680 Wilshire

Blvd., Los Angeles, California 90054. Completed entry forms must be postmarked no later than November 30, 1969.

## LOOK!

## CARPET SALE

- DIRECT FROM FACTORIES
- DISCONTINUED PATTERNS
- FACTORY DROPS ● 1st and 2nd QUALITIES



|                             |        |                   |               |
|-----------------------------|--------|-------------------|---------------|
| 501 NYLON<br>Large Remnants | \$3.49 | CARPET<br>6 Rolls | \$3.99<br>YD. |
|-----------------------------|--------|-------------------|---------------|

|                              |               |                                      |               |
|------------------------------|---------------|--------------------------------------|---------------|
| Heavy<br>POLYESTER<br>CARPET | \$3.99<br>YD. | NYLON<br>100% Continuous<br>Filament | \$1.99<br>YD. |
|------------------------------|---------------|--------------------------------------|---------------|

|   |  |
|---|--|
| 9 A.M.<br>till<br>6 P.M.<br>Thursday<br>Till 9 P.M. | 7/16 INCH PAD Yd. 75¢<br>EXPERT<br>INSTALLATION Yd. \$1.00 |
|---|--|

\*CONVENIENT TERMS  
\*FREE ESTIMATES  
**CARPET DISCOUNT CENTER**  
5127 - 34th 792-2531 Labbock In 5 Points Center

**MAKE THIS A WESTERN CHRISTMAS**  
**Ragland's Western Wear**



## OLD MEXICO RESTAURANT

828 Ash - Plainview

Phone 293-1817



**SPECIALIZING IN MEXICAN FOOD**

Daily 11:30 - 2:00 - 5:30 - 9:30  
Saturday 11:30 - 2:00 - 5:30 - 10:00  
Sunday 11:30 - 9:30 P.M. (all day)

**Old Mexico Restaurant**

828 Ash Plainview



**TO KEEP YOUR CATTLE IN TOP CONDITION, USE....**

**BEEFMASTER LIQUID FEED**

MANUFACTURED BY PRODUCERS GRAIN CORP.

BEEFMASTER LIQUID FEED IS AVAILABLE AT:

**DIMMIT WHEAT GROWERS, INC.**

Phone 647-2141

DIMMIT

● **EARLY**  
In The Month

● **EARLY**  
In The Week

● **EARLY**  
In The Day

**SHOP EARLY**

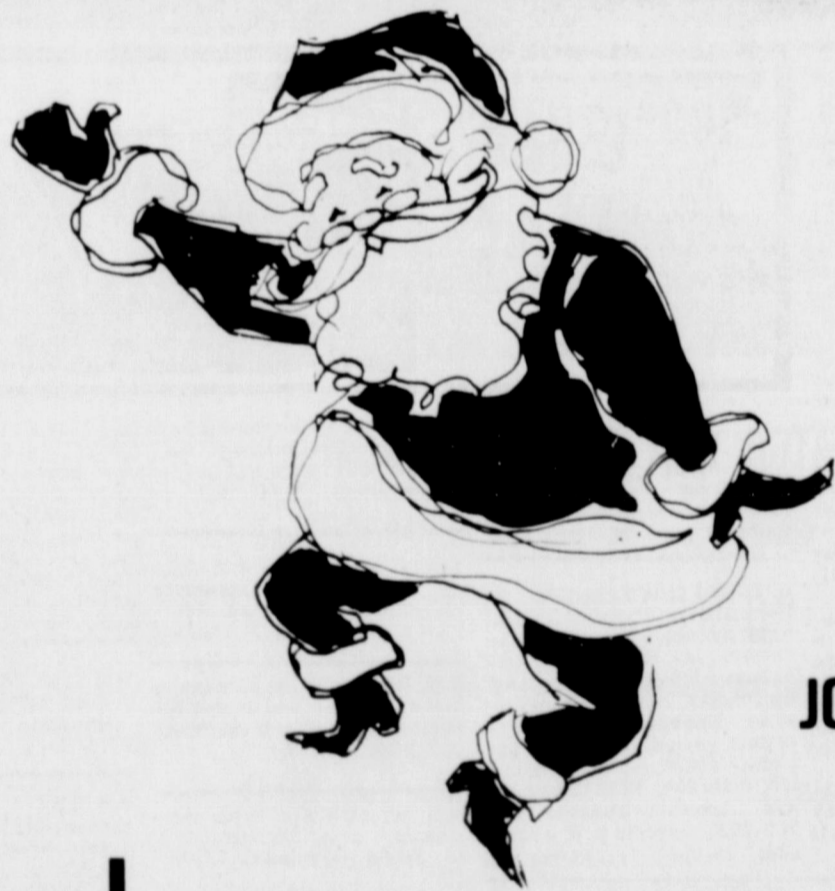
**Parade In Earth**

Don't Be A Last Minute Santa This Year... Do Your Gift Shopping In Earth, Now While Selections Are Complete And

You Can Shop Leisurely... Plan Your Shopping Trips To avoid The Rush Hours.

Your Earth Merchants Have A Wonderful Selection Of Christmas Gifts For Everyone On Your List...

**CITIZENS STATE BANK**  
MEMBER FDIC - EARTH



**THIS YEAR JOIN THE**