

# Local Bank Shows Largest Increase

★★★★★★  
**NOSIN...**  
 With Polly  
 ★★★★★★

Good judgement was used, in my estimation, when the House unseated Harlem's congressman, Adam Clayton Powell for his misappropriation of Government funds.

Powell had kept his wife, who lives in Puerto Rico, on the payroll for \$20,578 a year, and was found to have deposited 16 of her last 19 pay checks in his own account.

He had also taken trips to his fishing lodge in the Bahamas with his secretary, paid for as official committee business. These trips were usually taken under the name of other staffers.

With the testimony of Powell's graft on government funds already made public, 300 Negroes chimed and chanted on the steps of the Nation's capital, some burning draft cards in an attempt to aid Powell in retaining his seat of importance, and to make themselves feel they were underdogs because Powell was unseated.

If he whites demonstrated in behalf of all the whites who have corrupted, we could doubtless find something each day to demonstrate about.

It's a shame that Americans, Black or White, won't commit themselves to stand for "Right" regardless of race or creed, color, or church membership. But apparently right means nothing anymore.

If he is wrong, his skin is of little importance, he's still wrong... and if authority doesn't turn thumbs down on this action and put a stop to disturbances of this sort, then there may be an uprising or revolution of people who are tired of demonstrations, BLACK OR WHITE.

NOSIN

The President asked for another tax raise Tuesday night in his address. One thing is evident for sure and that is death and taxes. The way it's going now, the worry over taxes may cause our death...

## Springlake Church Selects Music Director

Jerry Field, student at Wayland Baptist College, has accepted the position as Music and Youth Director at the First Baptist Church, Springlake.

This is Field's second year at Wayland, and he is a member of the Wayland International Choir.

During the summer, he served as full time music and youth Director at the First Baptist Church in Shamrock.

His wife, Sherry, is a Freshman at Wayland. She is the daughter of Mr. and Mrs. J. L. Bass, pastor of the First Baptist Church, Farwell.

Field is replacing Phil Langley, who resigned the position recently.

## License Plates Go On Sale February 1

Automobile owners will not have the privilege of driving their cars with '66 license plates much longer, as sale of the '67 tags starts on Wednesday, February 1.

The deadline for having the plates on the vehicles is April 1.

The new license plates will be white background, with black lettering, and begin with the letters **CKK**.

Two Men Return Recently From Mexico Trip

Don Larkin, pastor of the Springlake Baptist Church, and Marvin Aaron, pastor of the Spanish Baptist Mission in Springlake, returned recently from a trip to Mexico.

The twosome drove to Larado where they boarded a bus for the trip to Monterrey. There they toured the interesting points of the city.

They went by train to Mexico City where they spent 3 days. While there, they attended the First Baptist Church in Mexico City on Sunday morning and attended a cantata Sunday night. Over 2,000 people were present for the cantata.

Citizen State Bank in Earth showed the largest increase in deposits over any of the six banks in the county as of December 31, 1966.

The progressive hometown bank, with president Joe Temple at the stem, made a record gain of 100 new accounts during the past year, which according to Temple, was partially responsible for the \$385,000 increase in deposits. The only other bank in the County to show an increase was Security State Bank in Littlefield, which showed a \$118,000 increase over last year.

Temple became president of the local bank in late December of 1965.

Although only the two above banks showed an increase, the County's financial status is believed to be in good condition as the total deposits in the six banks, Littlefield Savings and Loan and Citizen State Bank of Anton held their own, despite heavy losses from crops in the area.

The overall deposit for the eight institutions was \$46,437,420.03, compared to \$47,127,085.60 at the same time in 1965, showing only a decrease of \$689,665.57.

The bank at Anton is included in the figures because Anton is considered part of the Lamb County trade area, although Anton is in Hockley County.

Littlefield Federal Savings and Loan also showed a substantial increase in accounts with \$10,779,607 as of December 31, compared to \$9,097,002 for the same time in 1965.

Loans and discounts, including Commodity Corporation Loans on cotton or grain at the seven banks amounted to \$15,865,641.31 as of December 31, 1966.

Figures for deposits and loans and discounts as of December 31, 1966 are:

FIRST NATIONAL BANK, Littlefield; Deposits, \$5,788,864.61; L&D, \$3,164,615.91.

SECURITY STATE BANK, Littlefield; Deposits, \$9,461,739.52; L&D, \$4,582,649.44.

FIRST NATIONAL BANK, Amherst; Deposits, \$3,958,206.26; L&D, \$764,303.96.

CITIZEN STATE BANK, Earth; Deposits, \$3,610,597.11; L&D, \$1,872,247.77.

OLTON STATE BANK, Olton; Deposits, \$7,143,392.71; L&D, \$3,286,879.67.

FIRST NATIONAL BANK, Sudan; Deposits, \$2,942,458.49; L&D, \$1,140,512.59.

CITIZEN STATE BANK, Anton; Deposits, \$2,552,554.33; L&D, \$1,054,431.97.

## 1966 Postal Receipts Up 2%

Harold Miller, postmaster, states that the Earth Post Office has increased and grown in receipts at a rate of approximately 2% from 1965.

The receipts for 1966 were \$21,801.22, while those of 1965 were \$22,226.51. This figure does not include money orders. However, it does include stamp sales, box rent, money order fees, and 2nd and 3rd class mail postage.

## Springlake Lions Hold Banquet In Lubbock

Forty eight couples from the membership of the Springlake Lions Club attended a banquet in Lubbock Friday night climaxing the end of an attendance and membership drive by the club.

The winning side sparked by the enthusiasm of K. B. Parish and Marvin Been were treated to a delicious dinner at the "Embers" located at the Ko Ko Corner in Lubbock by the losing group. This membership and attendance drive is an annual affair.

The attendance record for the Springlake Lions over the last six months period is set at 87 1/3 percent.

Also in attendance at the banquet were District 272 Governor, Jack Strong, and Mrs. Strong of Lubbock and Deputy District Governor, Jarvis Angeley and Mrs. Angeley of Earth.



VOLUME 13 10 CENTS EARTH, LAMB COUNTY, TEXAS, THURSDAY, JANUARY 12, 1967 8 PAGES NUMBER 21

## Area Receives Raging Dust Storm

Near-hurricane force winds feeding off a mammoth Great Plains blizzard whipped blinding dust across wide swath of the Panhandle and South Plains Friday.

The Plains dust storm, which whipped in the Springlake and Earth area about 9 a. m. Friday and continued until 2:30 p. m., rode approximately 72 miles per hour winds, snapping power lines, overturning cotton trailers, and smashing windows.

Friday's duster was tagged in many area towns as the worst in many years.

Visibility in Earth was cut to less than a block at various times during the day.

Billowing dust slowed highway traffic to a crawl. Operations returned to normal as winds subsided and a bright sun finally peeked through the dust later in the afternoon.

Wind scattered debris over several area farms, and many television antennas, signs, and fences suffered heavily from the wind.

A power pole was toppled in Earth, disrupting electricity in the town from 10:15 a. m. until 12:15 p. m.

Approximately 15 cotton trailers were reported to have been overturned at Earth Co-op Gin.

A block fence between the Junior High and High School was blown down.

In Springlake, on Highway 385, a van truck was reported to have been turned over while traveling at a slow speed.

The changeable West Texas weather cannot be predicted. At 2:30 p. m., the sun began shining beautifully and all was normal the remainder of the day.

## Weige Named Chairman For Red Cross Drive

At the regular meeting of Lamb County American Red Cross Board on January 7, it was announced that Bill Weige, a Red Cross Board Member, would be County Chairman for the March drive of Lamb County.

Other chairmen from various Lamb County towns and communities will be announced later.

The Executive Secretary reported the following number of cases receiving attention through the County office in December were: Active Service, 14, Veterans, 45, and Civilians, 28.

Board members were present from Sudan, Pleasant Valley, Spade, and Littlefield.

It was announced that two First Aid courses have been arranged, one in Olton, and another in Earth, with Wayne Cole of Olton as instructor.

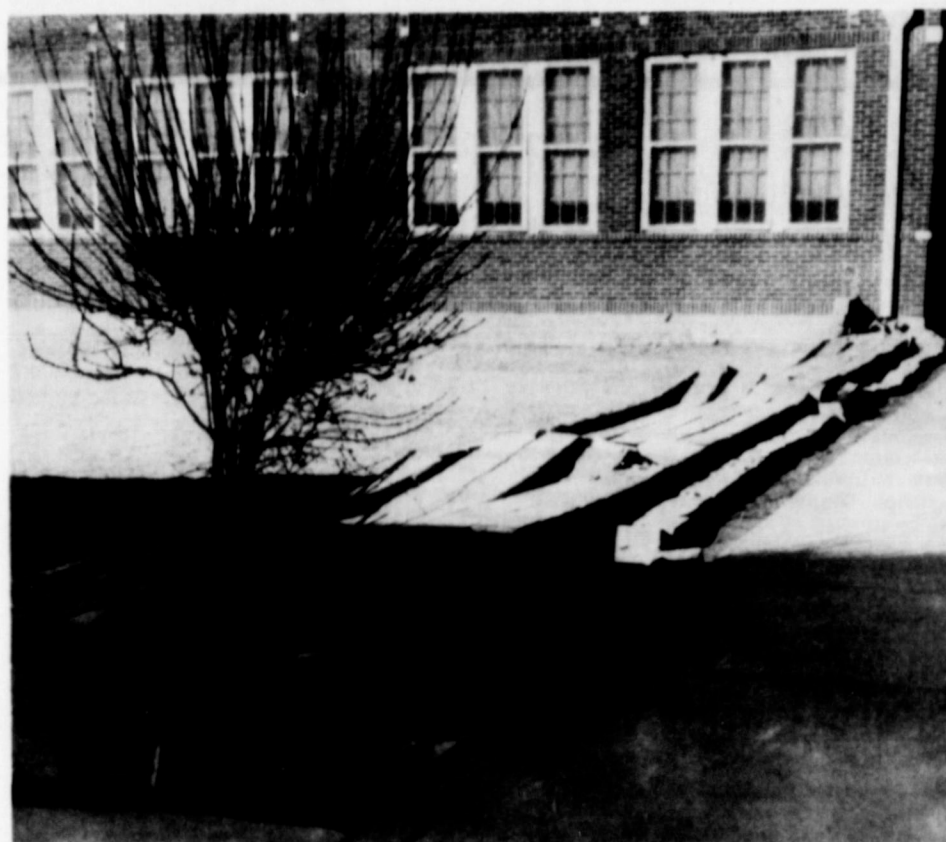
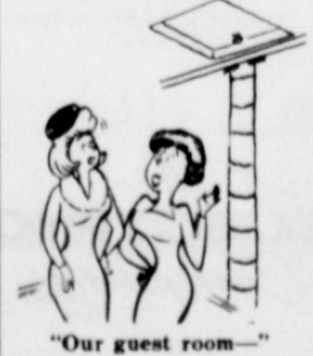
## Olton Attorney To Open Office in Earth

Andrew W. Stroebel, Attorney at Law, of Olton, announced this week his intentions of opening an office in Earth for the purpose of practicing law and doing tax work for area people.

Stroebel's office will be open each Wednesday, beginning on January 18 in the former office building of Guy Daughtry, located adjacent to the Citizen State Bank and local Post Office building.

Hours will be from 9 a. m. to 5 p. m. each Wednesday. Stroebel is the attorney for the City of Earth.

## My Neighbors



GONE WITH THE WIND. This cinder block fence between the Junior High Building and the High School Building was blown down Friday, when wind gusts reported to be 72 miles an hour, carried dust through the sky causing visibility to be almost zero.

## Committee Appointed To Work On Annual Banquet

The regular monthly meeting of the Directors of the Chamber of Commerce and Agriculture was held January 6, in the Chamber office at 10 a. m.

A letter from the Women's Auxiliary Committee from the West Texas Chamber of Commerce was read. Following a lengthy discussion, it was decided to table the matter until the next meeting.

The letter from the West Texas Chamber of Commerce concerning community inventory was read, and it is to be filled out and returned as soon as the information can be secured.

A letter from the Grain Sorghum Producers was read, explaining the plans for promotion for the coming year.

A discussion on the need for a night watchman for the City was held by Neil Pounds. The Chamber agreed to go along with anything the City decides to do about this matter.

A membership committee was appointed in an attempt to enlarge the membership of the chamber.

Plans for the annual banquet were discussed, and a committee was appointed to select the date and location for the banquet, and to make a report to the Directors at the February meeting. The committee includes M. E. Kelley, Tuffy Dent, and Leroy Wilkinson.

It was reported that James Busby has agreed to serve as a temporary Board member for the Hospital District, until the election is held, for the Hospital District.

Plans for the Junior College were discussed, and a report was made on the meeting at the school house. Other meetings of this nature are being planned for the near future.

Phillip Haberer asked if there was a possibility of a factory of some kind being located in Earth which would be able to use some of the by-products of the Grain Sorghum Wet Mill located in Dimmitt. It was suggested that a box or paper factory might be able to use the by-products of the mill. The discussion was tabled until the next meeting.

Attending the meeting were Harold Miller, Neil Pounds, Perry Martin, Phil Haberer, Leroy Wilkinson, Edwin O'Hair, and M. E. Kelley.

## New Bookkeeping, Tax Clerk Hired at School

Mrs. Vernie Bearden has accepted the position as financial secretary and bookkeeper of Springlake-Earth School. She will be assisted by Mrs. Dallas Clinch, who will serve as tax clerk.

Among Mrs. Bearden's responsibilities will be taking care of the general fund. She will be in charge of the operating fund, interest and sinking fund, the school payroll, the money coming in from the Federal program,

and also will make a monthly luncheon report.

Mrs. Bearden was employed as Tax Accessor-Collector for the school approximately five years, prior to resigning her position about eighteen months ago.

The new employees will be replacing Mrs. Naleen Dent, former bookkeeper and tax clerk. Mrs. Bearden took over her position on January 2. Mrs. Clinch began her duties on January 5.

## EDITORIAL... DANGEROUS DOLLS...

Concern has been aroused over the "Fire Dolls" that were sold in Lubbock toy markets during the holidays.

The dolls imported primarily from Poland and England, according to Lubbock sources, were found to be highly inflammable rag dolls with Nitro-Cellulose heads. So dangerous were the dolls that intense sunshine could cause the dolls to burst into flames.

Seems strange indeed that a manufacturing company would import their work unaware of this danger when all products manufactured are supposed to be tested prior to shipping out.

With "gadget trade" between the United States and Alien Countries wide open, how can we be sure that this thing may not be repeated, maybe in the form of viruses, potent virus, capable of disabling numerous segments of the American population.

## Pay Taxes on Only Half Of Capital Sales Gain

College Station-Farm assets have been classified into two categories by the Internal Revenue Service. Knowing the proper assets to put in each category can mean an income tax saving, points out James Mallett, Extension farm management specialist at Texas A&M University.

The animals must be held for breeding, draft, or dairy purposes and owned before sale for 12 months or more. Other assets such as land and buildings must be held six months or more before sale to qualify for capital gains treatment. The A&M specialist said all kinds of farm livestock, including breeding animals may be eligible for capital gains treatment if they are used for breeding, draft or dairy purposes.

For complete information about requirements and limitations of capital gains taxes, see IRS publication No. 225, Farmers Tax Guide, 1967 edition, available from county agricultural agents or the District Director of Internal Revenue Service.

The first category, items produced for sale, is called ordinary income. All ordinary income is subject to tax, said Mallett. Examples of ordinary income are calves, yearlings, or cattle raised for sale. Steers, cows, pigs and other livestock purchased for resale are also classified as ordinary income, said Mallett.

The second category, items used for the production of income, is called the production plant or capital items. Mallett said only half the gain from capital sales may be subject to tax. Cows, bulls, sheep and

horses for breeding, draft, or dairy purposes are subject to capital gains and only one-half the profit may be taxable, he said.

College Station-Farm assets have been classified into two categories by the Internal Revenue Service. Knowing the proper assets to put in each category can mean an income tax saving, points out James Mallett, Extension farm management specialist at Texas A&M University.

The animals must be held for breeding, draft, or dairy purposes and owned before sale for 12 months or more. Other assets such as land and buildings must be held six months or more before sale to qualify for capital gains treatment. The A&M specialist said all kinds of farm livestock, including breeding animals may be eligible for capital gains treatment if they are used for breeding, draft or dairy purposes.

For complete information about requirements and limitations of capital gains taxes, see IRS publication No. 225, Farmers Tax Guide, 1967 edition, available from county agricultural agents or the District Director of Internal Revenue Service.

The first category, items produced for sale, is called ordinary income. All ordinary income is subject to tax, said Mallett. Examples of ordinary income are calves, yearlings, or cattle raised for sale. Steers, cows, pigs and other livestock purchased for resale are also classified as ordinary income, said Mallett.

The second category, items used for the production of income, is called the production plant or capital items. Mallett said only half the gain from capital sales may be subject to tax. Cows, bulls, sheep and

horses for breeding, draft, or dairy purposes are subject to capital gains and only one-half the profit may be taxable, he said.

The animals must be held for breeding, draft, or dairy purposes and owned before sale for 12 months or more. Other assets such as land and buildings must be held six months or more before sale to qualify for capital gains treatment. The A&M specialist said all kinds of farm livestock, including breeding animals may be eligible for capital gains treatment if they are used for breeding, draft or dairy purposes.

For complete information about requirements and limitations of capital gains taxes, see IRS publication No. 225, Farmers Tax Guide, 1967 edition, available from county agricultural agents or the District Director of Internal Revenue Service.

The first category, items produced for sale, is called ordinary income. All ordinary income is subject to tax, said Mallett. Examples of ordinary income are calves, yearlings, or cattle raised for sale. Steers, cows, pigs and other livestock purchased for resale are also classified as ordinary income, said Mallett.

The second category, items used for the production of income, is called the production plant or capital items. Mallett said only half the gain from capital sales may be subject to tax. Cows, bulls, sheep and

horses for breeding, draft, or dairy purposes are subject to capital gains and only one-half the profit may be taxable, he said.

The animals must be held for breeding, draft, or dairy purposes and owned before sale for 12 months or more. Other assets such as land and buildings must be held six months or more before sale to qualify for capital gains treatment. The A&M specialist said all kinds of farm livestock, including breeding animals may be eligible for capital gains treatment if they are used for breeding, draft or dairy purposes.

For complete information about requirements and limitations of capital gains taxes, see IRS publication No. 225, Farmers Tax Guide, 1967 edition, available from county agricultural agents or the District Director of Internal Revenue Service.

The first category, items produced for sale, is called ordinary income. All ordinary income is subject to tax, said Mallett. Examples of ordinary income are calves, yearlings, or cattle raised for sale. Steers, cows, pigs and other livestock purchased for resale are also classified as ordinary income, said Mallett.

The second category, items used for the production of income, is called the production plant or capital items. Mallett said only half the gain from capital sales may be subject to tax. Cows, bulls, sheep and

## Committee Appointed To Work On Annual Banquet

The regular monthly meeting of the Directors of the Chamber of Commerce and Agriculture was held January 6, in the Chamber office at 10 a. m.

A letter from the Women's Auxiliary Committee from the West Texas Chamber of Commerce was read. Following a lengthy discussion, it was decided to table the matter until the next meeting.

The letter from the West Texas Chamber of Commerce concerning community inventory was read, and it is to be filled out and returned as soon as the information can be secured.

A letter from the Grain Sorghum Producers was read, explaining the plans for promotion for the coming year.

A discussion on the need for a night watchman for the City was held by Neil Pounds. The Chamber agreed to go along with anything the City decides to do about this matter.

A membership committee was appointed in an attempt to enlarge the membership of the chamber.

Plans for the annual banquet were discussed, and a committee was appointed to select the date and location for the banquet, and to make a report to the Directors at the February meeting. The committee includes M. E. Kelley, Tuffy Dent, and Leroy Wilkinson.

It was reported that James Busby has agreed to serve as a temporary Board member for the Hospital District, until the election is held, for the Hospital District.

Plans for the Junior College were discussed, and a report was made on the meeting at the school house. Other meetings of this nature are being planned for the near future.

Phillip Haberer asked if there was a possibility of a factory of some kind being located in Earth which would be able to use some of the by-products of the Grain Sorghum Wet Mill located in Dimmitt. It was suggested that a box or paper factory might be able to use the by-products of the mill. The discussion was tabled until the next meeting.

Attending the meeting were Harold Miller, Neil Pounds, Perry Martin, Phil Haberer, Leroy Wilkinson, Edwin O'Hair, and M. E. Kelley.

## Pay Taxes on Only Half Of Capital Sales Gain

College Station-Farm assets have been classified into two categories by the Internal Revenue Service. Knowing the proper assets to put in each category can mean an income tax saving, points out James Mallett, Extension farm management specialist at Texas A&M University.

The animals must be held for breeding, draft, or dairy purposes and owned before sale for 12 months or more. Other assets such as land and buildings must be held six months or more before sale to qualify for capital gains treatment. The A&M specialist said all kinds of farm livestock, including breeding animals may be eligible for capital gains treatment if they are used for breeding, draft or dairy purposes.

For complete information about requirements and limitations of capital gains taxes, see IRS publication No. 225, Farmers Tax Guide, 1967 edition, available from county agricultural agents or the District Director of Internal Revenue Service.

The first category, items produced for sale, is called ordinary income. All ordinary income is subject to tax, said Mallett. Examples of ordinary income are calves, yearlings, or cattle raised for sale. Steers, cows, pigs and other livestock purchased for resale are also classified as ordinary income, said Mallett.

The second category, items used for the production of income, is called the production plant or capital items. Mallett said only half the gain from capital sales may be subject to tax. Cows, bulls, sheep and

horses for breeding, draft, or dairy purposes are subject to capital gains and only one-half the profit may be taxable, he said.

The animals must be held for breeding, draft, or dairy purposes and owned before sale for 12 months or more. Other assets such as land and buildings must be held six months or more before sale to qualify for capital gains treatment. The A&M specialist said all kinds of farm livestock, including breeding animals may be eligible for capital gains treatment if they are used for breeding, draft or dairy purposes.

For complete information about requirements and limitations of capital gains taxes, see IRS publication No. 225, Farmers Tax Guide, 1967 edition, available from county agricultural agents or the District Director of Internal Revenue Service.

The first category, items produced for sale, is called ordinary income. All ordinary income is subject to tax, said Mallett. Examples of ordinary income are calves, yearlings, or cattle raised for sale. Steers, cows, pigs and other livestock purchased for resale are also classified as ordinary income, said Mallett.

## Pay Taxes on Only Half Of Capital Sales Gain

College Station-Farm assets have been classified into two categories by the Internal Revenue Service. Knowing the proper assets to put in each category can mean an income tax saving, points out James Mallett, Extension farm management specialist at Texas A&M University.

The animals must be held for breeding, draft, or dairy purposes and owned before sale for 12 months or more. Other assets such as land and buildings must be held six months or more before sale to qualify for capital gains treatment. The A&M specialist said all kinds of farm livestock, including breeding animals may be eligible for capital gains treatment if they are used for breeding, draft or dairy purposes.

For complete information about requirements and limitations of capital gains taxes, see IRS publication No. 225, Farmers Tax Guide, 1967 edition, available from county agricultural agents or the District Director of Internal Revenue Service.

The first category, items produced for sale, is called ordinary income. All ordinary income is subject to tax, said Mallett. Examples of ordinary income are calves, yearlings, or cattle raised for sale. Steers, cows, pigs and other livestock purchased for resale are also classified as ordinary income, said Mallett.

The second category, items used for the production of income, is called the production plant or capital items. Mallett said only half the gain from capital sales may be subject to tax. Cows, bulls, sheep and

horses for breeding, draft, or dairy purposes are subject to capital gains and only one-half the profit may be taxable, he said.

The animals must be held for breeding, draft, or dairy purposes and owned before sale for 12 months or more. Other assets such as land and buildings must be held six months or more before sale to qualify for capital gains treatment. The A&M specialist said all kinds of farm livestock, including breeding animals may be eligible for capital gains treatment if they are used for breeding, draft or dairy purposes.

For complete information about requirements and limitations of capital gains taxes, see IRS publication No. 225, Farmers Tax Guide, 1967 edition, available from county agricultural agents or the District Director of Internal Revenue Service.

The first category, items produced for sale, is called ordinary income. All ordinary income is subject to tax, said Mallett. Examples of ordinary income are calves, yearlings, or cattle raised for sale. Steers, cows, pigs and other livestock purchased for resale are also classified as ordinary income, said Mallett.

The second category, items used for the production of income, is called the production plant or capital items. Mallett said only half the gain from capital sales may be subject to tax. Cows, bulls, sheep and

horses for breeding, draft, or dairy purposes are subject to capital gains and only one-half the profit may be taxable, he said.

The animals must be held for breeding, draft, or dairy purposes and owned before sale for 12 months or more. Other assets such as land and buildings must be held six months or more before sale to qualify for capital gains treatment. The A&M specialist said all kinds of farm livestock, including breeding animals may be eligible for capital gains treatment if they are used for breeding, draft or dairy purposes.

For complete information about requirements and limitations of capital gains taxes, see IRS publication No. 225, Farmers Tax Guide, 1967 edition, available from county agricultural agents or the District Director of Internal Revenue Service.

The first category, items produced for sale, is called ordinary income. All ordinary income is subject to tax, said Mallett. Examples of ordinary income are calves, yearlings, or cattle raised for sale. Steers, cows, pigs and other livestock purchased for resale are also classified as ordinary income, said Mallett.

The second category, items used for the production of income, is called the production plant or capital items. Mallett said only half the gain from capital sales may be subject to tax. Cows, bulls, sheep and

horses for breeding, draft, or dairy purposes are subject to capital gains and only one-half the profit may be taxable, he said.

The animals must be held for breeding, draft, or dairy purposes and owned before sale for 12 months or more. Other assets such as land and buildings must be held six months or more before sale to qualify for capital gains treatment. The A&M specialist said all kinds of farm livestock, including breeding animals may be eligible for capital gains treatment if they are used for breeding, draft or dairy purposes.

For complete information about requirements and limitations of capital gains taxes, see IRS publication No. 225, Farmers Tax Guide, 1967 edition, available from county agricultural agents or the District Director of Internal Revenue Service.

The first category, items produced for sale, is called ordinary income. All ordinary income is subject to tax,



# The EARTH NEWS-SUN



Published at Earth, Texas 79031 every Thursday except the first Thursday following Christmas.

Entered as Second Class Matter at the Post Office at Earth, Texas 79031, October 1, 1954--Under Act of Congress March 3, 1879.

### SUBSCRIPTION RATE

Earth and Trade Territory, per year, \$3.50  
Elsewhere in United States, Per year, \$5.00

### CLASSIFIED RATES

¢ per word, first insertion, ¢ per word thereafter--6¢ Minimum.

### ADVERTISING RATES GIVEN ON REQUEST

ROSS AND POLLY MIDDLETON-----Publishers

## Potpourri...

By DPW

It is getting harder each week, finding a subject to write on, that is. Not that there are no subjects running around loose. Therein lies the problem. There are so many and varied topics that need and should be discussed it is becoming increasingly difficult to select only one among the many.

To cite one example, I have noticed over the past years the number of football players in our junior high schools that earn letter awards. This season alone, 23 players earned awards in our school. That they earned them there is no doubt. But as to whether they will follow through with this initial training is another question entirely.

Multiplying 23 by four, the number of grades in high school, you have 92. By stretching the imagination, this should be the total number of boys out for high school football in this school if they would stick. I realize this to be an impossibility. Some move away, grades take their toll and a very few injuries bar the paths of others. But the total that is prevented from playing by adverse conditions is small indeed. The number that quit of their own accord is quite the reverse.

Now I cannot help but wonder why. I have been around coaching and coaches long enough to know it is not of their choosing. I also know the coaching profession does nothing to drive the boys away. It has to be something else. And, try as I might, I still am unable to come up with a complete answer.

But the number of young American male students involved in quitting is great enough to be of concern to all of us. It may well be that former President Harry Truman was right in saying the Americans were fast becoming too soft and physically unfit. And physically unfit only because they do not participate in strenuous exercises or sports of any kind.

You can drive by any school in the United States today, take one good, long look at the parking lots and find part of the answer right there. It is true that a few dedicated public school athletes drive their own cars. But the number of non-participating students driving their cars is far greater. And in most cases,

as statistics have proven, their grades also fall below par. I once asked a student, a potentially fine athlete, who was of good health and size, why in the world he didn't participate in athletics. He had in junior high and had done a very good job. He made no bones about answering. He stated unequivocally that as long as he had a car, he would much rather get in it, drive to the gathering place of teenagers, and then make the "drag" a few hours before going home.

Another of the "usual" answers is prevention by the parents. This could well be true. Yet, those same parents easily give permission to "drag" and ride the motor scooters according to the wishes of the students. All one has to do is check the statistics on serious injuries and even fatalities brought about by motor vehicles.

I have no answer to the problem. And it is a problem. However, I believe I could and would be safe in stating that a good percentage of the answer will have to come from the home itself. And, working an old saw to death, I have faith enough in our populace to believe that when the true picture is seen, they will step in and prevent the things that are detrimental to the physical and mental growth of our young people.

## YH Club Plan Valentine Party

The Young Homemakers met at the Home Making Department Monday at 7:30 p. m. for a business meeting.

The group made plans for their Valentine party to be held at the Community Building from 2-4:30 p. m. on February 13. The Young Homemakers Chapter from Lazbudie will be special guests.

Various committees for the party were elected. The program committee consists of Mrs. Carol Pounds, Mrs. Judith Jones, and Mrs. Yvonne Layman. Those on the decoration committee are Mrs. Vicki Sanders, Mrs. Linda James, and Mrs. Gaye Pellham.

Mrs. Carolyn Stephens, Mrs. Jeanne Clayton, and Mrs. Karen Kendrick will compose the food committee.

Mrs. Carol Pounds served refreshments of Cokes and cracker snacks to Mrs. Judith Jones, Mrs. Karen Kendrick, Mrs. Yvonne Layman, Mrs. Carolyn Stephens, Mrs. Gaye Pellham, Mrs. Jeanne Clayton, and Mrs. Vicki Sanders, new member.

## Mann, Kelley Attend School Administrators Conference

Superintendent Bill Mann and Guy F. Kelley were among some 1500 administrators from throughout the State of Texas to attend the School Administrators Advisory Conference held in Austin January 4-6.

Delegates to the eighteenth annual conference included administrators from public, private, and parochial schools, colleges and universities, as well as county school superintendents.

The Texas Education Agency annually sponsors the Conference so delegates can discuss new educational programs, and review and improve procedures used by the Agency in its relations with local public schools. Also known as the

Mid-Winter Conference, the annual get-together provides a two-way communication between school administrators and Agency staff members and gives the administrators an opportunity for exchanging ideas.

Glenn Ivy, Director of the Governor's Committee on Public School Education, related the activities of the Committee to date and projected their future in his keynote address. Dr. J. W. Edgar, Texas Commissioner of Education, presided at the first general session at 9 a. m. Thursday, January 5.

Both Mann and Kelley returned from the trip January 7.

## Sorority Has Program On Voice, Vocabulary

The Beta Sigma Phi met Tuesday night, January 10 at the Earth Community Room. During the business meeting, President Tommie Bills read a letter inviting each member to the State Convention in El Paso, June 23, 24, 25.

Candidates for valentines Sweetheart were chosen by the members. They are Mary Williams and Sunnye Randolph. The new sweetheart will be crowned at the valentine banquet to be held in February.

A layette shower honoring two of the member's new sons will be held January 19 at the home of Mrs. Betty Packard. The infants are the sons of Mr. and Mrs. Gary Cowley and Mr. and Mrs. Wayne Tunnell. Members are invited to attend.

Tommie Bills presented the topic of her program for the evening, "Voice and Vocabulary Reflect the Inner You." Examples were given on how the vocabulary can be improved. Each member was tape recorded as she read a given part to see what her voice sounded like.

The program was concluded by showing films of the Halloween Party.

Mrs. Glendia Ott and Mrs. Linda Laing served cake and coffee to the members present. Attending the meeting were Mrs. Richard Bills, Mrs. Jamie Boone, Mrs. Wayne Tunnell, Mrs. Ray Tom Packard, Mrs. Robert Taylor, Mrs. Mike Simmons, Mrs. John Laing, Jr., Mrs. Jim Williams, Mrs. Gene Tunnell, Mrs. Don Randolph, Mrs. Rayburn Ott, and one new member, Mrs. Richard Mitchell.

ADVERTISING WILL MAKE YOU \$\$\$\$\$\$

## Scout News

BROWNIES NO. 398

Brownie troop no. 398 met Tuesday at the Scout Hut with Terri Harper leading the group in the pledge to the flag, the Brownie Promise, and Smile Song.

Diane Eagle led a game, followed by Kim Clayton leading the group in a song, "Happy Birthday" was sung to Terri Harper.

The group began its embroidery projects. They worked on a sampler, learning the outline stitch. In future meetings, the girls plan to learn the satin stitch, the lazy daisy stitch, the cross stitch and the French knot.

Meeting with the 19 girls present were Mrs. Marretta James, Mrs. Eddie Haydon, Mrs. Wendell Clayton, and Mrs. Wilson Lewis.

BORWNIES No. 373

Brownie troop no. 373 met Thursday at the scout hut and reviewed the Indian Lore Badge.

Following this review, the girls made felt needle books. The projects for the month of January were discussed.

At next week's meeting, the girls will begin their embroidery project, working toward their needlecraft badge.

## ZIP Code Needed On All Mail

Use of Zip Code will make it easier to mail packages after January 15, Postmaster Harold D. Miller of Earth, said today. New rates for a new system for identifying parcel post zones will go into effect on that date as provided in legislation signed into law by President Johnson on September 20, 1966, the Postmaster said. The rate increases will average about 10 cents a parcel, Miller said. Starting July 1, the law provides for a series of size and weight increases on packages mailed between first-class offices. Earth is a 2nd class office. The size and weight increases will be in five annual steps, the last coming on July 1, 1971.

Use of Zip Code in the recipient's address will enable the sender or a mail clerk to quickly determine the proper zone, and thus the rate, for the package. The zones will be based on the distance a parcel travels between the 552 sectional centers in the country, Miller said. By consulting a simple chart, which is available at all post offices, the zone can be readily identified because the first three numbers of the Zip Code represent the sectional center. This replaces a method in which a directory often had to be consulted to locate the proper zone for each of the nation's 33,000 post offices.

The new rates will range from 40 cents for a three-pound parcel destined for local delivery to 60 cents for the same parcel to zone 3 (150 to 300 miles) to \$1.05 to zone 8 (over 1,800 miles.) The new zoning method will also apply to air parcel post, catalogs and to publishers who pay zone rates on the advertising portion of their periodicals.

Miller noted that all parcels mailed between post offices within the Amarillo sectional center will be charged at the first zone rate. There are 86 post offices within the Amarillo Sectional Center.

The new rates are expected to provide an additional \$74 million a year for the Post Office Department. The later size and weight increases will add another \$32 million a year. The additional revenue is to help keep the Department within 4 percent of costs on parcel post as the law requires.



CLEFT PALATE is a birth defect that is sometimes hereditary. A victim of this inherited defect is Lonnie Dill, 9, Columbus, Ohio, seen here with his mother at March of Dimes Birth Defects Center at Children's Hospital, Columbus. Youngster's mother underwent 21 operations for same disorder.

## FHA Girls Assigned Secret Grandmothers

The FHA is currently sponsoring a project known as "Secret Grandmothers." Each girl has been assigned a secret grandmother. She may send her grandmother cards or small gifts on various occasions.

In April, the FHA will sponsor a tea in honor of all the FHA secret grandmothers. During this event, each girl will make herself known to her secret grandmother. This project is fun for both girls and their secret grandmothers. If any local FHA member is unaware of the identity of her secret grandmother, Mrs. Marie Slover will be glad to supply this information.

The Boy Scouts attended the movie in Lubbock Tuesday night entitled, "Follow Me Boys."

Accompanying the 58 boys were Travis Jaques, Mr. and Mrs. Pete O'Hair, and Mr. and Mrs. Jerry Hawthorne.

**TIRE TALK by Jimmy BITNER**

LEAVE YOUR HAT ON--WE'RE EATING OUT!

WELL, YOU DESERVE A REST, DEAR.

DRAGGING T.V. DINNERS FROM ICE BOX TO OVEN ALL WEEK MUST BE EXHAUSTING.

BITNER TIRE & SUPPLY NEVER TIRES OF GIVING THE BEST SERVICE TO THEIR CUSTOMERS!

**BITNER TIRE & SUPPLY**

Phone 257-5631 TIRES - BATTERIES - ACCESSORIES

B.F. Goodrich EARTH, Texas

**EVERYONE IS TALKING**

**ABOUT THE BIG JANUARY CLEARANCE SALE**

**STARTING SOON AT...**

**Cobb's of MULESHOE**

WATCH FOR THE OPENING DATE, YOU WON'T BE DISAPPOINTED

**BERKELEY**

**SUBMERSIBLE Water Systems**

We offer a full line of dependable submersibles for 4-inch wells that are 60 to 1000 feet deep. Since the pump is at the bottom of the well, it is protected from both fire and freezing. Because of their efficiency, Berkeley submersibles meet your capacity and pressure requirements with greatest economy.

- 1/2 through 5 h.p. motors
- Stainless steel pump shaft
- Time tested, water-lubricated motor

**MULESHOE ELECTRIC**

210 E. 3rd

Phone 272-3330 --- 272-3369

**ELECTRIC SERVICE DOLLAR**

**We've consistently s-t-r-e-t-c-h-e-d your electric service dollar to give you more!**

Today, you pay less for an average kilowatt hour of electricity than you did in 1952. That's because you're using more, enabling us to use larger and more efficient generators. Through use of this more efficient equipment, we're able to offset the inflationary pressures that cause rising prices.

And, to continue to keep electricity costs low, without sacrificing dependability, we'll invest more than \$20 million in 1967, in new construction.

Electricity is still the biggest bargain in your family budget.

**The ELECTRIC Company**

**SOUTHWESTERN PUBLIC SERVICE COMPANY**



# Sunnyside News...

By Tenny Bowden

Mr. and Mrs. Raymond Lilley had dinner last Saturday with Mr. and Mrs. Raymond Lewis and family. They visited in Shamrock last Sunday with his brother, Mr. and Mrs. C. V. Wood and his sister who was also visiting there. Jack Jackson was admitted to Plains Memorial Hospital last Monday after a back injury he received while on the job at El Paso Natural Gas Plant.

day. She had some tests made in Plainview Friday and will enter the hospital there on Monday. Her husband is an employee of the Waggoner Dairy. Mr. Brown was in the hospital during Christmas. Her mother came Friday to help with the children over the weekend.

Floyd Ivey went to Raton, New Mexico last Wednesday night to go mountain lion hunting. Thursday, he returned Thursday night. Mokey Ivey of Dimmitt went with him. Unless Waggoner came in from their place near Sulfur

Springs, Monday, and visited with his family here and in Dimmitt until Thursday.

Mr. and Mrs. Ezell Sadler had a New Year's dinner for their family Monday. Those present were Mr. and Mrs. James Powell, Randy, Teresa, Danae, and Cheryl Powell of Dimmitt and his parents, Mr. and Mrs. Woodrow Powell of Earth, Mr. and Mrs. Larry Sadler, Carrie, and her parents, Mr. and Mrs. Tex Conard and Juanelle of Dimmitt, Mr. and Mrs. David Sadler and her parents, Mr. and Mrs. Jake King, Carl Lynn and Brenda of Hereford.

Mrs. L. B. Bowden worked at Plains Memorial Hospital in the library and at the desk and gift shop Monday.



THIS LOVELY MAHOGONY BOOK CASE was recently completed by Jose Rodriguez an eighth grade student in his first year of industrial arts. The project took 10 weeks to complete.

Mr. and Mrs. Cecil Curtis and Debbie visited with Mr. and Mrs. Bill Baker and children in Slaton and Mr. and Mrs. Jack Stephens and family on their way home from the Gulf Coast. They got home last Sunday night.

Mr. and Mrs. Milburn Haydon visited in Weatherford with his parents, Mr. and Mrs. Raymond Haydon, other relatives and friends Tuesday through Friday. Mr. Haydon has been in the hospital there.

Mrs. Milton Ott attended her Sunday School Class dinner with the other members of her class in Earth Tuesday.

Cecil Curtis served on the Petit Jury Tuesday and Wednesday in Littlefield.

The WMS met Wednesday night for the second society program. Mrs. M. D. Durham had charge of the program.

Mrs. E. R. Sadler and Mrs. Jack Wolf of Vega left Thursday morning for the coast to visit with the M. H. Fawkes for a few days.

Mr. and Mrs. Ezell Sadler had dinner in Dimmitt with Mrs. Pearl Sadler Friday. Randy, Teresa Danae, and Cheryl Powell spent Friday night and Saturday with them. Gene Carson was home from Tech for the weekend.

Rev. and Mrs. Tom Reynolds and children of Plainview had supper with Rev. and Mrs. M. D. Durham Saturday night. Mr. and Mrs. Milburn Haydon left Sunday morning for Weatherford after receiving word Saturday night that his father was to be admitted to a Fort Worth Hospital Sunday afternoon.

Mrs. Dewayne Loudder and Lane visited Sunday afternoon with Mr. and Mrs. Alton Loud-

der and Mr. and Mrs. L. B. Bowden at the Bowden home. The Adult III Sunday School class had a class dinner at the home of Mrs. Noah Spencer Sunday. Those present were Rev. and Mrs. M. D. Durham, Rev. and Mrs. Eddie Howard, Mr. and Mrs. Cliff Brown and boys, Mr. and Mrs. Glenn Wilson and La Glenda, Mr. and Mrs. Roy Phelan, and the Noah Spencer family.

## NOTICE

A Junior Leaders Arts and Home Badge Roundtable and Ceremonies workshop will be held on Tuesday, January 17 from 9:30 a. m. to 2:30 p. m. in the girl scout house in Muleshoe. Anyone interested in attending is asked to bring a sack lunch.

Herbert Dunn, Lamb County Tax Assessor-Collector will be in Earth at the City Hall all day Wednesday, January 18, to collect State and County taxes in the area.

The four junior high basketball teams from Springlake-Earth will go to Sudan Thursday afternoon to play the Hornets. Schedule of the games are as follows: 7th grade girls 4 p. m.; eighth grade girls at 5 p. m.; seventh grade boys at 6 p. m.; and eighth grade boys at 7 p. m.

## Deadline Near For Return Of Census Blanks

Only nineteen days remain before the deadline for the school census blanks to be turned into Springlake-Earth School for all school age children in the Springlake-

The Earth News-Sun, Thursday, January 12, 1967--Page 3

Earth School District. Mrs. Oletha Sanders, school secretary, states that all blanks should be filled in and returned to the school by January 31.

All children who will be six years old on or before September 1, 1967, but will not be 18 or older on or before that date should be counted even though they may not be in school.

If you as a parent have not received and filled out a

school census blank, you are asked to phone the school tax office at 257-4321 and ask for a blank to be filled out.

The six year olds who will start to school next September are the ones most overlooked in the census. Please read the census blank carefully, fill it out completely and return it to school by your child, or bring it to the school superintendent's office no later than Tuesday, January 31.

# BUSINESS and INDUSTRIAL DIRECTORY



**MURRAY'S MULESHOE JEWELRY**

To Rest Assured use **SAFETY DEPOSIT BOX** Protection  
**FIRST STATE BANK**  
Dimmitt, Texas

Your **BUICK OLDSMOBILE DEALER**  
**BROCK MOTOR Muleshoe, Texas**

Your Dealer For **MAYTAG ZENITH ADMIRAL KELVINATOR KITCHEN AID**  
**JOHNSON-POOL FURNITURE Muleshoe**

**Cobb's**  
MULESHOE'S COMPLETE DEPARTMENT STORE  
QUALITY MEMORABLES FOR THE ENTIRE FAMILY

**Harvey Bass Appliance**  
YOUR DEALER FOR  
• FRIGIDAIRE  
• RCA VICTOR  
• MOTOROLA  
PHONE 272-3030  
Muleshoe, Texas

SALES AND SERVICE OF U. S. PUMPS  
**U.S. PUMPS**  
JIM BALDWIN 287-2757

**B. & W. Pump & Machine**  
SPRINGLAKE, TEXAS  
986-2971  
CLINTON WILLIAMS 285-2304

**Social PRINTING**  
Earth News-Sun

## Mid-Winter Clearance STARTS JANUARY 16 - OPEN 7 A. M.

FOR WORKING GIRLS TO SHOP

Closed January 14 for Mark Down...  
**SHOP EARLY FOR BEST SELECTION**

ONE GROUP **SKIRTS**  
VALUES FROM \$5.98 to \$14.98

**1/2 price**

ONE GROUP LADIES **DRESSES**  
FROM \$19.95 to \$69.95  
**1/2 price**

**KNIT SUITS**  
**1/2 off**

LADIES' **COATS** ENTIRE STOCK  
\$39.95 to \$139.95 ONLY  
**1/2 price**

LADIES' **SWEATERS**  
NEW STYLES & COLORS  
ALL SIZES **1/3 off**

ONE GROUP **SKIRTS**  
VALUES TO \$16.98  
**1/3 off**

LADIES' ALL STYLE **DRESSES**  
VALUES FROM \$19.95 to \$59.95  
**1/3 off**

ONE RACK OF **SLACKS**  
VALUES TO \$14.00 **1/2 off**

COSTUME **JEWELRY**  
**1/2 price**

**Pajama Sets**  
**1/2 off**

ONE GROUP **LINGERIE-GOWNS HALF SLIPS-BRAS**  
**1/3 off**

MULESHOE

*The Fashion Shop*  
OPAL THOMPSON OWNER-MGR.

MULESHOE

# Now rolling into Ford Country... Special '67 Fords at White Sale prices!



Here comes the big money-saving event of the year! Here come special low prices on full-size, luxury-equipped Ford Custom 500's with pleated vinyl seats, bright-metal trim, full wheel covers, whitewalls. White Sale savings on all Ford-line cars during this event! Come see... come save now!

White Sale Savings on Ford Pickups!



Two front axles for smooth ride! White Sale special includes bright grille, horn ring, deluxe hub caps, arm rests!

**JACKSON FORD, INC.**  
Earth, Texas



## Mrs. Criswell Honored On 78th Birthday

Mrs. Earl Watson and Mrs. Arden Fields honored their mother and grandmother, Mrs. Elma Criswell, with a surprise birthday dinner Sunday in the home of Mrs. Earl Watson.

The table was laid with a lovely birthday tablecloth, and was centered with a beautiful two-tiered birthday cake. The cake featured a large styrofoam "78" and was sitting on a mirror encircled with ivy.

Baked turkey and dressing, baked ham, and all the trimmings, pies, cakes, tea, and coffee were served by the hostesses to Mrs. Janey Way, Mrs. Johnny Bushy, Mrs. Myrtle Clayton, Mrs. Marvel Curuthers, Mrs. Ilo Sanders, Mrs. Thelma McClanahan, Mrs. Mattie Boone, Mrs. Ester Bomar, and Mrs. Edna McClure.

## Cubs Practice Skit For Pack Meet

The Cub Scouts met Tuesday at the Scout Hut, with all members present.

Roll call was answered by the boys telling their favorite Christmas gift.

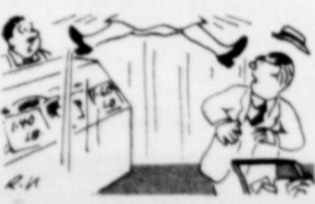
The group practiced the skit that they will present at the next pack meeting.

The flag salute, and cub scout honor and pledge were presented.

Games were played during the remainder of the meeting.

Mrs. Richard Stockstill served cup cakes and Cokes to all those present.

## The Old Timer



"Price ceilings are back when you hear the price you hit the ceiling."



SEVENTH GRADE TEAM is pictured from left to right, front row: Renee Clark, Norma Cantu, Karen Hinchliffe, Karen Dear, Sherry Pittman, Janet Britton. Second row, Coelita Biles, Louise Eagle, Wenell Walker, Ida Vega, Debbie Hitt, Becky Littleton. Third row, Regina Cole, La Donna Sigman, Criss Dent, Suzy Temple, Marian Dawson, and Donna Anderson.

## Rites Held Tuesday For Mrs. J. Haberer

Mrs. John Haberer, 96, died at 6:20 p.m. Sunday in the Knight's Rest Home in Littlefield, following a lengthy illness.

Mrs. Haberer came to the area from Nebraska in 1910 with the late John Haberer. They lived on a sheep ranch in the Big Square Community.

Mrs. Haberer had been a long time member of the Presbyterian Church.

She is survived by one son, Johnny of Rt. 4, Muleshoe; one daughter, Mrs. Howard Greathouse, Bangkok, Thailand; 14 grandchildren; and 31 great-grand children.

Funeral services were held Tuesday at 2 p.m. in the Presbyterian Church in Here-



MRS. JOHN HABERER

ford with Rev. Wingert, pastor officiating.

Grandsons of Mrs. Haberer served as pall bearers. They are Roger Haberer, Jerrell Haberer, Phil Haberer, Russel Haberer, Newton Goodwin and Jerry Tunnell.

## Scouts to Work On Folk Lore Badge

Girl Scout Troop no. 178 met at the Scout Hut on Wednesday, with members receiving a brief summary of the following meetings.

At the next meeting, Mrs. Wesley Clark will assist the girls with the Folk Lore Badges.

The election of new troops was discussed, with Mrs. Richard Stockstill, leader, telling the group the correct procedure for an election.

The flag ceremony and Brownie promise and laws were led by Mary Francis Weil.

Refreshments were served at the Drug Store to the eleven members present by Mary.

SHOP WITH EARTH MERCHANTS FIRST

## TOPS Make Plans for A R D

The Happy Losers TOPS Club met Thursday at 7 p.m. in the high school building.

Mrs. Florence Gover, weight recorder, weighed in 17 members.

Mrs. Pauline Hucks, leader, called the meeting to order at 7:30 p.m.

Roll call was answered by the members telling the number of pounds lost or gained

during the past three weeks.

Mrs. Era Walker was crowned queen of the month.

Pals for the next three months were drawn, and plans were made to go to Big Springs on January 28 for Area Recreation

Day.

Plans were also made to have the Muleshoe Jenny TOPS over for a salad supper on February 9.

Mrs. Gover reported that the total number of pounds lost

for 1966, beginning May 12 and continuing through December 31 was 494.

The next meeting will be held on January 12. All members are urged to attend and to bring a visitor.

# Citrus Sale!



VALENCIA or NAVEL ORANGES  
 Ruby Red GRAPEFRUIT

40 POUND BOX  
**\$4.00**

Place Your Order With E.G. Gaston Or Any Member Of Springlake-Earth FFA Before January 16th.

FRUIT WILL BE ORDERED ONLY FOR THOSE WHO PLACE ORDERS

Fruit Will Be Delivered By January 25th

## Springlake-Earth FFA

## FHA Group Makes Plans For Forthcoming Events

The Springlake-Earth Chapter of the Future Homemakers of America met Monday, January 9 at 6 p.m. in the high school auditorium.

The meeting was called to order by Joan Dawson, and the opening ritual was begun.

On the agenda of business

were these items: the best beau banquet, cancelled stamps for collectors, a February chili supper, and valentines for Viet Nam.

The theme decided upon by the girls for the banquet was "Lover's Lane."

The banquet, scheduled for February 11, will begin at 7 p.m. and will be a formal occasion. Charge for each plate will be 50 cents.

The following committees were appointed to work on the banquet: recreation committee, decorating committee, menu committee, and clean up committee.

It was announced that all cancelled stamps would be due Friday, January 27.

The group voted to have a chili supper in February. Also in February the girls are reminded to buy valentines for the soldiers fighting in Viet Nam.

A letter of appreciation for Christmas gifts given by the FHA was received from the special education class, under the direction of Betty Anderson. The letter was read at the meeting.

The closing ritual was given and the meeting was adjourned.

## YWA Studies

### "Great Commission"

The YWA met Wednesday, January 4 in the home of Pat Bryant.

Pat read the prayer calendar, prior to various members presenting the program entitled "The Great Commission."

During the business meeting, the group discussed its programs for the remainder of January and February.

Refreshments were served to Gaye Upchurch, Janita Blackburn, Mrs. Troy Blackburn, Brenda O'Hair, and hostess, Pat Bryant.



"There's nothing like a little soft soap to remove a dirty look."

FOUR DOLLARS BUYS MORE AT  
**POUNDS (Rexall) PHARMACY**

WE FILL ANY DOCTORS PRESCRIPTIONS

PHONE 2-7-2861 EARTH

# Effective immediately.

Current Dividend

**5%**

Per Annum



Current Dividend

**5%**

Compounded Quarterly

**\$15,000**

Your savings with us are now insured up to \$15,000 by the Federal Savings and Loan Insurance Corporation, an agency of the United States Government. Congress has passed and the President has signed legislation, effective immediately, which will provide this additional protection.

So now, in addition to sound management and substantial reserves, you have this added protection (up to \$15,000) by a U.S. Government agency, when you place your savings with us. Remember, **NO ONE HAS EVER LOST A PENNY** in a savings account insured by the FSIC.



**Littlefield Federal SAVINGS AND LOAN**  
 LITTLEFIELD, TEXAS

## Dear Customers:

RUTHERFORD and COMPANY HAD A FINE STOCK OF WELL KNOWN BRAND MERCHANDISE... MEN'S, WOMEN'S and CHILDREN'S CLOTHING, SHOES and ACCESSORIES and HOME FURNISHINGS. WE HAVE HAD A SUCCESSFUL CLOSEOUT SALE and THANK YOU FOR YOUR WONDERFUL PATRONAGE. AS A RESULT WE ARE OUT OF MOST COMMON SIZES and MOST WANTED MERCHANDISE, BUT DO HAVE A LOT OF GOOD MERCHANDISE LEFT IN ODD LOTS And SIZES...

**This Remaining Merchandise Will Be Sold at RUMMAGE SALE PRICES**

**Rutherford & Company**  
 EARTH

COME IN and LOOK IT OVER... IF THE PRICE DOESN'T SUIT YOU, WE'LL CONSIDER ANY REASONABLE OFFER...



### This Week's Good Guy

Mike Hedges was selected Good Guy of the week by members of Springlake-Earth Junior High School. Mike was selected as wittiest seventh grader. He is the son of Mr. and Mrs. Buddy Hedges.



MIKE HEDGES

### Local Drive In Featuring Charcoal Steaks

Steak eaters in the area may now be assured of all the lip-smackin' goodness a steak has to offer when ordering a charcoal steak at the local Wolverine Drive In. The new charcoal system has just been installed, and the choices of steaks are available for slow cooking, sealing in all the juices in each steak. The management invites you to try their charcoal steaks, and ask your evaluation of this new delicacy.

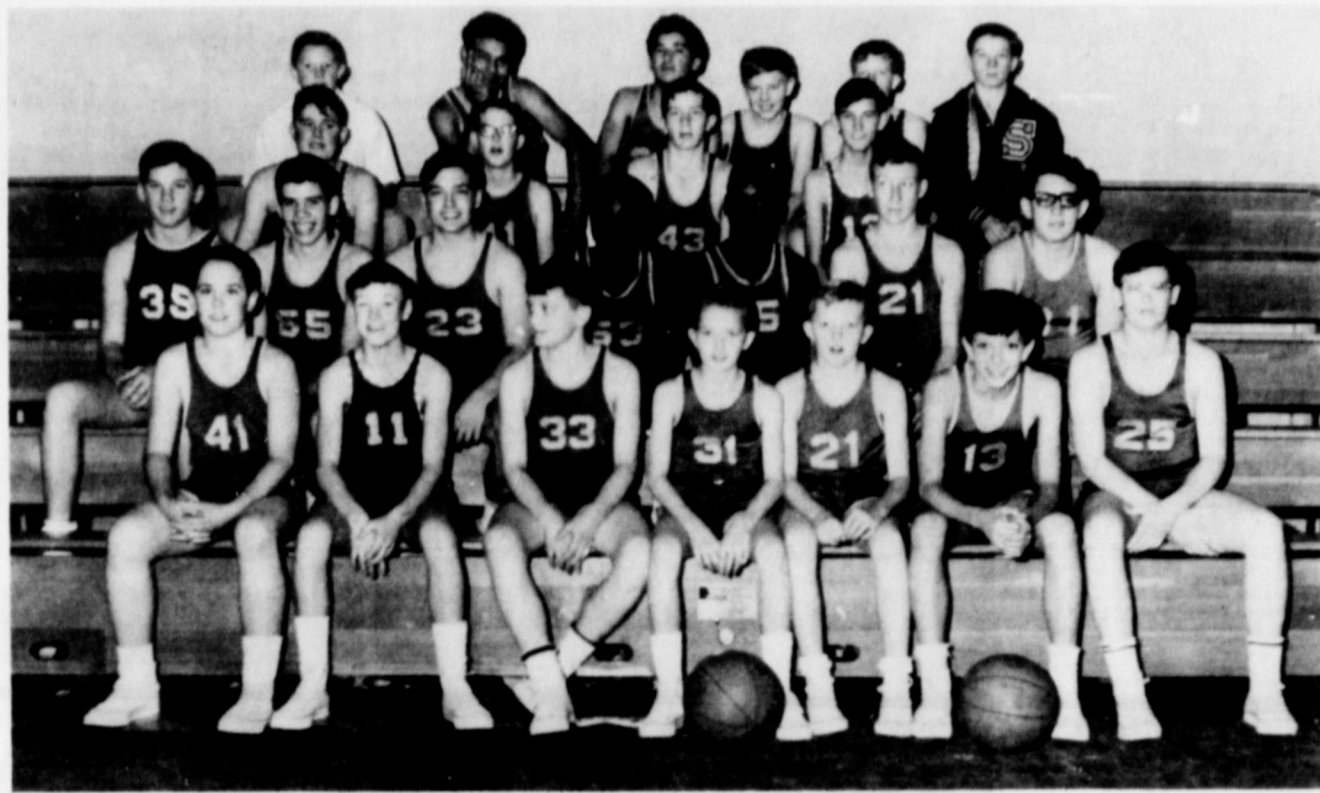
### Study Club Meeting Today

The Town and Country Study Club will meet Thursday (today) at 7:30 p. m. in the home of Mrs. L. Z. Anglin, Mrs. Louis Cummings, Caprock District T. F. W. C. President of Plainview will be guest speaker. Mrs. Cummings has chosen to speak on "Service Through Harmony." A playlet entitled "Federation" will be presented by Mrs. H. S. Sanders, Mrs. L. Z. Anglin, and Mrs. Marie

### FFA Meets Monday Night

The FFA met Monday at 7 p. m. in the vocational agriculture building at Springlake-Earth School, with 14 members present. At the last meeting, a motion was referred to a committee to get a Coke machine in the vocational agriculture shop. The committee reported back that the school had a policy saying that no vending machines are allowed. A motion was made to send money to Korea to help the boys, but the motion was dropped because of lack of sufficient information. The group discussed putting up a fence around the agricultural pins at the rodeo grounds. The motion was carried to erect a fence and to buy the material at a farm sale Thursday, if they could get it at a bargain.

Ross, All Study Club members are urged to attend this meeting.



EIGHTH GRADE BOYS BASKETBALL TEAM pose for picture Friday. They are left to right, front row; Mike West, Danny Boone, Kent Coker, Johnny Kelley, Danny O'Hair, Jerry Oden and Johnny McNamara. Second row, Johnny Eagle, Kent Parish, Tony Barton, Roy Rivers, Glen Chambers, Larry Rudd, and Monte Winder. Third row, Mike Perkins, Samuel Lewis, Kenneth Anderson and Donnie Galloway. Fourth row, Tommy Ruby, Selso Ramon, Refregio Samarron, Glenn Lackey, Butch Hamilton, and Frank McNamara.

### Uncle of Mrs. Kelley Dies

George G. Green, 68, uncle of Mrs. M. E. Kelley, died at his home in Slaton at 1 a. m. Tuesday. Mr. Green was Lubbock County Commissioner of Precinct 2 since January 1, 1949. Green won the post as commissioner by defeating the late Ben Mansier in 1948. He holds the record for longevity of service as a county commissioner in Lubbock County, having served some eight years longer than any other such official, according to immediate available records. Green, who had been under treatment for malignancy for the last several months, was active in his public office until the latter part of December, 1966. He recently returned from Houston, where he had received medical attention.

Funeral services were held at 2 p. m. Tuesday in the First Baptist Church, Slaton, with J. T. Bolding, pastor of the First Baptist Church, Lubbock officiating. Assisting were C. E. Eastman, pastor of Westview Baptist Church, Slaton, and John Cartrite, pastor of the Slaton First Baptist Church. Survivors include his wife, Mrs. Lillian Green; three sons, Dr. Earl Green of Lubbock, Bill Green of Slaton, and Kenneth Green of Midland; four daughters, Mrs. Betty Ort of Mesquite, Texas, Miss Joan Green of Dallas, Mrs. Venita Womack of Roscoe, and Miss Mary Ruth Green of Lubbock; three brothers, J. D. of Cheyenne, Okla., Bob of Seminole, Okla., and Homer of Gage, Okla.; five sisters, Mrs. Fannie Teague of Slaton, Mrs. Lillie Sandusky of Trinidad, Colo., Mrs. Rina Sellers of

Sayre, Okla., Mrs. Maggie Carr of Henry, Ill., and Mrs. Lula Taylor of Lawton, Okla.; and 12 grandchildren. Attending the funeral services with Mr. and Mrs. M. E.

Kelley and Mr. and Mrs. A. E. Kelley of Earth were Mrs. J. C. Green and Mr. and Mrs. R. O. Barnett all of Marlow, Okla., and Mr. and Mrs. Amos Green of Sayre, Okla.

★ ★ ★ Clans of Scots, groups of Irish lacemakers, Indians who practice ways that are dark arts to many other Americans, guard and preserve the old.

## Rico GRAIN SORGHUM

### Tops for Combining!

Bright red high quality grain. Wide adaptation, sturdy upright plant type, excellent threshability. Recommended for most sorghum growing areas and particularly where head smut is a problem. Harvest 100 to 125 days.

Book Your Seed Now



ASGROW SEED CO.

Drawer I, Farwell, Texas 79325

## WHERE IS THE BEST

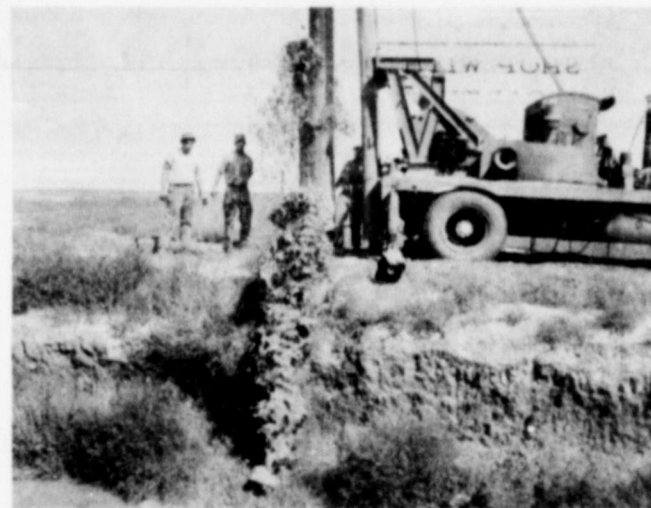
## WATER ?

WE ARE EQUIPPED TO

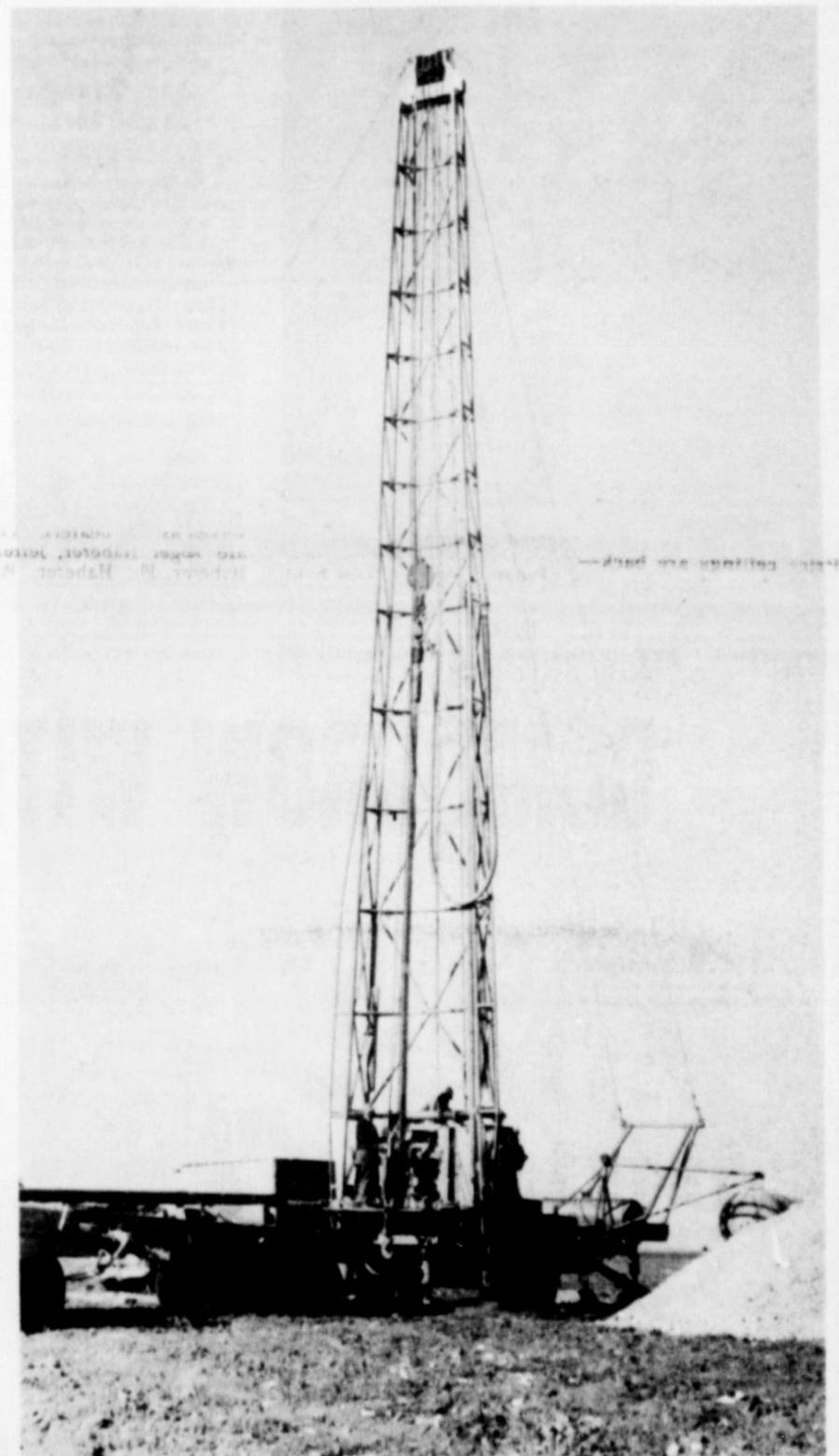
DIG AS DEEP AS

## 2,000 Feet

WITH ANY SIZE HOLE



DEVELOPING A NEW HOLE WITH A 30 FOOT, 14 INCH BALER



All Drilling Done By The Davis Bros. Drilling Co. Of Olton, L. T. And Thomas Davis Has Had 15 Years Experience In The Drilling Business, And Are Very Capable Of Drilling Any Size Hole To 2000 Feet Deep. This Wilson Drilling Rig Will Do The Job For You.

## U. S. PUMPS NOW USING WOOD LINE TUBING

HIGHLY DEVELOPED, LONGER LASTING, WILL OPERATE IN CROOKED HOLES, PULLS WITH LESS HORSEPOWER

WE ARE IN THE

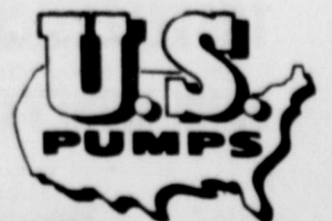
## PUMP & MACHINE BUSINESS

★ LATHE MACHINE WORK ★ GEAR HEAD REPAIRS (All Makes) ★ PUMP REPAIRS (All Makes)

## SALES and SERVICE of U. S. IRRIGATION PUMPS



FREE ESTIMATES ON ALL JOBS



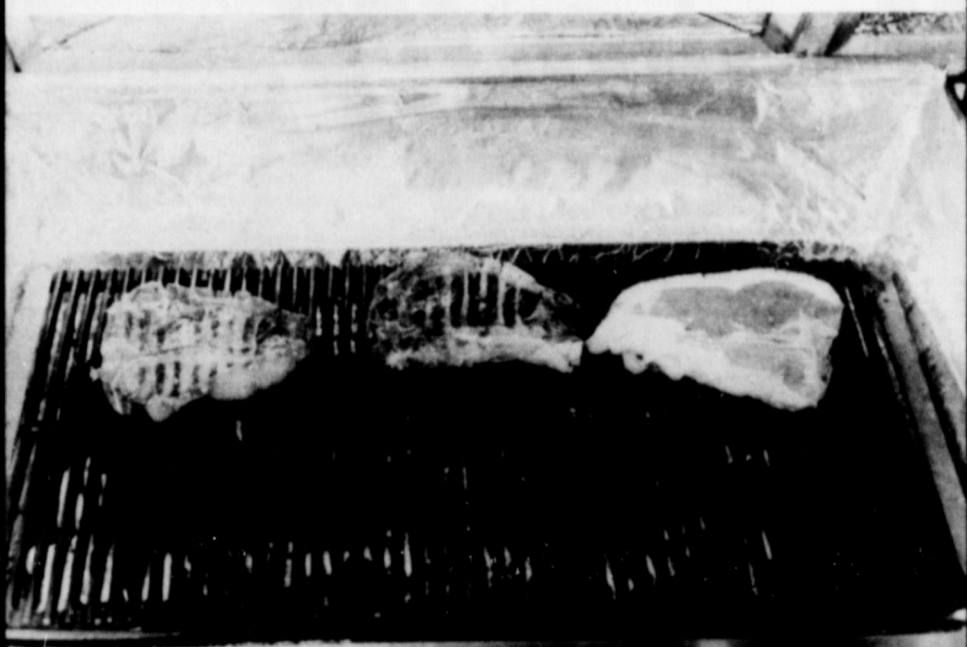
CALL US ANY TIME

## B. & W. PUMP & MACHINE

JIM BALDWIN PHONE 986-2971

CLINTON WILLIAMS SPRINGLAKE, TEXAS

## D-E-E-E-LICIOUS



### CHARCOAL BROILED STEAKS

SERVED THE WAY YOU LIKE THEM

8 oz. CHOPPED SIRLOIN... \$1.19

12 oz. T-BONE STEAK..... \$1.59

16 oz. T-BONE STEAK..... \$2.06

MAY WE SERVE YOU SOON

## WOLVERINE DRIVE-IN

EARTH



Girls Teams Victorious, Boys Drop 2 Games

# Springlake-Earth Split 4 With Dimmitt

The Springlake-Earth varsity and B teams saw action Friday night against a stubborn Dimmitt squad. The Wolverette B team barely edged past the Bobettes B team, 38-37, and the Wolverine B team was beaten by Dimmitt, 31-28.

In the varsity division, Dimmitt had little trouble in downing the Wolverines 82-52.

Logan Armstrong led the Wolverines in scoring, dumping in

26 points for the night. Ronnie Kenmore dropped in 24 points, leading the Dimmitt crew in scoring and was followed by Ray Bradley with 11, Stanley Bymes 10, John Howell 4, Tom Stafford 7, Kent Lindsey 6, Billy Glidewell 4, Becele Goodwin 4, Don Moore 4, and Jack Bradford, 2.

Wolverine players scoring points behind Armstrong's 26 point output were Wayne Stockard 5, Randy Washington 7, Perry Don O'Hair 4, Doug

Messer 4, Jessy Cole 2, and Tim Matthews 1.

In the girls' game, the Wolverettes jumped off to an early lead and downed the Bobettes 83-62 behind the shooting of Anita O'Hair, who was high for the night with 39 points. Susan Britton dropped in 21 points followed by Marsha Dawson with 17, Dalpha Banks 4, and Beverly Prather with 2.

For the Bobettes, Debra Summers scored 33 points for the high point honors for her team and was followed by Allan Webb with 23, Carolyn Simpson 4, and Genita Aldridge 2.



DEBRA SUMMERS no. 13 drives by Pansy Been for a lay up shot. Debra led Dimmitt in scoring with 33 points. Other players pictured are no. 25 Carolyn Simpson of Dimmitt and no. 24, Judy Gover of Springlake-Earth.

## Student Council Nets \$120 In Harlem Game

Approximately \$300 was taken in Monday night at the Harlem All Star and Earth All Star game in the Springlake Earth gym.

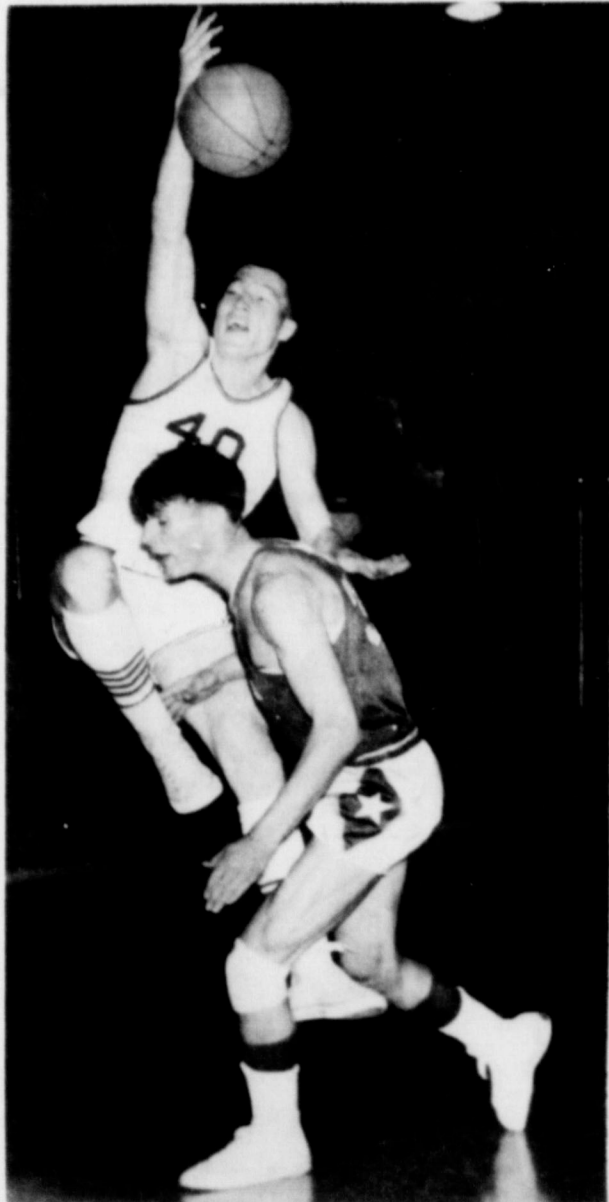
The local student council sponsored this hilarious Harlem All Star game. Of the \$300 taken in, the student council received approximately \$120. The proceeds will be used to send members of the student council to the state work shop.

The near capacity crowd enjoyed seeing a fancy exhibition, razzle dazzle ball handling, intricate routine, and all sorts of shenanigans.

## NOTICE

A program outlining requirements for club awards will be presented Monday, January 16, at 7:30 p. m., when the Springlake-Earth 4H Club meets in the Junior High Library. Participating will be Welda Barton, Mike Cleavinger, Fransee Faver, Eddie Alair, and Joy Faver, with Mrs. Lewis Faver as director.

Members of the Letterman's Club are selling Wolverine Badges. These are to help identify Wolverines at ball games. Proceeds will be used by the Letterman's Club for purchasing flowers for the queen, parents, etc. Any-



STEVE LARKIN blocks the shot of Jack Bradford no. 40, and drew a foul penalty. The Bobcats went on to win the game, 82-52.

LOCAL 8TH GRADE BOYS WIN 31-30

The eighth grade boys won by a margin of only one point in a hard played game Thursday night with Farwell.

The game was neck to neck all the way with Tony Barton racking up 12 points to be high point scorer for Springlake with Kent Parish trailing close behind with 9 points to his record.

The game was saved by Danny Boone, who made a free throw near the end of the game, with the score, 31, 30, to give Springlake-Earth the one point

that put them out front, with a 31-30 win.

LOCAL 7TH GRADE GALS WIN 29-15

The seventh grade girls paced by the hard playing of Janet Britton who scored 19 of the 29 points in the game, won an easy victory Thursday night over the Farwell team, 29-15.

Other girls racking up points were Criss Dent 6, Susy Temple 2, and Debbie Hitt 2 points.

Outstanding defensive work was done by guards Suzy Temple, Becky Littleton, and

Marion Dawson.

7TH GRADE BOYS LOSE 25-23 THURSDAY

In a district game, Thursday night, the local seventh grade boys went down swinging, losing by a margin of only a couple of points.

The loss of this hard fought game gave the local team a 2 win, 2 loss record for the season.

The local team worked hard, led by high point scorer Donnie Wheat, but when the final whistle blew the score stood at 25-23.

NOW AVAILABLE AT TRI-COUNTY SAVINGS AND LOAN ASSOCIATION

# 5%

**your savings are insured to \$15,000**  
by the Federal Savings and Loan Insurance Corporation, a permanent agency of the United States Government.



FEATURES OF OUR SAVINGS PLAN:

- \* 5% Interest, paid or compounded quarterly---Applies to ALL accounts, Regardless Of Size.
- \* Savings deposits in by 10th of month earn from 1st of month.
- \* Funds are protected to \$15,000.00 by an agency of the Federal Government.
- \* Funds are not tied up for long periods of time to earn maximum rate.
- \* Funds are available at anytime when needed.

MAY WE ENCOURAGE YOU TO BEGIN A SAVINGS PROGRAM WITH US.

**Tri-County**

SAVINGS AND LOAN ASSOCIATION

MULESHOE, TEXAS

# COME GROW WITH US

## Lamb County's Fastest Growing

and

## Most Progressive Bank

### "ONE STOP" BANKING SERVICE

CHECKING ACCOUNTS  
TIME SAVINGS ACCOUNTS  
SAFE DEPOSIT BOXES  
BANK BY MAIL  
TRAVELERS CHECKS  
BANK MONEY ORDERS

CROP PRODUCTION LOANS  
AUTOMOBILE LOANS  
COMMERCIAL LOANS  
LIVESTOCK LOANS  
FARM MACHINERY LOANS  
HOME MODERNIZATION LOANS

# CITIZENS STATE BANK

Member F. D. I. C. - Earth

Our Annual

January

# Clearance Sale

## IS NOW IN PROGRESS

EVERYTHING THROUGHOUT THE STORE HAS BEEN DRASTICALLY REDUCED FOR QUICK CLEARANCE...SHOP EARLY

# WARE'S

Littlefield



**BUY  
SELL**

# CLASSIFIED ADS

**TRADE  
LEASE**

**LEGAL NOTICE**

STATE OF TEXAS;  
COUNTY OF LAMB;  
EARTH-SPRINGLAKE HOSPITAL DISTRICT

NOTICE is hereby given that the undersigned intend to apply to the sixtieth legislature of the State of Texas for the passage of a law, the general purpose, nature and substance of which are as follows:

Such legislation shall create a hospital district under Article IX, Section 9 of the Texas Constitution, and shall comprise all territory contained within the boundaries described as follows, to-wit:

**BEGINNING** at the Northwest corner of Lamb County, Texas;

**THENCE** East along the north line of Lamb County to a point in the East line of Section 32, Block 1, W. E. Halsell Subdivision, said point also being in the East line of Block 1;

**THENCE** South along the East line of Section 32 and Block 1, W. E. Halsell Subdivision, to a point in the North line of Section 6, Block T-2, R. M. Thomson Survey, Lamb County, Texas, said point also being the Northernly Southeast corner of Section 32;

**THENCE** West along the Northernly South line of Section 32, Block 1, W. E. Halsell Subdivision and the North line of Section 6 and Section 7, Block T-2, R. M. Thomson Survey to the interior Southeast corner of Section 32 and the Northwest corner of Section 7;

**THENCE** South along the East line of Section 32 and Block 1, W. E. Halsell Subdivision, to a point in the East line of Section 81, Block 1, W. E. Halsell Subdivision, said point also being the SW corner of Section 59, Block T-2, R. M. Thomson survey;

**THENCE** East along the South line of Section 59 and 58, Block T-2, R. M. Thomson Survey and the North line of Section 1, Block T-1, T. A. Thomson Survey, to the NE corner of said Section 1;

**THENCE** South along the East line of Block T-1, T. A. Thomson Survey to its SE corner, said point also being the SE corner of Section 40 of said Survey;

**THENCE** South along the East line of Section 6, Block A-5, Lamb County, Texas, to the SE corner of Section 6 and Block A-5;

**THENCE** West along the South line of Section 6 and Block A-5 to the SE corner of Track 21, League 244, Dickens County School Land;

**THENCE** West along the South line of League 244, Dickens County School Land and Leagues 239 and 238, Cottle County School Land to the SW corner of Cottle County School Land, said point being the SW corner of Labor 25, League 238, Cottle County School Land;

**THENCE** North along the West line of League 238, Cottle County School Land, to its NW corner and the NW corner of Labor 5, League 238, Cottle County School Land;

**THENCE** West along the South line of League 234, Dallas County School Land, Leagues 221 and 219, Castro County School Land, League 206, Ochiltree County School Land to a point in the West line of Lamb County, Texas, where the South line of League 206 Ochiltree County School Land intersects with the West boundary line of Lamb County, Texas;

**THENCE** West along the South line of League 206, Ochiltree County School Land to a point in the West line of Lamb County, Texas, where the South line of League 206 Ochiltree County School Land intersects with the West boundary line of Lamb County, Texas;

**THENCE** North along the West line of League 238, Cottle County School Land, to its NW corner and the NW corner of Labor 5, League 238, Cottle County School Land;

**THENCE** West along the South line of League 234, Dallas County School Land, Leagues 221 and 219, Castro County School Land, League 206, Ochiltree County School Land to a point in the West line of Lamb County, Texas, where the South line of League 206 Ochiltree County School Land intersects with the West boundary line of Lamb County, Texas;

**THENCE** North along the West line of League 238, Cottle County School Land, to its NW corner and the NW corner of Labor 5, League 238, Cottle County School Land;

**THENCE** West along the South line of League 234, Dallas County School Land, Leagues 221 and 219, Castro County School Land, League 206, Ochiltree County School Land to a point in the West line of Lamb County, Texas, where the South line of League 206 Ochiltree County School Land intersects with the West boundary line of Lamb County, Texas;

**THENCE** North along the West line of League 238, Cottle County School Land, to its NW corner and the NW corner of Labor 5, League 238, Cottle County School Land;

**THENCE** West along the South line of League 234, Dallas County School Land, Leagues 221 and 219, Castro County School Land, League 206, Ochiltree County School Land to a point in the West line of Lamb County, Texas, where the South line of League 206 Ochiltree County School Land intersects with the West boundary line of Lamb County, Texas;

**THENCE** North along the West line of League 238, Cottle County School Land, to its NW corner and the NW corner of Labor 5, League 238, Cottle County School Land;

**THENCE** West along the South line of League 234, Dallas County School Land, Leagues 221 and 219, Castro County School Land, League 206, Ochiltree County School Land to a point in the West line of Lamb County, Texas, where the South line of League 206 Ochiltree County School Land intersects with the West boundary line of Lamb County, Texas;

**THENCE** North along the West line of League 238, Cottle County School Land, to its NW corner and the NW corner of Labor 5, League 238, Cottle County School Land;

**THENCE** West along the South line of League 234, Dallas County School Land, Leagues 221 and 219, Castro County School Land, League 206, Ochiltree County School Land to a point in the West line of Lamb County, Texas, where the South line of League 206 Ochiltree County School Land intersects with the West boundary line of Lamb County, Texas;

**THENCE** North along the West line of League 238, Cottle County School Land, to its NW corner and the NW corner of Labor 5, League 238, Cottle County School Land;

**THENCE** West along the South line of League 234, Dallas County School Land, Leagues 221 and 219, Castro County School Land, League 206, Ochiltree County School Land to a point in the West line of Lamb County, Texas, where the South line of League 206 Ochiltree County School Land intersects with the West boundary line of Lamb County, Texas;

**THENCE** North along the West line of League 238, Cottle County School Land, to its NW corner and the NW corner of Labor 5, League 238, Cottle County School Land;

**THENCE** North along the West line of Lamb County, Texas, to the NW corner of said county and the place of beginning.

The legislation shall provide that the District shall assume full responsibility for providing medical and hospital care for the needy residing within the District and shall have power through its Board of Directors to issue and sell as the obligations of such hospital district bonds for the purchase, construction, acquisition and repair or renovations of buildings and improvements and equipping same for hospital purposes and to levy a tax creating an interest and sinking fund to pay interest on and principal of such bonds as same mature, to provide for the operation and maintenance of the District and its hospital system and for the purpose of making further improvements and additions to the hospital system, and for the acquisition of necessary sites therefore by purchase, lease or condemnation, provided that said tax shall not exceed 75¢ on the \$100 valuation of all taxable property within the District.

The legislation shall also provide that such district shall not be created unless or until an election is held at which such election there shall be submitted to the qualified property taxing electors the proposition of whether or not Earth-Springlake Hospital District shall be created with the authority to levy annual taxes at a rate not to exceed 75¢ on a \$100 valuation of all taxable property within such district, and a majority of the qualified property taxing electors vote in said election in favor of the proposition.

The legislation shall further provide that the management and control of the District shall be vested in the Board of Directors composed of five members, the initial members of which shall be named in the legislation and their successors to the Board of Directors shall be elected for staggered terms annually.

The above enumeration of provisions to be contained in such legislation is not intended to be exclusive but only to express the general purpose, nature and substance thereof. Such legislation will also make other provisions and confer other powers in connection with the general purpose and nature thereof above stated.

Given this the 3rd day of January, 1967.

NEIL POUNDS  
M. E. KELLEY  
FERRY MARTIN  
JOE B. TEMPLE  
JAMES BUSBY

(Published in the Earth News-Sun Thursday, January 5, 12, 19, and 26, February 2, 1967)

WANTED: Baby sitting to do in my home, preferably daytime. Call Mrs. Norman Clayton. Phone 257-2762

INCOME TAX SERVICE  
I will fill out Income Tax Forms At My Home  
Phone 257-5201  
Mrs. Wilson Lewis  
1/5/4tc

TAYLOR FURNITURE  
G.E. Appliances  
Check Our Prices Before You Buy  
We Finance

HAMMONS FUNERAL HOME  
Ambulance Service  
Phone 385-5121  
LITTLEFIELD TEXAS

FEEDERS GRAIN, INC.  
DAILY BUYERS FOR CATTLE FEEDERS  
Federal Storage License 3-4451  
We Can Use Your Grain  
SUDAN LIVESTOCK and FEEDING CO.  
Phone 227-5321  
Sudan

FOR SALE: Large 2 1/2 bath, brick veneer house for sale. Good loan available. Phone 385-5050 in Littlefield, Littlefield Federal Savings and Loan Ass'n. 11-24-tfc.

TO PARTY WITH GOOD CREDIT: Repossessed 1966 Singer sewing machine in walnut console. Automatic zig-zagger, blind hems, fancy patterns, etc. Total balance, \$23.76 terms. Write Credit Dept., 1114 19th Street, Lubbock, Texas. 11-24-tfc

FOR SALE OR RENT: Two bedroom house. Would sell with small down payment. Call 257-2036 or 257-2033. 12/1/3tc

MONUMENTS  
Winsboro Blue Granite  
White Georgia Marble  
and Others  
Including Bronze for Memorial Park Specifications  
See Percy or Connor  
Partners or Call Collect  
Ottom, Texas  
Phone 285-2621 or 285-2767

LOSE WEIGHT safely with Dex-A-Diet tablets. Only 98¢ at POUNDS DRUGS, 11/3/10tp

QUICKBALL PRYOR CO., INC.  
Automobile Parts  
Supplies & Equip.  
P.O. Box 567  
Earth Texas

FOR SALE: Large 2 1/2 bath, brick veneer house for sale. Good loan available. Phone 385-5050 in Littlefield, Littlefield Federal Savings and Loan Ass'n. 11-24-tfc.

FOR SALE: Large 2 1/2 bath, brick veneer house for sale. Good loan available. Phone 385-5050 in Littlefield, Littlefield Federal Savings and Loan Ass'n. 11-24-tfc.

FOR SALE: Large 2 1/2 bath, brick veneer house for sale. Good loan available. Phone 385-5050 in Littlefield, Littlefield Federal Savings and Loan Ass'n. 11-24-tfc.

FOR SALE: Large 2 1/2 bath, brick veneer house for sale. Good loan available. Phone 385-5050 in Littlefield, Littlefield Federal Savings and Loan Ass'n. 11-24-tfc.

FOR SALE: Large 2 1/2 bath, brick veneer house for sale. Good loan available. Phone 385-5050 in Littlefield, Littlefield Federal Savings and Loan Ass'n. 11-24-tfc.

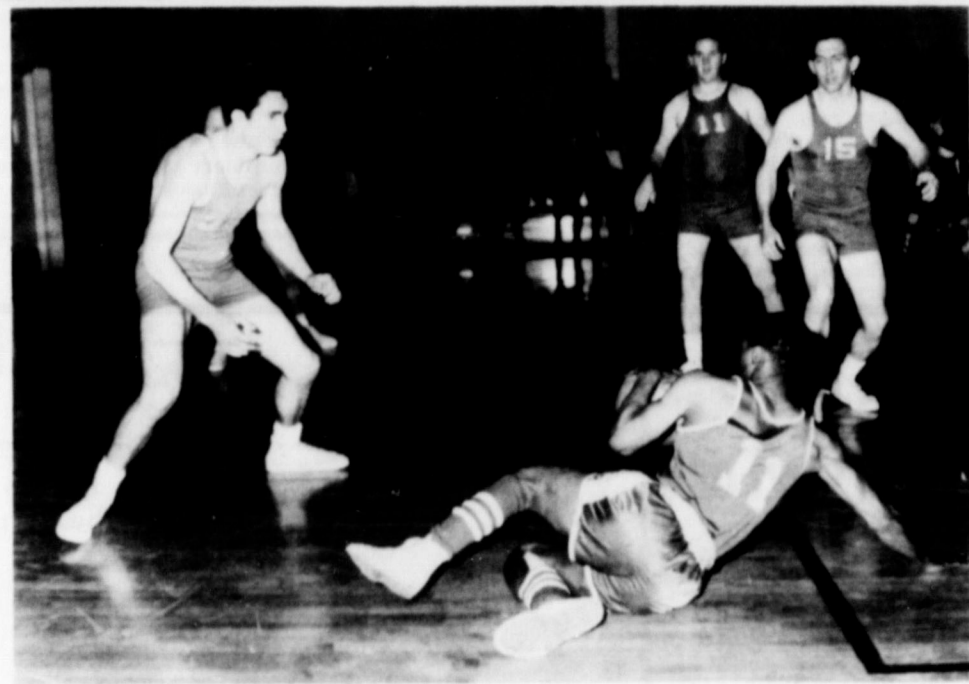
FOR SALE: Large 2 1/2 bath, brick veneer house for sale. Good loan available. Phone 385-5050 in Littlefield, Littlefield Federal Savings and Loan Ass'n. 11-24-tfc.

FOR SALE: Large 2 1/2 bath, brick veneer house for sale. Good loan available. Phone 385-5050 in Littlefield, Littlefield Federal Savings and Loan Ass'n. 11-24-tfc.

FOR SALE: Large 2 1/2 bath, brick veneer house for sale. Good loan available. Phone 385-5050 in Littlefield, Littlefield Federal Savings and Loan Ass'n. 11-24-tfc.

FOR SALE: Large 2 1/2 bath, brick veneer house for sale. Good loan available. Phone 385-5050 in Littlefield, Littlefield Federal Savings and Loan Ass'n. 11-24-tfc.

FOR SALE: Large 2 1/2 bath, brick veneer house for sale. Good loan available. Phone 385-5050 in Littlefield, Littlefield Federal Savings and Loan Ass'n. 11-24-tfc.



**DREBBLING HARLEM STYLE** in a most relaxed sorta way is being done by a member of the Harlem All Stars while playing a game Monday night in the Springlake-Earth Gym with the Earth All Stars. Ready to make an all out effort for possession of the ball is Jimmy Stockstill, Dean Foshee, and Neil Pounds, all members of the local team.

**Lazbuddie News...**

By Mrs. C. A. Watson  
Lazbuddie school menu, Monday, January 16, through Friday, January 20.  
Monday: Baked ham, green beans, potatoes, apple salad, rolls, butter, honey and milk.  
Tuesday: Pinto beans, vienna sausage, buttered rice, cabbage slaw, spiced applesauce, cornbread, vanilla pudding and milk.  
Wednesday: Barbecued beef, browned potatoes, English peas, tossed salad, rolls, jelly, butter, milk.  
Thursday: Hamburgers, tomatoes, lettuce, pickles, relish, sliced cheese, fruit jello and milk.  
Friday: Chicken noodles, celery sticks, blackeyed peas, gelatin salad, ice cream, rolls, butter, and milk.  
Mr. and Mrs. Wayne Clark and daughter, Terry Lee, were in Mansfield, Arkansas, the past weekend to attend to some business and visit her brother and family.  
Little Dennis Redwine was feted with a birthday party in the home of his parents, Mr. and Mrs. Clyde Redwine, Sunday, January 8. Special guests for the occasion were his grandparents, Mr. and Mrs. Raymond Houston and Mr. and Mrs. J. C. Red-

wine. Dennis was one year old.  
Birthday greetings this week go to Gregory Crim, Kenneth Caldwell, Evelyn Kay Darling, Davie Engking, Julie Durate, Nancy Bush, and Lloyd Rigney.  
Mrs. E. V. Crain suffered a stroke Saturday night and was rushed to the Friona Community Hospital. Word Monday was that she was improved.  
Mr. and Mrs. M. V. Vise returned last week from Fresno, California, where they had visited with Mr. Vise's parents, Mr. and Mrs. Robert Vise and with Mrs. Vise's sister, Mrs. Bob Freeman.  
Pvt. E/2 Jerry Weaver left by bus Wednesday for overseas duties in Vietnam. Pvt. Weaver had recently completed a course in supply training at Fort Lee, Virginia.

Adrian Weir is a surgical patient this week in the Green Memorial Hospital in Muleshoe.  
Mr. and Mrs. Wister Harrison, former Lazbuddie residents have moved to Amarillo where Harrison will be employed

**FOR SALE**  
3 Bedroom house, Single Garage, Storm Cellar, And fenced yard.  
**FOR SALE**  
New 3 Bedroom Brick, Double Garage and Fenced Yard.  
Call 257-4931  
1/5/3tp

**FOR SALE**  
Two bedroom house, 100 foot lot, attached garage, A. B. Odum, City Drug, phone 257-3301.  
1/5/tfc

**FOR RENT:** Two bedroom house. See or call A. C. Barton 257-3541.  
1-5-2tp

**FOR SALE**  
One Large Or Two Medium Size Residential Lots. Beautifully Landscaped in Restricted Area  
See LENA HITE  
10-20-tfc

**TRUCK SEATS EXCHANGED 15 MINUTE SERVICE**  
**MCCORMICK'S AUTO SUPPLY AND TRIM SHOP**  
PHONE 385-4555  
LITTLEFIELD

**PAYNE FUNERAL HOME**  
PHONE 246-3351 AMHERST, TEXAS

**FOR SALE OR RENT:** Two bedroom house. Would sell with small down payment. Call 257-2036 or 257-2033. 12/1/3tc

LOSE WEIGHT safely with Dex-A-Diet tablets. Only 98¢ at POUNDS DRUGS, 11/3/10tp

QUICKBALL PRYOR CO., INC.  
Automobile Parts  
Supplies & Equip.  
P.O. Box 567  
Earth Texas

**FOR SALE**  
3 Bedroom house, Single Garage, Storm Cellar, And fenced yard.  
**FOR SALE**  
New 3 Bedroom Brick, Double Garage and Fenced Yard.  
Call 257-4931  
1/5/3tp

**FOR SALE**  
Two bedroom house, 100 foot lot, attached garage, A. B. Odum, City Drug, phone 257-3301.  
1/5/tfc

**FOR RENT:** Two bedroom house. See or call A. C. Barton 257-3541.  
1-5-2tp

**FOR SALE**  
One Large Or Two Medium Size Residential Lots. Beautifully Landscaped in Restricted Area  
See LENA HITE  
10-20-tfc

**TRUCK SEATS EXCHANGED 15 MINUTE SERVICE**  
**MCCORMICK'S AUTO SUPPLY AND TRIM SHOP**  
PHONE 385-4555  
LITTLEFIELD

**PAYNE FUNERAL HOME**  
PHONE 246-3351 AMHERST, TEXAS

**FOR SALE OR RENT:** Two bedroom house. Would sell with small down payment. Call 257-2036 or 257-2033. 12/1/3tc

LOSE WEIGHT safely with Dex-A-Diet tablets. Only 98¢ at POUNDS DRUGS, 11/3/10tp

QUICKBALL PRYOR CO., INC.  
Automobile Parts  
Supplies & Equip.  
P.O. Box 567  
Earth Texas

with the John Deere Co. Members of the Midway Variety Club met Tuesday at the radio station in Muleshoe, then went to Girls Town USA at Whiteface to carry items donated by members of the club and other people in the area.

The Young Farmers of Lazbuddie met at the school Thursday of last week and organized the Young Farmers organization in the Lazbuddie area. Twenty-one young farmers became charter members with Scotty Windham as advisor.

Officers for the new organization are: Keith Menefee, president; vice-president, Jim Roy Daniels; secretary, Wayne Clark; reporter, G. Don Gallman; program chairman, Andy Fuquay; and membership chairman, Don McDonald. The group will meet each 3rd Thursday evening at 7:30.

Mr. and Mrs. C. C. Greaif visited in Littlefield Sunday with a friend, Mrs. A. D. Bitten. Mrs. Bitten had surgery in a hospital after falling and breaking her hip. She is recuperating at her home in Littlefield.

Lazbuddie folks were well represented at Muleshoe for the production of Sound of Music held by the Fine Arts Department of the school. John Gullef, former Lazbuddie student, was presented the major award for being best actor.

Mr. and Mrs. Cleburn Ramage, Muleshoe, visited the Charlie Watsons Monday evening.

Mrs. N. M. McCurdie returned Friday after a few days' visit with her granddaughter and family, the James McKensie's of Plainview.

Guest in the Frank Hinson home Tuesday through Thursday of last week was her father, Earl Meachem, and a niece, Mrs. Doyle Hendricks, of

**FOR SALE:** Good used aluminum pipe in 4", 5", 6", 7", and 8" sizes, at a good price. Also we have the well-known extruded alcoa aluminum pipe in all sizes. We buy used aluminum pipe. Before you trade, see State Line Irrigation Co., in Littlefield, phone 385-4487. 1/12/tfc

**Farmer's Filing Data Released By IRS**

Dallas, Texas - Farmers who earned at least two-thirds of their 1966 gross income from farming should file their declaration of estimated Federal income tax for 1966 on or before Monday, January 16, 1967. Form 1040ES should be used for this purpose.

However, Ellis Campbell, Jr., District Director of Internal Revenue in northern Texas, said that farmers need not file an estimate if they file their 1966 Federal income tax return, Form 1040, and pay in full any tax due by February 15, 1967.

"Farmer's Tax Guide," (Publication No. 225), which furnishes information on this subject, may be obtained by dropping a post card to your District Director, Internal Revenue Service, 1600 Patterson Street, Dallas, Texas 75201 or from your county farm agent.

Fishermen who expect to receive at least two-thirds of their gross income from fishing

Woodriver, Nebraska. Shorty Steinbock is a surgical patient in a Lubbock hospital this week.

Brenda and Brent Hall are spending a few days with their grandparents, Mr. and Mrs. L. R. Hall and other relatives in the Lazbuddie area. They will go to Wilcox, Arizona, to join their mother and attend school in that area after the mid-term exams.

**SPARE TIME INCOME**  
Refilling and collecting money from NEW TYPE high quality coin operated dispensers in this area. No selling. To qualify you must have car, references, \$600 to \$1000 cash. Seven to twelve hours weekly can net excellent monthly income. More full time. For personal interview write P. O. Box 10573, Dallas Texas, 75207. Include phone number. 1/12/tfp

**BUSINESS OPPORTUNITY MAN OR WOMAN.** Reliable person from this area to service and collect from automatic dispensers. No experience needed. We establish accounts for you. Car, references and \$985 to \$1785 cash capital necessary. Four to 12 hours weekly nets excellent monthly income. Full time more. For local interview, write Eagle Industries, 3954 Wooddale Ave. So., Minneapolis, Minnesota. 55416. 1/12/tpc

may file declarations of estimated tax, or Form 1040 in lieu of declarations of estimated tax, on the same dates prescribed for farmers.

**County Library Board Hears Annual Report**

The Lamb County Library Board met Monday in Littlefield, with Mrs. C. O. Stone, chairman, presiding.

Librarian, Mrs. Hicks, read and discussed the annual report. She reported that 22,729 books were checked out in 1966, and that 409 new families had applied for the privilege to check out books.

Attending the meeting were Mrs. Allen White, Amherst; Mrs. Archie Brown, Spade; Mrs. Bonnie Haberer, Pleasant Valley; Mrs. E. B. Hutchinson, Sudan; Mrs. C. O. Stone, Mrs. R. L. Graham and Mrs. Hicks all of Littlefield; and County Judge Jim Mangum.

Mrs. L. T. Smith was admitted to the Medical Arts Hospital in Littlefield Thursday where she underwent surgery Friday morning. She is reported to be in fair condition.

**UNCLE LUKE IS A SKEPTIC**

To be truthful about it, Uncle Luke is plumb "ornery" about a lot of things. He rants at the blasted "airplanes" that scare his chickens . . . he fusses about the way women dress nowadays . . . he's never been to a picture show . . . and one of his pet hates is those "x"x" squawk boxes" somebody around the house is always turning on while he's trying to read his newspaper. Oh yes! Uncle Luke likes his newspaper . . . dotes on it, in fact. Says it's the only way a feller could tell what's really going on in this crazy world nowadays.

Thank goodness we don't have to put up with many folks like Uncle Luke. . . but if you have an advertising message and want to be sure Uncle Luke sees it. . . put it in YOUR HOMETOWN NEWSPAPER.

**Texas Press Association**  
1716 SAN ANTONIO STREET, GREENWOOD 7, 3021 AUSTIN, TEXAS

**The Earth News-Sun**

**STATE LINE IRRIGATION CO. Inc.**  
**IRRIGATION SYSTEMS**  
Clovis Phone 762-4557  
Littlefield Phone 385-4487 Muleshoe Phone 272-3109





SPORTING NEW JACKETS this foursome, members of the seventh grade team were among the 23 lettermen of their class receiving jackets. Coach Bell made the presentation. Left to right are Carl Sulser, Hoyt Glascock, Mike Cleavinger, and Donnie Wheat. The eighth grade lettermen also received jackets Monday.

### Thirty Seven Junior High Boys Letter in Athletics

Thirty seven athletes, lettering members of the two junior high teams, were presented athletic jackets during a meeting in the junior high library Monday morning. Cecil Slover, principal, called the meeting to order. Coach Terrell Bell presented 23 seventh grade boys with jackets, followed by the presentation of jackets to 14 members of the eighth grade team by Coach Earl McKinley. Those receiving jackets in the seventh grade were Eddie Alair, Donnie Wheat, Carl Sulser, Sammy Matlock, Greg Slover, Mike Cleavinger, John Kelley, Hoyt Glascock, Donnie Templeton, Bruce Bridges, Leland Dear, Steve Hatfield, Weldon Eagle, Cris Brock, Mike Hedges, Pete Acevedo, Billy Ray Thomas, Edress Bar-

nes, Oscar Florez, Refrigio De La Garza, Gary Jones, Terrell Ott and Gary Larkin. Eighth grade boys receiving jackets are as follows: Butch Hamilton and Glen Lackey, managers, Frank McNamara, Refugericco Samarron, Efran Zambarano, Selso Ramon, Johnny Eagle, Danny O'Hair, Jerry Oden, Danny Boone, Kent Parish, Jerry Barden, Johnny McNamara, Gary Layman and Tony Barton. Others lettering but who did not want jackets were Jerry Oden, Samuel Lewis, Tommy Ruby, Mike West, and Kent Coker.

### Rites Held Saturday For J. W. King

J. W. King, 82, died Thursday at the Plainview Medical Clinic, resulting from an automobile accident on December 24. Funeral services were held Saturday at 2 p.m. in the First Baptist Church, Springlake, with Don Larkin, pastor, officiating, assisted by James Flippo of Amarillo. Burial was in the Earth Cemetery under the direction of Lemmons Funeral Home of Plainview. King was a resident of Springlake from 1925 until 1961, when he moved to Plainview. He is survived by his wife, Avor; one son, Elmer of Springlake; one daughter, Mrs. Lillian Mayfield, Plainview; 8 grandchildren; 25 great grandchildren; and 2 sisters, Mrs. Fanny Magnus, Greenville, Calif., and Mrs. Lucy Mitchell of Apache, Oklahoma.

### NOTICE

Girl Scout cookie orders are to be turned in to Mrs. Norman Sulser no later than January 21.

thus increase the demand for farm products. Exports are taking an increasing share of farm product marketings and prospects for the 1966-67 marketing year point to another sizable rise in foreign dollar sales. McHaney sees an increase about equal to last year's which could push total dollar sales close to the \$6 billion mark. The economist calls attention to three factors which he lists as uncertainties for the year ahead. They are possible changes in the Vietnam conflict and their impact on the general economy and agriculture; the new grain program with added acreages and their influence on 1967 crop output and foreign crop prospects and their effect on export markets.

### WHO ARE ILL

Pete Parish was rushed to the Amherst Hospital Monday night, following a heart attack in his home. He was transferred to Lubbock Hospital Wednesday, but was dismissed immediately. He is reported to be improving.

### Brother of Local Resident Dies

Gordon Alexander Messer, 57, of Fort Worth, brother of Marcus Messer of Earth, died at 5:45 p.m. Friday, in a Fort Worth Hospital. Services were held at 10 a. m. Monday in the chapel of Owens-Brumley Funeral Home in Fort Worth. Burial was in the Laurel Land Cemetery there. A native of Memphis, he operated a service station in Fort Worth. Survivors include his wife, Lucille; one daughter, Mrs. Angelina Svensen of Atwater, Calif.; one sister, Mrs. Lee Waller of Fort Worth and two grandchildren; two broth-

ers, Jeff of Fort Worth and Marcus of Earth.

"An emergency is generally an opportunity. Take advantage of it." Fred W. Crown, The Bergen (N. J.) Citizen.

### FOR SALE

Good Grain Fed Beef  
Cut, Wrapped At Just 48¢ per pound  
Nafzger Bros. Beef  
See AT  
EARTH LOCKER  
1/12/tfc

### —NOTICE—

I will be at the City Hall in the following towns on the dates indicated for the purpose of collecting State and County taxes:

- AMHERST..... January 16
- SUDAN..... January 17
- EARTH..... January 18
- OLTON..... January 19-20
- SPRING LAKE..... January 24 A. M.

Voter registration receipts may be obtained from the City Secretary of the above named towns through January 31, 1967.

### HERBERT DUNN

Tax Assessor-Collector,  
Lamb County

### Economist Says Outlook Is Good for 1967 Agriculture

The 1967 economic outlook for agriculture is good. The production faucet is being opened up to take care of both domestic and foreign demand increases and total cash receipts from farm marketings will be larger than in 1966, says John G. McHaney, Extension economist at Texas A&M University. Feed grain acreage is expected to increase by 12 to 15 million acres and wheat allotments have been increased by almost one third, he adds. Those additional acres are needed to bring production in line with expanding markets and to rebuild carryover stocks of grain, explains the economist. Government payments to producers will be smaller, perhaps by a half billion dollars, as more acreage is returned to production. McHaney says production expenses will continue to climb;

however, he looks for the increase to be less than that of last year. Realized net farm income in 1967 may not reach the near-record level of 1966 but it is expected to be well above the 1965 figure. Farmers added \$18 billion to their assets during 1966 to bring the total value of their assets to \$273 billion. The \$35 billion increase during the past two years exceeds that of any previous consecutive 2-year period since balance sheet estimates began in 1940, McHaney said. While total indebtedness increased, owners' equities increased by \$14 billion, about the same rate as in 1965. The domestic demand for farm products is expected to increase in 1967 but at a slower rate than 1966. General economy activity is expected to keep consumer buying power on the upward move and

Now's the time to Shop... and Save!

# INVENTORY SALE



### —USED CARS and TRUCKS—

#### 1963 T-BIRD

Loaded, Like New, 26,000 Actual Miles  
Only **\$1995.00**

#### 1965 FL 500-4 dr.

V8 Engine, Air Conditioner,  
Contains 9500 Actual Miles **\$1995.00**

#### 1965 OLDS 98

Loaded, Extra Clean,  
A Low **\$2650.00**

#### 1964 FORD XL

Loaded **\$1499.00**

#### 1965 CHEV. El Camino

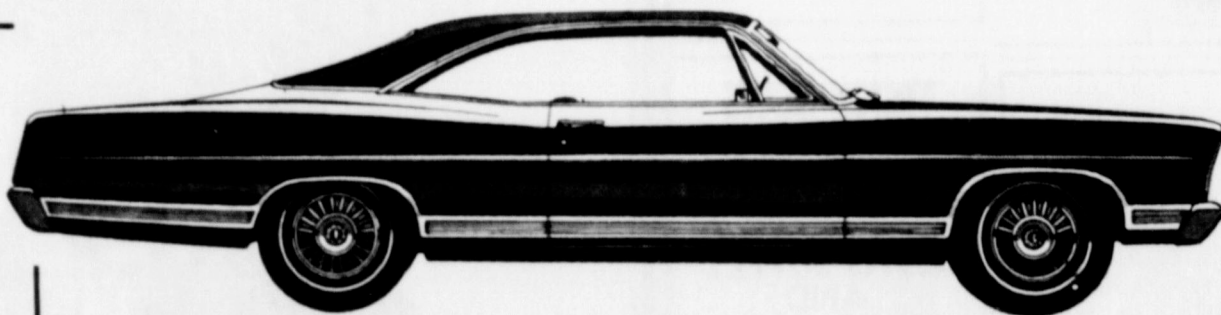
V8 Automatic Transmission,  
Extra Sharp **\$1499.00**

#### 1964 FALCON RANCHERO

V8, 4 Speed, Nice **\$1195.95**

#### 1962 FORD 1/2 ton Pickup

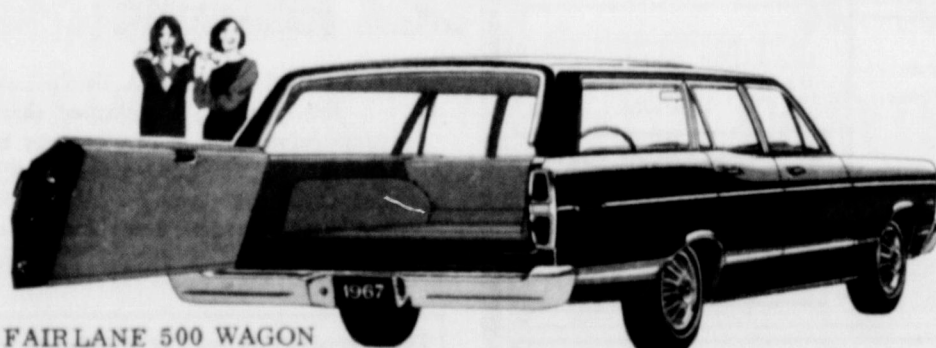
Good Irrigation Unit **\$895.00**



FORD GALAXIE XL 2-DR HARDTOP VINYL ROOF



FAIRLANE 500 2-DR HARDTOP



FAIRLANE 500 WAGON

### —NEW CARS—

#### 1966 FL 500 -4 dr. Sedan

Automatic Transmission, Air Conditioner,  
V8 Engine, W/S/W/Tires, Radio, Wheel  
Covers, Tinted Windshield,  
List \$3,355.94 **Only \$2595.00**

#### 1967 FALCON FUTURA-2 dr. HT

V8 Engine, Automatic Transmission, Tinted  
Windshield, W/S/W/Tires, **\$2585.00**  
Wheel Covers List \$2970.05

#### 1967 FL 500-2 dr. HT

289 V8 Engine,  
W/S/W/Tires,  
Automatic Transmission, Air Conditioner,  
Radio, Wheel Covers, **\$2899.00**  
List \$3358.27

#### 1967 MUSTANG-2 dr. HT

289 V8  
Engine,  
Automatic Transmission, F 70x14 Wide Oval  
W/S/W/Tires, Air Conditioner, Radio,  
Tinted Glass, Wheel Covers, **\$2950.00**  
List \$3416.71

#### 1967 COUNTRY SEDAN SW

6 Passenger, 390 V8 Engine, Automatic  
Transmission, Radio, W/S/W/Tires, Air  
Conditioner, Courtesy Light Group, Power  
Steering, Power Brakes, Tinted Glass,  
W Covers, List \$4024.56 **\$3435.00**

## Jackson Ford, Inc.

John Adrian, Manager Phone 257-3341