

## Springlake Ginner Found Dead Tuesday Morning

Lee Roach, 59, Harlingen, Texas, a ginner for the Springlake Gin Inc., was found dead in his bed Tuesday morning about 10 o'clock, by his employers Bill and Billy Braden, co-owners of the gin. Funeral arrangements are to be held in Harlingen but were incomplete at press time Wednesday.

Braden said Roach failed to work Monday because he was not feeling good. However, later in the day about noon Monday, Braden saw him at a Grocery Store in Earth buying food items and at that time he told Braden he was feeling better and would be at work Tuesday.

Roach failed to arrive at work at the regular time Tuesday. About 10 o'clock Braden went

to his apartment in Springlake to see about him. Upon arriving he found the door latched and he failed to receive a response to his call. He returned to get his son and the two men made their way into Roach's apartment to find him dead.

They immediately summoned Lamb County Sheriff McNeese in Littlefield. A call was also put through to Roach's daughter in California. Mrs. Roach had left Springlake Saturday to visit the couples daughter in California.

M. Roach whose home is in Harlingen, Texas has been employed by Braden during the ginning season for the past three years. Each year the couple moved here about September 1 and resided in Springlake until January 1.

## KT Farms Take High Honors At Texas State Fair

Tracy Angeley of KT Farms of Earth and Kimberley Kay, daughter of the Tracy Angeleys, recently took honors in the Pan-American Livestock Exposition at the State Fair of Texas in Dallas.

In the Hampshire Swine division held Monday, October 6, KT Farms took the honors for grand champion sow and senior champion sow. Kimberley Kay Angeley took reserve grand champion sow and junior champion sow.

Other honors in the Hampshire division taken by KT Farms are as follows: Class 81-February Boar Pig, 2.5; Class 82-March Boar Pig, 3.4; Class 89-Senior sow, 1; Class 93-February sow pig, owned by Kimberley Kay, 1; Class 94-March sow pig, 8.

In the Wednesday, October 8, Yorkshire division KT Farms took top honors for reserve grand champion boar, an April boar pig, reserve junior champion, senior champion sow, grand champion sow, a March sow pig, junior champion sow and reserve junior champion sow.

In the Yorkshire division KT

## Lions Club To Sell Light Bulbs Tuesday

The Earth Lions Club will meet at 12 noon Tuesday, October 21, for their regular weekly luncheon.

Immediately following lunch, members of the Club will canvass the city of Earth with their annual sale of light bulbs.

Funds obtained from the sale of light bulbs will be used in the club's conservation for the blind program and other worthwhile projects.

Anyone failing to be contacted in the canvass Tuesday and wish to buy light bulbs may purchase them from any member of the Earth Lions Club.



SMILING JR. HIGH TWIRLERS... Terri Smith, Darlene Suber, and Sheila Lewis, head twirler, were the threesome selected Monday to perform with the Jr. High Band at the last two Junior High Pep Rallies this season.

Farms also took honors for Class 157-March boar pig, 2; Class 158-April boar pig, 1; Class 169-March sow pig, 1; Class 170-April sow pig, 4; Class 175-Get-of-sire, 2.

## Pep Rally Slated Tonite

There will be a Wolverine Pep Rally Thursday (tonight) at 6:30 p. m. on the parking lot of the B and W Super Market.

Cheerleaders, Springlake-Earth High School, Band, Wolverine teams and coaches will be on hand for this rally. The cheerleaders are encouraging parents and members of the community to back the Wol-

verines and help build their spirit for the battle slated with the Farwell Steers Friday night at the Farwell Stadium.

Members of the community are also urged to attend the pep rally Friday afternoon at 3:30 p. m. in the Springlake-Earth High School Gym.

Be a loyal Wolverine supporter by attending both pep rallies.

## School Board Meets For Monthly Session

Members of the Springlake-Earth School Board met Monday morning in the high school for a short routine meeting.

The board reviewed the enrollment attendance in the Springlake-Earth School System for this month. Total enrollment is 848 students. Enrollment for elementary is 437, junior high 143, high school 239, and special education had an enrollment of 29. These figures compare to 426 students in elementary, 138 in junior high and 239 enrolled in high school, and 27 in special education for a grand total of 830 students last month.

Board members had a short review and study on the School Guidance System.

The Board then dismissed until their next meeting for November 10.

THE AVERAGE AMERICAN ate nearly 162 pounds of meat last year.

## Young Farmers To Have Cotton Harvest Program

The Springlake-Earth Young Farmer's Organization will hold their monthly meeting in the Agriculture Room on the Springlake-Earth School Campus Thursday, October 16, at 8:00 p. m.

The educational program will be presented by James Lot, Lovellend, and will be entitled "Better Cotton Harvest-Better Grades and Quality."

Anyone interested in the latest facts and figures on cotton harvest are cordially invited to attend.

Refreshments will be served at the conclusion of the program.

The NEWS Paper Dedicated to the Development of the World's Richest Irrigation Area

# The Earth News-Sun

"A CONSOLIDATION OF THE EARTH NEWS AND EARTH SUN, OCTOBER 12, 1967"

VOLUME 16

10 CENTS

EARTH, LAMB COUNTY, TEXAS, THURSDAY, OCTOBER 16, 1969

10 PAGES

NUMBER 8

## Pitts Named Winner Of Santa Fe Educational Award

COLLEGE STATION—John Pitts of near Earth was named one of the ten of Texas' outstanding 4-H Club member named winners of the coveted Santa Fe Educational Awards for 1969.

Santa Fe has supported 4-H on a regional basis since 1923.

Others on the list of winners, their home towns and counties as released by the state 4-H office include Don Rader Jr., Glazier, Lipscomb; Donna Huffaker, Star Rt., Hale Center, Hale; Mary Dee Minszer, Childress, Childress; Mary Joyce Spears, Bellevue, Clay; Jane Platt, Rt. 6, Palestine, Ander-

son; Brenda Sue Burns, Canton, Van Zandt; Derek Washington, Houston, Harris; Jimmy Bartlett, Mauriceville, Orange; and Cornelio Cano Jr., Donna, Hidalgo County.

The 10 will be among the Texas delegation attending the National 4-H Club Congress in Chicago, November 30-December 4, the announcement said.

In addition to the educational awards, four of the group were singled out for all-round excellence and will be awarded \$500 college scholarships. The four are Donna Huffaker, Brenda Sue Burns, Jane Platt and Cornelio Cano Jr.

The 10 have a combined total of 78 years of 4-H Club work, 7.8 years per member, which emphasizes the significance of the awards. Each has compiled an outstanding record in leadership and achievement not only in 4-H but in community school and church activities.

Each was first a county winner, then district and finally a member of the state blue ribbon group.

Their highly successful 4-H careers have been supervised by their local county Extension agents and local adult leaders.

## Annual Pig Sale Slated For Saturday In Earth

The seventh annual FFA Pig Sale is slated for Saturday, October 18. The local FFA is co-operating with Lazbuddie FFA and Wilson FFA in this project.

The sale is scheduled to begin at 12:30 p. m. in the Livestock Show Barn at Earth. The pigs will be sifted down to 250 head.

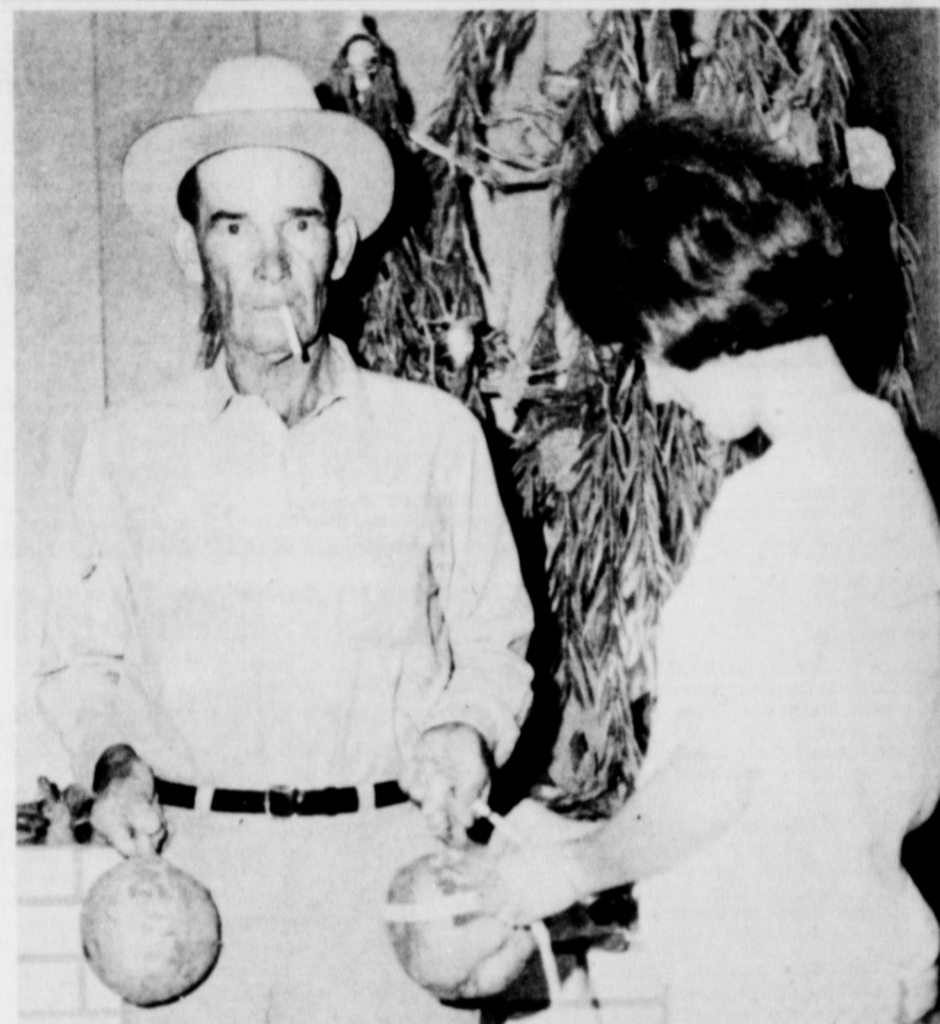
Hampshires will be furnished by the Springlake FFA, Lazbuddie FFA, Tracy Angeley of Earth, and Jimmy Seaton. Durocs will be presented by the Lazbuddie FFA Boys, Mike Cleavinger, and Ken Dawson, Springlake, and Luther Hill, Littlefield.

Bob Phipps of Earth, H. D. Tucker, Wilson, and the Lazbuddie FFA will provide the Poland China.

Berkshires will be presented by the Wilson FFA and Lazbuddie FFA, and Chesterwhites by Lazbuddie FFA.

Crossbred pigs will also be available at the Pig Sale. Many of these will be by Rebel's lineage the York Boar Buddy Winter bought from Iowa State. The Springlake FFA will have several outstanding York-X-Hamps as well as Lazbuddie FFA, Tracy Angeley, Jerry Jones, and others. It is believed that some of the best crosses to be seen this fall are available.

Food will be served at the Show Barn.



THEY GROW 'EM BIG IN TEXAS... Al Kelley is shown holding a sweet potato weighing 4 lbs. 15 ozs. and measured to be 21 inches in circumference. The potato was grown 5 miles North and 24 west of Earth on the L. J. Welch farm. The smaller potato weighed 3 lbs. 4 ozs. and was 17 1/2 inches in circumference. It was grown by Chester Kelley, on the Kelley farm—6 1/2 miles north and 1 mile west of Earth. Carolyn Kelley, is shown measuring the potato for her uncle, Al Kelley.

## Barton Wins Grid Contest, Sanders Takes Season Lead



JR. HIGH DRUM MAJOR... Lonnie Wilson, an eighth grader at Springlake-Earth Jr. High, will be leading the Springlake-Earth Jr. High Band during the 1969-70 school period.

Mark Barton took first place in the News-Sun football contest this week and by so doing, hopped up to second place in the over-all season standing.

He narrowly edged out C. W. Conway, who placed second, with Mike Parson coming in third. This is the first time Mike Parson has won any money in the contest. He is currently tied for 13th place in the season standings.

Tom Sanders, who has won third place only once during the five past weeks is currently in first place for the seasons overall standings. Sanders has been consistent in scoring high throughout the contest, just missing the money just west of the time. Sanders has a score of 405, won second place during the first week, along with first this week.

The top 32 contestants are within 110 points, at any time there can be a shift as the margin between the group is so low.

Standings for the five weeks are as follows:

Tom Sanders-410; Mark Barton-405; Karen Layman-395; Floyd Henderson-390; Richard A. Moore-375; 6th, Wanda Sanders and Bill Freeman-365; 7th, Alma Stockstill, Dale Riggs, Larry Price, and E. C. Hudson-360; 8th, Jim Winder, Elroy Wisian Jr., Jo Eddy Riley, Ben Y. Lopez, and Cindy Barton-350; 9th, C. W. Conway-345; 10th, Terry Riddle and Marvin Ben Jr.,-340; 11th, Alan Duncan, Jimmy Randolph, and Percy Parson-330; 12th, J. W. Deat, Troy Layman, Ann Jones, and Rhonda Parson-320; 13th, Karen Dear and Mike Parsons-315; 14th, Bill McKinney and Margaret Parsons-310; 15th Dale Parsons-300.

Others in the contest are running close, within ten to twenty points of the 300 mark. Keep your entries coming in, everyone still has a chance at the big prize, as well as the weekly prizes.

## Bring Them In!

Jerry Starles, local Band Director, has indicated that now is the time for area people who have used band instruments to sell to bring them to the school. He explained that these instruments have to be approved and a price set on them before they are offered for sale to student members who are in the market for instruments.

Starles explained, that this must be done prior to the showing of new instruments in the near future.

## 11th Annual Sandhill Crane Hunt Slated

The Muleshoe, Jaycees have scheduled their seventh annual Sandhill Crane Hunt to be held November 1, through November 9.

The Muleshoe Jaycees have arranged a gain for land adjacent to the Muleshoe National Wildlife Refuge. This refuge is the oldest in the State of Texas, and during the winter months, there are as many as 100,000 sandhill crane wintering away from their arctic breeding grounds. The Muleshoe population represents the largest concentration of this species in the United States.

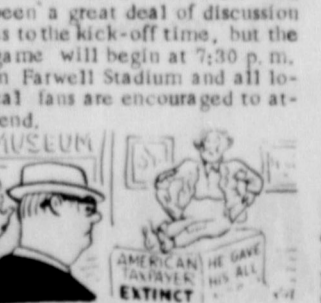
The Jaycees will also provide transportation to and from the hunting area. Shells and licenses will be available and the guides will leave the Dinner Bell Restaurant, 1700 W. American Blvd., which is hunt headquarters, one and one-half hours before sunrise each day.

The costs for the hunt are as follows, \$5.00 a day for each hunter or \$7.50 for the weekend. \$15.00 is the fee set for the season November 1 through November 9.

The hunter who kills the largest bird during the hunt will receive a Remington Twelve-Gauge Automatic Shotgun. For more information, contact Jerry Hutton, Manager Muleshoe Chamber of Commerce, Box 525, Muleshoe, Texas 79347. Phone-Area Code 806-272-4248.

## Wolverine vs Farwell, Friday

J. W. Sallis, high school principal, announced that the game scheduled for Friday, October 17, between the Farwell Steers and the Springlake-Earth Wolverines will begin at 7:30 p. m. Sallis stated that there had been a great deal of discussion as to the kick-off time, but the game will begin at 7:30 p. m. in Farwell Stadium and all local fans are encouraged to attend.



"It looks as though the taxpayer will be the first of America's natural resources to be completely exhausted."

## Baptist Church Members To Attend Associational Meeting

The annual meeting of the Llanos Altos Association will be conducted at the First Baptist Church in Dimmitt beginning at 9:15 a. m. October 17, with area churches attending.

The selected theme for this years program will be entitled, "Be Ye Steadfast-Untenable-Abounding."

Jr. R. Manning of the First Baptist Church of Sudan will conduct the annual session. The scripture, Ephesians 6:11, will be presented by R. B. Hall, Littlefield Baptist Church. Glen Wilson of the First Baptist Church of Amberst will give a memorial service for those

who have passed away during the past year.

The Association will also be privileged to hear selected topics by State Missions Commission Secretary, Charles McLaughlin; Ed Morgan, Speaker of Plains Baptist Assembly, of Floydada; and Dr. Franklin L. Swanner, Area Missionary for the past twenty-two years.

Lunch will be served by the First Baptist Church of Dimmitt at 12:30. Members of the First Baptist Church in Earth elected to be messengers are Rev. and Mrs. David Hartman and Mrs. R. S. Cole.

## Be A Wolverine Supporter Attend All Pep Rallies

The 1969-70 Springlake-Earth High School Cheerleaders are going all out to fulfill the motto, set by the student council, "Seek Total Participation." The group has tried several things, they currently are placing signs in places of business encouraging attendance at all high school pep rallies.

High school coaches are pleased with the evident spirit in the team, cheerleader's, and student body, but with all this, there still seems to be one important factor missing for total success. That is the lack of participation by parents and res-

ident's of the community at pep rallies.

Pep rallies are necessary to build the spirit of the Wolverine squad and to show them that the community is backing them one hundred percent. Don't be just a bystander attending the pep rallies each Friday afternoon at 3:30 p. m. in the high school gym. Enthusiasm is catching. Let's do our part to show the Wolverines, that they have the confidence of school, parents, and community. Be a loyal Wolverine fan and attend all pep rallies, games etc.

## Freeze Affects Cotton Harvest

Signs of the approaching winter were noted with temperatures reported as low as 26 degrees Monday morning as the first killing freeze hit the Springlake-Earth Area.

The freeze was somewhat unexpected and unwanted by area farmers who were hoping for a little longer growing season for their crops.

With the extensive rains in the area this season, moderate damage was done to the area cotton crop.

Area, gimmers estimate 20 per cent damage in the Earth area and 30-40 per cent damage in the Springlake Comm. with perhaps a loss of one-third the money crop. O. C. Frye, manager, at the Campbell Gin Company at Dodd reported 15-20 per cent damage, but the grades on cotton in the Dodd area will not be lowered to much, he said.

With the early freeze area gins will soon begin operating in full swing and the 1969 cotton harvest will be "over and out."



# The EARTH NEWS - SUN



Published at Earth, Texas 79031 every Thursday except the first Thursday following Christmas.

Entered as Second Class Matter at the Post Office at Earth, Texas 79031, October 1, 1954--Under Act of Congress March 3, 1879.

### SUBSCRIPTION RATE

Earth and Trade Territory, per year, ..... \$3.50  
Elsewhere in United States, per year, ..... \$5.00

### CLASSIFIED RATES

6¢ per word, first insertion, 5¢ per word thereafter---60¢ Minimum.

### ADVERTISING RATES GIVEN ON REQUEST

ROSS AND POLLY MIDDLETON-----Publishers



## Financial Facts

By Norian Dudley

Many of the functions of the modern bank came from Greek Temples. In the Parthenon, there was a special chamber called the "Opesrhodomos." It was a storage vault for gold and silver. It also held valuables deposited by the worshippers.

With private bankers and smaller Temples, treasure was stored in individual boxes. Many mistakes were made resulting in court action for settling claims. The following is a case from ancient records:

A greek named Timosthenes left some valuable cups with an Athens banker. The banker lent the cups to a relative.

They were never returned. The case was brought into court and Timosthenes was indemnified.

The atmosphere of religious awe tended to keep the Temples inviolate. However, they were not as efficient or secure as today's deposit vault.

### WATCH NEXT WEEK FOR "ANCIENT ROMAN BANKS"

Money spent at home, builds your community, lets all be builders.

You will always receive courteous attention at CITIZENS STATE BANK! We handle every type of banking service--personal or commercial. For all your banking needs, come to CITIZENS STATE BANK, Box 20, 257-3451. Open 9 to 3 Monday thru Friday.

## Jr. Honor Society Holds Induction Service

The W. L. Mann Chapter of the National Junior Honor Society held their annual induction service for new members Tuesday afternoon in the Springlake-Earth High School Auditorium. Charles Winder lead the group in the Pledge of Allegiance.

The Springlake-Earth Jr. High Choir provided a selection of songs for the group. Scott Lee, Honor Society President, gave the introduction of members who gave talks on topics pertaining to Honor Society.

Hal Wood, Leadership; Jimmy Coler, Citizenship; and Sammy Parish discussed, character.

Members of the seventh grade were then inducted into the National Jr. Honor Society. The new members are Steve Morgan, Dub Jones, Eric Freeman, Greg Welch, Dyke Gaston, Ruth Street, Jeff Matlock Quincy Lewis, Lupe Flores, and Junior Sauseda.

Meeting was concluded with JoAnne Coher, Denise Temple, and Gaye Ellis leading the group in the school song. Sponsors for the Jr. Honor Society is Mrs. Nancy Baucum.

## Explorer Program Planning Conference Set October 18

Four representatives from each of the South Plains Council's 30 Explorer Posts will gather for a full day of discussion and orientation at the Tech Student Union Building on October 18. The event will open with registration at 9:00 a. m. under the auspices of the Women's Service Organization.

Those representing the Local Explorer Post will be Jerry Barden, Jimmy Littleton, Johnny Kelley, and Dale Riggs, Advisor.

South Plains Council Explorer Committee Chairman said that Robert C. Glow, Assistant National Director of Exploring Service, will be present to observe the conference, which is one of the first to be held nationally.

Emphasis of the full day's conference will be on program events at all levels including Post, District, Council, and National. Participants will conclude the activities with attendance at the Tech - Mississippi State game.

## Members Of Baptist Church Attend Littlefield Youth Rally

Eighteen members of the Earth First Baptist Church attended a Youth Rally at the First Baptist Church in Littlefield, Monday evening.

not be half-hearted but be totally involved in religious pursuits.

Dr. Roy McClung, President of Wayland Baptist College in Plainview was the guest speaker. Dr. McClung spoke on the topic "The Now Christian." He indicated that to be a "now Christian" one must first be a Christian. He also showed a Christian in today's world can

The Youth Council of the Earth First Baptist Church was presented a banner for having one of the largest groups attending the Littlefield Youth Rally.

Following the program refreshments were served to all those attending in the lower auditorium of the Littlefield First Baptist Church.

## School Enrollment Census To Begin October 19

A survey of school enrollment at all levels from nursery school through college will be conducted in this area by interviewers of the Bureau of the Census during the week of October 19, according to Francis H. Wilmer, Director of the Bureau's regional office in Denver.

Local interviewing will be part of a nationwide effort made annually to measure the Nation's school and college population. A similar survey in October 1968 showed total enrollment to be 58.8 million persons--33.8 million in elementary school, 14.1 million in secondary school, 3.3 million in kindergarten, 816,000 in nursery school, and 618 million in college.

The survey will be made along with the monthly national survey of employment and unemployment for the Bureau of Labor Statistics of the U. S. Department of Labor which furnishes a basic measure of national economic health.

Information collected in Census Bureau surveys can be used only to determine statistical totals, and facts about each person and family are kept confidential by law.

Interviewer who will visit households in this area is Mrs. Rosemary McNeese of Amberst

## Jr. G.A.'s Enjoy Program 'All Are Called'

Members of the Jr. G.A.'s met Tuesday afternoon at the First Baptist Church in Earth under the supervision of Mrs. Lillie Wuerflein, Leader.

The girl's enjoyed an interesting program entitled "All are Called." Four members of the Jr. G.A.'s presented a skit depicting how they could use their individual talents to tell others about Jesus.

A short planning meeting was held making preparations for next week's program, "Missionary Companions." Caroleen Hulcy will be in charge of the program.

The Prayer Calendar was read by Mrs. Lillie Wuerflein. Refreshments of cookies and punch were prepared and served by Mrs. Wuerflein to those attending.

## Springlake WMU Conduct Mission Action

Members of the Springlake Women's Missionary Union of the Springlake First Baptist Church met Tuesday morning at the church for their weekly meeting.

Mrs. Herbert Miller read the Calendar of Prayer.

The group then organized to

participate in their scheduled

Those participating in Mission Action were Mrs. Don Holmes, Mrs. Theima McClanahan, Mrs. Lowell Walden, and Mrs. Herbert Miller.

Mission Action, WMU members conduct mission action by visiting with various residents of the Springlake Community.

## Chapman Funeral In Muleshoe

Funeral services for Herman Clinton Chapman, 74, long time resident of the Earth area were conducted Tuesday at 2:30 p. m. in the Singleton Chapel of the Chimes in Muleshoe. Rev. David Hartman, pastor of the First Baptist Church in Earth officiated.

Chapman died Sunday at 9:20 p. m. in the West Plains Hospital in Muleshoe where he had been a patient for seven days.

Chapman was born in Bell County, Texas, June 27, 1895, and moved to the Earth Area in 1920 where he resided up until the time of his death. Survivors include his wife Alma, one daughter, Mrs. W.H. Jones of Earth, five grandchildren and ten great grandchildren.

Interment was in the Dimmitt Cemetery under the direction of Parson-Ellis-Singleton Funeral Home.

## BIG FURNITURE SALE STORE WIDE Would You Like To Save \$50 - \$100

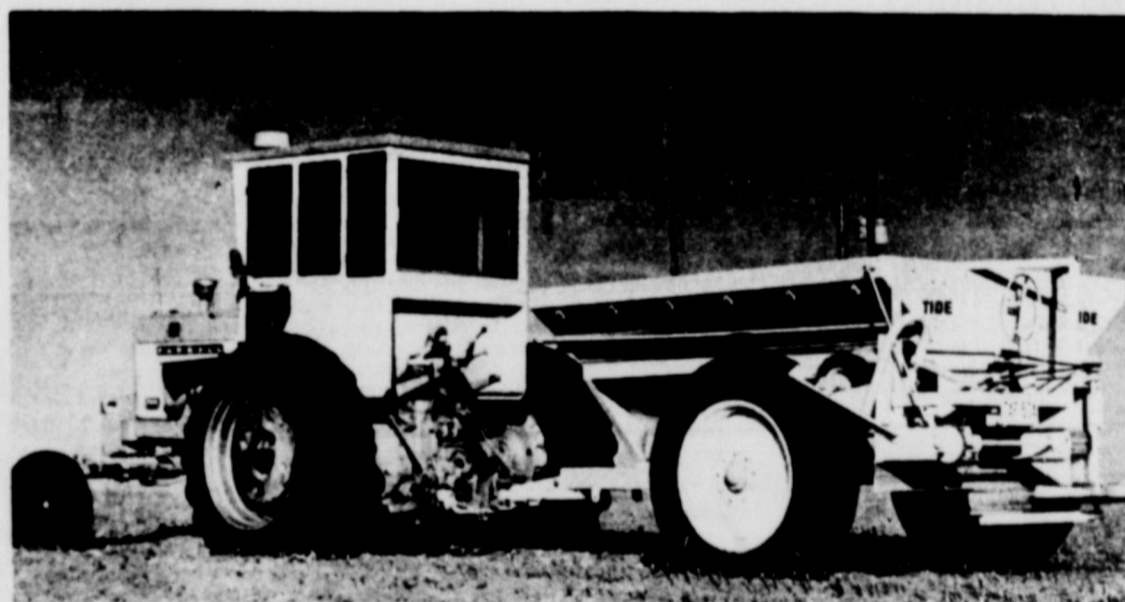


## HILL ROGERS FURNITURE

PH 385-4322 Lubbock Highway Littlefield

### Memo To GRAIN GROWERS...

## TIDE'S Fall Plow-Down Program Will Make You Money!

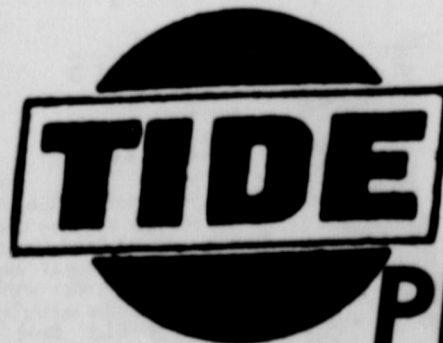


### Try TIDE ... You'll Be Glad You Did!

As soon as possible after harvest, shread your stalks and apply Tide's Prescription-Blend Fertilizer and start your Fall Plow-Down Program.

Tide's Fall plow-down program is designed to make you money:

1. Fall plow-down spreads your work load... reduces time, labor and equipment requirements at planting time.
2. Fall plow-down insures against uncertain Spring weather... gives you two opportunities to apply a complete fertilizer program. (Fall and Spring)
3. Fall plow-down aids in decomposing stalks and builds up soil-nutrients.



# TIDE

## PRODUCTS, INC.

Cliff Brown  
846-2341  
Sunnyside

Richard Franks  
938-2191  
Hart

Bill Langston  
285-3365  
Olton

# M I L O

## CHECK WITH KING BEFORE YOU SELL YOUR GRAIN

WE WOULD LIKE TO PURCHASE YOUR GRAIN, AND WILL PAY TOP MARKET PRICES FOR IT...

- We Have Bonded Storage...
- Speedy Service...
- Courteous Personnel...
- We Sincerely Appreciate Your Grain Business...



# KING GRAIN CO.

Phone: 272-4541

Muleshoe, Texas



### Lose 10 Lbs. In 10 Days On New Grapefruit Diet

NEW YORK (Special)-This is the revolutionary new grapefruit diet that everyone is suddenly talking about. Literally thousands upon thousands of copies have been passed from hand to hand in factories, plants and offices throughout the U.S. and Canada. Word of its success has spread like wildfire because this is the one diet that really seems to work for most overweight people. A well known Toronto columnist recently reported it to the skies. He praised losing 20 pounds quickly and easily long after he despaired of ever getting down to his wartime weight of 165 pounds, all without giving up the occasional beer or rye. If it is followed exactly the average overweight person should lose 10 pounds in 10 days. There will be no weight loss in the first four days, but you will suddenly drop 5 pounds on the 5th day. Thereafter you will lose one pound a day until the 10th day. Then you will lose 1 1/2 pounds every two days until you get down to your proper weight. Best of all there should be no hunger pangs.

Now revised and enlarged, this new diet plan lets you stuff yourself with foods that were formerly "forbidden". Such as big steaks trimmed with fat, Southern fried chicken, rich gravies, mayonnaise, lobsters swimming in butter, bacon, fats, sausages and scrambled eggs.

You can eat until you are full until you cannot possibly eat any more. And still you should lose 10 pounds in the first ten days, plus 1 1/2 pounds every two days thereafter until your weight is down to normal. The secret behind this new "Quick weight loss" is not generally known. Fat, it has been theorized, does not form fat. Perhaps fat fights fat. And the grapefruit juice in this new diet might act as a catalyst (the "trigger") to start the fat burning process. You stuff yourself on the permitted foods listed in the diet plan, and still lose unsightly fat and excess body fluids. When the fat and blood are gone you will cease to lose weight and your weight will remain controlled. A copy of this new and startlingly successful diet plan can be obtained by sending \$3 to The

KANE ASSOCIATES  
P.O. BOX 846  
GRAND ISLAND, NEBR.  
68801

Unconditional money-back guarantee. If after trying the diet plan you have not lost 7 pounds in the first 7 days, another 6 pounds in the next 7 days, and 1 1/2 pounds every two days thereafter, simply return the diet plan and your \$3 will be refunded promptly, and without argument. Tear out this message as a reminder. Decide now to regain the trim attractive figure of your youth, while still enjoying hearty breakfasts, lunches and dinners. Order now before others snap up the limited supply.

(Paid Adv.)  
Mr. and Mrs. Gene Chaney and Melissa and Mr. and Mrs. Bill Chaney of Olton, and Mr. and Mrs. S. H. Chaney of Earth, had dinner in Plainview Sunday evening.

### Church To Hold Banquet

The First Baptist Church in Earth will hold a Church Worker's Banquet October 22 at 7:30 p.m. in the Fellowship Hall of the church.

The banquet will be held in honor of new officers, which include Sunday School and Training Union teachers, Women's Missionary Union, Baptist Brotherhood, and Music Department. These are the departments that do so much toward the operation of the church.

Speaker for the occasion will be Dr. J. Ivyloy Bishop who teaches in the Bible Department at Wayland Baptist College in Plainview.

Plans are being made for entertainment to be provided by the Church Trio.

All those involved in these church activities are encouraged to attend.

### DICKEY NEW MECHANIC FOR LOCAL FIRM

Jim Dickey, formerly of Lubbock, is now associated with Brown-Jordan Ford, and is an expert and well trained mechanic.

Dickey has reviewed factory training from Detroit, Michigan, as well as from Dallas. He and his wife, DeAnne, reside in Earth.

### Baptist Brotherhood View Film "Mister Outsider"

Members of the Baptist Brotherhood of the First Baptist Church in Earth met at 6:30 a.m. in Fellowship Hall for the monthly breakfast.

The program consisted of a film titled "Mister Outsider." The film dealt with individuals outside the church and how these may be outsiders by the fact that they may be next door neighbors and still not be a part of the church, because they

### Work Clothes In Need Of Goodwill Centre

The Earth Goodwill Centre was open for business Saturday under the direction of members of the Springlake-Earth PTA.

The Centre took in a total of \$19.05 for the day's sales. The Centre is receiving numerous requests for men's work clothes and shoes in various sizes.

There is also a demand for items of children's clothing. PTA members assisting were Mrs. Kenneth Hinson, Mrs. Bill Matlock, Mrs. Nolan Dudley, and Mrs. Bill Morgan.

The Centre will be open Saturday with members of the Earth United Methodist Church directing sales.

### Troop 614 Work On Tenderfoot Badges

Twenty-three members of Troop 614 of the Boy Scouts met Thursday night at the Scout Hut in Earth for their weekly meeting.

Travis Jaques, Scout Master, called the meeting to order and lead the group in the Pledge of Allegiance.

Following opening ceremonies the group worked on projects enabling various Scouts to attain their Tenderfoot Badges. Assisting these were Kenny O'Hair and Jimmy Coker, second class Tenderfoot Badges and Bill Morgan, Scott Lee, and Brad Haley, first class Tenderfoot Badges.

The next meeting of Scout Troop 614 will be Tuesday, October 21, at 6:30 p.m. at the Scout Hut.

Elza Barnes read the Prayer Calendar to conclude the meeting.

4-H CONSERVATIONISTS - Conservation of natural resources is one of the many projects open to 4-H Club members in Texas. Soil and water conservation, forestry, wildlife conservation, range improvement and others can be chosen by the member for intensive study.

Elza Barnes read the Prayer Calendar to conclude the meeting.

### Earth GA's Consider Program 'I Is The Norm To Conform?'

The intermediate group of the G.A.'s of the First Baptist Church of Earth met Tuesday afternoon at the church under the leadership of Mrs. R. S. Cole and Mrs. Jerry Starke.

The scripture for the day, John 4:19-21, and the prayer for missionaries were read by Mrs. Starke.

The program for this weeks study was entitled "Is The Norm To Conform?" Each girl was given a questionnaire to fill out in an effort to determine various traits of individuality. In connection with the theme Mrs. Starke gave a talk using these topics, "Me, Myself and Others," "Personality Plus," "Five Talents or One," and "The Call of Conformity."

At the conclusion of the discussion the girls were asked to consider their answers to the questionnaires and tell how they could use their talents in missionary work both in home and community.

Elza Barnes read the Prayer Calendar to conclude the meeting.

Elza Barnes read the Prayer Calendar to conclude the meeting.

Elza Barnes read the Prayer Calendar to conclude the meeting.



If you continue in my word, you are truly my disciples. —(John 8:31).

God has shared with us the ability to love. When our words

are charged with love, they have a way of bringing harmony and unity into our life and into the lives of others. God has shared with us the ability to manifest life. When our words are vital, they generate forces that heal and construct. Life flows freely through the individual who works freely with living ideas.

### NEW CAR TRADE-INS BARGAIN PRICED!

1969 FORD LTD. COUPE, power steering, power brakes, air conditioning, vinyl top, . . . . .	\$3750.00
1968 CADILLAC SEDAN De VILLE, four door, well equipped, . . . . .	\$4690.00
1967 PONTIAC EXECUTIVE, four door, power steering, power brakes, air conditioning, . . . . .	\$2285.00
1967 PONTIAC CATALINA, four door, power steering, power brakes, air conditioning, . . . . .	\$1995.00
1967 CADILLAC ELDORADO loaded, . . . . .	\$4460.00
1969 CADILLAC SEDAN De VILLE four door, loaded, . . . . .	\$5695.00
1968 PONTIAC CATALINA, four door, power steering, powerbrakes, air conditioning, . . . . .	\$2245.00



GOOD SELECTION OF '70 PONTIACS

\$\$\$ SAVE HUNDREDS OF DOLLARS \$\$\$  
ON NEW '68 PONTIACS (only 2 left) AND ALL '69 PONTIAC DEMONSTRATORS

- 1970 Pontiac Bonneville 4-Door Sedan
- See or Call . . .
- Woody Spencer
- Carroll Foster
- Buster Smith

### DON RIERSON PONTIAC-CADILLAC, INC.

3110 OLTON ROAD Plainview 296-2788

SEE OR CALL  
**BUSTER SMITH**  
For The  
**Best Deal To Be Found**  
On A  
**New or Used Car**  
Bus. Phone 296-2788  
Res. Phone 93-1737  
**Don Rierson Pontiac - Cadillac, Inc.**  
3110 Olton Road-Plainview

**GOOD HEALTH Is Your Greatest Asset**  
See Your Health Food Center In Plainview For Health Foods And Vitamins  
**FERN PROTEIN** 10 oz. can \$125  
**YEAST PLUS** 1 lb. can \$250  
Hours 10-4 Monday-Tuesday-Thursday-Friday  
10-6 Wednesday  
Open only by appointments on Saturday  
**HEALTH FOOD CENTER**  
Phone 296-9781  
3000 Olton Rd. Plainview

**Explorer Troop 614 Tour KMP Pump Company**  
Explorer Troop 614 met Tuesday, October 14, at 8:00 p.m. in the Pioneer Natural Gas Office.  
Program for the evening was a tour of KMP Pump Company, Earth. Doug and Gus Parish, co-owners of the Pump Manufacturing Company, showed the assembly and the lathe rooms in the shop, and explained the use of the various machines in making parts for the pumps. They also explained the purpose of the different parts in a pump and the types of pumps made by their company. After the tour questions were answered about the equipment.  
The group then returned to the Gas Office for a brief business meeting.  
Those attending were Jerry Barden, Tony Barton, Michael Lewis, Samuel Lewis, Danny O'Hair, Johnny Kelley, Jimmy Littleton, Greg Slover, Carl Subser, and the troop leader, Dale Riggs.

**Booster Club Holds Weekly Meeting**  
BOOSTER CLUB HOLDS WEEKLY MEETING  
A large number of Wolverine supporter's were present for the weekly Monday night meeting of the Springlake-Earth Booster Club in the Springlake-Earth School Cafeteria.  
Coach Travis Sursa gave a scouting report on the Farwell Steers, followed by the film of the Anton-Wolverine game. Coach Dean Wright gave his comments on the game and brief run-down on the current condition of the Wolverines.  
The Club held a business meeting with the sale of Booster Club "Sung Bags" the topic for discussion.  
Members voiced their concern over the lack of support and attendance at the Wolverine games and encourage everyone to be a loyal Wolverine fan by attending all games.

**NOTICE**  
I Will Be At The City Hall In The Following Towns On The Dates Indicated For The Purpose Of Collecting State and County Taxes:  
**SPRINGLAKE — OCTOBER 17A.M.**  
**AMHERST — OCTOBER 20**  
**SUDAN — OCTOBER 21**  
**EARTH — OCTOBER 22**  
**OLTON — OCTOBER 23-24**  
3% Discount Allowed For October Payment Of State And County Taxes.  
Voter Registration Receipts May Be Obtained From The City Secretary Of The Above Named Towns From October 1, 1969 Through January 31, 1970.  
**HERBERT DUNN**  
Tax Assessor-Collector,  
Lamb County

**ATTEND OUR 21st Anniversary Sale**  
On April 1, 1948 Harvey and Marie Bass opened for business in Muleshoe, and have enjoyed wonderful business now for over 21 years. We wish to thank you, our wonderful customers, for making this possible. We hope to serve you for many years to come and invite you to visit us at anytime. We are having this Anniversary so that you may be able to buy quality products at great reduced prices.  
We are offering 50 TV's and Stereos at prices lower than has ever been made in Muleshoe, or in the West Plains Area. We will have a very interesting week of programs. On Thursday afternoon October 23 at 2 p.m. we will have a cooking school conducted by Muriel Bridge, Home Service Director, Southwestern Public Service, and Bobby Ann Dutton, Home Service Advisor, Southwestern Public Service. The food cooked will be given away as well as a Frigidaire Ice Ejector.  
You may register daily, during the week for either a Frigidaire Dishwasher, Range, Washer, Dryer, Freezer or Refrigerator to be given to some person present at 9 p.m. Saturday night October 25th.  
Free balloons for the kids-door prizes for ladies, will be given. Free coffee and cookies will be served. Then hear the Sudan Singers, all eight of them, under supervision of Bud Wiseman, in person, sing gospel songs, as well as popular, starting at 8 p.m. Saturday night October 25th. This is always one of the enjoyable times of the year.

**YOU ARE INVITED**  
ALL APPLIANCES, SEWING MACHINES, CARPET, TABLE AND CHAIRS—everything is marked at great savings during this Big Event.  
Check a few of these prices listed below. They are a few examples of the bargains you will find among our fine merchandise.

**CURTIS MATHIS TELEVISIONS (In Stock)**  
Color - 14" COLOR PORTABLE On Stand---\$239.95 WT  
Color - 23" CURTIS MATHIS Color Console, Wood Cabinet Walnut or Maple---\$359.00 WT  
12 YEAR PICTURE WARRANTY \$12.00 EXTRA  
ALL OTHER CURTIS MATHIS PRICED ACCORDINGLY  
SAVE AT OUR 21st ANNIVERSARY CELEBRATION

**FRIGIDAIRE** PRODUCT OF GENERAL MOTORS  
APPLIANCES  
FRIGIDAIRE REFRIGERATOR - 19 cu. ft., 2 Door Cooper - Sold These Models For \$649.00 -- 1 to go at \$399.00 WT  
REFRIGERATOR II, 6N---\$169.00WT Dial O Frost  
FRIGIDAIRE WASHER & DRYER WAN & DAN ---\$339.00 WT  
REFRIGERATOR 20 ft. Side By Side With Ice Maker---\$477.00 WT  
Every Dishwasher, Electric Range, Washer, Dryer, Freezer, Refrig. Refrigerator will be Marked Down To Sell During This Big Celebration!

**MOTOROLA TELEVISIONS (In Stock)**  
14" COLOR TV---\$269.95 WT  
20" COLOR CONSOLE, Solid Wood Cabinet Your Choice Of 3 Styles-----\$394.00WT  
The Best Prices Ever Offered On Color TV.  
23" COLOR, EARLY AMERICAN, Maple Console ---\$439.00WT  
ALL OTHERS MARKED TO BOTTOM  
SAVE AT OUR 21st ANNIVERSARY CELEBRATION

**RCA TELEVISIONS & STEREOS**  
ALL RCA TELEVISIONS AND STEREOS WILL BE MARKED DOWN FOR THE LOWEST PRICES EVER DURING THIS CELEBRATION.  
WE WILL NOT BE UNDER SOLD!  
All Radios, Tape Recorders, Tape Players and Cassette Players Will Be Priced To Go.  
NO REASONABLE OFFER WILL BE TURNED DOWN.  
TRY US, AND YOU WILL BELIEVE US.  
SAVE AT OUR 21st ANNIVERSARY CELEBRATION

**SEWING MACHINES**  
New Machine Prices Start At \$38.00  
SINGER - NECCHI - NELCO - GOODHOUSE KEEPER  
All In Portable Cases, Heads Only Or Cabinets.  
SAVE \$50.00 on the new 640 SINGER, In Beautiful Maple Cabinet During This Great Event.  
AGAIN YOU WILL NOT BE ABLE TO BEAT OUR PRICES.

Muleshoe **HARVEY BASS APPLIANCE** Muleshoe







## FHA Hear Guest Speakers From Girls' Town

Members of the Springlake-Earth FHA met October 8 in the Home Economics Cottage on the Springlake-Earth Campus with Kathy Lee, president, presiding.

The program was presented by Mrs. Sally Star, House Mother at Girls' Town, Donna Stone, Miss Girl's Town, and Marilyn Sharp, resident of Girls' Town. The group gave a general review of life at Girls' Town contrasted to life in a regular home. Mrs. Star explained how Girls' Town is operated and how it is supported by donations. The girls also outlined how the educational program is conducted at Girls' Town.

A business meeting was conducted and plans made to conduct another canned goods drive slated for October 25. Plans were also made to send items to the service men in Vietnam. Kathy Lee, president, encour-

ages everyone when purchasing items at local business firms to buy two items and place one in the box provided to be sent to Girls' Town. The boxes will be left in the stores until after the Christmas holidays.

Refreshments of cookies and punch were served to FHA members, guest speakers, and Mrs. Bud Matlock, Mrs. D. D. Cavitt, Mrs. Crill Bulls, and Miss Kim Halley and Mrs. Cecil Slover, sponsors.

The next meeting will be November 12 in the Home Economics Cottage with a panel discussion on "Decisions That Count."

SOME OF THE NEWEST TOOLS of the era of separates, reports Kay Elmore, are vests, pants, skirts, casual short capes and double breasted blazers. Miss Elmore is an Extension clothing specialist at Texas A&M University.



RUFUS CARTER HONORED ON 80th BIRTHDAY. Left to right Lewy Bradshaw, grandson, Rufus Carter, Karen Williams, great-granddaughter, and Mrs. Onie Bradshaw, daughter.

## Rufus Carter Honored With Party On 80th Birthday

Rufus Carter, one-time resident of the Earth, Springlake, Lazbuddie area was honored with a birthday party on his 80th birthday, at his home in Farwell, Sunday, October 12.

Approximately twenty-five guests attended the celebration. Punch and sheet cake, decorated with the words Happy Birthday and the large figure 80 were served to the group.

Hostesses for the occasion were the honoree's three daughters, Mrs. Onie Bradshaw, Farwell; Mrs. Don McClure, Tulare, California, and Mrs. Mary Baker, Big Springs.

Rufus Carter was born in Wise County, Texas, October 11, 1889 and moved with his family to Southwestern Oklahoma in 1898 when he was eight years old.

Carter was married in 1911 to Lula Hullet and resided in Clifton,

Oklahoma, for twenty years.

In 1932 the Carters moved to the Plains and were engaged in farming near Muleshoe, Dodd, and Springlake. In 1937 he bought farmland east of Lazbuddie where he resided until his wife's death in 1966. He moved to his present home at Farwell shortly following his wife's death.

Carter has three daughters, one son, Harvey Carter of Stockton, California, eleven grandchildren and nine great grandchildren.

Carter claims that by putting everything he had into something he believed in, hard work, and visiting with friends have been the key ingredients to a happy fulfilling life.

His advice to those who want to reach their eighties and past is to "Have a sense of humor and forget birthdays."

## Earth Jr. Girl Scouts Work Toward Citizenship Badge

Twelve members of the Earth Jr. Girl Scout Troop 373 met Monday afternoon at the Earth Community Building for their weekly meeting.

The program involved an activity period with the girls' working toward the Jr. Girl Scout Citizenship Badge. The girls were instructed on the proper way to fold it. The group was also instructed on what it means to be a United States Citizen and how one can gain or lose this privilege.

A business meeting was held with the girls' meeting plans to participate in the Halloween Carnival to be held October 31 beginning at 6:00 p.m. and lasting until after the Sudan wolverine game at the Agriculture Show Barn in Earth.

The Flag Ceremony was conducted by Brenda Belew, Dorothy Rivers, and Carmen Wimberly.

Refreshments were served to the girls by Scouts, Neshia Lewis and Liddy Smith.

## Town and Country Study Club Has Program On Conservation

Members of the Town and Country Study Club met in the home of Mr. and Mrs. B. Campbell Thursday night for their regular meeting.

Mrs. Marie Ross, president, presided over the business meeting.

Mrs. Clay Beavers opened the program with the reading of Psalms 1:1-6.

Mrs. R. W. Fanning, conservation chairman was in charge of the program "The Gems of God's Earth."

Mrs. Marie Ross presented slides on "The Big Thicket." This is a beautiful spot in South Texas that is fast becoming ruined by industrialism and pollution. The Texas Federation of Women's Clubs are making a diligent effort to assist those already interested in the subject to get a 100,000 acre plot set aside as a national monument by the Congress of the United States.

Delicious refreshments were served to members Mrs. Clay Beavers, Mrs. Sam Gearty, Mrs. R. W. Fanning, Mrs. J. L. Hinson, Mrs. Ray Kelley, Mrs. John Laing, Mrs. Carra Morgan, Mrs. B. F. Orteg, Mrs. C. T.

Richardson, Mrs. Marie Ross, Mrs. Wayne Rutherford, Mrs. H. S. Sanders, Mrs. John Welch, and guests Mrs. Mirtie Beard, Mrs. Othel Trye, Mrs. Alford Dutton, Mrs. L. W. Sanders, and Mrs. Drew Swearingin.

T and C Club To Install Flagpole In Cemetery

Mrs. Marie Ross, President of the local Town and Country Study Club, reported this week that the club had elected to have a flagpole installed in the Earth Memorial Cemetery, as a project for the membership. Mrs. Ross said that anyone wishing to donate to this project could do so by seeing any member of the club.

The club has already secured a plot and has received permission to erect the pole.

Gus Parish has donated pipe, H. S. Sanders Lumber has donated pulleys for hoisting the flag, and Dave Cavitt will dig the hole for erecting the pole.

## Springlake Sunbeams Have Activity Period

The primary and beginner groups of the First Baptist Church of Springlake met October 8 for their weekly meeting.

The two groups are currently involved in the study of countries of the world with the primaries studying Brazil and the beginners conducting a study of Japan.

Mrs. Hollis Payne, primary leader, supervised her group in an activity period. The boys and girls made decorative flowers from colorful construction paper and book matches.

The beginners under the direction of Mrs. Bill Lunsford made mission banks. The banks

were baby food jars made into miniature Japanese men which stresses the topic of their study.

Refreshments of cookies and punch were served to the sixteen Sunbeam members by members of the Women's Missionary Union of the Springlake First Baptist Church.

## Party Line

Doug Messer, son of Mr. and Mrs. M. W. Messer of Earth, returned to his parent's home October 8 after being hospitalized in Lubbock Methodist Hospital for injuries he sustained in an accident near Abernathy Friday, October 3.



**REDDY KILOWATT REMINDS YOU . . .**

IT'S TIME TO STOCK UP DURING THE

**EARTH LIONS CLUB LIGHT BULB SALE**

Beginning October 21



When a club member comes a-knocking on your door, he'll have a carload of light bulbs. You'll get 4-100 watt, 2-75 watt and 2-60 watt bulbs and all for only \$2.00. It's a bargain, but at the same time they are using the money earned to carry out worthwhile projects for our community.



## Earth Sunbeams Have Study On Brazil

The primary group of the Earth First Baptist Church Sunbeams met Tuesday afternoon with their leader, Mrs. David Hartman.

The group is considering an outlined program for area Sunbeams with a study on the country of Brazil. The hour was spent learning various words in the Portuguese language and making name tags so that all members of Sunbeams could get acquainted.

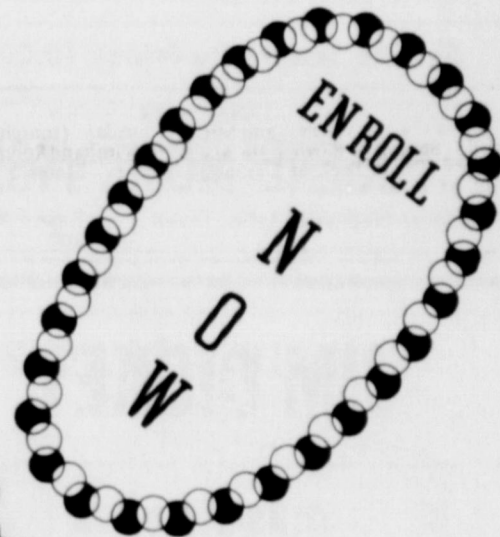
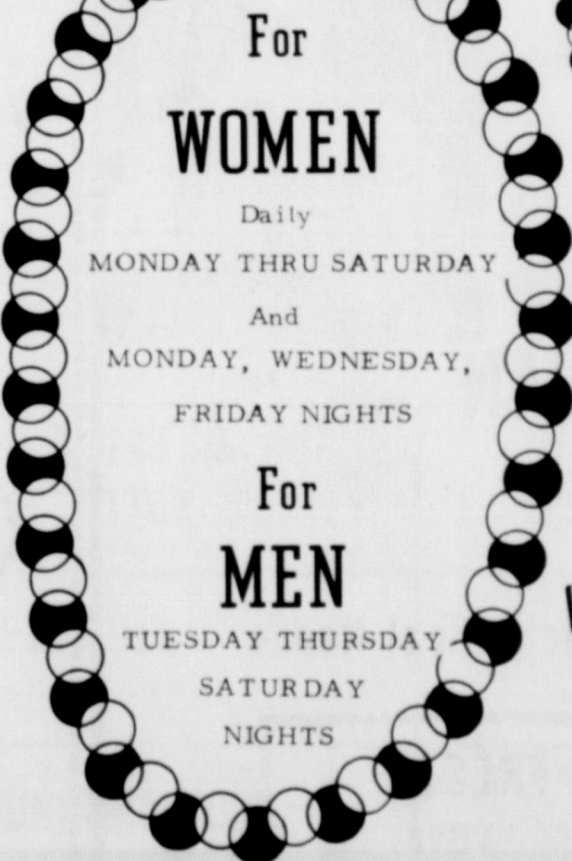
Following the activity period the group enjoyed refreshments of cookies and punch prepared by Mrs. Lillie Wuerflein.

Those attending were Era Rivers, Kyle Kelley, Kim Holder, Andy Hartman, Jackie Rivers, and Rodney Davis.



## TRIM and SLIM STUDIOS

Watch For Our Formal Opening In The Very Near Future



WE WILL BE HANDELING Carolina Scented Soaps Village Soap Products

9am - 9pm

ENROLL FOR 1 YEAR OR 3 MONTH COURSE

## TRIM & SLIM STUDIO

Mrs. Glen McGeath, Instructor  
Ph: 257-3903 - Earth

THE LATEST SPA EQUIPMENT IS INSTALLED



**TASTY TACO**

Hall Ave. & 7th  
Phone 385-6124  
Littlefield

**WILL YOU DO US A FAVOR?**

OUR goal is to serve each and every customer the finest Mexican Food in the South Plains... at a price that everyone can afford.

WE use only the finest ingredients in all our food. Our restaurant is equipped to serve 54,000 persons each month. It is almost a super-human job to please everyone--but, if we have help from you, our customer--we can very nearly achieve this goal.

PLEASE let us know about any item--any service--that is not satisfactory to you.

**YOUR SATISFACTION**

IS OUR UTMOST DESIRE  
THANKS A MILLION...  
..TASTY TACO MANAGEMENT

Tostados — Steak — Enchiladas
Sopapillas — Tacos — Burritos

Chili Rellenas — Chalupas — Seafood



## LEGAL NOTICE

Notice is hereby given to bidders of the intention of the City of Earth, Texas, to sell the following equipment to-wit:

One used 503 Gallon Maintainer.

The City Secretary will receive sealed bids for the sale of the above equipment up to 8:00 p. m. December 1, 1969, and a meeting of the City Council will be held at the City Hall of the City of Earth at 8:00 p. m. November 3, 1969.

The City of Earth reserves the right to reject any or all bids. EXECUTED this 15th day of October, 1969.

E. C. Kelley  
Mayor, City of Earth, Texas

Published in the Earth News-Sun on Thursday, October 16 and October 23, 1969.

Marco Polo noted that the ancient Chinese wove cloth with colored cotton.



**DILIGENT READERS:** Judy Herriage, Terri Smith, Quency Lewis, and Barbara Lanier, who are students at Springlake-Earth Junior High, recently received awards for reading a specified number of books during the Junior High Summer Reading Program.

### Rebekah Lodge Holds School Of Instruction

Eleven members of the local Rebekah Lodge met October 9 in the Oddfellow Lodge Hall in

Earth for their regular meeting. Activities Thursday night were devoted to the Rebekah School of Instruction conducted by Mrs. Forrest Simmons, Lodge Deputy. The members were given instructions on the By-laws of the Rebekah Lodge and points of Rebekah Secret Work and other Rebekah activities.

Refreshments of cake, coffee, and punch was prepared and served by Mrs. Francis Kelley to members attending.

Those present were Mrs. Lucille Henderson, Mrs. Pat Higgins, Mrs. Forrest Simmons, Mrs. Orbie Armstrong, Mrs. Francis Kelley, Mrs. Alma Stockstill, Mrs. Jim Robbins, Mrs. Era Walker, Mrs. Norene Taylor, Mrs. Clyde Parish and Mrs. Harvey Kendrick.

### Local Dears Enroll In LCC

Lonnie and Myrna, son and daughter of Mr. and Mrs. J. W. Dear, of Springlake, have enrolled for the fall semester at Lubbock Christian College. Both Lonnie and Myrna were graduates of Springlake-Earth High School. Lonnie was FFA President, FFA Secretary, and a member of the Letterman's Club. Myrna was a member of band for 4 years, FTA, FHA, and was on the Annual Staff. Lonnie is majoring in Biology-Chemistry and Myrna is majoring in Elementary Education. Lubbock Christian College is a private liberal arts college now entering its thirteenth year. It is a four year college offering bachelors degree in fourteen major fields of study.

### My Neighbors



"For a change I'm not going to insist on the usual formality of a vote. We'll just go on doing everything my way, period."

## Letters to the Editor

### HELP NEEDED!

Re: STANLEY BARTON HOSS, JR., Also known as William Matecka

Dear Sir:  
We recently wrote you regarding captioned subject, who was a badly wanted fugitive, believed to have kidnapped a young woman and her daughter in Cumberland, Maryland. I wish to inform you Hoss was apprehended October 4, at Waterloo, Iowa, in possession of the 1969

Pontiac belonging to Linda Peugeot, who disappeared September 22, 1969. Unfortunately, neither Mrs. Peugeot or her two year old daughter have been located to date. If your paper should receive any information concerning these victims, I would appreciate it very much if you would contact the Dallas Office.  
Thank you for your cooperation in this matter.

Very truly yours,  
J. Gordon Shanklin  
Special Agent in Charge

THE LEADING CAUSE of fires statistically is cigarettes and matches--about 162,000 U. S. building fires a year result from their improper use and disposal. Actually, PEOPLE cause most of the 2,400,000 fires annually, through carelessness, negligence and ignorance.

## Cotton Harvesters

The

### Allis Chalmers 7-60XTB

The Only One That Can Be Equipped To Handle Broad Cast Cotton.

### PRICED TO SELL

See Earl Ladd Or H. E. Reeder At

## MULESHOE IMPLEMENT SUPPLY

Muleshoe Muleshoe

## WE ARE STILL PAYING

# HIGHEST CASH PRICES

for your milo

WE OFFER FAST DEPENDABLE SERVICE AND

WE ARE LARGE ENOUGH TO SERVE YOU AND

SMALL ENOUGH TO APPRECIATE YOUR BUSINESS

# STATE LINE GRAIN, INC.

DELBERT BLACK, Mgr

246-3570  
481-3301

AMHERST FARWELL

## Tulia Livestock Auction, Inc.

IS NOW RECEIVING THEIR FALL RUN OF WHEAT PASTURE

and LIGHT STOCKER CATTLE

### WE NOW HAVE:

Good and Choice Black and Black-Whiteface Steers weighing 350 pounds.

One Class of Good and Choice Steers weighing 200-250 pounds.

Good and Choice Charolais Steers weighing 375 pounds.

This is just a few of the classes we have at all times. These cattle will be sold at any time through the week. BUYERS ARE WELCOME AT ANY TIME.

If we don't have the class of cattle you need we will be more than pleased to special order for you. Use our complete facilities for branding, vaccinating, and doctoring cattle for pasture.

We have trucks available for pick-up and delivery.

Auction Sale Every Friday 10:00 a.m.

### CONTACT

**EUGENE MOTE, MGR.**

Dimmitt Highway, Tulia, Texas Phone 995-2202

## JIM DICKEY

Is Now

Associated With



## BROWND-JORDAN FORD

And Can Fulfill All Your Mechanical Needs

### PEAK ANTI FREEZE

\$155 GAL. \$900 CASE

### Tune Up Special

Points, Plugs, Condensers, and Set Carbureator, Dwell, and Timing.

8 Cylinder \$15<sup>95</sup>

6 Cylinder \$12<sup>95</sup>

## Brownd - Jordan Ford Co. EARTH

Phone 257-2045

## JOIN THE BAND

WITH

### May & Duncan Music Company

- FIND OUT ABOUT OUR TRIAL PLAN FOR BEGINNERS
- TRY BEFORE YOU BUY
- ALL RENTAL FEES APPLIES TOWARD PURCHASE

"SOUND BUYS"

AUTHORIZED DEALER FOR THE FAMOUS BRANDS		
BUNDY	BACH	GEMEINHARDT
SELMER	BUESCHER	REYNOLDS
OLDS	VITO	HOLTON
KING	NOBLET	SIGNET
CLEVELAND	LEBLANC	LUDWIG

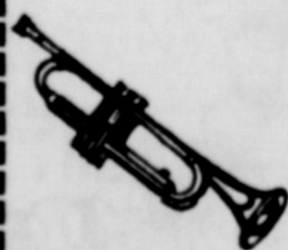
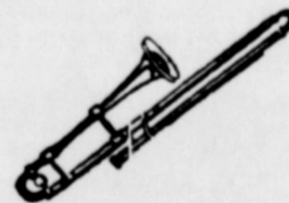
### Complete Repair Service

## May & Duncan Music Co.

"SERVING MUSIC EDUCATION"

209 WEST SEVENTH  
PLAINVIEW

ALSO IN AMARILLO -- PHONE 355-9022





# Support Your Team... Go to the Games

October 17 **WOLVERINES** at **FARWELL STADIUM** Game Time 7:30 P.M.

## FOOTBALL CONTEST

Nothing to Subscribe to... Nothing to buy...

No Obligation...

JUST FILL OUT AND SEND IN YOUR ENTRY...



### 3 Big Prizes

Given Away Weekly

FIRST PRIZE \$500 SECOND PRIZE \$300 THIRD PRIZE \$200

### CONTEST RULES

The teams that are playing in this week's contest games are listed side by side in the official entry blank on this page.

Use the handy entry and mark out the teams you predict to lose. Print the scores you predict in the tie-breaker game in the spaces provided.

Each week's entry must be turned in or mailed to the Earth News-Sun office. Contestants are given a week to prepare and turn in their entries.

Entries must be in by 4:00 p.m. Friday or postmarked on that date. All late entries will be discarded.

In case of ties, a coin will be flipped to determine the winners.

Each week the number of games correctly predicted will count toward each contestant's season total. The person picking the most games correctly for the entire season will receive the grand prize. In the event of a tie on the season total, a coin will be flipped to determine the winner.

The weekly prizes will be given to the persons picking the most number of games for that week. The tie-breaker will count as one of the games picked, and the predicted scores will be used to determine the top three places in that week's contest, if necessary.

Only one entry per person is allowed.



ENTRY FROM MUST BE TURNED IN BEFORE 4 PM FRIDAY, OCTOBER 24

### OFFICIAL ENTRY FORM

GAME TO BE PLAYED OCTOBER 24-25-26

TEAM	TEAM
KRESS	FARWELL
SUDAN	VEGA
WHITE DEER	STRATFORD
PETERSBURG	ROOSEVELT
FRIONA	FLOYDADA
IOWA PARK	MEMPHIS
LUBBOCK DUNBAR	LAMESA
ATLANTA	GREEN BAY
TEXAS TECH	SMU
NEW YORK	BOSTON

TIE BREAKER Indicate Score  
 WOLVERINES BOVINA MUSTANGS

Name \_\_\_\_\_  
 Address \_\_\_\_\_  
 City \_\_\_\_\_ State \_\_\_\_\_

<b>LAYMAN BROS.</b> Butane & Garage 257-3385 Earth	<b>OLTON STATE BANK</b> Member of F.D.I.C. Olton	<b>SPRINGLAKE GIN, INC.</b> "We appreciate Your Business" Phone 986-2401 Springlake	<b>SPRINGLAKE WELDING</b> Billy Russell Phone 986-2671 - Springlake
<b>EARTH AUTO PARTS</b> "Home Owned & Home Operated" Phone 257-3305 - Earth	<b>THOMPSON Chevrolet Co.</b> Phone 285-2646 - Olton	<b>Flagg Grain Co. - Dodd Elevator</b> George Blanton, Mgr. - Flagg Carl Gregory, Mgr. - Dodd	<b>EARTH GIN CO.</b> Phone 257-3371 - Earth
<b>BRYANT'S Dept. Store</b> "Nationally Advertised Wearing Apparel" Earth	<b>PARSON - ELLIS - SINGLETON Funeral Home</b> Phone 257-3350 - Earth	<b>KITTRELL ELECTRONICS</b> Zenith-RCA-Whirlpool N. Broadway, Hart 101 E. Bedford, Dimmitt Phone 938-2197 Phone 647-2197	<b>FULFER GULF STATION</b> Phone 257-3355 - Earth
<b>POUNDS (Rexall) PHARMACY</b> Phone 257-2170 - Earth	<b>Bailey County Electric Cooperative</b> Phone 272-4504 - Muleshoe	<b>EARTH OIL &amp; GAS CO., INC.</b> <b>SPRINGLAKE MOTOR SUPPLY</b> Earth Springlake	<b>BUSBY AUTO PARTS</b> Phone 986-2441 - Springlake
<b>KMP Lake Pump Mfg. Co.</b> Phone - 257-3411 - Earth	<b>Production Credit Association</b> Martel LeVeque, Olton 285-2651 W. B. LeVeque, Muleshoe 272-3162	<b>REDI FUEL</b> Phone 257-2195 - Earth	<b>BARTON BROS. Gin Co., Inc.</b> Phone 257-3911 - Earth
<b>CITIZEN STATE BANK</b> Member F.D.I.C. Earth	<b>HOWELL'S 216 FLORAL</b> "Football Mums" Gid & Mildred Howell, Owners 257-2051 - Earth	<b>PAYNE FUNERAL HOME</b> Phone 246-3351 - Amherst	<b>SUN-VUE FERTILIZERS, INC.</b> your Smith-Douglass fertilizer dealer! No. Amherst Road-Don Curtis, Manager-Office Ph: 257-2135 Home Phone 257-3747 - Truck Phone 965-2429
<b>EARTH CO-OP GIN</b> Earth	<b>EARTH ELEVATOR</b> "Your Purina Dealer" Phone 257-3301 - Earth	<b>SANDERS LUMBER CO.</b> Phone 257-2005 - Earth	<b>CENTRAL COMPRESS</b> Sudan <b>NICHOLS GIN</b> Pleasant Valley
<b>FARM CHEMICAL CO.</b> Earth and Springlake	<b>HARVEY BASS Appliance</b> "Your Frigidaire Dealer" Phone 272-3030 - Muleshoe	<b>WHITE'S AUTO STORE</b> "The Home Of Greater Values" Phone 257-2120 Earth	<b>EARTH TEXACO</b> Don Taylor, Owner Earth
<b>Wayne Rutherford "66" Station</b> Zella Mae & Wayne Rutherford Phone 257-3375 - Earth	<b>Northern Propane Gas Co.</b> Phone 647-2135 - Dimmitt	<b>TAYLOR MARKET BASKET</b> "Home Owned and Home Operated" Earth	<b>EARTH NEWS SUN</b> Ross and Polly Earth
<b>FEEDERS GRAIN CO.</b> Phone 227-5321 - Sudan	<b>BROWND - JORDAN Equipment Co.</b> Phone 257-3484 - Earth	<b>GERALD'S BARBER SHOP</b> Phone 257-3982 - Earth	<b>SUPPORT THE WOLVERINES</b>



# Local Wolverines Muzzle Bulldogs 58-8

Terry Bridge and Willy Wilborn led the scoring Friday night in the Wolverines 58-8 victory over the Anton Bulldogs.

Terry Bridge was top scorer for the Wolverines with three touchdowns and five extra points for a total of 23 points.

Willy Wilborn scored two touchdowns, one on a 65 yard punt return and a pass from Mike Cleavinger for 71 yards. He made a two point conversion on a pass from Bridge, making his total contribution 16 points.

The scoring was kicked off early in the game by Tony Barton who took a pitch out from Hoyt Glasscock and scampered 24 yards for the first TD of the game. This seemed to set the pace for the entire game.

Bridge scored the next TD by busting up the middle for 8 yards. The next TD came when he suddenly broke loose to outrun his opponent and scampered for 41 yards down the field for another touchdown.

In the final scoring of the first quarter, Wilborn returned an Anton punt for 65 yards to pay dirt.

At the end of the first quarter the Wolverines led by a score of 27-0.

The only scoring for the Wolverines in the second quarter was a 30 yard field goal by Hoyt Glasscock.



WHERE DO YOU THINK YOU'RE GOING? Says Tony Barton to Randy Jones No. 20 as he heads for the goal line for the first of his two touchdowns Friday night.

Anton's only score came in the second quarter via a lateral from Tom Gilbert to James Holmes who traveled 9 yards for the touchdown. The two point



TERRY BRIDGE-No. 31, hard running Wolverine fullback had 215 yards and 3 touchdowns in 16 carries Friday night against Anton. Terry is leading district 3A in total points scored for the season with 76 points.

conversion came by way of a pass from Tom Gilbert to James Holmes.

The close of the first half came with scoreboard showing, Wolverines 30 and the Bulldogs 8.

In the third quarter Hoyt Glasscock scampered 31 yards on a keeper for the first score in the second half.

Tony Barton took a lateral from Glasscock for 31 yards and his second touchdown of the night.

In the final period of play Mike Cleavinger passed to Wilborn who turned on the steam and traveled 71 yards for his second touchdown.

Final scoring for the night was

done by Bridge, who broke up the middle for 41 yards to score. The ball game came to an end with the scoreboard showing Springlake-Earth Wolverines 58-Anton Bulldogs 8.

Springlake-Earth had 17 first downs, 399 yards rushing and 183 passing, for a total of 582 yards on offense.

Anton had 15 first downs, had 85 yards rushing and 124 yards passing for a total of 209 yards on offense.

Friday night the Wolverines travel to Farwell to open district play against one of the Wolverines arch rivals, the Steers. Let's all turn out to see the Wolverines bulldog the Steers. Game time is 7:30 p. m. for all district games.

DISTRICT 3A STANDINGS				
Team	W	L	T	Pts.
Kress	5	0	0	140
Bovina	4	1	0	114
Springlake-Earth	4	1	0	108
Vega	3	1	1	86
Sudan	3	2	0	118
Farwell	2	3	0	27

**Last Week's Results—Kress 34, Silverton 4; Springlake 56, Anton 8; Boudwin 21, Farwell 27; Sudan 78, Plains 22; Vega 41, Texline 33; Fremship 42, Bovina 31.**

**Friday's Schedule—Bovina at Sudan; Springlake at Farwell; Vega at Kress.**

SCORING LEADERS	
Player	Team
Terry Bridge	Springlake
Johnny Jackson	Kress
Mike Bessuchamp	Bovina
Stuart McMeans	Bovina
Dean Rowell	Farwell
Larry Hanna	Sudan
Jackie Richardson	Vega
Tony Barton	Springlake
Jerry Belair	Sudan
Hoyt Glasscock	Springlake

\*Includes field goals.

# Peanut Growers Approve Texas First Commodity Check-off Referendum

AUSTIN--Texas' first commodity check-off referendum was approved by state peanut growers last week with an 84.2% majority, Agriculture Commissioner John C. White announced recently.

Results of the election were certified by Ross Wilson, manager of the Southwestern Peanut Growers Association, and forwarded to Commissioner White. Nine growers were also selected on the ballot as members of the commodity producers board which will set program goals and handle funds, White said.

The new board members are scheduled to hold their first meeting this week for election of officers. They will operate officially as the Texas Peanut Producers Board.

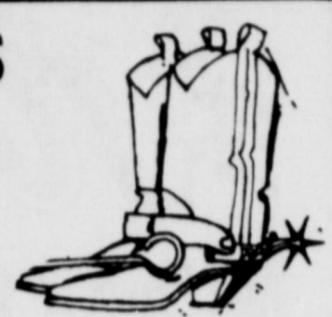
The commodity check-off program was authorized by the Legislature this year with House Bill 764. It enables growers of various commodities to organize and assess themselves for purposes of product promotion,

education, research, and disease and insect control. Ballotting by peanut growers was conducted by mail with a September 24th postmark deadline. The canvassing committee was named by the Southwestern Peanut Growers Association with the approval of Commissioner White.

## BOOTS

By

TONY LAMA  
JUSTIN  
NOCONA  
TEXAS  
ACME



Can All Be Found At

## FAIR STORE

120 Main Muleshoe

## WE OFFER



Charter Service



Flight Instruction

Air Craft Rental  
Hanger Space

Complete Aerial  
Application Service

## P & H Flying Service

Phone 385-4844 Littlefield

Mr. and Mrs. S. H. Chaney returned this week from Blue Jacket, Oklahoma, where they visited her sister and family, Mr. and Mrs. Jimmy Gray.

## LAMB COUNTY HOG and CATTLE CO.

NOW OPEN FOR BUSINESS

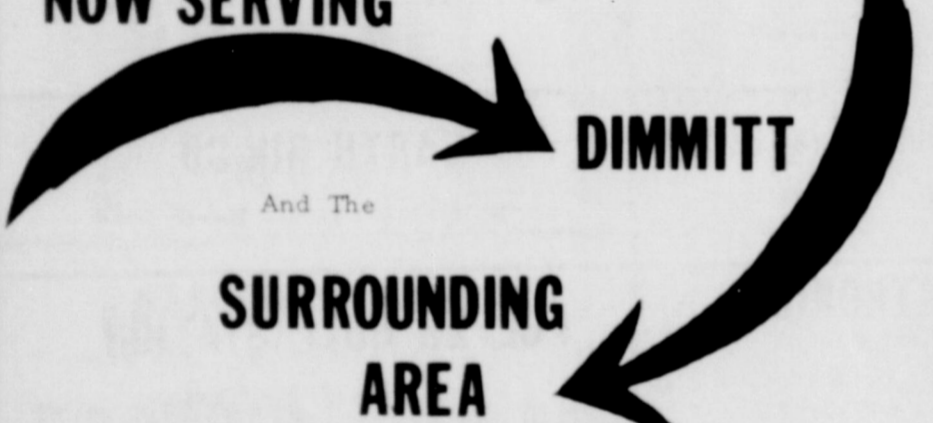
We Pay Market Prices For  
TOP HOGS And LIVESTOCK

We meet competition  
Large enough to serve you  
Small enough to appreciate your business

Located 1 Mile East Of Crossroads Service Station  
On Highway 84-Between Amherst And Littlefield

PH 246-3693 BONDED OWNED BY L.B. EADY

NOW SERVING



DIMMITT


And The

SURROUNDING  
AREA

FRONTIER BODY SHOP

209 1/2 E Bedford - Dimmitt - Phone 647-4498

We Specialize In



Windshield Installation

Ask For:

T. C. HUGHES

Shop Foreman

JIMMY SMITH

Bookkeeper, Appraiser,  
West Texas State University Student

JOE SMITH

Owner Of Tulia and Dimmitt Shops

We Use The Most Up To Date Equipment Available, And We Stand On Our Reputation Of Serving Satisfied Customers In The Tulia Area For The Past 6 Years.

Tulia Shop, Operated By Joe Smith Is Located  
At 820 Southwest 2nd, Tulia, Texas.

## WHY

### Plowdown Stubble With Liquid Fertilizer?

# HERE'S WHY

1. LIQUID FERTILIZER WILL STICK TO THE STALKS.
2. LIQUID FERTILIZER GIVES YOU MORE EVEN DISTRIBUTION OF ANALYSIS.
3. LIQUID FERTILIZER GOES TO WORK IMMEDIATELY DECOMPOSING STALKS.
4. LIQUID FERTILIZER AIDS GERMINATION OF MILO AND WEED SEED.



We have the following Liquid Fertilizer available.  
Also a blend of any analysis you may want.

28-0-0	URAN
10-34-0	
8-16-0	(with 11 trace elements and
4-10-10	micro nutrients)
12-0-0-26	
8-25-5	

Now is the time to apply and plowdown your  
Fertilizer needs for next year -

Pay Now Or No Interest Charged Till After June 1, 1970  
NO EQUIPMENT OR LABOR NEEDED WE DO IT ALL  
Your Past and Future Business Appreciated

## GREGORY FERTILIZER CO.

Dan Gregory OLTON  
PH 285-2330



# Borman, Campbell To Speak At International Textile Symposium

Astronaut Frank Borman and Under Secretary of Agriculture J. Phil Campbell will head a distinguished panel of speakers who will be addressing the International Textile Symposium at Texas Tech University in Lubbock, October 30th and 31st.

Colonel Borman, Astronaut and Commander of Apollo 8, the first manned Apollo flight to orbit the moon, has accepted an invitation to speak to the International Symposium on Thursday, October 30th, according to an announcement by Dr. John R. Bradford, Director of the Textile Research Center and Dean of the College of Engineering at Texas Tech.

Dean Bradford stated, "As an astronaut for the National Aeronautics and Space Administration and as the newly appointed Field Director, Space Station Task Group, at the Manned Spacecraft Center in Houston, Colonel Borman is extremely busy and we are most pleased that his schedule will allow him to participate in this International Textile Symposium. The success of the historic flight last Christmas, and the diplomatic assignments that have followed, have provided Colonel Borman with an excellent background for speaking to this international audience." Colonel Borman will address the luncheon meeting on "Apollo and Space Stations."

Colonel Borman will be introduced by Congressman George Mahon of Lubbock, Chairman of the Appropriations Committee of the United States House of Representatives.

The Honorable J. Phil Campbell, Under Secretary of Agriculture, will address the world gathering on Friday, October 31st. Secretary Campbell



COLONEL FRANK BORMAN



J. PHIL CAMPBELL

who takes great pride in his farm background, lived on his Georgia farm until moving to Washington to accept his current appointment. Secretary Campbell has a deep understanding of farm problems gained through many years experience. He is the son of a pioneer agricultural family and while earning his degree from the College of Agriculture of the University of Georgia he operated a Grade A dairy and raised cotton on the family farm.

President Nixon appointed Mr. Campbell Under Secretary of Agriculture in January 1969. The President also appointed him to the board of the Commodity Credit Corporation, which approves and finances specific price support programs and determines basic policy for the purchase, sale, and storage of agricultural commodities. His subject "Fiber Opportu-

unities of Today and Tomorrow" will be of genuine interest to all.

Another highlight will be the formal dedication of the newly expanded Textile Research Center. This Center has undergone tremendous growth during the past three years and now encompasses over 50,000 square feet of floor space. When completed, the Textile Research Center will be capable of studying textile operations on a large commercial scale from fiber production through dyeing and finishing.

The keynote speech October 30th will be delivered by

Julius H. Goldberg of New York City. Mr. Goldberg has a rich background in textile and chemical engineering and since 1953 has served as a consultant to fiber producers, chemical companies, textile mills, machinery manufacturers, and allied industries. His subject will be, "Ceiling Zero—Visibility Unlimited."

"The International Aspects of the Cotton Industry" is the subject title assigned to Roy B. Davis of Lubbock. As Chairman of the Board of the National Cotton Council and a life long student of the cotton industry, no one could be better qualified to handle this delicate subject. Mr. Davis served on President Johnson's Cotton Advisory Committee, he is a past director of Texas A&M University, and in 1968 was selected by Texas A&M University to receive the Distinguished Alumni Award. He is a past president of the National Cottonseed Products Association and is now serving on the Regional Export Expansion Council for the United States Department of Commerce. The many honors that he has received include Man of the Year selected by The Progressive Farmer magazine and Man of the Year designation by the Texas Agricultural Extension Service.

The needs and demands of the consumer will get special treatment by Fred Fortess, Manager, Consumer Technical Relations, Celanese Fibers Marketing Company of New York. In his talk entitled "Engineering Man-Made Fibers for Fashion and Performance," Mr. Fortess will draw on his experience in creating new and improved textile products as a result of his contacts with Home Economists

and other consumer organizations. Presiding over this first morning's program will be Dr. Michel Cordelier, Director of Foreign Relations, Institute Textile de France, Paris, France. The moderator for the afternoon session will be Alejandro Yujico, Jr., Vice President, General Textiles Incorporated, Rizal, Republic of Philippines.

Afternoon speakers will include Felix Colangelo, President, Wool Bureau, Inc., New York, N.Y. Mr. Colangelo's topic will be "International Aspects of the Wool Industry." As President of the Wool Bureau and Director of the U.S. Branch of the International Wool Secretariat, Mr. Colangelo is in the unique position of knowing all aspects of wool, both at home and abroad. After a nine year stint in the wool textile manufacturing industry, Mr. Colangelo joined the Wool Bureau in 1953 as financial controller. In September of the same year he was appointed Secretary-Treasurer and in 1963 was elevated to U.S. Branch Director and given executive authority for all of the International Wool Secret-

ariat activities in the United States.

Another Wool expert, Dr. Harold Lundgren, Chief, USDA Wool and Mohair Laboratory, Western Utilization Research and Development Division, Albany, California, will follow Mr. Colangelo. Dr. Lundgren's subject "Physiological and Psychological Criteria in the Selection of Fabrics" will be of vital interest to producers and mill executives, alike. Dr. Lundgren's in-depth study of proteins, particularly as found in wool, lead to the development of the WURIAN process for easier care of wool products by the Western Utilization Research Laboratory. He is a member of various scientific and honorary societies and has participated in many national and international symposia. His many honors include the U.S. Department of Agriculture's Superior Service Medal, the Golden Fleece Award of the California Wool Growers Association, election of the Royal Swedish Academy of engineering science at Stockholm, and the Olney Medal from the American Association of Textile Chemist and Colorists.

Apparel Manufacture with new Fabrics" will be Jerry A. Cogan, Jr., President, Deering Milliken Research Corp., Spartanburg, South Carolina. Mr. Cogan's rich background in textiles and textile research provides him with an insight to what the future holds for the textile industry.

"Chemical Finishing of Cotton" is the subject for the Friday morning speech by Dr. Leonard Smith, Director of Utilization Research, National Cotton Council, Washington, D.C.

Completing the Friday morning program will be the address by Secretary Campbell and the dedication ceremonies.

Chairman for this final session will be Charles G. Scruggs, Editor, The Progressive Farmer, Dallas, Texas.

Of special interest during the International Symposium will be the Thursday evening banquet at the Lubbock Country Club. Dr. Willis V. Tinsley, Dean, College of Home Economics, Texas Tech University, will be Master of Ceremonies and Dr. Milton Harris, Founder of the Harris Research Laboratories, will be the after dinner speaker on the subject of "Textile Science as Part of the Changing Science Scene". A colorful fashion show "The Fashion World of Tomorrow" will be coordinated and narrated by Mrs. Kim Dawson, Fashion Coordinator, The Apparel Mart, Dallas.

This is the first International Textile Symposium, that includes all segments of the complex textile industry. We are very pleased to be sponsoring such an important event in Lubbock and on the campus of Texas



The Bible Through faith... won strength out of weakness.—(Heb. 11:33, 34).

Some persons may equate strength with the power to move heavy objects; or the power to move other persons through the force of their will. But the strength of God is the strength that is equated with ever-renewing vitality, with an eagerness for life. It enables us to help other persons without attempting to dominate them. It is a strength that is equated with the God-power within us.

## Final Reductions Have Been Made

All Remaining Inventory Going At

**DEALER COST** Or Less  
**Savings Of Up To 50%**

And More

Item	Condition Of Stock
LIVING ROOM SUITES	SELECTION EXCELLENT
RECLINER CHAIRS	SELECTION GOOD
ARM CHAIRS	SOLD OUT
COFFEE & END TABLES	SELECTION FAIR
LAMPS	SELECTION FAIR
DINING ROOM SUITES	SELECTION LIMITED
BEDROOM SUITES	SELECTION FAIR IN UPPER QUALITY
MATTRESS & BED SPRINGS	SELECTION GOOD
WASHERS & DRYERS	SELECTION LIMITED
RANGES	SELECTION LIMITED
DISH WASHERS	SELECTION LIMITED
REFRIGERATOR	SELECTION EXCELLENT
FREEZERS	SOLD OUT
COLOR TV'S	SELECTION EXCELLENT

ONLY A FEW WEEKS LEFT TO TAKE ADVANTAGE OF THESE MANY SAVING PRICES

Family Mart, Inc. d/b/a

**WAREHOUSE**  
**Furniture - TV - Appliances**

121 SE 2nd

Dimmitt

## Career Opportunities

in the Panhandle-South Plains-Eastern New Mexico area in a Major Communications Company. Experience not Required - We provide training leading to qualification as cable splicers helper, Equipment installer's Helpers, Groundman, Lineman and Station Installer. Good Pay and Benefits. High school graduates preferred, but will consider less. Also openings for experienced cable splicers and equipment installers. Pay Comensurate with Experience. Apply to

**GENERAL TELEPHONE COMPANY**

Box 992, Littlefield, Texas  
AN EQUAL OPPORTUNITY EMPLOYER.

## SPECIAL!!!

CONTINUOUS FILAMENT NYLON PILE

Good Selection **CARPET** Colorful Selection

**5.95** SAVE NOW **6.95**

INSTALLED OVER SPONGE RUBBER PADDING

**Son Carpet Center**

"Plainview's Oldest Carpet Speciality Store"

805 Broadway Plainview 296-2761

**BUY SELL**

# CLASSIFIED ADS

Mrs. Lucy Lewis and Mrs. C. L. Houchin are to attend a Training Program of the American Cancer Society October 15, 16, in Houston, Texas.

LOST: School Service Award Pin. Engraved with Springlake-Earth School. Call 257-3887. 10/17/2tp

**Don't Forget!**  
To See **George Long**



For Your Automotive And Truck Needs **Pontiac, GMC, Rambler, And Better Used Cars Rierson Pontiac**  
Clovis, New Mexico  
Home Phone: 481-3876  
Farwell, Texas

## My Neighbors



"Never heard of it..."

CALL **JOHNNY ENLOE**  
Phone 257-3776  
For All Your Cleaning Needs  
Your Local Representative For **JACK SPRATT JANITOR SUPPLY CO.**  
We Can Supply Your Needs For Business, Church and Home.

FOR LEASE: Ditch wench trencher. Call Don Spain at Oilton Farm Supply, 285-2404. 10/3/tfc

FOR SALE: House and small tract of land, 12.2 acres, with 8 inch irrigation well. Located northwest of Muleshoe, close in. Phone 272-3795. 10/16/2tc

FOR SALE: '66 Mobile Home, 12x50, day phone, 257-3305, night 257-3825. 7/17

FOR SALE: 3 bedroom home carpeted throughout, storm windows, insulated, washer and dryer connections, large garage, fenced yard, large concrete cellar. Call A. B. Odom after 5:30 p.m., 257-3488. 10/9/tfc

SEE ME FOR ALL Types of Insurance, Ivey Insurance-210 W. Bedford, Dimmitt, 7/17/tfc

SEWING MACHINE REPAIR SERVICE-all work fully guaranteed call Oilton 285-2906. 7/17/tfc

FOUND: Set of GM automobile keys call Earth News Sun 257-2451-owner pay for ad. 10/9/tfc

FOR RENT or SALE: 2 bedroom house, washer and dryer connections, garage, antenna. Call A. B. Odom after 5:30 p.m., 257-3488. 10/9/tfc

FOR SALE: 60 foot, 3 bedroom mobile home. Jim Dick McNeill. Phone 257-2147. 10/9/2tc

NEED PARTY WITH GOOD CREDIT in Earth area to take over payments on 1968 Model Singer Sewing Machine in Walnut console. Will zig zag, button hole, fancy patterns, etc.,. Five payments at \$5.55 or will discount for cash. Write Credit Dept., 1114 19th St., Lubbock, Texas 79401.

FOR SALE: Nine City lots south of Earth Elevator, contact Citizens State Bank in Earth. 1/18/tfc

FOR RENT: Two bedroom house, carpet, utility room. \$50 per month. Phone 257-2461. 6/8/tfc

FOR APPLIANCE REPAIR call Edwin O'Hair, Phone 257-2154 or 257-3346. 4/4/tfc

FOR RENT: Two bedroom house located on Cedar Street. Call 257-3844 or 257-3745. 10/16/tfc

FOR SALE-Sewing Machines We are franchise dealers for Singer, Necchi, Necco and Good Housekeeper. We repair any make. Scissors and pinkie shears sharpened. Call 272-3030 in Muleshoe, Texas, Harvey Bass Appliance. 6/1/tfc

**MONUMENTS**  
Winnboro Blue Granite  
White Georgia Marble  
and others  
Including Bronze for Memorial Park Specifications  
See or Call Collect Percy Parson, Oilton Phone 285-2621 or 285-2767 Frank Ellis, Muleshoe 272-4572

**TRUCK SEATS EXCHANGED 15 MINUTE SERVICE McCORMICK'S AUTO SUPPLY AND TRIM SHOP PHONE 385-4555 LITTLEFIELD**

**QUICKBALL PRYOR CO., INC.**  
Automobile Parts Supplies & Equip. P. O. Box 567 Earth Texas

**HAMMONS FUNERAL HOME**  
Ambulance Service  
Phone 385-5121  
LITTLEFIELD TEXAS

**FEEDERS GRAIN, INC. DAILY BUYERS FOR CATTLE FEEDERS**  
Federal Storage License 3-4451  
We Can Use Your Grain  
**SUDAN LIVESTOCK and FEEDING CO.**  
Phone 227-5321  
Sudan

## BUSINESS and INDUSTRIAL DIRECTORY

**COMMERCIAL PRINTING**  
EARTH NEWS-SUN

To Rest Assured use **SAFETY DEPOSIT BOX Protection**  
**FIRST STATE BANK**  
Dimmitt, Texas

Your BUICK OLDSMOBILE DEALER  
**BROCK MOTOR Muleshoe, Texas**

**TEXAS PRESS ASSOCIATION**  
MEMBER

**Harvey Bass Appliance**  
YOUR DEALER FOR  
• FRIGIDAIRE  
• RCA VICTOR  
• MOTOROLA  
PHONE 272-3030  
Muleshoe, Texas

**JOB PRINTING**  
EARTH NEWS

SHOP FOR ALL YOUR OFFICE SUPPLY NEEDS AT **EARTH NEWS-SUN**  
PHONE 257-2145 EARTH

NEED MONEY FOR CHRISTMAS? Be A FULLERETTE In Earth And Earn Up To \$50.00 A Week Servicing FULLER BRUSH Customers.  
Write **FULLER BRUSH CO.**  
6D Lubbock National Building  
Lubbock, Texas  
Ph: PO 2-2412



## Tips On Blenders Given

COLLEGE STATION.--Most blenders operate best if the container is two-thirds or less full. For thick mixtures, Linda Jacobsen, Extension home management specialist, says to fill the container only half full. For thin, free-flowing mixtures, the container can be three-fourths full. To clean the blender, the specialist suggests filling the container half full of water, adding a few drops of detergent. Operate for an instant, rinse and dry.

## Texas Second In Angus Business

Texas Angus breeders registered 32,966 head of new purebred Angus calves during the 1969 fiscal year and sold and transferred the registration papers on 27,061 head to rank second in the nation in both these categories, Lloyd D. Miller, secretary of the national beef registry association with headquarters in St. Joseph, Missouri reported.



EARTH LIONS CLUB MEMBERS WERE ENTERTAINED--Tuesday at noon by the Springlake-Earth Choral Group. Members of the group are: Maria Bosquez, DeAnne Brock, Gary Buckner, Mary Lou Cerda, Regina Cole, Donnie Galloway, Tresea Glasscock, Don Haberer, Camille Haberer, Karen Hinchliffe, Kent Kelley, Kathy Lee, Frank McNamara, Paul Miller, Frances Padilla, Brenda Roberson, Larry Rudd, Ramona Russell, Rickie Russell, Refugie Samarron, Chuck Smith, Gloria Stephens, Rosie Posada, JoAnne Temple, Janice Townsend, Karen Dear, Marion Dawson and Helen Washington. The group was conducted by Mrs. Donna Benke.

During the 12 month period ended September 30 some 454 persons started new Angus herds in the state and took out life memberships in the American Angus Association. Also some 182 Texas youngsters joined the Association as junior members, enough to rank the state third in the nation in both categories.

Nationwide sales of Angus cattle were up 10% in the 1969 fiscal year compared to 1968, and average prices were also higher. Total transfers were 338,971 head compared with 308,082 the previous year. The average price for all cattle sold at auction was \$490, up \$26 per head over last year. Registrations of new Angus calves were 388,888, more than the total reported by any other breed association, but down about 4% from last year's record high. The decline in registrations was attributed to a change in fees and ages for registering Angus that went into effect April 1.

## Banks Lending More Money To Farmers

Exceptional gains registered in 1968 maintained the leadership of Texas banks among lenders providing credit and other financial services to the state's farmers and ranchers, according to Derrell Henry of Odessa, President of the Texas Bankers Association. Based on the 28th annual farm lending summary of the American Bankers Association Agricultural Committee, Mr. Henry said that as 1969 opened, Texas banks were aiding farm and ranch customers with \$886,200,000 in loans. Included in this total were \$722,237,000 in production and other types of loans not secured by real estate, a gain of 10 percent over the previous year and of 47 percent since 1964; also \$163,983,000 in mortgage loans, up 16 percent for the year and 71 percent since 1964.

At the same time, \$476,365,000 in farm real estate loans was held by Federal Land Banks, an 8 percent annual gain, \$610,406,000 by life insurance companies, plus 4 percent; \$667,000,000 by individuals and others, plus 7 percent; and \$13,658,000 by the Farmers Home Administration, a 6 percent decline from the preceding year.

"These figures assembled by the American Bankers Association are the result of a trend long familiar to Texas Bankers," Mr. Henry said. "All of us, big city and small town bankers alike, recognize that agriculture requires big capital investments and operating funds. In light of the ABA figures, I think it is self evident that Texas banks are working to serve the needs of our growing farm and ranch economy."

## 9th Annual Association Set For October 17 In Littlefield

The Ninth Annual Session of the Llanos Altos Baptist Association is October 17, from 9:15 a. m. - 12:30 p. m. at First Baptist Church in Dimmitt. Dr. Raymond Perkins is the host pastor. Moderator for the day is J. L. Bass, pastor of First Baptist Church in Farwell. The theme for the program is "Steadfast, Unmovable, and Abounding."

There are thirty-three churches and eight missions with a membership of forty-six hundred co-operating together in the Llanos Altos Baptist Association.

Dr. Charles McLaughlin will be the featured speaker at 9:55 a. m. He is the State Mission Commission Secretary of the Baptist General Convention of Texas.

The annual sermon will climax the program at 12:00 preached by J. R. Manning, pastor of First Baptist Church, Sudan. D. C. DeBose is the alternate preacher. Lunch will be served by the host church.

Several from Springlake and Earth are expected to attend.

About 50% of cotton produced is used for clothing.



IDS *Disciplined Services*  
exclusive national distributor for  
**SIX MUTUAL FUNDS**  
for a prospectus (informative booklet)  
CALL YOUR IDS MAN  
David LeRoy Thompson  
Muleshoe Phone 272-4477

## Spanish Furniture Is Best Seller

COLLEGE STATION.--Spanish-Mediterranean styled furniture still is the top selling style but sales in modern and contemporary styles are increasing the fastest.

Bonny Lay, Extension housing and home furnishings specialist, reports on a semi-annual survey conducted by the home furnishings trade newspaper, Home Furnishings Daily.

According to rooms, Spanish rules in the bedroom, dining room and family room. It was listed second behind traditional for the living room.

Green, whether solid or the dominating color in a print, is the

favorite color for both traditional and modern furnishings. Gold was second with black-brown-beige neutrals, yellows and blues showing a definite increase in popularity, Miss Lay says.

In woods, walnut dominates the modern, contemporary and Scandinavian styles; whereas pecan is for Spanish-Mediterranean styles. Maple continues to be favored for French and Italian; and mahogany for 18th century styles.

Mr. and Mrs. L. Z. Anglin visited with relatives in various portions of Oklahoma last week.

## We Now Have

### A GOOD LINE OF GIFT ITEMS



For All Occasions

And Also

### Several Antiques

We Have A Large Selection Of Mens, Womens, and Children's Clothing, Both New and Used.

-GOOD SELECTION-

### WESTERN BOOTS

Boots and Shoes - New or Rebuilt

WESTERN SHIRTS & WESTERN SLACKS

ALSO

Blankets, Quilts, Bedspreads, Curtains, Drapes

STORE HOURS

9-8 Monday-Friday, 9-10 Saturday, 9-7 Sundays

## OSBORN'S DISCOUNT MART

103 E. Bedford Dimmitt, Texas

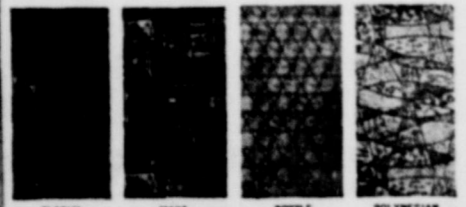
## Regency House of Paneling

3805 - AVE. A . . . PHONE SH7-3316

HOURS: MON. THRU FRI. 8 TO 5:30 - SAT. 8 TO 12

EMBOSSED ROOM DIVIDERS for BEAUTY in both 2 and 3 dimensional panels:

CHOICE OF 3 COLORS--AMBER, RED, GREEN, GOLD

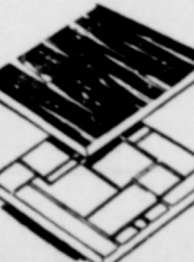


### ROOM DIVIDERS

2' x 6' Panels . . . . . \$5.95

Stained Mahogany Frames.. \$7.95

### FLOOR TILE



Vinyl Asbestos

12" x 12" \$14 1/2¢ SQ. FT.

These beautiful American and African hardwoods are complimented by a tough plastic-type Acrylic lacquer finish. This durable finish is easily maintained and will give permanent beauty and luster.

### African Hardwood Paneling

4' x 8' Sheet TAWNEY OKUME \$6.95

### American Hardwood Panels

AUTUMN BIRCH 4' x 8' Sheet \$6.95

## Regency House of Paneling

## POPULAR DEPT. STORE

SPECIALS FOR THURSDAY, FRIDAY, AND SATURDAY 501 Broadway - Plainview

### LADIES' DRESSES

Sizes 3-11, 5-11, 10-20, 14-24 Super Extra Size 28-32

### GIRL'S DRESSES

Entire Stock Sizes 9 Months to 14 Years 1/4 OFF Regular Price

### GIRL'S COATS

Sizes 4-6X 8-14 \$4.95 UP

Mens Work & Dress In Extensive Styles Boots 20% OFF

With The Lowest Price In The Entire Area

## Our New SPRAY TRUCK Is Ready To Serve You...



We Handle A Complete Line Of SOL-U-PHOS, and GOODPASTURE LIQUID FERTILIZER

We Can Apply All Liquid Fertilizers & Herbicides

Contact David, Sandy, or Phil at

## FARM CHEMICAL CO.

Springlake