



# BAILEY COUNTY JOURNAL

The Community Of Opportunity-Where Water Makes The Difference



© 1990

Vol. 31, No. 33

Published Every Sunday At Muleshoe, Bailey County, Texas 79347

Member  
TEXAS PRESS  
ASSOCIATION

20¢

Sunday, August 16, 1992

## Mule Days Celebration Begins Friday

### around Muleshoe

Four students from Muleshoe are among the 335 Eastern New Mexico University students named to the 1992 summer semester Dean's Honor Roll.

Those students are Consuelo Alanis, junior elementary education major, cum laude; Nancy L. Benham, teaching certification, cum laude; Alice Felan, elementary education major, summa cum laude; and Kristy Dianne Wolfe, sophomore special education major, summa cum laude.

Eastern students receive one of four designations as a Dean's Honor Roll student and are graded on a 4.0 scale. Summa cum laude students have a 3.8 to 4.0 grade point average while magna cum laude recipients have a 3.17 to 3.79 GPA. Cum laude students hold a 3.6 to 3.69 GPA and students receive "honors" if they have a 3.25 to 3.58 GPA.

\*\*\*

Ropesville's annual fund(D) Fiesta and Craft Show has been scheduled for Saturday, August 29 at the Ropes High School (Ranch and Ellington Street).

Parade line up will be at 8:30 a.m. and included in the parade will be antique car clubs, riding clubs, Red Raider Red, Mask Rider, Texas Tech Pom-Pom Girls, Shriners

Cont. Page 6, Col. 5

### Bailey County Included In Disaster Area

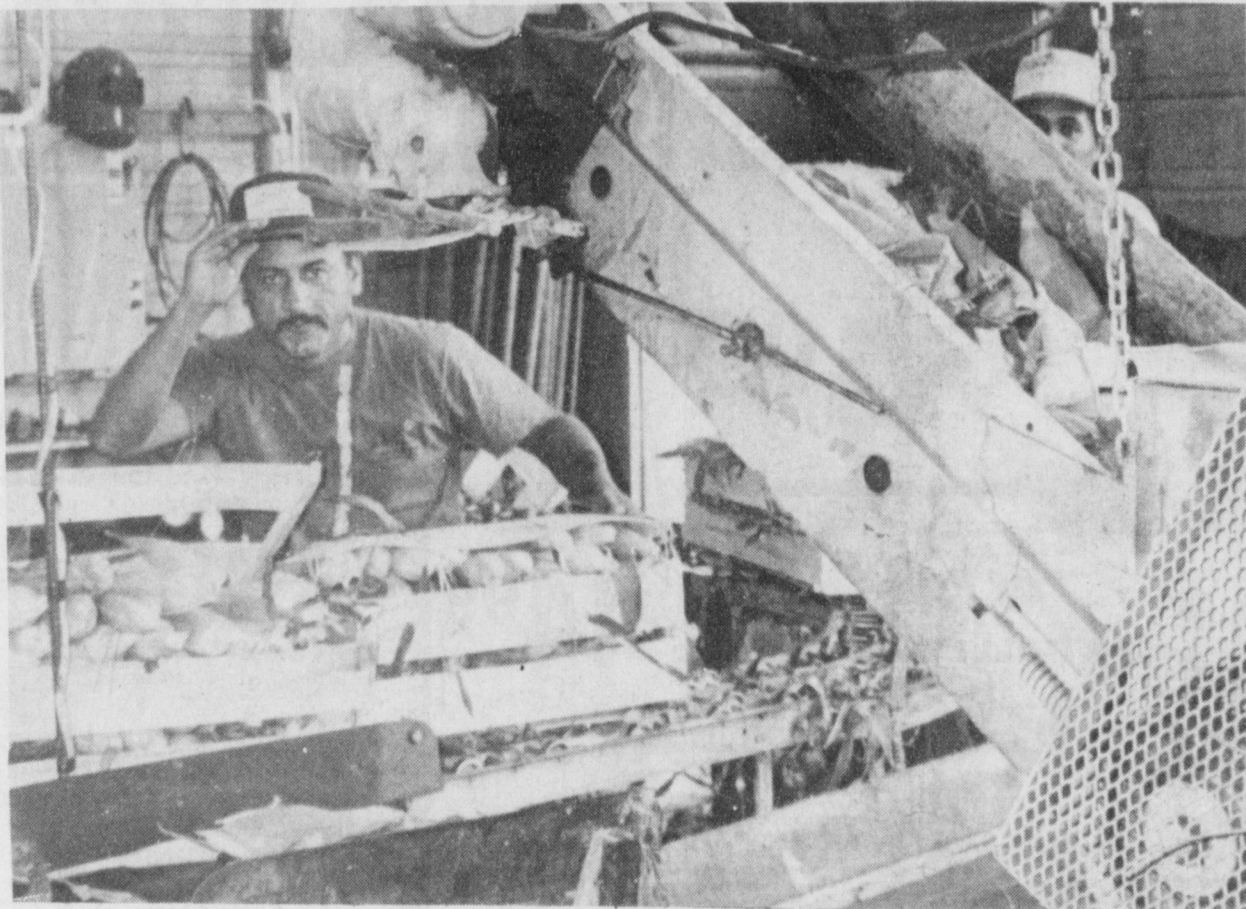
Gov. Ann Richards has asked President Bush to declare 12 Texas counties as major disaster areas due to agriculture losses from excessive rain and hail which have affected the area since May.

The Governor's request specifically cites the need for unemployment assistance and emergency loans, to relieve economic hardship created by a devastate cotton crop in the affected counties.

Those counties include Bailey, Briscoe, Castro, Cochran, Crosby, Floyd, Hale, Hockley, Lamb, Lubbock, Parmer and Swisher.

In her request, the governor noted that the disaster has left thousands of migrant farm workers unemployed and threatens the

Cont. Page 6, Col. 5



GETTING CORN READY FOR SHIPPING---Ben Roming ships approximately 3,000 boxes of sweet corn daily. The corn is grown locally and sent to Dallas, Houston, San Antonio, Amarillo, Las Angeles, Oklahoma City, and Missouri. The corn is pre-cooled and then iced down before shipping. Roming starts the corn processing in mid-July and continues until Labor Day. (Journal Photo)

## 1992-93 School Term To Open Tuesday

With the opening of school in the MISD only a few days away, principals from each of the four campuses in the district met with the School Board Monday night and reviewed the handbooks of each of the campuses.

Principals at each of the campuses are Helen Grigsby, Dillman Elementary; Barbara Finney, DeShazo Elementary; Bob Graves, Watson Jr. High; and Al

Bishop, high school.

It was the general concensus that even though all of the campuses are not ready to open at the present time they will be Tuesday morning, August 18.

"We are ready to get into the school," Ms. Grigsby said. "We have moved the librarian into a classroom until the new library is finished. The contract date is Oct. 15, but it could possibly be

finished in September. The work on the building will not effect the learning process at the school. The air conditioner works beautifully in the lunch room."

Ms. Grigsby reported that Dillman now has 310 students and more are expected. The school also has five new teachers to begin the 1992-93 school term.

When asked if the construction would have an effect on the emergency exit plans, Mrs. Grigsby said, "No, we began practicing last fall, and the students pretty much know where to go. Ms. Grigsby is not expecting there to be a problem if there is an emergency.

"Our homework policy is a little different than last year," Mrs. Finney said, in speaking for DeShazo Elementary School. "We will also be starting a little earlier and dismissing earlier. The tardy bell will sound at 8:20 a.m. and school will dismiss at 3:10."

"We expect to have 400 students at DeShazo this fall," Mrs. Finney continued. "With two additional third grade classes. We have eight new teachers at DeShazo, only three of these teachers are new to the district."

DeShazo now has a new mural in the front hall.

"Our handbook is basically the same as last year," Bob Graves, principal at Watson Jr. High, told the school board Monday night.

"We are not ready to begin school now, but we will be by next week," Graves said.

"The tardy bell will sound at 8:20 a.m. and school will dismiss at 3:30 p.m.

About 375 to 380 students, an increase of 25 students, is expected at Watson Jr. High.

"We are really excited about the opening of school," Graves said. "Students may pick up their schedules Monday afternoon from 2 to 3 p.m. Graves continued.

At high school, Al Bishop, principal, said, "We are not ready now, but we will be by Tuesday. I think the kids will like the cafeteria, it looks real good."

Three hundred and eighty students are expected to be enrolled in the high school. "We may lose 20 to 30 to the PEP school," Bishop continued.

Sam Harlan called the regular meeting of the board to order at 7

Cont. Page 6, Col. 1

## Roping Events Set Friday Night

Come one! Come All! Mule Days promises to be another big event in Muleshoe on August 21 and 22.

On Friday all of you Mule-ropers can practice and join in the fun of roping for prizes at Joe's Boot Shop. This should be a real "Kicker" for groups of all ages. Both Friday and Saturday there will be some awards given for the winners.

There will also be some "Western Story Telling" by two of what is said to be very famous story tellers at Joe's Boot Shop during Friday and Saturday. Everyone is asked to drop in and join the fun.

Friday evening, there will be some serious and exciting roping events by really good professionals at the Muleshoe Roping Arena. These events will carry over to Saturday night. There will also be a concession stand open at the rodeo grounds both Friday and Saturday.

Mule Coon Jumping will begin at 9 a.m. Saturday at the Mule Memorial Parking Lot.

The story of Mule-jumping goes back to the "Early American" says when "raccoon" hunting was done on mules. When the hunters approached a fence, they would get off their mules, put a coat or gunny sack over the fence, and the mules would then jump over and resume the chase. Thus, the mule coon

jump contests were begun. The world record for this event is said to be approximately six feet and four inches. This should be an interesting sight.

Immediately following the mule-jump, activities will proceed to the Riding Club arena located east of Muleshoe on Highway 84 at the Stockyard Auction Exit-North side of the highway-across the railroad tracks. There will be a "Mule-Pulling contest followed by the completion of the calf and steer roping contests.

The Muleshoe High School athletes will be introduced at the Benny Douglass Stadium.

A street dance has been scheduled on Main Street from 9 p.m. to midnight hosted by "The Fun Dancers-Entertainers."

At 6:30 p.m. the show will get underway at the Heritage Center. The Saga of Bailey County with real acting by the Mule Plex Production group of professional actors and actresses, can-can dancing, fun and frolic in a historical type of entertainment.

An old fashioned meal will be served at a minimal charge, Cont. Page 6, Col. 5

## Muleshoe ISD Offers Vocational Programs

Muleshoe I.S.D. offers vocational programs in Vocational Agriculture, Consumer and Gainful Homemaking, Industrial Education, and Distributive Education. Admission to these programs is based on enrollment in appropriate grade level in Muleshoe High School.

It is the policy of Muleshoe I.S.D. not to discriminate on the basis of race color, national origin sex, or handicap in its vocational programs, services or activities as required by Title VI of the Civil Amendments of 1972, and Section 504 of the rehabilitation Act of 1973, as amended.

Muleshoe I.S.D. will take steps to assure that lack of English language skills will not be a barrier to admission and participation in all educational and vocational programs.

For information about your rights or grievance procedures, contact the Title IX Coordinator, Adrian Meador, at 514 West Avenue G. Muleshoe, Texas 79347. Telephone 272-3325.

## Jose Brothers Here For Mule Days

The Jose Brothers will be performing at Joe's Boot Shop Saturday, August 22 during the Mule Days Celebration.

The Jose Brothers are a duo group comprised of Clay Lindley-cowboy comic, and Gil Prather-accomplished musician, singer, and

songwriter. For several years The Jose Brothers have brought their special blend of humor, cowboy poetry and music to Arizona, Colorado, New Mexico, Nevada and Texas; and while audiences from far and wide enjoy the Jose Brothers, they are said to be a special West Texas favorite.

Cowboys, as well as Cowboy Folklore, are experiencing a phenomenal resurgence across the entire United States. Both Lindley and Prather are respected as top professionals in folklore, comedy, and music, and perform at most of the larger poetry gatherings and Western Song Feasts. Their art is clean, good humored entertainment suitable and enjoyable for the whole family.

Clay "Thumbtack" Lindley (AKA: JosA"-A. Pendejo"-The Cowboy Nerd") was born in Del Rio in July of 1959. For some unknown reason Lindley was blessed with the ability to swim the river while wrapped in a burlap tow sack. The feat so impressed his mother that she allowed him to live with the rest of the family until he later graduated from Silver City (New Mexico) High School.

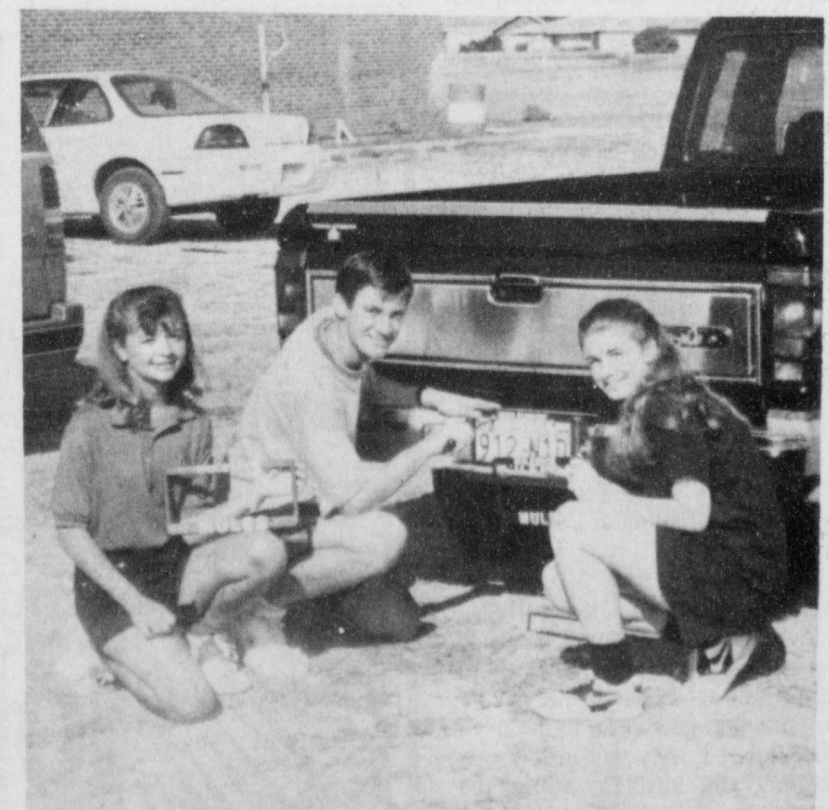
Soon after graduation, Lindley migrated South where he attended school at Sul Ross State University in Alpine. Throughout his college career and immediately following graduation, he worked for various ranches in the Davis Mountains of West Texas. Later, he worked on ranches in Nevada, Wyoming and Montana.

Gilbert D. Prather (AKA: "JoshB"-B. Pedenjo") was born in Abilene, Texas, a fourth generation Texan whose ancestor's followed

Cont. Page 8, Col. 2



MULE DAYS' PERFORMERS---"The Jose Brothers" will be performing at Joe's Boot Shop Saturday, in conjunction with the Mule Day's activities. (Guest Photo)



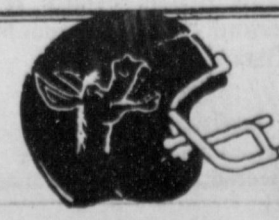
MONEY MAKING PROJECT---Members of the Fine Arts in Muleshoe High School are selling License Plate Holders, black with the Mules painted in white, as a money making project. Mason Conklin, who is involved in Band and Theatre was caught by a Journal photographer as he installed one of the holders on his pick-up. Also pictured are Jeanne Cox, a Theatre student; and Christy Holt, who is involved in Band and Theatre.



Thursday,  
August 20

# Meet The Mules

7 p.m.



## New Tall Class Begins

Twenty-six young Texans recently were selected to participate in the third class of the Texas Agricultural Lifetime (TALL) program.

TALL, a two-year educational program designed for people ages 25 to 40 in agriculture-related careers, identifies and develops leaders to shape and direct the future of agriculture. The class meets in various locations every other month for about three days and studies current issues related to agriculture, said John Sykes, TALL coordinator.

Seminars this year will be held in College Station, Sulphur Springs, Lubbock, the lower Rio Grande Valley and Mexico, Corpus Christi, Austin, Washington, D.C., Amarillo, Houston and San Angelo. Class members also will be able to study the global implications of agriculture and other business interests by participating in an international study tour.

In each location, participants will study the economy and industry of that area and subjects that might encumber area businesses. Issues include water control, environment food safety, animal welfare, education and other social issues.

"We traditionally schedule a tour of another state," Sykes said. "We decided to forego that this year and concentrate on Mexico and its economy in light of the pending free trade agreement and development of trade relations with Texas."

Additionally, TALL provides training in communication skills and other areas of personal development.

"Agricultural producers always have known you're going to reap what you sow," Sykes said. "There's a shrinking representation in agriculture as the average age of producers increases and the industry endures radical changes. Agriculture must have strong spokespersons at all levels of decision-making," he said.

Fifty young people have participated in the previous two classes. The most difficult decision for a TALL applicant may be the time commitment, Sykes said. The curriculum involves at least 50 days over a two-year period.

"I am amazed at the chemistry of TALL alumni and class members.

### Three Way News

by: Mrs. H.W. Garvin

George Tyson spent the past week attending a family reunion at Lake Brownwood.

Mrs. Marvin McCaul returned home Saturday from the Methodist Hospital. She was injured in a car wreck two weeks ago. Glad to have her back.

We wish to express our sympathy to the Andrew Whitner family on his death. He was buried Saturday. Services were held at Three Way Baptist Church. Burial was in the Morton Cemetery. The Whitners had lived in our community for many years.

The Joe Sanders spent last week in Muleshoe helping her father A.G. Taylor celebrate his birthday.

Chris Lock from Maple and Malinda Turnia from Enochs were married in Three Way Baptist Church Saturday evening. Both were graduates of Three Way school. The couple plan to attend college in Canyon.

Mr. and Mrs. H.C. Toombs spent several days fishing at Lake Kemp this week.

Believe it or not, a family at Clovis has several small fowls in their back yard. One goose is in love with the bar-b-que oven. Anyone that gets close to the oven gets flogged. My son-in-law was feeding the animals while the owners were on vacation, and got bit by the goose.

Mr. and Mrs. Elvis from Roswell visited Mrs. M.W. Garvin and George Tyson Monday afternoon.

Sunday morning Mr. and Mrs. Woodrow Chamberlain from Weatherford visited their aunt Mrs. H.W. Garvin.

Unselfishness is a rare virtue, not to be expected too often.

They really become a family as lifelong relationships are developed. Their network is phenomenal and their commitment to strengthening agriculture is the best in the state," he said.

"TALL has given me a holistic perspective to the agricultural industry. It has taught me the diversity of views in agriculture that I didn't understand two years ago," said Jim McAdams, a

Huntsville rancher who participated in TALL II.

"We talk of global agriculture, but it doesn't really all come together until you actually witness the economic, social and political diversity," he said.

Another TALL participant, Tim Laws, vice president of Sulphur Springs State Bank, noted that society in the United States has evolved from a predominantly rural

society focused on agriculture to one that is more urban.

"As that has taken place there has been a real gap in leadership in the agricultural sector and in rural America. This program was created to fill that gap," he said.

Participants in TALL III are Jennifer Bailey of Houston; Bill Bandy, Amarillo; Steve Brown, Mountain Home; Randy Darnell, Amarillo; Carla Everett,

Georgetown; Jeff Fairchild, Adrian; Nate Goldenberg, McGregor; Bill Helwig, Roger Lee; Mike Hill, Andrews; Terry Holland, Carthage; Dana Jackson, Ranger; Brenda Kellermeier, Mereta; Pat McDowell, Amarillo; Jay Massenger, Muleshoe; Allen Moczygamba, Allen; and David Moore, Dumas; Cesar Pacheco, Brownsville; Jim Perry, Comstock; Mike Petter,

Pleasanton; Albert Purnell, Woodlawn; Kimberly Sims, College Station; Paul Strouhal, Sunray; Randy Tower, Malakoff; Steve Wilkins, Ozona; Eddie Womack, Perryton; and Lorie Woodward, Austin.

"The applicants for TALL III were all talented agricultural people," Sykes said. "The competition was strong and the judges had a difficult time determining this class.

# WELCOME TO THE CURRY COUNTY FAIR

## A&M FARM & RANCH OPEN EVERY SUNDAY 11 A.M. - 5 P.M.



**NEW Roundup LG Herbicide Is Here!**  
1 Quart

Specially formulated for homeowner use. Kills over 110 weeds and grasses, roots and all. And, it's biodegradable.

**\$19.99**

**GREENSWEEP WEED & FEED**

Apply to kill more than 30 types of weeds, improve overall appearance. Cover 5,000 Sq. ft.

**\$4.99**



**Char-Broil GAS GRILLS #5224**

**\$99.99**

- 24,000 BTU Dual Burner
- 235 Square Inch Primary Cooking Area
- Broil-View® Window
- Masterflame™ Precision Cooking System
- Push-Button Igniter
- Plated Steel Cooking Grid

Condiment Tray Not Included



**Barrel of Fun igloo. \$14.99**

**2 GALLON BEVERAGE COOLER**

**1/2 GALLON JUG \$2.49**

# Discounts In Every Department

**3300 CFM WINDOW COOLER**

With Motor

**\$269.99**

**2800 CFM WINDOW COOLER**

With Motor

**\$184.99**

**SALE PRICES GOOD SUNDAY AUG. 16 THROUGH SAT. AUG. 22**

**Evaporative COOLER PADS**

#1-28" x 34" .....	\$1.49
#2-22" x 34" .....	\$1.49
#3-24" x 30" .....	\$1.49
#4-24" x 36" .....	\$1.49
#5-30" x 36" .....	\$1.99
#30-32" x 40" .....	\$2.47

**STRING TRIMMERS Gasoline Powered**

**ST-285 TRIMMER WITH BRUSH KIT**

**\$129.99**

**HOMELITE ELECTRIC**

**ST-70 \$49.99**

**Brush Cutter Kit**

**\$129.99**

**#A-70 7,000 CFM COOLER PUMP**

**\$10.99**

**#HD-55 5500 CFM PUMP**

**\$5.99**

**YARD TRACTOR**

Model 132-800H  
18 HP Twin Cylinder Engine  
48" Triple Blade Cutting Deck  
8-Speed Shift-on-the-Go Transaxle

**\$1349.99**



**#40 Broadcast Spreader**

**Sale Price \$18.99**



**NEELSON CRAWLER SPRINKLER**

**SALE PRICE \$44.99**



**26' HI-WHEEL SELF-PROPELLED ROTARY MOWER**

Model #122-5600

**\$399.99**



**REAR DISCHARGE MOWER**

Model 112-426R  
4 HP Quantum Engine  
21" Rear Discharge  
9-Position Height Adjusters

**\$189.99**



# A&M FARM & RANCH SUPPLY

3 AREA LOCATIONS

2600 Mabry Drive, Clovis, NM 1-505-762-7717 | 1601 S. Ave. D, Portales, NM 1-505-356-8543 | 1302 W. American Blvd., Muleshoe, TX 1-806-272-5571

All Stores Open Monday - Saturday 7:30 am - 6:00 pm  
Sundays 11:00 am - 5:00 pm

## Creative Living

by: Sheryl Borden

Information on waterproofing the home, credit use and misuse, and making custom fit sweaters will be the featured topics on "CREATIVE LIVING" on Tuesday, August 18 at 12 noon and Saturday, August 22 at 2:00 p.m. (All times are mountain). "CREATIVE LIVING" airs on Public Broadcasting Station KENW-TV from Eastern New Mexico University.

Bettie Dixon, representative from Thompson's Weatherproofing Products, will discuss how to protect the exterior of the home in order to prolong its beauty and life. Ms. Dixon is from Memphis, Texas.

Becky Cutler, education director for the Consumer Credit Counseling Service, will discuss the ten warning signs of a credit crisis. Ms. Cutler is from Denver, Colorado.

Susan Guagliumi, representative from Studio Home Knitting Machine, will demonstrate how to make custom fit sweaters on a home knitting machine. Ms. Guagliumi is from Cleveland, Oh.

On Tuesday, August 18 at 9:30 p.m. and on Thursday, August 20 at 12:00 noon, "CREATIVE LIVING" will present information on machine appliques, the importance of calcium in the diet, and how to use a temperature probe for microwave cooking.

Sue Hausmann, Director of Education and Merchandising for Viking Sewing Machine Co., will demonstrate several machine applique projects that can be done in just a matter of minutes. Ms. Hausman is from Cleveland, Ohio.

Ona Scandurra, representative from the National Dairy Board, will talk about calcium and will explain why it is so important in the diet. Ms. Scandurra is from New York City.

Amy Makemson, Tappan Co. representative, will demonstrate how easy it is to use a temperature probe in the microwave. A temperature probe can eliminate some of the guess work in knowing when a food item is thoroughly cooked. Ms.

Makemson is from Dalton, Ga. "CREATIVE LIVING" is produced and hosted by Sheryl Borden. The show is carried on more than 100 PBS stations in the United States, Canada, Guam, Puerto Rico, and is distributed by Pacific Mountain Network, Denver, Colo. Viewers can request copies of materials offered on the show by sending one 29 cent stamp for each handout requested. Send the stamps, along with your name, address, and booklets requested to: "CREATIVE LIVING" Requests % KENW TV Station #52 Eastern New Mexico University Portales, N.M. 88130

### Words Of Inspiration

by Cliff Hargrove

A hoe may be an odd sign for a conquerer and an odd quest for a victor, but the hoe is just that kind of sign. A man who carries a hoe is a man who is clearly prepared to go out and do an honest days work. It is hardly an exaggeration to say that what the world needs more than anything else is men who are ready and prepared and willing to do an honest day's work.

Tolstoi has a story about a nobleman who always had an open house. At the evening, anyone could come and have a meal. No one was ever turned away, but there was one test. The nobleman would look at the hands of every guest, if they were rough with toil, then the quest was given an honor seat at the top of the table. If the hands were soft, then the quest was given a place at the foot of the table.

A workman needs not to be ashamed. A man who is prepared to do an honest day's work is indeed the conquerer. There are some victories that we cannot all win; but the victories of honest work are open to all to win.

Any fool may write a most valuable book by chance, if he will only tell us what he heard and saw, with veracity.

-Thomas Gray.

### CREAMY CHEESECAKE

Luscious and light, only one-tenth the fat and half the calories of regular cheesecake.

13 (2 1/4 in. diameter) chocolate wafer cookies or 31 (1 3/4 in. diameter) chocolate cookies

1 envelope unflavored gelatin

1/4 cup lowfat milk

1 container (16 oz.) 1% cottage cheese

1/2 cup nonfat dry milk powder

1/2 cup granulated sugar

1 tablespoon grated orange peel

1/4 teaspoon salt

1 container (8 oz.) vanilla lowfat yogurt

In a 9 in. pie plate, place cookies on the bottom and around the side, breaking cookies in half, if necessary, set aside. In a small saucepan, sprinkle gelatin over milk. Let stand for 5 minutes to soften. Over low heat, cook and stir constantly until completely dissolved, 3 to 5 minutes. Remove from heat, cool slightly. In the bowl of a food processor fitted with a metal wing blade, or in the container of a blender, process cheese, dry milk, sugar, orange peel and salt until smooth. With processor running slowly add gelatin mixture. Spoon into prepared pie plate. Gently spread yogurt over cheese mixture. Refrigerate until firm, 2 to 3 hours. Garnish with fresh fruit and mint leaves, if desired.

YIELD: 8 portions  
per portion: 146 mg. calcium, 178 calories.

Ross Perot, presidential candidate:

"There's been a ninety day effort to redefine my personality," referring to Republican Party charges.

George Bush, U.S. President:

"The court has unnecessarily cast away the venerable and proper tradition of non-sectarian prayer at public celebrations," referring to ruling that bars prayer at school commencements.

### Bailey County Journal

Established March 31, 1963. Published by Muleshoe Publishing Co., Inc. Every Sunday at 304 W. Second, Box 449, Muleshoe, Tx. 79347. Second Class Postage paid at Muleshoe, Tx. POSTMASTER: Send address changes to the Bailey County Journal, P.O. Box 449, Muleshoe, Tx. 79347.



L.B. Hall, Publisher  
Sammye Hall, Vice-President/Comptroller  
Evelene Harris, News Society  
Holly Millsap, Advertising  
Diana Bermea, Classified

SUBSCRIPTIONS  
Muleshoe Journal and Bailey County Journal  
By Carrier Yearly - \$14.00  
Bailey and surrounding counties  
By Mail - \$15.75  
Elsewhere - \$17.50

Advertising Rate Cards on Application  
"Advertisers should check their ad the first day of insertion. The Journals will not be liable for failure to publish an ad or for a typographical error or errors in publications except to the extent of the cost of the ad for the first day of insertion. Adjustment for errors will be limited to the cost of that portion of the ad where the error occurred."

### Foreign Student Visits Sudan

Sirku Lahadsmaki of Hanna Finland, was among 300 students that left Helsinki on a chartered plane headed for the United States almost six weeks ago, as part of the Lions Club Youth Exchange.

Sirku spent her first three weeks in Mexico, with a doctor and his family. She has been staying with Loretta, Suzanne, and Jill Reid since she arrived in Sudan two weeks ago. She has been to Lake Brownwood skiing with Gloria Humpreys and the journalism girls. She has also been in Ruidoso, N.M. and to the play, Texas.

Sirku is 18 years old, and she will be a senior in high school, when she returns home to Finland. Her hobbies include acting, singing, dancing, and poetry. Sirku can speak five languages fluently: English, German, French, Swedish, and Spanish. Her parents are youth leaders for the Lutheran Church, which is the predominant church in Finland. She has one sister, 15, and two brothers, 10 and 19.

Sirku left Sudan last Thursday, August 6.

May blessings be upon the head of Codmus, or the Phoenicians, or whoever invented books.

-Thomas Caryle.

### Thank You

The family of Joe R. Baker wishes to express appreciation and warm affection for the many people who gave of themselves so fully during the last years of his life.

His love for the Reynolds' brothers and their families was well deserved. They were always by his side in times of need.

Melvin Griffin and wife, Wanda, were neighbors for many years and continued to provide peace of mind and happy moments after he was confined to the nursing home.

Special thanks also to Mart and Nettie Long and Thora Baker, whose quite presence was such a comfort during the last days and to the caring and competent nursing staff at Muleshoe Medical Center and Nursing Home.

To all of you we pledge to honor your many good deeds by helping others in our daily lives.

We relinquish our brother and uncle to another Kingdom with the peaceful knowledge that he left this world with dignity and memories that will live in us all.

Lois M. Long & Family  
Loma Baker

# End Of Season "Hot Buy" Bargains

**41.00**  
Orlik-Broom II 2-Speed Vacuum is lightweight.

**W-D 40**  
9 oz. **1.29**

**Hose Reel**  
 **9.99**

**Delsey 4 Roll Pk. Toilet Tissue**  
 **95¢**

**16" Weed Eater**  
Elec. Tap N Go **39.99**

**Gazebo Kit**  
 **1,850.**

**Encor Odyssey 52" Ceiling Fan**  
 **39.99**

**Shelf Lumber**  
1" x 12" x 4' **4.25**  
1" x 12" x 6' **6.45**

**Master Mechanic 7 1/4" Circular Saw**  
 **54.99**

**Black & Decker 1 1/2 hp Router**  
 **69.99**

**Evaporative Coolers**  
4500 CFM DOWNDRAFT **295.99**  
4800 CFM WINDOW **399.99**

**Ortho Hornet & Wasp Killer**  
 **1.99**

**Model 86 Self Propelled Lawn Chief Mower**  
 **5 HP Rear Bagger**

**Southwestern Bell Cordless Freedom Phone**  
 **79.99**

**Garage Door Openers**  
Reg. 149.95 **125.00**

**AC/Furnace Air Filters** **2/1.25**

**Bakers Secret 3 pc. Cookie Sheets**  
 **6.99**

**5 HP Rear Bagger**  
 **299.99**

**Hot Buys In Every Department To Numerous To List**

**Your Choice**  
4 ft. Glider **99.99**  
9'X 9' Pavillion **99.99**  
Picnic Table

Prices Good Until Wed., Aug. 19, 1992

**Fry & Cox**  
Lumber Hardware

401 S. 1st Muleshoe 272-4511

Hours: Mon. - Sat. 8 a.m. - 6 p.m. Sun. 1:30 p.m. - 4:30 p.m.



# Henry Family Celebrates 33rd Annual Reunion

The 33rd Annual Henry family reunion was held in Muleshoe, Texas at the Bailey County Civic Center on Friday, August 7th through Sunday August 9th, 1992. This year the reunion was hosted by Kenneth and Darlene Henry of Muleshoe, and J.R. and Betty Henry of Canyon, Texas. There were 95 in attendance from 7 states.

All four of the surviving children of John R. and Lou Henry were in attendance. They are Ruby Henry Jackson of Plainview, Texas, Clyde D. Henry of Canyon, Texas, and Eula Henry Perkins of Okmulgee, Ok., and Gladys Henry Bledsoe of Davis, Ok.

A Thursday night start of the reunion began as sixteen family members attended the production of "Texas" in Palo Duro Canyon. For most of the time, it was reported all thoroughly enjoyed the production.

On Friday, the Muleshoe Country Club and Golf Course was the site of the 1st annual Henry Reunion Golf Tournament. Twelve entrants were divided into three teams and after 18 holes of golf, each team was tied. Mike Thompson's team of Jonathan Thompson, Mike Henry and Kenneth Henry won on the third hole of a card play-off. The team members won a Muleshoe Country Club golf cap. Bobby Jack Angely won a prize for the longest drive, and Mike Thompson a prize for the drive closest to the hole. All the participants had very favorable comments on the excellent condition of our local golf course.

Darlene Henry was in charge of the food, and she reported serving more than 450 plates of food. The food, fellowship, and visiting was enjoyed by all. The Bailey County Civic Center was an excellent location for a family reunion of this size. Most of the out of town guests stayed at the Heritage House Inn and were able to enjoy their swimming pool. Many took advantage of the Putt-Putt Golf Course that was nearby and played several games of golf.

Those who were in attendance were Nick Bledsoe, Davis, Ok., Opal, Grant, and Brock Bejeck of Southlake, Tx., Helen Shaw of Englewood, Ca., Kathy Halstead of Bend, Oregon, Jacque Shaw of

Elezibeth, Co., Weldon Waldrop of Alpharetta, Ga., Lynette Norris of Alpharetta, Ga., Pat and Jim Smith of Nowata, Ok., Karen, Gary, Krisa, and Nathan Lambert of Bartlesville, Ok., Verna, Eugene, and Ernie Cannon of Coalgate, Ok., Bill and Carol Perkins of Broken Arrow, Ok., Brad Roberts of Broken Arrow, Ok.

From Plainview: Mike, Terri, Jonathan and Julie Thompson, Thelma and Glen Bailey, Darlene, Tommy, and Terry Curry, Buddy, Joshua, and Sara Seago, Kim, Sandy, Monica, Brandon, and Casey Seago, Jackie, Cindy, Tristan, Cody, and Colby Seago, and Junior Jackson. Ruby, Jewel and J. C. Thompson of Petersburg, Tx., Jay Thompson of Lubbock, Tx., Sheri Thompson of Lubbock, Tx., Diane, Darrell, Daryl-Ann, and Jesse Reynolds of Silvertown, Texas. Nell Henry, Canyon, Tx., Gail and Kurt Fowler, Witxhita Falls, Tx., Gene Henry, Canyon, Tx., Ron, Michelle, Clay, and Jessica Henry, Masterson, Tx., Earl and Jean Henry, Levelland, Tx., Shirley and Smokey Hyde, Shreveport, La., Edith and Curtis Goss, Austin, Tx., Jerry Goss, Spicewood, Tx., Robin and Stubie Doak, Carrollton, Tx., Sharla and Mark Bruns, Ft. Worth, Tx., Sheri and Darrell Oden, Austin, Tx., and Mike, Monica, Hailey, and Blake Henry of Lubbock, Tx.

Friends in attendance were Bobby Jack, Sharron, and Amy Angely of Earth, Tx., and Susie and Shane Enoch of Las Cruces, N.M.

## Meet The New 1992-1993 Mules

The Muleshoe Athletic Booster Club would like to invite and encourage all parents of athletes and members of the community to come out and meet the new 1992-1993 Mules on Thursday, August 20, at 7:00 p.m. at the Benny Douglas Football Stadium. There will be ice cream served immediately following the introduction of our coaches and athletes. The Booster Club will be selling license plate covers, on board signs, signature ads, and business ads. We would like to relate to you, that the money made from the projects go to support all athletes in all sports. You can purchase the license plates, covers, signs, and ads at the Town and Country West Store, also. Our athletes need our support--come join us, and ...

MEET THE MULES!

## In Fashion

If your fashion budget is limited, choose one outfit that will look good all during the year. One special dress for all occasions could be a classic shirtwaist dress with long cuffed sleeves.

Another example is the figure-flattering wrap dress in a traditional pattern of blue-grey plaid material. A contrasting collar completes this wrap dress of rayon-polyester.

A just decision is one that lets us win.

For Your  
Mary Kay Cosmetics  
Josie Flowers  
272-3865  
8 a.m. - 12 noon  
& after 6 p.m.

Time For  
Those Back  
To School  
Cookouts!



1/2 Beef  
Cut & Wrapped To  
Your Specifications  
**\$1.51** lb.

Whole Loins  
KC Strips  
**\$3.99** lb.

Cut & Wrapped To  
Your Specifications

Larry's Own  
Breakfast  
Sausage  
6 lb. Box Sliced  
**\$1.50** lb.

Hams

Larry's Award-Winning  
Home Cured Bone-In  
**\$1.99** lb.

Larry's Award-Winning  
German  
Sausage  
**\$1.99** lb.

Pork Loins  
By The Loin  
12-15 Lb. Each  
**\$1.73** lb.

# Winkler Meat Co.

401 Main Let Us Cater Your Next Party! 272-4703

## New Pastor Elected



Rev. and Mrs. Raydon Stanford. Rev Stanford is the newly elected Senior Pastor of the Christian Center Church of Muleshoe.

The Christian Center Church of Muleshoe is pleased to announce the election of Rev. Raydon Stanford as Senior Pastor of the church effective as of August 5, 1992. Rev. Stanford is married to the former Sharla Digby of Olton, the daughter of Ronnie and Sharon Digby of Olton.

Raydon Stanford has traveled across the country as an evangelist and singer with the Anchor Brothers Band for thirteen years, and says the Anchor Brothers are still "going strong". "I will continue to serve with the Anchor Brothers Ministries while serving as pastor of the Christian Center", Stanford says.

"I'm very happy to be associated with this church and these people. They have a heart for the spiritual and daily needs of the community, and they believe the Bible has the answers to all of life's problems. I believe that the church offers a great deal to this community, and I look forward to serving this congregation, and this community in this capacity.

Raydon Stanford also continues to do a one hour news show on KMUL Radio Station, weekdays from 6:00-7:00 a.m.

There is no book so bad that something good may not be found in it.

-Cervantes.



## Joshua Denae Dodson

Mr. and Mrs. Rod Dodson of Houston would like to announce the birth of a daughter, Joshua Denae, born July 7th. She weighed 7 lbs. 11 oz. Grandparents are Kyle and Pat Holt of Wiener Neustadt, Austria and V.A. and Pat Dodson of Muleshoe.

## Hayli Renee Clements

Travis and DeAnn Clements of Lubbock are the proud parents of a daughter, Hayli Renee, who was born at 8:11 a.m. July 3 in the Methodist Hospital.

Hayli Renee weighed five pounds and seven ounces and was 19 inches long. She has two brothers, Travis Blake, four and half, and Cory Austin, three and half years of age.

Paula Clements of Lubbock is Hayli Renee's grandmother.

Local great grandparents included: Ruth and Dee Clements of Muleshoe and Mae Provence of Lubbock, formerly of Muleshoe.

## Wilsons Celebrate 50th Anniversary

Mr. and Mrs. Bernard Wilson celebrated their 50th Wedding Anniversary Sunday, August 9. A reception was held in the Fellowship Hall of the Sudan Church of Christ. Hosts for the event were their children and grandchildren Mr. and Mrs. Jack Wilson, Alan and Catherine of Abeline, and Mr. and Mrs. Kelly Kasey, and Kara of Spring, Texas.

Bernard Wilson and the former Elsie Thompson were married August 9, 1942, in Mobeetie, Tx.

# Welcome To MULE DAYS

**AND COUNTRY JUNCTION**  
106 EAST AMERICAN BLVD.  
MULESHOE, TEXAS  
806-272-7504

**Friday & Saturday,  
August 21 & 22**

ALL Mulehide Boots **10% off**

ALL Men's & Boys Shirts **20% off**

1 Rack Ladies Jeans & Tops **30% off**

**FREE** Rocky Mountain Cap or T-Shirt With  
Purchase Of Rocky Mountain Jeans

Introducing The New Line Of *Tony Lama Ropers*  
**ONLY \$79.00**

**Saturday, August 22nd.**  
Kids - Meet "The Rodeo Clown" and  
Enter The Annual Mini Mule Team Roping Contest!

**Kids Mule Roping Competition Starts At 12 p.m.**  
Four Age Groups  
8 yrs. and under, 9 to 12, 13 to 15 & 16 to 18yrs.  
1st, 2nd, & 3rd Place Prizes include, Buckles,  
Jackets, and T-Shirts.

**Mechanical Mule Roping For All Ages**  
(Including 20 to 35 & 50 and older)  
No Entry Fee - Prizes awarded 1st, 2nd & 3rd Places  
Be sure to see the roping challenge between EMS and The  
Morton Law Enforcement at 11:30 a.m.!

**Hear The Jose Brothers**  
(Cowboy Poets & Singers: Clay Lindley & Gil Prather)  
Perform Saturday, 12 p.m. & 5 p.m.

Open Jackpot - Mechanical Mule Roping at 5 p.m.  
(\$10 Entry Fee)

Pot Match Guaranteeing \$1,000 Gift Certificate  
Roping Practice All Day Friday

Sidewalk Sale At Country Junction!

## Dodson-Jesko Exchange Vows

Mary Dodson of Richardson and Jeff Jesko of Muleshoe were united in marriage Saturday, June 6th, at a wedding mass. Mass was offered by Fr. Gus Melito, which included a double ring ceremony. The wedding was at St. Joseph's Catholic Church in Richardson.

The bride was escorted by Charles Murray. The matron of honor was Debbie Beachley. The bridesmaids were Cathy Luce and Dawn Thar. They were all from the Dallas area, and long time friends of the bride. The attendants wore fitted street length dresses made of yellow satin, complimented by above the elbow sleeves and stiff, sheer matching peplum. Each wore a string of pearls, which was a gift from the bride, and carried an assorted spring bouquet.

The flower girl was Cristen Luce. Cristen is the daughter of Scott and Cathy Luce. She wore a long pink satin dress, with a full skirt, and pink ballerina shoes. She carried a white basket decorated with assorted spring flowers.

Scripture readings were given by best man, Terry Jesko, a cousin of the groom and groomsman, Daniel Schacher. Also serving as groomsman was Jason Jesko.

Mary is the daughter of Viena Dodson of Wylie, and Jeff is an '83 graduate of Lazybuddie, and is the son of Larry and Dixie Jesko of Muleshoe.

A reception followed at Ellis Castle, featuring a beautiful buffet of fruits, vegetables, cheese, and meats. The three tiered Italian cream wedding cake was decorated with fresh flowers, and topped with

a throw away bouquet of assorted spring flowers.

After their honeymoon trip to South Padre Island, the couple will live north of Muleshoe, where Jeff will be engaged in farming.



Mr. and Mrs. Jeff Jesko of Muleshoe

## Wedding Shower Honors Miss Wendy Jarman

A wedding shower honoring Wendy Jarman was given Tuesday, August 10 in the home of Carelean Hamilton. Guests were greeted by Carelean Hamilton, Wendy Jarman, and Carolyn Jarman.

A maroon and white rosebud corsage was presented to the bride to be.

The serving table was covered with a dainty ecru lace table cloth, accented with a bouquet of burgandy silk flowers. Refreshments of cookies, fruit, and finger sandwiches were served from crystal appointments.

Special guests included Juanita Jarman, Wendy's grandmother, and Jo Deel Neel, Wendy's Aunt.

Hostesses for the occasion included: Dianne Allison, Judy Brockman, Beckye Conklin, Linda Elliot, Paulette Foster, Sharon Grant, Sue Holt, Jo Ann Luscombe, Sheryl Morris, Janice Bradshaw, Vickie Burch, Paula Daniel, Tracy Elliot, Donna Glover, Carelean Hamilton, Brenda Jesko, Pam Miller, Eva Nell Stovall, and Marjorie Precure.



Miss Wendy Jarman

brother of the groom. The best man and groomsmen are from Muleshoe. The groom and his attendants wore black tuxes with white shirts, complimented by pink rosebud boutiniers.

The ring bearer was Seth Glenn, second cousin of the groom. Seth is the son of Tim and Donna Glenn of Arlington.

The bride presented each mother with a rose.

The key to happiness in life lies in unselfishness.

## Jennyslippers

Donna Kirk was in charge of the Jennyslipper meeting at noon Tuesday. She introduced her sister from Arizona, who is visiting in Muleshoe.

Mrs. Kirk read a letter from a lady in Plainview, who won the painting given in a drawing on July 4. Mrs. Kirk also read a letter from Kip McCall, recipient of the Jennyslipper scholarship.

A discussion was held on The Saga of Bailey County. The Jennyslippers will have an ice cream booth, selling ice cream for \$1.00 per cup.

The group also voted to have a food booth in the Bailey County-West Texas Fair.

## Rebekah Lodge

August 11: Muleshoe Lodge no. 114 was opened by our Noble Grand, Doris Lambert. Chaplain gave the opening prayer, and June read the minutes of the last meeting which were approved. Several letters were read.

Herford Friendship Lodge has invited us for pot luck, August 22 at 7:30. An invitation was read for a silver tea for Grandmaster, Waynon Little, in Waco August 30th.

A letter was read from our President, Christine White, listing many dates she will visit. She will be in Amarillo Sept. 22. Next week the charter will be dropped for Assembly Past President Addie Bell Aston and Past Sovereign Grand Master Harold L. Scott.

Clovis Lodge is having their usual meeting Under The Stars Saturday evening, Aug. 15.

Fern and Clara Lou served twelve members present.

Doris reported her brother was very ill and in the hospital.

We missed the men that are usually with us. They went to Plainview Circle Seven meeting. Also Mary Ann,

Mickey, and Linda...each one of you is always missed. KEEP OUR CHILDREN SAFE...

May we soon see all of our members present.

Ona, Lodge Deputy, gave a school of instructions, Chaplain gave the closing prayer, and our Noble Grand closed the meeting for the night.

## Sudan News

by Teresa Gordon

### BIRTHDAYS

- \*Aug 9-Bud Province
- \*Aug 10-Brook Drake, Haldon Messamore, Amy Synatsch
- \*Aug 11 Dot Nix, Gill Rogers
- \*Aug 12-Brook Baker, David Quisenberry
- \*Aug 14-Josh Cheaster, Linda Damron, David Williams, Linda Kay, Magdaleno Perez
- \*Aug 15-James Withrow, Glenn Gatewood, Gloria Faz

### Anniversaries

- \*Aug. 9-Mr. and Mrs. Bernard Wilson, Mr. and Mrs. Keith Downs
- \*Aug 11- Mr. and Mrs. G. C. Ritchie, Mr. and Mrs. Billy John Ford, Mr. and Mrs. Don Harper, Mr. and Mrs. Joe Ky Shultz
- \*Aug 13- Mr. and Mrs. Jonathan Robertson,
- \*Aug 14- Mr. and Mrs. Jerry Bellar, Mr. and Mrs. Steve Edwards



# ALLSUP'S

**PRICES EFFECTIVE-  
AUGUST 16-22, 1992**

**318 W. Amer Blvd.**

**272-4862**

**GOTTA HAVE IT** ALL TYPES PEPSI-COLA 12 Pk. 12 Oz. Cans **\$2.79**

**Corn King MEAT FRANKS** 12 OZ. PKG. **49¢**

**ALL FLAVORS TOMS CHIPS & SNACKS** REGULAR 89¢ FOR ONLY **79¢**

**GAS FOR A YEAR WINNERS**

LUZ CHAVARRIA-ABILENE, TX.  
MARY WESSNER-WHITE DEER, TX.  
KALEENA SOTELO-MONAHANS, TX.  
FRED McMULLENS-MELROSE, N.M.  
KATHY McCARTY-DUMAS, TX.  
DONNA ATKINS-HOBBS, N.M.

**SANDWICH BREAD** 1 1/2 LB. LOAF 69¢ EACH OR **2 \$1** FOR

**MELLO CRISP SLICED BACON** 1 LB. PKG. **99¢**

**SHURFINE CHARCOAL BRIQUETS** 10 LB. BAG **\$1.59**

**Famous 32 oz. "Tallsup" Drink** **59¢**

**Shurfine 1 lb. Box Crackers** **79¢**

**BREAKFAST BURRITOS** EACH **89¢**

**ALLSUP'S CORN DOGS** **2 89¢** FOR

**ALL FLAVORS DORITOS® CHIPS** 6 OZ. BAG **99¢**

**CARAMEL COATED POPCORN CRACKER JACK** 3 PACK-1.25 OZ. BOX **99¢**

**DISPOSABLE FITTI PAPERS** 22 OR 34 COUNT PACK **\$5.99**

**SUPER MARIO BROTHERS SUCKERS** REGULAR 99¢ FOR ONLY **59¢**

**LIBBY'S POTTED MEAT** 3 OZ. CAN **3 \$1** FOR

**LAUNDRY DETERGENT AJAX ULTRA** 18 WASH LOADS **\$2.99**

**Shurfine 4 lb. Bag Sugar** **\$1.69**

**Shurfine Hamburger Dill Slices**

**Paper Towels 2 rolls \$1.00** 32 oz. **\$1.19**

**The BEST of the Fair**

CURRY COUNTY FAIR - AUG. 17-22

**JUSTIN ROPERS** AS LOW AS **\$79.98**

**SPECIAL! 4X BLACK HATS..... \$65.00**

**ALL OTHER FELT HATS..... 20% OFF**

**STRAW HATS..... 50% OFF**

**KIDS' FELT HATS..... \$29.98**

**ROCKY MOUNTAINS FOR LADIES** Starting At **\$17.98**

**JUST ARRIVED!! BEAUTIFUL PENDLETON JACKETS** Don't Delay- These Won't Last Long!

**ALL MEN'S AND LADIES' SHIRTS..... 20% OFF**

**ALL LITTLE GIRLS' JEANS..... 20% OFF**

**13 MWZ INDIGO**

**MEN'S WRANGLERS..... \$15.98**

**13 MWZ**

**CHILDREN'S WRANGLERS..... Starting At \$11.98**

**Rip's** \*Layaways Welcome\*  
\*Free Gift Wrapping\*

**IN TEXICO** 314 Wheeler Ave. 482-3363  
open 8:00 am to 6:30 pm CDT or 800-748-2459

## School Opens

Cont. from Page 1

p.m. Monday in the School Administration building. Curtis Shelburne gave the invocation. Minutes of the previous meeting were approved as read.

Joseph Sanchez reported on the Enriched Learning program at Dillman Elementary School. "We will be working with the Kindergarten and first graders a half day a week," Sanchez said. "We will work with the second grade all day, one day a week. It was reported that since it was hard to identify the gifted and talented students in kindergarten, first and second grades, these students are being grouped together and the program is called Enriched Learning.

The selection of the Gifted and Talented students begins in the second grade.

Sanchez thanked Ms. Grigsby and Ms. Finney, stating that they were real supportive. He also explained his first unit. He said that he would be at Dillman on Thursday and Friday and at DeShazo Monday, Tuesday and Wednesday. He explained that they were considering starting the First Latin in the fourth grade.

Bill Moore, superintendent of the MISD gave a report on the PEP School and introduced Freda Schooler, principal.

Moore stated that at the present time there were 20 to 21 students definitely interested in attending PEP School and more were considering attending.

"We need 30 students to break even and we hope to have 75 at the beginning of school," Ms. Schooler said. "We do have a limit of 150 students."

Classes are set up for 80 minutes each and all work will be done during school hours, no homework will be taken home.

Students and parents must sign a contract that they will attend school at least one year.

Repairs continue on the building.

## Fine Arts...

Cont. From Page 1

"To be able to repeat this again this year, we need the help of parents, not only in the concession stand on Friday night, but with other money making projects," Ms. Holt continued. "We need more parents to come to our meetings for fresh ideas and new faces."

The Fine Arts Boosters are now selling License Plate Holders--Black with white letters saying Muleshoe Mules. They are to be sold for \$5.00 each and maybe purchased from the following businesses and individuals: Fry and Cox, Chubby's Beauty Shop, at the high school band hall, Muleshoe Motor, Patches of Paint or you can call Kay Graves or Becky Conklin.

The next meeting will be on Sept. 7.

The building has been re-roofed and we are presently lowering the ceiling and working on the floors.

Ms. Schooler reported that she had hired a secretary, Georgia Decker, and a complete teaching staff. Included in the school will be a day care center, to open Sept. 1, as well as a WIC Clinic.

The board approved a waiver for the exemption of students from their final exams.

Dale Oil received the bid for fuel for the 1992-93 school term.

In his report, Moore stated that for the first time he had good news, "We know how much money we will receive from the CED Tax for the first time." The school will receive a three percent increase. The CED tax has been set for 75-77 cents.

A budget hearing has been set for August 24 prior to the regular board meeting.

During the executive session, the board hired four new teachers, Johna Benwickson, a Special Ed teacher at the high school; Vickie Bundick and Vezra Turnvoville, third grade teachers at DeShazo Elementary; and Tracy Pile, who will teach kindergarten at Dillman Elementary.

In appreciation of the teaching staff of MISD, Robert Hooten will host a Hamburger Cook-out in their honor, to kick the school year off, at 6 p.m. Monday.

## Brothers...

Cont. From Page 1

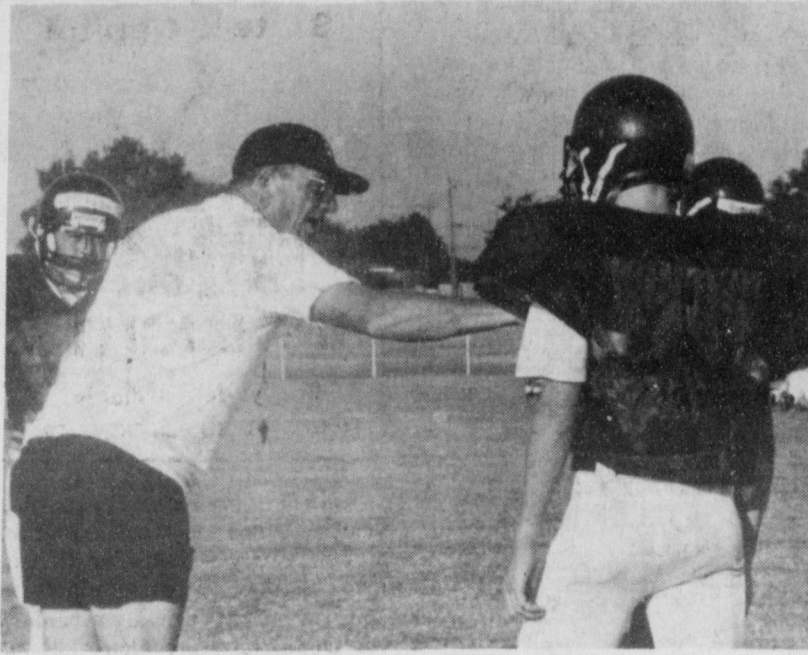
the open range. As most young West Texas cowboys, Prather was involved in rodeo for several years.

Family ranching interests and rodeo led Prather to Alpine, where he attended Sul Ross State University and was involved for several years cowboying and operating ranches in the Big Bend Region.

The years spent in the Rio Grande Country were a major influence on Prather unique "Border" style of songwriting and singing.

The lure of music led Prather to the world of Country Western songwriting and singing. As he says, "Day work cowboyin' paid \$6.00 a day for a 12 to 14 hour day. A man could make \$8.00 a night pickin and singin' in the rough-neck joints of West Texas. Prather thought he had found the end of the rainbow. He spent the next several years in the Country Western Music field.

The Jose Brothers offer a professional show of cowboy comedy, song, and poetry and are available for stage shows, concerts, banquets, creative writing seminars, readings, conventions and other events.



FOOTBALL BEGINS IN MULESHOE---Coach Randy Adair, athletic director for the Muleshoe ISD instructs the 1992-93 Mules, on the technique of blocking. (Journal Photo)

## DPS Warns First Weeks Of School Most Dangerous

Bells will be ringing shortly, as thousands of Texas children return from summer break. This means making adjustments in their routines. It's also time for Texas motorists to make some adjustments in their driving habits.

The first few weeks of school are the most dangerous, according to Major Vernon Cawthon, Regional Commander for the Texas Department of Public Safety. "This time of year presents safety problems for both the school children and the drivers," Major Cawthon explained. "Many kids are attending school for the first time and others might be going to a different school where they are unfamiliar with the local traffic conditions."

Another problem is that during the summer recess many drivers have gotten out of the habit of being alert for both school zones and school buses. Drivers must remember that children have many things on their minds as they go to and from school. They are also easily distracted from important things like remembering to watch for traffic. This is an ideal time for parents to remind their children about school bus safety rules, since many school bus accident victims are struck by vehicles while waiting for the bus. Major Cawthon gave several safety tips concerning this. Children should be reminded to:

---Line up away from the road and wait for the approaching bus to come to a stop before entering the roadway to board.

---Avoid pushing and shoving. ---Use the grab handle when boarding and move directly to a seat.

While the bus is in motion, children should:

---Avoid horseplay.

---Refrain from shouting or making loud noises that could distract the driver.

---Remain seated for the entire trip, even when the bus is approaching its destination.

Upon arrival at the bus's destination, children should:

---Exit the bus in a quiet and orderly manner.

---Walk to where the driver can see them if they must cross the street, and wait until the driver signals them before attempting to cross.

---Remember that although it is against the law for vehicles to pass a school bus that is loading or unloading passengers, some drivers still do. Students should always check both ways on any street before crossing.

By observing the speed limits in school zones, being alert for increased pedestrian traffic, and watching for school bus activities, we can make this a safe school year for all.

### Difficult

Our politicians are perfectly familiar with all the questions of the day. The difficulty is that they don't know the answers.

-Democrat, Davenport, Ia.

## Disaster

Cont. from Page 1

employment of cotton gin workers and truckers dependent on the cotton crop in the area.

According to Ed Laundry, disaster recovery manager for the Governor's Division of Emergency Management, the estimated value of cotton crop loss to date is more than \$320 million and lost wages total almost \$20 million.

The disaster declaration, Laundry said, would make available in the affected counties such assistance programs as the Department of Labor Disaster Unemployment Assistance, and Small Business Administration and Farmer Home Administration emergency loans.

## Mule Days...

Cont. from Page 1

although you may have to sit on a bale of hay or take your own stool or lawn chair.

A softball tournament will be going on at the New City Park.

A carnival will be arriving on Tuesday, August 18 and should be opening for fun and rides in the evenings at 6 p.m. at the Boy Scout Grounds, on South Main Street.

Larry Winkler's Bar-B-Que wagon will be serving barbecue sandwiches at the north end of Main Street. The Leadership Muleshoe group will have a cold drink stand at the Mule Memorial Parking Lot. Liberty Cellular Telephone company will have a give-away booth at Gordon Wilson's Radio Shack on Main street.

All restaurants usually open on Friday and Saturday will be open on Mule Days for regular hours. Other businesses will retain regular hours of business.

## Muleshoe...

Cont. from Page 1

with their go-carts, and many more entries.

Several area celebrities will play, "Beverly Hillbillies", magical.

Ending the day will be a "Hoedown" area square dancers, caller will be Sid Perkins and a free street dance. "Come have fun! Come and Christmas Shop," said Vickie Hamley, Fun(D) Fiesta Committee member.

Craft booths will be open from 9:30 a.m. to 5 p.m.

\*\*\*

All assistance, Laundry noted, is contingent upon the President's issuance of the Disaster Declaration.

## Muleshoe Part Of Car, Truck Sales Upswing

Car and truck sales continue a steady improvement over last year for Ford dealerships in the sales region that includes Muleshoe.

The area Ford dealerships are among 390 in the region that delivered 13,334 trucks last month, a four percent increase compared to the same period a year ago. For car sales, Ford's Southwest sales region had a three percent increase for July with sales of 6,629 units compared to June sales of 6,408.

Ford's vehicles with top increase in the region were the Club Wagon and Econoline. The Club Wagon and Econoline each showed a 86 percent and 35 percent increase respectively compared to a year ago.

"July is the seventh straight month that Ford car and truck sales have been up over last year," said Les Brown, the division's regional sales manager. "The redesign of several 1992 models such as the Taurus, Econoline, Club Wagon, and the all-new 1993 Probe which just went on sale in July, have contributed to this success."

Other vehicles with top increases were the Ranger, up 12 percent and the Explorer, up seven percent.

The Muleshoe-area Ford dealers are part of the company's sales region representing Texas and portions of Oklahoma.

## BRIEFS

Noriega gets 40-year term for drug role.

Steven Provost hired as new White House chief speech writer.

Third World Environment threatened by mining.

Forecasters see 2.1 percent economic growth this year.

Yeltsin approves withdrawal of military from Baltics.

# Ingram's Super Spectacular Sale

Boy's & Girls  
Spring & Summer  
Sportswear  
**50% off**

Spring  
Dresses  
Infant Sizes to Girls-Size 14  
**50% off**

Infant Sizes to  
Boys-Size 16  
**50% off**

Spring  
Dress Clothes  
**50% off**

Jr & Missy  
Spring & Summer  
Dresses  
**50% off**

Jr. & Missy  
Spring & Summer  
Sportswear  
**50 - 60% off**

Men's  
Sportswear &  
Swimmingwear  
**50% off**

Selected Assortment of  
Children's &  
Ladies Shoes  
**up to 60% off**

Junior & Missy  
Rocky Mountain & Zena Jeans  
**30% off**

705 Main

Friona, Tx.

806-247-3291

## Five Area Telephone Coop. Inc.

is proud to introduce our new, authorized directory publisher...

**Consolidated Communications Directories**

We know you'll be pleased with Consolidated's professionalism and quality. Their representatives will be contacting area businesses very soon to discuss yellow pages programs for the

January 1993 edition of the official

**Five Area Telephone Coop., Inc.**  
Muleshoe, Texas  
Telephone Directory

Serving:

Bula, Lariat, Lazbuddie, Lehman, Maple and Needmore

With Additional Listings For:

Earth, Littlefield, Morton, Sudan and Muleshoe

For more information, please call,

**1-800-654-9890**

# ASCS Releases Farm Program Dates

The following dates were released by the local ASCS Office Tuesday morning.

## FINAL CERTIFICATION DATE

The final date to certify or request aerial measurement service on all spring seeded crops, conservation use acreage (CU), and ACR has been extended until August 14, 1992. This is also the final date to certify to zero acreage planted if the farm has a base for that commodity. A complete acreage report must be filed including all program crops, sunflowers, soybeans, alfalfa, fruits, vegetables, and etc., by this deadline. An accurate certification is very important, so please don't guess. The reported acreage cannot differ from the spot checked acreage by the larger of 5 percent, or 1.0 acre, not to exceed 10.0 acres, or the farm could be ineligible for program benefits. Please call **NOW** for an appointment.

## FAILED ACRES

Any program crop that has failed due to drought, excessive moisture, hail, or for any other reason beyond the producer's control, must be certified and an ASCS-574 (Disaster Application) filed before the crop is disturbed in order to be eligible for program benefits.

## MAINTENANCE OF ACR, CU FOR PAY AND CRP

This office is still making ACR, CU For Pay, and CRP maintenance spot checks. We have found that many of you are pushing your luck by not taking proper care of this land, (especially CRP). Proper weed control measures **MUST** be carried out in a **TIMELY** manner or it will cost you your program benefits.

## SEED GRAIN CONTRACTS

Any participating producer who has planted a crop under a seed contract, will be required to submit a copy of the signed contract to this office. If this affects you, please submit as soon as possible.

## PDP/TIP Public Hearing Held Tuesday Night

Marsha Allen welcomed the group that gathered in the court room of the Bailey County Court House for the PDP/TIP Public Meeting Tuesday night.

Ms. Allen also recognized the agency officials, Mell Pope, Gene Cheddy and Ray Bradley.

The background of the planning process for the public highways was explained. It was explained that the Internodal Surface Transportation and Efficiency Act of 1991 (ISTEA) has undoubtedly changed many details and procedural requirements for the planning process. However, the basic "3-C" planning process is expected to continue.

The 1993 Transitional Project Development Plan (PDP) is the Texas Department of Transportation's 10-year planning document that guides and controls project development. The PDP is being carried out in three phases to allow local input from citizens.

TIP is a more specific program of transportation improvement projects covering a three year period.

The group presented a draft copy of the projects that best meet the criteria for cost effectiveness and funding levels.

They also explained that the Transportation Improvement Program (TIP) is a documentation of short-range three year projects that are recommended for advancement during the program period. In this report, the TIP represented a list of transportation improvement projects proposed for implementation during fiscal years 1993, 1994, and 1995.

It was explained that the projects included in the TIP have been evaluated for cost effectiveness. This accounts for average daily traffic truck traffic, user delay costs, and overall construction cost of each project.

This program also includes all federally funded public transportation projects.

Proposed improvements in Bailey County include the reconstruction of the existing roadway from South Highway 214 from F.M. 298 South to the Cochran County Line. This is a strip of roadway 14.64 miles long. Also included for Bailey County is the construction of 9.15 miles of new FM roadway from F.M. 298 to F.M. 54.

Also to be constructed is a 9.135 mile stretch of new roadway from F.M. 298 to F.M. 54.

## COTTON WAREHOUSE RECEIPT REQUIREMENTS

Beginning this year, warehouse receipts showing cotton as being received by the warehouse from anyone other than the producer may only be accepted for loan or loan deficiency payment (LDP) if the producer provides a gin tag listing showing that the receipts presented were ginned for the producer or to the account of the producer.

## NL PAYMENTS FOR 1991

There will be no "NL" payments for 1991 Wheat, Barley or Oats, since the national weighted average market price was larger than the

## Lazbuddie ISD Board Meeting Held Tuesday

The board of trustees of the Lazbuddie Independent School Board met in regular session at 8:15 p.m. Tuesday in the board room of the school.

Minutes of the July 9 and 31 meetings were approved as read, and current bills were paid.

Superintendent Phil Warren gave a report on various summer activities.

A discussion was held on the C.E.D. rates.

Valli Welch, elementary principal, and Rick Copp, secondary school principal, gave their reports.

A discussion was held on the preliminary budget and a budget hearing was set for August 20.

The board approved the Elementary, Secondary, Facility and Bus Driver Handbooks as presented.

They also approved a change in group medical coverage for employees or the Lazbuddie ISD. The board approved changing to the American Medical Security.

The recognition of Scott Brown, trustee, was approved and a discussion for filling the open position was tabled until the next meeting.

They approved the substitute teacher list and accepted AAA Roofing's bid for repairs.

They reviewed changes on Bid Specification and will accept bids for a school van.

## loan rate before reductions.

### ACP FUNDS AVAILABLE

Funds are still available for cost share assistance on conservation practices. If you are interested in installing terraces, irrigation pipelines, or grasses, please contact this office.

### PEANUTS

The final date to submit contracts for additional peanuts is September 15, 1992.

### INTEREST RATE

The loan interest rate for August is 3.750 percent.

### TEXAS STATE ASCS CONFERENCE OFFICE CLOSED

This office will be closed beginning at 3 p.m., Monday, August 24 through Wednesday, August 26, so that all employees can attend the Texas State ASCS Conference to be held in Lubbock, Texas. Please mark your calendar and plan your office visit around these dates. We thank you in advance for your cooperation.

### OFFICE CLOSED

This office will be closed Monday, September 7, 1992, in observance of Labor Day.

## Know The Weather

How big is the eye of a hurricane? Is it true that the eye is sometimes completely clear while for hundreds of miles on each side the sky is filled with clouds?

The eye of a hurricane is never more than a few miles, usually less than five. It's true that sometimes in the middle of the great storm--in the eye, so to speak--the sky overhead will suddenly appear blue.


Winds will calm down and for a few minutes a strange stillness will descend--with roaring winds just a few miles distant in all directions. This is the very center of the circular motion of the winds (counterclockwise), the hub of a great blowing circle.

The lull soon ends when the winds return--they are from the opposite direction--and often just as strong as before.

### Taxpayers & Conventions

Most taxpayers don't attend political conventions but they will pay nearly \$49 million for them--the amount the government and host cities are kicking in for everything from star-spangled podiums to rent on the convention halls.

**State Capital**



**HIGHLIGHTS**

By Lyndell Williams  
TEXAS PRESS ASSOCIATION

AUSTIN - Capitol eyes last week focused on Land Commissioner Garry Mauro, criticized by the news media for using state phones as campaign manager for Democratic presidential front-runner Bill Clinton.

Speculation was rife on both sides of the political fence.

The Texas Republican Party called on federal authorities and the Travis County district attorney to investigate illegalities by Mauro and his staff on Clinton's behalf.

Meanwhile, Texas Democrats worried whether Clinton, who won the Texas primary last month, would keep or dump Mauro.

Mauro apologized, calling it "stupidity" on his part, and his office began cooperating with the Travis County probe.

But he squelched rumors of being dumped; Mauro hosted a Clinton fundraiser in Austin which raised about \$100,000.

The Texas dollars will pay for Clinton's media ads in this week's New York primary, where a big win could possibly sew up the nomination.

Republicans are still pushing for a federal probe, putting little faith in the Travis County courthouse officials controlled in part by liberal Democrats.

That failing, Republicans will almost certainly target Mauro when he is up for re-election in 1994, but it better be a stronger candidate than the GOP has served up in the past.

### Perot's Campaign Phones

Speaking of campaign phones, Texas billionaire H. Ross Perot said the toll-free numbers he set up to get signatures on his petition to run for president is taking 90,000 calls per hour.

Perot told CBS he has 100 open lines and will add more.

Seeking to add his name as a third candidate for president, an independent, Perot faces staggered deadlines in the various states, the first being May 11 in his home

state Texas.

### Electronic Welfare Card

State government is preparing to test an electronic welfare benefits card -- like a welfare credit card -- this summer, which Comptroller John Sharp thinks will reduce fraud and save \$10 million annually.

Plans are to start a six-months' test this summer for services ranging from food stamps to aid for dependent children.

Recipients will use a credit card at grocery stores; one good effect may be to stop the use of food stamps as currency for drugs and sex.

### National Guard Cuts

Proposed federal cuts to the national reserve force will trim \$43 million annually from the Texas National Guard as the Pentagon seeks to save \$20 billion over the next five years.

Capt. John Stafford, spokesman for the Texas National Guard in Austin, said individual guardsmen will not lose their jobs if they are willing to retrain.

### Ellis Now Lobbyist

State Sen. Rodney Ellis, D-Houston, has been hired by the Mexican government to lobby Congress for their interests in the North American Free Trade Agreement.

He ran the Washington, D.C. office of the late Congressman Mickey Leland before his own election to the state senate.

The proposed pact would dissolve trade restrictions between the U.S., Mexico and Canada.

### Other Highlights

■ Texas Lottery director Nora Linares promised the Hispanic Women in Leadership conference she will hire more minority workers than any other state agency, more than 20 percent.

■ Gov. Ann Richards killed a

proposal to close the state school which is the largest employer in Mexia: "I cannot destroy a town," she said.

■ A grand jury declined to indict former Texas Department of Commerce director Bill Taylor on charges of fiscal wrongdoing used by Richards to sweep clean the appointments by her predecessor, Bill Clements.

■ Meanwhile, a second group of former agency employees, also hired under Clements, has filed a federal lawsuit against Richards, claiming they were fired because they were Republicans.

■ State Treasurer Kay Bailey Hutchison ended her agency's practice of cashing personal checks for state lawmakers. Traditionally, the agency warned the lawmakers of insufficient funds, allowing him/her time to cover them without a penalty.

■ Texas Libertarians say Ross Perot's presidential bid would hurt their party's top candidate, Andre Marrou, but would help down-ballot Libertarians because Perot's money will get out the vote.

■ Gov. Richards appointed two judges elected in the March 10 primary to fill temporary seats created by resignations. Susan Larson of El Paso was appointed to the 8th Court of Appeals; Bill Peek of Texarkana was appointed judge of the 202nd District Court in Bowie County.

## Blood Drive Set In Sudan

The First Baptist Church in Sudan will sponsor a Blood Drive in Fellowship Hall of the Church on Sunday, August 16th from 12:30-4:00 p.m. You are encouraged to come and donate blood. You may call the church office at 227-2072, mornings, for an appointment, or just drop by on Sunday afternoon.

SUMMERTIME  
**ONE DAY DIET.**

**Lose 16 to 20 lbs. In 30 Days**

If you just need to trim off a little or want to loose a lot of weight, ONE DAY DIET is the newest and most powerful concept in dieting that's sure to be your last! You only need enough willpower for "ONE" Day, because tomorrow you eat anything you want.

**100% Natural & Drug Free**  
**30 Day Money Back Guarantee**  
**Ground Floor Marketing Opportunity**

For Information & Free Sample Contact  
**Charlie Hanks, Rt. 1, Box 675**  
**Muleshoe, Tx. 79347 (806) 965-2471**

## Notice Of Calculation Effective Tax Rate, Estimated Unencumbered Fund Balances, and Debt Schedule

This notice presents information about three tax rates. Last Year's tax rate is the actual rate used to DETERMINE 1991 PROPERTY TAXES. This year's effective tax rate would impose the same amount of taxes on the same properties as last year. This year's rollback rate is the highest tax rate the taxing units may set before taxpayers can start rollback procedures. This notice contains a summary of the effective and rollback tax rate calculations. You can inspect the full calculations at Bailey County Appraisal District, 104 East Avenue C, Muleshoe, Texas.  
Name of person preparing this notice Margaret L. Johnson.  
Title Chief Administrator/Assessor Collector.  
Date prepared August 13, 1992.

### NOTICE OF 1992 EFFECTIVE AND ROLLBACK TAX RATE FOR:

#### LAST YEAR'S TAX RATE

Last year's operating taxes-----	\$	686,709	246,743
+Last year's debt taxes-----	\$	0-	0-
=Last year's total taxes-----	\$	686,709	246,743
÷Last year's tax base-----		176,079,254	41,351,295
=Last year's total tax rate(per \$100 value)-----		.3900	.5967

#### THIS YEAR'S EFFECTIVE TAX RATE

Last year's adjusted taxes-----	\$	686,709	246,743
÷This year's adjusted tax base-----		168,974,801	40,985,995
=This year's effective tax rate(per \$100 value)-		.4064	.6020
x1.03=Maximum rate unless unit publishes notices and holds hearings-----		.4185	.6200

#### THIS YEAR'S ROLLBACK TAX RATE

Last year's adjusted operating taxes-----	\$	686,709	246,743
÷This year's adjusted tax base-----		168,974,801	40,985,995
=This year's effective operating rate-----		.4064	.6020
+ .08=This year's maximum operating rate-----		.4864	.6820
+This year's debt rate-----		0-	0-
=This year's rollback rate before adjustment----		.4864	.6820
+Rate to recoup lost Revenue-----		.0606	.0542
=Adjusted Rollback Rate-----		.5470	.7362

#### SCHEDULE A: UNENCUMBERED FUND BALANCES

The taxing units estimate the following balances will be left at the end of this fiscal year. These balances are not encumbered by a debt obligation. Estimated unencumbered M&O of General Fund Balance-----

	-0-	-0-
--	-----	-----

#### SCHEDULE B: 1992 DEBT SERVICE-----

The taxing units estimate the following amounts will be paid from property tax revenues(or additional sales tax revenues) for long-term debts that are secured by property taxes.

	-0-	-0-
--	-----	-----

# Bailey County Appraisal District

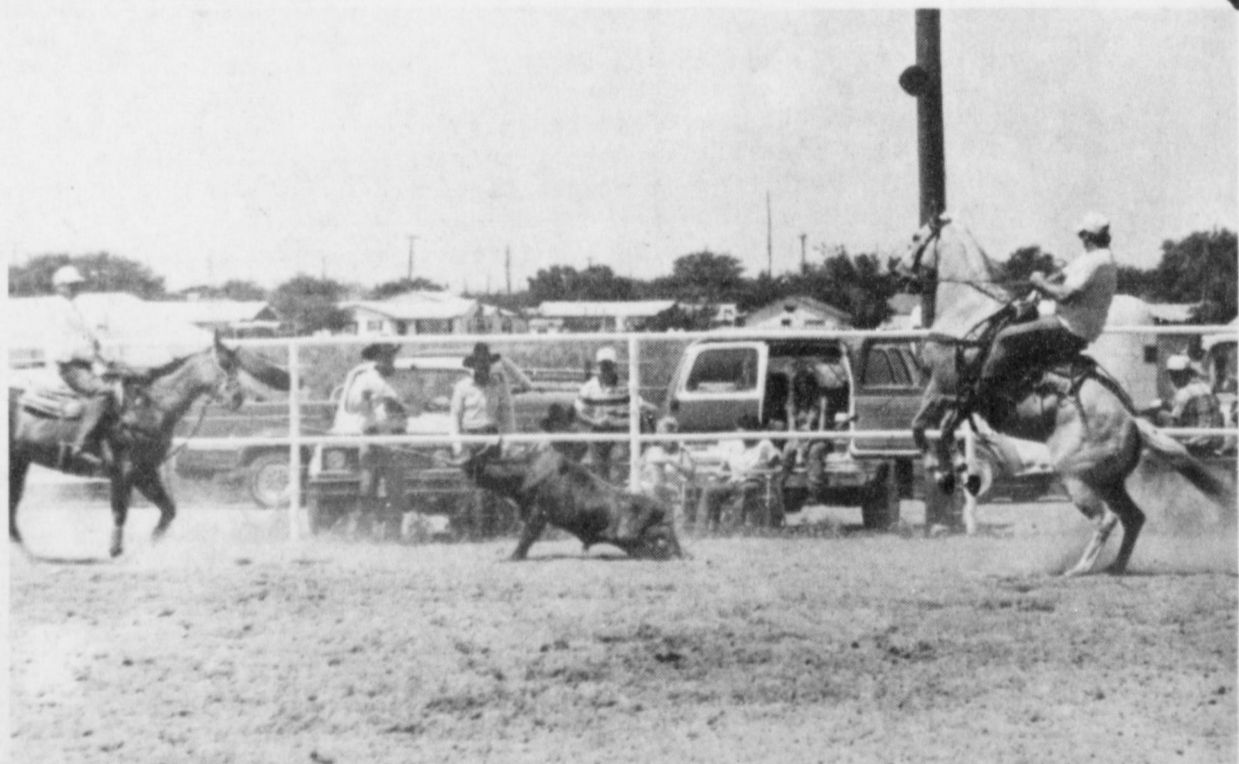
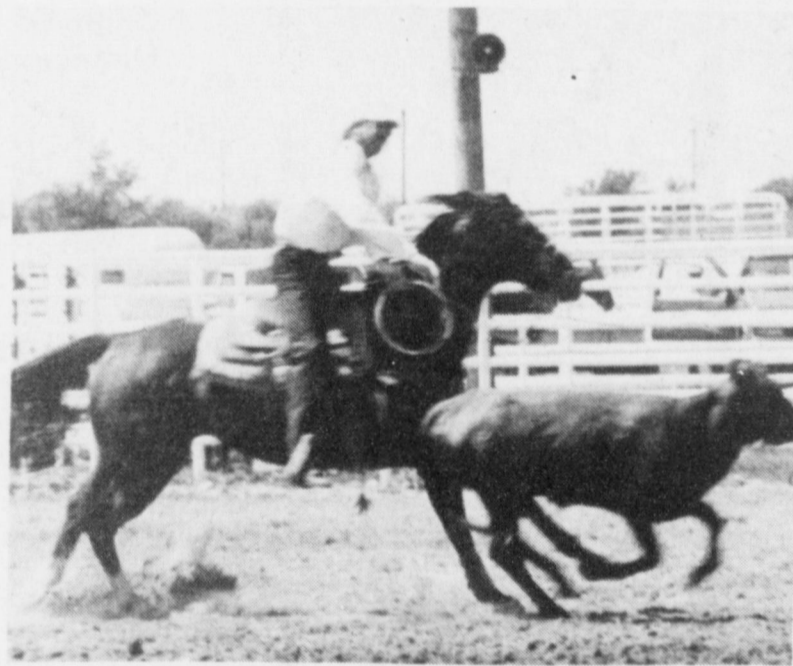
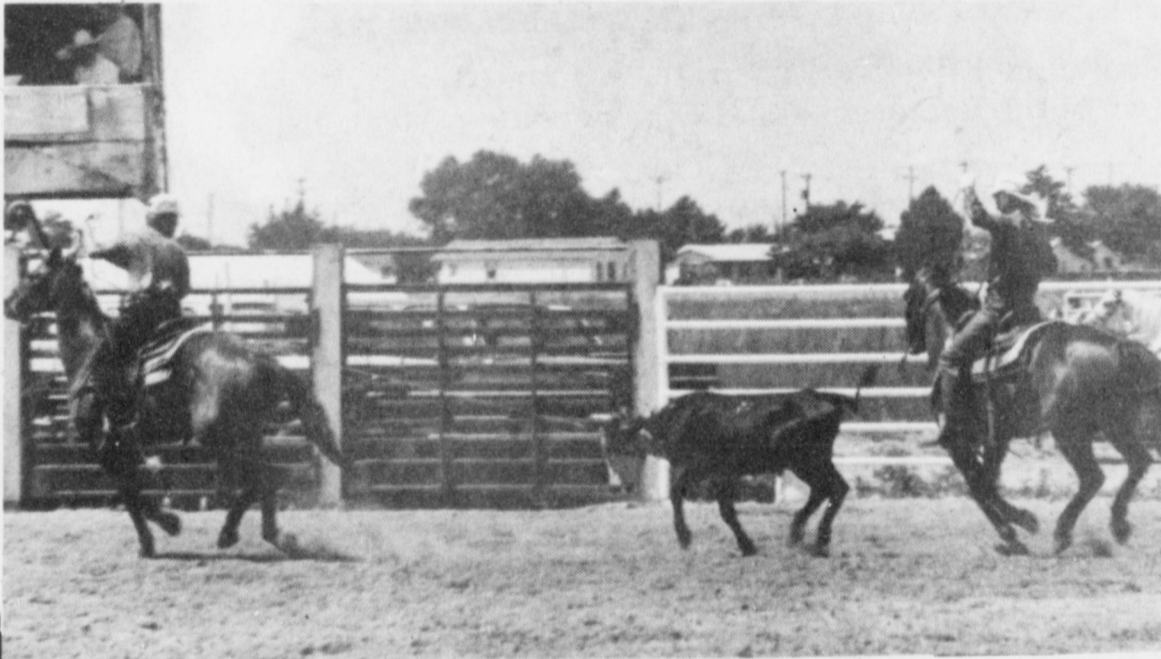
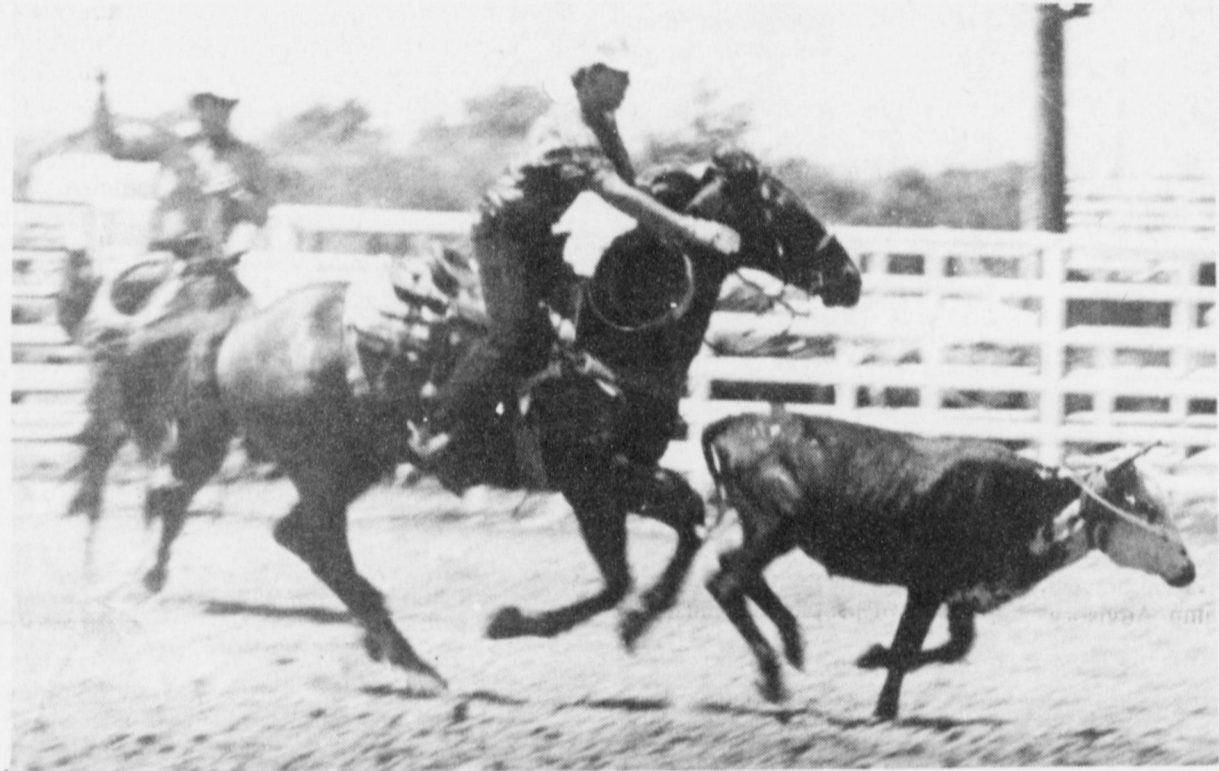
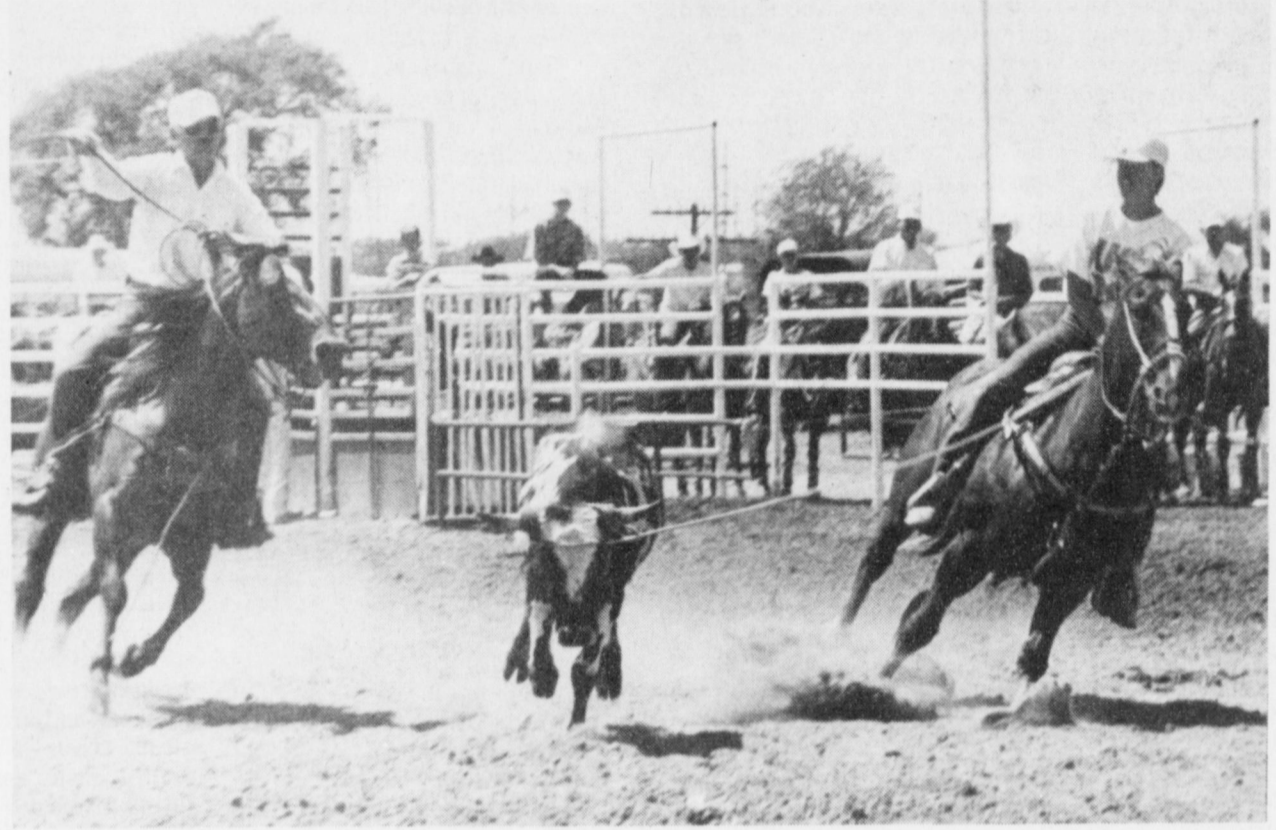
104 E. Ave. C.

Muleshoe, Tx. 79347

# Four County Match

## Team Roping Action

### August 9th





**REPORT FROM Congressman Larry Combest**

Somehow it seems that Congress should have more weighty issues to consider than "National Tap Dance Day." However, one-third of the laws passed in the last Congress made someone's day, week or month a national observance through commemorative legislation. Most of the time, these days go by with little notice except to the organization or persons who lobbied their congressman for the commemorative observance. By contrast, this legislation takes a great deal of time from congressional offices only so that some constituents can literally have a nice day.

Each Congress wades through more than 7,600 bills to produce about 600 measures that become law, yet almost 200 of those laws will proclaim special days. Despite this unnecessary workload, Congress has not passed the one law that would divert this flood of commemoratives to an independent commission. Concerned about how Congress whiles away its legislative days, 151 of my colleagues and I support the National Commemorative Advisory Act. This commemorative commission would recommend appropriate national observances for presidential proclamations.

As it is now, the Speaker of the House and powerful committee chairmen decide whether any proposed law is ever considered by Congress. However, members of Congress could also exercise self-restraint in introducing commemoratives. As a matter of policy, I do not cosponsor legislation declaring commemorative days.

I am supporting current efforts to reorganize the operation of Congress. Priority should be given to matters such as the national debt, balancing the budget, comprehensive health care reformed a presidential line-item veto. Instead of passing 200 commemorative laws, Congress should focus on the issues.

After all, the U.S. Postal Service has a Citizen's Stamp Advisory

Committee that independently recommends subjects for commemorative postage stamps. This citizen's committee decides the details, taking Congress out of the stamp business. As a result, in the last five years, Congress has attempted only 14 stamp proposals. If they feel strongly about a proposal, members of Congress can do as I did, when I wrote in support of the committee's consideration of a Buddy Holly stamp for its series of American Music Legends.

Instead of handing commemoratives over to a commission, this session of Congress will include consideration of "Elvis Presley Day," "National Quilting Day," and "Karate Kids Just Say No to Drugs Month." Hey, I like Elvis, I have nothing against quilting bees and I encourage appropriate role models against drugs. But as Senator Fritz Hollings said, "We should honor our constituents not by passing commemorative after commemorative, but by spending our time working on legislation that will make a real difference in their lives."

Maybe passing non-controversial commemoratives gives Congress an opportunity to vote in unity on some legislation. Maybe it gives an illusion to a few constituents that they are taking a direct part in government lawmaking. More likely however, is the clear view in the public's eye that by passing "National Tap Dance Day" Congress may prefer to tap dance around the more difficult and important issues of the day.

U.S. Representative Larry Combest (R-Texas) announced that the House approved \$2 million 890 thousand in a final version of funding for the Plant Stress and Water Conservation Research Laboratory at Texas Tech University in Lubbock. While the U.S. Senate had originally failed to include any funds for the planned construction of a comprehensive laboratory facility, the Senate is expected to agree to the funding with a vote in that chamber this week.

"This research addresses the nationwide need for improving fiber and food crops," said Combest. "Strengthening a plant's ability to withstand drought, cold, heat and wind can have significant impact in the lives of people who must rely

on crops produced under extreme weather conditions. It is noteworthy that Congress has continued to recognize both the caliber of scientists and the appropriate West Texas location for studying the effects of diverse weather conditions."

As sponsor of the Plant Stress Research program in Congress, Combest will participate in ground breaking ceremonies for the lab's green house complex at 10:00 a.m. on Thursday, August 20. The laboratory will be built on 50 acres of university land at the northwest corner of the intersection of 4th Street and Memphis Avenue. consolidating six separate labs on campus into one facility will allow the scientists to work more closely on plant genetics, biochemistry and soil science.

**Enochs News**  
by: Mrs. J.D. Bayless

Guests in the home of Mr. and Mrs. Bill Ken were friends Mr. and Mrs. Ken Jackman from Mesa, Arizona. They visited from Friday til Thursday.

\*\*\*\*

Mr. and Mrs. Dale Nichols attended the funeral service of Rev. Jimmy Gresham at Wheeler Funeral Home in Portales, N.M. last Tuesday at 3:00 p.m. He was a former pastor of First Baptist Church of Enochs.

\*\*\*\*

Ted Belez is home from the hospital following surgery and is doing well.

\*\*\*\*

Mrs. Orene Hall from Anaheim, Ca. visited her sister-in-law and husband, Mr. and Mrs. J.E. Dayton, Friday afternoon til Sunday. Mrs. Oleta Burris of Wellman spent Saturday night with them, and they drove to Show Low, Az. to visit Cleo and Leta Hall on Sundy.

\*\*\*\*

**Beef Cattle Short Course, Set Aug. 17-19**

More than 1,000 people are expected to attend the annual Beef Cattle Short Course and Trade Show on Aug. 17-19 at Texas A&M University.

"The short course will provide useful information about industry issues and management practices that can make ranching more efficient," said Dr. Larry Boleman, beef cattle specialist with the Texas Agricultural Extension Service.

Beef specialists and researchers will discuss the "National Beef Quality Audit" and results of the Extension Service's "Ranch to Rail" program during the general session on Tuesday, Aug. 18. Additionally, Alan Sobba, director of tax and trade for the National Cattleman's Association in Washington, D.C., will discuss challenges and issues facing the U.S. beef industry.

Agricultural economists and beef specialists will discuss the national Standardized Performance Analysis program that afternoon. Participants will earn what performance and financial information is needed from ranchers to make use of this national database.

To assist producers with marketing, the latest information on weather, grain supplies and cattle prices will be given in "Falling Rain and Beef prices," during the morning session on Aug. 19. Also of marketing interest will be the live animal demonstration that afternoon. Panelists will discuss the value of cattle based upon type, age, sex, and conformation, and the value of breeding cattle and breeding programs.

Breakout sessions Tuesday and Wednesday will offer smaller, in-depth classes on these topics:

- \* Reproduction--The control of reproductive diseases, the value of pregnancy determination in cows and breeding soundness in bulls, adequate herd nutrition, and factors that influence supplemental feeding.
- \* Health management--Causes, prevention and trace-mineral treatments of common infectious diseases of beef calves, including scours, septicemia and pneumonia. Also, new treatment devices for horn flies.
- \* Nutrition--Supplementation programs for young cattle, replacement heifers, stocker cattle, and cow herds. Effective protein supplements, supplemental energy sources and mineral supplements will be described, and recommendations made for various areas of the state. The program will include an update on trace mineral supplementation.
- \* Breeding and genetics--Breeding systems, their relative benefits and ranch resources required for the success. Sources of information for evaluation of genetic potential, such as herd records, bull test results and national sire evaluation Expected Progeny Differences.

The trade show will feature about 50 beef industry exhibits and Texas A&M agricultural department displays. Industry representatives and A&M researchers will be on hand to answer questions throughout the short course.

The program will be held in the J.Earl Rudder Theatre Complex, the Memorial Student Center and the Louis Pearce Pavilion on the Texas A&M campus.

For more information, contact a county Extension agent, Dr. Boleman or Anne Moody, telephone (409) 845-2051, or write the Beef Cattle Short Course, Rm. 114, Kleberg Center, Texas A&M University, College Station, Tx. 77843-2471. Requests for information may be faxed to (409) 862-2942.

Every child should have his chores whether the family be rich or poor.

**Nursing home News**  
by: Joy Stancell

Tuesday afternoon Leonard McCormick was visited by his granddaughter, Vanna, and her children. They took him for a ride around town.

\*\*\*\*

The Aging Parent Support Group met Monday night in the Conference Room. The next meeting is scheduled Monday, Sept. 14th at 7:00 p.m.

\*\*\*\*

Wednesday afternoon Mrs. Killingsworth and Rie Kimbrough played music and led songs for our sing along.

\*\*\*\*

Ona Porter was visited by her daughter Wednesday morning.

\*\*\*\*

Each Sunday morning the Muleshoe Church of Christ conducts our Communion Service; Clara Lou Jones has Bible study.

\*\*\*\*

Sunday afternoon the Muleshoe singers came to play and sing Gospel music.


\*\*\*\*

Tuesday afternoon Laverne James, Bonnie Green, Claudine Embry, Beverly Wagnon, Ashley, and La Rhonda came to shampoo and set the ladies hair.

\*\*\*\*

Wednesday morning Melvin Griffin hosted the Men's Coffee Time. Flo Jones and Wanda Kittrell hosted a cheese and crackers party for the ladies and men. Our special guest for the occasion was David McIntire.

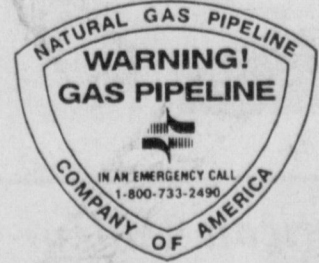

**We're working to protect you—but we need your help!**



Our most important goal at Natural Gas Pipeline Company is to safeguard everyone who lives and works along our pipeline route. But as hard as we try, we can't do the job alone. We need your help to spot and report pipeline emergencies so we can react promptly. And we need your cooperation to prevent accidents from happening.

**Help prevent pipeline accidents:**

- Call BEFORE you dig, drill, blast or doze.
- Watch for our signs at road, railroad and river crossings, at fence lines, ditches and other sites.
- For no-cost location of underground facilities, call the 24-hour "TESS" number (1-800-DIG-TESS) to reach Texas Excavation Safety System. Please call two working days in advance.

**Signs of a pipeline emergency:**

- Hissing or shrill SOUND.
- Unusual BLOWING dirt or dust.
- Persistent BUBBLES in water.
- DYING PLANTS amid healthy ones.
- FIRE or EXPLOSION near pipeline.

**To report a pipeline emergency:**

- Phone 1-800-733-2490, our toll-free, 24-hour line.

**Steps to take in a pipeline emergency:**

- Evacuate the area immediately.
- Avoid potential ignition sources.
- Warn others to stay away.

**Natural Gas Pipeline Company of America**  
A MIDCON CORP COMPANY

**Biggest Savings of the year**

**Teague-Strebeck Chevrolet-Geo**

**48 MONTHS FINANCING**

**2.9% APR\***

**Hurry, For A Limited Time Only!**

**On All Chevrolet Pickups**  
(Excluding Crew Cabs)



**\*2.9 APR GMAC Financing On Approved Credit**

**TEAGUE-STREBECK CHEVROLET-Geo**

356-3501 (On The Lovington Hwy. 763-3501 Across From Poygnors')




### Patients in Muleshoe Area Medical Center

August 11-13  
 Tuesday: Concha Estrada, Victor Foss, Richard Reyes, Adriana Gonzales, Maria Derma, Morin, Gavina Gomez, Adalberto Rojas, Diana Sanchez  
 Wednesday: Victor Foss, Richard Reyes, Adriana Gonzales, Maria Derma, Gavina Gomez, Adalberto Rojas, Matt Lee, James Linson.  
 Thursday: Victor Foss, Richard Reyes, Adriana Gonzales, Maria Derma, William Harvey, Adalberto Rojas, Matt Lee, Bella Villa, James Linson, Lindey Chancey.

### Muleshoe Menu

AUGUST 18-21

**DILLMAN & DESHAZO**  
**TUESDAY**  
 BREAKFAST  
 Pancakes, Juice, Milk  
 LUNCH  
 Hamburger, Baked Beans French Fries, Milk  
**WEDNESDAY**  
 BREAKFAST  
 Cinnamon Toast, Juice, Milk  
 LUNCH  
 Frito Pie, Veg. Dippers w/Ranch Dressing, Golden Corn, Dinner Roll, Milk  
**THURSDAY**  
 BREAKFAST  
 Breakfast On A Stick, Juice, Milk  
 LUNCH  
 Ball Park Hot Dogs, French Fries, Chilled Fruit, Milk  
**FRIDAY**  
 BREAKFAST  
 Biscuits w/Gravy, Juice, Milk  
 LUNCH  
 BBQ On A Bun, Green Beans, Fruit Cobbler, Milk

**JR. HIGH & HIGH SCHOOL**

**TUESDAY**  
 BREAKFAST  
 Pancakes, Juice, Milk  
 LUNCH  
 Hamburger, French Fries, Burger Toppings, Chilled Fruit, Milk  
**WEDNESDAY**  
 BREAKFAST  
 Cinnamon Toast, Juice, Milk  
 LUNCH  
 BBQ On A Bun, Baked Beans Chilled Fruit, Milk  
**THURSDAY**  
 BREAKFAST  
 Breakfast On A Stick, Juice, Milk  
 LUNCH  
 Homemade Burrito, Stuffed Potato, Golden Corn, Chilled Fruit, Fresh Baked Cookie, Hot Dinner Roll, Milk  
**FRIDAY**  
 BREAKFAST  
 Biscuits w/Gravy, Juice, Milk  
 LUNCH  
 Golden Steak Fingers, French Fries, Green Beans, Dinner Roll, Milk

### Three Way Menu

AUGUST 17-21

**MONDAY**  
 BREAKFAST  
 Cereal, Juice, Fruit, Toast, Milk  
 LUNCH  
 Chicken Fried Steak W/Gravy, Creamed Potatoes, Green Beans, Rolls, Milk, Apple Cobbler  
**TUESDAY**  
 BREAKFAST  
 Waffles, Sausage, Juice, Milk  
 LUNCH  
 Taco, Tossed Salad, Corn, Milk, Pineapple Upside-down Cake  
**WEDNESDAY**  
 BREAKFAST  
 Eggs, Hash Browns, Juice, Biscuit, Milk  
 LUNCH  
 Hamburgers, Hamburger Salad, French Fries, Milk, Jello  
**THURSDAY**  
 BREAKFAST  
 Pancakes, Juice, Milk  
 LUNCH  
 Salmon Patties, Salad, Pork N' Beans, Cornbread, Milk, Cookies  
**FRIDAY**  
 BREAKFAST  
 Biscuit, Gravy, Juice, Milk  
 LUNCH  
 Chicken Strips W/Gravy, Whipped Potatoes, Brussel Sprouts, Roll, Milk, Peaches

### Accent On Health

The Texas Department of Health (TDH) Bureau of Dental Health Services warns parents that the practice of calming a baby for sleep by giving it a bottle of milk, formula or juice can cause serious harm to the infant's teeth.

Dr. Donald Crow, chief of the bureau, said that prolonged bottle feeding of babies with sugary liquids during sleep can lead to a condition called "baby bottle tooth decay." The condition is a leading cause of oral health problems among children younger than 3, and often is the start of severe, life-long dental problems which can affect the patient's general health and

nutrition.

While about 60 percent of Texas children have some tooth decay, about 16 percent is caused by baby bottle tooth decay, according to Dr. Crow.

Dr. Crow explained that when children feed from bottles while they are awake, saliva helps to wash away concentrations of sugar and acid that can damage teeth. However, while sleeping, a baby's saliva flow is greatly reduced. Consequently, sugar concentrations may remain in a sleeping baby's mouth for hours, allowing bacteria to convert more sugar into harmful acids.

The resulting decay, Dr. Crow explained, can rapidly affect several teeth and cause severe pain. The upper teeth are the most likely to be damaged, although others are susceptible. Pain and infection can discourage eating. It also can cause premature tooth loss, which can

result in crooked or crowded adult teeth.

To avoid baby bottle tooth decay, TDH recommends that parents:

- \* Fill the baby's bottle only with water for naps and bedtime.
- \* Do not let a child sleep with a bottle of milk, formula, juice or soda pop.
- \* Do not give a child a pacifier dipped in any sweet substance.
- \* When most baby teeth have appeared, begin brushing and flossing the baby's teeth.
- \* Teach the baby to drink only from a cup before his first year.
- \* Begin the baby's regular dental visits before age 2--sooner if any problems have appeared.

\* Ask the dentist whether the municipal water supply is fluoridated, and if it is not, ask what other fluoride sources he recommends to strengthen the baby's teeth.

### The Country Peddler Show of Lubbock

The Country Peddler Show of Lubbock will be September 11, 12, & 13, 1992 in the Lubbock Memorial Civic Center (1501 6th Street).

An unparalleled selection of quality home decorating accessories, original fashion designs, and collectibles--furniture, textiles, carvings, art, pottery, baskets, paintings, potpourri, porcelain, jewelry, stenciling, as well as original design dresses, vests, jackets, skirts, and collars--all handcrafted by the country's leading artists and designers.

Entertainment will be provided by Kendra Ward & Bob Bence of Langsville, Ohio featuring the delicate melodies of the hammered and Mountain Dulcimers.

Admission is \$4 for adults, \$2 for Senior Citizens, and children under 12 are free (No strollers please).  
 SEPT. 11, FRIDAY 4-9 P.M.  
 SEPT. 12, SAT. 9AM-6 PM  
 SEPT. 13, SUN. 11 AM-5 PM  
 For additional information write P.O. 706 Port Aransas, Tx. 78373 or call 512-749-5449.

**Poet Laureate**  
 Mona Van Duyn, a poet from St. Louis who has won most of the nation's top literary awards, was named by the Library of Congress as the nation's first female Poet Laureate.

**CALL**  
 Mark Morton  
 109 S. 1st Muleshoe  
 272-7519

**HEALTH INSURANCE**

State Farm Mutual Automobile Insurance Company Home Office Bloomington, Illinois

### Immaculate Conception Catholic Church

Father Patrick Maher  
 Northeast of City

**First Baptist Church**  
 220 West Ave. E.  
 Pastor Stacey Conner

**Trinity Baptist Church**  
 314 E. Ave. B  
 Rev. Dale Berry

**Circle Back Baptist Church**  
 Intersection FM 3397 & Fm 298  
 Rev. Jessie Shaver  
 946-3676

**Calvary Baptist Church**  
 1733 W. Ave. C.  
 Rev. Rick Michael

**Church of Compassion**  
 605 W. 8th  
 Jimmy Williams  
 272-5624

**Progress Baptist Church**  
 Alan Petersen  
 Progress, Texas

**Richland Hills Baptist Church**  
 17th and West Ave. D  
 Rev. Terry Taylor

**St. Matthews Baptist Church**  
 Corner of West Boston & West Birch  
 Pastor M.S. Brown

**Progress Second Baptist Church**  
 1st and 3rd Sundays  
 Rev. Arthur Hayes

**Primitive Baptist Church**  
 621 South First  
 Elder Cleveland Bass, Pastor

**1st Baptist Church**  
 Lazbuddie, Tx.  
 Gary Wilcox, Pastor  
 965-2126

**New Covenant Church**  
 Plainview Hwy  
 Sunday 10:00 a.m.  
 Wednesday 7:00 p.m.  
 Jimmy Lowe, Pastor

## PARCHED EARTH

The long summer months come and with them the dry season. All growing things begin to feel the heat and show the effects of thirst. Plant life begins to wither and fade away.

When one leaves God out of his life there is the same fading and incompleteness as the plant without water.

This Sunday put God into your life, Attend church.

*"If any man thirst let him come unto me, and drink."*

The Church is God's appointed agency in this world for spreading the knowledge of His love for man and of His demand for man to respond to that love by loving his neighbor. Without this grounding in the love of God, no government or society or way of life will long persevere and the freedoms which we hold so dear will inevitably perish. Therefore, even from a selfish point of view, one should support the Church for the sake of the welfare of himself and his family. Beyond that, however, every person should uphold and participate in the Church because it tells the truth about man's life, death and destiny; the truth which alone will set him free to live as a child of God.

© Coleman Adv.

**St. John Luthern**  
 Sunday School and Bible Classes 9:30 a.m.  
 Church Services 10:30 a.m.  
 Rev. Richard Greenthaner

"Inglesia Pentecostal Unida"  
 207 East Ave. G  
 272-5944  
 Pastor: Wenceslado Trevino

**Lazbuddie Methodist Church**  
 965-2121  
 Doug Chapman, Pastor

**New Vision Church of the Nazarene**  
 814 W. Ave. C  
 272-3622  
 Pastor David R. McIntire

**Jehovah Witness**  
 Friona Hwy  
 Jack Tiffin, Minister  
 Warren Meeks, Minister

### Primera Iglesia Bautista

223 E. Ave. B  
 Roy Martinez, Pastor

**Lariat Church of Christ**  
 Sunday School 10:00 a.m.  
 Worship 11:00 & 6:00 p.m.  
 Wednesday Services 7:00 p.m.  
 Sam Billingsley, Minister

**Muleshoe Church of Christ**  
 Clovis Hwy  
 Bret McCasland, Minister

**16th & Ave. D Church of Christ**  
 Sunday 10:30 a.m.  
 Evening 6:00 p.m.  
 Wednesday 7:30 p.m.  
 Curtis Shelburne, Minister

**Lazbuddie Church of Christ**  
 Minister, Keith Coumier  
 Sunday School 9:30 a.m.  
 Morning Services 11:00 a.m.  
 Evening Services 6:30 p.m.  
 Mid-Week Services 7:30 p.m.  
 272-3984

**First Assembly of God**  
 Rev. G. Dean Reid, Pastor  
 Sunday School 9:45 a.m.  
 Morning Worship 11:00 a.m.  
 Evening Services 6:30 p.m.  
 Mid-Week Services 7:30 p.m.  
 272-3984

**Spanish Assembly of God**  
 East 6th and Ave. F.  
 Mike Doyle, Pastor

**First United Methodist Church**  
 507 W. 2nd Street  
 Richard Edwards, Pastor

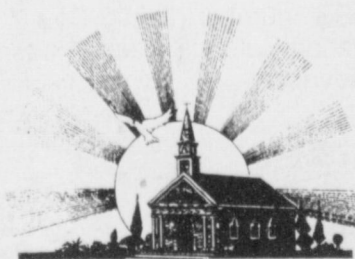
**El Divino Salvador Methodist Church**  
 5th and E. Ave. D  
 Leonard Gonzales, Pastor

**United Pentacostal Lighthouse Church**  
 207 East Ave. G  
 Rev. N.W. Thompson  
 272-3258

**The Christian Center**  
 Morton Hwy  
 272-5992



## Attend The Church Of Your Choice!



<b>Western Drug</b> 114 Main 272-3106	<b>Throckmorton Refinishing Shop</b> 319 E. Amer. Blvd. 272-5345	<b>Lowe's Marketplace</b> 401 W. Amer. Blvd. 272-4585	<b>American Valley Inc.</b> W. Hwy 84 272-4266
<b>Decorator's Floral &amp; Gifts</b> 616 S. 1st. 272-4340	<b>Bratcher Motor Supply</b> 107 E. Ave. B 272-4288	<b>Richland Hills Texaco</b> 1914 W. Amer. Blvd. 272-4875	<b>Bob Stovall Printing</b> 221 E. Ave. 272-3373
<b>Dairy Queen</b> 1204 W. Amer. Blvd. 272-3412	<b>Bobo Insurance Agency</b> 108 E. Ave. C 272-4264	<b>Bailey County Farm Bureau</b> 1612 W. Amer. Blvd. 272-4567	<b>Combination Motors &amp; Salvage</b> 272-4458
<b>Irrigation Pumps &amp; Power</b> W. Hwy 84 272-4483	<b>Wes-Tex Feed Yards, Inc.</b> 272-7555	<b>Viola's Restaurant</b> 2002 W. Amer. Blvd. 272-3838	<b>5-Area Telephone Cooperative Inc.</b> 302 Uvalde 272-5533

# CLASSIFIEDS 272-4536

## CLASSIFIED RATES

15 Words & Under  
Minimum Charge  
\$2.30  
Thereafter  
\$2.00  
16 Words & Over  
1st Insertion  
15 cents per word  
2nd Insertion  
13 cents per word

**CLASSIFIED DISPLAY RATES**  
\$1.75  
Per Column Inch

**DEADLINES**  
12 noon Tues.  
For Thursday Paper  
12 noon Friday  
For Sunday Paper

To receive the reduced rate after the first insertion, ad must run continuously.

We reserve the right to classify, revise, or reject any ad. We are not responsible for any error after ad has run once.

## 1. Personals

**CONCERNED**  
About Someone's Drinking?  
**HELP IS AVAILABLE**  
through Al-Anon  
Call 272-2350 or 965-2870 or come to visit Tuesday and Thursday nights, 8:00 p.m. & through AA call 965-2870 or come visit Tuesday nights, 8:00 at 620 W. 2nd, Muleshoe.

For more information and assistance regarding the investigation of get-rich-quick, work-at-home and other financial/business opportunities, The Muleshoe and Bailey County Journals urges its readers to contact the Better Business Bureau, 1206 14th St., #901, Lubbock, TX 79401 or call (806)763-0459

## 2. Lost & Found

Tea-cup apricot male poodle. Answers to Skipper. Lost from Muleshoe Animal Clinic. Work-272-7504--Home 272-5328, ask for Nadia.

**REWARD OFFERED!!**  
\$2-33t-6tc

## 3. Help Wanted

**WANTED:**  
General Manager for Muleshoe Country Club. Needs experience in bookkeeping, management skills and people oriented. Send resume to Box 733, Muleshoe, TX 79347.

Texas Sesame is now taking applications for seasonal harvest help. We need elevator workers, scale operators, and bookkeepers at all three locations. Apply in person at Muleshoe, Springlake and Flagg. No phone calls will be accepted.

**BEAUTICIAN NEEDED**  
Full or part time. Apply in person **MAIN STREET BEAUTY SHOP**  
M3-31t-8tc

## 3. Help Wanted

**PHOTO TRIMMERS**  
EARN TO \$125 PER DAY!  
NO EXPERIENCE NEEDED.  
1-800-262-4389

**\$200-\$500 WEEKLY**  
Assemble products at home. Easy! No selling. You're paid direct. Fully guaranteed.  
**FREE** Information-24 Hour Hotline.  
801-379-2900  
Copyright # Tx 340DH A3-31t-16tp

**TRUCK & TRACTOR DRIVERS WANTED:**  
Monthly salary, lots of travel. Job runs March-December. Contact Scott or Charles at SCB Farms, Inc. in Bovina, TX--(806)238-1206 S3-31s-tfc

## 8. Real Estate

**FOR SALE:**  
3-1-Carport. Fenced Back Yard. Good Location.  
HCR Real Estate. Call 272-5318.  
33s-2tc

**HOUSE FOR SALE**  
4-2 1/2-2 Brick 201 Smith St. Sudan, LR-Den-PP-2 DR-1 EXTLT-2 Story Workshop-Fenced, C Fans-Built-ins All Elct-BB Htrs-EVAC-Lots Closets. Call for Appointment at 272-2229 or 272-3332.  
H8-30s-4tcS

**Assume Loan**  
3-1-1 Brick, Blinds, Fans, Central Heat, Fenced yard. 1424 West Ave. C. 272-5234  
S8-33s-tfc

**FOR LEASE:**  
House 3-1-1 near high school available August 10. Call 799-5374  
Lubbock collect. Must have references.  
C13-32s-4tc

The Estate settlement 172 acres located near Morton. Farmland with pasture, two wells suitable for livestock, and/or irrigation. Call (806)894-2133  
F8-33t-8tc

## 9. Automobiles For Sale

**CHEAP! FBI/U.S. SEIZED**  
89 MERCEDES.....\$200  
86 VW.....\$100  
87 MERCEDES.....\$150  
65 MUSTANG.....\$50  
Choose from thousands starting \$25.  
**FREE** Information-24 Hour Hotline.  
801-379-2929  
Copyright # Tx340JC A9-31t-16tp

**SEIZED VEHICLES BY DEA, FBI and U.S. Customs.** Low as \$100. Cadillacs, GM, BMWs, Mercedes, Porches, Fords. Call 1-315-733-8512 Ext. R104  
T9-31s-6tc

## 11. For Sale Or Trade

Two side-by-side lots for sale. \$400 each. If interested call (918) 773-8946 or write Freeman Davis, Rt. 1 Box 203 AA, Vian, OK, 74962.  
D11-33t-4tp

## 15. Misc.

Allison Funderland has opening for the fall. Call Dianne Allison--272-3304.  
A15-33s-2tc

I do housecleaning and I have references.  
272-4993  
M1-33t-4tc

**FOR RENT:**  
Large Self Storage rooms with 24 hour a day access. Call J & J Self Storage at 272-4307.  
S15-27s-tfc

## GOT WEEDS ON CRP? CALL JACK LITTLE FOR FREE ESTIMATE ON COST OF CUTTING WEEDS! SATISFACTION GUARANTEED! CALL 806-272-4805 MULESHOE L15-30t-tfc

## 8. Real Estate

**SMALLWOOD REAL ESTATE**  
232 Main 272-4838  
3 Bedroom, 1 Bath, 1 Carport, Central Heat. \$1,000 Down--\$312.00/mo. Includes Taxes and Insurance.

## 8. Real Estate



**SMALLWOOD REAL ESTATE**  
232 Main 272-4838  
3 Bedroom, 1 Bath, 1 Carport, Central Heat. \$1,000 Down--\$312.00/mo. Includes Taxes and Insurance.

## 15. Misc.

**ROUND-UP APPLICATION**  
Pipe-wick mounted on high-boy. 30 in. or 40 in. rows. Cotton, milo, soybeans and Vol. corn. Call: Roy O'Brian 265-3247

## 18. Legals

The Muleshoe Independent School District will accept bids for a pick-up for the Agriculture Department. Sealed bids should be mailed/delivered to MISD, 514 West Ave. G, Muleshoe, TX 79347 to the attention of Buck Johnson, Asst. Supt./Operations. Bids will be accepted until 1:00 p.m. on Monday, August 24, 1992. The following specifications should be met or exceeded: 1991/1992 1 ton pick-up, 7.3 Diesel engine, 55,000 miles or less, crew cab, automatic transmission, cloth seats, electric windows, tilt wheel, cruise control, air conditioned, heater, am-fm w/ cassette, electric trailer brakes, 5th wheel plate, chrome hitch. Vehicles bid will be subject to visual inspection. MISD reserves the right to accept or reject all bids.  
M18-33s-2tc

## 8. Real Estate

**YOU CAN'T LOSE—OR GET LOST—WITH THE ROADS OF TEXAS!**  
Get your copy at MULESHOE PUB CO. Only 12.95

## 8. Real Estate

The cookbook everyone is talking about **TEXAS COUNTRY REPORTER COOKBOOK**  
256 pages of recipes from the viewers of the popular tv show hosted by Bob Phillips  
\$13.95  
Pick up your copy at MULESHOE PUB CO

## 8. Real Estate

## NEWS VIEWS

Elizabeth Taylor, matrimonial expert and actress: "President Bush and Mr. Quayle, you know you're wrong," commenting on administration policy to bar most emigrants with AIDs virus.

William Kristol, chief of staff to Vice President Quayle: "To say the least, dumping Quayle would be no solution at all."

Roy Smith, of Goldman Sachs: "There has to be some reward for success," commenting on revelation bosses Robert Rubin and Stephen Friedman each made \$15 million last year, tops among investment bankers.

Chester Walsh, whistle-blower at GE who uncovered fraud: "I did a lot of research to see what happened to (other) people who reported wrongdoings. All I found was that they lost their jobs, their security; they lost everything."

Victor Schwartz, product liability expert: "There was so much information in the public realm about the dangers of smoking, it will be hard to persuade a jury... (one) began to smoke because of misleading statements from the tobacco industry."

## HOROSCOPES

### Aug 16-22

#### ARIES - March 21/April 20

You could be moving towards an important financial commitment — and it looks like a good time to make a decision. A friend will help you tie up some loose ends that have been preventing you from making social plans. The end of the week could easily turn into a romantic time.

#### TAURUS - April 21/May 21

A problem at work that's been dragging on for a long time looks like it's going to be cleared up very soon. It's going to make you a lot busier — but a lot happier. Do your best to avoid confrontations this week and — most importantly — control your temper.

#### GEMINI - May 22/June 21

You've probably been letting yourself go a bit, and it's time you started watching your health. You may begin the week feeling a bit under the weather and, if you're not careful, it could develop into something more severe. But there's some welcome news about a friendship you've been trying to strengthen for some time.

#### CANCER - June 22/July 22

You could find yourself dragged into a rather awkward situation over the next few days — and although you won't feel much like getting involved, you're going to find it very difficult to stay out of it. There is some good news on the way regarding a project you are involved in. A package you've been expecting finally arrives.

#### LEO - July 23/August 23

Money matters are going to be causing you a bit more concern than usual — and you may have to alter one or two rather ambitious plans you've been making. Make yourself listen to advice a bit more — and try to curb any extravagant tendencies. Keep up on current events.

#### VIRGO - Aug 24/Sept 22

Be patient with friends who seem inconsistent — you'll find it will pay off in the end, as you may need their help with a complicated problem later on. There's going to be a change in weekend plans, but what you end up doing will be more fun than the original plan.

#### LIBRA - Sept 23/Oct 23

You're going to be very busy these next few days — and you could get heavily involved in a new project. A few words of advice: Don't be abrupt with people who express doubts about your ideas; they have your interests at heart. An old flame could turn up on the social scene again.

#### SCORPIO - Oct 24/Nov 22

You may be called on to make an important decision in the very near future — and it could involve uprooting yourself. This is an ideal time for changes of any sort — you will find that you can settle into new surroundings very quickly. Friends keep your social life extremely busy this week.

#### SAGITTARIUS - Nov 23/Dec 21

Try to express yourself a little more clearly this week. Stating your opinions directly will help prevent people from drawing incorrect conclusions about your attitudes — and you'll minimize the possibility of unwarranted hostility. This week, there's a chance of meeting someone (probably a Capricorn) who could have a positive influence on your future.

#### CAPRICORN - Dec 22/Jan 20

Someone you haven't seen for a long time takes you by surprise. It should be a pleasant meeting. At work, the emphasis is going to be on teamwork. You'll find you achieve quite a lot by combining forces with colleagues. It's a good week for domestic activity as well, especially if you are planning any home improvements.

#### AQUARIUS - Jan 21/Feb 18

Your already-busy social life gets even busier! You'll be the center of attraction socially — and that will bring you closer to someone you've been trying to impress. A rather big worry that has been troubling you gets resolved. The solution might be a bit of a surprise to you at first — and it may take some courage on your part to take the first steps toward sorting things out.

#### PISCES - Feb 19/March 20

You will meet someone new in the next day or two — someone who turns out to be very special in the months ahead. Don't hurry things, though, or you might scare him or her off. An unexpected invitation involving new and interesting people is on its way. Overcome shyness and you'll meet with success.

#### YOUR BIRTHDAY THIS WEEK

The next 12 months: You have a warm heart and are very generous, but you have a mean streak, too. Don't let a good friend become the butt of your jokes — there's just so much kidding he or she will take. You could lose a very valuable friendship. You may be considering a career move. If so, September would be a very good time for a change. New romance is likely for spring.

## Bingham & Nieman Realty

116 E. Ave. C. George Nieman, Broker 272-5286 272-5285

**RICHLAND HILLS**  
PRICE REDUCED- 3-2-2 Brick, Cent. A&H, built-ins, FP, sunken lv. area, ceiling fans, earhtone carpets..... RH-1

3-2-2 Brick, Cent. A&H, built-ins, FP, fenced yd., \$50's!!! RH-2  
3-3-1 Carport, Cent. A&H, built-ins, FP, abundant storage, covered patio!!!! RH-3

NICE RESIDENTIAL LOTS.....\$5,000 UP  
JUST LISTED 4-2-2 Brick, Large living/dining combined...\$50's!!!! RH-5

3-2-1 Brick, Cent A&H, with fenced yard...\$50's! RH-6  
JUST LISTED- 3-2-2 Brick with fireplace, 5 ceiling fans, new carpet & paint, new dual fuel heat pump, abundance of closet space...\$90's..RH-8

VA Property 3-2-2, 1/2 Acre, FP, Built-ins, Storage Bldg...\$30's  
3-2-2 car detached garage Brick with fireplace, nice earhtone car, Heat Pump...\$30's

**HIGH SCHOOL**  
VERY NICE 2-2-1+1 carport, Cent. A&H, built-ins, low maintenance lawn, Much More!! \$30's! HS-1

**IMMACULATE LARGE BRICK HOME** 3-2-2 Heat Pump, built-ins, Whirlpool, loads of storage, lg. shop-storage, \$70's!!!! HS-2  
3-2 Remodeled, heat pump, built-ins, fenced yd., storage bldg. \$20's!!!! HS-3

4-2-2 Brick, Built-ins, Cent A&H, ceiling fans...\$40's!!!! HS-5  
FmHA financing to a qualified buyer-3-1 1/2-1-1 Brick in tip-top shape...\$20's..H-6

**HIGHLAND AREA**  
3-2-1 Brick, Cent. A&H, FP, built-ins. MAKE OFFER!!!! HL-1  
3-2-1 Home, wall furnace heat, window evap. air, \$20's!!!! HL-2

**LENAU ADD.**  
3-1-1 car carport-Den with fireplace, floor furnace heat. Low \$20's...L-8

NICE 4-2-2 carport, lg. home with Cent. Heat, Evap. air, built-ins, FP \$30's!! L-1

REMODELED BRICK 3-2-1 with Cent. heat, built-ins---- \$20's!!!! L-2

3-2-2 Brick-Fireplace, built-ins, & large workshop/storage bldg. all on oversized corner lot... Low \$50's....CC-1

3-1-1 carport Home, Cent. A&H, built-ins, FP, fenced yd. \$20's!!!! L-3

3-1 1/2-1 Cent. heat, evap. air, cov. patio, fenced yd. L-4

3-2-1 carport Neat & Clean, built-ins, A&H, cov. patio, storage bldg...\$30's!!!! L-5

3-2-1+carport, Brick, ceiling fans, Approx. 2060 sq. ft...\$40's L-6

JUST LISTED-2-1-1 carport, fenced back yard, with two storage bldgs...Priced in the \$20's...L-7

4-3 Bath, Brick, on 2 acres built-ins, FP, Geothermal Ht. Pump, horse stalls, pens & tack rm. Also income producing shop on location or use for your own needs...\$80's!!! Price Reduced!!!

VERY NICE 4-2-2 Brick Home on 6 ac., Cent. A&H, 2300'+lv. area, MUCH MORE!!!!!! 70's!!!! HR-4

3-2-2 Brick, btl-ins, Ht. pump, FP. 2.5 acres on pavement. \$60's!!!! HR-3

3-2-3 Carport Mobile Home on 11 ac. edge of town, MAKE OFFER!!!!!! HR-5

3-2-1 on 1 acre, Cent. Heat, Evap. Air, Remodeled. \$30's!!!! HR-6

NICE 3-2-2 Brick on 1 ac. on hwy., Cent. A&H, built-ins, fenced yd. Make Offer!!! HR-7

**ASK ABOUT OUR COMMERCIAL LISTINGS**

320 acres Dryland, Three Way area. Reduced. \$225 per acre!!!

PLEASANT VALLEY--160 acres, 8" well. Lindsey circle!!!!

354 ac. S. of town, good allot. & yields!!!!!!!

IT'S REIGNING CATS AND DOGS (and 1001 other things) IN THE CLASSIFIEDS

Classify! Call 272-4536



Play is one of the main bases of civilization.

—Johan Huizinga

# Lowes Pay-n-Save MARKETPLACE

## SCHOOL SUPPLY HEADQUARTERS



**Coca Cola**  
**2** 20 oz. 8 Pack For **\$5** Asst.  
 2 Liter **Coca Cola** **\$1.39** Asst.

### Lowes Pay-n-Save MARKETPLACE QUALITY MEAT

**Boneless Chuck Roast** **\$1.37** lb.

**Bone-in Chuck Steak** **\$1.27** lb.

**Bone-in Chuck Roast** **97¢** lb.

**Wright's Sliced Slab Bacon** **97¢** lb.

**Jumbo Pack Drum sticks** **77¢** lb.

**Beef Boneless Arm Roast** **\$1.77** lb.

**Chuck Steaks** **\$1.47** lb.

**Beef Boneless Charcoal Arm Steaks** **\$1.97** lb.

**Charcoal Steaks** **\$2.37** lb.

**Tenderized Charcoal Steaks** **\$2.37** lb.

**Extra Lean Ground Beef** **\$1.67** lb.

**Fresh Fryer Boneless Chicken** **\$3.47** lb.

### Introducing Freshness!

**Bartlett Pears** Nature's Finest **57¢** lb.

**Red or White Grapes** **47¢** lb.

**Fresh Pineapples** A Real Treat **\$1.47** ea.

**Golden Delicious Apples** **77¢** lb.

**Small Red Delicious Extra Fancy Apples** **3** ea. **\$1** For

**Sno White Cauliflower** Great on Salads **97¢** ea.

**Texas Grown Yellow Onions** Great Anytime **3** lbs. For **\$1**

**Fresh Carrots** 2 lb. Cello Pack **69¢** ea.

### SCHOOL SUPPLY HEADQUARTERS

**Lowes Pay-n-Save MARKETPLACE**

**Bic Pens** **99¢** 10 pack

**Spiral Notebook** **3** **\$1** 70 ct. For

**Clear View Vinyl Binders** **\$1.99** 1 1/2" ea.

**K & M Hot Stuff Storage Case** **\$1.49** ea.

**Hot Ones Poly Binder** **\$1.19** ea.

**Elmer's Glue-All** **59¢** 4 oz.

**3 Subject Spiral Notebook** **79¢** ea.

**Liquid Paper Pen & Ink Correction** **\$1.39** ea.

**Crayola Crayons** **99¢** 24 count

**Portfolio Pocket & Prong** **4** For **\$1**

**Marks A Lot** **59¢** ea.

**Rose Art Water Colors** **89¢** 8 ct.

**Stic Pen** **99¢** 6 pack

**Draws A Lot** **\$1.39** 10 ct.

**Empire Fancy Pencils** **2** **\$1** #2 10 ct. For

**Master Combination Pad Lock** **\$2.99** ea.

**Write Bros. Stic Pens** **99¢** 10 ct.

**Colorific Colored Pencils** **99¢** 12 ct. 4 1/2"

**Bluebell Ice Cream** Where Available **\$2.79** Asst. 1/2 Gal.

**Charmin Tissue** **89¢** 4 Roll

**Lay's Potato Chips** **\$1.99** 5 1/2" Size

**Bounty** **59¢** Jumbo Roll

**Liquid Detergent** **\$3.19** 3 1/2 gal.

**Oreos** **\$2.49** 20 oz.

**Seedless Raisins** **\$1.29** 1 1/2 lb. pack

**Crisco Oil** **\$2.99** 64 oz.

**Kool Aid Coolers** **\$1.99** Asst.

**Facial Tissue** **\$1.59** 250 ct.

**Duncan Hines Cookies** **\$1.29** Asst. 11 oz.

**Folgers Coffee** **\$1.79** 13 oz. Asst.

**Nestle Quik** **\$3.69** 2 lb.

**Log Cabin Syrup** **\$2.29** Reg. or Lite 24 oz.

**Save 50¢** EXPIRES 8-26-92

### Lowes Pay-n-Save MARKETPLACE

**Stouffer's Entrees** **\$1.69** Asst. 9-12 oz.

**Dole Pineapple Juice** **\$1.39** 12 oz.

**Half Moon Cheddar/Colby Cheese** **\$2.99** 16 oz.

**Parkay Margarine Quarters** **59¢** 1 lb.

**TreeSweet Juice** **2** **\$1** Asst. 10 oz. For

# Lowes Pay-n-Save MARKETPLACE

515 W. Amer. Blvd. Muleshoe 272-4406

401 W. Amer. Blvd. Muleshoe 272-4585

Prices Effective August 1992

SUN MON TUE WED THUR FRI SAT 16 17 18 19 20 21 22

WE RESERVE THE RIGHT TO LIMIT QUANTITIES IN TEXAS

Our Best to you