



BONNIE GRABOW and PAT PALMER

S-E Schools Have Two Student Teachers

For the present time, the Springlake-Earth School system has added two student teachers from Texas Tech to their list of educators.

Pat Palmer of Levelland, and Bonnie Grabow of Brenham will not only be filling the capacity as educators, but will be receiving an education as they do student teaching in the field of Home Economics. The two will be engaged in this activity through March 6.

The first portion of their stu-

dent teaching will be spent in observing the local homemaking classes, with the remainder of the time being spent teaching the local classes. The student teaching will be done under the supervision of Miss Kim Hailley, and Mrs. Cecil Slover, the local homemaking teachers.

While doing their student teaching at Springlake-Earth, the twosome will be guest in the home of Mr. and Mrs. Marvin Sanders.

Final All-State Band Tryouts Slated For Saturday

The final auditions for All-State Band are slated for Saturday, January 24, when band students will be competing with top musicians for All-State Band honors. The auditions are to be held on the Texas Tech Campus in Lubbock.

Local band students, Sharla Haberer, trombone, and Johnnie Kelley, cornet, will be vying for positions by competing with top students from (UIL 1-)

Amarillo, as well (Region 6), Midland, Odessa, and El Paso; and (Region 16) - Lubbock.

Sharla and Johnnie won the right to represent the Lubbock District by placing high in tryouts held earlier.

Director for the All-State Band will be Dr. William D. Revelli of the University of Michigan. In charge of state-wide tryouts is Bill Dean of Odessa High School.

Local Woman Injured In One-Car Accident

Mrs. R. D. Usery, 61, of Earth sustained knee and leg injuries about 3 p. m. Thursday in a one car accident at the intersection of U. S. 60 and Texas 207 in

Panhandle. Mrs. Usery was returning from Sayre, Oklahoma when the accident occurred. A Carson County Sheriff Officer said Mrs. Usery was traveling west on U. S. 60 in a 1968 Chevrolet when her car struck a light pole on the right hand curb just before entering the intersection.

Mrs. Usery was taken to Amarillo's St. Anthony's Hospital by ambulance where she was admitted. Friday morning, she underwent leg surgery and is now reported to be improving. Extensive damage to the Usery vehicle was caused by the accident.

My Neighbors



"He's taking that one little promotion rather large, wouldn't you say?"

The NEWS Paper Dedicated to the Development of the World's Richest Irrigation Area

The Earth News-Sun

"A CONSOLIDATION OF THE EARTH NEWS AND EARTH SUN, OCTOBER 12, 1966"

VOLUME 16

10 CENTS

EARTH, LAMB COUNTY, TEXAS, THURSDAY, JANUARY 22, 1970

10 PAGES

NUMBER 21

Local Youth Place In Lamb County Stock Show

A record number of entries in the lamb and swine divisions were judged at the Annual Lamb County Junior Livestock Show held Friday and Saturday in Littlefield.

Grand Champion honors on the swine division went to Bruce Bridges 190-pound heavy weight Duroc.

Bruce is a Springlake-Earth FFA member and is the son of Mr. and Mrs. John Bridges of Earth.

Reserve Grand Champion honors went to a 190-pound heavy weight Hampshire owned by Robert Ahrens of the Olton FFA.

In the sheep division, Grand Champion honors went to Cory Logsdon's 88-pound middle-weight medium wool lamb.

Reserve Grand Champion Lamb was Marlos May's 108-pound Dorset Lamb, shown by his sister, Marlana.

The judging in the sheep division lasted until about 9:30 Friday night when a total of 180 lambs had been sifted by County Agent Ken Cook of Silverton.

Cook stated "I like to take my time on these animals because these kids have spent a lot of hours with them and parents and instructors have spent a lot of time in counseling with them and their problems."

Lanny Tucker, Ag instructor at Hart High School, was the judge in the swine division, viewing approximately 95 animals in 11 classes.

Before revealing top animals in that division, Tucker complimented this year's show by saying that "the quality of animals in the show have improved 1,000 percent, within a few years Lamb County could have the best show in the area-bar none!"

He continued by praising those who were in the stands and along the sidelines to view the show, stating "this is one of the reasons we have these shows, to show you the progress that's being made, and when you're interested, then we're able to continue with encouragement."

In the steer judging which began at 1 p. m. Saturday, several local youth took honors in the various divisions.

Craig Barton local FFA member took the honors for Champion cross-breed steer, Reserve Grand Champion steer, first heavyweight Angus steer and

Champion Angus. Other local winners in the Lamb County Stock Show are listed in their respective divisions below.

Angus, lightweight--1-Brad Bridges; 3-Donald Templeton, Angus, mediumweight--3-Welda Barton.

Angus, lightweight--3-Leland Dear; 7-Larry Dear, Hereford, mediumweight--1-Bruce Bridges.

Crossbreed--Reserve and second--Leland Dear.

SHEEP: Fine Wool, heavyweight--1-Kent Lewis, Springlake-Earth 4-H.

Fine Wool champion was shown by Kent Lewis and Fine Wool reserve shown by Sandra Duval.

Dorset, lightweight--3-Sheila Lewis, Springlake-Earth 4-H. Medium Wool, lightweight--3-Sheila Lewis.

Medium Wool, middleweight--5-Kent Lewis, Springlake-Earth 4-H.

Southdown, lightweight--1-Sheila Lewis, Springlake-Earth 4-H; 4-Kent Lewis, Springlake-

Champion Southdown was shown by Freddie Maxwell and reserve champion Southdown was shown by Sheila Lewis.

SWINE: Crosses, lightweight--3-Brad Bridges, Springlake-Earth 4-H. Crosses, heavyweight--2-Brent Been, Springlake-Earth 4-H.

Durocs, middleweight--4-Donald Templeton, Springlake-Earth FFA.

Durocs, heavyweight--1-Bruce Bridges, Springlake-Earth FFA; 2-Brad Bridges, Springlake-Earth 4-H; 3-Brent Been, Springlake-Earth 4-H.

Hampshires, lightweight--1-David Hinchliffe, Springlake-Earth FFA; 3-Steve Randolph, Springlake-Earth FFA.

Hampshires, heavyweight--2-Welda Barton, Springlake-Earth FFA; 3-Craig Barton-Springlake-Earth FFA; 3-Weldon Eagle, Springlake-Earth FFA.

Poland Chinas, lightweight--2-Donald Templeton, Springlake-Earth FFA; 4-Leland Dear, Springlake-Earth FFA.

The local Fat Stock Show is slated for February 20 and 21.

Senator Hightower To Speak At Baptist Church Sunday Morning

The monthly breakfast of the Brotherhood Organization of the First Baptist Church in Earth was held Friday morning at 6:30 a. m. in the Fellowship Hall. During the meeting the group voted to secure State Senator Jack Hightower of the 30th District, as speaker for the 11 a. m. Sunday morning services at the church.

Following a delicious breakfast of eggs, bacon, biscuits, and coffee, prepared by Paul Wood, Roger Haberer, and J. B. Thomas, the group considered the program.

In business discussion, the organization completed plans for Baptist Men's Day which will be Sunday, January 25, at the church with Senator Hightower delivering the worship services. The local laymen of the church will be active in both the morning and evening worship services Sunday with various men of the church teaching classes. A men's choir will be featured at both services.

Senator Hightower, 43, was first elected to the Senate in 1964, having previously served as a member of the Agricultural Committee of the Southern Council of State Governments and as a Texas member of the Multistate Tax Compact Commission. His special interests as a lawmaker have been in the fields of Law Enforcement and Education. During the year 1969 he was honored by the Vocational Agricultural Teachers



SENATOR JACK HIGHTOWER

Association of Texas and the State Bar of Texas with the Distinguished Service Award of each organization.

Hightower has also announced that he will file as a candidate for re-election in the Democratic primary.

David Hartman, pastor of the church, gave a brief report on an Evangelistic Conference he and his wife attended in Fort Worth.

Approximately sixteen men of the community were present for the breakfast and program.

Rep. Clayton Issues Plea To Texans To Register

Representative Bill Clayton issued an urgent plea from his Austin office, Monday, for the citizens of Texas to register to vote before January 31, 1970. Clayton stated that many issues will be facing the general electorate during 1970. Besides the many candidates for public office to be considered at the primary and general elections, there will also be city elections, school board elections, and several local bond elections.

Also facing the voters in 1970, Clayton said, will be seven Constitutional Amendments to be voted on in the November general election. One of the most controversial and heated issues ever to confront the State of Texas will be decided by the people in November, when they

mark their ballot for or against liquor by the drink.

To participate in these elections and to express yourselves it is necessary to register to vote by January 31.

Clayton said that the decisions that are made in 1970 could affect Texans for many generations to come, and he encourages everyone eligible to qualify themselves to vote.

The Lamb County Water Association meeting is set for Tuesday evening, January 27, at 7:00 p. m. in the Security State Bank in Littlefield.

The purpose of the meeting is to elect officers for the new year and discuss business of the Lamb County Water Association with a particular emphasis of the discussion pertaining to the Lamb County Water Association becoming a unit of Water, Inc.

Many counties around the area have become units of Water, Inc. and upon becoming a unit can become a district when it obtains a hundred members in the parent organization. By doing this the county can elect a director to represent it on the Board of Water, Inc. This seems to be working well in several counties about us and certainly helps in keeping all the county units informed as to what is happening in the field of water resource development. This meeting is of great importance to you and the future of your county.

Mr. Tom Williams, Field Director for Water, Inc. and Mr. Bill Clayton, Executive Director of Water, Inc. will be present for the meeting.

County Water Association Meet Set Tuesday In Littlefield

The annual school census is being taken during the month of January, for scholastics for the school year 1970-71.

The oldest child in school from each family has received a census form to be taken home. These forms should be returned as soon as possible, according to school officials.

Parents whose oldest child starts to school for the first time next year (those who will be six years old on or before September 1, 1970) should come by one of the school offices and fill out a census form. Or, they may call and the form will be mailed.

★★★★★★★★

FREE!

VOTER REGISTRATION
See Your Tax Assessor-Collector Before Jan. 31

★★★★★★★★



WINTER WONDERLAND. Trees and utility lines were blanketed in a coat of misty white Wednesday morning as weather conditions in the Earth area Tuesday night caused the icing condition. However, by noon Wednesday the sun broke through the hazy sky leaving no trace of winter.

The EARTH NEWS-SUN



Published at Earth, Texas 79031 every Thursday except the first Thursday following Christmas.

Entered as Second Class Matter at the Post Office at Earth, Texas 79031, October 1, 1954--Under Act of Congress March 3, 1879.

SUBSCRIPTION RATE

Earth and Trade Territory, per year.....\$3.50
Elsewhere in United States, per year.....\$5.00

CLASSIFIED RATES

6¢ per word, first insertion, 5¢ per word thereafter-----60¢ Minimum.

ADVERTISING RATES GIVEN ON REQUEST

ROSS AND POLLY MIDDLETON-----Publishers

Local Couples Attend Evangelism Conference

The Texas Baptist Evangelism Conference met in the Tarrant County Convention Center Arena in Fort Worth for a three day meeting January 12, 13 and 14.

The general theme for the entire Conference was "This We Believe."

The conference was composed of five sessions each dealing with some aspect of Baptist beliefs. For example, the Monday evening sub-theme was "This We Believe Concerning Man." Other specific emphases throughout the conference were on the sub-themes of "This We Believe Concerning Christ," "This We Believe Concerning Revival," and "This We Believe Concerning Last Things." Music was an integral part of the three day meeting with exception of the Tuesday evening session beginning with singing. The music was provided by a group called the Texas Baptist Ministers of Music under the direction of Joe Ann Shelton of Fort Worth.

On Wednesday morning, Dr. George Warrell, pastor of the Lamesa First Baptist Church, addressed the group. Dr. Warrell gave a very interesting sermon on the second coming of Christ and what it means. Dr. Warrell is a brother-in-law to Roger Haberer of Earth. Peak attendance for any one session was estimated at 13,000. One Fort Worth pastor remarked that the Tuesday evening crowd was the largest ever gathered in the brief existence of the Convention Center Arena.

Dale Evans was featured speaker at the convention that night. Those attending from Earth were Mr. and Mrs. Ray Kelley and Rev. and Mrs. David Hartman.

Services Set For Father Of Local Resident

Funeral services for William Robert Wilson, 73, of Blair, Oklahoma will be held Thursday (today) at 2 p.m. in the First Baptist Church with Rev. Marshall Howard, pastor of the church, officiating.

Wilson died Tuesday morning in an Altus, Oklahoma hospital. Wilson was born at Madill, Oklahoma, came to Harmon County in 1900 and moved to Blair two years ago. He was a retired farmer.

Survivors include his wife, Viola; a daughter Mrs. Carl Taylor of Earth; a son, Steve of Blair; three sisters, Mrs. B. J. Boswell of Tulsa, Mrs. Fay Lee of Seattle, Washington, and Mrs. Clesia Wilson of Altus, four grandchildren and two great-grandchildren. Burial will be in Restlawn Cemetery at Altus by Timms-Barnett Funeral Home of Hollis.

J. W. and Lexie Pierce visited Saturday in the home of Mrs. E. R. Hawkins. J. W. Pierce is Mrs. Hawkins son-in-law.



AMAZING, Jan Blackburn looks on in amazement as two of her fellow teammates, Debbie Martin and Daisy Washington, attempt to stop a Farwell forward from sinking a basket.

Two Dimmitt Men Killed In Grain Elevator Mishap

Two Dimmitt men were killed Tuesday afternoon when a load of grain spilled into a bin where they were working.

Woody George, 55, and Valentin Barrera, 25, were the two victims. Barrera's brother Joe, was working nearby when he heard the men's cries from the bin at Bruegel & Son Elevator north of Dimmitt.

Barrera made an attempt to rescue the two men by tying a rope to the top of the bin and around his waist entering the bin.

As he neared the men, the grain shifted and he ran to the elevator office to telephone the Dimmitt Fire Department for help.

When the firemen arrived, Joe Barrera was almost overcome by chaff from the grain and had to be hoisted from the bin. Firemen had to build a fence in the bin and auger the grain out before the bodies were re-

covered some two hours after the mishap.

Both men were pronounced dead at the scene by Justice of the Peace Elvan De Viney.

Joe Barrera, had in the meantime gone to notify his brothers family about the accident when he lost control of his car and suffered shoulder injuries in an accident.

He was treated and released from Plains Memorial Hospital in Dimmitt.

George, a native of Turkey, had lived in Dimmitt for 30 years.

He is survived by his wife, Edith; a son, Donald of Tacoma, Washington; two daughters, Mrs. Joyce Bishop of Crosbyton and Mrs. Linda Lienen of Dimmitt; and his stepmother, Mrs. George Vice of Canyon.

Barrera was born in Corpus Christi and had lived in Castro County for about 10 years.

Survivors include his wife, Janie; two sons, Victor, 3 and Valentin Jr., 18 months; his parents, Mr. and Mrs. Silite Barrera of Dallas; his grandparents, Mr. and Mrs. Estendillo Barrera of Corpus Christi; six brothers, Joe and Felipe of Ohio, and Frankie, Lojina, Margarito and Johnny, all of Carlsbad, New Mexico; and three sisters, Carmen of Corpus Christi, Mary of Lawton, Oklahoma and Janie of Carlsbad, New Mexico.

TWO BUSINESS FIRMS CLOSE

Taylor Furniture Co. and City Shoe Shop, two city business firms, formally closed their doors Saturday night after a public auction was held to clear the stores of remaining merchandise.

C. O. Taylor, who had been in business in Earth for some time, was the owner of both business establishments. Taylor and his wife, Wilma will be in business in Hereford where they own and operate a furniture and appliance store.



I send my messenger to prepare the way before me.—(Mal. 3:1).

Divine order is a right state of mind, body and affairs. We prepare for the way for good by declaring Divine order. When we need light and guidance, clear our minds for the light of Christ to guide us. Let Him guide us in our human relations, work and in choosing the right paths for divine order in coming to wise decisions. Let's give thanks that God's good plans and purposes are revealed to us.

Local 4-H Club Studies Parliamentary Procedure

The local chapter of the Springlake-Earth 4-H Club met Monday at 7:30 p.m. in the Earth Show Barn for their monthly meeting.

In business discussed by the club, it was decided that as a community project, the chap-

ter would be responsible for keeping the inside and outside of the Show Barn clean.

For the monthly program Craig Barton, Welda Barton, Bruce Bridges, and Kent Lewis gave a program on parliamentary procedure. The group demonstrated how to carry a motion

through the house, how to nominate a person for office, and other parliamentary procedures.

Refreshments of donuts were served by Mrs. John Bridges. Approximately 25 4-H members and their sponsors, Mr. and Mrs. Thurman Lewis, were present for the meeting.

Kelley Twins Cast In "West Side Story"

Plainview, --Anita and Donita Kelley, twin daughters of Mr. and Mrs. Donald C. Kelley, Earth, have both been named for roles in "West Side Story," spring musical at Wayland Baptist College. They will play Estella and Margarito, respectively.

The production will be staged in Harral Memorial Auditorium at 8 p.m. on February 12 and 13, with a 2 p.m. matinee slated for February 14 as a part of Wayland's homecoming activities.

The announcement of the cast came from Jerry P. Watson, director of the show, and Michael D. Lamkin, musical director. Auditions were held for singers, dancers and actors to fill the some sixty roles in the show. The musical employs more characters than any ever staged at Wayland.

Anita and Donita are both 1969 graduates of Springlake-Earth High School. Both are freshmen elementary education majors and hold membership in Wayland Singers and Pionettes, women's sextette.

Pickup-Tractor Accident Causes Heavy Damage

A pickup-tractor accident within the city limits of Earth Thursday morning, caused heavy damages to the vehicles involved.

According to Weldon Parson of the Littlefield Highway Patrol, a Ford tractor belonging to the City of Earth hit a 1969 Chevrolet pickup owned and driven by Troy Earl Blackburn when the steering mechanism on the tractor locked.

Margarito Ramos a city employee, was driving the tractor east on Highway 70 when the malfunction caused the tractor to veer across the center stripe and hit the Blackburn pickup in the left door, bed, and fender.

Parson estimated damage to the pickup at about \$1,000 and \$200 damage to the tractor.

There were no personal injuries in the accident.

WORTH TALKING ABOUT

There would seem to be an excellent chance that productivity could grow by more than is now generally anticipated. To the extent that productivity can be increased, the need for price increases will be reduced, and the possibility of more rapid correction of price inflation than the forecasts imply becomes brighter. There scarcely is justification at the moment for starry-eyed confidence that this will be the pattern, but there is at least justification for cautious hope that the economy is on the edge of a major productivity advance. —Tilford Gaines, Vice President and Economist Manufacturers Hanover Trust

MOTOROLA QUASAR SALES

TV Corner

1401 A WEST 5TH
PHONE 296-2776
PLAINVIEW, TEXAS 79072

MAYIAG
5TH AND MAIN
PHONE 839-2776
HALE CENTER, TEXAS 79041

SALES SERVICE

Farmers—

Design Greater Profits In 1970 With Bovina Feeders -

Bovina Feeders, Inc. is ready to talk with you about better prices in 1970. We're now offering a TOP MARKET contract on ensilage for this year.

And we're also ready to discuss your corn production plans with you. We'd like to buy corn from you this fall . . . at the TOP PRICE and at a moisture content of up to 30 per cent.

This early harvest method for corn offers a multitude of advantages to farmers. Stop in our office soon, let's talk about top prices, early harvesting of corn . . . and cattle feeding.

Feeding cattle is our business, but we're ready to TALK TURKEY about your 1970 crops!

"Designed With Area Farmers and Feeders In Mind"

Bovina Feeders, Inc.

Phone Oklahoma Lane 825-2103
Redge Priest, Manager

Used Furniture Wanted

By The House Full Or By The Piece..

Swap Shop

Muleshoe
Call 272-3074

INTEREST RATES ARE UP...

AT

NEW MEXICO SAVINGS AND LOAN ASSOCIATION

PAY	6 1/2 %	Certificates Of Deposit Of \$5,000.00 Held One Year.
PAY	6 %	Certificates Of Deposit Of \$1,000.00 Held One Year.
	5 %	ON PASSBOOK ACCOUNTS Compounded Quarterly

NEW MEXICO SAVINGS AND LOAN ASS'N.

Mail Inquiries To P.O. Box 956
Clovis, 88101 — We Pay All Postage
On Savings Made By Mail

518 PILE ST.
CLOVIS, N. MEX.

PHONE 763-3479

Offices in Clovis - Albuquerque - Roswell - Las Cruces

Earth Cub Scouts Work On Achievement Badges

Earth Cub Scouts Den 2 met Monday afternoon at the Earth Scout Hut for their weekly meeting. In an activity period, the troop worked on various achievement badges by learning how to tie various knots and learning new rope tricks. The group also enjoyed playing several games that involved the use of ropes and strings. Cary Sawyer and Stan Runyon, Denner's, for the month of January, concluded the program by leading the group in the Flag Ceremony.

Refreshments of Cracker Jacks were served by Stan Runyon to Cary Sawyer, Allen Moore, Keith Clayton, Mark Bridge, Timmy Craft, Kelley Green, Lexie Fennell, Mrs. Bobby Green, and Mrs. Doland Fennell, den mothers.

PARTY LINE

Max Price, son of Mr. and Mrs. Larry Price returned home Tuesday following a tony Friday morning in the South Plains Hospital in Amherst.

Voter Registration Pace Normal, Deadline January 31

According to Lamb County Tax Assessor-Collector, Herbert Dunn, 3400 Lamb County resident have registered to vote. County voters will be facing several elections during 1970. "Registrations are running about average for this time of the year, and we expect them to increase in the next few days," Dunn remarked. "I would guess that we've registered less than half of the voters we expect to register this year," he said. "We want to urge voters to register ahead of the January 31

deadline. Our office in the courthouse will be closed January 31 so registrations should be made in person by closing time January 30, or applications must be postmarked by January 31 in order to meet qualifications," Dunn emphasized. In the presidential election year of 1968 the Lamb County figure was 8,623. Included in this year's balloting are election of county clerk, county judge, county treasurer, county commissioners for Precincts 2 and 4, county school superintendent, 17 county Democratic and Republican precinct chairmen, Republican chairman, Democratic chairman, Peace Justices for Precincts 1, 2, 4 and 5; district clerk, district judge and state representative.

PARTY LINE

Mr. and Mrs. Darrell Kenner and family of Muleshoe and Mr. and Mrs. Delvin Walden and children of Springlake visited Sunday in the home of Mr. and Mrs. Lowell Walden.

4-Week Police Academy To Begin February 9th At WTSU

Canyon--A four-week basic police academy will be held on the campus of West Texas State University February 9-March 6, Bobby Hudson, head of the university security office, said today.

The courses will be taught by members of the Texas A&M University Police Extension Service.

Hudson said the purpose of the academy is to qualify new policemen for certification under a new state law.

Registrations for the academy should be mailed to Hudson, Box 295, West Texas State, Canyon 79015.

AMONG THOSE WHO ARE ILL

Mrs. Melton Welch underwent knee surgery Tuesday in Lubbock's Methodist Hospital where her condition is reported as good.

Mrs. Marie Ross was admitted as a patient in Amherst South Plains Hospital Tuesday.

Mr. and Mrs. Charles Packard and Evelyn of Hereford and Mr. and Mrs. Fred Welch, Earth visited Sunday in the home of Mr. and Mrs. John Welch. Mrs. Packard is the John Welch's daughter.

Tell Her...
You Care ...



WITH A
STEAK THATS RARE!

I MEAN, WHY SQUANDER GOOD FISHING MONEY ON DIAMONDS AND MINK WHEN THERES PLENTY OF BEEF?

Remember Gentlemen, The Road To An Occasional Happy Relationship, By Passing The Kitchen Sink Once In A While And Leads Straight To Our Great Door.

Come And Let Us Serve You While You Relax And Enjoy A Day Off From The Kitchen.

OPEN SUNDAYS
Dinner Bell Cafe

Phone 272-460
Muleshoe

JANUARY CARPET SALE

BE SURE TO CHECK THESE REMNANTS

12x15' 2"	Beige Acrilan Reg. \$199.00	\$119.00
12x16' 11"	Bronze Polyester Reg. \$225.56	\$124.68
12x19' 3"	Lemon-Lime Nylon Shag Reg. 229.74	\$112.95
12x16' 10"	Bronze-Green Tweed Nylon Reg. \$202.89	\$99.65
12x18' 6"	Bronze Tweed Nylon Sag Reg. \$196.12	\$108.45
15x16' 7"	Bronze-Green Tweed Nylon Reg. \$238.69	\$121.61
15x9' 3"	Bronze - Green Tweed Nylon Reg. \$137.20	\$67.45
12x19'	Avocado Nylon Reg. \$176.04	\$83.59
12x26' 6"	Orange and Olive Nylon Shag Reg. \$386.86	\$201.47
15x19'	Brown Tweed Kitchen Carpet Reg. \$220.11	\$107.36
15x21'	Beige Nylon Reg. \$303.25	\$157.50
12x15'	Green Tweed Nylon Reg. \$139.00	\$68.00
12x17' 7"	Bronze Polycrest Reg. \$233.33	\$110.22
15x13' 5"	Brown Nylon Reg. \$198.87	\$88.88
12x31' 7"	Beige Nylon Reg. \$375.90	\$184.80
15x29' 8"	Beige Acrylic Reg. \$529.21	\$271.92
12x14' 8"	Green Splush Reg. \$253.30	\$146.70

PADDING & INSTALLATION AVAILABLE AT A SLIGHT EXTRA CHARGE

SPECIAL
WHILE SUPPLY LASTS

1 Roll Green Tweed
1 Roll Gold Tweed
1 Roll Red Tweed

\$4.95
Sq. Yd.

INSTALLED WITH
B.F. GOODRICH PADDING

KITCHEN CARPET

Green Tweed or
Gold Tweed

\$6.95
Sq. Yd.


INSTALLED WITH
B.F. GOODRICH PADDING

TRADER'S

109-111 MAIN CLOVIS 763-5537

Say!

Why don't you take a pencil - or pen - in hand and fill out a voter registration form and send it to your county tax assessors office so you can vote in 1970? Okay! Better hurry! The deadline is Saturday January 31!



ONLY YOU CAN VOTE!
BUT YOUR MOTHER, FATHER, DAUGHTER, SON, HUSBAND OR WIFE CAN

REGISTER FOR YOU!

DON'T BE A VOTE-POOR FAMILY. GET ALL YOUR FOLKS REGISTERED BY JAN. 31.

Only 9 Days Left

APPLICATION FOR VOTER REGISTRATION CERTIFICATE

LAMB COUNTY, TEXAS

Name _____ Date _____

Address _____ RFD _____ Box _____ Zip Code _____

AGE	SEX	OCCUPATION	LENGTH OF RESIDENCE - YEARS	BIRTHPLACE STATE OF COUNTRY

CITIZENSHIP
 Native Born Naturalized
*Includes foreign born of American parents.

If under 21, show date of birth: _____
 If resident of state less than 1 year, show date of arrival: _____
 If resident of county less than 6 months, show date of arrival: _____

Mail Voter Registration Certificate (1) to above permanent address (2) to my temporary address at _____
 (3) hold for delivery to me or person. (Strike statements which are not applicable.)

I understand that the giving of false information to procure the registration of a voter is a felony.

*No one can act as agent and sign for another, except husband, wife, father, mother, son or daughter. Agent must be qualified elector in county.

Note: Return this application to the County Tax Assessor-Collector. Agent's address: _____
 Agent's relationship to applicant: _____

Signature of applicant or agent: _____

CITIZEN STATE BANK Member F.D.I.C. Earth	EARTH INSURANCE Perry Martin Earth
EARTH TEXACO Don Taylor, Owner Earth	PATTERSON PAY & SAVE Earth
EARTI NEWS SUN Ross and Polly Earth	SAWYER FERTILIZER & CHEMICAL Earth
LAWMAN BROS. Butne & Garage Earth	NICHOLS GIN Pleasant Valley

S-E Home Economics Classes Take Field Trip To Lubbock

Approximately twenty-eight girls from the local Springlake-Earth Housing and Home Furnishing Class and Home Economics III classes traveled to Lubbock Monday for a field trip.

The first stop for the group was Harold Griffith Furniture, while at the store, Harold Griffith, owner, gave a tour of the store pointing out what to look for in materials and construction, when buying furniture. The girls were then allowed to tour the store on their own comparing styles and prices.

Following the tour of Harold Griffith Furniture, the group visited Fields and Company Appliance Center. The guide

there gave hints on buying larger appliances, warning that some of the new conveniences found on appliances have not as yet been perfected. The group also visited the Living Center display floor examining lighting fixtures that go with various types of furniture.

Following lunch at Furr's Cafeteria, the students visited Perin's Draperies, comparing the styles and prices of drapes and bedspreads.

Adult sponsors for the field trip were Mrs. Cecil Slover, Mrs. Carl Jones, Mrs. Orville Cleavinger, Mrs. Chester Kelley, Mrs. Norman Cleavinger, and Pat Palmer, Bonnie Grabow, student teachers.

Mrs. Cooper Named TOPS Queen

Mrs. Herman Cooper was named Queen for the Week at the meeting of the local Happy Losers TOPS Club held Thursday night at the Goodwill Centre. Mrs. Cooper showed a weight loss of 3 1/2 pounds. Mrs. Robert Bridge was announced as runner-up with a 2 1/2 pound weight loss.

The fifteen members of the Club weighed in by Mrs. A. W. Gover showed a total loss of 8 1/4 pounds for the week.

Mrs. Fred Clayton, then presented a short program on "How To Diet and Lose Weight."

The TOPS have one new member of the Club, Mrs. Billy Speck, a former member of the Brownfield TOPS Club.

The meeting was dismissed with the "TOPS Song."

Mr. and Mrs. Fred Welch and family visited Monday night in the home of Mr. and Mrs. John Welch.

What's Cooking at School.

JANUARY 26-30

MONDAY
Salmon Patties
New Potatoes
Tossed Salad
Lemon Jello Cake
Hot rolls-butter
Milk

TUESDAY
Baked Ham
Candied Yams
Green beans
Strawberry Shortcake
Wheat rolls-butter
Milk

WEDNESDAY
Meat Loaf-catsup
Au gratin potatoes
Red Devils Cabbage Slaw
Chocolate cookies-fruit
Corn bread-butter
Milk

THURSDAY
Hamburgers
Mustard-onions
Pickles, lettuce
Oven fried potatoes
Catsup
Cherry Cobbler
Milk

FRIDAY
Roast Beef-gravy
Blackeyed peas
Macaroni Salad
Fruited Jello
Hot rolls-butter
Milk



MISS PAULETTE MCFADDEN

McFadden - Stockstill Engagement Told

Mr. and Mrs. Paul McFadden of Lubbock announce the engagement and approaching marriage of their daughter, Paulette Marie, to Jimmy Stockstill, son of Mrs. Alma Stockstill of Earth.

The couple will exchange vows in the First Baptist Church of Earth, Saturday, February 14, at 7:30 p.m.

The bride-elect is a 1969 graduate of Estacado High School in Lubbock.

The prospective bridegroom is employed in Denver City.

Friends and relatives of the couple are cordially invited to attend.

Springlake Brownies Hold Weekly Meeting

Springlake Brownie Troop #8 met Tuesday afternoon at the Springlake Community Building for their weekly meeting.

The opening ceremonies consisting of the Pledge of Allegiance, Brownie Pledge, and "America" were led by Nellie Palacio.

For the weeks activity period, the girls finished work on their terry cloth aprons. Assisting the girls with the sewing was Kathy Bibby, Jr. Leader.

Refreshments of marshmallows were served by Treasa Lunsford to Carrie Barden, Lyndsy Fields, Belinda Hampton, Sue Bradley, LaCretia James, and Nellie Palacio.

WSCS Studies "The Inner Life"

The Women's Society of Christian Studies of the Earth United Methodist Church met Tuesday at 9:30 a.m. in the Fellowship Hall to consider the first portion of a WSCS four part study.

This study will be based on the text "The Inner Life" by Harvey H. Pottoff.

Mrs. Ray Axtell was in charge of the first study, with the main thought of the study being the reality of the Inner Life. The program was conducted in group discussion form with all WSCS members present taking part.

While considering this study, the group will be meeting at 9:30 a.m. each Tuesday until the four sessions are completed.

Present for the meeting were Mrs. Sam Ceasley, Mrs. Gladys Goodwin, Mr. Naomi Burgess, Mrs. Ida Allen, Mrs. Beula Coker, Mrs. Jack Beavers, Mrs. Kenneth Cowby, Mrs. Jack Hinson, Mrs. Geie Brown, Mrs. Jimmy Shirey, and Mrs. Ray Axtell.

Mrs. E.C. Kelsey, Carolyn, Keavin, and Kyle visited Sunday in the home of Mr. and Mrs. Randy Kelle and Blake of Lubbock.

YOUR NEW FLOOR COVERING WILL BE EXPERTLY INSTALLED BY OUR FACTORY TRAINED CRAFTSMAN.
Telephone 257-2905

**H.S. Sanders
Lumber**
Earth

XIT Study Club Entertained By Musical Trio

The XIT Study Club of Springlake met Tuesday night in the Fellowship Hall of the Springlake First Baptist Church for a regular meeting.

Music was the mood for the program, with a trio from the Springlake-Earth Chorus singing several ballads. The trio was composed of Jimmy Littleton, Camille Haberer, and Paul Miller.

Musical selections sung by the group included "Merry In The Morning," "Four Strong Winds," "500 Miles," "Puff The Magic Dragon," and "The Cruel War." Refreshments of cookies, coffee, and hot chocolate were

served by Mrs. Ed Jones and Mrs. Jim Stephens.

Guests present for the program were Mrs. Twila Goheen, Mrs. Jim Winder, Mrs. Don Holmes, Mrs. J.A. Littleton Jr., Mrs. Joy Haberer, Mrs. Sam Barden, and Mary Patterson.

XIT Study Club members present were Mrs. Ed Jones, Mrs. Orville Drake, Mrs. David Metcalf, Mrs. Jim Stephens, Mrs. Ernest Baker, Mrs. W.B. Hucks, and Mrs. Donnie Clayton.

The next meeting of the club will be February 3 in the home of Mrs. Ernest Baker.

Springlake Girl Scouts Work On Dabbler Badges

Springlake Jr. Girl Scout troop 309 met Monday afternoon at the Springlake Community Building for their weekly meeting.

Dina Jo Hampton and Kathy King opened the meeting with the Flag Ceremony.

As a progressive step toward obtaining their Scout Dabbler Badges, the girls began work on a "collage." A "collage" is a picture made from things such as pieces of material, lace, string, macaroni, and any other objects that they may wish to use in their picture.

In a short business meeting, the troop discussed the overnight camping trip to Camp Rio Blanco near Silverton. The trip is slated for April 10.

Tammy Davis served refreshments of ice cream sandwiches to Kathy King, Jill Barden, Susan Clayton, Connie Dear, Dina Jo Hampton, Kaye Howell, Rae Ann Hamilton, Mrs. Beulah Newton, Mrs. Bud Martens, and Mrs. Johnnie Williams.

Refreshments were served by the hostesses to Mrs. C.T. Richardson, Mrs. Ann Hamilton, Mrs. Beulah Newton, Mrs. Bud Martens, and Mrs. Johnnie Williams.

Mrs. Belew Hostess To Wesleyan Service Guild

Members of the local Wesleyan Service Guild of the Earth First United Methodist Church met Monday night in the home of Mr. and Mrs. R.H. Belew for their regular meeting.

The meeting was opened by Mrs. Johnnie Williams leading in prayer.

Mrs. Beulah Newton presented an interesting program on "Africa." Mrs. Newton pointed out that African's are currently taking the responsibility themselves to provide spiritual food for their own people. In doing this they are allowing the Methodist missionaries in Africa to use their time more fully to aid those who as yet have not received God's word.

The program was concluded with the Guild Benediction. Refreshments of cake and coffee were served by the hostesses to Mrs. C.T. Richardson, Mrs. Ann Hamilton, Mrs. Beulah Newton, Mrs. Bud Martens, and Mrs. Johnnie Williams.

Intermediate GA's Discuss Race Relations

The Intermediate groups of the GA's of the Earth First Baptist Church met Tuesday afternoon for their weekly program. In charge of the program was Mrs. Jerry Starks, leader.

The weekly Prayer Calendar was given by Peggy Cantrell and the scripture taken from Luke 7:36-50 was read by Mary Johnson.

Mrs. Starks presented a very interesting program entitled "What Can A Christian Do About

out Race Relations?" Dealing with the theme, the groups discussed how prejudices are formed and what their attitude, as GA members, should be toward the people of other races they come in contact with.

Refreshments were served by Margretta Hood and Carrie Riddle to Mary Johnson, Peggy Cantrell, Patricia and Barbara Lanier, Joyce Thomas, Alice Johnson, and Christie Starks, guest.

St. Clair's in MULESHOE

**January Clearance
Is Still
In Progress**

Bargains In Every Department

Several Groups LADIES' SPORTSWEAR	Boy's SWEATERS
1/3 OFF	1/3 & 1/2 OFF
MEN'S SUITS Reg. \$65.	GIRL'S DEPARTMENT
Sale Price \$39.99	Reduction Of 33 1/3% On Dresses, Coats, Sport Sets, Pants & Blouses

**Rx for avoiding
colds & flu**

FIRST, SEE YOUR DOCTOR... THEN FOLLOW THESE RULES:

- Be sure to get plenty of sleep and rest daily
- Whenever possible, avoid contact with crowds during flu season
- Wash frequently and be sure to observe all the rules of good hygiene
- Eat well-balanced, nutritious meals
- Dress warmly and avoid exposure to drafts
- Ask your doctor about the advisability of shots against colds and flu

WE CARRY A COMPLETE SUPPLY OF COLD REMEDIES

POUNDS PHARMACY
NEIL POUNDS
Phone 257-2170 Earth

Underground IRRIGATION SYSTEMS

● CONCRETE PIPE ● PLASTIC PIPE
● ASBESTOS - CEMENT PIPE

DON'T BE FOOLED BY ALL THE HULLABALOO ON HIGH PRESSURE PLASTIC PIPE. STAY WITH THE OLD RELIABLE.

CEMENT - ASBESTOS PIPE BY JOHNS-MANVILLE FOR ALL YOUR HIGH PRESSURE PIPE NEEDS. BACKED BY A 5 YEAR GUARANTEE.

PORTABLE ALUMINUM SYSTEMS
By ALCOA

FLOW LINE - GATED PIPE - SPRINKLER SYSTEM
ALSO WHEEL ROLL SPRINKLERS

**Trade With The Old
Reliables At
State Line Irrigation**

LITTLEFIELD
1601 Houston Ave.
T. L. Timmons - Manager
Pat Briggs - Salesman
A 806 385-4487

MULESHOE
215 North 1st
James Macha - Manager
John Hammock - Salesman
A 806 272-3450

WE HAVE HAD 20 YEARS EXPERIENCE IN UNDERGROUND IRRIGATION SYSTEMS.

STATE LINE IRRIGATION

UNDERGROUND DISTRIBUTION SYSTEMS

Earth Rainbow Assembly Hold Inniation Service

Three girls were installed as members of the Earth Assembly, No. 156, Order of the Rainbow for Girls when they met Monday night at 6 p. m. in the Masonic Lodge Hall for an Inniation Service.

The three installed were Gina Wisian, and Patricia and Barbara Lanier.

Following the initiation, Connie Kelley, Worthy Advisor, gave a short program honoring Jo Anne Temple, Worthy Associate Advisor, presenting her with a rose. Jo Anne will be installed as new Worthy Advisor of the assembly in ceremonies Saturday night at 6:30 p. m. in the Earth Masonic Lodge Hall.

Miss Kelley also honored her grandmother, Mrs. Myrtle Clayton, by presenting the Earth Assembly with an Altar Bible in the name of her grandmother. The Bible will be placed on the Altar at each meeting of the assembly.

Mrs. Clayton was the first Mother Advisor of the Earth Assembly and did much to organize the local Rainbow Chapter.

Connie and her grandmother are not the only two members of the family to serve the local Rainbow, Connie's mother, Mrs. Donald Kelley, and two sisters, Annita and Donita, have all served in the capacity of Worthy Advisor.

Mrs. J. A. Littleton Jr., Mother Advisor, was also honored by the Rainbow stations of Faith, Hope, and Charity. The stations presented Mrs. Littleton in the East and gave her a lovely gift. Serving in these Rainbow stations are Joan Dudley, Faith, Karen Hinchliffe, Hope, and Becky Littleton, Charity.

In closing, Connie thanked each Rainbow officer for the support that each had given her during her term as Worthy Advisor. She gave a special thanks to her mother for making the Pot of Gold and pedestal covers and painting the Rainbow Jewels that were used during the meeting while she was Worthy Advisor. These objects will remain for the Chapters use during the future terms of other Worthy Advisors.

The meeting was concluded by all the Rainbow girls participating in a beautiful retiring march.

The Hall was decorated for the initiation with an archway entwined with roses in the East and accented on each side of the room with a picket fence entwined with roses and greenery. The various Rainbow Stations were covered in their respective colors.

Refreshments of cookies and punch were served by Joan and Lora Dudley and Kleta Haberer from a table covered with a blue cloth centered with a vase of pink roses.

Guests present for the meeting were Mrs. Myrtle Clayton, Mrs. Phillip Haberer, Mrs. B. Campbell, Mrs. Forrest Simmons, Mrs. R. L. Byers, and Mrs. J. A. Littleton Jr.

Earth MYF Plan Chili Supper

The Junior High MYF of the Earth United Methodist Church met Sunday afternoon at 5 p. m. for their weekly meeting.

Darlene Sulser, MYF member, gave a very interesting program entitled "Reconciliation for a Broken World." The topic showed how personal relationships with friends or parents can be improved, making the world a better place in which to live.

Following the lesson, the group made final plans for a Chili Supper to be given January 25 in the Earth United Methodist Church Fellowship Hall. Serving will begin at 7 p. m., with a menu consisting of chili, crackers, coffee, tea, and pie. There will be no charge for the meal, but donations will be accepted.

MYF members present were Melissa Been, Marianne Messer, Pat Cleavinger, JoAnne Coker, Jimmy Coker, Dyke Gaston, Scott Lee, Kevin Alexander, and Mrs. Bud Matlock, sponsor.

Mr. and Mrs. David Johnson were dinner guests in the home of Mr. and Mrs. Houston Stephens Sunday night.



PRUDA KAY SANDERS

Sanders - Fults Engagement Told

Mr. and Mrs. Marvin Sanders of Earth announce the engagement and approaching marriage of their daughter, Pruda Kay, to Harold E. Fults of Friona, son of Mr. and Mrs. Ronie Fults of Saguacha, Colorado.

The couple will exchange vows in the Earth First Baptist Church, Saturday, March 7, at 6:00 p. m.

The bride-elect is a 1965 graduate of Springlake-Earth

High School, and a 1969 graduate of Hardin Simmons University, Abilene. She is currently a Special Education Teacher at Shirley Elementary School in Hereford.

The prospective bridegroom is employed at Missouri Valley Beef Packers at Friona.

Friends and relatives of the couple are cordially invited to attend.

Springlake Sunbeams Study "God's Beautiful World"

The beginner group of Sunbeams of the First Baptist Church in Springlake met Wednesday afternoon, January 14, for their weekly meeting.

In an activity period, the group made a mural using cut-out pictures. The theme of the mural was "God's Beautiful World." This project was to show the children that the world and everything in it belongs to God. The children also colored pictures of squirrels and nuts, showing how God provides food for animals such as the squirrel. Mrs. Bill Lunsford, beginner leader, read the story, "How God Cares For the Squirrel," and the group discussed it.

Refreshments of cup cakes and Kool-Aid were served by Mrs. Dorothy Washington.

Sunbeams present for the meeting were Diane Jones, Rocky Lunsford, Kathy Cain, Kyle Holmes, and Steven Washington.

Notice

There will be a Come and Go Bridal Shower honoring Debbie McAlpine, bride elect of Keith Griffin, Saturday, January 31, from 4 to 6 p. m. in the home of Mrs. Norman Sulser.

Pottery and stainless steel selections at Pounds Pharmacy.

Local FHA Holds Monthly Business Meeting

The Springlake-Earth Chapter of the FHA met Wednesday, January 14, in the Home Economics Cottage for a regular business meeting. Presiding at the meeting was Kathy Lee, FHA president.

The main subject for discussion was the annual Best Beau Banquet which has been slated for Saturday, February 14. Each girl in FHA will be assigned to work on a committee for the banquet.

Speaker for the Banquet will

be Bill Sarpulis, former FFA State President.

The dates for Twirl Week were also set for February 11-22. During this time, the custom of boy's asking girls for dates is reversed and the girls are given the privilege of choosing their preferred date.

The girls were also reminded that the FHA TUBFRIM project would end January 20. This project involves collecting and sending cancelled postage stamps overseas.

Approximately 49 FHA members, and Mrs. Cecil Slover, Miss Kim Hailey, Pat Palmer and Bonnie Grabow, student teachers, were present for the meeting.

Party Line

Mrs. Nat Bearden and Mrs. Gerald Inglis, Tooni, and Terri visited Sunday with Mrs. G. C. Bearden and Mr. and Mrs. J. B. James and children of Olton. Mrs. G. C. Bearden is Mrs. Nat Bearden's mother-in-law.

My Neighbors



"He'll think of you every time he triumphs over a clogged drain!"

SOUTH PLAINS HOSPITAL-CLINIC

Announces Their ANNUAL MEETING Saturday, January 31

AT 2 P. M.

EVERYONE IS INVITED TO ATTEND

Meeting to be in the Amherst High School Auditorium

Used 'TRADE IN' Items For Sale

Electric Clothes Dryer New Model \$110

Refrigerator Runs Quietly \$45

Dinette Set Table With 4 Chairs All Hardwood \$59.95

Clothes Dryer Gas Heated 90 Day Guarantee \$89.95

21" TV's With Guarantee \$37.50 and up

Adding Machine Hand Operated \$27.50

Electric Range Works O. K. \$39.95

4 New Storm Windows A Bargain \$40

WESTERN AUTO Muleshoe

NOTICE TO PARENTS Of School Age Children

The school census is being taken during the month of January this year. All children who are six years old on or before Sept. 1, 1970 but will not be 18 or older on or before that same date should be counted in this census. It is very important that all children six to 18 years be counted in this census. The child should be counted even though he may not be in school and even though he or she may be married.

If you, as a parent, have not received and filled out a school census blank on or before January 31 you are being overlooked and should do one of the following:

1. Phone the school office and ask for a census blank.
 2. Call in person at the School Tax Office and get a census blank and fill it out.
- Remember, if your child will be six years old next September 1, he should be counted in the census now, even though he is not in school now. If he is six but not 18 or older next September 1 he should be counted now. All children from six to 18 should be counted. The six year olds who start next September to school are the ones most overlooked in the census. Failure to count them costs the school and taxpayers extra money. Please help us not to overlook anyone.

Don't Wait 'Till Feb. 1st To Turn Your Blanks In - As That Will Be Too Late

SPRINGLAKE - EARTH SCHOOLS



Spend A Week With Jones in "The Land Of Sale" Saturday, January 17 - Saturday, January 24

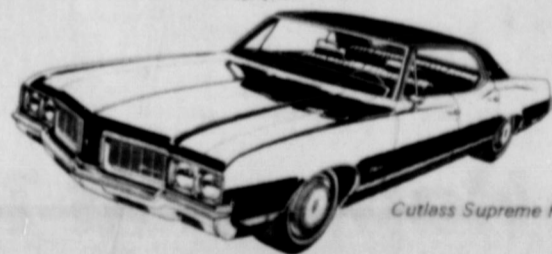
	Regular Price per Pair	3 Pairs	6 Pairs
Reinforced Sheer	1.50	3.75	7.50
Cantree*	1.75	4.50	9.00
Sheer Heel, Demi-Toe	1.75	4.50	9.00
Support Sheer	3.95	9.75	19.50
Panty Hose	3.00	7.50	15.00
Support Panty Hose	5.95	14.85	29.70
Panty Pair* Girdle	3.00	7.50	15.00
Panty Pair* Stockings	2.00	4.95	9.90

Call's Muleshoe

Thank You For Attending

Our Grand Opening Celebration

RUBEN T. BROCK SR Of Littlefield, Was The Winner Of The Color TV.



Cutlass Supreme Holiday Sedan

WE ARE LOOKING FORWARD TO SERVING YOU WITH THE BEST CAR DEALS AND TRUCK

DEALS ON

OLDS-CADILLACS-GMC



Hardtop Sedan de Ville

Marcum Olds-Cadillac

Phone 385-5171

Littlefield

Springlake WMU Conduct Royal Service

Members of the Women's Missionary Union of the Springlake First Baptist Church met Tuesday morning for their Royal Service and regular business meeting.

Mrs. Herbert Miller gave the weekly Prayer Calendar. Mrs. Lowell Walden, presented the Royal Service on the topic "Enthusiasm in Northeast U.S.A." Mrs. Waldens presentation dealt with the Southern Baptist's Project 500. This project began in 1960 and was motivated by the mounting concern for people. The aim of the project was to strategically locate 500 churches or church-type missions in the United States. The favorable results from this project has expanded the challenge for Southern Baptist.

Mrs. Walden presented several examples showing how this program works. One outstanding case showed how two families in an isolated spot began associating with each other and discussing spiritual matters. Within three months, more than fifty people had begun to associate with these families, and it was necessary to find facilities which would accommodate, and be suitable for worship services.

This project is one of the many that the local Women's Missionary Union supports.

Present for the meeting were Mrs. Velma Baker, Mrs. Don Holmes, Mrs. Herbert Miller, Mrs. Ilo Sanders, and Mrs. Lowell Walden.

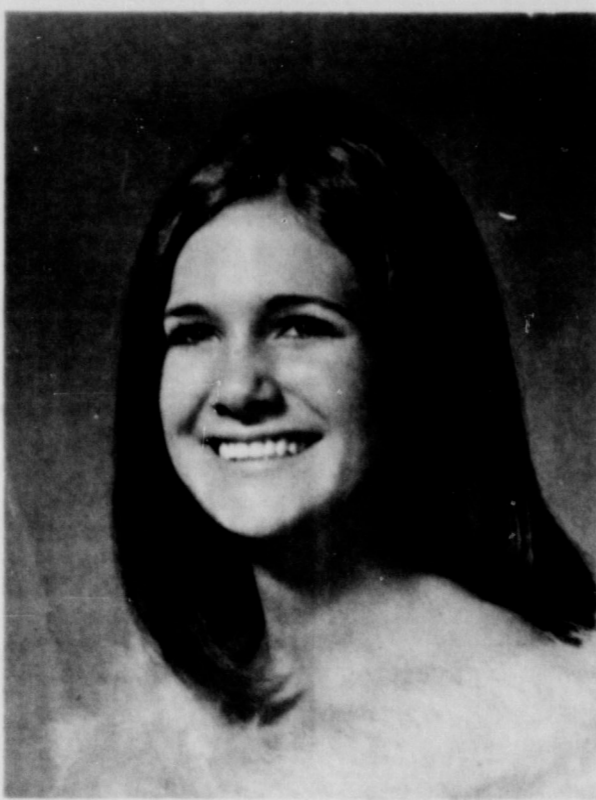
Goodwill Centre In Need Of Bedding

The local Earth Goodwill Centre was open Saturday for a regular business day. Assisting with the sales were members of the local Rebekah Lodge.

A total of \$13,10 was taken in for the day's activities. It was reported, that the Centre is still receiving demands for items of bedding including blankets, sheets, and other similar items. Other things needed by the Centre include items of children's clothing in a variety of sizes.

Rebekah Lodge members conducting sales were Mrs. Mildred Kendrick, Mrs. Minnie Pate, and Mrs. Louise Kelley.

Mrs. Nat Bearden visited last week in the home of her daughter and family, Mr. and Mrs. James Dempsey and children of Lubbock.



MISS JO ANNE TEMPLE

Jo Anne Temple To Be Installed Rainbow Worthy Advisor

Miss Jo Anne Temple, daughter of Mrs. Peggy Temple, Springlake and Joe Temple, Houston, will be installed as Worthy Advisor, Earth Assembly, 156, Order Of The Rainbow For Girls, at 6:30 p.m. Saturday, January 24, at the Masonic Lodge Hall in Earth. Installing officers for the event will be Mrs. Peggy Temple, Installing Officer; Mrs. Eva Hopping, Installing Marshall; Mrs. Lucille Campbell, Installing Musician; Sharla Haberc, Installing Chaplain, and Mary Nell Walker, Installing Recorder.

Everyone is invited to attend the installation service. Rainbow as her theme and "Climb Every Mountain" as her song during her term as Worthy Advisor. During the installation service, a duet composed of Becky Sanders and Jan Hedges will sing her chosen song. Serving as mascots will be Corey Hopping, and Marilyn and Carolyn Durham. Ushers will be Cokey and Scotty Hopping. Rainbow Dad is Clifford Hopping.

Sponsors for the new Worthy Advisors term are Mrs. Donald Kelley, Mrs. Melvin Bock, and Mrs. Marvin Sanders.

HD Agent Gives Tips On Storing Pecans

Pecans can become rancid. The high oil content which lends their characteristic rich flavor makes pecans very perishable.

To store pecans for year around use, the cooler the place the better, says Lady Clare Phillips, county home demonstration agent.

At room temperature (70 to 80 degrees) pecan meats keep fresh only two months. In the home freezer at zero-degrees, pecans will be in good condition for two years.

Before cracking pecans, soak them in water to increase the number of whole kernels obtained. Pour boiling water over the nuts and let them soak 15 to 30 minutes depending on the thickness of the shell.

Soaking makes the kernels more pliable so they hold together better during the shelling operation. Crack the pecans when the shells are dry.

Like meat, pecans supply protein, fat and B vitamins. One cup pecan halves has 740 calories.

Pecan flavor blends well with many foods; waffles for breakfast, soup or bread for luncheon, salads, pastries and desserts for dinner. Mrs. Phillips has other ideas for using pecans; add chopped nuts to bread crumbs for casserole topping, use chopped nuts to top pumpkin pie in the last few minutes of baking, or roll cheese balls in chopped nuts before serving.

GOOD YEAR
Complete FARM SERVICE ON TIRES

WE HAVE FAST ON THE FARM SERVICE WE DO VULCANIZING AND CAN REPAIR OR REPLACE ANY SIZE TIRE.

NOW Good Year Polyglas Tires To Fit Every American Car.

GOOD YEAR POLYGLAS Tractor Tires Tractor Tires

Come On In And Get A Deal

JAMES CRANE TIRE CO.

Plainview Hiway - Muleshoe - PH:272-4595

Ex-Smokers Sleep Better

Los Angeles-Heavy smokers sleep poorly. Ex-heavy smokers sleep better.

This is revealed by research at the U.C.L.A.'s sleep research facility by Drs. Anthony and Joyce Kales and T. L. Tan. By studying the brain waves of eight chronic smokers, the researchers discovered that they rarely achieved deep sleep and they dreamed abnormally. After giving up cigarettes, the

onetime smokers fell asleep more quickly, slept better and stayed asleep longer. For the first few nights, some complained of nightmares, but these faded away within a short time. Achieving normal levels of deep sleep took longer.

Party Line

Mr. and Mrs. Ray Axtell, Rev. and Mrs. Johnnie Williams, and Mrs. Naomi Burgess, were luncheon guests in the home of Mrs. D.M. Allen, Sunday.

If This Happened To You, Would Your Insurance Cover The Damage?

Come In And Let's Talk Over Your Coverage

Texas Farm Bureau Insurance

Phone 272-4567 - Muleshoe

ANNOUNCING THE OPENING OF THE NEW DAY'S NURSING HOME

1201 NORRIS CLOVIS, NEW MEXICO

We Are Now Taking Applications For The Aged and Retirement.

- Registered Nurses on Duty
- Well Prepared Meals
- Medicaid

We Are In The Process Of Being Licensed For Medicare.

- Serving Clovis Since 1949.

DAYS OFFERS THE KIND OF QUIET SERENE, PLEASANT HOME-LIKE ATMOSPHERE YOU WOULD ENJOY LIVING IN.

THE PUBLIC IS CORDIALLY INVITED TO VISIT THE HOME VISITING HOURS ARE FROM:

10:00 a.m. to 4:00 p.m. - 6 p.m. to 9 p.m.

DAY'S NURSING HOME 1201 NORRIS

Phone 763-6489 - Clovis

KCBD-TV LUBBOCK, TEXAS

12:00-New Mexico Report-C
12:15-Sign Off

CHANNEL 11

C- Denotes Color

THURSDAY January 22

7:00-Early Report-C
7:05-Farm Report-C
7:25-Today's Weather-C
7:30-Today-C
8:25-Morning Report-C
8:30-Today-C
9:00-It Takes Two-C
9:25-News-C
9:30-Concentration-C
10:00-Sale of Century-C
10:30-Hollywood Squares-C
11:00-Jeopardy-C
11:30-Who, What or Where Game-C
11:55-News-C
12:00-Mid-Day Report-C
12:15-Community Closeup-C
12:30-Life with Linkletter-C
1:00-Days of Our Lives-C
1:30-The Doctors-C
2:00-Another World-C
2:30-Bright Promise-C
3:00-Name Droppers-C
3:30-Peyton Place
4:00-Hazel-C
4:30-Big Valley-C
5:30-Huntley-Brinkley-C
6:00-Evening Report-C
6:30-Daniel Boone-C
7:30-Ironsides-C
8:30-Dragnet-C
9:00-Dean Martin-C
10:00-Final Report-C
10:30-Tonight Show-C
12:00-New Mexico Report-C
12:15-Sign Off

FRIDAY January 23

(7:00 to 6:30 same as Thurs.)

6:30-High Chaparral-C
7:30-Name of the Game-C
9:00-On Stage-Married Alive
10:00-Final Report-C
10:30-Tonight Show-C

SATURDAY January 24

7:00-The Heckle and Jeckle Show-C
8:00-Here Comes the Grump C
8:30-The Pink Panther-C
9:00-H. R. Pufnstuf-C
9:30-Banana Splits-C
10:30-Flintstones-C
11:00-Jambo-C
11:30-Underdog-C
12:00-Roy Rogers-C
1:00-New Mexico Outdoors-C
1:30-Wild Kingdom-C
2:00-Basketball-Texas Tech at TCU-C
4:00-Shell's Wonderful World of Golf-C
5:00-Bing Crosby Golf - C
6:00-Evening Report-C
6:30-Andy Williams-C
7:30-Adam 12-C
8:00-Movie-Last Safari, Stuart Granger-C
10:15-Final Report-C
10:45-Movie-The Brass Bottle-Tony Randall, Burl Ives
12:15-New Mexico Report-C
12:30-Sign Off

SUNDAY January 25

8:00-Faith for Today-C
8:30-Glory Road-C
9:00-Insight
9:30-Herald of Truth-C
10:00-Ask Your Minister-C
10:45-First Baptist Church
12:00-Meet the Press-C
12:30-Frontiers of Faith-C
1:00-Movie
3:00-Movie
4:30-Adventure at our Door-C
5:00-Frank McGee-C
5:30-G.E. College Bowl-C
6:00-Evening Report-C

MONDAY January 26

(7:00 to 6:30 same as Thurs.)

6:30-Walt Disney-C
7:30-Bill Cosby-C
8:00-Bonanza-C
9:00-The Bold Ones-C
10:00-Final Report-C
10:30-Tonight Show-C
12:00-New Mexico Report-C
12:15-Sign Off

TUESDAY January 27

(7:00 to 6:30 same as Thurs.)

6:30-Jeannie-C
7:00-Debbie Reynolds-C
7:30-Julia-C
8:00-Movie
10:00-Final Report-C
10:30-Tonight Show-C
12:00-New Mexico Report-C
12:15-Sign Off

WEDNESDAY January 28

(7:00 to 6:30 same as Thurs.)

6:30-The Virginian-C
8:00-Kraft Music Hall
9:00-And Then Came Bronson-C
10:00-Final Report-C
10:30-Tonight
12:05-New Mexico Report-C

SHOP WITH THE Merchants That Advertise IN The News-Sun, THEY WANT YOUR BUSINESS

KLBK-TV LUBBOCK, TEXAS

12:00-Theatre-SOS Pacific-Pier Angeli-Richard Attenborough
1:39-Sign Off

CHANNEL 13

THURSDAY January 22

6:23-Sign On
6:30-Farm & Ranch News-C
7:00-CBS Morning News-C
8:00-Captain Kangaroo-C
9:00-The Lucy Show-C
9:30-Beverly Hillsbillies
10:00-Andy Griffith-C
10:30-Love of Life-C
11:00-Where the Heart Is-C
11:24-CBS Midday News-C
11:30-Search for Tomorrow-C
12:00-Channel 13 News-C
12:12-Farm & Ranch News-C
12:22-Paul Harvey-C
12:30-As the World Turns-C
1:00-Love is a Many Splendored Thing-C
1:30-Guiding Light-C
2:00-Secret Storm-C
2:30-Edge of Night-C
3:00-Matinee Theatre-C
4:30-Three Stooges
5:00-Gomer Pyle-C
5:30-Evening News-C
6:00-Channel 13 News-C
6:10-Weather-C
6:20-Sports Report-C
6:30-Family Affair-C
7:00-Jim Nabors Variety Hour
8:00-Movie-Never Too Late-C-Paul Ford and Connie Stevens
10:00-News & Weather-C
10:30-Merv Griffin
12:00-Little Bit of News & Weather - C
12:05-Sign Off

FRIDAY January 23

(6:23 to 6:30 same as Thurs.)

6:30-Get Smart-C
7:00-Good Guys-C
7:30-Hogan's Heroes-C
8:00-Movie-Wake Me When Its Over-C-Emie Kovacs, Don Knotts, Dick Shawn, Jack Warden
10:00-News & Weather-C
10:30-Merv Griffin-C

SATURDAY January 24

6:53-Sign On
7:00-The Jetsons-C
7:30-Bugs Bunny-Road Runner C
8:30-Dastardly & Muttley in Their Flying Machine-C
9:00-Perils of Penelope Pitstop-C
9:30-Scoby Doo, Where Are You? - C
10:00-The Archie Show-C
11:00-The Monkees-C
11:30-CBS Children Hour-C
12:30-Johnny Quest-C
1:00-American Basketball Association All-Star Game-C
5:00-Learn & Live-C
5:30-News with Roger Mudd
6:00-Something Else-C
6:30-Harlem Globetrotters-C
7:30-My Three Sons-C
8:00-Green Acres-C
8:30-Petticoat Junction-C
9:00-Mannix-C
10:00-Double Feature-The Enemy General-Van Johnson The Flying Fontainers Michael Callon
12:38-Sign Off

SUNDAY January 25

7:58-Sign On
8:00-Tom & Jerry-C
8:30-Batman-C
9:00-Oral Roberts-C
9:30-Movie-Screaming Mimic-Anite Ekberg
10:45-Broadway Church of Christ
12:00-Three Stooges
12:45-Reading Dynamics-C
1:00-NHL Hockey-St. Louis @ Philadelphia-C
3:30-Movie-Suicide Mission-Leif Larsen

MONDAY January 26

(6:23 to 6:30 same as Thurs.)

4:30-Amateur Hour-C
5:00-Three Stooges
5:30-Governor & JJ-C
6:00-Lassie-C
6:30-To Rome with Love-C
7:00-Ed Sullivan-C
8:00-Glen Campbell Goodtime Hour-C
9:00-Mission Impossible-C
10:00-New, Weather & Sports
10:30-Curtain Call-C-The Goddess-Lloyd Bridges, Kim Stanley
12:15-Sign Off

TUESDAY January 27

(6:23 to 6:30 same as Thurs.)

6:30-Lancer-C
7:30-Red Skelton-C
8:30-Movie-Four Fables of Love-Leslie Caron
9:55-Reading Dynamics-C
10:00-News & Weather-C
10:30-Merv Griffin Show-C
12:00-Little Bit of News & Weather-C
12:05-Sign Off

WEDNESDAY January 28

(6:23 to 6:30 same as Thurs.)

6:30-Hee Haw-C
7:30-Beverly Hillsbillies-C
8:00-Danny Thomas-Yesterday, Today, Tomorrow
9:00-Hawaii Five O-C
10:00-News & Weather-C
10:30-Merv Griffin-C
12:00-Little Bit of News & Weather-C
12:05-Sign Off

Texans Face Auto Insurance Rate Increase Unless Accidents Decrease

Austin--Texans may face another auto insurance rate increase unless traffic accidents in the state are reduced by 140,000 in 1970, a leading insurance industry spokesman here said Wednesday.

Expressing overall support for Gov. Preston Smith's traffic safety program, F. Darby Hammond, Executive Director of the Southwestern Insurance Information Service (SIIS), said additional measures were needed to strengthen the Governor's plan and reduce the carnage on Texas highways. He said the present program was not extensive enough to achieve this purpose.

"We must face our total responsibility regarding the terrible human losses suffered on our roadways," Hammond said. "The direction of our auto insurance rates will be an accurate indicator of our success or failure."

In a letter to Gov. Smith, Hammond proposed stricter enforcement of Texas traffic law officers in arresting violators and by judges in taking a "harder line" toward traffic law violators.

Hammond noted that traffic accidents would have to be reduced by 140,000 in Texas to even begin thinking about holding the line on auto insurance rate increases. "It is quite unlikely the Governor's traffic safety program, as it now stands, would accomplish such a reduction," he said.

Gov. Smith was also urged in the letter to begin public information and education programs. One such program would promote improved knowledge of traffic laws and improved driving skills. Another plan calls for driver information and education brochures to

be included with each set of new license plates.

Outlining eight points in his letter to the Governor, Hammond said the SIIS improvement plan would require no additional legislation for implementation. He said inclusion of the SIIS recommendations would help bring much closer to reality the massive reduction of auto accidents necessary to hold the line on auto insurance rates.

The SIIS plan calls for:

1. A program of more intensive enforcement of traffic laws by the DPS and local police;
2. A driver information program aimed to promote improved driving skills and better knowledge of traffic regulations;
3. A program to urge all judges in traffic cases to take a harder line on all violators;
4. An evaluation of the Texas traffic courts;
5. A call for the Attorney General to instruct judges to stop granting stay orders that allow violators of the financial responsibility law to drive, and to deny occupational licenses to those with more than three traffic violations in three consecutive years;
6. Impounding the autos of those arrested for driving while intoxicated;
7. Encouraging expanded coverage in the media on improving driving habits and on traffic safety; and;
8. Inclusion of a traffic safety brochure with each set of new license plates.

Donna Blackwell spent the week-end in Canyon visiting Beverly Britton who is a student at West Texas State University. While at Canyon, Donna and Beverly attended a Grass Roots concert in Amarillo.

Meat For The Seventies, Frozen?

College Station--Two recent experimental programs in merchandizing frozen meats have pointed up both potentials and problems, reports Frank Orts, Texas A&M University Extension meats specialist.

A Philadelphia firm for the past two years has been merchandizing 17 different frozen meat cuts from chopped beef to roasts. These products are packaged in a special wax-plastic hot melt process which seals frozen meat in an attractive high gloss carton.

The package, explains Orts, does not show the raw product, but rather how a discriminatory hostess might serve it to her family and guests. This firm has reported substantial growth in the sale of frozen meat from coast to coast in addition to a strong international market. They have found that shoppers associate the idea of frozen meat with convenience, says the specialist.

A Wisconsin firm has introduced a frozen meat bundle containing 14 cuts. Some problems have occurred such as lack of freezer space in the market and of visibility of individual cuts in the bundle.

Some housewives, notes Orts, have the idea that frozen meats in the meat counter are of sub-par quality; however, this was quickly changed after trial usage. They said the meat was very fresh even after it had been in their home freezer several days.

One of the major problems



CUTEST COUPLE. Eddie Alair and Suzy Temple win the votes for the cutest couple at Springlake-Earth High School. These titles were bestowed upon them as result of recent student elections.

Annual Homecoming Set At Pep Saturday, January 31

The Pep Ex-student Association extends a cordial invitation

to all former students, teachers, patrons and friends to attend the eleventh annual Homecoming, Saturday, January 31. Registration begins at 4:30 p.m. with open house throughout the afternoon.

A basketball game will be held at 5:00 p.m.

Banquet at 6:30 p.m. in the school cafeteria at \$1.25 per plate. Menu will be ham, baked potato, green beans,

tossed salad, strawberry shortcake. Cooking committee is Mrs. Gaubert Demel, Valeria Shannon, and Evelyn Albus. Banquet speaker is Mr. Owen C. Connor, Pep school Counselor, Master of Ceremonies will be Elroy Simmacher member of 1951 graduating class. Mike Albus, president of the Ex-students Association will preside at the business meeting. A free dance ticket will be

given to the person or persons having the closest birthday. A door prize will be awarded. The 1970 Homecoming Queen will be crowned after the business meeting. The evenings activities will close with a dance at 9:00 p.m., music by a western band.

ATTEND CHURCH SUNDAY

The Old timer



"Try not to think of me as a back-seat driver, dear. Think of me as a co-pilot."

REGISTER TO VOTE

your family's PRESENT

... A FREE GIFT when you open any new savings account of \$100.00 or more, or add \$100.00 or more to an existing account. Or you can choose Gold Bond Stamps as your bonus.

and FUTURE

5 1/4%

CERTIFICATE OF DEPOSIT ACCOUNT \$1,000 Minimum Deposit

5%

90 DAY NOTICE ACCOUNT No Minimum Deposit

4 3/4%

REGULAR SAVINGS ACCOUNT No Minimum Deposit

NOW



BRIERCROFT SAVINGS AND LOAN ASSOCIATION

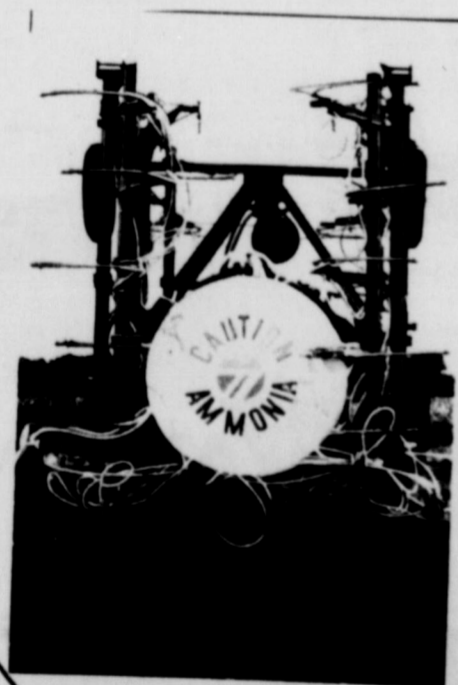
50th & Ave. Q

Lubbock, Texas

(New Coronado Branch Opening Soon at 34th & Toledo)

We Have The New TCI 45' Anhydrous Applicator

The TCI 45' Anhydrous Applicator Shown For Highway Travel.



Call Today For Demonstration

Available DEMONSTRATION On Your PREPARED LAND

- Wide-swath applicator has 45' wide toolbar
- Folds to 8' for highway travel
- Easier for one man to handle than the conventional ammonia applicator
- Utilizes 1000 gallon tank
- Can be pulled by an 80 H. P. tractor at 5 - 7 M. P. H.
- Electric winch system for folding and unfolding of toolbar
- Designed for use on pretilled soil
- Permits easier application
- Meters the ammonia accurately regardless of ground speed
- Eliminates need for furrow sealers
- Cuts knife replacement costs in half
- Leaves fields in excellent condition for planting
- Eliminates trash gathering problem

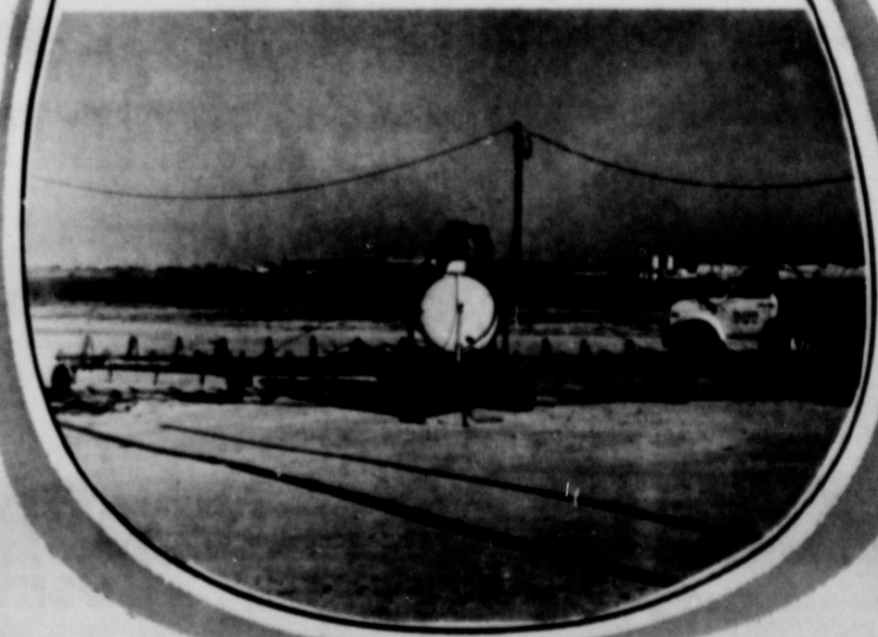
Will Do Up To 300 Acres A Day

We Also Have A Service Rig For Application Of Treflan

Sawyer Fertilizer & Chemicals

Call Today For Demonstration

The TCI 45' Anhydrous Applicator Ready For Use In The Field.



Earth

Wolverines Defeated By Farwell and Vega

In varsity basketball action Friday and Tuesday nights the Springlake - Earth Wolverine team was defeated by the varsity teams of Farwell and Vega.

In action Friday in the Farwell Gym, the Wolverines were defeated 78 - 56 by the varsity team of Farwell.

The Wolverines entered the game with a fierce determination to win, but were not able to attain a Wolverine victory.

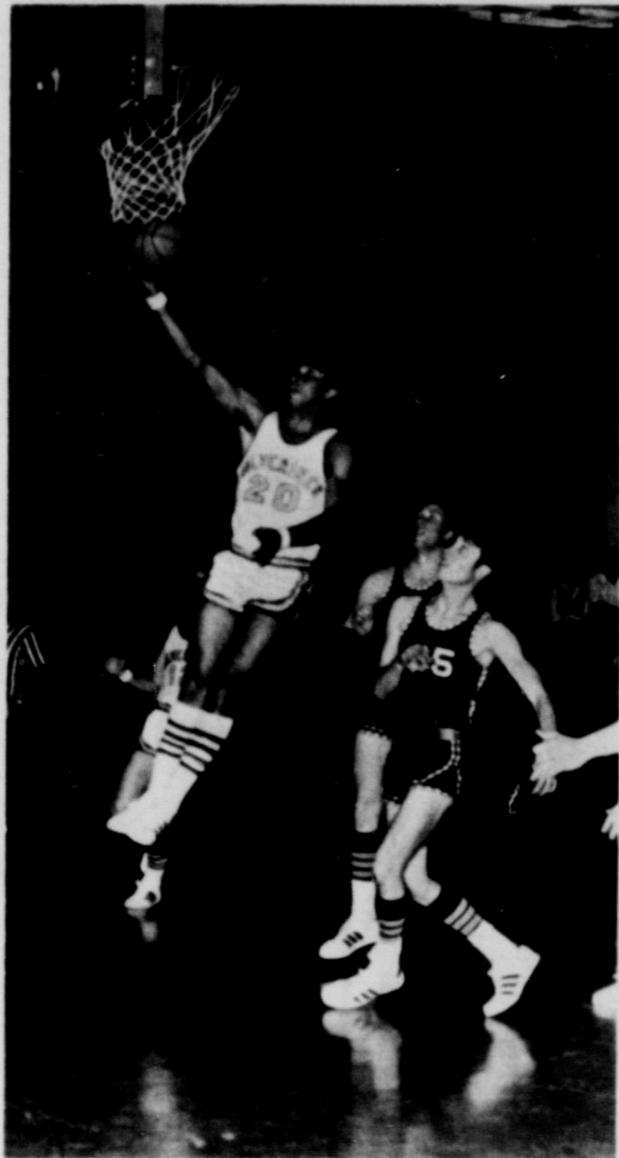
High point man for the Wolverines was Willie Wilborn with 18 points, followed closely by Terry Bridge with 11 points.

In basketball action Tuesday night in the home gym the local Wolverines were downed 52-

49 by the varsity team of Vega. The local team trailed throughout the entire game but at the end of the third quarter of play, the Wolverines had soared in action to move within two points of Vega. They tried so hard to gain the lead but were unable to score enough points during the final quarter of play to overtake the victors.

High point scorers for the Wolverines were Willie Wilborn with 18 points, followed by Mike Cleavinger with 11 points and Steve Sanderson with 9 points.

High point man for Vega was M. Hall with 11 points.



FLOATING ON AIR, Willie Wilborn makes scoring two points look easy as he goes in for a lay up against the varsity team of Vega. Wilborn was high point man for the Wolverines scoring 18 points.

Girl's "B" Team Defeat Farwell Lose To Vega

The Springlake - Earth "B" Girls Team saw basketball action Friday and Tuesday nights as they met the "B" Teams of Farwell and Vega.

Friday night in Farwell Gym the local team was victorious as it defeated the "B" Team of Farwell by a one point margin 25-24.

The game proved to be an exciting one as scoring for both teams ran even throughout the first half of the ball game. The scoring changed, however, when the Springlake-Earth team scored 10 points to the opposing teams 2 points during the third period of play. The Farwell team made a come back during the fourth quarter scoring 8 points to the local "B" teams 1 point, that however, was insufficient, making the final score 25-25, Springlake-Earth.

High point girl of the local team was Karen Armstrong with 15 points, followed by Sherry Pittman with 6, and Suzy Temple with 4 points.

High scorer for Farwell was La Shawn Sheets with 16 points. In basketball action in Wolverine Gym Tuesday night the "B" Girls Team lost a 43-20 game to the "B" team of Vega.

Vega had gained the lead after the first quarter of play, and the local team was not able to sink enough points during the remainder of the game to attain a victory.

High point girl for Springlake-Earth was Sherry Pittman with 14 points, followed by Suzy

Temple with 4 points, and Becly Wright with 2 points.

Wolverettes Play Two, Win Two

The 1969-70 Springlake-Earth Wolverette basketball team added two more victories to their list as they defeated the Farwell varsity team Friday night in Farwell Gym and the Vega varsity team Tuesday night in Wolverine Gym.

The fighting Wolverette showed the same fierce spirit that they have shown throughout season Friday night when they downed Farwell 45-32.

At the end of the first half of the game, Farwell held a 1 point lead over the Wolverettes. The fighting determination throughout the final half of the game was a contributing factor to the Wolverette victory.

Vicky Gregory was in her usual high scoring form as she was high point girl for the Wolverettes sinking 16 points. Vicky was followed closely by two other high scorers in the game, Janet Britton and Jan Hedges, both with 11 points each.

High point girl for Farwell was Jeniene Taylor with 16 points.



TWO POINT ATTEMPT, Janet Britton, Wolverette forward, attempts to sink two points against Farwell in basketball action Friday night in Farwell Gym. The Wolverettes were victorious 45-32.

January Bookmobile Schedule

Lorene Sooter, Bookmobile librarian, for the High Plains Bookmobile has announced the Bookmobile schedule for the

The Wolverettes chalked up their second victory Tuesday night when they scored 62 points to the opposing team total of 36.

The Wolverettes gained the lead early in the first quarter of play and maintained it through each of the three remaining periods.

Vicky Gregory was again high point girl of the game sinking a total of 24 points for the Wolverettes. Other scorers in the game were Janis Bridge, 12 points, Janet Britton, 9 points; Jan Hedges and Jenna Banks, 7 points each; and Jimma Banks completing the scoring with 3 points.

High scorer for Vega was Pam Davis with 11 points.

remainder of the month of January.

The Bookmobile will be in this locality, so that those wishing to use the service may do so.

The Bookmobile will follow the schedule listed below.

THURSDAY, JANUARY 29
Springlake 1-11:00-11:45 a.m.
Springlake II-12:00-1:00 p.m.
Earth - 1:15-3:45 p.m.
FRIDAY, JANUARY 30
Pleasant Valley-10:00-11:00 a.m.

Pat Dent of Alexandria, Virginia is currently visiting with the Leon Dents and L. H. Dents of Earth. Pat Dent is a nephew to L. H. Dent.

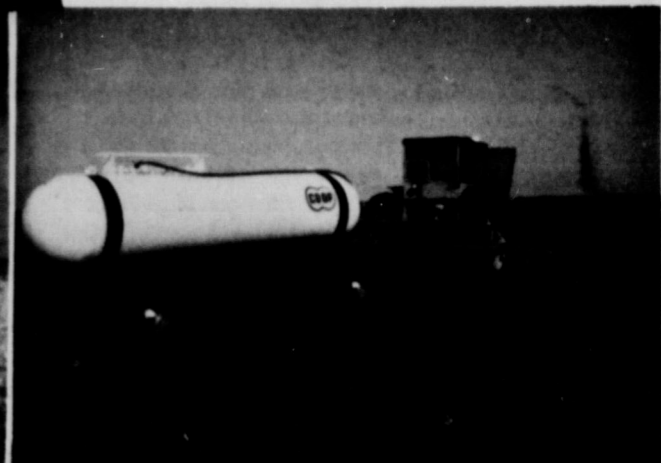
Mr. and Mrs. Bill Wyatt of San Angelo were week-end guests in the home of Mr. and Mrs. L. A. Glasscock.

THE RIGHT FERTILIZER =

THE HIGHEST YIELDS



This is the first load of '69 corn received at the Flagg Elevator produced by Jack Angeley harvested and hauled by Phillip Haberer. Pictured is Mr. Haberer and Junior Lawson.



We have added 12-21 ft. tool bar rigs that are available for your use.

TO FURTHER SERVE YOU

WE NOW HAVE

"BIG A"

The Tires Are 44" Wide And 60" High.

The Machine Will Pack The Ground

Just Half As Much As A Man Would



OTHER

ADVANTAGES

- *Saves Labor
- *Makes Land Easier To Farm
- *Avoids Crop Injury
- *Runs In Rain, Snow or Mud
- *Leaves Soil In Better Condition

- *Saves Time
- *No Labor Involved
- *Avoids Spring Rush And Spreads Workload
- *Minimum Soil Compaction

WE CAN NOW SERVICE ON LIQUID

OFFER YOU ALL TYPES FERTILIZER

DIMMITT WHEAT GROWERS

Dimmitt

NEW DECADE SPECIALS

1970 Dodge Challenger

2 Door Hardtop, Stock No. 126. Color: Red. 3 Speed Floor Shift, 229 CID Engine, Deluxe Wheel Covers, White Wall Fiberglass Tires, Bucket Seats, 6 Cylinder Engine.

List Price \$3021.75

Special \$2688.

1970 Dodge

D100 Sweptline 3/4 Ton PU Stock No. 121. Color: Green 318 V8 engine, Loadline Transmission, Oil Pressure Gauge, Radio, Bright Front Bumper, Exterior Trim Wheel Lip & Sill Moulding, Wheel Covers, Front Springs 1250 Lbs. Rear Springs 1400 Lbs. Cam, Power Steering, Custom Pkg., Undercoating.

List Price \$3503.85

Special \$2995.

1970 Dodge Challenger

2 Door Hardtop, Stock No. 163. Color: Bright Blue. 3 Speed Floor Shift Transmission, 318 V8 Engine, Tinted Windshield, Chrome Remote Control Left Mirror, Undercoating & Hood Insulator Pad, Music Master Radio, Deluxe Wheel Covers, White Wall Tires, Fiberglass.

List Price \$3244.45

Special \$2875.

1969 Dodge Charger

2 Door Hardtop, Stock No. 133. Color: Cream. Basic Radio Group, Torqueflite Transmission, 383 CID Engine, 2 BBL, All Windows Tinted Glass, Air conditioning, Undercoating, Hood Insulator Pad, Rear Seat Speakers, White Wall Fiberglass Tires.

List Price \$4257.55

Special \$3726.

GARLAND MOTOR CO.

AUTHORIZED DEALER CHRYSLER MOTORS CORPORATION

710 E. 3rd Phone 385-4454 Littlefield

"THE SPOT"

EARTH'S PAST TIME CLUB
Now Open For Business

Monday-Saturday 10:00 Till 10:00
Sunday 1:30 to 6:00 P.M.

Sunnyside News...

By Tenny Bowden.

Funeral services were conducted at the Sunnyside Baptist church Friday afternoon for Houston Carson who passed away in the hospital at Fort Lyon, Colorado at 6:00 p.m. Tuesday of a blood clot.

Mrs. Carson and Resa and Mrs. Raymond Carson of Olton had just taken him back on Saturday after a two week visit here. They visited with him again on Sunday and he was well and in good spirits, when they left.

They got the message he was ill in time for all the family, but Mr. and Mrs. Gene Carson to get there before he passed away, and they were on the way. Lillian and part of the family flew, the others went by car.

Rev. M.D. Durham of Whiteharral and Rev. Mack Turner conducted the services, directed by Parsons Funeral Home of Olton. He was buried at Olton.

Pallbearers were Milburn Haydon and L.B. Bowden of the community, Merrill Brigrance of Olton, and Curtis Malone and Lawrence McLain of Hart, and Joe Hysinger of Hereford. Honorary pallbearers were Roy Phelan, John Moore, and Bob Ott of the community, John Zeigler of Tullia, Howard Bridges of Weatherford who was unable to come, Ira McLain of Hart, Jerry White of Dallas, and Parley Myers and Bill Weaver of Olton.

The choir furnished the music with a quartet made up of Gerald Elkins, Robert Bridge, Carl Bradley, and Rev. Durham singing "How Great Thou Art". Houston sang the lead in this quartet in the place of Gerald Elkins in former days in the church services.

The Carsons have lived in the community since 1954 when they bought the place where they now live. Resa was born here.

Mr. and Mrs. Raymond Lewis of Olton visited after the funeral services with Mr. and Mrs. Donnie Lilley.

Mr. and Mrs. Ezell Sadler visited in Hale Center after the funeral with Mr. and Mrs. Ezell Keeler.

Mr. and Mrs. L.B. Bowden, and Mrs. E.R. Sadler visited in Dimmitt with Mrs. John Turner after the funeral services.

Mr. and Mrs. E.R. Sadler returned home from the Gulf Coast Wednesday evening after a six week visit with M.H. Fowlkes and Mr. and Mrs. C.J.

Fowlkes. They talked at Christmas with Captain and Mrs. Myles Sadler in Brussels, Belgium. They spent Thursday night in Austin on the way home with her parents.

Mrs. Pearl Sadler of Dimmitt spent Monday until Wednesday with Mr. and Mrs. Ezell Sadler. She had dinner Wednesday with Mr. and Mrs. Gale Sadler. She spent Wednesday night and Thursday with Mr. and Mrs. E.R. Sadler. She visited Wednesday afternoon with Mr. and Mrs. W.E. Loudder, Mrs. Ezell Sadler and Ramona Dones.

Mrs. Larry Odom visited Wednesday with Leslie Loudder. She visited with him again Friday and spent the afternoon with Mr. and Mrs. W.E. Loudder and Ramona so Mrs. Sadler and Mrs. Bowden could both attend the funeral services.

Mrs. H.L. (Viviline) Duke of Big Springs spent last Saturday night with Mr. and Mrs. Edd Duke and visited with Mr. and Mrs. Robert Duke and family. She has spent this week with her brother, Dr. Bill Murphy for medical treatment. Mrs. Edd Duke and Mrs. Wendell Payte visited with her Saturday afternoon in Plains Memorial Hospital.

Mr. and Mrs. Wendell Payte and family of Big Springs arrived Friday to spend the week-end with Mr. and Mrs. Edd Duke and Mr. and Mrs. Robert Duke and family. Mrs. Payte is the daughter of Mrs. Viviline Duke.

Bob Duke played in the Donkey basketball game in Dimmitt Monday night. The game was sponsored by the FFA.

Mrs. Ray Joe Riley and Mrs. Gerald Graham helped with the giving of the measles vaccine to about 200 Springlake-Earth students. They are both registered nurses.

Mrs. Larry Sadler visited in Plains Memorial hospital in Dimmitt Wednesday and again Friday with her sister, Juanelle

Conard who underwent dental surgery Wednesday while home for the between semesters at Hardin Simmons University. She and the children also visited with Mr. and Mrs. Tex Conard.

Danny Bradley made 3 points in the "B" team game with Kress Tuesday.

Mrs. Bill Morgan and Mrs. Garner Ball were on the sick list this week with the flu or flu like symptoms.

Noah Spencer and Rev. Mack Turner showed slides to the residents at the Golden Spread Nursing Home in Dimmitt Tuesday evening.

Mr. and Mrs. David Sadler and Melody of Lubbock arrived Friday night to spend the week-end here and in Hereford. They and Mr. and Mrs. Larry Sadler and girls and Mr. and Mrs. James Powell and children of Dimmitt had supper Saturday night with Ezell Sadler and visited with Mrs. Sadler after she got home from the W.E. Loudders.

Mr. and Mrs. Bob Ott, John and Punk Gilbreath attended the funeral services of Andy Elder in Dimmitt Thursday afternoon.

Kent and Kelly Bradley spent Friday afternoon with their grandparents, Mr. and Mrs. Jess Matlock of Springlake.

Steve Morgan was on the Springlake-Earth 7th grade "B" Honor Roll the last six weeks.

Marian Dawson was on the Springlake-Earth High School Honor Roll "A" roll for Juniors. Terry Bridge was on the Senior "B" roll, David Bradley the "B" Junior roll, Lisa Orr, Lesa Morgan, and Renee Jones on the Freshman "B" roll.

In the tournament last week-end in Hale Center the Wolverines lost to Plainview 80-26 won over Hale Center 101-27, and won over Kress 65-63. Terry Bridge was high point man in the Hale Center game with 20 points. They also won over Kress at Springlake Tuesday night 67-57. The Wolverettes defeated Kress 55-30. Jank Bridge plays on this team.

Mr. and Mrs. Roy Phelan spent Monday night at Tullia with Loyd Morris and all spent the day Tuesday at the Morris cabin at Greenbelt Lake.

Mr. and Mrs. Roy Phelan, Dina Jo Hampton attended the Springlake Girl Scout work meeting Monday afternoon.



MOST COURTEOUS BOY. As a result of Willie Wilborn's outstanding quality of being courteous, the Springlake-Earth student body has named him as Most Courteous Boy for the 1969-70 school year.

They worked on Merit Badges. Sue Bradley and Belinda Hampton attended the Springlake Troop 308 Brownie meeting. They worked on aprons.

Debbie Matlock is one of the Springlake-Earth Housing and Home Furnishing Class. They have been working on upholstering chairs.

Mrs. Houston Carson went to Graham Sunday to be with the family of Houston's sister whose husband had passed away. His funeral will be Monday. Resa stayed with Mr. and Mrs. Dubby George.

Mr. and Mrs. Jim Swinney and Dawn of Lubbock and Mrs. Shirley Craig visited Saturday afternoon with Mr. and Mrs. Cliff Brown, Lee, and Lynn. Mr. and Mrs. E.R. Brown of Lubbock and Mr. and Mrs. Hilton Brown and Timmy of Plainview had supper with the Cliff Browns Saturday night.

Mr. and Mrs. Cliff Brown and boys and Ed Dawson and Clint attended the organizational meeting of the Little Dribbler Basketball team at the Springlake-Earth school Thursday night. Mr. Dawson was elected president. The organization is for all boys 8 through 1 interested.

Mr. and Mrs. Curtis Swinney and family spent the week-end in Texhoma with friends.

Mrs. Charles Axtell has been teaching school at Sudan since sometime in October, a fact overlooked up to now.

Some snow fell in the community Sunday, but was very spotted. Some places there

Fine Arts Department In Muleshoe Presents Musical

Muleshoe High School's Fine Arts Department will present Meredith Willson's "The Unsinkable Molly Brown" January 22 and 24 in the high school auditorium with curtain at 8:00 p.m.

All seats are reserved at \$1.50 in advance and \$1.75 at the door.

This will be the Fine Arts Department's seventh annual musical to be presented for the

community and surrounding area.

Popular tunes from the Musical include: "I Ain't Down Yet," "Colorado My Home," and "I'll Never Say No" plus many other favorites.

community and surrounding area.

Popular tunes from the Musical include: "I Ain't Down Yet," "Colorado My Home," and "I'll Never Say No" plus many other favorites.

PARTY LINE

Kim Hailey, Pat Dalmer of Levelland, Bonnie Grabow of Brenham, Diane McCallum, Mr. and Mrs. Perry Martin, Mr. and Mrs. Bill Anderson and Kathleen, and Mr. and Mrs. Bill Mann and Jimmy were luncheon guests in the home of the Marvin Sanders Sunday.

GMC

Long Wide Box
Price-\$2295
Delivered in Littlefield

Marcum Olds-Cadillac
801 Hall Ave.
8th Street & Highway 385
Phone 385-5171
Littlefield

YOUR NEW FLOOR COVERING WILL BE EXPERTLY INSTALLED BY OUR FACTORY TRAINED CRAFTSMAN.

Telephone 257-2005

H.S. Sanders
Lumber
Earth

SEE OR CALL

BUSTER SMITH

For The
Best Deal To Be Found

On A
New or Used Car

Bus. Phone 296-2788 Res. Phone :93-1733

Don Rierson Pontiac - Cadillac, Inc.
3110 Olton Road-Plainview

POLITICAL CALENDAR

MARY BETH WILLEY
For County Clerk of Lamb County

LUCY MORELAND
For County Treasurer Of Lamb County

RAY LYNN BRITT
District Clerk

BUY SELL CLASSIFIED ADS

TRACTOR TIRES WHOLESALE DEALERS WELCOME

11.2 x 20.4 P18	41.95	3.11
12.4 x 20.4	43.95	4.18
13.6 x 20.4	45.95	5.25
14.8 x 20.4	47.95	6.32
16.0 x 20.4	49.95	7.39
17.2 x 20.4	51.95	8.46
18.4 x 20.4	53.95	9.53
19.6 x 20.4	55.95	10.60
20.8 x 20.4	57.95	11.67
22.0 x 20.4	59.95	12.74
23.2 x 20.4	61.95	13.81
24.4 x 20.4	63.95	14.88
25.6 x 20.4	65.95	15.95
26.8 x 20.4	67.95	17.02
28.0 x 20.4	69.95	18.09
29.2 x 20.4	71.95	19.16
30.4 x 20.4	73.95	20.23
31.6 x 20.4	75.95	21.30

11.2 x 15.6 Flatation Tire Tube wheel 60-58 77
Used 12.4 x 38 - 16.9 x 34 - 18.4 x 34 - 16.9 x 38 - 18.4 x 38 - 18.4 x 38 - Goodrich - Goodyear - Firestone.

BITNER TIRE & SUPPLY
1014 E. 9th, Littlefield
Ph. 385-6011 Day or Night.

I WILL DO BABY SITTING in my home after 6:00 week days and all day Saturday. Call 257-3914 or come by 537 N. Elm. 1/22/ttc

DRIVERS NEEDED

Train NOW to drive semi truck, local and over the road. You can earn over \$4.00 per hour, after short training. For interview and application, call 214-742-2924, or write Safety Dept., Nationwide Systems, Inc., 4747 Gretna, Dallas, Texas, 75207. 1/22/ttc

SPARE TIME INCOME

Refilling and collecting money from NEW TYPE high-quality coin-operated dispensers in your area. No selling. To qualify you must have car, references, \$600. to \$2900 cash. Seven to twelve hours weekly can net excellent monthly income. More full time. For personal interview write UNITED DISTRIBUTING CO., DEPT. A, P.O. BOX 10605, Dallas, Texas 75207 Include Phone Number.

REPOSSESSED

1970 Model Home Entertainment Center Less Than 3 Months Old. Giant Screen Color T.V., With 26,000 Volt RCA Licensed Chassis, 4 Speed Jam Proof Record Changer, Deluxe Radio, Multi-Speaker Sound System, Low Payments, Balance Less Than Half of Original Cost. Call Credit Mgr. Collect At Lubbock Stereo Center 1913-19th St. 747-5572 1/8/5tc

LITTLEFIELD COIN CENTER
Is Now Open
Located In The Old Fair Store Building 312 Phelps Littlefield We Buy And Sell Coins, Carry A Complete Line Of Coin Supplies, Bid Board Closes Monday 7 P.M. WANTED SILVER COINS BEFORE 1965

"TOPARTY WITH GOOD CREDIT" repossessed late model Singer sewing machine in four drawer walnut cabinet, will zig-zag, blind hem, fancy patterns, ect. Five payments at \$5.65, write Credit Manager, 1114 19th Street, Lubbock Texas. 1/8/tfc.

Complete Insurance Service. B4UBIDIBURNBLOWAY See Ivey Insurance at 210 W. Bedford-647-3518-Dimmitt, 1/15/tfc

INCOME TAX RETURNS. Prepared by Mrs. Wilson Lewis after 5 p.m. and Saturday call 257-3333 on East Highway 70. 12/25/6tc (D4) 3/5/4tc

FOR YOUR back hoe work and caliche hauling call 986-2091, Earl Watson, Springlake. 11/25/2/66P

FOR SALE: AKC registered beagle puppies, Females \$25, males \$30. Call 257-3933 after 5 p.m. 1,15/2tc

FOR SALE-3 bedroom, 2 bath, brick home, central heat, ref. air, fenced, kitchen and baths carpeted, large 2 car garage. Priced for quick sale. Contact C.O. Taylor, 12/25/tfc

WILL DO CATERING: for farm sales and parties, Home baked pies and cakes, Mrs. Beula Danforth 257-3844, 1/22/tfc

FOR SALE: Nine City lots south of Earth Elevator, contact Citizens State Bank in Earth. 1/18/tfc

FORRENT-Two bedroom house, carpet, utility room, \$50 per month. Phone 257-2461. 6/8/tfc

WELL kept carpets show the results of regular Blue Lustre spot cleaning. Rect electric shampooer \$1. Glamour Shoppe. Phone 257-3405.

FOR SALE-Sewing Machines We are franchise dealers for Singer, Necchi, Neclo and Good Housekeeper. We repair any make. Scissors and pink-ing shears sharpened. Call 272-3030 in Muleshoe, Texas. Harvey Bass Appliance. 6/1/tfc

MONUMENTS
Winnboro Blue Granite White Georgia Marble and others Including Bronze for Memorial Park Specifications See or Call Collect Percy Parson, Olton Phone 285-2621 or 285-2767 Frank Ellis, Muleshoe 272-4572

QUICKBALL PRYOR CO., INC.
Automobile Parts Supplies & Equip. P.O. Box 567 Earth Texas

HAMMONS FUNERAL HOME
Ambulance Service
Phone 385-5121
LITTLEFIELD TEXAS

TRUCK SEATS EXCHANGED 15 MINUTE SERVICE McCORMICK'S AUTO SUPPLY AND TRIM SHOP
PHONE 385-4555 LITTLEFIELD

FEEDERS GRAIN, INC. DAILY BUYERS FOR CATTLE FEEDERS
Federal Storage License 3-4451 We Can Use Your Grain SUDAN LIVESTOCK and FEEDING CO. Phone 227-5321 Sudan

QUICKBALL PRYOR CO., INC.
Automobile Parts Supplies & Equip. P.O. Box 567 Earth Texas

BUSINESS and INDUSTRIAL DIRECTORY

<p>JOB PRINTING</p> <p>EARTH NEWS</p>	<p>COMMERCIAL PRINTING</p> <p>EARTH NEWS-SUN</p>	<p>Your BUICK OLDSMOBILE DEALER</p> <p>BROCK MOTOR Muleshoe, Texas</p>
<p>Social PRINTING</p> <p>Earth News-Sun</p>	<p>To Rest Assured use SAFETY DEPOSIT BOX Protection</p> <p>FIRST STATE BANK Dimmitt, Texas</p>	<p>TEXAS PRESS ASSOCIATION MEMBER</p>
<p>SHOP FOR ALL YOUR OFFICE SUPPLY NEEDS AT EARTH NEWS-SUN PHONE 257-2145 EARTH</p>		
<p>Harvey Bass Appliance YOUR DEALER FOR * FRIGIDAIRE * RCA VICTOR * MOTOROLA PHONE 272-3030 Muleshoe, Texas</p>		

Former Resident Deputy Sheriff In Denver City

W.A. Hatfield, formerly of Earth and a veteran of nine years as a law enforcement officer, has taken over the reins as deputy sheriff in Denver City.

In 1961, Hatfield entered law enforcement work as a member of the municipal police department in Olton. Later, he went to Friona as a member of the city police department there.

From Friona, he became a deputy sheriff in Lamb County, residing at Earth, a post he held three years before moving to Petersburg as a Hale County deputy.



BELATED PLAQUE. Perry Martin of the Earth Chamber of Commerce presents Dave Cavitt of Southwestern Public Company with a lovely plaque. Southwestern Public Service Company was the winner in the business division of the Annual Chamber of Commerce Christmas Lighting Contest.

It Pays To Work To Keep Your Health

Most of us have plenty of resolutions for the making, but any resolution regarding your health is a resolution well made, advises the Texas State Department of Health.

Plan ahead this year. Maintaining good health requires a little time and forethought, but it's much cheaper and simpler than trying to get well again.

Resolve to lead a balanced life with plenty rest and exercise. Weight lifting or running the mile daily may not be your dish, but almost anyone can take a leisurely walk each day. Simply walking from the supper table to the bed is scarcely enough exercise for any well person.

Resolve to eat a balanced diet. Nutritionists recommend regular mealtimes with some of the basic four each day. Specifically, this includes a meat or meat substitute, bread, or cereal, milk or dairy product, and fruit and vegetables—especially one rich in vitamin C.

Foods come in many colors, textures and flavors, and can be easy on the eyes and tempting to the palate, as well as fuel for your body.

Resolve to see your doctor and your dentist for yearly check-ups, unless you need them more often. They can detect many dangers, and in many cases prevent serious problems. Many types of cancer, for example, can often be cured if detected early.

Resolve to see that you and your family are protected against today's preventable diseases—smallpox, lockjaw, whooping cough, polio, measles, etc. Keep your immunizations up to date.

Resolve to use your head where your health is concerned. Nothing cures everything. Beware the peddler who says it does, or who comes bearing fancy gadgets, radiation cones

Jr. High Basketball Teams Drop Four To Bovina

The Springlake-Earth Junior High boys and girls, seventh and eighth grade, basketball teams traveled to Bovina Monday night where they were defeated by the junior high teams of that school.

In the first game, the local seventh grade girls team was defeated 13-3 by the opposing team.

Scoring for Springlake-Earth were Melissa Beem with 2 points and Peggy Gregory with 1 point.

In eighth grade girls competition, the local team was defeated by a narrow 22-18 margin

by the Bovina eighth grade girls team.

High point girl for Springlake-Earth was Darlene Sulser, 9 points. She was followed by Kim Kelley with 7 points and Ronda Wright with 2 points.

In boys competition the local seventh grade team was defeated 32-29 and the eighth grade team was downed by the Bovina eighth grade squad 54-24.

The next scheduled games for the local junior high teams will be January 22, 23 and 24 at Springlake-Earth Jr. High Tournament.

Games In Plainview This Week-end For Queens

Plainview--The Hutcherson Flying Queens and Wayland Pioneers will be involved in three games this weekend in Plainview with the Queens playing Quachita Baptist twice while the men return to District 8 NALA North Zone action Saturday against Wiley College.

Harley Redin's Queens are 8-2 for the season and will be meeting Quachita for the first time this year. Friday's game is set for 8 p. m. in the Estacado Junior High Gym since the Plain-

view Bulldogs, who are battling for the first round title in District 4-AAAA will be meeting Lubbock Coronado at 8 p. m. in the high school gym.

The Queens and Quachita take the court at Plainview High Gym again Saturday night at 6:30 with the Pioneer-Wiley game to follow. Friday's game will be the first home appearance by the Queens since they downed the Mexico Olympic Team, December 1.

Probable Queen starters will be Wanda Rose of Atascosa (7, 7) at center, Cheri Rapp of Estil-line (17, 7) and Carolyn Domak of Jourdanton (6, 4) at forwards and Susan Britton of Springlake-Earth (6, 4) and Mayme Patterson of Burns Flat, Oklahoma (6, 6) at guards.

Bob Clindaniel's Pioneers off to one of their best seasons ever, were defeated 78-72 by Wiley, January 10 in Marshall. WBC is 1-2 in zone play.

Probable starters for the Pioneers are Obie Garrett of Level-land (4, 4) at guard, Charles Hardin of McAadoo (15, 8) and Ted Welch (7, 7) of Seminole at forwards, Gene Chism (9, 9) of South Bend, Ind., at high post and Jim Driskell (10, 3) of Billings, Mont., at low post.

or super juicing machines. If you're not sure, check with your local medical society or a local health authority.

Resolve to practice good personal hygiene every day of the year. Brush your teeth after meals, take a daily bath, wash your hands before eating or preparing food. A clean body and sanitary surroundings foster healthy living.

Resolve to take care of your health during 1970.

Ray Lynn Britt Files For Re-election As District Clerk For County Offices

I am very grateful to the residents of Lamb County for electing me as your District Clerk. The cooperation of each person with whom I have come in contact through the various duties of the office has been sincerely appreciated. It has been a pleasure and an honor to serve you by working diligently for the benefit of this county and its citizens through conscientious attention to the functions required.

If you, the voters of Lamb County, choose to elect me as your District Clerk for a second term, I will work to the best of my ability to continue to improve the office and the services it renders to the people of this county.

Therefore, I am asking you to permit me to continue serving



RAY LYNN BRITT

you in this capacity and respectfully request your support in the forthcoming election.



February 1, 1862—"The Battle Hymn of the Republic" published anonymously in the *Atlantic Monthly*.

February 4, 1902—Charles A. Lindbergh, American aviator, born at Detroit, Michigan.

February 8, 1802—Simon Willard received a patent on a banjo clock.

February 10, 1932—First international ski tournament held at Lake Placid, New York.

February 11, 1812—Massachusetts Governor Gerry's passage of a redistricting bill

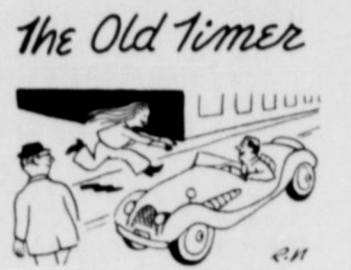
started the term "gerrymander."

To date, only ten prospective candidates have filed for placement on the Democratic primary ballot, according to information supplied by Glenn Batson, County Democratic Chairman.

Lucy M. Moreland has filed for re-election to the County Treasurer post; G.T. Sides has filed for re-election as County Judge; Mary Beth Willey, County Clerk; Ray Lynn Britt, District Clerk; J.N. Bowen, Justice of Peace Precinct 12; Hubert Dykes, Commissioner of Precinct 12; Billy Hall, Precinct 12 Chairman; C. Roy Stevens, County School Superintendent; Bill Clayton, State Representative District II; and Glenn Batson, County Democratic Chairman.

So far, only one person has filed for each of the open Lamb County Office. However, only one person has filed for Democratic County Precinct Commissioners, leaving the offices of the remaining 16, precincts

open. The Democratic Executive Committee has set the filing fee at one month's salary.



"Modern girls adore spinning wheels—four of them and a spare."

YOUR VOTE COUNTS!
But You Can Not Vote Unless You REGISTER
By Saturday, Jan. 31



TONY LAMA
Exclusive in Clovis
At
Torrence's Western Store
217 W. 7th - CLOVIS, N. M.

White Sale comes to Ford Country. Big savings on the whole herd.

WHITE SALE TORINO
Special edition of our lowest-priced hardtop. Includes dual racing mirrors, carpets, whitewalls, and more. And it's waiting for you now!

WHITE SALE GALAXIE 500
Lowest-priced full-size V-8 hardtop anywhere. Special White Sale edition with 302 CID V-8 and special interior trim now means extra savings on the big, quiet Galaxie!

WHITE SALE FORD EXPLORER SPECIALS—The pickups with the biggest choice of sale-priced options. Explorer... with Ford's exclusive Twin-I-Beam front suspension. Now's your chance to save up to \$197* on an F-250!

*Based on manufacturer's suggested retail prices



BROWND-JORDAN FORD

EARTH, TEXAS

Dallas District Ford Dealers Advertising Fund



Financial Facts.

By Norlan Dudley

Do you know how long we've been calling our paper money "Greenbacks"?

It may surprise you to know the term is as old as our national currency. The first issue of United States paper money was the series of Demand Notes of 1861. Because of obvious reasons, the note acquired the nickname "Greenback."

An interesting fact to note is that our first Greenback Dollar wasn't actually even a dollar! The Demand Notes of 1861 were only issued in five, ten and twenty dollar denominations.

The original Greenbacks were unique to American currency. Unlike the paper money issued after 1861, they were signed by hand by employees of the Treasury on behalf of the Treasury officials. The demand Notes

also backed the Treasury Seal and had the serial number imprinted only once.

WATCH NEXT WEEK FOR "CURRENCY IS HISTORY"

If you know of anyone interested in locating a business or industry in Earth or the area, contact us at Citizens State Bank.

Whether you are interested in saving money—or borrowing, we are most accommodating at CITIZENS STATE BANK. Discuss your financial needs with us, we'll be happy to serve you. Give us the chance to say "yes!" Come in today, CITIZENS STATE BANK, phone 257-3451. Open daily 9 til 3.

LEAVE THE WORRY TO US...

INCOME TAX SERVICE
For Farmers, Individuals and Business Returns

COPY MACHINE SERVICE AVAILABLE

—Call or See—

Mary Dennis and Betty Truelock

311 E. 8th (One Block East Of Post Office)
Office Phone 285-2768 or 285-2298

WISH I'D SAID THAT



Labor seems to be by far the biggest contributing factor to inflated prices... and that, my friends, is one commodity that doesn't digest easily.—E. J. Kirby, Jr., The Chariton (Mo.) Courier.

It is not always granted to the sower to see the harvest. All work that is worth anything is done in faith.—E. M. Remsburg, The Vista (Calif.) Press.