



© 1990

Vol. 29, No. 26

16 PAGES TODAY

Published Every Sunday At Muleshoe, Bailey County, Texas 79347

Member  
**TA** TEXAS PRESS  
ASSOCIATION

**20¢**

SUNDAY, JULY 1, 1990

# Lee Horsley To Highlight Celebration

## Mule Plex Production Plans Family Fun Night 'The Man Who Came To Dinner;' Variety Acts And Candy Sales

This will be a very busy week in Muleshoe, with three days of celebration planned.

On Monday night, the first of two nights of the annual Mule Plex Production Co. *Family Fun Night* will be held at 7 p.m. in the Muleshoe High School auditorium.

Highlighting the evening will be the comedy under the direction of Kerry Moore - *The Man Who Came To Dinner*.

A number of local personalities will be in the cast including, Jan Pierce as Mrs. Stanley; Jo Beth Edwards, Miss Preen [Nurse]; Dawn Long as June Stanley; and Marilyn Cox playing Sarah [Cook].

Also, Sherri Shipman, Mrs. McCutcheon [Neighbor]; Janet Gracey, Maggie [Secretary]; Jeanne Cox, Harriet Stanley; and Sharron Angeley, Lorraine Sheldon.

And, Jack Young, Dr. Bradley; Barry Wilson, Mr. White-side; Mike Caldwell, Beverly; Roger Clarkson, Bert [newspaperman]; John Street, Mr. Stanley; Royce Harris, John [Butler]; Robert Orozco, Richard Stanley; and Larry Parker, Sandy [June's Boyfriend].

Before the play, a number of local artists will perform in variety acts.

Another popular feature will be the annual candy sale, with

more than 250 prizes, many worth more than \$100, to be given away during the candy sale.

Selected sacks of candy will have a prize number inside. The purchaser can claim the prize from the stage that has the corresponding number. Included in the prizes are several jars of money.

As the auditorium is expected Cont. Page 6, Col. 1

## City Officials Give Warning On Fireworks

(Editor's note: With the 4th of July holiday very near, warnings are being issued on the use of fireworks within the city.)

To: Citizens of Muleshoe and the surrounding area:

Please be aware that there is a City Ordinance against the use of fireworks within the City Limits of Muleshoe.

Persons violating this ordinance may be issued a citation and fined up to \$200. Fireworks WILL be confiscated!!

Wayne Holmes  
Chief of Police

Due to the lack of rainfall this year, buildings, grasses, etc. are extremely dry and volatile. The danger of fire is HIGH. Everyone must be careful with fires; especially with fireworks!!

Let's all be careful and have a safe and happy 4th of July celebration.

Jimmy Mills  
Fire Marshall  
City of Muleshoe  
Fire Department



**TV CELEBRITY TO VISIT MULESHOE**--This week, Lee Horsley, left, star of the TV series *Paradise* will be in Muleshoe to visit his grandmother, Allie Horsley, center. Also scheduled to visit in Muleshoe will be Bruce Horsley, right, who is Lee Horsley's father. Horsley will be making appearances at *Family Fun Night* and in downtown Muleshoe on July 4th. (Guest Photo)

### around muleshoe

\*\*\*  
The Ex-Students Association of Muleshoe will host a reunion July 7 at the Bailey County Civic Center for the classes of 1926-1965.

Activities include registration at 10 a.m., a brunch at 11 a.m., a banquet at 7 p.m., and a dance at 8:30 p.m.

For information, call James Glaze at 272-4743; Irvin St. Clair at 272-3356 or Betty Jordan Beatty at 272-3770.

\*\*\*  
Two items are on the agenda for a special meeting of the Board of Trustees of the Muleshoe Independent School District at 7 p.m. on Monday, July 2, in the school administration building.

The items will be to adjust tentative Career Ladder List; and meet with Search Consultant from TASB.

\*\*\*  
On May 13, Kara Jill Stancell received her bachelor of arts degree from the University of Missouri, St. Louis.

She graduated Summa Cum Laude, which requires a grade point average of 3.8 or over on a 4.0 scale. She was also a university scholar and a member of Phi Kappa Phi honor society.

In August, Miss Stancell will begin graduate school at the University of Florida where she will pursue a master of arts degree in preparation for a Ph.D. in Modern European History.

Miss Stancell is the granddaughter of Mr. and Mrs. Jessie Stancell of West Camp, Faye Martin of Muleshoe and the late L. E. Martin of Muleshoe.

\*\*\*  
Two hundred and sixty-one Southwestern University students (Georgetown) have been named to the 1990 Spring Semester Distinction List for academic excellence -- 253 full time and eight part time students.

Included on the list was Tracy Lyn Elliott of Muleshoe.

\*\*\*  
A Co-Fd and Men's 3-2 Pitch Softball Tournament is scheduled for July 4th at the New City Park.

Cont. Page 6, Col. 2



**FLAG RAISING CEREMONY AT THE CIVIC CENTER**--Wednesday morning, members of the Muleshoe VFW conducted a formal flag raising ceremony at the Bailey County Civic Center as members of the MAC Committee and Jennyslippers, as well as county officials looked on. The flag was purchased by MAC for the Civic Center. (Journal Photo)

## Heat Stress Can Affect Corn Yields During Drought Period

By Spencer Tanksley  
CEA-AGRI

Corn is a very water sensitive crop that generally must be irrigated adequately to maintain moderate-to-high soil moisture. Timely irrigations on corn can mean extra bushels at harvest and high quality of grain and bushel weights.

### A. IRRIGATION

Corn plants should never experience severe moisture stress or yields will be greatly affected. Particular attention should be given to providing sufficient water during the 3-week period beginning just before tasseling and extending through silking. This stage is the most critical period in the development of the corn plant.

Managing irrigation water to maintain adequate soil moisture conditions to produce good quality and high yields requires a knowledge of how much water is needed at the different growth stages of the developing

corn plant. The following chart will identify the different growth stages and amount of daily water requirements of the corn plants.

STAGE OF GROWTH	DAILY WATER REQUIREMENTS
Young Seedlings	.2 inch
8-10 Leaf stage	.3 inch
Tasseling and Pollination	.5 inch
Grain Filling	.5 inch
Grain Maturity	.3 inch

**B. POLLINATION**  
The highest corn plant water requirements of the season usually occur during the silking and pollination and remain high for about 10 days when grain filling begins. Moisture stress during tasseling, silking and pollination periods is normally quite costly due to delayed silking and poor pollination.

Damage may occur to the pollen and ear structure if

## Emergency Haying Approved

Bailey County has been approved for emergency haying and grazing during the 5-month nongrazing period which is May 15 through October 14.

Acreage designated as ACR, CU for pay, and the required eight percent *SHALL NOT* be hayed or grazed under the emergency haying and grazing provision if irrigation has or will occur on the designated acreage between January 1, 1990, and the end of the 5-month non-grazing period which is October 14, 1990.

Producers who paid the fee of \$10 to leave the small grain standing on ACR, CU for pay, and the required eight percent -- these acreages are also ineligible to be hayed or grazed during the 5-month period.

Producers who are eligible for the emergency haying and grazing during the 5-month non-grazing period, *MUST* sign a register and complete the necessary paper work in the ASCS office prior to any haying or grazing occurring.

For further information, you may contact the Bailey County ASCS office.

sufficient water is not available at this time of development of the corn plant. Once damage occurs, there is little chance of recovery by providing adequate soil moisture later. Producers should be prepared to irrigate

Cont. Page 6, Col. 1

## Our Nation On This Fourth Of July --1990

By Congressman Larry Combest

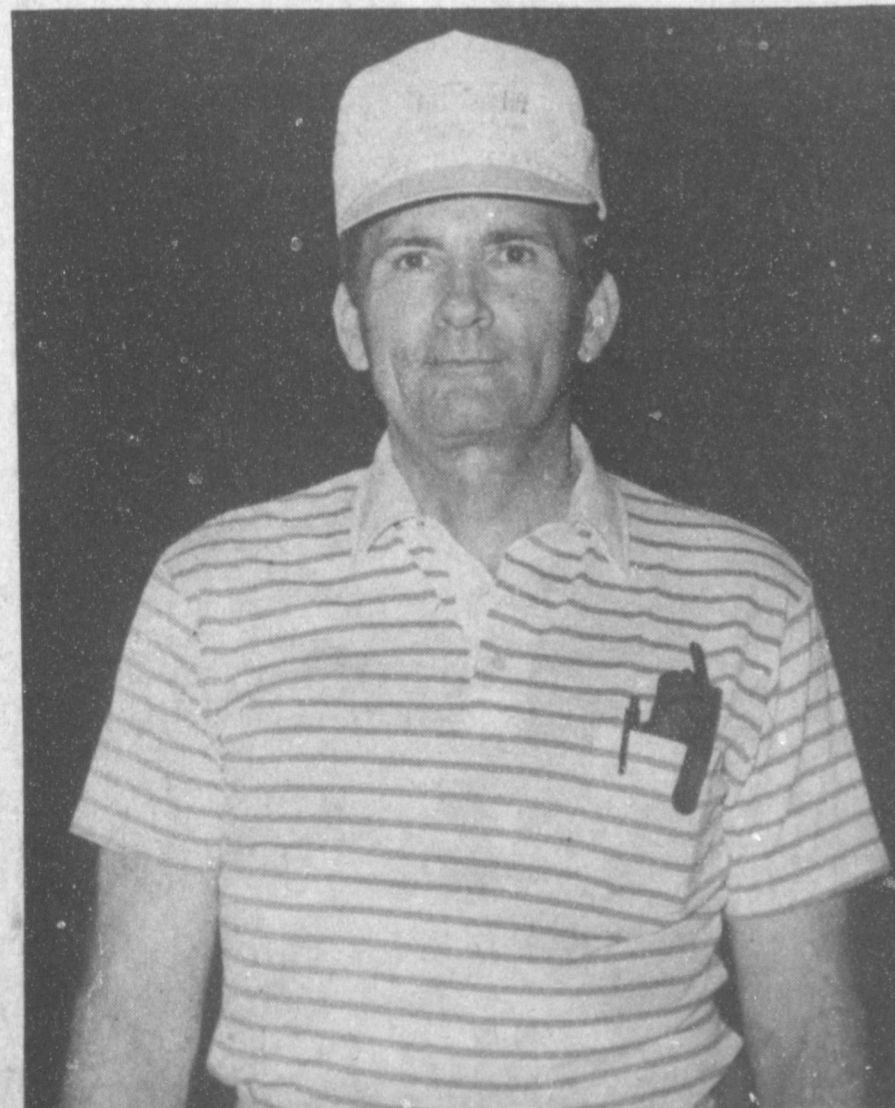
On birthdays, we tend to take stock of where we are in our lives. On our nation's 214th birthday, this Fourth of July, we can look with clear vision at our accomplishments and the challenges we face together.

We are a nation of people with differing views, but we make room for those views as we work shoulder to shoulder to meet our challenges. When we keep the size of our problems in perspective, we measure those problems with confidence, not confusion. When we look at our country's ability and willingness to deal with those challenges, we have seen that we make progress.

Measuring our situation realistically is our best guide to choosing our solutions. We should not sell ourselves short. We stand on the doorstep of the 21st Century where economic and political changes bring added importance to our position in the world.

Countries experiencing new freedoms look to us for leadership and investment. The United States is the world's largest economy, the largest market, the leading importer, and the leading exporter. This helps us here at home. Just last year alone, merchandise exports contributed to more than one-third of real growth in our Gross National Product (GNP) and accounted for nearly seven million jobs in the U.S.

You do not have to look any further than our own countryside to see the best example of our productive strength. Our farmers are the most productive in the world, with a bountiful harvest that also feeds millions



**WINNER OF MINIATURE GOLF TOURNAMENT**--Monday night, civic club members met for a golf tournament at the Mule Putt Miniature Golf Course. Winner of the tournament was Jerry Hicks. A number of local people participated in the tournament during the evening. (Journal Photo)

# Creative Living

by: Sheryl Borden

Information on making yogurt at home and cooking barbecue a la carte will be the featured topics on "Creative Living" on Tuesday, July 3 at 12 noon and Saturday, July 7 at 2 p.m. (All times are Mountain.)

Marilyn Wilkinson is Senior Vice-President in the Communications and Public Relations Department with the United Dairy Industry Association. Ms. Wilkinson will explain that calories and fat are usually lower in frozen yogurt than in ice cream, and frozen yogurt is higher in calcium and other important minerals. Ms. Wilkinson is from Rosemont, IL.

Vickie Jones is Marketing Home Economist with Southwestern Public Service Co. in Roswell. She will demonstrate barbecue a la carte using the microwave oven and the food processor. Ms. Jones will prepare several recipes that are perfect for accompaniments to a barbecue meal—or any meal for that matter.

On Tuesday, July 3 at 9:30 p.m. and on Thursday, July 5 at 12 noon, "Creative Living" will present information on healthful baking and on quilting.

Mari-Lou Callahan with the Hershey Foods Corporation will demonstrate some chocolate desserts that are low in fat, calories and cholesterol. Each of the dessert recipes uses unsweetened cocoa which has been approved for baking by the American Heart Association. Ms. Callahan will also share some tips for modifying some other favorite dessert recipes to make them more delicious and much more nutritious. Ms. Callahan is from Hershey, PA.

Margaret Prina is co-owner of The Quilt Works in Albuquerque and will show an array of quilting supplies that make the job easier. Ms. Prina will demonstrate how to quilt and then share some tips that will make the task easier.

"Creative Living" is produced and hosted by Sheryl Borden. The show is carried on more than 100 PBS stations in

the United States, Canada, Guam and Puerto Rico and is distributed by Pacific Mountain Network, Denver, CO. Viewers can request copies of materials offered on the show by sending one 25 cent stamp for each handout requested. Send the stamps, along with your name, address and booklets requested to:

"Creative Living" Requests  
% KENW-TV Station #52  
Eastern New Mexico University  
Portales, N.M. 88130

**CHOCOBERRY SPLASH**  
Crushed ice  
¼ cup sliced fresh strawberries  
2 tablespoons Hershey's syrup  
¾ cup chilled skim milk  
2 tablespoons club soda  
2 tablespoons vanilla ice milk

Fill tall glass with crushed ice. Into blender container measure all ingredients except club soda. Cover; blend on medium speed until smooth. Pour into glass over crushed ice; add club soda. Serve immediately. one 12-oz. serving.

## Basketball

### Camp Held

#### At Texas Tech

Texas Tech University was the place for the Texas Tech Girls Basketball Camp. June 3-8 Nichole Maxfield, Brandy Martin, Mandy Davis, and Amy Adams attended this camp. Over 150 girls from all around made up 16 teams. The team championship went to the team of Brandy Martin, Nichole Maxfield, 3 girls from Meadow, 2 from Abernathy, and 1 from Grover. This team won out of 16 teams.

Nichole, Brandy and one girl from Abernathy won the 3 on 3 contest out of 50 teams for the 3 on 3 division.

Nichole hit 27 out of 30 FT, and also was awarded the Most Outstanding Offensive Player of Camp.



**THE PARTY GOES ON**—Although Ana Coffey, the only resident of Muleshoe Health Care Center to celebrate a birthday in June, was unable to attend, the Needmore Community Club hosted a party Thursday afternoon. Mr. and Mrs. J. C. Shanks and the Needmore Club provided the entertainment and Creations by Helen provided the flowers. Ms. Coffey was born June 3, 1908. Pictured Minnie Pettijohn, a resident, Mrs. Lloyd Beaty, Janie Moraw, and Lillian Street.

(Journal Photo)

## 'A Night At The Theatre'

Are you ready for the event of all events to jazz-up your summer programs? Mark your calendars now on Friday, July 6th, for the Annual Good Ole Summertime Banquet and Dance. The chicken fried steak dinner is scheduled to kick-off at 6:00 p.m. at the Lubbock Municipal Civic Center Banquet Hall.

The theme this year is "A Night at the Theatre" and an exciting evening is planned with you in mind. A variety of musicals performed by the Lubbock Community Theatre is the main event capped off with dancing to L.C. Crow and "The Five Star Band." The night promises to be one you will never forget.

Directors are encouraged to contact me at (806) 767-2675 to reserve a block of tickets for your program. Money for tickets (\$7.00 a ticket) must be received on or before Friday, July 6th. Tickets are limited and are selling fast. Reserve yours now!

Contact Newt Wheeler at: Senior Programs, P.O. Box 2000, Lubbock, Tx. 79457. Hope to see you there!

**ATTENTION**  
Your only local media of general circulation that qualifies for & has a 2nd class newspaper subscribers mailing permit.  
U.S. Post Office Approved.

**Bailey County Journal** USPS 040-200  
Established March 31, 1963. Published by Muleshoe Publishing Co., Inc. Every Sunday at 304 W. Second, Box 449, Muleshoe, Tx. 79347. Second Class Postage paid at Muleshoe, Tx. 79347.

**MEMBER 1990**  
**TEXAS PRESS ASSOCIATION**

L. B. Hall, Publisher  
Sammy Hall, Vice President/Controller  
Celia Williams-Jacobson, News  
Evelene Harris, Society  
Holly Millspaugh, Advertising  
Dora Tomson, Classified

**SUBSCRIPTIONS**  
Muleshoe Journal and Bailey County Journal  
Bailey and surrounding counties  
Muleshoe Journal and Bailey County Journal  
Elsewhere in Texas \$14.75  
Muleshoe Journal and Bailey County Journal  
Outside Texas, \$16.50  
Yearly By Carrier  
\$12.50

Advertising Rate Card on Application.  
\*Advertisers should check their ad the first day of insertion. The Journal will not be liable for failure to publish an ad or for a typographical error or errors in publication except to the extent of the cost of the ad for the first day of insertion. Adjustment for errors will be limited to the cost of 1000 portions of the ad where the error occurred.

## Home Delivery Program Begins At Sudan

The board of directors of the "Sudan Home Delivery Program" met at 7:30 p.m. Tuesday, June 12th in the Community Center.

Officers and directors named to the "Sudan Home Delivery Program" and the clubs, organizations and groups they represent are as follows:

President, Jonelle Bandy, Chamber of Commerce; Secretary, Jim Ingle, Lions Club; and treasurer, Harold May, Senior Citizens.

Directors: Norma Burnett, Firemans Auxiliary; Pearl Davieau, Senior Citizens; Cliff Hargrove, Baptist Church; Jim Hawthorne, Methodist Church; Rick Hill, Fire Department; Mike McDonald, Church of Christ; Ronnie Smith, Lions Club; Nellie Williams, Individual; and Kay Wiseman, Women's Club.

The first delivery of the hot noon meals began Monday, June 18. Hot meals will be delivered three times a week at noon, on Monday, Wednesday and Friday. If anyone is

interested in receiving a hot meal at noon or if you know anyone you might think would qualify for his program please contact one of the above board of directors so that an application can be filled out to see if the person will qualify for the program. The rules and regulations will be explained to the recipient at the time the application is filled out.

The meals will be picked up by the Sudan Senior Citizens at the Littlefield Senior Citizen's Center and took to Sudan. The deliveries to the homes will be made by members of the various groups, organizations, clubs, and individuals wishing to help with this program. The first two weeks of deliveries will be done by the Baptist Church and the second two weeks by the Lions Club.

The next meeting of the Board of Directors will be at 7:30 p.m. July 10th at the Community Center.

Most of the people who are in a hurry have nothing to do.



## NOTICE

We Will Be Open On Monday & Tuesday July 2nd & 3rd & Closed On Wednesday, July 4th!

We Will Re-open On Thursday July 5th at 11:00 a.m.

# Leal's

1606 W. Amer. Blvd.  
272-3294



## GIANT TENT BOOT SALE & COUNTRY JUNCTION SIDEWALK SALE!

106 East American Blvd.  
MULESHOE, TEXAS  
806/272-5074

July 4th - 7th — Wednesday - Saturday  
9:00 a.m. to 6:00 p.m.

Many Items Reduced Throughout The Shop

Handmade Quilts - **\$65**

1 Large Lot Unfinished Wood Decorative Pieces With "Low" Prices

Roll-Top Oak Desk - **\$500**

Many New Muleshoe Souvenirs Including - Muleshoe Popcorn Buckets & "MuleBerry" Jelly

Barbara Hall will have a booth with many of her Handmade Bronze-Copper & Pottery Items!

Also The "Mural Master" will have a booth selling his original handprinted T-Shirts & Caps

Come One! - Come All!  
& Help Us Celebrate  
Lee Horsley Day!

# JULY 4 SALE!

NEW

1989 Models

Drastically Reduced!

'89 Plymouth Horizon 4 Door

SOLD

'89 Chrysler New Yorker

Originally \$24,314<sup>00</sup> Now \$18,411<sup>62</sup> with Rebate

'89 Dodge Colt 2 Door

Originally \$8,715<sup>00</sup> Now \$6,289<sup>00</sup> with Rebate

'89 Dodge Caravan

Originally \$14,816<sup>00</sup> Now \$12,902<sup>88</sup>

We Have A Large Selection Of 1989 Lease Car For Sale At Special Prices!

See Us First!

"Car Capitol Of The West Plains"

## Muleshoe Motor Co.

1225 W. Amer. Blvd. 272-4251

## Lazbuddie Youth Selected

### For Fina All-State Team

Scottie Lee Zamzow, valedictorian of his class of 157 students at Victoria High School and class president his sophomore, junior and senior years, was named Captain of the 1989-90 Fina All-State Scholar-Athlete Team. The announcement was made in Dallas recently at a banquet honoring Zamzow and the 11 other members of the team. Each team member was awarded a \$3,500 scholarship to the college or university of his or her

choice. As captain, Zamzow received the Governor's Award for Academic Excellence trophy.

The selection of Zamzow as Captain of the honorary team is the latest triumph in his notable high school career. He was captain of the football team and the track team in both his junior and senior years. He was an all district selection in football in both his junior and senior years and was district champion in track. He will

attend the U.S. Air Force Academy where he will major in Aeronautical Engineering.

In addition to Zamzow, the other members of the 1989-90 Fina All-State Scholar-Athlete Team are:

Jason K. Baxter, McCullough H.S., The Woodlands; Jonathan L. Ellisor, Crosby H.S., Crosby; Joseph D. Fletcher, R.L. Paschal, H.S., Fort Worth; Jeffrey T. Garrett, Permian H.S., Odessa; Karin A. Gventer, Grapevine H.S., Grapevine; Jeffrey C. Harris, Bryan H.S., Bryan; Mia M. Jennings, Lazbuddie H.S., Lazbuddie; Tiani X. Olson, Los Fresnos H.S., Los Fresnos; Faith S. Radle, Incarnate Word H.S., San Antonio; Patrick C. Sherrill, Springtown H.S., Springtown; and Keith A. White, Mansfield H.S., Mansfield.

All 12 of the members of this year's Team graduated first or second in their classes. Seven were class presidents and 10 were team captains. All were actively involved in their communities, schools, churches, and local charities.

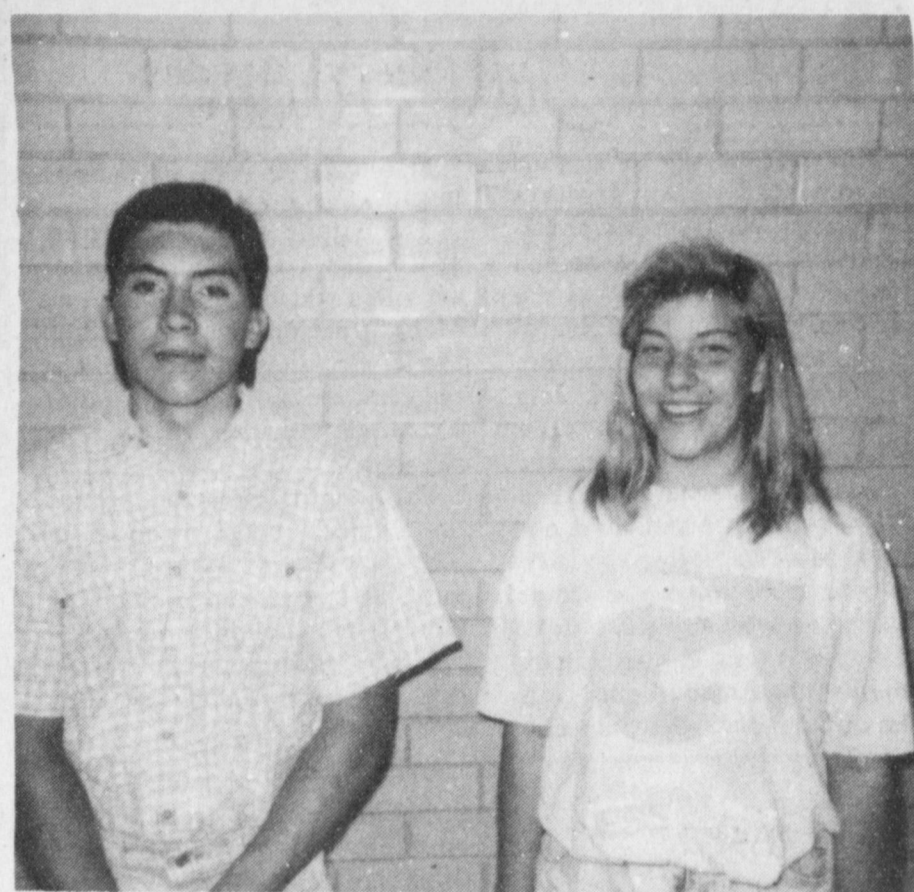
The Team members, representing public and private high schools throughout Texas, were selected by a panel of judges from the 64 finalists whose names were announced in January. More than 2,000 athletes, meeting the program's challenging eligibility requirements, submitted applications. Each qualified applicant had to be a high school senior participating in varsity athletics at the interscholastic level, be in the top ten percent of his or her class, and have a grade average

of 90 or above. Although they must have received a varsity letter, athletic ability in itself was not the major determinant in the selection process. In addition to athletic and academic achievement, the candidate was judged on leadership in worthwhile school and community activities.

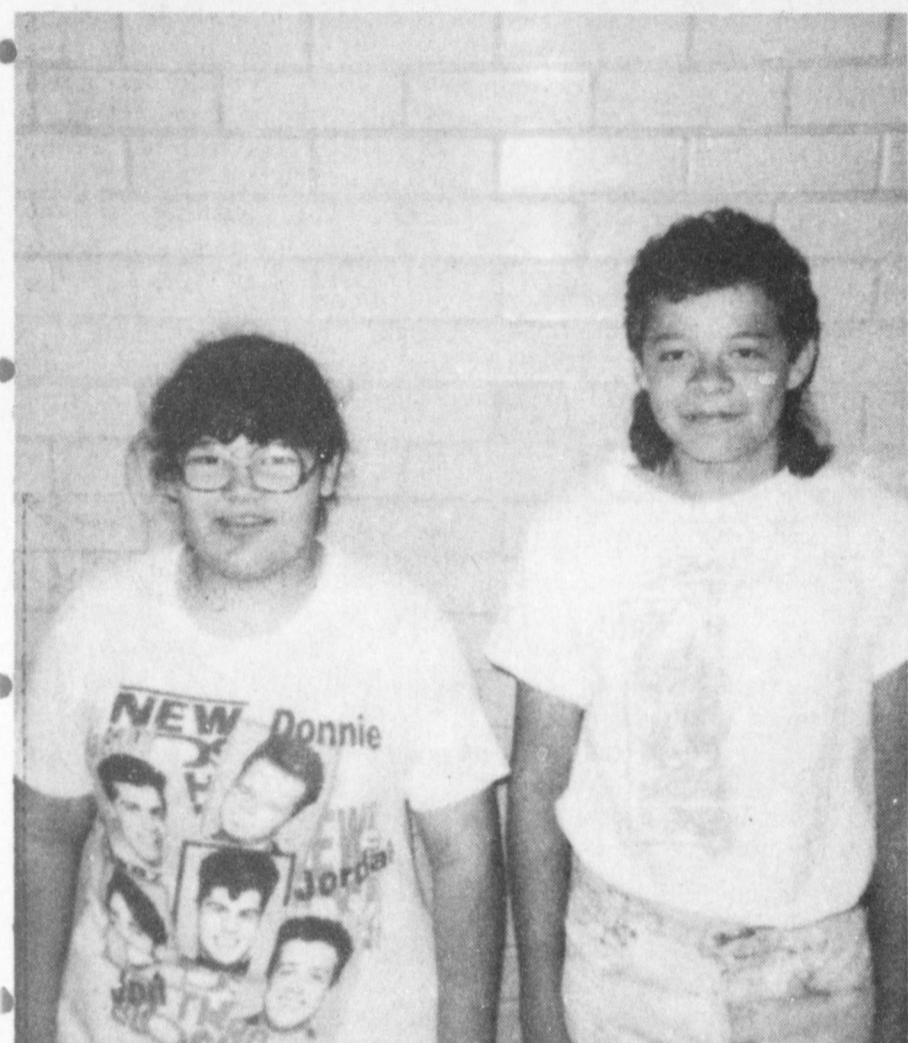
At the honors banquet, Coach Forrest Gregg of Southern Methodist University and Irv Cross of CBS Sports, were the featured speakers. Earlier in the day, the Team members attended a luncheon in their honor at Ed "Too Tall" Jones' house. In addition to Ed, Preston Pearson, Jethro Pugh, Harvey Martin, Jim Jeffcoat and Dallas Maverick Derek Harper honored the student athletes.

American Petrofina, Incorporated (AMEX: APIA), through its main operating subsidiary, Fina Oil and Chemical Company, engages in crude oil and natural gas exploration, production and marketing; petroleum products refining, supply and transportation, and marketing; and chemicals manufacturing and market-

ing. Organized in 1956, it is part of an international group of about 200 companies in 33 countries affiliated with Petrofina S.A., which is headquartered in Brussels, Belgium.



HIGH SCHOOL  
Gerardo Mata & Amy Willingham



JUNIOR HIGH  
Eva Jo Alcala & Chris Everett

The test of intelligence is your ability to detect sham.

A compliment a day keeps the quarrel away.

Those who don't depend upon others will not be disappointed.

Never ask for a favor unless you are ready to grant one.

The man who works for nothing will find himself very busy.

Writers will do well to avoid the intoxication of adjectives.

For Your  
Mary Kay Cosmetics  
Josie Flowers  
272-3865  
8 a.m. - 12 noon  
& after 6 p.m.

# Come One Come All

What: 4th of July Celebration  
When: Wednesday, July 4th  
Where: Muleshoe, Tx  
Time: All day

*Activities for everyone!*

Watermelon Seed Spitting Contest

Square Dancing

Tractor Pull

Water Polo

Fire Works

MAC Drawing

Mule Patty Bingo

Old Settlers Reunion

*Plus Many Other Activities*

**Be Sure To Attend The Mule-Plex Production Co., Inc. Family Fun Night Monday & Tuesday, July 2nd & 3rd!**

**MULESHOE STATE BANK**

MEMBER FDIC

101 West American Blvd. Phone 806/272-4561  
MULESHOE, TEXAS 79347

# 4th JULY of BONUS

With Coupon Below Save...

# 40% OFF

ANY ONE REGULAR PRICED ITEM\* IN THE STORE!

Here's how it works!

Bring This Coupon to ANTHONYS  
★ Good through July 4th, 1990★

## SAVE 40% OFF

ANY ONE REGULAR PRICED ITEM\* IN STORE  
\*EXCLUDES MEN'S AND BOY'S WRANGLER AND LEVI'S DENIM.  
Coupon not valid in conjunction with any other coupon or towards existing layaways or holds.

You Choose the Merchandise and SAVE!

\*EXCLUDES MEN'S AND BOY'S WRANGLER AND LEVI'S DENIM  
Open July 4th 10 a.m. to 4 p.m.

Happy 4th of July!

**ANTHONY'S**

*We're Good at Making You Look Great!*

321 Main Muleshoe, Texas 272-3478

# Jennyslippers To Serve Breakfast July Fourth

Get your day off to a good start Wednesday, July 4 with a good hearty Jennyslipper breakfast. Breakfast will be served between 7 and 9:30 a.m. at the Old Western Auto Store building, in downtown Muleshoe, where all the Fourth of July activities will be held. The Jennyslippers will also sponsor an all day bazaar. Sixteen booths, both local and from out of town, will be set-up, so take a break in between the other activities and go into the bazaar and browse around, take a look at all the hand made items, you just might find that special

something you have been looking for.

The parade will get underway at 10 a.m., followed by other activities which will continue on Main Street throughout the day. Model airplanes will be flying at the park most of the day and at 6 p.m. all activities will move to the park.

Pat Langfitt, president, called the regular noon meeting of Jennyslippers, to order Tuesday and Ruby Green read the minutes of the previous meeting. The main topic of discussion was the Fourth of July activities.

Vivian White announced that the "Old Settlers" reunion will be held at 3 p.m. at the Bailey County Civic Center. She encouraged everyone to attend, stating that you don't have to be an old settler to attend.

Joyilene Costen, Vivian White and Ruby Garner volunteered to be judges for the "Garden Spot Of The Week".

Everyone was reminded of the membership meeting scheduled for 7 p.m. Tuesday, July 10 at the Putt Putt Miniature Golf Course. This will be family night and everyone is reminded to take a prospective member. Prospective members are always welcome. Home made ice cream and cookies will be served.

On Tuesday, July 24, the Jennyslippers will meet at noon at the Girl Scout Hut for a brown bag lunch and meeting.

### NOTES, COMMENT

Tolerance is the key to peace of mind.

The half-truth is more dangerous than the big lie.

Most people will do anything for money, except work.



**JENNYSLIPPER GARDEN SPOT**--This week's garden spot can be seen at 1705 W. Ave. H, home of Mr. and Mrs. W. F. Bartley. Each week the Jennyslipper judges choose a garden spot from nominations made by the Muleshoe residents. If you know of a yard you would like to see receive this honor, call the Muleshoe Chamber of Commerce office before 5 p.m. on Wednesday and make your nomination. (Journal Photo)



**JENNYSLIPPERS PRESENT CHECK**--Thursday afternoon, Norma Bruce, Jennyslipper treasurer, presented Nancy Kidd, Chamber of Commerce Manager, and Lonnie Adrian, Chamber president, a check, proceeds from the Walk-A-Thon, to pay for the Fourth of July fireworks. She also presented them another check to go toward the Fourth of July expenses. (Journal Photo)

## Senior Citizens

The Muleshoe Senior Citizens met at the Old Depot on Monday, June 25 for a covered dish luncheon with 26 present including visitors, Russell and Lena Campbell, Oxford, CA; Bro. Mike Doyle; and Rachel Snider, administrator of the Health Care Center; Lona Embry, Mrs. Pearl Cox and Leonard and Betty Criswell. The invocation was given by Lester Howard.

In the absence of Katie Roubinek, president, Mae Wilterding had charge of the business and the program. Minutes of the previous meeting were read and approved. The Birthday Song was sung for Betty Griswell, Opal Robison and Zora Mae Bellar.

Everyone joined in for an old fashion sing-a-long.

Bro. Mike Doyle, chaplain for the Health Care Center, brought a devotional from Isaiah 16:4 "And even to your old age, I am He, and even to your old age, I will carry you, I have made, and I will bear, even I will carry and will deliver you."

The meeting was closed with a prayer by Bro. Doyle.

### Golf Benefit Scheduled At Clovis

It's time to "Play Fore Eastern," July 13-15, at Colonial Park Country Club in Clovis, N.M. The 36-hole Partnership Best Ball Tournament will benefit scholarship programs at Eastern New Mexico University in Clovis and Portales. Allen (Whitey) Bryant is the honorary tournament chairman.

Wayne Moore and Bobby Crane, from Portales, championship flight winners from 1988 and 1989 are returning to defend their title in this fourth annual event. Fifty-nine teams participated in the 1989 tournament.

Friday, July 13 at 5 p.m., a special "Shoot-Out" will be conducted for flight winners from the 1989 competition. The two winners of the "Shoot-Out"

will receive a Pro-Staff golf bag and matching head covers donated by Michelob.

The course will be open all day Friday for golfers to play a practice round, and a no-host social will be held at 7 p.m. Saturday pairings and starting times will be announced, and door prizes will be awarded.

On Saturday, the low handicap field tees off at 8 p.m., and the high handicap field tees off at 1 p.m. Sunday the tee off times will be reversed. Flight assignments will be based on last year's tournament scores and/or the lowest attested handicap of the partner.

Going to school, boys and girls, may not be a pleasure trip but it will look like one after you buck the world for a living.

The family of  
**Audree Ross Dudley**  
(Born on the Fourth of July)  
request the honor of your presence  
at her  
**80th Birthday Party**  
Sunday, July 8th  
at the  
**Bailey County Civic Center**  
from  
2-5 p.m.  
Friends & Relatives Welcomed  
"Your Presence Is The Best Gift  
You Could Ever Give"

★★★  ★★★

## Come Help Us Celebrate

**in Muleshoe!**

*Lots Of Activities For Every Age!*

Kids Activities

Model Plane Demonstration

Old Settlers Reunion

Dunking Tank


Autographing Session with Lee Horsley

Ugly Leg Contest

Cow Patty Bingo

Horseshoe Pitching

Water Polo



plus many more activities!

**Bailey County Farm Bureau**

1612 W. Amer. Blvd. 272-4567

# JEANS by JAY

FOR THOSE WHO WAIT FOR THE BEST

## SALE

OF THE YEAR. . .

YOUR TIME HAS COME.

Sale Starts Monday, July 2

# 30-50%

OFF On All  
Summer Merchandise

- \* Men's Shop
- \* Ladies' Apparel
- \* Junior
- \* Missy

Door Buster  
Select Racks  
**75% OFF**

## JEANS by JAY

1015 W. 2nd (Additional Parking In Back) 356-3787  
2 Blocks From ENMU  
**PORTALES**




## Mr And Mrs Drake Celebrate Anniversary

Mr. and Mrs. Robert E. Drake were honored with a golden wedding anniversary re-

ception Sunday afternoon, June 17 at the First United Methodist Church in Sudan.

Hosts for the occasion were: Mr. and Mrs. William D. Meyer, Adrienne Audrey and Anne of Houston.

The serving table was covered with an ecru cutwork cloth, handmade in Hong Kong. The cake was in the shape of two bells and cookies. Punch, coffee, and mints and nuts were also served.

Family members attending from out of town included: Mr. and Mrs. Brooks Boye, Katy and Amy, San Antonio; Mrs. Ric Evans, San Antonio; Mrs. Lois Agee and Guy Agee, El Paso; Lt. Col. Ret. and Mrs. George Drake, Altus, OK; Dr. Wilson Drake, Dobbin; Mr. and Mrs. Harvey Frick, Lubbock; Lawrence Drake, Tulia; Mr. and Mrs. Garland Wade, Glen Rose; Mr. and Mrs. John Drake, Arlington; and Mrs. Kathleen Goodwin, Hillsville, VA.

Other out of town guests included: Mrs. Sid Bailey (Mindy Richards), Oklahoma City, OK; Charissa Richarz, Lubbock; Monte Rogers, Houston; Gaylene Rogers, Dallas, Mr. and Mrs. Ivan Layton, Amarillo; Bethany and Hannah Williams, Lubbock; Mrs. Randy Humphreys, Levelland; Mr. and Mrs. Noel Lumpkin, Littlefield Stephanie Minyard, Albany; Phil Kent, Muleshoe; Mr. and Mrs. John Evans, Amarillo.

Also Mr. and Mrs. Ronald Ashford, Amanda and Adrienne Muleshoe; Mr. and Mrs. Ancel Ashford, Muleshoe; Cebia Bruton, Oklahoma City; Berry Bottoms, Amarillo; Janie Brown, Lubbock; Mrs. Frank Prokop, Garland; Rev. and Mrs. Pitts Davis, and Sarah, Lubbock; Mr. and Mrs. Burek Tollett, and Zachery; Mr. and Mrs. Willie Florence, Littlefield; and Mr. and Mrs. Bobby Brown, Heath and Heather, Lubbock.

Great grandparents are Mr. and Mrs. Jose Orozco of Muleshoe and Mrs. Virginia Contreras of Littlefield. Great great grandmother is Patricia Orozco of Muleshoe.



### Latest Arrivals

#### Dez 'Rae Mercedes Contreras

Liz and Anthony Contreras are the proud parents of a daughter born Wednesday, June 20 at 3:30 in Clovis High Plains Hospital.

The young lady weighed six pounds and 11 and half ounces and was 19 and half inches long. She has been named Dez 'Rae Mercedes Contreras.

Grandparents are Mr. and Mrs. Alex Garcia of Muleshoe, Pete Contreras and Stella Leal, both of Littlefield.

Great grandparents are Mr. and Mrs. Jose Orozco of Muleshoe and Mrs. Virginia Contreras of Littlefield.

Great great grandmother is Patricia Orozco of Muleshoe.

#### Mitchell Brett Forti

Henry and Melissa Forti are the proud parents of son, Mitchell Brett. The young man weighed 9 pounds and 2 ounces. He was born at 3:29 a.m. on June 10 in Phoenix, AZ.

Mitchell's grandparents are Peggy Burnett, Muleshoe, and Elisabeth Forti, Phoenix, AZ.

Great-grandparents are Mr. and Mrs. H.L. Hughes, Texico, and Mr. and Mrs. Clinton Burnett of Broadview, N.M.

His great-great-grandmother is Lillian Clark of Friona.

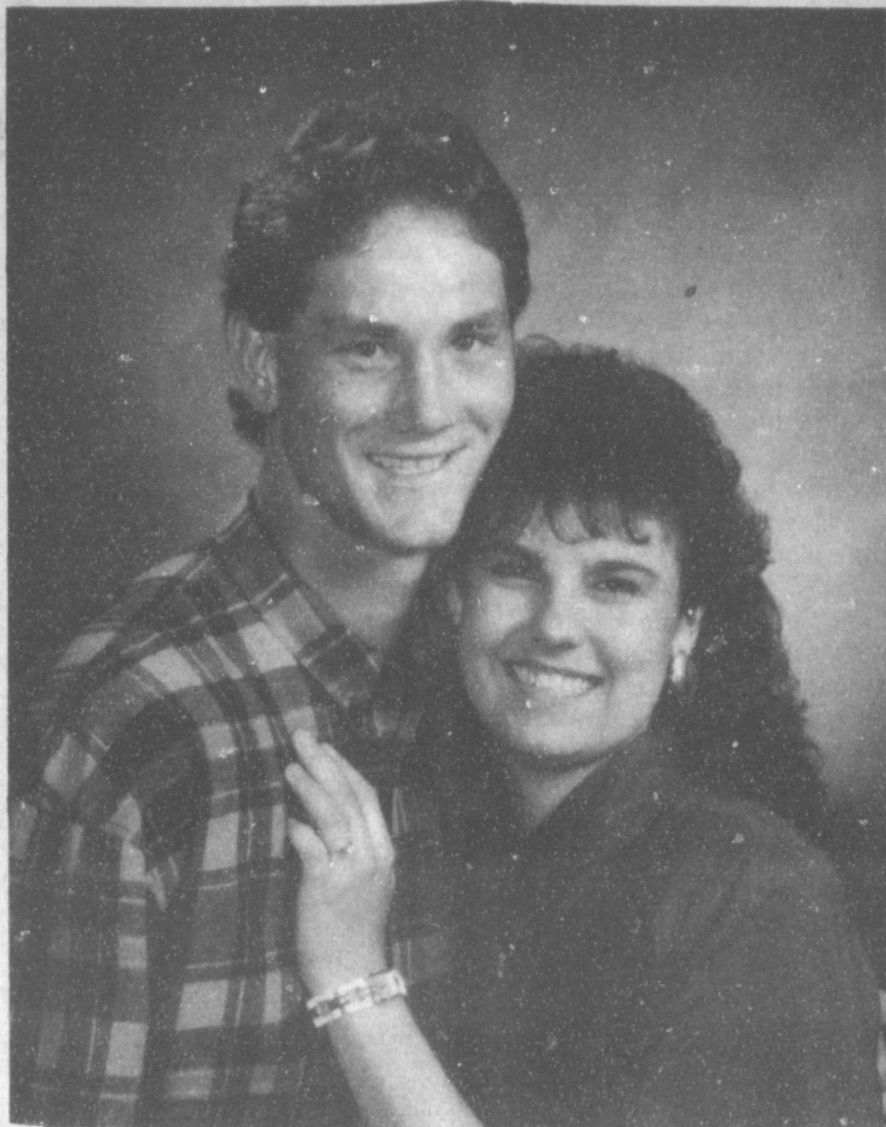
#### Bradley Alan Reston

Roger and Serena Reston of Sudan announce the birth of a son, Bradley Alan. He was born May 30, at 3:55 a.m. in University Medical Center in Lubbock.

The young man weighed eight pounds and 15 ounces and was 21½ inches long.

Maternal grandmother is Janice Reaves of Hobbs, N.M. Paternal grandmother is Claudine Reston of Denver City.

Maternal great grandmother is Lera Hanson of Brownfield. Paternal great grandparents are Louie and Velma Hanson of Grandfalls.



**ENGAGEMENT ANNOUNCED**--Mr. and Mrs. Tommy Edwards of Dalhart announce the engagement and approaching marriage of their daughter, Lea Ann Edwards, to Timothy Harold Lust, son of Mr. and Mrs. Glenn Lust of Lazbuddie. The bride elect is a graduate of Spur High School and is presently attending Angelo State University at San Angelo. Lust is a graduate of Lazbuddie High School and is attending Angelo State University. The couple plan to exchange marriage vows at 6 p.m. August 5, at Central United Methodist Church at Dalhart. (Guest Photo)

### Lamb County History Book Taking Shape

"The new history book about Lamb County is taking shape beautifully except to the Littlefield area," according to Mardema Ogletree, project director. "Usually, on a project of this magnitude, two years of work is needed. Thanks to some hard-working volunteers, the limited edition of Lamb County Heritage should be published much sooner and hopefully be a cooperative effort of all communities," she added.

The general history of the county will include "Indian Campsites and Old Trails," "Cavalrymen and Buffalo Hunters," "Historic Lamb County Ranches," "First Families and County Organization," "County Seat Battles and Duggan's Great Wall," "Paper Railroads and the Farmers Invasion," "Early Marriages and Other Public Records," and much more.

The topical and pictorial section will include in addition to the town and community histories (schools, churches, etc.), "Rodeo History," "Writers, Artists, and Musicians,"

"Lamb County Ghosts--A Town, A Stallion, And...".

More than 400 family stories have been received and are being processed for publication. People who have reserved space need to get their stories in as soon as possible or cancel their reservations.

Also, if you hurry, you can take advantage of the pre-publication price of \$49.50 for Lamb County Heritage, with a deposit of just \$20.00 (Deposits are refundable if you should want your money back.) Only a few extra copies at a higher price will be available after the book goes to press.

For more information call Mardema Ogletree at (806-799-7947

### Tops Club

TOPS chapter No. 34 met at 6:30 p.m. Thursday, June 28 at the Heritage Thrift Shop.

Leader, Laverne James called the meeting to order with the TOPS pledge, fellowship song and a prayer. The song was led by Alma Robertson, song leader.

Evelene Harris called the roll with 16 members responding. Best loser for the week was Evelene Harris. First runner-up was Alma Robertson and second

runner-up was Lucille Harp.

Mrs. James reported on the workshop in Plainview last Saturday. She read some literature she got at the workshop including a comical poem about a chocolate chip cookie. Those attending the workshop were Laverne James, Betty Jo Davis, Mollie Davis, Lucille Harp, and Alene Bryant.

The group welcomed a new member, Retha Knowles. She is a former TOPS member.

July 5 will be awards night and the crowning of the six months best loser. Everyone was reminded to bring a gift for the best loser.

## Ben Franklin

*Better quality for less*

2104 W. Amer. Blvd. Mon. - Sat. 8:00 a.m. - 8:00 p.m.  
272-3855 Sun. 12 - 5:00 p.m.

GREAT AMERICAN BIRTHDAY BARGAINS

<p>51 ct. 6.4 oz. <b>Foam Cups</b> 2 For \$1.00</p>	<p>Thermos 34 qt <b>Cooler</b> \$9.99</p>
<p>100 ct 9" <b>Paper Plates</b> 99¢</p>	<p>Kingsford 8 lb. Match Light <b>Charcoal</b> 99¢</p>
<p>Ladies &amp; Girls <b>Swimsuits</b> 50% off</p>	<p>Needs No Starter Fuel With Charcoal <b>Disposable Grill</b> 99¢</p>
<p>Diamond 25 ft. Roll <b>Foil</b> 2 For \$1.00</p>	<p><b>Hibachi</b> 10 x 17 \$5.97</p>

### NOTES, COMMENT

No one is interested in your troubles.

Speaking of dirt, what is the latest best-seller?

Some modern dancing leaves us speechless.

Mental vacations are more necessary than physical rest.

## SALE-A-BRATION OF SAVINGS

SAVE  
30% to 60%

**GET SUMMER'S  
BEST SPORTSWEAR  
COLLECTIONS  
&  
SEPARATES-  
FOR LESS!**

(WHILE IT'S  
STILL SPRING!)



Rip's

IN TEXICO  
314 Wheeler Ave.

Open 8:00 a.m. to 8:30 p.m. CDT  
482-3363 or 800-748-2459

We Welcome:



FREE GIFT WRAPPING LAYAWAYS WELCOME

Happy  
4th of July

July  
Clearance Sale

10 to 40% off

All  
Pesticides, Fertilizers,  
Trees, Shrubs, Flowers,  
& Pottery

Kristy's Plants

710 E. Amer. Blvd.  
272-5536

## Lee Horsley

Cont. From Page 1

to be packed for both performances, be sure to be early in order to get a parking place, and a seat.

Tickets will be on sale at the door for \$5 for reserved seats (if any are left); \$4 for general admission and \$2 for children under the age of 12.

Family Fun Night gets started with variety acts at 7 p.m. on July 2 and July 3.

Lee Horsley is expected to make appearances during the performances.

He and his family will also ride in the parade on July 4, then he will be available in downtown Muleshoe at 2 p.m. on Wednesday, July 4, to sign autographs.

### Stress...

Cont. From Page 1

corn as soon as plants show rolling or wilting during these periods of extreme heat.

Pollen development can be greatly affected during periods of extreme heat, especially when temperatures exceed 95 degrees, and can be destroyed or killed in the tassel when the temperature is above 100 degrees. If our temperatures remain this high, some fields that are under moisture stress may also have poor pollination and seed set.

### C. GRAIN DEVELOPMENT

Water requirements remain high during the early stages of grain development, often described as the blister or milk stage. During this time, grain develops and rapidly increases in weight. Adequate soil moisture must be available during the first four weeks of grain filling for high volume grain production.

Formation of the black layer is a signal of full kernel maturity. The black layer becomes visible after the maturity line reaches the inward tip of the kernel. Corn can no longer increase in weight after the black line appears and reduces if moisture content during the drying period before harvest.

Additional information on corn production may be obtained at Bailey County Extension Service office in the courthouse, Muleshoe.

He was born May 15, 1955 in Muleshoe, to Mr. and Mrs. Bruce Horsley, but grew up in Colorado.

He attended the University of Northern Colorado, where he majored in vocal music and minored in theatre.

His acting career began on the stage in touring productions of popular shows like *West Side Story* and *Damn Yankees*.

Lee Horsley was about to head for Broadway when an agent asked him to screen-test for a TV mini-series, *The Gangster Chronicles*. Although Horsley did not win the part, he did impress Paramount Television executives, and they cast him as Archie Goodwin in William Conrad's *Nero Wolfe* series.

That lasted only a season, but it led to a starring role in the adventure movie *The Sword and the Sorcerer* and that led to his own TV series: *Matt Houston*.

Other TV credits include Agatha Christie's *13 at Dinner*; Danielle Steele's *Crossings* and the miniseries *North and South: Book II*.

His wife's name is Stephanie.

### Muleshoe...

Cont. From Page 1

Entry fee is \$65 per team and first and second place T-shirts will be given to Co-Ed and Men's teams.

For more information, call William Orozco at 272-4797.

### Nation...

Cont. From Page 1

born to this country from ancestors seeking freedom and challenge. We have grown from 13 colonies with the idea of practicing democracy into a nation of democratic ideas put into practice. We still stand for the same ideals of our great-grandparents; we have not lost our way.

And on this nation's birthday, our flag still waves proudly.

and they are the parents of two children.

He is currently starring in the TV series *Paradise*.

While in Muleshoe, he will be joined by his wife and children; his parents, and his brother. While here, they will be visiting with his grandmother, Allie Horsley, a longtime Muleshoe resident.

Many other activities are planned for the Fourth of July, according to Nancy Kidd, manager of the Muleshoe Chamber of Commerce and Agriculture, including:

On Wednesday, July 4, registration begins for the 10K and 2-mile runs will be held on the Winkler Meat Co. parking lot and the Jennyslippers will be series.

### Several Former Students Sought From '75 Class

The Muleshoe High School graduating class of 1975 is asking your assistance in locating the following former students:

Francis Baca, Kenneth Fender, Rosalinda Garxia, Linda Hernandez, Vicki Hutchinson, Joe Pate, Mary Price, Garry Floyd, Mary Ellen Gonzales, Pat Gonzales, Chelsea Williams, Eugene Reeder, Dianne Barrett and Angelica Bazaan.

Also, Vicki Dunn, Gary English, Janie Gonzales, Robin Gross, Debbie Mills, Baldemar Orozco, William Ray, Pam Roberts, David Rodriguez, Phyllis Smith, Sylvester Torres, Linda Vinson and Pat Gonzales.

If you have any information concerning the whereabouts of these individuals, please call Jonice Killough Pollard at 946-3336 or Sheryl Bass Engeling at 965-2351.

**MAPLE BRANCH**  
Bailey Co. Sheriff's  
Office  
946-3300

Winkler will be serving food at 12 noon, followed by a watermelon seed-spitting contest in front of Higginbotham at 1 p.m.

At 2 p.m. Senator John Montford will be at the entrance to the old Cobb building; the MAC drawing will be held; Lee Horsley will sign autographs and a golf scramble gets underway at the Muleshoe Country Club.

This will be followed at 2:30 p.m. by square dancing in front of the old theater; a karate demonstration on E. Ave. B; a gymnastics demonstration and a 3-legged sack race in front of Higginbotham.

Then, at 3 p.m. will be the Old Settlers Reunion at the Civic Center; the Great American 'Mule Plop' on Perry's parking lot; and a tobacco spitting contest on the vacant lot between the Fair Store and Western Drug.

A tractor pull for ages 6-10 will begin at 3:30 p.m. in the vacant lot between the Fair Store and Western Drug; and at 4 p.m. Water Polo will start on the street in front of Winkler Meat Co.

The Ugly Leg Contest will begin at 11:30 a.m. in front of the old Cobb building; and square dancing starts in front of Damron Drug, while Cow-Patty Bingo will be held on Perry's parking lot.

Rotary Club, Spanish Assembly of God Church and Larry

4-6 p.m. will be time for the Open House at Janes Ranch House and at 5 p.m., it will be clean up time on Main Street as all activities will be moving to the city park.

A radio-controlled plane demonstration is scheduled at the new city park, followed by music beginning at 6 p.m. Also, the 4-H exchange students will be selling hamburgers. There will be drawings for the Rotary's Hawaiian trip as well as for the 4-H club.

At 8 p.m. Crystal Creek Band will play, followed by fireworks at 10 p.m.

Winding up the day will be a free street dance at KMUL AM-FM on West-Eighth Street.

There will be a lot of all day activities, which will include videos for kids, Roadriders bike show, car show at the bank lot, dunking tank, hop scotch, ring toss, horse shoe pitching, fishing, arts and crafts, pop-a-shot, Boy Scout Town, Jennyslipper's Bazaar, radio controlled planes, quilt show, clowns 'n stuff, and train rides for the kids.

Plan for a full, busy day on July 4, 1990, says Nancy Kidd.

### Questions & Answers From Bob Bullock

Dear Bob Bullock:

We have so many wonderful cooks among our church members that we've decided to sell lunches to raise money for our building fund. Do we charge sales tax on the meals? M.C.; Lubbock

Dear M.C.: Meals sold by a church aren't taxable.

Dear Bob Bullock: If a patient is released from the hospital but needs a medical alert medallion to wear at home, in the event of emergency, is the medallion service taxable? C.P.; Houston

Dear C.P.: It depends on who provides the service. If the service is provided by a hospital owned by a city, county or hospital district, the service isn't taxable. But if it's provided through a private hospital-profit or non-profit, it's a security service and is taxable.

The Children of  
Clemmie and Earl Ladd  
(Mr & Mrs Earl Ladd, Sr.)  
request the honor of your presence  
at a reception in honor of the  
**Sixtieth Wedding**  
Anniversary  
of their parents  
Saturday, the seventh of July  
nineteen hundred and ninety  
between three-thirty and five o'clock  
Muleshoe Depot  
(2200 W. Amer. Blvd.)  
No Gifts Please

# Give your money a raise.

**7.75%** Introducing Sunbelt's Money Market Investment Account. It's like a traditional savings account because you can come in and withdraw your money anytime you want. As much as you want. But there's nothing traditional about the rate, which is higher than many regular money market accounts.\* Open a Money Market Investment Account at Sunbelt. You'll be doing your money a favor.

\*\$5,000 minimum deposit needed for higher rate with no service charge. Initial deposit must be at least \$5,000. No checking or third-party withdrawals allowed. Rate subject to change without notice.

**Sunbelt Savings** FSB  
No Excuses. Answers.

Muleshoe: 304 Main St. 272-5527



© Sunbelt Savings, Inc. 1990

Try Paula's Fresh Lemonade!

**Winkler's Bar.B.Q. Wagon**  
Will Be At  
**Joe's Boot Shop**  
106 E. Amer. Blvd.  
on  
July 2nd thru July 7th  
Monday thru Saturday  
Serving Breakfast from 8:00 a.m. until 10:00 a.m. Bar B.Q. will be served until 7:00 p.m.

**Bar B. Q. Sandwichs**  
(Sliced or Chopped)  
**Sausage on a stick**  
**Beef Fajitas**  
Come Enjoy The  
4th of July Activities  
In Muleshoe

**Winkler Meat Co.**  
401 Main Let Us Cater Your Next Party! 272-4703

**Joe L. Combs**

**Services Held**

**In Oklahoma**

Funeral services for Joe Combs, 85, of Leedey, OK were held at 2:30 p.m. Sunday, June 24 in the First Baptist Church of Leedey with Sam Dyer, pastor of the First Baptist Church at Leedey, officiating.

Interment was in New Hermon Cemetery in Leedey under the direction of Shaw Funeral Home in Leedey. Combs died June 22 in Community Hospital in Elk City, OK.

Combs was born on Sept. 22, 1904, at Ravie, OK to Frank and Melisa Combs. Mr. and Mrs. Frank Combs made a home for their family in Eastern Oklahoma Territory, before Statehood, and in this area Combs spent his early life and attended the early schools of this part of Oklahoma. The family then migrated to western Oklahoma settling in Washita County, and here Combs grew up.

On Nov. 21, 1926, he married Norma Hart at Carter, Okla. They made their home in Sentinel for five years, then moved to Carter. This was their home for another five years, at this time they moved to Sweetwater, living there two years before establishing a home in the Leedey area, where he has been a resident these past 51 years.

Combs was a farmer. He also

owned and operated a feed store. He was a member of Leedey First Baptist Church, serving as a Sunday School Teacher, and in other needful ways.

Combs was honored with an award by The Leedey F.F.A. Chapter, as an Honorary Chapter Farmer. He was an enthusiastic supporter of "The Cubs".

He was preceded in death by his parents, Frank and Melisa

Combs; a sister, Parlee Fite, and four brothers, Jesse, Ollie, Haskell, and L.B.

Survivors include two daughters, Dorothy Holcomb and husband, Orville of Leedey, and Norma Jo Prather and husband, Donald of Muleshoe; two sisters, Ethel Combs and Hazel Breeze Smith, both of Leedey; ten grandchildren, Charles and Mike Holcomb, Nicki Day and husband, DeWayne, Lorri Boyd

and husband, Russ, Beth Louthan, Terri Louthan and husband, Crig, Mark and Jenny Holcomb, Joe Don Prather and wife, Pam, and Kay Lynn Brantley and husband, Curby; eleven great grandchildren, Rusty Puffinbarger, Mitch, Kelly, and Stacy Boyd, Trent Louthan, Joshua, and Kody Louthan, Jamie and Jered Prather, and Mandy and T.J. Brantley.

**Mary Kay Cosmetics**  
 1/2 price Sale On  
 All Glamour Products In Stock!  
**Josie Flowers**  
 272-3865

CELEBRATE  
America SALE

**HOMAK**  
**Homak 19" Steel Tool Box w/ Tray**  
 Hip roof tool box with removable tote tray. Red baked enamel finish. Padlock hasp. 19 x 6 x 6 1/2" (303-1341)

sale  
**7.59**

**3 Piece Tool Storage Center**  
 sale  
**88.88**  
 Three drawer tool chest with lift up lid for additional storage. Chest sits on an 8" riser. Cabinet is 26 1/2" wide. Both chest and cabinet are lockable. (303-2265)



**HOMAK**

**Black & Decker Palm Sander**  
 1/4 sheet palm grip sander. Ball bearing construction. Includes 24 pieces of sandpaper—FREE! #7445C (316-0702)

sale  
**37.88**

**Black & Decker 3/8" Cordless Drill**  
 Two speed, reversing drill/screwdriver is great for small and big jobs. Use low speed for driving screws, high speed for drilling. Three hour charger. Use anywhere. Full 2 year home use warranty. #9020P (314-3104)

sale  
**34.97**

**SKIL**  
**Skil Super Twist Kit**  
 Has twice the power and 50% higher driving speeds than the original Twist. Built-in bit storage. Charging stand. Includes 13 accessories and case. #2210-02 (314-2965)

sale  
**39.99**

**FLANO**  
**Plano Tote 'N Tool Box**  
 Portable convenient! 20" box with lift-out tray. Recessed handle. Two latches. Plastic. (303-1127)

sale  
**11.99**

**OLYMPIA-TOOLS**  
**13 Piece High Speed Bit Set**  
 Hardened and tempered steel bits. Sizes 1/16 to 1/4". Designed to fit 1/4" or larger drills. In plastic case for protective storage. (315-5900)

sale  
**5.99**

**Courthouse News**

**MARRIAGE LICENSE**  
 David Marshal Head- Youngsville, LA and Toni Belinda Henry-Muleshoe, Tx.

**DEEDS**  
 Agustin Padilla and wife Maria Padilla to Guadalupe Padilla and wife Felipa Padilla. All of Lots (20) & (21), in Block (46), Original town of Muleshoe, Bailey County, Texas.

Marian C. Wilson to Gilbert Gomez. All of Lots (66), (68), (70), & (72), Block (6), Pear Street, to town of Progress, Bailey County, Texas. All of Lots (74), (76), (78), (80), (82), & (84), Block (7), Pear Street to town of Progress, Bailey County, Texas.

**CIVIL COURT**  
 Raymundo Villalobos-DWI, 60 days jail, \$300 fine, 1 year probation.

**CIVIL MINUTES**  
 The State of Texas VS Joe Bob Newman-Judgement of Forfeiture.

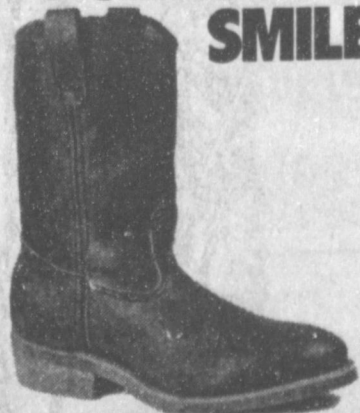
**Patients in Muleshoe Area Medical Center**

**JUNE 26-28 TUESDAY**  
 Rafael Franco, Cindi Smith, Chris Aycock, David Johnson, Naomi Austin, and Olga Valdez

**WEDNESDAY**  
 Anabel Vargas, Miguel Angel Cruz, Stephanie Brown, Rafael Franco, Cindi Smith, Chris Aycock, Elodia Reyna, David Johnson, Rigoberto Barron, and Olga Valdez

**THURSDAY**  
 Anabel Vargas, Kandy Casarez, Chris Aycock, Elodia Reyna, Stephanie Brown, David Johnson, Rigoberto Barron, and Olga Valdez

**PULL-ON A SMILE!**



**1155**  
**Anthony's**  
 321 Main  
 272-3478



**Soft Touch**  
**Latex Wall Primer**  
 Positive sealing on new drywall for excellent paint adhesion. Uniform finish. Pigmented. White. Gallon. (551-6315)

sale  
**9.99**  
 SAVE \$4

**Soft Touch**  
**ONE COAT Latex Ceiling Paint**  
 Spatter resistant. One coat coverage. Flat matte finish. Helps hide imperfections. Gallon. (550-6050)

sale  
**11.99**  
 SAVE \$3

**Soft Touch**  
**ONE COAT Latex Flat Wall Paint**  
 Color choices! From the whitest white to the deepest blue. Dries to a washable matte finish. 1,100 colors! Gal. (550-6068 thru 6142)

sale  
**10.99**  
 SAVE \$4

**Soft Touch**  
**Latex Semi-Gloss Enamel**  
 Our toughest latex enamel paint. Dries hard and satin-smooth. One coat coverage. Tools and hands clean up with soapy water. 1,100 colors! Gallon. (549-6021 thru 6104)

sale  
**14.99**  
 SAVE \$3

**Aluminum 14' Extension Ladder**  
 sale  
**46.99**  
 Safe traction tread rungs and twist-proof construction. 200 lb. duty rating. Type III. (589-6154)

**16' Extension Ladder** (589-6162) **52.99**  
**20' Extension Ladder** (589-6204) **79.99**  
**24' Extension Ladder** (589-6246) **119.99**  
**28' Extension Ladder** (589-6287) **149.99**

**Heavy Duty Airless Painter Kit**  
 Heavy duty kit. 2.5 amp motor. Sprays oil and water-based paints, enamels and stains. Ten piece set includes 5 ft. extension tube to draw paint directly from the can. (586-8419)

sale  
**98.88**

**Anti-Rust Enamel Spray Paint**  
 Your next paint project is a snap with Coast to Coast spray paints! High durability! For use on wood and metal. Available in a wide assortment of colors plus primers. 12 oz. (579-3807 thru 3989)

sale  
**2.99**

**1.6 Cu. Ft. Cube Refrigerator**  
 For office, TV room or bar. Freezer section with two cube trays. 18 x 19 1/2 x 38 1/2". 117V. 40 watt output. Brands may vary. (236-9502)

sale  
**\$119**

**Admiral Portable Dishwasher**  
 The top surface is a cutting board! Extra capacity lower rack, 2 flatware baskets and soft food disposer. Eight cycles including plate warmer. Extra sound insulation. 36 x 24 1/2 x 36 1/4". White. (239-9517)

sale  
**\$429**

**Admiral Large Capacity Washer**  
 Big 20 lb. capacity! Three wash/spin speed combinations, three water temperature fabric selections, large load opening, sudsguard, lint filter, bleach dispenser. 3/4 hp motor. White. Colors extra. (238-0129)

5 Year Limited Warranty  
 sale  
**\$399**

**Admiral 20 Lb. Capacity Electric Dryer**  
 Multi-cycle, multi-heat temperature control with fluff, permanent press, cottons, linens and 'wrinkle out' selections. Lint filter, inside light, buzzer reminder, timed dry and automatic dry cycles. White. Colors extra. (238-0624)

5 Year Limited Warranty  
 sale  
**\$299**

**Admiral Ranges, Your Choice**  
 sale  
**\$299**  
**Gas Range.** Porcelain oven, removable dual burners and lift-up cooktop. White. Colors extra. (238-0011) **Electric Range.** Porcelain oven with adjustable, self-locking racks. Three 6" and one 8" element. Two piece broiler pan. Bottom storage drawer. White. Colors extra. (239-5010)

Certain state and federal regulations may prohibit the sale of ranges with pilot light ignition. Check local codes.

Admiral 71 Home Appliances

**Rubbermaid 2 Gal. Jug**  
 Nice wide mouth makes this jug easy to fill and easy to clean. Thick thermal insulation. New Up-N-Out spout. Fast flow faucet. (620-2915)

sale  
**9.99**

**Rubbermaid 24 Qt. Cooler & Jug**  
 Two-piece combo includes 24 quart cooler with hinged lid and 1/2 gallon jug with NEW Up-N-Out spout. (620-2956)

sale  
**14.99**

**Coast to Coast Home & Auto**

P O Y N O R S

103 Main Muleshoe 272-4552

# HAPPY BIRTHDAY AMERICA

Ugly Leg Contest

Kids Activities

Cow Patty Bingo

Jennyslippers Sidewalk Breakfast

Golf Scramble  
Watermelon Seed Spitting Contest

## Come Help Muleshoe Celebrate

Square Dancing

★ PARADE

## July 4th & Lee Horsley Day

3-Legged Sack Race

Mule-Plex Production

Muleshoe Pitching

10K & 2 Mile Run

MAC Drawing

Lots, Lots & Lots Of Activities For Everyone!!

Old Settlers Reunion

Radio Control Plane Demonstration

Tractor Pull

Water Polo

Authographing Session with Lee Horsley

Presented By The

Following Businesses:

**Bernice's Beauty Shop**

**Scoggin Ag Center, Inc.**

**Leal's Restaurant**

**Chubby's Beauty Shop**

**Perry Brothers, Inc.**

**Dairy Queen**

**Glenna's Beauty Retreat**

**Wilson Drilling**

**American Valley Inc.**

**Lookin' Good**

**Decorators Floral & Gifts**

**K & J Center**

**Richland Hills Texaco**

**Viola's Restaurant**

**Terry Field Insurance**

**Posada's Radiator**

**La Placita Restaurant**

**Discount Furniture**

**Muleshoe Trade Center**

**Serv-All Thriftway**

**Skagg's Motor Machine**

**Alex's Tire Service**

**Shipman & Son Body Shop**

**Church's Fried Chicken**

**Irrigation Pumps & Power**

**Muleshoe Diagnostic Lab**

**Sudduth Field & Co.**

**Mission Cable**

**Spudnut Shop**

**Ana's House of Beauty**

**Bobo Insurance**

**Wes-Tex Feed Yards, Inc.**

**Bailey Gin Co.**

**Bob Stovall Printing**

**Robert D. Green, Inc.**

**Muleshoe Livestock Auction Inc.**

**Noble TV & Appliance**

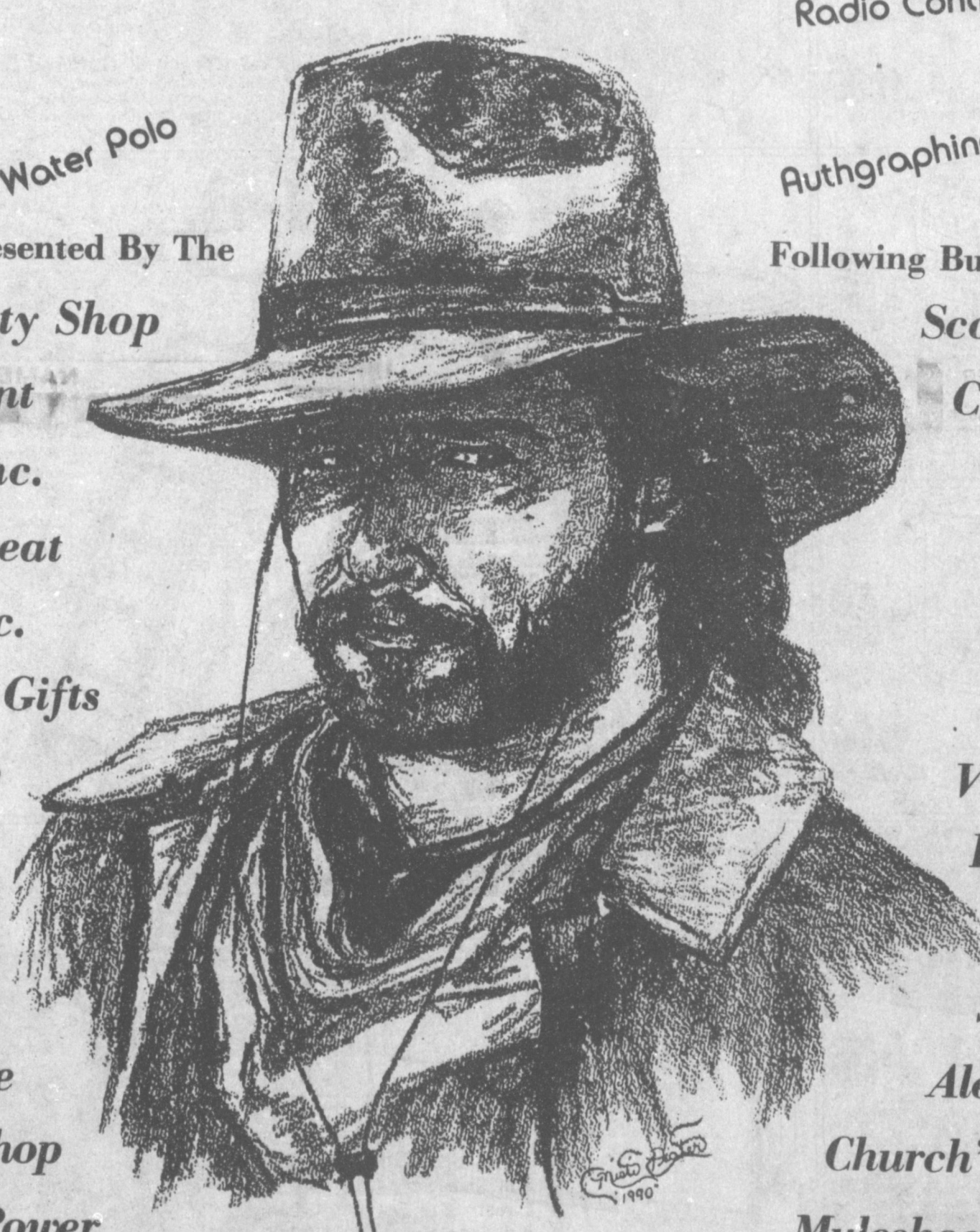
**Williams Bros. Office Supply**

**Bruce Inc.**

**Allison Bookkeeping & Tax Service**

**Muleshoe Truck & Auto Service Center**

**A & M Farm & Ranch Supply, Inc.**



## Don't Miss Out On The Big 4th Of July Celebration!



### Sudan News By Ann Gaston

Stephanie Minyard is visiting with her grandmother, Mrs. Rhoda Minyard.

Mr. and Mrs. Arnold Vereen of Albuquerque, N.M. spent the weekend visiting his sisters, Bert Vereen, Mrs. J.W. Olds, and Mrs. Radney Nichols.

Spending the weekend with Mr. and Mrs. Glenn Gatewood was their granddaughters, Rhonda Reagan of College Station, and Rachel Gatewood of Littlefield.

J.B. Bottoms of Amarillo attended the 50th anniversary of Mr. and Mrs. Bob Drake on Sunday and also visited in the home of Mrs. J.W. Olds and Mr. and Mrs. Acie Daniell.

Lacey Deanne and Martha Louise Gatewood celebrated their birthday on Wednesday, June 20. Lacey is the great granddaughter of Louise and they were born June 19th. The party was given in the home of Mr. and Mrs. Glenn Gatewood.

The cake, decorated by Amanda Chester, carried out the theme of "New Kids On The Block" and punch was also served.

Special guests were: Lacey's mother, Amanda; Tara Amanda, her sister Ronnie Gatewood, Lacey's grandfather, Dolores Harper, great great aunt, Kathy Gatewood, her aunt and cousins, Jamie, Grant and Julie Gatewood, and Dora Black.

Sudan Area Senior Citizens will be selling sandwiches, brownies, pies and drinks at the Pioneer Independence Day Celebration. There will be lots of food needed, so members are asked to come by the center and see what they will need to bring.

Mindy Humphreys was honored on her 11th birthday with a birthday party at the Pizza Inn in Littlefield. Those attending were: Heather Bourland, Breann Baker and Kasey Humphreys.

Also attending were her grandmothers, Edith Humphreys, and Dot Nix; her aunt and cousins, Ann, Kade and Kady, Gaston, and her parents and brother, Rick and Pam Humphreys and Clint.

After eating pizza and open-

ing presents. Heather and Breann went home with Mindy for a slumber party.

Pvt. Michael W. Kidd has completed basic training at Fort Leonard Wood, MO. During the training, students received instruction in drill and ceremonies, weapons, map reading, tactics, military courtesy, military justice, first aid, and Army history and traditions.

He is the son of Coy and Betty J. Kidd of Amherst. His wife, Brandy is the daughter of Dennis B. Cawthon of Littlefield.

The private is a 1988 graduate of Amherst High School.

Five Sudan band students recently traveled to Austin to compete in the U.I.L. State Solo and Ensemble contest. The contest was held at the University of Texas, and attracted over 13,000 music students from all school classifications. Since the contest uses an "open CLASS" concept, the students from Sudan were competing with students from Class A to Class AAAAA.

A tuba solo with piano accompaniment. Sabrina Faz also received a II on a baton twirling solo. Gayla Rasco made a III on her baton twirling solo, and a flute trio consisting of Suzanne

Reid, Glenna Testerman, and Sabrina Faz also made a III.

Alan Black, Sudan Jr. High student was chosen as outstanding winner in the Lamb County Soil & Water Conservation District's essay contest. The award plaque was presented by Gaylon Burns, chairman of the SWCD, at the Sudan high School awards day. The essay contest is held every year and the essays stress the importance of soil and water conservation. The contest is open to all students in the county.

More than 2,000 Texas Tech University students quali-

fied for the academic honors list at the end of the 1990 spring semester. Sudan students making the honor rolls included the following: Dora Jean Black, Michael Merle May, and Vicki Gayle Surrent, were all on the Dean's list. Tommy Blake Laceywell was on the president, honorroll.

More than 1,400 students at Texas Tech University received degrees in spring 1990 commencement exercises.

Those from Sudan receiving degrees included: Dora Jean Black, B.S. Degree in Home Economics, and Gena Suzette Pearcey, B.S. in Physical Edu-



**SAIL SAFELY THROUGH SUMMER**

**BUCKLE UP!**

Texas Coalition for Safety Belts

# DON'T BUY ANY FURNITURE BEFORE

SATURDAY, JUNE 30, 1990

## BARGAIN WORLD FURNITURE

**WAREHOUSE INVENTORY 10 HOURS ONLY**

STORE WILL BE CLOSED OVER \$300,000 NAME BRANDS DOORS OPEN

NO MONEY DOWN UP TO 36 MONTHS TO PAY O.A.C.

DON'T MISS THESE LOW PRICES

**Blow Sale Held Over**

11 a.m. 'Til 9 p.m.

**SATURDAY**

NAME BRANDS RELEASED

SAVE 30 to

**55%**

10 HOURS 11 A.M. 'TIL 9 P.M.

DISCOVER VISA MASTERCARD ACCEPTED

NO PHONE ORDERS ON THE SPOT FINANCING PLENTY OF LOADOUT FACTORY REPS ON HAND CREDIT TERMS AVAILABLE 11 A.M. TO 9 P.M. EXTRA SALES HELP

LIVING ROOM	BEDROOM	RECLINERS & CHAIRS	BEDDING	DINING ROOM & DINETTES	OCCASIONAL FURNITURE	SLEEPER SOFAS
<b>3 PC. GLOBAL LIVING ROOM SUITE</b> Includes Sofa-Loveseat and Chair. Nice Blue Cover. Big & Beely Style. Slight Damage. Reg. \$1,299.95 Sale..... <b>\$647</b>	<b>MATES BED</b> Includes Nice Headboard and Footboard-Rails-Under Chest and Bedding. Reg. \$349.95 Sale..... <b>\$197</b>	<b>Men's Size Blue VELVET RECLINER</b> 3 Position Style. 1 Only. Floor Sample. Reg. \$299.95 Sale..... <b>\$147</b>	<b>KING KOIL TRUCKLOAD MATTRESS SALE</b> <b>5 YEAR GOOD QUALITY MATTRESS SETS</b> Twin Size Set Reg. \$199.95 SALE <b>\$97</b> Full Size Set Reg. \$299.95 SALE <b>\$137</b>	<b>5 PC. KITCHEN SET</b> Nice Formica Top Table With Metal Legs and 4 Sturdy Chairs. Reg. \$219.95 Sale..... <b>\$137</b>	<b>ALL WOOD DAY BED</b> Very Sturdy Construction. Includes Mattress. Nice Pine Finish. Reg. \$269.95 Sale..... <b>\$147</b>	<b>LOVESEAT SLEEPER SOFA</b> 2 Cushion Style. Open With Twin Size Mattress. Hurry For This. Reg. \$299.95 Sale..... <b>\$167</b>
<b>4 PC. CURVED SECTIONAL</b> Includes Full Size Sleeper-Recliner. Armless Chair & Corner Wedge. Reg. \$1,199.95 Sale..... <b>\$887</b>	<b>5 PC. Painted BEDROOM SUITE</b> Includes Triple Dresser-Mirror-Large Chest-Nite Stand and Full or Queen Bookcase-Headboard. Choice of Black or White. Reg. \$699.95 Sale..... <b>\$397</b>	<b>BASSETT RECLINER</b> Triple Roll Back. Brown Velvet Cover. Hurry For This One. Reg. \$499.95 Sale..... <b>\$297</b>	<b>BETTER QUALITY 312 COIL 10 YR. MATTRESS SETS</b> Twin Size Set \$269.95 <b>\$137</b> Full Size Set \$349.95 <b>\$167</b> Queen Size Set \$449.95 <b>\$227</b> Full Size Set \$599.95 <b>\$297</b>	<b>9 PC FORMAL DINING ROOM SUITE</b> Includes Double Pedestal Table-6 Chairs-Buffer and Light Chairs. Reg. \$2,999.50 Sale..... <b>\$1,787</b>	<b>4 SHELF BOOKCASE</b> Sturdy Construction. Nice Oak Finish. Lots of Storage Space. Reg. \$49.95 Sale..... <b>\$27</b>	<b>Early American QUEEN SIZE SLEEPER</b> Beautiful Blue Velvet Cover. Pine Wood Accent. Innerpring Mattress. Reg. \$699.95 Sale..... <b>\$477</b>
<b>6 PC. Compatibles LIVING ROOM GROUP</b> Sofa-Loveseat-Matching Large Corner Table-Square Cocktail and 2 End Tables. Blue Tone Herculon. Reg. \$1,499.95 Sale..... <b>\$897</b>	<b>4 PC. OAK BEDROOM GROUP</b> Includes Large Triple Dresser-Mirror-Full or Queen Size Bookcase-Headboard and Chest. Reg. \$369.95 Sale..... <b>\$197</b>	<b>CLOSEOUT ON ROCKERS AND SWIVEL ROCKERS</b> Choice of Colors and Styles. Sale Priced From <b>\$97</b>	<b>BETTER QUALITY 312 COIL 15 YR. MATTRESS SETS</b> Twin Size Set \$319.95 <b>\$167</b> Full Size Set \$399.95 <b>\$197</b> Queen Size Set \$549.95 <b>\$267</b> Full Size Set \$699.95 <b>\$347</b>	<b>CLOSEOUT ON ALL WOOD BAR STOOLS</b> With Swivel Seats and Backs. Close Out Price And Sale From <b>\$37</b>	<b>TWIN-FULL QUEEN SIZE BRASS FINISH HEADBOARDS</b> Hurry For These! Reg. \$69.95 Sale..... <b>\$37</b>	<b>QUEEN SIZE SLEEPER</b> 3 Tier Back. Beautiful Beige Velvet Cover. Opens with Queen Deluxe Foam Mattress. Reg. \$699.95 Sale..... <b>\$397</b>
<b>5 P.C. Conversation PIT GROUP</b> Includes 2 Sofas. Loveseat and 2 Ottomans. Nice Antron Cover. Reg. \$899.95 Sale..... <b>\$497</b>	<b>5 PC. Ashley Black BEDROOM SUITE</b> Includes Large Triple Dresser-Mirror-Full or Queen Headboard-Chest and Nite Stand. Contemporary Style. Reg. \$1,199.95 Sale..... <b>\$677</b>	<b>WHITE METAL DAY BED</b> Floor Sample. Slight Damage. Includes Springs and Mattress. Reg. \$229.95 Sale..... <b>\$97</b>	<b>ROOM SIZE RUGS</b> 9x12 Sale..... <b>\$97</b> 12x12 Sale..... <b>\$127</b>	<b>5 PC. CASTER DINETTE</b> Woodgrain Top with 4 Sturdy Chairs. Reg. \$499.95 Sale..... <b>\$347</b>	<b>Lots Of Cocktail-Lamp-End Or Occasional Tables</b> Choice of Styles & Finishes. Sale 1/2 PRICE	<b>3 PC. EARLY AMERICAN SLEEPER, LOVESEAT AND CHAIR</b> Beautiful Nylon Antron Cover. Reg. \$1,199.95 Sale..... <b>\$777</b>
<b>3 PC. Early American LIVING ROOM SUITE</b> Includes Sofa-Loveseat and Chair. Nice Nylon Antron Cover. Reg. \$799.95 Sale..... <b>\$447</b>	<b>Solid Oak BEDROOM GROUP</b> Includes Large Triple Dresser-Tri-Way Mirror-Dresser-Chest with Mirror-Headboard and Nite Stand. Reg. \$1,699.95 Sale..... <b>\$987</b>	<b>DECORATOR TABLE LAMPS</b> Choice of Colors and Styles. Values to \$39.95 Sale..... <b>\$1377</b>	<b>4 PC RATTAN LIVING ROOM GROUP</b> Includes Loveseat-Chair and 2 End Tables. Reg. \$699.95 Sale..... <b>\$297</b>	<b>6 PC. FAMILY ROOM GROUP</b> Rich Pine Finish On Arms. Includes Sofa-Chair-Rocker and 3 Tables. Reg. \$99.95 Sale..... <b>\$397</b>	<b>5 PC. Brass &amp; Glass TABLE SETS</b> Includes Cocktail and 2 End Tables. Reg. \$179.95 Sale..... <b>\$97</b>	

### SALE PRICED

## "Classic Beauty"



Ladies Diamond Solitaire  
1/5.....**\$29900**  
reg. 399.00  
1/4.....**\$39900**  
reg. 499.00  
1/3.....**\$44900**  
reg. 650.00  
1/2.....**\$89900**  
reg. 1199.00

ALL WEIGHTS APPROXIMATE  
ENLARGED TO SHOW EXQUISITE DETAIL

**Holmberg Jewelry**  
Serving Clovis 48 years  
Credit Terms Available  
321 Main Clovis, N.M.

## BARGAIN WORLD FURNITURE

318 MAIN  
Clovis, N.M.

- On The Spot Credit
- No Money Down
- No Interest Until October

- Delivery Available (at a slight charge)
- No Layaways
- No Phone Orders
- All Items subject to prior sale

Store Will Be Closed Friday To Mark Down Prices!

## Use Of Prickly Pear Cactus Being Explored

Texans are taking a new look at a thorny old foe. They are exploring more ways to use prickly pear cactus as food for the table and feed for the range.

Prickly pear cactus is becoming fashionable as an ethnic food, and it is becoming more commonly found in the grocery produce section as a specialty food, said Dr. Wayne Hanselka of Corpus Christi, a range specialist with the Texas Agricultural Extension Service.

Ranchers, Hanselka said, also are extremely interested in using the prickly pear for livestock feed during drought periods.

Interest in the food potential of the cactus has prompted the planning of a Cactus Conference July 21 at Texas A&I University, Kingsville. The meeting, to begin at 9 a.m. in the Student Union Building, will be conducted by the Extension Service, Texas A&I and the Texas Prickly Pear Council.

Hanselka said people eat the cactus as a vegetable, when the green succulent leaves or "nopalitos" are sliced and used in salads. The plant also produces a pear-shaped red, yellow or pale green fruit, or "tuna." Products made from the fruits range from cactus candies to prickly pear sherry.

Hanselka said most prickly pear varieties have spines, but a few are thornless.

"This past winter, some of the thornless varieties proved to be less cold-hardy than the thorny pear," he said. "But the extreme cold last December killed both kinds of pear over much of South Texas."

"Marketing groups in Texas, Arizona and California are looking at new ways to expand the human uses for cactus," Hanselka said. "In the western states, produce companies have well-organized campaigns going for their specialty products."

Dr. Peter Felker, scientist in charge of Texas A&I University's Semi-Arid Forest Resource Center, said several South Texas growers have planted nopalito varieties of cactus in rows and have from 300 to 700 plants established.

"With nopalitos retailing around \$1.50 a pound, they can grow from 4,000 to 5,000 pounds of fresh weight cactus on rather limited acreage," Felker said. "The plants need to be protected from winter's cold by plastic."

Felker said other growers, from Austin to San Antonio to Del Rio and southward, are in business to grow the fruit, or tunas.

"This cactus fruit sells from \$1.80 to \$4 a pound, depending on the season," Felker said.

"Food companies and specialty firms are buying most of the tunas, including a lime green fruit often called 'tuna blanco' or white fruit, from Mexico. But Texans are getting into the cactus fruit business just in time to benefit from a nationwide marketing effort."

At the July conference, Felker said, almost a dozen talks will be given by scientists working

### Health News

#### Medic Alert Bracelet

Individuals who have a special medical condition that a doctor should know about in an emergency should consider wearing a Medic Alert bracelet. Critical information is engraved on the Medic Alert emblem, along with a 24-hour emergency Medic Alert phone number which provides more information.

According to the American Hospital Association, one out of four Americans has a condition that may not be obvious to medical personnel in the event of severe illness or injury. This condition could affect treatment. These conditions include chronic illnesses such as diabetes and asthma, visual or hearing disabilities, allergies, bleeding disorders, heart problems and dependence on special medication.

Today almost 2 million people are registered with Medic Alert in the United States, but many more should be registered. Medic Alert is also recognized internationally, with 1 million members in 21 other countries.

Persons interested in joining Medic Alert can call 1-800-ID-ALERT for more information. Lifetime membership in Medic Alert, including the bracelet or necklace and an annually updated wallet card, costs \$25.

#### Cold Wave

Hypothermia isn't just for winter any more. According to the American Hospital Association, jumping into cold water for a quick summer cooldown can be more shocking to the system than a cold northerly wind. Cautions must be taken when swimming or even wading in cold streams or lakes. Always swim with a companion. Keep an eye out for signs such as shivering, slurred speech, mental confusion, drowsiness and weakness. Fast action to get out of the water and into warm surroundings is imperative for recovery.

with prickly pear in Mexico, California and Texas.

Dr. Robert McLaughlan of Texas A&I will discuss the use of the A&I biomass harvester for chopping and harvesting prickly pear for cattle feed.

Salvador Valdez, director of the economic development office of the Texas Department of Agriculture, will speak on funding options for prickly pear production.

Mexican scientists reporting on their prickly pear research are Dr. Facundo Barrientos Perez of the Chapingo Research Center, Dr. J. Caballero-Mellado of Puebla and Fernando Escalante of Saltillo.

Besides the discussions, the program also will include displays of cactus products, a food contest featuring prickly pear fruit recipes, cooked nopalitos in casseroles and other dishes, and wine and sherry made from prickly pear.

Manufacturers of ranch "pear burners," or the equipment used to burn the spines off prickly pear so cattle can eat it, will present a pear-burning demonstration.

Marcus A. "Buddy" Johnson of Crystal City, Zavala County Extension agent who is growing 17 varieties of cacti in a demonstration test, said many South Texas ranchers depend on prickly pear to feed their herds during extended drought periods.

"As a result, some ranchers are now replanting the pear in areas where cactus has been fed to cattle," Johnson said.

Bill Maltsberger, Cotulla

rancher and president of the Prickly Pear Council, has a 500-acre cactus demonstration nursery on his ranch.

"As the pear is burned off and fed to cattle, I replant the acreage for future use," Maltsberger said.

"One problem in producing the pear is finding cold-tolerant varieties," Johnson said. "Research and variety tests help here."

He said another problem, particularly in growing the thornless varieties, is that wildlife will devour the plants before they can attain any size.

Because so little of the pear is produced for human food in Texas, Johnson said, local and national markets are importing the cactus from Mexico.

In 1988, he said, 1.14 million pounds of nopalitos and 2.17 million pounds of tunas were imported from Mexico through Texas border markets at Laredo, Eagle Pass, Progreso and Hidalgo.

"Although the Texas restaurant trade and supermarket chains used a considerable amount of the prickly pear products," Johnson said, "thousands of pounds of the attractively boxed produce were shipped on the specialty markets catering to ethnic and Yuppie foods along the East Coast and several cities in Canada."

Shop  
Muleshoe  
First!

## SPC Schedules Summer

### Cosmetology Exams

Summer entrance exams for the cosmetology program at South Plains College will be given July 10 and Aug. 1 prior to fall enrollment.

The exams, scheduled from 9-11 a.m., will be administered in the SPC Student Assistance Center, located on the third floor of the library. Fee is \$10.

Cosmetology classes begin Sept. 1 at SPC.

Students in the 12-month program have access to a fully-equipped cosmetology lab and a New Image Salon Systems computer which prevents hair-

styles. Basic cosmetology skills such as haircutting and hairstyling, facials and skin care are taught, along with specialized techniques such as application of glass nails, waxing, corrective makeup and ear-piercing.

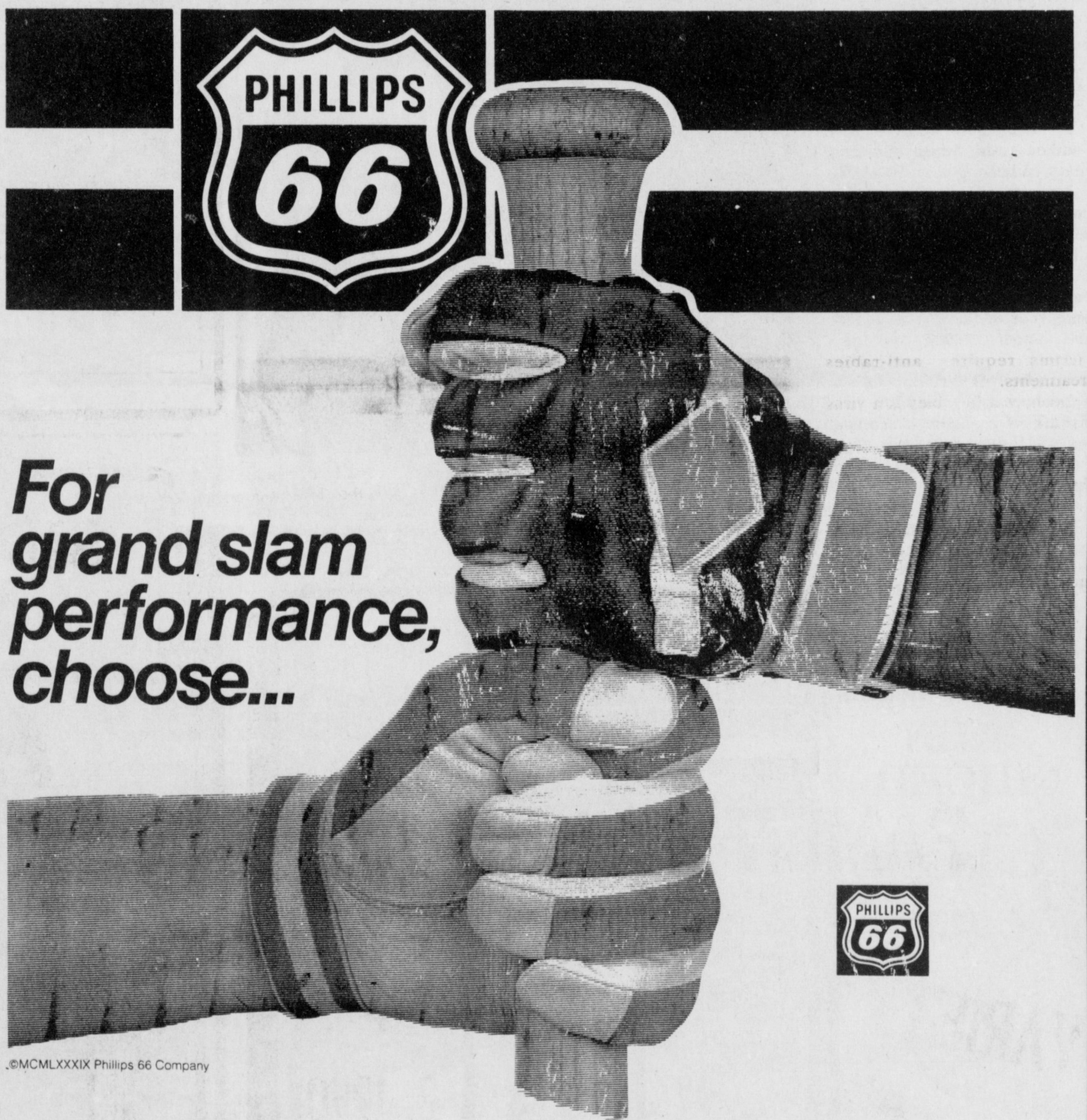
Those successfully completing the program are awarded a certificate of proficiency and eligible to take the state board exam in cosmetology for licensure as cosmetologists in Texas.

Instructor is Carolyn Newkirk. For more information, contact the SPC counseling office at 894-9611, ext. 368.

	1990 Crop		1990		Month
	Pool Cash Advance	Sale Flat	Contract Basis		
Feed Corn.....	Mkt.....	5.03,-0.14	No Bid.....		May
White Cobb Yellow.....	4.50.....	5.00,-0.16	No Bid.....		May
Red Cobb Yellow.....	4.00.....	5.18,-0.05	No Bid.....		May
White Food Corn.....	5.00.....	6.00,0.40	No Bid.....		May
Milo.....	Mkt.....	4.19,-0.61	No Bid.....		May
Soybeans.....	No Pool..	5.34,-0.90	-0.95.....		May
Wheat.....	No Pool..	2.82,-0.36			KC May

100%  
Prices effective June 29, 1990

**Farmer's Co-Op Elevators**  
272-4335



©MCLXXXIX Phillips 66 Company



**SUPERCLEAN<sup>®</sup>**  
**PREMIUM**  
**UNLEADED**

**AVAILABLE NOW!**

At Our FUELCARD Station At 715 W. Amer. Blvd.  
or Call 272-4556 for Farm Delivery



**Western "66" Company**

Earth Hwy

Muleshoe

272-4556

## OPENING NEW DOORS!



Time for a change? Need a better job or a profession change? Read the employment opportunity columns in today's

**Muleshoe & Bailey Co.**  
**Journals**  
272-4536

...We'll help you get your foot in the door!

# Rabies In Humans Can Be Prevented

The recent death of a 22-year-old South Texas man from rabies could have been prevented if he had sought immediate medical treatment, say experts with the Texas Agricultural Extension Service and Texas Department of Health.

Medical records show the Hidalgo County man was bitten by a rabid bat about 47 days before his death earlier this month.

All types of animal bites should always get prompt medical attention, said Dr. Bruce Lawhorn, veterinarian with the Texas Agricultural Extension Service.

Dr. Keith Clark of the Texas Department of Health, Austin, said if the latest victim had sought immediate treatment for the bite, the death could have been prevented.

Clark said treatment to prevent human rabies cases includes quickly administering immune globulin to the bite victim followed with a series of five anti-rabies vaccinations over a month's period.

"The incubation period for human rabies can vary from 14 days to several years," Clark said.

He said the human rabies case this month was the first recorded in Texas since 1985. One also was confirmed in 1984.

The 1985 case involved a 19 year-old man who had migrated to Abilene from Mexico, according to health department records. The 1984 case occurred in a young Houston immigrant who succumbed to a rare strain of rabies that she had acquired in Southeast Asia more than four years earlier.

Lawhorn said that contrary to popular belief, rabies can and do occur in all seasons and in all parts of the country.

Clark said more than 500,000 persons are bitten by animals each year in the United States, and about 30,000 of these victims require anti-rabies treatments.

Lawhorn said rabies is a virus disease of the central nervous system. It can be transmitted by the bite of a rabid animal through saliva contacting a skin break.

"All warm-blooded animals, including humans, are suscept-

ible to rabies," Clark said. "In Texas, skunks, bats, foxes and raccoons are the most commonly affected animals."

Lawhorn said rabies is spread by the bite of a rabid animal that infects one or more dogs or cats during a fearless invasion into a community.

"The disease develops in the domestic animals and they bite and transfer the infection to other pets and perhaps humans," Lawhorn said.

"Children, because of their close association with the pets, are most often the human victims," Lawhorn said.

Control of rabies depends on immunization of pets and other domestic animals, Lawhorn said, and on alerting the public to the signs and hazards of the disease.

"Enforcement of animal control regulations also is important," he said.

Lawhorn said any time a dog, fox, skunk, cat or bat bites a human, there is a danger that the animal may be rabid. He recommended that these immediate precautions be taken:

- Identify the biting animal by kind, size, color and location. Caution children to seek the help of a policeman or other

- Have the animal caught. Immediately report the incident to animal control officials or police and keep the biting animal in sight until it is apprehended. Trying to catch the animal without professional help will risk multiple human exposure.
- Wash the wound thoroughly with soap and hot water. Rinse well and disinfect with alcohol, iodine or other disinfectants. This lessens the chance of contracting rabies by removing or inactivating virus in the wound.
- See a physician as soon as possible for a decision on the need of anti-rabies treatment.
- If possible, have the biting dog or cat tested for rabies or placed under observation. If it is alive and normal after 10 days of observation, the animal was not infective at the time of the bite. A veterinarian should monitor all aspects of this confinement and observation period. The 10-day period of observation is valid only for dogs and cats.
- Wild animals, such as skunks, bats, foxes or raccoons, should be submitted immediately by a veterinarian

## Three Way News by: Mrs. H.W. Garvin

Mrs. D.A. Williams from Enochs visited with her parents, the George Tysons' Sunday.

Rev. Rodger Foot and the members of the Three Way

Baptist Church attended the Anchor Brothers concert Sunday evening in Morton, sponsored by the Ministerial Alliance.

Mrs. Bob Foley and her sister, Mrs. Jerry Damron, from Needmore attended the Kindle reunion over the weekend with their parents, Mr. and Mrs. Robert Kindle.


The Maple Church of Christ honored their minister Sunday evening with a love offering and a dinner in Littlefield.

Mr. and Mrs. Robert Kindle spent the weekend in Childress attending the Kindle family reunion.

D.V. Terrell was a dinner guest in the Rayford Masten home Sunday.



ROTARY HOSTS PATRIOTIC SPEAKER--Mort Cross, left, a local minister and evangelist, was guest speaker for the Muleshoe Rotary Club Tuesday. He was introduced by Rotarian Herb Parks. Cross spoke on *The American Vision*. (Journal Photo)



**SAE 15W/40  
FLEET HEAVY DUTY  
10 TBN MOTOR OIL**

MULTIPURPOSE PREMIUM PROTECTION  
FOR GASOLINE & DIESEL ENGINES

Conoco Multipurpose lubricants help you reduce your inventory and the risk of misapplication.

**SAE 15W/40**  
Fleet Heavy Duty 10 TBN Motor Oil **2.59** Gallon

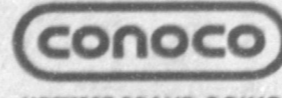
**12.95** 5 Gal. Pail     **142.45** 55 Gal. Drum

---

**SAE 30W**  
Fleet Heavy Duty 10 TBN Motor Oil **2.49** Gallon

**12.45** 5 Gal. Pail     **136.95** 55 Gal. Drum

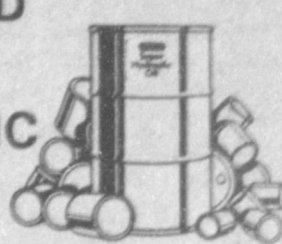
• BULK LUBRICANTS     • DIESEL FUEL



HOTTEST BRAND GOING\*

• TECHNICAL ASSISTANCE     • GASOLINE

**CONFUSED ABOUT HYDRAULIC OILS?**



Why gamble with off brands, unknowns, and re-runs, when you can buy Conoco Super Hydraulic oils for less \$?

These universal oils are excellent for systems with pumps of all types. They meet the most rigid specifications. Available in the popular ISO viscosity 32, 46, and 68.

**CONOCO SUPER HYDRAULIC OIL**

**1.99** Gallon

**109.45** 55 Gal. Drum     **9.95** 5 Gal. Pail

**Morrison Oil Company**  
P.O. BOX 750 MULESHOE, TEXAS  
**272-4688**

You are wanted at  
**Muleplex Production Company's**  
**FAMILY FUN NIGHT**

**VARIETY ACTS...**  
and  
**Candy Sales**  
with lots of prizes

RESERVE SEATS...\$5.00  
ADULTS . . . . . 4.00  
CHILDREN . . . . . 2.00

**JULY 2 & 3, 1990**  
7:00-9:30 p.m.

7:00-9:30 p.m.  
Muleshoe High School Auditorium

**THE MAN WHO CAME TO DINNER**

July 2 & 3, 1990

Three-Act Comedy

**JULY 4**  
**LEE HORSLEY DAY!**

Special Guest Appearance by **LEE HORSLEY**  
Muleshoe's Own TV Personality

Don't forget to stay in town for July 4th! There will be something for everyone to do.

**SIDEWALK SALE**

**HUGE**  
July 4th  
**Sidewalk Sale**

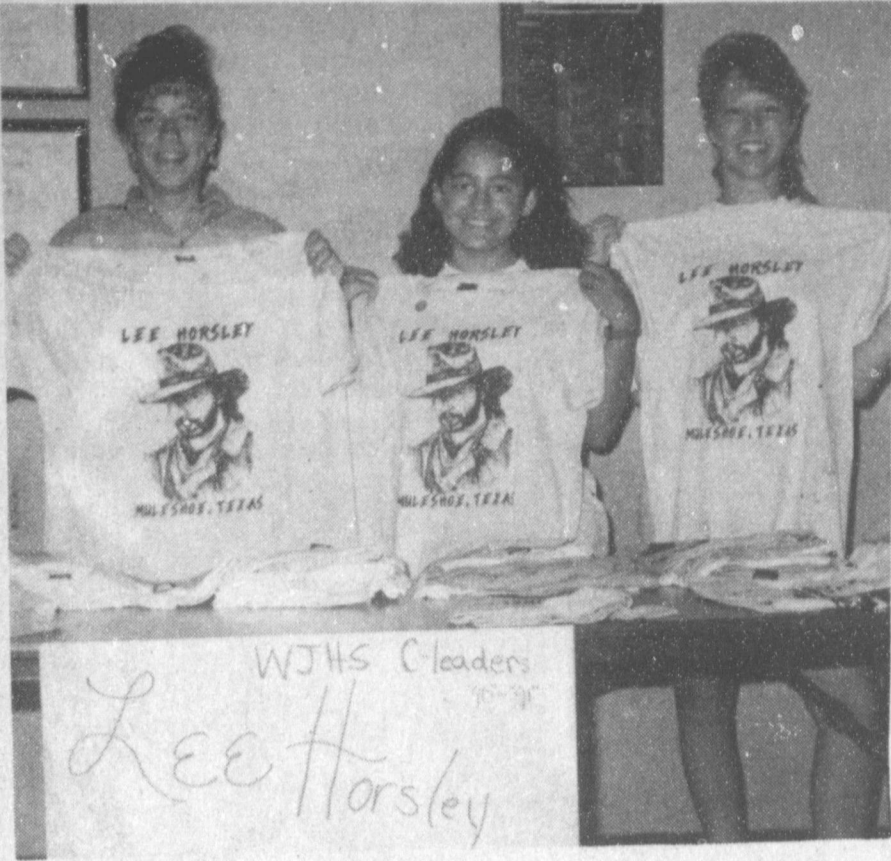
Everything In Our Sidewalk Sale

At Least **50% off** Discounts From **50 to 90% off**

Wednesday July 4th **ONLY!!!!**

**P O Y N O R S**

103 Main Muleshoe 272-4552



**JUNIOR HIGH CHEERLEADERS SELLING T-SHIRTS**--Tuesday, three of the Watson Junior High School cheerleaders were at the Muleshoe Rotary Club selling Lee Horsley T-Shirts as a fundraiser. Pictured from left are Allyson Field, Kit Dominguez and Michelle Williams. (Journal Photo)

### Jehovah's Witnesses Schedule Convention

Muleshoe Officials of the Watchtower Bible and Tract Society have revealed completion of plans for a series of 142 district conventions of Jehovah's Witnesses in the United States during the summer of 1990.

Spokesman Pat Shropshire said in Amarillo that 59 separate facilities would be used to accommodate 1,412,000 delegates expected for the four-day district convention meetings.

Shropshire said the convention program would be presented in nine languages. In addition to English they include: Spanish, Chinese, French, Greek, Italian, Japanese, Korean, and Portuguese.

Shropshire said 13 delegates would represent the congregation from Muleshoe at the convention scheduled July 5-8 at the Civic Center in Amarillo.

Speaking of language, Shropshire said language has been a divisive factor in human relations for centuries.

"Language is only one of the reasons for divisions among men, however," he said. "Others are nationality, race, education, and social status. But Jehovah's Witnesses are working internationally to overcome all these divisive factors and become truly united."

The convention theme for 1990 is "Pure Language." The program will stress that the "pure language" is one of truth and will endeavor to show the practicality of making God's Word, the Bible, the dominant force in uniting people worldwide.

Last summer we saw a more striking display of this unity in the cities of Chorzow, Poznan, and Warsaw in Poland. Witnesses, speaking at least 20 different languages, were present from 37 lands. Yet, a striking oneness was manifest

by all of the over 160,000 that attended.

Be means of talks, demonstrations, symposiums and dramas the theme of international unity will be emphasized, Shropshire said.

Helmut Kohl, Chancellor of West Germany:

"It would be a fatal development if the external and internal conditions of German unity were not completely clear when the day of German unity comes."

Schedules are made to remind you how far behind you are in your work.

Our advice to you this week is to take care of your heart, and live a while.

On April 15 many Americans will be surprised to learn how much money they made in 1989.

It's good business, even in family deals, to keep the record straight.

**THRIFTWAY**  
is hosting a  
**CHOLESTEROL SCREENING**  
(No Fast -Finger Stick -5 Min.Result)  
TRIGLYCERIDES and GLUCOSE  
(12 hour fast required)  
\$ 6.00 per test  
10:00 am - 6:00 pm  
**Friday, July 6 & Saturday, July 7**

Baker asks Lithuania to compromise with Gorbachev.

Thornburgh denies charge of cover-up.

Kennedy Center is safe but needs massive repairs.

Scientists hail space telescope's first pictures.

# IT'S A GRAND OLD 4th



**Hurry !! Hurry!!**

**On Down To**

**Muleshoe, TX**

**And Help**

**Us Celebrate The**

**4th of July**

**&**

**Lee Horsley Day!!**



**Lots of Activities For Both The Young & Old**

**W.T. Services**

**319 E. American Blvd. 272-4888**

## Come Help Us Celebrate July 4th In Muleshoe & Visit With Lee Horsley!

### SCHEDULE OF EVENTS

**Monday, July 2, 1990**

**MULEPLEX PRODUCTION**-High School Auditorium

**Tuesday, July 3, 1990**

**MULEPLEX PRODUCTION**-High School Auditorium

**Wednesday, July 4, 1990**

**7:00 a.m.** 10K & 2 Mile Run, Registration-Winkler Meat Co. parking lot  
**SIDEWALK BREAKFAST**-Western Auto Building sidewalk, Jennyslippers

**8:00 a.m.** 10K & 2 MILE RUN begins

**8:30 a.m.** MULESHOE PITCHING, Registration-Old Chevrolet lot

**9:00 a.m.** MULESHOE PITCHING begins  
**PARADE LINEUP**-Boy Scout Lot south end of Main Street  
**GOLF SCRAMBLE**-Muleshoe Country Club

**10:00 a.m.** PARADE begins

**11:00 a.m.** KIDS ACTIVITIES-1st block of Main Street

**11:30 a.m.** UGLY LEG CONTEST-in front of old Cobb building  
**SQUARE DANCING**-in front of Damron Drug  
**COW-PATTY BINGO**-Perry's parking lot

**12:00 noon** **EAT EAT EAT EAT EAT EAT EAT** Rotary Club-south end of Main, Spanish Assembly- middle part of main, Larry Winkler-Joe's Boot Corner

**1:00 p.m.** WATERMELON SEED-SPITTING CONTEST,-in front of Higginbotham

**2:00 p.m.** SENATOR JOHN MONTFORD-entrance of old Cobb building  
**MAC DRAWING**  
**LEE HORSLEY**  
**GOLF SCRAMBLE**-Muleshoe Country Club

**2:30 p.m.** SQUARE DANCING-in front of old theater  
**KARATE DEMONSTRATION**-in their building on Ave. B.  
**GYMNASTICS DEMONSTRATION**  
**3-LEGGED SACK RACE**-in front of Higginbotham going North

**3:00 p.m.** OLD SETTLERS REUNION-Civic Center  
**THE GREAT AMERICAN 'MULE PLOP'** -Perry's parking lot  
**TOBACCO SPITIN' CONTEST**-vacant lot between Fair Store & Western Drug

**3:30 p.m.** TRACTOR PULL (ages 6-10)-vacant lot between Fair Store & Western Drug

**4:00 p.m.** WATER POLO-street in front of Winkler's Meat Co.

**4:00 p.m.** -  
**6:00 p.m.** OPEN HOUSE AT JAMES' RANCH HOUSE-Heritage Foundation Area

**5:00 p.m.** MAIN STREET CLEAN UP--EVERYONE, EVERYONE, EVERYONE!!!!

**5:30 p.m.** RADIO CONTROL PLANE DEMONSTRATION-New City Park

**6:00 p.m.** -  
**8:00 p.m.** MUSIC BEGINS  
**4-H EXCHANGE STUDENTS FAMOUS HAMBURGERS**  
**ROTARY'S HAWAII TRIP DRAWING**  
**4-H-CLUB DRAWING**

**8:00 p.m.** CRYSTAL CREEK BAND

**10:00 p.m.** FIREWORKS! FIREWORKS!

**KMUL STREET DANCE AFTER FIREWORKS AT KMUL PARKING LOT AND STREET**

#### ALL DAY ACTIVITIES

Video for kids, Roadriders bike show, car show at bank lot, dunking tank, hop scotch, ring toss, horseshoe pitching, fishing, arts & crafts, pop-a-shot, Boy

Scout Town (Boy Scout Lot), Jennyslipper's bazaar, radio-control planes (New City Park), quilt show (St. Clair bldg.), clowns & 'stuff', Spanish Assembly Concession at New City Park

## Farmer's Co-op Elevators

5 Locations To Serve You!

Clays Corner

Enochs

Muleshoe

Old Griffith

Pleasant Valley

272-4335

## "TEXAS" Buries Time Capsule, July 4

Memorabilia from the 25th anniversary season of "TEXAS" will be buried on Wednesday, July 4, at 7 p.m. on the grounds of the Pioneer Amphitheatre in Palo Duro Canyon State Park to be opened on the 50th anniversary of the musical drama on July 4, 2015.

The capsule, measuring ten inches in diameter and two foot long, will hold a 1990 "TEXAS" souvenir program, a bumper sticker, a musical cassette, film, a tent card and a "Tucker Yelldell" shirt worn by Jerry Williams. The cylinder will also keep 1990 cast reunion information, a schedule of the season's opening week events and the silver star ribbon cut at the dedication of the Silver Anniversary Patio on June 13, 1990.

The ceremony will take place in the main area across from the concession stand, in front of the statue of Founder Margaret Harper.

The time capsule is sponsored by The First State Bank of Happy in Canyon. It will be painted, filled and buried by the 1990 "TEXAS" cast and staff.

The 25th anniversary of "TEXAS" has prompted a series of special events that began on June 13, 1990. Prizes each night recognize the 250th persons with a musical cassette of "TEXAS," the 2,500 persons with a Cowboy Morning Breakfast and a Palo Duro Canyon poster, the 10,000th persons with a Hudsbeth House Bed and Breakfast, the 25,000th persons with a cowboy hat given by

Boots & Jeans, and the 50,000th and 100,000th persons with trips back to anywhere in Texas courtesy of American Airlines.

The chow call triangles that are awarded to the persons coming the longest distance have been painted silver this year and so far, awarded nightly to only international visitors.

An opening week of events brought Texas Parks & Wildlife Chairman Chuck Nash, over 20 legislators, commissioners and staff of the Texas Department of Commerce, President of the Corporation of Public Broadcast Systems Donald Ledwig, Paul Green Foundation Director Stephen Barefoot, Institute of Outdoor Drama Director Scott Parker, American Airlines executives and managers, and former "TEXAS" souvenir program artists.

The Panhandle-Plains Historical Museum in Canyon currently is displaying all 25 "TEXAS" souvenir programs with art by some of the featured artists including the 1990 artist Frank Reaugh.

Written by Pulitzer Prize winning author Paul Green, "TEXAS" is the story of the settling of the area, told by a cast of 80 using sensational song, dance and the latest sound and light.

"TEXAS" plays nightly except Sundays at 8:30 p.m. through August 25 beneath the cliffs of Palo Duro Canyon State Park.

For reservations to "TEXAS" call 806-655-2181 or write Box 268, Canyon, Texas 79015. Tickets are \$10, \$8 and \$6 for adults; and \$10, \$4 and \$3 for children under 12 years old.

## Mammogram Importance Stressed

Approximately one in ten women will develop breast cancer at some time in their lives. It is estimated that in 1990, 150,000 women will develop the disease and 44,000 will lose their lives to it.

Although these statistics are frightening, women can protect themselves. Early discovery of breast lumps and prompt treatment of breast cancer can decrease mortality in women of all ages.

"Breast cancer can be detected early in three ways—breast self-examinations, physical checkups on a regular basis and mammography," said Doris Scales, RN, nurse specialist in the Hodges Cancer Center.

Scales advises women to perform breast self-examinations every month, beginning at age 20. This procedure can help a woman to become aware of the normal size, shape and feel of her breasts. This familiarity makes the early warning signs of cancer easier to detect. Any unusual changes should be reported immediately to a doctor.

"It is important, however, for women to remember that breasts are composed of ducts

and fat, which can change over time. For this reason, breast exams should be performed by a doctor every three years for asymptomatic women between 20 and 40 and every year for women older than 40," said Scales.

Mammography is an X-ray procedure that can detect the smallest of lumps long before a self-exam or even a doctor's examination. The procedure produces a high-quality image of the internal structure of the breasts and can detect any existing lumps or calcifications.

"Coupled with breast self-examinations and clinical examinations mammography is the most accurate way to detect breast cancer in its earliest and most treatable form," said Scales.

"Asymptomatic women age 50 and over should have a mammogram every year. Between ages 35 and 39, a woman should have her first mammogram, and asymptomatic women 40-49 should have a mammogram every one to two years," said Scales.

For more information, contact the Hodges Cancer Center at (806) 793-4214.

**Come One -  
Come All  
And Help Us  
Celebrate The  
4th of July  
&  
Lee Horsley Day  
in Muleshoe!**



Be Sure To Attend The  
Mule-Plex Production Co., Inc.  
**Family Fun Night**

Monday & Tuesday  
July 2nd & 3rd

Don't Forget The  
**All Day Activities**  
on Main Street  
on The  
**4th of July**

SEE YOU THERE!!!

**Paco Feed Yard**  
265-3281



## Jennyslipper Breakfast

July 4th

On Main Street

Lee Horsley Day

7:00 a.m. to 10:00 a.m.

Breakfast Burrito..... **Only \$1.00**

Ham... Sausage ... Bacon

Cinnamon Rolls..... **\$1.00**

Orange Juice..... **75¢**

**Yum!  
Yum!** Coffee..... **50¢**

**Ya'll Come!!**

**Cash Rewards  
Up To \$1,000  
For Information!  
Call  
Bailey County  
Crime Line  
272-HELP**



**Hurry!!**

**On Down To  
Muleshoe**

**And Help Us Celebrate The  
4th of July  
&**

**Lee Horsley Day!!**

**Lots of Activities For Both The Young & Old**



202 S. 1st

Member F.D.I.C.

272-4515

### County Court Agenda

The Bailey County Commissioners Court will meet in SPECIAL SESSION in the Bailey County Courthouse, Monday, July 2, 1990.

The meeting will begin at 3:30 p.m. and will continue until all business is concluded, with the following items on the agenda:

1. Approve the minutes of the previous meeting.
2. Payment of routine County bills.
3. Consider Budget Amendment No. 7 to FY 1990 Budget.

### Kiwanis News



By R.A. Bradley

14 Kiwanians, 2 honorary Kiwanians and one guest met this morning at the Church of Christ. Honorary Kiwanians were Chad Johnson and Robbie Clapp and our guest was Ryan Clapp. President Jim Lutz called the meeting to order Lyndon Huckaby gave the invocation. Randy Lewis, who got there early this morning looking for the worm. The only worm he found was Brad and he didn't want him, so Randy gave the friendship coin to some Terry Hutton because Randy thought that Terry had not had a friend in quite sometime.

To ALL Kiwanians, the Kiwanis Club will start meeting next Friday morning at 6:30 a.m. at LaPlacita Cfe on Main Street. Each Kiwanian needs to be there. Remember, Friday, July 6th, 6:30 a.m. at the LaPlacita Cafe.

The fireworks stand is just west of Muleshoe. Be sure and get your fireworks from the Kiwanis Club, and be careful and have a wonderful and safe July 4th.

Reggie Johnson passed a picture around of the K-Bars baseball team who won 2nd in the league and first in the tournament. It seems that one of our honorary members who was a member of the K-Bars team for the season 7 homeruns, 1 grand slam. Congratulations Chad Johnson. We are very proud of you.

Remember, July 16th, Kiwanis Picnic, for all Kiwanians and your families. Mule Putt Golf Course.

Brad

### V. C. Waddell Services Held At San Benito

Private memorial services for V.C. "Jack" Waddell, 81, were held Saturday in Baptist Temple Church in San Benito.

Waddell was born in Lohn and was a farmer, a member of Rio Hondo Masonic Lodge, San Benito Lodge and was a Baptist.

Survivors include his wife, Pearl Waddell of San Benito; three daughters, Mrs. Jean Ann Boone of Longview, Mrs. Wanda Mae Walker of Maple and Marjorie Kay Johnson of San Benito; two sisters, Mrs. Turdie Huie of Rio Hondo and Mrs. Mary Moore of Lohn; nine grandchildren; and one great grandchild.

4. Provide for budget hearing, Friday, August 24, 1990.
5. Open bids for County fuel purchases.
6. Open bids for purchase of a dozer for Precinct #2.
7. Discuss Coliseum rates and rules and provide for possible research committee.
8. Consider granting right-of-way easement to Robert Ruiz.
9. Hold public hearing for proposed Community Development Grant for health center-5

### BRIEFS

Soviets approve bill outlawing insults to the president.

No interest rate hikes likely from Federal Reserve.

Presidential panel to urge military action vs terrorists.

### Enochs News

by: Mrs. J.D. Bayless

Mr. and Mrs. Stanley Snitker of Midland were dinner guests in the home of his parents, Mr. and Mrs. Clifford Snitker last Tuesday.

Ellen Bayless was in Littlefield last Tuesday to have her machine fixed. She also visited Mrs. Alberta Bryant.

Mr. and Mrs. Jack Stanley spent Father's Day with their daughter, Mrs. and Mrs. Alton

Jones at Lubbock.

Mrs. Mamie Adams was admitted to Methodist Hospital in Levelland last Thursday for tests and X-rays. Get well soon.

Mr. and Mrs. Bill Key visited in the home of Mr. and Mrs. Gary Welch in Muleshoe last Tuesday.

Ellen Bayless was in Muleshoe Friday on business and visited Mrs. Blanche Aubrey. She had just come home from the hospital in Lubbock Thursday.

Roger Jones and son, Brady of Luders visited his mother, Mrs. Lorella Jones and brother, Wendell, recently.

Mrs. Bill Key, Mrs. Bobby Adams and Mrs. Bonnie Long visited Mrs. Mamie Adams at the hospital in Levelland Sunday afternoon then stopped in Morton and heard the Anchor Brothers Band at 6 p.m. at the County Auditorium.

### Competitive Prices On Ironing

Shirts.....60 cents | Small Tablecloths \$1.50  
Large Tablecloths \$2.25 | Levis.....75 cents

### J's Cleaners

203 Main

272-4823

### Immaculate Conception Catholic Church

Father Patrick Maher Northeast of City

### First Baptist Church

220 West Ave. Ave. Barry Bradley, Pastor

### Emmanuel Baptist Church

Iglesia Bautista Emmanuel 107 East Third Isias Cardenas, Pastor

### Trinity Baptist Church

314 E. Ave. B. Rev. Dale Berry

### Circle Back Baptist Church

Intersection FM 3397 & FM 298 Pastor, Jessie Shaver 946-3676

### Calvary Baptist Church

1733 W. Ave. C. Rev. Rick Michael

### Victory Baptist Church

605 West 8th James Williams, Pastor

### Progress Baptist Church

Charles Fisk, Pastor Progress, Texas

### Richland Hills Baptist Church

17th and West. Ave. D. Allen Petersen, Pastor

### St. Matthews Baptist Church

Corner of West Boston & West Birch M.S. Brown, Pastor

### Progress Second Baptist Church

1st and 3rd Sunday Rev. Arthur Hayes

### Primitive Baptist Church

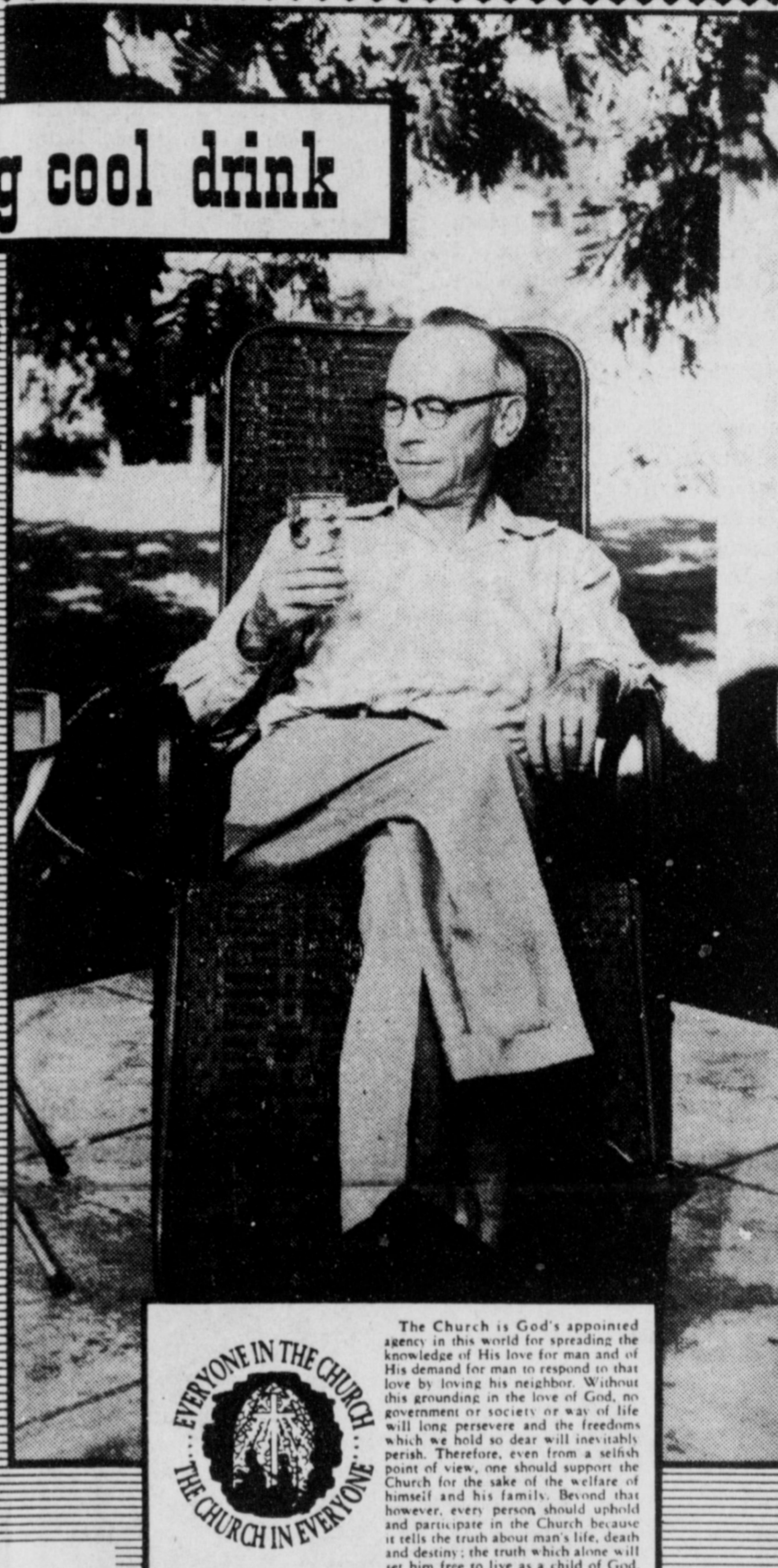
621 South First Elder Cleveland Bass, Pastor

### 1st Baptist Church

Lazbuddie, Tx. 965-2126 Gary Wilcox, Pastor

### hot day—long cool drink

Sometimes there seems to be literally nothing to equal the refreshment of a tall cool glass of tangy fresh lemonade on a hot still day; it truly perks up a tired body. How good it is that we have such refreshment. The good news of the Gospel is that there is also refreshment for a tired life. A decision to trust in God and the life which He gives one moment by moment is like a refreshing breeze in dusty, dry life. Life, no matter how tired, or discouraged, or wrapped in despair, can be renewed by knowing and trusting God's love. Go to the Church and hear the story of that Love which is eternally yours.



The Church is God's appointed agency in this world for spreading the knowledge of His love for man and of His demand for man to respond in that love by loving his neighbor. Without this grounding in the love of God, no government or society or way of life will long persevere and the freedoms which we hold so dear will inevitably perish. Therefore, even from a selfish point of view, one should support the Church for the sake of the welfare of himself and his family. Beyond this however, every person should uphold and participate in the Church because it tells the truth about man's life, death and destiny; the truth which alone will set him free to live as a child of God.

### St. John Luthern

Sunday School and Bible Class 9:30 a.m. Church Services 10:30 a.m. Rev. Mac Bearss, Pastor

### Lazbuddie Methodist Church

965-2121 Doug Chapman, Pastor

### New Covenant Church

Plainview Hwy Sunday 10:00 a.m. Wednesday 7:00 p.m. Jimmy Lowe, Pastor

### Jehovah Witness

Friona Hwy.

### The Community Church

Morton Hwy. Mort Cross, Pastor 272-5992

### Church Of The Nazarene

9th and Ave. C. Dennis Hayes, Pastor

### Truth Tabernacle Pentecostal Church

200 E. Ithaca & Fir 272-3391 Les James, Pastor

### Templo Calvario

507 South Main Sunday 10:00 a.m. Sunday Evening 7:00 p.m. Evangelistic Services J.L. Soto, Pastor

### Primera Iglesia Bautista

### Lariat Church Of Christ

Sunday School 10:00 a.m. Worship 11:00 & 6:00 p.m. Wednesday Services 7:00 p.m. Sam Billingsley, Minister

### Muleshoe Church Of Christ

Clovis Hwy. Bret McCasland, Minister 16th & Ave. D.

### Church Of Christ

Sunday 10:30 a.m. Evening 6:00 p.m. Wednesday 8:00 p.m. Curtis Shelburne, Minister

### Lazbuddie Church Of Christ

Minister, Keith Courmier Sunday School 9:30 a.m. Morning Services 10:00 a.m. Evening Services 6:00 p.m. Wednesday Night 7:00 p.m.

### First Assembly Of God

521 South First St. 272-3017 9:45 Sunday School 11:00 Morning Worship 6:30 Evening Services 7:30 Mid-week Services Rev. G. Dean Reid, Pastor

### Spanish Assembly Of God

East 6th and Ave. F. Mike Doyle, Pastor

### First United Methodist Church

507 W. 2nd Street Richard Edwards, Pastor

### El Divino Salvador Methodist Church

5th and Ave. D. Jose M. Fernandez, Pastor

### United Pentacostal Lighthouse Church

<b>Western Drug</b> 114 Main 272-3106		<b>Attend The Church Of Your Choice!</b>		<b>Dairy Queen</b> 1204 W. Amer. Blvd. 272-3412	
<b>Wes-Tex Futures, Inc.</b> 1910 W. Amer. Blvd. 272-5585		<b>Serv-All Thriftway</b> 401 W. Amer. Blvd. 272-4585		<b>American Valley, Inc.</b> W. Hwy 84 272-3767 or 965-2622	
<b>Bob Stovall Printing</b> 221 E. Ave. B. 272-3373		<b>Combination Motor &amp; Salvage</b> 272-4458		<b>Farmer's Co-Op Elevators</b> Muleshoe 272-4335	
<b>Main Street Beauty Salon</b> 115 Main 272-3448		<b>W.T. Services, Inc.</b> 319 E. Amer. Blvd. 272-4888		<b>Bratcher Motor Supply</b> 107 E. Ave. B. 272-4288	
<b>Irrigations Pumps &amp; Power</b> West Hwy 84 272-4483		<b>Wes-Tex Feed Yards, Inc.</b> 272-7555		<b>Muleshoe Lawn &amp; Leisure</b> 522 W. Amer. Blvd. 272-3162	
				<b>Bobo Insurance</b> 108 E. Ave. C. 272-4264	
				<b>5-Area Telephone Cooperative, Inc.</b> 302 Uvalde 272-5533	
				<b>Richland Hills Texaco</b> 1914 W. Amer. Blvd. 272-4875	

### THE FITTIN'EST... (East or West of the Pecos)



1177 The Fair Store 120 Main 272-3500



MADE IN U.S.A.

# CLASSIFIEDS 272-4536

**CLASSIFIED RATES**  
 15 Words & Under Minimum Charge \$2.30  
 Thereafter \$2.00  
 16 Words & Over 1st Insertion 15 cents per word  
 2nd Insertion 13 cents per word  
**CLASSIFIED DISPLAY RATES**  
 \$1.75 Per Column Inch  
**DEADLINES**  
 12 noon Tues. For Thursday Paper  
 12 noon Friday For Sunday Paper  
 To receive the reduce rate after the first insertion ad must run continuously.  
 We reserve the right to classify, revise, or reject any ad. We are not responsible for any error after ad has run once.

**1. Personals**

**CONCERNED About Someone's Drinking? HELP IS AVAILABLE**  
 through Al-Anon  
 CALL 272-2350 or 965-2870 or come to visit Tuesday nights, 8:00 p.m. or Saturday mornings at 10:30 a.m. and through AA call 965-2870 or come visit Tuesday nights, 8:00 at 620 W. Second, Muleshoe.

**3. Help Wanted**

Turn your spare time into X-tra money. Also, clubs and non-profit organizations needing an excellent fund raiser - Call Allan at the Ranch House Motel - Room 38. Hours Monday thru Friday 5-9. Tuesday thru Saturday 9-1.

The Bailey County ASCS Office is now taking applications for employment to fill a regular appointment thru July 6, 1990.  
 Applicants must be citizens of the United States, be of good character, personality suited to work with farmers, and others.  
 ASCS experience is required.  
 Candidates shall be considered without discrimination because of race, color, religion, national origin, sex, political affiliation, personal sponsorship, physical or mental handicap, age, marital status, or other non merit factors. ASCS is an Equal Opportunity employer.  
 A3-26t-2tc

Steere Tank Lines Inc. in Dimmitt, Texas is now accepting applications for experienced semi-truck drivers. One year experience in last 3 years necessary. Must be at least 21 years of age. Please apply in person. We are an equal opportunity employer.  
 S3-25t-4tc

**3. Help Wanted**

**APPLY NOW.** \$6.25 to start. Small Appliance with seven openings in our display advertising department. No experience necessary. Call today! (505) 762-6730.  
 A3-26s-3tc

**HELP WANTED:** Part time desk clerk position. Call 272-7575 for appointment.  
 H3-26s-tfc

**WANTED:** Experienced machinist and gearhead man. Call (806) 238-1596 days or 238-1328 nights-after 9 p.m.  
 B3-25s-tfc

**SALES OPPORTUNITY INSURANCE**  
 National rural organization is looking for experienced insurance agents to represent an exclusive group health program, underwritten by an A+ rated company. Excellent income and career opportunities available to a limited number of qualified agents in your area. These positions will be filled in the next two weeks. For an opportunity to meet with area representatives call 1-800-445-1525.

**9. Automobiles For Sale**

**FOR SALE:** 1984 Chrysler Fifth Avenue, Silver Gray. Nice Car. And a 1980 Chevy 1/2 ton Pick-Up with top. Standard Shift. Low mileage. 272-1575  
 H9-26s-tfc

**11. For Sale Or Trade**

**FLUTE for sale.** Artley flute. Excellent condition. Call Danny Shipman at 272-4596 for more information.  
 11-26s-6tp

Peerless Submersible Pumps. Used part of one season. Muleshoe Area.  
 185' 6" 25 H.P.  
 160' 5" 15 H.P.  
 with accessories. \$2500.00 each, negotiable.  
 1-715-835-8372  
 Lila Schultz  
 3834 Nimitz  
 Eu Claire, Wis. 54701  
 S-24s-4tps

**15. Misc.**

**GARAGE SALE-Sat.** 9-7 and Sunday 10-5. Two miles north on Hwy. 214. Golf cart, 2 wall heaters, bedroom and living room furniture, bicycles, and miscellaneous items. Call 272-5241.  
 M15-26t-2tc

**VEACH ROOFING**  
 All Types. Built Up-Gravel Composition  
 \*Cedar  
 \*Free Estimates  
 \*Work Guaranteed  
 Jerry Veach, Owner,  
 272-3208 or 293-5617  
 15-24s-13tp

**WANTED TO BUY:** Alfalfa to grind. Call 227-2185 after 5:00 or 227-2856.  
 S15-23s-8tc

**ROUND-UP APPLICATION**  
 Pipe-wick mounted on high-boy. Row Crops. CRP. Vol. Corn, 30" or 40" rows. Roy O'Brian, 265-3247.  
 B11-23t-tfc

**8. Real Estate**

**FOR SALE OR RENT:** 3 bedroom brick home with fireplace. Located 3 miles west of Earth on Highway 70. 272-3056.  
 J8-16t-tfc

**HCR REAL ESTATE**  
 3-1 and 1-1 stucco on same lot. Fenced back yard.  
**Thursie Reid**  
**272-5318**

**3. Help Wanted**

**SALES OPPORTUNITY INSURANCE**  
 National rural organization is looking for experienced insurance agents to represent an exclusive group health program, underwritten by an A+ rated company. Excellent income and career opportunities available to a limited number of qualified agents in your area. These positions will be filled in the next two weeks. For an opportunity to meet with area representatives call 1-800-445-1525.

**8. Real Estate**

**HOUSE FOR SALE:** 3 bedrooms-2 baths; 723 W. Ave. F. Call 272-5498

**18. Legals**

**NOTICE TO BIDDERS**  
 The Threeway Independent School District, Maple, Texas will be receiving bids for a Computer Classroom Building at the Superintendent's office until 8:00 p.m., Friday, July 6, 1990, or sealed bids may be mailed directly to Don Parker, Superintendent, Threeway Independent School, P. O. Box 60, Maple, TX 79344.

Plans and Specs may be acquired from: Grimes and Associates  
 1105 13th, Suite A Lubbock, Texas 79401

The trustees of Threeway Independent School District reserve their right to reject any and all bids and waive all formalities that are in the best interest of the school district.  
 G18-25t-3tc

**TEXAS**  
*It's Like A Whole Other Country.*

**8. Real Estate**

**18. Legals**

**NOTICE TO CREDITORS**  
 Notice is hereby given that original Letters Testamentary for the Estate of MARY ETTA LAYTON, DECEASED, were issued on June 26, 1990, in Docket No. 1839, pending in the County Court of Bailey County, Texas, to: J.E. LAYTON and ROBERT H. LAYTON. The residence of J.E. LAYTON is in Bailey County, Texas, and his post office address is: Route 2, Box 98, Morton, Tex. 79346; the residence of ROBERT H. LAYTON is in Hudspeth County, Texas, and his post office address is: Post Office Box 201, Dell City, Texas 79837.

All persons having claims against this Estate which is currently being administered are required to present them within the time and in the manner prescribed by law.  
 DATED the 27th day of June, 1990.  
 Gordon H. Green  
 Attorney for the Estate

**8. Real Estate**

**18. Legals**

**PUBLISHED NOTICE**  
 Notice is hereby given that the partnership known as WILSON-ROBERTS PARTNERSHIP, between CALVIN LEWIS ROBERTS, CLAIRE JANET ROBERTS, MARY KATHRYN WILSON, ROBERT ALLEN WILSON, WILLIAM GUY WILSON, KATHLEEN D'ANN THOMAS, and RODNEY JOE WILSON, was dissolved on June 15, 1990, so far as relates to CALVIN LEWIS ROBERTS OF Curry County, New Mexico, and CLAIRE JANET ROBERTS, of Curry County, New Mexico. All debts to the partnership and those due by them will be settled with them and by the remaining partners, and the new partner, KENNETH LEE WILSON, who will continue the business under the new firm name of WILSON PARTNERSHIP.

CALVIN LEWIS ROBERTS  
 CLARA JENETT ROBERTS, a/k/a  
 CLAIRE JANET ROBERTS

**8. Real Estate**

**18. Legals**

**MARY KATHRYN WILSON**  
**ROBERTS ALLEN WILSON**  
**WILLIAM GUY WILSON**  
**KATHLEEN D'ANN THOMAS**  
**RODNEY JOE WILSON**  
**KENNETH LEE WILSON**

Shop Muleshoe First!

**8. Real Estate**

**18. Legals**

**LEGAL NOTICE**  
 Muleshoe ISD is accepting bids for copy machine services. For bid specifications, call (806) 272-3911 or write Dr. Tom Alvis, Muleshoe ISD, 514 W. Ave. G, Muleshoe, Texas 79347.

**8. Real Estate**

**log homes dealership**  
 EXCELLENT INCOME POTENTIAL  
 Investment 100% secured by model home, starting at \$13,416. Retain your current job. Call Don Hickman Toll Free 1-800-633-0670 or Collect 615-399-1721  
**Country Living LOG HOMES**  
 2711 Murfreesboro Rd. Antioch, Tennessee 37013

**BAILEY COUNTY LAND FOR SALE**  
 Owner will finance the following size blocks: 2-80 acres, 3-160 acres, 1-320 acres, and 1-277 acres. Wheat, milo and cotton allotments. 1 1/4 circles of permanent grass. 7 Center Pivots. A Sweet Cattle Set-Up.  
 If interested, contact T.L Timmons  
**806-385-4487 (Day)** **806-925-6484 (Night)**

**Jo Ann Chester Realty**  
 320 ACRES CRP FARM WITH 2/6 inch wells underground tile & pivot pad. Bailey County.  
**806-227-2368**

**J.B. Sudderth Realty, Inc.**  
 109 Fifth Street Farwell, Texas  
 Realtors/Certified Appraisers  
 Sold all our farm land-Call if you have farm land to sell.  
 3200 Acres grassland and cultivated with improvements.  
 Beautiful Country family home. Room for animals & pets. 15.4 Acres. 3 Bedroom, 1 3/4 Bath, Brick, 2 Car Garage, Irrigation Well with Pipe. Domestic Well, TV Dish, Fruit Trees, Box Cars, Barns, Steel Pens; Located on Hwy. Owner says sale-priced to sell.  
**J.B. Sudderth Broker**  
**Daren Sudderth Broker**  
**Master Senior Appraiser**  
**806-481-3288**

**Smallwood Real Estate**  
 232 Main Muleshoe 272-4838  
 405 E. Dallas--3 Bedroom, 1 Bath, 1 Car Garage, Central heat, Cook top, Oven, & Dishwasher. Beautiful carpet, Evaporative cooling. Fenced back yard. Large storage building.  
 FOR RENT, 201 Main--Furnished Office: Four private offices and 1 large reception room. Central heat and refrigerated air. Reasonable rent.  
 STUCKO--3 Bdr., 2 Bath, Living Room, Den, Large Kitchen & Dining Area. 1 Car Garage. Fenced back yard. 2,456 sq. feet; Corner lot 75X140. Priced to Sell.

**1. Personals**

**Suffering From Pain of Migraine Headache? Back & Intractable Pain? Stress Related Pain? Call Dr. Samuel Williams, We Can Help! Initial Consultation Free!**  
**Samuel Williams, Dr. of Clinical Hypno Therapy**  
**806-791-3300- Lubbock**

**Bingham & Nieman Realty**  
 116 E. Ave. C 272-5285 or 272-5286

**RICHLAND HILLS**  
 IMMACULATE-ENERGY EFFICIENT 3-2-2 Brick, Cent. A&H, built-ins, FP, sunken lv. area with cathedral ceiling, ceiling fans, earhtones, storage bldg., much more!!50's

**NICE 3-2-2 Brick, 2,300' +/- lv. area, earhtone carpets, built-ins, FP, cent. A&H, fenced yd. & more \$70's!!!!!!**

**4 NICE RESIDENTIAL LOTS PRICED FROM \$5,000.00!!!!!!**

**NICE 3-2-2 Home, HEAT PUMP, built-ins, FP, earhtone carpets, fenced yard, & much more. PRICED TO SELL!!!!!!**

**3-2-2 Brick on large corner lot, Cent. A&H, built-ins, storm windows & doors, large basement, much more!!!!!!**

**JUST LISTED-3-2-2 Brick on corner lot, Cent. A&H, built-ins, FP, cov. Patio & more. \$60's!!!!!!**

**HIGH SCHOOL**  
 2-1/2-1 Brick, fl. furnace, CA, fenced yard & more. \$20's!!!!!!

**PRICE REDUCED 3-1-1 Home earhtone carpets, fenced yard, storm cellar & workshop!!!!!!**

**IMMACULATE 2-1-1 Home, Cent. A&H, built-ins, nice carpets, storm windows & doors, well insulated, nicely remodeled, fenced yd., cellar, & much more. \$20's!!!!!!**

**3-2 Home, nicely remodeled, Heat pump, storm windows & doors well insulated, ceiling fans, fenced yd., storage bldg. & more. \$20's!!!!!!**

**HIGHLAND AREA**  
 NICE 3-2-1 Brick Home, cent. A&H built-ins, large den with fireplace. Fenced yard, storage bldg. \$40's!!!!!!

**JUST LISTED-VERY NICE 4-2-1 Brick, Cent. A&H, built-ins, earhtone carpets, large utility, enclosed patio, storm windows & doors, gas grill, spktr. sys., stor. bldg., fenced yd. & more. \$60's!!!!!!**

**PRICE REDUCED 2-2-2 Brick, corner lot, Cent. A&H, spacious rooms, utility, cov. patio, fenced yard, & much more. \$40's!!!!**

**NICE 3-2-2 Brick, Cent. A&H, built-ins, FP, sunken lv. area with cathedral ceiling, ceiling fans, earhtones, storage bldg., much more!!50's**

**NICE 3-2-2 Brick, Cent. A&H, built-ins, FP, Spktr. Sys., Sun room, fenced yd., & Much More!!!!!!**

**3-1-1 carport Home, wall furnace, evap. air, built-ins, fenced yd. \$20's!!!!!!**

**LENAU ADD**  
 JUST LISTED-3-1 1/2 Home, Cent. heat, Evap. air, new paint and counter-top, fenced yd., storage bldg., & more. \$30's!!!!!!

**3-1 Home on corner lot, wall heat, fenced vd.\$20's!!!!!!**

**NICE 4-2-2 carport HOME, Cent. A&H, built-ins, FP, Cent. Vac., Office, sewing Area, fenced yard, & MUCH MORE. \$40's!!!!!!**

**COUNTRY HOMES**  
 NICE 3-1-2 Home on 4.25 acres on pavement close to town, 2 large (barn-workshop) plus other small bldgs. \$60's!!!!

**NICE 3-2 Home on 1 Acre on pavement close to town, Cent. A&H, built-ins, large kitchen, lv. rm., den, utility, large storage-workshop, & more. \$40's!!!!!!**

**3-2-2 Brick on 25 acres, close to town, Cent. A&H, built-ins, shop, barn, new 4 wire fence all around, much more!!!!!!**

**3-2-3 carport Home on 11 acres at edge of town, Cent. A&H, built-ins, storm cellar, barns, & corrals. \$50's!!!!!!**

**3-1-1 Home on approx. 5 acres at edge of town, domestic well and irrig. well, barns & more. \$20's!!!!!!**

**VERY NICE 3-2-1 Home on 1 acre, close to town, Cent. Heat, Evap. air, nice carpets, nicely remodeled. \$30's!!!!!!**

**2-1 Home, 20 acres, sub. pump, sprinkler, barns & corrals. \$40's!!!!**

**EXCELLENT COMMERCIAL TRACT 175' x 100', Hwy. 70 & 84, railroad spur access at rear approx. 1200 sq. ft. bldg. PRICED TO SELL!!!!!!**

**NICE 3,500 sq. ft. office bldg. across from Courthouse. PRICED TO SELL!!!!!!**

**George Nieman, Broker** **Dianne Nieman, Broker**

 <p>SHURFINE ASSORTED SODA POP 6 PK., 12 OZ. CANS <b>99¢</b></p>	 <p>SHURFINE CHARCOAL LIGHTER 32 OZ. BTL. <b>99¢</b></p>	 <p>SHURFINE PREMIUM PORK AND BEANS 15 1/2 OZ. CANS <b>3 99¢</b> FOR</p>	 <p>SHURFINE WATER OR OIL PACK LIGHT CHUNK TUNA 6 1/2 OZ. CANS <b>2 99¢</b> FOR</p>	 <p>SHURFINE ASSORTED POTATO CHIPS 7 OZ. PKG. <b>79¢</b></p>	 <p>SHURFINE CS/WK GOLDEN CORN OR CUT GREEN BEANS 16 OZ. CANS <b>3 99¢</b> FOR</p>	 <p>SHURFINE DINNERS MACARONI &amp; CHEESE 7.4 OZ. BOXES <b>6 99¢</b> FOR</p>	 <p>SHURFINE 36 MED. OR 24 LGE. DISPOSABLE BABY DIAPERS CONV. PACK <b>\$4 88</b></p>
---	---	---	--	---	---	--	---

# SHURFINE SUMMER SALE



### Shelf Specials

SHURFINE ASSORTED BARBECUE SAUCE	18 OZ. BTL.	<b>69¢</b>
SHURFINE HEAVY DUTY 9" PAPER PLATES	40 CT. PKG.	<b>\$1 99</b>
SHURFINE TRASH CAN LINERS	10 CT. BOX	<b>\$1 19</b>
SHURFINE TALL KITCHEN BAGS	15 CT. BOX	<b>\$1 19</b>
SHURFINE LAWN & LEAF BAGS	10 CT. BOX	<b>\$1 89</b>
SHURFINE LIQUID LEMON/GREEN DISH DETERGENT	32 OZ. BTL.	<b>\$1 29</b>
SHURFINE LEMON DISH AUTO DETERGENT	50 OZ. BOX	<b>\$1 69</b>

SHURFINE RINSE FABRIC SOFTENER	GAL JUG	<b>\$1 79</b>	SHURFINE SQUEEZE CHOCOLATE SYRUP	24 OZ. BTL.	<b>\$1 39</b>
SHURFINE COFFEE FILTERS	100 CT. PKG.	<b>49¢</b>	SHURFINE INSTANT CHOCOLATE DRINK MIX	2 LB. CAN	<b>\$2 49</b>
SHURFINE BLENDED CAT FOOD	3.5 LB. BAG	<b>\$2 49</b>	SHURFINE NATURAL OR BUTTER MICRO. POPCORN	3 PK. BOX	<b>\$1 29</b>
SHURFINE CAT LITTER	10 LB. BAG	<b>\$1 19</b>	SHURFINE MIXED NUTS	12 OZ. CAN	<b>\$2 59</b>
SHURFINE INSTANT TEA	3 OZ. JAR	<b>\$1 99</b>	SHURFINE HONEY ROASTED PEANUTS	12 OZ. CAN	<b>\$1 99</b>
SHURFINE COFFEE CREAMER	16 OZ. JAR	<b>\$1 19</b>	SHURFINE PLAIN OR IODIZED SALT	3 26 OZ. CTNS	<b>99¢</b>
SHURFINE ASSORTED DRINK MIXES	8 OZ. CAN	<b>\$1 49</b>	SHURFINE FRUIT COCKTAIL	16 OZ. CAN	<b>69¢</b>
SHURFINE SUGAR FROSTED FLAKES	20 OZ. BOX	<b>\$1 99</b>	SHURFINE ASSORTED YELLOW CLING PEACHES	16 OZ. CAN	<b>69¢</b>

 <p>SHURFINE KETCHUP 32 OZ. ETL. <b>89¢</b></p>	 <p>SHURFINE BATHROOM TISSUE 8 ROLL. PKG. <b>\$1 88</b></p>	 <p>SHURFINE PAPER TOWELS JUMBO ROLLS <b>2 99¢</b> FOR</p>	 <p>SHURFINE ALL PURPOSE FLOUR 25 LB. BAG <b>\$3 89</b></p>	 <p>SHURFINE GRANULATED SUGAR 5 LB. BAG <b>\$1 69</b></p>
---	---	--	---	---

### Quality Meats

HEAVY GRAIN FED BEEF CENTER CUT BONELESS	LB.	<b>\$1 79</b>
CHUCK ROAST	LB.	<b>\$1 89</b>
BONELESS SHOULDER GREAT FOR OUTSIDE GRILLING	LB.	<b>\$1 69</b>
ARM STEAK	LB.	<b>\$1 69</b>
LEAN FRESH BEEF	LB.	<b>\$1 69</b>
GROUND CHUCK	LB.	<b>\$1 69</b>
SHURFINE QUALITY MEAT FRANKS	12 OZ. PKG.	<b>99¢</b>
SHURFINE SLICED BOLOGNA, SALAMI OR P&P LOAF	6 OZ. PKG.	<b>79¢</b>
LUNCHEON MEATS	6 OZ. PKG.	<b>\$1 59</b>
SHURFINE SLICED COOKED HAM	6 OZ. PKG.	<b>\$1 59</b>
SHURFINE CHICKEN SALAD	7 1/2 OZ. CTN.	<b>89¢</b>
SHURFINE HAM SALAD	7 1/2 OZ. CTN.	<b>99¢</b>
SHURFINE PIMENTO OR JALAPENO CHEESE SPREAD	7 1/2 OZ. CTN.	<b>\$1 29</b>



SHURFINE QUALITY SLICED BACON  
**\$1 59**  
1 LB. PKG.

HEAVY GRAIN FED BEEF BONELESS  
**CHUCK ROAST**  
**\$1 39**  
LB.



SHURFINE LEMONADE  
12 OZ. CANS  
**2 99¢**  
FOR




SHURFINE MARGARINE  
1 LB. QTRS.  
**3 99¢**  
FOR



### Fresh Produce

JUICY SWEET NECTARINES	LB.	<b>59¢</b>	SALAD SIZE TOMATOES	LB.	<b>39¢</b>
FRESH GREEN CABBAGE	4 LBS.	<b>\$1 00</b>	ZUCCHINI OR YELLOW SQUASH	LB.	<b>49¢</b>
WHITE ONIONS	3 LBS.	<b>\$1 00</b>	RED OR GREEN LEAF LETTUCE	BUNCH	<b>49¢</b>

THOMPSON SEEDLESS  
**GRAPES**  
**89¢**  
LB.



SHURFINE SLICED HAMBURGER DILL PICKLES 32 OZ. JAR <b>99¢</b>	SHURFINE CHUNK OR WITH GRAVY DRY DOG FOOD 25 LB. BAG <b>\$4 69</b>	SHURFINE CRUNCHY OR SMOOTH PEANUT BUTTER 18 OZ. JAR <b>\$1 29</b>	SHURFINE SALAD DRESSING 32 OZ. JAR <b>99¢</b>	SHURFINE LIQUID BLEACH GAL. JUG <b>79¢</b>	SHURFINE EVAPORATED MILK 12 OZ. CANS <b>2 99¢</b> FOR	SHURFINE VEGETABLE OIL 48 OZ. BTL. <b>\$1 69</b>	SHURFINE BLUE OR ALL PURPOSE LAUNDRY DETERGENT 42 OZ. BOX <b>99¢</b>	ALL TYPES 3 LITER COCA-COLA <b>\$1 59</b>
--	--	---	---	--	--	--	--	--

### Grocery Specials

GOLD STAR ASSORTED FRUIT DRINKS	GAL JUG	<b>79¢</b>
SHURFINE BARTLETT REG. LIGHT PEAR HALVES	16 OZ. CAN	<b>69¢</b>
SHURFINE ASSORTED IN JUICE PINEAPPLE	20 OZ. CAN	<b>69¢</b>
SHURFINE PINK GRAPEFRUIT COCKTAIL	48 OZ. BTL.	<b>\$1 79</b>
SHURFINE WHITE GRAPEFRUIT JUICE	48 OZ. BTL.	<b>\$1 79</b>
SHURFINE CRANBERRY JUICE	48 OZ. BTL.	<b>\$1 79</b>
SHURFINE CRANAPPLE JUICE	48 OZ. BTL.	<b>\$1 79</b>
SHURFINE CRANRASPBERRY	48 OZ. BTL.	<b>\$1 79</b>
SHURFINE WHITE OR GOLDEN HOMINY	3 15 OZ. CANS	<b>99¢</b>
SHURFINE FANCY SWEET PEAS	2 17 OZ. CANS	<b>89¢</b>

SHURFINE WHOLE PEELED TOMATOES	2 16 OZ. CANS	<b>89¢</b>
SHURFINE TOMATO SAUCE	5 8 OZ. CANS	<b>99¢</b>
SHURFINE SMALL PITTED RIPE OLIVES	6 OZ. CAN	<b>99¢</b>
SHURFINE BLACK PEPPER	4 OZ. CAN	<b>\$1 29</b>
SHURFINE GARLIC SALT	5 1/2 OZ. BTL.	<b>69¢</b>

### Health & Beauty Aids

WESTERN FAMILY ASSORTED TOOTH PASTE	6.4 OZ. TUBE	<b>99¢</b>	WESTERN FAMILY ROLL ON DEODORANT	2 1/2 OZ. SIZE	<b>99¢</b>
WESTERN FAMILY ASS. ANTI PLAQUE RINSE	16 OZ. BTL.	<b>\$1 79</b>	WESTERN FAMILY ASSORTED BALSAM SHAMPOO	15 OZ. BTL.	<b>99¢</b>
WESTERN FAMILY ASPIRIN	250 CT. BTL.	<b>99¢</b>	WESTERN FAMILY ASSORTED BALSAM CONDITIONER	15 OZ. BTL.	<b>99¢</b>
WESTERN FAMILY NASAL SPRAY	1 OZ. BTL.	<b>\$1 69</b>	SHURFINE 60-75-100 WATT SOFT WHITE LIGHT BULBS	2 CT. PKG.	<b>89¢</b>



WE RESERVE THE RIGHT TO LIMIT QUANTITIES.  
**AF AFFILIATED FOODS INC.**  
 MEMBER STORE  
 PRICES EFFECTIVE JULY 1-7, 1990