

PAGE ONE

A QUICK READ OF THE NEWS

Cops hunt teddy bear

The black bear appeared to be deep in a slumber in Margaret Lowry's garden. Even a blast from a police-cruiser siren and a special noisemaking device didn't rouse it.

Lowry was concerned about sightings of bears in her Berkshire Hills town of Adams, Mass.

In the incident, which happened last August, two police officers tried to wake the 4-foot bear with the siren. Then an environmental officer, who was called for backup, tried to get it moving with a device that sounds like a firecracker. Still nothing.

Finally, an officer gave the bear a poke with a long prod, and that's when it was discovered to be stuffed.

Dispatcher Gregory Charon said police had no reason to suspect that the creature wasn't real.

"Based on what's been happening this summer, it wasn't something the officers wanted to get close to without knowing," Charon said.

Police didn't know who put the bear in the garden. "It must have been some type of prank," dispatcher Tony Piscioneri said.

Concertgoers duped?

In Hong Kong, a city of fakes from counterfeit Rolex watches to bogus Gucci bags, red-faced cultural officials have been faced since late last year with figuring out whether music lovers were duped by a fake Russian orchestra.

Thousands of fans paid up to \$31 to listen to what was described in programs and advertisements as the Moscow Philharmonic Orchestra. Officials were troubled to learn that the same orchestra was supposed to have played in France, Portugal and Spain on the same dates.

An executive with the Philharmonic's agents said the Hong Kong concert was performed by free-lance musicians, along with as many as five Philharmonic members, but her agency had no part in it.



Drawing date: Saturday, Jan. 24
Winning numbers: 18-19-30-32-33-42
Estimated jackpot: \$18 million
Winners: 0
Next drawing: Wednesday, Jan. 27
Estimated jackpot: \$23 million

On this date in history

Jan. 29— Texas' Permanent School Fund is set up by the Fifth Legislature (1854).

Also Jan. 29 — Confederate gunboats capture U.S. warships near Sabine Pass, Texas (1863).

Feb. 1— Rutgersville College, near present-day LaGrange, opens its doors and becomes the first Texas college worthy of the name (1840).

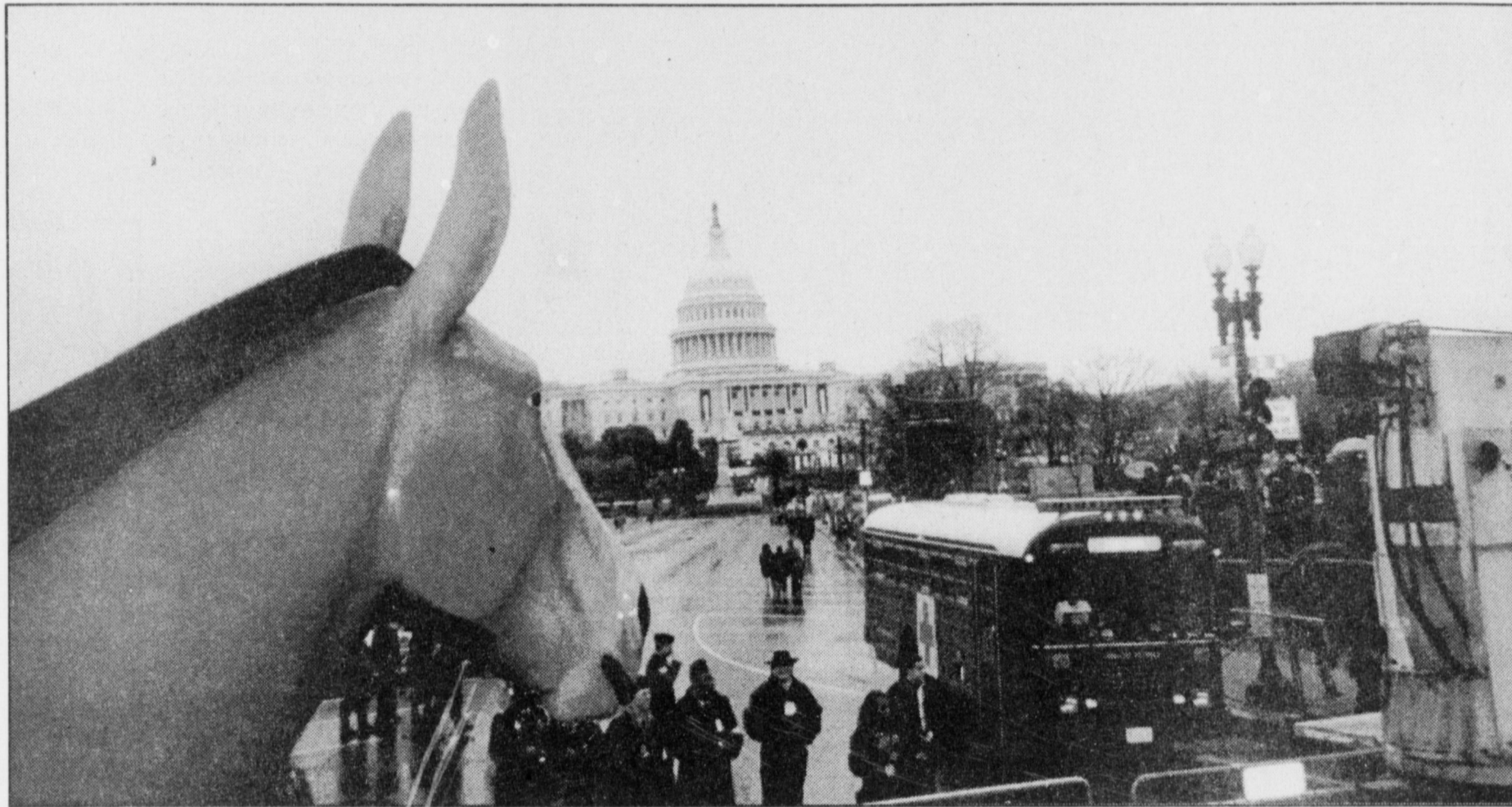
LOCAL WEATHER

Sunday should be cold and snowy again, according to Friday night's forecast, but then the high temperature should rise from Sunday's 33 to Monday's 50 and remain seasonably warm for a few days. Morning low temperatures should be in the 20s throughout. Scattered showers are possible Monday as the moisture moves out of the area, but there was no indication of snow after Sunday.

Editor Ronn Smith can be reached at 272-4536 or ctyankee@fivearea.com

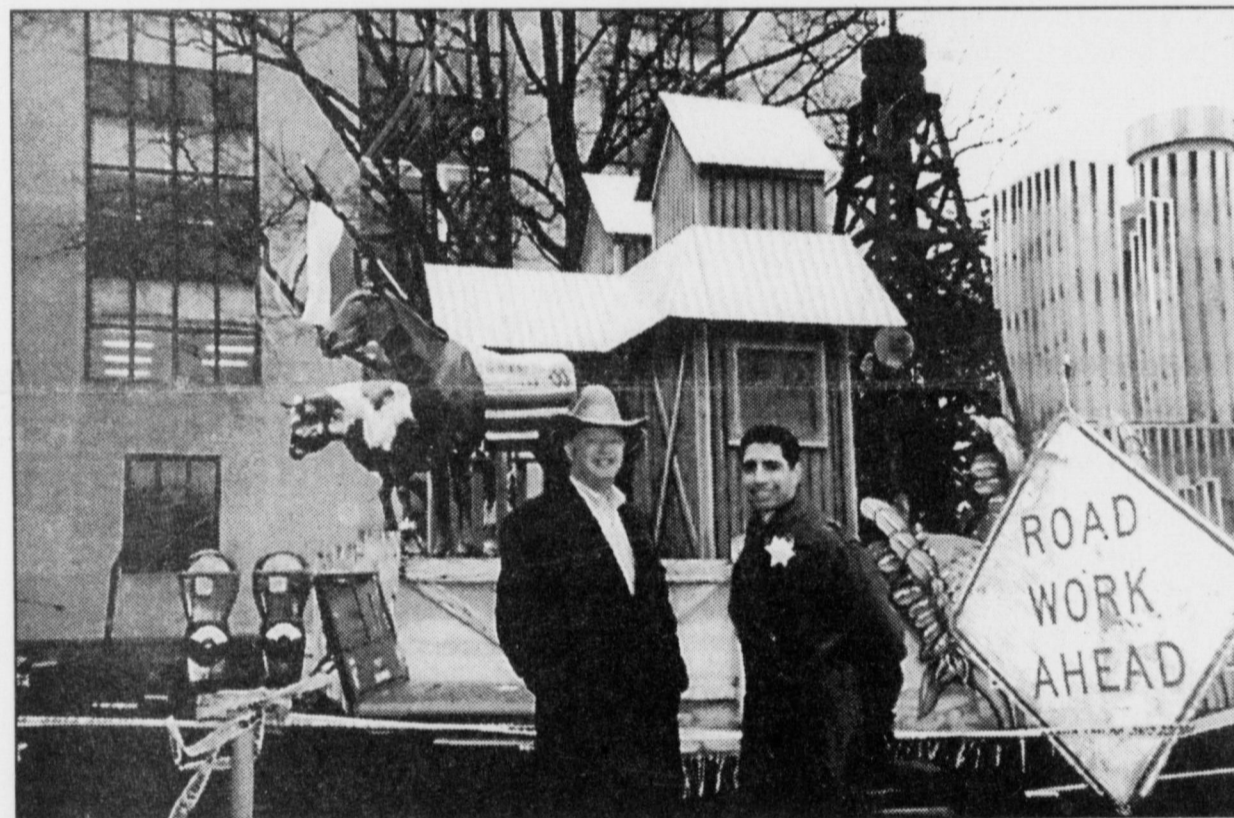
Missed your paper? Call carrier Melissa Flores at 272-6719 or the Journal during business hours, 8:30 a.m.-5 p.m.

Ol' Pete goes to Washington



Courtesy photos: Clifton Meyers

Ol' Pete is profiled in front of the U.S. Capitol as the Texas float makes its way along the inaugural parade route.



The eyes of Texas

Straight out of Muleshoe, Ol' Pete (more formally known as the National Mule Memorial) stands at the front of Texas' float in the inaugural parade (left). Former Muleshoe resident Rick Meyers and Mayor Victor Leal are in the foreground. Leal also got a chance (below left) to ride the float with professional golfer Ben Crenshaw and his wife, Julie, while Muleshoe resident Chuck Smith (below, at right) visited later with singer Wayne Newton. "It was one of the best weekends I've ever experienced," Leal said Friday. "I never even had the desire to tour Washington before, but I was probably wide-eyed and open-mouthed the whole time I was there." Asked about the publicity for the town, he said, "When you'd tell people you were from Muleshoe, they'd say, 'Oh, you've got the Mule Memorial. I don't think this is the end of the publicity the city will be getting out of this.'"



We never know who is watching

If you knew that every memory you ever had would be erased except for one, which one would you choose to keep?

I wouldn't worry about memories of my parents because both of them are still with me. Life would be odd without memories of my friends or the rest of my family, but I wouldn't keep those memories, either.

I would keep a memory I have held close to my heart for most of my 15 years — the memory of my grandpa.

My grandpa, William Douglas Cook Sr., died when I was three months shy of 4 years old. He was a great grandpa;

Katye's Kaleidoscope By Katye Cook

many of my relatives don't know how I managed to hang on to this memory, but I have.

The thing I remember most clearly about my grandpa is "the tiger." Grandpa would lie in the doorway, yell my name and wait for me to come running. Then he would grab me by the waist and tickle me and yell, "The tiger's gonna get you; the tiger is gonna get you!"

This always got me so excited and wound up that it took "forever" to calm me down.

Everything else I remember about my grandpa are things someone has told me.

I would keep the memory of my grandpa because it is all I have of him. If all but one of my memories were erased, I could start making new memories of friends and family the next day, but I could never have my own memories of my grandpa again.

What I am saying is: Make each moment count. You are making a memory for someone else, so make it worth remembering.

Katye Cook, a freshman at Three Way High School, writes this column for the Journal.

Classic Cable begins addressing city's complaints

Only a week after a representative of Classic Cable met with the Muleshoe City Council and heard complaints about the company's service, the company moved local Channel 6 to cable Channel 6 so that it can be included in the basic cable package.

One complaint aired at the council meeting was that Channel 6 was being broadcast as Channel 17, which is not available in the basic package.

City Manager Rick Hanna said Friday that he had received several positive

see CABLE on page 2



Journal photo: Ronn Smith

Safe and sound

Muleshoe city employees Juan Flores (left) and Julio Ortega secure Ol' Pete back on his site at the Mule Lot on Friday after the statue's trip to Washington, D.C., to represent Texas in the presidential inaugural festivities.

Eagles drop close games to Cotton Center, Amherst

Michael Soliz poured in 17 points and Robert Rodríguez added 11 Tuesday night as Three Way narrowly lost to Cotton Center 54-49. Anthony Furgeson had 18 rebounds.

A 20-point third quarter put the game on ice for Cotton Center.

Scoring contributions for Three Way also came from Carlos Contreras (nine),

Furgeson (eight) and Jordan Gray (four).

Amherst 41 Three Way 41

The Three Way Eagles lost an overtime squeaker 44-41 to Amherst on Jan. 19.

The Eagles jumped out to a 10-2 first-quarter lead and held on 21-19 at halftime and 31-26 at the end of the third quarter. The Bulldogs came fighting

back to tie the score at 39-all by the end of regular play, then outdid Three Way 5-2 in overtime.

Anthony Furgeson had a good night for Three Way, with 21 points and seven rebounds. Michael Soliz led the Eagles in rebounds with 10.

Soliz and Robert Rodríguez scored eight points apiece while Carlos Contreras contributed

Roosevelt turns tables on Lady Mules, 59-44

By DELTON WILHITE
Journal correspondent

The Lady Eagles of Lubbock Roosevelt literally ran over the Lady Mules on Tuesday night in this season's second meeting of the two teams.

The Lady Mules' pressure defense allowed them to run away with the first game, but Roosevelt was better prepared Tuesday and returned the favor, 59-44.

Megan Tipps made the first points of the game by grabbing a long rebound, scoring from the elbow and making the ensuing free throw.

Roosevelt answered with a bucket and a three to grab an early lead.

Mindy Locker tied the game with a pair of free throws after being fouled attempting to put back a rebound, but Roosevelt went on a 14-4 scoring run to finish the first quarter leading

19-9.

Early in the second frame, Candace Hutto trimmed the Lady Eagles' lead to three, but Roosevelt used a pair of threes to stretch its lead back to 10 points by halftime.

The Lady Mules were able to get only as close as six points during the third quarter. Shani Rasco put back a rebound and Britni Gartin was fouled in the act of shooting and made both free throws; that made the score 34-28. Muleshoe was not able to mount another threat as Roosevelt opened a 43-30 lead

by the end of the quarter.

Tipps led the scoring for Muleshoe with eight points, Gartin and Locker added seven each, Rasco and Tommie Hernández made six each, Hutto five, Jessica Carpenter three and Annie Cox two.

Muleshoe had 24 turnovers, was called for 25 fouls and made 15 of 23 free-throw attempts.

The Lady Mules are 3-3 in district, trailing Shallowater (6-0), Dimmitt and Roosevelt (each 4-2).

Three Way girls lose to Cotton Center, comes close to Amherst

A 14-point fourth quarter came too late to help the Three Way Lady Eagles on Tuesday night as they fell 43-30 to the Cotton Center Lady Elks.

"We did not show up!" coach Linda Pshigoda said. "After the game, I told the girls that it was important to finish the season with 110 percent effort."

Cotton Center's 13-point first-quarter lead (17-4) spelled the difference in the game, although the Lady Eagles

outscored their opponents in both the second and fourth quarters.

Julie Salamanca and Kara Heinrich each had eight points for Three Way, followed by Cynthia Baeza and Candace Quick with five apiece.

Leading rebounders for Three Way were Heinrich (nine), Baeza (eight) and Alma Rodríguez (seven).

Amherst 30 Three Way 28

The Amherst Lady Dogs managed to pull out a 30-28 victory over Three Way on Jan. 19 despite the fact that the Lady Eagles led 13-9 at halftime and still held on 17-16 at the end of the third quarter.

Julie Salamanca led Three Way scoring with 11 points, prompting coach Linda

four.

"This was a tough overtime loss that dropped us out of the district lead," coach Royce Winnett said. "Our district is extremely even this year, and any team can beat the other."

"We have to get ready for the second half of district and win the rest of our games," Winnett added.

— The Sports Babes

Pshigoda to say, "I was very pleased with her play. She has really stepped up for the team. . . . These girls are not used to playing with a lead."

Cynthia Baeza also had a good night on the boards for Three Way, hauling in 15 rebounds.

— The Sports Babes

HOSPITAL NEWS

Muleshoe Area Medical Center has released the following information about patient loads:

Jan. 18 — María Arzola, Ethel Ayres, Jefferson Cook, Luís E. Franco, Corina Gauna, Dorothy Hood, Clarence Jordan, Nancy J. Phelps, Alexandra Sánchez, Doris Stanford and Donald Williams.

Jan. 19 — Ethel Ayres, Nina M. Bryant, Jefferson Cook, Rex O. Fennell, Luís E. Franco, Corina Gauna, Dorothy Hood, Clarence Joran and Linda McGonagill.

Jan. 20 — None reported.

Jan. 21 — None reported.

Jan. 22 — Miguel R. Acevedo, Ethel Ayres, Corina Gauna, Josie Guerrero, Dorothy Hood, Ivor Lake, Fidelfo Saucedo and Iris A. Saucedo.

Jan. 23 — Corina Gauna, Josie Guerrero, Dorothy Hood,

Joely Meléndez, William T. Millen and Manuela Rejino.

Jan. 24 — Helen Beaver, Corina Gauna, Josie Guerrero, Kasey Hearn, Dorothy Hood, Joely Meléndez, William T. Millen, Manuela Rejino, Christopher S. Toscano and Doris E. Wedel.

HONORS

GALLMAN

Muleshoe city secretary LeAnn Gallman graduated from the Texas Municipal Clerks Certification Program on Jan. 18.

Graduates complete about 200 hours of individual study and attend eight two-day seminars for 100 hours of classroom study.

The program is located at the University of North Texas in Denton.

AROUND MULESHOE

Financial Aid Seminar set

The Jennyslippers will sponsor the annual Financial Aid Seminar at 7 p.m. Feb. 1 in the high school cafeteria.

Representatives of colleges, universities and lending institutions are expected to give short presentations. Afterward, parents and students may meet with the representatives individually.

Information on applying for financial aid for education will be provided.

The seminar is open to high school juniors and seniors, their parents, and any adult who is interested in higher education.

Junior-senior banquet planning starts

There will be a parent meeting at 5 p.m. Feb. 1 in the Muleshoe High School Library to discuss plans for the junior-senior banquet.

Parents are encouraged to come and present their ideas. Anyone who cannot attend the meeting but would like to help is asked to contact one of the junior class sponsors.

'New' products to be introduced

A skin-care product line new to Muleshoe will be introduced at an "advanced skin-care clinic" from 3 p.m. to 5 p.m. Jan. 29 at the Bailey County Coliseum.

Free facials will be offered.

Anna Bales, national director for New Image International, will conduct the clinic.

Muleshoe nets 1.25" from snow

The series of snowfalls (prior to Tuesday) in January had netted Muleshoe 1.25 inches of moisture before Tuesday's wet snow and rain, according to weatherman J.K. Adams.

Public calendar

Jan. 29 — 10 a.m. Bailey County Commissioners Court, in the commission room at the courthouse.

Feb. 4 — 6:30 p.m. Johnny Ray Watson in concert at First United Methodist Church.

March 8 — Deadline to apply for the Kristy M. Landers Memorial Scholarship; application forms are available at the high school counseling office.

The deadline for items to appear in *Around Muleshoe* is 5 p.m. Monday for Thursday's editions and 5 p.m. Thursday for Sunday's editions.

Bailey County Journal USPS 040-200
Established March 31, 1963. Published by Triple S Publishing, Inc.
Every Sunday at 304 W. Second, Box 449, Muleshoe, TX 79347.
Second Class Postage paid at Muleshoe, TX.
POSTMASTER: Send address changes to the Bailey County Journal, P.O. Box 449, Muleshoe, TX 79347.
We are qualified members of:
Panhandle Press Association, National Newspaper Association,
West Texas Press Association and Texas Press Association

WEST TEXAS PRESS ASSOCIATION
MEMBER 2000
PPA
Panhandle Press Association

Scot Stinnett, Publisher
Lisa Stinnett, Vice-President/Comptroller
Ronn Smith, Editor
Beatrice Morin, Classifieds
Leah Bell, Advertising

© 1990

SUBSCRIPTIONS: Muleshoe Journal and Bailey County Journal
By Carrier Yearly - \$22.00
Bailey County — by mail - \$24.00
Elsewhere - \$26.00
Advertising Rate Cards on Application

Advertisers should check their ad the first day of insertion. The Journals will not be liable for failure to publish an ad or for a typographical error or errors in publications except to the extent of the cost of the ad for the first day of insertion. Adjustment for errors will be limited to the cost of that portion of the ad where the error occurred.

Continental Credit
206 S. Main St. in Muleshoe
LOANS While You Wait!
Credit Starter Loans
\$100 to \$467
Mon.-Thurs. 8:30 a.m. to 5:30 p.m.
Fri.-8:30 a.m. to 6 p.m.
Phone Applications Accepted **272-3673**

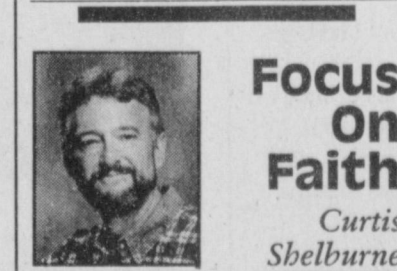
EL PASO NATURAL GAS
We're your neighbor!
At EL PASO NATURAL GAS, your safety is our first concern. That's why our pipelines are marked with caution signs. We have a toll-free phone number that you can call anytime you:

- Smell a natural gas odor
- See soil erosion or discolored vegetation near the pipeline
- Hear a hissing sound or see dust blowing up from the ground
- See construction or other activity near the pipeline

1-800-334-8047 or 911
YOUR SAFETY IS OUR FIRST CONCERN

Dentally Speaking, Happy Anniversary!

I went to the dentist one morning this week. That's nothing particularly unusual. I am a committed and faithful customer. Diligent, even. You can set your clock by me, dentally speaking. I feel very strongly about trying to go to the dentist at least once every five years or so, more often if I'm in intense pain that lasts several days. One of the only things I feel more strongly about than regular attendance at dental appointments is



Focus On Faith
Curtis Shelburne

regular eating at regular meals. Since dental problems make that difficult, I go to the dentist regularly. Every five years or so.

Actually, I walk into the dental office a lot more often than that. My children go much more regularly than I do, regularly enough for all of us, I think. I sometimes go with them, and I always enjoy visiting with the people at the office. I like them all. I just happen to prefer visiting standing up without anybody's hands in my mouth and no ghastly sounds emanating from my constricting throat.

You know the sounds I mean. High-pitched whines from massive industrial drills. Low-pitched whines from "Yours Truly" underneath the drill.

I admit it. Both sounds, but particularly the high-pitched one, run me absolutely up the wall. It's an interesting situation. I try to keep

my top half still while my bottom half is dancing a veritable jig in the chair and searching for any good way out. I try to muster all my concentration to keep my mouth open wide and pointed toward a good friend who has my best interests at heart but happens also to have drills and needles pointed down my gullet. If I concentrate on staying in the chair, my mouth starts to bite the drill. If I put my effort into not biting the drill, I find that I've turned my mouth 180 degrees away as if I expected him to get to my teeth through the back of my head.

This is difficult. One friend in the office laughingly suggested whiskey before the visit. She was kidding, but, when you think about it, maybe it's no accident that most old westerns feature saloons right down the street from the dentist's office.

Anyway, to my friends down at the particular tooth tavern I frequent regularly, every five years, I just want to say "Happy Anniversary!" Today, January 26 as I write, is the time-honored anniversary of the patent for the dental drill. 1875. For over a century and a quarter this screaming marvel has served us well. That's about long enough I'd say. Aren't lasers quieter? (And I really like what you're doing with glue.)

But Happy Anniversary anyway! To the rest of you, well, I hope you go to the dentist regularly. Maybe even more regularly than I do. And, speaking of attendance, I hope you'll go to church Sunday. I'm told that the pastoral practitioner down at our place can deaden whole crowds with no injections at all. Still, why not give it a shot?

Curtis Shelburne is minister of the 16th & D Church of Christ in Muleshoe.

Mules grab 'good win' by trouncing Roosevelt Eagles 75-54

By DELTON WILHITE
Journal correspondent

Offense was not a problem for the Mules on Tuesday night as they defeated the Lubbock Roosevelt Eagles 75-54 in Muleshoe.

Line-up changes and determination by the Mules to put more points on the board resulted in a good win for the Mules.

"It was a good win for us," Mules coach Ralph Mason said, "and we put some points on the board. We made a switch

defensively tonight and ran mostly a zone, so we could get out on our break quicker."

Dan Williams and Kyle Atwood moved the ball on the perimeter and put the ball where it was needed. This quick ball movement caused Roosevelt to over-adjust in its end zone and leave scoring lanes for the Mules. Roosevelt was forced to try to get a double team on the Mules' inside game.

Jeff Shelburne is difficult to stop with just one man. He can use either hand to score and

utilizes his size and strength. Darrell Lewis plays bigger than he is, and his quick hands and feet leave the defense in his wake as he cuts to the basket.

In the third period against Roosevelt, Lincoln Riley was making a cross-court pass to Atwood when Lewis spotted a lane to the hoop and picked off Riley's pass and drove the lane.

Roosevelt had started the game in man-to-man defense, so Muleshoe pounded the ball inside to Shelburne, Lewis and Riley. After the Eagles changed

to a zone, Lewis popped out behind the arc and nailed a three to give the Mules an 18-12 first-period advantage.

Landon Sheets notched a three from the corner to get the Mules rolling in the second stanza. Riley put back two offensive rebounds and hit Joey Tucker with a long pass to complete a fast break.

Tucker struck from behind the arc on the Mules' next possession to finish a 12-1 Mule run in the first four minutes of the second quarter. Roosevelt

answered with an 8-2 run of its own by stacking their post. The run was broken when Lewis gave beat his defender to the hoop to give the Mules a 32-21 cushion at half.

The teams exchanged points in the third quarter. With Atwood making two shots from behind the arc and Sheets adding a third, the period ended with the Mules holding on to their 11-point cushion.

In the first two minutes of the final period, Roosevelt shaved the Mule lead to six

points. But by the final two minutes, the Mules had pushed their lead back to a comfortable 10 points, and finished off the game with 10 of 12 free throws while allowing Roosevelt only a single three-pointer.

Lewis led Muleshoe with 22 points, including a three in the first period. Shelburne added 13, Riley 10, Sheets nine, Tucker eight, Atwood six (two threes in the third quarter), Williams four and Sonny Chávez three.

Freshman boys lose heartbreaker to Littlefield Wildcats, 45-43

By DELTON WILHITE
Journal correspondent

The freshman Mules could not make a four-point third-quarter lead stand up through the fourth quarter, losing to Littlefield 45-43 Monday night in Muleshoe.

Layne Sheets attempted a half-court shot with 3:74 seconds left on the clock but the shot missed the mark.

The teams started out with a

defensive battle in the first quarter. Victor Jaramillo made one of two free throws to give the Mules a 6-5 edge after one frame.

In the second quarter, Sheets beat the defense down the lane to make a bucket, plus seven of eight from the charity stripe.

Bryan King hit from the elbow and Tatom Heathington banked in a three from the top of the key to extend the Mules'

halftime lead to 21-14.

Littlefield tied the game at 23 midway through the third period. But the Mules came back, with Heathington making two free throws and Jaramillo canning a baseline jumper to give the Mules a four-point advantage by the end of that quarter.

The Wildcats took a 38-36 lead with 3:24 showing on the clock, thanks to back-to-back

buckets and a free throw.

Sheets kept the Mules close with a "give-and-go" to Tyrel Gear, who got position and was fouled on a defensive rebound. At the two-minute mark, his two free throws cut the Littlefield lead to a single point. Sheets made one of two from the line to tie the game at 43 with only 20 ticks remaining on the clock.

Littlefield got the ball across

the time line and called for a time-out with 10 seconds in the game. The coach drew up the play and the Wildcats executed, taking a two-point advantage and leaving the Mules 3:74 seconds for a desperation shot. Littlefield pressured the ball, but Sheets was able to get the ball to midcourt for a long shot that went wide of the mark.

Sheets led the Mule scoring with 19 (including 13 of 16 free throws), with Heathington adding 12 (two threes), King six, Jaramillo four and Gear two.

The Mules face Dimmitt in Dimmitt on Monday.

OBITUARIES

ETHEL AYRES

Services were held Wednesday at the First Baptist Church of Muleshoe for Ethel Ayres, 83, of Muleshoe. Dr. Stacy Conner officiated. Burial was in Muleshoe Memorial Park.

Ellis Funeral Home handled arrangements.

Mrs. Ayres was born July 29, 1917, in Roosevelt County, N.M. She died Monday at Muleshoe Area Medical Center.

She married Ervin L. Ayres in El Monte, Calif., on Aug. 18, 1972. He died Feb. 19, 1991.

She was a graduate of Eastern New Mexico University in Portales and worked as a high school secretary at El Monte High School for 20 years.

She moved to Muleshoe in July 1993 from Morro Bay, Calif. She was a member of the First Baptist Church, where she was a volunteer and a member of the Joy Choir. She also volunteered at Muleshoe Area Medical Center for seven years. She was a member of the American Association of Retired Persons and the Muleshoe Senior Citizens.

Mrs. Ayres is survived by two sisters, Clydetta Mitchell of Muleshoe and Burnadeen Ferrell of Dallas, and several nieces and nephews including Marilyn Wilson and Helen Marshall, both of Muleshoe.

Casket bearers were Gordon Wilson, Jim Mitchell, Bill Mitchell, Ronnie Holt, Marshall Cook and Lionel Patterson.

Honorary bearers were the nurses of Muleshoe Area Medical Center.

The family suggests memorials to buy IV pumps for Muleshoe Area Medical Center (708 S. First).

LESLIE FAY BRUNS

Services were held Saturday at Ellis Funeral Home Chapel for Leslie Fay Bruns, 87, of Muleshoe. Curtis Shelburne and the Rev. Brad Reeves officiated. Burial was in Muleshoe Memorial Park.

Ellis Funeral Home handled arrangements. Mr. Bruns was born Oct. 6, 1913, in Snyder, Okla. He died Jan. 25 in Muleshoe.

The family moved from Mountain Park, Okla., to Parmer County in the 1930s. He married Ruby Nell Morris on July 5, 1937, in Clovis. They lived in the Stegall area until World War II, when they moved to Clovis and he worked as a brakeman on the railroad. They moved to Aiken, Texas, in 1947 and back to Parmer County in 1951. He served as chairman of the Parmer County Republican Party and as a director of the Parmer County Farm Bureau. He was in-

strumental in bringing natural gas and telephone service to southern Parmer County.

He was a longtime member of the Church of Christ.

Mr. Bruns is survived by his wife; four sons, Morris, Jerry and Bruce Bruns, all of Muleshoe, and Mark Bruns of Littlefield; three daughters, Judy Watson of Breckenridge, Toni Tucker of Possum Kingdom and Jane Stephens of Shallowater; a sister, Ruth Briscoe of Muleshoe; and a brother, Don Bruns of Muleshoe; seven grandchildren, Brent Stephens, Kristi Borthwick, Troy Watson, Jeremy Bruns, Neal Watson, Amber Bruns and Jeffrey Bruns; and a great-granddaughter, Kate Borthwick.

The family suggests memorials to Hospice of Lubbock (P.O. Box 53276, Lubbock 79453).

RAYMON CLEVINGER

Services were held Thursday at the First Missionary Baptist Church of Morton for Raymon Clevinger, 68, of Morton. The Rev. Randy Johnson officiated. Burial was in Morton Memorial Cemetery.

Ellis Funeral Home of Morton handled arrangements.

Mr. Clevinger was born July 6, 1932, at Bula. He died Jan. 23 in Covenant Hospital at Lubbock.

He married Ernestine Stovall at Bula on May 24, 1952, and they moved to Morton in 1979 from Whitharral.

He was a member of the First Missionary Baptist Church of Morton. He had served for many years as a 4-H leader in Hockley County and was an honorary member of the Whitharral High School FFA Chapter. He had served on the Cochran County Farm Bureau, was recognized as the Morton school athletic booster of the year for 1987, and had been an umpire for the Ladies Softball League in Morton. He was a farmer and for the past few years had worked for Ellis Funeral Homes in Morton, Muleshoe, Earth and Sudan.

Mr. Clevinger is survived by his wife; a son, Joe Ray Clevinger of Taylor, Texas; a daughter, Christy Clevinger of Levelland; three sisters, Beatrice Stanley of Spade, Lillie Scott of Soldotna, Alaska, and Lois Brown of Midland; a brother, Bill Clevinger of Newberg, Ore.; and five grandchildren.

The family suggests memorials to New Mexico Christian Children's Home (1356 New Mexico 236, Portales 88130-9411)

or the First Missionary Baptist Church of Morton.

NAOMI BURGESS

Services were held Saturday at the Earth United Methodist Church for Naomi Burgess, 94, of Earth. The Revs. Albert Lindley and Henry Stone officiated. Burial was in Sprinklake Cemetery.

Parsons-Ellis Funeral Home of Earth handled arrangements.

Mrs. Burgess was born March 30, 1906, in Vinson, Okla. She died Jan. 24 in Buckner Ryburn Nursing Home in Dallas.

She married Floyd Ernest Burgess on Aug. 7, 1926, in Vinson. They moved to the Earth area from Vinson 63 years ago. He died in 1964.

LETTER TO THE EDITOR

Dear Editor,

It is a pleasure to see the beautifully impressive addition to the Mule Lot. I commend the Muleshoe Chamber of Commerce for such a traveler eye-catching visitor's center.

With an attractive visitor's center, it is regrettable that visitors seldom find anyone there to greet them or answer their questions about our town.

I have found it difficult to call the center. For several days, I called. Finally, yesterday I was able to call and have someone answer the phone.

I wanted to learn the details about placing my parents' names on one of the planks in the platform. The woman who answered the phone could not tell me, and referred me to Roger Williams or Lavon Hunt.

Over the years, I have seen no

Mrs. Burgess attended Southwestern State College at Weatherford, Okla. She was a homemaker and gardener and a member of the Earth United Methodist Church, where she was active in the WSCS and taught Sunday school.

She is survived by three sons, Kenneth L. Burgess of Abilene, Jimmie E. Burgess of Dallas and Michael L. Burgess of Richardson, Texas; a daughter, B. June Brown of Omaha, Texas; 13 grandchildren; 19 great-grandchildren; and four great-great-grandchildren.

She was preceded in death by six sisters and four brothers.

The family suggests memorials to Earth United Methodist Church (P.O. Box 181, Earth 79031).

small town with a comparable lovely visitor center.

LaVONNE MCKILLIP
Muleshoe



Bruns

Cellular Phone Service At It's Best!
2000 MINUTES
for \$**39.99**
Call Susan for details!
Phone Applications Accepted.
Offer Ends Soon! Some Restrictions Apply

For A Limited Time Only!
STARTAC
3000
with activation
99¢

Ask Us About Our Other Offers At
CELLULAR
2000
202 Main Street • Muleshoe
272-7523/272-5153
CELLULAR ONE Open: 10:00 am to 5:30 pm
Author and Dealer

Electronic Filing
included with your
return.

104 Avenue C
Muleshoe, TX
Phone
(806) 272-3332
Fax
(806) 272-5309
hrblock@fivearea.com
If no answer call
(806) 946-3696 or (806) 373-6050

H&R BLOCK
rapid refund

The Pieces Fit...
Bring your W-2 form to Muleshoe Motor Company. We'll have a professional tax service prepare your 2000 taxes. Then use your anticipated refund for a down payment or to pay the TT&L on a new vehicle. You might even decide to purchase one of our quality used cars.

No more puzzling over what to do with that extra cash.

Now...interest rates as low as 0.9% on 2001 Ford Taurus. And interest rates starting at 3.9% on all 1/2 tons, including Supercabs and Supercrews.

MULESHOE MOTOR CO.
See our complete vehicle lineup at muleshoemotor.com
1225 West American Blvd. • 272-4251 • 1-800-432-7617

Golden Wedding Anniversary Celebration
Jacque Baker and Wanda Mitchell

were married on January 26, 1951 at the Lawrence Ave. Church of Christ in Anton, Texas. On January 27, 2001 a celebration was held at the Canyon House of the Countyline Restaurant. Hosting the event were their children, spouses and families. Relatives and friends were present for the occasion.

This included Rand and Jane Baker of Missouri City, Craig and Deborah Baker of San Antonio, Texas; Brad and Mary Baker of El Paso, Texas; and Scott and Jaime Baker of Austin, Texas.

Also hosting for the occasion were the nine grandchildren of the couple.

BAILEY COUNTY DEVOTIONAL PAGE

Boehning Dairy
DRINK MORE MILK.
 Brian Boehning Earth, Texas

AG AVIATION
 2 1/2 miles North on HWY 214
 272-3066 FAX 272-3534
 P.O. Box 68 • Muleshoe, TX

MULESHOE VALLEY INC.
 West Hiway 84
 272-4266 Muleshoe

STEVE STANCELL - OWNER
Two locations to serve you
 1900 W. American Blvd. 272-5337
 107 E. American Blvd. 272-3978

Lowe's MARKETPLACE
 401 W. American Blvd. • Muleshoe • 272-4585

Leal's 107 E. Ash Muleshoe, TX 272-5772
 Tortilla Factory, Inc.

WINKLES TRUCKS, INC.
 Box 757 (806) 247-2724 Friona, TX

SAIN IRRIGATION & MACHINES
 Complete Pump Service
 W. American Blvd. 272-4397
 Walt Sain Muleshoe, TX 272-4148

CENTRAL COMPRESS & WAREHOUSE
 SUDAN, TEXAS

PACO FEED YARD, LTD.
 Commercial Cattle Feeders
 P.O. Box 956, 265-3281 Friona, TX
 Feller Hughs-Mgr.

BAILEY COUNTY ELECTRIC COOPERATIVE ASSN.
 Muleshoe — 272-4504 Morton — 266-8600

MAPLE COOP GIN
 927-5501 Maple, Texas

1ST BANK MEMBER FDIC
 202 South First 272-4515

Muleshoe Feed Barn
 311 W. American Blvd. Muleshoe, TX 272-5626

WES-TEX FEED YARDS, INC.
 Custom Cattle Feeding
 272-7555 Muleshoe, TX

Decorators Floral & Gifts
 616 South First 272-4340 Muleshoe, TX

T.J.'s Donuts
 328 S. Main St. Muleshoe 272-3542
 Open Monday thru Friday, 5 am to 2 pm • Saturday, 5 am to 1 pm

MULESHOE LIVESTOCK AUCTION
 Muleshoe, TX • Sale Every Saturday
 Clayton, C.L. & Thurman Myers • 272-4201

minsa corporation
 P.O. Box 484 272-5545 Muleshoe, TX
 FAX (806) 272-5135 (800) 852-8291

United Supermarkets

Facts About The BIBLE BY JOHN LEHTI

HEAVE OFFERINGS

A MOST IMPORTANT PART OF THE ANCIENT ISRAELITES' WORSHIP OF GOD WAS THE SACRIFICIAL OFFERING TO THE LORD. THE HEAVE OFFERING (THAT IS, THE PART TAKEN AWAY FROM A LARGER MASS AND SET ASIDE FOR JEHOVAH) SUCH AS THE RIGHT SHOULDER OF A LAMB BECAME, WHEN THE SACRIFICIAL CEREMONIES WERE OVER, THE PERQUISITE OF THE PRIEST CONDUCTING THE CEREMONY AND WAS EATEN BY HIM IN THE PRECINCTS OF THE SANCTUARY (NUM. 18:9, 10; C.F. LEV. 6:16). ONCE HAVING LEARNED THIS, WE CAN UNDERSTAND THE DOUBLE SIGNIFICANCE TO CERTAIN ACTS RELATED IN THE SCRIPTURES. SAMUEL, THE PROPHET, WHEN HE INVITED SAUL TO EAT WITH HIM AND OTHERS AT A "HIGH PLACE" (A SHRINE OF WORSHIP) AND, AT SAMUEL'S DIRECTION, THE COOK SERVED SAUL THE SHOULDER OF MEAT, SIGNIFYING SAUL'S IMPORTANCE TO THE OTHER GUESTS, WHO DIDN'T KNOW THEN THAT HE WOULD SOON BE THE FIRST KING OF ISRAEL! (1 SAM. 9:15-24)

AND NOW SAMUEL SETS THE SUCCULENT SHOULDER SECTION, USUALLY SERVED TO HIGH PRIESTS, BEFORE THE AMAZED SAUL...

236 SAVE THIS FOR YOUR SUNDAY SCHOOL SCRAPBOOK

This devotional & directory is made possible by these businesses who encourage all of us to attend worship services.

- | | |
|--|---|
| <p>ASSEMBLY OF GOD
 FIRST ASSEMBLY OF GOD
 521 South First Street • 272-3017
 Jack Stone, Min. • 272-3984
 S.S. 9:45 am, W.S. 11 am & 6:30 pm, Wed. 7:30 pm
 EL BUEN PASTOR
 415 E. Ave. F • Pastor Felix Cadena
 S.S. 9:45 am, W.S. 11 am & 6 pm, Wed. 7 pm</p> <p>BAPTIST
 CALVARY BAPTIST
 1733 W. Ave. C. Rev. Jeff Coffman
 CIRCLE BACK BAPTIST
 Intersection FM 3397 & FM 298
 Jessie Shaver, Min • 946-3676
 FIRST BAPTIST
 220 West Ave. E., Dr. Stacy Conner
 FIRST BAPTIST
 Lazbuddie • 965-2126
 PRIMERA IGLESIA BAUTISTA
 223 E. Ave. E., Rev. Greg Guzman
 PRIMITIVE BAPTIST
 621 South First, Elder Cleveland Bass, Min.
 PROGRESS BAPTIST
 Progress, TX
 Bro. O.J. Bewley
 PROGRESS SECOND BAPTIST
 Arthur Hays, Min.
 1st & 3rd Sundays
 RICHLAND HILLS BAPTIST
 17th & West Ave. D, Randy Tucker, Pastor
 ST. MATTHEWS BAPTIST
 Corner of W. Boston & W. Birch
 Floyd R. Monroe, Min.
 THREE WAY BAPTIST
 927-5467
 TRINITY BAPTIST
 314 E. Ave. B, Robert Brown, Min.</p> <p>CATHOLIC
 IMMACULATE CONCEPTION CATHOLIC CHURCH
 805 E. Hickory, Joseph Agustine, Min.</p> <p>CHARISMATIC EPISCOPAL ST. CLEMENTS
 1536 W. American Blvd. • 272-5954
 Father Sergio Leal
 Sun. W.S. 10:30 am</p> <p>CHRISTIAN TRINITY CHRISTIAN CENTER
 1723 W. American Blvd. • 272-3877
 Reydon Stanford, Min.</p> | <p>CHURCH OF CHRIST
 LARIAT CHURCH OF CHRIST
 Sam Billingsley, Min.
 S.S. 10 am; W.S. 11 am & 6 p.m., Wed. 7 p.m.
 LAZBUDDIE CHURCH OF CHRIST
 Nathan Crawford, Min.
 S.S. 9:30 am; W.S. 10:20 am & 5 pm; Wed. 7 pm
 MULESHOE CHURCH OF CHRIST
 22nd & W. American Blvd.
 Harry Riggs, Min.
 S.S. 9:30 am; W.S. 10:20 am & 6 pm; Wed. 7:30 pm
 16th & AVE. D CHURCH OF CHRIST
 Curtis Shelburne, Min. • 272-4619
 S.S. 10:30 am & 1:30 pm; Wed. 7:00 pm</p> <p>LUTHERAN
 ST. JOHN LUTHERAN
 Lariat, TX-David Symm, Min.
 S.S. 10:30 am; W.S. 9:30 am</p> <p>METHODIST
 FIRST UNITED METHODIST HISPANIC MINISTRIES
 E. 5th and E. Ave. D
 Pastor Benito Cavazos
 FIRST UNITED METHODIST
 507 W. 2nd St.
 Pastor Brad Reeves
 LAZBUDDIE METHODIST
 965-2121
 EL DIVINO SALVADOR U.M.C.
 619 E. 5th Street & Ave. G, Muleshoe, TX
 Raul Martinez, Pastor</p> <p>NAZARENE
 NEW VISION CHURCH OF THE NAZARENE
 814 W. Ave. C • 272-3622
 William Perhealth, Pastor-S.S. 10 & 11 am; W.S. 7 pm</p> <p>PENTECOSTAL
 UNITED PENTECOSTAL LIGHTHOUSE
 207 East Ave. G • 1-800-454-6051
 Pastor McKibben, S.S. 10 am
 Thursday, Bible Study 7 pm</p> <p>INTER DENOMINATIONAL NEW COVENANT
 Plainview Hwy.
 Steve Claybrook, Pastor
 W.S. 10 am; Wed. 7 pm</p> |
|--|---|

MULESHOE PEA & BEAN, INC.
 RR 2 Box 297 272-5589 Muleshoe, TX

WEST CAMP GIN, INC.
 Better Ginning & Courteous Service
 Rt. 2 Box 1000 • 925-6681 Muleshoe, TX

THE TRINITY COMPANY
 MULESHOE, TEXAS
FIRST AG CREDIT MULESHOE
 "Serving Farmer & Bailey Counties"
 272-3010 • Fax 272-5388
 316 Main • P.O. Box 424 • Muleshoe, TX

MOHAWK AUTO PARTS
 1701 W. American Blvd. 272-4425 Muleshoe, TX

New Tex Truck Parts & Service
 107 E. 5th St. • Muleshoe 272-4106 or 800-918-9048
 4200 Mabry Drive • Clovis, NM (505) 762-7186 or (877) 762-9112

MULESHOE MOTOR CO.
 1225 W. American Blvd. 272-4251

MULESHOE ANIMAL CLINIC
 GENERAL PRACTICE
 1430 US Hwy. 84 • Muleshoe, TX Office: 272-4990

IRRIGATION PUMPS & POWER
ZIMMATIC CENTER-PIVOTS
 W. Hwy. 84 272-4483

WESTERN DRUG
 & Something Special Gifts
 1411 W. American Blvd. 272-3106 Muleshoe

PARMER CO. COTTON GROWERS CO-OP GIN
 825-3701
 Ron Riley-General Mgr. Farwell, TX

Henry Insurance Agency
 "Serving You Since 1964"
 111 West Avenue B 272-4581 Muleshoe, TX

"THE FIVE AREA TELEPHONE COOPERATIVE, INC."
 West Plains Telecommunications, Inc.
 Five Area Systems, Inc., Plateau Wireless
 Five Area Long Distance - Five Area Internet
 302 Uvalde Muleshoe, USA (806) 272-5533

AGRO DISTRIBUTION
 Hwy. 84 • 272-4203
 Muleshoe, Texas Bruce Bruns - Mgr.

"Do All" Family Enterprises
 203 S. Main St. • 272-4725 • Muleshoe
 Gift Wrapping Now doing Auto Repair! Party Planning
 Shipping Via UPS Minor Home Repair
 Catering & Floral Design New Location! & Remodeling

FARMERS CO-OP ASS'N
 of ENOCHS
 "Your Farmers Owned Gin"
 Chemicals • Seed • Fuel & Oil • Fertilizer
 806-927-5511 Wade Baker, Mgr.

Antiques & Fine Things
 of Muleshoe
 2104 W. American Blvd. • 272-4217

McCormick Seeds, Inc.
 400 East Ash • Muleshoe, Texas
 272-3156 A complete line of field seeds
 Tim McCormick Roland McCormick

Ellis Funeral Homes
 Muleshoe - Morton - Earth - Sudan Texas
 1-800-299-4574

1315 W. American Blvd. 272-3333 Muleshoe, TX

TEXAS FARM BUREAU INSURANCE CO.
 Life-Auto-Home-Crop FARM BUREAU INSURANCE
 1612 W. American Blvd. • 272-4567 • Muleshoe

GOOD YEAR JAMES CRANE TIRE CO., INC.
 Mike Hahn 107 Main 272-4594 Muleshoe, TX

Jarman Seed
 801 W. American Blvd. Muleshoe, TX • 272-5985

Leo's Blacksmith & Machine Shop
 "Family Owned Since 1966"
 • WELDING - SHOP OR FIELD • REBUSH TRACTOR FRONT ENDS
 • ALL TYPES OF STEEL • BOLTS • AGRIC BEARINGS
 • FABRICATING PARTS & EQUIPMENT
 310 W. American Blvd. • 272-4418 • Muleshoe



Twirling to Arizona

Sudan High School twirler Brandi Nichols signs a letter of intent to become a twirler at the University of Arizona. Looking on is UofA twirling coach Shirlee Bertonoli. The university's 20 twirlers perform at the school's football games, including bowl games, and at such events as Phoenix Cardinal games and the local fund-raiser "Stand By Your Band." Nichols is the daughter of Jimmy and Cindy Nichols and the granddaughter of Dwayne and Mary Powell and Darrell Nichols. Her aunts include Alma Burton and Maxine Donaldson, both of Muleshoe, and Marley Hall of Sudan.

Seventh-grade Mules muzzle Littlefield Wildcats

By DELTON WILHITE
Journal correspondent

Littlefield made five threes Monday night in Muleshoe, but the seventh-grade Mules played consistent ball each quarter and overtook the Wildcats by halftime. The Mules' steady play lifted them to a 44-31 victory.

The Mules used good entry passes to Tyler Sheets at

the post position to counter the three-point shooting of the Wildcats, but Littlefield still shot out a 16-10 first-quarter lead.

Jared Flores, Kevin Kilmer, Brady Black and Trevor Turnbow scored in the second period to knot the halftime score at 20-20. Sheets, Flores, Kilmer and Cody Clark continued to put

points on the board for the Mules, and defensive pressure held Littlefield to eight points in the third period as the Mules took a 32-28 advantage.

Flores scored on back-to-back fast breaks in the final period, Sheets put back a rebound, and Black beat his defender off the dribble before time expired. An

airtight Mule defense in the final stanza allowed the Wildcats a three-pointer but no more.

Sheets led Mule scoring with 14 points, while Flores added 10, Black nine, Kilmer seven and Clark and Turnbow, two each.

The Mules tangle with Dimmitt at Dimmitt on Monday night.

SPECIAL TO THE JOURNAL
HOUSTON — Reaching for a thermometer instead of fatty snacks might curtail the urge to overeat.

Behavioral psychologists at Baylor College of Medicine are testing whether monitoring body temperature and deep relaxation techniques can help control overeating triggered by stress or negative emotions. In times of stress the body pumps blood away from the extremities to reduce potential bleeding, causing cold hands and feet.

By recognizing the signs of stress, chronic overeaters gain insight into why they overeat, according to Dr. Ken Goodrick, an associate professor of family and community medicine at Baylor. "One of the main reasons people give for overeating is that they are stressed, depressed and feeling insecure," Goodrick said. "They choose comfort foods to feel better and soothe their feelings."

Goodrick gives study participants an electronic thermometer to monitor their skin temperature whenever

they feel stressed or want to overeat. Study organizers also teach participants relaxation techniques, such as deep breathing, to help cope with negative emotions.

To relax and avoid overeating, Goodrick offers the following strategies:

- Set aside 20 minutes a day to relax. Choose an activity that is enjoyable and is not work-related, such as taking a walk, yoga or reading a novel. Such activities sustain energy and make a person feel better longer than eating a candy bar or a handful of potato chips.

- Practice the "747" method of breathing to relax. Inhale deeply for seven seconds, hold for four seconds and then exhale slowly for seven seconds. Use this method for two to three minutes whenever you feel stressed or overwhelmed.

- Take a five-minute break for each hour of work. Use that time to practice deep breathing, stretching or looking at something pretty, like a flower. Just a few short minutes of relaxation can boost your productivity.

- Pay attention to how your

body feels. Many people go through the day becoming tenser and tenser, and yet they do nothing about it. Periodic stretching can help relieve tension that produces sore muscles in the neck, shoulders and back.

"We are a stressed-out society, and few of us know

how to relax," Goodrick said. "Yet we have an overabundance of food around to comfort us. Through our study, we hope to make people more aware of the relationship between their emotions and eating and help them learn other ways to cope."

Save up to 50%
On most Prescriptions, Medical Supplies
& Personal Care Needs

Heartland
1038 W. Street • Omaha, NE 68107

Call for a Free Catalog
or Price Quote!
1-800-228-3353

Program Code T599 0000 0000

AgriFlex Credit
OPERATING FINANCING

Name Brand Crop Inputs
Flexible Credit Package
Agronomic Advice
Marketing Advice
Crop Insurance
Leasing

Contact your local representative:
Terry Moore
Plainview, TX
806-296-5679

All from one source...
Ag Services of America, Inc.
www.agservices.com 1-800-395-8505

FREE TAX REFUND ESTIMATES
GET YOUR TAX REFUND FAST
with electronic filing. **e-file**

It's Your Money!

- Low Service Fees
- Refund Loans in 1-3 Days!
- Direct Deposit
- Tax Preparation Available

Gold Star FINANCE

• Phone Applications Welcome
• 30 Minute Approval in Most Cases!

Open: Mon-Fri. 9 am - 6 pm (MDT)

1407 N. Main • (505) 742-2737
Clovis, NM **¡Se Habla Español!**

SCHOOL MENUS

MULESHOE JR./SR. HIGH
Jan. 29
Breakfast — Pancakes, assorted cereal with toast, juice and milk.
Lunch — Oven-fried chicken, cream gravy, super sack lunch, turkey, chicken nuggets with roll, mashed potatoes, cream gravy, green beans, peaches, assorted juice 10% and milk variety.
Jan. 30
Breakfast — Cinnamon toast, French-toast sticks, assorted cereal with toast, juice and milk.
Lunch — Szechwan chicken, chef salad, hot dog on a bun, french fries, rice, egg roll, peach cobbler, assorted juice, milk variety and assorted condiments.
Jan. 31
Breakfast — Sausage biscuit, pancakes, assorted cereal with toast, juice and milk.
Lunch — Corn dog, super sack lunch, ham, chicken salad sandwich, potato puffs, vegetable soup, applesauce, assorted juice, milk variety and assorted condiments.
Feb. 1
Not available.
Feb. 2
Not available.

MULESHOE ELEMENTARIES
Breakfast — Doughnut, French-toast sticks, pancakes,

assorted cereal with toast, juice and milk.
Lunch — Cheeseburger on a bun, chef salad, peanutbutter and jelly sandwich, french fries, ranch beans, peaches, assorted juice, milk variety and assorted condiments.
Jan. 30
Breakfast — Blueberry muffin, French toast sticks, pancakes, assorted cereal with toast, juice and milk.
Lunch — Chicken nuggets with roll, baked potato with roll, peanutbutter and jelly sandwich, mashed potatoes, green beans, Rice Krispy treats, assorted juice and milk variety.
Jan. 31
Breakfast — Sausage biscuit, french toast sticks, pancakes, assorted cereal w/ toast, juice and milk.
Lunch — Pizza pocket, Pepperoni, chef salad, peanutbutter and jelly sandwich, broccoli, fruit cocktail, brownies, assorted juice 10% and milk-variety.
Feb. 1
Not available.
Feb. 2
Not available.

THREE WAY
Jan. 29
Breakfast — Pancakes, peanut butter and syrup, cereal, graham cracker, juice and milk.
Lunch — Corn dog, potato

wedges, cheese sticks, mustard, pears and milk.
Jan. 30
Breakfast — Doughnuts, sausage, cereal, graham crackers, juice and milk.
Lunch — Swiss steak, mashed potatoes, gravy breen beans, hot roll, apple cobbler and milk.
Jan. 31
Breakfast — Hash browns, Canadian bacon, toast and jelly, cereal, graham crackers, juice and milk.
Lunch — Meat and bean burrito, Spanish rice, green salad, salsa, cupcakes and milk.
Breakfast — Sausage gravy, biscuit and jelly, cereal, graham crackers, juice and milk.
Lunch — Chicken nuggets, scalloped potatoes, corn, white bread, chocolate-covered almonds and milk.
Feb. 2
Breakfast — Breakfast burrito, cereal, graham crackers, juice and milk.
Lunch — Sub sandwich, pickles, onion, lettuce, tomato, fried potatoes, mixed fruit and milk.

LAZBUDDIE
Lunch — Salisbury steak, Pizza (PK-1), subs, noodles, green beans, carrots, applesauce, salad, Jell-O, yogurt, cottage cheese and milk.
Jan. 30
Lunch — Chili-cheese

fries, tuna sandwich, burritos, pinto beans, hominy casserole, mixed vegetables, pears, salad, Jell-O, yogurt, cottage cheese and milk.
Jan. 31
Lunch — Chicken pot pie, hamburgers (PK-1), egg rolls, corn on cob, sweet potatoes, pineapple, salad, Jell-O, yogurt, cottage cheese and milk.
Feb. 1
Lunch — Stromboli, pizza, corn dogs (PK-1), pork and beans, Tater Tots, peaches, salad, Jell-O, yogurt, cottage cheese and milk.
Feb. 2
Lunch — Manager's Special.

Do You Want to Be a Teacher?

Are you a college graduate who does not have a teaching certificate but would like to pursue a teaching career?

Apply to the
West Texas A&M University
Panhandle Alternative Certification for Educators (PAGE) Program.

Initial admission requirements include a:

- four-year degree from an accredited college or university and
- 2.5 overall grade point average on a 4.0 scale.

Eligible participants may select a teacher certification program in elementary education, secondary education, generic special education, bilingual education or English as a second language.

For more information, call (806)651-2599.

A Member of The Texas A&M University System

NewImage International
ADVANCED SKIN CARE CLINIC

MONDAY, JAN. 29 – 3 PM TO 5 PM
FREE FACIALS (\$140 Value)
Bailey County Coliseum, Muleshoe, TX
Featuring Anna Bales, National Director for New Image International
◆ Revitalizing ◆ Hydrating ◆ Nourishing ◆ Regenerative

Health & Nutrition: Herbal Products & Nutritional Supplements

Many people say they have had phenomenal benefits from New Image all natural products. Circle one of these health problems and bring it to the briefing for a FREE Health Cassette of testimonials.

(1) M.S. Miracles	(4) High Blood Pressure	(7) High Blood Sugar
(2) Migraine Headaches	(5) Cholesterol Problems	(8) Ritalin Free (ADD)
(3) Allergy, Asthma, Hayfever & Sinus	(6) Fibromyalgia	(9) Arthritis

Come and hear Anna Bales, New Image National Director for seven years, explain about Health and Nutrition on Monday, Jan. 29th at 7 pm.

A journey of a thousand miles begins with one step!



At the Texas Migrant Education Conference last November, Janie Balderas (left) and Margie Alarcón were awarded all-state certificates for their identification and recruitment of migrant students, which pushed the Muleshoe Independent School District to the top in its category. Shown with the two is Frank Contreras, director of the state's Division of Migrant Education.

Campaign finance and gun control continue to be contentious issues

The annual questionnaire continues. Each year since I was elected to the Senate, I have published a series of questions seeking readers' opinions regarding matters in the forefront of the public policy debate.

This week's column deals with another set of issues of interest to a great many Texans.

As always, I would like to thank your local newspaper for allowing me to communicate with you in this way.

Campaign Reform

It looks as if campaign finance reform will play a prominent role on the agenda of the 107th Congress.

- Would you change the current federal campaign finance law that allows a candidate to loan himself or herself an unlimited amount of campaign funds, and then hold fund-raisers to reimburse himself or herself after the election? Should there be a limit on such self-loans?

Yes _____ No _____

- Would you support changing the current \$1,000-per-individual, per-candidate contribution limit to adjust for inflation?

Yes _____ No _____

- Do you believe the current federal campaign finance laws yield a level playing field for candidates who challenge incumbents?

CAPITOL COMMENT



U.S. SENATOR

KAY BAILEY HUTCHISON

Yes _____ No _____
 • What else, if anything, would you change about our current campaign finance laws?

Firearms Issues

As Texans are well aware, gun control continues to be a major question confronting Congress. As a strong supporter of the Second Amendment to the U.S. Constitution, I am interested in hearing your ideas on this sub-
 • Do you believe that all gun owners should be registered and licensed?

Yes _____ No _____

- Is it reasonable for the government to require trigger locks to be provided with the sale of every gun?

Yes _____ No _____

- Should the federal government encourage state-sponsored

voluntary programs, such as the one in Texas, where trigger locks are distributed at no cost but their use is not required by law?
 Yes _____ No _____
 • Would you support more stringent reporting requirements on vendors at gun shows?

Yes _____ No _____

- Do you think that imposing more stringent requirements on vendors has the potential to drive gun shows underground and may therefore result in fewer background checks on gun buyers?

Yes _____ No _____
 Additional comments:

This survey can be clipped and mailed to the following address: Sen. Kay Bailey Hutchison Survey, 284 Russell Senate Office Building, Washington, D.C. 20510.

NURSING HOME NEWS

by Joy Stancell

Jeanetta Hukill's sister and brother-in-law from Lubbock and her daughter and son-in-law, Wanda and Melvin Griffin of Muleshoe, visited her on her 92nd birthday Tuesday.

Thursday morning, Zona Gatewood along with the Rev. Felix and Victoria Cadena, pastor of the Spanish Assembly of God, directed the devotional.

Thursday afternoon, Aline Locke, Grace Scarborough, Rosie Martin, Juanita Teague, Nettie Quesenberry, Bootie Tiller, Jackie Davenport, Ozell Cherry and Grace Plyer painted ceramics. J.C. Shanks and Nan Gatlin looked on and gave moral support.

Friday morning, Pat Watson came for music therapy with the theme "President's Inaugurals of the Present and Past."

Grace Scarborough and Aline Locke helped getting bread machines going Friday morning. The bread, along with flavored butter, was served to residents, visitors and staff later in the day (while it was still warm). This was an activity to celebrate National Activity Professional Week.

The Snitker Brothers, J.C. and Curtis, entertained Friday afternoon, singing and playing their mandolin and guitar on audience

requests. Saturday morning, the residents watched the inaugural events on the big-screen television in the day room.

Harold and Mary Jo Burge and Melvin and Wanda Griffin directed the bingo "bonanza" Saturday afternoon. There is always a big turn out for this event.

Sunday afternoon, members of the Primitive Baptist Church came for a singing service.

The Muleshoe Church of Christ directs a Communion service each Sunday morning.

Buster Kittrell teaches the Sunday school class each week.

Tuesday, Evelyn Ellington made and delivered 10 nice lap robes for the residents.

Wednesday morning, Loyce Killingsworth, Harold Burge and the activity department staff served coffee, juice and doughnuts to the residents. The residents were given a small quiz about table manners as they drank their coffee. The residents passed with flying colors. Brady Mason, Cody Faver and Loyce Killingsworth directed the devotional.

Wednesday afternoon, Janet Denton from Friona played her electric piano and sang for the residents.

June Conway has made at least 20 pom poms for our "Super Mules" party Friday afternoon.

Joe Embry, Elsie Damron and Harold Burge visited with the residents Tuesday afternoon.

Gladys Wilson made Rice Krispie squares for the residents after their exercise class Monday.

Carrie Morris directed a craft class for the residents Monday afternoon.

The January birthday party was hosted by Melvin and Wanda Griffin and Joy Whitt on Thursday afternoon. Honorees were Jeanetta Hukill (Jan. 23) and Webb Watts (Jan. 10, 1904). Sharon Gunn provided the entertainment and Lasting Impressions gave Hukill a corsage and Watts a boutonniere, and a special balloon attached to a TY Beanie Baby.

Gene Lowe and Mr. and Mrs. Harlen Davis visited Cecil Davis recently.

Clara Coffman received visits from her daughter, Maudie Mudford, this week.

Alda Odom was visited by JoElla Cowart, who brought Odom a bouquet of fresh flowers.

Betty Ramage delivered quarters for the bingo games Friday.

ADOPTION

CHARITY CARS - DONATE your vehicle. As seen on Oprah and People Magazine. Tax deductible, free towing. We provide donated vehicles to struggling families 1-800-442-4451. www.charity.cars.org.

BUSINESS OPPORTUNITY

\$1.00 STORES! \$1.00-\$10.00 STORES! 13,000 products. Financing available. Complete from \$47,900. Call 1-800-829-2915.

BIG MONEY! OPPORTUNITY isn't just knocking! It's kicking the door down! Call now! Free information 1-800-408-2219, ED # 5119. www.earnmor.com/5119.

WORLD WIDE TELECOM II, the exclusive, authorized distributor of Verizon's Texas prepaid phone card has a sub-distributor opening available in the area. Minimum investment \$1000. Toll Free 1-877-351-2299.

DRIVERS WANTED

COMPANY PAID CDL training & first year income \$35K - Steven Transport -OTR drivers wanted! Non-experienced or experienced, 1-800-333-8595. EOE.

DRIVER: CONVENANT TRANSPORT *Coast to coast runs *Teams start up to 46cpm *\$1,000 sign-on bonus for experienced company drivers. For experienced drivers, 1-800-441-4394; owner/operators 1-877-848-6615. For graduate students 1-800-338-6428.

DRIVERS-OWNER/OPERATORS: Run regional. Home weekly! Paid: Base plate, permits, fuel taxes. 81cpm. Loaded and empty plus fuel surcharge. 1-800-454-2887. Arnold Transportation.

DRIVERS - CFI HIRING OTR company/student/owner operators. Company with one year experience start at \$.32cpm. Owner/Operator start at \$.87cpm all miles (w/fuel surcharge). Also ask about our 2-week spouse training program in an automatic transmission truck. Call 1-800-CFI-DRIVE.

DRIVERS - YOU WILL see the difference in SRT. *Great pay. *Paid weekly/ *Excellent benefits. *\$1,250 sign-on bonus. *Student graduates welcome. Call SRT today toll free: 1-877-BIG-PAY-DAY (1-877-244-7293).

INTERSTATE LEASING - DRIVERS and Owner/Operators wanted for various runs. CDL training available. Tuition reimbursement up to \$3,000. (EOE-m/f), www.swifttrans.com. 1-800-227-5751.

SWIFT TRANSPORTATION - DRIVERS and Owner/Operators wanted for various runs. CDL training available. Tuition

Journal Classifieds

Deadlines are 5 p.m. Monday and Thursday Continued on Next Page Call 272-4536

AUCTION

JOHN TANNAHILL AUCTIONEERS
 P.O. Box 668
 Friona, Texas 79035
 Phone: 806/250-3336 or 806/265-7902

AUCTION

Wednesday, January 31, 2001 - 10:00 A.M.

LOCATED: FRIONA, TX - From Jct. US Hwy 60 and Texas Hwy 214; 1 mile North on Texas Farm Road 214; Then 5/8 mile East on County Road G. Watch for signs.

W.M. Massie & Others

The Following Will Be Sold at Public Auction

For More Information: John Tannahill - (806) 250-3336 or (306) 265-7902, (806) 265-7917

TRACTORS

- 1- 1987 John Deere 4850 MFWD Diesel Tractor, Cab, Power Shift, AC, Htr, 3 Hyd, QH, 20.8X38 Rear Rubber, Duals
- 1- 1987 John Deere 4650 Diesel Tractor, Cab, QR Trans, AC, Htr, 2 Hyd, QH, 20.8X38 Rubber, Duals
- 1- 1978 John Deere 4640 Diesel Tractor, Cab, AC, Htr, 2 Hyd, QH, 20.8X38 Rubber, Duals
- 1- 1987 John Deere 4640 Diesel Tractor, Cab, 2 Hyd, 18.4X38 Rubber, Rough
- 1- 1974 John Deere 4430 Diesel Tractor, Cab, 3 Pt Hitch, 18.4X38 Rubber, Salvage
- 1- 1976 Case 1270 Diesel Tractor, Cab, 2 Hyd, 3 Pt, 20.8X38 Rubber
- 1- 1973 International 1466 Diesel Tractor, Cab, 6 Pt, Remote, 18.9X34 Rubber
- 1- 1969 John Deere 4020 LPG Tractor, 3 Pt, Remote, 18.9X34 Rubber
- 1- Ferguson 10 Tractor WF, 3 Pt, Needs starter

EQUIPMENT

- 1- International 5700-34 Sweep Plow wharrows
- 1- Krause 4960 - 30' FW Tandem Disc
- 2- John Deere 520 Grain Drills
- 1- John Deere 7100 Maxmerge Planter, 6 Row, 40"
- 1- Big Ox 9 Shank Ripper w/ choppers, Drag Type
- 2- Winkle Type Flails, 20'
- 1- Tye & Row Grain Drill, 3 Pt
- 1- International 496 - 30' Tandem Disc
- 1- Big Ox 9 Shank Ripper, 3 Pt
- 1- Lillian 6 Row 40" Rolling Cultivator, 4 Tine
- 1- Krause 21' Sweep Plow, 3 Pt
- 1- Krause 16' Sweep Plow, 3 Pt
- 1- International 760 20' Offset Disc
- 1- Big John 11 Shank Ripper, 3 Pt
- 1- Noble 30' Springtooth Harrow, DT
- 1- Roll-A-Cone 6 Row 40" Inner Row Ripper w/Diers
- 1- John Deere 4 Row Shredder, DT

TRACTORS

- 1- Caldwell 4 Row Shredder, DT
- 1- Tye 21' Grain Drill
- 1- John Deere 7 Row Lister w/ markers & GW
- 1- International 480 - 21' Tandem Disc
- 1- Burch 21' Tandem Disc
- 2- John Deere Buser Planters
- 2- John Deere DRA Grain Drills
- 2- John Deere 435 4 Bottom Breaking Plows
- 6- International 295 Planter Units
- 3- John Deere 400 Rotary Hoers, 1-30' & 2-21'
- 1- SM 21' Cultipacker
- 1- John Deere 2 Row Shredder
- 1- Yetter 6 Row 40' Cultivator
- 2- Hamby 21' TSB Sweep Plows, GW
- 1- Hamby 21' DSB Runout Rig, GW
- 1- Hamby 21' DSB 7 Shank AA Rig, GW
- 1- Krause 21' Tandem Disc
- 1- Roll-A-Cone 21' 6 Row 40' DSB Cultivator, GW
- 1- Servis 7' Blade

TRAILERS, TANKS & DISC ROLLERS

- 2- 1000 Gal Steel Mixing Tanks
- 2- 500 Gal Propane Tanks
- 2- Army Portable Disc Rollers

TRUCKS & PICKUPS

- 1- 1973 Chevrolet C60 SA Grain Truck, 4SP/2SP, Hobbs 16' Steel Bed, Hoist, 9.00X20 Rubber, Radio, Htr, Clean, Shredded
- 2- GMC 4000 SA Grain Trucks, V6, 4SP/2SP, 16' Steel Bed, Hoist, 9.00X20 Rubber
- 1- 1975 GMC 25 ADR Pickup, V8, Auto Trans, Service Box
- 1- Chevrolet 4X4 Luv Pickup

NON-CLASSIFIED

Very Few Small Items - Please Be on Time

1- John Deere 8 Row 20" Corn Head

More Equipment by Sale Day

1- Wylie 1000 Gal Sprayer w/foamer
 Not Responsible For Accidents

PLEASE BE ON TIME FOR THE SALE - WE ARE AGENTS AND AGENTS ONLY. Any Announcement Sale Day Takes Precedence Over All Other Announcements. Written or Otherwise. We appreciate and solicit Your Business! Please Bring Your Own Checkbook.

JOHN TANNAHILL - (806) 250-3336 (8154)

DRIVERS WANTED

reimbursement up to \$5,000. (EOE-m/f), www.swifttrans.com. 1-800-284-8785.

DRIVERS: NORTH AMERICAN Van Lines has openings in logistics, relocation, blanket wrap and flatbed fleets. Minimum of 3 months OTR experience required. Tractor purchase available. Call 1-800-348-2147, Dept. TXS.

\$1,000 SIGN-ON BONUS. Flatbed drivers. Good pay, excellent benefits with retirement. Peterbilt conventionals. Air ride flats. Specialized Hauling 1-800-831-0870.

DRIVER - OWNER OPERATORS and company drivers - Call now! Great pay and benefits. High weekly miles, West Coast lanes, Trucks governed at 72 mph! Your choice - Late-model Peterbilts, Freightliners, Kenworths. Call today! 1-800-528-3675. John Christner Trucking. EOE.

DRIVERS 2-DAY ORIENTATION. Great pay, Miles, support staff. Home at your request. Class A CDL required. We'll be there for you. Continental Express, 1-800-727-4374.

DRIVERS: ALLIED VAN Lines has openings in electronics and trade shows. Class A CDL with 1 year OTR experience. Tractor purchase available. Call 1-800-734-2200, Dept. ATXS.

TRUCK DRIVERS OTR 2-3 weeks - Solos and teams - Good miles/pay, excellent equipment and benefits. One year OTR Experience required. Gulf Coast Transport, 1-888-988-8666.

A \$35,000 PER YEAR career! C.R. England needs driver trainees. 15 day CDL training. Housing/meals included. No

DRIVERS WANTED

upfront \$\$\$ Tractor Trailer Training. 1-888-781-8556.

FINANCIAL SERVICES

NEED CASH? \$500.00 cash by phone. Same day service. Checking account required. No credit checks. No upfront fees. Call toll free now, 1-888-891-6669.

CREDIT CARD DEBT? Avoid bankruptcy. *Stop collection calls. *Cut finance charges. *Cut payments up to 50%. Debt consolidation. Fast approval. No credit check. Call 1-800-270-9894.

A BAD DAY is being in debt! Lower your payments and interest immediately and confidentially. Call ACCC now at 1-888-BILL-FREE, www.billfree.org. Non-Profit service.

BE DEBT FREE - YEARS sooner! Low payments. Reduce interest. Stop late fees. stop collectors. Family credit counseling. Non-profit Christian agency. Se habla Español Recorded message: 1-800-729-7964. Free quote. www.familycredit.org.

FOR SALE

UNDELIVERABLE BUILDINGS DUE to winter storm! Save thousands on arch stel buildings. 25x40, 30x50, 50x110. Great Workshp/garages. Call 1-800-3441-7007, www.steelmasterusa.com.

PURPLE MARTIN BIRD houses, \$29.95. Large and small martin gourds, and telescopic poles, 38' tall finch feeders. Free catalogs. Order today! Call toll free, 1-800-658-8908. www.sk-mfg.com.

AMAZINGLY LOW PRICES - Wolff Tanning Beds. Buy factory direct. excellent service, flexible financing available. Home/commercial units.

FOR SALE

Free color catalog Call today, 1-800-658-8908. www.sk-mfg.com.

HELP WANTED

AIR FORCE. GREAT career opportunities available for high school grads, ages 17-27. Plus up to \$17,000 enlistment bonus if you qualify! To request additional information call 1-800-423-USAF or visit www.airforce.com

AVON - LOOKING FOR higher income? More flexible hours? Independence? Avon has what your looking for. Let's talk. 1-888-561-2866. No upfront fee.

CLAIMS PROCESSOR! \$20-\$40/ hour potential. Processing claims is easy! Training provided, must own PC. Call now! Medicor, LLC 1-888-568-7649, ext. 698.

COMPUTER, INTERNET PEOPLE wanted to work online. \$125-\$175 an hour. Full training. Vacations, bonuses and incentives. bilinguals also needed. 48 countries. Free e-book: www.profitpc.net.

CREDIT CARD+ ELECTRONIC payments + e-commerce solutions. Exciting business, top commissions, overrides, residuals, stock options, fun. \$100K plus possibility. 1-888-207-5110, www.usms.com.

MEDICAL BILLING, NO experience needed. Full time/ part time. Training provided. PC required. Must type 30+wpm. Up to \$60K per year. 1-800-240-1548, Dept. 555, www.epsmmed.net.

LEGAL SERVICES

ATTENTION: PPA USE (phenylpropanolamine) dexamtrm and triaminic hemorrhagic stroke/bleeding of brain. Grossman & Waldman, 1-800-833-9121. Free con-

Deadlines are 5 p.m. Monday and Thursday

Call 272-4536

January 28, 2001

AUCTIONS

LEGAL

HELP WANTED

REAL ESTATE



Auction Calendar

Tuesday - January 30, 2001 - Sale Time: 9:30 AM/10:30 TX
J.P. "Johnny" Stroud - Owner
 Located: Portales, NM - Selling: Farm & Ranch Equipment

Saturday - February 3, 2001 - Sale Time: 10:00 A.M.
K.C.M.O. Farms, Omni Farms & Bill Langston - Owners
 Located: Plainview, Texas - Selling: Farm & Ranch Equipment

Saturday - February 10, 2001 - Sale Time: 9:30 A.M.
Ford Area Farmers - Owners
 Located: Vega, Texas - Selling: Farm & Ranch Equipment

Tuesday - February 13, 2001 - Sale Time: 10:00 A.M.
Michael McFadden - Owner
 Located: Olton, Texas - Selling: Farm Equipment

Saturday - February 17, 2001 - Sale Time: 10:00 A.M.
Duane Castleberry - KC Mufflers
 Located: Muleshoe, Texas - Selling: Vehicles, Shop, Farm Equipment & Real Estate

Tuesday - February 20, 2001 - Sale Time: 10:00 A.M.
Weldon Pruitt Estate - Owners
 Located: Muncy, Texas - Selling: Farm Equipment

Wednesday - February 21, 2001 - Sale Time: 10:00 A.M.
Seminole Area Farmers - Owners
 Located: Seminole, Texas - Selling: Farm & Ranch Equipment

Thursday - February 22, 2001 - Sale Time: 10:00 A.M.
Lamesa Area Farmers - Owners
 Located: Lamesa, Texas - Selling: Farm & Ranch Equipment

Saturday - February 24, 2001 - Sale Time: 10:00 A.M.
Metcalf Farms - Owners
 Located: Perico, Texas (near Dalhart) - Selling Farm & Ranch Equipment

Tuesday - February 27, 2001 - Sale Time: 10:00 A.M.
Kress Area Farmers - Owners
 (Consignments Welcome - Contact Johnny Street - 293-5627 or 847-7400)
 (call by February 10th to be advertised)
 Located: Attebury Grain Leg - Center Plains, Texas - Selling: Farm & Ranch Equipment

Five Star Auctioneers

Answering Service: (806)296-0379 - P.O. Box 1030 - Plainview, Texas 79073
 Jim Summers... (806)864-3611 / Mervin Evans... (806)864-3721 / Jimmy Reeves... (806)864-3362
 We Are Not Responsible For Accidents - We Are Agents & Agents Only - If you have not established yourself with our company, please bring bank letter. Terms: Cash, Personal or Business Check, Cashiers Check-All Accounts Settled Day of Sale

MULESHOE INDEPENDENT SCHOOL DISTRICT

Muleshoe ISD is accepting bids for the leasing of twelve large copy machines and four small machines. Specifications may be picked up at 514 West Ave G., or by calling 806-272-7400. Sealed bids must be received by February 5th, 2001. Muleshoe ISD reserves the right to accept or reject any and/or all bids in the best interest of the District. Published in the Muleshoe Journal January 25 and February 1 and in the Bailey County Journal January 28 and February 4, 2001.

HELP WANTED

Lamb Healthcare Center in Littlefield - Hiring Full time and Part time Labor and Delivery RN's.

Experience required. 7pm to 7am - Competitive Salary with Benefits. Call 385-6411 ext. 214

Buckner Children & Family Services

Buckner Children & Family Services has a part time position for a Homemaker Case aide to provide services to families with children at risk. Experience working with children preferred. We offer competitive compensation and benefits. Fax resumes to (806)795-9727 or mail to 129 Brentwood, Lubbock, TX 79416. Applicants may also apply in person at 129 Brentwood, Lubbock, EOE/AA

FOR SALE

Computer For Sale

1 1/2 years old with program Asking \$700 Call 272-5095

FOR SALE

For Sale - 1987 Chevy Shortbed Pick-up. Great work truck!

Asking \$1,700, OBO Call 272-5095

Gray Brahman Bulls and heifers. Registered from J.D. Hudgins bloodline. Spade Brahman's, Spade, TX. (806)233-2481.

SERVICES

AIR CONDITIONING

Financing available on new central refrigerated air conditioning-heating equipment. As low as \$59 a month. Bad credit? Bankruptcy? No Problem! WE WILL FINANCE YOU! Air America 791-1093

UNBELIEVABLE DEAL!

2000 MINUTES FOR \$39.99 FREE PHONE FREE ACTIVATION FREE CASE WITH PURCHASE OF CAR CHARGER CALL AMERICA TOLL FREE INCLUDES 750 WEEKEND MINUTES AND 750 EVENING MINUTES
 CELLULAR 2000 202 MAIN STREET (806)272-7523 OR 272-5153

Will do your ironing! I deliver & pick-up within Muleshoe! I provide starch! Bring this ad for a 10% discount! Also call if interested in Avon - to buy or sell! Call Denise Coldiron 272-3140.

Let our Classified section work for you! Call today 806-272-4536

Homeworkers Needed \$635 weekly processing mail. Easy! No experienced needed. Call 1-800-440-1570 Ext 5085 24Hrs

DEADLINES FOR CLASSIFIED ADS

Monday 5 PM for Thursday's issue
 Thursday 5 PM for Sunday's issue

REAL ESTATE

BAILEY COUNTY

29 acres near Muleshoe, off Hwy 214 N., 8.64% Interest, \$134/Mo., Owner Finance Forest America Group 800-275-7376

Lazbuddie Area

640 Acres - 4 Sprinklers, 350 to 500 gallons water big wheat & grazing goes, possible 50-70 thousand return by June 1. Contact Wayne Clark at 806-965-2895.

Apartments For Rent

1 Bedroom
 2 Bedrooms
 Call 272-3711 or 946-7668

House for Sale at 823 W. Ave. D

Call 806-481-5041 for an appointment

LAMB CO - 1378 acre farm/beef factory, 8 circles, large set of steel pens with circular crowding alley, hyd. chute and scale, barbed wire & steel post fencing, near town, pavement.

Roosevelt/Parmer Counties - 2816 acres with large peanut quota, nice home plus two other houses, grain storage-double dump pits, legs, grain dryer, 70' truck scale, large shop/equip. storage, hay barn with concrete floor and grain package, preon. yard with hyd. chute, covered working area, sprinkler irrigated, pavement, can divide into 4 units (Coop N.M. Broker).
 www.scotlandcompany.com
 Ben G. Scott - Broker (806)933-9698 day/eve

SHOP EQUIPMENT, NON-CLASSIFIED -

- 1-1987 Chevy 1/2 T. 3.0L V6
- 1-1990 Ford Bronco
- 1-1991 Ford Bronco
- 1-1992 Ford Bronco
- 1-1993 Ford Bronco
- 1-1994 Ford Bronco
- 1-1995 Ford Bronco
- 1-1996 Ford Bronco
- 1-1997 Ford Bronco
- 1-1998 Ford Bronco
- 1-1999 Ford Bronco
- 1-2000 Ford Bronco
- 1-2001 Ford Bronco
- 1-2002 Ford Bronco
- 1-2003 Ford Bronco
- 1-2004 Ford Bronco
- 1-2005 Ford Bronco
- 1-2006 Ford Bronco
- 1-2007 Ford Bronco
- 1-2008 Ford Bronco
- 1-2009 Ford Bronco
- 1-2010 Ford Bronco

RICHLAND HILLS - PARK RIDGE AREA

- NICE 2-1-1 Brick, Cent. Heat, win. evap. air, built-ins, new carpet & paint, storm windows & doors, approx. 1515' lv. area, fenced yd., MORE!!! \$39,5K!! RH-4
- VERY NICE 3-2 1/2-2 Brick Home, new paint, carpet, tile, & vinyl, new shingles, Hi-Eff. Cent. A&H, built-ins, FP w/Country Comfort insert provides heat savings, also has approx. 600 sq. ft hobby/game room attached by breezeway, with nice carpet, wall heat, win. evap., 1/2 bath plus extra stor. bldg. & MUCH MORE!!! \$93K!! RH-3
- LOT 83, PKRGD. - \$1000.00, SEVERAL OTHER NICE LOTS ARE AVAILABLE - CALL FOR MORE INFO!!
- NICE 3-3-1 Brick, Cent. heat, evap. air, built-ins, fans, 2000' + lv. area, fenced yd., patio, stor. bldg.!! \$57,5K!! RH-1
- JUST LISTED-NICELY REMODELED 3-2-3 Brick Home on corner lot, new paint, carpets, whirlpool tub, shower unit, & heat pump. Home also has built-ins, fireplace, fenced yd., Stor. Bldg. & MUCH MORE!!! \$79,900!! RH-2

HIGHLAND AREA

- NICE 3-1-1 Brick, Cent. heat & evap. air, nice carpet, fans, 2stor. bldgs., fenced yd., MORE!!! \$36,5K!! HL-1

LENAU - COUNTRY CLUB AREA

- 2-1-1 Home, wall furn. heat, \$18K!! L-4

COMMERCIAL

- Duplex (2-2 bdrm. 1 bath units) plus 1 (2 or 3 bdrm) for residence or rental. \$30K!!
- GOOD INCOME PROPERTY - approx. 3490' bldg., paved parking, good net lease!! PRICED TO SELL!
- Established Business: Land, Bldg. & Equip., \$75K!!

- 6,600 sq. ft. metal building with approximately 1080 sq. ft. additional storage area on Hwy. 70-84, 140' x 100' tract!! \$34K!!
- 200 Main & E. Ave. B-4 rental units plus upstairs & basement or renovate for your own special use!! \$65K!!

FARM FOR SALE

A 137.1 acres more or less, located in Northwestern Cochran County. A dryland rowcrop farm. The Farm Service Agency (FSA) has priced the property to sell at \$42,000.00. The property is being offered for sale to those individuals the Farm Service Agency considers to be qualified beginning farmers or ranchers, and all prevailing claimants in the civil action Pigford vs. Glickman. Beginning farmers or ranchers who are prevailing claimants will be given first priority consideration in the purchase of the property. If more than one beginning farmer or rancher who is a prevailing claimant submits an application; priority within this group will be determined by lottery. Qualified beginning farmers or ranchers must be in need of FSA credit assistance either in the form of direct FSA financing, an FSA guaranteed loan or a participation loan. For other requirements and information on how to qualify as a beginning farmer or rancher, you may contact your local FSA office. Financing may be available subject to the availability of funds. If financing is not available at the time of sale, the selected applicant will be given the opportunity to lease the property for up to 18 months or until such time that Agency funds become available, whichever comes first. Applications must be completed and received by February 15, 2001. The Government reserves the right to cancel the sale at any time, and the right to reject any or all applications. For additional information contact FSA at 703 Ave I, Levelland, TX 79336, (806)894-9683. The Federal Equal Credit Opportunity Act prohibits creditors from discriminating against credit applicants on the basis of race, color, religion, national origin, sex, marital status, age (provided the applicant has the capacity to enter a binding contract); because all or part of the applicant's income derives from any public assistance program; or because the applicant has in good faith exercised any right under the Consumer Credit Protection Act. The Federal agency that administers compliance with this law is the Federal Trade Commission, Equal Credit Opportunity, Washington, DC 20580. USDA regulations prohibit discrimination in USDA programs because of your race, color, religion, sex, age, national origin, marital status, familial status, sexual orientation, disability, or because all or part of your income is derived from any public assistance program; or because you have filed a program complaint, participated in any program complaint proceeding, or opposed a prohibited practice. If you believe that you have been discriminated against for any of the reasons stated above, you may file a complaint with the Director, Office of Civil Rights, United States Department of Agriculture, Room 326-W, Whitten Building, 1400 Independence Avenue, S.W. Washington, DC 20250-9410.

160 ACRES IRRIGATED FARM

One well. Lays good. Southeast of Lazbuddie.

320 ACRES IRRIGATED FARM

Southwest of Lariat. 4 Wells. 2 Sprinklers. Priced to Sell!!!
 Call Daren at J.B. Suderth Realty, Inc. 806-481-3288.

3/2/1 plus large carport. Geo-Thermo heating/air. Fully carpeted. Yard sprinkler system. Call for an appointment at 272-3856.

For Sale, 3 Bedroom, 2 bath with large carport on 1 acre, 2 1/2 miles North on Hwy. 214. Call (505)355-4241

Procrastination is the thief of time!

Vic Coker Land Co.

Agricultural Real Estate

- SOLD** 160 Acres in Parmer County - Excellent Soil. Good water. Pivot. Very Nice Farm.
- Parmer County** - 960 Acres on Pavement. 2 Half Miles. 5 Wells. Large Barn. Modest House.
- New Listing** - 160 Acres Northeast of Muleshoe in Parmer County. Center pivot. Good soil and 650 G.P.M. water.
- Parmer County** - 480 Acres on Pavement. 3 Pivot sprinklers. 2 Wells.
- East of Muleshoe** - 328 Acres. 90 Acres of C.R.P. 1 Large center pivot. 5 wells.
- Northeast of Muleshoe** - 195 Acres with center pivot. 2 wells. Lays good.
- SOLD** 160 Acres. North of Muleshoe. Nice clean farm with center pivot. Good soil. Good wells & admissible wells. Reasonably priced.
- 160 Acres Southwest of Muleshoe**, with sprinkler & 3 wells. Good Livestock place.
- Northwest Lamb County** - 160 Acres with pivot. 2 Wells. \$500/Acre.
- 280 Acres in Hub Area**. Excellent soil, lays good. Excellent water. 2 Wells. Reasonably Priced.
- Castro County Lamb County Line**, 600 Acres on Pavement. EXCELLENT WATER, 4 Wells. 3 Centerpivot sprinklers.
- Bailey County Dryland** - 2 Labors South of Muleshoe. Allocated. 150 Acres of growing wheat.
- Bailey County** - 320 Acres with Very Nice Brick Home. Large Barn. 2 Sprinklers. 6 Wells.

310 Main Street, Suite 103
 Muleshoe, Texas
 Office (806) 272-3100 Home (806) 965-2468

Five Star Auctioneers

Tuesday, January 30, 2001 - Sale Time: 9:30 New Mexico 10:30 Texas Time
 BAD WEATHER DATE: WEDNESDAY, FEBRUARY 7, 2001
 LOCATED: From Portales, New Mexico, 9 Miles South On Hwy. 206, Then 1 Mile West On RR15S; Or From Dora, New Mexico, 7 Miles North On Hwy. 206, Then 1 Mile West On RR15S.
J.P. "JOHNNY" STROUD - OWNER
 Telephone: Mr. Stroud (505) 359-1483 Or (505) 760-1607, Or Auctioneers: Merv Evans (806) 864-3721 Or Jim Summers (806) 864-3611
 LIMITED CONSIGNMENTS WELCOME ON FARM & RANCH EQUIPMENT, NO SMALL ITEMS, PLEASE CALL FIRST
 Lunch Served By T-C BBSQUE
 After 39 Years of Farming, Johnny is Retiring And The Following Will Be Sold At Public Auction:
 NOTE: This Sale is Full Of High Quality Equipment, Tractors & Combine
 Don't Miss This Auction - Your Attendance Will Be Appreciated

TRACTORS, FRONT END LOADER, DUALS

- 1-1983 John Deere 4550 M.F.W.D. Diesel Tractor, Cab, A.C. H.E. Radio, 3 sp. 3 Hyd. Wts., Quick Hitch, 16 8000 Front Rubber, Van 18400 Rubber, 34 4274, Sound & Sides, Shredded
- 1-1981 John Deere 4800 Diesel Tractor, Cab, A.C. H.E. Radio, 3 sp. 2 Hyd. Wts., Quick Hitch, 20 8000 Rubber, 2 100 Hrs. On In Frame Overhaul, SN 14804, Sound & Sides, Shredded
- 1-1982 John Deere 4440 Diesel Tractor, Cab, A.C. H.E. Radio, 195 Trays, 3 sp. 2 Hyd. 16 8000 Rubber, 112 150 Hrs. Front End Loader, 8 Buckets (To Be Sold Separately Than Together) SN 5619, 7407 Total Hrs. 200 Hrs. On In Frame Overhaul, Sound & Sides, Shredded
- 1-1983 John Deere 4800 Diesel Tractor, Cab, A.C. H.E. Radio, 3 sp. 2 Hyd. Wts., Quick Hitch, 20 8000 Rubber, 2 100 Hrs. On In Frame Overhaul, SN 14804, Sound & Sides, Shredded
- 1-1984 John Deere 4440 Diesel Tractor, Cab, A.C. H.E. Radio, 195 Trays, 3 sp. 2 Hyd. 16 8000 Rubber, 112 150 Hrs. Front End Loader, 8 Buckets (To Be Sold Separately Than Together) SN 5619, 7407 Total Hrs. 200 Hrs. On In Frame Overhaul, Sound & Sides, Shredded
- 1-1985 John Deere 4800 Diesel Tractor, Cab, A.C. H.E. Radio, 3 sp. 2 Hyd. Wts., Quick Hitch, 20 8000 Rubber, 2 100 Hrs. On In Frame Overhaul, SN 14804, Sound & Sides, Shredded
- 1-1986 John Deere 4440 Diesel Tractor, Cab, A.C. H.E. Radio, 195 Trays, 3 sp. 2 Hyd. 16 8000 Rubber, 112 150 Hrs. Front End Loader, 8 Buckets (To Be Sold Separately Than Together) SN 5619, 7407 Total Hrs. 200 Hrs. On In Frame Overhaul, Sound & Sides, Shredded
- 1-1987 John Deere 4800 Diesel Tractor, Cab, A.C. H.E. Radio, 3 sp. 2 Hyd. Wts., Quick Hitch, 20 8000 Rubber, 2 100 Hrs. On In Frame Overhaul, SN 14804, Sound & Sides, Shredded
- 1-1988 John Deere 4440 Diesel Tractor, Cab, A.C. H.E. Radio, 195 Trays, 3 sp. 2 Hyd. 16 8000 Rubber, 112 150 Hrs. Front End Loader, 8 Buckets (To Be Sold Separately Than Together) SN 5619, 7407 Total Hrs. 200 Hrs. On In Frame Overhaul, Sound & Sides, Shredded
- 1-1989 John Deere 4800 Diesel Tractor, Cab, A.C. H.E. Radio, 3 sp. 2 Hyd. Wts., Quick Hitch, 20 8000 Rubber, 2 100 Hrs. On In Frame Overhaul, SN 14804, Sound & Sides, Shredded
- 1-1990 John Deere 4440 Diesel Tractor, Cab, A.C. H.E. Radio, 195 Trays, 3 sp. 2 Hyd. 16 8000 Rubber, 112 150 Hrs. Front End Loader, 8 Buckets (To Be Sold Separately Than Together) SN 5619, 7407 Total Hrs. 200 Hrs. On In Frame Overhaul, Sound & Sides, Shredded
- 1-1991 John Deere 4800 Diesel Tractor, Cab, A.C. H.E. Radio, 3 sp. 2 Hyd. Wts., Quick Hitch, 20 8000 Rubber, 2 100 Hrs. On In Frame Overhaul, SN 14804, Sound & Sides, Shredded
- 1-1992 John Deere 4440 Diesel Tractor, Cab, A.C. H.E. Radio, 195 Trays, 3 sp. 2 Hyd. 16 8000 Rubber, 112 150 Hrs. Front End Loader, 8 Buckets (To Be Sold Separately Than Together) SN 5619, 7407 Total Hrs. 200 Hrs. On In Frame Overhaul, Sound & Sides, Shredded
- 1-1993 John Deere 4800 Diesel Tractor, Cab, A.C. H.E. Radio, 3 sp. 2 Hyd. Wts., Quick Hitch, 20 8000 Rubber, 2 100 Hrs. On In Frame Overhaul, SN 14804, Sound & Sides, Shredded
- 1-1994 John Deere 4440 Diesel Tractor, Cab, A.C. H.E. Radio, 195 Trays, 3 sp. 2 Hyd. 16 8000 Rubber, 112 150 Hrs. Front End Loader, 8 Buckets (To Be Sold Separately Than Together) SN 5619, 7407 Total Hrs. 200 Hrs. On In Frame Overhaul, Sound & Sides, Shredded
- 1-1995 John Deere 4800 Diesel Tractor, Cab, A.C. H.E. Radio, 3 sp. 2 Hyd. Wts., Quick Hitch, 20 8000 Rubber, 2 100 Hrs. On In Frame Overhaul, SN 14804, Sound & Sides, Shredded
- 1-1996 John Deere 4440 Diesel Tractor, Cab, A.C. H.E. Radio, 195 Trays, 3 sp. 2 Hyd. 16 8000 Rubber, 112 150 Hrs. Front End Loader, 8 Buckets (To Be Sold Separately Than Together) SN 5619, 7407 Total Hrs. 200 Hrs. On In Frame Overhaul, Sound & Sides, Shredded
- 1-1997 John Deere 4800 Diesel Tractor, Cab, A.C. H.E. Radio, 3 sp. 2 Hyd. Wts., Quick Hitch, 20 8000 Rubber, 2 100 Hrs. On In Frame Overhaul, SN 14804, Sound & Sides, Shredded
- 1-1998 John Deere 4440 Diesel Tractor, Cab, A.C. H.E. Radio, 195 Trays, 3 sp. 2 Hyd. 16 8000 Rubber, 112 150 Hrs. Front End Loader, 8 Buckets (To Be Sold Separately Than Together) SN 5619, 7407 Total Hrs. 200 Hrs. On In Frame Overhaul, Sound & Sides, Shredded
- 1-1999 John Deere 4800 Diesel Tractor, Cab, A.C. H.E. Radio, 3 sp. 2 Hyd. Wts., Quick Hitch, 20 8000 Rubber, 2 100 Hrs. On In Frame Overhaul, SN 14804, Sound & Sides, Shredded
- 1-2000 John Deere 4440 Diesel Tractor, Cab, A.C. H.E. Radio, 195 Trays, 3 sp. 2 Hyd. 16 8000 Rubber, 112 150 Hrs. Front End Loader, 8 Buckets (To Be Sold Separately Than Together) SN 5619, 7407 Total Hrs. 200 Hrs. On In Frame Overhaul, Sound & Sides, Shredded
- 1-2001 John Deere 4800 Diesel Tractor, Cab, A.C. H.E. Radio, 3 sp. 2 Hyd. Wts., Quick Hitch, 20 8000 Rubber, 2 100 Hrs. On In Frame Overhaul, SN 14804, Sound & Sides, Shredded
- 1-2002 John Deere 4440 Diesel Tractor, Cab, A.C. H.E. Radio, 195 Trays, 3 sp. 2 Hyd. 16 8000 Rubber, 112 150 Hrs. Front End Loader, 8 Buckets (To Be Sold Separately Than Together) SN 5619, 7407 Total Hrs. 200 Hrs. On In Frame Overhaul, Sound & Sides, Shredded
- 1-2003 John Deere 4800 Diesel Tractor, Cab, A.C. H.E. Radio, 3 sp. 2 Hyd. Wts., Quick Hitch, 20 8000 Rubber, 2 100 Hrs. On In Frame Overhaul, SN 14804, Sound & Sides, Shredded
- 1-2004 John Deere 4440 Diesel Tractor, Cab, A.C. H.E. Radio, 195 Trays, 3 sp. 2 Hyd. 16 8000 Rubber, 112 150 Hrs. Front End Loader, 8 Buckets (To Be Sold Separately Than Together) SN 5619, 7407 Total Hrs. 200 Hrs. On In Frame Overhaul, Sound & Sides, Shredded
- 1-2005 John Deere 4800 Diesel Tractor, Cab, A.C. H.E. Radio, 3 sp. 2 Hyd. Wts., Quick Hitch, 20 8000 Rubber, 2 100 Hrs. On In Frame Overhaul, SN 14804, Sound & Sides, Shredded
- 1-2006 John Deere 4440 Diesel Tractor, Cab, A.C. H.E. Radio, 195 Trays, 3 sp. 2 Hyd. 16 8000 Rubber, 112 150 Hrs. Front End Loader, 8 Buckets (To Be Sold Separately Than Together) SN 5619, 7407 Total Hrs. 200 Hrs. On In Frame Overhaul, Sound & Sides, Shredded
- 1-2007 John Deere 4800 Diesel Tractor, Cab, A.C. H.E. Radio, 3 sp. 2 Hyd. Wts., Quick Hitch, 20 8000 Rubber, 2 100 Hrs. On In Frame Overhaul, SN 14804, Sound & Sides, Shredded
- 1-2008 John Deere 4440 Diesel Tractor, Cab, A.C. H.E. Radio, 195 Trays, 3 sp. 2 Hyd. 16 8000 Rubber, 112 150 Hrs. Front End Loader, 8 Buckets (To Be Sold Separately Than Together) SN 5619, 7407 Total Hrs. 200 Hrs. On In Frame Overhaul, Sound & Sides, Shredded
- 1-2009 John Deere 4800 Diesel Tractor, Cab, A.C. H.E. Radio, 3 sp. 2 Hyd. Wts., Quick Hitch, 20 8000 Rubber, 2 100 Hrs. On In Frame Overhaul, SN 14804, Sound & Sides, Shredded
- 1-2010 John Deere 4440 Diesel Tractor, Cab, A.C. H.E. Radio, 195 Trays, 3 sp. 2 Hyd. 16 8000 Rubber, 112 150 Hrs. Front End Loader, 8 Buckets (To Be Sold Separately Than Together) SN 5619, 7407 Total Hrs. 200 Hrs. On In Frame Overhaul, Sound & Sides, Shredded

COMBINE, GRAIN TRUCKS, WATER TRUCK, GRAIN CARTS

- 1-1986 Case 1880 Aerial Flow Diesel Combine, Cab, A.C. H.E. Radio, Monitor, 1010 37 Header, 30 5000 Rubber, 2 118 Hrs. On New Eng. Overhaul & New Insects Pump & New Turbo Charger, 2 Owner & Shredded, SN 18155
- 1-1978 GMC T.A. Grain Truck, 360 Eng. 5 Sp 2 Sp. 22 Bed, 12 C. Hoop, Rubber Ties, 110 0000 Rubber
- 1-1975 Chev. C65 T.A. Grain Truck, 427 Eng., Allison Automatic Trans, 27 Bed, 12 C. Hoop, Rubber Ties, 110 0000 Rubber
- 1-1999 Chev. C65 T.A. Water Truck, 427 Eng. 5 Sp 2 Sp. 3 000 Gal. Metal Water Tank, 10 0000 Rubber, 5 HP, 855 Gal. Eng. Pump Water
- 1-1999 Chev. C65 T.A. Grain Cart, 427 Eng. 5 Sp 2 Sp. 3 000 Gal. Metal Water Tank, 10 0000 Rubber, 5 HP, 855 Gal. Eng. Pump Water
- 1-1999 Chev. C65 T.A. Grain Cart, 427 Eng. 5 Sp 2 Sp. 3 000 Gal. Metal Water Tank, 10 0000 Rubber, 5 HP, 855 Gal. Eng. Pump Water

EQUIPMENT

- 1-1983 John Deere 1800, D.T. 37 Shark ChiselPoint Plow, H.P.W. Working G.W. 1 Set Front 4x4 On G.W., Has Extra 4x4 Rear Bar For Picking, R.A.C. Harrows
- 1-International 55 D.T. 31 Shark ChiselPoint Plow, H.P.W. Trainers
- 1-Coulters 42 D.T. Hyd. Fold Deep Furrow Grain Drill, 12 Spoked Press Wheels, Red Box
- 1-Ty 8 Row, 3 sp. Grain Drill, 10' Spaced, D.D., Press Wheels, G.W.
- 1-Ty 4 Row, 3 sp. Grain Drill, 10' Spaced, D.D., P.W., G.W.
- 1-John Deere 950, 4 Bottom, 10' Switch Row
- 1-Starting 10' Row Packer
- 1-Henry 3 sp. 28' Liquid Fertilizer Rig, 31 Shank, 1'x2', 2 Sets G.W., T.S.B., L.M., H.P.W., 2 2000 Blue Pump
- 1-John Deere 400, 28, 3 sp. Rotary Hoe
- 1-Prairie Walkers 16 Row D.T. Sandgraver
- 1-Prairie Walkers 3 sp. 8 Row, Subcutter Will Beam On Front Bar
- 1-San Stevens 18 Row, 3 sp. Hyd. Fold Sandgraver
- 1-San Stevens 3 sp. 8 Row Subcutter
- 1-John Deere 60, 8 Row, 4 sp. G.W.D. Litter-Master Paster, Incorporators

SPRAY EQUIPMENT, TRAILERS, TANKS

- 1-Aero Sales 1000 Gal. T.A. Coop Spray Rig, 40' Folding Booms, Elec. Cab Control, Ace Hyd. Pump, Shredded
- 1-Wyler Tens Set 500 Gal. Sola Mount Spray Rig
- 1-Wyler 300 Gal. Poly Front Mount Spray Rig With Tractors & Cab Control
- 1-Henry 1000 Gal. Poly 4 Wheel Liquid Fertil. Trailer, 11 8000 Rubber, High Clearance
- 1-1000 Gal. Diesel Tank On S.M. Trailer, G.P.I. 12 V Pump
- 1-1000 Gal. Upright Poly Liquid Fertilizer Storage Tank
- 1-2000 Gal. Upright Poly Liquid Fertilizer Storage Tank
- 1-210 Gal. Chemical Tank W/GPI 12 Volt Pump
- 1-1000 Gal. Chemical Tank With Hand Pump
- 1-500 Gal. Overhead Fuel Tank & Stand
- 1-500 Gal. Fuel Tank W/GPI 12 Volt Pump
- 1-50 Gal. Proppane Tank

TRACTOR & TOOLBAR MAKEUPS

- 22 John Deere Subtype Weights
- 1-John Deere 8' Front End Loader Bucket
- 2-Sets Roll-A-Cone Hyd. Level Fold Row Markers
- 1-Sets R.A.C. Cattle Jaw Markers
- 1-John Deere 14' 4" X 7" Toolbar
- 1-Lot 900 Chisel Points
- 1-Set John Deere Gauge Wheels
- 1-Lot Shanks, Clean Spacers, 1'x2' & 2"
- 1-Lot Diamond Toolbars, Var. Lengths
- 1-Tractor Draw Bar
- 1-Lot Sweepers, Knives, Chains
- 1-Lot Sulfur Pans

SHOP EQUIPMENT, NON-CLASSIFIED

- 1-1987 Century Elec. Welder
- 1-Magnum 25 AC Arc Welder
- 1-200 Fox Arc Weld Working Lead
- 1-Campbell Elec. Air Compressor
- 1-Sandrom Elec. Air Compressor
- 1-Small Shop Axl.
- 1-18' Wooden Pans Bin
- 1-4"x12' Metal & Wood Shop Table With 4" Small Shop Axl.
- 1-Lot Extension Cords
- 1-Lot Saws, Hacks, Wrenches
- 1-Lot Tanks
- 1-Crossbar Toolbox
- 1-Monroe Grain Trailer
- 1-4" Brass Grain Probe
- 1-Lot Galvanized 2" Pipe
- 5-36 3/32" Steel Pipe
- 1-Truck 38 Wheel
- 1-Lot Scrap Iron
- 2-General 5 0000 New Truck Tires
- 1-Lot Scrap Iron, Old Farm Implements

Five Star Auctioneers

MERVIN W. EVANS... (806) 864-3721 (Home)
 JIM SUMMERS... (806) 864-3611 (Home)
 JIMMY REEVES... (806) 864-3362 (Home)
 DONNA NOEL... (806) 293-1124 (Secretary)

OFFICE: (806) 296-0379
 P.O. BOX 1030 • PLAINVIEW, TEXAS 7

SCORE BIG SAVINGS THROUGHOUT THE STORE



PRICES EFFECTIVE JANUARY 24-30, 2001

MEAT

BEEF CHILI MEAT	LB	\$2²⁹
BEEF BONELESS ARM ROAST	LB	\$2²⁹
BAR S GROUND BEEF PATTIES	3 LB. PKG	\$5⁹⁹
10 LB. BAG CHICKEN LEG QUARTERS	LB	29¢
BONELESS PORK SIRLOIN ROAST	LB	\$1⁹⁹
SKIN-ON WHITING FILLETS	LB	\$1⁸⁹
BAR S BONELESS HALF HAM	LB	\$1⁹⁹
5 LB. AVG. CORN KING OR BAR S WHOLE HAM	EACH	\$6⁹⁹
BAR S 1 LB. CHUNK OR PRE-SLICED EXTRA LEAN HAM	YOUR CHOICE	\$3³⁹
BAR S SLICED BACON	12 OZ. PKG	\$1³⁹
CASA DE LOWE'S CHORIZO	8 OZ. PKG	89¢
HILLSHIRE FARM LIT'L SMOKIES	1 LB. PKG	2/54
OSCAR MAYER RED RIND MEAT BOLOGNA	16 OZ. PKG	\$1⁶⁹
OSCAR MAYER • CHOPPED HAM • HAM AND CHEESE • ROASTED WHITE TURKEY • SMOKED TURKEY • HONEY CHOPPED HAM • HONEY SMOKED WHITE TURKEY HAM OR TURKEY	16 OZ. PKG	\$2⁹⁹
OSCAR MAYER SMOKED OR HONEY COOKED HAM	16 OZ. PKG	\$3⁵⁹
OSCAR MAYER ASSTD. VARIETIES MEAT WIENERS	16 OZ. PKG	\$1⁷⁹
OSCAR MAYER ASSTD. VARIETIES BEEF FRANKS	1 LB. PKG	2/55
BAR S JUMBO MEAT BOLOGNA	5 LB. PKG	\$4⁹⁹
BAR S JUMBO MEAT FRANKS	1 LB. PKG	89¢
BAR S MEAT FRANKS	12 OZ. PKG	3/52
BAR S BEEF FRANKS	12 OZ. PKG	2/53
BAR S BAGGED RED FRANKS	2 LB. PKG	\$2⁹⁹
SELECT GROUP VLASIC		
46 OZ. WHOLE DILLS OR 16 OZ. STACKERS DILLS OR STACKERS ..	YOUR CHOICE	2/54
ASSTD. CHEX MIX SNACKS	7.75-8 OZ.	99¢
BETTY CROCKER ASSTD. POP-SECRET POPCORN	3 PACK	2/53
ASSTD. HERSHEY'S MINIATURES	13 OZ.	\$2⁹⁹
LOWE'S DRINKING WATER	GAL. JUG	2/51
ASSTD. FLAVORS GATORADE DRINKS	32 OZ. BTL	4/55
Q AND Q VERMICELLI	5 OZ. PKG	4/51
ASSTD. KRAFT GRATED PARMESAN	8 OZ. JAR	\$3⁷⁹
ORI. OR 3-CHEESE KRAFT SHREDDED PARMESAN	7 OZ. JAR	\$3¹⁹
KRAFT REG. OR LIGHT MIRACLE WHIP	32 OZ. JAR	\$2⁴⁹
ASSTD. 10 PACKS CAPRISUN OR TANG DRINKS	6.7 OZ.	2/55
KRAFT MINUTE RICE	28 OZ. BOX	\$2⁴⁹
TACO BELL TACO SHELLS	12 CT. PKG	\$1²⁹
• 12 OZ. GRAPENUTS O'S • 13 OZ. COCOA OR FRUITY PEBBLES • 13 OZ. CINNACRUNCH PEBBLES • 24 OZ. GRAPENUTS • 20 OZ. RAISIN BRAN POST CEREAL	YOUR CHOICE	2/55
ASSTD. GRINDS MAXWELL HOUSE EXCLUDES DECAF. COFFEE	11-13 OZ. CAN	2/54
KRAFT SELECT GROUP MAC & CHEESE DINNERS ..	9.4-14 OZ.	2/54
ASSTD. HERSHEY'S SYRUP	18.5-24 OZ. BTL	3/55
BEST MAID SWEET OR DILL RELISH	12 OZ. JAR	2/53
EL HORNO FLOUR TORTILLAS	10 CT. PKG	89¢
ALL VARIETIES COCA-COLA, SPRITE OR DR. PEPPER	6 PK-12 OZ. CANS	3/55
ALL VARIETIES COCA-COLA, SPRITE OR DR. PEPPER	3 LITER BTL	3/54
ALL VARIETIES COCA-COLA, SPRITE OR DR. PEPPER	6 PK-.5 LITER	2/54

FROZEN & DAIRY

ASSTD. 12" ORIGINAL OR BAKE TO RISE RED BARON PIZZA	22-28 OZ. PKG	2/56
ASSTD. STOVE TOP OVEN CLASSICS	14-15.7 OZ. PKG	\$2¹⁹
TEXSUN ORANGE JUICE	12 OZ. CAN	99¢
MARGARITA, PINA COLADA OR STRAWBERRY DAIQUIRI BARCARDI MIXERS	10 OZ. CAN	3/55
ASSTD. BANQUET POT PIES	7 OZ. PKGS	2/51
SELECT GROUP WEIGHT WATCHERS ENTREES	6.25-11.5 OZ. PKG	3/55
SELECT GROUP BANQUET VALUE MENU OR SELECT MENU	6.7-11 OZ. PKG	99¢
LOWE'S HOMOGENIZED/SHURFINE/SHURSAVING LOW FAT PREMIUM QUALITY ALL VARIETIES MILK	GALLON JUG	\$1⁹⁹
PLAIN SOUR CREAM, FRENCH ONION OR GREEN CHILI DIP	16 OZ. TUB	2/53
KRAFT REG. OR 1/3 LESS FAT PHILADELPHIA CREAM CHEESE	8 OZ. BOX	2/53

KRAFT REG. OR LIGHT VELVEETA LOAF	32 OZ. BOX	\$3⁹⁹
SELECT GROUP KRAFT SINGLES	12 OZ. PKG	2/55
SELECT GROUP CUBES OR SHREDDED KRAFT CHEESE	8 OZ. PKG	2/54
BAR S AMERICAN SLICES	5 LB. PKG	\$9⁹⁹
GOLDEN COUNTRY CHEESE SINGLES	10.7 OZ. PKG	99¢
ASSTD. KRAFT SINGLES	12 OZ. PKG	2/55
KRAFT CHEDDAR CUBES ...	7.5 OZ. SNACK PK.	2/55
ASSTD. KRAFT DIPS	6-8 OZ. TUB	99¢
PUDDING, GELATIN OR CHEESECAKE JELL-O SNACKS	4-6 CT. PACK	\$2¹⁹
ASSTD. KRAFT HANDI-SNACKS PUDDING OR GEL CUPS	4 PK.	99¢
ASSTD. BLUE BUNNY ICE CREAM	5 QT. PAIL	\$4⁹⁹
CREAMY IMPERIAL SPREAD	48 OZ. TUB	2/53
ASSTD. DANNON YOGURT	8 OZ. TUB	2/51

PRODUCE

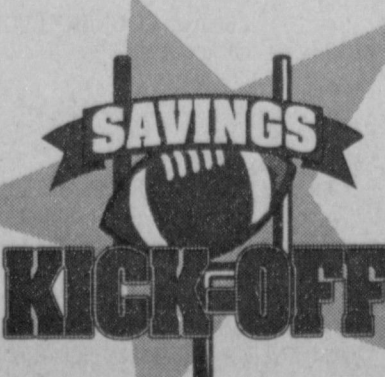
CREAMY HASS AVOCADOS		3/51
YOUR CHOICE • RED RIPE ROMA TOMATOES • SPICY JALAPEÑO PEPPERS • MEXICAN SQUASH • SWEET LARGE TANGELOS • FRESH JICAMA	LB	87¢
FRESH BOK CHOY	LB	67¢
MINI CARROTS	16 OZ. PKG	97¢
FRESH CILANTRO	BUNCHES	3/51
DOLE SALAD AMERICAN BLEND	10 OZ. BAG	\$1⁹⁷
MEDIUM YELLOW ONIONS	LBS	3/51
TENDER CELERY HEARTS	10 OZ. PKG	\$1⁵⁷
AVOMEX FRESH GUACAMOLE	16 OZ. PKG	\$2⁹⁹
READY TO EAT VEGETABLE TRAYS	EACH	\$9⁹⁹
BORDEN'S REG. OR SALTED ROASTED PEANUTS	16 OZ. PKG	2/53
TANGY JUICY LEMONS OR LIMES		8/51
WASHINGTON EXTRA FANCY RED DELICIOUS APPLES	LB	67¢

DEL MONTE KETCHUP	24 OZ. BTL	88¢
SHUR SAVING SALTINES	16 OZ. BOX	79¢
WOLF BRAND ASSTD. CHILI NO BEANS	15 OZ. CAN	89¢
LAY'S ASSTD. PRE-PRICED \$2.99 POTATO CHIPS ..	BUY ONE, GET ONE	FREE
NABISCO AIR CRISPS	7 OZ. BOX	2/54
NABISCO RITZ CRACKERS	16 OZ. BOX	2/55
ASSTD. BUGLES SNACKS	6 OZ. PKG	99¢
LOWE'S SANDWICH BREAD	24 OZ. LOAF	69¢
QUAKER HARINA PREPARADA	8 LB. BAG	\$3⁹⁹
SUNNY VANILLA WAFERS	11 OZ. PKG	99¢
QUAKER ASSTD. CEREAL	13-18 OZ. BAG	2/53

HEALTH & BEAUTY

STAYFREE ASSTD. REG. OR ULTRA THIN MAXI PADS	18-24 CT. PKG	\$2⁹⁹
MENSTRUAL RELIEF WOMEN'S TYLENOL	24 CT.	\$3⁷⁹
HEARTBURN RELIEF PEPCID COMPLETE	15 CT. PKG	\$5⁹⁹
EXTRA STRENGTH CAPLETS, GELTABS OR GELCAPS TYLENOL PM	50 CT. PKG	\$5⁹⁹
CHILDREN'S ASSTD. OR ALLERGY D TYLENOL COLD	4 OZ. BTL	\$4⁹⁹
CAPLETS TYLENOL ARTHRITIS	50 CT. PKG	\$4⁹⁹
ORIGINAL OR GRAPE CHILDREN'S MOTRIN	4 OZ.	\$4⁹⁹
ASSTD. TYLENOL COLD & FLU	24 CT. PKG	\$3⁹⁹
ASSTD. TABLETS CHILDREN'S TYLENOL ...	30 CT. PKG	\$2⁹⁹
MOTRIN COLD & FLU	10 CT. PKG	\$2⁹⁹
MOTRIN MIGRAINE PAIN	24 CT. PKG	\$2⁶⁹
CAPLETS IMODIUM A-D	18 CT. PKG	\$4⁹⁹
LIQUID MINT OR CHERRY MYLANTA SUPREME	12 OZ. BTL	\$3⁷⁹
CHILDREN'S TYLENOL COLD AND PLUS COUGH	24 CT.	\$3⁵⁹

GREAT AS A TOY BOX OR ICE CHEST BUCKETS	18 GALLON	2/510
GREAT FOR ICE CREAM FLOATS AND ICED TEA MUGS	EACH	\$1
KLEENEX • 70 CT. COLD CARE LOTION • 95 CT. BOUTIQUE COLOR • 175 CT. WHITE OR ASSTD. • 70 CT. WHITE ULTRA • 108 CT. WHITE ULTRA • 85 CT. EXPRESSIONS FACIAL TISSUES	YOUR CHOICE	3/54
KLEENEX DOUBLE ROLL COTTONELLE	12 ROLL PKG	\$5⁹⁹
KLEENEX VIVA PAPER TOWELS	REG. ROLL	99¢
SCOTT NAPKINS	400 CT. PKG	\$2⁵⁹
DIXIE FRUIT 48 CT. 9" OR 24 CT. 10" PAPER PLATES	YOUR CHOICE	\$2¹⁹
DIXIE COLOR PLASTIC CUPS	20 CT. 16 OZ. PKG	\$1¹⁹
ZIPLOC • STORAGE 40 CT. GAL., 50 CT. QT. • FREEZER 40 CT. QT., 30 CT. GAL. OR 10 CT. 2 GAL. FREEZER OR STORAGE BAGS		\$2⁹⁹
ANTIBACTERIAL OR HERBAL FANTASTIK TRIGGER	32 OZ. BTL	2/55
WHISKAS ASSTD. CAT FOOD	5.5 OZ. CANS	3/99¢



WESTERN UNION MONEY TRANSFERSM
"The fastest way to send money"

Lowe's
MARKETPLACE

401 W. American Blvd. Muleshoe 272-4585

WE RESERVE THE RIGHT TO LIMIT QUANTITIES IN TEXAS