

3 Days - Thursday - Friday - Saturday - Doors Open 8:00 Thursday Morning

Semi-Annual - Store-Wide - Money-Saving

CLEARANCE SALE

GROUP
BOBBIE BROOKS
SWEATERS -- SKIRTS
SLIM JIMS
HALF PRICE

GROUP
SHIP N' SHORE
BLOUSES
\$1.98

GROUP
GIRLS'
SWEATERS
1/2 PRICE

ALL BRAS
GIRDLES
20% OFF

GIRLS'
SPORTSWEAR
Reduced

PIECE GOODS SALE

EVERY YARD REDUCED

REG.	SALE	REG.	SALE
49c	39c	79c	59c
59c	49c	89c	69c
69c	55c	\$1.00	79c

FIELDCREST TOWEL SALE

REG.	SALE	REG.	SALE
79c	59c	\$1.98	\$1.59
\$1.00	79c	\$2.98	\$2.49
\$1.19	89c	\$3.95	\$2.98

ALL SHEETS ON SALE

Muslin — Percalé — Floral
Flat - Fitted - Double - Single

ALL LADIES UNDERWEAR ON SALE

SLIPS		PANTIES	
REG.	SALE	REG.	SALE
\$2.95	\$2.49	79c	59c
\$3.95	\$3.39	\$1.00	79c
\$4.95	\$3.98	\$1.35	98c
\$5.95	\$4.79	\$1.65	\$1.29

MOJUD
HOSIERY
ON SALE

\$1.00	79c
\$1.35	98c

CHILDREN'S
PANTIES

69c	55c
79c	59c
\$1.00	79c

—ALL REGULAR BRANDED STOCK—
NO SPECIAL PURCHASES OF SALE MERCHANDISE
— EVERY ITEM REDUCED —

—SAVE NOW ON YOUR—

WINTER AND STAPLE NEEDS

Ready-To-Wear Sale

Dresses - Suits - Blouses - Sport Clothes

Drastic Reductions In This Department

FAMOUS BRAND
DRESSES

Reg.	Sale
\$9.95	\$5.98
\$10.95	\$6.98
\$12.95	\$8.98
\$14.95	\$9.98

BOBBIE BROOKS
BLOUSES — SKIRTS
SLIM JIMS

Reg.	Sale
\$3.95	\$2.98
\$4.95	\$3.79
\$5.95	\$4.49
\$7.95	\$5.98

GROUP LADIES DRESSES
Values To \$14.98

\$4.98

LADIES SWEATERS

Bobbie Brooks

Third Off

All Ladies
Robes Reduced

All Childrens Play
Clothes Reduced

All Shoes On Sale

Dress - Work - Play - Tennis - Boots

All Ladies Shoes
Fourth Off

Group Ladies Shoes
\$1.98

P. F. Tennis Shoes
\$4.98

All Childrens Shoes
25% Off

SALE — BOYS' SHIRTS

Reg.	Sale
\$1.98	\$1.59
\$2.49	\$1.98
\$2.98	\$2.49

BOYS' DRESS PANTS

25% OFF

ALL BOYS' SWEATERS
ON SALE

Please — No Gift Wrappings; No Refunds
On Sale Merchandise

SALE ON

MEN'S SPORT SHIRTS

Reg.	Sale
\$2.98	\$2.49
\$3.98	\$3.29
\$4.98	\$3.98
\$5.98	\$4.59

SALE
Shorts — U-Shirts
85c — 69c
\$1.00 — 79c

SALE
ON GLOVES
20% OFF

ALL WORK CLOTHES ON SALE

KHAKI PANTS & SHIRTS

SALE ON
SWEAT SHIRTS

Zipper	
Hooded	Plain
\$1.59	\$1.29
\$2.29	\$1.98
\$2.98	\$2.59
\$3.49	\$2.98

SALE ON
MEN'S

Western Shirts	
\$4.98	\$3.98
\$5.98	\$4.79
Boys' Western	
Shirts	\$2.98

-- JACKET SALE --

All Men's And Boys' Jackets
Reduced

MEN'S		BOYS'	
\$10.95	\$7.98	\$5.98	\$3.98
\$12.95	\$8.98	\$7.98	\$4.98
\$14.95	\$9.98	\$9.98	\$6.98
\$17.95	\$12.98	\$14.98	\$9.98

GROUP

MEN'S SLACKS

1/2 PRICE

Men's Lee Riders
\$3.69

Boys' Lee Riders
Sizes 4-12 — \$2.69
Sizes 13-16 - \$3.49

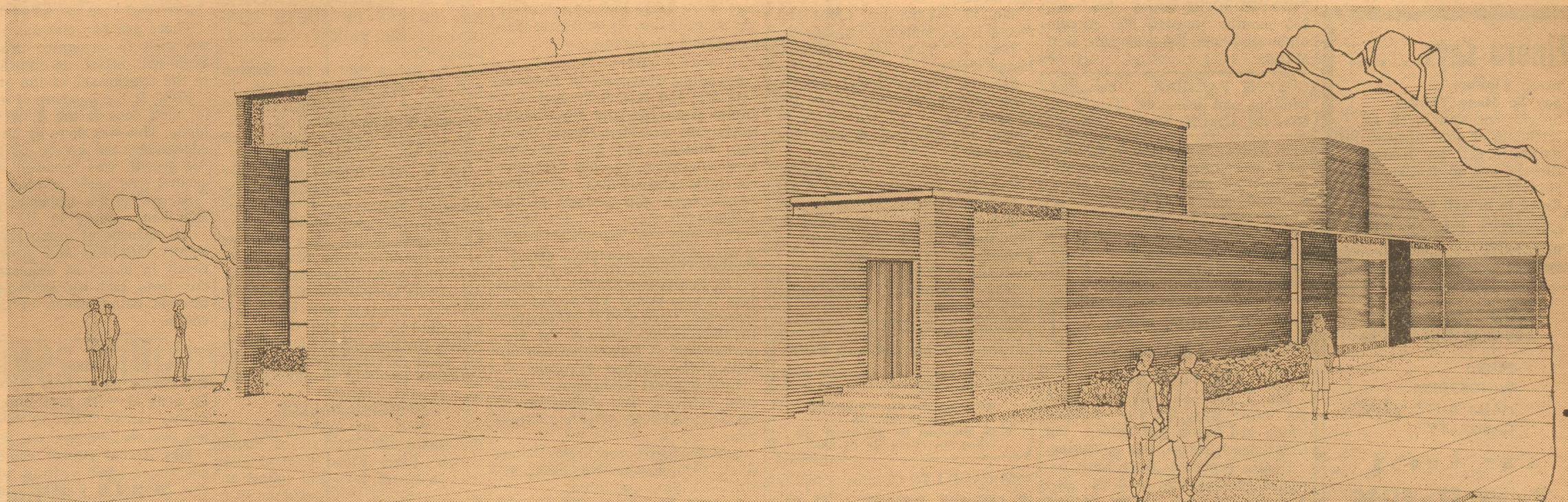
Lee Westerners
\$4.29

Boys' Westerners
\$3.49

THE RATLIFF STORE

ELDORADO AND SONORA, TEXAS

School Improvement Proposals for January 15th Bond Election

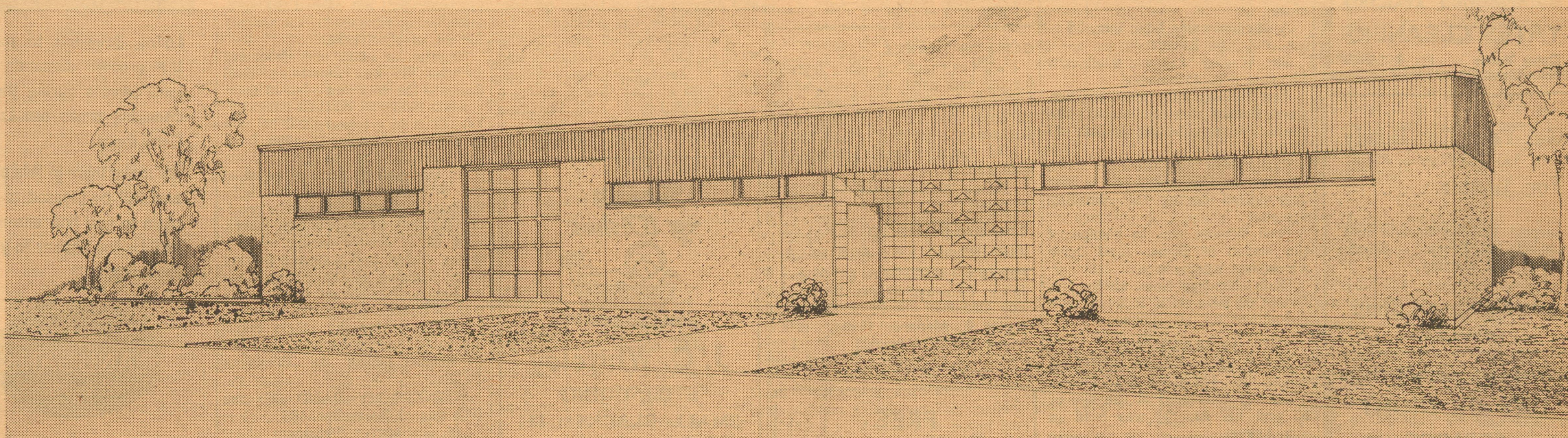


Item No. 1—NEW BAND HALL

The proposed band hall is an extension to the present building facilities that is adequate for present and foreseeable number of band members and will include rehearsal room, practice rooms, instrument and uniform storage and music library. Included in this building is a classroom area of adequate size for two classrooms.

This building will be of matching color and architectural design to

present buildings, and will be situated at the southwest side of the present auditorium and along the street across from the gymnasium. This building is to replace the present band hall which was designed for a maximum of 30 band members. This creates a hazardous overcrowded condition with a present band membership of 100 together with acoustical and temperature problems.



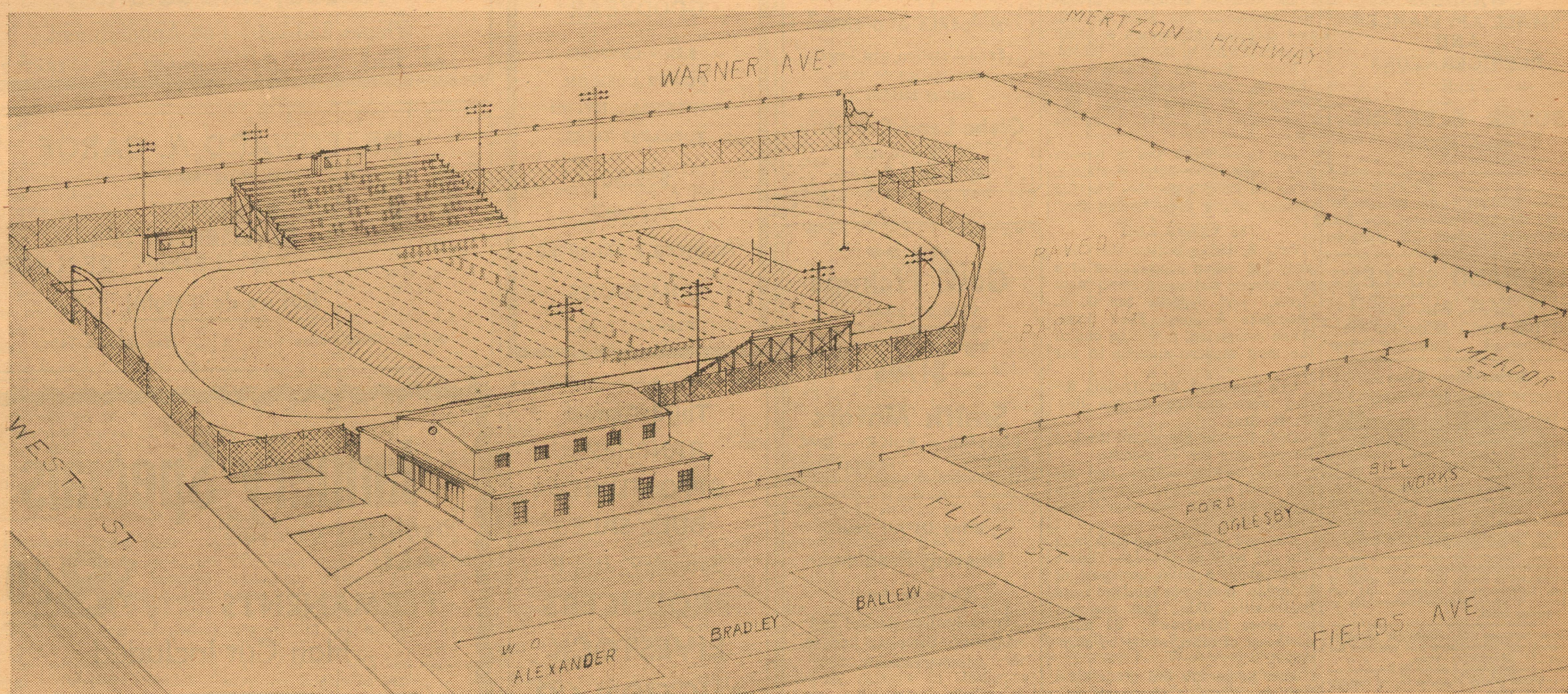
Item No. 2—VOCATIONAL AGRICULTURE BUILDING

This building will house facilities which include shop, classroom, storage and wash room suitable for the present number of 40 or more boys. Noise and distraction will be eliminated between shop and classroom but both facilities can be supervised by one instructor. The shop equipment will include 4 AC electric welders, one DC portable welder, one air compressor, one paint gun, 1 power hack saw, and one acetylene manifold.

This building is to replace the present room which was originally

used as a wood work shop and is only 1215 square feet. The state minimum requirement for this school is 2800 square feet and plans are for the new building to be 3250 square feet.

This building will be of rigid frame steel construction with pebble grained concrete sides and will be of matching color to surrounding buildings and will be facing southeast, adjacent to the old band building. The relocation of the vocational ag. class will make available more immediately needed classroom space and completely eliminate noise, dust, fumes and distraction from connecting classrooms.



Item No. 3—NEW ATHLETIC FIELD

The proposed new athletic field will be located alongside and west of the Gymnasium, in the presently vacant area as shown on the above plat. This new plant will include the playing field, new cinder track, spectator stands, concession stand and restroom facilities. The entire parking area is to be paved and will provide an excess of space compared with the presently used facilities south of town.

Dressing room space in the Gymnasium will be enlarged to accommodate the entire Physical Education program, plus dressing facilities for visiting teams.

The reason for proposing this move from the present location is twofold. First, public pressure has been felt for a number of years toward building dressing room facilities for our teams at the present site. Upon consultation with architects, estimates submitted showed a cost of over

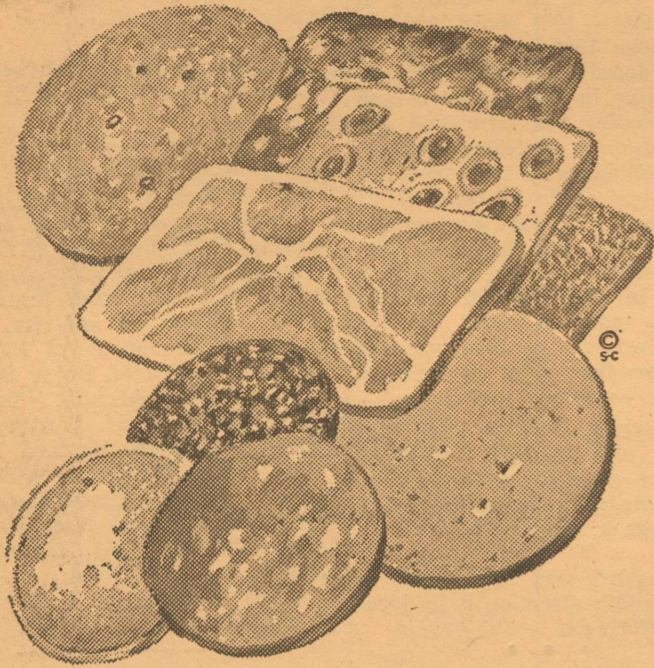
\$32,000 for dressing rooms, plus additional estimates which would have called for a total expenditure exceeding \$40,000 to make necessary improvements. Water and sewage disposal problems would still be a factor relative to dressing room additions at our present site, since no satisfactory, practical solution could be offered to solve this problem. Through the use of this money, the entire plant can be moved and present facilities in our Gymnasium utilized to their full extent. Secondly, relocation places our entire school plant in one location. Transportation of children and school personnel is eliminated altogether.

Item No. 4—AUDITORIUM STAGE CURTAINS

Renovation of the Stage Curtains in the Auditorium is included in the proposed improvement program. Wear and tear through the years have made their mark on these curtains and rehangng and redesigning are necessary to up-date and put the curtains in acceptable condition.

Shop **HERE**, SAVE *here!*

Market Values



Gooch's
Sliced
Salami
Bologna
Liverloaf

6-Oz Pkg.
29^c

Beef Chuck
Roast

Pound
59^c



Gooch SLAB
BACON

Pound
79^c

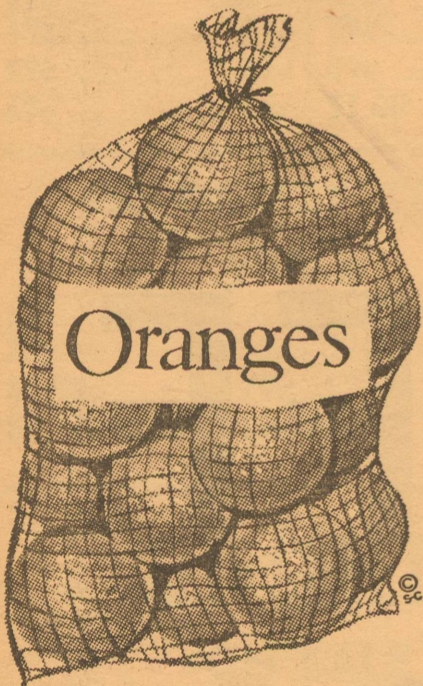
Rider
Franks

3-Lb Bag
1.29

Young, Tender
Beef Liver

Pound
39^c

Produce Buys



New Crop
Oranges

5-Lb. Bag
49^c

New Crop Texas
Grapefruit

5-Lb. Bag
49^c

Tender - Sweet
Carrots

1-Lb. Bag
9^c

Texas
Yellow Onions

2 Pounds
9^c

Health and Beauty Aids



Style
HAIR SPRAY

13-Oz. Can
59^c

24's
Resolve Anti-acid

59^c

BUFFERIN For Fast Pain Relief
36's **59^c**

Kitchen Aids

Kleenex
FAMILY NAPKINS

60 Count—Cello Wrap
2 **29^c**

Scott Towels Decorated Big Roll
Each **37^c**

Chinet Paper Plates New Plastisized Compartment
12-Count **29^c**

Frozen Food Bargains



Patio - Beef
ENCHILADA DINNER

Each
49^c

Frozen Rite
Parker House ROLLS

24-Count
39^c

Youngblood's Fresh Frozen
Wishbones or Breast

1-Lb. Box
89^c

Stock Up on These Canned Foods

Kimbell's
Cut Green Beans

303 Cans
4 **69^c**

Kimbell's
Whole Green Beans

303 Cans
3 **69^c**

Kimbell's
Pork & Beans

300 Cans
6 **69^c**

Kimbell's
SWEET PEAS

303 Cans
4 **69^c**

Kimbell's — Diamond
TOMATOES

303 Cans
4 **69^c**

Kimbell's — Greens
Mustard or Turnip

303 Cans
5 **69^c**

Kimbell
Big K Flour

10 Lbs. **69^c**

Kimbell's
Coffee

1 Lb. **69^c**

Kimbell
Shortening

3 Lbs. **69^c**

Imperial
Sugar

5 Lbs. **49^c**

Giant Box
Tide or Bold

69^c

Woodbury
BATH SOAP

Bar **10^c**

Joy - Suds
BUBBLE BATH

1-Lb. Can **29^c**



Premium
CRACKERS

Pound
33^c

Nabisco
Bacon Thins

Box
39^c

PARKER FOODS