

10c  
COPY

# Eldorado Success

Schleicher County's Only Newspaper

Offering The Best Advertising Medium

Est. 1901, This County's Oldest Business Enterprise

65TH YEAR

ELDORADO—SCHLEICHER COUNTY, TEXAS (76936) Thursday, September 22, 1966

Number 38

## Rainfall To Date Equals Last Year's

Average rainfall for the first 8½ months of this year appears to be 17.61 inches which is equal to the entire year of 1965, according to recent rainfall records.

Figures are from Lloyd Johnson of the Soil Conservation office, and are averages of three gauges—one in Eldorado, one from Jack Wade and one from Hensel Matthews.

The city of Eldorado itself is credited with 21.06 inches of rainfall for the year to date—nearly 9 of it falling in August and September.

Figures for the three gauges for August, September to date, and year total are:

	Aug.	Sept.	Year
Jack Wade	5.53	4.67	17.64
H. Matthews	2.05	2.50	14.15
Eldorado	5.00	3.70	21.06

## Church Youths To See SMU-Navy Game

Some weeks ago SMU Coach and Athletic Director, Hayden Fry, issued an invitation to all Texas Methodist young people to be the guests of SMU on September 24 when the Mustangs take on the Midshipmen of the Navy in the Cotton Bowl at Dallas. A large number of youth and adults are going from Eldorado, and since the evening Youth Fellowships of the Methodist, Presbyterian and Christian churches are combined (the Senior Hi's meeting in the Methodist church and the Jr. Hi's in the Presbyterian church), all of these groups will be represented. The young people will be seated in a special youth section in the Cotton Bowl.

The FFB Sunday School class of the Methodist church will provide a light breakfast (coffee, milk, doughnuts), in the Fellowship Hall for all those going. Breakfast will be served at 4:30 a.m. this Saturday. The bus which has been chartered for the trip will leave at 5:00 a.m. Everyone will take a sack lunch, thus enabling the group to arrive at the stadium around noon. The game will begin at 2:00 p.m. After the game the group will remain overnight in Ft. Worth, staying at the Clayton House Motel. On the return trip Sunday a brief worship service will be conducted by Rev. Salter at a roadside park. The noon meal Sunday will be eaten in Brownwood. The group will arrive in Eldorado on Sunday, September 25, sometime between 4:00 and 6:00 p.m.

Young people and counselors attending from here number 64, and will include:

Martha Sue Page, Debra Murr, Stella Hubble, Shirley Hubble, Tanya Yates, Connie Sue Speck, Maureen McCravy, Susan Hill, Vickie Jones, Arlene Hartgraves, Vickie Preston, Claudia Meador, Peggy Hill, Linda Derrick, Genie Newport, Bunny Lester, Lisa McAngus, Sheila Murr, Randy Yates, Alona Haynes, Rusty Meador, Jimmy McGinnes, Mickey Pennington, Rickey Buchner, Mike Olson, Chris McCravy, Hyman Sauer, Buddy Calk, Bob Haynes, Kirk Jones, Bobby DeLong, Ronnie DeLong, Gary Derrick, Danny Halbert, Bubba Davidson, Jerry Childers.

Jim Martin, Dafid Blakeway, Bob Page, Keith Williams, Paul Page, Mike Haynes, Johnny Danford, Carl Porter, Willie Manning, Walter Speck, Billy Doc Hubble.

Counselors: Mr. and Mrs. Jim Martin, Mr. and Mrs. John Murr, Mr. and Mrs. L. V. Newport, Mr. and Mrs. Ed Meador, Mr. and Mrs. Henry Speck Jr., Mr. and Mrs. Bill Hubble, Mr. and Mrs. Wilson Page, Mr. and Mrs. Dick Preston, and Ref. D. G. Salter.

Mrs. Ed Meador has been in charge of arrangements for the trip. A few \$2.50 adult tickets are available and may be obtained by calling Rev. Salter, 2721.

### COLLEGE STUDENTS:

A 9-month subscription to the Success costs just \$3.00. Subscribe now, if you have not already done so.

## Post Script

"We are proud of our hospital," so said a woman in a filling station where we stopped on our way out of Robert Lee on Monday evening.

It was E. C. (Pete) Peters, president of Schleicher County C of C, accompanied by Fred Gunstead, who journeyed all the way to Robert Lee Monday evening to learn what made their hospital "click" with the people in that city. We found that those we talked with—like the station lady—were proud and happy with the institution, and we wished many more from Eldorado could visit their plant.

This week Robert Lee is playing Eldorado at Eldorado, and when we went through their new hospital and nursing home, we couldn't help but wish that Eldorado had been playing at Robert Lee.

If they had, it would have been an opportunity for scores of Eldoradoans to visit their hospital and to have come away impressed with the layout like we were.

J. E. Quisenberry, hospital district trustee and secretary, and Mrs. Truman Hines, hospital administrator, were very cordial and accommodating during the hour we spent with them.

The Coke County Hospital district does not include the whole county, but consists of the two commissioner districts on the west side of the county.

The West Coke County District Hospital seems to be a going concern and we would urge you to visit it any time you are in that area.

—ps—

Mrs. R. W. Young has re-opened the West Texas Cafe in the Eldo Hotel building, which had been closed since last Spring.

Mrs. Young will serve free coffee and doughnuts Monday.

—ps—

Robert Brian Keller is new in Eldorado and is living in Mrs. Dameron's duplex.

—ps—

City Secretary Lum Burk reported this week that tax bills will go in the mails on Sept. 28th, and payments may be made in the office beginning Oct. 1st.

This year, each individual lot in the city limits will be billed separately for taxes.

—ps—

Delbert and Imogene Edmiston report that the movies being shown this coming week end at their Eagle Drive-In Theatre will be the final ones for this season. Following the showings of The Trouble With Angels and Paradise, Hawaiian Style, the theater will be closed for the fall and winter.

The drive-in theater, which is located on the Menard highway just across the railroad tracks, was opened about 15 years ago by the Edmistons.

Likewise, last week's Eden Echo reported that the Eden drive-in theater was also closing for the winter.

—ps—

Our old friend, J. C. Whiteley, dropped in last Friday to pick up a copy of the Brady paper, and reported, "I'm getting old—I'm 88 today!"

Although he was carrying a cane he doesn't use it much except when he has to step up on a high curb. He had just walked to the post office and was on his way back home.

A lifelong blacksmith, Mr. Whiteley still has a small shop next to his residence and continues to ply his trade by sharpening sweeps and crowbars and other light jobs. He lays the cane aside when he is in his shop because there are plenty of things to hold onto.

He and Mrs. Whiteley observed their 65th wedding anniversary earlier this year.

—ps—

A Special Reminder to College Students and their parents: A subscription to the Success for the coming 9-month school term costs just \$3.00.

This is a good way to keep in touch with happenings back home, while you are away at school.

—ps—

Eldon Calk announces in an ad on page 5 that his Eldorado Drug store will have a 15th Anniversary Sale, starting Monday. Calk bought the store 15 years ago from O. E. Deal, who had previously bought it from the late L. M. Hoover.

—ps—

Some of my best friends disagree with me on certain matters and I have long since learned that that is no reason for not continuing to be friends.

Last week we carried a message from Walter Pope in which he declared he was not in favor of a tax supported hospital for Schleicher county.

I want to say now that we have no quarrel with Mr. Pope. We respect his position. When he came to our office on Tuesday of last week he was courteous and respectful, and his 4-year-old boy hit it off in an agreeable manner with our 4-year-old granddaughter. That was enough to make us kinda like Walter Pope.

But he says Schleicher county can't afford the luxury of a county hospital because it has been proved that it doesn't work out in Kimble county, of which Junction is the county seat.

We contend that Kimble county can not be compared to Schleicher county. Kimble county has no oil fields. The tax burden there falls on the land owner. They have a tax valuation of 7 million compared to 17 million in Schleicher. There the tax burden falls on the land owners, while in Schleicher, oil companies pay 70% of the taxes and land owners pay the other 30%.

This difference is reflected in our county wide school system, where Schleicher can afford a new band hall, a new ag. building and a new football stadium without undue burden on the small tax payer. Junction is still staging their football games on a race track.

First class facilities, either present or in building, were responsible for our school in securing the services of a top-ranking coach and a band leader, when vacancies occurred there this year.

By the same token if we expect to secure the services of first-class doctors we must provide first class facilities—which would be a first-class hospital.

While pointing to Junction as a hospital failure, perhaps we should look around and see if all the others are failures. Menard is considering additions to its facilities. Robert Lee seems to be doing well, and McCamey is going ahead—no backward.

Many small new businesses have failed because they did not have resources back of them to tide them over the first few years when they were getting started.

Don't get us wrong—setting up a hospital doesn't guarantee that there will never be any more problems. There will be disagreements and problems and mistakes.

Proud as we are of our school you may remember that nine years ago we paid \$5,000 to buy back a superintendent's contract, when there was a revolt in our school system.

Those things happen, but they don't prevent the steady progress and improvement of our civic set-up.

Some of the best thinking of our leaders at present believe that a county wide hospital district is the answer to our medical facilities problem and it should be given support.

To compare Schleicher with Kimble county is not the way to go at it.

Walter—?

—ps—

Mr. Leslie Woullard is local chairman of the Lions International Peace Essay Contest. He stated this week that he expects to have students from one or two English classes in Eldorado High School to submit entries. Deadline for the entries is December 10th.

The contest, open to young people who will be 14 but less than 22 years of age as of January 15, 1967, was announced by the president of Lions International, Edward M. Lindsey, of Lawrenburg, Tenn., during the association's annual International Convention in New York this past summer.

There might be some college students from here who also would enter this contest, provided of course that they are in the required age range.

—ps—

As the Success goes to press this week, we are still having cloudy damp weather, and Mike's Gin is still awaiting the first cotton bale.

## Robert Lee Steers Here Tomorrow

### Bulletin Board

#### HOW THEY CAME OUT LAST WEEK:

Sonora—Open date		
Ozona 33	Big Lake	0
Rankin 31	McCamey	0
Eldorado 7	Crane	21
Iraan 14	Stanton	14
Junction 3	Mason	26
Menard 14	Eden	18
Sanderson 7	Van Horn	19
How They Stand: W	L	T
Ozona	2	0
Rankin	2	0
Sonora	1	0
Eldorado	1	1
Iraan	1	0
Junction	1	1
Menard	0	2
Sanderson	0	2

#### Where They Play Tomorrow Night:

Sonora in Mason
Big Lake in Rankin
Ozona—
Robert Lee in Eldorado
Iraan in McCamey
Eden in Junction
Jim Ned in Menard
Sanderson in Grandfalls

#### COMMENT:

Robert Lee Coach Kenneth Mitchell began his first year with the Steers this September. Previously, he was at Junction for the past several years. While in Junction, he developed a great desire to beat Eldorado and is rumored to say that if his Steers down the Eagles tomorrow night, he will feel that he has had a satisfactory season regardless of the outcome of their remaining games. Conservative conclusion is that the Steers will make maximum effort tomorrow night.

The Eldorado Eagles face a powerful adversary tomorrow night on Eagle Field. Opponents are the Robert Lee Steers collectively, a ponderous and power-minded crew, picked this year to capture their 4-B District honors. Robert Lee has 17 returning lettermen including all 11 starters. Their starting lineup averages 181 pounds.

Offensive posture favored by the Steers is a Basic Slot T; they utilize a powerful running attack spearheaded by 190-pound Fullback Blair, a pair of strong halfbacks both weighing 155, and a 160-pound QB named DeVoll. Their backfield consists of two seniors, one junior, and one sophomore.

Defensively they employ a six-man line with two line backers and a three-man secondary. They vary defensive tactics but favor such standard tricks as looping the entire line either way with the linebackers sliding the opposite direction.

Not only do they have a strong running attack but they can employ the excellent passing combination of QB DeVoll to Number 88, Pitcock, a 205-pound senior end. This does not rule out their other end, also a 205-pound senior, Williams.

Conclusions are that the Steers are dangerous adversaries and area forecasters will in the majority favor them over the Eagles. Their starting lineup will probably be as follows:

No.	Name	Pos.	Wt.
11	Williams	LE	205
87	Skipworth	LT	190
65	Fields	LG	180
50	Lomas	C	190
64	Bloodworth	RG	180
78	Prealor	RT	180
88	Pitcock	RE	205
25	Rowe	LHB	155
24	Voeburg	RHB	155
35	Blair	FB	190
10	DeVoll	QB	180

The Eagles will counter Robert Lee Power with their admirable "Thin Green Line" stubbornness combined with effective blocking and overall competitive spirit.

Understandably the 16-man Eagle roster permits little change in line-up. Offensively, Donald Rogers and Jesse Bosman will man the end positions; John Mayo and Rickey Buchner, the tackles; Chris McCravy and Ricky Jones, guards; Allan Corbell at Center; with Roy Davidson and J. Halbert at half-back positions, Pat Childers at full-back, and D. Halbert at QB.

Defensively, D. Halbert and Mickey Pennington will take over as ends on the six-man line; Rogers and Buchner at the tackles, Mayo and Corbell at guards, these six being backed up by Chris McCravy and Pat Childers. The three-man secondary will be made up of J. Halbert, Roy Davidson, and J. Bosman.

Game forecast: Cautious but decidedly optimistic. The Steers have conquered Menard by a lopsided 33-0, in their only game to date; but their ability to counter the Eagles' fierce competitiveness and high velocity offensive activities should be scrutinized carefully if not skeptically.

## Eagles Bow To Crane By Hard-Fought 21-7

A proud and stubborn Eldorado team made up of 16 lads took on the 44-man Class AA squad of Golden Cranes last Friday night in Crane and stunned the Long legged birds for a full three quarters before disaster overtook the Eagles. Game statistics show that Eldorado had the better ground attack as well as the better defensive record against Coach Dan Anderson's charges. It is hard to see how the game could be considered anything but a strong moral victory for the Class A Eagles.

Eldo.	Crane	
5	First downs	13
158	Yards rushing	87
34	Yards passing	152
190	Total yards	239
4of12	passes att./comp.	12of21
4	passes intercepted	2
1	fumbles lost	0
3for22	pen. & loss	5for26

Eagle scoring was dramatic and took place after "The Thin Green Line" kicked off to Crane and forced them to punt. The ball was downed on Eldorado's 32-yard line.

(Continued on Page 5)

### State Democratic

#### Convention Under Way

Mr. and Mrs. Dick Preston and Mr. and Mrs. Gerald Hartgraves left Sunday afternoon for Austin to attend the State Democratic Convention as delegates from Schleicher county.

They were elected delegates at the County Convention held back in the Spring. Schleicher was allowed two votes, and the four will have a half-vote each.

They were due home from the convention Wednesday.

Cardboard 10c & 20c, Success

### Tax Rate Set

At their Sept. 12 meeting, the Commissioners Court of Schleicher county set a tax rate of \$1.35, allocated as follows:

July	.01
Road & Bridge	.07
General	.65
Permanent Improvement	.07
Road W., Int. & Sink.	.00
Road & Bridge Special	.15
Farm-Market Road	.30
'62 Road Bond, Int. & Sinking	.10
Total Rate	\$1.35

Don't forget the first meeting of the P-TA for this new school year will be Tuesday, 7:30 p.m.

## Cheering The 1966 Eagles and Their Boosters To Victory



THIS YEAR'S cheer leaders at the football games are, left to right: Nancy Kay Jurecek, Billie Gayl Blaylock, Carolyn Wilson, Chris Edmiston, and Randy Yates.

## Special Price

On Giant 16.7 Cu. Foot Whirlpool  
No-Frost Refrigerator

**\$298**

You Don't Buy A Major Appliance Often,  
So Shouldn't You Buy The Best . . .

R.C.A. WHIRLPOOL APPLIANCES

**EL DORADO HARDWARE CO.**

Phone 853-2727—Eldorado, Texas

### Home Demonstration Agent's Column By MRS. VIDA KREKLOW

One of the speakers at the State Conference of Extension workers made mention of an ever present group of people who are perpetually against everything. Sometimes they are against things just for the sake of opposition.

He illustrated his thought with this story.

A school superintendent told of the illness of the High School principal last summer. The school board met on the night of his hospitalization and someone suggested that they send him a card.

After quite a bit of wrangling as to the wording of the message, the card finally read—

"By a vote of 4 to 3 we wish you a speedy recovery." Signed, Your School Board.

Last spring after I mentioned our creating flower making demonstrations in the county, I had request for patterns and instructions from a woman in Pontiac, Michigan.

I sent as much material as I had on hand and noted in the column that requests coming from as far away as 1600 miles were given close attention. All just for fun, of course.

Right on the heels of that paper came a letter from Cloverdale, California, sent by Mrs. Ruby Dickens Richardson. I was delighted to hear from Ruby. She used to be our neighbor out in the Reynolds community; she says:

"Dear Vida, I'm cooking your Rice with chicken and cheese now. I'm always trying out your receipts you have in the paper. My husband always looks to see what you have in the paper, too.

"Now, I'm going to break your record, because I want the directions for making the tissue paper flowers. I certainly would have like to been there for that lesson on making those flowers. I read when you had it.

"I am 85 miles north of San Francisco. It is almost 2,000 miles from here to Eldorado; while I was in Texas last year for almost 11 months I had the paper transferred to my son, George, who lives here with his family. Reminds me it is almost time to renew it. Yours truly, Ruby."

I publicly apologize for having been so long in answering your letter, Ruby, and your directions for making the flowers will be on their way soon.

Anybody farther away than 2,000 miles?

I get repeated questions about the nonstick finishes on cook ware—usually called teflon because the term was first used in connection with cook ware treated to resist sticking.

A few statements may clear up some fogginess of ideas about this comparatively new treatment of cooking utensils.

The new nonstick finishes are safe to use. The U. S. Food and Drug Administration says that the nonstick finishes are safe for food and conventional kitchen use.

Nonstick finishes require gentle treatment. They are made of material softer than the surface to which they are applied and are highly susceptible to scratching. Foods should never be cut with a metal knife in a nonstick coated utensil. Use tools of nylon, rubber, plastic or epoxy-coating when stirring food in a nonstick coated utensil. You may get some scratches, and if they bother you, colorless scratch-repair products are available.

The nonstick finishes are easy to clean, but this has been over-emphasized. A swish and a rinse is not enough for cleaning—it takes hot suds and scrubbing to get rid of greas. If cleaning isn't thorough, you'll get a buildup of greasy film. This affects nonstick qualities and leads to discoloration of all colors except very dark ones. The nonstick coated utensils can be put in the dishwasher, but never use steel wool, metal pads or cleansers because they damage the finish.

Discoloration can come from too much heat as well as skimpy cleaning. Keep top-stove temperatures medium or below. Take special care not to let a pan over-heat when it's empty. Don't deceive yourself that food can't burn in a nonstick utensil. In the oven, the suggested temperature limit is 425 to 450 F. Never place a nonstick utensil under the broiler.

This week's contribution to better eating when having ground meat is called—

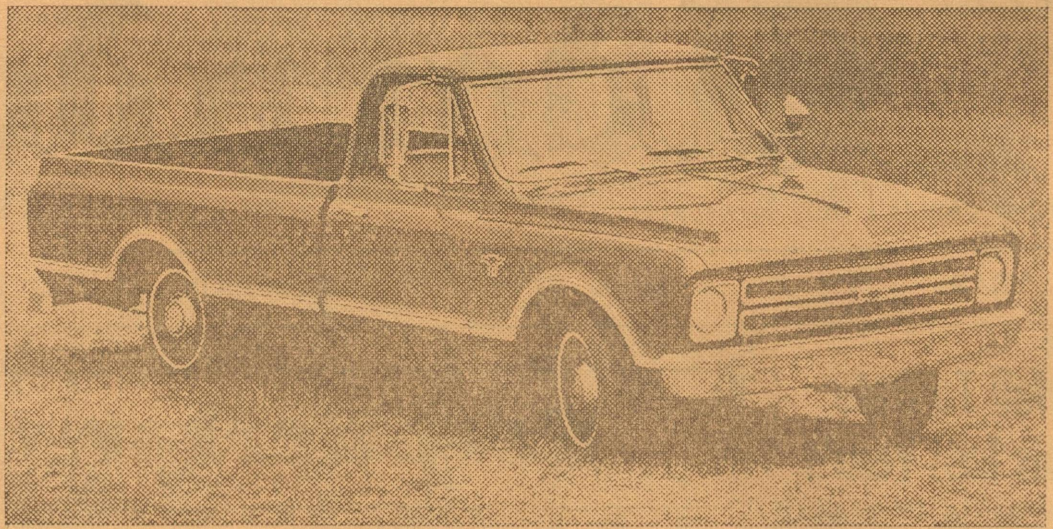
### THREE ADDITIONAL COLORS IN POSTER BOARD

- Bright Yellow
- Bright Orange
- Solid Black

6-ply stock, size 22x28 in.  
25c SHEET

SUCCESS OFFICE

## Many Improvements In Restyled 1967 Chevrolet Truck Line



Clean, trim practical styling that gives a low, fleet look to this Fleetside pickup is only one of many advances in the 1967 Chevrolet truck line. Vision, cab comfort, and corrosion-resistance are improved. Other new features in the line include longer bodies and more power for Chevy-Vans, a redesigned, lower four-wheel-drive series, and diesels in forward-control delivery vans. In some larger models, a new shorter cab and front sheet metal design give a shorter wheelbase for improved maneuverability with no loss in load space.

### Beef N' Sausage Tamale Pie

- 1 lb. Ground Beef
- ½ lb. Sausage (Pork)
- 1 medium onion, chopped
- 1 teaspoon garlic salt
- Pepper to taste
- 1 green pepper, minced
- 1 can tomatoes (15 oz.)
- 1 can whole kernel corn
- 1 can (3 oz.) pitted black olives
- 1 teaspoon chili powder
- 1 cup corn meal mix
- ½ cups sweet milk
- 3 eggs, well beaten
- 1 cup grated cheese.

Brown ground beef, sausage and onion seasoned with garlic salt and pepper. Soak corn meal in sweet milk, then add all remaining ingredients, except cheese; mix well. Turn into greased 3 qt. baking dish. Bake at 350 degrees for 40 to 50 minutes. Sprinkle with grated cheese last 15 minutes. Good enough for company; 6 to 8 portions.

Cardboard 10c & 20c, Success

### Three To Attend State H. D. Convention

College Station, Texas.—Between 800 and 1,000 members of the Texas Home Demonstration Association are expected to participate in the organization's annual meeting in Corpus Christi, Sept. 21-22.

This word came from Mrs. C. R. Berkley of Odessa, president of the state homemakers' organization which has a membership of more than 36,000 women.

A special recognition ceremony is planned for 40-year club members during this 40th annual meeting, Mrs. Berkley has announced.

Ben Barnes, Texas' Speaker of the House of Representatives, will address the opening convention session.

Delegates who planned to attend from Schleicher county were Miss Constance Spence, Mrs. H. A. Belk, and Mrs. Charles Schrier.

### Mrs. Kreklow To Attend A&M Training Course

College Station, Texas.—Speakers from housing, education, research, interior design and related fields are to address participants in a training course in housing at Texas A&M University, September 26-30.

Approximately 55 Extension county home demonstration agents from throughout Texas have pre-registered for the training session, including Mrs. Vida Kreklow of Schleicher county.

### SENIORS HAVE CONCESSION

The Senior class will have the concession stand at the football game here Friday night with Robert Lee.

SALESBOOKS: Simple charge tickets in duplicate, with carbon; 50 sets to pad, 10c each.—Success

# BARGAINS

STORM AND SCREEN EACH  
**Wepco Aluminum  
Doors, 2' 8" x 6' 8" . 23.00**

Also Size 3' x 6' 8" Same Price

NATURAL GAS OR L.P.G.  
**30-Gal. Mission  
Water Heaters . . . 47.50**

**Sheet Rock  
4 x 8 x ½, each . . . 1.30**

DOUBLE COMPARTMENT—21 x 32—3 HOLES  
**Ledge Type  
Steel Sinks, each . . . 9.95**

EACH  
**2 x 4 Studs, 8 ft.  
No. 2 Fir, and better . . . 49c**

## Foxworth - Galbraith Lumber Company

Phone 853-2744 Eldorado, Texas

## BUSTER'S LIQUORS

IN SONORA

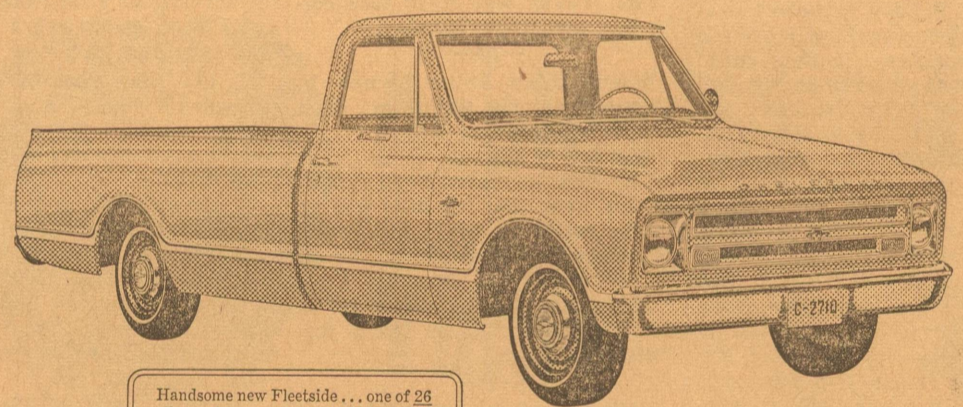
\$\$\$ SHOP BUSTER'S AND SAVE \$\$\$

- 3—5ths OLD CHARTER, 86 proof . . . \$15.00
- 3—5ths CHAMPION BOURBON, 80 . . . \$14.00
- 3—5ths OLD CROW, 86 proof . . . \$12.00
- 3—5ths SEAGRAMS 7 CROWN, 86 . . . \$12.00
- 3—5ths ROYAL BOURBON, 80 . . . \$ 9.00
- 3—5ths OLD QUAKER, 80 proof . . . \$ 9.00
- 3—Qts. SEAGRAMS V.O. 86° . . . \$20.00
- 3—Qts. CANADIAN CLUB, 86° . . . \$20.00
- 3—Qts. GIN . . . \$13.00
- Choice of Seagram's, Schenley's or Gilbey's
- 3—Qts. Cuttysark SCOTCH, 86° . . . \$23.00
- 3—Qts. J & B SCOTCH, 86° . . . \$23.00

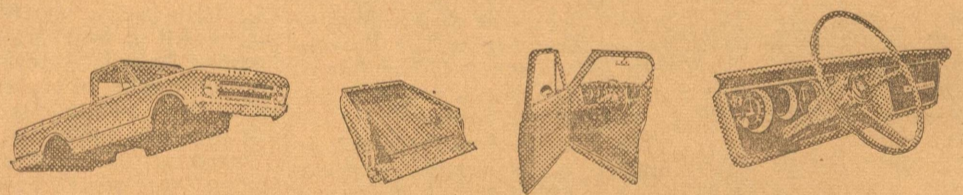
PEARL, LONE STAR AND FALSTAFF BEER  
Case of Cans \$4.25 Case of Bottles \$4.25  
COORS, MILLERS OR BUDWEISER BEER  
Case of Cans \$4.50 Case of Bottles \$4.50

DEER HUNTERS— Half gallon of Old Charter for the heaviest deer killed in Schleicher County. Another half gallon Charter for the deer with most points. All entries must be made to Buster's at Sonora.

## NEW LOOK!



Handsome new Fleetside . . . one of 26 all-new Chevy pickup models for 1967!



Here's the brand new '67 Chevy pickup! Strikingly new in styling, its trim appearance puts many cars to shame. And tough new body sheet metal resists rust bet-

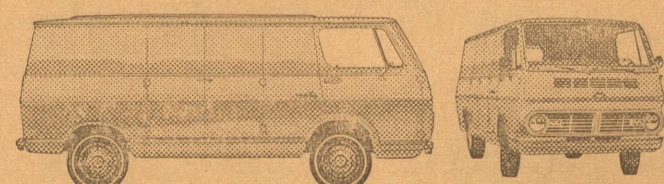
ter. New all-steel pickup box provides full-depth double-wall side panels and tailgate. And the attractive new color-keyed cab interior is roomier. Also, there's

better visibility plus many added safety features. The new '67 Chevy pickup looks so good and is built so well you can use it for almost anything!

## A BRAND NEW BREED OF

### NEW LENGTH!

MORE LOAD SPACE ON A LONGER WHEELBASE!



ALL-NEW CHEVY-VAN 108 (108" WHEELBASE) NEWLY STYLED CHEVY-VAN 90 (90" WHEELBASE)

New Chevy-Vans in two sizes for '67 . . . new V8 power, too! All new for '67 is the Chevy-Van 108 with 108" wheelbase and 256-cu.-ft. load space. Or pick the Chevy-Van 90 with 209-cu.-ft. cargo area. Both can be equipped

with hustling V8 power. There's a brand new breed of Chevy trucks at your Chevrolet dealer's, so stop by soon!

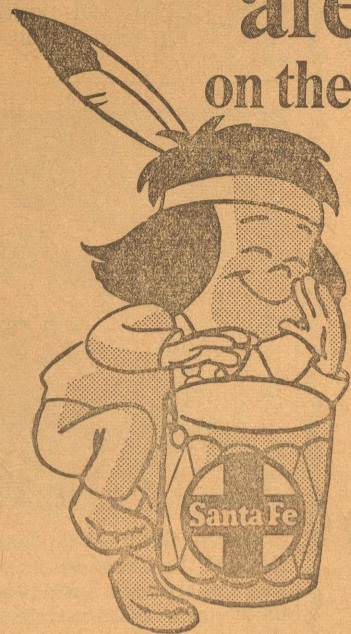


## CHEVY TRUCKS FOR '67!

## EAGLE CHEVROLET CO.

201 DIVIDE STREET ELDORADO, TEXAS PHONE 853-2531

# Big travel bargains are back on the Santa Fe!



## What's the gimmick?

Simple. It's the off-season. From September 15th through May 15th, you can save up to 20% (sometimes even more) on round-trip rail fare.

First class or coach, either way it's a travel bargain. And not just on special days, but any day of the week. Your return ticket is good for 30 days—on any Santa Fe train. There's no tax on Santa Fe tickets.

So you see, there's really no gimmick. Just savings. This time, why not take a vacation on the way? Travel Santa Fe. And save.

Ask your local Santa Fe agent for full details on Bargain Fares—and other Santa Fe travel bargains.

R. M. GREENHILL, Agent, SANTA FE RAILWAY  
Phone: 853-2660, Santa Fe Station, ELDORADO, TEXAS 76936

## 1967 Truck Line Shown By Chevrolet

The most significant cab and sheet metal styling change in Chevrolet history, featuring clean, angular lines with a functional character, leads a long list of improvements in the 1967 Chevrolet truck line, now being shown at Eagle Chevrolet-Olds here in Eldorado.

Other highlight features include:  
—Addition of longer, larger capacity models with 1/2 and 3/4-ton rating to the Chevy-Van and Sport-van series;  
—Diesel models in the 3/4 and 1-ton city-delivery Step-Van and forward-control chassis line;  
—Completely redesigned low silhouette 4-wheel drive series;  
—V8 power for Chevy-Vans;  
—Expansion of the model lineup to 406 models on 37 wheelbases;  
—A Custom Sport Truck option for light-duty conventional cab models, including such luxury items as full carpeting and bucket seats.

The new styling is enhanced by lower overall height which gives a longer, lower, more trim look. The graceful inner slant above the belt line adds a sleek note, but also is functional by helping to protect windows from mud splash and gravel blasting. Visibility is improved by the larger windshield and door glass and narrow corner pillars.

### Truck Safety Improvements

Fifteen safety-related product improvements will be added to the 1967 Chevrolet truck line as standard equipment, E. M. Estes, general manager, announced today.

Most of the items will be on the conventional light- and medium-duty models which represent at least 80% of Chevrolet truck volume, Estes said. Exceptions will be principally on low-volume models because of variations in body type or structural differences.

The lineup of protective devices includes:

1. Dual master cylinder brake system with warning light.
2. Four-way hazard warning flasher.
3. Energy-absorbing steering wheel of deep-center design.
4. Telescoping lower steering shaft.
5. Energy-absorbing instrument panel with smooth contoured knobs and levers.
6. Padded instrument panel.
7. Padded sun visors.
8. Folding front seat back latch.
9. Inside day-night mirror with shatter-resistant vinyl-edged glass.
10. Thicker laminate windshield glass.
11. Barrier-type cab rear window mounting.
12. Lane change feature incorporated in directional signal control.
13. Positive interior push button door locks.
14. Class A turn signals, which meet I.C.C. requirements for lens area and luminosity.
15. Soft low profile window control knobs.

### On The Screen . . .

## It's Elvis In Hawaii 2nd Time Around

Elvis Presley is back in action again with "Paradise, Hawaiian Style" which will be shown in big-screen color Sunday and Monday nights at the Eagle Drive-In Theatre here in Eldorado.

This is his second trip to the Islands via the motion picture screen. The first was in 1961 with "Blue Hawaii."

By this time, most interested parties know pretty well what to expect from a Presley picture (this is the 21st) and this one is no exception. It does not deviate from the tried and proven formula. Producer Hal Wallace has reaped big rewards with these same cards before and most probably will again.

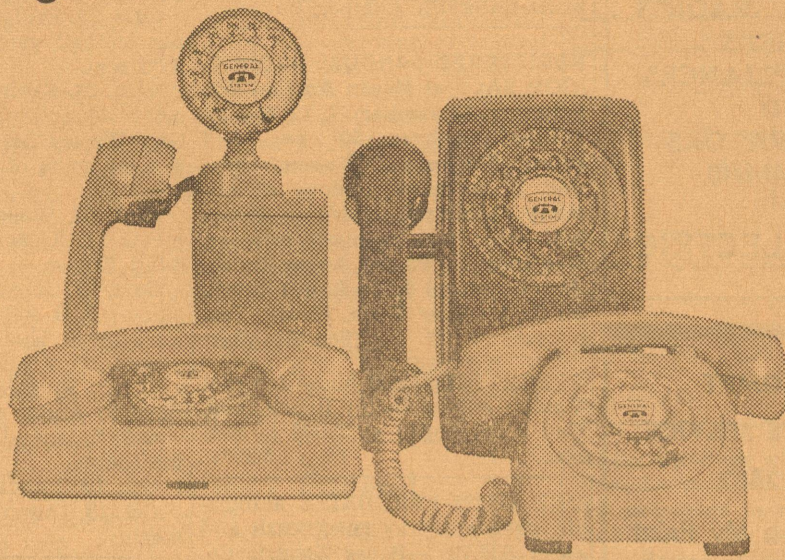
Presley is cast as an airline pilot who returns to his home in Hawaii after losing his job. He and a friend (played by Japanese actor James Shigeta) form a helicopter island-hopping service. But Presley's romantic and musical nature will not stay buried for long and soon the pilot is melodiously pre-empting upon his numerous girl friends to garner passengers for his fledgling business. Romance enters the scene in the shapely form of Suzanna Leigh as a blonde and tanned secretary.

Romance, music, a bevy of bikini clad pretty girls and some really spectacular color shots of the lush island scenery are combined and mixed brightly into a palatable but light concoction that could perhaps use a little thickening for dramatic weight but as a showcase for its star is not wanting a thing.

The script is definitely lightweight and is calculated not to get in the way of the 10 original songs, most of which are tuneful, lively creations which fit the mood if not the surroundings.

Mr. and Mrs. J. D. Huckaby of Richardson, former Eldorado residents, visited here over the week end with the Paul Page family.

# Which one do you want next?



Will it be the lovely, little STARLITE® telephone for the bedroom? Or the smart SPACE-MAKER® phone or Wallphone for

the kitchen or family room? All in decorator colors. Call our Business Office for details.

**GENERAL TELEPHONE**  
A Member of the GTE Family of Companies

### On The Screen . . .

## Troubles Disappear As 'Angels' Reform

It shouldn't happen to a Catholic girls school, but it does when a pair of uninhibited, resentful, rebellious and stubborn teen-agers invade the battlements and towers of St. Francis Academy—and that's "The Trouble with Angels." It is in color and will be shown Saturday night at the Eagle Drive-In.

When the extroverted Hayley Mills, her blond hair done to a beautiful auburn, and introverted June Harding, making her film debut, arrive at St. Francis, their antics and pranks throw into confusion the placid, genteel training which Rosalind Russell, as the Mother Superior, is trying to instill in her young charges.

Miss Mills constantly comes up with a "scathingly brilliant idea," each one expressing her resentment against school discipline and each one landing the two teen-agers at the pots in the kitchen as punishment.

There are times when Miss Russell, her patience thinning to the bare stage, would want to throw the baggages out, but she relents each time and gradually Miss Russell becomes less an ogre in black and white to the girls and the human qualities begin to emerge from behind the all-enveloping habit she wears.

This is especially apparent when Miss Russell works into the wee hours to help Miss Harding win a sewing prize and when her own emotions spill over at the bier of her most trusted helper in the convent.

"The Trouble With Angels" is based on the novel, "Mother Superior" written by Jane Trahey, a New York advertising executive. The screenplay has been prepared by Blanche Hanalis. William Frye, whose name is more familiar in television credits, is making his debut as a producer, but he has called on veteran TV-film director Ida Lupino to handle the directorial reins.

The film starts off at a jerky pace. It is too episodic and the rapid shift of action is confusing. Miss Mills' "ideas," while comic in themselves, are too many and the action almost settles down to a sequence of girls plot deviltry, they do it, they get caught, they get punished.

Just before this becomes too tiresome, the emphasis shifts as the patient efforts of Miss Russell begin to get through the wall of stubbornness that the girl has built around herself.

It is obvious from the start that Miss Mills will see the error of her ways before the film has run its course of 111 minutes, but there is a real surprise in the finale at graduation as the Mother Superior announces Miss Mills has decided to stay on at St. Francis as a novice nun.

Although the central action revolves around Misses Russell, Mills and Harding, the story is ably advanced by such as Binnie Barnes, making her first film appearance in 17 years as the nun in charge of the band; Gypsy Rose Lee, in a brief appearance as a dance instructor; Camilla Sparv, New York model as the young nun who plans to work in a leper colony; Marge Redmond, the math-teaching nun whose death moves the Mother Superior to emotional despair; Mary Wickes, as her usual wacky self teaching swimming.

This is almost an all-female cast, with less than a half dozen males appearing. Kent Smith appears briefly as Miss Mills globe-trotting

NOTICE BOOKKEEPERS: You may order B&P Standard columnar sheets for your loose-leaf ledger binders at the Success office.

relative; Pat McCaffrie as Miss Harding's scandalized father; Jim Hutton as the headmaster of the rival New Trends School of Progressive Education.

The settings are in keeping with the idea of the story—A rural railroad station near Los Angeles, a

castle-like estate in Pennsylvania, an exclusive girls school on the West Coast and a lavish Beverly Hills estate. The colors are bright despite the somber black-grey-white tones of the nuns' habits and the score by Jerry Goldsmith is in keeping with the action.

### YOUR LOCAL

## Full Service Bank

OFFERS YOU—

- Checking Accounts
- Savings Accounts
- Agricultural Loans
- Commercial Loans
- Automobile Loans
- Personal Loans
- Safety Deposit Boxes
- Bank-By-Mail
- Bank Money Orders, and
- Many Other Everyday Services.

Come In And See Us Today

## THE FIRST NATIONAL BANK

Eldorado, Texas

### Who Owns My Bank?

Only Production Credit Association borrowers say,

"I DO!"

Borrowers of the Texas PCA own their own loan company. That's the reason the interest costs are low. He is assured of courteous and interested consideration because he can say:

"WE GET OUR MONEY FROM OUR OWN 'OUTFIT!'"

## Texas Production Credit Association

116 S. OAKES SAN ANGELO, TEXAS  
J. R. Canina, Pres. E. D. Webster, Dir.  
R. C. Chandler, V-Pres. Aubrey DeLong, Dir.  
J. Burney Ligon, Dir. Lee Russell, Asst. Mgr.  
Phil H. Lane, Mgr.

Just Off the Press — Order Your Copy Now!

## 1966 TEXAS ALMANAC 1967



CURRENT AND COMPLETE

It's brand new and completely modernized, all facts and figures updated plus many brand new features. The Texas Almanac is the "Encyclopedia of Texas." Contains millions of facts to settle any argument about Texas. Invaluable reference aid to businessmen, teachers, students, salesmen, farmers, etc. Ideal as a gift.

Covers every phase about Texas—economics, politics, geography and history. Full details on each county. Exhaustive information on manufacturing, livestock, crops, oil, transportation. Has many brand new historical features. If it's about Texas—it's in the 1966-1967 Texas Almanac.

over 700 pages

\$1.79 Per Copy At The Success Office

## GET "REDDY" FOR WINTER

with

# Flameless electric heating

...the HEART of total electric living!

Your present electric cooling system may be the basis for adding a flameless electric heating system. If not, West Texas Utilities can put you in touch with Reddy Kilowatt recommended dealers to show you the many choices of electrical heating equipment. Another advantage of electric home heating—economy! During the winter months, when you heat electrically, you only pay WTU's low 1¢ per kilowatt hour rate. After the first basic step of 500 KWH, all the electricity you use for all purposes costs only 1¢ per kilowatt hour plus taxes and fuel adjustment.

Now is the time to get ready for this economical home heating to avoid the rush! Live better and heat better—electrically!



West Texas Utilities Company  
an investor owned company

**Cheapest, Hardest Working Salesmen In Town Are in the ADVERTISING SUPER MARKET**

For your Repairs on TV's **RADIOS** **WASHERS** **SMALL APPLIANCES** **AND** **REFRIGERATORS**  
Phone 853-2810 call  
**BOYER ELECTRIC**

---

**FOR PROMPT**  
**AMBULANCE SERVICE**  
**CALL 2582**

Also Operating My Paint and Body Shop in north-eastern Eldorado.

**R. V. SHEPPARD**

**INSURANCE**

**FIRE**  
**WINDSTORM**  
**HAIL; AUTO; LIFE**  
**CASUALTY**

**Car Loans**

**Tom Ratliff**  
Phone 853-2636

**OUR DRY CLEANING DEPARTMENT**  
is now in **FULL SWING**

Bring in those dirty clothes NOW you have been saving back to have dry cleaned.

**MOTHPROOFING AVAILABLE**

**YATES CLEANERS**  
Doug Yates Ph. 853-2900

**Motor Tune-Ups**

All Makes **GENERATOR and STARTER REPAIRS**  
**GENERAL AUTOMOTIVE WORK**

All Work Guaranteed

**Lowe's Repair Shop**  
Gilbert Lowe

**DAY OR NIGHT SERVICE**

**RATLIFF-KERBOW FUNERAL HOME**

Eldorado Sonora  
Phones, Eldorado -- 853-2636  
If No Answer, Dial - 853-2860  
Or call (Toll) Sonora... 21871

**QUICK SERVICE** on orders for rubber stamps, Dating stamps and stamp pads in stock. The Success.

**ELDORADO SUCCESS**  
PUBLISHED EVERY THURSDAY  
At Eldorado, Texas 76936

Fred Gunstead... Editor-Publisher  
Bill Gunstead... Associate Editor

**Subscription Rates**  
1 Year, in Schleicher County \$3.00  
1 Year, Elsewhere... \$4.00

Entered as Second Class Matter at the post office at Eldorado, Texas, under the Act of March 3, 1887.

Any erroneous reflection upon the character, standing or reputation of any person firm or corporation which may appear in the columns of the Success will be gladly corrected upon same being brought to the attention of the publisher.

Notice of entertainments where a charge of admission is made, obituaries, cards of thanks, resolutions of respect, and all matters not news will be charged for at the regular rates.

Announcements of revivals for churches are considered advertising and charged for at regular advertising rates.

Unsolicited poetry charged for at regular advertising rates.

Pictures — Unsolicited pictures for publication charged for at engraver's rates.

Front page advertising announcements to be charged for at a rate equal to three times the regular rate.

**TEXAS PRESS ASSOCIATION**

**TPA**

**MEMBER 1966**

TAKE soil away the Blue Lustre way from carpets and upholstery. Rent electric shampooer \$1. Foxworth-Galbraith Lumber Co.

**REGISTERED ANGUS PRODUCTION SALE** at Mason Auction Co., Saturday, September 24, 12:30 p.m. Selling 140 lots; 50 cows and calves, 40 bred and 30 open heifers and 20 pulls. Bloodlines of our many champions at Major Shows will sell. Please request catalogs. Dan Lehmberg's Art Angus Ranch, Art, Texas and Grote Angus Ranch, M. E. & Oliver Grote, Mason, Tex. (Sep 8-15-22c)

**THREE-BEDROOM** house for rent 7 miles out on Bailey Ranch road. Call J. M. Logan at 23099 in Sonora. (Sep 15-22\*)

**ONE USED FRIGIDAIRE** automatic washer; works good; cash and carry \$35.70. —Boyer Electric Co.

**CUSTOM PLANTING**, small grain. See Ross McAngus or call 853-2464. (S 1-29\*)

**TWO good clean rent houses** near the school. Call 853-2355. (c)

**In Those Days**  
Compiled From Success Files

**ONE YEAR AGO**  
Sept. 23, 1965—A County Development Seminar was being held, sponsored by Ed Meador and a few others. Glenn Biggs spoke. The Boy Scouts were starting their new year under direction of Perry Don Free, Scoutmaster. The street near the high school gymnasium was being paved.

**FIVE YEARS AGO**  
Sept. 21, 1961—Fred Watson was awarded the "Good Citizen Award" at a Lions Club ladies' night. Funeral services were held at Alpine for Gary Lee Bryant, 8-year-old grandson of Mr. and Mrs. Pete Bryant. A daughter was born to Mr. and Mrs. Lynn Griffin. The P-TA was starting their year with an ice cream supper. Ernest K. Nimitz was home from his summer job in Colorado, and left to resume his studies at A&M. The Rev. and Mrs. C. M. Nyquist visited in Enterprise, Kansas. Engagements announced: Betty McCoy and Hal King, and Joyce Durst and Walter Ray Donaldson.

**12 YEARS AGO**  
Sept. 23, 1954—A son was born to Mr. and Mrs. Toby Posey. Mrs. Cornelia C. Mund died. Mrs. Mabel Parker was attending a county treasurers' association meeting in Corpus Christi. C. W. Biggs moved here from Sweetwater to work as printer at the Eldorado Success. Grover Lee Johnson was released from service and he resumed employment with Shell.

Ralph Fowler was appointed crew leader for the 1954 Census of Agriculture in this county. Mr. and Mrs. S. W. Frisby and son Carey returned from a vacation trip to points in Arkansas.

**35 YEARS AGO**  
Sept. 25, 1931—A. F. Luedecke, former Schleicher sheriff, died at the age of 55, following a lingering illness of several months. Gusta V. Graves was elected Senior class president and Lucile Oglesby was secretary. Other members of the class were Frances Ballew, Vera Blaylock, Bernice Bricker, Morris Bricker, Bernard Carr, Dixie Faught, Dahlia Fae Johnson, Melba Jones, Pauline Kent, Karl Kerr, Hollis McCormick, Albert McGinty, Lawrence Morgan, Vance Morgan, Clyda Pruitt, Pauline Rape, Grace Ratliff and Ellie Thompson. Walter Ramsay, son of Mr. and Mrs. W. N. Ramsay, came in Sunday for a few days' visit with his parents. Miss Margaret Williams left this week to take up nurse training at the St. Johns Sanitarium. Jeanette Henderson left Monday for Dallas for the new term in Miss Hockaday school there. Fine arts classes were being organized here, with Miss Estelle Cocke teaching dramatics and Mr. H. G. Munden giving instruction on violin and wind instruments. They were from the San Angelo School of Fine Arts and were to hold classes in the home of Mrs. D. E. DeLong. A daughter was born to Mr. and Mrs. S. F. Shoemaker. Students leaving for colleges included: Joe M. Christian, Texas Tech; Joe Hearne Moore, A&M; Margaret Tisdale, Southwestern University, Georgetown. Miss Ruby Wilson, daughter of Mr. and Mrs. L. T. Wilson, became the bride of Mr. Mildred Deaton. Bailey Ranch Gin Co. advertised, "We have installed a flour and corn mill. It will run one day in each week until further notice."

**ELDORADO LODGE**  
No. 890 — A. F. & A. M. Stated meeting 2nd Thursday in each month, at 7:00 p. m. from Oct. 1 to April 1, and at 8:00 from April 1 to October 1. Visiting brethren welcome.

**Community Calendar**

Sept. 22, Thursday. Drivers License Patrolman here.

Sept. 22, Thursday. Jr. High and "B" football teams to Ozona for games beginning at 6:00.

Sept. 23, Friday. Robert Lee here for football game with Eagles at 8:00 p.m.

Sept. 24, Saturday. Gift tea honoring Joan Griffin, bride-elect of Guy Wesley Martin, 3:30 to 5:00 p.m. at home of Mrs. M. H. Woodward.

Sept. 28, Wednesday. Lions club meets 12:15, Memorial Building. Sybil Kinser.

Sept. 27, Tuesday. Woman's Club coffee, 9:30 a.m. at Mrs. Bascom Hartgraves' home.

Sept. 27, Tuesday. P-TA meets.

Oct. 1, Saturday. Eldorado Eagle Band to Austin for Band Day.

Oct. 6, Thursday. American Legion meets.

Oct. 10, Monday. O.E.S. meets.

Oct. 13, Thursday. Masonic Lodge meets.

**CARD OF THANKS**  
I wish to thank all my nice friends who sent flowers, cards, and letters. To those who visited and called while I was in the hospital and while I am still recuperating in San Angelo. Earl joins me in thanking all of you.  
Mrs. Earl Cathey \*

**CARD OF THANKS**  
Mr. W. O. Alexander wishes to express his thanks to the friends who have sent flowers, cards, and food during his illness and for the many expressions of kindness and well wishes for his recovery. Your kindness is deeply appreciated. May the Lord bless you and keep you is our prayer.  
Mrs. W. O. Alexander and sons (c)

**Elmora Says**  
I have just returned from floral design school at Lubbock. New stock artificial flowers, and pot plants. All sorts of wedding supplies.  
**Love's Flowers**  
Phone 853-2700

**NEW 1966 GMC Pickups**  
With all standard equipment including heater and defroster.  
**\$1850**  
**Smith Motors**  
PONTIAC — BUICK — GMC  
2-4761 Sonora, Texas

**Billy Bruce DRILLING SERVICE**  
ALL TYPES ROTARY AIR DRILLING  
—water Well Holes  
—Fence Holes  
—Utility Holes  
—Test Holes \$1.00 Foot.  
For Information Call—  
Phone 853-2310, Eldorado

**COMPLETE IGNITION STOCK**  
Delco Batteries, fuel pumps, water pumps, generators, to fit all makes.  
**Harkey**  
Auto Supply & Garage  
Bennie Harkey Ph. 2975

**General Welding OF ALL KINDS: FARM AND INDUSTRIAL**  
We do all kind of Repairs on Stock Trailers and Horse Trailers. Trailers built to order.  
**Bulldog Hitches and Jacks**  
**Eldorado Welding Shop**  
Earl Dean Clark — Phone 853-2603

See Us For All Types Of **Air Conditioning**  
**COMMERCIAL AUTOMOTIVE AND DOMESTIC**  
**TOPLIFFE**  
**GAS & ELECTRIC SERVICE**  
Phone 853-2355

**Real Estate Bargains**

2-bedroom, plus 2 rented apartments...\$8,000  
2 bedroom, well worth...\$3,250  
3 Bedroom home in Glendale...\$12,000  
2 bedroom home in Glendale...\$3,500

It's a pity the Government quit making \$2.00 bills; they were so handy to buy a dollar's worth of groceries.

**WILLIAMS REAL ESTATE**  
Phone 853-2611 Eldorado, Texas

**COUNTY AGENT'S COLUMN**  
by Tiny Godwin  
**Schleicher County Agricultural Agent**

Housewives should be conscious of other considerations when buying beef than price and cost per serving. These factors are very important when doing budget buying, but in order to be satisfied with a particular cut of beef, it must be juicy, flavorful and tender. Three factors which are present in a cut of beef and are indicative of eating quality are marbling, color and texture. Marbling is the intermingling of small flakes of fat within an individual muscle. The large seams of fat lying between muscle should never be classified as marbling. Marbling is an indication of juiciness, flavor, and to a small degree, tenderness. The color of lean meat which is an indication of youthfulness, relates to tenderness because usually the younger the animal the more tender the meat. A light cherry red color is considered to be from young beef while the darker red, the older the animal. The texture of the meat is usually an indication of tenderness. Fibers, which can be seen on close examination of muscle bundles, are an indication of tender meat if they are small and fine. If the cut of meat possesses marbling, a light color and a fine texture to the lean, then with proper preparation, it should be juicy, tender and flavorful. Carving a cooked roast will also influence the overall tenderness of a cut. Roast should always be sliced across the grain of the meat rather than with the grain. By cutting across the grain shorter fibers are chewed.

Mosquitoes are becoming a major problem in the county, and conditions brought on by the widespread rains have increased their numbers. The most common mosquito encountered in the late fall and early winter in Texas and Schleicher county is the Culex breed of mosquito. These insects are a menace to man and animals through their continual biting and annoyance. Several kinds transmit diseases such as malaria, yellow fever to man and encephalitis to man and horses, and heartworms to dogs. Mosquito control can be an expensive and complex job, but if certain precautions are observed by each individual much of the complexity and expense can be avoided. For the home owner there are three basic precautions that can be used to control mosquitoes: (1) Dripping outdoor faucets and leaky pipes should be repaired, (2) Puddles resulting from evaporative cooler drainage should be eliminated and (3) Tin cans and other articles which might trap and hold even a small amount of water should be destroyed. Proper use of insecticides around the farm and home can also be helpful in controlling the pests. The wise use of irrigation water and proper drainage to prevent standing water will contribute greatly to the reduction of mosquito numbers.

Small girl's essay on parents: "The trouble with parents is they are so old when we get them, it's hard to change their habits."

Average rainfall for September has been about 3.62 inches for the year up to Monday of this week. September is the most erratic rainfall month on the calendar and varies from no rainfall to 37.85 inches in 1936. The second highest September rainfall occurred in 1915 — 8.26 inches. The second highest rainfall month ever recorded for the county was May 1957 with 9.28 inches. The seasonal distribution peaks are May and September for this area. The monthly average being 2.54 inches for May and the long time or 30 year average for Sep-

**CLASSIFIED ADVERTISING RATES**  
First Insertion.....4c word  
Additional Insertions.....2c word

Minimum 50c Each Insertion  
Cash In Advance  
\$1.00 Minimum On All Small Ads  
Taken On Phone Or By Mail

**FREE FERTILIZER** available at Paul Phillips brooder houses. Come and get it. (22-29\*)

**Highlights and Sidelights FROM YOUR State CAPITOL**

Austin, Texas.—Far-flung operations of the Texas Parks and Wildlife Department have been placed under new administrative leadership. Commissioners have named J. R. (Bob) Singleton as executive director. He replaces J. Weldon Watson who resigned last June. Singleton had been serving as director of Region IV with headquarters in La Porte. He picked Robert G. Mauermann, Region V director at Rockport, as his chief deputy. In his first press conference, Singleton said he is considering recommending a change in the Commission's controversial policy on shell dredging. He did not displace exactly what he has in mind but said any such proposal would be "in the field of broad policy." His own close observation of dredging operations, he added, have convinced him that the Commission's 1963 and 1964 orders permitting shell dredging up to 300 feet of live reefs under close department supervision result in "extremely insignificant" oyster kill. This issue has been heatedly debated between dredgers on one hand and fishermen and conservationists on the other since the old 1,500-foot-minimum-distance from reef policy was abolished. A statewide tour of department facilities, particularly the parks, is planned by Singleton in order to familiarize himself first-hand with problems and needs. Singleton declined to express his views on "closed door" meetings of the three-member P-W Commission. However, he did say "The commission sets policy. . . My duty is to implement and carry out that policy."

**A.G. Rules . . .**  
Not only can a county cut its tax rate when the reason for the tax disappears, but, according to Attorney General Waggoner Carr, it must. He pointed to the law which prohibits the use of tax funds for any purpose other than for which it was levied. Carr also held that, while a city may prohibit the sale of alcoholic beverages at any time, it may not prescribe a lesser penalty for such an offense than is provided by state law. A district court has exclusive jurisdiction over all suits on behalf of the state and county for the collection of penalties on delinquent personal property taxes, although the county court may have the power to share jurisdiction in a suit against property for the actual taxes, Carr ruled. tember being 3.51 inches. Average or "normal" rainfall seldom occurs. What counts is when it falls. The timing is right for good pastures both temporary and permanent until spring with normal rainfall from now until May 1967. Give some people an inch and they think they are rulers.

**West Texas Cafe**

**NOW OPEN**

**UNDER NEW MANAGEMENT**

**COME IN MONDAY FOR FREE COFFEE & DOUGHNUTS AND GET ACQUAINTED.**

**Mrs. R. W. Young**

### Crane Game

(Continued From Front Page)

On the second play of the first Eagles series, Ricky Buchner threw a blasting block into Crane's 160-pound defensive tackle, Howard Nolan. John Mayo then devastated the Crane two-man line-backing unit, and Jay Halbert hastened some 75 yards over the Crane goal line. Pat Childers kicked the extra point and the Eagles led 7-0.

The first quarter ended with the same score although the Cranes unleashed all they had.

The first half ended and "The Thin Green Line" had frustrated all Crane efforts and the score remained 7-0 for Eldorado.

Late in the third quarter Crane was forced to kick from their 48-yard line. An official ruled that an Eagle receiver had inadvertently touched the ball and Crane was presented a golden opportunity by chance which they had not been able to earn. The ball lay on the two-yard line and it took the Cranes two downs to push it over. Their try for point failed and the third quarter ended 7-6 for Eldorado.

About midway in the 4th quarter, the Cranes were able to block an Eagle punt and capture it on the three-yard line. They scored in three plays and the score stood 13-7 for Crane.

On the kickoff with some four minutes to go, the Cranes kicked the ball into the end zone. Eldorado took it on the 20. Hoping to get back in the game, they hazzarded a pass; but Crane intercepted and raced some 18 yards for the final Crane touchdown. The try for point was good and the game ended 21-7 for Coach Dan Anderegg and Associates.

It was a tough one to lose. The Eagle coaching staff points with pride to the fact that Crane could not go as much as a total of 10 yards on the ground in the first quarter and that no Eagle opponent has been able to penetrate Eagle ground defenses to date. The staff preferred not to single out any individual of "The Thin Green Line" for praise, commenting that the Eagle staff and Team feels that they won the ball game and that they are happy with the pride, self-respect, and team morale engendered by the Eagles' total effort last Friday night.

Mr. and Mrs. Joe Edens and Mrs. Lum Burk were in Ricksprings last Saturday where they attended funeral services for Mrs. Orville Cowert.

### Funeral Held For Celia McDuff, 21

A one-car accident claimed the life of a Sonora girl early Wednesday morning of last week on the outskirts of San Angelo.

Dead was Celia McDuff, 21, daughter of Mrs. Frank Potmesil of Sonora. Three other passengers in the car were injured when the car flipped twice.

Miss McDuff was pronounced dead at the scene of the accident. She had lived in San Angelo for the past three months and attended San Angelo Business College for a short time. She worked as a waitress at Zentner's Steak House in San Angelo.

Survivors include a brother, Howard Menyard of Sonora, and the maternal grandparents, Mr. and Mrs. F. B. Calcote of Odessa, former Eldorado residents.

She was born May 20, 1945, in San Angelo.

Funeral services for Miss McDuff were held Friday afternoon in the First Baptist church here, with interment in the Eldorado cemetery. Ratliff-Kerbow Funeral Home had charge of arrangements.

### P-TA To Hold First Fall Meeting Tuesday Night

The first meeting of the Schleicher County Parent Teacher Association for 1966-67 will be held Tuesday, September 27th, at 7:30 p.m. in the school auditorium.

This is open house and every one is urged to attend, with opening ceremonies to be held in the auditorium. New teachers will be introduced at this time and everyone will be invited to visit the new band hall and agriculture building. Refreshments will be served by the hospitality committee.

"A Year for New Learning and Growth" is the theme for the new year.

New officers are:  
 Pres. ----- Mrs. Bob Sykes  
 Vice-Pres. ----- Mrs. B. G. Maness  
 Sec. ----- Mrs. Robert Jay  
 Treas. ----- Mrs. E. C. Peters  
 Parliamentarian ----- Mrs. E. Jackson

These officers have planned a new and exciting program for the entire year, and deserve your support. Won't you help them by attending these meetings —Rep.

Dana McWhirter of Augusta, Ga., visited here recently with his grandparents, Mr. and Mrs. Lum Burk. He was accompanied here by Burke May. Both left last week to return to Georgia where they will enter Georgia State at Athens.

### Letters From The People

#### Some Nurses' Point of View Towards a Hospital

We are definitely for a hospital here in Eldorado. We are always hearing and reading about the Nursing Shortage and yet here in Eldorado we have several nurses that choose to stay home rather than have to go work all the way to Sonora, Ozona, or San Angelo and also being away from our homes and families 9 to 11 hours daily counting the time on the road plus exposing ourselves to the dangers on the road especially if we worked the evening or night shifts.

Now, what do we achieve by going to work out of town. First, the satisfaction of helping sick people get well but remember it's out of town people, not our own home ones. And as we all know the Nursing Profession is not the best paid job and then when the nurse ends up paying for an extra family car to get her to work out of town, the extra high gasoline bill and the extra bills for the wear and tear of the car, it just does not pay her to practice her profession that is so much in demand everywhere.

The main reason why we are 100% behind building a Hospital here in Eldorado is not so that we can have jobs but for the progress and improvement of our town and above all so that we can have a Doctor here in Eldorado. As we have heard so often we cannot have a Doctor here unless we have a Hospital as they too do not want to be on the road to a Hospital out of town and by not having a Doctor here a lot of people rely on the Nurses to take care of emergencies or other medical problems which is not the Role of a Professional Nurse and which we definitely do not want as our responsibility. We do want to do all in our power to work and cooperate with our Doctors and in doing everything possible to have the medical facilities that we so need here in Eldorado.

Mrs. Domingo Pina R. N.  
 Mrs. Sybil Kinsler L. V. N.  
 Mrs. Blanche West U. G.

Mrs. W. O. Alexander, who has been ill for two months and seriously for three or four weeks, is steadily improving at home.

### Reynolds H. D. Club

Beautiful your windows and glass walls, was the program given by Vida Kreklow in the Jack Wade home to seven members and one visitor, Mrs. Milton Faught.

Window shades are coming back to replace some venetian blinds. The shades can easily be made of most any material. There are sprays to treat them to give body, glaze and water proof so they may be wiped with a damp cloth.

In the absence of the president, Mrs. H. A. Belk, and vice president, Mrs. Daisy Mikeska, Mrs. J. Tom Williams presided.

Council report was given by Mrs. L. E. Lloyd. Our county wide bake sale will be Nov. 16. A work shop on "papier mache jewelry" will be Oct. 5th at 2:00 o'clock at the Memorial Building. Everyone is invited.

We discussed the possibility of developing a creative activity program, for people whose work load is not as heavy as once was, and now have time on their hands; and also a Reach and Teach program, for club members to help home makers that have never attended club, and need to be taught short cuts, better nutrition, etc.

Vida will attend a work shop at A&M the last week of this month. She always brings back valuable information she shares with us. —Rep., Mrs. J. Tom Williams.

### Parkers Visit In Okla.

Mr. and Mrs. Earl Parker spent last week end in Perry, Oklahoma, visiting their son and daughter-in-law, Mr. and Mrs. Carl Parker. While there they visited with Mr. and Mrs. C. F. Jones at Stillwater. C. F. is professor in Oklahoma State University, and is the son of Mrs. Ray Jones and the late Ray Jones. He formerly was band director in the school here.

The Parkers also visited Mrs. Ray Jones and Mr. and Mrs. John R. Jones. The Joneses say they enjoy the Eldorado Success very much and send their regards to all their friends here.

### Seniors Set Bake Sale

Hungry for something sweet? The Senior Class will be having a Bake Sale Saturday, September 24th. The sale will begin at 9:30 a.m. in front of the drug store.

They will be selling cakes, pies, and pastries. Be sure and be there to help support the Senior class. This is one of their early projects to earn money for their senior trip. We'll have gobs of goodies so see you Saturday. —Rep.

### DAR Holds 1st Meeting

The El Dorado Chapter DAR had its first meeting for 1966-67 at the Memorial Building with Mrs. Luke Thompson, regent, presiding.

Using "Beginning" as the theme, Mrs. L. M. Hoover, chaplain, read Genesis I: assorted verses; St. John I: 1, 2, 3. She requested the prayer to be given by Mrs. J. B. Montgomery and Mrs. W. N. Ramsay to lead the national anthem.

Remembering Constitution Week September 17-23, Mrs. Elizabeth R. Powell presented our constitution as the life of our country.

The regent's table was appropriately decorated with an antique cloth centered with a beautiful patriotic arrangement of Fall flowers.

The hostesses, Mrs. W. F. Meador, Mrs. J. E. Hill, and Mrs. W. N. Ramsay served a delicious refreshment plate.

### Attend Funeral At Lampasas

Mrs. John F. Faught, 78, died at the Santa Anna Hospital September 17th. Funeral services were held at Lampasas on September 19th, with interment in Faught Cemetery.

Deceased was born July 31, 1888 at Fredericksburg, was married to John F. Faught at Doss, Texas, on Nov. 3, 1912.

She is survived by four sons and five daughters, and by five brothers and seven sisters, including Mrs. Otto Sauer of Schleicher county.

Attending the funeral from Eldorado were: Mrs. Otto Sauer, Victor and Clemens Sauer, Mr. and Mrs. Milton Faught, Mr. and Mrs. Bob Faught, Mr. and Mrs. Billy Jack Reynolds, Mr. and Mrs. Edgar Sauer, and Mr. Jack Faught.

### Family Dinner Held

Mr. and Mrs. Milton Doyle, Roby, Texas, gave a dinner in their home last Sunday, Sept. 18th, in honor of their son, David Doyle and wife. They have been in Germany three months and are home on leave.

David is captain in the Air Force and he has to go to Viet Nam soon, for 12 months' duty. After visiting in Roby with home folks, his wife will live in California near her parents, during his absence.

Those present for the dinner were: Mr. and Mrs. Claude Doyle, Mrs. Ruby Damron, Mr. and Mrs. Jimmy Doyle, Jimmy Dan and Mike of Eldorado; Mrs. B. J. Eth-

## EAGLE

**DRIVE-IN THEATRE**  
 ELDORADO, TEXAS

Show Starts At 7:45 P.M.

Saturday, September 24

**The Trouble With Angels**  
 —In Color—

Rosalind Russell Hayley Mills

Sunday, Monday, September 25-26

**Paradise Hawaiian Style**

Elvis Presley —In Technicolor

These showings will be the final ones for this season. Thanks for all patronage in recent months, and watch for our re-opening next Spring. —Delbert and Imogene Edmiston.

redge, Jackie and Greg, Mrs. Jerry Doyle and Jonana, of Lubbock; Mr. and Mrs. Doc Harding, Windy and Shad of Hobbs, New Mexico; and Curtis, and Robert Doyle of Roby.

### Birthday Observance

In observance of J. C. Whiteley's 88th birthday, his daughters spread a family dinner at his home here Sunday.

Besides Mr. and Mrs. J. C. Whiteley, those present were Mr. and Mrs. Laman Hazelwood and Mr. and Mrs. Vernon Hazelwood of Eldorado, and Mr. and Mrs. Jack Whiteley and Mrs. Vernon Carroll of Brady.

Garage  
 Repair Orders  
 in stock  
 at  
 Success Office

# Eldorado Drug's 15th Anniversary Appreciation Sale

**CONTAC**

Regular 1.49 ..... \$1.19

95c Tooth Paste, all brands ..... 65c  
 89c Bayer Aspirin ..... 64c

**VIGRAN**

30 Free with 100 at ..... \$3.29

Vitalis, 4-oz. size ..... 55c  
 Old Spice Smooth Shave ..... 59c

**ALL BAND AIDS**

One-Third Off Regular Price

Lady Esther Face Cream ..... 1/2 Off  
 Tums ..... 3 Rolls ..... 20c

**Kaz Thermo Kaps**

Reg. 9.95, now ..... \$4.95

\$1.89 Kaz Mist Room Vaporizer ..... \$1.19

SALE STARTS MONDAY, SEPT. 26th  
 CONTINUES THRU OCTOBER 1st

**AQUANET**

Special Sale Price ..... 69c

Delseys - 8 Rolls ..... \$1.00  
 \$1.29 Micrin, this sale ..... 99c

**SWEETA**

Regular 69c, now ..... 49c

Cotton Balls - 130 for ..... 44c  
 \$1.19 Aresin Cough Syrup ..... 89c

**Regular Flashlight Batteries**

6 for \$1.00

60c Alcohol, this sale ..... 39c  
 \$2.75 PhisoHex ..... \$2.19

**All Soft Touch**

Creams and Lotions ..... 33c

**HAIR DRIER**

Regular \$15.95 ..... \$10.95

35c Kleenex ..... 4 for \$1.00  
 Radan Sore Throat Gargale ..... 69c

**Assorted Plastic Wares**

Reg. 2.98, for ..... 98c

Regular 49c Kotex ..... 33c  
 Toni Permanents ..... Third Off

**DECORATOR CANDLES**

1/2 Price

Vamoos Insect Repellant ..... 79c  
 Loose Leaf Filler, 300 sheets ... 39c

**Glamorous Guard Hair Savers**

Regular 3.50, for ..... \$2.25

1.25 Dusharme Hand and Body Cream 60c



FRESHMEN and other Eagle football beginne s. Left to right on the front row are: Bob Sykes, Sidney Reynolds, Les Byrd, Johnny Dan'ord, Sam Oglesby, and William Edmiston. On the back row are: Paul Page, Wayne Doy e, Jim Martin, James Davis, Mike Olson, and Bob Page. —Staff Photo

**Soil Conservation Dist. Supervisor Election Set**

An election for a supervisor from sub-division 3 of the Eldorado-Divide Soil and Water Conservation District will be held next month.

Otis Deal is presently serving as district supervisor of this zone. Supervisors are elected for a term of five years, with the terms staggered so that one supervisor's term expires each year. The supervisors are elected by land owners in the subdivision they represent. Yes, Soil Conservation Districts in Texas are 100% in the hands of landowners, all of whom must be actively engaged in farming or ranching.

District supervisors run the business of the Soil Conservation district and can call upon and receive aid from state or federal agencies who have technical knowledge to assist farmers and ranchers to work out their conservation plans.

Further details as to time, place, and program will be published in the Eldorado Success next week.

Texas Almanacs at Success

**School Menus**

Monday, Sept. 26: Baked ham, candied sweet potatoes, blackeyed peas, cabbage & pineapple & apple salad, buttered rolls, milk, canned fruit.

Tuesday, Sept. 27: Fried chicken and gravy, creamed potatoes, okra and tomato gumbo, peach halves, buttered rolls, milk, chocolate cake with white icing.

Wed., Sept. 28: Beef stew and vegetables, cole slaw, cheese strips, buttered rolls, milk, cornbread, fresh fruit cup, peanut butter cookies.

Thursday, Sept. 29: Swiss steak, buttered rice, green beans, strawberry jello mold, buttered rolls, milk, apple brown betty.

Friday, Sept. 30: Turkey salad, tuna salad, french fries, three bean salad, buttered rolls, milk, ice cream sandwiches.

**MASONIC WORKSHOP SET**

E. J. Humphreys of Del Rio, chairman of the five-county Masonic Workshop Area F-5, has announced that a Workshop is sche-

duled for Tuesday, September 27, at 8:00 p.m., in the Masonic Hall in Sonora.

Humphreys said that Eldorado and Sonora Lodges are especially invited to attend the Workshop.

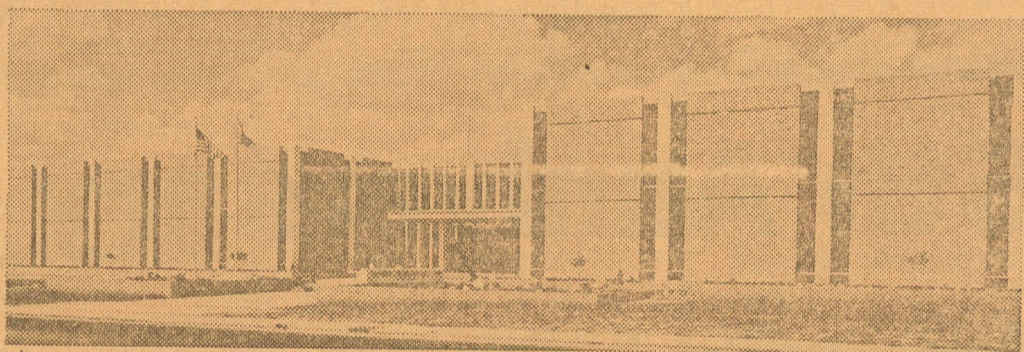
Nearly 200 such meetings are held twice a year for officers and members of over 970 Masonic Lodges in Texas. The Masonic Fraternity is the state's largest fraternal group with nearly 250,000 members.

**Gift Tea To Honor Miss Griffin Saturday**

The home of Mrs. M. H. Woodward will be the setting for a Gift Tea this Saturday honoring Miss Joan Griffin, bride-elect of Mr. Guy Wesley Martin.

Calling hours will be from 3:30 until 5:00 o'clock.

Hostesses will be Mes. Woodward, Jerroll Sanders, Joe Griffin, T. C. Stanford, Sadie Davidson, L. D. Mund, Claude Doyle, F. D. Blair, Henry Moore, Jack Bell, Grauvil Hext, Ben Biggs, E. G. Donaldson, Tom Dempsey, Cramer Sofge, C. N. Clark, Billy F. Blaylock, Norman Hodges, H. W. Scott.



General Telephone invites you to the expanded General Office Building **OPEN HOUSE**

2701 JOHNSON STREET—SAN ANGELO  
SATURDAY AND SUNDAY—1 to 6 P. M.

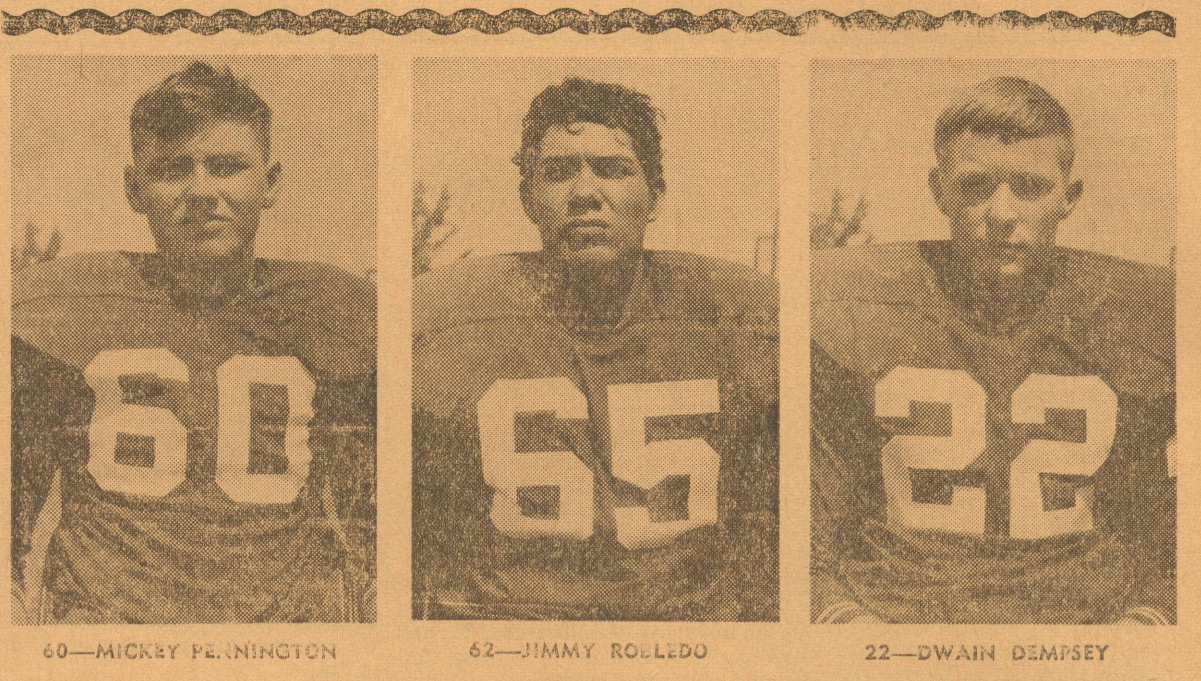
This is an invitation to you and your family to visit the new General Office Building in San Angelo, this week-end.

Telephone operations for a vast five-state area are directed from it, including communities served by Southwestern States Telephone and General Telephone of the Southwest.

The 90,000 sq. ft. addition and the original 59,000 sq. ft. building will be open for you to see, together with its modern equipment. In addition, many interesting and informative exhibits and demonstrations have been arranged which we believe you will enjoy seeing.

The building is at 2701 Johnson near the High School Football Stadium in San Angelo, with ample parking for all visitors. Plan now to attend — we are expecting you!

**GENERAL TELEPHONE**   
A Member of the GT&E Family of Companies



60—MICKEY PENNINGTON

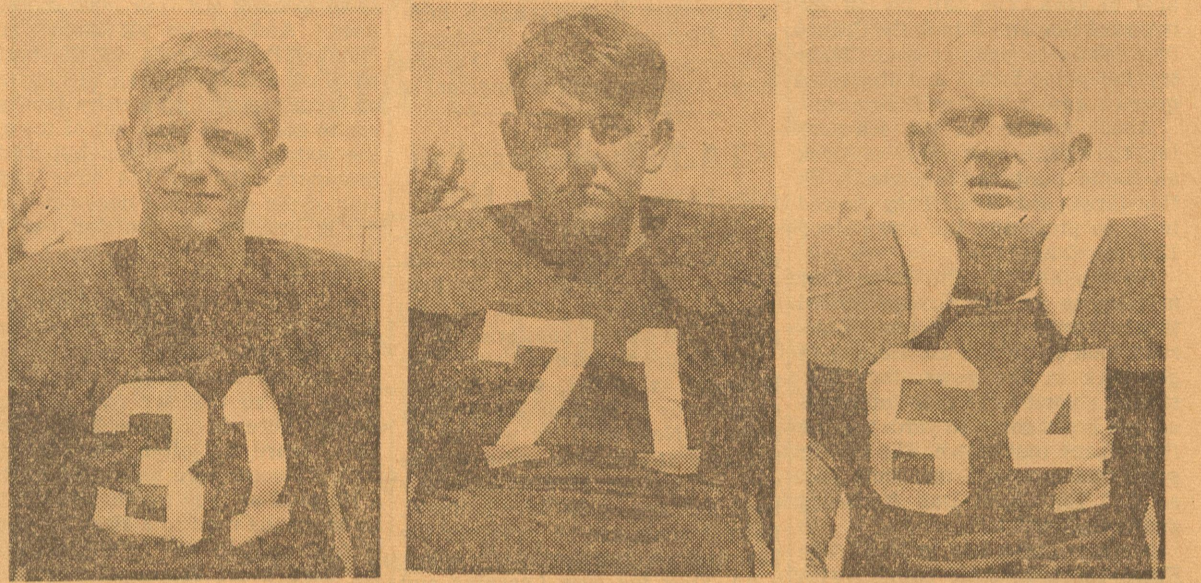
62—JIMMY ROLLEDO

22—DWAIN DEMPSEY

**EL DORADO HARDWARE CO.**  
Phone 853-2727

**JAVA JUNCTION CAFE**  
Shorty and Mazelle Taylor

**THE FIRST NATIONAL BANK**  
Serving Schleicher County Since 1907



31—RODNEY MEADOR

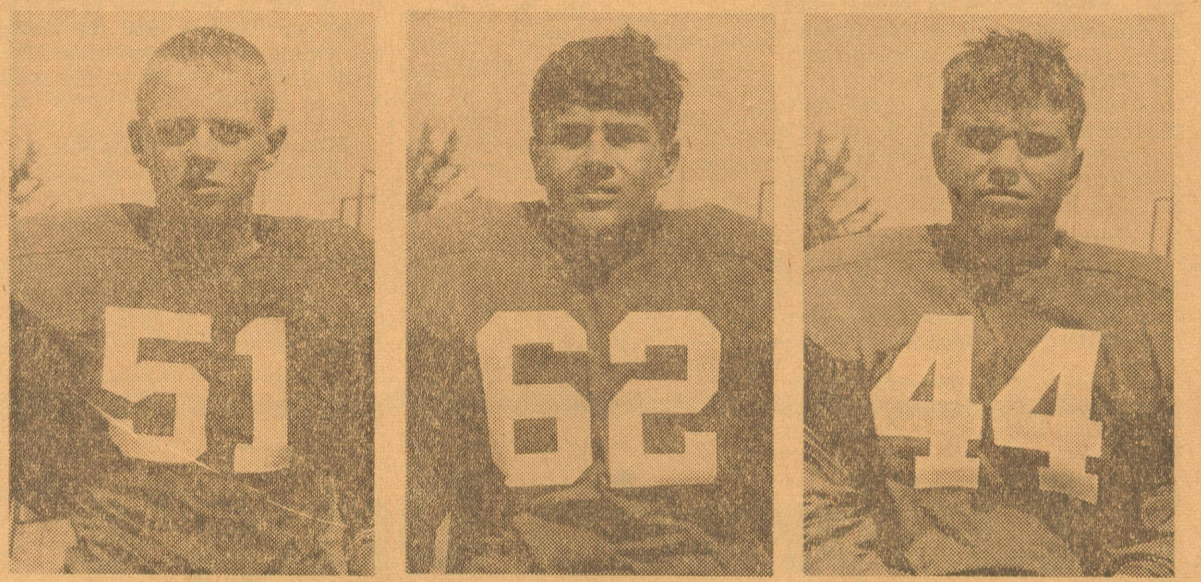
71—JIMMY MCGINNES

64—BOBBY DELONG

**EL DORADO WOOLENS, INC.**  
Finest In Wool & Mohair Products

**MARY'S BEAUTY SHOP**  
Mary Hernandez—Ph. 853-2755

**B. F. HARKEY**  
Auto Supply and Garage



51—ROSS WHITTEN

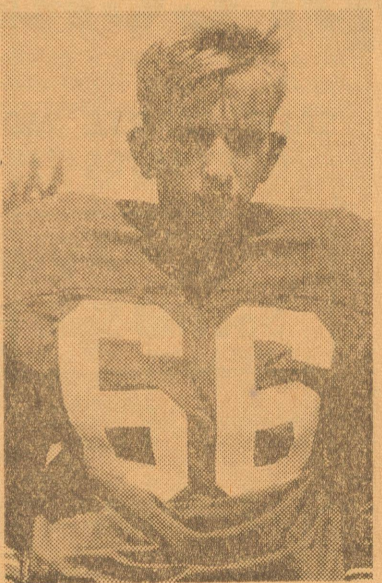
65—ALBERT TORRES

44—JIMMY MANN

**ELDORADO VARIETY**  
Gene and Vernell M. Calla

**ROBERT (BOB) PAGE**  
Oil Properties

**BENNIE'S BARBER SHOP**  
B. K. Patton



66—DAVID LLOYD

**ELDORADO WOOL CO.**  
Your Purina Dealer

**BRUSHY TOP STORE**  
Mr. and Mrs. Glynn Edmondson

**THE RATLIFF STORE**  
Dry Goods

**BELK'S BUTANE**  
H. A.—Dixie—Allen—Jimmy

**WILLIAMS FINA STATION**  
George Williams

**MCCORMICK'S DRIVE-IN GROCERY AND STATION**  
Hollis and Bee McCormick

**SHIPMAN GROCERY**  
At Sofge Motel on the Menard Hwy.

**MIKESKA GIN**  
Your Business Appreciated

**YATES CLEANERS**  
Doug Yates

**ANDY NIXON WELDING & CONSTRUCTION SERVICE**  
Mr. and Mrs. Andy Nixon

**GRIFFIN'S GULF STATION**  
Dan Griffin

**W. F. (ROCKY) MEADOR**  
Oil Properties

ALL THESE EAGLES' PHOTOS MADE POSSIBLE BY LOCAL BOOSTERS WHOSE NAMES APPEAR ON THESE PAGES. TRADE WITH THEM !!

**LEE'S DRIVE-IN**  
Lee Halbert

**DAVIDSON HARDWARE**  
Bud Davidson—Mrs. Sadie Davidson



**PETE BRYAN**  
Assistant Coach

**JACK BELL**  
Assistant Coach

**KENNETH THOMAS Jr.**  
High Coach

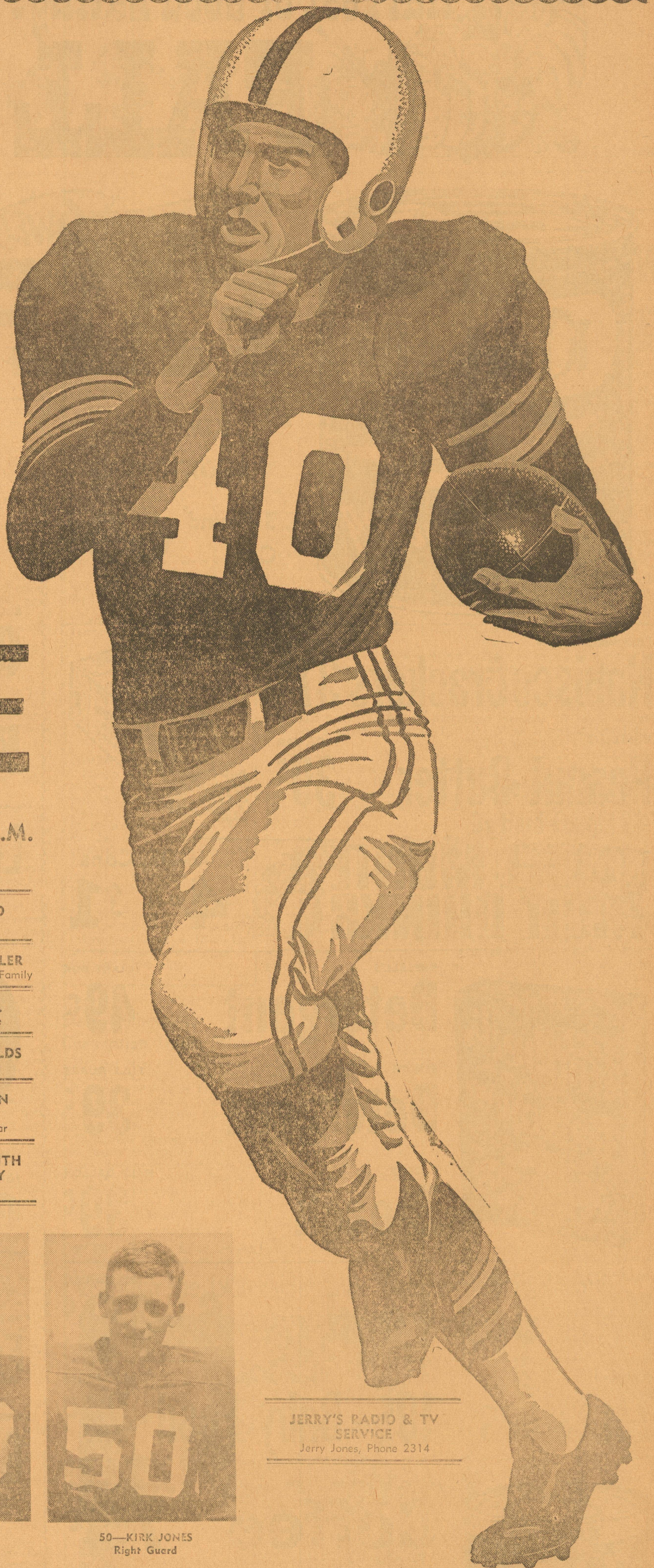


RAY MORGAN  
Head Coach and Athletic Director

**ELDORADO EAGLES**  
**1966 FOOTBALL SCHEDULE**

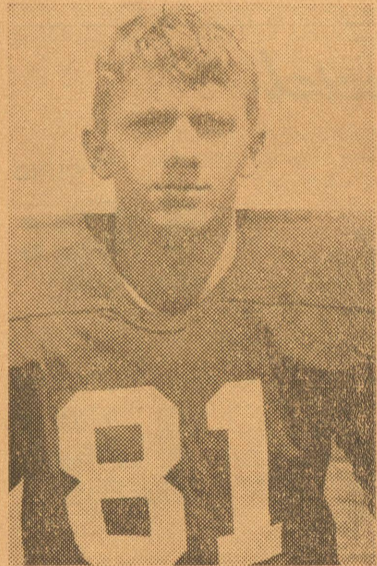
Sept. 9.....	Eden 0.....	Eagles 25
Sept. 16.....	Crane 21.....	Eagles 7
Sept. 23.....	Robert Lee.....	Here, 8:00 P.M.
*Sept. 30.....	Menard.....	Here, 7:30 P.M.
*Oct. 7.....	Sanderson.....	There, 7:30 P.M.
*Oct. 14.....	Iraan.....	Here, 7:30 P.M.
*Oct. 21.....	Sonora.....	There, 7:30 P.M.
*Oct. 28.....	Junction.....	Here, 7:30 P.M.
*Nov. 4.....	Rankin.....	There, 7:30 P.M.
*Nov. 11.....	Ozona.....	There, 7:30 P.M.

\* District Games



**YEA EAGLES!**  
**LET'S GO! BEAT:**  
**ROBT. LEE**

HERE — TOMORROW NIGHT — GAME TIME 8:00 P.M.

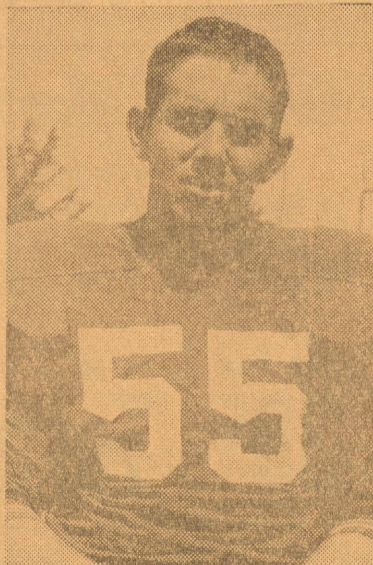


81—DONALD ROGERS  
Left End

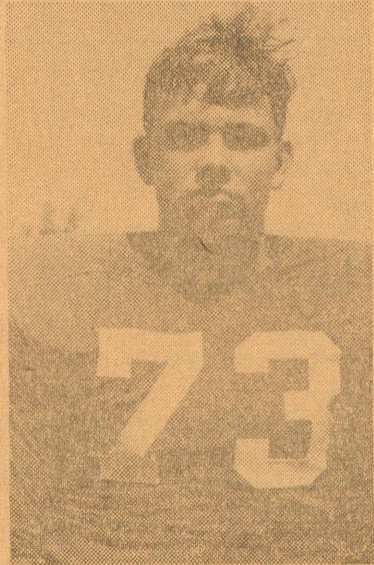
<b>STAR-K KITCHEN</b> Ben Keel	<b>ETHEREDGE TEXACO</b> Jack Etheredge
<b>ELDORADO DRUG</b> For Your Health's Sake	<b>JOHN STIGLER—JEWELER</b> Mr. and Mrs. John Stigler and Family
<b>FRIENDLY WASH</b> And Used Furniture	<b>JACK HALBERT, JR.</b> Butane—Mobil Consignee
<b>CLOVIS OIL CO.</b> Clovis and Ada Belle Taylor	<b>EAGLE CHEVROLET-OLDS</b> John Hodges—Paul Page
<b>SOUTHWEST TEXAS ELECTRIC CO-OP, INC.</b> Owned By Those It Serves	<b>LUM DAVIS COSDEN SERVICE</b> Firestone Tires & Goodyear
<b>WESTERN AUTO ASSOCIATE STORE</b> Buddy White, Prop.	<b>FOXWORTH-GALBRAITH LUMBER COMPANY</b> Eldorado, Texas



76—JOHNNY MAYO  
Left Tackle



55—CHRIS McCRAIVEY  
Left Guard



73—ALLAN CORBELL  
Center

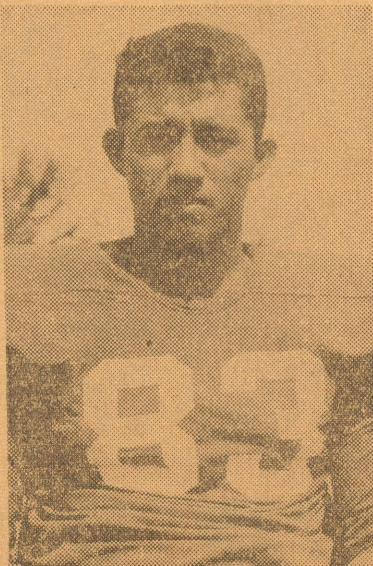


50—KIRK JONES  
Right Guard

JERRY'S RADIO & TV SERVICE  
Jerry Jones, Phone 2314



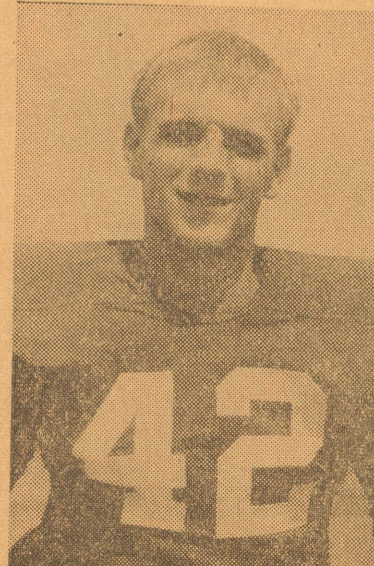
75—RICKY BUCHNER  
Right Tackle



83—JESSE BOSMAN  
Right End



11—DANNY HALBERT  
Quarterback



42—ROY DAVIDSON  
Left Halfback



33—PAT CHILDERS  
Fullback



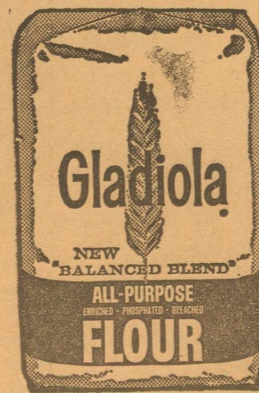
21—JAY HALBERT  
Right Halfback

# A Harvest of Good Eating! FALL

# FOOD



SAVE! SAVE! SAVE!  
**FAIR!**



GLADIOLA 5 LB. BAG  
**Flour 49<sup>c</sup>**  
GLADIOLA  
Cake Mix 3 FOR 89c

KIMBELL'S  
SHORTENING  
3 Pound  
Can..... **69<sup>c</sup>**  
LIMIT ONE

### Top Quality Meats

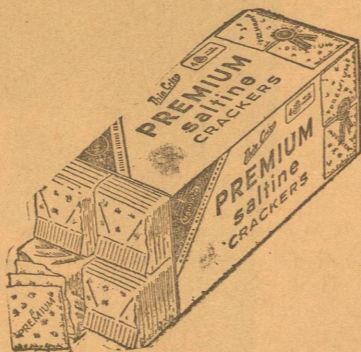


BLUE RIBBON QUALITY (WHOLE ONLY) POUND  
**Gooch Picnics 39<sup>c</sup>**

GOOCH — BLUE RIBBON POUND **Bacon 79<sup>c</sup>**  
GOOCH COUNTRY STYLE 2 LB. BAG **Sausage 99<sup>c</sup>**

GOOCH — 6-OZ. PKG. 3 FOR **Lunch Meat 79<sup>c</sup>**  
FRESH SLICED POUND **Beef Liver 39<sup>c</sup>**

PREMIUM SALTINE POUND BOX  
**Nabisco Crackers 37<sup>c</sup>**



KIMBELL'S 18-OZ. JAR  
**Peanut Butter 39<sup>c</sup>**

**NEW DEL MONTE FRUIT DRINKS** 46-Oz. Cans  
**4 FOR \$1**

KIMBELL'S GIANT GOX  
**Detergent 49<sup>c</sup>**

SEQUIN - LIQUID FULL QUART  
**Detergent 39<sup>c</sup>**

CLOROX HALF GALLON  
**Bleach 39<sup>c</sup>**

YOUR DOG'S BEST FRIEND NO. 300 CAN  
**Kim Dog Food 6 FOR 49<sup>c</sup>**

DIAMOND NO. 1 CAN HEINZ STRAINED 3 FOR  
**Tomatoes 10<sup>c</sup> Baby Food 29<sup>c</sup>**

MARYLAND CLUB ONE POUND  
**Coffee 75<sup>c</sup>**

MARYLAND CLUB 2 LB. CAN  
**Coffee 1.49**

MARYLAND CLUB 2-OZ. JAR  
**Instant Coffee 49<sup>c</sup>**

KLEENEX 200 COUNT  
**TISSUES 4 FOR \$1.00**

DELSEY 2 ROLL PACK  
**TISSUES 4 FOR \$1.00**

### Fresh Produce Special

WASHINGTON — DELICIOUS POUND  
**Apples 19<sup>c</sup>**

EAST TEXAS POUND  
**Yams 15<sup>c</sup>**

TOKAY POUND CELLO BAG  
**Grapes 19<sup>c</sup> Carrots 10<sup>c</sup>**

### Frozen Foods

PATIO — DINNERS EACH MORTON'S EACH  
**Enchilada 49<sup>c</sup> TV Dinners 39<sup>c</sup>**

WELCH FROZEN 12-OZ. CAN AMIGO — CORN 15-COUNT PKG.  
**Grape Juice 39<sup>c</sup> Tortillas 19<sup>c</sup>**

### Dairy Department Specials

ASSORTED FLAVORS EACH  
**Pillsbury Cookies 49<sup>c</sup>**

PARKAY POUND GANDY'S HALF GALLON  
**Margarine 29<sup>c</sup> Fro Zan 3 FOR \$1**

KIMBELL'S 10 COUNT KRAFT'S QUART  
**Biscuits 3 FOR 25<sup>c</sup> Orange Juice 39<sup>c</sup>**

# PARKER FOODS