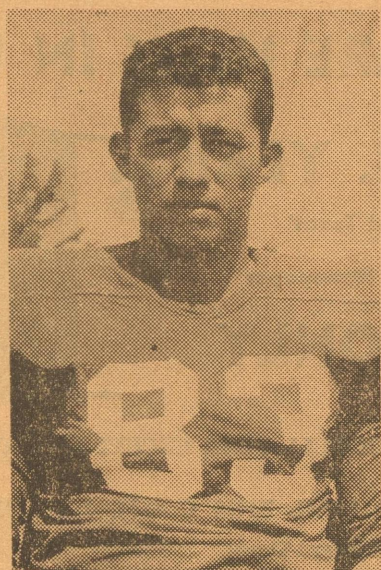


Eagle Lettermen

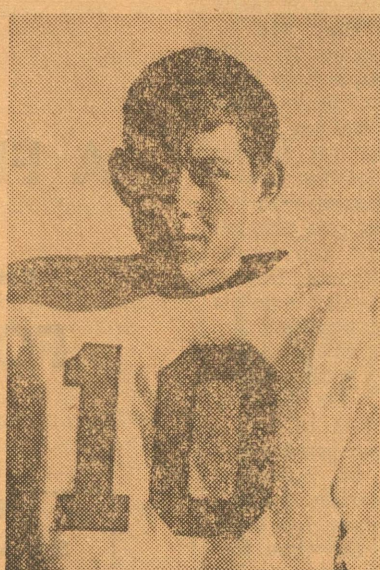
For the 1966 Football Season



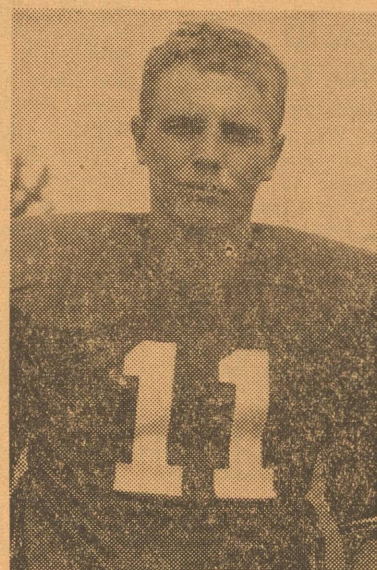
81—DONALD ROGERS
End



83—JESSE BOSMAN
End



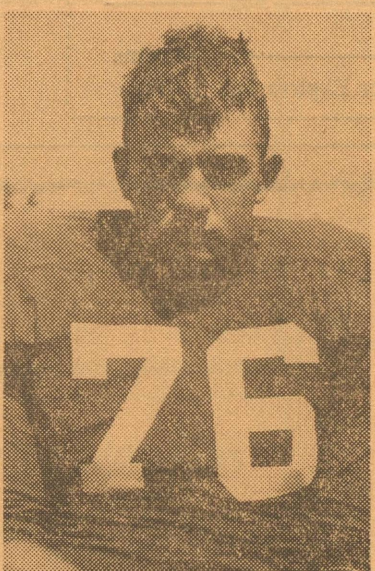
82—BUFF WHITTEN
End



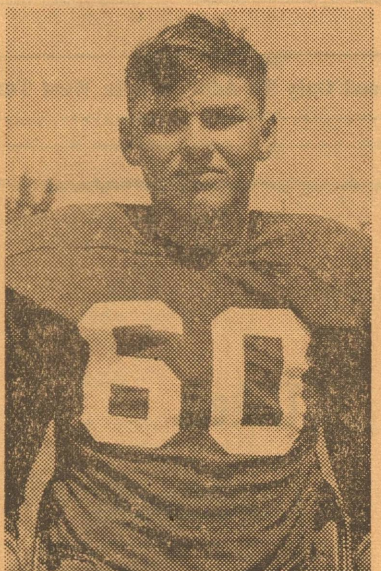
11—DANNY HALBERT
Quarterback



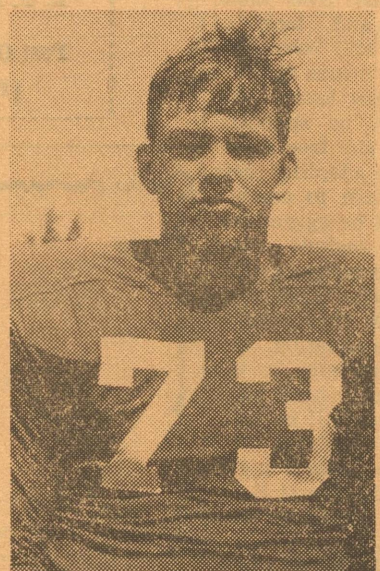
31—RUSTY MEADOR
Fullback



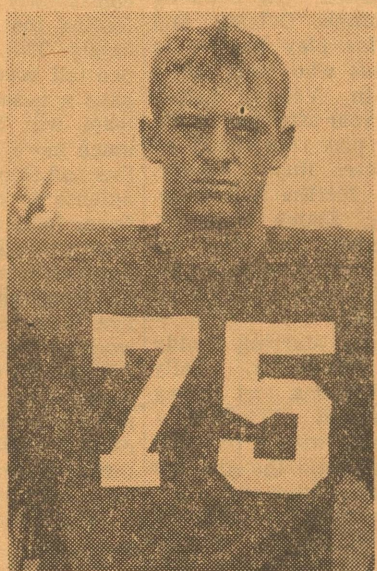
76—JOHNNY MAYO
Tackle



60—MICKEY PENNINGTON
Tackle



73—ALLAN CORBELL
Tackle



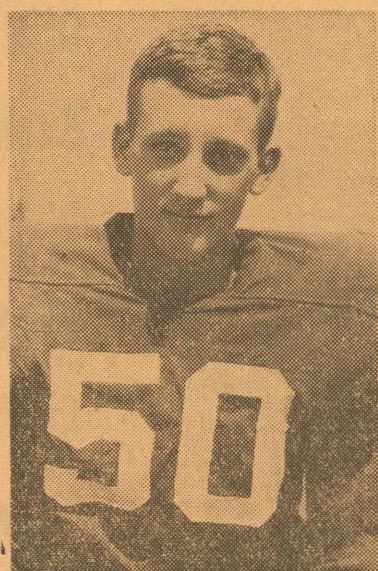
75—RICKY BUCHNER
Tackle



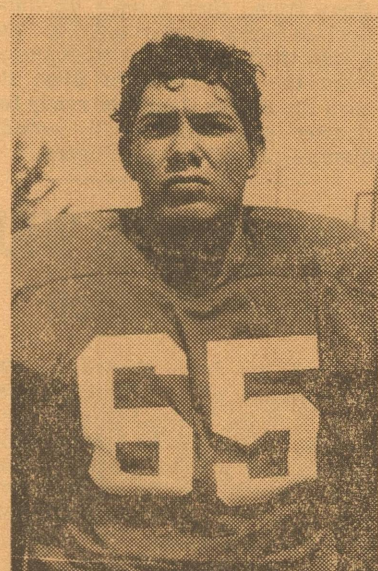
22—PAT CHILDERS
Fullback



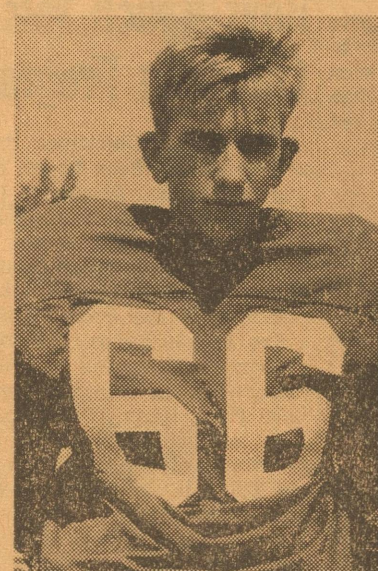
55—CHRIS McCRAVEY
Guard



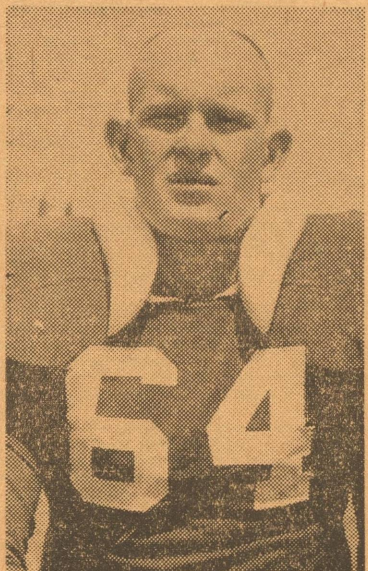
50—KIRK JONES
Guard



65—ALBERT TORRES
Guard



66—DAVID LLOYD
Guard



64—BOBBY DELONG
Center



51—ROSS WHITTEN
Center



42—ROY DAVIDSON
Halfback



21—JAY HALBERT
Halfback



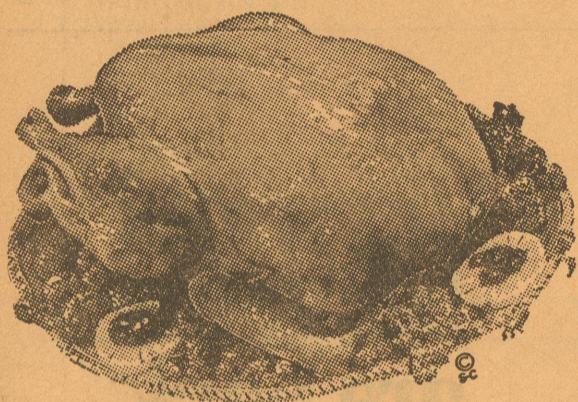
22—DWAIN DEMPSEY
Halfback

(Contributed In The Public Interest By The Success)

Thanksgiving FOOD SALE

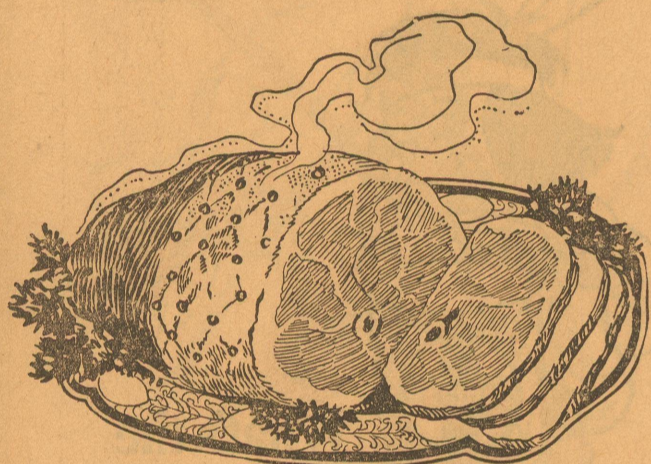
WE'VE GOT 'EM YOUNG, TENDER

TURKEYS



Pound
Plantation
PRIME
TURKEY
TOMS **39^c**

SWIFT'S BUTTERBALL TURKEY HENS 59c Lb.



Gooch Sugar Cured HAMS

WHOLE . . . 59c Lb.
BUTT . . . 59c Lb.
SHANK . . . 49c Lb.



GOOCH — BLUE RIBBON QUALITY

1-LB. PKG. **BACON 69^c**

Dairy Case Specials



GANDY'S HALF-PINT
WHIPPING CREAM 29^c

COUNTRY STYLE — SOLID POUNDS
Margarine 2 FOR 29^c

GOOCH POUND
BRICK CHILI 59c

GOOCH 2-LB. BAG
SAUSAGE 99c



KIMBELL'S SHORTENING
3-Lb. Can 69c

KIMBELL'S MILK TALL CANS
2 for . 29c

KIMBELL'S YAMS
2½ CAN 29c

KIMBELL'S SALT
2 for . 19c

Produce Department Specials



Yellow 2 Lbs.
Onions 19^c

Fresh
CELERY
2 STALKS . . . 25c

Select Russet
POTATOES
10-Lb. Bag
39^c

Pard—300 Can
DOG FOOD 2 for 29c

¼-Lb. Box
LIPTON TEA 39c



REYNOLDS WRAP 12" x 25' Roll
ALUMINUM FOIL 29c

HIPO-LITE PINT
MARSHMALLOW CREAM . 19c



Kraft's Quart
MIRACLE WHIP 49c

Del Monte 303 Can
GOLDEN CORN 19c

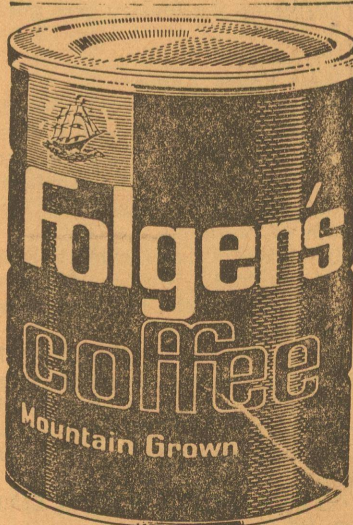
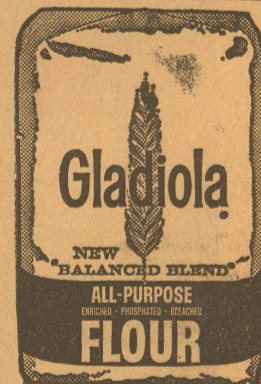
Del Monte 303 Can
APRICOT HALVES 25c

Kimbell's 18-Oz. Jar
PEANUT BUTTER 49c

Nabisco Pound
SALTINE CRACKERS 33c

Gladiola 5-Lb. Bag
Flour . . . 49^c

Gladiola 5-Lb. Bag
CORN MEAL . 39^c



Folger's 1-Lb. Can
COFFEE . . . 75^c

Morton's Frozen Each
PUMPKIN PIES . . . 29c

Morton's Frozen Each
MINCE PIES . . . 29c

PARKER FOODS