

Clean Up Your MEDICINE CHEST

12 Safety Rules To Prevent Accidental Poisoning

1. Keep all medicines and household poisons (cleaning fluids and insecticides) out of the reach of children.
2. Never refer to medicine as "candy" to your child.
3. Read all labels carefully and follow directions.
4. Don't take a medicine prescribed for someone else.
5. Never increase the dosage or the frequency of a dose of medicine—unless your doctor suggests it.
6. Throw out the contents of all old medicine bottles.
7. Keep internal medicines in one cabinet and external medicines and poisons in another.
8. Do not place poisonous liquids in soda bottles.
9. Throw out all unlabeled medicines and containers.
10. Do not take or give medicines in the dark—when you may be sleepy.
11. Protect your skin when using insecticides, solvents or cleaning agents. Remember some products can be absorbed through the skin; use as directed.
12. If someone takes a potentially toxic substance in your home, call a physician immediately. Don't wait for symptoms to appear.

Eldorado DRUG
For Your Health's Sake
ELDON CALK, R. PH., Owner
Eldorado TEXAS Phone 853-2633

School Menus

(All meals served with hot rolls and milk.)

Thursday, March 5: Turkey and dressing, giblet gravy, waldorf salad, creamed English peas, sliced beets, fruit cobbler.

Friday, March 6: Roast beef and gravy, creamed potatoes, black-eyed peas, carrot & apple & raisin salad, applesauce cake.

Monday, March 9: German style sausage, pinto beans, potato salad, tossed green salad, purple plums.

Tuesday, March 10: Ground beef patties with gravy, macaroni and tomatoes, candied carrots, cabbage slaw, chocolate pudding.

Wed., March 11: Beef and vegetable stew, cheese strips, strawberry congealed salad, cornbread and crackers, fruit cobbler.

Thursday, March 12: Fried chicken and gravy, Spanish corn, raisin & apple & celery salad, green beans, jello with fruit.

Friday, March 13: Sandwiches—tuna salad, pimento cheese, ham salad; English pea salad, potato chips, fresh fruit cup, peanut butter cookies.

Of the 7½ million boys and girls who camp yearly in the United States, over 1½ million are Girl Scouts.

MEMORIAL PROGRAM

Your Memorial Gift is a fitting tribute to a loved one. This remembrance helps support the research, education and service programs of the American Cancer Society.

Memorial gift funds may be sent to your local Unit of the Society.

AMERICAN CANCER SOCIETY

We have the appropriate cards to send to the family and to the donor, and will send your check to the American Cancer Society in Austin.

HELEN CARLMAN
Memorial Chmn. Schleicher County



COUNTY AGENT'S COLUMN

by Ting Godwin

Schleicher County Agricultural Agent

The State Extension Program will intensify activities in a new program to increase income for producers of the state. "3.76 in '76" is the new slogan for the new program aimed at upping the state's present agricultural incomes total of \$2.75 billion by \$1 billion during seven years. Program efforts will be consolidated in cooperation with other agencies and organizations concerned with Texas agriculture, will be focused on reaching the full potential of each economically important agricultural commodity produced in the state.

What will be Schleicher county's realization to achieve this over-all objective?

As the program is launched within the county, projections of income potentials will be provided or each economically important enterprise of this county in an effort to reach the countywide goal. County Program Building Committees will then study the county projections and set an annual goal and long range goal to be reached by target date.

Guidelines as mailed to all producers in 1967 will be brought up to date by the agent and county planning committees which will provide a plan for growth and increased income through production guidelines for each agricultural commodity. The guides will be based on latest research information relating to increasing production and marketing efficiency.

It will be a very busy year in agriculture of applying all known technology into work plans that can be worked and financed to attain a much higher goal of production, while producing a higher commodity while applying the key to all future growth by efficient marketing.

A day of worry is more exhausting than a week of work.

"Crossbreeding has opened a challenging new era for purebreds."

And guests will see and hear much of crossbreeding during the March 12 beef cattle field day sponsored by the Texas A&M University Agricultural Research Center at McGregor.

Theme of the annual program will be "Designing Cattle for Tomorrow's Needs."

Efforts are being made for as many producers from Schleicher county to attend as possible.

Signs of spring are beginning to show and spring fever will soon be a common "disease". It is also the time when working tools and recreation equipment come out of storage.

Such things as outboard motors, power saws and power lawn mowers will soon be put to use.

When using such engines, there are some things to keep in mind and spring service is one of them.

Home Demonstration Agent's Column

Does spanking help a child learn?

He often learns better from indirect clues such as the behavior of those who care for him, says Jane Feischer, Extension specialist in family life education.

"Even a small child knows when you are pleased with him, and when you are not," she says. "He can tell by the look on your face, or the tone of your voice, or the way you help him with his sweater or put his plate down in front of him."

A child wants his parents to accept and love him. If he does something of which parents disapprove for good reasons, he should be helped to understand that what he is doing is not acceptable.

This is how he learns, the specialist says.

Often a child already understands better than parents think. A stony silence and tight lips may mean more than any spoken words. Just make sure the child understands how the parent feels—and why.

If inflation bugs you, don't just beef and bear it. Do something! Take your cue from the decade of the thirties when everyone watched their pennies. You shopped smart, compared prices, passed up what you really didn't need, bargain-hunted, and made good use of what you had on hand. If you did the same today, with incomes so much higher, you'd actually make money because every SAVED dollar is a full dollar, whereas the EARNED dollar is reduced by federal, state and city income tax deductions.

Here are a few guidelines for tax-free savings.

Review the operator's manual. Then follow the manufacturer's recommendation on care, maintenance and operation of the engine. Pay special attention to the safety rules.

Before putting it in use, find out the type of gasoline that is recommended. This is listed in the manual. Be sure the crankcase is filled with the proper lubricating oil and that grease has been applied to the spots where it is called for in the manual. Check all belts or chain drives and make the proper adjustments and give the equipment a trial run before it is put in heavy service.

As the year progresses, the engine should get regular cleaning but gasoline should never be used for this job. When a motor must be worked on, remove the spark plug wire to prevent an accidental start. It's best never to tamper with the engine governor. Excessive speed can ruin a motor.

Never run a gasoline motor inside a closed building. The carbon monoxide in the exhaust is deadly and can't be seen, smelled or tasted.

It is also a good idea to keep children and pets away from operating equipment since all moving machinery is dangerous.

When all else is lost the future still remains.

Don't buy just any transplant or nursery stock. Later troubles can be avoided by purchasing only disease-free, healthy plants.

If possible, root systems should be checked for detection of such diseases as rots, galls or knots. Avoid buying any plant that does not have a healthy appearing root system.

Stems of plants should be checked for dead areas or cankerous-type lesions which may later kill the plant, and diseases can be carried to healthy plants already growing by planting those with diseases.

Select bulbs which are not discolored and are free of scab-like lesions on the surface. Healthy bulbs will have smooth surfaces free from spots and pittings. Evergreens should be checked for signs of leaf spot and their color should reflect uniformity and a healthy growing condition. The extra price for top grades of nursery stock is often a good investment.

It should be kept in mind that some ornamentals are susceptible to cotton root rot and only those resistant to this disease are suggested. A list of the plants showing the most tolerance to cotton root rot is available in my office.

The logical starting point for a disease prevention program is the planting of only disease-free stock.

Every minute I am angry, I lose 60 seconds of happiness.

Buy only what you planned to buy when you go to the store. If you spot something you want desperately, go home and think about it for a few days. The urge to splurge may pass. Since men are greater impulse buyers than women, don't send your husband out for the groceries.

Look for food sales in your neighborhood. With a freezer you can buy enough of each sales item for several meals.

You'll be dollars ahead if you substitute lower-cost fish, cheese or egg dishes a couple of times a week for red meat which accounts for 25% of all you pay for food. And you won't be compromising on nutrition, for these foods have essentially the same protein value as meat.

Convenience foods such as prepared potatoes, pre-chopped onions, or frozen specialties save time at the expense of money. If you're willing to exchange time for savings, do so.

According to the Department of Agriculture, about 10% of food calories the average family buys ends up in the garbage. So if the family isn't eating everything you dish out, serve less and buy accordingly.

Don't pass up the opportunity for further sizeable savings by substituting multi-use baking soda for a wide assortment of single use products. Inexpensive soda, for example, can replace such costly grooming staples as dentifrice, mouthwash, deodorant, after-shampoo rinse and foot powder; such medicine cabinet essentials as acid indigestion remedy, sunburn and poison ivy lotions, and sore throat gargle. And when it comes to cleaning, baking soda used either in solution or dry as a scourer offers certain unique advantages over the specialized and costlier compounds. It ousts odors, gets at the source and kills them rather than

camouflaging them beneath a floral fragrance. And baking soda is pure, not a conglomerate of unpronounceable chemicals, so that when cleaning, particularly around food areas, you're not haunted by fears of harmful residue.

So say the people who make bakign soda. And their advice is not bad, either.

Girl Scout Councils countrywide are reaching out to the disadvantaged youngsters in their area, with programs under the aegis of the Office of Economic Opportunity, the Department of Health, Education and Welfare, Department of Housing and Urban Development and Bureau of Indian Affairs, among many other federal agencies.

ACTION 70 is a new nationwide Girl Scout effort to help overcome prejudice and cement understanding among people. The undertaking came about as a direct result of the 1969 National Senior Girl Scout Speakout Report—the report which reflected the thinking and calls for action of 284 Speakouts held around the country in the call of 1968. 9,470 Senior Girl Scouts and 1,047 non-Scouts participated.

Overstreet To Attend Legion Boys State

One high school boy will represent Eldorado at the 1970 session of Texas American Legion Boys State, Commander R. V. Sheppard of Post 257 of The American Legion announced today.

Named to participate in this annual American Legion workshop in the organization and operation of state and local governments was James L. (Jimbo) Overstreet.

The 1970 Texas American Legion Boys State will be in session from June 6 to June 13, 1970, at the University of Texas, Austin, Commander Sheppard said.

Departments (state and territorial organizations) of The American Legion will sponsor 51 of these Boys States this summer. Two outstanding youths from each of The American Legion Boys States will go to American Legion Boys Nation in July in Washington, D. C., where they will study federal government organization and operation in much the same manner as the Boys State delegates participate in training in state government.

During their Boys State sessions,

the Eldorado youth will participate in the organization of political parties, campaigns, elections, and the enactment and enforcement of their own laws within a mythical state.

"As one of the Legion's outstanding youth-training programs, Boys State affords these youngsters

an opportunity to learn the functions of government," Commander Sheppard said. "Also, they will see the importance of the role a good citizen has in discharging his citizenship responsibilities. They soon discover how good government depends upon the active interest of every citizen."

BARGAINS

—SPRING TIME IS PAINT TIME—

- Interior Latex Wall Paint, Gal. \$4.19
- Exterior Latex Paint, Gal. \$4.89
- Linseed Oil, Raw (Bulk), Gal. \$2.10
- Paint Roller Set, Each \$1.49
- 5-Quart Paint Buckets 59c
- 9 x 12 Heavy Weight Drop Cloth, Each 59c
- Wall Size, 1-lb. box 49c
- Adhesium, The Stickiest Thing On Earth, Pint 95c

FOXWORTH-GALBRAITH LUMBER CO.
PHONE NO. 853-2744 ELDORADO, TEXAS
GROWING WITH THE SOUTHWEST SINCE 1901

1970 Vehicle License Tags NOW ON SALE

Beginning Feb. 1 To April 1, 1970

PRESENT — Three Part License Plate Renewal Application With Your Fee

If You Do Not Receive Your Application By Mail Present Your Title and Last Year's Receipt—to

Orval N. Edmiston

Sheriff, Tax Assessor-Collector For Schleicher County

Also Come In and Render Your Property for 1970 Sign Your Homestead Exemption.

Robert Massie Co.

Furniture — Carpet

WEST TEXAS' LARGEST HOME FURNISHING STORE

Whether yours is a small or a large budget, whether your need is one room, A houseful or one piece, Our management and our experienced sales personnel are anxious to serve you according to your wishes.

MAKE OUR STORE YOUR HEADQUARTERS WHEN SHOPPING IN SAN ANGELO

12-14 E. Twohig

Telephone 655-6721



Walter C. Pope III.....Chairman
Otis Deal.....Vice-Chairman
George Humphrey.....Secretary
Voy Lee Butts.....Member
Clay F. Atkins.....Member

Farmers in the Eldorado-Divide S & WCD say they have seen very few years that moisture conditions were as good as now. However the good moisture condition has not stopped conservation farmers from applying and maintaining conservation practices to conserve soil and water.

Contour farming continues to be practiced by most all row crop farmers in the District. In most cases, contour farming was one of the first conservation practices to be applied on almost all dry cropland in the county. In the beginning, farmers followed contour guides run by technicians of the Soil Conservation Service. After terraces were constructed on fields they have been followed for contour purposes.

New cropland or old cropland that has not been terraced, is the only land needing contour lines run.

New contour lines have been run this year on two of Bob Faught's fields. One of the fields has not been on cropland for many years. Faught has farmed the field on the contour in previous years. The purpose of re-running the contour lines was to space lines whereby maximum contour benefit would be attained. Faught served as rodman in assisting Lloyd Johnson of the Soil Conservation Service in running the contour lines.

Victor Sauer is another cooperator with the Eldorado-Divide SCD, who has farmed on the contour for many years. Nearly all of Sauer's cropland in the Reynolds community has been terraced for several years. However, some of the cropland that was terraced and contour farmed at one time, does not have terrace on it now due to its being irrigated occasionally. When field is irrigated Sauer follows irrigation guides with some grade. In years that field is not irrigated contour lines are followed to conserve all rainfall possible.

Sauer experiences the same inconveniences as other conservation farmers in farming on the contour. There is just no easy way to work out point rows and it's easier to follow straight line row than a crooked row. "Even though farming on the contour with terraces creates somewhat of a problem, I would not farm dry cropland without terraces and contour rows," Sauer stated.

Terraces on dry cropland on Sauer's farm are maintained regularly to maintain needed height and

width. When fields are broke with one way plow, maintenance work is done on terraces. "I have let terraces get too run down when seedbed was being prepared with tandem disk and bedders. When this happens I always spend a little extra time in maintaining the terraces after crops are harvested," Sauer said.

Sauer assisted Johnson, Soil Conservation Technician, in running some contour lines on his farm recently. In recent years Sauer has nearly always served as rodman when any engineering work was done on his place.

Some of the cropland in the District has not been prepared for this year's crops due to field being too wet. Jesus Minor was in this category, when Johnson of the SCS was at his place recently. Minor farms the W. J. Steward farm about 12 miles northwest of Eldorado. Minor was busy preparing fields for the 1970 crop year. Even though he was late in getting land prepared he was not in too much of a rush to do maintenance work on the level terraces.

Contour farming is not new to Minor. Since he began farming in Schleicher county he has farmed on the contour. The Steward farm is the first place Minor has rented that had terraces. Most all terraces were constructed on the place when Minor first rented it. However, the landowner has had some terraces built since Minor moved on the farm.

Even though moisture conditions are good now there is no doubt that I will need more rain to make a good crop, terrace maintenance that I am doing now, and farming on the contour, can help hold whatever rainfall I get for crop production, Minor stated.

Terrace maintenance can usually be done with farm equipment already in use on the farm. The one way plow has probably been used more in maintaining terraces than any other implement. Cost of maintaining terraces is minor if carried out regularly as needed. Terraces that are permitted to deteriorate, to the point that little of the terrace remains, can cause damage to fields. Cost of building terraces back to needed height and width can be as much as the original cost of construction if continuously plowed down.

Contour farming does not add any additional cost to farming operations. Even though no more cost of farming is involved, contour farming can increase crop yield 20% or more. When used in combination with all needed conservation practices on dry cropland, contour farming and terraces properly maintained will help assure maximum crop yields.

McGINNESSES HAVE GUESTS

Lynda McGinnes and Dixie Drummond, both teachers in the Lovington, NM, schools, and Carol Streber who teaches at Artesia visited recently here with Mr. and Mrs. Elton McGinnes. Also visiting was Jim McGinnes of A&M.

Mrs. Anna MacTaggart was here last Friday visiting with Mrs. Moore.

The Girl Scout National Center West, a recent acquisition of some 15,000 acres in the Bighorn Mountains near the tiny town of Ten Sleep, Wyo., is a geological treasure. This non-urbanized land will provide the opportunity for Girl Scouts of today and future generations to live in and experience the open grandeur of our West and help preserve for them a priceless part of our American heritage.

THREE ADDITIONAL COLORS POSTER BOARD

- Bright Yellow
- Bright Orange
- Solid Black

6-ply stock, size 22x28 in.

25c SHEET

SUCCESS OFFICE

Two More Visiting Days For Public Schools Week

Grade	Lunch Time
Thursday, March 5	
Fifth Grade	11:35
Seventh Grade	12:15
Friday, March 6	
Sixth Grade	11:40
Eighth Grade	12:15

NOTICE

I Am No Longer in the Ambulance Business Here in Eldorado and Schleicher County. This service is being discontinued effective April 1st.

All accounts due Sheppard Ambulance Service are now payable, and your co-operation will be appreciated.

This action has been brought about by too many uncollectible accounts.

—R. V. SHEPPARD

Notice of Hospital District Election

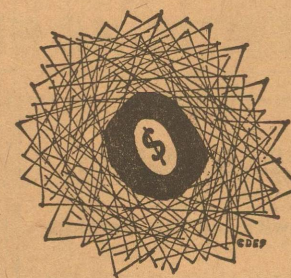
Notice is hereby given that the annual Director election of Schleicher County Hospital District will be held on Saturday, April 4, 1970.

The present law requires that any person desiring his name to be printed on the ballot as a candidate for director shall file a petition, signed by not less than 10 legally qualified voters, with the secretary of the board of directors, asking that such name be printed on the ballot. Such petition shall be filed with such secretary at least 25 days prior to the date of election; such date this year being March 10th.

Four directors are to be chosen at the April 4 election. Terms of Carroll Ratliff, Ronnie Mittel, Guy Whitaker, and Peyton Cain expire. The term of office is for two years.

RONNIE MITTEL, SECRETARY.

YOUR PERSONAL SERVICE BANK



A nest egg of savings can be what it takes to make your dreams come true

At First National we help your savings to grow . . . by paying interest—at a guaranteed rate.

DRIVE-IN BANKING

Our convenient drive-in windows make your trips to the bank a pleasure, with no parking or waiting problems involved.

The First National Bank

Eldorado, Texas

YOUR FRIENDLY SERVICE BANK

Texas Almanacs For Sale At The Success Office



You do the cooking and let Reddy do the clean-up job.

Own today's most work-saving range—an electric self-cleaning range—from your local dealer.



FREE WIRING

Normal 220 volt wiring to WTU residential customers who buy an electric range from a local dealer or WTU.

Live the carefree way with Famous Frigidaire Electric Appliances See them at WTU

West Texas Utilities Company

Equal Opportunity Employer

an investor owned company

We Salute Girl Scout Week, Mar. 8-15



GIRL SCOUTS OF THE U. S. A.

The time is ripe for constructive and extensive improvement in our society.

Girl Scouts of the U. S. A. is one agency which is showing the way. Good citizenship has always been part-and-parcel of the Girl Scout movement. The Girl Scouts are working with many agencies to this end.

Girls of El Camino Council have worked with civic clubs, hospitals, and other agencies throughout the Council. Some girls helped with the Kiwanis Club Christmas project. Others worked for two weeks at a Day Camp for Retarded Children, sponsored by the Association for Retarded Children. Boys attending the Operations Orphans Camp every year in Mason are treated to sack lunches made and packed by the Mason Girl Scouts. Programs on Safety were presented by Scouts to young people at Community Action Centers.

Many troops shared Christmas and other holidays with children at Day Care Centers with parties and special programs. Many of our Scouts have worked with Historical Societies by serving as Museum Aides and guides. Such activities carry out the goal of bringing civic organizations into the heart of the Girl Scout movement and its activities.

Participation in a Girl Scout troop gives a girl an experience in the democratic process of troop government. It gives her a better understanding of the democracy we live in before entering the world as adults.

Girl Scouting develops leadership qualities and will enable them to take a major hand in bringing about the changes in our social processes at this critical period in history.

The purpose of youth is not just to enter the system. The aim should be to change it for the better.



Girl Scouts of the U. S. A. is one organization that is trying to educate youth to set changes in motion in a constructive way to build on the foundations of the old, rather than to tear down the good with the bad.

GIRL SCOUTS FACE TODAY'S PROBLEMS

"Listen to us," one Scout says. "We see the problem. We realize the challenges. We think we can do the job. We want to try."

Here is what Girl Scouting is doing. It is reaching out to economically depressed areas. Today, 500,000 Girl Scouts are from families with below median income.

"Scouting gives me a feeling that others want me and need me . . . a belief in myself and respect for others," says this new Girl Scout.

And she, with her sister Scouts — more than 3,000,000 strong, speaks out and actively helps those less fortunate than herself.

In migrant camps, Girl Scouts teach English to children. In hospitals, they serve the sick and infirm. In emergencies—hurricanes or riots—Girl Scouts are there, taking care of children, serving food to the dispossessed.

Others also work in poverty areas; they help cool the long hot summer by providing day camps, useful activities, for inner-city girls.

The new triennium theme, 'Awareness—Action' reflects the deep involvement of Girl Scouts of the U. S. A. with the needs of the World.

This is modern Girl Scouting.

At Start Of 1970 Girl Scout Week, Local Members and Leaders Have The Best Wishes Of These Boosters ! !

Southwest Texas Elect'c Co-Op

Owned By Those It Serves

Mikeska Gin

It's a Pleasure To Serve You

Davis's Fina Station

Mr. and Mrs. Lum Davis

The Ratliff Store

Dry Goods

Eagle's Nest Cafe

Gene and Vernell McCalla

Foxworth - Galbraith Lbr. Co.

Eldorado, Texas

The Top Package Store

Glynn Edmondson

Yates Cleaners

Doug Yates & Employees

Eldorado Variety

Gene and Vernell McCalla

Hext Foods

Granvil Hext and Jack Hext

Eldorado Wool Company

Your Purina Dealer

Etheredge Texaco Service

Jack Etheredge

Eagle Chevrolet - Olds

Paul Page—Jim Thornton

The Eldorado Success

Printing—Advertising—News

Famous Women Boost Girl Scouting

Lucille Ball—Princess Grace of Monaco—Sandra Dee—Margaret Truman—what do these women have in common? Would you believe—Girl Scouting?

Add to these names a long list of noted women who are eager to talk about Girl Scouting's good influence on their lives, and you get an idea of the pervading force of this 3,750,000-member organization.

"Girl Scouts are far more effective than Telstar," said one celebrity. "They are already one group all over the world—a group based on common values, sharing a common goal of caring deeply enough or other people to build a world congenial to human life."

Besides Debbie Reynolds, who actively heads a Girl Scout recruiting corps, other film celebrities, either ex-Scouts or Scout leaders now, are: Dinah Shore, Dorothy Lamour, June Haver, Polly Bergen, Joanne Woodward, Jean Seberg, Margaret O'Brien and Bette Davis. Opera stars Rise Stevens, Eleanor Steber and Vivian della Chiesa and a host of well known business and professional women, are among others who have been active in Scouting.

Even that "Get Smart" girl, Barbara Feldon, known to television's millions, may owe some of her All-American image to her Scouting background.

Here are some comments on Girl Scouting from a few lady notables: —Sandra Dee, "Scouting really started me up the ladder." She says Harry Conover, the agent, saw her model at a Girl Scout benefit and signed her.

—Lucille Ball was patrol leader of her troop in Jamestown, New York. Her Girl Scout registration card is still on file there.

—Jean Seberg was a Brownie in Marshalltown, Iowa.

—Dinah Shore says, "In Girl Scouting I first tried my wings in group singing."

—Ditto, Debbie Reynolds: "I found my love of singing and performing in Girl Scouts."

—Shari Lewis, puppeteer and television personality, spent summers at a Girl Scout camp, "Laughing Water," in New York State. "I simply loved the dough I wrapped around a stick and stuffed with peanut butter and baked over a fire," she says, referring to Scout cookouts.

—Princess Grace of Monaco says, "My Scouting experience in Philadelphia serves me well in connection with our movement here in the Principality."

And Mrs. William Childs Westmoreland, wife of the famous general, also may be indebted to Girl Scouting. Of the general, when she first met him, she says: "I really adored him—he was going with my Girl Scout leader at the time—so when I was 11, I proposed. He told me, 'I'll wait until you grow up.'" They were married eight years later.

SNELSON ON COMMITTEE

Lt. Gov. Ben Barnes has announced the appointment of three state senators to the Committee on Marking and Branding of Livestock.

Named by Barnes were Senators Jack Hightower of Vernon; W. E. (Pete) Snelson of Midland; and Murray Watson of Mart.

Created by Senate Concurrent Resolution 74, the Committee will study laws regarding the marking and branding of livestock, with the view of modifying and updating the present law in Texas to give the state a more modern and uniform branding and marking system.

Girl Scouts of the U. S. A. is the largest voluntary organization for girls in the world. Current membership is approximately four million.



Typical Group of Brownies Who Are Getting Ready for Girl Scout Week

Facts About The Girl Scouts

Name of Organization: Girl Scouts of the United States of America.

Purpose: To inspire girls with the highest ideals of character, conduct, patriotism, and service so that they may become happy and resourceful citizens.

Membership: Membership is open to all girls from 7 through 17 years of age who accept the Girl Scout Promise and Laws. Membership dues are one dollar per year.

Adults—both men and women—are eligible for membership if they subscribe to the Promise and Laws and pay the same dues as girls. They serve as leaders or program consultants or as members of board of directors, finance committees, camp committees, troop committees, or in other positions of voluntary leadership.

Total membership is almost 4 million. This includes 3,250,000 girls and 670,000 adults. Since 1912 there have been more than 29,000,000 members (23,000,000 girls and 6,000,000 adults.)

Founder: Juliette Gordon Low organized the first troop on March 12, 1912 in Savannah, Georgia.

Chartered by the Congress of the U.S.A.: March 16, 1950.

Nat. Headquarters: 830 Third Avenue, New York, NY 10022.

Honorary Vice President: Mrs. Richard M. Nixon.

Nat. Pres.: Mrs. Douglas H. MacNeil, Princeton, N. J.

Nat. Executive Director: Miss Louise A. Wood.

International Affiliation: Girl Scouts of the U. S. A. is a member of the World Association of Girl Guides and Girl Scouts, a federation of the Girl Guide and Girl Scout organizations in 81 countries of the free world. The World Bureau is located in London, England.

Organization: Girl Scout Councils are local units chartered by the national organization to administer and develop Girl Scouting within a specified area. There are almost 400 Girl Scout councils in the United States. Girl Scouts are organized in troops which meet weekly with adult leaders to plan their activities. There are 158,000 Girl Scout troops in the United States, and at U. S. military and civilian locations in more than 50 countries around the world. Girl Scouts belonging to U. S. troops overseas are called TOFS—Troops On Foreign Soil.

Reynolds H. D. Meets

The Reynolds Home Demonstration Club met in the home of Mrs. L. E. Lloyd on Feb. 24th with 10 members and our agent, Mrs. Vida Kreklow, present. Our new president, Mrs. Jack Wade, called the meeting to order. Mrs. L. E. Lloyd gave a report on the planning meeting which she attended in Ballinger. The District meeting will be April 23rd in Fredericksburg. Mrs. Jack Wade was elected to attend as our delegate.

The following committees were appointed: parliamentarian, Mrs. Bascom Hartgraves; telephone, Mrs. Leonard Wilson; reporter, Mrs.

Perry Mittel; hospitality, Mrs. H. A. Belk, Mrs. Milton Faught, Mrs. W. V. Lux; 4-H Club, Mrs. B. J. Reynolds; finance, Mrs. H. Moore; and Mrs. Ello Wilde, Mrs. L. Moore and Mrs. Victor Sauer.

After the business meeting Mrs. Kreklow gave an interesting lesson on style and fabric and the care of different types of fabrics.

Our next meeting will be in the home of Mrs. W. V. Lux on March 10. —Rep. by Mrs. Cecil Williams.

In 1912, the year Girl Scouts was founded, there were 18 girls in the first troop. Today, there are more than 3 million girls in 163,047 troops.

Attention Farmers

Get Your Cottonseed Orders In Early. Seed is in short supply this year, so you should order yours as soon as possible.

Mikeska Gin

Wayne Mikeska

Good Neighbor H. D.

The Good Neighbor H. D. Club met Feb. 24th at 2:30 p.m. in the home of Mrs. Bethel Jeffrey. Seven members attended.

President Annie Speck called the meeting to order. Members answered the roll call with the name of a flower each would like to plant.

After minutes and a treasury report, Mrs. Speck appointed 1970 committee members. Members of the telephone committee are: Mrs. Eleanor Jeffrye and Mrs. Nancy Dannheim. Members of the finance

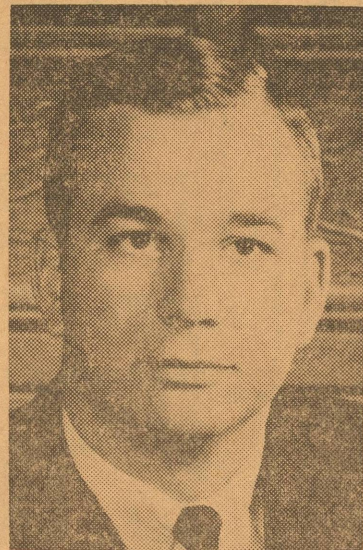
committee are Mrs. Eleanor Jeffrey, Zelma Henderson, and Opal Parks. Etta Ruth and Nancy Dannheim will continue to send birthday cards to the elderly.

On April 23rd there will be a district meeting in Fredericksburg for all clubs. Mrs. Eleanor Jeffrey and Mrs. Annie Speck will attend as delegates from our club.

The next meeting will be held at Mrs. Dell Edmiston's in March.

Then Mrs. Kreklow gave a report on the "Communication of Clothes". It seems that each of us wears clothes to say something. —Mrs. Sherrill Dannheim.

Youth-Led REVIVAL



LONNIE HAYTER Evangelist

"Remember Now

Thy Creator In

The Days of

Thy Youth."

—Eccl. 12:1



WALTER JOHNSON Singer

FIRST BAPTIST CHURCH

Eldorado, Tex. Rev. Kenneth Vaughan, Pastor

March 8 thru 13

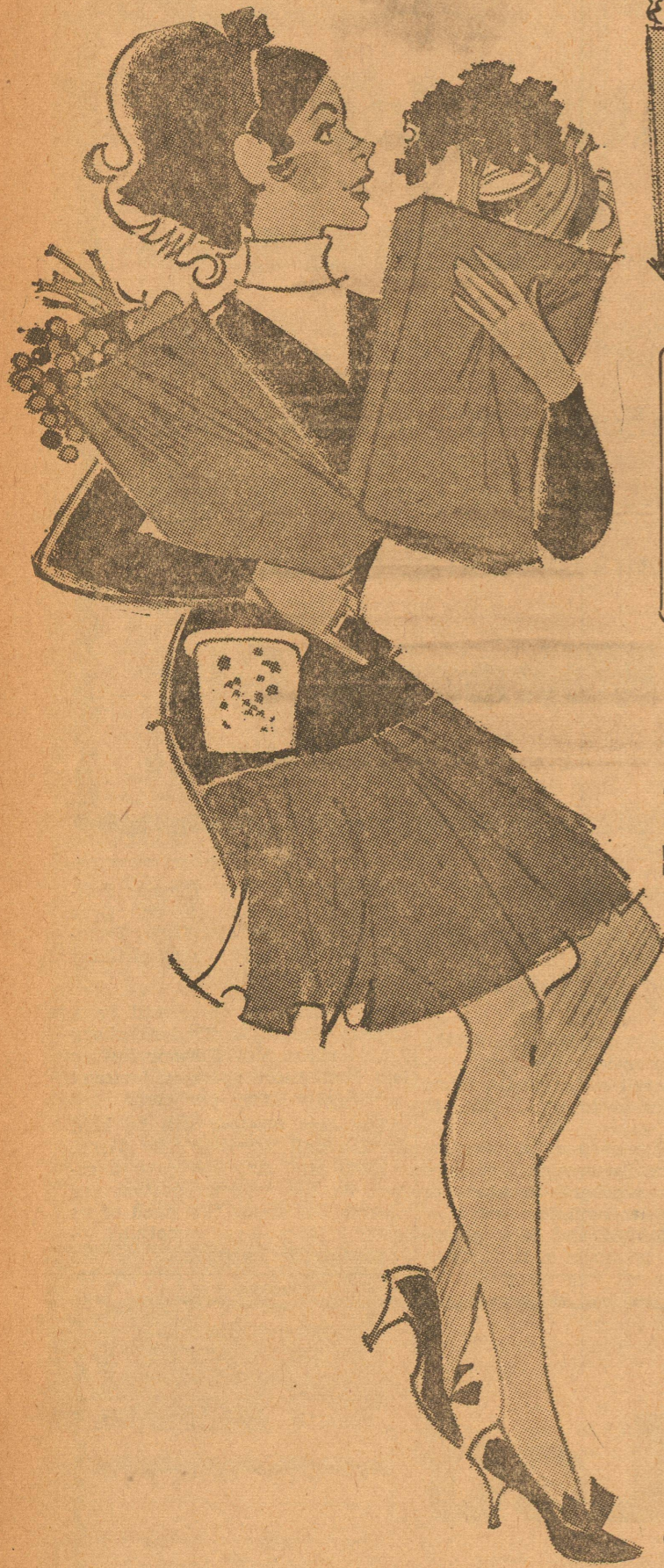
SERVICES: 7:00 a. m. and 7:00 p. m.

BREAKFAST SERVED EACH MORNING

A NURSERY WILL BE PROVIDED



Bentsen. Senator for the Seventies.



SACKS OF SAVINGS

ON TOP QUALITY FOODS

PARKER FOODS

FIRESIDE
SALTINES

1 Lb. Box **25^c**

MY-T-FINE
PUDDINGS
Regular Or Instant

Box **10^c**

MISSON
CUT GREEN BEANS

303 Cans **3 FOR 49^c**



LIPTON Instant Tea **99^c**
BIG 3-OZ. JAR

THE BRISK TEA Lipton Tea **39^c**
1/4 LB. BOX

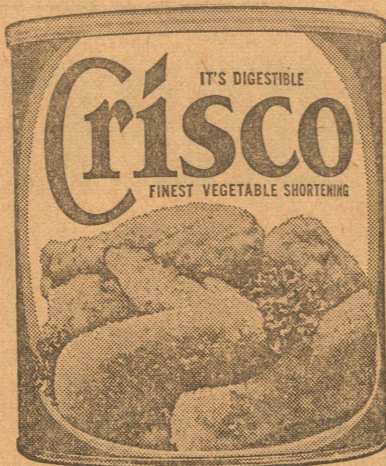
KIMBELL'S Lunch Meat **49^c**
12-OZ. CAN

WISH BONE Italian Dressing **35^c**
8-OZ. BOTTLE

PURE VEGETABLE Crisco **79^c**
3 LB. CAN

THE LIGHT OIL Crisco Oil **49^c**
24-OZ. BOTTLE

FRENCH — COUNTRY STYLE Potatoes **59^c**
16-OZ. BOX



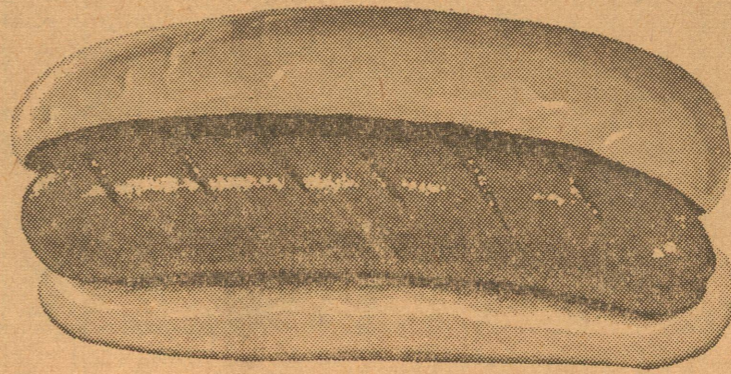
Diamond Yellow Cling

Peaches
3 No. 2 1/2 Cans **89^c**

GAINS

Dog Meal
5 Lb. Bag **79^c**

VALUE TRIMMED MEATS



GOOCH
BIG COUNTRY
FRANKS
2 Lbs. 89^c

GOOCH 1 LB. PKG. Bacon **79^c**

SEMI BONELESS PORK ROAST **69^c**
POUND

LEAN, MEATY PORK STEAK **69^c**
POUND

FAMILY — BEEF STEAKS **79^c**
POUND

GARDEN FRESH VEGETABLES



USDA No. 1 BAKING POTATOES **10^c**
Pound

VINE RIPENED TOMATOES **19^c**
POUND

CELLO - BAG CARROTS **2 FOR 29^c**
1-LB. BAGS



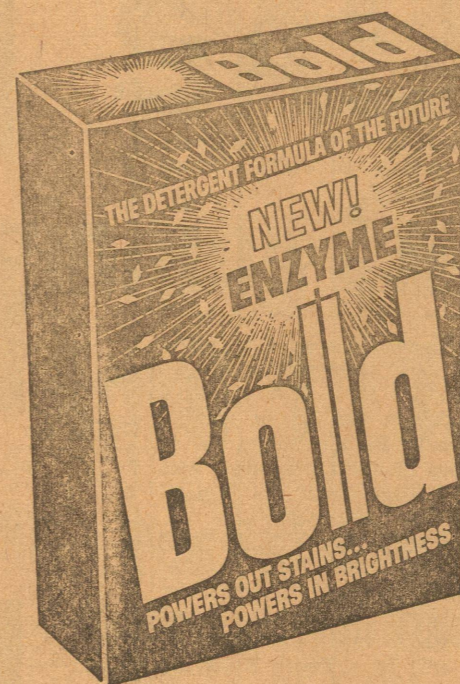
PATIO — BEEF ENCHILADA DINNER **39^c**
EACH

LIBBY'S SPINACH **4 FOR 89^c**
10-OZ. PKG.

WHOLE SUN ORANGE JUICE **19^c**
6-OZ. CAN

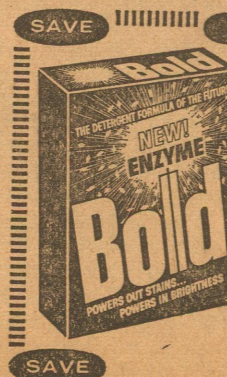
LIBBY'S — BROCCOLI SPEARS **3 FOR 89^c**
10-OZ. PKG.

KIMBELL'S MILK tall can **19^c**



KING SIZE
Bold
99^c

redeem this coupon and save



SAVE VALUABLE COUPON SAVE
5 LB. 4 OZ. KING SIZE
BOLD, only 99^c
WITH THIS COUPON
Good Only at Parker Foods
LIMIT 1 COUPON PER PURCHASER
Offer Expires March 21st SAVE