

Voy Lee Butts.....Chairman
 Walter C. Pope, III.....Vice-Chairman
 J. C. Bumgardner.....Secretary
 Clay F. Atkins.....Member
 Otis Deal.....Member

WILDLIFE AND CONSERVATION INSEPARABLE

By Lloyd B. Johnson, S.C.S.

The deer, turkey, doves, quail and rabbits provide most of our hunting in Schleicher county. All of the game are on privately owned lands.

Most of our wildlife crop is grown and harvested on land used mainly for livestock and cultivated

crops. This means that farmers and ranchers are the key to abundant wildlife. The land use decision of farmers and ranchers can cause a scarcity or an abundance of wildlife. The choice is largely theirs.

The Soil Conservation Service as part of its assistance to Soil Conservation districts and watershed projects, helps individual land operators apply many soil and water conservation practices that help maintain and increase wildlife.

Food, water and cover is essential in good wildlife management. These three elements are affected directly by the use and treatment given the land by those who use it. When farmers and ranchers use the land according to its capability and treat it according to its needs, wildlife will also be provided needed cover, food and water.

Wildlife of all kinds is dependent on the food grown and maintained on the land for their needs. When grass gets short farmers and ranchers feed the animals on the farm or ranch. Since game animals get very little, if any of this feed, they are left to survive with inadequate feed, if they can.

Good range management assures the rancher of the maximum forage production on his land. To attain maximum forage production on rangeland the best use must be made of rainfall received. When proper grazing use is practiced there is always enough grass on the land to hold all or nearly all of the rainfall received in this area.

(Annual average rainfall 19 inches 35 years). On the other hand, when grass is kept short with numerous bare areas throughout pastures, as much as 50% of rainfall received can be lost by runoff. It takes grass to grow grass and keep rainfall where it falls for best use. When rangeland is used wisely for all types of domestic animals it is also being managed in a way that is most beneficial to wildlife.

Farmers and ranchers in the Eldorado-Divide S&WCD are applying conservation practices to speed up the restoration of their grassland. Heavy grazing pressure and misuse has caused rangeland to steadily deteriorate. As choice forage plants have been weakened and killed by overuse, they have been replaced with plants that provide less food for wildlife and livestock. Range seeding and control of the undesirable brush along with proper grazing use and needed deferments is being done by numerous producers in the Great Plains Conservation Program.

For the past several years rangeland in this area has been infested with unwanted woody plants. It has been found that some dense brush used more moisture entering the soil than good plants. It was estimated that these non-economic plants wasted an estimated 38% of the state's total annual rainfall.

Controlling brush is one of the numerous measures that can be used to help improve grassland and wildlife habitat. However, brush control must be used wisely in combination with other conservation measures. Poorly planned brush control not followed by good rangeland management is harmful to wildlife. Brush control improperly done can also damage the land for livestock. Wise brush control followed by good grassland management can greatly benefit wildlife.

Properly planned brush control

News & Advertising Copy Deadlines:

MONDAY of Each Week: Please turn in contributed columns, club reports for preceding week end, society and personal news, etc.
TUESDAY Morning: More General News.
TUESDAY Afternoon, Late: Only news items of real significance such as deaths can be accepted.

IN GENERAL: Please Turn in News and Ad Copy As Early in The Week As Possible.

THE ELDORADO SUCCESS

PRINTING—ADVERTISING—NEWS

—SINCE 1901

Try Our Complete Service For Your Car Or Truck

Washing, Greasing, Goodyear and Firestone Tires, Continental and Firestone Batteries. Stamps Given on credit card and cash sales, and Open Accounts paid by the 10th.

MITTEL TEXACO SERVICE

GAIL MITTEL

PHONE 2739 OR 2488

and range seeding can be done whereby wildlife and livestock will be benefitted. Good, high productive rangelands have a more stable wildlife food supply. Depleted rangeland infested with solid brush offer plenty of cover but little food during stress periods such as droughts or severe winters.

Healthy wildlife, good range, plenty of food and hiding places—this happens only when grasslands are managed wisely. And only when livestock and wildlife are kept in balance with forage produced.

Six Flags Closes Best Season Yet

Arlington, Texas.—Six Flags Over Texas has ended its 1972 season with all attendance records broken.

Final figures put the season's attendance at 2,062,000. The old record, 2,037,000 was set in 1967.

Six Flags General Manager Robert W. Freeman said, "We are already making preparations for the 1973 season which will begin early in the spring."

He continued, "We discovered in 1972 that new attractions in the area and the changes which have been made in the Park itself made Six Flags more popular than ever. The sharp increase in attendance meant one thing to us—expansion. So, for the coming season, we will open an entire new section with two major rides and a number of other attractions which will increase the Park's capacity and provide more entertainment than ever before."

He said full details of the program will be announced soon.

The 1972 season also saw records broken for daily attendance at the Arlington, Texas, theme park. On May 13, a new record for a single day's attendance was set as 36,607 persons passed through the turnstiles. A new high for a summer day was set August 12, with more than 30,200 persons visiting the 145-acre complex.

Just prior to the end of the 1972 season, Six Flags Over Texas welcomed the 20-millionth guest to visit the fun spot since it first opened in 1961.

Befana's Search Ancient Legend

An ancient legend tells of Three Wise Men stopping to ask directions of an old woman, Befana. They invited her to go with them to worship the new-born King, but she would not leave until she had swept her house and baked her bread. So the Wise Men left without her.

When her housework was finished, Befana packed a basket of toys for the Christ Child and set out after the Wise Men, but she never overtook them. So every Christmas she searches for the Christ Child with her basket of toys, leaving gifts for the children in each house she passes.



Is now the time to buy land?

Acquiring that farm might seem more practical with financing through the Federal Land Bank. Land is easier to pay off when costs are amortized over extra years with a long-term Land Bank Loan. Your total cost of borrowing, too, can be less. Ask us for help: We know land values; we will inspect the property. We will then try to make a loan that meets your exact needs.



A. E. PRUGEL, MANAGER

Federal Land Bank Association of Sonora

Telephone 387-2777

School Menus

(All meals served with buttered rolls and milk.)

Thursday, Dec. 7: Fried chicken and gravy, creamed potatoes, buttered broccoli, congealed strawberry salad, gingerbread.

Friday, Dec. 8: Chili with or without beans, cheese strips, cole slaw, stuffed celery, fruit cobbler.

Monday, Dec. 11: Meatloaf, buttered potatoes, green beans, shoestring cut beets, canned fruit.

Tuesday, Dec. 12: Smothered steak and gravy, buttered rice, candied carrot coins, lime jello salad, chocolate cake, fudge icing.

Wed., Dec. 13: Enchilada casserole, pinto beans, cabbage & apple & pepper salad, fruit cobbler.

Thursday, Dec. 14: Barbecued chicken, pork & beans, potato salad, spiced apple rings, banana pudding.

Friday, Dec. 15: Hot dogs/chili, sauerkraut, cheese strips, fresh fruit cup, brownies.

—Receipt Books at The Success.

YOU WILL VOTE SATURDAY, DEC. 16TH ON ELDORADO'S 1% MUNICIPAL SALES TAX

HERE ARE SOME ANSWERS TO SOME OF THE MOST OFTEN ASKED QUESTIONS:

- Q. What items are subject to the 1% sales tax?
- A. The 1% city sales tax is applicable only to those sales now taxed under the the State Sales & Use Tax Act.
- Q. There is a 2% State tax on automobiles. Would the city sales tax also apply to automobile sales?
- A. No. The 2% tax on automobiles is an excise tax: the municipal sales tax would not apply to automobile sales.
- Q. Does the city sales tax apply to sales at wholesale?
- A. No only to retail sales. Goods sold for resales are not taxable.
- Q. Does a person residing outside of the city limits pay the 1% sales tax?
- A. Yes, when he makes a purchase of personal property subject to the tax in city which has adoped the local sales tax. In return, he enjoys the city's streets facilities, police protection and other advantages of the city for which city residents pay the major share.
- Q. Is the local sales tax regressive—that is will it cause a particular hardship for lower-income families?
- A. A sales tax has more elements of equity than any other type of tax, and this is particularly true in Texas, since so many essential items are exempt from the sales tax.
- Q. Why should a city dweller who rents his residence favor the local sales tax?
- A. For one matter, the person who rents enjoys the same services avaiable to the property owner. For another, if it is necessary for the city to raise property taxes, the increased cost of this tax will be passed along in the form of higher rent charges.
- Q. Are city sales tax payments deductible from our Federal income tax reports?
- A. Yes.
- Q. Who can vote on the 1% local sales tax?
- A. Any registered voter in the city. A simple majority is required to put the sales tax into effect.

Vote FOR Municipal Sales Tax Saturday, December 16th

Paid for by committee for Muncipal Sales Tax

Kent's Automotive

712 N. Divide

Phone 853-2733

COMPLETE AUTO REPAIR

NAME BRAND PARTS

Including

DELCO, MOTORCRAFT & AC

SAFETY INSPECTION STATION

Robert Massie Co.

Furniture — Carpet

WEST TEXAS' LARGEST HOME FURNISHING STORE

Whether yours is a small or a large budget, whether your need is one room, A houseful or one piece, Our management and our experienced sales personnel are anxious to serve you according to your wishes.

MAKE OUR STORE YOUR HEADQUARTERS WHEN SHOPPING IN SAN ANGELO

12-14 E. Twohig

Telephone 655-6721



Austin, Tex.—Most homeowners are expected to get a big break on insurance rates next year.

Exceptions will be those who live in the 27-county Gulf Coast area.

The industry-oriented Texas Insurance Advisory Association recommended the State Board of Insurance reduce by 17.7% extended coverage (hail, windstorm, vandalism, etc.) rates and by 16.2% homeowners' rates in the North-Northwest area. That includes most of the Panhandle and South Plains.

Association recommendations for the big Central Inland territory (Dallas, Fort Worth, San Antonio, El Paso, Austin areas) included a 12.1% decrease in extended coverage and 10.9% reduction in homeowners' premiums.

The Seacoast territory (Beaumont & Port Arthur, Houston, Galveston, Corpus Christi and Brownsville areas) would get a 17.5% hike in extended coverage premiums and an 8.3% increase in homeowners' policy rates.

All territories would benefit from an Association proposal to reduce fire insurance rates statewide by 7.7%.

An Association spokesman estimated total savings at \$6 million for extended coverage and \$9.8 million for homeowners' insurance in the Central Inland territory. He calculated increases of \$3 million for extended coverage and \$5.9 million for homeowners' rates in the Seacoast territory.

About 500 insurance agents who attended the Board hearing on the proposals expressed approval but loudly protested another recommendation by the Association to standardize their commissions.

The Board staff is awaiting directions as to whether to calculate new rates on its own formula or the new recommendations.

Courts Speak

Texas Supreme Court agreed a retrial is in order for a lawsuit against Union Carbide Company as a result of an explosion which killed two and injured two.

The Court of Criminal Appeals held a San Antonio man cannot complain about exclusion of blacks from his murder trial jury since he agreed to the exclusion himself.

The Third Court of Civil Appeals held property owners in Wylie County School District should have the right to join the Abilene School District.

The Supreme Court threw out a district court injunction preventing a State Bar grievance committee investigation of complaints against a former Hill County district attorney.

A Houston Court of Civil Appeals decision that heirs of a man who died in a Waller County Hospital after an auto accident should get a full trial of a malpractice suit against a doctor who treated the wreck victim was upheld by the State Supreme Court.

Attorney General's Opinions

Deputy constables are authorized to carry guns only after they have completed a minimum amount of training, Atty. Gen. Crawford C. Martin held.

Martin's opinion, requested by Brazos County Attorney W. T. McDonald Jr., also stated that reserve deputy constables serve without pay at pleasure of the constable within the period of time authorized by the county commissioner's court.

Martin reached these conclusions in other new opinions:

—Harris County can operate a mental health center for the state but cannot change it into a county

department by commissioner's court resolution.

—Parks and Wildlife Department can spend other money for park expansion than that set out in item 10B of the appropriation bill.

—A Beauty operator may offer cosmetology services in a barber shop and may operate a barber shop under general supervision of a Class A barber, but a barber may not operate a beauty shop without a cosmetology license.

—A district attorney who applies for retirement on a certain date fixes the date his office is vacated.

Gas Problems Told

Natural gas suppliers are dwindling and producers are not meeting agreements the Railroad Commission was told in a hearing last week.

The Commission is studying the possibility of setting priorities for gas distribution when there is short supply.

One pipeline company claimed a chief supplier delivered little more than half the gas is agreed to provide. A company spokesman suggested homes and schools get first priority on the gas supply available, with second priority allocated to generation of electricity for domestic consumers.

Horse Racing Revival?

A Senate committee is conducting a survey, results of which admittedly may be used to bolster a new drive for pari-mutuel horse race betting.

The Senate Horse Racing Study Committee sent out 5,000 questionnaires to assess the horse industry and its economic impact on Texas.

Among questions asked of the horse owners and riding equipment suppliers is whether pari-mutuel wagering would expand their operations and how local lawmakers would vote on the issue.

The Committee vice-chairman said results of the survey "could be used to build an economic case" for wagering on horse races. A meeting of the panel is slated here December 14 to hear opponents of racing and pari-mutuel gambling and to receive a report on potential state revenue from legalized gambling. Committee heads said a constitutional amendment would be necessary to revive pari-mutuel betting on the races.

How To Pick Up \$5 Million

Texas could gain \$5 million a year in delinquent sales taxes by changing collection procedures in the comptroller's office, a Senate interim study committee has been told.

Actually, an Illinois tax expert estimated, the state could collect \$8 million more each year, but hiring of an additional 200 state sales tax auditors would take about \$3 million of the gain.

An attorney general's representative said Attorney General Martin wants to require Texas businesses to post bond to insure payment of the sales taxes they collect.

Pollution Money May Be Lost

Texas may get only half the federal funds it counted on to help build new sewage treatment plants, State Water Quality Board Chairman Gordon Fulcher stated.

A new federal act, said Fulcher, would cut Texas' allocation to \$55.4 million for fiscal 1973 for treatment plant aid, as compared with \$106.3 million for fiscal 1972.

Fulcher said the loss would "hurt a whole lot of cities and towns in the state, particularly smaller communities which depended on federal help (up to 75%) to finance the plants.

Short Snorts...

Atty. Gen.-elect John Hill has pledged to head up a "strike force" of lawyers to fight organized crime in Texas.

The State Bar came up with a plan for prepaid legal services.

A seven-months' survey has been initiated by the U. S. Department of Agriculture to detect citrus blackfly infestations in the Lower Rio Grande Valley.

Parks and Wildlife Department has ordered an exhaustive study of Mustang Island in preparation for developing the site as a new state park.

A consumer protection study committee of the state heard a plea for new laws to protect tenants from unscrupulous landlords who refuse to refund security deposits or make needed repairs.

Morris Webb of Waco has been named to the state advisory council for technical-vocational education.

Gov. Preston Smith plans to make about 50 appointments to offices before his term expires.

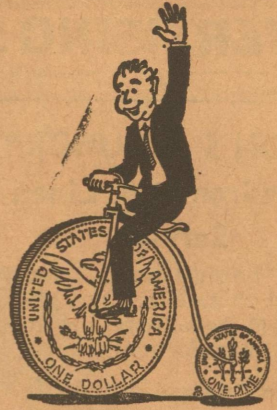
An El Paso representative-elect will introduce a bill to protect the confidential nature of newsmen's sources.

Attorney General Martin underwent cataract surgery at John Hopkins Hospital, Baltimore, Md., last week.

SALES PADS, just 10c each at the Eldorado Success office.

TYPEWRITER RIBBONS, for Royal, Underwood, and Remington—available at the Success.

YOUR PERSONAL SERVICE BANK



You can get more mileage out of your money when you use low-rate bank credit

When you need credit, see First National, where you don't pay a high rate of interest to cover losses on those who don't pay.

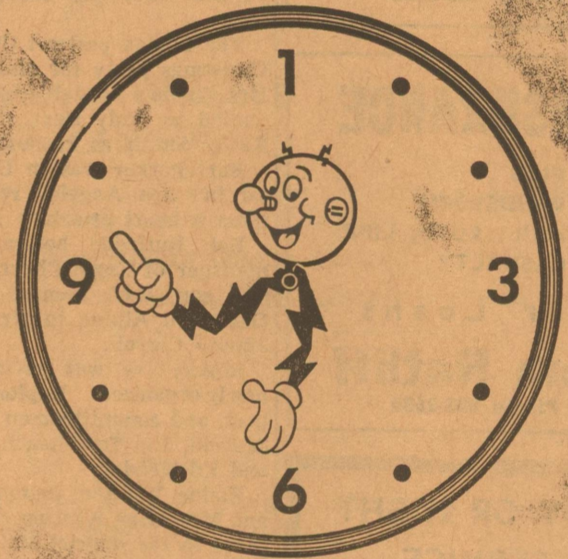
DRIVE-IN BANKING

Our convenient drive-in windows make your trips to the bank a pleasure, with no parking or waiting problems involved.

The First National Bank

Eldorado, Texas

YOUR FRIENDLY SERVICE BANK



Reddy Bargain Time

Every minute of every day, your electric clock indicates with visible proof, the precision and dependability of electric service.

It's dependable, because electricity operates the clock faithfully — 24 hours a day. It's precise, because our electric system operates in time with a master clock at the U.S. Naval Observatory, keeping your clock in step, down to the second.

Your clock operates a whole year on about 43 cents worth of electricity...one of the bargains you get with your electric service.

Today, the average residential customer uses nearly twice as much electricity as he did in 1962. But the average cost of a kilowatt hour is 15% less now than it was ten years ago.

West Texas Utilities Company

An Equal Opportunity Employer

CHRISTMAS Is Just Around The Corner ! !

This year, send your Christmas cards to your friends and relatives who are out of town, and greet your friends here the easy way by placing a

GREETING MESSAGE

in the special Christmas Editions of the Eldorado Success, to be published this year on Thursday, Dec. 14 & 21. While these editions are published mainly for business concerns to greet the public, we also welcome Greeting Messages from individuals. For less than the cost of a box of Christmas cards, you can place a small Greeting Message in the hometown newspaper, and save

- COST OF CARDS
- SALES TAX ON THE CARDS
- POSTAGE
- TIME ADDRESSING ENVELOPES

And with your message in the Success Greeting Edition, you greet many people you would not send cards to.

You are welcome to come in and look over our selection of Greeting Ad layouts.

PRICED AS LOW AS \$2.00

Eldorado Success

Phone 853-2600

Shop First With Your Friendly Local Merchants

Ken Braden Motor Co

SERVING SONORA AND ELDORADO

A COMPLETE SALES AND SERVICE DEALERSHIP Representing CHEVROLET - OLDSMOBILE PONTIAC AND BUICK & CHEV. PICKUPS

Contact James Williams Car Market, Eldorado, Ph. 853-2611 or Braden Motor Company, Sonora, Texas... Phone 387-2529

YOUR BUSINESS WILL BE APPRECIATED

Cheapest, Hardest Working Salesmen in Town Are in the ADVERTISING SUPER MARKET

OLSON'S LAUNDRY
Laundromat & Linen Service
We do finished work, rough dry and alterations. Dust Mops, Walk off mats, Towels, Aprons and red rags for rental.

Myers
Submersible Pumps
Check with me for complete line. I also do contract wiring.
Blake's Electric
B. L. Blakeway Ph. 853-2775

LOWE'S REPAIR SHOP
AUTOMOTIVE LAWN MOWER REPAIR
REPAIRS OF ALL KINDS
In Northeast Eldorado

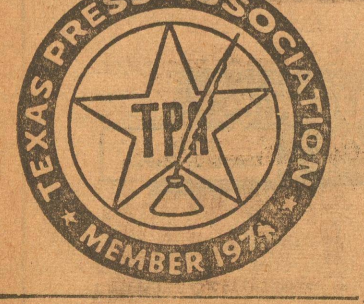
Western-Bilt
If They're Western-Bilt They're Guaranteed
Free Pick Up and Del.
Phone 853-2862

INSURANCE
FIRE WINDSTORM HAIL; AUTO; LIFE CASUALTY
Car Loans
Tom Ratliff
Phone 853-2636

DAY OR NIGHT SERVICE
RATLIFF-KERBOW FUNERAL HOME
Eldorado Sonora
Phones, Eldorado -- 853-2636
If No Answer, Dial -- 853-2860
Or call (Toll) Sonora -- 21871

ELDORADO SUCCESS
PUBLISHED EVERY THURSDAY
At Eldorado, Texas 76936
Fred Gunstead... Editor-Publisher
Bill Gunstead... Associate Editor
Subscription Rates
1 Year, in Schleicher County \$4.00
1 Year, Elsewhere...\$5.00

Entered as Second Class Matter at the post office at Eldorado, Texas, under the Act of March 3, 1879.
Any erroneous reflection upon the character, standing or reputation of any person...



Member WEST TEXAS PRESS ASSOCIATION

YEARLING Angus bulls, commercial and registered. Bardolierne, Charterhouse, Bondoliere breeding. Call Ray McGuffin, Ft. McKckett, phone 915-396-4342. (to 12-7)

CARDBOARD 10c & 20c, at Success
DO PEOPLE read these small ads in 'The Success'? You just did.

In Those Days
ONE YEAR AGO
Dec. 9, 1971—A community musical program was coming up, 'The Christmas Messiah' with Pat Ragsdale as director.

FIVE YEARS AGO
Dec. 7, 1967—Funeral services were held for Claude Doyle, 63.
The P-TA Christmas musical program was set, with Mrs. Stigler and Mr. McDonald in charge.

12 YEARS AGO
Dec. 8, 1960—Mrs. Jim Martin, president of the Study Club, and John Stigler, Lions Club president, announced arrangements for the annual Christmas decorating contest.

35 YEARS AGO
Dec. 10, 1937—Coach Weldon Bynum's Eagles were going to Honda for the Regional Championship Game with the Owls of Medina county.

County Ag. Agent W. G. Godwin spoke at a meeting of farmers and ranchmen for the Agricultural Conservation program.

ELDORADO LODGE
No. 890 - A. F. & A. M. State
meeting 2nd Thursday in each month, at 7:00 p. m. from Oct. 1 to April 1, and at 8:00 from April 1 to October 1. Visiting brethren welcome.

The Truth That Heals
8:15 a.m. Sundays
KGKL-960 Angelo
New Christian Science
Radio Series

Community Calendar
Dec. 7, Thursday. Senior Citizens party sponsored by H. D. Clubs, 2:30 to 5:00 p.m., Memorial Bldg.
Dec. 7, Thursday. Am. Legion.
Dec. 7-9, Eagle varsity basketball boys to Ozona tourney.

Pesticide Clean Up Is Big Fall Chore
Pesticide clean-up should be one of the major fall farm chores. Light containers, crushed or broken, and small quantities of left-over pesticide may be buried on the farm.

Prepare Lawn Mower For Winter
If you haven't already done so, better get that lawn-mower ready for winter. You probably won't be using it for some time, but you can make sure it's in good working order when your lawn greens up next spring.

Agency Checks On Dispensing Devices
(From the office of Attorney General Crawford C. Martin.)
Have you ever wondered who checks the accuracy of the gasoline pumps at the many service stations across our state?

Interested in starting a weight watcher program in Eldorado?
Call Julie Pollard
Sonora, Texas Ph. 387-2836

CLARKS HAVE VISITORS
Visiting in the home of Mr. and Mrs. Tucker Clark last week were their two sons. Mr. and Mrs. Tony Clark of La Pryor, Mr. and Mrs. (Vickie) E. Clark of Angleton; others Mr. and Mrs. Steve Allen of Humble, Mr. and Mrs. John Clark and two sons of Alpine, Mrs. Maude Clark and Mrs. Seaborne of San Angelo.

CUB SCOUT TRAINING COURSE
J. B. Ward of the San Angelo Boy Scout office was here Wednesday morning to conduct a training course for Cub Scout den mothers.

Duplicate Bridge
We had seven tables of players last week with visitors from San Angelo and Menard.
Winners were:
Mrs. L. T. Barber, San Angelo and Mrs. Hayden Callan, Menard, 1st;

A Winner
Mrs. William Sauer and children of Van Horn visited in Eldorado and Schleicher county Friday night and Saturday, returning home Sunday.

County Ag. Agent's Column
By Jerry Swift
Pesticide Clean Up Is Big Fall Chore

SCHLEICHER COUNTY RAINFALL RECORDS SINCE 1936
Year Jan Feb Mar April May June July Aug Sept Oct Nov Dec Total

County Ag. Agent's Column
By Jerry Swift
Pesticide Clean Up Is Big Fall Chore

Prepare Lawn Mower For Winter
If you haven't already done so, better get that lawn-mower ready for winter. You probably won't be using it for some time, but you can make sure it's in good working order when your lawn greens up next spring.

Agency Checks On Dispensing Devices
(From the office of Attorney General Crawford C. Martin.)
Have you ever wondered who checks the accuracy of the gasoline pumps at the many service stations across our state?

Interested in starting a weight watcher program in Eldorado?
Call Julie Pollard
Sonora, Texas Ph. 387-2836

CLARKS HAVE VISITORS
Visiting in the home of Mr. and Mrs. Tucker Clark last week were their two sons. Mr. and Mrs. Tony Clark of La Pryor, Mr. and Mrs. (Vickie) E. Clark of Angleton; others Mr. and Mrs. Steve Allen of Humble, Mr. and Mrs. John Clark and two sons of Alpine, Mrs. Maude Clark and Mrs. Seaborne of San Angelo.

CUB SCOUT TRAINING COURSE
J. B. Ward of the San Angelo Boy Scout office was here Wednesday morning to conduct a training course for Cub Scout den mothers.

Duplicate Bridge
We had seven tables of players last week with visitors from San Angelo and Menard.
Winners were:
Mrs. L. T. Barber, San Angelo and Mrs. Hayden Callan, Menard, 1st;

A Winner
Mrs. William Sauer and children of Van Horn visited in Eldorado and Schleicher county Friday night and Saturday, returning home Sunday.

County Ag. Agent's Column
By Jerry Swift
Pesticide Clean Up Is Big Fall Chore

SCHLEICHER COUNTY RAINFALL RECORDS SINCE 1936
Year Jan Feb Mar April May June July Aug Sept Oct Nov Dec Total

"E" CLUB CHRISTMAS TREE SALE
FIRS AND PINES
Week Days and Saturdays
At H. S. Ag. Building
—Everyone Buy One—

place and it will be ready to go next spring.

A Winner
Mrs. William Sauer and children of Van Horn visited in Eldorado and Schleicher county Friday night and Saturday, returning home Sunday.

Duplicate Bridge
We had seven tables of players last week with visitors from San Angelo and Menard.
Winners were:
Mrs. L. T. Barber, San Angelo and Mrs. Hayden Callan, Menard, 1st;

CUB SCOUT TRAINING COURSE
J. B. Ward of the San Angelo Boy Scout office was here Wednesday morning to conduct a training course for Cub Scout den mothers.

CLARKS HAVE VISITORS
Visiting in the home of Mr. and Mrs. Tucker Clark last week were their two sons. Mr. and Mrs. Tony Clark of La Pryor, Mr. and Mrs. (Vickie) E. Clark of Angleton; others Mr. and Mrs. Steve Allen of Humble, Mr. and Mrs. John Clark and two sons of Alpine, Mrs. Maude Clark and Mrs. Seaborne of San Angelo.

Duplicate Bridge
We had seven tables of players last week with visitors from San Angelo and Menard.
Winners were:
Mrs. L. T. Barber, San Angelo and Mrs. Hayden Callan, Menard, 1st;

A Winner
Mrs. William Sauer and children of Van Horn visited in Eldorado and Schleicher county Friday night and Saturday, returning home Sunday.

County Ag. Agent's Column
By Jerry Swift
Pesticide Clean Up Is Big Fall Chore

SCHLEICHER COUNTY RAINFALL RECORDS SINCE 1936
Year Jan Feb Mar April May June July Aug Sept Oct Nov Dec Total

Fountain Time At...
ELDORADO DRUG
—Cosmetics —Perfumes —Costume Jewelry —Drug Supplies —Magazines —Electrical Gifts —King's Chocolates —Cameras —Suntan Lotions —Greeting Cards —Stock Remedies

Where Friends meet for cool, refreshing fountain drinks and ice cream treats!

Eldorado DRUG
For Your Health's Sake
ELDON GALK, R.P.H., Owner
Eldorado TEXAS
Phone 853-2633

PREVENT ROADSIDE FIRES
TEXAS HIGHWAY DEPARTMENT

CLASSIFIED ADVERTISING RATES
First Insertion...4c word
Additional Insertions...2c word
Minimum 50c Each Insertion
Cash in Advance
\$1.00 Minimum On All Small Ads
Taken On Phone Or By Mail

ROOFING
ALL TYPES ROOF REPAIR and quality roofs.
KENT ELLIOTT ROOFING
Ph. 655-2800, San Angelo, Texas

County Extension Agent's Column
By DIANE DURRETT

Consumer Friends

This is the third article in a four-part series on consumer merchant behavior. Written as the holiday season approaches, it outlines a 10-point consumer code of ethics.

If thoughtless, deceitful consumers are the worst enemies of other consumers, it stands to reason that thoughtful, honest consumers can be their best friends. Food consumer code of ethics reads like the Golden Rule—do unto business the way you want business to do unto you.

Here are 10 practices a thoughtful consumer follows—

1. Exhibit the same kind of treatment you expect to receive from the business firm—be honest, and don't cheat or default on payments.
2. Be pleasant in all dealings.
3. Read carefully all contracts before signing. Don't sign what you didn't read or understand. Be sure there are no blanks. Remember you've agreed with the contract; be prepared to keep your part of the deal.
4. Respect merchandise you handle. Avoid getting cosmetics on garments; don't squeeze fruit or taste foods.
5. Make only reasonable demands on a company's services. Remember they add to costs.
6. Quietly report shoplifters to the clerk or manager.
7. Be honest in returning merchandise—don't return used goods as "new" or unsuitable merchandise.
8. Pay bills when they're due—if you can't, inform the merchant and explain.
9. Be honest in filling out credit and job applications.
10. Point out mistakes in your favor as well as those in the merchant's favor.

Next Week: "Sales Gimmicks . . . Holiday Tricks or Treats?"

Holiday Fashions

Holiday fashions—more a "state of mind" than a season—are foremost in the thoughts of women everywhere as they prepare for all aspects of the holidays.

Current holiday fashions contain variety and excitement enough to satisfy and flatter each individual. Colors will be rich versions of the deepest jewel tones—emerald, ruby, sapphire and jade. Neutrals are also strong, from pure white to eggshell, camel to beige, grays and definitely black.

Crisp colors of the newly revived plaids and jet-age batiks are also winners. A wide variety of fabrics promise to fill the scene with a sense of holiday magic, and more often than not, they'll glitter in soft, shiny hues. Corduroy is back in many textures and designs. Velveteens, as always, are important. And velours gain added prominence in elegant jacquard wovens.

Evening clothes offer the wearer a fabric option. Some feature brilliant glitter, sequins and metallics. Others are traditional sportswear fabrics, such as gray flannel and corduroy, designed to capture the holiday feeling.

Accessories include free-spirited and decorative beltings, ornaments and baubles. Egyptian-influenced jewelry is quite good—particularly pendants—along with stranded pearls, ivory and stainless steel looks.

An awareness of holiday fashion trends promotes more consumer satisfaction for dollars spent—whether buying ready-to-wear or selecting fabrics and patterns for home sewing.

"Instructable" Money

The upcoming holiday season means traveling for a lot of people. Of course, traveling involves money. Although there's always some danger of losing money, the hustle and bustle of the season can make it even more so. Eliminate that worry by using travelers checks. It's possible to have them replaced at a moment's notice, no matter what has happened to them. However, the user does have some responsibility. For instance, he must keep track of the checks he has spent. That's simple to do. A purchase agreement is furnished when the checks are bought. The serial number of each check is given and a space provided to record the date and place each check was cashed.

For safety, the purchase agreement should be kept separate from the checks. Thus, if the checks are lost, the person has an identification of the checks and a reference to the ones already spent. Then the number of missing checks can be accurately reported. In order to have a better idea of what to do in case of lost checks, one should know the specific location of the nearest refund center. Also, he needs to know the center closest to his destination—and all along the route. These centers are located world wide.

OUR OWN SPIRIT

Each year as the Christmas season approaches we think back of our own childhood Christmases and remember the innocent, uncomplicated joy we felt and how eagerly we awaited the great day. Now, as adults, we still look forward to Christmas with anticipation but with a deeper feeling as a brief period of peace and serenity—a promise of love and good will that perhaps will someday prevail in a world that is now filled with violence and chaos. It is a joyous season to be shared with family and friends and we celebrate around a beautiful table set with our finest china and silver. The most memorable part of Christmas, however, may well be the part we cannot see or touch, the spirit of love and perpetual hope we all have.

IN GERMANY

The children in Germany begin the Christmas season with the hanging of a calendar. The calendar shows a painted house. Doors and windows of the house often hide pieces of candy.

GIVE SOMEONE YOU LOVE SYLVANIA COLOR TV



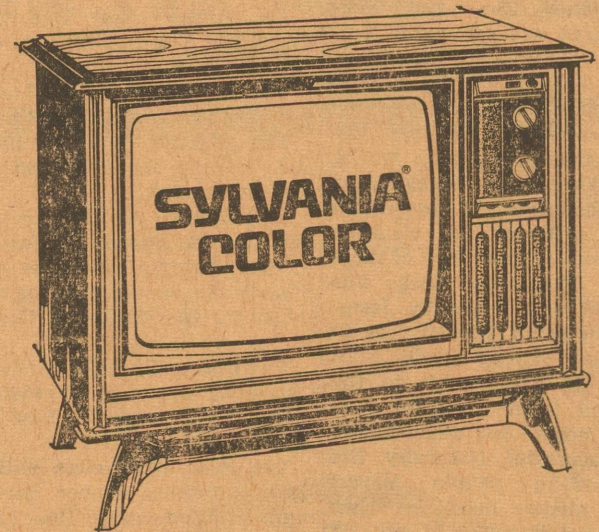
SYLVANIA CONSOLE COLOR TV MODEL CF2401K

- Early American style cabinet of Maple grain vinyl on wood composition
- Huge 23-inch diagonal picture
- Color Bright 85 (R) picture tube for a sharp, natural color picture
- Gibraltar 90 (TM) chassis for solid-state performance and reliability
- AFC push button locks in fine tuning—a perfect picture even when you change channels

REG. \$509.95

ONLY \$485.00

ANY TERMS YOUR CREDIT JUSTIFIES



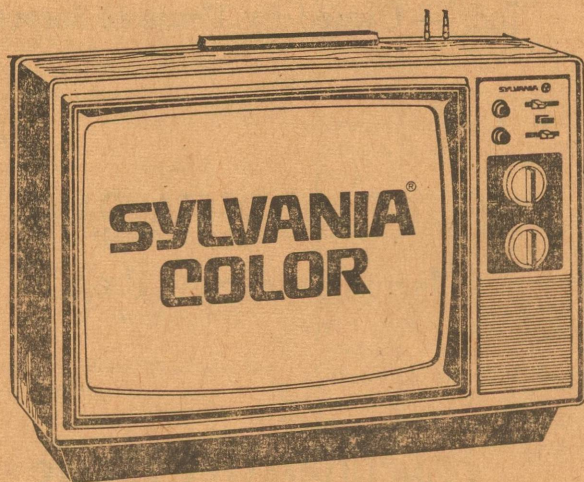
SYLVANIA CONSOLE COLOR TV MODEL CL2251W

- Contemporary style cabinet of Walnut veneers, hardwood solids and decorative non-wood material
- Giant 25-inch diagonal picture
- Chromatrix (TM) picture tube combines brightness with contrast for the sharpest Sylvania color picture ever
- Gibraltar 90 (TM) chassis for solid-state performance and reliability
- AFC push button locks in fine tuning—a perfect picture even when you change channels
- Perman-Lock (TM)—the anti-goof color tuning system that never forgets
- Instant Color (TM) provides perfect color picture in seconds—no warm-up time required
- Swivel base turns 15 degrees to each side for viewing comfort

REG. \$629.95

ONLY \$569.95

MANY OTHER MODELS AND PRICES TO CHOOSE FROM



SYLVANIA PORTABLE COLOR TV MODEL CX2171W

- Cabinet of Walnut grain finish on high-impact plastic with Black and Chrome accents
- Big 19-inch diagonal picture
- Color Bright 100 (TM) picture tube for a sharp, bright color picture
- Gibraltar 95 (TM) chassis for solid-state performance and reliability
- Roll-about stand optional extra

Reg. \$399.95

ONLY \$375.00



VARIETY STORE ANNEX

—BARGAINS GALORE—

In Time For Your Christmas Shopping !!

Two Doors Back of Variety Store on Gillis Street

- Double Knit \$2.98
 - Ladies' Blouses \$2.98 & \$4.98
 - Cobbler Aprons \$1.50
- Mr. Dee Cee Work Clothes and Corduroy \$5.00 Pair

OPEN 2:00 TO 6:00 EACH DAY

Eldorado Variety

Gene and Vernell McCalla

JERRY'S T-V SERVICE

ELDORADO, TEXAS

PHONE 853-2314

THOUGHT FOR THE WEEK

By The Ministerial Alliance of Eldorado

"He Could Not Be Hid." Mark 7:24

In the early part of the ministry of Jesus, as throughout His ministry, He performed certain miracles. In so doing He demonstrated in physical terms His work of salvation, which is His primary purpose.

After He had performed the miracle of feeding a multitude from five loaves and two fishes and had ridiculed the Pharisees' objection to the disciples' eating with unwashed hands the Bible says, in Mark, chapter 7, verse 24, that Jesus desired to be alone and went into a house in the region of Tyre and Sidon. Then Mark makes a remarkable observation of Jesus' desire for temporary privacy: he simply says "but he could not be hid." This unusual statement calls for the questions, "why?" and "what does that fact lead us to conclude concerning our Christian practice?"

It is hereby suggested that there are at least two answers to the first question, "why?" First, "He could not be hid" because He was aggressive in man's service and in sin's conquest. Invariably, Jesus placed misery and error on defense. He was always the invader. Suffering and delusion were constantly on the defensive. Human nature being what it is, misery was thoroughly entrenched in Jesus' day. Sin is man's tyrant. Ignorance is his blind; but Jesus attacked directly and never came out "second best" from the encounter. As illustrations of sin, blindness, paralysis, leprosy, natural deformation and even death cowered in utter defeat from the touch of our Lord, Jesus.

Second, Jesus "could not be hid" because of the thrill wrought in His conquests. Thrill was the inevitable result of His works. Anyone with a normal imagination and a reasonably close observation of human suffering can visualize the victorious exuberance of those people and their loved ones who were healed and raised by Jesus' touch or command. His services fit precisely into human needs. To the blind He gave sight; to the hungry, food; to the dead, life. And so on. His power was superhuman and was successful. Naturally, His achievements in people always pointed to similar needs in other people. The tidings could not be made silent.

Then comes the question, "what are the Christian conclusions from this remarkable statement of a remarkable fact?"

It is contended here that those conclusions, though challenging, are very simple. While there are probably more than that, two conclusions are hereby suggested. One is that present discipleship should be aggressive. Christian discipleship has no meaning apart from a

commission; and our commission has been given us by the Lord in terms such as "go," "teach," "baptize," etc. Christianity is a loving, holy, positive movement and must never "be hid."

The second and last conclusion is that we need a renewed sense of the thrill of service in the name of Jesus Christ. Nothing is more exciting, thrilling and truly wonderful than to be an instrument of divine service through Jesus Christ our Lord.

Let us renew our dedication thereto.

—Kenneth Vaughan

THANKS, EVERYONE

The Medical Center Auxiliary Rummage Sale was a success.

We would like to say "thank you" to each person who contributed in any way to make the day successful. Also, to all who bought at the sale.

We appreciate the use of the Methodist Educational Building, the space for posters and the publicity by the Eldorado Success.

We need more members in the Auxiliary! Again, thank you.

Methodist Notes

The Sunday School Christmas program will be presented night of Sunday, Dec. 17, in the church sanctuary.

On Sunday night, Dec 24th, a Christmas Eve Communion service will be held.

The Official Board had a meeting Wednesday night of this week.

The Ministry on Education are still waiting for toys and games for the nursery.

Last Sunday an offering was taken for the Texas Mission Home in San Antonio, and this coming Sunday the annual offering will be taken for the Methodist Home at Waco.

The Dorcas Circle will have their Christmas party on Monday, Dec. 11th, in the home of Mrs. Frank Meador.

The FBF adult class will have their Christmas dinner party the night of Wednesday, Dec. 13th, at the Ed Meadors' "round house" in the southwest part of the county.



Special Gift

You could pass the tree a hundred times without seeing the bright little bird peeping out.

Nature neglected to give man such camouflage. In the scheme of things he is actually quite obvious. But God created man in His image—a much greater asset. He was given a strong body and a mind with which to think. And He has given us a very special gift; the miracle of Faith.

Yes, Faith is a gift. It comes only through our seeking, and the quest is not an easy one. Strangely enough, you might not find Faith in church. But there you will discover where to begin to look for it.



Sunday
Jude
20-25
Monday
Job
13:3-16
Tuesday
Job
14:10-22
Wednesday
Psalms
16:1-11
Thursday
Psalms
23:1-6
Friday
Psalms
90:1-17
Saturday
Jeremiah
17:9-14

Scriptures selected by the American Bible Society

Copyright 1972 Keister Advertising Service, Inc., Strasburg, Virginia

These religious messages are sponsored by the following interested Schleicher business firms:

Eldorado Churches Welcome You

First Presbyterian Church
7 North Cottonwood
Gordon F. Garlington, Jr., Pastor
Sunday School ----- 9:45 A. M.
Morning Worship ----- 11:00 A. M.
Union Youth Fellowship 6:00 P. M.
Joint Methodist & Presbyterian
Evening Service 7:00 P. M.

West Side Church Of Christ
Divide Street
Morning Service ----- 10:30 A. M.
Evening Service ----- 6:00 P. M.
Wed. Evening Service -- 8:00 P. M.

First Assembly Of God Church
Menard Highway
Robert Sherman ----- Pastor
Sunday School ----- 9:45 A. M.
Morning Worship ----- 11:00 A. M.
Evening Worship ----- 7:30 P. M.
Wed. Bible Study ----- 7:30 P. M.

First Baptist Church
Kenneth W. Vaughan ----- Pastor
W. Gillis Ave.
Sunday School ----- 9:45 A. M.
Morning Worship ----- 11:00 A. M.
Union Youth Fel. ----- 6:00 P. M.
Church Training ----- 6:00 P. M.
Evening Worship ----- 7:00 P. M.
Sunday Evening Choir
Practice ----- 7:45 P. M.
Wed. Prayer Service -- 8:00 P. M.

First Christian Church
Allen Hurt ----- Layman
Sunday School ----- 9:45 A. M.
Morning Worship ----- 10:45 A. M.

First United Methodist Church
Fred S. Cox ----- Pastor
109 N. Divide
Sunday School ----- 9:45 A. M.
Morning Worship ----- 10:45 A. M.
Union Youth Fel. ----- 6:00 P. M.
Joint Methodist & Presbyterian
Evening Service 7:00 P. M.
Wednesday Evening Choir
Practice ----- 8:00 P. M.

United Pentecostal Church
Warner and Hackberry
Walter L. Ford, Pastor
Sunday School ----- 10:00 A. M.
Morning Worship ----- 11:00 A. M.
Evening Worship ----- 7:00 P. M.
Services on Tuesday and Thursday evenings at 7:30.

Church Of Christ—Mertzon Hwy.
Clarence Ware, Minister
Classes ----- 10:00 A. M.
Morning Worship ----- 11:00 A. M.
Youth Fellowship ----- 5:00 P. M.
Evening Worship ----- 6:00 P. M.
Wednesday Service --- 7:30 P. M.
Dinner on the Ground Each
First Sunday
Ladies Bible Class each
Tuesday Morning ----- 9:30

Gethsemane Assembly of God Mis.
Nick Robledo, Pastor
Sunday School ----- 10:00 A. M.
Worship Service Friday, 7:30 P. M.

Antioch Baptist Church
Billy Daniels, Pastor
Callender & Mulberry
Sunday School ----- 10:00 A. M.
Morning Worship ----- 11:00 A. M.
Bible Study ----- 7:00 P. M.
Preaching Service --- 7:30 P. M.
Wed. Night Service --- 7:30 P. M.

First Baptist Mexican Mission
El Paso St. & Concho Ave.
Sunday School ----- 10:00 A. M.
Sunday Services ----- 11:00 A. M.
Sunda Night Services -- 7:00 P. M.
Wednesday Services --- 7:30 P. M.

St. Luke Missionary Bapt. Church
East Street
Rev. Willie Jones, Pastor
Sunday School ----- 9:45 A. M.
Worship Service on First and
Third Sundays of each month at
11:00 A. M. and 4:00 P. M.

Our Lady Of Guadalupe Catholic
Highway 277 North
Fr. Richard Gagnon ----- Priest
Sunday Mass ----- 10:00 A. M.
Wednesday Services -- 8:30 P. M.

St. Mary's Episcopal Church
McWhorter Ave. and Pelt Street
The Rev. Lea Roy Aldwell, Rector
Sunday Morning Worship: 10:00

Primitive Baptist Church
Menard Highway
Elder Carl Watson, Pastor

Service each 2nd Sunday at 11:00 a.m. and 2:00 p.m. Congregational singing half hour before preaching.

FOREMOST -- FINEST DAIRY PRODUCTS

Elmer Garlitz—Indep. Distributor

SOUTHWEST TEXAS ELECTRIC CO-OP.

Inc. — Owned By Those It Serves

EL DORADO RESTAURANT

Jerrall Sanders — Prop.

CONCHO VALLEY FARMS

F. R. Butler & Son—Phone 2858

KENT'S AUTOMOTIVE & GARAGE

Phone 2733—No. Angelo Hwy.

THIS ADV. SPACE FOR SALE

Call The Success: 2600

THE ELDORADO SUCCESS

Printing—Advertising—News

THE JAVA JUNCTION CAFE

Catherine and Walter Gonzales

JERRY'S RADIO & T-V SERVICE

Jerry Jones — Phone 2314

ENGDAHL'S GARAGE

South Main Street—S. C. Engdahl

DIVIDE CABLE CORPORATION

Selma Dickson—Eldorado & Sonora

20th Century and Santa Claus

In this twentieth century, many persons wonder whether Santa Claus and the giving of presents have become too commercialized. Small children are bewildered when they see more than one St. Nicholas on the street or in stores. When we consider the traditions with him, we are amazed at what has happened to him.

Several cities, including New York, and Hollywood, stage elaborate parades, featuring Santa Claus, that draw thousands of spectators.

We have a town that glorifies St. Nicholas, not far from Evansville, Indiana, a small community called Santa Claus. It is said that in 1882 at a general store on Christmas Eve, residents were discussing what to name their town, when Santa Claus walked in. At once someone called out, "Let's call it Santa Claus!" and so it got its unusual name.

Nowadays, at Christmas time, this is one of the busiest places imaginable. Mail arrives from every state and even from other countries to be stamped with the postmark "Santa Claus".

The Twelve Days Of Christmas

ON THE TWELVE DAYS OF CHRISTMAS
MY TRUE LOVE SENT TO ME
TWELVE DRUMMERS
DRUMMING
ELEVEN PIPERS PIPING,
TEN LORDS A-LEAPING,
NINE LADIES DANCING,
EIGHT MAIDS A-MILKING,
SEVEN SWANS A-SWIMMING,
SIX GEESE A-LAYING,
FIVE GOLDEN RINGS . . .
FOUR CALLING BIRDS . . .
THREE FRENCH HENS . . .
TWO TURTLEDOVES
AND A PARTREGE IN A
PEAR TREE.



HERE'S A STAR . . . Jim Nabors, TV's Gomer Pyle of the U.S. Marine Corps, tops a Christmas tree with a photo of Bob Hope, veteran Christmas goodwill ambassador to American servicemen around the world.

CHRISTMAS COVERS THE EARTH



Like a blanket of softly fallen snow, Christmas covers the earth. Its radiance lights up a storm-tossed world with the brilliancy of new hope; it brings before the universe the potential goodness and greatness of man. Through the spirit of Christmas the ideals of the Master will yet transform the universe of man. Christmas ever leads humanity upward. Christmas still lives.

Depressions, earthquakes, wars . . . none of these can destroy the spirit of Christmas; the darkness of fear cannot blot out its light; hatred, envy, and jealousy cannot withstand it; greed and selfishness retreat from it. Nothing can halt its advent into the hearts of men. Christmas still lives.

Christmas Comes But Once A Year

How seldom Christmas comes - only once a year; and how soon it is over - a night and a day! If that is the whole of it, it seems not much more durable than the little toys that one buys of a fakir on the street corner. They run for an hour, and then the spring breaks, and the leg comes off, and nothing remains but a contribution to the dust heap.

But surely that need not be the whole of Christmas - only a single day of generosity, ransomed from the dull servitude of a selfish year - only a single night of merrymaking, celebrated in the slave-quarters of a selfish race! If every gift is the token of a personal thought, a friendly feeling, an unselfish interest in the joys of others, then the thought, the feeling, the interest, may remain long after the gift is forgotten.

—HENRY VAN DYKE

PAINT THE DOOR

Don't neglect the front door and foyer, when dressing up your holiday house. A fresh coat of paint will brighten your threshold and provide a gleaming backdrop for your Christmas door decoration.

At Christmas Time

Give The Eldorado Success

AS A GIFT FOR THE COMING YEAR. A SUBSCRIPTION FOR THE YEAR OF 1973 WOULD BE APPRECIATED BY YOUR OUT-OF-TOWN RELATIVES AND BY OTHERS WHO HAVE LIVED HERE IN THE PAST AND MOVED AWAY. THE SUCCESS WILL PROVIDE A LINK WITH THE OLD HOME TOWN, AND YOUR THOUGHTFULNESS WILL BE REMEMBERED THROUGHOUT THE COMING YEAR.

THE ONE-YEAR SUBSCRIPTION RATE IS \$5.00 TO A TEXAS ADDRESS, OR ELSEWHERE IN THE UNITED STATES. JUST FILL IN AND MAIL THE HANDY COUPON WITH YOUR PAYMENT TODAY. WE WILL BE HAPPY TO SEND A SPECIAL CHRISTMAS GIFT GREETING CARD WITH YOUR NAME.

P. S.—THE SUCCESS SUBSCRIPTION RATE HERE IN SCHLEICHER COUNTY IS JUST \$4.00 A YEAR.

The Success, Eldorado, Texas 76936

Dear Sirs: Please enter a subscription for one year to the following address, for which payment is enclosed:

Name.....

Address.....

City..... State..... Zip Code No.....

Christmas gift greeting card to be signed from.....

GIVE EXTRA CHRISTMAS GIFTS

Save on our low, low prices—get



FREE! FREE! FREE!

2,500 (\$1.00)

S & H Green Stamps
Register once with
each \$5.00 purchase.

Drawing
to be held at
4:00 p. m.
Friday, Dec. 22nd

1st Prize—
1,500 S&H Stamps

2nd Prize—
1,000 S&H Stamps

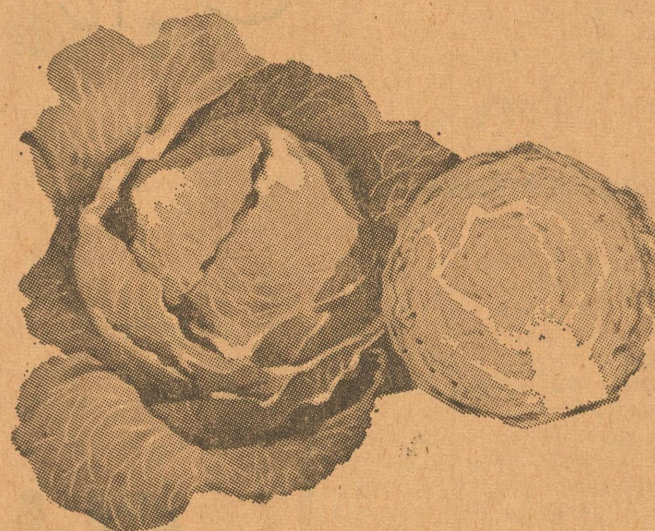
Limit One Winner
For Each Prize



Paradise
Old English
**FRUIT & PEEL
MIX**

16 Oz. **59c**

Glace Cherries
Diced Citron
Assorted Pineapple
Diced Orange Peel
Diced Lemon Peel



Firm Green Heads

Texas
CABBAGE

8c

Pound

WASHINGTON DELICIOUS POUND

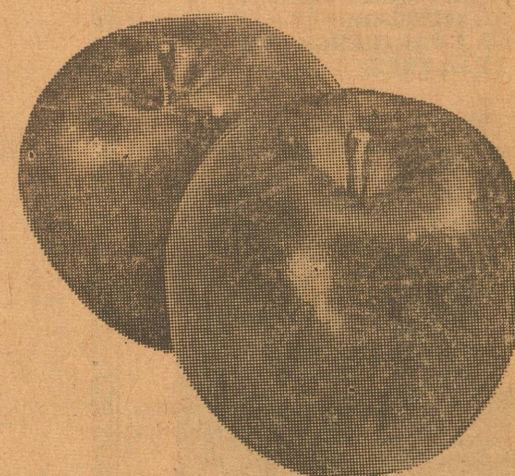
Apples 29c

CALIFORNIA NAVEL POUND

Oranges 19c

CHIQUITA LBS

Bananas 2 29c



BIRDS EYE 10 OUNCE

Cut Corn 4 FOR \$1

BIRDS EYE 10 OUNCE

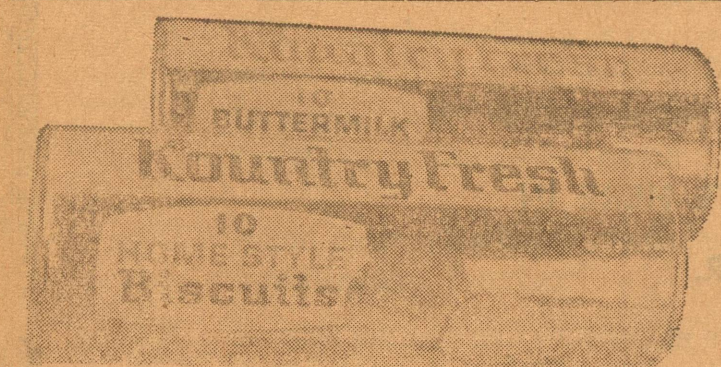
Green Peas 4 FOR \$1

BIRDS EYE MIXED 10 OUNCE

Vegetables 4 FOR \$1

BIRDS EYE 10 OUNCE

Spinach 4 FOR \$1



Kountry Fresh
BISCUITS

4 10 Count Cans **29c**

TEXAS CELLO 1-LB. BAG

Carrots 15c

ROUND RED 6-OZ. BAG

Radishes 10c

SUGAR BARREL PURE CANE

Sugar

With \$5.00
Purchase
Excluding
Cigarettes
Limit One

5-LB. BAG

49c

BETTY CROCKER—ALL FLAVORS

Hamburger Helper

EACH

49c

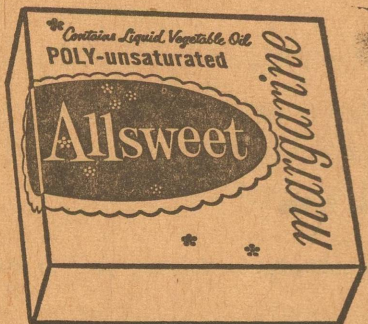


ALL-SWEET POUND

Margarine 29c

KOUNTRY FRESH HOMOGENIZED HALF GALLON

Milk 65c



**KEEBLER
RED TAG SALE**

Old Fashioned
Oatmeal

Old Fashioned
Sugar
Fig Bars

3 FOR \$1

KOUNTRY FRESH QUARTS

Breakfast Drink 3 FOR 89c

KIMBELL'S—Enriched, All Purpose, 5-LB. BAG

Flour Limit One 39c

DIAMOND PURE—Limit One 3-LB. CAN

Shortening 59c

KOUNTRY FRESH BIG 10-OZ. BAG

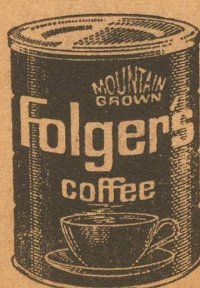
Potato Chips 49c



Parker Foods, Inc.

We give **S&H GREEN STAMPS**

At Parker Foods
SAVE 10c WHEN YOU BUY
1-LB. CAN FOLGER'S COFFEE



Special Price
79c

Coupon Expires Dec. 9, 1972