





**ONLY YOU CAN VOTE!**

**BUT YOUR MOTHER, FATHER, DAUGHTER,  
SON, HUSBAND OR WIFE CAN**

**REGISTER FOR  
YOU!**

**DON'T BE A VOTE-POOR FAMILY. GET  
ALL YOUR FOLKS REGISTERED BY JAN. 31.**

(Contributed In The Public Interest By The Success)

Our New Telephone Number Is

**853-2331**

PLEASE PUT THIS NUMBER DOWN  
AND USE IT  
WHEN YOU WISH TO CALL US  
For Those Good Phillips 66 Products  
and Services

**Meador Oil Co.**

So. Main Street Mack McAngus, Mgr.

**Water Adds Cost  
To Food Items**

College Station, Texas.—“We’re paying more and more at the super-market just for the privilege of carrying home plain, ordinary water,” reports Mrs. Doris Myers, Extension home management specialist.

Soup manufacturers have realized that consumers will pay a good price for water, so they’re adding it at the plant,” the specialist explains. By advertising an “honest, old-fashioned soup,” they can get the public to pay two to three times the single serving price of condensed soups.

A recent survey taken in Washington, D. C., shows that soups with water added cost about 12.5 cents per serving, while condensed soups cost about 4.2 cents for the same serving.

There are other products in which we pay for water, Mrs. Myers adds. Some puddings and whipped toppings come ready to eat. Fruit drinks often containing only 6% actual fruit are made up mostly of water.

“Just think how much money we’ve spent on bottled drinks and the energy exerted lugging home all those bottles of water,” she points out.

But convenience can’t be ruled out. When we’re in a hurry or unable to make the product ourselves, convenience foods come in handy. Products such as ready-to-eat puddings save cooking and cleaning equipment. And some take the guesswork out of cooking.

Soups and soft drinks, however, are another story. A can of soup still needs to be opened and the contents heated in a pan. Do you consider it much work to add water?

The next time you feel the cost of living tugging at your pocket-book, stop and think. Is it worth the extra cost to have someone else turn on the faucet?

Ray Ballew, who spent two weeks during the holidays with his parents and other relatives and friends, returned to his station in Orlando, Florida, on Monday, January 4th.

**12 Plentiful Foods  
Named For January**

College Station, Tex.—The U. S. Department of Agriculture’s January plentiful foods list may equal the length of your list of New Year’s resolutions, reports the Texas Agricultural Extension Service.

Pork and applesauce are featured for the month, and represent a real treat in flavor combinations. In addition to the featured items, fresh oranges, frozen concentrated orange juice, canned orange juice, dry peas, fresh apples, apple juice, fresh grapefruit, canned grapefruit juice, onions and potatoes will be plentiful.

The plentiful foods list is part of USDA’s program to inform the public and the food trade about foods expected to be in abundant supply in the immediate future and in need of merchandising aid. The list is developed by USDA commodity specialists in cooperation with various segments of the food industry.

Pork production during the last few months has been running well above a year ago—and October output was the largest for any month on record.

A record production of early, midseason and navel oranges will keep supplies plentiful, according to USDA’s Consumer and Marketing Service. This season’s grapefruit crop is expected to be a fourth larger than last season.

The nation’s apple crop is estimated at around 150 million boxes, down from last year but still a large production. Keep plenty of apples on hand for out-of-hand eating and cooking.

A record-large summer onion crop and a record fall potato crop are sending large supplies of these popular vegetables to market. Potatoes and onions keep well, so you may want to stock up.

**IN MARINE RESERVES**

Clay Meador left Dec. 31st for San Diego, Calif., for six months of training in the Marine Reserves.

His mailing address is:  
Pvt. James C. Meador 2535356  
Plt 1175 M.C.R.D.  
San Diego, California 92140

CARDBOARD 10c & 20c at Success

YOUR PERSONAL SERVICE BANK



**The best place  
to get a  
genuine  
Bank Rate Auto Loan  
is at a  
genuine bank**

**BUSINESS LOANS**

We can give prompt loan service to any sound business enterprise in this area needing funds for inventory, improved equipment or interim operating expenses.

Here at First National you can get the figures to prove this fact of life.

**The First National Bank**

Eldorado, Texas

YOUR FRIENDLY SERVICE BANK

Onion Skin Paper, \$1 Packets at Success

**For the  
next 45 days,  
our car deals  
will give you  
more than  
a car.**



These days, every car dealer is offering you a deal. Including us.  
The difference is, our deal includes more than a car.  
On cars delivered now through February 28, during our “What-Would-You-Do” Special, American Motors will give you a General Electric 12-Inch Portable TV with any new car you buy from us.  
But that doesn’t mean we won’t give

you a good deal, too.  
Because we’ve got the best cars we ever had this year, and we’re going all-out to give you a better deal than you can get anywhere else.  
Plus the tv set.  
Maybe you don’t expect this much from a car dealer, but, if you had to compete with GM, Ford and Chrysler dealers, what would you do?

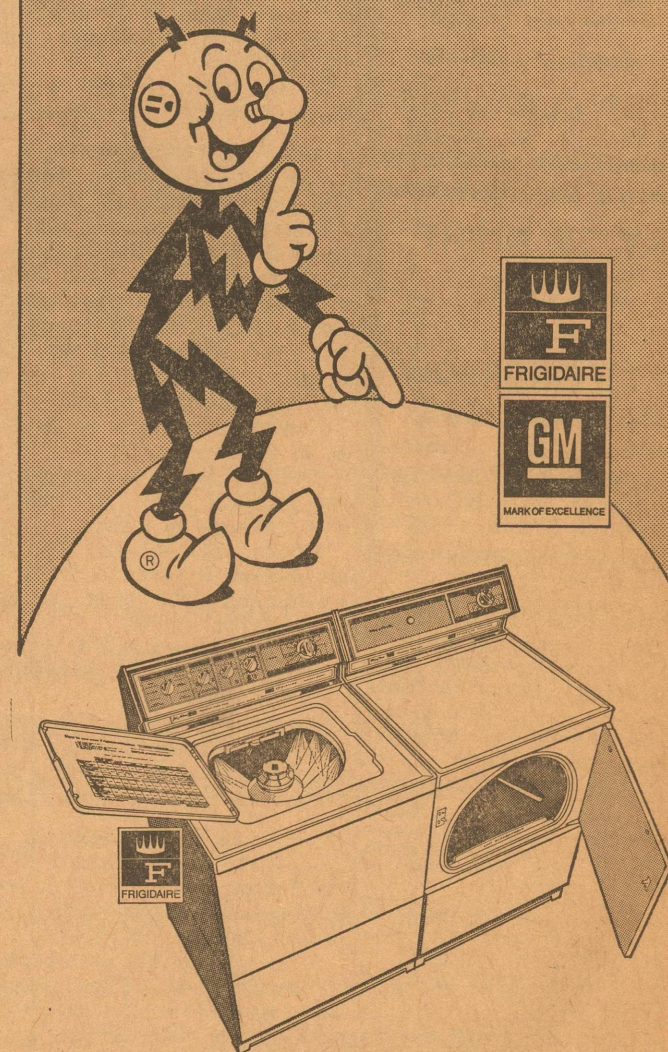
**If you had to compete with GM, Ford and Chrysler dealers,  
what would you do?**

**American Motors Dealers**

EARL PARKER MOTORS P. O. Box 715 102 Divide Street Eldorado, Texas

Try the

**FRIGIDAIRE**  
Jet Action Laundry Pair



Frigidaire’s Jet Action Pair is the only 18-pound capacity laundry pair you can buy that’s only 54 inches wide. With flexible capacity, wash and dry up to 18 pounds—without attachments of any kind. Wash a negligee to a family-size load or anything in between. Let the people at West Texas Utilities show you the many other benefits and features of this Jet Action Pair. Plan right now to go see the features of the Frigidaire washer and dryer Jet Action Pair at West Texas Utilities.

Also remember, WTU offers free normal 220 volt wiring to West Texas Utilities residential customers who buy a new Dryer.

West Texas Utilities  
Company

Equal Opportunity Employer  
an investor owned company





**FOR  
PROMPT  
JOB  
PRINTING**

**CALL  
THE SUCCESS**

# Notice To Public

I now have a poor boy's secretary installed in my office to take all calls. The Number is 853-2944. This machine will be on duty on a 24-hour basis.

Listen to message and then listen for starting tone, and then give your message, remembering to give your name. This will enable me to receive your message and attend to it at once. Thank you.

# Horace Linthicum

## 4-H Horse Club Meets

The Schleicher County 4-H Horse Club had its second club meeting Wednesday, Jan. 6th.

Kay Williams, the club president, appointed members to the standing committees.

The guest speaker was Mr. Tersco. He spoke on the subject

of worming horses. The club will meet again next month to discuss plans for a Valentine Party.

All people from ages 9-19 are still encouraged to join the club. Contact June Williams, John Rae Powell or Jim Cawley. —Mike Redwine, rep.

—Receipt Books at The Success.

Call No. 476 Charter No. 8575 Nat. Bank Region No. 11

### REPORT OF CONDITION, CONSOLIDATING DOMESTIC SUBSIDIARIES, OF THE

## The First National Bank OF ELDORADO

In the State of Texas, At The Close of Business On December 31, 1970  
Published In Response To Call Made By Comptroller of the Currency,  
Under Title 12, United States Code, Section 161.

ASSETS	
Cash and due from banks (including \$ None unposted debits)	869,676.18
U. S. Treasury securities	547,207.50
Obligations of States and political subdivisions	1,566,045.45
Other securities (including \$13,500.00 corporate stock)	13,500.00
Federal funds sold and securities purchased under agreements to resell	100,000.00
Loans	2,673,977.32
Bank premises, furniture and fixtures, and other assets representing bank premises	45,000.00
Real estate owned other than bank premises	2,733.64
Other assets including \$ None direct lease financing	8,483.76
<b>TOTAL ASSETS</b>	<b>5,826,674.35</b>
LIABILITIES	
Demand deposits of individuals, partnerships, and corporations	2,236,269.12
Time and savings deposits of individuals, partnerships, and corporations	2,041,897.46
Deposits of United States Government	19,957.90
Deposits of States and political subdivisions	643,569.59
Deposits of commercial banks	4,793.88
Certified and officers' checks, etc.	22,597.71
<b>TOTAL DEPOSITS</b>	<b>4,969,085.66</b>
(a) Total demand deposits	2,557,403.26
(b) Total time and savings deposits	2,411,682.40
Other liabilities	46,795.02
<b>TOTAL LIABILITIES</b>	<b>5,015,830.68</b>
RESERVES ON LOANS AND SECURITIES	
Reserve for bad debt losses on loans (set up pursuant to IRS rulings)	46,183.71
<b>TOTAL RESERVES ON LOANS AND SECURITIES</b>	<b>46,183.71</b>
CAPITAL ACCOUNTS	
Equity capital-total	764,609.96
Common Stock-total par value	75,000.00
No. shares authorized	7,500
No. shares outstanding	7,500
Surplus	375,000.00
Undivided profits	294,759.96
Reserve for contingencies and other capital reserves	19,850.00
<b>TOTAL CAPITAL ACCOUNTS</b>	<b>764,609.96</b>
<b>TOTAL LIABILITIES, RES. &amp; CAPITAL ACCOUNTS</b>	<b>5,826,674.35</b>

MEMORANDA	
Average of total deposits for the 15 calendar days ending with call date	4,861,688.21
Average of total loans for the 15 calendar days ending with call date	2,640,830.66
Interest collected not earned on installment loans included in total capital accounts	30,328.02

I, Raymond D. Hall, Cashier, of the above-named bank do hereby declare that this report of condition is true and correct to the best of my knowledge and belief.

Raymond D. Hall

We, the undersigned directors attest the correctness of this report of condition and declare that it has been examined by us and to the best of our knowledge and belief is true and correct.

Leslie L. Baker  
Jo Ed Hill  
Paul Page

Directors

## GIRL SCOUT TROOP 91

Jan. 11, 1971. We elected officers. They are as follows:  
President Elizabeth Niblett  
Vice Pres. Mary A. Pina  
Secretary Sharon Watson  
Treasurer Vivian Espinosa  
Reporter Cleva Clark  
Song Leader Jill Yates  
We had two birthday girls, Frances Bland and Sharon Watson. We gave them a party.  
Sharon served refreshments.  
Rita Lozano will serve next week. —Rep.

## Evidence Of Age May Take Several Forms For Social Security

"Probably the largest single problem in filing for social security benefits today is evidence of age," J. M. Talbot, social security manager, said today. "Of course, if the person has a birth certificate or church record of birth made before age five, there is no problem."

In a large percent of cases, however, the person's birth was just not recorded before age five. "When there is no public or church record of birth available," Mr. Talbot said, "then we must secure the best possible evidence of the person's age."

The best evidence of age is not the same in every case. There are many documents which can be used to establish age, such as census records, school records, military records, voting records, and many others.

"Sometimes, we have to dig pretty deep," Mr. Talbot concluded, "but, we have never failed to establish an age for a person. Probably one of the most unusual cases we have had concerned a man in Alabama. There was nothing to show his age or date of birth. His mother died shortly after he was born, and finally he brought in her tombstone to show that he had to have been born before that date. We accepted it."

For more information, contact the Social Security Office at 3000 West Harris Ave (P.O. Box 3806) in San Angelo, Texas, or see the representative when he is in your area. Persons who are unable to meet with him are encouraged to call the office in San Angelo. The phone number is 949-4608.

The Social Security representative, Jules Gipson, is due here next on Jan. 28th and will be at the Court House from 9:30 to 11:30 a.m. that day.

## Highway Department Sets New Work Week

Austin, Tex.—The Texas Highway Commission today reduced the normal work week of hourly-paid maintenance employees of the Texas Highway Department from 45 to 40 hours a week.

The change is effective on March 1st. The action was taken to bring the work week of hourly-paid maintenance employees into line with those of salaried employees of the Department who have been on a regular 40-hour work week for several years.

The Commission has had under study for a considerable time a proposal to place all employees on a uniform work week without a reduction in gross pay. The action today implements this proposal.

## L. V. Newports Attend Funeral In Oklahoma

Lawrence Newport was notified Saturday that his sister, Mrs. Ed Butler, had died at her home at Sunray, Texas. She was about 65 years of age.

Mr. and Mrs. Newport left Monday afternoon for Abilene, where they spent the night, and from there went to Fletcher, Oklahoma, where Mrs. Butler's funeral services were held Tuesday afternoon.

## MEMORIAL PROGRAM

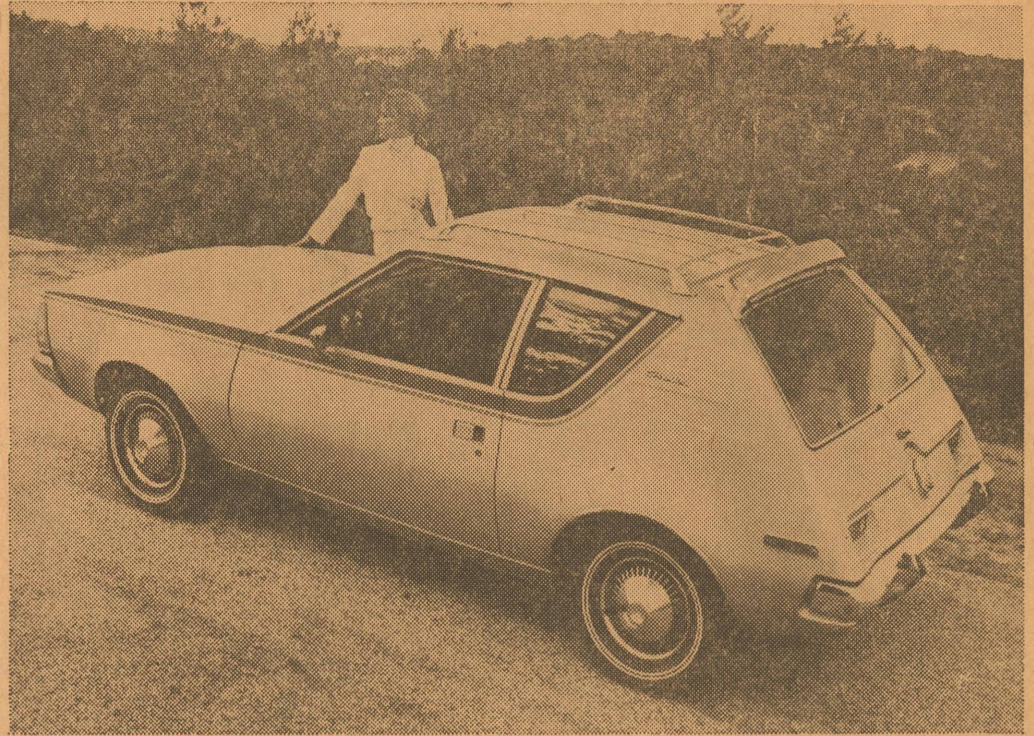
Your Memorial Gift is a fitting tribute to a loved one. This remembrance helps support the research, education and service programs of the American Cancer Society.

Memorial gift funds may be sent to your local Unit of the Society.

## AMERICAN CANCER SOCIETY

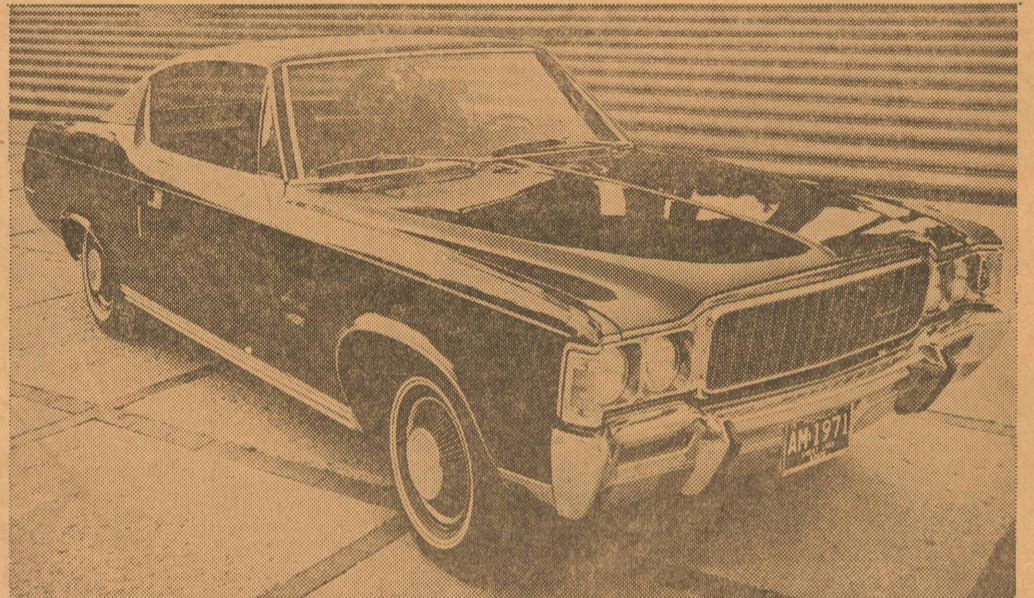
We have the appropriate cards to send to the family and to the donor, and will send your check to the American Cancer Society in Austin.

HELEN CARLMAN  
Memorial Chmn. Schleicher County




## Gremlin Subcompact Gets New 6 Cyl. Engine

American Motors' Gremlin, first of the new breed of U.S. subcompacts, receives a 232 CID Six as the standard engine for 1971. Floor or column-mounted three-speed transmissions are optional at no extra cost. The uniquely styled, 96-inch wheelbase small car offers numerous new options, including a 258 CID Six, liftgate air deflector, custom wheel covers and spoke-style mag wheels. The '71 Gremlin goes on sale Oct. 2.




## Ambassador Adds Automatic Shift For 1971

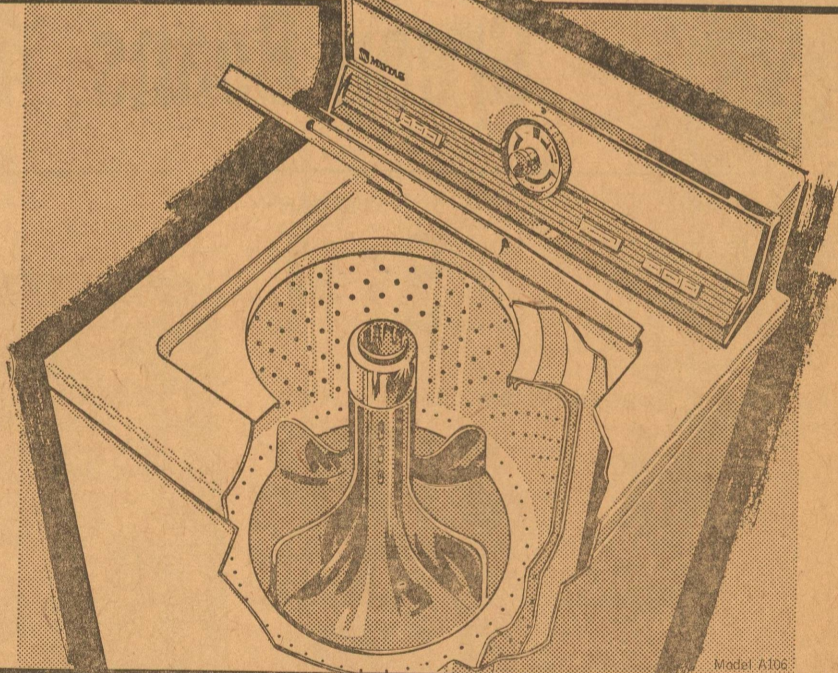
American Motors' luxurious Ambassador, only full U.S. car line to offer air conditioning as standard, includes automatic transmission as standard for 1971. A new Brougham nameplate joins the line, shown in the hard-top version above. All models feature a hand-some new die-cast grille and side marker lights mounted in front fender ends. Interiors have been extensively restyled, and 11 new exterior body colors are offered. V-8 engines are standard on six of the seven models in the '71 Ambassador line, on sale Oct. 2.



**Lint Filter Agitator**  
Famous Maytag thorough, yet gentle action. Built-in under-water lint filter plus automatic softener dispenser.



**Automatic Water Level Control**  
Saves gallons of water! Matches water level to size of load. Post-fill ends water pressure problems.



**Family-Size Tub**  
Built to handle family-size loads. Maytag Washpower™ Automatics get big or small loads uniformly clean.

**Hot, Warm or Cold Wash Temp**  
Pushbutton selectors give you the right temperature for all your laundry—work or play clothes, delicates or dungaries.

**GREAT NEW 525 WARRANTY\***  
5 year cabinet warranty against rust 2 years complete washer 5 years transmission assembly



3 water temps • Positive metered fill • Full-cycle safety lid stops action in seconds • Swirlaway draining action in lint remover tub • Automatic unbalance load protection • Rust-proof lid ball hinges • Rugged proven helical drive • Virtually indestructible pump • Strong adjustable leveling legs • Famous Maytag Dependability!

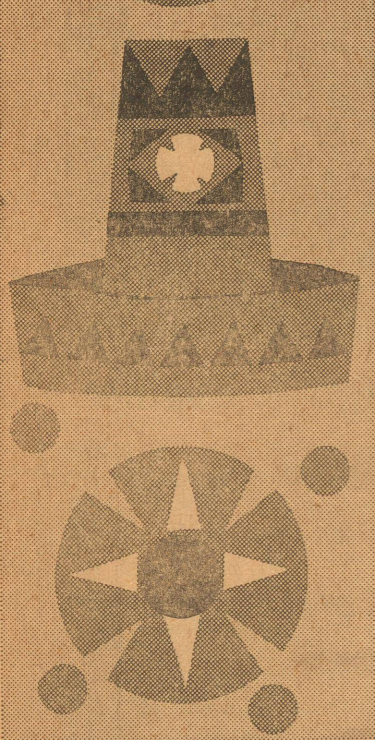
Sales and Service

# HANDY HARDWARE

Eldorado, Texas

Phone 853-2807

# FIESTA DEL MONTE



Del Monte  
FRUIT COCKTAIL  
**4** 303 Cans **\$1**

Del Monte  
PINEAPPLE  
**4** No. 1 1/2 Cans **\$1**



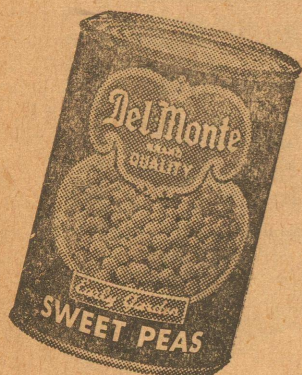
DEL MONTE 303 CAN  
Sweet Peas **4** FOR **\$1**

DELMONTE — TOMATO 303 CAN  
Wedges **4** FOR **\$1**



DEL MONTE — WHOLE KERNEL 303 CAN  
Golden Corn **4** FOR **\$1**

DEL MONTE — CREAM STYLE 303 CAN  
Golden Corn **4** FOR **\$1**



DEL MONTE — CUT 303 CAN  
Green Beans **4** FOR **\$1**

DEL MONTE — WHOLE 303 CAN  
Green Beans **4** FOR **\$1**

DEL MONTE — GARDEN 303 CAN  
Spinach **5** FOR **\$1**

DEL MONTE — PINEAPPLE - GRAPEFRUIT 46 OZ. CAN  
Juice Drink **2** FOR **79¢**

DEL MONTE PINEAPPLE 46-OZ. CAN  
Juice **2** FOR **79¢**

DELMONTE — TOMATO 14-OZ. BOTTLE  
Catsup **4** FOR **\$1**



DEL MONTE 45-OZ. CAN  
Tomato Juice **2** FOR **79¢**



GIANT BOX

**TIDE**

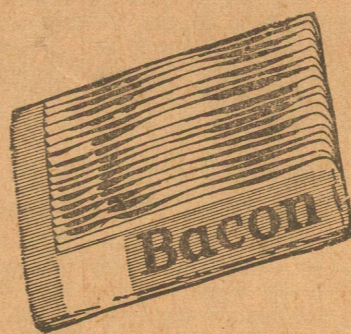
**75¢**

GIANT BOTTLE

**JOY**

**49¢**

*the meat with the Blue Ribbon Quality*

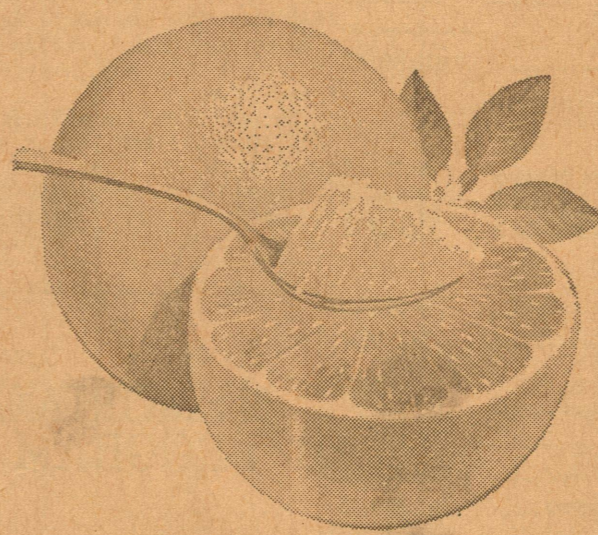


GOOCH — BLUE RIBBON POUND  
**Bacon 59¢**

GOOCH — COUNTRY STYLE 2 LB. BAG  
**Sausage 98¢**

LEAN, TENDER POUND SEMI-BONELESS POUND  
**Pork Steak 59¢ | Pork Roast 49¢**

DAISY DELL HALF GALLON GOOCH — FROZEN POUND  
**Ice Cream 79¢ | Beef Steaks 79¢**



TEXAS RUBY RED GRAPEFRUIT  
Pound ..... **10¢**

CALIFORNIA AVOCADOS  
Large Size ..... **2 FOR 49¢**

**We give S.N. GREEN STAMPS**



**FIESTA DEL MONTE**



**Parker Foods**  
INC.