

Eldorado Success

Schleicher County's Only Newspaper—

—Offering The Best Advertising Medium—

—Est. 1901, This County's Oldest Business Enterprise—

73RD YEAR

ELDORADO—SCHLEICHER COUNTY, TEXAS (76936)

Thursday, August 15, 1974

Number 33

Case And Brown Elected By Co-Op

The 29th annual membership meeting of the Southwest Texas Electric Co-Operative was held Tuesday night on the courthouse lawn and Memorial Building. The barbecue was prepared by Orland Harris and about 850 plates were served to the members and their guests.

In the business session called to order by the president J. D. Strauss the election of directors for three-year terms was held. Fred Case was re-elected to the board of directors and William L. Brown was elected to a new term.

Brown replaces Leonard Lloyd who did not seek re-election as a director on account of health.

Jones, Hay and Sanders of San Angelo was re-named by Co-Op members to be auditor this year.

Invocation at the start of the get-together was given by Rev. Gordon Garlington of the First Presbyterian Church.

In his manager's report, Elton McGinnis pointed out that so far the power shortages that have affected other parts of the country have not affected this area or the availability of power here. However, there have been some shortages of materials of all kinds, along with increased costs. These costs must be passed along to member-consumers in the form of higher bills.

Also, the Co-Op is continuing to upgrade their personnel through training and safety programs. Also, the poles and other plant properties are being maintained in good form and replaced as necessary.

J. C. Schooley, line superintendent, awarded service awards as follows:

Deral Moody, digger operator, 5-year;

Ronnie Sauer, lead lineman, 10-year;

Doyle Easterwood, line foreman at Ozona, 25-year, and he was given a \$25 savings bond.

Another 5-year award was presented to Peyton Cain, secretary of the board of directors.

Office Manager L. D. Mund introduced guests, who included: Bob Krueger of New Braunfels, Democratic candidate for Congressman of the 21st District; Jim Lincoln of Texas Electric Co-Operatives, who was photographer; and Elmer Sullivan, Abilene; Slim Kirkland, San Angelo. Don White and Glenn Seals of San Antonio, and Corky Galbraith of San Angelo.

The drawing for door prizes was held, with Roxanne Pina drawing the tickets.

Prizes, donors and winners were: Light bulb package, Nelson Electric Supply Co., Jim Hearn.

Electric hand mixer, Temple Supply, San Antonio, Johnny Griffin.

Waffle grill, Southwest Texas El. Co-Op, Jim Thornton.

Quarter-inch electric drill, San Angelo Electric Service Co., Elton Davis.

Light bulb carton of 24, Nelson Electric Supply, W. G. Powell Jr.

Toastmaster broiler-oven, Priester Supply Co., James Williams.

Electric blender, Sw. Co-Op., Oscar Keeney.

Carton of 24 light bulbs, Nelson Electric, Charles Pfluger.

Decorator candle, Cathy's, Santos Pina.

Quarter-inch drill, Sw. Co-Op, C. L. Atkins.

Electric can opener, Temple Inc., A. E. Prugel.

Hand Mixer, Austin Meters, Jerry Johnson.

Floodlight, Foxworth-Galbraith Lbr. Co., Richard Preston II.

Carton of 30 light bulbs, General Electric Supply Co., George Draper.

Waffle Grill, Sw. Co-Op, Auta Mae Bradshaw.

Toastmaster broiler, Southwest Electric Service, San Antonio, Mrs. Deral Moody.

Automatic juicer, McCalla's Dept. Store, Palmer West.

Electric ice cream freezer, Starratt Supply Co., San Angelo, Billy Gene Edmiston.

Dutch oven, Sw. Co-Op, Mrs. John Williams.

A gift was then presented to Roxanne and the meeting closed with a moment of silent prayer by all present in memory of Don McCormick who died last January in Austin and who was the first and subsequent long-time manager of the co-operative. Until his death he was manager emeritus.

Post Script

Our prayers and best wishes go out to PRESIDENT GERALD FORD as he assumes the duties of our highest office. His initial message to the nation Monday was enthusiastically received, in which he declared that inflation was our greatest problem.

City of Eldorado recently has completed establishing a water loading rack on South Main street next to Haley Transports.

Completing this water loading rack had been delayed for several months because of a delay in receiving connection joints of a special size.

Prior to this water tankers were filled near fire hydrants in various parts of the city, and it usually resulted in a lot of waste water, creating a loblolly of water and caliche. Often they had to move from one hydrant to another in order to keep streets passable.

Now the situation has been corrected according to City Secretary Phil Olson. A water meter has been established at the location, and water is being metered for each tanker that comes there to fill up.

The average city resident probably won't notice the difference, but this is a definite improvement. It was staved a number of months ago under direction of Palmer West.

—ps—

With our subscribers: Mr. and Mrs. Wendel Briggs have moved here from Farmington, N.M.

Mrs. L. T. Wilson has gone to California to spend some time with relatives. She will receive her mail care of Ruby Deaton, 2901 Concord Blvd., Concord, California 94519.

Mora White is a new subscriber at Box 441, McCamey, Tex 79752.

Mrs. Van Horn has entered new subscriptions for her grandchildren:

Mrs. Bill Brumfield (Connie Sue) 466 Gladewood, Plano, Tex 75074.

Walter Speck, 2111 Molley Hall (no. 1106) Houston, Tex 77025.

Eldred Roach is a new subscriber at Harper, Tex 78631.

—ps—

Billy Williams was just leaving when I arrived again just before sunset last Friday at the Cecil Williams country store out in Reynolds. I found that Gertrude was alone. Cecil had been carried back to St. John's hospital the day before, and Gertrude was also without the help of her granddaughter, Cindy Atchley, who had returned to Odessa with her dad.

The Cecil Williams country store was essentially a "Maw-and-Paw" store and provided a pleasant and comfortable livelihood for the couple as long as they operated it together.

But now with Cecil gone or unable to help, Gertrude is concerned about the future of the Country Store.

—ps—

Short of print paper again! We are due another ton of print paper to be delivered soon!

We have a standing order for one ton of print paper in July and one ton in late December from Nationwide Papers in San Antonio.

Our last order barely arrived this past January.

Our next order was due for delivery in late July.

We received assurances several weeks ago that our one-ton order had been processed and that it would be included in a carload coming down from Canada.

New Nationwide Papers has wholesale facilities at Fort Worth, Houston, and San Antonio. Our ton may be included in a carload in any one of these places. When will it arrive in San Antonio and be delivered by truck here in Eldorado?

We don't know—and we've started to worry.

We called San Tone this past week and were assured that our ton was IN TRANSIT but they did not know how soon it would arrive down there!

The size of our print paper is 28 x 44—an unusual size. One of the standard sizes for weeklies is 30 x 44. We asked if they had some 30 x 44 paper they could cut down to 28 x 44. Answer was that they are out of 30 x 44—too.

So that's where we are this week.

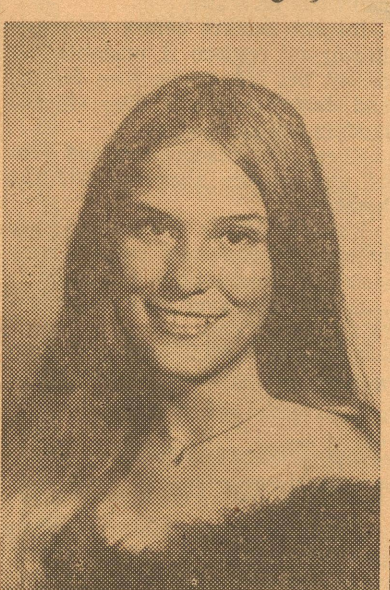
First Vice President Of Sheriff Association



ORVAL EDMISTON
Schleicher County Sheriff and Mrs. Orval Edmiston were in Houston recently for the convention of the Sheriff's Association of Texas, and he was elected first vice president of the group.

This was the 96th annual convention, and the sheriff's association is one of the oldest such groups in Texas. The 1975 convention is to be held in Odessa and in 1976 will be in San Angelo.

Miss Rinehart Engaged



NANCY RINEHART
Mr. and Mrs. B. E. Rinehart have announced the engagement and forthcoming marriage of their daughter, Nancy Juanene, to Roy Gene Lloyd, son of Mr. and Mrs. Earl E. Lloyd.

The wedding is set for September 28 at 7:00 p.m. in the First Methodist Church in Eldorado. A reception will follow in the fellowship hall.

Miss Rinehart is a 1974 graduate of Eldorado High School and is employed by Griffin's Gulf station. Her fiancé also is a 1974 graduate of EHS, is employed by Delta Drilling Company.

ANTIOCH BAPTIST CHURCH
will have charge of the services this Sunday afternoon, August 18, at the Nursing Home.

Football Practice On

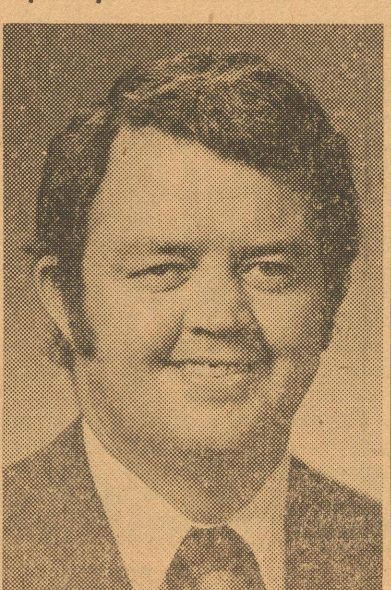
The Eagle football started their twice-daily workouts Monday and have continued them through this week, under direction of Coach Mike Quimby and his staff.

The season will get under way with two out-of-town games at Rankin and Ozona on Sept. 6 and 13 respectively.

MRS. SAUER'S BROTHER DIES
Funeral services were held last Wednesday in Fredericksburg for Peter J. Baethge, 73. He was a brother of Mrs. Otto Sauer of this county.

Several relatives attended the funeral from here.

To Nevada Position with Sperry And Hutchinson



DAVID KUYKENDALL
David Kuykendall, Staff Assistant for The Sperry and Hutchinson Company at the Fort Worth Regional Warehouse, has been promoted to general foreman at Sparks, Nev., S&H Distribution Center. Effective August 1, his appointment was announced by William Bradlock, Director of Warehouse Operations at the company's home office in New York.

A native of Eldorado, Kuykendall attended Eldorado high. He is a graduate of Hardin-Simmons University where he obtained the B. A. degree in religion. He also has attended Southwestern Baptist Theological Seminary.

Kuykendall joined the S&H staff in Fort Worth in 1969 as an order filler and was promoted to staff assistant in 1970. His new position will include supervision of the production operations in the warehouse, such as shipping, receiving and order filling.

Kuykendall, his wife, the former Carolyn Glenn of Bronte, and their two daughter, Kristi, 6, and Karen, 1, will reside in Sparks.

Visiting with Gladys Gunn over the week end were her three sisters, Mrs. Ralph Roseman, Long Beach, Cal.; Mrs. D. C. Macon, of Stamford, Texas, and Mrs. C. W. Carlan, Snyder; also Mr. and Mrs. Doug Garrett and family, San Angelo, Mrs. W. A. McKeever and daughter, Tenice, of Anson, Texas, and Mrs. Hazel Overton of Stamford.

Swimming Pool Season To Be Ended Soon

Elmer and Willene Garlitz have been managing the county swimming pool this summer and they announce that this coming Sunday, August 18th, will be the final day of daily operation.

The pool will be open the following two week ends, including the Labor Day week end. It will be open on Saturday and Sunday, Aug. 24 and 25, and on Saturday, Sunday and Monday, Aug. 31 and Sept. 1 and 2.

The pool hours these final days will remain at 2:00 to 6:00 p.m.

School To Start Monday Morning

The 1974-75 term of school will start Monday morning with buses making their regular runs and a full day of classes being held on chedule.

Supt. Guy Whitaker reports arrangements complete. Robert Jay is high school principal and Walter Wallis is elementary principal. The faculty assignments were unavailable for publication this week and will be run later.

The In-Service sessions for faculty members have been going on this past week.

The school cafeteria will serve lunches with following price schedule:

K thru 3	40c
Grades 4-6	50c
Grades 7-12	60c
Adults	75c

Special education is being implemented this year on a limited basis.

SCHOOL HOURS:

High School	8:05 to 3:35.
Grade School—	
Grades 1-2-3	8:10 to 2:45
Grades 4-5-6	8:10 to 3:30

News Of The Sick

Mrs. Marylue Olson underwent surgery Monday morning in Shannon hospital and remained there through the early part of the week.

Nimitz Improving
Ernest K. Nimitz was transferred last week from Temple, Veterans Administration Center to the V. A. Section of Baptist Memorial Hospital in San Angelo after several months of physical and speech therapy, he is much improved and is enjoying visitors.

Aaron Steward was entered as a patient in St. John's hospital Monday and was scheduled for surgery Wednesday. He is in room 233.

Ashley Niblett, son of Mr. and Mrs. C. J. Niblett, had surgery last week in a San Angelo and was convalescing at home part of this week.

TYPEWRITER RIBBONS, for Royal, Underwood, and Remington available at the Success

More Good Rains Cover A Wide Area

When you see large pools of water standing all over the golf course you know we have had a period of good rain. That's what the golf course looked like Sunday morning.

Eldorado reports are for better than four inches. Phoning to various places Monday found similar figures.

Some cumulative totals reported earlier in the week were:

Northern Nat. Plant	7.50
Howard Derrick Ranch	7.50
C. C. McBurnett Ranch	6.00
Forrest Runge ranch	6.00
Fred Case Ranch	6.00
Al Forlano	5.00
Mary Davis Coupe	4.50
E. H. Dannheim, Bailey Rch	4.50
George Humphrey	3.40
James Williams farm	3.50
Dick Bearce	3.20
Aaron Steward	5.00
Bob Faught	5.00

Edith Runge keeps a record of the yearly rainfall and reports she has had 18.65 inches of rain this year on her ranch out near the county line in the north part of the county.

MRS. WRIGHT COMING 22ND
Mrs. Joanne C. Wright, Adult Social Service Worker, State Department of Public Welfare, will be at the County Courthouse, from 10:00 a.m. to 3:00 p.m. on August 22nd, 1974.

The Jim Head family returned during the week end from a trip to the West Coast and other points. They visited the Grand Canyon in Arizona, in California with his uncle and at San Francisco, and in Salt Lake City, Utah, before returning home. They were away for about 10 days.

42 Party Held Last Week

Mrs. Virginia Griffin was hostess last Thursday when she entertained the Merry Maker 42 Club in her home. There were three tables of players. Those present were: Allie Cheatham, Jake Spencer, Maude Bassinger, Zelma Henderson;

Rose Brannan, Mary Joiner, Mable Griffin and Annie Speck;

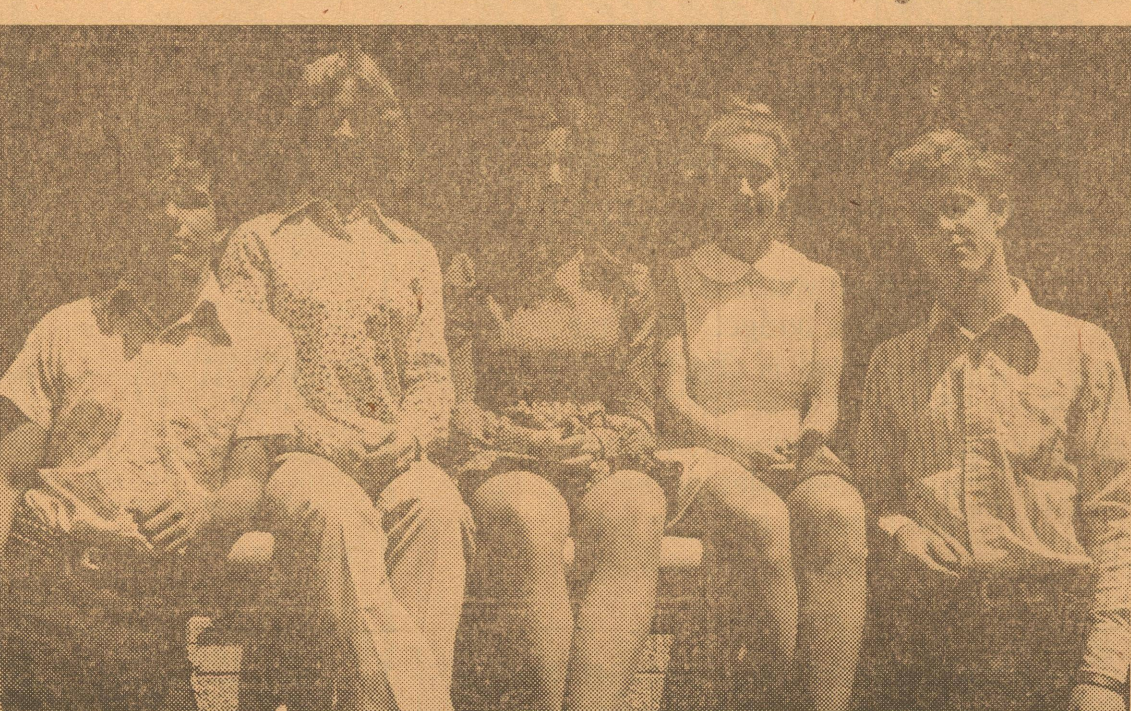
Opal Parks, Bessie Doyle and one guest Natalie Stockton.

After the party was over, a business meeting was held, and officers were elected for another year.

Mrs. Annie Speck resigned as president. The club elected Opal Parks as president and Bessie Doyle was re-elected secretary and reporter.

The hostess served fruit salad, crackers, cookies and coffee. Everyone had a wonderful time. Mrs. Mable Griffin will entertain the club Aug. 22nd. —Rep.

Here Are The Student Council Officers For Eldorado High For 1974-75



E.H.S. STUDENT COUNCIL OFFICERS for 1974-75 are shown, left to right: Mark Thornton, Parliamentarian; Margaret Powell, Corresponding Secretary; Carolyn Page, Recording Secretary; Wally Joiner, Vice President; and Jimmy Cawley, President.

—Success Staff Photo

Electric Co-Operatives Hold State Meeting

For Texas' 80 electric cooperatives and their 600,000-plus member owners, the current energy crisis is an adversity. But how to turn this adversity into opportunity was the main topic of discussions at the August 7-9 annual membership meeting of the Association of Texas Electric Cooperatives in Dallas.

Hundreds of electric cooperative board members and managers and other employees from across the state participated in discussions of critical timely issues on the future of energy supplies in Texas and the nation.

Attending from Southwest Texas Electric Co-Op were Manager and Mrs. Elton McGinnis, President and Mrs. J. D. Strauss, and Tom Gregg of San Angelo, attorney.

TRANSFORMER GOES OUT

An 833 KVA transformer at Southwest Texas Electric Co-Op's Big Lake sub-station went out Monday night. Cause was not immediately determined and the work crew were working on it by Tuesday morning.

All the efficiencies of local loan service.



What do you expect from an agricultural loan? Long terms? Reasonable charges? These traditional advantages have been offered by the Federal Land Bank for over a half-century. But the Land Bank also provides personal attention and prompt service. We're the local lender who understands local needs. Come to the Land Bank . . . for many good reasons.

Federal Land Bank Association of Sonora
A. E. Prugel, Mgr.
Telephone 387-2777



Fields Designated

The Texas Railroad Commission, Oil & Gas Division, has announced designation for some fields in District 7-C.

The Fort McKavett (4,150 lime oil) field of Schleicher County was opened May 19 with recompletion of Luling Oil & Gas Co., Inc., San Antonio, No. 2-B J. F. Webster "B", former 4,270 lime oil producer 30 miles east of Eldorado.

It was finaled to pump 31.44 barrels of water, with gas-oil ratio of 312-1, through perforations at 4,134 to 144 feet.

Location is 1,650 feet from the north and 330 feet from the west lines of 4-8-TW&NG.
Daily allowable is 31 barrels.

Second Field

The Page Ranch, South (Canyon oil) field of Schleicher county was opened May 7 with completion of Tucker Drilling Co., Inc., San Angelo, No. 1-A Page Brothers, seven miles west-northwest of Eldorado.

It was finaled for 2.33 barrels of 44 gravity oil, plus 3.02 barrels of water, through a 20-64-inch choke and perforations at 6,635-655 feet.

Location is 5,495 feet from the north and 2,034 feet from the west lines of Concho CSL No. 2.
Daily allowable is two barrels.

Lions Met Yesterday

At the Lions Club meeting held at noon yesterday, Bill Rogers of San Angelo gave a program on the Mazda rotary engine. He was introduced by Richard Kent, chairman of the Attendance and Membership committee, and also the program chairman for this month of August.

Last week's program was on West Texas Boys Ranch.

—SCRATCH PADS for sale at the Eldorado Success office.

PHONE

853-2226

To Contact

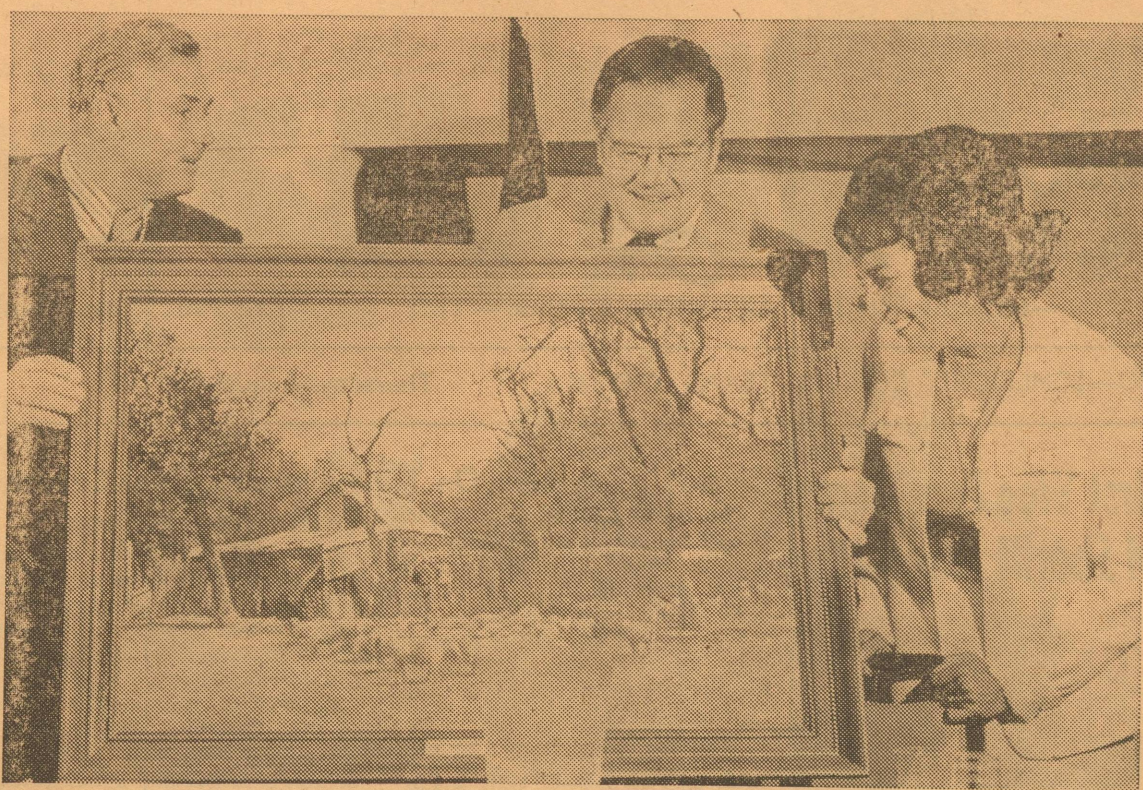
Cecil Westerman Drug
In Page Bldg., In Eldorado

ROOFING

ALL TYPES ROOF REPAIR and quality roofs.

KENT ELLIOTT ROOFING
Ph. 655-2800, San Angelo, Texas

Mort Mertz Presents Painting To Governor and Mrs. Dolph Briscoe



Mort Mertz, president of Texas Sheep and Goat Raisers Association, is shown presenting Governor Briscoe and Janey with a painting in behalf of the Association when Governor Briscoe spoke recently at their Annual Convention in Fort Worth. In his address, Governor Briscoe stated that "Texas enjoys one of the best business climates in the entire nation, and as long as I remain Governor, I intend to protect this climate." The Mertz family live here in Eldorado and he has area ranching interests.

County Ag. Agent's Column

By Jerry Swift

Anaplasmosis In Cattle

Anaplasmosis is a continuing problem in Texas cattle. Anaplasmosis is an infectious blood disease of cattle which constitutes a serious threat to the health and well-being of Texas livestock. It is caused by one-celled parasites in the bloodstream which attack and destroy the red blood cells, resulting in anemia and sometimes death. The disease does not affect humans.

Symptoms of the disease are similar to some other cattle diseases. They include anemia, a yellow appearance of the skin and mucus membranes, difficulty in breathing, dehydration and constipation. Affected animals may become excited and death can occur 24 hours after symptoms are first noticed.

Anaplasmosis is less serious in young cattle. However, unless adequately treated, cattle of any age that recover from the disease usually become carriers for life and can spread the disease.

The disease is one of the most costly in beef cattle in this country. Some 50,000 to 100,000 cattle die of it each year. The beef industry suffers an estimated \$100 million loss annually due to livestock deaths and decreases in beef and cattle production.

The disease has been a problem in large sections of the United States for many years and may continue to spread from the increased transportation of "carrier" cattle to previously uninfected areas.

Anaplasmosis is spread by insects and ticks or by man through careless use of instruments used in dehorning, castrating and vaccinating.

For an animal to become infected, the parasites must be introduced directly into the animal's bloodstream. It is not spread by contact or by the feces or urine of sick or carrier animals.

Two tests are commonly being used to diagnose anaplasmosis. Both require blood samples and are best

performed in the laboratory. One is called the complement fixation (CF) test and the other the rapid card test. The rapid card test should become available for veterinary use in the field in the near future. If so, the test can then be done on the ranch and the results made available within a short time after the sample is drawn. Presently, the tests can be done at the Texas Veterinary Medical Diagnostic Laboratory for those ranchers who want to determine which animals are carriers of anaplasmosis.

Currently, control is up to the individual. There are basically four types of control. The test and segregate program consists of testing the herd and separating the infected animals from those not infected. This works well for the herd owner who has a small turnover.

The test and treat program involves adding chlortetracycline to the feed of infected animals at 5 milligrams per pound of body weight for 60 days. Vaccinating animals will reduce the severity and cut death losses but does not prevent the disease. Low level feeding of antibiotics such as one-half milligram of chlortetracycline per pound of body weight per day during the season that transmission can occur helps prevent the disease and reduces the severity of new cases.

Farm Falls Top Accident List

Falls may sometimes be funny when no one gets hurt. But most of the time falls lead to serious injury; some can even be fatal.

Falls are responsible for nearly one-fourth of the work-related injuries on farms and ranches. So, extra care should be given to preventing falls. The National Safety Council calls special attention to this point during the upcoming National Farm Safety Week.

Children under 14 years of age and persons over 65 suffer the most falls around the farm and ranch. However, the elderly usually suffer the most serious falls, and these often lead to permanent crippling or death.

Persons not in these two age groups often become victims of falls because their normal living-working environment becomes too familiar and their activities become too mechanical. This leads to in-

attention and a failure to recognize certain hazards. Familiarity also leads to over-confidence and deliberate risk-taking.

We offer some suggestions for everyone to follow to prevent accidental falls.

—Watch your step. Survey your path to spot slipping, tripping hazards.

—Wear shoes and boots with slip-resistant sole and heels. Clean them off before climbing, mounting farm equipment or walking on hard, smooth surfaces.

—Keep walking surfaces free of ice, snow, manure, loose grain and similar materials.

—Never permit children to ride on farm equipment. Establish the "no riders" rule.

—Use hand rails or rails when climbing off and on machinery. Use handrails on stairs.

—Inspect ladders before each use. Repair or replace if unstable or faulty. Set ladders on firm footing and don't overreach. Stay off tall ladders on gusty days.

—Keep your place clean and free of unnecessary slipping, tripping hazards.

—Keep buildings maintained. Fix broken flooring and steps. Every stairway should have handrails.

—Don't block your view when carrying large items.

—Look for hidden hazards when walking in weeds and tall grass.

Top Entertainment Lineup Set At Six Flags

Arlington, Tex.—Country singing star Donna Fargo and the soul/pop group known as The Hues Corporation are scheduled for appearances at Six Flags Over Texas.

On Friday, August 16, Donna Fargo will present two shows in the park's Music Mill Theater. Her two gold singles, "Funny Face" and "Happiest Girl In The Whole U. S. A." have been heard on just about every radio station in the country. And her latest release, "You Can't Be A Beacon" (If Your Light Don't Shine) is rapidly climbing the charts. Friday's shows will be at 8:00 p.m. and 10:00 p.m.

On Saturday and Sunday, August 17 and 18, The Hues Corporation will appear. With three successive hit singles, "Freedom For The Stallion," "Miracle Maker" and their biggest yet, "Rock The Boat," the three-member soul and pop group have hit the bigtime. Their shows at Six Flags will be at 8:00 p.m. and 10:00 p.m. on Saturday and at 7:00 p.m. and 9:00 p.m. on Sunday.

Six Flags will be in full operation on Friday and Saturday from 10:00 a.m. until midnight and from 10:00 a.m. until 11:00 p.m. on Sunday.

Hill To Be Speaker At ASU Commencement

Texas Attorney General John L. Hill will be in San Angelo Friday (Aug. 16) to deliver the commencement address for summer commencement exercises at Angelo State University.

The commencement program is scheduled for 7:30 p.m. in the gymnasium of the Physical Education Building. Some 263 students at the University are currently listed as candidates for degrees.

SAN SABA VALLEY RC&D meeting is set for Thursday, August 15th, at 2:00 p.m. in the Menard County Court House. Bob Gordon will be guest speaker.

NEED AND APPRECIATE YOUR REAL ESTATE LISTINGS

Residential — Farm and Ranch

With the current shortage of available housing in Eldorado your real estate investment can return a premium for you.

LET US HELP YOU IN YOUR REAL ESTATE NEEDS

Meador Land Company

Box 696 853-2688 853-2681

Ed Meador E. C. Peters Lynn Meador

(Aug 15-22c)

COME DANCE WITH ME!

Registration

will be Tuesday, August 20

Memorial Building - Eldorado

3:00 - 5:00 p. m.

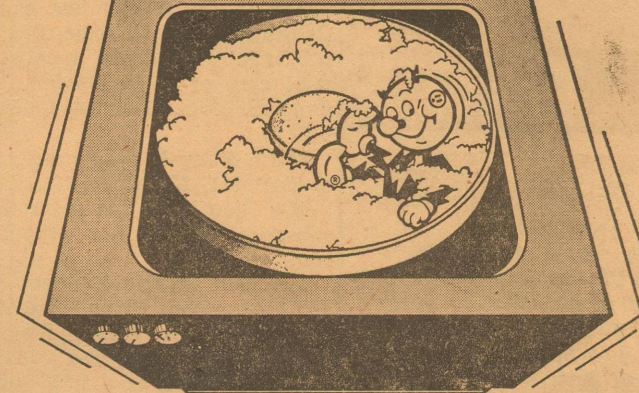
CLASSES TO BEGIN SEPTEMBER 4

BALLET TAP AEROBATICS JAZZ

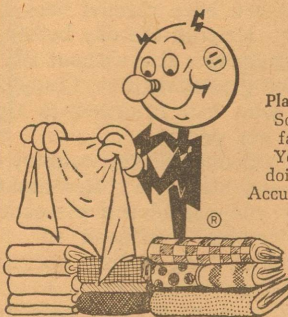
VON ESCUE

Certified Member of Texas Assn. Teachers of Dancing

Conserve & Save Energy ...Use it wisely



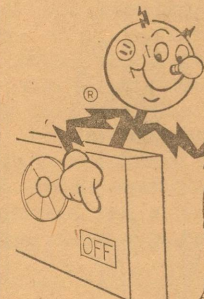
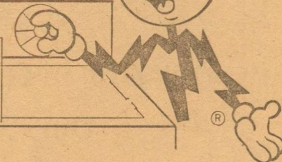
Reddy's consumer tips on... washers



Plan Ahead
Sort clothes according to type of fabric, colorfastness, degree of soil and garment construction. You'll save both hot water and electricity by doing similar items together. Accumulate a full load before running your washer.

Be Selective
Choose the cycle that is precisely appropriate for the clothes you are washing. Is a "hot" temperature setting really necessary? Except for heavily soiled items, most loads will come clean in either a cold or warm wash. Look into cold wash detergents.

Use the least amount of detergent that will get your clothes clean—most loads require only an ounce or less! Overloading causes extra strain and wear on your equipment; check the manufacturer's recommendations for load weight. Balance your load by alternating small and large items.



For Safety Sake
Be sure control is "off" before reaching into your washer. If one is necessary, use only a heavy duty extension cord. Be sure your washer is grounded. Keep dry cleaning agents, color remover and Fiberglows out of your washer. It's a good idea not to wash clothes containing cleaning fluids in your washer.

Remember, Reddy supplies the energy—but only you can use it wisely!

West Texas Utilities Company
An Equal Opportunity Employer

Robert Massie Co.

Furniture — Carpet

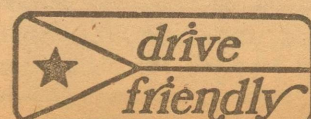
WEST TEXAS' LARGEST HOME FURNISHING STORE

Whether yours is a small or a large budget, whether your need is one room, A houseful or one piece, Our management and our experienced sales personnel are anxious to serve you according to your wishes.

MAKE OUR STORE YOUR HEADQUARTERS WHEN SHOPPING IN SAN ANGELO

12-14 E. Twohig

Telephone 655-6721



Phone 2619 for Complete Line of Exxon Products. Farm and Ranch Butane. All Business Appreciated.

Eldorado - Divide Petroleum Co.

Exxon Products — Raymon Mobley & Employees

High Protein Desserts

Point one. Everybody likes dessert, but most people eat it with varying degrees of guilt, feeling they really shouldn't be consuming so many calories and/or so much fat. Point two. Everybody who is at all health conscious wants plenty of protein in the daily diet. Point three. The food budget is under considerable strain these days. Put these three factors together, and it becomes obvious. What this country needs is an inexpensive dessert that's relatively high in protein, low in calories and fat, and so absolutely delicious that the family feels it's getting a treat.

Now that your dessert problems are solved in theory, here's the actual solution. Serve an iced milk sherbet for dessert. This sherbet is pretty to look at, light and refreshing to the taste. Best of all, it's good for you because it's made with Carnation instant nonfat dry milk, the milk that supplies all of the protein with none of the butterfat.

For calorie counters, cholesterol watchers and active school-children who need all the protein power they can get, iced milk sherbet is a treat that's hard to beat. Tonight, serve your own family one of these delicious and nutritious desserts. You owe it to yourself! (Note that both recipes can be doubled or tripled to fit your freezer.)

HIGH PROTEIN STRAWBERRY SHERBERT

(Makes about 6 cups)

- 1 cup fresh or thawed frozen unsweetened strawberries
- 1 teaspoon unflavored gelatine
- 1/4 cup liquid Carnation instant nonfat milk*
- 1/2 cup sugar
- 1 egg white
- 1/2 teaspoon vanilla
- 1/4 cup water

Mash or puree strawberries. Soften gelatine in water. Place 1/4 cup milk and sugar in saucepan. Add softened gelatine and cook over low heat, stirring constantly, until gelatine is dissolved (1 to 2 minutes). Remove from heat. Beat egg white until soft peaks form. Add vanilla. Gradually stir in remaining 1 cup milk, strawberries and gelatine mixture until blended. Chill 2 hours. Freeze according to ice cream freezer directions.

HIGH PROTEIN CHOCOLATE SHERBERT

(Makes 5 to 6 cups)

- 1 teaspoon unflavored gelatine
- 1/4 cup water
- 2 cups liquid Carnation instant nonfat milk*
- 1/2 cup sugar
- 1 ounce melted unsweetened chocolate
- 1 egg white
- 1/2 teaspoon vanilla

Soften gelatine in water. Place 1/4 cup milk and sugar in saucepan. Add softened gelatine and cook over low heat, stirring constantly, until gelatine is dissolved (1 to 2 minutes). Remove from heat. Gradually stir remaining 1 1/2 cups milk into melted chocolate to form smooth mixture. (If milk is added too fast, chocolate will not distribute evenly.) Beat egg white until soft peaks form. Add vanilla. Gradually stir in gelatine mixture and chocolate mixture until blended. Chill 2 hours. Freeze according to ice cream freezer directions.

*Make according to label recipe for extra nourishment.

SHARON WATSON AND MR. CRAIG MARRY



Mr. and Mrs. Jimmie Craig

The marriage of Sharon Watson to Jimmie Craig has been announced by the bride's mother, Mrs. David Weinkauff of Eldorado, and father, Rick Watson of San Angelo. The bridegroom's parents are Mrs. Kenneth Clark of San Antonio and the late Weldon Craig. The couple were married July 30th. The reception was held in the home of Ella Allen, grandmother of the bridegroom. Mr. and Mrs. Jimmie West are grandparents of the bridegroom.

Sharon will be a sophomore this fall at Eldorado high school. Jimmie is a 1971 graduate of Windham high school. The couple are residing in Eldorado.

Texas' Biggest Block Party Set In San Antonio September 12 Thru 15

Over 3,000 Texans will stage the granddaddy of all festivals in San Antonio, the Texas Folklife Festival on September 12-15 to show the world how Texans have fun.

Sponsored by the UTSA Institute of Texan Cultures, the Festival sprawls over 15 acres of the Institute and HemisFair Plaza grounds.

Texas' "Biggest Block Party" is described by O. T. Baker, festival manager, in this way: "It's sort of an informal statewide family reunion for more than 100 communities representing 26 ethnic groups who are exhibited on the floor of the Institute."

Visitors to the fete can taste the foods of 24 nations, enjoy the music and dances of a dozen ethnic groups, try their skills at games, contests and demonstrations. They can join in the fun of an "East Texas Style Singing Convention" held nightly under a Pioneer Brush Arbor, the largest in the state.

The festival will be home base for outstanding Texas characters, yarnspillers, houndsmen, oxen drivers, ranchers, cowboys, rodeo producers, champion bull riders and laconic horse traders.

There will be a fun center for kids called "Barnyard Doings" where the youngsters can learn to make children's toys. They can work with hand-loom weaving, paint folk posters, or make pottery. They can play in a giant haystack, seesaw or jump rope.

Nostalgically, the festival will recall the spectrum of frontier life with a cane and grist mill, log house raising, Indian Village and Cattle Drive, Corral.

A process of making pottery learned from Texas Indians will be demonstrated at a dung-pit kiln. Visitors are welcome to help fire the kiln, toss chips into the dung pit, make and polish their own pottery, or even "grease" the pots! Baker said groups from 19 area festivals and annual events from throughout the state will participate. Fifty-one artists and craftsmen will demonstrate full-time diverse skills such as bread crumb sculpture, tinsmithing, stained glass, lye soap making, caricatures and western art.

Visitors can sprawl on the grassy slopes of the Institute grounds to observe constant entertainment on seven stages. Entertainment varies from old-time fiddlers to flamenco guitarists; from country and western groups to bluegrass, folk and jazz.

Mixing with champion polka and dulcimer bands will be sturdy German oompah and marching Irish and Scottish bagpipers.

Dancing will be a major activity with the largest stage built to accommodate ethnic folk musicians and costumed folk dancers representing Swedish, Greek, Polish, Irish and German-Texans. Lebanese, Mexican and Spanish-Texan folk dancers will dominate two other stages. Jewish folk dancers will perform in front of their traditional "Sukkah," as they celebrate the most colorful of Jewish harvest festivals, the "Sukkas."

Already scheduled are the state-wide Czech Beseda Dancers, Tigua and Alabama-Coushatta tribal dancers, and pioneer square dancers.

Visitors can "eat their way around the world" at the festival. They can sample a bit of Indian jerky or fried rattlesnake steak; try the taste thrills of Alsatian parmesa, Danish pastries, Japanese teriyaki or such regional specialties

as Gilmer yam pies and Cajun gumbo.

There will be hardy cowboy foods prepared by range cooks and served from authentic range wagons with the traditional foods of 18 additional ethnic groups, ranging from Chinese won-ton to Negro Soul Food.

New among the fun and games of Texans at the festival is Irish hurling, a head bashing type of field hockey. Other zany events are Cajun crawfish races, Indian stick-ball games and "tomahawk throw."

New shooting demonstrations will include old musket-type rifles used by early Texas pioneers and precision shooting and fast-draw exhibitions.

Visitors can participate in several types of do-it-yourself events: arm wrestle with the "Bexar County Cowards," enter a domino tournament, compete in corn shuckin' and shelling or watermelon seed spitting contests. They can also pitch horseshoes, try Belgian bowling or play English darts.

Visitors can enter an English Pub, kiss the Irish "Blarney Stone" and gawk at the largest "Pajak" (pie-yunk) in Texas—a 36' x 31' hanging mobile exhibited by Polish Texans.

It's going to be a Texas-size party and if you enjoy fun, mark your calendar for September 12-15 at the UTSA Institute of Texan Cultures in San Antonio.

Inflation Challenges Family Management

College Station, Tex.—Planning now for living costs in future years is the key to maintaining a family's desired life style, one authority noted.

She's Lynn Bourland, home management specialist, Texas Agricultural Extension Service, The Texas A&M University System.

"When setting their goals, families can keep ahead of future living costs by planning ahead for the expense of inflation, additional family members, emergencies and college education," she said.

Another long-range plan involves goal setting of parents who no longer have the financial responsibility of their children. She suggested developing an income maintenance plan to support them during periods of reduced earnings.

"Families who cannot build a cost-of-living factor into their retirement income plan could avoid forced drastic reduction in their style of living in later years by reducing their present spending level to one they can reasonably maintain as prices rise."

The specialist pointed out that in spite of inflation, most families have experienced disguised improvements in their scale of living in the form of additional built-in services, safer products and technological improvement in consumer commodities.



Some people believed that thunder was caused by horses' hooves.

DON'T DROP OUT OF SCHOOL ! ! !

If You Do Drop Out, Your Education and Job Opportunities Will Drop Out Too!

Today, more than ever before, a high school diploma is vital if a young man or woman wants a career. In fact, it's difficult to obtain any job without completing high school. When a job is available to the non-graduate, it is often one that stops where it starts. There is little chance for advancement.

Look beyond the promise of an immediate salary—look to the future and don't drop out of school!



The First National Bank
Of Eldorado

APPLICATIONS

are being taken for the position of Neighborhood Aide. Application forms can be obtained at the Neighborhood Center on the San Angelo highway.

(Aug 8-15c)

News & Advertising Copy Deadlines:

MONDAY of Each Week: Please turn in contributed columns, club reports for preceding week end, society and personal news, etc.

TUESDAY Morning: More General News.

TUESDAY Afternoon, Late: Only news items of real significance such as deaths can be accepted.

IN GENERAL: Please Turn in News and Ad Copy As Early In The Week As Possible.

THE ELDORADO SUCCESS

PRINTING—ADVERTISING—NEWS

—SINCE 1901



In Scotland it's believed that a ringing in the ears foretells the death of a friend.

A Special Word To Out-Of-Town Subscribers

Please notify us promptly when you change your mailing address.

Newspapers are Second Class Mail and are not forwarded as First Class letters are.

We appreciate receiving both your old and new addresses, and MUST have your ZIP Code number in order to assure proper delivery. Your co-operation will enable us to send Success papers to you without delay in the mails.

THE ELDORADO SUCCESS

Serving Schleicher County Since 1901

THAT'S A FACT

SPICE OF LIFE
THE MOST EXPENSIVE OF ALL SPICES IS MEDITERRANEAN SAFFRON. IT SELLS FOR MORE THAN \$800.00 PER POUND! (IT TAKES 32,000 FLOWERS TO MAKE A POUND!)

STUCK...
FOR A PRESENT? HOW ABOUT A U.S. SAVINGS BOND? INSTEAD OF HAVING A LIFE SPAN OF A DAY...OR A WEEK...OR MONTHS... U.S. SAVINGS BONDS WILL LAST AND LAST...AND INCREASE IN VALUE WITH TIME! WHAT OTHER GIFT CAN MAKE THAT CLAIM? AND DON'T FORGET...YOU CAN JOIN THE PAYROLL SAVINGS PLAN WHERE YOU WORK

PUCK'S PEAK
EVER WONDER HOW FAST A HOCKEY PUCK TRAVELS? BOBBY HULL WHEN WITH THE CHICAGO BLACK HAWKS, SENT A LEFT HANDED SLAP SHOT ZOOMING AT A SPEED OF 118.3 M.P.H.!

You Are Invited To Come In And See Our Newly Completed

GIFT ROOM

GIFTS OF ALL KINDS FOR ALL OCCASIONS

Gift Wrappings: 25c, 50c and 75c

Gift Wrapping FREE On Gifts Costing \$10 Or More

—Lay Away Now For Christmas—

Call 853-2226 For Prescriptions

This is the 4th Westerman Drug in the Big Country

WESTERMAN DRUG

Cecil Westerman Would Like To Be YOUR Pharmacist

Cheapest, Hardest Working Salesmen In Town Are In The ADVERTISING SUPER MARKET

TERMITES? Then Call King's Termite & Pest Control, Collect 949-8611 Bonded Insured Licensed King's Pest Control Service 2820 W. Ave. N. San Angelo, Texas Johnny J. King, Mgr. (to 28*)

Myers Submersible Pumps Check with me for complete line. I also do contract wiring Blake's Electric B. L. Blakeway Ph. 853-2775

LOWE'S AUTOMOTIVE REPAIR SHOP Tune-Ups, Minor Repairs Lawn Mower Repairs IN NORTHEAST ELDORADO

Western-Bilt If They're Western-Bilt They're Guaranteed Free Pick Up and Del. Phone 853-2596

INSURANCE FIRE WINDSTORM HAIL; AUTO; LIFE CASUALTY Tom Ratliff Phone 853-2636

RATLIFF-KERBOW FUNERAL HOME Eldorado Sonora Phones, Eldorado 853-2636 If No Answer, Dial - 853-2860 Or Call Sonora - 387-2266

ELDORADO SUCCESS PUBLISHED EVERY THURSDAY At Eldorado, Texas 76938 Fred Gunstead...Editor-Publisher Bill Gunstead...Associate Editor Subscription Rates 1 Year, in Schleicher County \$400 1 Year, Elsewhere \$5.00

Any erroneous reflection upon the character, standing or reputation of any person firm or corporation which may appear in the columns of the Success will be gladly corrected upon same being brought to the attention of the publisher.

TEXAS PRESS ASSOCIATION MEMBER 1974 WEST TEXAS PRESS ASSOCIATION

TEXAS ALMANACS at the Success

In Those Days

ONE YEAR AGO Aug. 16, 1973—James Williams' used car lot was burglarized, and a '69 Plymouth Fury was taken away and wrecked.

FIVE YEARS AGO Aug. 14, 1969—Hired to the school faculty were Mrs. Evelyn Stigler, Mrs. Jean Kuykendall, and Mr. Gary Ray Wallace.

12 YEARS AGO Aug. 16, 1962—Funeral services were held in the Eastside Baptist church for Mrs. Henry L. (Maude Ella) Turnbow, 83.

35 YEARS AGO Aug. 18, 1939—Pipeline arrived for the new gas line to serve Eldorado, and surveying was about complete.

50 YEARS AGO Aug. 18, 1924—The first school building in Eldorado was dedicated.

75 YEARS AGO Aug. 18, 1899—The first school building in Eldorado was dedicated.

100 YEARS AGO Aug. 18, 1874—The first school building in Eldorado was dedicated.

125 YEARS AGO Aug. 18, 1849—The first school building in Eldorado was dedicated.

150 YEARS AGO Aug. 18, 1824—The first school building in Eldorado was dedicated.

175 YEARS AGO Aug. 18, 1801—The first school building in Eldorado was dedicated.

200 YEARS AGO Aug. 18, 1776—The first school building in Eldorado was dedicated.

ELDORADO LODGE No. 890 - A. F. & A. M. Stated meeting 2nd Thursday in each month at 7:00 p. m. from Oct. 1 to April 1, and at 8:00 from April 1 to October 1. Visiting brethren welcome.

Community Calendar

Aug. 19, Monday. School starts. Aug. 21, Wednesday. Lions Club meets 12:05, Memorial Building. Aug. 22, Thursday. Merry Makers 42 Club meets with Mable Griffin. Aug. 29, Thursday. Social Security representative at Court House, 9:30 to 11:30 a.m. Sept. 5, Thursday. Hospital Auxiliary meets.

FOR SALE: Blackface bucks and ewes. See or call L. D. Mund 853-2544. 1*

DOUBLE-BED SIZE box springs and mattress, for sale. Also gas heater and vacuum cleaner, and small tape recorder and a regular tape recorder. See Mrs. Hervey Willis or call 853-2313 after 5:00. *

GARAGE SALE Friday & Saturday, Ed Hicks residence, 706 Carson. Boys & girls clothing, shoes, coats, some furniture, dishes flower arrangements, paperbacks, jewelry, misc. 1*

FOR SALE: Pick-up camper, motor boat, 14 ft.; river boat. —W. H. Clifton, 505 West St. 1*

GARAGE AND MOVING SALE—Thursday and Friday, Aug. 15 and 16. 505 West St. 1*

GARAGE SALE at Mobley residence, all day Friday. Joyce Ann Speck and Jan Mobley. 1tc

PORCH SALE Wednesday evening and all day Thursday at the Clovis Taylor residence across from the school.

TO ALL MY FRIENDS I wish to express deepest thanks for the cards, flowers, visits, and food brought while I was in the hospital and since my return home. Thanks to my pastor, the Rev. Gene Stark, for his visits and prayers. Also, to the doctor and nurses and Hospital staff I express appreciation for the fine care given. May God bless one and all. Claudia Galbreath *

'72 KAWASAKI 500 motorcycle. 7700 miles; one owner; excellent condition. Phone 853-2960. *

DO PEOPLE read these small ads in The Success? You just did.

School News

Newcomers To Pre-Register New families in the town of Eldorado who have school age children in grades kindergarten through 6 have been asked by Walter Wallis, elementary principal, to come by his office this Friday in order to pre-register their children and receive room assignments.

Mr. Wallis pointed out that this could cut down on work the opening day of school Monday.

Hospital Auxiliary Met On August 1st

The Hospital Auxiliary met Aug. 1st with the president, Mrs. James Page presiding. There were six members present. A balance of \$743.53 was reported in the treasury.

Mrs. Winnie Jackson gave a good report from the gift shop. A motion was made and carried to buy some tapes and records for the stereo to be used for the Nursing Home activities.

Mrs. Rance McDonald was elected as treasurer to fill the unexpired term of the late Mrs. C. C. McLaughlin.

Mrs. Winnie Jackson and Mrs. Rance McDonald were appointed to see about getting a memorial in memory of Mrs. McLaughlin. The next meeting will be Sept. 5th. —Rep.



Some people believed that thunder was caused by horses' hooves.

The Truth That Heals 8:15 a.m. Sundays KGKL-960 Angelo Christian Science Radio Series

CLASSIFIED ADVERTISING RATES First Insertion.....4c word Additional Insertions.....2c word Minimum 50c Each Insertion Cash In Advance \$1.00 Minimum On All Small Ads Taken On Phone Or In Mail



Voy Lee Butts.....Chairman Clay F. Atkins.....Vice-Chairman J. C. Bumgardner.....Secretary Otis Deal.....Member Walter C. Pope III.....Member

Farmers and Ranchers in Schleicher County continue to take advantage of the Great Plains Conservation Program in applying effective conservation on their land. Since 1961 when the Eldorado Divide Soil and Water Conservation District was activated into the Great Plains Conservation Program a total of 35 contracts on 99,122 acres have been signed. All conservation practices planned on 21 places totaling 44,350 acres has been applied and the contracts have expired. One contract has been terminated by mutual agreement and one terminated due to noncompliance, total acres for both being 5675 acres.

This year brush management has been done by dozing on 1859 acres. Range seeding has been done on 1859 acres and 207 acres of cropland has been seeded to grass and converted to rangeland. Parallel terrace systems have been completed on two places for a total of 44,919 feet. Two wells, three storage tanks and numerous feet of pipeline and water troughs have also been completed already this year.

This year's accomplishments brings the to date total of range seeding to 30,103 acres, brush management to 40,383 acres, wells for livestock water 20, water storage tanks 15, pipeline for livestock water 31,000 feet, terraces 126,054 feet, diversion terraces 10,716 feet and 161 acres of land leveling.

Management type conservation practices as well as enduring type practices have been applied and maintained by all GPCP producers. All rangeland under contract is deferred at least three months during the growing season one year out of three. Following range seeding the pasture is deferred from the beginning of the growing season until after frost for two successive years. All the young grass seedlings that come up have an opportunity to become established and make seed. Grasses already established become more vigorous and more forage is produced for livestock and wildlife use.

Proper grazing use on the 82,741 acres of rangeland is applied each year. Grazing half and leaving half of each year's growth helps continue the range improvement until maximum potential production is reached. Growing more grass and then properly using it enables ranchers to attain maximum potential production.

School Menus

(All meals served with buttered rolls and milk.)

Monday, Aug. 19: Baked ham, macaroni and cheese, English peas, tossed green salad, canned fruit.

Tuesday, Aug. 20: Meatloaf, whipped potatoes, mixed greens, sliced beets, banana pudding.

Wednesday, Aug. 21: Hamburgers, lettuce, tomatoes, fresh fruit cup, peanut butter cookies.

Thursday, Aug. 22: Roast beef and gravy, creamed potatoes, green beans, congealed strawberry salad, chocolate cake, icing.

Friday, Aug. 23: Sandwiches—tuna, pimento cheese, peanut butter; five bean salad, carrot sticks, ice cream.

Carl Sofge Dies

Carl Sofge, 78, of Richland Springs, died Monday in San Saba Memorial Hospital. Services were held Tuesday in Howell-Doran Funeral Home chapel with burial in City Cemetery.

He was born Sept. 22, 1895 in San Saba county, was married to Joyce Whitt in 1925 at Richland Springs and served during World War I.

Survivors include his wife; two sisters, Mrs. Fred Riley of Eldorado and Mrs. Nora Davis of San Angelo and a brother, Cramer Sofge of Eldorado.

INTS FOR HOMEOWNERS INSULATION

Because of high prices for gasoline, more people have been staying close to home this summer. That hasn't been bad with air conditioning. But with electric rates soaring, it's been expensive to keep cool.

One way to beat both the heat and the high cost of air conditioning is to install proper insulation. Attic floor insulation alone can save 25 per cent or more of the cost.

Winter savings are even greater, because in most climates heating bills are higher than those for cooling. The National Bureau of Standards and the Office of Consumer



Affairs have jointly stated that combined heating-cooling savings from six inches of insulation may be returned in a year or two.

To determine whether an attic floor is adequately insulated, the home owner should measure the thickness of existing insulation. Less than six inches isn't considered enough.

According to the National Mineral Wool Insulation Association, if the attic already has some insulation, new insulation that doesn't have a vapor barrier should be laid on top of the old. It's an easy do-it-yourself job.



Glass is made mainly of sand, soda and lime. Between 11 and 12 million tons of sand are used each year to make glass in the United States, according to World Book Encyclopedia.



A Touch of Home While Away From Home

ELDORADO SUCCESS

announces

SPECIAL SUBSCRIPTION RATES

FOR SCHLEICHER CO. COLLEGE STUDENTS

Nine Months of the Eldorado Success \$4.00

- This special short-term subscription rate is for students only. Subscription must be ordered and paid for no later than September.

Use this handy coupon. Just fill in and mail or bring to the Success office with payment of \$4.00

Student's Name _____

Mailing Address _____

City _____ State _____

Postal ZIP Code No. _____

GENERAL REVENUE SHARING

ACTUAL USE REPORT

General Revenue Sharing provides federal funds directly to local and state governments. Your government must publish this report advising you how these funds have been used or obligated during the year from July 1, 1973, thru June 30, 1974. This is to inform you of your government's priorities and to encourage your participation in decisions on how future funds should be spent.

CATEGORIES (A)	ACTUAL EXPENDITURES	
	CAPITAL (B)	OPERATING/ MAINTENANCE (C)
1 PUBLIC SAFETY	\$	\$
2 ENVIRONMENTAL PROTECTION	\$	\$2,367.57
3 PUBLIC TRANSPORTATION	\$	\$6,354.38
4 HEALTH	\$	\$
5 RECREATION	\$	\$
6 LIBRARIES	\$	\$
7 SOCIAL SERVICES FOR AGED OR POOR	\$	\$
8 FINANCIAL ADMINISTRATION	\$	\$ 177.00
9 MULTIPURPOSE AND GENERAL GOVT.	\$	\$
10 EDUCATION	\$	\$
11 SOCIAL DEVELOPMENT	\$	\$
12 HOUSING & COMMUNITY DEVELOPMENT	\$	\$
13 ECONOMIC DEVELOPMENT	\$	\$
14 OTHER (Specify)	\$	\$
15 TOTALS	\$	\$8,899.95

THE GOVERNMENT OF
ELDORADO TOWN
has received General Revenue Sharing payments totaling
\$7,951
during the period from July 1, 1973, thru June 30, 1974.
ACCOUNT NO. 44 2 207 001
ELDORADO TOWN
CITY TREASURER
BOX 713
ELDORADO TEXAS 76936

(D) TRUST FUND REPORT

(1) Balance as of June 30, 1973	\$8,435.84
(2) Revenue Sharing Funds Received from July 1, 1973 through June 30, 1974	\$7,951.00
(3) Interest Earned	\$ 107.69
(4) Total Funds Available	\$16,494.53
(5) Total Amount Expended	\$8,899.95
(6) Balance as of June 30, 1974	\$7,594.58

NONDISCRIMINATION REQUIREMENTS HAVE BEEN MET
(E) CERTIFICATION: I certify that I am the Chief Executive Officer and, with respect to the entitlement funds reported hereon, I certify that they have not been used in violation of either the priority expenditure requirement (Section 103) or the matching funds prohibition (Section 104) of the Act.
Signature of Chief Executive: *Raymond J. Nobley* Date: *8-15-74*
Name and Title: **RAYMOND J. NOBLEY Mayor**

(F) The news media have been advised that a complete copy of this report has been published in a local newspaper of general circulation. I have records documenting the contents of this report and they are open for public scrutiny at **City Hall, Cottonwood St., Eldorado, Tx.**

IMPORTANT: THE UPPER HALF OF THIS PAGE MUST BE PUBLISHED (SEE INSTRUCTION H)

It is not required that the lower half of this form be published.

OMB NO. 048R0506

CARBON COPY - RETAIN FOR YOUR FILES



AND WE ARE PLEASED TO WELCOME ALL STUDENTS AND FACULTY TO OUR WELL-LOCATED STORE COME IN FOR

SCHOOL SUPPLIES
Discount Priced

ALSO, ALL FISHING GEAR IN STOCK IS NOW
10% OFF REGULAR PRICE.

KWIK THRIFT

Richard & Glenda Harris

Market Report

College Station, Tex.—Meat prices are trending upwards, as predicted, Mrs. Gwendolyn Clyatt said this week.

"Bacon and ham prices have increased, and the cost of many fresh pork and beef cuts have risen," the consumer marketing information specialist, Texas Agricultural Extension Service, The Texas A&M University System, added.

"Prices on blade chuck roasts and corned beef are economical, and some stores are offering ground beef with soy protein, round steak, standing rib roast and beef liver at special prices." Occasional values at pork counters include quarter loins cut into chops and liver.

Chickens are also a little higher than they were, and consumer demand has dropped a bit—probably because of fewer bargain prices, Mrs. Clyatt said. Diminishing appetites during hot weather may be another factor, she speculated.

The marketing information specialist further predicted higher egg

prices within the next few weeks. Noting that now is the time to enjoy fresh fruit and vegetables currently on the market, Mrs. Clyatt also predicted higher prices for processed fruits and vegetables.

"At fresh vegetable counters, lettuce is abundant with prices a bit lower, and potatoes follow the same pattern. Cabbage, dry yellow onions, okra, squash, radishes and green onions are among the most economical choices.

"At fruit counters, plums and nectarines are in good supply, and prices are mostly moderate. Peach prices are relatively high.

"Cantaloupes and watermelons—of excellent quality—are moderately priced, and grape prices should decrease some as their season progresses," the specialist said.

Consumer Watchwords: Turkey supplies are predicted to remain at record levels this month—and turkey is now "specialized" at most attractive prices.

Roast turkey, turkey in casseroles, a la king or in salads can turn casual summer meals into special occasions.

Playday Set At Brady On August 31st

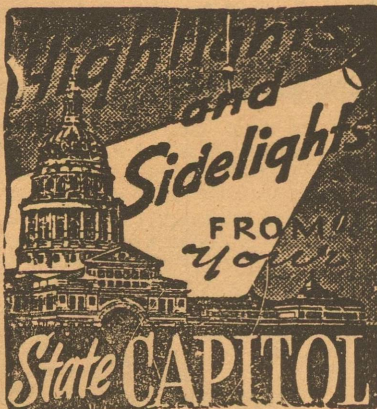
McCulloch County 4-H Horse Club will sponsor a Horse Playday, Saturday, August 31, in the G. Rollie White Arena in Brady. Events will be held for almost all ages of youth as well as adults. Anyone interested in further information may contact the McCulloch County Extension Office.

This event will begin at 7:00 p.m. following the World's Champion Goat Cookoff and County Fair which will be held in Richards Park.

Duplicate Bridge

Winners last week: Blakeways, 1st; Imogene Edmiston and Zeila Baker, 2nd; Flora Hubble and Melissa O'Harrow, 3rd.

We will have a two session Tournament Saturday, August 31st. The first session will be a Charity Tournament for the American Cancer Society at 1:30 p.m. Sandwiches and cookies will be served between sessions. Night session will begin at 7:00. Mrs. L. T. Barber of San Angelo will direct both sessions.



by Lyndell Williams
Texas Press Association

Austin, Tex.—Gov. Dolph Briscoe asked a full report on intelligence activities of the Department of Public Safety.

Briscoe said he would not rule out a separate citizens committee inquiry into DPS surveillance of individuals, but he will look at a DPS report before asking any further probe.

Surveillance activities of DPS came under critical scrutiny due to an agent's report on Robert W. Pomeroy, who led a citizens' group opposing a nuclear power plant near Fort Worth. DPS Director Wilson Speir has apologized for the Pomeroy report, and noted that it was never made a part of DPS permanent files since Pomeroy was not engaged in illegal activity.

Meanwhile, the state Senate's Jurisprudence Committee will have a select sub-committee headed by Sen. Oscar Mauzy of Dallas checking into the Pomeroy case and, generally, into invasion of privacy issues.

Attorney General's Opinions

Atty. Gen. John Hill held the state Office of Traffic Safety isn't authorized to sell T-shirts with a "Drive Friendly" logo to finance a traffic safety program.

In other recent opinions, Hill concluded: —Willacy county cannot use federal revenue sharing funds to support its hospital district or a non-profit clinic for low-income residents.

—Texas Tech University can purchase group term life insurance from mutual companies for its faculty and staff.

—Blood donors over 18 are entitled to the same compensation as those over 21, regardless of a state statute.

—Parttime employment as social workers is not prohibited under the dual employment prohibition of Texas law.

—A statute exempting from forced sale for taxes homesteads of persons over 65 is constitutional.

—A county may locate its juvenile detention facility in the same building as its county jail, as long as juvenile and adult offenders do not come in contact with each other.

—A district judge may assess as court costs reasonable investigators' fees for social studies called for in the family code.

Prison Plan Carried Out
Agreed-on procedures were used to handle the Fred Gomez Carrasco siege at Huntsville prison, according to Governor Briscoe.

Briscoe said a variety of contingency plans had been approved for any emergency at the prison.

He said he is convinced that under the circumstances Department of Corrections Director W. J. Estelle Jr. "did all that was humanly possible to protect the lives of hostages and, at the same time, (to) protect the people of the State of Texas."

DPS named Ranger Capt. J. F. "Pete" Rogers to investigate how guns and ammunition were slipped into the prison to Carrasco.

A Walker County grand jury is also investigating the incident, in which Carrasco, another inmate and two women hostages were slain during a breakout attempt after the longest prison revolt of its kind in U. S. history.

Short Snorts

Nearly 1.1 million Texans — 9.14% of the state's population — received food stamps with a total value of \$35.1 million in May, Welfare Commissioner Raymond Vowell reported.

The Texas Folklife Festival is scheduled in San Antonio September 12-15 at the Institute of Texan Cultures.

Eleven Jewish delegates filed a federal court suit to force recess of the September 17 State Democratic Convention which falls on Rosh Hashana, a high Jewish holy day.

Texas truck and bus owners are getting calls from Internal Revenue Service on the highway use tax due August 31.

Business activity in the state reached new record levels during the first half of 1974.

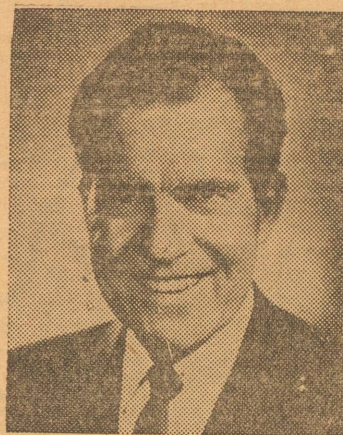
Revenue from cigarette taxes increased nearly \$2 million from

July 1973 to July 1974 — to \$22.5 million for the month.

Water districts, under a new order of Texas Water Rights Commission, will be allowed to raise interest rates on bond issues as long as the action doesn't affect the overall amount of the issue or raise the district's tax rate.

Texas Manufacturers Association recommended changes in legislation to enable the state to administer and enforce its own occupational safety and health program.

President Nixon Resigned Last Week



Richard M. Nixon

Following impeachment talk the past several months, Republican President Richard M. Nixon resigned as U. S. president last week and has been succeeded by Gerald Ford. Ford was to announce his vice-presidential choice later this week.



Many Bohemians would sprinkle fern seed in with their savings to keep the hoard from decreasing.



Zuni Indian women sometimes keep the soil of their husband's footprints, to keep them faithful!

News & Advertising Copy Deadlines:

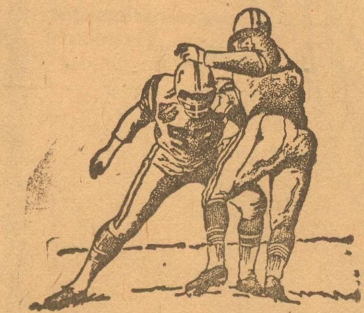
MONDAY of Each Week: Please turn in contributed columns, club reports for preceding week end, society and personal news, etc.

TUESDAY Morning: More General News.
TUESDAY Afternoon, Late: Only news items of real significance such as deaths can be accepted.

IN GENERAL: Please Turn in News and Ad Copy As Early In The Week As Possible.

THE ELDORADO SUCCESS

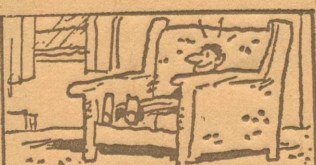
PRINTING—ADVERTISING—NEWS —SINCE 1901



BOOST THE 1974 ELDORADO EAGLE FOOTBALL BOYS

Get On the Booster Ad Series That Will Start Appearing In The Success on September 5th.

Call 853-2600



It's believed in Wales that anyone who spends the night sitting in a certain giant "chair" will be at dawn either a mad man or a poet.



Welcome Students

GET YOUR

SCHOOL SUPPLIES HERE

Pencils * Compass

Scissors * Crayons * Note Books

Spiral Notebooks — All Prices

Folders * Rulers * Erasers

All Necessities from 1st thru 12th Grades

Full Line Of School Jeans

Boots Work Shoes

Track Shoes

Material And Complete Line of Sewing Notions

McCalla's
Department Store

Andrews To Head Sonora Schools

Dr. Joe R. Andrews, a native of Junction, has been hired by members of the Sonora Independent School District Board of Trustees, to fill the job of superintendent of schools. Dr. Andrews has had 16 years experience as a school superintendent, the past seven having been spent as superintendent of the Boling Independent School District.

Dr. Andrews has Bachelor of Science and Master of Arts degrees from Southwest Texas State University. He received his Doctorate of Education in Administrative Education from the University of Houston.

Mrs. Andrews, a native of Brady, is an elementary teacher and she and Dr. Andrews are parents of two sons, both of whom are graduates of Texas A&M University.

Dr. Andrews replaces Ken McAllister who recently resigned and accepted the position of principal of Miles High School. —Devil's River News, Sonora.

Andrews was formerly principal of Eldorado High School a number of years ago.

Tower And Harlan To Tour 21st District

U. S. Senator John Tower will spend Saturday and Sunday, Aug. 17-18, campaigning across the 21st Congressional District with Republican Doug Harlan.

Tower and Harlan will be honored at functions in Kerrville, Fredericksburg, New Braunfels, San Angelo and Hondo.

A public reception will be held in Kerrville at 10 a.m. Saturday in the Guadalupe Room of the Holiday Inn. At noon, Tower and Harlan will be in Fredericksburg for a barbecue lunch at Pavilion 3 of Lady Bird Johnson Park. This event is also open to the public.

New Braunfels supporters have arranged a traditional German Gemlichkeit for 3 p.m. Saturday at the Civic Center. Polka music, good food, and beer will be featured and all interested persons are invited.

A cocktail party and dinner will be held Saturday evening in San Angelo. Tower and Harlan will stay there overnight and then fly to Hondo for a Sunday lunch.

Doug Harlan has served as a professor of political science in San Antonio. He was Republican nominee for 21st District Congressman in 1972 and he ran a good but unsuccessful race against long-time Democratic incumbent Ovie Clark Fisher. Fisher underwent heart surgery last year and did not seek re-election this year.

Krueger Responds To Nixon's Resignation

The Democratic nominee for U. S. Congress in the 21st District, Robert (Bob) Krueger, was in Junction on Thursday, August 8th, when President Nixon officially resigned from his office as Chief Executive.

Speaking to a crowd of 21st Congressional District voters on the courthouse steps, Krueger said, "A painful period for Mr. Nixon and for the American people has been brought to a close with his resignation."

Krueger, an independent businessman and former university dean, cited the need for solving the problems of inflation, the energy crisis, and a host of other important national concerns. "Our citizens are now anxious to get on with the business of running the country, and all citizens are prepared to work with a new President and the Congress to set new directions for our nation," explained the Democratic congressional candidate.

Expressing his hope for an era of public officials who will work to earn their constituents' trust and confidence, Krueger said, "It's important that we gain something from this experience. I believe that Watergate, which exemplified some of the 'old politics' that had existed for a long time, will prove to be a 'watershed' in American political life."

Home Economics At A Glance

Nancy Jane Baumann
Assistant County Extension Agent

Inner fabrics successfully applied to a garment achieve a professional look. But successful application depends on knowing what to use and when and where to use it.

Understanding the differences among lining, underlining and interfacing can help the homemaker learn which to use.

Underlining is a second layer of fabric, constructed with the fashion fabric. It gives shape to the garment and helps prevent wrinkling.

Interfacing is attached to these two layers of fabric. It prevents stretching and adds strength to areas of stress. Interfacing adds shape to detail areas such as collars, pockets or hemlines.

Lining covers the inside of the garment. The lining is constructed separately and is attached just before the garment is finished.

Lining provides a smooth and comfortable finish. It reinforces the shape of the garment and minimizes clinging.

Any combination of fabric applications—or all three together—can be used in constructing a garment.

Select inner fabrics by draping all layers with the fashion fabric. Inner fabrics should be lighter in weight than the fashion fabric and have similar fiber content and care requirements.

Displaying Works Of Art

The way a work of art is prepared for display can enhance its appearance. Works of art should be enjoyed and used to create more pleasing surroundings—never display anything you do not care to view.

Watercolor paintings, drawings

and prints are usually framed with a mat and glass.

Oil paintings do not need glass and usually the mat is omitted and only a wide frame is used.

Textile hangings can hang from a rod to allow the textile to drape at its own will.

Sculpture is usually mounted on a base.

Methods of finishing artwork become a part of the piece. They should be pleasing and harmonizing with it, but never become so important that they distract from the work itself.

Some suggestions for displaying works of art are:

—Allow plenty of space around important art objects so they keep their importance.

—Be careful to allow sculpture to be seen from all sides.

—Smaller art objects can be grouped together and even grouped with personal mementoes or interesting shapes, colors and textures.

—Objects or groups of objects hung on the wall should have their horizontal centers approximately aligned around the room.

The level should be at the eye level from which the works will be seen most frequently—in a hall, eye level standing; around a conversation area, eye level seated.

—Shapes of artwork should harmonize with other shapes in their presence and should be arranged in relation to the other shapes.

Some Extension Reminders . . .

Economical rice makes an excellent meat extender. The blandness of rice is ideal to absorb the flavors of meat sauces, gravies or natural juices and helps make full use of all the nutrients in the meat or seafood main dish.

In dips calling for a sour cream base, a low-cost substitution is sieved cottage cheese. Cottage cheese, dairy sour cream and yogurt keep only about one week in the refrigerator.

Untreated high blood pressure

can lead to heart attacks, strokes, and kidney failures, Dr. Barbara Sears, health education specialist, Texas Agricultural Extension Service, The Texas A&M University System reported.

Cashing in cents-off coupons at the supermarket is good shopping sense, Janice Garrett, home management specialist, Texas Agricultural Extension Service, The Texas A&M Univ. System noted.

The diet of affluent Americans has decreased in quality during the last 20 years, but the poor may be eating more nutritiously. The reason is Food Assistance Programs, including commodities and food stamps, Sally Springer, foods and nutrition specialist, Texas Agricultural Extension Service, The Texas A&M Univ. System reported.

Gerlach To Houston Job

Houston, Tex.—John D. Gerlach has been named Assistant Vice President and Director of Personnel at Capital National Bank, Houston's sixth largest bank.

Gerlach joins Capital National after five years with First National Bank, Fort Worth, where he was Assistant Vice President and Assistant Personnel Director. He holds a degree from Angelo State University, San Angelo, and attended the American Bankers Association Personnel School.

Gerlach is son-in-law of Mr. and Mrs. M. H. Woodward of Schleicher county.

TYPEWRITER RIBBONS, for Royal, Underwood, and Remington—available at Success

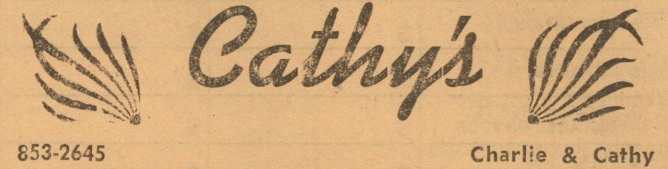


MAYTAG

Sales & Service

—BRIDE SELECTIONS—

Linda Dannheim.....bride elect of Tom Thurman
Jean Rountree.....bride elect of Tommy Steel



653-2645

Charlie & Cathy

BRIDAL GIFT SELECTIONS

—FOR—

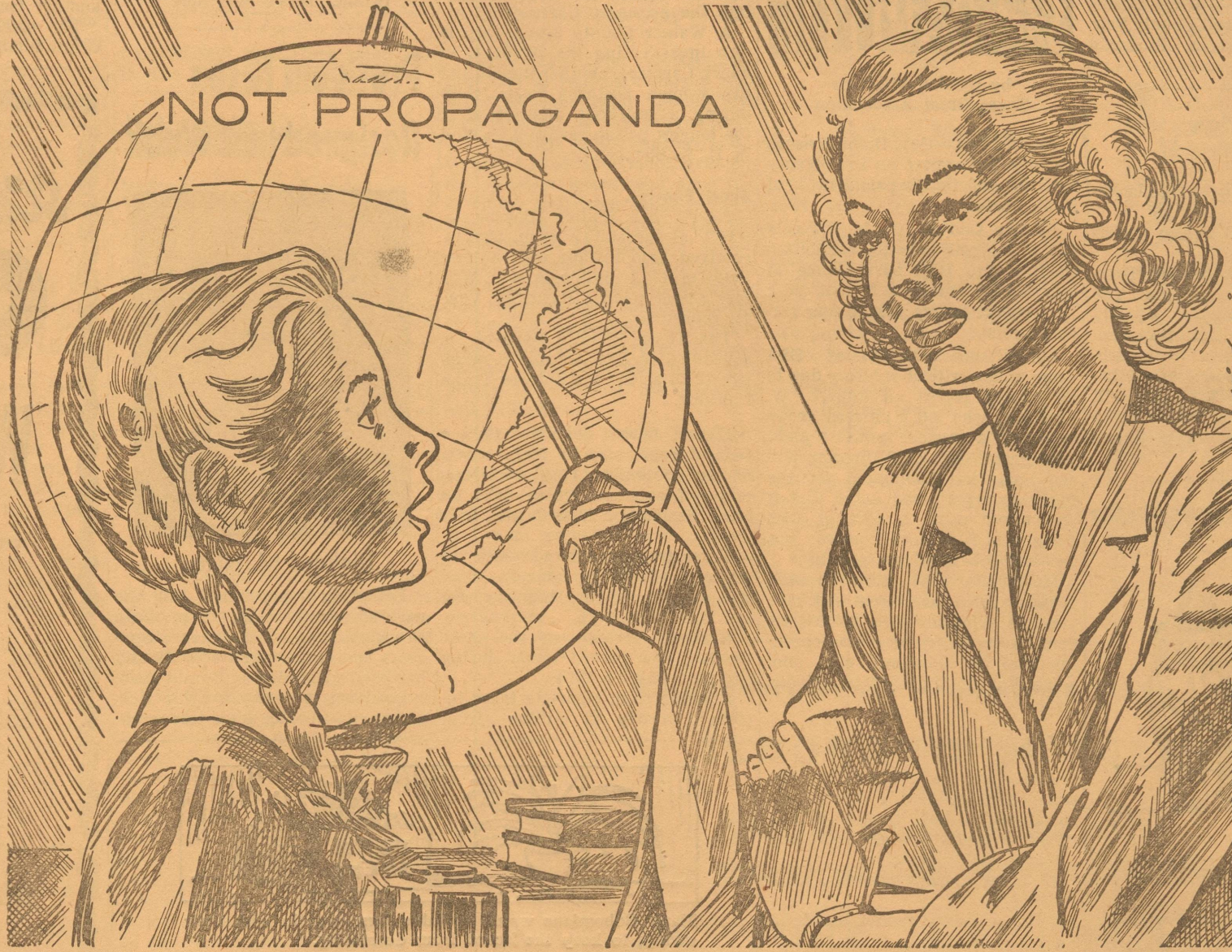
LINDA DANNHEIM

bride elect of Tom Thurman

WESTERN AUTO ASSOCIATE STORE

SHE TEACHES TRUTH...

NOT PROPAGANDA



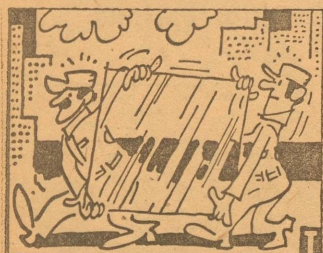
Today's teacher faces not only a room full of new faces but also a host of complex personalities . . . young people from diverse backgrounds, but with common needs. It's a great responsibility and a challenging task to mold these young minds. Sometimes a thankless position, but satisfying to those who are dedicated to the teaching profession.

The dedicated teacher recognizes this challenge, knowing that such dedication transmits to students a desire to learn, to excel, and to become better people. Our Eldorado teachers ably meet this challenge, and through them, tomorrow's citizens emerge.

We at Southwest Texas Electric Co-Op are proud of the Eldorado schools and of our area teachers, who work with inspiration and dedication to build better citizens for West Texas. We, too, are proud to have a part in the growth and development of this area.

Southwest Texas Electric Co Operative

Owned By Those It Serves



Glass is made mainly of sand, soda and lime. Between 11 and 12 million tons of sand are used each year to make glass in the United States, according to World Book Encyclopedia.



The following events, selected by the Texas Tourist Development Agency, are but a few of the many excellent recreational opportunities offered by communities across the state. A more complete listing of Texas events may be obtained free of charge by writing TTDA, Box 12008, Austin 78711.

Aug. 1, 2, 3 38th Annual XIT Reunion and Rodeo, Dalhart. Named for the famed XIT Ranch, this annual celebration has become one of the more famous and better-known rodeos. The XIT was the world's largest ranch under fence in the 1880's — covering some three million acres. Old XIT hands gather during this event and relive old memories and enjoy good food and fellowship. For a schedule of events, write XIT Reunion and Rodeo, Box 966, Dalhart 79022.

Aug. 2-11 Aqua Festival, Austin. Ten days of water-oriented activities featuring power boat races, a regatta, land and water parades, fireworks displays, fiesta nights and demonstrations by the famed Air Force flight demonstration team "The Thunderbirds." For a full schedule of events, write Aqua Festival, Box 1967, Austin 78767.

Aug. 2, 3, 4 Fourth Annual Black-Eyed Pea Jamboree, Athens. Prizes totaling \$1,600, with a grand prize of \$500, will go this year to cooks submitting the best black-eyed pea recipes (main course, appetizer and salad categories). Included in the event are a cook-off, taste-in (for \$1 one can sample the top fifteen recipes in each of the three categories), country dinner (roast beef, coleslaw, cornbread and black-eyed peas), pea shelling contest and NATO (National Association of Terrapin Owners) Grand Prix. Featured this year will be a concert by Ernest Tubbs and Tony Douglas. For further information, write Athens Chamber of Commerce, Box 608, Athens 78751.

Aug. 5-10 59th Annual De Leon Peach and Melon Festival, De Leon. The Aug. 5 tractor pull contest and Aug. 8-10 old-time fiddlers' contest are two of the highlights of this traditional festival. Beginning at 4 p.m. on Aug. 10, thousands of

pounds of ice cold watermelons are sliced on Main Street and passed out to visitors. For further information, contact Mrs. Betty Terrill, De Leon Melon Festival, Box 44, De Leon 76444.

Aug. 8, 9, 10, 36th Annual Texas International Fishing Tournament, South Padre Island. Registration is Aug. 7 for competition in the offshore, bay, surf and junior divisions. A fish fry, open to the public, and the awarding of prizes are scheduled for Aug. 11. In addition to the traditional silver and trophies, a 15-foot fiberglass Caravelle boat and a Penn International 50 reel will be among the top prizes sought by the competing fishermen. The Sea Ranch marina on South Padre Island will serve as tournament headquarters and weigh-in station. For more information, contact Mrs. Judy Veach, T.I.F.T., P. O. Box 577, Port Isabel 78578.

Aug. 10 Fourth Annual 4H State Dog Show, Lubbock. Held at the Fair Park Coliseum, the show is open to all 4H members. Check-in will begin at 8:00 a.m. with judging at 11:00 a.m. Awards will be given in three main areas: Obedience, showmanship and confirmation. 300-400 dogs are expected to be entered in this year's show. For more information, contact Mr. Bob Hand, Chamber of Commerce, Box 561, Lubbock 79408.

Aug. 24-31 Sesquicentennial, Victoria. Historical pageant is the theme for this summer celebration honoring the Six Flags of Texas, with a different flag to be honored each day. For more information, write Kemper Williams, Victoria Bank and Trust Company, Victoria 77901.

Aug. 25 St. Louis Day Celebration, Castroville. Begun as a mere parish picnic in 1889, this event now attracts several thousand visitors to this little Alsatian village on the banks of the Medina River 25 miles west of San Antonio. More than 10,000 visitors feast on sausage and barbeque dinners with serving beginning at 10:30 a.m. Entertainment continues throughout the day. For more information, write Mrs. Kay Tschirhart, Chamber of Commerce, Box 572, Castroville 78009.

Yucca and Yellow Bee



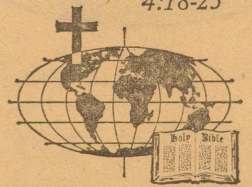
Something wonderful happened yesterday.

I was walking in Grandma's garden, feeling a great sadness that she would never again walk there with me. Her favorite flower, the creamy-blossomed yucca, stood out delicately against the blue sky, breaking my heart with its loveliness. A yellow bee trembled over it a moment, then settled on a pearly petal. Bright-hued blossoms waved in the gentle breeze, pond ripples sparkled in the sun, and for one golden instant, I felt her presence. A prayer she'd taught me years ago came to my lips, "Grant me, God, eyes of the Spirit to see, in the beauty of Your world, reflections of infinity."

I thought of how clearly Grandma had seen God's goodness. Her love of God and devotion to His Church had shone in everything she said and did.

Because of her devotion I too felt God's love all about me. I knew then and there that I would never be lonely again with the Church to sustain and guide me.

Sunday
Romans
8:1-13
Monday
Romans
8:18-25
Tuesday
I Peter
4:12-19
Wednesday
Galatians
2:15-21
Thursday
John
4:10-19
Friday
Hosea
6:3-6
Saturday
Romans
4:18-25



Scriptures Selected By The American Bible Society

Copyright 1974 Keister Advertising Service, Inc., Strasburg, Virginia

Eldorado Churches Welcome You

First Presbyterian Church
7 North Cottonwood

Gordon F. Garlington, Jr., Pastor
Sunday School 9:45 A. M.
Morning Worship 11:00 A. M.
Union Youth Fellowship 6:00 P. M.
Joint Methodist & Presbyterian
Evening Service 7:00 P. M.

West Side Church Of Christ
Divide Street
Morning Service 10:30 A. M.
Evening Service 6:00 P. M.
Wed. Evening Service 8:00 P. M.

First Baptist Church
Gene Stark, Pastor
W. Gillis Ave.
Sunday School 9:45 A. M.
Morning Worship 11:00 A. M.
Union Youth Fel. 6:00 P. M.
Church Training 6:00 P. M.
Evening Worship 7:00 P. M.
Sunday Evening Choir
Practice 7:45 P. M.
Wed. Prayer Service 8:00 P. M.

First Christian Church
Allen Hurt, Layman
Sunday School 9:45 A. M.
Morning Worship 10:45 A. M.

First United Methodist Church
Thom Elliott, Pastor
109 N. Divide
Sunday School 9:45 A. M.
Morning Worship 10:45 A. M.
Union Youth Fel. 6:00 P. M.
Joint Methodist & Presbyterian
Evening Service 7:00 P. M.
Wednesday Evening Choir
Practice 8:00 P. M.

United Pentecostal Church
Warner and Hackberry
Walter L. Ford, Pastor
Sunday School 10:00 A. M.
Morning Worship 11:00 A. M.
Evening Worship 7:00 P. M.
Services on Tuesday and Thursday evenings at 7:30.

Church Of Christ—Mertzon Hwy.
Silas Triplett, Minister

Classes 10:00 A. M.
Morning Worship 11:00 A. M.
Evening Worship 6:00 P. M.
Wednesday Service 7:30 P. M.
Dinner on the Ground Each
First Sunday

Gethsemane Assembly of God Mis.
Nick Robledo, Pastor
Sunday School 10:00 A. M.
Worship Service Friday, 7:30 P. M.

Antioch Baptist Church
Billy Daniels, Pastor
Callender & Mulberry
Sunday School 10:00 A. M.
Morning Worship 11:00 A. M.

First Baptist Mexican Mission
El Paso St. & Concho Ave.
Sunday School 10:00 A. M.
Sunday Services 11:00 A. M.
Sunda Night Services 7:00 P. M.
Wednesday Services 7:30 P. M.

St. Luke Missionary Bapt. Church
East Street
Rev. Willie Jones, Pastor
Sunday School 9:45 A. M.
Worship Service on First and
Third Sundays of each month at
11:00 A. M. and 4:00 P. M.

Our Lady Of Guadalupe Catholic
Highway 277 North
New time for Sunday Mass is
9:00 a.m.
Wednesday Mass 7:30.

St. Mary's Episcopal Church
McWhorter Ave. and Pelt Street
The Rev. Lea Roy Aldwell, Rector
Sunday Morning Worship: 10:00

Primitive Baptist Church
Menard Highway
Hugh Montgomery, Pastor
Service each 2nd Sunday at 10:30
a.m. and 2:00 p.m. Also on Satur-
day evening before at 7:00 p.m.
Congregational Singing.

These religious messages are sponsored by the following interested Schleicher business firms:

FOREMOST — FINEST DAIRY PRODUCTS

Elmer Garlitz—Indep. Distributor

THE ELDORADO SUCCESS

Printing—Advertising—News

SOUTHWEST TEXAS ELECTRIC CO-OP.

Inc. — Owned By Those It Serves

KENT'S AUTOMOTIVE & GARAGE

Phone 853-2733—No. Angelo Hwy.

EL DORADO RESTAURANT

Jerrold Sanders — Prop.

JERRY'S RADIO & T-V SERVICE

Jerry Jones — Phone 2814

CECIL WESTERMAN DRUG STORE

In The Page Building On S. Main Street

THIS ADV. SPACE FOR SALE

Call The Success: 2600

DAVIS FINA SERVICE — FIRESTONE

Hugh Wyland — Phone 853-2872

DIVIDE CABLE CORPORATION

Selma Dickson—Eldorado & Sonora

FOOD SAVINGS by the BAGFUL

Pearl Drops
TOOTH POLISH
 Reg. \$1.59
 2.75 Oz. **1.39**

Moisturelle
LATHERING
CLEANSER
 Reg. \$1.19
 6 Oz. **99c**



Confident
Denture
ADHESIVE
CREAM
 Reg. 98c
 1.40 Oz. **79c**

Clairel
Balsam 2
CONDITIONER &
CREME RINSE
 Reg. \$1.59
 8 Oz. **1.39**



GANDY'S 5 QT. BUCKET
Ice Cream 2.19

KOLD KOUNTRY 10 OUNCE
Whip Topping 49c

KOLD KOUNTRY BRUSSELS 10 OUNCE
Sprouts 39c

California
 Ice Berg
LETTUCE

19c
 Lb.

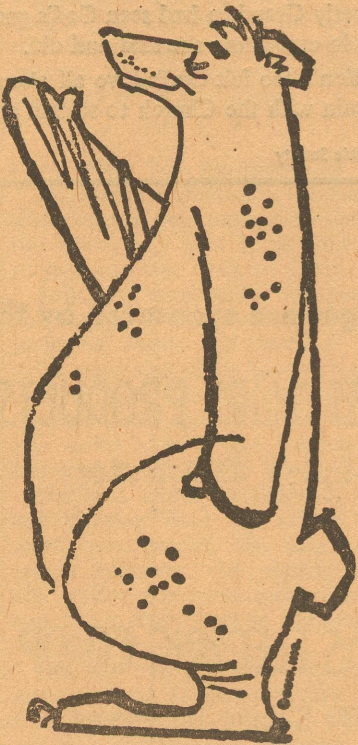


KOLD KOUNTRY FRENCH FRIED
Potatoes 69c

SARA LEE APPLE OR CHERRY
Fruit Pies 1.59

KOLD KOUNTRY 10 OUNCE
Mix-Vegetables 35c

KOUNTRY FRESH 32 OUNCE
Fruit Drinks 35c



Chiquita
BANANAS
 Large Golden
 Fruit, Lb. **19c**

New Crop
RUSSET POTATOES
 10-Lb.
 Bag **79c**

MARYLAND CLUB 1 LB. CAN
Coffee Limit One 98c

FRENCH'S 4 OUNCE
Black Pepper 49c

DIAMOND PURE—Limit One 3 LB. CAN
Shortening 1.39

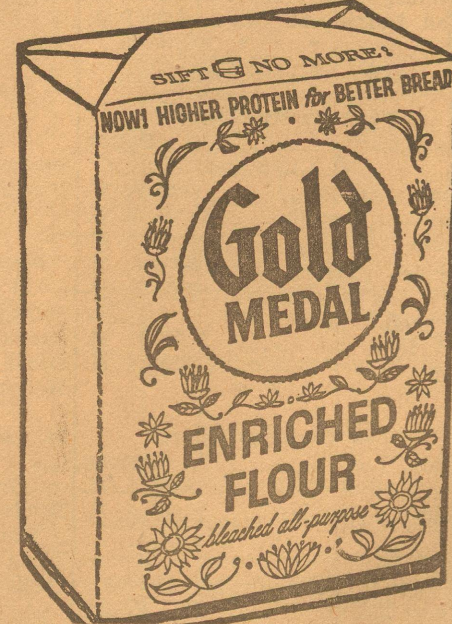
KIM TALL CANS
Dog Food 3 FOR 39c



GOLD MEDAL— 5-LB. BAG
Flour Limit One 89c

KIM—Limit One GIANT BOX
Detergent 59c

PICKLE BARREL 32 OUNCE
Pickles 69c



SPECIALS Good Thursday, Friday & Saturday
Parker Foods, Inc.

PORK	POUND	BEEF	POUND
SPARE	79c	SHORT	49c
RIBS		RIBS	

We give S.A. GREEN STAMPS