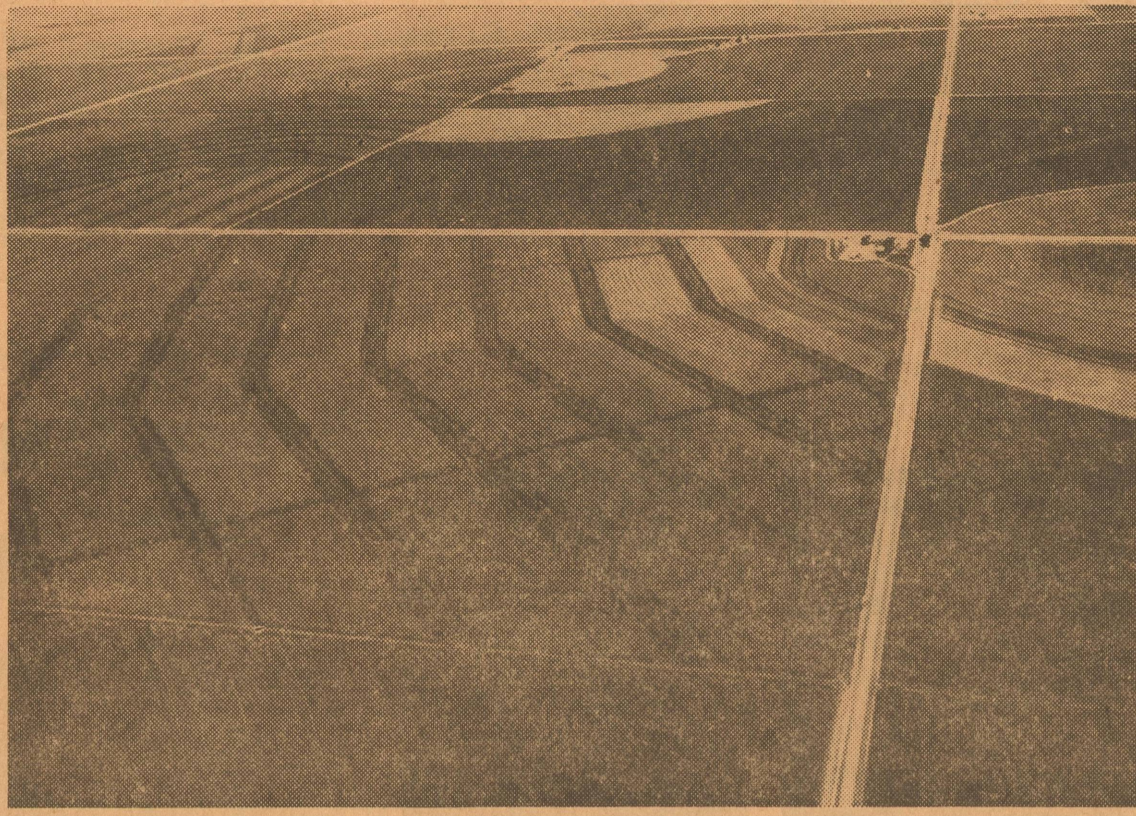




Fountain Time At
ELDORADO DRUG

- Cosmetics
- Perfumes
- Costume Jewelry
- Drug Supplies
- Magazines
- Electrical Gifts
- King's Chocolates
- Cameras
- Suntan Lotions
- Greeting Cards
- Stock Remedies

Where Friends meet for cool, refreshing fountain drinks and ice cream treats!



Voy Lee Butts.....Chairman
Clay F. Atkins.....Vice-Chairman
J. C. Bumgardner.....Secretary
Walter C. Pope III.....Member
Otis Deal.....Member

Level parallel terraces are being constructed on cropland throughout America. These popular terraces without any point rows, have become the first choice of farmers in Soil and Water Conservation Districts in America.

Most all terraces constructed in the Eldorado-Divide S&WCD, in recent years have been parallel. "Point rows have always been one of the main objections of most farmers, caused by the conventional level terrace system. Point rows in parallel terrace systems are almost completely eliminated," states Lloyd B. Johnson of the Soil Conservation Service.

The purpose of terraces on cropland in Schleicher County has been to conserve water received from rainfall. With water conservation being the main reason for terraces, nearly all terraces were constructed on the water level. Very few terraces on cropland were constructed with a grade whereby the water ran out one or both ends of the terraces. Terraces that were inadvertently constructed with a grade have been torn down and level terraces constructed.

The benefits received from level terraces that are not parallel should not be minimized. Water held by these terraces would total many acre feet of water that would have otherwise been lost from cropland and crop use. Rainfall received is hardly ever more than is needed to produce good crops. Also, rainfall is not always received at the time it is needed. Terraces hold the water on the land when it does rain and thereby helps to meet the moisture needs of crops in dry periods.

The introduction of parallel ter-

aces has caused terrace construction to speed up in most soil and water conservation district. However, many miles of terraces remain to be constructed before the maximum amount of soil and water is conserved. The decision and choice of conserving needed water and soil for good crop production is made by the owners and operators of the land. Assistance in planning, design, layout and checking for completion is available from the Soil Conservation Service. Cost share assistance is available through the Great Plains Conservation Program.

Parallel terraces save water for crop use along with many other advantages to farmers. Row crop equipment with an even multiple of eveal rows can be used. Double planting with drills or row planters in point row area is eliminated. Crops destroyed by point rows and rows used to turn on are reduced or completely eliminated. Acres planted are easier to calculate in a parallel terrace system.

Rainfall received in Schleicher county is hardly ever more than is needed for good crop yields. Therefore, it is always unwise to allow water to be lost by run-off. The only way the maximum amount of rainfall received can be held on the land, is by applying and maintaining all needed conservation practices. Terraces are nearly always one of the needed practices in Schleicher county.



Cooperation Can Aid Rural Waste Disposal

College Station, Tex.—A little cooperation between rural communities can lower costs and improve the quality of an age old problem—garbage collection and disposal.

According to J. Patrick Hall and Dr. Lonnie Jones, two economists with the Texas Agricultural Experiment Station, rural communities, where possible, should share the costs of solid waste disposal because of the added benefits.

Most of the disposal methods used by smaller towns in Texas do not meet the minimum legal requirements laid down by recent laws. Improving the disposal system would raise the costs unreasonably, perhaps as high as \$15 per person annually.

But by getting together, rural communities could afford to keep

Kent's Automotive
712 N. Divide Phone 853-2733
COMPLETE AUTO REPAIR
NAME BRAND PARTS
Including
DELCO, MOTORCRAFT & AC
SAFETY INSPECTION STATION

Support Better Scouting

Buy
GIRL SCOUT COOKIES

their charges for the services down and still offer good and legal garbage disposal. Costs of the improved system would be spread over the larger population of the combined communities and mean less cost per person.

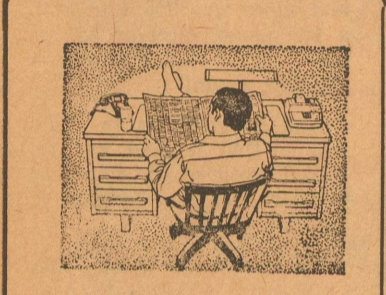
These multi-community systems would face certain costs such as increased transportation and building rural collection containers or transfer stations, but these would be more than offset by the economies and efficiencies in serving the larger population.

Typical costs for a community with a population between 1,500 and 3,000 may run as high as \$15

a year per person. By several of these smaller communities cooperating until their combined population reached about 9,000, costs would be lowered to about \$8. An actual average cost for Texas communities between 6,000-7,000 population was \$9.32 per person each year.

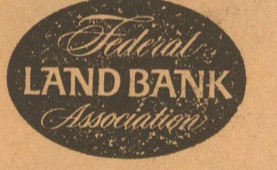
In addition to lower costs to the taxpayer, improved service quality also results as the additional revenue allows the operation to expand.

Hall is a research assistant and Jones an assistant professor in the Department of Agricultural Economics and Rural Sociology at Texas A&M University.



Is now the time to buy land?

Acquiring that farm might seem more practical with financing through the Federal Land Bank. Land is easier to pay off when costs are amortized over extra years with a long-term Land Bank Loan. Your total cost of borrowing, too, can be less. Ask us for help: We know land values; we will inspect the property. We will then try to make a loan that meets your exact needs.



A. E. PRUGEL, MANAGER
Federal Land Bank Association of Sonora
Telephone 387-2777



No Need For Advertising?

—Preachers don't preach just once a year even though people are against sin.

—Teachers review lessons. They know that children do forget and often have to be told more than once.

—Highway patrolmen drive up and down the highways, and caution drivers although motorists know the law and should obey.

—Mail order firms continue to send out catalogues.

—Not all of us know what is sold in stores in the home town, and we need to be invited continually to trade in your place of business.

—The Notre Dame cathedral has stood for centuries, but still they ring the bell every day.

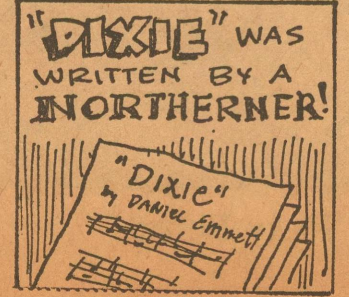
—If you're one of those who believe in continuous and profitable advertising, you'll want to use the columns of the

Eldorado Success
Phone 2600

Try Our Complete Service For Your Car Or Truck

Washing, Greasing, Goodyear and Firestone Tires, Continental and Firestone Batteries. Stamps Given on credit card and cash sales, and Open Accounts paid by the 10th.

MITTEL TEXACO SERVICE
GAIL MITTEL PHONE 2939 OR 2488



News & Advertising Copy Deadlines:

MONDAY of Each Week: Please turn in contributed columns, club reports for preceding week end, society and personal news, etc.
TUESDAY Morning: More General News.
TUESDAY Afternoon, Late: Only news items of real significance such as deaths can be accepted.

IN GENERAL: Please Turn in News and Ad Copy As Early In The Week As Possible.

THE ELDORADO SUCCESS
PRINTING—ADVERTISING—NEWS —SINCE 1901

FIVE ERRORS

No. 1

A MAN—

Struck a match to see
if the gasoline tank of
his automobile was empty . . .
IT WASN'T

No. 2

A MAN—

Patted a strange bulldog
on the head to see if it
was affectionate . . .
IT WASN'T

No. 3

A MAN—

Speeded up to see if he
could beat a train to
the crossing . . .
HE COULDN'T

No. 4

A MAN—

Tried to repair a high
tension electric line
with his bare hands . . .
HE COULDN'T

No. 5

A MAN—

Cut out advertising
to see if he could
save money . . .
HE DIDN'T

The Eldorado Success

Phone 853-2600

FOOD SAVINGS by the BAGFUL

Kountry Fresh
POTATO CHIPS
Big 10-Oz. Bag **49¢**

Sunbeam SANDWICH COOKIES
Assorted 22-Oz. Bag **59¢**

KIMBELL'S 8-OZ. CAN
Bean Dip **25¢**



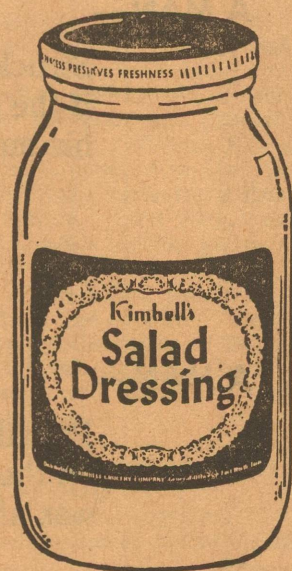
Elam's 100% Whole Wheat FLOUR
2-Lb. Box **89¢**

Elam's 100% Whole Rye FLOUR
2-Lb. Box **98¢**

STONE GROUND 2-LB. BAG
Meal **49¢**



Texas Grown Cabbage
Firm Green Heads **10¢** Lb.

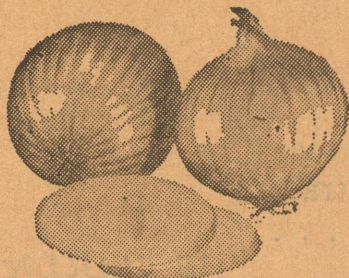


KIMBELL'S — Limit One
Salad Dressing **39¢** QUART

DIAMOND PURE—Limit One
Shortening **59¢** 3-LB. CAN

FOR FRYING OR BAKING
Wesson Oil **59¢** 24-OZ. BOTTLE

TEXAS POUND
Yellow Onions **15¢**



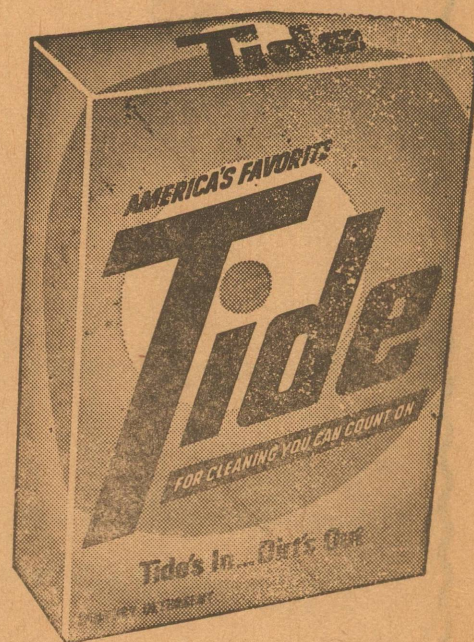
CALIFORNIA 70'S SIZE
Avocados **2 FOR 49¢**

LAUNDRY DETERGENT
TIDE With \$5.00 Purchase Excluding Cigarettes **69¢** GIANT BOX

KALEX BLEACH **29¢** HALF GALLON

LIQUID CLEANER
Mr. Clean **99¢** KING SIZE

ALL PURPOSE LIMIT ONE
Kimbell Flour **39¢** 5 LB. BAG



TEXAS 1-LB. CELLO
Carrots **15¢**

CRISP RED 6-OZ. BAG
Radishes **10¢**

RUBY RED TEXAS 5-LB. BAG
Grapefruit **59¢**

TEXAS JUICE 5-LB. BAG
Oranges **49¢**

CAMPBELL'S REG. CAN
Chicken Noodle Soup **2 FOR 29¢**

KIMBELL'S 303 CAN
Golden Corn **19¢**

DEL MONTE 14-OZ. BOTTLE
Tomato Catsup **4 FOR \$1**

KIMBELL'S 12" X 25' ROLL
Aluminum Foil **25¢**

KLEENEX JUMBO ROLL
Kitchen Towels **3 FOR \$1**

FACIAL TISSUES 200 COUNT
Kleenex **29¢**

WHOLE SUN 6-OZ. CAN
ORANGE JUICE **19¢**

KOUNTRY FRESH 1-LB. TUBS
MARGARINE **\$1** 3 FOR

Parker Foods, Inc.

We give *S.N.* GREEN STAMPS